

Dentistry at Half Price

An cutting prices seems to be in vogue, without in the slightest cutting the quality. We are going to do all regular dentistry at half usual prices for Class A work.



Actual Bridge and Alveolar Work on Models, Showing No Gold Crowns. Bridge work, \$5 per tooth. Gold and porcelain crowns and fillings, \$5 each. Silver fillings, \$3 up. Whitest we make good plates from \$15 each up. We are featuring our former \$100 genuine India plate at \$15, and a \$125 fish colored plate at \$60. All Tru-bite teeth. A perfect fit guaranteed for no charge. (Cheap rubber plates are dangerous and profitless, hence you do not make them.) They are unsanitary, porous, smelly and poisonous. Cheap rubber plates containing half ounce of mercury and colored with mercury salts. Both are poisonous. Rubbing the throat, rubber-plate diarrhoea, etc. stomach irritation and cyanide of sulphur poison are becoming well known to the medical and dental profession.

ON ALVEOLAR WORK

There will be no reduction. It costs double the cost of bridge work to make and in most cases worth double. It is a positive success in cases where bridge work is absolutely impossible and in all cases where bridge work is possible. In the latter it is merely a question of which is the better. If you have two or more good teeth or roots, one or more on each side, all your missing teeth can be satisfactorily replaced. The work is beautiful, durable, comfortable and natural in look. You do not have to be without teeth, waiting for the gums to heal and work to be made. Your defective teeth are not extracted until the work is finished, ready to immediately fasten in the mouth. The new teeth fit in the freshly extracted sockets without pain or danger. They become solid and look exactly like they grew there. Frank's more. Many patients have had jaw expression caused by reading gums and sunken cheeks. We have made about 1,000 cases in these offices in the past 17 years, and the work has given general satisfaction.

ALVEOLAR DENTISTS

204 Haight Bldg., Second and Pine

WILBUR FAVORS PLANS

NAVAL SECRETARY WILL BE HONORED IN NORTHWEST.

Public Luncheon in Hippodrome Will Be Among Leading Features on Itinerary.

Secretary of the Navy Curtis D. Wilbur has approved his itinerary in Seattle and the Northwest, the Seattle Chamber of Commerce was advised yesterday by Rear Admiral T. A. Hoogewerf, commandant of the 13th Naval District. The secretary will arrive in Seattle Friday, August 29. With this announcement, plans for Secretary Wilbur's reception here on his first official visit to Seattle and Puget Sound took new impetus. A public luncheon in the Hippodrome Friday noon, August 29, will be the central feature of Seattle's greeting to the head of the United States Navy Department.

Tickets for the public luncheon, which is being given under auspices of the Seattle Chamber of Commerce, are limited to 1,200 and are on sale at the Tourist Information Bureau of the Chamber of Commerce, 702 Third Ave. They also will be sold at meetings of service and business clubs this week.

Secretary Wilbur's itinerary in the Northwest follows: Friday, August 29—8:30 a. m.—Arrives in Seattle. Met at railway station by the Chamber of Commerce, civic and naval officials. Guest of City of Seattle in New Washington Hotel. 9 a. m.—Party to accompany Secretary Wilbur to Sand Point Aviation Field assembly at New Washington Hotel. 9:15 a. m.—Leaves Washington Hotel for Sand Point inspection. 12 noon to 1:30 p. m.—Official luncheon at Hippodrome. 3 to 4:30 p. m.—Automobile tour around Seattle. 6 to 8 p. m.—Guest of Plymouth Congregational Church. 9 p. m.—Leaves Seattle for Bremerton. Saturday, August 30—8:30 a. m.—Official reception for Secretary Wilbur at Navy Yard, followed by installation. 11:45 a. m.—Short address to Navy Yard employees. 12 noon—Dedication of addition to Navy Y. M. C. A., Bremerton. 12:15 p. m.—Chamber of Commerce luncheon. Bremerton. 1:30 p. m.—Inspection of Key-Port Torpedo Station, Ammunition Depot and Kitsap Lake Camp. 7 p. m.—Dinner at commandant's residence, Navy Yard. 8:30 p. m.—Reception at Officers' Club. Sunday, August 31—Rest. The secretary will return to California aboard the flagship California at daybreak Monday morning.

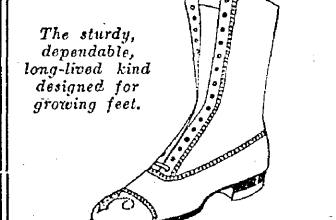
PLEADS NOT GUILTY IN ALIEN LAND LAW CASE

Thomas Chapman of Kent pleaded not guilty to a charge of violating the alien land law by assisting T. Tomlnaka to reap the profits from twenty acres of garden land, before Superior Judge A. W. Frater yesterday. Chapman, a few minutes previously, filed a bond to guarantee his appearance for trial. County Commissioner Frank H. Paul and Frank Terrace, good roads advocate and White River Valley pioneer, signed Chapman's bond.

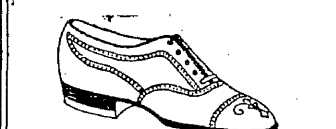
Back to School

And the most important matter of all is what the children shall wear so that they may look well and start feeling well clad! The Bon Marche for years has studied carefully the needs of this back-to-school time, and this year, more than ever, we are thoroughly ready. Dependable, suitable, serviceable and correctly styled—that's the children's wear you'll find here. And you'll find it at savings!

Now for School Shoes!

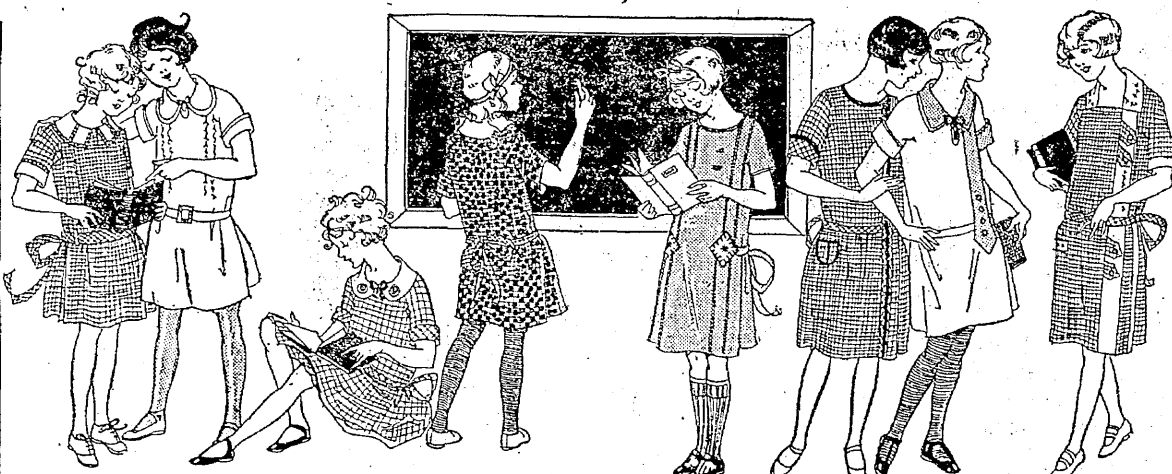


Growing Girls' High Lace Shoes \$4.95 Black or brown calf with Goodyear welt-sewed soles of oak leather. On semi-round toe lasts, with school heels and rubber top lifts. Sizes 2 1/2 to 7.



Growing Girls' Calf Oxfords \$4.45 Black or brown calf with Goodyear welt-sewed soles and rubber heels. Made on semi-English lasts. Sizes 2 1/2 to 7.

Boys' Oxfords and High Shoes. Brown or black calf, with Goodyear welt-sewed oak leather soles. Built on Munson Army, Haight, or semi-high-toe lasts. Rubber heels, and in Blucher or straight lace styles. Sizes 9 to 13 1/2, \$3.50. Sizes 1 to 2, \$4.00. Sizes 2 1/2 to 6, \$4.50. Sizes 6 to 11, for big boys, \$3.00. Third Floor, The Bon Marche.



She'll Go Merrily in One of These Truly Unusual Gingham Frocks

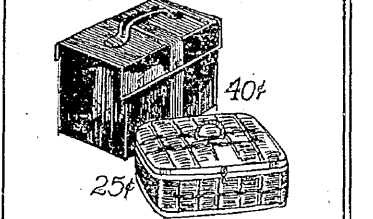
An Eastern designer, alert to needs of school girls, made up specially for them distinctive dresses of Soft Scotch Ginghams. Our buyer recognized a superlative value—and we price them close to cost! Here they are, ready for your choosing.

GAY checks and plaids—all made with attention to detail, in workmanship and trimmings. Panty dresses in the group. ALSO some tailored frocks of colorful linette. This lot features all the dainty bright shades girls love—and come in sizes 6 to 14.

Coats for School \$12.95 Both Smart and Serviceable! IMPORTED, stripes and overplaided polars—many fur trimmed, and others finished with scarfs and rows of buttons. In shades of rose, green, tan and gray. For girls, sizes 6 to 14. Girls' Wear, Second Floor, The Bon Marche.

School Frocks \$5.95 For Cooler Days VELVETEENS, French Serges and Flannels—ornamented with hand embroidery, clever applique in colorful patches and trim little rows of buttons. In wanted shades of gray, tan, green, rose, navy, brown and blue. Sizes 6 to 14.

School Lunch Carriers



Colored Lunch Baskets, bamboo bound, 10c. Large Lunch Baskets, bamboo bound, 25c. All Bamboo Lunch Baskets, very strong, 25c. "Gilmans" Folding Lunch Boxes, 80c. Heavy Japanned tin Lunch Boxes, 40c. "Universal" Lunch Boxes, with vacuum bottle and tin containers, \$3.00. Union Street Basement, The Bon Marche.



15-Inch \$1.50 School or Utility Bags Reduced to 75c Made of embossed leather—roomy and stoutly built for lugging books to school or for shopping. Finished with lock and latches, and buckled straps. In brown, mahogany and black. Fourth Floor, The Bon Marche.

There's Service in Bon Marche Suits! And for "Back to School" We Specialize on

A Two-Knicker Suit at \$12.50 Wool suitings or corduroys, tailored carefully to our own specifications. Good looking styles. Shades of gray, tan, brown, green and blue. Sizes 7 to 18. Other School and Dress-Up Suits, \$9.85, \$15.00, \$18.50 and \$22.50.

STAND-WEAR All-Wool Sweaters \$5.95 The name tells the story. Built from all-wool yarn—to our own specifications—and will surely stand the wear. In middy style with double elbow and notched collar. Heather colors, with stripings in school colors. Other Middy Sweaters in school colors, \$5.45 to \$8.45. Boys' New School Caps at \$1.45 One-piece top, with unbreakable visor. In pretty materials. Sizes 6 1/2 to 7 1/2. Other styles, \$1.25 to \$2.50. Main Floor, The Bon Marche.

Silks Bengaline and Faille In Autumn Frocks

Weaves that are much wanted for Fall, and at the same time within the reach of all. Here they are: 36-Inch All-Silk La Jersey 98c Very serviceable—suitable for lingerie and shirting—in shades of tan, sky gray and white. 36-Inch Tubular Rayon Vesting 79c Fine quality easily made up—in shades of orchid, peach, pink and white. 40-Inch Crepe de Chine 75c Popular colors—street and evening shades. 40-Inch Black Charmeuse \$1.85 Fine quality jet black Charmeuse Satin. 36-Inch Novelty Rayon \$1.45 Much wanted for early Fall dresses—fine quality in rose, tan, blue, orchid, powder and gray—as well as printed fabrics. 36-Inch Printed Crepe 79c Silk mixture in new designs and colors—favorite color mixtures to select from, including gray, green, brown, tan, wine, black, light and dark blue, with contrasting design. 38-Inch Brocaded Alpaca \$1.25 Very lovely and lustrous in checks, plaids and conventional designs—shades of cocoa, navy, tan, beige, brown, honeydew, jade, Copenhagen, sky, gray and Bermuda pink. 40-Inch Gros de Londre Silk \$1.95 All silk material. In shades of cocoa, midnight, navy, orchid, African gray and tan. 40-Inch Satin Canton \$2.45 Fine quality—in popular colors—white and black. 40-Inch Sport Satins \$1.45 Is much used for early Fall. In shades of navy, gray, tan, rose, canary, white and black. 36-Inch Printed Radium 89c All-silk fabric—popular and serviceable. Delightful color mixtures in Persian and conventional. Third Floor, The Bon Marche.



Back to School In Correct Hats for Fall! Exceptional Values, \$2.25

FELTS—in straight and droop pokes, and winning off-face styles. Trimmed with braid, ribbon, applique and metal buttons. In black, tan, blues, greens, russets and all the newer tones. Banded Felt Hats, \$2.95 Darling Velour Hats to withstand the rains, \$3.95 Third Floor, The Bon Marche.

Cottons

For school and Autumn, here are fabrics that many Seattle women are wanting. For instance: Anderson's 36-Inch Suiting 35c 2,000 yards, in plain colors of green, brown, navy, yellow and orange. Lengths to 20 yards. 36-Inch Cotton Poplin Suiting 25c 2,300 yards Striped Poplin, solid grounds with neat hairline stripes, in light blue, tan and navy. Lengths to 20 yards. 32-Inch Fast Colored Ginghams 25c 2,000 yards, fine for school clothes. Good colors. Lengths to 20 yards. 36-Inch White Outing Flannel 20c 2,000 yards—fast colored, fine quality—in all good colors. Lengths to 20 yards. All-Linen Unbleached Crash 12 1-2c 1,500 yards—just the thing for kitchen use. Unbleached All-Linen Crash 18c 1,800 yards, heavy quality, 15 inches wide. 18x18-Inch Linen Napkins \$3.25 Dozen 100 dozen, pure linen, with floral patterns. Third Floor, The Bon Marche.

Winsome Loveliness!

A weekly visit in the comfortable confines of our BEAUTY SHOP will add that charm of person without which neither smart millinery nor chic attire can attain a becoming ensemble. Beauty Shop, Second Floor, The Bon Marche.

THE BON MARCHE BARGAIN BASEMENT

An Unusual Combination of Style and Economy SILK DRESSES —of the Better Kind

\$14.75 Sizes to 48 Charmette! Satin Back Canton! Canton and Flat Crepe!

There is an air of smartness and distinction about this group of charming little dresses. The dress you have been wishing for is here in a style to delight you, and temptingly priced, too. Yokes of contrasting colors; knotted silk fringes forming pointed waistline; self-colored buttons forming yokes; pin-tucked effects; full-length ruffles with button-trimmed lace insertion; charmingly matching neck, back, front, and cuffs and collars; ties, collars and cuffs in contrasting shades; coat styles with novelty buckles.

Nearly every kind of a dress you could imagine, in black, navy, cocoa, sand, oakwood. This New Shipment Will Solve Your Shoe Problem!

Women's Novelty PUMPS—BARGAINS

\$4.85 Sizes 3 to 7. Widths B, C and D Good Looking Black Patents, Satins, Kids and Suede Military and Spanish heels; good, flexible leather soles; colored kid sock linings; tailored one-straps; lattice and novelty cut-outs with elastic goods. Some with black kid trimmings.

The Bon Marche Pike St., Second Ave., Union St., Seattle.