

Seattle Japanese Indicted as Arms Plotters

MURDER OF K. C. WOMAN IS CHARGED TO BROTHER

George W. Welsh, 2nd, Held for Slaying Last March; Action Terminates Long Probe in Midwest Case

By Associated Press.

KANSAS CITY, Wednesday, Jan. 28.—George W. Welsh, 2nd, 28 years old, was indicted by a county grand jury today on a charge of slaying his pretty sister, Leila Adele Welsh, 24, in her bedroom last March.

The indictment—climaxing weeks of investigation—was drawn by the attorney-general's office at Jefferson City and returned to Circuit Judge Marion D. Waltner.

Welsh was summoned before the jury for questioning when he returned here from California for the Christmas holidays.

Soon after the slaying he had told officers he slept on a divan in the living room near his sister's bedroom the night of the murder.

The Welsh slaying has been one of Kansas City's most baffling mysteries. An abundance of clues led investigators through a maze of conflicting channels.

Mother Discovers Murder

It was shortly after 9 o'clock the morning of last March 9 that Mrs. Marie F. Welsh ran screaming from her home in a quiet South Side residential district to the home of a neighbor. There she told of finding her daughter slain in her bed. The girl had been beaten and slashed.

On the floor near the bed was a track chisel, a kind of hammer used by railroad men. A man's white shirt, later identified as one a neighbor had discarded near his garage, was found in the room.

In an open window of the girl's bedroom, half a pair of draperies lay on the sill, hanging partly outside. L. B. Reed, then chief of police, said the draperies had been deliberately placed there by the slayer.

Many Clues Checked

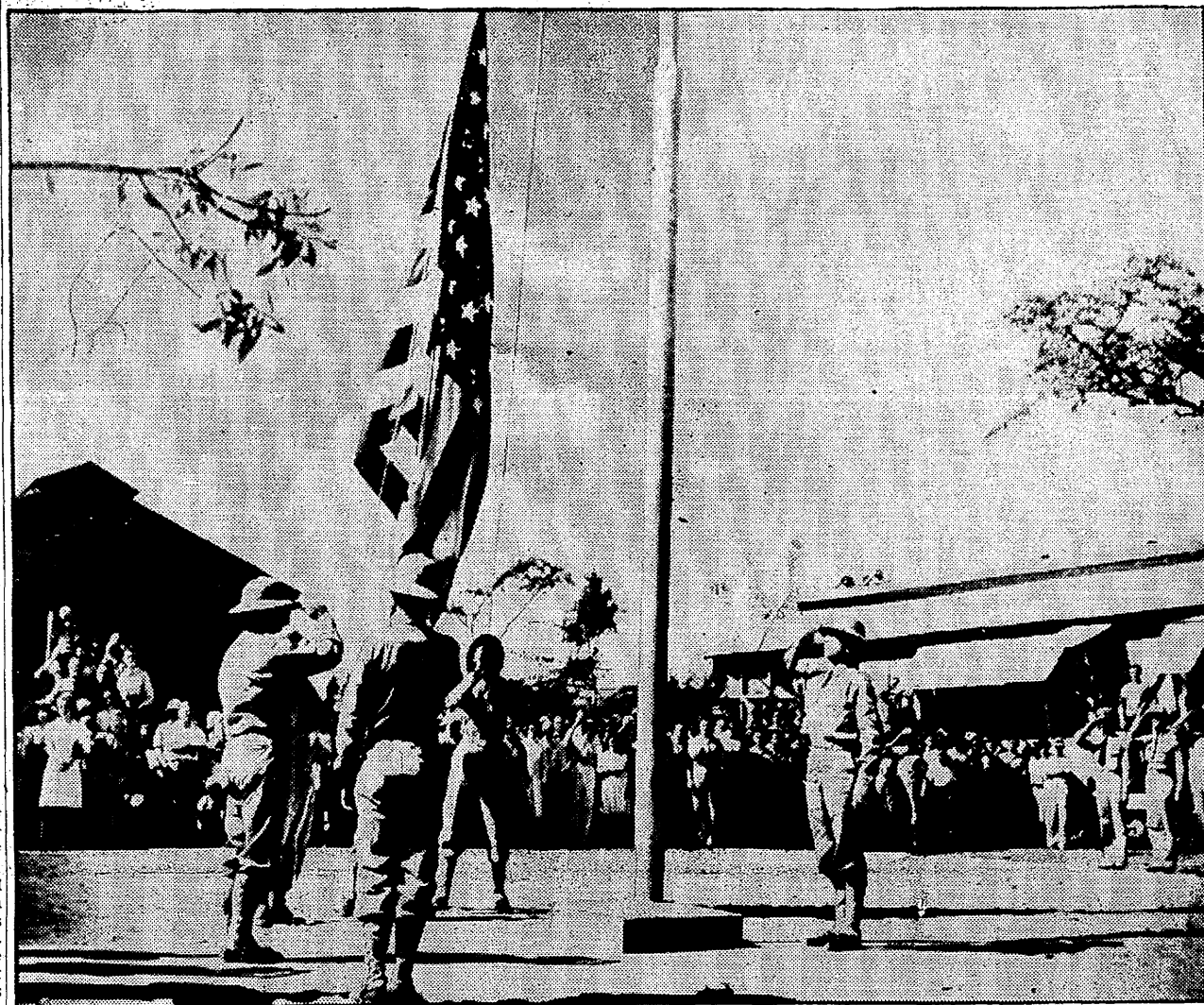
The mother told police that when she went to awaken her daughter for Sunday school she found a chair tilted against the inside of the bedroom door.

Myriad clues—cigarette butts, a butcher knife stuck nearly to the hilt in the earth outside of the bedroom window, footprints of what police believed to be a small man, bits of paper and string—were found. They were checked and rechecked.

Subsequent investigation dis-

(Continued on Page 9, Column 2.)

STARS AND STRIPES RAISED IN JAMAICA



AT JAMAICA BASE

The United States flag is raised over a United States Army base in

Jamaica, British West Indies. Lieut. Col. Robert G. Lovett (right), in charge of the base, salutes.—A. P. wirephoto.

34 DEAD IN COLORADO MINE BLAST

By Associated Press.

MOUNT HARRIS, Colo., Wednesday, Jan. 28.—Thirty-four miners perished in an explosion in the Victor American Fuel Company coal mine late last night. Only four men escaped alive.

Black damp, deadly carbon-dioxide gas, filled the shaft after the blast and impeded the work of rescue crews, unable to reach the victims for nearly six hours.

It was another six hours before the first bodies were brought out—

(Continued on Page 3, Column 2.)

Evacuation of North Singapore Ordered; Jap Transport Sunk

By Associated Press.

NEW YORK, Wednesday, Jan. 28.—The British radio, heard today by the Columbia Broadcasting System, reported that "25,000 to 30,000 Japanese are said to have been drowned already" in the United Nations' air and sea attacks on Japanese troop transports and warships in the Strait of Malacca.

By Associated Press.

Giant American four-motor bombers, smashing anew at a Japanese invasion armada in Macassar Strait, sank a big transport and straddled a cruiser with sticks of bombs, it was announced officially today. A direct hit was scored on the cruiser.

A War Department bulletin said a formation of eight United States Army bombers engaged in the attack, in which one of the bombers was lost.

The communique said there was relatively little ground fighting on the Bataan Peninsula in the Philippines but that the enemy had landed small numbers of reinforcements in the Subic Bay area.

Toll Raised to 36

RANGOON, Burma, Wednesday, Jan. 28.—(P)—Yankee volunteer flyers achieved another air-fighting miracle east of Rangoon today when in a daylight dogfight they destroyed six Japanese fighter planes by unofficial count, probably destroyed six more and damaged nine others of a disrupted formation of 37. The American fighters returned to their base without suffering any casualties. (For other details of Burma fighting see Page 9.)

SINGAPORE, Wednesday, Jan. 28.—(P)—Orders were issued today for the evacuation by noon Friday of all civilians and livestock from a strip one mile deep on the northern shore of Singapore Island which faces the Malayan mainland across the narrow Johore Strait.

The edict came as the fighting lines swayed about 50 miles above the water hurdle which the Japanese must cross in any land-based attempt to invade this British Pacific bastion.

The nearest enemy approach apparently was along the Malacca Strait, on the west coast of the

EXPORTERS AND AGENTS ARE ACCUSED BY U. S. JURY

Information Charges Conspiracy to Ship Military Equipment to Japan; Failure to Register Is Cited

By Associated Press.

WASHINGTON, Wednesday, Jan. 28.—Three Americans and three prominent Japanese were indicted today by a federal grand jury on charges of failing to register as agents of Japan despite the fact that for years they distributed books and pamphlets in behalf of the Nipponese. Those indicted were Ralph Townsend of Lake Geneva, Wis., a former consular agent in China; David Warren Ryder and Frederick Vincent Williams of San Francisco; Tsutomu Ohana, K. Takahashi and S. Tekeuchi, all of San Francisco.

(See Page 2 for details.)

Charles T. Takahashi and Edward Y. Osawa, American-born Japanese exporters of Seattle, were indicted today by a federal grand jury on charges of conspiring unlawfully to export military equipment and munitions to Japan.

Two other American-born Japanese, Thomas Shinao Masuda and Kenji Ito, Seattle attorneys, were indicted on charges of acting unlawfully as agents of Japan without having notified the State Department.

The indictment against Takahashi and Osawa named three other persons who, Gerald Shucklin, chief assistant United States attorney, said now are in Japan or China. They are M. Ikuta, Koh Kohno and M. H. Kiang.

The indictment accused Takahashi and Osawa of conspiring to furnish the Japanese army with three steel dismantled storage tanks and accessories. It said that the two Japanese, when applying for an export license, falsely declared the tanks were to be shipped to China.

\$25,000 Bonds Set

There are three counts to the indictment.

It was indicted on 24 counts and Masuda on 11 counts, charging that they acted unlawfully as agents of Japan on various dates. Each also was charged with aiding Japan by having possession and control over certain property and papers, which were not identified.

All four were arrested shortly after the bombing of Pearl Harbor and are in the county jail in lieu of \$25,000 bond each.

The indictment against Takahashi and Osawa also listed 22 overt acts, one of which said that Osawa left for Japan last March to effect the conspiracy. Other overt acts including the sending of correspondence and telegrams, some in code, to Takahashi by Osawa and the other defendants, now in the Orient.

The steel storage tanks, each valued at \$29,500 f. o. b. Seattle, were not sent, as their application to export them was rejected.

NAZI SALE OF WAR LOOT IN U. S. CHARGED

By Associated Press.

NEW YORK, Wednesday, Jan. 28.—The German High Command and their agents in New York City were accused in a federal indictment today of dumping plundered loot and spoils of war in United States markets, the proceeds to be used to finance propaganda work in North and South America.

A New York corporation, its president, and three other individuals were named in the conspiracy indictment.

Those indicted were the Pioneer Import Corporation; Werner von Clemm, its president, said by federal agents to be a cousin of the wife of German Foreign Minister Von Ribbentrop; Carl von Clemm, Werner's twin brother, said by authorities to be a German emissary in Italy; Ernest Cremer, manager of the Diamond Control Office, a regulative body established by the Nazis in the Low Countries following their occupation, and Carlos

Smooth as Satin