

22 Japanese Are Employed At University

Twenty-two Japanese are employed at the University of Washington, but University officials said today there have been no protests against the presence of the 22 on the campus, although citizens have urged their removal at other institutions.

The University's 1,700 faculty members, clerical workers, buildings and grounds workers and other employees, are American-born. Six of the 22 are on the teaching staff, but only one is a faculty member, according to technical classification.

Henry F. Tatsuma, an American veteran of the First World War, is an assistant professor in the Far East Department at the University. Five other Japanese are teaching fellows. The rest are clerks, employed either full time or part time in various departments of the institution.

Sweden has an area of 172,032 square miles.

Southwest Artists To Exhibit at College

The Third Annual Exhibition for Artists of Southwest Washington will be held in the College of Puget Sound at Tacoma, April 19 to May 3. The Tacoma Art Association will appoint the jury of selection and awards. Oil and watercolor paintings and sculpture will be exhibited in three divisions.

Holiday Is Ignored By Astoria Workers

ASTORIA, Or., Feb. 27.—While 17,000 Pacific Coast defense workers were off the job Monday because they could not get double time, the 165 workers at the Astoria Marine Construction Company, engaged on naval contracts, were working at straight time.

Parachute Fouled, Flyer Falls to Death

MERIDIAN, Miss., Feb. 27.—Fouling his parachute on his plane after bailing out here yesterday, Second Lieut. W. J. McGowan of Alhambra, Calif., fell to his death just north of the Meridian Air Base, where he was stationed.

Greek Air Units To Fight With British

LONDON, Feb. 27.—(AP)—Units of the Royal Hellenic Air Force, equipped with Hurricane fighters, will be in action with British Imperial forces in the Eastern Mediterranean in the near future, it was announced today.

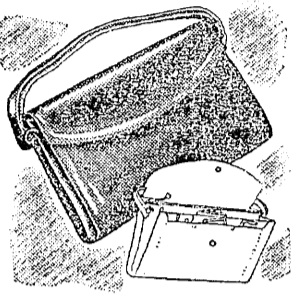
'Gents' Fill Seats; Blood Donor Faints

CHICAGO, Feb. 27.—(AP)—With men seated all about her, Miss Rose Doble stood hanging to a strap for about 20 minutes in a crowded street car before she collapsed.

The only railway line in Mauritius is owned by the government and now has 51 steam locomotives, 172 passenger cars and 744 freight cars.

Helps You Overcome FALSE TEETH Looseness and Worry
No longer be annoyed or feel ill at ease because of loose, wobbly false teeth. FASTEETH, an improved alkaline (non-acid) powder sprinkled on your plates holds them firmer so they feel more comfortable. Soothing and cooling to gums made sore by excessive acid mouth. Avoid sunbarrasment caused by loose plates. Get FASTEETH today at any drug store. (ADV.)

GET SEARS QUALITY... SEARS SAVINGS AND SATISFACTION... NOW, AS ALWAYS



Spring Collection HANDBAGS
Fabric and some simulated leather bags. Squashy pouch styles and trim. Tailored styles. Some zippers. **1.00**



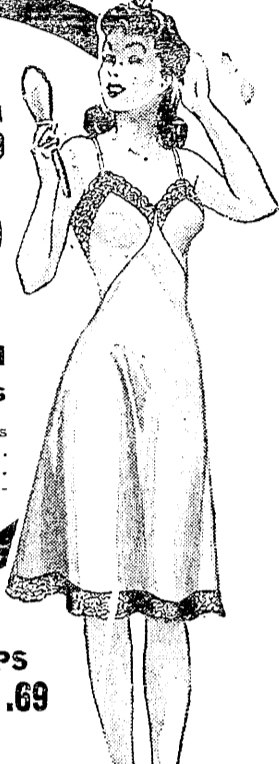
Accessory Accents New GLOVES
Tailored and dressier styles with novelty trims. Assorted colors, in soft versatile fabrics. 6 to 8 1/2. **79c**



White for Spring NECKWEAR
Feminine frills and smoothly tailored neckline trimming to snap you into Spring! Fresh, new look for dark dresses. (At First Ave. and Ross. Stores Only) **49c**



Charmode-Francine SLIPS 1.29
Tailored, Gored Novelty Trims
Four-gore cut on the bias with rip-proof seams... embroidered and lace trims... tailored rayon satin. Full-cut sizes. 32 to 40.

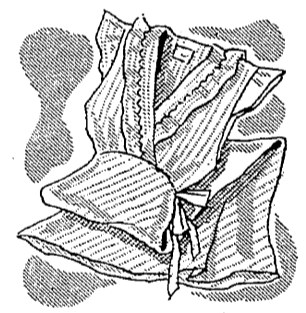


Women's RAYON SLIPS
Slim-Fitting, Well-Cut Rayon satin or crepe in a four-gore princess style with shaped lace top. Sizes 32 to 44. **1.69**

4-Star Jamarete COTTON PAJAMAS 1.49
Double Stitched



For Sleeping Comfort
Man-tailored at a man's shirt house with full, comfortable cut! Multi-striped cotton broadcloth. Full cut sizes—34 to 40.



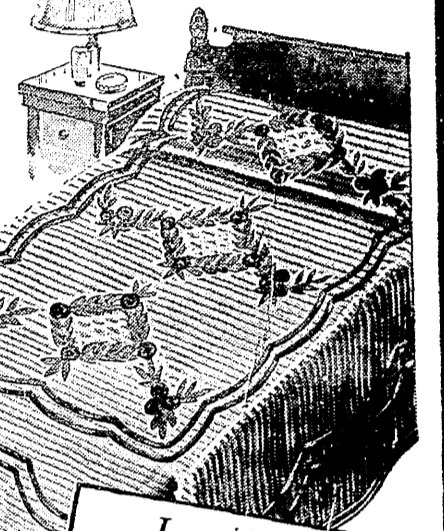
RAYON GOWNS 1.69
Prints and plain colors, tailored and lace-trimmed in rayon crepe and satin. 34-44.

Luxury At a Little Price CHENILLE BEDSPREADS

In New Designs 6.98
Thick, velvety chenille in scroll pattern in close-harmony colors, dark blue on blue and others. Garland pattern with white ground... flower wreaths and bow-knots in pastel shades.

CHENILLE BEDSPREADS 3.98
Posy design on a white background with pink pastel flowers. Blouses with roses, blue, peach or green grounds and brighter trims.

CHENILLE BEDSPREADS 5.49
Solid color pastel "Carnoo" pattern. "Sage" on white grounds with flowers in color. "Spartan" has darker grounds.



Laundierite SHEETS 1.19
SIZE 81x99
Balanced weave for balanced wear. Constructed to stay smoothly uniform and firm through many washings. Long-wearing. **LAUNDIERITE CASES 29c**
Same famous quality keeps these cases smooth and firm to the touch for years. **Super-durable Guest Chamber Sheets 1.53**
4 1/2" muslin wide wide weaves with selvages and 3-inch hems 81x99. **Cases to Match Hand-torn in 42x36-inch sizes. 37c**

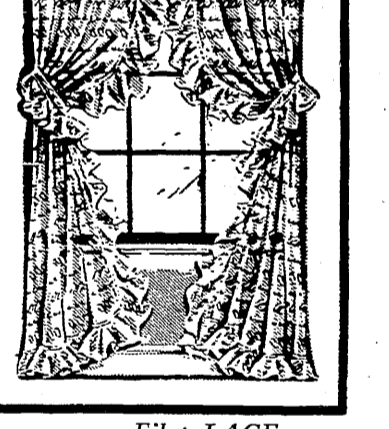


"4-Star" Slumbersound BLANKETS 5.49
Part Wool 72x90 in. Blended Warmth
"Teca" acetate rayon is interwoven with wool (content on label) to give that added warmth without weight! Solid colors with rayon satin bindings sewn with Nylon thread for durability.



4-Star De Luxe ODORA WARDROBES 7.75
Extra Features
Mirror on each door, top hat space, rust-resistant plated steel parts, lighter interior is easier to see.

TWIN-DOOR "ODORA" With Two Shelves Metal locks and metal reinforced corners. All wood framed. Brown wood-grained finish. Size 54 1/2 x 37 1/2. 5.29



New Priscilla CURTAINS 89c
Cushion, Pin Dot
Better Quality
Grenadines, marquisettes and volles in assorted pastels or colored dots with neutral grounds.

CURTAIN YARDAGE 12c
Rayon marquisettes, grenadines, rayon and cotton nets. Neutral shades.



Filet LACE TABLECLOTH 4.98
Sears' Special Price
In Creamy Light Ecru
From fine quality, lustrous mercerized cotton with scalloped picot edge. Choose from three distinctive patterns.

LACE TABLECLOTH 1.98
Finest American cotton 2-ply yarn! 6-point filet-type weave in flower designs. Nice hem with picot edge. 67x88-inch.

New Paradise PRINTS 25c
For Spring
Splashes of vivid prints on 80-square cotton. Perfect for your first frocks and playthings. **Embassy PRINTS 69c**
Rayons in bright-colored colors and conventional designs. 29 inches wide.

4-Ounce Skein Worsted Yarn 65c
Mothproofed*
100% virgin wool to give you long service. 4-ply weight in large color choice. *For 10 washings—20 dry cleanings.

SPORT YARN 55c
In 2-oz. balls. Medium weight all-purposes quality, for tea towels and many household uses. (At 1st Ave. and Roosevelt Stores Only)

KNITTING PINS 10c
Made from pyralin, with knob end. In heavy size 10 to 16 inches long. (At 1st Ave. and Roosevelt Stores Only)

CROCHET HOOKS 10c
Steel, gold-plated hooks. All sizes from 1 (large) to 14 (fine).

Unbleached MUSLIN 29c
Closely woven all-purposes quality, for tea towels and many household uses.

Hand Towel 29c
Selvaged sides and firmly attached hems. Plaid on white terrycloth. Size 20x40 inches.

TOWEL 19c
Colorful plaid cotton towels. 15 1/2 x 30 inches.

SUGAR LINERS 5c
Ready to hem and use as dust cloths, dish towels and straining.

Women's SILK HOSE 1.00
Ring-free and Clear
Flatteringly clear, snag-resistant. Also heavier weights for busy working women. Full-fashioned, proportioned to foot size. 3 1/2 to 10 1/2.
Women's SILK HOSE 79c
Light, bright new spring shades to wear with navy blue and pastel colors. Sizes 3 1/2 to 10 1/2.
Women's COTTON ANKLETS 10c
Plain or mercerized cotton in assorted colors to match your sportswear. Sizes 9 to 11.

Joan Bradley SWEATERS 1.69
All Wool Zephyr-light pull-over to complete your spring suit ensemble. 32 to 40. ALL WOOL CARDIGAN.....1.98

Girls' Classmate UNDIES 29c
Slick knit rayon in undies tailored to fit. Panties in brief, cuff and bloomer style. Also vests in terracote and white. Sizes 2 to 14.

GIRLS' RAYON SATIN SLIPS 79c
With picot or lace trim. Nice enough to wear with your Sunday best. Smooth-fitting, lines in terracote or white. Sizes 4 to 14.

New Honeysuckle DRESSES 1.19
Washables
A fresh crop of adorable cottons! Ginghams and sailor dresses. Rickrack and piping trims. All have deep hems. 2 to 6 1/2.

Children's Gay ANKLETS 19c
Mercerized cotton anklets with picot trimmed or patterned cuffs. Some rayons. 3 1/2 to 7 1/2. Not all in every size.

Juvenile PLAYSUIT 59c
In Blue
Designed for active children, with button-down front, in playcloth or covert. 2, 4, 6.

CHILDREN'S COATS 6.95
In Spring Colors
Smart polo coat style for young Yankee Doodle Dandies! Soft wool content on label lined with shiny rayon. Sizes 2 to 6.

CHILDREN'S COATS 6.95
Herringbone Tweed
Tailored and double-breasted in light beige. Size 2 to 6. Wool content on label.

Peggy Adair SHOES 3.30
Patent and Kid
Designed with beauty and sensibility for today's active women! Two heel lengths in kid model sketched. (On Sale at 1st Ave. Store Only)

SADDLE OXFORDS 2.59
Girls' Styles
Your pet saddle styled for barefoot comfort! Goodyear welt construction, leather quarter linings, non-slip heel. 5 widths and 50 sizes.

GIRLS' OXFORDS 3.19
Saddle in four color combinations with Goodyear welt, rubber sole and heel. Sizes 3 1/2 to 9.

Children's BILTWEELS Quality Leather 2.39
Sport and Dress
Oxfords in dress and sport styles, brown, black and white. Also dressy T-strap in white or black. 8 1/2 to 2 1/2. (1st Ave. and Roosevelt Stores Only)

Crisp New APRONS 29c
Bright Colors
Pretty and practical! Cut on generous lines to cover and protect your dress. Vivid flower prints.

Underwear 39c
Tearose Only
Comfort Fit
Snug-fitting knit rayon in pantie, briefs, bloomers, vests and waists. Hip size, 30 to 42. Bust size, 34 to 44.

SEARS, ROEBUCK AND CO.

SOUTH END STORE... First Ave. S. at Lander
NORTH END STORE... Roosevelt Way at E. 65th
IN BREMERTON... 252 Fourth Street