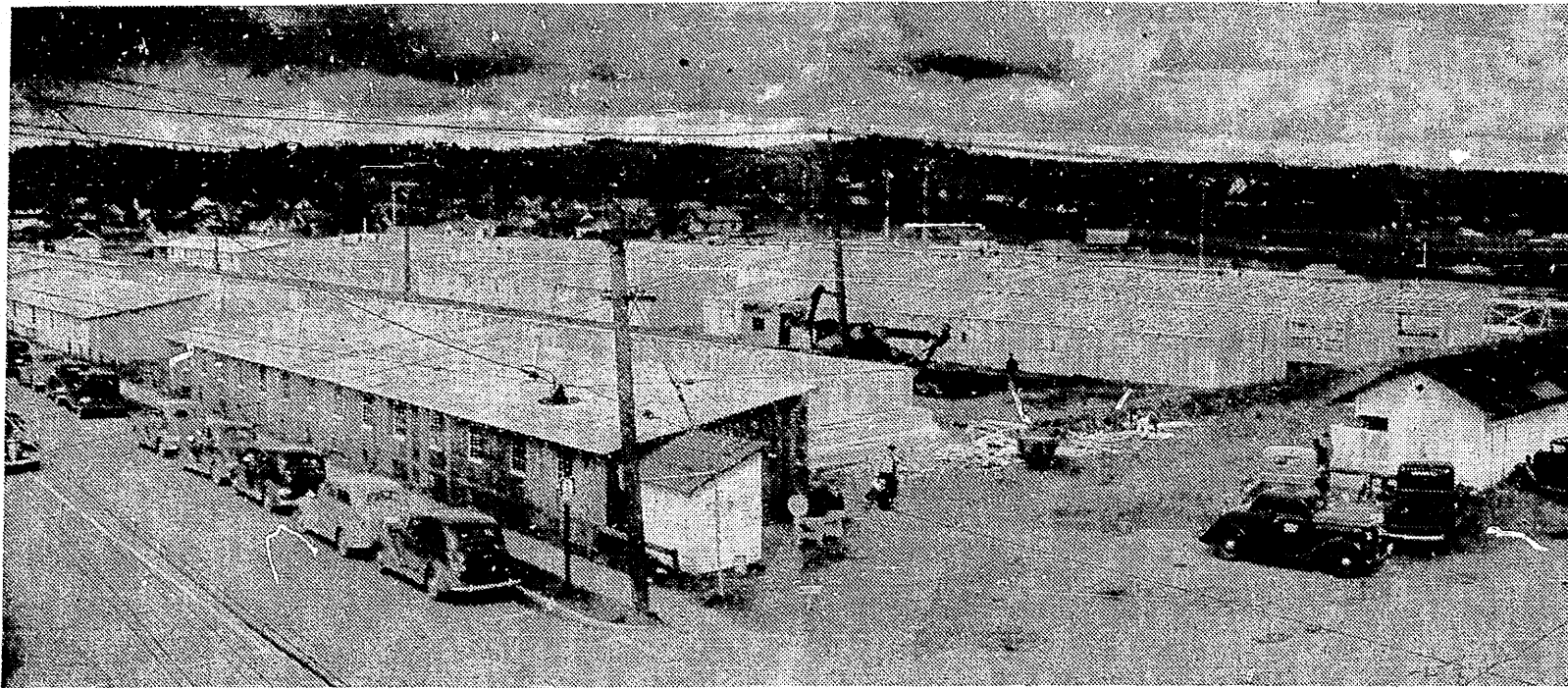
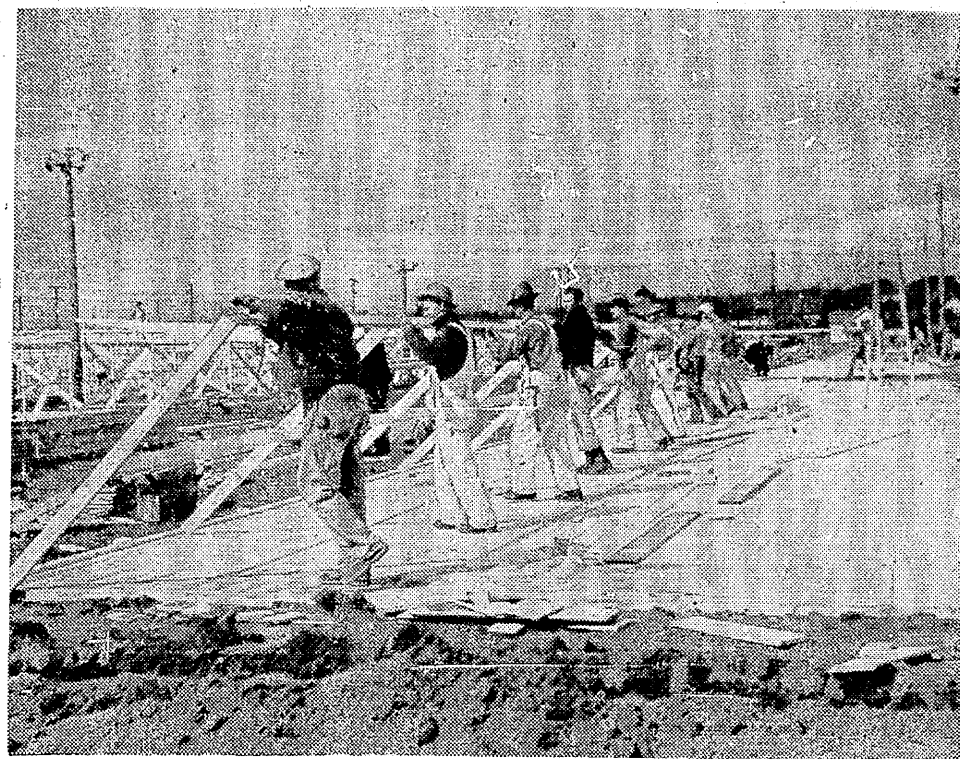


# WHERE NIPPONESE WILL AWAIT TRAVELING ORDERS



Mushrooming within a few days is this giant building project on the 19-acre parking lot across from the Western Washington Fair Grounds at Puyallup, where 8,000 Japanese will be housed pending transfer to permanent evacuation centers. This photograph gives an idea of the general scene. The buildings in the foreground are nearly completed, while others beyond them are in various stages of construction under a lightning-construction program.



Here is how the workmen are able to build the barracks so rapidly. Within an hour after bulldozers have cleared the ground, floors have been laid. Then men build the uprights flat on the floor and raise them into place, as shown here. Six hundred men worked yesterday.

## LONGACRES TO HOUSE EVACUEES

Longacres racetrack was chosen as a second Washington evacuation center yesterday by Lieut. Gen. John L. De Witt, commanding general of the Western Defense Command and Fourth Army, to augment the automobile parking lot at the Western Washington Fair Grounds in Puyallup.

It was not known how long the track will be used or if it will interfere with the racing season, scheduled to open June 27.

It was the first official Army announcement that either site had been chosen, although it was known generally that the center was under construction in Puyallup and it was expected that another would be started some place in the valley south of Seattle.

Joseph Gottstein, proprietor and majority stockholder in the track, said he had received no official notification of the track's selection from the Army. He said until newspapers telephoned him he had been continuing plans for the 1942 racing season, which would run through the summer to Labor Day.

**War Comes First**  
"It's a lot more important to win the war than run horses," Gott-

stein said. "I wouldn't want the races to cause injury to a single boy fighting in the Philippines. Compared with the war, horse racing doesn't amount to anything. I can't help being disappointed if there is to be no season. I've spent quite a little money improving the grounds and getting ready to open."

"But I don't think that's important. Anything they do is fine as far as I'm concerned."

Gottstein said there is a possibility the Japanese will be removed in time for racing.

"If it is and if the track can be made useable in time, the racing season will go on as scheduled," Gottstein added. "We've set up the whole program, including three charity days—for the Red Cross July 9, the Navy Relief July 30 and the Army Relief August 20. But if the Army's still using it, we'll abandon our plans."

Neither the racetrack nor fairgrounds will be permanent quarters for evacuated Japanese, but will be used as temporary reception centers where the evacuees can remain until removal to permanent resettlements.

**Capacity Estimated**  
The extent of each site's capacity was not announced, but together they are expected to handle all of Washington's 9,000 Japanese.

Official announcement of the two Washington sites was included in a statement naming four other centers, two in Arizona and one each

## ROBBER TAKES \$40 FROM INN

A hold-up man, driving an automobile without license plates, robbed the China Inn, Greenwood Avenue at North 85th Street, of \$40 at 2:30 o'clock this morning.

Joe Chinn, proprietor, said the robber, about 40 years old, ordered a package of cigarettes and then menaced Chinn with a pistol. The robber fled with \$40 from the cash register.

Chinn said the man drove away in a 1937-model coupe, which had no license plates.

In Oregon and California, the Associated Press said.

The Oregon site will be on the Pacific International Exposition Grounds near Portland, to accommodate about 3,000 persons. The Salinas Rodeo Grounds, to accommodate a similar number, was chosen in California.

In Arizona, the Army chose two former Civilian Conservation Corps camps, each caring for about 300 persons.

Owing to war evacuation, which has reduced its population by about 3,000,000, London no longer is the world's largest city. It now ranks after New York and Tokyo.

## Recreation For Service Forces Big Park Task

Recreation for service men featured the 1941 program of the Park Department, its annual report filed yesterday with the City Council showed.

Community - recreation - center service was given to the service men, who participated in football, baseball, swimming and boxing tournaments. More than 2,450 soldiers, sailors and marines used the golf courses at half rate, the report said.

Ben Evans, the department's recreation director, was assigned to aid the morale division of the Fort Lewis command and to cooperate with Bremerton in its recreation program.

Park facilities were taxed to the utmost by the defense program, with crowds in the parks so large there weren't enough picnic tables. Total attendance at Jefferson Park golf course was 81,889, at Jackson Park course 57,600 and at West Seattle course 20,171.

It is estimated in December, 1942, the United States will be spending funds for the war effort at the rate of \$55,000,000,000 a year, two and one-half times the present rate.

## OPERATORS FOR JAP FARMS LAG

About a third of the necessary number of operators to take over farm lands of Japanese evacuees have registered with the Farm Security Administration at 808 Second Ave., Charles A. Agers, field representative, announced today.

Agers said the curfew proclamation, preventing Japanese from traveling farther than five miles from their homes, had hindered efforts of the F. S. A. to register the Japanese and find operators, but that this is being remedied as fast as possible.

"It was like the mountain and Mohammed," Agers said. "The Japanese couldn't come to us, so we went to them, holding meetings in rural areas near Auburn, Kent, Vashon, South Park, Bothell, Kirkland and similar farm regions."

"The Japanese provided crews for the registration and even interpreters. We now are tabulating all this information."

Agers urged white or Filipino farmers, who desire to take over evacuee farms, to register at the Seattle office.

It is estimated from 600 to 900 farms will be left in King County

by Japanese evacuees, and 125 in Pierce County.

A similar situation exists up and down the Pacific Coast, according to the Associated Press. The United States Employment Service in San Francisco announced that Japanese farmers are swamping coastal offices with requests for persons to farm their lands.

The F. S. A. in San Francisco said it has supervised the transfer of about 1,000 farms of some 50,000 acres in the three Coast states, and that unreported transfers probably will bring the total to about a third of the transfers needed.

Other agencies assisting in helping to find new farmers to prevent loss of production include banks, chambers of commerce, farm cooperatives and processor and shipper organizations.

**Shingle Election Called**

WASHINGTON, April 2.—(AP)—The National Labor Relations Board today ordered an election to determine a collective bargaining agency among employees of the Double M Shake and Shingle Company, Eugene, Or., on representation by Local No. 5246, International Woodworkers of America, a Congress of Industrial Organization affiliate.

A baseboard to hold telephone and electric wires and appliance outlets in rooms that a Philadelphia has invented has a removable covering.

## Puyallup Assembly Center For Japanese Rises Rapidly

Puyallup residents watched with amazement today the growth of a "mushroom city" within the town's limits as the Army rushed construction of an assembly center, which will be used to house 8,000 Japanese who are to be evacuated from this area.

On the parking lot of the Western Washington Fair Grounds, hundreds of men were welding saws and hammers to erect a group of barracks or dormitories in which the Japanese will live until transported to other concentration centers.

The buildings arose as if by magic. The contractors were given the "go" signal last Saturday, and already five of the long shed-like buildings have taken concrete form.

First of the original construction is being completed on the 19 acres across the street from the fair grounds. About 3,000 Japanese will be housed on this parking lot. Another lot of six acres and a third of nine acres also have been taken over and buildings will be erected there for 2,000 more Japanese.

Buildings in the fair grounds proper, in which soldiers have been

quartered since last fall, are being remodeled to care for 3,000 more.

The speed of the new construction work is a marvel to the many spectators. Bulldozers clear a space for the building. Crews then rush in and lay a temporary foundation. Within an hour the floors have been laid and an hour later the walls are being raised into position.

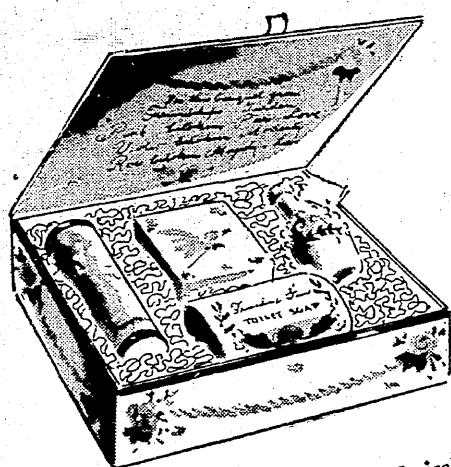
At the assembly center, Japanese will be classified by work they can do, and sent to a permanent center.

Six hundred men were on the job yesterday. Men are hired only at Pier 11-B in Seattle. Men who apply at the job directly are sent back to Seattle for certification. The applicant must have a birth certificate. The pier office will be open Sunday.

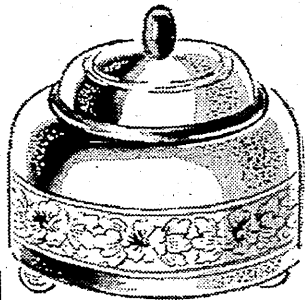
A. E. Bartell, head of the Western Washington Fair Association, said the association had turned over the fair grounds and the parking lots to the government for \$1.

Bartell said the Army has agreed to remove the temporary buildings when they no longer are needed. That is expected to be within three months and not late enough to interfere with fair plans for 1942.

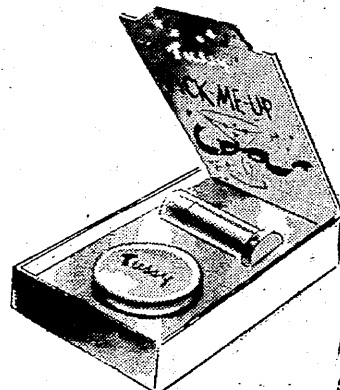
# Frankly sentimental... for her Easter



Friendship's Garden Gift Box. Contains toilet water, sachet, soap, talc for 1.00



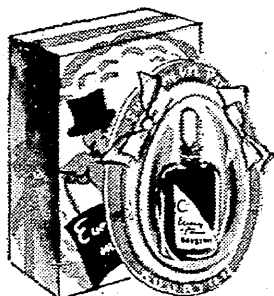
Musical Powder Boxes. Several styles in pastel colors. Swiss movements. At 3.95



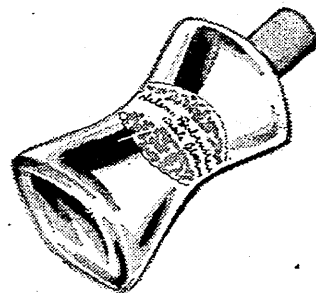
Tussy Pick-me-up. Matched lipstick and compact rouge in plastic cases at 1.00



Exquisite Crystal Perfume Bottles at 2.50 (matching powder boxes and trays).



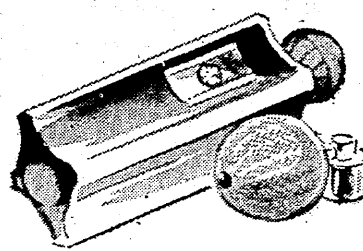
Bourjois' Evening in Paris Perfume, in Easter egg box. 1/4-oz. size for just 1.25



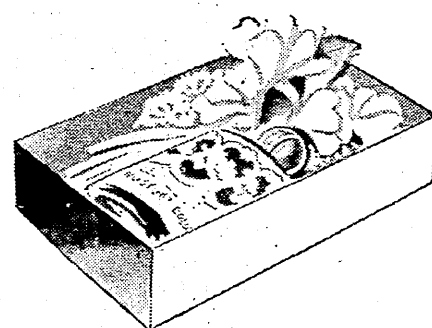
Helena Rubinstein's Apple Blossom Cologne. Sweetly refreshing! 4-oz. at 1.00



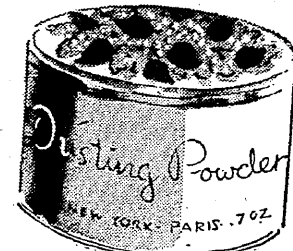
Spring Lilac Talcum by Richard Hudnut. Cool, dainty, fragrant gift. 50¢



Spring Lilac Toilet Water by Richard Hudnut. 1.00 With atomizer, priced 1.50



Nosegay Cologne, floral fragrance by Dorothy Gray. In box with nosegay. 1.00



Spring Lilac Dusting Powder for a luxury feeling! By Richard Hudnut. 1.00

Honeysuckle... the fragrance as fresh as dew! Harriet Hubbard Ayer's delicate, meadow-sweet scent that whispers, "you're prettier than you think!" We have it in Cologne, 5-oz. for 1.15... soap and talcum set at 1.00... dusting powder, 1.00... and talcum at 65c. From a man with imagination to the woman in his life at Easter-time!

Toiletries, Street Floor