

\$8,800 FOR CODE JOB; HALF DONE U. S. LISTS JOBS FOR EVACUEES

City Building Supt. Charles C. Hughes and A. M. Young, Seattle architect who resigned yesterday afternoon as chairman of the building-code revision committee, both were agreed today on one point of their controversy:

The committee has spent \$8,800 in its work and is only half finished with it.

But the two men are at odds as to the reason for this situation.

Resignation Handed In

The revision committee, made up of nine men prominent in the local building industry, was set up by Gov. Arthur B. Langlie when he was mayor, to review the building code and recommend revisions to bring it up to modern standards. The committee was assigned to work under the city building superintendent. Yesterday, Hughes received Young's letter of resignation.

"Problems arising within the Department of Building prevented the preparation of material to be reviewed by the committee," Young wrote Hughes. He said this resulted in depletion of the original \$1,800 allotted by the Council for the work and an additional \$3,000. Last September the Council appropriated \$4,000 more with the order that this absolutely finish the job.

Lack of Time Cited

"But due to lack of attention of your department, we are behind schedule," Young wrote. "We have now but three and one-half months left of our ten months' appropriation and we have about one-half of the code still to review. There is not enough time left to do the job properly or even reasonably adequately."

Young said the code committee worked diligently, but that the department did not cooperate.

Hughes said today: "I'll answer the letter, all right! The committee has spent its money but its job is only half done. I don't know who appointed them. But I don't think it's my fault they aren't up with their work."

Kent Japanese Is Arrested On Travel Charge

Charged with entering Wyoming without a travel permit from the Army Kuramatsu Hanada, 56 years old, an alien Japanese from Kent, was held in Cheyenne today.

Curfew regulations require that alien Germans and Italians and all Japanese remain within five miles of their homes unless given special permission by the Army to travel.

Cheyenne police said Hanada will be turned over to the United States attorney's office for prosecution, the United Press reported.

Japanese who already have been evacuated from the Pacific Coast area and those who are to be evacuated received the first detailed information today on what will be expected of them at the resettlement camps to which they will be sent.

The War Relocation Authority announced it is planning different types of work opportunities for the 130,000 Japanese who will be removed from present homes, the Associated Press reported. They are:

- 1.—Public work contributing to the war effort, such as development of land for irrigation.
- 2.—Production of needed agricultural commodities for subsistence of the evacuees and for sale.
- 3.—Manufacturing of articles such as camouflage nets, cartridge belts, wood products and other articles required by the military establishment.
- 4.—Private employment, when and where possible.

No 'Private Pursuits'

The evacuees will not take part in private pursuits for several months, at least not until all have been removed from military areas, according to M. S. Eisenhower, director of the authority. Immediate work opportunities will be on large, supervised public projects.

"It is important," Eisenhower said, "that opportunities are made available for the Japanese to contribute the maximum to needed production." The whole evacuation problem will be discussed with state and federal officials from ten Western states at Salt Lake City "Tuesday."

At the present time only one large resettlement center has been established. That is the one at Manzanar in Owens Valley, California, the one to which 237 Japanese from Bainbridge Island were sent. Others have been sent there from the Los Angeles area.

It was explained that assembly centers, such as that being set up at the Puyallup Fair Grounds and that to be built at Longacres race track, will house the Japanese until such time as they may be sent to resettlement projects. Some may be held only a day or two, others for as long as three months.

Eisenhower said the resettlement program obviously cannot be handled speedily enough on the basis of hundreds of individual requests for small assembly projects and so the Salt Lake conference was called to discuss a larger program. In Tacoma today, S. S. Blackwell, assistant supervisor of the Farm Security Administration, said there is a possibility of a great influx of Filipino and Mexican labor to the Puyallup Valley and other Puget Sound farm regions as a result of Japanese evacuation. He added that the great demand for such labor in California might be the only factor to halt such an immigration.

Blackwell also said the vegetable crop this year will be less than in former years and predicted higher prices this summer.

Registration Continues

Japanese continued to register in California today for removal. Registration date has not been set for the Puget Sound area but is expected to be soon.

Federal Bureau of Investigation agents last night arrested 22 alien Japanese in the San Pedro, Long Beach and Redondo Beach areas. These will be sent to concentration camps for the duration.

Another arrest was that of Miss Fumi Asazuma, 22 years old, a freshman art student at the University of California, who was taken into custody on the campus on a presidential warrant.

Norse Ships May Be Safe—London

LONDON, April 3. (AP)—Some of the 11 Norwegian ships which made a break for freedom from Swedish ports two days ago may have eluded the German warship patrol, the Ministry of Information said today.

It's Easter Time at MacDOUGALL'S



Big beautiful BRIMS

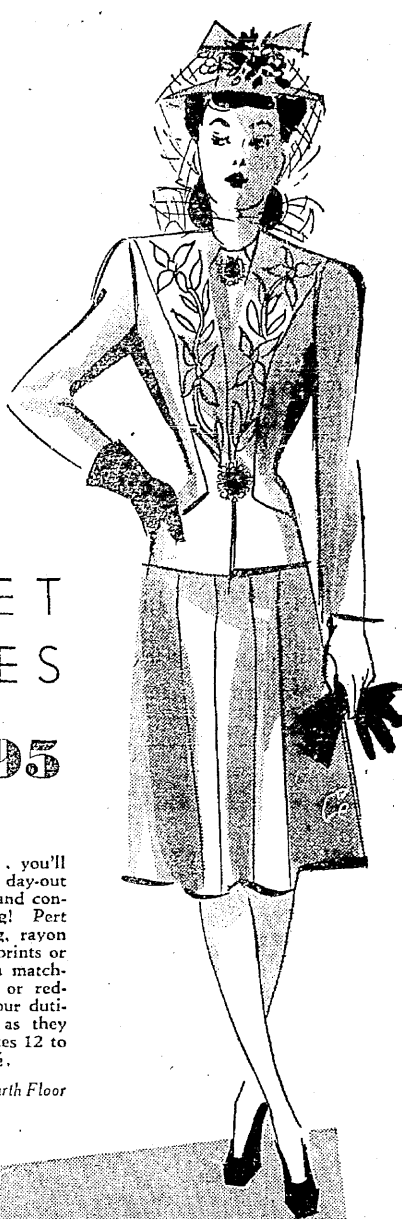
great flattery for just . . . **5.00**

The hats that men love . . . romantic face shading brims that give you great charm. Choose YOURS in smooth straw, in dramatic black, or in white that sheds soft, flattering light onto your face. Others . . . 7.50 to 12.00.



• Millinery . . . Fourth Floor

double-your-money easter fashions JACKET DRESSES **12.95**



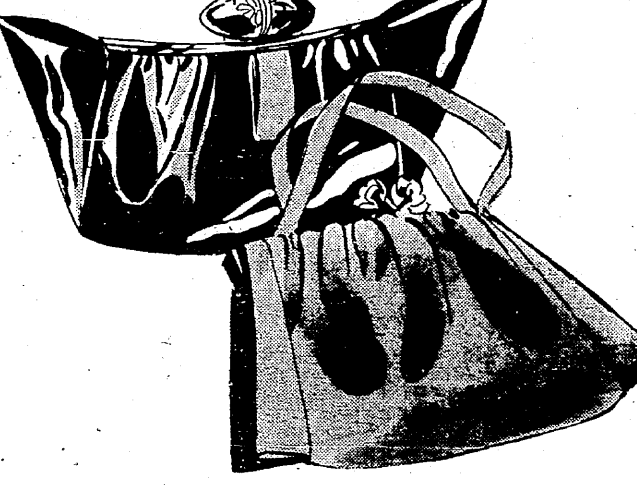
Exhilarating ensembles . . . you'll choose to wear day-in and day-out . . . starting Easter morn, and continuing throughout Spring! Pert little crepe, shantung, rayon dresses . . . in monotones, prints or stripes . . . with their own matching or contrasting jackets or redingotes. . . . Destined to be your dutiful, steadfast companions as they flatter you for Spring! Sizes 12 to 20, 38 to 44, 18½ to 24½.

• Fourth Floor

Sale! . . .
Sheer NYLONS
 If Perfect . . . They'd Be 1.95
1.50 Pr.
 • SUNTAN • AUBURN
 Lovely complement to your smart Easter ensemble . . . sheely beautiful three-thread hose . . . all Nylon from top to toe . . . at a budget-pleasing price! Sizes 8½ to 10½.
 • SORRY! NO MAIL OR PHONE ORDERS
 • MacDougall's . . . Main Floor

impeccably tailored . . . classically casual . . . **CAVALRY TWILL**
 They'd Be Exciting **24.95**
 News at 29.95!
 Wear them with assurance in the Easter Parade. . . . these tailored-to-perfection casual coats . . . wear them later with your suits . . . sports and defense-minded dresses . . . even with slacks! A new weave this Spring . . . 100% virgin wool Cavalry Twill with covert-like surface . . . Spring's most versatile coat fashion!
 • blue • beige • aqua • sizes 10 to 20
 • Coat Shop . . . Fourth Floor

EASTER SUIT NECESSITY!
Smart Handbags
2.95
 A grand array of brand new bags for Easter, including our complete collection of famous "Rambler" handbags! Featuring every success style . . . in patents, capeskins and favorite fabrics—to complement your new ensemble!
 Every bag as carefully detailed as your Easter suit!
 • Main Floor



SUBTLE COMPLEMENT TO EASTER **1-to-4-Strand PEARLS*** **1.95 and 2.95**

Flattering subtlety for your Spring costumes . . . lustrous, gleaming pearl necklaces with rhinestone and baguette clasps. So carefully matched and graduated you'll find the low price hard to believe. Choose from 1- to 4-strands . . . large or small graduation.
*Simulated. • Main Floor



EASTER . . . Spring's greatest day for lads and lassies

from pigtail shop! all-wool **POLO COATS** **12.95**

Boxy casual coats of 100% virgin wool . . . for Pigtailers to wear Easter morning, and far into Spring! Double-breasted styles with pearl buttons, back pleat, flap pockets. The linings are of fine quality lustrous satin. Sizes 8 to 14 in camel color. PERT LITTLE EASTER BONNETS OF STRAW OR FELT . . . **1.98**
• Pigtail Shop . . . Third Floor

boys' smart all-wool **SPORT JACKETS** **9.95**

Important item in every boy's Spring wardrobe! All-wool sports coats in new patterns, tweeds and shetlands. All man-tailored . . . in tan, coco and blue . . . sizes 10 to 20. Junior wool sport jackets, 6 to 12, **5.95, 6.95, 7.95**

Pleated Front Gabardine Slacks **3.98**
Man-tailored slacks to match or contrast his sport coat. Of fine gabardine with pleated front, zipper closing, matching belt. Tan, teal, blue and brown . . . 12 to 20. Boys' Gabardine Sports Shirts, blue, tan, green, cocoa, 10 to 18. . . . **1.29**
• Boys' Shop . . . Fifth Floor



NOW!
 is the time to make your **Basement Liveable** as low as **\$50** for 15x20-ft. area

YOUR BASEMENT SHOULD NOW SERVE A TWO-FOLD PURPOSE . . . A Play-room or Black-out Room

ARMSTRONG'S Asphalt Tile is the ideal basement floor—the only type which can be laid over concrete in cellars. It comes in 41 attractive plain and marble patterns and offers unlimited design possibilities. It gives you a smooth, resilient floor that's just right for dancing or playing games. It's an easily cleaned floor, too—one that won't be marred by carelessly dropped cigarettes or spilled drinks. It's durable, moisture-resistant, scuffproof—the rich colors can't wear off because they run through the full thickness of the material.

Estimates Without Obligation
Fred C. Schram & Co., Inc.
 1912 3rd Ave. MAin 2244



Lustrous Fabric Quality at its Best!
2 x 2 White
 LUSTROUS PIMA COTTON (152x80 FULL COUNT)

Broadcloth Shirts
 (Sanforized—maximum shrinkage 1%)

at only **2.50** Verified equiv. 3.50

Men! Here's a remarkably low price for the finest feeling, best looking shirt you have ever worn.

2x2 full count 152x80 PIMA YARN BROADCLOTH . . . the finest, longest cotton fibre grown . . . so fine in fact it feels and looks like silk. All the finest tailoring approximating custom craftsmanship in fit and appearance. Choice of wit-proof seamless trubeized or soft collars. You've never seen quality like this at our lowest price in years for 2x2 white pima yarns . . . so stock up . . . you'll buy them 6-at-a-clip and wear them endlessly!

Sizes 14 to 17, Sleeve Length 32 to 35
• Men's Shop . . . Main Floor