

ALL MUST SHARE

A. P. Wirephotos

SELF-DENIAL ASKED



IN WASHINGTON LAST NIGHT His face mirroring the seriousness of his words, President Roosevelt told the civilian population of the nation that its every member would feel the effect of his newly announced program for stabilizing the cost of living, and called upon it for self-denial and sacrifice. The President addressed the nation from the White House.—A. P. wirephoto.

BORIS MEETS HITLER



AT FUEHRER'S HEADQUARTERS King Boris of Bulgaria bowed his head as Adolf Hitler grasped his hand when the monarch went to the Fuehrer's headquarters March 25 to have what the caption for this picture called "a hearty chat about the questions interesting both nations." A special train took the Bulgarian king to Hitler.—A. P. wirephoto. (Picture just received approved by German, Portuguese, British and United States censors.)

Lost in Action



AMERICAN EAGLE Pilot Officer John Flynn of Chicago was lost in aerial combat over France Monday when his American Eagle comrades shot down five Nazi planes, the British Air Ministry announced today.—A. P. wirephoto.

LONDON, April 29.—(P)—Pilot Officer John Flynn of Chicago was lost in aerial combat over France Monday when his American Eagle comrades shot down five Nazi planes, the British Air Ministry announced today. Fellow pilots said Flynn's plane was shot down by a Fock-Wulf fighter soon after they arrived over their target at St. Omer. Ten minutes later Flynn's attacker was shot down in flames. The 20-year-old pilot, officially posted as missing, had been with the Eagles four months.

COLLABORATED TO DEATH

By Kirby



EXPLOSION FLATTENS CHEMICAL PLANT



IN NEW BRUNSWICK, N. J., YESTERDAY One person was killed and at least eight were injured when an explosion leveled a two-story brick building housing a chemical plant. Here is a general view of the wreckage showing also damage to windows and roof of house at left.—A. P. wirephoto.

ROSTOCK BLAZES FROM R. A. F. BOMBINGS

(Transatlantic cable transmission impaired the clearness of this photograph)

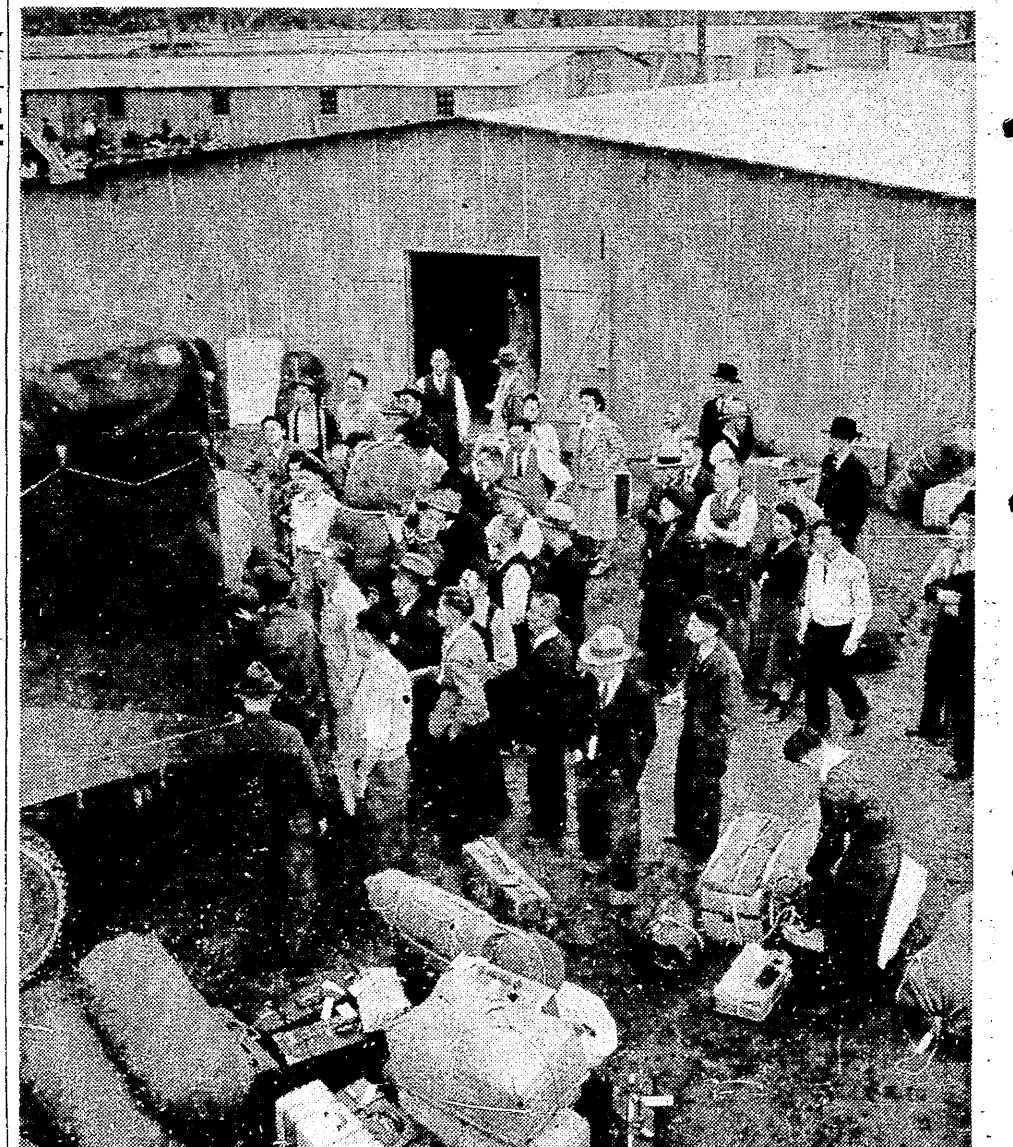


BRITISH TARGET Heavy smoke floats over the center of Rostock, German Baltic base, after the third night's bombing by the Royal Air Force. This photograph, taken from an R. A. F. reconnaissance plane April 26, was radioed from London yesterday after a fourth bombing of the city, site of a Heinkel plane factory.—A. P. wirephoto.

The President can pardon offenders against federal law but cannot override a state court.

The federal census calls any town with 2,500 inhabitants or more a city.

JAPANESE UNLOAD AT NEW HOME



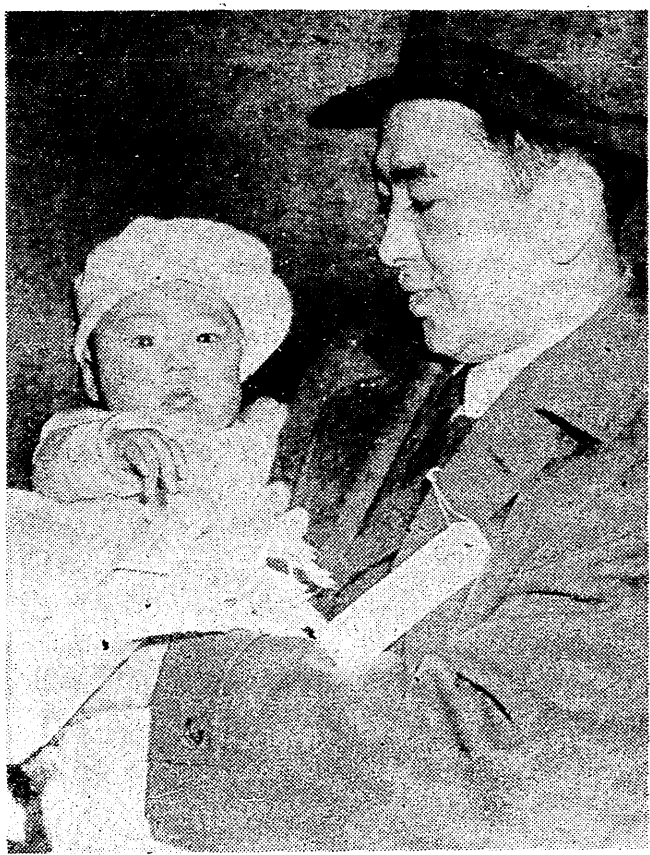
Vans jammed with the personal belongings of Seattle Japanese are shown as they were unloaded at the Puyallup assembly center yesterday. The vans and busses and private automobiles filled with evacuees, traveled in one long caravan.

WAR BOND WINNER



At Kent Junior High School, an assembly was called hurriedly yesterday so that G. S. Robinson (left), assistant vice president of the Pacific National Bank of Seattle, could present \$25 war bond prizes to May Hanada (center), 14 years old, and Betty McAlexander, 13. May will be among evacuees soon to go to the Puyallup center, and won third prize in a state-wide junior high school war bond poster contest. Betty won second place among elementary school entrants. The contest was sponsored by the State Department of the American Legion. It drew 347 entries.

YOUNGEST EVACUEE



Youngest evacuee among the advance party was 3-month-old Brian Kashiwagi, shown above with his father, Mits Kashiwagi, as they arrived for registration. Kashiwagi, who lived at 3508 Genesee St., is a bookkeeper. The assembly center provides facilities so that mothers of small babies like Brian can prepare formula. The arrivals yesterday were an "advance cadre" of a larger evacuation this week.

About 5,000 volunteer observers assist the United States Weather Bureau.

Government surveys show tobacco is produced on one-eighth of the nation's farms.

The constitution of Brazil was patterned after that of the United States.

Farm-marketing income in 1941 was about \$10,000,000,000, a substantial increase over 1940.

The more grain included in the cow's ration, the more milk the cow produces.