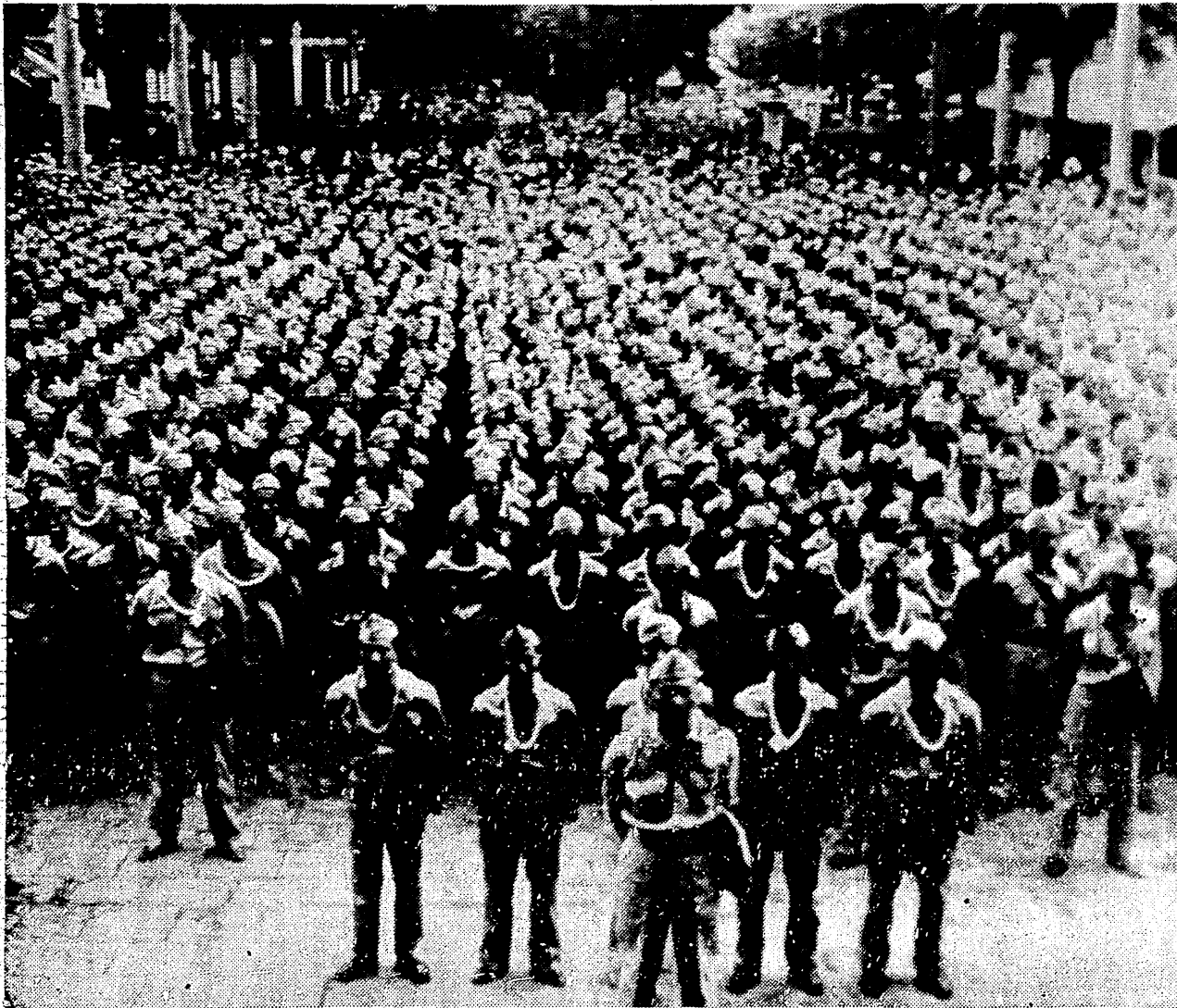
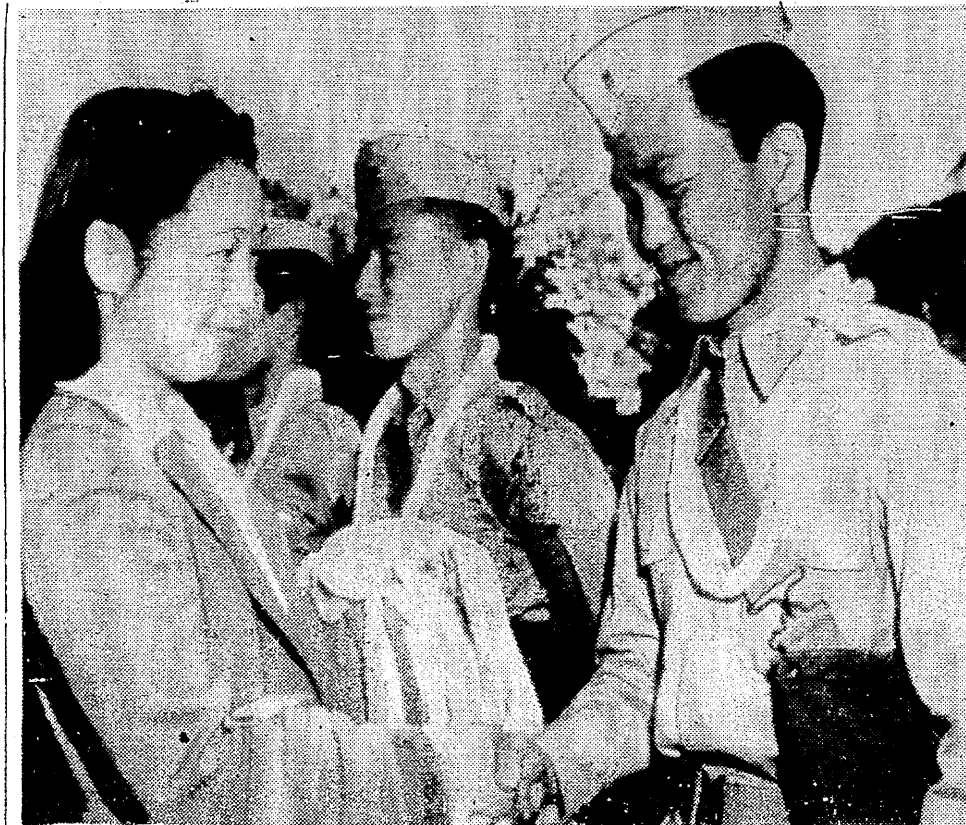


AMERICAN SOLDIERS OF JAPANESE ANCESTRY OFF TO WAR



IN HONOLULU—In Honolulu's first wartime parade, more than 2,000 new American soldiers of Japanese ancestry marched through crowded streets March 28 on their way to board ship for undisclosed destination.—A. P. wirephoto.



ALOHA—Florence Shirotakei gives a floral lei to 2nd Lieut. Robert Kadowaki, one of the 2,600 Niseis who have been called to the colors in the United States Army. The farewell scene was on the dock at Honolulu March 28 when the soldiers of Japanese ancestry set sail.—A. P. wirephoto.

Hawaii's Japanese Loyal, Says F. B. I. Chief

WASHINGTON, April 5.—(AP)—The Japanese population of Hawaii was not guilty of espionage committed in the territory prior to Pearl Harbor, J. Edgar Hoover, director of the Federal Bureau of Investigation, told a House appropriations subcommittee during hearings made public today.

Hoover said espionage committed in Hawaii prior to Pearl Harbor was done "by espionage agents and consular agents of the Japanese government." The F. B. I. chief told the committee there had been no sabotage or espionage committed in Hawaii subsequent to Pearl Harbor and

that his organization had "practically no trouble with the Japanese in Hawaii." Crossing the Andes Mountains at such a height that the air is rare, the Central Railway of Peru must carry tanks of oxygen for passengers with weak lungs.