

Daily Tulean Dispatch

TULE LAKE COLONY

Vol. IV No. 33

NEWELL, CALIFORNIA

Mon. December 21, 1942

5140 JOIN COOPERATIVES

A total of 5,140 persons joined the Co-op during the first week of the membership drive, it was reported by the Co-op education department today. Three blocks have not yet turned in their reports.

Block 13 had the highest total with 157 members.

Backed by both the City Council and the Planning Board which at their respective meetings went on record to give the Co-op its vote of confidence, the membership committee and its staff are continuing their drive for more members.

LUMBER STACKERS

ASK APRON RETURN

Aprons for lumber stackers were borrowed by workers in the lumber yards. There are only a limited supply of aprons, it was announced.

Borrowers are requested to return them immediately to The Tulean Dispatch office at #1608.

HEALTH DEPARTMENT SAYS DISEASES, COLD INCREASING

At the present there are 51 cases of chicken poxes, 35 measles, and numerous cases of colds prevailing over the City, according to a graphic sketch posted in the Public Health department.

These communicable diseases are on the increase with the greatest number in Ward V. However, it was revealed that Ward VI was the first to report these sicknesses.

All cases of communicable diseases should be reported to the block manager at once.

Visiting nurses making daily check on all cases

WILL CREATE FUND TO AID STUDENTS

A college scholarship fund committee has recently been organized, it was announced by Paul Fleming, to help deserving Tri-State High School graduates to continue further schooling in colleges.

Students will be selected on the basis of scholarship record, character and need, it was indicated.

To assist the graduating class of this quarter, December 23, the committee is asking for donations this week. Contributions in cash or pledges payable on January 15 will be received by all block managers, Harry Mayeda at #1808, Paul Fleming at the administration building or by any of the school principals.

The committee consists of Jeanne McKay, Mrs. Garnet Van Buskirk, Tatsumi Yasui, Harry Mayeda, Harold Jacoby, and Paul Fleming.

VITAL STATISTIC

BORN: To Mr. and Mrs. Robert Shigeru Ishimoto, a boy on Dec. 17, at 1:11 p.m.; weight, 7 lbs. $\frac{1}{2}$ oz.

are Anna Endo, Alice Tokuno, Mrs. Kay Jinbo, Florence Watamura, Sue Tamiyasu, Tsuyako Suzuki, Bernice Himoto, and Grace Yamamoto.

COOP ASK RESIDENT COOPERATION ON CLOTHING ALLOWANCE CHECKS

Because of the limited number of clothing allowance checks which can be cashed at the Co-op stores each day, cooperation of the colonists was asked in this matter.

It is the desire of the Co-op stores, it was added, to accommodate all these checks as a service

WANTED: 2 P.E. GIRL TEACHERS

The increase in demand for physical education in the schools has necessitated the addition of two more female teachers, it was reported.

Anyone interested in working with the physical education department of the school should apply at the Placement Office at once.

MORE IDEAL GIFTS

ON DISPLAY; #3001

Crepe paper French dolls, Dutch dolls, Christmas cards, Christmas wreaths, scrap books, calendar, yarn dolls and wooden placards have been added to the elementary school students' display at #3001-A, it was announced by Aiko Suguro, Red Cross secretary.

These products of the students are ideal for Christmas gifts.

These handicrafts are being sold, and proceeds will go toward the Junior Red Cross.

to the colonists but the limited actual revolving cash curtails the cashing of a large amount of checks daily.

Assurance was given however that every effort will be exercised to cash all possible government checks.

TULE LAKE WILL HAVE GYM AUDITORIUM SEATING 1500

CONSTRUCTION HAS STARTED

By BRYAN MAYEDA

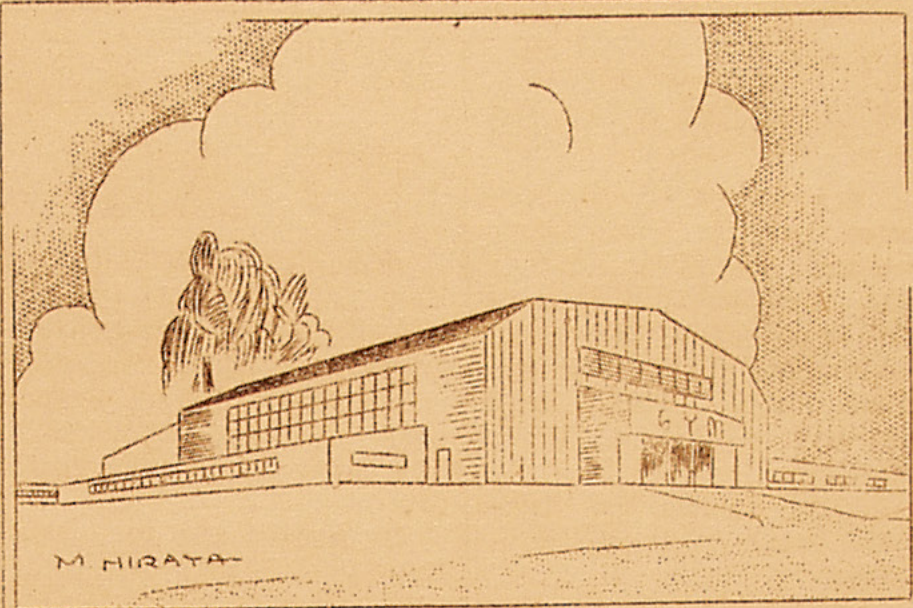
Concrete pouring operations have started on the new Gym-Auditorium to be erected in the fire-break area between the warehouses and 6th Avenue, facing Block #4, #5, and #6. The details of the structure, as released by the Construction offices, are as revealed in actual blueprints.

The size of the building is 157 by 160 feet, and is 32 feet in height over three stories. The main auditorium will feature a 96 by 80 feet, smooth-finished, basketball court. It is a regulation, approved type, high school court--capable of maintaining two practice games at one time. Four fixed and two swinging backstops are indicated on plans.

The main entrance, of three double doors, will face 6th Avenue. A ticket booth will be located on the left side of the main door. Directly above the main entrances, a projector-room will be built with accommodations for two movie projectors and spot light equipment. The far end will have a 40 by 22 feet stage, complete with dressing rooms on both sides.

In game periods, benches will adequately seat 650; but in other functions, where the floor area will be utilized--the hall will comfortably accommodate 1500.

The east section will be the boys' unit, with shower facilities, lockers, various storage and equipment rooms, and the coach's office. The west section is the girls' unit, with similar facilities and rooms. In addition, the west section will have rest-rooms and a special health unit. This health wing will extend in the direction of



FOR SPORTS AND ENTERTAINMENTS

Fire Station #1.

Three special athletic rooms, each size 24 by 31 feet, will be situated directly behind the stage. Various indoor activities will center in these sections.

Harry Katsuyama, construction engineer, will supervise this project. He is well known in Northern California circles as the designer and supervisor in the construction of the spectacular "Bussei Hall" in Sacramento and many other well known structures in the valley area.

With the completion of the Gym-Auditorium, eight buildings----constituting the junior and senior hi-

gh schools, will be erected on various sides of the central gymnasium. Outdoor basketball, volleyball, handball, tennis, croquets and other miscellaneous courts, for both boys and girls, will be leveled off on the school grounds. According to blueprints, a track and football field is marked out west and adjacent to Block #68 in Ward #7.

Colonists are requested to stay clear of the survey stakes and lumber on the operations-ground. The cooperation of everyone is essential if the project is to move along on time, Paul Matsumura, head surveyor indicated.

A CHRISTMAS PRAYER

This Christmas message is a prayer.

It is a prayer joined by the thousands of loyal Japanese Americans in the firm conviction that democracy is not dead.

It is a prayer fervent in the hope of an early American victory and the creation of peace and order out of the chaos; a better understanding and tolerance among all mankind the world over.

It is a prayer for the 5000 nisei U.S. soldiers on the far-flung battlefronts serving their native country -- right or wrong. Our petty grievances are so very small compared to the supreme sacrifices they are making.

It is a prayer of gratitude to the many Caucasian friends who have not forgotten us in our trials and misfortunes. Tolerance, humanity, and Christmas cheers are not mere words. We have felt their warmth here in our remote isolation.

It is a prayer of thanks for our health and strength and the grim determination to start life anew in the eventual resettlement.

G.J.N.

SHIRRELL TO LEAVE DECEMBER 27 FOR POSITION OF EVACUEE EMPLOYMENT HEAD

Project Director Elmer L. Shirrell will leave here on December 27 to take over his new job as head of Evacuee Private Employment Division of the WRA, it was officially announced today.

Before going to Washington D. C. where he is to spend about two weeks, he is to leave for his home in Santa Barbara for a week's vacation.

Hint of his departure was first given at a dinner given by Shirrell for the old council members about three weeks ago.

When he spoke at that dinner about

his impending departure from the project where he had resided ever since the first volunteer contingent arrived late in May, he lost control of his emotion and it was reported that he could not hold back the tears when he bid the old council members farewell.

During the past week many farewell dinner in honor of Mr. and Mrs. Shirrell have been given by various organizations in the Project.

The recreation department may sponsor an open air gathering in honor of Shirrell.

ENTERPRISE SOCIAL CLUB ORGANIZED

Representatives of all Tule Lake cooperative enterprises held a meeting last week to form one big organization, the Enterprise Social Club.

The officers were elected as follows: Henry Ichimura, pres.; Richard Imai, vice-pres.; Yoriko Hosokawa, sec'try; Jimmy Hashimoto, social chairman; M. Yoshiyama, Y. Tanaka, and S. Matsunaga, advisors.

REPORT CLOTHING SALES AUTHORIZED

Sale of clothing has been authorized with the understanding that clothing is to be used by colonists on the Tule Lake Project and is definitely not to be sent from the Project. Any violation will result in the discontinuance of the sale of clothing.

ELMER L. SHIRRELL
Project Director

APPOINTMENTS FOR BEAUTY SHOP FILLED

The appointments at the Tulean Beauty Shop for this month are all taken.

Appointments for afternoon on the 31, will be cancelled due to project holiday.

YBA DONATIONS ACKNOWLEDGED

The Tule Lake YBA acknowledges a donation of \$5.00 from Mr. Jack Kubota, Ward I representative.

NO MORE NEW LEAVE APPLICATIONS ISSUED UNTIL FURTHER NOTICE

The Leave Office will not be able to issue any more new applications until further notice, it was declared by Loren Huyke, leave officer.

The office is booked up with interviews for two weeks, and lack of equipment makes it impossible to handle any more volume for the present time. As soon as

they are able to take in more, it will be announced in The Tulean Dispatch.

MOVIE TICKETS ON SALE AT MANAGERS

Tickets to the Deanna Durbin film, "That Certain Age", will be sold by the block manager and the ward leaders, it was announced today.

Noteworthy BULLETINS

LETTERS

...for the following individuals are being held at the post office: Miss Hatsumi Murakami, Takaki Junjiro, May Okumura, M. Nakano, Mr. and Mrs. George Okara, Lillian Fukayo, Tsutomu Tonamura and Mr. T. Hasebe.

A PACKAGE

...is being held at the post office for Mr. and Mrs. Yoshida and family from Haruko H. Odoni, Denver, Colorado.

A PARCEL POST

...with no name is being held at the post office. Contains knitting needles No. 16 2910 size 12. Bring invoice to claim.

VITAL STATISTIC

BIRTH: To Minao and Aya-ko Shimotori, #3805-D, a girl on Dec. 19.

TO CAMP SAVAGE ON DEC. 16

...Milton Tanizawa and John Tanizawa left for Military Intelligence School in Savage, Minnesota.

14 INDIVIDUALS

...left the Project for Nampa, Idaho, on boat

field contracts which will expire in March.

BATH CONSTRUCTED

Under supervision of Block Manager Jack Okumura, residents of Block 34 constructed wooden Japanese bath tubs for each of its three shower rooms.

LOST PLEASE RETURN

LOST: A small, silver wrist watch valued as a keep sake. If found, please return to #13 block manager's office. Reward.

LOST: A bunch of keys, 2 trunk keys, 1 ladies' wardrobe-case key, 1 suitcase key, 2 Yale Keys. If found, return to block #38 manager's office.

LOST: A black wallet containing clothing check #34,920. Contact Block 6 manager.

LOST: A pair of bifocal glasses. \$10 reward. Return to 618-A, or Block 6 manager.

LOST: A wallet with important papers, by Haruto Harada of Mess 26. Return to Block 26 manager's office mail box.

JUNIORS NAME LEAGUE STARS

FIRST TEAM

MICK TAMIYASU, Midgets...E...Panthers, AKIRA KUSHIDA YORIMI MATSUMOTO, M'sville G....Seahawks, JIM MORIKAWA ED YOSHIKAWA, Seahawks...C.Thunder-bolt, TOTS SUMIDA TAKAO HONMA, Zero.....G..Isleton, YOSHIO FUJIMOTO ANDY SUGIYAMA, Seahawks..G.M'sville, GEORGE UGHIHARA BOB TOMITA, Isleton.....H...Seahawks, BOB HAYASHIDA SHIG YOSHIMURA, M'sville..H.....Panthers, FRANK HORIG MASAHIRO HONDA, Zero.....F.....Seahawks, TED TSUKIJI

HONORABLE MENTION: Ends--TOMI NISHIYAMA, Zero;

TAR FUKUMORI, Zero; EARL YONEHIRO, Seahawk. Guards--NORMAN YASUI, Zero; TAK SASAKI, Marysville. Center--JAMES ICHIKAWA, Panthers. Backs--ANDY KAGIYAMA, Blitzers; JAMES TAKEITA, Marysville; JOE YADA, Midgets.

Five stars from the second place Seahawks, 3 from the champion Marysville Jrs., 2 each from the Zeros, Isleton, and Panthers, and 1 each from the Thunderbolts, and Midgets placed on the official Junior Football League All-Star first and second teams.

At the end positions, a pair of high-scoring men Mick Tamiyasu, Midgets, and Andy Sugiyama, Seahawks, were tops.

Yorimi Matsumoto, hard working Marysville lineman, and Zero's Takao Honma were standouts at guard.

Ed Yoshikawa, Seahawks ace center, was practically an unanimous selection.

Making up the All-Star backfield are Bob Tomita, of Isleton, Shig Yoshimura, Marysville Jrs., and Masahiro Honda, Zero fullback, who was the top scorer of the league.

NORTHEAST LEAGUE RESULTS

Block 23--15, Block 35--5
Block 22--14, Block 24--10
Block 34--12, Block 36--8

NORTH LEAGUE RESULTS

Block 9--14, Block 73--33
Block 10--10, Block 11--11
Bl. 19 forfeit over Bl. 68
Block 10--12, Block 10--6
Block 9--15, Block 11--12
Block 12--18, Block 28--10

CENTRAL LEAGUE RESULTS

Block 38--28, Block 27--13
Block 38--42, Block 29--0
Scoreless--13, Block 27--6

SOUTH LEAGUE RESULTS

Block 28--43, Block 5--5
Block 57--24, Block 51--5
Bl. 52 forfeit over Bl. 54
Block 53--9, Block 58--4
Block 52--18, Block 57--17
Bl. 51 forfeit over Bl. 54
Block 41--16, Block 50--14

SECOND TEAM

WARD LEAGUES SCORING

NORTH LEAGUE		G	Pts.
T. Ono, Block 9	2	2	24
N. Kono, Block 10	2	2	18
G. Mano, Block 73	2	2	12
O. Hamatani, B. 10	2	2	12
CENTRAL LEAGUE			
A. Noda, Block 38	2	2	18
B. Watanabe, B. 38	2	2	18
K. Tokuyoshi, B. 28	1	2	16
M. Ogata, B. 28	1	1	15
A. Miura, Bl. 38	1	1	14
NORTH-EAST LEAGUE			
R. Iwata, Bl. 36	1	1	8
T. Hosokawa, B. 23	1	1	8
SOUTH LEAGUE			
Miyazaki, Bl. 57	2	2	15
Hirai, Block 57	2	2	12
H. Hamamoto, Bl. 41	1	1	9
Matsui, Bl. 57	2	2	8

Page 4 Monday, Dec. 21, 1942

TOMORROW'S STARS PLAY IN WARD CASABA LEAGUES

Time was when the young boys watched the older ones play basketball in envy and admiration. But now with the beginning of the ward basketball leagues, they had come into their own and they just say, "We can do anything that the older guys do."

Proof that they can do anything was proven in the first week of play when everything from overtime games to massacres were witnessed. And in the shooting department the youngsters, all 13 and under, didn't do so bad either. One player sports a 12 point average, while 3 have a 9 point average per game.

They are all stars in the making and in a few more years they'll be targets of admiring glances by the basketball fans.

Ward teams play two halves of 16 minutes running time each.

Worst beating of the week and one for the books was the one handed to Block 29 by Block 38. Score 42 to 0.

The two overtime games were between Block 75 and 9, and Block 41 and 50.

WARD STANDINGS

NORTH LEAGUE				NORTHEAST LEAGUE			
	W	L	Pct.		W	L	Pct.
Block 10	2	0	1.000	Block 23	1	0	1.000
Block 9	2	0	1.000	Block 22	1	0	1.000
Block 19	1	0	1.000	Block 34	1	0	1.000
Block 12	1	0	1.000	Block 31	0	0	.000
Block 68	0	1	.000	Block 35	0	1	.000
Block 20	0	1	.000	Block 24	0	1	.000
Block 73	0	2	.000	Block 36	0	1	.000
Block 11	0	2	.000	Block	0	0	.000
SOUTH LEAGUE				32-53 #	#	Withdrawn	
Block 52	2	0	1.000	CENTRAL LEAGUE			
Block 51	2	0	1.000		W	L	Pct.
Block 41	1	0	1.000	Block 38	2	0	1.000
Block 53	1	0	1.000	Block 28	1	0	1.000
Block 58	0	1	.000	Scoreless	1	0	1.000
Block 50	0	1	.000	Block 27	0	1	.000
Block 54	0	2	.000	Block 29	0	2	.000
Block 57	0	2	.000				