

TULE LAKE DISPATCH DAILY

Volume 6 No. 24

Newell, California

Friday, August 13, 1943

ADVANCED AID COURSE SET

An advanced course in First Aid will be taught beginning Monday, August 16, in building 6617-C, according to Miyoko Abe, First Aid Instructor.

This course will be designed for those who have just completed the Standard course and desire more instruction and practice in practical problems, and for those who took the Standard course sometime previously and desire to bring their knowledge up-to-date.

New courses consist of five two-hour periods and the textbook used will be the American Red Cross First Aid textbook.

An advanced certificate will be issued to those satisfactorily completing the work.

All those interested may sign-up Monday morning from 8:30 a.m. in 6617-C.

WANTED

3 competent Japanese translators wanted who can translate stories in English to Japanese.

IN NEW YORK AREA

FIND JOBS AFTER ARRIVAL SAYS OLDS

"Because there are many attractive job opportunities in the Eastern states, persons who are interested are invited to come to New York, Boston and Philadelphia and stay in hostels or private homes and find their job after arrival," stated Charles Olds, representative of the Eastern states, including New England, New York, Delaware, New Jersey, parts of Pennsylvania, Maryland and Virginia.

Mr. Olds was born in Japan and having lived there for some 15 years, he is able to speak a little Japanese. His mother was also born in Japan.

MAIL ORDER DEPARTMENT DISCONTINUED AT CANTEEN

EFFECTIVE MONDAY, AUG. 16

From August 16, the entire Mail Order Department will be discontinued, and this will include the closing of all mail order service at all canteens.

Heretofore, since the discontinuance of Montgomery Ward orders, at their request, only Sears Roebuck & Company services were being continued, but from August 16, the Sears

More Vegetables Are Harvested

With the warm weather continuing, vegetables at the farm have been harvested in large quantities, both for this center and other relocation centers. Starting Monday, August 9, the crops being harvested for this week are as follows: 962 sacks of turnips; 995 crates of green onions; 1300 crates of spinach; 705 hampers of peas; 270 crates of nappa; 250 crates of lettuce and 5000 lbs. of new potatoes.

Contact John D. Cook, Reports Office.

orders will also be closed.

However, all claims for adjustments will be accepted as usual for transmittal at Canteen #4 mail order department.

Father Dai Back From Journey

Father Dai, a prominent community leader of Tule Lake, returned on August 10, from an intensive study of the resettlement program. His journey took him to some of the largest cities and farm areas in the United States.

Some of the cities which he visited were Denver, Chicago, Kansas City, St. Louis, Cleveland, Detroit, Ann Arbor, St. Paul, Madison, Minneapolis, Superior and Columbus.

The purpose of his trip was to study how the resettled nisei are readjusting themselves to their new environments and jobs. He also investigated future possibilities of resettlement. His study proved

DEADLINE TO REDEEM SCRIP

Records of the Co-op show that there is still a substantial amount of unused scrip outstanding.

The Board of Directors at its last meeting felt that every opportunity should be given to members to redeem unused scrip on hand. Notice is hereby given that August 25, 1943, will positively be the last day on which unused scrip will be redeemed by the Tule Lake Co-op at its Business Office, Whse. #351.

After such date, any funds remaining in the scrip liability account will be transferred to the reserve fund and the account closed.

VISITOR

Lester T. Reabe, head of the Education Department in Washington, visited the project yesterday. He met with the individual staffs of the faculties, and left the project last night.

that opportunities in farming and rural life are great.

"Up to this time there have been relatively few people coming to this area from the centers, therefore, the field is wide-open and there is every prospect of securing a job upon arrival. It is often easier and more satisfying to make one's own interview. Very often, there are disappointments when commitments are made before reaching one's destination."

Mr. Olds wishes to emphasize, however, that although his advice is for a person to come directly to the East without a specific job offer, there are a consid-

(Continued on Page 3)

Introducing

Ray D. Johnston, project director of the Rohwer Relocation Center, is 45 years old, a native of Arkansas and a veteran of the first World War. He received his Bachelor of Science degree in Agriculture from the University of Arkansas in 1921 and spent the next four years in county agent work and farming. Going back to school he received a degree of Master of Science in Agriculture from Iowa State College at Ames, Iowa, in 1926.

After finishing school Mr. Johnston was engaged in construction work for nearly three years, and in agricultural extension work as county agent, in several Arkansas counties, for more than six years. He was employed in the State and Regional offices of the Farm Security Administration from 1935 to 1939. During this period he was assistant state director and assistant chief of the Tenant Purchase Division. In March, 1939, he became community manager of a Farm Security project at Dyess, Arkansas. He remained there until July, 1942. The Dyess colony was a farming project comprising more than 15,000 acres, and 267 families farmed there. In July, 1942, Mr. Johnston became director of the Rohwer Center.

Mr. Johnston is married and has two boys, ages 3 and 6 and one girl, 9 years old. His hobbies are hunting and fishing, but he says both have been sadly neglected since he has been at Rohwer.

Quiet and slow of speech, Mr. Johnston has the respect and confidence of all who work with him. One evacuee said, "Mr. Johnston always finds time to talk to us about our problems, he is very sympathetic and understanding, but he is conservative and we know that he will never promise us more than he

HELEN KELLER SENDS MESSAGE TO HANDICAPPED STUDENT HERE

(When the students of the school for handicapped children in this Project informed Miss Helen Keller that they had decided to name the school in her honor, Miss Keller wrote the following letter to Hannah Takagi, one of the students and spokesman for the group.--Editor's note)

Arcan Ridge
Westport, Conn.

Dear Hannah,

How I love your beautiful, sweet letter and the love that made you write it! Truly it is wonderful that you and the children at the Tule Lake School should think so kindly of me, a stranger, when you must miss your homes and many other things dear to you.

I shall never forget the tribute you have paid me --giving my name to the Tule Lake Project. I am glad of the chance that the children there have to learn to read books, speak more clearly and find sunshine among shadows. Let them only remember this--their courage in conquering obstacles will be a lamp throwing its bright rays far into other lives beside their own.

Often I think of the marvelous, artistic, poetry-filled Nippon I knew and loved. Always I am grateful to all the people there--blind and seeing, deaf and hearing, great and humble, who showed me every kindness and the most touching hospitality. War, change and sorrow cannot take from us anything really noble, gracious and helpful in our lives.

You live in golden California where I have spent many of my happiest days. I live here in New England where the winters are cold and skies gray, but how lovely the springs are when the birds return from the South, and the old stone walls, pastures and woods burst into rich bloom! I wish I could show the children the garden and the rocks around which I work from half-past five until breakfast, weeding, raking up leaves and clipping grass. The fragrances from roses and evergreens make me feel that I truly see, the morning peace and the sweet, quiet earth bring courage when I need it for tasks hard to accomplish.

With best wishes for the children in their studies and victory over limitation, and with warmest thanks for writing to me, I am,

Affectionately your friend,
Helen Keller (Signed)

FOOD DELIVERY TRUCKS MADE

The new house-like creations built on the beds of some trucks are used for the delivery of food by the mess management.

In all, there are four of these so-called moving houses which have been built by the Construction Department and painted by the Motor Pool.

can give." A former associate gave an excellent one-line description of him when he said, "He is a cool and level-headed administrator, not easily swayed by pressure groups."

DR. OPLER SPEAKS ON ASSIMILATION

On Sunday, August 8, Dr. Marvin Opler spoke to the CYF on the topics "Youth and Assimilation" and "Importance of Assimilation to the Nisei."

The reason for the inauguration of such structures is to insure the protection of the food from dust, sunlight and other foreign matters injurious to the food. Another reason is that with the rear opening and two side doors, the men can move the food more easily, which is an added convenience.

RELOCATION

MANY JOB POSSIBILITIES
IN LARGER CITIES IN EAST

(Continued from page 1)

erable number of offers in various types of work. He will be glad to discuss this with anyone wishing further information.

When asked to describe some characteristics of the Eastern States as well as the job possibilities, Mr. Olds replied, "Anyone desiring city jobs will find most of the opportunities in Boston, New York, Philadelphia and Washington. There are also some farming possibilities, truck and poultry farming and many domestic opportunities, including some for couples or families."

"New England is the oldest part of the country with hilly, fertile lands scenically very similar to Japan. The climate is rather cold in the winter and not too warm in the summer. Farming possibilities are great in dairy, truck and fruit growing sections. There are many industrial jobs paying 65 cents per hour for inexperienced workers, also for hospital work, and excellent domestic offers paying up to \$150 a month for couples and \$10 to \$15 a week for single persons."

"New York being the largest city in the world, it is extremely cosmopolitan, densely populated with representatives of almost every race. New York is the cultural center of the world, the center for practically every opportunity, and housing is easier to secure than in any other large city in the country. There are approximately 2,000 resident Japanese in New York, and two Japanese churches. Jobs are open for nursery and greenhouse workers, beauty operators, seamstress and needle trades workers, laundry workers, opportunities for practical nurses' training, pharmacists, auto mechanics and office workers."

"Philadelphia, the headquarters of the Friends Service Committee, is a friendly community where a great deal of hospitality work has been done. Temporary housing is assured for anyone relocating to this city. Those desiring domestic work will find splendid opportunities. There are several industrial jobs available from \$25 a week and up, several openings in hospitals and also openings for office workers."

Colonists are urged to see Mr. Olds at Placement-1208.

THE OREGONIAN

PUBLICIZES THE EVACUEES

In the August 10 issue of the Oregonian, adjustments and resuming normal living outside the relocation centers. Of the 110,000 in the transported group, here are typical cases among those who have been already trained or re-located in a diversity of employments. Two-thirds of total number were born in this country, more than half of them are Christians."

"Under the program of the war relocation authority, persons of Japanese ancestry, moved inland from the Pacific coast at the war's outbreak, are now making

AT PLACEMENT

...1 chimney sweeper
...1 auditor
...1 dept. secretary
...5 typist-clerks

JOBS..

...25 nisei young men and women wanted for exceptionally fine opportunities at Camp Carson, Colorado Springs, Colorado.

...6 young nisei men wanted at once for good jobs at kitchen duty at the University of Colorado. Here is an opportunity for those seeking education in friendly and pleasant surroundings.

...6 nisei men wanted for kitchen help at Ft. Warren, Laramie, Wyoming. Desirable location.

For further information contact O. Leon Anderson at the Placement Office, 1208.

CHICAGO OFFERS

...seven job offers for domestic workers. Salaries from \$10-\$21 per wk. and \$100 per mo. for couples.

...2 experienced men for growing gardenias and 2 men experienced in growing roses. 70¢ per hr. and free housing. (C. Haussermann Co.)

...18 day workers for heavy work at 50¢ per hr. plus overtime.

...a camp cook at 35¢ per hr. plus room and board.

...2 truck drivers at 60¢ per hr., room and board included.

...80 men for cutting rough wood and peeling. (Bonifas Lumber Company)

...a truck farmer at \$90-\$100 per mo. plus room and board. (Schneider)

...a family to do farm work at \$100 per mo. plus room and board. (Henderson)

RECREATION, MUSIC
PROGRAMS GIVEN

The High School is emphasizing recreation and music programs at 7108 for its students.

The recreation building is open during the day and in the evenings from 7 to 9 p.m.

Evening camp fire programs, hikes and picture programs are being planned for the second half of the summer session. The second half begins Monday, August 16.

GIRLS VOLLEYBALL RULES

Rule 1. Grounds

1. COURT. The playing surface shall be a rectangular court sixty feet long and thirty feet wide, including outer edge of lines, free from obstructions and having a height of fifteen feet or more which is free from apparatus or other obstructions or projections.

2. BOUNDARY LINES. The court shall be bounded by well-defined lines two inches in width, and which shall be at every point at least three feet from walls or any obstructions. The lines on the short sides of the court shall be termed the end lines, those on the long sides the side lines.

3. CENTER LINE. A center line, two inches in width, shall be drawn on the court immediately beneath and parallel to the net.

4. A line, three feet in length, shall intercept the end line, ten feet from the right back corner, to designate the serving line.

Rule 2. Net

NET. The net shall be three feet wide over all and thirty-two feet in length when stretched. It shall be made of a four-inch square mesh of black or dark brown No.30 thread. The net shall be bound top, ends and bottom with one-quarter inch ma-

FOURTH ROUND MAJOR HARBALL SCHEDULE IS SLATED

Hardball this weekend brings together the co-owner of the undefeated spot in the major league race, Warehouse nine, against the Riverside. Warehouse is led by Spike Muraoka who boasts three consecutive shut-out games.

Hillmen and the Northwest will tangle to take hold of the second place running. The up-and-coming Northwest boys should give the powerful Hillmen a tough tussle, if not to come out on top.

Games this weekend are:

AUGUST 14, 1943

2:00 p.m. Field

Warehouse vs Riverside #1

Isleton vs Courtland #3

AUGUST 15, 1943

Okole House vs Pacers #1

(1:00 p.m.)

Holland vs Marysville #2

(2:30 p.m.)

Northwest vs Hillmen #3

(2:00 p.m.)

West Sacramento-----Bye

Bye

BIG TENNIS SKED

THIS WEEK-END

City champions in both the men's singles and doubles tournaments will be decided over the week-end.

In the singles finals slated for 1:30 p.m., Sunday, James Osuga formerly from Sacramento, California will cross rackets with Sab Maruyama of Medford, Oregon.

This match should be the best of the whole tourney and could easily go into three sets. Both men play a fine all-around game and odds are about even.

In the doubles tournament, semi-finals matches are set for Saturday, beginning at 1:30. Favored to enter the finals, to be played Sunday at 3 p.m., are the teams of Nakao-Nishihara and Maruyama-Nakagiri who are paired against Takemoto-Matsumoto and Osuga-Osuga, respectively.

The champs in each division will receive trophies.

WESTERN LEA. STDS.

TEAMS	W.	L.	PCT.
Pacers	3	0	1.000
Moonshiners	3	0	1.000
W.O.C.	1	0	1.000
Garage	2	1	.666
Broncos	1	1	.500
Peach Bowl	1	2	.333
Hinodes	1	2	.333
Termites	0	2	.000
Tacoma Truckers	0	2	.000
Silver Baron	0	2	.000

nila rope. A double thickness of white canvas, two inches wide, shall be sewed to the top and ends of the net, through which shall be run a wire cable one-quarter inch in diameter. The net shall be tightly stretched by the four corners between walls or uprights which are entirely outside the court, and it shall cross the court midway between the end lines and parallel to them. The cable shall be drawn so as to permit as little sag as possible and the top of the net shall be level and measure seven feet, six inches from the center to the ground. (To be con't.)

AMERICAN & NATIONAL ALL-STARS TO CLASH TONIGHT

PROBABLE STARTING LINEUPS REVEALED

The National and American All-Stars in the Junior League will cross bats tonight at Field 17-26 from 7:00 p.m.

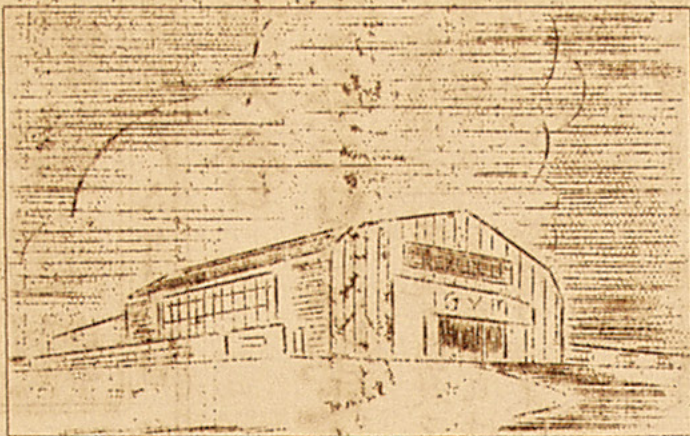
Winner of tonight's encounter will meet the Pacific Coast selections in a later date for the League's All-Star Championship.

The probable starting line-ups for tonight are as follows:

NATIONAL LEAGUE ALL-STARS	TEAM
POS.	
P--K. Togami..TruckersJrs	
C--N. Yasui.....Zeros	
1b-Y. Kumasaki.TruckersJrs	

2b-R.Otsuji.....Zebras	
3b-R.Tekawa.....Unknowns	
SS-H.Kajihara.....Comets	
LF-G.Kamihara.....Blk. 67	
CF-J.Fukai.....Unknowns	
RF-B.Dote.....Hadakas	
RSS-J.Kato.....Zeros	
AMERICAN LEAGUE ALL-STARS	
POS.	TEAM
P--N.Ishimoto....Rattlers	
C--R.Fukushima...Block 42	
1b-H.Kajita....Greenhorns	
2b-F.Hikawa.....Block 36	
3b-T.Ike.....Rattlers	
SS-S.Kajita.....Rattlers	
LF-N.Terada.....Pacers	
CF-J.Takano....Greenhorns	
RF-L.Fujii.....Greenhorns	
RSS-T.Mano.....Shangri La	

HIGH SCHOOL AUDITORIUM DEDICATION PROGRAM SLATED FOR THIS WEEK-END



• ABOVE...High school auditorium which will be dedicated this Saturday afternoon with a ceremony starting at 2 o'clock.

First Project Judo Meet Set For Sunday, Aug. 22

The first project judo tournament is being planned for Sunday, August 22 from 2 p.m. at the new high school auditorium.

LABOR DAY

RAFFLES SOLD

With over \$150.00 worth of prizes to be given away, a huge Labor Day Raffle will be sponsored by the Ward Recreation Leaders.

The first prize is a trunk set, while a suitcase and a night stand are listed as second and third prizes, respectively.

Raffle tickets are now on sale at 5¢ by the members of Recreation Boys & Girls dept. and the Ward Rec Committee.

The tourney will be sponsored by the Adult Social Activities of the Recreation dept. Mr. Harry Mayeda, supervisor of the CAS, will be the general chairman.

The tentative program is as follows:

1. Opening address--Mr. Harry Mayeda.
2. Welcome address--Mr. Y. Tsuchida, judo adviser.
3. Ukemi waza--under 12 years.
4. Randori--under 12 years.
5. Judo matches--under 12 years.
6. Ukemi waza--over 13 years.
7. Randori--over 13 years.
8. Judo matches--over 13 years.
9. Randori--over 13 years.
10. Team matches.
11. Judo exhibitions.

TWO DAY AFFAIR TO BE HELD BY CONSTRUCTION DEPARTMENT

SATURDAY AND SUNDAY

Dedication program of the High School Auditorium will be held this Saturday and Sunday, August 14-15 under the sponsorship of Mr. Harry Katsuyama and his Construction division. Mr. Katsuyama, architect and engineer, designed and supervised the construction of the auditorium.

The two-day program is as follows:

SATURDAY

- 2 p.m.--Dedication ceremony.
- 3 p.m.--Nisei entertainment program.
- 7 p.m.--Adult entertainment program (for wards 1, 5 & 6.)

SUNDAY

- 7 p.m.--Adult entertainment program (for wards 2, 3, 4 & 7.)

With Harry Mayeda as the chairman, the dedication ceremony will be held on Saturday from 2 p.m.

Speakers on the program are Mr. Raymond Best, project director, Mr. Martin Gunderson, superintendent of schools, and a representative of the Construction dept.

The nisei entertainment program will follow the dedication ceremony with Miss Alice Mayeda as chairman. The cream of nisei entertainers will appear on the show.

Adult entertain-

MOVIES

"The Flame of New Orleans" will be the new movie to start showing on Monday, August 16, according to the Recreation motion picture dept.

Other movies now showing throughout the project are "I Wanted Wings" and "The Count of Monte Cristo."

The show-goers are asked to observe the "no-smoking" rule.

The adult entertainment program will be held in the evening from 7 p.m. Odori numbers by students of Misa Bando and Sahomi Tachibana, and a classical drama, "Sendai Hagl" will be presented.

For the adult program, those living in wards 1, 5 and 6 are asked to attend the Saturday performance, while a repeat program will be held on Sunday evening for those living in wards 2, 3, 4 & 7.

CONSTRUCTION PROGRAM

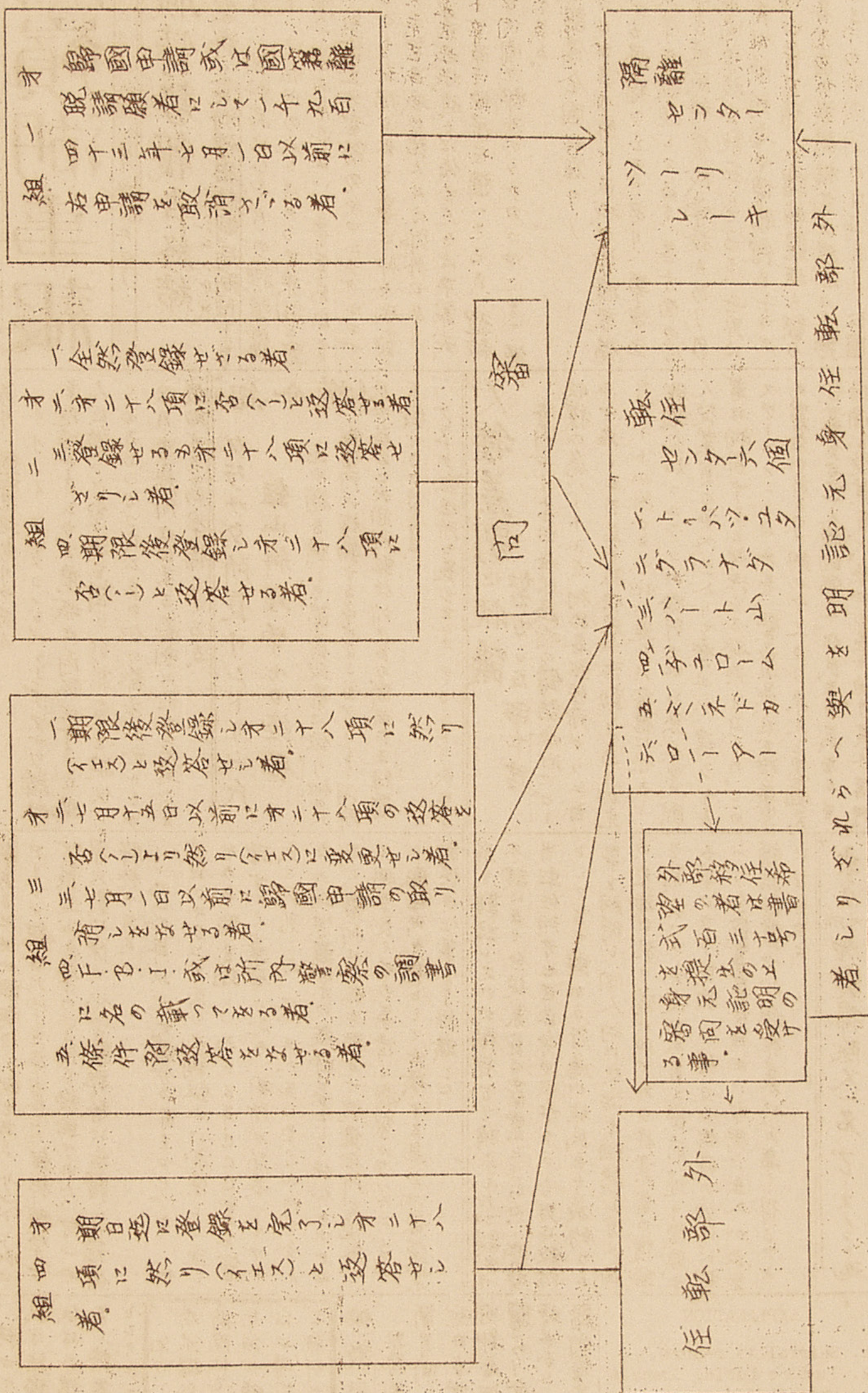
DEDICATION CEREMONY

Saturday, August 14	2 p.m.
Chairman.....	Mr. Harry Mayeda
"God Bless America".....	Group
Opening address.....	Mr. Harry Mayeda
Poem.....	Mr. Katagiri
Musical selection..	High school orchestra
Speaker.....	Mr. Raymond Best
Vocal solo.....	Miss Fumiko Yabe
Speaker.....	Construction dept.
Speaker.....	Mr. Martin Gunderson
Violin solo.....	Mr. Yuichi Takahashi
Presentation of auditorium.....	Construction dept.
Musical selection..	High school orchestra

NISEI ENTERTAINMENT PROGRAM

Saturday, August 14	3 p.m.
Chairman.....	Miss Alice Mayeda
Ballroom trio.....	Robert Abe, Mickey Kaihara, Keiji Yamasaki
Piano solo.....	Miyoko Inouye
Acrobatic solo.....	Toshi Ikeda
Clarinet solo.....	Miki Tanaka
Toe tap.....	Keiko Onouye
Skit.....	Drama dept
Vocal solo.....	Sumiko Takenoto
Ballet.....	Kayoko Uchihara
Hawaiian strings.....	Tak Ota
Piano solo.....	Haruko Satow
Tap.....	Lucille Tanaka

隔離遂行計畫表 (繰訂正済)



才 歸國申請又は国籍離
脱申請者にして一九九百
四十二年七月一日以前に
右申請を取消せる者。

一 全然登録せざる者。
才 才二十八項に否(し)と返答せる者。
二 登録せるも才二十八項に返答せ
ざりし者。
組 四 期限後登録し才二十八項に
否(し)と返答せる者。

一 期限後登録し才二十八項に然り
イエスと返答せし者。
才 七月十五日以前に才二十八項の返答を
否(し)より然り(イエス)に変更せし者。
三 七月一日以前に歸國申請の取り
消しをなせる者。
組 四 下(下)イ。或は所内警察の調書
に名の載つてゐる者。
五 条件附返答をなせる者。

才 期日迄に登録を完了し才二十八
四 項に然り(イエス)と返答せし
組 者。

前の発表に重大な誤謬がありましたから
訂正の上再び掲載致します。