

THE TULEAN DISPATCH

Vol. 7 No. 10

Newell, California

Tuesday, Oct. 5, 1943

UNAUTHORIZED MOVEMENTS CONDEMNED

W.R.A. CENTERS, FIRE LOSSES FAR BELOW NAT'L AVERAGE

Property losses resulting from fires at relocation centers during the quarter ending June 30, 1943 were far below the national average, according to a report released today by William E. Hoffman, head of the WRA Fire Protection Section in Washington.

Only 63 fires were reported by the ten relocation centers during the 3-month period, with damage to building, contents, and equipment estimated at \$1,080. A large fire at the Colorado River Project accounted for \$3,000 of the estimated total damage.

"WRA has reduced fire losses for the quarter to less than 9-1/2 cents per cent", Mr. Hoffman stated.

On June 30, the 10 centers had a total of 20 modern fire engines manned by a force of 692 evacuee firemen and fire protection officers.

All evacuee personnel are employed 44 hours a week, thus making the

companies 24 hours a day.

(cont. on page 2)

NEED EXTRA BLANKETS?

"To every individual possessing only three blankets, a fourth will be issued through the block manager's office, after the last incoming train has arrived," reported Lorne D. Huycke, Housing Superintendent.

50,000 Find New Homes in U.S.

More than 50,000 Japanese have relocated throughout the United States during the past year, reported the Seattle Post Intelligencer.

Roberts Cozzens, WRA Field Asst. Director for Calif. and Ariz., stated that less than 50% of the evacuees, between the ages of 18 and 25 will return to the Pacific coast after the war.

Cozzens stated that 50,000 Japanese in this country were "never under the WRA or the army."

Huycke Says Evacuees Jeopardize Welfare of the Community

"Unauthorized movement by center residents are jeopardizing the general health and well-being of the Tule Lake colonists, warned Lorne Huycke, housing superintendent."

Huycke stressed the view that the order is intended to protect the interests of all the colonists and not a ruling invented for the pleasure of the housing staff.

Continuing Huycke exclaimed, "Can those who have moved without authorization answer the following questions to their own satisfaction?"

1..."How can we deliver your mail and urgent telegrams from friends and relatives in other projects if we don't know your address?"

2..."How can we advise you that your freight is here from the other project?"

3..."In case some member of your family becomes critically injured and only has a few minutes to live, how can we notify you on time if we don't know where you live?"

4..."How many of you

have moved to apartments larger than justified by the number in your family? Do you realize this means that when the last train arrives, some of the families will be sleeping in the firebreaks, or worse yet from your selfish standpoint, will be moved in with you?"

5..."Do you realize that you are wasting rationed food? The Housing Office reports to Mess Management every day the population (Cont' on page 2)

"SUPT. OF SCHOOLS"

Mr. Kenneth M. Harkness, superintendent of Tule Lake Center schools, arrived here on June 14, 1942. He has held this position continuously except for a brief time when he acted as Assistant Project Director in charge of Community Management. Mr. Harkness has for the past few weeks, been general chairman of the Segregation Committee. He is at present making arrangements for the opening of the schools here at his office in the new high school building.



KENNETH M. HARKNESS

CLINIC SCHEDULE

9-10 a.m. Morn.	Mon. Pedia- trics	Tues.	Wed. Pedia- trics Post- Partum	Thurs. Chest	Fri. Pedia- trics	Sat. 10-11am surgical
1-2 p.m.	Med. E.N.T.	Eye Surgical Pre-Na- tal	Med. E.N.T.	Eye Surgical Pre-Na- tal	Med. E.N.T.	

WELCOME SHOW SLATED BY C.A.

A huge Nisei welcome program is busily being planned by the Community Activities section. This reception will consist of a grand reception ball and a All-Center All-Star cast talent show.

Also being planned is a two days Issei program. Dates for these program will be announced in later issues of the Dispatch.

MORE ON FIRE PROTECTION TOPS IN W.R.A.

(Cont' from page 1)

The excellent record achieved at the centers is particularly impressive when it is realized that all Project buildings are temporary in structure and highly flammable. Fire protection officers at the centers have been handicapped by problems of equipment and apparatus, and more importantly-by the fact that evacuee firemen responsible for the protection of life and property have been inexperienced and have required thorough training and guidance in the use of modern fire-fighting equipment and techniques.

The total population of relocation centers on June 30 exceeded 96,000 persons; building were valued at over \$40,000,000. A city of comparable size, such as Allentown, Pennsylvania, with a population of approximately 96,000, experienced fire losses of \$22, 595 during 1942, with per capita losses estimated at 54 cents.

EX-TULE REV. CALLS MEETING

Native Detroit nisei citizens got together with represented relocated evacuees at a meeting in Detroit, Michigan, called by Rev. Shigeo Tanabe of the Council of Churches to cope with problems encountered locally by the nisei, according to Pacific Citizen. Rev. Shigeo Tanabe is an ex-Tule Lake Project Union Church minister.

Rev. Tanabe recently arrived from Cleveland, Ohio, and he reported that he would confine, most of his efforts toward alleviating the housing situation.

MORE ON

UNAUTHORIZED HOUSING

(Cont' from page 1)
tion of each block. If these figures are wrong, too much food is sent to some blocks and is wasted while others do without. Are you complaining about the portion on your plate?

"Then you will ask, he said, 'What can be done to make moves possible with authorization?' This can be accomplished as soon as all incoming movements are completed, and Housing Adjustment Board established to consider all requests for moves. Every effort will be made to appoint men to this board who have the respect of the majority of the residents of this project. Moves will be approved only on the basis of rules which have been drawn up on the principle of fairness to the majority," Huycke declared.

"Only in this way can we use our housing to provide satisfaction for

SEGREGANTS' MAIL TO BE DELAYED

Until the housing department is able to complete an accurate list of all people who have arrived in this project within the last few weeks, all newcomers, all mail of whatever nature--letters, newspapers, magazines, packages--will not be distributed until such time as the correct address of all people recently arrived here can be completed.

CO-OP SHOE REPAIR SHOPS

The Co-op shoe repairing shops are located at the following places:

- #1 Repair Shop-Block 41
- #2 Repair Shop-Block 72

AT PLACEMENT

- ...two experienced watch repairers
- ...ten licensed barbers
- ...licensed beauticians
- ...one auto mechanic with tools

NOTICE

The Community Analysis Department has transferred from 801-A to 1308-D, announced, Dr. Oupler.

the greatest number. All of you will see the necessity of putting a stop to this undesirable development at once," concluded the superintendent.

SPORTS

ZEPHYRS TOPS MOONSHINERS

The highly touted Sacramento Zephyrs scored a 47 to 20 victory at the expense of the Moonshiners last Sunday night.

Hitoshi Ota of the Zephyrs enjoyed a field day as he scored 25 points before the final whistle. The Moonshiners were led by Aki Kushida with 13

counters.

The Zephyrs have averaged 65 points per game for their six tilts while keeping their opponents to an average 13 baskets per game.

Managers are again requested to hand in score sheets at the Tulean Dispatch office, 1608.

70
**Oct. 15 Deadline
 For Packages
 Sent Overseas**

Christmas packages to soldiers overseas must be sent by Oct. 15, according to United States Army Postal Service bulletin.

The packages must not weigh more than five pounds. They must not exceed 15 inches in length or 36 inches in length and girth combined.

Also it will be necessary to wrap the parcels securely and to address them correctly, including rank and full name, serial number, name of outfit, A.P.O. number and postmaster at the port of embarkations.

Fvt. John Doe
 Co. B.-435th Engineers
 A.P.O. 4567
 c/o Postmaster
 San Francisco
 California

**SHELBY NISEI REPORTED FIGHTING
 IN SOUTHERN EUROPE**

Reported in action against the Germans in the Italian front are the Nisei soldiers from Camp Shelby, Mississippi. According to the news broadcast the Nisei doughboys are doing exceptionally

well under enemy fire.

While in Camp Shelby the Japanese-Americans were known to be one of the toughest outfits in that vicinity. General Sherwood Dixon of Dixon, Ill., swears that the Nisei boys have the toughest battalion "south of the north pole".

Colonel James M. Handley of Mandan, S. D., a battalion commander, expressed his opinion of the combat team as:

"I'll take these men into battle without hesitation when the time comes. They're topflight soldiers with a topflight cause. And most of them are honestly worried there won't be enough war to go around."

Departees

MONDAY, OCT. 4

June Kimiko, Harry Inosuke, Cheryl Iwai; Spokane, Washington; Shimi, Masami, Sumiko, Masao, Minoru Mitsui; Sanichi, Daisy Kanda; Espanola, Wash.

TUESDAY, OCT. 5

Arthur Shiono, Heart Mountain, Wyoming.

- WANTED -

WANTED: Typewriter. Contact Blk. 6 Block Manager's Office.

UNCLAIMED MAIL

LETTERS FOR: Marion Aorio, Gloria H. Sakata, Mr. Toshihiko Ono, Helen K. Taniguchi, Miss Yoneko Todoraki, Mrs. Iseio Hashimawari, Koye Sato, Walter J. Okinski, Mr. Mitsuo Matsumura, Miss Hedn Kenugi, Mr. Kazuo Nishimoto, Mr. Fusataro Nakamoto, Mr. S. Wada, Mr. Setsujiro Uno, K. Kayahara, Esq., Miyo Miyoshi, Yukiye Ikeda, Rev. & Mrs. Onoyama, Mr. Kuni Seki, Ochiro Nakayama, Miss Suma Tsuboi, Mr. Y. Nomi, Takeo Hawada, Mr. Toshiro Sato, Miss Hisa Nishimura, Fred I. Otsuka, Makoto Kobukata.

POST CARDS FOR: Ruth Yamamoto, Mr. Sasaki, H. Nishguchi, June Ishida, Jack Isida.

C.O.D. FOR: Miss May Miyama, Kaoru Murauka, Masami Kazama, Mitsu Nakahara, Audrey Nagatani, Louse Tarogaki, Hiro Masuoka, Grace Yamasaki, Mr. Masao Konya, Harry Eloisui.

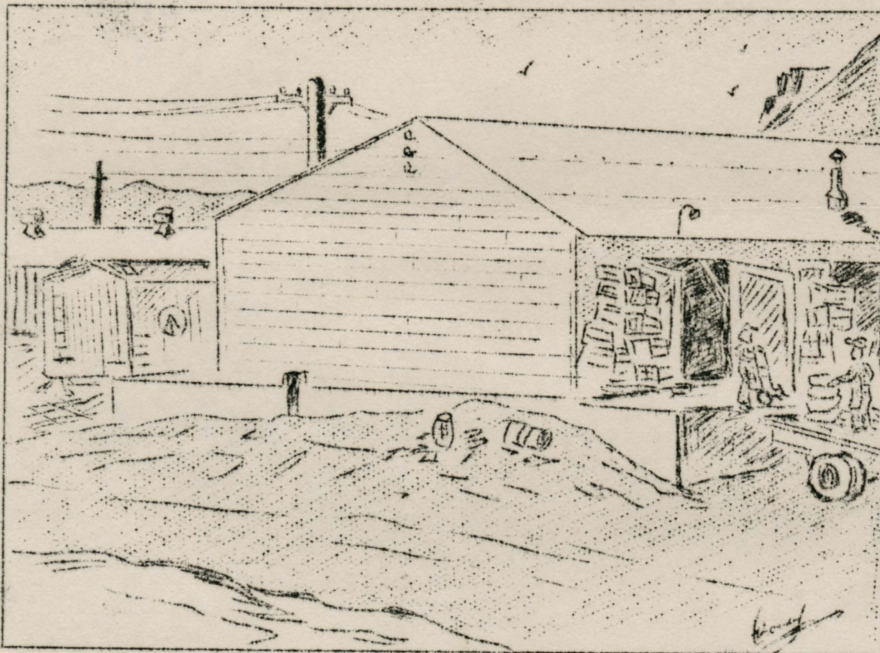
PARCEL POST FOR: Tamaichi Yuaka

NEWSPAPERS FOR: Mr. Leo C. Oku, Waichi Takeguchi.

- THANK YOU -

We wish to express our deepest gratitude to all who attended the funeral of our son. Thank you.

Yamaoka family
 7414-B



Packing Shed-Depot For Vegetables

One of the busiest places on the project at this time of year is the packing shed. The large green building on the railroad siding on the southwest corner of the project fairly hums with activity when the farm vegetables are brought in for packing and shipping to other projects.

As truck loads of fresh, crisp vegetables arrive, they are unloaded by men and washed and trimmed by women who are experts in this kind of work. Next, the vegetables are packed and iced by men who are experienced in packing vegetables. The covers are then nailed on the boxes and the boxes rolled along the automatic rollers to the doors of the refrigerated railway cars.

Some vegetables are washed and shipped in sacks, such as turnips, carrots, potatoes, etc., and are then stacked in refrigerated cars for shipment to other projects.

Sixty-four carloads of potatoes, spinach, turnip-tops, peas, green onions, nappa, beets, carrots and broccoli have been shipped to five other projects,

Letter To The Editor

We who are leaving for the Tule Lake center feel that as segregees, we are demonstrating our loyalty in a difficult if not painful manner. Basically, none of us wish to be mistreated. Beneath our physical exterior we have a firm belief that we, too, are upholding those edicts of the American Constitution by protesting their misinterpretations by the government agencies.

We do not wish to see the failure of an American ideal, but evacuation brought just that. It involved our homes, our fortunes and the lives that we live as has been shown since the onset of the forced migration.

Our fault is that we have chosen the hard way without understanding the immediate consequences in our own lives, because we had a deep feeling of injustice without being

factually analytical of the situation on hand.

No, we do not believe that any segregee complains of those who have answered otherwise. There is rather a sense of kinship in our instincts of what is justice and what is not justice.

An ideal has been distorted, but the segregees and all of us are upholding it with uncomplaining patience.--From "Letter to the Editor," ROHWER COMPOST

MANZANAR PRIVATE BUSINESS MUST CLOSE

Project Director Ralph Merritt has asked the elimination of private enterprises, according to the Manzanar Free Press.

Merritt stated that it is unfair to allow any one in the center to profit at the expense of the rest. The Co-op, being the only enterprise, has taken the responsibility of providing goods and services which are needed by the residents and not furnished by the WRA.

MINIDOKA IRRIGATOR

3 Youths Are Injured In Hunt Automobile Accident

Three Hunt youths were injured in a truck accident about 5 p.m., on Sept. 23, in the warehouse area.

Noboru Izumi, Blk. 42-12-C, was the most seriously injured of the three. He suffered severe lacerations of the right ear, fracture of the right arm and general body bruises. Escaping with minor cuts and bruises were Henry Ueda, Blk. 31-4-G, and Kiyoshi Shimizu, Blk. 19-5-C, both of whom

escaped with minor cuts and body bruises.

Although full details are not available as yet, it was reported that the accident occurred when a truck backed up and crushed the three youths against a warehouse wall.

MANZANAR FREE PRESS

TOFU PRODUCTION PROCEEDS UNDER SCHEDULE IN AUGUST

As in many other centers, Tofu production is

camp will be surrounded by a double fence, spotlights, watchtowers, and armed sentries.

The external guard of Tule Lake will be entirely in the hands of the army; the center and its residents, however, will be under WRA administration. The project will have its own Internal Security, activities, welfare, education, hospital, etc. The only difference between the internal operation of Tule Lake and that of relocation centers will be lack of community government at Tule, Wolter stated.

proceeding in Manzanar under schedule, according to August's monthly report.

Eight evacuee workers are employed in this division; they made approximately 6870 cakes of tofu during August. Cleanliness and sanitary conditions are paramount at the Tofu factory.

The report also showed that a new shoyu formula which uses glucose as a substitute for sugar is being used as a result of a test by various chefs.

Officer Describes Tule Lake Center

Lundgren T. Main, chief procurement officer of Heart Mt., who returned with the first trainload of incoming Tuleans has given a vivid account of his recent trip.

He was impressed with the fertility of Tule Lake soil which is composed of volcanic ash.

Tule Lake boasts a

4,000 acre farm program. Despite the shorter growing season, the farm produces over \$1,000,000 in crops.

Tule Lake's livestock program is on a greater scale than that at Heart Mt. Hogs number approximately 2,500 and there are nearly 30,000 chickens.



GILA NEWS-COURIER

BLOCKS IN TULE WILL NOT BE FENCED OFF - WOLTER

鶴嶺湖事報

十月五日 少晴
オレニニ号

なほ止まぬ無届移転

速かに中止せよ

住宅部長所民の協力要望

最近無届にて移転する人々が多く住宅部では非常に困惑してゐるが、ハイク住宅部長は本日次の如く所民の協力を要請した。

住宅部の許可なしの移転は速かに中止してまうたい。この規則は住宅部員が自己慰安のために制定したものでなく、所民全体の利益のためである。勝手に移転した人々は次の問に答へて見てください。

- (一) 郵便物や電報はどうして配達出来るか。
- (二) 外部からの訪問者はどうして通知しますか。
- (三) 家族の着がタクシデントに違つて危篤の場合はどうしますか。
- (四) 家族の救済に大きなサポートへ移転した後から来た人々が住宅部が無い場合はどうでせう。
- (五) 住宅部の報告が各グラウラへ食料が配給されてゐます。勝手に移転し食物を無駄にしてゐる事を考へて存知ですか。
- (六) 無届で移転して貰ふの気持はどうです。今後何ヶ月のその気持で生活せねばならぬのですか。

給されてゐます。勝手に移転し食物を無駄にしてゐる事を考へて存知ですか。

(六) 無届で移転して貰ふの気持はどうです。今後何ヶ月のその気持で生活せねばならぬのですか。

かゝる状態を約二万人の住宅を取扱ふのは外部から見ると容易ではありません。新入者の移動完了後、住宅調整部を新設して最も公平に調整する方針であり、

在米日系市民約五萬

内四割は外部へ移住

戦後も沿岸帰還は望み薄

キヤリフォルニア並にアリゾナ州のWRM地方次官コーバート、コロンビア九月九日、北米日系市民は約五萬に於て日系米人は

何き次の如く發表をなした。

現在米國には約五萬人以上の日系米人が居住してゐるが、その中約四万パーセントはWRM管理下に解放されて自由の身となつてゐる。又転任所の外部には今迄は陸軍とかWRMの管理下には置かれなかつた。此等二万人の二世が他の米國人と同じ様な生活を望んでゐる。此等二万人の四、千八百より二千五百迄の約五万パーセントは戦後太平洋沿岸へ歸還すると推定されるが、西部に於ては好機會が少いと考へてゐる。関係は、大抵数は他州へ再定住するであらう。

郵便物

住宅部では完全な所民住所録が編纂出来るとして新入所民は郵便物(書翰新聞雑誌)及小包類を郵便局の指定された特

別窓にて受け取る様要請して居る。クリニツク

診察時間

今後二週間のクリニツク時間
時、十時、十一時、午後一時、二時迄で診察科は左の如し。

- ① 午前小兒科、午後内科
- ② 午前耳鼻咽喉科
- ③ 午前眼科、外科、産科
- ④ 午前小兒科、婦人科
- ⑤ 午後内科、耳鼻咽喉科
- ⑥ 午前外科、産科
- ⑦ 午後眼科、産科
- ⑧ 午前小兒科、午後内科
- ⑨ 午前耳鼻咽喉科

- EXPLANATION
1. Unauthorized moving
 2. 40% nisei released from WRA
 3. 3 blankets per person
 4. New residents mail
 5. Clinic schedule
 - 6,7. Acknowledgements

會葬御礼

故山因義雄葬儀の際に多数御金葬下され御厚情の程深く感謝致し候。御厚情の程深く感謝致し候。御厚情の程深く感謝致し候。

十月三日 義山岡喜大 親戚一同

會葬御礼

故大進藤友一様葬儀の際に能く御厚情の程深く感謝致し候。御厚情の程深く感謝致し候。

一九四三年九月廿日 義山 親戚一同 遺族親戚一同

日本を過少評價は標示物

飛行機、建艦能力は倍加

上院戦線視察團統後發言

九月十九日のA.P.電に依れば三名の上院議員は二週間、互に戦線視察より帰還し、統後國民の日本國實力の過少評價に對して警告を發した旨を報告してゐる。

シヨジヤ州民衆會堂に於て、共和黨は濠洲に於ける將軍の聲明を引用し、

九月十九日のA.P.電に依ると、日本の飛行機製作能力は一月五箇台と推定されてゐたが、事實は一月十台の製作能力を有して居り、又建艦能力も従前の建造率に倍加してゐる旨を發表し、ブルス

以上院議員(イン州)の聲明は濠洲に於ける將軍の聲明を引用し、

九月十九日のA.P.電に依ると、日本の飛行機製作能力は一月五箇台と推定されてゐたが、事實は一月十台の製作能力を有して居り、又建艦能力も従前の建造率に倍加してゐる旨を發表し、ブルス

西南太平洋統帥部は印度ビルマ戰線司令官マクラント、バタン郷に從属せられたらうと言及し、高氏はロソチ上院議員(ワヤセセソト)に於いて前線將兵運は陸海軍首の樂觀

巧妙にて正確な 日本空軍の新戦法

ジヨインペン号撃沈さる

過日、米國海軍輸送船ジヨインペン号はワケルキヤナル島の基地に於て日本空軍に撃沈されたが、その時日本軍の用いた戦法は驚くべき巧妙であり、又正確であつた。

この戦術に對して、既に述べられた日本軍爆撃機の中、一機は被撃の最中、燃焼してゐた。

然るに我々の多くは、この責務を怠り、彼等の將來を考へて見ると、戦慄せざるを得ない。

先づ高度用爆撃機が三台、西部より飛来したので、地上部隊は探照燈、高射砲、夜間戦闘機を集中して防戦したが、爆撃機は一台低空飛行で輸送船に向つておたのを探知出来ず、あつた時は既に船は燃焼してしまつた。

日本側交換船 「帝亞丸」

サイゴンを出帆

A.P.通信社が接受した東京放送に依れば、米國人、カナダ人、及び南米ナリ國人を乗せた日本側の交換船「帝亞丸」は去る九月三十日、印度支那サイゴン港を出帆、米國側の交換船「リムホルム」号と交換が

行はれる印度のホルトカル領をアマガブに向つた。

二世戦闘部隊
イタリイ戰線、ドイツ軍と交戦中、米國の内ラデオ放送に依れば、ミシシッピイ州、エールビー兵營で訓練を受けた二世戦闘部隊は、歐洲方面に派遣され、目下イタリイ戰線、ドイツ軍と銃火を交へてゐるが、成績は良く、相當活躍してゐる模様である。

少年犯罪の増加(三)

(沙市P1紙より)

少年の犯罪は十八才以下に多く、少女の方は十九才以下に多くある。即ち二十才以下の少女の檢査率は六四・七、少年少女年齢十七才の檢査率は七・七、増加した。即ち夜間未下

少年の犯罪は十八才以下に多く、少女の方は十九才以下に多くある。即ち二十才以下の少女の檢査率は六四・七、少年少女年齢十七才の檢査率は七・七、増加した。即ち夜間未下

少年の犯罪は十八才以下に多く、少女の方は十九才以下に多くある。即ち二十才以下の少女の檢査率は六四・七、少年少女年齢十七才の檢査率は七・七、増加した。即ち夜間未下

- EXPLANATION
1. Senators report from battlefield.
 2. Juvenile crime increases.
 3. New aerial trick.
 4. Japanese exchange ship left Indo-China
 5. Nisei soldier in Italy