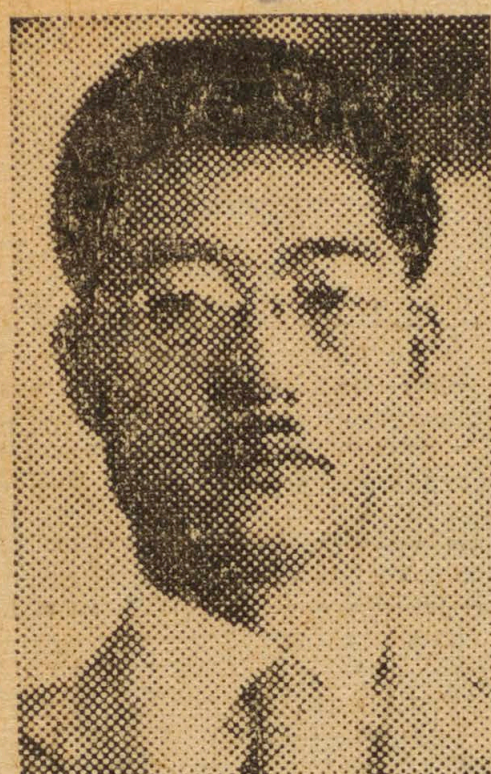


# Dewa Retires After 30 Years With Hospital

*MAY 18 1940*  
Completing exactly 30 years of service with the Japanese hospital, Isoto Dewa, superintendent, formally retired from his work at a brief ceremony held yesterday afternoon in the assembly hall of the nurses' home.

Plans for his retirement were first announced last May, and Kensaku Tsunoda, who succeeds him as superintendent of the hospital and



**Kensaku Tsunoda      Isoto Dewa**

director of the Japanese Aged Home, began his duties as acting superintendent and acting director on June 1 last year.

At yesterday afternoon's ceremony, Dewa was presented with a formal letter of appreciation and gift by the Japanese Benevolent Society of Hawaii, which administers the hospital and the aged home, and also other gifts by his fellow employes.

Born in Hiroshima, Japan, on September 18, 1891, Dewa first came to Hawaii in June, 1909. After spending a little over a year in Kau and Pahala on Hawaii, he became connected with the Japanese hospital on May 11, 1911, working himself up to the position of superintendent.

With his retirement from his hospital work, Dewa said that he will devote all his time to the management of the Hawaii Benri Sha, local curio and stationery store, of which he is the principal owner.



### PATTERN 9472

It's fun to "make every stitch she wears", with a Pattern like 9472 for inspiration! Two favorites are combined in one style in this Marian Martin ensemble for a little girl, with both a jumper and a bolero included. The jumper is really a smart suspender skirt, cut in just two pattern parts plus the straps that button-on in front. The jaunty bolero has a choice of long or short sleeves and may match or contrast the skirt. A neat blouse with a small rounded collar and short sleeves completes this vivacious young outfit. A colorful 'nursery' print cotton, or a monotone and plaid wool would be a good fabric choice!

Pattern 9472 may be ordered only in children's sizes 4, 6, 8, 10 and 12. Size 6, jumper and bolero, requires  $2\frac{1}{4}$  yards 35 inch fabric; jumper,  $1\frac{5}{8}$  yards 35 inch fabric; blouse,  $\frac{7}{8}$  yard contrast.

Send SEVENTEEN CENTS in coins for this MARIAN MARTIN pattern. Be sure to write plainly your SIZE NAME, ADDRESS, and STYLE NUMBER.

Send your order to THE NIPPU JIJI, PATTERN DEPARTMENT P. O. BOX 1230, HONOLULU.

JA-P159.004

For LATEST FASHIONS