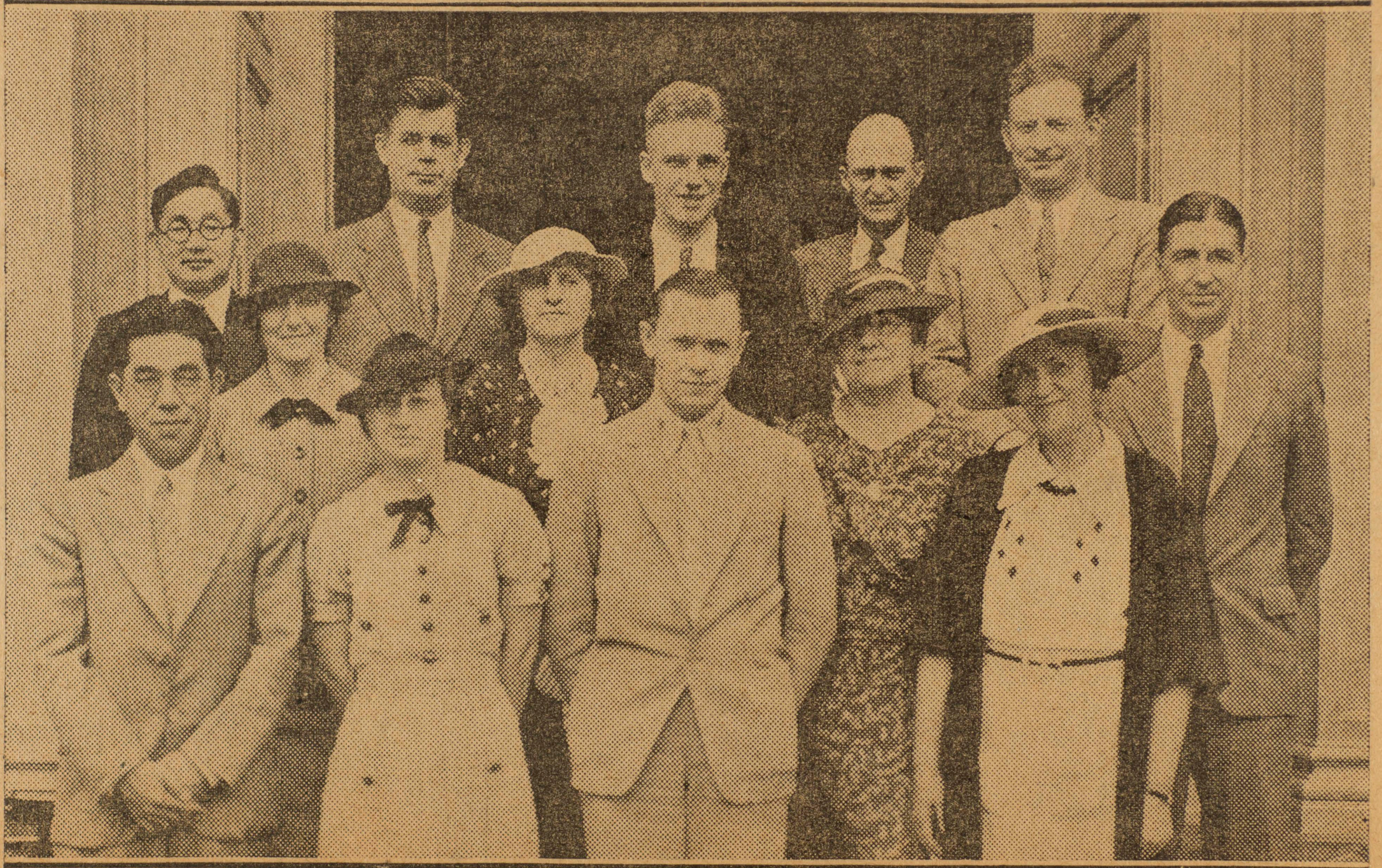


JAN 30 1936

In Charge Of Leadership Training Course



Here are the members of the faculty of the leadership training course opened by the Inter-Church Federation of Honolulu on Monday evening, with more than 100 students enrolled. They are (first row) the Rev. E. S. Fujinaga, registrar; Miss Bessie Rogers, Dr. Walter J. Homan, Miss Elizabeth Harris, dean; (second row) Miss Marian Sargeant, Miss Mable I. Hawthorne, Mrs. S. C. Winne, Lloyd R. Killam, chairman; (third row) Euchio Chang, Carl Anderson, the Rev. Oscar M. Newby, L. E. Eichelberger, and the Rev. F. B. Withington.

JAN 30 1936

FAVORITE TO BEAT

Gives Elks Hard Fought Game

Hilo Champs Not Expected To Win Again

New Japanese Diamond Season Slated to Start Sunday

By MASA HIRAIWA
[Nippu Jiji Correspondent]

HILO, Jan. 29.—All eyes are focused on the Hawaii Japanese baseball league which opens the new season with two games on Sunday. While invariably all of the clubs reported practically the same aggregations that showed during the previous year, indications at present are their showings would be con-

Horiguchi Likely To Take On Joe Velasco In Hilo Fight

Nippu Jiji Correspondence

HILO, Jan. 29.—M. K. Choo, Honolulu boxing promoter, envisions a bright future for boxing in Hilo and intends staging monthly smokers in Hilo regularly from February 15 when he will present his first card, he said on his arrival from Honolulu on the plane this morning.

Choo said he has come to Hilo to complete arrangements for the first show, which, according to him, may feature "Piston" Horiguchi against an opponent he has not yet selected. He said Horiguchi's opponent will depend on the outcome of his match with Young Guildo in Honolulu on February 7.

Choo intimated there is a chance Joe Velasco may be chosen to oppose Horiguchi in Hilo.

He said he has appointed Antone Martin, a well-known local Puerto Rican manager of boxers, as his representative in Hilo.

He is returning to Honolulu by plane tomorrow.

Lihue Japanese Club Awards At Stake Feb. 29

Prizes donated by the Lihue

Britain's New Monarch Ardent Golf Follower

International News Service P267-002