

PACIFIC CITIZEN Published weekly except the last week of the year. 125 Weller St. Rm. 302, Los Angeles 12, Calif., MA 6-4471

PC LETTERBOX: What Is a 'Minority Group'?

In "Social Problems" by Gillin, this thought-provoking question arises (pp. 97-98): "What is a Minority Group?"

Value of Athletics for Youth Cited

Last Sunday (Mar. 11) I attended the Community Youth Council Jamboree held at the Belvedere Jr. High School and came away with a feeling of gratitude and pride for all the hard working men that made this event possible.

BUILDERS OF INCOME PRODUCING PROPERTIES



APATO, INC.

10 UNITS ARCHITECT DESIGNED APARTMENT DEVELOPED AND BUILT THROUGH APATO, INC.

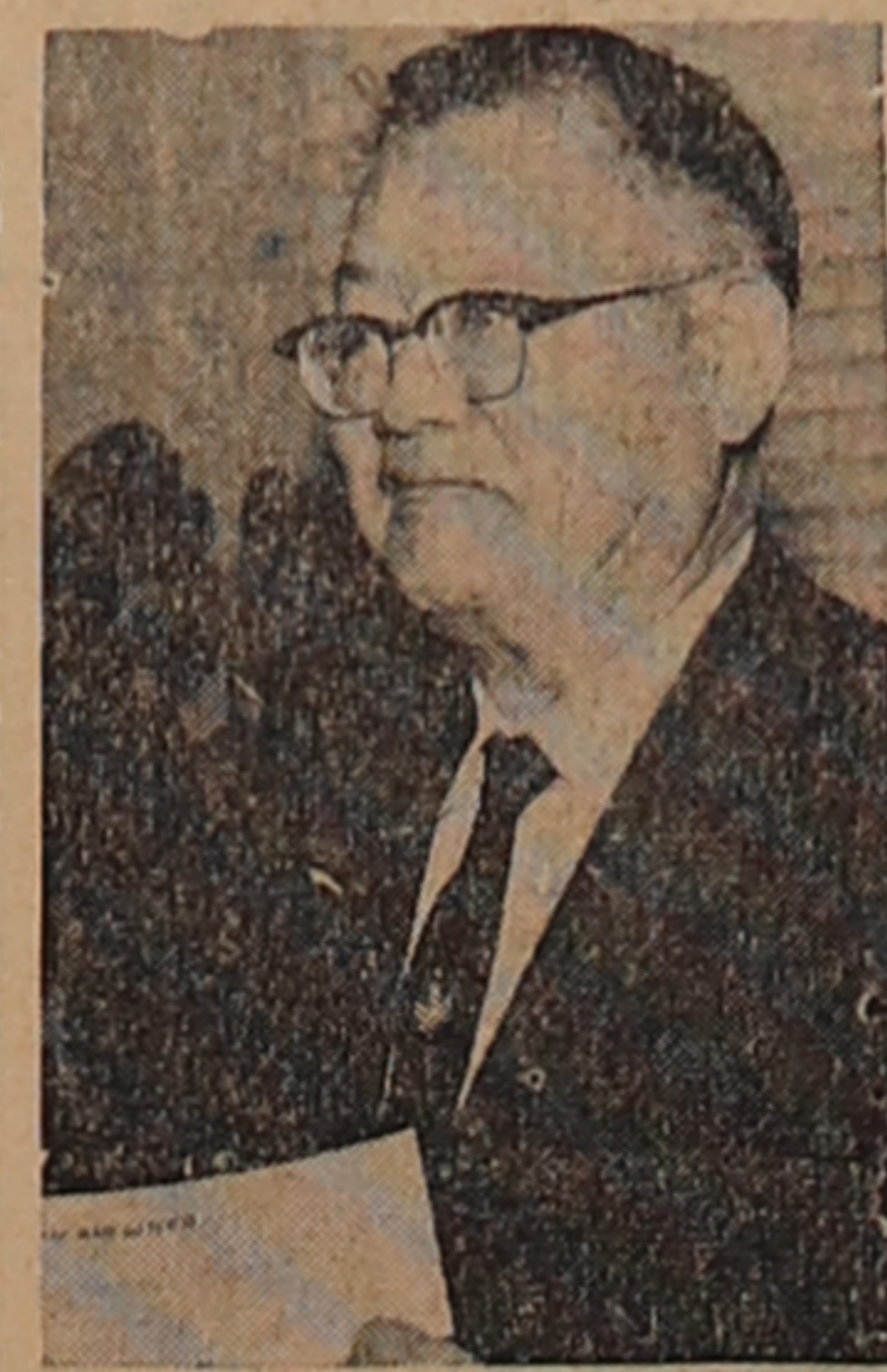
For Things Japanese Gifts - Magazines - Records THE YOROZU Wholesale and Retail 322 'O' St., Sacramento 14

Support Our Advertisers A Good Place to Eat - Noon to Midnight (Closed Tuesdays) LEM'S CAFE REAL CHINESE DISHES

STOCKS-BONDS Investment Securities Y. CLIFFORD TANAKA Sales and Analysis List of "Preferred & Common Stocks for Income" Available.

Introducing a Nisei 'Dunker'

An extremely interesting profile on Sim Togasaki was featured in a recent issue of the "Gospel Messenger," official organ of the Church of the Brethren, Elgin, Ill. The author, Vernard Eller, is assistant professor of religion at La Verne College, La Verne, Calif.



SIM TOGASAKI

San Francisco, where Kikumatsu established a retail shop specializing in Japanese wares. It was in a rooming house on Stevenson St. Susumu (of which Sim is merely a convenient short form) was born.

NISEI FUN TOUR TO MEXICO

Departing May 26, 1962 (9 days) \$410 COMPLETE! MEXICO CITY-XOCHIMILCO-GUADALUPE-TEOTIHUACAN UNIVERSITY CITY-CUERNAVACA-TAXCO-ACAPULCO

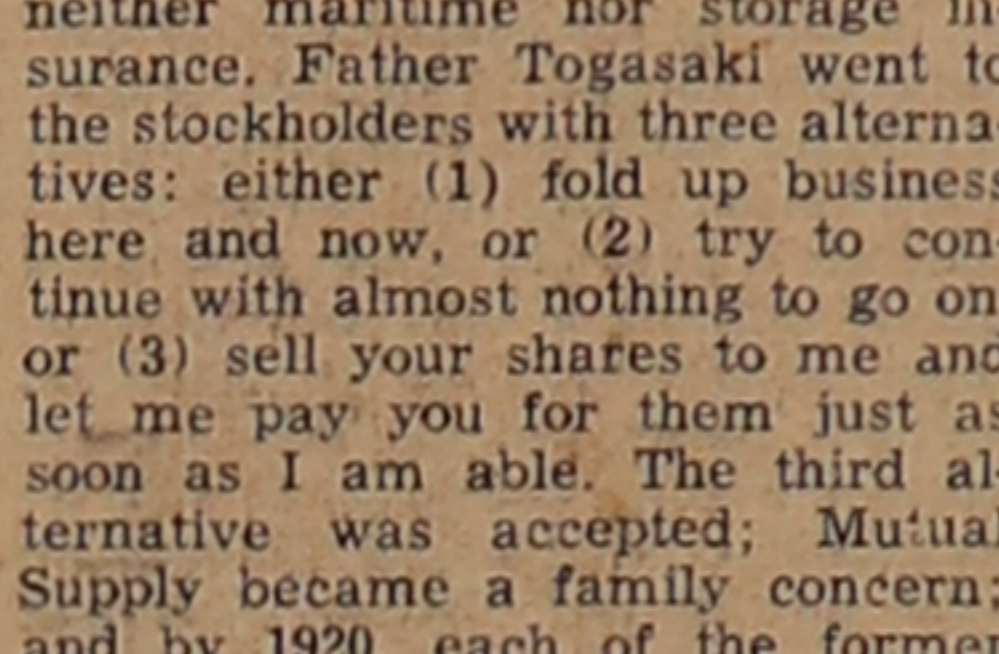
Though Sim did not join the Church of the Brethren (or even hear of it, for that matter) until he was a married man with a family, his background certainly equipped him for the role of a Dunker.

Taiyo-Do Travel Service 327 E. 1st St., Los Angeles 12, Calif. MA 5-1505 We Welcome Our Issei To Join Us

For CONSIDERATE Service . . . Tours - Cruises - Hotels - Tickets to Everywhere via Every Plane, Ship Bus or Train YAMATO TRAVEL BUREAU

back, but I fully intend to do so." "That isn't necessary," the magnate replied. "The agreement is that all debts were canceled by the fire."

After the fire, the Japanese businessmen of San Francisco (notably laundrymen and such) had a very rough time of it. The white community tried to force them out of competition by refusing to sell them the machinery and equipment they needed.



By Henry Mori

Los Angeles NEWSLETTER

DO YOU MISS US LAST WEEK?

WE MARVEL at these columnists who pound out copy every day. Deadlines haunt us everytime even when they come every other week for Los Angeles Newsletter.

Four of Sim's sisters have earned their R.N. degrees, and three of them are at present practicing nurses. The other three have gone on to get M.D. degrees and are practicing physicians.

Illustration of a man standing on a pedestal labeled 'FOR OUTSTANDING CONTRIBUTION TO ISSEI STORY'. Text: Our 'Oscar' for Top Supporting Role

Los Angeles NEWSLETTER

Oh, yes, our Mori Mansion is holding up, despite inflationary spending, we calm the well-meaning, maternal readers.

When summer rolls around the annual Nisei Week Festival, Aug. 10-19, gets underway. Just imagine, it'll be the 22nd edition, only disrupted during the war years.

Ed Honda took us to one corner several months ago and said, "Henry, let's go and I go to Toyo Miyatake and have Archie get our latest mug shots."

DON K. NAKAJIMA, INC. THE DONN REALTY CO.—REALTORS 14715 So. Western Ave., Gardena, Calif.

MEMBER FEDERAL DEPOSIT INSURANCE CORPORATION EACH DEPOSIT INSURED UP TO \$10,000 For your 1962 Automobile the big 4\5 plan at the Bank of Tokyo of California

THE BANK OF TOKYO OF CALIFORNIA SAN FRANCISCO 64 Sutter St. SAN FRANCISCO Buchanan and Sutter. LOS ANGELES 120 So. San Pedro GARDENA 16401 So. Western.

- Business - Professional Guide Your Business Card placed in each issue for 26 weeks at: 3 Lines (Minimum) \$21 Up to 8th line: \$5 per line 9 Lines (1 inch) \$50 Up to 18th line: \$4 per line

Greater Los Angeles ASIATIC FILMS DISTRIBUTING CO. Japanese and Filipino Films for Rent 133-B Weller (12), MA 8-9876

Financial Industrial Fund A Mutual Fund Co-District Mgrs. George J. Inagaki - Matao Uwate 110 N. San Pedro (12) MA 8-4688

Flowers for Any Occasion - Member FTD Flower View Gardens ART ITO (13th Year 1000er) 3376 Glendale Blvd., NO 3-3146

FUJI RXALL DRUGS Prescription Specialists STEPHEN H. OKAYAMA 300 E. 1st St. (12) MA 8-5197

KIYOSHI D. KAGAWA, Sr. Underwriter Occidental Life Insurance Co. of Calif. Suite 301, 3460 Wilshire Blvd., L.A. 9 DU 5-3211, (res) EX 8-2854

KAWAI HEARING SERVICE Finest in Hearing Aids - SY 2-3092 Day or Evenings for Home Appointments Shig Kawai, Hearing Aid Adviser

NEW JAPANESE-AMERICAN NEWS Bilingual Daily - Saburo Kido, publisher 345 E. 2nd St. - (12) MA 4-1495

DR. ROY M. NISHIKAWA Specializing in Contact Lenses 234 S. Oxford (4) - DU 4-7400 Berkeley, Calif.

Design - Commercial Fabrication TAKA'S PLASTIC SHOP Doll & Trophy Cases of 1/8" Plastic Today Takayana! 1109 San Pablo Ave. Eves: LA 4-2087 - Albany, Calif.

Sacramento Nisei Owned City Center Motel 12th & D Sts. - GI 3-7478 Swimming Pool-Room Phones Refrigerated Air-Conditioning Television

"Flowers for All Occasions" East Sacramento Nursery AND FLORIST 58th & Folsom Blvd., GL 5-8298

Royal Florist "When it's best said by flowers . . . say it with ours." - Roy Higashino 2221 - 10th St. - GI 8-3764

Wakano-Ura Sukiyaki - Chop Suey Open 11 - 11, Closed Monday 2217 - 10th St. - GI 8-6231

Stockton, Calif. LEN FRANKLIN Complete Insurance Service Special Group JACL Plans Available 1902 Pacific Ave., Howard 5-1231

Seattle, Wash. JACL Nat'l Conv., July 28-30, 1962 Century 21 World's Fair 1962 Be Our Guests During World's Fair FRYE DRIVE-IN HOTEL James M. Matsuoka - Wm. Y. Mimbo 3rd & Yesler Way, Main 2-8303

Imperial Lanes Nisei Owned - Fred Takagi, Mgr. 2101-22nd Ave., So., East 5-2525

International Realty Co. James M. Matsuoka & Associates 526 S. Jackson, MA 3-2303

Kinomoto Travel Service Frank Y. Kinomoto 521 Main St., Main 2-1522

TOMI'S FLOWER SHOP Shochi and Tomi Suyama Orders by Wire Accepted 15607-1st Ave So., Cherry 3-7670

Washington, D.C. MASAOKA-ISHIKAWA & ASSOCIATES Consultants Washington Matters 919 - 18th St. NW (6),

Fugetsu-Do Confectionery 315 E. 1st St., Los Angeles 12 MADison 5-8395

Ask for . . . 'Cherry Brand' Mutual Supply Co. 200 Davis St. San Francisco

MITTLE'S Furniture Store Where you can get the best the least. COMPLETE HOME FURNISHINGS 2666 W. Pico, Los Angeles DU 2-3308

