



NAT'L JACL TO HONOR SENATOR KUCHEL FEB. 23

Testimonial Slated in Conjunction with NC-WNDC Quarterly

SAN FRANCISCO.—Sen. Thomas A. Kuchel (R-Calif.), will be honored by the JACL at a testimonial dinner in San Francisco on Sunday, Feb. 23.

He will be the guest of honor at a dinner meeting to be sponsored by the San Francisco JACL in conjunction with Northern California-Western Nevada JACL District Council.

The first quarter NC-WNDC meeting for 1964 had been originally scheduled for San Juan Bautista on Feb. 9 with the San Benito County JACL as hosts but it was shifted when it was learned that Sen. Kuchel would be back in California over the Washington Birthday holidays and be available for the Feb. 23 meeting.

Scroll for Service

He will be presented with the National JACL Scroll of Appreciation for his long record of assistance to legislative programs sponsored by the JACL and especially for his prompt action in 1962 in introducing a bill to prevent the U.S. Internal Revenue Service from taxing payments made to Issei and Nisei by the government on evacuation claims.

The IRS had started to tax larger payments following investigations made in the San Francisco area, especially among nursery operators.

The JACL was planning to present the scroll to California's senior senator in November at the final 1963 quarterly meeting in San Mateo. However, when Congress failed to adjourn in late autumn as scheduled, Sen. Kuchel had to cancel his November engagement.

He will be the main speaker at the coming San Francisco dinner. Plans are now being made by Don Negi and the locale for the dinner will be announced shortly.

Arizona reveals details for Feb. 8-9 PSWDC quarterly

PHOENIX, Ariz. — Transportation and housing details for delegates, friends and their families attending the first quarterly session of the Pacific Southwest District Council for 1964 at the Ramada Inn here Feb. 8-9 were announced today by Mrs. Hatsuye Miyauchi, Arizona JACL president.

Because the JACL meeting is scheduled in the midst of the heavy winter tourist season, it was advised that out-of-towners should confirm their reservations directly with Ramada Inn, where a block of rooms have been set aside for the DC session.

Rates begin at \$12.25 singles, \$14.25 doubles, \$16.25 twin view, and \$18.25 double view.

The package registration fee for the two-day meeting, which includes two business sessions, dinner-dance on Feb. 8 and chuck wagon style luncheon Feb. 9 at South Mountain Park, was announced at \$10 per person. Grilled steaks are on the luncheon menu.

Delegates arriving early Saturday will be escorted and transported by host chapter members on a sightseeing tour. Close by are the zoo, Legend City and amusement centers. JACLers bringing their golf clubs may try out the Mesa Country Club or view the Phoenix Open.

Round-trip fare for the chartered bus leaving from the Los Angeles JACL Regional Office Friday evening, Feb. 7, is \$12.50 per person, payable upon departure. The office is accepting reservations until Feb. 3. Trip is expected to take about 10 hours.

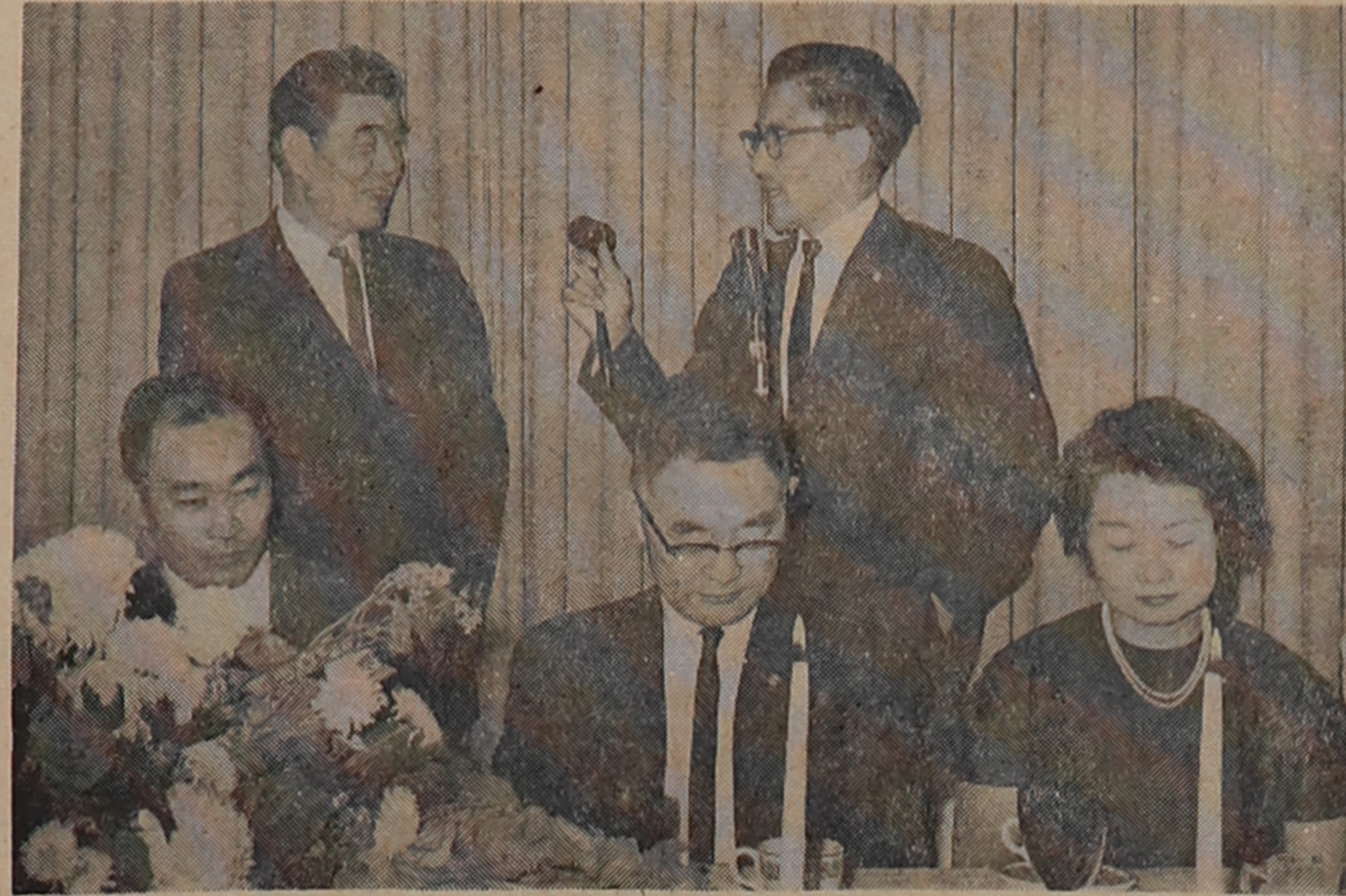
San Jose JACL named for county grand jury

SAN JOSE.—Norman Mineta, insurance broker, was one of a 30-man venire for the 1964 Santa Clara county grand jury, it was announced here this past week.

He was one of the 12 prospective jurors named from the San Jose-Alviso district. A panel of 19 members will be chosen by lot for the 1964 jury.

Among 34 Semi-Finalists

LOS ANGELES.—Charles Kamayatsu, nominee of Superior Court Judge John Aiso, is included in a group of 24 men and 10 women who were asked to report next week for final selection of 23 for the 1964 county grand jury.



CHICAGO JACL outgoing president Mark Yoshizumi (right) turns over his duties to Lincoln Shimidzu (center) Council chairman Dr. James Takao of Cincinnati; (left) at 19th annual chapter inaugural dinner, and Mrs. Sumi Miyake. Seated at the banquet table (from left) are Joe

—James S. Ogata Photo.

San Francisco JACL elects Ed Moriguchi

SAN FRANCISCO. — Eddie Moriguchi was elected president of the San Francisco JACL, succeeding Tad Ono who held the post for the past two years.

Moriguchi, a certified public accountant, and the new cabinet officers were chosen Jan. 6 at the first meeting of the new chapter board of governors. He was membership chairman last year as the chapter topped the 1,000-member mark for the sixth straight year.

The new officers will be installed Feb. 23 when the chapter hosts the first quarterly session of the NC-WNDC.

SAN FRANCISCO. — Dave Hara succeeds Roy Oni as president of the San Francisco Jr. JACL for the coming year.

Gresham-Troutdale elects Henry Kato as president

GRESHAM, Ore. — Henry Kato, onetime PNWDC chairman, was installed as 1964 president of Gresham-Troutdale JACL at a recent dinner held at the Anchorage State Sen. and Mrs. Alfred Corbett, guests of honor, both spoke to members on the role of the individual and of the need for understanding for the survival of democracy.

Kaz Kinoshita was general chairman. Kaz Tamura was toastmaster. Jack Ouchida was the installing officer. Tosh Okino was the outgoing president.

Mile-Hi names Furukawa

DENVER. — Dave Furukawa was sworn in as president of the Mile-Hi JACL at the New Year's Eve dinner-dance at the Hilton Hotel here.

A CU coed from Boulder, Martha Ozaki, reigned as the Belle of the Ball.

San Luis Valley elects

ALAMOSA, Colo. — Kay Shiohita was installed as 1964 president of the San Luis Valley JACL at the Mt. Blanca Inn last week.

Meanwhile, a six-man membership committee was announced as follows:

Jimmie Kunugi, Monte Vista; Fred Hayashida, Blanca; George Hishinuma, Ft. Garland; Frank Uyeda, Den Ono, Alamosa; and Nobu Ashida, La Jara.

Roy Inouye is 1000 Club chairman. Jimmie Kunugi is scholarship chairman.

Milwaukee elects Day

MILWAUKEE.—Douglas Day will be installed as 1964 president of Milwaukee JACL at its inaugural dinner tomorrow at Walter Wong's Limehouse Restaurant. Ernie Johnson, of the Braves public relations office, will be the main speaker.

D.C. elects Kobayashi

WASHINGTON. — Key Kobayashi, who served as first vice-chairman last year, was elected chairman of the Washington, D.C., JACL for 1964, replacing Edwin Mitoma.

The new officers will be installed at a dinner-dance Jan. 25 at the Naval Weapons Plant Officers' Club. Speaker has not been announced. Kaz Horita, EDC chairman, of Philadelphia has consented to install the officers.

Stockton installation

STOCKTON. — Dr. Kenzo Terashita was elected 1964 Stockton JACL president and will be installed with other members of the board on Jan. 26, 6 p.m., at Webb's restaurant, 129 E. Weber Ave.

Boise Valley-Snake River to install officers

CALDWELL, Idaho. — The Boise Valley JACL and Snake River Valley JACL will install their 1964 officers jointly at a dinner-dance being hosted by the Boise Valley chapter tomorrow at the Masonic Hall here. John Arima is the new host chapter president.

George Sugai, past national vice-president, will be the installing officer. Mrs. Ruth Miyake is chairman. Archie Yamamoto is handling tickets.

The annual chapter bazaar will be held at the newly built Caldwell armory on Sunday, Jan. 26.

FEPC director to speak

RICHMOND. — Yoshio Hotta will be installed by Jack Mayeda, National JACL administrative assistant, as the 1964 Contra Costa JACL president at the Yamato Sukiyaki in San Francisco on Feb. 1.

The dinner will commence at 6:30 with State FEPC Director Edward Howden as the main speaker. James Kimoto, program chairman, is being assisted by: Tey Inaoka, Meriko Maida, Dr. Yoshie Takasaki, George Nakamura, Yumio Yoshi, Fumi and George Sugi-hara, Elsie Kano, Ben Takeshita, James and Vi Kimoto.

Civic dignitaries of Contra Costa county are also being invited as special guests. Richard S. Komatsu will emcee.

Dave Tatsuno to address Salinas Valley inaugural

SALINAS. — Ted Ikemoto will be installed as 1964 chapter president of Salinas Valley JACL at a dinner-dance tomorrow at the Hyatt House here.

Dave Tatsuno of San Jose, well-known for his activities with youth and the YMCA, will be the main speaker. His topic will be "No Man Is an Island". Harry Iida and outgoing president Tom Miyana are dinner co-chairmen; Ikemoto, toastmaster.

Ventura County elects

OXNARD. — The Ventura County JACL installation dinner-dance will be held at the Colonial House on Jan. 24, 7:30 p.m., with Mayor Robert F. Howlett of Oxnard as main speaker.

Immediate past National JACL President Frank Chuman will install the 1964 cabinet headed by Yas Yasutake. Outgoing president Yosh Sakazaki will emcee. The local Hawaiian Club will entertain and Dave Davidson's band of Santa Barbara will play at the dance.

By the Board:

Treasurer's Afterthoughts

By Kumeo Yoshinari, National Treasurer

All of the chapters and their officers are to be commended for the vital role they have played in contributing their share toward the fulfillment of the budget. As of this writing, the amount will probably fall short by some \$10,000 of reaching the \$126,000 goal.

Actual statistics will be published when Yone Satoda, Assistant National Treasurer, is able to get the audit report after the CPA has gone over the books. This will be sometime in February.

After the record of two consecutive years of having met the budget objectives, it is disheartening to admit that we failed in 1963. However, very frankly, it is laudable that over \$115,000 will have been raised this past year. This performance, in the face of increased National membership dues and higher chapter quotas, is noteworthy for which I thank everyone who had anything to do with this achievement.

(Continued on Page 4)

'Nisei of Biennium' nominations open until May 15, 1964

LOS ANGELES. — The Japanese American Citizens League will honor the "Nisei of the Biennium" at its 18th biennial National Convention banquet July 4 in Detroit, it was announced today by Frank F. Chuman, chairman of the National JACL Recognitions Committee.

The "Nisei of the Biennium" recognition is bestowed upon a Japanese American whose distinguished community leadership has "helped to advance the welfare of persons of Japanese ancestry and which has brought about a greater acceptance of our people into the American way of life" or whose distinguished achievement in a specific field where such accomplishments are nationally recognized has "contributed to the status and prestige of Nisei in America."

The Recognitions Committee is accepting nominations for this coveted award from individuals, JACL chapters and district councils. A May 15, 1964, nomination deadline was set. Nomination forms are obtainable from the chairman, care of the JACL Regional Office, 125 Weller St., Los Angeles 12.

Five Finalists

The committee will review the nominations and select five finalists. A special panel of judges will select the Nisei of the Biennium. Nominations are to be made for either the "distinguished community leadership" or "distinguished achievement" category.

All past winners are eligible for nomination, but they will be judged only on their accomplishments in nature receiving their previous awards. The recognition will be in the form of the JACL gold medalion and a scroll bearing a suitably inscribed citation. The other four finalists will be presented the JACL silver medalion suitably engraved.

Chapters were cautioned not to release any publicity in behalf of their candidates in order to spare them any possible embarrassment. Such announcements will be made by the Recognitions Committee.

Previous Winners

Internationally-known architect Minoru Yamasaki was the "Nisei of the Biennium" for the 1961-62 period. The other four finalists were Dr. Kiyoshi Tomiyasu, Schenectady, N.Y.; Caesar Uyesaka, Santa Barbara; John Y. Yoshino, Washington, D.C.; and Tom Kitayama, Union City, Calif.

Previous Nisei of the Biennium were Rep. Daniel Inouye (1959-60), Bill Hosokawa (1957-58), George J. Inagaki (1955-56), Hiroshi Miyamura (1953-54), Minoru Yasui (1951-52), and Mike Masaoka (1950).

C. of C. president

FRESNO. — Takashi Morita has been elected president of the Biola Chamber of Commerce for 1964, succeeding A.B. Gardoso. Morita is a 1000 Club member of Fresno JACL.

Renew Your JACL Membership Today



SALT LAKE JACLERS presented some of the special awards during the installation party recently here (from left) Rupert Hachlya, outgoing IDC chairman who received the National JACL commendation for outstanding achievement as district council chairman; Rae Fujimoto, who received the JACL Silver Pin; Barbara Mitsunaga, editor of the chapter newsletter receiving the PC Jimmie Sakamoto Memorial

Award; Josie Hachlya, the JACL Silver Pin; Henry Kasai, recognized by National JACL and IDC for efforts in repeal of the Utah anti-miscegenation law; Tats Misaka, outgoing chapter president, who received the past president's pin; and Alice Kasai, co-recipient of the National JACL and IDC award with her husband Henry for efforts in the repeal of the anti-miscegenation law.

—Terashima Studio Photo.

Don't sign petition to nullify housing law, NC-WNDC urges

SAN FRANCISCO. — Reiterating support for the Rumford Fair Housing Act, the executive board of the Northern California-Western Nevada District Council Sunday urged Japanese Americans in a

The JACL resolution pointed out that exercise of property rights is not restricted by the three acts, which prohibit discrimination based upon race, color, creed, national origin or ancestry in the sale and rental of real property.

Masaoka represents JACL at White House immigration conference; 50 groups called

(Special to the Pacific Citizen) WASHINGTON. — Mike Masaoka, Washington JACL Representative, was among some 50 representatives of national organizations concerned with a liberalized immigration policy that met with President Johnson and congressional leaders at a special White House meeting last Monday morning.

Masaoka was invited by both Kenneth O'Donnell, special assistant to the President, and Abba P. Schwartz, administrator of the Bureau of Security and Consular Affairs of the Dept. of State.

The President noted to the invited group that he had emphasized the need for substantial changes in the immigration law in his recent State of the Union message. He made clear that he endorsed the proposals submitted by the late Kennedy Administration last summer, including the formula for eliminating the National Origins System through the gradual decrease in annual immigration quotas over a five-year period.

Present System Hit

He explained his denunciation of the racist overtones of the National Origins System by reminding that Presidents Roosevelt, Truman, Eisenhower, and Kennedy has also opposed this method of determining annual immigration into the United States. He mentioned specifically that the British and the German quotas were never filled, while those for Italy and Greece were oversubscribed for many years to come.

He stressed that this country should ask what an immigrant might be able to contribute to this nation, not what country he is from.

Then, regarding the separation of families, he questioned whom among those in the group would like to face that kind of discrimination in their own families caused by the quota system.

The President called for a "common sense" standard for determining immigration opportunities to replace the National Origins System. He called upon members of the Congress to support the "fair and reasonable" immigration standards proposed in the pending bill, describing the issue as a "nonpartisan" one.

Snowstorm Delays Hearing

The White House meeting, held during one of Washington's worst snow storms in years, attracted

natures for its petition which would nullify the Rumford Act, the Hawkins Act and those portions of the Unruh Act as it applies to housing.

The JACL resolution pointed out that exercise of property rights is not restricted by the three acts, which prohibit discrimination based upon race, color, creed, national origin or ancestry in the sale and rental of real property.

Masaoka represents JACL at White House immigration conference; 50 groups called

(Special to the Pacific Citizen) WASHINGTON. — Mike Masaoka, Washington JACL Representative, was among some 50 representatives of national organizations concerned with a liberalized immigration policy that met with President Johnson and congressional leaders at a special White House meeting last Monday morning.

Masaoka was invited by both Kenneth O'Donnell, special assistant to the President, and Abba P. Schwartz, administrator of the Bureau of Security and Consular Affairs of the Dept. of State.

The President noted to the invited group that he had emphasized the need for substantial changes in the immigration law in his recent State of the Union message. He made clear that he endorsed the proposals submitted by the late Kennedy Administration last summer, including the formula for eliminating the National Origins System through the gradual decrease in annual immigration quotas over a five-year period.

Present System Hit

He explained his denunciation of the racist overtones of the National Origins System by reminding that Presidents Roosevelt, Truman, Eisenhower, and Kennedy has also opposed this method of determining annual immigration into the United States. He mentioned specifically that the British and the German quotas were never filled, while those for Italy and Greece were oversubscribed for many years to come.

He stressed that this country should ask what an immigrant might be able to contribute to this nation, not what country he is from.

Then, regarding the separation of families, he questioned whom among those in the group would like to face that kind of discrimination in their own families caused by the quota system.

The President called for a "common sense" standard for determining immigration opportunities to replace the National Origins System. He called upon members of the Congress to support the "fair and reasonable" immigration standards proposed in the pending bill, describing the issue as a "nonpartisan" one.

Snowstorm Delays Hearing

The White House meeting, held during one of Washington's worst snow storms in years, attracted

The resolution also encouraged Nisei to lend unequivocal support and compliance with the provisions of the state's fair housing laws and civil rights acts.

Gov. Brown Rapped

SACRAMENTO. — Secretary of State Frank Jordan, a Republican, doesn't think Governor Brown should be taking sides in a campaign to qualify a housing initiative measure for the ballot. Last week, Jordan asked Attorney General Mosk for clarification of the oath of office taken by state officials.

Jordan feels a constitutional officer should not express himself on such matters until the people have had a right to petition. If the proposal gets on the ballot, then he can favor it or fight it all he wants.

Brown has strongly opposed efforts of the California Real Estate Assn. to qualify an initiative to nullify the state's fair housing laws, urging people to refuse to sign the petitions.

Initiative Illegal

LOS ANGELES. — Civil rights lawyers here, including Frank Chuman, chairman of the Los Angeles County Commission on Human Relations and National JACL board member, this week submitted a brief to the Sacramento superior court where the NAACP is seeking an injunction to keep the CREA anti-housing initiative from being placed on the ballot. The attorneys said the initiative is illegal in that "fundamental rights may not be submitted to vote".

As proposed in the initiative, it asks that the state sanction a right of property owners to deny others the right to acquire property because of race, the brief pointed out.

"The right of owners of property must always be balanced against those of the people to enjoy the basic, indispensable and inalienable freedoms embodied in the U.S. Constitution," the brief declared.

NISEI WITH CAMERA

OFTEN SEEN WITH L.B.J.

WASHINGTON. — That Oriental person with camera often seen near President Lyndon Johnson these days is Yoichi Okamoto, 47-year-old Nisei attached to the U.S. Information Agency.

A favorite photographer of President Johnson was accompanied the then Vice President on visits to the Berlin wall and other overseas areas during the past three years, Okamoto has in recent weeks been on loan to the White House from the USIA.

Berkeley JACL board concurs with study of citizens on de facto school segregation

BERKELEY. — The Berkeley JACL board, reviewing a report of the Citizens Study Committee on De Facto School Segregation, generally concurred with the findings and recommendations, it was revealed recently.

"We are convinced that a breakdown in the school system's de facto segregation pattern is essential," the JACL wrote to the Berkeley Board of Education, "both to the achievement of equal opportunity for minority groups and to better communication between those of differing racial and cultural backgrounds, which must necessarily begin in the early, impressionable childhood years if it is to be effective."

The board had appointed a top caliber citizens committee to assist in the search for answers to the problem of racial imbalance in the school system.

The Berkeley JACL endorsed the basic recommendations for redistricting elementary and junior high school boundaries combined with "limited open enrollment", the changes in the "tracking" method, policies suggested with respect to certificated staff and the emphasis on compensatory education.

The committee report noted that children of Oriental ancestry are fairly evenly divided among the various schools, "but those in schools otherwise segregated bear the same disadvantages as the white and Negro children".

(Similar studies of de facto school segregation are being pursued in other major California cities.)

De facto segregation in L.A. schools reviewed

LOS ANGELES.—Taro Kanow, retired county civil service employee, was the first Nisei to serve on the Los Angeles County Grand Jury last year.

He was among four jurors who took issue with some of the recommendations made in the final report about de facto segregation in the county schools. The minority report, published at their own expense, denied that segregation exists "because that takes affirmative action" and charged that:

"... De facto segregation is therefore a propaganda device that has been foisted on the people by the skilled and trained leadership of a highly organized minority."

Remedies for alleged de facto school segregation recommended by the school committee included: Elimination of double sessions.

(Continued on Page 3)

To Our Subscribers

CHANGE OF ADDRESS

If you're moving, please let us know at least three weeks before changing your address. Place address label here and print new address below.

Attach Label Here

Address	
City	State
Effective Date	ZIP Code

PACIFIC CITIZEN

PUBLISHED WEEKLY EXCEPT THE LAST WEEK OF THE YEAR.
125 Weller St. Rm. 302, Los Angeles 12, Calif., MA 6-4471
JACL Headquarters: 1634 Post St., San Francisco 15, Calif.
Washington Office: 919 - 18th St. NW, Washington 6, D.C.
Except for the Director's Report, news and opinions expressed by columnists do not necessarily reflect JACL policy.
Subscription Rate: \$4 per year (payable in advance).
(\$2 of JACL membership dues is for a year's subscription to PC.)
Airmail: \$10 additional per year. Foreign: \$6 per year
Entered as 2nd Class Matter in Post Office, Los Angeles, Calif.

K. Patrick Okura, National JACL President
Dr. Roy Nishikawa, Chairman, Pacific Citizen Board
HARRY K. HONDA, EDITOR
ISAAC MATSUSHIGE, BUSINESS MANAGER
CHARLES KAMAYATSU, ADVERTISING

Ye Editor's Desk

CANAL CONSCIOUS

The Canal Zone crisis this past weekend recalls a set of 1900 Nicaraguan stamps in my collection at home.
President McKinley had appointed a commission in 1898 to study an Isthmian canal route, the choice coming down to Panama or Nicaragua. Meantime, McKinley was assassinated and young Teddy Roosevelt assumed office at 42. The "Rough Rider" who did not relish being dubbed "His Accidency" set out to prove he was entitled to be elected president "in his own right" and believed that nothing would impress the American people more than to make the dirt fly by starting the much-talked-about canal.

The New Panama Canal Co., successor to the defunct de Lesseps organization, was asking \$109 million for its holdings in 1901. The commission appointed by McKinley favored the Nicaraguan route, primarily on the grounds of lower cost. The directors of the French canal company got panicky and dropped their price to \$40 million that tipped the scales in favor of Panama. The House of Representatives had voted 308-2 in favor of the Nicaraguan route. Up to this point Roosevelt seemed to have favored the Nicaraguan route but now persuaded the commission to change its recommendation, which it did in early 1902.

Resourceful lobbyists for the French company swung into action, including a Frenchman, Philippe Bunau-Varilla, former chief engineer of the original organization and a large stockholder of the new concern. In the interests of his fellow investors, he came to America and made contacts with the "right people," including Secretary of State John Hay, Sen. Mark Hanna (R-Ohio) and President Roosevelt.

Attempting to belittle the Nicaraguan route, Bunau-Varilla raised the bogey of volcanoes along that route but without success until May, 1902, when Mt. Pelee in the French West Indies Island of Martinique suddenly erupted and wiped out a town of 40,000. A few days later, Mt. Momotombo in Nicaragua became active — the very mountain that was engraved on the postage stamps of the republic, shown belching forth in magnificent eruption.

Bunau-Varilla later wrote: "I was lucky enough to find 90 stamps (among the Washington dealers, that is, one for every senator." Below each stamp pasted on sheets of paper was written: "An official witness of the volcanic activity of Nicaragua."
Such astute lobbying was not without its influence as Panama adherents rallied in force, led by Sen. Hanna, then chairman of the Republican National Committee. After extended debate, the Senate amended the original Nicaraguan bill so as to provide for a Panama canal, provided the President could secure the right-of-way

across the Isthmus of Panama from Colombia and that if he could not do so "within a reasonable time and upon reasonable terms" he was to turn to Nicaragua. The amended bill became law in June, 1902.

The story from this point, it appears, has been related in the background stories printed in the daily papers. Bunau-Varilla eventually managed to have himself represent the Republic of Panama in Washington and signed the treaty in 1903 which gave the United States in perpetuity a zone 10 miles wide in return for \$10 million down and \$250,000 a year. Bunau-Varilla was a French citizen at the time and had signed the pact 15 days after the revolution — a pact, incidentally, approved by his superiors unseen.

As our history professor used to say — "the chickens are coming home to roost," were he to comment on what happened in the Canal Zone. Had the Nicaraguan waterway been selected, there would have been no need for a revolt, since Nicaragua was already an independent state and she was willing to do more than Colombia on advantageous terms. The Isthmian Canal Commission had twice endorsed the Nicaraguan route, which though longer was nearer the United States. But Roosevelt's insistence "to make dirt fly" and his desire not to be thwarted has become a thorn in U.S. relations with Latin America.
Very interesting — this hobby of stamp-collecting.

HOLIDAY ISSUE

The 1963 Holiday Issue wrap-up below shows how many column inches of display advertising and the one-line name insertions were solicited by the chapters and district councils. It represents nearly \$12,000 gross income, of which the chapters are due some \$1,500 in commissions. Deducting the incidental expenses for printing and mailing the Holiday Issue, the PC will have close to \$5,000 — enough to help balance the financial operations for the year.
We can't thank the chapters enough for assisting in this project year after year.

HOLIDAY AD BOXSCORE

Display Ads
Alameda, 44 inches, Arizona, 12 inches, Berkeley, 6 inches, Boise Valley, 10 inches, Chicago, 126 inches, Cleveland, 3 inches, Clovis, 1 inch, Contra Costa, 8 inches, Detroit, 18 inches, Downtown, 8 1/2 inches, East L.A., 9 inches, Ft. Lupton, 2 inches, Fowler, 2 inches, Fremont, 2 inches, Fresno, 47 inches, Gardena Valley, 39 1/2 inches, Hollywood, 6 inches, Idaho Falls, 6 inches, Long Beach, 8 inches, Los Angeles, 347 inches, Mid-Columbia, 3 inches, Mile-Hi, 126 inches, Monterey, 30 inches, Long Beach, 8 inches, Los Angeles, 16 inches, Omaha, 7 inches, Parker, 21 inches, Pasadena, 14 inches, Philadelphia, 11 inches, Placer County, 14 inches, Puyallup Valley, 39 inches, Reedley, 13 inches, Sacramento, 62 inches, St. Louis, 4 inches, Salinas, 48 inches, Salt Lake City, 27 inches, San Benito, 2 inches, San Diego, 86 inches, San Fernando, 25 inches, San Francisco, 123 1/2 inches, Sanger, 12 inches, San Jose, 6 inches, San Luis Obispo, 2 inches, San

(Continued on Page 4)

JACL RESOLUTIONS: NC-WNDC: Against CREA Initiative

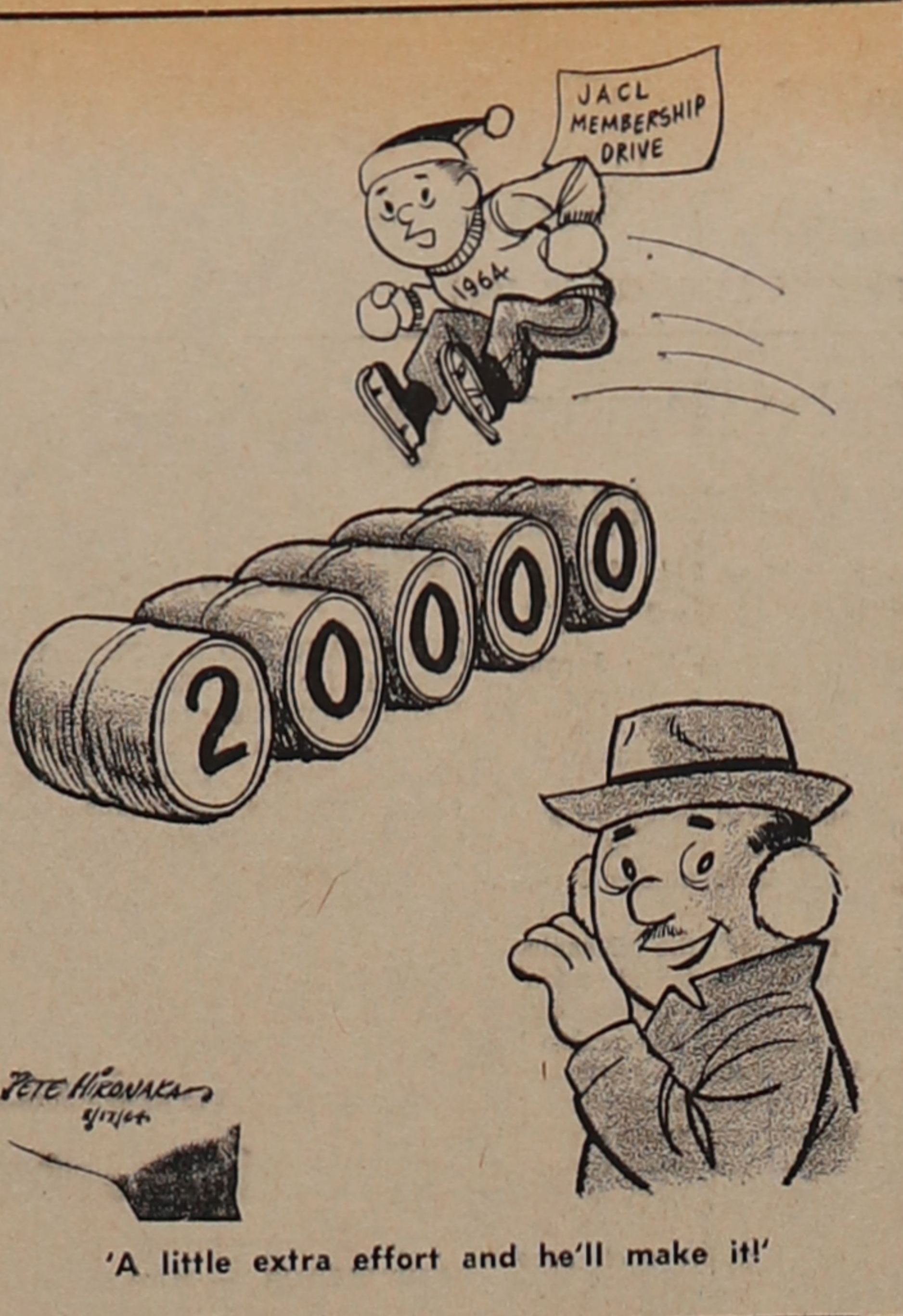
WHEREAS, the California Real Estate Association has reaffirmed their continuing the Constitutional Amendment initiative efforts which would nullify the Rumford Fair Housing Act, Hawkins Act and those portions of the Unruh Act as it applies to housing, and WHEREAS, the Rumford Fair Housing Act, Hawkins Act and the Unruh Act as it applies to housing prohibit discrimination based upon race, color, creed, national origin and ancestry in the sale and rental of real property and does not otherwise restrict the exercise of property rights, and WHEREAS, the Rumford Fair Housing Act has been in effect since Sept. 30, 1963, and has not been given sufficient time to function in its entirety, and WHEREAS, the Rumford Fair Housing Act at San Francisco, Calif.

Housing Act, Hawkins Act and the Unruh Act have direct bearing on the well-being of all residents of the State of California,
NOW, therefore, be it resolved by the Executive Board of the Northern California-Western Nevada District Council of the Japanese American Citizens League that those of Japanese ancestry be encouraged not to sign the initiative petition being circulated by the California Real Estate Association and other supporting organizations and further be encouraged to work at the local level in unequivocal support of and compliance with the provisions of the Housing Act has been in effect since Sept. 30, 1963, and has not been given sufficient time to function in its entirety, and

Jan. 12, 1964.
WHEREAS, the Rumford Fair Housing Act at San Francisco, Calif.

'STORE FOR MR. SHORT'
Joseph's Men's Wear
233 E. FIRST ST., LOS ANGELES 12
TIMELY CLOTHES JOE ITO

Decorated Cakes for Every Occasion
AMY'S PASTRIES
Closed every Monday
5119 East Pomona Blvd., East Los Angeles
TOSH YUJIRI (IN FOOD GIANT MARKET) AN 2-3521



PC LETTERBOX: Beacon Shines in Fountain Valley

It was with much concern that I recently attended hearings in San Francisco and Los Angeles, as a member of the Senate Fact Finding Committee on Race Relations and Urban Problems, to hear the problems of minorities in California.
As legislators, we have been called upon to pass laws designed to protect individual persons, or minority groups, from discriminatory acts. With this Committee, headed by Senator John Holmdahl of Alameda County, we are now attempting a study of the nature and causes of some of these discriminatory acts.
In wartime, we afford all of our eligible citizens an equal opportunity to get killed, regardless of race, creed or religion. Having spent five years in uniform, I know of no instance where a soldier, sailor, or marine was denied an equal chance to get shot at by the enemy because of skin pigmentation.
The city officials of Fountain Valley are to be praised for their actions in showing the people of California one way to peacetime opportunity.
"J" EUGENE MCATEER
State Senator
San Francisco.

In a letter to the Honorable Joseph Callens, Mayor of Fountain Valley, I wrote that "this action becomes a shining beacon of light in California, as well as across the country."
Fountain Valley also made news in 1957, when it first incorporated as a city, by electing James Kanno, a Japanese American, as its first mayor.
Hisamatsu Tamura, who passed away 25 years ago, came to Southern California some 63 years ago. He contributed much to the growth of the agricultural area, and was a long-time president of the Japanese association there. He left three sons, one of whom is now Superior Court Judge Stephen K. Tamura of Orange County.
During the hearings on Race Relations, we heard many persons

describe the problems of minorities in California; problems that are complex, sensitive, and detailed with emotion.
As legislators, we have been called upon to pass laws designed to protect individual persons, or minority groups, from discriminatory acts. With this Committee, headed by Senator John Holmdahl of Alameda County, we are now attempting a study of the nature and causes of some of these discriminatory acts.
In wartime, we afford all of our eligible citizens an equal opportunity to get killed, regardless of race, creed or religion. Having spent five years in uniform, I know of no instance where a soldier, sailor, or marine was denied an equal chance to get shot at by the enemy because of skin pigmentation.
The city officials of Fountain Valley are to be praised for their actions in showing the people of California one way to peacetime opportunity.
"J" EUGENE MCATEER
State Senator
San Francisco.

Japan Air Lines sets all-time mark in 1963
TOKYO. — Japan Air Lines announced it has set all-time records in 1963 in both passenger and cargo services on its international and domestic lines.
The announcement said JAL carried an estimated 253,857 passengers and 4,206 tons of cargo on its international runs for the calendar year.

State of Union Message

WASHINGTON. — Since most Americans of Japanese ancestry now are in the so-called middle class of our economic society, just one generation removed from the heartaches and headaches of the immigrant-low income group, and since most of the economic and social problems attacked had at least haunting reference to the not-so-long-ago experiences of those of Japanese ancestry in this country, President Johnson's first State of the Union message, delivered to the Congress and to the American people on January 8, struck a responsive chord in the hearts and minds of most Nisei Americans.

In a relatively short message reminding not of the eloquence but of the broad sweep of the Roosevelt New Deal pronouncements, President Johnson made it quite clear that, in addition to carrying out the major commitments of the Kennedy Administration which he inherited, he was launching his own particular program. He pledged war against racial discrimination, against poverty, against unemployment, and against fiscal irresponsibility.

While in this congressional and presidential campaign year it was to be expected that the Republicans would brand the message as political and the opening of the campaign by the new Chief Executive to be elected this November in his own right, nevertheless it was as are most speeches of this kind—an assessment of the condition in which our nation finds itself and an outline of what the President as our national leader hopes to do in improving the lot and life of all our people.

Now, the crucial test is in its implementation, for sound words and good intentions do not in themselves resolve the identical problems.
It may be significant, however, that for the first time since the beginning of the cold war, a President was able to place his emphasis on domestic and internal issues—and not on foreign relations. It may also be significant that, though he touched upon almost every conceivable public sector, he failed to mention agricultural problems.

JACL's Interests
Of special interest to JACL were two legislative suggestions by the President. One was in reference to civil rights and the other to liberalized immigration opportunities.
He placed highest priority on civil rights, expressing the hope "Let this session of Congress be known as the session which did more for civil rights than the last hundred sessions combined". Subsequently, he devoted a whole section of his message to underlining the official and personal concern of his Administration in the cause of civil rights.
The second section was devoted to immigration, and probably represents the first official views that President Johnson has ever given to his personal convictions

on this vital subject, though in the Senate he voted to override then President Truman's veto of the Immigration and Nationality (Walter-McCarran) Act of 1952, which extended to all races, including the Japanese, the right of citizenship through naturalization and immigration opportunities to the United States.
President Johnson's statements on both these topics are believed to be the strongest ever expressed in any State of the Union message in history.

On Civil Rights
On civil rights, he declared "Let me make one principle of this Administration abundantly clear: All of these increased opportunities—in employment and education and housing and in every field—must be open to Americans of every color."
"As far as the writ of Federal law will run, we must abolish not some but all racial discrimination."
"For this is not merely an economic issue—or a social, political, or international issue. It is a moral issue—and it must be met by the passage this session of the bill now pending in the House."
"All members of the public should have equal access to facilities open to the public."
"All members of the public should have an equal chance to vote for public officials—and to send their children to good schools—and to contribute their talents to the public good."
"Today Americans of all races stand side by side in Berlin and Viet-Nam."
"They died side by side in Korea."
"Surely they can work and eat and travel side by side in their own country."

White House Call
To spell out his thinking on immigration and to rally support for such legislation, the President called a special meeting at the White House this past Monday (Jan. 13) morning of leaders of national organizations concerned with immigration problems.
Significantly, JACL's Washington Representative was among those invited to attend.
Also this Monday and Tuesday mornings, the Senate Judiciary Subcommittee on Immigration and Naturalization held hearings on various immigration bills at which Senators and Congressmen expressed their views on this whole subject matter. Public hearings at which private organizations and individuals may be heard are to be announced later. These are the first such hearings held by the Senate Subcommittee in more than six years.
The House Judiciary Subcommittee on Immigration and Naturalization has completed public hearings on the probable impact of increased immigration on the national economy, unemployment, housing, etc. It has not announced any plans for public hearings on any general immigration legislation.

On Immigration
And, on immigration, he outlined his objective: "We must lift by legislation the bars of discrimination against those who seek entry into our country, particularly those with much-needed skills and those joining their families."
"In establishing preferences, a nation built by immigrants of all lands can ask those who now seek admission: 'What can you do for our country?'"
"But we should not be asking: 'In what country were you born?'"

The House Rules Committee began hearings a week ago yesterday (Jan. 9) as to whether the civil rights bill reported by its Judiciary Committee last October should be cleared for full floor consideration, debate, and vote, and under what conditions.
It is anticipated that the House of Representatives will be able to consider this highest priority bill sometime in February.
After House passage, the bill will be considered in the Senate, where it is expected to run into the traditional Southern filibuster against such legislation.
Aside from Dixiecrat opposition to all aspects of the measure, it

is thought that the Republicans may direct their objections to the so-called fair employment practices section and the public accommodations provisions of the bill.
Frankness compels us to report that there are suspicions among many civil rights advocates that the President, in spite of his personal espousal of this legislation, may accept compromises in order to secure final congressional approval of some kind of "meaningful" law.
In this context, it is remembered that as Senate Majority Leader he stripped down a general civil rights bill to one on only voting rights in 1957, though it must be conceded that this was the first civil rights law to be approved by Congress since Reconstruction Days after the Civil War almost a hundred years ago, and—as explained by the then Majority Leader—the only provision that would have passed at that time.

White House Call
To spell out his thinking on immigration and to rally support for such legislation, the President called a special meeting at the White House this past Monday (Jan. 13) morning of leaders of national organizations concerned with immigration problems.
Significantly, JACL's Washington Representative was among those invited to attend.
Also this Monday and Tuesday mornings, the Senate Judiciary Subcommittee on Immigration and Naturalization held hearings on various immigration bills at which Senators and Congressmen expressed their views on this whole subject matter. Public hearings at which private organizations and individuals may be heard are to be announced later. These are the first such hearings held by the Senate Subcommittee in more than six years.
The House Judiciary Subcommittee on Immigration and Naturalization has completed public hearings on the probable impact of increased immigration on the national economy, unemployment, housing, etc. It has not announced any plans for public hearings on any general immigration legislation.

Washington, D.C.
The National Origins System nor his personal immigration philosophy.
Democratic Senator Philip A. Hart of Michigan, principal sponsor of the Kennedy Administration bill, and Republican Senator Kenneth B. Keating of New York, principal GOP co-sponsor, decried the racism in our immigration law and urged that those present at the meeting work for a more enlightened immigration policy that is more consistent with American ideals and objectives. Both thanked the President for "giving impetus" to what both considered to be "an unpopular issue".

Masaoka—
(Continued from Front Page)

Masaoka—
(Continued from Front Page)

Boone Professional Guide
Your Business Card placed in each issue for 26 weeks at:
3 lines (Minimum) \$25
Each additional line \$6 per line
Large type (10 pt.) counts as two lines.
ONE BOLD FACE LINE PER AD
Greater Los Angeles
ASIATIC FILMS DISTRIBUTING CO.
Japanese and Filipino Films for Rent
133-E Weller (12), MA 8-9876

Flower View Gardens Florists
1801 N Western Ave Ph. 466-7373
Art. Ito welcomes your phone orders and wire orders for Los Angeles
FUJI REXALL DRUGS
Prescription Specialists
STEPHAN H. OKAYAMA
300 E. 1st St. (12) - MA 8-5197
KOBY'S REXALL PHARMACY
3114 W. Jefferson Blvd. RE 1-5139
Larry A. Kobayashi, Pharm. Free Dly Service

KOKUSAI INTERNATIONAL TRAVEL, INC.
240 E. 1st St. (12) MA 6-5284
Jim Higashi, Bus. Mgr.
NEW JAPANESE AMERICAN NEWS
Bilingual Daily - Saburo Kido, publisher
English Section with Editorial Opinions
345 E. 2nd St. (12) - MA 4-1498
NISEI FLORIST
In the Heart of Lili Tokyo
328 E. 1st St., MA 8-5606
Fred Moriyuki - Memb. Teifloria
DR. ROY M. NISHIKAWA
Specializing in Contact Lenses
234 S. Oxford (4) - DU 4-7400

RAFU REALTY CO.
Dean A. Hostler & Assoc.
Homes - Income - Business - Insurance
3105 W. Jefferson Blvd. (18) RE 1-4155
Sacramento
Wakano-Ura
Sukiyaki - Chop Suey
Open 11 - 11. Closed Monday
2217 - 10th St. - GL 8-6231
Seattle, Wash.

Imperial Lanes
2101 - 22nd Ave. So., East 5-2529
Nisei Owned - Fred Takagi, Mgr.
Kinomoto Travel Service
Frank Y. Kinomoto
521 Main St., MA 2-1522
Washington, D.C.
MASAOKA-ISHIKAWA & ASSOCIATES
Washington Matters
919 - 18th St., NW (6),

LOS ANGELES JAPANESE CASUALTY INSURANCE ASSOCIATION
—Complete Insurance Protection—
AIHARA INS. AGY. Aihara-Omatsu-Kakita
114 S. San Pedro, MA 8-9041
ANSON T. FUJIOKA, Room 206
312 E. 1st., MA 6-4393, AN 3-1109
FUNAKOSHI INS. AGY. Funakoshi,
Manaka-Masunaka, 218 S. San Pedro
MA 6-5275, HO 2-7406

HIROHATA INS. AGY., 354 E. 1st
MA 8-1215, AT 7-8605
JOE S. ITANO & CO., 318 1/2 E. 1st
MA 4-0758, SY 8-5997
INOUE INS. AGY., Norwalk—
15029 Sylvanwood Ave., UN 4-5774
TOM T. ITO, Pasadena—669 Del Monte
SY 4-7189, MU 1-4411

MINORU 'NIX' NAGATA, Monterey Park—
1497 Rock Haven, AN 8-4554
SATO INS. AGY., 366 E. 1st St.
MA 9-1425, AN 1-6519

Inagaki & Morgenstern
CO., INC.
Real Estate - Marketing
Management Consultants
A. IKE MASAOKA, Associate
4564 Centinela Ave., Los Angeles 66
EXmont 1-2282

Kimura PHOTOMART
Cameras and Photographic Supplies
114 N. San Pedro St. MA 2-3968

Penthouse Clothes
3860 CRENSHAW BLVD., SUITE 230
Los Angeles - AX 2-2511
Sam Ishihara, Hank Ishihara,
Sakae Ishihara, Richard Tsujimoto,
"Cap" Aoki

JAL's unique "extras" cost no more!
All airline jet fares to Japan are the same. The difference between airlines lies in their service, convenience and dependability of their schedules. JAL costs no more, but offers so much more. Only JAL offers you the enchantment and service of Japan, from the moment you step aboard. You are pampered by hostesses trained since childhood in the art of pleasing others. You dine on delicacies of both Japan and the West. In either Economy or First Class, flying JAL is a travel experience unique in all the world.
Now 11 DC-8s every week to Tokyo. Fly from San Francisco early in the afternoon on Monday, Wednesday, Friday, Sunday; from Los Angeles every morning except Monday. If you wish, stop over in Honolulu to visit friends and relatives—another JAL "bonus" at no extra fare. See your travel agent or
JAPAN AIR LINES
Offices in Los Angeles, San Francisco, Seattle, New York, Chicago, Washington D.C., Detroit, Cleveland, Philadelphia, San Diego, and other major cities.

By Larry Tajiri

Vagaries

Not Much Doing These Days

THESE ARE slow times for Nisei in entertainment. The only Japanese American with a leading role in a forthcoming film is Miiko Taka, the Los Angeles actress who made her movie debut opposite Marlon Brando in "Sayonara" some years back. Miss Taka is one of Bob Hope's leading ladies in his new comedy, "Global Affair," which is scheduled to be released shortly by MGM. Several members of Hollywood's Japanese colony appear briefly in the saki-yaki house sequence in another MGM comedy, "Sunday in New York," including Teru Shimada.

There may have been a time four and five seasons back when two dozen Nisei were working on Broadway ("Flower Drum Song," "Suzie Wong," "A Majority of One") but this season the only Nisei in a play in the New York theater is Michi Kobi who plays Nurse Nakamura in "One Flew Over the Cuckoo's Nest," a comedy starring Kirk Douglas. Miss Kobi (Michiko Okamoto) has played the leading female roles in such Hollywood films as "12 to the Moon" and "Tokyo After Dark" and also has played leads on TV's "Playhouse 90" and other video dramas. Her first important New York role was in a drama about postwar Nippon, "Wedding in Japan," a story of a Negro GI who marries a Japanese girl. Miss Kobi toured the country in "Teahouse of the August Moon."

Incidentally, Mariko Niki, Broadway's original Lotus Blossom in "Teahouse of the August Moon," retired from the theater after that role but the part was played in New York and on the road by a number of Nisei actresses, including Reiko Sato and Miss Kobi.

This week "Teahouse of the August Moon," a most sturdy comedy vehicle was revived by the Melodyland theater near Disneyland in Anaheim, Calif. Burgess Meredith, who played Sakini on Broadway, has returned to the theater in the Melodyland production and the cast reportedly includes a number of Nisei. The Anaheim theater used a large Nisei cast in their recent production of "Flower Drum Song" which starred James Shigeta.

Now that "Flower Drum Song" has completed the longest run of any show in Las Vegas history, Jack Soo is considering several TV pilots which may eventually blossom in a series deal if sponsors are willing and a network has a time slot open. Soo (Goro Suzuki) also has established himself as a comedy personality in Las Vegas and probably will return there for another engagement. He and Yoko Tani can be seen currently as husband and wife (he plays a TV cameraman) in the comedy, "Who's Been Sleeping in My Bed?" which stars Dean Martin.

Meanwhile, Pat Suzuki, the original Linda Low of the Broadway production of "Flower Drum Song," has reestablished her career after two years out for marriage and motherhood. Pat has

been singing in some of the country's top supper clubs and last week filmed a guest appearance on the Red Skelton Show.

ALTHOUGH some individuals have been busy, employment has been scant for the hundred or so professionals of Japanese ancestry who make a living in the theater, movies and television. In recent years the trend has been away from Oriental subjects, although the pendulum of interest should swing back again.

The jet age, however, has made the studios of Tokyo far more accessible to Hollywood and if a role such as that of the rebel leader in "Ugly American" comes along, Hollywood is just as likely to reach out for a actor from Japan as Producer George Englund did for Eiji Okada. The latter delivered an excellent performance in his first English-language role.

The demise of such Oriental and Pacific-focused television series as "Hong Kong," "Adventures in the South Seas," "Hawaii Eye" and the like, has limited the number of roles for the performers who specialize in bit and featured roles. Among the stars, however, Miyoshi Umeki remains busy with an emotionally-satisfying performance in a recent "Dr. Kildare" program in which James Shigeta played her husband. It matched Miss Umeki's delineation of a retarded woman in "Tears for a Nobody Doll" on the "Sam Benedict" series a season ago.

THE biggest theatrical project in the future which may affect Japanese Americans in films in Fred Zinnemann's projected production of James Michener's "Hawaii" for the Mirisch Brothers and United Artists.

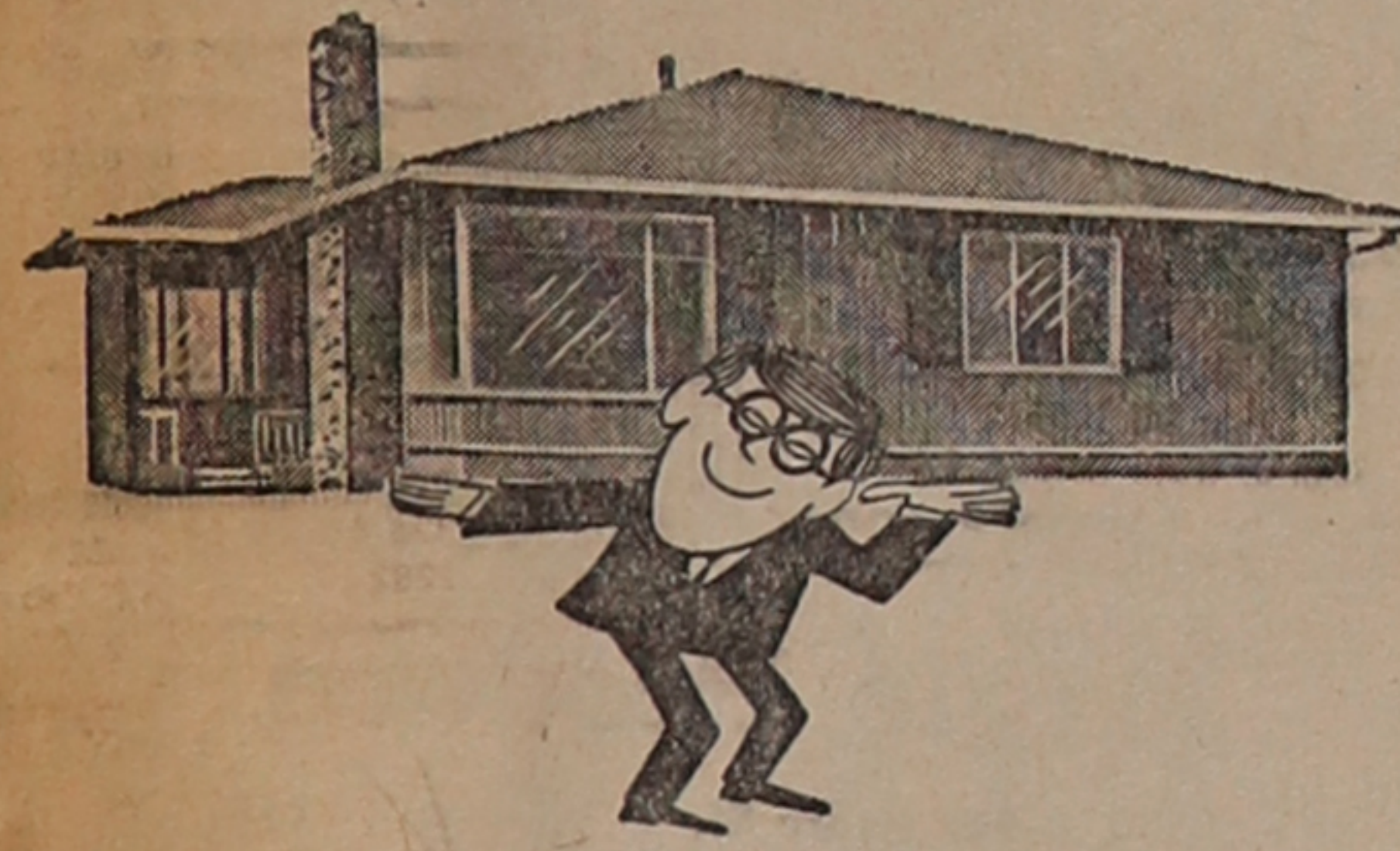
Dalton Trumbo is now completing the script for the film which is expected to star Alec Guinness and is scheduled for a production start later this year.

The Trumbo script is expected to give considerable emphasis to the story of the Sakagawas of Hawaii as Michener told it in his novel. This would mean that the film will include several important roles for actors of Asian ancestry.

Rev. Paul Tamura, 78
HONOLULU.—The Rev. Paul K. Tamura, 78, of Harris Memorial Methodist Church since 1942, died of pneumonia Jan. 10. During his ministry in California between 1908 and 1928, he was among the leaders in the fight against racial discrimination.

He was a graduate of the Univ. of Southern California and received a master's degree from Occidental College.

California Artists Materials
Commercial & Fine Art Supplies
2420 W. 7th St., Los Angeles 57
DU 5-2436—Mail Order, Delivery Service



LIKE TO MOVE INTO A NEW HOME? It's Easy!

Ask The Sumitomo Bank's loan department for a low-cost home loan

The Sumitomo Bank OF CALIFORNIA

State-wide Banking Facilities

HEAD OFFICE—SAN FRANCISCO • 365 California St. • YU 1-3363
SACRAMENTO OFFICE • 1400 Fourth Street • 443-5761
SAN JOSE OFFICE • 515 North First Street • 298-6116
LOS ANGELES OFFICE • 129 Weller Street • MA 4-4911
CRENSHAW OFFICE • 3810 Crenshaw Blvd., L.A. • AX 5-4321
GARDENA OFFICE • 1251 W. Redondo Beach Blvd. • DA 7-8811
MEMBER FEDERAL RESERVE SYSTEM & FEDERAL DEPOSIT INSURANCE CORPORATION

SUNDAY Day & Night **BOWLING 29** PER GAME
30 ABC-SANCTIONED ALLEYS — NO WAITING
Hawaiian Saimin Cocktails **VOGUE BOWL 9th & Grand** MA 7-1101

Oakland site for new Sumitomo bank selected

OAKLAND.—The site of the new Sumitomo Bank of California office here was announced last week to be at 20th and Franklin Sts. in downtown Oakland. The new building is being designed by the firm of Shig Lyama and Robert Tanaka, associate.

A two-story structure with the main floor and mezzanine to be occupied by the bank, it will be framed in white concrete intersecting arches or "trees" visible throughout the lower floor. The arches will support the second floor, to be available for office space on a lease basis.

William (Mo) Marumoto, is president of Alpha Dynamics, Inc., builders and developers of La Habra, which recently broke ground for a \$2.5 million, 118-home development adjacent to the Walnut Valley Golf Club in Walnut.

Hixson & Jorgensen were appointed advertising agents for Yamaha International from March 1, according to James Jingu, advertising and public relations manager for the California firm distributing pianos, motorcycles and snow skis.

Fred Hirasuna and Masao Nakata of Fresno were reappointed members of the California Strawberry Advisory Board for one-year term ending Dec. 31, state director of agriculture Charles Paul recently announced. R.I. Okamura of Selma was reappointed as an alternate member.

Harley H. Taira of Taira Realty Co., 5273 1/2 E. Beverly Blvd., was installed as a board member of the Montebello District Board of Realtors for 1964. An active member of the district board since 1959, he is also a member of the California Real Estate Assn. and the National Assn. of Real Estate Brokers.

Taira was also president of Community Brokers Service, a multiple listing service in the East Los Angeles, Monterey Park, Montebello area for 1963.

To fete farm trainees

LOS ANGELES.—Some 100 Japanese agricultural trainees in California will be hosted by the So. Calif. Japanese Chamber of Commerce Jan. 18 at the New Ginza at a dinner in their honor. The trainees (not to be confused with supplemental farm workers) will tour Disneyland, U.C. Riverside, the Ishimatsu Citrus Nursery and Grand Canyon the following week before returning to their own farms.

Engagement

WALNUT CREEK.—Active Contra Costa JACLers, Mr. and Mrs. John Yasuda, announced the engagement of their daughter, Janice Setsuko, to Sam Takemoto, son of Mr. and Mrs. George I. Takemoto of Watsonville, during the New Year holidays here. A June wedding is planned.

Janice, a 1962 graduate from Pleasant Hill High, is employed as a dental assistant. George is a student at U.C. Medical Center, San Francisco.

Guest Columnist: A New Chapter President

(Not every chapter can boast a member who has a daily column in a newspaper and this past week in his Shin Nihon "Observation" column, Saburo Kido tells of his own—the Downtown L.A. JACL, but in a sense it is a tribute to all 1964 chapter presidents.—Editor.)

BY SABURO KIDO

Los Angeles

The Downtown Los Angeles JACL chapter is a fortunate organization. Somehow, it is able to uncover some person who is willing to assume the responsibilities of the President. And the remarkable thing is that the newly discovered leader shows such enthusiasm and interest that it makes the old timers wonder why such a man had not been discovered sooner.

Last year, a precedent was established when Father Clement of the Maryknoll Mission was drafted into service. At that time, we expressed our appreciation for his agreeing to take the helm of this important chapter.

And this year, the committee set their heart upon one person. We were privately skeptical about the choice. In the first place, we were not too sure whether he would consent to accept the position. And in the second place, we did not know whether the local head man and the head office in San Francisco would approve. There was no question about his qualifications.

From what I hear, the delegation was fortunate in that one of the directors was visiting the bank when the call was made. When the subject was brought up, the committee had the strong support of none other than one of the past JACL National Presidents, George Inagaki, who is one of the officials of the Bank of Tokyo of California. He thought it was a grand idea. And what better stamp of approval could be obtained than to have one of the directors endorse such a move about having a bank staff member to serve as a community leader.

Takes Good Hold

After the election, it was an eye opener to see the new President pitch in to learn the background of the JACL, the activities, ideals and policies, and to lay plans for his administration.

In one sense, such enthusiasm brings forth the latent support which is ready to be offered if any leader is willing to carry his load and then ask for cooperation and help.

There is no doubt that the Downtown JACL is one of the key chapters in the national organization. It is composed chiefly of 1000 Clubbers, those who are contributing \$25 a year to JACL's activities and program. In other words, it is unusual in that its members are older persons of Japanese ancestry. This is why naturalized citizens have served as presidents in the past.

The new President, Takito Yamaguma, has been a resident of Los Angeles from before the war. His career has been in the banking field. He has been with the Bank of Tokyo of California from the start, occupying the position

Buffet at Home

In order to acquaint himself with the members of his cabinet, including the advisory board, he had a special buffet dinner at his home on Thursday evening. I was invited so I was happy to attend. I have known of Mr. Yamaguma ever since the bank started. I had heard that he attended the Buddhist Japanese Language School in Honolulu during the days when my brother was attending the school.

I was introduced to Mrs. Yamaguma formally for the first time. And we met the charming young daughter, who is a freshman at USC.

The dinner which had been prepared for us was something which was unusual for most of us. All of us made a pig of ourselves. Almost everyone had two helpings and some had more than that. No names will be mentioned.

Almost everything had been home-made. The meat which was used to wrap vegetables, such as carrot and potatoes, was something new to me. Then there was the cucumber slice which had crab salad stuffings. Then there was the Japanese food which may be called "oden." And there was another dish which was a modified chow mein. And not the last but least was the "tsukemono" which I used for my "chazuke." I am well known among the Japanese eating places where I frequent in L.A. Tokyo for the extra "tsukemono" I ask.

Program Prepared

Before we came home, the entire year's program was drawn up. I presume they will be released through the proper channels. Suffice it to say that the good work of Father Clement will be continued. And with a banker at the helm, the financial problems of the chapter undoubtedly will be handled efficiently and in a business-like manner.

Although I am in a more or less retired category these days, it was refreshing to once more be watching first hand the enthusiastic leadership of a new president. We hope the new regime will add prestige to the JACL as a community organization. JACL will further improve its "image" when it has dedicated men, such as President Yamaguma, to carry on its activities and functions.

AUTOMATIC LIFE membership is credited to those who have maintained their 1000 Club membership for 20 years.

Genuine Japanese Cuisine
Cocktails
Japanese Blossom
LA BREA 419th St. WE 7-1033

LIL BOKIO FINEST CHOP BUEY HOUSE
SAN KWO LOW
FAMOUS CHINESE FOOD
228 East First St. Los Angeles MA 4-2075

CRENSHAW SQUARE
tai ping
CANTONESE CUISINE
Private Parties, Cocktails, Banquet Facilities
KAY YOSHIMOTO
Appearing Nightly
3888 Crenshaw, Los Angeles, AX 3-8243

Authentic Cantonese Cuisine - Luncheons, Dinners Daily - Cocktail Lounge
新 SUNNY LEE'S 李
9504 Sepulveda Blvd, near the New L.A. International Airport
Eddie & Frank Kochiyama, Your Hosts OREGON 3-0400
Suki-yaki - Japanese Food - Beer - Wine - Sake

Daruma Cafe
123 S. San Pedro St., Los Angeles Mits Kato
Tel. 688-8964

Booth - Family Ondol Room - Banquet Hall - Food to Go
KOREA HOUSE
FINEST KOREAN FOODS
Open Daily & Sunday, 11 A.M. to 11 P.M.
LOS ANGELES — 2731 W. Jefferson, RE 5-5232
SAN FRANCISCO — 1628 1/2 Post St., FI 6-9750

FOR RESERVATIONS CALL MILLIE — RAYmond 2-2097
THE FUJIYAMA INN
JAPANESE CUISINE AND COCKTAIL LOUNGE
Corner Potomac and Atlantic Blvds. Closed Mondays
826 Potomac Blvd., Los Angeles 22, Calif.

the new moon
Your Host: Wallace Tom
a singularly outstanding restaurant offering the quintessence of Cantonese dining is located at 912 South San Pedro Street, Los Angeles. Phone MAdison 2-1091

School bias—

(Continued from Front Page)
setting of school boundaries where ever possible to avoid ethnic segregation, merit employment, transfers and promotions, textbooks "accurately portraying" the roles of racial groups, workshops for "sound human relations" and equal education for all.

To change school boundaries "at the demands or even threats of one race is an act of discrimination against another race," the minority report argued.

Foreman Myron J. Carr, Jr. said he was sorry a minority report was filed "because it put a blot on what I feel was an outstanding record by the 1963 grand jury."

Nisei art teacher exhibits in new medium

WHITTIER.—Rio Hondo Jr. College's head of the fine arts department, Yoshio Nakamura, is a guest exhibitor this month at the Whittier Art Gallery, showing his paintings and sculptures completed over the past five years.

Classifying himself as semi-abstract and somewhat impressionistic, Nakamura's works include several paintings done in a new plastic medium — polyvinyl acetate.

A fine arts graduate from USC, he has taught at Whittier High and was awarded the "Teacher of the Year" honors in 1960 by the San Gabriel Valley Federation of Women's Clubs and the local woman's club.

Nisei elected managing editor of Princeton daily

PRINCETON, N.J.—Mel Masuda, 21, of Honolulu was elected managing editor of the Daily Princetonian, the university daily newspaper, this past week. He is a junior student at the School of Public and International Affairs.

KONO HAWAII
EXOTIC FOODS
TROPICAL DRINKS
ENCHANTING ATMOSPHERE
• KONO ROOM
• LUAU SHACK
• TEA HOUSE
(DAILY)
PH. JE 1-1232
226-50
HARBOR BLVD.
SANTA ANA, CALIF.
(South of Disneyland)

ORIENTAL AND HAWAIIAN FOOD
CENTINELA OKAZU-YA
Okazu, Sushi, Saimin, Lauau, Poi
4505 Centinela Ave., L.A. 66
(Mar Vista) - Phone: 391-4740

Peninsula cagers open league; 26 teams compete

SAN JOSE.—Twenty-six teams from San Jose, Mountain View, Palo Alto, San Mateo and San Francisco comprise the Peninsula Youth Basketball League, which got underway recently with five games being played at the local Buddhist gym.

Players range in age from 9 to 18. Program includes girls teams. Locally, the San Jose JACL is a co-sponsor of the San Jose CYS program, which has teams in the league. Instrumental in the success of the program here are such former athletes as:

Tom Taketa, Tetsu Kifune, George Kurasaki, Chi Akizuki, George Yamada, Mori Shimada, Katsuo Minato, Herman Suto, Haruo Taketa and Kay Tanouye.

Scholarships offered

LOS ANGELES.—Four \$100 awards to winter 1964 high school graduates of Japanese ancestry in Southern California will be made by the Japanese American Centennial Scholarship Fund, Inc., it was announced today by Frank H. Hirata, secretary, Japanese Chamber of Commerce, 125 Weller St. Application forms are due Feb. 4.

J & R
American & Chinese Dishes
We Pack Food To Take Out
Closed Tuesday
4423 W. Adams (At Crenshaw)
Los Angeles—Republic 5-7843

PAUL'S KITCHEN
The Aristocrat of Chinese Food
KITCHEN NO. 2
3125 W. Jefferson, L.A.
Tels: 731-0769 — 731-0760
ORIGINAL KITCHEN
1012 S. San Pedro, L.A.
Tel: 747-8231
Genuine Chinese Bar-B-Q - Authentic Cantonese Cuisine - Banquet Facilities - Weddings - Installations - Food to Take Out
Your Hosts: Paul Yee & Alan Yee

Lem's Cafe
REAL CHINESE DISHES
320 E. 1st St., Los Angeles
Phone Orders Taken
MA 4-2953
Sign Up in JACL Today

When in Elko . . . Stop at the Friendly
Stockmen's
CAFE - BAR - CASINO
Elko, Nevada
IMPERIAL GARDENS RESTAURANT
SUKIYAKI
For Holiday Parties and Wedding Receptions
Group - Special Rates
Buffet - \$3.00 and up - Banquet - \$3.50 and up
8225 SUNSET BLVD. Reservation - DLfield 6-1750

Bush Garden
SUKIYAKI
SEATTLE 614 Maynard St. PORTLAND 121 SW 4th St. SAN FRANCISCO 598 Bush St.

SAVINGS ACCOUNT
DEPOSITS
...made by the tenth of each month earn interest from the first. Consolidate all your accounts at the friendly Bank of Tokyo.

THE BANK OF TOKYO OF CALIFORNIA
SAN FRANCISCO HEAD OFFICE • 64 Sutter Street • YU 1-1200
S.F. JAPAN CENTER BRANCH • Buchanan & Sutter Streets • FI 6-7600
SAN JOSE BRANCH • 1336 North First Street • Phone 298-2441
FRESNO BRANCH • 1458 Kern Street • Phone 233-0591
LOS ANGELES BRANCH • 120 South San Pedro Street • MA 8-2381
L.A. CRENSHAW BRANCH • 3417 West Jefferson Boulevard • RE 1-7934
GARDENA BRANCH • 16401 South Western Avenue • FA 1-0902
SANTA ANA BRANCH • 501 North Main Street • Phone 541-2271
Member Federal Deposit Insurance Corp. Each Deposit Insured to \$10,000

Second Thoughts: by Jack Maveda
Job of Administrative Assistant

That job title of mine, Administrative Assistant, can be misleading and may connote as many meanings as there are interpreters. However, may I reassure each of you that it is only because of the apathy which exists within our organization that I exist only in theory and not in actuality.

Regardless of the discrepancy in my title and the role which I am supposed to play as gleaned from convention minutes and the constitution, I can not possibly fulfill any of supposed assignments if they are not made known.

It is with heartfelt regret, that many in the Parent Organization have not even answered my request for the record of their chapter-sponsored youth group, except for Mt. Olympus and San Francisco Chapters.

P&A Quarterly Reports
Many chapters have not submitted their Program and Activities Quarterly reports for 1963.

Membership Cards
There are still three chapters which have not submitted the name of their 1964 membership chairman.

Calendar
Jan. 18 (Saturday)
Milwaukee - Inaugural dinner, Walter Wong's Limousine, 5:30 p.m.

Jan. 19 (Sunday)
Downtown L.A. - Installation dinner, Imperial Gardens, 7 p.m.

Jan. 20 (Monday)
West Los Angeles - Auxiliary meeting, home of Mrs. Harold Harada, Jan. 23 (Thursday)

Jan. 24 (Friday)
Ventura County - Installation dinner-dance, Colonial House, Oxnard, 7:30 p.m.

Jan. 25 (Saturday)
Berkeley - Installation dinner, Rickshaw Restaurant, 7:30 p.m.

Jan. 26 (Sunday)
D.C. - Installation dinner-dance, Naval Weapons Plant Officers Club, 6:30 p.m.

Jan. 27 (Monday)
Boise Valley - Bazaar, Caldwell Armory.

Jan. 28 (Tuesday)
Stockton - Installation banquet, Web's, 6 p.m.

Jan. 29 (Wednesday)
Los Angeles - PSWDC exec. bd. meeting, Daruma, 12 p.m.

Jan. 30 (Thursday)
Contra Costa - Installation dinner, Yamato Sukiyaki, San Francisco, 6:30 p.m.

Jan. 31 (Friday)
Orange County - Installation dinner, Disneyland Hotel, 7:30 p.m.

Arizona - PSWDC quarterly meeting, Ramada Inn, Phoenix, Feb. 12 (Friday)

Philadelphia - Election meeting.

JAN. 15 - 21 INCLUSIVE
Aien no Hito (Immortal Love)

AND
Shio Kumi (Kabuki Dance)
Starring Hideo Takamine, Keiji Sata, Tatsuyo Nakada and Nobuko Otoba

KABUKI THEATER
Adams at Crenshaw
Tel: 734-0362 - Free Parking

NOW SHOWING TILL JAN. 21
Daiel Color With English Sub-Titles 'Yoru no Hairo' (Black Dividend)

'Uta Ando'
Raizo Ichikawa, Fujiko Yamamoto

KOKUSAI THEATRE
3020 Crenshaw Blvd., L.A., RE 4-1148

STARTS TODAY
Color by Eastmancolor
'The Young Co-eds' (Hai Hai Sannin Comedy)

Musical Comedy Starring Mie Nakao, Mari Sono, Yukari Ito

Yuzo Kayama, Yuriko Hoshi in 'The Feudists' (Hakone Yama)

TOHO LA BREA
9th and La Brea - WE 4-2312
Daily 7:00, Sat. & Sun. 2:00

Oratorical and Essay Contest
May I remind all past-presidents to relay to their successors all material previously received from Dr. Joseph D. Sasaki, chairman of the National JACL Oratorical and Essay Contest, regarding this year's contest rules and regulations. It is very important that the new chapter officers be alerted to their obligations of providing an opportunity for all the youths within their jurisdiction to compete in the Chapter, District and National Oratorical and Essay contests.

Present Assignments
Besides fulfilling the many assignments delegates to me by the National Board and the National Director, regarding the functions within our National Organization, I have just completed chairing a committee on the evaluation of a supplementary social studies textbook on Japan, which is to be adopted for use by the California Public Schools.

It has also been my privilege to attend and participate in the California Committee for Fair Practices meeting in Fresno, where the proposed initiative by the California Real Estate Association for a state constitutional amendment to nullify fair housing legislation was discussed.

I have been asked to install the newly-elected officers of the Fremont, Berkeley, and Contra Costa Chapters, as well as to participate as a Discussion Group Leader for the California Department of Social Welfare Workshop on Minority Group Relations, at the Bellevue Hotel, San Francisco, on Feb. 5-6. This will involve the responsibility of County Welfare Departments for preventing and eliminating racial discrimination in all aspects of public welfare administration and the mechanics and techniques for effective channels of communication and work with minority groups.

Although this "area workshop" is for county welfare directors and their administrative and supervisory staffs, social workers and their clerical staff, it will be opened to those who are vitally interested in this particular aspect of community service. It is really part of a state-wide effort to help all of us administer public welfare in such a way that it may help each and every one of us improve our relationship with each other; preventing and eliminating racial tension and discrimination, regardless of race, creed, or religious belief.

1964 Officers

Boise Valley JACL
John Arima, pres.; Joe Koyama and Harry Matsui, 1st. v.p. (social); Roy Oyama, 2nd v.p. (memb.); Mas Kido, 3rd v.p. (memb.); Ben Uda, treas. (2-yr. term); Mrs. Nori Oyama, rec. sec.; Yuki Uemura, treas.; Yukio Kuma, cor. sec.; Mickey Yemoto, cor. sec.; Frank Kubota, Tok Yamamoto, del.; Bob Mochizuki, pub.; Yoshito Takahashi, memb.; Jim Miyamoto, leg. counsel; Herbert Yoshida, Tom Heyamoto (North); Ted Takahashi, Roy Miyake (South); Harry Ikuma, Ed Mochizuki (East Sunnyside); Tom Koga, Tom Shohara (West Sunnyside); Bob Nakatawa, Herb Hirasuna (Blackstone), memb.-at-lge.

Clovis JACL
Bob Hirasuna, pres.; Min Miyamoto, v.p.; Sam Murakami, 2nd v.p.; Todd Uemura, treas.; Yukio Kuma, rec. sec.; Mickey Yemoto, cor. sec.; Frank Kubota, Tok Yamamoto, del.; Bob Mochizuki, pub.; Yoshito Takahashi, memb.; Jim Miyamoto, leg. counsel; Herbert Yoshida, Tom Heyamoto (North); Ted Takahashi, Roy Miyake (South); Harry Ikuma, Ed Mochizuki (East Sunnyside); Tom Koga, Tom Shohara (West Sunnyside); Bob Nakatawa, Herb Hirasuna (Blackstone), memb.-at-lge.

Delano JACL
Mas Takaki, pres.; Jeff Fukawa, 1st v.p.; Ben Nagatani, 2nd v.p.; Takashi Kono, treas.; Toshi Katano, rec. sec.; Mary Okasaki, cor. sec.; Marge Nagawa, soc.; Tom Watanabe, 1000 Club.

Electrolux
NEW AUTOMATIC
Assistant Manager
Bill Matsumoto
583-9944
AXminister 2-6913

INSIST ON THE FINEST
KANEMASA Brand
FUJIMOTO'S EDO MISO.
Quality Available at Your Favorite Shopping Center
FUJIMOTO & CO.
302-306 S. 4th West
Salt Lake City 4, Utah
Phone: EMpire 4-8279

TOYO Miyatake
STUDIO
318 East First Street
Los Angeles 12
MA. 6-5681

CAMPBELL'S flowers
Across from St. John's Hosp
2032 Santa Monica Blvd
Santa Monica, Calif
Mary & George Ishizuka EX 5-4111

Nisei Week queen heads Gardena Valley JACL

GARDENA. - Nisei Week's 1962 festival queen, France Yanai, was elected president of the Gardena Valley JACL, succeeding Leon Uyeda, a two-term leader.

As part of the drive to recruit more young people into the chapter, the chapter begins an intermediate dance class starting tonight at the Japanese Community Center, 2000 W. 162nd St., at 8:30 with Joe Fletcher, Long Beach 1000er, as instructor. The first session will be complimentary, co-ordinator George Chogyoji stated.

By the Board - (Continued from Front Page)

The names of such chapters were unknown to me at this time in order to give them due credit. In subsequent announcements, we will give proper acknowledgment to all those which went over the top in 1963.

Budget Revenue
Inasmuch as 91 percent of the budget income is derived from regular, supporting, and 1000 Club membership dues, it is befitting to cite that 1963 was an outstanding year in this regard. Forty chapters surpassed their 1962 performances and 7 hit an all-time high in membership. Five chapters equalled their previous years' totals whereas 19 more could equal their 1962 mark by adding anywhere from 1 to 10 to their present figures.

The composite review shows that 62 out of 86 chapters did a wonderful job in membership recruiting. As of Dec. 6, 1963, we had 17,956 in membership, of which over 1,600 were in the 1000 Club.

The above results predict a promising outlook for 1964 and the future years. As a person who has listened to much "crying" in the past at the various National conventions when the delegates argued that if the dues were raised or if their quotas were increased, their chapters would lose membership.

I am delighted that, contrary to their alarms, the recent trend is an overall increase in membership. Whether this growth is attributed to membership maturity, better solicitation methods, or whether it is due to acknowledged merits in the JACL, it does not matter as far as I'm concerned, but it does give a big boost towards easing our financial problems.

Significance of 20,000 Members
I'm grateful to see that our National Membership Chairman, Dr. Dave Miura, has set a goal of 20,000 members for the coming year. I would now be doubly happy if our National 1000 Club Chairman, "Wild Bill" Matsumoto, would come out for a drive to make it 2,000 for his One Thousand Clubbers. If both of these gentlemen will make good on their goals, the chairman of the Budget and Finance Committee can sleep in their "bed of roses."

If every chapter made a little more effort, realization of the 20,000 can be easily attained. On the success of such projection, the National budget will not be the harassing dilemma that it has been in the past. Such affluence would permit budgeting of monies into constructive ways to strengthen chapter programs and activities which is presently in need of bolstering to magnify its appeal for broad new membership.

Let's Get Ready for Detroit
In closing, I'd like to mention that we're only 6 months away from the 18th Biennial Convention in Detroit. It thusly behooves us to become concerned with the matters which will be presented there.

Space allotted here will not allow me to go into the various aspects of JACL finance, so the presentation will be deferred to be covered in subsequent articles. Thanks for your financial support in 1963! I hope you'll help to make it even better in 1964!

Idaho Falls 1000ers elect new chairman

IDAH0 FALLS, Ida.—A smorgasbord dinner at Jack's Chicken Inn here was the gala scene of the Idaho Falls JACL 1000 Club New Year's Eve party chaired by Shoji Nukaya, outgoing 1000 Club chairman.

The chapter 1000ers elected Eileen Martin as its 1964 chairman. No other JACL chapter has its 1000 Club chairman elected in this fashion.

Idaho Falls is also the birthplace of the 1000 Club, having been founded here at an IDC meeting in 1947.

Special guests included: Mr. and Mrs. Fuji Hikkida, Rexburg; Mr. and Mrs. Kiyoshi Sakata, Rexburg; Mr. and Mrs. Sam Yamasaki, Mr. and Mrs. Sam Sakaguchi and Mr. and Mrs. Doyle Bingham, all of Idaho Falls.

Mrs. Fred Ochi and Mrs. Deto Harada assisted in the party and entertainment. Thirty members and guests attended.

Christmas Program
The chapter Christmas party at Veterans Memorial Bldg. was presented by the women of the chapter, co-chaired by Sally Yamasaki and Bud Sakaguchi, social chairmen. Sam Sakaguchi, chapter president, extended the welcome and then Leo Hosoda emceed the talent show featuring:

A Sasei singing group accompanied by Dianne Nishioka; tap dances by Jackie Ogata, Jill Ogata and Della Sakaguchi; sailor dance by Carrie Jean Ogawa; accordion solo by Kenny Martin; ballet dances by Diane Yamasaki and Judy Nukaya; vocals by Moyo Ogawa; acrobatic dance by Kathy Ueda; piano solos by Georgia Kobayashi, Dianne Nishioka and Margaret "The Night Before Christmas" by LaDean Marshall with Santa making his appearance.

Children under 12 exchanged gifts and the evening closed with refreshments.

Christmas Party
MILWAUKEE.—Nearly 90 JACLers and children were entertained by Jolly the Clown and 11 other talented youngsters at the recent Milwaukee JACL Christmas party at Mitchell Park Pavilion. Terry Lynn Minami was mistress of ceremonies.

Displaying their talents were: Scott Matsumoto, Glorion Day, vocals; Gale Shinozaki, Susan Obara, piano; Chiyoko Uchida and Margaret Miyayoshi, poetry; Sharon Nambu, Joanne Kubo, hula duet; Terry Watanabe, ukulele; Robin Matsumoto, accordion; Sharon Ochiai, tap dance.

On the party committee were: Elva Matsumoto, Elaine Shinozaki, prof.; Mr. and Mrs. C. Tanouye, refreshments and gifts.

December Activities
GRESHAM, Ore. — Gresham-Troudale JACL hosted a Christmas party for over 100 at the G-T Hall, featuring a chicken dinner served by a committee headed by Mary Asakawa and Aya Fujii. Santa Claus (Jack Ouchida) was on hand presenting gifts to all children 12 and under. A program of cartoon movies concluded the gay affair.

Nogi Asakawa and Frank Nishioka co-chaired the annual skating party Dec. 30, which was attended by a record-breaking crowd of young and old alike.

Berkeley. — A net profit of \$431.61 was realized by Berkeley JACL at its Dec. 14 benefit movie. A sum of \$300 was forwarded to National JACL as partial fulfillment of its chapter quota.

Membership Push
SALT LAKE CITY.—An intensive membership campaign was planned by Salt Lake JACL from Jan. 11 through Feb. 2 with three vice-presidents Al Ju, Pee Wee Kobayashi and Rae Fujimoto in charge. All chapter board members are assisting.

With over a 1,000 names compiled, every attempt will be made to contact them either by phone or mail. Chapter dues are \$6 per person.

Holiday Issue (Continued from Page 2)

Luis Valley 3 inches, San Mateo 11 inches, Santa Barbara 4 inches, Santa Maria 5 inches, Seabrook 168 inches, Seattle 38 inches, Selma 4 inches, Snake River 168 inches, Sonoma County 8 inches, Southwest L.A. 92 inches, Stockton 32 inches, Tulare County 46 inches, Washington 16 inches, Watsonville 1 inch, West L.A. 68 inches, Wilshire-Uptown 10 inches, Exchange 22 inches.

Pacific Southwest 35 inches, Midwest 7 inches, Central Calif. 6 inches, Intermountain 6 inches, Eastern 5 inches, Pacific Northwest 5 inches, No-Cal. Western Nev. 3 inches, Mt. Plaine 4 inches, Total Display-2,305 1/2 inches.

One Line Insertions
Arizona 13, Bakersfield 15, Chicago 15, Cincinnati 24, Cleveland 24, Dayton 15, Detroit 30, East L.A. 21, Gresham-Troudale 31, Hollywood 8, Idaho Falls 19, Long Beach 19, Mid-Columbia 13, Mt. Olympus 31, Omaha 21, Parlier 24, Pasadena 19, Philadelphia 29, Pierce County 29, Portland 33, Puyallup Valley 41, Rexburg, Sacramento 27, St. Louis 24, Salinas 21, Sanger 18, San Diego 29, San Fernando 60, San Francisco 50, San Jose 25, San Mateo 6, Santa Barbara 33, Seattle 32, Sonoma 31, Southwest L.A. 7, Stockton 28, Twin Cities 32, Venice Culver 15, Washington 59, Watsonville 9, West L.A. 20, White River 13.

One Line Insertions Total-1041.

Chapter Call Board

Orange County JACL
Keynote Speaker: Dr. Daniel G. Aldrich Jr., chancellor of the new Univ. of California at Irvine, will be the keynote speaker of the Orange County JACL installation banquet at Disneyland hotel Feb. 1, according to Minoru Inadomi, chapter president.

Aldrich will present a general report of the Irvine campus, which he has headed since January, 1962. He has been associated with agriculture and water resources during his entire career with UC, being dean of agriculture before his appointment to head the new campus.

Berkeley JACL
Mayeda to Speak: Jack Mayeda, administrative assistant to National Director Mas Tsuru, will install the 1964 Berkeley JACL officers and address the group at the Ricksbar Restaurant on Jan. 25, 7:30 p.m. Tickets at \$2.50 per person are available from board members and at Yamasaki Realty Co., 2439 Grove St.

Elections are being conducted through the mail this week.

West L.A. Auxiliary
Auxiliary Plans: The West Los Angeles JACL Auxiliary will have its first meeting of the year Monday at the home of its president, Mrs. Harold S. Harada, to schedule its calendar for the year and select chairmen for the major projects.

Downtown L.A. JACL
Inagaki to Install: Takito Yamagata, newly-elected president of Downtown L.A. JACL, and his cabinet will be installed this Sunday.

Venice-Culver JACL
Yacht Harbor Locale: The multimillion dollar Marina del Rey Yacht Harbor will be the setting for the 1964 Venice-Culver JACL installation dinner-dance Jan. 25, 6:30 p.m., at the Admiralty Room of the Sheraton Marina (entrance through the Golden Galleon Restaurant).

Wilson - Spalding - Volt - Brunswick
Centinela Sporting Goods
Athletic Equipment - Guns - Model Toys
Silaflex and Truline Fishing Rods
Owen Yoshikawa, Prop.
4509 Centinela Ave., L.A. EX 7-2251

Homes - Income Property - Insurance
For Best Buys Consult Us
Midway
REALTY & INVESTMENT CO.
Shigeo Imamura Realtor & Associates
4564 West Washington, Los Angeles
WE 8-2773

TOM YOKOI KAZUO ADACHI
GEORGE INAI STAN SHIMIZU
GRAM NORIYUKI J. YAMASHITA
FRANCES SASAI KAY TAKAZAKI

YOKOI Realty Co.
4539 Centinela Ave.
VE 9-5914

Homes - Income Prop. - Bus. Oppor.
WLA - Santa Monica - Culver City
FRED Makimoto Realty
(Vista Realty)
EX 1-0385, UP 0-1872
4569 Centinela, L.A. 66

Income Property - Homes - Land
REAL ESTATE -
SAM IWANA
2605 Temple St. DU 5-5056
Los Angeles 26 Eye. CA 1-8204

THE CALLARI'S
GEMS AND JEWELRY
Opal-Jade
Star Sapphire
Fusako Callari Joe Callari
313 1/2 E. 1st St. Tel. 628-2998
Open Daily 10:30 to 6:00 pm
Sundays by Appointment

Toyo Printing
Offset - Letterpress - Linotyping
309 S. SAN PEDRO ST.
Los Angeles 12 - Madison 6-8153

Mitsuba Sushi
226 E. First St.
MA 5-8165
(Closed Tuesdays)

East L.A. - Montebello - Monterey Park
Taira REALTY CO.
C.B.S. Multiple Listing Service
Harley H. Taira, Realtor and Assoc.
5273 1/2 E. Beverly Blvd., L.A.
RA 3-9858 (res.) AN 2-7137

WE "CURL" UP AND "DYE" FOR YOU
Chickie's Beauty Salon
730 E. 1st St., Long Beach, Calif.
Open Evenings by Appointment
Chickie and Mas HE 6-0724

JAPANESE BRUSH PAINTING
FOR FUN, LEARNING & GIFT GIVING
Sumi set containing 2 Fude brushes, Sumsu and Sazuri, gift boxed... \$2.25
Large Sumi set containing 4 Fude, Sumsu and Sazuri, gift boxed... \$7.75
Instruction book \$9pp by T. Mikami... 2.00
Art of Japanese Brush Painting 127pp 3.55
Finest imported rice 100 sheets... 1.50
paper, approx. 10 x 13 200 sheets... 2.75
Order by mail, add 25c postage. Immediate delivery. Write for FREE catalog of fine gifts.

SHERIGAL STUDIO
Dept. 24P 18-12 21st Ave.
Astoria, N.Y.

Help us Celebrate Our Anniversary (OUR FIRST)
DEC. 31, 1963 \$7,500,000
DEC. 31, 1962 \$1,154,000

42 E. First Street, L.A. 12, Phone MA 4-7434
Hours: 10 a.m. to 5 p.m. daily Saturdays: 10 a.m. to 2 p.m.
Free Parking

Chapter Call Board

Orange County JACL
Keynote Speaker: Dr. Daniel G. Aldrich Jr., chancellor of the new Univ. of California at Irvine, will be the keynote speaker of the Orange County JACL installation banquet at Disneyland hotel Feb. 1, according to Minoru Inadomi, chapter president.

Aldrich will present a general report of the Irvine campus, which he has headed since January, 1962. He has been associated with agriculture and water resources during his entire career with UC, being dean of agriculture before his appointment to head the new campus.

Berkeley JACL
Mayeda to Speak: Jack Mayeda, administrative assistant to National Director Mas Tsuru, will install the 1964 Berkeley JACL officers and address the group at the Ricksbar Restaurant on Jan. 25, 7:30 p.m. Tickets at \$2.50 per person are available from board members and at Yamasaki Realty Co., 2439 Grove St.

Elections are being conducted through the mail this week.

West L.A. Auxiliary
Auxiliary Plans: The West Los Angeles JACL Auxiliary will have its first meeting of the year Monday at the home of its president, Mrs. Harold S. Harada, to schedule its calendar for the year and select chairmen for the major projects.

Downtown L.A. JACL
Inagaki to Install: Takito Yamagata, newly-elected president of Downtown L.A. JACL, and his cabinet will be installed this Sunday.

Venice-Culver JACL
Yacht Harbor Locale: The multimillion dollar Marina del Rey Yacht Harbor will be the setting for the 1964 Venice-Culver JACL installation dinner-dance Jan. 25, 6:30 p.m., at the Admiralty Room of the Sheraton Marina (entrance through the Golden Galleon Restaurant).

Wilson - Spalding - Volt - Brunswick
Centinela Sporting Goods
Athletic Equipment - Guns - Model Toys
Silaflex and Truline Fishing Rods
Owen Yoshikawa, Prop.
4509 Centinela Ave., L.A. EX 7-2251

Homes - Income Property - Insurance
For Best Buys Consult Us
Midway
REALTY & INVESTMENT CO.
Shigeo Imamura Realtor & Associates
4564 West Washington, Los Angeles
WE 8-2773

TOM YOKOI KAZUO ADACHI
GEORGE INAI STAN SHIMIZU
GRAM NORIYUKI J. YAMASHITA
FRANCES SASAI KAY TAKAZAKI

YOKOI Realty Co.
4539 Centinela Ave.
VE 9-5914

Homes - Income Prop. - Bus. Oppor.
WLA - Santa Monica - Culver City
FRED Makimoto Realty
(Vista Realty)
EX 1-0385, UP 0-1872
4569 Centinela, L.A. 66

Income Property - Homes - Land
REAL ESTATE -
SAM IWANA
2605 Temple St. DU 5-5056
Los Angeles 26 Eye. CA 1-8204

THE CALLARI'S
GEMS AND JEWELRY
Opal-Jade
Star Sapphire
Fusako Callari Joe Callari
313 1/2 E. 1st St. Tel. 628-2998
Open Daily 10:30 to 6:00 pm
Sundays by Appointment

Toyo Printing
Offset - Letterpress - Linotyping
309 S. SAN PEDRO ST.
Los Angeles 12 - Madison 6-8153

Mitsuba Sushi
226 E. First St.
MA 5-8165
(Closed Tuesdays)

East L.A. - Montebello - Monterey Park
Taira REALTY CO.
C.B.S. Multiple Listing Service
Harley H. Taira, Realtor and Assoc.
5273 1/2 E. Beverly Blvd., L.A.
RA 3-9858 (res.) AN 2-7137

WE "CURL" UP AND "DYE" FOR YOU
Chickie's Beauty Salon
730 E. 1st St., Long Beach, Calif.
Open Evenings by Appointment
Chickie and Mas HE 6-0724

JAPANESE BRUSH PAINTING
FOR FUN, LEARNING & GIFT GIVING
Sumi set containing 2 Fude brushes, Sumsu and Sazuri, gift boxed... \$2.25
Large Sumi set containing 4 Fude, Sumsu and Sazuri, gift boxed... \$7.75
Instruction book \$9pp by T. Mikami... 2.00
Art of Japanese Brush Painting 127pp 3.55
Finest imported rice 100 sheets... 1.50
paper, approx. 10 x 13 200 sheets... 2.75
Order by mail, add 25c postage. Immediate delivery. Write for FREE catalog of fine gifts.

SHERIGAL STUDIO
Dept. 24P 18-12 21st Ave.
Astoria, N.Y.

Chapter Call Board

Orange County JACL
Keynote Speaker: Dr. Daniel G. Aldrich Jr., chancellor of the new Univ. of California at Irvine, will be the keynote speaker of the Orange County JACL installation banquet at Disneyland hotel Feb. 1, according to Minoru Inadomi, chapter president.

Aldrich will present a general report of the Irvine campus, which he has headed since January, 1962. He has been associated with agriculture and water resources during his entire career with UC, being dean of agriculture before his appointment to head the new campus.

Berkeley JACL
Mayeda to Speak: Jack Mayeda, administrative assistant to National Director Mas Tsuru, will install the 1964 Berkeley JACL officers and address the group at the Ricksbar Restaurant on Jan. 25, 7:30 p.m. Tickets at \$2.50 per person are available from board members and at Yamasaki Realty Co., 2439 Grove St.

Elections are being conducted through the mail this week.

West L.A. Auxiliary
Auxiliary Plans: The West Los Angeles JACL Auxiliary will have its first meeting of the year Monday at the home of its president, Mrs. Harold S. Harada, to schedule its calendar for the year and select chairmen for the major projects.

Downtown L.A. JACL
Inagaki to Install: Takito Yamagata, newly-elected president of Downtown L.A. JACL, and his cabinet will be installed this Sunday.

Venice-Culver JACL
Yacht Harbor Locale: The multimillion dollar Marina del Rey Yacht Harbor will be the setting for the 1964 Venice-Culver JACL installation dinner-dance Jan. 25, 6:30 p.m., at the Admiralty Room of the Sheraton Marina (entrance through the Golden Galleon Restaurant).

Wilson - Spalding - Volt - Brunswick
Centinela Sporting Goods
Athletic Equipment - Guns - Model Toys
Silaflex and Truline Fishing Rods
Owen Yoshikawa, Prop.
4509 Centinela Ave., L.A. EX 7-2251

Homes - Income Property - Insurance
For Best Buys Consult Us
Midway
REALTY & INVESTMENT CO.
Shigeo Imamura Realtor & Associates
4564 West Washington, Los Angeles
WE 8-2773

TOM YOKOI KAZUO ADACHI
GEORGE INAI STAN SHIMIZU
GRAM NORIYUKI J. YAMASHITA
FRANCES SASAI KAY TAKAZAKI

YOKOI Realty Co.
4539 Centinela Ave.
VE 9-5914

Homes - Income Prop. - Bus. Oppor.
WLA - Santa Monica - Culver City
FRED Makimoto Realty
(Vista Realty)
EX 1-0385, UP 0-1872
4569 Centinela, L.A. 66

Income Property - Homes - Land
REAL ESTATE -
SAM IWANA
2605 Temple St. DU 5-5056
Los Angeles 26 Eye. CA 1-8204

THE CALLARI'S
GEMS AND JEWELRY
Opal-Jade
Star Sapphire
Fusako Callari Joe Callari
313 1/2 E. 1st St. Tel. 628-2998
Open Daily 10:30 to 6:00 pm
Sundays by Appointment

Toyo Printing
Offset - Letterpress - Linotyping
309 S. SAN PEDRO ST.
Los Angeles 12 - Madison 6-8153

Mitsuba Sushi
226 E. First St.
MA 5-8165
(Closed Tuesdays)

East L.A. - Montebello - Monterey Park
Taira REALTY CO.
C.B.S. Multiple Listing Service
Harley H. Taira, Realtor and Assoc.
5273 1/2 E. Beverly Blvd., L.A.
RA 3-9858 (res.) AN 2-7137

WE "CURL" UP AND "DYE" FOR YOU
Chickie's Beauty Salon
730 E. 1st St., Long Beach, Calif.
Open Evenings by Appointment
Chickie and Mas HE 6-0724

JAPANESE BRUSH PAINTING
FOR FUN, LEARNING & GIFT GIVING
Sumi set containing 2 Fude brushes, Sumsu and Sazuri, gift boxed... \$2.25
Large Sumi set containing 4 Fude, Sumsu and Sazuri, gift boxed... \$7.75
Instruction book \$9pp by T. Mikami... 2.00
Art of Japanese Brush Painting 127pp 3.55
Finest imported rice 100 sheets... 1.50
paper, approx. 10 x 13 200 sheets... 2.75
Order by mail, add 25c postage. Immediate delivery. Write for FREE catalog of fine gifts.

SHERIGAL STUDIO
Dept. 24P 18-12 21st Ave.
Astoria, N.Y.