

New eligibility rules in effect for JACL keg meet

IN THIS ISSUE

- GENERAL NEWS
California brief eloquent in pleading for yen claims case before U.S. Supreme Court; L.A. voters to decide on evacuee pension credit
NATIONAL-JACL
New eligibility rules effective for 1967 JACL Nat'l Nisei bowling tournament; Nat'l JACL Credit Union declares 5 pct.
DISTRICT-JACL
JACL-CPS rates for NC-WNDC unchanged; PNWDC seminar on human relations to discuss JACL motto; For Better Americans in a Greater America
CHAPTER-JACL
L.A. chapters install en masse; Judge Yonehiro predicts Placer County as next boom area
COLUMNISTS
Enomoto: Chicago Welcome.
Orawa: Seattle Scene Today.
Masaka: Legislative Goals.
Hosokawa: The Last Thing.
Kumamoto: Ratification, Uow!
Sakamoto: Keep It Coming.
Ohno: Taking Stock in PSWDC.
Ye Ed's: The Bosworth Book.

PERSPECTIVES

Jerry Enomoto
Nat'l President

Thanks to the benevolence of the weather gods, and the non-infallibility of the weather man, the Chicago and Cleveland climate was kind to me. Although her usual foresight where my well being is concerned was appreciated, the gloves, scarf and rubbers Joyce packed for me were not essential.

CHICAGO WELCOME

President Henry Terada, MDC Governor Hiro Mayeda, MDC Youth Commissioner Ross Harano, and former San Franciscan Dave Yoshioka were on hand to meet me at O'Hare.

An excellent dinner and an evening of informal discussion about JACL took place at the "New Wilson Village", a restaurant operated by Henry Chinn, a 1000 Clubber, and good friend of the Chicago Chapter. Among those on hand to lend their expertise to the issues were past National President Shig Wakamatsu, Hiro, National 1000 Club Chief Frank Sakamoto, National Legislative Committee Chairman Harold Gordon, Ross, Midwest Office Secretary Esther Hagiwara, MIDYC Chairman Elaine Yamada, Chicago Jr. JACL President Karen Suzuki, Chicago Young Adults President Susan Odanaka, Chiye Tomihiro, Misako Inouye, Lincoln Shimizu, and many others, including a group of Jr. JACLers and Young Adults. Memory and space limits acknowledgment of all whom I met.

POST-GAME FESTIVITIES

The inevitable late evening, early morning fun, so characteristic of JACL and so hospitably provided by Chicago, resulted in some further fellowship at the "Naka Noya", a beautiful restaurant where Dave's wife, Sylvia, greets the guests. This gives me a chance to recall quickly that a visitor from Covina, in Southern California, Marvel Miyata, (husband formerly a JACL Chapter President) attended the meeting and joined us at Naka Noya. Incidentally Marvel says efforts are underway to add a 90th Chapter in her neck of the woods. Sumi Shimizu was another whom I forgot to mention above.

After a time I found myself in Dr. Frank's new white Grand Prix, warmly escorted between Chiye and Misako, who were intent on curing my cold (I did have a bad one) with Dave and Sylvia, being shown some of Chicago's landmarks which, unfortunately were blighted by the darkness, rain and dirty snow and ice. The Chicago I knew and lived in 20 plus years ago has changed considerably, but nature's gifts and liabilities never change.

We wound up the night (morning) in the "Gaslight", the original "key club" from which the Playboy, of more publicized renown, was copied. Thanks to the generous hospitality of Dave, who has a key (harder to obtain than the Playboy key) we enjoyed a real fun climax to a most enjoyable evening. The speak-easy type atmosphere, complete with an Al Capone type character and a bevy of well endowed gals, suitably clothed (no topless), takes no back seat to San Francisco. Particularly entertaining was a room where a hot combo backs a show put on by four gals who double by serving the drinks. A giant blonde, red head and two brunettes with talent and enthusiasm caused Frank to try to sign up the blonde for the MDC-EDC Convention 1000 Club Whing Ding. Incidentally it's the

LOS ANGELES—Entry forms for the 21st annual National JACL Nisei Bowling Tournament are due Monday, Jan. 23, tournament chairman Easy Fujimoto reminded today.

Entry fees must accompany all entries with checks made payable to Yas Minamide, treasurer, and mailed to Ty Kajimoto, 1246 Gardena Blvd., Gardena, Calif. 90247.

Entry forms for men's and women's divisions are available at Holiday Bowl, site of the 1967 tournament Mar. 6-11, 3730 Crenshaw Blvd., Los Angeles, 90008 (AX 5-4325).

Operating under the eligibility rules stipulated by the 1964 National JACL Convention that the tournament be opened to all JACLers, each participant must be a current member of the American Bowling Congress or Women's International Bowling Congress as well as the Japanese American Citizens League for both 1966 and 1967.

To retain the "Nisei" flavor of the tournament, at least four members of each five-man team must be of Japanese ancestry and one member of each doubles team, mixed doubles and ragtime doubles.

National JACL Credit Union Declares 5 Pct.

SALT LAKE CITY—The National JACL Credit Union board of directors have declared a 5 pct. per annum dividend for the last half of 1966, it was announced this week by president S. Ushio.

With the life insurance feature attached to the share-savings, the 5 pct. dividend is an excellent return to members of the credit union, Ushio pointed out.

Dividends will be credited prior to Jan. 15 to the members' share account.

This past year, five members passed away and two loan accounts were paid off totaling with interest \$552.10 and their beneficiaries received as insurance proceeds on share-savings \$5,209.52.

Since the inception of the share-loan insurance program, 14 loans were paid off totaling \$11,444.95 and 31 share accounts amounting to \$23,476.24.

JACL Credit Union annual meeting slated Jan. 28

SALT LAKE CITY—The 1967 annual meeting of the National JACL Credit Union will be held at the Ramada Inn here on Jan. 28, starting with 6:30 p.m. mixer and followed by a buffet supper at \$1.50 per member.

Ichiro Doi and George Yoshimoto, co-chairmen of the meeting, have set a Jan. 25 reservation deadline for attendees.

Business agenda includes the election of two directors and one member to the credit committee, and reports. Nominations to the board are Yukus Inouye of American Fork, Utah, and S.C. Umemoto of Salt Lake City. Tsutomu Mitsui is a nominee for the credit committee. Nominations may be made from the floor if the nominee has consented.

Dancing will follow from 9:30. Door prizes and the color-TV set to the borrowing member who holds the winning ticket will be given away.

JARP

Next morning at breakfast and until a late morning plane to Cleveland, Shig and I kicked the Japanese American Research Project around. Certainly this talk reinforced my impression that Shig, in whose regime this project was born, has invested much of himself under circumstances that sometimes should have given him more gray hairs than he has.

As I scribble these lines on Monday morning, enroute to a work conference here in Sacramento, I must forego till next week my experiences in Cleveland.

Tournament entries must be certified as to JACL membership and official league averages by the local chapter president or member of the National JACL Advisory Board on Bowling.

All bowlers will be checked for ABC, WIBC and JACL membership cards at time of registration.

Entering Averages

Participants in each event shall be divided into squads according to official averages posted on entry sheets. The averages are computed on the basis of the official Blue Book or current 21-games or more average as of Jan. 1, 1967, whichever is higher.

If a substitution is made after closing date causing a team or individual average to be higher than the highest on the scheduled squad, that team or individual is ineligible for that squad's prizes. Fifty percent of the prize fee goes to squad prizes.

There shall be no refunds after the close date for entries.

Bowlers must report 15 minutes before squad time. Tardy bowlers are to bowl from the frame in progress. Team captains will be advised of the schedule in sufficient time.

(Continued on Page 5)

Civil rights hearings on Hawaii bias underway

HONOLULU — The Hawaii State Advisory Committee on Civil Rights began hearings on the Neighbor Islands where the public can register discrimination complaints.

Kenneth Nakamura, committee secretary, said he had first-hand knowledge of housing discrimination because he is a landlord. As an experient he answered a few ads by telephone and found only Japanese Americans were acceptable and others refused haole, Negroes and servicemen.

JACL-CPS rates for coming year slaying the same

SAN FRANCISCO — JACL-CPS rates for the next contract year starting March 1 will remain the same as those in effect at the present time.

This was the announcement made this past week by John Yasumoto, head of the JACL-CPS committee who said:

"Despite rising costs of hospital and medical services, the California Physicians' Service has notified us that the current rates will be retained when the contract with the JACL is renewed in March."

Yasumoto, also said that because of a favorable record set by the group this past year, two benefits eliminated from the original JACL-CPS contract late in 1965 will be restored from March 1. These are:

X-Ray and Lab Tests

1—A \$50 allowance per calendar year for out-patient diagnostic x-ray and laboratory services for subscriber and each dependent.

2—A \$300 accident rider for each subscriber and dependent to pay for expenses not covered by the regular contract.

The JACL-CPS group was first organized in March, 1963. Some 2,800 enrolled in this group health plan, about 1,000 of them over 65 years of age.

Because of the staggering proportion of older Issei in the original sign-up, claims payments were higher than estimated. CPS had to raise its rates and eliminate the above two benefits.

Helped by Medicare

The record of this group with CPS became favorable after July 1, when all over 65 were transferred to Medicare.

The JACL-CPS quarterly rates are as follows:

Single male \$21.50, single female \$26.50, two persons \$48 and three or more \$59.

Yasumoto announced that 165 new members were signed up during the open enrollment period late last year. Although CPS identification cards have not been sent out as yet, those 165 have been covered by the plan since Dec. 1 under group coverage No. 1900, he added.

COOLIE TRADE LAW REPEAL BILL SUBMITTED

WASHINGTON — Rep. Spark Matsunaga (D-Hawaii) introduced a bill in the 90th Congress to repeal the obsolete "coolie trade" laws. A similar bill he authored in the 89th Congress passed the House on Sept. 19, 1966, but the Senate failed to take final action.

PACIFIC CITIZEN
Membership Publication: Japanese American Citizens League, 125 Weller St., Los Angeles, Ca 90012 (213) MA 6-4471
Published Weekly Except Last Week of the Year Second Class Postage Paid at Los Angeles, Calif.
Vol. 64 No. 2 FRIDAY, JANUARY 13, 1967 Edit/Bus. Office: MA 6-6936 TEN CENTS

Calif. brief eloquent in pleading for yen claims at Supreme Court



GAVEL TRAVELS — Members of the 1967 Twin Cities JACL executive board witness transfer of the president's gavel from Bill Doi (left) to Dr. Roy Yahahiro, new leader. Witnesses are (from left): seated—Mrs. Fred Ohno, Robert Girard (v.p.), Eimi Kuramoto, Marie Kallio; standing—Sumi Teramoto, Paul Iida, Mrs. Ken Tanaka, Dr. Patrick Hagihara, Dr. Yoshio Sako, Saburo Aisawa, Kay Kushino, Mieke Fujita, and Rev. Andrew Otani.

Zderadoctor 'nth' house?

MINNEAPOLIS—With election of 1967 officers by the Twin Cities JACL, the saying there now is:

"Come to the board meetings and have all your ills corrected" or "if all else fails, have your card punched by 'Chaplain' Rev. Andrew Otani."

As president, Dr. Roy Yahahiro is professionally a psychologist at General Mills. Dr. Yoshio Sako, new board member is professor of surgery at the Univ. of Minnesota and chief of the cardiovascular surgery at Veterans Hospital, Ft. Snelling.

Dr. Patrick Hagihara, another new board member, is chief resident surgeon at University Hospitals; while Saburo Aisawa, past chapter p.r. chairman, is chief druggist and assistant to the North Memorial Hospital administrator.

Mieke Fujita, past corresponding secretary and still on the board, heads the hematology department at Methodist Hospital. May Tanaka is secretary for the Hennepin County Chest Clinic.

JACL motto cue for PNWDC seminar on human relations

SEATTLE—The Pacific Northwest District Council will conduct its first human rights seminar on Sunday, Feb. 26, 1:30 p.m., at Meekers Landing at nearby Kent, it was announced by Phil Hayasaka, DC human rights committee chairman.

The seminar will attempt to focus the JACL motto, "For Better Americans in a Greater America", to mean that a greater America results when all persons, regardless of race, religion or national origin, participate equally in the American society; and that the recognition of, concern for and action toward this end would result in being better Americans.

The seminar is the first step toward formation of human rights committees in all PNWDC chapters, the director of Seattle's Human Rights Commission explained. The 90-minute meeting is open to all JACLers and interested persons.

Moderated by Hayasaka, the 90-minute seminar will begin with three panelists: Dr. Calvin Takagi, associate professor at the Univ. of Washington School of Social Work, presenting the overview picture of human rights and how it relates to Japanese Americans.

Masao Satow, national JACL PNWDC chapters.

Variations of cancer death rate may be due to hormones, B.C. study shows

VANCOUVER, B.C.—Japanese Canadian women have one of the lowest rates of breast cancer, it was revealed recently by Dr. W. Macdonald of the British Columbia Cancer Institute.

"Breast cancer," he said, "is related in some unknown way to hormones. Measurements of some of the hormones of Japanese Canadian women are about half way between those of Japanese women in Tokyo and English women in London. Thus, although the hormonal pattern of Japanese Canadian women seems to have changed a little as they have partially adopted Canadian habits, this change has not influenced their low rate of breast cancer."

In a December article in the Vancouver JCCA Bulletin Dr. Macdonald reported:

"During the past 20 years it has become apparent that the death rates from different types of cancer vary greatly in different countries.

"Japan has less cancer than Canada or the United States but about one half of the cancers that do occur are in the stomach. In Canada only 10 percent of cancers occur in the stomach but the death rate from breast cancer is 10 times as high as in Japan.

"The death rate from stomach cancer of Japanese persons who migrate to Canada or the United States has fallen and is now only about one half of what it is in Japan. groes."

(Special to the Pacific Citizen) WASHINGTON — As the Supreme Court of the United States moves toward a possible March hearing in the so-called yen claim cases against the prewar California branches of the Yokohama Specie Bank, the State of California has filed an amicus curiae (friend of the court) brief on behalf of the thousands of Issei and Nisei depositors concerned, according to the Washington JACL Office.

Signed by Thomas C. Lynch as the Attorney General, Charles A. O'Brien as the Chief Deputy Attorney General, and Charles W. Rumph as Deputy Attorney General, the brief follows up the Amicus Memorandum filed by these three California State legal officers last summer in which they urged that the nation's highest tribunal grant certiorari (hearing) in the matter.

The Supreme Court agreed to hear oral arguments in the case late last year.

For Californians

In explaining the "Interest of Amicus Curiae", the brief declares that "These petitioners are of Japanese ancestry and are citizens of the United States by birth or naturalization. The great majority of them are residents of the State of California as well. Consistent with the policy of the State of California to redress as possible the regrettable injuries suffered by Japanese American citizens during World War II, the Attorney General of the State of California deems it appropriate to present this brief amicus curiae in support of this petition (to find that the prewar depositors are entitled to be repaid on the basis of the pre-war exchange rate of about four yen to a dollar).

"As set forth in our Memorandum Amicus Curiae, presented to this Court of June 1, 1966, that policy is represented both by legislative act and judicial decision over the past twenty-five years. We are convinced that a sound legal and equitable basis lies within the power of the Court to continue that policy. We are satisfied that the briefs filed on behalf of these petitioners disclose to the Court a path to such a solution.

"Our concern here goes beyond the petitioners who are California citizens. The people of California have a deep and abiding interest in seeing that justice is provided all citizens of this nation.

"However compelling and justifiable the circumstances surrounding the original seizure, they are now long past. A continuing sequence of retributory measures has subsequently been enacted—by Congress, this Court, and the courts and Legislature of the State of California. The underlying ethic of this Republic, founded as it was on sure principles of justice and equity, provides a compelling reason for the speedy resolution of this matter in favor of these petitioners."

Arguments Advanced

The State's brief continues: "We will not attempt here to augment the legal arguments so capably presented by petitioners' (50-page) brief. Rather, we will attempt to illuminate more clearly the factual basis upon which petitioners' claim for relief rests.

"Several facts perhaps have become obscured in this lengthy litigation:

"1—The deposits claimed do rightfully belong to these petitioners. Each of them filed a timely claim in 1946, the first opportunity provided. This is conceded by Respondent (Office of Alien Property, Department of Justice).

"2—Congress unequivocally expressed a policy to return these deposits in the Trading

with the Enemy Act. Furthermore, there is little doubt that the Congress which enacted that humane legislation had no intention of subjecting the claimants to a fifteen or twenty-five year delay.

"3—Many, if not the majority, of the 7,500 original claimants were elderly citizens laboring under an English language barrier.

Discouraging Policy

"4—The 1958 letter from the Custodian of the Office of Alien Property was a detailed and highly technical directive presenting a confusing array of alternatives and time limitations. In addition to its complexity, its most discouraging aspect was an unequivocal declaration of policy of a high government official that only two percent of the original deposits would be returned.

"5—Over 54 percent of those persons originally sent letters abandoned their claims at that point, either explicitly or implicitly. A reasonable inference is that they were completely discouraged by the offer of return. Without more, the fact that 4,100 out of the 7,500 claimants failed to follow the procedure outlined carries its own inference regarding the effect of the O.A.P. letter . . .

"The ultimate issues, therefore, are (1) whether the humane considerations expressed by Congress in the Trading with the Enemy Act will be effected by tolling the statute of limitations, and (2) whether any prejudice whatsoever will result to Respondent if the equitable principle of tolling is invoked. On the latter issue, Respondents have made no such contention. To adhere rigidly to the statutory limitations provision would not only be totally inconsistent with well-established principles of equity, but would frustrate the clear intent of Congress."

Conclusion

The California State brief concludes that "We are persuaded there would be little justice in affirming the lower court's decision (that because the depositors did not enter into litigation concerning their rights within the 60-days specified in the law, they thereby lost their right to recover their deposits). California's concern is not solely with the claimants before this Court. They represent subsequent generations of Japanese American citizens as well. Their attitudes toward, and respect for, the institutions of our society of law will be deeply affected by this Court's decision."

Joseph Rauh, attorney for the depositors and one of the more distinguished lawyers to practice before the Supreme Court in recent years, described the California brief as one of the most eloquent and meaningful amicus curiae that he has ever read. He declared that it summarized well the factual questions involved and should be most persuasive with the Court, especially since States do not often intervene in cases of this nature involving individuals.

Evacuee pension up for L.A. vote

LOS ANGELES — Proposal to give full pension credits to Japanese Americans who lost their civil service status with the City of Los Angeles as a result of Evacuation will be placed on the April 4 municipal election ballot.

Councilman Tom Bradley, who was instrumental in securing unanimous council approval for the charter amendment proposal Dec. 30, said the measure, if passed, would benefit only three Nisei civil service employees.

He also expressed optimism for a favorable vote. Two years ago, San Francisco voters provided similar benefits to a Nisei civil service employee who was evacuated.

RECOGNITION

SILVER PINS
Downtown L.A. — Soichi Fukui, Frank Suzuki (Jan. 7, 1967).
CHAPTER AWARDS
Hollywood — Frank Chumman Award (Outstanding Member): Yuki Kamayatsu (Jan. 7, 1967).

Washington Newsletter: Mike Masaoka

Legislative Goals

Washington
As the First Session of the 90th Congress prepared to convene at noon Jan. 10 and the President to deliver his annual State of the Union message to a nation-wide radio and television audience, this may be an appropriate opportunity to summarize JACL's legislative objectives for the coming congressional session.

At the 19th Biennial National Convention held in San Diego late last July, the National Council unanimously agreed that the JACL should continue to join in efforts to secure more liberal and humane amendments to the immigration and naturalization law and more meaningful and comprehensive civil rights legislation.

Inasmuch as the October 1965 Amendments to the Immigration and Nationality Act of 1952 removed race as a qualification, JACL's efforts will now be concentrated on securing a general liberalization of the basic statute.

Specifically, the National Council urged five amendments to existing law.

1—Labor clearances necessary for certain professional and skilled workers seeking entry into the United States and for most Western Hemisphere immigrants should be liberalized. They should not be used as a means to arbitrarily restrict and prohibit immigration to this country.

2—Rights of native born and naturalized citizens, particularly as they relate to loss of citizenship, should be equalized.

3—Statute of limitations to prevent deportation after 10 years, for instance, should be adopted to prevent the separation of families except for the most serious of crimes.

4—Easing of certain exclusion provisions to permit the reuniting of families in the United States.

5—Permitting the adjustment of status of immigrants of the Western Hemisphere on the same basis as for those from the Eastern Hemisphere.

Beyond these specific amendments, JACL is committed to removing the discriminations in immigration as between natives of the Old and New Worlds. The 1965 Amendments, while removing racial discriminations from the immigration code, created hemispheric distinctions, with prospective immigrants from the Old World being granted greater opportunities for entry into the United States than those from the New World, thereby reversing the historic policy of the country.

Since the Second Session of the last 89th Congress failed to enact the Administration-proposed Civil Rights Act of 1966, JACL is committed to another attempt on this and other civil rights legislation.

The Administration proposals in the last Congress called for nondiscrimination in the selection of trial juries in state and federal courts, expedited and accelerated desegregation of schools and other public facilities, greater protection for Negroes and civil rights workers against violence or other interference with their constitutional rights, and nondiscrimination in the sale and rental of all housing.

In addition, the Leadership Conference on Civil Rights, of which JACL is a charter member, proposed five "strengthening" amendments:

1—Provide an automatic "trigger" for setting into motion procedures for selecting state juries on a non-discriminatory basis.

2—Permit removal of civil rights cases from state to federal courts.

3—Create an Indemnification Board that would investigate acts of violence against civil rights workers and make monetary awards to victims or next of kin.

4—Extend coverage of the fair employment provisions of the 1964 Civil Rights Act to require local and state governments to hire employees on a non-discriminatory basis.

5—Establish a Fair Housing Board with authority to issue "cease and desist" orders to prevent discriminatory housing and rental practices.

No doubt there will be other proposals advanced to extend and assure the civil rights of all Americans. And JACL will generally follow the leadership of the Leadership Conference in deciding whether to support these proposals or not.

Realistically, JACL knows from long political experience that unless the Administration proposes and then works for specific legislation in these areas of immigration and civil rights, the chances for their enactment are almost nil.

It is for this reason that JACL was particularly concerned whether the President in his State of the Union message would urge consideration of legislation affecting immigration and civil rights.

All immigration and most civil rights bills are considered by the Judiciary Committees of the House and the Senate.

In this new session, Dean of the House Emanuel Celler is expected to be re-elected chairman of the House Judiciary Committee. As in the recent past, he is also expected to be the chairman of the Civil Rights Subcommittee. Cleveland Democrat Michael Feighan is expected to be renamed chairman of the House Judiciary Subcommittee on Immigration and Naturalization. In the last session, the full Committee was composed of 24 Democrats and 11 Republicans. Four of the Democratic members were either defeated or retired last November. The ratio of Democrats to Republicans and the political orientation of the new members of the Committee may well determine the course of immigration and civil rights legislation in the new Congress.

All 11 Democratic members and five Republican members of the Senate Judiciary Committee of the last session are back, so a change in the ratio of Democrats to Republicans may be crucial to any legislation of concern to JACL. Mississippi's arch conservative James Eastland is expected to retain his chairmanship of the full Committee and of the Immigration and Naturalization Subcommittee. North Carolina's Sam Ervin is also expected to retain his chairmanship of the Constitutional Rights Subcommittee.

Notice to JACL Chapter

Membership Chairmen:

National JACL Headquarters has special reply envelopes to assist your membership campaign.

Only \$1.75 per 100

NEWS CAPSULES

Military

Pfc. Curtis T. Ando, son of Mr. and Mrs. Charles T. Ando, Rt. 1 Box 168, Powell, Wyo., was among U.S. Marines killed in action in Vietnam during the final week of 1966, the Defense Dept. announced.

Flowers-Garden

Landscape architect Hideo Sasaki, formerly chairman of Harvard's landscape architecture department, of Sasaki-Walker Associates, San Francisco, will landscape the linear park of the 2.7-mile aerial section of the Bay Area Rapid Transit project in El Cerrito and Albany.

The California Assn. of Nurserymen named Moto Asakawa of San Diego, president of Presidio Nursery, Inc., chairman of its retail study committee to aid nurserymen operate their individual businesses. George Oki, past president of California Assn. of Nurserymen, of Sacramento was named chairman of its wholesale nursery study committee to conduct studies of wholesaler and grower problems and refer them with recommended action to other committees or the board of directors.

Dr. Toshio Murashige, of the UC Riverside horticultural sciences dept., was granted a \$1,000 check from the California Assn. of Nurserymen for his research seeking new methods of producing plant materials through meristem culture rather than propagating cuttings, seeds, plant divisions and bulbs. The 17-chapter So. Calif. Gardeners Federation under leadership of Ralph Ota, president, will assess members \$5 for its building project starting in 1967.

Agricultural

A group of 23 Japanese farm trainees began their six-month program in northern Colorado on the farms of Paul Hoshiko, Jr., of Kersey, Sam Tanaka of Longmont and Samuel Noriyuki of Wellington.

Beauties

Rep. Patsy Mink was one of 10 famous women selected by Redbook magazine for a special beauty feature in the January issue. "The biggest beauty problem is my skin which seems to dry out so here," she said, speaking of the Washington, D.C. climate. Mrs. Mink admits it is easier to stay a natural beauty in Hawaii's kind climate. "I've had to start using an all-over body lotion... something I've never needed in Hawaii."

Entertainment

Mako Iwamatsu drew raves in Daily Variety's review of Century-Fox film "The Sand Pebbles". He plays the role of a coolie. He also starred as a samurai in ABC-TV's "F Troop" telecast Jan. 5. He is the son of Mr. and Mrs. Taro Yashima, well-known artists.

Miko Taka appears in a "Girl from U.N.C.L.E." segment Feb. 7 over NBC-TV in the role of Mme. Dao, leader of an Asian country. CBS-TV Playhouse premieres Jan. 29 (9-10:30 p.m. PST) with "The Final War of Oily Winter", story of an American GI in Vietnam. Robert Okazaki, Dennis Iwamoto and Alice Nishimura have parts in the colorcast drama. The Wakita Ensemble of koto and shakuhachi players will broadcast from the L.A. County Museum Sunday, Jan. 29, 2:30 p.m. over KFAC.

Philadelphia critics gave negative reviews to the pre-Broadway run of "Chu Chem", a musical combining Yiddish and Zen Buddhist theater with many Nisei in various roles. It closed at the Locust Theater after four days Nov. 19 "for revisions". James Shigetani, one of the leads, Robert Nisei in the cast include Robert Ito, Sumiko Murashima, Yuki Shimoda, Haruki Fujimoto, Tom Matsushita, Reiko Sato, Joanne Miya and Dana Shimizu.

A Japanese student of modern jazz dancing, Kuniko Nara of Tokyo, appeared Dec. 19 on Per. Como's Christmas special on NBC-TV. She studied at June Taylor School of

Dance and appeared in Ethel Merman's revival production of "Annie Get Your Gun" on Broadway last summer. Young Long Beach Samsel Nancy Ichino, 13, daughter of the Paul Ichinos, has passed entrance examinations with honors for membership in the Royal Academy of Dancing, London. She is the first American child to achieve this high level of accomplishment.

Death of Walt Disney Dec. 15 was mourned by many of his Nisei employees, especially those who were given their start as artists when Disney had his first studios in the Silverlake district. Tom Okamoto, now an advertising artist with Studio Seven, said Disney was one of the first to give the Nisei a chance in the art field before the war. The late Bob Kuwahara went on from his Disney training to syndicate his own cartoon strip out of New York. James Tanaka is still associated with the Disney enterprise out of New York in merchandising.

Willy K. Ito and Iwao Takamoto started with Disney and are now with Hanna-Barbera. Howard Kakudo worked for Disney for many years.

Churches

Eleven Buddhist holidays being observed in America will be made more prominent in a program being pushed by the Buddhist Churches of America. They are:

Jan. 1—Shusho E (New Year's), Jan. 16—Shinran Shinon Memorial Day, Feb. 15—Nirvana Day, Mar. 22—Spring Higan, Apr. 8—Buddha Day, May 21—Fujimatsuri or Shinran Shinon Day, July 15—Bon, Sept. 1—BCA Day (commemorates founding of first Buddhist temple at San Francisco, Sept. 1, 1889), Sept. 23—Autumn Higan, Dec. 8—Bodhi Day, Dec. 31—Joya E.

The Buddhist Churches of America, San Francisco, announced the appointment of 41 lay speakers, many of whom having served as teachers for many years. Named to help their own churches, lay speakers may be invited to address services and functions at other churches. Forty will serve churches in California.

The religious organization, Sokagakkai of America, has changed its name to Nichiren Shoshu of America as of Dec. 20.

Medicine

Mrs. Barbara Takahashi, public health nurse for the past 21 years with the Berkeley public schools and health department, retired on Dec. 16. She is the wife of prominent optometrist Dr. Henry Takahashi. Dr. Wright Kawakami of San Jose is treasurer of the Santa Clara County Optometric Society for the coming year.

Dr. Dan Oniki, staff surgeon at the Cottonwood Hospital, was recently elected treasurer of the Salt Lake County Medical Assn.

Dr. Tom H. Tamaki, active Philadelphia JACLer, and his wife Marion have returned from a three-week trip to Japan. While there, Dr. Tamaki, director of the Montgomery Hospital dept. of pathology, read his paper "Mesothelioma and Asbestos Bodies in Norris-town, Pa." before the sixth international Congress of the International Academy of Pathology held at Tokyo. He also participated in the ninth international Cancer Congress in Tokyo.

An \$84,000 research grant from Hartford Foundation was given to Dr. Teruo Hirose, on the staff at St. Barnabas Hospital, Bronx, N.Y., to continue his studies of thoracic surgery.

Courtroom

Believed to be the first Japan-born attorney to be granted a license to practice in California, Ben Kiyoshi Takahashi, 45, of Los Angeles has passed the state bar examination. He graduated in 1944 from a Japanese law school, came to the U.S. in 1948 and studied at USC law school intermittently while working and supporting a family. He also became a naturalized citizen in the meantime.

Though Dr. Steve K. Abe, clinical psychologist at Metropolitan State Hospital, Norwalk, has treated sex offenders in his work, Anaheim Judge Logan Moore ruled him sane and three other witnesses in a recent anti-pornography trial as "unacceptable" to testify as experts on prurient interests in entertainment media. On trial were two theater owners for showing "Sexus", which police branded as obscene.

A trial which lasted 62 court days in Redwood City has ended with Superior Judge James T. O'Keefe returning a verdict for the plaintiff, Torakio Hongo, head of Hongo Nursery, Hilo, who was charged with price fixing orchids sent to the mainland. Calvin Ontai, owner of Tropical Hawaiian wholesale Florists, was defendant.

Government

Tacoma-born Kay Watanabe, 42, is city treasurer of Santa Monica, first Nisei to head a department for the city. He graduated from UCLA in 1959 and was an accountant and then city paymaster before being picked to the top job.

Sports

Cappy Harada, general manager of the Lodi Crushers in the California League, was selected by Sporting News as 1966 baseball executive of the year in the Class A Leagues. He is credited with arranging a number of Japanese ball players training in America, including ex-Giants pitcher Masanori Murakami.

It is Coach Richard Urano's first season mentoring the Eaton (Calo.) High school wrestling team. Martin Nakazawa, 212-lb. Narbonne High guard, was selected to the Los Angeles All-Marine first team. Dick Sakai, 187-lb. flanker back for Gardena High was named to the second team. Dave Endow, 145-lb. Roosevelt High scabback, was named to the All-Eastern League first team. Robert Matsumoto, 140-lb. scabback for University High, was awarded first string berth on the All-Western League team.

For years, Taro Miyasato was the top bowler in Hawaii but today it is Thomas (Bones) Yamasaki, winner of the 1966 Hawaii Match Game championship with 10,096 pins for an average of 206. The victory gives him the right to represent Hawaii in the Nat'l All-Star tournament May 19-29 at St. Louis, Mo.

Sonoma County JACLer Jim Fallon bowled a big 759 series Dec. 13 in the Sonoma JACL league at Rose Bowl—the second highest in the city—on games of 269-255-235.

Fighting Harada of Japan has successfully defended his world bantamweight boxing title for the third time and avenged the only KO of his career in winning the decision over Jose Medel of Mexico at Nagoya Jan. 3.

Literary

Two Nisei were named winners in the 1967 Imperial poetry party held Jan. 12. They are Toyoshi Hiramatsu, 53, a Japanese Canadian of Ontario whose work was among the 15 best waka (31-syllable) poems, and Mitsuharu Kume, 47, a Japanese Brazilian auto mechanic, among the 20 waka poems winning high appreciation but not be read. Some 43,000 poems were submitted.

Business

Six Nisei employed by the Sumitomo Bank of California have been promoted Dec. 22. Three are assistant managers, three are new assistant cashiers:

Assistant Manager — George Yamashiro, Crenshaw office; Aki Muraoka, Sacramento; and William Sakakura, Oakland; Assistant Cashier — Stanley Yamashige, Crenshaw; James Kajioka, Sacramento; and George Fujimoto, head office business department, San Francisco.

Three Japan-built YS-11 turbo-prop aircraft went into service with Hawaiian Airlines Dec. 22. The 60-passenger YS-

11 is making its maiden appearance as a commercial transport in the American market place.

Eldfinknegae, 47, Orange County businessman, replaced Dr. Masami Ogata on the board of directors of Mercury Savings & Loan Assn., Buena Park. Elden is president-owner of Bolsa Agricultural Supply, Inc., and Santa Ana Chemical, Inc., part-owner of B & K Farm Supply (Oxnard) and president of Astro Engineering Corp. During WW2, he was a paratrooper with the 11th Airborne Div.

James Ariyasu, of Oriental Realty, was named Venice realtor of the year in recognition of his chairmanship of the Venice Realty Board special projects coordination committee. Ariyasu hails from Tulare, served with Army intelligence during WW2 and went into business in Los Angeles after being discharged.

Melvin Ikeda, hair stylist at Buena Park, won first place in the annual Orange County Coiffures Guild's Carnival of Coiffures recently. He has been associated with Tei's Hair Styling for the past four years.

Owner-operator of Miyako Restaurant in Pasadena for the past eight years, Robert Kawashima has opened another swank Japanese eatery with the same name in Orange County at Town and Country shopping center in Orange. A 1949 UCLA graduate, Kawashima entered the restaurant business on advice of a close friend, Ken Ishizaki, owner of the famed Yamato Restaurants in San Francisco and Century Plaza. Kawashima is an active Pasadena JACLer, Rotarian and member of the Tournament of Roses Committee, Pasadena Human Relations Committee and a UCLA Pauley Pavilion founder.

School Front

Ursinus College senior Ronald Hirokawa, son of Mr. and Mrs. James Hirokawa of Philadelphia, is listed in the 1966-67 edition of Who's Who among Students in American Universities and Colleges. At the 1964 JACL convention, he represented the Philadelphia Youth Group. His younger brother Ted was third-place winner in the 1966 national JACL oratorical contest at San Diego.

Youth

Active San Mateo scouting leader Takashi Obata of the Buddhist Church Explorer Post 700 was awarded the Silver Beaver, scouting's highest national award for service to youth. He began scouting as assistant scoutmaster of San Juan Bautista Japanese Gakuen troop 27 before WW2.

Organizations

Mitsugi Nakagiri, active JACLer, is new president of the Venice Japanese Community Center. He succeeds Kaz Adachi. Fumi Matsuhara, secretary of the San Francisco Bay Area Boy Scout Council chief executive, is the charter president of the new San Francisco chapter of National Secretaries Assn. George Mochizuki is 1967 chairman of the Madera Japanese American Community Corp.

Sister Cities

The Fresno city and county Sister City committee has recommended naming of three new streets for its sister cities: Lahore, Moulmein and Kochi. Los Angeles has its Sister City (Nagoya) named for a street in the Harbor area.

ANSON T. FUJIOKA INSURANCE AGENCY

announces the removal of its office on Jan. 9

to

321 E. 2nd St., Suite 500
Los Angeles, California 90012
Telephone (Area Code 213) MA 6-4393

Opportunity . . . to trim taxes while
you control distribution
of your estate

Opportunities like this are waiting. One or more of them can improve your financial situation. Call in a New England Life "man of opportunity" — one of a select group of our agents with broad understanding of business and current tax legislation. The "men of opportunity" shown here-with are pleased to be numbered in this group.

HARRY MIZUNO
The Hall of Fame
for million
dollar production

ROSS HARANO
Star Producer
Award

HARVEY C. YUDELL AGENCY
NEW ENGLAND LIFE

79 W. Monroe St., Chicago 3, Ill. FRanklin 2-7834

Classic Catering

At Weddings — 25th Anniversary Parties
— Special Consideration to Organizations —
CHESTER YAMAUCHI RE 5-7661 LOS ANGELES



By Elmer Ogawa

Northwest Picture

As It Looks Here Today

January is usually inventory time and it may not be a bad idea to check on some of the past year's changes and happenings for the "thousands" of former Seattleites who are said to be PC readers.

Mt. Rainier, long regarded as the western hemisphere's Mt. Fuji, now encounters new handicaps in its fight for a place in the sun, and in the vista of view happy natives.

Used to be the haze from the now well controlled forest fires was number one in obstructing the view. Now smog from the new Kent-Auburn industrial region diminishes the number of days for viewing. Add this to the naturally cloudy and overcast days, it now looks as if there won't be many days left.

With the new industrial developments both south and north of the city, it is predicted reliably that population in this area will increase by 600,000 before 1970.

With two choked-up bridges across Lake Washington, a third is in the planning stages, and word is that it is soon to be followed by two more. Someone suggested long ago that we just fill in and pave the top of 25-mile long Lake Washington. It presents a terrific pollution problem anyhow.

Changing Skyline

The ever-growing Seattle First Nat'l Bank has for some months now been putting in the foundation for its new 50-story home and office building occupying the block at the 4th Avenue level just across the street from the library. A grandstand with seats and large view window has been built for sidewalk superintendents, and later on as the building goes up, closed circuit TV will take the viewers to watch construction in round the corner spots. Situated between the Third and Fourth Avenue levels, as it is, the new building will tower over the Space Needle by nearly a 100 feet.

Add to this, the 39-story hotel planned for the block where the Orpheum theatre now stands, and nearly a dozen more existing skyscrapers like Minoru Yamasaki's IBM building, you'd never know the town's skyline, once entirely dominated by the (500 ft.) L.C. Smith Bldg.

Another story is the development in airport facilities. Ask your travel agent. Also, one can "go now - pay later" on Seattle Transit. Holders of "Sea-First" bank credit cards can buy and charge \$10 rolls of transit tokens.

The Sport Scene

In sports, Seattle is at last breaking out with a professional sports franchise. This one is in basketball, and it comes

in the wake of the great effort when we were voting on many important things during the Nov. 8 election. Awaiting the outcome of that election was the National Football League, and the issue at stake was the floating of a bond issue of some \$38,000,000 to build a domed stadium for professional football and baseball, no other adequate facilities being available here. With a 60 percent majority vote necessary for passage, only a majority of about 58 percent could be mustered, so here is a case where the majority went down to defeat.

The killer whale national attraction "Namu" tried to escape during the mating season last summer and drowned himself. Operations are under way to get another, and a mate if possible, by next tourist season.

Jr. JACL president Eileen Suyama now is singing six nights a week at the Gaslamp, and carrying a full 15-hour course in her senior year at the U. of W. Recently featured in a front page story in the morning daily too. The "grab shot" picture under existing light could have been more complimentary however.

Never before had we become aware of a Samsel skater being featured in an ice show. This one, Mitsuko Funakoshi in Ice Capades. She is feature skater in two numbers, one a brilliantly illuminated polynesian fantasia, in which she brings down the house with a supersonic speed Tahitian hip wiggle and also as a featured skater in an offering with "Met" overtones. The show is highly recommended family entertainment—so if it hasn't come to your town yet . . .

News Deadline Tuesday

INSIST ON
THE FINEST
KANEMASA
Brand
FUJIMOTO'S
EDD MISO.

AVAILABLE AT YOUR
FAVORITE SHOPPING CENTER
FUJIMOTO & CO.
302-306 S. 4th West
Salt Lake City, Utah

Plastic and Metal
Pantograph Engraving
Specializing in Trophies & Awards
NANKA
ENGRAVING CO.
3723 W. Pico Bl., L.A., Cal. 90019
HIDEO YAMAGUCHI - 735-5677

JACL Major Medical Health and Income Protection Plans

CENTRAL CALIFORNIA DISTRICT COUNCIL
Hiro Kusaki, 275 N. Abbey Street, Fresno, Phone 233-6171

PACIFIC SOUTHWEST DISTRICT COUNCIL
JACL Office, 125 Weller Street, Los Angeles, Phone 626-4471

MOUNTAIN PLAINS DISTRICT COUNCIL
Gail L. McClurg, 1390 Logan Bldg., Denver, Colo. Phone 292-0070

The Capital Life Insurance Company
Home Office: Denver, Colorado

Excellent Sales Opportunity for career agents.
All information confidential, call:

PAUL CHINN
General Agent
FRED M. OGASAWARA & JIMMY S. GOZAWA
Associate General Agents
470 S. San Vicente Blvd.,
Los Angeles Phone: 653-0505

First
in
Quality

In
Schools
and
Libraries

COMPTON'S PICTURED ENCYCLOPEDIA
(Division of ENCYCLOPAEDIA BRITANNICA, INC.)
TERU WATANABE 254-9750
653 So. Ave. 60 Los Angeles

Sunshine Carpet Cleaner
CARPET • UPHOLSTERY • FLOOR WAXING
Free Estimates Tommy Kotani 387-7746
Serving L.A. County
Have It Cleaned Professionally at Least Once a Year
(50 Pct. Longer Wear Can Be Expected)

SHIMA CARPET COMPANY
House of Distinctive Carpets—4726 E. Floral Dr., L.A. AN 2-2249
Complete Selection of Name Brand Carpets - Custom Made Carpets
Quality Installation - Wall-to-Wall Carpet Cleaning - Repairing
Rug & Upholstery Cleaning Nick & Chieko, Props.



By Bill Hosokawa

From the Frying Pan

Denver, Colo.

THE LAST THIRD—Permit us, for a day, to be serious. On Jan. 1, James Reston of the New York Times, one of the most respected commentators on the world scene, published a thought-provoking column in which he said:

"No matter whose babe is first born in 1967, all or almost all of this new generation from now on will live most of their lives in the 21st Century. By 1970, over half of the American people will be 25 years old or under. The vast majority of the human race will not be white, and they will be hungry, and a quarter of them, despite the Joint Chiefs of Staff, will be Chinese. If you put all this into your computer it is bound to come out trouble." He went on to say:

"Midcentury is now gone, but its problems are still with us. The problem of the New Year and the years to come is to liquidate the old issues and get on to the new: not the East-West but the Rich North and the Poor South problems; not the war in Vietnam but the war on poverty; not the agrarian problems of the past but the urban problems of the present and future: not the ideological problems of the middle third of the century, but the practical problems of the last third: not the questions that are in the old men's minds, but the questions that are in the minds of the young."

And perhaps it is also significant that Time Magazine chose as its Man of the Year not Lyndon Johnson, not any member of the older generation trying valiantly (but without assurance of success) to keep the world from blowing itself up, but the generation of the 25 and under.

ANOTHER GENERATION—Ev these hard criteria, the Nisei must be considered creatures of the mid-century. Most of them were born within the first third of the 20th Century, reached maturity in the middle third, must pass on the baton to a new generation in the last third. And if this view is valid, then the Nisei attained their greatest stature in turning the adversity of the Evacuation into the achievement of their full rights as Americans in the decade that followed the end of War II.

The encouragement of the Junior JACL (which is a horrible name) and the gradual assumption of responsibility by the older Sansei is evidence enough that at least some of the older Nisei understand it is time to begin the graceful retreat from the limelight. Reston points out that the problems facing the world during the last third of the century are different from those of the middle years; he hints that the older generation does not understand this or, understanding, is unable to cope with them.

In a slightly lesser degree, this would seem to be the situation in Nisei society. Most Nisei are still grappling and remaining preoccupied with, old business while the Sansei generation is looking to new and different challenges to meet and dragons to slay.

PAST AND FUTURE—Just as the present power generation is reluctant to admit it has botched up its chance to run the world, the Nisei can point with considerable pride to its accomplishments and the legacy it will be leaving for the Sansei. Still, the Nisei will agree that if the problems ahead are different, they are also formidable and realistically we are less confident of our ability to cope with current issues than we were with the issues of 30 years ago.

If the Nisei have gained any wisdom of the years, it would be in their confidence in the Sansei. The Issei yielded their hold on the pursestrings and the guidereins of power only reluctantly, and usually with a dread that the Nisei were irresponsible, immature and often incompetent. The Nisei knew better then, and the wiser ones know the Sansei today are far more capable than they were in their own youth.

National JACL Credit Union

ANNUAL MEETING—JAN. 28, 1967

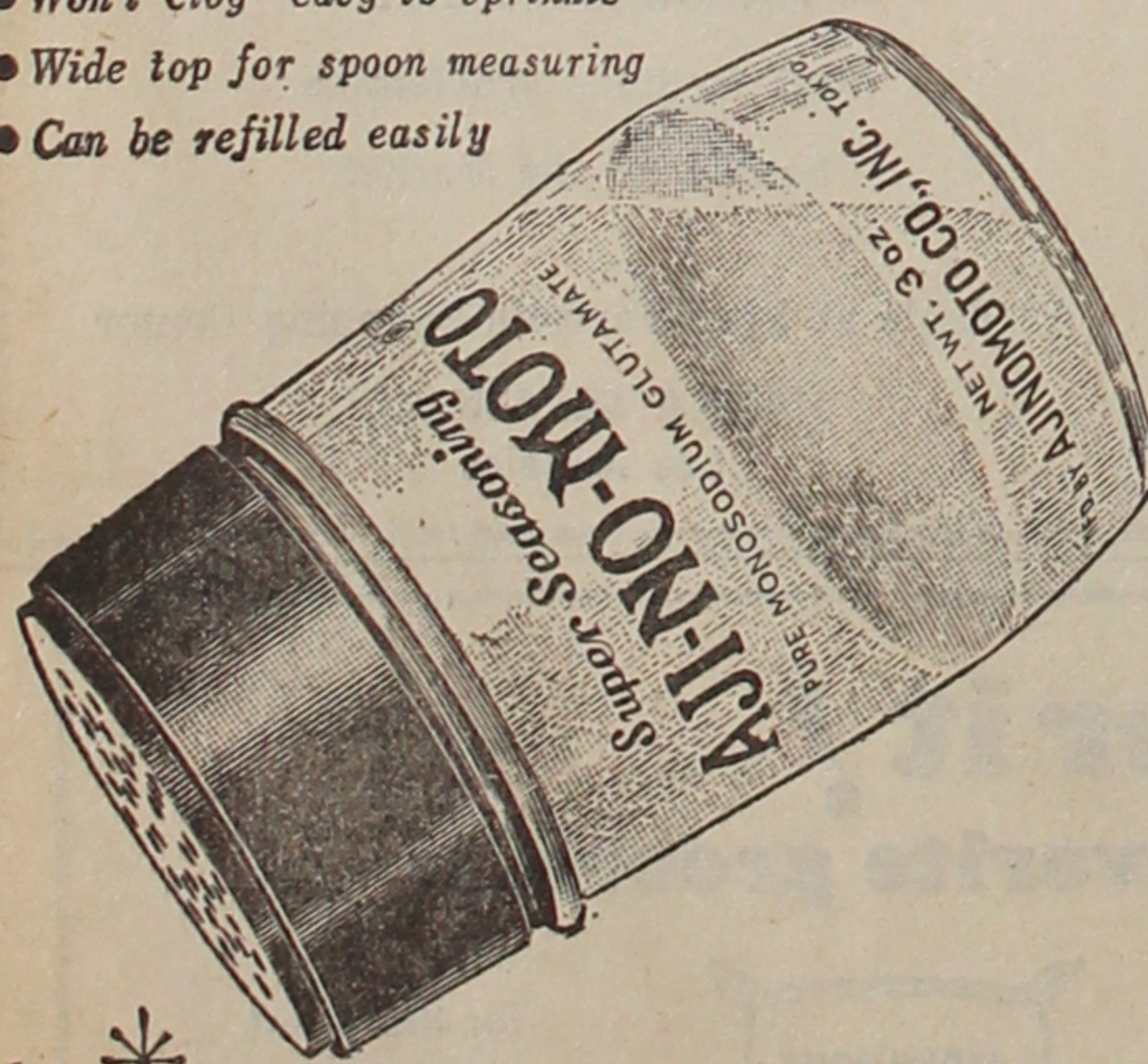
Saturday—6:30 P.M.

RAMADA INN—Salt Lake City

Mixer, Buffet Supper, Elections, Dancing
\$1.50 Per Member for Buffet Supper

3-oz. Pinch-Bottle

- Won't slip even in wet hands
- Won't clog—easy to sprinkle
- Wide top for spoon measuring
- Can be refilled easily



Your favorite super seasoning

AJI-NO-MOTO®

SOLD AT YOUR SUPER MARKET AND GROCERY STORE

SJR 20 STATE COMMITTEE MARKS VICTORY AT SEATTLE CELEBRATION

BY EIRA NAGAOKA

SEATTLE—The State Committee for SJR 20 celebrated its victory at a Dec. 9 dinner at Bush Gardens with 240 in attendance.

Henry B. Owen, committee chairman, was presented a National JACL scroll of appreciation from Jerry Enomoto, national president.

Mike Masaoka, speaker for the evening, referring to Owen and his steering committee members, declared that "if we are thankful and grateful, then the least we can do to show our appreciation to our friends is to correct the remaining inequities in our American life and give to those who are not as fortunate as we are." The

Washington representative was referring the current civil rights struggle.

Campaign workers from the various JACL chapters and steering committeemen were also singularly honored. Tak Kubota expressed thanks to the chapters for their support and reported some \$19,000 were received from district councils, chapters in and out of the Pacific Northwest district and individuals.

Next Step

The unfinished business before the state legislature in wake of the SJR 20 victory (final official tally: Yes—430-984, No—415,082) is for a motion to remove the state statute (Article II, sec. 33) by a majority vote.

Kubota said, in spite of many new faces in the legislature following the November elections, "no difficulty is anticipated." Thus, the six-year JACL campaign to remove the statute prohibiting aliens from owning land will have been realized.

Owen, executive vice-president of KING Broadcasting Co. and statewide campaign chairman for Sen. Warren G. Magnuson, is well known in state business circles. He is past president of the Seattle Better Business Bureau, vice president of Frederick & Nelson (1924-36) and Bon Marche (1936-42), leading department stores here, and served in both WWI and 2 as an Army officer.

His wife Frances is also prominent in local affairs, having served on the Seattle school board for 20 years since 1945, on the Washington State University board of regents since 1957 and a trustee of Children's Orthopedic Hospital since 1934. She was a judge for the National JACL scholarship earlier this year.

Phil Hayasaka was dinner emcee. Sen. Magnuson extended greetings as did Mayor Dorm Braman and David Peyton, representing Gov. Daniel Evans. Carl Niwa sang, accompanied by Mrs. Hide Shimomura.

Financial Report

The SJR 20 committee financial report, as of Dec. 4, was as follows:

SJR 20 FUND REPORT
(Funds other than National JACL)
District Councils — PNWDC, \$191.81; PSWDC, \$221.63; MDC, \$250; NC-WNDC — \$250; PNWDC tickets \$1,224.20.
Chapters—(Out of State) \$100 — San Francisco, San Diego.
\$50 — Contra Costa, Dayton, Orange County, Philadelphia, Portland, San Jose, Snake River Valley, Washington, D.C.
\$25 — Gresham-Troutdale.
\$20 — Downtown L.A.
\$10 — San Francisco Jr. JACL.
Chapters—(Washington)
Puyallup Valley, \$3,008.94; White River Valley, \$500; Spokane, \$494 (raised locally and not part of overall figure); Seattle, \$500.
Out-of-State Individuals—\$130.
General — \$224.59; Movie (gross) — \$4,777.75; talent show (gross) — \$264.50; Citizens Committee for SJR 20 — \$1,904.81; Bank Interest—\$338.85.
TOTAL—\$19,142.08.

Chapter Call Board

Orange County JACL
Installation: Charles V. Elwell, corporate director for Hunt Foods and Industries, Inc., Fullerton, was announced as the main speaker for the Orange County JACL installation dinner-dance Jan. 14 at Sheraton Beach Inn in Huntington Beach.
Part-time faculty member at the USC School of Business, Elwell is an advisory council member of the President's Committee on Youth Opportunity, and active with North Orange County YMCA board of director, Chapman College and Fullerton Jr. College business advisory councils.

Henry Kanegae, nat'l 3rd v.p., will emcee. Min Nitta is banquet chairman.

Contra Costa JACL

Installation: The Contra Costa JACL will hold its 1967 installation banquet at the Berkeley House, 920 University Ave., Berkeley on Saturday, Jan. 21, 6:30 p.m., according to Ben Takeshita, outgoing president, who is chairman for the affair. George Nakagawa of Richmond and his cabinet will be installed. James Kimoto of Walnut Creek will be toastmaster.

Special guest speaker will be John P. Williams, director of Oakland Redevelopment Agency, who is well-known for having represented Oakland at Senate hearings in Washington, D.C., on urban problems. Reservations may be made by phoning Mrs. Masako Oishi, 233-0189.

'Night in Japan'

LOS ANGELES — Sheraton West Hotel presents a Night in Japan dinner program Jan. 17, 7 p.m., in cooperation with Mitsui Travel Service, Sun-tory Imports, Japan Air Lines, Canadian Pacific Airlines, Pan American World Airways and other carriers. Entertainment will include films on Japan and dancing by students of Mme. Kanuma Fujima.

Five headliners to appear at D.C. installation, cultural relations lead

(Special to the Pacific Citizen)

WASHINGTON — In sports parlance, Washington, D.C. JACL Chapter's annual installation banquet, to be held Saturday evening, Jan. 28, at the Marriott Motor Hotel in Rosslyn, Va., off Key Bridge, will be a quintuple header.

It will start off with cocktails at 6 o'clock, the banquet at 7 and dancing afterwards. Feature No. 1 will be guest speaker Shun-ichi Yamanaka, Counselor of the Embassy of Japan and its cultural and information officer, who will speak on "The Cultural Heritage of the Nisei".

Feature No. 2 will be the traditional installation of the Chapter officers and board members for 1967, as well as of the Junior JACL officers. Feature No. 3 will be the presentation of a citation to Retired Army General Charles Willoughby, who was chief of staff for intelligence for General Douglas MacArthur in World War II and Korea, by Hawaii Congressman Spark M. Matsunaga.

Feature No. 4 will be greetings by Dillon S. Myer, wartime director of the War Relocation Authority, on the 25th anniversary year of the 1942 Evacuation of all persons of Japanese ancestry from their West Coast homes and associations.

Feature No. 5 will be greetings by Retired Navy Captain Allan Bosworth, whose most recent book "America's Concentration Camps" is being made available to JACL members in advance of the regular public sale next month.

Banquet Theme

According to banquet chairman Ben Fukutome and Henry Wakabayashi, the theme of the Installation Banquet will be "Our Cultural Heritage", in keeping with the new JACL emphasis on cultural activities, as witness the newly created National JACL Committee on Cultural Relations.

Both have added that of all the Japanese Embassy officials, Counselor Yamanaka was the most eminently qualified to comment on the cultural heritage of the Japanese in the United States and how, as American citizens desiring to make their greatest possible contributions to American life, they might pass on an under-

standing and appreciation of the best in Japanese culture to enrich America's cultural inheritance.

The banquet chairmen noted that the 48-year-old diplomat, who was born in Osaka and who passed his Higher Foreign Service examinations in 1942, first came to the United States as a Third Secretary in the Embassy in 1951. Then, after serving in Buenos Aires and in Bangkok, he returned to the U.S. in 1958 to be Programme Officer for the Bureau of Technical Assistance Operations in the United Nations Secretariat in New York. In 1961, he was named Chief of the Economic and Social Section of the United Nations Bureau in the Ministry of Foreign Affairs in Tokyo, and in 1963, he was appointed Chief of the Security Section, North American Affairs Bureau, Ministry of Foreign Affairs, also in Tokyo. In 1965, he was assigned to the Japanese Embassy in Washington with the rank of Counselor.

Kaz Oshiki New Prexy

Kaz Horita of Philadelphia, Eastern District Council Governor, will install the newly elected officers. Kaz Oshiki, 1947 winner of the JACL-administered Pvt. Ben Frank Masaoka Memorial Scholar-

ship and the first Nisei to be appointed as an Administrative Assistant to a Member of Congress (Robert Kastner of Wisconsin), will be installed try on the West Coast took as the 1967 Chairman and Miss Anne K. Fukutome as 1967 president of the Junior JACL, along with their respective board members and officers.

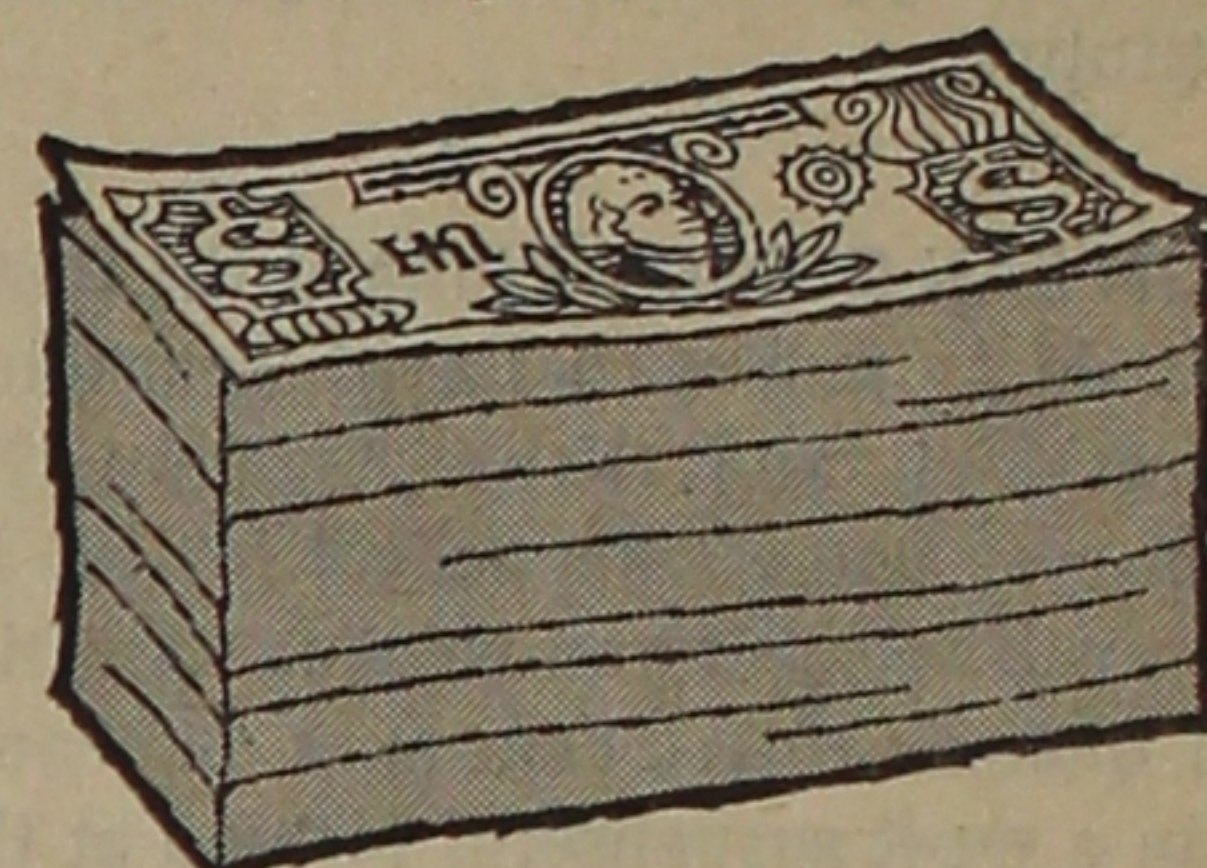
The presentation to General Willoughby is being made at the request of the 25th Military Intelligence School Reunion Committee, since the General was not able to attend that Reunion in San Francisco over Veterans' Day.

Congressman Matsunaga, who served in both the 100th Infantry Battalion and with the Language School in Camp Savage and Fort Snelling, will make the presentation on behalf of fellow MIS veterans.

Inasmuch as 1967 marks a quarter of a century since the mass military Evacuation of all persons of Japanese ancestry on the West Coast took place and inasmuch as Dillon Myer, by his humane conduct of the WRA, contributed so much to the current acceptance of all persons of Japanese ancestry in this country, it was thought that greetings by this able and dedicated septuagenarian would be most appropriate. By the way, Myer hopes to have his book on the WRA story published later this year.

The participation of Capt. Bosworth is a natural, according to the banquet chairmen, since his most recent book is dedicated to the past and present members of JACL. On a first-come, first served basis, the book will be available to JACL members. (Continued on Page 4)

want to
increase your SAVINGS?



now is the time.

Your savings are now insured up to \$15,000—yet earn premium interest of 5% with a Bank of Tokyo Savings Certificate.

MAKE YOUR MONEY GROW AT

THE BANK OF TOKYO OF CALIFORNIA

San Francisco Main Office • 64 Sutter Street • YU 1-1200
Japan Center Branch • Buchanan & Sutter Sts. • FI 6-7600
San Jose Branch • 1336 N. First Street • Phone: 298-2441
Fresno Branch • 1458 Kern Street • Phone: 233-0591
Los Angeles Main Office • 120 S. San Pedro St. • MA 8-2381
Crenshaw Branch • 3501 W. Jefferson Blvd. • RE 1-7334
Gardena Branch • 16401 So. Western Avenue • FI 1-0902
Santa Ana Branch • 501 North Main Street • KI 1-2271
Western Los Angeles Branch • 4032 Centinela • EX 1-0678

Member Federal Deposit Insurance Corporation • Each Deposit Insured Up to \$15,000



JACK S. KUSABA
UC and Hastings Law School
graduate and leader in
community affairs

We'd like to make an important appointment with you...

... a significant appointment that can secure you continuing peace of mind. As the newly-appointed Manager of our expanded Trust Department, I'd like to show you how you may handle your personal financial affairs and estate matters in order to cope more effectively with our increasingly complex way of living.

How? By setting up Trusts, by advance tax planning, by providing up-to-the-moment information needed for proper investments and by the numerous other ways to secure effective estate planning—these are only a few of the many areas in which our knowledgeably experienced officers can help you, with as much—or as little—management as you may wish. Consult your attorney. Then come by and see us—or better still—send for information or write for an appointment. We will help you program today for tomorrow's demands.

Jack S. Kusaba
Assistant Vice President & Manager
Trust Department

The Sumitomo Bank OF CALIFORNIA

TRUST DEPARTMENT 365 California Street, San Francisco, California

8 Offices Serving You Statewide

HEAD OFFICE: SAN FRANCISCO • SACRAMENTO • SAN JOSE • OAKLAND
LOS ANGELES • CRENSHAW • GARDENA • ANAHEIM

Member Federal Reserve System and Federal Deposit Insurance Corporation

MERIT SAVINGS AND LOAN ASSOCIATION

324 EAST FIRST ST., LOS ANGELES 12, CALIF. MA 4-7434
HRS: 10 AM TO 5 PM; SAT: 10 AM TO 2 PM; FREE PARKING

CIVIC NATIONAL BANK

5% PER ANNUM

Time Deposits Minimum \$1000

MAIN OFFICE

321 E. 2nd St., Los Angeles

Phone 624-9591

BRANCH OFFICE

Marina del Rey, Calif.

Phone 870-0334

Member Of

Federal Deposit Ins. Corp.

Federal Reserve System

Most People
Have a Job

FINANCIAL
PROGRAMS

Incorporated

Offers You
A Career

We are a 30-year-old mutual fund and insurance financial institution — nationwide. Why not look into the possibilities of a sales career as an investment representative — on a part or full time basis?

If you qualify, we offer: classroom and field training at our expense, all of the usual group benefits, high income potential, management opportunities — now, and exceptional men and women may start part-time. We train you during present employment. (You can improve your future without risking your present). Experience not necessary.

Those presently employed who would like to increase their income, expand their knowledge in the field of investments, and enjoy a career with prestige — call today for a personal, confidential interview. You may find a new FINANCIAL future.

FINANCIAL
PROGRAMS

Incorporated

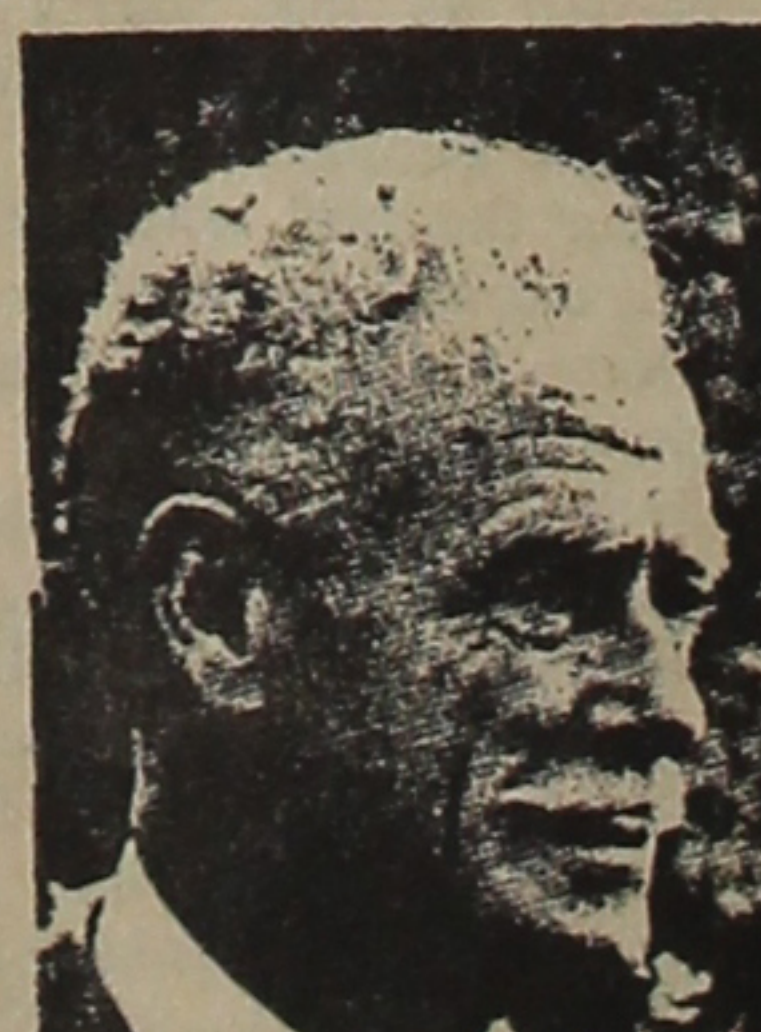
Matteo Uwate
Divisional Manager

110 N. SAN PEDRO STREET

LOS ANGELES 90012

MA 8-4688

Equal Opportunity Employer



Captain Allan R. Bosworth (U.S. Navy, Ret.) is a former newspaperman and the author of fifteen other books. A native of Texas, he has traveled extensively in Europe and the Far East. He lives in Roanoke, Virginia.

AMERICA'S CONCENTRATION CAMPS

by ALLAN R. BOSWORTH

The shocking story of 110,000 Americans behind barbed wire — in the United States — during World War II. Their crime: Japanese ancestors.

JACL NATIONAL HEADQUARTERS
1634 Post Street
San Francisco, California 94115

Please send me _____ copies of AMERICA'S CONCENTRATION CAMPS by Capt. Allan Bosworth at the special price to JACL Members of \$5.00. (Regular price: \$5.95)

NAME: _____

Enclosed check to "J.A.C.L." for \$ _____ ADDRESS: _____

Chapter: _____ City: _____ State: _____ Zip: _____

By Alan Kumamoto

Accent on Youth



GOOD GRIEF, BEWARE—Shinnen Omedeto or Happy New Year! But what a way to start 1967 when you have your initial article of the year appear on Friday, the 13th. Perhaps it will be good luck for us the rest of the year.

By now we should have made all our resolutions, including those to help advance Jr. JACL and the JACL Youth Program for the coming year. One way, of course, is to get your pencil or pen out and start marking the calendar and planning activities.

RATIFICATION, NOW!—During the Christmas-New Year interlude, we visited with Martin Koba, PSWDYC representative to the National Youth Council (NYC), in San Diego. Subsequent to that meeting, Martin informs us that as he sees it there is basically not much needed to alter the Jr. JACL Constitution as drafted (see PC Quarterly, Sept. 2, 1966).

As a consequence, Martin has asked Jr. JACL chapters for ratification. Our office has prepared instruments of ratification. To date, only San Francisco and Mid-Columbia Jr. JACL chapters have approved. Within the coming months when District Youth Councils (DYC) will be meeting, other chapters will be reminded of either approving or disapproving the Jr. JACL Constitution.

DOWN IN SAN DIEGO—While at the Border City, we also chanced to talk with David Takashima, local Jr. JACL president, and Glenn Asakawa, PSWDYC chairman who was home from school for the holidays. David, as you will recall if you were in San Diego, was the national queen contest chairman who announced the winner in a most suspenseful fashion at the youth banquet.

It seems San Diego Jr. JACL has reduced their original board down to a more workable number and under the tutelage of capable advisers, their program should be one filled with a variety of activities designed to meet the needs of the varying age groups of young people there.

Meanwhile with the PSWDYC, Glenn seems to have taken the helm of the District solidly and is trying to advance the DYC progressively. A senior at Cal Poly (Pomona), his responsibility is quite large because of the number of chapters within the district. It competes quite favorably with that of Northern California in being the most numerous in chapters and in members.

Good luck to both Dave and Glenn. The coming year will be one of rewards because we know it will be one filled with planning and hardships.

APPLICATION FORMS & PC—National Jr. JACL membership application forms have been available at the So. Calif. JACL Office for the past several months. Most districts and DYCs have received them. Again, the request: if you have not asked for application forms, do so immediately.

The forms are quadruplicate: first two copies going to National Headquarters and Youth Program Office, third copy for the chapter, the fourth copy for the individual member as a receipt.

Membership cards are returned to the chapters, filled with information gained from the application form, for signature of the chapter president and distribution to the members.

Dues-paying Jr. JACLers are also eligible for a special youth rate subscription to the Pacific Citizen. Some are beginning to take advantage of the reduced rate (\$1.50).

JOINT INSTALLATION—Southern California did it in grand but informal style swearing in the chapter officers of Downtown L.A., East Los Angeles, Hollywood, Pasadena, San Fernando Valley and Wilshire-Uptown. The seventh chapter (and sole Jr. chapter) was the Hollywood Jr. JACL.

As a first in the PSWDC, the affair turned out to be a very nice arrangement at Pickwick Restaurant. The food was exceptionally good as far as banquet fare goes. There were pros and cons over such joint installations but in this case, the mixing of six metropolitan L.A. chapters appeared to have the trappings of a district council affair in many respects.

This Saturday, Orange County JACL holds its installation at Sheraton Beach Inn.

With the installation season upon us, there will be more installations to which we shall be attending in the very near future. But the seven chapter installation of last weekend handled one-third of the Pacific Southwest district chapters.

ABBREVIATIONS—People have asked what all those abbreviations in "Accent on Youth" mean.

We're not the only ones guilty of abbreviating without first spelling the word out completely. But please keep in mind that as you become more familiar with the JACL organization, these abbreviations will have more meaning. Besides, JACL (Japanese American Citizens League) is hardly spelled out.

But if confused, drop us a line and ask.

WHO CARES—Views of the Japanese American community in general are discussed at informal luncheons attended by George Saiki of the L.A. Mayor's staff, John Saito of the L.A. County Commission on Human Relations staff, associate national director Jeffrey Matsui, Frank Hirata of the So. Calif. Japanese Chamber of Commerce and yours truly.

Some of the questions recently posed include:

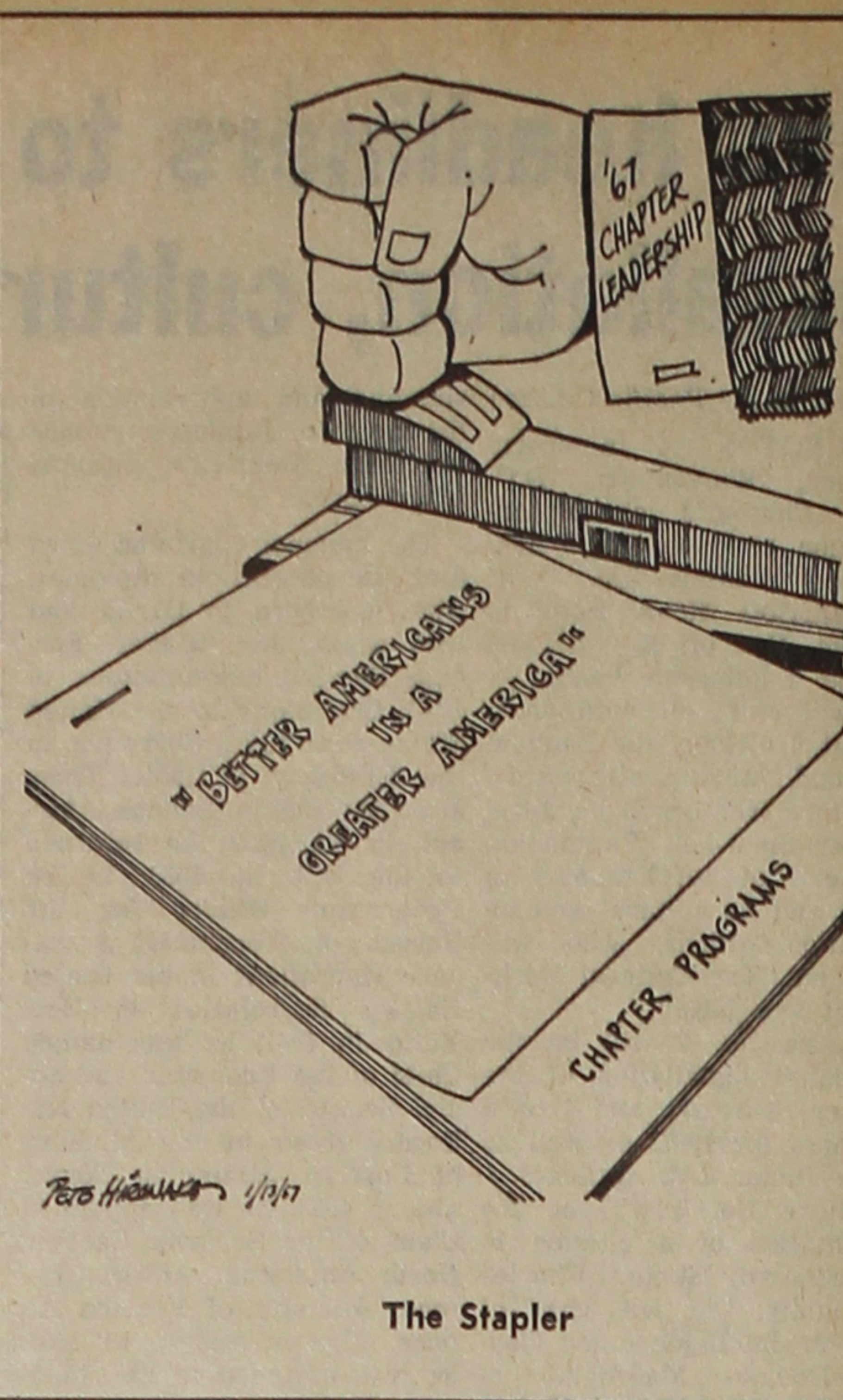
1—Do you think that the Nisei or Sansei are currently craving Japanese cultural things or are they drifting away from them?

2—Are the Nisei or Sansei becoming actively involved in civil rights or do they wave it by?

3—Where are the Sansei going and what is their future?

4—Do you think the Nisei or Sansei still possess group "haji" or a feeling of reserve or bashfulness within a mixed gathering?

We openly solicit opinions through the PC Letterbox or this column.



1967 JACL Officers

BAKERSFIELD JACL

Guy Murotani, chmn.; Lloyd Kumataka, v.p.; Mary Tatsuno, treas.; Nellie Tatsuno, sec.; Mike Torii, del.-at-lge.

CLOVIS JACL

Todd Iyemura, pres.; Harry Ikuma, 1st v.p.; Sam Kusakami, 2nd v.p.; George Shimizu, treas.; Mike Miyamoto, rec. sec.; Yoshiko Yamamoto, cor. sec.; Hy Ike-eda, Tokyo Yamamoto, del.; Fumio Ikeda, memb.; Bob Mochizuki, leg. counsel; Naichi Shohara, pub.; Harry Miyake, Ted Takahashi, Kiyoshi Kawai, Archie Hirasawa, Bob Mochizuki (West Sunnyside), Ed Mochizuki, Yukio Ikuma (East Sunnyside), Kay Takahashi, Kazuo Yamoto (Blackstone), Jim Miyamoto, Masao Yamamoto (North Clovis), del.-at-lge.

DELANO JACL

Paul Kawasaki, pres.; James Nagatani, 1st v.p.; Takashi Kono, 2nd v.p.; Sam Azuma, treas.; Mitsuzi Nagatani, rec. sec.; Toshi Katano, cor. sec.; Saburo Okino, 1000 Club, social; Saburo Okino, 1000 Club, del.-at-lge.

DOWNTOWN L.A. JACL

Ed M. Matsuda, pres.; Mitsuhiko H. Shimizu, Frank Tsuchiya, Takito Yamaguchi, Katsuma Mukae, v.p.; Al Hatada, sec. treas.; Tats Kushi, Solchi Fukui, 1000 Club; Ichiro Takahashi, Ted Kojima, sgt.-at-arms; Frank Suzuki, Kiyoshi Kawai, Archie Miyatake, Ted Okumoto, pub. rel.; Fr. Clement, chaplain.

EAST LOS ANGELES JACL

Ritsuko Kawakami, pres.; Ma-ble Yoshizaki, 1st v.p.; Hiro Omura, 2nd v.p.; Sumi Ujimori, 3rd v.p.; Walter Tatsuno, treas.; June Tanikawa, cor. sec.; Dr. Robert T. Obi, 1000 Club; Ken Kato, Henry Onodera, spe. events; Kimi Akiyoshi, hist.; Mattie Furuta, pub.

HOLLYWOOD JACL

Muriel Merrell, pres.; James N. Kasanara, Patricia S. Kasahara, 1st v.p.; June Taomae, v.p.; Mary Voelkner, cor. sec.; Amy Ishii, rec. sec.; Lowell Hattori, treas.; Charles Tanaka, 1000 Club; Fred Taomae, hist.

HOLLYWOOD JR. JACL

Joan Kitada, pres.; Chris Watanabe, v.p.; Kary Kambara, rec. sec.; Marilyn Ishihara, cor. sec.; Ken Kambara, treas.; Karen Kato, hist.

MT. OLYMPUS JACL

Frank Yoshimura, pres.; Ken Nozaki, 1st v.p.; Lillian Sueoka, 2nd v.p.; Taro Sudo, treas.; Amy F. Tomita, rec. sec.; Joanne Sueoka, cor. sec.; Lou Nakagawa, sgt.-at-arms; Tom Matsumori, youth adv.; Yaeiko Ikegami, hist.; Yuki Namba, newsletter; Sadie Yoshimura, pub.-hospitality; Aiko Okada, 1000 Club; Helen Oniki, Ida Ninomiya, Tom Seo, Minoru Matsumori, directors.

ORANGE COUNTY JAYS

Allan Uyesugi, pres.; Roy Narasaki, v.p.; Linda Eki, sec.; Helene Nizawa, treas.; Dorri Iwata, social; Alan Nomura, ath.; Mallory Nomura, hist.; Janet Kobayashi, Joyce Mitani, Carolyn Kato, Glenn Nishizu, memb.-at-lge.; Messrs and Mmes. Minoru Nitta, Henry Aihara, Ben Shimizu, adv.

PARLIER JACL

Harry Kubo, pres.; Ralph Kimoto, v.p.; Tom Yamanaoka, treas.; Kengo Osumi, rec. sec.; Bob Okamura, cor. sec.; Tom Takata, 1000 Club; Noboru J. Doi, ath.; James Goishi, social; Min Doi, pub.-hist.

PASADENA JACL

Akiko Abe, pres.; Bob Miyamoto, Mary Yusa, Frances Hira-

Top-flight orchestra

draws at Watsonville

WATSONVILLE

Now regarded as the "party of the year", some 150 Nisei Watsonvillers gathered Dec. 10 to honor the 1967 Watsonville JACL cabinet headed by Harry Akimoto and its outgoing president Buzz Noda.

National Director Mas Saito installed the officers and reported on current JACL matters. Ben Umeda was toastmaster. Herb Miller's 14-piece orchestra, which has played for the most expensive and exclusive parties in Northern California, entertained before a Nisei group for the first time.

The Rev. Sumio Koga of Westview Presbyterian Church and the Rev. Junjo Tsumura of the Watsonville Buddhist Church gave the invocation and benediction, respectively. On the dinner-dance committee were:

Tak Higuchi and John Kurimoto, co-chmn.; Shig Kusanagi, co-chmn.; Reiko Hane and Ida Kusumoto, dec.; Mitche Miyamoto, pub.

Renew Your JACL Membership Today

L.A. area chapters install en masse

BURBANK — A cross-section of JACLers residing in metropolitan Los Angeles joined six chapters and one Jr. chapter last Saturday in their first mass installation dinner-dance at Pickwick Restaurant here.

Downtown L.A., East Los Angeles, Hollywood, Pasadena, San Fernando Valley, Wilshire-Uptown JACL chapters and the Hollywood Jr. JACL witnessed the mass swearing-

in ceremonies conducted by Associate National Director Jeffrey Matsui.

National Youth Director Alan Kumamoto swore in the Jr. JACL officers in a separate ceremony.

Devoid of officials from the public arena, the joint installation was staged as a family affair under the capable emceeing of Ted Tsukahara, vice-governor of the Pacific South-

west District Council.

The new chapter presidents are Ed M. Matsuda, Downtown L.A.; Mrs. Muriel Merrell, Hollywood; Ritsuko Kawakami, East Los Angeles; Mrs. Aki Abe, Pasadena; John

Kaneko (re-elected), San Fernando Valley; Mrs. Kimi Matsuda (re-elected), Wilshire-Uptown; and Joan Kitada, Hollywood Jr. JACL.

Special Awards

Downtown L.A. presented the silver pin to Frank Suzuki and Soichi Fukui, lauding their loyalty and dedication to the chapter for the past decade and more.

Mrs. Yuki Kamayatsu was cited as the outstanding member of the Hollywood JACL and presented the chapter's Frank Chuman Award.

A total of 75 officers was sworn into office. Some 300 persons attended the function. Music for the dance was furnished by Sammy's Combo.

Junior Jottings

San Diego Jr. JACL holds a membership dance Jan. 28, 8 p.m., at Toyon Community Center, National City, with Edy and the Showmen providing the music. Dress: school clothes.

Hideko Oda and Fred Yonemoto are co-chairmen of the second annual San Jose Jr. JACL cultural show, "Shibui", to be held Mar. 12, 1-5 p.m., at the local Buddhist Church. Proceeds go toward the club's scholarship fund.

Beni Basha Cafe

Genuine Japanese Food
3929 W. Olympic Blvd.
Los Angeles — 934-4403

Mikawaya

Sweet Shop
244 E. 1st St., L.A.
MA 8-4935

COMMERCIAL REFRIGERATION
Designing - Installation - Maintenance
Sam J. Umemoto
Certificate Member of R.S.E.S.
Member of Japan Assn. of Refrigeration.
Licensed Refrigeration Contractor
SAM REI-BOW CO.
1506 W. Vernon Ave., Los Angeles
AX 5-5204

Fugetsu-Do

CONFECTIONARY
315 E. 1st St., Los Angeles 12
MAdison 5-8595

Bush Garden
SUKIYAKI
SEATTLE 614 Maynard St.
PORTLAND 121 SW 4th St.
SAN FRANCISCO 598 Bush St.

L'I Toklo's Finest Chop Suey House
SAN KWO LOW
Famous Chinese Food
228 E. 1st St. Los Angeles MA 4-2075

When in Elko . . . Stop at the Friendly
Stockmen's
CAFE - BAR - CASINO
Elko, Nevada

the new moon
a singularly outstanding restaurant offering the quintessence of Cantonese dining is located at 912 South San Pedro Street, Los Angeles . . . Phone MAdison 2-1091

tai ping
CANTONESE CUISINE
Private Parties, Cocktails, Banquet Facilities
3888 Crenshaw, Los Angeles, AX 3-8243

GOLDEN DRAGON
INSTANT SAIMIN
— HAWAIIAN RECIPE —
Most Sanitary Wholesome
Saimin on the Market
Available at Your Favorite Shopping Center
NANKA SEIMEN CO.
Los Angeles

KONO HAWAII
EXOTIC FOODS
TROPICAL DRINKS
ENCHANTING ATMOSPHERE
KONO ROOM
LUAU SHACK
TIA HOUSE
(Sukiyaki)
Ph. JE 1-1232
226 SO. HARBOR BLVD.
SANTA ANA, CALIF.
(South of Disneyland)

MAN GENERAL LEE'S JEN LOW
475 GIN LING WAY — MA 4-1825
New Chinatown - Los Angeles
Banquet Room for All Occasions

KAWAFUKU
Sukiyaki — Tempura
Sushi — Cocktails
204 1/2 E. 1st St., L.A. MA 8-9054
Mme. Chiye Nakashima
Hostess

A Good Place to Eat -
Noon to Midnight (Closed Tues.)
Lem's Cafe
REAL CHINESE DISHES
320 E. 1st St., Los Angeles
Phone Orders Taken
MA 4-2953

Eigiku Cafe
Dine - Dance - Cocktails
SUKIYAKI • JAPANESE ROOMS
314 E. First St.
Los Angeles • MA 9-3029

Mitsuba Sushi
226 E. First St.
MA 5-8165
(Closed Tuesdays)
New Owner — Mr. Y. Kawai
Sukiyaki - Teriyaki - Tempura
Fuji Gardens
424 Wilshire Blvd.
Santa Monica, Calif.
Ph. 451-3167

Join the 1000 Club
Take-Out Service • Free Parking
Uptown Cafe
3045 W. Olympic Blvd., L.A.
DU 9-5847
Peggy & Kiyo Ohata, Prop.

Los Angeles Japanese Casualty Insurance Assn.
—Complete Insurance Protection—
AIHARA INS. AGY. Aihara-Omatsu-Kakita, 114 S. San Pedro 628-9041
ANSON FUJIKO Rm 206, 312 E. 1st 626-4393, 263-1109
FUNAKOSHI INS. AGY. Funakoshi-Kagawa-Manaka-Morey
218 S. San Pedro, 626-5275, 462-7406
HIROHATA INS. AGY. 354 E. 1st 628-1215, 287-8605
INOUE INS. AGY. 15029 Sylvanwood Ave., Norwalk 864-5774
TOM T. ITO 669 Del Monte, Pasadena 794-7189, 681-4411
MINORU 'NIX' NAGATA 1497 Rock Haven, Monterey Park 268-4554
STEVE NAKAJI 4566 Centinela Ave., 391-5931, 837-9150
SATO INS. AGY. 366 E. 1st St. 629-1425, 261-6515

CAL-VITA PRODUCE CO., INC.
Bonded Commission Merchants—Fruits & Vegetables
774 S. Central Ave. L.A.—Wholesale Terminal Market
MA 2-8595, MA 7-7038, MA 3-4504

Eagle Produce
929-943 S. San Pedro St. MA 5-2101
Bonded Commission Merchants
— Wholesale Fruits and Vegetables —
Los Angeles 15

Ask for it!
at your favorite grocer...
for the finest selected JAPANESE FOOD PRODUCTS
DAIMARU Brand - HIME Brand
WEL-PAC Brand - DYNASTY Brand
JAPANFOOD Brand
JAPAN ROSE Rice
BOTAN Calrose Rice - CAPITOL Calrose Rice
CAMELIA Arkansas Rice - LIBERTY Arkansas Rice
japan food corporation
920 S. MATEO STREET • LOS ANGELES, CALIFORNIA 90021

- Business and - Professional Guide

Your Business Card placed in each issue for 26 weeks at: 3 lines (Minimum) \$25 Each additional line \$6 per line

Greater Los Angeles

Flower View Gardens
FLORISTS
1601 N Western Ave Ph. 466-7373
Art to welcome your phone orders and wire orders for Los Angeles

GEORGE J. INAGAKI REALTY
Re Masaka, Associate
Acres, Commercial & Industrial
4568 Centinela, Los Angeles 66
397-2161 -- 397-2162

KOKUSAI INTERNATIONAL TRAVEL, INC.
240 E. 1st St. (12) MA 6-5284
Jim Higashi, Bus. Mgr.

NISEI FLORIST
In the Heart of Little Tokyo
328 E. 1st St., MA 8-5606
Fred Moriyuchi - Memb. Teleflora

DR. ROY M. NISHIKAWA
Specializing in Contact Lenses
234 S. Oxford (4) - DU 4-7400

YAMATO TRAVEL BUREAU
312 E. 1st St., L.A. (12)
MA 4-6021

San Jose
EDWARD T. MORIOKA, Realtor
Sales, Exchanges, Investments
565 N. 5th St. -- 294-1204

Sacramento
Wakano-Ura
Sukiyaki - Chop Suey
Open 11 - 11, Closed Monday
2217 - 10th St. -- GI 8-6231

Reno, Nev.
TOP HAT MOTEL
Shirley and Sumi Kajimura, Hosts
375 W. 4th St. -- 786-1565

Seattle, Wash.
Imperial Lanes
2101 -- 22nd Ave., SE, EA 5-2525
Nisei Owned -- Fred Takagi, Mgr.

Kinomoto Travel Service
Frank Y. Kinomoto
521 Main St., MA 2-1522

Washington, D.C.
MASAOKA - ISHIKAWA AND ASSOCIATES, INC.
Consultants -- Washington Matters
919 - 18th St., NW (6)

Kenny Yoshimura
CORT FOX FORD
FLEET PRICES ON '67 FORD MUSTANG TRUCK
Call for Information
NO 5-1131

Penthouse Clothes
3860 Crenshaw Blvd., Suite 230
Los Angeles - AX 2-2511
Gardena - DA 1-6804
1601 Redondo Beach

STUDIO
318 East First Street
Los Angeles, Calif.
MA 6-5681

Kimura
PHOTOMAT
Cameras and Photography Supplies
114 N. San Pedro St. MA 2-3958

triangle
CAMERA
3445 N. Broadway, Chicago.
Complete Photo Equipment, Supplies
GR 2-1015 JAMES S. OGATA

Toyo Printing
Offset - Letterpress - Linotyping
309 S. SAN PEDRO ST.
Los Angeles 12 -- Madison 6-8153

Ask for ...
'Cherry Brand'
MUTUAL SUPPLY CO.
1090 SANSOME ST., S.F. 11

MARUKYO
Kimono Store
101 Weller St.
Los Angeles
MA 8-5902

TO OUR SUBSCRIBERS WHO ARE MOVING

New Address
City State ZIP

Effective Date
If you're moving, please let us know at least three weeks prior. Attach current address label below on the margin of this page.

THANK YOU, Pacific Citizen Circulation Dept.
125 Weller St., Los Angeles, Ca. 90012

Tie and Garter: 'Sir' Frank Sakamoto Keep It Coming

Chicago Well, this Christmas season, our mailman needed help in bringing in all the letters. Besides the usual Christmas mail came the letters from the loyal 1000 Clubbers responding to the picture of the pair of legs. There were quite a few anonymous letters asking if the pair of legs belonged to the National President's wife, Mrs. Joyce Enomoto or to Mrs. Barbara Miura. Another friend asked if it belonged to Mrs. Sue Ohno.

There was another letter from San Jose, the name of the sender I don't know, asked if the legs belonged to Mrs. Betty Inouye. One interested reader wanted a hint on the approximate geography that this pair of legs is prancing about on (would like to propose marriage). The answer to that is -- she's somewhere within the 50 states.

Well, may I say to those who are inquiring, you get getting warm -- if not warmer. The unveiling of the legs will be held at the National Convention in San Jose. At least someone's reading our column.

If you note the position of the garter, it has somewhat moved up to where it belongs. We now have 1,824 paid members according to our polls. So KEEP IT COMING!

Our good old Chicago Chapter 1000 Club chairman states that it will double its present number of 1000 Clubbers. Also, Phoenix, Arizona under our National 1000 Club Membership Chairman Johnson Sakata states that they will double their present 1000 Club membership.

So may I ask all you new 1000 Club Chairmen to re-gear your plans and shoot for double or nothing.

Again, I plead with you -- let's put the garter where it

Bowling -- (Continued from Front Page)

Protests are to be made in writing. Decisions by the tournament committee upon consultation and advice of the JACL National Board on Bowling shall be final.

The tournament is sanctioned under "moral support" sanction of ABC and WIBC. The Progressive Westside JACL and So. Calif. Nisei Bowling Assn. are co-sponsors of the 1967 tournament.

Tournament Fees

Entry fees for the various events are as follows:
EVENT M. Women
Team (5-man) \$32.50 \$27.50
Doubles 13.00 11.00
Singles 6.50 5.50
All-Events (Opt'l) 2.00 1.00
6-Game Singles 8.50
4-Game Singles 6.25
Mixed Doubles 10.00 10.00

Airport Marina Hotel, 8601 Lincoln Blvd., (670-8111) will be the tournament headquarters. The mixer on opening day (Mar. 6) will be held at Fox Hills Country Club with Shozo Hirazumi as chairman. The awards dinner will be staged at the Airport Marina's Regency and Garden Rooms on Saturday (Mar. 11), 7 p.m., with Tom Miyawaki as chairman.

Bob Uyemori is chairman of the men's division; Eiko Nomura, the women's division.

Jim Okita, booklet chairman, said deadline for advertising in the official tournament program is Feb. 1. Tournament physicians are Drs. Dale T. Inaba and Ron Akashi, who have volunteered to be on call in case of an emergency.

Three Generations of Experience ...

FUKUI Mortuary, Inc.

707 E. TEMPLE ST.
LOS ANGELES, 90012
MA 6-5824

Solchi Fukui, President
James Nakagawa, Manager
Nobuo Osumi, Counsellor

Shimatsu, Ogata and Kubota Mortuary

911 Venice Blvd., Los Angeles
RI 9-1449

—SEIJI 'DUKE' OGATA—
—R. YUTAKA KUBOTA—

Idelshi, Yoshinori, 79: Nov. 12 -- nephew Kei, Mitsuru, niece Yasuko Yamane.
Imamura, Masao, 72: Oxnard, Nov. 14 -- w. Yasu, s. Masatoshi, Hideo.
Inouye, Gunzo, 80: Dec. 3 -- w. Kane, s. Bill, Seichi, Tadao, Taro, d. Lily Aratani, 10 gc, sis Mrs. Eiju Miyamoto.
Iwanaga, Aki, 88: Dec. 22 -- s. George (Chicago), Aki, Ross, d. Kiyome Inoue.
Kaji, Masako, 72: Gardena, Dec. 11 -- s. George T., 3 gc.
Kamimura, Etsuo, F. 49: Culver City, Dec. 8 -- w. Fumiko, s. Carson, br. Jack, Roy (Monterey), Tom (San Jose), sis Sumie Oda.
Kaminishi, James H., 50: Gardena, Nov. 11 -- 2 e, 3 gc, br. Roy, Satoshi.
Katayama, Tomozo, 84: Nov. 22 -- s. Tom N. (Chicago).
Kawamura, Akizo, 85: Nov. 10 -- w. Hideo, Kapu, Kaname, d. Fumie Doi, Haruko Matsunaga, 14 gc.
Kido, Yasu, 71: Nov. 19 -- h. Sozaburo, s. Fred S., John T., Takeo, d. Yoshiko, Teruko, Sumiko Hanawa, Grace Kunisaki, Irene Nakamura, 12 gc, 4 gc.
Kishi, Gichi, 75: El Monte, Nov. 11 -- w. Minoru, s. Teruo, Jim X., d. Yukiko Anami, Setsuko Akaba.
Kishimoto, Toshio, Dec. 15 -- d. Elaine, step-d. Fumie Shimabukuro, Hideo Inouye, Masano Tanaka, Etsuo Nagafuchi, Doris Shigaki, 10 gc.
Kiyama, Asao, 74: Nov. 17 -- w. Tami, s. Norio, Kineo (Japan), Hideo Matsuo, d. Yukiko Ohashi, 10 gc, 2 gc.
Kobayashi, Asajiro, 79: Nov. 1 -- w. Tami, s. Dr. George, Robert, Mary Genzaki, Margaret Konishi, 14 gc.
Kurotori, Masagoro, 82: Dec. 16 -- w. Yoshie, Katsu, Seiji, Tadao, Hiroshi Isomoto, 7 gc.
Mitokawa, Reitaro, 70: Dec. 18 -- w. Tomiko, s. Ray, George, d. Nobuko, Hiroko, Kunitake, br. Kenishi Yoshimura (Hawaii).
Miura, Kenichi, 81: Gardena, Dec. 12 -- w. Toki, d. Miye Suzuki, Shizuko Hara, 2 gc.
Miyabe, Wayne K., 5 mos.: Nov. 14 -- p. Henry and Laura, gp. Mr. and Mrs. Shigenobu Miyabe, Mr. and Mrs. Hiroshi Urata.
Munemori, Nana, 80: Long Beach, Nov. 17 -- s. Robert, d. Kikuyo, Shizuko (Ventura), Yaeiko Yokoyama (Hawaii), 5 gc, 4 gc.
Murakami, Takeyo, 64: Dec. 20 -- d. Teruko Okada, 4 gc.
Naga, Satoru, 80: Nov. 8 -- s. Tadashi, Masaki, Yoshinori, d. Kimie, Aiko Hori, Kaoru Takasashi, 11 gc, 1 gc.
Nomura, Hisakichi, 78: Santa Barbara, Nov. 21 -- w. Tsuchiyo, s. Tatsuro, d. Kikuyo Mori, Hiyo Fujii.
Nonoshita, Toshiko, 73: Long Beach, Nov. 22 -- s. Ryooji, Hideo.
Noto, Sachiko, 61: Dec. 20 -- h. Hideo, s. Kuo, Tomomi, d. Kaoru, Masumi, Hideo, Yoshiko Ushijima, Yaeiko Miyakawa, 10 gc, 1 gc.
Oka, Terumi, 46: Long Beach, Dec. 14 -- br. Etsuo, sis Teruyo Tashima, Himeko Schulte.
Okada, Carmelinda, 51: Oct. 29 -- h. Lincoln, br. Robert Costello, Robert Ponce, Adolph Ponce, Ine Consuelo d. Bonzo.
Okawa, Kaeko, 83: Canoga Park, Nov. 23 -- w. Kito, s. Chigusa, Ronald.
Oki, Takao, 64: Montebello, Nov. 22 -- w. Sueko, s. Eugene N., d. Yoshiko Oda, Masano Honda (Stockton), Mae Kimura, 8 gc.
Okumura, Jim H., 41: Nov. 30 -- w. Chiyu, s. Toshiro, Hiroo, p. Mr. and Mrs. Seichi.
Ono, Tsuyu, 78: Dec. 19 -- s. Yoshinori, Yohsime, d. Shizuko Yohsime, Yohsime, Sagara, Koichi, 55: Dec. 10 -- br. Toyokuma, n. Grace K., Sahara, William H., 51: Dec. 18 -- w. Chiyu, s. Robert, Fred, d. Wendy.
Sakai, Einoshin, 85: Nov. 9 -- w. Hideo, s. Etsuo, Richard, Yuki, d. Betty Yamamoto, Jane Price, 4 gc.
Sakurai, William H., 68: Dec. 9 -- w. Tamara, s. Robert, Yohsime, James Fred, d. Florence, Kurao Shishino.
Seko, Kaoru, 82: Wilmington, Nov. 17 -- w. Etsuo, George, Koshi, Saburo, Shiro, 7 gc, Shimabukuro, Kamada, 70: Gardena, Nov. 4 -- h. Masel, s. Yukichi, d. Kiku Kaneshiro (Hawaii), Yukino Shima, 7 gc.
Shirado, Seishu, 50: Nov. 30 -- w. Fumiko, s. William, d. Grace, Joyce.
Somen, Morikichi, 81: Dec. 15 -- w. Hatsue, d. Victoria Morioka, 3 gc.
Suzuki, Pfc. Kenny (USMC), 23: Dec. 14 (in Vietnam) -- p. Mr. and Mrs. Kanenori (Santa Monica).
Taira, Takakichi, 79: Nov. 29 (in Japan) -- s. Junichi, d. Michie Hori, 3 gc.
Takahashi, Dorothy T., 57: Nov. 9 -- s. Robert W., br. Shunichi and Takeichi Yabe, sis Fusako Yabe.
Takeshita, Shinobu, 38: National City, Nov. 25 -- w. Kaoru, s. Timmy, Randy, d. Lane, p. Ikuyo and Mine, br. Sadahide, Isamu.
Tamanaha, Jenga, 74: Dec. 11 -- w. Yoshiko, s. Yoshitaka, Isamu, d. Etsuko Arai, Sachiko Oyakawa, 8 gc.
Tanaka, Iris, 17: Santa Maria, Nov. 4 (auto-train accident at Harbor City) -- p. Mr. and Mrs. Kichinosuke Yoshizawa, brother Arnold, sister Dorothy.
Tomita, Ryokichi, 88: Nov. 18 -- s. Tadashige, Eiji, d. Lillian Okamoto, May Wong, Misa Shiba.

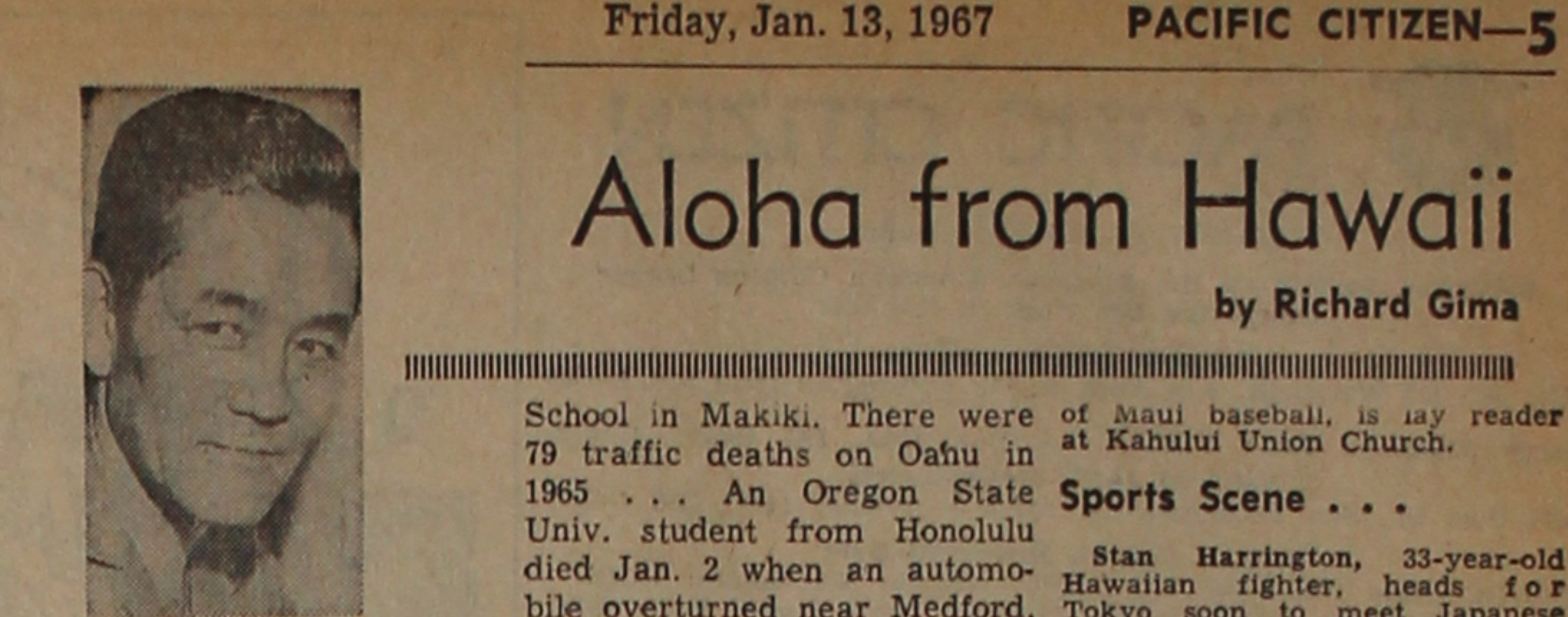
FRESNO
Kawate, Cary S., 6: Sanger, Nov. 18 -- p. Mr. and Mrs. Satoru. Mano, Mrs. Shin, Oct. 31 -- d. Grace Utsunomiya, Eiko Hashimoto, 10 gc. Matsufuji, Matsutaro, 86: Hanford, Nov. 25 -- w. Rui, s. Yoshitaka, Shigeru, d. Kikue, Teruko Ohashi.
Morita, Ichitaro, 84: Nov. 22 -- w. Yuki, s. Kazutani, d. Kimiko Hashimoto, Machiko Masuda.
Nishimura, Masaru, 69: Parlier, Dec. 14 -- w. Haruwo, s. Tom, Joe, d. Yuki, Mitsuko, Kazuo.
Nomura, Takichi, Lindsay, Nov. 3 -- w. Kikue, d. Emily Hoshiko, Mary Shintaku, Osame Tsuboi.
SAN FRANCISCO
Dote, Shinjiro, 68: Sebastopol, Nov. 7 -- w. Koko, s. Shinji, Shingo (Japan), d. Tomoko, Yaeiko Yamada.
Fujihara, Saikichi, 85: Sebastopol, Nov. 15 -- w. Tsuyu, s. Satoru, Kaname, d. Tomie, Shizue Hamakawa, Kiyoko Tanisaki, Mari Nisato.
Hatanu, Masaru, 56: Monterey, Dec. 7 -- w. Kiyoko, s. Katsumi, br. Katsuo.
Hida, Masao, 67: Santa Rosa, Nov. 18 -- h. Katsuki.
Imai, Misao, Dec. 7 -- h. Masato, d. Joan Hayashi, 2 gc, br. Takeo, Hideo Hamakawa.
Kaneda, Tatsumi, 72: Walnut Creek, Oct. 27 -- s. Masaru, George, Harry, Tatsuki, d. Aki, Kobuke, Tomoko, 77: Sebastopol, Oct. 25 -- w. Some, d. Yoneko Shimizu, Masako Ono. Matsumoto, Tozo, San Jose, Dec. 19 -- w. Tsuyu, s. Isamu, d. Asaye Honda, Shimeko Tanaka, Akiye Kawakami, Janet Nakamoto.
Masako, Saju, 88: Pacific Grove, Nov. 20 -- w. Haya, s. Haruo, Etsuo, Fujio.
Okado, Atsuji, 70: Sunnyvale, Dec. 17 -- w. Yasuko, d. Ayako Ota, 1 gc.
Oshida, Hachiro, 88: Dec. 14 -- w. Tatsuyo, s. Henry, d. Fumiko Miura, Masaye Miura, Toshiye Hiura.
Saiki, Saka, 87: Monterey, Nov. 5 -- George, 4 gc. El Cerrito, Sano, Tokujiro, 82: w. Masako, s. Harold, d. Sally Takeda, Georgia Omi, m. Teru, br. Aki, sis Mitsue Suzuki, Ikuzo: Sausalito, Dec. 2 -- w. Tanyo, s. Toshio, d. Frances. Yamane, Seiji, Dec. 20.
Yamamoto, N. 15: Dec. 5 -- p. Mr. and Mrs. Bob, sis Hanny Uyemura, Candice, Yukari, br. Kikyo Yamamoto, Toshiko Ousako.
Yamane, Sakae, 62: Palo Alto, Dec. 2 -- h. Toru, s. Kiyoharu, Kenji, Tom, d. Satsuko Yamamoto, Hideo Matsumoto.
Yasuda, Heitoku, 75: Richmond, Dec. 19 -- w. Shizuka, s. Takashi, d. Satsuko Tsuyuki, Nancy Oda.

SACRAMENTO
Inada, Yoshimatsu, 83: Dec. 19 -- w. Tatsuno, s. Masao, d. Sadie, Fumiko Silva, Kaneko Shimizu. Kinoshita, Yoshimatsu, 91: Marysville, Nov. 28 -- br. Shiro, Matsuda, Tameru, 66: s. Masanobu, Kitaura, Peggy Jinno.
Mitawa, Sawano, 67: Lodi, Oct. 29 -- h. Kanichi, s. Larry, Ben, d. Frances Otani, Mary Kanagawa, Shirley Iwanaga (Campbell), 13 gc.
Minamide, Koto, 80: Stockton, Nov. 2 -- s. George, Harry, Gus, d. Masako, Shimasaki, Hideo Iwata, Sumie Fukui (Japan).

SEATTLE
Adachi, Saki, 79: Nov. 29 -- s. Shin, Ted, d. Hisako Tanaka (Lodi), Rose Takamoto (Yuba City), 11 gc, 2 gc.
Higano, Hanji, 80: Oct. 25 -- w. Ura, s. Dr. Norio (Worcester, Mass.), d. Shizuko Miyamoto (Orange, Calif.), Dr. Aiko Kodame (Japan).

DENVER
Imai, Yoichi, 103: Dec. 28.
Kaneoka, Zenjiro, 89: Dec. 28.
Nakasawa, David, 19: Blanca, Dec. 8 -- f. Sotaro, and brothers.

CHICAGO
Terao, Hana, 73: Nov. 7 -- h. Sueo, 25, 2 d.
WASHINGTON, D.C.
Kinoshita, Masako, 54: Silver Spring, Md., Dec. 14 -- h. Sakae, s. Kazuo, George, d. Reiko Kozuma, Sumie Coffin.



Honolulu There will be 100,000 more visitors coming to Hawaii this year than in 1966, according to a Bank of Hawaii forecast. Although the Hawaii Visitors Bureau is still tallying its figures on 1966 tourist arrivals, the bank said there were 700,000 visitors for 1966, representing an increase of 95,000 over 1965.

Tsuyoshi Nishimoto was installed for his second year as president of the Honolulu Japanese Chamber of Commerce at its annual banquet Dec. 29 at its annual New Year's Banquet ... Sen. Daniel K. Inouye said Jan. 5 that he will return to Hawaii Jan. 27 to testify at a Civil Aeronautics Board hearing on proposals for direct jet services between the Mainland and Hilo ... Clarence Montalvo, a member of the Maui County Liquor Commission, on Jan. 2 wounded his wife, then killed himself with a shotgun as his 15-year-old daughter tried to stop him. Montalvo, 35, died instantly of chest wounds from a 12-gauge shotgun at the family home on Waihehu Beach Rd. at Paukukalo, Maui.

Hawaii's first New Year baby was born at 1:12 a.m. Jan. 1 at Queen's Hospital and was given a name to fit the occasion. He is Scott Hiapo Masakichi Naganuma. Hiapo is Hawaiian for "first born." He is the son of Mr. and Mrs. Stanley Naganuma, both 21, of 833-A 9th Ave., Kaimuki ... Takaaki Nakamoto of the Hilo Young Buddhists Assn. has been chosen its president for 1967. He has succeeded Shizuo (Pancho) Murashige ... Kinzo Fujita, a famous painter from Japan, held a one-man show Jan. 9-14 at the Shirokiya Dept. Store in Ala Moana Center.

War Casualties ...

PFC Richard C.B. Jacobs, 23, of Kahului, Maui, was killed in action in Vietnam Dec. 28. He was the 66th Island serviceman killed in Vietnam.

The retirement of Kunichi Murata, senior vice-president of City Bank of Honolulu, was announced Jan. 6. He was with Sumitomo Bank for 21 years and then moved to American Security Bank as vice-president. When Murata retired in 1961, he was persuaded to join City Bank.

Attorney Masaji Marumoto, a former justice of the Hawaii Supreme Court, is one of several lawyers under consideration today for appointment to the high court. Two others regarded as strong candidates for Supreme Court appointments are former State Senate President Kazuhisa Abe of Hilo and Herman Lum, U.S. district attorney for Hawaii.

Support for a proposed constitutional amendment lowering the voting age to 18 on a nationwide basis was announced Jan. 6 in Washington by Senator Daniel K. Inouye ... Howard Hamamoto has joined the Crown Corp. in the newly created position of executive vice-president. He formerly was a vice-president of Mortgage, Finance & Leasing Corp., a subsidiary of Amfac, Inc.

Maui Capsules ... Amy Tam of Maui Community College has been installed as president of the Maui Council of Teachers of English ... Bernard Y. Emoto, son of Mr. and Mrs. Gichi Emoto of Wailuku, has received a \$400 Henry George and Sons award for the 1966-67 academic year at Washington State Univ., Pullman, Wash. ... Stephanie Asae Nishihara, daughter of Mr. and Mrs. Shigeo Nishihara of Makawao, has been awarded the silver wings of an American Airlines stewardess after completing training at the airlines Stewardess College, Fort Worth, Tex. ... Edward F. Ansal of Mill Camp, Wailuku, has retired from Wailuku Sugar Co. after 30 years of service. For many years he was active as a sumo wrestler ... St. Anthony High School's class of 1967 is planning a reunion for June, 1967, according to Ronald Carbonell and Mrs. Judy Torres Gomez, steering committee chairmen ... Dr. Victor N. Kobayashi, son of Mr. and Mrs. N. Kobayashi of Lower Paia, is an assistant professor of education at the Univ. of Hawaii. He is married to a Mainland girl and they have one son ... Ichiro (Iron) Machara, long-time leader

Obituaries ...

Hawaii VIP's who died last year included William C. Tsukiyama, Riley H. Allen, Ralph Johnson, Eddie Tam, Kui Lee, William Blaisdell, Richard Rice, Mr. George Randolph Sevier, Louise Hollingsworth and Lyman H. Bigelow.

Tin Yan Jim On, 54, a teacher of vocational agriculture at Hawaii's schools for 26 years, died of a heart attack on New Year's Day. He lived at 27 Leliehae Rd., Honolulu. He was in the last five years taught at Wailua High School. Tin Yan was an outstanding football player and his Maori team. He was a graduate of the University of North Dakota. Survivors include his wife, two sons and three daughters ... Mrs. Patsy Tateishi Oshima, 58, of Lanai City, Lanai, was found dead in a bathtub in a Keaua teaching hospital Jan. 3. She reportedly suffered a stroke or heart attack while bathing at the home of her daughter, Mrs. Basil (Mildred) Fuertes, Sr., and Mrs. Fuertes are teachers at Keaua School on the Big Island.

Albert P. Lino, former Honolulu postmaster, died Dec. 17 at Kaiser Hospital. He was 78. Alyce M. Makahihala, 31, of 131-A Hauoli St., Kailua, Aloha Week center in Kailua, died Dec. 15 at St. Francis Hospital ... Arthur G. Smith, 84, prominent Honolulu attorney, died Dec. 23 at Queen's Hospital. He was the senior member of Smith, Wild, Beebe and Cades law firm and was a former president of the Hawaii Bar Assn. ... David Furukawa, 58, president and manager of the Excelsior Dairy on the Big Island, died of brain hemorrhage Dec. 19. He was listed by police as a traffic casualty, the 18th on Big Island highways last year compared with 11 in 1965 ... Harry W. Larson, 63, who retired Oct. 1 as manager of Libby, McNeill & Libby's Molokai plantation after 37 years with the company died at his home Dec. 18. Death was attributed to a heart attack.

Maui Capsules ...

Frank Takao, 43, was sworn in Jan. 3 as a district magistrate for Honolulu. The appointment is for four years and pays \$15,000 a year ... Mitsuyuki Kido, former state senator, is the new board chairman of Universal American Export Corporation ... Edward Y. Matsumoto, v.p. of Finance Factors. He joined the company in 1958 as a collection officer.

A schoolteacher was killed in the last fatal traffic accident of 1966 -- Oahu's 85th. She was Mrs. Martha Ann Hathaway, 28, of 1436 Victoria St., a teacher at Hanalei.



To: Rose Hills Educational Dept. A
3900 Workman Mill Road, Whittier, Calif. 90608

Please send my free Estate Portfolio. PC

NAME _____

ADDRESS _____

CITY _____ STATE _____

Send for your free Estate Portfolio today. A few minutes taken now to prepare these brief forms will save your family days of heart-breaking searches to assemble this same data at time of need ... can save hundreds of dollars in benefits.

Mail the coupon...NOW!

Copyright Rose Hills Memorial Park Association

Attention VETERANS...

Your Discharge Papers may be worth \$250 to your family!

Many men and women who have served in our Armed Forces do not realize that in the event of their death, the Veterans Administration may contribute \$250 or more to help defray funeral and burial expenses.

Complete instructions on how to secure these veteran benefits are just one of the time and money saving helps in the new Estate Portfolio, prepared for you as a service by the Rose Hills Educational Department.

This new Estate Portfolio is absolutely free ... based on experiences of thousands of families, as compiled by Rose Hills Memorial Park. It gives you a complete

file of your affairs ... everything your family will need should an emergency arise.

Envelopes are catalogued for insurance policies, discharge papers, Social Security data, personal vital statistics, business records, will, lists of people to be notified, tax and financial data, plus complete instructions on what must be done in case of a family crisis.

To: Rose Hills Educational Dept. A
3900 Workman Mill Road, Whittier, Calif. 90608

Please send my free Estate Portfolio. PC

NAME _____

ADDRESS _____

CITY _____ STATE _____

Send for your free Estate Portfolio today. A few minutes taken now to prepare these brief forms will save your family days of heart-breaking searches to assemble this same data at time of need ... can save hundreds of dollars in benefits.

Mail the coupon...NOW!

Copyright Rose Hills Memorial Park Association

HARRY K. HONDA, Editor
Published weekly by the Japanese American Citizens League except the last week of the year

Editorial-Business Office
Rm. 307, 125 Weller St., Los Angeles, Ca. 90012—Ph.: (213) MA 6-6938

Jerry Enomoto, Nat'l Pres. — Roy Uno, PC Board Chmn.
National JACL Headquarters
1634 Post St., San Francisco, Ca. 94115 — Phone: (415) WE 1-6644

District Council Representatives
PNWDC—Kimi Tambara; NC-WNDC—William Matsumoto; CCDC—Selco Hanashiro; PSWDC—Tets Iwasaki; IDC—Frank Yoshimura; MPDC—Bill Hosokawa; MDC—Joe Kadowaki; EDC—Leo Sasaki

Hawaii: Allan Beekman, Dick Gima, Japan: Tamotsu Murayama

Entered as 2nd Class Matter at Los Angeles, Ca. — Subscription Rates (payable in advance): U.S. \$4 per year, \$7.50 for two years. U.S. airmail: \$10 additional per year. Foreign: \$6 per year. —\$2.50 of JACL Membership Dues for 1 year Subscription—

Except for JACL staff writers, news and opinions expressed by columnists do not necessarily reflect JACL policy.

6 — Friday, Jan. 13, 1967

Ye Editor's Desk

THE BOSWORTH BOOK

Cartons containing Capt. Bosworth's "America's Concentration Camps" are stacked high in the JACL offices across the country and it is a good guess these will dwindle fast. As a documentary on what happened to Japanese Americans 25 years ago, replete with footnotes and an excellent bibliography, the book about Evacuation (and we've noted Bosworth also capitalizes Evacuation—a practice started by the Pacific Citizen in referring to the mass military removal of persons of Japanese ancestry from the West Coast in 1942) can be one where demand exceeds our own supply.

Headquarters advises that the initial 1,000 autographed copies by the author are "sold out". Nearly half was ordered by coupons which have appeared in the PC. JACL offices across the country are now mailing these out to members who have ordered them.

Additional copies without autograph have also been received by JACL offices and these are now available at the pre-publication price of \$5 to JACLers, many of whom are buying several to give to their friends and institutions.

In the weeks to come, reviews from various sources will appear in the PC. Some surprises from West Coast readers are anticipated when they learn of the roles played by civic leaders to oust the Japanese under military might at a time when civil courts were in operation. We also expect the initial printing will be sold out before Easter.

MASS INSTALLATION RITES

Six Los Angeles area chapters and a Jr. JACL club swore in their 1967 cabinet members in a mass ceremony last weekend. As an informal family affair, the New Year week was a "natural" for it allowed JACLers to wish each other the best for the coming year.

If it lacked decorum of an individual chapter installation, steps to incorporate some of the public relations flavor shall be needed in the future. A main speaker to state the JACL case or the Nisei cause before an array of invited public officials must be sought. Formalities of gavel exchange and presentation of the president's pin deserve a spotlight without making it appear overly repetitious.

For the working press, the occasion jammed six events into one night and they're for that.

For the chapters, it avoided the conflicts of dates and allows them a quicker start on programming.

For the officers, it was an excellent opportunity to get acquainted—and internal PR got a boost.

This was a first in Southern California and certainly it shouldn't be the last.

To Central California: Move over. You're going to have company. (Central California District Council swears in their 10 chapter officers en masse each year.) Los Angeles may have a 10 chapter installation one of these days.

By the Board:

Taking Stock in the PSWDC

BY AKIRA OHNO
PSWDC Past Governor
West Los Angeles

As we start another year, I would like to stop for a moment and take stock of our accomplishments in the Pacific Southwest District Council this past year.

1—We have given civil rights a place of concern among our chapters.

2—The district urged a realistic wage structure for the JACL staff in order to secure highly qualified personnel.

3—We were fortunate to secure the services of Jeffrey Matsui as associate national director this year, working in our Southern California JACL regional office.

4—Another new chapter, SE-LANOCO, has been welcomed in our midst.

5—The qualifications for the sapphire and silver pin have been upgraded.

6—Title of district council chairman to district governor clarifies his position in relationship with the chapters.

7—Problems regarding the sponsorship of a district-wide event, the Nisei Relays, have been ironed out so that co-hosts of this meet for the next biennium have been secured.

8—Determination of three zones for our district has been approved by the district board and the chapters will vote on it at our May convention next year.

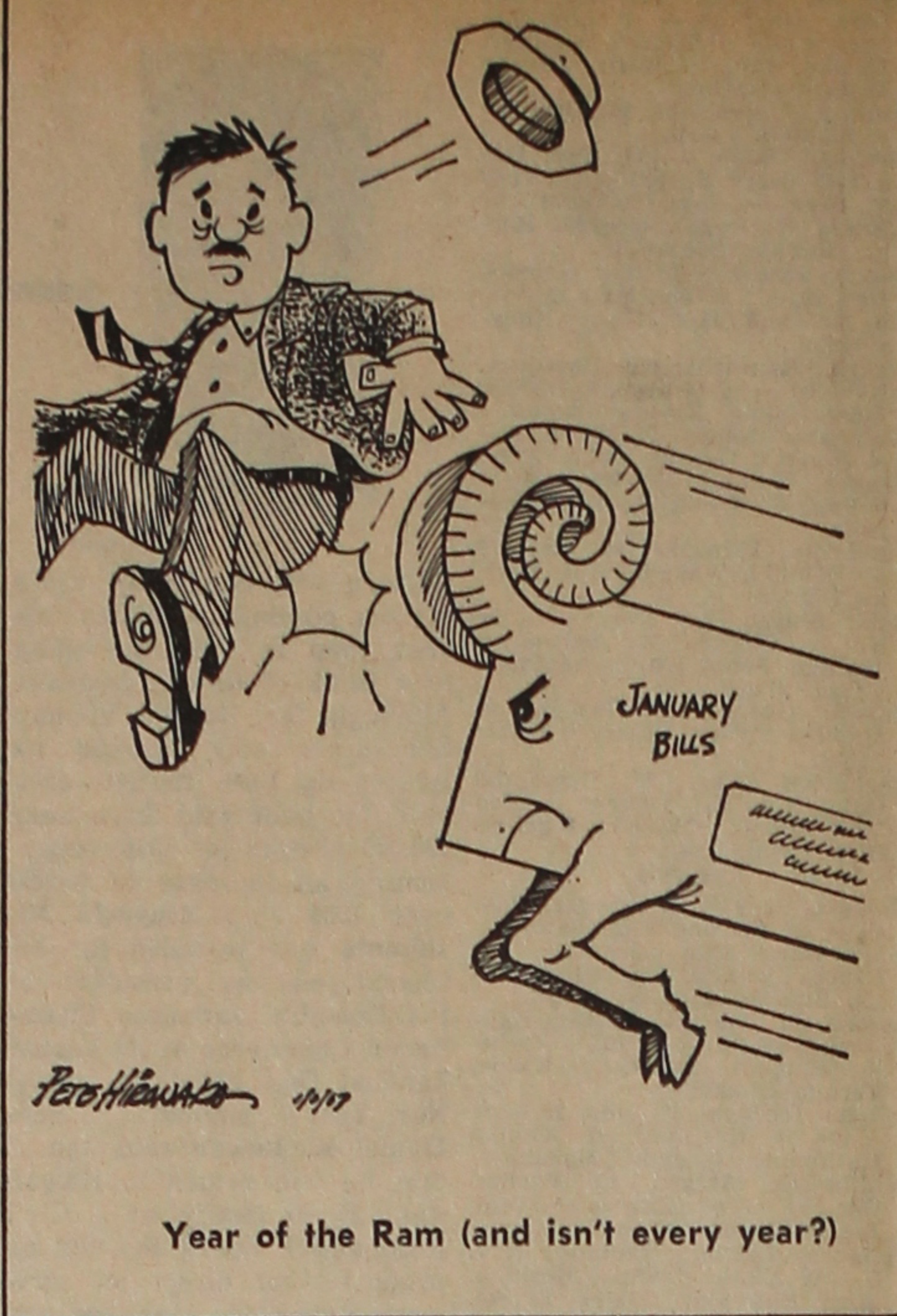
San Fernando and Pasadena are 1967 co-hosts; Orange County and Long Beach in 1968.

As I evaluate the year's activities, it seems there is still much to be done. For example, we could have handbooks or guidelines for our chapters. Chapter installations have been varied and lacking standards.

The youth, treasurer and fund-raising programs—to name a few—also need guidelines for up and coming leaders.

All said and done, I foresee a very busy year in 1967.

(This was submitted as Aki Ohno's By the Board "finale" Venice-Culver JACL members for the time being.—Editor.)



Letters from Our Readers

OUR HARVARD SCHOLAR

Dear Sir:

Recently, Our Harvard Scholar undertook the definition of the term, "Moderate," and at best, I would say that he did an abominable job (See PC Nov. 18). The equations and syllogisms by which he argues his point are about as reliable and astute as some of the more repugnant attempts at stereotyping racial characteristics. The most obvious to us as Japanese Americans would be the idea that all Japanese have slant eyes, have buck teeth, and apologetically utter, "so solee please."

Our Scholar arrives at the conclusion by use of syllogisms and equations apparently foreign to all but Harvard scholars and some assistance from one Lillian Smith, that all moderates are advocates of the "Do Nothing Program", are apathetic of all evils, are in reality, sympathizers of the Ku Klux Klan, and the Fascists movements of George Lincoln Rockwell; are in essence morally and spiritually confused. Our Scholar's syllogisms are constructed to read, "All Moderates are bad, therefore, all bad people are Moderates."

Anguished and distressed by the definition bequeathed to us by our Harvard Scholar, I sent my secretary to the closest book store, with all dispatch, to purchase the latest edition of "Mr. Webster's" great work, the Webster Dictionary. The word "Moderate" was found immediately below the noun, Model. "Mr. Webster" apparently assumes a substantially different definition of the word "Moderate" and if we should assume for a moment that "Mr. Webster" could be correct in his definition (although the probabilities are that he is grossly in error) it would be good to be a Moderate for by Webster's humble definition, a Moderate, among other complimentary things, is reasonable, calm tempered. Of course, as I have parenthetically stated, "Mr. Webster" is probably grossly in error. After all, his book is published in Springfield, Mass. and certainly no one not even the natives of Springfield would dare persist in their academic theories against the weighty and considered opinion of one from the Cambridge Area, no less the Harvard Scholar himself.

Regrettably, I am, or at least have, in the past considered myself a Moderate. I have labored under the belief that all people should enjoy equal rights but the vehicle to its attainment is one of peaceful demonstration, peaceful demands; not violence as in Watts, not the violent refusal to serve in the Armed Services. What did our brothers and Fathers do, for example, in the days of our unfortunate plight? They volunteered for service to reaffirm our pledge that we are Americans, equal to all, second to none.

I am now appalled at the awesome sins I have unwittingly committed against humanity although I have never once consciously confused Martin Luther King with George Lincoln Rockwell. I have never consciously turned away from injustice, cruelty, unpopular causes, merely because of its unpopularity, from discrimination, bias, and bigotry. In my confused state of "moderation", I believed that I had

always openly advocated the advancement of all people, the active participation in the JACL. I wrongfully believed that I had served as a humble officer of our humble chapter of JACL, have defended the indigents without compensation in the interest of preserving the constitutional safeguard that all men are equal before the law, and have lobbied before our state legislature for civil rights legislation.

Take a look again, Mr. Harvard Scholar, at the program of the NAACP. They advocate peaceful, reasonable, calm tempered protest against the indignation and justice heaped upon them. They advocate peaceful assemblages, peaceful demonstrations. Moderates like I, pledge our active support to them and others like them. On the other hand, we denounce and actively resist any attempt of forceful and lawless vendettas. The Watts incident and all others like it was and is as grave a crime as the lynching parties of the Ku Klux Klan and participants of such corruption are as guilty as the Ku Klux Klan of the homicide of the "American Dream."

Look again, Mr. Endo, at your equations and syllogisms; look again at the definition you suggest. My humble knowledge of deductive and inductive logics obviously does not lead me to the same conclusions you reach.

If you persist in your definition and I in mine, certainly someone must be wrong and most certainly it must be I who is in error. But please, sir, let me live my life out, suffering as I may be from all the ridiculous illusions I have come to espouse; let me pass away, believing that a Moderate truly can be something good, something between the two extremes. Let me pass away, believing that I, a Moderate, have made a humble contribution to my society.

KENNETH M. HISATAKE
Attorney-at-Law
431 S. 3rd East
Salt Lake City, Utah

CALENDAR

Jan. 14 (Saturday)
Livingston-Mercer — Installation dinner, Hotel Covell, Modesto, 7 p.m.; Jerry Enomoto, spkr.
Orange County — Installation dinner-dance, Sheraton Beach Inn, Huntington Beach, 6:30 p.m.; Charles Elwell, spkr.—15

Gresham-Trousdale — Jr. JACL outing, Snow Bunny Lodge, Jan. 18 (Wednesday)
Seattle — Bd Mtg. JACL Office, 8 p.m.

Jan. 21 (Saturday)
Contra Costa — Installation dinner, Berkeley House.
Marysville — Installation dinner-dance, Prospector's Village, Oroville.

Venice-Culver — Installation dinner-dance, Cockatoo Restaurant, Hawthorne.
PSWDYC — Snow outing, Selanoco Jr. JACL hosts; bus lvs lrv JACL Regional Office.

Jan. 23 (Monday)
Deadline: Nat'l JACL Bowling Tournament entries at Los Angeles.

Jan. 28 (Saturday)
San Diego — Jr. JACL membership dance, El Toyon Comm Ctr, National City, 8 p.m.
Chicago — Jr. JACL food baskets, Salinas Valley — Installation dinner, Italian Villa, 6:30 p.m.; Dr. Tom Tseketa, spkr.

Salt Lake City — Nat'l JACL Credit Union annual meeting, Ramada Inn, 6:30 p.m.
D.C. — Installation dinner-dance, Key Bridge Marriott Motor Hotel, 6 p.m.

Jan. 28-29
IDC — Quarterly meeting, Salt Lake City JACL hosts.
Jan. 29 (Sunday)
Hollywood — Ikebana class, Flower View Gardens, 2 p.m.

Jan. 31 (Tuesday)
Seattle — Human Relations Mtg. JSSC, 8 p.m.

TOHO LA BREA THEATRE • LA BREA AT NINTH • WE 4-2342

HIT COLOR COMEDY!
"5 GENTS ON THE SPOT"

starring HISAYA MORISHIGE
FRANKY SAKAI
NORIEHI MIKI
KEIJI KOBAYASHI

DAISUKE KATO
YOKO TSUKASA
MICHIO ARATAMA

A HEART-WARMING DRAMA!
"GREEN LIGHT TO JOY"

written by Keisuke Kinoshita
starring KIYOSHI ATSUMI
KEIKO AWAI
YURIKO HOSHI
TETSUO ISHIDATE

Jan. 11 thru 24

CLASSIFIED ADVERTISING

EMPLOYMENT—Los Angeles

MACHINISTS

PERMANENT POSITIONS

— 58 HOUR WEEK —

Large Commercial Backlog 1st & 2nd Shifts
Bus transportation to door

- N/C MACHINISTS
- GENERAL MACHINISTS
- TOOL & DIE MAKERS
- TURRET LATHE
- DRILL PRESS
- INSPECTORS
- ACME GRIDLEYS
- MILLS
- PUNCH PRESS

Call Mr. Koster at UP 0-3781

Apply or send complete resume

THE HARTWELL CORP.

— SINCE 1939 —

9035 Venice Blvd., Los Angeles

Open Saturdays 10 to 4

An Equal Opportunity Employer

Pacific Tube Company

5710 Smithway Street

City of Commerce

This major producer of steel tubing and bars, has immediate openings for—

Maintenance Electricians

EXPERIENCED — Starting wages for electricians are \$3.43-1/2 to \$3.58-1/2 per hr. These openings are on the afternoon shift.

Liberal employee benefits, that are equal to, or better than, benefits offered in the basic steel industry are provided. If you have no pending military obligations and are interested in joining a stable and progressive organization—call

MR. I. W. PAYNE, PERSONNEL DIRECTOR

723-1331 for appointment

Pacific Tube Company

An Equal Opportunity Employer

NURSES

RN's & LVN's

All Shifts

Full or Part Time

MEDICAL - SURGICAL PATIENTS

Nurses are involved in planning improved methods for patients' care with this nursing service.

MANY EMPLOYEE BENEFITS

Call for interview appointment
721-5151, Ext. 223 or 255
Apply or Send Resume

Beverly Hospital
309 W. Beverly Blvd.
Montebello

ELECTRONIC

ASS'T. SUPERVISOR

Good potential for man with 2 years electronics training. Experienced in solid state circuitry, background in production line techniques and supervising personnel. Many fringe benefits. Citizenship not required.

James B. Lansing Sound

3249 Casitas Ave., Los Angeles

Sewing Machine Operators

No experience necessary.

Apply

9 to 11 a.m. — 12:30 to 3 p.m.

FORM-OUTH

1432 West 166th Street

Gardena DA 9-1197

CINEMA

Now Playing till Jan. 17

Kagi

(THE KEY)

AND

'Tough Guy'

KOKUSAI THEATRE
3020 Crenshaw Blvd., RE 4-1148

Now Playing till Jan. 17

Dohkonjo Taisho
(BULLDOG COURAGE)

Masayuki Nagato, Shoichi Shirai
Shintaro Kuraoka,

AND

Namida ni Naritai
(CRY FOR JOY)

Teruhiko Saigo,
Chieko Matsubara,

Kabuki Theater
Adams at Crenshaw

Tel: 734-0362 — Free Parking

Lab Technologists

Community Hospital of San Gabriel

Hiring: Male or Female

Start to \$710 Month.

Must be California licensed or equivalent.

PHONE — MR. MOHLMAN
289-5454, ext. 288

or send resume to

218 S. Santa Anita St.

San Gabriel, Calif.

Turret Lathe

Machinists

CLASS A OR B

Apply or send resume

MAGNAVON CORP.

12647 So. Prairie Ave.

Hawthorne, Calif.

OPERATORS

Experienced

POCKET MAKERS • JOINERS

BACK MAKERS also FRONT

MAKERS

SLEEVE SETTERS also COLLAR

SETTERS

Top wages paid to experienced help.

New Company. Pleasant working conditions. Paid Vacations.

Scotty Manning Mfg. Co.

799 Towne Ave., L.A. 4th floor

OPERATORS

Single Needle & Specials, Experienced only. Steady work. Good pay.

Ivan of Calif.

743 So. Santee St.

Los Angeles 7th Floor

OPERATORS

Single Needle & Specials, Experienced on Power Machine. Factory in East Los Angeles. Apply to Mrs. Sera.

1219 S. Herbert, L.A.

264-2680 (Japanese Spoken)

Yamato Employment Agency

Job Inquiries Welcome

Rm. 202, 312 E. 1st St., L.A.

MA 4-2821 • New Openings Daily

OF INTEREST TO MEN

Transm Rebidr, Burbank 150-wk

Turret Lathes exp Lynnwood 4.00hr

Machinist, B exp, e'side .300hr

Gen Helper, nurse, S'land 1.50-3hr

Material Hndlr, Vernon st 148wk

Accnt, deg, plus exp.....856+

Bkpg Clk, trade co.....400

Draftsman Tr, w'side200 hr

OF INTEREST TO WOMEN

Accnt, deg, plus exp.....856+

Clk-Steno, trade ass'n.....400+

Typist Clk, dntn.....416

Typist, Bev Hills.....390

Solderer, exp, day - nite to 2.25hr

Electro Assemb, Tr, Para. 1.75-hr

Shop, fd mfg, dntn1.50 hr

Cook Helper, WLA300mo+tr/b

RENTALS—Los Angeles

Luxurious Oriental Motif

15-unit Balanced Power apartments for rent, 1 and 2 Bdrms., unfurnished, gas built-ins, air-conditioners, swimming pool. Near all freeways.

TORI-I APARTMENTS

2168 Alhambra St.

Call Joe H. Ikeda

662-1528 662-3402

Funke & Co.
Largest Stock of Popular and Classic Japanese Records
Japanese Magazines, Art Books, Gifts
340 E. 1st St., Los Angeles
S. Ueyama, Prop.

Marutama Co. Inc.
Fish Cake Manufacturer
Los Angeles

Nanka Printing
2024 E. 1st St.
Los Angeles, Calif.
Angelus 8-7835

Close to Baldwin Hills-Crenshaw Area

Jet Inn
Minutes to Downtown or Int'l Airport
Heated Pool - Elevator - TV
Air Conditioned - 24 Hr. Switchboard
NISEI OPERATED
4542 W. Slauson, L.A., AX 5-2544

Ono Fish Cake Co.
Formerly Daimaru Kamaboko, Honolulu
'ONO' BRAND
Kamaboko, Tempura, Pork Tempura
—Made Fresh Daily—
333 S. Central Ave., Los Angeles
MASAO ONO Tel. 628-6896

EXPERIENCED — Starting wages for electricians are \$3.43-1/2 to \$3.58-1/2 per hr. These openings are on the afternoon shift.

Liberal employee benefits, that are equal to, or better than, benefits offered in the basic steel industry are provided. If you have no pending military obligations and are interested in joining a stable and progressive organization—call

MR. I. W. PAYNE, PERSONNEL DIRECTOR

723-1331 for appointment

Pacific Tube Company

An Equal Opportunity Employer

SAITO REALTY CO.
HOMES - INSURANCE
One of the Largest Selections
2421 W. Jefferson, L.A. RE 1-2121
JOHN TY SAITO & ASSOCIATES

'DON'K. NAKAJIMA, INC.
REALTOR
14715 So. Western Ave.
Gardena, Calif.
323-7545 321-3386

Empire Printing Co.
COMMERCIAL and SOCIAL PRINTING
English and Japanese
114 Weller St., Los Angeles 12 MA 8-7060