

IN THIS ISSUE

- SPECIAL REPORT
Text of Jerry Enomoto's address to PSWDC Convention 4
- GENERAL NEWS
Maryland governor names Nisei to county board of education; Hawaii legislature adjourns; West Covina Japanese honor pre-war friends 2
San Francisco TV documentary shapes up 3
- DISTRICT—JACL
Venice-Culver JACL worries PSWDC Convention to success; Sonoma County wins NC-WNDC Chapter of Year 1
- CHAPTER—JACL
Chicago JACL only ethnic group to testify at Illinois fair housing bill hearing 1
- COLUMNISTS
Masaka: It Can Happen. Ogawa: Springtime in Seattle. Hosokawa: Travels East. Hoota: Introduction. Gima: State Legislature. Gordon: Back in Harness. Shiozaki: FSW Impressions. Henry: Ugly Americans? Ye Ed's: PSW Convention.

PERSPECTIVES

● Jerry Enomoto Nat'l President IN PSWDC

The Pacific Southwest District Council has been often maligned in JACL because of a failure to expand its membership in an area that is supposed to abound with potential JACLers. Whether that criticism is valid or not, the District has given JACL a number of outstanding leaders. It was gratifying therefore to be a part of a fine PSW Convention in L.A. last weekend.

Held at the Airport Marina Hotel, and hosted by the Venice Culver Chapter, the confab was well attended and, despite the apprehension of President Gram Noriyuki and Chairman Dr. Richard Saiki, can be marked a distinct success. I sensed that there was a feeling of friendship and positive goals in the air.

I noted this despite my own knowledge that there are JACLers in the Southland who are not, to say the least, enamored of what I have written in this corner. I was only sorry that I could not exchange views with more people. Suffice it to say that I could not agree more with one JACLer, who said that it would be a sad organization if we all agreed with each other, all the time.

Frank Chuman, Past National President, was cited, not only by UCLA on Saturday night, but was presented with a legislative resolution of commendation, at the luncheon. Retired Assemblyman Don Allen who participated in the Sab Kido Testimonial in San Diego, presented the scroll with some well chosen and deserved words of praise for Frank's varied service.

Blueprint for JACL

Renowned philanthropist and seven time president of the Japan America Society of Los Angeles, Victor Carter, presented a timely banquet speech that was right on the mark. Concern for the broader community and pride in our heritage, were his major themes, as he suggested ways in which JACL could be more effective. Incidentally, he became a Life 1000 Clubber.

An unexpected and pleasant surprise was the presence of EDC Governor Kaz Horita at the 1000 Club Whing Ding. Kaz also shared a morning with us in an informal National Officers session. That session was, as others around the country have been, productive and helpful in giving us direction in tough problem areas.

White vs. Black Hats

Sunday morning, Glen Asakawa, PSWDYC Chairman, donned a black hat to question the need for JACL and to condemn it as a segregationist outfit. Two cuties in white hats, Patty Dohzen and Marilyn Hamano, rose to refute Glen and convert him. I then rode up in the rear to talk about the JACL, and its hopes and expectations for the future. I regretfully got pulled away from one discussion group, so I missed some follow-up, but I thought the format an excellent way to stir up thought and questions.

The Jr. JACL, its projects and its leaders in PSW looked real good to me. I only hope we can help them with their uncertainties about us.

A very deserved expression of nothing more than the affection and gratitude of friends for a nice guy was well communicated by Mrs. Muriel Merrill, Hollywood Chapter President, as she presented Harry Honda with a key to Japan. To coin a cliché, I couldn't think of a more deserving person, or a more talented one, to join the JACL Tour and tell us the story.

A FEW NOTES

Congratulations to Aki Ohno for his art show idea and to Mitsuo Sonoda for her committee for putting it over. To Dr. Frank Sakamoto goes a well deserved commendation for an energetic and productive approach to boosting the 1000 Club. Frank and Dr. (Continued on Page 3)



BENEFIT SYMPHONY CONCERT — Mrs. Kazuo Kudo, clad in kimono, will be guest soloist in a koto rendition when Akira Edno (second from right), conducts the Long Beach Symphony orchestra in "Concert Japonique" on May 21, 8 p.m. at Gardena High School auditorium. Dr. John Kashiwabara, left, and Mrs. George Mio, right, are co-chairing the Benefit Concert, which is being sponsored by the Long Beach Harbor District JACL. —Photo by Art Noda

JACL only ethnic group called in Ill. housing study

(Special to the Pacific Citizen) CHICAGO—With a deep personal commitment and great enthusiasm Masaru Funai prepared an eloquent statement, packed his briefcase and flew to Springfield, April 11, to represent the JACL.

"The Japanese American Citizens League is firmly committed to the promotion of equal opportunities for all persons based on merit and without regard to race, creed, color, national origin or ancestry, and it submits that enactment of Senate Bill 155 into law will be a significant step in promoting equal opportunities in the area of housing to all people."

With these opening words, Mas Funai put the Chicago Chapter officially on record before the Illinois State Senate and the public as being in favor of the strongest and most far-reaching of the many fair housing bills now pending before the legislature.

A well known and highly respected Chicago attorney at 37, Mas is a partner in the law firm of Masuda, Spivack & Funai, which is located in the heart of the Chicago financial district. He is a graduate of the University of Hawaii and Northwestern University Law School.

At Own Expense

As a resident of suburban Lincolnwood, he is not only concerned about the effects of the passage of a fair-housing act on a metropolitan center, but also its effect of the suburbs, which are principally composed of owner-occupied single dwellings. Funai had the full support of the JACL Board and traveled to Springfield at his own expense to testify.

Representatives from a total of 30 diverse groups and a crowd of 300-400 people were at the hearing. Of these, only 18 had the opportunity to give their views. JACL was the only ethnic group called.

"Discussion of the pros and cons of the proposed fair housing bill have frequently been couched in terms of the quest for adequate housing by the Negro Americans, and the enactment of Senate Bill 155 into law may, in some quarters, be deemed to be another private campaign to be waged by the Negro Americans."

AJA Experiences

Funai continued his statement by saying "to demonstrate the falsity of this line of thought, and to remind ourselves that discrimination in housing can affect any group of people in a given environment or circumstances, we urge the distinguished members of this Committee to consider the experiences of the Japanese Americans and the very circumstances under which a substantial number of them became residents of the State of Illinois..."

After reminding them about the Evacuation Funai stated "the experiences of the Japanese Americans might serve as a sobering reminder to this Committee and the members of the General Assembly of the need for fair housing legisla-

Portlanders aid in 'Japan Week'

PORTLAND—A "Salute to Japan" week under sponsorship of the World Affairs Council of Oregon, the Japan Society of Oregon and the Portland Chamber of Commerce April 29 through May 6 attracted direct assistance and support of local JACLers, according to Dr. Albert A. Oyama, chapter president.

A program of traditional dances, drama, music, karate and judo demonstrations was presented at Hoyt Hotel on the opening day. Exhibits of Japanese art and manufactured goods and movies on Japan were shown during the week at the Meier and Frank store auditorium during the week.

The Japanese Garden in Washington Park was also among the attractions during the week.

The Portland JACL assisted in general publicity and decorations for the Hoyt Hotel program.

RECOGNITION

- JACL SAPPHIRE PIN
Hollywood—Mitsuo Yamamoto (May 7)
Orange County — Mas Uyesugi (May 7)
Long Beach—Dr. John Kashiwabara (May 7)
- JACL SILVER PIN
Hollywood—Danar Abe (May 7)
Venice-Culver—Frances Kitagawa (May 7)
- SCROLL OF APPRECIATION
PSWDC—West Los Angeles JACL Women's Auxiliary (May 7)
Venice-Culver—Grayson Turney (May 7)
San Fernando Valley — Harold E. Tanner (May 7)
East Los Angeles—Assemblyman Edward E. Elliott (May 7)

PACIFIC CITIZEN

Membership Publication: Japanese American Citizens League, 125 Weller St., Los Angeles, Ca 90012 (213) MA 6-4471
Published Weekly Except Last Week of the Year — Second Class Postage Paid at Los Angeles, Calif.

Vol. 64 No. 19
FRIDAY, MAY 12, 1967
New Telephone: MA 6-6936
TEN CENTS

Venice-Culver worried PSW confab to success

BY FRANCES KITAGAWA

LOS ANGELES — Venice-Culver JACL, which worried to the eve of the Pacific Southwest District Council convention last weekend, is floating on Cloud 9, boosted by the hurrahs and congratulations of some 300 delegates who made the May 5-7 affair the most memorable affair in years.

Presence of the youth, the colorful pieces in the art show, the challenge of convention speaker Victor M. Carter, the sentimental gesture to PC Editor Harry Honda, and inspiring close of National President Jerry Enomoto's address all meshed beautifully to make this district convention the best ever.

Even delightfully witty Jeffrey Matsui, regional director and associate national director, hustling 1000 Club national chairman Dr. Frank Sakamoto of Chicago, and vivacious NYC queen Gayle Sasaki of Pasadena were new personalities that made this weekender glow like an aurora.

A surprise participant was Eastern District Governor Kaz Horita of Philadelphia, winding up company business in California before leaving for home Saturday afternoon.

Distinguished UCLA Alumns
Always welcome were the

JACL old-timers like Mas Satow, national director who explained JACL's role on yen claims at the business session; Frank Chuman, past national president who was accorded the 1966 State Legislature resolution citing his public record, on the heels of being awarded the Distinguished UCLA Alumni Award in Community Service; and our own George Inagaki, past national president and 1000 Club national chairman who joined Dr. Sakamoto in the caucus with other chapter 1000 Club chairmen.

Carter, 1967 United Crusade chairman and seven-year president of the Japan America Society here, called upon JACLers to translate the Japanese American Creed into convictions, habits and actions within the community. He called up chapters and individual members to utilize their power of good public-relations in expressing a stand or an opinion, promote cultural heritage and education.

Recognitions
Carter was introduced by Katsuma Mukaeada, 72, former Downtown L.A. JACL president and a "teenager" as far as being a naturalized citizen as he was among the first Issei to become a citizen locally in 1952.

The convention banquet also served as a bouquet of honored citizens who were cited by JACL chapters for their concern to persons of Japanese ancestry and loyalty and service to their chapters. (The recognitions are listed elsewhere on this page.—Editor.)

The PSWDC also recognized the West Los Angeles JACL Women's Auxiliary with a scroll of appreciation for its East-West Flavors cook book, the proceeds of which have financially aided several local organizations. Some \$8,700 has been donated. And the cookbooks are still available; 12,500 have been printed to date.

Enomoto, as the convention luncheon speaker Sunday, expressed confidence JACL will continue to serve persons of Japanese ancestry as it has done in the past. (Text of speech is published elsewhere.—Editor.)

Hollywood JACL president Mrs. Muriel Merrell presented a check to the PC editor to enable him to join the JACL-Japan Tour Oct. 14-Nov. 4. He was visibly moved by the amount.

Whing Ding
Opening the three-day convention was the hilarious and howling 1000 Club whing-ding chaired by George Isoda on Friday night. The morning after was taken up with Enomoto meeting with local news.

(Continued on Page 3)

MARYLAND GOVERNOR PICKS NISEI TO COUNTY BOARD OF EDUCATION

BY NORMAN ISHIMOTO

ANNAPOLIS, Md. — Goro George Asaki, 44-year-old Westinghouse Corp. engineer and Washington D.C. JACL member, was appointed to the Anne Arundel County Board of Education by Maryland Gov. Spiro T. Agnew, thus becoming the first Nisei to be appointed to an important post in this state.

In naming Asaki to a six-year term effective May 1, Gov. Agnew described him as having a "sound educational background" and demonstrating a "keen interest in the school system of Anne Arundel County."

Active in county affairs for over 15 years, he is now president of the Northeast High School PTA and secretary of the Lake Shore Rotary Club. He is a former member and vice-commander adjutant of the Institute of Radio Legion; Eta Kappa Nu, a collegiate electrical engineering honor; and Alpha Phi Omega, a collegiate men's service fraternity.

A native of Hanford, Calif., Asaki graduated from the MIS at Ft. Snelling and served in the Southwest Pacific and Korea area during World War II. He attended Visalia Junior College, received his engineering degree from the Univ. of Chicago, and holds an advanced engineering degree from George Washington University and a certificate in business from Johns Hopkins University.

The School Board nominating convention had recommended three candidates, though the governor is not required to follow its recommendations.

Defending his selection of the convention's second choice, Gov. Agnew noted that Asaki was "highly recommended" and that the convention's first choice, Mrs. D. Ellwood Williams, Jr., had passed the state's mandatory retirement age.

Gardeners have free contractor bill amended

SACRAMENTO — Sen. Alan Short's bill to have work done on trees illegal except by a contractor or the owner was amended to exempt nurserymen or gardeners hired by the owner, according to the Professional Gardeners Federation of Northern California.

Haruo Ishimaru, PGF executive secretary, testified before the Calif. Senate Committee on Business and Professions May 1 in urging the amendment, which was also acceptable to the Calif. Assn. of Arborists, which originally sponsored the bill.

This is the first major legislative victory for professional gardeners in over a decade, according to Ishimaru.

JACL CREDIT UNION LOAN LIMIT RAISED

SALT LAKE CITY—The National JACL Credit Union, as of May 8, can loan \$1,500 to its members on a signature, it was announced this week by treasurer Hito Okada.

Its institutional advertising in the Pacific Citizen was also changed to suggest those who are on the border line on the JACL trip to Japan will make up their minds by a little financial help from their credit union.

Okada revealed that the credit union board has suggested the first payment on loans for the vacationer be extended 60 days so no payments are involved during the vacation period.

Japan-America Society in Washington elects its first Nisei president

(Special to the Pacific Citizen) WASHINGTON — Mike Masaka was elected president of the Japan-America Society of Washington, D.C., by its Board of Trustees.

The veteran Washington representative of the Japanese American Citizens League and president of Masaka-Ishikawa and Associates, Inc., the only Nisei international public relations and economic consultation firm, thus becomes the first Japanese American and also the first of Japanese ancestry to head up such a society in the United States.

Elected as vice-president was Luis Core, senior vice-president of Riggs Bank, the oldest and largest bank in the nation's capital; secretary was Dr. Wilcomb E. Washburn, chairman of the Department of American Studies of the Smithsonian Institution; and treasurer, Commander Lee Houchins of the U.S. Navy.

Others elected to the executive committee, along with the Society officers, were Sam Waugh, former State Department official and former president of the Export-Import Bank; Shun-ichi Yamanaka, Counselor of the Japanese Embassy; and H. William Tanaka, attorney at law, who will serve as society counsel.

Masaka has served as vice-president under former Ambassador William Sebald, who was the political adviser to General Douglas MacArthur during the Occupation of Japan and then Deputy Assistant Secretary of State for Far Eastern Affairs, and under Retired Army Lt. Gen. Clovis Byers, now vice-president of the General Telephone and Telegraph Co., prior to his election as President.

Others elected to the 30-member board of trustees of the second largest Japan-America Society in the country included: Congressman Spark Matsunaga of Hawaii; Ryojo Sunobe, minister of the Embassy of Japan; Hideo Suzuki, executive director of the International Monetary Fund (World Bank); Kenji Kawamura, chief of the Asahi Shimbun Washington Bureau; Warren Tsuneshi, chief of the Oriental Division of the Library of Congress; and Katsuya Nohara, Washington district manager of Japan Air Lines.

Among holdover trustees are Sen. Daniel Inouye of Hawaii, retired Navy Rear Admiral A. H. McCullum, retired newspaperman Oland Russell who was the first public relations officer for the 442nd Central Postal Directory Team when it was activated at Camp Shelby, Miss., in 1943, and John Yoshino, active JACLer who is an official of the Bureau of Public Roads of the Department of Commerce.

Ambassador of Japan Ryuji Takeuchi is the Honorary President and Secretary of State Dean Rusk is the Honorary Trustee of the Japan-America Society, which is composed of American and Japanese nationals dedicated to improving understanding and bilateral relations between the United States and Japan, as well as a cultural appreciation of things Japanese.

Hawaii legislature adjourns, key bills approved

(Special to Pacific Citizen) HONOLULU — The State Legislature adjourned after having set a record of accomplishment, but leaving some problems unresolved. Among the bills approved are the following:

Providing for a Constitutional Convention to be held in Honolulu July 15, 1968. Eighty-two delegates will be elected June 1, 1968. All will run as non-partisans, 63 to be elected from Oahu and 19 from the Neighbor Islands.

Sweeping new legislation to benefit homeowners who lease the land they live on; a highway safety program calling for the re-licensing of drivers; legislation to permit the City to purchase the strike-plagued Honolulu Rapid Transit Co.; a bill to set up a milk control commission; a code of ethics for all State employees except judges; provision for a State ombudsman, whose job it will be to hear complaints of citizens to hear complaint of citizens about the government.

The Legislature made Hawaii the first state in the nation to pass a bill that would compensate crime victims with up to \$10,000. Though excluding peace officers, the bill makes eligible for compensation victims of crimes, those injured trying to stop a crime or help apprehend a criminal; persons responsible for supporting the victim (such as parents); and dependents of a victim who has been killed.

The Legislature failed to pass a bill to abolish the Subversive Activities Commission. The Legislature also killed a proposal from the Governor for a land swap to permit the State to build a new prison at Pauwela, Maui. This leaves the Governor in the position of having started construction of a Maui Community College on land the State does not own.

15 Weeks to Go

EDC - MDC Convention - Sept. 1-4

PICK-CONGRESS HOTEL, CHICAGO

Washington Newsletter



By Mike Masaoka

IT CAN HAPPEN

The recent so-called mayoral elections in Japan resulted in at least two political bombshells. One was the election of leftist Dr. Ryokichi Minobe as Governor of Tokyo-To. The other was the election of Communist Masao Takasuna as Mayor of Shiojiri, in Nagano Prefecture.

Governor Minobe was elected by a plurality of less than 150,000 votes out of more than five million ballots cast, over candidates backed by the Liberal Democratic Party and the Democratic Socialist Party.

While few allege that Governor Minobe is now an active Communist, his victory has raised concern among many conservative Japanese leaders of a possible resurgence of violent un-American demonstrations in the world's largest city.

Though a strong case can be made that the defeat of the Liberal Democratic Party-backed Dr. Masatoshi Matsushita, an American-educated President of the Episcopal Church-affiliated Rikkyo University in Tokyo, was attributable to such causes as the electorate's dissatisfaction with rising inflation, corruption in the municipal government of Liberal Democratic Governor Dr. Ryutaro Azuma who did not run for reelection, the television personality of the winner, the 601,527 votes cast for the Komeito Party's Kenichi Abe, etc., there is no doubt that the pro-United States, pro-Western Liberal Democratic Party of Prime Minister Eisaku Sato was shaken by the results.

The leftists have already threatened to eclipse the 1960 demonstrations in 1970, when the Mutual Security Treaty becomes open to abrogation by either the United States or Japan after a year's notice. Sato's Government has already expressed its desire to continue this bilateral arrangement beyond the 1970 deadline.

In addition, the new Governor who has expounded Marxian economic theories in the past may attempt to resolve the many problems that beset all huge metropolitan areas — slums and lack of housing, traffic congestion, air pollution, rising prices, increasing crime, inadequate educational and recreational facilities, insufficient employment opportunities, growing population pressures, etc. — by revolutionary and radical means.

Dr. Minobe was arrested in 1938 as a suspected Communist and spent 18 months in prison. Released during World War II, he spent the years until Japan's Occupation as a farmer. Son of a famous father, Dr. Tatsukichi Minobe, a member of the pre-war House of Peers who was also jailed, but for teaching his Imperial University law classes that the Emperor was "an organ of the state" when the military was supreme, Tokyo's Governor Minobe was married to the elder sister of Zentaro Kosaka, who was the Foreign Minister in the Hayato Ikeda Cabinet from 1960 to 1962. They are now divorced and their only child, a daughter, is a student.

The Mayor of Shiojiri is the first Communist mayor in Japanese history. He defeated the incumbent, who was supported jointly by the Liberal Democratic, Japan Socialist, and Democratic Socialist parties, in a stunning upset.

Since Japan regained her sovereignty in 1952 and re-entered the family of nations, she has been singled out as democracy's showpiece in the Far East, the only non-white nation on earth that, within the framework of a democratic government and under a free enterprise system, has been able to compete on equal footing with the so-called western powers.

Her remarkable post-World War II economic growth, her efficient industrialization, her effective penetration of world markets, and her speedy adjustment to international realities — all have been the envy of many peoples and nations.

While Japan is now a part of America's vast security commitments and considered to be the western bastion of democracy, confronting both Communist China and Soviet Siberia on its flanks, the fear of many Free World militarists and political leaders is that — at some future time — Japan may shift into a neutralist position between the West and the East, and, eventually, end up as an ally of Mainland China.

It would be well for Americans of Japanese ancestry and JACL, to ponder soberly the long range implications of the last mayoral elections in Japan.

It would be well for Americans of Japanese ancestry and JACL, to ponder soberly the long range implications of the last mayoral elections in Japan.

It would be well for Americans of Japanese ancestry and JACL, to ponder soberly the long range implications of the last mayoral elections in Japan.

NEWS CAPSULES

Sister Cities: The highest unclimbed, unnamed Alaskan peak in the Wrangell Range was conquered April 27 by a joint U.S.-Japanese climbing party.

Business: Stan Sonobe, active San Diego JACLer, has been transferred by United Air Lines to San Francisco. His son, Blake, now an Air Force Academy cadet and active with the Jr. JACL, was a chapter scholarship winner.

Military: Ensign Paul Ishikawa Jr., USNR, son of Mr. and Mrs. Paul Ishikawa of 1221 E. Lehi Road, Mesa, Ariz., was graduated from the Basic Naval Aviation Officers School at Pensacola, Fla.

Bauties: Carolyn Sakota, daughter of Mr. and Mrs. Kazuo Sakota, was named runner-up at the Miss Sugar Salem pageant.

Youth: An Adrian High School Future Farmers of America member, Barry Fujishiro, Jr., was elected Oregon state president of the Future Farmers of America at the annual meeting in Eugene.

Organizations: Ed Sato, president of Westside Optimists, southwest Los Angeles, presented Wilber Robinson, Jr., his respect for Law medalion for his bravery in capturing a bank robber singlehandedly last year.

Entertainment: Appearing this weekend at the Quail Club in North Hollywood is a new Samsel stand-up comic Harry Fujimoto, who hails from Alamosa, Colo.

Churches: The San Luis Valley Buddhist Church in LaJara, Colo., celebrated its 30th anniversary recently.

Flowers-Garden: Original pen drawings are profuse in Tom T. Yutani's book "Garden Weeds of Southern California".

Organizations: Ed Sato, president of Westside Optimists, southwest Los Angeles, presented Wilber Robinson, Jr., his respect for Law medalion for his bravery in capturing a bank robber singlehandedly last year.

Entertainment: Appearing this weekend at the Quail Club in North Hollywood is a new Samsel stand-up comic Harry Fujimoto, who hails from Alamosa, Colo.

Churches: The San Luis Valley Buddhist Church in LaJara, Colo., celebrated its 30th anniversary recently.

Flowers-Garden: Original pen drawings are profuse in Tom T. Yutani's book "Garden Weeds of Southern California".

Organizations: Ed Sato, president of Westside Optimists, southwest Los Angeles, presented Wilber Robinson, Jr., his respect for Law medalion for his bravery in capturing a bank robber singlehandedly last year.

Entertainment: Appearing this weekend at the Quail Club in North Hollywood is a new Samsel stand-up comic Harry Fujimoto, who hails from Alamosa, Colo.

Churches: The San Luis Valley Buddhist Church in LaJara, Colo., celebrated its 30th anniversary recently.

State delegate, is the daughter of the Tok Yamashita, Caldwell. The Vallvue High student won General Mill's outstanding foods award at school.

School Front: Arizona State University gave Ronald K. Masunaga of Phoenix a scholarship based on promise of high academic performance.

Sports: Ralph Nishimi of Sacramento to Kagero Club won the No. Calif. Nisei Golf Assn. 36-hole tournament, which attracted some 210 golfers to the Monterey courses of Del Monte and Spyglass Hills.

Sports: Hawaii-born Paul Fuji not only became the first Nisei ever to win a world's boxing title when he knocked out Sordro Lopopolo of Italy to grab the junior welterweight crown, but set a new Japanese gate record when a staggering \$200,000 gross receipts was announced.

Churches: The San Luis Valley Buddhist Church in LaJara, Colo., celebrated its 30th anniversary recently.

Flowers-Garden: Original pen drawings are profuse in Tom T. Yutani's book "Garden Weeds of Southern California".

Organizations: Ed Sato, president of Westside Optimists, southwest Los Angeles, presented Wilber Robinson, Jr., his respect for Law medalion for his bravery in capturing a bank robber singlehandedly last year.

Entertainment: Appearing this weekend at the Quail Club in North Hollywood is a new Samsel stand-up comic Harry Fujimoto, who hails from Alamosa, Colo.

Churches: The San Luis Valley Buddhist Church in LaJara, Colo., celebrated its 30th anniversary recently.

Flowers-Garden: Original pen drawings are profuse in Tom T. Yutani's book "Garden Weeds of Southern California".

Organizations: Ed Sato, president of Westside Optimists, southwest Los Angeles, presented Wilber Robinson, Jr., his respect for Law medalion for his bravery in capturing a bank robber singlehandedly last year.

Entertainment: Appearing this weekend at the Quail Club in North Hollywood is a new Samsel stand-up comic Harry Fujimoto, who hails from Alamosa, Colo.

Churches: The San Luis Valley Buddhist Church in LaJara, Colo., celebrated its 30th anniversary recently.

Flowers-Garden: Original pen drawings are profuse in Tom T. Yutani's book "Garden Weeds of Southern California".

Organizations: Ed Sato, president of Westside Optimists, southwest Los Angeles, presented Wilber Robinson, Jr., his respect for Law medalion for his bravery in capturing a bank robber singlehandedly last year.

Entertainment: Appearing this weekend at the Quail Club in North Hollywood is a new Samsel stand-up comic Harry Fujimoto, who hails from Alamosa, Colo.

Churches: The San Luis Valley Buddhist Church in LaJara, Colo., celebrated its 30th anniversary recently.



Mayor Sam Yorty relinquishes his City Hall seat to "Boy Mayor" Don Nakanishi, who took over the City's top position last week as part of the citywide observance of Boys' Week.

Prewar friend of W. Covina Japanese to mark golden anniversary in Japan: WEST COVINA — Known affectionately as Uncle Ted and Aunt Hazel to prewar Japanese Americans residing in San Gabriel Valley.

Pancake Breakfast: SAN JOSE — Fathers and sons of the San Jose Community Youth Services are staging its annual Mother's Day pancake breakfast this Sunday till noon at the local Buddhist church annex.

Churches: The San Luis Valley Buddhist Church in LaJara, Colo., celebrated its 30th anniversary recently.

Flowers-Garden: Original pen drawings are profuse in Tom T. Yutani's book "Garden Weeds of Southern California".

Organizations: Ed Sato, president of Westside Optimists, southwest Los Angeles, presented Wilber Robinson, Jr., his respect for Law medalion for his bravery in capturing a bank robber singlehandedly last year.

Entertainment: Appearing this weekend at the Quail Club in North Hollywood is a new Samsel stand-up comic Harry Fujimoto, who hails from Alamosa, Colo.

Churches: The San Luis Valley Buddhist Church in LaJara, Colo., celebrated its 30th anniversary recently.

Flowers-Garden: Original pen drawings are profuse in Tom T. Yutani's book "Garden Weeds of Southern California".

Organizations: Ed Sato, president of Westside Optimists, southwest Los Angeles, presented Wilber Robinson, Jr., his respect for Law medalion for his bravery in capturing a bank robber singlehandedly last year.

Entertainment: Appearing this weekend at the Quail Club in North Hollywood is a new Samsel stand-up comic Harry Fujimoto, who hails from Alamosa, Colo.

Churches: The San Luis Valley Buddhist Church in LaJara, Colo., celebrated its 30th anniversary recently.

Flowers-Garden: Original pen drawings are profuse in Tom T. Yutani's book "Garden Weeds of Southern California".

Organizations: Ed Sato, president of Westside Optimists, southwest Los Angeles, presented Wilber Robinson, Jr., his respect for Law medalion for his bravery in capturing a bank robber singlehandedly last year.

Entertainment: Appearing this weekend at the Quail Club in North Hollywood is a new Samsel stand-up comic Harry Fujimoto, who hails from Alamosa, Colo.

Churches: The San Luis Valley Buddhist Church in LaJara, Colo., celebrated its 30th anniversary recently.

Flowers-Garden: Original pen drawings are profuse in Tom T. Yutani's book "Garden Weeds of Southern California".

Northwest Picture

Seattle alumni may walk up the spiral incline to enjoy what's really a bird-eye view of the Husky games. And soon the upper decking will be more than doubled.

While we're in the sky, there's the 500 foot Smith tower which since 1914 has been overlooking the downtown district, and since 1962, the 610 foot Space Needle which lets you overlook Queen Anne, the highest of Seattle's seven hills, where one can see almost to Canada on a clear day.

A very few decades ago this frontier town, modern because of its newness, seemed to be populated principally by loggers and fishermen. This locality was known to a select few as a stellar tourist attraction, but then as now but a scant percentage of the potential was ever attained because then as now this state is way down the list when it comes to spending a few dollars for tourist advertising.

Recently we have been called the biggest "company town" in the world which is not exactly a compliment. But the charm of this charmed land is still with us as in the decades past. Only a few things have been changed such as the hundreds and thousands of jets departing here across the pole to Europe, to Alaska, the Orient, Hawaii and all points east and south, while sharing the sky with the test pilots.

A spot of rain and a good stiff wind clears out the smog as it did in the days of forest fire epidemics.

For the tourist, new attractions have been added to those old classics of the past; the snow covered Olympics which seem to rise from the west shore of Puget Sound, the big bathtubs called locks second in size to Panama which lift ocean going ships to the level of fresh water Lake Union and Washington.

There is the lush University of Washington campus and its aboretum across the lagoon. And the impressive UW stadium with its cantilevered upper deck where 15,000 favored

There is the lush University of Washington campus and its aboretum across the lagoon. And the impressive UW stadium with its cantilevered upper deck where 15,000 favored

There is the lush University of Washington campus and its aboretum across the lagoon. And the impressive UW stadium with its cantilevered upper deck where 15,000 favored

There is the lush University of Washington campus and its aboretum across the lagoon. And the impressive UW stadium with its cantilevered upper deck where 15,000 favored

There is the lush University of Washington campus and its aboretum across the lagoon. And the impressive UW stadium with its cantilevered upper deck where 15,000 favored

There is the lush University of Washington campus and its aboretum across the lagoon. And the impressive UW stadium with its cantilevered upper deck where 15,000 favored

There is the lush University of Washington campus and its aboretum across the lagoon. And the impressive UW stadium with its cantilevered upper deck where 15,000 favored

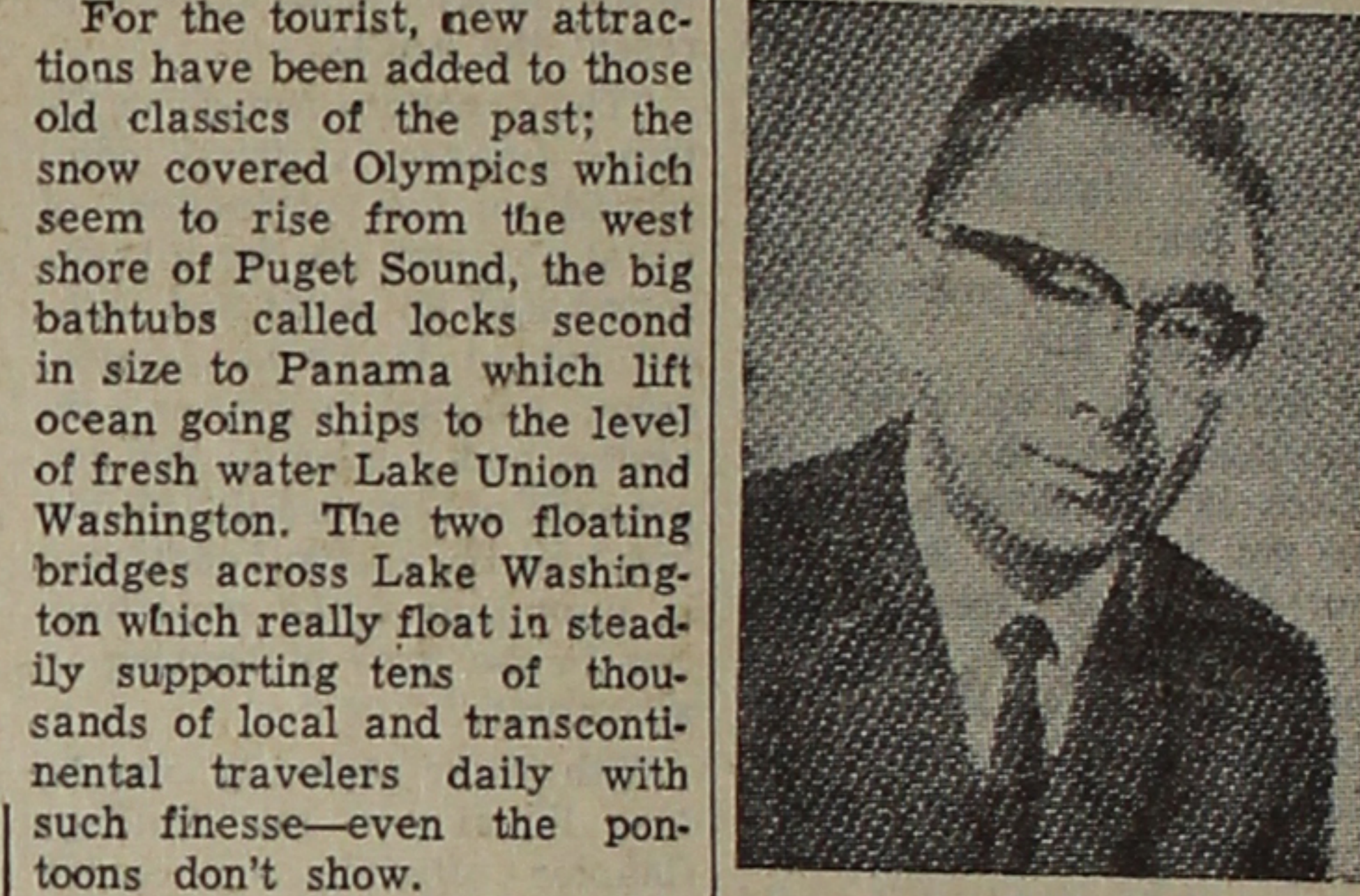
There is the lush University of Washington campus and its aboretum across the lagoon. And the impressive UW stadium with its cantilevered upper deck where 15,000 favored

There is the lush University of Washington campus and its aboretum across the lagoon. And the impressive UW stadium with its cantilevered upper deck where 15,000 favored

There is the lush University of Washington campus and its aboretum across the lagoon. And the impressive UW stadium with its cantilevered upper deck where 15,000 favored

There is the lush University of Washington campus and its aboretum across the lagoon. And the impressive UW stadium with its cantilevered upper deck where 15,000 favored

By Elmer Ogawa



GEORGE MATSUMOTO President

Nisei-Owned and Operated In the Heart of L.A. Tokyo

MERIT SAVINGS AND LOAN ASSOCIATION

324 EAST FIRST ST., LOS ANGELES 12, CALIF. MA 4754

CIVIC NATIONAL BANK

FULL SERVICE BANK SAFE DEPOSIT BOXES INTERNATIONAL DIVISION COURTEOUS TELLERS QUICK EFFICIENT SERVICE

321 E. 2nd St., Los Angeles Open Saturdays — 10 a.m. - 1 p.m. Phone 624-9591

BRANCH OFFICE 4678 Admiralty Way Marina del Rey, Calif. Phone 870-0334

MEMBER FEDERAL DEPOSIT INSURANCE CORPORATION

Jewels by Tamako

Original creations in Jade, Pearls, Coral, Amber, Diamonds, Sapphires, Emeralds and Rubies. Credit Cards Honored. Free Validated Parking.

CENTURY CITY 95 Century Square Pavilion Call 277-1144 10250 Santa Monica Blvd., L.A.

When visiting Knott's Berry Farm and Disneyland... Stay at Crescent Motel

8530 Beach Blvd. Buena Park Tel. 828-3466, 828-3483

Mikawaya Sweet Shop

244 E. 1st St., L.A. MA 8-4935

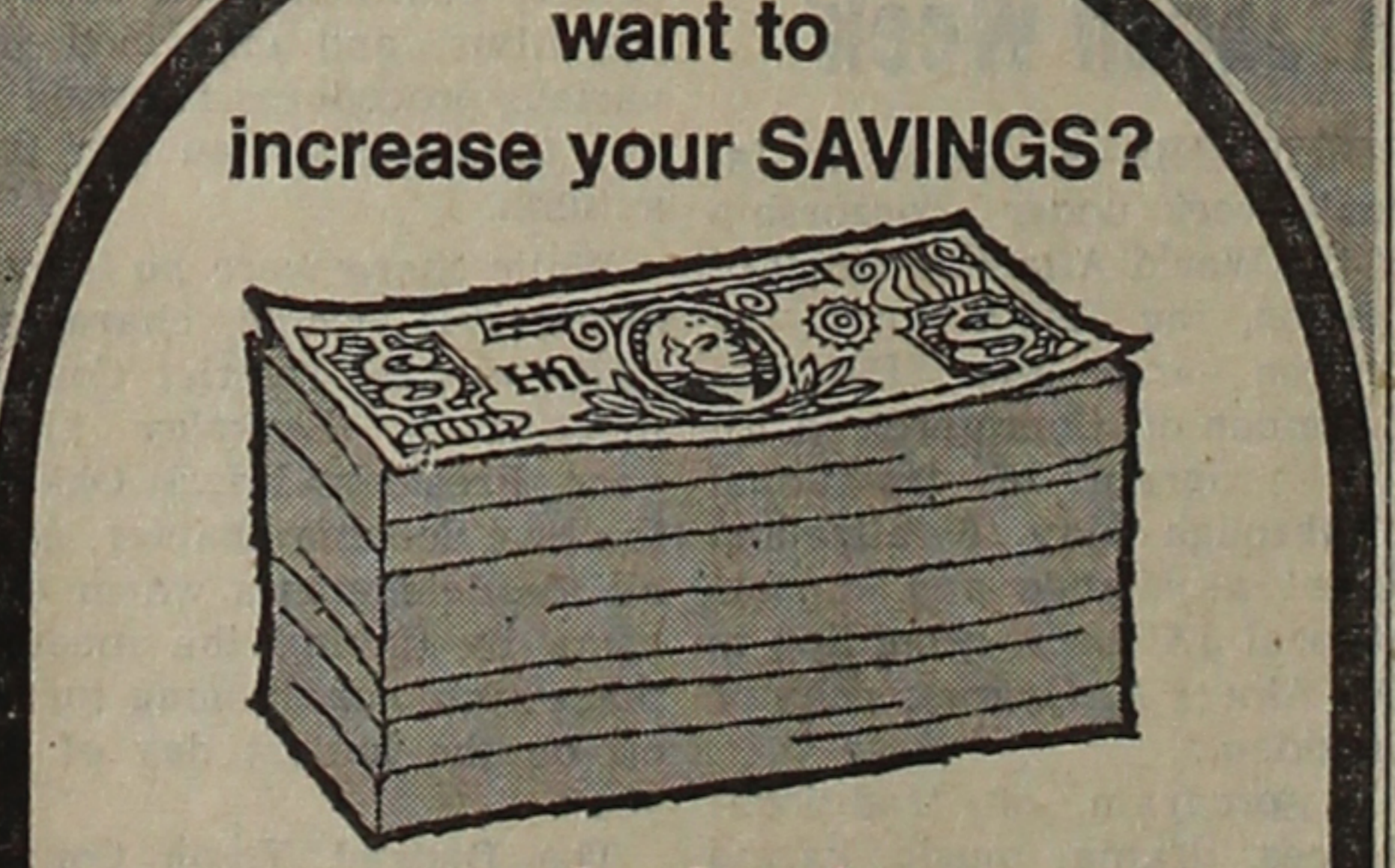
Orchid Cactus

IN BLOOM NOW! 34th Annual Flower Show Now Till June 30 9 a.m. to 6 p.m. Every Day

CACTUS PETE, JR. 4949 Valley Blvd., L.A. 32 CA 1-2290

Eagle Produce

929-943 S. San Pedro St. MA 5-2101 Bonded Commission Merchants — Wholesale Fruits and Vegetables — Los Angeles 15



want to increase your SAVINGS? now is the time. Your savings are now insured up to \$15,000 — yet earn premium interest of 5% with a Bank of Tokyo Savings Certificate.

MAKE YOUR MONEY GROW AT THE BANK OF TOKYO OF CALIFORNIA

San Francisco Main Office • 64 Sutter Street • YU 1-1200 Japan Center Branch • Buchanan & Sutter Sts. • FI 6-7600

CAL-VITA PRODUCE CO., INC. Bonded Commission Merchants—Fruits & Vegetables 774 S. Central Ave. L.A.—Wholesale Terminal Market MA 2-8595, MA 7-7038, MA 3-4504



By Bill Hosokawa

From the Frying Pan

CHICAGO — They had only 48 hours notice, but some of the faithful got on the phone and passed the word. And so on a rainy Sunday afternoon a surprisingly good turnout showed up at Mona's Nakano-ya to meet Capt. Allan R. Bosworth, author of "America's Concentration Camps."

Captain Bosworth is a tall, lean, erect, white-haired gentleman with a way of making people feel at home. It was easy to see he was a little surprised at the enthusiasm with which the Nisei have taken to his book, and not at all displeased. At Wakamatsu's urging he spoke about some of his experiences — including an assignment to tail a Japanese naval officer in San Francisco a long time before the war — and reported that of scores and scores of reviews on his book, only three were in the least critical. And one of these, he said, was written by a reviewer who obviously hadn't bothered to go beyond the first few pages.

Bosworth and his new-found Nisei friends were busy demolishing Japanese dinners, including raw fish, when Wakamatsu signaled it was time to go and he drove me down to the airport.

LOUISVILLE, KY. — Some of the Black Power boys were busy trying to embarrass Louisville with demands for open housing on the eve of the Kentucky Derby, and while we were there the traditional Pegasus Parade was called off as a precaution. The television stations were showing films of Negro activity, but where we were Louisville was quiet, peaceful, gracious and soggy with the spring monsoon.

Back in 1960, we'd been in Tokyo when far-left student groups had paraded through the streets in opposition to the U.S.-Japan Mutual Security Treaty. Ultimately the demonstrations had toppled the Kishi government. Most of the action was concentrated in front of the Diet building. A few blocks away, in the Akasaka district, the expensive night clubs had been open as usual. Television viewers had a choice of tuning in on a baseball game or spot coverage of the demonstrations. It was an unrealistic situation, and we experienced the same feeling in Louisville where a dead serious protest movement was largely being ignored by the general populace.

NEW YORK — Perhaps it was foolhardy, but we had only seven hours to get the business completed, so we rented a car and headed north through the rain over the crowded and confusing parkways. Los Angeles freeways are wider, but they are no more crowded than the routes that dip and sweep and thread their way through this part of the teeming East.

We were only slightly tardy for the lunch at Pleasantville where Reader's Digest editors talked about Roy Otake, who is their man now in Tokyo. If there are pressures involved in editing and publishing a magazine with the world's largest circulation, they are not apparent at Pleasantville where offices are carpeted, everyone speaks in genteel tones, and deadlines appear to be distant matters. Pleasantville is only 50 miles or so from Manhattan, but it seems to be another world away.

MONTREAL — The Canadian immigration officer asked my nationality and I told him I was an American. He asked where I was born and I told him Seattle. Fine, he said, and waved me on. Didn't even ask to see a driver's license or other proof of residence. The customs officer didn't bother to look into my suitcase or ask a single question. "Enjoy your stay in Canada," he said pleasantly. And so to Expo 67, which will be the subject of next week's dispatch.

Rutgers site of U.S.-Japan culture exchange confab

NEW BRUNSWICK, N.J. — Some 50 scholars and experts gathered here May 3 to appraise Japanese-American relations on one of the American campuses where the cultural exchange began 100 years ago.

Americans and Japanese attending the three-day Japan-Rutgers Conference at Rutgers University were welcomed by two university presidents, Dr. Mason W. Gross of Rutgers and Dr. Hugh Borton of Harvard College.

Dr. Borton, chief of mission to the American-Japanese Cultural Conference with the rank of ambassador, addressed the opening session.

Dr. Ardath W. Burks, director of international programs at Rutgers, organized the conference.

The opening session was held at the Rutgers University library, where an exhibition of materials on early American missionaries, educators and employees of the Japanese government were on display. Rutgers was able to gather a considerable amount of such materials because many of the first Americans to venture into Japan were men with Rutgers connection.

It was through influence of early missionaries and educators from Rutgers in Japan that the first two Japanese students to come to Rutgers enrolled in 1868.

The results of the Rutgers conference will be published in a book to be edited by Dr. Burks.

Rexburg JACL to sponsor Girls State participant

REXBURG, Idaho—The local JACL chapter will sponsor the Girls State participant from St. Anthony High School, Sny-Lea Girls State will be held June 11-17 at Northwest Nazarene College, Nampa.

Donna Miyasaki, Sugar Salem High delegate to Girls State, is the daughter of active JACLers here, the Tommy Miyasakis. She is a cheer queen and school band majorette, and Rexburg JACLs secretary.

The Rexburg JACL is also preparing for the IDC-IDYC summer quarterly session scheduled July 29-30.

News Deadline Tuesday

Chapter Call Board

Spokane JACL

For the Mothers: As a Mother's Day special program, the Spokane JACL will sponsor a Japanese movie entitled "Akao Roshi" at the Spokane Buddhist Church May 14, 7 p.m. This movie is a television adaptation of the Japanese classic "Chushingura".

East Los Angeles JACL

Meeting: Rep. Edward R. Roybal will present an American flag flown over the nation's capitol to members of East Los Angeles JACL when they meet May 19 at the ELA Gardeners Hall, 2420 E. First St., from 7 p.m.

Ritsuko Kawakami, chapter president, said the former Los Angeles city councilman will be introduced by Jack Nagano, board member. Roybal will report on foreign and inter-American affairs and international organizational movements.

A film on Japan will be shown, narrated by Fred Takata, onetime JACL regional director now with Mitsuline Travel Service.

Hollywood JACL

Afternoon Concert: Hollywood JACL introduces its 1967 Nisei Week quesen candidate Cathy Okamura at its first Sunday Afternoon Concert, May 28, 2 p.m., at the Wilshire Ebell Club Fine Arts Room, 743 S. Lucerne Blvd.

Feature performers at the concert will include the Ishii brothers, cellist Ken and flautist Robert, in concert; the Endo sisters Ellen and Barbara in folk tunes from Japan and swing from California; the "Sewing Circle", talented blind singing trio from John Marshall High; the Bottle Blowers from the Hollywood Jr. JACL; and the Instant Hula Girls, directed by Mary Suyeishi.

Dodger Night: Hollywood JACLers have obtained a block of 30 reserved seats (\$2.50) for the Pittsburgh-L.A. baseball game at Dodger Stadium for Friday, June 2.

Surprise Turnout
DAYTON — When the local JACL programmed a family swimming party April 9 at Wright-Patterson Air Base gym, chairman Frank Titus anticipated no more than 15 but thanks to the telephone committee calling members and potential new ones, a banner turnout of 54 members and guests appeared to the happy surprise of the host committee.

Nisei tax cases in public eye

BY ALLAN BEEKMAN
(Special to the Pacific Citizen)
HONOLULU — The sentencing of Tadashi Sakai, Kauai contractor, found guilty of making a false statement in an attempt to settle his delinquent taxes, disposes of another case against three prominent Islanders charged with tax evasion.

The other cases concerned Richard Kageyama, 49, real estate operator and former City Councilman, and Dr. Frank T. Inouye, 45, educator and businessman.

Sakai changed his plea from innocent to no contest. Federal Judge C. Nils Tavares found him guilty and sentenced him to two years in prison, but suspended all but two weeks of the sentence. Sakai will be on probation for the remainder of the suspended sentence.

He could have been sentenced to three years in prison, fined \$5,000, or both.

Kageyama Case

Kageyama was acquitted of filing fraudulent income tax returns for 1959 and 1960. In a 2½-week, non-jury trial, his attorney, Arthur Reinwald, stressed a lack of intent on the part of Kageyama and carefully painted a picture of his client as naive and scatterbrained.

Potbellied, heavy-jowled, with bags beneath his eyes, Kageyama took the stand to tell of his life from the date of his birth on the Island of Hawaii. He left the village

high school in his junior year, after the death of his father, but returned to graduate at 22. He came to Honolulu on a cattlehip and tried unsuccessfully, lacking funds and having no car for transportation, to be elected to political office. Then he served four years in the Army.

After his discharge from the Army, he served five terms on the City Council, a total of ten years. There he always seemed to be a center of controversy.

"Disorganization was Mr. Kageyama's normal behavior," his attorney said of him. "He was observed to constantly mix up his business, personal and political records. . . . The logical inference is not tax evasion."

Judge Tavares agreed the Government had not proved its case beyond a reasonable doubt. But though acquitted, Kageyama may still have to pay civil penalties and interest if the Internal Revenue Service can prove he owes back taxes.

Deliberate Evasion

Where Tavares stressed lack of intent in acquitting Kageyama, Federal Judge Martin Pence, in finding Inouye guilty, dwelt on the evasion as being "deliberate and calculated."

Though married to a local girl, Inouye came to Hawaii from the Mainland. His specialty is American history. After coming to Hawaii, teaching at the University, and trying his hand at selling encyclopedias, he returned to the Mainland to work for his doctor's degree.

For his thesis he researched the activities of Sir William Johnson, British soldier and colonial landowner, in the Mohawk Valley of New York during the Revolutionary War.

Well-groomed, cultured, personable, possessed of a doctor's degree, he quickly gained important posts after his return to Hawaii. He was director of the University of Hawaii's Hilo branch from 1952 to 1957. He was assistant manager of the Hawaii Visitors

Bureau during 1961 and 1962. He reported taxable income of \$9,023.41 for 1961 and \$8,404.49 for 1962. He was indicted for tax fraud and evasion for these years, the Government contending he should have filed returns of \$37,645.90 for 1961 and \$12,259.91 for 1962.

He pleaded no contest to the 1961 charge only. The 1962 charge is pending until moved on by the Government.

Chastened

When he appeared for sentencing, his attorney, Henry Shigekane, pleading against imprisonment for his client, said Inouye had been chastened by his experience. "Here is a man," Shigekane said, "who enjoyed stature in the community, but is now avoided by friends when they meet on the street."

No doubt there is merit in the statement that Inouye was being shunned by former associates—especially those whose own consciences are uneasy about their tax returns and who fear public acknowledgment of their acquaintance might invite suspicion and investigation.

Judge Pence, however, as unmoved by Shigekane's plea. The judge said the unreported funds had come from the sale of mailing lists to real estate operators who paid for them with money orders at Inouye's request "to avoid detection."

As Inouye, in his usual conservative business suit, stood before the bench with bowed head, the judge gave reasons for the action he was about to take.

"The mailing lists came from sources over which you had control or access to . . . you violated their trust and took—and sold lists—when you shouldn't have sold . . . Yours, as you know, was not an act of impulse . . . yours was done with deliberate, calculated intent . . . of a man of tremendously high IQ . . . a man who was most respected in the community."

Pence sentenced Inouye to a year and a day, Inouye to serve out his term at Terminal Island, California.

CALENDAR

- May 13 (Saturday)
Portland—Jr JACL Triple Treat, Timber Lanes, 7:15 p.m.
Sacramento — Jr. JACL cake sale.
Gresham-Troutdale — Issei dinner, 6 p.m., GT Hall.
Wilshire-Uptown — Japan Night, St. Mary's Episcopal Church, 7:30 p.m.
Hollywood — Mother's Day Matinee Theater Party, Music Center.
Twin Cities—Jr JACL Play.
May 14 (Sunday)
Spokane—Mother's Day program, Buddhist Church, 7 p.m.
Placer County — Community picnic, JACL Recreation Park.
Marysville—Community picnic.
Salinas Valley — Cemetery clean-up.

Fugetsu - Do
CONFECTIONARY
315 E. 1st St., Los Angeles 12
MA 51595

San Francisco TV documentary on Japanese Americans completed

SAN FRANCISCO—Six members of the San Francisco Jr. JACL will soon be seen on a local television program airing their Nisei views on their parents (Nisei) and grandparents (Issei).

A director-cameraman team from KRON-TV was at the home of Mr. and Mrs. John H. Ota, 663 28th Ave., recently to color-film the evening with the Sansei youngsters.

They included Russell Obama, Janis Ikezoe, Miyo Ota, Francis Oka, Margaret Ota and John Ota.

The KRON team spent about three and half hours to film a 30-minute footage of the discussion.

Don Zavin, a director of the KRON-TV "Assignment Four" show, said the evening's discussion will be one of the 11 segments to be shown in a half-hour documentary on the Issei-Nisei-Sansei people of San Francisco and its environs.

Zavin said he has already interviewed and filmed these segments: Mas Satow, at his National JACL headquarters; Franklin Tokioka, atop a high building in the Japanese Cultural and Trade Center now under construction; Jr. JACL musical show, "Oeyama"; chanoyu ceremony at the Nichiren Buddhist Temple; Capt. Allan Bosworth, author of "America's Concentration Camps" on his recent visit here; Japanese language teaching at the UC Extension;

vernacular newspaper making at the Hokubei Mainichi; San Francisco's Nihonmachi in general; the Inouye Brothers farm in Yuba City.

Considerable footage of the evacuation film taken by WRA back in 1942 will be obtained from the National Archives in Washington, Zavin said.

"We have probably about four hours of raw film now on hand for this Japanese documentary," Zavin said.

All this will have to be boiled down to fit the "Assignment Four's" 30-minute show. The Japanese documentary program was originally slated to be shown on Monday, May 15. However, due to the considerable footage involved and the time necessary for editing, the show may probably have to be postponed for showing on Monday, May 29.

"If we couldn't still make it by then the program will have to be held back until September," Zavin said.

KRON-TV's "Assignment Four" is seen over Channel 4 every Monday night at 7 p.m.

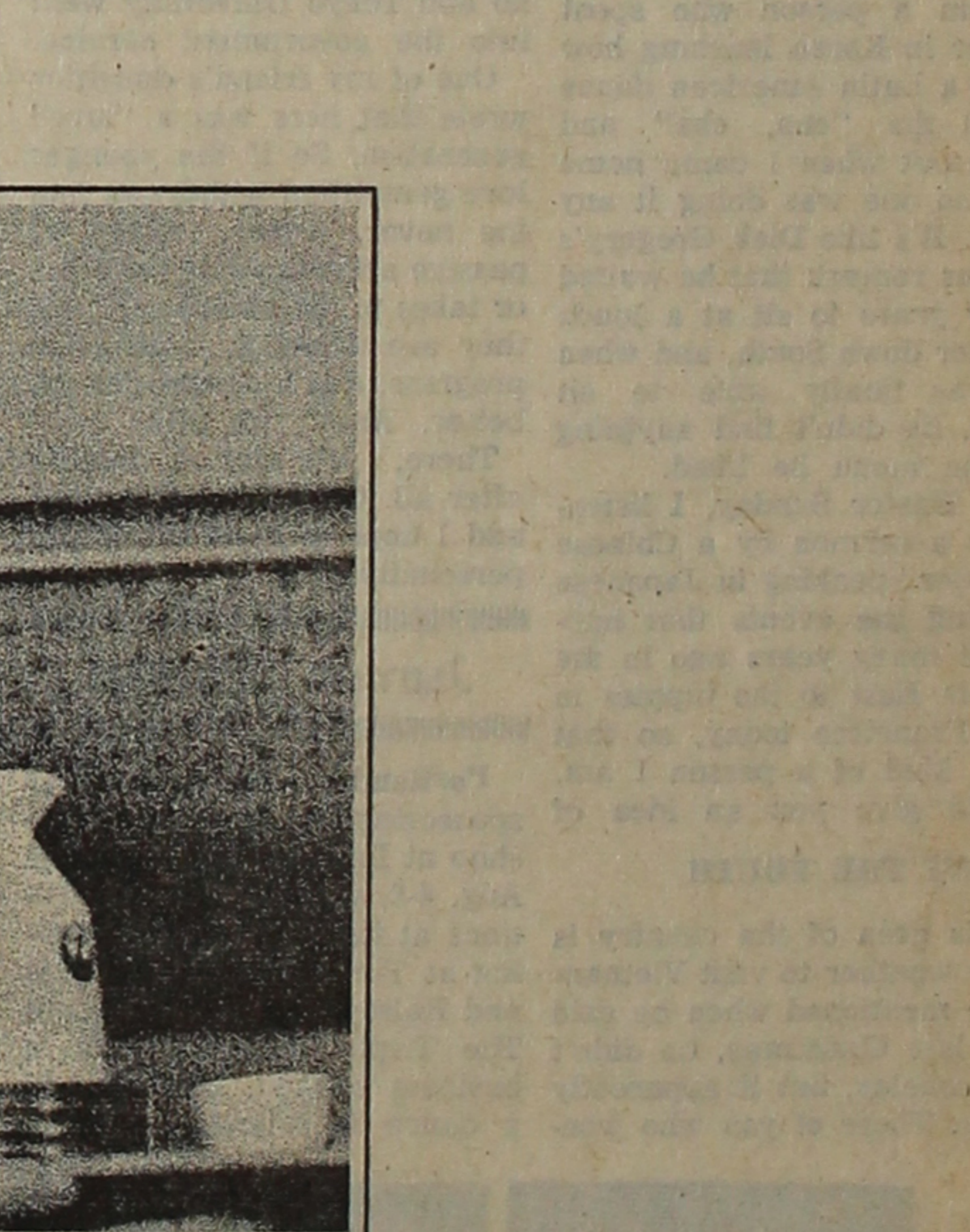
"In all of my assignments with the KRON-TV show, this has been the most exciting one," Zavin added in referring to the Japanese documentary filming.

—Hokubei Mainichi

LIFE MEMBERSHIP in the 1000 Club is a lump sum payment of \$500.

Crocker-Citizens
the big bank where little things count

CROCKER-CITIZENS NATIONAL BANK • California's Oldest National Bank
More than 260 offices statewide • Member Federal Deposit Insurance Corporation



WHY THE CHANGE-OF-PLAN PROVISION IN NEW ENGLAND LIFE CONTRACT IS SO VALUABLE

A man's financial condition often is far different at 50 from what it was at 25. I'd like to tell you more about . . . Suppose you bought an Ordinary Life Policy from New England Life several years ago. And now believe that a retirement income policy is what you need. Can you simply switch plans? Yes. Must you pay the difference in premiums back

to the original issue date? No. You pay the difference in reserves only, which can be substantially less. Or if ten or more premiums remain, you may pay the difference in cash values. Under certain conditions, you may even be able to convert to another plan merely by paying an increased premium until the policy matures or is paid-up.



HARRY MIZUNO
The Hall of Fame for million dollar production

ROSS HARANO
Star Producer Award

HARVEY C. YUDELL AGENCY
NEW ENGLAND LIFE
79 W. Monroe St., Chicago 3, Ill. FRanklin 2-7834

Los Angeles Japanese Casualty Insurance Assn.
— Complete Insurance Protection —

AIHARA INS. AGY. Aihara-Omatsu-Kakita, 114 S. San Pedro . . .	628-9041
ANSON FUJIOKA AGY., 321 E. 2nd, Suite 500 . . .	626-4393, 263-1109
FUNAKOSHI INS. AGY. Funakoshi-Kagawa-Manaka-Morey 218 S. San Pedro . . .	626-5275, 462-7406
HIROHATA INS. AGY. 354 E. 1st . . .	628-1215, 287-8605
INOUE INS. AGY. 15029 Sylvanwood Ave., Norwalk . . .	864-5774
JOE S. ITANO & CO., 318-1/2 E. 1st St. . . .	624-0758
TOM T. ITO 669 Del Monte, Pasadena . . .	794-7189, 681-4411
MINORU NIX NAGATA 1497 Rock Haven, Monterey Park . . .	268-4554
STEVE NAKAJI 4566 Centinela Ave. . . .	391-5931, 837-9150
SATO INS. AGY. 366 E. 1st St. . . .	629-1425, 261-6519

TRAVEL NOW!
PAY LATER!

VACATION with adequate cash reserves.
\$100 Loan — 12 monthly payments of \$8.89
\$300 Loan — 12 monthly payments of \$26.66
\$1,000 Loan — 36 monthly payments of \$33.21

NATIONAL JACL CREDIT UNION
242 SO. 4th EAST * SALT LAKE CITY, UTAH 84111

Fly the world of JAL...the world around

Wherever in the world you fly, you can include the pleasures of "Japan" on JAL. You relax in a classic atmosphere, and are served in the Japanese manner. Your kimono-clad hostess offers you the graces of Japan. *O-shibori*. Warmed *sake*. *Tsumami-mono*. And then your choice of either delicious Japanese or Continental cuisine. She treats you as an honored guest in a Japanese home.

can include it on any one of JAL's 13 weekly flights leaving from San Francisco to Tokyo. From Honolulu continue on JAL, which offers you more flights than any other airline from Hawaii to Tokyo. Eastbound from San Francisco, fly Japan Air Lines to London via New York on a "Happi Flight," and relax in a JAL Happi Coat all the way across the Atlantic. Either way, continue on Japan Air Lines around the world. Fly JAL . . . now one of the elite few airlines that flies across the United States and completely around the world. See your travel agent.

JAPAN AIR LINES
the worldwide airline of Japan



K.I.S.S.

INTRODUCTION

We shall leave it to Yosh Hotta, assistant National JACL director at San Francisco, to explain the initials of his column, which will appear regularly in the Pacific Citizen in turn with other JACL staffers.—Editor.

San Francisco
My name is Yoshio Hotta. I always answer questionnaires that ask: Born? with "Yes", Sex? "Yes". I always answer "Yes" because "No"—"No" can cause a lot of problems as some of you who were in camps will recall. I feel great empathy towards our concern with miscegenation problems because I too was born of mixed parents: male and female.

JACL PROBLEMS
The JACL is concerned internally these days with two very interesting problems: Youth and Cultural Heritage. As the new boy in class I am not about to give any sermons or sage words of advice. Sometimes as I ponder the solutions to weighty problems that will affect ourselves and the generations to come, I am distracted by Mas Satow humming "Hamabe no Uta" as he is working. In these days of "Sakura" and "Aishittachia yo" as typical Japanese pop songs knowing that Mr. Satow is humming "Hamabe no Uta" dates me very much.

To show you that I have some coath, my philosophy in life can be expressed by the famous haiku: "Furuya Ike, Kawazu tobikomu, Mizu no oto." Roughly translated as "sometime even frog jump into water." I do believe that if you throw some pebbles into a still pond, the ripples on the water, will reach out ever wider, and who knows what the results will be?

Outside of the National JACL office, the final concrete touches to the Japan Cultural Center are being put into place. It seems as though it will cover the yawning chasms of empty space and waste very well. I particularly like it because it gives me a feeling of vigor, of change, and of progress.

Another reason is that it got rid of the old buildings. After being away for some years from the haunts of my childhood, it unnerved me to see the same guys standing on the corner, holding up the old relics with their feet, as though all the years had cast them into the ground, immobile, and gathering dust.

WHO AM I?
I am a person who spent a year in Korea learning how to do a Latin American dance called the "cha, cha" and found out when I came home that no one was doing it any more. It's like Dick Gregory's famous remark that he waited many years to sit at a lunch counter down South, and when he was finally able to sit down, he didn't find anything on the menu he liked. On Easter Sunday, I listened to a sermon by a Chinese minister speaking in Japanese relating the events that happened many years ago in the Middle East to the hippies in San Francisco today, so that what kind of a person I am, should give you an idea of ANENT THE YOUTH

This area of the country is know whether to visit Vietnam. Hope mentioned when he said that last Christmas, he didn't or Berkeley, but it apparently youth. Those of you who won-

der what is happening to the has great attraction to the very close to the place Bob younger generation could do no worse than look at the applicants for your JACL scholarships and fellowships. All the applicants are in the top one or two percent of their classes, and the amount of extra-curricular activities in which they are engaged is incredible.

Where they got their brains and energy I don't know. Of course they had to have time, and I know where they got that, it's due to all of you carting them around from place to place. Of course, any time you feel that the younger generation is beyond your comprehension, you might remember that they can't be all bad, after all, you are their parents.

Since we rarely hear the chief of state of any country say anything about "outh, the following extract of Prime Minister Eisaku Sato's administrative policy speech to the Japanese Diet on March 14, 1967, may give you an idea of the people you will visit on the JACL Japan Tour:

"It is my sincere wish that young people will be conscious of their pride and responsibility to become a driving force of the Japan of the future and to make contributions to the welfare of mankind of tomorrow and they acquire a strong will and develop stout bodies which will enable them to overcome any hardships so that they will grow up into citizens endowed with rich human qualities, patriotism, and a sense of mission of serving the public interest."

If the bizarre dress of the hippies is a symbol of non-conformity and protest against the world as they see it, they still have a long way to go to match the dress of the students I used to see at Ichiko and Tokyo University. They wore their hair as long as the hippies, wore the roughest dress they could find or dirty up, and were the best students in Japan. They generally raised all kinds of trouble by tackling the Tokyo police whenever they wanted to protest anything.

One day watching a particularly rough demonstration where the police and students were banging heads, I asked a Japanese government official if this portended some terrible fate for Japan. "Oh no" said the official, "I don't worry too much because I used to do this myself when I was going to school." That might have been true because traditionally, the graduates of Ichiko and Tokyo University went into the government service.

One of my friend's daughter wrote that hers was a "love" generation. So if the younger love generation withdraws into the never, never, world of passive acceptance of frivolity, or takes to the streets, at least they are thinking, looking for progress, and a change for the better. Aren't we all? There, you got a lecture after all. Glad to be of service and I hope to meet all of you personally soon.

Junior Jottings
Portland Jr. JACL, which is sponsoring its Summer Workshop at Lewis & Clark College Aug. 4-6, will discuss preparations at its Triple Treat meeting at Timber Lanes, SE 41st and Halsey, May 13, 7:15 p.m. The Triple Treat covers a business session, bowling and a dance to follow.

LOS ANGELES — Following is the text of National JACL President Jerry Enomoto's address to the PSWDC Convention held by Venice-Culver JACL over the May 5-7 weekend at Airport-Marina:

Pride in one's self, one's country, and in organizations to which one belongs is a wonderful feeling. As Nisei and Sansei we are blessed with a heritage which helps each of us to enjoy that feeling, in a country which gives us the maximum opportunity to translate that pride into spiritual and economic prosperity. To many of us the Japanese American Citizens League has been the one organization which has bound us in a common effort to elevate ourselves from the status of second-class citizens. It is our relative success, that effort, and the JACL's role in it, that makes us proud of it.

It therefore, seems most appropriate that I begin my remarks today on this note of our pride in the JACL. Today, 25 years after the difficult days when the wartime camps began, and some years after the impact of its greatest legislative gains, the JACL still works for American of Japanese descent and enjoys the support of over 20,000 adults and youth, in 89 chapters from coast to coast. We have fostered JACL pride in you, but I think it is also permissible to toast its present.

Summer Fellowships
Just last Friday at the final judging of applicants for the JACL-Japan Air Lines Summer Fellowships, one of the judges, Dr. Wilson Riley, Director of Compensatory Education for the State Department of Education, paid tribute to the JACL and JAL for their role in the "thick and thin" while project. Certainly it is no accident that JACL was given the privilege of administering this fellowship. I, incidentally, sincerely, thank JAL. Our congratulations also to your PSWDC Legal-Legislative Chairman and Ed Kikita, who has earned one of those fellowships.

It seems to me that only a national organization, with JACL's history and community respect, could have conceived and successfully pushed the idea of writing the history of the Japanese in America. That idea, later called Japanese American Research Project, is now in its fifth year. A scholarly volume and a popular history will be completed in 2 years. A scientific sociological study will continue beyond, in the good hands of UCLA, with the corollary support of JACL. A researchable grant from the National Institute of Mental Health will permit the latter. It is worthy of note that the good offices of a Washington representative, Mike Masaoka, was in no small measure responsible for that grant.

We can all be proud of the tribute accorded JACL by Captain Allan Bosworth, who dedicated his very successful book, "America's Concentration Camps" to it. Measure of Progress
It is one measure of the progress of 25 years, when an American attorney of Japanese ancestry argues an amicus curiae brief for the JACL before the highest court of our land. It is equally significant that the National Resources of the Virginia anti-miscegenation law, with neither plaintiff being of Japanese ancestry. There can be little dispute that these Japanese Americans who will benefit from the recent court decision to permit the late year deposit claims recovery, recently, received a just verdict. The early and ongoing voice of the JACL had something to do with the decision even as unofficial results are. It is amusingly pathetic, that our National Headquarters has been contacted by people who want to know if they can still file claims, even for

PSWDC art show exhibits 40 items
LOS ANGELES — The first PSWDC high school art show, which added color and warmth to the convention, was won by Susan Narita, 18, of Long Beach, who entered an oil. She is the daughter of Mrs. Nobie Narita. Cash prize of \$75 and trophy were awarded by Mrs. Mitsu Sonoda, art show chairman, during the convention luncheon. Miss Narita, Long Beach candidate for Miss PSWDC, also entered a ceramic which won honorable mention. Over 40 pieces were entered. Other winners were: 2nd (\$50) — Gail Goto, ELA; 3rd (\$25) — Jane Ishii, Pas.; Honorable Mention — Erika WLA; George Hamano, Selanoco; Seiko Kashihara, ELA; Kikumio Nagao, Ven-Culver; Jim Nakabara, L.A.; Special Awards for ingenuity, originality, creativity) Donna Ikkanada, WLA; Harley Sagar, SFern. The judges were: Carlo Buonora, Kotchi Kawaha, Natsuo Tomimatsu. On the committee: Taya Isono, Haru Nakata, Rose Shiba, Suki Uyeno, Miye Yoshida.

evacuation losses. Perhaps what is significant is that they called JACL. Here in the Pacific Southwest, we have dedicated JACLers who serve our national organization in various capacities. Board members David Miura, Henry Kanegae, Ronnie Shiozaki, Dr. Roy Nishikawa, Roy Uno and Kay Nakagiri are all busy men who make time for JACL, because they believe in it. "Thick and Thin"
No less important are those staff professionals, without whom the organization could not function. It is important to make it a matter of record that the Pacific Citizen has recently been the

tribute to this district. Unfortunately, I continue to hear about the people who don't like "National," or who think we don't need a Washington office, that our representative is overpaid. The people who really don't like us because they don't think national has a program, can be educated by all of us. When the long delayed P. R. Brochure comes out, it will be a useful tool. Those who don't like us, because they disagree with our philosophy about things like civil rights, race relations, will have to join us, and be heard, because I don't think we are going to change that philosophy.

Tribute to Mike
Very little of what I said today and lot of what I haven't said, could not be accomplished without a lot of JACLers and the influence and know how of Mike Masaoka. Since I have assumed the presidency of this organization, I have seen first hand, the extent of JACL-type activities, some local and some not, that go to Washington. Mike is never too busy to at least listen, or reply in writing. No one in JACL can be counted upon for suggested solutions to problems, or replies to communications soliciting counsel, quicker and more reliably than Mike. Like all of us he makes mistakes and gets out of line at times, but let no one make the mistake that Mike does not earn what he's doing for JACL.

Here in PSW we have our National Membership Committee chairman, James Kasahara. His committee is working on a membership kit which, together with the P.R. Brochure, should help us better tell the JACL story today. But, in the final analysis, it is up to each of us to help educate the members we have, and the members we want to get. If you believe in the organization, tell people what the National Program is. If you don't think the Chapter Program is alive, do something about it. Listening passively to criticism, and adding our own gripes is not going to improve our program or increase our membership.

Note of Pride
Finally, I'd like to go back to the note upon which I began: PRIDE. We can, indeed, be proud of the JACL, but I think that we can be prouder. There is still much in our Democracy that is imperfect. Since I assumed the responsibilities of this position, I have often heard the theme that we are becoming a partisan organization. It seems to me that some of our good JACLers confuse non-partisanship with non-activity. In these times of National Human Relations Organization can remain insulated from political activity and be effective. What kind of political activity, then, might be the real issue? Measures intended to combat discrimination in any sphere of our lives are to improve the lot of all Americans through the elimination of barriers, like poverty, housing, lack of opportunity, and the kind of activity I'm talking about. These are not, or perhaps should not be, partisan issues. The JACL long ago committed itself to support of open housing.

Korematsu Decision
Many of you read the editorial in Life Magazine, speaking to the Evacuation and the Korematsu Decision, declaring that process constitutional. It is felt by many that the National Resources of the JACL is the best bet to find a test case, and work to reverse that decision. After saying all this, I realize that our Regional Director Jeffrey Matsui, who has been getting his feet on the ground these past few months has probably been finding the ground shifting under him. Jeff is charged with getting more members, a tough job. The chartering of the Selanoco Chapter and the more recent birth of the San Gabriel Chapter, and possibility of another in the Riverside area, are gratifying and a

MATSUNO SUSHI
313 E. 1st St.
Los Angeles - MA 8-8816
Man Fook Low
Genuine Chinese Food
962 So. San Pedro St.
Los Angeles 15, Calif.
688-9705

LI' Tokki's Finest Chop Suey House
SAN KWOLLOW
Famous Chinese Food
228 E. 1st St. Los Angeles MA 4-2075

Serving the Most Authentic Chinese Food
Golden Dragon Cafe
960-962 N. Hill Street, Los Angeles
—Banquet Rooms Available—
David Lee, Mgr. 626-2039

OUR 30th YEAR PRIME RIB DINNER COMPLETE
NEW SWALLY'S ONLY 325
FUN BANQUET FACILITIES FROM 10 TO 500 —
2611 E. OLYMPIC BLVD. (Opposite Sears Soto Street Store) 268-1291 • Closed Sun.

Dine at Southern California's Most Exquisite Shangri-La Room
tai ping
CANTONESE CUISINE
Private Parties, Cocktails, Banquet Facilities
3888 Crenshaw, Los Angeles AX 3-8243

Bush Garden
SEATTLE 614 Maynard St. PORTLAND 121 SW 4th St. SAN FRANCISCO 598 Bush St.

When in Elko... Stop at the Friendly Stockmen's CAFE - BAR - CASINO
Elko, Nevada

the new moon
Your Host: Wallace Tom
a singularly outstanding restaurant offering the quintessence of Cantonese dining is located at 912 South San Pedro Street, Los Angeles • Phone MAdison 2-1091

Here in California, that principle is in serious jeopardy. Who are the legislators who work for an effective, fair housing law? Who are those who seem more interested in repealing what legislation we have, rather than strengthening it to get something done. We should want to know these answers, not their political affiliation.

Bigotry and Contempt
I have been in a field for 15 years in which the direct result of the social ills of discrimination and prejudice are painfully evident among minority groups. Better housing, education, and employment are not the only answers, but they help.

Even in our penal institutions, we are facing the need for taking a good look at staff attitudes on the racial issue. The President's Crime Commission speaks to the existence of bigotry and contempt for minorities among the police forces of our nation. I recently interviewed an officer in charge of the community relations unit in a police department, who spoke not only to the need to get into certain areas to communicate with people, but to the subtle and not so subtle prejudice encountered in the official hierarchy.

Some of this is a matter, not of race, but mental health. Not long ago, a PSW JACLer talked to me about a National JACL Project, pushing mental health as a vitally needed program. There seems to be some controversy about this subject now in California, the resolution of which I hope does not result in our walking backwards.

Intergroup Relations
I am a firm believer in the idea that laws set an expectation for people, and because they do, they are a necessary prelude to the attack on elimination of

Lem's Cafe
(Kel Rin Low)
REAL CHINESE DISHES
320 E. 1st., Los Angeles
Phone Orders Taken
MA 4-2953

MAN GENERAL LEE'S JEN LOW
475 GIN LING WAY — MA 4-1825
New Chinatown — Los Angeles
Banquet Room for All Occasions

Mitsuba Sushi
226 E. First St.
MA 5-8165
(Closed Tuesdays)
New Owner — Mr. Y. Kawai

Eigiku Cafe
Dine • Dance • Cocktails
SUKIKAWA JAPANESE ROOMS
314 E. First St.
Los Angeles • MA 9-3029

KONO HAWAII
EXOTIC FOODS
TROPICAL DRINKS
ENCHANTING ATMOSPHERE
• KONO ROOM
• LUAU SHACK
• TEA HOUSE
(Sukiyaki)
PH. JE 1-1232
226 SO. HARBOR BLVD.
SANTA ANA, CALIF.
(South of Disneyland)

prejudice. Unhappily we are not going to eliminate prejudice. As a JACLer, I am interested in our organization nationally and locally participating, whenever and wherever possible, in improving communication with other ethnic minorities (Intergroup Relations) if you will, working for laws that eliminate existing discriminations, becoming active in programs that bring impact of private and public resources upon the problems of education and employment.

Several weeks ago, the Sacramento Bee ran an editorial under the heading, "Group Hatred," analyzing the reaction of other minority groups to the Negro's plight. The piece ended with the statement, "It is too bad more organizations do not emulate the JACL, whose members have overcome the rankest sort of discrimination and prejudice. JACL has not turned inward. JACL knows equality and brotherly understanding are indivisible, surely this lesson can be driven home to other nationally and ethnic groups which have reacted irrationally to the Negro's assertion of their right to the American Dream."

I leave it to you to judge whether we are entirely deserving of that description.

Full Commitment
Join the 1000 Club
I do not believe that Japanese

AMERICAN NATIONAL MERCANTILE CO.
949 E. 2nd St., Los Angeles 12 — MA 4-0716

Yamasa Kamaboko
— WAIKIKI BRAND —
Distributors: Yamasa Enterprises
515 Stanford Ave., L.A. Ph. 626-2211

3-oz. Pinch-Bottle
• Won't slip even in wet hands
• Won't clog—easy to sprinkle
• Wide top for spoon measuring
• Can be refilled easily

BRAND NEW PRODUCT
GOLDEN DRAGON
INSTANT SAIMIN
— HAWAIIAN RECIPE —
Most Sanitary Wholesome
Saimin on the Market
Available at Your Favorite Shopping Center
NANKA SEIMEN CO.
Los Angeles

Ask for it!
at your favorite grocer...

for the finest selected JAPANESE FOOD PRODUCTS
DAIMARU Brand - HIME Brand
WEL-PAC Brand - DYNASTY Brand
JAPANFOOD Brand
JAPAN ROSE Rice
BOTAN Calrose Rice - CAPITOL Calrose Rice
CAMELIA Arkansas Rice - LIBERTY Arkansas Rice

JACL NATIONAL HEADQUARTERS
1634 Post Street
San Francisco, California 94115
Please send me copies of AMERICA'S CONCENTRATION CAMPS by Capt. Allan Bosworth at the special price to JACL Members of \$5.00. (Regular price: \$5.95)

NAME: _____ ADDRESS: _____
Enclosed check to "J.A.C.L." for \$ _____
Chapter _____ City _____ State _____ Zip _____

1967 Officers
PROGRESSIVE WESTSIDE JACL
Dr. Rodger Kame, pres.; Dr. Franklin Minami, 1st v.p.; Roy Fujino, 2nd v.p.; George Yoda, 3rd v.p.; Jerry Higashi, 4th v.p.; Roy Komori, treas.; Frieda Inouye, rec. sec.; Darlene Hiroto, cor. sec.; Ed Kakita, del. and legal counsel.

WHITE RIVER VALLEY C.L.
Tom Hikiida, pres.; Jim Onchi (Kent), Joe Nishimoto (Auburn), v.p.; Ishi Suyematsu, treas.; Midge Maebori, rec. sec.; Tedi Kanda, cor. sec.; Willie Maebori, del.; George Kawasaki, 1000 Club.

MAIKO BRAND
For Finest Japanese Food

SOLD AT ALL GROCERY STORES...
American National Mercantile Co.
949 E. 2nd St., Los Angeles 12 — MA 4-0716

Yamasa Kamaboko
— WAIKIKI BRAND —
Distributors: Yamasa Enterprises
515 Stanford Ave., L.A. Ph. 626-2211

3-oz. Pinch-Bottle
• Won't slip even in wet hands
• Won't clog—easy to sprinkle
• Wide top for spoon measuring
• Can be refilled easily

BRAND NEW PRODUCT
GOLDEN DRAGON
INSTANT SAIMIN
— HAWAIIAN RECIPE —
Most Sanitary Wholesome
Saimin on the Market
Available at Your Favorite Shopping Center
NANKA SEIMEN CO.
Los Angeles

Ask for it!
at your favorite grocer...

for the finest selected JAPANESE FOOD PRODUCTS
DAIMARU Brand - HIME Brand
WEL-PAC Brand - DYNASTY Brand
JAPANFOOD Brand
JAPAN ROSE Rice
BOTAN Calrose Rice - CAPITOL Calrose Rice
CAMELIA Arkansas Rice - LIBERTY Arkansas Rice

JACL NATIONAL HEADQUARTERS
1634 Post Street
San Francisco, California 94115
Please send me copies of AMERICA'S CONCENTRATION CAMPS by Capt. Allan Bosworth at the special price to JACL Members of \$5.00. (Regular price: \$5.95)

NAME: _____ ADDRESS: _____
Enclosed check to "J.A.C.L." for \$ _____
Chapter _____ City _____ State _____ Zip _____

1967 Officers
PROGRESSIVE WESTSIDE JACL
Dr. Rodger Kame, pres.; Dr. Franklin Minami, 1st v.p.; Roy Fujino, 2nd v.p.; George Yoda, 3rd v.p.; Jerry Higashi, 4th v.p.; Roy Komori, treas.; Frieda Inouye, rec. sec.; Darlene Hiroto, cor. sec.; Ed Kakita, del. and legal counsel.

WHITE RIVER VALLEY C.L.
Tom Hikiida, pres.; Jim Onchi (Kent), Joe Nishimoto (Auburn), v.p.; Ishi Suyematsu, treas.; Midge Maebori, rec. sec.; Tedi Kanda, cor. sec.; Willie Maebori, del.; George Kawasaki, 1000 Club.

MAIKO BRAND
For Finest Japanese Food

SOLD AT ALL GROCERY STORES...
American National Mercantile Co.
949 E. 2nd St., Los Angeles 12 — MA 4-0716

Yamasa Kamaboko
— WAIKIKI BRAND —
Distributors: Yamasa Enterprises
515 Stanford Ave., L.A. Ph. 626-2211

3-oz. Pinch-Bottle
• Won't slip even in wet hands
• Won't clog—easy to sprinkle
• Wide top for spoon measuring
• Can be refilled easily

BRAND NEW PRODUCT
GOLDEN DRAGON
INSTANT SAIMIN
— HAWAIIAN RECIPE —
Most Sanitary Wholesome
Saimin on the Market
Available at Your Favorite Shopping Center
NANKA SEIMEN CO.
Los Angeles

Ask for it!
at your favorite grocer...

for the finest selected JAPANESE FOOD PRODUCTS
DAIMARU Brand - HIME Brand
WEL-PAC Brand - DYNASTY Brand
JAPANFOOD Brand
JAPAN ROSE Rice
BOTAN Calrose Rice - CAPITOL Calrose Rice
CAMELIA Arkansas Rice - LIBERTY Arkansas Rice

JACL NATIONAL HEADQUARTERS
1634 Post Street
San Francisco, California 94115
Please send me copies of AMERICA'S CONCENTRATION CAMPS by Capt. Allan Bosworth at the special price to JACL Members of \$5.00. (Regular price: \$5.95)

NAME: _____ ADDRESS: _____
Enclosed check to "J.A.C.L." for \$ _____
Chapter _____ City _____ State _____ Zip _____

- Business and -
Professional Guide

Your Business Card placed
in each issue for 26 weeks at
3 lines (Minimum) \$25
Each additional line \$6 per line

Greater Los Angeles

Flower View Gardens
FLORISTS
1801 N. Western Ave. 466-7373
Art to welcome your phone orders
and wire orders for Los Angeles

GEORGE J. INAGAKI REALTY
Inc. Associate
Acreage, Commercial & Industrial
4568 Centinela, Los Angeles 66
397-2161 — 397-2162

KOKUSAI INTERNATIONAL
TRAVEL INC.
240 E. 1st St. (12) MA 6-5284
Jim Higashi, Bus. Mgr.

NISEI EMPLOYMENT AGENCY
In the Heart of Little Tokyo
328 E. 1st St., MA 8-5606
Fred Moriuchi - Mem. Teleflora

NISEI FLORIST
In the Heart of Little Tokyo
328 E. 1st St., MA 8-5606
Fred Moriuchi - Mem. Teleflora

DR. ROY M. NISHIKAWA
Specializing in Contact Lenses
234 S. Oxford (4) - DU 4-7400

YAMATO TRAVEL BUREAU
312 E. 1st St., L.A. (12)
MA 4-6021

San Jose
EDWARD T. MORIOKA, Realtor
Estate Growth - Tax Deductions
565 N. 5th St. — 294-1204

Sacramento
Wakano-Ura
Sukiaki - Chop Sui
Open 11 - 11, Closed Monday
2217 10th St. — 61 8-6231

Reno, Nev.
TOP HAT MOTEL
Shin and Suki Kajimura, Hosts
375 W. 4th St. — 786-1565

Seattle, Wash.
Imperial Lanes
2101 — 22nd Ave., So. EA 5-2525
Nisei Owned — Fred Takagi, Mgr.

Kinomoto Travel Service
Frank Y. Kinomoto
521 Main St., MA 2-1522

Washington, D.C.
MASAOKA - ISHIKAWA
AND ASSOCIATES, INC.
Consultants — Washington Matters
919 18th St., NW (6)

Appliances -
TV - Furniture
TAMURA
And Co., Inc.
The Finest
in Home Furnishings
3420 W. Jefferson Blvd.,
Los Angeles 18
RE 1-7261

Complete Home
Furnishings
Koby's Appliances
15130 S Western Ave.
Gardena, DA 4-6444, FA 1-2123

Penthouse Clothes
3860 Crenshaw Blvd., Suite 230
Los Angeles - AX 2-2511
Gardena - DA 1-6804
1601 Redondo Beach

Shimatsu, Ogata
and Kubota
Mortuary
911 Venice Blvd., Los Angeles
RI 9-1449
—SEIJI 'DUKE' OGATA—
—R. YUTAKA KUBOTA—

TOYO
Myotake
STUDIO
318 East First Street
Los Angeles, Calif.
MA 6-5681

triangle
CAMERA
3445 N. Broadway, Chicago,
Complete Photo Equipment, Supplies
GR 2-1015 JAMES S. OGATA

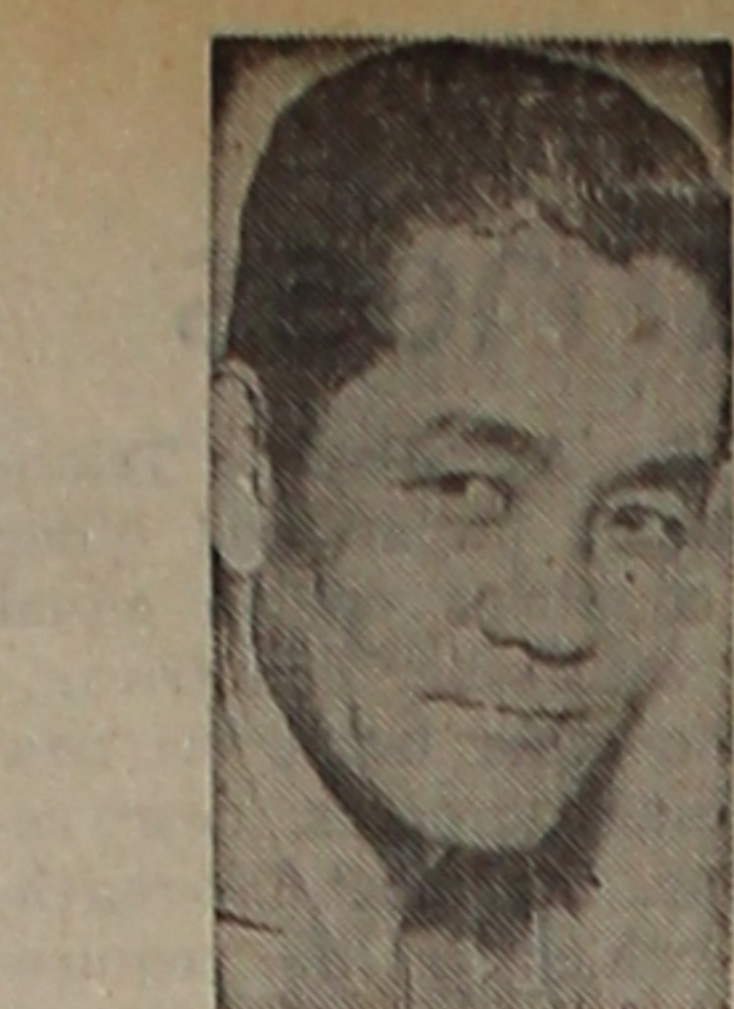
Kinura
PHOTOMART
Cameras and Photographic Supplies
114 N. San Pedro St. MA 3-9868

Ask for ...
'Cherry Brand'
MUTUAL SUPPLY CO.
1090 SANSOME ST., S.F. 11

Peskin & Gerson
GLASS CO.
Plate and Window Glass
Glazing of All Descriptions
MA 2-8243
724 S. San Pedro, Los Angeles

Breaths
HONOLULU

Arashiro, Meihel, 69: Pearl City,
April 19 — w Kame, 5 Karuo,
James M. (Los Angeles), 6 d,
Ginoza, Roy I., 44: Kapahulu,
April 29 — w Yaeoko, 5 Lester, d,
Gail,
Hayase, Toki, 89: Hana, Maui,
May 3 — w Matsushiro, Masao,
Shiroichi, d Yaeoko, Mmes To-
kuno Murakami, Robert Miyaj-
ji, Morris Masunaga,
Ibata, Louise R., 31: Nuanu, Maui,
April 20 — m Moyo, br Sholeih,
Gail,
Inouye, Fusa, 86: Hilo, April 24
— w Tachi, Hideo (Los Angeles),
d Tamayo Murota, Fumie Ya-
mamoto,
Ishibashi, Fusano, 85: April 23 —
w Tami, d Mrs. Thomas K. Tau-
bota,
Ishimaru, Evelyn S. 47: May 4 —
h Rupert, s Paul, d Linda, Van-
na, Sandra,
Kamaga, Kuma, 68: April 22 — s
Herbert, Kazuo, d Betty, Mmes.
Peter Cano, Eki Masuoka,
Kawada, Sue, 88: May 4 — s
Francis, Robert, Kenneth, d
Mrs. William Yamamoto,
Kitagawa, Tsumo, 76: Puunene,
April 24 — h Katsuki, s Masayuki,
Yukito, Chitaku, Sunao (all
of Calif.), Kiyoshi, 3 d,
Koyama, Hiroyuki, Satoru Inoue,
April 24 — s Akira, Kichisaburo, Chiyo-
kichi, Toyokichi, d Tokiko and
Mrs. Tokichi Kondo,
Koyama, Tetsuo, 83: April 30
— h Tawachi, s Hideo, Kiyomu,
Edward, Walter, Donald, d Uriko
Ogata, Helen Shoji, Rose
Koyama,
Kunishi, Kurajiro, 100: Hilo, April
20 — s Sakae, Nobuo, Stanley, d
Kiyoko, Hisano Amabe (Sea-
toe),
Kuramoto, Matsutaro, 86: Hilo,
April 30,
Masuda, Haru, 73: April 24 — s
Masahiro, Kazuo, d Betty, Mmes.
Hiroshi Nobuta, Alice Horie,
Robert Hosoi, Yasuo Mente,
Richard Yamamoto,
Masuda, Seki, 81: April 27 — h
Yabuchi, s Haruo, Ryoso, 5 gc,
Matsuo, Tokutaro, 76: April 20
— w Asayo, s Kazumasa, Stan-
ley, Hideo, Larry, Satoru Inoue,
G. Kimiko Yoshioka, Bessie Okazaki,
Migashi, Manzuichi, 84: Paauhau,
April 29 — w Kimi, s Hisao, 4
gc,
Misawa, Setsuyo, 84: April 24 — s
Akira, James T. Watanabe, d
Mmes. Thomas Kanai, Paul Ta-
kagi, Hotel Kikunura, Fred
Fukunaga, Jerry Shinaka,
Miyagawa, Otogoro, 94: April 22
— s Koichi, d Mrs. Torao Yamamoto,
Mogami, Masayo, 92: April 21 —
d Florence,
Nagasaki, Jiro, 85: Kurltown,
Nagasaki, 81: April 24 — s
Satoshi, Tsugumi, Masami, Kenzo,
d Ruth Kobayashi (Calif.), Fumie
Matsumoto (Calif.), Shimoko
Horihata, Fatsuo Ogata,
Nakama, Sove, 48: Waiehe, April
19 — w Hatsuiko, s Richard, David,
Melvin, d Mmes. Haruo
Meguro, Kame, Nakamura,
Nakamura, Yoshitaro, 67: May 1
— w Umeyo, s James, George,
d Mmes Scott Sakihara, Mike M.
Nakano, (L.A.),
Omoto, Yoshiyuki, 81: Maui, April
20 — s James, Megumi, d Mrs.
Kiichi Hiwatashi,
Oshiro, Arlene J., 21: Aiea, April
25 — m Mr. and Mrs. Yoshio, 2
br, 3 is,
Oshiro, Kame, 79: April 20 — w
Kama, s Seiko, Atsushi, Masuo,
Suzumi, Yoshinobu, d Hatsuko
Taba,
Sakamoto, Tsuru, 89: April 26 —
s Kiso, Kazumi Ishitani (Calif.),
d Kimi, Chie, and Mrs. Senjiro
Miyamoto,
Shinshiro, Kame, 77: April 30 —
h Kameji, s James, Haruo,
Masanobu, d Hideo, Sakima,
Kiyoko Oshiro, Beatrice Izu,
Adeline Halley,
Suzuki, Tomyo, 67: Hilo, April
20 — h Shuntaro, s Masao, Shigeo,
Michio, d Hanako Oda, Jane Sa-
mura, Elsie Suzuki, Fumiko
Henry,
Taba, Yamato, 85: Kekaha, May
1 — w Noriyuki, Noriyoshi, Norio,
Arthur, d Fusa Hayashi, Aiko
Maeda,
Takahashi, Kiku, 75: Hilo, April
26 — s Thomas, P., Raymond, d
Haruko, Shigeno, Yoshie Aono,
Tanaka, Shigeno, 68: April 22 —
s Ronald, Hiroshi, Mitsuru,
Taniuchi, Tadamichi, Naomi,
Mmes. Shigeo Tamahana, Heinz
Wutscher, Fuyoko Matsumura,
Teruya, Alfred S., 52: April 22 —
d Grace, d Sallie, Carol, Cath-
erine, June,
Tomishima, Shige, 82: April 21 —
s Namami, James, Susumi, d
Mmes. Tomoyo Katsuko, Kiyoko
Inasaki, Paul Osumi, Raymond
Taga,
Uemura, Mrs. Kanevo, 76: Kekaha,
April 29 — d Hisae Yama-
saki, 3 gc,
Yamashita, Shige, 93: Kula, Maui,
May 2 — s Kenishi, d Kumevo
Hira, Tamayo Ueyeda, Kiyoko
Fujiiwara,
Yamauchi, Junichi, 45: Wahiawa,
April 30 — m Toki, 7 br (Floyd
in L.A.),
Yokomura, Torachii, 71: May 3
— w Ota, s George, James, d
Mmes. George Tomita, Sam Ni-
shimura,



State Legislature ...

Honolulu
A bill to raise tuition for
out-of-state students at the
Univ. of Hawaii was given final
passage in the State Senate
April 29. The bill provides
that non-resident tuition shall
be not less than twice that
charged to resident students.
It applies only to undergradu-
ates. "Hawaii Pono!" is
about to become the official
scout of the State of Hawaii.
A bill designating it as the
official State song was passed
by the State Senate April 27.
It already been passed by the
House.

Twenty-three Nisei have
been confirmed by the State
Senate for boards and com-
missions. They are Shoichi
Okumoto, board of account-
ants; Kenichi Nakata, board
of registration, Maui County;
Masashi Murakami, boxing
commission; Ronald Y. Kondo,
board of paroles and pardons;
Garat Hokada, board of ac-
countants; Paul F. Hirashima,
advisory committee on flow-
ers and foliage; Mark Y. Mu-
rakami, civil service commis-
sion; Charles K. Imamoto, civil
service commission; Yoshio
Nakashima, civil service com-
mission; Shizu Murashige,
board of registration for Puna,
Hilo and Hamakua; Yoso Ryu-
saki, board of registration for
Kau, Kona and Kohala; Thom-
as M. Uyetake, contractors li-
cense board; Gilbert Hayashi,
tax appeal court; Harvey K.
Ishido, board of taxation re-
view; Joseph A. Tokita, board
of taxation review; Hiromu
Yamanaka, real estate com-
mission; Hirotschi Yamamoto,
board of registration for Oahu;
Fred S. Fukushima, Hawaii
Employment Relations Board;
Claude T. Yamamoto, com-
mission on children and youth;
Stanley Y. Mukai, library ad-
visory commission; Jitsuo Ma-
tsubara and Teruo Uchimura,
Maui County's library ad-
visory commission; and Mrs.
Alice K. Soderant, library ad-
visory commission, County of
Hawaii. . . The State Senate
confirmed more Nisei to vari-
ous boards and commissions
over the Apr. 29-30 weekend.
They were Hiroshi Tanaka,
Board of Land and Natural
Resources; Dr. Roy S. Naga-
kura, Board of Veterinary Ex-
aminers; Charles S. Ota,
Board of Regents, Univ. of Ha-
waii; and Sadao Kawamoto,
Board of Barbers.

Louis H. Matsukado, chief phar-
macist at Hilo Hospital, has been
selected by the Hawaii Pharma-
ceutical Assn. as the 1967 recipi-
ent of the A. H. Robins "Bowl of
Hygeia" for outstanding com-
munity service. Walter Hi-
ronaka has been installed presi-
dent of the Hawaii Pharmaceuti-
cal Assn. The group held its 10th
annual convention April 19 at the
Royal Hawaiian Hotel.
Mr. and Mrs. Cornello T. Ibarra
of Kaneohe have possibly the
largest family in Hawaii, if not
in the world. They have 29 chil-
dren, including three sets of
twins — ranging in age from 39
to 2 Mrs. Ibarra has had 30 con-
firmations, which may be a
world's record. The couple has
lost four children.
Sugar production at all Kawaii's
great plantations is down sharply
from last year because of the
weather. Not one of the island's
plantations has approached pro-
duction figures for the same
period in 1966, and a larger drop
is expected after this past week's
heavy rains. At this date last
year, local sugar producers had
ground 36,145 tons of 96-degree
sugar. This year's total so far is
only 29,506 tons.
Maui householders are going to
pay 9.2 per cent more for their
electricity beginning this month.
This is roughly \$1.50 a month for
the average customer. This is the
first rate change at Maui Electric
since 1949. One of the reasons for
the rate increase is to finance the
purchase of Lahaina Light and
Power Co.

HONOLULU — No passenger
car larger than a compact
would be allowed on Hawaii
highways and streets if a bill
introduced by State Sen. Sa-
kai Takahashi becomes law.

Three Generations of
Experience ...
FUKUI
Mortuary, Inc.
707 E. TEMPLE ST.
LOS ANGELES, 90012
MA 6-5924
Solchi Fukui, President
James Nakagawa, Manager
Nobuo Osumi, Counselor

FREE!
8TH ANNUAL
Mother's Day
ROSE
SHOW
SATURDAY, MAY 13
SUNDAY, MAY 14
SEE more than a thousand cut roses,
over a hundred dramatic rose arrangements
submitted by individuals in this area, (there's
still time to enter your own!). And, of course,
you'll want to spend hours in the Garden
itself — where more than four thousand rose
bushes in over four hundred varieties are
now in full bloom. If you love roses — and
who doesn't? — this is the show for you.

LOCATED AT
ROSE HILLS MEMORIAL PARK
3900 Workman Mill Road - Whittier, California
Telephone: OXford 9-0921
AMPLE FREE PARKING • NO ADMISSION CHARGE

Aloha from Hawaii

by Richard Gima

A 50-story building — twice as
tall as the tallest building in
Honolulu today — may be built
in Waikiki. It was learned April
25 that the Maroon Estate is ne-
gotiating with Dillingham Corp.
to build the huge structure on the
estate's seven-acre tract bounded
by the Ala Wai, Kalakua Ave.,
Hobron Lane and John Ena Rd.
It would include a parking gar-
age, shops and restaurants, more
than 800 hotel rooms and more
than 300 apartment units. . . A
twin-towered hotel of 23 and 20
stories is planned as the first major
project in the Liliuokalani
Trust's development of its 18
acres in Waikiki. In an application
for the permit filed with the City,
the developer was listed as John
D. Andrews, a Mainland busi-
nessman. The plan calls for 603-
a hotel with an estimated cost of
\$9 million. Mr. Tom Omeri, at-
torney for the developer, said
April 24 that the adhering class-
ification of the trust's master plan,
which he said seeks to create a
well-lighted and park-like atmo-
sphere. The hotel will take up
the entire frontage on Kalakaua
between Ohua St. and Paopao
Ave. This is the block Diamond
Head of the Foster Tower Hotel.

'Must see' spot . . .
To those of you on the Main-
land visiting Hawaii, there is
one place which is a "must"
for you to see, it's the Polyn-
esian Cultural Center in Laie,
Windward Oahu. Let me tell
you in all truthfulness, your
visit to the Islands may not,
cannot, be called complete un-
less you visit the center. Its
four-nights-a-week program
(Monday, Wednesday, Friday
and Saturday), is pardon the
clique, just fabulous as well
as out of this world. . . Sen.
Daniel K. Inouye will address
the Chamber of Commerce of
Hawaii at its quarterly mem-
bership meeting June 1 at the
Royal Hawaiian Hotel. Titled
"The Summit," Inouye's ad-
dress will deal with the U.S.
in Vietnam.
Stanley Yoshida, formerly with
Certified Grocers Corp., has been
named v.p. in charge of sales
for R.C. Cola-Nehi Beverages of
Oahu. From the R.C. Cola-Nehi
company has been promoted as a
senior v.p. of Hawaii National
Bank. Inouye started his bank-
ing career as a messenger boy
years ago. The new \$26
million Shriners Hospital for
Crippled Children across from
Central Union Church was dedi-
cated April 30. The wood
reception desk to its unique treat-
ment plan, everything has been
done to assure silling children the
most pleasant surroundings
and medical care. . . Two
Honolulu pediatricians have been
elected to fellowship in the
American Academy of Pediatrics.
They are Dr. Frances F. Naka-
mura of 1350 S. King St. and Dr.
Raymond J.C. Wong of 1507 So.
King St.

Stoney Himoto has been named
chairman of the special gifts di-
vision of Kuakini Hospital's mod-
ernization and development fund
committee. The \$100,000 fund of
American Savings & Loan Assn.
Team captains under his super-
vision are Ted T. Morioka, Stan-
ley Sugita, Francis Wong and
Wakayama, Takao Yamauchi and
Ernest Furukawa.
Howard I. Takenaka was re-
elected pres., and Peter T. Hirata
was re-elected v.p. of the Hawaii
Credit Union League at the re-
cent meeting on Maui. . . Richard
Yamada, former controller of
County of Hawaii, has been named
president of the Hawaii Underwriters,
which has been appointed treasurer of both firms.
Samuel S. Wong is the new man-
aging director of the Hawaii
branch. He succeeds Earl S. Hi-
rotsu, who becomes an adminis-
trative assistant to the Hawaii
branch. The Hawaii Underwriters
has been named to the board of
directors of American Pacific
Group, Inc. Torioze, a native of
Hilo is president of City Pharm-
acies, Inc.

A House concurrent resolu-
tion introduced April 19 in the
State House calls for Gov.
John A. Burns to study the
feasibility of establishing a law
school in Hawaii. The resolu-
tion, introduced by Rep. Rob-
ert C. Oshiro, asks that the
report be completed before the
1968 budget session of the
legislature. The resolution
states, "A law school here will
enable our young people to
gain a legal education without
the considerable cost of ac-
quiring such education at an
out-of-state institution".

The Kaumakani Theatre on
Kauai was destroyed April 25 by
a fire which began shortly before
midnight. The wooden structure
was built about 1946 when Kauai
milk village was started. It
had not been in use recently. . .
A Big Island plantation worker
was killed April 26 when a con-
crete mixer truck, owned by
injury himself. Takeji Suzuki, 57,
was working in the garage on a
tractor equipped with a heavy
boom. The boom dashed him and
he tumbled backwards onto the
garage floor. He died in Kohala
Hospital later. . . The Hilo fire
rescue squad on Apr. 26 checked
deep crevices in and around the
1960 Kapoho lava flow for an 88-
year-old man missing since Apr.
21. Jintaro Tanaka of Kapoho ap-
parently wandered away from a
pickup truck as his son, Shiyoki,
picked orchids Sunday. . . Wil-
lam T. Hironaka, assistant man-
ager of the National Mortgage &
Finance Co. Ltd., has been elected

31 HOTEL-15,000 APARTMENTS
IN LOS ANGELES AND HOLLYWOOD
Unlimited accommodations in downtown areas. Starting
rates from \$2.50 through \$10.00. Fine accommodations at
the Cloud and Catalina Motels, Teris, Stillwell, Clark
and Figueroa Hotels. The Harvey Hollywood and Padre Hotels
serve the film industry. Downtown economy includes the
Victor and Cecil Hotels. 15,000 apartments are available
throughout Los Angeles and Hollywood at all prices.
Weekly and Monthly Rates Available
For reservations or brochures, write:
Consolidated Hotels, Department "J"
1301 Wilshire Blvd., Los Angeles 17, California

ALPHA TO ALL ISLANDERS AND NISEI
See TED ASATO for Special Discounts
on all New and Used Cars and Trucks
Harry Mann Chevrolet
5735 So. Crenshaw Blvd.
Los Angeles 294-6101
Hovey-Dallas Chevrolet
15600 S. Western Ave., Gardena, Calif. DA 3-0300
FRED A. HAYASHI
Res. DA 7-9942
HOME OF THE NISEI BOWLERS
HOLIDAY BOWL
3730 CRENSHAW BLVD., L.A. 15 AX 5-4325
HOLIDAY STARDUST BOWL
1035 W. WALNUT PARKWAY, WEST COVINA

president of the Hawaii Fire Rat-
ing Bureau. . . Walchi
Hakusui, v.p. and business office
manager of the head office of
Central Pacific Bank, has been
promoted to senior v.p. in charge
of loan investment. He succeeds
Kiyoshi Sawada, who is resign-
ing to become associated again
with the Sumitomo Bank in Ja-
pan. Warren Hira, a v.p. of Cen-
tral Pacific, will take over Haku-
sui's president position. . .
Charles K. Hamane has been
named v.p. in charge of Ameri-
fac Properties, subsidiary of Am-
fact, Inc. He will coordinate with
other builders, developers and
contractors in joint venture trans-
actions and will maintain liaison
with governmental and commu-
nity organizations. . . Richard W.
F. Lee has been named assistant
treasurer of Honolulu Gas Co.
He joined the firm in 1938 as a
clerk in the billing dept.

Carol Dol, daughter of Mrs. Dol
of 3123 Castle St., won the 1967
All-Hawaii Amateur Song Contest
April 16 at the Nippon Theatre. It
was sponsored by the Honolulu
Japanese Jaces as part of the
15th annual Cherry Blossom Kes-
sels and radio station KZOO.
Second place went to Sue Ota,
daughter of Mr. and Mrs. Ota,
2514 S. Beretania St. Miss Dol
won a free trip to Japan and a
color TV set. . . Shirley Takitani
of 2931 Kalia Rd., Honolulu, won
the popularity award and a
free trip to Las Vegas. . . Mrs.
Betty Farrington, past president
of Miroune, Mrs. Haruo Murakami
of 2514 S. Beretania St. Miss Dol
won a free trip to Japan and a
color TV set. . . Shirley Takitani
of 2931 Kalia Rd., Honolulu, won
the popularity award and a
free trip to Las Vegas. . . Mrs.
Betty Farrington, past president
of the National Federation of Repub-
lican Women. The four-day con-
vention will open May 3 in Wash-
ington, D.C.

Maui County has some 3,060
substandard housing units, Robert
Oshiro told the bd. of supervisors.
Oshiro told the bd. of supervisors,
to hire three inspectors to bring
second phase work to the federal
housing code. He said periodic
inspection of substandard homes is
one of the federal government
requirements. He said the inspec-
tion in many urban renewal pro-
grams.
Maunaloa College's application
for accreditation by the Western
Assn. of Schools and Colleges
was evaluated recently by a
team headed by Dr. Clifford
Rover, former president of
Maunaloa. . . Ka Leo O
Hawaii, Univ. of Hawaii student
newspaper, received a first
honors rating certificate from
the Associated Collegiate Press.
Issues of Ka Leo received 3,820
out of a possible 4,000 points in
coverage, content, make-up and pho-
tography. . . The new \$2.6 mil-
lion Shriners Hospital for Crip-
pled Children on Punaohu Rd.
will be dedicated April 30. The
new structure doubles the 30-bed
capacity of the old building under
construction for two years.

Traffic death . . .
A passenger in a small for-
eign sedan was fatally injured
when the car hit a guard rail
and tree near Waiialua, Oahu,
on the morning of April 30.
The victim was George P.
Kauhi, 30, of 4163 Keaka Dr.,
Alilamano, a roofer for Quality
Roofing Co. . . A 5-year-old
Kalihii boy was electrocuted
April 29 when he fell across
three badly frayed electric
wires while playing on the
roof of a house at 1814 Demo-
crat St. He was Brian Yahiuku,
son of Merle Yahiuku of 1816
Democrat St. Children with
whom he was playing said
Brian climbed onto the roof
after he saw an older boy up
there looking for a tennis ball.
Brad K. Kumabe, son of Mr.
and Mrs. Herbert T. Kumabe of
723 A.1. Hausten St., has won an
appointment to the next class at
the Air Force Academy at Colo-
rado Springs. This was announced
April 23 by Sen. Daniel K. Inouye
who explained the Kaimuki High
School senior received his prin-
cipal appointment after his other
nominees were disqualified for
various reasons. Kumabe's bro-
ther, Bert, another Inouye nomi-
nee, is a member of the class of
1968 at the University of Idaho.
Twelve Aloha Council Scouts will
make up the contingent attending
the 12th World Jamboree at Far-
mington State Park, Idaho, Aug.
9. The group will be meeting for
training periodically until de-
parture late in July. The 12 are
Robert N. Utter, Keith Douglas,
Young, Clemson Lam, Richard Ki-
mura, Mark Kameo, Erik M. Han-
sen, Theodore Miyamoto, Douglas
Stewart, Herbert T. Kumabe, of
Gordon, Hass and William L.
Robertson. . . Mike Eng, Paul
Janto, Corey Park and Bob Pey-
ton have been elected senior class
senators to the Associated Stu-
dents Univ. of Hawaii for the
coming school year. Elected dele-
gates to the National Students
Association are Gordon, Park and
Gary Toyama.
K. J. Luke, president of Hawaii
National Bank, was installed
president of the new president
of the Hawaii Bankers Assn. at
the group's annual dinner at Ka-

Ronald Noboru Matsuwaki were
married April 15 at the Church of
the Crossroads. The bride is the
daughter of Mr. and Mrs. Koichi
Nakamoto, and the bridegroom's
parents are Mr. and Mrs. Yoshi-
katsu Matsuwaki of Koloa, Kauai.
Mrs. Matsuwaki is a graduate of
the Univ. of Hawaii, and her hus-
band is a graduate of Oregon State.
Deaths . . .
Mrs. Hannah Gulick Suehiro,
90, retired principal of Nuanuu
Day School, died April 27 at
her home at 3746 Pukalani Pl.
Mrs. Suehiro was born in Ja-
pan and was educated at
American mission schools
there. She taught piano at
Kobe College for Women, later
coming to Hawaii and teach-
ing in public schools on the
Big Island. She came to Hono-
lulu in 1923 and founded the
Nuanuu Day School. She re-
tired as principal in 1953. She
is survived by a daughter,
Amy. . . Harry Yukio Shima-
bukuro, 29, was killed April 30
in Salem, Ore., in a traffic
accident. A native of Spreckel-
sville, Maui, he was a clerk
for a Salem trucking company.
He is survived by his wife,
Ellen; two sons and two
daughters.
Jubo Sakai, 77, of 2251-A Palolo
Ave. died Mar. 7 in Japan. He
was born in Kumamoto. . . Mrs.
Kiyoko Nishibayashi, 81, of 628-E
Waipua Lane died April 13. She
was a native of Hiroshima. . . Solchi
Sasaki, 89, of 404 North Kuakini
St. died April 15. At one time he
was manager of the Outrigger Canoe
Club. He is survived by his
wife, Mitsune; two sons, Jack
and Richard; and daughter, Mrs. Har-
old Yamamoto Fujimoto, 72, of Lualaba,
Kauai, died April 14. She was
a native of Hawaii. . . Yochi Im-
ano, 77, of Waimane Village, Laha-
na, died April 17 at Maui Memorial
Hospital. He was a retired Pioneer
Mill Co. construction worker. He
was born in Hiroshima. . . Gus-
bert Onaka, 35, of Holoaloa, Big
Island, died April 17. He was a
veteran of the Korean War and
was a coffee farmer and rancher.
He is survived by his wife, Matsuko;
two sons, Kelsey and Bert;
and a daughter, Renee. . . Yohel
Nakamura, 84, of Capt. Cook, Ha-
waii, died April 17 at Kona Hospi-
tal, Naka-mura, a retired farmer,
was a native of Kumamoto.
Dr. Benjamin L. Li, 63, of 1941
Malikii St. died April 17 at his
home. He had practiced medicine
in Honolulu since 1932. He is sur-
vived by his wife, Helena; a
daughter, Mrs. Robert R. Lum of
San Francisco; and a son, Ronald
Lum. Mrs. Mitsue Takano, 79,
of 94-20 Pupukuli St., Waihanu, died
April 18. Mrs. Sakai Fujitani,
80, of 1112-A Piikoi St. died April
19.

House subcommittee on
May 2 killed a bill to airlift
all classes of mail between the
Mainland and Hawaii, UPI re-
ported. A spokesman for the
Post Office and Civil Service
Committee said the panel felt
such service was too costly for
now but might be practical
within three years, when jum-
bo jets are expected to reduce
the cost of air transportation.

Rep. Spark Matsunaga, who
introduced the bill, said he
would file a similar measure
in the next session of Congress
to "remind" legislators of the
Island State's postal needs.
Matsunaga had testified in
April that slow postal service
was placing Hawaii's citizens
"outside the mainstream of
national life".

Paul Y. Ishimoto has at-
tained the status of a 45-year
veteran in the Boy Scouts of
America. He was honored at a
breakfast meeting May 9.
Hawaiian entertainer Don
Ho, it's reported, scooped up
\$124,500 on his recent West
Coast and Canadian concert
tour. He played seven one-
night engagements from Cana-
da to San Diego.
Sports Scene . . .
Bro. Robert L. Bader, 54, former
athletic director at St. Louis High
School, died April 19 at St. An-
thony School in Wailuku, Maui.
Death followed surgery for a se-
vere stomach ailment. He had
taught in Marianist high schools
on Maui and Oahu for 22 years.
Between 1947 and 1952 he was di-
rector of athletics at St. Louis.
. . . Masa Kaya will defend his
Navy-Marine Open golf champi-
onship this year. Kaya, who turned
pro in early April, won the
event as an amateur last year,
beating an all-star pro field in-
cluding Ted Makalena. This year's
event will be held May 4-7 at the
Pearl Harbor course. He'll be el-
igible to accept cash in the \$1,500
event. Among the pros who have
indicated they'll compete are Jim-
my Ukauike, Chuck Jones, Jerry
Johnston and host pro Rich Mer-
kel.

Society Pad . . .
Patricia Tsutae Morimoto and
Paul Itaru Kaneda were married
April 9 at Honpa Hongwanji Mis-
sion. Bride is the daughter of
Mr. and Mrs. Richard T. Morimoto.
Parents of the bridegroom are Mr.
and Mrs. Minoru Kaneda. The
bride is an assistant supervisor of
the Records Section, Kaiser Foun-
dation Health Plan. Her husband
is assistant loan manager of Be-
nicial Finance Co. . . Lanette Ki-
miko Iwanaga and Gary Kiyoshi
Yoshioka were married April 15
at Honpa Hongwanji Mission. The
bride is the daughter of Mr. and
Mrs. Harry Y. Iwanaga, and the
bridegroom's parents are Mr. and
Mrs. Richard S. Yoshioka. Both
are graduates of Honolulu Busi-
ness College. . . Lorna Michie Haruki
and Alvin Yoshitaro Sakki were
married April 15 at Nuanuu Bap-
tist Church. Parents of the bride
are Mr. and Mrs. Umeki Haruki
and the bridegroom's parents are
Yasuo Sakki and the late Mrs.
Sakki. Lorna is the daughter of
Hawaii and her husband, who
also attended the university, is
with the Air Force at Travis AFB,
Beverly Ann Nakamoto and

Support Our Advertisers

Stocks and Bonds On
ALL EXCHANGES
Fred Funakoshi
Reports and Studies
Available on Request
RUTNER, JACKSON & GRAY INC.
Member: New York Stock Exchange
711 W. 7TH ST., LOS ANGELES
MA 0-1080
Res. Phone: AN 1-4422

MARUKYO
Kimono Store
101 Weller St.
Los Angeles
MA 8-5902

DON K. NAKAJIMA, INC.
REALTOR
14715 So. Western Ave.
Gardena, Calif.
323-7545 321-3386

GARDENA — AN ENJOYABLE JAPANESE COMMUNITY
Poinsettia Gardens Motel Apts.
13921 So. Normandie Ave. Phone: 324-5883
68-Units - Heated Pool - Air Conditioning - GE Kitchens - Television
OWNED AND OPERATED BY KOBATA BROS.

Empire Printing Co.
COMMERCIAL and SOCIAL PRINTING
English and Japanese
114 Weller St., Los Angeles 12 MA 8-7060

</

Ye Editor's Desk

PSWDC CONVENTION

Manliness does not prevail at this moment in trying to hold back a tear or two in acknowledging the overwhelming response from my many friends who are making it possible for me to join the JACL-Japan Tour...

That something was afoot by the so-called "Harry Honda Japan Tour" committee was innocently spilled by Crossroads editor Wimp Hiroto in his column...

But there were other significant incidents at the PSWDC Convention, which call for comment.

What looked like a mistake turned out to be a blessing. The 1000 Club chapter chairmen in the district held a caucus with National 1000 Club chairman Dr. Frank Sakamoto while the district council was in session...

Constant worrying, losing sleep and edgy nerves must be ingredients for a successful venture such as the PSWDC convention, despite the many planning meetings which precede such an undertaking.

Aki Ono's brainstorm—the first PSWDC high school art show—gave the JACL convention a new lift. It projected the Sansei to a new plateau,

making the elder Nisei beam with pride. So did the lovely voice of Nancy Fujihira, member of the Venice-Culver JACL sponsored Charmes, who thrilled all in a most pleasing manner...

We also acknowledge the continental breakfast in the meeting room preceding the Sunday business session provided by the host Venice-Culver chapter.

Our Aloha from Hawaii editor Richard Gima, who must from necessity be brief in covering the personalities and events of the week, related the passing of 92-year-old Judge Delbert E. Metzger...

As federal judge from 1939 to 1952 in Hawaii, Metzger might have prevented the Evacuation in 1942 were he in California. He was that kind of judge.

During World War II, Metzger was willing to take on a military government that had ruled too sternly and too long in relation to the diminished energy threat. He fined Lt. Gen. Richardson, Army commanding general in Hawaii, \$5,000 for contempt of court. The U.S. Supreme Court upheld Metzger.

The judge also declared a decree restricting foreign language schools to be invalid. Metzger had a grand jury list thrown out because it didn't fairly reflect the racial makeup in Hawaii. He also held that because a man had served in the Japanese Army did not mean he had to forfeit his American citizenship.

A confirmed battler of constitutional rights, the Kansan-born Democrat who came to Hawaii in 1899 and organizing the Democratic party a year later on Kauai, Metzger kept his integrity in the early 1950s when the nation was preoccupied with the excesses of McCarthyism.

Noted the Honolulu Advertiser in its editorial last week: "Whatever one's views on that era, there is no question he was right in ruling that ball 'was never intended as a punishment for defendants before trial.'" The "Hawaii Seven" were eventually acquitted.

Sakura Script: by Jim Henry

Ugly Americans?

Sankei Kim is quoted: "The U.S. considers non-communist Asian countries only as her anti-Red front bases. She treats Korea from the point of strategy, too. This is clearly revealed by the proportion of her military and economic aid to Korea."

Pointing out that the U.S. Vietnam policy is "no exception", the weekly further quotes Aichi Prof. Tokumatsu Sakamoto: "Do Americans know that Vietnamese are calling them insane?"

4-Americans have "no sense of ideas." In other words, Americans can understand ideas "only on the basis of yes-or-no, democracy or communism and enemy or friend". He said: "Therefore they cannot understand that what is moving Asia is not communism but simple emotions and ideas of racial independence."

5-Americans are "salesmen of idealism." "Idealism is always confronted with contradictions," says the weekly. "But led by goodwill, Americans tend to tackle such contradictions by force. Therefore they have no time to think of others... Each American is selling American goodwill and idealism."

6-Americans "consider prosperity above all else." Adds Prof. Kunihiro: "Put yourself in the position of those who are forced to buy it."

7-Americans "consider self-centered." Korean critic



Our Queen for All Seasons

Letters from Our Readers

Mother's Day 1967

Editor: There is a remarkable Issei woman living in California. She is the mother of ten Nisei children; grandmother of 19 Sansei grandchildren, and great grandmother of five Yonsei children.

She works in the garden of her home, raising flowers and vegetables. She takes the beautiful flowers she raises with her on regular trips to the final resting place of her deceased spouse in Oakland. He, too, loved his garden and the beauty of nature. He passed away just one year short of celebrating their golden wedding anniversary.

Among the vegetables she raises are Italian beans and kohlrabi which she makes into "Otsukemono." Her children who visit her from the East from time to time, would rather sit in her kitchen to enjoy Oshazuke with her kohlrabi than dine in the best restaurants in San Francisco.

This Issei woman, like thousands of other Japanese women, came to the United States as a Japanese picture bride over 60 years ago, entering the U.S. via Seattle, before settling in California. Who can ever forget the rollicking laughter of her children at the time she reminisciently told them that when her husband (and their father) came up to Seattle to claim her, he wanted to buy her a pair of women's shoes. She said, no, she didn't need any as she already had a pair—showing him the pair of oversized man's clothoppers, given to her by a sailor.

As the years passed by this Issei woman met and overcame, with amazing fortitude, the many problems, she had to face as a mother of 10 children. Through all the hardships, the heartaches, and pains, she has never lost her sense of balance. This probably is the key to her success in life. She kept everything on an even keel. She loved her family and they loved her.

In addition, she has been a friend to many, young and old alike. She is now in her

eighties—getting on in years, but still young in spirit and doing what she likes best to do. She goes to church to worship and she visits with her friends. She has an abiding faith in God that He will take care of everything. She is at peace with herself and feels grateful for each day.

This Issei has always had a great desire for learning, thirsting after knowledge of many things. She still goes to public school each day to learn to read and write better. When she is praised for her perseverance in attending classes, she is embarrassed. With a twinkle in her eyes and a quick laugh which lights up her whole face, she says she forgets more than she is learning.

After she became an American citizen (Walter-McCarran Act) she intensified her educational efforts more and more. She challenges her grandson who is in an Ohio college by writing letters to him in English. She even suggests that it would be nice if he would learn some Japanese and write to her in simple Japanese.

Like so many Issei pioneer women who had to work hard, by the sweat of her brow she eked out a livelihood and taught her children by living example, all about the finer virtues of life—honesty, respect, duty, honor, thrift, courtesy, and kindness. She sent her four sons to serve in the U.S. Army during WWII, while she and her husband remained in a relocation camp. She said that for them to serve was to be a responsible male U.S. Citizen. She admonished her sons to serve with honor.

This and other thoughts came to me as I read Jeffrey Matsui's comments about the Issei in his PC column (April 21). The Issei left a great heritage to the Nisei and we are forever grateful to them. The Issei pioneer woman about whom I have written is my mother.

JOHN Y. YOSHINO 11409 Lund Pl Kensington, Md.

In bad taste

Editor: I was disappointed to read Tamotsu Murayama's "Tokyo Topics" on the subject of Editor Kay Nishida in the May 5 PC.

In my opinion such statements are conclusions or observations by Mr. Murayama which serve no useful or positive purpose. For the Pacific Citizen to pass on this matter reflects poor editorial judgment.

EDISON UNO 515 Ninth Ave. San Francisco, Calif.

offering such stories "to stir up anti-American feelings," but "to help Americans understand Asia better."

Still, it concludes with the childish nonsensical comments to writer Shotaro Yasuoka who not long ago wrote a book titled, "Sentimental Journey Around the United States".

"I understand very little about the Vietnam war," he says. "But isn't the U.S. wrong in this case, too? The U.S. is a country with the history of wiping out all the American Indians. (There are more American Indians living today than 100 years ago—Editor's Note.) Perhaps, being confused with their frontier spirit, they are ready to wipe out all the Viet Cong people. But things won't go as well as they wish. It will be a grave matter if they misconstrue the Vietnam war as a western."

And still the controversy rages! JACL Credit Union Serves All Members

In the Hopper: Harold Gordon Back in Harness

Chicago After a "sabbatical" of several years, I have the mixed feelings of one who goes on an extended vacation—it is good to get away—and good to be back.

In the past few years, I have been confining my activities JACL-wise to occasional bull-sessions with Shig re the research project, and with Kumeo on problems which arose during his term as National President—also an occasional stint as M.C. at a local function.

It is good to be in the swim again and have the memos come piling across my desk—some dealing with old familiar problems—but with so large a volume dealing with new ones, that I wonder at the occasional suggestion that JACL should confine itself to socials and picnics. Nature of these memos will be the subject of a future column.

In this one I shall comment briefly on the manner in which the 1965 amendment to the Immigration Law has been working in practice.

15 YEARS LATER

I vividly remember the soul-searching at the time of the passage of the 1952 Act. Our friends in the Leadership Conference, as well as large numbers of JACLers were disturbed because JACL, as a matter of national policy, did not actively oppose the passage of the act which retained the obnoxious national origins quotas, but instead supported and aided in the passage of the law because of the material benefit to persons of Japanese ancestry.

The lapse of 13 years, from 1952 to 1965, before the next important changes in the Immigration Law were adopted (including the abolition of the national origins quotas)—the heart-warming spectacle of the naturalization, in their declining years, of thousands of Issei—and the large numbers of immigrants from Japan, despite the minuscule quota of 185, vindicated the "bird in the hand" policy of 1952.

Just as the 1952 Act left much to be desired, the major amendment of 1965 created new problems which require remedial legislation.

On the plus side are the liberal provisions for pooling of unused quotas, so that every country can share on the same basis; the preferences created for the re-uniting of families; and elimina-

tion of the Asia-Pacific Triangle, placing Japan and other Asian countries on an equal footing with other countries.

On the other hand the new amendment creates new restrictions, the most far-reaching of which is the requirement that prospective immigrants with no close relatives in the U.S. have a profession or skill which is in short supply in this country and that each applicant obtain an individual "labor clearance" from the Department of Labor, to that effect.

Under the prior law, if the Secretary of Labor did not affirmatively certify the labor market was over-supplied, immigration was not affected. An official of the Department of Labor put it this way: "Under the old system, the door was open unless the Secretary of Labor chose to close it. Under the new system, the door is closed unless the Secretary decides to open it."

The hardest hit, as the operation the amendment appears to be developing are the immigrants' (like my parents or those of yours who came over prior to, and after, the turn of the century) who, while they might have sufficient background or native intelligence to make good citizens and rear families of good citizens, do not have a profession or skill which is short supply. Under the present act this type of immigrant will be virtually eliminated.

Other inequities have cropped up which evidently were overlooked by the framers of the amendment; e.g. there is at present no preference status for parents of resident aliens; natives of the western hemisphere have not only been put under a quota limitation (120,000) for the first time, but are actually discriminated against in certain respects to the detriment of our "good neighbor" policy.

However the principal stumbling block has been the requirement for labor certifications which has actually placed the Department of Labor ahead of the Immigration Service in determining which immigrants have the required professions and skills in short supply.

Efforts are now being made by various congressmen, including Senator Fong, who has recently introduced a number of bills to alleviate these new restrictions. However with the prevailing sentiment in Congress for protecting the American labor market, no changes are likely to be made in the immediate future.

By the Board: Ron Shiozaki PSW Impressions

Gardena 10 years or more. Sapphire pins for 10 years or more service on the district or national level were awarded to Dr. John Kashiwabara of Long Beach and Miwa Yanamoto of Hollywood.

Business-session was concluded by Sunday noon with several excellent district projects proposed. First of which will be the presentation of "Concert Japanese" featuring the Long Beach Symphony Orchestra under sponsorship of the Long Beach-Harbor District Chapter on May 21. The conductor of this outstanding symphony orchestra is Akira Endo, member of the Long Beach chapter. Also featured will be renowned kotoist, Kazuo Kudo.

Second project that was sanctioned was the proposed "Japan Days" at the fabulous Century City Plaza. A tremendous opportunity for the PSWDC to promote Japanese art and culture, it also has great potential as excellent source of revenue for the district. Date of the affair has not yet been set.

The convention was concluded with an excellent luncheon featuring our very articulate and personable National President Jerry Enomoto, who delivered a provocative message, "A Perspective of JACL".

During the program a special presentation was made, which felt was the highlight of the entire convention. A special committee known as the "Friends of Harry Honda" presented to our fine editor of the Pacific Citizen a free trip of the "orthcoming JACL Japan Tour".

When Muriel Merrell, president of the Hollywood chapter and one of the persons instrumental in activating the movement, called Harry to the rostrum the thunderous applause and standing ovation was a fervent expression of appreciation and high regard for dear friend Harry Honda. Response from Harry was brief but his expressions and comments affected every person in attendance. It was indeed a touching moment of mutual and reciprocal appreciation. I know that when I say "Bon Voyage" it carries with the wishes of all your dear friends.

CLASSIFIED ADVERTISING CHICK SEXORS WANTED \$12,000 to \$15,000 per year in growing territories. Udaka's Chick Sexing Service Headquarters of Expert Poultry Sexors 1248 Alcott Rd., Gadsden, Ala. 35901 Phone Area 205, 546-1876

RENTALS—Los Angeles UNFURNISHED APARTMENTS \$90, 2 bdrm, dining room, laundry, garage. REAL ESTATE — Los Angeles HOUSE FOR SALE LOS ANGELES: Baldwin Hills, executive, contemporary view home, custom designed, all glass walled in front for privacy. EMPLOYMENT—So. Calif. Telephone secretary for personalized telephone service in Ambassador area. COUPLE to live-in. Large house, good workers. NO COOKING, help around house. Gardening work for husband. CR 1-5196. OPERATORS EXPERIENCED OVERLOOK NIGHT SHIFT Full or Part Time, Excellent working conditions, Fringe Benefits. YAMATO Employment Agency Job Inquiries Welcome Rm. 202, 312 E. 1st St., L.A. MA 4-2821 • New Openings Daily OF INTEREST TO MEN Stock CLK, upholstery... 2.99hr Retail Food Ckr... Union Scale Tr Driver, 1 1/2 ton fruit co... 2.76hr Box Boys, yng' w'side... 1.75/1.82hr Butcher, mkt south... 125wk Cook, Gardena... 22.50day Gzn Ofc CLK, various duties to 500

Kenny Yoshimura CORT FOX FORD FLEET PRICES ON '67 FORD, MUSTANG, TRUCK Call for Information NO 5-1131

NISEI Established 1936 TRADING CO. APPLIANCES - TV - FURNITURE 348 E. FIRST ST., L.A. 12 MADISON 4-6601 (2, 3, 4)

Nisei American Realty 2029 SUNSET BLVD., L.A. 26 DU 8-0694 Eddie E. Nagao, Realtor Wallace N. Ban Viola Redondo George Chey

Toyo Printing Offset - Letterpress - Linotyping 309 S. SAN PEDRO ST. Los Angeles 12 — MADISON 6-8153

COMMERCIAL REFRIGERATION Designing - Installation - Maintenance Sam J. Umamoto Certificate Member of R.S.E.S. Member of Japan Assn. of Refrigeration. Licensed Refrigeration Contractor SAM REI-BOW CO. 1506 W. Vernon Ave., Los Angeles AX 5-5204

ED SATO PLUMBING AND HEATING Remodel and Repairs - Water Heaters, Garbage Disposals, Furnaces - Servicing Los Angeles - Call: AX 3-7000 RE 3-0557

Aloha Plumbing PARTS & SUPPLIES - Repairs Our Specialty - 1948 S. Grand, Los Angeles RI 9-4371

New Japan Restaurant OPEN DAILY NOW SERVING Superb Japanese Food Luncheon - Dinners at Reasonable Prices Take-Out Orders Your Host: George Nozawa Banquet Facilities 3029 W. Jefferson Los Angeles - RE 5-7471

SAITO REALTY HOMES INSURANCE One of the Largest Selections 2421 W. Jefferson, L.A. RE 1-2121 JOHN TY SAITO & ASSOCIATES Real Estate & Insurance Nakamura Realty 2554 Grove St., Berkeley 4, Calif. Phone 848-2724 San Mateo Hayward Office 512 Third Ave. 25101 Mission Bl. 342-8301 581-6565

CINEMA Now Playing till May 25 Zatoichi Tekka Tabi (THE BLIND SWORDSMAN) Shintaro Katsu, Shiro Fujimura Yoshihiko Aoyama, Kiyoko Sunjuzi ANI Mod-a-E KOKUSAI THEATRE 3020 Crenshaw Blvd., RE 4-1148

Now Playing till May 23 Kachan to Juichi-no Kodomo (OUR WONDERFUL YEARS) Directed by Heinosuke Gosho Sachiko Hidari, Kiyoshi Atsumi AND Kazeni Kite Kumo ni Kike (AWAKENING) Kabuki Theater Adams at Crenshaw Tel: 734-0362 - Free Parking

TOHO LA BREA THEATRE 1966 ART FESTIVAL ENTRY WINNER OF NKK AWARDS '66 THE HEART OF HIROSHIMA (AI to Shi no Kiroku) NOTHING CAN PART AN A-BOMB VICTIM FROM HIS SWEETHEART! Starring TETSUYA WATARI (Blue Ribbon Award Winner) Hayashi SAYURI; YOSHINAGA HIDEKI; TAKAHASHI in action drama "DRAGON'S FANGS" MAY 13-26 1967