

**MONTEREY OFFICERS** — Jerry Enomoto (center), national JACL president addressed the Monterey Peninsula JACL installation dinner. He is shown with George Uyeda (left), outgoing president, and Dr. John Ishizuka, 1967 chapter president. —Monterey Peninsula Herald Photo.

## IN THIS ISSUE

### GENERAL NEWS

Evacuation issue looms in yen deposit argument before U.S. Supreme Court. Maryland senate passes anti-miscegenation repealer. Nisei named Hawaii state school superintendent. John R. Lechner, who once sued Pacific Citizen, dies. ....1

### NATIONAL-JACL

JACL Bowling tournament at Los Angeles draws 108 teams. ....1

### DISTRICT-JACL

Intermarriage blast by Ben Kuroki surprises PSWDC. ....1  
PNWDC announces Japan Tour. ....3

### CHAPTER-JACL

Enomoto expresses concern over tuition at U.C. at Monterey Peninsula installation. Wakamatsu reviews History Project progress at Twin Cities installation. ....3

### COLUMNISTS

Enomoto: What's the Answer? Masaka: JACL and Senators. Ogawa: 'Pringles' in Action. Hosokawa: Sino-Japanese Relations. Matsui: JACL-Q & A. Gima: Aloha from Hawaii. Henry: Family Crisis. Ye Ed's: Ben Kuroki.

## PERSPECTIVES

● Jerry Enomoto  
Nat'l President

### WHAT'S THE ANSWER?

Gene Orro, a "where the action is" type of psychologist, addressed the San Francisco Chapter Installation last Friday night. Steve Doi, active JACLer and politically active Republican (a healthy combination) introduced the speaker. Employed at the Youth Opportunity Center in Hunter's Point, Mr. Orro gave an often blunt, hard-hitting presentation that was attention holding throughout, and never without humor. The problems of poverty and the ghetto were the subjects of his talk, and he offered no easy answers.

Yet within the cynical and sardonic text of his commentary, upon what were not the answers, there was a message as to what direction we might look, if we cared enough. His remarks confirmed again that the idea of money and jobs being panaceas for ending poverty and ghettos is an illusion.

Plainly put, one of the things he was saying was that it is difficult, if not impossible, to make people in ghettos care about the same things we care about.

Mr. Orro also seemed to be citing something which my own experience in the "War on Poverty" in San Joaquin County revealed. When people who have been left alone to live as best they could are suddenly urged to "lift themselves up and be heard", to come to meetings, to be "helped", etc., we should not be surprised when they misunderstand our motives or are "ungrateful" for our proffered hand of friendship. I met people who lived in ghettos who tried to respond, but who quickly became discouraged by a combination of people in the power structure without enough tolerance, bureaucratic processes that drowned you in red tape, well meaning people with no understanding of the problems, bickering and jealousy among their own groups.

Another point, not new but worth noting, is that discrimination no longer makes practical, economic sense. The idea that it should be fought on those grounds, and not on ethical, moral grounds, is at least logical from the point of view that people who lack ethics, often have a keen awareness of economics and practicality.

Personally, I found Mr. Orro a timely speaker who had something to say to us, if we wanted to listen. At one point he said, he was asked to "give em hell", and that he was tired of giving people "hell". Perhaps we in JACL ought to give ourselves hell for a change.

### PARTISAN POLITICS

On the eve of our National Board meeting, I was glad to

(Continued on Page 6)

## 108 teams sign up in JACL bowling meet

LOS ANGELES — A total of 108 teams (78 men's and 30 women's) have registered for the 21st annual National JACL Bowling Tournament schedule Mar. 6-11 at Holiday Bowl, 3730 Crenshaw Blvd., according to Easy Fujimoto, tournament chairman.

(As in previous years, the Pacific Citizen plans to carry the roster of individual teams the week prior to the tournament.)

While the bulk of men's team range in the 900 average class, Shig's Service of Culver City captained by Shig Nakagiri ranks on top with a 1001, followed by two 992 teams captained by John Kim of Los Angeles and Fuzzy Shimada of Santa Clara.

In the women's division, majority of the teams are in the 800 class but three are in the 900s: Jewels by George, 946, and Hotel Riviera, 911, of Los Angeles, and Kikkoman International, 905, of San Francisco.

Six men's teams are competing out of Honolulu, 16 from Utah-Colorado (11 men's, 5 women's), and four from the Pacific Northwest (3 men's, 1 women's). A men's team from Chicago is also entered.

### 22 200-Bowlers

While the majority of men bowlers range in the 180s, there are 22 sporting averages 200 and better. Dennis Matsunami of Los Angeles is the top bowler with 213. The leading femme bowler is Judy Sakata of Los Angeles at 198.

Tournament schedule:  
Tuesday, Mar. 7  
Mixed Doubles — Four squads: 6, 7:15, 8:30, 9:45 p.m.  
Wednesday, Mar. 8  
Men's Sweepers — Five squads: 10 a.m., 1:30, 3:30, 5:30, 9 p.m.; Women's Sweepers—Two squads: 12n, 7:30 p.m.

## Dr. Lechner dies, once sued the PC

LOS ANGELES — Dr. John R. Lechner, 67, founder of the Americanism Educational League, died Feb. 12 after a lengthy illness.

The Austrian-born educator came to California in 1924 and founded his league in 1927 "to promote the American constitutional form of government and expose subversive propaganda." He was honored for his work by the American Legion in 1937 and by the City Council in 1959.

Dr. Lechner was to have been commended for his Americanism by the California state legislature in February, 1961 but then national JACL president Frank Chuman strongly opposed and the resolution was permanently tabled.

Chuman had referred to stories in the Pacific Citizen, which described Lechner as a "bigoted racist" for his activities during and post WW2 period questioning the loyalty of persons of Japanese ancestry in America.

A month later, Lechner sued the Pacific Citizen for retraction or damages of the article written by Larry Tajiri commenting upon the legislative action. No retraction was made and no further action was taken. It was the first time the JACL publication had been sued.

## Rev. Katagiri heads Seattle-King City EO

SEATTLE — The Rev. Mineo Katagiri was elected president of the Seattle-King County Economic Opportunities Board recently, succeeding Don Custor, mayor of Renton. An all-day seminar was held for board members to primarily educate new members.

## Kiyosaki to head Hawaiian schools

HONOLULU — Ralph H. Kiyosaki, 47, was unanimously selected by the Hawaii State Board of Education Feb. 9 to be the new superintendent of schools at a salary of \$26,000 per year, effective June 1.

Currently the director of the Univ. of Hawaii Peace Corps Training Center in Hilo, Kiyosaki is a home-born, home-grown, home-developed administrator.

Born in Spreckelsville, Maui, he received his B.Ed. degree in 1941 from the Univ. of Hawaii. Most of his early work was as a teacher and intern supervisor at the university. He served as superintendent of the Big Island District in 1959 and last spring was named assistant state superintendent for curriculum but refused in face of internal controversy.

Dr. Richard E. Ando, board chairman, said Kiyosaki "possesses an intimate knowledge of the Hawaii educational system, a distinct advantage to us in that the solution of problems need not wait a long period of orientation." Over 100 leaders in education had applied for the position.

## Intermarriage blast surprises PSW CLers

BY ELLEN ENDO  
English Editor, Rafu Shimpo

LOS ANGELES — "We're losing our Japanese heritage through intermarriage," World War II war hero and newspaperman Ben Kuroki told a luncheon gathering during the Pacific Southwest Council JACL's first quarterly meeting.

Kuroki's comments were greeted by chuckles combined with subdued shock. The session was held last Sunday (Feb. 12) at the Alondra Club in Lawndale, hosted by Gardena Valley JACL.

The luncheon audience did not seem as surprised at the Nisei war veteran's statement as it did of the fact that he had prefaced his sharp comment with a lengthy recapitulation of the prejudice he had suffered as probably the first Japanese American to return to California since the evacuation.

Kuroki recalled headlines such as "BROADCAST CANCEL BEWILDERS U.S. JAP HERO," which followed the much-publicized cancellation of his schedule appearance on a (Ginny Sim's) radio program. He included several incidents of discrimination against him in his talk, pointing out the American people "have come a long way since then."

### Lauds Issei Spirit

Kuroki, who is copy editor for the Ventura County Star-Free Press, praised Issei "for coming here and getting along so well, without knowing any English." He then proceeded to chastise the Nisei for their "tendency to forget and take for granted things we should remember," and counted his remark with statistics proving 56 percent of Japanese American hold white collar jobs, and 26 percent are professional men—far above the Caucasian percentages.

He added "it seems to be a sad nowadays for the Nisei to marry blonde girls."

"I have even heard," he said, "that the Nisei boys on college campuses won't date Nisei girls; they want to date blonde girls!"

"We're getting a little bit too good for our own kind," In his half hour address, Kuroki hopped from politics to his war and postwar experiences to intermarriage to anecdotes about Issei and their language barrier.

### Republican Supporter

Concerning politics, the Nisei spokesman boasted of his Republican party affiliation and his support of 1964 Presidential candidate Barry Goldwater.

### Renew Your JACL Membership Today

## RECOGNITION

JACL SAPPHIRE PIN  
Twin Cities—Tomo Kosobayashi (Feb. 4).

JACL SILVER PIN  
Gardena Valley — Mrs. Dorothy Koko, John Fujita, Leon Uyeda (Feb. 12).

# PACIFIC CITIZEN

Membership Publication: Japanese American Citizens League, 125 Weller St., Los Angeles, Ca 90012 (213) MA 6-4471

Published Weekly Except Last Week of the Year Second Class Postage Paid at Los Angeles, Calif.

Vol. 64 No. 7

FRIDAY, FEBRUARY 17, 1967

Edit/Bus. Office: MA 6-6936 TEN CENTS

## Evacuation issue looms in yen deposit arguments

WASHINGTON—The U.S. government's treatment of Japanese Americans during World War II loomed as the larger question this week before the U.S. Supreme Court, which Tuesday heard the plea of 4,100 Japanese Americans to have returned their bank savings seized in 1942.

Referring to the U.S. seizure as enemy alien property deposits in the prewar Yokohama Specie Bank, Joseph L. Rauh, Jr., attorney for the claimants, told the court, "These are people who were wronged by our government."

Richard A. Posner, the government's attorney, countered that there was "no arbitrariness, no injustice, no unfairness" in the refusal to return the funds estimated at more

than \$4 million. He said the Japanese Americans "slept on their rights" by failing to seek judicial review of an adverse 1961 decision concerning their claim within the 60-day statute of limitations provision of the Trading With The Enemy Act.

The argument was replete with legal technicalities. Rauh claimed that the government's argument runs afoul of the doctrine of equitable estoppel, which holds that a party who has caused an opponent to fail to sue by misrepresentation may not later claim that the statute of limitations has expired.

Posner said that doctrine applies only to suits between private parties, not the government. Even if it did apply, he added, there was no misrepresentation by the government.

Two members of the high court played key roles in the treatment of Japanese Americans 25 years ago—Chief Justice Earl Warren and Associate Justice Tom C. Clark. Warren, as California attorney general in 1942, supported the legality of evacuating persons of Japanese ancestry from the west coast. Clark, as head of the Wartime Civilian Control Administration (predecessor to War Relocation Authority), directed the move of Japanese into assembly centers.

Last July Clark told a board of San Diego Union editors he regretted the Evacuation, admitting he has made a lot of mistakes in his life but that there are only two he would

acknowledge publicly—his role in the Evacuation and the other as prosecutor at the Nuremberg trials.

California Attorney General Tom Lynch last summer in an extraordinary move filed a brief in support of the Japanese American appeal, calling the lower court decision of Jan. 13, 1966, rejecting the claim as a "regression to an unfortunate era we hoped had ended."

In 1946, Congress had set aside \$10 million for paying claims on deposits seized by the government. In 1957, the Office of Alien Property decided to use the postwar yen-dollar conversion rate (360 to 1) on return of deposits. This represented 2 pct. of the pre-war 4 to 1 rate.

The government then asked depositors to surrender their deposit certificates in return for settlement. About 4,100 of them failed to reply, fearing to lose their "last tangible evidence of claim" and that such surrender meant acquiescence in the 2 pct. return offer.

Those who failed to surrender were informed by the government that their claims had been dismissed and that under the statute further judicial recourse was closed till after publication of the validated claims.

Those who did reply instituted further legal proceedings and received the higher, prewar conversion rate after the government reversed its position. The 4,100 depositors (Continued on Page 2)

## Anti-poverty measures too late at Hunter's Point

SAN FRANCISCO — Most of the present programs to fight poverty in places such as Hunter's Point are "too late" and virtually ineffective, declared Gene Orro of the Hunter's Point Youth Opportunities Center in his talk at the San Francisco JACL installation dinner Feb. 10.

Some 150 members and guests attended the annual event at which Mrs. Yo Hironaka assumed the chapter presidency as the second woman executive in the chapter's 37-year history.

Also inducted were Mrs. Toyoko Doi, chapter women's auxiliary president, and Glenn Watanabe, new president of the S.F. Junior JACL, plus officers of the three groups and chapter board.

In his talk on "Ghetto Psychology," Orro presented some of the problems he faces daily and some of the attitudes of both the white and Negro communities.

### 'Secure, Comfortable'

He said that most of those in such racial ghettos as Hunter's Point remain because they feel "secure and comfortable" and are "recognized as equals" by their neighbors. Because they feel rejected and are conditioned to expect rejection, organized efforts to help them as the current poverty program have not been successful.

"Poverty is not a matter of money," Orro said. It has been a way of life to them and until they were told they are living in poverty most of them don't realize it.

"If the poor people didn't want to be poor, there have always been ways of getting out," Orro declared.

However, the problem cannot be solved by giving them money, giving a student his high school diploma which he didn't earn or even giving them jobs.

After the Hunter's Point riot last year, he pointed out that "securing jobs" was offered as an immediate solution by community leaders.

"Most of the young people bought flashy, 1951 cars with their first paycheck and then quit their jobs," Orro reported. The reason they quit, he said, was that they couldn't show off their car if they worked.

### Not Race Riot

About the Hunter's Point riots, Orro said that it was not a racial riot. Crowd of whites and Negroes watched from nearby streets along with 400 policemen while young kids broke into stores along one street, he said.

It was a demonstration by Negro youngsters against what has become a symbol of extremely harsh, unjust and highly discriminatory authority—the police.

He pointed out that the National Guards when called out had no trouble taking care of

### Contra Costans to air Sansei teenage problems

EL CERRITO — Jr. JACLers, school teachers and counselors man the Contra Costa JACL panel discussion on the problems of Sansei teenagers next Tuesday, 7:30 p.m., here at the Richmond Free Methodist Church, 5399 Potrero Ave.

Barbara Olsen, Contra Costa College instructor in psychology, will be the moderator. Panelists include:

Jr. JACL—Leonard Kam, Irene Takahashi, Garry Asazawa, Sandy Ishizawa, and Michael Sasaki; Adult Group — Mrs. Patsy Tanabe, Patty Iiyama; Pat J. Halligan, counselor at Juan Crespi Jr. High School; and Leah Okamoto, Concord Handicapped School instructor.

They will discuss parental attitudes on current teenage fads, pressure about grades, Sansei identity, etc. Mrs. Chizu Iiyama and Glenn Onizuka are program co-chairmen.

### News Deadline Tuesday

News Deadline Tuesday

## UTAH ATTORNEY GENERAL JOINS JACL AT SALT LAKE INAUGURAL

BY ALICE KASAI

SALT LAKE CITY—An outspoken and controversial figure, Utah Attorney General Phil Hansen, uttered only kind words to the Salt Lake JACL which held its installation dinner Feb. 8 at the Pagoda.

"You are one minority who takes care of yourselves and others with an air of humility," the first state attorney general to join the JACL declared. "It is a tough assignment to be proud and humble at the same time."

Hansen, known for his stands on obscenity, capital punishment and no business on Sundays, was introduced by his one-time tax counselor and outgoing chapter president Tubber Okuda.

Tats Misaka, Intermountain District Council governor, installed Toshiyuki Kano, state highway design engineer, as 1967 chapter president. Misaka also praised the incoming

president as a bilingualist sorely needed in the community since the passing of Henry Kasai.

Phyl Poulson, executive secretary to Utah's Anti-Discrimination Division, Dept. of Labor, was also present and renewed his membership.

Attorney General Hansen's personal secretary at the office is Mrs. Kay Aoki, sister of Tubber Okuda. And on Hansen's staff as assistant attorney general in charge of the welfare department is Raymond Uno, a past chapter president.

Kano announced the following committee chairmen:

Skip Tabata, memb.; Rupert Hachiyu, pub. rel.; Sam Watanuki, memorial; Nob Mori, ed. and schol.; Wilford Higashi, pub. serv.; Helen Yagi, Emi Oshita, picnic; Kay Nakashima, Tom Matsubata, rummage sale; George Kimura, movie; Tubber Okuda, sports; Raymond Uno, youth; Tosh Iwasaki, gen. mgt.; Alice Kasai, pub.; Jimi Mitsunaga, Mas Yano, constitution; Ichiro Doi, 1000 Club and Endowment Fund; Koko Suto, fin.; Mitsuko Sasaki, recog.; Tom Miya, nomin.



**THE BIG FIVE** — Salt Lake JACL installed its 1967 officers at the Pagoda Feb. 8 and heard Utah Attorney General Phil Hansen (standing at right), who was introduced by outgoing chapter president Tubber Okuda (standing at left). The new president Toshiyuki Kano (standing, middle) was praised by Intermountain District Council Gov.

Tats Misaka (seated at right) for his command of Japanese and English languages, sorely needed in the community since the passing of Henry Kasai. Phyl Poulson (seated at left), executive secretary to Utah's Anti-Discrimination Division in the State Dept. of Labor, attended to renew his membership in the chapter.

—Kimura Studio Photo.



By Mike Masaoka

## Washington Newsletter



Washington

### JACL & SENATORS

Now that the United States Senate has been formally organized for business for the First Session of this 90th Congress, it may be of interest to note the positions of leadership and committee assignments enjoyed by Senators from the various states where most Americans of Japanese ancestry reside and where, in most instances, there are also JACL chapters.

In addition to noting their congressional service and seniority on their respective committees, other leadership aspects are mentioned when applicable.

But first, it may be worthwhile to identify the names of the Democratic chairmen of all the standing committees and to compare the ratio of Democrats to Republicans in this Congress with those in the last (89th), since the November 1966 election resulted in a net gain of three GOP seats.

**Aeronautical and Space Sciences** — Clinton P. Anderson of New Mexico, 16 to 6, as compared to 11 to 5 in the last Congress.

**Agriculture and Forestry** — Allen J. Ellender of Louisiana, same as last session, 10 to 5.

**Appropriations** — Carl Hayden of Arizona, 17 to 9, as against 18 to 9.

**Armed Services** — Richard Russell of Georgia, 12 to 6, from 12 to 5.

**Banking and Currency** — John Sparkman of Alabama, 9 to 5, from 10 to 4.

**Commerce** — Warren G. Magnuson of Washington, 12 to 6, same as last year.

**District of Columbia** — Alan Bible of Nevada, 5 to 3, from 5 to 2.

**Finance** — Russell B. Long of Louisiana, 12 to 7, from 13 to 6.

**Foreign Relations** — J. W. Fulbright of Arkansas, 12 to 7, from 13 to 6.

**Government Operations** — John L. McClellan of Arkansas, 10 to 5, from 10 to 4.

**Interior and Insular Affairs** — Henry M. Jackson of Washington, 11 to 6, from 11 to 5.

**Judiciary** — James O. Eastland of Mississippi, 11 to 5, same as last Congress.

**Labor and Public Welfare** — Lister Hill of Alabama, 10 to 6, same.

**Post Office and Civil Service** — A. S. Mike Monroney of Oklahoma, 8 to 4, same.

**Public Works** — Jennings Randolph of West Virginia, 10 to 6, from 11 to 6.

**Rules and Administration** — B. Everett Jordan of North Carolina, 6 to 3, same.

**Washington** — It is the only non-southern, non-border state, which has two chairmen for major committees, Warren G. Magnuson of the Commerce Committee and Henry M. Jackson of the Interior and Insular Affairs Committee. In addition, Magnuson is the dean of the West Coast senatorial delegation, having served since 1944. Previously, he served in the House from 1937 to 1944. He is also a member (6th) of the Appropriations Committee and (3rd) of the Aeronautical and Space Sciences Committee. Jackson also served first in the House, from 1941 to 1953, prior to his Senate service that year. He is also a member (4th) of the Armed Services Committee and (2nd) of the Government Operations Committee.

**Oregon** — Democrat Wayne Morse, Senate service from 1945, (2nd) on Labor and Public Welfare Committee, (4th) on Foreign Relations Committee, and (2nd) on District of Columbia Committee. Republican Mark O. Hatfield, elected last November, (15th) on Agriculture and Forestry Committee and (17th) on Interior and Insular Affairs Committee.

**California** — Republican Thomas H. Kuchel is the Minority Whip, or Assistant Republican Leader, from 1953, (12th ranking overall) ranking minority member of the Interior and Insular Affairs Committee, and (21st) fourth ranking Republican on the Appropriations Committee. Republican George L. Murphy, elected in 1964, is (14th) the fourth ranking minority member of the Senate Labor and Public Welfare Committee and the (14th) fourth ranking Republican on the Public Works Committee.

Although not a legislative committee, Senator Murphy is also Chairman of the Republican Senatorial Campaign Committee, which help elect GOP candidates to the Senate, and raises and dispenses funds for this purpose.

**Hawaii** — Republican Hiram L. Fong, who was elected to the Senate when his Territory attained Statehood in 1959, is the (14th) third ranking minority member of the Judiciary Committee and the (10th) and (12th) second ranking Republican on both the Public Works Committee and the Post Office and Civil Service Committee. Democrat Daniel K. Inouye, who was elected to the House when Hawaii became a State, was elected to the Senate in 1962. An Assistant Majority Whip or Assistant to the Assistant Democratic or Majority Leader, he is a member (9th) of the Armed Service Committee and (6th) of the Public Works Committee.

**Arizona** — Venerable Carl Hayden is not only the dean of the Senate but also of the Congress, having been elected to the House when Arizona became a State in 1912 and serving consecutively since. He began his Senate service in 1927 and is the President Pro Tempore of the Senate, chairman of the Appropriations Committee, and a member (8th) of the Interior and Insular Affairs Committee and (2nd) of the Rules and Administration Committee. Republican Paul Fannin, elected in 1964, is a member of three committees, (15th) fourth ranking Republican on Interior and Insular Affairs, (15th) fifth ranking minority on Labor and Public Welfare, and (12th) fourth ranking Republican on Post Office and Civil Service.

**New Mexico** — Democrat Clinton P. Anderson served in the House from 1941 to 1945, before being named Secretary of Agriculture. A Senator since 1949, he is the chairman of the Aeronautical and Space Sciences Committee, (3rd) on the Finance Committee, and (2nd) on the Interior and Insular Affairs Committee. Democrat Joseph M. Montoya served in the House from 1957 to 1965 before being elected to the Senate. He is a member (7th) of the Agriculture and Forestry Committee, (8th) of the Public Works Committee, and (10th) of the Government Operations Committee.

### Yen deposit

(Continued from Front Page)  
asked for the same treatment, but the government refused, citing their failure to appeal the decision before the 60-day deadline.

(In the June 17, 1966, PC, a thorough background of this case appears in Mike Masaoka's Washington Newsletter. In it, he says the yen claims represents "one of the few unresolved inequities and injustices remaining out of the WW2 mistreatment of Americans of Japanese ancestry.")

## NEWS CAPSULES

### School Front

A \$135,000 two-story building for the Japanese Language School Unified System at 1218 S. Menlo Ave., Los Angeles, is scheduled for completion in May, according to Kakuo Tanaka, chairman of the board. It will have 14 classrooms and will feature studies at the junior high and high school levels, according to Dr. Yae-mitsu Sugimachi, school director and founder. The Japanese language school system has a staff of 64 instructors and student body of 1,300 throughout its eight-school system in the county. One hour sessions are held during the week and a five-hour session on Saturdays. . . . The Los Angeles City School Superintendent Jack Crowther, faced with \$15 million deficit in next year's budget, has proposed to drop the mandated foreign language program that would free nearly \$900,000. The State Board of Education is being asked to exempt the foreign language program, including the teaching of Japanese in grades six through eight for the 1967-68 term.

### Press Row

Jim Hijiya, 17, student reporter for the Spokane Spokesman Review and senior at Lewis and Clark High, won the Spokane Jr. Press Club \$1,500 journalism scholarship. He is the son of Mrs. Nami Hijiya, Spokane. . . . Kay Funakoshi, editor-in-chief of the Los Angeles High School paper, shared the Hollywood Citizen News Outstanding Journalism Award with sports editor Dave Mussatti. Kay is the daughter of Mr. and Mrs. Wilhelmine Funakoshi.

New officers of the Hawaii Hochi, bilingual newspaper in Honolulu, took over Feb. 10 following a stockholders meeting. Larry Sakamoto was named editor. Other officers include: Hideo Tanaka, bd. chmn.; Paul Yempuku, pres.; Masanori Ikeda, v.p.; Kiyotaka Inai, managing editor; publisher, Shigeru Sueno; sec., Konosuke Oishi; Chizuko Kawamoto, Walchi Fukui, Isamu Tomioka, Masakazu Ikeda, board of directors.

### Churches

Japanese Protestants and Buddhists joined in the 50th anniversary celebration of the Selma Japanese Mission Church Feb. 5 as 13 of the original members were honored. Founded as a Christian Sunday school for Japanese in 1917, it also was a meeting place for local Buddhists since 1923. The original site was on the 1700 block of Whittier St. and the property was sold in 1954 for a two-acre parcel on Floral Ave., where a new mission was built.

### Military

Despite protests of veteran groups in the U.S., which have recently cooled, to erect a memorial to the Japanese war dead on Guam, Msgr. Oscar Calvo, a Guamanian war hero and sponsor of the project, reported Roman Catholics and Buddhists in Japan have added their support in the amount of \$500,000. The project has both U.S. State Dept. and Interior Dept. approval. Ground was broken Jan. 18 for the 97-ft. cenotaph being designed by Kenji Hara, a Tokyo architect.

Missing for a whole week, Capt. Shigeru Yanagihara, 44, of the Japanese Maritime Self-Defense Force, attending an anti-submarine warfare school at San Diego, was found Feb. 12 in nearby Encinitas after a civilian recognized him from a photograph in the San Diego Union. He is one of 13 officers representing 11 countries attending the school. Authorities said no foul play was involved.

**Rep. Spark M. Matsunaga** (D-Hawaii) introduced legislation to provide an average over-all increase of 5.4 percent in pension payments to veterans, or their widows and children.

### Organizations

The Japan-America Society of Seattle elected Charles L. Spence, president, Pacific Lumber & Shipping Co., as 1967 president. Among the officers are James K. Fukuda, Weber Industries, and Yoshio Minato, Mitsui & Co., Ltd., v.p.; Peter I. Ontaki, Japan Air Lines; Shige Okada, C.T. Takahashi Co.; Henry S. Tsumi, Univ. of Washington; Masanori Izawa, Bank of Tokyo, board members.

### Business

Dick Y. Nerlo, president of the Westminster Board of Realtors, is the Orange County chairman of the Industrial and Commercial Assn. of Real Estate Brokers. . . . Kenji Osano, Japanese owner of hotels in Waikiki who made a conditional purchase of the Flamingo Hotel and casino last month, may not realize his ambition of owning a Las Vegas hotel because of his citizenship. Purchase was contin-

gent upon transfer of the gaming license to Osano, who had organized the Fujiya Nevada Corp. to operate the hotel.

### Entertainment

International folk songs and dances were featured in the West Park Jewish Community Center Brotherhood Week observance last Sunday at Canoga Park. A Japanese dancing group under direction of Miyoko Komari participated. . . . A Los Angeles Sanel pop singer by the name of Joji Hama, 20, who signed with Victor-Japan last year, has his first record released this week: Kimisae Areba Boku wa Shiawase (I'm Happy as Long as I Have You). He is the son of Mr. and Mrs. Dan Hama, 1765 S. Westmoreland, schooled in Japan but completing his high school education here. He began as a vocalist with the Taiheyo Band at 16 and introduced by Tak Shindo, Hollywood composer and musician, to Victor-affiliated composer Masanobu Tokui, who trained him.

### Music

Shigemi Matsumoto, 20, music student at San Fernando Valley State College, won the western regional auditions of the Metropolitan Opera held Sunday at the Univ. of Southern California. The one-time Nisei Week princess will compete in the national finals in New York in April. She sang three arias to win in the competition embracing singers from California, Nevada and Arizona. Prizes include \$300 from the Metropolitan Opera National Council and the \$250 Mario Chamlee Memorial Award, which was presented by Mary Costa. . . .

### Government

Frank Natsuhara of Auburn was appointed to the Auburn Park Board for a three-year term by Mayor Robert Gaines. . . . The Nisei wife (nee Shuko Miwa) is a member of the Canadian Parliament, Howard Johnston of Okanagan-Revelstoke, B.C., is secretary of the Parliamentary Wives Assn. in Ottawa. The group is comprised of wives of members of the Canadian senate and house of commons. . . . The Rev. Russell K. Nakata, canon at St. John's Episcopal Cathedral, was appointed by Denver Mayor Tom Curran to the unexpired term of the late Rabbi Samuel Adelman as member of the Denver Housing Authority Board. The Nisei cleric will serve until Aug. 31, 1967.

### Vital Statistics

Shintaro Frank Takaki of Coeur d'Alene, Idaho, died Feb. 3, 11 days after his 100th birthday. A pioneer in raising sugar beets and a labor contractor in the Pacific Northwest area since the 1900s, he first came to the U.S. in 1885 and was living in Idaho the past 22 years. He was recently interviewed by the Japanese History Project. His wife died last year at the age of 91, a few days before their 75th wedding anniversary. Mrs. Takaki came to the U.S. with her mother in 1880 at the age of 4 and spoke virtually only in English.

### Crime

Julio Hayashida, 24, exchange student from Peru, was shot by police as he allegedly attacked Mrs. Doris Murayama, 27, a young Los Angeles widow in her bedroom Feb. 10. Police had answer a call from a neighbor who heard the woman scream. . . . Five gunmen raided a drug store at 5825 S. Vermont Ave., Los Angeles, Feb. 12, and held captive 10 customers and five employees, including pharmacist Tom Sakamoto, escaping with about \$500 from the cash registers.

### Fashions

An assortment of new textiles from the Japan Silk Assn. are on preview exhibit this week (ends Feb. 17) at the Ambassador Hotel under direction of Kow Kaneko, Pasadena couturier. In the fashion design contest for Southland collegians, two Nisei entries were among those picked for the final judging. The finalists: Patricia Jean Tsumura, Chouinard's, and Lorraine Kidani, Woodbury.

### Beauties

An Oriental dance student for 13 years, Laura Watanuki, daughter of Mr. and Mrs. Max Watanuki of San Mateo, is in the running for Miss Michigan State University, who will compete later in the Miss America pageant preliminaries. While at San Mateo's Aragon High, she was senior class vice-president and student body secretary.

### Welfare

Tsuguo Ikeda of Seattle is executive director of the Atlantic St. Center, which is completing a \$500,000 study seeking ways to help troubled junior high school youth and their families. The center is financed by the Missions of the Methodist Church, the National Institute of Mental Health and United Good Neighbors.

## Intermarriage rising among 'Sansei' Mexicans, UCLA study project finds

LOS ANGELES — Mexican Americans in Los Angeles County are intermarrying at an increasing rate with Anglos (members of the majority population), according to a report just published by the Mexican-American Study Project at UCLA.

Twenty-seven percent of Mexican American women who married in 1963 chose Anglo husbands, while on the man's side, 24 percent took Anglo brides, a survey of Los Angeles County marriages revealed.

Roughly comparable figures for the period from 1924 to 1933 show only 10 percent intermarriage at that time, according to the authors of the report, entitled "Intermarriage of Mexican-Americans."

Joint authors of the report, which is No. 6 of the preliminary publications of the Ford Foundation-sponsored project, are Frank G. Mittelbach, Dr. Joan W. Moore, and Ronald McDaniel.

Other findings of the report are as follows:

1—Intermarriage rates in Los Angeles are considerably higher than in other communities such as San Antonio.

2—Mexican Americans of the third generation are more likely to marry outside their own community than first and second generation immigrants. Among the third generation a man or woman is "more likely to marry an Anglo than a re-



By Elmer Ogawa

## Northwest Picture

### 'Fringies' in Action

The word "fringe" might be new, but here in the Northwest we have had that type of character in varying degrees for a long time.

Perhaps it is the weather or some other wonderful influence beyond the immediate control of mankind that has brought on this phenomenon, a special breed of dissenters, some of whom can be blamed for hindrance of progress, the holding up of the freeway (in 1953 we were dreaming of seeing it completed by 1960), the stadium, backwardness in port development, the long hassle about one-way streets, the second Lake Washington bridge, etc., etc. We're starting what will probably be another 15 year argument about three more bridges.

For years we have had a group which vigorously opposed any addition to the near original pioneer population. The reasons: traffic congestion, community crowding and contamination or shall we say pollution of our naturally clean wonderland and deterioration of the natural virgin recreational facilities.

Earlier preliminary reports of the Mexican American Study Project include such subjects as education, immigration, poverty and residential segregation. The project is directed by Professor Leo Grebler of UCLA.

### St. Peter's continues

**pre-school program**  
SEATTLE — The St. Peter's pre-school enrichment program, first such program in the area, has started its second year. The JACL Human Relations Committee reported this week.

Staffed by volunteers, it meets on Tuesday, Thursday and Friday mornings from 9:30 a.m. at St. Peter's Episcopal Church, 1610 S. King.

Immediately after the service, it meets on Tuesday, Thursday and Friday mornings from 9:30 a.m. at St. Peter's Episcopal Church, 1610 S. King.

Staffed by volunteers, it meets on Tuesday, Thursday and Friday mornings from 9:30 a.m. at St. Peter's Episcopal Church, 1610 S. King.

Staffed by volunteers, it meets on Tuesday, Thursday and Friday mornings from 9:30 a.m. at St. Peter's Episcopal Church, 1610 S. King.

Staffed by volunteers, it meets on Tuesday, Thursday and Friday mornings from 9:30 a.m. at St. Peter's Episcopal Church, 1610 S. King.

Staffed by volunteers, it meets on Tuesday, Thursday and Friday mornings from 9:30 a.m. at St. Peter's Episcopal Church, 1610 S. King.

Staffed by volunteers, it meets on Tuesday, Thursday and Friday mornings from 9:30 a.m. at St. Peter's Episcopal Church, 1610 S. King.

Staffed by volunteers, it meets on Tuesday, Thursday and Friday mornings from 9:30 a.m. at St. Peter's Episcopal Church, 1610 S. King.

Staffed by volunteers, it meets on Tuesday, Thursday and Friday mornings from 9:30 a.m. at St. Peter's Episcopal Church, 1610 S. King.

Staffed by volunteers, it meets on Tuesday, Thursday and Friday mornings from 9:30 a.m. at St. Peter's Episcopal Church, 1610 S. King.

Staffed by volunteers, it meets on Tuesday, Thursday and Friday mornings from 9:30 a.m. at St. Peter's Episcopal Church, 1610 S. King.

Staffed by volunteers, it meets on Tuesday, Thursday and Friday mornings from 9:30 a.m. at St. Peter's Episcopal Church, 1610 S. King.

Staffed by volunteers, it meets on Tuesday, Thursday and Friday mornings from 9:30 a.m. at St. Peter's Episcopal Church, 1610 S. King.

Staffed by volunteers, it meets on Tuesday, Thursday and Friday mornings from 9:30 a.m. at St. Peter's Episcopal Church, 1610 S. King.

Staffed by volunteers, it meets on Tuesday, Thursday and Friday mornings from 9:30 a.m. at St. Peter's Episcopal Church, 1610 S. King.

Staffed by volunteers, it meets on Tuesday, Thursday and Friday mornings from 9:30 a.m. at St. Peter's Episcopal Church, 1610 S. King.

Staffed by volunteers, it meets on Tuesday, Thursday and Friday mornings from 9:30 a.m. at St. Peter's Episcopal Church, 1610 S. King.

Staffed by volunteers, it meets on Tuesday, Thursday and Friday mornings from 9:30 a.m. at St. Peter's Episcopal Church, 1610 S. King.

Staffed by volunteers, it meets on Tuesday, Thursday and Friday mornings from 9:30 a.m. at St. Peter's Episcopal Church, 1610 S. King.

Staffed by volunteers, it meets on Tuesday, Thursday and Friday mornings from 9:30 a.m. at St. Peter's Episcopal Church, 1610 S. King.

**Chick Sexors**  
We have openings in Georgia and Alabama for 3 or 4 additional sexors in \$14,000-\$17,000 territories. All leg-horns are available. We have a favorable set up for chick sexing couples seasonal or year round.  
If interested, call collect immediately.  
FRED KOTO  
CHICK SEXING ASS'N.  
P.O. Box 36  
Avondale Estates, Ga. 30002  
(Area Code 404) 443-7908

**Drapery Cleaning "Specialists"**  
Recommended by Interior Decorators.  
"Do Not Leave Drapery Hang Over Two or Three Years!"  
We Will Take Down and Rehang With Decorator Fold  
We Operate Our Own Plant  
**Miyake**  
**Able Cleaners**  
5511 N. FIGUEROA ST.  
Los Angeles PH. 256-3248

LOS ANGELES - GARDENA - LONG BEACH - TORRANCE  
**KEN NAKAOKA COMPANY**  
Real Estate and Business Opportunities  
Residential - Commercial Acreage - Exchange  
**KIYOTO KEN NAKAOKA - Realtor**  
Eileen Takemoto Masaharu Kuraoka Charles S. Ueda  
Alice Kaijia Richard Uchida Sam Matsushima  
Alice Umetsu Gladys Tanamachi Gerald J. Kobayashi  
Bill Shishima Kats Nishi  
15225 S. Western Ave., Gardena, Calif.  
FA 1-3285 DA 3-4444

**'DON'K. NAKAJIMA, INC.**  
**REALTOR**  
14715 So. Western Ave.  
Gardena, Calif.  
323-7545 321-3886

**Hovey-Dallas Chevrolet**  
— New & Used Cars and Trucks —  
15600 S. Western Ave., Gardena, Calif. DA 3-0300  
**GEORGE T. YAMAUCHI** **FRED A. HAYASHI**  
Res. DA 3-7218 Res. DA 7-9942

**Empire Printing Co.**  
COMMERCIAL and SOCIAL PRINTING  
English and Japanese  
114 Weller St., Los Angeles 12 MA 8-7060

'Store for Mr. Short'  
**JOSEPH'S MEN'S WEAR**  
238 E. 1st St., Los Angeles  
'TIMELY CLOTHES' 626-1830 JOE ITO

HOME OF THE NISEI BOWLERS  
**HOLIDAY BOWL**  
3730 CRENSHAW BLVD., L.A. 16 AX 5-4325

—In West Covina Shopping Center near Broadway Dept. Store—  
**HOLIDAY - STARDUST BOWL**  
1035 W. WALNUT PARKWAY, WEST COVINA

The Credit Union  
Umbrella Man  
says:  
Be Enlightened . . . When you buy a car . . .  
The credit union gives you a low rate on both New and Used cars, with no added-on charges or service fees.  
You can buy your auto insurance anywhere. No compulsory sales of insurance at the credit union.  
No charge for life insurance on eligible loans.  
It's worth a trip or a letter to the credit union to get the straight answer on the financing and purchasing of a car.  
**NATIONAL J.A.C.L. CREDIT UNION**  
242 South 4th East St.  
Salt Lake City, Utah 84111

### Sports

**Tok Ishizawa** of Los Angeles has stroked his second 300 game in the Holiday Bowl doubles tournament Feb. 9. It was about three years ago in a similar tournament that he scored his first perfect game. It was Holiday Bowl's 12th 300 game by a Nisei—the largest number at a single bowling center. . . . **Makoto Sakamoto** of USC took all-around honors at the UCLA Invitational gymnastics meet Feb. 4, while his brother **Mikio** finished third. Makoto won the parallels, horizontal bars, tied for first in the long horse, second in the still rings and tied for second in the floor exercise.

### Architects

Canada's National House-builders Assn. appointed Nisei architect **Kiyoshi Izumi** of Regina to a newly formed economic and sociological research committee, which plans to study how private and public housing construction can assist in the problems of housing the handicapped ranging from the mentally retarded to the aged.

**MARUKYO**  
Kimono Store  
101 Weller St.  
Los Angeles  
MA 8-5902

**Stocks - Bonds - Securities**  
Listed Securities - Unlisted Securities - Mutual Funds  
Japanese Stocks - Japanese Bonds - Japanese Dollar Bonds  
Monthly Purchase Plans  
REPORTS FREE UPON REQUEST—CALL FOR  
**Y. CLIFFORD TANAKA**  
Sales and Analysis

**SHEARSON, HAMMILL & CO.**  
3324 Wilshire Blvd., Los Angeles 5, Calif.  
DUinkirk 1-3355  
Members of the New York Stock Exchange  
and other leading security and commodity exchanges

**For Finest Japanese Food**  
**MAIKO BRAND**  
SOLD AT ALL GROCERY STORES . . .

**American National Mercantile Co.**  
949 E. 2nd St., Los Angeles 12 — MA 4-0716

**31 HOTEL—15,000 APARTMENTS**  
IN LOS ANGELES AND HOLLYWOOD  
Unlimited accommodations in downtown areas. Starting rates from \$2.50 through \$10.00. Fine accommodations at the Cloud and Catalina Hotels, Teris, Stillwell, Clark and Figueroa Hotels. The Harvey Hollywood and Padre Hotels serve the film industry. Downtown economy includes the Victor and Cecil Hotels. 15,000 apartments are available throughout Los Angeles and Hollywood at all prices.  
Weekly and Monthly Rates Available  
For reservations or brochures, write:  
Consolidated Hotels, Department "J"  
1301 Wilshire Blvd., Los Angeles 17, California

**GARDENA — AN ENJOYABLE JAPANESE COMMUNITY**  
**Poinsettia Gardens Motel Apts.**  
13921 So. Normandie Ave. Phone: 324-5883  
68-Units - Heated Pool - Air Conditioning - GE Kitchens - Television  
OWNED AND OPERATED BY KOBATA BROS.

**Yamasa Kamaboko**  
— WAIKIKI BRAND —  
Distributors: Yamasa Enterprises  
515 Stanford Ave., L.A. Ph. 626-2211





By Bill Hosokawa

## From the Frying Pan

Denver, Colo.

**SINO-JAPANESE RELATIONS** — A Chinese American friend of ours, born in the old country but a longtime resident of these parts, gave an engagement party the other day for his daughter. Her fiancé was a California Sansei. They made a handsome couple and the average Caucasian seeing them hand in hand would never have realized one was of Japanese parentage, the other of Chinese origins. Matter of fact, it probably would not have made any difference to the Caucasian observer if he had wondered about it at all. After all, don't Irish Americans marry French Americans and Italian Americans marry Polish Americans and so on and so on and so on?

These things are easy enough to say, of course, but sometimes marriage between people of different cultural backgrounds can be a prickly matter to kinfolk, particularly parents. In this case our friend, the father of the bride-to-be, was thoroughly philosophical about his daughter's choice. He saw nothing wrong about her marrying a Japanese American if he was an upstanding individual and besides, he said, it would be easy enough to imagine that he was a northern Chinese if the thought of Japanese blood was uncomfortable.

The bride's mother had been somewhat more difficult to win over, but eventually she had blessed the engagement and everyone seemed to be properly happy about the way things turned out.

Perhaps it had never occurred to the bride's father, but he was relating his feelings to an oddly assorted group. One couple was a Jewish lad from New York who had gone to Japan in military service, and his Japan-born wife. The others were a Nisei couple who have a Swedish American daughter-in-law.

**A PERSONEL MATTER**—It long has been argued that choice of marriage partners in the American ethic is strictly a personal matter. Thus efforts to regulate inter-racial marriage by law have been opposed in many quarters and many anti-miscegenation (that's a word with an unpleasant sound) statutes have been abolished. In the Oriental culture, however, marriage by tradition has been considered a family affair with the principals involved having little or nothing to say about choice of life partner.

In travels around the country, I get the impression that among Nisei with youngsters of marriageable age, the search for eligible Sansei is a matter of some considerable concern, particularly among the mothers. This is especially true east of the Pacific coast where opportunities to associate with other Nisei families may be limited and where in all other respects the Nisei families have been thoroughly integrated into the greater American community.

Why the distaff side of the parental team should be the more deeply concerned is, to a layman, somewhat difficult to understand. Perhaps it is the natural protective instincts of mothers. Still, it is the female who, forsaking family, parents and all others, breaks away from hearth and home and vows forever after to accept a new life with the man of her choice. The woman is the adventurous one, the adaptable one, the pliable one who is able to adjust to new circumstances.

Meanwhile, human nature being what it is, we in this land of many cultural and racial origins are likely to see an increasing number of inter-ethnic and inter-racial marriages. Even today couples of mixed backgrounds are not looked upon with the same kind of curiosity as a decade ago.

It would be nice, of course, if all parents could have their way, but history shows that it is the youngsters who demand and make change and the parents who accept it.

# UC, state college tuition may have stymied Nisei

MONTEREY—Jerry Enomoto, national JACL president, told the Monterey Peninsula JACL at its annual installation banquet Feb. 4 that he is gravely concerned with the proposed tuition charge at the Univ. of California.

"A free education has resulted in providing a rich heritage. Had there been no historical state policy against tuition, we must wonder how many of us would have arrived at this position."

Dr. John Ishizuka was installed as chapter president at the dinner at the Mark Thomas Inn. He took over the gavel from George Uyeda before a capacity audience who had gathered to hear the national president.

### Man of the Year

Mas Yokogawa was named the man of the year and received a special recognition award from Paul Ichijima and a beautifully lettered copy of the Japanese American Creed.

Enomoto said that as the JACL grows stronger, having just organized its 89th chapter, and "as our image grows" the organization must work for equal rights for all Americans.

While the JACL has always been nonpartisan, he said, it is his personal opinion that perhaps the time has come to take a more active political stand on civil rights, naming names and supporting those who work for it and campaign against those obstructionists who work against it.

"We should speak up," he said.

Enomoto installed the chapter officers as well as the Women's Auxiliary and Jr. JACL cabinet members headed by Ruby Hori and Sumi Nakamura, auxiliary co-chairmen, and James Ogata, Jr. president.

Guests at the headtable included Pete Dinkel, Pacific Grove city councilman, and Mrs. Dinkel. The Rev. Kisan Ueno gave the invocation. Ted Durein was master of ceremonies.

—Monterey Peninsula Herald.

### Chapter Call Board

#### Sequoia JACL

**Potluck Supper:** Sequoia JACL has scheduled an Oriental potluck dinner on Saturday, Mar. 4, 6:30 p.m., at the Palo Alto Buddhist Church with Roz Enomoto, social chairman, in charge. Edes Enomoto and Taz Kuwano are co-chairing the preparations.

**Blue Cross:** The Sequoia JACL Blue Cross program will launch its enrollment period from April 1, according to chairman Mamoru Fukuma (245-3775). A companion plan for those over 65 who are in Medicare is also available.

#### Fremont JACL

**Potluck:** Fremont JACL commences another year with its Get Acquainted family potluck supper tomorrow (Feb. 18) at the Southern Alameda County Buddhist Church from 6 p.m.

Mrs. Eleanor Sekigahama, chairman for the event, is being assisted by: Mrs. Chiemi Sakuda, Mrs. June Handa, Mrs. Michiko Handa, and Mrs. Sally Inouye.

### 1967 Officers

**BERKELEY JACL**  
Vernon Nishi, pres.; Goro Endo, v.p.; Skip Yamashita, treas.; Amy Maniwa, rec. sec.; Naoko Ito, cor. sec.; Ike Nakamura, 1000 Club; Mamoru Hirota, Miles Suda, Sandy Kaya, Hiroshi Kanda, George Fujinaga, Dr. Yoshinari Tanada, Roy Matsumoto, bd. membs.

**MONTEREY PENINSULA JACL**  
Dr. John Ishizuka, pres.; Dr. Tak Hattori, v.p.; Yoshio Satow, exec. sec.; Haruo Nakasako, treas.; Yoshi Sumida, rec. sec.; Mas Yokogawa, del.; Paul Ichijima, alt. del.; Dr. Clifford Nakajima, hist.

**MONTEREY JR. JACL**  
James Ogawa, pres.; Yoshi Sumida, v.p.; Peggy Nishida, rec. sec.; John Esaki, cor. sec.; Jim Omoto, treas.; Rollins Menda, ath.; Barbara Ono, hist.

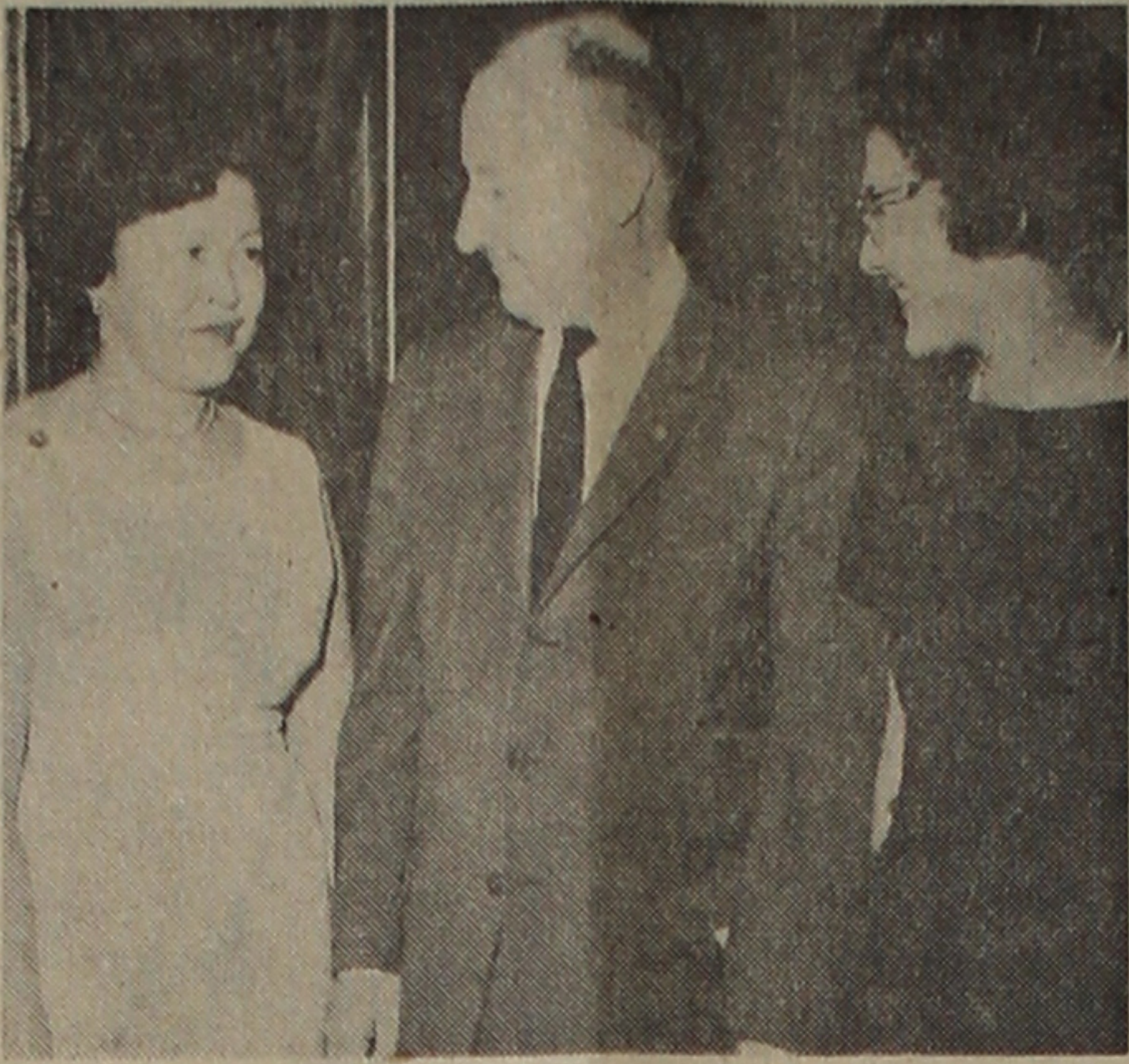
**MONTEREY WOMEN'S AUXILIARY**  
Ruby Hori, Sumi Nakamura, co-chmn.; Ruby Tabata, sec.; Alice Minemoto, treas.; Jean Esaki, hist.; Harkie Honda, Sunshine Girl; Helen Nakashima, youth adv.

### Paper glider soars 137 ft. for top award

SAN FRANCISCO — Robertson Reed Smith, a 9-year-old San Franciscan, won the origami category in the first International Paper Airplane Competition sponsored locally by the San Francisco Chronicle in conjunction with the Scientific American.

The Pacific basin division gold trophy went to Y. Nino-miya of Tokyo, whose slender paper glider soared 137 ft. when launched by hand from a loading ramp 10 feet above the hangar floor at San Francisco International Airport this past week.

All entries are being forwarded to New York for the final competition.



**INSTALLATION SCENE** — Mrs. Jerry Enomoto (left), wife of the Nat'l. JACL president, meets Ted Durein, managing editor of the Monterey Peninsula Herald, a member and director of the Monterey Peninsula JACL chapter, and Mrs. John Ishizuka, wife of the 1967 president at recent installation.

—Monterey Peninsula Herald Photo.



**AUXILIARY OFFICERS** — Three officers of the Monterey Peninsula JACL Women's Auxiliary attending the 1967 installation are (from left) Ruby Tabata, Ruby Hori (co-chairman) and Harkie Honda.

—Monterey Peninsula Herald Photo.

## Matsunaga bill would permit western hemisphere natives to adjust status

WASHINGTON — Rep. Spark M. Matsunaga (D-Hawaii) last week introduced legislation which would enable any national of a Western Hemisphere country, being physically present in the United States, to acquire immigrant status without leaving the U.S.

According to the Hawaii lawmaker: "The only recourse now available to an alien from a Western Hemisphere country, other than a refugee from Cuba, who wishes to have his status changed to that of a lawful permanent resident, is to leave the U.S. for an indefinite period of time in order to secure an immigrant visa at a U.S. consular office abroad and then reentering as

a permanent resident. Legislation enacted by the 89th Congress permits Cuban refugees to adjust their status without having to leave the U.S. Aliens from countries outside of the Western Hemisphere are not required to leave and then reenter the U.S.

"Such procedure places a great burden upon the U.S. consular offices in Canada and Mexico which at present do not have large enough staffs to handle the large volume of immigrant visa applications from such applicants. Moreover, existing law frequently imposes considerable expense and great personal hardship upon their applicants."

## Social Security option for gov't. employees eyed

WASHINGTON — Rep. Spark M. Matsunaga (D-Hawaii) introduced legislation Feb. 1 to give federal and postal employees the option of securing social security benefits in addition to their civil service retirement benefits.

The legislation would be self-supporting since the cost would be borne entirely by federal employees who would pay the prevailing social security tax in return for the benefits. Such employees would then be eligible for all social security benefits on top of their civil service retirement benefits including Medicare.

Said Matsunaga: "Each employee would have a two-year period to elect whether to come under social security. Those who decline would have another chance at the end of five years to elect to come under social security."

## MIS veteran heads Stockton chapter

BY JAMES TANJII

STOCKTON — George Matsumoto, incoming president of the Stockton Chapter of the Japanese American Citizens League, will be installed along with his staff of officers by Judge Bill Dozier on Feb. 26, 6:30 p.m. at the Risso's Restaurant on Waterloo Rd.

The new president was born in Sebastopol, Calif. graduated from Anahy High School there and attended the Latter Day Saints Business College in Salt Lake City. He is a World War II veteran having served with the Military Intelligence Service at Fort Snelling.

Recent activities in the JACL include serving as the CPS Insurance Commissioner and a member of the Northern-California and Western Nevada JACL District Council Board. He has been a member of the JACL since 1938. He is also a member of the American Legion, Karl Ross Post and the Better Business Bureau.

He and his wife, Amy, are parents of two sons Jerry and Allen and a daughter, Janie.

Mr. Matsumoto is the proprietor of George's Shoe Store and has lived in Stockton since 1959.

Guest speaker for the evening will be Jerry Enomoto, national JACL president.

## INDIAN PRE-SCHOOL NEEDS, TOYS, TRUCKS

SEATTLE—Toys, books, plastic buckets, medium-size trucks, sand shovels and rhythm instruments are being sought for the Indian preschool sponsored by the Plymouth Congregational Church and held on the second floor of the Japanese Congregational Church Bldg., 305-17th South, according to the JACL Human Relations Committee.

Be a Registered Voter

## Twin Cities holds 20th installation, hear progress of History Project

BY PAUL IIDA

MINNEAPOLIS — Japanese History Project chairman Shig Wakamatsu, after describing the difficulties encountered during the early days of the project, told the 20th annual Twin Cities JACL installation dinner here Feb. 4 that adequate finances now will cover studies of the Nisei and Sansei.

Wakamatsu, keynote speaker and installing officer, also cited the persons and organizations who have assisted in

the history project, which began some four years ago as a sociological history of the Issei in America.

Minneapolis Mayor Arthur Marks, lauded the contributions of Naftalin, in the opening remarks of the Twin Cities Japanese in various fields.

Dr. Frank Sakamoto, national 1000 Club chairman, presented the JACL sapphire pin to Tomo Kosobayashi and the JACL silver pin to Kimi Hara, Sumi Teramoto and Paul Tsuchiya.

Receiving the past president pin were Bill Doi, outgoing president, Paul Tsuchiya and Kay Kushino.

Dr. Roy Yamahiro is the 1967 chapter president.

There were 130 members and guests present.

## Maryland—

(Continued from Front Page)

said they had heard of none of the churches.

"This is obviously phony as hell," State Sen. Royal Hart (D-Prince George's) said of the postcard campaign.

Sen. Verda Welcome (D-Baltimore), a Negro and sponsor of the bill, said "this was the work of a white man—we know who he is." She declined to name him.

The message on the cards said, in part, "We of this Negro Church are against racial intermarriage because it is against God's Will ... It is evil."

### Open Housing Bill

The open housing bill, covering the sale of new homes and rentals in old and new apartment projects of five or more units, was introduced by Hart, Mrs. Welcome, Sen. James Clark Jr. (D-Howard, Montgomery) and three others.

It is based on proposals made earlier by Democratic members of Gov. Spiro T. Agnew's Advisory Committee on Human Rights, but the Committee itself has not decided whether to endorse the bill.

The bill would prohibit racial discrimination by real estate agents or home builders but permit sales agents to follow "express written instructions" of an owner if the owner is not involved in the real estate or building business.

This would provide a loophole to exempt the sale of most existing homes from the bill's provisions.

The bill also contains a ban against blockbusting, exempts of homes operated by religious or fraternal organizations for their own members and puts enforcement in the hands of the State Interracial Commission.

## PNW Japan tour plans announced

SEATTLE—The Pacific Northwest JACL District Council has announced its group tour to Japan via Japan Air Lines, departing Saturday, Nov. 4 and returning Nov. 25, at \$895 per person, including meals, accommodations and sightseeing.

(The National JACL Japan Tour is scheduled for Oct. 15-Nov. 4 at \$849 per person. See Feb. 10 PC.)

Reservations are now open and require a \$100 deposit to hold definite space. Balance is due not later than Oct. 1. Deposits are completely refundable upon cancellations of reservations made prior to Oct. 1. For reservations checks should be made payable to Emi Somekawa and forwarded to 200 SW 4th Ave., Portland, Ore. 97204.

The itinerary includes visits to:

Tokyo, Nikko, Kamakura, Hakone, Odawara, Nagoya, Toha, Ise, Yamato, Yagi, Kyoto, Nara, Takarazuka, Kobe, Beppu, Hiroshima, and back to Tokyo with stopover in Honolulu.

## Credit union TV prize tickets based on loans

SALT LAKE CITY—Winner of the color TV set offered by the National JACL Credit Union has been ascertained, according to Hito Okada, credit union treasurer.

The tickets were provided on the basis of loans and not on share deposits, as previously reported (see Feb. 3 PC).

## DOLLAR-A-DAY RENT-A-CAR

America's Lowest Car Rental System

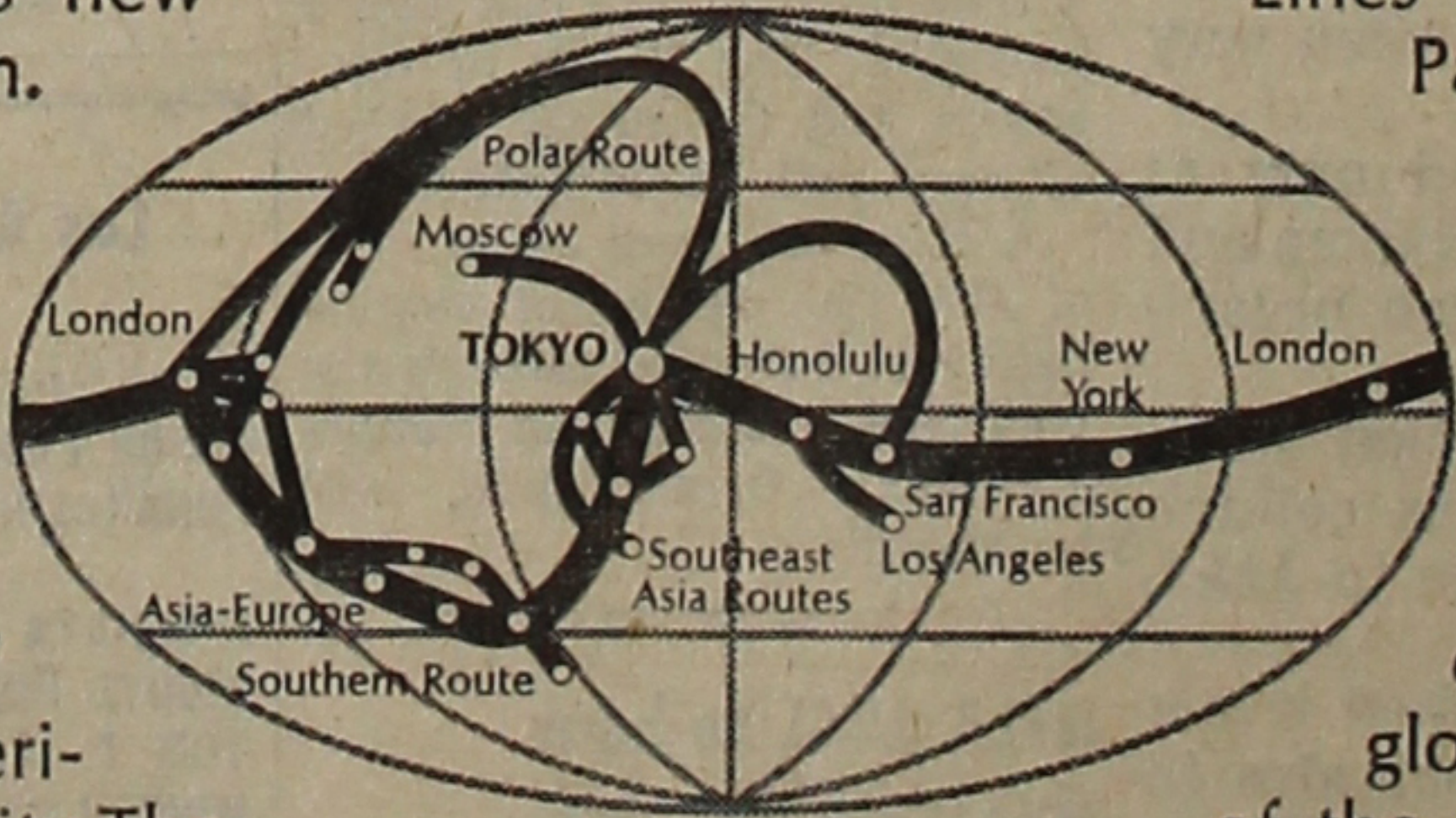
VOLKSWAGENS	.....\$1 per Day plus 10c per mile
VALIANTS	.....\$2 per Day plus 10c per mile
CHEV. II	.....\$3 per Day plus 10c per mile
MUSTANGS, CHEV. IMPALAS	.....\$4 per Day plus 10c per mile
FORD GALAXIES	.....\$4 per Day plus 10c per mile

ADDITIONAL SAVINGS BY WEEK OR MONTH

Call Irv Fischbein, Phone 626-9211  
5th and Grand, Downtown Los Angeles

# NOW Fly Japan Air Lines Direct to London ...and Around the World!

Welcome aboard Japan Air Lines' new transAtlantic service to London. Now you can fly JAL from Honolulu and San Francisco direct to New York where you can stop off for an extra vacation at no increase in fare. Then join a JAL "Happy Flight" to London ... and on to the major cities of Europe and the Orient. And experience traditional Japanese hospitality. The classic atmosphere of your Jet Courier Cabin. The unique service of your kimono-clad hostess as she offers you the graces of Japan. Fly Japan Air



Lines direct to the Orient across the Pacific. Flights from Los Angeles any day of the week. And 13 times a week from San Francisco. Stop over in Honolulu at no extra fare. From the Orient continue with us westbound on around the world. Now you can add Japan Air Lines to any global itinerary, as JAL becomes one of the elite few airlines that fly across the United States and around the world. See your travel agent for further information on JAL's global service, or your nearest Japan Air Lines office.

\*A complimentary Happy Coat is yours to wear throughout this transAtlantic flight. N.Y.-London service begins March 7th.

**JAPAN AIR LINES**  
the worldwide airline of Japan



### 3oz. Pinch-Bottle

- Won't slip even in wet hands
- Won't clog—easy to sprinkle
- Wide top for spoon measuring
- Can be refilled easily



Your favorite super seasoning

**AJI-NO-MOTO®**

SOLD AT YOUR SUPER MARKET AND GROCERY STORE

PC Cut-Off Date - Feb. 28, 1967

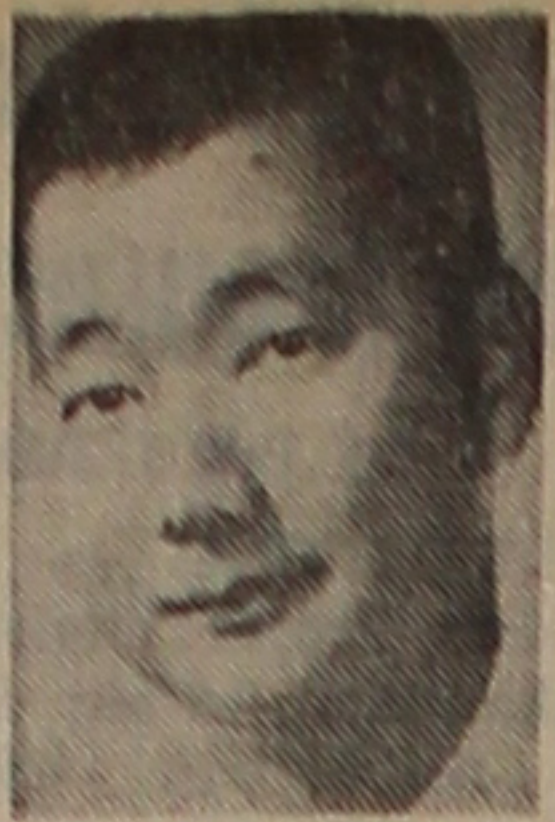
1966 JACL members whose subscriptions to the Pacific Citizen have expired with membership have until Feb. 28, 1967, to renew membership through their respective chapters to insure uninterrupted service from the Pacific Citizen.

Renew Your Membership  
for 1967 Today



By Jeffrey Matsui

## Sounding Board



About six years ago while still living in Kaimuki, Hawaii, I was sitting under a tree on Sunday trying to take a short nap when I was interrupted by voices from the neighbor's house. It was just the usual conversation between the mother and her 12-year-old child. It went like this:

"Mother, mother, when can I buy a bra? Mother, when can I buy a bra? Mother! I said when can I buy a bra!" "Aw shuddup John!"

The reason I mention the above story—and it is a story—is to set the mood for today's column which will be a question and answer type dealing with a few of the most frequently asked questions on JACL. There was also supposed to be a moral to the story but I couldn't figure it out so let's just get into the questions.

### Q.—WHAT IS JACL?

A.—The JACL is the only organization in the U.S. whose specific interest is to protect and promote the welfare of all Japanese Americans. Every minority group has its counterpart of the JACL.

### Q.—WHAT IS THE PURPOSE OF JACL?

A.—Actually the organization serves many purposes. It serves as a fraternal organization, cultural organization, and it promotes and encourages programs and activities which enhance our image as good citizens. But above all, its purpose is to provide leadership by encouraging its members to take on civic responsibilities and be alert to the problems and needs of the community. There are also at times problems and needs (such as the Alien Land Laws) that are common to all Japanese Americans and which can be best combatted through the concerted action of all J. A. through a national organization with a network of chapters throughout the country.

### Q.—WHY SHOULD WE HAVE A JAPANESE-AMERICAN ORGANIZATION; AREN'T WE PROMOTING SEGREGATION?

A.—Dr. Scott Miyakawa, Sociology Professor at Boston University, answered this question by saying, "Because we are an identifiable minority we cannot as individuals set ourselves apart from the problems of the rest of the group. Since we cannot escape being judged as a group it is important for us to have an organization that promotes the good image of the Japanese-American. Public acceptance of this image results in more rapid and lasting integration."

### Q.—I'M TOO BUSY TO GO TO MEETINGS AND PARTICIPATE IN THE LOCAL PROGRAMS.

A.—Even if you can't actively participate in the organization, you can provide support by paying your dues which is used to finance such programs and activities which may be directed to assist not only the J.A. community but also the total community.

For example, while standing by the gymnasium doorway at the Pacific State Hospital where the Progressive Westside Chapter was giving a huge Christmas party for the retarded patients, I was asked by a Caucasian gentleman who had been watching the party activity for a few minutes, "Are these Chinese or Japanese?" I explained the hosts were Japanese-Americans from the JACL. He didn't take notice of the fact that they were JACLers — only that they were Japanese. He stayed only a few seconds longer but before he left he commented, "It's a very nice party. The Japanese are nice people."

The reason I mention this is to show that whenever an activity is directed at the whole community, it reflects back not only to the JACL but to everyone in the J. A. community whether you're an active member, non-active member or non-member. And it's a positive reflection. So don't be a free-loader—support the organization with your dues.

### Q.—HOW COME THE DUES ARE SO HIGH?

A.—I would change this question to why are the dues so low. Let me explain. A single membership costs \$7 in the majority of cases, depending on the individual chapters.

From this amount the chapter keeps \$2 and remits \$5 to National Headquarters. The \$2 kept by the chapter is used to carry out its program and activity for the membership and the community.

From the \$5 sent to National, you are entitled to receive a 6-8 page weekly newspaper, The Pacific Citizen, which has the largest circulation of any Japanese American paper in the whole U.S.

It also entitles you to membership in a fine group medical program and credit union. This amount further acts as an insurance to protect you against whole-sale acts of discrimination against you based on your ancestry. For all this you're paying 41 cents a month or just over 1 cent per day.

### Q.—ISN'T JACL TAKING TOO MUCH CREDIT FOR WORK DONE FOR JAPANESE AMERICANS?

A.—To the contrary, after going through the files and records, I find that the organization has been far too modest in its accomplishments and has been very naive in doing so.

In my opinion, modesty is appreciated only as character traits of heroes in the novels and cinema and is not in the least appreciated practice by an organization.

And just to show you that I do believe that JACL should do a little bragging, let me end this column with President Lyndon B. Johnson's message to JACL at its last convention:

"What your organization has accomplished is not only a tribute to our democratic system but also to those of you who were willing to accept the challenge of leadership in making the American dream more meaningful for all Japanese Americans."

## — CALENDAR OF JACL EVENTS —

Feb. 17-19 San Francisco — National JACL Interim Board Mtg., Hilton Airport Inn.  
Feb. 18 (Saturday) Fremont — Get Acquainted family potluck, So. Alameda Buddhist Church, 6 p.m.  
Feb. 19 (Sunday) Chicago — Brotherhood dinner, Francis Parker School, 330 W. Webster Ave.  
Feb. 20 (Monday) West Los Angeles — Auxy Mtg., Dr. Robert Watanabe res., 7:30 p.m.  
Feb. 21 (Tuesday) Sequoia — Bd Mtg.  
Feb. 22 (Wednesday) Contra Costa — Panel: Problems of Sansei Teenagers, Richmond Free Methodist Church, 8:30 p.m.  
Feb. 23 (Thursday) Potrero Ave., El Cerrito, 7:30 p.m.  
Feb. 23 (Thursday) Downtown L.A. — Luncheon Mtg., Tokyo Kaikan, 12n; Dr. Tom T. Omori, spkr.  
Feb. 24 (Friday) Seattle — Young Adults bowling party, UW Campus.  
Feb. 24 (Friday) Philadelphia — Bd Mtg., Isami Yamakawa's res., 8 p.m.  
Feb. 25 (Saturday) Mile-Hi — Memb Mtg., Tri-State Buddhist Church, 7:30 p.m.  
Feb. 25 (Saturday) Cincinnati — Potluck supper, 1st United Church on Walnut Hills, 6 p.m.  
Feb. 25 (Saturday) Mt. Olympus — Issel Appreciation Night, Salt Lake Buddhist Church.  
Feb. 26 (Sunday) New York — Installation dinner, Park 100 Restaurant, 6 p.m.; Capt. Allan Bosworth, spkr.  
Feb. 26 (Sunday) "America's Concentration Camps."



**ALL-WOMAN CABINET** — For the first in San Luis Valley JACL history, an all-woman cabinet will govern. Looking over new issues are (from left): seated — Mrs. Roy Inouye, La Jara, pres.; Mrs. Francis Wakasugi, Blanca, v.p.; standing — Mrs. Harry Sumida,

Blanca, rec. sec.; Mrs. Morris Tanaka, Blanca, treas.; and Mrs. Lamar Smith, Alamosa, cor. sec. The women were installed Jan. 28 at the annual dinner at Mt. Blanca Inn, Fort Garland, Colo.

—The Valley Courier Photo.

## Women assume chapter command

BY PEARL MALLON NICHOLAS  
Valley Courier  
Woman's Page Editor

ALAMOSA, Colo. — For the first time in the history of the San Luis Valley Japanese American Citizens League five women form the cabinet, the governing body of the organization.

They are as follows: Mrs. Roy Inouye, La Jara, the new president; Mrs. Francis Wakasugi, Blanca, vice president; Mrs. Harry Sumida, Blanca, recording secretary; Mrs. Lamar Smith, Alamosa, corresponding secretary; Mrs. Morris Tanaka, Blanca, treasurer and Mrs. Elsie Ogura, Alamosa, historian.

These women were sworn in to office Jan. 28 at the annual JACL banquet held at Mt. Blanca Inn. District Judge Richard Conour, Del Norte, conducted the ceremonies.

Following the dinner Morris Tanaka, president, introduced Gus Guzman, Alamosa, who in turn introduced the Singing Hutells of Alamosa, Ralph,

his wife, Joyce, daughter Holly and son, Steve, who entertained with several musical selections. Mrs. Hutsell, accompanied by her husband, sang the National JACL Hymn.

### Issel Honored

Several first generation Japanese in the Valley were present and were introduced by Roy Inouye. They were Yui Fujimoto, K. Ono, Mrs. F. Uyeda and Mr. and Mrs. M. Miyake, all of Alamosa. Mr. and Mrs. Ray Moroye of the JACL Denver Chapter, were among the guests.

Mrs. Y. Fujimoto recited the creed of the JACL which was followed by the introduction of the speaker of the evening, Dr. John Marvel, president of Adams State College, who along with Mrs. Marvel were special guests. Bob Showalter made the introduction.

"You, as Japanese American citizens are 'carriers of promise,'" Dr. Marvel began. "You are a reconciling agent in a world that is hostile and you are filled with great convictions which are reflected in your objectives by restoring faith in people."

### Three Goals of Man

Dr. Marvel went on to say there are three basic goals for man: First, he is seeking a way to identify himself; second, he is trying to seek satisfaction in a way of life; third, he is establishing a rightful relationship with his fellowmen. These three goals, he pointed out, cannot be fashioned without education.

He spoke of the tremendous comeback of the Japanese nation since World War II, the

prejudices they have overcome and the economic stability of Japan. He stated the educational level in that country was high indeed.

"All education does not take place on a campus. Good home environment plays a great part and the fact that no matter how old we are we never stop learning."

Dr. Marvel praised the Japanese people as a whole, the JACL organization individually, and pointed out the fine records Japanese students attained. He said that as the standard of living rises, so very often the standard of morality declines.

"Man cannot live by bread alone, neither can he live without bread. He must learn that the way to serve an invisible

Creator is to serve a visible people with character to match the mountains," he concluded.

**MAN**  
GENERAL LEE'S  
**JEN**  
**LOW**

475 GIN LING WAY — MA 4-1825  
New Chinatown — Los Angeles  
Banquet Room for All Occasions

**KAWAFUKU**  
Sukiyaki — Tempura  
Sushi — Cocktails  
204 1/2 E. 1st St.,  
L.A. MA 8-9054  
Mrs. Chiye Nakashima  
Hostess

A Good Place to Eat  
Noon to Midnight (Closed Tues.)  
**Lem's Cafe**  
(Kel Rin Low)  
REAL CHINESE DISHES  
320 E. 1st., Los Angeles  
Phone Orders Taken  
MA 4-2953

**Eigiku Cafe**  
Dine • Dance • Cocktails  
SUKIYAKI • JAPANESE ROOMS  
314 E. First St.  
Los Angeles • MA 9-3029

**Mitsuba**  
Sushi  
226 E. First St.  
MA 5-8165  
(Closed Tuesdays)

New Owner — Mr. Y. Kawai  
Sukiyaki • Teriyaki • Tempura  
**Fuji Gardens**  
424 Wilshire Blvd.  
Santa Monica, Calif.  
Ph. 451-3167

**KONO HAWAII**  
EXOTIC FOODS  
TROPICAL DRINKS  
ENCHANTING  
ATMOSPHERE  
• KONO ROOM  
• LUAU SHACK  
• TEA HOUSE  
(Sukiyaki)  
Ph. JE 1-1232  
226 SO.  
HARBOR BLVD.  
SANTA ANA, CALIF.  
(South of Disneyland)

**Mikawaya**  
Sweet Shop  
244 E. 1st St., L.A.  
MA 8-4935

**Man Fook Low**  
Genuine Chinese Food  
962 So. San Pedro St.  
Los Angeles 15, Calif.  
688-9705

**MATSUNO SUSHI**  
513 E. 1st St.  
Los Angeles — MA 8-8816

**COMMERCIAL REFRIGERATION**  
Designing • Installation •  
Maintenance  
**Sam J. Umemoto**  
Certificate Member of R.S.E.S.  
Member of Japan Assn. of  
Refrigeration  
Licensed Refrigeration Contractor  
**SAM REI-BOW CO.**  
1506 W. Vernon Ave., Los Angeles  
AX 5-5204

**Fugetsu - Do**  
CONFECTIONARY  
315 E. 1st St., Los Angeles 12  
MADISON 5-8595

**Los Angeles Japanese Casualty Insurance Assn.**  
—Complete Insurance Protection—  
AIHARA INS. AGY. Aihara-Omatsu-Kakita, 114 S. San Pedro .... 628-9041  
ANSON FUJIOKA AGY., 321 E. 2nd, Suite 500 .... 626-4393, 263-110,  
FUNAKOSHI INS. AGY. Funakoshi-Kagawa-Manaka-Morey  
218 S. San Pedro, ..... 626-5275, 462-7406  
HIROHATA INS. AGY. 354 E. 1st ..... 628-1215, 287-8605  
INOUE INS. AGY. 15029 Sylvanwood Ave., Norwalk ..... 864-5774  
TOM T. ITO 669 Del Monte, Pasadena ..... 794-7189, 681-4411  
MINORU 'NIX' NAGATA 1497 Rock Haven, Monterey Park ..... 268-4554  
STEVE NAKAJI 4566 Centinela Ave., ..... 391-5931, 837-9150  
SATO INS. AGY. 366 E. 1st St. .... 629-1425, 261-6515

**CAL-VITA PRODUCE CO., INC.**  
Bonded Commission Merchants—Fruits & Vegetables  
774 S. Central Ave. L.A.—Wholesale Terminal Market  
MA 2-8595, MA 7-7038, MA 3-4504

**Eagle Produce**  
929-943 S. San Pedro St. MA 5-2101  
Bonded Commission Merchants  
— Wholesale Fruits and Vegetables —  
Los Angeles 15

### DTLA JACL to hear Nisei missile expert

LOS ANGELES — Downtown L.A. JACL will have Dr. Tom T. Omori, Aerojet General executive and authority on missiles, as luncheon speaker next Thursday, Feb. 23, at the Tokyo Kaikan, according to Ed Matsuda, chapter president. Dr. Omori, now of Pasadena, was honored by National JACL in 1964 as a Nisei of the Biennium for distinguished achievement.

**Fowler meeting**  
FOWLER — Fowler JACLers meeting last night at Bruce Lodge viewed the film, "Property Values and Race". Mike Yoshimoto was in charge of the program.

## West LA earth-science members may have discovered some new fossil fish

LOS ANGELES—Fossil fishes of the Miocene age (15 million years) and their paleoecologic significance were discussed Feb. 3 by Jules Crane, professor of biology, Cerritos College, to 89 members of the West Los Angeles JACL Earth Science Section.

Crane spoke on those related to the specimens collected by the JACLers at a quarry near Lompoc during the December field trip and in the Santa Monica Mountains.

After his most enlightening talk, a workshop was conducted under Crane's supervision to prepare and identify the specimens collected from the Lompoc quarry. Several fishes were uncovered which seemed to be new, and these were donated to Crane for further study.

He stressed the importance of the occurrence of fishes in the diatomaceous shale primarily to determine the condition of deposition of the fish beds. These strata, which contains minute diatoms (secreted by a calcareous Algae), was believed to have been deposited in shallow (100-200 meters) quiet waters.

### Viper Fishes

From the fossil fish fauna, he singled out the viper fishes (Chauliodontidae) as being a very characteristic form which can be compared to the living species.

The living forms inhabit waters near a depth of about 1,000 meters and the diatomaceous shale is inferred to have been deposited near that depth.

The difficulties encountered while trying to make a direct comparison between the living forms to the fossil specimens were also mentioned. Fossil specimens are flattened and show only the hard parts, while the living forms are in three dimensions, making comparative study difficult. To this end, a strong X-ray is being used to obtain a picture of the living specimen which then resembles the outline of the fossil form.

### Auxiliary Meeting

LOS ANGELES — Orthopaedic surgeon Dr. Robert Watanabe will show a research film he made on bone fusion of the hip at the West Los Angeles JACL Women's Auxiliary meeting Monday, 7:30 p.m., at his home, according to Mrs. George Kanegai, Auxiliary president.

Meeting will also welcome new members, discuss future events dealing with kimono and harmony of colors and organize the Auxiliary's canvass for the American Cancer Society. Mmes Robert Watanabe and Kiyoshi Sonoda are Cancer Drive leaders.

Serving the Most Authentic Chinese Food  
**Golden Dragon Cafe**  
960-962 N. Hill Street, Los Angeles  
—Banquet Rooms Available—  
David Lee, Mgr. 626-2039

**Bush Garden**  
SUKIYAKI  
SEATTLE 614 Maynard St.  
PORTLAND 121 SW 4th St.  
SAN FRANCISCO 598 Bush St.

When in Elko . . . Stop at the Friendly  
**Stockmen's**  
CAFE • BAR • CASINO  
Elko, Nevada

**the new moon**  
a singularly outstanding restaurant offering the quintessence of Cantonese dining  
is located at 912 South San Pedro Street, Los Angeles • Phone MADison 2-1091  
Your Host: Wallace Tom

Dine at Southern California's Most Exquisite Shangri-La Room  
**tai ping**  
CANTONESE CUISINE  
Private Parties, Cocktails, Banquet Facilities  
3888 Crenshaw, Los Angeles, AX 3-8243

BRAND NEW PRODUCT  
**GOLDEN DRAGON**  
INSTANT SAIMIN  
— HAWAIIAN RECIPE —  
Most Sanitary Wholesome  
Saimin on the Market  
Available at Your Favorite Shopping Center  
**NANKA SEIMEN CO.**  
Los Angeles

## Ask for it! at your favorite grocer ...

for the finest selected JAPANESE FOOD PRODUCTS

DAIMARU Brand - HIME Brand, WEL-PAC Brand - DYNASTY Brand, JAPANFOOD Brand

JAPAN ROSE Rice

BOTAN Calrose Rice - CAPITOL Calrose Rice, CAMELIA Arkansas Rice - LIBERTY Arkansas Rice

**jic japan food corporation**  
920 S. MATEO STREET • LOS ANGELES, CALIFORNIA 90021



## Business and Professional Guide

Your Business Card placed in each issue for 26 weeks at 3 lines (Minimum) ..... \$25  
Each additional line \$6 per line

### Greater Los Angeles

**Flower View Gardens**  
FLORISTS  
1801 N. Western Ave. Ph. 466-7373  
Art. Ito welcomes your phone orders and wire orders for Los Angeles

**GEORGE J. INAGAKI REALTY**  
Ike Masakazu, Associate  
Acreage, Commercial & Industrial  
4568 Centinela, Los Angeles 66  
397-2161 - 397-2162

**KOKUSAI INTERNATIONAL TRAVEL, INC.**  
240 E. 1st St. (12) MA 6-5284  
Jim Higashi, Bus. Mgr.

**NISEI FLORIST**  
In the Heart of Lili Tokyo  
328 E. 1st St., MA 8-5606  
Fred Moriyuchi - Memb. Teleflora

**DR. ROY M. NISHIKAWA**  
Specializing in Contact Lenses  
234 S. Oxford (4) - DU 4-7400

**YAMATO TRAVEL BUREAU**  
312 E. 1st St. (12) MA 4-6021

### North San Diego

**JOSEPH'S AUTO ELECTRIC**  
Tune-Up, Generator, Carburetor  
460 E. Vista Way, Vista 726-1740

### San Jose

**EDWARD T. MORIOKA, Realtor**  
Sales, Exchanges, Investments  
565 N. 5th St. - 294-1204

### Sacramento

**Wakano-Ura**  
Sukiyaki - Chop Suey  
Open 11 - 11, Closed Monday  
2217 - 10th St. - GI 8-6231

### Reno, Nev.

**TOP HAT MOTEL**  
Shig and Sumi Kajimura, Hosts  
375 W. 4th St. - 786-1565

### Seattle, Wash.

**Imperial Lanes**  
2101 - 22nd Ave. So., EA 5-2525  
Nisei Owned - Fred Takagi, Mgr.

**Kinomoto Travel Service**  
Frank Y. Kinomoto  
521 Main St., MA 2-1522

### Washington, D.C.

**MASAKA - ISHIKAWA AND ASSOCIATES, INC.**  
Consultants - Washington Matters  
919 - 18th St., NW (6)

### Kenny Yoshimura

**CORT FOX FORD**  
FLEET PRICES ON '67  
FORD, MUSTANG, TRUCK  
Call for information  
NO 5-1131

### Penthouse Clothes

3660 Crenshaw Blvd., Suite 230  
Los Angeles - AX 2-2511  
Gardena - DA 1-6804  
1601 Redondo Beach

### TOYO MYSTAKE

**STUDIO**  
318 East First Street  
Los Angeles, Calif.  
MA 6-5681

### Kimura

**PHOTOMART**  
Cameras and Photographic Supplies  
114 N. San Pedro St. MA 2-3968

### triangle CAMERA

3445 N. Broadway, Chicago,  
Complete Photo Equipment, Supplies  
GR 2-1015 JAMES S. OGATA

### Toyo Printing

Offset - Letterpress - Linotyping  
309 S. SAN PEDRO ST.  
Los Angeles 12 - MADison 6-8153

### Ask for... 'Cherry Brand'

**MUTUAL SUPPLY CO.**  
1090 SANSOME ST., S.F. 11

### TO OUR SUBSCRIBERS WHO ARE MOVING

New Address \_\_\_\_\_  
City \_\_\_\_\_ State \_\_\_\_\_ ZIP \_\_\_\_\_  
Effective Date \_\_\_\_\_  
● If you're moving, please let us know at least three weeks prior. Attach current address label below on the margin of this page.  
THANK YOU, Pacific Citizen Circulation Dept.  
125 Weller St., Los Angeles, CA 90012



**CHERRY BLOSSOM TIME** — Fifteen Cherry Blossom queen candidates were introduced aboard the SS Monterey in Honolulu harbor. They are (from left) Gerraime Maehara, Carol Arita, Sharon Ota, Cynthia Aoki, Christine Suzuki, Cindy Shigeno, Gwen

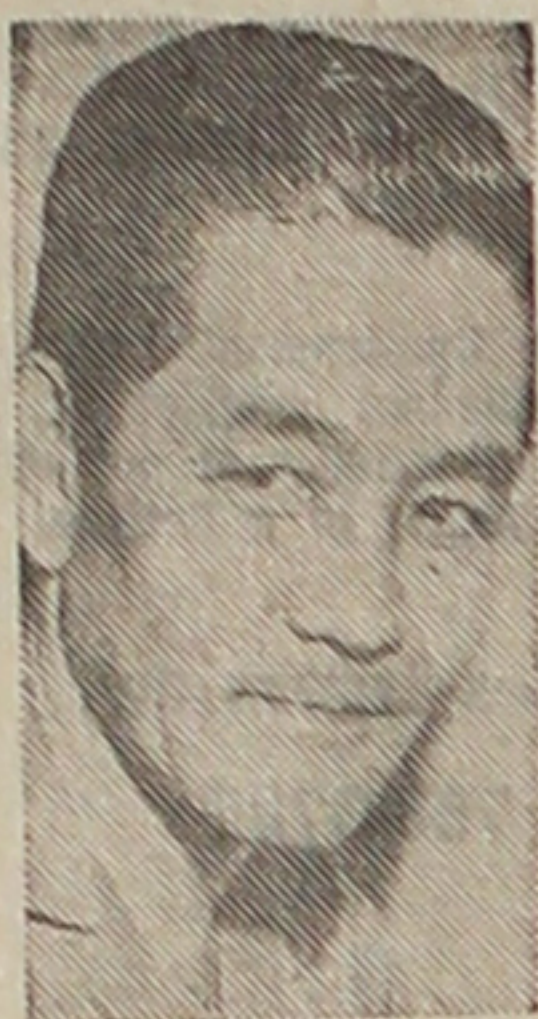
Nishizawa, Barbara Higashi, Ginger Matsumoto, Sheila Shimizu, Karen Kameda, Lynette Nishioka, Audrey Nakagaki, Judy Katayama, and Sonia Asayama. Ages range from 17 to 22, in weight from 95 to 125, in height from 5 feet to 5 ft. 6. The prettiest will be

chosen April 1, succeeding Queen Sandra Shimokawa, culminating celebration starting with a cultural and trade show Feb. 23-25 and ending with a Honolulu Symphony Orchestra concert April 15.

—Jack Matsumoto Photo.

## Aloha from Hawaii

by Richard Gima



### Honolulu

Democratic backers of Sen. Nelson K. Doi and one defector — Sen. Sakae Takahashi — from the faction which supports Sen. Nadeo Yoshinaga named Doi the state senate president for the session which was to open Wednesday. Takahashi, formerly a Yoshinaga supporter, gave the Doi group the eighth vote it needed to have a majority of the 15 senate Democrats. But victory for Doi was not a certainty at press time. . . . Homecoming for Sen. Daniel K. Inouye was saddened Feb. 9 when he learned that the family's 12-year-old fox terrier was missing. The senator's parents let the dog, Chibi, out early the morning of Feb. 8 without her collar or her dog tag. (Dog was found last Sunday.)

Hawaii's alien population will be up about 1,000 over last year's total of 45,794. In 1965, 4,076 persons born in China immigrated; in 1966, the total was 17,210. Filipino immigrants jumped from 3,208 to 9,981. Natives of Hong Kong increased from 697 to 4,075. Japan and Korea had smaller increases—Japan from 3,000 to 3,663 and Korea from 2,198 to 2,869. . . . Wallace F. Aoki has been elected treasurer of Aloha Airlines, replacing O. Ben Thomas who left the company in November. Aoki, 29, previously was assistant treasurer. He is a graduate of the Univ. of Hawaii.

### Killed in Action . . .

Airman 1st Class Ronald Kazuo Miyazaki, 24, of 67-427 Aikaula St., Waialua, was killed in action Jan. 31 in Vietnam where he had been serving as a flight mechanic in the 12th Air Commando Squadron. He was the 70th serviceman from Hawaii to die in Vietnam. . . . Air Force 1st Lt. James S. Miura of 66-057 Kam Highway, Haleiwa, was a navigator on an HC-130 Hercules aircraft that rescued a U.S. civilian pilot during an early morning search operation over the Atlantic. Miura and his crew began the mission from Lajes Field, Azores. . . . Airman 2nd Class Howard H. Kaneshiro, son of Mr. and Mrs. Seichi Kaneshiro of 94-1065 Waipahu St., Waipahu, has been decorated with the Air Force Commendation Medal at Nha Trang Air Base in Vietnam. He was awarded the medal for meritorious achievement as an aircraft mechanic at McClellan AFB in Calif.

Sen. Daniel K. Inouye has selected Brian Y. Fukuda of Pearl City as his principal appointee to the Air Force Academy, and Alan T. Murakami as principal appointee to the Naval Academy. Inouye selected Randy L. Hartshorn, John M. Jones, Charles H. Lawrence and Michael F. Tanigawa, all of Honolulu, as his Merchant Marine Academy choices.

**CAMPBELL'S flowers**  
Across from St. John's Hosp.  
2032 Santa Monica Blvd.  
Santa Monica, Calif.  
Mary & George Ishizuka EX 5-4111

Inouye's quota for West Point is filled. . . . James T. Fujitaka was Fujitaka of Motor Supply was honored in Las Vegas recently by American Motors as one of its top 100 salesmen. He sold 234 cars last year. . . . Lena Machado, the Songbird of Hawaii is feeling fine and singing again. She suffered the loss of her left eye, broken right knee, and her right hand was badly mangled when her station wagon hit a tree at Koloa, Kauai, in Oct. 1965. She's been performing at private parties and hopes to return to the public stage soon.

### Outstanding Farmer . . .

The Hawaii State Jaycees have named Hilo farmer Harold Tanouye, Jr., 31, as Outstanding Young Farmer of the Year. He will represent the state in the national award program to be held in Harrisburg, Va., Apr. 8-11. Tanouye is manager of two floral firms, Hawaiian Heart and Hawaiian Anthuriums. . . . Lloyd Oki, 17, Punahou School senior, will represent Hawaii in the national finals of the Voice of Democracy script-writing contest sponsored by the Veterans of Foreign Wars and the Ladies Auxiliary. Oki will leave Mar. 2 for a five-day trip to Washington, D.C., as a guest of the VFW and also receive a \$100 U.S. savings bond. . . . Donald Fujimoto, co-ordinator of Kapiolani Community College, has been elected president of the Hawaii Community College Assn. for 1967.

Toshio Koge, 27, a State Prison parolee, has filed a \$750,000 claim against the City for injuries he said he suffered at the hands of police Oct. 23. Koge, who is reportedly paralyzed from the neck down, filed the claim with Mayor Neal S. Blaisdell. . . . Jack P. King, 57, a former legislator who is now a watchman, was beaten over the head Friday night, Feb. 3, by one of two men he discovered burglarizing the Hawaiian Cold Storage Co. at 348-A Puuhale Rd. Police said King was struck with a hammer and required treatment for head injuries. King served in the Territorial House of Representatives between 1949 and 1955. . . . A group of 78 Kailua, Oahu, children between the ages of 12 and 14 were arrested for gambling Feb. 8 in a raid that kept policemen in the Windward Oahu community busy for six hours. The raid took place at a home on S. Kainalu Dr. near Kailua Intermediate School. . . . Christine Sui Lin Wong is Hawaii's entry in the Miss Chinatown USA contest held annually by the San Francisco Chinese Chamber of Commerce. The contest will be held on Feb. 18. Last week's Top Ten Tunes: 1—Young Rascals' 'I've Been

Lonely Too Long'; 2—Buckin' hams' 'Kind of a Drag'; 3—Monkeys' 'I'm a Believer Stepping Stone'; 4—Galls' 'Bonsai John'; 5—Hermits' 'Kind of a Hush'; 6—Rolling Stones' 'Ruby Tuesday/Let's Spend the Night Together'; 7—Mojo Men's 'Sit Down, I Think I Love You'; 8—Robbs' 'Bittersweet'; 9—Trini Lopez' 'Gonna Get Along Without Ya Now'; 10—Jay Black's 'What Will My Mary Say'.

Charles Ane, former National Football League star, has joined American Security Bank as a special accounts representative in the business development department. He most recently was with Gold Bond Stamp Co. . . . Morris S. Yoshii, a loan representative with 1st National Bank, is attending a Bankers' Business Development Institute conference this week in San Francisco. . . . Proceeds from the McKinley High School PTAs annual carnival will be used to finance the school band's trip to an interstate competition Mar. 20, 21 and 22 at Las Vegas, Nev. The band trip for 100 members is expected to cost about \$15,000. . . . Hawaii's unemployment rate during 1966 was 6 percent below the national average according to the State Labor Dept.

Barbara Ann Yamanaka, a 1964 Kaimuki High School graduate, has finished a program at the national training center of Volunteer in Service to America (VISTA) at Cincinnati, Ohio. She has been assigned to the Grace Hill House in St. Louis, Mo. . . . Ben H. Oshiro was honored as Member of the Year by Hui Makala at a banquet Feb. 4 at Kahala Hilton. The hui is composed of Americans of Okinawan ancestry. Its primary objective is to provide scholarships to the Univ. of Hawaii. . . . Hideo Uradomo is the new treasurer of Pacific Guardian and Life Insurance Co. He will keep his job as vice-president.

The Hawaii Redevelopment approval to the plan of a Hono-Agency on Feb. 6 gave tentative lulu development firm for a \$5 million shopping center in a 14½ acre parcel of Project Kalo'o. The plan provides gross leaseable space of 177,000 square feet, including a J. C. Penney department store around an air conditioned pedestrian mall. It has been named tentatively as the Hilo Mall. . . . Kona physicians are concerned over a serious deficit of registered nurses and other professional personnel at Kona Hospital, they advised County Chairman Shunichi Kimura Feb. 6. Dr. Chisato Hayashi is head of the medical staff.

### Church Award . . .

A Hilo man received the United Buddhist Assn. Distinguished Service award for 1966 Feb. 4 at an inaugural ball at the Volcano House. He was Hiroshi Ikeda, president of the Hilo YBA and a mail carrier for the Hilo post office. . . . The Venerable Ernest K. Shinkaku Hunt, 90, the only Caucasian Buddhist priest in Hawaii, died Feb. 7 at his home, 3815 Monterey Drive. He served on the staff of Soto Mission of Hawaii on Nuuanu Ave. for many years. . . . An Episcopal priest on Feb. 8 re-

ceived the annual distinguished service award of the Maui Junior Chamber of Commerce. He is the Rev. William H. Aulenbach, Jr., 35, of Wailuku, pastor of the Church of the Good Shepherd. . . . Mitsuo Tokita has been elected moderator of Lihue Christian Church for 1967.

Paul M. Akama is the new president of the Lihue Republican Club. . . . George Tamura, manager of the Lihue branch of the Bank of Hawaii, is the new first vice-president of the Kauai Chamber of Commerce. He was elected to the post by chamber directors to fill out the term of James F. Morgan, Jr., who resigned. . . . Dr. Jack T. Ishida, associate specialist in agricultural economics, is the new president of the Hawaii Extension Specialists Assn. of the Univ. of Hawaii Cooperative Extension Service. . . . Charles A. Miyata, president of Masonry, Inc., was installed recently as president of the Oahu Masonry Contractors Assn. at Natunoya Teahouse. . . . Richard Mikami, lab technician with HCD, Ltd., is the winner of the first annual "Kahuna" award sponsored by Construction Products, Ltd.; the award will be given annually to an outstanding member of the Concrete Technicians Assn. . . . Stanley T. Himeno, president of Airport Volkswagen, is one of 160 executives who will attend the 13-week Advanced Management Program of the Harvard Univ. Graduate School of Business Administration; the session begins this week. . . . There's a new \$500,000 building and a new name—Aloha Moana Farmers Market. Kiyoshi Tanoue, market president, said the Ward Estate spent \$250,000 replacing the burned-out building, and the 12 merchants who occupy the market contributed a like amount.

The Rev. Niles Kageyama has always been a live wire. At Kauai High School he was a sprinter on the track team and speedy member of the football team. And he has continued his lively pace in adult life. In the course of a few weeks last summer, the 23-year-old native of Koloa, Kauai, got married, was graduated from a seminary and became pastor of Windward Missionary Church in Kaneohe.

**JACL Credit Union Serves All Members**  
**ROSE HILLS**  
OFFERS OPPORTUNITIES TO MATURE MEN  
• FREE TRAINING FOR A CAREER IN COUNSELING  
Excellent Earnings and Company Benefits  
CALL  
**OXford 9-0921**  
ASK FOR MR. FRENCH

**Shimatsu, Ogata and Kubota Mortuary**  
911 Venice Blvd., Los Angeles  
RI 9-1449  
—SEIJI 'DUKE' OGATA—  
—R. YUTAKA KUBOTA—

Three Generations of Experience . . .  
**FUKUI Mortuary, Inc.**  
707 E. TEMPLE ST.  
LOS ANGELES, 90012  
MA 6-5824  
Solchi Fukui, President  
James Nakagawa, Manager  
Nobuo Osumi, Counselor

Friday, Feb. 17, 1967

PACIFIC CITIZEN—5

## Deaths

### Mutsuko Nogami, 53

**TOKYO**—Mrs. Mutsuko Nogami, 53, a former Alameda (Calif.) resident, died of cancer at her Shinagawa-ku home on Feb. 12. She was the wife of Kiyo Nogami, president of Nissei Corn Co., a confectionery firm, and onetime Hankyu Braves baseball player.

**SAN FRANCISCO**  
Endo, Tomo, 70: San Jose, Feb. 3 — s. Katsuhiko, Mitsuhiko, Toru, d. Sachie Sugita, Kazuo Masatani, Satuki Hirai.  
Haruta, Yusaku: Cupertino, Feb. 1—w. Shizue, s. Hiroshi, Isao. Morita, Tsui, 73: Watsonville, Jan. 26—h. Seitaro, s. Hiroshi, George.

### Suisun Oldtimers

**SUISUN** — Oldtimers of Suisun Valley and their families are gathering for a reunion Mar. 18 at Cordella Firemen's Center. To prepare for the event, the Suisun Nisei Club and Suisun Nisei Women's Club expect those planning to attend to notify Roy Nakamura, Rt. 1, Box 128A, Suisun, or Mrs. Sumi Okahara, 801-5th St., Fairfield, by Mar. 1.

d. Evelyn Watanabe, Dorothy Asato, Mary Haramoto, Helen Tomioka.  
Nobusuye, Itaru, 62: San Jose, Jan. 24—w. Yaeiko, d. Etuko, Keiko, Toni (Japan), 2 gc.  
Sasaki, Tosh, 86: San Jose, Jan. 26 — w. Fusako, s. Moriyuki, d. Atsuko, Mihoko Yonetani, p. Mr. and Mrs. Okuchi.  
Yoshida, Hanichichi: Watsonville, Jan. 26 — w. Ruri, s. Richard, d. Helen Yamamoto, Teruko Urabe, Ritsuko Calkins, Nobuko Suzuki.  
**SACRAMENTO**  
Hashioka, Genichi, 81: Colusa, Jan. 25 — w. Nobu, d. Masako Kanazawa.  
Ishizuka, Kunisaburo, 70: Walnut Grove, Feb. 7 — w. Taka, s. Kunio, d. Yuriko, Kiyoko.  
Ito, Toshiro, 68: Lodi, Feb. 5 — s. Kazuo, br. Ichii.  
**PORTLAND**  
Shiohshi, Mrs. Haruno, 88: Feb. 7—s. Sam, Chikara, d. Margaret Sera (Seattle).  
Sunamoto, Mrs. Sen, 73: Boring, Feb. 4—h. Shozo, five children.

**SEATTLE**  
Chihara, Tama, 75: Bainbridge Island, Feb. 8 — s. Takashi (Aptos, Calif.), Toshio (Japan), Masa, Joe, Tokuo (Auburn), d. Mines, Richard Shimono, Sjoji Suko, Sam Shirasago (Hardin, Mont.), Stan Tsujikawa (Auburn).  
Nishimura, Takishiko, 83: Auburn, Jan. 30—w. Misuno, s. Joe, Henry, d. Alice Hama (Seattle).  
**SALT LAKE CITY**  
Nakai, Kihiei, 83: Jan. 29 — d. 4 gc.  
**IDAHO**  
Takaki, Shintaro, 100: Couer d'Alene, Feb. 2, s. Robert, Max (Culva Vista, Calif.).

## 2 WAYS TO EARN MORE INTEREST AT SUMITOMO-

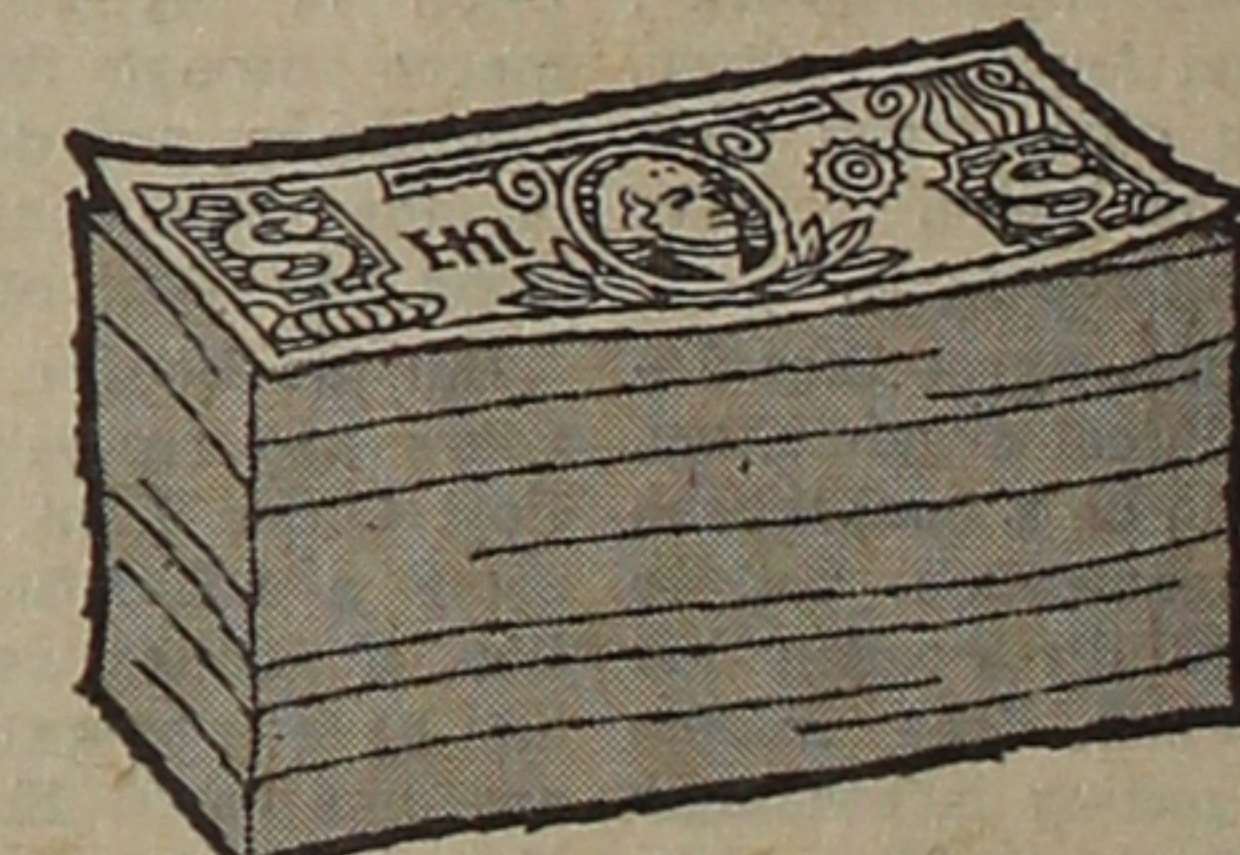
1. BY TRANSFERRING YOUR SAVINGS BY THE 10th OF THE MONTH YOU EARN INTEREST FROM THE 1st ON REGULAR SAVINGS.
2. TIME DEPOSITS ON 90-DAY OR MORE MATURITIES NOW EARN A BIG 5% PER ANNUM. \$1,000 MINIMUM.

### The Sumitomo Bank OF CALIFORNIA

Head Office . . . 365 California St., San Francisco, Tel. 981-3365  
Sacramento . . . 1331 Broadway, Sacramento, Tel. 433-5761  
San Jose . . . 515 North First St., San Jose, Tel. 298-6116  
Oakland . . . 400 Twentieth St., Oakland, Tel. 835-2400  
Los Angeles . . . 129 Weller St., Los Angeles, Tel. 295-4321  
Crenshaw . . . 3810 Crenshaw Blvd., Los Angeles, Tel. 295-4321  
Gardena . . . 1251 W. Redondo Beach Blvd., Gardena, Tel. 327-8811  
Anaheim . . . 2951 W. Ball Rd., Anaheim, 92804, Tel. 826-1740

MEMBER FEDERAL DEPOSIT INSURANCE CORPORATION

## want to increase your SAVINGS?



now is the time.

Your savings are now insured up to \$15,000—yet earn premium interest of 5% with a Bank of Tokyo Savings Certificate.

### MAKE YOUR MONEY GROW AT THE BANK OF TOKYO OF CALIFORNIA

San Francisco Main Office • 64 Sutter Street • YU 1-1200  
Japan Center Branch • Buchanan & Sutter Sts. • FI 6-7600  
San Jose Branch • 1336 N. First Street • Phone: 298-2441  
Fresno Branch • 1458 Kern Street • Phone: 233-0591  
Los Angeles Main Office • 120 S. San Pedro St. • MA 8-2381  
Crenshaw Branch • 3501 W. Jefferson Blvd. • RE 1-7334  
Gardena Branch • 16401 So. Western Avenue • FA 1-0902  
Santa Ana Branch • 501 North Main Street • FA 1-2271  
Western Los Angeles Branch • 4032 Centinela • EX 1-0678

Member Federal Deposit Insurance Corporation • Each Deposit Insured Up to \$15,000



Captain Allan R. Bosworth (U.S. Navy, Ret.) is a former newspaperman and the author of fifteen books. A native of Texas, he has traveled extensively in Europe and the Far East. He lives in Roanoke, Virginia.

## AMERICA'S CONCENTRATION CAMPS

by **ALLAN R. BOSWORTH**  
The shocking story of 110,000 Americans behind barbed wire—in the United States—during World War II. Their crime: Japanese ancestors.

**JACL NATIONAL HEADQUARTERS**  
1634 Post Street  
San Francisco, California 94115

Please send me \_\_\_\_\_ copies of AMERICA'S CONCENTRATION CAMPS by Capt. Allan Bosworth at the special price to JACL Members of \$5.00. (Regular price: \$5.95)

NAME: \_\_\_\_\_  
Enclosed check to "J.A.C.L." for \$\_\_\_\_\_. ADDRESS: \_\_\_\_\_  
Chapter: \_\_\_\_\_ City \_\_\_\_\_ State \_\_\_\_\_ Zip \_\_\_\_\_





# PACIFIC CITIZEN

HARRY K. HONDA, Editor

Published weekly by the Japanese American Citizens League except the last week of the year

Editorial-Business Office

Rm. 307, 125 Weller St., Los Angeles, Ca. 90012—Ph: (213) MA 6-6938

Jerry Enomoto, Nat'l Pres. — Roy Uno, FC Board Chmn.

National JACL Headquarters

1634 Post St., San Francisco, Ca. 94115 — Phone: (415) WE 1-6644

District Council Representatives

PNWDC—Kim Tambara; NC-WNDC—Homer Y. Takahashi; CCDC—

Seico Hanashiro; PSWDC—Tetsu Iwasaki; IDC—Frank Yoshimura;

MPDC—Bill Hosokawa; MDC—Joe Kadowaki; EDC—Leo Sasaki

Special Correspondents

Hawaii: Allan Beckman, Dick Gima, Japan: Tamotsu Murayama

Entered as 2nd Class Matter at Los Angeles, Ca. — Subscription

Rates (payable in advance): U.S. \$4 per year, \$7.50 for two years.

U.S. airmail: \$10 additional per year. Foreign: \$6 per year.

—\$2.50 for JACL Membership Dues for 1 year Subscription—

Except for JACL staff writers, news and opinions expressed

by columnists do not necessarily reflect JACL policy.

6 — Friday, Feb. 17, 1967

## Ye Editor's Desk

BEN KUROKI

JACL has long recognized the sacrifice and heroism of the Nisei who fought during World War II. They were the ones who bought with life and blood the freedoms persons of Japanese ancestry take for granted today.

And Ben Kuroki, aerial gunner during WW2 with 58 missions over Europe and the Pacific theaters of operation, is perhaps the most well-known.

Last Sunday, he addressed the Pacific Southwest District Council meeting at Gardena Valley, recounting the prejudice he encountered during his between-mission stay in Southern California 25 years ago and the personal fight he waged to overcome anti-Nisei discrimination. Lack of speaking time cut into his talk but he recalled the guttier episodes.

Some have taken his closing remark about intermarriage as a "rap" as he wondered aloud why Nisei fellows today prefer blondes. Kuroki, still the fighter, was expressing what many Nisei parents across the land regard as a break against the traditions their Issei parents tried to teach if a Japanese marries a non-Japanese. Yet this may be the desire which might virtually disappear by the fourth generation if immigration from Japan were suspended. But immigration is now more open than ever.

Of JACL's current push on cultural heritage, Kuroki hailed it as a meaningful contribution not only to the American scene but especially to the younger Japanese American.

Of JACL's concern in poli-

## Perspectives—

(Continued from Front Page)

see our Nationalist V.P. Tom Shimazaki deal with this topic in last week's "By the Board". With respect for Tom's views, and hoping others will honestly express theirs, I offer the following reactions.

I very much agree that JACL is a political organization. It is tough to be a nonpartisan political organization, but we have successfully trodden that middle ground. The middle ground is getting increasingly tough to chart. As Tom says, issues such as "civil and human rights" have become "inherent in the partisan political structure of our nation". The point is made that no person or organization can crusade in this area without involvement in "partisan political philosophies".

Precisely because of the points Tom makes, I contend that JACL must become increasingly involved. It is naive in these times to separate civil rights from partisan politics. However, when the issues concerned us directly, JACL did not hesitate to get involved.

Was Prop. 14 a partisan political issue? JACL committed money and staff to the campaign against it, where does that put us?

As for the U.C. tuition problem, I feel that the NC-WNDC resolution carefully and completely spells out its position, as a JACL district, in declaring itself against tuition.

Lastly, this is an issue that provokes emotions and I am of the opinion that emotion triggering issues that may cause strife and division in JACL should not be dodged. Imposition of narrow, rigidly defined, constitutional limitations to activities on behalf of we Japanese Americans alone, is a good way to starve JACL to death. As former Contra Costa Chapter President, Ben Takeshita, put it, JACLers who don't like the way we're going have every right to make themselves heard and, further, to try to influence the policy and direction of our national organization through active participation.

NOTE OF THANKS

To the Oakland Chapter for its welcome support of the idea that JACL must be involved in the issues that face us. Welcome, not because the Chapter agrees with me, but because it was the first sign that a Chapter cares enough to write a letter.

tics, he was surprised by the JACL rebuttal over use of the National JACL scroll of appreciation to him in connection with a Nisei for Goldwater leaflet circulated in the fall of 1964. "I thought JACL was for Nisei getting involved in politics," he said. But JACL's point was the possible misrepresentation in the leaflet that National JACL was connected with the campaign by obvious use of the scroll.

Now a copy editor with the Ventura County Star-Free Press, Kuroki spoke rather uneasily to his first Nisei audience since coming to the west coast. In the months to come, he may be asked to address other Japanese American groups on the issues of the day. He'll be ready the next time. His record in the past gives us that assurance.

### POSTAL RATES

The Congress will be asked again to raise postal rates on the premise that it's not paying its way—especially newspapers and magazines under Second Class and the so-called "junk" mail under Third Class. Because of the last increase in 1964, the Pacific Citizen had to boost its subscription rates for JACL members. But whatever the increase might be again, we are not anticipating a further raise in subscription fees.

This much said, we can consider the problems of postal rates with a more detached perspective.

Originally, communications through the posts were considered a subsidized public service, a cost that must be paid if democracy were to be served for it depends upon an informed electorate and citizenry. And in all governmental departments the concept of service has been traditional. Agriculture is served by the Dept. of Agriculture; commerce through the Dept. of Commerce, and down the line of the President's cabinet. None pay their own way.

But the Hoover Commission years ago recommended the Post Office Dept. might become a non-deficit organization, if politics were removed and have it operate on a business-like basis. But the White House and the party in power have used the Post Office Dept. for paying off political favors. If this condition is to persist, then the public is entitled to subsidization of the posts just as other departments are helped by tax monies.

The furor against "junk" mail deserves another look. Since our government, like many other postal administrations in other parts of the world, maintains the class, it is obligated to handle it as efficiently and adequately as possible or banish it.

Third Class mail is recognized as the business-getting and business-building arm. It has been found successful by the companies which use it, or they wouldn't become involved.

To the end that it means generating sales of goods and services, which adds to the Gross National Product, creating more jobs and thereby increasing the taxable income, it more than pays for itself in the business it creates, the employment it provides and in the return of tax money to the government.

Those who complain their mail boxes are filled with Third Class mail should remember there are waste-baskets, if this material upsets them.

Parcel post or Fourth Class, which has had more increases in rates, is losing out to private concerns, which puts the Post Office to shame.

If further postal rate increases are to be considered, it may be also proper at the same time to reorganize the entire system so the public can be served efficiently.

JACL MEMBERSHIP is open to all American citizens 18 years of age or over who agree to abide by the Constitution and By-Laws of National JACL.



'It's probably Jerry Enomoto—our man-in-motion.'

## — Letters from Our Readers —

### COLLEGE REGENT

Editor:

In the Feb. 3 issue of the Pacific Citizen, there appears a picture of Mr. Taul Watanabe together with President G. Herbert Smith of Willamette University with the caption that reads in part, "Watanabe is believed to be the first Nisei serving as trustee and regent for a college of higher education in the continental United States." Several readers of the Pacific Citizen have questioned me about this.

Not with any intent to detract in any way from the many accomplishments of Mr. Watanabe, but only to keep the record straight, may I point out that the caption appears to be incorrect.

On Feb. 14, 1964, Governor Mark O. Hatfield appointed my husband, Ray T. Yasui, a member of State Board of Higher Education of Oregon to fill a one year unexpired term of Mr. William Walsh. On Feb. 26, 1965, he was then reappointed by Governor Hatfield, with confirmation of the State Senate, to serve a six year term from March 3, 1965, to March 7, 1971. As one of the nine members of the Board of Higher Education, he serves as a regent for nine universities and colleges.

The Oregon state system of Higher Education is comprised of Oregon State University, Corvallis; University of Oregon, Eugene; Portland State College, Portland; Oregon College of Education, Monmouth; Southern Oregon College, Ashland; Eastern Oregon College, Le Grande; and Oregon Technical Institute, Klamath Falls. The medical and dental schools of the University of Oregon, Portland.

There is a bill introduced in the Oregon Legislature which will change the name, Board of Higher Education, to Board of Regents so as to avoid the confusion of the former with the Board of Education which administers elementary and high schools.

MIKIE K. YASUI

Rd. 1 Box 1000  
Hood River, Ore.

### LESS PARTISAN?

Dear Editor:  
Our JACL president's column Perspectives sounds more and more like a political column. Why not be honest about it and call it the Democratic Perspectives. Often it has little to do with Japanese Americans specifically; it sounds like a recruiting column for the Democratic Party with its peculiarly slanted interpretations.

I believe I can guess what the column will say. The battle against tuition proposal for the university is not political. It is in California in that the Democratic Party has made it so. A request for the students who use the university facilities to make a token payment of the cost of educating them is not unusual. The tax payers are still paying the majority expenses. An added personal expenses for the use of public facilities, such as the State universities and colleges, is not uncommon. Those who drive on the public highways pay gasoline and auto taxes to help finance the roads.

"I'm certain that Nisei's record of college attendance is as good in other States as in California. If in California the State universities were tuition free, in other States it was and is not. A minimal tuition fee is not what will determine whether a student can or cannot attend college; much more will depend on his ability and his motivations. You don't need a silver spoon in your mouth in order to pay a minimal tuition fee.

The great cry concerning the firing of the University President Clark Kerr is even more politically motivated. Whether Kerr was a good president or

bad president, I do not pretend to know. But it was obvious that the tax payers who foot the bills were pretty unhappy about the universities, especially the Berkeley campus. When taxpayers become dissatisfied, it isn't uncommon for the head man to get the ax.

When Kerr was in office the militant students did their best to drag him down. Now that he has been fired they threaten to get the regents who threaten him. When Kerr was still in these same students said that Berkeley was a bad campus. Now that he has been fired the Student Senate passed a resolution praising Kerr for lifting Berkeley from a "good campus to the best."

What does the faculty members mean when they demand autonomy for the university? If they mean freedom from interference from every politician who wants to dictate what should and should not be taught, that autonomy is a necessity. But if they mean that the bill-paying taxpayers have no right to examine the end product of the university occasionally and say whether or not they are satisfied, that kind of autonomy of course cannot be granted.

Kerr was not fired for his political beliefs. His firing reflected the disenchantment among taxpayers with the way the university was being run.

It may be stated that our president's statement concerning "Caucasian friends of JACLers" is also one sided. They have praised us as much for the way we achieved success as for the success itself. Some have even deplored Nisei's involvement in certain civil rights tactics. They are also a little sad and disappointed at the Nisei, but for a completely different reason than our president's friends. We need a better definition and understanding of the term "involvement in civil rights struggle."

In general I am in agreement with most of the well stated sentiments expressed by our president. Above, however, are some of the other-side-of-the-coin picture which should not be ignored. In JACL there are both Democrats and Republicans. All topics are fair game for comments. But shouldn't our president's column be a bit less partisan?

CLIFFORD UYEDA  
1333 Gough St.  
San Francisco, Calif.

### ISSEI HISTORY

Dear Editor:

To find accurate data and facts about Japanese pioneers in the United States is not an easy task.

About the (PC Jan. 27) item about the death of "Dr. Katsuki, first U.S. trained Japanese doctor, who graduated from the U.C. School of Medicine in 1896"—there was at least one who graduated from a U.S. school of medicine prior to '96.

Seinosuke Oishi, from Wakayama, attended the University of Oregon School of Medicine in 1891 and graduated in 1895. After graduation Oishi returned to Japan to practice medicine. Later he became interested in Socialism and was arrested in the so-called "Dai-gyaku Jiken"—supposedly plotting to kill the Emperor Meiji.

Dr. Oishi was hanged on Jan. 24, 1911, in Tokyo, along with 11 other Japanese "anarchists". These may be "unpleasant facts" but they are part of history.

KARL G. YONEDA  
320 Pennsylvania Ave.  
San Francisco, Calif.

### Japanese coins

TOKYO — New Japanese 50-yen and 100-yen coins are being circulated from this month. The 100-yen notes will be withdrawn about 1973.

## CLASSIFIED ADVERTISING

### EMPLOYMENT—So. Calif.

NURSES

### RN's Needed

EXCELLENT SALARY

Alondra

Community Hospital

9246 E. ALONDRA

Bellflower

Tel. 866-9741

### ☆ OPERATORS

S & A Blouse Mfg. Co.

Hiring experienced operators

SINGLE NEEDLE & OVERLOCK

— Apply in Person —

1390 Newport Ave.

LONG BEACH, CALIF.

### Ogawa —

(Continued from Page 2)

ing, albeit from different sources which made the Kai-sha people the toast of uptown cocktail parties in that time past, but the rank and file found its place in the ghetto of Main and Jackson Street, and their children were sent to the balcony of movie houses and got the cold shoulder or a long, long wait in the after theater joints.

### Problem Today

"Assimilation" was the key word to the problems of the time, as much as the word "integration" now.

To quote the words of Fred Marshall's P.I. Saturday feature cartoon "Twas ever thus on Puget Sound", and looking back through the roster of "undesirable" minorities from the time of the anti-Chinese riots of 1885-86, we look askance at the latest development.

In connection with President Johnson's program to help some 700 families to migrate from economically distressed areas of the U.S. to this locality where things are booming and labor is in short supply, comes now a well informed source which says that some few hundred families of Watts, California area are included, and the tone of alarm from this source is indeed resonant. They say we are already beset with the problems of taking care of more desirable, alert, and able citizens who come under their own power from other parts of the country, so why should this area be burdened with assimilating the less desirable type of immigrant? Seems to me we've heard the story before.

### Sakura Script: by Jim Henry

## Family Crisis

Yokohama  
Those Nisei who thought it would never happen in male dominated Japan, take notice. With the disintegration of the family unit in postwar Japan, the father-image has changed considerably. In the past, the father was the mainstay of the family both economically and emotionally. Now, he often feels himself an outsider in his own home, particularly after his children, nearing adulthood, disregard his presence. His wife on the other hand, in order to help pay the children's education expenses, spends much time away from home doing some part-time work.

There is the case of the man who threw a lit cigarette into the sleeve of a party kimono worn by a young girl. On arrest, he turned out to be an employee of a leading firm, in a supervisory position. A similar case was that of a man who poured ink on a girl's kimono. Both, on questioning, said they felt left out at home. Truly this pattern of disintegration poses a deep social problem and undoubtedly will increase. It is a far cry from the old Japan and quite ironic in a way.

HOW'S BUSINESS?  
A constant source of curiosity and problem for Japanese business executives is how their competitors are doing. Even in this age of electronic computers, economists take days, weeks or even months to compile various economic indicators.

However, department store executives have a handy way to draw up a general picture of the competition. They don't need computers or even economists. They just ask detectives.

Why?  
It seems the more prosperous a store is, the more crowded it is and pickpockets like crowded places. Thus pickpockets become a handy barometer for the state of business.

When detectives at the Tokyo Metropolitan Police Board worked out a table of pickpocketing cases reported from major stores recently, it looked alarmingly like a listing of profits for these firms. Placings in both tables almost corresponded.

What do they do and see in Japan in such a short period? The average soldier's radius of activity takes in perhaps Tokyo Tower, the department stores, a theater, a Tokyo night club, and maybe a quick trip to Nikko at most. Aside from that, his stay is lonely and hectic mainly.

In a foreign land, speaking a different language in most cases, he is denied the companionship of most people as well as being unable to understand, appreciate or enjoy many of the things some of us here take for granted.

It is the little chat with a Japanese family met on the train, the feeding of pigeons in the park, a telephone call

### EMPLOYMENT—No. Calif.

## ELECTRONICS DRAFTSMEN PRINTED CIRCUIT DRAFTSMEN PRINTED CIRCUIT DRAWING CHECKERS

ELECTRONICS DRAFTSMEN to draw schematics, system diagrams, logic diagrams, electrical assembly drawings. Will layout terminal boards from schematics. Must have knowledge of component symbols, and a familiarity with MIL SPEC'S and STD'S desirable, but not mandatory. 18 months to 2 years experience required.

PRINTED CIRCUIT DRAFTSMEN to layout and tape printed circuits from schematics and logic diagrams, using discrete components and/or integrated circuits. Must be familiar with industry and/or MIL STD'S governing printed circuit layout. 18 months to 2 years experience required.

PRINTED CIRCUIT DRAWING CHECKERS to check printed circuit art work and art masters against logic diagrams for continuity, tolerances, component size, interference, and conformity to prevailing industry and MIL standards. Checking will also involve the use of integrated circuits as well as discrete components. Minimum of 1 year checking printed circuits required.

LINK GROUP, General Precision, Inc., Western Development Laboratory located in the San Francisco Bay Area, has permanent openings for personnel in the above listed classifications. An equal balance of commercial and government work provides the long term stability of a national corporation.

To arrange local Los Angeles interview, call day or evening (213) 753-3706

## LINK GROUP

General Precision, Inc.

1451 California Avenue

Palo Alto, Calif.

An Equal Opportunity Employer A plans for progress company.

### OPERATORS

EXPERIENCED

Pleasant working conditions

and steady work.

New Factory

KNITCRAFT CORP.

2900 S. Main St., Los Angeles

748-2685

STOCK CLERK—Dresses & Sports Wear; Part time, \$1.50 hr. Evans, 822 S. Los Angeles St., 622-8215.

WANTED — TYPIST and light bookkeeping in small mfg. plant. Prefer woman over 30. Call 332-5016 or 581-3959 eve or weekends.

### ☆ OPERATORS

Single Needle & Specials, Experienced on Power Machine. Factory in East Los Angeles. Apply to Mrs. Sera.

1219 S. Herbert, L.A. 264-2680 (Japanese Spoken)

Yamato Employment Agency

Job Inquiries Welcome  
Rm. 202, 312 E. 1st St., L.A. MA 4-2821 • New Openings Daily

### OF INTEREST TO MEN

Shop & Delivery Boy, dntn to 2.25  
Shop & Delivery Boy .to 2.25 hr  
Whse Order Filler, distr. so. .90/wk  
Serv Statn Attendant, n.east .380+  
Delivery Boy, p.t. dntn to 1.75/hr  
Maint Houseman, apt. .to 1.85 hr  
Domestic Couple, P'dena .500+  
Body & Fender Rpm, auto 3.00/hr  
Systems Analyst, exp .1.000  
OF INTEREST TO WOMEN

Typist Clk, no dntn .368  
Secty, food co .450-465  
Asst Bkpr, so/west .to 433  
Typist Clk, hotel biz .375  
Clk Typist, dntn .1.75/wk  
Pottery Factory Tr, e'side 1.50/hr+  
Factory Wkr, p.t. print. 1.40/hr+  
Paste-Up Wkr, p.t. print. 1.40/hr+

### ● REAL ESTATE — Los Angeles

### No. Montebello Area

#### 5 Builders — Exclusive

New, 4-bdrm, 3 baths, exclusive

homes. Walnut cabinet, top

Thermalor appliances, lath plaster,

carpets over wood floors.

—

#### Brighton Hills

5 yrs. new, 3 bdrm, 1 1/2 baths.

20 x 40 pool, large level lot.

BY OWNER

—

CALL

RA 3-7462 RA 3-3455

## New Japan

## Restaurant

OPEN DAILY

NOW SERVING

Superb Japanese Food

Luncheon - Dinners

at Reasonable Prices

— Take-Out Orders —

Your Host: George Nozawa

Banquet Facilities

3029 W. Jefferson

Los Angeles - RE 5-5741

### Toshiro Mifune in Hiroshi Inagaki's 1956 OSCAR WINNER

## "SAMURAI THE LEGEND OF MUSASHI"

in EASTMANCOLOR with SUBTITLES

NEVER SHOWN BEFORE! ORIGINAL UNEDITED VERSION!

Part I of Three

co-feature

YUZO KAYAMA in COLOR COMEDY

"AFFAIR IN A COUNTRY SCHOOL"

TOHO LA BREA THEATRE - 1000 LA BREA - 1000 LA BREA

Part I of Three

co-feature

YUZO KAYAMA in COLOR COMEDY

"AFFAIR IN A COUNTRY SCHOOL"