

By JERRY ENOMOTO
Nat'l. JACL President

Sacramento National affairs, which ultimately affect the little man in or out of America's ghettos, are often far removed from the awareness or interest of that same little man.

The AMA Image

According to the news media, the gentleman appointed, Dr. Egeberg, shares most of Dr. Knowles' views, so Secretary Finch and the American public have really not lost. We hope so. We are also told that Dr. Knowles' appointment was opposed at least partly because he is "too liberal" in his views about certain issues having to do with the cost of medical and hospital services, and their delivery to the people.

Although the image may not be either completely accurate, nor completely fair, the AMA has not been known as a champion of the poor. On the contrary, it is medical students who establish and its typically had press with the poor and minorities.

It is indeed unfortunate that, once again at a time when we should be using every chance to improve our relationships with that alienated segment of our society, we blow it.

The picture, as it certainly must have ultimately appeared to many, is that of another victory for special interest forces over the little man.

Whether the little man is aware enough to be conscious of it or not, certainly those Americans who believe in reasonable and proper approaches to the social problems of our time will do well to ponder the significance of this farce, when we talk of the alienation of the underprivileged.

Incidentally, I caught on one national television hook-up, the spectacle of the AMA spokesman reading a message to Mr. Finch about "this selection" for the position, being abruptly cut off by the "press agents" when a reporter asked him (the spokesman) why he referred to Dr. Egeberg as Finch's choice, when indeed he wasn't.

Help! . . .

Every chapter has recently gotten from Haruo Ishimaru, Cultural Heritage Chairman, certain requests having to do with writing up a brief historical resume of the Issei in their areas, and their contributions, plus the name of the Congressman to whom the material can be given to present into the Congressional Record. This is a part of our National Centennial Celebration, and its success will depend entirely upon Chapter follow-up.

I ask every Chapter President to make this a priority job, so that the material is in Haruo's hands by September 1. Here is another concrete job that you can do to implement a part of a national program that you mandated. Please waste no time acting!

Seattle's ACE . . .

The birth of the "Asian Coalition for Equality" in Seattle reflects another step forward in the concern of Orientals for that better America. Composed of Chinese, Filipinos and Japanese, and spearheaded by the Rev. Mieno Katagiri, ACE intends to move into all areas of the struggle for human rights.

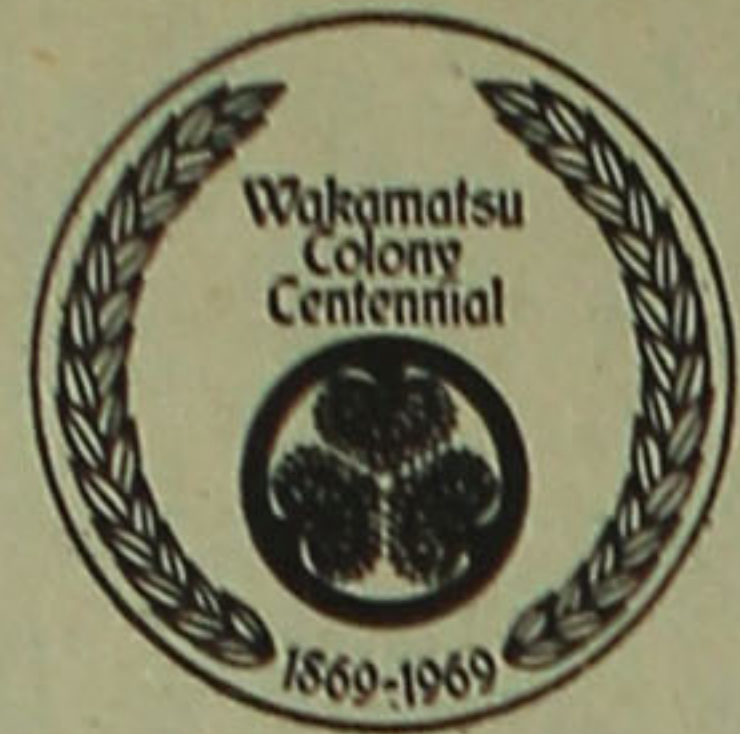
Quoting from the Seattle Times, "The individuals who formed ACE believe Orientals should be participants in, rather than spectators of, the struggle for equality."

In the Seattle JACL Newsletter, Phil Hayasaka discusses this body and its purposes. Also in the same Newsletter appears a very timely piece called "Japanese Americans—What Role?" by Joseph T. Okimoto, M.D., a Seattle board member. (See PC, July 4; "Seattle Chapter Gadfly").

I am very encouraged by these growing signs of Japanese Americans and JACL facing up to the tough and uncomfortable realities of what's wrong in American life today, and what we can do (big or small) about it.

Contra Costa-Fremont chapters slate picnic

SAN RAMON — The Little Hills Ranch here will be the locale again for the annual Contra Costa JACL picnic July 20 with Fremont JACL joining to make the affair larger and more fun-packed. Gates open at 9 a.m., the games from 1-4 p.m., and the games from 1 p.m. according to Jerry Irei, general picnic chairman.



PACIFIC CITIZEN

Membership Publication: Japanese American Citizens League, 125 Weller St., Los Angeles, Calif. 90012; (213) MA 6-6936
Published Weekly Except First and Last Weeks of the Year—Second Class Postage Paid at Los Angeles, Calif.

VOL. 69 NO. 2

FRIDAY, JULY 11, 1969

Subscription Rate Per Year
U.S. \$5, Foreign \$7

TEN CENTS



SEAFAIR QUEEN CANDIDATES—Among these ladies will be the queen and princesses to represent the Greater Sattle Japanese Community in the annual Seafair Queen contest this summer. Candidates (from left) are: front—Joyce Okamoto, Karen Tsukiji, Arlene Naganawa, Karlyne Omoto, Judy Saiki; middle—Linda Hoshide, Julie Saka-

hara, Kathy Sakita, Christine Yamashiro; back—Dodi Morio, Cathy Hori, Gwen Kawabata, and Janet Ishihara. Missing — June Eguchi, Elaine Aoki and Margaret Kihara. Queen will be introduced July 12 at the Seattle Center Snoqualmie-Nisqually Room during the coronation ball.

—Photo by Joe Sakamoto

A Zengakuren Close-up

By BILL MARUTANI

Tokyo THE OTHER EVENING, leaving the law offices rather late and quite exhausted, I was taking a short-cut through Hibiya Park when I came upon the first of many advance contingents of "zen-gakuren" students who sat about in clusters, their helmets and towels in hand and their red banners fluttering atop long, bamboo poles. They had been demonstrating ("demo" for short) daily so the assemblage and the approaching demonstration had lost their novelty for me.

But on an impulse I decided to approach one group, curious to hear from the students themselves, even if only briefly, their objective, their demands, their views, and the purpose of the continued demonstrations.

So lacking trepidation, I "waded" into and thus began a "brief" hour-and-a-half of lively, sometimes heated, give-and-take.

FULLY REALIZING THAT on what could easily be a touchy, if not inflammatory, topic which would demand an opportunity and facility on my part to express myself concisely and fully, I broached the situation by asking which of the students spoke English, this query itself being in "Eigo."

There was a moment of surprise, students quickly looked at one another and one of them was heard to say "Wait, wait" ("chotto, chotto") this fellow wants to know if there's anyone here who speaks "Eigo."

A slight pause and another student was then heard to make a remark of a contemptuous nature at which point, in fairness to them (in "Nihongo") that I did understand some Japanese so they might take that into consideration ("chui-seyo") in freely making remarks. That assertion, in their tongue, caused another brief flurry with several of them speaking at once. But it broke the ice.

WHAT, THEY DEMANDED, was my interest and who was I? Answering the last query first, I identified myself as a Nisei (more flurries) studying Japanese law ("Yes, a 'bengoshi' in America") and that as a lawyer I was inter-

IN THIS ISSUE

- SPECIAL REPORT Zengakuren Close-up 1
- GENERAL NEWS 'Friendly Coffee Hour' affects Noguchi hearing coverage 2 Parents' duty to teach love and responsibility 4
- JACL-NATIONAL Interim session for National Board and staff set; U.S. commemorative stamp for Japanese immigration centennial sought; JACL national credit union's 5 1/4% dividend highest yet 1
- JACL-CHAPTER Dayton-Cincinnati Clerks fill single charter flight to Japan . . . 1
- COLUMNISTS Enomoto: The AMA Image, Masako: Warren Court, Hosokawa: Aggressive City, Honzen: Shizawa Formula, Kamamoto: Sex, Games, Quiet, Gima: At City Hall, Hamanaka: From Main St. to Madison Ave., Sakamoto: Forgotten People, Estes: Nara's Shoshon, Gima: Maruichi: Visible Majority, Yamauchi: Don Garter Glove, Yaeuchi: Sane's Search for Identity.

SPECIAL REPORT

would they then negotiate. The students were not clear what would constitute "equal footing."

SOME THEN LASHED OUT at this PC columnist and terms such as "American aggression in Vietnam," "suppression of Negroes," and even "inherent evils of capitalism" ("shihon-shugi") were hurled at me in rapid succession, seeking now to place me on the defensive.

I, in turn, readily conceded that our American system, being operated by humans (and not gods—"kami") and thus subject to human frailties, was not without its faults and shortcomings — but there in fact was an appreciable body of people openly expressing their opposition to America's role in Vietnam; that with its shortcomings, nevertheless it was the best system of government insofar as I was concerned. Could they identify a better system in our present world?

THIS LED TO A DISCUSSION of ideologies in the course of which many other points were touched upon, the discussion ("giron") at times lashing out on a personal note ("You say that because you're a lawyer, not a member of the 'working class'—at which I mused to myself, "If they only knew what 'work' I've experienced in my life, they would be in the comparative shelter of the academic life in an affluent society").

But then I could not be harsh in my judgment; after all, it was not that long ago that I, too, was flush with idealism—which I trust I've not lost—including some impractical goals.

As we finally parted (they went to join the throng) I shouted to them "Kanarazu shikkari yaru-zo!" Indeed, I hear their resounding shouts in the streets.

HIROSHIMA KENJINKAI HOLD A-BOMB MEMORIAL

SACRAMENTO — The Hiroshima Kenjin Kai here holds its annual memorial services on the weekend nearest Aug. 6, the day U.S. dropped its A-bomb on Hiroshima in 1945. It will be held this year at the Japanese Pioneer Methodist Church on Sunday, Aug. 3.

The services remember those who have died in the atomic bombing as well as Kenjinkai members who have died during the year. Jack Tsuchida is chairman of the 1969 observances.

NEWS DEADLINE—Saturday

S. F. JACL CREDIT UNION

New Loan Rates Effective Now

SAN FRANCISCO — The San Francisco JACL Credit Union announced a new schedule of interest rates for its members in view of the change in current rates advertised by banks and other financial institutions. New loan rates effective immediately are:

1—Used car loans—1/3 down balance 1% rate on unpaid balance per month, 2 years term.

2—Real Estate loans—7 1/2% per annum up to 20 years. Maximum loan \$10,000.

3—Loans covered by paid up credit union shares—0.7% on unpaid balance, 2 years to pay.

4—Home Improvement—3% per annum, \$3,000 maximum, 5 years to pay.

5—All personal loans up to \$1,000—1% on unpaid balance, 2 years to pay.

6—New Car—1/3 down required, 2% on unpaid balance, 2 1/2 to 3 years to pay.

The credit union board also announced that it will comply with the new federal legislation known as "Truth in Lending" which will require all borrowers to know the exact cost of borrowing funds.

The San Francisco JACL Credit Union has ample funds available for its members. All credit union loans are insured by the Federal Reserve Student Loan program which allows students to borrow up to \$1,500 from the credit union at receiving wide attention. Applications and details may be obtained from Treasurer Ichiro Sugiyama at the new offices of the credit union, 540 - 45th Ave., #4121 or calling 387-4578.

NAT'L JACL CREDIT UNION

DECLARES 5 1/4 PERCENT DIVIDEND—HIGHEST YET

SALT LAKE CITY — The board of directors of the National JACL Credit Union declared a 5 1/4% per annum dividend for the first half of 1969, making it the highest dividend ever paid by the JACL credit union.

"It compares most favorably with other lending institutions even without the special Share Savings Life benefit that members enjoy," treasurer Hito Okada said.

Members share account were credited July 1 with this dividend on the second quarter of the 1969 statement. Distribution of dividends was in excess of \$30,000, Okada added.

JAPAN IMMIGRATION TO U.S. STAMP REQUESTED

SAN FRANCISCO — JACL chapter presidents this week were being urged to write their congressmen and senators to recommend issuance of an appropriate commemorative stamp to mark the Japanese immigration centennial.

The first group of immigrants from Japan came to the United States to establish the short-lived Wakamatsu Tea and Silk Farm in 1869. The event was marked when a State of California historical landmark plaque was dedicated at Coloma, June 7, with the JACL Wakamatsu Centennial Committee in charge.

DAYTON-CINCINNATI JACLERS GOING TO TOKYO JULY 12 ON CHARTER HOP

DAYTON — What began as a dream of one of the Dayton members in early 1967, has now blossomed into a JACL Charter Flight to Tokyo leaving on July 12, for three weeks of touring in Japan.

The idea of an international charter flight from the Dayton Chapter, which had a membership of 76 in 1966, seemed more of a fantasy at the onset, but even from the beginning enthusiasm ran high, according to Dr. Mark Nakachi, flight chairman.

A flight questionnaire distributed in the summer of 1967, indicated that about 125 persons were interested in such a flight. By January of 1968, as word of the proposed flight spread in the Dayton and Cincinnati areas, 190 persons had indicated an interest in the flight.

Shortly thereafter, the Dayton Chapter Board of Directors and membership voted to act. Northwest Airlines for a 165 person, \$70,000 charter contract to Tokyo.

Oversubscribed

When the initial call for flight reservations by means of a \$50 per person deposit was made in the spring of 1968, approximately 120 reservations were made within the initial deadline period of 6 weeks. By the fall of 1968, through the efforts of flight co-chairmen Ron Egelston and Dr. Nakachi and help from many Dayton members, 190 persons had paid their deposits.

By April 1969, eight months and two installments of \$175 and \$200 per person later, the entire plane was sold out. Fifteen fully paid up persons remained on the standby list.

The impact of this flight on local chapter membership and activities has been short of miraculous. The Dayton Chapter membership rose to an all time high of 175 members in 1968, and is again approaching that figure in 1969. The Cincinnati Chapter membership has increased proportionately.

Sister City Fete

Recently, the Japanese city of Dayton, Ohio were proclaimed sister cities. Fred Fisk, Dayton Chapter sister city chairman, along with city and NCR officials have arranged a visit to Oiso on July 14 for flight participants.

The Dayton JACL contingent will go as official delegates of the city of Dayton. A grand welcoming and exchange program has been planned for that visit.

Stockton Buddhists dedicate new church

STOCKTON — The new Stockton Buddhist Church, built at the cost of \$1 million, was dedicated last week (June 29-30). It is located four blocks east of Pixie Woods in West Stockton bordering Smiths Canal near Louis Park.

The old site at 148 West Washington was purchased by the state to make way for a cross-town freeway.

Besides the church, architect Seichi Kami of Berkeley included a Japanese garden, an educational building, parking for 200 cars and a combination gym, cafeteria, stage and movie projection room.

Sumitomo Bank branch in San Mateo to open Aug.

SAN FRANCISCO — The 10th branch of the Sumitomo Bank of California will open Aug. 1 at Hillsdale Shopping Center, San Mateo, it was announced by president Isao Yamasaki, with David H. Saito as manager.

The shopping center is one of the largest in Northern California, with some 100 tenants including Sear's, Macy's and Emporium.

The Sumitomo Bank will face El Camino Real and occupy a portion of the premises formerly occupied by Livingston Bros.

Trip for underprivileged Sacramento children slated

SACRAMENTO — Some 50 underprivileged children of various ethnic backgrounds will be guests of Sacramento JACLers who will charter a bus to take them to see the San Francisco Giants play July 20.

Prior to the game, the children will have the opportunity to meet some of the Giants baseball stars, according to Eddy Yumikura, trip chairman.

Nat'l JACL board & staff interim session scheduled

LOS ANGELES — The 1969 interim meeting of the National JACL Board and Staff will be held at International Hotel near L.A. International Airport, commencing after luncheon Friday, July 18, and adjourning before noon, July 20, according to Jerry Enomoto, national president.

As much as possible, discussions will be confined to those matters which require decision, Enomoto added.

Opening session will be a review of JACL objectives and methods of attainment — in essence, a general free-wheeling discussion which may also point directions for the National Planning Commission, the Sacramento explained.

Expected to attend are: Henry Kaneaga, 1st v.p. of Orange County; Kay Horita, 2nd v.p. of Philadelphia; Dr. John Kanda, 3rd v.p. of Puvalup Valley; Kay Nakagiri, sec. of San Fernando Valley; Yone Satoda, treas. of San Francisco; Dr. Frank Sakamoto, 1969 Club chmn. of Chicago; Kumeo Yoshinari, past pres. of Chicago; K. Patrick Okura, past pres. of Omaha; Kan-

go Kunitzugu, PC Bd. chmn. of Los Angeles; His Suzuki, youth commissioner, of Sacramento; Bill Marutani, legal counsel, of Philadelphia; Patti Dohzen, nat'l. Jr. JACL chmn. of Los Angeles; Dr. Warren Watanabe, EDC gov. of Philadelphia; Henry Tanaka, MDC gov. of Cleveland; Lily Okura, MPDC gov. of Omaha; Henry Kato, PNWD gov. of Greater-Portland; Ron Yokota, IDC gov. of Pocatello; Dr. Kenjo Terashita, NC-WNDC gov. of Stockton; Tokuo Yamamoto, CC-DC gov. of Clovis; Al Hatate, PSWDC gov. of Los Angeles; Mas Satow, MDC of Massachusetts; Jeffrey Matsui, Alan Kamamoto, Raymond Uno and Harry Honda; Dr. Roy Nishikawa of Los Angeles; Dr. David Miura of Long Beach, and Ray Okamura of Berkeley (the final trip by invitation).

Action Reports

On the agenda are matters pertaining to: 1—Budget & Finance: where do we stand, expenditures outside of budget to date, policy recommendation for Convention program budget.

2—Uniform membership dues: status of current study.

3—Legal: liability insurance, network of attorneys, 4—Youth program.

5—Membership Services: Inagaki Award, Tokoku Yamamoto, CC-DC gov. of Clovis; Al Hatate, PSWDC gov. of Los Angeles; Mas Satow, MDC of Massachusetts; Jeffrey Matsui, Alan Kamamoto, Raymond Uno and Harry Honda; Dr. Roy Nishikawa of Los Angeles; Dr. David Miura of Long Beach, and Ray Okamura of Berkeley (the final trip by invitation).

6—Public Affairs: Okinawa Issue Treaty, legislative, public relations.

7—Program Services: planning, scholarship, immigration centennial, JAL fellowship.

8—Nominations, recognition, publications.

9—100 Club, Pacific Citizen, Endowment Fund, Personnel, Convention handbook, Property and Office.

10—Civil Rights.

11—Title II repeal campaign.

12—Ethnic Concern: student aid.

13—Centennial banquet.

14—Washington Office.

15—National Conventions.

16—Convention testimonial.

"Where Are We Now?"

Since the 1968 national convention at San Jose, where human rights for all minorities to be implemented with meaningful programs on the chapter level was mandated, Enomoto summarized on the eve of the interim session that:

1—A civil rights coordinator in Raymond One of Salt Lake City has been retained.

2—The National Ad Hoc Committee to Repeal Emergency Detention Act has been fully activated.

3—The Wakamatsu Colony Centennial celebration was

successfully staged to kickoff the National JACL commemoration of the Japanese immigration centennial.

4—Support of Dr. Thomas Noguchi in his efforts to obtain just and fair treatment was extended.

5—Work of the National Ad Hoc Committee on Ethnic Concern has been effective. Its concept of aid to "disadvantaged" students through a Student Aid program was born indirectly from this committee.

While these are not the only things JACL has done this past year, Enomoto indicated the five represent "basic JACL program priorities."

"We Do We Go?"

Five more basic issues which Enomoto felt will need immediate attention involve: 1—Establishment of civil rights programs at the chapter level.

2—Expansion of Title II repeal committee's efforts at the chapter level.

3—Chapter cooperation in the JACL celebration of the Japanese immigration centennial in two more special programs.

4—Follow-up on the outcome of the Dr. Noguchi hearings.

5—Translation of the Ethnic Concern committee's work into national scope.

"I feel we are making gains but, in certain areas and in certain ways, we have a long way to go," Enomoto said, "to make the latter half of this biennium particularly productive."

Special Projects

Also under consideration at the interim session are proposals for a documentary film on JACL, a revamping of the National JACL Constitution, membership manual, restructuring the Planning Commission, Rohwer Memorial and Cemetery, point system for determining candidates for JACLer of Biennium, an Emerald Pin for 20 years service to JACL (with 10 years at district or national level) and continuity of the Washington JACL Office.

Visiting board and staff members will be guests of the Pacific Southwest District Council and chapters at a buffet supper on Saturday at the home of Dr. and Mrs. Kiyoshi Sonoda.

The JACL personnel committee is scheduled to meet on Thursday, prior to the convening of the interim session.

Marutani is interrupting his studies in Tokyo to attend the interim session.

60,000 Japanese new in S. America

TOKYO — The Japan Emigration Bureau reported that 639 Japanese citizens emigrated to Latin American countries in fiscal 1968.

The figure, the bureau said, was only one-thirtieth of that of 1959, a peak year for Japanese migration to Latin America.

The bureau said that since 1952, 60,000 Japanese have gone to live in Latin America. Brazil got the largest number, 30,000, and Paraguay the second largest number, 6600.

Hearing date set for judo school incident of bias

NEW YORK — A woman who charged that her 10-year-old son was denied judo lessons because he is a Negro has been granted a public hearing by the State Division of Human Rights.

The hearing was scheduled for July 9 by Commissioner Robert J. Mangum on order of Long Island regional investigator James Foster, who checked the complaint and found cause to credit the allegations.

Mrs. Ethel Washington alleged that in 1968 when she first attempted to enroll her son at the Long Island Ogata Judo Dojo she was told that children under 10 were not accepted. She reapplied last April and was told that the school does not give lessons to Negroes.

Mrs. Washington named as respondents in the case the school and its director, Kenichi Ogata.

BOXSCORE ON TITLE II REPEAL COMMENT: Watch (and Make) This List Grow

The following governmental bodies, organizations, newspapers, magazines have passed resolutions or favorably commented on repeal of Title II: (Nearly all of this is due to the good efforts of JACL members).

GOVERNMENTAL BODIES

- 1—Los Angeles County Commission on Human Relations (March)
- 2—Los Angeles County Board of Supervisors (March)
- 3—City of Los Angeles Human Relations Commission (June)
- 4—San Francisco Human Rights Commission (April)
- 5—San Francisco Board of Supervisors (May)
- 6—City of Seattle Human Rights Commission (March)
- 7—City of San Jose Human Relations Commission (March)
- 8—City Council of San Jose (April)

PUBLIC MEDIA

- 1—Editorial, Chicago Daily News (April)
- 2—Editorial, San Francisco Chronicle (May)
- 3—Editorial, Los Angeles Times (May)
- 4—Editorial, Fresno-Modesto-Sacramento Bee (May)
- 5—Editorial, Palo Alto Times (May)
- 6—Editorial, East-West (May)
- 7—Editorial, The Nation (June)
- 8—Editorial, California Farmer-Consumer Bulletin (June)
- 9—Editorial, KGO-TV, San Francisco (May)
- 10—Columnist, San Francisco Examiner (April)
- 11—Columnist, The Arizona Republic (May)

ORGANIZATIONS

- 1—ACLU, Palo Alto Chapter (Sept. 1968)
- 2—ACLU, San Jose Chapter (Sept. 1968)
- 3—Community Relations Conference of Southern Calif. (Jan.)
- 4—So. Calif. Div., American Jewish Congress (Feb.)
- 5—National Association of Social Workers (April)
- 6—California Democratic Council (April)
- 7—ILWU, San Francisco Local (April)
- 8—ILWU, Northern California District Council (May)
- 9—Chinatown Youth Council, San Francisco (May)
- 10—NAACP, Berkeley Chapter (June)
- 11—San Mateo City School District, Title IV Task Force (Sept.)
- 12—San Francisco Council for Civic Unity (May)
- 13—San Francisco Conference on Race and Religion (June)
- 14—ILWU Federated Women's Auxiliaries (June)

NOTICE: This listing of supporting organizations and editorials may be only a partial list. If you know of other organizations and editorials, and as more support is developed, please notify and send copies of the resolution or commentary to: Ray Okamura, 1159 Park Hills Rd., Berkeley, Calif. 94708.

The Warren Court



On Monday, June 23, Chief Justice of the United States Earl Warren retired, after 16 years of tumultuous and constructive service on the nation's highest tribunal and court of last resort.

While JACL and Japanese Americans may fault Earl Warren—and rightly so in our opinion—for his continuing refusal to explain his role in the 1942 wartime mass arbitrary Evacuation and detention of all persons of Japanese ancestry from their West Coast homes and associations, history may well rank him with the legendary John Marshall as among the nation's greatest chief justices.

Aside from the historic landmark decisions that were handed down by the Warren Court, his administration may be also remembered for the willingness of the judiciary to assume responsibility for taking decisive action in several vital areas of human endeavor at a time when the two other branches of government—the executive and the legislative—had defaulted in their leadership.

Had the Court not responded to the urgent demands of the times, there is some question as to the status now and the future of our system of representative government.

In a news conference soon after his retirement, the 78-year-old Californian who had successively been the State's Attorney General and then a three-term Governor, as well as a vice presidential candidate of the Republican Party, before being nominated to be Chief Justice by the late President Eisenhower in 1953, listed what he himself considered to be the three most significant decisions of his service on the highest appellate bench in the land.

They were (1) Baker v. Carr in 1962, which opened the way for legislative and congressional reapportionment under a "one man, one vote" formula, (2) Brown v. Board of Education in 1954, which declared school segregation unconstitutional and voided the "separate but equal" doctrine, and (3) Gideon v. Wainwright in 1963, which held that all defendants in serious criminal cases were entitled to legal counsel.

In other precedent-setting decisions, the Warren Court more precisely defined the required separation of church and state, the meaning of the First Amendment guarantees of free speech, assembly, and petition, and the distinction between human and property rights.

Though not a legal philosopher or technician, Earl Warren was an activist more concerned with the practical results than with theory or even precedents.

The importance of Baker v. Carr was that it recognized that the population of the nation had moved from the rural areas to the urban centers and that there was great discrepancies in the number of citizens represented by their respective state legislators and congressmen. Los Angeles County, the most populous in the state, for instance, was represented by a single Senator in Sacramento, while almost every other county was also represented by a State Senator.

By requiring legislative and congressional reapportionment under a concept that each citizen is entitled to the same representation as any other citizen, political power was transferred from the farms to the cities, thereby better enabling the metropolitan areas to cope with their great social, economic, human, and political problems. Control over state legislatures particularly by so-called cow counties was broken, and it became more difficult for a minority of the population to frustrate the majority.

The significance of Brown v. Board of Education goes far beyond that of school segregation alone, though this was—and is—crucial to the advancement of the disadvantaged, the denied, and the discouraged. The nine justices rightly recognized that integrated education is the basis for individual and group progress.

In a sense, this single case nullified the concept created after the Civil War that by providing "separate" facilities the segregation of the races was sanctioned. It was the forerunner of many other cases that opened up public accommodations, public transportation, and public facilities to all Americans without regard to race, color, creed, or national origin. It also set the precedent for equalized opportunities in employment, housing, treatment, etc.

Based upon the dictates of the Warren Court, the Congress finally enacted civil rights and human betterment laws in 1964 and the Executive began to implement and to administer them.

And, it may well be that so-called social, economic, and moral inquiry, unrest, and even "revolution" of these times may be traced in part at least to the questioning of society's status quo by the Supreme Court in recent years.

The implications of Gideon v. Wainwright are that there shall be no distinction between the wealthy and the poverty-stricken in criminal cases.

Previously, there was much to commend American justice as being for only the wealthy who could afford qualified counsel to protect their rights—personal and property. The poor—too often—had to depend upon the "mercy" of the courts, particularly in criminal cases where they were opposed by the police and the investigative and legal authority of the constituted government, while they could not afford attorneys to represent their position.

Now, the Supreme Court has established the principle that every person is entitled not only to be the beneficiary of the rights themselves, but also to the means to exercise those legal rights.

In a "farewell" editorial, The Washington Post summarized these three keystone opinions in these words:

"... Earl Warren has been—not a philosopher but a problem-solver. His judicial opinions underline that. In the last 16 years, the Court has tackled basic problems in the law. It broke the bottleneck over legislative reapportionment when the rest of government could not or would not change policies that gave political power to land as well as people. It broke the stalemate of segregation and civil rights, pointing the way by which all citizens could become equal without resorting to violence. It concerned itself with making 'equal justice under law' mean the same for the rich and poor, the powerful and the powerless. Without the Court's efforts to solve these problems, the nation would be even more divided than it is today and would be suffering even greater domestic turmoil..."

Astronauts taking message to moon from world leaders

WASHINGTON — The U. S. Space Agency invited the heads of nations around the world to send messages to the moon with the Apollo XI astronauts. In Tokyo, the Japanese premier immediately took steps to be included.

Premier Eisaku Sato's message in his own calligraphy reads: "Congratulations on mankind's first landing on the moon and the whole achievement." It is signed and dated July, 1969.

The messages are being microfilmed so that the astronauts can take it to the moon for preservation there.

Japan asks UN aid to reclaim Kuriles

NEW YORK—Japan has reaffirmed its claims to the southern Kurile Islands, which have been in Soviet hands for the past 25 years, the Japanese delegation to the United Nations revealed.

The claim was contained in a document submitted June 24 by the Japanese delegation to the UN trusteeship council. Japan rebuffed the earlier Soviet claim to the northern Pacific islands, of Habomai, Shikotan, Kunashiri and Etorofu were surrendered as a result of the Yalta Conference agreement toward the end of World War II.

Japanese Foreign Minister Kiichi Aichi will visit Moscow in early September to press Japan's bid for return of the Soviet-held Kurile Islands, Tokyo sources also reported.

Tule Lake high school graduates plan reunion

SACRAMENTO — Plans for a 25-year reunion of the Tri-State High School graduates of 1945 at Tule Lake WRA Center in the summer of 1970 has been proposed.

Of necessity, people in the locale to be selected as the reunion site will assist. Those in the Sacramento area, Nobuya Nimura of Rt. 3 Box 2096A, Loomis, and Dr. Yukio Ueyo, 6111 Fordham Way, Sacramento 95831, have suggested either Los Angeles and San Francisco and would appreciate correspondence from all who are interested.

Kidney Disease bill

WASHINGTON — Rep. Spark Matsunaga (D-Hawaii) last week (June 25) introduced legislation, the National Kidney Disease Act of 1969, which would provide for the funding of \$74 million in the next five years to meet the urgent need for a comprehensive program to combat kidney disease. The Matsunaga bill has already received the support of 59 cosponsors in the House, and a similar measure has been introduced in the Senate.

Oldest scout troop

SAN FRANCISCO—Boy Scout Troop 3 celebrated its 55th anniversary May 31. Founded by eight Chinatown boys, it was San Francisco's first and is the oldest Chinese scouting unit in America.

CALENDAR

- San Gabriel Valley—JACL mixer, East San Gabriel Valley Japanese Community Center, 8 p.m.
- Alameda—Bowling tournament, Mel's Bowl.
- San Jose—Jr. JACL dance, Leninger Hall.
- Philadelphia—Picnic, Friend's Central.
- July 12-13
West Los Angeles—Crenshaw Sq. carnival booth.
- July 13 (Sunday)
NC-WNDCC-Exec Br Mtg, Oakland.
- July 14 (Monday)
West Los Angeles—Dinner, Mtg, Uncle John's Pancake House, Santa Monica, 6:30 p.m.; Kango Kunitzugu, spkr.
- CCDC-Ed Mtg, Fresno Bank of Tokyo, 8 p.m.
- July 18-20
Los Angeles—Nat'l JACL Interim Board Mtg, International Hotel.
- July 19 (Saturday)
San Gabriel Valley—Panel discussion, Saisei in the Inner City, East San Gabriel Valley Japanese Community Center, 8 p.m.; Victor Shibata, moderator, with members of Yellow Brotherhood.
- July 20 (Sunday)
Sacramento — Underprivileged Children's trip, Candlestick Park, San Francisco Giants game.
- West Los Angeles—Steak bake, Circle Hills, 3 p.m.
- Contra Costa—Copter picnic, Little Hills Ranch, San Ramon.
- July 21 (Monday)
West Los Angeles—Auxiliary Mtg, Felicia Mahood Ctr, 8 p.m.; Mike Yamaki, spkr., "Yellow Brotherhood."
- July 26 (Saturday)
Progressive Westside—"Seaside Swing" dance, SurfRider Inn, Santa Monica, 9:30 p.m.
- San Diego—Awards dinner-dance, Tiki Hut, Town & Country Hotel, 7 p.m.; Jerry Enomoto, spkr.
- July 27 (Sunday)
East Los Angeles—Beach party, Chicago-YJA Ed Mtg, JACL Office, 7:30 p.m.
- Prog. Westside—Pancake breakfast, Food Giant, Parkline, Los Angeles, 8 a.m.-12n.
- Aug. 2 (Friday)
Pasadena—Steak bake, Oak Grove Park.
- Aug. 1 (Friday)
West Los Angeles—Music on the Mall program.
- Aug. 3 (Sunday)
Milwaukee—Chapter picnic Brown Deer Park.
- Aug. 3 (Tuesday)
Oakland—Ed/Gen Mtg, Sumitomo Bank, Oakland, 7:30 p.m.
- Aug. 3 (Friday)
Mt. Olympus—Summer outing.
- Aug. 9-10
NC-WNDCC-DVC—3rd Qtrly session, Oakland and Al-Co co-hosts; luau at Castlewood Country Club, Sunday meeting at Edgewater Inn.

NEWS CAPSULES

Government

Masamori Kojima, administrative assistant to Los Angeles Councilman Thomas Bradley, was named the Oriental representative on the Economic and Youth Opportunity Board by the executive board of Council of Oriental Organizations.

Dr. Carl T. Hirota, San Francisco dentist, resigned from the city's Juvenile Justice Commission, an advisory agency to Youth Guidance Center, because of press of business. He served three of his four-year term... Fresno county board of supervisors appointed Tak Yorizane of Parlier to be a member of the Parlier Cemetery District.

Armin H. Meyer, the new U.S. ambassador to Japan, admits he knows little of the culture of Japan but is confident he will do a good job of filling the shoes of his predecessor, U. Alexis Johnson. Meyer arrived in Honolulu June 19 for discussions with Adm. John S. McCain, Jr., commander of Pacific forces. He left for Tokyo June 23.

Rep. Spark M. Matsunaga on June 20 in Washington defended the verdict of the Supreme Court that the Congress acted improperly when it refused to seat New York Rep. Adam Clayton Powell. Matsunaga was in the minority on the 1967 Powell vote and is one of the few House members to uphold the high court's action on the controversial Negro member of Congress.

Organizations

Tak Taketa of El Cerrito, who first joined the Easter Seal Rehabilitation Center as a staff physical therapist in 1958, was named associate director of the Alameda County Easter Seal Society. The ex-Marystville Nisei is a San Jose State graduate and holds a PT certificate from Stanford.

Dr. Akio Hayashi, first Nisei elected a Lions district governor in California, was honored by a State Assembly resolution, which was presented by Gov. Reagan last week (June 25). The Sacramento Nisei dentist was attending the Lions International Convention in Tokyo this past week.

Military

Dr. Toshi Kuge of Portland is commander of the 313th Convalescent Center, an Army reserve unit in summer training at Letterman General Hospital, Presidio of San Francisco.

Maj. Donald S. Fujitani of Honolulu was graduated June 6 from the 10-month course at the Army Command and General Staff College at Ft. Leavenworth, Kan. In service since graduation.

Deaths

- SEATTLE
Hayashida, Setsu, 74; Apr. 10-3
Kazuya, d. Mmes. Takami
Tachiyama, Melvin, 50; Apr. 10-3
Takayama, George, 70; Apr. 10-3
Fukutomi (Oxnard).
- Habashi, Thomas, 60; Apr. 12-7
Yoshihiko, Sachiko, 60; Apr. 12-7
Hobashi, Masa (Japan), br and 2 sis.
- Kobayashi, Ayako, 62; Apr. 14-8
Tokuro, Hideo (Honolulu), d. Teru, Aiko, Reiko, Horvitz, m. Natsu, Yamauchi, 2 br; Matsunaga, Takashi T., 67; Apr. 21-7
Setsu, Matsunaga, Yoritaro, Apr. 9 (f)-s Robert H., d. Sachiko Yamamoto (New York).
- Shimazaki, Kumajo, 80; April 3
Tachiyama, Jironosuke; b. b. w. Misayo, Iwao, d. Hatsuji Harada (Philadelphia), Shizue Hoshino (Los Angeles), 10; 6; 1 etc.
- Takahashi, Yaoki; Apr. 10 (f)-w Hanayo, s. Mamoru, Hiroshi, Sadamu, Ben (San Jose).
- Tanabe, Henry Yachi, 68; May 15-7
w. Riso, s. Theodore, Thomas, d. Mitsuo, Mrs. Minoru Uchinuma, 4 c.
- Toda, Hatsuogoro, 84; Apr. 12-7
Same, s. Dr. Terrence, Dr. May, d. Mmes. Tom Chinsuburo, Mitsu Hirata.
- Urakawa, Yoshio, 64; Apr. 22-7
Masayo, d. Hideo, Hachiro Hoshiguchi, George Morihoro, William Maekawa, Shigeru Tada, mother & 4 br.
- HONOLULU
Arakaki, Mrs. Kiyu, 83; May 4-8
Stanley, m. Toyo Hasegawa, b. Ken, Kozo, s. Reiko Kelley.
Arizumi, Mrs. Sawayo, 78; Apr. 29-7
s. Haruo, Rufus, d. Mrs. Thomas Sakakihara, Dorothy Aizumi, 8 c.
- Asato, Tameki, 77; May 5-7
Haruko, s. Charles, Howard, Kenneth Asato, George Chinen, d. Shirley Kobayashi, Esther Tamayose, Doris Husalar, Linda Asato, b. Tamekichi Sato, s. Kazuo, 16 c.
- Fujishige, Henry H., 50; Yokohama, May 4-7
Nancy, s. Royi Saito, Tanyu, p. The Bunichi Fujishiges, b. Tsugio, Takeshi, Shizuo, Akira, s. Fumie Takekoshi, 4 c.
- Gushiken, Masamori, 60; May 3-7
w. Chiyoko, s. Lawrence, Melvin, 3 Jan. 3 c. 2 b. 2 s.

Shimatsu, Ogata and Kubota Mortuary

911 Venice Blvd.
Los Angeles
RI 9-1449
SEIJI DUKE OGATA
R. YUTAKA KUBOTA

Three Generations of Experience FUKUI Mortuary, Inc.

707 E. Temple St.
Los Angeles, 90012
MA 6-5824
Solchi Fukui, President
James Nakagawa, Manager
Nobuo Osumi, Counsellor

ing with a BBA degree from Univ. of Hawaii in 1956, he was last stationed at Xavier University, Cincinnati.

George A. Sasaki, past commander of the Chester Kelly VFW Post, Reedley, was named to the 20-man All-State Team of Post Commanders, an honor reserved for distinguished post commanders. Sasaki is also commander of the DAV unit in Reedley... Maj. Richard M. Nakagawa of Fresno is commanding the 818th Transportation Bn. and attached units now at Camp Roberts for its annual Army Reserve two-week field training.

School Front

The American Federation of Teachers Local 1325 in San Francisco have insisted Dr. S. I. Hayakawa resign as acting president of San Francisco State College. If he doesn't by July 6, when the college board of trustees meets next, a suit will be filed to force him to resign. Hayakawa, in Los Angeles, responded: "This shows the extraordinary vindictiveness of the AFT and its determination never to let the campus be peaceful again."

Judy E. Mukasa of Mercer Island, Wash., was honored as Woman of the Year at High-Line Community College and elected to the Who's Who among Students in American Junior Colleges. She was a homecoming princess, student body treasurer and honor student. She is the daughter of the Thomas Mukasas, active Seattle JACLers.

Courtroom

Deposed Canadian provincial judge Lucien Kurata, 46, has been allowed to resume the practice of law as the Law Society of Upper Canada concurred with a recommendation of Justice Donald Keith, who had removed the first Nisei magistrate of Canada last May 1, that no action be taken as to his activities as a barrister.

Business

San Francisco psychiatrist Dr. Tod Mikuriya, 35, accused the American Medical Association's view of marijuana as archaic, "immoral and inaccurate." The charge was leveled June 25 during the American Public Health Assn. convention at Oakland. He also called laws prohibiting possession of marijuana a waste of both time and money. He is a former research scientist on marijuana for the National Institute of Mental Health and worked with heroin addict patients near Princeton, N.J.

Graduate of Chiba Medical College in Japan, Dr. Kazuo Orimo became director of San Joaquin General Hospital at French Camp July 1. The Monterey-born Nisei was medical director at Bret Harte Hospital, where he spent a year in residency (1956-57) in the study of tuberculosis. As hospital director, Dr. Orimo will be in charge of all phases except finance, which is being handled by an administrator for all county medical facilities.

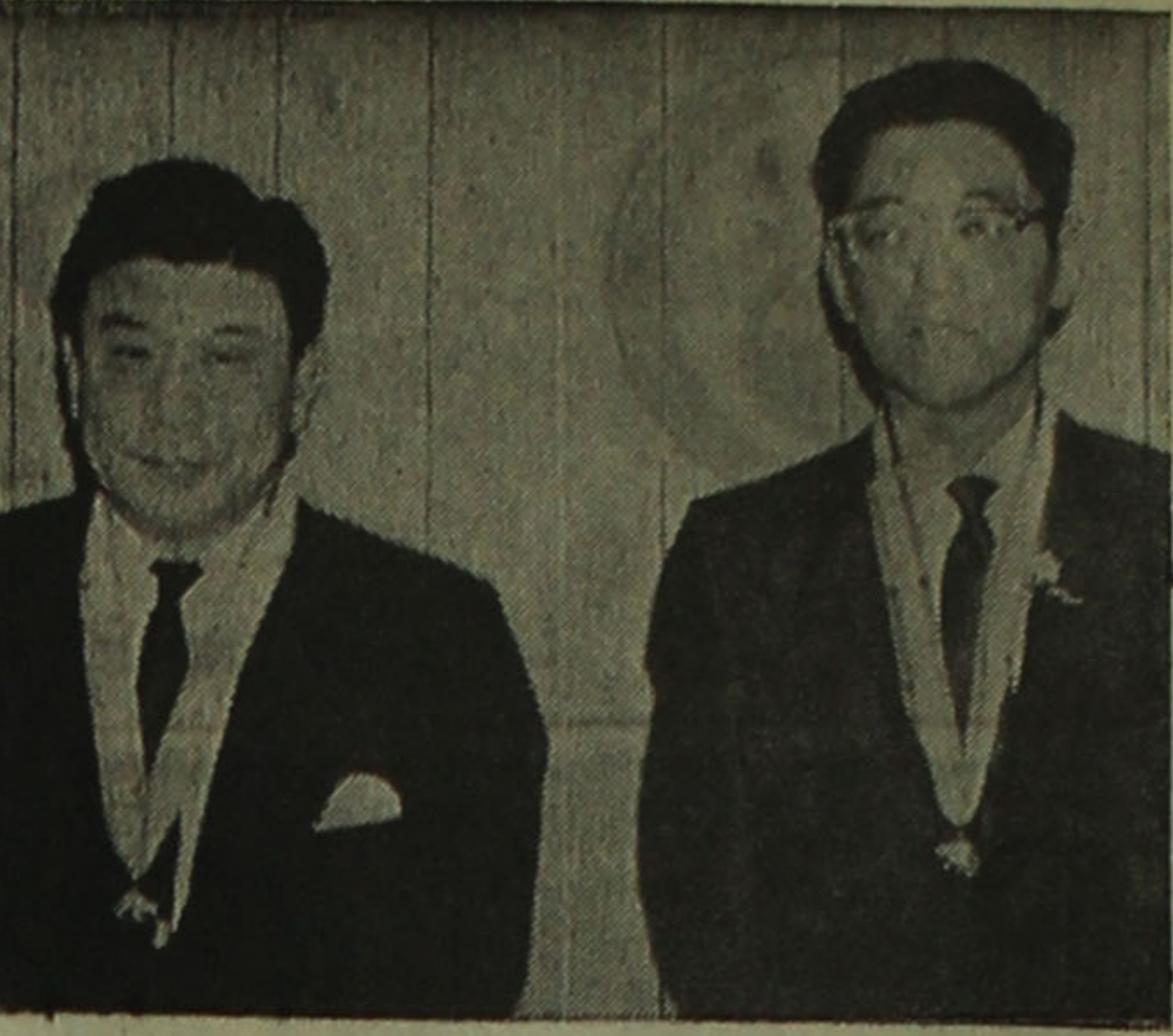
Three Bay area Nisei had prominent roles in the staging of the 46th annual American Physical Therapy Assn. conference in San Francisco June 27-July 3. Tak J. Taketa of El Cerrito was in charge of preparing for the conference as chairman of the host Northern California chapter of some 500 members. Frank Yakuichi of Burlingame and Ken Tsukushi of Redwood City were handling publicity and public relations.

Tom T. Shimasaki, CLU, New York Life Insurance Co. representative at Lindsay, was elected Fresno chapter president of American Society of Chartered Life Underwriters.

Some 55,000 units of the Toyota Corona automobiles manufactured in 1966, 1967 and 1968, were being recalled for replacement of brake tubes, it was announced by Toyota Motor Sales.

S. Joseph Shiro, 42, now owns the Jim Mate Pipe and Tobacco Shop near San Francisco's Union Square at 575 Geary. Original owner Jim Mate created an aromatic pipe tobacco blend without use of artificial additives or sweeteners. The new owner is the son of the late Yoshimatsu Shiro, a pioneer rice grower, of Sacramento. A 442nd veteran, he, his wife Fumiko and three children live in Mill Valley... The sixth reciprocal trade pact between the Port of Los Angeles and a major industrial and manufacturing centers in Japan was announced July 1 by the Harbor Commission here and Shizuoka Governor Takeyama in Japan. Shizuoka's port is Shimizu, pointed out Harbor Commissioner Fred I. Wada. Similar pacts are in effect with prefectures of Hokkaido, Okayama, Wakayama, Nagasaki and Miyagi.

The Japan Exposition, Trade and Culture, 1969 will be held at the Los Angeles Memorial Sports Arena from Nov. 2-30.



SCOUTING HONORS—Two Puyallup Valley JACLers who were recognized for outstanding work by Boy Scouts and recipients of the Silver Beaver are (from left) Yosh Dogen, who received his several years ago, and Dr. George Tambara, who received it several weeks ago.

Medicine

Frank Yatsu, MD, asst. professor of neurology at UC Medical Center, San Francisco, was named a Markle Scholar, an honor reserved for 25 young medical scientists in Canada and the U.S. each year. The John and Mary Markle Foundation, New York, annually awards 5-year grants with a \$6,000 per year stipend attached, to encourage careers in medical schools as teachers and researchers. A native of Los Angeles, Dr. Yatsu graduated in medicine from Western Reserve University Hospital in Cleveland, served his residency in neurology at Columbia Presbyterian Medical Center and was a research fellow in neurochemistry at Albert Einstein College of Medicine, prior to a two-year tour of duty in the Navy. He is chief of neurology at San Francisco General Hospital.

San Francisco psychiatrist Dr. Tod Mikuriya, 35, accused the American Medical Association's view of marijuana as archaic, "immoral and inaccurate." The charge was leveled June 25 during the American Public Health Assn. convention at Oakland. He also called laws prohibiting possession of marijuana a waste of both time and money. He is a former research scientist on marijuana for the National Institute of Mental Health and worked with heroin addict patients near Princeton, N.J.

Graduate of Chiba Medical College in Japan, Dr. Kazuo Orimo became director of San Joaquin General Hospital at French Camp July 1. The Monterey-born Nisei was medical director at Bret Harte Hospital, where he spent a year in residency (1956-57) in the study of tuberculosis. As hospital director, Dr. Orimo will be in charge of all phases except finance, which is being handled by an administrator for all county medical facilities.

Three Bay area Nisei had prominent roles in the staging of the 46th annual American Physical Therapy Assn. conference in San Francisco June 27-July 3. Tak J. Taketa of El Cerrito was in charge of preparing for the conference as chairman of the host Northern California chapter of some 500 members. Frank Yakuichi of Burlingame and Ken Tsukushi of Redwood City were handling publicity and public relations.

Some 55,000 units of the Toyota Corona automobiles manufactured in 1966, 1967 and 1968, were being recalled for replacement of brake tubes, it was announced by Toyota Motor Sales.

S. Joseph Shiro, 42, now owns the Jim Mate Pipe and Tobacco Shop near San Francisco's Union Square at 575 Geary. Original owner Jim Mate created an aromatic pipe tobacco blend without use of artificial additives or sweeteners. The new owner is the son of the late Yoshimatsu Shiro, a pioneer rice grower, of Sacramento. A 442nd veteran, he, his wife Fumiko and three children live in Mill Valley... The sixth reciprocal trade pact between the Port of Los Angeles and a major industrial and manufacturing centers in Japan was announced July 1 by the Harbor Commission here and Shizuoka Governor Takeyama in Japan. Shizuoka's port is Shimizu, pointed out Harbor Commissioner Fred I. Wada. Similar pacts are in effect with prefectures of Hokkaido, Okayama, Wakayama, Nagasaki and Miyagi.

The Japan Exposition, Trade and Culture, 1969 will be held at the Los Angeles Memorial Sports Arena from Nov. 2-30.

Crime

Monterey Park police arrested Masahiro F. Noguchi, 24, as a suspect with a taste for rare coins and currency. He denied, however, being near the scene of two Pebleton St. burglaries the previous day (June 25). An estimated \$200 in \$10 bills—including a rare Hawaii-stamped bill—and coin collection was reported stolen from the bedroom of Keiji Ushiro, 1930 Pebleton, police said. And George M. Yamasaki of 1500 Pebleton estimated \$249 in bills was taken from his home the same day. Included was a Hawaii-stamped \$10 bill. Police noted a Hawaii-stamped \$10 bill on Noguchi after being arrested on suspicion of burglary.

MUSIC

Clarinetist Doris Nishimoto, 17, of San Mateo has joined the USA School Band and Chorus, now touring the Orient. Daughter of the Satoru Nishimotos, she is one of six Californians in the group selected by the First Chair of America, a national music honors society.

Music

Rep. Spark Matsunaga (D-Hawaii) July 1 introduced legislation which would grant a Federal Charter to incorporate the nationwide Pop Warner Junior League Football program under the name "Pop Warner Little Scholars, Inc." Presently it operates under a non-profit charter granted by the state of Pennsylvania.

Sports

Yoshiharu Satow, manager of the Sumitomo Bank at Sacramento, won low nets honors in the Stockton Buddhist Church dedication golf tournament with 95-26-69 over Swenson Park's course... After five years of home & home match with Sacramento Nisei Golf Club, the Garden City Golf Club of San Jose finally broke into the win column with a 57-51 victory at Sunset National Country Club. Socks Hayashi of San Jose paced with a 74 gross. In the net department, Ted Tsukiji turned in a 68 score to win.

A team of six Japanese swimmers will compete in the third annual Santa Clara International invitational classic July 11-13, led by butterfly specialists Yasuo Takada and Satoshi Maruya, both members of the Japan Olympics team last year. Joining them are breaststroke stars Nobutaka Taguchi and Yoshima Nishizawa, also Olympians. Tadashi Honda and Masumi Aoki, another pair of butterflyers, complete the sextet.

The American Baptist Foundation has purchased the Global Baseball League from its founder-owner Walter Dilbeck. Among the six teams comprising the league founded earlier this year was the Tokyo Dragons, which has been playing in Venezuela.

in cabins, according to Warner Shimonishi, 618 N. Third St., San Jose, who can supply additional information.

Music

Clarinetist Doris Nishimoto, 17, of San Mateo has joined the USA School Band and Chorus, now touring the Orient. Daughter of the Satoru Nishimotos, she is one of six Californians in the group selected by the First Chair of America, a national music honors society.

Sports

Rep. Spark Matsunaga (D-Hawaii) July 1 introduced legislation which would grant a Federal Charter to incorporate the nationwide Pop Warner Junior League Football program under the name "Pop Warner Little Scholars, Inc." Presently it operates under a non-profit charter granted by the state of Pennsylvania.

Yoshiharu Satow, manager of the Sumitomo Bank at Sacramento, won low nets honors in the Stockton Buddhist Church dedication golf tournament with 95-26-69 over Swenson Park's course... After five years of home & home match with Sacramento Nisei Golf Club, the Garden City Golf Club of San Jose finally broke into the win column with a 57-51 victory at Sunset National Country Club. Socks Hayashi of San Jose paced with a 74 gross. In the net department, Ted Tsukiji turned in a 68 score to win.

A team of six Japanese swimmers will compete in the third annual Santa Clara International invitational classic July 11-13, led by butterfly specialists Yasuo Takada and Satoshi Maruya, both members of the Japan Olympics team last year. Joining them are breaststroke stars Nobutaka Taguchi and Yoshima Nishizawa, also Olympians. Tadashi Honda and Masumi Aoki, another pair of butterflyers, complete the sextet.

The American Baptist Foundation has purchased the Global Baseball League from its founder-owner Walter Dilbeck. Among the six teams comprising the league founded earlier this year was the Tokyo Dragons, which has been playing in Venezuela.

'To Serve You'

Nannette Mugishima, daughter of the Harold and Pearl Mugishima of Monterey Park, was selected Miss Teen of Crenshaw Square and will reign this weekend at its Oriental summer festival. Sponsored by the San Fernando VFW Post, Nannette graduated last month from Alhambra High. On her court will be Christine Fukui, Janice Hokoda, Joanne Inouye, Nadine Kato, Teri Jean Miyakawa and Paire Morikawa. (Mrs. Mugishima was secretary at the So. Calif. JACL Office several years ago).



Politics

Japanese American Republicans of Southern California members will meet State Sen. George Deukmejian at Reef Restaurant, Long Beach, July 27 with Dr. John Kashiwabara and Richard Hanki in charge. At their last meeting June 30, State Commissioner of Corporations Anthony Fiermo addressed the group on the activities of his department.

Churches

Dr. Harry Kitano, UCLA social work professor, will be keynote speaker at the No. Calif. Young Peoples Christian Conference Aug. 3-9 at the Valley of the Moon in Glen Ellen, some 30 miles north of San Francisco. Conference theme is "Sensei—What's Your Bag?" Cost is \$35 which includes meals. Own bedding is needed for lodging.

AL HATATE

Vice President
Nisei-Owned and Operated
In the Heart of L.A. Tokyo

MERIT SAVINGS AND LOAN ASSOCIATION

321 EAST FIRST ST., LOS ANGELES 12, CALIF. (N. 21ST) WED. 10 AM TO 5 PM / SAT. 10 AM TO 2 PM / FREE PRINCIPAL

DIAMONDS ARE MORE VALUABLE THAN EVER

While other world commodities fluctuate in price diamonds get more valuable year after year.

SUMITOMO'S "DIAMOND PASSBOOK" PLAN MAKES YOUR MONEY GROW THE SAME WAY.

EASY SAVING. You can open an account with as little as \$500 and add \$100 or more at any time.

HIGHEST BANK INTEREST. 5% compounded quarterly with effective yield of 5.094% per annum when held for one year. Interest earned from date of deposit to date of withdrawal.

WITHDRAWALS. Partial or full withdrawals can be made during first 10 days of January, April, July and October on deposits 90 days or longer prior to the end of each calendar quarter. Also by written notice of at least 90 days.

Phone, write or come in for further information.

THE SUMITOMO BANK OF CALIFORNIA

SAN FRANCISCO / SACRAMENTO / SAN JOSE / OAKLAND
LOS ANGELES / CRENSHAW, L.A. / GARDENA / ANAHEIM

SOON ALSO IN SAN MATEO AND MONTEREY PARK
Your Deposits Insured up to \$15,000 by Federal Deposit Insurance Corp.

GO EXPO '70

MARCH 15 TO SEPTEMBER 13, 1970

It's never too early... Plan now to attend EXPO '70 in Osaka with Bank of Tokyo's New Savings Plan.

Come in and pick up the new Savings Plan brochure with summer & spring festivals listed.

THE BANK OF TOKYO OF CALIFORNIA

San Francisco / Japan Center / San Jose / Fresno / Los Angeles
Gardena / Crenshaw / Santa Ana / Western Los Angeles



Sansei Slant

By PATTI DOHZEN
Chairman, Nat'l Youth Council

Los Angeles
While meeting with various junior chapters in discussing club problems, the subject of the lack of successful activities continually pops into the course of conversation. In most cases, members feel that the success of a planned activity is dependent upon the number that

The Ashizawa Formula

attend. The more participants, the more fun everyone will have. While the general assumption is that larger groups create more enthusiasm, sheer numbers do not always guarantee a successful activity.

What, then is a good criteria for measuring the success of an event, or is there such a means in which an intangible can be measured? Such a philosophical question as this was raised at a board meeting early this year. Interestingly enough, our great wizard, Winnie-the-Pooh (NYC rep Winston Ashizawa) offered a fairly complete solution to this problem.

Accomplishment x Good (Benefit) x Good (Recipients) x Risk (Virtuosity) = Success.

The number of participants divided by the accomplishments multiplied by the benefit of the activity times the good effect of those who receive it multiplied by the energy and effort expended results in a successful project.

Chapters who incorporate this guideline formula into their activities can be somewhat assured that those members involved will gain enjoyment and satisfaction. This formula will be used as the judging criteria for the Project E-GAD chapter presentations at the National Convention in 1970.

Norman Ishimoto and Winston will be working on the awards and notifying chapters in the near future.

Visitor in L.A. . . .

It seems as though Los Angeles is one of the stopping places for out-of-town visitors this summer. Not to be excluded was Rich Okabe, Midwest DYC chairman. He stopped off at the JACL office and we had a hurried phone conversation before I had to go to my night summer school class.

Our main topic of discussion was the plans that are being made for restructuring the national organization.

As one of my projects this summer, I will be contacting many people to gather opinions and ideas. David Takashima, youth intern, Alan Kumamoto and Russ Obana, past national youth council chairman, will probably be the main resources of information. Final approval of the project will be made by the districts. Although time did not permit a lengthy conversation with Rich, I did find out that the junior membership is getting younger. The average age in the Midwest is 16. This also seems to be the trend in other districts; the college age member is beginning to be of the minority in most areas.

Reserved for Jr. JACL . . .

For those who will be visiting Los Angeles this summer and plan to come to the JACL office, it will move across the hall into three large rooms. There will be a reception room, an office for the youth director and the associate director, and a conference room. I'm not sure how this can be taken, but youth director Alan Kumamoto tell me that the closet has been reserved for Jr. JACL!



NISEI WAR MEMORIAL—Salt Lake JACL observed Memorial Day at the base of the Nisei War Memorial monument in City cemetery. Sam Watanuki (left), program chairman, stands with Mrs. Roy Watanabe who lays the JACL wreath, accompanied by Mrs. George Kimura, wife of the chapter president. Ministers of the three Japanese churches, Rev. Kanyu Osawa of Nichiren; Rev. Paul Kato of the Church of Christ; and Rev. S. Ishihara, Buddhist Church, rendered the messages. Murray Hoki, president, LDS Church, Dai-Ichi branch, delivered benediction.

PARENTS' PRIMARY DUTY TO CHILD IS TO TEACH LOVE, RESPONSIBILITY

(The following article, condensed from the recent Glendale Elementary School District newsletter, was written by the president of the board of trustees. We believe it has wide applicability today.)

By TOM KADOMOTO
Phoenix
The end of another school year is rapidly approaching and we will have our children

JACL chapters give own scholarships

SAN LORENZO — Vance M. Yoshida of Mt. Eden High won the Eden Township JACL achievement award of \$100 for his outstanding leadership at school as student body president.

Tosh Nakashima, chapter president, presented the award at the school honors assembly. Vance is the son of the Eiichi Yoshidas. He is in Japan for six weeks on a Lions International Youth Exchange this summer and will enter UC Davis in the fall.

Oakland JACL accepting scholarship applications

OAKLAND—Applications are being accepted for the Oakland JACL scholarship until Aug. 15 from all June, 1969, high school graduates in the local Japanese community or whose parents are local JACL members, according to Yoshio Ison o, chapter scholarship chairman.

Forms may be obtained from any Oakland JACL cabinet member or from Ison o, 522 Weldon Ave., Oakland 94610.

San Gabriel Valley JACL plans two July meetings

WEST COVINA — The San Gabriel Valley JACL will have two separate meetings this month at the East San Gabriel Valley Japanese Community Center here, according to Dave Ito, president.

First is a social mixer July 12, 8 p.m., for youth 14 and over interested in forming a Jr. JACL. Second is a public meeting July 19, 8 p.m., on the problems of the Sansei in the Inner City with Victor Shibata as moderator and members of the Yellow Brotherhood.

Progressive Westside JACL selects 1968 Relays queen for Nisei Week

LOS ANGELES—A tall, state-ly 18-year-old beauty will represent the Progressive Westside JACL in the annual Nisei Week queen contest.

She is Toni Dawn Sakamoto, who was crowned Miss Progressive Westside of 1968 at a recent coronation dance at the Hacienda Hotel. She was introduced by Roger Shimizu, chapter president, and given her tiara by the past year's titleholder, Frances Miyamura.

Toni is the daughter of Mr. and Mrs. John Sakamoto of Culver City. Born in Los Angeles, she stands 5 feet 6 1/2 inches and weighs 110 pounds.

A recent graduate of Culver City High School, Miss Sakamoto was an active student there. She served as a member of the Class Council, a varsity cheerleader and member of the Chitons, a service club active in school and community.

Representing Venice-Culver JACL, she won the Miss Nisei Relays title last year and also reigned as Miss Pacific Southwest District Youth Council. She was also Miss Crescent Bay Optimist of 1968.

Modeling is Miss Sakamoto's career choice. She attended modeling school while still in high school, and hopes to get into television commercials and magazine ads.

1000 Club Notes

June 30 Report

With 53 new and renewing memberships in the 1000 Club, National JACL Headquarters acknowledged the following: (Current total is 1,964.)

- 21st Year: Gardena Valley—Joe H. Kubota.
- 26th Year: Chicago—Noboru Honda, Thomas T. Masuda.
- 19th Year: San Francisco—Mrs. Teiko Kuroiwa; Philadelphia—S. John Nitta, Mrs. T. Ann Nitta.
- 17th Year: Orange County—Hitoshi Nitta.
- 18th Year: Gresham-Troutdale—Hawley H. Kato; Chicago—Mike Kudo, Sumi Shimizu; San Diego—George S. Muto.
- 13th Year: Orange County—Minoru Nitta, Mitsuo Nitta, Shosuke Nitta; San Francisco—Takeo Okamoto; Chicago—Jack Ota.
- 14th Year: Orange County—Tachio Goya; Salinas Valley—Frank K. Hibino; Santa Barbara—Makio Mike Hida; Chicago—Dr. Roy Teshima.
- 13th Year: San Diego—Shig Nakashima, Bert M. Tanaka.
- 12th Year: New York—Tatsujii M. Shiotani.
- 11th Year: Reno—Mas B. a. b. a.; Stockton—Arthur K. Nakashima; Cincinnati—Tad Tomimoto; San Francisco—Warren T. Yamazaki; Pasadena—Ray M. Okura; Placer County—Koichi Uyeno.
- 8th Year: Portland—Bobby Endo; Portland—Nobi Sumida.
- 5th Year: St. Louis—William H. Eto; French Camp—Hiroshi Shimizu.
- 4th Year: Philadelphia—Herbert J. Horikawa; French Camp—Yoshio Ted Itoya.
- 3rd Year: Seabrook—Mrs. Audie DuBois, Mrs. Ellen Nakamura; Venice-Culver—Chizu Kaneta; San Francisco—Akiko Nakano; Chicago—Kyoto Nishimoto; San Jose—Yasumi Shimizu; Berkeley—Mike Noboru Suda.
- 2nd Year: San Jose—Dave Sakai.
- 1st Year: Gardena Valley—Thomas N. Shigeokuni; Philadelphia—Hisaye N. Takashima.

Pioneer Project voices interest in Noguchi case

LOS ANGELES — "Pioneer Project," a predominantly Sansei group concerned with needy Issei, this past week called for an impartial, objective review in the Dr. Noguchi case.

In a resolution sent to the County Board of Supervisors, the Civil Service Commission and the County Administration Office, the Pioneer Project expected a fair and just conclusion in the light of testimony presented at the hearing of the ousted Japanese coroner.

ROSE HILLS

care and comfort are nearby

People care at Rose Hills. Care has provided the comfort of sympathetic, experienced counselors and created the convenience of every needed service at one place: Mortuary, Cemetery, Flower Shops, Chapels, Mausoleums, Columbarium. At time of need, call Rose Hills for every need. People care.

3500 Workman Mill Road • Whittier, California • OXford 4-0921

So much more—costs no more

TANIGUCHI ANTIQUES

*Samurai Swords
Bought and Sold*

1609 1/2 Laguna Street
San Francisco
Tel: (415) 567-8047

INSIST ON THE FINEST

KANEMASA Brand

FUJIMOTO'S EDO MISO.

AVAILABLE AT YOUR FAVORITE SHOPPING CENTER

FUJIMOTO & CO.
302-306 S. 4th West
Salt Lake City, Utah

LEE'S Four Seasons Restaurant

Open Daily: 11:30 a.m. - 10 p.m.
3980 W. Santa Barbara Ave., L.A. - AX 6-9228, AX 4-0610

Banquets - Orders to Take Out
Lunches and Dinners
Prop: Ken & Chao Lee

WELCOME TO SAN FRANCISCO NIHONMACHI

Gosha-Do

BOOKS, STATIONERY & RECORDS

1680 POST STREET
Tel. 921-0200 • San Francisco, California 94115

Seiki

Appliances Hardware
Imported Gifts

1620 POST STREET
SAN FRANCISCO
Telephone: 346-5010

INTRODUCING THE SECRETS OF ORIENTAL LOVELINESS

SHISEIDO
COSMETICS

fuji-ya

1462 POST • SAN FRANCISCO
TEL: (415) 931-3302

(MAIL ORDERS ACCEPTED)

Japanese Records
Tapes, Magazines
Books & Gifts

TOMIKO

cocktails
luncheon
dancing

JAPANESE CULTURAL & TRADE CENTER
1581 WEBSTER ST.
PH: 346-0700
SAN FRANCISCO

N. B. DEPARTMENT STORES

Kimonos & Accessories
Distinctive Gifts

SAN FRANCISCO
1722 BUCHANAN ST.
SAN JOSE
140 E. JACKSON ST.

Honnami

DISTINCTIVE GIFTS
FOLK CRAFT
BOOKS

1709 BUCHANAN STREET
SAN FRANCISCO PH: 346-8779

YOUR CREDIT UNION

National JACL Credit Union

242 S. 4th East
Salt Lake City, Utah 84111
Tel. (801) 355-8040

Los Angeles Japanese Casualty Insurance Assn.

— Complete Insurance Protection —

Aihara Ins. Agcy., Aihara-Omatsu-Kakita, 250 E. 1st St. 628-9041
Anson Fujioka Agcy., 321 E. 2nd, Suite 500..... 626-4393 263-1109
Funakoshi Ins. Agcy., Funakoshi-Kagawa-Manaka-Morey
218 S. San Pedro..... 626-5277 462-7406
Hirohata Ins. Agcy., 322 E. Second St..... 628-1214 287-8605
Inouye Inc. Agcy., 15029 Sylvanwood Ave., Norwalk..... 864-5774
Jae S. Itano & Co., 318 1/2 E. 1st St..... 624-0758
Tom T. Ito, 595 N. Lincoln, Pasadena, 794-7189 (L.A.) 681-4411
Minoru 'Nix' Nagata, 1497 Rock Haven, Monterey Park..... 268-4554
Steve Nakaji, 4566 Centinela Ave..... 391-5931 837-9150
Sato Ins. Agcy., 366 E. 1st St..... 629-1425 261-6519

HALL OF FAME

Over one million
dollar of sales annually

HARRY MIZUNO

STAR PRODUCER

ROSS HARANO

New England Life
79 W. Monroe, Chicago
Franklin 2-7834

JACL Major Medical Health and Income Protection Plans

ENDORSED
TRIED
TESTED
PROVEN

The Capitol Life Insurance Co.

CHINN & EDWARDS
General Agents

11866 Wilshire Blvd. BR 2-9842
Los Angeles, Calif. 90025 GR 8-0391

Excellent Service Opportunity for Career Agents

Sushi - Noodles - Bento
Tempura - Sake - Beer

A KEMI
FOOD TO TAKE OUT

238 E. 2nd, L.A. 688-8036

Tin Sing Restaurant

EXQUISITE CANTONESE CUISINE

1523 W. Redondo Blvd.
GARDENA DA 7-3177

Food to Go
Air Conditioned Banquet Rooms 20-200

Fugetsu-Do

CONFECTIONARY

215 E. 1st St., Los Angeles 12
MADISON 8-8595

Eigiku Cafe

Dine - Dance - Cocktails
BUKUYAKI • JAPANESE ROOMS

314 E. First St.
Los Angeles • MA 9-3029

Commercial Refrigeration
Designing Installation
Maintenance

Sam J. Umemoto

Certificate Member of RSES
Member of Japan Assn. of Refrigeration
Lic. Refrigeration Contractor
SAM REI-BOW CO.
1506 W. Vernon Ave.
Los Angeles AX 5-5204

Hickory Farms of Ohio

America's Leading Cheese Store
Home of the Famous "BEEF STICK" Foods and Candies
From Around the World!

Ports of Call Village
Wharf's Village
SAN PEDRO, CALIF.

Mikaway

Sweet Shop

244 E. 1st St.
Los Angeles MA 8-4935

MAN GENERAL LEE'S JEN LOW

475 GIN LING WAY — MA 4-1828
New Chinatown - Los Angeles
Banquet Room for All Occasions

KONO HAWAII

EXOTIC FOODS
TROPICAL DRINKS
ENCHANTING ATMOSPHERE

- KONO ROOM
- LUAU SHACK
- TEA HOUSE

Pk. # 11-1332
226 SO. HARBOR BLVD.
SANTA ANA, CALIF.
(South of Disneyland)

KAWAFUKU

Sukiyaki — Tempura
Sushi — Cocktails

204 1/2 E. 1st St.,
L.A. MA 8-9054

Mrs. Chiye Nakashima
Hostess

The Finest in Japanese Cuisine

New Ginza RESTAURANT

Luncheon • Dinner
Cocktails
TAKE-OUT LUNCHEONS
Group Parties

704 S. SPRING • Res. MA 5-2444

3 Generations Superb Cantonese Food — Cocktail Bar — Banquet Rooms

Quon's Bros. Grand Star Restaurant

Beautiful former Miss Hawaii—Deli-Fin Thursday
Entertaining at the Piano

943 Sun Mun Way (Opposite 951 N. Bdry.)
NEW CHINATOWN — LOS ANGELES
MA 6-2285

Dine at Southern California's Most Exquisite Shangri-La Room

太平 tai ping

CANTONESE CUISINE
Private Parties, Cocktails, Banquet Facilities

3888 Crenshaw, Los Angeles AX 3-8243

When in Elko . . . Stop at the Friendly

Stockmen's

CAFE • BAR • CASINO

Elko, Nevada

Bush Garden

SUKIYAKI

SEATTLE 614 Maynard St. PORTLAND 121 SW 4th St. SAN FRANCISCO 598 Bush St.

Golden Palace Restaurant

Excellent Cantonese Cuisine
Cocktail and Piano Bar

Elaborate Imperial Chinese Setting
Banquet Rooms for Private Parties

911 N. BROADWAY, LOS ANGELES
For Reservations, Call 624-2133

TO OUR SUBSCRIBERS WHO ARE MOVING

New Address

City State ZIP

Effective Date

• If you're moving please let us know at least three weeks prior. Attach current address label below on the margin of this page.

THANK YOU, Pacific Citizen Circulation Dept.
125 Weller St., Los Angeles, Ca. 90012

Kinokuniya Books

Japan's Largest Publishers and Booksellers

Invite You to Visit Their Newest Branch in San Francisco

Complete Selection Of
Japanese Books and Periodicals
Books in English on Japan and Asia

SHOP SALES MAIL ORDERS
Open Daily 10:30 a.m. to 7:00 p.m. Closed on Monday

KINOKUNIYA BOOKSTORES OF AMERICA CO., LTD.
Japanese Cultural & Trade Center
1581 Webster St., San Francisco, Calif. 94115
Tel: (415) 567-7625/567-7626

(PLEASE CLIP AND SEND THIS COUPON FOR FREE CATALOG)

Please send me a FREE CATALOG OF KINOKUNIYA BOOKS

(Name).....
(Street).....
(City, State)..... (Zip).....



Aloha from Hawaii

by Richard Gima

Inside the Capitol

At City Hall

Honolulu city councilmen voted June 20 "to save Diamond Head" by formally adopting a resolution to turn much of the crater into a park. With a 6 to 2 vote, councilmen authorized the acquisition of 32 acres of residentially developed properties on the seaward side of the famed landmark. Purchase price is believed to be at least \$14 million. Voting against the resolution were Councilmen Brian Casey and Mary George. They favored buying homes on the makai side of Diamond Head Road, but not those of the upper part of the crater. Stuffed shirts at City Hall will be out of style until the end of Oct., and aloha garb and muumuu will be in. A memorandum has been signed permitting all municipal employees to wear aloha dress to work, starting immediately.

Mauli County Councilman Joseph E. Bulgo has asked that priority consideration be given for the construction of a high school in the Pukalani area of Maui. Bulgo referred to the rapid growth of that area and the expansion and developments now being planned by local developers. He suggested that a school there could serve Kula, Makawao, Hāiki, Pukalani and Pukalani. Students from those areas now travel to Maui High School in Hamakua, but plans have been made to relocate that school to new facilities in Kahului—still farther from the students' homes.

The firing of Police Chief Edward J. Hitchcock by the Maui County Police Commission Apr. 25 was upheld in circuit court in Wailuku June 20. Circuit Judge S. George Fukunaga dismissed suits brought by Hitchcock against acting Chief Francis B. DeMello and members of the commission in an attempt to get his job back.

Lee Maice, mgr. of Honolulu Redevelopment Agency, on June 20 said it was "wonderful news" that the federal government had released more than half a million dollars to enable the city to continue the Kapahuu General Neighborhood Renewal Project. The \$506,797 announced June 20 by Sen. Hiram Fong is an advance on the \$9.9 million that Honolulu requested of the federal government for the Honolulu portion of the Kapahuu project. Sen. Fong said in Washington June 20 that he would support a 1970 budget estimate of \$10.2 million for the nation's resource conservation and development program of the Soil Conservation Service which Hawaii hopes to receive \$1.1 million. Rep. Patsy T. Mink has introduced a bill aimed at aiding small investors by increasing the interest paid on U.S. savings bonds. The bonds currently pay 4 1/2 per cent interest. But large commercial investors receive upwards of 6 per cent on treasury bonds in the open market, according to Rep. Mink.

Accidents-Injuries

Denichi Shigemoto, 45, a Mid-Pacific Institute cook, was burned June 23 while trying to extinguish a fire that gutted his duplex apartment on the school grounds. Shigemoto was treated at Queen's Medical Center for burns on his face, left shoulder and legs, then released. . . . Bert Sakai, 43, has been reported missing in the Kings Landing plantation's Kukaia fields. He was the harvesting superintendent for the plantation. Toyama was crushed beneath a tractor operated by George

DeMello, 54, of Paoulo. DeMello was backing a tractor, and Toyama had apparently walked behind it, when the mishap took place.

Donald M. Kanesiges, 11, son of the Shiao Kanesiges of Lualaba, Kauai, was in guarded condition June 14 in Queen's Medical Center from injuries suffered in a traffic accident June 12 near his home. Donald, riding on a bicycle, smashed with force into the side of a passing car.

Kiyoshi Nakaya, 40, of Waimea, Kauai, was seriously injured June 14 when he fell 200 feet while hunting pig in Waimea Canyon. Nakaya suffered a fractured knee and dislocated shoulder. He was in guarded condition after

Scholarships

Seven Hawaii teachers have been selected by the Seton Hall University's Institute of Far Eastern Study to spend seven weeks in Japan, beginning July 1. The teachers, part of a group of 20, are Robert Kato, Elaine Kimura, Hideo Kiyokawa, Mrs. June K. Luke and Joseph U. Yano, of Hilo. The Kaula 442nd Veterans Club has awarded its third annual scholarship of \$100 to Edwin Nakaya, a Waimea High School graduate. He is the son of the Charles Nakaya of Makawao. Edwin plans to enter the Univ. of Hawaii in the fall. Previous winners were Iwao Okamura and Glenda Valenciano.

School Front

Former Punahoa principal Walter Curtis and his wife, Betty, have left Hawaii for Escondido, Calif., where they will make their home. Curtis retired after 40 years with the school. . . . Two local high school seniors have been selected to represent Hawaii at the National Youth Science Camp in West Virginia. They are Edmund Liu of McKinley High School, and Glen K. Hori of Honolulu High School on the Big Island. They will be among 100 youths taking part in seminars, lectures and field trips to Washington. . . . Tuiji Suzuki has been named principal of the new Maui district School, and Santiago Agcaoil has been appointed principal of Diamond Head School. The board of education also appointed George Yamamoto principal of Radford High School to replace Andrew Nii, who's the new Maui district superintendent.

Business Ticker

Thomas Y. Sakamoto, asst. v.p. and mgr. of Bank of Hawaii's Hilo branch, will return to the main office as asst. v.p. of the branch, division manager, Kilauea, who has been aiding Japan Air Lines tour groups since 1960, has been appointed JAL district assn. mgr. in Seattle, Wash. . . . The City Bank of Honolulu celebrated its 10th anniversary June 19. The bank opened its doors on June 19, 1959, with \$3 million in assets and 23 employees. Today assets have risen past \$1 million and employs 167 persons, including 10 of the original 23. Koichi Hoba became pres. in 1961. James Morita, one of the founders of the bank, is chairman of the board.

Police Force

Eight Honolulu Police Dept. captains have changed jobs. Former traffic captain Clifford Anderson now heads the community relations division, replacing Roland Sagum, now a night patrol captain. Anderson's traffic post was taken by William Sneed, whose administrative captaincy is held by Alonzo Hutchison. Abraham Alonzo gave a night captaincy to Gladson Carringer, a former night captain. George Shih now heads the records division. Charles Duarte also becomes a night captain. . . . Capt. Richard Haake, personnel and training officer for the Maui Police Dept., has been assigned to head the identification and records bureau, a lesser position. The orders did not say how long the assignment would last. He is acting Chief Francis B. De Mello assigned Detective Shinyuzo Takumi to replace Haake in the personnel post.

Vietnam KIA

Army Maj. Robert W. O'Keefe, a Lilehua HCT instructor in 1967 and 1968, was killed in action in Vietnam June 18. The army said O'Keefe was killed when his helicopter was flying crashed and burned during a military mission. He would have been 32 on June 21. Pfc. Sasa Uii, 20, a Honolulu marine, was killed in action June 15 in Vietnam. Sasa, the 201st Islander, died in Vietnam, was killed when his unit came under small arms fire while on search and clear mission seven miles south of Danang. He is survived by his wife, Helen, of 577 N. Vineyard St.

July 9-15
Shutsugoku
Shijuhachiji-kan
(48 Hours to Kill)
Ryunsuke Minagishi, Michio Yasuda
Akio Hasegawa, Kikko Matsuoaka
AND
Nemuri Kyoshiro Joyoken
Raizo, Ichikawa, Shiro Fujimura
Nesko Kubo, Akemi Negishi

KOKUSAI THEATRE
3020 Crenshaw Blvd., RE 4-1148

Jet Inn
Minutes to Downtown or Int'l Airport
Heated Pool - Elevator - TV
Air Conditioned - 24 Hr. Switchboard
NISEI OPERATED
4542 W. Slauson, L.A., AX 5-2544

HANDY LITTLE
IS HERE!
an instant cooking base from the maker of "AJI-NO-MOTO"

Empire Printing Co.
COMMERCIAL and SOCIAL PRINTING
English and Japanese
114 Weller St., Los Angeles 12 MA 8-7060

The Foul Line: Gary Yamauchi

Don Carter Bowling Glove

Last week the "Foul Line" discussed the purpose and functions of the various bowling aids on today's market. I went on to explain the importance of knowing "why" a bowling device can remedy certain problems. In short, a bowler should know what effect the bowling aid will have on his game before any purchase is made.

To further illustrate the effects of a particular item, I have chosen the Don Carter Bowling Glove as this week's example. The Carter Glove is manufactured for both men and women and is available in four sizes ranging from small to extra large.

The glove, itself, contains a triangular foam rubber pad that increases in thickness from the center of the palm to the heel of the hand. Because of the manner in which the pad is placed in the glove, it is easy to understand why so many bowlers admit to the "feel" that it gives them more "feel" true; however, it may prove interesting to know why this added "feel" is obtained.

Natural Grip
First of all, most bowlers have the holes drilled on one center line across the middle of the label. (To get a better idea, draw your grip on a piece of paper). Now hold your hand with the palm up and you will see that it is naturally, your thumb must be in the center of your palm.

Since this is not the case, the hand must be turned so that both the thumb and fingers can be placed in the holes. It is this turning of the hand that causes the outside portion of the hand to rise off the ball. (The side of the hand opposite thumb). It also creates a pressure line that extends from the middle finger to the base of the thumb.

When the Don Carter Glove is worn, the gap that is created by the turning of the hand is filled. Also, the pressure line is transferred toward the outside portion of the hand enabling the bowler to get the added feel. In essence, he has simply spread the pressure across more of his hand instead of it being on one line near the index finger.

From my experience, I have found that the use of the Carter Glove will help me "stay behind" the ball for a longer time before the hand is turned. This effect is caused by the fact that the span on the ring finger is somewhat increased. (Overall span is also increased due to the height of

the pad). For me, this increase in span gives me a higher track on the ball and, consequently, a smaller hook. At the same time, it causes the release of the ball to be speeded up, again due to the longer span.

Knowing these facts, I use the glove on occasions when I seem to be turning the ball very early. After laying off for some time, I find the use of the glove ideal since I know I will have a tendency to overturn the ball. There are times, also, when the fit of my ball seems a little short, and again I revert to the glove for a little better feel.

Lastly, on conditions where I desire a straighter roll, I go to the glove for added lift from the ring finger.

I personally think the Don Carter Glove is one of the finest bowling aids on the market. It can prove very useful to many bowlers seeking a better feel to the ball. Bowlers who now purchase the glove should, however, remind themselves of what the glove is intended to do. They should remember that a bowling device should only be purchased to do a specific job.

BOWLING SHORTS
I should mention that I also use a special pad with my Carter Glove. I have removed the standard pad in the foam rubber. For my span, I find that the standard pad is too large for comfort. Also, when using the pad, it may be a good idea to use the pressure on the ring finger. I find it much more comfortable for my entire hand.

A reminder from John Mechligian at Freeway Lanes in Selma: Spots are still available in the Rain Singles classic for all the bowlers heading to Fresno for the California State Championship. Only two spots remain and only two bowlers are currently standing in the high money brackets. Some of them are Mas Iwata, Sun Valley 10th hdp., Min Yasumura, Long Beach 20th hdp., Mike Namoyori, Los Angeles 24th hdp., Kayoko Suda, 1st ladies scr., Minnie Hira, Long Beach 1st ladies scr., Mari Matsuzawa, 1st ladies Sakata, tied for 13th and 14th scr. Terese Nakagawa, 10th ladies hdp. Heidi Inouye, 2nd ladies high gm. and Hit Obara, 5th mens' high game.

How about Sam Fukumoto winning two pots at Eagle Rock in the NBA Five Game Singles Sweeper. He's starting to bowl like the old Sam Fukumoto. I guess married life agrees with him. Ehling Hira or he's just trying to stay ahead of Danny.

Alameda tournament
ALAMEDA The Alameda JACL bowling tournament will be held July 12 at Mel's Bowl with Mas Kadota and Don Yoshisato in charge. Prizes will be awarded in two categories: regular bowlers and non-bowlers or beginners.

CLASSIFIED ADVERTISING

Cash with Order. 10¢ per word, \$3 minimum per insertion.

EMPLOYMENT
Yamato Employment Agency
Job Inquiries Welcome
Rm. 202, 312 E. 1st St., L.A.
MA 4-2821 • New Openings Daily
OF INTEREST TO MEN
Warehouse, electronics... 350-450
Arc Welders, truck, east... 350-450
Bus Supervisor, auto-truck 135-150/wk
Truck Driver, "A" Torrance 3.38/hr
Rkt Prod Clks, exp M.P. un scale
F.C. Bkpr, retail biz... 385-650
Bkpr Clk, flower biz... 443up
Sales, ship co, bilingual, to 750-
OF INTEREST TO WOMEN
Pers Secty, imports, west to 600-
1-Girl Office, WLA... to 500
PBX-Clk, gen mds... 385-650
Couple domestic Sa Mar... 585-600
F.C. Bkpr, retail exp... 200hr
Food Packers, gen benefits... 1.85up
Inspector Tr, electronics... 1.85up
PM OPR, better dresses... 2-3.00hr

AUTO SALESMEN
\$300 to \$500 Month
In your spare time! We're starting a new program for salesmen to work in your spare time. No experience necessary, we'll train. \$1000 per mo. on commission. Open interview daily, 10 am. to 7 p.m. Ask for Mr. Ray, Central Ford, 124 S. Figueroa, Los Angeles.

OPERATOR
SAMPLE MAKER
Must be able to make complete garment. Swim wear, Sports wear.
Beach Mates Inc.
933 E. 11th St., Los Angeles
625-8165 or 625-8166

OPERATORS
Experienced on dresses. Make complete garment. Top wages. Weekly bonus and paid vacation. Steady work.
NORMA FASHIONS
719 S. Los Angeles St.
Room 314 - Los Angeles, Calif.

WLA LEGISLATOR-attorney details conservative, public relations-minded secretary for 35. Available mid-July. 473-2147.

CAREER OPPORTUNITIES
LEARN of job opportunities in theater. Enroll in ICCO apprentice program. No experience necessary. 735-1621.

RANCHES—ACREAGE
305 Ac. alfalfa ranch on Mojave River. Abundant water, 800,000 gal. reserv. w/all eqmt; rolling water lines, 3-3/4 hrs, ranch house and bunk house, corrals, tool sheds, & milking barn. 150 Ac. new alfalfa crop. Potential 500-700,000 gr p/yr. Frnly org will sell to principles interested in gd land buy 650 p/Ac. Call or write: Alba Enterprises Box 1180, Crestline, Calif. (714) 358-2192

50 Ac. Mtny-Sal Hwy, subdiv id, gently rolling, 4500 p/Ac. 60 Ac. Upr Carmel Vly, priv, gud for org retreat or country hms. Some bldg sites, some steep, 472,000. Fort av. 1800 Ac Sal Vly ranch nr Soledad, 400 ac gd for grapes nr Paul Mason. Hwy & RR frontage. Permit for air strip, 5 wells, 861,000. Bar & restaurant site, main Salinas rd by motel. All or part of 43,365 sq ft. Owner can't "build to suit" or subor. \$137,000.
We specialize in ranches and land. THEIL HAMPTON REAL ESTATE 40 W. Alisal St., Salinas, Calif. (408) 234-2285

California Land
Several large parcels, 10,000 acres and up for investment or development. Principals only. Write or call:
IMPERIAL REALTY
1390 Lincoln Ave.
San Rafael, Calif. (415) 456-6322

TOP 90 ACRES
Northwest of Holtville in new producing area. With or without house. Write or call.
IMPERIAL REALTY
P.O. Box 13
Imperial, Calif. (714) 355-2275
(714) 352-0284 anytime.

Oregon Acreage
Canby-Mollala: 160 acre farm. 140 acre cult, level, tiled. Fine new home, Farm, sub-divide or raise nursery stock. For details, write or call First Line Properties, 234 S. Oxford (4) - DU 4-7400, Ore. (503) 246-8466 anytime.

Southern California
ALMOST 1000 ACRES
Only \$250,000. Just moments from the San Bernardino Frwy., less than 80 mi. from downtown L.A. Paved rd. to the prop, almost 5000' elevation, gorgeous views. Write or call: Buck Alderete, Realtor, 1704 N. Ross Ave, Santa Ana, Calif. (714) 547-6469.

18 AC. ranch. Prunes, grapes, pasture. Completely modernized older home. Owner financed. \$75,000 with \$15,000 down.
LIVE STREAM near Coast. Beautiful 1800 AC. ranch. Fenced. Abundant water. In Sonoma Co. \$225 per ac. Excellent financing. Write or call: Francis Realty, 1303 College Ave., Santa Rosa, Calif. (707) 545-4220

Mt. Ranch—Trinity Co. 300 Ac. fisherman's paradise, hunting, too. Mineral springs to drink or bathe. 50 Ac. alfalfa under irrigation. Fertile pasture, fir & oak timber. Old barn, orchard. Great summer homes or resort potential. \$168,780. 28% dn. For more info this and other prop contact Sequoia Realty (Helen L. Bartlett) 1506 Main, Fortuna, Calif. (707) 725-5421.

Lyndy's
926 S. Beach Bl.
ANAHEIM, CALIF. JA 7-5178
Harold Goertzen, Res. Mgr.
Between Disneyland and Knott's Berry Farm

Greetings
BINER-ELLISSON MFG. CO.
225-8162
1101 N. Main St., Los Angeles

DOWNY DETECTIVE AGENCY
William Quinn
862-3363
8715 McCullish Ave. Downey

Greetings to the Entire Japanese American Community

GUARDIAN FENCE CO.
424-8653
1050 E. Spring St. Long Beach

FIGHT CANCER
Toyo Printing
Offset - Letterpress - Linotyping
309 S. SAN PEDRO ST.
Los Angeles 12 - Madison 6-8153

Nanka Printing
2024 E. 1st St.
Los Angeles, Calif.
Angelus 8-7835

NISEI Established 1936
TRADING CO.
• Appliances • TV • Furniture
348 E. FIRST ST., L. A. 12
Madison 4-6601 (2, 3, 4)

Appliances - TV - Furniture
TAMURA
And Co., Inc.
The Finest in Home Furnishings
3420 W. Jefferson Blvd.
Los Angeles 18
RE 1-7261

ED SATO
PLUMBING AND HEATING
Remodel and Repairs - Water Heaters, Garbage Disposals, Furnaces
— Servicing Los Angeles —
AX 3-7000 RE 3-0557

Best Wishes from a Friend
Aloha Plumbing
PARTS & SUPPLIES
— Repairs Our Specialty —
1948 S. Grand, Los Angeles
RI 9-4371

Message To Hertz & Avis. Move Over.
But not too far. We won't take up that much room. We're just a small, new auto rental and leasing firm. Auto-Ready, Inc. We're ready when you are. With a shiny new Impala. Or a sporty Chevy II. Or a sprightly Toyota. Just like you rent, Hertz and Avis. Same dependability. Same, clean ashytras. Same friendly service. Only one difference. Our rates are a lot less than what yours are. We're generous to a fault. Yours. Try us. For example, take advantage of our weekend special. Call 624-3721.

Auto-Ready, Inc., 354 East First Street, Los Angeles, Calif. 90012

MAS YOSHINO
AT
JACK MCAFFEE MOTORS
NEW & USED
Authorized Volkswagen and Porsche Dealer
825 N. Victory Blvd., Burbank
Tel. 845-8384
600 ft. from Golden State Freeway—Burbank Blvd. West off-ramp

Appliances - TV - Furniture
TAMURA
And Co., Inc.
The Finest in Home Furnishings
3420 W. Jefferson Blvd.
Los Angeles 18
RE 1-7261

ED SATO
PLUMBING AND HEATING
Remodel and Repairs - Water Heaters, Garbage Disposals, Furnaces
— Servicing Los Angeles —
AX 3-7000 RE 3-0557

Ask for... 'Cherry Brand'
MUTUAL SUPPLY CO.
1090 SANSOME ST., S.F. 11

Marutama Co. Inc.
Fish Cake Manufacturer
Los Angeles

BRAND NEW PRODUCT
GOLDEN DRAGON
INSTANT SAMIN
— HAWAIIAN RECIPE —
Most Sanitary Wholesome
Saimin on the Market
Available at Your Favorite Shopping Center
NANKA SEIMEN CO.
Los Angeles

Appliances - TV - Furniture
TAMURA
And Co., Inc.
The Finest in Home Furnishings
3420 W. Jefferson Blvd.
Los Angeles 18
RE 1-7261

Appliances - TV - Furniture
TAMURA
And Co., Inc.
The Finest in Home Furnishings
3420 W. Jefferson Blvd.
Los Angeles 18
RE 1-7261

Business and Professional Guide
Your Business Card placed in each issue for 26 weeks at 3 lines (Minimum).....\$25
Each additional line \$6 per line

Greater Los Angeles
EASTMONT REALTY
Ship Kuwahara & Roger Yawata Rty
2340 S. Atlantic Blvd., Monterey Park

Flower View Gardens
FLORISTS
1801 N. Western Ave. 466-7373
Art Itz welcomes your phone orders and wire orders for Los Angeles

IMCO REALTY
Acres Commercial & Industrial
George Inagaki - Ike Masakoa
4568 Centinela, Los Angeles 90066
397-2162 — 397-2162

KOKUSAI INTERNATIONAL TRAVEL, INC.
321 E. 2nd St. (12) 626-5284
Jim Higashi, Bus. Mgr.

NISEI FLORIST
In the Heart of L!l Tokyo
328 E. 1st St., LA 8-5606
Fred Moriguchi - Memb. Telephone

DR. ROY M. NISHIKAWA
Specializing in Contact Lenses
234 S. Oxford (4) - DU 4-7400

YAMATO TRAVEL BUREAU
312 E. 1st St., L.A. (90012)
MA 4-6021

Watsonville, Calif.
TOM NAKASE REALTY
Acreage - Ranches - Homes
Income
Tom T. Nakase, Realtor
96 College Rd. (408) 724-5477

San Jose, Calif.
EDWARD T. MORIOKA, Realtor
Specializing Through Experience
201 Summitmo Bk. Bldg. 294-1204

Sacramento, Calif.
Wakano-Ury
Sukiyaki - Chop Sura
Open 11-11, Closed Monday
2217 10th St. — GI 8-6231

Reno, Nev.
TOP HAT MOTEL
Shjo and Sumi Kallimura, Hosts
375 W. 4th St. — 786-1563

Portland, Ore.
Oregon Properties near Portland
Farm - Acreages - Residential
Business - Industrial - Recreational
J. J. WALKER INC.
19043 S.E. Stark St., Portland 97238
Henry T. Kato, Realtor
(503) 665-4145

Seattle, Wash.
Imperial Lanes
2101 — 22nd Ave., So. EA 8-3258
Nisei Owned — Fred Takagi, Mgr.

Kinomoto Travel Service
Frank Y. Kinomoto
521 Main St., MA 2-1522

Washington, D.C.
MASAOKA - ISHIKAWA AND ASSOCIATES, INC.
Consultants — Washington Matters
919 18th St., NW (6)

MARUKYO
Kimono Store
101 Weller St.
Los Angeles
628-4369

Complete Home Furnishings
Koby's Appliances
15130 S Western Av.
Gardena DA 4-6444 FA 1-2123

IBM KEYPUNCH, COMPUTER TRAINING
For Men, Women
Automation Institute
Edward Tokeshi, Director
451 So. Hill, L.A., Ph. 424-2838
(Approved for visa students)
(Approved for Veterans)

SAITO REALTY CO.
HOMES - INSURANCE
One of the Largest Selections
2421 W. Jefferson, L.A.
RE 1-2121
JOHN TY SAITO & ASSOCIATES

Marutama Co. Inc.
Fish Cake Manufacturer
Los Angeles

PHOTOMART
Cameras and Photographic Supplies
114 N. San Pedro St. MA 2-3886

triangle CAMERA
3443 N. Broadway, Chicago
Complete Photo Equip., Supplies
GR 2-1015 James S. Ogata

TOYO Miyatake
STUDIO
318 East First Street
Los Angeles, Calif.
MA 6-5681

Published weekly by the Japanese American Citizens League... Editorial-Business Office... National JACL Headquarters...

Nara's house of history-Shosho-In date from 751 A.D.

By DON ESTES The Japanese are a people who could fairly be described as "heritage oriented". They have, as a nation and a people, exhibited an understanding of history, and their unique position in man's long story.

HERITAGE

have resulted in the destruction and loss of some of his major cultural and intellectual accomplishments.

The Japanese, through their feeling for history, have achieved a small miracle by preserving many examples of the most important artifacts that were ever produced in the Far East.

The Shosho-In is one of the oldest buildings in Japan and is certainly of the oldest wooden buildings in the world. The building itself is unique in that it dates from about 751 A.D. It was originally intended to be the repository of the Todaiji. The fact that a wooden treasure house has stood for over twelve hundred years against the destructive forces of man and nature and has not only survived intact but preserved a collection of rare treasure, is little short of miraculous.

The building itself is a rectangular wooden structure made of hinoki and asunaro wood. It is 109 feet long and thirty feet wide. The entire structure is raised almost nine feet above the level of the ground by forty massive pillars. The Shosho-In is divided into three sections: North, Middle and South.

The treasures are divided into twenty-five categories to cover the 240 objects that range from documents to carpenter's tools. The 240 figure does not begin to convey the enormous size of this unique collection. For example, the wer baskets, which are treated as a single item, number 565, while arrows number 3,703. The size and great variety of this collection give us an intimate and remarkably clear picture of eighth century Japan.

Annual Airing

The Shosho-In is closed throughout the year except for the short period of its annual airing which usually runs from October and November but never lasts more than 26 days. Even during that period the buildings will be closed on wet or rainy days. Until the Meiji Period, the building was only infrequently opened. In 1883 a petition to open the Shosho-In annually received Imperial sanction, and at the same time permission to view the treasures was extended to an exclusive few. Admission today is by card only, with preference being given to those having academic qualifications. Usually on the 16th of Nov., with regal ceremony, the building is sealed under Imperial Seal and for another eleven months the great treasures cannot be seen.

Hamanaka

Continued from Page 3 gai," the mimeographed overseas news-letter of the MIS Language School, Fort Snelling.

We enjoyed the sheet overseas, about 16 pages every month. And on the staff with Peter was T/Sgt. Tom Okamoto, well-known former Walt Disney artist.

Then the following year, 1946, Sgt. Ohtaki and Seattle's Cpl. Henry (Popo) Yorozu co-edited the MISLS Album, the school's historical book. Ohtaki took time to get his BA in International Business from very friendly Macalester College in St. Paul. He sales repped several years for Northwest Orient in L.A. before going with JAL.

Personality in Brief Among his many affiliations he lists: the Rotary, Japan America Society, the Chamber, Sales & Marketing Execs, JACL (Thousands Club), Shunju Club, World Affairs Council, Japanese Community Service.

Ohtaki has the kind of personality destined for many successes. He is young enough, affluent, cultured, urbane. A soft but crisp talker. A hint of Bill Buckley expressions. A good listener who tilts his head to catch your every word. Dresses well. Seemingly relaxed. The only thing about him that looks hurried is his handwriting.

He successfully PR'd the 1962 JACL confab here, and last year handled the PR for the local Cultural Festival. He is thorough, organized, has class. You've got to like him, as New Yorkers will learn soon. Local boy makes good. Yes, we're happy for him, but we shall miss him. Sayonara... ogenki de...



EAST (Really 'East') WIND: Bill Marutani

The Visible Majority

Tokyo (June 20)

THE TERM "VISIBLE MINORITY" is one we Nisei hear so much vis-a-vis our lives in the United States. But here in Japan this same Nisei is, at least in this particular respect, cast in the uncommon (to the Nisei) role of being part of the visible majority, or perhaps more accurately, the "invisible majority". However, years of living in the United States preconditions the mind to certain attitudes and concepts with the Nisei thinking and acting like an American which, of course, he very much is.

Then certain little acts on the part of this invisible majority, somewhat bewildering at first because the Nisei American neither expects nor realizes what is occurring, begin to take perceptible form and suddenly the realization sinks in that he is being regarded and treated,—by non-Japanese, incidentally, as well as by the Japanese themselves,—as a natural part of this invisible majority.

HOWEVER, THIS TREATMENT is not without its problems. First, as indicated above, it is a little bewildering because the Nisei probably has never experienced having the invisible majority simply and naturally regarding him as part of them. (Consider, for example, the mixed reactions of a white American were he to be so regarded and treated.)

Then, there is the matter of language and customs: being initially considered as another Japanese the Nisei is expected to understand the rapid flow of words whether he be in a restaurant, train or asking directions of a police officer. (This is particularly true if the Nisei's "hatsu-on" is passably legitimate, even though his vocabulary may be limited. It misleads the Japanese listener into believing that the speaker (you) is just another Japanese, or darn close to being one.)

OBSERVANCE OF CUSTOMS and proper etiquette on the part of the Nisei is also naturally expected by the Japanese under these circumstances; for obvious reasons, the Japanese neither expects nor is thereby offended by the lack of such compliance by a white person. It's understandable and thereby forgivable.

For a person, who appears physically to be Japanese and is regarded (from a physical standpoint) as a part of this invisible majority, to fail to observe the social niceties and amenities "of Rome" risks such Nisei as being regarded as an uncultured boor. (I still haven't mastered the form of bowing politely on the more formal occasions: feet together, arms straight down against the sides of the body, standing ram-rod straight, and then bending from the hips—not the neck, the shoulder or the back, but the hips.)

"WHILE IN ROME", however, "do as the Romans do", particularly in view of these circumstances. Such simple but basic knowledge as what to say when being introduced... and how to say it. Consider, for example, how any person would be regarded, in our American society, no matter what his education, culture or breeding, if such person did not know how to conduct himself during introductions.

SOME EVERYDAY TRIVIAL OBSERVANCES of "East Wind", loud or even colorful neckties are practically nonexistent in the business world (or in the better stores, although some that cater to the tourist trade will stock less formal appearing ties); similarly men's suits tend to be dark and of a simple pattern (and I included my light, summer plaid suit!); when making a selection in a store apparently it is common to say "Kore-o-chodai-shimasu" instead of "Kore-o-itadakimasu", and I had learned as a lad. In fact, it appears that many of "East Wind's" Meiji-Taisho jargon and customs inherited from my Issei parents are passe.

YAMATO-DAMASHI? Passe or not, much of the old Japan in "East Wind's" book ought to be preserved and cherished by the Japanese—and I refer to culture, not economics or politics. In my book, few things are quite so dignified as a Japanese male garbed in "nihon-gi" and nothing is more graceful, more beautiful or more elegant than to see a Japanese woman (or child) attired in a kimono. A flowing symphony of serene grace and elegance.

SIGNS OF SUMMER: Tourists en masse with cameras, loud jackets and bright dresses... The rents in Tokyo (the highest in any city in the world, 2 1/2 times higher than its closest rival, Manhattan) go even higher. Summer rates at seashore resorts, already inflated, increase 30 to 50 per cent July through September... An Oriental colored lass, trim and neatly dressed in white summer attire, chatting away in Nihongo with her Japanese escort... John Wayne, decked out as a cow-hand, speaking Nihongo on TV in a "bera-bera" manner.

The Ginza Sunday crowd (stores open full blast), an oozing, shifting, plastic mass of human bodies (one more body and surely the plastic would explode)... Zengakuren students endlessly snaking about the business district, helmeted, red banners flying, chanting anti-war slogans ("Hankosen!"). Thousands... The police nearby attired with plastic faceguards and armor, incongruously reminiscent of Samurai gear... Shouts of "Kaere! Kaere!" from the Zengakuren upon sighting the "po-ri" (not "buta's")... Why cabbies zip on far runs (I concluded): because charges are based on kilometers, not time... A cabbie's explanation of the rarity of cab hold-ups: the three most serious "social" ("shakai") crimes in Japan are rape of a minor, forcible rape and sticking up a cabbie.

THINGS TO IMPORT TO THE U.S.: Those hot, Oshibori Towels (sealed in plastic), so welcome in restaurants, particularly in this sticky weather... the custom of No Tipping in most places... the Mass Transit system, without question far exceeding anything we have in the States; clean, efficient and on-time... Prompt Service of restaurants, stores and offices... that Mochiya near Roppongi in the Toriizaka shopping area: real good eatin' even for this "non-mochi" man.

THINGS NOT TO IMPORT: Those inane Pachinko parlors, jammed every night... Some of the so-called "Mōdan" Sculpture, garish and and totally unimaginative (where have I heard that before?)... Cooking Fish in the basement restaurants in office buildings.

SOME MUTUALITY: Loud rock 'n' roll bands with a heavy beat (one can hear them into the streets)... Beate Dress with colored, metal-rimmed glasses and, of course, shoulder-length-tresses... Mini-skirts... and "lousy" movies.

Parents' duty to child; teach love, responsibility

Continued from Page 4

our affluent society has unintentionally or unknowingly twisted our values and has brought about "parent apathy" among some of us who wish to take the easy way out, shirking all responsibility which is legally and rightfully ours.

We must overcome this situation by taking firm and positive steps, even if it takes a generation to correct it. Misguided parents tend to think that giving their child any and everything money can buy, and letting him do as little as possible, is an expression of love.

Can't Buy Everything

Nothing can be farther from the truth. Somebody said, "While thinking that money can buy anything, we may lose something very precious that money can never buy—the future of our children."

Old fashioned love has changed to a superficial love or gold plated love—it looks good on the surface only.

A true parental love should be like a gold coin—solid gold—love all the way through, not just the hugging and kissing manifestation of it, but the love that expresses respect and concern for the child and his future.

Denying privileges is an important form of expression of long range true parental love. It is a fundamental ingredient for a child's happiness and success.

Value of Things

A child must be taught to understand and appreciate the value of things.

Here again, affluence has a tendency to make us careless with our possessions and the property of others. A child must learn thriftiness and not be wasteful.

Many children as well as adults, think it stylish or fashionable to leave food on their plate when finished eating, while millions are starving elsewhere in the world. Is this morally right?

Let's start this summer by teaching our youngsters the 4-Rs of morality. This is an area that is primarily the responsibility of the home—not the school.

4-Rs of Morality

As parents let's do some homework this summer on the midst of plenty. (1) Respect (2) Responsibility (3) Reliability (4) Rights of others.

1—Respect must be taught through discipline and obedience. When a child learns to respect his parents, he will learn to respect teachers, other adults, law and authority. And at the same time he will learn to appreciate them.

Appreciation goes hand-in-hand with respect, but it must be taught. In many instances, corporal punishment is a must. If you tell your child he is going to get a spanking for doing or not doing a certain thing, keep your promise. Never make false threats.

Later in life he will appreciate and admire your firmness and he will learn to be firm.

Strict Accountability

2—Responsibility. Good behavior flows from responsibility. It is said that the more independent and successful young people come from those homes that demanded the strictest accountability and responsibility.

And, interestingly, these are the very young people who maintain the closest and fondest family ties.

3—Reliability. A child's attitude is formed within the home. A child must learn to keep his promise and be honest. Others may have to depend on him.

4—Rights of others. We are so busy today with our own rights that we have all but forgotten the "rights of others."

Yet when you consider the rights of others, your own will fall in their right place.

When you hear about student protests and riots, you can see they have completely ignored the "rights of other students"—the students who want to study and who have paid high tuition.

Should they be deprived of their rights?

Summer Project

Let's all make this summer an enjoyable one, but a profitable one for the sake of our children's future and the future of America.

For those of us who have lost parental control, let's try to regain it tactfully, so neither loses face in the process. It will take some determination and fortitude, but it is not impossible. After all, it is for our children's sake.

—Reprinted from Arizona Republic

Accent on Youth Alan Kumamoto Sex, Games, Quiet



A young person was protesting in a great sense against the lack of communication between adults and teenagers. He was using sex as a topic and reacting to parents that shy away or reply in some naive way wishing to avoid such conversation. In one monologue the speaker covered communication weaknesses within families, the need for increased dialogue and understanding of sex in family settings, and the generation gap of thought and action between parents and their off-spring.

This individual was also trying to tie in the strain of ethnic background that he felt tainted the avoidance of many of his parents' peers. The Mexican American adult, he was continuing, is guarded about his very children and especially so in such taboo topics as sex.

We wondered as we sat there listening in this mixed racial human relations camp setting, how this conversation paralleled situations for Japanese American teenagers. This open forum was held in a place called the Free Speech Aréa which we thought was appropriately labeled.

Down at the Think Color session during this year's Brotherhood-Anytown USA Camp and we found the day's Yellow Caucus convened. After a few moments of adjusting to the conversations we were asked to relate what JACL was currently involved in doing. The Noguchi case was on the tip of our tongue, followed by Title II repeal, the concerns of the Ethnic Concern Committee, etc.

And as opinions, counter-opinions, and questions continued we felt that once again the general non-yellow audience had stereotypically categorized "all" yellow as this or "all" yellow as that.

We played a one-word-description game to indicate Oriental visions and impressions possessed by the non-Asians. Then to reverse the process we played another game as we got hung-up with "the whites" growing defensive as the Asian American kids used some generalized phrases labeling them. It was interesting listening to Asian American stereotypes of the white as a rich, middle-class people and to see the repulsed, angered pale faces going through changes. The non-yellow youth found how it really felt to be treated as generalized image.

We believe that there is value in having interracial confrontation whereby one can honestly express their feelings regarding others. Perhaps more important, however, is the dialogue which is furnished when those of like-ethnic identities come together and learn to share their differences as individual human beings. This aspect also was accomplished in another informal setting.

Some may say that the expected took place when about a dozen Asian Americans found themselves in a group. Typically they would say there would be a lack of conversation, etc. And in our particular situation the conversation was lacking in many spots.

A parting comment which gave some food for thought came after one of the staff adults gave his personal positive image of Orientals and ended by asking: So if you're quiet what's wrong with it? And indeed there is nothing wrong with being of a quiet nature but the crucial question is: why are many Asian American kids quiet?

TIE & GARTER: Dr. Frank Sakamoto

The Forgotten People

Chicago We took a good hard look at their salaries as compared with rising salaries elsewhere.

Because some of our staff members have been loyal and remained with us for many years, we tend to take them for granted. They are in a sense our forgotten people, the people left behind by our organization.

Are we going to wait for protests and a revolt before we come to a rude awakening? We should consider what we would have to pay to replace these people, if indeed, we could replace them at all, for it would be difficult to find people with as much interest and dedication.

As a nonprofit organization, we have always had, and probably always will have, financial problems. We could say we have lacked the financial resources. However, possibly we have also lacked the awareness and the will.

Issei Couple

Continued from Page 3

Bill Mine. Another daughter Mrs. George Shimamoto of Newark, N.J., flew out to attend the special event. Of 15 grand-children, nine of them were there. The couple have eight great-grandchildren.

Mine, who is 90, came to Watsonville in 1903 from Fukushima prefecture. He sent for Mrs. Mine, who will be 90 this month, to join him in 1909. They have lived here since, except during the war years of 1942-45. Mine farmed until his retirement.

25 Years Ago

In the Pacific Citizen, July 8, 1944

Fifth Army announces June 26 100th Infantry incorporated into 442nd Central Postal Directory, first official word of 442nd's arrival in Italy... Yaezo Hitomi, 44, Tule Lake co-op general manager, found slain July 3... Eleven Granada center Nisei convicted in draft cases, sentenced to 10-18 month terms... Validity of military orders excluding Japanese Americans challenged in injunction suit by ACLU on behalf of Mrs. Shizuko Shiramizu and Dr. George Ochiikubo. California race-baiters (Japanese Exclusion Assn.) fail to get proposed initiative to bar Nisei citizens from ownership of land on ballot, unable to obtain 170,000 signatures... Univ. of California pres. Dr. Sproul warns against hysteria on Nisei question in Los Angeles, "a powerhouse of race-baiting"... Appeal filed for Heart Mountain draft evaders sent to Ft. Leavenworth... Editorials: "Right to Return" (on ACLU injunction suit against Gen. Bonesteel); "Setback for Racists" (on Japanese Exclusion Assn.'s failure to secure enough signatures on initiative).

ARE YOU A SUBSCRIBER?

Form for subscribers to provide name, address, city, state, zip, and payment information.

Ye Editor's Desk

SANSEI'S SEARCH FOR IDENTITY

We're not in the habit of reading through the family section, so it was the women in the PC Office who called attention the other day to Sharon E. Fay's poignant piece in the Los Angeles Times on Family Therapy as a weapon to fight delinquency. Perhaps her familiarity with Japanese Americans — after doing a three-part series on the subject last year — and knowing of their low crime and delinquency rate focused the presence of a pretty, close-eyed teenager at Las Palmas School for Girls, a residential treatment center in East Los Angeles operated by the County Probation Department for delinquent girls.

The free discussion between the Japanese American mother and her daughter comprised the opening of the story. "You always act so ashamed," the daughter accused her mother. "It's hard for me to be close to you when you're so ashamed of me." Another parent in the family therapy session interrupted to tell her: "You have a tendency to blame your mother without understanding her emotions." And he turned to the mother: "I think you feel inferior because you're a member of a minority race. And because your daughter has misbehaved, it's another nail in your coffin of shame."

The mother, in admitting to the truth of that comment, broke down in tears, signaling the relief that admission has unleashed after weeks of denial.

"Let's go back," suggest Dr. Thomas Wilson, psychiatrist and consultant at Las Palmas. "I was very touched by your tears. How did you feel just now?"

"I cried," the mother responded as a concerned young resident passes her a box of tissue, "because I didn't realize that he could understand how I feel," indicating the man seated at her right.

Under the gentle probing of the entire group, the Japanese American mother related her hitherto repressed resentment during the World War II evacuation and internment of her people. The parents in the group listened, ashamed. The Las Palmas teenagers, born long after World War II, had their eyes open in new-found compassion. The daughter, across the room from her mother, was crying softly. She had never heard her mother before express these feelings. Asked what she was feeling at that moment, she explained:

"I'm crying because I'm sad because it happened that way. And I'm mad because it happened that way."

Straightening up, the daughter said that before the Las Palmas family group sessions, she had been ashamed of her ethnic origin. "But now I feel like I'm somebody, that I'm proud and want to stand up for my race."

Last year, Miss Fay found that the Sansei (like the daughter at Las Palmas School) "in a period of ferment... a changing breed of cat" and quoting Dr. Robert Wilson of UCLA, director of the Japanese American Research Project, "We don't know what to think about them—and neither do they."

Described as the spokesman for the younger generation, JACL Youth Director Alan Kumamoto told Miss Fay a "typical Sansei still runs around with Japanese American groups and has ideas which are basically like those of his Nisei parents." However the important difference, in Alan's opinion, was that "high school kids identify more as whites... they don't consider themselves Japanese." This identity crisis hits hard in college, he told Miss Fay: "You may think you're white—but you see that others don't think so when you can't get into this or that sorority or fraternity. That's when you suddenly find out you're not equal."

This has produced the side effect of Sansei becoming interested in Japanese culture and his heritage "in order to find out who you really are." Another important change, Alan added, was the disappearance of the Japanese concept that the person is the reflection of his entire family. The Sansei have come to think in American terms—that an individual stands on his reputation alone.

In the same story last year, Miss Fay heard attorney Frank Chuman relate that by the time a Japanese American delinquent manifests his problems, "it's after a long period of incubation. And the reason behind the behavior is more often the child's relationship with his parents. There's extraordinary pushing going on on the part of the parents who pressure their children into becoming over-achievers and when some of these kids can't make it there's a reaction—and sometimes the result is trouble with the law."

As for the daughter being committed to Las Palmas, group psychiatric social worker, Mrs. Jane Bolen, suggested it had been an indirect result of her lack of pride in her race—that her refusal to accept her identity led her to run around with bad companions.

"But I always told my daughter to be proud of her background," her mother protested.

"You've been telling your daughter one thing but feeling another," a nearby parent pointed out.

By the end of the two-hour session, the mother and daughter looked at each other with fresh understanding and said their farewells in the happiness of a new-found basis of communication.

There is more to Miss Fay's story about Las Palmas and how the family group therapy sessions began 15 months ago and what it has accomplished. The story, I think, should open the eyes of those who misunderstand the Sansei search for identity. Unless it's seen in the worst light, so many find it insignificant. And that's tragic.