

Matsunaga, Mink in finals

By ALLAN BEEKMAN

(Special to The Pacific Citizen)
HONOLULU—With only 59.8 per cent of the registered voters casting ballots in Honolulu County, incumbents for major offices in Hawaii easily won solid endorsement. As predicted, Honolulu Mayor Frank F. Fasi, and U.S. Reps. Patsy T. Mink and Spark M. Matsunaga scored Democratic nomination.

With 61,310 votes, Fasi won 52 per cent of the Democratic vote. His strongest opponent, Mason Altieri, with 38,706 votes, gained 32 per cent. Kekoa D. Kaapu, 18,408, secured 14 per cent; Paul A. De Mark, 1,274, had one per cent. On the Republican ticket, State Sen. D. G. Anderson easily won the nomination over four other candidates with 24,235 votes.

Thus a situation has occurred strikingly similar to that of the election in 1968, in which Fasi received 50.3 of the Democratic vote in the Primary. Though he has gained in strength, his vote falls short of the landslide his supporters had hoped for.

As in 1968, Fasi will face State Sen. D. G. Anderson in the General Election.

Closed Primary

Under Hawaii's closed primary law, voters could choose only a Democratic or Republican ballot; in the General they will receive ballots permitting them to vote for candidates of either Party. There are more candidates on the Democratic ballot, which encourages a disproportionate number of voters to vote Democratic in the Primary.

In a bitter three-candidate

race for the Democratic nomination for the U.S. House from the 2nd Congressional District, Mink won 70 per cent of the votes. 60,714 persons voted for her compared with 14,158 for Atty. John W. Goemans and 6,264 for retired Air Force major George B. Carter.

Carter said of her, "I hope she will particularly remember to serve her district rather than fiddle around with her own personal war against the Defense Department."

Though Carter had attacked her viciously, his charges fell short of the vilification directed at her by Goemans. Calling her a traitor, Goemans had strongly hinted she might face indictment by a Federal grand jury for violating the Logan Act.

Goemans' Tactics

Mink described the charge of Goemans as "largely a campaign of personal attacks against me . . . But I think the voters have indicated what they think of Mr. Goemans' tactics."

Though many voters were offended by the campaign of Goemans, the election results fail to sustain the conclusion that his tactics have been discredited. Goemans entered the race as a weak candidate. Had he run an orthodox campaign, he might have received fewer votes than he did.

His campaign alienated some voters partly because of their prejudice against a man making a personal attack on a woman—whatever the grounds. His aspersions doubtless found favor with some—especially those of mainland origin beguiled by the appearance of the local government being run by a foreign clique.

Pacific Coast politicians cried yellow peril when this fascist recruited votes. If immigration from the mainland continues to grow, and the local government fails to put its house in order, so the tactic of branding local politicians as minions of a foreign government may be expected to likewise increase.

Mink will face Republican Diana Hansen in the General.

Unopposed in Primary

Unopposed in the Democratic Primary, Matsunaga polled 61,051 votes for nomination from the 1st District. In the General, he will face Fred W. Rohlfing, who won the Republican nomination with 17,293.

Kauai County Council Chairman Ralph S. Hirota, 47, scored an unexpected victory over Mayor Anne K. Vidinha, winning the Democratic nomination for the Kauai mayoralty, 4,685 to 4,542. Hirota will face Republican Francis M. F. Ching in the General.

Ann M. Nakagawa, 18, became the youngest person ever elected to political office in Hawaii and the U.S. when she beat Jacob Y. Pao, a Korean American landscape architect, 11,751 to 4,935, for the Democratic nomination to the State Board of Education from Central Oahu. Since no Republicans were entered in the contest, the nomination of the Univ. of Hawaii freshman means she has been elected outright.

Primary Election

Successful Nisei candidates, besides those already mentioned—follow. (CAP-ITALS identify candidates elected outright because of lack of opposition in the General.)

—Incumbent
KAUAI County Council (3)—Burt K. Tsuchiya (D), Shigeomi Kubota (D), Rose Ono Shaw (D), 10—Palolo—St. Louis (2)—"Joe" Shiranaka (R), "Chiyoko" Shiranaka (R).
HAWAII County—Mayor: "Shunichi" Kimura (D).
HAWAII County Council (9)—(Three elected At-Large)—At-Large: Herbert T. Matayoshi (D), District (1)—Yamada (D), Kohala District (1)—Kikue HISAOKA (D), Kona District (1)—William Kawahara (D), Fred Y. Fujimoto (D), Puna District (1)—Tomio Fujii (D).

MAUI County Council (9)—"Yoshi" Yanaguchi (D), "Lanny" Haru Morisaki (D), "Harry" K. Kikue Young (D), "Goro" HOKAMA (D), (Lanani), Barney Tokunaga (R), Masao Sone (R).

STATE HOUSE
1—Puna-Kau (1)—"Jack K. Suwa (D).
2—Kohala-Hamaku (1)—"YOSHITO TAKAMINE (D), Minoru Inaba (D).
3—Kona-S. Kohala (1)—"Minoru Inaba (D).
4—W. Maui-Molokai-Lanai (2)—"Ronald Y. Kondo (D), "Motobisa Uemori (D).
5—Waialeale-Hawaii-Kai (2)—Norman K. Kono (R).
6—Diamond Head-Waialeale-Kahala (2)—"Patricia Sakai (R).
7—Palolo-St. Louis (2)—"Ted Morioka (D), "Taduo Beppu (D).
8—Kaimuki-Kapahulu (2)—"KERO NAKAMA, "HYROSHI KATO.
9—Maunaloa-Makiki (3)—"Charles T. Ishijima (D).
10—Maunaloa-Kakaako (2)—"Jean Sadako King (D), "Clarence Y. Akiaki (D).
11—Punchbowl (2)—"ROBERT KIMURA (D).
12—Nuuanu-Alewa Heights (2)—"Peter S. Iha (D).
13—Upper Kalihi (2)—"AKIRA SAKIMA (D).
14—Maunaloa-Aiea (2)—"MITSUO UCHIYAMA, "JAMES H. WAKATSUKI (D).
15—Ewa-Pearl City (3)—"Patsy Kikue Young (D), "Tatsuo Kikishinami (D).
16—Waianae (1)—Harold Omori (D).
17—Wahiawa-Waianae (2)—Harry Higa (D), "Howard K. Oda (R).
18—Francis T. Manukawa (R).
19—Kaneohe-Kalihi (3)—"Richard H. Wasi (D), "Ralph K. Ajiu (R).
20—Kalihi (3)—"Richard A. Kawakami (D), "Tony T. Kunimura (D), "Dennis R. Yamada (R).

—Incumbent
KAUAI County Council (3)—Burt K. Tsuchiya (D), Shigeomi Kubota (D), Rose Ono Shaw (D), 10—Palolo—St. Louis (2)—"Joe" Shiranaka (R), "Chiyoko" Shiranaka (R).
HAWAII County—Mayor: "Shunichi" Kimura (D).
HAWAII County Council (9)—(Three elected At-Large)—At-Large: Herbert T. Matayoshi (D), District (1)—Yamada (D), Kohala District (1)—Kikue HISAOKA (D), Kona District (1)—William Kawahara (D), Fred Y. Fujimoto (D), Puna District (1)—Tomio Fujii (D).

MAUI County Council (9)—"Yoshi" Yanaguchi (D), "Lanny" Haru Morisaki (D), "Harry" K. Kikue Young (D), "Goro" HOKAMA (D), (Lanani), Barney Tokunaga (R), Masao Sone (R).

STATE HOUSE
1—Puna-Kau (1)—"Jack K. Suwa (D).
2—Kohala-Hamaku (1)—"YOSHITO TAKAMINE (D), Minoru Inaba (D).
3—Kona-S. Kohala (1)—"Minoru Inaba (D).
4—W. Maui-Molokai-Lanai (2)—"Ronald Y. Kondo (D), "Motobisa Uemori (D).
5—Waialeale-Hawaii-Kai (2)—Norman K. Kono (R).
6—Diamond Head-Waialeale-Kahala (2)—"Patricia Sakai (R).
7—Palolo-St. Louis (2)—"Ted Morioka (D), "Taduo Beppu (D).
8—Kaimuki-Kapahulu (2)—"KERO NAKAMA, "HYROSHI KATO.
9—Maunaloa-Makiki (3)—"Charles T. Ishijima (D).
10—Maunaloa-Kakaako (2)—"Jean Sadako King (D), "Clarence Y. Akiaki (D).
11—Punchbowl (2)—"ROBERT KIMURA (D).
12—Nuuanu-Alewa Heights (2)—"Peter S. Iha (D).
13—Upper Kalihi (2)—"AKIRA SAKIMA (D).
14—Maunaloa-Aiea (2)—"MITSUO UCHIYAMA, "JAMES H. WAKATSUKI (D).
15—Ewa-Pearl City (3)—"Patsy Kikue Young (D), "Tatsuo Kikishinami (D).
16—Waianae (1)—Harold Omori (D).
17—Wahiawa-Waianae (2)—Harry Higa (D), "Howard K. Oda (R).
18—Francis T. Manukawa (R).
19—Kaneohe-Kalihi (3)—"Richard H. Wasi (D), "Ralph K. Ajiu (R).
20—Kalihi (3)—"Richard A. Kawakami (D), "Tony T. Kunimura (D), "Dennis R. Yamada (R).

—Incumbent
KAUAI County Council (3)—Burt K. Tsuchiya (D), Shigeomi Kubota (D), Rose Ono Shaw (D), 10—Palolo—St. Louis (2)—"Joe" Shiranaka (R), "Chiyoko" Shiranaka (R).
HAWAII County—Mayor: "Shunichi" Kimura (D).
HAWAII County Council (9)—(Three elected At-Large)—At-Large: Herbert T. Matayoshi (D), District (1)—Yamada (D), Kohala District (1)—Kikue HISAOKA (D), Kona District (1)—William Kawahara (D), Fred Y. Fujimoto (D), Puna District (1)—Tomio Fujii (D).

MAUI County Council (9)—"Yoshi" Yanaguchi (D), "Lanny" Haru Morisaki (D), "Harry" K. Kikue Young (D), "Goro" HOKAMA (D), (Lanani), Barney Tokunaga (R), Masao Sone (R).

STATE HOUSE
1—Puna-Kau (1)—"Jack K. Suwa (D).
2—Kohala-Hamaku (1)—"YOSHITO TAKAMINE (D), Minoru Inaba (D).
3—Kona-S. Kohala (1)—"Minoru Inaba (D).
4—W. Maui-Molokai-Lanai (2)—"Ronald Y. Kondo (D), "Motobisa Uemori (D).
5—Waialeale-Hawaii-Kai (2)—Norman K. Kono (R).
6—Diamond Head-Waialeale-Kahala (2)—"Patricia Sakai (R).
7—Palolo-St. Louis (2)—"Ted Morioka (D), "Taduo Beppu (D).
8—Kaimuki-Kapahulu (2)—"KERO NAKAMA, "HYROSHI KATO.
9—Maunaloa-Makiki (3)—"Charles T. Ishijima (D).
10—Maunaloa-Kakaako (2)—"Jean Sadako King (D), "Clarence Y. Akiaki (D).
11—Punchbowl (2)—"ROBERT KIMURA (D).
12—Nuuanu-Alewa Heights (2)—"Peter S. Iha (D).
13—Upper Kalihi (2)—"AKIRA SAKIMA (D).
14—Maunaloa-Aiea (2)—"MITSUO UCHIYAMA, "JAMES H. WAKATSUKI (D).
15—Ewa-Pearl City (3)—"Patsy Kikue Young (D), "Tatsuo Kikishinami (D).
16—Waianae (1)—Harold Omori (D).
17—Wahiawa-Waianae (2)—Harry Higa (D), "Howard K. Oda (R).
18—Francis T. Manukawa (R).
19—Kaneohe-Kalihi (3)—"Richard H. Wasi (D), "Ralph K. Ajiu (R).
20—Kalihi (3)—"Richard A. Kawakami (D), "Tony T. Kunimura (D), "Dennis R. Yamada (R).

—Incumbent
KAUAI County Council (3)—Burt K. Tsuchiya (D), Shigeomi Kubota (D), Rose Ono Shaw (D), 10—Palolo—St. Louis (2)—"Joe" Shiranaka (R), "Chiyoko" Shiranaka (R).
HAWAII County—Mayor: "Shunichi" Kimura (D).
HAWAII County Council (9)—(Three elected At-Large)—At-Large: Herbert T. Matayoshi (D), District (1)—Yamada (D), Kohala District (1)—Kikue HISAOKA (D), Kona District (1)—William Kawahara (D), Fred Y. Fujimoto (D), Puna District (1)—Tomio Fujii (D).

MAUI County Council (9)—"Yoshi" Yanaguchi (D), "Lanny" Haru Morisaki (D), "Harry" K. Kikue Young (D), "Goro" HOKAMA (D), (Lanani), Barney Tokunaga (R), Masao Sone (R).

STATE HOUSE
1—Puna-Kau (1)—"Jack K. Suwa (D).
2—Kohala-Hamaku (1)—"YOSHITO TAKAMINE (D), Minoru Inaba (D).
3—Kona-S. Kohala (1)—"Minoru Inaba (D).
4—W. Maui-Molokai-Lanai (2)—"Ronald Y. Kondo (D), "Motobisa Uemori (D).
5—Waialeale-Hawaii-Kai (2)—Norman K. Kono (R).
6—Diamond Head-Waialeale-Kahala (2)—"Patricia Sakai (R).
7—Palolo-St. Louis (2)—"Ted Morioka (D), "Taduo Beppu (D).
8—Kaimuki-Kapahulu (2)—"KERO NAKAMA, "HYROSHI KATO.
9—Maunaloa-Makiki (3)—"Charles T. Ishijima (D).
10—Maunaloa-Kakaako (2)—"Jean Sadako King (D), "Clarence Y. Akiaki (D).
11—Punchbowl (2)—"ROBERT KIMURA (D).
12—Nuuanu-Alewa Heights (2)—"Peter S. Iha (D).
13—Upper Kalihi (2)—"AKIRA SAKIMA (D).
14—Maunaloa-Aiea (2)—"MITSUO UCHIYAMA, "JAMES H. WAKATSUKI (D).
15—Ewa-Pearl City (3)—"Patsy Kikue Young (D), "Tatsuo Kikishinami (D).
16—Waianae (1)—Harold Omori (D).
17—Wahiawa-Waianae (2)—Harry Higa (D), "Howard K. Oda (R).
18—Francis T. Manukawa (R).
19—Kaneohe-Kalihi (3)—"Richard H. Wasi (D), "Ralph K. Ajiu (R).
20—Kalihi (3)—"Richard A. Kawakami (D), "Tony T. Kunimura (D), "Dennis R. Yamada (R).

PACIFIC CITIZEN

Membership Publication: Japanese American Citizens League, 125 Weller St., Los Angeles, Calif. 90012; (213) MA 6-6936

Published Weekly Except First and Last Weeks of the Year Second Class Postage Paid at Los Angeles, Calif.

VOL. 75 NO. 16

FRIDAY, OCTOBER 20, 1972

Subscription Rate Per Year
U.S. \$5. Foreign \$8.50 12 CENTS

SEATTLE LAWYER NAMED JACL REP IN WASHINGTON

Barry Matsumoto
Expected to Report
Nov. 1 in D.C.

(Special to The Pacific Citizen)
CLEVELAND, Ohio — A young Seattle attorney, Barry D. Matsumoto, 27, was appointed Washington Representative of the Japanese American Citizens League by National JACL President Henry T. Tanaka of Cleveland.

The appointment represents the first move in the organization's new look for staff since longtime Washington representative Mike Masaoka has terminated his activities on July 1 and National Director Masao Satow in San Francisco will step down next February.

Matsumoto is expected to report Nov. 1 to Ushio, interim Washington representative and national executive director-designate. Ushio is hopeful of assuming his post at San Francisco by late December.

The organization is now in the process of enlisting national staff in San Francisco and regional directors in Chicago, Los Angeles and Seattle.

Honor Graduate

Born in Heart Mountain, Wyo., Matsumoto graduated magna cum laude in political science from Univ. of Washington in 1967 and was conferred his juris doctor degree in 1970 from UW Law School, where he graduated among the top 10 to be named to the Order of the Coif. He is also a member of the Phi Beta Kappa and Phi Eta Sigma.

Associated with the law firm of Bogle, Gates, Dobrin, Wakefield and Long he is active with the Seattle JACL, International District Improvement Assn., Employment Opportunities Center, Model Cities Program and was recently appointed to the Governor's Asian American Council.

Seattle JACL will have to secure another president-elect now that Matsumoto leaves. He had just assumed the post after the previously elected president-elect informed the board he could not fulfill the position because of new commitments.

'New Dimension'

Commenting upon the appointment, Ushio in Washington said, "Barry's legal background brings a new dimension to JACL's representation in Washington and will greatly enhance the potential of JACL's staff."

At this critical point in JACL history as an organization, Ushio was also pleased "that a man of Barry's calibre and talents has been chosen for this key position. As other new members are named to the JACL staff, we hope to develop as a team which can effectively set new directions and programs dedicated to all segments of the Japanese American community."

In San Francisco, President-elect Shig Sugiyama who is in charge of personnel said the final selection was approved in a telephone poll by the executive committee for the National Board.

Interview Panel

The candidates had been interviewed by a panel comprised of Yori Wada, Phil Hayasaka and David Hirai with Sugiyama chairing.

The interview was conducted with guidelines to determine specific personal qualities and to evaluate certain abilities and knowledge, Sugiyama revealed.

Other candidates were Dennis Nishikawa, Richard Omata, Richard Amano and Wayne Horuchi. Some of them expressed interest in regional director positions in JACL.

Community Involvement

Matsumoto, as a member of the State of Washington Governor's Asian American Advisory Council, was assigned to the education task force to define issues and develop programs. A series of meetings with state officials and educators in the public schools, community college and university levels are being held to crystallize the issues of prime concern to the Asian Americans.

With Model Cities since 1971, Matsumoto serves on three task forces: law & justice, manpower-economic development, and citizen's advisory council (East Branch).

He helped the Employment Opportunities Center, an Asian American community project founded as a job referral agency, secure \$68,000 in Model Cities funding this year and in line for \$120,000 for the next fiscal year.

Double-edge reparations asked in PNW resolution

(Special to The Pacific Citizen)
PORTLAND, Ore. — The second United States pay in terms of World War II detention camps a per capita sum for reparations was presented by the Columbia Basin JACL chapter this past week (Oct. 8) to the Pacific Northwest District JACL District Council.

The district council adopted the Columbia Basin JACL resolution.

The chapter further pro-

posed that all Americans of Japanese ancestry then residing in the Western Defense Command who were not interned be also eligible for evacuee reparations because they were also subjected to personal indignities as well as economic loss due to restrictive regulations, according to Edward Yamamoto, Columbia Basin chapter president.

Yamamoto explained that Japanese Americans living in these areas who were not evacuated were denied access to jobs or business opportunities on an equal basis as all other Americans.

Scope of Area

The Western Defense Command was established by the War Relocation Authority on Dec. 11, 1941, to include the states of Washington, Oregon, California, Montana, Idaho, Nevada, Utah, Arizona and the Territory of Alaska with Lt. Gen. John L. DeWitt commanding and headquartered at the Presidio of San Francisco.

Executive Order 9066 permitted DeWitt to designate on Mar. 2, 1942, a "prohibited area" and "restricted area" that covered approximately the western half of the Pacific Coast states and Arizona. By the end of June the same year, all persons of Japanese ancestry except those interned in hospitals were detained in assembly centers and later transported by the military to concentration camps inland.

Action of the Columbia Basin JACL expands the resolution adopted by the National JACL Council at its recent convention in Washington, D.C., for evacuee reparations.

The National JACL convention passed a resolution which only involves those who were evacuated.

Rauh's Proposals

In the opening round, the JACL convention had heard Joseph L. Rauh, Jr., counsel for the Leadership Conference on Civil Rights, at the congressional banquet where he offered several options for Congress to overturn the Korematsu Case, which declared the Evacuation constitutional.

Because the evacuation of Japanese Americans in 1942 was a loss of liberty as well as property, Rauh proposed several options:

1—Provide a flat sum for all persons held in the detention camps, perhaps relating to some standard as with prisoner-of-war pay.

2—Establish a fund to aid vari-

ous sorts of descendants of those imprisoned.

3—Provide a fund to encourage better understanding in group relations so that the tensions of 1942 will never again beset this nation.

4—Or do a combination of any or all of the above.

In his address (see July 7 PC), titled: "Overturning the Evacuation (Korematsu) Decision—Can Bad Law Be Reversed?" Rauh believed a review of the Korematsu decision was "an unlikely event" since the Constitution restricts the courts to actual cases.

Up to Congress

There is no present case which can serve to reverse the Korematsu decision as no one is threatening to exclude persons of Japanese ancestry from the Pacific Coast to otherwise repeat the dark days of 1942, he continued. "So it is up to Congress rather than the Court . . . for a reversal of that decision," Rauh proposed.

He recognized that Congress in 1948 passed a law to pay for property losses due to evacuation but the conditions for claims were so technical and documentary proof so difficult to meet that most Japanese claimants settled by a 1951 amendment their claims running to many thousands of dollars for a \$2,500 "compromise" amount.

The successful action by Congress only last year to repeal Title II of the Internal Security Act of 1950 (the Emergency Detention Act), Rauh said, was "not enough."

Korematsu Case

The Korematsu case involved a Nisei, Toyosaburo Korematsu, who was ordered to report to an assembly center from his San Leandro (Calif.) home in the spring of 1942. He refused to comply with the military exclusion order. Taken to the courts, eventually the U.S. Supreme Court sustained the government's name of exclusion in the name of preventing sabotage and espionage, that "it was impossible to bring about an immediate segregation of the disloyal from the loyal."

The conviction, Rauh said, was based on the assumption that many persons of Japanese ancestry were likely to commit acts of espionage and sabotage against the country of their birth or adoption.

"Experience proved this assumption wrong," he declared. "There were no acts of espionage."

Continued on Page 5

Nisei farmers harvest grapes; donate wages

DELANO, Calif. — About 500 members of two San Joaquin Valley growers organizations picked grapes Saturday (Oct. 7) at White River Farms in Delano and donated their wages to non-striking workers in a special harvest called "Worker Appreciation Day."

It was an expression of support for White River Farms and appreciation of laborers who are not taking part in the strike by the United Farm Workers Union, Harry Kubo, president of the Nisei Farmers League, said.

The turn-out of farmers was less than half of the 1,000 Kubo predicted would be working in the fields. Most of those who showed up to harvest the grapes were members of the Nisei Farmers League or Central Calif. Farmers Association.

About 50 to 70 union pickets were reported outside the ranch Saturday.

The harvest by non-union labor began Sept. 7 after negotiations broke down between White River Farms and the UFW in late August. A farm spokesman estimated about 80 per cent of the 5,000-acre crop has been picked.

Commenting upon the appointment, Ushio in Washington said, "Barry's legal background brings a new dimension to JACL's representation in Washington and will greatly enhance the potential of JACL's staff."

At this critical point in JACL history as an organization, Ushio was also pleased "that a man of Barry's calibre and talents has been chosen for this key position. As other new members are named to the JACL staff, we hope to develop as a team which can effectively set new directions and programs dedicated to all segments of the Japanese American community."

In San Francisco, President-elect Shig Sugiyama who is in charge of personnel said the final selection was approved in a telephone poll by the executive committee for the National Board.

The interview was conducted with guidelines to determine specific personal qualities and to evaluate certain abilities and knowledge, Sugiyama revealed.

Other candidates were Dennis Nishikawa, Richard Omata, Richard Amano and Wayne Horuchi. Some of them expressed interest in regional director positions in JACL.

Community Involvement

Matsumoto, as a member of the State of Washington Governor's Asian American Advisory Council, was assigned to the education task force to define issues and develop programs. A series of meetings with state officials and educators in the public schools, community college and university levels are being held to crystallize the issues of prime concern to the Asian Americans.

With Model Cities since 1971, Matsumoto serves on three task forces: law & justice, manpower-economic development, and citizen's advisory council (East Branch).

He helped the Employment Opportunities Center, an Asian American community project founded as a job referral agency, secure \$68,000 in Model Cities funding this year and in line for \$120,000 for the next fiscal year.

Mainland supporters of Rep. Mink urged to replenish her election fund

WASHINGTON — Since Congresswoman Patsy Takemoto Mink has just emerged from her victorious primary election Oct. 7 as the Democratic candidate for the National House of Representatives and with less than two weeks to push her campaign for reelection against her Republican opponent on Nov. 7, her mainland friends and supporters are urged to contribute to her campaign by among others, Mike Masaoka, longtime Washington lobbyist.

Checks should be made out to the Friends of Mink Committee and should be sent directly to 94-801 Farrington Highway, Waipahu, Hawaii 96797, Masaoka urged. Those contributing more than \$10 should also include their occupation and the address of their business or employment, in order to comply with the 1972 election laws.

Because Mrs. Mink was involved in a very difficult three-way primary race, much of her campaign fund had been expended and in order to assure a meaningful race against State Sen. Diana C. Hansen, who has been campaigning against Patsy for almost two years now, contributions from the mainland will be appreciated.

Presidential Nominee

Patsy Mink is the first woman of Asian ancestry to be a nominee for the presidency of the United States. Although some have dismissed her showing in the Oregon presidential primaries this summer as strictly political, there are many women and Americans of Asian ancestry, especially Japanese Americans, who felt that her candidacy demonstrated not only that there were qualified persons of Asian American origin who could be viable candidates for the presidency of the United States of America but also that a Japanese American could be a serious contender for the White House. As such, Patsy is a symbol of what Japanese Americans may attain, as well as what an able and eloquent woman of Oriental background can do in the political arena.

With Congressman Spark M. Matsunaga as her colleague in the House, they have formed a remarkable and effective team not only for the kind of legislation that Japanese and other Asian Americans espouse but which all Americans of decency and goodwill desire. This team should not be broken up because one or the other is defeated for the lack of funds, Masaoka declared.

In Congress Since 1965

Patsy, a Sansei born and educated in Hawaii, received her law degree from the Univ. of Chicago Law School in 1951. Awarded a number of honorary degrees from colleges and universities, she served in the Territorial House and the State Senate of Hawaii prior to her election in 1965 to the National Congress.

One of the acknowledged liberals of the House, she is a regional vice president of the Democratic Study Group. She has won recognition for her work in education and in labor matters. A member of the House Committee on Education and Labor and of the House Interior and Insular Affairs Committee, she has represented not only Hawaii but also the United States in several international conferences.

She was helpful to the Convention Board of the National JACL Convention which was held in Washington this past June. She was the principal speaker at the Corcoran Gallery opening of the exhibit Executive Order 9066 in the East Coast and a participant in the Congressional Dinner feature of the Convention.

HOLIDAY ISSUE

1972 BOXSCORE

Display Ads

1971 Total: 5,028*

To Date This Year: 808*

Fresno . . . \$180 Salomone . . .

San Fran . . . \$480 PC Ad . . .

Seabrook . . . \$160

Bulk-Rate

One Liners

1971 Total: 513 Names

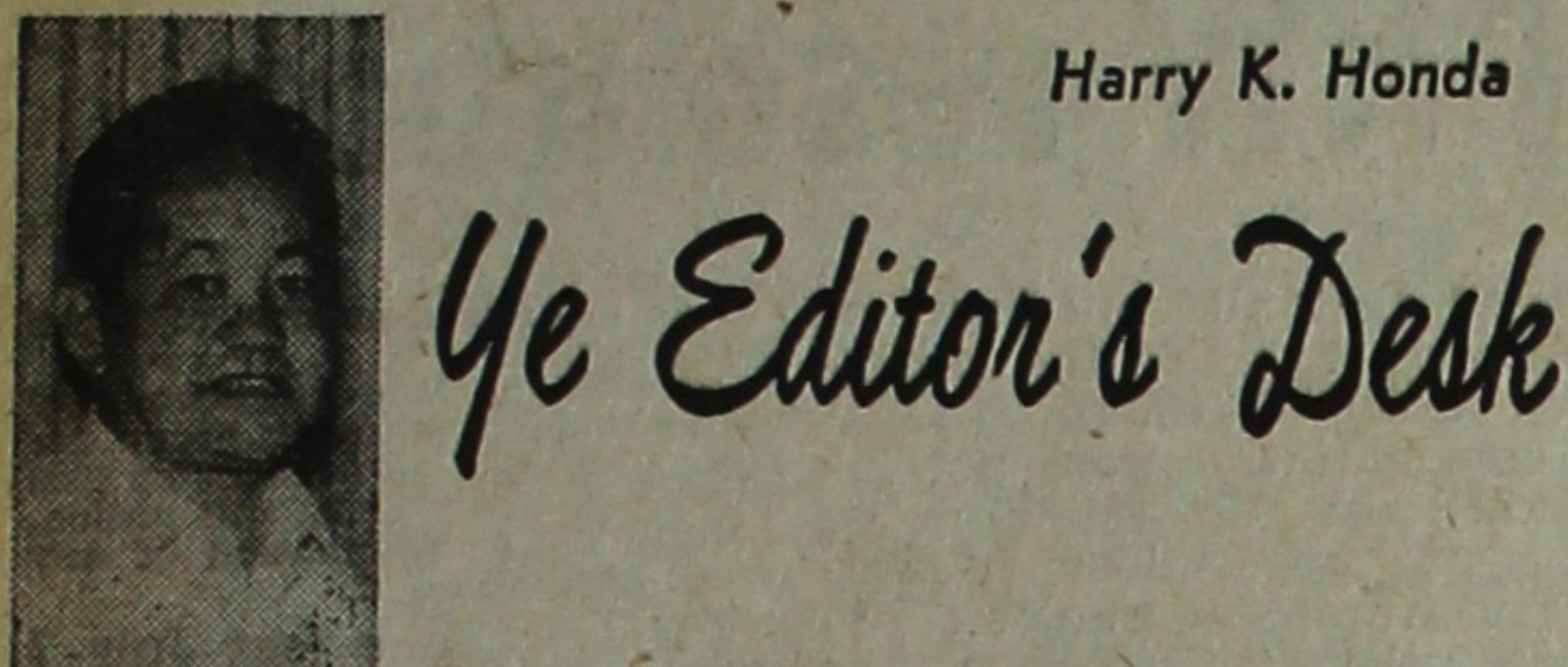
Priorities

By HENRY T. TANAKA
National JACL President

To get JACL "on board" as expeditiously as possible and within the framework and mandates of the National Council is a monumental task faced by our

HENRY T. TANAKA, President KAY NAKAGIRI, Board Chairman
HARRY K. HONDA, Editor
District Representatives
PNWDC—Eira Nagaoka, NC-WNDC—Homer Takahashi, CDC—Izumi Taniguchi, PSWDC—Ken Hayashi, IDC—Harriet Kimura, MPDC—Bill Hosokawa, MDC—Joe Tanaka, EDC—Kaz Oshiki
Advertising Representative
No. Calif.Lee Ruttle, 46 Kearny. Rm. 406. San Francisco 94108
Three dollars of JACL Membership Dues for one-year subscription. Second-class postage paid at Los Angeles, Calif. Subscription Rates (payable in advance): U.S. \$5 a year, \$11.50 for two years. Foreign \$8.50 a year. 1st-class service, U.S. \$11 extra per year. Airmail service, U.S. and Canada, \$15 extra per year, Japan, Asia, Europe, \$48 extra per year.
News and opinions expressed by columnists, except for JACL staff writers, do not necessarily reflect JACL policy.

2— Friday, Oct. 20, 1972



Harry K. Honda

Ye Editor's Desk

EVACUATION OF BRITISH ASIANS

What has been happening halfway around the world in East Africa has not escaped us for the reports from Kampala, the Ugandan capital, bare a similar ring to what happened to Japanese Americans thirty years ago. British Asians—40,000 of them, immigrants and their children from British India—are being expelled by the Ugandan government. Britain hopes she can comfort up to 30,000, despite the public clamor against it. The recent decision of the United States to take up 1,000 from Uganda is little more than a token gesture but nonetheless welcome to the British. Other countries have also responded to the British appeal in an international effort to find homes for the world's latest batch of refugees.

On Aug. 5, Uganda President Idi Amin announced the 80,000 Asians in his country would have to leave within three months. He accused them of "sabotaging the economy of the country."

By mid-September, the first group of Uganda Asians were being airlifted to London. They were bereft of their possessions, even down to the bangles, chains and rings that had adorned the womenfolk. Blankets and sweaters were given by resettlement volunteers to ward off the wet chill that greeted them. Colored cards were handed them by immigration officers to speed clearance procedures: green—if they already had friends and someplace to go; blue—if they had no friends, could speak English and had accommodations; pink—with accommodations but no money; and yellow—no friends, no money, no accommodations and possibly no English. Social services assisted those who needed financial help. Buses were ready to take those without accommodations to a disused Royal Air Force base nearby for temporary quarters. The resettlement board, in the meantime, was feeding a computer in London trying to match expellees with job opportunities and housing.

This exodus was related by one American at Kampala, who wrote to the Honolulu Advertiser. One native-born Ugandan Asian told him if they didn't get out within 90 days, "we'll be put into a concentration camp." Other non-Asians—the British, Arabs, Isarels, etc., are also feeling the same pressure and fear their turn to be hounded is almost certain to come next. Another told him that one haole with Ugandan citizenship visiting Europe was stripped of his passport by the Ugandan embassy in London. Through friends he was offered sanctuary in another country, thus electing to abandon his home and possessions in Uganda for sake of freedom. The American traveler was sorry to see Asian girls manhandled by soldiers at the checkpoints in Kampala—there were nine of them between the hotel where he was staying and the airport 10 miles away.

As for the other side, a local citizen told this same tourist the Ugandans feel the Asians, who comprise less than 1% of the population, have all the good jobs, monopolize and dominate the business. The country has a big unemployment problem, hence the economy must be reordered to benefit the majority. When the British allowed independence, the Indians had an opportunity to show their faith in Uganda where most of them were born but they chose British rather than Ugandan citizenship. They have only themselves to blame. Their action shows they trust the British more; they have refused to identify themselves with Uganda.

The history of Asians in East Africa dates back to the 1890s when the British imported them to construct a railroad from the coastal town of Mombasa to the interior. Others followed becoming shopkeepers and artisans. The white settlers looked on them as a threat and prevented their farming in the rich highlands of Kenya. (Shades of the alien land laws in western U.S.A.) They were educated separately and socially segregated. But as British subjects—most of them Hindus—they could not be kept away.

By the 1920s with the British Asian population in East Africa up to 50,000, they began to fill the middle-level ranks of government, serving as surveyors, clerks, cashiers, policemen. With education and wealth, they became the professionals and investors of East Africa.

By the 1960s, as the British East Africa colonies became independent, the British Asian population was up to 350,000, constituting a real middle-class controlling the commerce but without political power. Though the majority of them were native-born in East Africa, they stayed aloof of the black African struggle for independence and retained their cultural dress and customs by clinging to Indian ways.

Automatic citizenship was granted all native-born Asians in the East African countries and others had a right to citizenship if they registered within two years. Uganda became independent in 1962. While most elected for British status, several thousands in Uganda who did register have complained their applications are still not processed.

Compounding the British Asian problem is the 1968 British law restricting "colored" British immigration—3,000 British Asians from East Africa—thus revoking their right to enter British freely.

The difficulties of Uganda are part of the problem of cultural or racial minorities in the world—in Northern Ireland, South Africa, Israel, Russia, Britain, America, etc. It also shows up that rich nations do not understand poor nations. The Uganda question is a rare example of the poor forcing their will on the rich, of reversing a British immigration policy designed to ease British political problems rather than Uganda's.

The reluctance of white Britons to accept nonwhite Britons with their discriminatory immigration laws further illustrates that their moral position in making accusations of Ugandan racism has been undermined.

Vigorous activity within chapters can sustain JACL

(Paul Tanaka is president-elect of the Puget Sound Valley JACL. He is also a member of the Tacoma City Human Relations Commission and is chairman of the human relations committee for the Tacoma Assn. of Classroom Teachers.)

By PAUL A. TANAKA

Tacoma Since the 22nd Biennial National JACL Convention in Washington, D.C., The Pacific Citizen has been replete with controversy and resignations. As one reflects on the various articles and columns, there appears to be a definite split over "where we have been" and "where are we headed." Over the past few years the PC has carried many articles devoted to the history and milestones of the

GUEST COLUMN

Japanese Americans in the United States and the re-counting of memorable occasions of yesteryear.

It cannot be denied, the history has been a colorful one. The pitfalls and successes were meaningful and monumental. The road was never "paved in gold." Human dignity and human lives were sacrificed along the way. Deprivation, incarceration, personal insults, and bigotry have all been tasted. The standards currently enjoyed have all been gained through tireless efforts and tenacity—not through birthrights. The efforts to maintain and improve these standards of living has been a constant struggle. Yes, it has been quite a story, where we have been, but now, where are we headed?

In this marvelous age of technology where more advances have been made in the past twenty years than in all the previous history of man, what lies in store for us? What must we do to keep up or survive in the tumultuous years to come?

As rapid technological gains change the very manner in which we exist what occupational skills or fields will become open and which will cease to exist? Do the educational institutions plan for change or do they merely go about preparing our children to fit into a stagnant world?

As the political and international scenes shift and waver what will be come of us Asians and all of Asia? What effect will this have on the Asians in America today and tomorrow?

What will become of the drug scene? Is the recent attempt to provide drugs for the addicted a hint of things to come? Will methedone become common and popular?

With what party reforms will the Republicans counter the recent Democratic Party movement? Does the youth movement in politics mean anything?

Is pollution of the land to continue?

When will all Americans become first class citizens?

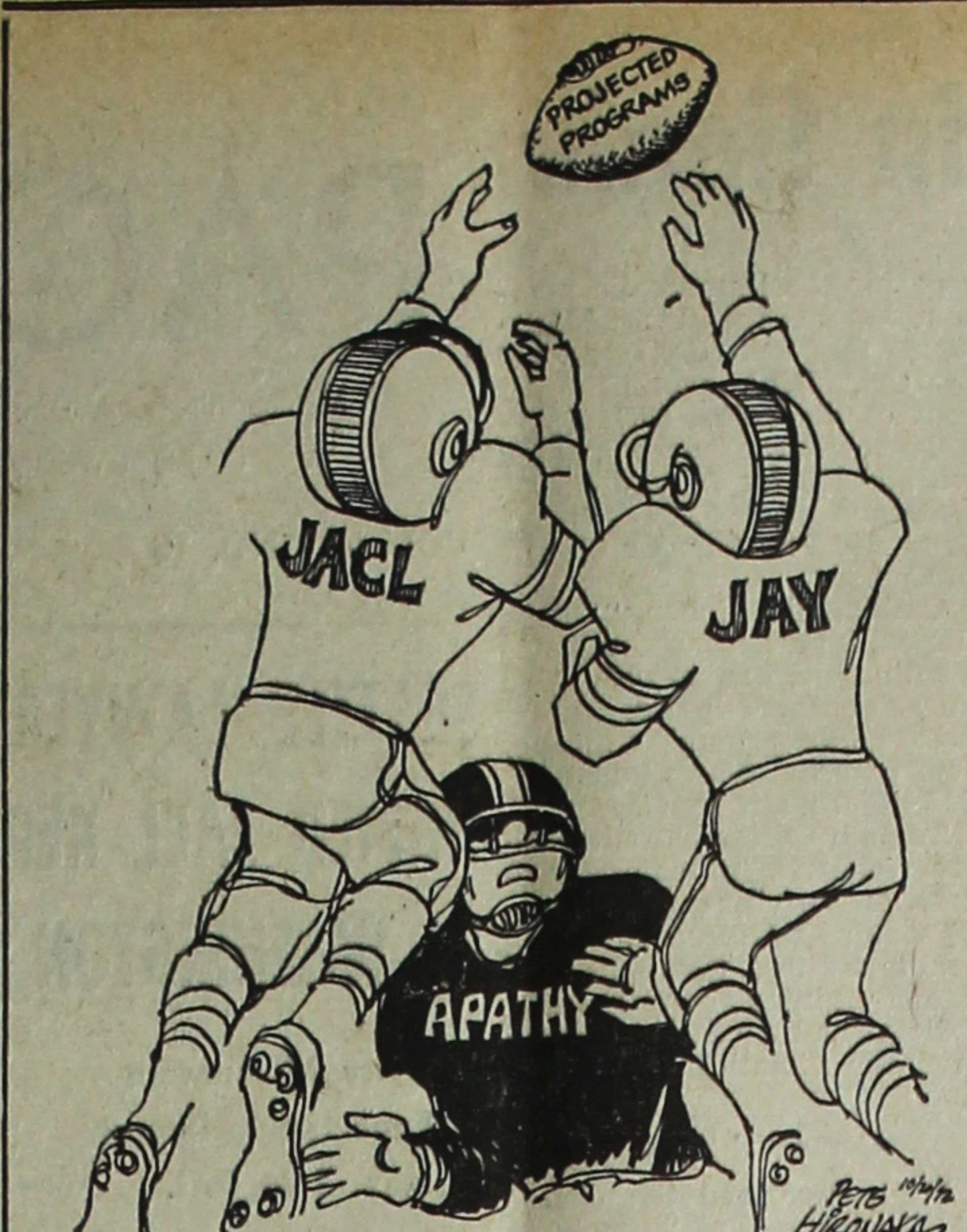
Many, many problems and issues will be cropping up in the near and immediate future. Will we as an organized group of citizens take a stand on each of them? I hope so. As concerned citizens and as Japanese Americans, a minority ethnic group, we must come forward and state our positions on the issues. To skirt the issues, to avoid possible involvement, and to steer clear of controversy is to shirk our responsibility to our communities and our families. We must evaluate each problem and take into consideration how it will effect us as a visible group of people. We must place ourselves into the controversy as though it were our very own crisis in an attempt to visualize the ramifications of our decisions. We must uphold the right of human dignity for all people in this country and avoid the pitfalls that accompanies complacency and apathy. We must stand up for the civil rights of all who are threatened with oppression.

The Puget Sound Valley Chapter is one of distinction. We have increased our membership while our dues have remained high. We have members involved in many areas in our community. We have been involved in some of the confrontations, but we have also avoided many.

Our future history must be content to sit on our laurels reminiscing over our past, but, flect the fact that we were not rather, that we were not complacent and continued to strive for the improvement of our society. Our history must show that within our own ranks we suffered discord because of the diversity of our occupations.

Our educational concerns for our children must show dispute between our parents, our teachers, and our educational educators. Our Indian fishing rights concerns must show division between our sports fishermen, our conservationists, and our treaty rights advocates. Our lettuce boycott concerns must show entanglement between our farmers, our migrant workers supporters, and our humanists. Our history must reflect a desire for the status quo and a desire for change—and the struggle they produced.

Fellow JACLers, we must move within the times and in spite of the times. In order for our national JACL to survive there must be vigorous activity within the numerous chapters. Our task must be to continue to strive for the



Necessary Double Coverage

LETTERS FROM OUR READERS

JACL Convention

Editor:

The problems the JACL has been having since the June convention are most interesting to me, because they reflect, in almost perfect image, the organizational problems of my own mispent youth. In part of course, it is the old bulls vs. the young bulls, with ideological dressing, held with great sincerity by the blessed young folk. The old folks, of course, know better, and in many respects, indeed they do, yet times move and what wouldn't work in my day just might today or tomorrow.

I feel certain that in the long run matters will work out, and a needed institution, such as JACL, will continue in vigor.

ROBERT M. CULLUM
Albuquerque N.M.

(Mr. Cullum was recently honored by the Dept. of Interior for Distinguished Service, having served with the Bureau of Indian Affairs for 20 years. He also assisted the Issei earn their naturalization privileges and was on the War Relocation Authority staff during WW2.—Ed.)

NBC-TV essay

Editor:

The NBC-TV show, "Guilty: By Reason of Race" vividly portrayed the psychological and physical suffering of 110,000 people forcibly evicted from their homes and interned in miserable quarters all because of ancestry.

As usual during a war the administration fosters a climate of fear and hysteria. Most Americans believed that Japan made an unprovoked surprise attack on Pearl Harbor. Yet Jeannette Rankin, Member of Congress, made a speech in the House of Representatives Dec. 8, 1942 in which she fully documents the aggressive moves of our government in making an impossible economic situation for Japan, that war was fully expected and that repeated warnings had been sent to Pearl Harbor by our War and Navy Depts. (Congressional Record, 77th Cong., 2nd Session).

There were some of us who did not go along with the war hysteria, and in particular, we could not see why Japanese Americans should be treated like criminals. We tried to show our sympathy by visiting our friends at Tanforan, Tule Lake, Camp Harmony and Santa Anita.

MPs Strife

Of these four camps, my father and I found the severest military discipline at Santa Anita. We arrived by bus from Los Angeles and showed our previously obtained pass at the gate. After walking in the hot sun a quarter of a mile, we reached a shed called "Reception Center." A Caucasian in military uniform looked at us severely and examined our pass. "This pass is not stamped. You'll have to go back to the gate and get it stamped." I said, "It is a long way back. If we go, we will miss seeing our first group of friends." Then I prayed silently that there

equality in society for all minority ethnic groups—the Blacks, Chicanos, First Americans, and Asians.

We must criticize publicly any organization that demonstrates a void in minority hiring practices and affirmative action plans.

We must oppose publicly any discriminatory practices and institutional racism based on race, color, creed, or sex.

We must go on record whether our nation should come to the aid of Israel and abandon South Vietnam, abandon both, or continue to be the savior for all oppressed nations.

We can no longer remain uninvolved. Undoubtedly we will pick the wrong side in some issues, but by far we will be on the side of righteousness. Only by remembering the indignities of the past, with its deleterious effect on ourselves, and applying a philosophy of how it should be as our future actions can we be an effective and viable organization. We must work to ward off those ends.—Puget Sound Valley JACL Newsletter.

might be a spark of humanity behind that hard exterior. There was. He said, "Well, get it stamped when you go back." (A second visit was planned).

Our first group of six (limited) friends sat across a room-length, seven foot wide table, with welcoming smiles. We were not allowed to pass anything over or touch them. (Gifts could be left at a nearby receiving room for inspection).

With the number of visitors and internees conversing, it was hard to hear, especially the gentle Issei, Matsu Kawai, with her soft Japanese accent. I stood up and leaned over to hear her. "The guard barked at me, 'If you touch any of them, I'll put you out.' Dear motherly Mrs. Kawai wept. (Some of the guards were not so overbearing.)

Only recently I learned from a friend's unpublished manuscript that some internees arriving late at Santa Anita, tired from an all-day trip, had to shovel out manure from the horse stalls to make room for their beds!

Shall we now resolve to do our utmost to prevent such a monumental injustice as the Evacuation from ever occurring in America again? One good step, I believe, is to write as Edison Uno suggested, to Robert Northshield, NBC News, 30 Rockefeller Plaza, New York 10020 with copy to Dr. James Holliday, 2090 Jackson Street, San Francisco 94109, commending them for televising such an excellent documentary on the Evacuation.

ELSIE R. RENNE
Menlo Park, Calif.

Narrative on Issei

Editor:

I have just had the opportunity to read the text of Jim Yamasaki's address (PC, Sept. 1, 8) to the Rotarians. The little known history of our Issei pioneers, placed in the perspective of Mr. Yamasaki's general theme, comes through with a tremendous punch! May I add my gratitude to him and to you for sharing this excellent presentation with your public.

Should Mr. Yamasaki's address be made available in booklet form or reproduced in some way, I would appreciate knowing about this so available to family, friends, and teachers.

JUNE SHIMOKAWA
Seattle

(Jim, there's a fertile idea for your boss or your club.—Ed.)

United Way campaign

LOS ANGELES—United Crusade-support youth groups, including scouts, Boys Club and Camp Fire Girls, kicked off the 1973 campaign with a door-to-door canvass Oct. 1 in central Los Angeles, according to Mrs. Ken Kozasa, residential campaign chairman. The county drive to aid some 250 youth service groups is seeking a minimum of \$40 million.

25 Years Ago

In the Pacific Citizen, Oct. 11, 1947

U.S. Civil Service Commission reveals existence of secret file on Japanese Americans. . . Prospects for Nisei women workers better than the men in California. . . Aiko Koyama first Nisei named to federal grand jury in Sacramento. . . Civic, religious groups fight housing ban after Calif. supreme court refuses to intervene restrictive covenant case. . . Catholic couple (Negro-Caucasian) sue

In the Pacific Citizen, Oct. 18, 1947

Presentation of JACL plaque to French town memorializing rescue of Lost Battalion in abeyance pending decision of Battle Monuments Commission. . . Gen. Mark Clark notes Nisei GI record in speech to Advertising Agencies convention, urging incorporation of all racial, national groups in America. . . Counsel in Oyama test case will declare California alien land law is "race legislation"

NATIONAL JACL CONVENTION

By DR. ROY NISHIKAWA
Wilshire JACL

Los Angeles Many old friends and JACLers have asked, "What happened at the National JACL Convention?" They had read the written comments of others in the Pacific Citizen or had talked with people about it and they felt that something was missing.

They felt that there had to be another dimension to the resignations of the Los Angeles based staff. The repeated charges of "JACL changing directions and not serving the community" was inexplicable in view of JACL's past and current record.

They were especially disturbed with the "lack of trust" expressed in JACL's national leadership. For it was Past President Ray Uno who originated the idea of JACL "foxes" (field office expeditors) and Past President Jerry Enomoto, one of the great liberals in the JACL, who were primarily responsible for bringing most of the young staff, into JACL in the first place. This gave them a forum in which to express and try out their ideas, a chance to travel around the country to meet JACL and youth leaders and opportunities which heretofore had not been available to them.

Who makes policy?

To say, as one ex-staffer has said that "David Ushio will now determine the policies of JACL" simply reveals how mistaken even professional staff can be about the internal workings of the National JACL.

Major policy decisions are made by the National Council and implemented by the National Board and Staff, National & Regional Committees and by the Chapters.

Most other major decisions made by the National Director are subject to the approval of the National Board. So when it was made to look as though David Ushio's appointment would drastically change the direction of JACL and keep it from serving the "community" it was a questionable issue and most delegates recognized it as such.

The young staff was unable to sell their program to the National Board and to the National Membership because they did not or could not write adequate reports on the specific type of work they were doing. An unfortunate case of failure in communication and perhaps in supervision.

Confusion, Division

Another unfortunate factor injected into the controversy were the many innuendos, malicious charges and attacks upon the character and integrity of certain leaders before, during and after the convention. This not only served to confuse the basic issues but were highly inflammatory and divisive in nature.

David Ushio has been accused of a lack of integrity and of not being very bright; Jerry Enomoto and Helen Kawagoe have been accused of "selling out" and Mike Masaka has been accused of manipulating Ushio's appointment. Mike has long been a favorite target of the dissidents because of his leadership, prestige and influence. Other officers have been labelled "morally bankrupt."

I, too, have been accused of being a coward and of being dishonest on certain occasions. I have not agreed with the views of the accusers. On the other hand, the Far Right has also chastised me for being too liberal! The accusers are a small group on the New Left who have appointed themselves the "conscience" of not only the JACL but of the Community as well.

Changing Values

In recent years, among certain circles, old values such as patriotism, persistence, thrift, self-sacrifice, hard work, loyalty, accountability, courtesy and responsibility have been subjected to derision and attack as "middle class" values which are pretty square.

Now that some on the New Left have dropped out of the JACL, they've been talking in terms of possibly starting a new organization of their own. I say more power to them. I cannot join with those on the Right who say "good riddance" or "throw the radicals out."

Young activists (not necessarily on the New Left) have performed a real service in bringing certain problems to the attention of the JACL. There are so-called "community groups" who need and deserve a lot of support: Issei on welfare, drug addicts, Asians subject to discrimination, needy students, health fairs, etc. In every case I have given time or money or both to help these groups.

JACL's community role

Many community problems are so large and complex that whatever JACL does must be a supplement to the existing groups and agencies. It would be impossible, indeed foolish, if JACL tried to take on all of the needy and humanitarian problems that exist. And realistically, how we do things cost just as much as what we do. The best ideas in the world will not work unless these ideas are adequately communicated and sold. And even the most worthwhile project will fall short if it is not well planned and organized and unless all segments within a given community are involved. This has been one of the real difficulties in the problem-ridden Los Angeles area: Too many groups with too little communication, coordination

DELEGATE AT D.C.

Nowadays it is more fashionable to be "with it" and to follow your own desires and interests. To try a new project and if it doesn't work — well — there are always other projects.

Among the New Left there is a tendency to be distrustful of and disenchanted with the establishment. If you do not or cannot fit too well into the establishment, the thing to do is to work outside the system. Do your own thing is the credo. And to lend credibility to this you must do this on behalf of the "people" or the "community" — meaning generally a group in which you have some interest or which needs a spokesman. At the same time you denigrate such institutions as the school, the churches and the YWCA.

These are the institutions, one ex-staffer claimed, which are responsible for creating and maintaining the drug and delinquency problem! Under this philosophy, very little room is left for individual responsibility, for the freedom of choice which exists for an individual to make a specific response to a specific situation. Instead, the blame is placed on society. Society, of course, has many, many shortcomings and all of us need to do our best to correct them. But when impressionable young people (e.g. drug abusers) are told in effect that it isn't their fault it is society's; how much incentive has been given to get off drugs?

Spectrum of J.A. society

In our Japanese American society (a microcosm of the larger society) perhaps there are few extremists on the very edges of the Right or Left. But there are some determined people on the New Left and a few quiet but extremely stubborn and narrow-minded people on the Far Right. The latter are probably more interested in maintaining the status quo rather than in making progressive changes. They may have some deep-seated prejudices based upon race or color. And they can even be prejudiced on such flimsy issues as long hair, sloppy clothes and age. But they are not very well organized, if at all.

The people on the New Left do not have too many in their group but they are far better organized and have lines of communication between them. They are found in large metropolitan areas such as Los Angeles, the San Francisco Bay Area, Chicago, New York and possibly Seattle, Salt Lake City and Denver. Although small in numbers, they are articulate and have no hesitation in "using" the JACL if it serves their purposes. And on occasion, some of them may also distort, exaggerate or twist a situation if this will serve their ends.

When attacking the opposition (mostly those in the Middle) words like dishonesty, moral bankruptcy, sell-out, betrayal, Hitler etc. come easily to them. Many issues are needlessly placed on an adversary basis which is OK in the courtroom but hardly the method of choice if you are going to convince people to go your way.

The Far Right, of course, can also use these methods but they usually choose to remain silent. Their method is more one of withdrawal rather than aggression.

The New Left at one time or another had their quarrels with almost every type of establishment group. The Chamber of Commerce, the press, the YWCA, the JACL, and they even quarrel among themselves. They definitely are not "quiet Americans." But because the vast majority of the Nisei are quiet and upbringings they remain vulnerable to attacks from the New Left.

Now that some on the New Left have dropped out of the JACL, they've been talking in terms of possibly starting a new organization of their own. I say more power to them. I cannot join with those on the Right who say "good riddance" or "throw the radicals out."

Young activists (not necessarily on the New Left) have performed a real service in bringing certain problems to the attention of the JACL. There are so-called "community groups" who need and deserve a lot of support: Issei on welfare, drug addicts, Asians subject to discrimination, needy students, health fairs, etc. In every case I have given time or money or both to help these groups.

JACL's community role

Many community problems are so large and complex that whatever JACL does must be a supplement to the existing groups and agencies. It would be impossible, indeed foolish, if JACL tried to take on all of the needy and humanitarian problems that exist. And realistically, how we do things cost just as much as what we do. The best ideas in the world will not work unless these ideas are adequately communicated and sold. And even the most worthwhile project will fall short if it is not well planned and organized and unless all segments within a given community are involved. This has been one of the real difficulties in the problem-ridden Los Angeles area: Too many groups with too little communication, coordination

and cooperation. On a broader national scale, one source of difficulty, as I see it, is that we need to define "community" and the "people." It is natural to be concerned most with the problems that are close at hand. I'm sure that the Central California farmer and I would look at the farm labor and drug problems with different perspectives. It is very likely that on a given problem depending upon the precise definition of the community involved and the people involved, JACL should give unstinting support action on all levels — local, regional and national. Another problem may call for only local or regional action.

Without taking into consideration the rise of the New Left in the last few years; the complacency of the middle and the resistance on the Far Right; and the lack of precise definitions for terms like "community" and "people"; and the needs for looking at Society as we find it — not what we would like it to be — without this kind of perspective, the average non-convention going JACLer may find it difficult to understand the full implication of what happened at the National Convention.

The Ushio appointment

The Ushio appointment had been discussed prior to the convention at a PSWDC caucus. The initial presentation of the report on his appointment sounded as though Ushio had not only said he would fire the L.A. staff but would also censor the Pacific Citizen, dictate JACL policies and downgrade community work. At the same time all members of the Personnel Committee voting for Ushio were severely condemned.

Al Hatate had also attended the Personnel meeting and tried to present what he felt to be a more balanced picture of what happened. For this, he was, in the words of one delegate, "crucified" by some of the most vocal on the New Left. It seemed incongruous that if Ushio were such a bad choice for Executive Director, he would be urged to stay on as Washington Representative, but this was what the district caucus decided.

The Ushio appointment had triggered a Caucus Board

meeting in Washington one day before the Convention I understand that investives were being spewed like machine gun fire for five hours. But the Board voted by a two to one margin to confirm the appointment. Since I was not present at that meeting I cannot offer further comment.

I was present at the National Convention meeting when the New Left and the staff workers presented their case. Each staff worker was given a chance to speak. Now, it seemed to me, it was a good opportunity for the staff to explain the type of work that they were doing and to appeal to the National Council for support. After all, Ushio would not become the Executive Director until next year. (I believe that position is actually misnamed; it is best defined as Executive Secretary of the national organization.) With sufficient chapter support the staff could be placed on a probationary basis as was suggested by the other candidate for the position.

I felt that this kind of strategy would have had a good chance for success. But it was not to be.

Perhaps it was not planned to come out the way it did, but each staff worker in turn got up and said in effect, "I cannot work for an organization whose leadership I cannot trust and which is not interested in serving the people of the community."

Most of the delegates, including myself, were stunned. Whether the intention was there or not, the effect was that the New Left and the staff were assuming the mantle of moral superiority in the name of the "community" and the "people" and the same time putting down the organization and its leadership.

As one of the leaders of the New Left said after the Convention, "They blew it." But this was not the end. Most of the New Left and the staff in question did not show up at the official scheduled meeting in the Cannon Caucus Room of the House of Representatives on the next

Continued on Next Page

JACL Pins

With the abolishment of the National Recognition Committee as a general committee, nominations for JACL pin recognitions are to be directed to JACL National Headquarters. Special forms for the JACL Silver pin and Sapphire pin are available at National Headquarters. All nominations to be submitted at least one month before presentation.

1—JACL Silver Pin nomination from the Chapters will be approved so long as the Chapter recommends and the nominee meets the minimum requirement of ten years of active service to the Chapter.

2—JACL Sapphire Pin nominations will be approved so long as the District recommends and the nominee meets the minimum requirement of ten years of active service, at least five of which were in the District or National levels.



Bill Hosokawa

From the Frying Pan

Denver, Colo.

SANSEI LITERATURE—And here is yet another response to the recent column about the relative dearth of literary output by Nisei and Sansei. It comes from Toge Fujihira, the distinguished photographer and cinematographer who probably is about as widely traveled as any Nisei alive. Toge, who is on the staff of the United Methodist Board of Missions headquartered in New York, has been writing recently (notably in the Board of Missions' "New World Outlook" magazine) as well as photographing. And because his letter covers the subject very well, we are turning over this space to him:

"Recently a book of poems by Margaret Tsuda (wife of Bob who works for the Asahi in New York), entitled 'Cry Love Aloud', was published by Poetica Press. Most of Margaret's poems are reprints of her poetry that has appeared in the Christian Science Monitor and a couple of other publications. She has also illustrated the book with her own sketches.

"A blurb about the poems says, 'Both the poems and the author are deep-rooted in Manhattan bedrock. Margaret Tsuda was born and schooled in New York City, including art courses at Hunter College, and continues to live in Newark within sight of the Hudson River skyline. She has developed a loving eye for all grass and greens that grow in the midst of pavement and pollution. The poems celebrate all green presence, the graces, that keep life fresh and meaningful.'

"Now we come to the Sansei, which as you say may have more literary promise than the Nisei. They have already started to express themselves in many ways. Earlier this year the Amerasia Creative Arts Program of New York published a boxed collection of poems, songs, essays written by Asian Americans titled 'Yellow Pearl'. Let me quote from their preface:

"'Yellow Pearl' is a collection of the creative talents of young Asian Americans. It is also an expression of an emerging consciousness of being Asian in America. We need to write about the war, Attica, and our people's history. We need to express our loves, our loneliness and our dreams. Through 'Yellow Pearl' we share what we feel, what we think and what we are with our brothers and sisters. . . . In trying to project a view of ourselves as Asians in America, we found this best expressed through a clear statement against basic philosophies of exploitation and oppression—of individuals as well as nations. For many of us, the hope has been the 'Yellow Pearl', subjective as it is, has become a part of that movement which is attempting to build a more responsive and responsible society."

"In this collection are a number of songs, folksongs of Asian American life written and composed by Chris Iijima and Joanne Miyamoto. They are a couple of Sansei folksingers who have appeared before Asian American groups from coast to coast. Other Sansei credited are: Dennis Hirota, Pamela Eguchi, Bun Yoshikami, Takashi Yanagida, Dorothy Suzuki, John H. Saka, Larry Hama, Tomi Tanaka Ohata, Toyo Obayashi, Merle Motooka and Shin'ya Ono.

"A boxed package can be purchased for \$2.50 plus 50 cents handling charge from the Amerasia Creative Arts Program, c/o Basement Workshop, 54 Elizabeth St., Chinatown, New York 10013.

"In San Francisco, a group of young activist Asian Americans have issued two volumes of AION, which is copyrighted by Asian American Publications. They say, 'AION hopes to provide an objective, informative and analytical forum for the many Asian political and community groups who are putting theory into practice, and for the self-definition of Asian artists and writers.' The editor is Janice Mirikitani."

Fujihira mentions the "Amerasia Journal," published by the Yale Asian American Students Association, which vanished after two issues, and "Asian Women," published by the Asian American students at the University of California. He concludes with: "There must be other publications in Asian American communities that I am not aware of, but the Sansei seem to be well along the way to expressing their creative thoughts."

Thank you, Toge Fujihira, for the update on Sansei literary efforts, and more power to them.



By Jim Henry

Sakura Script

The Cartoon Temple

TOKYO — Shuyu Doki, 59, chief priest of Jyorakuj temple in Kawasaki, Kanagawa Prefecture, is a happy man when he dons his priestly robes. His 280-year-old Buddhist temple is probably Japan's first and foremost manga (cartoon) temple.

It's already drawing many newcomers, especially the younger generation, to the temple's hall of prayer, says priest Doki.

The cartoons, which extend over the past 100 years, range from the Meiji era, 1868-1912, to the present Showa era. "Many, in particular the caricatures, well portray the times," Doki says. Of special interest, he adds, are those which happened to be sketched on the fusuma, sliding paper doors, during the war years. More than 100 cartoons include 30 on the fusuma, 10 on the sugido, sliding cedar doors, some 20 on the walls and 4 large e-maki, hanging scrolls.

Doki, being chief of the statistics section of the Kawasaki city hall, says "statistics and figures can make life mighty dull. That's why there's consolation and comfort in my temple after office hours. The satire and humor in the cartoons and caricatures are a source of enlightenment."

Eagle Produce

929-943 S. San Pedro St. MA 5-2101

Bonded Commission Merchants
— Wholesale Fruits and Vegetables —
Los Angeles 15

REVENUE SHARES CAN COPE WITH URBAN PROBLEMS

San Jose Mayor
Mineta Testifies
Before State Body

SAN JOSE, Calif. — A state senate housing panel was assured last week (Oct. 7) by San Jose Mayor Norman Mineta that federal revenue-sharing could answer the city's "severe urban sprawl" problem by making available "adequate community services" necessary to cope with growth.

Mineta and a number of other community leaders testified on local urban problems before State Sen. Nicholas Petris' select committee on housing and urban affairs.

While the population of the city has doubled since 1960 (from 204,196 to 471,400), opposition to higher property taxes and limited availability of revenue has forced the city to become "creative in our search for new revenue sources," Mineta said.

A recent Kaiser Engineering study shows San Jose needs 10,400 low-income housing units.

Environmental Impact

But of greater concern is the temporary freeze on all building permits, a ban implemented by the state supreme court ruling of Sept. 21 that requires environmental impact studies be completed before projects can be built. No guidelines were spelled out in the 6-1 decision, a grim-faced Mineta said.

An emergency meeting of the city council was called Oct. 5 to discuss the decision with builders, contractors, labor unions and environmentalists.

The mayor noted the annual payroll of the building industry in San Jose was \$126 million.

The court held that the 1970 law requiring environmental impact studies on public projects also holds true for private development authorized by a local agency.

(City officials in Monterey, which also slapped a building moratorium, lifted the ban by preparing a questionnaire which their building inspectors, builder or developer, will fill out, calling for data on appearance, traffic, sewage, tree removal, driveways, utilities and storm drains.)

Minority contractors sign agreement with CRA

LOS ANGELES — The Community Redevelopment Agency and the American Federation of Minority Contractors signed an agreement, assuring equitable participation of minority contractors in construction within the City's urban renewal projects.

The Federation represents contractors from the American Indian, Black, Chinese, Filipino, Japanese, Korean, and Latin-American communities. Robert Gurule is Federation president while Tosh Terazawa is secretary.

The agreement is based on the Agency's 2½-year old policy of affirmative action for equal opportunity among minority groups in jobs, contracts and services under the Agency's jurisdiction.

WHITE HOUSE FELLOWS

Asian Americans Urged to Apply

(The PC Washington Bureau)
WASHINGTON, D.C. — William H. Marumoto, staff assistant to the President, urged qualified Asian Americans to seriously consider applying for appointments as 1973 White House Fellows.

Chosen by a National Commission on a non-partisan basis, the Fellows serve a one-year internship at the highest level of the Federal Government as special assistants to members of the President's Cabinet and White House staff. In this capacity these young men and women have a unique opportunity to observe and participate in policy making at the national level, Marumoto said.

The program was founded by President Lyndon B. Johnson in 1964, at the suggestion of the then Secretary of Health, Education and Welfare, John W. Gardner.

Each year since 1964, 15 to 20 exceptionally promising young men and women have been selected to serve as White House Fellows. During their fellowship year, they are assigned to work as assistants to members of the Cabinet and the White House staff. Following their year in Washington, they return to their respective communities and professions.

One Nisei Selected

Many of the former White House Fellows are now actively participating in state and local government. Melvin Masuda of Hawaii is the one Asian American thus far, in

Entertaining Family-Type Films FROM SHOCHIKU

Available for JACL Benefit Showings or Fund Raising at Moderate Rates
Chambara - Comedies - Historical - Melodrama

FOR INQUIRIES WRITE TO:
SHOCHIKU FILMS OF AMERICA, INC.
4417 West Adams Blvd., Los Angeles, Calif. 90016
Telephone: (213) 733-8181

A NISEI VIEW OF JAPAN: by Dr. Roy Doi

Gaijin and Japanese

Part III

There are two types of gaijin in Japan. One is the obviously foreign person with blond hair who stands 6 feet tall and stands out like a dandelion in a well kept lawn. The other gaijin include the Nikkei, Southeast Asians, and other less obvious foreigners. I'm still uncertain what type of gaijin the Indian and African are, and I am not being facetious.

The most highly respected and royally treated gaijin are the blond types. They however are not called "hakujiin" anymore but are called "seiyojin". Apparently the term "hakujiin" implied some sense of white superiority to the Japanese and now they use the term seiyojin which is in my understanding a term which describes a Caucasian.

The somewhat derogatory term, "keto", which is literally translated as "haughty Chinese", was derived from the fact that the first hairy Europeans came from the direction of China. This term is only used behind the backs of foreigners just as the term "Jap" is probably used behind the backs of Nikkei in America.

Feeling of Inferiority

The Nikkei reviewer of Kawasaki's book, "Japan Unmasked", was slightly bothered by Kawasaki's statement that the Japanese have an inferiority complex towards the seiyojin. I think that it is only natural that the Japanese do have this feeling of inferiority.

From the Meiji Jidai Japan has been borrowing technology from the West. First the Europeans and then the Americans have had tremendous influence on the modernization of Japan, and any Japanese will concede that this was borrowed technology. The defeat during World War II showed that Western power was still superior and the victory over the Russians in the Russo-Japanese War (1904-05) had not really proved that Japan had "caught up" with the Western nations.

This feeling of inferiority is translated into a royal treatment of the seiyojin at times which borders on the ridiculous. They certainly get preferred treatment at public places, are placed in the "superior" position by most Japanese regardless of their true social status, and are known to do no wrong although they may be totally oblivious of the correct Japanese customs and rituals.

A Japanophile may think that this writer is one Nikkei who has a completely distorted picture of the situation, since the Japanese are noted for their generous hospitality and the ritualized treatment of guests is truly outstanding in Japan; however this Japanophile is probably white and has either not experienced or perhaps not recognized the fawning nature of the Japanese over white gaijin. As an inconspicuous gaijin it was really an emotional experience to witness this "lowly subject to royal white master" behavior.

Reminded of Issel

As a Nikkei who had just come through about five years of agonizing self-analysis as to my identity and my posi-

tion in the American social system, my initial response was of disgust, since these Japanese were acting just as the Issel acted towards their white masters. In fact the Issel behavior towards the whites is probably a mixture of awe for the white man of the Meiji Jidai in addition to the respect usually shown toward a superior in Japanese society.

The Japanese who were isolated so long from the rest of the world during the Tokugawa Jidai have maintained a sense of inferiority towards the seiyojin, but I sensed a change in the 20-25 year old Japanese. Here is a Japanese who was born after the war, who has known a good life, and who can see that the Japanese are doing well economically, politically, scientifically, technologically, and athletically; this Japanese now feels very proud of how Japan has recovered from the devastation of WWII and feels second to none.

But let's get back to the relationship between the Japanese and the not too obvious foreigners, e.g. the Nikkei. Our experience, in a situation where it was clear that we were gaijin, we usually were treated with deference. Part of this was due to the fact that my meishu (name card) stated that I was with the University of California which carries a high status connotation even in Japan. The other fact is that gaijin tend to frequent places which are somewhat beyond the usual means of most Japanese so that regardless of whether we were Japanese or Nikkei we would be treated with respect.

One always has to keep this in mind: Japan is a country where status is very important. Unfortunately this can determine one's relationship with Japanese, because most would prefer to interact with someone of higher status.

Shopping in Japan

In my wife's first venture down her shopping street filled with one room shops selling tofu, age (deep fried tofu), and tofu products, or fresh udon and soba, or vegetable and meat, or chicken and eggs (most of the chicken is sold boneless), or meat, or sushi and manju, or fish and other sea products, or senbei and other cookies, or rice and salt (we didn't realize that rice and salt had government controlled prices and special stores for them when we first arrived; now they have been removed from price controls), or soy sauce and seasonings, or beer and soft drinks, or hard liquors, or slippers, or umbrellas, or dresses, or electric appliances, or medicines, or katsu (cullet style of cooking in deep oil vats), and many other little shops each specializing in a handful of products, my wife found a curious and not friendly hostile atmosphere. They were amazed that someone who looked so typically Japanese could not speak Japanese except for one or two phrases.

When she became a regular customer, they became very friendly and gave her many "services" (a little extra meat, a cheap plastic "presento") as her Japanese improved they became her friends.

At the adult level we had exceptionally good relationships. University colleagues were very open and friendly particularly since many of them had already spent some time in the U.S. I found an open acceptance, a respect more than I had received in the U.S., and nothing unfavorable because I was a gaijin or a Nisei.

In fact most educated Japanese are acquainted with the hardships of the Issel and Nisei before and during WW II and have much respect for them. They are sometimes taken aback at our poor Japanese and yet some were amazed that I could even speak Japanese, since most gaijin don't speak Japanese.

Some Confusion

There is a slight confusion among the Japanese concerning Nisei, since they can't quite accept the fact that genetically related people could really be foreigners. Yet our behavior pattern, as it was difficult to explain the Red Army murders in the Japanese Alps where they massacred 12 of their own groups, the recent shootings by three Japanese school boys in the airport in Israel, and other violent events, just yet our behavior pattern, as it was difficult to explain

speech or lack of ability to speak Japanese, and our thinking make us definitely gaijins.

Frankly one of the motivating forces in my writing these articles was the experience I had in a cabaret in Sendai. As I sat down with my hostess, she purred out her welcome and as I came back with "My, are all Sendai girls so beautiful?", she recognized something in my speech which was slightly atypical and asked me what part of Japan was my home. I said my home was in California.

She looked amazed and asked me if I was really an American. Upon learning this fact, she said "Anata wa hen na gaijin ne!" (You are a strange foreigner aren't you!). To me that was such an interesting comment. I had a difficult time concentrating on the cabaret mood and then there decided to study this problem and discover why I was a "hen na gaijin".

My children's experience was somewhat mixed. We lived in a Kyoto University apartment for foreign scholars and therefore had no Japanese families living close by. My children also attended the Kyoto Intl. School which was taught in English, although the Japanese language was taught one hour a day to all the students.

My children experienced more outright discrimination in Japan than they have ever experienced in the U.S.

Children Picked On

The discriminatory behavior was directed from Japanese children of similar age. My daughter Kathryn had her nose bloodied at the ice rink, and my son Douglas and his 20 Japanese youths were chased about six city blocks along the River until they were able to get up the banks by Demachi. These were the worst cases but there is a constant harassment not only of Sansei, but of all gaijin children, by Japanese children.

I should state that these cases only occurred with Japanese children that they did not know. The Japanese children that they knew well were extremely kind, courteous, friendly, and pleasant. It appears that the very young openly display their hostility towards unknown foreigners. Will these youths upon reaching adulthood still harbor these feelings, but mask them in their behavior?

Since these youths shouted anti-American slogans at my English, Swiss, German, Israeli, American, Canadian, and American Japanese, it seems that the anti-American feeling propagated by some of the major newspapers is doing a disservice to the youths of Japan. They may be growing up with an anti-foreigner fever just at the moment when good international feelings are so important to Japanese trade and economy.

I think the Japanese have to break out of the feeling of being an isolated country "so far" from America and Europe and realize they are within 8-10 hours of the U.S. (the same time it takes to go from Kyoto to Sendai by limited express) and the rest of the world is also very close.

Positive Feelings

Luckily my children had so many pleasant experiences to counteract the unpleasant ones that they came away with a positive feeling about Japan; but I don't think they will ever forget their experiences. (Do we Nisei ever forget the WWII American concentration camps?)

My family has a way of analyzing our daily experiences over our supper table and we try to rationalize why certain things occur. It makes being a parent a tough one, but I have learned as much from my children as I have from any other group of people in Japan.

It was difficult to try to explain the Red Army murders in the Japanese Alps where they massacred 12 of their own groups, the recent shootings by three Japanese school boys in the airport in Israel, and other violent events, just yet our behavior pattern, as it was difficult to explain

Convention -

Continued from Page 2

day. This was a very important meeting since the controversial budget was the main item on the agenda. The L.A.-based staff had prepared an alternative budget tying CIP and Youth programs into Visual Communications and Education. Here was another chance to really sell the delegates but no attempt was made.

PSWDC Caucus

One morning I walked into a PSWDC Caucus. I saw President-Elect candidate Ross Harano of Chicago on the hot seat. Ross had received considerable support in the PSWDC before the convention but was now undergoing a grilling because he had supported the Ushio appointment at the National Board Meeting.

I could see that emotions were running very high; that there was talk about the district pulling out; that membership drives would be delayed; that monies raised would not be turned over to Headquarters; and that the PSWDC should refuse to participate in the elections. At this time someone tried to get the district to go on record to abstain from voting during the balance of the convention.

Someone asked, "Any opposition?" Silence.

I spoke up. I told the delegates that this seemed to be a futile gesture which would accomplish nothing, could be misinterpreted, and which could be divisive.

One delegate said, "That's only one person, anybody else oppose?"

Silence.

The meeting broke up without a formal vote but I felt that most of the delegates were having second thoughts.

On the last day of the Convention, just prior to the Elections, a small group got together and prepared a position paper entitled "Statement of Concern - Minority Report." I read the paper over in a floor caucus and I had no objections to most of the ideas expressed and said so. But I would have rewritten it so that it would not have had

the massacres which occurred in Bangla Desh, Northern Ireland, Tanganyika, and North and South Vietnam.

PR Problem

This brings us to the fact that although we were treated well and enjoyed Japan immensely, we were at the end still gaijin and Americans. This is the point that is difficult to get across to the American public if we Nikkei are going to be exposed to the hostility of the Americans towards Japan, the JACL and other groups should continue to push vigorously a program of educating the general American public.

A new item several years ago attests to the difficulties of such a problem. That particular news item mentioned that some wealthy San Francisco peninsula families were going to fire their "Japanese gardeners" if Japan continued to boycott Israel economically. Now if another ethnic group which is usually so understanding, generous, and fair to Japanese Americans can harbor within its own group a number of people of such mentality, one can imagine the problem that must exist in America today which is raising once more "the yellow peril distress flag".

PACIFIC CITIZEN—3
Friday, Oct. 20, 1972

the implication that the JACL would no longer serve the community or the youth.

Without prior consultation this group had asked Governor or Helen Kawagoe to read the paper on behalf of the district. Apparently Helen did not like the tone of the statement and had started to re-write when I was called to the podium to make Ross Harano's nomination speech.

By the time I had returned, it seemed that Helen had changed her mind. She asked the small group to make their own statement on their own behalf. The matter had now become whether the PSW delegates were going to support their governor or to back the small group. My understanding is that all but two delegates in the district voted in writing to support their governor.

The lessons to be learned from this experience, it seems to me, is that one may have some excellent ideas and projects but if few will buy them because of the lack of skill in presentation or because of an arrogant attitude that says, "Unless you do it this way, you are insensitive, dishonest, an SOB, etc.," then he has defeated his own purposes. On one occasion I was told that "Unless you are for us, you are against us." I cannot buy that kind of rationality.

What the New Left failed to appreciate and understand is that the vast majority of the American people and the majority of the JACL members are part of the establishment and if the New Left wants understanding and support, they must speak the language of the majority. The New Left can shock them and get their attention by the use of harsh rhetoric, or by the assumption of unilateral actions but the New Left will fail to get them on their side by the use of such tactics.

Establishment is not necessarily a dirty word and to try to make it so invites a backlash.

This is a reality that must be faced whether we like it or not.

Myths about JACL

One of the most repeated myths recited about the JACL seemed to be that "it is not serving the community."

A lot depends upon what one means by "community." Study the JACL history and examine the record: The Immigration and Naturalization Act, the Evacuation Claims Act, the Soldiers' Bride Act, Prop. 14, the anti-Miscegenation laws, the Alien Fishing Laws, the Alien Land Laws; Title II, literally hundreds of restrictive State Laws.

And if in addition we examine the public relations program that JACL has undertaken we must conclude that all of this has been done for the benefit of the community in the broadest and truest sense. This is irrefutable. And those who would promote the myth that JACL is not acting in the best interest of the community simply have not done their homework.

As for community service on the local level, it has now been several weeks since the convention ended. I cannot see any drastic changes in the direction of JACL here in Southern California.

Our district is still interested in and still participating in those activities which we were engaged in just prior to the convention. We will miss

Continued on Next Page

NEED A CAR LOAN?

Low Cost
Liberal Terms
No Extra Charges

SEE YOUR

National JACL Credit Union

Mail: P. O. Box 1721, Salt Lake City, Utah 84110

Office: 242 S. 4th East, Salt Lake City

Tel.: (801) 355-8040

Remember You Can Borrow Up to \$1,500
on Your Signature

ROSE HILLS

care and comfort
are nearby

People care at Rose Hills. Care has provided the comfort of sympathetic, experienced counselors... inspired the beauty of the world's most naturally beautiful memorial park... and created the convenience of every needed service at one place: Mortuary, Cemetery, Flower Shops, Chapels, Mausoleums, Columbarium. At time of need, call Rose Hills for every need. People care.

ROSE HILLS
MORTUARY...CEMETERY

3900 Workman Mill Road • Whittier, California
• OXford 9-0921

So much more—costs no more

Calif. Prop. 19 explained by 1000 Club member

By SEN. RALPH DILLS

Sacramento
Any ballot proposition
scheduled to be voted on in
November will get a lot of
attention from California vot-
ers prior to election day, but
it's doubtful that any will re-
ceive more critical comment
than Proposition 19 — the
"generation gap" measure.

I've dubbed it so because
it deals with the touchy sub-
ject of the possession and use
of marijuana.

GUEST COLUMN

Although the California
public has become more tol-
erant of the use of mari-
juana in recent years, a sub-
stantial majority — accord-
ing to the California Poll —
react negatively to this propo-
sition which would remove
criminal penalties for the pos-
session of small amounts of
marijuana by persons 18
years and over.

Proposition 19 would also
allow for licensed cultivation
of marijuana for personal
consumption, similar to the
laws which permit Califor-
nians to make their own wine
or brew their own beer for
their use. However, transpor-
tation and possession of mari-
juana for sale would remain
criminal offenses if the con-
troversial Proposition 19 is
approved by voters at the
general election.

2-1 Against

The pollsters tell us that
sentiment at the time of the
poll was running about two
to one against the marijuana
ballot proposition. To measure
sentiment on the issue, the
poll asked a representative
sample of potential voters to
react to the wording of the
proposition as it will appear
on the November ballot.

Proposition 19 qualified for
the ballot when its proponents
obtained more than the nec-
essary 326,000 signatures
earlier this year. The group
sponsoring the measure ar-
gues that Proposition 19 could
not legalize, but would "de-
criminalize" marijuana pos-
session and use by an in-
dividual.

By this they intend that an
individual has the right to
grow and consume marijuana
for his own personal use, but
that the sale or other com-
mercial use of marijuana
would remain illegal.

Pennsylvania Government

Earlier this year a nation-
al commission on marijuana
and drug abuse, headed by
Pennsylvania Governor Ray-
mond Shafer, urged such a
national policy. It recom-
mended that the nation pick a
path between the present so-
cial and legal attitude of to-
tal marijuana prohibition on
one hand, and legalization on
the other.

Many State and national
officials, including many law
enforcement officials, have at-
tached the concept of the de-
criminalization by allowing
personal cultivation and use
of marijuana would inevita-
bly lead to an increase in il-
legal sales. Many of my col-
leagues in the Senate and As-
sembly apparently feel like-
wise, as measures aimed at
decriminalizing the posses-
sion of marijuana have been
soundly defeated in recent
years.

The District Attorney of
Los Angeles, in fact, points
out that decriminalization
would establish a schizophrenic
legal situation in which
the use is legal, but the sale
illegal. The user would be
socially acceptable and the
seller labeled anti-social.
Users would be drawn into
an even deeper contact with
the counterculture forces, ac-
cording to the DA.

(State Sen. Dills is a 1000
Club Life Member, Gardena
Valley JACL.)

CALENDAR

Oct. 21 (Saturday)
Sequoia-McCloskey-Stewart
debate, Palo Alto Buddhist
Church, 7:30 p.m.
San Mateo-Community health
fair, Martin Luther King Comm.
Ctr., 11 a.m.-4 p.m.
St. Louis-Fall Festival, Kirkwood
Jr. High.

Oct. 21-22
MDC-Mtg. Twin Cities hosts
West Valley-U.N. Festival booths,
Santa Clara Fairgrounds, San
Jose.

Oct. 24 (Tuesday)
Sequoia-Bd Mtg., Palo Alto
Buddhist Church, 7:30 p.m.
Oct. 26 (Thursday)
Sacramento-Reg. Mtg. Nisei
Memorial Hall, 7:30 p.m.

Oct. 28 (Saturday)
Cleveland-Holiday Fair, Euclid
Central Jr. Hl., 4-9 p.m.
San Mateo-Monte Carlo fun
night, San Mateo Buddhist
Church, 8 p.m.

Oct. 29 (Sunday)
West Los Angeles-Arcy wine-
tasting party, Yamato's restau-
rant, Century Plaza, 12:30-3:30
p.m.

Sequoia-Salmon fishing trip,
aboard "Sunrise" fr Sausalito,
Oct. 31 (Tuesday)
West Los Angeles-Hallowe'en
party, Stoner Playd.

Nov. 3 (Friday)
West Los Angeles-Earth Sci
mtg. Westside YMCA.

Nov. 4 (Saturday)
Dayton-Cincinnati Inst. Gnr.
Nell's Heritage House, Dayton.
Dr. Hideki Kato, spkr., "U.S.-
Japan Affairs."

Nov. 5 (Sunday)
ELEC-Mtg. Seabrook JACL hosts
hosts.

Nov. 5 (Sunday)
West Los Angeles-Inst. program
NC-WNDC-Griety Session,
Fremont JACL hosts.

Nov. 6 (Monday)
West Los Angeles-Bd Mtg. -
Nov. 7 (Tuesday)
ELECTION DAY

CHAPTER PULSE

October Events

Sequoia to host McCloskey-Stewart debate

A debate has been sched-
uled by Sequoia JACL be-
tween Rep. Pete McCloskey,
Republican incumbent con-
gressman, and his Democratic
opponent, James Stewart, at
the Palo Alto Buddhist
Church Issei Memorial Hall
on Oct. 21, 7:30 p.m.

Persons not in the congres-
sional district are also wel-
come for it is an opportunity
to become more aware of local
and national issues, meeting
chairman John Enomoto said.
The 18-year-old who will be
voting for the first time are
also encouraged to attend.

Persons not in the congres-
sional district are also wel-
come for it is an opportunity
to become more aware of local
and national issues, meeting
chairman John Enomoto said.
The 18-year-old who will be
voting for the first time are
also encouraged to attend.

Persons not in the congres-
sional district are also wel-
come for it is an opportunity
to become more aware of local
and national issues, meeting
chairman John Enomoto said.

Persons not in the congres-
sional district are also wel-
come for it is an opportunity
to become more aware of local
and national issues, meeting
chairman John Enomoto said.

Persons not in the congres-
sional district are also wel-
come for it is an opportunity
to become more aware of local
and national issues, meeting
chairman John Enomoto said.

Persons not in the congres-
sional district are also wel-
come for it is an opportunity
to become more aware of local
and national issues, meeting
chairman John Enomoto said.

Persons not in the congres-
sional district are also wel-
come for it is an opportunity
to become more aware of local
and national issues, meeting
chairman John Enomoto said.

Persons not in the congres-
sional district are also wel-
come for it is an opportunity
to become more aware of local
and national issues, meeting
chairman John Enomoto said.

Persons not in the congres-
sional district are also wel-
come for it is an opportunity
to become more aware of local
and national issues, meeting
chairman John Enomoto said.

Persons not in the congres-
sional district are also wel-
come for it is an opportunity
to become more aware of local
and national issues, meeting
chairman John Enomoto said.

Persons not in the congres-
sional district are also wel-
come for it is an opportunity
to become more aware of local
and national issues, meeting
chairman John Enomoto said.

Persons not in the congres-
sional district are also wel-
come for it is an opportunity
to become more aware of local
and national issues, meeting
chairman John Enomoto said.

Persons not in the congres-
sional district are also wel-
come for it is an opportunity
to become more aware of local
and national issues, meeting
chairman John Enomoto said.

Persons not in the congres-
sional district are also wel-
come for it is an opportunity
to become more aware of local
and national issues, meeting
chairman John Enomoto said.

Persons not in the congres-
sional district are also wel-
come for it is an opportunity
to become more aware of local
and national issues, meeting
chairman John Enomoto said.

Persons not in the congres-
sional district are also wel-
come for it is an opportunity
to become more aware of local
and national issues, meeting
chairman John Enomoto said.

Persons not in the congres-
sional district are also wel-
come for it is an opportunity
to become more aware of local
and national issues, meeting
chairman John Enomoto said.

Persons not in the congres-
sional district are also wel-
come for it is an opportunity
to become more aware of local
and national issues, meeting
chairman John Enomoto said.

Persons not in the congres-
sional district are also wel-
come for it is an opportunity
to become more aware of local
and national issues, meeting
chairman John Enomoto said.

Persons not in the congres-
sional district are also wel-
come for it is an opportunity
to become more aware of local
and national issues, meeting
chairman John Enomoto said.

Persons not in the congres-
sional district are also wel-
come for it is an opportunity
to become more aware of local
and national issues, meeting
chairman John Enomoto said.

Persons not in the congres-
sional district are also wel-
come for it is an opportunity
to become more aware of local
and national issues, meeting
chairman John Enomoto said.

Persons not in the congres-
sional district are also wel-
come for it is an opportunity
to become more aware of local
and national issues, meeting
chairman John Enomoto said.

Persons not in the congres-
sional district are also wel-
come for it is an opportunity
to become more aware of local
and national issues, meeting
chairman John Enomoto said.

Persons not in the congres-
sional district are also wel-
come for it is an opportunity
to become more aware of local
and national issues, meeting
chairman John Enomoto said.

Persons not in the congres-
sional district are also wel-
come for it is an opportunity
to become more aware of local
and national issues, meeting
chairman John Enomoto said.

Persons not in the congres-
sional district are also wel-
come for it is an opportunity
to become more aware of local
and national issues, meeting
chairman John Enomoto said.

Persons not in the congres-
sional district are also wel-
come for it is an opportunity
to become more aware of local
and national issues, meeting
chairman John Enomoto said.

Persons not in the congres-
sional district are also wel-
come for it is an opportunity
to become more aware of local
and national issues, meeting
chairman John Enomoto said.

Persons not in the congres-
sional district are also wel-
come for it is an opportunity
to become more aware of local
and national issues, meeting
chairman John Enomoto said.

Persons not in the congres-
sional district are also wel-
come for it is an opportunity
to become more aware of local
and national issues, meeting
chairman John Enomoto said.

Persons not in the congres-
sional district are also wel-
come for it is an opportunity
to become more aware of local
and national issues, meeting
chairman John Enomoto said.

Persons not in the congres-
sional district are also wel-
come for it is an opportunity
to become more aware of local
and national issues, meeting
chairman John Enomoto said.

Persons not in the congres-
sional district are also wel-
come for it is an opportunity
to become more aware of local
and national issues, meeting
chairman John Enomoto said.

Persons not in the congres-
sional district are also wel-
come for it is an opportunity
to become more aware of local
and national issues, meeting
chairman John Enomoto said.

Persons not in the congres-
sional district are also wel-
come for it is an opportunity
to become more aware of local
and national issues, meeting
chairman John Enomoto said.

Persons not in the congres-
sional district are also wel-
come for it is an opportunity
to become more aware of local
and national issues, meeting
chairman John Enomoto said.

Persons not in the congres-
sional district are also wel-
come for it is an opportunity
to become more aware of local
and national issues, meeting
chairman John Enomoto said.

Persons not in the congres-
sional district are also wel-
come for it is an opportunity
to become more aware of local
and national issues, meeting
chairman John Enomoto said.

Persons not in the congres-
sional district are also wel-
come for it is an opportunity
to become more aware of local
and national issues, meeting
chairman John Enomoto said.

Persons not in the congres-
sional district are also wel-
come for it is an opportunity
to become more aware of local
and national issues, meeting
chairman John Enomoto said.

Dr. Akio Hayashi, Mrs. Midori
Hiyama, Mrs. May Shirai, Rich-
ard Matsumoto.

San Mateo awards \$6000 in scholarships

Six scholarships were re-
cently awarded by the San
Mateo JACL to high school
seniors. Recipients of \$1500
each were:
Connie S. Sakai, daughter of
Mr. and Mrs. Harry Sakai;
and Randall J. Fong, son of Mr.
and Mrs. James Fong.

Connie is now a student at
U.C. Davis and is studying
physical therapy. Randall is
attending Stanford University
in architecture.

Four secondary awards of
\$75 each were presented to:
Suzanne Takayama, daughter of
Tom Takayama; Don Morioka,
son of Mr. and Mrs. Morioka;
Sharon Higaki, daughter of Mr.
and Mrs. Harry Higaki; Thomas
A. Kojimoto, son of Mr. and
Mrs. Yoh Kojimoto.

Installation

Joint Dayton-Cincinnati installation fete set

The joint installation of
Dayton JACL and Cincinnati
JACL officers will be held on
Saturday, Nov. 4, 6:30 p.m.,
at Nell's Heritage House, 2189
S. Dixie Hwy, Dayton.

Dr. Hideki Kato, professor
of political science at Earlham
College, who appeared as a
panelist at the Japan Week
symposium on U.S.-Japan re-
lations, will be the guest
speaker. Mas Yamasaki, past
MDC governor, will be install-
ing officer. Mrs. Midori Kawa-
nishi will entertain with sev-
eral solos. Frank Titus, now
attending law school in Col-
umbus after a career in the
Air Force, will be emcee.

San Jose Mayor Mineta to address Sequoia fete

San Jose Mayor Norman
Mineta will be the guest
speaker at the Sequoia JACL
installation dinner-dance on
Saturday, Nov. 18, 7 p.m., at
the Golden Pavilion restau-
rant, Los Altos. Tickets are
\$7.50 per person and avail-
able from board members, in-
cluding:

Ann Okamura (366-8042), Tets
Sumida (328-7474), Hid Kashima
(388-7490) and Tom Yamane (969-
1166).

Chapter is currently con-
ducting its election by mail. The
ten elected to the board are
to be notified Oct. 24, when
the board meets.

September Events

Over 260 attend Sequoia Issei program

The first Sequoia JACL
community Issei testimonial
dinner held Sept. 16 at the
Palo Alto Hyatt House at-
tracted 260 persons, nearly a
third of them Issei over age
70.

Highlights included the ad-
dress by Mr. Watanabe from
the Japanese consulate gen-
eral office, remarks by 94-
year-old Mr. Funabiki, enter-
tainment by the Minyo Doko-
kai and Shinsei Band, and
handling of arrangements by
the youth members. Jay Sasa-
gawa was program chairman,
Tets Sumida emceed the pro-
gram in eloquent Japanese.
Commemorative gifts to the
120 invited guests were pre-
sented by the Bank of Tokyo
and Sumitomo Bank of Cali-
fornia.

Co-sponsoring the testimo-
nial event were:

Aldergate Methodist Church,
Mid-Penninsula Gardeners Assn.,
Nichiei Kyokai, Palo Alto Bud-
dhist Church, Peninsula Free
Methodist Church.

West Valley panel attracts 70 people

Nearly 70 people were pre-
sent at the West Valley JACL
meeting Sept. 30 to hear and
participate in a panel discus-
sion on the "direction of JA-
CL" moderated by Steve Na-
kashima.

National Director Mas Sa-
tow emphasized that commu-
nity involvement projects are
not being de-emphasized and
said the decentralization of
the organization through re-
gional offices would better
serve local chapter projects.

Edison Uno, co-chairman of
the Bay Area Community
JACL, thought that the "suc-
cess of JACL is at the same
time its failure." He men-
tioned many areas in which JA-
CL has been successful but
also many issue - oriented
areas which have been neg-
lected.

Dan Kubo, former "fox,"
saw the organization as com-
posed of those "who have
made it" and could see little
relevance for him or other
young adults. Dr. Ray Uchi-
yama, past chapter president,
explained why the chapter
was formed and felt that lo-
cal activities are most im-
portant to chapter members.

A question and answer period
followed.

It is not obligatory for a
generation to have great men.
—Ortega Y Gasset

Persons not in the congres-
sional district are also wel-
come for it is an opportunity
to become more aware of local
and national issues, meeting
chairman John Enomoto said.

Persons not in the congres-
sional district are also wel-
come for it is an opportunity
to become more aware of local
and national issues, meeting
chairman John Enomoto said.

Persons not in the congres-
sional district are also wel-
come for it is an opportunity
to become more aware of local
and national issues, meeting
chairman John Enomoto said.

Persons not in the congres-
sional district are also wel-
come for it is an opportunity
to become more aware of local
and national issues, meeting
chairman John Enomoto said.

Persons not in the congres-
sional district are also wel-
come for it is an opportunity
to become more aware of local
and national issues, meeting
chairman John Enomoto said.

Persons not in the congres-
sional district are also wel-
come for it is an opportunity
to become more aware of local
and national issues, meeting
chairman John Enomoto said.

Persons not in the congres-
sional district are also wel-
come for it is an opportunity
to become more aware of local
and national issues, meeting
chairman John Enomoto said.

Persons not in the congres-
sional district are also wel-
come for it is an opportunity
to become more aware of local
and national issues, meeting
chairman John Enomoto said.

Persons not in the congres-
sional district are also wel-
come for it is an opportunity
to become more aware of local
and national issues, meeting
chairman John Enomoto said.

Persons not in the congres-
sional district are also wel-
come for it is an opportunity
to become more aware of local
and national issues, meeting
chairman John Enomoto said.

Persons not in the congres-
sional district are also wel-
come for it is an opportunity
to become more aware of local
and national issues, meeting
chairman John Enomoto said.

Persons not in the congres-
sional district are also wel-
come for it is an opportunity
to become more aware of local
and national issues, meeting
chairman John Enomoto said.

Persons not in the congres-
sional district are also wel-
come for it is an opportunity
to become more aware of local
and national issues, meeting
chairman John Enomoto said.

Persons not in the congres-
sional district are also wel-
come for it is an opportunity
to become more aware of local
and national issues, meeting
chairman John Enomoto said.

Persons not in the congres-
sional district are also wel-
come for it is an opportunity
to become more aware of local
and national issues, meeting
chairman John Enomoto said.

Convention—

Continued from Page 3

those who have dropped out
but I am sure that we can
pick up the pieces and build
an even greater JACL.

Another favorite line used
by the New Left to ques-
tion the motives of some JA-
CL members by saying that
they are in it to promote
their own interest while the
New Left is in it to pro-
vide for the welfare of the
community. This thinking is
extremely shortsighted and
distorted. I have seen some
selfish individuals in the JA-
CL (as in any group) but I
outweighing them are the
majority who have proven
themselves loyal, persevering
and generous in their concern
for the community. Those
who would use the JACL for
their own purposes have never
lasted very long in the
organization. Those with true
commitment have proven it
with as much as ten, twenty
and even thirty years of ser-
vice.

It seems ironic to hear that
some cohorts of the New Left
are now saying, they would
leave the JACL except for the
insurance benefits!!

Inevitable confrontation

This report could have
been, I suppose, a much
tougher one. Names, dates,
and items could be mention-
ed—preceding, during and
following the convention.
Some things that happened
were unbelievable. And some
things were said and done
that brought a sense of shame.

Bitterness and anger still
linger. But there is no bitter-
ness or anger in me... only
a deep sense of sorrow. Yet
to be fair, I know that un-
der less emotional circum-
stances many of these things
would not have happened.

Having said all of this, I

Renew JACL Membership

SPRAY EQUIPMENT & REPAIR CO.

In Imperial Paints
Spray Equipment for All Your Needs and Service
For Your Parts

150 E. Orangethorpe 956-3030
Anaheim, Calif.

LIDO SHORES HOTEL & MARINA

Fine Plush Hotel Rooms and Excellent Marina
For the Entire Family at Low Rates
Charlie & Elsie Painter, Proprietor

617 Lido Park Ave. 673-8800
Newport Beach, Calif.

LLOYD'S REALTY

For All Your Real Estate Needs
Buying & Selling Homes - Rental Service
Land Investments

1300 W. Commonwealth 870-5180
Fullerton, Calif.

MALONEY'S TIRE CO.

Excellent Quality Tires in All Makes, Michelin, Pirelli,
Sonic at Low Prices. Also Front End Works, Complete
Brakes, Shock Absorbers, Wheel Balance, Tire Truing.
Prompt and Friendly Service

252 N. Anaheim Blvd. 635-2890
Anaheim, Calif.

LICHEE RESTAURANT

Lunch - Dinner - Banquet - Cocktails - Food to Go.
Visit Our Dragon Room - Cocktail Lounge
Open 7 Days a Week

6785 Westminster Ave. (Westminster Center) 893-1368
Westminster, Calif.

VILLA SONORA RESTAURANT

Most Delicious Mexican Foods for the Entire Family
at Low Prices
Friendly, Prompt, and Courteous Service

140 North Raymond 879-2950
Fullerton, Calif.

TRINITY LUTHERAN CHURCH

William L. Duerr, C. Rodger Meyer, Pastors
Sunday Service—8:00 & 10:30 a.m.
Radio Broadcast—KYMS FM 106.3, 9 a.m. Sun.
Christian Day School—Grades K-8th
Telephone Chapel 547-2882

902 South Broadway, Santa Ana, Calif. 542-0784

SWIFT PRODUCE

Top Quality Fresh Produce - Frozen Foods
For All Needs and Choices at Low Prices

7699 Ninth Street, Bldg. D. 522-6124
Buena Park, Calif.

VIEBECK'S BAKERY & COFFEE HOUSE

Fine Bakery Products
& Coffee Shop

312 S. Main St. 543-4233
Santa Ana, Calif.

VESTA CERAMICS

6035 Beach Blvd. 523-9262
Buena Park, Calif.

JOHN D. TODD

Only Quality Salad Dressing
1297 O Logan Ave. 540-5934
Costa Mesa, Calif.

MAS LAWNMOWER

Lawnmowers Sales & Service
Briggs & Stratton - Jacobsen
Honda
Sharpening - Tune-up - Parts
Engine Overhauling
7561 Commonwealth 521-8287
Buena Park, Calif.

FABRIC ALLEY

Serving All of Orange County
Dressmaking & Alterations
Foreign & Domestic Fabrics
105 Santa Isabel 646-4573
Costa Mesa, Calif.

must at the same time ac-
knowledge that the New Left
and the young staff have
helped to shake JACL out of
its lethargy and complacency.
This is not something new.
The NAACP, the Urban
League and the ADL all have
their "Young Turks" who help
to give their

Aloha from Hawaii

by Richard Gima

Hawaii Today

Honolulu
Physicians, veterinarians, dentists, collection agents, elevator mechanics, optometrists, pharmacists, private detectives and all other professionals who need a year's residency before to qualify for a license are no longer required to prove residency for any length. This is according to Dick Okaji, head of the state's professional and vocational licensing division.

Herds of pigs in the Kona hills of the Big Island are Hawaii's last known carriers of the communicable disease brucellosis which afflicts cattle, swine, goats and dogs. It also can be transmitted to humans. All four Hawaii counties declared free of brucellosis last year after a decade-long control program by the State Dept. of Agriculture. Then the thousands of wild boars on the Big Island turned up with the disease, also known as undulant fever.

Names in the News

City Budget Director James Sakai has resigned to become acting director of the City Dept. of Finance. Sakai, 45, has been the city's budget director since 1969.

The Young Americans for Freedom has awarded Robert Fukuda, U.S. district attorney for Hawaii, a Freedom Award for "his tireless efforts against organized crime." . . . Classmates and friends of Beatrice Kirk, Punahou class of 1940, will be interested to know that she is the wife of acting FBI director Louis Patrick Gray III. . . . Henry Kitamura has resigned as director of the Legislative Reference Bureau, the major research agency serving the state legislature. He plans to enter private law practice. . . . Fugio Matsuda, director of the State Dept. of Transportation, has been elected secretary-treasurer of the Airport Operators Council International. . . . Dr. Francis L. Lock, Honolulu dentist, has been installed as president of the Oahu unit of the American Cancer Society. . . . Six ILWU members from Hawaii have been elected by the union's international officers to make trips to foreign countries this year. They are Saburo Fujisaki, Antonio Kahawala, Norman Asuncion, Mariano Acoba, Fred Taniguchi and Donald Rickard.

State Sen. Nadeo Yoshinaga is reported to be in satisfactory condition after a heart surgery recently at the Cleveland Clinic in Ohio. Doctors recommended the surgery, Yoshinaga's relatives reported, because the senator's overall condition was good.

Arlene A. Teraoka of Papakou on the Big Island has been awarded a \$1,000 National Merit Scholarship. She is a graduate of Hilo High School and plans to major in psychology at Yale Univ.

Four American citizens were honored during Citizenship Day ceremonies Sept. 17 at the Honolulu International Center. They were E. E. Black, Dr. James H. Tengan, Aldine M. Canha and Charles D. Phillips.

Sam Hironaka, president of Maui Savings & Loan Assn., has been installed as president of the Savings & Loan League of Hawaii. . . . Fred Tamura, retiring v.p. of Meadow Gold Dairies, has been elected to a vacancy on the Hawaii Food Industry Assn.'s board of directors. . . . Retired Adm. Harry Felt, former Pacific commander-in-chief, has been re-elected to his fourth term as president of the Hawaii Foundation for American Freedoms (HFAF). Others elected were Wallace C. Young, 1st v.p.; Benjamin Ayson, 2nd v.p.; Jay Field, reappointed to his tenth term as executive v.p.; and executive committee members Felt, Young, T. G. Singlehurst, George Wheaton and Daniel S. C. Liu.

Friends of Dr. and Mrs. Jerry J. Nakano, former Honolulu

Japan may try GI

in criminal case

TOKYO — The U.S. Embassy said the Japanese government has jurisdiction over Lance Cpl. James S. Benjamin, 25, of Austin, Tex., a marine accused of killing an Okinawan servant on Sept. 20.

Ambassador Robert Ingersoll indicated Benjamin will be handed over if indicted by Japanese under terms of the status of forces agreement. "If charged by Japan, he will be tried in a Japanese court," Ingersoll explained.

Until Okinawa reverted to Japan, GIs accused of crime against Okinawans were usually tried at closed door courts martial, which contributed to widespread Okinawan resentment.

Join the JACL

FLOTEC INC.

Manufacturer of Industrial and Chemical Pumps

14510 S. Carmentia

Norwalk, Calif.

921-1495

THE OTHER BALL RESTAURANT

Featuring Live Nude Entertainment and Exotic Dancing on Stage

Open 11:30 a.m. to 1 p.m. for Lunch and Dinner

825 E. Valley Blvd.

San Gabriel, Calif.

288-7412

BRUCE MULHEARN REALTOR INC.

All Phases of Real Estate

11316 S. Pioneer Blvd.

Norwalk, Calif.

864-2721

LYLE W. MILLER - MASONRY CONTRACTOR

Masonry Contractor, Concrete Block Buildings

Industrial and Commercial Fireplaces, Block Walls

Licensed and Insured

6019 Temple City Blvd.

Temple City, Calif.

287-1037

lu residents, will be happy to know that their daughter Serene was one of seven high school students from Oklahoma who took part in the Sir Alexander Fleming Scholars program this summer. The program has been named for the noted British scientist who discovered penicillin and came to Oklahoma to dedicate the research foundation building. The scholars were picked from 108 applicants. Serene also placed first in Oklahoma's poster contest and vocabulary competition and represented the state in the Junior Classical League Convention held in Washington, D.C. Mrs. Nakano, the former Lillian Gima, Dr. Nakano is an associate professor of medicine at the Univ. of Oklahoma.

Maul police Lt. Karl Teshima, Jr. was among the 200 law enforcement officers to graduate from the FBI National Academy recently.

Richard Kaneko of Honolulu has been re-elected president of the senior division of the Hawaii Federation of Young Buddhist Assn. . . . Dr. Norman Abramson, a Hawaii professor of electrical engineering, was given the regional 1972 Achievement Award by the National Institute of Electrical and Electronics Engineers.

The Hui Makaaia, an Okinawan American organization, has awarded eight scholarships to the Univ. of Hawaii. The scholarships amount to \$3,000. Recipients are Patrick Tsukayama, Narumi Yamamoto, Amy Arakawa, Ronald Toma, Carol Taketa, Joyce Miyamoto, Mary Ann Shinsato and Rena Gushikawa. . . . Laurence Gay, senior v.p. of Amfac, Inc., has been elected president of the Honolulu Symphony Society.

Political Scene

Congressman Spark Matsunaga said here recently that Sen. George McGovern's proposals to cut back defense spending would help Hawaii. Matsunaga said he believes Gov. John Burns now shares that view, and that is why Burns has consented to be honorary chairman for the McGovern campaign. Said Matsunaga, "Hawaii will become the first line of defense under McGovern's peace plan." Matsunaga's remarks were made Sept. 3 at a McGovern fund-raising dinner. State GOP chairman Carla Coray wants Mayor Frank Fasi to clear the record on charges that one of his aides has been involved in organized gambling. Mrs. Coray cited a story in the Honolulu Advertiser which said Fasi campaign chairman Harry C. C. Chung had been named in police briefings on organized gambling. Said Mrs. Coray, "The mayor has access to police files. . . . It is his political lieutenant who is under fire. Thus it is the mayor's responsibility to open the files to the public and set the record straight."

Sen. David McClung, pres. of the state senate and a Democrat, said in a recent speech that Mayor Fasi's four years in city hall was "a struggle for absolute power." Fasi, too, is a Democrat. McClung told West Honolulu Rotary Club members that Fasi tactics were similar to those of Adolf Hitler and Napoleon Bonaparte. McClung said that Fasi of Hawaii face the same situation the British did in 1940 when the Battle of Britain began. Hitler threw "an arrogant challenge, couched in fear and hurled with the defiance of those who seek absolute power."

Times survey shows

McGovern lead thin

LOS ANGELES — A Los Angeles Times door-to-door survey of 956 registered voters in five scattered precincts in traditionally Democratic areas in Los Angeles County indicates McGovern is in deep trouble — the Democratic presidential aspirant holding only a 3-2 margin over Mr. Nixon whereas it was 4-1 in 1968, Humphrey over Nixon.

Among the voters quoted in the story was one Asako Okumura, a young teacher living in the predominantly Chicano precinct in Boyle Heights. "It looks like I'll have to choose between the lesser of two evils," she told the Times. "I vote Democrat in the time, so I know I won't vote for Nixon. But I'm not sure about McGovern. His welfare proposal was confused for such a long time. I saw him debate Humphrey before the last election and thought Humphrey did better. I voted for Humphrey (in the primary)."

Join the JACL

READY REALTY

Income Commercial

10550 S. Carmentia

Whittier, Calif.

941-3201 941-3231

THE LIBRARY

OF THEATRE ARTS

13065 Valley Blvd.

La Puente, Calif.

336-9249

CHRISTI DANIELS

Bridal & Formal Shoppe

Dresses, Gowns, Bridesmaids

Dresses, Formal, Cocktail Dresses,

Special Rates for Organizations

316 N. Citrus Ave.

Covina, Calif.

339-3107

FRENCH AMERICAN

BAKERY

15849 E. Main

La Puente, Calif.

333-2293

Greetings

COMMERCIAL CONVEYOR

CORP.

9526 Rush

South El Monte, Calif.

444-7858

Military News

Some 1,500 veterans and their families are expected to attend the National Nisei Veterans Convention to be held next June 25 here. The event will be sponsored by the 442nd Veterans Club, Club 100, MIS Veterans Club and the 1399th Veterans Club. Fred Ida and Akira Fujiki have been named general chairman and assistant general chairman, respectively.

Entertainment Scene

Elvis Presley will take part in a live broadcast originating Jan. 1 at the Honolulu International Center. It will be in the form of a world-wide telecast, and sponsors expect a viewing audience of more than one billion.

Education

The state Dept. of Education has hired fewer new teachers for the 1972-73 school year than for any of the preceding six years. Only 314 new teachers had been hired as of Aug. 30, and only 50 to 60 more are expected to fill last-minute vacancies over the next few weeks. In all, about 4,700 teachers have applied for jobs, but there are no jobs available. Some 2,750 of them are elementary teachers (2,000 of them Hawaii residents) and the rest are secondary teachers (1,200 to 1,400 of them residents).

Deaths

Dr. Clifford S. Kuwamoto, 45, of 4346 Puu Puni St., a dental surgeon, died Sept. 5 at Queen's Medical Center. He was a graduate of the Univ. of Illinois dental school.

Dr. Robert T. Matsushita of 1017 Luauwai St. died Sept. 20. He is survived by his wife, Mitsue, and a brother, George.

Paul I. Fagan, Jr., 56, retired president of Universal Motors in Honolulu, died at his home in Santa Barbara, Calif., Sept. 3. He was active in Honolulu sporting circles and was voted Sportsman of the Year in 1954.

William P. Moriyma, 60, a state tax office worker, was stabbed in the eye with an umbrella tip Aug. 30, died Sept. 4 at St. Francis Hospital. A charge of attempted first degree murder has been lodged against Peter K. Kahuhu, 68, who is being held at Halawa Jail.

Congressional Score

From Sen. Hiram L. Fong's office: "Social Security is the biggest single business operation in America. Its importance demands that the system receive the most careful surveillance. Changes in the system have often been hastily conceived and have sometimes ignored the most pressing needs of the people. I am preparing a bill to create an independent, bi-partisan Social Security commission to review and recommend improvements in the system. The commission would seek the most efficient ways to channel help to those covered under Social Security, to check into scope of coverage and adequacy of benefits, and to eliminate inequities."

ing needs of the people. I am

preparing a bill to create an

independent, bi-partisan Social

Security commission to review

and recommend improvements

in the system. The commission

would seek the most efficient

ways to channel help to those

covered under Social Security,

to check into scope of coverage

and adequacy of benefits, and

to eliminate inequities."

ing needs of the people. I am

preparing a bill to create an

independent, bi-partisan Social

Security commission to review

and recommend improvements

in the system. The commission

would seek the most efficient

ways to channel help to those

covered under Social Security,

to check into scope of coverage

and adequacy of benefits, and

to eliminate inequities."

ing needs of the people. I am

preparing a bill to create an

independent, bi-partisan Social

Security commission to review

and recommend improvements

in the system. The commission

would seek the most efficient

ways to channel help to those

covered under Social Security,

to check into scope of coverage

and adequacy of benefits, and

to eliminate inequities."

ing needs of the people. I am

preparing a bill to create an

independent, bi-partisan Social

Security commission to review

and recommend improvements

in the system. The commission

would seek the most efficient

ways to channel help to those

covered under Social Security,

to check into scope of coverage

and adequacy of benefits, and

to eliminate inequities."

ing needs of the people. I am

preparing a bill to create an

independent, bi-partisan Social

Security commission to review

and recommend improvements

in the system. The commission

would seek the most efficient

ways to channel help to those

covered under Social Security,

to check into scope of coverage

and adequacy of benefits, and

to eliminate inequities."

ing needs of the people. I am

preparing a bill to create an

independent, bi-partisan Social

Security commission to review

and recommend improvements

in the system. The commission

would seek the most efficient

ways to channel help to those

covered under Social Security,

to check into scope of coverage

and adequacy of benefits, and

to eliminate inequities."

ing needs of the people. I am

preparing a bill to create an

independent, bi-partisan Social

Security commission to review

and recommend improvements

in the system. The commission

would seek the most efficient

ways to channel help to those

covered under Social Security,

to check into scope of coverage

and adequacy of benefits, and

to eliminate inequities."

ing needs of the people. I am

preparing a bill to create an

independent, bi-partisan Social

Security commission to review

and recommend improvements

in the system. The commission

would seek the most efficient

ways to channel help to those

covered under Social Security,

to check into scope of coverage

and adequacy of benefits, and

to eliminate inequities."

ing needs of the people. I am

preparing a bill to create an

independent, bi-partisan Social

Security commission to review

and recommend improvements

in the system. The commission

would seek the most efficient

ways to channel help to those

covered under Social Security,

to check into scope of coverage

and adequacy of benefits, and

to eliminate inequities."

ing needs of the people. I am

preparing a bill to create an

independent, bi-partisan Social

Security commission to review

and recommend improvements

in the system. The commission

would seek the most efficient

ways to channel help to those

covered under Social Security,

to check into scope of coverage

and adequacy of benefits, and

to eliminate inequities."

ing needs of the people. I am

preparing a bill to create an

independent, bi-partisan Social

Security commission to review

and recommend improvements

in the system. The commission

would seek the most efficient

ways to channel help to those

covered under Social Security,

to check into scope of coverage

and adequacy of benefits, and

to eliminate inequities."

BOOK REVIEW: Allan Beekman

Memoir of Westerners in Japan

TALES OF THE FOREIGN SETTLEMENTS IN JAPAN, by Harold S. Williams, Chas. E. Tuttle Co., Paperback, 351 pp., \$2.95.

On July 1, 1859, after more than two centuries of isolation, Japan opened the ports of Yokohama and Hakodate to trade, in accordance with treaties made with the Western nations. During the period of seclusion, Nagasaki had been open to the Dutch and Chinese, but only on limited and humiliating terms.

Japan was to open Kobe and Osaka in 1868; Tokyo in 1869.

The Japanese authorities assigned areas of the treaty ports for foreign residence. With appropriate exceptions, foreigners were restricted to travel with a radius of about 25 miles from these areas. Fearing assassination from xenophobic samurai, isolated from the natives by language, custom, and interest, the foreigners formed close-knit communities.

Anti-Foreign Notices

Outside the concessions were reminders that the ideals revered by the foreigners might be abhorred by the native authorities. At the entrance to most towns and villages stood notice boards offering rewards for information against Christians—varying from 100 pieces of silver against a common believer to 500 for information against a priest.

St. Francis Xavier had introduced Catholicism into Japan in 1549, and it was chiefly due to official fear of this religion that foreigners were excluded in 1638. The autocratic had proceeded with such ruthlessness against Christianity that it appears to have been the only time that religious persecution has realized its purpose of near-extirpation.

Evidence of the brutality of Japanese justice abounded. The accused were transported in bamboo cages like fowls being taken to market. Before the government building at Kobe, and also on the beach at Wada Point, condemned persons were beheaded. Heads of the executed were fixed on top of long pikes where they putrefied as ravens fed on them.

Extraterritorial Rights

To escape the rigors of such a criminal code, the treaty nations had insisted on the right to try those of their countrymen accused of wrongdoing. Each treaty nation set up consular courts. An American charged with an offense against a Japanese was tried in an American court; a Japanese offending against an

Rep. Danielson named

to I & N Subcommittee

WASHINGTON—Rep. George Danielson of Los Angeles (D-Calif.) was appointed to the House subcommittee on immigration and nationality, filling the vacancy due to death of Rep. William Ryan (D-N.Y.). Danielson is the only West Coast member on this subcommittee.

With major sources of immigration now being from Asia, Mexico and South America and the fact that Danielson's own district (the 29th) is nearly half foreign-born or children of foreign-born parents, he said he was "pleased to accept this new responsibility."

with the government urged to establish some commission or claims court to ascertain the losses.

Utamaro print

NEW YORK — A London collector paid a record high of \$37,000 for a Japanese color woodblock print in a wild bidding spree Oct. 10 here at Sotheby Parke Bernet Galleries. The piece was Kitagawa Utamaro's portrait of a Japanese waitress.

BASIS OF \$250,000 FEDERAL GRANT TO ASIAN AMERICAN GROUP TOLD

LOS ANGELES — A project which would provide technical and planning assistance for community-based programs and established policy boards in Asian American communities in Seattle, San Francisco, and Los Angeles has been given a \$249,894 first-year grant by the Department of Health, Education and Welfare (HEW).

Grantee agency is Special Service for Groups, Inc., a United Way agency in L.A. headed by executive director George Nishinaka. Funding will go to the Asian American Planning and Technical Assistance Project (AAPTAP), sponsored by the Asian American Social Workers (AASW).

The planning project was the result of a 6-month grant from the HEW's Social and Rehabilitation Service (SRS) in July, 1971. It was organized and planned by members of an AASW/SRS task force which included participants from Asian communities in Seattle, San Francisco, and

L.A., representing Chinese, Filipino, Japanese, Korean, and Samoan populations.

Minority Planning

AAPTAP is one of seven national minority planning projects funded by HEW/SRS. Other minority community projects are for American Indians, blacks, Chicanos, Cubans, gypsies, and Puerto Ricans.

Overall purpose of these research and demonstration projects is to enable minority groups to identify the barriers that prevent eligible members of those communities from receiving social and rehabilitation services and to develop methods for overcoming these barriers.

In addition, the AAPTAP project proposes to further assist Asian American communities to exercise greater self-determination in identifying problems, in developing community resources, and to develop community-based recommendations so that social service programs will be more responsive to the needs and concerns of the Asian community by federal, state and local agencies.

Three Field Offices

AAPTAP will have offices and staffs in the three Pacific Coast cities. Contracts will be established with other Asian communities across the country in those states and cities with significant Asian populations. For example, preliminary contract has already been made with groups in Honolulu, Chicago, Denver, Philadelphia, New York and Boston.

Specific objectives of AAPTAP are as follows:

- 1-To establish effective community based policy boards in each of the three project localities.
- 2-To provide technical and planning assistance in program planning, proposal development, and exploratory research development as requested by community groups and individuals.
- 3-To provide technical and planning assistance to community groups in the project which have received funding.
- 4-To maintain coordination and communication between project localities with community groups and individuals, with public and private agencies on the local, state and federal levels.
- 5-To provide training for community groups and interested individuals through mini-workshop sessions which will focus on aspects of technical assistance, program planning and grantmanship.
- 6-To involve the Asian American communities across the country to participate in the project and to enable community groups to receive any necessary technical and program planning assistance.

Long-range objective is to enable the development of sufficient community-based resources, service and knowledge during the three to five-year existence of the project.

Four AAPTAP component units, which may answer further questions are as follows:

- Coordinating Unit—Jim Miyano, dir.; Christine Ung, sec.; 1300 W. Olympic Blvd., Los Angeles 90015, (213) 385-4464.
- Seattle Unit—Donna Yee, tech planning dev. spclt.; Dorothy Cordova, comm. planning dev. spclt.; Paul Motoyoshi, off. mgr.; 1908 E. Jefferson, Seattle 98122, (206) 329-0054.
- San Francisco Unit—Ken Nakamura, dir.; Tom Kim, comm. spclt.; David Quan, econ. spclt.; 915-A Grant Ave., Rm. 4, San Francisco 94108, (415) 989-1176.
- Los Angeles Unit—Richard Wong, dir.; Jeanne Abella, comm. spclt.; Elizabeth Wu, econ. analyst; Aprille Emi, off. mgr.; 1320 Glendale Blvd., Los Angeles 90026, (213) 388-9355.

Local Scene

Los Angeles

Creative Workshop, an innovative approach to education of children (age 3 to 12), resumed its Saturday morning sessions at Maryknoll School. The workshop stresses total development of the child through group cooperation, creative expression and decision making. Concerning enrollment, parents may call Ellen Hamada (836-0438), Bob Miyamoto (294-0229) or Lani Suenaga (837-4566).

The L.A. chapter of the 100th Infantry will have a 30th anniversary party Oct. 21 at the 442nd Memorial Hall, 1438 Oak St.

The Asian American Education Commission held its monthly meeting Oct. 18 at the L.A. Board of Education to elect officers, discuss Prop. 13 (Watson tax initiative), and student advisory task force.

An Asian American Community Mental Health Training Center is being developed as a five-year project under a federal NIMH grant to social work students for training and experiences relevant to Asian peoples and create a base to develop curriculum material applicable to the Asian American community. The center is also expected to be an in-service training facility for community people, according to the Asian American Social Workers, administrators of the grant. An advisory board is now being organized of students, faculty, agency representatives and laymen to serve as the policy-making body of the center.

San Francisco

Bay Area Asian Law Students conference is being called by the Asian Law Students Organization at Hastings College on Saturday, Oct. 28, 9 a.m.-5 p.m. Open to the community, the conference will focus on the problems of the Asian community, the role of the Asian attorney and examine minority admission programs in the California law schools.

Black & white photographs of Japan: 1948-1954 by Betsy O'Hara, one of the first non-military U.S. civilians to be in the Kobe-Osaka area, will be exhibited by the San Francisco Art Commission as a Neighborhood Arts program Oct. 17-31 at the Nihonmachi Gallery, 1700 Post St. The gallery is open Wednesday through Sunday, 1-4 and 7-9 p.m.

Japanese Community Services, Inc., the informational and referral service at 1624 Post St. is conducting its first fund drive to help meet minimal staff salaries. Contributions are tax-deductible. Though now a member agency of United Bay Area Crusade, no financial support has yet been granted. Any money that is granted will not be available to United Japanese Community Service (of which JCS is a component) until April 1973 at the earliest, it was reported.

Portland

"The Pride and the Shame", the Seattle JACL traveling exhibit on the history of Japanese in the Pacific Northwest, has been on display this week (Oct. 14-Oct. 20) at Portland State University's Smith Memorial Center. The local JACL cooperated with PSU in the week-long presentation and at the reception opening the exhibit. Books on Japanese Americans were also highlighted in a display while films, "Yellow Brotherhood" on drug abuse and "Sleep-walker" on Asian women, were shown.

Spokane

Highland Park Methodist Church, the city's largest Japanese congregation, marked its 70th anniversary on Sept. 15 with many Caucasians present to express their appreciation to the contributions of the Japanese community to the city. The Spokesman-Review editorial added: "Our city has been enhanced both in physical beauty, cultural heritage and spiritual character because Japanese dwell among us."



Asian Women's Center—Temporarily housed at the Los Angeles YWCA Metropolitan Headquarters, 722 So. Oxford, are the recently appointed staff for Asian Women's Center, (from left) Sandy Wong, adm. asst.; Irene Hirano, associate director; and Linda Iwataki, director. Staff positions are open in their program areas of individual-family counseling, women and health, drug abuse, child care and education. —Photo by Visual Communications

DR. HARUKO MORITA

Legislature Lauds School Principal

LOS ANGELES — Dr. Haruko Morita, principal at Garvanza School, was honored recently by the State Legislature with a Senate resolution commending her for "service to the community and the field of education."

Dr. Morita received a framed copy of the resolution at ceremonies held at the Aragon Avenue School, where she was a principal for the past nine years. Sen. David A. Roberti of the 27th District, introduced the resolution.

Education

tion at the request of Gonzalo Perez, president and the Aragon Avenue School Advisory Council.

Dr. Morita began her teaching career in Stockton, in 1942 and taught in the Rohrer Relocation Center in Arkansas, Illinois, and Southern California. She has supervised and administered the training of hundreds of student teachers and administrators at California State University at Los Angeles and Mount St. Mary's College. She was vice principal at Malabar Street School, principal at Farmland, summer school principal at Ann, Albion and Griffin Avenue Schools.

Dr. Morita was appointed by Secretary of Health, Education, and Welfare, Elliott Richardson to the 20-member Advisory Committee of the Teachers Corps. She was listed in the 1971 Edition of the Personalities of the West and Midwest. She has been a member and officer of numerous learned and professional organizations, among them the Institute for the Development of Educational Activities, the California Honor Scholarship Society of which she is a life member, the California Association for Supervised Teaching, and the California Congress of Parents and Teachers Association of which she is an honorary life member.

Dr. Morita also serves as Commissioner of the Asian

State School for Deaf superintendent ousts Sansei, mother cites prejudice

LOS ANGELES — A determined young mother has filed a lawsuit against the state of California, naming the California State School for the Deaf at Riverside and Dr. Richard G. Brill, superintendent, as defendants.

Mrs. Lynne Choy Uyeda, wife of Akito F. Uyeda of 1871 S. Cloverdale Ave., Los Angeles, initiated the action after school officials expelled her 10-year-old son, Craig, because they "could no longer meet his educational needs" and, at best, give only custodial care. Craig had been a resident student at the school since January, 1968.

Mrs. Uyeda contends that her son's civil rights have been violated because she believes her son was unjustly forbidden to return to the school, one of only two such institutions operated by the state. The other facility is California State School for the Deaf located in Berkeley.

High IQ Range

Craig, third of four sons and profoundly deaf since birth, is considered an exceptionally bright young man, with test results showing he has superior intelligence in the 130 to 160 I.Q. range. He was placed in the Riverside school's deaf multi-handicapped unit, which is generally reserved for pupils who have other learning handicaps in addition to their deafness.

Dr. Brill and other school personnel blame what they describe as an "emotional and frustration problems" as the reason for Craig's expulsion last May.

It was not until after the parents were asked to take their son home that Mr. and Mrs. Uyeda were made aware of certain rights involving their son's education.

Prejudice Cited

Mrs. Uyeda believes, however, that Dr. Brill and his staff have been prejudicial in their selection of students for the multi-handicapped unit, as well as for the regular school.

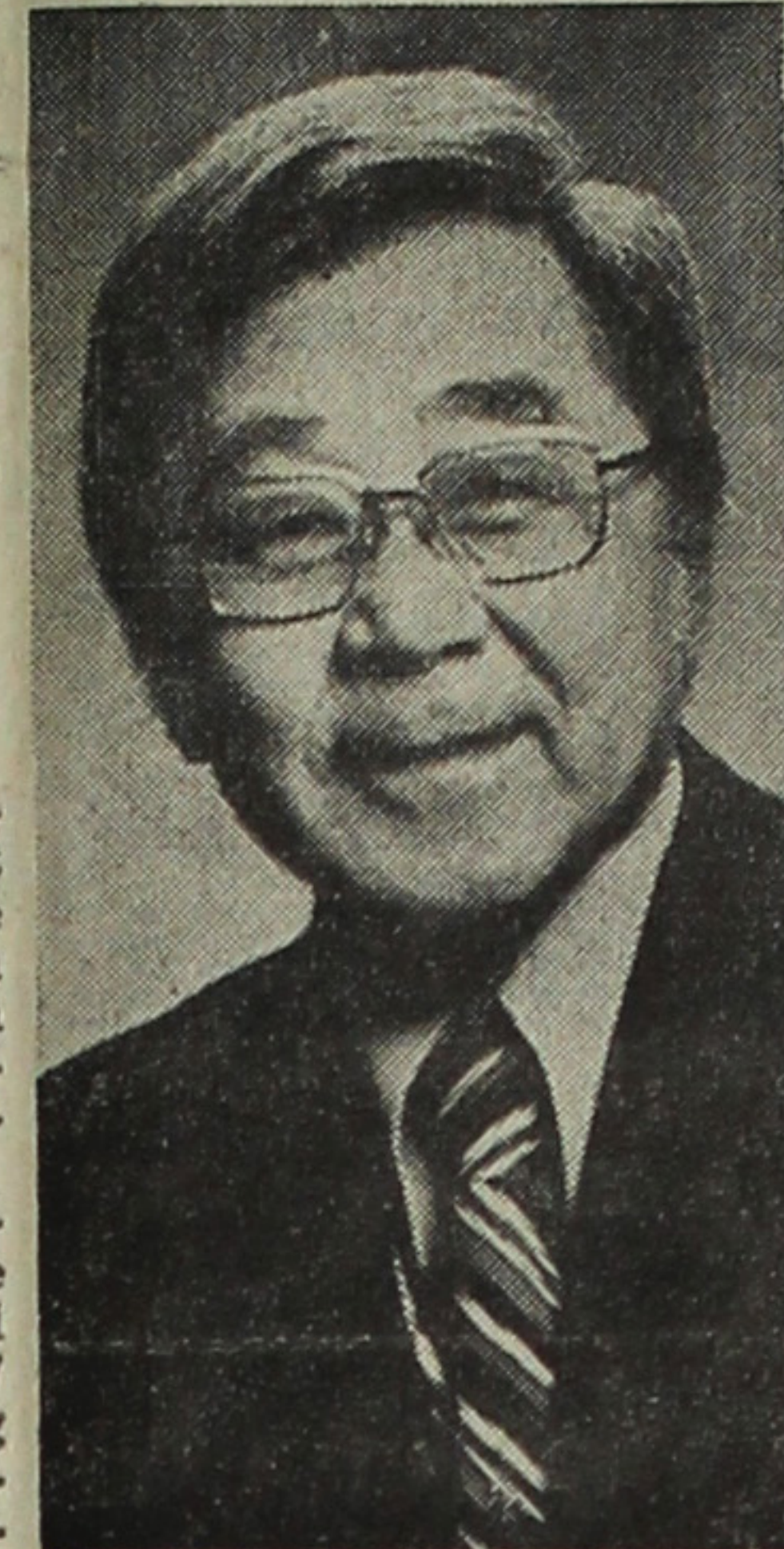
She points out that if the school officials' accusations for expulsion concerning her son are true, then he is in need of the special education program the Riverside staff can provide and should not be turned away.

NEWS CAPSULES

Mrs. Sybil Ratcliff, who has charged she was not given due notice for dismissal and seeks to return to the position. The city council directed the city attorney to answer the summons filed by the ex-city clerk.

Insurance and real estate broker Frank Tsukamoto of Berkeley, whose police officer son, Frank Jr., was slain two years ago in a senseless killing, was promoted to lieutenant in the Contra Costa county deputy sheriff organization.

Business



Active Gardena Valley JACLer and onetime Downtown L.A. JACL president Harry M. Fujita (above) was awarded the Charter Life Underwriter designation at conference ceremonies in San Francisco Sept. 15. In the life insurance business since 1951, he established an agency for a California based company in 1958 and in 1971 joined the Woods Agency of Massachusetts Mutual Life Insurance, Los Angeles. He has qualified for the company's Inner Circle in 1971 and 1972, the Million Dollar Round Table, and National Quality Award ten times. On a two-week business tour of the U.S., Sunory International president Keizo Saji and U.S. sales manager George Harada hosted a reception at the Century Plaza Hotel Oct. 11 for Southern California dignitaries. Saji is surveying investment opportunities in the U.S. as well as evaluating the American commercial climate, business and political attitudes in wake of the recent changes in diplomatic and trade relations.

During his 1965-66 sabbatical leave, he earned his master's degree at Oregon State. A native of Seattle, he attended Bethel College in Kansas and graduated from the Univ. of Washington. He is married to a school teacher and father of four children ranging in age from 5 to 13. A former national judo champion, a 5-dan holder, he is president of Seattle Dojo, the oldest judo school in America.

Joseph Y. Sano, 71, was appointed instructor in Oriental languages and literature by the Univ. of Colorado at Boulder. Harry Matsunaka is electronics instructor at Morgan County (Colo.) Community College, where his lab includes digital logic trainer.

Government

Denver Housing Authority now includes the Rev. Russell K. Nakata, assistant rector at St. John's Episcopal Cathedral, as a member of its board of commissioners.

The drawn-out controversy over the firing of the Commerce City (Colo.) city clerk continued while the city manager went ahead and hired Robert Oshima, to succeed

Frank H. Hirata, longtime executive secretary with the Japanese Chamber of Commerce of Southern California, is resigning as customer relations director with the Port of Los Angeles Authority, a post he has held for the past 2½ years, to join the Nakano Transportation & Warehouse Co., a Japanese firm developing its U.S. operation by construction of a new building in Compton's Watson Industrial Park. Hirata will be vice president.

The era of permanent press, drip dry clothing and washable double knits has made laundries almost superfluous, according to Wil Tsukamoto, who sold People's Laundry to join the firm of Insurance

1973 CHEVROLET
Fleet Price to All—Ask for
FRED MIYATA
Hansen Chevrolet
11351 W. Olympic Blvd. West L.A.
479-4411 Res. 826-9805

5.25% 5.75%
6% Inquire about our
Multiple Interest Rates

MERIT SAVINGS
AND LOAN ASSOCIATION
324 EAST FIRST ST., LOS ANGELES, CALIF. 90012 / 624-7434
HRS: 10 AM TO 5 PM / SAT. 10 AM TO 2 PM / FREE PARKING

Low cost new auto loans!

Sumitomo Bank of California
365 California Street, San Francisco, Calif. 94104 • Sacramento, San Jose, Oakland,
San Mateo, Contra Costa, Los Angeles, Gardena, Anaheim, Monterey Park, Wilshire-Grand

Politics

The Asian Americans for McGovern-Shriver office in Los Angeles received a statement Oct. from Sen. Daniel Inouye (D-Hawaii) endorsing the candidacy of Sen. McGovern for President. "I believe there is a choice in 1972," Inouye said. "It is a choice between compassionate, open government led by George McGovern and the restrictive, closed government of the Nixon administration. My choice is George McGovern."

Fine Arts

Artist-author Taro Yashima of Los Angeles has won the grand prix in the desirability aquarelle gouache (mixed media based on watercolor) category of the 23rd international art show in Paris. A total of 714 artists from 34 countries were invited to exhibit with seven artists named grand prix winners. "Being invited was honor enough and I still can't believe it," Yashima said. "Making this my new point of departure, I wish to devote more of myself to art from now on."

Book

Commercial illustrator George Suyoka, Hawaiian Nisei who graduated at Oregon State of Chicago and now living in Illinois, was commissioned to illustrate "Momotaro", one of the five ethnic-related children's stories, written and edited by Ruth Tabrah, member of the Hawaii State board of education, on sale at \$2.50 at the Bank of Hawaii in commemoration of its 75th anniversary. The books list at \$5.95.

Courtroom

Nisei rancher Goro Kagehiro of Yuba City took the stand Oct. 5 in the trial of Juan Corona, accused of killing some 25 farm workers in the spring of 1971, at Solano County Superior court at Fairfield. Kagehiro said Corona, a farm labor contractor, had a crew at his property thinning peaches from May 13-19 and it was on the last day by the Corona crew that he noticed a hole dug in one of his orchards. A few hours later, he saw that it had been filled and called authorities, who then discovered the first of the 25 bodies in their graves.

Los Angeles County Superior Court Judge Aulen F. Busch last week (Oct. 10) sentenced Hacienda Heights man, Allen J. Mizuno, 32, who threatened to blow up Hollywood Park unless he was paid \$50,000 to 90 days in jail, fined \$300 and placed on four years probation. While no explosives were found, Mizuno was arrested when he attempted to retrieve the ransom package.

Deaths

Takemaru Hirahara, 82, of Caldwell, Idaho, died Oct. 5. A native of Oita-ken, he came to the U.S. in 1906, worked in Denver and joined the Salvation Army in 1925 in San Francisco, retiring in 1952. Two sons and two daughters survive, Dave (Seattle), Mike (Oakland), Midori Furushiro (Caldwell) and Lily Oshiro (Chicago).

Rev. Seikaku Mizutani, 76, resident minister of the Walnut Grove Buddhist Church since 1951, died Sept. 25. During the war, he was at Rohrer WRA Camp and prewar from 1916 at Placer, Bakersfield, San Luis Obispo, Portland and Lodi temples.

Shimatsu, Ogata and Kubota Mortuary
911 Venice Blvd.
Los Angeles
RI 9-1449
SEIJI DUKE OGATA
R. YUTAKA KUBOTA

Three Generations of
Experience
FUKUI
Mortuary, Inc.
707 E. Temple St.
Los Angeles 90012
626-0441
Solchi Fukui, President
James Nakagawa, Manager
Nobuo Osumi, Counselor

mander. He, with senior v.c. Howard Hieshima and junior v.c. Bill Toguri, represented the post at the American Legion convention in Chicago held in August. The Nisei Post 1183 is co-sponsoring a charter flight to Hawaii with the Chicago JACL for the 442nd reunion from June 25-July 7, 1973.

Science

Subject of a major personality sketch by Victor Cohn, science writer on the Washington Post staff, in the Post's Sunday magazine, "Potomac", on Sept. 24 was Dr. Makio Murayama, the only basic scientist at National Institutes of Health working full-time on sickle cell anemia. The San Francisco-born Nisei was honored by JACL as a Nisei of the Biennium at the last national convention in Washington. Cohn noted the lack of support to enhance his research though NIH superiors deny Murayama is being slighted.

Architect

Sacramento architect Edwin Kato estimated damage to the Farrell's Ice Cream parlor, battered by a jet plane unable to take off Sept. 24, and scene of 22 persons killed, to be about \$100,000 and would take up to five months to reconstruct. Farrell's hasn't decided yet to reopen at the same stand.

Asian Studies

Arizona State University's Center for Asian Studies at Tempe is headed this semester by Dr. Yung Hwan Jo, professor of political science, and among recent staff faculty appointees was Mrs. Shigeo Fukai, specialist in Japanese politics from Tokyo and doctoral candidate at the Univ. of Tennessee. Its first symposium, set for next Feb. 2-3, will examine the future of Taiwan. Several eminent scholars including the State Dept. head of the Chinese desk will participate. The center will publish their papers along with policy statements from the nations involved, according to Dr. Jo.

Awards

Karl K. Nobuyuki, 27, director of Gardena's Youth and Community Services Organization (YASCO), has been chosen to be included in the 1972 edition of "Outstanding Young Men of America." He has been active in combating drug abuse, serving as both the acting chairman of the Centinela Valley region of the Inter-Agency Task Force on Drug Abuse and as a member of the steering committee of the task force on the county level.

Military

The Leeward Oahu-School VFW Post in Hawaii renamed its post in honor of the Wahiawa Medal of Honor winner in special ceremonies Oct. 14. Named the Cpl. Terry T. Kawamura VFW Post 3840, the 19-year-old Sansei was killed in Vietnam in March, 1969, when he threw himself on a satchel charge to save the lives of his comrades.

Joe Sagami heads the Chicago Nisei Post 1183 as com-

GARDENA — AN ENJOYABLE JAPANESE COMMUNITY

Poinsettia Gardens Motel Apts.

13921 So. Normandie Ave. Phone: 324-5883
68-Units • Heated Pool • Air Conditioning • GE Kitchens • Television
OWNED AND OPERATED BY KOBATA BROS.

CAL-VITA PRODUCE CO., INC.

Bonded Commission Merchants—Fruits & Vegetables
774 S. Central Ave. L.A.—Wholesale Terminal Market
MA 2-8595, MA 7-0338, MA 3-4504

How would you like to realize a minimum
net capital gains of 35% per annum?

Minimum \$10,000. Write for Details.

DYKE D. NAKAMURA

Registered and Licensed by the Tokyo
Securities Exchange Commission
International Financial Counsellor and Fiduciary

REPRESENTING

YAMA KICHI SECURITIES CO.

100-C Tokyo Masonic Bldg.
1-3 Shibakoen 4-chome, Minato-ku
Tokyo, Japan (105) Tel. 432-4891/5

We've got a yen for your new car

at a new low interest rate:

Sample 36-Payment Schedule (New Automobile)

Cash Price	\$3,000.00	\$4,000.00	\$5,000.00
Total Down Payment			
Required (Minimum)	750.00	1,000.00	1,250.00
Amount Financed	2,250.00	3,000.00	3,750.00
Finance Charge	270.00	359.88	450.12
Total of Payments	2,520.00	3,359.88	4,200.12
Monthly Payment			
Approx.*	\$ 70.00	\$ 93.33	\$ 116.67

Annual Percentage Rate 7.51% Based on 36-Month Loan.

Come Drive a Bargain with
THE BANK OF TOKYO
OF CALIFORNIA

San Francisco Main Office: Tel. (415) 981-1200

S.F. Japan Center Branch: Tel. (415) 981-1200

Mid-Peninsula Branch: Tel. (415) 941-2000

San Jose Branch: Tel. (408) 298-2441

Westgate San Jose: 1494 Saratoga

Fresno Branch: Tel. (209) 233-0591

North Fresno Branch: Tel. (209) 233-0591

Los Angeles Main Office: Tel. (213) 687-9800

L.A. Downtown Branch: 616 W. 6th, (213) 627-2821

Crenshaw-L.A. Branch: Tel. (213) 731-7334

Western L.A. Branch: Tel. (213) 391-0678

Gardena Branch: Tel. (213) 321-0902

Santa Ana Branch: Tel. (714) 541-2271

Panorama City Branch: Tel. (213) 893-6306

San Diego Branch: Tel. (714) 236-1199