

By Henry T. Tanaka
National JACL President

At least once a year we could expect a visit from Toge Fujihira, a world renowned photographer, whose documentary films about people have also taken him to the far corners of the world. Toge spent many hours with our family, sharing stories of people in villages and ghettos. He told us about their spirit

RIP: Toge Fujihira

of hope and their determination to survive in an environment of despair and disadvantages.

Through his films he captured that spirit and determination, and communicated to all of us a sense of human understanding and sensitivity.

A month ago, Toge embarked on an assignment which took him to several provinces in Canada. His next to last assignment was in Vancouver, British Columbia, before returning to his home in Roslyn Heights, New York, for the Christmas holidays. He died suddenly while checking in at the hotel.

His family, his relatives and many friends throughout the world shall miss him. Our family will miss him, too. Toge was my wife Sach's brother-in-law.

November weekends . . .

Two weeks ago, I was in San Diego to hear Bill Hosokawa, in his straightforward and eloquent manner, tell the JACLers of the Pacific Southwest District Council that the Nisei are kicking. And indeed they are as I listened and participated in the Council's business session. Headed by newly-elected Governor Masamune Kojima, the Council will surely continue its format as a highly vocal and action-oriented group on issues of district and national importance.

The following day I had the opportunity to talk with representatives of the Central California District Council in Fresno who were concerned over the letters I had sent on behalf of National JACL to congressmen regarding the Watergate case. It was their concern that National statements should have the support of the National Board, not just the Executive Committee. It was my concern that the timing of such releasing be also an important consideration if JACL is to have any possible impact on relevant National issues.

After much deliberation, I believe the representatives (most of them, anyway) agreed that the statements in no way, could we be accused or engaging in partisan politics. Interestingly enough, so far, this has been the only district to respond to the letters which were sent to all members of the National board. I appreciate the opportunity to discuss this matter with the CC District Council.

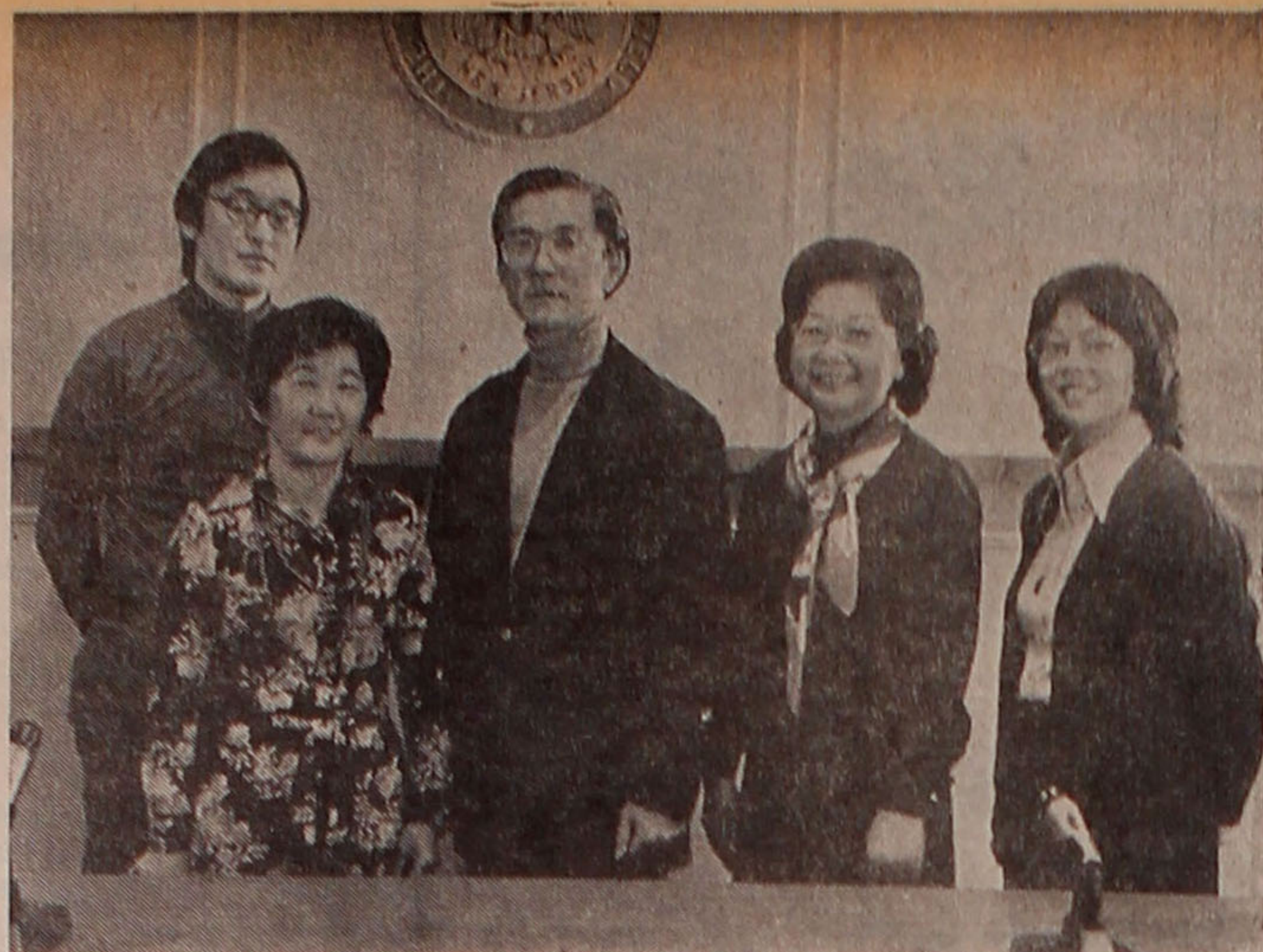
A week later, I attended a most productive and stimulating Intermountain District Council Convention in Boise, Idaho, at which members of the Pacific Northwest District Council were also in attendance. Lively business sessions and workshops on education, public relations and employment/affirmation portends even more stimulating meetings in the future under the new leadership of EDC Governor, George Kimura, and PNW Governor, Dr. Jim Tsujimura.

For 1974 . . .

Meanwhile, the multitude of activities assigned to members of the National staff/board are in high gear.

New membership form and procedures for eventual computerization; Updating the President's handbook; Planning for the National JAY Convention scheduled for August, 1974;

Distribution of pledge cards for the national JACL building fund drive; Preparing national convention . . .



JACL LEADERS—Seabrook JACL hosted the Eastern District Council fall conference Nov. 17. Among the 70 delegates were (from left) Barry Matsumoto, Washington representative; Gracye Ueyehara, EDC governor;

Shig Sugiyama, nat'l JACL president-elect; Ellen Nakamura, host chapter president; and Gail Nishioka, EDC regional director and asst. Washington representative. —Bridgeton Evening News Photo.

EDC raising \$10,000 for room for public info in new JACL bldg.

SEABROOK, N.J. — The Eastern District Council, at its fall conference here Nov. 17 at the Upper Deerfield Township Municipal Bldg., has committed itself to raise \$10,000 for a public information room in the proposed JACL Headquarters Building.

Kaz Horita, past national JACL vice-president, of Philadelphia and a regional campaign coordinator for the JACL Building Fund Drive had presented detailed plans of the estimated \$250,000 structure in a slide presentation.

Horita also stressed the need of the JACL headquarters building and to insure EDC's share in meeting this national goal appointed the following to work with him: Washington, D.C.—Harry Takagi, Cherry Tsutsumida; Philadelphia—Howard Okamoto, Seabrook—Charles Nagao; New York—Ron Inouye.

National JACL President-elect Shig Sugiyama and Barry Matsumoto, Washington

JACL representative, were present to share their experience and guidance on other National programs. Mrs. Gracye Ueyehara, EDC governor, chaired the morning and afternoon sessions.

Public Relations

Sugiyama's informative report on the activities of the National Public Relations Commission dealt with P. R. goals of JACL and the problems involved today in trying "to establish our own identity as Americans." Some 10 objectives tentatively considered for National P. R. Program created considerable interest and discussion.

EDC groups strongly indicated their support National JACL public relations efforts — even though there are some differences in opinion on the ways and means of accomplishing this purpose. EDC Public Relations Project Committee with Ron Inouye

as chairman will continue its research and planning for an effective means of carrying out the public relations for JACL.

Dennis Minami of Washington, D.C., representing EDC's JAY reported on their tentative plans for week-end workshop conference in the near future for the youth groups in EDC area.

In order to improve the system of administering the numerous National JACL Scholarship awards — EDC Committee will work toward up-grading the program. EDC Governor appointed the committee to make the recommendations to streamline the National Scholarship guidelines. On the committee are: Tami Ogata, NYC; William Marutani, Herb Horikawa, Philadelphia; Vernon Ichisaka, Seabrook; and Shig Sugiyama, Washington.

Research into the history of the Japanese Americans on the East Coast, sponsored by EDC, is only partially completed, according to Ron Inouye. Because of its importance on a National basis, the EDC referred the East Coast Japanese American Research Project to the National Committee to expedite its completion.

Luncheon Speaker

Speaking at the luncheon served at the Buddhist Church by its women's organization, Don Wilshire of C.F. Seabrook Co. explained some of the future plans for the new membership procedures.

As a main interest for the luncheon program, Mrs. Gail Nishioka, new Regional Director of EDC, presented the documentary slides on the History of Japanese Americans. A brief translation in Japanese by Charles Nagao was provided for the benefit of some of the senior members present.

In the afternoon workshop on "Ethnicity in Education: the role of the JACL Chapters", Mrs. Nishioka, who was in charge, presented two general areas of the theme: (1) What ethnic studies means to education in general and (2) Some general suggestions as to what individual JACL Chapters can do.

New EDC Director

Gail Ann Chew Nishioka from Oakland, Calif., who is serving as the first regional director of JACL Eastern District Council and assistant Washington representative, had much to offer in directing the discussion with her youthful spirit and enthusiasm. With an M.A. degree in Philosophy of Education in June 1973 from Univ. of California, she comes with numerous experiences as project and administrative assistant to programs dealing with youth and ethnic studies. She served as teaching assistant on Asian American Studies at UC Berkeley. This summer, she conducted a work-shop on "Education and Ethnicity" at the EDC-MDC Convention in Detroit.

On "Ethnic Studies—Overall Stressing to Education", Gail stressed that "a new consideration is beginning to emerge whereby individuals believe that it is possible for our society to view itself as a culturally pluralistic one: a 'common society' of men who share mutual respect and understanding and who need not be like one another to work together to achieve common goals."

She pointed out that "in the final analysis, what is meant by an 'integrated society' includes an understanding of the individual as separate and unique, on the one hand, and a belief in society where it is possible for men to live together, regardless of their differences. But what is cared for most by each is the opportunity to benefit common good where all men are allowed the opportunity to benefit."

Chapter Programs

Some of her recommendations for JACL Chapter programs included: community-student project or a joint Nisei-Sansei project; establishing speakers bureau and form-

Malheur County, Ore. PNW-IDC regional director Don Hayashi was the evening speaker. During the business sessions, he explained the new membership procedures.

Eyebank Explained

Snake River JACL hosted the Saturday luncheon where W.D. Hallock of Boise, president of the Idaho - Oregon Sight Conservation Foundation, explained the activities of his organization. There is a dire need for donors to the eyebank, he said. Blind teacher Frank Smith related his past experiences.

The seven IDC chapters reviewed their quarterly programs during the Saturday session. Tanaka explained what he envisioned for JACL this coming year while 1000 Club chairman Tad Hirota

Continued on Page 4

Plaintiffs reject Younger apology of 'racist' report

SAN FRANCISCO — Speaking for the plaintiffs who have filed a class action suit against Attorney General Evelle Younger for publication of a "distorted" intelligence bulletin concerning Chinese, Mason Wong of Youth Service Center and Mike Lee of Neighborhood Legal Assistance reaffirmed their rejection of Younger's "apology" as released to the media Nov. 20. Younger's statement only regrets the cover and impression made for the Criminal Intelligence Bulletin for July, 1973, "Triad: the Mafia of the Far East", and does not admit "the report is distorted", both Wong and Lee contended.

A retraction of the bulletin as requested in the lawsuit has not been made, they added. Nor have any of the plaintiffs been contacted by Younger's office (as of early December).

Wong feels that the report, in putting Asian Americans in a negative light, will affect how police will treat Asian American youths. He cited the L.A. race riot in the 1950s and the Chicago riot in 1968 as examples of how negative psychological preparation of policemen can lead to disaster.

Wong and Lee emphasized the lawsuit is an attempt to prevent similar bulletins from being published in the future and make law enforcement agencies more responsive to the Asian American community.

Copies of the Younger bulletin may be secured from Asians for Truth and Justice, 250 Columbus Ave., San Francisco 94133. —East/West

Membership Publication: Japanese American Citizens League, 125 Weller St., Los Angeles, Calif. 90012; (213) MA 6-6936
Published Weekly Except First and Last Weeks of the Year—Second Class Postage Paid at Los Angeles, Calif.

VOL. 77 NO. 24

FRIDAY, DECEMBER 14, 1973

Subscription Rate Per Year
U.S. \$9. Foreign \$20

12 CENTS

AGGRESSIVE U.S. SALES TO JAPAN MARKET URGED

Japanese Ambassador Yasukawa Addresses L.A. Trade Symposium

LOS ANGELES — Describing the United States and Japan as "the two most dynamic economies in the world," Japanese Ambassador Takeshi Yasukawa last week (Dec. 5) told 400 world traders from 11 western states that "the \$400 billion Japanese market, now about half the size of the American market, is ready and willing to be exploited by an aggressive U.S. sales effort."

Citing the lessons of the current oil crisis, and the success with which Japan and the United States are correcting their recent trade imbalance through "friendly consultation and mutual policy adjustments," Yasukawa declared that "new forms of world economic cooperation will be at the top of the international agenda for the remainder of this century."

The energy crisis demonstrates, the envoy said, that "the modern industrial state . . . cannot survive without foreign trade . . . not only trade in manufactured goods with other industrialized nations, but also trade in essential raw materials and energy with the resource-rich developing countries in the Middle East, Asia, Africa and Latin America."

Value of Foreign Trade

Moreover, according to the Japanese diplomat, "even if the United States meets President Nixon's goal of energy self-sufficiency by 1980, your prosperity will be short-lived if your great foreign markets dry up for want of energy, and if the rest of the world economy slows to a crawl — or worse, slips into anarchy in the competitive struggle for scarce energy and other raw materials resources."

Referring to current pressures on world food supply, the speaker suggested that "one of the most critical factors in world food supply and prices will be whether American agriculture — the most efficient food producers in the world — will be able to increase production in proportion to rising world demand."

Future world economic stability and growth, he said, require "continuing reliable access to food, energy and raw materials supply — for all nations."

Both the international monetary system and GATT trading rules "need to be updated in light of the new realities," Yasukawa stated, so we can "move deliberately into an increasingly open world trading system . . . A single world economy has already emerged. Our international economic institutions must catch up with that reality."

He added, "A world that breaks up into hostile economic blocs will also be a world of dangerous political hostilities."

New Problems

Acknowledging that "an open world economy will . . . bring its own new problems," the envoy declared that the U.S.-Japan "success so far in managing (our) complex relationship is a very useful demonstration that the problems of an emerging 'one world economy are also manageable. Japan and the United States are proving, for example, that highly advanced and competitive economies can be each other's best customers."

Pointing out that "among your trading partners Japan took by far the largest steps to help the United States resolve its recent trade and payments problems," Yasukawa invited the traders to expand American exports to Japan. "Even the United States and Japan, rich as we have become, are still dependent for our continued prosperity on a stable but dynamic wider world economy."

Ambassador Yasukawa spoke at a luncheon at the Biltmore Hotel, following a symposium of Western states world trade organizations on "Communications: The Key to Doing Business in Japan."

Fowler Nisei accorded high Masonic honors

FRESNO, Calif. — Harry E. Hirakawa of Fowler, an orchardist, fruit packer and shipper, has been named a Knight Commander of the Court of Honor in Scottish Rite Freemasonry.

The honor is one that cannot be petitioned for, just above the 32nd degree. It was granted by the Supreme Council of the U.S. Southern Jurisdiction of Scottish Rite Freemasonry meeting in Washington, D.C.

Back House inquiry into impeachment

(Special to The Pacific Citizen) CLEVELAND, Ohio—Support for the House Judiciary Committee's inquiry into the possible impeachment of President Nixon and establishment of an independent special prosecutor to be appointed by the Chief Judge of the U.S. district court for the District of Columbia was expressed this past month by National JACL President Henry Tanaka.

Rep. Peter Rodino, Jr. (D-N.J.), chairman of the House Judiciary Committee, where impeachment proceedings must begin according to the U.S. Constitution and House rules, began the inquiry in mid-November.

Tanaka, in his letter of Nov. 2 to Rodino, assured the organization's support into the inquiry.

"Substantial Basis"

"Because there is a substantial basis (as a result of the Senate Watergate hearings) for believing that the President may have engaged in misconduct, it is now the solemn constitutional duty of the House of Representatives to examine the President's record to determine if impeachment is warranted."

"While the commencement of an impeachment inquiry is a serious affair, a judicious and principled inquiry by the House can provide the means

by which the public's confidence in the orderly and legitimate processes of government can be restored.

"In this regard, it is imperative that the House Judiciary Committee proceed with its inquiry in a principled manner and that it not allow partisan political considerations to color its deliberation," Tanaka said.

The House Judiciary Committee is comprised of 21 Democrats and 17 Republicans — only five of the 38 served on the Committee when it wrote the landmark public accommodations law of 1964.

House Judiciary

A bulk of JACL-sponsored legislation over the past quarter century also originated in this committee—such as Issei naturalization, repeal of Title II (Emergency Detention Act), evacuation claims, immigration and civil rights.

Current members of this committee are (in order of seniority):

DEMOCRATS—Peter W. Rodino, Jr. (N.J.), chairman; Harold D. Donohue (Md.); Jack Brooks (Tex.); Robert W. Kastenmeier (Wis.); Don Edwards (San Jose, Calif.); William L. Hungate (Mo.); John Conyers Jr. (Mich.); Joshua Eilberg (Pa.); Jerome R. Waldie (Antioch, Calif.); Walter Flowers (Ala.); James R. Mann (S.C.); Paul S. Sarbanes (Md.); John F. Seiberling (Ohio); George E. Danielson (Los Angeles, Calif.); Robert F. Drinan (Mass.); Charles B. Rangel (N.Y.); Barbara C. Jordan (Tex.); R.H. Thornton (Ark.);

Elizabeth Holtzman (N.Y.), who defeated Emmanuel Celler, who defeated this committee for over 20 years; Wayne Owens (Iowa); Edwards Mevinsky (Iowa).

REPUBLICANS—Edward Hatchinson (Mich.); Robert McGlothy (Ill.); Henry P. Smith (N.Y.); Charles W. Sandman (N.J.); Thomas F. Hallback (Ill.); Charles E. Wiggins (Covina, Calif.); David W. Dennis (Ind.); Hamilton Fish (N.Y.); Wiley Mayne (Iowa); Lawrence J. Hogan (Md.); William J. Keating (Ohio); Caldwell Butler (Va.); William S. Cohen (Me.); Trent Lott (Miss.); Harold V. Froelich (Wis.); Carlos J. Moorhead (Glendale, Calif.); and Joseph F. Marabito (N.J.).

Special Investigator

The House committee has completed work on a House bill establishing a special Watergate prosecutor outside the post of the executive branch—similar to the bill in the Senate, which the JACL president referred to in his letter to Sen. James O. Eastland, chairman of the Senate Judiciary Committee.

JACL shares the widely expressed concern that a full and complete investigation of possible misconduct by President Nixon and his close associates will not occur so long as the special prosecutor in the Watergate matter remains under control of the President, Tanaka said.

"By his dismissal of Special Prosecutor Archibald Cox, the President has emphatically demonstrated that he is unwilling to allow a complete and vigorous investigation," Tanaka explained.

"The administration of justice requires not only fairness and impartiality in fact but also the appearance of fairness and impartiality. Disclosures of possible Presidential misconduct and the President's disregard for his previous commitment to the independence of Special Prosecutor Cox raise serious questions with regard to the President's credibility."

Investigation

"In light of these serious questions, it is extremely unlikely that an investigation conducted under control of the President can ever satisfy the public's justifiable skepticism of the President's willingness to allow an investigation into his own possible misconduct."

"Thus no matter how full and impartial a Justice Dept. inquiry may ultimately prove to be, there will remain substantial and lingering doubt in the public mind as to the legitimacy of such an investigation," Tanaka continued.

The President's appointment of Leon Jaworski as his special Watergate prosecutor should not deter passage of the Senate Bill 2611, Tanaka added. Jaworski was sworn in Nov. 5.

Pan-Am raises JACL charter flight fare

PORTLAND, Ore. — The Portland JACL was advised in mid-November by Pan American World Airways it had no alternative but to increase charter flight rates in 1974 because of fuel supply limitations and higher prices "affecting the airline industry worldwide and creating a force majeure situation."

Fare for charter flight to Japan sponsored by the local JACL, leaving July 28 and a return Aug. 18, has been raised from \$325 to \$350 per person.

1973 PC Holiday Issue Boxscore

● Display Ads—Goal: 5,182*	
As of Dec. 7: 5,402*	
Alameda	160 Riverside
Arizona	17 Sacramento
Ark	3 St. Louis
Berkeley	280 Salinas
Chicago	96 Salt Lake
Cincinnati	9 San Benito
Cleveland	4 San Diego
Clovis	6 Serrano
Col Basin	6 S. Francisco
Contra Costa	9 San Gabriel
Delano	17 Sanger
Detroit	34 San Jose
Downtown	160 Seabrook
East L.A.	330 Seattle
Edin Washp	80 Selanoco
French Camp	6 Sonoma Co.
Fresno	180 Stockton
Gardena	320 Tulare City
Gr Pasadena	5 Twin Cities
Idaho Falls	5 Watsonville
Milwaukee	16 West L.A.
Milwaukee	16 West L.A.
Monterey	160 Eastern DC
Mt. Olympus	10 CDC
Oakland	30 NC-WN DC
Orange City	10 IDC
Pasadena	23 PSWDC
Phila	21
Portland	160 PC Ad
Puyallup V.	80 PC Office
Redley	6
	*Bulk-Rate

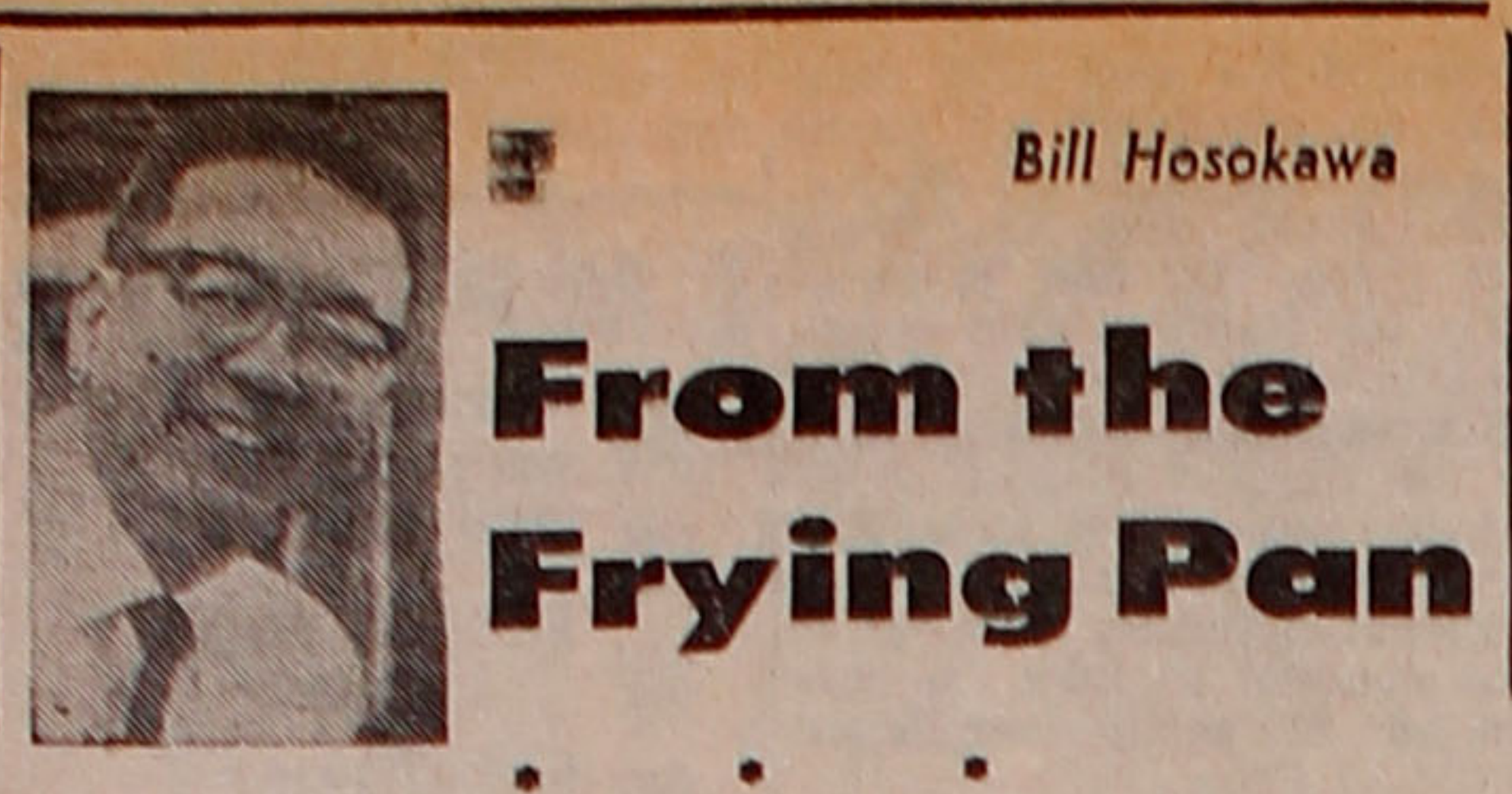
● 1 Liners—Goal: 629 Names	
As of Dec. 7: 515	
Cincinnati	19 Orange
Cleveland	38 Pasadena
Cortez	15 Phila
Dartton	15 Riverside
Delano	14 St. Louis
Detroit	53 Sn. Benito City
Edin Washp	2
Marysville	16 Santa Barbara
Milwaukee	25 Sonoma Co.
Mt. Olympus	35 Spokane
Omaha	24 Twin Cities
	Ven-Culiv

Holiday Issue Project

25 units — \$725.50

Thank You All for Helping to Pass Our Goal

PC Office Phones
626-6936 — 628-3768



From the Frying Pan

Bill Hosokawa

IN MEMORIAM—I hope you will not mind too much if I devote this space to recollections of a man who died a few days ago. He was one of my earliest friends; we knew each other before we entered our 'teens. His name is Toge Fujihira. His given name was Kazuo, but he never used it. If I ever knew how he got the nickname Toge—pronounced like Tohg with a hard "g" sound—I've forgotten. Elsewhere in this newspaper will be an obituary, for he left a prominent mark in his profession as photographer and cinematographer, but this will be a personal reminiscence.

In my youth the Fujihira family live in Seattle's University district. It was a fairly fancy area, compared to where most Japanese families lived, but there was nothing fancy about the Fujihira home. His dad was a fruit and vegetable peddler who worked out of a truck. A number of fraternities and sororities were among his customers. Toge used to help out on the route and that was about as close as he came to getting into a frat even though he was graduated from the University of Washington.

There was an empty lot next to the Fujihira home and that's where I parked the jalopy that was my transportation to and from the university. My passengers, who paid me a nickel a ride to help buy gas, would go back to the car at noon and there we ate our sandwiches. When it got too cold, Toge's mother would invite us into the kitchen where we could sit and talk while we ate. We talked about the things young college students talk about and usually the conversation would turn to our futures in a depression-burdened land where there seemed to be few jobs for anyone and none at all for Japanese Americans.

Toge wanted to study medicine. Sometimes he'd tell about hunting for stray cats so he'd have a subject to dissect in his biology class. His grades weren't bad, but they weren't quite good enough to qualify him for the few slots that medical schools provided for the brightest Nisei. So he went to New York and became a photographer. A good one. But he would have been a very good doctor, too, because he was compassionate and gentle and understanding. The world of medicine lost a good recruit because of the barriers of discrimination.

You might think that growing up in the kind of environment we did, Toge and others of his time would be bitter with their lot. Few were, and Toge was one of the more blithe spirits. We first met at the Salvation Army Fresh Air Camp, near Auburn, Wash., where Nisei kids from the city were given an opportunity to sleep outdoors, learn a bit about camping and nature and, incidentally, get out from under their parents' feet. One phase of camp life was picking strawberries and raspberries on a farm operated by an Issei. It was a chore no one relished and as I recall, Toge was responsible for publishing a parody on the 23rd Psalms which started something like this: "Old man Kano is my boss. I shall not want him." For one span of time Toge was our tent-leader but he didn't make a good one. He was too gentle and not bossy enough.

Toge's work as photographer took him to distant parts of the globe for months on end and sometimes I wondered how his family fared while he was gone. And surely his homecoming was a time of joy for he viewed the world with wide-opened curiosity and loved to relate the strange and wonderful things he had seen. Occasionally he would make time to write to me about items that might be of interest to this column's readers—Nisei in Brazil who spoke nothing but Portuguese, Chinese merchants prospering on some Caribbean island, the beauty of Japan and the rugged courage of Korea.

The end came for Toge like the clicking of a camera shutter. One moment he was vitally alive, looking forward to a new assignment. And in the next moment he was gone, which is the way many of us would like to go when the time comes. There is no need to be morbid. Toge lived a full and satisfying life. And a productive one, too. What more can we wish for?

On the Margin

By Kats Kunitzugu

BAMBOOZLE ME NOT (Part 2)

The element in Little Tokyo which is now rising to protest the redevelopment of the area, pointing the finger of guilt equally at the Community Redevelopment Agency and the "big, bad, greedy corporations from Japan," is indulging in loose, wishful and stereotyped thinking, it seems to me.

Their concept of Little Tokyo hits the other end of the pendulum's swing from merchants, big and little, who make their living in Los Angeles' traditional Japanese town. In the protestors' concept, the 150 or so Issei who live in the roach-infested fire-traps there have become the symbol of the "community" they talk about with such proprietary feeling.

The Issei, they postulated in a special issue of *Gidra*, the monthly newspaper published by Samsel in Los Angeles, are going to be "evicted" by the CRA to make room for a "luxury" hotel to be built by a consortium of Japanese corporations.

To our knowledge, no resident of the area—Issei, Mexican-American, Black or white—has been threatened with eviction to make room for the hotel. In fact, the hotel project was carefully designed in phases to accommodate a delay in the senior citizen housing plans caused by a switch in federal policy. The CRA has repeatedly assured residents that a Department of Housing and Urban Development rule specifically forbids moving people out unless there is housing assured for them, and the CRA intends to abide by that rule.

The protest is strong on emotion but weak in understanding economic realities. I have been observing the Little Tokyo scene since 1948 when I went to work for the old Nisei weekly, *Crossroads*, and in the quarter century since, the character of the area has changed. The change has been particularly noticeable in the past decade. Little Tokyo has vitality, but that vitality owes more to post-war immigrants from Japan and the "shosha" people than to the Issei, Nisei or Samsel. Think of the new businesses which have opened during the past decade, and you realize that the appeal is largely to the Japanese-speaking population.

These people don't fear "Japanese domination." And neither do the Issei in the "enclaves" who are anxious to move into a spanking new Little Tokyo. Towers and don't really care who builds it.

The fear is largely in the minds of the protestors and among them are a handful of business people who are going to be inconvenienced by moving or who fear they can't pay the higher rent. What they don't realize is that if the building they occupy is unfit for occupancy, their landlord is going to have to do extensive remodeling or rebuild. In any case, the subsequent rent will be higher.

The CRA's role is one of providing planning and professional know-how in bringing some order to redevelopment. The lack of leadership in Little Tokyo, coupled with the strong personality of the Little Tokyo project manager, has made it appear at times as though the CRA is taking the leadership in everything. However, nothing is going to get accomplished in redevelopment unless everyone with a stake in Little Tokyo thinks of it in terms of enlightened self-interest, not just in terms of narrow self-interest. And the self-interest can be just as narrow on behalf of the disadvantaged Issei as it can be over one's own handkerchief-sized lot in the redevelopment project.

TOGE FUJIHIRA, 57

People around the world favorite for United Methodist board photographer

NEW YORK — Toge Fujihira, staff photographer of the United Methodist Board of Global Ministries in New York, died suddenly Wednesday afternoon, Nov. 28, in Vancouver, B.C. He was 57.

At the time of his death he was on a special assignment for the United Church of Canada.

As the Board's photographer since 1942 Fujihira was a quiet, unassuming "artist with a camera" who was equally adept at photographing people, churches, community projects, churches, community projects or football teams. He had been to nearly every area of the "free world"—Latin America, Africa, Asia, including such infrequently covered countries as Nepal, Okinawa, or Vietnam, before the war.

He also free-lanced for many other Protestant denominations, and his work has appeared in numerous church and secular publications.

Seattle-Nisei

Born in Seattle, he came to New York in 1938 and worked as a photographer for the Japanese-American News, a weekly newspaper that folded with the advent of World War II.

His career led to some startling and occasionally dangerous adventures. Shortly after the end of World War II, for example, he was in the Philippines filming a prison chaplain at work. At that time the Japanese were still looked on as enemies of the country, and when the chaplain came into the prison incited, he was infuriated to find a Japanese photographer at work. He locked Fujihira into a common room with about 50 Filipino convicted criminals, a number of whom looked very threatening.

Fortunately, Fujihira's mild manner gradually charmed them, and before his enforced overnight stay was through, they were chatting amiably away. (There was no language barrier, since English is the official language of school instruction in the Philippines).

Narrow Escape

In Calcutta in 1960, he was photographing street scenes, and had taken the precaution of having an official government photographer accompany him to the "old city"—the slums. A young Indian radical violently objected to this and confronted him furiously in English: "You want to show how poor the people of India are!" As a large crowd gathered, the government photographer identified himself and tried to calm the mob, but they refused to be dispersed. Finally, two Western-dressed businessmen passed and advised Fujihira to leave the area immediately. He made a dash for his companion's jeep while the Indian photographer held off the crowd. "It was a fairly narrow escape," he said.

In 1949, on his first trip to Africa for the Board, Fujihira told of a flight from Dakar to Monrovia in a small DC-3, when the plane flew so low as to be almost skimming the palm trees, with visibility practically zero. Since the flight was French and the pilot was French, he said that he—at the risk of sounding Franco-phobic—had a picture of the pilot with one hand on the controls and the other on a bottle of wine. On hearing this story, someone asked, "How long was that flight?" His quick reply: "forever."

Luxurious Trek

Not all of Fujihira's adventures were dangerous ones. Possibly his most luxurious trek was one sponsored by Chrysler International—a tour covering 23 of the major cities of the world. The purpose of the tour was to introduce a new turbine engine car, and crew, and Fujihira were all flown on a chartered plane.

Christmas party

SAN LORENZO, Calif.—Eden Township JAACL hosted its 25th annual Christmas party Dec. 8 at the Eden Japanese Community Center here. Mrs. George Minami was chairman.

Alien checkpoints near border legal

SAN DIEGO, Calif. — U.S. Border Patrol checkpoints for illegal aliens on highways miles away from the U.S.-Mexico line are constitutional, a federal judge ruled Dec. 5. "All of them (checkpoints) are functional equivalents of the border," U.S. Dist. Judge Howard Turrentine said in a 39-page decision issued after three days of hearings. The rulings stemmed from appeals by attorneys representing about 20 suspected alien and narcotics smugglers who have been charged or convicted after being stopped at checkpoints.

The 9th U.S. Circuit Court of Appeals in San Francisco is expected to review Turrentine's ruling when it considers the same issue Dec. 11. The Border Patrol operates checkpoints in San Diego, Riverside and Imperial counties.

Postal authorities plan to relate other tales, such as Urashima Ta-ro, Momotaki, Battle of the Monkey and Crab, Tongue-Cut Sparrow, Mouse's Wedding, Cracking Mountain and Lucky Teakettle.

Television—

Continued from Page 2

and the current crop of brutalized Super-Blacks. None of these grievous lapses from taste, truth and artistry, however, justify the surrender to minority—or, for that matter, majority—group pressures which reportedly ban increasing numbers of films from the nation's television screens. To bar that classic, "The Treasure of the Sierra Madre," in response to Mexican-American objections to the character of a Mexican bandit is as unacceptable as it is to excise the Mafia from moviedom to avoid the wrath of certain Italian-American pressure groups or to banish "Oliver Twist" or "The Merchant of Venice" because of their anti-Semitic overtones.

Television entertainment programming ought to be guided—more than it often appears to be—by professional standards of artistry and taste. Not every old movie needs to be revived simply because it is in a convenient and inexpensive can. But the decisions should be made on the basis of the film's merit, not in reaction to ethnic or special interest pressures.

Charlie Chaplin's "Modern Times" may still be anathema to doctrinaire capitalists. The Marx Brothers and W.C. Fields, in the best tradition of comic genius, relied heavily on their capacity to offend a maximum number of special interests. "Gone With the Wind" is hardly a modern civil rights manifesto. Police unions and hard hats' protective organizations might wish to bar many of the sixties' radical-chic productions.

There are two proper responses to motion picture entertainment—hard-headed criticism or the exercise of the inalienable right to tune out. Censorship by threat or pressure is incompatible with the principles of a free society.

—New York Times

JACL Washington Rep. replies to editorial

Following is the copy of Washington JACL Representative Barry Matsumoto's reply to the above editorial. New York Times.

acterizes the pressure brought by minority groups to ban certain racially offensive movies from television as "Censorship—Incompatible with the principles of a free society." Such a characterization is curious in light of the editorial's previous comment that not every old movie need be shown on TV and that TV programming should be guided by "professional standards of artistry and taste." I suppose that the use of the adjective "professional" is intended to imply that there are a certain group of people who by reason of their training or background are best suited to make judgments on artistry and taste.

In this regard, I would suggest that there is no better group to judge matters of racial good taste than racial minorities themselves. Thus, the pressures which a racial minority brings to bear on local stations is no more than an expression of that group's judgment of the "film's merit"—a standard which the editorial appropriately notes is entirely proper in determining whether a movie should be shown on television.

Finally, the editorial fails to comprehend that minority group pressure is a form of the "hard-headed criticism" which it characterizes as a "proper response" in a free society. That the Times may not agree with the judgments of certain minority groups on certain movies does not justify the editorial's failure to recognize the propriety of minority group pressure.

It may be that the Times wishes to say that "hard-headed criticism" is proper only when it is not designed to seek the banning of a movie and only when it does not result in a station manager's decision not to air a particular movie. Such a position would be proper if television stations would grant minority groups air time to respond to the misimpressions which racially offensive movies convey. However, it is rare for television stations to allow for such responses. Therefore, the only effective "hard-headed criticism" which is available to minority groups is to seek the removal of offensive movies.

BARRY D. MATSUMOTO
Washington

Okinawa JCP

NAHA — The Okinawa People's Party, founded in 1947 under leadership of Kamejiro Senaga, now a Diet member in the lower House, was reorganized Oct. 31 as the Okinawa chapter of the Japanese Communist Party. The party has six seats in the 44-seat Okinawa prefectural assembly. Senaga also joined the party, making him the 40th Communist Party member in the House.

Ukiyoe exhibit

TOKYO — A total of 224 Ukiyoe prints out of some 3,000 belonging to the Berlin National Museum were shown for the first time in Japan in October.

Tunney bill for bilingual courts called 'vital', Senate panel told

WASHINGTON — Sen. John V. Tunney (D-Calif.) called for an end to discrimination in federal courts by providing for simultaneous translation of all proceedings in cases involving non-English citizens.

Such translations — much in the manner used at the United Nations — would be required by the Bilingual Courts Act (S. 1724) introduced by Tunney in May.

In testimony Oct. 11 before the Judiciary Subcommittee on Improvements in the judicial machinery, Tunney called the legislation "vital to the open and even-handed dispensation of justice."

Tunney pointed out, "In California, the Chinese, the Japanese, and other Americans of Asian extractions have, for several generations contributed enormously to the development of its culture and economy, yet their district in the judicial system has been nourished by the linguistic differences which are their 'birthright.'"

He continued: "The Bilingual Courts Act attempts to remedy a long-standing deficiency in our federal judicial system — the inability of thousands of non-English speaking Americans to defend themselves adequately in proceedings conducted in a language alien to them."

"The cornerstone of our legal system is the equality of treatment that it guarantees to every citizen, rich or poor, old or young, black, brown, yellow, or white. We cannot permit the circumstances of birth to decide the right of redress in a courtroom."

"The long strides which we made throughout the 1960s in extending civil rights protection to all minority groups should not be taken as evidence that our task is complete. If persons must still come before our courts unable to comprehend fully the nature of the testimony or the charges that have been made against them, then they are suffering a handicap which is impermissible under our laws and our Constitution."

"My bill is designed to remedy this situation by providing for simultaneous oral translation of all federal courtroom proceedings, both in civil and criminal matters, so that any individual incapable of speaking or understanding the English language with sufficient facility will be able to participate knowledgeably in such proceedings."

A SEASONAL REMINDER

If you're one of those needing extra cash for Christmas, your credit union can probably give you the help you need.

NATIONAL JAACL CREDIT UNION
242 SO. 4th EAST

P. O. Box 1721, Salt Lake City, Utah 84111

Low cost new auto loans!

Sumitomo Bank of California

Hawaii state supreme court justices Abe and Marumoto resigning Dec. 28

HONOLULU—Associate Justices Kazuhisa Abe and Masaji Marumoto have resigned from the state supreme court in the past month, effective Dec. 28, the last formal business day of the year.

When Justice Abe announced his resignation in late October, Gov. Burns, who has the prospect of filling two vacancies on the court early next month, indicated he hoped to name a Circuit Judge Thomas S. Ogata to the vacancy. But there was no indication from the Governor's office this past week to fill the vacancy to be created by Marumoto's departure.

Both Abe and Marumoto were serving seven-year terms which were to end on May 5.

Term Expires 1974

All three of the Supreme Court justices' terms were scheduled to expire several weeks after the final adjournment of the 1974 legislative session, too late for Senate confirmation of new appointments.

Marumoto, Abe and Levinson all were appointed in 1967—prior to the 1968 Constitutional Convention, which provided for 10-year terms for all judges. Justice Levinson said he plans to serve out the balance of his term.

One Nickel Remains

Other Burns appointees serving on the high court are Chief Justice William S. Richardson, the Democrat who served as Burns' first lieutenant governor, and Bert T. Kobayashi, Burns' former attorney general.

Richardson's term extends to 1984, and Kobayashi's will end in 1979.

Marumoto, 68, is the first justice to serve on the high court under appointments made by two different governors.

A Republican, he was first named to the State Supreme Court by President Eisenhower in 1956. He was appointed again by William F. Quinn, a Republican governor, shortly after statehood in 1959 and served one year before resigning.

In 1967, Marumoto returned to the high court under an appointment by Burns.

Private Practice

Marumoto notified Burns of his intention to retire in a letter dated Oct. 25, three days after the Governor underwent surgery for the removal of a cancer of the colon.

He told Burns he will return to private practice as a counselor with the law firm of Padgett, Greeley, Marumoto and Steiner, in which his son Wendell is a partner. Acting Gov. George Ariyoshi said Marumoto's resignation was accepted with regret.

"While we deeply regret losing the outstanding judicial qualifications and personal wisdom that Justice Marumoto has brought to the bench, we must honor the personal reasons for his decision to retire from public service at the end of the year," Ariyoshi said.

"He has served with distinction and contributed substantially to the integrity of our Supreme Court and to the many progressive actions taken by the court in recent years to strengthen our system of equal protection under the law."

Stricter federal protection for U.S. floriculture industry urged

WASHINGTON — "American floriculture can be ruined by foreign disease and unfair competition," according to Rep. Burt L. Talcott (R-Calif.), urging government should strictly enforce quarantine laws on imports.

Three years ago imports represented one-half of one per cent of the U.S. cut flower market. This year imports just from Colombia are running at 16 to 18 per cent of all domestic sales because a variety of competitive advantages work to the benefit of foreign producers.

America's \$19.8 million floriculture business is a labor industry with 40 to 50 per cent of this total paid out in wages. Labor in domestic greenhouses cost \$20 to \$30 a day; in Latin America it is \$2 to \$3 a day, Talcott pointed out.

Foreign competitors also to these advantages Oct. 31 in transportation rates. For example, it costs California producers \$28 per 100 pounds to ship by air to the Miami market; it cost a Colombian producer only \$8. Additionally, California growers must pay a 5% airport tax which foreign growers are allowed to avoid.

Rep. Talcott called attention to these advertisers Oct. 31 in messages to the House Ways and Means Committee, Federal Trade Commission and Food and Drug Administration.

He also noted, "While water control, pesticide regulations and fuel shortages adversely affect the flower growers of the Monterey Bay area, embargoes, and non-tariff barriers restrict the shipment of U.S. flowers into countries such as Colombia, Ecuador, Australia, Mexico and Canada. Surely we can exert the same amount of vigor in protecting our floriculture industry as these countries exert to guard theirs against American growers."

Rep. Talcott called attention to these advertisers Oct. 31 in messages to the House Ways and Means Committee, Federal Trade Commission and Food and Drug Administration.

He also noted, "While water control, pesticide regulations and fuel shortages adversely affect the flower growers of the Monterey Bay area, embargoes, and non-tariff barriers restrict the shipment of U.S. flowers into countries such as Colombia, Ecuador, Australia, Mexico and Canada. Surely we can exert the same amount of vigor in protecting our floriculture industry as these countries exert to guard theirs against American growers."

Judge Takasugi

LOS ANGELES — The judges of the East Los Angeles Judicial District will formally invest Robert M. Takasugi of the East L.A. judicial district on Dec. 14 at the East Los Angeles Municipal Court, 4837 E. 3rd St. (Takasugi was past national JAACL legal counsel).

We've got a yen for your new car at a low interest rate. Come Drive a Bargain with

THE BANK OF TOKYO OF CALIFORNIA Member FDIC

San Francisco Main Office: Tel. (415) 981-1200
S.F. Japan Center Branch: Tel. (415) 981-1200
Mid-Peninsula Branch: Tel. (415) 941-2000
Oakland Branch: (415) 839-9900
San Jose Branch: Tel. (408) 298-2441
Westgate Branch: Tel. (408) 298-2441
Fresno Branch: Tel. (209) 233-0591
North Fresno Branch: Tel. (209) 233-0591

Los Angeles Main Office: Tel. (213) 687-9800
L.A. Downtown Branch: 616 W. 6th, (213) 627-2821
Montebello Branch: Tel. (213) 726-0081
Crenshaw-L.A. Branch: Tel. (213) 731-7334
Western L.A. Branch: Tel. (213) 391-0678
Gardena Branch: Tel. (213) 327-0360
Santa Ana Branch: Tel. (714) 541-2271
Panorama City Branch: Tel. (213) 893-6306
San Diego Branch: Tel. (714) 236-1199

Low cost new auto loans!

Sumitomo Bank of California

A Minority of One

By Edison T. Uno

San Francisco
Many of my JACL friends were a bit shocked when I told them I was not attending the kick-off dinner for the National JACL Building Fund which featured Senator Daniel K. Inouye recently in San Francisco. With all due respects to Senator Inouye, I purposely avoided the dinner because I do not subscribe to this new effort by JACL to raise a quarter million dollars for permanent headquarters.

This is not the first time I have disagreed with the priorities of JACL and I'm sure it will not be the last. Somehow, I cannot get too excited about us JACLers raising funds to erect a monument, if you please, to our own glory. This is not to say that a building fund and purchase of real estate isn't a sound investment and may be very profitable in the long run.

Twenty years ago, I urged the national JACL to purchase a large house which could be used as office space, meeting rooms, guest rooms for visiting members, and a multi-purpose community resource. Back in those days, such a renovation would easily be under \$80,000. Several community organizations I know have beautiful, reasonable, and functional offices in large Victorian type buildings here.

For a national organization such as JACL to solicit funds from its membership, I believe more facts should be made available so that an intelligent judgment can be made.

I wonder if members know enough about this subject. Perhaps, the more obvious question is do we really give a damn?

It seems to me that we've been paying rent for some 40 years and like anyone who pays rent, there is no equity established in our tenancy. Do we really need to build and own our own home at this late date? Certainly, there is pride of ownership and some merit to the image we project as a national organization, but aren't these rationalizations to justify the need? I've been a JACLer for more than 25 years. I hope the day will come when JACL will have fulfilled its stated objectives and that the Sansei will organize a new organization that is distinctly meeting their needs.

I really can't understand an organization which refuses to use some of its assets in the Endowment Fund for immediate needs. I seriously wonder if the JACL isn't reflecting the average Nisei mentality of materialism and image (what others think of us) as manifested by this current fund drive.

Who really knows what our annual rent is? Who really knows the cost of construction per square foot or the cost of

Architect leads Contra Costa

RICHMOND, Calif. — Dan Uesugi of El Cerrito was elected president of the Contra Costa JACL and the 1974 board will be installed in mid-January.

A native of Hawaii, Uesugi has been a California resident for the past two decades and an architect with the Berkeley firm of Arthur Iwata Architects. He and his wife, Gerry, are parents of three children. Eric 15, Steven 12, and Chris 9.

When asked what he would like to see in his year, Uesugi hoped more of the younger people would become involved in JACL activities. He would also like to join with other Asian American groups to promote the various cultural aspects.

CALENDAR

- Dec. 15 (Saturday) East Los Angeles—2nd anniversary dinner, Imperial Dragon Restaurant, 7:30 p.m.
- Stockton—AUX Christmas party, Henry Kusama, 8 p.m.
- Dec. 16 (Sunday) Salt Lake—Mt. Olympus—Issei Center Christmas dinner, Pagoda Restaurant, 8 p.m.
- Dec. 18 (Tuesday) West Valley—Bd Mtg.
- Dec. 21 (Friday) San Fernando Valley—Christmas party, Community Center, 6:30 p.m.
- Dec. 22 (Saturday) New York—Christmas party, Ruby Schaar's apt., 2 p.m.
- Dec. 29 (Saturday) Salt Lake—1000 Club Holiday dinner-dance.
- Sequoia—Mochitsuki, Palo Alto Buddhist Church.
- Dec. 31 (Monday) Gardena Valley—New Year's Eve dinner-dance, Queen Mary, Long Beach, 7 p.m. (Reservations required; call 537-5434 or 327-2759).
- San Jose—New Year's Eve dinner-dance, Hyatt House Mediterranean Room, 7 p.m. (dance from 9 p.m.)
- Contra Costa—New Year's Eve party, Toraya Restaurant, Berkeley, 9:30 p.m.
- San Francisco—New Year's Eve dinner-dance, White Whale, Ghirardelli Square, 9 p.m.
- Santa Maria—New Year party, Jan. 5 (Saturday)
- Sonoma County—Installation potluck dnr, Enmanji Memorial Hall.
- Evans Recreation Hall, Jan. 11 (Friday)
- Philadelphia—Bd Mtg. Tets Iwasaki's, Jan. 12 (Saturday)
- San Fernando Valley—Inst Dnr, Odyssey Restaurant, 7 p.m.; Assemblyman Paul Bannai, spkr.
- Jan. 15 (Tuesday) West Valley—Bd Mtg.
- Jan. 19 (Saturday) New York—Memb Mtg.
- West Valley—Inst Dnr.
- Orange County—Inst dnr, Kono-Hawaii Restaurant, Santa Ana, 7 p.m.; George Takei, spkr.
- Riverside—Inst dnr, Indian Hills Country Club, Assemblyman Paul Bannai, spkr.
- San Mateo—Inst dnr, Shadow's Restaurant, 7 p.m.; Jere Takahashi, spkr.

CHAPTER PULSE

Installation

Bannai to address San Fernando Valley

Paul Bannai from the 67th District will be guest speaker at the San Fernando Valley JACL installation dinner to be held on Sat., Jan. 12, at the Odyssey Restaurant, 15600 Midwood Drive, in Mission Hills. A social hour will begin at 6:30 p.m. with dinner at 7:30.

The Chapter's 1974 board of governors will be headed by newly elected president, Phil Shigekuni, a Yonsei and a counselor at Cleveland High School. Phil is very active in the United Teachers Association, the San Fernando Holliness Church and other community and civic endeavors. He resides with his wife, Marian and two daughters in Sepulveda.

Installation dinner chairman Arnold Hagiwara, will be assisted by:

Toastmaster, John Kaneko; guests, Ron Yoshida; decoration, Katie Muto; tickets, John Nishizaka; reservations, Fred Muto; recognitions, Bob Moriyuchi; program, Arnold Hagiwara; and publicity, Sam Ueyehara.

Tickets and reservations are available at \$10 per person from Fred Muto (899-3855) and Arnold Hagiwara (363-0293).

December Events

Contra Costa to hold New Year's Eve party

Reservations are due by Dec. 27 for the Contra Costa JACL New Year's Eve party at Berkeley's Toraya Restaurant, 1695 Solano Ave. For a \$7 per person (\$14 couple), there will be Japanese-style hors d'oeuvres, refreshments, noisemakers and varied music to dance to, according to Ben Takeshita (235-8182) who is taking reservations.

The chapter decided this year to hold a New Year's Eve party at a reasonable cost and close to home.

Stockton women to host 'shabu shabu' dinner

The Stockton JACL Women's Auxiliary will host a Christmas "shabu shabu" dinner on Dec. 15, 6 p.m. at the home of Mrs. Henry (Mary) Kusama, 1238 Stanton Way.

Those attending are requested to bring a gift for exchange limited to \$2, according to Mabel Okubo (463-7945) who is also handling reservations.

San Franciscans await New Year's Eve frolic

A sumptuous dinner followed by dancing to the music of George Yamasaki's Trio is planned for the San Francisco JACL New Year's Eve party at the White Whale restaurant in Ghirardelli Square.

The tab is \$12.50 per person, which includes holiday favors. Reservations until Dec. 27 are being requested by Wes Dol (774-5611) and Yo Hironaka (752-2667).

Meanwhile, Ichiban JACL Chapter with 1,475 members this year figures to top the 1,500 mark next year, according to membership chairman Frank H. Minami (1822 10th Ave., S.F. 94122), who noted chapter dues as \$12 single, \$20 couple, \$27 for 1000 Club, \$36 for 1000 Club and spouse.

Salt Lake Issei Center to host Holiday party

Christmas will be a little early this year for Issei residents as the SLC Issei Center, sponsored by the Salt Lake and Mt. Olympus JACL chapters, holds its holiday party Dec. 16, 6 p.m., at Pagoda Restaurant.

Reservations for the \$4.50 per plate dinner (Issei will be admitted free) are being accepted by Harriet Kimura, Satoye Tsujimoto and Kimi Saibara.

Eigiku for sushi

NEW YORK—The New York Times (Oct. 21) travel tips on "What's doing in Los Angeles" by its bureau chief Steven Roberts and his wife Cokie Roberts, a TV producer, recommended Eigiku in Little Tokyo for sushi and shrimp tempura. Ethnic identities tend to get homogenized in Los Angeles but the best authentic local food is Mexican or Japanese, the Roberts noted.

Ishihara, K. Yanagihara, Mr. & Mrs. Roy Kurozum, Chester Miyashita, Rev. & Mrs. Ohmura.



CORPORATE MEMBER—California Blue Shield is the latest JACL 1000 Club corporate member, the eighth signed by the San Francisco JACL. At the plaque presentation are (from left) Gus Barlas, v.p.; Eugene Potloff, sr. v.p.; and Gus Giron, asst. v.p., all of Blue Shield; David Ushio, JACL executive director; and Frank Minami, San Francisco JACL memb. v.p. The chapter has 120 Thousand Clubbers (8%) among its membership of 1,475. The eight corporate members contribute to the JACL budget the equivalent of 178 regular members.—Photo by Wes Dol.

Intermountain—

Continued from Front Page

and Sugiyama reported on the JACL Building Fund drive. Other IDC officers elected were: Jack Ogami, Snake River, 2nd v.g.; and Ken Nodzu, Mt. Olympus, trees.

Salt Lake JACL cited for solid effort

SALT LAKE CITY, Utah — The recent Intermountain District Council convention at Boise (Nov. 23-24) recognized the Salt Lake JACL as the "chapter of the year" and "chapter of the biennium", according to local JACL chapter president Tom Sutow.

The Chapter of the Biennium award also carried a \$200 cash prize, Sutow said.

The Salt Lake Chapter was number one in sale of the Japanese Cook Book, an IDC project; had the largest membership (436) and conducted chapter projects throughout 1972-1973 to earn the double award.

Workshops

The convention workshops conducted by chapters was not only unusual but interesting both from the standpoint of attendance and participation. Hospitality extended by the host chapter, Boise Valley, was particularly outstanding, he said.

The Salt Lake chapter furnished as its share of the convention program an intermission program at the farewell dance which featured a rock and roll guitar number by Hershey Kasal and Ralph Ottenheimer (Salt Lake City).

Salt Lake and Mount Olympus members and delegates chartered a bus to attend the convention and claimed "it's the only way to go!"

Homesick mother slays own 7-year-old son

SAN FRANCISCO — Aiko Umegaki, homesick wife of a Japanese rubber firm representative here, decapitated her son, Kosuke, 7, and then tried to convince her husband to join her in death, police said.

Patrolman Al Sonoda, who speaks Nihongo, quoted the woman as saying she is a Buddhist and believed the family could end its troubles and be reunited in heaven. The family came here a year ago and since had been homesick and unhappy.

EDC—

Continued from Front Page

ing study groups and seminars; JACL aide presentations not only for the benefit of Asian Americans, but for the interested community groups; cooperation with school system in providing in-service training presentations; and sponsoring an Eastern Regional Conference on Asian American studies or an introductory seminar on the Asian American experience, inviting the young and old to participate.

EDC Governor Ueyehara announced the next EDC meetings are scheduled for Washington, Jan. 26, Philadelphia, Mar. 16-17, and New York City, May 18, and preparation for National Convention in Portland, next summer. She stressed that even though EDC is the smallest district council, it represents a wide diversity and the center of major national activities and "It is our concern to take the initiative in many significant National Programs".

Seabrook Chapter held an informal buffet dinner for the JACL delegates and friends following the EDC sessions at the Buddhist Church with Seabrook members helping the

Skyrocketing elevators

TOKYO — There are more than 15,000 elevators in Tokyo alone. And when a certain highrise building in Shinjuku is completed, it will house the world's fastest elevator.

Ground slowly sinking

TOKYO—The ground is sinking progressively not only in the eastern and northern parts of Tokyo, but in suburban areas as well, according to the results of a survey revealed by the Metropolitan Government.

Two boy friends the rage

TOKYO — Most office girls aged about 23 or 24 have more than two boy friends and usually get married to one of them, according to an insurance company survey.

Ginkgo tree insured for 62-million yens

FUKUOKA — A huge sacred ginkgo tree of Kushida Shrine in Fukuoka, well known to the residents as the "Ginkgo of Kushida," has been insured against accidents.

Under the insurance scheme, a pedestrian injured by a broken twig will receive a maximum of ¥20,000,000 and the driver of a car damaged by the tree will receive a maximum of ¥3,000,000. The shrine authorities must pay an annual premium of ¥2,000,000.

The authorities insured the tree since they are unable to cut off its branches sticking out over a road.

Thought for the Week

We crucify ourselves between two thieves: regret for yesterday and fear of tomorrow.—Fulton Oursler

The Largest Japanese Garden Restaurant East of the Orient

Sambi OF TOKYO

Exquisite Dining - Finest Japanese Food - Excellent Service Distinctive Quality

Plan Now for Your Holidays—Special Group Rates Luncheon Dinner Cocktails Entertainment



All Major Credit Cards Accepted 8649 Firestone Blvd. 771-4871 - 869-1171 DOWNEY, CAL. Ample Free Parking

GET AN \$11,280.00 COLLEGE EDUCATION AT NO COST TO YOUR FAMILY.

THAT'S ABOUT WHAT FOUR YEARS OF COLLEGE COSTS THESE DAYS. MORE THAN A LOT OF FAMILIES CAN HANDLE. WE'RE OFFERING OVER 1,000 FOUR-YEAR ROTC SCHOLARSHIPS TO HIGH SCHOOL SENIORS. IF YOU'RE SELECTED, WE'LL PAY FOR YOUR TUITION, BOOKS AND LAB FEES—PLUS \$100.00 A MONTH FOR UP TO 10 MONTHS OF THE SCHOOL YEAR.

Army ROTC
P. O. Box 12703
Philadelphia, Pa. 19134

Tell me how Army ROTC can round out my education without getting in the way.

Name _____
Address _____
City _____ County _____
State _____ Zip _____
Date of High School Graduation _____
College Planning to Attend _____

Army ROTC SER 3-03

Army ROTC. The more you look at it, the better it looks.

co-chairmen Fusa Kazuoaka and Kayko Ichinaga.

EMPEROR

RESTAURANT
949 N. Hill St.
(213) 485-1294
PEKING FOOD SPECIALTY
Cocktail Lounge
Party & Banquet Facilities
DINAH WONG, Hostess

Eigiku Cafe
Dine • Dance • Cocktails
BUKIYAKI • JAPANESE ROOMS
314 E. First St.
Los Angeles • MA 9-3029

UNDER NEW MANAGEMENT

KONO HAWAII
Tea Room
Featuring TEPPAN YAKI
Polynesian Dancers
at LUAU SHACK
Superb Musical Combo
from Las Vegas
Cocktails in Kono Room
226 SO. HARBOR BLVD.

(South of Disneyland, near First St., Santa Ana)
Ph. (714) JE 1-1232
Luncheon: 11 a.m. - 2 p.m.
Dinner: 5 - 10 p.m.

QUON BROTHERS
GRAND STAR
Lunch • Dinner • Cocktails
Entertainment
4 TIME WINNER OF THE PRIZED RESTAURANT WRITER AWARD
BANQUETS TO 200
943 N. Broadway • Free Parking
in New Chinatown • 625-2285

Tin Sing Restaurant
EXQUISITE CANTONESE CUISINE
1523 W. Redondo Blvd.
GARDENA DA 7-3177
Food to Go
Air Conditioning
Banquet Room
20-200

酒念市
Nam's Restaurant
Cantonese Cuisine
Family Style Dinners
Banquet Room • Cocktail Lounge
Food to Go
205 E. Valley Blvd.
San Gabriel, Calif.
Tel. 280-8377

VISIT OLD JAPAN
MIYAKO
Luncheon Dinner Cocktails
PASADENA 139 S. Los Robles • 795-7005
ORANGE 33 Town & Country • 541-3303
TORRANCE 24 Del Amo Pk. Sq. • 542-8677

Little Tokyo's Finest Chop Suey House
SAN KWO LOW
Famous Chinese Food
228 E. 1st St. Los Angeles MA 4-2075

Bush Garden
SUKIYAKI
SEATTLE 214 Maynard St.
PORTLAND 121 SW 4th St.
SAN FRANCISCO 598 Bush St.

STOCKMEN'S MOTOR HOTEL • CASINO
BAR • COFFEE SHOP
RESTAURANT
SWIMMING POOL
INDOOR PARKING
Fully Air Conditioned • TV
Box 270, Elko, Nev.
Tel. 738-5141

UMEYA's exciting gift of crispy goodness
Tops for sheer fun, excitement, wisdom plus Flavor!
Umeya Rice Cake Co.
Los Angeles

Yamasa Kamaboko
— WAIKIKI BRAND —
Distributors: Yamasa Enterprises
515 Stanford Ave., L.A. Ph. 626-2211

GARDENA — AN ENJOYABLE JAPANESE COMMUNITY
Poinsettia Gardens Motel Apts.
13921 So. Normandie Ave. Phone: 324-5883
68-Units • Heated Pool • Air Conditioning • GE Kitchens • Television
OWNED AND OPERATED BY KOBATA BROS.

CAL-VITA PRODUCE CO., INC.
Bonded Commission Merchants—Fruits & Vegetables
774 S. Central Ave. L.A.—Wholesale Terminal Market
MA 2-8595, MA 7-7038, MA 3-4504

Eagle Produce
929-943 S. San Pedro St. MA 5-2101
Bonded Commission Merchants
— Wholesale Fruits and Vegetables —
Los Angeles 15

Naris cosmetics
"Naris is the difference"

3830 Crenshaw Blvd. • Crenshaw Square
Los Angeles, Calif. 90008
(213) 299-2118

CLASSIFIEDS

Announcement
MEN OR WOMEN: If you are interested in earning \$1,000 per month, part time with only \$2,500 to invest, fully refundable, call COLLECT Mr. Wells (214) 243-8001.
STUNNING JAPAN used commemorative stamps. All different, 45 for \$1.00. No approvals. Never found in this kind of packet. A thoughtful gift for Christmas. Rush your order now. J. Henry, Box 55, Pacific Citizen.

Employment
Yamato Employment Agency
Job Inquiries Welcome
Rm. 202, 312 E. 1st St., L.A. 624-2821 • New Openings Daily
FREE
Seely, no s.h., meat, co. to 650
Steno Clk, bank, dntn. to 650
Gen Ofc Girl, trade co. 620-541
Clk, documentation, frgt. to 700
Gen Agnt, deg & exp to 14,000
Sales, chem prod, Japan 1,000+
Asst Foreman, elec ex to 20,000
Couple, domestic, Encino to 1,000
Plater, brass/chrome, exp to 4,000
Factory, chemical mfr. 3,000
Tr. Driver, groc biz 2,700-3,000
Attendant, pump gas 125-135/wk
Trs, wrnging, imp food 2,000
Hostess, phn wk, rest'ant 2,000
Fd Bar Girl, prep seafood 22,500
Tr, color print wk to 3,000

Real Estate
DELUXE 2 BEDROOM apt., 2 bathrooms, built-ins, carpet, grapes, Central air. Near schools. 2941 S. Shermanshow St., Los Angeles 90064.
Support PC Advertisers
— 24 Hour Emergency —
"We Do Anything in Glass"

PESKIN & GERSON
GLASS CO.
Est. 1949 — Licensed Contractor
Store Fronts — Insurance Replacements
Sliding Glass Doors — Louvers — Mirrors
Glass Tops — Plate Windows
& Auto Glass — Free Estimates
724 S. San Pedro St., L.A. 90014
(213) 622-8243

SAITO REALTY CO.
HOMES... INSURANCE
One of the Largest Selections
2421 W. Jefferson, L.A.
RE 1-2121
JOHN TY SAITO & ASSOCIATES

CHEVROLET
Fleet Price to All—Ask for
FRED MIYATA
Hansen Chevrolet
11331 W. Olympic Blvd., West L.A.
479-4411 Res. 826-9805

Mikawaya
Sweet Shop
244 E. 1st St.
Los Angeles MA 8-4935
Ask for...
'Cherry Brand'
MUTUAL SUPPLY CO.
1090 Sansome St., S.F. 11

Wesley WSCS Cookbook
13th PRINTING
Oriental and Favorite Recipes
Donation \$2.50 Handling Fee
Wesley United Methodist Church, 666 N. 5th St., San Jose, Calif.

Empire Printing Co.
COMMERCIAL and SOCIAL PRINTING
English and Japanese
114 Weller St., Los Angeles 90012 MA 8-7060
Los Angeles Japanese Casualty Insurance Assn.
— Complete Insurance Protection —
Aihara Ins. Agcy., Aihara-Omatsu-Kakita-Fujioka 626-9625
250 E. 1st St.
Anson Fujioka Agcy., 321 E. 2nd, Suite 500... 626-4393 263-1109
Funakoshi Ins. Agcy., Funakoshi-Kagawa-Manaka-Morey 462-7406
321 E. 2nd St. 626-5275
Hirohata Ins. Agcy., 322 E. Second St. 628-1214 287-8405
Ito S. Itano & Co., 318 1/2 E. 1st St., Norwalk 864-5774
Tom T. Ito, 595 N. Lincoln, Pasadena 794-7189 (L.A.) 681-4411
Minoru 'Nix' Nagata, 1497 Rock Haven, Monterey Park 268-4554
Steve Nakaji, 4566 Centinela Ave. 391-5931 837-9150
Sato Ins. Agcy., 366 E. 1st St. 629-1425 261-6519

1974 JAACL Summer Charter Flight
TO JAPAN
via Pan American World Airways
\$350.00 Per Person*
* Increase due to fuel price increase and other factors
Roundtrip Portland to Tokyo
Leave JULY 28 and Return AUGUST 18
This charter flight is open to all members of the JAACL and their immediate family members. It has been approved and authorized by the JAACL National Travel Committee. Of special interest to participants in the 1974 National JAACL Convention, this flight is scheduled to leave Portland at the conclusion of the convention proceedings. To confirm reservations, a \$100 per person deposit should be made payable to JAACL CHARTER FLIGHT and mailed to James K. Iwasaki, 200 S.W. Fourth Ave., Portland, Ore. 97204. For flight reservations, information, or assistance in obtaining arrangements in Japan, please use the coupon below.

TO: James K. Iwasaki Summer JAACL Charter Flight
200 S.W. Fourth Ave., Portland, Oregon 97204
Names and Relationship of persons accompanying JAACL Member:
Address:
City/State/ZIP:
Telephone: Amount Enclosed:
Name:
 We will require tour arrangements while in Japan, please send information.

BOOK REVIEW: Allan Beekman

Edo Period Novel Reissued

THE NEEDLE-WATCHER: The Adams Story, British Samurai, by Richard Blaker, Tuttle, Paperback, 494 pp., \$3.50.
In the year 1600, a Dutch ship, *Liefde*, dropped anchor in the Bungo Strait, off the island of Kyushu, Japan. In command of the skeleton crew of sick and dying men was an Englishman, Will Adams.

Adams was taken to Osaka for examination by Ieyasu Tokugawa, one of the five ministers appointed as regents for Hideyoshi's son and heir, Hideyori. Traits and skills manifested by the famished, ailing Englishman intrigued the nobleman who had assumed control of the country and was scheming to consolidate his grip.
Born 1564 at Gillingham, Kent, England, Adams had been apprenticed in the mercantile marine at age 12. Afterward, he had served in the British navy later, as master and pilot, in the company of Barbary merchants.

Bound for East Indies
In 1598, he had shipped as pilot major with a fleet of five ships that were to sail westward from the Netherlands via the Straits of Magellan to the East Indies. Storms and attacks by hostile Indians had scattered the fleet off the coast of Chile; all that remained was the *Liefde* with its handful of survivors.
Ieyasu recognized skills and personal traits in Adams that could be profitably employed. The ruler forbade the pilot to leave Japan and impressed him into service.

Adams lectured Ieyasu on mathematics, including geometry, on geography and shipbuilding, also serving as translator and diplomatic counselor. Ieyasu made Adams a samurai and presented him with a residence near Nihombashi, Edo (now Tokyo) and an estate worth 250 *koku* in Sagami, Miura-gun, Itsumi-mura (now Kanagawa-ken).

'Miura Anjin'
The Japanese quickly bestowed the title *Anjin* (pilot) on Adams. From his estate at Miura, he acquired a surname. Miura *Anjin* is said to have married the daughter of an Edo magistrate of Denmacho.
He engaged in shipbuilding and helped the British East India Company found a factory at Hirado. When the restriction on his leaving Japan was lifted, he sailed to many parts of Asia as ship owner and master. But he never returned to England, never surrendered his Japanese citizenship, and died in Japan May 16, 1620.

From his title *Anjin* Sama, the Japanese named a street in Tokyo in his memory: *Anjin-cho*.
The novel begins with Adams and a Dutch shipmate being transported by palanquin to Osaka. Along the avenue through which they pass are crosses from which hang corpses of humans and the remains of what had once been the corpses of humans.

Adams and his companion also fear they will be crucified. When they are arraigned before Ieyasu, a Portuguese Jesuit priest, who had previously examined them, and who acts as interpreter, tells them, in Dutch, that they are charged with piracy, robbery and murder upon Japanese seas. It develops that through fear of the threat imposed to the Catholic faith imposed by the Protestant newcomers, the priest has suborned witnesses and woven a net of guilt around Adams and his companion.

The wily Ieyasu, however, has other Dutch interpreters at hand, their linguistic skill unknown to priest and prisoners. The upshot of the audience is the discrediting of the priest and the beginning of favor to Adams.
Ieyasu lodges Adams in the home of a samurai. The daughter of the samurai falls in love with Adams who reciprocates the passion. Adams wrestles with the problem of how to claim the girl over the prejudices of the father who would not dream of bestowing her on a man of lower rank.

Confounding the prejudices of the father, Adams has himself promoted to samurai status. He claims the girl and thereby botches the story. At this point, though the author goes on and on, inspiration flags.
The author has obviously researched his subject, but his knowledge of Japan of the period is nevertheless superficial. Upon meeting, noblemen shake hands with themselves, like Chinese. Samurai are alternately identified as noblemen and called soldiers even when they are not.

The superabundant dialogue tends toward bombast, the scenes are unvisual, the motivation improbable, a plot conspicuously absent. The Will Adams story still awaits the telling by an author of talent.

Renew Your Membership
JAPAN — 1974
via Japan Air Lines
West L.A. JAACL
Summer Vacation
Charter—\$325
Round trip: L.A.—Tokyo
(June 18-July 17)
Open to JAACL members and family; \$100 deposit required for each reservation. Land arrangements by JTB. Write to Roy Takada, Inc., 1702 Weller Ave., Los Angeles 90025; tel. 820-1133 or 820-4309.

1974 JAACL Summer Charter Flight
TO JAPAN
via Pan American World Airways
\$350.00 Per Person*
* Increase due to fuel price increase and other factors
Roundtrip Portland to Tokyo
Leave JULY 28 and Return AUGUST 18
This charter flight is open to all members of the JAACL and their immediate family members. It has been approved and authorized by the JAACL National Travel Committee. Of special interest to participants in the 1974 National JAACL Convention, this flight is scheduled to leave Portland at the conclusion of the convention proceedings. To confirm reservations, a \$100 per person deposit should be made payable to JAACL CHARTER FLIGHT and mailed to James K. Iwasaki, 200 S.W. Fourth Ave., Portland, Ore. 97204. For flight reservations, information, or assistance in obtaining arrangements in Japan, please use the coupon below.

TO: James K. Iwasaki Summer JAACL Charter Flight
200 S.W. Fourth Ave., Portland, Oregon 97204
Names and Relationship of persons accompanying JAACL Member:
Address:
City/State/ZIP:
Telephone: Amount Enclosed:
Name:
 We will require tour arrangements while in Japan, please send information.

FAREWELL TO MANZANAR
by Jeanne Wakatsuki Houston and James D. Houston
The New book which details the concentration camp experience of Jeanne Wakatsuki and her reflections on life after WW2.
100 autographed copies for your Holiday giving.
Price \$5.95 plus 30c tax; No tax for out-of-state buyers. This special price only until Dec. 31, 1973.
We will gift wrap and ship on request.

Japanese American Curriculum Project
Box 367, San Mateo, Calif. 94401
Send to:
Address:
City/State/ZIP:
Telephone: Zip:
Enclosed \$_____ for _____ copies

EDWIN KANEKO

Named FAA resident director in Guam

HONOLULU — The Federal Aviation Administration of the Dept. of Transportation has named Edwin T. Kaneko, of Honolulu, as its new Resident FAA Director on Guam.
Kaneko will serve as Director of FAA operations on Guam. He is also authorized to act for the Regional Director on nontechnical program matters that may require immediate action.

Representatives and officials of foreign governments. He will also serve as FAA's representative on local transportation coordination groups and similar organizations.
Kaneko is also authorized to act for the Regional Director on nontechnical program matters that may require immediate action.

Governor's Office
Gov. John Burns returned to St. Francis Hospital Nov. 30 for further tests after spending 10 days at his Washington Place home. He was to undergo a third and final operation after the latest series of tests to close a colonostomy. Burns was first operated on Oct. 22 for removal of cancerous portion of his colon.

Honolulu Scene
The first Tendai Mission ever constructed outside Japan was opened Nov. 25 in Honolulu. Chief Abbot Elhal Sugawara, leader of the 1,200-year-old, 3-million member Tendai sect of the Mahayana Buddhism, officiated at the opening of the mission on Jack Lane in Nuuanu Valley. The local mission will be headed by Bishop Ryokan Ara, who was previously bishop of Suikagawa City in Fukushima Prefecture.
Nineteen men four boys were arrested Nov. 25 on charges of obstructing the sidewalk at Pali-Samuel King sentenced Harry Pui Fong, head of a local bookmaking ring, to six months in jail after his attorney, Wilfred Young, told the judge that gambling arrests will not stop betting. "Imprisonment of my client will not eliminate bookmaking in the State of Hawaii," Young said. King has permitted Fong to remain free until after New Year's.

Paintings bought
TOKYO — Mitsui & Co. was revealed as purchaser of Rousseau's "Tropic Zone" (\$1.5 million) and Monet's "Lady" (\$750,000), which will be on display next month at the National Western Art Museum. They were bought last year from Marlborough of London.

Old Photos
Editors of the JAACL Pictorial History of Japanese in America have extended the deadline to Jan. 31, 1974 for old photographs for possible use in the pictorial. Details of the search are listed in the *Issei Pioneer Album* form appearing below.
Chapters are also urged to appoint a committee to assist in this project.

ISSEI PIONEER ALBUM
Pictorial History of Japanese in America
Sponsored by JAACL and Japanese American Research Project
In order to properly interpret each photograph with captions, donors are asked to fill in as much as possible the information requested below.
Photo not used in the book will be returned.
Donors who do not wish to send original photographs or other mementoes could go to their own photographers and have photographic copies for reproduction made to size 5 x 7 glossy. All photographs or other materials will be returned to the respective donors if requested.

Please send all photographs and other materials to:
or to:
Mrs. Michi Asawa
Issei Pioneer Album
16766 Bollinger Drive
Pacific Palisades, Calif. 90272

Donor's Name _____ Tel _____
(include area code)
Address _____ Street _____ City _____ State _____ Zip Code _____
For photographs: Name of specific event. For example: anniversary portrait, Shizuoka Kenjinkai picnic, family and friends outing, Garden City School baseball game, etc.

Date _____ Location _____
Name of person or persons in the photo, whenever possible, from left to right, 1st row, 2nd row, etc. _____
Other interesting information regarding photograph, if lack of space, please attach additional paper. _____

Return photo to donor.
 Deposit in JARP Special Collection, UCLA Research Library.
If sending articles or calling attention to such articles, please note:
 Article is enclosed.
 Return Article to donor.
 Existence of article being mentioned only.

Name of newspaper, book, magazine _____
Author _____ Location _____
Date _____ Publisher _____
Other Information: _____

Signs of Class Bias
The Samsel at the seminar were troubled by their sense of an "elitist mentality" in Japanese attitudes, citing the widespread Japanese assertion that most of their countrymen who emigrated were "farmers who couldn't make it" in their overcrowded rural community.
Fukushima was incensed by what he took to be a slight of the frequent question, "Why did his grandparents leave Japan?" He said there seemed to be bias against farmers.
The Samsel agreed that language was a tremendous barrier. Fukushima, now a research student at Tokyo University, said that when he spoke English in Japanese surroundings, he was sometimes berated as if he was trying to be "a smart aleck."
On the other hand, Taira said: "As I was surprised to find how much my Japanese acquaintances wanted to say to me. That's why I have decided to stay in Japan a little longer."

Ex-Stars and Stripes writer Mike Berger returned to Tokyo to marry a Japanese girl several years ago said in a recent San Francisco Chronicle story he had interviewed about 25 Samsel who had come to Japan "to find the other half of me" and afterwards found it was their "first big mistake". There was cultural shock, frustration and some confusion.
Looking at the problem from the other side, a Japanese graduate student told Berger: "The Japanese make the mistake of expecting too much of the Nisei (an all-inclusive term describing overseas Japanese). We expect them to speak Japanese, most do not speak very well. We expect them to think as we do, they certainly do not. Their minds are essentially American, much more direct and logical. Once this gap becomes evident, Japanese, I am afraid, begin to look down on the Nisei."

General Appearance
The general appearance of Nisei and Samsel also often marks them as the products of a non-Japanese environment as a result of diet and life-style. Their foreign mannerisms are another giveaway.
"Neither really an outsider nor fully a Japanese, the Nisei is a special breed," says Daniel I. Okimoto, the California-born author of "American in Disguise." An account of his experiences as a Nisei in both the United States and Japan, it was published in 1971 by John Weatherhill, Inc., of New York and Tokyo.

The peculiar position of his group, according to Okimoto, is shown by the Japanese habit of referring to such persons as either Nisei or Nikkeijin — of Japanese descent — instead of calling them *gaijin*, that is, foreigners, or identifying them by nationality.
"Many Nisei have been in Japan a long time and speak the language well," he said, referring to the thousands who are permanent residents.
Mostly middle-aged or older, many of these are former Americans who lost their United States citizenship because of service in the Japa-

Aloha from Hawaii

by Richard Gima

Vernon Nunokawa, a veteran of 33 years of public service, has retired from his post as executive director of the state's Public Utilities Commission, effective Dec. 28. Nunokawa said he has no definite post-retirement plans. Nunokawa left the police department in 1961 after 20 years of service. He was the former bandmaster of the Big Island county band, will retire at the end of the present year. He will be 74 next February. Baellig, who has been band director since 1963, will give away to Armando Mendonza, who will take over the band on Jan. 10.

Courtroom
Attorney Arthur Trask decried a recent court decision upholding the 1971 appointment of Matsuo Takabuki as a Bishop Estate trustee. Trask represented Col. Curtis Kekoa, who unsuccessfully had sued the state supreme court seeking to overturn its appointment. "To deny the Hawaiian people the right of a hearing to question any appointment to the trusteeship of the estate of Princess Bernice Pauahi Bishop should finally unify the Hawaiian people to fight for justice," Trask said.

The family of the late Chosel Onaga, 47, who died Feb. 22, 1972, with seven others in an All Air Hawaii plane crash while enroute to Lanai, has received an \$82,857 out-of-court settlement from the airline. Onaga, a carpenter, was going to Lanai to work on a school construction job when the plane crashed on the island of Pali-Samuel King sentenced Harry Pui Fong, head of a local bookmaking ring, to six months in jail after his attorney, Wilfred Young, told the judge that gambling arrests will not stop betting. "Imprisonment of my client will not eliminate bookmaking in the State of Hawaii," Young said. King has permitted Fong to remain free until after New Year's.

Names in the News
Larry E. Stevens, 34, a computer specialist who disappeared more than a year ago, has been found. Stevens, who dropped out of sight on Oct. 4, 1972, was confirmed located in mid-July in New Mexico by the Hawaii State Attorney General's office. He disappeared after charging Mayor Frank Ito's campaign with improperly using city computers.
Sharon S. Matsuura of 3609 Kumuani St. has been awarded a Rotary Foundation fellowship for graduate study in Germany during the 1974-75 academic year. She will study German and German literature at the Univ. of Freiburg.

State Capitol
Minoru Hirabara, Democratic state chairman, offered to help mediate the dispute between warring factions of the party in the state House of Representatives. The House is split between eight dissident members seeking to reform the way the House is run and the majority faction led by Speaker Tadao Beppu. The dissidents, led by Rep. Richard Wong, want to decentralize the power structure and give more power to the committees.

Hawaii Today
Honolulu
Fresh pineapples recently sent from Hawaii reached New York markets in just 36 hours after being picked in Wahiawa. They were sold for \$1 to \$1.28 per five-pound fruit in supermarkets by two grocery chains. Castle & Cooke officials termed the event an important extension of the fresh pineapple airlift begun experimentally this fall to Dallas, Houston and Chicago. On the basis of experience so far, C&C predicts more than five million pounds of fresh pineapples may be sent to the Mainland next year.
Hawaii is assured of not having to move its clocks ahead when the rest of the nation goes on daylight saving time because of the energy crisis. Rep. Spark Matsunaga said on Nov. 27, Hawaii is exempted from the time change by an amendment introduced by Matsunaga.

Honolulu businessman Edward Brennan told the Honolulu Rotary Club Nov. 27 that the rising tide of Japanese investments has placed the Islands' ability to control their destiny in danger. Brennan, manager of Gold Bond Stamp Co., said so powerful are the Japanese companies now investing in Hawaii's economy that only positive and swift governmental action can keep the situation from getting out of hand. He said Japanese investors now own 10 hotels and six golf courses in Hawaii. With \$300 million invested,

to separate pedestrian and motor traffic. Economic development is not serving to hold down commodity costs; but a precarious balance is being maintained because the rate of development happens to keep ahead of the spiraling cost of living. The industrious Japanese is like a rat racing around a suspended wheel, nicknamed an "economic animal" by people abroad. But this does not necessarily mean that he is completely satisfied with this state.

EASY JAPANESE IN A MINUTE
The mono wa sugu urikireru. (The good items will soon be sold out.)
Hayaku kaimono o shita ho ga ii desu. (It's better to do your shopping early.)

OTHER SIDE OF THE TRACKS—Unemployed, seeking work through the labor offices in Tokyo, number over 20,000 of which 6,000 are women. Sixty-seven per cent of the women are over 50, and the work they obtain is cleaning refuse from gutters and rivers, and cleaning parks and streets. The work nets an average of 631 yen a day, totaling only 15,000 yen or so a month. Seventy per cent of the women engaged in those jobs are widows or are divorced; the remainder are women whose husbands are ill or otherwise unable to work. The majority are bringing up children on their meager wages.
THE OLD SCHOOL—Husbands in Japan as elsewhere tend to give poorer marks to their wives than to their wives than to their mothers as housewife, although young girls before marriage still continue to take all kinds of lessons in "bridal training" courses. The main reason for the discontent of the current era's husbands seems to be that such things as plain every day cooking, cleaning, manners and social etiquette, which were mostly learned in the homes in the past, are now neglected.

PURELY PERSONAL OPINIONS
That tense and pained expression on the faces of social climbers indicates that they are suffering from mountain sickness.

1974 JAACL CHARTER FLIGHT
To Japan

VIA JAPAN AIR LINES
Spring Charter: Lv Mar. 30, Ret Apr. 20

This charter is open to all JAACL members only regardless of what chapter they may belong. This charter has been approved and authorized by the JAACL National Travel Committee. Reservations together with deposits or payments for the flight should be mailed to the following address as soon as possible to guarantee yourself a seat on the flight. This flight is not restricted to 1000 Club members only.
Reservations together with deposits or payments for the flight should be mailed to the following address as soon as possible to guarantee yourself a seat on this flight.

Make checks payable to: JAACL Charter Flight
Mail to: Mr. Aki Ohno, Chairman
JAACL 1000 Club Charter Flights
P. O. Box 60078
Los Angeles, Calif. 90060

NEW LOW FARE—\$325.00
Round Trip Los Angeles to Tokyo

Tour arrangements in Japan can be made through the services of MITSUINE TRAVEL SERVICE
327 EAST FIRST STREET
LOS ANGELES, CALIF. 90012 TEL. (213) 625-1503
The tour offered for this trip will be the same as the popular Nisei Fun Tours sponsored by Mitsuline.

For information in regards to the Charter Flight, please contact Mr. Ohno.
For information in regards to the Tour Arrangements and Documentation, please contact Mitsuline Travel Service.

Dear Mr. Ohno:
Please reserved _____ seats for the '74 Spring Charter. I enclose \$100 deposit for each person. Please send me the contracts and other information in detail.
Name(s): _____
Address: _____
Amount enclosed: \$ _____ Telephone: _____



Hawaii Today

Honolulu
Fresh pineapples recently sent from Hawaii reached New York markets in just 36 hours after being picked in Wahiawa. They were sold for \$1 to \$1.28 per five-pound fruit in supermarkets by two grocery chains. Castle & Cooke officials termed the event an important extension of the fresh pineapple airlift begun experimentally this fall to Dallas, Houston and Chicago. On the basis of experience so far, C&C predicts more than five million pounds of fresh pineapples may be sent to the Mainland next year.
Hawaii is assured of not having to move its clocks ahead when the rest of the nation goes on daylight saving time because of the energy crisis. Rep. Spark Matsunaga said on Nov. 27, Hawaii is exempted from the time change by an amendment introduced by Matsunaga.

Honolulu businessman Edward Brennan told the Honolulu Rotary Club Nov. 27 that the rising tide of Japanese investments has placed the Islands' ability to control their destiny in danger. Brennan, manager of Gold Bond Stamp Co., said so powerful are the Japanese companies now investing in Hawaii's economy that only positive and swift governmental action can keep the situation from getting out of hand. He said Japanese investors now own 10 hotels and six golf courses in Hawaii. With \$300 million invested,



Jim Henry

Sakura Script

Where Do I Go from Here?

ACTUAL JAPAN ECONOMY—Although Japanese economy boasts the world's highest percentage of development, such statistics show only half of the picture. Prosperity is evident, but on the other hand, there is much evidence of unbalance as well.

Under the shadows of tall modern buildings are crowded, tiny wooden-shack dwelling. Right beside the super expressways are crowded narrow mazes that serve as streets, with no special lanes

to separate pedestrian and motor traffic. Economic development is not serving to hold down commodity costs; but a precarious balance is being maintained because the rate of development happens to keep ahead of the spiraling cost of living. The industrious Japanese is like a rat racing around a suspended wheel, nicknamed an "economic animal" by people abroad. But this does not necessarily mean that he is completely satisfied with this state.

EASY JAPANESE IN A MINUTE
The mono wa sugu urikireru. (The good items will soon be sold out.)
Hayaku kaimono o shita ho ga ii desu. (It's better to do your shopping early.)

OTHER SIDE OF THE TRACKS—Unemployed, seeking work through the labor offices in Tokyo, number over 20,000 of which 6,000 are women. Sixty-seven per cent of the women are over 50, and the work they obtain is cleaning refuse from gutters and rivers, and cleaning parks and streets. The work nets an average of 631 yen a day, totaling only 15,000 yen or so a month. Seventy per cent of the women engaged in those jobs are widows or are divorced; the remainder are women whose husbands are ill or otherwise unable to work. The majority are bringing up children on their meager wages.

THE OLD SCHOOL—Husbands in Japan as elsewhere tend to give poorer marks to their wives than to their wives than to their mothers as housewife, although young girls before marriage still continue to take all kinds of lessons in "bridal training" courses. The main reason for the discontent of the current era's husbands seems to be that such things as plain every day cooking, cleaning, manners and social etiquette, which were mostly learned in the homes in the past, are now neglected.

PURELY PERSONAL OPINIONS
That tense and pained expression on the faces of social climbers indicates that they are suffering from mountain sickness.

1974 JAACL CHARTER FLIGHT
To Japan

VIA JAPAN AIR LINES
Spring Charter: Lv Mar. 30, Ret Apr. 20

This charter is open to all JAACL members only regardless of what chapter they may belong. This charter has been approved and authorized by the JAACL National Travel Committee. Reservations together with deposits or payments for the flight should be mailed to the following address as soon as possible to guarantee yourself a seat on the flight. This flight is not restricted to 1000 Club members only.
Reservations together with deposits or payments for the flight should be mailed to the following address as soon as possible to guarantee yourself a seat on this flight.

Make checks payable to: JAACL Charter Flight
Mail to: Mr. Aki Ohno, Chairman
JAACL 1000 Club Charter Flights
P. O. Box 60078
Los Angeles, Calif. 90060

NEW LOW FARE—\$325.00
Round Trip Los Angeles to Tokyo

Tour arrangements in Japan can be made through the services of MITSUINE TRAVEL SERVICE
327 EAST FIRST STREET
LOS ANGELES, CALIF. 90012 TEL. (213) 625-1503
The tour offered for this trip will be the same as the popular Nisei Fun Tours sponsored by Mitsuline.

For information in regards to the Charter Flight, please contact Mr. Ohno.
For information in regards to the Tour Arrangements and Documentation, please contact Mitsuline Travel Service.

Dear Mr. Ohno:
Please reserved _____ seats for the '74 Spring Charter. I enclose \$100 deposit for each person. Please send me the contracts and other information in detail.
Name(s): _____
Address: _____
Amount enclosed: \$ _____ Telephone: _____

Local Scene

Hunters Point
up for sale

NEWS
CAPSULES



Mrs. Helen Kawagoe (above)

Los Angeles
The Nisei Singles Club host two parties this month, a Christmas eve dance at the Legion Hall in Torrance and a New Year's eve dance at the Legion Hall in Pacific Palisades.

The Chinese Juniors are sponsoring their seventh annual art show for amateur artists in all medias Jan. 26-27 at the East-West Savings during the Chinese New Year celebration. Exhibited works may be offered for sale.

East-West Players holiday season opens Dec. 20 with Hans Christian Anderson's "The Emperor's Nightingale," a soft-rock musical, scored by Hatsu Uda, musical director for the Players.

Dr. William J. Johnston, L.A. school superintendent, was honored at a dinner reception Dec. 13 hosted by the Asian American Education Assn. at Golden Palace restaurant.

San Francisco Peninsula
A Mochitsuki will be held Dec. 29, 10 a.m., at the Sturge Presbyterian Church, San Mateo.

San Jose
The "Shells" will provide music for the fifth annual YJA New Year's Eve dance at the Hyatt House Mediterranean Room with dinner beginning at 6:30 and the dance from 9:30. Dinner-dance tickets are \$27.50 per couple and may be purchased from Hiro Kinoshita (265-7206) and Gene Kinoshita (255-8511).

An annual mochi-tsuki will be held by the Wesley United Methodist Church on Dec. 28-30 with proceeds going towards the church building fund for a social hall. The church has expressed appreciation to the community for its support in the past years. Orders for komochi, okasane and noshimochi are now being taken at the church office (292-7552).

The San Jose Jackson-Taylor Business and Professional Men's Assn. decided to beau-

SAN FRANCISCO — At least five Japanese groups and three U.S. firms are said to be interested in purchasing the Hunters Point naval shipyard when it closes next June 30, according to the Mayor's Office of Economic Development.

The U.S. firms plan to use the facility for the almost certain construction of an unprecedented large fleet of tankers to haul Alaskan crude to American oil refineries.

The Japanese also sense the same shipbuilding bonanza, but a legal question whether a foreign-operated yard would be entitled to federal construction subsidies even if it were building ships for U.S. flag operations has been raised.

Chinese New Year fete
slated Jan. 25-27

LOS ANGELES — The Chinese American community here ushers in the Year of the Tiger and Year 4672 with its traditional big weekend festival Jan. 25-27.

The golden dragon parade is scheduled on Friday, Jan. 25, 8 p.m., in Chinatown. Units wishing to join should see Bill Hong (628-6217).

'Strong and sexy'

HARTLEPOOL, England — A hundred Chinese girls, all Hong Kong factory workers between 17-23, sent an order to a lonely hearts club here in this northern town for 100 "strong and sexy" British bridegrooms. Men they knew at home were all old and not very nice, one girl, 18, said.

Sacramento

Young Adults Buddhist Assn. will hold its 19th annual Northern California conference Dec. 16 at the Sam's Rancho Village here. Assemblyman Paul Bannai will be keynote speaker.

Government

Santa Maria lettuce grower Isamu Sam Minami has been appointed by Gov. Ronald Reagan to the board of directors of Santa Barbara County Fair. Minami fills the post of another Nisei, Ray Koyama, who passed away in May. Born in Guadalupe in 1922, Minami is a life long resident of the valley and is associated with his brothers in the family enterprise, the Security Farms. He is a 1000 club member. Minami and his wife, Grace, have two children.

Health

San Jose Mayor Norman Mineta was accorded the first annual distinguished service award by the San Jose Friends of the National Jewish Hospital and Research Center, Denver at a Nov. 15 testimonial dinner. Proceeds from the \$125 per couple dinner went to the research center.

Science



Dr. Richard I. Tanaka (above) of Anaheim, Calif., was voted president-elect of the International Federation for Information Processing, comprised of delegates from 35 nations. The California Computer Products, Inc., executive has been the U.S. representative to IFIP since 1969, assisted several UN committees on studies for use of computers in developing nations and U.S. Commerce Dept. trade missions. A UC Berkeley graduate in electrical engineering, with a doctorate from Cal-tech, his three-year term as president-elect begins next August during the IFIP Congress in Stockholm.

manager at the Montebello bank, succeeds as Western L.A. branch manager.

Kiyoo Minoura, manager of the Bank of Tokyo of California's San Francisco main office and a director of the bank, has been named an executive vice president, according to Masao Tsuyama, president. Also promoted to executive vice president of the

AI A. Shimoguchi, who has been Japan Air Lines San Jose sales representative for the past four years, has been appointed JAL's district sales manager in Portland. Before joining JAL, he operated his own insurance and real estate firm in San Jose for 18 years. In Portland he succeeds Harry Meador who has been transferred to San Diego.

Venice-Culver JACL Sam Shimoguchi, 48, manager of Bank of Tokyo's Western L.A. branch, was named manager of their Panorama City branch and Stanley K. Mori, assistant

1000 Club Membership

National Headquarters acknowledged 5719 new and renewing 1000 Club memberships during the last half of November, as noted below, for a month-end total of 2,811 as compared with 2,400 last year.

- BERKELEY 2—Japan Travel Bureau, Inc. 2—Urata, Masaji G. HOISE VALLEY 1—Kido, Hiro. CCDC 20—Ando, Mats. CHICAGO 1—Corbelle, Judith 1—Fanta, Barbara 3—Fuji, Bennie 17—Hagiwara, Mrs. Esther 1—Hara, Colin 17—Higashuchi, Jake K 20—Ichiyasu, Harry 8—Kabamoto, Jack 2—Koga, Albert 1—Kono, Mrs. Florence 20—Seto, Paul 2—Sugimoto, Midori CINCINNATI 22—Toki, Masaji 5 DOWNTOWN L.A. 11—Nitake, Mrs. Hanako EAST LOS ANGELES 25—Inadomi, Yoichi EDEN TOWNSHIP 20—Fuji, Kenji FRESNO 2—Nozaki, Dr. Joseph 19—Masuoka, Dr. Shig J 25—Ono, George S. WARYVILLE 11—Hatanaka, Thomas MILE HI 16—Yasui, Minoru MILWAUKEE 17—Nakahira, Shigeru MONTEREY PENINSULA 1—Perino, Gene OAKLAND 16—WeHara, Dr. Russell N. 20—Miyakawa, Tomio PHILADELPHIA 14—Hamada, Tauglo POCATELLO 20—Kawamura, Akira Ike PROGRESSIVE W/SIDE 25—Tsurumoto, Dr. George UENO 19—Fuji, Onok 14—Daikei, Frank M. SACRAMENTO 19—Fuji, Onok SAINT LOUIS 20—Eto, Dr. Jackson SALT LAKE CITY 21—Okada, Hito SAN DIEGO 19—Obayashi, Alfred Y. SAN FRANCISCO 12—Fujimoto, Joe J. 19—Itoizaki, Kenji 1—Kreba, Christina P. SAN JOSE 23—Katayama, Yoshio SANTA BARBARA 17—Sutow, Mary 18—Sutow, Tomiko SANTA BARBARA SEATTLE 18—Sakahara, Ted A. SNAKE RIVER 20—Itami, Tom 19—Murakami, Shigeo 24—Saito, Joe Y. 15—Saito, Belle 15—Sasaki, Barton STOCKTON 18—Inatani, Frank 19—Itaya, Sam VENICE-CULVER 15—Kado, Ryozo 23—Mikawa, George 17—Shishino, Dr. Takao WASHINGTON D.C. 6—Matsumoto, Glenn K. 23—Takagi, Harry

Education

Three active Nisei in Santa Maria Valley JACL are serving the elementary school district: Chapter president Mrs. Ellen Kishiyama is an Emergency School Aid Act representing the Asians in the community; Toru Miyoshi, insurance man was named to the Affirmative Action committee and on the school board for five years is Tak Shigenaka, local contractor.

Flower-Garden

Landscaping designing of a home in Arcadia by Pasadena's Tom Matsuoka has earned him honors in Contractors Assn. competition. Matsuoka's work on the home of William F. Krumm has received official recognition as the best example of a large renovation landscaping project in 1973.

Crime

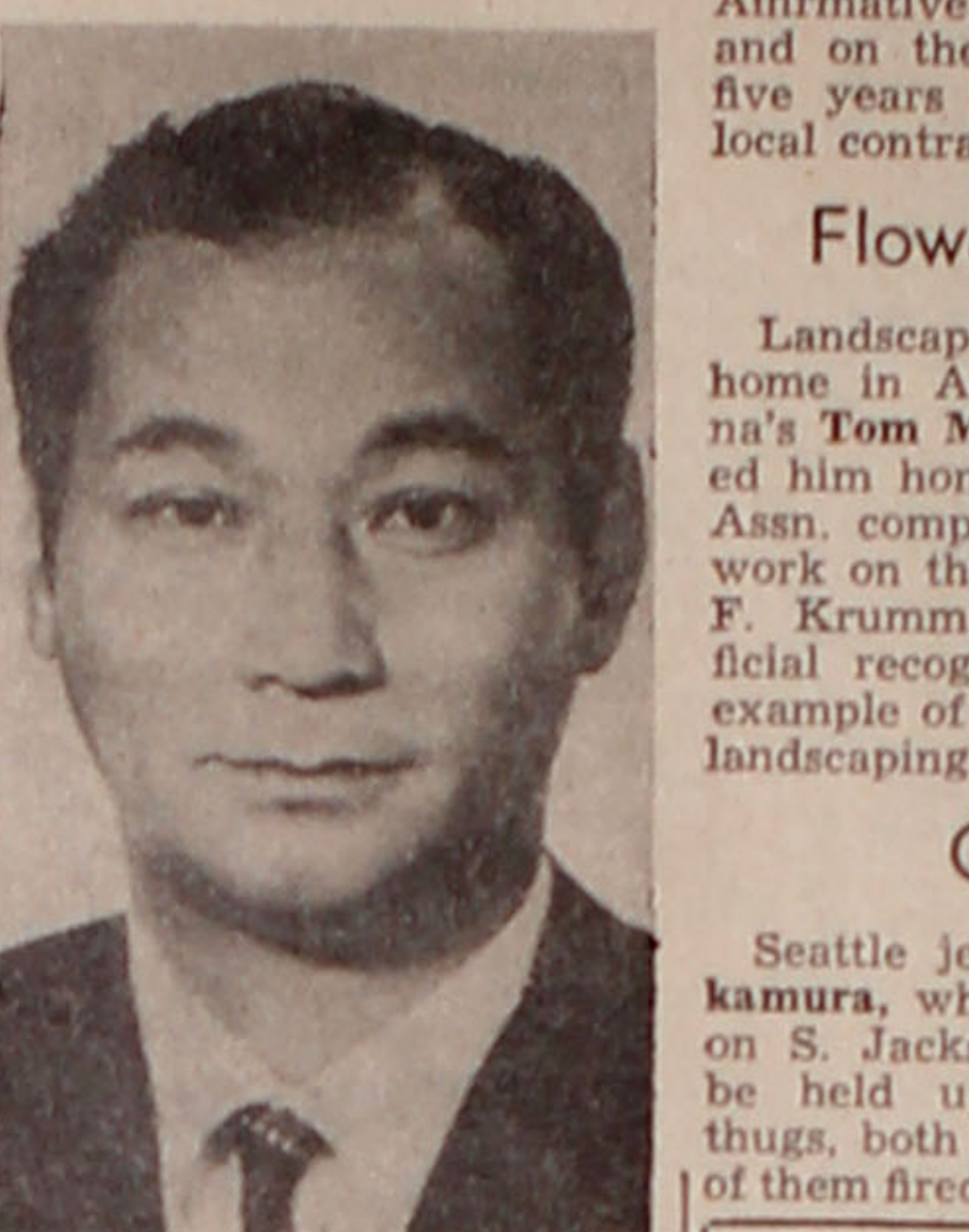
Seattle jeweler Masaji Nakamura, who operates a shop on S. Jackson St. refused to be held up by two young thugs, both about 17, and one of them fired twice at him with

Education

Richard Masachika Kiyasu, 23, a Nisei drifter, surprised in a burglary attempt Dec. 3 inside a residence at La Habra Heights, held a teenage boy and his father at knifepoint for four hours before he was overpowered by sheriff's deputies. Kiyasu has been booked for investigation for burglary, kidnap, assault with a deadly weapon and intent to commit murder.

Garbage nuisance is mounting in Tokyo

TOKYO — The garbage war is raging in Tokyo with no solution in sight. Tokyo Governor Minobe's proposal to build a garbage disposal plant in the middle of the Shinjuku area has met with a strong protest movement from among the local residents. But Shinjuku Ward has no disposal plant of its own within its boundary although it spews out 874 tons of refuse a day.



state-chartered bank is Yasuo Yoshizawa (above) who has been named manager of the bank's Southern California region and also the Los Angeles main office. Yoshizawa replaces Akira Kawasaki who is returning to Japan for reassignment by the Bank of Tokyo, Ltd. Previously Yoshizawa was manager of the bank's Gardena branch and until now has been the Japanese agent in Los Angeles and also a director of the state bank.

Three Generations of Experience
FUKUI
Mortuary, Inc.
707 E. Temple St.
Los Angeles 90012
626-0441
Soichi Fukui, President
James Nakagawa, Manager
Nobuo Osumi, Counsellor

Shimatsu, Ogata
and Kubota
Mortuary
911 Venice Blvd.
Los Angeles
RI 9-1449
SEIJI DUKE OGATA
R. YUTAKA KUBOTA

Professional Guide
Your Business Card placed in each issue for 25 weeks at 3 lines (minimum) MA 6-5666. Each additional line \$4 per line.

Greater Los Angeles
FLOWER VIEW GARDENS FLORIST
1601 N. Western Ave. (213) 466-7373
Art. Its. welcome. your Floral Gift orders for the Greater L.A. Area Mention PC.

JACL Group Health Ins.
Jimmy Gozawa (213) 765-9715
7359 Clean Ave., Sun Valley 91352

NISEI FLORIST
In the Heart of L.A. Tokyo
328 E. 1st St. MA 6-5666
Fred Moriyoshi Mems. Teleflora

YAMATO TRAVEL BUREAU
312 E. 1st St. L.A. (906) 212-1101
MA 4-6021

Watsonville, Calif.
TOM NAKASE REALTY
Acreage Ranches - Homes
Income
Tom T. Nakase, Realtor
25 Clifford Ave. (408) 724-6477

Pacific Grove, Calif.
SUNSET MOTEL
Nr ocean, golf, conference grnd
133 Asilomar Bl. (408) 375-3936

San Jose, Calif.
EDWARD T. MORIOKA, Realtor
Service Through Experience
Bus. 246-6666 Res. 241-9554

Sacramento, Calif.
Wakano-Ura
Sukiyaki - Chop Sui
Open 11-11 Closed Monday
2217 10th St. - GI 8-6231

Seattle, Wash.
Imperial Lanes
2101 - 22nd Ave. So. EA 5-2525
Nisei Owned - Fred Takagi, Mgr.

Kinomoto Travel Service
Frank Y. Kinomoto
521 Main St. MA 2-1522

Washington, D.C.
MASAOKA - ISHIKAWA
AND ASSOCIATES, INC.
Consultants - Washington Matters
2021 L St. NW (202) 361-1111

Toyo Printing
Offset - Letterpress - Linotyping
309 S. SAN PEDRO ST.
Los Angeles 12 - Madison 6-8153

MARUKYO
Kimono Store
101 Weller St.
Los Angeles
628-4369

Nanka Printing
2024 E. 1st St.
Los Angeles, Calif.
ANgelus 8-7835

Appliances - TV - Furniture
TAMURA
And Co., Inc.
The Finest
in Home Furnishings
3420 W. Jefferson Blvd.
Los Angeles 18
RE 1-7261

Complete Home
Furnishings
Koby's Appliances
15130 S. Western Av
Gardena, DA 4-6444, FA 1-2123

NISEI Established
1936
TRADING CO.
Appliances - TV - Furniture
348 E. FIRST ST., L.A. 12
MAdison 4-6601 (2, 3, 4)

Aloha Plumbing
LIC. #201875
PARTS & SUPPLIES
- Repairs Our Specialty -
1948 S. Grand, Los Angeles
RI 9-4371

ED SATO
PLUMBING AND HEATING
Remodel and Repairs Water
Heaters, Garbage Disposals,
Furnaces
- Servicing Los Angeles -
AX 3-7000 RE 3-0557

NEW LOCATION
Kimura
PHOTOMART
Cameras and Photographic Supplies
316 E. 2nd St., Los Angeles
622-3968

TOYO
Myatake
STUDIO
318 East First Street
Los Angeles, Calif.
MA 6-5681

ATTENTION EXPERIENCED PROPERTY MANAGERS HUD WANTS YOU

The U.S. Dept. of Housing and Urban Development is proposing to enter into Area Management Contracts (AMC) with 31 separate professional management organizations. The contract will be publicly advertised, competitively bid and awarded under Federal procurement regulations. These three year contracts will be awarded for the purpose of providing management services for residential real property which HUD has acquired title to or otherwise obtained custody of. These 31 contracts will be located in geographical areas which would contain between 100 and 200 properties.

The locations of these areas are summarized as follows: Covina, West Covina, La Puente, Baldwin Park, Duarte, Norwalk, Long Beach, Paramount, Lynwood, Pasadena, Altadena, West Hollywood, San Fernando, Sylmar, Lancaster, Saugus, Inglewood, (7) in South Central Los Angeles, Highland Park, (3) Compton, Santa Barbara, San Luis Obispo, Bakersfield and Santa Maria.

You are invited to attend a public meeting to be held at 9:00 A.M. on Thursday, December 13, 1973 at the Los Angeles County Board of Supervisors Hearing Room, 500 West Temple, Los Angeles. HUD staff will conduct an in-depth discussion of the qualifications and responsibilities involved in administering an Area Management Contract. These qualifications and responsibilities are summarized below. (note: these provisions are subject to modification).

QUALIFICATIONS OF BIDDERS

In order to satisfy the Government's requirements, bidders must submit evidence of the following minimum qualifications:

- a. Must have the capability and be willing to establish his Area Management Contract (AMC) office within the geographic area of the contract.
- b. Must agree that the AMC organization or a division thereof will be prohibited from selling all real estate and insurance on real estate, and will be prohibited from receiving kickbacks, fees or any consideration from such sales.
- c. At least one member of the permanent AMC organization must have a current real estate brokers license.
- d. The AMC must be willing and capable of financing operations under the contract for a period of 90 days. This will require approx. \$40,000 in working capital.
- e. The manager of the AMC organization must have at least three years general management experience, and at least two years specialized experience in the property management field.
- f. At least one member of the AMC organization must have at least five years experience in the home construction or rehabilitation field, and must have a professional knowledge of construction techniques, and costs. He must be able to fully prepare comprehensive property repair surveys, service reports in progress and conduct final inspections of completed repairs.
- g. The bidder must agree to the stipulation of being prohibited from having more than one AMC within one HUD jurisdiction (e.g., within the geographic area of the HUD Los Angeles area Office). Exceptions may be authorized by the HUD office.
- h. In some areas the bidder must demonstrate that, at least one member of the AMC organization be able to speak Spanish to the degree of being able to function as an interpreter, or have immediate access to such a person.
- i. Bidders must be considered a responsible prospective contractor in accordance with the standards established in the Federal Procurement Regulations.

Summary of Services to be Performed

The Contractor shall perform the following services stipulated with his regular employees at no additional expense to the Government. It shall be further understood that assignment or transfer of this contract by the Contractor is prohibited by statute (41 USC 15).

- a. Posting such Government signs as may be authorized by the Government.
- b. Notifying the police, utilities and taxing authorities of Government ownership.
- c. Informing the Government promptly concerning all damage resulting from vandalism, fire, windstorm, and other causes at the outset and thereafter as circumstances require.
- d. Transmittal of statements or bills (if required) as to tax or improvement assessments in ample time for payment.
- e. Winterizing of all operating systems and equipment, as to all properties vacant at the outset or subsequently vacated or at such other time as conditions require.
- f. Removal from the premises of all trash and debris, both as to interior and grounds.
- g. Securing the properties, in accordance with HUD specifications, against unauthorized entry and damage by the elements at the outset and hereafter as needed in storing the Government purchased materials when no longer required, and utilizing materials on a priority basis when there are new requirements.
- h. Mowing the grass, trimming the shrubbery, and watering when needed or required.
- i. Recommendation to the Government on a continuing basis contractors who are interested in performing repair and maintenance services. This will include furnishing such background and experience data as may be necessary for the Government to approve contractors for providing services to the Government under contract.
- j. If required and upon request by the Government, the Contractor will solicit quotations from three or more contractors found to be responsible by the Government in accordance with Government instruction, prepare repair purchase orders for HUD approval and conduct inspections to assure satisfactory compliance with repair and maintenance contracts.
- k. Cooperate with and assist selling brokers to expedite the sale of listed properties. To provide compensation and incentive for this effort HUD will pay the contractor in accordance with the following schedule after the property is listed for sale, 1% of sale price if property is sold within 12 weeks.
- l. Investigate and post complaints regarding physical condition of a property. If the nature of the complaint permits, contact the repair contractor and require correction of the problem. If the nature of the problem requires immediate corrective action, the AMC is authorized to pay for the expenditure for repairs to a maximum of \$200.00. The AMC will show the disbursement on the monthly report, and will submit an itemized bill with the monthly report.
- m. The Contractor will complete and furnish repair specifications—Forms—in at least eight (8) copies to the Government. This form will normally be prepared for each property added to the contract and may also be requested for properties presently identified under the contract if the Government determines that completion of the form will aid its disposition program. The repair specifications shall include the results of the systems tests. Property repair surveys must be approved by HUD.
- n. Shall establish an emergency phone number which can be called twenty four (24) hours a day. The AMC should be prepared to reach any property within six (6) hours.
- o. When required by HUD, will obtain the services of security guards, alarm devices or other normal security measures.
- p. The Contractor will be required to establish a separate bank account for AMC fund disbursements.
- q. The Contractor shall be required to furnish the necessary professional and technical personnel, clerical services, equipment, materials and materials to fully perform the contract. Except that the Government will supply the required quantity of standard prefabricated forms.
- r. Conduct walk-through inspection of each property under the contract at least once every two weeks. A final walk-through inspection will be made with the selling broker and purchaser of the property. Notes will be made of this final inspection as to the condition of the property at the time of sale. This inspection report will be forwarded to HUD for inclusion in the case file.
- s. Prepare the sales credit purchase for each property sold under the contract. Utilize HUD form the related exhibits, compiling the proper forms to facilitate the assembling of the complete credit package. This is to be accomplished within 15 days after receipt of sales contract form 2384 from the HUD office.
- t. Accumulate and pay necessary utilities cost while property is under this contract. The contractor may monthly submit the amount to HUD for reimbursement on the monthly accounting report.
- u. The Contractor shall arrange for and supervise the following continuing services subject to the procurement and conflict of interest provisions of the contract. The actual repair or maintenance costs shall be reimbursable from project funds or through the U.S. Treasury, or paid direct by the Government through the U.S. Treasury, as appropriate.
- v. (1) Continuing maintenance of buildings and grounds.
- (2) If required and upon request by the Government, obtain and include results of current certified test reports concerning the condition of all operating systems and equipment on the repair specification form.
- (3) Obtain a roof inspection on all properties added to this contract. If repairs are needed, solicit quotations from three or more contractors and prepare purchase order for HUD approval to contractor receiving award.
- (4) Obtain structural pest inspections from three licensed contractors on all properties added to this contract. If pest or termite work is required, prepare a purchase order for HUD approval to pest control contractor with most reasonable bid to eliminate infestations.
- w. The Contractor shall perform custodial services on vacant properties assigned hereunder which are encumbered by mortgages assigned to the Secretary under contracts of mortgage insurance or where the property has been abandoned and the Secretary holds a purchase money mortgage token book in connection with the sale of such property or other form of legal possession of which the Secretary does not hold free and clear title to such property.

Questions regarding this advertisement should be in writing and addressed to **Mr. Philip Rask**, Chief, Property Disposition Branch, HUD, 2500 Wilshire Blvd., Los Angeles