



PRIORITIES: Henry Tanaka

## Decision-Making

I believe one of the most difficult adjustments of National Board members is to view JACL from a national scope. This is natural, with 65% (15 of 23) of the national board serving as district governors or district youth chairmen. Only 35% of the National Board are elected by the National Council.

To assist with this adjustment, a new format of National Board meetings was instituted. Separate "caucuses" were organized to provide opportunities for sharing experiences and problems related to district and youth matters. The Executive Committee met separately to discuss sensitive issues relating to personnel problems.

The effect of caucus meetings preceding National Board meetings has been most encouraging. Board members have related more quickly to national issues. They have gained a better and more realistic understanding of JACL concerns which affect the total membership. Board meetings have not been taken up by time consuming experience-sharing reports. Board members get to know each other through sharing and participation in the caucus meetings.

To serve on the National Board is no longer an honor; it is a job! For too long the responsibilities for decision-making have been invested in few individuals, whether by choice, default, or unequal distribution of duties among the board members.

An effective board is one that is well informed, responsive to diverse views, task-oriented, and decisive. It is not "hung up" by titles or status consciousness. I believe that JACL has been fortunate in having such a board during the past two years. And I am hopeful that future board members will continue to be selected who have the sense of personal commitment and task-oriented approach to JACL's activities and programs.

The relationships between board and staff has yet to be clarified. There are those in the past who have felt that staff should not participate in board

meetings.

I disagree strongly. Staff members should be viewed as partners in the decision-making process that involves program planning, development and implementation. Their technical skills and personal commitment to JACL are invaluable assets.

In the operations of JACL, unilateral decision-making has no place in the organization. No one person should be invested with the authority to make all the decisions for the organization, whether a board member or staff person. On the other hand, it would be totally unrealistic for the entire membership to participate collectively in all matters of decision-making. It is for this reason that a National Board representing and protecting the interests and concerns of JACL have been duly elected to carry out the mandates of our membership.

As a rule, decision-making should be a participatory process at all levels, locally, district and national, if such decisions are to accurately reflect the desires of the membership. Those issues which have national implications should flow through the channels provided.

Perhaps our district councils need to be strengthened and given more assistance so that such issues expressed by local chapters can be properly and more expeditiously dealt with. To bypass the district councils is to disregard an important phase of the participatory decision-making process. Of course, there are exceptional matters which may require the immediate attention of the National Board.

Every day, each one of us is making decisions which affect our personal lives, our families, our work and our relationships with others. It is the more difficult decisions to improve the quality of our lives our communities and the people we serve which are more demanding and involved.

Understanding, respect for others views, a willingness to compromise, rational and logical thinking, and a sense of cooperation to fulfill the goals are essential ingredients for effective decision-making. It is too easy to blame someone else, thereby avoiding one's involvement in decision-making.

Mr. Tanaka's address: 2192 Grandview Ave., Cleveland, Ohio 44106

### ADMINISTRATION AT HEADQUARTERS

## New guidelines and systems improve daily procedures, services to chapters

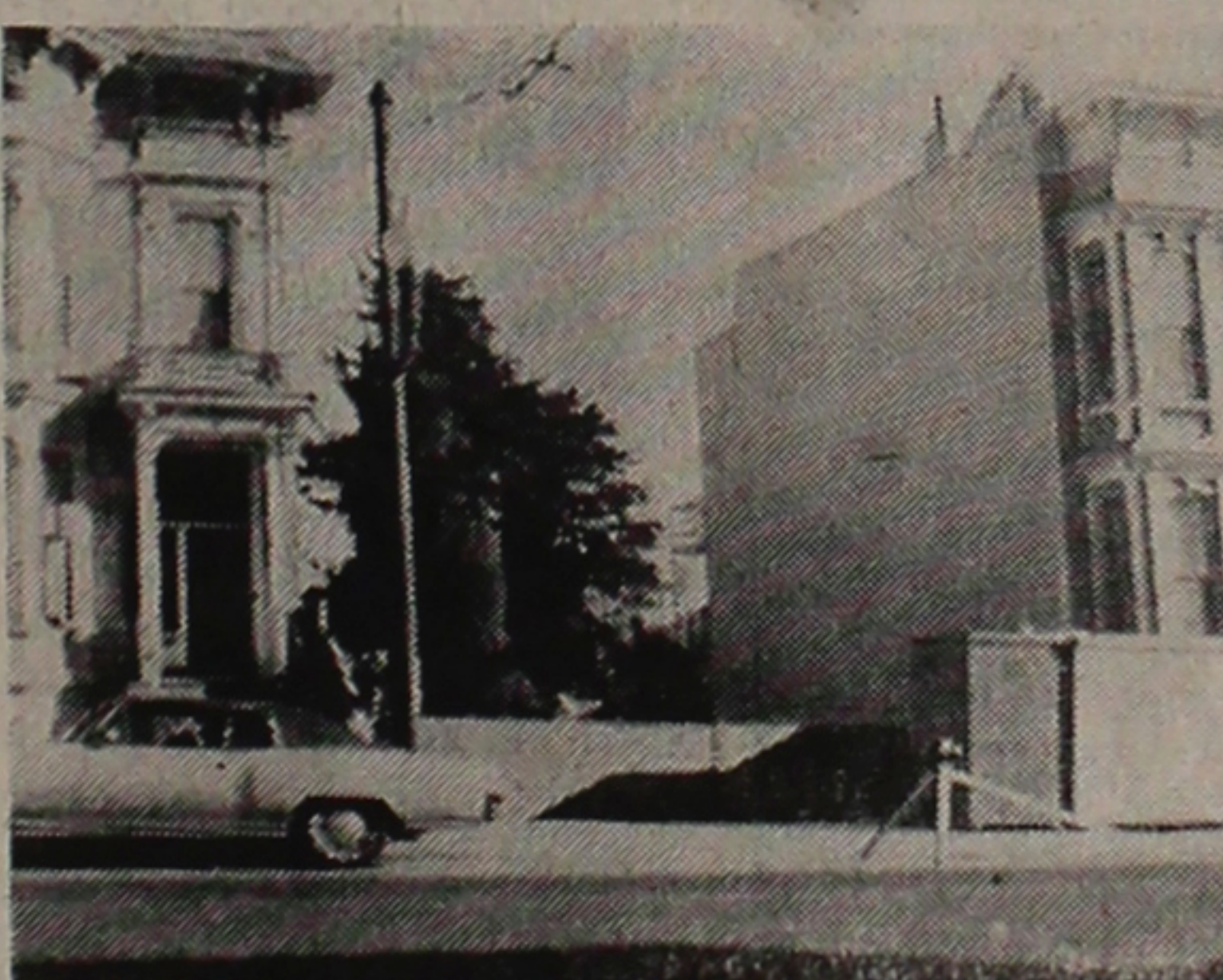
The workings behind the scenes of JACL have undergone great changes in the past year. From budgeting to personnel procedures, the end product is an ever-expanding organization better equipped to meet the needs of a growing membership.

In the area of membership services a new method of membership processing was developed to keep pace with the growth of JACL. The utilization of carbonized, multiple forms helps to facilitate Pacific Citizen subscriptions, chapter receipts and the future conversion to computerization.

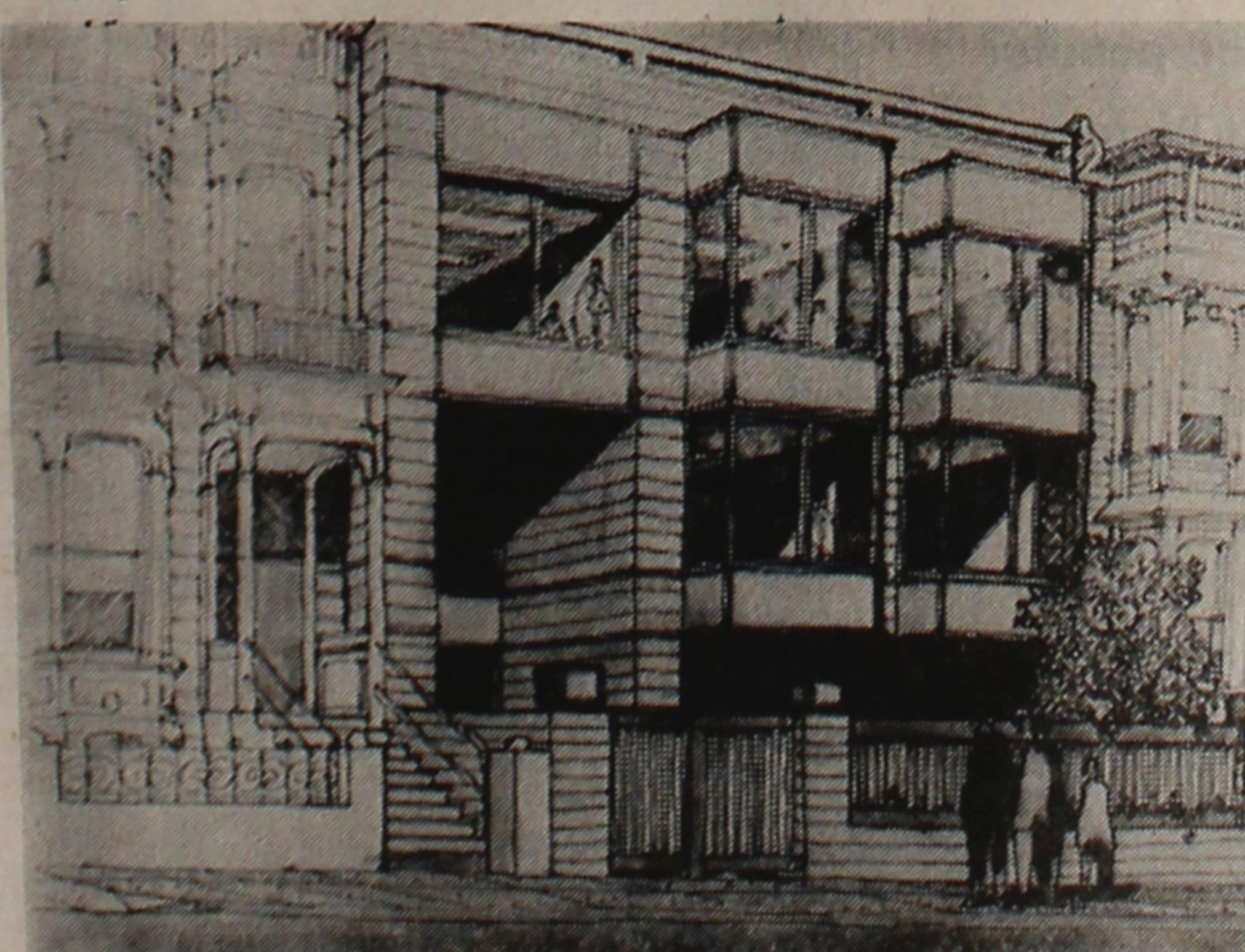
At Hatate, National Treasurer, and Jim Murakami, National Vice President for research and services, head up a special committee to implement this change to computerization in the next biennium.

With addition of a business manager to staff, JACL's money matters came under a new accounting and budget reporting system. The organization's accounting procedures have been streamlined and revamped with plans for institution of an updated system. JACL budgets will now be reported quarterly and work is in progress to develop a central information file on chapter income for federal tax purposes.

In the area of charter flights, a new set of guidelines was developed by the JACL Travel Committee, EXECOM, National Board and Staff. Under these guidelines, beginning 1975, all charter flights will be coordinated directly out of JACL Headquarters, centralizing the administration and dissemination of information.



What was a residence at 1763 Sutter St. in San Francisco is no more. The frame structure was razed June 18 to make room for the JACL Headquarters Building. The building at left is the Nichibei Kai, and served as National JACL Headquarters in the mid-1950s upon its return from Salt Lake City.



The architect's rendering of new JACL Building, San Francisco.

Portland and Gresham-Troutdale JACL Chapters Co-Host

**3 THE 23rd BIENNIAL NATIONAL CONVENTION**  
July 23-27, 1974 - Sheraton Motor Inn  
Weeks Remain Till JACL Convention Week in Portland

### SCHOLARSHIPS

## 2 more awards make it twenty for \$6,450 total

With the addition of two new scholarships, National JACL will be offering 20 awards, totaling \$6,450, to students entering the collegiate and graduate levels.

The two new scholarships that will be available in 1975 are the Magochi Kato Memorial Freshman Scholarship for \$250 established by Kato's widow, Mrs. Shizuko Kato of Los Angeles, and the Nishiburo Albar Memorial Graduate Scholarship for \$300 sponsored by the Turlock Social Club. At the request of Mrs. Kato, the scholarship will be awarded to a college freshman planning to enter the field of medicine or ministry.

Since the national program began in 1946, nearly 200 students have been aided. Almost \$56,000 has been granted in awards.

The national scholarships are offered in addition to the many local awards made by individual chapters. In 1973 chapters offered 171 scholarships worth \$22,065. By extending these figures it would be safe to estimate that on the national and local levels, JACL has awarded at least a quarter of a million dollars in scholarships since beginning its program.

In addition to the scholarships, JACL offers a student aid program awarding grants from \$100 to \$300 to students based on financial need. Since the program began in 1969, at least \$15,000 has been awarded.

### Nat'l Council to review scholarship guidelines

National JACL Freshman Scholarships will be in for a new look in 1975 if the National Council adopts the revised guidelines proposed by the National Education Committee.

Affected by the new guidelines will be the method of application, amounts of the scholarships and evaluation of candidates, according to Grayce Uyehara, Education Committee Chairperson.

Under the proposed system all students will have an equal opportunity to compete. "Often in the past, chapters have been faced with the dilemma of several highly qualified students competing for the one chapter nomination," Mrs. Uyehara explained. "Under the revised guidelines there is no limit to the number who can apply for the national honors."

Because of the rise in the current cost of education and in order to have the JACL scholarships provide significant financial assistance, the Committee further recommended that the minimum amount of each award be \$500. Currently the scholarships range in amounts from \$200 to \$500.

"This can be done by consolidating some of the present awards or by segmenting them with funds from JACL or funds solicited from individuals, corporations and foundations," Mrs. Uyehara said.

The system of evaluating the applicants was also examined by the Education Committee. It suggested that the criteria for rating be divided equally into three areas: financial need, academic achievement and personal/extra-curricular activities.

In addition to suggesting changing in these areas, the Education Committee plans to begin an affirmative effort to encourage application from

### HEADQUARTERS BLDG.

## Ground breaking set July 13

Groundbreaking for the National JACL Headquarters Building in San Francisco will be held Saturday, July 13, at 11 a.m. at the construction site on Sutter St. between Laguna and Buchanan. It was announced by the groundbreaking committee co-chairmen Steve Doi, Mas Satow and Tad Hirota.

"We are planning a very simple program at the building site," Doi said, "and we are especially hopeful that many of the old time JACLers will be able to attend since it is largely through their efforts that JACL is where it is today."

Among the special guests invited to attend are representatives from state and city governments, consul general from Japan, Redevelopment Agency, Nihon Machi Merchants Assn., Nichi Bei Kai and national and local JACL chapters.

Following the groundbreaking ceremonies will be a no-host luncheon at Suehiro's Restaurant in the Japan Center. Master of ceremonies for the groundbreaking will be Mas Satow and for the luncheon Tad Hirota.

### PRESIDENTIAL CLASSROOM

## JACL offered 75 slots next year in week-long study of government

Seventy-five Japanese American high school students will have the opportunity to participate in the 1975 sessions of the Presidential Classroom for Young Americans in Washington, D.C., according to a report from Angie Whitaker, Executive Director of the program.

Based on JACL's successful participation this year, Ms. Whitaker has set aside 75 slots to be filled by JACL. "This is the first year that

# Biennium in Review Issue

This week's Pacific Citizen may look a little different to many of you and rightly so. We've worked with Editor Harry Honda to present a special biennial review edition.

Some of the added features are special pieces by Bill Hosokawa, Shig Sugiyama, David Ushio and myself as well as articles that deal with the work of JACL in the present and future bienniums.

—Henry Tanaka

# PACIFIC CITIZEN

Membership Publication, Japanese American Citizens League, 125 Weller St., Los Angeles, Calif. 90012; (213) MA 6-6936  
Published Weekly Except First and Last Weeks of the Year—Second Class Postage Paid at Los Angeles, Calif.

VOL. 79 NO. 1

FRIDAY, JULY 5, 1974

Subscription Rate Per Year  
U.S. \$7 Foreign \$9.50

15 CENTS



JAL-JACL Ethnic Heritage Fellows will be available during the Summer of 1975 to JACLers and JAYs. David Ushio, (left) National JACL executive director and Tamotsu Nakamachi, JAL western regional director, examine a catalog from Sophia University in Tokyo where the fellowship winners will study. Four persons will be selected for an 8-week period of study and travel.—JAL photo.

### JAL-JACL FELLOWSHIPS

## Summer study in Tokyo for four to be offered from next year

Four JAL-JACL Cultural Heritage Fellowships will be offered beginning the summer of 1975. It was announced by Tamotsu Nakamachi, JAL Western Regional Manager at San Francisco and David Ushio, JACL Executive Director.

In making the announce-

ments, Nakamachi stated "Japan Air Lines takes great pleasure in sponsoring the fellowship program for summer study at Sophia University. The satisfaction of seeing four youths study and learn about their heritage in the land of their forefathers is shared by us all."

The fellowships cover an eight-week course of study & travel in Japan. Expenses covered by JAL include round-trip flight from New York or San Francisco to Tokyo, tuition fees, room, board, educational materials and a two-week field trip outside of Tokyo.

"Throughout the country Saneji are becoming increasingly interested in their ethnic heritage," Ushio said. "This program opens up an exciting opportunity for Saneji to learn first hand about the land and culture of their ancestry."

"These fellowships demonstrate a sensitivity on the part of JAL to the needs of Americans of Japanese ancestry," Ushio added. "JACL welcomes the opportunity to administer this innovative program."

Application will be open to all members of the Japanese American Youth (JAY) and JACL and their families between the ages of 18 and 30.

Minimum qualifications, selection criteria and deadlines are being developed by JACL and JAL and will be announced at a later date.

### JACL REGIONAL OFFICES

## Two more opened in 1973-74, propose another pair next year

What is a regional office?

According to a report prepared by Jim Murakami, National vice president for research and services, the primary charge of a regional office is to provide administrative assistance and technical service to JACL districts and chapters within its region.

Murakami's report, which provided guidelines for regional directors and offices, was approved by the National Board and will serve as guidelines for more regional offices as established.

In the past biennium two new regional offices were established in Chicago and Portland. The Chicago office is headed by Regional Director Tom Hibino and services the Midwest District. In Portland Regional Director Don Hayashi works in the Pacific Northwest and Intermountain Districts.

Two additional regional offices are proposed for the next biennium in the recently revitalized Mountain Plains District and in the Central California District.

The effectiveness of a regional office is reflected in the observations of Lillian Kimura, Midwest District Governor.

"I've found that with a regional office here in Chicago, the communications flow from the Governor to the chapters has increased. For the initial stage of our work here that was what was needed to be done," Ms. Kimura said.

In the future, Ms. Kimura sees the regional office and director participating in the areas of leadership training and membership and program development on the chapter level. "Now that we have the office and a director we can begin to do these things," she added.

In relating to chapters, Ms. Kimura does not want herself or Hibino to "go the banquet circuit. When we visit

to work and help them, whether it be to develop more meaningful programs or increase membership. If we attend or speak at a banquet at the same time, then fine."

"Our district is not very strong right now, but as we work with them and get the local chapters into the framework of the national organization, I know it will be a different story. One of the functions of the regional office, I feel, is to inform the chapters what is going on at national level and interpret for them how they will be affected. By doing this, we want to get them turned on to the whole national organization," she concluded.

### WORK WITH GROUPS

## More visible and influential

JACL members, officers and staff have made Japanese Americans become a more visible and influential minority by participation in many human and civil rights organizations.

Nationally, JACL has worked with:

Leadership Conference on Civil Rights, the American Civil Liberties Union, American Immigration and Citizenship Council, Anti-Defamation League of the B'nai B'rith, National Urban League, National Association for the Advancement of Colored People, and American Jewish Congress.

Locally, many JACLers participate in and help to found organizations with names such as Asian Americans for Fair Media, Asian American for Community Involvement and Asian American Alliance. In addition, many city, county and state human rights commissions include Japanese Americans as members.

### U.S.-JAPAN RELATIONS

## JACL steps up contacts with both governments, media

The topic of U.S.-Japan relations and its effect on the Japanese in America has been of concern to many JACLers for some time. In the last issue of the Pacific Citizen, the report of the ad hoc JACL Public Relations Commission included the subject as one of its major concerns.

The Public Relations Commission was made up of individuals well versed in the professional aspects of public relations, including media, journalism, government relations, international relations and advertising.

The main thrust of the Commission's recommendation was to better the communications link between JACL and the governments and publics of the United States and Japan.

JACL has been working to-

wards that goal through media on both sides of the Pacific and by establishing and maintaining important contacts with the two governments.

In the past biennium, Henry Tanaka, JACL president, and David Ushio, JACL executive director, met with Japan's Prime Minister Kakuei Tanaka during his historic visit to the United States. Many JACLers in Washington were invited to the White House for a State Dinner honoring the Prime Minister.

In addition, there has been increased dialogue between the various Consul General offices in the U.S. and JACL officers and staff. Contacts have been made with the Consul Generals in Los Angeles, San Francisco, Portland

Continued on Next Page

# Affinity Inescapable

By BILL HOSOKAWA

If JACL in general and the Pacific Citizen in particular seem to be preoccupied with Japan, it is with good reason. Japan plays a very important part in our lives as Americans.

Japan is the land of our ancestry. Even though we are born in the United States, educated as Americans and have political loyalty only to the United States, the map of Japan is engraved indelibly on our faces. We cannot escape that act, or the fact that many of our fellow Americans cannot see beneath our skins.

We are interested in Japan because that country was responsible for the peculiar problems we faced in World War II. Even today what Japan does, what kind of country Japan is, reflect inevitably on all Americans with Japanese faces.

Hence for our own protection, if for nothing else, we Japanese Americans want to see that Japan remains a good neighbor, and that relations between our two countries stay cordial.

There are broader reasons for our concern. Japan is the cornerstone of our Far Eastern policy. We are linked by a mutual assistance treaty that requires the United States to go to Japan's aid if it is attacked. We hope that time will never come. A democratic, economically vigorous, friendly Japan will help to assure a stable Far East. American troops have fought in Asia four times in the last century—in Siberia after

World War I, in World War II, in Korea and Vietnam—and must do everything possible to avoid a fifth time.

Japan is our most important overseas trading partner. Our lives have been enriched by imports from and exports to Japan. The benefits of this trade far outweigh the hostility that has developed from excessive competition. It is to our benefit to increase trade and minimize the hostility.

Japan's cultural heritage can contribute to our appreciation of the non-materialistic aspect of our lives. We don't necessarily have to take an interest in Japanese culture because of our ancestry. But we can recognize that Japan has developed a rich culture that is of interest to all the world.

Because of ethnic ties, our interest in Japan is natural but it needn't be inevitable nor should it necessarily be exclusive. Still, the affinity is inescapable and in these times, critical.

At one time Japanese Americans were seen as a possible bridge of understanding between the two countries. Experience indicates this is an impractical, romantic fantasy. But there is no reason Japanese Americans cannot help their country to take a realistic, practical interest in our relations with Japan. Our Europe-oriented nation has overlooked Asian problems in the past with disastrous consequences and we can contribute to the national welfare by emphasizing the importance of our relations with Japan. At the same time we will be helping our own position as Americans.

Continued on Page 5



• Harry K. Honda

## Ye Editor's Desk

NIKKEI SHIMIN—VOL. 1, NO. 1

Come October 15, the Pacific Citizen completes 45 years of publication. It began as The Nikkei Shimin in 1929 as the official publication of the San Francisco JACL. At the 1932 National JACL Convention in Los Angeles, it was officially adopted as the JACL's official publication. Somewhere in antiquity, someone was responsible for renaming Nikkei Shimin "The Pacific Citizen" as the first issue carried a "We Want a Name Contest" coupon, offering the winner \$15. As the contest deadline was Dec. 1, 1929, it is safe to assume the present name was chosen for use in 1930.

Iwao Kawakami (still pounding type at the Nichi-Bei Times in San Francisco) was the editor. Purpose of the Nikkei Shimin, he wrote, was "to give the new Japanese American citizens an appropriate medium through which they can express themselves". The PC still observes this basic policy. And Iwao hoped the expressions would be "creative" for such determines the cultural progress of a nation or a race. It is good to note some of the pieces in the PC have been selected since for Nisei anthologies.

The lyrics in Iwao's initial editorial haven't changed much through the years. "We, the Japanese Americans, are in a position where we represent the blending of two races or, in another sense, we are an entirely new group of young people in America. It would not be amiss, therefore, to believe that new forms of creative expression will rise from our group. Let us first, however, consider the basic soil in which our creative expression will take root. There are, to my conception, three promising aspects of Japanese American life.

"In the first place, the agricultural aspect; secondly, the industrial aspect; and lastly, the social or intellectual aspect.

"The agricultural aspect is, despite the various legislative restrictions placed on it, a steadily progressing one. The first generation of Japanese farmers have learned through bitter lessons from Mother Nature and are now in the position to reap the honest efforts of their toil and without doubt they shall reap moral rewards as well as material ones. Their sons and daughters have been given a splendid heritage of patient pioneering." This struggle with soil has made the Issei tiller a folk hero with the now Sansei generation.)

"The industrial aspect is, perhaps, the most practical and lucrative one. As the Japanese population in America increases, there will constantly grow a demand for well-trained, efficient business men and women. This will inevitably lead to the social aspect which is based, in majority of the cases, on industrial success." (This was not to come till the heroics of the Nisei GIs during WW2 opened the doors of industries previously closed.)

"The social and intellectual aspects are, by far, the least developed by the Japanese Americans. There are, to be sure, individual examples of social and artistic leadership; yet they cannot begin to compare in quantity or quality with those other races in America. The Japanese American, in most cases, confronts the pitfall of imitation or unoriginality; and those are precisely the things one must learn to avoid." (If there are Nisei philosophers in our midst, none have been recognized as such to date. But among the great thinkers of the day we'd like to mention would include the late Larry Tajiri and Saburo Kido.)

"It is in order to help the new American citizens (the Nisei) avoid these pitfalls and in order to encourage the development of healthy sincerity in the matter of expression that we wish to introduce this publication to the Japanese American people..."

The front page has a photograph of the historic April 5-6, 1929, convention to form a national Nisei organization. (The same picture was reprinted in the 1955 JACL Silver Anniversary issue—and we discovered the 1955 caption omitted Kay Tsukamoto standing in the back row next to Tom Yego.)

The lead story relates the brief history of the New American Citizens League, started in 1928 in San Francisco, and what transpired at the April conference to "nationalize" the Nisei clubs on the west coast into a federation or league. The main speaker of that meeting was a Chinese American writer with the San Francisco Bulletin, Victor Kwong, urging a sincere Sino-Japanese understanding for securing in Asia "a great pillar for peace of the world". One of the last business resolutions adopted decided the name of the new organization to be the Japanese American Citizens' (with the apostrophe) League. When was that apostrophe dropped?

Sim Togasaki was instrumental in securing sufficient advertising from the community to launch the publication, a 4-column paper half the tabloid size, printed at Tokai Printing. The first issue was six pages but subsequent numbers were to be four pages coming out twice a month. A subscription contest was conducted with the person turning in the most by Dec. 15 getting two tickets to the Stanford-Army post-season football game.

The only known copy of this issue, we add here, is on deposit in the JACL-JARP Special Collection at the UCLA Library. We borrowed it to have it microfilm with our scattered prewar editions. A complete set of the prewar PCs was last seen in Salt Lake City at JACL Headquarters. It was to have been transferred to Los Angeles—but it never showed up and is presumed lost.

## 25 Years Ago

In the Pacific Citizen, July 9, 1949

U.S. will not seek death or life crack down on Nisei-penalty in d'Aquino trial... operated horse parlor... Ses-McGrath subcommittee will sue Hayakawa hopes to make hold hearings on Walter, Judd comeback on American screen naturalization bills... First Nisei appointee (James Maryknoll priest (James keishi Yoshihara) leaves to en-S. Tokuhisa) will go to Japan roll at Naval Academy, on mission... Denver auth-



David Ushio

## National Dialogue

NATIONAL COLLECTIVE VOICE—JACL

of the sympathetic treatment not get involved in Black community or police issues, especially when controversial matters are in dispute. One Nisei man was especially indignant and said, "JACL's responsibility is to only Japanese Americans and for me to stay out of other people's business—especially the police's."

When San Francisco Mayor Alioto initiated a "preventive detention dragnet" to apprehend the infamous Zebra Killer, the JACL National Office issued a prompt public statement condemning the action as being unconstitutional and reminiscent of the same type of disregard for constitutional guarantees that led to the evacuation of Japanese Americans in 1942. JACL called for an immediate ending of the Operation Zebra dragnet because of its blatant, unconstitutional aspects. Despite the fact that within two days of the JACL statement, the courts ruled the Mayor's action unconstitutional and ordered an immediate end to the practice, we received phone calls from individuals, both Japanese American and non-Japanese American, condemning us for speaking out on this issue.

Many Japanese Americans insisted that JACL "should

I asked him if he had been evacuated during World War II. His reply was yes. My next remark caused him to stammer and then hang up on me. "Wouldn't it have been nice if more people from other communities and groups would have spoken out against the denial of Japanese American rights in 1942 when the police and Army put us in camp?"

As an organization JACL must be willing and eager to take on controversial issues. It is apparent that the more we venture into important issues of our nation, the more we will uncover latent feelings that many Japanese Americans would rather ignore or hide. We have witnessed in the past year many events that have required an immediate response from the National organization. The National Officers and the National Director have consciously attempted to respond in a prompt and responsible way which clearly states the organization's views.

As a truly national organization, JACL has a duty to society, to our membership and to our organizational integrity to be forthright, responsible and at times unpopular in our public positions if we are to be a dynamic entity on the national scene.

Our grassroots strength as an organization is emphasized by the participation of each member and chapter in all types of activities at the community level. Each active member and chapter of JACL brings to their local community a focal point for advocating a just and equitable society; for educating the public regarding the culture, history, hopes and aspirations of Japanese Americans; and for establishing community bonds of goodwill between neighbors and groups.

In a society where Japanese Americans constitute but a fraction of 1% of the total population, the importance of a national collective voice is paramount.

The collective strength of the all-important individual member and chapter endeavors is reflected and magnified in a strong vibrant National JACL willing to act, speak out, defend, and advocate on issues of importance to America.

Chapter President's Handbook: Although a new edition is being prepared, copies of the old handbook are still available. It contains information valuable to any chapter president on how to lead a chapter.

Congressional Tributes: The many tributes JACL has received by the United States Congress are available for reference and viewing at National Headquarters.

Library: A resource library with more than 150 titles is available for use by members and non-members alike at National Headquarters. Almost all books deal with the topic of Japanese in America. The library also contains a complete set of The Pacific Citizen. All reference material must be used on the premises and cannot be checked out since many books are out of print and cannot be replaced.

Workshop I: The Japanese in America has been in use since last fall and according to JACL Regional Office reports the most popular part of the kit is the slide presentation.

It seems that the visual aspect of the slides adds variety and helps to maintain interest whenever our members are asked to do a presentation on Japanese American history," according to Don Hayashi, Pacific Northwest/Intermountain regional director.

An example of how the slides have been used came for Dr. Tom Taketa, San Jose, who writes, "They helped me considerably in my discussion at Santa Clara University about our Evacuation experience during World War II."

Dr. Taketa, who is a biologist, supplemented his presentation with a showing of "Nisei: Pride and Shame" and

reports that the students responded with both interest and emotion. In addition to the slide presentation, Workshop I includes a history outline, an annotated bibliography and sections on researching the Japanese American experience and interviewing the Issei.

Soon to be released is Workshop II on the Evacuation and camp experience. The kit will include a slide presentation, a bibliography, a chronology of events leading up to and during the internment and a special section on the location of the camps and their present accessibility. This last portion of the kit will be unfinished when the workshop is released since information on all the camps is not available. Maps and data are still being gathered and will be added as they are obtained.

JACL members and chapters may borrow the entire workshop kit or just the slide presentation from any of the JACL regional offices or National Headquarters.

The workshops were exclusively written, developed and produced for National JACL by Don Estes of the faculty at San Diego City College and a member of the San Diego JACL; Margie Yamamoto, JACL national staff; and Visual Communications of Los Angeles.

• JAPANESE AMERICAN RESEARCH PROJECT (JARP)

## 6 books for Bicentennial

December 31, 1974, is the expected completion date for six books resulting from the Japanese American Research Project, according to Shig Wakamatsu, JARP chairman, of Chicago.

"The books will be in manuscript form and from there will go to the publishers for editing and printing," he explained. "We would like to have the books finished and in bookstores in time to coincide with the U.S. Bicentennial in 1976."

The JARP executive committee met in Los Angeles the weekend of June 22 at which time the authors presented progress reports. The majority of them were able to provide the committee with three completed chapters as they had been requested at the April JARP meeting.

The authors and their books are: Dr. Robert A. Wilson, UCLA, a book on the general history of the Japanese in America; Drs. Gene N. Levine and Darrell Montero, both of UCLA, a sociological study of the Japanese Americans with an emphasis on the community; Dr. Edna Bonacich, of UC Riverside, and Dr. John Modell, Univ. of Minnesota, a sociological study with the emphasis on economics.

Also Dr. Masakazu Iwata of Biola College, La Mirada, Calif., a study of the agricultural and horticultural contributions of the Japanese Americans; Dr. Yasuo Sakata, State Univ. of New York at Stony Brook, history of the earliest Issei, from 1880 to 1905; and Frank Chuman, Los Angeles attorney, the legal history of the Japanese in America.

A seventh book by Dr. Modell has been completed and the manuscript is awaiting submission to publishers. Wakamatsu said.

### • CAREER EDUCATION HEW office hears from J.A. caucus

Japanese American educators and community leaders were gathered from across the nation early last year to participate in the National Conference on Career Education in Washington, D.C., sponsored by the Dept. of Health, Education and Welfare.

Making up the Japanese American caucus were: Frank Fujii, Seattle; Ross Harano, Chicago; Dr. Junji Kumamoto, Riverside; Astor Mizuhara, Berkeley; Bob Nakamura, Los Angeles; Dr. Isami Taniguchi, Fresno; David Ushio, San Francisco; Grace Uyehara, Philadelphia; and from Washington, D.C., Todd Endo, Toyko Biddle and Barry Matsumoto.

The JACL Washington Office coordinated the participation by these individuals.

Based on the final deliberations of the caucus, Ross Harano delivered a position paper to the assembled conference. He pointed out the consequences of the melting pot theory for racial minorities who can never become part of an American mainstream based on assimilation.

The paper presented a seven-point resolution for submission to the Office of Education.

The resolution called for an increased number of minorities, especially Asian Americans, in all levels of decision making dealing with career education; affirmative action on all levels of government to hire more Asian American educators, administrators and counselors; utilization of Asian Americans on an advisory capacity; programs to deal with language difficulties of Asian Americans; and greater Asian American participation at future Career Education conferences.

Thousand Clubbers  
Donate \$25 a Year

### • WORKSHOP KITS

#### Slide presentation popular in telling J.A. history

When did the first Japanese come to America? What did they do when they got here?

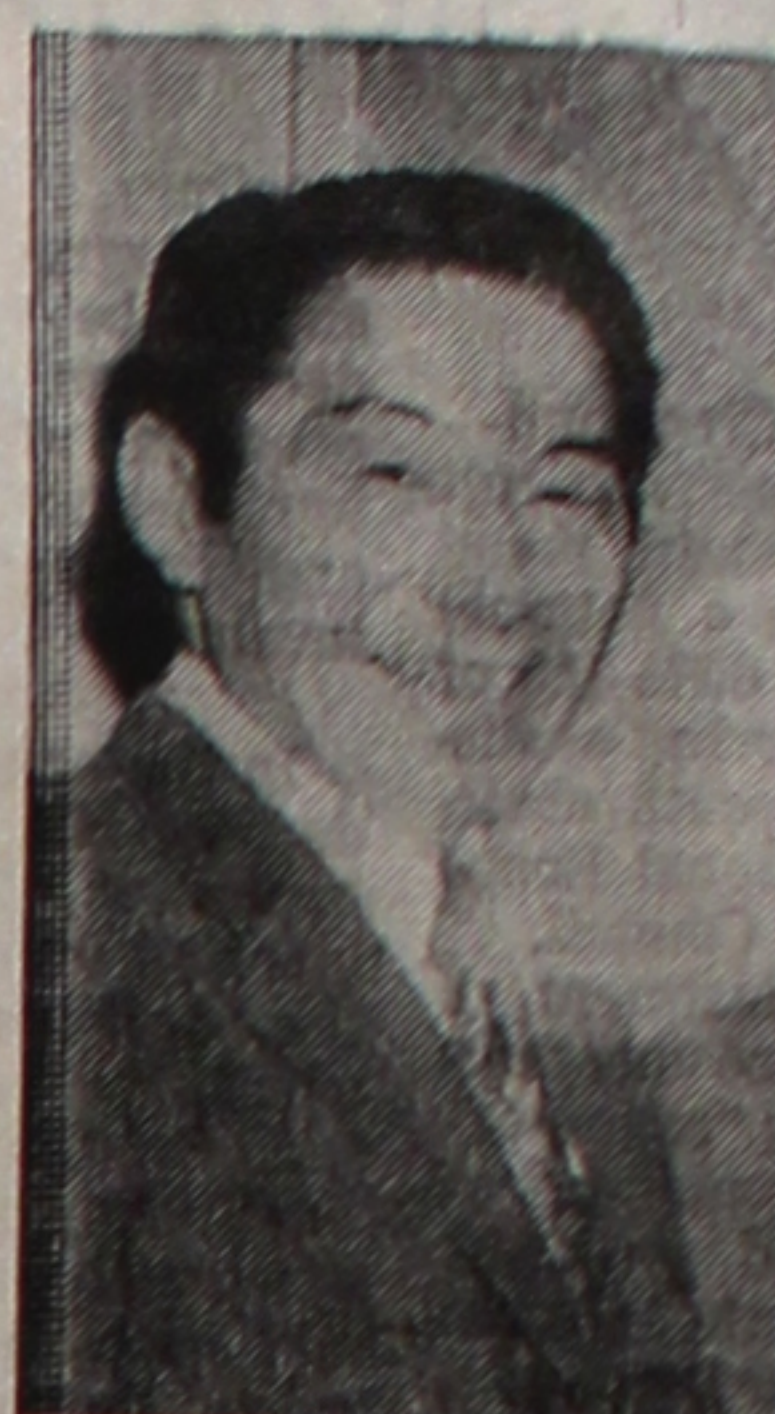
Tell me more about the World War II Evacuation? Mention Japanese American history and these are but a few of the questions most often asked. Chapters are now finding it easier to answer these questions with the aid of a series of JACL-produced workshop kits.

Workshop I: The Japanese in America has been in use since last fall and according to JACL Regional Office reports the most popular part of the kit is the slide presentation.

It seems that the visual aspect of the slides adds variety and helps to maintain interest whenever our members are asked to do a presentation on Japanese American history," according to Don Hayashi, Pacific Northwest/Intermountain regional director.

An example of how the slides have been used came for Dr. Tom Taketa, San Jose, who writes, "They helped me considerably in my discussion at Santa Clara University about our Evacuation experience during World War II."

Dr. Taketa, who is a biologist, supplemented his presentation with a showing of "Nisei: Pride and Shame" and



Shig Wakamatsu

Wakamatsu said, Modell's book is an economic study of the Los Angeles Japanese American community from 1900 to 1942. This volume is based on Modell's doctoral dissertation which was written using the resources at JARP.

The Issei Pioneer Album, an offshoot of JARP, is being coordinated by Toyo Miyatake and Mrs. Michi Asawa, both of Los Angeles. "This pictorial history would be a very valuable addition to the books now being written," Wakamatsu said.

"Several publishers have indicated their interest in handling the book once completed," he added, "but Mr. Miyatake and Mrs. Asawa are having difficulty completing the album. They are in need of pictures from other parts of the country."

In order for the album to be truly representative, he explained, photographs are needed from all over the United States depicting Japanese Americans in all types of situations beyond the typical stereotype.

• Shigeki Sugiyama

## To the Point

**THE CHANGING SCENE**—The past biennium has been a period of transition and change for the National JACL organization. As new, innovative programs were initiated, a concomitant need also arose to adjust organizational structure and processes. Because most on-going JACL programs have continued, the membership-at-large may not be aware or conscious of the substantive and stylistic changes that have occurred and will probably continue to evolve as JACL adapts to changing times.

The increase in staff to man our new offices and to plan and carry out new programs necessitated the formalization of new and updated personnel policies and procedures. Thus a new personnel policies and procedures manual, which provides comprehensive guidance on such matters as staff recruiting and hiring procedures, salary and fringe benefit schedules, supervisory relationships, employee evaluation, and formalized employee grievance procedures, was developed and adopted.

The increased cost of operating JACL programs, complex payroll requirements resulting from staff being located in a number of States (each with different taxing and withholding requirements), accounting of funds received from government and other sources, and closer Internal Revenue Service attention to our financial transactions and accounts all necessitated the updating of our basic accounting system.

Additionally, the need to stretch our relatively limited but still substantial resources has led to development of an improved cost accounting and budgeting procedures.

Hassling and squabbling often results from misunderstanding about the policies and procedures for a given program. JACLers actively involved in these programs assume that everyone knows what the policies are, despite the fact that much of what is done is often based on policies and practices that have evolved over time and have been passed on more or less by word of mouth.

Further, as new committees are appointed each biennium to carry out on-going programs, much time is wasted re-doing what has already been done by preceding committee members—for lack of clear guidances.

In an effort to eliminate or at least reduce this kind of counter-productive effort, new sets of guidelines were developed to cover some of our continuing programs, such as the scholarship, health insurance and travel programs. Other program areas are still to be covered.

The foregoing changes are obviously internally oriented and intended to strengthen the structural integrity of the organization. But making the organization more administratively efficient, though desirable, doesn't do a bit of good if the organization still cannot or will not accomplish anything worthwhile or satisfy the interests and needs of its members or the public it serves.

Thus, the most significant innovation introduced during the biennium was the active involvement of the National Board and Staff in developing a new approach for decision-making by the National Council through a change in the convention format.

A key change was the active involvement by chapters and district councils long before the convention in considering, evaluating and clarifying the overall goals of JACL and in developing proposals to achieve these goals. The intent was to have grass-roots participation in setting overall JACL direction and to assure that the National Council—through its decisions based on full knowledge would be instrumental in clearly articulating that direction for all to know.

The idea may not have caught on completely, and there are undoubtedly some who are skeptical that power politics can be eliminated from JACL—as well as some who still want to play the old game—but it's hoped that we are on the right track.

The results of the Portland Convention will give us some indication whether efforts of all concerned—the chapters, district councils, National Board and Staff working together—can effect in moving JACL ahead with greater capacity to meet the challenges of the future and with a clear sense of direction.



• Bill Hosokawa

## Frying Pan

Seabrook, N.J.

**FUJI HOUR**—Every Sunday afternoon since early March, all activity among the Issei in this community comes to a halt as the JACL Fuji Hour is broadcast by radio station WSNJ in nearby Bridgeton. The familiar Oriental theme music is heard, and then the warm, cheery voice of Japan-born Mariko Ono comes on to announce in flawless Japanese that the next 30 minutes will be directed to those in Southern New Jersey who speak Japanese.

Mariko Ono plays recordings of Japanese music, then introduces the Rev. Shingetsu Akahoshi of Seabrook Buddhist Church. Invariably he has a pertinent commentary on the news from Japan, or he devotes a few minutes to recounting some interesting bit of Japanese American history. The program, understandable, was warmly welcomed by the Issei, and many Nisei and Sansei are making a point of listening in. The program has received notes of thanks from listeners—many of them Caucasians—from communities with names like Willow Grove, Cape May and Cherry Hills.

The program was begun last March by the local JACL chapter as a cultural project and a service to the Japanese-speaking element in the Seabrook area. It was financed for the first ten weeks or so by a contribution from the IBM Fund for Community Service. The money paid for air time, but a great deal of volunteer work led by chapter president Ellen Nakamura went into the planning and taping. Ray Ono, Mariko's husband, was recruited as engineer and technical adviser for the taping sessions. Some of IBM's money also went to buy records and other supplies.

Since the end of June the program has gone "commercial." The program runs only 30 minutes despite its name, and the station charges \$30 for air time. Five Bridgeton and Seabrook firms sponsors it at the rate of \$6 a week in return for spot announcements. One of the sponsors is a real estate firm which realistically cannot expect to get much business from the elderly Issei, but it goes along anyway.

Ellen Nakamura is delighted with the appreciation shown by the Issei and considers the Fuji Hour one of the more significant projects of her administration. Her successor, Sunkie (her real name is Sunako) Oye feels pretty much the same way about the program so it is likely to be on the air for a while.

No small reason for the program's success is the Rev. Mr. Akahoshi, who had retired in Japan a few years ago when he was asked to come back and serve the Seabrook temple. As the first executive secretary of the Buddhist Churches of America, he had become acquainted with early Issei history. He had also served a good many years in Hawaii, so he can call on a wealth of personal knowledge for some of his stories about the history of the Issei. He has, of course, been diplomatic about staying away from religious subjects in deference to the Christian members of the Seabrook Issei community.

During my visit to Seabrook the Rev. Mr. Akahoshi recalled an Issei pilot back in the 1920s who hoped to fly from the United States to Japan. The man's name was Goto, as the Rev. Mr. Akahoshi remembers it, but the first name has been forgotten. As a warm-up for his trans-Pacific flight, Goto flew from somewhere in California to Salt Lake City. He had asked a friend to meet him at the airport and drive him into town for the night, but for some reason the friend failed to appear. Goto then refueled and took off immediately into threatening weather for Denver. His plane crashed into some mountains northeast of Salt Lake City and Goto was killed.

On one of his visits to Salt Lake City soon after the crash the Rev. Mr. Akahoshi was asked to conduct a memorial service for Goto. He remembers going to the lofty, rugged crash site, and being astonished at the flimsy construction of the plane which seemed to be little more than aluminum tubing, wooden reinforcement, and linen fabric. Some day it would be interesting to go through Utah archives and Salt Lake City newspapers files to learn more about the intrepid Goto.

• TEXTBOOKS ON LITERATURE AND LANGUAGE ARTS

## Adoption ignores Code

The adoption of textbooks found to be biased against ethnic minorities and women drew protests from JACL and other minority organizations during a recent hearing before the California State Board of Education in Los Angeles.

In spite of objections of these groups and individuals, the Board in a 7 to 3 vote approved the list. The books in question cover the areas of reading, literature, English language, arts, dictionaries, foreign language and English as a second language and will be used by the some 3 million students in California.

JACL, educational and human rights organizations are investigating the possibility of a class action suit against the State Board of Education for failing to enforce the legal requirements set forth in the State Education Code and related documents pertaining to the content of materials submitted by textbook publishers. JACL began last fall to work in the area of textbook adoption. National Staff was asked to serve on the Legal and Factual Analysis Committee, an advisory body to the State Education Dept.'s Curriculum Development and Supplemental Materials Commission.

The Committee was a legislative prototype for future committees to increase ethnic representation and input in the process of approving instructional materials with specific regard to legal and factual accuracy in the portrayal of a pluralistic society as provided for in the State Education Code. General intent was to increase commu-

nity involvement in the educational process.

Dr. Junji Kumamoto, professor of Entomology at UC Riverside and a member of the Curriculum Commission, recommended that JACL be asked to serve as a member of the Committee. The Commission is the body that evaluates the books and makes its recommendations to the State Board.

David Ushio, National Executive Director, and Patricia Nakano, Assistant Director for Program Development, alternately attended sessions of the Committee in Sacramento during September and October, 1973, for the purpose of reviewing instructional material for accurate, factual and diverse portrayals.

"At that time we were not satisfied with the outcome of those sessions and had strong objections to the adoption of many of the texts," Ushio recalled. "As a result, we prepared and delivered a minority opinion position paper to the Commission which later won support of several members of our Committee."

Ushio delivered the minority position paper to the Curriculum Commission on Nov. 1, 1973. The two main topics of concern were general non-compliance with the State Education Code in the preliminary screening of educational materials and failure on the part of the Curriculum Commission and State Board of Education to provide clearly defined guidelines for the Committee regarding its organization and functions.

Among the examples of non-compliance with the Edu-

cation Code offered in the position paper was the recommended use of a film entitled "Japanese Boy" in an approved teacher's guide to be used for discussion and to increase understanding about Asia.

According to the report, it is factually inaccurate to use a film dealing with Japanese culture when the pictures of clothing worn by the characters, their environment, mode of transportation, etc., and the name of the orphan are not related to Japanese culture. Moreover, the singular inclusion of an Asian story does not deal with the multicultural nature of the Asian American experience and the blend of two or more cultures in the U.S.

The report further pointed out that many of the dictionaries approved for use in public schools carried inaccurate or misleading and negative definitions. One inaccuracy cited in several dictionaries was the definition of the epithet "Jap" as the abbreviation for Japanese and Japan with no indication that its use is derogatory. Other words cited were heathen, Mongoloid and ethnic.

The paper was further critical of the unrealistic time frames allowed the Committee to review some 6,000 items submitted by publishers and producers of instructional materials. It also questioned the committee composition and the selection process and asked for a clearer definition of accountability, goals and general guidelines for the Committee.

• JACL'S ANTI-DEFAMATION COMMITTEE

## Racism abuses Nikkei

Anti-defamation continues to be an issue of concern for JACL. In the past year efforts by JACL have been continuous and expanding. It has ranged from removing the offensive epithet "Jap" from common usage to combating negative stereotypical portrayals of Japanese by the media.

This work has required the cooperation of JACLers on all levels—from members in the field to the National JACL Anti-Defamation Committee to National officers and staff.

In the state of California, JACL was instrumental in having license plates recalled that carried racial slurs such as "Jap". This action required the passage of legislation by the state legislature to enable the Department of Motor Vehicles to revoke the offensive plates.

More recent actions have resulted in the United States Air Force dropping the acronym "JAP" in referring to the Judge Advocates Office, Procurement Division; the Library of Congress officially adopting the abbreviation "JPN" in place of "JAP"; and the issuing of a directive by California Governor Ronald Reagan to eliminate the abbreviation "JAP" in all state publications.

Comedian Bob Hope and Watergate attorney John Wilson both used the term "Jap" in public and were greeted with negative publicity and letters from all parts of the United States. JACL members, officers and staff were in

the fore of this movement since JACLers had been directly affected.

Hope used the term in one of his jokes during a Boy Scout Jamboree resulting in discomfort and harassment for a Japanese American troop from Seattle which was present. Wilson, following a hard day before the Senate Watergate Committee, of which Senator Daniel Inouye is a member, referred to Sen. Inouye as "that little Jap" over network television. Fast public and JACL action in both instances resulted in apologies from Hope and Wilson.

Much of JACL's anti-defamation activity continues to be educational, pointing out to the ease with which one can allow racist feelings to surface.

For example, in Chicago Chiye Tomihiro, chairperson of the National Anti-Defamation Committee, critically viewed the trial of a Japanese American police officer. Although he and a fellow officer were convicted in which "the prosecution and press stressed his racial background."

Throughout the trial he was referred to as "the Japanese" policeman and the prosecutor constantly asked him to pronounce his name thereby impressing upon the jury his different background. Ms. Tomihiro said.

In 1973 and 1974 JACL found more subtle types of racism. The Bank of America came

under sharp JACL criticism when it aired a commercial with an Asian actor portraying an aggressive, sneaky character. JACL together with the San Francisco-based Chinese for Affirmative Action succeeded in having the commercial removed from further broadcasts.

The Chrysler Corporation in an effort to combat the competitive sales of Japanese imports, utilized the voice of a man with a heavy stereotypical Japanese accent in a radio commercial. The calls began coming in at National Headquarters and with the aid of the many Asian American groups in the area, the commercial, which was created by the advertising firm of Young and Rubicam, was taken out of further circulation.

Many newspapers and magazines through ignorance continue to utilize "Jap" as the contraction of Japanese and Japan. As these instances are brought to JACL's attention, a copy of the new anti-defamation brochure is sent out with a letter encouraging the use of "Jpn" as a more acceptable abbreviation.



**Visual Communications'** Bob Nakamura (center) trains his camera on a subject during the filming of the Issei Film Project. Assisting him are members of the Visual Communications staff, Eddie Wong (left) and Alan Kondo (right). The film, which is tentatively titled "Wataridori" or "Birds of Passage," is scheduled to be completed in late July of this year.

• VISUAL COMMUNICATIONS, INC.

## Six more film studies due

Late July is the projected completion date for the Issei Film Project, reports Bob Nakamura, director of Visual Communications in Los Angeles.

"We are only disappointed that we will not have it completed in time for the 1974 JACL Biennial Convention in Portland," Nakamura said. The Issei film is funded by a \$50,000 grant from the National Endowment for the Humanities to JACL which was subcontracted to Visual Communications, Inc., for development.

Currently VC is working on the historical sections, sound-track and editing of the film. Its working title is "Wataridori" or "Birds of Passage." "We thought this might be an appropriate title since the Issei who first came to America did not think they would be here permanently, but would earn their fortunes and return home," Nakamura explained.

"The most frustrating thing about this film is that we are finding it impossible to tell the whole story in only a half hour," the filmmaker said. Three Issei were interviewed for the film. They included an old-timer who was a pioneer in the fishing industry, a widow who presents the Issei woman's story and a younger Issei in his 60's. In addition to the Issei



**Dave Ushio**, National JACL Executive Director, speaks at banquet in connection with Mountain-Plains District Council meeting March 16 at Denver. Also present were Henry Tanaka, National President; Don Hayashi, Pacific Northwest-Intermountain regional director; and delegates from Arkansas Valley, Ft. Lupton, and the host Mile-High chapters. A slide presentation on the Issei from National Headquarters was also shown. Mountain-Plains District Governor Dr. Mayeda conducted the meeting; Marge Taniwaki, Mile-Hi chapter president, was in charge of the dinner.

—Photo by Tom Masamori

• MOUNTAIN-PLAINS DISTRICT COUNCIL

## Tri-State Office comeback seen

The re-establishment of a regional staff position is one of the main goals of the reactivated Mountain Plains District Council, reports Dr. Takashi Mayeda, MPDC Governor, of Denver.

Dr. Mayeda recently presided over an enthusiastic meeting of 20 representatives from the five chapters in the Mountain Plains District. The Ft. Lupton chapter was host to the gathering on June 15, the second held this year by the district after two years of inactivity.

Also attending the meeting were David Ushio, National Executive Director and Don Hayashi, Pacific Northwest-Intermountain Regional Director. Following the meeting a banquet was held in conjunction with the Ft. Lupton scholarship award. Ushio was guest speaker and addressed the graduating high school and college students present.

"If the Mountain Plains District is to be reactivated and revitalized it is very important that we have a regional staff person at least on a part-time basis," Dr. Mayeda said.

The Denver JACL regional office, which was closed some 20 years ago, was the first regional office in JACL, established in early 1943 as the Tri-State Office with the late Joe Grant Masaoka as regional director.

The Mountain Plains District covers the states of Nebraska, Colorado, New Mexico, Texas, adjoining sections of Wyoming and Montana. "Because of the size of our district it would be almost impossible for anyone to cover this area on a voluntary basis," he explained.

The district's proposal for the establishment of a regional office will go before the National Council at Portland. "If funds are approved for this function, then our district will probably call a meeting

soon after the convention to begin laying the groundwork for staffing of a regional office," Dr. Mayeda said.

A part-time regional director, Dr. Mayeda feels, will be invaluable in helping to establish new chapters in areas such as Houston, Texas, where there are concentrations of Japanese Americans.

Also discussed during the MPDC meeting were the many proposals and resolutions that chapters will be called to vote upon at the National Convention. The chapters exchanged ideas on ways that they could work together on the district level in order to contribute on a national scale.

Hayashi who has been working with the district in the absence of a regional director for the area finds that "the Mountain Plains district senses a need to work together and cooperate to establish outreach to the community as well as to its membership."

"If the enthusiasm generated at their last meeting continues, we may find the Mountain Plains becoming the most active district in the nation," Hayashi predicts.

Los Angeles

**A QUIET HERO**—I read, with much nostalgia and pleasure, the fine tribute paid Hito Okada by Shake Ushio and Mike Masaoka in the recent issues of the P.C.

Hito, who stands at the head of the many "quiet heroes" of the JACL, deserves every bit of the encomiums so fittingly paid him by the above two as well as that many more that he will receive during the Testimonial Luncheon planned in his honor at the coming Portland Convention.

Now, when praises are going to be heaped on Hito, I want to get into the act too and put in my two-bits worth. However, for my part, I want no more than to reminisce a little and pass on to the readers some of my prize recollections of Hito covering more than thirty years of friendship.

Hito and I both being avid fishermen, my pleasantest memories of course deal with some of our trout fishing expeditions. For me, the most unforgettable incident was the time Hito and I were fishing a lake in Idaho. I latched on to what seemed a real whopper and Hito kept up a string of instructions on how to get her in near the boat without getting the line busted. This I finally did and Hito netted a trout more than twice the size of anything I had ever caught in my whole life. She was found pounds if she was an ounce. Man... I was thrilled! I was already envisaging that blousy mounted on the wall of my den.

Hito proceeded, very helpfully and seriously, to remove the hook from the trout's mouth and then... My Gawd, he nonchalantly tossed it back in the lake! I couldn't believe what I was seeing! I stood there petrified for at least fifteen minutes before I began to slowly realize that I'm supposed to have a sense of humor about all this. I still think to this day that if Hito hadn't helped me to land a seven pounder later in the afternoon, our friendship might have ended right there on that Idaho lake and I wouldn't be writing this today.

There is another thing about Hito that I will never forget. I was still overseas when Poston Relocation Center began to close. My wife's and my own folks had no place to go. Hito sensed this and how he managed it, I don't know, but he located a house for them in Salt Lake City. I remember that Yuki's and my folk's letted repeated over and over again how kind and helpful Hito was to them with everything. So it was that when I finally got back and stepped off the train at Salt Lake City, I approached Hito, quite emotionally overwhelmed with gratitude, to express to him how grateful I was but he didn't give me a chance to say a single word. He just stuck out his hands and said, "For hell sakes, you sure took your time about winning your war. Mike (meaning Masaoka) has been back a long time already." He put me on even keel fast and, in his own way, he let me know that my "thanks for everything" was sufficient between us.

There was also an incident when I got a glimpse of another aspect of Hito that I'll always remember. This was at the 1952 National Convention held in San Francisco. JACL old-timers will recall that it was at this Convention we got a long-distance call from Mike Masaoka that Truman's veto had been overridden and, at long last, we had won our fight to gain citizenship for our parents. When the news was announced from the podium, I couldn't hold back the tears. I lowered my face, embarrassed to have others see me so overwhelmed. However, when I glanced at Hito beside me, his eyes too were filled with tears but he was holding his head high and proudly. He made me realize that, "Damn it, we had put our heart and soul into the fight and fought so long to gain our objective that now, in victory, we can shed a few tears and be proud of it."

Oh, there are many, many more recollections of Hito, much too numerous to detail here. But, whether I add more such as his master-minding the 1000 Club or go no further, it all leads to one conclusion... that Hito, besides being one of the all-time great JACLers, is also one of the warmest, most understanding and ever-thoughtful persons with whom I have ever associated. I look upon our friendship as one of life's rare treasures to be truly cherished.

To help "sell" the 1000 Club in its early days, George Inagaki conducted the "1000er Corner" in the JACL Reporter with an informal flair graced with gentle humor—in the same style as above. Hence, we recalled his column title of 25 years back. George as an open invitation to revisit these columns anytime.—Editor.

## Come to Portland

CONVENTION SCHEDULE SHARED

By ROWE SUMIDA

With July here, Portland and Gresham-Troutdale JACLers are busily putting the final touches on the Convention, July 23-27.

The Convention Board chairman, Dr. Jim Tsujimura, announced that the appropriate dress for the convention will be informal during the day and dressy attire in vogue for the convention dinners.

City Council member Charles Jordan has called on Portlanders to shed their coats and ties during the months of July and August and put on summer garb. Portland's weather has been sunny and warm the past couple of weeks, and the weather forecaster says showers will be a thing of the past during Convention Week.

Though informal street clothes will be appropriate during the day and in con-

Continued on Page 5



**Arthur Flemming** (center), chairman of the U.S. Commission on Civil Rights and one-time president of the Univ. of Oregon, accepts invitation to be principal speaker at the National JACL Convention Sayonara Banquet July 27 at Portland. Receiving word for JACL are David Ushio (left) and Barry Matsumoto, Washington JACL representative.

• SPEAKERS FOR CONVENTION

## Masuda, Inouye, Flemming

A trio of prominent figures familiar to many JACLers make up the guest speaker line-up for the JACL National Convention in Portland.

Main speaker at the opening ceremonies on Wednesday, July 24, will be Dr. Minoru Masuda, past Seattle JACL president and a professor in the Department of Psychiatry at the Univ. of Washington. He will speak on the conference theme: "Asian American."

On Thursday, July 25, the banquet will feature Sen. Daniel K. Inouye as keynote speaker. During this event the Mike Masaoka Distinguished Service Award will be presented to an individual or group for outstanding achievement in the area of U-Japan relations or civil rights.

Dr. Arthur Flemming, Chairman of the U.S. Com-

mission on Civil Rights, will address the Saturday, July 27, Sayonara Banquet. At this time the Japanese American (Nisei) of the Biennial will be announced and the new JACL National officers installed.

Other speakers can be expected at the luncheon Thursday to honor Hito Okada and during the JACL Awards luncheon Saturday when the JACLer of the Biennial and the Inagaki Citizenship award will be presented.

Special guests invited to attend many of the convention functions include: Tom McCall, Governor of Oregon; Mark O. Hatfield, Senior U.S. Senator from Oregon; Bob Packwood, U.S. Senator from Oregon; Edith Green, U.S. Congresswoman; Wendell Wyatt, U.S. Congressman; Masatomi Higaki, Japanese Consul General in Portland; Neil Goldschmidt, Mayor of Portland; and Al Myers, Mayor of Gresham.



# On Margin

## PAST THE WINTER OF OUR DISCONTENT

Los Angeles

The past winter has been one of discontent, not to mention near despair on the part of some people, as far as the redevelopment of Little Tokyo was concerned.

It looks, however, as though everything is finally going to come together when the next winter is over.

This was the heartening news that became evident with the progress reports at the Little Tokyo Community Development Advisory Committee meeting last Thursday evening.

Little Tokyo Towers, the senior citizen housing sponsors, reported that its feasibility report has been turned into HUD by the deadline, a soils engineering report (financed by a low interest loan by the Sumitomo Bank of California) has been completed, a filing fee (financed by an 8 per cent interest loan from the Mitsubishi Bank of California) has been paid, a co-operative HUD has instituted a faster processing of the feasibility study and the groundbreaking should be possible by November or December.

Little Tokyo Plaza, the First Action commercial area, reported that their floor space has been 65 per cent leased, and with property owners on the north side of First St. reported negotiating with the city to sell their 20-foot frontage for an equal area in the back, the Plaza has re-offered priority option to north-side businesses to relocate to the Plaza.

The property on which Union Church will be built has been in court dispute, but a settlement was arrived at and the church may build as soon as the Presbytery okays the sale of the old church property and the plans for the new one.

Preliminary plans for the Higashi Hongwanji have been completed, its fund drive is going gung ho (a buyer already to purchase the old one in Boyle Heights) and they expect to start construction late this year.

The Japanese American Cultural and Community Center is in the midst of its fund drive, and with heartening support from various community groups as well as philanthropic individuals, may reach its preliminary goals of \$½ million by the end of this year.

Owners of property within the triangle bounded by Weller, Second and Los Angeles Streets have sold or have expressed a willingness to sell, which will facilitate the building of the hotel. The County Board of Supervisors has okayed the building of a multi-level parking structure elsewhere in the Civic Center, which is good news for the possibility of acquiring the county parking lot which is part of the triangle.

A vigorous Affirmative Action program has already been initiated to press for Asian American participation to the fullest extent in the construction phase of the foregoing projects.

Kajima Associates, which will be designing the new hotel for East-West Development Corp., a consortium of many leading Japanese business firms, presented slides of its preliminary plans which were accepted by the Community Redevelopment Agency Board. The 451-room building with banquet facilities will be a structure of which Little Tokyo can be proud.

All that was good news, but there was a disturbing bit of bad news where it is hoped that vigorous community action may fend off a threatened eviction.

The San Pedro Firm Building next door to the old Union Church has been cited, along with many other residential structures in Little Tokyo and elsewhere in the city, to bring the building up to the fire safety code.

The building's landlord is the city of Los Angeles. And specifically, the Board of Public Works has refused to make any improvements on the building since it will eventually be razed. Eviction notices were expected to be sent to the tenants, giving them 90 day's notice.

The LTCDC members were up in arms when they found out that all the private property owners in Little Tokyo (except one) and the CRA, which owns the Sun Hotel and the Sun Building, have signified their intentions of making fire safety improvements by taking out building permits which give them 180 days to complete the job—only the city, as a landlord, has refused and is taking the easy way out.

The Firm Building tenants are long-time residents and business people in Little Tokyo, who expect to move to Little Tokyo Towers and Little Tokyo Plaza or elsewhere in Little Tokyo when the structures are built.

We believe it is not unreasonable to expect the city to expend the \$25,000 or so needed to bring the building up to safety standards and keep the low-income residents in Little Tokyo, since comparable housing is nearly impossible to find in the tight low-income housing market. The city should be setting the example, instead of dragging its feet.

## Minority Week

**WOMEN** — The Watergate has virtually wiped out the White House Office of Women's Program. All the key women recruited by presidential counselor Anne Armstrong have left or given notice and no successors have been indicated. Mrs. Armstrong, however, said efforts will be going ahead "strong as ever" on behalf of women.

**JOB BIAS** — AT&T May 30 settled its second major job discrimination case in 16

## CALENDAR

July 7 (Sunday)  
West Los Angeles—Issei program, Mahood Ctr., 2-4 p.m.  
Detroit—Far Eastern Festival, Cobo Hall.  
PSWDC—Pre-Conv Mtg., JC of C Conf Rm 206, 125 Weller, Los Angeles, 1-3 p.m.  
July 8 (Monday)  
West Los Angeles—Bd Mtg., Mahood Ctr., 7-20 p.m.  
Mt Olympus—Lagoon Night.  
July 9 (Tuesday)  
San Mateo—Bus Mtg., Sturge Presbyterian Church, 8 p.m.  
Salt Lake—Bd Mtg., Summer School Annex, 7 p.m.  
Puyallup Valley—Bd Mtg., Emi Somakawa's res 8 p.m.  
July 12-13  
Riverside—Sandal Festival, Riverside Plaza.  
July 13 (Saturday)  
San Mateo—Keiro Kai, Buddhist Church.  
July 14 (Sunday)  
Contra Costa—Picnic, Little Hills Ranch.  
July 16 (Tuesday)  
CCDC—Pre-Conv Mtg.  
July 20 (Saturday)  
San Francisco—Pre-Conv 1000 Club whiling ding, Miyako Hotel, 7 p.m.  
San Gabriel Valley—Benefit luau, 2525V Japanese Comm Ctr, 2:30 p.m.



Toshiro Doi (left) of San Francisco representing the Issei addresses the Tule Lake pilgrimage ceremonies held in front of the camp entrance. Others are Ben Takeshita (center), emcee, and Seiichi Otow, NC-WNDC pilgrimage chairman.

## AMERICAN-STYLE CONCENTRATION CAMPS

### Historical landmark plaques, pilgrimages recall WW2 Evacuation

The evacuation and internment of more than 110,000 persons of Japanese ancestry during World War II remained a forgotten page in American history for many years. The sites of the ten camps became barren stretches of earth with little remaining to remind Americans of this bleak period in the history of American justice.

It wasn't until 1961, almost 20 years after the first camp opened that the Rohwer camp in Arkansas was resurrected and made a state historical landmark.

The monument and cemetery at Rohwer were repaired and cleared of weeds and debris and declared an Arkansas State Historical Park in late 1961. The then Governor Orville Faubus signed the bill making the site a historic park and approved an appropriation bill for construction of a special road to the cemetery.

The monument was built by internees in memory of 30 Nisei soldiers, relatives of Rohwer residents, who were killed in battle.

Instrumental in arranging this event were Dr. Joseph B. Hunter, former assistant project director; Chicago JACL, Chicago Nisei American Legion Post 1138; Chicago Issei Representatives; and McGehee American Legion Post.

Since that time, periodic pilgrimages have been made to Rohwer by groups and individuals.

The second camp to achieve the historic landmark status was Manzanar in 1972. With the guidance of the Manzanar Committee and assistance of JACL, a plaque was placed at the stone guardhouse of the entrance to what was once a community of 10,000. The cemetery, tall white monument and guard house are all that remain of the original camp.

The Manzanar Committee has been sponsoring annual pilgrimages to the site since 1969, even before it was named a landmark.

The most recent camp to join the historic landmark ranks is also in California, Tule Lake. Located near the California-Oregon border, the first pilgrimage to Tule Lake held over the 1974 Memorial Day weekend, attracted more than 200 persons, some traveling from as far away as Seattle and Los Angeles.

The pilgrimage was sponsored by the Northern California-Western Nevada District of JACL with Seiichi Otow, Community Affairs Chairman for the district, as overall chairman.

Meanwhile in Salt Lake City, Utah, the Topaz Committee has formed and is headed by Mt. Olympus JACLer Frank Yoshimura. In a recent visit to the site the Committee members cleared away some of the rubble at the campsite and began investigating the possibilities of having a state historical marker placed there.

Plans are also underway in the Mountain Plains District for a pilgrimage to the WRA campsite at Amache, Colorado (also known as Granada). Helping in the organization of the proposed trip is Marge Taniwaki, President of the JACL Mile High chapter in Denver.

Former internees of the Crystal City (Tex.) internment camp.

## HONOREES

### Satow, Wirin

Although JACL is never at a loss for deserving individuals to honor, two men who have long and unselfishly served the Japanese American community were singled out during the past biennium and feted with testimonial banquets, Mas Satow and A. L. Wirin.

Satow had for more than a quarter century served the JACL as its National Executive Director. Wirin, the past Chief Counsel for the American Civil Liberties Union for over 40 years, was one of the key figures in helping Japanese Americans regain their rights following World War II. On the chapter level, in 1973, 24 silver and 12 sapphire pins were awarded to JACLers for contributions to the community and the organization.

ment camp are also determining a suitable reminder to be placed at the site, which is now a high school campus.

## CHARTER FLIGHTS

### Coordination for better service

Improved JACL charter flight service to Japan is predicted by Tad Hirota, National 1000 Club Chairman, with the adoption of policies and procedures by the National Board to centralize the JACL travel operations.

According to the new regulations, all charter flights will be coordinated by National JACL through a Travel Committee appointed by the National President.

"With a more centralized administration of the charter flights," Hirota explained, "we are hoping to avoid the problems that have plagued flights in the past."

In some instances, chapters have forfeited thousands of dollars in deposits when contracts were not met and insufficient numbers signed up for flights. Other flights have been cancelled when charters have been planned locally conflicting with another JACL charter.

"Since the national organization is ultimately responsible for all JACL flights, these new regulations will minimize any unnecessary or harmful liabilities," Hirota said.

Added features of the new program will be uniform prices for flights, all flights open to all members and a substantial saving on land tour packages. The last feature will come about as a result of direct JACL negotiation for the tours.

## MEMBERSHIP

### 30,000 mark

The first half of the current biennium saw an increase of 1,103 members for a total 28,965 members at the end of 1973. Membership totals by the end of 1974 are expected to go well over the 30,000 mark.

By May 31 of this year membership total stood at 24,908, an increase of 852 over the same period in 1973. By Districts, NC-WN leads the field with 10,073 members in this five-month period. PSW is second with 7,425. Other District totals are Midwest, 1,877; PNW, 1,662; CC, 1,481; IDC, 1,162; EDC, 797; and MP, 431.

In the area of special memberships 1973 saw marked increases in all categories with a total of 2,560. These included 2,479 1000 Club memberships, 37 Fifty Club, 32 Century Club and 12 Corporate memberships. Thousand Club is expected to attract more than 3,000 members in 1974.

## CREDIT UNION

### 6 pct. dividend

JACL's Credit Union continues to grow and its dividends to its members increase according to latest reports from S. Ushio, president of the National JACL Credit Union.

A 6% per annum dividend was declared for the first half of 1974 with \$53,800 being credited to member deposits. In 1973 a total of \$88,644 was paid in interest on deposits. In that same year 761 benefited from loans amounting to \$959,790.69.

The National Credit Union has grown considerably since its beginning in the 1940's. Today it has over \$2 million in assets and is serving the financial needs of JACL members from all over the United States. During the 1974 Biennial convention in Portland JACL will be honoring a man who has been instrumental in that success, Hito Okada. Okada, a past JACL National President, was the founder of the National Credit Union. It was through his tireless efforts that the Credit Union has grown to what it is today. The Testimonial Luncheon in his honor will be held on Thursday, July 25.

## PREPARING FOR PORTLAND

### EASTERN DISTRICT FIRST GROUP

### REVIEWING ALL CHAPTER PROPOSALS

SEABROOK, N.J. — At the pre-convention session hosted by Seabrook JACL June 15 at the Upper Deerfield Town, ship Municipal Hall, the Eastern District Council delegates had an opportunity to discuss the various chapter-instituted proposals.

It was the EDC's position that every opportunity be given to all delegates to hear all the proposals and if necessary, to eliminate workshops.

The new convention procedure is calling for different workshops at which writers of the proposals would be present to explain them, followed by district caucuses to give delegates a complete review.

On the student intern proposal, EDC wondered if it would deplete national staff time in maintaining program operations. The proposal asks for \$11,742 to provide ten youth to listen at their respective regional offices or at Headquarters.

On the Internment proposal to have National hire a full-time fund raiser at a cost of \$52,340 the first year, EDC noted that given the tight money situation, it would be very difficult to obtain money from foundations and government.

EDC held it was unrealistic to establish a development office if prospects for funding are not very good. It was suggested a JACL staff person who could devote full time to proposals and fund raising was preferable.

On the twin EDC proposals for a public relations office, some delegates feared delegates might opt for the interim office because of the lower price tag of \$21,820 as compared with a full-time PR office in New York at \$73,540.

On the proposal to secure congressional reparations for evacuees, Mike Masasaka, an alternate D.C. delegate, noted Congress has already declared the World War II experience an injustice to Japanese Americans and the problem has been in the courts—not the Congress. The problem is to have the Korematsu decision overturned, since it regards the Evacuation as within the proper exercise of presidential powers in time of war to detain citizens without due process.

On the project to complete the history of Japanese Americans on the East Coast with a \$17,362 budget, it was explained JARP royalties have already been allocated. Therefore, by "nationalizing" the project, the Board might then be instructed to find money for funding. EDC delegates were informed.

On establishing a paid legal staff at Headquarters and regional offices to research alleged anti-Asian American discrimination and provide legal assistance to JACL at all levels, the budget of \$234,139 is the largest among the chapter-initiated proposals. EDC recalled a separate legal arm of JACL had been considered. As to whether there is really a need for activities in this area, former National JACL legal counsel Bill Marutani, a Philadelphia JACL delegate, said that he definitely did think so.

On the request from the Asian Law Caucus (a non-JACL program) for \$21,230 to establish the Asian American Legal Defense and Education Fund, Marutani said he could understand why some JACLers might not want to fund a

so-called non-JACL program if JACL were active in this area, but since JACL is not active in this critical area, then the least JACL could do would be to assist an already established organization, such as the Asian Law Caucus.

On the major budget proposal, chapter delegates are expected to discuss the matter of increasing membership dues at the local level.

EDC Gov. Grace Uyehara was upset with the ranking that the National JACL executive committee had given to each proposal in its presentation for fear it may influence some of the delegates". The numbering of proposals should have been at random, she felt.

Seventeen proposals were submitted with 11 ranked and recommended and the other six not included in the recommended ranks since the latter are incorporated in an on-going program activity. The latter six involved regional offices in Fresno and Denver, continuation of the Pacific Citizen as a weekly and funding for student aid, community programs and a textbook project.

The EDC meeting was held in conjunction with the 20th anniversary Seabrook JACL celebration.

EDC will next meet in New York on Saturday, Oct. 19.

## Togin, Sumitomo

### join FISL group

### for student loans

LOS ANGELES — Federally Insured Student Loans will be available for the fall semester of 1974 through new programs jointly announced by the Bank of Tokyo and the Sumitomo Bank of California. Full details of eligibility and terms will be posted inside all California branches of both banks.

In accordance with established criteria, qualified applicants will be able to borrow from \$2,000 to \$2,500 for each school year, up to a total of \$6,000 to \$10,000, with the advantage of government guarantees.

Applications for the program will be accepted at any branch of either bank. Actual processing, because of its complexity, will be centralized at the Japan Center Branch in San Francisco and the Los Angeles branch office of the Bank of Tokyo, and at the San Francisco and Los Angeles main offices of the Sumitomo Bank.

Spokesmen for both banks indicated that the guaranteed student loan program will significantly assist qualified students to benefit from higher education while at the same time developing a sense of financial responsibility.

"We have had the honor of working with the Bank of Tokyo and the Sumitomo Bank in the past and know that their concern for the community they serve is genuine," David Ushio, JACL Executive Director said. "Since many JACL families will be affected by this program, we commend the two banks for their sensitivity to the needs of the community and their willingness to aid us in those needs."

JACL has long been a supporter of the federal student loan program and has passed resolutions at their 1970 and 1972 National Conventions urging the banks to take part in the program.

## CCDC renovating

### its new office

FRESNO, Calif. — Volunteers last week (June 22) started renovating the CCDC-JACL Regional Office and a Service Center in the Nippon Bldg., 908 F St. A call is out for serviceable furniture for the center.

On the CCDC Office committee are: Dr. Irumi Taniguchi, chmn.; Mike Iwatsubo, Ken Mayeda, asst.; Norman Otani, Shirley Masumoto, Debbie Tom, Hiro Kusaka, Sally Slocum and Tom Nakamura.

It was also announced that guest speaker for the CCDC convention Nov. 23-24 at the Fresno Sheraton will be a former Delano Nisei, the respected economist Sam Nakagawa with Kidder, Peabody of New York.

There's only one success—be able to spend your life in your own way.—Christopher Morley.

Old Brittany  
Crepierie Bretonne  
San Francisco's Only Breton Creperie  
The Cannery  
2801 Leavenworth  
Tel. 776-6996  
World Famous Restaurants  
Lunch-Dinner-Cocktails, Banquets & Parties Arranged

Thought for the Week  
There's only one success—be able to spend your life in your own way.—Christopher Morley.

Response to an Ad  
Means Another Ad!

## Eigiku Cafe

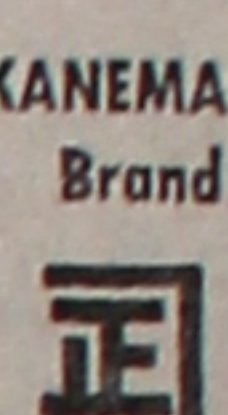
Dine • Dance • Cocktails  
SUKIYAKI • JAPANESE ROOMS  
314 E. First St.  
Los Angeles • MA 9-3029

Ask for  
'Cherry Brand'  
MUTUAL SUPPLY CO.  
1090 Sansome St. S.F. 11

## Mikawaya

Sweet Shop  
244 E. 1st St.  
Los Angeles MA 8-4935

INSIST ON  
THE FINEST  
KANEMASA  
Brand



FUJIMOTO'S  
EDO MISO.

Available at Your  
Favorite Shopping Center  
FUJIMOTO & CO.  
302-306 S. 4th West  
Salt Lake City, Utah

Naomi's Dress Shop  
Sport & Casual Styles 3-18  
116 N. San Pedro St.  
Los Angeles 680-1553  
Open Tue-Fri 9:30-6:30 and  
Sat 11-2 Closed Sun-Mon

11  
CANNELL'S  
flowers  
Across from St. John's Hosp.  
2032 Santa Monica Blvd.  
Santa Monica, Calif.  
Mary & George Ichnioka 828-0911

Commercial Refrigeration  
Designing • Installation  
Maintenance

Sam J. Umemoto  
Certificate Member of RSES  
Member of Japan Assn. of  
Refrigeration  
Lic # 208863 C-38  
SAM REIBOW CO.  
1506 W. Vernon Ave.  
Los Angeles AX 5-5204

— 24 Hour Emergency —  
"We Do Anything in Glass"

PESKIN & GERSON  
GLASS CO.  
Est. 1949 — Licensed Contractors

Store Fronts • Insurance Replacements  
Sliding Glass Doors • Louvers • Mirrors  
Glass Tops • Plate Window  
& Auto Glass • Free Estimates  
724 S. San Pedro St., L.A. 90014  
(213) 622-8243

Bush Garden  
SUKIYAKI  
SEATTLE 614 Maynard St.  
PORTLAND 121 SW 4th St.  
SAN FRANCISCO 598 Bush St.



Box 270, Elko, Nev.  
Tel. 738-5141

STOCKMEN'S  
MOTOR HOTEL • CASINO  
BAR • COFFEE SHOP  
RESTAURANT  
SWIMMING POOL  
INDOOR PARKING  
Fully Air Conditioned • TV



MRS. FRIDAY'S  
Gourmet Breaded Shrimps  
and Shrimp Puffs

FISHING PROCESSORS  
1327 E. 15th St. Los Angeles

(213) 746-1307

The New Moon  
Banquet Rooms available  
for small or large groups

912 So. San Pedro St., Los Angeles MA 2-1091

## Empire Printing Co.

COMMERCIAL AND SOCIAL PRINTING  
English and Japanese  
114 Weller St., Los Angeles 90012 MA 8-7060

## Eagle Produce

929-943 S. San Pedro St. MA 5-2101  
Bonded Commission Merchants  
— Wholesale Fruits and Vegetables —  
Los Angeles 15

Marutama Co. Inc.  
Fish Cake Manufacturer  
Los Angeles

Stock and Bonds  
ALL EXCHANGES

## Fred Funakoshi

Reports and Studies  
Available on Request  
KAWANO & CO.  
Membr. Pac Coast Stk Exch.  
626 Wilshire Blvd.  
Los Angeles 680-2350  
Res. Phone: 261 4422

LYNDY'S  
926 S. Beach Bl.  
Anaheim, Calif. JA 7-5176  
Harold Goertzen  
Res. Mgr.  
Between Disneyland and  
Knott's Berry Farm



Largest Stock of Popular  
and Classic Japanese Records  
Japanese Magazines, Art Books,  
Gifts  
340 E. 1st St., Los Angeles  
Ueyama, Prop.

KONO  
HAWAII  
Tea Room  
Featuring  
TEPPAN YAKI  
Lunches:  
11 a.m. - 2 p.m.  
Dinners: 5 - 10 p.m.  
Tommy, Luci & Bobby  
in the Cocktail Lounge  
226 SO. HARBOR BLVD.  
(South of Disneyland, near  
First St., Santa Ana)  
(714) 531-1232

QUON BROTHERS  
GRAND STAR  
Lunch • Dinner • Cocktails  
Entertainment  
4 TIME WINNER OF THE PRIZED  
RESTAURANT WRITER AWARD  
BANQUETS TO 200  
943 N. Broadway Free Parking  
in New Chinatown • 626-2285



Japanese American (Nisei) of the Biennial and the George Inagaki Citizenship Award.

The combined efforts of the National Education Committee, EXECOM and staff have resulted in the scholarship guidelines for implementation in 1975. A standardized judging form has been developed and administrative functions centralized. There has also been close coordination with volunteers to identify new sources of funds for additional scholarships.

Under the guidance of President-Elect Shig Sugiyama, a new set of personnel procedures were developed. Job descriptions, salary scales, and general personnel policies were included in the procedures.

In addition to changes in the general day-to-day operations of JACL members can look forward to a new convention format in Portland this summer. Under the direction of the EXECOM, the national staff with the Convention Leadership Team appointed by President Henry Tanaka has developed standard forms and procedures for the Convention.

Now chapters and delegates will have an opportunity to review proposals, constitutional amendments and resolutions well in advance of the convention and the process for submitting items for National Council vote is well defined.

PCYA—

Continued from Front Page

especially among our young people," he said. "For this reason, I'm hoping to see all of our chapters get behind this program next year and fill all of the 75 positions offered us."

The most vivid descriptions of the Presidential Classroom experience came from the students themselves. Kim Hatanaka, who applied through the Marysville JACL, wrote: "Everyday was scheduled with seminars, tours and special programs held all over the Washington, D.C. area. The Presidential Classroom seminars featuring men and women in today's politics were highly informative and many times heated by the probing questions of students."

Further Kim found "... I came away from the program with not only a deeper understanding for the American political process, but with a greater knowledge of the people and backgrounds which make up this country. My educational horizons have been considerably broadened, due to the stimulating introduction of ideas and facts which were related to me during the week ... (the Presidential Classroom) has left an indelible mark upon my mind."

In addition to official Presidential Classroom activities, JACL arranged special private meetings for the 15 students with Senator Daniel Inouye, Congressman Spark Matsunaga and Congresswoman Patsy Mink.

Nine of the students attended the Presidential Classroom on tuition scholarships sponsored by National JACL 1000 Club. Some of the students were also assisted by local chapter grants.

JACL will begin seeking students to fill the 75 Classroom spots this fall. Announcements will be made directly to JACL chapter presidents and through the Pacific Citizen and the Japanese American press. Further information will be available through JACL National Headquarters and its regional offices.

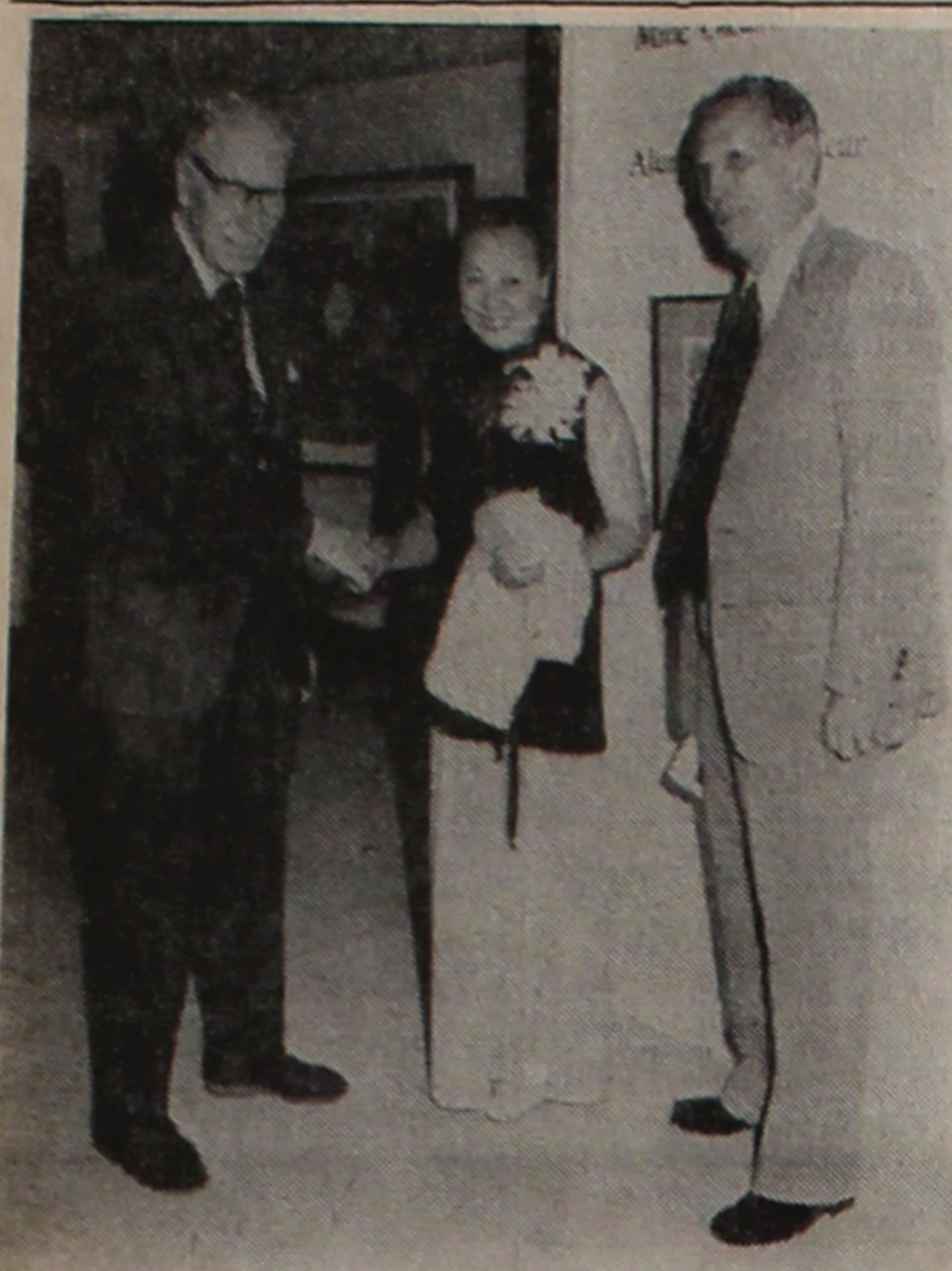
PBS-TV to show 13 Japanese films

TOKYO—Thirteen noted Japanese films will be shown in the United States over the Public Broadcasting System (PBS) of 240 affiliated TV stations starting in October.

Prof. Edwin O. Reischauer of Harvard, former U.S. ambassador to Japan, will introduce each film, relating its background and cultural aspects. Included are:

Akira Kurosawa's "Seven Samurai"; Kenji Mizoguchi's "Sanjuro"; "Yojimbo"; "The Hidden Fortress"; "The 400 Blows"; "The 7th Year Itch"; "The 10th Year Itch"; "The 12th Year Itch"; "The 15th Year Itch"; "The 18th Year Itch"; "The 21st Year Itch"; "The 24th Year Itch"; "The 27th Year Itch"; "The 30th Year Itch"; "The 33rd Year Itch"; "The 36th Year Itch"; "The 39th Year Itch"; "The 42nd Year Itch"; "The 45th Year Itch"; "The 48th Year Itch"; "The 51st Year Itch"; "The 54th Year Itch"; "The 57th Year Itch"; "The 60th Year Itch"; "The 63rd Year Itch"; "The 66th Year Itch"; "The 69th Year Itch"; "The 72nd Year Itch"; "The 75th Year Itch"; "The 78th Year Itch"; "The 81st Year Itch"; "The 84th Year Itch"; "The 87th Year Itch"; "The 90th Year Itch"; "The 93rd Year Itch"; "The 96th Year Itch"; "The 99th Year Itch"; "The 102nd Year Itch"; "The 105th Year Itch"; "The 108th Year Itch"; "The 111th Year Itch"; "The 114th Year Itch"; "The 117th Year Itch"; "The 120th Year Itch"; "The 123rd Year Itch"; "The 126th Year Itch"; "The 129th Year Itch"; "The 132nd Year Itch"; "The 135th Year Itch"; "The 138th Year Itch"; "The 141st Year Itch"; "The 144th Year Itch"; "The 147th Year Itch"; "The 150th Year Itch"; "The 153rd Year Itch"; "The 156th Year Itch"; "The 159th Year Itch"; "The 162nd Year Itch"; "The 165th Year Itch"; "The 168th Year Itch"; "The 171st Year Itch"; "The 174th Year Itch"; "The 177th Year Itch"; "The 180th Year Itch"; "The 183rd Year Itch"; "The 186th Year Itch"; "The 189th Year Itch"; "The 192nd Year Itch"; "The 195th Year Itch"; "The 198th Year Itch"; "The 201st Year Itch"; "The 204th Year Itch"; "The 207th Year Itch"; "The 210th Year Itch"; "The 213th Year Itch"; "The 216th Year Itch"; "The 219th Year Itch"; "The 222nd Year Itch"; "The 225th Year Itch"; "The 228th Year Itch"; "The 231st Year Itch"; "The 234th Year Itch"; "The 237th Year Itch"; "The 240th Year Itch"; "The 243rd Year Itch"; "The 246th Year Itch"; "The 249th Year Itch"; "The 252nd Year Itch"; "The 255th Year Itch"; "The 258th Year Itch"; "The 261st Year Itch"; "The 264th Year Itch"; "The 267th Year Itch"; "The 270th Year Itch"; "The 273rd Year Itch"; "The 276th Year Itch"; "The 279th Year Itch"; "The 282nd Year Itch"; "The 285th Year Itch"; "The 288th Year Itch"; "The 291st Year Itch"; "The 294th Year Itch"; "The 297th Year Itch"; "The 300th Year Itch"; "The 303rd Year Itch"; "The 306th Year Itch"; "The 309th Year Itch"; "The 312nd Year Itch"; "The 315th Year Itch"; "The 318th Year Itch"; "The 321st Year Itch"; "The 324th Year Itch"; "The 327th Year Itch"; "The 330th Year Itch"; "The 333rd Year Itch"; "The 336th Year Itch"; "The 339th Year Itch"; "The 342nd Year Itch"; "The 345th Year Itch"; "The 348th Year Itch"; "The 351st Year Itch"; "The 354th Year Itch"; "The 357th Year Itch"; "The 360th Year Itch"; "The 363rd Year Itch"; "The 366th Year Itch"; "The 369th Year Itch"; "The 372nd Year Itch"; "The 375th Year Itch"; "The 378th Year Itch"; "The 381st Year Itch"; "The 384th Year Itch"; "The 387th Year Itch"; "The 390th Year Itch"; "The 393rd Year Itch"; "The 396th Year Itch"; "The 399th Year Itch"; "The 402nd Year Itch"; "The 405th Year Itch"; "The 408th Year Itch"; "The 411th Year Itch"; "The 414th Year Itch"; "The 417th Year Itch"; "The 420th Year Itch"; "The 423rd Year Itch"; "The 426th Year Itch"; "The 429th Year Itch"; "The 432nd Year Itch"; "The 435th Year Itch"; "The 438th Year Itch"; "The 441st Year Itch"; "The 444th Year Itch"; "The 447th Year Itch"; "The 450th Year Itch"; "The 453rd Year Itch"; "The 456th Year Itch"; "The 459th Year Itch"; "The 462nd Year Itch"; "The 465th Year Itch"; "The 468th Year Itch"; "The 471st Year Itch"; "The 474th Year Itch"; "The 477th Year Itch"; "The 480th Year Itch"; "The 483rd Year Itch"; "The 486th Year Itch"; "The 489th Year Itch"; "The 492nd Year Itch"; "The 495th Year Itch"; "The 498th Year Itch"; "The 501st Year Itch"; "The 504th Year Itch"; "The 507th Year Itch"; "The 510th Year Itch"; "The 513th Year Itch"; "The 516th Year Itch"; "The 519th Year Itch"; "The 522nd Year Itch"; "The 525th Year Itch"; "The 528th Year Itch"; "The 531st Year Itch"; "The 534th Year Itch"; "The 537th Year Itch"; "The 540th Year Itch"; "The 543rd Year Itch"; "The 546th Year Itch"; "The 549th Year Itch"; "The 552nd Year Itch"; "The 555th Year Itch"; "The 558th Year Itch"; "The 561st Year Itch"; "The 564th Year Itch"; "The 567th Year Itch"; "The 570th Year Itch"; "The 573rd Year Itch"; "The 576th Year Itch"; "The 579th Year Itch"; "The 582nd Year Itch"; "The 585th Year Itch"; "The 588th Year Itch"; "The 591st Year Itch"; "The 594th Year Itch"; "The 597th Year Itch"; "The 600th Year Itch"; "The 603rd Year Itch"; "The 606th Year Itch"; "The 609th Year Itch"; "The 612nd Year Itch"; "The 615th Year Itch"; "The 618th Year Itch"; "The 621st Year Itch"; "The 624th Year Itch"; "The 627th Year Itch"; "The 630th Year Itch"; "The 633rd Year Itch"; "The 636th Year Itch"; "The 639th Year Itch"; "The 642nd Year Itch"; "The 645th Year Itch"; "The 648th Year Itch"; "The 651st Year Itch"; "The 654th Year Itch"; "The 657th Year Itch"; "The 660th Year Itch"; "The 663rd Year Itch"; "The 666th Year Itch"; "The 669th Year Itch"; "The 672nd Year Itch"; "The 675th Year Itch"; "The 678th Year Itch"; "The 681st Year Itch"; "The 684th Year Itch"; "The 687th Year Itch"; "The 690th Year Itch"; "The 693rd Year Itch"; "The 696th Year Itch"; "The 699th Year Itch"; "The 702nd Year Itch"; "The 705th Year Itch"; "The 708th Year Itch"; "The 711th Year Itch"; "The 714th Year Itch"; "The 717th Year Itch"; "The 720th Year Itch"; "The 723rd Year Itch"; "The 726th Year Itch"; "The 729th Year Itch"; "The 732nd Year Itch"; "The 735th Year Itch"; "The 738th Year Itch"; "The 741st Year Itch"; "The 744th Year Itch"; "The 747th Year Itch"; "The 750th Year Itch"; "The 753rd Year Itch"; "The 756th Year Itch"; "The 759th Year Itch"; "The 762nd Year Itch"; "The 765th Year Itch"; "The 768th Year Itch"; "The 771st Year Itch"; "The 774th Year Itch"; "The 777th Year Itch"; "The 780th Year Itch"; "The 783rd Year Itch"; "The 786th Year Itch"; "The 789th Year Itch"; "The 792nd Year Itch"; "The 795th Year Itch"; "The 798th Year Itch"; "The 801st Year Itch"; "The 804th Year Itch"; "The 807th Year Itch"; "The 810th Year Itch"; "The 813th Year Itch"; "The 816th Year Itch"; "The 819th Year Itch"; "The 822nd Year Itch"; "The 825th Year Itch"; "The 828th Year Itch"; "The 831st Year Itch"; "The 834th Year Itch"; "The 837th Year Itch"; "The 840th Year Itch"; "The 843rd Year Itch"; "The 846th Year Itch"; "The 849th Year Itch"; "The 852nd Year Itch"; "The 855th Year Itch"; "The 858th Year Itch"; "The 861st Year Itch"; "The 864th Year Itch"; "The 867th Year Itch"; "The 870th Year Itch"; "The 873rd Year Itch"; "The 876th Year Itch"; "The 879th Year Itch"; "The 882nd Year Itch"; "The 885th Year Itch"; "The 888th Year Itch"; "The 891st Year Itch"; "The 894th Year Itch"; "The 897th Year Itch"; "The 900th Year Itch"; "The 903rd Year Itch"; "The 906th Year Itch"; "The 909th Year Itch"; "The 912nd Year Itch"; "The 915th Year Itch"; "The 918th Year Itch"; "The 921st Year Itch"; "The 924th Year Itch"; "The 927th Year Itch"; "The 930th Year Itch"; "The 933rd Year Itch"; "The 936th Year Itch"; "The 939th Year Itch"; "The 942nd Year Itch"; "The 945th Year Itch"; "The 948th Year Itch"; "The 951st Year Itch"; "The 954th Year Itch"; "The 957th Year Itch"; "The 960th Year Itch"; "The 963rd Year Itch"; "The 966th Year Itch"; "The 969th Year Itch"; "The 972nd Year Itch"; "The 975th Year Itch"; "The 978th Year Itch"; "The 981st Year Itch"; "The 984th Year Itch"; "The 987th Year Itch"; "The 990th Year Itch"; "The 993rd Year Itch"; "The 996th Year Itch"; "The 999th Year Itch"; "The 1002nd Year Itch"; "The 1005th Year Itch"; "The 1008th Year Itch"; "The 1011th Year Itch"; "The 1014th Year Itch"; "The 1017th Year Itch"; "The 1020th Year Itch"; "The 1023rd Year Itch"; "The 1026th Year Itch"; "The 1029th Year Itch"; "The 1032nd Year Itch"; "The 1035th Year Itch"; "The 1038th Year Itch"; "The 1041st Year Itch"; "The 1044th Year Itch"; "The 1047th Year Itch"; "The 1050th Year Itch"; "The 1053rd Year Itch"; "The 1056th Year Itch"; "The 1059th Year Itch"; "The 1062nd Year Itch"; "The 1065th Year Itch"; "The 1068th Year Itch"; "The 1071st Year Itch"; "The 1074th Year Itch"; "The 1077th Year Itch"; "The 1080th Year Itch"; "The 1083rd Year Itch"; "The 1086th Year Itch"; "The 1089th Year Itch"; "The 1092nd Year Itch"; "The 1095th Year Itch"; "The 1098th Year Itch"; "The 1101st Year Itch"; "The 1104th Year Itch"; "The 1107th Year Itch"; "The 1110th Year Itch"; "The 1113th Year Itch"; "The 1116th Year Itch"; "The 1119th Year Itch"; "The 1122nd Year Itch"; "The 1125th Year Itch"; "The 1128th Year Itch"; "The 1131st Year Itch"; "The 1134th Year Itch"; "The 1137th Year Itch"; "The 1140th Year Itch"; "The 1143rd Year Itch"; "The 1146th Year Itch"; "The 1149th Year Itch"; "The 1152nd Year Itch"; "The 1155th Year Itch"; "The 1158th Year Itch"; "The 1161st Year Itch"; "The 1164th Year Itch"; "The 1167th Year Itch"; "The 1170th Year Itch"; "The 1173rd Year Itch"; "The 1176th Year Itch"; "The 1179th Year Itch"; "The 1182nd Year Itch"; "The 1185th Year Itch"; "The 1188th Year Itch"; "The 1191st Year Itch"; "The 1194th Year Itch"; "The 1197th Year Itch"; "The 1200th Year Itch"; "The 1203rd Year Itch"; "The 1206th Year Itch"; "The 1209th Year Itch"; "The 1212nd Year Itch"; "The 1215th Year Itch"; "The 1218th Year Itch"; "The 1221st Year Itch"; "The 1224th Year Itch"; "The 1227th Year Itch"; "The 1230th Year Itch"; "The 1233rd Year Itch"; "The 1236th Year Itch"; "The 1239th Year Itch"; "The 1242nd Year Itch"; "The 1245th Year Itch"; "The 1248th Year Itch"; "The 1251st Year Itch"; "The 1254th Year Itch"; "The 1257th Year Itch"; "The 1260th Year Itch"; "The 1263rd Year Itch"; "The 1266th Year Itch"; "The 1269th Year Itch"; "The 1272nd Year Itch"; "The 1275th Year Itch"; "The 1278th Year Itch"; "The 1281st Year Itch"; "The 1284th Year Itch"; "The 1287th Year Itch"; "The 1290th Year Itch"; "The 1293rd Year Itch"; "The 1296th Year Itch"; "The 1299th Year Itch"; "The 1302nd Year Itch"; "The 1305th Year Itch"; "The 1308th Year Itch"; "The 1311th Year Itch"; "The 1314th Year Itch"; "The 1317th Year Itch"; "The 1320th Year Itch"; "The 1323rd Year Itch"; "The 1326th Year Itch"; "The 1329th Year Itch"; "The 1332nd Year Itch"; "The 1335th Year Itch"; "The 1338th Year Itch"; "The 1341st Year Itch"; "The 1344th Year Itch"; "The 1347th Year Itch"; "The 1350th Year Itch"; "The 1353rd Year Itch"; "The 1356th Year Itch"; "The 1359th Year Itch"; "The 1362nd Year Itch"; "The 1365th Year Itch"; "The 1368th Year Itch"; "The 1371st Year Itch"; "The 1374th Year Itch"; "The 1377th Year Itch"; "The 1380th Year Itch"; "The 1383rd Year Itch"; "The 1386th Year Itch"; "The 1389th Year Itch"; "The 1392nd Year Itch"; "The 1395th Year Itch"; "The 1398th Year Itch"; "The 1401st Year Itch"; "The 1404th Year Itch"; "The 1407th Year Itch"; "The 1410th Year Itch"; "The 1413th Year Itch"; "The 1416th Year Itch"; "The 1419th Year Itch"; "The 1422nd Year Itch"; "The 1425th Year Itch"; "The 1428th Year Itch"; "The 1431st Year Itch"; "The 1434th Year Itch"; "The 1437th Year Itch"; "The 1440th Year Itch"; "The 1443rd Year Itch"; "The 1446th Year Itch"; "The 1449th Year Itch"; "The 1452nd Year Itch"; "The 1455th Year Itch"; "The 1458th Year Itch"; "The 1461st Year Itch"; "The 1464th Year Itch"; "The 1467th Year Itch"; "The 1470th Year Itch"; "The 1473rd Year Itch"; "The 1476th Year Itch"; "The 1479th Year Itch"; "The 1482nd Year Itch"; "The 1485th Year Itch"; "The 1488th Year Itch"; "The 1491st Year Itch"; "The 1494th Year Itch"; "The 1497th Year Itch"; "The 1500th Year Itch"; "The 1503rd Year Itch"; "The 1506th Year Itch"; "The 1509th Year Itch"; "The 1512nd Year Itch"; "The 1515th Year Itch"; "The 1518th Year Itch"; "The 1521st Year Itch"; "The 1524th Year Itch"; "The 1527th Year Itch"; "The 1530th Year Itch"; "The 1533rd Year Itch"; "The 1536th Year Itch"; "The 1539th Year Itch"; "The 1542nd Year Itch"; "The 1545th Year Itch"; "The 1548th Year Itch"; "The 1551st Year Itch"; "The 1554th Year Itch"; "The 1557th Year Itch"; "The 1560th Year Itch"; "The 1563rd Year Itch"; "The 1566th Year Itch"; "The 1569th Year Itch"; "The 1572nd Year Itch"; "The 1575th Year Itch"; "The 1578th Year Itch"; "The 1581st Year Itch"; "The 1584th Year Itch"; "The 1587th Year Itch"; "The 1590th Year Itch"; "The 1593rd Year Itch"; "The 1596th Year Itch"; "The 1599th Year Itch"; "The 1602nd Year Itch"; "The 1605th Year Itch"; "The 1608th Year Itch"; "The 1611th Year Itch"; "The 1614th Year Itch"; "The 1617th Year Itch"; "The 1620th Year Itch"; "The 1623rd Year Itch"; "The 1626th Year Itch"; "The 1629th Year Itch"; "The 1632nd Year Itch"; "The 1635th Year Itch"; "The 1638th Year Itch"; "The 1641st Year Itch"; "The 1644th Year Itch"; "The 1647th Year Itch"; "The 1650th Year Itch"; "The 1653rd Year Itch"; "The 1656th Year Itch"; "The 1659th Year Itch"; "The 1662nd Year Itch"; "The 1665th Year Itch"; "The 1668th Year Itch"; "The 1671st Year Itch"; "The 1674th Year Itch"; "The 1677th Year Itch"; "The 1680th Year Itch"; "The 1683rd Year Itch"; "The 1686th Year Itch"; "The 1689th Year Itch"; "The 1692nd Year Itch"; "The 1695th Year Itch"; "The 1698th Year Itch"; "The 1701st Year Itch"; "The 1704th Year Itch"; "The 1707th Year Itch"; "The 1710th Year Itch"; "The 1713th Year Itch"; "The 1716th Year Itch"; "The 1719th Year Itch"; "The 1722nd Year Itch"; "The 1725th Year Itch"; "The 1728th Year Itch"; "The 1731st Year Itch"; "The 1734th Year Itch"; "The 1737th Year Itch"; "The 1740th Year Itch"; "The 1743rd Year Itch"; "The 1746th Year Itch"; "The 1749th Year Itch"; "The 1752nd Year Itch"; "The 1755th Year Itch"; "The 1758th Year Itch"; "The 1761st Year Itch"; "The 1764th Year Itch"; "The 1767th Year Itch"; "The 1770th Year Itch"; "The 1773rd Year Itch"; "The 1776th Year Itch"; "The 1779th Year Itch"; "The 1782nd Year Itch"; "The 1785th Year Itch"; "The 1788th Year Itch"; "The 1791st Year Itch"; "The 1794th Year Itch"; "The 1797th Year Itch"; "The 1800th Year Itch"; "The 1803rd Year Itch"; "The 1806th Year Itch"; "The 1809th Year Itch"; "The 1812nd Year Itch"; "The 1815th Year Itch"; "The 1818th Year Itch"; "The 1821st Year Itch"; "The 1824th Year Itch"; "The 1827th Year Itch"; "The 1830th Year Itch"; "The 1833rd Year Itch"; "The 1836th Year Itch"; "The 1839th Year Itch"; "The 1842nd Year Itch"; "The 1845th Year Itch"; "The 1848th Year Itch"; "The 1851st Year Itch"; "The 1854th Year Itch"; "The 1857th Year Itch"; "The 1860th Year Itch"; "The 1863rd Year Itch"; "The 1866th Year Itch"; "The 1869th Year Itch"; "The 1872nd Year Itch"; "The 1875th Year Itch"; "The 1878th Year Itch"; "The 1881st Year Itch"; "The 1884th Year Itch"; "The 1887th Year Itch"; "The 1890th Year Itch"; "The 1893rd Year Itch"; "The 1896th Year Itch"; "The 1899th Year Itch"; "The 1902nd Year Itch"; "The 1905th Year Itch"; "The 1908th Year Itch"; "The 1911th Year Itch"; "The 1914th Year Itch"; "The 1917th Year Itch"; "The 1920th Year Itch"; "The 1923rd Year Itch"; "The 1926th Year Itch"; "The 1929th Year Itch"; "The 1932nd Year Itch"; "The 1935th Year Itch"; "The 1938th Year Itch"; "The 1941st Year Itch"; "The 1944th Year Itch"; "The 1947th Year Itch"; "The 1950th Year Itch"; "The 1953rd Year Itch"; "The 1956th Year Itch"; "The 1959th Year Itch"; "The 1962nd Year Itch"; "The 1965th Year Itch"; "The 1968th Year Itch"; "The 1971st Year Itch"; "The 1974th Year Itch"; "The 1977th Year Itch"; "The 1980th Year Itch"; "The 1983rd Year Itch"; "The 1986th Year Itch"; "The 1989th Year Itch"; "The 1992nd Year Itch"; "The 1995th Year Itch"; "The 1998th Year Itch"; "The 2001st Year Itch"; "The 2004th Year Itch"; "The 2007th Year Itch"; "The 2010th Year Itch"; "The 2013th Year Itch"; "The 2016th Year Itch"; "The 2019th Year Itch"; "The 2022nd Year Itch"; "The 2025th Year Itch"; "The 2028th Year Itch"; "The 2031st Year Itch"; "The 2034th Year Itch"; "The 2037th Year Itch"; "The 2040th Year Itch"; "The 2043rd Year Itch"; "The 2046th Year Itch"; "The 2049th Year Itch"; "The 2052nd Year Itch"; "The 2055th Year Itch"; "The 2058th Year Itch"; "The 2061st Year Itch"; "The 2064th Year Itch"; "The 2067th Year Itch"; "The 2070th Year Itch"; "The 2073rd Year Itch"; "The 2076th Year Itch"; "The 2079th Year Itch"; "The 2082nd Year Itch"; "The 2085th Year Itch"; "The 2088th Year Itch"; "The 2091st Year Itch"; "The 2094th Year Itch"; "The 2097th Year Itch"; "The 2100th Year Itch"; "The 2103rd Year Itch"; "The 2106th Year Itch"; "The 2109th Year Itch"; "The 2112nd Year Itch"; "The 2115th Year Itch"; "The 2118th Year Itch"; "The 2121st Year Itch"; "The 2124th Year Itch"; "The 2127th Year Itch"; "The 2130th Year Itch"; "The 2133rd Year Itch"; "The 2136th Year Itch"; "The 2139th Year Itch"; "The 2142nd Year Itch"; "The 2145th Year Itch"; "The 2148th Year Itch"; "The 2151st Year Itch"; "The 2154th Year Itch"; "The 2157th Year Itch"; "The 2160th Year Itch"; "The 2163rd Year Itch"; "The 2166th Year Itch"; "The 2169th Year Itch"; "The 2172nd Year Itch"; "The 2175th Year Itch"; "The 2178th Year Itch"; "The 2181st Year Itch"; "The 2184th Year Itch"; "The 2187th Year Itch"; "The 2190th Year Itch"; "The 2193rd Year Itch"; "The 2196th Year Itch"; "The 2199th Year Itch"; "The 2202nd Year Itch"; "The 2205th Year Itch"; "The 2208th Year Itch"; "The 2211th Year Itch"; "The 2214th Year Itch"; "The 2217th Year Itch"; "The 2220th Year Itch"; "The 2223rd Year Itch"; "The 2226th Year Itch"; "The 2229th Year Itch"; "The 2232nd Year Itch"; "The 2235th Year Itch"; "The 2238th Year Itch"; "The 2241st Year Itch"; "The 2244th Year Itch"; "The 2247th Year Itch"; "The 2250th Year Itch"; "The 2253rd Year Itch"; "The 2256th Year Itch"; "The 2259th Year Itch"; "The 2262nd Year Itch"; "The 2265th Year Itch"; "The 2268th Year Itch"; "The 2271st Year Itch"; "The 2274th Year Itch"; "The 2277th Year Itch"; "The 2280th Year Itch"; "The 2283rd Year Itch"; "The 2286th Year Itch"; "The 2289th Year Itch"; "The 2292nd Year Itch"; "The 2295th Year Itch"; "The 2298th Year Itch"; "The 2301st Year Itch"; "The 2304th Year Itch"; "The 2307th Year Itch"; "The 2310th Year Itch"; "The 2313th Year Itch"; "The 2316th Year Itch"; "The 2319th Year Itch"; "The 2322nd Year Itch"; "The 2325th Year Itch"; "The 2328th Year Itch"; "The 2331st Year Itch"; "The 2334th Year Itch"; "The 2337th Year Itch"; "The 2340th Year Itch"; "The 2343rd Year Itch"; "The 2346th Year Itch"; "The 2349th Year Itch"; "The 2352nd Year Itch"; "The 2355th Year Itch"; "The 2358th Year Itch"; "The 2361st Year Itch"; "The 2364th Year Itch"; "The 2367th Year Itch"; "The 2370th Year Itch"; "The 2373rd Year Itch"; "The 2376th Year Itch"; "The 2379th Year Itch"; "The 2382nd Year Itch"; "The 2385th Year Itch"; "The 2388th Year Itch"; "The 2391st Year Itch"; "The 2394th Year Itch"; "The 2397th Year Itch"; "The 2400th Year Itch"; "The 2403rd Year Itch"; "The 2406th Year Itch"; "The 2409th Year Itch"; "The 2412nd Year Itch"; "The 2415th Year Itch"; "The 2418th Year Itch"; "The 2421st Year Itch"; "The 2424th Year Itch"; "The 2427th Year Itch"; "The 2430th Year Itch"; "The 2433rd Year Itch"; "The 2436th Year Itch"; "The 2439th Year Itch"; "The 2442nd Year Itch"; "The 2445th Year Itch"; "The 2448th Year Itch"; "The 2451st Year Itch"; "The 2454th Year Itch"; "The 2457th Year Itch"; "The 2460th Year Itch"; "The 2463rd Year Itch"; "The 2466th Year Itch"; "The 2469th Year Itch"; "The 2472nd Year Itch"; "The 2475th Year Itch"; "The 2478th Year Itch"; "The 2481st Year Itch"; "The 2484th Year Itch"; "The 2487th Year Itch"; "The 2490th Year Itch"; "The 2493rd Year Itch"; "The 2496th Year Itch"; "The 2499th Year Itch"; "The 2502nd Year Itch"; "The 2505th Year Itch"; "The 2508th Year Itch"; "The 2511th Year Itch"; "The 2514th Year Itch"; "The 2517th Year Itch"; "The 2520th Year Itch"; "The 2523rd Year Itch"; "The 2526th Year Itch"; "The 2529th Year Itch"; "The 2532nd Year Itch"; "The 2535th Year Itch"; "The 2538th Year Itch"; "The 2541st Year Itch"; "The 2544th Year Itch"; "The 2547th Year Itch"; "The 2550th Year Itch"; "The 2553rd Year Itch"; "The 2556th Year Itch"; "The 2559th Year Itch"; "The 2562nd Year Itch"; "The 2565th Year Itch"; "The 2568th Year Itch"; "The 2571st Year Itch"; "The 2574th Year Itch"; "The 2577th Year Itch"; "The 2580th Year Itch"; "The 2583rd Year Itch"; "The 2586th Year Itch"; "The 2589th Year Itch"; "The 2592nd Year Itch"; "The 2595th Year Itch"; "The 2598th Year Itch"; "The 2601st Year Itch"; "The 2604th Year Itch"; "The 2607th Year Itch"; "The 2610th Year Itch"; "The 2613th Year Itch"; "The 2616th Year Itch"; "The 2619th Year Itch"; "The 2622nd Year Itch"; "The 2625th Year Itch"; "The 2628th Year Itch"; "The 2631st Year Itch"; "The 2634th Year Itch"; "The 2637th Year Itch"; "The 2640th Year Itch"; "The 2643rd Year Itch"; "The 2646th Year Itch"; "The 2649th Year Itch"; "The 2652nd Year Itch"; "The 2655th Year Itch"; "The 2658th Year Itch"; "The 2661st Year Itch"; "The 2664th Year Itch"; "The 2667th Year Itch"; "The 2670th Year Itch"; "The 2673rd Year Itch"; "The 2676th Year Itch"; "The 2679th Year Itch"; "The 2682nd Year Itch"; "The 2685th Year Itch"; "The 2688th Year Itch"; "The 2691st Year Itch"; "The 2694th Year Itch"; "The 2697th Year Itch"; "The 2700th Year Itch"; "The 2703rd Year Itch"; "The 2706th Year Itch"; "The 2709th Year Itch"; "The 2712nd Year Itch"; "The 2715th Year Itch"; "The 2718th Year Itch"; "The 2721st Year Itch"; "The 2724th Year Itch"; "The 2727th Year Itch"; "The 2730th Year Itch"; "The 2733rd Year Itch"; "The 2736th Year Itch"; "The 2739th Year Itch"; "The 2742nd Year Itch"; "The 2745th Year Itch"; "The 2748th Year Itch"; "The 2751st Year Itch"; "The 2754th Year Itch"; "The 2757th Year Itch"; "The 2760th Year Itch"; "The 2763rd Year Itch"; "The 2766th Year Itch"; "The 2769th Year Itch"; "The 2772nd Year Itch"; "The 2775th Year Itch"; "The 2778th Year Itch"; "The 2781st Year Itch"; "The 2784th Year Itch"; "The 2787th Year Itch"; "The 2790th Year Itch"; "The 2793rd Year Itch"; "The 2796th Year Itch"; "The 2799th Year Itch"; "The 2802nd Year Itch"; "The 2805th Year Itch"; "The 2808th Year Itch"; "The 2811th Year Itch"; "The 2814th Year Itch"; "The 2817th Year Itch"; "The 2820th Year Itch"; "The 2823rd Year Itch"; "The 2826th Year Itch"; "The 2829th Year Itch"; "The 2832nd Year Itch"; "The 2835th Year Itch"; "The 2838th Year Itch"; "The 2841st Year Itch"; "The 2844th Year Itch"; "The 2847th Year Itch"; "The 2850th Year Itch"; "The 2853rd Year Itch"; "The 2856th Year Itch"; "The 2859th Year Itch"; "The 2862nd Year Itch"; "The 2865th Year Itch"; "The 2868th Year Itch"; "The 2871st Year Itch"; "The 2874th Year Itch"; "The 2877th Year Itch"; "The 2880th Year Itch"; "The 2883rd Year Itch"; "The 2886th Year Itch"; "The 2889th Year Itch"; "The 2892nd Year Itch"; "The 2895th Year Itch"; "The 2898th Year Itch"; "The 2901st Year Itch"; "The 2904th Year Itch"; "The 2907th Year Itch"; "The 2910th Year Itch"; "The 2913th Year Itch"; "The 2916th Year Itch"; "The 2919th Year Itch"; "The 2922nd Year Itch"; "The 2925th Year Itch"; "The 2928th Year Itch"; "The 2931st Year Itch"; "The 2934th Year Itch"; "The 2937th Year Itch"; "The 2940th Year Itch"; "The 2943rd Year Itch"; "The 2946th Year Itch"; "The 2949th Year Itch"; "The 2952nd Year Itch"; "The 2955th Year Itch"; "The 2958th Year Itch"; "The 2961st Year Itch"; "





**RIVERSIDE**—Mine Okubo (center), hailed as the first alumna of the year at Riverside City College, is welcomed by J. Coleman Scott (left), her English instructor during the early 1930s and board of trustee member instrumental for her nomination, and Arthur Knopf, who was in charge of the special Okubo exhibit at the campus where some of her "Citizen 13660" sketches depicting life in evacuation camps and other postwar pieces were shown. One man exhibition tour of Japan this summer is also being arranged. —Cut Courtesy: Kashu Mainichi

## Federal funding to aid new Americans in gateway cities urged by Rep. Mink

SAN FRANCISCO — In the Bay Area for a series of meetings with Asian American groups and to address the UC Berkeley graduate minority student seminar over the Memorial Day holiday weekend, Rep. Patsy Mink (D-Hawaii) called for broad-based support of her bill (HR 9895), the New Americans Education and Employment Assistance Act.

Support from "gateway cities" such as San Francisco for federal funding to help provide basic social services to immigrants and thus help receive local governments of extra financial burden was urged for the Mink bill, now in the House Committee on Education and Labor.

The bill provides grants of \$1,000 per immigrant to states and "gateway cities where more than 5% of the population are immigrants."

Other gateway cities include New York, Boston, Miami, New Orleans, Chicago, Seattle and Los Angeles.

"These cities then," said Rep. Mink, "could determine through their existing social agencies how programs of education, health, housing, job training, orientation, public assistance and other activities could be carried out."

The Mink bill in addition would authorize U.S. Public Health Service treatment for immigrants, food stamps, travel grants of up to \$250 for immigrant to travel from a gateway city to another state for employment purposes and directs the U.S. Employment Service to establish

programs in gateway cities of job referral for immigrants to jobs available in other states.

San Francisco Human Rights Commissioner Harvey Wong, who introduced Rep. Mink to a press conference at the Commission offices, said that endorsement of HR 9895 by the local HRC was in response to the representations brought to him from many minority and ethnic communities.

Support has come as well from the city's board of supervisors, where Supervisor Quentin L. Kopp last February introduced a resolution of endorsement.

Proponents of HR 9895 cite as precedent for federal assistance to immigrants the program in Florida for Cuban immigrants which began about 1961.

Total expenditure from 1961 through 1972 to Cuban immigrant needs was \$729,000,000 and has been a factor in the rapid emergence of Cuban residents as businessmen, community leaders and a political force.

Rep. Mink said she expected hearings on her bill to be set for mid-summer.

Proponents of HR 9895 cite as precedent for federal assistance to immigrants the program in Florida for Cuban immigrants which began about 1961.

Total expenditure from 1961 through 1972 to Cuban immigrant needs was \$729,000,000 and has been a factor in the rapid emergence of Cuban residents as businessmen, community leaders and a political force.

Rep. Mink said she expected hearings on her bill to be set for mid-summer.

Proponents of HR 9895 cite as precedent for federal assistance to immigrants the program in Florida for Cuban immigrants which began about 1961.

Total expenditure from 1961 through 1972 to Cuban immigrant needs was \$729,000,000 and has been a factor in the rapid emergence of Cuban residents as businessmen, community leaders and a political force.

Rep. Mink said she expected hearings on her bill to be set for mid-summer.

Proponents of HR 9895 cite as precedent for federal assistance to immigrants the program in Florida for Cuban immigrants which began about 1961.

Total expenditure from 1961 through 1972 to Cuban immigrant needs was \$729,000,000 and has been a factor in the rapid emergence of Cuban residents as businessmen, community leaders and a political force.

Rep. Mink said she expected hearings on her bill to be set for mid-summer.

Proponents of HR 9895 cite as precedent for federal assistance to immigrants the program in Florida for Cuban immigrants which began about 1961.

## NEWS CAPSULES

### Elections

Santa Ana City Councilman Harry K. Yamamoto (D) garnered 5,631 votes in the June 4 primaries for the new 72nd California Assembly District seat to finish second behind Richard Robinson who had 8,260. Republican nominee is former L.A. Ram football star Marlin McKeever.

### Nisei Week

Another Nisei Week queen candidate, Lorraine H. Iida, 21, of Sylmar was announced by the San Fernando Valley Japanese American Coordinating Council. She is the daughter of the Ted Iida, currently attending CSU-Northridge, and the ninth candidate for the 1974 crown.

### Churches

Maryknoll Society's first Nisei priest, Fr. James Tokuhisa of Seattle, celebrated his silver jubilee of ordination June 11. He has been in the Japan missions since, currently assigned at Tsu, Mie-ken.

Fresno City College student Brian Nagata, 19-year-old son of the Tom Nagatas, active Fowler JACLers, was named the 1974 exchange representative for the Buddhist Churches of America-Japan Nishi Hongwanji summer program. A member of the Fresno JAYs and Central Cal YBA, he visited Japan in 1971 for the world Boy Scout jamboree. The BCA summer exchange is a five-week program.

### Music

The American Theater Organ Society presented Maria Kumaigai in a morning concert at the Wilmette Theater June 16. She came from Tokyo to study the organ in 1969, has played at Grace Cathedral, San Francisco, on its five-manual 100-rank pipe organ and at the Detroit Theater.

Isao Tomita, practitioner of electric electronic music, has been signed by RCA Records. The diskery bowed his first album, "Snowflakes Are Dancing," in its N.Y. studios. The album is an electronic take-off on Claude Debussy music, in the groove of Columbia Records' click "Switched On Bach" a couple of years ago.

### Science

Ames Research Center scientist Vance Oyama was among 39 chosen by NASA for the 1978 probe of Venus. Dr. Oyama will participate in experiments determining the characteristics of the Venus atmosphere and clouds with a gas chromatograph. Two spacecrafts are involved, one orbiting and the other penetrating the Venus atmosphere.

### Education

Japan-America Centennial Treaty Scholarship Fund committee at Los Angeles awarded its top \$350 prize to Brent T. Shoji of Monroe High, ranking No. 3 in his class of 1,100 with a 3.95 grade point

average, and planning to study pre-med at UCLA. The fund committee awarded a total of \$5,050 to 43 Sansei honor students.

Scholastic honors were accorded to El Molino High honor student and valedictorian Gregory Yamamoto of Forestville, Calif., who won a Bank of America mathematics award, Doyle scholarship, senior athletic award and an athletic lifetime pass... Cal State L.A. associated students v.p. Ken Chin, a Roosevelt High (L.A.) graduate, was named to the Who's Who among Students in American Universities and Colleges. Active in various campus groups, he is currently chairman of a committee to raise \$600,000 for a child care center on campus, works as a teaching assistant at Garfield High and is believed to be the first Boyle Heights resident to be honored in the collegiate who's who... Dr. Izumi Taniguchi, Fresno JACLers and Central California district governor, was promoted a full professor of economics, effective Aug. 31, at Fresno State University.

Lodi High senior Peggy Matsumura, daughter of the Frank Matsumuras of Acampo, won a \$6,000 college scholarship from Campbell Soup Co.'s Sacramento plant. A total of 14 scholarships are offered annually to children of Campbell Soup employees throughout the U.S. She intends to major in accounting at Delta and later at UCLA.

Institute of Buddhist Studies, Berkeley, held its fourth commencement June 24. Betty Meko Osako was conferred a masters of arts in Buddhist Studies for her research on the writings of Zonkaku, 14th Century Japanese cleric. Dr. Elizabeth Nottingham, sociology professor-emerita of Queens College, New York, was commenced speaker. She was Fulbright exchange professor at Rangoon, 1957-58. The Institute summer session lectures include Dr. Leo Pruden of Brown University and Dr. Kyosetsu Fujiwara of Berkeley.

### Fine Arts

An RKO studio retoucher prewar, Kango Takamura, 79, of Los Angeles is donating 73 watercolors, prouced during WW2 while he was detained at Santa Fe (N.M.) Internment Camp and Manzanar, to the UCLA Research Library. Existence of these paintings was first made public last fall.

### Military

Dale Miyadi, a pharmacy proprietor, was installed as commander of the Fourth District Nisei Memorial VFW Post 1961 of Gardena. He served as an Army pharmacist in the Korean conflict and is a graduate in pharmacy from Univ. of Colorado.

### Crime

Two 18-year-old youths, Mike Sakurai and Edward M. Kosaka, who were arrested with two others in connection with the Mar. 14 robbery of a Gardena liquor store, were found not guilty by a South Bay municipal court jury June 5. Neither Sansei were identified by Kenichi Murayama, proprietor. Kosaka was still in custody for probation violation from previous narcotic arrests.

No charges were filed against a San Leandro appli-

ance store owner, J. Nakashima, who June 16 fired his shotgun and killed a man who ignored his warning to abandon his alleged attempt to steal his car. Police identified the victim as Michael Swift, 29.

### Travel

Mrs. Grace Fujita, who joined Japan Air Lines' staff when it opened its Los Angeles office in 1954, was promoted to a management role as passenger sales account executive and leader of a four-man sales team. In 1959 she was JAL's first woman supervisor and headed the local reservations staff. In 1961 she headed the "tour desk" as a pilot project, which is now established in other regional offices. Part of the original staff of three people, the JAL office here now employs over 800, "but we're still a close family family", Mrs. Fujita insisted.

### Courtroom

Clark Saito, 55, of Monterey Park was selected the judges of the Los Angeles municipal bench to be their court clerk. He has been chief clerk of the criminal division for the past seven years. He is co-author of the current court clerk's manual, has been with the municipal court for 21 years and holds teaching credentials and a law degree.

San Francisco Municipal Judge Harry W. Low became the first Chinese American jurist in the S.F. superior courts when Gov. Reagan appointed him June 17 to replace Judge Byron Arnold who is retiring July 2.

### Milestones

Hiroshi Nakajima, 86, who established Empire Printing Co. in Little Tokyo 60 years ago, died June 19. Surviving are wife Tomi, s. Ichiro, Toshio and d. Tatsuko Mikakawa.

Charles Y. Yonezu, 70, of San Francisco died June 6. Prewar he operated Soko Transfer, which was started by his father. After the war, he was associated with a custom brokerage firm. Surviving are wife Grace and sis Yae Hira-ga of Ohio.

Three Generations of Experience  
**FUKUI**  
Mortuary, Inc.  
707 E. Temple St.  
Los Angeles 90012  
626-0441

Soichi Fukui, President  
James Nakagawa, Manager  
Nobuo Osumi, Counsellor

**Shimatsu, Ogata and Kubota**  
Mortuary  
911 Venice Blvd.  
Los Angeles  
RI 9-1449  
SEIJI DUKE OGATA  
R. YUTAKA KUBOTA

Best Wishes to the Entire Japanese American Community  
"Compliments - Bart Rallo"  
**Indio Datsun**  
93-191 Highway 111  
Indio, Calif. 92201  
(714) 347-7708

Japanese American Community  
Best Wishes to the Entire  
**Richardson Fasteners**  
6872 Palm Ave.  
Highland, Calif. 92346  
(714) 862-1612

**THE MITSUBISHI BANK**  
OF CALIFORNIA  
HEAD OFFICE  
800 Wilshire Blvd., Los Angeles, Calif. 90017 (213) 623-7191  
LITTLE TOKYO OFFICE  
321 East Second St., Los Angeles, Calif. 90012 (213) 680-2650  
GARDENA OFFICE  
1600 W. Redondo Beach Blvd., Gardena Calif. 90247 (213) 532-3360  
Member FDIC

**Low cost new auto loans!**  
**Sumitomo Bank of California**

Best Wishes to Japanese American Community  
**Sunlight Electric Supply Co.**  
(A TFI Co.)  
512 Front St., San Diego, Calif. 92101  
(714) 234-8191

**NEED A CAR LOAN?**  
Low Cost  
Liberal Terms  
No Extra Charges  
**National JACL Credit Union**  
Mail: P. O. Box 1721, Salt Lake City, Utah 84110  
Office: 242 S. 4th East, Salt Lake City  
Tel.: (801) 355-8040  
Remember you can borrow \$3,000 on your signature with a qualified credit rating.

**OPEN SATURDAY**

7.50% 6.75% 6.50% 5.75% 5.25%

48-month Certificates \$1,000 minimum \$1,000 minimum \$1,000 minimum \$1,000 minimum \$1,000 minimum

**MERIT SAVINGS AND LOAN ASSOCIATION**  
324 EAST FIRST STREET, LOS ANGELES, CALIFORNIA 90012  
PHONE (213) 624-7434  
HOURS: Monday thru Friday 10 to 5PM/Saturday 10 to 2PM  
BY FEDERAL REGULATIONS: A SUBSTANTIAL FINANCIAL PENALTY IS INCURRED FOR EARLY WITHDRAWAL EXCEPT AS NOTED

We've got a yen  
for your new car  
at a low interest rate:  
Come Drive a Bargain with

**THE BANK OF TOKYO**  
OF CALIFORNIA Member FDIC  
San Francisco Main Office: Tel. (415) 981-1200  
S.F. Japan Center Branch: Tel. (415) 981-1200  
Mid-Peninsula Branch: Tel. (415) 941-2000  
Oakland Branch: Tel. (415) 839-9900  
Fremont Branch: Tel. (415) 792-9200  
San Jose Branch: Tel. (408) 298-2441  
Westgate Branch: Tel. (408) 298-2441  
Salinas Branch: Tel. (408) 424-2888  
Fresno Branch: Tel. (209) 233-0591  
North Fresno Branch: Tel. (209) 233-0591  
Los Angeles Branch: Tel. (213) 687-9800  
L.A. Downtown Branch: 616 W. 6th, Tel. (213) 627-2821  
Montebello Branch: Tel. (213) 726-0081  
Crenshaw-L.A. Branch: Tel. (213) 731-7334  
Western L.A. Branch: Tel. (213) 391-0678  
Gardena Branch: Tel. (213) 327-0360  
Torrance Branch: Tel. (213) 373-8411  
Santa Ana Branch: Tel. (714) 541-2271  
Panorama City Branch: Tel. (213) 893-6306  
San Diego Branch: Tel. (714) 236-1199

- Business and -  
**Professional Guide**  
Your Business Card placed in each issue for 25 weeks at: 3 lines (minimum) \$25 Each additional line \$6 per line  
• Greater Los Angeles  
**FLOWER VIEW GARDENS FLORIST**  
1801 N. Western Ave. (213) 466-7373  
Art. H. welcomes your Floral Gift orders for the Greater L.A. Area Mention PC.  
**Chapter-Sponsored JACL Group Insurance**  
Jimmy Gozawa (213) 765-9715  
7359 Clear Ave. Sun Valley 91352  
**NISEI FLORIST**  
In the Heart of L.A. Tokyo  
328 E. 1st St. MA 8-5606  
Fred Moriyasu Mem. Teleflora  
**YAMATO TRAVEL BUREAU**  
312 E. 1st St. L.A. (90012)  
MA 4-6021  
• Watsonville, Calif.  
**TOM NAKASE REALTY**  
Acreage Ranches - Homes - Income  
Tom T. Nakase, Realtor  
25 Clifford Ave. (408) 724-6477  
• San Jose, Calif.  
**EDWARD T. MORIOKA, Realtor**  
1092 Nottingham Pl., San Jose  
Bus.: 246-6606 Res.: 241-9554  
• Sacramento, Calif.  
**Wakano-Ura**  
Sukiyaki Chop Sui  
Open 11-11 Closed Monday  
2217 10th St. - GI 8-5231  
• Seattle, Wash.  
**Imperial Lanes**  
2101 - 22nd Ave. So. EA 5-2522  
Nisei Owned - Fred Takagi, Mgr  
**Kinomoto Travel Service**  
Frank Y. Kinomoto  
521 Main St. MA 2-1522  
• Washington, D.C.  
**MASAOA - ISHIKAWA AND ASSOCIATES, INC.**  
Consultants - Washington Matters  
2021 L St. NW (20036)  
Tell Our Advertisers  
You Saw It in the PC

**Toyo Printing**  
Offset - Letterpress - Linotyping  
309 S. SAN PEDRO ST.  
Los Angeles 12 - Madison 6-8153  
**MARUKYO**  
Kimono Store  
101 Weller St.  
Los Angeles  
628-4369

**Nanka Printing**  
2024 E. 1st St.  
Los Angeles, Calif.  
ANgelus 8-7835

Appliances - TV - Furniture  
**TAMURA**  
And Co., Inc.  
The Finest in Home Furnishings  
3420 W. Jefferson Blvd.  
Los Angeles 18  
RE 1-7261

Complete Home Furnishings  
**Koby's Appliances**  
15130 S. Western Ave.  
Gardena, DA 4-6444, FA 1-2123

**NISEI** Established 1936  
**TRADING CO.**  
• Appliances - TV - Furniture  
348 E. FIRST ST., L.A. 12  
MAdison 4-6601 (2, 3, 4)

**Aloha Plumbing**  
LIC. #201875  
PARTS & SUPPLIES  
- Repairs Our Specialty -  
1948 S. Grand, Los Angeles  
RI 9-4371

**ED SATO**  
PLUMBING AND HEATING  
Remodel and Repair Water Heaters, Garbage Disposals, Furnaces  
- Servicing Los Angeles -  
AX 3-7000 RE 3-0557

NEW LOCATION  
**Kimura**  
PHOTOMART  
316 E. 2nd St., Los Angeles  
622-3968

**TOYO**  
Myatake  
**STUDIO**  
318 East First Street  
Los Angeles, Calif.  
MA 6-5681

**Nat'l Audubon Society**  
backs whale moratorium

**NEW YORK** — The National Audubon Society called on its 300,000 members June 17 to boycott goods from Japan and Russia until those nations "stop their needless slaughtering of whales."

The action came after appeals to the governments of Japan, Russia and the U.S. proved fruitless. It cancelled ecology workshops scheduled for Russia and Japan and the advertising of Japanese and Russian products in its magazine.

### Town Meetings

**WASHINGTON**—The National Town Meeting resumes Wednesdays, 10-11:30 a.m., at the Eisenhower Theater at Kennedy Center for the Performing Arts. Admission is free.

### Local Scene

#### Los Angeles

**Chatterton Book Store**, 1818 N. Vermont, will exhibit Estelle Ishigo's paintings and sketches during the month of July. Some of her pieces depicting life in Heart Mountain WRA Camp are included.

#### Portland

A reunion of former Salem (Ore.) Community Church members and Nikkei will be held on the Sunday after the National JACL Convention here at the Westminster Presbyterian Church, 1624 NE Hancock St., July 28, 12:30-6 p.m. Sharing of snapshots and scrapbooks will be a part of the program. Joe Yada will emcee. Further information may be obtained from Mrs. Jessie Tanaka, 3354 NE 76th Ave., Portland, Ore. 97213. To help defray costs of program and meal, \$10 adult and \$5 for children over six is requested. Those unable to be present may have their name and address listed in the souvenir program for a \$2 contribution.

### Film on Issei

**LOS ANGELES** — UCLA Asian American Studies Center's documentary film, "Issei: The First 50 Years," which utilizes the photographs on file at UCLA, County Museum of Natural History and JACL-Visual Communications, has been completed. (The 20-minute, B&W film is not to be confused with the Bob Nakamura-Visual Communications production on the same subject now in the final stages of production.—Ed.)

Best Wishes to Japanese American Community

**Riverside Thoroughbred Farm**  
2950 Wallace, Riverside, Calif. 92509  
(714) 683-3750

Best Wishes to Japanese American Community

**THE INDIAN ROOM**  
North & South American Folk Art  
Art Object & American Indian Jewelry  
1440 S. Coast Hwy., Laguna Beach, Calif. 92651  
(714) 494-0123

Best Wishes to Japanese American Community

**H & E HOME BUILDERS CITY**  
★ Herb and Ed Stein ★  
27285 W. Main St. 15121 Palmdale Rd.  
Barstow, Calif. Victorville, Calif.  
(714) 256-2128 (714) 245-3486

Best Wishes to Japanese American Community

**AL JOHNSON FLORIST**  
6189 Magnolia Ave., Riverside, Calif. 92506  
"We Specialize in Table Arrangements" for Parties & Meetings  
Also Funeral Arrangements & Weddings  
Phone (714) 686-3010

Best Wishes to Japanese American Community

**VICTOR B. HANDAL & BROS., INC.**  
784 So. San Pedro St. 627-8514  
Los Angeles, Calif.

**エスクローの手續.....**  
所有権 (タイトル) の保護.....

WRITE for our free pamphlet explaining Escrow Procedure and Title Protection. Check:

☐ English ☐ Japanese ☐ Spanish

Best Wishes to Japanese American Community

**KELLY GOLF**  
Professional Repairs

3314 Adams Ave., San Diego, Calif. 92116  
(714) 281-0842

Japanese American Community  
Best Wishes to the Entire

Compliments of a Friend

"O.W.O."

Japanese American Community  
Best Wishes to the Entire

**WALLACE MOIR CO.**  
9595 Wilshire Blvd.  
Beverly Hills  
273-7300