





**Ye Editor's Desk**

The 1973 Pacific Citizen financial brief (shown above) isn't meant to be a poetic display but it shows what transpired in the previous 1971-72 biennium, what the current 1973-74 biennium is likely to be, and what the next 1975-76 biennium appears to be.

As budgets (b) go, we're always on the conservative side. The next five columns of figures to the right are percentages for the five segments of the PC budget: Editorial, Business, Production, Mailing and Overhead. Last two columns indicate the number of pages published during the year and paid circulation.

To comment on the variations in percentages, Business and Overhead expenses are steady. In Editorial, an assistant has been added. In Production, by budgeting for the same number of pages each, the percentage drops a point per year. Increases in advertising, however, means additional pages and adjustment in percentages will show up in Editorial and Business. In Mailing, the jumps are scheduled in 2nd Class rates. (Time Magazine for Feb. 25 relates this predicament best. We recommend its reading.)

Now for brief look at income:

Tr & Income	Ads	TI	JACL	Sub	Misc	Balance
71—\$ 95,612	23	17	50	10	—	-1,944
72—103,379	23	17	49	11	—	+1,368
73—117,619	20 1/2	15 1/2	56	7	1	-1,304
74—123,719e	20	16	56	7	1	-1,335
75—137,358e	18	15	60	7	—	+4,556
76—141,559e	19	14	60	7	—	-183

The 60-40 ratio in PC income (subscription/advertising) has been traditional since PC w/Membership was instituted in 1961. And without a fulltime ad salesman, the ratio will likely tip to 67-33. It may appear we shall have to mount a direct-mail campaign to get advertising one of these days to help balance the books at the end of the year.

The column of figures at right for 1971-73 are history, but something can be done for 1974-76. The "plus" balance for 1975 is based upon the subscription rate for JACLers pegged at \$4 per year.

The big PC project in the coming year (now that we have our PCs microfilmed and in the process of developing an index) is to streamline the circulation aspects. We keep growing, expenses creep upward and the toils never falter.

**SAN FERNANDO VALLEY JACL: Phil Shigekuni**  
**On Being Called a 'Gook'**

"You're a slant-eyed gook." The man who uttered these words spat them out again, as if I might not have heard them the first time. I stared back at him angrily, not believing this sort of thing could be happening.

What provoked this kind of response from one stranger to another? Let me go back a moment.

I was the second person to approach the counter at the eye clinic at Kaiser-Permanente. After a minute or two,

**CHIAROSCURO**

This column is reserved for Chapter Presidents. They are either submitted or gleaned from Chapter newsletters.—Ed.

A man came to stand next to me to wait until the receptionist was free. When she finally was through with the lady ahead of me, she looked up.

Before I could respond, the man who had come in after me showed his papers toward the receptionist. I said to the man, "I believe I was next."

He responded, "Who do you think you are, anyway? I was here way before you came in."

My response to this was, "Who do I think I am? I was next in line." Whereupon his angry retort.

You might be thinking, "Why did you make a big deal out of such a minor thing? What difference would it have made who went first?" Perhaps you might be right.

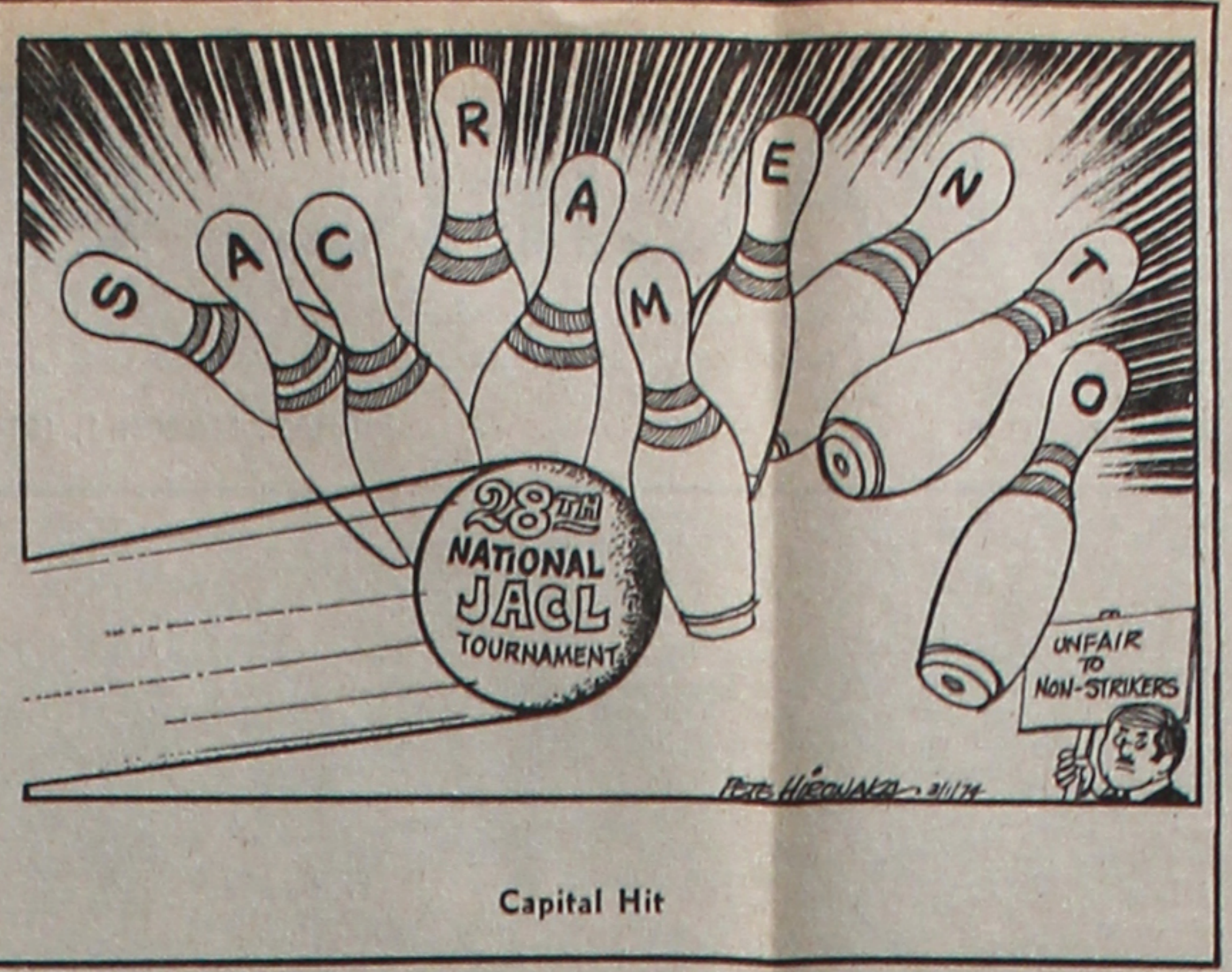
But on the other hand, what can be gained from this experience? In retrospect, these thoughts occur to me. First, RACISM is alive and well in the San Fernando Valley.

Second, this racism is easily concealed when there is no conflict in a relationship. As long as an individual (or group) takes a quiet, submissive role, things stay pretty peaceful. As soon as there are differences leading to conflict, concealed prejudices do not remain that way long.

Third, I was called a gook, not a "Jap." The reality of today would seem to indicate to counter this form of racism, Asians must unite as Asians, not as Japanese, Chinese, Filipino, etc.

So what does all this have to do with JACL? Last Sun-

**LETTERS**  
**Holiday Issue**  
 Editor:  
 The material on Iva Toguri d'Aquino in the 1973 Holiday Issue is a valuable contribution to contemporary understanding of post-War attitudes. We would like to have this material included in the library of the Pearl Harbor Memorial Museum.  
 WARREN E. SESSLER  
 Managing Director  
 Honolulu, Hawaii



**IN MEMORIAM**  
**Tom Hayashi: 1917-1974**

By MIKE M. MASAOKA

In the tragic passing of Thomas Toshio Hayashi, of New York City, on Feb. 9, Americans of Japanese ancestry lost one of our greatest leaders.

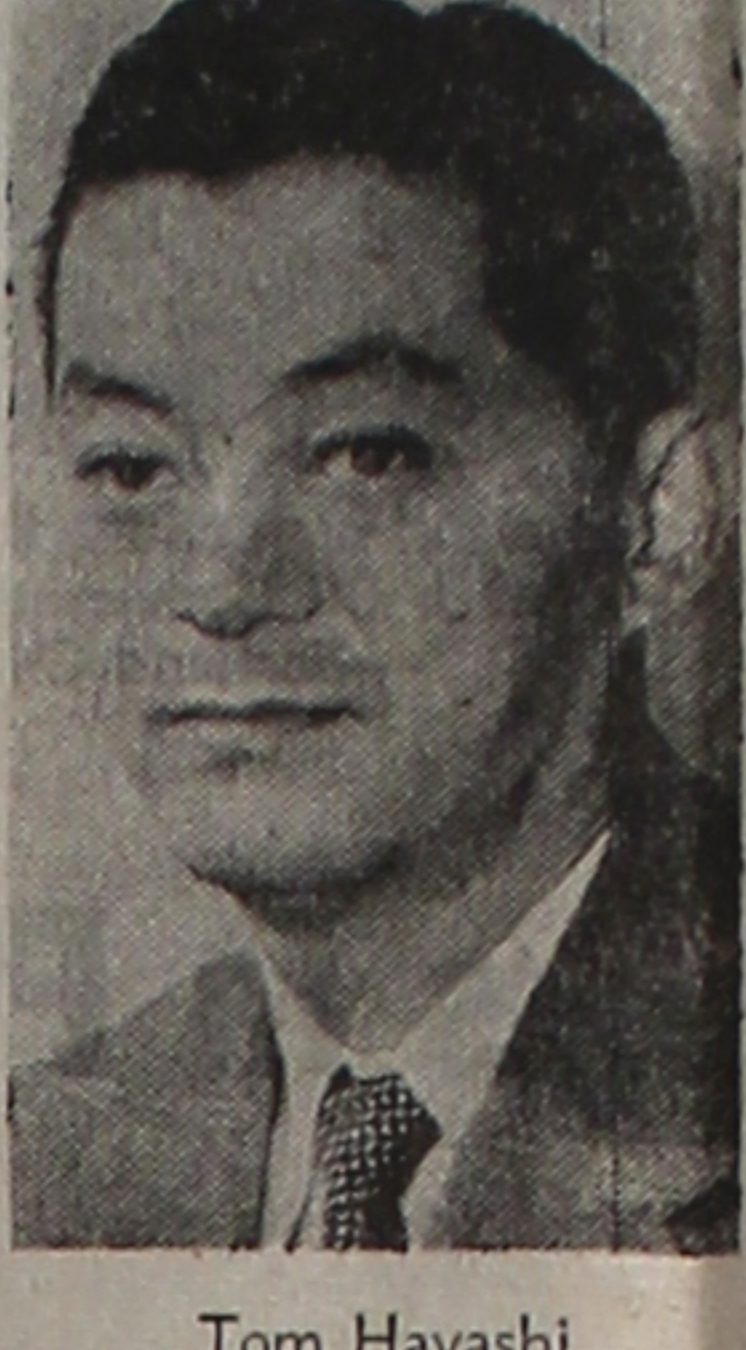
Though he was not too active directly in JACL and Japanese American problems of late, when JACL and American Japanese needed his kind of personal leadership and inspiration he was there in the forefront, fighting for causes in which he believed and which he knew were right. In fact, his whole life personifies the heroic story of the Nisei in these United States.

Born 56 years ago, Dec. 5, 1917, in Sacramento, Calif., the third child and the first son, he lost his mother when he was only one year old. His father remarried, and in the custom of many Issei that marriage was with the younger sister of his first wife. Tom loved and revered his "second" mother, as he loved and was devoted to his sister and brothers by his new mother.

When he was in high school, Tom's father passed away. As "head" of his family, he worked long and hard in those depression days to keep his brothers and sisters together. And, even in those "early" years when he had no time or opportunity to pursue his own ambitions because he had to support his family, he dreamed someday of becoming a lawyer since he felt that only through the law could he help eliminate the bars of discrimination which he saw every day against those of Japanese ancestry.

When the war came, along with others of Japanese origin in Sacramento, he was evacuated to the Tule Lake War Relocation Center. He quickly realized that camp life was not for him and he was among the first in Tule Lake to seek, and to receive, leave to attend college. With the help of the Baptists and the Student Relocation Council, he secured a scholarship to Bard College in New York.

Among his fellow Nisei from the WRA camps at that time were Dr. Jin Kinoshita, now of Washington and one of the great research ophthalmologists of the world, and Taro Kawa, one of Los Angeles' most successful businessmen.



Tom Hayashi

So, much credit is due Tom Hayashi for JACL's successful program in Washington—in the Congress and in the courts—for corrective and remedial legislation and litigation that have made this nation a better and more humane place for all, especially those of Japanese background, to live and work.

Once the major legal, legislative, and administrative problems of the Nisei were resolved, Tom turned his prodigious energy and dedication to helping improve relations between the United States and Japan, remembering always that the travail that was visited upon his family and others of Japanese ancestry was brought about in large measure because relations between the country of his citizenship and the land of his ancestry were strained and broken in World War II.

He recalled history and knew that the Pacific War was caused in large part by the failure of the United States and Japan to develop truly mutually profitable commercial relationships, that when American markets and oil supplies were closed Japan unfortunately for all concerned decided upon the military alternative.

So he worked hard to help Japanese organizations and companies enter the United States and to sell their output here. Again, with the perception of genius, he was aware that certain Japanese trading practices and operations might arouse suspicion and even anger, so he pioneered in trying to persuade Japanese entities in this country to be more than "economic animals" and to contribute to and serve community betterment as concerned citizens.

zens in every locality in which they conducted business.

About ten years ago, he became a senior partner in Whitman and Ranson, one of the most prestigious law firms in the nation, thereby proving to himself and to others of minority ancestry that within the "system" regardless of color, race, or national origin one could attain "the top" in one's chosen profession.

But, to Whitman and Ranson, as to every other endeavor in which he became involved, Tom gave far more than he received. He brought a new dimension to the corporate law firm and assured Japanese companies that they could command the services of even the most distinguished law firms in the United States.

At the time of his untimely passing, Tom probably had more Japanese clients than any other attorney. He probably held more directorships too than any other Nisei businessman.

When he passed on, Tom was the Chairman of the Japanese American United Church of Christ, a member of the Board of Trustees of Bard College, and the leading inspiration behind the JACL project to write a history of the Japanese on the East Coast, with special reference to the development of trade relations between Japan and the United States, not to mention various other civic activities and professional societies.

Aside from all his worldly achievements, Tom was a remarkable personality. No one whom I have ever known loved life more, and was happier in trying to live it to its full. He never forgot his childhood hardships or his wartime travails, or those who helped him along the way. He probably gave more time freely to help his fellow men, to those who needed advice and guidance, than most attorneys. And few cherished his family—his wife Futami and daughter Holly and all his brothers and sisters—than did he.

Tom lived his life as he played poker—with a zest and an understanding of what was involved that few, if any, could rival, willing to take a chance when the gamble was worth taking and always in keeping with the spirit of fellowship and good cheer, prepared to permit a friend to win a few hands to recoup his losses even at his own expense, etc.

We who knew Tom and worked with him have lost a truly great and good friend. But, we all know and are inspired by the fact that Tom was among the very few who made the world a better place because he lived among us. And perhaps his example will serve to inspire us to do likewise.

**25 Years Ago**  
 In the Pacific Citizen, Feb. 26, 1949

Rules committee approves forms . . . Large group of Judd Naturalization bill . . . war-stranded Nisei return Twelve Japanese American from Japan on Gen. Gordon representatives serve in two . . . Chicago's human relations groups win wide recognition . . . National young to amend Enemy Trading Act . . . Buddhists group seeks recognition by Army of religious . . . Justice department advises care in filing claims cemetery markers.

In the Pacific Citizen, Mar. 5, 1949

House passes Judd naturalization bill . . . Masaoka voices Nisei gratitude for house action on Judd bill . . . First Japanese American (Takekoshi Yoshihara) wins appointment to U.S. naval academy at Annapolis . . . Mrs. d'Aquino asks U.S. court to call Gen. MacArthur as witness in treason trial . . . Oregon legislature repeals wartime anti-Issei amendment to state alien land statute . . . Government asks individual trials in bid of renunciants to regain citizenship rights.

**Low cost new auto loans!**

Sumitomo Bank of California

**Chicago JACL Credit Union reports banner year, declare 5% in dividend**

CHICAGO—Several historical highs were noted in 1973 to make it a banner year for the Chicago JACL Federal Credit Union, according to Dudley Yatabe, president. They were in loans at \$372,305; share deposits at \$513,804 and total assets of \$556,363—political, economic and social unrest notwithstanding.

The report was presented at the 27th annual meeting of the credit union held Jan. 25 at Como Inn, attended by 115 shareholders and friends. Tak Tomiyama, v.p., was emcee and dinner chairman.

The board of directors declared a 5% per annum dividend and Yatabe pointed out that only through more requests for loans such as funds for vacations and JACL Convention plans, could the dividend rate be increased and thus preclude any increase in the interest rate for loans. The credit union offers the lowest cost possible of any lending institution, he added.

Attorney Thomas Masuda, a charter member of the credit union, was honored with a belated 25-year meritorious service plaque. George Ikegami was cited for his 10 years of continuous service on the board. Elected to two-year terms on the board were:

Father: Hagihara, Richard Hi-kawa, Thomas Masuda, Jack Nakagawa, Ariye Oda, Lincoln Shimizu, Sumi Shimizu and Dudley Yatabe.

**1000 Club plans tennis tourney at indoor court**

PORTLAND, Ore.—National JACL 1000 Club is sponsoring a tennis tournament at the new and fabulous indoor courts of Portland Tennis Center during JACL Convention week here July 22-27.

Entries are solicited from chapter teams in men and women singles, doubles and mixed doubles. Prospective participants should indicate whether they are (a) novice, (b) intermediate, (c) experienced—so that proper match pairings can be made by the tournament committee.

Early sign-ups are being requested by Peter Nakahara and Dr. Tak Inouye, tournament co-chairmen, of 90 E. Taylor St., San Jose, Calif. 95112.

San Jose intends to field a team as well as individual match players. A chapter tennis team is comprised of two women singles, two men singles and two mixed doubles with a designated team captain.

The design of the courts and adjoining clubhouse provides the finest in court surface, lighting, heating, ventilation and comfort to players and spectators alike, according to Convention officials.

**Convention—**  
 Continued from Front Page

Those who visited the Pacific Northwest in the past are also being welcomed to enjoy the Convention Week. The new attraction is the Spokane World's Fair—about a day's trip from Portland.

In the meantime, JACL chapters will be sent specific information regarding accommodations during Convention Week.

**OREGON TRAVEL PACKET—FREE**

1974 National JACL Convention JACL Northwest-Intermountain Office 327 N.W. Couch St. Portland, Oregon 97209

PLEASE SEND FREE your OREGON Travel Information Travel packet, including maps, events and activities for vacationers.

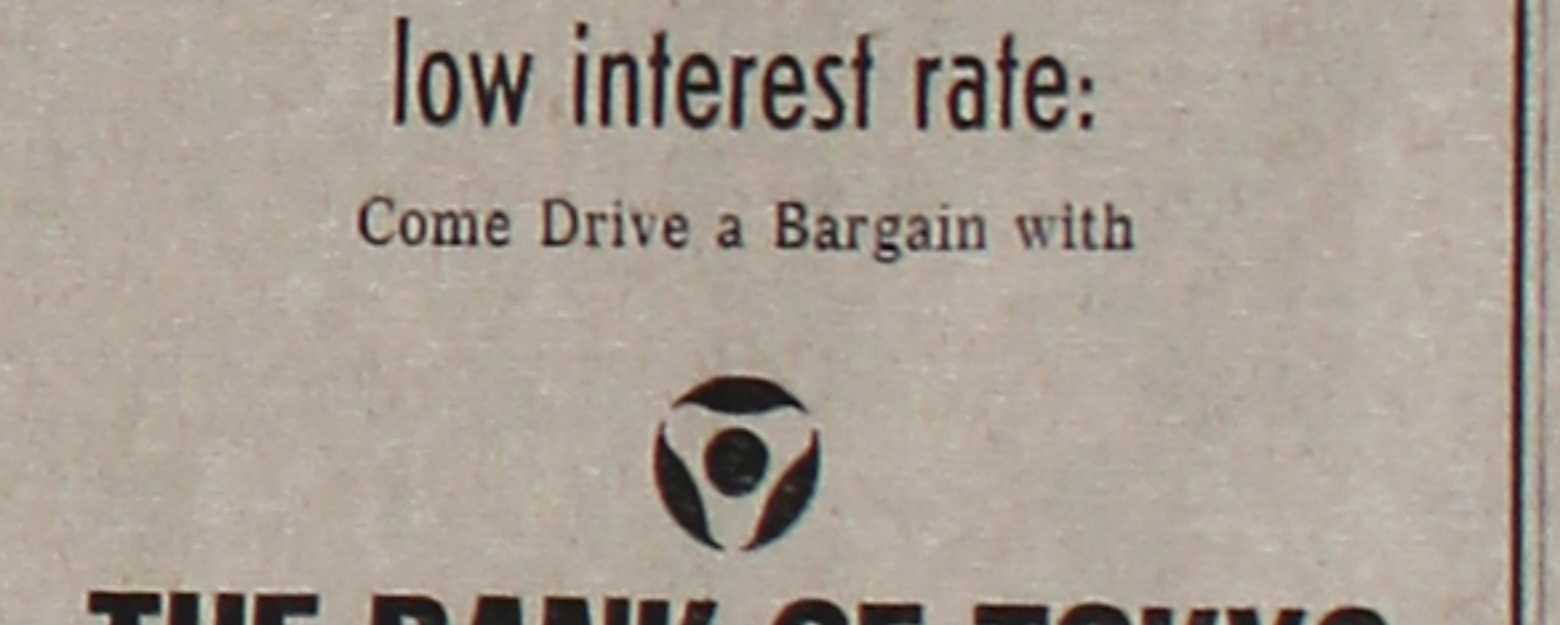
Name: \_\_\_\_\_  
 Address: \_\_\_\_\_  
 City: \_\_\_\_\_ State: \_\_\_\_\_ Zip: \_\_\_\_\_

**Tax Time - See Us**

**National JACL Credit Union**  
 Mail: P. O. Box 1721, Salt Lake City, Utah 84110  
 Office: 242 S. 4th East, Salt Lake City  
 Tel.: (801) 355-8040

Remember you can borrow \$3,000 on your signature with a qualified credit rating.

**We've got a yen for your new car at a low interest rate:**  
 Come Drive a Bargain with



**THE BANK OF TOKYO OF CALIFORNIA** Member FDIC

San Francisco Main Office: Tel. (415) 981-1200  
 S.F. Japan Center Branch: Tel. (415) 981-1200  
 Mid-Peninsula Branch: Tel. (415) 941-2000  
 Oakland Branch: Tel. (415) 839-9900  
 San Jose Branch: Tel. (408) 298-2441  
 Westgate Branch: Tel. (408) 298-2441  
 Fresno Branch: Tel. (209) 233-0591  
 North Fresno Branch: Tel. (209) 233-0591

Los Angeles Main Office: Tel. (213) 687-9800  
 L.A. Downtown Branch: 616 W. 6th, (213) 627-2821  
 Montebello Branch: Tel. (213) 726-0081  
 Crenshaw-L.A. Branch: Tel. (213) 731-7334  
 Western L.A. Branch: Tel. (213) 391-0678  
 Gardena Branch: Tel. (213) 327-0360  
 Santa Ana Branch: Tel. (714) 541-2271  
 Panorama City Branch: Tel. (213) 893-6306  
 San Diego Branch: Tel. (714) 236-1199

**- Business and - Professional Guide**

- Greater Los Angeles**  
**FLOWER VIEW GARDENS FLORIST**  
 1501 W. Western Ave. (213) 466-7373  
 Art its welcome your Floral Gift orders for the Greater L.A. Area Mention P.C.
- Chapter-Sponsored JACL Group Insurance**  
 Jimmy Gosawa - (213) 765-9715  
 7359 Cleon Ave. Sun Valley 91352
- NISEI FLORIST**  
 In the Heart of Lili Tokyo  
 928 E. 1st St. MA 8-5405  
 Fred Moriguchi Mamb. Telephone
- YAMATO TRAVEL BUREAU**  
 312 E. 1st St., L.A. (90012)  
 MA 4-6571
- Watsonville, Calif.**  
**TOM NAKASE REALTY**  
 Acreage Ranches - Homes - Income  
 Tom T. Nakase, Realtor  
 25 Clifford Ave. (408) 724-6477
- Pacific Grove, Calif.**  
**SUNSET MOTEL**  
 Nr ocean, golf, conference grnd  
 133 Asilomar Bl. (408) 375-3936
- San Jose, Calif.**  
**EDWARD T. MORIOKA, Realtor**  
 Service Through Experience  
 Bus: 246-6406 Res: 241-9554
- Sacramento, Calif.**  
**Wakano-Ura**  
 Sukiyaki - Chop Sui  
 Open 11-11 Closed Monday  
 2217 10th St. — GI 8-6231
- Seattle, Wash.**  
**Imperial Lanes**  
 2101 - 22nd Ave. SE SA 5-3225  
 Nisei Owned — Fred Takagi, Mgr
- Kinomoto Travel Service**  
 Frank Y. Kinomoto  
 521 Main St. MA 2-1522
- Washington, D.C.**  
**MASAOKA - ISHIKAWA AND ASSOCIATES, INC.**  
 Consultants — Washington Matters  
 2021 L St. NW (202) 361-1111

**Toyo Printing**  
 Offset - Letterpress - Linotyping  
 309 S. SAN PEDRO ST.  
 Los Angeles 12 — MADison 6-8153

**MARUKYO**  
 Kimono Store  
 101 Weller St.  
 Los Angeles  
 628-4369

**Nanka Printing**  
 2024 E. 1st St.  
 Los Angeles, Calif.  
 ANgelus 8-7835

Appliances - TV - Furniture  
**TAMURA**  
 And Co., Inc.  
 The Finest in Home Furnishings  
 3420 W. Jefferson Blvd.  
 Los Angeles 18  
 RE 1-7261

Complete Home Furnishings  
**Koby's Appliances**  
 15130 S. Western Av  
 Gardena DA 4-6444 FA 1-2123

**NISEI** Established 1936  
**TRADING CO.**  
 Appliances - TV - Furniture  
 348 E. FIRST ST., L.A. 12  
 MADison 4-6601 (2, 3, 4)

**Aloha Plumbing**  
 LIC #201875  
 PARTS & SUPPLIES  
 — Repairs Our Specialty —  
 1948 S. Grand, Los Angeles  
 RI 9-4371

**ED SATO**  
 PLUMBING AND HEATING  
 Remodel and Repairs. Water Heaters, Garbage Disposals, Furnaces  
 — Servicing Los Angeles —  
 AX 3-7000 RE 3-0557

**NEW LOCATION**  
  
**PHOTOMART**  
 Cameras and Photographic Supplies  
 316 E. 2nd St., Los Angeles  
 622-3968

**TOYO Myotake**  
**STUDIO**  
 318 East First Street  
 Los Angeles, Calif.  
 MA 8-5681

CLASSIFIEDS

Announcement  
RETURN WITH us now to those thrilling days of yesteryear, when radio was young. Pepper Young's Family, Amos 'n' Andy, Fibber McGee & Molly, Escape, Suspense, and many many more. \$1 (refundable) brings huge catalog. Majestic Records, Post Office Box 13128, Sacramento, Calif. 95813.

Stamps & Coins  
STUNNING JAPAN used commemorative stamps. All different. 45 for \$1.00. No approval. Never found in this kind of packet. Rush your order now. J. Henry, Pacific Citizen.

Employment  
Self-employed?  
WITHOUT a tax-sheltered retirement plan!!! Learn all about the benefits offered by Keogh. Send us the coupon below.

Imperial Financial Services, Inc.  
110 N. San Pedro St. All different. Los Angeles 90012. Tel. (213) 623-6888.

YAMATO  
EMPLOYMENT AGENCY  
FREE  
Acct. Ass't, steel comp. N.H. to \$50  
Gen. Ofc. etc mgr. asst. to \$50  
Ptn. Recpt. typng, blngl. 387  
Tylst. Clk. purch. dept. dtn. 568  
Tr. junior underwriting 300-600  
Cook, Jpnz fd, Las Vegas 700

Commercial Refrigeration  
Designing - Installation  
Maintenance  
Sam J. Umemoto  
Certificate Member of RSES  
Member of Japan Assn. of Refrigeration.  
Lic. # 208863 C-38  
SAM REIBOW CO.  
1506 W. Vernon Ave.  
Los Angeles AX 5-5204

SAITO REALTY CO.  
HOMES - LIFE - INSURANCE  
One of the Largest Selections  
2421 W. Jefferson, L.A.  
RE 1-2121  
JOHN TY SAITO & ASSOCIATES

Mikaway  
Sweet Shop  
244 E. 1st St.  
Los Angeles MA 8-4935  
News Deadline: Saturday

Exceptional Quality Home  
3 bdrm and family rm. 1 1/2 bath. Many extra fine features. Choice location, near schools.  
So. San Gabriel  
(213) 280-4241

1974 JAACL Summer Charter Flight TO JAPAN  
via Pan American World Airways  
\$350.00 Per Person\*  
\* Increase due to fuel price increase and other factors  
Roundtrip Portland to Tokyo  
Leave JULY 28 and Return AUGUST 18

WEST LOS ANGELES JAACL  
1974 Summer Charter Flight  
To Japan  
VIA JAPAN AIR LINES (Flt. JL 1061)  
\$350.00 Per Person\*  
\* Increase Due to Fuel Price Increase  
Roundtrip Los Angeles-Tokyo  
Leave June 20; Return July 16

Open to all JAACL members and their immediate family. Approved and authorized by JAACL National Travel Committee. Applications will be accepted on first-come, first-served basis accompanied with \$100 payment, second payment of \$125 due March 1 and final payment of \$125 by April 1, 1974. Checks payable to West L.A. JAACL Charter Flight. To confirm reservation, \$100 per person deposit should be mailed to:  
George Kanegai, Summer Tour Coordinator  
1857 Brockton Ave., Los Angeles 90025

Name(s):  
Address:  
City, State, ZIP  
Phone: Amt. Enclosed:  
We will require tour arrangements while in Japan, please send information.

For additional flight information, tour arrangements or assistance, call: Roy Takeya (820-4309); Steve Yagi (397-7921), Autumn Tour Director; Toy Kanegai (820-1133); or George Kanegai (820-3592).  
Autumn Tour leaves SEPTEMBER 28 and returns OCTOBER 20. Steve Yagi, Autumn Tour Coordinator

Aloha from Hawaii

by Richard Gima



Hawaii Today

Honolulu  
Chairman Malcolm MacNaughton of Castle & Cooke said on Jan. 31 Life of the Land's charge that C&C plans to sell Lanai to a Japanese corporation is "utterly ridiculous." "I don't know where Mr. Hodges got his information but he is completely misinformed," MacNaughton said. Hodges, Life of the Land's executive director, said his information came "from sources close to Castle & Cooke," but declined to name them.

Courtroom  
Wilford Pulawa, reputed crime syndicate boss, earned at least \$842,000 during 1969, 1970 and 1971, but he paid only \$863 in federal income taxes, the jury was informed Feb. 5. Pulawa reported on his income tax returns that he and his wife, Evelyn, made only about \$16,700 during those three years, according to accountant Forrest Calkins, technical adviser to the Internal Revenue Service from Los Angeles testified in federal court in the trial of Pulawa and four alleged associates charged with conspiring to defraud the government of tax revenues.

Political Scene  
Minoru Inaba, 70, (D) is a candidate for the Fourth Representative District of North and South Kona and South Kohala. He was the oldest member of the State House when he was upset in 1972 and is a former Big Island educator.

Dr. Ralph Hook, Jr., 50, dean of the College of Business Administration at the Univ. of Hawaii, resigned Feb. 5 because of budget cuts that make his job today "a different job than I was hired for." He will return to UH at the end of a year-long sabbatical leave as a professor of marketing "unless something more attractive comes along," Hook said.

City Hall  
The city council's proposed experiment of putting its employees on a 10-hour, four-day work week to save gasoline ran into labor opposition Feb. 5 David Trask, executive director of the Hawaii Government Employees Assn., said his group is "unilaterally opposed to the 4-10 week." Trask said he doesn't believe the fuel shortage has reached crisis proportions, and until it does, he "won't allow a vote to change the contract."

Medical Notes  
Legalized abortions, which were approved by the 1970 Hawaii state legislature, showed a slight decline in 1973 after two years of intensive activities. The State Dept. of Health said that in 1973 there were 4,408 elective abortions — as contrasted with spontaneous fetal abortions and miscarriages.

Eugene Helbush, chairman of the executive committee of the Regional Medical Program

Wayne Honda, 17, son of the Yasuo Hondas of Honolulu, Kona, died Jan. 31, apparently from poisoning. He was flown to Honolulu and admitted to Queen's on

Discount store job application form demanding citizenship status hit

LOS ANGELES — Questions concerning citizenship appearing on the White Front Stores, Inc., application for employment have come under severe scrutiny of the U.S. Commission on Civil Rights, Japanese American Community Service-Asian Involvement Office and the Japanese American Citizens League this past week.

A six-part question, the application asks:  
1—Are you a citizen of the U.S.?  
2—if not, do you intend to become a citizen?  
3—if not a U.S. citizen, have you the legal rights to remain permanently in the U.S.?  
4—Do you intend to remain permanently in the U.S.?  
5—Have you ever been interned or arrested as an enemy alien?  
6—Are your parents or spouse citizens of the U.S.?

Mori Nishida and Ken Honji fear there is trend of blatant as well as subtle racism emerging against Asian-Americans. PSW regional director Craig Shimabukuro expressed similar concern at the PSWDC quarterly session Feb. 8.

WASHINGTON — Governor Grayce Uyebara conducted an action-packed EDC meeting Jan. 26 at the Washington Motel and Country Club in near by Gaithersburg, Md. Despite the gasoline shortage and threat of filling stations being closed, all vice-governors and chapter presidents plus many interested members attended from Philadelphia, New York, Seabrook and D.C.

Among the old business discussed were the invigoration of EDC JAYs, progress report on the National Building Fund which has already achieved EDC's self-established target, and revitalization of the East Coast Japanese American Research Project.

New business included the scholarship committee report, EDC's regional office, the workshop to discuss the National Convention nominations for national officers and the Planning Commission's questionnaire.

The meeting climaxed with a workshop on the Role of JAACL in Public Relations. Shig Sugiyama, National President-Elect, in his overview described the recommendations of the Public Relations Commission and concluded that PR is every member's responsibility and not solely of a committee or a commission.

Mike Masaoka presented the thesis that at times Japanese Americans become innocent victims of Japan-U.S. relationship, and the best way to overcome this was through high level government officials. Pat Okura, past National President, speaking on PR in the community, explained various means for PR. He summarized that PR should not be conducted to put something "over the public" but to put something "for the public."

Bill Marutani, past National JAACL general counsel, stressed the need for proper mental attitude. He said that "we should never apologize for being Japanese Americans and be proud of the fact."

A heated, thrilling and thought-provoking discussion with the audience followed the formal presentations by the panel members. The panel was moderated by Sus Uyeda, a Vice Governor of EDC.

Other vice governors are Vernon Ichisaka from Seabrook, and I. Murray Sprung from New York. The chapter presidents are Ronald Inouye, New York; George Higuchi, Philadelphia; Ellen Nakamura, Seabrook; and Sus Uyeda, Washington, D.C.

Schools for Blind  
Japan has 250,000 visually handicapped children, including 10,000 who receive education at 75 schools for the blind.

SIGHTED READERS AND DRIVERS  
Sightless Institute seeks volunteers  
LOS ANGELES — The Japanese American Sightless Institute, 312 E. First St., Rm. 503, is developing its library of Braille materials and cassette tapes recorded from printed matter. The Braille department can be managed by the Institute members; however, the cassette tape project requires the assistance of sighted readers.

Further, the blind cannot drive automobiles or read printed material, and unfortunately again, some blind people have not learned to take advantage of public transportation. Therefore, the Institute is looking for volunteer readers and drivers. Those who can help may call the JASI (825-8682 or 625-4333).

Volunteer workers are proving to be valuable not only to the Institute, but also to the volunteers themselves. It is evident (from past experience) that blind and sighted people working together create a bond of trust which is very much needed in the Japanese community.



Bill Hosokawa

From the Frying Pan

DENVER, Colo.  
GATHERING OF THE TONG—The good members of the Hop Sing Tong, Denver branch, assembled for their annual New Year's banquet the other Sunday evening, and we were among the fortunate who attended as guests. The food, of course, was sumptuous (the Chinese gentleman across the table assured us that some of the ingredients had been flown in from San Francisco and the banquet would cost at least \$70 for each table of 10 diners), but we won't get into that. What was most striking was the resemblance between the Tong's new year festivities and the Shimen-enkai parties that the Issei took such delight in through what seemed to be the entire month of January each year during my youth.

The Hop Sing Tong's invitation, relayed by old friend Herbert Wong who was hosting the affair at his New China Cafe, was for 9 p.m. That was understandable. The Hop Sings run a good many of the Chinese restaurants around town, and being very practical people it was only prudent that they take care of the Sunday evening trade, add up the receipts, clean up to get dressed before hurrying over to the new year party. Few of them made it by 9 p.m., even though their non-Chinese guests were all present and accounted for. Herbert had thoughtfully placed a bottle at each table to make the delay less painful.

Eddie Chinn, whose grandfather bossed a crew of Cantonese helping to build the transcontinental railroad across Wyoming, was philosophical as we waited for the party to start. "I guess it's going to be Chinese time again," he said.

I explained that there is such a thing as Japanese time, too, which usually means a delay of 30 minutes past the appointed hour. Eddie grinned broadly and said: "Chinese time is one hour late."

The wait provided plenty of time to look around. This just as well could have been a Japanese gathering. The faces were Oriental, but most of them could be either Japanese or Chinese. Tired, wrinkled old faces. Bright young faces. Teenage boys with long hair. Teenage girls with long hair. And children, lots and lots of

Bannai co-authors legislation to protect privacy of petition signers

SACRAMENTO, Calif. — Assemblyman Paul T. Bannai has co-authored legislation to protect each citizen's fundamental right to petition the government, without fear of secret dossiers or reprisals.

The bill (1) requires that no marking decipherable without a code may be placed on any voter's affidavit; (2) makes it a violation to use the code for any purpose other than verification that an initiative has qualified, and (3) requires that after one year, both the code and the petition signatures shall be destroyed unless required as evidence by some pending court action.

The need for such legislation developed with the recent disclosure that voters registrar offices in several counties maintained secret lists of all initiatives signed over the years by any individual. These lists have been made available to certain officials, law enforcement agencies, and others who wished to compile a political profile of an individual without his knowledge.

Minority groups to aid Calif. governor proposed  
SACRAMENTO — Assemblyman Alex Garcia (D-Los Angeles) introduced two bills creating a Commission on Spanish-Speaking Affairs and a Commission on Asian Affairs as a "direct pipeline" to the Governor of California.

Open hearings to review state department and agency policies in education, employment, housing, health, welfare and recreation would be convened by the commissioners.

ESL for Asians courses designed  
LOS ANGELES — An "English as a Second Language" (ESL) curriculum to assist non-English speaking Asian adults has been successfully designed as a result of a three-year project headed by Sadae Iwataki for the Los Angeles City Schools.

Results of the project, funded by the U.S. Office of Education, were submitted Feb. 14 to the Board of Education.

Mrs. Iwataki's staff isolated the differences and peculiarities between English and some of the major Asian languages, such as Chinese, Japanese, Korean and Tagalog. Once these differences were explained to foreign-speaking students, it became easier for them to adjust to use of English.

Have You Made Your Pledge to the Bldg. Fund?

Los Angeles Japanese Casualty Insurance Assn. Complete Insurance Protection

Aihara Ins. Agcy., Aihara-Omatsu-Kakita-Fujioka	626-9625
250 E. 1st St.	
Anson Fujioka Agcy., 321 E. 2nd, Suite 500	263-1109
Funakoshi Ins. Agcy., Funakoshi-Kagawa-Manaka-Morey	
321 E. 2nd St.	626-5275 462-7406
Hirohata Ins. Agcy., 322 E. Second St.	628-1214 287-8605
Inouye Ins. Agcy., 15029 Sylvanwood Ave., Norwalk	864-5774
Joe S. Itano & Co., 318 1/2 E. 1st St.	624-0758
Tom T. Ito, 595 N. Lincoln, Pasadena 794-7189 (L.A.)	681-4411
Minoru 'Nix' Nagata, 1497 Rock Haven, Monterey Park	268-4554
Steve Nakaji, 4566 Centinela Ave.	391-5931 837-9150
Seto Ins. Agcy., 366 E. 1st St.	629-1425 261-6519

si  
MEXICO  
LAWSON SAKAI ASSOCIATES  
6115 Camino Verde Drive  
San Jose, CA 95119  
578-2630  
SANTA TERESA, NEAR IBM

