

Tough Job Ahead

Washington — Three weeks ago, I reported that — in follow-up to resolutions of the Midwest and Pacific Southwest District Councils — I had asked for the National Board's approval to appoint an investigative body to inquire into charges and allegations concerning the performance of the national leadership. Although an early and favorable response to my request was expected, the reply from the Board members after some four weeks indicates that a majority of the Board does not approve of an investigation by a separate body.

Accordingly, in the absence of clear authorization to spend money to have the facts and issues in the controversy clarified, I have had to suspend the appointment of the proposed fact-finding commission. The whole matter will now rest with the National Board, which will meet in special session on June 7 in accordance with the MDC resolution and as called by the three members of the Board from the Midwest.

Since many JACLers are undoubtedly concerned and puzzled by the seemingly controversy, it is hoped that the National Board will be able to resolve the matter to the satisfaction of the JACL membership as a whole.

In this regard, the MDC was requested to specify the particular charges it wished to have considered, to assure that the intent of the MDC resolution could be met. It has been indicated to me, however, that specific charges were not considered by the district council in the formulation of that resolution.

It is further understood that the PSWDC is calling upon the National Board to consider "charges" against certain officials. (Copies of the resolution calling for his action have not been received by the Board as yet.) The charges are reportedly contained in a transcript of the proceedings of a district council meeting held on March 9. That is, it appears that the National Board is expected to study what is purportedly to be a verbatim transcript of the tape recordings of some 5 or 6 hours of discussions to elicit the charges to be considered.

Since Executive Director David Ushio and I (as well as President-elect James Murakami and Vice Presidents Helen Kawaguchi and Dr. Izumi Taniguchi) were present at that particular district council meeting and responded — to the best of our ability — to the questions posed by delegates and others present at the meeting in what I understood was supposed to be an "open and frank discussion," it is again not clear what was or is intended by the PSWDC resolution.

If I recall correctly, the delegates at that meeting could not and did not specify any particular charges for consideration.

From JACL Nat'l Headquarters

Communication

Development Committee reports

San Francisco — How much can the JACL Development Committee raise? Nobody knows for sure; not even the committee itself. They do know that raising funds won't be easy. And that was the subject of the first meeting of the committee held here April 4-5.

Identifying sources of funds was the major topic of discussion at the day-long meeting. According to Noboru Nakamura, chairman of the committee, there was general agreement among the members that securing both unrestricted funds — monies which can be used for any purpose — and restricted funds were major concerns for JACL.

"They felt that the state of the national economy and the stock market might make securing funds difficult," Nakamura said. "The critical financial situation in which JACL finds itself makes this a high priority item, nevertheless."

To assist in finding funds for JACL each member of the committee was assigned the task of establishing a development committee in his or her locale, each committee to be made up of persons who can be most influential in developing contacts in organizations which are potential sources of funds for JACL — organizations such as corporations, foundations and government.

Heritage Project to meet again

San Francisco — In a report on activities since the second meeting of the National JACL Ethnic Heritage Project advisory council April 4-5, project director Patricia Nakano indicated a third meeting of the advisory council is being planned for May 30-31 here to review the draft of its teacher manual before publication.

The basic format of the manual was outlined at the April meeting and the staff has been assembling a rough draft as its main assignment. Specialists in graphics and format were to review the material May 10.

Meetings by certain advisers also continued in recent weeks to share project developments with individuals involved in Asian American studies and curriculum development in Chicago and New York.

Research coordinator Roy Hirabayashi's visit to Seattle (April 7-9) was found to be very useful with Mako Nakagawa arranging the schedule, meeting with various members of the Asian American community and Seattle JACLers.

Bowling tourney entries received

First entries for the 20th annual National JACL Bowling Tournament scheduled from July 25-August 2 at the Golden Gate Lanes in El Cerrito have been received by Mrs. Yo Ishizawa, entries chairman, it was announced today by Hi Akagi, tournament coordinator. Entry deadline is June 15.

The headquarters hotel for the 1975 tourney will be the Marriott Inn in the Berkeley Marina. Rooms at the Berkeley House Motor Inn and the San Francisco Miyako Hotel have been blocked off also, according to Ken Yamahiro, housing chairman.

Akagi also revealed that Steve Ito, president of the

committee reviewed the projects mandated by the 1974 National Convention, among which are the Asian American Legal Defense and Education Fund (AALDEF) and Nisei retirement program. It was felt that both of these projects are "probably fundable."

In addition, the committee will pursue funds for other projects as well as other Convention mandates, which will greatly benefit the organization.

The committee concluded its meeting with all members agreeing that they should be able to attract the funds that JACL badly needs. But they said that they cannot do it alone; they hope that they will get the enthusiastic help of every member as they pursue this objective for JACL.

Members of the committee, who were selected because of their familiarity with various aspects of the field of fund-raising, are:

Sharon Fujii, Ron Inouye, Toru Ishiyama, Helen Kawaguchi, Mike Marikita, Kiyuru Masuda, Tomie Moriguchi, Jim Murakami and Nakamura.

Ray Bendiner, JACL's Director of Development, and David Ushio, National Executive Director, are both ex-officio members. The initial meeting was attended by all committee members except Inouye, Ishiyama and Masakawa.

Classroom observation in San Francisco grades K-3 and 4-6 was also conducted to determine what approaches were being used there. Ms. Nakano said, a workshop was conducted in the Alisal School District in Salinas. And development of a social science framework for the Japanese bilingual-bicultural program was discussed with Emerson School personnel.

Discussions were also held with Edison Uno with regard to the council about community participation in the project and with Bonnie Cochran of the Ethnic Heritage Project-Social Science Center, Boulder, Colo., to share methodology in assessment of instructional materials and to explore dissemination capability for the JACL project.

Site visits were also scheduled with the Sacramento school district bilingual-bicultural project and the Sacramento State Asian American Studies Department. Meetings were also planned with Charles Miura of Intergroup Relations for the Sacramento Schools and with Isao Fujimoto at UC Davis.

East Bay Nisei Bowling Assn. has been appointed assistant tournament coordinator. The awards banquet will be staged at the Marriott Inn with Jerry Irei, Northern California-Western Nevada District Council JACL 1000 Club chairman, in charge. He will be assisted by the 1000 Club chairman of all the East Bay JACL chapters.

A sum of \$1,000 will be added to the Tournament prize fund from proceeds developed through the benefit prize sales and advertising in the souvenir booklet, it was reported by chairman Tad Hirota of the National 1000 Club, sponsoring body of this year's competition.

JACL HQ. BLDG. DEDICATION GALA SLATED IN JULY



Full Day Program  
Planned with  
Evening Banquet

SAN FRANCISCO — With completion of the National JACL Headquarters Building this past week (May 16), plans are now underway to launch a festive dedication event during the month of July.

More about the design of the building will be revealed in a subsequent report. The three-story modernistic building is located on 1765 Sutter in San Francisco Nihonmachi.

Jack Kusaba and Dr. Terry Hayashi will act as co-chairmen in charge of overall planning. Ben Takeshita and Cherry Tsutsumida will assist as co-vice-chairmen.

The dedication theme will be "Yesterday, Today and Tomorrow," a phrase that symbolizes the heritage of the Issei, contributions of the Nisei and aspirations of the Sansei.

The celebration will emphasize the national effort that went into the making of the building. According to Kusaba, "This building owes part of itself to every chapter in the United States. We want its dedication to reflect that fact."

Dedication plans

The day's event includes a special breakfast, an outdoor dedication ceremony, and a schedule of planned tours for such groups as the Issei, chapter presidents, and JACL delegations. The dedication will be culminated that evening at a banquet featuring a significantly distinguished speaker.

Assisting in the planning will be Hats Abizawa, Nobu Nakamura, Wes Doi, Harry Tanabe, Steve Doi, and Yo Hironaka.

Continued on Next Page

It appears that little concern has been given to these considerations by those urging particular courses of action in the present matter.

Thus the National Board will face a difficult task in addressing the issues which may be involved and in resolving the conflict to the satisfaction of the membership-at-large with due consideration for the rights and dignity of any persons who may be affected as well as for the rights and well-being of the organization as a whole.

JACL wreath due at Unknown Tomb

WASHINGTON — JACL will participate in the annual Memorial Day ceremonies May 26 at Arlington National Cemetery by laying a wreath at the Tomb of the Unknown Soldiers. National President Shig Sugiyama will present the wreath, it was announced by Ira Shimazaki, Memorial Day committee chairman.

JACL is one of the very few non-military organizations participating in the national ceremonies.

The Washington, D.C., JACL memorial services will be held the day prior, May 25, 10 a.m., at the grave of Pfc. Thomas T. Kuge, section 34, at Arlington. Chapter members then assist in placing flowers at each of the Nisei graves.

MURAKAMI TO SPEAK AT SAN BRUNO RITES

SAN FRANCISCO — JACL National President-elect James Murakami of Santa Rosa will be speaker for the annual Memorial Day Service for the Nisei War Dead at Golden Gate National Cemetery in San Bruno May 26, 10 a.m. in Section R of the cemetery.

Sponsoring organizations are the Golden Gate Nisei Memorial Park, VFW; Northern California veterans of the U.S. Military Intelligence Service Language School; and the Japanese American Citizens League: National, Northern California-Western Nevada District Council, and San Francisco Chapter.

FRED TAKATA: 1925-1975

JACL-PC ex-staffer succumbs

LOS ANGELES — Fred T. Takata, 49, manager of Mitsubishi Travel Agency for nearly a decade and with the firm since 1961, died of cancer May 10 at St. Joseph's Hospital in Orange. Final rites were conducted May 15 at Nishi Horyuwanji with 600 mourners attending.

In 1973, he was appointed executive vice president of his firm.

Takata, a 1000 Club life member with the Downtown L.A. JACL, was instrumental in organizing the so-called "Nisei Fun Tours" for his agency — first to Japan and the Orient, then Europe, to the South Pacific and more recently to Africa.

Prior to joining Mitsubishi in 1961, when it was then known as Taiyo-do, Takata was So. Calif. JACL regional director for four years, succeeding Tats Kishida in June, 1957. The previous year (1956), he had been East Los Angeles JACL president.

Born in Los Angeles, he was attending Poly High when WW2 broke. The family relocated to Anaheim WRA Center and moved to Denver where Fred finished at South High. He served in the Army at SHAEF in the European theater, returned to Los An-

geles to operate an Eastside market, joined the Bank of America staff briefly and was active with the JACL and Young Buddhist Assn.

Mas Dobashi, East L.A. JACL president, indicated this past week the board will name Nishi Horyuwanji with 600 mourners attending.

Takata also doubled as PC business manager during his term.

Continued on Next Page



Fred Takata, 49

PACIFIC CITIZEN

Membership Publication: Japanese American Citizens League, 125 Weller St., Los Angeles, Calif. 90012; (213) MA 6-6936  
Published Weekly Except First and Last Weeks of the Year — Second Class Postage Paid at Los Angeles, Calif.

VOL. 80 NO. 20

FRIDAY, MAY 23, 1975

Subscription Rate Per Year  
U.S. \$7. Foreign \$9.50 15 CENTS

Bldg. Fund tops \$410,000

SAN FRANCISCO — Over \$400,000 has been contributed to the National JACL Headquarters Building Fund, according to Steve Doi, co-chairman of the National Campaign Committee. The 5,339 donors to the Building Fund have donated a grand total of \$417,949 through April 30.

Seventeen percent of the JACL membership has come out in support of this project, a turnout considered excellent by professional fund-raising statisticians, Doi exclaimed.

"I personally think it's fantastic," said Doi. "This is a tremendous accomplishment for the JACL and for all the JACLers. The faith that went into the planning of this building and into the development of the funds required to actually construct and furnish the building is testimony to the positive future to which the JACL can look forward."



SAN FRANCISCO — Co-chairmen of the new JACL Headquarters Bldg. dedication sometime in July are Jack Kusaba (left) and Dr. Terry T. Hayashi. An all-day schedule is being planned.

Tad Hirata, co-chairman of the National Campaign Committee, agreed and added: "What the books say is 17 percent may be actually 34 percent, perhaps even higher. Most people who are sending in one pledge card are contributing on behalf of their spouses; some represent their children and parents, too. Several JACL Chapters have made a single pledge on behalf of 25 to over a 100 contributing members."

"We are also extremely grateful to the over 300 donors who are not JACL members, but who have pledged their support of this project and of the future of the JACL," Hirota added.

Strong faith in JACL

"We have reached a high plateau in terms of contributions," said co-chairman Mas Satow. "The high level and caliber of contributions to the Building Fund Campaign is a genuine tribute to the people that make this organization strong. Due to the increased costs of construction, furnishing, maintenance and utilities, however, additional funds will be more than welcome."

"The JACL as an organization had pledged itself to the

construction of the National Headquarters Building almost two years ago, and as I see it, the determination to live up to that pledge has not weakened even in these times of inflation and recession. We have built the organization upon the greatness of its individual members; we can build this national JACL Headquarters on that same greatness, I am certain."

The building fund campaign opened with a kickoff banquet Oct. 28, 1973 with Sen. Daniel Inouye as keynote speaker, who declared, "I think the time has come for the Quiet American to have his own office."

By September, 1974, the amount pledged and contributed to the Fund topped the \$300,000 mark toward a goal of \$375,000 — a goal that escalated because of rising costs of construction due to inflation. At year's end, the fund total reached \$366,700.

FRED I. NAKAGAWA CASE

AMERICAN SCHOOLS IN JAPAN STILL COOL TOWARD AFFIRMATIVE ACTION

YOKOHAMA, Japan — The three-year struggle for a promotion of Fred I. Nakagawa, Nisei teacher with the U.S. Dept. of Defense Dependents Schools in Japan, has ended in his favor after two hearings and investigations. He will be considered for the next available position of assistant principal.

But Nakagawa said last week (May 14) he was not pleased with the overall decision since the agency continued to deny racial discrimination had been involved in his denial of the promotion and would not take affirmative action to eliminate future cases of this kind. An appeal to the U.S. Civil Service Commission appeals review board is being considered, Nakagawa said.

Nakagawa had contended the school management failed to consider his qualifications when he sought promotion to the administrative position in the fall of 1972. A teacher of 13 years at the time, he held a master's degree and 12 additional college credit hours in education. He also received outstanding ratings from his principals.

He also credited the support of the National Education Assn., Washington, D.C.; attorney Raymond Uno of Salt Lake City and other friends who rallied to his support.

Job favoritism — In Washington, Rep. John E. Moss (D-Calif.) of Sacramento made public a U.S. Civil Service Commission report this past week (May 6) showing repeated violations of equal employment opportunity regulations in 1973-74 within a number of federal agencies.

Agencies named included the Equal Employment Opportunity Commission, National Science Foundation, Smithsonian Institution, Small Business Administration, Merchant Marine Academy, National Technical Information Service and the Defense Mapping Agency.

Kept secret by the commission, Moss said their reluctance to publicize the findings raised questions about its commitment for equal job rights for the 2.7-million federal employees.

The reports found cronyism, political favoritism and other irregular practices being used to fill employment needs. Commission officials declined to say how many personnel management studies had been prepared in all.

The General Accounting Office, the congressional investigating agency, also charged May 4 that government agencies with being so lax in enforcing anti-discrimination rules in employment practices required by government contractors that it does not even have a list of all the contractors.

The GAO study was an outgrowth of 1973 hearings by

Continued on Next Page

Kissinger, Leo McCarthy, Juan Marichal, Alexander Solzhenitsyn, Seiji Ozawa, all of whom were not born in America?

'My Lai' mentality

"I'm concerned about the racism and insensitivity injected into this issue," said Ushio. "Not too many months ago, Americans were appalled to learn of the atrocities committed at My Lai. We were horrified to hear Lt. Calley and other officers justify the slaughter of unarmed, innocent women and children by saying, 'Gooks don't value life as Americans do' or 'Gooks don't care about freedom or family'."

"The atrocities of My Lai were opposed to the American sense of fair play, justice, respect and equality shown all people regardless of race, creed or color."

"It is shocking to hear national leaders, who were re-

Continued on Page 3

Pat Okura speaks on Asian Americans before junior class at West Point

(Special to The Pacific Citizen) WEST POINT, N.Y.—K. Patrick Okura, executive assistant to the Director, National Institute of Mental Health,

helped to dispel the notion that Asian Americans are a "model minority" in an address before the junior class here at the U.S. Military Academy.

The past national JACL president was invited April 14 to speak to the Class of 1977 as part of the Cadet Human Relations training program. The audience was composed of 1,015 cadets, faculty, military and civilian members of the garrison.

Contemporary problems faced by the Asian American minority—especially those immigrants who have come within the past five years from Korea, China and the Philippines—are in the areas of employment, housing, social relations, health and mental health services, social services, education and language, Okura declared.

Many are unskilled, but those who are skilled are unable to find employment commensurate with their training and education, Okura noted, especially professionals from the Philippines and Korea.

They live in Asian ghettos, known as Chinatown, Manilatown, Little Tokyo, etc., where newly-arrived immigrants attempt to seek their existence in already overcrowded, unsafe housing.

Language handicap — Language has severely handicapped many of the youngsters who have completed studies commensurate with their age; English is a foreign

language to them; and the mainstream of American life is somewhat a foreign culture, Okura added.

Asian Americans, capable of contributing to the common good, should "be encouraged and prepared to participate without their having to deny their own heritage," Okura said, in the effective delivery of education, health and social services.

He also delved into the problems of the Asian American elderly who, because of their limited English-speaking ability, have not fully participated in the various programs for the aging, such as Social Security, public assistance, old age assistance, Medicare and Medicaid, public health assistance, etc., because of the lack of bilingual information and outreach dissemination.

Bilingual and bicultural staff should be provided to foster effective service delivery, Okura continued.

Patients in nursing homes, hospitals and those committed

language to them; and the mainstream of American life is somewhat a foreign culture, Okura added.

Asian Americans, capable of contributing to the common good, should "be encouraged and prepared to participate without their having to deny their own heritage," Okura said, in the effective delivery of education, health and social services.

He also delved into the problems of the Asian American elderly who, because of their limited English-speaking ability, have not fully participated in the various programs for the aging, such as Social Security, public assistance, old age assistance, Medicare and Medicaid, public health assistance, etc., because of the lack of bilingual information and outreach dissemination.

Bilingual and bicultural staff should be provided to foster effective service delivery, Okura continued.

Patients in nursing homes, hospitals and those committed

Continued on Page 3

BCA and Nat'l JACL Youth Programs co-sponsor June 6-7 film showing

SAN FRANCISCO — The National Youth Programs of the Buddhist Churches of America and the JACL will host a showing of six films from the Visual Communications, Inc. of Los Angeles on Friday and Saturday, June 6 and 7.

The June 6 showing will be held at the Oakland Buddhist Church, 825 Jackson St., from 8:30 to 10:30 p.m.

The June 7 showing will be in the Student Union of CSU-San Jose from 2:30 to 4:30 p.m. Admission will be \$2 for the general public and \$1.50 for students with identification. Proceeds go towards defraying the costs of putting on the showing.

In addition to the six films, two individuals from Visual

Communications will be present to give some background information on their organization, to discuss their films, and to answer questions. Among the films to be shown:

(1) Watadon: Birds of Paradise, (2) City City, (3) The Journey, (4) I Told You So, (5) Pieces of a Dream, (6) To Be Me: Tony Quan.

Visual Communications, Inc. is a non-profit group of Asian American media specialists, parents, students, and educators, dedicated towards producing materials such as films, filmstrips, books and other items for general educational use at all grade levels.

For further information, call either Tom Okamoto (776-5600) or Gail Nishioka (563-3202).







# ● Bill Hosokawa Frying Pan

## THE MOST DIFFICULT AGE?

Denver, Colo. At 3, one is no longer a mewling infant nor yet a child capable of reason. At 3 one is developing a mind of his own, pressed by needs and desires but unable to articulate them and without the physical skills to accommodate all that welling nervous energy. And so life is full of frustrations and misunderstandings and inevitably a 3-year-old must explode in sudden outbursts of temper and petulance. Three is indeed a difficult age.

These are thoughts that come to mind this evening now that Matthew William Harveson, age 3, has gone back home to California with his father, mother and baby brother Jon. Matt is grandchild No. 4. He and his family spent a brief vacation with us, and as is inevitable with little people his age, the long periods of fun were punctuated by less happy moments.

Perhaps some of that was the fault of his grandparents. Matt unfortunately must have felt shortchanged in the amount of attention he was getting because his brother Jon at age eight months is a chubby butterball of good humor, uncompaining so long as he gets his rations on time and blessed with a fetching grin. It is hard for a 3-year-old to compete against someone like that.

And yet in his small-child way Matt taught us a lesson. If his moments of unhappiness were loud and violent, they were also of short duration. He is not one to bear grudges, the way we adults are inclined to do, or to seek vengeance

## Aloha from Hawaii

By RICHARD GIMA

### Honolulu

A new interisland ferry ship, the *Boeing Jetfoil*, began testing in Hawaiian waters this past week (it came from Seattle May 11) with actual service starting June 11, announced officials of Pacific Sea Transportation and Matson Navigation Co. Surface transportation between the islands is being revived after an absence of more than a quarter century.

Cocaine worth at least \$10-million was seized May 6 by customs at the Honolulu airport. Arrested was a Fountain Valley, Calif., medical receptionist Dionisia Ferrer, 24, who had arrived from Tahiti. It was believed to be the island's biggest haul.

Total number of unemployed went up another 3,000 in March to 27,800, the State Labor Dept. reported. Number of employed is 335,400. . . . Hawaii and Florida appear to lead in the national \$1-billion race for a site to build an ocean-based nonnuclear power plant, says the Advertiser. Congress last year set aside \$20 billion to be spent over a 10-year period on research and development for alternate nonnuclear energy.

### Names in the News

Selected third-place winner in the Junior Miss contest held May 3 at Mobile, Ala., was Corlis Jean Chang, 17, daughter of the Mun Bo Changs of Kaimuki, attending Sacred Heart Academy. She garnered \$5,000 in scholarships. The Rev. Abraham Akaka, pastor of Kawaiahao Church, delivered the 75th anniversary sermon at the Church of the Scribes, Van Nuys, Calif., and made honorary pastor there. . . . Defense began its case May 5 in the federal income tax evasion trial of reputed underworld leader Wilford Pulawa, 38. Prosecution witnesses said his money came in the form of protection payments from gambling operations; Pulawa told the judge and jury he had lived all his life off his wife's earnings as a drug store clerk and theater cashier. The government charges he made more than \$600,000 during 1969-70-71 and failed to pay the taxes on more than \$546,800.

### Sports Scene

UH athletic director Paul Durham, 61, resigned for personal reasons. He had been head football coach and athletic director at Linfield College, Ore., before assuming the UH post in 1968. . . . Advised in 1973 by his physician to retire after suffering a heart attack, Donald Mahi returns as head football coach this fall at Castle High School.

### Neighbor Island

Hilo's General Lyman Field, which began to service direct Mainland flights in 1967, may soon be open to foreign passenger flights as the state legislature has appropriated \$2.7-million to construct a separate customs facility. . . . Big Island retired legislator Joseph Garcia suffered a heart attack in April and is now recuperating at home. . . . Ex-Sen. Eureka Forbes is seriously ill in Leahi Hospital.

### Business Ticker

Matano Fukuzawa and Reuben Zane have been elected to the board of Liberty Bank of Honolulu. . . . John Bellinger, president of First Hawaiian Bank, and attorney Robert Oshiro have been elected to the board of Hawaiian Telephone Co. . . . Michael Matsumoto has been promoted to secretary and director of Shimizu, Shimabukuro & Fukuda, consulting structural engineers.

### Deaths

Amy Richardson, 54, wife of Chief Justice William Richardson, died May 1 following a long illness.

## VOTER REGISTRATION BY MAIL BILL SEEN AS COSTLY NEW BUREAUCRACY

WASHINGTON . . . Need for greater voter participation at all levels in U.S. elections was stressed by Sen. Hiram L. Fong (R-Hawaii) this past week (May 7) but said federal voter registration by mail is not the way to accomplish this goal.

In an opening statement on the National Voter Mail Registration Bill (S. 1177) before the Senate Post Office & Civil Service Committee, of which Fong is the ranking Republican member, he said the proposed bill would encourage greater fraud, create a new bureaucracy creating taxpayers hundreds of millions of dollars and, in many states, would mean dual registration — one by the Federal government and one or more state and local governments.

Fong also noted that both Hawaii Gov. George Ariyoshi, who as former lieutenant governor was in charge of voter registration, and present Lt. Gov. Nelson K. Doi, now in charge, are on record currently opposed to the measure, which has been a subject of debate since 1971.

Fong said Ariyoshi and Doi were concerned because of the prospect of "mass confusion" among voters and "multiplying" the opportunities for committing fraud" among other reasons. "I feel that there are better alternatives (than S. 1177) and many more prudent ways to commit the millions of taxpayers monies."

Fong outlined what he regarded as defects to the proposal and hoped the hearings would elicit sound, grass-root ideas for improving voter registration and participation. "We need to encourage more response from people around the country who are actually responsible for the conduct of registration efforts and elections," Fong declared.

### Record elsewhere

In stating his opposition, Fong noted that proponents claimed voter registration by mail would substantially increase participation but:

1—In Texas, which has voter registration by newspaper coupons, only 20.5% of the voting age population voted in 1974 — the lowest turnout in the Nation.

2—In North Dakota, which has no voter registration, only 56.2% of the eligible voters voted.

3—In Maryland and New Jersey, which have mail registration systems, the expected sharp increase did not occur. Instead, the number of registered voters in New Jersey, as of November 1974, was 39,000 fewer than for the 1973 gubernatorial election. And in

## Okura —

(Continued from Front Page)

to mental hospitals have not fared well because of the language barrier and insensitivity of staff, he added. Other elderly have been forced to live in one-room units, paying rents beyond their means. And the Filipino elderly who worked as a seasonal migrant labor have little or no retirement benefits of any kind.

Okura referred to a California study that indicated the median income of all Chinese families with about four persons to be around \$3,900 per year—below the government poverty guideline of \$4,000. For the Filipino family it was about \$3,000 per year.

### First visit

A rare experience for Okura who has addressed countless groups around the country and this being his first visit at the academy, he made like the tourist by arriving a day early.

He was also treated to stand in review with West Point officers to witness 4,000 cadets assemble and march into Washington Hall, the cadet mess, for dinner.

**MAJOR APPLIANCES**  
**We make** CARPETING ROOFING  
 SCHOOL CLOTHES NEW CAR  
 DOCTOR BILLS  
**DENTAL WORK**  
**PERSONAL LOANS**  
 TAXES MOTORCYCLE  
**BILL CONSOLIDATION HOME IMPROVEMENTS BOATS**

**National JACL Credit Union**  
 Mail: P. O. Box 1721, Salt Lake City, Utah 84110  
 Office: 242 S. 4th East, Salt Lake City  
 Tel.: (801) 355-8040  
 Remember you can borrow \$3,000 on your signature with a qualified credit rating.

**Low cost new auto loans!**

**Sumitomo Bank of California**

Member FDIC

## NISEI RELAYS SITE CHANGED TO HARBOR

WILMINGTON, Calif. — The 1975 PSWDC Nisei Relays will be held June 1 at Harbor Jr. College, 1111 Figueroa Pl., Wilmington.

The switch from El Camino College was due to circumstances beyond the control of the host chapters. Gardena Valley and East Los Angeles, Relays official Tak Kawagoe explained.

Harbor College is adjacent to the Harbor Freeway north of the Anaheim St. off-ramp.

## Chapter Pulse

### Installation

Some 100 members and friends attended the San Jose JACL installation dinner at Sakura Gardens April 20. Mike Honda, chapter president and one of the five California Outstanding Young Men of the Year, continues for a second term.

Jerry Fencmet, director of the Calif. Dept. of Corrections, was the main speaker who covered many topics on prison reform, but stressing the fact that prisons are institutions for punishment while adding that much good has done for inmates by enabling them to secure their high school or college degrees as well as acquire technical skills. The positive features, he noted, are of course undersold because the prime purpose of the Department is not to recruit.

Discussions about group therapy, visitation rights and homosexuality also spiced the question and answer period.

The normal installation ceremonies were dispensed with, according to emcee Jim Ono, "to allow more time for our guest speaker, the audience to dip their fingers in their glasses and initiate the officers".

### May Events

Graduating seniors, 36 in all, were honored by the Shreve River Valley JACL at its May 17 graduates dinner at Eastside Cafe, Ontario, Ore., according to chairman Michael Maeda of the dinner committee.

Gail Nishicka, National JACL youth director, and IDC G-v. George Kimura of Salt Lake City were guests speakers. Gary Kamo was toastmaster. Dancing followed to the music of the Newport Trio. On the banquet committee were: Mrs. Frances Nishimura, Mrs. Toshiko Okura, Mas Atagi, Mrs. Mitsuo Ogami, Yas Teramura, George Saito and George Matsuo.

### June Events

Sacramento JACL again coordinates the Japanese community picnic at spacious Elk Grove Park on Sunday, June 1, from 11 a.m. Participating community groups are assisting chairman Winston Ashizawa to assure a full day's program for enjoyment of the young and old.

### April Events

The second annual Japanese American art-cultural festival sponsored by S. J. JACL April 3-5 at Mayfield Mall was declared a "smashing success" by the crowd, merchants and officials.

Mrs. Marjie Iseke and

David Takamoto, who co-chaired the fair, credited the success to contributing artists, demonstrators, performers and the JACL art committee members.

Ruth Tsuboi displayed sterling silver jewelry; Keiko Mizuhara made Japanese paper dolls; Lori Kono, her older sister and parents demonstrated Bunka, a form of embroidery; Lee and Kiyu Yano displayed their ceramics and porcelain; Sunny Hara, macramé; May Watanabe, paper flowers; and Laura Oku, puppets.

Other participants included cartoonist Jack Matsuoka, sumi-e artist Hiroshi Sakai and pitter Monte Kawahara; the Taiko Drummers and kendosists with genuine swords.

### March Events

New theories on the origin of the Japanese people, language and culture were presented by Dr. Iwao Ishino at the Washington, D.C. JACL general meeting Mar. 22 at Argyle Recreation Center, Silver Spring, according to Alley E. Watada, program chairman.

Dr. Ishino pointed out that the people, language and culture had developed independently and described where and how these probably originated.

More than 90 people attended the evening lecture. Dr. Ishino is chairman of the anthropology department at Michigan State, currently on leave and with the National Science Foundation as director of anthropology division.

## Vietnamese —

(Continued from Front Page)

pulsed by Calley's words, now saying that we should not admit the Vietnamese refugees or that we should send them back," said Ushio. "It would be a sad commentary on American principles if we were now going to resort to a 'My Lai mentality' to judge poor, homeless refugees, most of whom are children.

"This nation is founded on a basic principle of justice and the strength of America is in the rich diversity of her people who bring their unique cultures, heritage, food, history, talents, and hopes to this land. May we continue in this tradition by welcoming the Vietnamese," concluded Ushio.

## TARBELL REALTORS

Riki Yonezawa  
 13311 Artesia Blvd.  
 Cerritos, Calif.  
 926-5821 (714) 522-4442

The annual Milwaukee JACL 1000 Club social Mar. 22 at the Country Gardens with 25 guests from Chicago present was rip-rearing as ever with Jim Miyazaki emceeing a program of hilarious hits, staged by Ed Jenokuchi and gang.

Invitation was extended by Richard Yamada of Chicago to join the JACL Japan charter flight from Chicago, leaving Oct. 2 and returning Oct. 25.

## July Events

San Mateo JACL will honor its senior citizens at a Keiro Kai dinner on Saturday, July 12, 5:30 p.m. at the Buddhist Church. Affair is being jointly sponsored by the JACL, Buddhist Church, San Mateo Gardeners Assn. and Sturge Presbyterian Church.

Those who become 80 this year will receive a city plaque. Those over age 65 will be dinner guests of the sponsoring groups. Those planning to attend should by June 30 call:

Yamaguchi (343-1822), Grayce Kato (245-5187), Yosh Kojimoto (241-3740) or Dr. Mitch Wakasa (343-0116).

Order PC for Your Schools or Libraries

ORCHID CACTUS (EPHYLLUMS) IN BLOOM NOW!

42nd Annual Flower Show —Open Until July 1— 9 a.m. - 5 p.m. Every Day

Unusual and Exotic Tropical and Cactus

"CACTUS PETE"

4949 Valley Blvd., Los Angeles CA 1-2290

## NATIONAL JACL TRAVEL COMMITTEE

## CHARTER FLIGHT TO JAPAN

ADMINISTERED BY SAN JOSE JACL

LEAVE San Francisco International Airport on JAL for Tokyo Sept. 28, 1975

RETURN To San Francisco from Tokyo Oct. 20, 1975

All JACL members, spouses, dependent children and parents in same household are eligible.

Round Trip Fare: \$445.00

SEAT ON FIRST COME, FIRST SERVED BASIS

Mail payment to or for terms of flight information contact:

GRANT SHIMIZU

724 N. FIRST ST., SAN JOSE, CALIF. 95112—(408) 297-2088

San Jose JACL Fall Flight, c/o G. Shimizu 724 N. First St., San Jose, Calif. 95112

Please reserve seat(s) for the Fall flight. I am a member of the JACL or will have been for at least six months prior to date of flight departure. I agree to the \$25 cancellation fee in the event I cancel my reservations after 60 days prior to the flight departure date. Enclosed is \$110 for each reservation.

Names: \_\_\_\_\_

Address: \_\_\_\_\_

City State ZIP: \_\_\_\_\_

Phone: \_\_\_\_\_ Passport No. \_\_\_\_\_

☐ Send tour brochures ☐ Flight only

FRIENDLY SERVICE

**THE MITSUBISHI BANK OF CALIFORNIA**

HEAD OFFICE  
 800 Wilshire Blvd., Los Angeles, Calif. 90017 (213) 623-7191

LITTLE TOKYO OFFICE  
 321 East Second St., Los Angeles, Calif. 90012 (213) 680-2650

GARDENA OFFICE  
 1600 W. Redondo Beach Blvd., Gardena, Calif. 90247 (213) 532-3360

SAN FRANCISCO OFFICE  
 425 Montgomery St., nr. California (415) 788-3600  
 Member FDIC

**Japan Charter Flights**

Sponsored by Nat'l Japanese American Citizens League

FLY JAPAN AIR LINES TO TOKYO—NEW REVISED SCHEDULE

NJACL Flt.	Dates	Departing from	Roundtrip Fare	Aircraft/Capacity
No. 2—Apr 9-Apr 30		San Francisco	\$434**	DC8/132 Sold Out
No. 3—Jul 23-Aug 20		San Francisco	\$434	DC8/152 Sold Out
No. 7—Sep 28-Oct 20		San Francisco	\$445	DC8/152
No. 5—Oct. 2-Oct 25		Chicago	\$522	DC8/152
No. 4—Oct. 6-Oct. 27		L.A. and S.F.	\$446	747/361

\*\* All prices include Round Trip Airfare, \$3.00 Airport Departure Tax, and \$25.00 JACL Administrative Fee. All seats (adult and child alike) are the same price on any one flight. Infants under two years who will be carried during the flight will be charged 10% of the listed flight fare. All fares may be subject to change. Rev. 3-28-75

FLY Japan Air Lines

**JAL jib**

TOUR with Japan Travel Bureau International

OPEN TO ALL BONAFIDE JACL Members, Their Spouse, Dependent Children and Parents

Send this coupon today! to a JACL-authorized travel agent, your chapter Travel Chairperson, or to:  
 Steve Doi, Chairperson  
 NJACL Travel Committee  
 22 Peace Plaza, Suite 203  
 San Francisco, CA 94115

Send me information RE: Nat'l JACL Japan Charters. Especially Flight No. \_\_\_\_\_

Name \_\_\_\_\_  
 Street \_\_\_\_\_  
 City \_\_\_\_\_ State \_\_\_\_\_ Zip \_\_\_\_\_  
 Phone \_\_\_\_\_ Chapter \_\_\_\_\_

**Tour with Japan Travel Bureau International**

JTBI-JACL Tours	Places	Basic Fare	Single Room Supplement
7-Day Expo Tour	Tokyo, Kyoto, Osaka, Okinawa.....	\$253.65**	\$75.40
10-Day Japan Tour	Tokyo, Kyoto, Kobe, Takamatsu, Uno, Okayama, Hiroshima.....	\$260.50	\$55.95
14-Day Japan Tour	Tokyo, Kyoto, Kobe, Takamatsu, Hiroshima, Beppu, Fukuoka.....	\$372.35	\$76.40
Sansei Study Tour	Tokyo, Nagoya, Ise, Nara, Mt. Koya, Osaka, Kyoto.....	\$291.00	(none)
Arrival Package	Transfer to hotel, overnight in Tokyo.....	\$ 23.90	\$12.15
Departure Packages	Overnight in Tokyo, transfer to airport.....	\$ 23.90	\$12.15

\*\* All prices based on 30 or more members traveling together (in the case of Sansei Study Tour, 25). Air passage Osaka/Okinawa not included in 7 Day Expo price. Included in all tours: hotel accommodations; but, rail, steamer transportation, English-speaking guide and escort. All fares may be subject to change.



# On Margin

## A FAREWELL TO FRED

Los Angeles — In a world where there are few men like him, the sudden death of Fred Takata, manager of the Mitsuine Travel Service and erstwhile Southern California regional director of the JACL, at age 49, with so much yet for him to live for, is a tragedy not to be borne.

A gentle man and a gentleman, Fred was a rarity in these times—a man whose word was as good as gold, all 24 carats and shining. He was a man who never seemed to feel the need to massage his ego at someone else's expense. An even-tempered man, he was the embodiment of that wonderful word—amiable—with all its Gallic connotations of a man who is aware of all that is bitter and sweet in this world, weighs it all and finds the world still a pretty good place in which to live.

To live—there was so much for him to live for! A pretty, intelligent wife whom he married after a long bachelorhood, three lively daughters and the son he couldn't conceal his pride for, a new home in the Orange County suburbs and an ever-widening circle of friends and acquaintances who wanted Dame Fortune to smile on Fred, because he was such a nice guy.

I remember commenting on the quality of the friendships that Fred fostered, the comment contained in a column I wrote upon Fred's retirement some ten or so years ago. Everyone there at the testimonial dinner which overflowed the third floor facilities of Kawafuku was there because they genuinely wanted to be there—not from any

## BOOK REVIEW: Susan Sunada 'Americans from Japan' reissued

The late Bradford Smith wrote in his AMERICANS FROM JAPAN (Lippincott, 1948), "The Nisei have two cultures, a heritage from Japanese and a heritage from America." While he passed away in 1964, the words he wrote in 1947 about Americans of Japanese Ancestry (AJAs), as Mr. Smith calls us throughout his story) remain immortal:

"Almost everyone today knows that the fate of the world hangs upon America's ability to live up to its principles, to attain leadership by a full implementation of ideals

### Playwright search

SAN FRANCISCO — Asian American Theater Workshop, of 144 Central Ave., San Francisco 94117, is offering a \$150 prize for original one-act plays exploring the Asian American experience. Entries must be received by Aug. 30.

## CALENDAR

May 23-25 Cleveland-JAY camp out.  
May 25 (Sunday) Washington, D.C.—JACL Memorial Day rites, Pic T. T. Kuge grave, Sec 24, Arlington Nat'l Cemetery, 10 a.m.  
May 26 (Monday) San Francisco—JACL, VFW, MIS Ann. memorial service, Section R, Golden Gate Nat'l Cemetery, 10 a.m.; James Murakami, spkr. Washington, D.C.—JACL wreath at Tomb of the Unknown Soldiers, Arlington  
May 30 (Friday) Contra Costa—Family volleyball, Adams Jr HS, 7-10 p.m.  
May 31 (Saturday) Salinas Valley—Scholarship dnr, Towne House, 7-10 p.m.  
East Los Angeles—Emerald Ball, Hilton Hotel, L.A., 7:15 p.m. dnr, 9 p.m. dance.  
West Los—JACL dnr, Chicago—Scholarship dnr, Marriott Motor Hotel, 6:30 p.m. Mike Matsuda, spkr.  
Chicago—JACL activity, June 1 (Sunday) PWDC—Nisei Relays, Harbor Country, Wilmington Sacramento—Comm. picnic, Elgin Grove Park, 11 a.m.  
West Los Angeles—JACL-St. Cit. Shs., 1-2 p.m.  
West Valley—Picnic, June 6 (Friday) Oakland—Natl JACL-JAY/BCA film showing, Oakland Buddhist Church, 8:30 p.m.; Vis Comm productions.  
West Los Angeles—Las Vegas weekend, 14 Mahood Ctr, 5:30 p.m.  
June 7 (Saturday) Nat'l JACL—Board Mtg, San Francisco.  
San Jose—Natl JACL-JAY/BCA film showing, CSU-San Jose, 2:30 p.m.; Vis Comm productions.  
San Fernando Valley—Scholarship awards, SFV JACC, Pacoima, 8 p.m.; Justice Stephen Tamura, spkr.  
Riverside—Graduates Dnr, Boush Ctr.  
San Mateo—Japanese movie bus. out.  
June 8 (Sunday) Cleveland—JAY mtg.  
June 9 (Monday) West Los Angeles—2d Mtg.  
June 13 (Friday) San Jose—Ed Mtg, JACL Bldg, 8 p.m.  
June 14 (Saturday) Cleveland—JAY dance.  
EDC—Mtg, Seabrook JACL hosts. Seabrook—JAY dnr.  
Puyallup Valley—Graduates dnr, Sherwood Inn, Tacoma.  
June 15 (Sunday) San Francisco—JACL Olympics, Keweenaw Stadium.  
Natl JACL—Bowling tournament entry.  
June 16 (Monday) West Los Angeles—Auyv mtg.  
June 17 (Tuesday) Salinas—Ed Mtg, Bank of Tokyo 8 p.m.  
June 21 (Saturday) Cleveland—JACL dnr.  
Brown Derby, Rt. 21, Independence, 8:30 p.m.  
Puyallup Valley—Asian Day Festival, Red Guard Armory, Tacoma.  
June 22 (Sunday) Salinas—JACL picnic, Park. Riverside—Comm picnic, Sylvan Park, Redlands.  
MPOC—Arkansas Valley hosts.

## Eunice Sato wins Long Beach post

LONG BEACH, Calif. — Six Long Beach city council members, including Mrs. Eunice N. Sato, were returned to office last week (May 13) in the city-wide election.

Mrs. Sato polled 29,435 votes while her opponent Ronald Morgan garnered 9,436.

She was previously elected by voters in her own 7th district in a special election to fill a vacancy three months ago.

## Rep. Mineta opposes Hathaway nomination

WASHINGTON — Rep. Norman Mineta (D-Calif.) opposed the nomination of former Wyoming Gov. Stanley K. Hathaway as Secretary of Interior in a letter May 9 to Sen. Henry Jackson, chairman of the Senate Interior Committee.

His record as governor indicates as being "a vigorous proponent of uncontrolled industrial development" in the Grand Tetons National Park and leasing of state land for strip mining, opposition to federal assistance to land-use planning and endorsement of clearcutting entire forests does not lend itself to the concerns which should be paramount to the Secretary of Interior, Mineta pointed out.

## Local Scene

Los Angeles — Nikkei applicants are being sought by Los Angeles (485-4423), the mayor's volunteer corps to city government, to conduct tours for school children and other visitors at city hall.

"Country Fair" is the theme for the Japanese Retirement Home (renamed from Home for the Aged) to be held June 7, 10 a.m.-6 p.m. at the Home grounds, 3rd and Boyle Ave. Other groups will have food and game booths while local artisans will sell their goods.

Tamiko Hirano will be coordinator for JACS this summer to organize and coordinate affirmative action activities in the construction field through the Affirmative Action Task Force (628-8590). Men and women interested in entering the construction trades should apply for openings now, especially those experienced but carrying no labor union card.

The Assemblyman Bannai Boosters will have its installation dinner May 22, 7:30 p.m. at Alondra Club in Lawndale. Bill Gerber is the new chairman.

Friends of Assemblyman Paul Bannai will honor the Gardena Valley Republican at a \$50-a-plate dinner-dance June 8, 6 p.m. at the Americana Hotel, Culver City. For reservations, call Sue Okabe (321-0785).

California Oriental Peace Officers (COPO) initiated its annual scholarship fund-raising campaign with Assemblyman Paul Bannai as co-chairman.

San Diego — San Diego County Human Relations Commission (299-2840) is setting up the region's first Affirmative Action Clearinghouse to assist employers and county residents, according to executive director James S. Fukumoto.

A 20-ton rubber tree (Ficus decra) was placed in the Central Federal Tower plaza now under construction in downtown San Diego. Wimmer, Yamada, Iwanaga & Associates, landscapers architects for the project, also had a coral tree transplanted in the courtyard.

While Bradford Smith pointed out the injustices done by the majority, he also extolled the Oriental virtues and view of life and said "we have the carriers of that culture within our borders. Our strength, if we but knew it, is in our minorities. It is a strength we have scarcely tapped."

A sense of duty, undying gratitude, integrity, loyalty, honesty, eagerness to learn and to excel — such cultural traits were handed down to us by training, not heredity, observed Smith. "We are lucky to have the Nisei. We would be luckier still if we knew how to use them. And if we truly understood how to use them, we would be on the way to conquering the darkness that scares us all."

We are lucky to have had a Bradford Smith tell our story. He wrote what needed to be written, distinguishing between fact and fallacy, decrying the unrightable wrongs caused by bigots. He wrote the truth. People have read the book, reflected and meditated. And it became known that Smith was right.

Smith had taught for five years at Alhkyo and three years at Imperial universities in Japan. He returned to the U.S. in 1936 to help organize the Humanities courses at Columbia. With the outbreak of World War II, he became chief of the Office of War Information in the Central Pacific. In 1945-46, he received Guggenheim Foundation fellowships to research and write the story, "Americans from Japan," which has been out-of-print for many years even though listed in numerous bibliographies during the past 25 years.

Wealth of information compiled by Smith cannot easily be found in any other single volume.

Mrs. Sunada of Logan, Utah, a free-lance writer, and lecturer, earned the Petersen Award in 1974 as the outstanding news correspondent for the Deseret News. Currently, she is volunteer editor of a monthly Boy Scout publication.

New York — The Social Security office will have a multi-lingual branch in downtown Manhattan at 107-109 Lafayette St., around June 1, according to the Japanese American Help for the Aging. Japanese language material is being prepared and efforts to secure a Japanese-speaking claims representative are underway.

For the Record — In the PC last week, it was reported nearly 43,000 black elected officials in the U.S. when it should read "nearly 3,000" in the story on the Voting Rights Act extension to also protect Asian Americans.

CARD OF THANKS — Frederick Touru Takata (1925-1975) of 18101 Catherine Circle, Villa Park, Calif. 92667

The Fred Takata family, his parents Masaru and Hisako, brother Richard and sister Dorothy Lord sincerely thank friends and relatives for their kind expressions of sympathy. Fred Takata, who was born in Los Angeles, a veteran of WW2 and manager of Mitsuine Travel Agency, passed away May 10, 4 a.m., following a prolonged illness at St. Joseph Hospital in Orange County. Funeral services were held May 15 at Nishi Hongwanji under direction of Fukui Mortuary.

## PC's People

### Education

Director Peter H. Lee of East Asian studies at the Univ. of Hawaii was among 308 outstanding scholars, scientists and artists to receive a Guggenheim Fellowship last month. He plans to write about the rhetorical structure of East Asian (Japan, China, Korea) poetry and compare it with forms of Western poetry. Some comparison of concepts in East-West prose has been noted in his recent book, "Songs of Flying Dragons" (Harvard).

Susan Oyama, daughter of the George C. Oyamas of Tokyo, was reappointed assistant professor of psychology for the coming year at John Jay College of Criminal Justice at the City University of New York. She recently received her doctorate from Harvard and taught at Sarah Lawrence College in Bronxville.

### U.S. Bicentennial

Japanese American Day has been proposed by the Bent County (Colo.) Bicentennial Committee as part of its 1976 celebration to emphasize the contributions of the Issei-Nisei in southeastern Colorado to agriculture. The Japanese first came to the area in 1906, later settling in the four-county communities of Las Animas, Rock Ford, Ordway, Swink, Lamar, Granada-Holy along the Arkansas River.

### Organizations

Monterey Peninsula JACL — John Y. Goto was elected president of the Monterey Rotary Club, assuming office June 26. He is self-employed but had been chief lab technician at Monterey Hospital for 21 years. Rotary presidential election process consists of placing a name in nomination for three successive weeks. If there is no opposition, the nominee becomes president (a form of consensus decision-making that prevails in Asian cultures).

Asian American Voluntary Action Center at Los Angeles elected Hoover Ng and Ma Tacy Lee co-chairmen. Mrs. Betty Kozama, director, and board member Mrs. Joanne Kumamoto completed a four-day conference at Boulder, Colo., sponsored by the National Information Center on Volunteerism.

San Jose JACL president Mike Honda was among five honored May 2 at the California Jaycee state convention at Palm Springs for a distinguished service award. He is with the Stanford Center of Research and Development in Teaching.

### Churches

Takeshi Saito, graduate of Emory University who served as a hospital chaplain in Atlanta, was hired as community developer by the Central Valley Japanese Christian Community of Fresno to assist non-English speaking Nikkei with their problems, irrespective of religious faith. Elder Issei, wives of servicemen at the military bases, students from Japan attending

### Naomi's Dress Shop

Sport & Casual, Sizes 3-18  
116 N. San Pedro St.  
Los Angeles 680-1553  
Open Tue.-Fri. 9:30-6:30 and Sat. 11-9. Closed Sun.-Mon.

LYNDY'S  
926 S. Beach Bl.  
Anaheim, Calif. JA 7-5176  
Harold Goertzen  
Res. Mgr.  
Between Disneyland and Knott's Berry Farm

CAMPBELL'S  
Flowers  
Across from St. John's Hosp.  
2032 Santa Monica, Calif.  
Mary & George Ishizuka 828-0911

Shimatsu, Ogata and Kubota Mortuary  
911 Venice Blvd.  
Los Angeles RI 9-1449

SEIJI DUKE OGATA  
R. YUTAKA KUBOTA

Three Generations at Experience...  
FUKUI  
Mortuary, Inc.  
707 E. Temple St.  
Los Angeles 90012 626-0441

Soichi Fukui, President  
James Nakagawa, Manager  
Nobuo Osumi, Counselor

UMEYA's exciting gift of crispy goodness  
Tops for sheer fun, excitement, wisdom plus FLAVOR!  
Umeya Rice Cake Co.  
Los Angeles

area colleges may reach him at 4545 E. Shields Ave. (252-1374) — Rev. Perry Saito was appointed minister of Wauwatosa (Wis.) Methodist Church, one of the largest congregations in the Milwaukee suburban area. Perry hails from Medford, Ore. His wife, Fumi, is formerly from Sacramento.

### Government

Florence Ochi Kong of Los Angeles, deputy appointment secretary to Gov. Edmund Brown Jr., visited Supervisor Kenneth Hahn to discuss the Governor's farm labor legislation (SB 813 by Sen. Dunlap and AB 1533 by Asst. Berman). The supervisors endorsed by a 3-1 vote the bill which provides for secret ballot election, creates an agricultural labor relations board and restricts secondary boycotts... Milwaukee JACL Ed Hida, vice-president of DePaul Rehabilitation Hospital, was named to the special advisory committee to the Milwaukee County Board of Public Welfare dealing with mental health, mental retardation and alcoholism.

## Japanese garden at Nimitz Center

FRIDRICKSBURG, Tex. — Retired Japanese Admiral Nobuo Fukuchi, 71, dedicated a peace lantern at the Admiral Nimitz Center here April 26, marking the first step toward a Japanese Garden of Peace being designed by Japanese architects.

The late Admiral Nimitz, who commanded the Pacific Fleet during World War II, was a young officer fresh out of Annapolis when he became a warm friend of Japanese Admiral Heihachiro Togo, organizing a fund-raising campaign later to restore the Mikasa Togo's flagship during the historic battle of Tsushima Straits in 1905.

Earlier in the week, Fukuchi met with Mrs. Nimitz at her Berkeley, Calif., home and extremely pleased at the interest Japan was showing in her famed husband.

MARUTAMA CO. INC.  
Fish Cake Manufacturer  
Los Angeles

Nam's Restaurant  
Cantonese Cuisine  
Family Style Dinners  
Banquet Room Cocktail Lounge  
Food to Go  
205 E. Valley Blvd.  
San Gabriel, Calif.  
Tel. 280-8377

The New Moon  
Banquet Rooms available for small or large groups  
912 So. San Pedro St., Los Angeles MA 2-1091

Little Tokyo's Finest Chop Suey House  
SAN KWO LOW  
Famous Chinese Food  
228 E. 1st St. Los Angeles MA 4-2075

GARDENA — AN ENJOYABLE JAPANESE COMMUNITY  
Poinsettia Gardens Motel Apts.  
13921 So. Normandie Ave. Phone: 324-5883  
68 Units Heated Pool Air Conditioning GE Kitchens Television  
OWNED AND OPERATED BY KOBATA BROS.

Yamasa Kamaboko  
— WAIKIKI BRAND —  
Distributors: Yamasa Enterprises  
515 Stanford Ave., L.A. Phone 626-2211

DELIGHTFUL seafood treats  
DELICIOUS and so easy to prepare  
MRS. FRIDAY'S  
Gourmet Breaded Shrimps and Shrimp Puffs  
FISHING PROCESSORS  
1327 E. 15th St., Los Angeles (213) 746-1307

Los Angeles Japanese Casualty Insurance Assn.  
— Complete Insurance Protection —  
Aihara Ins. Ag., Aihara-Omatsu-Kakita-Fujioka 250 E. 1st St. 626-9625  
Anson Fujioka Ag., 321 E. 2nd, Suite 500 626-4393 263-1109  
Funakoshi Ins. Ag., Funakoshi-Kagawa-Manaka-Morey 321 E. 2nd St. 626-5275 462-7406  
Hirohata Ins. Ag., 322 E. Second St. 628-1214 864-5774  
Inoue Ins. Ag., 15092 Sylvanwood Ave., Norwalk 287-8605  
Tom T. Ins., 595 N. Lincoln, Pasadena 749-7189 (LA) 681-4411  
Minoru 'Nix' Nagata, 1497 Rock Haven Monterey Park 268-4554  
Steve Nakaji, 11964 Washington Place 391-5931 837-9150  
Sato Ins. Ag., 366 E. 1st St. 629-1425 261-6519

George Yoshinaga

## Ringside Seat



### NISEI RELAYS OR BUST

Los Angeles — There are several things that a person reaching the age of 50 must remember. One of them is that he can't act like he's a 20-year-old.

I learned this fact, rather painfully, the other night at Gardena High School.

For the past four weeks I have been trying to work myself back into shape for the "senior's 100-yard dash" slated for the Nisei Relays (June 1).

After letting one's body go to pot for 30 years, a four-week conditioning period causes more aches and pains than conditioning.

However, whether I run in the special race or not I can say that I have lost 12 pounds and that certainly can't hurt.

At any rate the other night my son challenged me to a race at 100 yards. He gave me a 25 yard handicap.

Forgetting that I should act my age I accepted.

At the word "go," I flew (or was it staggered) out of the starting position and ziped (or was it stumbled) down the straight-away.

About 30 yards down the track the muscle in my right leg protested violently and I pulled up lame. If I was a car it would be called a

"blow-out." If I was a race-horse they would take me out and shoot me.

After I managed to sit down on the grass on the football field I felt more foolish than I felt the pain.

If I was 20, I would probably get over my aches in a day or two but at 50 I can see that the misery lingers.

As they say around the race track, I may be an early "scratch" from the race if I can't work the kinks out of my muscle.

Too bad they don't have a "finge" race. That's the only

INSIST ON THE FINEST  
KANEMASA Brand  
FUJIMOTO'S EDO MISO.

Available at Your Favorite Shopping Center  
FUJIMOTO & CO.  
302-306 S. 4th West  
Salt Lake City, Utah

酒念市  
Nam's Restaurant  
Cantonese Cuisine  
Family Style Dinners  
Banquet Room Cocktail Lounge  
Food to Go  
205 E. Valley Blvd.  
San Gabriel, Calif.  
Tel. 280-8377

The New Moon  
Banquet Rooms available for small or large groups  
912 So. San Pedro St., Los Angeles MA 2-1091

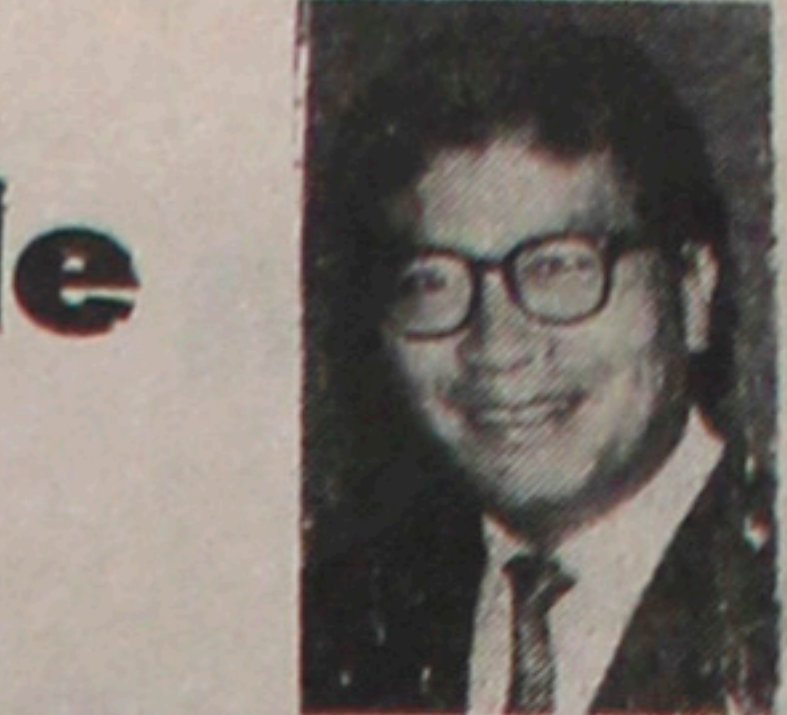
Little Tokyo's Finest Chop Suey House  
SAN KWO LOW  
Famous Chinese Food  
228 E. 1st St. Los Angeles MA 4-2075

GARDENA — AN ENJOYABLE JAPANESE COMMUNITY  
Poinsettia Gardens Motel Apts.  
13921 So. Normandie Ave. Phone: 324-5883  
68 Units Heated Pool Air Conditioning GE Kitchens Television  
OWNED AND OPERATED BY KOBATA BROS.

Yamasa Kamaboko  
— WAIKIKI BRAND —  
Distributors: Yamasa Enterprises  
515 Stanford Ave., L.A. Phone 626-2211

DELIGHTFUL seafood treats  
DELICIOUS and so easy to prepare  
MRS. FRIDAY'S  
Gourmet Breaded Shrimps and Shrimp Puffs  
FISHING PROCESSORS  
1327 E. 15th St., Los Angeles (213) 746-1307

UMEYA's exciting gift of crispy goodness  
Tops for sheer fun, excitement, wisdom plus FLAVOR!  
Umeya Rice Cake Co.  
Los Angeles



"blow-out." If I was a race-horse they would take me out and shoot me.

After I managed to sit down on the grass on the football field I felt more foolish than I felt the pain.

If I was 20, I would probably get over my aches in a day or two but at 50 I can see that the misery lingers.

As they say around the race track, I may be an early "scratch" from the race if I can't work the kinks out of my muscle.

Too bad they don't have a "finge" race. That's the only

Mikawaya  
Sweet Shop  
244 E. 1st St.  
Los Angeles MA 4-9335

CHEVROLET  
Fleet Price to All—Ask for FRED MIYATA  
Hansen Chevrolet  
11351 W. Olympic Blvd., West L.A. Res. 479-4411  
Res. 479-9003

KONO HAWAII RESTAURANT  
Polynesian Room  
(Dinner & Cocktails Floor Show)  
Cocktail Lounge  
(Entertainment)  
Tea House  
Teppan & Sukiyaki  
Banquets

Kono Hawaii Restaurant  
226 South Harbor Blvd.  
Santa Ana, Calif. 92704  
(714) 531-1232

OPEN EVERY DAY  
Luncheon 11:30 - 2:00  
Dinner 5:00 - 11:00  
Sunday 12:00 - 11:00

Old Brittany  
Creperie Bretonne  
San Francisco's Only Breton Creperie  
The Cannery  
2801 Leavenworth  
Tel. 776-6996  
World Famous Restaurants  
International Award  
Lunch-Dinner-Cocktails, Banquets & Parties Arranged

EMPEROR RESTAURANT  
949 N. Hill St.  
(213) 485-1294  
PEKING FOOD SPECIALTY  
Cocktail Lounge  
Party & Banquet Facilities  
DINAH WONG, Hostess

TIN SING RESTAURANT  
EXQUISITE CANTONESE CUISINE  
1523 W. Redondo Blvd.  
GARDENA DA 7-3177  
Food to Go  
Air Conditioned  
Banquet Rooms  
20-200

VISIT OLD JAPAN  
MIYAKO  
Luncheon Dinner Cocktails  
PASADENA 139 S. Los Robles • 795-7005  
ORANGE 33 Town & Country • 541-3303  
TORRANCE 24 Del Amo Fash. Sq. • 542-8677

Bush Garden  
SUKIYAKI  
SEATTLE 614 Maynard St.  
PORTLAND 121 SW 4th St.  
SAN FRANCISCO 598 Bush St.

EMPIRE PRINTING CO.  
COMMERCIAL AND SOCIAL PRINTING  
English and Japanese  
114 Weller St., Los Angeles 90012 MA 8-7060

Eagle Produce  
929-943 S. San Pedro St., Los Angeles 625-2101  
Bonded Commission Merchants  
— Wholesale Fruits and Vegetables —

Los Angeles Japanese Casualty Insurance Assn.  
— Complete Insurance Protection —  
Aihara Ins. Ag., Aihara-Omatsu-Kakita-Fujioka 250 E. 1st St. 626-9625  
Anson Fujioka Ag., 321 E. 2nd, Suite 500 626-4393 263-1109  
Funakoshi Ins. Ag., Funakoshi-Kagawa-Manaka-Morey 321 E. 2nd St. 626-5275 462-7406  
Hirohata Ins. Ag., 322 E. Second St. 628-1214 864-5774  
Inoue Ins. Ag., 15092 Sylvanwood Ave., Norwalk 287-8605  
Tom T. Ins., 595 N. Lincoln, Pasadena 749-7189 (LA) 681-4411  
Minoru 'Nix' Nagata, 1497 Rock Haven Monterey Park 268-4554  
Steve Nakaji, 11964 Washington Place 391-5931 837-9150  
Sato Ins. Ag., 366 E. 1st St. 629-1425 261-6519

part of my body which is celly in shape. Daily pounding on the typewriter keys for all these years have kept my fingers in teenage condition.  
—Kashu Mainichi

CLASSIFIEDS  
The PC Classified Rate is 10 cents a word, \$3 minimum per insertion. There is a 3% discount if same copy appears four times. Unless prior credit has been established with the PC, payment is requested in advance.

Employment  
YAMATO  
EMPLOYMENT AGENCY  
312 E. 1st St., Rm. 202, L.A.  
NEW OPENINGS DAILY  
624-2821

Ask for...  
'Cherry Brand'  
MUTUAL SUPPLY CO.  
1090 Sunsume St.  
San Francisco, Calif.

Commercial Refrigeration  
Designing - Installation  
Maintenance  
Sam J. Umemoto  
Certificate Member of RSES  
Member of Japan Assn. of Refrigeration  
Lic. #208863 C-38  
SAM REIBOW CO.  
1506 W. Vernon Ave.  
Los Angeles AX 5-5204

SAITO REALTY CO.  
HOMES - INSURANCE  
One of the Largest Selections  
2421 W. Jefferson, L.A.  
731-2121  
JOHN TY SAITO & ASSOCIATES

GRAND STAR  
Lunch • Dinner • Cocktails  
Entertainment  
5 TIME WINNER OF THE PRIZED RESTAURANT WRITER AWARD  
BANQUETS TO 200  
Validation Free Parking 943 N. Broadway (in New Chintown) 626-2285

Eigiken Cafe  
Dine • Dance • Cocktails  
SUKIYAKI • JAPANESE ROOMS  
314 E. First St.  
Los Angeles • MA 9-3029

TIN SING RESTAURANT  
EXQUISITE CANTONESE CUISINE  
1523 W. Redondo Blvd.  
GARDENA DA 7-3177  
Food to Go  
Air Conditioned  
Banquet Rooms  
20-200

EMPEROR RESTAURANT  
949 N. Hill St.  
(213) 485-1294  
PEKING FOOD SPECIALTY  
Cocktail Lounge  
Party & Banquet Facilities  
DINAH WONG, Hostess

VISIT OLD JAPAN  
MIYAKO  
Luncheon Dinner Cocktails  
PASADENA 139 S. Los Robles • 795-7005  
ORANGE 33 Town & Country • 541-3303  
TORRANCE 24 Del Amo Fash. Sq. • 542-8677

Bush Garden  
SUKIYAKI  
SEATTLE 614 Maynard St.  
PORTLAND 121 SW 4th St.  
SAN FRANCISCO 598 Bush St.

EMPIRE PRINTING CO.  
COMMERCIAL AND SOCIAL PRINTING  
English and Japanese  
114 Weller St., Los Angeles 90012 MA 8-7060

Eagle Produce  
929-943 S. San Pedro St., Los Angeles 625-2101  
Bonded Commission Merchants  
— Wholesale Fruits and Vegetables —

Los Angeles Japanese Casualty Insurance Assn.  
— Complete Insurance Protection —  
Aihara Ins. Ag., Aihara-Omatsu-Kakita-Fujioka 250 E. 1st St. 626-9625  
Anson Fujioka Ag., 321 E. 2nd, Suite 500 626-4393 263-1109  
Funakoshi Ins. Ag., Funakoshi-Kagawa-Manaka-Morey 321 E. 2nd St. 626-5275 462-7406  
Hirohata Ins. Ag., 322 E. Second St. 628-1214 864-5774  
Inoue Ins. Ag., 15092 Sylvanwood Ave., Norwalk 287-8605  
Tom T. Ins., 595 N. Lincoln, Pasadena 749-7189 (LA) 681-4411  
Minoru 'Nix' Nagata, 1497 Rock Haven Monterey Park 268-4554  
Steve Nakaji, 11964 Washington Place 391-5931 837-9150  
Sato Ins. Ag., 366 E. 1st St. 629-1425 261-6519