

To the Point

THINGS BEFORE THE EXECOM

Washington I took a breather last week and skipped a column. The weather here was so unbearably hot, muggy and suffocating that getting some of the accumulated chores around the house (like cutting the lawn) caught-up completely drained any energy which might have been left over for cogitating over a typewriter.

The weather finally broke yesterday with cooling showers—delightful showers which have washed away the pollutants in the air (at least for the time being) so that we can once again breathe without too much effort. The relief has come just in time to see me off for the Executive Committee meeting in San Francisco this past weekend (Aug. 9-10).

As this is written, the results of the EXECOM meeting are not known. However, the agenda is lengthy and we can only hope that the important programmatic issues which have been hanging fire for several months now will have been resolved.

A major concern is our current financial status. We face another deficit for this fiscal year since our income has not reached the level anticipated in the National Council approved biennial budget. We'll be paring back planned expenditures substantially for the remainder of the biennium so that income and expenditures will hopefully be in balance by the end of the next fiscal year. It will be

well if we can do this without jeopardizing the success of ongoing programs.

Despite our financial difficulties, we must continue progress in the various current programs as well as take on new challenges which face us today that cannot be ignored. This will mean increased reliance on assistance from volunteers to do much or most of the work.

One of the new initiatives which should be taken is the provision of assistance and aid to the Indochina refugees. Executive Director Dave Ushio and Washington Representative Wayne Horuchi have been in consultation with various Federal agencies for the past few months to determine the various ways in which JACL (nationally and at the chapter level) can assist in the relocation and settlement of refugees. If enough chapters are willing to assist by sponsoring refugee families, we should be able to render substantial and immediate direct assistance to the refugees. More detailed information will be provided directly to the chapters after the EXECOM has had a chance to review the various options.

Since I'm shooting in the dark at this point in regard to the various matters to be taken up by the EXECOM, I'll leave it at that—with hopes that I'll have some good or encouraging news to report in my next column.

David Ushio

Dialogue

HEADQUARTERS DEDICATION

San Francisco In the July 20 dedication of the new National Headquarters of the Japanese American Citizens League, we dedicated more than just a building. The glass, steel, concrete and masonry on Sutter Street in San Francisco is a magnificent tribute to our Japanese American heritage as well as a symbol of hope for the future.

We are sorry all members could not attend the dedication ceremonies. The dedication reads: "JACL dedicates this National Headquarters Building in honor and memory of the Issei whose courage, foresight and pioneer spirit gave Japanese Americans the inspiration and guidance to become Better Americans in a Greater America."

We are not only unreservedly proud of our heritage but humbled by the profound experience of our tradition. This building is an enduring tribute to our sacrifice that began with the first Issei who immigrated to American shores. A sacrifice that was retold thousands of times in Relocation Camps and in Nisei lives on foreign battlefields. A sacrifice that continued in the insidious forms of racism and discrimination.

With this National Headquarters we have a practical environment where we may carry out the functional operations of the organization. We have a library, a research institute and a museum of Japanese Americana. We have rooms for meetings and conferences. We have a visitors' center and hospitality house. As the permanent home for

the oldest and largest national human rights organization representing Americans of Japanese ancestry, we have an instrument for realizing the shared goals of every Japanese American.

Some have said, "Why spend money on a building?" But we have built more than just a National Headquarters. Those who have contributed have shown their commitment to the future of JACL. This is a commitment to advancing the rights of citizenship for all Japanese Americans and for all peoples who strive for the benefits of racial justice and human dignity.

Challenge tackled

When the Building Fund Campaign was launched almost two years ago, there was a feeling of confidence. There was also an unmistakable sense of the tremendous challenge before us. The goal we had set for ourselves could not be achieved without the unselfish commitment of a dedicated membership. This required the willing sacrifice of thousands of individuals and the unstinting hard work of hundreds of volunteers in JACL chapters across the country and in the national organization.

As a result, more than 5,500 have contributed nearly \$450,000 and still the gifts come in. This was done in record time. Professional fund raisers are amazed at the type of participation we have had from our membership when I tell them about it. My only

Continued on Next Page

From JACL Nat'l Headquarters

Communication

1973 memo on Reparations

The opening part of the three alternatives to a proposed Reparations Legislation, as discussed by Barry Matsumoto, then Washington JACL representative, in an April 1973 memorandum to chapter presidents and district governors, was published in the Aug. 8 issue. Here is the concluding portion. The background and basic concepts were reprinted in the Aug. 1 issue—Ed.

(Continued from Last Week)

ALTERNATIVE NO. 2

Reparation Payments to Include All Nikkei Residents of Western Defense Command C. Some General Considerations with Regard to Alternative No. 2: It should be evident that extension of reparation payments to Nikkei residents of the Western Defense Command who were not evacuated and detained raises a number of difficult issues not present in a bill designed only to pay those who were evacuated and detained.

This is not to suggest that the claim of the former group is any less valid or important than the claims of the latter. However, it is imperative that we consider and answer the questions outlined above if we are to develop the strongest legislation possible.

It is also imperative that we recognize that the most just or equitable legislation may not necessarily be the easiest to obtain.

ALTERNATIVE NO. 3

Reparations Payments to a General Fund Rather Than to Individual claimants:

One final alternative should be considered. Rather than reek payments to individuals, it is possible to draft legislation which would create a fund from which various types or kinds of projects could be financed.

Some of the questions which we would have to consider in drafting this kind of legislation are:

- 1—How much money to request?
- 2—What kinds of projects would be financed from the fund?
- 3—How would the fund be administered?

A—One possible alternative: Creation of a Scholarship Fund. While it seems rather picaresque in these times to suggest the use of money for scholarships, a reparations bill designed to establish a permanent scholarship fund would have several advantages:

1—If the initial appropriation could establish a large enough amount, then the costs of administering the program and the actual amounts for the scholarships could be taken exclusively from the interest on the fund. Thus, the initial appropriation could serve as the basis for a continuing fund or program which the community could benefit annually.

The advantage of a continuing fund of this nature over a "one shot" individual payment program is that once the one shot payment is over,

Continued on Page 3

Nat'l JACL facing deficit of \$30,000

By HARRY HONDA (Ye Ed's Desk)

Decisions or recommendations of the National JACL Executive Committee (EXECOM) which met this past weekend, Aug. 9-10, at National Headquarters, San Francisco, on various matters were not known at presstime, but one of the main concerns was that of the 1975 budget.

National Executive Director David Ushio, in an Aug. 1 report, revealed the JACL financial picture as of June 30, 1975, was extremely critical. It looked like this:

1—JACL faces a \$30,000 deficit at the end of the 1975 fiscal year (Sept. 30).

2—JACL staff has been instructed to reduce unessential operations, travel costs, office supplies, telephone, Xeroxing, and possibly postage.

3—All staff travel outside the district is frozen indefinitely with some exceptions.

4—National officers and committees have been asked full cooperation in curtailing their travel.

20% cut

"None of us is happy with this necessity, but in the interest of balancing expenditures (with income) and making up for the 1975 deficit as well as meeting our commitment to retire the previous biennium's deficit, the 20% cuts in the current budget are reasonable," Ushio explained.

Shigeki Sugiyama, national president, and Tomio Moriguchi, national treasurer, met with Ushio over the July 19-20 weekend to study the current year financial picture as well as assess the coming fiscal year and prepare recommendations for the EXECOM.

meeting. Ushio was asked to have staff prepare an expenditure budget at the spending level of \$460,000 (or about \$102,900 less the \$562,900 budget adopted at the 1974 National Convention).

The staff projection for the final FY 1975 quarter, ending Sept. 30, anticipates \$88,700 income and \$132,160 expense. Year-end totals would read \$503,093.87 income; \$534,505.02 expense — \$31,411.15 deficit.

Accordingly, Wes Doi, NC-WNDC governor, and Masamune Kojima, PSWDC governor, having been informed of the current financial picture, they generally agreed with Ushio, who regretted the staff positions they had interviewed persons for will not be able to be funded in view of the budget cuts.

Board members and staff were expected to advise and comment on how financial obligations might be met and budgetary figures raised.

FY 1975 budget

While the 1974 National Convention approved a \$562,900 budget, based upon a significant membership increase. If this increase has not been realized, a secondary spending level of \$535,900 (or \$27,000 less) was established.

It now appears the 1975 membership will be about the same as 1974 (28,727). And the 1974 fiscal year was abbreviated to nine months because of the change instituted that year to have the JACL fiscal year end in October. The JACL fiscal year previously coincided with the calendar year.

On an adjusted basis, in-

Continued on Next Page



SAN FRANCISCO—Now hanging at National Headquarters before the room of the National Executive Director and the connecting National Board room is this scroll, encased in clear plastic, being held by Masao Satow (left), Mike Masaoaka and George Inagaki who made the presentation during the recent JACL Headquarters Bldg. dedication banquet at the St. Francis. —West Doi Photo

MASAOKA-SATOW DEDICATION

Executive rooms at Nat'l Headquarters dedicated by ADC to two JACL leaders

SAN FRANCISCO—Among the names listed in the JACL Building Fund acknowledgments from time to time are some carrying an asterisk, indicating ("—Masaoaka - Satow Dedication).

The mystery was dispelled during the recent Headquarters Dedication banquet here when George Inagaki, past national president, presented a plaque memorializing the contributions of the JACL Anti-Discrimination Committee and two of its key members: Mike Masaoaka, ADC's legislative director, in Washington, and Mas Satow, national JACL director, in Salt Lake City-San Francisco.

"These two great names in JACL belong in a permanent place of honor in JACL's National Headquarters," Inagaki said, "as a symbol of the best of our generation."

Masaoaka and Satow were described as "two who stand head and shoulders above the rest of us in their contributions to the growth and stature of our JACL."

While ADC's victories were in the legislative halls in Washington and the various states, in the courts of law and in the field of education, Inagaki recalled the two most significant achievements were the elimination of racial exclusion from immigrant and naturalization laws which enabled Issei to become U.S. citizens, and enactment of the Evacuation Claims Act.

Surviving members of the ADC and those who recognized the efforts of the two JACL stalwarts were approached by Inagaki and his special committee in March

Farm labor housing

WASHINGTON—The Senate has appropriated \$12.25 million for low-rent housing for domestic farm labor. Sen. John Tunney noted unfunded applications with Farmers Home Administration amounted to \$25 million in 1975.

PACIFIC CITIZEN

Membership Publication: Japanese American Citizens League, 125 Weller St., Los Angeles, Calif. 90012; (213) MA 6-6936
Published Weekly Except First and Last Weeks of the Year—Second Class Postage Paid at Los Angeles, Calif.

VOL. 81 NO. 7

FRIDAY, AUGUST 15, 1975

Subscription Rate per Year U.S. \$7. Foreign \$10 15 CENTS

FBI STILL KEEPS LIST OF SECURITY 'RISKS' ON FILE

Maintained Full Time Till JACL Had Title II Repealed

WASHINGTON—The FBI maintained for two decades a secret list of about 15,000 Americans "targeted for detention" in case of a national emergency, a bureau spokesman admitted Aug. 2.

The FBI had not previously admitted existence of the "security index." When asked why the agency was admitting it now, the spokesman said, "we're admitting a lot of things these days."

The list included Communist Party officials and "people who might commit sabotage or espionage in case of a national emergency," the spokesman said. It was started under provisions of the Internal Security Act of 1950 and was maintained until 1971, when Congress repealed the emergency detention provisions (Title II) of the act.

The JACL was responsible for repeal of this provision. "When the law was repealed, we did away with the list. There's no way we could maintain it because the President doesn't have the authority any more to detain anyone," the spokesman said.

However, the New York Times reported Aug. 3 that the list is still being maintained by the domestic intelligence division in expectation of a possible reinstatement of authority.

NYT reporter John Crewdson was informed by ACLU legal director Melvin Wulf in New York that he had never heard of the FBI's security index. But he called the practice "clearly unconstitutional," in the absence of any legislative authority to detain individuals in the event of any emergency. Under the First Amendment, Wulf noted, "You're supposed to have a

Continued on Next Page

Pres. Ford signs Voting Rights Act

WASHINGTON—President Ford last week (Aug. 6) signed a seven-year extension of the 1965 Voting Rights Act in a Rose Garden ceremony, declaring "the right to vote is at the very foundation of our American system." Without his signature, key provisions of the 10-year-old law would have expired after midnight Aug. 6.

The JACL joined the Leadership Conference on Civil Rights in rejoicing the extension.

The 1965 law banned electoral discrimination against blacks in seven Southern states. The 1974 amendment now broadens coverage to areas within 24 states where more than 5 pct. of voting-age residents are of the "language minority groups," which includes Asian Americans.

PSWDC CAMPAIGN FOR JWRO TOPS \$2,500

LOS ANGELES—Contributions from 192 JACLers and friends in the Pacific Southwest District Council toward the Japanese Welfare Rights Organization during the first week of August came to \$2,789, it was announced by the So. Calif. JACL Regional Office. Among major donors (\$50 and up) were:

Carl Kawagoye, James Oda, RIM Enterprises, Eagle Produce Co., Kiyoshi Sonoda and Victor M. Carter.

PAUL S. SAKAMOTO: San Jose JACler

Named district school superintendent

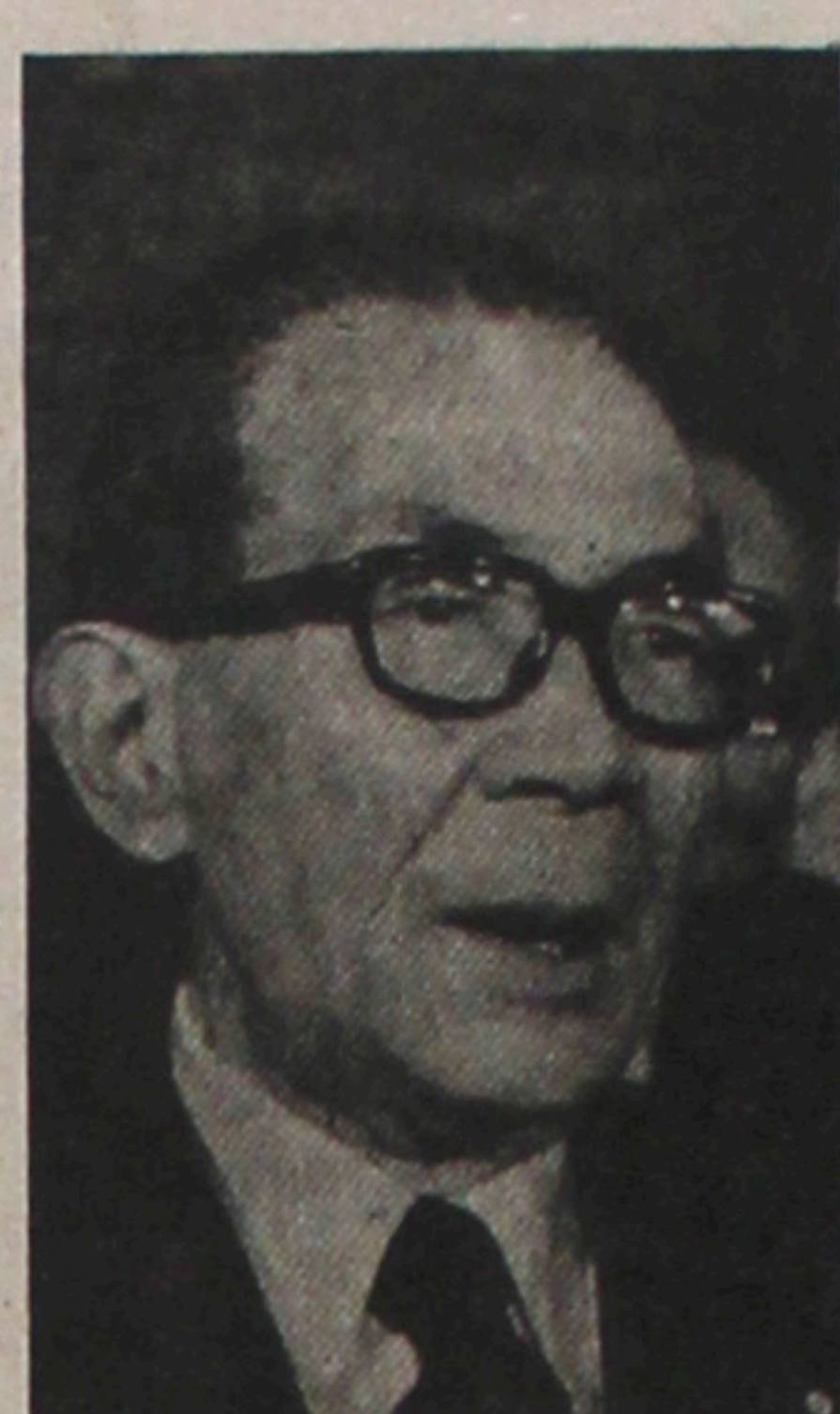
MOUNTAIN VIEW, Calif.—The Mountain View-Los Altos Union High School District board of education promoted its deputy superintendent, Dr. Paul S. Sakamoto, 41, to the superintendency as Daniel Predovich leaves the office Nov. 30.

The decision which came June 30 on a 4-1 vote of the board members in executive session, Sakamoto, who had the district's No. 2 official for three years, previously taught, counseled and was principal at Sunnyvale High School from 1956-59; earned his Ph.D. in educational administration at Michigan State, and became associate dean of student services at San Jose State.

In 1972 he was on a screening committee for administrative positions in the Mountain View-Los Altos district and was selected for one of those very jobs.

He has been in charge of curriculum and instruction and acting superintendent in

Miki-Ford talks productive



Prime Minister Takeo Miki

ity in East Asia. Both hoped the dialogue between North and South Korea would proceed to ease tensions and to eventual peaceful unification.

Further, they recognized the contribution of the U.S.-Japan treaty of mutual cooperation and security to stability in the Far East. Mr. Miki was assured U.S. would abide by its defense commitment to Japan.

President Ford reaffirmed the U.S. pledge to use nuclear weapons to defend Japan, if necessary. Prime Minister Miki, in turn, reaffirmed his nation would never rearm and "will never acquire nuclear weapons" before a National Press Club audience at the close of his two-day stay in Washington.

The Miki-Ford talks were hailed for producing "close, personal rapport" between the two leaders.

At the Press Club, Miki said Japan will abide "without any reservations" by the whale quotas proposed by the International Whaling Commission in June. He reiterated his faith in democracy.

"Democracy is said to be on trial because it is a clumsy and inefficient way to bring some measure of unity to the complex and social forces in the contemporary world. I do not believe it. My faith has never wavered that democracy is born out of diversity and thrives on it."

Other issues

On other international issues, the joint statement said both hoped for prompt settlement of the Middle East situation and early conclusion to negotiations between Soviet Russia and the U.S. on the limitation of strategic arms.

On nuclear proliferation, they agreed both U.S. and Japan should work positively in international efforts to prevent its proliferation and promote development of adequate safeguards. Miki intends to proceed with steps to bring about Japan's ratification of the nuclear non-proliferation treaty at the earliest possible opportunity.

On world economy, trade, energy and increasing interdependence of nations, they agreed the two nations share

a special responsibility in these areas and emphasized the need for an open international trading system. They also welcomed the resumption of dialogue between oil producer and consumer nations. Both called for establishing adequate supply and distribution of food to meet growing demands through an international coordinated system of nationally-held grain reserves. Miki stressed need for steady expansion in trade of agricultural products.

Japan and the U.S. will also increase cooperative efforts to assist developing nations economically through development assistance and trade.

Both appreciated achievements in the fields of medicine, science and technology, environmental protection. Both recognized the continued promotion of mutual understanding through cultural and educational exchange.

Miki told the Press Club that celebration of the U.S.

Continued on Page 3

72-branch bank merger with Togin one step closer

SAN DIEGO, Calif.—Shareholders of Southern California First National Bank approved its sale to the Bank of Tokyo of California by a 79 pct. majority, an SCF spokesman revealed this past week (Aug. 7). The sale still needs approval of government regulatory agencies and shareholders of the subsidiary of the Bank of Tokyo, Ltd., of Japan.

The sale for \$88 million would create California's eighth largest bank with assets of \$2 billion and over 95 branches. Recently, the Bank of Tokyo of California petitioned for a name change to California First Bank, if the merger is approved.

M was approved by SCF shareholders by a vote of 2,901,092-65,291. A bare majority was needed.



PHILADELPHIA—William M. Marutani dons his robe upon being sworn in as judge of the Court of Common Pleas, 1st Judicial District, on June 26 with his wife, Victoria, assisting. Seated in the background are their children (from left): Nancy, Marcia, Wesley and Mrs. Laurel Snyder.

BILL MARUTANI: Philadelphia JACler

Sworn in as Judge in June

PHILADELPHIA, Pa.—On June 26, William M. Marutani was sworn in as judge of the Court of Common Pleas in the 1st Judicial District of Pennsylvania. Administering the oath was presiding judge Edward J. Bradley.

Besides his children and wife, Victoria, who placed upon him the judicial robe, a great number of other Japanese Americans and other people representing a cross-section of other ethnic back-

grounds were witnesses, exhibiting the strong support behind the first Asian American jurist on a court of record east of the Rockies.

The Philadelphia JACler was born in Kent, Wash., in 1923. He was editor of the school paper at Enumclaw High (which explains his yen as a contributing columnist for the Pacific Citizen), graduating in 1941. World War II interrupted his pre-law studies

Continued on Page 3

Hosted by Cleveland Chapter JACL

★ CLEVELAND JACL BEREAS

JACL JAY

(EAST-MIDWEST)

1975 BIENNIAL CONFERENCE

August 21-24 • Baldwin-Wallace College Berea, Ohio

Conference Theme: ACTION! Come, Where the Action Is!

★ Where It's At!

For Registration Forms: Call or Write Mrs. Alice Nakao, 2510 Lincoln, Parma, Ohio 44134 (216-351-0913)



PACIFIC CITIZEN

Published Weekly by the Japanese American Citizens League except the first and last weeks of year. 125 Weller St., Los Angeles, Calif. 90012 No. 1857

Shigeki J. Sugiyama, National JACL President
Alfred Hatake, PC Board Chairman
Harry K. Honda, Editor

Second-class postage paid at Los Angeles, Calif. Subscription Rates (payable in advance): U.S. \$7 a year, \$13.50 for two years. Foreign \$10 a year, \$3.75 of JACL Membership Dues for one-year subscription. Note: Subscribers wishing first-class delivery, either air or surface, should inquire about rates domestic or international.

2- Friday, Aug. 15, 1975

● Harry K. Honda

Ye Editor's Desk

Continued from Front Page

come for FY 1974 was about \$260,000—though \$345,500 was remitted during the calendar year. Expenses came to \$298,000 for the nine-month FY 1974, leaving a deficit of \$38,000 plus.

The second National Board meeting called last June is expected to cost between \$10,000 and \$12,000—about double of the \$6,000 budgeted. The first National Board meeting convened in November last year. Normally, the National Board meets once a year—at the Convention during the even-numbered years and odd-numbered years either at Los Angeles or San Francisco.

The third quarter FY 1975 financial report (see below) also indicates excesses in the use of telephone, office equipment, office supplies and mailing—though part of the increase can be blamed on unanticipated rate increases or the item may have been under-budgeted. For instance, increased production and mailing costs this year have exceeded what the Pacific Citizen had budgeted in the spring of 1974 for application in the 1975-76 biennium.

Another \$20,000 has been spent outside the budget to cover the cost of recruiting personnel, interest, preparing convention minutes, Cultural Heritage dinner and a moving expense.

FY 1975, 4th Qtr

Headquarters' projects an \$86,700 income for the final quarter this year: \$50,000 from 2,000 regular members and 500 Thousand Clubbers;

\$6,500 in other income; \$20,000 from Development Office efforts; and \$9,700 at the Pacific Citizen.

Expenses for the same period is being budgeted at \$132,160 as follows:

Headquarters, \$38,235 (74% personnel, 5% rent, 21% office expenses, rent, travel); general services, scholarships, \$8,500; Washington and regional offices \$35,250; Pacific Citizen, \$32,750 (84% production, 30% personnel, 6% PC Board meeting); NYCC, \$300; Other Programs (Development Office), \$6,225; National Officers, \$3,000; and National Board meeting (carrying over expenses from the June meeting), \$7,900.

PC budget

By incorporating the PC budget of \$140,250 into the JACL budget starting this year, the total tripped the half-million dollar mark for the first time at \$562,900. Heretofore, the PC operating budget was separate.

The JACL budget for the previous 1973-74 biennium was \$359,887. Were the 1975-76 JACL budget adjusted without the PC budget, the total would be \$422,650—an 18% increase; but with the PC budget integrated, the increase rose to 58% plus.

One way to extricate the PC budget is to set up a separate JACL entity to publish the PC. The PC Board, which is scheduled to convene for the first time this biennium during the California Tri-District Conference Sept. 12-14 at Anaheim, will consider that possibility.

JACL FINANCIAL REPORT, Unaudited (As of June 1975)

INCOME:	Budget	Total
MEMBERSHIP DUES		
Regular.....	\$357,900	\$286,039.00
1000 Club.....	93,000	51,778.00
Fifty Club.....	4,000	3,490.00
Century Club.....	3,000	3,683.00
Corporate	10,000	2,025.00
Others.....		1,743.02
Total Dues:	\$472,900	\$348,753.02

OTHER INCOME		
Endowment Fund.....	25,000	17,499.80
Others.....	5,000	2,529.64
Total Other Income:	30,000	20,029.44

TOTAL HQ INCOME: \$502,900 \$368,787.46

PC INCOME		
Advertisement.....	60,000	38,695.77
Non-memb Subscript'n		7,315.80
Others.....		1,594.84
Total PC Income:	60,000	47,606.41

GRAND TOTAL: \$562,900 \$416,393.87

EXPENSES:

NAT'L HEADQUARTERS

Salaries.....	\$102,000	\$ 69,037.50
Personnel Benefits.....	11,200	7,616.77
Travel/Lodging.....	7,200	7,190.55
Rent/Utilities.....	9,000	7,908.14
Telephone.....	5,400	7,310.32
Office Equip Rental	4,800	9,930.69
Mailing & Postage..	4,200	5,146.13
Office Supplies....	4,500	11,639.93
	148,300	125,779.93

Services.....	17,500	11,783.29
Printing & Repro..	10,900	924.22
Student Aid/Schol'p	10,000	
Comm Mtg & Conv	8,000	4,599.16
	46,400	17,306.67

Washington, D.C....	40,950	26,386.91
NC-WN Regional Off.	18,500	6,486.15
PSW Regional Office	40,200	29,612.02
PMW-IDC Regional...	30,900	17,487.36
Midwest Regional...	35,050	21,739.80
Eastern Regional...	5,000	
Central Cal Regional	6,600	4,207.99
Mtn-Plains Regional	3,600	
Pacific Citizen....	140,250	100,731.40
NYCC.....	2,000	349.59
Other Programs.....	30,000	18,957.27
Nat'l Bd Mtg.....	6,000	8,158.39
	46,400	17,306.67

Execom/Nat'l Officers		
Expenses.....	750	711.00
Salaries.....	1,200	
Travel.....	7,200	4,302.54
	368,200	139,130.42

TOTAL BUDGETED:	\$562,900	\$382,217.02
UNBUDGETED EXPENSES:		
Personnel Recruitment		14,466.21
Interest Expenses		773.67
Cult Heritage Dinner		2,573.22
Convention Minutes		1,338.40
Moving Expense		976.50
Total Unbudgeted:		20,128.00

GRAND TOTAL: \$562,900 \$402,345.02



35th Annual Showcase

FROM THE FRYING PAN: Bill Hosokawa

The Leisure Boom

Twenty-five years ago when I visited Japan there were many more bicycles than automobiles in the streets of Tokyo. Bicycles were an essential mode of transportation. Now bikes are gone from the streets and Tokyoites go to a cycling course and rent one for exercise and recreation. This, as much as anything, dramatizes the changes that have taken place in this nation.

Not many years ago the Japanese were so busy working they were reluctant to take a vacation even though time off with pay was provided by employers. This year, during a one-month period beginning July 21, the Japanese National Railways will operate 4,908 extra trains throughout the country, mainly to sea and mountain recreation areas. It is estimated some 20 million passengers will be riding the trains during this period.

Last year, persons seeking reserved seats waited all night at railroad stations before the start of selling for each train, the way Americans used to queue up for World Series tickets. This year they've eliminated the all-night lineups; people turn in applications and the tickets are distributed by lot with a limit of four seats per customer.

With such congestion, it is understandable that the big Tokyo and Osaka hotels are urging local residents to avoid overcrowded trains, highways and resort areas by spending their vacations at the hotels. The New Otani, for example, has a "Summer House Plan" which provides a week's accommodations for a family of four for 91,000 yen, which is about \$300. This includes use of the swimming pool, but presumably meals and all else is extra.

Or if you'd like to live at home and commute to the hotel's swimming pool, admission is 2,500 yen (about \$8.50) for adults on weekdays and 1,200 yen (about \$4) for children. On weekends the charge climbs to 3,500 yen (about \$14) for adults and 2,000 yen (a bit less than \$7) for children. If you're really hooked on swimming, you might want to buy a season pass for 30,000 yen (about \$100).

In Osaka, the Royal Hotel invites you to take advantage of their Royal Summer Villa plan under which you get a room, two meals and use of the pool for 13,000 yen (just a bit under \$45).

For those who want to get away from it all, the Japan Travel Bureau chartered the 23,500-ton liner Oriental Empress for an eight-day Hongkong cruise via Okinawa. One group of vacationers left Yokohama on July 17, flying back from Hongkong. A second group was to fly to Hongkong and sail back on the ship. Fare for the ocean portion ranges from \$333 to \$1,333, with the air fare presumably extra.

The Japanese have also discovered the pleasures of camping out although the term means something different than in the United States. All you need to take on a Japanese camping trip is a change of underwear and socks. Everything else—tent, campsite, bedding, meals, eating utensils—is provided. Public health officials see to it that all the camps have showers, kitchens and flush toilets. If you'd like to sample this kind of camping you'll have to wait until next year. Reservations for this summer are filled.

All this will give you an idea of what it's like to look for recreational opportunities in an overcrowded country in an era when the masses have both the time and money to enjoy their leisure. Someone once suggested that the Japanese government was opposed to a five-day work week because it would give the people too much leisure time and there weren't enough facilities to take care of them all. And with the homes being so small, crowded and uncomfortable, too much leisure might lead to national unrest. Nonetheless, an increasing number of firms are switching from five and a half days to five days and the world-wide recession is hurrying this trend.

My room in the Pacific Hotel looked out over a double-decked golf driving range and the addicts were still hitting the balls late at night when I hit the sack. Will there be a third deck on the range the next time I visit Tokyo?

FBI—

Continued from Previous Page

right to any political opinion you want."

It was also reported Attorney General Edward H. Levi last March set up a task force to study FBI's intelligence-gathering operations and considered the legality of continuing the security index in the absence of any emergency designation authority. The New York Times could not learn what the task force had recommended to Levi.

Only official reference to the security index came to public light in early 1971 when documents were stolen from its FBI office in Media, Pa.

One former government of-

ficial familiar with the index told the Crewdson the idea behind the "special list" was probably sound years ago "when we would know a few weeks or a month in advance if a country was going to declare war on us". But he said that apart from the legal implications, the concept of "rounding up people who might commit sabotage or espionage" in time of war made less sense in the nuclear age. The guiding principle under which the index was compiled, the source told Crewdson, "was who would be dangerous to the country. That's a very nebulous concept," noting that as late as 1971, the list contained the names of "about a dozen" clergymen. The list in the late 1960s was reportedly pared down to

some 2,000 and which continued to decline further. The names which were weeded out were placed on a "reserve index". Crewdson could not learn whether the reserve list was still around.

25 Years Ago

In the PC, Aug. 12, 1950

Aug. 1—Calif. Democratic party convention calls for repeal of state alien land law (first ever taken by a major party in the state against statute).
Aug. 4—First Nisei (Robert S. Ustumi) of Oakland wins commission as pilot in U.S. Air Force at Williams AFB, Ariz.
Aug. 5—Korean war in 42nd day; 14 Nisei out of 24 Hawaiian on casualty list—1 KIA, 2 wounded, 11 MIA.

JACL Bldg. Fund Pledges and Contributions

Acknowledgement of 36 Donors: July 1-31, 1975

\$1 - \$99	Charles & Yukie Kanyasuta, Hol Chiaki Kumano, SF Peik Lindberg, LA Matthew M. Masuoka, Takashi Mitsuana, SJ Tom T. Murakami, SJ Takako Negi, SF T. Mishino, SMV Roy Oda, Det Peter Ohtaki, SJ Yuji & Grace Onishi, NY	John T. Saito, PrW Ryo Sato, Chi Masato Tanabe, Seq James Tanji, Sfk Por Gary & Kim Toji, Ber	Ray T & Mikie Yasui, Mid Frank T. Yoshimura, Sac Joseph K. Yoshino, SF
\$100 - \$249	Archbishop Nittin Ishida, SF Ted & Jane Kaneko, Ora Masaru Kolke, MD, (H) Katsumu Mukada, DTLA	Wallace K. Kagawa, Det Mountain View Greynhouse, Seq Dr. Kelly K. Yamada, S	
\$250 - \$499			
\$500 - \$999			
\$1,000 - \$4,999			

THE JULY REPORT

1000 Club Memberships

JACL Headquarters acknowledged 63 new and renewing 1000 Club members during the second half of July. The month-end total of active members signed since Dec. 1, 1974 stands at 1,854.

FIFTY CLUB (First Year)	9—Kawakami, Peter N 17—Nakazono, Jean 11—Ouye, Tom BOISE VALLEY (Third Year)
Kroner, Marvin (SFV) Smith, Leo (Cin) Yamagami, Taro (SJO)	12—Yasuda, Paul CHICAGO 4—Ishii, Marlon K 1—Anderson, Robert H 1—Gera, Bruce 9—Kawamura, Dr Alfred Y** 1—Marinkjanis, Sylvester 1—Mishima, Yuki 1—Towata, Luiza 1—Williamson, Wayne CINCINNATI 6—Smith, Leo* DETROIT 3—Oda, Roy
CENTURY CLUB (First Year)	
Fujikawa, Harry (SF) (Second Year) Kawamura, Dr Alfred (Chi) (First Year) Ota, Fred K (SW)	
ALAM: 8—Futagaki, 11—Takeoka, BERK: 7—Hirakawa, Jordan 4—Korda, George DETROIT: 3—Oda, Roy	

Nat'l Dialogue—

Continued from Front Page

answer to them is that we have a special kind of constituency.

The credit belongs to all of us: to the National Officers, Board and staff, to the District Officers, to the Chapter Presidents and their officers.

But most of all the credit belongs to the campaign volunteers who worked so diligently, and to the JACL members and other friends of the Japanese American community who gave so generously. To all who gave so generously of their time, of their efforts, of their financial resources, of themselves, we are extremely grateful. Your generosity has been made manifest and will endure for generations to come.

If you're S.F.-bound

In less than a week after the dedication, we had visitors from Utah, Denver, New York, and Seattle. We like that. The JACL National Headquarters belongs to the members.

San Francisco is said to be everyone's favorite city. We hope on your visit to this city you will use the National Headquarters as a resting place. This is your building. We hope you'll make it a home away from home. Let us help you with hotel reservations, sightseeing information.

Most of all we'd like you to visit and see your organization at work. We intend to sponsor exhibits of contemporary Japanese American artists, and a speakers forum. We invite you to use and enjoy the library and research facilities. We want to hear your impressions. The JACL National Headquarters belongs to the members. It is to be used by all of us for the betterment of all people.

When you build a building you are not finished. A finished building is only a physical entity from which to solve human needs. That is what is most exciting about our new Headquarters. It is a place where we can catch the vision of how JACL can use the talents of the many members we have for the betterment of humanity.

VISIT OLD JAPAN

MIYAKO

Luncheon Dinner Cocktails

PASADENA 139 S. Los Robles • 795-7005
ORANGE 33 Town & Country • 541-3303
TORRANCE 24 Del Amo Fash. Sq. • 542-8877

The New Moon

Banquet Rooms available for small or large groups

912 So. San Pedro St., Los Angeles MA 2-1091

Little Tokyo's Finest Chop Suey House

SAN KWO LOW

Famous Chinese Food

228 E. 1st St. Los Angeles MA 4-2075

GARDENA — AN ENJOYABLE JAPANESE COMMUNITY

Poinsettia Gardens Motel Apts.

13921 So. Normandie Ave. Phone: 324-5883
68 Units • Heated Pool • Air Conditioning • GE Kitchens • Television
OWNED AND OPERATED BY KOBATA BROS.

Yamasa Kamaboko

— WAIKIKI BRAND —

Distributors: Yamasa Enterprises

515 Stanford Ave., L.A. Phone 626-2211

Mrs. Friday's

DELIGHTFUL seafood treats
DELICIOUS and so easy to prepare

MRS. FRIDAY'S
Gourmet Breaded Shrimps and Shrimp Puffs

FISHING PROCESSORS
1327 E 15th St., Los Angeles (213) 746-1307

UMEYA's exciting gift of crispy goodness

Tops for sheer fun, excitement, wisdom plus FLAVOR!

Umeya Rice Cake Co. Los Angeles

1975 TRI-DISTRICT JACL CONVENTION

JOIN US! Sept. 12-14

Grand Hotel ANAHEIM, CALIF.

Orange County JACL Hosts

Because September is just around the corner, plan now to attend the convention and make a vacation a joint venture in September. The convention site is located within walking distance of Disneyland and other Southern California attractions like Knott's Berry Farm, Wax Museum, and Marineland are but a few minutes away. Bring your family, but plan now!

PACKAGE DEAL: \$34.50 Per Person
Registration \$ 3.00 Dinner-Dance.....\$20.00
Lunch \$ 5.00 (Non memb. \$25.00)
Lunch \$ 5.50 Dance Only \$ 5.00

Due to the availability of limited space at all hotels because September is still in the tourist season, request reservation forms from your district office as soon as possible. Return the hotel forms by Aug. 12 to the address on the card. For any or all of Tri-District package, mail a check, payable to Orange County JACL, 6181 Dover Dr., Huntington Beach, Calif. 92647, Attention: Ben Shimazu, Treasurer. For those who pre-register by Aug. 15th a drawing will be held for 2 tickets refunds (1 couple) to the dinner-dance. So register early!

PACKAGE DEAL REQUEST FORM

Orange County JACL Attn: Ben Shimazu, 6181 Dover Dr. Huntington Beach, Calif. 92647

Send me.....package deals at \$34.50 per member or \$39.50 for non-members.

Name.....
Address.....
City.....State.....ZIP.....
Amt. Enclosed \$.....Member:.....JACL

- Business -

Professional Guide

Your Business Card placed in each issue for 25 weeks at 3 lines (minimum).....\$25 Each additional line \$6 per line

Greater Los Angeles

FLOWER VIEW GARDENS FLORIST
180 N. Western Ave. (213) 466-7373
Art. It. welcomes your Floral Gift orders for the Greater L.A. Area. Mention PC.

NISEI FLORIST
In the Heart of L.A. Tokyo 328 E. 1st St. MA 8-5606
Fred Moriguchi Memb. Teleflora

YAMATO TRAVEL BUREAU
312 E. 1st St., L.A. (90012) MA 4-6021

Watsonville, Calif.

TOM NAKASE REALTY
Acreage Ranches - Homes Income
Tom T. Nakase Realtor 25 Clifford Ave. (408) 724-6477

San Jose, Calif.

EDWARD T. MORIOKA, Realtor
1092 Nottingham Pl., San Jose Bus: 246-6606 Res: 241-9554

Seattle, Wash.

Imperial Lanes
2101 - 22nd Ave. So. EA 5-2525
Nisei Owned — Fred Takagi, Mgr.

Kinomoto Travel Service
Frank Y. Kinomoto 511 Main St. MA 2-1522

Chicago, Ill.

SUGANO TRAVEL SERVICE
317 E. Ohio (60611) 944-5444, 642-7193
GR 2-4133 (Eve. Sun.)

New York City

Miyazaki Travel Agency, Inc.
The Staffer Hilton 401 - 7th Ave. (212) 760-1800

Washington, D.C.

MASAOA - ISHIKAWA AND ASSOCIATES, INC.
Consultant — Washington Matters 900 - 17th St., NW, Rm. 520 296-4484

Tell Our Advertisers You Saw It in the PC

MARUKYO
Kimono Store
101 Weller St. Los Angeles 628-4369

Red eye
日本人所有店
Levi's
Buena Park Carson Eagle Rock
Garden Grove - Northridge Orange - Puente Hills Mail San Bernardino - Torrance Westminster - Whittier

Appliances - TV - Furniture
TAMURA
And Co., Inc.
The Finest in Home Furnishings
3420 W. Jefferson Blvd. Los Angeles 18 RE 1-7261

Complete Home Furnishings
Koby's Appliances
15130 S. Western Ave. Gardena DA 4-6444 FA 1-2123

NISEI Established 1936

TRADING CO.
Appliances - TV - Furniture
348 E. FIRST ST., L.A. 12
MAdison 4-6601 (2, 3, 4)

Aloha Plumbing
LIC #201875
PARTS & SUPPLIES
Repairs Our Specialty
1948 S. Grand, Los Angeles RI 9-4371

ED SATO
PLUMBING AND HEATING
Remodel and Repairs Water Heaters, Garbage Disposals, Furnaces
— Servicing Los Angeles —
AX 3-7000 RE 3-0557

PHOTOMART
Cameras and Photographic Supplies
316 E. 2nd St., Los Angeles 622-3968

TOYO Miyatake

STUDIO
318 East First Street Los Angeles, Calif. MA 6-5681



Gail Nishioka

Hikari

PRESIDENTIAL CLASSROOM

San Francisco

Following the completion every year of the programs JACL sponsors for young people, each goes under some change and revision to hopefully improve the functioning of that program. We are now in the midst of revising the Presidential Classroom for Young Americans program, the National Scholarship program, and the Cultural Heritage Fellowship program. (The Student Aid, Graduate Scholarship, and JAYs programs will soon follow.)

The JACL chapters that sponsored students to a session of the Presidential Classroom for Young Americans (PCYA) in 1975 were asked to submit their criticisms and suggestions to the National Youth Director prior to the revision of the program for 1976. From the input of the chapters and young people who participated a new plan of operation for 1976 has been worked out which will hopefully enable the program to run more smoothly in the future.

An example of some of the changes which are going to be implemented follow.

In the past, those students who have attended session in the latter part of March have found that due to a regular congressional spring recess they had little or no success in meeting with members of their state congressional delegation. So, in 1976 the Classroom sessions will begin a full month earlier so as to avoid the spring recess and permit all of our young people in all of the sessions to have the opportunity of meeting with some of their state representatives.

Also, rather than having many of our students' paperwork tied up in the administration of the Presidential Classroom in Washington, D.C., through the cooperation of the Classroom staff, all application and processing of students sponsored by JACL will take place through the National Youth Director's Office in San Francisco. This should ensure for quicker and more efficient processing.

From all of the reports which have come in from students who have participated in the past, JACL is proud to have the opportunity to continue its participation in this very unique and outstanding program for young people. The Presidential Classroom for Young Americans is not just another course in government. It is an intimate, unique opportunity for our young people to view the government as it functions and to talk personally with some of the people that make the system work. The Classroom provides the kind of first-hand look and experience that very few of us will ever have the opportunity to know.

The JACL chapters which have participated in the past by sponsoring students have witnessed the confusion and difficulties which go into running a program on a national level, but the returns to our young people are without limit. We look forward to the continued success of the PCYA for our young people.

Any questions on the Presidential Classroom can be directed to: Gail Nishioka, Youth Director, JACL, 1765 Sutter St., San Francisco 94115, (415) 921-5225.

Reparations

Continued from Front Page

the public's attention or awareness of the injustice is likely to be over. However, with a continuing, annual program, there will be a constant reminder of the injustices suffered by the Japanese Americans.

2—A scholarship fund would be easy and inexpensive to administer. For example, the legislation could provide that the President or Congress would be periodically responsible for naming a board of trustees. The trustees could then determine the kinds of criteria on which the scholarships would be awarded and a small, probably part-time administrative staff would be responsible for the actual paper work involved in applying for and awarding the scholarships.

The costs of administering the program would be minimal and could be taken from the interest earned on the fund principal.

3—While the fund would not directly benefit the individuals who actually suffered during WW2, it would provide the best possible recognition of the travails of that generation of Japanese Americans. Since the fund would be established in the name of Japanese Americans, it would stand as a recognition of the injustices which they all suffered.—Barry Matsumoto.



When Care Means Everything

It's comforting to know Rose Hills is nearby.

There are sensitive times when care and understanding are all important.

We have known this for more than half a century and that is why Rose Hills offers every needed service — mortuary, cemetery, flowers, chapels, mausoleums and crematory — all within the world's most naturally beautiful memorial park.

Knowing you care... Rose Hills is nearby. Caring... and understanding... at Rose Hills that means everything.

ROSE HILLS MORTUARY/CEMETERY
3900 Workman Mill Road,
Whittier, California; 699-0921
BEAUTY-COMFORT-CONVENIENCE

MAJOR APPLIANCES CARPETING ROOFING

We make SCHOOL CLOTHES DOCTOR BILLS NEW CAR TAXES DENTAL WORK MOTORCYCLE

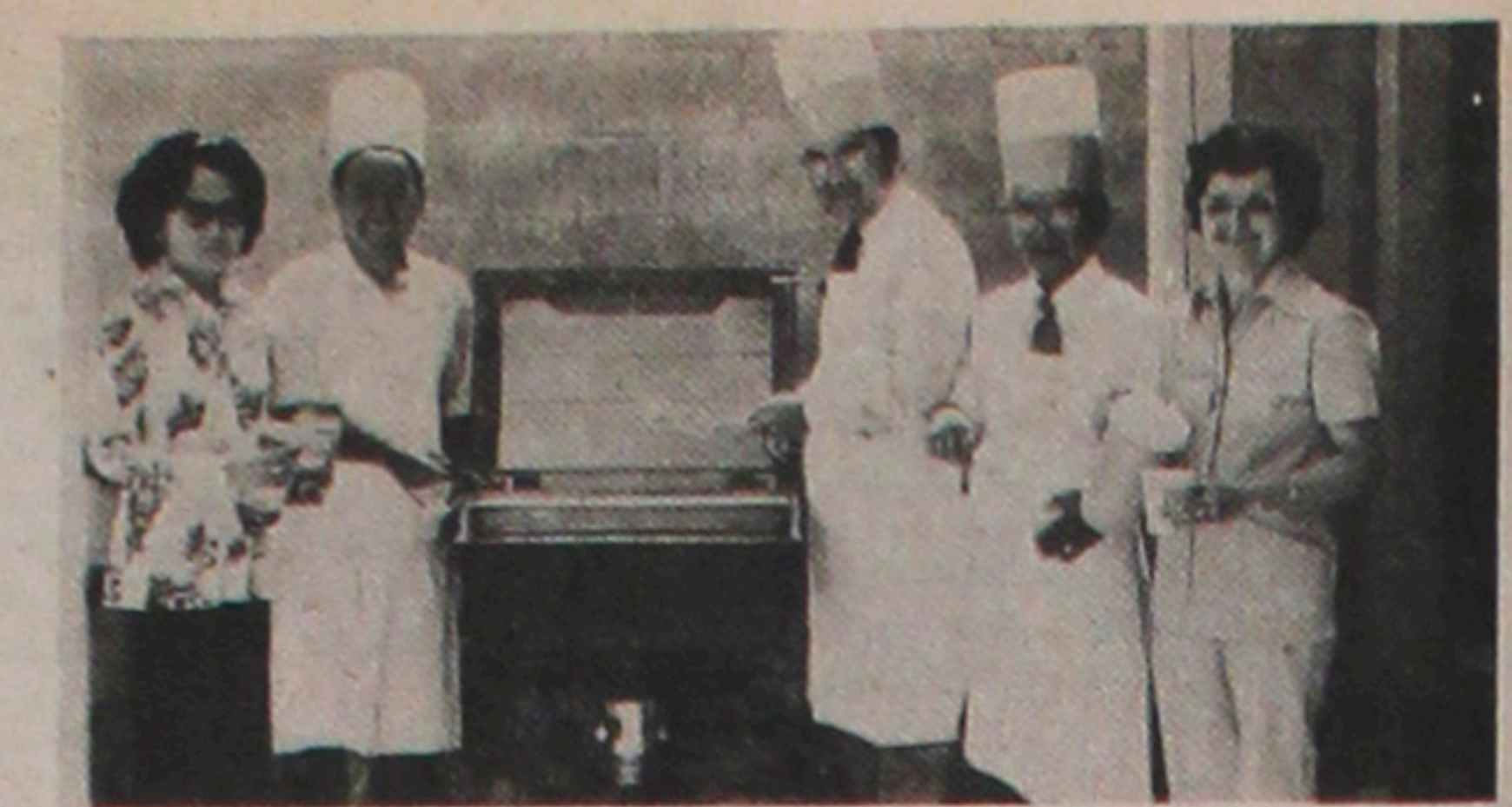
PERSONAL LOANS

BILL CONSOLIDATION HOME IMPROVEMENTS BOATS

National JACL Credit Union

Mail: P. O. Box 1721, Salt Lake City, Utah 84110
Office: 242 S. 4th East, Salt Lake City
Tel.: (801) 355-8040

Remember you can borrow \$3,000 on your signature with a qualified credit rating.



CITY OF CARSON JACL—PSWDC's newest chapter in Carson raised \$500 at a recent pancake breakfast at the neighborhood Better Foods Market. The promotion picture shows (from left) Fumi Takahashi, ways and means; Joe Sakamoto, chapter president; Assemblyman Paul Bannai; Sak Yamamoto, Carson mayor pro-tem; and Rita McCormack, publicity, prepping for the benefit held July 20.

Prime Minister Miki in sentimental homecoming in weekend visit of L.A.

LOS ANGELES — Anyone who has lived a while in Los Angeles cannot ignore the magnetism of the City of the Angels. Thus it was for Japan Prime Minister Takeo Miki, who was winding down his nine-day U.S. tour and spent the weekend (Aug. 8-10) here.

Miki is Japan's first post-war head of government to have studied in the United States, specifically here in Los Angeles. After an earlier trip around the world in 1929-30, he resided for nearly four years (1932-35) here to study English. Because the exchange rate suddenly plunged from \$49 to \$20 to one yen while here, he took on a job teaching Japanese to Nisei children at Showa Gakuen to support himself.

Past national JACL President Frank Chuman is among his Showa Gakuen students, many of whom have continued to maintain contact with their "sensei" (teacher). "That school was partly responsible for me not mastering English fully," he told L.A. Times correspondent Sam Jameson in Tokyo before he embarked on his first trip abroad as prime minister—significantly to the United States, as President Ford mentioned in his toast during the White House dinner Aug. 5. Mr. Ford's first overseas trip as President was to visit Japan last year, which Ford then noted reflected the "or-

Marutani —

Continued from Front Page

at the Univ. of Washington, and interned with his family for nine months near Fresno, Calif. He resumed his studies at Dakota Wesleyan, Mitchell, S.D., earned his law degree at the Univ. of Chicago, and admitted to the American Bar Assn. in 1954.

Active in community affairs, among the many organizations to which he belongs are the JACL, Small Business Administration, Nationalities Service Center, Philadelphia Bar Assn.'s civil rights committee, U.S. Civil Rights Commission and American Civil Liberties Union.

A veteran of the U.S. Army, he served as lieutenant in military intelligence during WW2.

Marutani's distinguished career in law included his argument before the U.S. Supreme Court in the anti-miscegenation case of *Loving vs. Virginia* (1967) for JACL in which the court held unanimously for the plaintiffs.

For his work as a civil rights lawyer in Bogalusa, La., in the summer of 1965, he was recognized as the "JACLer of the Biennium". He served the JACL as president of the Philadelphia chapter (1955), as Eastern District governor (1959-61), national 3rd vice-president (1962-64) and as national legal counsel (1962-70).

Pennsylvania Gov. Milton J. Shapp appointed Marutani to a vacancy on the court in March. Senate confirmation was required.

We've got a yen for your new car at a low interest rate:

Come Drive a Bargain with



THE BANK OF TOKYO

OF CALIFORNIA Member FDIC

San Francisco Main Office.....	Tel. (415) 445-0200
San Francisco Japan Center Branch.....	Tel. (415) 445-0300
Oakland Branch	Tel. (415) 839-9900
Fremont Branch	Tel. (415) 792-9200
Palo Alto Branch	Tel. (415) 941-2000
San Mateo Branch	Tel. (415) 348-8911
San Jose Branch	Tel. (408) 298-2441
Westgate Branch	Tel. (408) 298-2441
Salinas Branch	Tel. (408) 424-2888
Sacramento Branch	Tel. (916) 441-7900
Stockton Branch	Tel. (209) 466-2315
Fresno Branch	Tel. (209) 233-0591
North Fresno Branch	Tel. (209) 226-7900

L.A. Main Office: 616 W. 6th.....	Tel. (213) 972-5200
Los Angeles Branch	Tel. (213) 687-9800
Montebello Branch	Tel. (213) 726-0081
Crenshaw Branch	Tel. (213) 731-7334
Western L.A. Branch	Tel. (213) 391-0678
Gardena Branch	Tel. (213) 327-0360
Torrance Branch	Tel. (213) 373-8411
Panorama City Branch	Tel. (213) 893-6306
Artesia-Cerritos Branch	Tel. (213) 924-8817
Santa Ana Branch	Tel. (714) 541-2271
Irvine Branch, 17951 MacArthur Blvd.....	(714) 549-9101
San Diego Branch	Tel. (714) 236-1199

Shimada, Asami cop JACL bowling honors

(Special to The Pacific Citizen) EL CERRITO, Calif.—National JACL Bowling Tournament, a handicap affair for the first time, culminated here at Gold-ene Gate Lanes this past week (July 29-Aug. 2) with one link to its previous 28 annual tournaments — the all-event championship based on scratch scores.

Fuzzy Shimada of Santa Clara and Nobu Asami of East Bay shared the honors as the premier tournament champions. Both have been all-event winners previously. In fact, Asami won the event last year.

Shimada, the first Nisei to roll a perfect game in 1949, claimed the 1975 men's all-events trophy with 1822 on games of 630-607-585; while Asami did it with her 1653 on games of 509-549-595.

Prizes were distributed on a handicap basis with a share going to scratch efforts in lieu of quad prize distributions which marked the JACL bowling classic in the past, tournament director. Hi Akagi explained.

About 160 bowlers competed in the new mid-summer event. Previous JACL tournaments were held the first week of March. Fourteen men's and ten women's teams were entered.

Special Events
WOMEN'S SWEEPERS
Martie Tsutui (EB) 692-130-822; Helen Yawata (EB) 730-900-

CALENDAR

Aug. 13-17
JAY—Cal. Tri-District, Fresno
Aug. 16 (Saturday)
Los Angeles—Nisei Week coronation ball, Beverly Wilshire Hotel, 7 p.m. dinner; 10 p.m. coronation.
Aug. 19 (Tuesday)
Salinas—Ed Mtg. Bank of Tokyo, 8 p.m.
Aug. 21-24
EDC-MDC—Cleveland hosts: Joint Conference, Baldwin-Wallace College, Berea
Aug. 22-24
IDC—Idaho Fall hosts: Qtrly Session
Aug. 24 (Sunday)
NC-WNDC—Swim Meet, Gunn High, Palo Alto
Sept. 12 (Friday)
Philadelphia—Ed Mtg. Ray Master's eve.
Sept. 16 (Tuesday)
Salinas Valley—Ed Mtg. Bank of Tokyo, 8 p.m.

bolstered when the people of Japan can present another U.S. Bicentennial gift to the community where he got his start.—Harry K. Honda.

Fall Openings Still Available at St. Mary's Pre-School

- Starts Wed., September 10
- Early Childhood Specialists stress LANGUAGE DEVELOPMENT

State Accredited Teachers & Assistants For Ages 2½—5 Non-denominational



Wide variety of activities and discoveries offered to young children

ST. MARY'S EPISCOPAL CHURCH
961 S. Mariposa, Los Angeles 387-1336
For Information: Call Mrs. Isabelle Black Director Between 9 a.m. and 2 p.m.

CHIYO'S
Japanese Needlecraft Bunka Embroidery

Crafts Arts - Kits - Framings
WHOLESALE & RETAIL
Also Give Lessons

Chiyo K. Welch, Prop. (714) 995-2432
2943 W. Ball Rd., Anaheim Calif.
Open Mon.-Wed.-Thurs.-Fri.-Sat. 10-5 Eve. Fri. to 8:30 p.m.



CAMPBELL'S flowers
Across from St. John's Hosp.
2032 Santa Monica Blvd.
Santa Monica, Calif.
Mary & George Ishizuka 826-0911



LYNDY'S
926 S. Beach Bl.
Anaheim, Calif. JA 7-5174
Harold Goertzen Res. Mgr.
Between Disneyland and Knott's Berry Farm

Send Us Clippings from Your Hometown Papers

Low cost new auto loans!



Sumitomo Bank of California
Member F.D.I.C.

Friday, Aug. 15, 1975

Nisei Week



CENTER MANAGEMENT CO.

Carson Mall
700 South Flower Street
Los Angeles, Calif.
680-2767

We Support Brotherhood
Live It - Believe it

EAST WEST DEVELOPMENT CORPORATION

250 E. First Street, Room 612
Los Angeles, Calif.
485-1177

祝二世週

NISEI WEEK GREETINGS

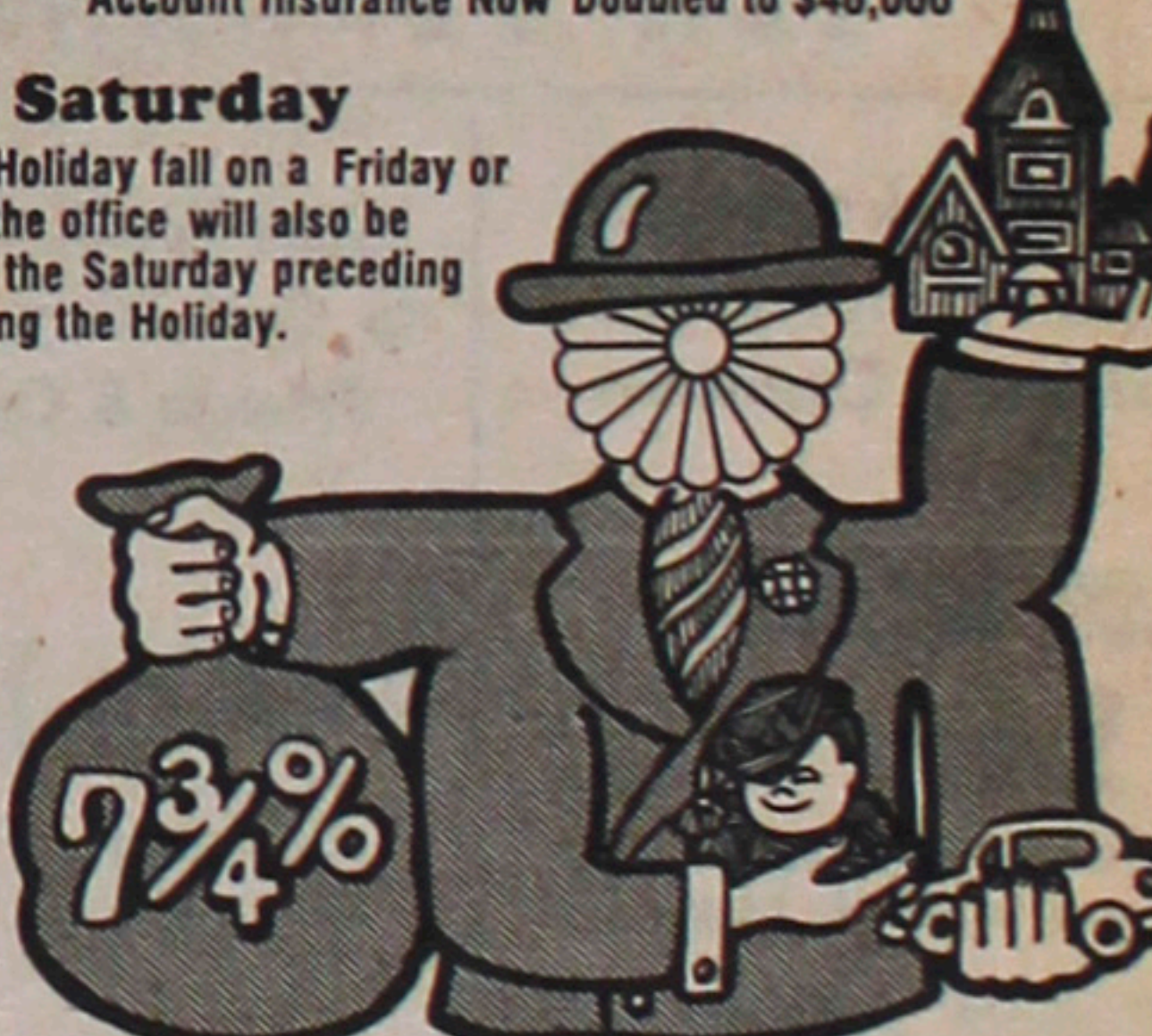
NATIONAL AUTO GLASS

180 Stores in Ten States
Now Serving You

Investors Dream

Account Insurance Now Doubled to \$40,000

Open Saturday
Should a Holiday fall on a Friday or Monday, the office will also be closed on the Saturday preceding or following the Holiday.



ANNUAL INTEREST RATES ON INSURED SAVINGS
All interest compounded daily

7 3/4%	7 1/2%	6 3/4%	6 1/2%	5 1/2%
--------	--------	--------	--------	--------

Certificates of Deposit may be withdrawn prior to maturity, but in accordance with Federal Regulation requirements, interest for the entire time of deposit will be recalculated at the prevailing savings passbook rate, less 90 days interest.

MERIT SAVINGS AND LOAN ASSOCIATION
LOS ANGELES: 324 East First Street 624-7434
TORRANCE/GARDENA: 18425 South Western Avenue 327-9301
MEMBER FSLIC

FRIENDLY SERVICE

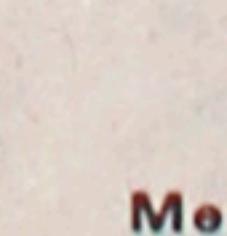
THE MITSUBISHI BANK OF CALIFORNIA

HEAD OFFICE
800 Wilshire Blvd., Los Angeles, Calif. 90017 (213) 623-7191

LITTLE TOKYO OFFICE
321 East Second St., Los Angeles, Calif. 90012 (213) 680-2650

GARDENA OFFICE
1600 W. Redondo Beach Blvd., Gardena, Calif. 90247 (213) 532-3360

SAN FRANCISCO OFFICE
425 Montgomery St., nr. California (415) 788-3600
Member FDIC



Sumitomo Bank of California
Member F.D.I.C.

Problems facing recent immigrants from China noted by L.A. professor

HONOLULU — New Chinese immigrants in Los Angeles and San Francisco show a "strong sense of disillusion and discontent," according to Cal State L.A. sociologist Lawrence K. Hong, who was here recently for the Conference on Asian Studies at the Univ. of Hawaii.

About 100 scholars from the Mainland attended the three-day meeting here in late June.

Dr. Hong said 158,995 Chinese immigrants entered the U.S. between 1966-1973, as compared with 17,813 in the previous 15 year period. Most of the recent arrivals are young, raised in Hong Kong and with "a strong sense of cultural pride and superiority commonly found among the Chinese people". Many are college-educated, had well-paying jobs before emigrating, but as newcomers with language difficulties and other problems, many find it impossible to obtain a job in keeping with their former social status, he said.

"This discrepancy between former status and current status is psychologically stressful for many of the recent immigrants," he said. For social and economic reasons, many live in the Chinatown areas and "are dismayed with the traditional attitude and life-style that pervade in their new neighborhood," Hong continued.

A third problem, he said, is that "Chinese have always been an apolitical people," emphasizing racial and cultural identities rather than national identity. While Americans are "highly political" in contrast, they often ask recent Chinese immigrants whether they prefer the government of mainland China or of Taiwan and newcomers are frustrated because of their reluctance to "commit themselves to either side," Hong said.—Advertiser

Japan Today

UCHIWA (ROUND FANS) —Department stores reported a boom in the sales of the round fans with the advent of summer festivals. Promotion in all three uchiwa-producing areas (the Hirae type in Kagawa-ken, Marue type in Chiba-ken, and Sashie type in Kyoto) had been declining since 1962 when electric fans and air conditioners took over. One uchiwa shopkeeper in Shinjuku revealed most of her customers are young people as makers are trying to surmise the reason for the pleasant boom.

SMOG—Rabbits exposed to ozone of one part per million (0.1ppm) in concentration for 10 days in a one-meter square chamber where its temperature was regulated at 25-degrees C. (77-F) were found to have their testis damaged—first time researchers were able to ascertain tissue-damage in testis, according to the Tokyo Research Institute for Environmental Protection.

A new begonia strain (Winter Queen Gamma 3), developed by Tokyo researchers exposing a seedling to radioactivity, reacts strongly to photochemical smog and other air pollution. When exposed to 0.15 ppm of ozone (equivalent to density in Tokyo on a smoggy day), white spots appear on the leaves within six hours, then change to water blisters, which break to brown the leaves.

Eight of the 23 wards in Tokyo are plagued by air pollution: Shinagawa, Chiyoda, Minato, Bunkyo, Shinjuku, Shibuya, Ota and Koto. Since the start of the new fiscal year in April, Shinagawa, was first to designate 57 patients as victims of "pollution diseases", enabling them to qualify for free treatment and allowances (compensation to kin of deceased patients of pollution diseases).

STAGFLATION — More than 90 pct. of office workers in the big cities entertain some apprehensions about their life and job in view of chronic stagflation, a Tokyo survey of 1,000 salaried male workers indicated. They were uneasy about their pay, price spiral, worried most if they or someone in the family became ill. To ease their mind from anxiety, 39 pct. got together with friends, 35 pct. subscribed to insurance plan and 8 pct. said they took to drink.



SAN FRANCISCO—Part of the English as a Second Language program at Alemany Community College Center is typing. Instructor Rose Beatty goes over lesson with Mrs. Kay Leghorn, 53, (seated) a widow of 17 years who came with her American husband in 1945. "The traditional Japanese way is for the children, when they are grown, to take care of their parents. But with things as they are today, my children cannot do this. I want to take care of myself," the fourth-year ESL student said. She is learning office skills to find work as a bilingual secretary.

Order PC for Your Schools or Libraries

HOUSE CLEARS BILL FOR U.S. FOLK LIFE CENTER

WASHINGTON — The House Rules Committee cleared Rep. Spark Matsunaga's bill to establish an American folk life center in the Library of Congress.

The center would be authorized to make grants, loans or enter into contracts with individuals or groups for development of material on American folk life as well as production of plays, workshops, displays, and audio-visual materials. The center would also maintain a national archive to collect creative works, artifacts and materials illustrating aspects of American folk life.

High influx of Asian immigrants, tourists to stay

WASHINGTON — Aside from the new influx of an expected 127,000 South Vietnamese refugees, official figures show immigration from Asian countries into the United States consistently running ahead of Europe for the past 10 years. The predominant Asian trend is expected to continue.

The Department of State, in an annual report from its visa office, said that European countries, traditional source of new American citizens, received only 84,813 permanent visas in fiscal 1974 compared with 117,090 in 1965.

At the same time, the number of permanent visas granted to Asian countries jumped from 15,186 in fiscal 1965 to 121,813 in fiscal 1974.

Non-immigrant visas — for tourism, business and such transients as foreign airline and ship crews — increased to 3,156,293 in fiscal 1974, up 11.4 per cent over the previous year.

"Immigration to the United States totaled 381,176, which is about 1 per cent higher than the fiscal 1973 total of 378,117," Thomas M. Recknagel, acting administrator of the Bureau of Security and Consular Affairs, said in a preface to the report issued in May.

"The growth of immigration was again due to primarily to the increase in the number of visas for immediate relatives of U.S. citizens. This minor increase in the total volume of immigration belies the geographic changes, which are characterized by increases for Asia, the Caribbean and Mexico, and by decreases for Europe and Canada."

Non-immigrant visas — for tourism, business and such transients as foreign airline and ship crews — increased to 3,156,293 in fiscal 1974, up 11.4 per cent over the previous year.

"Immigration to the United States totaled 381,176, which is about 1 per cent higher than the fiscal 1973 total of 378,117," Thomas M. Recknagel, acting administrator of the Bureau of Security and Consular Affairs, said in a preface to the report issued in May.

"The growth of immigration was again due to primarily to the increase in the number of visas for immediate relatives of U.S. citizens. This minor increase in the total volume of immigration belies the geographic changes, which are characterized by increases for Asia, the Caribbean and Mexico, and by decreases for Europe and Canada."

UC Berkeley reunion

MONTEREY, Calif.—UC Berkeley Nikkei alumni will hold their eighth annual reunion and golf get-together Oct. 11-12 at Rancho Canada with overnight accommodations at the Casa Munras here. Applications are being accepted by Mo Noguchi, 8 Drakes Cove, San Rafael 94903 at \$47 per package. Saburo Ikeda, defending champion, is reunion chairman.

KAGERO GOLFERS MARK GOLDEN JUBILEE

SACRAMENTO, Calif.—The Kagero Club, founded in 1925 by 14 Issei and Nisei golfers here, celebrated its golden jubilee at a gala banquet Aug. 3 at Sacramento Inn. It is the oldest active public golf club around, according to Tak Tsujita, who chaired the celebration.

Name of the club means "morning mist", appropriate since members have played on Sundays from the crack of dawn when dew was still fresh on the ground until dusk, according to Bob Fukushima's story of the club published in the 50th anniversary booklet (\$5, care of Tsujita, 1821 - 16th St., Sacramento 95816).

Many Kagero members were relocated to Tule Lake during WW2 where they designed a nine-hole course. There were tournaments where an errant ball landing outside the camp was retrieved by the MPs, the club historian Fukushima noted.

Cleveland

Euclid Villa recently marked its first year anniversary for its Japanese senior citizen residents.

NISEI WEEK GREETINGS

ARROW KEY SERVICES

We Are Pleased to Serve You

5517 Hollywood Blvd. 465-4134

Los Angeles, Calif.

Greetings to Our Many Japanese Friends

PAUL'S INDOOR PLANT SHOP

Under New Management
LYNN E. SCOTT

11016 Jefferson Blvd. 391-2464

Culver City, Calif.

NISEI WEEK GREETINGS

FLOWERS BY DON-MARIO

6261 Bristol Park Way 645-5670

Culver City, Calif.

NISEI WEEK GREETINGS

Guslav J. Molnar Landscape Architect

2014 S Sepulveda Blvd. 478-0778

West Los Angeles, Calif.

Greetings to Our Many Japanese Friends

BERYLWOOD TREE FARM

11590 W. Pico Blvd. 473-0310

Los Angeles, Calif.

NISEI WEEK GREETINGS

T & R LUMBER CO.

Nurserymen's Equipment & Supplies

7159 Telegraph Rd. 724-4316

Los Angeles, Calif.

Greetings to Our Many Japanese Friends

R. L. BEVINGTON GRIP EQUIPMENT AND STAGE RENTALS

650 N. Bronson 466-7778

Hollywood, Calif.

VENTURA COUNTY

NISEI WEEK GREETINGS

PETOSEED CO. INC.

"Seeds"

1905 Lirio (805) 647-1188

Saticoy, Calif.

NISEI WEEK GREETINGS

J. C. TOBIAS & SONS

Farm Equipment
Branch Management Specialists

251 S. Saticoy (805) 647-1315

Ventura, Calif.

Greetings to Our Many Japanese Friends

JOHN TAFT ELECTRIC CO.

SALES - SERVICE - PARTS

1151 Callens Road (805) 642-0121

Ventura, Calif. 93003

SAN DIEGO

NISEI WEEK GREETINGS

KELLY GOLF

Professional Repairs

7944 Convoy Court (714) 560-5589

San Diego, Calif. 92111

Nisei Week Greetings

TANNERS INDIAN ARTS

11844 Rancho Bernardo Rd. 92128

San Diego, Calif. (714) 487-8232

Nisei Week Greetings

KELLY'S STEAK HOUSE

248 Hotel Circle, Mission Valley

San Diego Calif. (714) 296-2131

Painters-paper hangers

LOS ANGELES — Affirmative Action Task Force of the Little Tokyo Community Development Advisory Committee (628-8590) announced a five-week on-going program for painting and paper hanging apprentices, being coordinated by Tom T. Taketa. Unemployed applicants over age 17 earn \$50 a week while being trained.

Choose PC Advertisers

Nisei Week Greetings

Southern California's Largest Discount Nursery Center

ALL AMERICAN HOME CENTER

Garden & Lawn Equipment & Supplies

7201 E. Firestone Downey, Calif. 923-9671

Happy Nisei Week

REDWOOD MFG. & LUMBER CO.

6123 1/2 W. Slauson Ave. Culver City, Calif. 397-3759

Nisei Week Greetings to Our Many Japanese Friends & Customers

REEL-IN MOWER SHOP

Lawn Mowers
Sales, Service & Parts

550 W. Manchester Blvd. Inglewood, Calif. 678-2372

Nisei Week Greetings

Compliments of a Friend

"O.W.O."

Happy Nisei Week

M & Y SERVICE STATION

262-9461
2701 E. First St. Los Angeles, Calif.

Nisei Week Greetings

Gregs Las Amigas Nursery

2090 S. Atlantic Blvd. Monterey Park, Calif. 721-5555

We Support Brotherhood. Live It. Believe It. Fighting for Peace.

Baller Hardware & Lumber

665-4149
2505 N. Hyperion Ave. Los Angeles, Calif.

Best Wishes to the Entire Japanese American Community

Compliments of a Friend

Nisei Week Greetings

PROFESSIONAL LANDSCAPE NURSERY

PASADENA

3336 Lombardy Rd. (213) 796-2880

UPLAND

1793 W. Arrow Highway (714) 985-2881

Nisei Week Greetings

SUNSHINE YAMAHA

Sales - Service - Accessories

1010 West Chapman Orange, California (714) 633-0064

Nisei Week Greetings to Our Many Japanese Friends & Customers

Old Schoolhouse Coins

415 W. Foothill Blvd. Claremont, Calif. (714) 624-3440

Nisei Week Greetings

C. G. SYSTEMS, INC.

313 N. Rexford St. Colton, Calif. 92324 (714) 825-2932

The Wigwam

Large Selection of Authentic Indian Jewelry and Artifacts Indian Owned and Operated

1418 Camino del Mar Del Mar Calif. 755-8855

LOS ANGELES

Greetings to Our Nisei & Sansei Friends



HUNT-WESSON FOODS, INC.

1645 W. Valencia Dr. 871-2100

Fullerton, Calif.

An Equal Opportunity Employer Male - Female

Greetings to Our Many Japanese Friends

RUPERTS CERTI-FRESH FOODS INC.

Fish & Seafood

13055 E. Molette 921-8311

Santa Fe Spring, Calif.

NISEI WEEK GREETINGS

EVERGREEN LANDSCAPING

Waterfalls - Garden Pools
Reasonable Rates for Home Owners Free Estimates

DAVID YEH

3811 Fuchsia Circle (213) 598-1100

Seal Beach, Calif.

Greetings to Our Many Japanese Friends

GROWIN' MY WAY NURSERY

Indoor Plants - Hand Made Pottery
Complete Nursery Supplies

600 Marina Dr. 430-2519

Seal Beach, Calif.

NISEI WEEK GREETINGS

Abale & Weber Landscape Architects

4429 E. Anaheim 433-0921

Long Beach, Calif.

Greetings to Our Many Japanese Friends

FRANCIS L. NORMAN NURSERY

8633 Duarte Rd. 285-9795

San Gabriel, Calif.

SAN BERNARDINO AND RIVERSIDE COUNTIES

NISEI WEEK GREETINGS

NEEL'S NURSERY OVER 50 YEARS IN THE DESERT

STATE LICENSED CONTRACTOR NO. 34792

Open Daily 7 a.m. till 6 p.m.

3255 Palm Canyon Dr. (714) 327-1251

Palm Springs, Calif. 92262

—YOUR PATRONAGE APPRECIATED—

NISEI WEEK GREETINGS

Lake Elsinore Sands Inn & Casino

Hwy #71

Lake Elsinore, Calif.

Upon Request We Have Group Facilities Available for All Auxiliaries, Clubs — Organizations

For Information & Reservations
Call: (714) 674-3101

—YOUR PATRONAGE APPRECIATED—

Compliments

SUNRISE NURSERY

"TREES & LAWNS OUR SPECIALTY"

- Tree Trimming • Complete Sprinkler Systems • Shrubs
- Insecticides • Garden Tools • Conditioner Distributors
- Sta-Rock & Exclusive Klean-Gro Soil

712 S. Sunrise Way (714) 327-6912

Palm Springs, Calif.

Greetings to Our Many Japanese American Friends & Patrons

ALBERS FEED & FARM SUPPLY

Complete Garden & Lawn Supplies

200 N. Harvard (714) 658-7242

Hemet, Calif.

NISEI WEEK GREETINGS

MARINA RIVIERA MOTEL

- Family Accommodations • Group Facilities • 41 Luxury Suites
- Excellent Fishing • Lake View from Every Luxurious Room
- TV & Hi-Fi in Every Room Centrally Located

Most Major Credit Cards Accepted

For Information & Reservations Call: (714) 866-7545

Box 979, Big Bear Lake 92315

SAN FERNANDO VALLEY

Nisei Week Greetings to Our Many Japanese Friends & Customers

Ace Lapidary Supply Inc.

We stock Everything for the Rock Hound

Custom Slabbing & Polishing

6023 N. Sepulveda Van Nuys, Calif. 997-1936

Nisei Week Greetings to Our Many Japanese Friends & Customers

North American Tree Service

3 Generations of Tree Works
High Topping
Oriental Pruning & Tree Removal
State Licensed Tree Contractor

Canoga Park, Calif. 347-3131

Home 347-8149

Nisei Week Greetings to Our Many Japanese Friends & Customers

Jacobs Bros.

Poly Cans - Pots
Shade Mat

8928 Sepulveda Blvd. Sepulveda, Calif. 892-1121

Nisei Week Greetings to Our Many Japanese Friends & Customers

Wilhelm Top Soil

Top Soil - Fill Dirt
Decomposed Granite

14239 Bessemer Van Nuys, Calif. 785-1342

Nisei Week Greetings to Our Many Japanese Friends & Customers

Sunnyslope Mum Gardens

11821 Foothill Blvd. Lake View Terrace 899-1020

Nisei Week Greetings to Our Many Japanese Friends & Customers

Valley Crest Tree Co.

13745 Sayre Sylmar, Calif. 367-5803

Nisei Week Greetings to Our Many Japanese Friends & Customers

California Camellia Gardens

Wholesale Growers of Azaleas & House Plants

13531 Fenton Ave. Sylmar, Calif. 367-1995

Nisei Week Greetings to Our Many Japanese Friends & Customers

Green Thumb Nursery & Hardware

Garden & Lawn Equipment & Supplies

21812 Sherman Way Canoga Park, Calif. 340-6400

Happy Nisei Week

SAN FERNANDO VALLEY GEM CO.

Gemstone Cutting & Polishing Machinery
Open 6 Days BankAmericard

5905 Kester Ave. Van Nuys, Calif. 786-7292

Nisei Week Greetings

BABBITS NURSERY

847 N. Hollywood Way Burbank, Calif. 846-6174

Asian American small entrepreneurs relatively ignored in minority aids

By CLAUDIA LEVY
(Washington Post)

WASHINGTON — As major Japanese industries grab a foothold in the faltering American economy, small business owners of Chinese, Japanese, Korean and Filipino ancestry are concentrating mainly on survival.

Relatively ignored in the black-oriented minority enterprise efforts of the federal government, some Asian American entrepreneurs are cut off by cultural differences from the arena of American commerce. And the inroads of Japanese industrialists have led to misconceptions about the business success of Asian Americans, these small business owners say.

Other Americans look at Japanese companies moving into this country and say, "Look at the Asian community; it's doing extremely well," one business development official said. "But they fail to distinguish between nationals and Asian Americans, who experience all the problems inherent to ethnic communities: lack of managerial talent, equity capital or the opportunity to get into growth industries."

In reality, Asian American businesses are largely mom-and-pop retail operations serving ethnic communities, limited in their growth because they have traditionally looked to friends, relatives and their savings for expansion capital instead of banks or federal loan programs.

"Historically, experience has tended to make us very withdrawn from the system," says Tsutomu "Toot" Uchida, head of the Los Angeles-based Asian American National Business Alliance. "The idea has been not to bitch, but to make

due with what we have," Uchida says. "There have been no ways to get into senior management, policy-making jobs. That's true today."

Overlooked Asians

One result of that and the fact that there are no Asian Americans in top administration posts, is that in six years of operation, the Commerce Department's Office of Minority Business Enterprise has funded only two Asian American business development organizations, his and one in San Francisco, while directing its resources to black, Spanish-speaking and American Indian programs, Uchida says.

According to the General Accounting Office last month, the program to help "disadvantaged" business owners become self-sufficient by giving them federal procurement contracts has met with minimal success.

Over 6,900 subcontracts totaling \$737.1 million over the past six years have been awarded by the Small Business Administration. In a GAO study of 110 companies, only 18 were found operating profitably.

Hawaii, with a large native population, has only recently been promised a \$200,000 OM-BE grant to set up a business development group. OM-BE has said in the past that it did not have the money to begin operations there.

According to Alma Henderson, staff assistant to Rep. Spark Matsunaga (D-Hawaii), the promise of funding was made by OM-BE director Alex Armendaris on the same day investigators from the General Accounting Office told the administrator

his L.A. regional office showed a pattern of discrimination against Asian Americans. Well over 60 per cent of America's oriental population lives on the West Coast.

Armendaris told a reporter that he feels the Asian American programs have "progressed quite well" and that he was more concerned that rural American Indians were not doing as well.

A lack of federal interest in Asian American business — some 66,000 were found to exist in 1972 — may be "our own fault," said Uchida, a management consultant of Japanese ancestry whose organization has helped set up more than 100 businesses in three years. "We have not articulated our needs. Other ethnic groups don't look at us as minorities in the national strategy meetings, it's always black-brown-American Indian."

Until a staff member of OM-BE added his organization's name, he said, no Asian American representatives were invited to a national conference on minority business held in March at the White House.

In the Washington area, which had 951 Asian Amer-

ican firms in 1972 and was 10th largest among metropolitan regions, new Chinese arrivals have tended to open restaurants and laundries instead of venturing into more risky enterprises, said Dr. William Chin-Lee, a Chinatown internist, who ran unsuccessfully for D.C. delegate.

Chinese in D.C.

In this respect, they are not unlike their counterparts in other cities, said the doctor, who is an organizer of Diplomat National Bank, planned as the city's first Asian-oriented financial institution, but not yet chartered.

"It is much easier to get loans from Chinese credit unions than it is to get credit from established institutions," he said. For Asian Americans, it is often "a matter of communication and identity ... Bankers do not know from the communications — whether this person can do well in his business."

To get around this problem, the Lee family established the Lee Federal Credit Union some years ago to provide loans to Chinese named Lee — who now number

Continued on Next Page

Friday, Aug. 15, 1975

PACIFIC CITIZEN_5

FRESNO COUNTY

NISEI WEEK GREETINGS

Custom Welding & Manufacturing

Custom Designed Equipment - Truck Trailers
Mfr. of Fruit Processing Machinery

7400 E. Manning Ave. (209) 834-3720
Fowler, Calif.

NISEI WEEK GREETINGS

The Newhall Land and Farming Co.

Agricultural Services Division
Equipment Rental Department &
Crop Thinning Service
Tractor Rentals

7750 Road 9, Firebaugh, Calif. (209) 659-3095

NISEI WEEK GREETINGS

BARR PACKING COMPANY

Fruits & Vegetable - Growers & Shippers
Compliments of E. L. Ted Barr Jr.

7th & L (209) 875-2541
Sanger, Calif.

NISEI WEEK GREETINGS

CONTRERAS ROOFING COMPANY

All Types of Roofing & Re-roofing
Residential Industrial Commercial

447 West Locust (209) 439-4272
Pinedale, Calif.

NISEI WEEK GREETINGS

REEDLEY NURSERY INC.

Specialists in Fruit Trees & Grapefruits

718 I (209) 638-2282
Reedley, Calif.

NISEI WEEK GREETINGS

Automotive Diesel & Electric Co., Inc.

Fuel Injection Pumps & Injectors - All Fuel Injection Lines
Distributors for KKI, Nissan, Denso
Turbocharger Repair & Exchange Bacharach Test Equipment
ALLIS CHALMERS-CAT - JHC - MASSEY - FERGUSON
JOHN DEERE - CUMMINS - CASE - GMC

2690 S. Cherry Ave. (209) 266-6334
Fresno, Calif.

NISEI WEEK GREETINGS

S. E. MARINER COMPANY

COOLER SUPPLIES
White Aspen Pads - Pumps, Belts, Etc.
Serving the Entire Valley

3815 E. Belmont (209) 266-9223
Fresno, Calif.

NISEI WEEK GREETINGS

TRAILER EQUIPMENT SALES, FRESNO

Formerly Clark Equipment Co.
Brown Trailer Division

3260 E. Annandale (209) 485-8440
Fresno, Calif.

NISEI WEEK GREETINGS

VALLEY TURF SUPPLY COMPANY

Mulches - Fertilizers - Sprinkler Systems & Supplies
Lawn Seed - Garden Tools - Lawn Mowers - Spreaders
Tillers - Fountains - Stepping Stones, Etc.

Garden Equipment Rentals
1408 N. Cedar Ave. (209) 251-8223
Fresno, Calif.

TULARE COUNTY

NISEI WEEK GREETINGS

MACKERSIE'S

Since 1954
Dry & Liquid Formulated Fertilizers
Consultation - Soil Testing
Mfrs. Altanuba Fertilizers

Rd. 100 at Ave. 416, Dinuba, Calif. (209) 591-9353

Greetings to Our Many Japanese Friends

T. APKARIAN & SONS

Grapes - Plums - Nectarines & Peaches

8093 Union Dr. (209) 591-2725
Dinuba, Calif.

NISEI WEEK GREETINGS

BLUE ANCHOR COMPANY

Deciduous Fruits

288 North "N" St. (209) 591-6030
Dinuba, Calif.

NISEI WEEK GREETINGS TO OUR MANY JAPANESE FRIENDS AND CUSTOMERS

AQUA THERMAL COMPANY

Irrigation Systems & Equipment

1018 W. Teapot Dome Ave. (209) 781-5580
Porterville, Calif.

NISEI WEEK GREETINGS

KLINK CITRUS ASSOCIATION

Packers & Shippers - Citrus Fruits

32921 Road 159 (209) 798-1108
Ivanhoe, Calif.

NISEI WEEK GREETINGS

TOWNER-MEYER COMPANY

WHOLESALE FARM EQUIPMENT
SALES - SERVICE - PARTS

3589 E. Jensen Ave. (209) 266-9491
Fresno, Calif.

NISEI WEEK GREETINGS

J. D. CANADAY, INC.

Plastic Pipe & Irrigation Systems

2812 S. Orange Ave. (209) 485-8235
Fresno, Calif.

NISEI WEEK GREETINGS

TRANS-WORLD SEED CORP.

1616 W. Shaw Ave. (209) 227-1668
Fresno, Calif.

NISEI WEEK GREETINGS

VALLEY NITROGEN PRODUCERS, INC.

Fertilizers

1221 Van Ness Ave. (209) 486-0100
Fresno, Calif.

NISEI WEEK GREETINGS

SELMA AG SUPPLY INC.

"Fertilizers"

1053 Golden State Blvd. (209) 896-1762
Selma, Calif.

NISEI WEEK GREETINGS

Hegglblade-Marguleas-Tenneco Inc.

Growers & Shippers

P.O. Box 98, Del Rey, Calif.
(209) 888-2082 (209) 888-2084

Best Wishes for Nisei Week

SAFETY ELECTRIC CORPORATION

A California Contractor #290-691

4967 E. Lansing Way (209) 291-0661
Fresno, Calif.

KERN COUNTY

NISEI WEEK GREETINGS

KAMPRATH SEED COMPANY

3701 South "H" Bakersfield
(805) 831-3456
P. O. Box 2072, Bakersfield, Calif.

NISEI WEEK GREETINGS TO OUR MANY JAPANESE FRIENDS AND CUSTOMERS

CONTINENTAL GRAIN COMPANY

FIELD SEEDS

P. O. Box 190 (805) 725-4511
Delano, Calif.
Box 222 (209) 982-1121
French Camp, Calif.

MERCED COUNTY

NISEI WEEK GREETINGS

BALICO AG SUPPLY

Fertilizers

11312 N. Santa Fe Dr. (209) 634-4362
Ballico, Calif.

NISEI WEEK GREETINGS

STANTON EQUIPMENT SALES

Fertilizing & Farm Equipment

1647 Front St. (209) 394-7994
Livingston, Calif.

Greetings to Our Many Japanese Friends

S AND A MFG. AND WELDING

Fertilizers Tenders & Spreaders Bulk Tanks
Sales - Service - Parts

7211 N. Pacific Ave. (209) 394-8048
Livingston, Calif.

NISEI WEEK GREETINGS

CENTRAL CALIFORNIA TOMATO GROWERS

1159 W. 15th (209) 722-8086
Merced, Calif.

Greetings to Our Many Japanese Friends

MERCED CHEMICAL CO.

Fertilizers - Insecticides

265 N. Arboleda Dr. (209) 722-9591
Merced, Calif.

NISEI WEEK GREETINGS

Z AND A SALES

Agricultural Chemicals

337 W. Pacheco Blvd. (209) 826-5754
Los Banos, Calif.

HANFORD

Best Wishes for Nisei Week

MYERS BROTHERS, INC.

Well Drilling
Specialists in Reverse Rotary Drilling
Modern Equipment

"If It's Water You Want Call Us"

24 Hr. Service - (209) 582-1913
8650 Lacey Blvd. Hanford, Calif.

NISEI WEEK GREETINGS

STRATFORD GROWERS INC.

Grain Division

20507 Main (209) 947-3261
Stratford, Calif.

NISEI WEEK GREETINGS

HARNISH-BRINKER SEED CO.

P. O. Box 277 (209) 884-2380
Five Points, Calif.

FRESNO COUNTY



PIZZERIA

ITALIAN DINNERS

Only Place in Fresno and Clovis Owned and Operated by NICK DICICCO

Featuring Pizzas, Italian Dinners Since 1956

Banquet Facilities Available

Open 7 Days 11:30 a.m. to Midnight

A Family Restaurant - Delivery Service - Order to Go

FRESNO: 3404 N. Cedar Ave. (209) 222-0544 or 222-7833

CLOVIS: 408 Clovis Ave. at Fourth St. (209) 299-3711 or 299-4222

NISEI WEEK GREETINGS

AMVAC - AG - CHEM

Fertilizers - Ag Chemicals

1541 Railroad Ave. (209) 299-7236
Clovis, Calif.

NISEI WEEK GREETINGS

HENDERSON GARDENS INC.

Plant Specialists Since 1926
Delivery & Installation
Landscape Consultation

4180 N. Flower Ave. (209) 291-2484
Clovis, California

NISEI WEEK GREETINGS

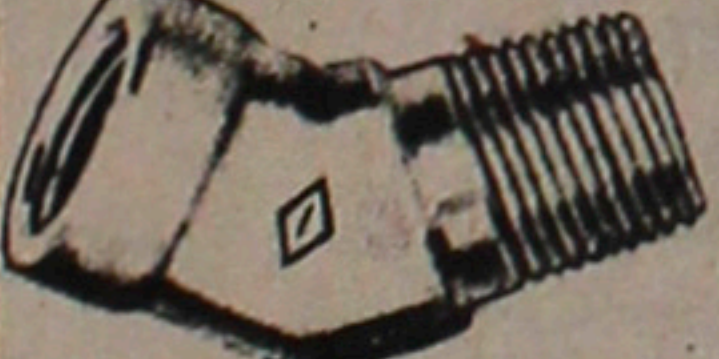
REEDLEY IRRIGATION PIPE CO.

Irrigation Systems
Concrete & Plastic
Installation Repairs Designing
Radio Dispatched Trucks - Free Estimates

1510 - 1st St., Reedley, Calif. (209) 638-3583

Nisei Week Greetings

CALIFORNIA EQUIPMENT CO.



Agricultural Drill - Shafts - Axles
Clutches - Transmissions
Power Takeoffs - Universal Joints
Hydraulic Hose & Couplings
Quick Disconnect Couplers

2740 E. Woodland Ave., Fresno, Calif. (209) 237-1805

MADERA

NISEI WEEK GREETINGS

THOMPSON & GILL INC.

Cattle & Feed Yard Equipment
Cattle Squeeze Calf Chute
Farm & Industrial Hardware

13462 Road 26 (209) 673-3504
Madera, Calif.

NISEI WEEK GREETINGS

VALLEY SPREADER

We Haul & Spread Gypsum & Manure
Serving the Entire Valley

2105 Howard Rd. (209) 674-8326
Madera, Calif.

NISEI WEEK GREETINGS

W. H. MOTT COMPANY

Agricultural Chemicals

10842-28 1/2 (209) 674-8726
Madera, Calif.

NISEI WEEK GREETINGS

Madera Tractor & Implement Co.

Farm Equipment
Sales - Service - Parts

24476 Ave. 14 (209) 674-8715
Madera, Calif.

NISEI WEEK GREETINGS

OXY-CHEM

24148 Robertson Blvd. (209) 665-4845
Chowchilla, Calif.

Kate Kunitugu On Margin

Los Angeles I had been asked to write something about the 30th anniversary of the atomic bomb drop on Hiroshima, and frankly I find myself at a loss of words. What can one say about that horrible day that has not been said already and more ably than my words can express?

In fact my reaction was closer to "So what else is new?" And the only reason I didn't say so to Sumi Ujimori who asked me was that I didn't want her to think "What a cold, uncaring person Kate Kunitugu is!"

But being a profound pessimist about human nature, I find that any picture of "chinkai" (songs for the repose of dead spirits) at this point leaves me with a bad hypocritical taste in my mouth. My honest opinion is that "We did it before, and we can do it again" in the words of a popular World War II song.

I look around myself, and I find a vast wasteland of uncaring persons, with a few exceptions—both about the fate of the 300,000 fellow human beings that perished or were maimed at Hiroshima-Nagasaki and about the fact that a similar fate hangs over our heads daily.

Disclosures about Watergate and more recently the CIA leave me, at least, with very little hope that some yahoo general or a president or a big thumb in the Kremlin

Richard Gima

Aloha

Univ. of Hawaii

The Univ. of Hawaii has been granted \$164,000 in federal funds for an 18-month research program into various aspects of tropical agriculture, especially taro and sweet potato production, Senator Pong has announced. The money comes from the U.S. Agricultural Research Service and goes to the university's College of Tropical Agriculture with Leslie Swindale and Kenneth Otogaki as principal investigators.

Names in the News

Island conservationist Robert Wenkam called for a limit on the number of tourists. In effect, he said too many visitors will ultimately destroy this island treasure. Attorney R. Dennis Chong, 35, will represent consumer interests before the state public utilities commission. He was named exec. dir., Public Utilities Division, State Dept. of Regulatory Agencies.

BOOK REVIEW: by Allan Beekman Survey of Slavery from Ancient Times

SLAVERY AND RACE: The Story of Slavery and its Legacy for Today, by Henry Marsh, St. Martin's Press, New York, 180 pp., \$6.95.

In 1440 Portuguese mariners brought back to Europe some blacks they had captured in Africa. Three years later a Portuguese ship returned with more than 200 captive blacks—men, women and children; these captives were sold at public auction.

The trade in black slaves grew. When Christopher Columbus discovered the New World in 1492, he opened to the slave trade an inexhaustible market. In 1503, the first shipload of black slaves sailed from Lisbon for the New World.

Though the Portuguese appear to have been the first Europeans to kidnap blacks into slavery, they did not found the institution of slavery. Slavery existed before the dawn of history. Except for those born into slavery, the principal source of slaves was prisoners of war. The Bible makes frequent reference to slavery; the Mosaic law lays down rules for the possession and disposition of them.

At her height, Athens is said to have had 155,000 citizens and 70,000 slaves. But in his discourses, Socrates scarcely mentions slaves—"to such an extent was the institution taken for granted, and the social conscience of even the best of men lulled by custom." Plato appears to have regarded slaves as subhuman; he assigns no part to them in his scheme for an ideal society.

To Aristotle the slave was an animate tool without claim to human qualities or rights. Victims in a just war, according to Aristotle, had demonstrated their superiority and so were justified in enslaving the vanquished.

Implicit in the argument of Aristotle is the assumption that defeat works on the vanquished a physical, mental and emotional metamorphosis that renders slavery their appropriate sphere.

... as it was proper for hunters to increase their property by capturing animals, so was it proper for civilized men, using the art of war, to hunt both beasts and men... because of his great influence on European thought (Aristotle) must bear considerable responsibility for the slave trade. In the early Roman Empire, half the residents were slaves.

CHIN-KON-KA

lin would not take it upon himself one day to push that fatal button.

A few weeks ago, I went to see the conclusion of "Sense to Ningen" (War and Human Beings), the Japanese movie ep/c about the Showa era. Four of these years were spent in Japan, some 50 or 60 miles from Hiroshima. The Feb. 26 Incident... the start of the so-called China Incident... the rabid ultra-patriotism were within my experience, not something I read in history books.

The massacre of whole villages of Chinese men, women and children by the "brave soldiers of the Imperial Japanese Army" was something of which we were ignorant in those 1930's years when I lived in Japan.

One is left again with the conviction that given the circumstances, we would have participated in bayonet practice against live human beings, that were we the German guards at Dachau, we would have said nothing about the gas chamber execution of the Jews, that were we Col. Paul W. Tibbets, we would have climbed into the cockpit of the Enola Gay and completed that fateful mission over Hiroshima.

Whatever hindsight scruples we have now are just that—hindsight scruples. My reaction hasn't changed from the one I had when I made a running visit to the Atomic Bomb Museum in Hiroshima four years ago—only the awful realization that human beings are capable of anything—including utmost cruelty to other human beings.

Perhaps the only Chin-kon-ka we can sing for all the victims of man's inhumanity to man is the realization that there but for the grace of God or fortune go I.

& Places

Orange County

Co-sponsored by the Orange County Interfaith Community and Pacific Asian American Center (formerly Council for Orange County Asian Americans), a workshop on how to sponsor an Indochinese refugee was held June 30 at Santa Ana College.

Stockton

Japan Week and Obon Festival were combined during the week of July 20-27 at the Stockton Buddhist Church. Cultural and martial arts and demonstrations took place in the evenings inside the week with a weekend bazaar from the afternoon.

PC's People

Organizations



ALVIN T. SATAKE

Active Berkeley JACL and Lions Club member, Alvin Takeo Satake was installed president of the Berkeley Jaycees July 20 at Spenger's. He is chief accountant and office manager of Shepard Co., a property management firm, Washington, D.C. JACLER Lily A. Okura, was elected to the National Capitol Area YWCA Board for a three-year term. She served a number of years on the Omaha YWCA Board and was the first woman elected to the Omaha YM-CA Board in 1971.

Government

Acting city manager Robert Oshima, 37, of Commerce City, Colo., resigned last month to accept a position with the Colorado Secretary of State's office. Oshima was also finance director and ex-officio city clerk at Commerce City.

Ft. Lupton (Colo.) city councilman George Uyemura was among those voting 4-2 recently to drop negotiations to annex a 1,000-acre Rancho development. A factor against annexation was the problem of providing an adequate supply of water.

Los Angeles Mayor Tom Bradley's Advisory Committee on the Status of Women appointed Sue Kunimoto Embrey and Paula Higashi Essex as new members. Embrey will serve on the Department of Water and Power subcommittee and Essex will work with the City Administrative Officer subcommittee. The May-

LITTLE TOKYO SHOPPING CENTER PROPOSAL ASKED

LOS ANGELES — Development proposals for the specialty shopping center in the Little Tokyo Redevelopment Project, to be located on Moline Alley between 1st and 2nd Sts., are being requested by the Community Redevelopment Agency from property owners by Sept. 5, according to Sachiyu Hirotsu, project director.

Proposals will be reviewed by the CRA board and staff. Following selection, CRA will then negotiate with a developer on an "exclusive rights" basis, during which time the developer must prepare a final proposal for presentation to the CRA board. Proposal would include design plans, financing sources and a construction schedule.

Business —

Continued from Previous Page

about 700 here. Frank Fong, a lawyer who followed in his late father's footsteps to become head of D.C.'s Chinese Consolidated Benevolent Association and unofficial mayor of the city's Chinatown on H Street NW, says that banks have begun to grant credit in recent years.

"But not too many old Chinese would like to use that credit," he said. "They don't want to even borrow money from the SBA" (Small Business Administration). They prefer to save up instead, often pooling resources with friends, he said. "They don't want to get involved with too many financial problems."

Invading southern Europe, Mohammedan Arabs enslaved captive Christians. When the tide of war turned, Christians enslaved Mohammedans.

Pope Nicholas V (1447-1455) authorized the Portuguese to impress into perpetual slavery "the Moors, heathens and other enemies of Christ". Before the introduction of black Africans, slavery flourished in Spain and Portugal.

Black slavery, however, imparted a new note to the hallowed institution. Before the introduction of blacks, slaves tended to be of the same ethnic group as the masters, a type of slavery the author identifies as "endo-ethnic". With the enslavement of blacks came "exo-ethnic" slavery, the masters being of a different race from the slaves and usually of a more advanced cultural system.

Since the learned and brilliant Aristotle had been able to believe that slaves physically resembling him, and culturally skin, are subhuman, how much easier it was to apply his dictum to these blacks—physically and culturally different from the masters.

Before industrialization and more enlightened opinion halted the trade, 15 million blacks had been transported to slavery in the New World. After the banning of such importation, time passed before the abducted and their descendants were set free.

Pockets of slavery still exist. Even where it has been abolished, its effects still spread a baneful influence. Though occasionally slipping into the argot of racism—referring to "barbarian blood" and the Jewish "race"—the author gives a masterly account of the institution of slavery. He speaks his well-organized, well-written narrative with thrilling episodes of societal counteraction to slavery; ancient and modern slave revolts, including such famous ones as that of Spartacus the gladiator; polemics, such as Harriet Beecher Stowe's "Uncle Tom's Cabin"; crusades, such as that of John Brown who, in his scheme to free the slaves, seized the Federal arsenal at Harper's Ferry in 1859.

Shimatsu, Ogata and Kubota Mortuary

911 Venice Blvd. Los Angeles RI 9-1449

SEIJI DUKE OGATA R. YUTAKA KUBOTA

or's Advisory Committee, formed to improve the status of women in city government is a 60-member voluntary organization representing the various geographical, ethnic, and socio-economic groups in Los Angeles.

Health

Dr. Tomlin Harada, chairman of the World Friendship Center in Hiroshima and surgeon who spent many years treating survivors of the atomic bomb blast, was a recent Los Angeles visitor, meeting with a medical group hosted by Dr. Thomas Noguchi, county chief medical examiner-corer.

Understood to be the first Samsel-owned dental clinic, Dr. Jon Y. Hatakeyama of Fresno established his Evergreen Park Dental Clinic July 7 at Morgan Hill. The first Fresno Jr. JACL president, he is a graduate of Fresno State and in dental surgery from the Univ. of California, San Francisco. He was in associate practice three years in Sunnyvale and is married to the former Connie Vasuhiko.

Dr. Shiroaki Ikeda of Pasadena is part of the experimental cardiology team at Huntington Memorial Hospital tackling cholesterol deposits inside artery walls. Directed by physician Richard J. Bing, professor of medicine at the USC medical school, the team found the addition of the substance ketocholesterol to the plasma reduced the amount of cholesterol by an average of 90 percent. Ketocholesterol is chemically identical almost to cholesterol but has a different metabolic action.

Education

Prof. Susumu Nakamura has retired from his 40-year position with the UC Berkeley Oriental Languages Dept. and some 200 well-wishers recently attended a testimonial dinner in his honor. During WW2, he was head Japanese instructor at the U.S. Navy Language School at Boulder, Colo. Among his graduates was Prof. Siedensticker, noted translator of Japanese novels... Julia Sakata of Mountain View, Calif., at Foothill College is recipient of the Fred Nitta scholarship, administered by the Buddhist Churches of America to honor the outstanding Buddhist youth of the year.

Festivals

Each group among the 200 Obon dancers participating in the July 5 Folk Life Festival, sponsored by the Smithsonian Institution, held its own practices for three months at New York, Philadelphia, Sea-

St. Mary's Pre-School fall program to start

LOS ANGELES — State accredited teachers and assistants staff the St. Mary's Pre-School, 961 S. Mariposa Ave., starting Wednesday, Sept. 10, it was announced by Mrs. Isabelle Black, director (3387-1336, between 9 a.m.-2 p.m.).

Cooking, gardening, science, music, puppetry and many experiences with different types of art material all help to enrich a child's vocabulary and help in speech development and ability to read. Mrs. Black explained. Enrolling a child in a good pre-school often determines the child's success in school in later years, she added.

A few openings still exist for the fall program, she added.



Largest Stock of Popular and Classic Japanese Records Japanese Magazines, Art Books Gifts

340 E. 1st St., Los Angeles S. Ueyama, Prop.

Naomi's Dress Shop Sport & Casual, Sizes 3-18

116 N. San Pedro St. Los Angeles 680-1553

Open Tue.-Fri. 9:30-6:30 and Sat. 11-9. Closed Sun.-Mon.

INSIST ON THE FINEST KANEMASA Brand

Available at Your Favorite Shopping Center

FUJIMOTO & CO. 302-306 S. 4th West Salt Lake City, Utah

Three Generations at Experience... FUKUI Mortuary, Inc.

707 E. Temple St. Los Angeles 90012 626-0441

Soichi Fukui, President James Nakagawa, Manager Nobuo Osumi, Counsellor

brook, Chicago, Cleveland and Washington, D.C. Accredited master of Japanese dance, Sahmi Tachibana of New York, was chief instructor and coordinator. Folk Minyo artists from Japan joined with their taiko drums and dancers. Bishop Kenryu Tsuji of the Buddhist Churches of America addressed the gathering on the Mall before the dance, which lasted about four hours.

Courtroom

Grace Nagai of Stockton was sworn in as a San Joaquin County grand jury member July 10 by Presiding Superior Court Judge John B. Cedhini, who called the 11-women, 8-men panel a "fine cross-section of our community".

Sports

Back in March, the Fox Hills Country Club members in Longmont purchased the club property from its owner-developer Phil Skrbina for a reported \$750,000. Renamed the Longmont Country Club, the board of directors is headed by Jim Kanemoto. The 145-acre course is west of Longmont on Colorado State Hwy 119.

Business

Berkeley-born Robert I. Nagata was named senior vice president at the San Francisco head office of Bank of Tokyo of California. He joined the firm in 1953, headed both the Crenshaw and Santa Ana branches and was recently administrative assistant to the president at the head office... Sumitomo Bank of California named Jack S. Kusaba senior vice president at the San Francisco main office. A graduate of Hastings School of Law, he joined the bank in 1954, was promoted vice president and trust department manager in 1967 and assumed additional responsibility as bank secretary in 1969.

Recently deputy general manager of the Bank of Tokyo Ltd.'s Los Angeles Agency, Kanji Kojima was named vice-president and manager of the Bank of Tokyo of California Gardena branch, succeeding Koretsugu Kodama, who returns to Japan for reassignment.

Isamu Kurokawa, manager of Sumitomo Bank's Sacramento branch, has been named manager of the San Francisco main office, succeeding Hyu Asamizu, who has been recalled to Tokyo for reassignment with the parent Sumitomo Bank Ltd. Kurokawa

SANTA BARBARA COUNTY

NISEI WEEK GREETINGS

FRIENDSHIP MANOR

Retirement Residence

Where Residents Enjoy the "Good Life"

6647 El Colegio Road, Goleta, California

For Information Please Call: (805) 968-0771

—YOUR PATRONAGE APPRECIATED—

NISEI WEEK GREETINGS

COASTAL - PIPCO

Wholesale Suppliers of Construction & Maintenance Material for Turf & Agricultural Irrigation

1326 W. Betteravia Rd. (805) 922-2128

Santa Maria, Calif.

NISEI WEEK GREETINGS

FRANK L. MARTIN COMPANY

Vegetable, Lawn, & Pasture Seeds

301 N. Depot (805) 925-2112

Santa Maria, Calif.

NISEI WEEK GREETINGS

PACIFIC MOTOR SERVICE

Chevron Products

Car & Truck Terminal Open 24 Hours Daily

Freeway & Betteravia

P. O. Box 707 Santa Maria, Calif.

(805) WA 5-9175

SAN LUIS OBISPO

NISEI WEEK GREETINGS

McCOY PUMP CO., INC.

Sprinkler Irrigation Systems Engineered & Installed

Pumps for Every Service - Water Systems

Pipe & Pipe Fittings - Well Testing

For Free Estimates Call:

(805) 238-0562

Paso Robles - San Luis Obispo

NISEI WEEK GREETINGS

WATER WELL SUPPLY

John Nairn, Owner

Well Drilling - Pump Sales & Service

Test Holes - Well Cleaning

182 Brisco Rd. (805) 489-2258

Arroyo Grande, Calif.

Best Wishes to Japanese American Community

KYLE TERMITE & PEST CONTROL

P. O. Box 825 (805) 543-3924

San Luis Obispo, Calif. 93401

for more than 20 years and witnessed the anti-Oriental racism in the American labor movement.

IMPROPER LOANS LEAD TO GRAND THEFT CHARGES

LOS ANGELES—The Los Angeles District Attorney's office issued a criminal complaint on July 31 against Joe Mitsuhiro, who has been charged with 22 counts of grand theft and forgery.

This action arose following an intensive investigation conducted by the California Dept. of Corporation of improper loans and transactions in the Pasadena Japanese Credit Union. Mitsuhiro had served as a member of the Supervisory Committee of that credit union located at 595 Lincoln Ave., Pasadena, Calif.

The Dept. of Corporations had previously revoked the license of the Pasadena Japanese Credit Union, and the business and assets of the credit union are currently being liquidated. During the investigation process, the department discovered certain irregularities which resulted in the filing of the criminal complaint by the Los Angeles District Attorney.

EMPEROR

RESTAURANT

949 N. Hill St.

(213) 485-1294

PEKING FOOD SPECIALTY

Cocktail Lounge

Party & Banquet Facilities

DINAH WONG, Hostess

TIN SING RESTAURANT

EXQUISITE CANTONESE CUISINE

1523 W. Redondo Blvd.

GARDENA

DA 7-1177

Food to Go

Air Conditioned

Banquet Rooms

20-200

Nam's Restaurant

Cantonese Cuisine

Family Style Dinners

Banquet Room Cocktail Lounge

Food to Go

205 E. Valley Blvd.

San Gabriel, Calif.

Tel. 280-8377

Ask for...

'Cherry Brand'

MUTUAL SUPPLY CO.

1090 Sansome St.

San Francisco, Calif.

Commercial Refrigeration

Designing - Installation

Maintenance

Sam J. Umamoto

Certificate Member of RSES

Member of Japan Assn. of Refrigeration

Lic. #208863 C-38

SAM REIBOW CO.

1506 W. Vernon Ave.

Los Angeles AX 5-5204

Bush Garden

SUKIYAKI

SEATTLE 614 Maynard St.

PORTLAND 121 SW 4th St.

SAN FRANCISCO 598 Bush St.

Toyo Printing

Offset - Letterpress - Linotyping

309 S. SAN PEDRO ST.

Los Angeles 12 - MADISON 6-8153

EMPIRE PRINTING CO.

COMMERCIAL AND SOCIAL PRINTING

English and Japanese

114 Weller St., Los Angeles 90012 MA 8-7060

Eagle Produce

929-943 S. San Pedro St., Los Angeles

625-2101

Bonded Commission Merchants

— Wholesale Fruits and Vegetables —

Los Angeles Japanese Casualty Insurance Assn.

Complete Insurance Protection

Aihara Ins. Agcy., Aihara-Omatsu-Kakita-Fujioka

250 E. 1st St. 626-9625

Anson Fujioka Agcy., 321 E. 2nd, Suite 500... 626-4393

Funakoshi Ins. Agcy., Funakoshi-Kagawa-Manaka-Morey

321 E. 2nd St. 462-7406

Hirohata Ins. Agcy., 322 E. Second St. 287-8605

Inouye Ins. Agcy., 15092 Sylvanwood Ave., Norwalk 864-5774

Tom T. Ito, 595 N. Lincoln, Pasadena... 749-7189 (LA) 681-4411

Minoru 'Nix' Nagata, 1497 Rock Haven Monterey Park 268-4554

Steve Nakaji, 11964 Washington Place... 391-5931

Sato Ins. Agcy., 366 E. 1st St. 629-1425

261-6519

CLASSIFIEDS

The PC Classified Rate is 10 cents per word, \$2 minimum per insertion. There is a 3% discount if same copy appears four times. Unless prior credit has been established with the PC, payment is requested in advance.

Employment

YAMATO EMPLOYMENT AGENCY INC. 315 E. 1st St., Rm. 302, L.A. NEW OPENS DAILY 624-2681

Services—San Francisco

TUTORIAL SERVICE seven days a week in San Francisco 94122. Call (415) 661-119