

11 charter flights to Japan being planned for 1976

SAN FRANCISCO—The National JACL Travel Committee last week (Aug. 20) announced its plans for the 1976 National JACL Travel Program of flights to Japan, according to Steve Dol, chairman of the Travel Committee.

Chapters and districts from all over the country have requested charters in the 1976 National Travel Program. So far, the following flights have been requested of air lines (lengths of stay for the spring and fall flights will be approximately three weeks; summer lengths of stay will range from three weeks to four weeks):

- (1) March-April from Los Angeles,
- (2) April-May from San Francisco,
- (3) June-July from Chicago,
- (4) July-August from Cincinnati,
- (5) July-August from Los Angeles,
- (6) August-September from San Francisco,
- (7) September-October from San Jose (S.F. departure),
- (8) October from Los Angeles,
- (9) October from San Francisco,
- (10) October from Chicago,

Membership status

JACL members who may be interested in joining one of these 1976 flights should make certain that their memberships are current and up-to-date. Civil Aeronautics Board regulations which stipulate six months membership in the chartering organization will still be in effect for the 1976 charter programs.

The National JACL Travel Committee also ruled that for 1976, all passengers 18 years of age and over must be JACL members in order to qualify for any flight. At last one member of the traveling family must have been a member of the JACL at least six months prior to date of departure. Passengers 17 years of age and under must be the dependent children of a JACL member who has been in the organization at least six

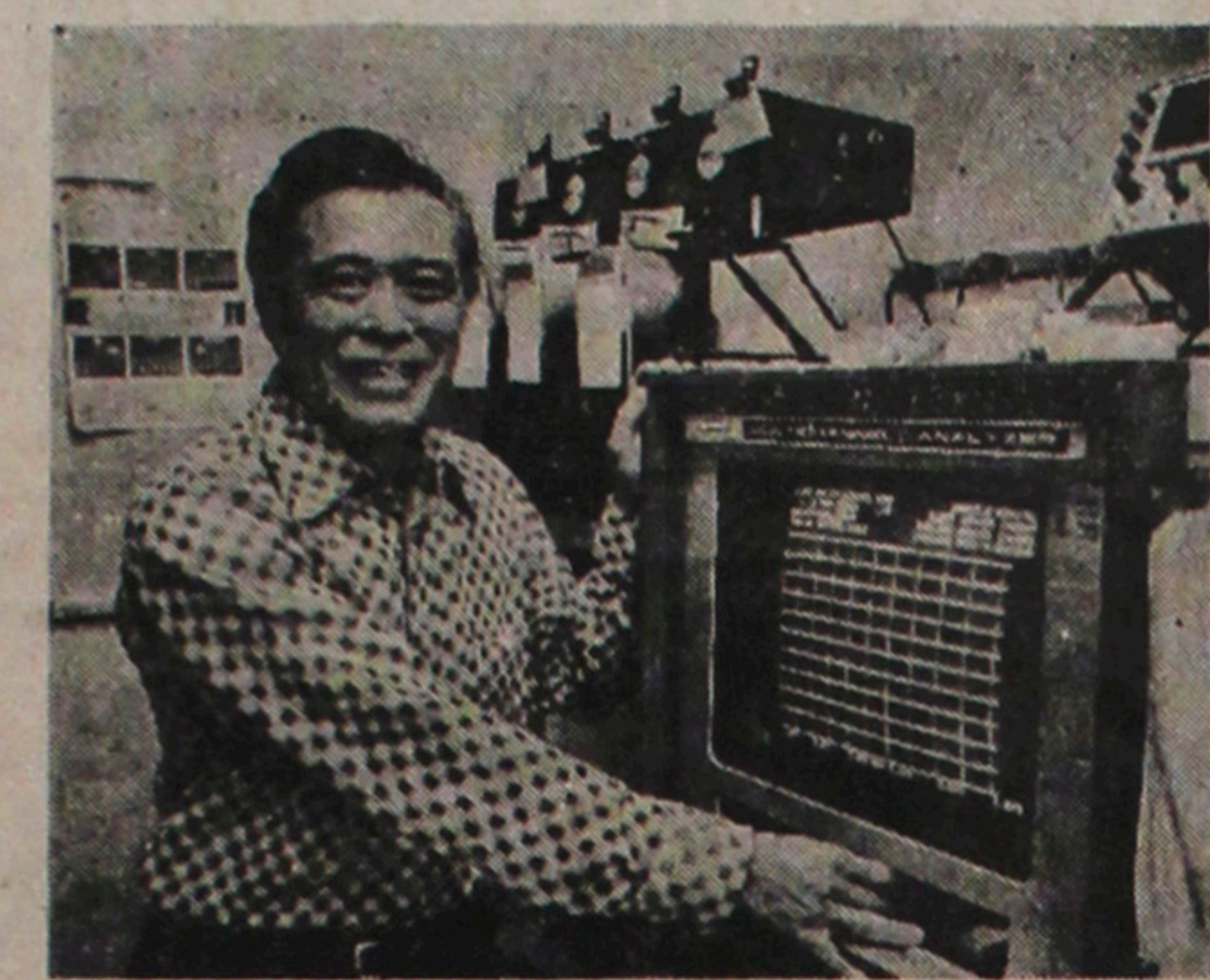
months prior to departure. Cost for the 1976 charters will represent a substantial savings over regular, commercial fares to Japan. The 1975 figures averaged \$425 to \$450.

Continued on Page 3

DISNEYLAND ADDED TO EMPEROR'S U.S. TOUR

TOKYO — Emperor Hirohito will visit Disneyland during his U.S. visit in October, it was disclosed here Aug. 14. The imperial visit of the Anaheim, Calif., attraction is scheduled for Oct. 8.

Conservative elements within the Imperial Household Agency, Foreign Ministry and ruling Liberal Democratic Party had expressed quiet opposition to the idea, suggesting it was beneath the dignity of the Emperor.



SAN DIEGO—Nisei staff member Minoru Koide of Scripps Institution of Oceanography, who will welcome the visit of Emperor of Japan there, stands beside his research equipment.

Nisei marine scholar at Scripps eagerly anticipates Emperor's visit

SAN DIEGO, Calif. — The noted Scripps Institution of Oceanography at UC San Diego and its staff will extend a hearty welcome to the Emperor of Japan when he visits it during his 14-day tour of the United States in October. (The date is Oct. 8).

Founded in 1903, the institute has special connections

with the Emperor for several reasons. One of them is that the Emperor has contributed seven of his books to Scripps. All concern shell fish in Sagami Bay in Shizuoka. More important, however, is the fact that a group of Scripps researchers visited Japan aboard its survey ship in 1953 and were allowed to visit the Emperor's laboratory and see him at work.

One of the visitors was Minoru Koide, 48, a Nisei who

Kodansha publishes 'Emperor Hirohito'

NEW YORK — Kodansha International has published "Emperor Hirohito: A Pictorial History" (\$4.95) to commemorate the Emperor's forthcoming visit of the United States. It consists of 96 pages with 118 pictures, 86 in color, and text.

The Imperial Household Agency granted Kodansha special permission to have the first photographic record published in English.

First shipment of books is expected here in mid-September.

From JACL Nat'l Headquarters

JACL REGULATIONS Travel Projects Outside Mainland U.S.

(The regulations below have been adopted by the National JACL Board at its interim session at San Francisco, June 21-23, 1975).

- 1—Sponsoring Chapter or District Council must secure approval from the National JACL Travel Committee by submitting Travel Project Form at least 12 months prior to departure. (Application forms are available at National JACL Headquarters).
- 2—Scheduled airlines are to be contracted.
- 3—JACL-sponsored flights are limited to those who are Chapter and National JACL members at least six months prior to departure, in accordance with current Civil Aeronautics Board regulations. Such JACL-sponsored flights to be open to all regular JACL members in contrast to special members, i.e. 1000 Clubbers.
- 4—No charter or group affinity flights will be authorized which conflict with the dates of the JACL National Biennial Convention.
- 5—Publicity on such Chapter or District sponsored flights to be limited to Chapter bulletins and Pacific Citizen.
- 6—An official representative of the sponsoring Chapter or District and/or official representative of the carrier shall be on the round-trip flight.
- 7—A financial report on the flight shall be submitted to all flight passengers upon the conclusion of the flight.
- Note: If flight is not approved by National JACL Travel Committee, National disclaims any and all liability, and Pacific Citizen will not accept any publicity for such unauthorized flights.

Communication

'76 membership campaign planned

National, district and chapter leaders were asked for input by Don Hayashi, associate national director, concerning the 1976 JACL membership campaign so that materials can be developed for a projected delivery date of Nov. 15.

Membership process will be basically the same as in previous years with the four-part application form, brochures and return envelopes to be furnished from Headquarters. A new 1000 Club brochure is to be added.

Under consideration is a New Chapter Formation Kit, outlining the basic requirements for organizing a chapter, a sample chapter constitution, application forms, program ideas and a list of possible resources. Also suggested is another membership brochure that would allow districts or chapters to insert their own copy along with a section covering the national organization. A tear-off flap return envelope for membership would replace the green envelopes provided last year, Hayashi noted.

Whaling committee awaits IWC report

SAN FRANCISCO — The latest memorandum from the JACL Whaling Issue Committee, chaired by Dr. Clifford Uyeda of San Francisco, covers a variety of issues:

- 1—Full report of the recently concluded International Whaling Commission meeting in London had not been received (as of July 15, date of the memorandum). Isolated reports from delegates were disappointing, "again raising criticism that IWC does little more than bestow international legitimacy on the predetermined demands of whaling nations". Talk is growing to have United Nations take over the IWC function and regulate the international whale stocks.
- 2—Following films are available to those who want to put on a "Whale Show":

"In Search of the Bowhead Whale", 50-min. color, free at nearest Canadian consulate; "Whales, Dolphins and Men", 75-min. color, \$30 rental fee, UC Berkeley Extension Media Center; "They Call Them Killers", 15-min. color, free at Canadian consulate.

3—Agreement with Friends of Earth that goals are identical and stressing need to continue to work together. Dr. Uyeda had lunch with David Brower, president, Friends of the Earth; and Barbara B. Wesselman, coordinator, Friends of the Earth International.

4—JACL position paper on whaling and activities of the JACL committees have come to the attention of Prime Minister Miki of Japan, according to a Foreign Office senior adviser.

'76 PCYA program launched

SAN FRANCISCO — General procedures for admission to the 1976 Presidential Classroom for Young Americans were outlined by National JACL Youth Director Gail Nishioka.

Six sessions, each starting on a Saturday, will commence earlier than previous years from Jan. 17. The last group starts from Feb. 21.

JACL chapters were being encouraged to sponsor a high school student. Headquarters has established a Dec. 1, 1975, deadline to reserve a spot. Headquarters is coordinating the registration.

In the first year (1974), there were 15 Nisei students sponsored by JACL chapters. This year, 32 students were sponsored. With ever-increasing popularity of the PCYA

program, at least 50 participants are expected to apply through JACL chapters in 1976. But admissions are limited, it was stressed.

The \$245 PCYA tuition covers registration, housing, meals, transfers upon arrival and departure from Washington, D.C., transportation around the city, instructional staff, materials, health and accident insurance.

Additional cost is transportation to and from Washington. Chapters may choose to underwrite the entire cost of the program, share expenses with the student's family or organize a special fund-raiser.

There are many former JACL-sponsored PCYA participants who are available for speaking engagements to chapters considering sponsorship.

Army ROTC in special effort to sign up Nikkei for college scholarships

FORT LEWIS, Wash. — Applications are now being taken for Army ROTC four-year scholarships.

The application period is Sept. 1 to Dec. 1, and male and female students may apply.

The scholarships pay college tuition, textbooks, laboratory fees and other educational expenses at any of 291 colleges and universities throughout the country that offer Army ROTC.

The Army currently has 6,500 four, three and two-year scholarships in effect.

The Army ROTC program is making a special effort to recruit Asian American students.

For the scholarship cycle ending Dec. 31, 1974, the Department of Army headquarters

in Fort Lewis, Wash., received 124 applications from Asian Americans. Of these, 23 were awarded the four-year scholarship and three were selected as first alternates.

Major Richard Tanaka, a member of the Fort Lewis staff, has been designated to provide assistance to Asian American applicants.

TORRES BILL PROPOSES CALIF. ASIAN PANEL

SACRAMENTO, Calif. — Assemblyman Art Torres (D-Los Angeles) this past week (Aug. 13) introduced a bill (AB 2479) to create a 11-member Commission on Asian and Pacific Island American Affairs.

A similar bill introduced by Sen. Alex Garcia (D-LA) was defeated in a Senate committee earlier this year but Torres feels confident public awareness is greater today to insure Assembly passage. Both legislators represent districts which include Little Tokyo and Chinatown.

The commission, besides acting as a clearinghouse of

Mine Okubo art

CARMEL, Calif. — Mine Okubo's traveling art exhibition of 50 works in oil, watercolor, tempera and gouache is now showing at the Sunset Community here until Aug. 30. It was first shown at Oakland Museum.

REDLANDS, Calif. — After a 13-year wait, the 1962 National JACL certificate of appreciation for Ralph P. Merritt, Manzanar WRA project administrator and later a Univ. of California regent instrumental to have the JACL Japanese American Research Project housed at UCLA, was formally presented this past week (Aug. 15) during a Redlands Rotary Club luncheon.

Accepting it for his late father was Redlands City Manager Ralph "Pete" Merritt II, from James Urata, Riverside JACLer who spoke, as he has done before service clubs and groups for the past two years, on the west coast Japanese Evacuation experience. Also present was Ralph P. Merritt III who, incidentally, was born at Manzanar.

Urata said this particular luncheon was of special significance since rest of the club members were not aware of their fellow member and city manager's relationship with Manzanar. Merritt Jr., who worked with his father and recalled much of what hap-

pened at Manzanar, in accepting the plaque said "that we must see to it that our nation never does such a thing to its citizens again as it did to American citizens of Japanese origin during the war".

Urata extolled the senior Merritt, whose associations with the Japanese dates from 1923 when he as president of Sun Maid Raisin Co. introduced the product to Japan, for his firm administration at Manzanar, but one with compassion and concern for the welfare of evacuees under the care. His intent was to make life as liveable as possible under difficult conditions, Urata explained.

In researching the role of the late Mr. Merritt, who died at age 80 in April, 1963, in the relocation program, Urata told of two people: one who knew him quite well—Frank Chuman, and the other who had met him on one occasion, San Fernando Valley Sun reporter Phil Jordan.

Chuman was hospital administrator at Manzanar and

PACIFIC CITIZEN

Membership Publication: Japanese American Citizens League, 125 Weller St., Los Angeles, Calif. 90012; (213) MA 6-6936
Published Weekly Except First and Last Weeks of the Year — Second Class Postage Paid at Los Angeles, Calif.

VOL. 81 NO. 9

FRIDAY, AUGUST 29, 1975

Subscription Rate per Year U.S. \$7. Foreign \$10

15 CENTS

JACL weak points viewed

ANAHEIM, Calif. — In two weeks, a mini-JACL convention which is expected to involve representatives from the 64 chapters in California and one each from Arizona and Nevada will be called to order by Orange County JACL, hosts to the second biennial California Tri-District Conference.

While the three district councils will stress their respective areas of interest through three workshops at the Grand Hotel here, the conference headquarters, on Saturday, Sept. 13, the closing session Sunday morning (Sept. 14) will address a basic issue that has been best expressed by former Washington JACL representative Mike Masaoka (PC 1974 Holiday Issue), "Should JACL still be all things to all peoples?"

Masaoka considered it to be one of the major weaknesses in JACL today and offered two alternatives:

- 1—That JACL stop trying to be an all-inclusive Japanese American group and become a strictly Nisei organization; and conversely, the Sansei might develop an organization for themselves.
- 2—Or how about overhauling JACL so that district councils, perhaps modified somewhat from their present largely geographical groups, can concentrate on local and regional problems; and leave National Headquarters to specialize in national legislation and PR activities?

JACL structure

Tri-District Conference co-chairman Henry Sakai figures this session may result in some resolution for consideration at the 1976 national convention at Sacramento and therefore has urged all chapters in the three districts to designate a voting representative.

He noted the same topic was discussed at the joint Eastern-Midwest District Convention hosted by Cleveland JACL this past weekend, "so the movement to look at JACL structure is gaining due attention".

Masaoka had also suggested national dues need by only minimal and move headquarters east to either New York or Washington with a smaller but perhaps more expert and professional headquarters staff. What he foresees is a "federated organization" in the second alternative. Each district council would contribute its share to the national budget, but most of its revenue would be raised and expended locally to meet local membership wants and projects.

The district would be responsible for selection and payment of its own regional director and staff, determining its own priorities within general guidelines determined by the National Council.

For instance, Masaoka noted, one district might be more concerned in rendering social and public services to those of Japanese ancestry in its region. Another might prefer to develop similar programs but for all Asian Americans. Still, another may prefer to set up special projects to help aging Issei and Nisei. Another might want to stress educational or scholarship objectives.

District autonomy

It is also possible under a federated basis for one district to help fund other organizations better qualified and equipped to handle such matters as social services. If local legislative and legal issues arise, several districts (as in California) may be involved and cooperative arrangements developed, Masaoka continued.

"The important factor to

keep in mind is that, under this proposal, each of the district councils would be practically autonomous, though loosely federated or joined in a national cooperative so that appropriate attention and action can be given to such national and international problems that may directly concern those of Japanese ancestry in the United States," Masaoka said.

Because of greater emphasis is to local and regional problems and issues, Masaoka thought it was quite possible that more members would become interested in joining and actively participate in JACL. "In a real way, chapters and district councils (would) become more accountable to local and regional needs and hopes," he explained.

Under National Planning Commission, an ad hoc committee of JACL structure was to have convened last week during the EDC-MDC convention with Lilliam Kimura of Chicago presiding to consider long-range plans on what JACL should be, what its primary responsibilities and objectives should be.

Tanaka Plan

Immediate past national president Henry Tanaka three years ago proposed a federated plan that involved expenditure or allocation of JACL monies. Basis here was the principle of greater autonomy for district councils, to help them be more effective and efficient in carrying out National programs and encourage innovative and imaginative services.

The so-called Tanaka Federated Plan was hardly pursued during his biennial as national president because of other organizational priorities, such as the repeal of Title II to the Internal Security Act and changeover within the in-

ternal staff with Mas Satow's resignation.

The Tanaka plan provided for a district council account for programs, basic minimum for each district (then set at \$3,750) but also tried to resolve how best to meet requests of districts in need of staff full or part-time through "more resourceful" use of available funds.

Allocation of funds, incidentally, will be a major topic during the Tri-District Conference workshop handled by the Northern California-Western Nevada district, which is comprised of 28 chapters but without the deserved services of its own regional director and an office. A recent NC-WNDC proposal calling for a regional office at Sacramento has been under study.

Central California District Council intends to survey the new California Agricultural Labor Relations Act, which

Continued on Page 4

Appeals panel for Petaluma low growth ordinance

SAN FRANCISCO—The Ninth U.S. Circuit Court of Appeals has upheld the controversial Petaluma ordinance controlling community growth restricting larger projects in the city to 500 new units a year.

Circuit Judge Herbert Y. C. Chy, a Kreean American barrister from Honolulu, penned the unanimous decision delivered Aug. 13 for the three-member court.

While critics argued such ordinances as Petaluma's unfairly restrict free movement and act, in effect, as a residential barrier to racial minorities, the court held:

"The concept of the public welfare is sufficiently broad to uphold Petaluma's desire to preserve its small-town character, its open spaces and low density of population and to grow at an orderly and deliberate pace."

Once an egg-ranching center, Petaluma, situated in southern Sonoma County, enacted its growth control plan in 1972 when its population reached 30,000 after undergoing a 25% increase in two years.

The anti-growth legislation was a stunning victory for advocates as it reversed an earlier decision by the U.S. district court here that the ordinance was unconstitutional, restricting the right of citizens to free movement.

Crosby fund gives \$1,000 to gakuen

MONTEREY, Calif.—The Bing Crosby Youth Fund has contributed \$1,000 to the Monterey Peninsula JACL for presentation to its Japanese Language School board for purchase of needed school supplies, it was acknowledged by chapter president James Fukuhara and the Rev. K. Ueno, school principal.

The donation was made during the gakuen graduation picnic dinner held June 7. The fund is supported by proceeds from the annual Bing Crosby pro-am golf tournament.

S.F. election foul-up anticipated

SAN FRANCISCO — National JACL branded as "insensitive and offensive" the comments reported in the press July 31 regarding the new Voting Rights Act by Frank Quinn, deputy registrar of voters.

Comments attributed to him reflect adversely upon the Office of Mayor, national executive director David Ushio declared in his letter of Aug. 6 to Mayor Joseph Alioto, and the desire to fully comply with the spirit and letter of the law to provide non-or-limited English-speaking voters with ballots in their primary language.

Chronicle reporter George Murphy feared the next election could be one great foul-up and it won't be San Francisco's fault.

Quinn said if the act is enforced as currently interpreted, "it will be disastrous". He refused to speculate on cost of printing, translating and distributing election material in five languages: Eng-

lish, Spanish, Chinese, Korean and Tagalog.

Some City Hall observers said it could run as high as \$2 million. Adding to the monumental task is the logistical problem on election day since the city has voting machines which provide 10 lines to list candidates and issues.

For the mayoral election next November, a minimum of three machines would be required at each precinct. The city has 1,676 voting machines for 942 precincts. So it appears precinct consolidation may be instituted, leading to longer lines of voters waiting to pull the levers. In a four-party primary, "we couldn't do it, mechanically," Quinn said.

Ushio said it was regrettable Quinn appeared overly anxious about the mechanics while disregarding the importance of increasing civic participation and responsibility.

Quinn's pessimism can be interpreted "as resistance to ensure efficient and timely implementation," Ushio said.

JACL is urging the Board of Supervisors to appoint a multilingual citizens committee to study the full implications of the Voting Rights Act and make recommendations to the Registrar of Voter to facilitate implementation before November.

JACL strongly endorsed the provisions of the Voting Rights Act expanding equal opportunities for all groups to participate in the democratic process, even the so-called language minorities.

REV. MINEO KATAGIRI: New York JACLer

Elected head minister in No. Calif.

SAN FRANCISCO — The Rev. Mineo Katagiri will assume his new position Sept. 1 as conference minister of the No. Calif. Conference of the United Church of Christ, it was announced here this past week. As conference minister, he heads a conference which includes 120 churches with memberships totaling 30,000 in Northern California and Nevada.

A long-time Seattle JACLer and more recently with New York JACL when he moved there, Rev. Katagiri was elected at the annual conference meeting at Asilomar and succeeds Rev. Richard Norberg, who leaves after 15 years to become a senior pastor in San Mateo.

A Honolulu-born Nisei, he was graduated from Univ. of Hawaii and Union Theological Seminary. Ordained in 1945, he worked in Honolulu, Maui and Kauai until 1959 when he became director of the Pilgrim Foundation at the Univ. of Washington. In 1965, he joined United Church's Metropolitan Mission in Seattle and two years later became senior minister of Ecumenical Metropolitan Mission. In 1970, he was assigned to the United Church of Christ headquarters in New York with its commission on mission priorities.

Mineo and Nobu Katagiri have three grown daughters.

Ralph Merritt plaque finally presented after 13 years



BELATED PRESENTATION—The National JACL certificate of appreciation, first announced in 1962, for the late Ralph P. Merritt for personal interest, support and encouragement to write the story of the Japanese in the United States is held by his son (right), grandson and James Urata (center), who made the presentation Aug. 15 after a Redlands Rotary Club luncheon where the Riverside JACLer spoke on the Japanese American Evacuation experience.

Merritt helped him to secure military clearance to continue his law studies at Maryland. When Chuman returned upon graduation to pick up his parents at Manzanar, Merritt assured Chuman that as a professional person he would be expected to handle cases for all people—not necessarily the Japanese as Chuman had felt.

Hated may be present in wartime but when peace comes it will disappear, Merritt maintained though Chuman could not believe it at the time, Urata recounted. "But today, as Merritt had predicted, Chuman is a very successful attorney with most of his clients outside the Japanese community," Urata pointed out.

Merritt was one of the unforgettable persons in Jordan's life, Urata found. The reporter was assigned to write a series of articles on evacuation 20 years after Pearl Harbor and found Merritt had been director at Manzanar.

Jordan was to be given an hour and if Merritt didn't like the questions, he might not

even get a full hour, Urata told the Rotarians. Opening minutes of the interview were cold but within a short time, Merritt relaxed and "would you believe it was 5 a.m. the next morning before Mr. Merritt excused himself". He spoke of his philosophy towards life, gave his opinions about the Evacuation and cited numerous anecdotes while director at Manzanar.

Jordan had obtained insight into a person whom he believed to be one of the country's outstanding leaders and a great humanitarian, Urata noted. "The philosophy he developed over the 80 years affected the lives of countless numbers of people."

Time has obscured the reason for the plaque never being delivered while Merritt was alive. It had been stored in the So. Calif. JACL Office virtually forgotten till the move to larger quarters across the hall in the Sun Bldg. surfaced the plaque.

Urata, building coordinator at Cal State College-San Bernardino, had informed the

Continued on Page 4

Further information on any of the current JACL programs may be secured by writing or calling National Headquarters, 1725 Sutter St., San Francisco 94115, (415) 921-5225; or the local JACL chapter.

Harry K. Honda

Ye Editor's Desk

THE DISNEYLAND DAZE

Accompanying relatives from Japan here on their first visit of Los Angeles this past week included a leisurely eight-hour of Disneyland and wondering what the Emperor and Empress of Japan might want to ride and see. Certainly, the "America on Parade"—a boisterous half-hour review of U.S. history that might be compared with Kyoto's elegantly-fashioned "Jidai Matsuri"—needs to be interpreted...

Somehow doing the Disneyland bit without youngsters is not as hectic but then we also found it wasn't as much fun either. Our relatives nevertheless savored every minute inside—snapping pictures discriminatingly and willing to wait up to a half-hour to get into the more popular attractions that didn't take more than five minutes to view and be dazzled.

In a couple of weeks, when the Pacific Southwest District Council hosts the second biennial California Tri-District Conference at Grand Hotel, which is also adjacent to Disneyland, the park will be on its winter schedule, open from 9 a.m. to 7 p.m. on weekends, and closed Mondays and Tuesdays.

GRASSROOT OPINIONS OF REPARATIONS

As previously indicated when the Pacific Citizen published then Washington JAACL representative Barry Matsumoto's 1973 memorandum of Evacuation Reparations (Aug. 1, 8 and 15), here is a survey form which the E.O. 9066, Inc., chaired by Paul Tsuneishi, 204 S. San Pedro St., Los Angeles 90012, has prepared and wishes readers to check and return. It need not be signed.

E.O. 9066 was recently incorporated as a nonprofit, nonpartisan organization, following a JAACL-sponsored panel on the subject of reparations hosted by San Fernando Valley JAACL and the PSWDC that urged grassroots sentiments be determined. The group reminds, "To do nothing when one knows there has been a gross violation of constitutional guarantee is to be remiss in the exercise of one's American citizenship."

Reparations Questionnaire

Prepared by and Return to E.O. 9066, Inc. 204 S. San Pedro St., Los Angeles 90012

PERSONAL BACKGROUND:

Male Female Age: Issei Nisei Sansei Kibei Non-Japanese YES NO

Were you evacuated to a camp? Where? For how long? Did you voluntarily evacuate? Were you living outside the Evacuation area at start of/during the war?

I. GENERAL FEELING:

Are you in favor of legislation to seek reparations for detention of persons of Japanese ancestry at the start of World War II?

Should E.O. 9066 petition the Supreme Court to review the constitutionality of the evacuation order?

Who should be entitled to reparations? Both citizen and non-citizens. Only U.S. citizens detained. (Comment welcome.)

Check as many as appropriate: Those who were not detained but who voluntarily relocated to avoid forced removal.

Those who were not detained, did not voluntarily relocate but who might have been affected nonetheless. Non-Japanese married to Japanese who were evacuated with their spouse. Those who chose expatriation to Japan.

Descendants of evacuees who might, for instance, receive memorial scholarships from reparation funds. (Further comments welcome.)

II: METHOD OF PAYMENT

(Check appropriate one.) Lump sum to those designated above except those granted scholarships. Payment based upon time spent in camps to evacuees as designated. (Check as many as appropriate below.) To Japanese American community organizations and programs. Lump sum to Issei; varying amounts to Nisei on individual claim basis. Establish memorial scholarship fund. (Other proposals welcome.)

III: PRIORITIES OF PAYMENT

(Please rank: 1, 2, 3, or 4.) Japan-born internees. U.S.-born internees. Memorial scholarships. Japanese American community groups and programs. (Further comment welcome.)

David Uhle Dialogue

A LOOK AT PRIVATE FOUNDATIONS

In our efforts to develop JAACL programs in recent months we have turned to private foundations for support. For the most part we have found them less than fully responsive.

It is not that JAACL does not have good projects worthy of consideration, but rather that we have not had exposure to these institutions. They do not know us or our needs and we have not known how to reach them. As we look more closely, we find that other minority groups face the same problems in getting foundation support.

Considering our experience we were very interested to read a June, 1975 report prepared by the U.S. Human Resources Corp. (HRC), a minority consulting firm based in San Francisco. The report was entitled "U.S. Foundations and Minority Group Interests" and prepared under a grant from the National Science Foundation. The report questions the responsiveness of foundations to minority group interests.

There are 30,000 private charitable foundations, some of which are very influential. These are not welfare or governmental institutions but philanthropic organizations set up by individuals, organizations or companies. The Carnegie, Ford and Rockefeller foundations are examples of general purpose foundations which operate with a professional staff.

Special purpose foundations are limited to a specific field or purpose. Company foundations facilitate company giving as well as giving financial benefit to the company. Family foundations are set up by individuals and run usually by the family and often serve as channels for the personal giving of the founders. Community foundations are companies in which funds are distributed through the trust departments of local banks.

Fund distribution

All foundations enjoy broad tax privileges. Because of these privileges, foundations ought to be acting in the interest of the entire society, especially by responding to those groups most in need of their assistance.

According to the research of the Human Resources Corp., this is hardly the case. For example, Americans of Spanish heritage account for 5 percent of the total population. From 1972 through March 1974, Spanish groups received 0.8 percent of all funds distributed by American foundations. Spanish heritage groups in the Northeast received proportionately more funds from more diversified sources than their counterparts heavily concentrated in the West and Southwest.

Americans of Asian ancestry make up 0.6 percent of the U.S. They received 0.1 percent of the total funds from foundations during the same period. Most of the funds went to Chinese organizations mostly in the Northeast. The West, with 57 percent of the Chinese American population,

Minority Week

Mrs. Margaret Bush Wilson, 55, a St. Louis lawyer, was elected as the first black woman to head the NAACP board. She defeated three male candidates. Her advocacy of expanding its youth programs was seen as abetting her chances for the chairmanship. She said the NAACP offers young people a chance to be trained in the art of leadership.

Indians, from their view of history, having nothing to celebrate, so a group of tribal leaders recently told the American Bicentennial Administration. Group spokesman Robert Burnette of the Rosebud Sioux said they represented 24 tribes in seven Western states.

25 Years Ago

In the PC, Aug. 19, 1950

Aug. 11-21 Nisei among 39 Hawaiians facing contempt charges for refusing to tell House Un-American Activities Committee about Communist Party activities.

Aug. 12-News of Mainland Nisei GIs being killed or wounded in action in Korea war amendments in Sacramento, Los Angeles, Hood River, Denver, Seattle, Philadelphia.

Aug. 14-Sen. Lucas (R-Ill.) motion to reconsider joint conference report of Walter Resolution (granting citizenship privileges to Issei) holds up bill for Presidential signature.

Aug. 22-Gen. Douglas MacArthur in Tokyo commends Rep. Francis Walter (D-Pa.) for his resolution to give Issei U.S. citizenship.

In the PC, Aug. 26, 1950

Aug. 15-Honolulu supervisor Richard Kagayama handed petition of impeachment; took oath of loyalty in January despite charges that the 42nd year veteran had been member of Communist Party within past five years.

Aug. 18-Calif. American Legion alters former state law excluding parents of Nisei GIs from terms of legislation.

Aug. 22-Gen. Douglas MacArthur in Tokyo commends Rep. Francis Walter (D-Pa.) for his resolution to give Issei U.S. citizenship.

received only 31 percent of the meager funds allocated for Asian Americans. Japanese, Korean, Filipino heritage groups were virtually ignored.

Similar patterns were found for other minority groups. Only 75 of the 30,000 foundations were found to have contributed to Spanish or Asian American beneficiaries.

Grants are often concentrated in the Northeast—which is, not coincidentally, the major locus of foundations headquarters in the United States.

Ironically, programs oriented to Asian or Spanish-speaking countries and studies are far more heavily subsidized than are programs directed to domestic Asian and Spanish-heritage minorities. Moreover, the small share of foundation money going to minorities is preponderantly spent on conservative, low-risk projects. This means it goes mainly to educational institutions.

The reasons for these are suggested by the make-up of the foundations. Their boards are ingrown, interlocking and self-perpetuating. They are dominated by white, Ivy League males with almost no women and ethnic minorities. This is also true of most of the staffs.

The report finds the foundations have not convincingly supported programs which seek institutional change, which challenge accepted mores, which correlate with the needs of disadvantaged groups. There are few programs which deal with basic issues, bring flexibility and innovation to social problems and which are conducted in a spirit of cultural hospitality rather than paternalism.

HRC recommendations

The report concludes that foundations should be the forerunners in furthering the dignity and equality of all peoples and races in American life.

The report makes several recommendations that would help bring this about. It suggests that minorities should give more attention to foundations as institutions and to system-changing possibilities rather than only making technical proposals. Minorities should look into a matching grant system, a limitation on the life of donor-controlled foundations.

Foundations should research into the needs of the community rather than relying on conventional wisdom. Data should be gathered regularly. Goals and objectives should match foundation resources to community needs. It is suggested that foundations consult with groups in a broad economic, social, political and cultural segment of the community.

Information should be solicited from the general public to reveal problems of those not well organized and who have few recognized spokesmen. National foundations could share information with community-level foundations.

Foundations should reexamine the amount of funding for internationally oriented activities. Often these projects appear more glamorous than domestic projects but may not be as worthy.

Foundations should fund projects which involve risk and raise questions of institutional change, not immediately shy away from the controversial. They are urged to support more groups without track records and those who have not received prior foundation acceptance.

Foundations are urged to make themselves more visible to minorities as a whole by reporting on goals and current projects and capacities, by making eligibility for grants well-known, by making available information on how to apply for grants. Regional consultants and outreach offices could provide greater access to foundations for interested groups. Smaller foundations might pool resources.

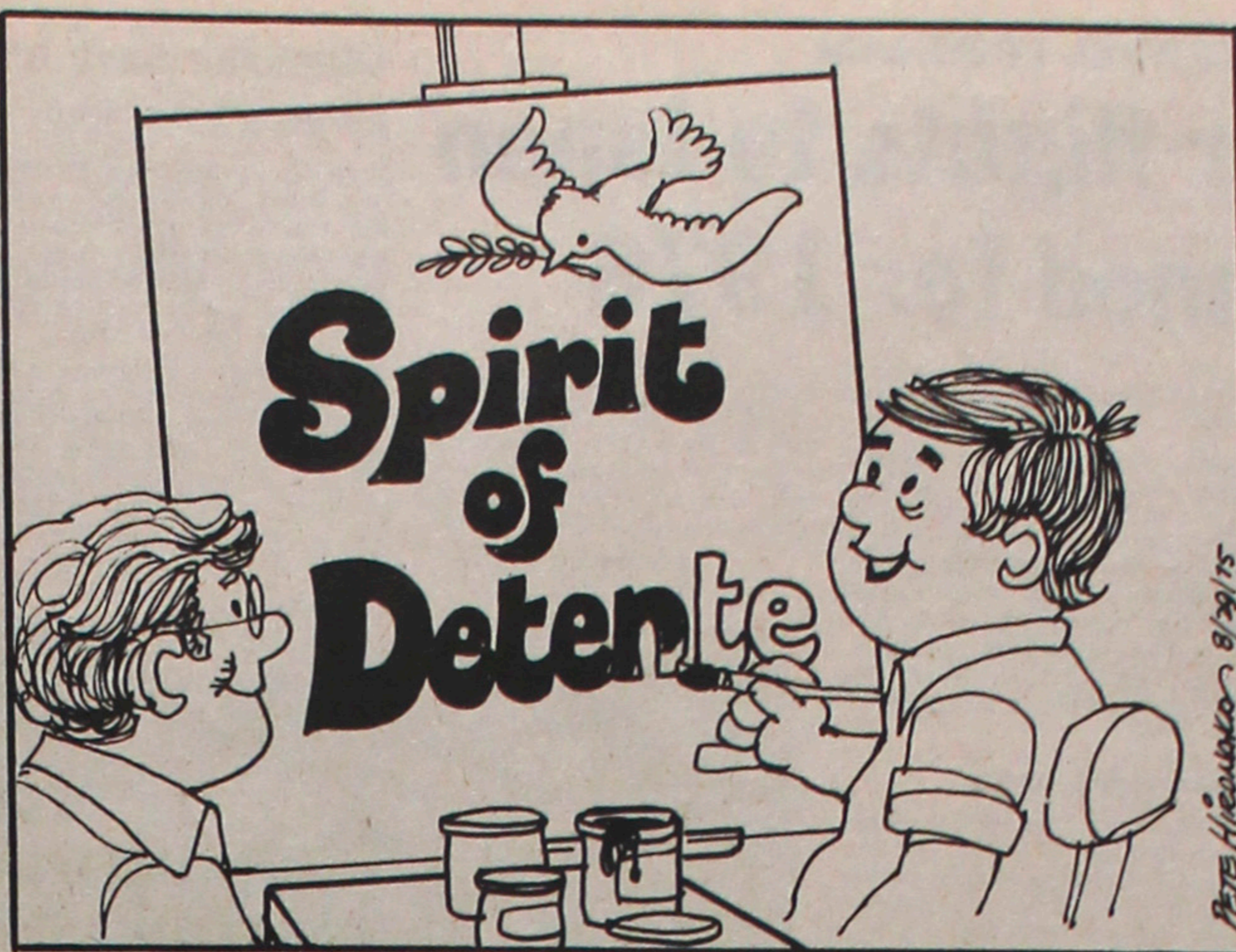
Foundations should locate ethnic groups for minority grants because minorities must have the right of self-determination.

More minority representation is needed on foundation boards and staffs. Compatible and constructive programs cannot be evolved if there are no minorities in foundation circles.

The Human Resources Corporation report also strongly recommends that a systematic data base relating to foundations and their responsiveness to minority be instituted.

JAACL comment

We at JAACL find many of these recommendations very worthwhile. Private foundations were set up for the good of the entire nation and their donors given tax relief which funds would otherwise go to the federal government and be distributed nationally. If these funds are being used for the special interests of the donors without consideration of the public need, then the tax privileges should be reconsidered.



'I'm sending this in as a possible theme for next year's National JAACL Convention.'

FROM THE FRYING PAN: Bill Hosokawa

It's a Small World

It was long after dark when Pan American's big bird brought the lights of Agana into view and gently set down on Guam, a tiny bit of America in the far western Pacific. We were to be there only an hour or so but I stepped out into the steamy night to see what I could see.

A PA system in a restaurant just outside the crowded terminal was blasting out some hard rock. A souvenir shop offered nothing that couldn't be bought for less in Taiwan, back down the line, or in Honolulu, a seven-hour flight eastward across the trackless Pacific.

Back outside, where a group of passengers waited patiently to board, one of the men looked oddly familiar. He kept glancing at me, and just about the time I decided to approach him he stood up and came toward me.

It was Joe Park, Dr. Joseph Park, Hawaiian-born Korean Nisei and one of America's most eminent chemists. Four years earlier he had retired from his post on the University of Colorado faculty, which he had joined after a distinguished career in industry, and the last I had heard he had gone to Korea to head up a research foundation.

"Joe, what are you doing here?" "I'm on my way to Iran," he said. Then he explained. He had resigned the presidency of the research foundation in Seoul because he couldn't tolerate the political interference. So he was going to visit for a while in Honolulu and Boulder, Colo., and en route he had stopped for a day in Guam to see what it was like.

"How did you get lined up in Iran?" "The Iranians have a lot of money and want to get into research but don't know how to do it," he explained. "Some of their people were graduate students of mine at the University of Colorado. They've been after me for years to come to Iran. So I finally accepted."

He had only a few minutes to talk but Dr. Park made one particular observation worth remembering. He said Japan didn't know it yet, but was headed for trouble because of inadequate expenditures for research and development. So far, he said, Japan had made enormous economic progress because of the skills or its workers. But more and more Japanese jobs are being taken over by countries with lower living standards and lower wages—Taiwan, Hong Kong, Thailand, Malaysia, Korea. Japan needs to push its research, he said, to find new products, new ways of doing things, if it wants to continue its economic growth.

It seemed to make a lot of sense.

In Tokyo, I had been unable to get in touch with Hatch Kita and his wife Kyoko. Hatch is a boyhood friend dating back to prewar Seattle and I first met Kyoko, a Tokyo native, during the Korean war. Kita reached Japan in 1945 with U.S. troops soon after the surrender and after he was mustered out he had remained in Tokyo ever since as a civilian employed by the U.S. Army. This trip to the Far East had come up so suddenly there hadn't been time to let Hatch know I was coming.

After checking in at the hotel, I telephoned his home. There was no answer. It was a Sunday, and probably he had gone for a drive to escape the oppressive heat. I telephoned again late that night and again the next day. Still no answer. He must have gone on an overnight excursion. Finally I left for Hong Kong without ever reaching the Kitas.

A week later, after I got home, I dropped them a note saying I was sorry to have missed them. That same day the mailman delivered a letter from Hatch. It said he had finally decided to retire and would be moving to Denver in a month or so.

From Our 60,000 Readers

PC Letter Box

Tri-District confab

Editor: As a JAACLer in good standing, I voice my strong opposition to the glorification being afforded John Dean by JAACLers.

Is it possible that the Japanese people can believe that an opportunist such as John Dean who so willingly assisted in heaping injustices upon all Americans until the lid blew off, and then couldn't squeal on the others fast enough in an attempt to save his own neck, could possibly be sincerely interested in the horrible injustices done the Japanese by the Evacuation?

Do they really feel that his known lifestyle portrays a man whose interest was sparked at the age of 8 (as per Ken Hayashi's article in the July 25 PC) and grew within him all these years, particularly during those years he so ably served the Nixon administration?

This gross naivete I cannot believe—main speaker for the Tri-District Conference Sept. 13 at Anaheim?

The Indian people didn't want Erlichman on their reservations even for free. Even though he too was trying to save his own neck by explanation of his sins, the Indians could have benefited from his knowledge at no cost, but didn't want even that great bargain if it included him. And to allow John Dean to profiteer by that same glib tongue by which he climbed so high in the Nixon Administration? Again, I ask, why?

DONNA DERMANSKY Gardena Valley JAACL

The Tri-District Conference committee was aware comments of this type existed within JAACL ranks. Nevertheless, it was felt that Dean's thoughts on a subject known very little "outside" of the Japanese American community would be of special interest.—Ed.

'Concentration Camps'

Editor: President Ford's recent visit (July 30) to the Nazi death camp at Auschwitz makes appropriate a reminder of the meaning of the term "concentration camp."

Being one of the most discriminated against minorities in American history, some Japanese Americans have been making efforts of late to call attention to their own relocation and detention during the second world war. Although in hindsight it has become easy for many who supported the Exclusion order to condemn it, the substantial question remains, might it ever happen again? Thus such an effort to put the relocation issue in the public light is an endeavor of considerable merit.

Unfortunately, some overzealous individuals insist on referring to the American relocation centers as "concentration camps." As one who lost six million Jewish brethren in the crematorium and gas-chambers of those artifacts of man's inhumanity, I am revolted each time I hear the term "concentration camp" used to describe the Japanese American relocation centers.

To suggest that the suspension of civil rights, loss of personal property and dignity, serious as they are suffered by 110,000 Japanese Americans is in some way tantamount to the systematic liquidation of six million persons is a gross distortion of history. It can serve only to confuse the minds and sensibilities of children who have yet to learn of that era three decades ago. I would heartily urge those who call the relocation centers "concentration camps" to consider the historical perspective they are suggesting. Names like Jerome, Tule Lake and Manzanar do not conjure the same images as those of Bergen-Belsen, Treblinka and Auschwitz.

MARK D. PETERS Los Angeles 90045

Who Am I? Who Are You?

ESTELLE ISHIGO

Is not human blood just plain blood No matter in whose veins it flows?

In this country America The home of you and me we find joy, Sorrow and all the emotions of human frailty In those of highest office to the humblest. No matter where anyone is from, all suffer alike Under punishment of hardship and privation, Whether the cause be the country of ancestors Or the powerful tie of love. May we banish Race prejudice and ethnic segregation, Let WE OURSELVES help raise Another FUHRER to rule anew.

Love is a power of life, It keeps things alive and growing, We use it for good or evil as each may desire.

May we have understanding and love For one another, each his gift to share Let us grow a strong nation— Of the WORLD'S PEOPLE—AMERICANS!

Aug. 2, 1975

Business Professional Guide. Your Business Card placed in each issue for 25 weeks at 2 lines (minimum) \$25. Each additional line \$6 per line.

Greater Los Angeles. FLOWER VIEW GARDENS FLORIST. NISEI FLORIST. YAMATO TRAVEL BUREAU.

Watsonville, Calif. TOM NAKASE REALTY. San Jose, Calif. EDWARD T. MORIOKA, Realtor.

Seattle, Wash. Imperial Lanes. Kinomoto Travel Service. Chicago, Ill. SUGANO TRAVEL SERVICE.

New York City. Miyazaki Travel Agency, Inc. Washington, D.C. MASAOKA - ISHIKAWA AND ASSOCIATES, INC.

Tell Our Advertisers You Saw It in the PC. MARUKYO Kimono Store. 101 Weller St. Los Angeles 628-4369.

Ped eye. Japanese All Stores. LEVI'S. Buena Park Carson Eagle Rock. Garden Grove - Northridge Orange - Puente Hills Mail San Bernardino - Torrance Westminster - Whittier.

Appliances - TV - Furniture. TAMURA And Co., Inc. The Finest in Home Furnishings. 3420 W. Jefferson Blvd. Los Angeles 18 RE 1-7261.

Koby's Appliances. 15130 S. Western Ave. Gardena DA 4-6444 FA 1-2123. NISEI Established 1936. TRADING CO. Appliances - TV - Furniture. 348 E. FIRST ST., L.A. 12 MADison 4-6601 (2, 3, 4).

Aloha Plumbing. LIC #201875. PARTS & SUPPLIES. Repairs Our Specialty. 1948 S. Grand, Los Angeles RI 9-4371. ED SATO PLUMBING AND HEATING. Remodel and Repairs. Water, Heaters, Garbage Disposals, Furnaces. Servicing Los Angeles. AX 3-7000 RE 3-0557.

Kimura PHOTOMART. Cameras and Photographic Supplies. 316 E. 2nd St., Los Angeles 622-3968. TOYO Myatake STUDIO. 318 East First Street Los Angeles, Calif. MA 6-5681.

Masamune Kojima, PSWDC Governor
By the Board

TRI-DISTRICT CONFERENCE

Los Angeles

Couple of years ago the governors of the three California district councils perceived a need for their districts to convene to discuss local issues and to attempt to set up a workable relationship among the chapters and districts. Thus, the concept of a Tri-District Convention was initiated and carried out with the first conference hosted by Central Cal at Fresno.

It was immensely successful in introducing the farming philosophy and economics to the essentially city folks from the Pacific Southwest. For the first time, many of the urban residents saw the scope and extent of a farm family life and were duly impressed by the graciousness and hospitality of its members. Several were heard to wonder aloud how these farmers could be characterized as vicious, greedy exploiters of farm laborers.

This year, PSWDC is hosting the Tri-District Conference at Anaheim on Sept. 12-14. Friday night will be the "welcome delegates" social with an appropriate cocktail mixer. Then on Saturday we setle down to business with three workshops by the districts.

Essentially, Central Cal will present the Farm Labor Legislation, PSWDC will present Reparations and Northern Cal will present "problems pitting districts against district".

The Saturday luncheon will feature speakers on Japan-America trade issues and the dinner-dance will feature John W. Dean III on Reparations. Sunday will be a discussion on problems concerning our districts and the national organization.

Delegates may come to realize that many of these problems are no longer disputes between districts, but between rural and urban chapters. In time, perhaps, this may lead to realignment of districts and chapters in order to seek a more compatible grouping of members. Other interesting possibilities come readily to mind. But in order to present your individual opinions and ideas as well as to observe and absorb the intellectual efforts of others, you must attend this Tri-District Conference.

All members, whether in these districts or not, are cordially invited to attend this conference. Since Disneyland is just across the boulevard, you are urged to come as a family unit. The kids as well as adults will enjoy this Fantasyland.

PSW preps for 2-step member recruitment

LOS ANGELES—A vigorous JACL membership recruitment plan was disclosed by So. Calif. JACL regional director Craig Shimabukuro at the recent PSWDC quarterly session hosted by East Los Angeles JACL Aug. 17.

Paula Higashi Essex was also credited for her input in developing the 1976 recruitment program. She, incidentally, is a California National Democratic Committee woman.

With two new chapters added in the district, Carson and Pan Asian (which is based in Monterey Park), prospects of meeting the previous year's district total of 8,838 have

been boosted. Total as of July 31 was 8,536 (96.6 pct.). Pre-campaign preparations are now being mobilized. The 1976 membership campaign is scheduled to begin in October, requiring a great deal of volunteer participation and expenditure of district and chapter funds.

"We realize some chapters are better equipped to launch a major drive than others, but we hope that each chapter will be able to adopt the plan to their respective situations," Shimabukuro added. It is imperative the 1976 campaign succeed to combat the financial problems, he said. During the pre-campaign

period, chapters were asked to notify the regional office to summarize their current programs, number of scholarships and the amounts awarded, support to other groups in terms of dollars or by official action and other support action, such as funding a student for the Presidential Classroom. This information would provide potential members basic information as to "what's JACL doing".

Training workshops in membership recruitment are also being planned during this period. A four-phase campaign will follow from October through May, 1976, accompanied by an intensive PR effort at the outset, renewal solicitations by mail going out in November and wrapping up with personal contacts to enlist new members from the new year.

Shimabukuro said people usually join JACL for one of two reasons. They are either interested in JACL programs or for membership benefits as chapters were urged to mention both in their appeal.

A 70% renewal goal by Jan. 1, 1976, was also suggested.

Chapters with more than 250 members were encouraged to establish new chapters. A 10 pct. increase over 1975 enrollment was also stressed.

The last two months of the campaign period (April-May), Shimabukuro explained, should be reserved for the "mop-up" phase, evaluation of the overall campaign and perhaps schedule a party to celebrate a successful drive.

Special effort should be made to recruit the young adults, those between ages 21 and 35. "We must begin to involve younger people now," Shimabukuro insisted. "If JACL is to remain a viable force in the community and nation in the coming decades." He noted over half of the current JACL member is past age 50, over three-fourths past age 40.

Chapter Pulse

Summer Events

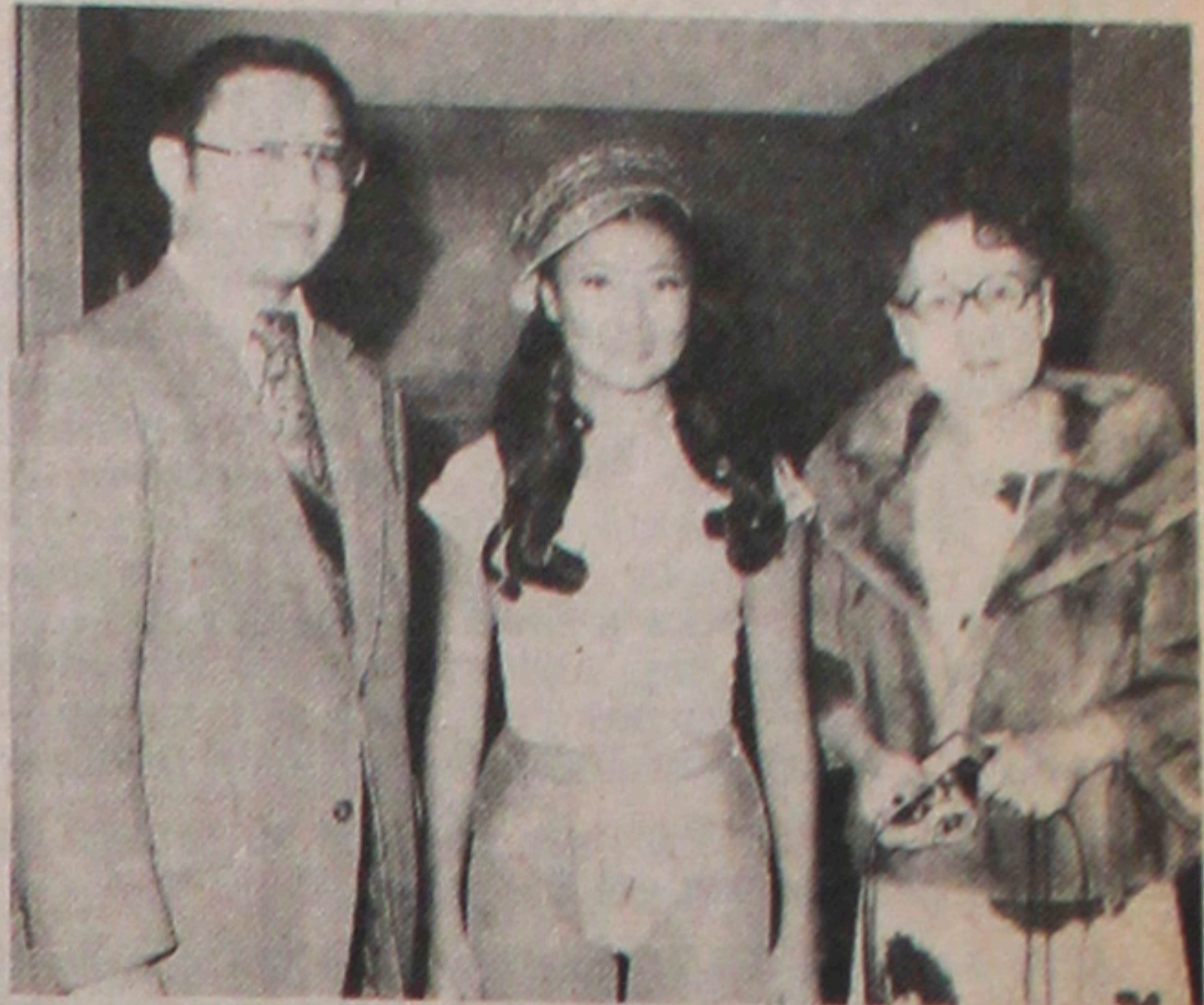
● Riverside JACL reported \$1,180 was netted during the recent sponsorship of the Riverside-Sendai Festival.

Chapter also assisted local baseball Pony League sponsor of the International Friendship games held at Donors Park Aug. 17-18 with 13 and 14-year-old youngsters from Japan. Next year, an American group will resume the exchange series in Japan.

● San Mateo JACL hailed it a successful Keiro Kai dinner as over 200 attended the annual Issei appreciation event held July 12 at the local Buddhist Church. As a community event, the dinner honors those (including Nisei now) over age 65.

The chapter also supported the June 15 testimonial dinner honoring Mr. Sanaya Ikeda, who was conferred the Order of the Sacred Treasure, 5th Class, from the Japanese government.

JACL also joined the Downtown Merchants and Lions Club luncheon July 14 honoring young tennis start Ann Kiyomura, daughter of the Harry Kiyomuras, for having



SAN FRANCISCO—Special treat for Hamilton Senior Citizens Center members was provided by the San Francisco JACL when the 1976 Ice Follies opened its show here in mid-August. All posed with feature artist Christy Ito, a Portland Saneil (center), who is skating her fifth season with the show. Others in the photo are Dr. Yoshio Nakashima, local JACL president (left), and Mrs. Kay Okamoto, Hamilton Senior Center, who contacted the Issei. Chapter also thanked Jan Yanehiro for arranging the back-stage meeting with Christy, and the eight drivers who picked up and brought home 31 of the Issei. The drivers were Eugene and Phyllis Hayashibara, Geri Inouye, Paul Yamashita, Ken Takahashi, Nob Mihara, Yosh Nakashima and Wesley Dol.

MURRAY SPRUNG: New York JACLer
25 Years of Dedicated Service Cited

NEW YORK — A morocco leather scroll in recognition of 25 years of dedicated service to National JACL and the New York JACL was presented to Murray Sprung, an attorney, during the New York JACL installation held June 21 at the New York Sheraton. As the chapter's "Member of the Year", he has represented the chapter at district and national council meetings and has been perennial member of the chapter board. A native New Yorker, he was valedictorian at Peter Stuyvesant High, went to Cclby College and graduated in law at St. John's and in social science at Columbia. He and his wife Mary worked together to keep JACL thriving in New York. The scroll, which carried the signatures of his fellow board members, was the art work of Henry Iijima.

EDITORIAL: Japan America Society 'Bulletin'

School Children Viewed as Pawns

Following appeared in the Japan America Society of Washington, D.C. publication, "Bulletin", for July-August, 1975.

A recent article in "Parade" magazine on Japanese American noted that this group is still often heretage to relations between the United States and Japan. The writer, David Ushio, says: "As U.S. and Japanese go, so go the fortunes of these citizens". Ushio is the National Executive Director of the Japanese American Citizens League, with headquarters in San Francisco.

Ushio recounts a recent experience of his own 3-year-old daughter, who was on a playground when a little girl came up to her and said, "You're bad". His daughter asked, "Why am I bad?" The other child replied, "Because you kill whales."

For a three-year-old child to be subjected to such an experience because of an international controversy over whales can only be described as appalling. Obviously, the childish accuser was only parroting what she had been told in school.

As many "Bulletin" readers may know, the aggressive campaign of American environmentalists to achieve a complete ban on whale killing has been carried into schools,

where children have not only been enlisted in their cause but have also been mobilized to "lobby" their parents and Congress. A substantial letter-writing campaign to Congressmen from school-children has been an impressive political fruit of the environmentalists' labor.

It is not the purpose of this editorial to weigh the pros and cons of the complex argument whether or not whales should be "harvested" for human use, as the whalers express it, or whether they should be interdicted to Japanese or other whaling countries.

But it is our purpose to point out the dangers of carrying an inflammatory political or public relations campaign into the nation's schools where American children, often very young, are used as unknowing and innocent tools, regardless of the emotional fall-out in either directions.

That the life of one Japanese American child could be deeply troubled by the charge "You are bad—you kill whales" gives frightening insight into the volatility and dangers of using school children for special pleading or political ends. Whatever the zeal of the environmentalists, and whatever may be the merits of their cause, this sort of tactics is utterly indefensible.

Though the immediate victims appear to be Japanese American children, the same principle applies to other issues which may have nothing to do with Japan. The clear lesson is: school children must not be allowed to be the pawns of lobbying or public relations campaigns aimed at influencing public opinion and national legislation.

Yomiuri editor back to write Nisei history

SEATTLE, Wash.—Associate editor Kazuo Ito of the Tokyo Yomiuri is back for the fourth time researching another book, this time about the Nisei of the Pacific Northwest.

Ito spent about seven years researching the Issei story, which was completed in 1972 and published under the title, "Hyakunen Sakura", and translated into English the following year and published for about \$40,000. The first time Ito came here was in 1967 as a Foreign Office student at Univ. of Washington. He intends to write a similar book on the Pacific Northwest Sansei next.

Tak Kubota of Seattle hailed Ito's book on the Issei. He said the JACL has already spent \$600,000 nationally on its history project and the book is still not published.

Travel—

Continued from Front Page

for one round trip fare to Japan, which included JACL administrative fee and airport departure tax of \$3. The commercial roundtrip fare to Japan from the West Coast is now \$1,004. The 1976 charter fares should be comparable, subject to increases as requested by the air lines.

The 1976 flight schedules and applications will be made available through chapters, district offices, and National Headquarters, as soon as the requested flights are confirmed. JACL-authorized travel agents will also be equipped to handle flight and land/tour arrangements. JACL authorized travel agencies for 1976 will be announced shortly.

For further information on the 1976 Flight Schedule, or to be placed on the mailing list, please write to: Steve Doi, National JACL Travel Committee, National JACL Headquarters, 1765 Sutter St., San Francisco 94115, or call (415) 921-3225.

Phyllis Hayashibara is a member of the National Staff assisting in the administration of the travel program. She is the person to consult when calling Headquarters.

CALENDAR

- Aug. 29 (Friday) Chicago—Dr. Harry Kitano reception, JASC Bldg., 7:30 p.m.
- Sept. 7 (Sunday) West Los Angeles—Issei-Citizen Appreciation, Mahood Rec Ctr, 2 p.m.
- Sept. 12 (Friday) Philadelphia—Ed Mtg, Ray Master's res.
- Sept. 12-14 PSW-CC-NWDC—Orange County JACL hosts Tri-District Conference, Grand Hotel, Anaheim; John W. Dean III, Sat banq spkr.
- Sept. 13 (Saturday) Houston—Folklife Festival, Sharpstown Shopping Ctr Mall.
- Sept. 16 (Tuesday) Salinas Valley—Bd Mtg, Bank of Tokyo, 8 p.m.
- Sept. 20 (Saturday) Downtown L.A.—Issei Citizenship 20th Anny luncheon, Golden Dragon Restaurant, 960 N Broadway, noon; Joseph Sureck, INS dist dir, spkr.
- Sept. 21-22 PNWDC—Portland hosts Qtrly session, Coliseum—Travelodge.
- Sept. 28 (Sunday) San Mateo—Comm picnic, Beresford Park.

St. Louis JACL prints 'Nisei Kitchen' cookbook

ST. LOUIS, Mo.—The local JACL has published its cookbook, "Nisei Kitchen" (\$3.95) featuring 216 pages of Chinese and Japanese recipes. Proceeds will be used to purchase a gift to the Japanese Garden at Shaw's Garden.

Togin majority supports merger

SAN FRANCISCO — An 82.4 pct. majority of the Bank of Tokyo of California shareholders (2,398,292 for—9,904 against) voted Aug. 15 to acquire the assets and assume the liabilities of So. Calif. First National Corp., San Diego, and its principal subsidiary, So. Calif. First National Bank.

In approving the proposed merger, Bank of Tokyo of California shareholders also ratified expansion of the board of directors from 17 to 25 and to change the name of the surviving bank to California First Bank.

Some 53 pct. of the California-chartered bank's outstanding shares is currently held by the Bank of Tokyo, Ltd., Tokyo; the remaining 1,381,471 shares owned by more than 3,000 U.S. shareholders, mostly Californians. The merger means creation of a California banking system with 100 branches and assets approaching \$2 billion.

NOTICE

Since regular mail is not delivered Saturdays, all copy expected to reach us over the weekend is to be sent via Special Delivery to Pacific Citizen c/o John's Lino-Comp Serv. 212 S. San Pedro St. Los Angeles, Calif. 90012

We've got a yen for your new car at a low interest rate:

Come Drive a Bargain with



- San Francisco Main Office.....Tel. (415) 445-0200
- San Francisco Japan Center Branch... Tel. (415) 445-0300
- Oakland Branch.....Tel. (415) 839-9900
- Fremont Branch.....Tel. (415) 792-9200
- Palo Alto Branch.....Tel. (415) 941-2000
- San Mateo Branch.....Tel. (415) 348-8911
- San Jose Branch.....Tel. (408) 298-2441
- Westgate Branch.....Tel. (408) 298-2441
- Salinas Branch.....Tel. (408) 424-2888
- Sacramento Branch.....Tel. (916) 441-7900
- Stockton Branch.....Tel. (209) 466-2315
- Fresno Branch.....Tel. (209) 233-0591
- North Fresno Branch.....Tel. (209) 226-7900

- L.A. Main Office: 616 W. 6th.....Tel. (213) 972-5200
- Los Angeles Branch.....Tel. (213) 687-9800
- Montebello Branch.....Tel. (213) 726-0081
- Crenshaw Branch.....Tel. (213) 731-7334
- Western L.A. Branch.....Tel. (213) 391-0678
- Gardena Branch.....Tel. (213) 327-0360
- Torrance Branch.....Tel. (213) 373-8411
- Panorama City Branch.....Tel. (213) 893-6306
- Artesia-Cerritos Branch.....Tel. (213) 924-8817
- Santa Ana Branch.....Tel. (714) 541-2271
- Irvine Branch, 17951 MacArthur Blvd.....Tel. (714) 549-9101
- San Diego Branch.....Tel. (714) 236-1199

When Care Means Everything

One visit convenience is a part of caring at a difficult time.

That's why Rose Hills Memorial Park offers beautiful chapels, a modern mortuary and crematory, dignified mausoleums and flower shops, all in one peaceful and quiet setting.

Dignity, understanding, consideration and care... A Rose Hills tradition for more than half a century.



Japan Charter Flights

Sponsored by Nat'l Japanese American Citizens League

FLY JAPAN AIR LINES TO TOKYO—NEW REVISED SCHEDULE

NJACL Flt Dates	Departing from	Roundtrip Fare	Aircraft/Capacity
No. 7—Sep 28-Oct 20	San Francisco	\$445	DC8/152 Full
No. 5 LAX—Oct. 1-24	Chicago and L.A.	\$570*	747/GA-100 Full
No. 5 SFO—Oct. 2-25	Chicago and S.F.	\$522	747/GA-100 Full
No. 4—Oct. 6-Oct. 27	L.A. and S.F.	\$446	747/361

* Passengers may be picked up at Los Angeles and fly to Tokyo for approximately \$440. Contact Yamada Travel Service or National HQ for information.

All prices include Round Trip Airfare, \$3 Airport Departure Tax, and \$25 JACL Administrative Fee. All seats (adult and child alike) are the same price on any one flight. All fares subject to change depending on the numbers of participants. Rev. 8-12-75

FLY Japan Air Lines



TOUR with Japan Travel Bureau International

OPEN TO ALL BONAFIDE JACL Members, Their Spouse, Dependent Children and Parents

Tour with Japan Travel Bureau International

JTBI-JACL Tours	Places	Basic Fare	Single Room Supplement
7-Day Expo Tour	Tokyo, Kyoto, Osaka, Okinawa.....	\$253.65**	\$75.40
10-Day Japan Tour	Tokyo, Kyoto, Kobe, Takamatsu, Uno, Okayama, Hiroshima.....	\$260.50	\$55.95
14-Day Japan Tour	Tokyo, Kyoto, Kobe, Takamatsu, Hiroshima, Beppu, Fukuoka.....	\$372.35	\$76.40
Sansei Study Tour	Tokyo, Nagoya, Ise, Nara, Mt. Koya, Osaka, Kyoto.....	\$291.00	(none)
Arrival Package	Transfer to hotel, overnight in Tokyo.....	\$ 23.90	\$12.15
Departure Packages	Overnight in Tokyo, transfer to airport.....	\$ 23.90	\$12.15

** All prices based on 30 or more members traveling together (in the case of Sansei Study Tour, 25) Air passage Osaka/Okinawa not included in 7-Day Expo price. Included in all tours: hotel accommodations; but, rail, steamer transportation, English-speaking guide and escort. All fares may be subject to change.

1975 Membership Progress

Percentage line compares with chapter's 1974 total.

PACIFIC NORTHWEST	Percentage Membership	PACIFIC SOUTHWEST	Percentage Membership
	20 40 60 80 100		20 40 60 80 100
California State	100	Arizona	100
San Francisco (Inland)	100	Cochise Valley	100
Mid-Columbia	100	Downsides L.A.	100
Portland	100	East Los Angeles	100
Seattle	100	Gardena Valley	100
Puyallup Valley	100	Greater Pasadena	100
Spokane	100	Hollywood	100
White River Valley	100	Inland Valley	100
NO. CALIF.-W. BEV		Long Beach-Porter	100
Alameda	100	Metropolitan L.A.	100
Bay Area Comm.	100	North San Diego	100
Berkeley	100	Orange County	100
Central Coast	100	Pasadena	100
Contra Costa	100	Progressive Westside	100
Delta	100	Riverside	100
East Township	100	San Diego	100
Fairfax	100	San Fernando Valley	100
French Camp	100	San Gabriel Valley	100
Fremont	100	San Luis Obispo	100
Gilroy	100	Santa Barbara	100
Livingston-Merced	100	Santa Maria Valley	100
Marysville	100	Selma	100
Mendocino Peninsula	100	South Bay	100
Oakland	100	Venice-Culver	100
Placer County	100	Ventura County	100
Redwood	100	West Los Angeles	100
Sacramento	100	Wilshire-Uptown	100
Salinas Valley	100	INTERMOUNTAIN	
San Jose	100	Boise Valley	100
San Francisco	100	Idaho Falls	100
San Mateo	100	Mt. Shasta	100
Seaside	100	Pacifica-Stockton	100
Sonoma County	100	San Jose	100
Stockton	100	Salt Lake City	100
Willamette	100	Snake River Valley	100
West Valley	100	Wasatch Front North	100
CENTRAL CALIFORNIA		MOUNTAIN-PLAINS	
Civitas	100	Arkansas Valley	100
Delta	100	Fort Lupton	100
Fresno	100	Maheo	100
Palmer	100	Omaha	100
Parlier	100	San Luis Valley	100
Redding	100	MIDWEST	
Sanger	100	Chicago	100
Santa Clara	100	Cincinnati	100
Santa Cruz	100	Cleveland	100
Stockton	100	Dayton	100
Willamette	100	Detroit	100
West Valley	100	Indianapolis	100
EASTERN		Los Angeles	100
New York	100	St. Louis	100
Philadelphia	100	Two Cities	100
Seattle	100		
Washington, D.C.	100		

Based upon July, 1975, figures. —Don Hayashi

MAJOR APPLIANCES CARPETING ROOFING
NEW CAR
DOCTOR BILLS
DENTAL WORK
MOTORCYCLE

We make PERSONAL LOANS

NATIONAL JACL CREDIT UNION
Mail: P. O. Box 1721, Salt Lake City, Utah 84110
Office: 242 S. 4th East, Salt Lake City
Tel.: (801) 355-8040
Remember you can borrow \$3,000 on your signature with a qualified credit rating.

BOOKS FROM PC

MAIL THIS ORDER FORM TODAY

- Nisei: The Quiet Americans, by Bill Hosokawa
() Paperback, Revised \$4.30 postpaid
() Japanese Edition, \$12 postpaid
- Jan Ken Po, by Dr. Dennis Ogawa. On the heritage of Japanese Americans in Hawaii.
() Hardcover, \$7.30 postpaid.
- America's Concentration Camps, by Bosworth Translated in Japanese Limited supply.
() Paperback, \$5.35 postpaid (In Japanese)
- Camp II Block 211, by Jack Matsuoka. Daily life in an internment camp as seen by a young cartoonist.
() Softcover, \$6.45 postpaid
- Hawaiian Tales, by Allan Beekman. Eleven stories of the Japanese immigrants in Hawaii.
() Hardcover, \$4.45 postpaid.

NAME _____
ADDRESS _____
CITY _____ STATE _____ ZIP _____
Total Amount Enclosed \$ _____

Low cost new auto loans!

Sumitomo Bank of California
Member F.D.I.C.

EAST WIND: Bill Marutani
A Rose by Any Other Name

Philadelphia
UNDOUBTEDLY YOU'VE HAD a similar experience. You meet an acquaintance from pre-camp or camp days; he was known to you as, let's say "Hichihaimon" (in which case it no doubt was shortened in the schoolyard to plain "Hi ch.") But now today, this being a few years removed from those schoolyard days, you refer to him by his full, proper, given name: Hichihaimon. You notice a short of sheepish smile and just a hint of squirming, and you quickly learn why: all of his current friends call him—and get this—"Llewellyn". Which mercifully is shortened to "Lew".

THE NAMES HAVE been changed to protect the guilty, but perhaps you get the point.

AND ALTHOUGH IT'S awkward to call him by his current monicker of "Lew"—it's as if one were referring to some stranger or newly-found acquaintance rather than good ol' "Hitch"—you manage to articulate this new name. ("Gads", you think to yourself, "with the whole world to pick from, where in dickens did he manage to dig up 'Llewellyn'?) And when you fondly recall the things that both of you shared as kids, somehow it just doesn't ring true when you refer to him as "Lew": it was country lad Hi'ch. Not Llewellyn.

EXCUSING A BIT of personal reference, if the truth be known, actually my first name isn't William either: it's Masaharu. The middle name of "William" was an after-thought by my parents who thought it only proper to recognize the doctor who delivered this columnist, Dr. William Taylor who I believe was once in Auburn, Washington. (I'd often thought how much more complex life in the schoolyard would have been for me if that doctor's name had been, say, "Percival".)

AS IT WAS, even with that name "William" life wasn't a bed-of-roses for me during recess, for more than once did I have to defend that label in the schoolyard: particularly when the kids found out that there was a flower—of all things—called "Sweet Williams". (To this day, we've never had any growing in our flower garden, at least not knowingly.) And in those days when most Nisei sought shelter by seeking to be 110% American (and I was assuredly one of them) I wasn't about to jump from the frying pan into the fire by telling the kids that, really, my first name wasn't William, that it was Masaharu.

I'VE WONDERED WHETHER or not the practice of giving a "nihon-mei" (so to speak) to the progeny of the Issei is dying out. On the level of the Nisei generation, at least in my sphere of experience, rare indeed was the Nisei who hadn't been endowed with a "nihon-mei". As for the Sansei, I receive some hard statistics whenever I see something formal, such as a wedding invitation. And I am always delighted to see a "nihon-mei", usually as the middle name.

FOR NO LONGER need we, or anyone else for that matter, hide ourselves in order to seek to demonstrate an extra ten percent.

JAMES HIGA: Artist

Crimps Old Newspapers to Sculpture

HONOLULU — Artist James Higa has concocted an ingenious way to deal with old newspapers.

Using a device called a "paper crimper," Higa pleats and crinkles newspapers into objects that sell for \$5 to \$1,200.

His three-dimensional paper sculpture, known as "Krimpart," have been on display recently at the Contemporary Arts Center of Hawaii.

Higa was born in Hawaii. In 1949, he went to Chicago to study at the Institute of Design, following this with a few years as a packaging designer with Container Corp. He left to start his own design firm in Evanston.

The designer's crimping career began when he was asked to create a three-dimensional pumpkin as part of a textbook illustration. Higa used a crude crimper device to turn flat sheets of paper into crinkled coils. His successful pumpkins inspired him to keep crinkling. He crinkled his way into a one-man show at the Chicago Press Club with horses, monkeys, donkeys and African masks.

Merritt -

Continued from Front Page

Pacific Citizen several years ago he knew Merritt Jr. and it was only a question of establishing a suitable occasion to make the belated presentation.

Urata's talk on Evacuation was accompanied by a slide presentation.

1975 TRI-DISTRICT JAEL CONVENTION
Tentative Schedule
Fri., Sept. 12
7:00-8:00 p.m.—Registration, Grand Hotel, Anaheim
8:00-11:30 p.m.—Welcome Mixer, Sky Room - Grand Hotel
Sat., Sept. 13
8:00-9:00 a.m.—Registration
9:00-9:15 a.m.—Greetings
9:15-11:15 a.m.—1st Workshop
11:30-1:30 p.m.—Lunch, Representative speakers from UAW & Japanese Corporations on "U.S.-Japan Trade Relations"
1:45-3:45 p.m.—2nd Workshop
4:00-5:00 p.m.—3rd Workshop
7:00-9:00 p.m.—Dinner, John Kame Od, Shiro Dohara, Ben T. Suzuki, "Reparations"
9:00-1:00 a.m.—Dance
Sun., Sept. 14
9:00-12 Noon—Open Discussion
HOTEL RESERVATIONS—Contact Grand Hotel, 1 Hotel Way, Anaheim, Calif. 92808 (714-772-7777) directly for confirmation. Mention JAEL Tri-District Conference.
PACKAGE DEAL—For package deal or single tickets, use form below. Early registration strongly urged.
HEAD COUNT—Chapters and individuals requested to report head count of those attending the luncheon and/or dinner-dance as early as possible to So. Calif. JAEL Office (213-626-4471) or Ben Shimazu (714-892-6278).

PACKAGE DEAL REQUEST FORM
Orange County JAEL Attn: Ben Shimazu, 6181 Dover Dr. Huntington Beach, Calif. 92647
Send me _____ package deals at \$34.50 per member or \$39.50 for non-members.
Name _____
Address _____
City _____ State _____ ZIP _____
Amt. Enclosed \$ _____ Member: _____ JAEL

1975 Nisei Week Queen and Court



LOS ANGELES—JAEL support continues Ellen Tamaki, East Los Angeles JAEL; actively in the annual Nisei Week Festival. Karen Geda, Gardena Valley JAEL; Susan High, Suburban Optimists; Miss Ogi, Judy Watanabe, Wilshire JAEL; Yuko Sakamoto, Metropolitan L.A. JAEL; Mary Morimoto, West Los Angeles JAEL; and Barbara Kikuta, Citrus Valley Optimists. —Toyo Miyatake Studio

Early Tri-District registrants sought

Orange County JAEL, co-hosts with the Pacific Southwest District Council, expects registrations to step up this weekend for the 2d biennial California Tri-District Conference, set for Grand Hotel in Anaheim Sept. 12-14.

Delegates should have made room reservations directly with the hotel. Rooms on the top floors have been blocked for the JAEL conference.

Registration chairman Ben Shimazu would appreciate early sign-up to avoid any last-minute hangups. Chapters are also expected to indicate how many are coming to assure enough seats are provided during the Saturday luncheon and dinner-dance.

All details are found in the Tri-District Conference announcement on this page.

Order PC for Your Schools or Libraries

Tri-District -

Continued from Front Page

provides for state-supervised, secret ballot elections so farm workers can choose what union—if any—they wish to belong. By the time Tri-District Conference meets, some elections will have been conducted as the new law went into effect this week (Aug. 28).

Reparations

Pacific Southwest District Council announced reparations as its single workshop topic, calling persons active in trying to package a possible legislative approach to secure some form of justice for the deprivation of basic civil rights during World War II due to internment without trial.

Henry Miyatake of the Seattle JAEL evacuation reparations committee will be among the panelists. The plan developed by his committee involves earmarking income tax returns toward a reparations fund to be administered by the government and distributed to evacuees, those in greatest need to be helped first.

Such questions as the risk involved in raising the ques-

tions of reparations, criteria for distribution and prospects of such a legislation being enacted are also to be faced by the reparations panelists.

What the former Presidential counsel John W. Dean III, who became interested in the topic of Evacuation reparations while serving in the Justice Department before he was tapped for assignment in the White House, will say during the Tri-District Conference banquet Saturday (Sept. 13) is expected to further discussion on this topic by the National JAEL political education committee.

PSWDC-JWRO CAMPAIGN SOARS OVER \$3,600

LOS ANGELES—The Pacific Southwest JAEL District Council campaign to assist the Japanese Welfare Rights Organization has acknowledged \$3,639 as of Aug. 18 from a total of 315 contributors. Major contributors \$25 and up (since the first report) and previously not mentioned are: No. 1—Shozo Iba MD, Hideo Okino, Nari Savings, Laguna Hills Nursery, Seisue Ozawa, Seno Realty Co., Ted T. Wada, Jerry Sakamoto, Robert N. Takamoto, Masashi Kawaguchi, Fumio Miyamoto, Seizo Mitobe, Genzo Nishida, Tak Studio, Yo Ando, Frank Sata Collaborates, William Koseki, Janice T. Saitani. No. 2—Tom T. Ho, Rodger T. Kame Od, Shiro Dohara, Ben T. Suzuki, Masahi Uru MD, Hiro Imai. No. 3—Takashi Watanabe, Maryknoll Church, Mrs. C. Kobayashi, Mrs. Chiveko Kishi, Masamune Kojima, Frank Nagatani, Masaru Morita. No. 4—Theodore H. Kaneko, Dr. Bo Sakaguchi. No. 5—None. No. 6—None. No. 7—(Aug. 15)—Carson JAEL, Takuo Endo, Shig Fukutomi, W. T. Hirose, Dick J. Kobayashi, Orange Thrope Nursery, Sachi, Iseo Terayama, West Los Angeles JAEL, Evelyn Yoshimura. No. 8—Tak Kawagoe.

JAEL Subscribers

Table listing JAEL subscribers by city and amount, including Los Angeles, Stockton, and others.

LOS ANGELES

NISEI WEEK GREETINGS TO OUR MANY JAPANESE FRIENDS AND CUSTOMERS

MUTUAL ESCROW CO.
13011 W. Washington Blvd. 870-8888
Los Angeles, Calif.

NISEI WEEK GREETINGS TO OUR MANY JAPANESE FRIENDS AND CUSTOMERS

MAIN STREET FEED STORE
21518 S. Main 835-3874
Carson, Calif.

VENTURA COUNTY

NISEI WEEK GREETINGS

COASTAL AG-CHEM
AVIATION DIVISION
Crop Dusting - Spraying - Seeding
Fertilizing
1015 E. Wooley Road (805) 487-4961
Oxnard, Calif.

NISEI WEEK GREETINGS

Condor Helicopters & Aviation Inc.
Crop Dusting, Spraying, Seeding & Fertilizing
2899 W. 5th (805) 487-5451
Oxnard, Calif.

SANTA BARBARA COUNTY

Greetings to Our Many Japanese Friends

WANDER CROP DUSTERS
Aircraft & Helicopter Dusting
Seeding & Liquid Spraying
3940 Mitchell Rd. Santa Maria, Calif.
(805) 937-6331 - 925-2249

NISEI WEEK GREETINGS

FRANK J. OLOCCO
AGRICULTURAL PEST CONTROL INC.
Crop Spraying • Weed Control • Soil Fumigation
Seed Treating • Sales & Application
3935 Brown Rd (805) 925-9563
Santa Maria, Calif.

Greetings to Our Many Japanese Friends

VALLEY FARM SUPPLY CO. INC.
Everything for the Farm in Crop Dusting, Spraying & Soil Fumigation
Agricultural Chemical & Insecticides
Soil Fumigants, Herbicides, Custom Application
Vegetable & Field Seeds - Fertilizers
1335 W. Main (805) 922-5848
Santa Maria, Calif.

Greetings to Our Many Japanese Friends

OXY-CHEM
Garden Valley Fertilizer Co.
FERTILIZERS
288 Guadalupe (805) 343-1312
Guadalupe, Calif.

NISEI WEEK GREETINGS

HELICOPTER TOURS ON BEAUTIFUL SAN FRANCISCO BAY

Pier 43—Behind Sailing Ship "Balcutha"
See the Fantastic San Francisco Skyline, Alcatraz and the Entire Bay Area by Helicopter \$6 for Adults — \$3 for Children
"THE ONLY WAY TO SEE BEAUTIFUL BAGHDAD by the BAY"
Commodore Air Tours - Pier 43 Fisherman's Wharf
(415) 982-4368 (415) 332-4482
San Francisco, Calif.

NISEI WEEK GREETINGS

BOB'S OPTICAL CO.
ROBERT A. (BOB) KROEPFELIN
Eye Glasses & Contact Lenses Made Exactly to the Prescription of Your Eye Physician
24-HOUR LENS REPLACEMENT
Mon.-Fri. 9:30 to 5:00 Open Saturdays 9 to 1
228 Meridian Ave., San Jose, Calif. (408) 297-6950

NISEI WEEK GREETINGS

EARTH AND SEA PRODUCTS
Greenhouse Fertilizers for Planters, Containers & Trees (Seaweed Application)
P.O. Box 1305 (408) 728-2231
Watsonville, Calif.

SACRAMENTO VALLEY

NISEI WEEK GREETINGS

BI-COUNTY EQUIPMENT
Authorized Allis Chalmers Farm Equipment
Sales • Service • Parts
3056 Colusa Hwy. (916) 674-0980
Yuba City, Calif.

NISEI WEEK GREETINGS

WASHBURN AGRICULTURAL SERVICE
Pesticide Field Service - Chemicals & Ground Rig
Application for All Pesticides
Radio Service for Your Convenience
Road 31 & Road 96 (916) 753-3046
Davis, Calif.

NISEI WEEK GREETINGS

Established 1961
INLAND TRACTOR CO.
Authorized John Deere
SALES - SERVICE - PARTS
Air-O-Fan Sprayer - Hancock Scraper
Harter-Carter Tomato Harvester
740 Onstott Rd (916) 673-2232
Yuba City, Calif.

NISEI WEEK GREETINGS

Established 1935
BARNICK PUMPS
Irrigation Equipment - Redit-Rain Sprinklers
For Engineered Systems That Will Best Fit Your Water Supply, Soil Composition, Terrain & Climate Needs
CALL US AT (916) 673-2194
Sales & Service
550 Onstott Rd. Yuba City, Calif.

NISEI WEEK GREETINGS

NORTHROP KING & COMPANY
Seed Specialists
Alfalfa, Ladino Clover, Sudan Grasses, Cover Crops, Vetches, Pasture Mixes
Range Grass & Vegetable Seeds
276 Wilbur Ave. (916) 673-6660
Yuba City

NISEI WEEK GREETINGS

MID-VALLEY TRACTOR CO.
Authorized John Deere Farm Equipment
SALES - SERVICE - PARTS
Tower Discs - Marvin Landplanes
Lillian Cultivators - Air-O-Fan Sprayers - Flory Nut Equipment
Owatona Swather Parts - Kilby Tree Shakers
489 Country Dr. (916) 343-8288
Chico, Calif.

NISEI WEEK GREETINGS

AULMAN & AULMAN
Water Well Drilling & Service
(Contractors License #305024)
Wells Deepened and Cleaned
Road 20 (916) 662-7210
Woodland, Calif.

NISEI WEEK GREETINGS

NORTHWEST AVIATION
Everything for Your Complete Agricultural Aviation Needs
Quality Application for Higher Yields
Road 88, Esparto, Calif.
(916) 787-3245 (916) 662-2562

NISEI WEEK GREETINGS

CRANSTON INTERNATIONAL INC.
Farm Equipment
SALES - SERVICE - PARTS
1209 E. Kentucky Ave. (916) 662-7373
Woodland, Calif.

NISEI WEEK GREETINGS

MEDLOCK DUSTERS
Crop Dusting & Spraying
Road 27 & Road 101 (916) 753-2819
Woodland, Calif.

NISEI WEEK GREETINGS

FARM AIR INC.
Crop Dusting - Spraying - Seeding - Fertilizing
3801 Airport Blvd. (916) 922-9063
Sacramento, Calif.

Aloha from Hawaii

Richard Gima

HAWAII TODAY — Cash surplus in the state coffers is nearly \$65 million, according to Eileen Anderson, director of the Dept. of Budget and Finance, which means the state will relax restrictions on spending by about \$8 million during the current fiscal year.

The drive for lower overseas phone rates for Hawaii may result in heavier local phone rate changes, says Hawaii Telephone Co. president William Rowland — by as much as \$4 per month per customer.

Influx of foreign immigrants to Hawaii has increased substantially since quota restrictions were relaxed in 1965—reaching a high of 9,013 in 1970. The stream has since subsided to an average of 6,562 annually between 1971 and 1974.

NAMES IN THE NEWS — Former Cambodia president Lon Nol is selling his Hawaii Kai home and looking for a bigger house. His present \$100,000 home on Kamilo St. has four bedrooms but is overcrowded with 13 persons living in it.

Gail Hashimoto, daughter of the Ed Hashimoto of Hilo, received a \$1,500 scholarship from Betty Crocker as its Family Leader of Tomorrow titlist.

For the heroic rescue of his 11-year-old cousin June 19, International S&L presented a \$50 Golden Aloha Award to Mark Karazawa, 14, son of the Kenichi Kanazawas of 742 Kaipli.

City Council chairman George Akahane and Robert Tom, Hawaiian Telephone Co. v.p.-sec. and treas., were elected to the St. Francis Hospital lay advisory board.

U.S. Jr. Chamber of Commerce presented its presidential award and Jaycee of the Year award for Hawaii to Alan Miyamoto, Kaneohe branch manager of Island Federal S&L.

EDUCATION — Gov. Ariyoshi named Mary Bitterman, Kenneth Char, Herbert Cornuelle, George Kanahete and Russell Okata to the East-West Center board of governors.

By midsummer next year, the new \$12-million Kaula Community College will have completed its first phase on the 200-acre site at Puhia.

New school principals assigned for the coming term include Dennis Hirose at Kalaheo High and Inter-

mediate School; William Wong, Kuniia Elementary; Richard Higashi, Salt Lake Elementary; and Ralph Watanabe, Helemano School.

Curriculum specialist Donald Enoki with the State Dept. of Education received his doctorate from Wayne State University.

Government retiree Hirobumi Uno is chairman of Hawaii Pacific College's undergraduate dept. of public administration.

POLITICAL SCENE — In the event Rep. Pa'sy Mink decides to seek a seat in the U.S. Senate next year, there are three potential candidates who may run for that office: David Hagino, 28 (D), a law student; State Sen. Joseph Kuroda (D); and former GOP state chairman Carla Coray.

Honolulu Councilman Ke-ko Kaapu held a \$25-per-couple fund-raiser July 21 but has no immediate plans to challenge Mayor Frank Fasi.

So far Democrats George Akahane and Dennis O'Connor have expressed interest in the mayoral race.

Major Frank Fasi may run for a third term in 1976.

SPORTS WHIRL — It's official. Aloha Stadium opens Sept. 13 when UH Rainbows faces Toxan A&I in the new season's grid opener.

Gov. Ariyoshi said in order to meet the Sept. 13 date, the state is spending an additional \$250,000 to air freight heavy equipment needed to lay the artificial turf and pay overtime to get the field in playing condition.

Crazy Legs Elroy Hirsch, Wisconsin athletic director, has been offered the same position at Univ. of Hawaii, which pays \$35M a year.

Other benefits offered in an attempt to land him include \$5,000 more each year from the Koa Annuette boosters, membership in Waiatale Country Club (worth \$10,000) and down payment on a condominium.

Retired Advertiser executive sports editor Andrew Mitsukado entered Kukanui Hospital in late June for a gall bladder surgery. He is on his way to recovery.

COURTROOM — U.S. Attorney's Office has three new assistants, Howard Chang, David Woo and Stephen Quinn.

Harold Fong heads the six-man staff.

A federal suit charges David Trask, head of the Hawaii Gov't Employees Assn., accepting money for affiliating his union with the American Federation of State, County and Municipal Employees. The suit charges accepting "substantial payment" in violation of the anti-racketeering act.

DEATH — Joan Gima (no relation to this writer), who ran Gima's Art Gallery at Ala Moana Center, died July 4. The artist was in her early 40s.

Mitsuru Takaki, 55, job foreman with Allied Construction Co., died July 7 after a fall at a Kaiser High School project site.

Mitauo Nitta, 60, died July 7 following fall from a 30-ft. scaffold at the HCS Sugar Co. factory in Puenene, Maui.

Japan Today

WW2 RELICS — Air-raid shelters in Yokohama, which saved millions of lives during the Pacific war, now constitute a dangerous playground for children as many have been weakened by earthquakes. The city has been filling them in but the cost has been expensive—93 million yen to fill just nine this year.

The precise number of air-raid shelters is not known because records have been lost.

Two rusty WW2 Japanese tanks recovered from the beaches of Saipan were unloaded at Yokohama, climbing three years of effort by former Japanese soldiers who survived the fierce fighting there in the summer of 1944.

Mainichi Daily News received a discolored Rising Sun flag bearing signature of about 60 people wishing the owner good luck on the battlefield, which had been in possession of C. Curtis Cheatham of Richmond, Va., who found it near Munda air base in New Georgia Island in July, 1943.

HERE AND THERE — About 3,500 small animals have been buried annually at the Takazuka Pet Cemetery on the slopes of Mt. Narayama in recent years. Service includes cremation, Buddhist ritual and interment.

Other pet cemeteries thrive in Fuchu, a Tokyo suburb, and Osaka.

The U.S. Army garrison at Zama held its 18th annual Bon Odori in mid-August, attracting some 35,000 people. Among the yukata-clad dancers were Lt. Gen. John Guthrie, commanding general, USAJ, his chief of staff and Zama Mayor Bunzaburo Shikano.

Four physically-handicapped Tokyo high school students swam across the 25-mile Tsugaru Straits from Aomori to Hokkaido in 12 hours. Three were girls.

Japan bonds called

LOS ANGELES — Bank of Tokyo of California will assist holders of the Japan Development Bank 15-Year 6% guaranteed external loan bonds due Sept. 15, 1976, which are being called for redemption Sept. 15, 1975.

Quote of Note

Who can protest and does not, is an accomplice in the act. —The Talmud.



Catherine Foy

The Miss Hawaii candidate Catherine Foy in the Miss America Pageant in Atlantic City, N.J., in September is a music education major at the Univ. of Hawaii who says the scholarship money will give her an opportunity to further her education, meet new friends and experience different places.

But the 21-year-old coed was not given much chance to express such things as racial pride, she being of Japanese-Caucasian heritage, because the sponsors (Honolulu Jaycees) were concerned that "somebody would be offended."

POLICE HEIGHT RULE IN HONOLULU CHALLENGED

HONOLULU — Jennie A. McAllister, 29-year-old woman of Chinese ancestry, claims her application to the Honolulu Police Dept. was rejected because she was four inches short of the 5 ft.-8 requirement. She had applied in June, 1974.

Since then, the height rule was amended to 5 ft.-7 and it may now be dropped entirely as new criteria are being developed in the form of physical agility tests. In the meantime, McAllister has, through the local ACLU, filed a class action suit in Federal court.

Life in GSDF

TOKYO — One out of every four members of Japan's Ground Self-Defense Force finds life in the service not worth it, according to a Defense Agency survey of 15,000 polled last year. Over three-fourths of those in the higher non-commissioned grades felt they were living worthy lives.

Nisei Week Greetings

AMBASSADOR AUTOMOTIVE CENTER

12921 Court St. Stantion, Calif. 893-8877

Mention Pacific Citizen

Nisei Week Greetings

THEE COFFEE SHOP

Fine Food Always

1645 W. Orangethorpe Fullerton, Calif. 526-2152

Nisei Week Greetings

Practical Nurses Registry

180 E. Main, Suite 140-A Tustin, California 542-8156

Poston: as it looked in '69

This first appeared in the spring of 1969, describing the former site of Poston WRA Center. What changes, since then, may be noted after the Manzanar Committee-Poston Project concludes its pilgrimage coming up Sept. 26-28.

By HENRY MORI

LOS ANGELES — What has happened to the former Colorado River Relocation Center in Poston, Arizona?

After the span of 23 years, only two adobe buildings stand, according to Edwin Hiroto and his family who spent Easter Sunday there as he was reminiscing the days of yore.

"It reminded us of the hard days of youth spending time behind barbed wires," Hiroto, administrative director at City View Hospital, declared. He took his wife and their two children to Poston just to see how things were.

"We were rather shocked to note that the two buildings were the only structures standing up. Then, strangely, we didn't see an Indian the three hour we picnicked near the Colorado River."

The original desert camp was divided into three adjacent centers, five to 10 miles separated in between. Later, they were designated as Camp I, II and III. The first confined 10,000 evacuees, the second and third housed 5,000 each, closely supervised by MPs.

The two remaining buildings are being used by the U.S. government, Hiroto said. The rest of the land has turned into farming of alfalfa and field crops. There are no longer Camps II and III. They have been completely leveled.

What has happened to Parker, Arizona, some "18 miles away" from no-man's land? A super highway cuts through the "center of the town" which

apparently hasn't expanded the last quarter century.

Completely paved

"What was once a dusty and sandy road to Poston from Parker is now completely paved as a highway. The distance, which was once "over 18 miles" through sage brush, has been cut down considerably. "The winding tracks are no longer . . .", said Hiroto who used to be reporter and circulation manager for Poston Chronicle, a daily camp bulletin.

The Hiroto's wondered what had happened to the graves which were plotted between Camp I and II. They saw not a single tombstone along the way. The highways might have changed directions to further confuse the passers-by, they said.

Fishing was fair, according to the former residents of the Arizona barrack town, Hiroto, only a teenager then, mused that the Arizona side Colorado River "can be a haven for sports fishermen and hunters". He said they saw wild horses coming down from the hills for water; quails skipping around; and snakes.

During camp days, roadrunners were prevalent and they would destroy the rattlers on sight.

From his reflections of the one-time hustling-bustling relocation center, Hiroto felt some sort of a monument should be erected by the U.S. government near Poston to "perpetuate the memory and indignity of what transpired from late May of 1942 to the closing of camps in 1945".

"We seem to have monuments for many other historic events. Why not camps?" He thought a movement toward that direction by interested leaders may produce a landmark of a sort for the evacuees — although not necessarily

the former resident of Arizona.

Hiroto said a recent unconfirmed source said "there were only gates left at Manzanar" indicating the burial of years gone by.

Sad departure

In previous periods, a caravan of cars would stop at

Poston to see the vast open fields which were once rowed with tar-papered Army barracks. "The curiosity seekers today won't find a single trace of what was once Poston, Arizona", the visitor concluded.

"In a way," Hiroto said, "this was a lonely and sad departure."

—Rafu Shimpo



MISS NISEI WEEK—Dulcie Ogi, 18, of Torrance, named the new Miss Nisei Week, gathers with her family following the coronation. They are (from left) grandmothers Mrs. K. Shitamoto, mother Mary Ogi, Dulcie, father Mamoru Ogi, brother Dan and family friend Assemblyman Paul Bannai. Mother teaches physical education at El Camino College, father works in the motion picture industry. Dulcie intends to major in cinematography in college.

CENTRAL CALIFORNIA

NISEI WEEK GREETINGS

HAWKE DUSTERS

Agricultural Spraying - Fertilizing
Seeding & Crop Dusting

Day or Night Call:
(209) 869-1881

5800 Langworth Road Oakdale, Calif.

NISEI WEEK GREETINGS

CARBERRY CROP DUSTERS

Agricultural Flying
Fertilizing - Seeding - Dusting - Spraying

5450 W. Belmont Ave. (209) 233-4155
Fresno, Calif.

NISEI WEEK GREETINGS

MILLER AVIATION

Crop Dusting - Spraying - Seeding - Fertilizing
Controlled Pollination
Walnuts Almonds Pistachios

2394 Ave. 376 (209) 897-5876
Kingsburg, Calif.

NISEI WEEK GREETINGS

WESTSIDE CROP DUSTERS INC.

"Crop Care by Air"
Spraying - Fertilizing

S. Butte Ave. & W. Oakland Ave.
Five Points, Calif (209) 884-2681

NISEI WEEK GREETINGS

WILLETT FLYING SERVICE

Agricultural Flying
Fertilizing - Seeding - Dusting
Spraying

Hwy 198 (209) 998-5751
Lemoore, Calif.

NISEI WEEK GREETINGS

CROP-AIRE, INC.

Spraying - Crop Dusting - Seeding
Fertilizing

3 Locations to Serve You
Reedley: (209) 638-5649
Hanford: (209) 582-1428
Visalia: (209) 734-3457

NISEI WEEK GREETINGS

GANDY FLYING SERVICE

Crop Dusting, Spraying, Seeding
& Fertilizing

11841 S. Henderson Ave.
Caruthers, Calif. (209) 864-3273

NISEI WEEK GREETINGS

PARMENTER & BRYAN

Crop Spraying

13133 Ave. 416 (209) 528-4708
Orosi, Calif.

NISEI WEEK GREETINGS

AGRI-FLY SERVICE INC.

Application by Helicopter
Spraying - Seeding - Fertilizing

24569 Ave. 90 (209) 535-4663
Terra Bella, Calif.

NISEI WEEK GREETINGS

SEQUOIA FERTILIZER CO.

Steer Manure & Fertilizers

20210 Ave. 176 (209) 781-2100
Porterville, Calif.



LOS ANGELES—Hand-made clocks made by members of the Colorado River Indian Tribes are exchanged for a bonsai tree from the Manzanar Committee-Poston Project at the recent Lotus Day Festival. Pictured are (from left) Naomi Deguchi, Tak Yamamoto, Marjorie McCabe, and Cindy Homer. The exchange was a prelude to the forthcoming Poston pilgrimage Sept. 28 by some 200 Japanese Americans.

remember the SUMMER OF '42?



"CAMP II, BLOCK 211"

A collection of provocative cartoons portraying everyday life among the residents of W.R.A. centers during World War II. Jack Matsuoka has found and captured the humor one might have experienced and witnessed at these camps. This is an ideal gift for all ages.

regular . . . \$7.95 SPECIAL for JACLERS . . . \$5.95

(5.95 is Cash & Carry. Add 50c per book on mail orders.)

Name _____
Address _____
City, State, Zip _____

PACIFIC CITIZEN
125 Weller St.
Los Angeles, Calif. 90012

Send me _____ copies of CAMP II, BLOCK 211 at \$6.45 each Postpaid.

Enclosed \$ _____

Edison T. Uno Minority One

WHEN MONEY TALKS

San Francisco deal of credit because they put their money on the future of JACL. At the recent dedication of the new JACL headquarters building, I missed the programs as I was cut-of-town working on the film, "Farewell to Manzanar".

Much credit belongs to the Building Fund Committee and those who worked so hard to meet the \$450,000 goal. Although I never endorsed the idea of a new building for our national staff because I thought there were more important priorities within JACL, I have always had a healthy respect for those who, in this case dedicated JACLers like Tad Hirata, Steve Doi, Mas Satow, Jim Ishimaru, Ben Takeshita, George Yamasaki, Jr., and a host of chapter people who worked so hard to fulfill this dream.

Allan Bookman Book Review

HIGH HOPES, LOW REALIZATION

A TIME FOR ANGELS: The Tragicomic History of the League of Nations, by Elmer Bendiner, Alfred A. Knopf, New York, 450 pp., \$12.95.

In Paris, Feb. 14, 1919, Pres. Woodrow Wilson addressed a Plenary Meeting of the Peace Conference. The Commission on the League of Nations, he announced, had submitted a report unanimously supporting a preliminary draft of a Covenant.

"The Covenant, said Wilson, is a definite guarantee of peace." For Wilson, approval of the Covenant, or constitution, by which the League would be guided, seemed the realization of a great ambition.

After leading America into the "war to end war," he had outlined 14 points as a basis for peace, the most important being: "A general association of nations must be formed under specific covenants for the purpose of affording mutual guarantees of political independence and territorial integrity to great and small states alike."

The amended text of the Covenant, adopted April 28, 1919, set forth the organization and purpose of the League as the first of 26 articles of the peace treaty with which it was to be inextricably entwined. The Covenant provided for collective security, with peaceful settlement of international disputes. Articles 16 provided for members to take common action, including economic sanctions, against any nation making war in violation of the Covenant.

Accepting Wilson's 14 points as a basis for peace, Germany had signed an Armistice with the Allies, Nov. 11, 1918. Germany formally surrendered June 23, 1919.

June 28, in the Hall of Mirrors, Versailles, Germany signed the peace treaty—thereafter to be generally known as the Versailles Treaty. Led by Wilson, 30 other

Shimatsu, Ogata and Kubota Mortuary

911 Venice Blvd. Los Angeles RI 9-1449

SEIJI DUKE OGATA R. YUTAKA KUBOTA

Three Generations at Experience... FUKUI Mortuary, Inc.

707 E. Temple St. Los Angeles 90012 626-0441

Saichiro Fukui, President James Nakagawa, Manager Nobuo Osumi, Counselor

Today there is another organization struggling to protect and preserve the interests of Asian Americans. The Asian-American Legal Defense and Education Fund, Inc. of Oakland is a non-profit organization created to assist Asian Americans assert their rights by every legal means. It is a young organization established and supported by young Asian American lawyers, para-legal assistants, community volunteers, and concerned citizens. Although it has been successful in litigating some employment discrimination cases on behalf of Asian Americans, it also does a great deal of working in legal education, immigration counseling, consumer protection, and other less glamorous endeavors necessary to maximize legal services to a number of Asian American communities on the West Coast.

AALDEF, as it is popularly known, is a labor of love. Thousands of volunteer hours have been given to the formation of this fund by many young people. Saneel attorney and fellow JACLer Dale Minami has been the guiding force.

AALDEF is in the process of seeking private foundation funds. In the meantime, they are in need of public support. Unfortunately, we do not have a Takimoto-san to seek out generous benefactors.

It seems to me that if our communities can come up with a building fund drive in excess of \$450,000; maybe, there are those who would be willing to contribute to this worthy organization. All donations are tax deductible. Checks should be made payable to AALDEF, 3408 Park Blvd., Oakland, Calif. 94610. It could well be that your help today will insure the security of the next generation.

Gene Sato, JACL chapter president, located the death certificate, indicating the man was a victim of "homicidal flying rocks from a blast" in Bingham. Records of the exact plot locations at the Bingham cemetery are now gone but the stone will be reinstated in the general area of the now-lost grave.

(The Salt Lake Tribune story identified the man as Mindyoshi Minkichi—but the picture of the headstone with the story reads otherwise.) Japanese began to work in the famous open copper mine at Bingham in 1909. During the same period, young Issei also worked in the coal mines and on the railroads, the sugar beet and truck farms outside of Ogden and Salt Lake City. A 1930 survey indicated the largest number of Issei workers were employed in the mines, followed by the railroads with farming third.

A Salt Lake JACLer said the story shows the chapter members do thing besides golf, ski, bowl and sell rare tickets.



Rev. Hirofumi Watanabe (l) and Gene Sato examine mysterious headstone recently matched with the man it commemorates who was buried in Bingham Cemetery 64 years ago. —Salt Lake Tribune

Mysterious headstone in sheriff's office finally returned to grave

SALT LAKE CITY, Utah—The Salt Lake County sheriff had in its evidence room a gravestone with Japanese writing for nearly three years. It was turned in by two children who found it in 1972.

The local Buddhist Church and JACL were called recently to assist in returning it to its original site. Rev. Hirofumi Watanabe translated the script, telling sheriff deputies it was the grave of Minokichi Watanabe, who was born in Chiba-ken in 1879 and died on April 9, 1911.

Gene Sato, JACL chapter president, located the death certificate, indicating the man was a victim of "homicidal flying rocks from a blast" in Bingham. Records of the exact plot locations at the Bingham cemetery are now gone but the stone will be reinstated in the general area of the now-lost grave.

(The Salt Lake Tribune story identified the man as Mindyoshi Minkichi—but the picture of the headstone with the story reads otherwise.) Japanese began to work in the famous open copper mine at Bingham in 1909. During the same period, young Issei also worked in the coal mines and on the railroads, the sugar beet and truck farms outside of Ogden and Salt Lake City. A 1930 survey indicated the largest number of Issei workers were employed in the mines, followed by the railroads with farming third.

A Salt Lake JACLer said the story shows the chapter members do thing besides golf, ski, bowl and sell rare tickets.

LOS ANGELES—Immigration authorities granted six South Vietnamese students the right to stay in the U.S. indefinitely after being the target of controversial deportation proceedings last fall.

Frank S. Pestana, attorney for the students, said the settlement came the last week of July and was approved by the immigration judge assigned to their deportation case.

All six, studying for advanced degrees, claimed they would be imprisoned and tortured by the Thieu regime if returned to South Vietnam for their anti-Thieu views. With the fall of the Thieu regime in April, the students were without the defense but similarly, the U.S. found itself it had no diplomatic relations with the new government.

CHICAGO—Production of 15 more Power-ski prototypes was announced by Harry Ono, president of the firm producing the Nisei-invented water recreation vehicle here. The first Power-ski production prototype is currently being tested.

The additional prototypes are expected to be completed within three months for further tests, demonstrations and dealer promotions.

MONTEREY, Calif.—The 1975 No. Calif. Nisei Golf Assn. tournament has been confirmed for Nov. 22-23 at Pebble Beach and Spyglass Hills, it was announced by Hiroshi Kusakal of Fresno, tournament chairman.

The 25th annual NCSGA meet is being co-sponsored by the Strickton Nisei, Fresno Nisei and Sequoia Nisei clubs, three of the 19 Nisei clubs in the association. Dr. George Suda of Fresno heads the committee to implement the silver anniversary into the 36-hole tournament.

When Germany precipitated WW2, in September 1939, by invading Poland and annexing Danzig, the prestige of the League had fallen so low that no nation appealed to the organization. The League formally closed April 19, 1946.

The author has organized his material well. He writes clearly, sometimes wittily. But cynicism and pessimism pervade the work. He ends by saying: "The League idea withered and died when each nation remembered that its holy mission was to serve itself. Where patriotism is a virtue it is hard to espouse a brotherhood that laughs at boundaries."

He may have confused patriotism with nationalism. Did America serve itself by repudiating League membership? Did the nations so soon to be reduced to ruin serve themselves by resorting to arms, appeasement, or other circumvention of League principles?

Asian American Review BERKELEY, Calif.—Students and staff of Asian American Studies at UC Berkeley (3407 Dwinelle Hall) have published its 212-page journal, Asian American Review (\$2), containing essays, short stories, poetry, bibliographies, photos and graphics. (Add 60 cents if mail order.)

PC's People

Elections Dr. Donald Hafa, appointed to the Gardena City Council to succeed new Assemblyman Paul Bannal's seat by then Mayor Ken Nakaoka, announced he will not attempt to retain his seat in the upcoming election next spring. He said he does not believe he could be elected to retain his seat because he does not attend the social functions expected of a councilman. He purposely kept a low social profile because of the controversy surrounding his appointment, he added.

Agriculture Nisei Singles holds its sixth annual installation dinner-dance Sept. 6, 6 p.m.-1 a.m. at Chalm Mart, 1919 S. Broadway with Grace Nagamoto taking over from George Eguchi as president. Non-member singles and former members are invited to join the festivities featuring the music of George Atsumo and his band. Tickets are \$8 and available by calling Aiko (661-7758), Yo (324-1614) or Meri (477-6997).

Government Sen. Daniel Inouye (D-Hawaii) may have to watch his budget more carefully as he is one of 22 U.S. senators who could be affected by a new Federal campaign finance law that limits income from payment for speeches, articles

Los Angeles Nisei Singles holds its sixth annual installation dinner-dance Sept. 6, 6 p.m.-1 a.m. at Chalm Mart, 1919 S. Broadway with Grace Nagamoto taking over from George Eguchi as president. Non-member singles and former members are invited to join the festivities featuring the music of George Atsumo and his band. Tickets are \$8 and available by calling Aiko (661-7758), Yo (324-1614) or Meri (477-6997).

Sacramento Auburn District Fair, running Sept. 11-14, ends with a parade Sunday with Bunny Nakagawa as grand marshal. Associated with the fair for 25 years and secretary-man-

These Advertisements Are Guides to Good Meals

TIN SING RESTAURANT EXQUISITE CANTONESE CUISINE 1523 W. Redondo Blvd. GARDENA DA 7-3177 Food To Go Air Conditioned Banquet Rooms 20-200

MARUTAMA CO. INC. Fish Cake Manufacturer Los Angeles

EMPEROR RESTAURANT 949 N. Hill St. (213) 485-1294 PEKING FOOD SPECIALTY Cocktail Lounge Party & Banquet Facilities DINAH WONG, Hostess

VISIT OLD JAPAN Miyako Luncheon Dinner Cocktails PASADENA 139 S. Los Robles • 795-7005 ORANGE 33 Town & Country • 541-3303 TORRANCE 24 Del Amo Fash. Sq. • 542-8677

The New Moon Banquet Rooms available for small or large groups 912 So. San Pedro St., Los Angeles MA 2-1091

Little Tokyo's Finest Chop Suey House SAN KWO LOW Famous Chinese Food 228 E. 1st St. Los Angeles MA 4-2075

GARDENA — AN ENJOYABLE JAPANESE COMMUNITY Poinsettia Gardens Motel Apts. 13921 So. Normandie Ave. Phone: 324-5883 68 Units Heated Pool Air Conditioning GE Kitchens Television OWNED AND OPERATED BY KOBATA BROS.

Yamasa Kamaboko — WAIKIKI BRAND — Distributors: Yamasa Enterprises 515 Stanford Ave., L.A. Phone 626-2211

Mrs. Friday's DELIGHTFUL seafood treats DELICIOUS and so easy to prepare MRS. FRIDAY'S Gourmet Breaded Shrimps and Shrimp Puffs FISHING PROCESSORS 1327 E. 15th St., Los Angeles (213) 746-1307

UMEYA's exciting gift of crispy goodness Tops for sheer fun, excitement, wisdom plus FLAVOR! Umeya Rice Cake Co. Los Angeles

CLASSIFIEDS

The PC Classified Rate is 10 cents a word \$3 minimum per insertion. There is a 3% discount if same copy appears four times. Unless prior credit has been established with the PC, payment is requested in advance.

EMPLOYMENT YAMATO 818 E. 1st St., Rm. 101, L.A. NEW OPENINGS DAILY 624-2881

HOLIDAY EXPRESS TO JAPAN For your business & pleasure trip to Japan with economical group fare! Lv. Los Angeles every Tue. 10 a.m. Ar. Tokyo Wed. 4:30 p.m. Ask your professional travel agent! ROYAL HOLIDAY EXPRESS Wholesale Tour Operator

INSIST ON THE FINEST KANEMASA Brand FUJIMOTO'S EDO MISO. Available at Your Favorite Shopping Center FUJIMOTO & CO. 302-306 S. 4th West Salt Lake City, Utah

Mikawaya Sweet Shop 244 E. 1st St. Los Angeles MA 8-4935

'Cherry Brand' MUTUAL SUPPLY CO. 1090 Sansome St. San Francisco, Calif.

Commercial Refrigeration Designing Installation Maintenance Sam J. Umemoto Certificate Member of RSES Member of Japan Assn. of Refrigeration Lic. #208863 C-38 SAM REIBOW CO. 1506 W. Vernon Ave. Los Angeles AX 5-3204

Eigiken Cafe Dine - Dance - Cocktails SUKIYAKI JAPANESE ROOMS 314 E. First St. Los Angeles MA 9-3029

GRAND STAR Lunch • Dinner • Cocktails Entertainment 6 TIME WINNER OF THE PRIZED RESTAURANT WRITER AWARD BANQUETS TO 200 943 N. Broadway (in New Chinatown) 626 2285

KONO HAWAII RESTAURANT Polynesian Room (Dinner & Cocktails) (Floor Show) Cocktail Lounge (Entertainment) Tea House Teppan & Sukiyaki Banquets Kono Hawaii Restaurant 226 South Harbor Blvd. Santa Ana, Calif. 92704 (714) 531-1232

QUON BROTHERS SEATTLE 614 Maynard St PORTLAND 121 SW 4th St SAN FRANCISCO 398 Bush St

Toyo Printing Offset - Letterpress - Linotyping 309 S. SAN PEDRO ST. Los Angeles 12 — MADison 6-8153

Nanka Printing 2024 E. 1st St. Los Angeles, Calif. ANgelus 8-7835

EMPIRE PRINTING CO. COMMERCIAL and SOCIAL PRINTING English and Japanese 114 Weller St., Los Angeles 90012 MA 8-7060

Eagle Produce 929-943 S. San Pedro St., Los Angeles 625-2101 Bonded Commission Merchants — Wholesale Fruits and Vegetables —

Los Angeles Japanese Casualty Insurance Assn. Complete Insurance Protection Aihara Ins. Agcy., Aihara-Omatsu-Kakita-Fujioka 250 E. 1st St. Los Angeles 90012 626-9625 Anson Fujioka Agcy., 321 E. 2nd Suite 500 626-4393 263-1109 Funakoshi Ins. Agcy., Funakoshi-Kagawa-Manaka-Morey 321 E. 2nd St. 626-5275 462-7406 Hirohata Ins. Agcy., 322 E. Second St. 628-1214 287-8605 Inouye Ins. Agcy., 15092 Sylvanwood Ave., Norwalk 864-5774 Tom T. Ito, 595 N. Lincoln, Pasadena 749-7189 (LA) 681-4411 Minoru 'Nix' Nagata, 1497 Rock Haven Monterey Park 268-4554 Steve Nakaji, 11964 Washington Place 391-5931 837-9150 Teto Ins. Agcy., 366 E. 1st St. 626-1495 241-4511

In Case You Missed It! 1975 Nisei Week Festival Souvenir Booklet: \$1.00 Program - Photos Galore - Queen Candidates ON SALE IN LITTLE TOKYO STORES Mail Orders Accepted at \$1.35 Postpaid by Nisei Week Souvenir Booklet Committee 307 E. 1st St., Los Angeles, Calif. 90012

Send to: Address: City: State: Zip: Enclosed: \$ for copies.