

Communication

NCWNDC shaping up four more chapters

PACIFIC CITIZEN

Membership Publication: Japanese American Citizens League, 125 Weller St., Los Angeles, Calif. 90012; (213) MA 6-9736
Published Weekly Except First and Last Weeks of the Year. Second Class Postage Paid at Los Angeles, Calif.

VOL. 80 NO. 8

FRIDAY, FEBRUARY 28, 1975

Subscription Rate Per Year U.S. \$7 Foreign \$9.50 15 CENTS

New scholarship deadline: April 1

Application deadline for JACL's Freshmen Scholarship and Graduate Scholarship programs has been extended from March 1 to April 1. It was announced by National JACL vice president Graye Ueyehara, chairperson of the national scholarship committee.

New guidelines, which were approved by the National JACL Board February, 1974, provide for greater emphasis upon financial need, larger amounts for each scholarship and direct application to the national committee.

Applicants are being reminded to indicate the names and amounts of other scholarships which they have received on the current scholarship form, available at Headquarters, regional offices or local JACL chapters. An information leaflet outlining the program is also available.

Judging at the first round will be accomplished by district-formed committees, each evaluating and screening applications from another district. Mrs. Ueyehara explained. To implement this phase, each district governor was expected to appoint a representative to the National Scholarship Committee. Appointed to date are:

PNWDC—Albert Abe (Portland); NC-WNDC—Howard Yamamoto (Contra Costa); CCDC—Tom Be Appointed; PSWDC—Mitsuo Sonoda (West Los Angeles); IDC—(TEA); MPDC—(TBA); MDG—Gordon Yoshikawa (Cincinnati); EDC—Gravey Ueyehara (Philadelphia); JAYs—Tom Nakao Jr. (Cleveland).

District screening committees are expected to be formed with five persons knowledgeable about the JACL scholarship program.

As this is the first year implementing the new format, Mrs. Ueyehara is prepared to adjust and refine the judging procedures for the 1976 program. Comments, suggestions and criticisms from chapters or individuals are welcome through their district representatives.

"What is important is that chapters shouldn't feel they are being disregarded in the new program or that their role is somehow less significant in the awarding of JACL's national scholarship," Mrs. Ueyehara noted. Under the new format, an equal opportunity is provided for all interested students for a National scholarship. Heretofore, chapters had nominated a single candidate for a scholarship.

By encouraging more students to apply, the chapters continue to have a crucial role in the national scholarship program, Mrs. Ueyehara concluded.

Ethnic Heritage research underway

Research into existing educational materials dealing with Japanese American is underway, reports Patricia J. Nakano, Director of the JACL Ethnic Heritage Project. The material being reviewed is in the area of social studies and covers grades kindergarten to 12th.

Twenty on-site visits have been scheduled throughout California in order to identify programs and materials which may be shared and used by other communities and school districts for the benefit of Japanese American children and others.

"The information that is gathered about existing local school district and community developed materials and projects will provide reference resources for teachers and administrators," Ms. Nakano explained.

The Ethnic Heritage Project was awarded to JACL in July, 1974, funded under Title IX of the Elementary and Secondary Education Act and administered by the U.S. Office of Education. Actual implementation and full staffing, however, did not occur until the early part of January, 1975.

According to Ms. Nakano the delay in implementation was due to two factors: (1) conflict in grant award with the dates of the JACL National Biennial Convention; (2) lengthy personnel procedures within JACL.

The present project staff includes Ms. Nakano; Roy Hirabayashi, researcher; and Valerie Jew, part-time clerical assistant.

A revised proposal was submitted by JACL at the request of the Office of Education in September, 1974, and approved in October, 1974. The basic goals as stated in the revised proposal appeared in the Jan. 31 Pacific Citizen.

The basic intent of the project is to review both traditional and non-traditional and locally developed materials, Ms. Nakano said. Traditional materials were reviewed from October to December, 1974 with the assistance of students, parents, teachers and JACL volunteers to see if school textbooks included Japanese culture and Japanese American roles and contributions.

"We found," she added, "that in most instances Japanese Americans were inadequately represented in materials for the social sciences. When Japanese Americans were included, factual inaccuracies, stereotypes and negative judgments were made about values and religious beliefs that may be practiced by Japanese Americans."

The responsibility of the project through its Advisory Council is to focus on the history, culture, contemporary issues and contributions of Japanese Americans.

Plans also call for the development of an in-service teacher training manual for use in schools in social studies.

"It is hopeful that more teachers and administrators will become aware of the concerns and needs of Japanese American students," Ms. Nakano said.

"In this small way, they will be aware of local developments and will be assisted in providing a better education for Japanese American children."

With this goal in mind, Ms. Nakano is requesting, on behalf of the Project, participation by any organization or individual in its development. "The staff would like to receive comments and suggestions," she said.

Copies of the Advisory Council minutes of the Jan. 31-30, 1974, meeting, project objectives and goals and other statements can be obtained upon request from JACL Headquarters.

Research into existing educational materials dealing with Japanese American is underway, reports Patricia J. Nakano, Director of the JACL Ethnic Heritage Project. The material being reviewed is in the area of social studies and covers grades kindergarten to 12th.

Twenty on-site visits have been scheduled throughout California in order to identify programs and materials which may be shared and used by other communities and school districts for the benefit of Japanese American children and others.

"The information that is gathered about existing local school district and community developed materials and projects will provide reference resources for teachers and administrators," Ms. Nakano explained.

The Ethnic Heritage Project was awarded to JACL in July, 1974, funded under Title IX of the Elementary and Secondary Education Act and administered by the U.S. Office of Education. Actual implementation and full staffing, however, did not occur until the early part of January, 1975.

According to Ms. Nakano the delay in implementation was due to two factors: (1) conflict in grant award with the dates of the JACL National Biennial Convention; (2) lengthy personnel procedures within JACL.

The present project staff includes Ms. Nakano; Roy Hirabayashi, researcher; and Valerie Jew, part-time clerical assistant.

A revised proposal was submitted by JACL at the request of the Office of Education in September, 1974, and approved in October, 1974. The basic goals as stated in the revised proposal appeared in the Jan. 31 Pacific Citizen.

The basic intent of the project is to review both traditional and non-traditional and locally developed materials, Ms. Nakano said.

"In this small way, they will be aware of local developments and will be assisted in providing a better education for Japanese American children."

With this goal in mind, Ms. Nakano is requesting, on behalf of the Project, participation by any organization or individual in its development. "The staff would like to receive comments and suggestions," she said.

Copies of the Advisory Council minutes of the Jan. 31-30, 1974, meeting, project objectives and goals and other statements can be obtained upon request from JACL Headquarters.

Cultural Heritage fete interest up

Interest in the forthcoming JAL-JACL Cultural Heritage banquet at the St. Francis Hotel, San Francisco, on Mar. 22 is mounting, especially among former Hawaii residents who want to meet Gov. George Ariyoshi.

Ariyoshi will be guest speaker at the banquet, according to Gail Nishio, National JACL youth director. It is also his first major appearance outside of Hawaii since being elected governor last November. "We are hoping to have a large turnout of former Islanders to help welcome him to California," Ms. Nishio said.

Margaret Yamamoto leaving staff

Margaret Yamamoto, assistant national director for communications and resource development, has resigned her staff position at National JACL Headquarters. It was announced Feb. 21 by National Executive Director David Ushio. She will join a local consulting firm, Urban and Rural Systems Associates, as an administrative assistant to a project director.

Her resignation from JACL is effective April 4. She also leaves a recent assignment as part-time regional director for the Northern California-Western Nevada JACL District Council.

"We are sorry to be losing her and wish her well in her new position," Ushio said.

Since joining the National staff in MFarch, 1973, Ms. Yamamoto has developed workshop kits in cooperation with Visual Communications and Don Estes of San Diego; handled PR duties for National JACL; established and maintained media contact resulting in radio, television and newspaper coverage of JACL activities both locally and nationally; served on the public relations committee of United Bay Crusades, San Francisco; and since last November, assumed the added responsibility as NC-WNDC regional director which she had filled on an interim basis earlier in the year.

In her new position, she will assist and develop material on child development for use by social workers, law enforcement officials and the general public.



Margaret Yamamoto

Further information on any of the current JACL programs may be secured by writing or calling National Headquarters, 22 Peace Plaza Suite 203, San Francisco 94115, (415) 563-3204 or the local JACL chapter.

STOCKTON, Calif.—Passage of a record \$3,445 District Council budget, discussion of the Tule Lake Plaque and passage of two regional originated resolutions highlighted the Northern California-Western Nevada JACL quarterly meeting at the Stockton Inn here on Sunday, Feb. 9.

The DC approved a budget of \$910 in excess of the \$2,535 it anticipates collecting in chapter and membership assessments.

"We felt it necessary to increase the budget to meet our higher costs and to fund the many new programs we wish to undertake and continue this year," explained Wes Doi, NC-WNDC Governor. "This deficit will be covered by the surplus funds we have had from previous years."

The biggest increase was seen in program and activities which totaled \$1,250, up \$850 from the previous year. This increase provides more funds for the DC committees, allows funds for the District Legal Defense contingency fund and small cash awards for the 14 Presidential classroom for Young Americans candidates being sent by NC-WNDC chapters.

This budget is in excess of the \$18,900 budget assigned to the district from national dues. The larger budget is to cover salaries for a half-time regional director and full-time secretary as well as office expenses and travel for the director.

Tule Lake plaque

Lengthy discussion was held on the wording for the Tule Lake Plaque. (Proposed text appeared in Pacific Citizen, Feb. 7, 1975)

A vote to approve the wording as proposed by the District's Tule Lake Committee ended in a deadlock vote of 10 to 10. Taking the Chairman's prerogative, Gov. Doi, rather than breaking the tie, referred the text back to committee for editing and amending. It will be submitted to the chapters for their approval.

Ter Inouye, Chapter of the Year Committee Chairman, of Fremont, reported that the DC board voted at its last meeting to enhance the Chapter of the Year program by adding cash awards. There will be awards of \$100 to the outstanding chapters in two categories: Membership under 300 and over 300.

The two resolutions approved by the body regarding the Committee of Atomic Bomb Survivors in the United States (CABS) and the Topaz Committee.

10 pct. increase

Vice Governor Frank Iwama reported that the membership goals of the chapters in the district should be set for 10% increases in 1975.

In addition the District Council chapters agreed to begin writing letters to Senator Albert S. Rodda, of the California Senate, commending him on his recent appointment of Rev. Shoko Masunaga, of Sacramento, as the first Buddhist Senate Chaplain. Senator Rodda has been criticized openly for this move.

Other agenda items included DC Committee assignments, Health plan guidelines, formation of new chapters, travel committee, JAY's activities, Chapter of the Year awards, and reparation legislation.

An organizational meeting was scheduled Feb. 26 to form a Marin County chapter. Fremont JACL is looking into the possibility of sponsoring a new chapter in nearby Pleasanton, while a Lodi chapter has been virtually set. A Las Vegas unit is already a provisional member of the district (since the JACL by-laws need to be amended to extend NC-WNDC jurisdiction to Southern Nevada).

NC-WNDC is currently comprised of 27 chapters.

SALT LAKE 'NIHONMACHI'—JCIP Multi-ethnic district feasible

A community project very dear to the hearts of Salt Lake City's minority groups was updated in the Desert News Feb. 5. The Salt Lake JACL has been actively involved, money-wise and time-wise through the JCIP—Japanese Community Improvement Program. JACLer Carl Inouye has been the leading force in ASSIST Inc., which coordinated studies that have impressed Salt Lake City and County commissioners.—Ed.

By SUZANNE DEAN (Deseret News)

SALT LAKE CITY, Utah—A "multi-ethnic district" with open air markets, restaurants and import stores could feasibly be established in 10 square blocks west of the Salt Palace, according to economic and social planning studies.

The studies are being reviewed by the directors of the Salt Lake City Redevelopment Agency, which must decide whether the area from 2nd to 4th West and North Temple to 4th South should be added to the existing West Temple Redevelopment Area.

If the boundaries of the present redevelopment area are expanded, the 10 blocks would become eligible for federal funds for clearing blighted structures and constructing low income housing. Other city planning studies give the area a first priority over any city neighborhood for anti-blight action.

The proposed district has a long history of accommodating newly arrived persons in Salt Lake City. Pioneer Park was the site of a fort where the first Mormon pioneers wintered and where other pioneers lived for a time.

By 1900, when foreign immigrants, particularly Greeks, began arriving, "mainstream" families already had moved away, according to a study of the area by LeBlanc and Co., San Francisco planning consultants.

"Minority group members settled in this west side area being vacated by other families," the study found. "As each minority group became assimilated into the mainstream and their income and residential options increased, they moved away from the area."

The various groups, however, left some symbols of their cultures behind. A few businesses catering to minorities remain, as does the Byzantine-styled Greek Orthodox Church, 300 W. 3rd South, and the Japanese Buddhist and Japanese Christian churches.

If problems of minorities are to be solved, the minorities themselves must suggest solutions, studies contend. "Any avenue that can be found to stimulate individuals to come together, share, communicate their thoughts and prepare strategies for action should be welcomed..."

Studies of the area have been coordinated by ASSIST, Inc. with the help of the University of Utah Bureau of Economic and Business Research, LeBlanc and Co. and leaders of local minority groups.

Then in 1972, proposals to create a large Bicentennial Park threatened to destroy the last vestiges of ethnic culture for the area. The Bicentennial Park idea later was abandoned by the federal government. But by then, minority pressure had resulted in new studies being launched to determine the feasibility of the proposed multi-ethnic area.

To thrive, a designated multi-ethnic area would first require a strong commercial center, suggests LeBlanc. An economic analysis of the Salt Lake City market indicates such a district could presently support 165,000 square feet, with businesses appealing to minorities, local residents and tourists.

Establishments could include a mod clothing store catering to blacks, a New Orleans-style jazz nightclub, a band performance Marachi Cantones restaurant and an inexpensive Japanese restaurant competing with existing, more exclusive Japanese eating places, the study suggests.

Once a "critical mass" of commercial development began reviving the area, the district likely could attract two or three hotels and several office buildings.

community thrive between West Temple and 6th South and South Temple and 3rd South into the early 1960s.

Construction of the Salt Palace and subsequent redevelopment activities, however, "obliterated the heart" of the old neighborhood, the LeBlanc study indicates. The structure "created a massive barrier between downtown... and the remainder of the community," resulting in economic failures of many businesses west of the complex.

Then in 1972, proposals to create a large Bicentennial Park threatened to destroy the last vestiges of ethnic culture for the area. The Bicentennial Park idea later was abandoned by the federal government. But by then, minority pressure had resulted in new studies being launched to determine the feasibility of the proposed multi-ethnic area.

To thrive, a designated multi-ethnic area would first require a strong commercial center, suggests LeBlanc. An economic analysis of the Salt Lake City market indicates such a district could presently support 165,000 square feet, with businesses appealing to minorities, local residents and tourists.

Establishments could include a mod clothing store catering to blacks, a New Orleans-style jazz nightclub, a band performance Marachi Cantones restaurant and an inexpensive Japanese restaurant competing with existing, more exclusive Japanese eating places, the study suggests.

Once a "critical mass" of commercial development began reviving the area, the district likely could attract two or three hotels and several office buildings.

As a community

"Because of its proximity to central city jobs and services, the study area provides a reasonably good location for critically needed low income housing," the LeBlanc study indicates. Despite high land costs, the Housing Authority and Redevelopment Agency could decide to provide 50 to 100 units in this area..."

Various studies have shown the area provides considerable low-priced housing, and some of it continues to be Orientals and Chicanos. In 1970, 653 persons lived in the area. Seventy percent lived in rented buildings.

A key element of a multi-ethnic area, would be a community center providing minorities a political and cultural gathering place.

If problems of minorities are to be solved, the minorities themselves must suggest solutions, studies contend. "Any avenue that can be found to stimulate individuals

to come together, share, communicate their thoughts and prepare strategies for action should be welcomed..."

Studies of the area have been coordinated by ASSIST, Inc. with the help of the University of Utah Bureau of Economic and Business Research, LeBlanc and Co. and leaders of local minority groups.

Then in 1972, proposals to create a large Bicentennial Park threatened to destroy the last vestiges of ethnic culture for the area. The Bicentennial Park idea later was abandoned by the federal government. But by then, minority pressure had resulted in new studies being launched to determine the feasibility of the proposed multi-ethnic area.

To thrive, a designated multi-ethnic area would first require a strong commercial center, suggests LeBlanc. An economic analysis of the Salt Lake City market indicates such a district could presently support 165,000 square feet, with businesses appealing to minorities, local residents and tourists.

Establishments could include a mod clothing store catering to blacks, a New Orleans-style jazz nightclub, a band performance Marachi Cantones restaurant and an inexpensive Japanese restaurant competing with existing, more exclusive Japanese eating places, the study suggests.

Once a "critical mass" of commercial development began reviving the area, the district likely could attract two or three hotels and several office buildings.

Japanese garden at zoo seen for Bicentennial

SALT LAKE CITY—The Salt Lake JACL was asked last year to review architectural plans for a proposed Japanese garden to be located at Hogle Zoo. Subsequent meetings by zoo officials, architects and James Hogle with Japanese American community representatives developed the recommendation to call a designator from Japan, possibly from Salt Lake's sister city of Matsumoto.

Funding from the garden project will come from the Hogle Zoological Society, which is responsible for capital improvements of the zoo. The city and county provides maintenance and security.

If completed by 1976, the group felt it could coincide with Utah's Bicentennial celebration.

Gov. Ariyoshi not in favor of 3d term

HONOLULU—Gov. George Ariyoshi announced Feb. 7 he would not seek a third term in office whether the legislature does or does not adopt a proposal to limit the governorship to two terms.

Ariyoshi said the limitation is a good idea and that it should apply to himself or any other future governor.

HIBAKUSHA ASSISTANCE JACL know-how shared

SAN FRANCISCO—Federal legislation providing aid to survivors of the U.S. atomic bomb dropped on Hiroshima and Nagasaki now residing in the United States was being drafted by a special workshop here Feb. 14.

The so-called Hibakusha Aid bill is expected to reinforce a similar measure introduced by Rep. Edward Roybal (D-Calif.) in the past Congress.

Besides representatives from the Northern California and Southern California Committees of Atomic Bomb Survivors in the U.S., attending the workshop were Dr. Thomas T. Noguchi, Los Angeles National coroner, and Gail Nishio, of the National JACL staff who took the lead in preparing the legislation, the Pacific Southwest and No. Calif.-W. Nevada JACL district councils, National JACL and the Japanese Community Services of San Francisco.

Purpose of the Act is to provide medical treatment, follow-up treatment, and research to individuals for physical and psychosomatic injuries sustained and directly attributable to the A-bomb explosions and radioactive fallout of August, 1945.

The act would establish a commission to assist beneficiaries, develop an exchange program of scientists and experts from other countries on the treatment and research of nuclear radiation. The commission would also designate certain medical facilities in the U.S. and employ a bilingual staff.

It was suggested that ad hoc committees be organized nationally to garner sponsorship for this bill which, as yet, has not been titled.

Two DCs support

The two JACL district councils met Feb. 9 in Los Angeles and Stockton, respectively, to support the atomic bomb survivors and their bid for legislation for treatment at the federal and state levels.

Mrs. Kazuyo Suyehi, vice president of the So. Calif. ABS Committee, appealed before the PSWDC for support of Calif. Senate Bill 115 which would provide a California institute of research and treatment of nuclear radiation.

Statistician

Yamada has been traveling through the U.S. armed with old U.S. air force spy photos of Hiroshima, a 1945 telephone book and detailed street maps listing the names of every person living in every house then.

Collecting health status data for the Atomic Energy Commission, his work may lead to a law helping to assess data useful in the event of human contamination from a nuclear power plant accident.

Labor saving move

WASHINGTON—Tourist visas for foreigners who stay up to six months are not renewable except for special circumstances, the Immigration and Naturalization Service announced Feb. 15.

Ethnic Concerns fear gardener's bill may affect recent immigrants hardest

LOS ANGELES—Some caution was expressed during the PSWDC session here this past week (Feb. 9) that the state licensing bill for landscape gardeners would affect recent immigrants from Mexico mostly according to Mike Ishikawa, PSWDC Ethnic Concerns committee chairman, who urged the Sen. Dill's bill be fully explored.

Japanese American gardeners have been in favor of this bill for many years.

The committee was also advised Assemblyman Mike Antonovich (R-Glendale) does not now plan to pursue to have the Manzanar plaque reworded from "concentration camps" to "relocation centers."

Flight of the PSW District Youth was disclosed by its chairperson Steve Endo who reported the DYC treasury is in need. Carwashes are being planned to replenish its account and the JAY movement being severely curtailed due to lack of chapter interest.

The meeting, hosted by Wilshire JACL, at the Olympus Hotel drew over 15 delegates.

Gov. Masamune Kojima, to overcome previous difficulties encountered in publishing the minutes, did not recognize motions unless submitted in writing.

In other actions of the meeting, which went over time 90 minutes, the PSWDC: a) Approved \$200 to sup-

2 NIKKEI SLAIN IN SEPARATE I.A. DAYTIME ATTACK

Drug Store Owner, Gardener Victims; Suspects Unknown

LOS ANGELES—An apparent victim of a daytime robbery, Eugene K. Mizuhara, 70, was found shot in the head in his store Feb. 12 and later succumbed at the hospital. He was proprietor of Nisei Drugs, 3314 W. Jefferson Blvd.

It was usual for the pioneer Nisei druggist to tend the store with his wife, Helen, but due to street construction which made the area difficult to travel, she remained at home in El Monte.

The other shooting occurred in the same Southwest Los Angeles area two days later (Feb. 14) when the body of Jack Yoshikiyo Yamauchi, 74, was discovered on the front lawn of the home at 1788 W. 36th St. He had been shot in the upper chest area.

Yamauchi, who lived at 111 S. Mariposa, had just completed his gardening chores at the residence owned by his nephew at that address, occupied by Mr. and Mrs. Tadao Yamakawa.

A witness said later, he saw a "boy between the age of 18 and 20" flee from the shooting scene, but did not elaborate. The shooting took place about 5:15 p.m., police said.

Authorities were unable to ascertain the motive for the killing since Yamauchi's wallet was still intact in his pocket.

Japan postpones vote on nuclear bomb ban

TOKYO—Foreign Minister Kiichi Miyazawa indicated to the Diet Feb. 10 that Japan is again delaying ratification of an agreement with the International Atomic Energy Agency to stop the spread of nuclear weapons. More time is needed, Miyazawa said, concerning the agency's inspection of Japan's nuclear facilities.

Those opposed to the treaty noted both France and China, both nuclear powers, have not signed the treaty. It has been signed by 60 nations, including the U.S. and Soviet Union.

NAT'L JACL RESUMING BOWLING TOURNAMENT FOR AUGUST 26-30

San Francisco—The 29th annual National JACL bowling tournament will be sponsored from Aug. 26-30 this summer in the Bay Area, according to Tad Hirota, National JACL vice president of membership services.

As mandated by the National Board, the annual JACL bowling tournament will be conducted by the 1000 Club this year. The tourney will be staged at one of the Bay Area bowling establishments.

Bids for the JACL tournament are being submitted by the Castle Lanes and Downtown Bowl in San Francisco, Mel's Bowl in Alameda, Broadway Bowl in Oakland, Golden Gate Lanes in El Cerrito, and the Lucky Lanes in Richmond, it was reported.

A pro-tem national bowling committee made up of members of the Nisei Bowling Associations in San Francisco, San Jose and the East Bay is being selected by Hirota to assist in staging the annual competition.

Rui Taniguchi of Richmond was selected to head the rules and regulations committee. Hi Akagi of Alameda has been appointed tournament co-chairman. Lois Yut and Muts Lynn will head the statistics department. Hirota will serve as tournament director.

Japanese American nat'l bowling tourney Mar. 3-8

SAN JOSE, Calif.—Eight-four men's team and 46 women's teams are poised to bowl in the first annual national bowling tournament under auspices of the newly organized Japanese American National Bowling Congress. The week-long event will be held Mar. 3-8 at Fiesta Lanes with Ozzie Shimada as chairman.

Included are teams from Chicago, Colorado, Utah, Idaho, Seattle, Portland, Hawaii, Northern and Southern California, and 25 men and 8 women bowlers from Japan.

Twenty-one men bowlers sport 200 and plus averages, headed by Earl Onishi of Hawaii with 227 and Dr. Ed Dong of Portland at 216. On the distaff side, Takeko Nishizawa of Eastbay comes in with the highest average of 191 followed by Dusty Mizunoue of Los Angeles at 190.

CBS-TV AXES 'KHAN' AFTER FOUR SHOWS

NEW YORK—CBS-TV has canceled "Khan", which debuted Feb. 7, after four shows, the final segment airing Feb. 28. Knight Dighief (of Hawaii Five-O fame) starred as a private detective operating in San Francisco's Chinatown.

Because the series opened to almost unanimous praise from critics across the country, CBS switched the premiere episode at the last minute.

Chinese Americans had protested the way the series was being produced, pressing for more Asian writers and employment of local Asian American performers and technicians.

JACL Subscribers

JANUARY, 1975 (No. 1)
The Pacific Citizen this month acknowledges 2,179 subscriptions from 38 chapters as listed below:

Arizona	20	New York	4
Bay Area	5	Reedley	27
Bolinas	2	Reno	33
Chicago	35	Sacramento	268
Cleveland	95	St. Louis	21
Coachella	57	Salinas	33
Col Basin	8	San Benito	23
Con Costa	136	San Jose	302
Dayton	19	Sta. Maria	33
Dawson L.A.	99	Seabrook	33
Eden Twnshp	31	Seattle	1
Gtr. Pas	9	Spokane	36
Hollywood	2	Twin Cities	1
Imperial Vly	25	Ven-Culver	73
Marysville	2	Wasatch	11
Metro L.A.	1	Wash. DC	42
Milwaukee	10	West L.A.	285
Mont Penna.	103	Willshire	9

Shigeki J. Sugiyama, National JACL President
 Alfred Hatate, PC Board Chairman
 Harry K. Honda, Editor

Second-class postage paid at Los Angeles, Calif. Subscription Rates (payable in advance): U.S. \$7 a year, \$13.50 for two years. Foreign \$9.50 a year. \$3.75 of JACL Membership Dues for one-year subscription. Note: Subscribers wishing first-class delivery, either air or surface, should inquire about rates domestic or international.

Friday, Feb. 28, 1975

Harry K. Honda

Ye Editor's Desk

JACL SENIOR CITIZEN MOVEMENT

Checking the first 100 replies of the 240 readers who responded to the current PC readership survey, we noted three-fourths of them were between the ages of 40 and 60 and that half of the 100 responding checked in between 50-59.

It confirms JACL is still a Nisei organization by and large and will probably remain so in the coming decade.

It takes no statistician to tell anyone JACL is still basically comprised of the generation which founded the organization over 40 years ago. But his estimates would be valuable in determining when the Sansei generation as PC subscribers (now less than 15% of those polled) will ascend into the majority ranks. He would take into consideration the fact that people in America are living longer, the Nisei have had fewer babies or because of relatively high intermarriage rate between Japanese women and non-Japanese men, such children may no longer be enumerated racially as Japanese.

We have not totaled the number of other people (presumably the spouse and children) who also read the PC, but we detect more "ones" than any other figure.

According to 1970 Census Bureau figures, most of the Sansei or Yonsei range between ages 5 and 19. The young adult group between 20 and 39 only outnumber the class of Nisei above age 60.

So the problem of aging becomes a real one within JACL. It's an American problem anyway. The rising life expectancy rates, which once meant a bag of neglect and resignation, are producing new stages of interest in the elderly as senior citizens and retirees.

Retiree program

JACL at its last national convention gave the "retiree program" (for want of a better name) the lowest ranking among the ten program proposals. But the rationale, as expressed by the author, Dr. Minoru Masuda of Seattle, is succinctly stated:

"No data is available, but there must be sizeable numbers of retirees in JACL. Many have long been the backbone membership of JACL and helped sustain it through difficult times. Oncoming retirement is of great concern now as longevity increases, inflation escalates, retirement ages drop and job careers terminate. To those retiring, it means a complete

readjustment of life-style to one of leisure and is apt to be more difficult for the Nisei whose work ethic and restricted opportunities may not have allowed a fuller expansion of potential activities.

"While affluence or nonaffluence may be a factor, the most important must be the psychosocial adjustment required. (Dr. Masuda is a professor or psychiatrist at the Univ. of Washington School of Medicine—so here he is imparting a professional reading of Nisei Society.) Self-work and dignity can be maintained and enhanced by expansion into a larger world of program activities. The JACL must accommodate to the needs of its membership and those outside its membership by offering to this oncoming wave of retirees, varied and appropriate avenues to their retirement and enjoyment.

"Further benefits to the JACL may be seen in an expanded pool of available talent for chapter activities as well as increased membership."

As a PSW pilot

That last paragraph hits the point Dr. Roy Nishikawa, of Wilshire stressed at the last Pacific Southwest District executive board meeting. The Masuda proposal appears to be a vehicle the PSWDC ought to consider as a pilot project. A new senior citizen chapter, maybe — one that would meet during the daylight hours, conduct programs midweek or engage in various voluntary action projects that seem to need help.

The Masuda proposal requested National to fund the experiment on a 90/10 cost-sharing basis with a selected urban area chapter. The retiree-organizer with the chapter could be compensated \$500 a month with the chapter picking up travel and certain other expenses to organize activities for other retirees in such fields as education, recreation, cultural, hobby, legislative or social programs. The organizer can also raise funds and work with other community groups working with the aging or retirees.

This JACL senior citizen movement will probably come up again—but the evidence which can be weighed if the PSWDC embarks on such a program will be valuable and add zest to the proposal when reintroduced.

The potential in the PSWDC is there. It's not all hell-bent on the "impeachment" thing we described last week in almost step-by-step fashion.

LETTERS FROM OUR READERS

Ban nuclear bombs

Editor:
 When the National JACL Committee on the Whaling Issue came out in support of the ten-year moratorium on whaling, they certainly took a negative stand. To begin with, I believe the whale conservation is focused out of proportion. Isn't there for these conservationists a more important issue to tackle with? For instance, how about the preservation of human beings? America used to be the atom bomb on the Japanese people and continues to intimidate other people with its possible use. Nothing is more disastrous than this.

Recently the Japan Council Against A & H Bombs sent a delegation to the U.N. to appeal for its total ban. They were cordially welcomed by the world body. Many American peace organizations and Christian groups such as American Friends Service Committee, Catholic Peace Fellowship and Episcopal Peace Fellowship are working toward this end. I think the JACL should take part in this movement and then extend an invitation to the whole conservationists to join. In this struggle we have to put the horse before the cart.

I am a Nisei veteran who

bore arms against military Japan and I don't want any one to misconstrue this letter as offering an apology for Japan.

JAMES ODA
 Fontana, Calif.

Tule Lake plaque

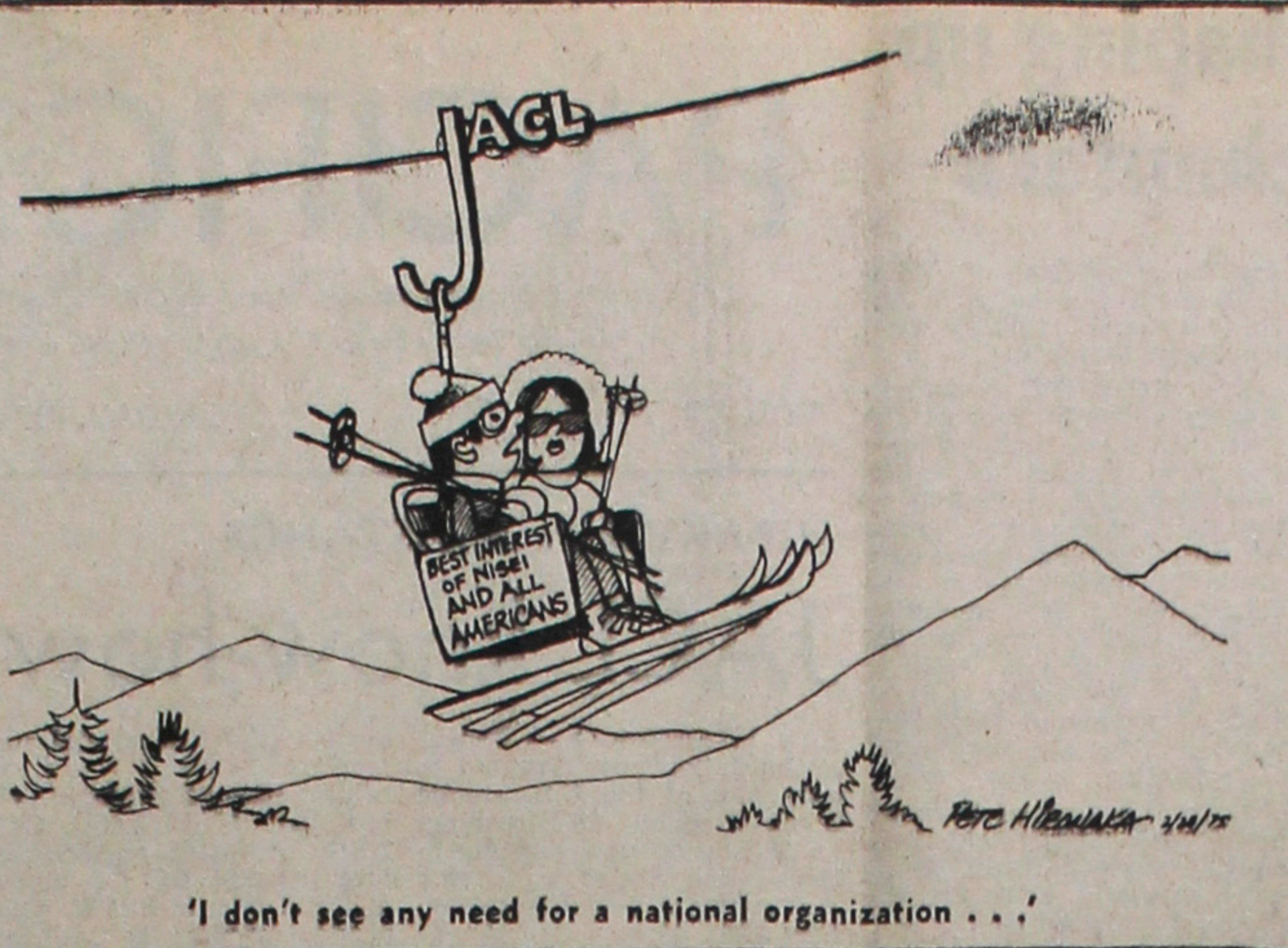
Editor:
 It would be a meaningful education project if the JACL Tule Lake Plaque Committee sponsors a nation-wide contest on what the text should be for the historic marker at the site of the camp. Outstanding entries can be compiled for a book as a record of impressions of this traumatic event. It would also stimulate entrants to study in depth the legal and social significance of Evacuation.

The efforts of the plaque committee are to be commended.

MASARU ODOI
 Gardena, Calif.

Senate chaplain

Editor:
 Would you please set forth your policy and JACL policy on how you respond to cases of discrimination. The letter from the Rev. Johnson ap-



'I don't see any need for a national organization . . .'

A Terrible Nightmare

THE TEXT

Following is the text of Kanji Kuramoto's speech before the NC-WNDC quarterly session Feb. 9 at Stockton soliciting support for legislation to provide federal and state assistance to U.S. survivors of the atomic bomb explosions of Hiroshima and Nagasaki.

Stockton
 My name is Kanji Kuramoto, chairman of the Committee of Atomic Bomb Survivors. I am very happy to be here, and I thank you for the opportunity given me to express my concerns to you. I was born in Honolulu, Hawaii and went to Hiroshima, Japan when I was three years old. I returned to the United States after World War II. The most miserable and unforgettable experience of my life was in Hiroshima in August, 1945, when I was a college student.

When I returned to Hiroshima two days after the atomic bomb was dropped. The city was a devastated picture of Hell. I cannot explain with my own words what I saw there. It was too much. It was really mankind's greatest sin.

Near the hypocenter, I dug up over twenty dead bodies during my two week search for my lost father. I saw many dying victims on the ground. Most were suffering from burns. They were crying and screaming "I am not going to die! . . . Where is my little son?" "I can't die here! I can't die until I see my children." "My name is . . . please tell my mother, I am OK . . ."

I can still hear the words today, "Oniichan sono omizu o chodai!" which means, "Please give me the water you have." I found a person burnt black with a swollen body. She was a young girl. She seemed ashamed because she was nearly naked. She died in tears after drinking the water. I still don't know who she was. I don't even know her name. These hopeless survivors were young and old, men and women, children and babies.

Because of the summer heat, wounds festered. Maggots swarmed on living bodies — something I had never seen before. I could do nothing for them but watch

them die one by one. The scenes were the bloody struggle of life and death. The invaluable human life was as worthless as that of a nameless insect. Dead bodies were left all over the city. They looked and smelled like rotten tomatoes, ugly with fleshy skins peeling.

I have tried to forget this tragedy. Returning to the United States was the escape from that tragic experience and gave me great relief. I enjoy a very happy life with my wife and two children, erasing and ignoring the A-Bomb event of early years. Two years ago, talking with the committee members at Los Angeles, I found that in the United States are still many victims suffering from radiation effects without any aid or support.

30 years hence

My experience then, however, were nothing compared to those other victims who were hit directly and are experiencing a living death. Thirty years have passed since the bomb. It was a long time ago. But since then, many victims died while others are still suffering from the atomic bomb radiation diseases.

I cannot understand why the American A-Bomb survivors are completely ignored. Most of them are American citizens.

I have talked with many victims. All survivors don't want to remember their horrible experiences. They don't want to see those pictures shown in this room. A young lady told me how she has been suffering the devilish and terrible experience. She and her family were having breakfast when there was a sudden flash. She remembers trying to free her leg from a roof timber and fire starting to break out. She remembers her mother telling her to run and not try to save the family because she would only be killed with them. She can still hear mother's crying, her sister's screaming and her brother's shouting.

In 1960 an old lady lost her husband by leukemia after many years of her nursing. In 1969 her daughter died from an unknown disease. After many years' medical treatments now her son is a living dead. Also she is suffering from high blood pressure.

From the report from Hiroshima, the most victims within one mile from the hypocenter have been dead for the last thirty years from various diseases effected by the atomic radiation. The recent report from Atomic Bomb Casualty Commission still has

Acupuncture bill

SACRAMENTO, Calif.—Senate Health Committee approved Sen. George Moscone's bill (S 86) to legalize acupuncture by persons other than physicians.

25 Years Ago

In the Pacific Citizen, Feb. 18, 1950

Not opposed to Issei citizenship, says Sen. Richard Russell . . . Nine Japanese Americans win election, 23 nominated for Hawaii constitutional meet . . . Veterans of 442nd will be honored by To-

kyo government . . . Critics praise Sessue Hayakawa's playing in "Three Came Home" . . . Story of famed Nisei combat unit told to people of Japan.

In the Pacific Citizen, Feb. 25, 1950

Hawaiians' clamor for share in 442nd film subsidies after letter from the writer-director . . . Justice Department reports 24 thousand claims filed by Japanese American evacuees . . . Sen. Scott Lucas

shown that victims with high radiation dose are three to four times more likely to develop leukemia and other forms of cancer. The victims have a great deal of psychological tension that they will succumb to the same disease as their relatives and friends who were fatal victims.

Uninsurables

Some survivors, however, do not want to report us as a "Hibakusha", because their employer and insurance companies will discriminate against them as a sick person. I was told some have been refused by the insurance company.

These suffering survivors and their off-springs have been ignored and forgotten for the last 30 years. Their suffering and agony and continuing without an end.

Fortunately, the survivors in Japan are provided with free medical care and financial aid by the Japanese Government. These "Hibakusha" have unique health care needs, but here in this country we have no provisions to meet the requirements of our suffering. The Committee of Atomic Bomb Survivors is working to obtain Federal and state aids.

Our group, however, is very small, less than 1,000 victims in the United States and less than 500 are in the state of California. Most of the victims are women. They are not aggressive and insistent, but reserved and hesitant. They speak only Japanese and they are unable to explain and express their own feeling or desires to the public or to their own medical doctor. They come from low to middle income classes so they cannot get large contributions for their cause.

In undertaking the enormous tasks to push this campaign, the Committee of Atomic Bomb Survivors is faced with extremely limited resources in both manpower and funds. There is no paid staff help. The Committee is made up almost entirely of a small number of volunteers who donate their time, effort and money. We need your good helping hands.

Last December, Lt. Gov. Mervyn Dymally introduced to state senate the bill (SB 15) to set up a research and treatment center for the California residents who suffer from atomic radiation. The bill has been in the Senate Health and Welfare Committee. The committee chairman is Senator Arlen Gregorio from San Mateo.

We need your strong backing. These ill-fated Japanese Americans truly need your deavor and generous contribution for this hard campaign. Please don't leave the poor suffering victims in the lurch. I, however, do not want to beg for your support but I am appealing to open your hearts to aid these pitiable sick victims in the spirit of true love.

(Persons wishing to contribute to the Calif. Committee of Atomic Bomb Survivors may send it to Kanji Kuramoto, 1100 Shell Gate Pl., Alameda, Calif. 94501.)

Issho-Ni

IRRESISTIBLE IMPULSES

Chicago About a month ago the Honolulu Mainichi in San Francisco carried an article concerning the alleged embezzlement of more than a half a million dollars by the assistant vice-president of a Chinatown savings and loan association. The item caught my eyes because of the seeming low incidence of "white-collar" crime by Asian Americans. Subsequent stories traced the flight of Quailand Tom, the suspect, to Taipei, Hong Kong, and then back to San Francisco to "face the music."

I got a big laugh out of the most recent article in which Attorney George T. Davis outlined the prospective defense for his client, Tom. According to Davis, Tom apparently does not deny that he took the money, or that he gambled away the entire sum in

Reno and Las Vegas. However, the attorney stated that he would base his defense on his client's "irresistible impulse" for gambling. He characterized Tom as a "Chinese Robin Hood in reverse" in that he took from the poor and gave it to the rich. His gambling losses could be considered "an effort to give the money away."

Boy, I can just imagine the kind of response I'd get if I told the wife that I had had an "irresistible impulse" to gamble away the food money. Or that I had been out playing "Robin Hood in reverse" and had given the money to the rich casino owners. She would undoubtedly have a few irresistible impulses" of her own.

I suspect that the Court will have a similar response for Quailand Tom—minus the expletives, of course.

TAKUMI TAKETA: San Jose JACLer

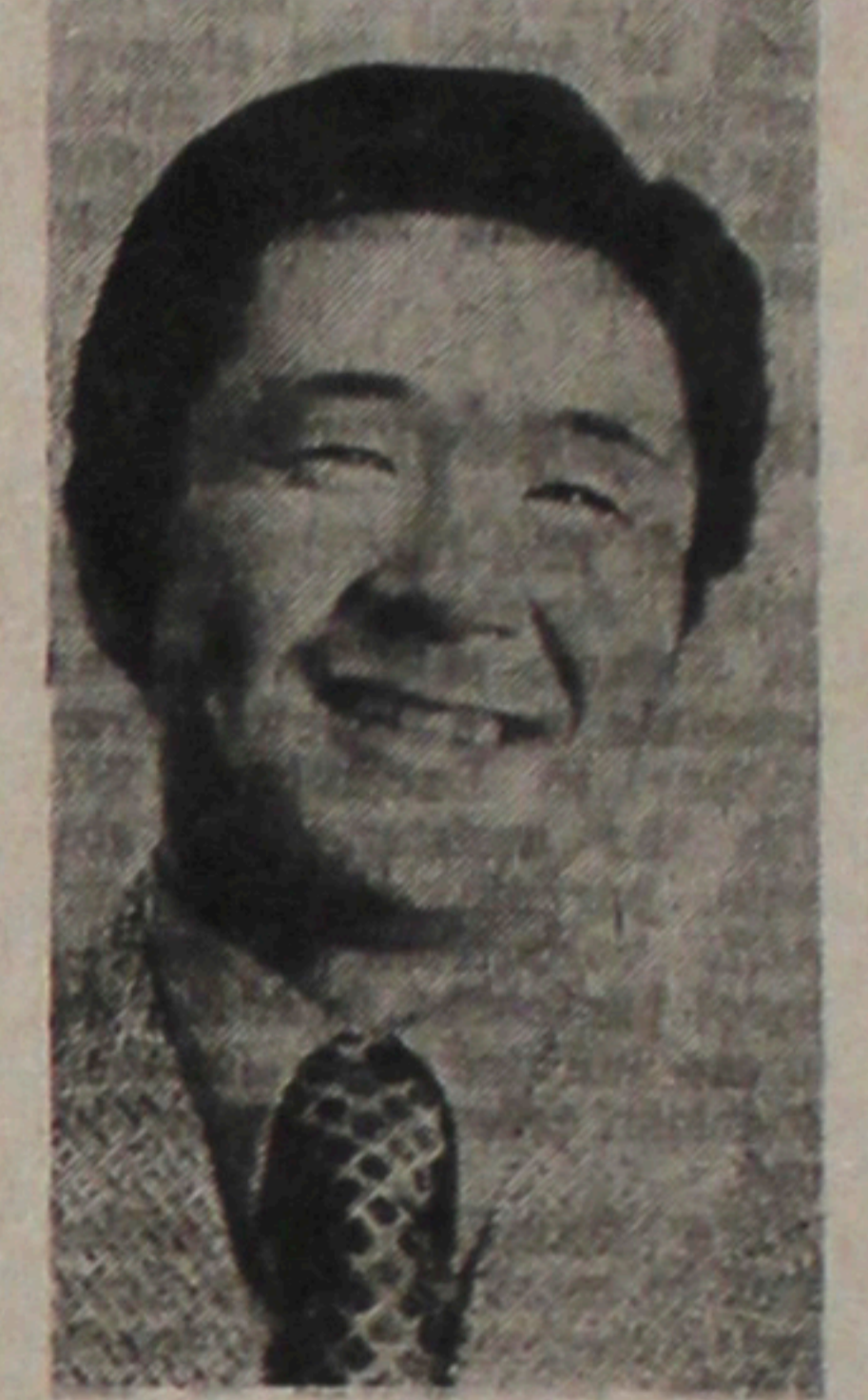
Easter Seal executive director

OAKLAND, Calif.—Appointment of Takumi J. Taketa as executive director of the Alameda County Easter Seal Society was announced recently by Charles W. Kruck, president of the board of directors.

Taketa, who joined the Easter Seal Rehabilitation Center here as a staff physical therapist in 1958, most recently served the society in his dual role as director of program and associate director.

A former resident of San Jose, he received a bachelor's degree from San Jose State and earned his Certificate in Physical Therapy at Stanford University.

He is a major in the Army Reserves, serves on the Alta Bates hospital advisory board, is president of the California Association of Rehabilitation Facilities and is on the board of its international organization.



Tak Taketa

Pause for a Chuckle

Nowadays, an obscene phone call is a call to the theater to find out what time the movie starts.

CHRISTMAS BILLS!

Pay your Holiday bills with a low interest consolidation loan from your Credit Union

National JACL Credit Union

Mail: P. O. Box 1721, Salt Lake City, Utah 84110
 Office: 242 S. 4th East, Salt Lake City
 Tel.: (801) 355-8040

Remember you can borrow \$3,000 on your signature with a qualified credit rating

Bank of Tokyo of California
 WE ALWAYS DO MORE.
 Member FDIC

Business and Professional Guide

Your Business Card placed in each issue for 28 weeks at 3 times minimum cost—\$25 Each additional line \$6 per line

Greater Los Angeles

FLOWER VIEW GARDENS FLORIST
 1801 W. Western Ave. (213) 466-7173
 Art 116 welcomes your Floral Gift orders for the Greater L.A. Area Mention PC.

NISEI FLORIST
 In the Heart of L.A. Tokyo
 328 E. 1st St. MA 8-5406
 Fred Moriuchi Mem. Teleflora

YAMATO TRAVEL BUREAU
 312 E. 1st St., L.A. (90012)
 MA 4-6071

Watsonville, Calif.

TOM HAKASE REALTY
 Acreage Ranches - Homes
 Income
 Tom T. Hakase Realtor
 25 Clifford Ave. (408) 724-6477

San Jose, Calif.

EDWARD T. MORIOKA, Realtor
 1093 Nottingham Pl., San Jose
 Bus: 245-6606 Res: 241-9554

Seattle, Wash.

Imperial Lanes
 2101 - 22nd Ave. So. EA 5-2525
 Nisei Owned — Fred Takagi, Mgr.

Kinomoto Travel Service
 Frank Y. Kinomoto
 521 Main St. MA 3-1922

Chicago, Ill.

SUGANO TRAVEL SERVICE
 317 E. Ohio (60611)
 744-5444, 642-7193
 GR 2-4133 (Evs. Sun.)

New York City

Miyazaki Travel Agency,
 Inc.
 The Stratford Hilton
 401 - 7th Ave. (212) 760-1800

Washington, D.C.

MASAOKA - ISHIKAWA
 AND ASSOCIATES, INC.
 Consultant — Washington Matters
 900 - 17th St., NW, Rm. 520 296-4484

Support PC Advertisers

Frying Pan

LITTLE MAGAZINE

Bill Hsokawa

Denver, Colo. — From time to time, going back to the '30s, Japanese-Americans have published "little magazines" to provide outlets for literary efforts or to espouse particular points of view. Most of them were well-intended but amateurish and short-lived.

Comes now a new publishing effort from Canada edited, sponsored and printed by Japanese Canadians but with concerns that reach out beyond their ethnic community. It is called *Rikka* and published in Toronto. A quarterly, the first volume was published last fall. *Rikka*, the editorial foreword explains, symbolizes the six-pointed snow crystal, or the "Six Beautiful Essences." Through the magazine the editors "seek to express the unity of the Universe, the bountiful terrestrial home which we take for granted, and all the people who inhabit it, sharing a common humanity despite manifestations of tribal mentality that often give painful experiences." The foreword goes on to say: "Focusing on our Japanese heritage, the editors will range over a wide horizon, sharing perspectives with others. With the Native Peoples of Canada and Australia, with Blacks in Canada and Africa, with all New Canadians of other extractions. With Israel, Nisei, Samsel, Yonsei in other parts of the world... Freedom and fair play are indivisible, and can no longer be enjoyed by one group at the expense of another."

The first issue leads off with an article titled "Social History of the Japanese in Canada" by Mitsuru Shimpo, a Japan-born sociologist teaching at the University of Waterloo. Gordon Hirabayashi, former head of the sociology department at the University of Alberta, writes on the subject, "Is Canada Racist?" Ely Goto, a Samsel, tells of a trip to Japan. Tomoyama Fuse, Japan-born sociology professor at York University, discusses "Identity in a Multi-Ethnic Society." Other authors in the first issue are Billy Diamond, a Cree Indian chief; David Suzuki, an outstanding Canadian Samsel geneticist who has hosted "Science Notebook," a prime-

300 help celebrate Tulare County's 40th anniversary

DINUBA, Calif. — The joint JACL 40th Anniversary banquet of the Delano, Parlier, Reedley and Tulare County chapters was a success as 300 JACLers and guests assembled Feb. 8 for the four-chapter celebration marking 40 years of service to the Japanese community.

In his opening remarks, emcee Tom Shimasaki recalled the tenor of the times—1935. The Japanese Exclusion Act, the state alien land law and other discriminatory laws and practices prevailed as the Nisei became of age. "The 40-year story is an epic of how we overcame the obstacles that were thrust against us... It is a story of a people and an organization and how we enhanced the welfare of persons of Japanese ancestry in the U.S., and in so doing, enlarged the area of freedom for all Americans," he declared.

Of the original 168, 49 charter members were present and introduced individually. Fourteen were from Parlier, 13 from Reedley, one from Delano and 21 from Tulare County. Twenty charter members have since deceased.

Among the speakers recounting the early years were: Fred Hirasawa of Fresno, which sponsored the establishment of Tulare County; Sue Yamashiro and Byrd Kumatake of Parlier, Joe Katano of Delano, Masaru Abe of Reedley and Hede Shirasawa of Tulare County.

Greetings were extended by: Dinuba Mayor Leonard Higdon, Tulare County JACL president Kay Hara, CCDC Gov. Mikio Uchiyama and Nat'l JACL vice president Izumi Taniguchi of Fresno.

National executive director David Ushio was guest speaker, presenting the audience with certain information that motivated Nisei to renew their vows with JACL and look forward to another 40 years of service with the Samsel at the helm.

—Tulare County JACL Newsletter



WASHINGTON—For lack of a wide-angle lens, the picture of the 1975 Washington, D.C. JACL officers being installed requires a stereoscopic pair on a vertical plane. TOP (from left): Dr. Melvin Chigiogji, pres.; Kaia Kitagawa, Mike Suzuki, Lily Okura, Yasue Redden, Seiko Wakabayashi, Paul Heit-



PSWDC backs Anti-Eviction Task Force bid for gov't review on urban renewal

LOS ANGELES — The Little Tokyo Anti-Eviction Task Force's resolution proposed for adoption to JACL's Pacific Southwest District meeting was passed overwhelmingly at its quarterly meeting here Feb. 9.

The resolution calls upon the JACL to assist the Anti-Eviction Task Force seek a federal government review of the impact of redevelopment on ethnic communities. Noted in the resolution were the dispersal of minority communities due to urban renewal and its negative influence on the poor, elderly residents and small businesses.

The resolution passed by PSW is similar to that adopted by the JACL at its National Convention in Portland supporting efforts of CANE (Committee Against Nihonmachi Eviction).

Nat'l JACL Credit Union annual meeting Mar. 8

SALT LAKE CITY — The annual National JACL Credit Union meeting will be held Mar. 8 at Prudential Plaza. Dinner will be served from 7:15, followed by the business meeting to elect three members to the board and concluding with dancing to Gary Amano's orchestra.

Reservations will be received until Feb. 28 at the JACL Credit Union office (355-8040). Tickets are \$3.50 for Credit Union members and their escorts. Non-members will be charged \$7.

Poston III High reunion

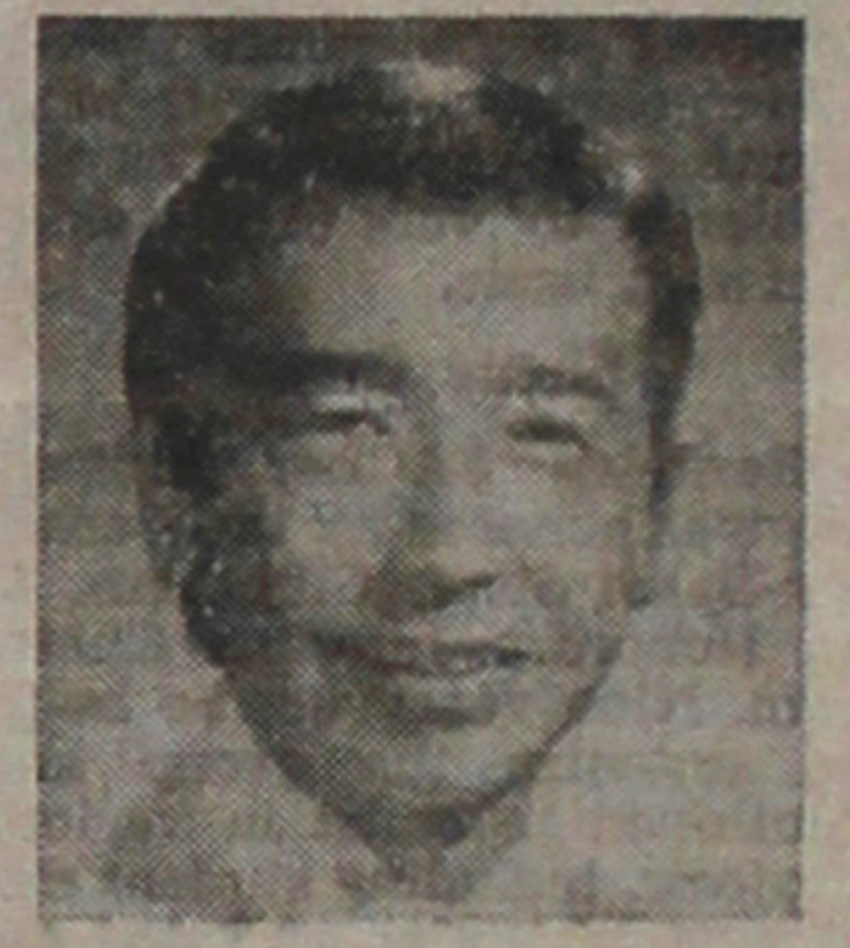
SAN JOSE, Calif. — Current addresses of Poston III High School graduates are requested by the reunion committee in order to plan the gala affair here Sept. 20. Tatsushi Ishida will be banquet toastmaster. Addresses should be sent to: Tooru Hirose, 1220 McBain, Campbell, Calif. 95058.

PSWDC endorses Asian Rehabilitation Services

LOS ANGELES — The PSWDC has overwhelmingly supported the fund-raising efforts of the Asian Rehabilitation Services, 1921 E. 7th St., Los Angeles, currently underway.

The campaign to raise \$25,000 to expand its production workshop and facilities, including a section working with the blind, is to be matched by government grants on a 4-to-1 matching basis.

An open house is planned for Saturday, Mar. 8, 1-4 p.m. When an exhibit of ARS products and services will be on display.



MACK M. MIYAZAKI
has completed all the requirements to be certified as a
QUALIFYING MEMBER OF THE 1975
MILLION DOLLAR ROUND TABLE

an independent, international association of life insurance agents. Membership reflects a commitment to continuing advanced education to better serve the financial security needs of families, individuals, and business.

California-Western States Life Insurance Company
Wilshire Agency - 3250 Wilshire Blvd., Los Angeles

Japan Today

THALIDOMIDE — The Japan Welfare Ministry and Dai Nippon Pharmaceutical Co. settled a 11-year-old lawsuit brought by families of 83 thalidomide children. Formal documents noted lump sum payments or monthly life pensions totaling \$2.3-billion. Dai Nippon also agreed to establish a welfare center to insure a stable life and provide artificial arms for victims. Exact number of thalidomide children in Japan is not known but estimates have been set at 200. But they also received the same benefits. The victim children are now of junior high school age.

WAR DEAD — The governments of India and Burma have consented to Japan Welfare Ministry's plan for repatriation during 1975 the remains of Japanese war dead in northwestern Burma, especially near Imphal where fighting was the most fierce during WW2. Japan's estimates 24 million Japanese died outside Japan during the Pacific war and nearly half of them have been repatriated.

In Canada

Longtime residents of Kamloops, B.C., Mr. and Mrs. Frank Imai donated three acres to the North Shuswap Community Assn. for recreational purposes, which was named the Imai Ball Park. In 1967, the Imais had donated an adjacent five acres for a school site in commemoration of Canada's centennial. Now 70 years ago, Imai had been growing strawberries on the three acres.

Nisei phys-ed teacher David Edamura and the Prince George (B.C.) School District were ordered by Justice Douglas Andrews to pay a \$1.5-million settlement to Gary Thornton, 19, who was partially paralyzed after breaking his neck in a gymnasium accident in 1971. Negligence was charged by the parents. The district carries a \$1-million liability policy and board secretary said he did not know where the balance could be found.

An Issei kamaboko manufacturer, Kanichiro Yoshida, in Vancouver celebrated his golden wedding anniversary recently by contributing \$10,000 to the Greater Vancouver Japanese Canadian Citizens Assn. Congratulatory messages had been received by the Wakayama-born couple from the Governor General, Prime Minister Trudeau, Premier of British Columbia, Japanese Consul General and the Mayor of Vancouver.

Quote of Note
When speculation has done its worst, two and two still make four.—Samuel Johnson

Hawaii Today

Honolulu
The Army Corps of Engineers has invited public comment on the proposed operation of an experimental oyster-raising project at Kaneohe Bay. Oyster Farms, Inc., headed by Taylor Pryor, has requested a permit from the corps to allow installation of water intake and discharge lines in the bay. The lines would eye-seawater through oyster-rearing trays located on land near the mouth of Kaneohe Stream. A corps official said there does not appear to be a need for a federal environmental impact statement for the project.

Persons of Hawaiian ancestry began making appeals to get \$1 billion from Congress to compensate Hawaiians for land allegedly taken by the United States government illegally. They began offering testimonies Feb. 11 at the state capitol before a committee consisting of Rep. Lloyd Meeds, chairing the hearings through the House subcommittee on Indian Affairs. He was flanked by Reps. Paty Mink and Spark Matsunaga. Meeds told the Hawaiians, "The testimony is very touching, and it shows how much has been lost by the failure of this country to consider the great strengths of its various ethnic groups." The bill to collect \$1 billion was initiated by the ALOHA (Aboriginal Lands of Hawaiian Ancestry).

Nikkei Christians TO MARK 100TH ANNIV.

SAN FRANCISCO — Japanese Christian congregations are anticipating the 100th anniversary celebration planned for the fall of 1977, according to the Rev. Y. Casper Horikoshi of San Jose, centennial chairman for the No. Calif. Japanese Christian Church Federation.

Honeymooners at Guam

TUMON BAY, Guam — What was a WW2 battleground here has become a playground for Japanese honeymoon couples. Seven of Guam's nine tourist hotels have been built here since 1960, each owned and staffed by Japanese.

Seattle art museum

SEATTLE, Wash. — A permanent Asian art gallery opened Feb. 20 at Seattle Art Museum. Its Asian collection is regarded as among the world's foremost.

Gov. George Ariyoshi

Gov. George Ariyoshi told Lt. Gov. Nelson Doi Feb. 6 he would not allow Doi to expand his staff. "There is only one governor of this state," Ariyoshi said, "and you can't have two administrations." Doi had asked the Dept. of Budget and Finance for seven new positions, a secretary and two receptionists. Doi's requests, it appeared, was made without consulting Ariyoshi.

Univ. of Hawaii

Dr. James Haviland, head of the four-man accreditation team, the national Liaison Committee on Medical Education, informed the UH School of Medicine that it will be recommended for accreditation for three years. This includes the usual two years granted to new four-year schools. Ordinarily, Haviland said, a new school about to graduate its first class of physicians gets only two years of accreditation, but in view of the Hawaii medical school's outstanding progress, the team has recommended accreditation for three years. The school will graduate its first class of 62 physicians in May.

Governor's Office

Gov. George Ariyoshi told Lt. Gov. Nelson Doi Feb. 6 he would not allow Doi to expand his staff. "There is only one governor of this state," Ariyoshi said, "and you can't have two administrations." Doi had asked the Dept. of Budget and Finance for seven new positions, a secretary and two receptionists. Doi's requests, it appeared, was made without consulting Ariyoshi.

Bilingual courts bill reintroduced

WASHINGTON — Sen. John V. Tunney (D-Calif.) reintroduced the bilingual courts act requiring translation of all Federal court proceedings involving non-English speaking Americans.

The bill, introduced Feb. 5 with 37 Senate co-sponsors, was unanimously approved by the Senate last September. But hearings in the House

retary and two receptionists.

Doi's requests, it appeared, was made without consulting Ariyoshi.

Univ. of Hawaii

Dr. James Haviland, head of the four-man accreditation team, the national Liaison Committee on Medical Education, informed the UH School of Medicine that it will be recommended for accreditation for three years. This includes the usual two years granted to new four-year schools. Ordinarily, Haviland said, a new school about to graduate its first class of physicians gets only two years of accreditation, but in view of the Hawaii medical school's outstanding progress, the team has recommended accreditation for three years. The school will graduate its first class of 62 physicians in May.

Governor's Office

Gov. George Ariyoshi told Lt. Gov. Nelson Doi Feb. 6 he would not allow Doi to expand his staff. "There is only one governor of this state," Ariyoshi said, "and you can't have two administrations." Doi had asked the Dept. of Budget and Finance for seven new positions, a secretary and two receptionists. Doi's requests, it appeared, was made without consulting Ariyoshi.

Bilingual courts bill reintroduced

WASHINGTON — Sen. John V. Tunney (D-Calif.) reintroduced the bilingual courts act requiring translation of all Federal court proceedings involving non-English speaking Americans.

The bill, introduced Feb. 5 with 37 Senate co-sponsors, was unanimously approved by the Senate last September. But hearings in the House

Over 80,000 Readers See the PC Each Week

Flyaway to Fukuoka, where the gods went to war, with a conqueror.



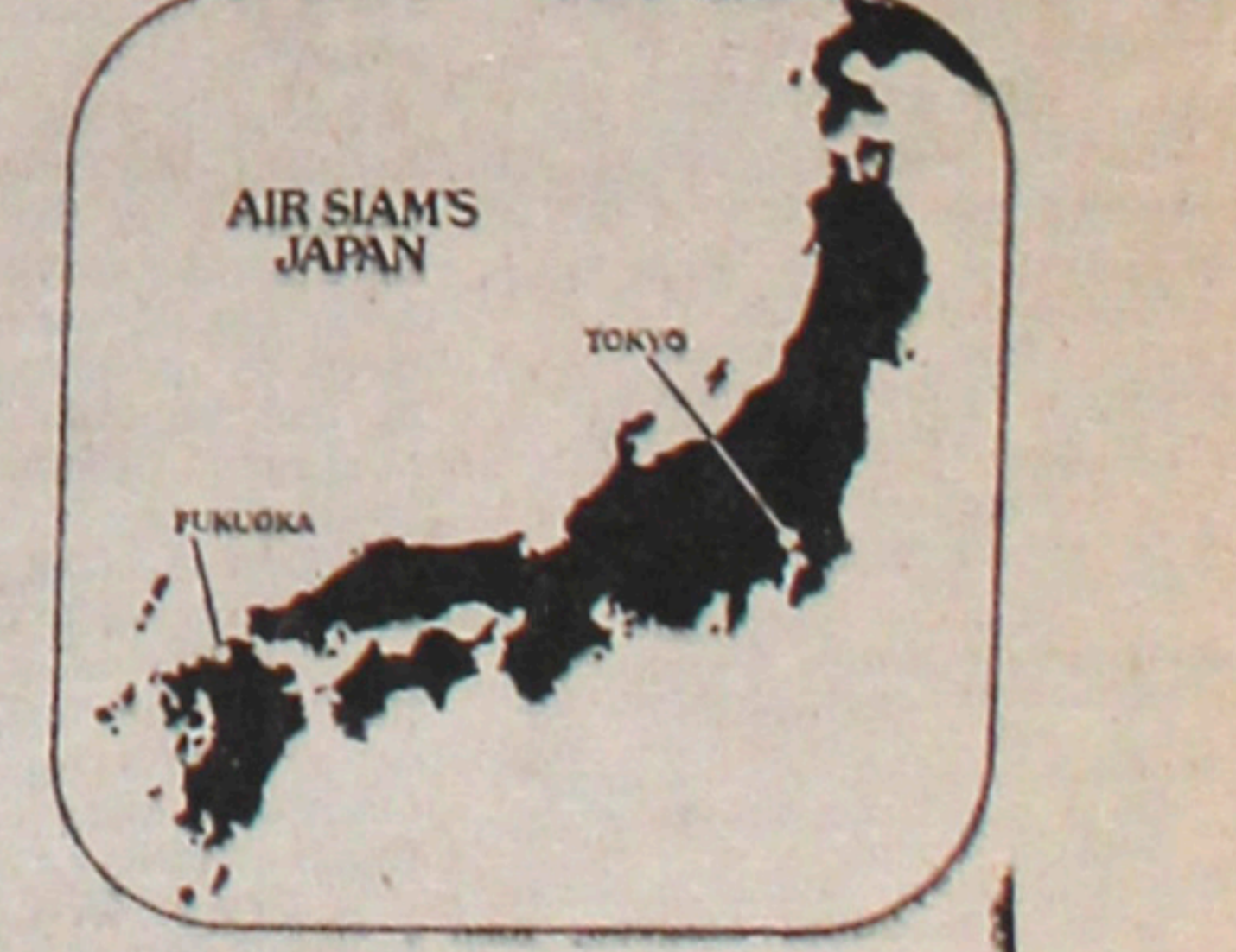
The date: 1284. The place: the ancient seaport of Fukuoka. Here, with the mightiest armada the world has ever seen, the great Kublai Khan launches the invasion of Japan.

But suddenly, out of nowhere, a great storm rises. Howling down like a thing alive, it annihilates his entire fleet; 150,000 warriors are lost.

Kamikaze — the Divine Wind.

The most towering saga in Japanese history happened here. Today, the richness of Fukuoka's past still lingers, with much to see and do. And only Air Siam's luxurious DC-10 Superbird can take you there direct from Los Angeles.

Call Air Siam or your travel agent. Flyaway to Fukuoka and you'll fly back into history.



FOR RESERVATIONS CALL TOLL-FREE: (800) 421-6861 Continental U.S. & Canada except California/ (800) 262-1371 Calif. except L.A./ (213) 776-7111 in L.A.



Kats Kunitzugu

On Margin

COMMUNICATING VISUALLY

Los Angeles
On a recent Sunday night at Koyasan Hall, Visual Communications and the Cinep Committee presented an evening of films by Asian American filmmakers.

Nine films were presented, as short as three minutes and as long as 38 minutes. Most were produced by the indisputably talented group at Visual Communications, a non-profit group which turns out educational materials, books, films and video tape productions that "affirm a culturally pluralistic view of American society," to quote their program notes. Non-VC films were two animation shorts by Peggy Okeya, a graduate student in theater arts animation at UCLA, and Alvin Tokunow, M.A. in theater arts film production from UCLA, who is teaching at California State University at Humboldt.

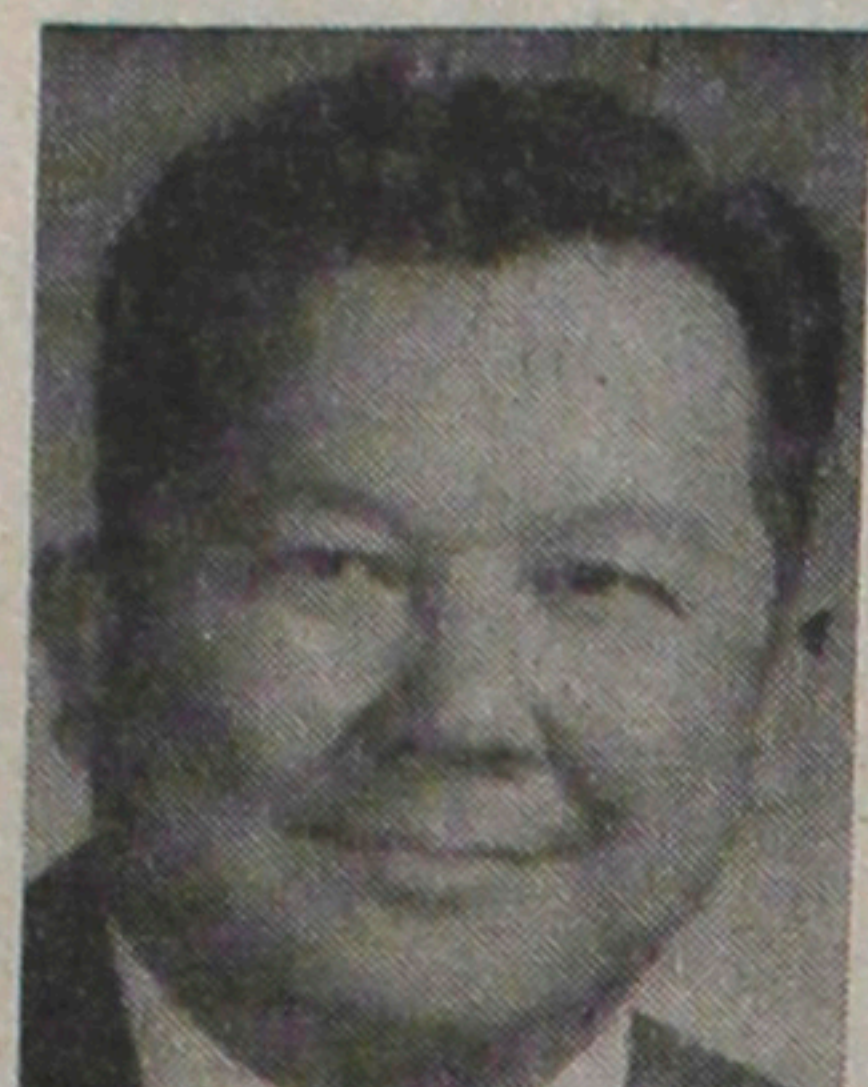
As further pointed out in the program notes, the films represent the initial efforts of Asian Americans in Los Angeles to communicate their self-concepts, a far cry from the racist fantasies or TV sitcoms in which only the faces are Asian.

By far the most moving and accomplished film was "Wata-dori: Birds of Passage," which traces the Issei story through the voice-over comments of the past. What I especially liked about it was the fact that the hard work and struggle against discrimination were there, yes, but so were the good times. As Bill Hosokawa commented in a recent column, we Nisei tend to think of our parents as always having been old—but they were young once and played tennis, went on picnics, drove around proudly in new cars, sparked and flirted . . . all recorded for posterity here in sepia photographs.

"Pieces of a Dream," also beautifully photographed, goes

PC's People

Business



Wallace Terui

Fremont JACL president Wallace Terui was honored for his 10 years of service with the Bank of Tokyo of California by bank president Masao Tsuyama in San Francisco. Terui is branch manager at Fremont.

Education

Keith Wong, Hoover School principal, is the president of the newly organized Asian American Educators Assn. of Stockton. Two longtime Stockton area JACLers, Sam Itaya and James Tanji, are v.p. and treasurer, respectively. . . . John D. Hokoyama was announced as principal of Maryknoll School in Los Angeles. He will be the first layman to be in charge of the Catholic school founded in 1921 for Japanese Americans and is assuming his post in the fall.

Churches

Calif. State Senate chaplain Rev. Shoko Masunaga of Sacramento was chosen chairman of the No. Calif. Buddhist Ministers Assn. . . . The Peninsula Free Methodist Church, which acquired a new church building at 703 Bradford St., Redwood City, held open house Feb. 2. The Rev. Soki Ito and Rev. Dan Shinoda are ministers of the Japanese and English divisions, respectively. . . . The Rev. George Uemura of Oakland was re-elected moderator of the No. Calif. Japanese Christian Church Federation. . . . The 33rd annual Western Young Buddhist League conference at the Sacramento Inn Mar. 28-30 will feature Edison Uno as keynote speaker on Saturday.

Military

Seaman Joan F. Yamanaka, daughter of the Ted Yamanakas of Santa Monica, received the Navy's Honor Woman award in February for outstanding performance while undergoing nine-week basic training at Orlando, Fla. Selection is by vote of her shipmates at basic.

Sister Cities

Berkeley JACLer Shigeru Jio was honored by the Berkeley-Sakai Sister City Assn. as an Honorary Lifetime Chairman. Nine years ago he helped organize the group and continued to assist in various projects, including student exchange, visitation of Sakai officials and orientations.

Milestones

Iwao Hara, 63, of Madison, Wis., died Feb. 13 in Tucson while he and his wife Mae were visiting Arizona. A Seattle-born accountant until his retirement last October, he was graduated from U. of Washington School of Business in 1933, was coordinator of the Mindoka WRA co-op and relocated in 1943 to Madison, where he became active with the United Methodist Church, Methodist Hospital, American Red Cross and the Optimists. Others surviving him are s. Joe, d. Ruth and James (all of Seattle) and sis. Fumiko Aori (Japan).

Mrs. Tomiye Takagi, 66, pre-WW2 resident of San Francisco, died Jan. 21 in Honolulu. Wife of the late Roy Takagi, NYK employee in San Francisco and active in early JACL activities, she had retired in January, 1974, from her position of many years at Hickam AFB.

Dr. Charles Kambe, 59, Philadelphia surgeon and associate professor at Temple Medical School since 1963, died Feb. 2. The Seattle Issei was graduated from the Univ. of Washington; from Univ. of Pennsylvania Medical School, 1943; served both internship and residency at Episcopal Hospital, certified in 1951 by the American Board of Sur-

gery, in the Army Medical Corps 1951-53, appointed fellow of the American College of Surgeons, 1953. A 13-year Philadelphia JACL 1000er, he is survived by w. Miyo, s. Dr. Joseph, Peter, d. Arbeta, two br and sis.

Jinsuke Kananori, 91, of Oxnard, Calif., died Feb. 12. A pioneer Issei leader and one-time board chairman of the Oxnard Buddhist Church, surviving are a widow, four sons, five daughters, 16 gc and 2 gc.

Some moviegoers may recall a three-part serial of about 10 years ago in which Mifune Toshiro plays Mifune. As he is scullied to the dueling ground, Mifune fashions a sword from a spare ear in the boat. Arriving at Ganryu, he wades ashore with the sun at his back; with a single blow he kills his opponent.

From about the time of the duel at Ganryu, Musashi began the search for perfect understanding through Kendo. "In 1643, he retired to a life of seclusion in a cave . . . (and) wrote 'The Book of Five Rings' (Go Rin no Sho), (which deals) with both the strategy of warfare and the methods of single combat in exactly the same way."

The dust jacket says the philosophy behind "A Book of Five Rings" can be applied to many areas of life other than Kendo. For example, many entrepreneurial Japanese businessmen use it today as a guide for business practice, running sales campaigns like military operations with the same energy that motivated Musashi."

Musashi writes, "When you have attained the Way of strategy there will not be one thing that you cannot understand . . . You will see the Way in everything."

Allan Beekman

Book Review

KENDO-KARATE: WITH OR WITHOUT

A BOOK OF FIVE RINGS: A Guide to Strategy, by Miyamoto Musashi, tr. by Victor Harris, The Overlook Press, dist. by Viking, 96 pp., \$7.95.

BLACK BELT KARATE, by Jordan Roth, Tuttle, 370 pp., \$27.50.

Born a samurai in 1584 in what is now Okayama - ken Miyamoto Musashi entered a world just emerging from "almost continuous civil war between the provincial lords, warrior monks and brigands . . . Oda Nobunaga had begun to unify the country his successor, Toyotomi Hideyoshi, continued the work. Unification and pacification plundered in any samurai of their calling of professional soldier; dispositioned samurai wandered the country as ronin, masterless swordsmen."

Musashi became such a ronin. He had made his first kill at the age of 13, beating a skilled swordsman to death with a stick. By the age of 30, he had fought 60 duels, killing all his opponents.

His most famous duel came

Feb. 28 (Friday) San Francisco—Inst dnr, Marines Memorial Club, 7:30 p.m.; John H. . . .

West Los Angeles—Las Vegas weekend, bus lvs 5:30 p.m., Mahood Rec Ctr, ret by Sun 8:30 p.m.

Feb. 28-Mar. 1 Nat'l JACL—KECOM Mtg, San Francisco

March 1-2 IDC—Wasatch Front North JACL

March 1-2 (Wednesday) West Valley—Gen Mtg, JACL Clubhouse, 7:30 p.m.

March 3 (Saturday) Nat'l JACL—Credti Union annual

March 4 (Sunday) West Valley—Bridge Club, JACL Clubhouse, 7:30 p.m.

March 5 (Sunday) Puysalino Valley—Membership

March 6 (Monday) West Los Angeles—Ed Mtg, Mahood Rec Ctr, 7:30 p.m.

March 7 (Tuesday) Oakland—Inst dnr, Marco Polo

March 8 (Wednesday) Wasatch Front North—Moria

March 9 (Thursday) Portland—New Memb potluck,

March 10 (Friday) West Los Angeles—Tour Orientation,

March 11 (Monday) West Los Angeles—Aux Mtg,

March 12 (Tuesday) St. Louis—Bd mtg,

March 21 (Friday) St. Louis—Bd Mtg,

March 22 (Saturday) Nat'l JACL—JAL-CJL Cultural

March 23 (Sunday) East Los Angeles—Scholarship

March 24 (Monday) West Los Angeles—Bd Mtg,

March 25 (Tuesday) San Jose—K Ichimatsu Testi-

March 26 (Wednesday) San Jose—K Ichimatsu Testi-

March 27 (Thursday) San Jose—K Ichimatsu Testi-

March 28 (Friday) San Jose—K Ichimatsu Testi-

March 29 (Saturday) San Jose—K Ichimatsu Testi-

March 30 (Sunday) San Jose—K Ichimatsu Testi-

DURING FEBRUARY

1000 Club Membership

JACL Headquarters acknowledges 208 new and renewing 1000 Club memberships for the first half of February as follows:

- | | | | |
|---------------------------|------------------------|-----------------------|-----------------------|
| FIFTY CLUB | BAY AREA | MT. OLYMPUS | 11—Kumagai, Raymond K |
| 1—Marumoto, William M | 1—Yanagimoto, Peter T | 2—Aoki, Huch | 12—Yuda, Minoru Jack |
| 2—Kunoda, Paul H (Mtl) | 15—Hironaka, Pete | 3—Kawakami, Charles S | 13—Inamoto, Mary |
| 3—Higashi, Shiro (Sal) | 12—Sato, Yoichi | 4—Kawakami, Mary | 14—Nakadum, Dr Yoshio |
| 4—Bryan, Howard (Son) | 4—Sugimoto, Sue | 5—Takekomi, Mary | 15—Nishi, Dick |
| 5—Miyahara, Dr Ben (MHC) | 10—Kunoda, James T | 6—Takekomi, Mary | 16—Sakai, Yojo |
| 6—Shiotake, E Sam (SBC) | 19—Katano, Joe | 7—Takekomi, Mary | 17—Sasaki, Eugene |
| 7—Iseri, Rosie (Sna) | 1—Kumasaka, Glen | 8—Takekomi, Mary | 18—Tateyama, Cherry Y |
| 8—Sakaguchi, Sam S (Ida) | 2—Kusuda, James | 9—Takekomi, Mary | 19—Uyeda, Dr Clifford |
| 9—Uyeda, Dr Clifford (SF) | 18—Matsuura, Arthur A | 10—Takekomi, Mary | 20—Yonemura, Tom T |
| 10—Suzuki, Hideo | 4—Downtown L.A. | 11—Takekomi, Mary | 21—Yonemura, Tom T |
| 11—Suzuki, Hideo | 4—Enoki, Tom (E) | 12—Takekomi, Mary | 22—Yonemura, Tom T |
| 12—Suzuki, Hideo | 3—Hazama, Toshio J | 13—Takekomi, Mary | 23—Yonemura, Tom T |
| 13—Suzuki, Hideo | 17—Nakamura | 14—Takekomi, Mary | 24—Yonemura, Tom T |
| 14—Suzuki, Hideo | Dr Robert M | 15—Takekomi, Mary | 25—Yonemura, Tom T |
| 15—Suzuki, Hideo | 21—Wada, George | 16—Takekomi, Mary | 26—Yonemura, Tom T |
| 16—Suzuki, Hideo | 6—Yawata, Roger M | 17—Takekomi, Mary | 27—Yonemura, Tom T |
| 17—Suzuki, Hideo | 2—Hashimoto, Richard | 18—Takekomi, Mary | 28—Yonemura, Tom T |
| 18—Suzuki, Hideo | 4—Tanouye, Harry | 19—Takekomi, Mary | 29—Yonemura, Tom T |
| 19—Suzuki, Hideo | 1—Tanouye, Shigeo | 20—Takekomi, Mary | 30—Yonemura, Tom T |
| 20—Suzuki, Hideo | 1—Terui, Wallace | 21—Takekomi, Mary | 31—Yonemura, Tom T |
| 21—Suzuki, Hideo | 7—Tsunimoto, Dr Eugene | 22—Takekomi, Mary | 32—Yonemura, Tom T |
| 22—Suzuki, Hideo | 5—Yamaguchi, Dr Jim | 23—Takekomi, Mary | 33—Yonemura, Tom T |
| 23—Suzuki, Hideo | 5—Nonaka, James | 24—Takekomi, Mary | 34—Yonemura, Tom T |
| 24—Suzuki, Hideo | 5—Nonaka, James | 25—Takekomi, Mary | 35—Yonemura, Tom T |
| 25—Suzuki, Hideo | 5—Nonaka, James | 26—Takekomi, Mary | 36—Yonemura, Tom T |
| 26—Suzuki, Hideo | 5—Nonaka, James | 27—Takekomi, Mary | 37—Yonemura, Tom T |
| 27—Suzuki, Hideo | 5—Nonaka, James | 28—Takekomi, Mary | 38—Yonemura, Tom T |
| 28—Suzuki, Hideo | 5—Nonaka, James | 29—Takekomi, Mary | 39—Yonemura, Tom T |
| 29—Suzuki, Hideo | 5—Nonaka, James | 30—Takekomi, Mary | 40—Yonemura, Tom T |
| 30—Suzuki, Hideo | 5—Nonaka, James | 31—Takekomi, Mary | 41—Yonemura, Tom T |
| 31—Suzuki, Hideo | 5—Nonaka, James | 32—Takekomi, Mary | 42—Yonemura, Tom T |
| 32—Suzuki, Hideo | 5—Nonaka, James | 33—Takekomi, Mary | 43—Yonemura, Tom T |
| 33—Suzuki, Hideo | 5—Nonaka, James | 34—Takekomi, Mary | 44—Yonemura, Tom T |
| 34—Suzuki, Hideo | 5—Nonaka, James | 35—Takekomi, Mary | 45—Yonemura, Tom T |
| 35—Suzuki, Hideo | 5—Nonaka, James | 36—Takekomi, Mary | 46—Yonemura, Tom T |
| 36—Suzuki, Hideo | 5—Nonaka, James | 37—Takekomi, Mary | 47—Yonemura, Tom T |
| 37—Suzuki, Hideo | 5—Nonaka, James | 38—Takekomi, Mary | 48—Yonemura, Tom T |
| 38—Suzuki, Hideo | 5—Nonaka, James | 39—Takekomi, Mary | 49—Yonemura, Tom T |
| 39—Suzuki, Hideo | 5—Nonaka, James | 40—Takekomi, Mary | 50—Yonemura, Tom T |

gery, in the Army Medical Corps 1951-53, appointed fellow of the American College of Surgeons, 1953. A 13-year Philadelphia JACL 1000er, he is survived by w. Miyo, s. Dr. Joseph, Peter, d. Arbeta, two br and sis.

Local Scene

Los Angeles

USC's Asian American Tutorial Project, which tutors recently-arrived children in the Chinese, Japanese, Korean and Filipino communities, is assisting Chinese-speaking persons free assistance on weekends filing their income tax returns at East-West Federal S&L, 935 N. Broadway.

The fourth annual National Koi competition will be held Mar. 1-2 at Busch Gardens in San Fernando Valley. Nearly 500 specimen are entered, according to Sherwin Mitchell, chairman.

S.F.—East Bay

To secure funds for the 1975 summer excursion planned for Issei aged, East Bay Japanese for Action, Inc., is collecting saleable items for a garage sale Mar. 22-23 at the Maniwa residence in Berkeley, 1709 Hopkins. Pickup can be arranged now by calling 415-848-3360 (day) or 526-1868 (eve).

Sacramento

Students at UC Davis will discuss the Bakke Case at an affirmative action conference on campus (Chemistry 194) Mar. 2 from 10 a.m.-5 p.m. Asian American Studies group is assisting in publicizing the event. The Nov. 1974 case is on appeal. It held UCD Medical School's admission policies were discriminatory because a white applicant was denied.

New York

Japanese American Help for the Aging (JAHPA) has received its incorporation papers from the state. It is based at 255 Seventh Ave., New York 10001. Originally organized to seek communal or cooperative housing for the Issei aged, its scope was later expanded to include other social services.

Shimatsu, Ogata and Kubota Mortuary

911 Venice Blvd. Los Angeles RI 9-1449 SEIJI DUKE OGATA R. YUTAKA KUBOTA

Best Wishes

AL'S ARCO SERVICE

Fast, Friendly Service U-Haul Trailers

5012 Lincoln 828-2990 Cypress, Calif. 90630

- | | | | |
|------------------------|------------------------|------------------------|------------------------|
| NEW YORK | NEW YORK | NEW YORK | NEW YORK |
| 1—Kurita, Dr Ikuya | 1—Kurita, Dr Ikuya | 1—Kurita, Dr Ikuya | 1—Kurita, Dr Ikuya |
| 2—Tanaka, Shizuo | 2—Tanaka, Shizuo | 2—Tanaka, Shizuo | 2—Tanaka, Shizuo |
| 3—Allen, Walter Jr | 3—Allen, Walter Jr | 3—Allen, Walter Jr | 3—Allen, Walter Jr |
| 4—Ando, Yukio | 4—Ando, Yukio | 4—Ando, Yukio | 4—Ando, Yukio |
| 5—Egusa, James T | 5—Egusa, James T | 5—Egusa, James T | 5—Egusa, James T |
| 6—Nakadol, Masako | 6—Nakadol, Masako | 6—Nakadol, Masako | 6—Nakadol, Masako |
| 7—Nakadol, Robert B | 7—Nakadol, Robert B | 7—Nakadol, Robert B | 7—Nakadol, Robert B |
| 8—Watanabe, Fern | 8—Watanabe, Fern | 8—Watanabe, Fern | 8—Watanabe, Fern |
| 9—Watanabe, Harry G | 9—Watanabe, Harry G | 9—Watanabe, Harry G | 9—Watanabe, Harry G |
| 10—Kaneoka, Dr Lester | 10—Kaneoka, Dr Lester | 10—Kaneoka, Dr Lester | 10—Kaneoka, Dr Lester |
| 11—Mehara, Dr Samuel K | 11—Mehara, Dr Samuel K | 11—Mehara, Dr Samuel K | 11—Mehara, Dr Samuel K |
| 12—Nakamura, Robert | 12—Nakamura, Robert | 12—Nakamura, Robert | 12—Nakamura, Robert |
| 13—Nakamura, Robert | 13—Nakamura, Robert | 13—Nakamura, Robert | 13—Nakamura, Robert |
| 14—Tsukamoto, Masa | 14—Tsukamoto, Masa | 14—Tsukamoto, Masa | 14—Tsukamoto, Masa |
| 15—Yamauchi, Shizuo Y | 15—Yamauchi, Shizuo Y | 15—Yamauchi, Shizuo Y | 15—Yamauchi, Shizuo Y |
| 16—Inahara, Dr Toshio | 16—Inahara, Dr Toshio | 16—Inahara, Dr Toshio | 16—Inahara, Dr Toshio |
| 17—Inoue, Jerry | 17—Inoue, Jerry | 17—Inoue, Jerry | 17—Inoue, Jerry |
| 18—Watarai, Jack S | 18—Watarai, Jack S | 18—Watarai, Jack S | 18—Watarai, Jack S |
| 19—Yamamoto, Dr Masa | 19—Yamamoto, Dr Masa | 19—Yamamoto, Dr Masa | 19—Yamamoto, Dr Masa |
| 20—Yamamoto, Dr Sam T | 20—Yamamoto, Dr Sam T | 20—Yamamoto, Dr Sam T | 20—Yamamoto, Dr Sam T |
| 21—Yamamoto, Dr Sam T | 21—Yamamoto, Dr Sam T | 21—Yamamoto, Dr Sam T | 21—Yamamoto, Dr Sam T |
| 22—Yamamoto, Dr Sam T | 22—Yamamoto, Dr Sam T | 22—Yamamoto, Dr Sam T | 22—Yamamoto, Dr Sam T |
| 23—Yamamoto, Dr Sam T | 23—Yamamoto, Dr Sam T | 23—Yamamoto, Dr Sam T | 23—Yamamoto, Dr Sam T |
| 24—Yamamoto, Dr Sam T | 24—Yamamoto, Dr Sam T | 24—Yamamoto, Dr Sam T | 24—Yamamoto, Dr Sam T |
| 25—Yamamoto, Dr Sam T | 25—Yamamoto, Dr Sam T | 25—Yamamoto, Dr Sam T | 25—Yamamoto, Dr Sam T |
| 26—Yamamoto, Dr Sam T | 26—Yamamoto, Dr Sam T | 26—Yamamoto, Dr Sam T | 26—Yamamoto, Dr Sam T |
| 27—Yamamoto, Dr Sam T | 27—Yamamoto, Dr Sam T | 27—Yamamoto, Dr Sam T | 27—Yamamoto, Dr Sam T |
| 28—Yamamoto, Dr Sam T | 28—Yamamoto, Dr Sam T | 28—Yamamoto, Dr Sam T | 28—Yamamoto, Dr Sam T |
| 29—Yamamoto, Dr Sam T | 29—Yamamoto, Dr Sam T | 29—Yamamoto, Dr Sam T | 29—Yamamoto, Dr Sam T |
| 30—Yamamoto, Dr Sam T | 30—Yamamoto, Dr Sam T | 30—Yamamoto, Dr Sam T | 30—Yamamoto, Dr Sam T |
| 31—Yamamoto, Dr Sam T | 31—Yamamoto, Dr Sam T | 31—Yamamoto, Dr Sam T | 31—Yamamoto, Dr Sam T |
| 32—Yamamoto, Dr Sam T | 32—Yamamoto, Dr Sam T | 32—Yamamoto, Dr Sam T | 32—Yamamoto, Dr Sam T |
| 33—Yamamoto, Dr Sam T | 33—Yamamoto, Dr Sam T | 33—Yamamoto, Dr Sam T | 33—Yamamoto, Dr Sam T |
| 34—Yamamoto, Dr Sam T | 34—Yamamoto, Dr Sam T | 34—Yamamoto, Dr Sam T | 34—Yamamoto, Dr Sam T |
| 35—Yamamoto, Dr Sam T | 35—Yamamoto, Dr Sam T | 35—Yamamoto, Dr Sam T | 35—Yamamoto, Dr Sam T |
| 36—Yamamoto, Dr Sam T | 36—Yamamoto, Dr Sam T | 36—Yamamoto, Dr Sam T | 36—Yamamoto, Dr Sam T |
| 37—Yamamoto, Dr Sam T | 37—Yamamoto, Dr Sam T | 37—Yamamoto, Dr Sam T | 37—Yamamoto, Dr Sam T |
| 38—Yamamoto, Dr Sam T | 38—Yamamoto, Dr Sam T | 38—Yamamoto, Dr Sam T | 38—Yamamoto, Dr Sam T |
| 39—Yamamoto, Dr Sam T | 39—Yamamoto, Dr Sam T | 39—Yamamoto, Dr Sam T | 39—Yamamoto, Dr Sam T |
| 40—Yamamoto, Dr Sam T | 40—Yamamoto, Dr Sam T | 40—Yamamoto, Dr Sam T | 40—Yamamoto, Dr Sam T |

CARD OF THANKS

Mrs. Majiu Yesugi (1899-1975)
Of Parma, Ohio
The families of Ken (Costa Mesa, Calif.), Mas (Newport Beach, Calif.), Takatoshi (Whittier, Calif.), Jack (Willowick, Ohio), Terumi Funakawa, Fumiko Shimabukuro and Setsuko Nakashige (all of Parma, Ohio), sincerely thank friends and relatives for their kind expressions of sympathy upon the death of their mother, Feb. 17. Services were held Feb. 21 at Busch Funeral Home, Parma. Rev. Izumi officiated at interment services at Pacific View Memorial Park, Newport Beach.
Family requests in lieu of flowers, gifts be made to Yesugi Memorial Fund, 2906 Marda Dr., Parma, Ohio 44134.

Three Generations of Experience

FUKUI Mortuary, Inc.
707 E. Temple St. Los Angeles 90012 626-0441

Soichi Fukui, President James Nakagawa, Manager Nobuo Osumi, Counsellor

CHEVROLET

Fleet Price to All—Ask for **FRED MIYATA**
11251 W. Olympic Blvd. West LA 479-4411 Res. 826-9805

Open to Members and Non-Members

1975 PILGRIMAGE
Via Trans World Airline

EUROPE TOUR \$1225

Sept. 18—Oct. 9, 1975
Los Angeles-London-Paris-Los Angeles

Escorted by Mrs. Toy Kanegai. Price Includes All Transportation Costs (Air & Ground), Lodging, Min. 1st Class Hotels and 37 Meals Included.

Brochures Mailed on Request, Write or Call:

Mrs. Toy Kanegai
1857 Brockton Ave.
Los Angeles, Calif. 90025
820-1133 (day); 820-3592 (eve)

NATIONAL JACL TRAVEL COMMITTEE FLIGHT To Japan