

COUNSELOR  
AND MENTOR

By SHIG SUGIYAMA

Washington

How does one express adequately—for himself or for all 30,000 JACLers—the loss and sorrow we all feel on the passing of Masao W. Satow, for so many years, "Mr. JACL" to so many of us? It was only three years ago that Mas retired as our National Director to after a quarter century of managing the day-to-day affairs of the National JACL—

TO THE POINT

from the dark days of our World War II evacuation from the West Coast through the climactic National JACL Convention at Washington, D.C. in 1972.

I was not privileged to know Mas personally through all of those turbulent years, but I had known of him through his wide reputation long before I actually met him and his loving wife and ever supportive helpmate, Chiz.

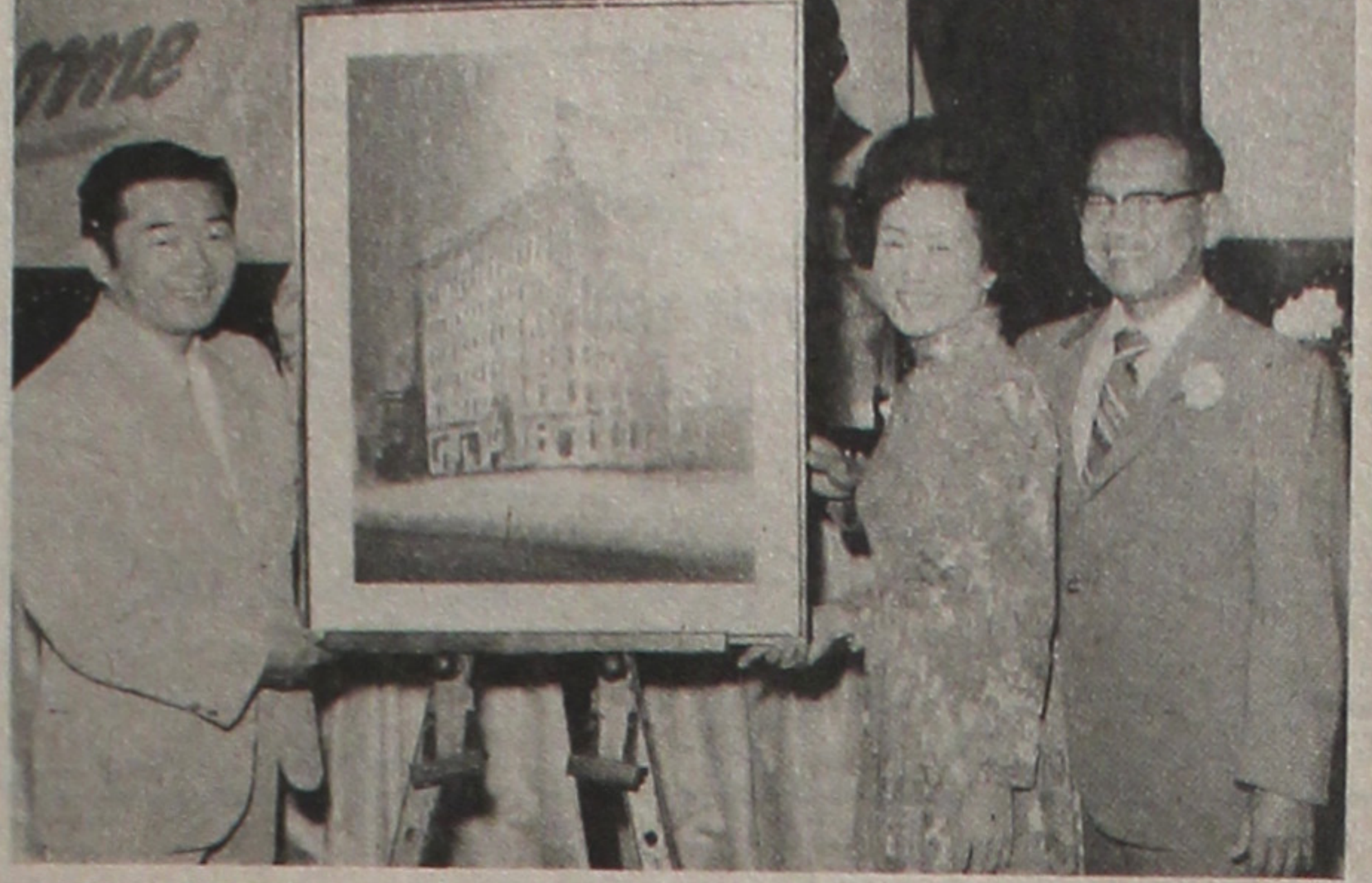
The few years that I fortunately was able to know Mas personally and to work with him on JACL matters have been the most rewarding of my life. His dedication and commitment to JACL and the causes for which JACL stands inspired me personally to become more actively involved, not only for JACL, but inspired me personally to become more actively involved, not only for JACL, but for all Japanese Americans.

Through Mas, I learned much of the instrumental role played by JACL in improving the life and welfare of all Japanese Americans. He taught me the ins and outs of JACL and assisted me in many ways as I endeavored to carry out my duties as an officer of JACL from the chapter level to the National Presidency.

In our conversations, Mas never spoke directly of his personal trials and tribulations during those years that he struggled to maintain the viability of the National JACL, except to recall those incidents amusing in retrospect which he knew would cause his listeners to chuckle. Yet we know that he was instrumental in pulling JACL through very difficult periods through much personal sacrifice.

Continued on Next Page

GLIMPSES OF MAS SATOW  
WITH HIS 'JACL FAMILY'



1972, AUGUST — Intermountain District Council honored Chiz and Mas Satow at a "homecoming" as past national president Raymond Uno presents an oil painting of the old Beason Bldg. in Salt Lake City, where JACL Headquarters was located between 1942 and 1952. Mas worked for seven years at Headquarters before it returned to San Francisco. Chiz grew up in Utah.



1961, MARCH—The National JACL Board, holding its first non-convention year meeting in Los Angeles, gets ready for a formal photograph. Mas stands ready. (Today, the background is studded with 40 to 60-story high-rise edifices.) Others are (from left) William Marumoto, Jerry Enomoto, Frank Chuman (partially hidden), Fred Hirasuna (side view), Mike Masaoka, (Joe Kadowaki is behind Mike), Bill Matsumoto (adjusting his tie), Frank Hattori, George Azumano, Patrick Okura, Mas, Henry Kato (of San Jose), Min Yasui (hidden), Dr. Roy Nishikawa, Joe Nishioka (behind Roy) and Mikio Uchiyama. The Kawakita question was among the key matters settled—that Pres. Eisenhower would be urged to commute the death sentence.

—All photos on this page from the PC Library.

PACIFIC CITIZEN

PUBLICATION OF THE JAPANESE AMERICAN CITIZENS LEAGUE  
125 Weller St., Los Angeles, Calif. 90012; (213) 626-6936  
Published Weekly Except First and Last Weeks of the Year — Second Class Postage Paid at Los Angeles, Calif.  
VOL. 82 NO. 10 FRIDAY, MARCH 12, 1978  
Subscription Rate per Year U.S. \$7. Foreign \$11 15 CENTS

Rest in Peace, Mas

SAN FRANCISCO—Masao W. Satow, JACL national director between 1946-73, died quietly in his sleep this past week (Mar. 3) at Kaiser Hospital. In failing health over the past year, he had been resting at home until hospitalized on Mar. 1. He was 68 years old.

He leaves his wife, the former Chizuko Uyeda; brother Roy of Los Angeles and sister Yoniko Fujiyoshi of Hawaii.

A visitation period was held last Friday at Carew & English in San Francisco.

Final rites were held Monday night at the Japanese Union Church, Los Angeles, with the Pastor, Rev. Howard Toriumi, officiating.



1925—Then a senior in high school, Mas (right) relaxes with friends during a summer hike. (This snapshot comes from the late Tep Ishimaru's album.)

He had married the former Chizuko Uyeda in 1942, setting up his first "home" at the Santa Anita Assembly Center and then at Granada (Colo.) WRA Center where he chaired the community council, a position analogous to "mayor" for the evacuees. Until joining the JACL staff in 1946, the Satows were living in Milwaukee, Wis., after evacuees were permitted to leave the camps.



Masao Satow

At the first postwar national JACL convention at Denver, Mas was elected national 2nd vice-president but three weeks later resigned to become JACL's Eastern-Midwest representative and help organize chapters and assist in resettlement work. The assignment was to be temporary, having been allowed a year's leave from the YMCA.

But when the year passed, JACL had established its Washington Office. Mike Masaoka, then national secretary, was named Washington representative and Mas succeeded as "acting national secretary" at Headquarters, then based at Salt Lake City.

JACL bowling tournament and scholarship programs.

And during the second half of his stewardship of National Headquarters, JACL sought to consolidate its gains through establishment of an endowment fund, preserve the Issei story, improve the internal operations for staff and regional offices and finally strike out to build its national headquarters building. Mas' personal attention to details assured the fruition of these projects.

the late Shuzo and Kiyose Satow. He grew up in Los Angeles, graduating from Polytechnic High School and from UCLA in 1929, when it was still on Vermont Ave. and the last senior class there before the campus moved to Westwood.

At the time of resignation in 1973, the League had grown to 94 chapters coast-to-coast with members in nearly 40 states.

At the 1972 national convention in Washington, he was honored at a testimonial luncheon that attracted his colleagues and friends from the west coast for the day—their busy schedules preventing their staying for the remainder of the convention.

He aspired to the ministry, graduating in 1932 with a Bachelor of Theology degree from Princeton Theological Seminary. Instead, he joined the YMCA staff upon his return to Los Angeles and served as secretary of the Japanese "Y" office until the Evacuation. He continued to represent the "Y" by touring all ten War Relocation Authority centers, engaging in surveys, job assistance and resettlement problems.

During the first half of his 12 bienniums as national director, he visited as much as 75 pct. of the chapters each biennium, lending his organizational expertise to local chapters raising funds for JACL's Issei legislative campaign. His genius to foster the common touch lent sustenance to the 1000 Club, the national JACL in 1974.

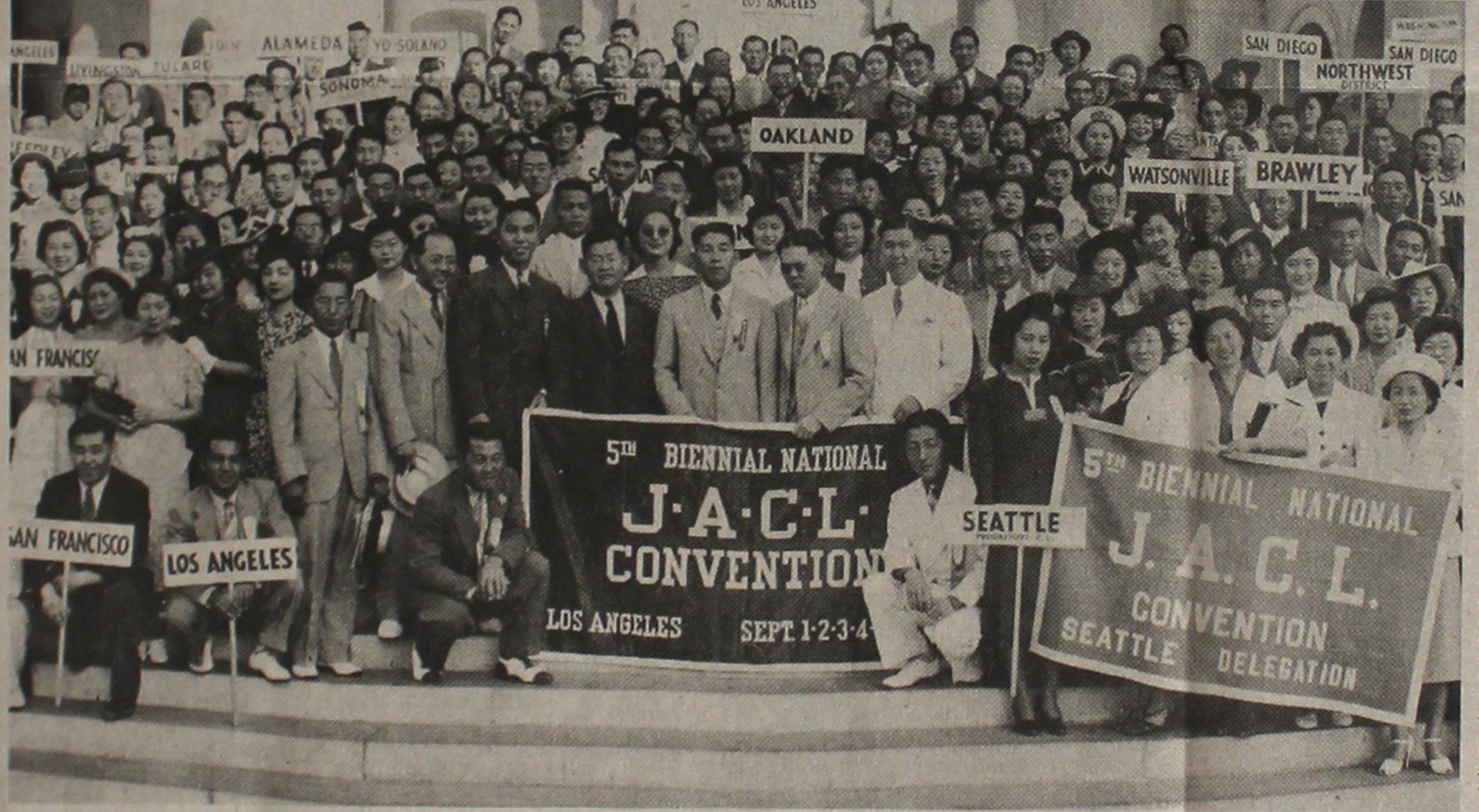
He became a senior adviser to the president of the Sumitomo Bank of California at San Francisco following his resignation from JACL in February, 1973. He also continued to work with the national Nisei bowling tournament after it was dropped by JACL in 1974.

Grew Up in L.A.  
Mas was born on Feb. 14, 1908 in San Mateo, Calif., to



1939, SUMMER—After graduating from Princeton Theological Seminary, Mas became secretary of the Japanese YMCA in Los Angeles. A happy but hectic event he organized were the summer camps at Little Green Valley.

When the average age of JACLers was 25



1938, SEPTEMBER—Center portion of the 30-inch roll photograph, taken on the steps of Los Angeles City Hall for the 5th Biennial National JACL Convention, shows delegate Mas in front holding a "Los Angeles" placard. To his right with the San Francisco placard is Yas Abiko. Others kneeling in front of the Convention banner are Kiyoshi Okura and Saburo Tani. Standing

directly behind are the national JACL officers of that period: Ken Matsumoto, Sim Togasaki, national president Walter Tsukamoto, Jimmie Sakamoto and Dr. Thomas Yatabe. (This was the first JACL convention Mike Masaoka of Salt Lake City attended and was ejected from the floor since he had no credentials to address the National Council.)



1952, MARCH—Team captains and representatives looking serious at the 5th annual National JACL Bowling Tournament at Los Angeles, the first ABC-WIBC sanctioned event for the all-Nisei classic are (seated at the table from left, clockwise) Eddie Matsueda of Honolulu, Mas, Harley Kusumoto, Tad Sako, Dr. Moon Kataoka, Dr. Takashi Mayeda and Dr. Jun Kurumada.



1967, OCTOBER—The 100 JACLers who comprised the first charter JACL-Japan Tour group can't forget those three weeks. One of the social highlights in Tokyo was the U.S. Embassy reception, where key Nisei in Japan had been invited. Here, Mas poses with then U.S. Ambassador U. Alexis Johnson and Pat Okura, co-tour leader and past national JACL president.



1975, JULY—Mas, Mike Masaoka and George Inagaki at the Headquarters Bldg. dedication banquet hold up a scroll, which memorializes the contributions of the JACL Anti-Discrimination Committee and the role both Mas and Mike had in correcting racial injustices through legislative and legal remedies. (This is the latest picture of Mas found in the PC library.)

OUR FONDNESS  
FOR MAS...

By DAVE USHIO

San Francisco

For those of us who have personally known Mas Satow, the deep sorrow we feel for his passing is universal. For Japanese Americans everywhere, even those yet unborn, we each own a debt to Mas for making our opportunities in America real ones. As individual JACLers we each have a special feeling for Mas based on an experience we have

EDITORIALS

Masao William Satow: 1908-1976

"Hold a prism to the sun and it casts a patch of rainbow. Likewise, hold a man up to the light and his spirit and talents become visible... It is crystal-clear he has combined the offices of ambassador, administrator and aide-all-around without diminishing or compromising the cause of the Japanese in America during his 40 years in community services and work with youth."

—1972 JACL Convention Testimonial

On the eve of his retirement as JACL national director, Mas Satow was honored by the organization he had been associated during all of his adult life—the first 15 years as member and an officer and the remaining 30 as staff and adviser—at its 1972 national convention in Washington.

This past week, the JACL, his myriads of friends and the community he so loved and served paused in final tribute. A man who was born on St. Valentine's Day and who finally succumbed on the day the Japanese observe as Hina Matsuri (Girl's Day) lived to see many of his dreams come true because he didn't believe in letting George do it. That was his style. That's what made Mas Satow run

As secretary of the Japanese YMCA in prewar Los Angeles, he nurtured in the hearts of thousands of young Nisei a love of God and country, loyalty and faith in their fellow man. During the dismal period of World War II, he joined the JACL staff to help with the immense problems created by Evacuation and resettlement. Foremost was fight to keep alive JACL's pressing goal to have the rights of Japanese Americans recognized in the 1940s, the privileges expanded in the 1950s, and then motivating Japanese Americans to become more concerned with the civil rights struggle of all Americans in the 1960s. When he retired from active role as JACL's national director on his 65th birthday in 1973, the JACL had turned the corner to become a human rights organization, involved in a greater task to all alleviate a host of social ills.

One unfulfilled dream, first expressed in 1946 when he became national secretary, was not often expressed publicly but remained a personal ideal. It is one which all JACLers can cherish and appreciate today:

"The millennium would be where JACL becomes strong enough to exact from every American of Japanese ancestry the price of a JACL membership for merely possessing a Japanese-looking face... There are too many within our own membership who have the mit'ka'n notion that they are doing us a favor by joining JACL instead of realizing that they are doing themselves a favor and thereby helping to insure their future security."

Continued on Next Page



**PACIFIC CITIZEN**

Published weekly except first and last weeks of the year at 125 Weller St., Los Angeles, Calif. 90012. Phone: (213) 626-6936, 628-3768

No. 1885

Shigeki J. Sugiyama, National JACL President  
 Alfred Hatate, PC Board Chairman  
 Harry K. Honda, Editor

Second-class postage paid at Los Angeles, Calif. Subscription rates (payable in advance): U.S. \$7 year; Foreign \$11 year. Note: 1st-class delivery available upon request, ask for rates. \$3.75 of JACL membership dues for one-year subscription through JACL HQ, 1765 Sutter St., San Francisco, Ca 94115.

## COMMUNICATIONS FROM JACL NATIONAL HEADQUARTERS

### Nat'l Scholarship

Applications are now being accepted for the 1976 National JACL Freshman and Collegiate Scholarship Programs. Deadline for both programs will be April 1, 1976.

Required accompanying materials (i.e., letter of recommendation, transcripts, SAT scores) must be received at Headquarters no later than April 8. Individuals who have not taken or are not required to take the SAT should submit their ACT score.

Application forms and information are available from local JACL chapters, regional offices in Chicago, Portland, Fresno, Los Angeles, and Washington, D.C., or JACL National Headquarters.

In 1975 JACL will be awarding 15 scholarships for gathering high school seniors ranging in value from \$1000 to \$250 and four scholarships for graduate students.

### Sugiyama -

Continued from Front Page

rice and perseverance. Mas was a selfless person.

Even after his retirement from JACL affairs, he was always there to provide counsel and advice to us relative newcomers. As a dedicated JACLer, he co-chaired the fund drive committee for the new National Headquarters

### Nat'l Dialogue -

Continued from Front Page

Later I was to relate this incident to Mas who laughed and remarked "Young man, you've got to remember, Chiz and I don't have children of our own—so we just adopted all the people in JACL as our family. When one of the family is hurting our parental instincts come quickly out."

And how true his statement has been.

Three weeks ago while chatting with Mas, again we talked of family, my concern for my little girls' and our common concern for the JACL family.

Building. In large measure, the headquarters building itself now stands as a testimonial to Mas' contributions and efforts over the years to laying sound foundations for JACL—the national organization for all Japanese Americans—for now and the future.

Inadequate as these words may be, these are my thoughts and remembrances of our dearly departed friend, counselor and mentor—Masao W. Satow. May he rest in peace.

"I remember when I visited 27 JACL chapters in 27 days," said Mas.

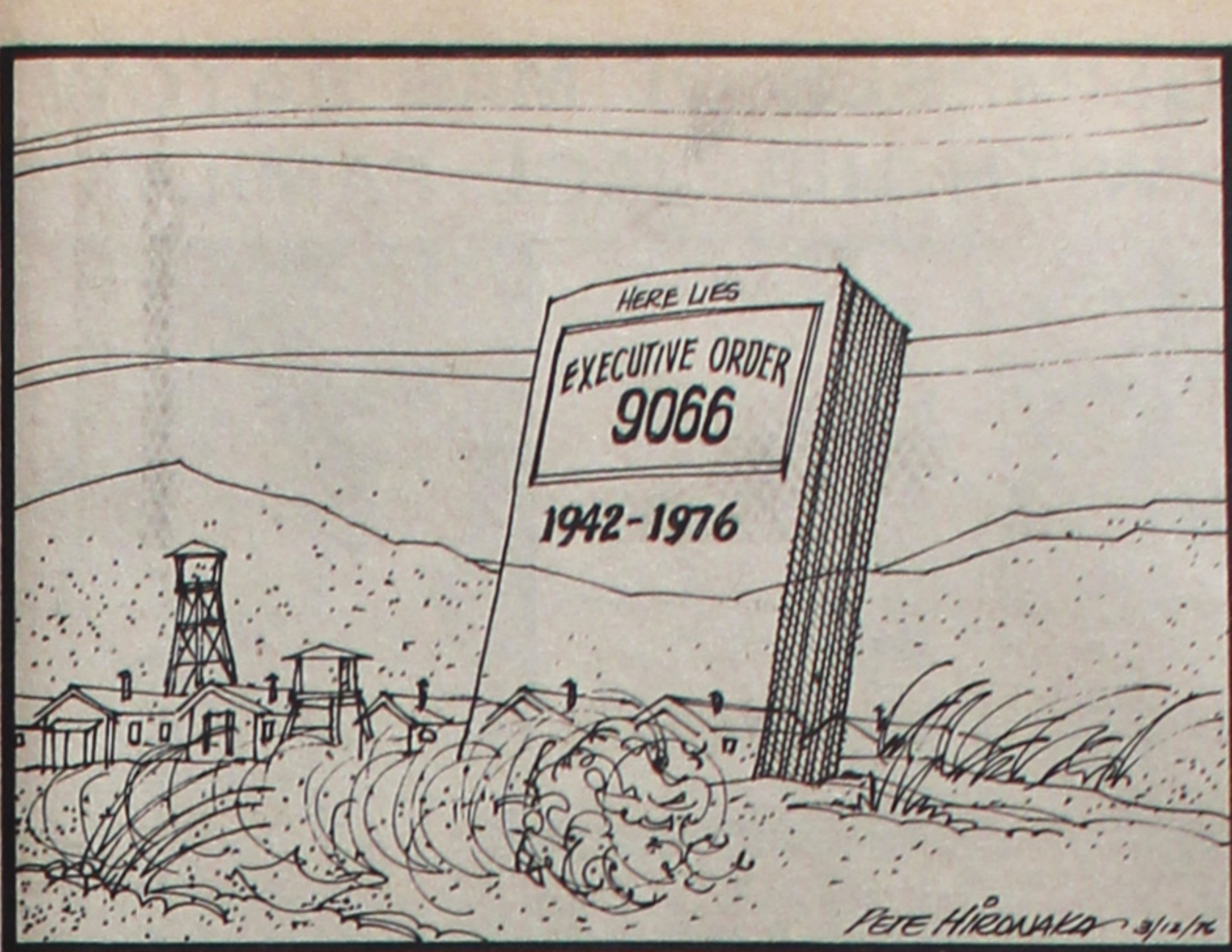
"They needed me to help pull together the various groups and to maintain peace in the family."

"You know, I love those folks—they're crazy sometimes—but they're the best in the world," he said.

"I only wish I had the strength so I could finish the scrolls of appreciation because I knew how much the JACLers like them. It's a family thing, you know."

As JACLers we mourn the loss of a great man, a true leader and a trusted friend.

Our family will never be the same.



FROM THE FRYING PAN: Bill Hosokawa

## The Press and Tokyo Rose

Denver, Colo.

Early in February the San Francisco Chronicle, a newspaper serving the Bay area and a large part of northern California, published a three-part series on the Tokyo Rose story. What triggered it was the efforts of the National Committee for Iva Toguri, an arm of the national Japanese American Citizens League, to win a presidential pardon for the Nisei woman convicted in 1949 of treason for broadcasting from Radio Tokyo during World War II.

The Committee contends that Iva Toguri, the person, was hopelessly and unfairly confused with the legend of Tokyo Rose, and that her trial and conviction were a miscarriage of justice.

The Chronicle's stories were written by two young reporters, Jerry Carroll and Keith Power. In the main, they support the Committee's contentions. Carroll and Power spent approximately two weeks researching and writing their series.

After the stories were published, the Chronicle ran an editorial saying Carroll and Power had uncovered "a damning list of blunders, half-truths and lies that the U.S. government used . . . to try and convict a person who, by all accounts, was at the very least a passive victim of nations at war. There is good reason to believe, in fact, that she was a heroine who actively and consistently told her Japanese captors that they would lose the war; that she resisted extreme pressure to become a Japanese citizen; and that she used her job on Japanese radio to water down anti-American propaganda."

The editorial went on to say the Chronicle's investigation found that Iva Toguri's trial "was marred by bribery, government obstruction, unscrupulous journalism, missing evidence, mistaken identity, witness intimidation, the violation of constitutional safeguards, racism, and pre-trial publicity of a sort that would lead to a speeding reversal today."

The Chronicle's conclusion: "In light of the facts shown in the Chronicle review of this sorry case, President Ford should grant her pardon."

### Expressions . . .

**enneth Hahn**  
 A. County Supervisor

Los Angeles

"Mr. Satow did so much good in his lifetime. He had great influence in America for people of all religions and groups." (—Part of tribute aid when the County Board Supervisors adjourned its 4th meeting in honor of Mas Satow.)

**en. Daniel Inouye**

Washington

Many thousands more benefited greatly from his many contributions and the great role he played in assuring people of Japanese ancestry in his country of their rightful place in the sun.

**ep. Spark Matsunaga**

Washington

To have known Masao Satow is a privilege that I shall always cherish. It is a privilege I know I share with countless other Americans. (He) was an enriching experience to all, young and old alike who were fortunate enough to have their paths cross with his.

It was during the period that Masao Satow was National Director that JACL emerged as an organization of national prominence for JACL to climb to greater heights as it inevitably will to carry on the work so ably advanced by him.

### JACL BUDGET STORY POSTPONED A WEEK

The second half to the National JACL Board preparation of the FY 1977-78 budget will appear in the next week issue.

**YONE U. STAFFORD**  
 West Chatham, Mass.

**'Concentration Camps'**

Editor:

I Lillian Baker believes that the dictionary definition of "concentration camp" is incorrect. We suggest we write them to have the definition changed.

Just a few days ago, President Ford in terminating Ex-

Such stories and editorials don't just happen. They are put in motion by people in authority and are executed by other people working at the direction of their superiors. The Chronicle's performance in this instance is a splendid example of investigative journalism in which reporters dig out hidden information and try to right a wrong.

Following the Chronicle's lead, it is likely that other publications will take up Iva Toguri's cause, belated as it is. The Denver Post, for one, already has told her story.

It is likely that the time, at last, is ripe to press Iva Toguri's cause, that an earlier efforts might have fallen on deaf ears. The public is more ready to hear appeals for justice as it relates to Japanese Americans. The press today is far more mature, and far more energetic about probing for the truth.

Iva Toguri's trial in 1949 was covered exhaustively by the San Francisco press, but once the verdict was reached nothing more was said. The press was passive. But only a few years before that, in the hullabaloo preceding the evacuation of 1942, much of the press led the assault on the Japanese Americans like a pack of baying hounds. And when the War Relocation Authority was under attack for "pampering" the evacuees, few newspapers bothered to check the wild charges of politically motivated congressmen before publishing them.

It is impossible to say just what part the press (and that includes radio commentators) had in the decision to evacuate the Japanese Americans. Certainly the press had a large role in whipping up the public sentiment that made evacuation possible. It is also probably safe to say that if a wide cross-section of the press had opposed the evacuation with vigor, it would not have taken place.

The American press is a powerful factor in the shaping as well as the reporting of history, and it is reassuring that those who practice the profession of journalism today are more thoughtful, more judicious in the use of their influence.

### LETTERS FROM OUR READERS

**Hoosier JACL**

Editor:

When the new Hoosier JACL chapter was in its conception stage, one question pressed by these present was the need for a JACL chapter in Indiana where the population of Japanese (2,279) is relatively sparse and scattered.

Two main reasons were given: (a) educating others in the Midwest about those reared in the Japanese American heritage, (b) preserving that heritage.

A less conspicuous benefit is the circle of friends being expanded, enriching one's life by sharing. For me, JACL offers that vehicle and it has been satisfying to be able to share and offer what we have with each other. (I hope) our chapter will be healthy and vibrant, receptive and encourage ideas from its members so that we continue to grow and contribute toward making all of us better citizens in this Bicentennial year.

**TERRY ISHIHARA**  
 Terre Haute, Ind.

**The Semanticist**

Editor:

I've been mildly amused at the letters criticizing Dr. S. I. Hayakawa for his lack of literacy. It's rather difficult to lay this on someone who has a B.A., M.A., Ph.D., D.E.A., D. Litt., L.H.D. and LL.D. and who is an internationally recognized authority on the meaning of the words.

**V. M. GREENE**  
 San Francisco

Editor:

Has S. I. Hayakawa whom I used to admire joined the Baker-Yamashita coalition which I, heretofore, thought was a committee of two to suppress inconvenient history? Or are they writing his material to insure reactionary California votes?

**YONE U. STAFFORD**  
 West Chatham, Mass.

**'Concentration Camps'**

Editor:

I Lillian Baker believes that the dictionary definition of "concentration camp" is incorrect. We suggest we write them to have the definition changed.

Executive Order 9066, which had been upheld by the Supreme Court, stated that there must be "an honest reckoning of our national mistakes as well as our national achievements". It took 34 years to admit, but the minority opinion was the correct one.

**CLIFFORD I. UYEDA**  
 San Francisco

### PETALUMA'S CURBS ON GROWTH LEFT STANDING

WASHINGTON — The U.S. Supreme Court Feb. 23 left intact the Petaluma ordinances that restrict the construction of new housing in the small town in Sonoma County, Calif., to 500 units a year. Without recorded dissent, the justices left standing the Aug. 13 decision issued by Circuit Judge Herbert Y. C. Choy of Hawaii.

The high court gave no reason for its refusal to hear the case, which offered the justices their first opportunity to rule on the constitutionality of antigrowth statutes.

The construction industry held it violated the citizen's right to travel, which the Supreme Court 30 years earlier recognized when California tied unsuccessfully to keep cut indigents.

Send Us Clippings from Your Hometown Papers

### 25 Years Ago

In the PC, Mar. 17, 1951

Mar. 9—Design by L.A. Nisei architects Kazumi Adachi and Dyke Nagano wins in Ft. Moore Pioneer Memorial competition.

Mar. 10—Army approves Buddhist symbol as inscription for grave markers at national cemeteries.

Mar. 12—Attorney Benjamin Ohnicks, 61, dies in Seattle; son of famous Arizona Issei pioneer Haichiro Onuki, had been interned by Japanese in Manila during WW2.

Mar. 13—Japanese descent population in Hawaii, as of Jan. 1, 1951, estimated at 185,205 (39.9% statewide).

Mar. 16—Nat'l JACL's first bowling tournament under ABC sanction opens at Vogue Bowl, Los Angeles.

## 'Farewell to Manzanar' has critics, too

By GAIL MURAMOTO

SAN FRANCISCO — Accompanying "Farewell to Manzanar" change from print to film is an unwritten chapter with its own melodramatic script and cast of characters.

Some in today's off-screen drama argue that the transformation of Jeanne and James Houston's book into a two-hour television film has resulted in a whitewashed distortion of Japanese American history. Others declare with equal conviction that the film is a sensitive and inspiring work of art that will bring the incarceration experience of 110,000 Japanese Americans during World War II into the consciousness of millions of television viewers.

Producer/director John Korty's version of "Farewell to Manzanar" was scheduled for airing March 11 on NBC-TV. And while the great majority of those who either participated in the film or attended one of several community preview showings praise Korty's work, the critics cannot be ignored for they are a vocal camp with strong convictions.

Evidence of the brewing controversy first surfaced when members of the South-

ern California Manzanar committee released a public statement (on July 1, 1975) criticizing Korty, who also directed "The Autobiography of Miss Jane Pittman", for failing to consult with them in the early script writing stages. The group was the first community-based organization to bring attention to the internment experience and had anticipated taking an early and active community advisory role.

While Korty Films, Inc. eventually invited the committee to the film's location at Tule Lake to participate, committee chairperson Sue Embrey claimed they were consistently treated with apprehension and suspicion. The committee provided them with revised scripts, tapes, and suggestions, she insisted, but to little avail. It was as if they were telling us, "Thanks for being here, but no thanks."

**The Other Side**

Others, however, refute the accusations and tell another story. Edison Uno, who served as Korty's technical advisor during filming, said Korty made every attempt to elicit and integrate community feedback into the final script. I can cite instances, he reflect-

ed, when Korty rewrote lines at the committee and other community members' suggestion to better capture both the Japanese American mood and the white hysteria surrounding the Evacuation despite possible repercussions from offended viewers.

He also noted that both he and Karl Yoneda of San Francisco, while not acting as official representatives, are members of the Manzanar committee and worked closely with Korty from the inception. In addition, Uno partially attributed the late invitation extended to the Southern California group to miscommunication. It was thought, he recalled, that someone had contacted them beforehand.

"The film is the most despicable self-righteous white racist vision of Japanese American in American film," wrote actor/writer Frank Chin in a 2½ page acid letter that raised eyebrows upon its publication in several Japanese American newspapers. Chin, who had a minor acting role, requested the removal of his name from the list of credits.

**Second Salvo Shocks**

In an interview Chin readily admitted that, as anticipated, his letter has resulted in lowered popularity ratings in both the Japanese American and Hollywood communities. "It seems silly to have to say these things," but "it is a matter of honesty." I wanted "to make people think and not passively accept the film as a messiah," he declared. I greatly fear that "Farewell to Manzanar" will "overshadow the genuinely great works of Japanese Americans about the camp period."

"It really saddens me very much that Chin feels that way, but I understand and I respect his rights as a person

**Not a Documentary**

There are few critics who would dispute the film's non-documentary nature, but they worry that inaccuracies may prove deceptive since the film is based upon historical facts. In particular, they are concerned that airing what they consider a superficial and "liberal" story that favors psychological drama over historical analysis of the evacuation and Third World history will do little more than perpetuate "the myth that was an isolated tragic 'mistake' of the American government."

Similarly another debate arises over Korty's decision to change the names of "Manzanar heretics". To critics this seems another indication of Korty's lack of respect for Japanese American history. "Would you change the names of the Commander of the Continental Army of Valley Forge from George Washington to Abraham Washington?", inquired Chin rhetorically. Especially, he protested, since it is being offered to school districts as Japanese American history.

Echoing Chin's observations, Embrey noted. "It does not take a Japanese perspective," but rather it shows the white people as being the "good guys" and portrays the Japanese Americans, especially those that participated in the riot scenes, as being the rabble rousers. "I think their main concern was to get it on television as a commercial enterprise."

**Rebuttal**

But despite even the most vociferous of protests, Uno steadfastly defends the film. "I am willing to stake my personal reputation and integrity on the film." These criticsizing "want to make an interpretation from their own political perspective." For one thing, he declared, such accusations insult the Asian American actors and actresses' intelligence since Korty allowed them maximum freedom to interpret their roles. And from my most could and did feel positively about their roles, he said.

Houston and other supporters reiterate Uno's sentiments and most feel the film's airing will pave the way for not only increased job opportunities for Asian-Americans but will also stimulate and inspire other films and productions on the subject.

Just what effect this film will ultimately have remains to be seen. Yet, perhaps one thing is clear, the decision jibes within the individual minds of millions of mass medium viewers, most of whom will remain as unaware of this behind the scenes controversy as they once were of a behind the scenes camp called Manzanar.

(John Korty was filming in Los Angeles and was unavailable for comment.—GM)

### The PC Observer

At 20 we don't care what the world thinks of us. At 40 we're concerned what it is thinking of us. At 60 we discover the world wasn't thinking of us at all.

A proud legacy

**15 weeks 'til**

**24th Biennial Nat'l JACL Convention**

**June 21-26, 1976**

**Sacramento, Calif.**

For Information: Sacramento JACL  
 P.O. Box 22583, Sacramento 95822

## 1976 Japan Flights

Sponsored by Nat'l Japanese American Citizens League

NJACL Flr.	Dates	Depart from	Aircraft /C/o	Roundtrip Fare	SEATS Sold	Open
No. 1—	Apr 6-26	Los Angeles	747/GA100	\$465	Sold	Out
No. 2—	Apr 5-26	San Francisco	747/GA100	\$465	Sold	Out
No. 3—	June 28-July 21	S.F. (San Jose adm.)	747/GA100	\$465	22	78
No. 4—						
No. 5—	Jul 24-Aug 14	Los Angeles	747/GA100	\$465	42	58
No. 6—	Aug 7-Sep 4	San Francisco	747/GA100	\$465	66	34
No. 7—	Sep 27-Oct 18	S.F. (San Jose adm.)	747/GA100	\$465	85	15
No. 8—	Oct 2-23	Los Angeles	747/GA100	\$465	16	84
No. 9—	Oct 2-23	San Francisco	747/GA100	\$465	Sold	Out
No. 10—	Oct 3-23	Chicago	DC8/152	\$559	31	121
No. 11—	Nov 8-29	Portland-SF	747/GA100	\$465	0	100
No. 12—	Oct 13-Nov 4	S.F. (Cen. Cal. adm.)	747/GA100	\$465	30	70

Air fare subject to revision pending airline's fare increases for 1976; prices include round trip airfare, \$3 airport departure tax, \$25 JACL administrative fee. Adult and child seats same price on any one flight; infants under two years 10% of regular excursion fare. Seating capacity subject to increase. All dates may be subject to change. 3-5-76

FLY Japan Air Lines



OPEN TO ALL BONAFIDE JACL Members

JACL Authorized Retail Travel Agents

For Land Tour Arrangements, Documentation and Customer Service, Contact One of the Following Authorized Travel Agents

SAN FRANCISCO, CALIF. 941—	(415)
Aki Travel Service, 1730 Geary Blvd (15).....	567-1114
East West Travel Corp., Mitsuo Hosaka	
391 Sutter St (10).....	398-5777
Japan American Travel Bureau, Tom Kibuchi	
250-B World Trade Center (11).....	781-8744
Kintetsu International Express, Ichi Taniguchi	
1737 Post St (15).....	922-7171
Kosakura Tours & Travel, Morris Kosakura	
370 Stockton St (10).....	956-4300
Nippon Express USA, Henry Oe	
39 Geary St (10).....	982-4965
Tanaka Travel Service, Frank/Edith Tanaka	
441 Northpoint St (10).....	474-7000
<b>SAN FRANCISCO EASTBAY</b>	<b>(415)</b>
Jin's Travel Service, Ken Yamahiro	
2451 Grove St, Berkeley 94704	845-1077
<b>SAN FRANCISCO PENINSULA</b>	<b>(415)</b>
Sakura Travel Bureau, Jim Makada	
511 Second Ave., San Mateo 94401	342-7494
<b>SAN JOSE, CALIF. 951—</b>	<b>(408)</b>
Travel Planners, Clark Takata	
2025 Gateway Pl., No. 280 (10).....	287-5220
<b>SACRAMENTO, CALIF. 958—</b>	<b>(916)</b>
New Orient Express, Goro Takahashi	
5455 Wilshire Blvd. (36).....	937-2146
<b>LOS ANGELES, CALIF. 900—</b>	<b>(213)</b>
Kokai Int'l Travel, Willy Kai/Togo Furumura	
321 E. 2nd (12).....	626-5284
Mitsubishi Travel Service, Hiromichi Nakagaki	
327 E. 1st (12).....	625-1505
New Orient Express, Goro Takahashi	
5455 Wilshire Blvd. (36).....	937-2146
<b>GARDENA, CALIF. 90247</b>	<b>(213)</b>
Gardena Travel Service, Toshi Otsu (#10 East Mall)	
1610 W. Redondo Beach, Pacific Square.....	321-5066
<b>SAN DIEGO</b>	<b>(714)</b>
South Bay Travel Center, J. E. Dunkle, 1005 Plaza Bl	
PO Box 295, National City 92105.....	474-2206
<b>OREGON</b>	<b>(503)</b>
Azumami Travel Service, Geo. Azumano/Jim Iwasaki	
200 SW 4th Ave., Portland 97203.....	223-6245
Iseri Travel Agency, Jan/Gorge Iseri	
PO Box 160, Ontario 97141.....	889-6488
<b>SEATTLE, WASH. 981—</b>	<b>(206)</b>
Kawaguchi Travel Service, Mike Kawaguchi	
711 - 3rd Ave, Suite 300 (104).....	622-5520
<b>IDAHO</b>	<b>(208)</b>
Caldwell Travel Service, Gene Betts	
PO Box 638, Caldwell 83605.....	459-0889
<b>CHICAGO, ILL. 606—</b>	<b>(312)</b>
Sugano Travel Service, Frank Sugano	
17 E. Ohio St (11).....	944-5444
Yamada Travel Service, Richard H Yamada	
812 N. Clark St (10).....	944-2730
<b>PENNSYLVANIA</b>	<b>(215)</b>
Bye's World Travel Center, Mrs. Chiyo Koiwai	
100 Main St, Lansdale 19446.....	242-1346
<b>NEW YORK, N.Y. 100—</b>	<b>(212)</b>
New York Travel Service, Stanley Okada	
535 Fifth Ave (17).....	687-7983

(As of Jan. 23, 1976: More Agents to Be Announced)

### - Business - Professional Guide

Your Business Card placed in each issue for 25 weeks at \$25 3 lines (minimum) — \$25 Each additional line \$6 per line

#### Greater Los Angeles

**ASAHI INT'L TRAVEL**  
 1111 W. Olympic, L.A. 90015  
 (213) 622-6125/29  
 USA - Japan - Worldwide  
 AIR - SEA - LAND - CAR - HOTEL  
 Please call: Tom or Gladys

**FLOWER VIEW GARDENS FLORIST**  
 FLOWERS & GIFTS  
 1801 N. Western Ave. L.A. Call:  
 Art In (213) 466-7375 Local or  
 FTD service world wide

**NISEI FLORIST**  
 In the Heart of Lili Tokyo  
 378 E. 1st St. MA 6-5606  
 Fred Moriguchi Mems. Teleflora

**YAMATO TRAVEL BUREAU**  
 312 E. 1st St. L.A. (90012)  
 MA 4-6021

#### Watsonville, Calif.

**TOM NAKASE REALTY**  
 Acreage Ranches - Homes  
 Watsonville  
 Tom T. Nakase Realtor  
 25 Clifford Ave. (408) 724-6477

#### San Jose, Calif.

**EDWARD T. MORIOKA, Realtor**  
 945 S. Bascom, San Jose  
 940-5444 Res. 741-9554

#### Seattle, Wash.

**Imperial Lanes**  
 2101 22nd Ave. So. EA 5-2525  
 Nisei Owned — Fred Takagi, Mgr

**Kinomoto Travel Service**  
 Frank Y. Kinomoto  
 521 Main St. MA 2-1522





Official Photographer: The White House

Here's a wide-angle photo of President Ford signing his proclamation formally nullifying Executive Order 9066.

## Other principals at Wendy's trial set

By LEE RUTTLE

Oakland  
By now most PC readers know who Wendy Masako Yeshimura is, her family background, her problems, how she became a subject for public scrutiny, and finally how Wendy must soon face Judge and Jury on charges of allegedly possessing illegal weapons and explosives.

When the courtroom drama unfolds the stage will be occupied by others who will determine her fate. The Jury, as yet uncalled, will, it is hoped, consist of twelve citizens, "her peers"—who are, it is hoped, unprejudiced and who believe in Justice.

Presiding on the bench of Dept. 4, Alameda County Superior Court, will be Judge Martin N. Pulich. Known for his sense of humor and informality, he is nonetheless a man of wisdom and compassion. A graduate of UC and Boalt Hall Law School, he was admitted to The Bar in 1947. From that year until 1963, he practiced law and was Public Defender for Alameda County.

### Judge Since 1963

In June, 1963, Pulich was appointed Judge, Oakland Municipal Court. In November, 1974, he was appointed to the Superior Court bench. Judge Pulich is married, has two grown children, and lives in Oakland. He is active in

judicial education and is a member of the Conference of California Jurisprudence.

Presenting the case for the prosecution will be Senior Trial Deputy District Attorney Jeffrey Horner, whose ten years experience in the D.A.'s office has gained him the reputation for being meticulous and dogged. Although his ardent sometimes brings forth a remonstrance from the bench, he generally is resourceful enough to pursue a straight course toward conviction.

Horne, also a product of UC and Boalt Hall, passed the State Bar in 1963. Following a two-year stint in the Army, during which he was assigned legal affairs, he worked for the General Counsel's office, UC, Berkeley. In 1966 Horner joined the D.A.'s office. He is a native Californian and his height of six-foot plus and a large frame present an impressive sight in the courtroom.

### Representing Wendy

In contrast to Horner, his opponent in the Yeshimura case is the slightly built, average height and bearded James Larsen, a younger man who gives the impression of being in control of his emotions in any crisis. His manner of presentation is low-key, although there seems to be no doubt he is capable of fireworks should the occasion demand.

Larsen, a law graduate of

UCLA, has for several years been an associate in the firm of Garry, Dreyfuss, McTernan, Herndon & Personen, Inc., of San Francisco. Charles Garry, who heads the firm, is a well known defender of cases involving persons of allegedly radical causes. Garry recently defended Black Panthers in San Francisco.

Jim Larsen, in whose hands Wendy Yeshimura has placed her faith and future, is married and lives in San Francisco.

Other members of the defense team include Frances Schreiber, Dale Minami, Eugene Tomine, and Garrick Lew. The latter three conduct their own law firm in Oakland.

### Ethnic Causes

Ms. Schreiber, an attractive, soft-spoken blonde, is a free-lancing attorney who champions ethnic causes. Her most recent crusade was in defense of native Americans at Wounded Knee. She volunteered her services in the Yeshimura case.

A graduate of New York University Law School, January 1972 Frances Schreiber was admitted to the N.Y. Bar in June of that year. A year later she was admitted to the Bar in California. For one year she served with the Legal Aid Society in New York City, and later spent two years as public defender in Contra Costa County.

Presently, she lectures at University of San Francisco and supervises clinical work in the Public Defender's office, Marin County. "Fran" is single, lives in Berkeley, and is a member of the National Lawyers Guild and the California Attorneys for Criminal Justice.

### Sansel Attorney

Dale Minami hales from Gardena, Calif. His dad, Sam, has been named "Man of the Year" several times in that community.

Dale graduated from USC in business administration and proudly wears a Phi Beta Kappa key. He studied law at Boalt Hall, San Francisco, and was admitted to the State Bar in 1971. His brother Rolie, a distinguished surgeon, teaches at Stanford University Medical College. Another brother, Neal, is a physical education instructor in a junior college. Dale is single and lives in Oakland.

Eugene Tomine studied criminology and criminalistics at UC Berkeley, then law at Boalt Hall. He was admitted to the Bar in 1972. In the Yo-

shimura case, Eugene has handled the research and pre-trial preparations. He is married and lives in Oakland, and is a member of The Lawyers Guild. Tomine was recently appointed to the Alameda County Assessor's Appeals Board. He has also worked for the Asian Law Caucus.

### Youngest Defender

Perhaps the youngest member of Wendy's defense team is twenty-five-years-old Garrick Lew. Another graduate of UC and Boalt Hall, he was admitted to the State Bar in 1974. While still in law school, "Garry" served for three years in the Asian Law Caucus and with the radical attorney, Denis Roberts. Lew is now on the Board of Governors of the Asian Law Caucus and is active with Chinese Affirmative Action. He is also a member of Alameda County and San Francisco Bar Association, the National Lawyers Guild, and the Wah Sung Club, a Chinese service club. He is single and lives in Oakland.

All three members of the law firm of Minami, Tomine & Lew are JACL members.

## 1976 officers

### ALAMEDA JACL

Hi Akagi, pres; John Towata Jr., Mrs. Sachi Nakamura, vp; Ray Hayama, treas; Nancy Tajima, sec; Haj Fujimoto, Blue Cross; Betty Akagi, Merit Ikeda, Robert Imazumi, Rolly Kadonaga, Don Kuge, Mrs. Toshi Takeoka, Jug Takeshita, Yas. Yamashita, bd memb; Kent Takeda, ex-officio.

### BERKELEY JACL

Min Sano, pres; Nob Kobayashi, vp; Paul Takata, treas; Jean Kato, sec; Yone Nakamura, cor sec; Bea Kono, ex-officio; bd memb—Dr. Laurence Harada, Jim Ishimaru, Steve Kodama, Gordon Kono, Morris Kosakura, Amy Haniwa, Edwin Nakamura, Dr. Gary Oda, Tak Shirasawa, Frank Yamasaki, Terry Yamashita, James Yano.

### FRENCH CAMP JACL

Hideo Morinaka, pres; Hatsuo Nonaka, Mizue Hatanaka, vp; Tom Foundation, treas; Hiroshi Shimomoto, rec sec; Faye Fujiki, Florence Shimomizu, pub; Yoshio Haya, del; Tom Natsu-hara, alt del.

### MONTEREY PENINSULA JACL

Doug Jacobs, pres; Pete Nakasako, Frank Tanaka, Clifford Nakajima, George Uyeda (pr), Tak Yokota, vp; Jack Ninomiya, treas; Bob Tachibana, bd clerk; Barton Yoshida, Blue Cross; P. Nakasako, bldg maint; Mas Yokogawa, gp; Goro Yamamoto, Issel rep; Nick Nakasako, Gakuen rep; Jim Fukuhara, newstr; Mickey Ichijui, 1000 Club; Yae Ninomiya, schol.

## CALENDAR

Mar. 13 (Saturday)  
St. Louis—Member potluck supper.  
Seabrook—Chow main dnr.  
Seabrook School North, 4:30 p.m.  
Chicago—JAYS Issel Casino Day.

Mar. 13-14  
PNWDC—Columbia Basin hosts: Qtrly session, Moses Lake, Wash.  
San Francisco—Nite at Races, Bay Meadows, San Mateo, 6:30 p.m.

Mar. 14 (Sunday)  
Puyallup Valley—Membership potluck, Tacoma Buddhist Church. (Postponed from Feb. 29)

Mar. 20 (Saturday)  
Idaho Falls—JACL Carnival, Veterans Memorial Hall.  
Berkeley—Get-Acquainted Social, Cerrito City Club, 8:30 p.m.

Wasatch Front North—Monte Carlo Night, Ogden Buddhist Church.  
Mar. 24 (Wednesday)  
90 Days Before Convention  
Deadline—Nominations for National JACL Officers by Chapters.  
CCDC—Dnr Mtg.

## So. Calif. JACL director resigns over pay policy

LOS ANGELES—Craig Shimabukuro is terminating his post as So. Calif. JACL regional director effective Mar. 17 under controversial circumstances involving personnel policy matters.

For the past seven months, he said he was unsuccessful in having his work performance evaluation and merit increase problems resolved. He also listed other allegations of "poor working conditions," many of which were denied by Headquarters, in his letter of resignation.

National Executive Director David Ushio did recognize and was grateful for Shimabukuro's efforts to fulfill the JACL goals during his 31 months as regional director.

Shimabukuro told the PS-WDC chapters the work was enjoyable, despite some very difficult times during his tenure, to make JACL "a more responsive, relevant community organization." The district council at its Feb. 22 session commended him for bringing credibility to the PS-WDC during an extremely critical period. He assumed the post a year after the then JACL staff here had resigned when Ushio was accepted as national director in the summer of 1972.

Shimabukuro told the PSW it has had a great deal of positive impact inside the organization and has been a leading advocate for the community.

Meanwhile, PSW District Governor Michael Ishikawa reminded applications for the position of So. Calif. JACL regional director are being accepted until March 25. Complete job description is available by calling the JACL Office (626-4471).

### Youth hall dedicated

Merit pay increases, if deemed justified, are made on the anniversary date of employment, according to the personnel policy. Shimabukuro joined the JACL staff on Aug. 1, 1973.

LOS ANGELES—Nishi Hongwanji Betsuin dedicated its new multi-purpose annex Feb. 29 with nearly 1,000 present. Bishop Kenryu Tsuji of the ro joined the JACL staff on Aug. 1, 1973.

## Pulse

### Scholarship

● **Eden Township JACL** announces five \$100 achievement awards will be offered to graduating high school seniors in the chapter area. Applicants must be students of Japanese ancestry or children of Eden Township JACL members. Qualified students of Japanese ancestry, regardless of JACL affiliation, are eligible.

The Eden JAYs are also offering awards to its graduating JAYs members.

### March Events

● **Wasatch Front North JACL** holds its annual Monte Carlo Nite fund-raiser Mar. 20 at the Ogden Buddhist Church with proceeds earmarked for scholarship and chapter activities. Stephen Oda, chairman,

is being assisted by Utaka Harada and Pap Miya.

Other chapter events for the year include golf and bowling tournaments, Issel night and possibly a tri-chapter picnic.

Memberships at \$14 per are being accepted by Jack Suekawa, 848 W. 2300 North, Clinton, Utah.

● **New York JACL** will meet Mar. 28, 2-4:30 p.m. to hear Michi Weglyn, author of the "Years of Infamy", at the Japanese American United Church, 255 - 7th Ave. at 25th St.

A discussion on reparations will also be held with a 16-minute cassette distributed by Seattle JACL to be placed to determined local chapter consensus on their proposal.

### Employ the Handicapped

Blind persons compete successfully in gainful employment with fellow workers who can see.

## Tax Time-See Us

### National JACL Credit Union

P.O. Box 1721, Salt Lake City, Utah 84110

Office: 422 S. 4th East, Salt Lake City

Tel.: (801) 355-8040

Remember, you can borrow \$3,000 on your signature with a qualified credit rating.

## NISEI KITCHEN

216 Pages Oriental Recipes  
\$5 Per Copy Postpaid

JACL Cookbook, c/o Mrs. Edwin Izumi  
422 Hazelgreen Dr., St. Louis, Mo. 63119

## ROSE HILLS

More than a half-century of care and understanding when it's needed most.

Care requires convenience. That's why one visit to Rose Hills Memorial Park takes care of every need during a difficult time.

Beautiful chapels, modern mortuary and crematory, traditional mausoleums, flower shops — and professional counselors who know care means everything.

Rose Hills... a naturally beautiful memorial park where dignity, understanding and care has been a hallmark of tradition for half a century.

Rose Hills MORTUARY/CEMETERY  
at Rose Hills Memorial Park  
Both at 3900 Workman Mill Rd., Whittier, Ca. 90601-0921

### SECOND CALL:

Los Angeles Area JACL Members

### 1976 JACL JAPAN FLIGHTS

**\$465** per Person, Round Trip

on Japan Air Lines 747 Garden Jet

DEPARTING FROM LOS ANGELES

SUMMER: Lv July 24 Return Aug. 14  
AUTUMN: Lv Oct. 2 Return Oct. 23

Open to all bonafide JACL members. No child discount on above fare. Infant 10% of Applicable Fare. Fare subject to change, pending 1976 airfare revision. All conditions subject to airline regulations.

For Info and Reservations, Call Following JACL-Approved Agencies

Kokusai International, 321 2nd St., Los Angeles. 626-5284  
Mitsuline Travel Service, 327 E. 1st St., L.A. 625-1505  
535 S. Grand Ave., L.A. 624-1505  
New Orient Express, 5455 Wilshire Blvd., L.A. 937-2146  
Gardena Travel Service, 1610 W. Redondo Beach, Gardena  
Pacific Square, No. 10 East Mall. 321-5066

Travel meeting and orientation (for APRIL Flight) for all interested in any JACL Japan Flight will be held TUESDAY, MAR. 23, 8 p.m., Sumitomo Bank of California, 3rd Floor, 101 S. San Pedro St., Los Angeles.

## The Mitsubishi Bank of California

**FRIENDLY SERVICE**

**HEAD OFFICE**  
800 Wilshire Blvd., Los Angeles, Calif. 90017 (213) 623-7191

**LITTLE TOKYO OFFICE**  
321 East Second St., Los Angeles, Calif. 90012 (213) 680-2650

**GARDENA OFFICE**  
1600 W. Redondo Beach, Gardena, Calif. 90247 (213) 532-3360

**SAN FRANCISCO OFFICE**  
425 Montgomery St., nr. California (415) 788-3600  
Member FDIC

WE'VE GOT A YEN FOR YOUR NEW CAR  
AT A LOW INTEREST RATE:  
Come Drive a Bargain with

## CALIFORNIA FIRST BANK

(Formerly the Bank of Tokyo of California)  
MEMBER FDIC

San Francisco Main Office	(415) 445-0200
San Francisco Japan Center Office	(415) 445-0300
Oakland Office	(415) 839-9900
Fremont Office	(415) 792-9200
Palo Alto Office	(415) 941-2000
San Mateo Office	(415) 348-8911
San Jose Office	(408) 298-2441
Westgate Office	(408) 298-2441
Salinas Office	(408) 424-2888
Sacramento Office	(916) 441-7900
Stockton Office	(209) 466-2315
Fresno Office	(209) 233-0591
North Fresno Office	(209) 226-7900

L.A. Main Office: 616 W. 6th	(213) 972-5200
Los Angeles Office	(213) 687-9800
Montebello Office	(213) 726-0081
Crenshaw Office	(213) 731-7334
Western L.A. Office	(213) 391-0678
Gardena Office	(213) 327-0360
Torrance Office	(213) 373-8411
Panorama City Office	(213) 893-6306
Artesia-Cerritos Office	(213) 924-8817
Santa Ana, 5th and Main Office	(714) 541-2271
Irvine Office, 17951 MacArthur Blvd.	(714) 549-9101
San Diego, Civic Center Office	(714) 236-1191

—With 75 Additional Offices—

## EUROPE CHARTER TOUR

MITSULINE & GATEWAY HOLIDAYS

Departing Los Angeles June 26, 1976

23-Day Grand Tour of Europe... Only \$1,378

Roundtrip Air Fare • First Class Hotel • Continental Breakfast Daily • Dinner throughout tour except London, Rome, & Paris • Rhine steamer cruise • Cheese fondue dinner party • Excursion to Capri • Comprehensive sightseeing throughout • and much more.

CANADIAN • ROCKIES • NISEI • FUN • TOUR  
June 19 8 Days \$698  
Breakfast Daily • Dinner as per Itinerary

FURTHER INFORMATION AND RESERVATION CONTACT:

MITSULINE TRAVEL SERVICE

324 E. FIRST ST., LOS ANGELES, CA. 90012 • (213) 625-1501

## MITSULINE South America Tour

DEPART: MAY 15 (Sat.)

RETURN: MAY 31 (Mon.)

TOUR FARE: \$1598.20

(Includes Round Trip Air Fare, Hotel Accommodations, 2 meals a day, Tip and Tour Fee)

Rio De Janeiro, Beach of Copacabana, Sao Paulo, Great Iguassu Falls, Asuncion, Buenos Aires, Lima, Sacred Cities of the Incas, and Machu Picchu.

Optional to Brazilia, add \$180.00.

ESCORT: MR. TAKITO YAMAGUMA

Reservation and information

IATA Approved

## MITSULINE TRAVEL SERVICE

327 E. First St., Los Angeles, Calif. 90012

Telephone: (213) 625-1505

## Low cost new auto loans!

Sumitomo Bank of California

Member F.D.I.C.





## JAYS slide show chief attraction at S.F. inaugural

SAN FRANCISCO — Unlike past installation dinners, the San Francisco JACL Inaugural Feb. 21 at Miyako Hotel spoke with a slide show presentation by the chapter Japanese American Youth (JAYS).

As a review of their past year's activities, the JAYS presentation showed two camera trips for bazaar at Sakura Matsuri, the summer Saturday camps for youth, holding a district quarterly, attending the Tri-District Convention in Central California, and holding a Christmas party where Santa appeared with several lovely helpers.

Dr. Yesh Nakashima, 1975 president, emphasized future activities should reflect the desires of people who support the chapter, and expected the membership to keep the Board informed.

Pres Gary Nakamura in his comments after being installed, noted his chapter board showed a balance of experienced Nisei and energetic Sansei willing to serve the local community together.

The chapter would look in two directions Nakamura said, toward the elderly who have worked hard toward providing for their children, and to youth whose support and leadership are keys to JACL's future.

Special recognition was paid to Claire Sanpei for her volunteer services to the chapter the past two years. She was business manager at Headquarters till mid-February.

George Yamasaki Jr., evening emcee provided entertainment with his combo after the dinner. Bob Fujitaka chaired the dinner-dance, which saw the generation gap spanned for one night.

The chapter board meets the first Tuesday each month at JACL Headquarters from 7:30 p.m. It is open to the community. President may be contacted by writing to P.O. Box 22425, San Francisco 94122.

## Kawaichi supports Nikkei interest in legal system

OAKLAND, Calif. — On Feb. 22 at Koto Restaurant, newly appointed Judge Ken Kawaichi of the Municipal Court spoke at the installation of Ray Nagai and his Oakland JACL cabinet.

Kawaichi highlighted the Asian Americans as participants in the criminal justice system. He discussed the discretionary powers which traverse the hierarchy of American jurisprudence and how the attitudes of these in power are reflected in the use of this discretion.

Kawaichi underscored the importance of examining the current situation of Asian Americans to determine whether racist or stereotypical ideas are playing substantial roles in the administration of justice.

He feels there is a renaissance of thought regarding participation of Japanese Americans in the legal system today and that is healthy. Emphasis was placed on continuing and increasing interest in the judicial process.

Norman Endo and Stephen Iseno were the recipients of the achievement awards. George Kondo, regional director, administered the oath of office.

## PNWDC committee appointment told

MOSES LAKE, Wash. — Pacific Northwest District Gov. Ed Yamamoto made several appointments to standing committees in preparation for the quarterly meeting being hosted by Columbia Basin JACL here Mar. 13-14. They included:

Dr. John Kanda (Puyallup Valley), constitution; Emi Somekawa (PV), membership; and Dr. Homer Yasui (Portland), nominations.

Kanda will also be parliamentarian at district sessions.

## MICHIKO SUZUKI: Washington, D.C. JACLer Heads new HEW operational agency

WASHINGTON — Michiko (Mike) Suzuki, just installed Washington, D.C. JACL president, was named acting commissioner Feb. 5 of the newly designated Public Services Administration—one of three major operational units in the U.S. Dept. of Health, Education and Welfare's social and rehabilitation service.

"Mike is a man for all seasons," the former commissioner John Young said. He made Titles IV and VI make as much sense as possible and sought to plant the seeds of Title XX of the Social Security Act, Young added.

The PSA was formerly known as the Community Services Administration, which is now the name of the successor agency to the Office of Economic Opportunity and not connected with HEW.

PSA provides cost matching and broad program guidance and assistance to states that wish social services under Title XX to eligible families, children, aged and handicapped individuals.

The combined federal, state and local cost for such services is estimated at \$2.6 billion for FY 1976.

Suzuki, who served with the Calif. State Dept. of Social



Mike Suzuki

Sacramento, previously worked with the Jewish Family Service in New York and with Japanese Children's Home (Shonien) and Japanese American Community Services in Los Angeles. He graduated in psychology from UC Berkeley and holds a master's degree in social work.

He and his wife, Nami, reside in Gaithersburg, Md., with their two children.

## EVACUEE RETIREMENT CREDIT FOR FEDERALLY EMPLOYED GETS BOOST

SACRAMENTO—SJR 31 memorializing the Congress and the President to enact legislation granting federal civil service retirement credit to Japanese Americans interned during World War II was unanimously adopted by the state assembly. It awaits the Governor's signature.

The Senate joint resolution was authored by Sen. John Dunlap (D-Napa) at the request of his constituent, Toshiko Yoshida of Benicia, and co-chairperson of the Committee for Internment Credit.

Dunlap commented that "there is no excuse for not extending this credit to those deserving Americans who received such deplorable treatment from the government during World War II."

CIC was formed in response from the Japanese American Postal Club of San Francisco last November and co-chaired by William Kyono and Toshiko Yoshida. The group represents a cross-section of federally employed Japanese Americans and interested persons of the Japanese American community. The group's goal is for organized effort in

securing legislation for internment credits.

CIC is supported by the Japanese American Citizens League (JACL), the American Postal Workers Union AFL-CIO, San Francisco Mayor George Moscone, National Association of Retired Federal Employees, and National Federation of Federal Employees.

Currently there are five bills pending in Congress. Supported by SJR 31: HR 4787 (Leggett), HR 5560 (Burton), HR 5654 (Ketchum), HR 5823 (Mineta) and S 1424 (Inouye).

The State of California grants credit under retirement plans to state employees who have spent time in Relocation Centers, the five bills before Congress would extend credit on the federal level.

In 1973, Congress passed legislation which enabled persons covered by Social Security to receive social security credits for time spent in Relocation Centers. Since federal employment does not qualify for social security credits, and is instead covered by civil service retirement benefits, it was agreed by Congress the time that equal treatment be given to those persons subjected to evacuation during World War II.

For more information, call the Committee for Internment Credit, 487 - 23rd Ave., San Francisco 94121. (752-1666).

Richard Gima

Aloha

## Hawaii Today

A December beating incident in Honolulu appearing in the Canadian press was interpreted as anti-white violence as the victims returned home and warned other Canadians to cancel their island vacation plans. . . . Sen. Daniel Inouye has proposed a Presidential commission to study the Hawaiian reparations claims during the U.S. Senate subcommittee hearings on the measure.

## Names in the News

Tin Hop Pang is president of the United Chinese Society for 1976. . . . Former State Rep. Wing Kong Chong, 59, (R) is making a second bid for mayor to the Big Island. He lost to the incumbent Mayor Herbert Matayoshi in 1974 by slightly more than 1,000 votes.

Hawaii-Chinese star Mike Lum plays for the Cincinnati Reds this season. He broke in the majors with the Atlanta Braves.

Dr. Stanley Yamane is president of the Waipahu Businessmen's Assn. . . . Dr. Herbert Kobayashi heads the Hawaii Dental Assn. . . . Jeanette Akamine of J's Waikiki Beauty Salon was elected president of the Honolulu Hairdressers-Cosmetologists Assn.

## Deaths

On Char, 86, one of Hawaii's best known commercial photographers died Feb. 16. Dr. Dai Yen Chang, 87, noted dentist and the first Chinese American elected to the Honolulu board of supervisors (1926-30), died Jan. 28.

## SANSEI STUDENT BALKS AT BEING TRANSFERRED, SUES SCHOOL BOARD

SEATTLE, Wash.—Two local high school students filed suit in federal court here Feb. 25, charging the Seattle School District with violating their constitutional rights when they were reassigned to Garfield High School last year.

The suits, separate but similar actions, seek temporary and permanent restraining orders and the possible closure of Garfield, located in the central area.

Students are Mark Simmons and Arthur Nakamura, both 16, who live in the Garfield attendance area. Their parents or guardians are also plaintiffs in the suits. Defendants named are individual school board members and school superintendent J. Loren Troxel. Students had been attending Ingraham High School, the suits say.

## 'Too Many Blacks'

The complaints say Garfield is educationally below the other high schools in the city, adding it has become "a battleground for racially motivated violence". The disproportionate number of blacks at Garfield—about 80 pct, for 1974-75 school year—has made it a racially segregated school, the suits contend.

Plaintiffs also accuse the school board of failing to adjust racial balance within the school, partly because the board has refused to start mandatory busing and realign attendance area boundaries. If the injunctions are not granted, the suits seek to have Garfield closed and its almost 1,200 students transferred.

Another alternative, the suits say, is to have boundaries redrawn so each school has an equal ratio of black and white students and asks for a sweeping regional desegregation plan including schools in Shoreline, Bellevue, Mercer Island, Renton and Highline.

If Garfield remains open, the suits demand immediate school desegregation be started to be in compliance with federal law. Both seek \$100,000 in damages.

Contributions may be sent to GVJCI, 15225 S. Western Ave., Gardena, Calif. 90249.

valley are to be asked through participating organizations. Donations from businesses, groups and major gifts assured start of construction of the two-story edifice, now expected to be ready for occupancy in June.

Justice Stephen K. Tamura of the state appellate court, San Bernardino, was conferred honorary Doctor of Civil Laws from his alma mater, Pomona College, at its Feb. 12 convocation in recognition of his "legal and judicial career of the highest integrity". He was a judge since 1961, first on the Orange County superior court, and on the appellate level since 1964.

## Citizen of the Year

LINDSAY, Calif. — Tulare County JACLer Mike Imoto, a lifelong resident and farmer here, was selected Citizen of the Year by the Lindsay Chamber of Commerce. He is also active with the Sister City effort, Boy Scouts, Kiwanis and County Fair. He is also a Lindsay Unified School District board of trustees member.

## JACL travel meeting

LOS ANGELES—JACL Japan Flight passengers and those interested are to meet Mar. 23, 8 p.m., at the Sumitomo Bank of Calif., 3rd floor, 250 E. 1st St. for a tour orientation. Those signed for the Apr. 6 flight will be handed their flight bags and a duty free agent will be present to accept orders. Meeting is sponsored by the JACL-approved travel agents.

## Bicentennial project

BERKELEY, Calif.—The history of Japanese Americans in Berkeley will be compiled as a Bicentennial project, according to Berkeley JACL chapter president Min Sano.

The chapter is currently seeking qualified students enrolled at UC Berkeley to assist in the project for university credit.

## ORANGE COUNTY

We Salute the Japanese Community

## UNITED PARCEL SERVICE

1331 S. Vernon 533-8000  
Anaheim, Calif.

Good Will Toward All Men  
**KATELLA AUTOMOTIVE**  
No. 1 in the Nisei Community  
8418 Katella Ave. 527-5766  
Stanton, Calif.

**COAST MUSIC**  
Orange County's Most Complete Music Store  
Sheet Music  
& Largest Selection of Preowned Organs  
Both Yamaha & Thomas  
1839 Newport Blvd. 642-2851  
Costa Mesa, Calif.

**NATE'S SAW & LAWN MOWER SHOP**  
Best Wishes to All Our  
Japanese Friends & Customers  
For the Annual Brotherhood Edition  
3625 W. First 531-5077  
Santa Ana, Calif.

**DENNIS UPHOLSTERING**  
839-7528  
Fountain Valley, Calif.

## PC's PEOPLE

### Elections

Santa Ana city councilman Harry Yamamoto declared his candidacy for the first supervisorial district in Orange County. He was appointed to the city council in 1970, won a half (two-year) term in 1971 and a full (four-year) term in 1973. . . . The President Ford Committee in California named Robert J. Keyes and Mrs. Toshi Yamamoto to head the California Minorities for Pres. Ford. Both were presidential electors in 1968. . . . West Valley JACL president S. Stephen Nakashima of San Jose and Paul Hail of Sunnyvale were named Santa Clara County co-chairman of the Dr. S. I. Hayakawa for U.S. Senate campaign. "Common sense is what Sam Hayakawa will take to Washington—and that's what we urgently need there," Nakashima said. The Mervyn Field California Poll Mar. 1 noted former Lt. Gov. Robert Finch leads in the race of the GOP nomination with 37 pct., with Hayakawa trailing at 32 pct. Rep. Barry Goldwater Jr. was the clear favorite until he decided not to run. Spread then was Goldwater, 42 pct.; Finch, 22 pct. and Hayakawa 17 pct.

**Courtroom**  
Justice Stephen K. Tamura of the state appellate court, San Bernardino, was conferred honorary Doctor of Civil Laws from his alma mater, Pomona College, at its Feb. 12 convocation in recognition of his "legal and judicial career of the highest integrity". He was a judge since 1961, first on the Orange County superior court, and on the appellate level since 1964.

### Government

Calif. State Assemblyman S. Floyd Mori (D-Pleasanton) was named to the Assembly Select Committee on Corrections to evaluate vocational programs in correctional institutions and examine jail facilities and programs for women. . . . Dr. Kenji Murase, professor of social work education at San Francisco State, was named to a 15-member

### S.F. Catholic mission to celebrate 50th year

SAN FRANCISCO—St. Francis Xavier Church commemorates its 50th year and the centennial anniversary of the Society of Divine Word missionaries who staff the Japanese Catholic mission on Apr. 18, Easter Sunday.

Now the national church for Japanese and Koreans in northern California, Fr. Joseph Guetzloe is pastor. Its Morning Star School also marks its 25 years of service this year.

## GARDENA-LONG BEACH

### NEUBAUER ENGINEERING

123 W. 155th St. 532-0303  
Gardena, Calif.

### McNALLY ELECTRIC

Commercial & Residential  
State Lic. #239028  
10621 Bloomfield 425-0388  
Los Alamitos, Calif.

### DUNCAN PLUMBING

24-hour emergency service. Commercial & residential.  
Radio controlled trucks. State Lic. #166705. Master  
Charge & BankAmericard accepted.  
25 years serving this area.

### 424-0022 425-9614

### MAID OF THE MIST

Expert Steam Carpet Cleaning  
\$9.50 Per Room—2 or More  
Licensed & Bonded - Free Estimates  
2633 E. 28th St. 595-5213  
Long Beach, Calif.

### DOMINGUEZ GOLF COURSE

Complete Pro Shop - Lessons  
18 Hole Par 3 Open 7 Days  
7 a.m. to 10:30 p.m.  
19800 S. Main St. 323-9115  
Carson, Calif.

### WEINHEIMER CARPET CLEANING

Expert Carpet & Upholstery Cleaning  
Reasonable Rates - Master Charge  
1660 Park Ave. 597-8828  
Long Beach, Calif.

### PENTHOUSE CLEANING

Expert Cleaning - Reasonable Prices  
Alterations - Drapery Cleaning  
Open Mon. - Sat. 7:30 - 6  
15495 S. Normandie Ave. 532-8670  
Gardena, Calif.

### ZEKE'S TIRE & WHEEL

Tires - Mags - Sizes to Fit Most Cars  
Open Mon. - Sat. BankAmericard Master Charge  
14301 S. Western Ave. 327-7782  
Gardena, Calif.

### MUREEN BODY SHOP

Expert Work Low Prices  
15804 Lakewood Blvd.  
Bellflower, Calif.  
925-7274

### THE DAISY TREE

Expert Hair Styling  
Open 7 Days  
9081 Imperial Hwy  
Downey, Calif.  
923-9809

### RAINWATER'S TV

Expert Repairs  
Black & White or Color  
10127 Rosecrans Blvd.  
Bellflower, Calif.  
867-6520

### BAKER'S BEAUTY SALON

Expert Hair Styling  
Open 7 Days  
6407 Long Beach Blvd.  
Long Beach, Calif.  
423-0214

U.S. HEW task force to study implementation of the new Title XX of the Social Security Act—a statutory base for public social services as of October, 1975.

### Milestones

Dr. Kenneth K. Nagamoto, 51, Los Angeles-born dentist, died of heart attack Feb. 26. A longtime member of the Progressive Westside JACL, he is survived by three daughters and a brother, Dr. Robert.

### Yatabe scholarship

CHICAGO—The Chicago JACL announced its Dr. Yatabe Scholarship fund drive had received \$6,837 as of Feb. 4.

### SAITO REALTY CO.

One of the Largest Selections  
2421 W. Jefferson, L.A.  
731-2121

### JOHN TY SAITO & ASSOCIATES

— 24 Hours Emergency —  
"We Do Anything in Glass"

### PESKIN & GERSON

GLASS CO.  
Est. 1949 - Licensed Contractor  
Store Fronts Insurance Replacements  
Sliding Glass Doors Louvers Mirrors  
Glass Tops Plate Windows  
& Auto Glass Free Estimates  
724 S. San Pedro St., L.A. 90014  
(213) 622-8243

### Aloha Plumbing

LIC. #201875  
PARTS & SUPPLIES  
Repairs Our Specialty  
1948 S. Grand, Los Angeles  
RI 4-3771

### Sam J. Umemoto

Lic. #208863 C-20-38  
SAM REIBOW CO.  
1505 W. Vernon Ave.  
Los Angeles AX 5-5204  
Experienced Since 1939

### Nanka Printing

2024 E. 1st St.  
Los Angeles, Calif.  
Angelus 8-7835

### ED SATO

PLUMBING AND HEATING  
Remodel and Repairs Water  
Heaters, Garbage Disposals,  
Furnaces  
— Servicing Los Angeles —  
AX 3-7000 RE 3-0357

### GRAND STAR

Lunch - Dinner - Cocktails  
Establishment  
6 TIME WINNER OF THE PRIZED  
RESTAURANT WRITER AWARD  
BANQUETS TO 200  
Validation Free Parking 943 N.  
Broadway (in New Chinatown) 676-2285

### KONO HAWAII RESTAURANT

Polynesian  
Room  
Dinner &  
Cocktails  
(Floor Show)  
Cocktail  
Lounge  
(Entertainment)  
Tea House  
Teppan &  
Sukiyaki  
Banquets  
226 South Harbor Blvd.  
Santa Ana, Calif. 92704  
(714) 531-1232

### OPEN EVERY DAY

Lunch 11:30 - 2:00  
Dinner 5:00 - 11:00  
Sunday 12:00 - 11:00

### Tai Hong Restaurant

Most Authentic Cantonese Cuisine  
Famous Family Style Dinners  
Cocktails till 2:00 a.m.  
Banquet Facilities 10:00 a.m. - 11:00 p.m.  
845 N. Broadway, L.A.  
485-1052

### EMPIRE PRINTING CO.

COMMERCIAL and SOCIAL PRINTING  
English and Japanese  
114 Weller St., Los Angeles 90012 MA 8-7060

### Eagle Produce

929-943 S. San Pedro St., Los Angeles  
625-2101  
Bonded Commission Merchants  
— Wholesale Fruits and Vegetables —

### Los Angeles Japanese Casualty Insurance Assn.

— Complete Insurance Protection —  
Aihara Ins. Agcy., Aihara-Omatsu-Kakita-Fujioka  
250 E. 1st St. 626-9625  
Anson Fujioka Agcy., 321 E. 2nd, Suite 500. 626-4393 263-1109  
Funakoshi Ins. Agcy., Funakoshi-Kagawa-Manaka-Morey  
321 E. 2nd St. 626-5275 462-7406  
Hirohata Ins. Agcy., 322 E. Second St. 628-1214 287-8605  
Inouye Ins. Agcy., 15092 Sylvanwood Ave., Norwalk. 864-5774  
Tam T. Ito, 595 N. Lincoln, Pasadena. 749-7189 (LA) 681-4411  
Minoru 'Nix' Nagata, 1497 Rock Haven Monterey Park 268-4554  
Steve Nakaji, 11964 Washington Place. 391-5931 837-9150  
Sato Ins. Agcy., 366 E. 1st St. 629-1425 261-6519

### Shimatsu, Ogata and Kubota Mortuary

911 Venice Blvd.  
Los Angeles  
RI 9-1449

### SEIJI DUKE OGATA R. YUTAKA KUBOTA

Three Generations at Experience  
**FUKUI**  
Mortuary, Inc.  
707 E. Temple St.  
Los Angeles 90012  
626-9441

Soichi Fukui, President  
James Nakagawa, Manager  
Nobuo Osumi, Counsellor

## FUJI FILM

The Pacific Citizen regrets the typographical error in the P.O. Box number in the order form appearing in the Feb. 27 issue. The correct mailing address is:

126 FILM CLUB  
P.O. Box 2370  
Salt Lake City, Utah 84110

It may be that orders for Fuji film and cameras as advertised may be returned since there is no box number that high as shown in the form. However, the Post Office in Salt Lake City has been alerted.