

Gail Nishioka

Nikari

1976 OVERVIEW ON YOUTH PROGRAMS

Whenever a new year begins, JACL's National Youth Program goes through re-evaluation and re-vamping to take into account changes in membership, attitude, and priorities of the people who have been and are involved with the program.

The employment publication which I wrote about during 1975 is being put in the form of a proposal which will be submitted to the JACL National Convention this coming summer.

To our employment board come announcements from federal agencies and private groups regarding openings.

To those individuals who cannot come in and look at the offerings we have placed on the board, perhaps you could send us your resume and we in turn can send to you whatever openings seem to match what you are looking for in terms of employment.

One of the greatest opportunities I had during the early part of this month was to meet and talk with a former JACL youth worker. We discussed his past experiences with the youth and the organization and also activities which he felt were valuable in the past and which would still be of value today.

The concept of District Youth Commissioners is something Jim Murakami, JACL President-Elect, and I had previously discussed as possibly reinstating. The concept of Youth Commissioners is centered around the knowledge that involvement by youth in our organization is and will be cyclical and continually in some state of flux.

We have also completed revisions on the National Youth Program Notebook for chapter youth workers, advisors to JAYs chapters, and JAYs. The Notebook includes information on program planning, program ideas, information on leadership skills, and other information valuable to any youth group.

Ideas for new projects or new areas where the youth of this organization might be involved in are always welcomed. We are constantly seeking new ways to improve and be involved. Please feel free to forward to us any new ideas or suggestions you might have. We consider everything.

In 1976, we look for the increased involvement and interest of JACLers across the nation in the Youth Program and JAYs. We invite you to join with us in our adventures!

The Spartan Beat Mas Manbo

Japan Bowl

TOKYO—The first, genuine, top rate American football game to be played in Japan was scheduled here Jan. 18 when the East and West All-Star collegiate teams from the U.S. clashed in the "Japan Bowl".

It was an eagerly-awaited event for football freaks in the country whose numbers have soared this past year with the air-wringing of outstanding U.S. football games on TV.

In fact, U.S. college grid-ers are now familiar figures to regular Japanese viewers, including this writer, as big games of the past season have been aired regularly on Channel 12 on Sundays either at noon or 6 p.m.

Other games viewed here included Boston College-Notre Dame, Michigan State-Michigan, USC-Notre Dame, Alabama-Missouri, Penn State-Maryland, Auburn-Alabama.

Before the season started, Ch. 12 was even televising old football games. One included O. J. Simpson in action against Notre Dame in the L.A. Coliseum—a scene very nostalgic to us as we've seen the Trojans and Bruins play there in the 1930s.

Capping the U.S. football season here, another TV station (Ch. 10) showed the 1976 Rose Bowl game live via telecast.

No sporting event is as col-

JACL credit union Portland - declares 6 1/4 pct. for 2d half of '75

SALT LAKE CITY, Utah—As of Jan. 1, National JACL Credit Union members had their accounts credited with 6 1/4% per annum dividend for the second half of 1975, it was announced by Hito Okada, credit union treasurer.

Total amount credited to share accounts was \$66,858.88. The credit union's annual meeting will be held Feb. 28, 7 p.m., at Prudential Plaza, 33rd South and State St. with a prime rib dinner, followed by dancing to Gary Amano's band from 9 p.m. Cost to members is \$5 per person.

Credit union president S. Ushio appointed Ichiro Doi, chmn., Saige Aramaki and Mary Uemoto to the nominating committee. These wishing to run for the board of directors should check with the nominations committee. Aramaki is also the POR rep, and Nobuo Iwamoto was named chairman of the education committee.



Kenji Machida

West L.A. JACLer named PSWDC legal counsel

LOS ANGELES—Kenji Machida, 31, succeeds L.A. deputy district attorney Lewis K. Ho as legal counsel in the Pacific Southwest JACL District Council, it was announced Jan. 15 by Gov. Mike Ishikawa.

Previously associated with the Beverly Hills firm of Alexander, Inman and Fine, Machida is now in private practice. He graduated from Harvard Law School and UCLA.

A West L.A. JACLer, he is married to the former Sara Oshman. He is also active with the Westside Optimists and Selman Pioneer Project.

In another appointment, Downtown L.A. JACLer Joe Hazama was named PSWDC liaison on the 1976 Nisei Week Festival Board. Hazama is PR officer with Mitsubishi Bank of California at its main headquarters here.

Sacramento -

Continued from Front Page moving towards participation of ethnic groups in California. Highlighting 1975, many of the Sacramento members got their chance in the movies as extras in the filming of the movie, "Farewell to Manzanar". Young and old alike spent two and one-half weeks

West Los Angeles 1976 Travel Program

Flights are open to JACL Members and their qualified family members. Membership must be at least 6 months immediately prior to departure.

FLIGHTS TO JAPAN

Table with 2 columns: Flight details (date, route, price) and Contact info.

L.A.-Tokyo, \$399 r.t. plus \$3 Departure Tax.

Optional Stopover in Honolulu, additional \$3. 12-day Land Tours available. Optional tours to Taipei, Hong Kong, Kyushu Extension, Hokkaido Extension on Flt. 3 only.

West L.A. JACL Flight, c/o R. Takeda 1702 Wellesley Ave., Los Angeles, Calif. 90025. Please reserve _____ seat(s) for your flight No. _____.

I am a JACL member or will have been at least six months prior to date of flight departure. I agree to the conditions of the contract and brochures.

Name: _____ Address: _____ City, State, ZIP: _____ Phone: _____ Passport No. _____

Send Tour Brochures _____ Flight Only _____

FOR ADDITIONAL INFORMATION PLEASE WRITE OR CALL: George Kanegai, 1857 Brocton Ave L.A. 90025 (213) 820-3592 (eve)

Next flight and tour meeting will be held at Falcia Mahood Recreation Center, 11338 Santa Monica Blvd., W.L.A., on Sunday, Feb. 15, 2 p.m.

Continued from Front Page

information on issues confronting the community. Family Activities Activities Chairman Bill Krider felt that there was a need to incorporate the family in the activities of the chapter.

Portland Chapter featured this past year a host of family-oriented activities as a ski trip to Mt. Hood (free of charge to member of the community), the annual picnic was held in July, sister-city (Sapporo, Japan) involvement, classes in cardio-pulmonary resuscitation in conjunction with the Oregon Heart Association, sponsorship of a Presidential Classroom candidate, a "get-acquainted" night with dinner, hospitality night at the Blitz-Weinhard Brewery, Japanese movies, and many other programs.

The key to the success of the chapter has been the incorporation of a newsletter. The backbone of the newsletter was Mickey and her husband Homer Yausti—not to mention countless contributing writers. It is interesting to note that Homer Yausti has been elected PNWDC Vice-Governor, and Mickey will be serving as PNWDC Historian.

In 1976, Portland will be headed by Al Shimoguchi, former resident of San Jose, Calif. The installation dinner is scheduled for Jan. 24. One of the chapters' plans for the '76 year is the JAL-JACL Cultural Heritage Program.

Membership is being sought right now at the Portland Chapter. For membership information, contact Nobu and Matt Masuoka, 13662 S.E. Market St., Portland, Ore. 97233. Membership dues are \$15, single and \$27, couple.

at Tule Lake during the filming.

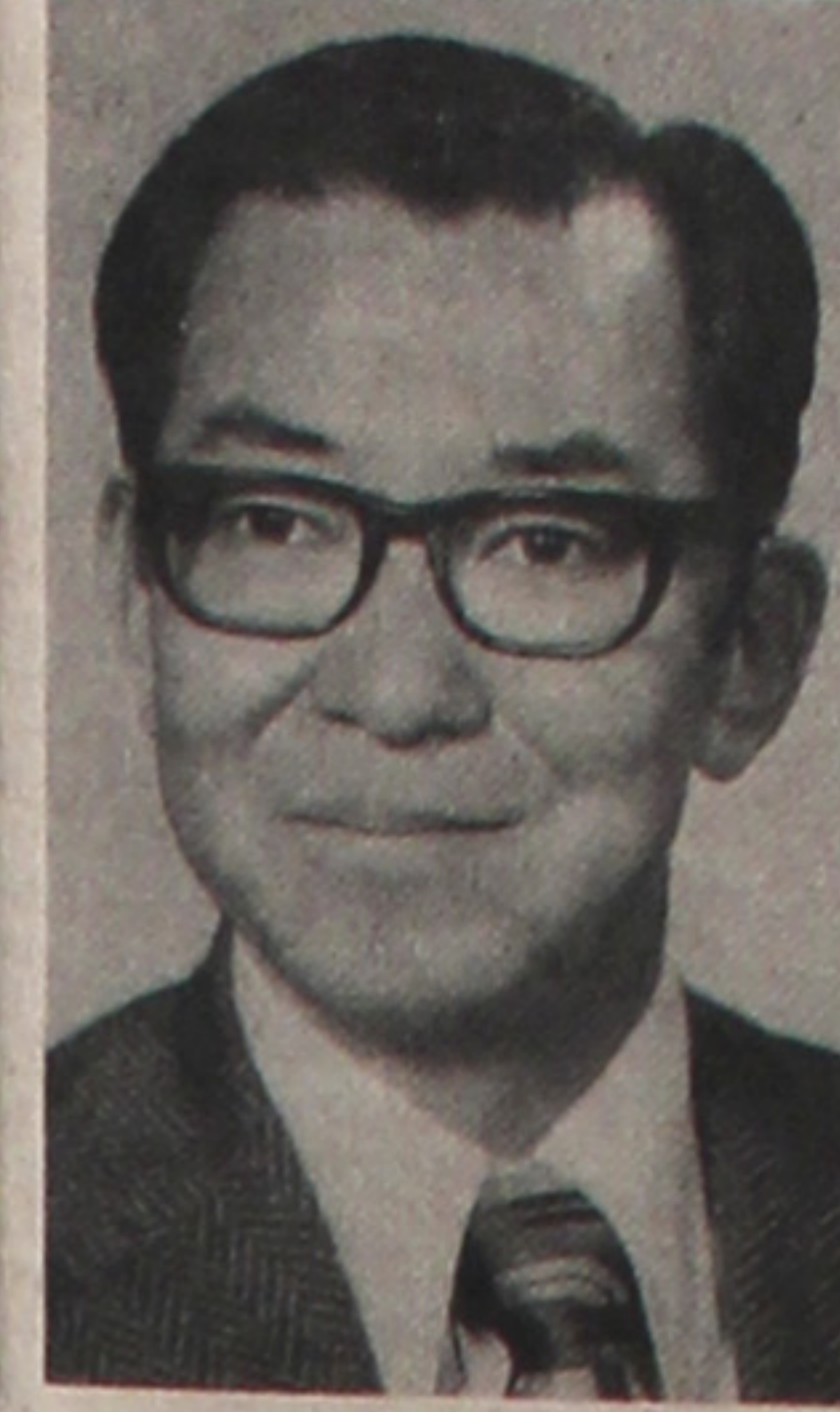
The Sacramento Chapter was originally founded in 1922 as the American Loyalty League. Walter Tsukamoto was its first president. When the organization was chartered in 1931 as a member of the JACL, Tsukamoto was again elected president. He served as National President from 1938-1940. Henry Takeda revived the chapter after World War II.

In 1960 Sacramento hosted the 16th Biennial Convention. Now, in 1976, Sacramento will once again be the host. Chairman Alan Oshima, along with Chewy Ito and Jerry Miyamoto guarantee that this convention will be better than the 1960 event.

"A Proud Legacy" is the theme of the 24th Biennial Convention to be held June 20-26. The Sacramento Chapter has been working steadily for many months towards an outstanding program.

Most of the efforts of the chapter have been focused towards organizing the upcoming convention. Most all of the members are currently working on different aspects of the convention, along with the chairman. The coordinators of these different areas are: Tom Okubo, special events; Phil Hiroshima and Bill Matsumoto, hospitality; Tak Tsujita, finance; Winston Ashizawa, book-let; Stim Suzuki and Bob Matsui, banquets; Alan Matsumoto, printing; Tom Fujimoto, publicity; Gerald Kajitani, photography; Frank Iwama, program; Pat Young and Charles Miura, youth; and Ralph Nishimi, project.

Pulse



Shigeo Tanouye

West Valley JACL anticipates an exciting installation dinner Jan. 24, 6:30 p.m., at Red Coach Inn, Wolfe Rd. and Homestead at Cupertino's Valco Village, with Dr. S. I. Hayakawa as keynote speaker, according to dinner chairman Dave Muraoka.

Members will have a choice of entree, \$6.50 for chicken and \$8 for top sirloin, with reservations being handled by Howard Watanabe (356-9243). Dr. Ray Uchiyama will emcee.

Steve Nakashima, prominent attorney, will be installed as 1976 chapter president. He succeeds Art Okuno. The chapter elections were held in conjunction with the Christmas party, which featured local youngsters in a talent show.

Lynda Uchiyama, piano; Shari Kamimori, Vicki Yagi, Jenni Takeda, instrumental trio; Denise Oki, Terri Shiozaki, Susan and Sara Kaku, cello; Corrine Carlson, Susan Snouse, Ken and Satoshi Okuno, Fresh Horn quartet.

French Camp JACL will hold a joint New Year's party and installation dinner Jan. 24, 6 p.m. at the French Camp Japanese Hall. The women's auxiliary is in charge of the party dinner with Yoshio Itaya as emcee.

Hideo Morinaka is the new president, succeeding Tom Natsuhara.

Seattle JACL will install John Matsumoto chapter president at its installation dinner on Friday, Feb. 6, 6:30 p.m. at Bush Garden with Bruce Chapman, Washington secretary of state, as guest speaker.

Matsumoto, purchasing agent for Bceing Co., succeeds Dr. Lindbergh Sata. Reservations at \$10 per person are being taken by Kimi Nakaniishi, banquet chairperson, and her committee.

Helen Akita, Don and Sally Kazama, Dr. Minoru and Hans Masuda, Tomio Moriyuchi, Hiro Nishimura, Hideo and Kayko Watanabe, and Dr. Terry Toda.

Idaho Falls JACL installed Mrs. Margaret Hasegawa as its 1976 chapter president. Mrs. Ruth Morishta is the Auxiliary president. They and their cabinet members were sworn into office in November by past IDC governor Joe Nishikawa.

Downtown Los Angeles JACL will have its 1976 installation dinner on Thursday, Feb. 5, 6:30 p.m. at Imperial Dragon Restaurant in Little Tokyo. George Fujita was re-elected to a second term as chapter president.

Orange County JACL will install Tom Kumagai, a Garden Grove attorney, as its 1976 president at the Grand Hotel, Anaheim, on Feb. 21. He succeeds Mike Ishikawa Jr., recently elected PSWDC governor.

Taketsugu Takei, state director of consumer affairs, of Sacramento will be guest speaker. Selanoco JACL re-elected Clarence Nishizu to his second term as chapter president. Former mayor of Santa Ana and now Rep. Jerry Patterson (D-Calif.) will be guest speaker at the installation dinner-dance on Saturday, Jan. 31, 7:30 p.m., at Los Coytes Country Club in Buena Park. Reservations at \$10 per person are being accepted by Nishizu (522-7253).

San Mateo JACL announced its 1976 officers will be installed Feb. 7 at the Airport Marina Hotel. Yesh Kojim to was re-elected president.

St. Louis JACL will hold its 1976 inaugural dinner on Sunday, Feb. 15, 6 p.m. at LeChateau. Program will be announced.

Milwaukee JACL will hold its 30th annual inaugural banquet Jan. 24, 6:30 p.m. at Country Garden Restaurant, 911 E. Layton Ave., with Shig Sugiyama, national JACL president, as guest speaker. Bob's Combo will play for the dance following. Tab is \$8 per person.

Marysville JACL greets the new year with an installation dinner-dance Jan. 24, 6:30 p.m. at the Vienna Inn. Prime rib is on the menu and tickets are \$8.50 per person, according to dinner co-chairmen Clark Tokunaga, Bill Tsuji and Shurei Matsumoto.

Bill Henry was re-elected chapter president. George Kondo, new NC-WNDC regional director, will be present. Judge Richard Schoenig will emcee.

The chapter is now governed by a 30-member board which includes the five immediate past presidents.

The board meets every third Wednesday, 7:30 p.m., at the JACL Room in the Marysville Buddhist Church annex.

At the December board meeting, the following committee appointments were made: Bill Tsuji, Harry Fukumitsu, picnic; George Inouye, den movie; George Nakao, H. Fukumitsu, insur.; B. Tsuji, recog; Helen Matsumoto, school; Tosh Sano, PCVA; Shu-

December Events Fremont JACL held a Christmas party Dec. 12 at Fremont Community Center, distributing gifts to children of chapter members and guests. A magician also entertained. In the above photo are (from left) Keith Yagi, emcee; Frank Nakasako as Santa, and Randy Hashimoto and Teri Hashimoto as his helpers. Chairing the event were Carole Yamaguchi, June Hashimoto, Kay Chun and Janice Kaneko.

CHRISTMAS BILLS! Pay your Holiday bills with a low interest consolidation loan from your Credit Union National JACL Credit Union P.O. Box 1721, Salt Lake City, Utah 84110 Office: 242 S. 4th East, Salt Lake City Tel.: (801) 355-8040 Remember, you can borrow \$3,000 on your signature with a qualified credit rating.

INVEST IN HAWAII Radio Station KKON - Kealahou, Hawaii 5000 watt transmitter - New Equipment Located on 4 acres fee simple property \$250,000 - terms The only station serving the Kona side of the Big Island Call (714) 684-7253 James W. Miller Co. Realtors WE'VE GOT A YEN FOR YOUR NEW CAR AT A LOW INTEREST RATE: Come Drive a Bargain with CALIFORNIA FIRST BANK ST (Formerly the Bank of Tokyo of California) MEMBER FDIC

The Mitsubishi Bank of California FRIENDLY SERVICE HEAD OFFICE 800 Wilshire Blvd., Los Angeles, Calif. 90017 (213) 623-7191 LITTLE TOKYO OFFICE 321 East Second St., Los Angeles, Calif. 90012 (213) 680-2650 GARDENA OFFICE 1600 W. Redondo Beach, Gardena, Calif. 90247 (213) 532-3360 SAN FRANCISCO OFFICE 425 Montgomery St., nr. California (415) 788-3600 Member FDIC

MERIT SAVINGS Anniversary Free Drawing Come in to register without obligation. Winner need not be present. Entry Forms are available at either office. Drawing (to be made) January 31, 1976. PARTIAL LIST OF PRIZES 1st Prize 24" RCA TV 2nd Prize Kenwood Stereo Set 3rd Prize Micro Oven AND MANY OTHERS MERIT SAVINGS AND LOAN ASSOCIATION LOS ANGELES MAIN OFFICE: 324 East First Street 624-7434 TORRANCE/GARDENA: 18425 S. Western Ave. 327-9301

MICHI WEGLYN'S 'YEARS OF INFAMY' A PACIFIC CITIZEN Pre-publication Offering It is an ideal gift in commemoration of the Bicentennial year. Notification will be made of any gift shipments, explaining shipment of YEARS OF INFAMY will be made in February-March. Checks payable to Pacific Citizen will be held by the PC Office till the books are shipped, but receipt will be acknowledged immediately. List Price: \$10.95 'Years of Infamy', published by William Morrow & Co., Inc., 105 Madison Ave. New York, N.Y. 10016

Low cost new auto loans! Sumitomo Bank of California Member F.D.I.O. An advertisement for car loans featuring a cartoon car character.

East Wind

'MOTTAINAI': IT'S CHIC

Bicentennial City, Pa.

WHETHER IT BE consciously or unconsciously, you've been practicing a way of living that is belatedly coming into vogue in our society.

AS A LAD my Issei mother insisted upon no-waste, and that included a clean rice bowl when I was finished.

SOMEWHAT RATHER AMAZING how some innocuous-seeming lesson directed to an impatient Nisei lad who did not welcome preachments, stuck nonetheless.

NOT UNLIKE MANY other words foreign to the English language, there is no synonym (at least to this Nisei) for the concept of "mottainai".

AS I STARTED out saying, so it is that a number of you who are Nisei in particular have been practicing conservation and maximum use of resources, simply as a way of life.

COME TO THINK of it: if we'd only let our Issei parents run this country, our Nation wouldn't be in the fix it's in today.

Seattle's reparation proposal put on tape

SEATTLE—An unusual and effective appeal for JACL chapter action to obtain redress of Evacuation was made last month (Dec. 7) with dispatch of a Seattle JACL packet containing a questionnaire, a cassette tape and transcript of the message.

Chapter presidents Lindberg S. Sata (1975) and John Matsumoto (1976) have requested other chapters and groups to either play the tape or have the message read.

In order to ascertain whether a sufficient degree of concurrence exists with the so-called Seattle Plan on reparations, a one-page questionnaire asks:

a) Number of persons attending who are in full or partial agreement or non-agreement. b) Number of persons in favor of direct congressional appropriations for funding.

c) Number of persons in favor of the "bootstrap" method—or the establishment of a trust by the Internal Revenue Service, taking income taxes paid by Japanese Americans to allocate reparations.

d) Number of persons in favor of direct, individual payments.

e) Issei Priority Number of persons who favor priority to Issei in any disbursement of payments, and the number who oppose this priority.

f) Number of persons in favor of block sums to various Nikkei organizations or for various projects because they are opposed to individual payments.

g) Feelings on the amount of payment as suggested (\$10 a day for each day of confinement in camp plus an additional flat sum of \$5,000); Number of persons who feel it reasonable; or excessive; or grossly inadequate.

Text of the 16-minute Appeal for Action to Obtain Redress for the World War II Evacuation and Imprisonment of Japanese Americans follows. The male voice is not identified.

basic in the origin and development of American history, traditions and statutes than the principle of equality of all persons before the law.

Even the most cursory study of our nation's history leads to the inescapable conclusion that in the opinion of the Founding Fathers, such as Franklin, Adams and Jefferson, true Americanism meant an unbending insistence by each individual that any government accord him equality of treatment before its laws and refrain from unjustly violating certain "unalienable rights" such as "life, liberty and the pursuit of happiness".

Over 50 years ago, the Government of the United States without a shred of evidence of misconduct or disloyalty and without even a pretense of a trial perpetrated the wholesale uprooting in 1942 and imprisonment of practically all Pacific Coast residents of Japanese ancestry.

True, the Government did not engage in systematic murder of Japanese Americans, but it did callously dispossess us of practically all the rest of our rights, such as the right to a fair trial, liberty, our jobs, our businesses, and our homes. This monstrous violation of the most basic of American traditions and laws relating to human freedom was the culmination of four decades of anti-Japanese propaganda of the most vile, outrageous and pervasive sort, particularly in the newspapers printed in the Pacific Coast states.

Nisei Rights Lost

This propaganda brainwashed the mass of white Americans into feeling that the Japanese were subhuman creatures, deserving of no rights whatever and brainwashed the Japanese Americans into thinking that they had been born of an unworthy race and that they had to submit meekly to practically an governmental trampling of their human rights in order to "prove" to others that the Nisei were "loyal Americans".

The fact that, even after a lapse of 30 years, no real attempt has been made by Japanese Americans to obtain redress for the wrongs, humiliations and loss of income suffered by them during their totally unwarranted imprisonment indicates that the older

Nisei at least, have been so psychologically crippled by their prewar and wartime experience that they have been unable to act as Americans should.

Passive submission or self-abasement when confronted by government tyranny or injustice was alien to the beliefs held by the founders of this nation.

If, in the face of British government tyranny, they had acted like the Nisei have in the face of American government tyranny, there would be no 200th Anniversary of the founding of our country to celebrate.

In commemorating the birth of our nation, therefore, it is time that Americans of Japanese ancestry repudiate the pseudo-American doctrine, promoted by white racists and apparently believed in by some former Nisei leaders, that there is one kind of Americanism for whites and another kind for non-whites.

If Japanese Americans are as American as the JACL has often claimed, then they should act like Americans and make every effort to seek redress through legislation and the courts for the rape of almost all their "unalienable rights" by the United States Government over 30 years ago.

PNW Attitudes

Judging from the polls taken on the attitudes of the people living in the Pacific Northwest areas and the quantity of anti-Japanese hate mail pignage agents and saboteurs at the start of World War II,

vision stations immediately following programs dealing honestly with the Evacuation and incarceration of Japanese Americans, over half of the white population of those areas believe to this day that the World War II treatment of the Japanese Americans was justified and that there was truth in the charges against us of espionage and sabotage.

By custom and tradition, any American who has been injured as a result of false accusations is expected to bring these responsible into court and obtain a judgment clearing his name and awarding him monetary damages from the offending parties.

When Japanese Americans obviously have done nothing against those who systematically vilified and labeled them during the first half of this century; have meekly submitted to mass imprisonment without receiving a formal statement of charges or a trial; and, thereafter have failed thus far even to ask for redress from the Government for that unjustified imprisonment, the white majority living on the Pacific Coast can hardly be blamed for looking upon the Japanese Americans as actually having been espies, pignage agents and saboteurs at the start of World War II.

Alaskan Natives in recent years.

There can be little doubt that someday Americans of Japanese descent will press for and obtain reparations for the World War II uprooting and imprisonment of the Issei and Nisei.

In fact, many of the Issei who were most seriously hurt by the Evacuation and imprisonment are already dead and gone and within five or ten years most of the remaining Issei will have passed away.

Need for Action Except for approximately 10% of the Nisei who are convinced that they "have it made" American Indian tribes and

Continued on Next Page

SAN JOSE

Greetings

Casino Card and Oakwood Lounge

Poker - Pan - Entertainment Nightly Ladies Invited - Open 24 Hours Daily

375 Saratoga Ave. (408) 296-9452 San Jose, Calif.

Greetings

Wilson's Garage Auto & Truck Repair

Expert Repairs on All Makes of Auto & Trucks Major and Minor Repairs - All Work Guaranteed

2611 Senter Rd. (408) 295-6488 San Jose, Calif.

SACRAMENTO VALLEY

Greetings

FARM FREIGHT INC.

Fruit & Grain Hauling

Rte. 1, Box 1763 (916) 371-6170 West Sacramento, Calif.

Greetings

PONDEROSA FARMS INC.

Fruit & Produce Hauling General Farm Trucking

8051 Rio Linda Blvd. (916) 991-1665 Elverta, Calif.

GREEN THUMB NURSERY

Established in 1951 49er Brand Garden Products - Authorized Scotts Dealer Complete Nursery & Garden Center Bedding Plants - Shrubs - Trees - Seeds Insecticides - Fertilizers Containers & Supplies - Pottery Garden Fountains

358 Onstott Rd. (916) 673-0981 Yuba City, Calif.

RAY PAOLETTI TRUCKING CO.

Fruit & Produce Hauling

100 Shasta Ave., Hamilton City (916) 826-3656 6893 E. Waterloo Rd., Stockton (209) 931-0637

ONSTOTT DUSTERS

All Types of Agricultural Flying Seeding - Spraying Crop Dusting - Fertilizing

180 Second (916) 673-1313 Yuba City, Calif.

Greetings

V. PINKSTON TRUCKING

Fruit & Produce Hauling General Farm Trucking

Road 33 (916) 795-4521 Winters, Calif.

Greetings

A. WAHL TRUCKING

Bulk & Flat Hauling Hay Cubes and Grains

(916) 662-6966 (916) 662-7003 360 W. Kentucky Ave.

SALINAS VALLEY

Greetings

MILLS DISTRIBUTING CO.

Distributors of Western Vegetables

P.O. Box 642 (408) 424-2591 Salinas, Calif.

Greetings

BRUCE CHURCH INC.

Fruit & Vegetable Packers & Shippers

1020 Merrill (408) 758-4421 Salinas, Calif.

Greetings

JACK SHELTON POTATO CO.

Contract Harvesting

532 Del Monte Dr. (408) 675-2280 Gonzales, Calif.

Greetings

TRANS-VALLEY TRANSPORT

Produce Hauling - 24 Hr. Service Licensed Carrier - ICC & PUC Permits

345 W. Laurel Dr., Salinas (408) 449-0250 P.O. Box 485, Gilroy (408) 842-2188

Greetings to Our Many Japanese Friends

D. NEILSEN TRUCKING

Fruit & Produce Hauling

1934 North Main (408) 449-1314 Salinas, Calif.

Greetings to Our Nisei Friends

BLAKEMAN TRUCKING INC.

Fruit & Produce Hauling

755-D Vertin Ave. Salinas, Calif. (408) 758-1903 - 758-0997

WATSONVILLE-SANTA CRUZ

Greetings

ELWIN R. MANN INC.

Fruit Packers & Shippers

MANN TRANSPORTATION 2838 Freedom Blvd. (408) 722-2464 Watsonville, Calif.

GREETINGS

GEORGE & PHILLIPS TRUCKING

Produce Hauling

144 W. Lake Ave. (408) 633-3435 Watsonville, Calif.

Greetings to Our Many Japanese Friends

CENTRAL COAST TRUCK SERVICE INC.

Fruit & Produce Hauling

50 Pine (408) 633-2198 Watsonville, Calif.

Greetings to Our Many Japanese Friends

RAY & JIM TRUCKING

General Hauling - Statewide

13570 Blackie Rd. (408) 633-3816 Castroville, Calif.

Best Wishes to All Our Japanese Customers

Driscoll Strawberry Association Inc.

Growers - Packers - Shippers Specializing in Strawberries

1750 San Juan Rd. (408) 722-3531 Watsonville, Calif.

Greetings to Our Many Japanese Friends

WELL-PICT INC.

Strawberries - Packers & Shippers

Matiasevich Lane (408) 722-3871 Watsonville, Calif.

STOCKTON

Greetings

STOCKTON SCAVENGER ASSOCIATES, INC.

526 East Weber Ave. Stockton, Calif.

(209) 464-7357

Greetings

HENDRIX & SON TRUCKING

General Trucking Fruit & Produce Hauling

3730 Munford Ave. (209) 464-6114 Stockton, Calif.

Greetings to Our Nisei Friends

KOORYMAN TRUCKING

Produce Hauling

1126 N. El Dorado (209) 948-8701 Stockton, Calif.

Greetings to Our Nisei Friends

BLINCOE TRUCKING COMPANY

Fruit & Produce Hauling Service at Its Best

2431 E. Mariposa Rd. (209) 466-9001 Stockton, Calif.

Greetings to Our Many Japanese Friends

PACOST CHEMICAL CO.

1906 E. Channel (209) 466-5301 Stockton, Calif.

Greetings to Our Many Japanese Friends

A. H. MARTIN

Grain Buying

3200 E. El Dorado (209) 948-2587 Stockton, Calif.

Greetings to Our Nisei Friends

N. A. GOTTELLI TRUCKING CO.

Produce Hauling

1634 E. Channel (209) 465-5694 Stockton, Calif.

Reparations

Continued from Previous Page

made" or have been "accepted by the whites" and are opposed to any action which would "rock the boat", there is general agreement among Japanese Americans that action to obtain redress for the evacuation and related injustices is needed.

Recent surveys shows that a heavy majority want any payments made directly to each individual claimant. The surveys also reveal almost total agreement that the Issei should be given first priority in receiving such payments.

If redress and justice are to be gotten for the Issei and Nisei, strong and determined efforts must immediately be initiated and pushed to a successful conclusion. Most Americans believe in justice and it is unlikely that their elected officials in the United States Government would deny a just settlement if the true facts of our unjustified maltreatment at the hands of the Government during World War II were properly presented.

1948 Claims Act

In seeking redress, the nature of injuries and losses for which we hope to obtain monetary compensation must first be understood. Through the provisions of the Evacuation Claims Bill which was signed into law in 1948, former evacuees received (after legal and processing fees) a total net payment of \$34,200,000 as "compensation" for their property losses which were estimated by the Federal Reserve Bank of San Francisco at \$400,000,000 in 1942.

Under the terms of those payments, we now are precluded from asking for a more just settlement for losses of property. Our present efforts, therefore, are directed toward obtaining redress for other injuries and losses.

For the mental and emotional suffering at the time of the Evacuation and the psychological injuries sustained from the exile from their homes no fair compensation in dollars can be computed.

Almost equally impossible would be any attempt to place a dollar value on the educational losses inflicted on the Japanese Americans of school age by the sudden termina-

tion of their normal schooling and by the Government's suppression of the teaching of the Japanese language and certain branches of Japanese culture.

On the basis of recent court awards to persons subjected to unjustified imprisonment of at least \$5,000 to each person to leave his domicile as a result of the Evacuation in 1942 would appear to be appropriate. When the difficulties and costs to the evacuees in later settling in other areas of the country or in returning to their home areas on the Pacific Coast are also considered, the sum we suggest is far from excessive.

Reasons for Compensation
Furthermore, we believe that we are entitled to seek compensation from the Government for first, the prolonged loss of our personal liberty, second, for the loss of normal wage and salary incomes, and third, for the loss of business income for those who owned their business and farms.

According to our estimates, based on 1942 dollars, the total wages and salaries lost by the Japanese Americans during their imprisonment was in excess of \$400,000,000. No amounts for the value of lost pension rights, job seniority, lost opportunities for promotion, etc. are included in that figure.

The total loss to Japanese Americans of the net incomes of businesses and farms which they were forced to leave behind as a result of their imprisonment is estimated by us to have amounted to over \$200,000,000 in 1942 dollars. To cover these three classes of losses, we are suggesting a payment to each former inmate of those prison camps of \$10 a day for each day of confinement, in addition to the flat payment of \$5,000 already mentioned.

Two different methods for obtaining the money to pay these sums have been suggested. The first is the direct Congressional appropriations procedure with annual incremental appropriations over a period of years. An example of this method was the Evacuation Claims Bill. That Bill proved to be disappointing to Japanese Americans because of the inadequate provisions in the Bill, niggardly handling of the claims, and insufficient funds appropriated by Congress.

The other suggested method is the Bootstrap Concept (sometimes referred to as the Seattle Plan). This plan would require Congressional approval to set up an Internal Revenue Service Trust Fund, which would receive Federal Income Taxes paid by persons of Japanese descent for a period of up to ten years or until all claims are satisfied.

Almost simultaneously with the receipt of such taxes by the Fund, claims would be paid starting with the oldest Issei. The amount of money available each year would reflect the income taxes allocated voluntarily by those of Japanese descent.

According to our estimates, over \$200,000,000 would be available for claims disbursements each year. This method of funding would have the

very important advantage of not being subject to the annual uncertainties of Congressional appropriations. It would also spare us from appearing to be pleading for Congressional handouts. The plan would include a basic stipulation which would prohibit those not allocating their taxes to the Fund from making any claims against the Fund.

Despite resolutions repeatedly passed at successive National JACL conventions in favor of seeking reparations, a surprising succession of national officers and staff members have displayed a glacial reluctance to start any kind of effective moves toward such a goal. About their only contributions to discussions of the subject have been to emphasize the difficulties which would attend any such efforts.

In order to start a successful drive to get reparations, it is first of all necessary for the various JACL chapter members to make it clearly known to the National JACL officers and staff that action to seek redress must be given top priority among the league's activities.

Chapter Push

Second, Japanese Americans must strive for and obtain public declarations of support for our goals from the greatest possible number of other organizations to which they belong such as churches, fraternal organizations, labor unions, civil rights groups, and political parties.

And third, our position and the statements of those who support our efforts should be conveyed by the Founding unmistakably and repeatedly. Fathers, continues to remain be brought to the attention of a fundamental principle of

our nation. And, that The permanent set aside and Constitution of the United States of America even 200 years after its birth cannot be changed by government officials no matter what rank or years they may occupy.

MERCED-MODESTO

Greetings to Our Nisei & Sansei Friends
SANSONI AGRI-ENTERPRISES
Buyers & Processors of Almond Hulls
Truck Hauling of Agricultural Products & By-Products
Any Point from San Francisco to Los Angeles
3234 N. Beachwood Dr. (209) 723-1079
Merced, Calif.

Greetings

MARIPOSA EXPRESS

Fruit & Produce Hauling
201 W. 15th (209) 722-2632
Merced, Calif.

Greetings

S & Z TRUCKING

Fruit & Produce Hauling
760 Pacific Ave. (209) 358-8861
Atwater, Calif.

TROPICAL TREATS FROSTY FREEZE

"Bring the Entire Family"
Try Our Delicious Products
470 W. 16th St. (209) 722-5861
Merced, Calif.

HANFORD

Greetings to Our Many Japanese Friends

COTTA TRUCKING INC.

Local & Statewide Hauling
Fertilizer, Straw, Cotton Seed, Hay, Grain, Gypsum
Diesel Tractors, Bottom Dumps, Flatbeds, End Dumps
21009 - 19th Ave. (209) 947-3315
Stratford, Calif.

TULARE COUNTY

Greetings to Our Many Japanese Friends

IPOCO TRANSPORTATION CO.

Local & Long Distance
Fruit & Produce Hauling
General Commodities Hauling
42599 Road 72 (209) 591-2160
Dinuba, Calif.

Greetings to Our Many Japanese Friends

BARNETT FARMS TRUCKING

General Farm Trucking
Fruit & Produce Hauling
25001 Road 164 (209) 747-0188
Visalia, Calif.

Greetings to Our Many Japanese Friends

GOLDEN FARMS EXPRESS INC.

Fruit & Produce Hauling
43107 Road 88 (209) 591-5171
Dinuba, Calif.

Greetings to Our Many Japanese Friends

TRIPLE M FARMS TRUCKING INC.

Fruit & Produce Hauling
1960 S. Indiana (209) 781-5930
Porterville, Calif.

GREETINGS

CAL-MAC FARMS TRUCKING

Fruit & Produce Hauling
260 North "L" (209) 688-7437
Tulare, Calif.

Greetings to Our Many Japanese Friends

RAY BROTHERS TRANSPORTATION

Specializing in Hauling of Fresh Fruits & Vegetables, Dried Fruits,
Seed & Nuts to Eastern Destinations
1830 N. Woodson Ave., Fresno (209) 237-4752

Greetings to Our Nisei Friends

BIG VALLEY TRUCK LINES

Flat Beds Hauling - Fruit & Produce
Local & Statewide
8762 E. Jensen Ave. (209) 268-2184
Sanger, Calif.

GREETINGS

J. E. DE LUCA TRUCKING

Refrigerated Transportation
Fruit & Produce Hauling
3170 W. Belmont Ave. (209) 485-2362
Fresno, Calif.

Greetings to Our Many Japanese Friends

FOGLIO BROTHERS TRUCKING

Fruit & Produce Hauling
1344 S. Dickenson Ave. (209) 266-3992
Fresno, Calif.

Greetings to Our Many Japanese Friends

JOE ARROYO TRUCKING

Dry Food Hauling
Grains, Barley, Sugar, Beets, Tomatoes,
Melons, Fertilizer, Grapes
1970 S. Crystal Ave. (209) 268-4820
Fresno, Calif.

Greetings to Our Many Japanese Friends

BRITZ FERTILIZER COMPANY

Fertilizers of All Varieties
P.O. Box 366, Five Points.....(209) 884-2421
Traver(209) 897-2667
Parlier(209) 646-2803
Firebaugh(209) 659-2881

Greetings to Our Many Japanese Friends

RAVISONI TRUCKING INC.

Fruit & Produce Hauling
24477 Ave. 14 (209) 674-4607
Madera, Calif.

Greetings to Our Many Japanese Friends

SEMPER TRUCK LINES INC.

Fruit & Produce Hauling
802 W. Herndon Ave. (209) 439-1835
Pinedale, Calif.

Greetings to Our Nisei Friends

TRINY MARBOZA TRUCKING

Produce Hauling
913 Pucheu (209) 655-4260
Mendota, Calif.

Greetings to Our Nisei Friends

KING RANCH ENTERPRISE

Grape Stake Redwood Products
10949 S. Fruit Ave. (209) 864-8264
Caruthers, Calif.

TURLOCK-MODESTO

GREETINGS

YOLO TRANSPORT

Fruit & Produce Hauling
General Trucking - Refrigeration & Flatbed
Fruit & Produce Hauling
Local & Statewide
3100 Patterson Rd. (209) 869-2180
Riverbank, Calif.

Greetings to Our Nisei & Sansei Friends

PROUTY TRUCKING INC.

General Farm Trucking
Grain, Fertilizers, Etc.
1149 Barium Rd. (209) 521-8706
Modesto, Calif.

Greetings to Our Nisei & Sansei Friends

ROGERS MOTOR EXPRESS

Fruit & Produce Hauling
235 Bunker Ave. (209) 521-2500
Modesto, Calif.

Greetings to Our Many Japanese Friends

BONANDER PONTIAC INC.

Authorized International Harvester Farm Truck
Sales - Service - Parts
231 S. Center (209) 632-8871
Turlock, Calif.

Greetings to Our Nisei & Sansei Friends

BONZI-CERES DISPOSAL

Residential - Industrial - Commercial
Agricultural
2070 Morgan Rd. (209) 537-1500
Ceres, Calif.

Greetings to Our Nisei & Sansei Friends

A. L. SESSUMS TRUCKING

Fruit & Produce Hauling
6505 Callander Ave. (209) 869-1685
Riverbank, Calif.

BAKERSFIELD

Greetings to Our Many Japanese Friends

MEL MAR & SONS TRUCKING

Fruit & Produce Hauling
534 E. Belle Terrace (805) 832-0665
Bakersfield, Calif.

Greetings to Our Many Japanese Friends

BERNARDINO OJEDA CUSTOM HARVESTING

General Farm Trucking
480 Holden (805) 854-5386
Arvin, Calif.

Greetings to Our Many Japanese Friends

WELCO TRUCKING

Statewide Hauling of General
Farm Commodities
Brown Material Rd., Lost Hills, Calif. (805) 797-2461 (805) 797-2355

FRESNO

T & T TRUCKING CO.

Refrigerated Service - Frozen Produce
Exempt Hauling Service: California - Arizona
6632 E. Parlier Ave., Fowler, Calif. (209) 834-5371

GREETINGS

**TENNECO INC.
AND
TENNECO WEST INC.**

Fruit Packers & Shippers
P.O. Box 98 (209) 888-2082 (209) 888-2084
Del Rey, Calif.

U.S. TRUCKERS ASSOCIATED

Fruit & Produce Hauling
**N. Hwy 99 & W. Herndon Ave.
Fresno, Calif.
(209) 442-0440**

GREETINGS

SUMMERS MOVING STORAGE

"To You It May Be Just Another Moving Company,
to Us It's a Reputation"
Local & Long Distance - Lowest Legal Rates
(209) 266-0221 - (209) 227-9505
1636 "H" St., Fresno, Calif.

Greetings to Our Many Japanese Friends

**H. P. METZLER & SONS
PACKING COMPANY**

Specializing in
Packers & Shippers
5286 E. Del Rey Ave. (209) 888-2094
Del Rey, Calif.

Greetings to Our Many Japanese Friends

ELLIOT MFG. COMPANY

Manufacturers of Fruit Processing
and Packaging Machinery
2664 S. Cherry Ave. (209) 233-6235
Fresno, Calif.

Greetings to Our Nisei & Sansei Friends

**WESTERN FARM SERVICE INC.
(CENTRAL VALLEY DIVISION)**

1805 N. Lafayette (209) 442-4720
Fresno, Calif.

DECEMBER REPORT 1000 Club Memberships

National Headquarters acknowledged 55 new and renewing memberships in the 1000 Club during the last half of December as reported by...

JACL Bldg. Fund Pledges and Contributions

Acknowledgement from 72 donors, Nov.-Dec. 1975. Barbara Iwamoto, Douglas Iwamoto, Saburo Iwamoto, Satsuko Iwamoto...

Chapter People Handling 1976 JACL Memberships

To insure uninterrupted subscription to the Pacific Citizen, current JACL members should renew now. Membership fees shown after the name of the Chapter...

PNWDC Columbia Basin (518-39), Ed Yamamoto, 4502 Fairchild Loop, Moses Lake, Wa 98837...

NC-WNDC Alameda (513-28), Sachi Nakamura, 1507-B Chestnut St, Alameda 94501...

CCDC Clovis (514-26, 5112), Toshi Kawasaki, 2013 Arden Dr, W Fresno, Calif 93703...

PSWDC Arizona (514-27), Kathy Hilda, 5046 W Maryland, Glendale 91201...

As of Jan. 9

7% TAX FREE IN ONE A RAISED MUNICIPAL BONDS Currently Available in Amounts of \$500 or more. Thomson & McKinnon Auchincloss Kohlmeyer Inc.

PC's PEOPLE Agriculture Harry Mastro Columbia Basin JACLer Harry Mastro of Moses Lake, Wash., was re-elected to a three-year term on the board of trustees of the National Union Assn. at its 62nd annual meeting at McAllen, Tex. He chaired the membership committee last year and was one of the award winners in the campaign. The organization has members in 20 states, Canada and New Zealand.

Education

Lawrence P. Tu, 21, of Annandale, Va., and a 3.8 GPA Harvard senior, will be among 32 Americans going next fall to Oxford as a Rhodes scholar. Though U.S.-born, he spent five years of his childhood in Taiwan, then to Seattle before the family settled in Virginia. His father, Kwei, is a manager for Air America, a CIA-connected airline.

Business Golden Gate Agency manager Katsumi Tokunaga was a featured speaker at the Franklin Life Insurance Co.'s all-southern agency meeting Jan. 4-7 at Montgomery, Ala. He spoke on the "Graphic Selling of Life Insurance."

Flower-Garden Richard Omi of Palo Alto will be installed president of the Professional Gardeners Federation of Northern California on Feb. 14 at Rodeway Inn, South San Francisco. He succeeds Tom Nakatani of the Diablo Gardeners Assn. The federation, comprised of 1,800 members, is comprised of 15 local groups.

Wesley UMW Cookbook 14th Printing, Revised. Oriental and Favorite Recipes. Donation \$4.00. Handling 50c.

Naomi's Dress Shop Sport & Casual, Sizes 3-18. 116 N. San Pedro St. Los Angeles 680-1553. Open Tue.-Fri. 9:30-6:30 and Sat. 11-9. Closed Sun.-Mon.

Yamasa Kamaboko - WAIKIKI BRAND - Distributors: Yamasa Enterprises. 815 Stanford Ave., L.A. Phone 625-2211

Mrs. Friday's DELIGHTFUL seafood treats DELICIOUS and so easy to prepare. MKS. FRIDAY'S Gourmet Breaded Shrimps and Shrimp Puffs. FISHING PROCESSORS 1327 E. 15th St., Los Angeles (213) 746-1307

Architect Onuma & Wood Associates, Inc. is an American architectural firm established in 1971 in Tokyo. Their pioneering efforts in master-plan concept in Japan was featured in the Dec. 12 Christian Science Monitor. Designer Joseph Onuma, a Nisei graduate from Univ. of Washington, worked for eight years with the Grosup group and other well-known firms in Europe and U.S. In 1966, he decided the Pacific Basin would be the future high growth area in construction and worked for an engineering firm in Tokyo where he met his partner Richard Wood, just from Hawaii.

Government Santa Maria JACLer Toru Miyoshi is a candidate for the Santa Maria city council. A real estate broker and co-owner-developer of Town & Country Shopping Center, the 47-year-old Guadalupe-born U.S. graduate is seeking his first public office though he had served on the Santa Maria Elementary School District integration committee. His lone opposition thus far is Mrs. Judith Horst.

Local Scene Los Angeles Japan Trade Center, now at the 24th floor of the Bank of America Tower, 555 S. Flower St., is exhibiting Japanese prints (osaku hanga) as part of the (Japan America Society's first) cultural program for the year.

San Jose Close to 150 members of the local CYS program and Zebras basketball teams were guests of Coach Carroll Williams of Santa Clara University Broncos at the recent Santa Clara-Creighton University (Nebr.) basketball game played at the recently-opened Toso gym in Santa Clara.

Seattle A community recognition dinner will be held Feb. 14, 7 p.m. at the Olympic Hotel for the Rev. Emery E. Andrews, pastor emeritus of the Japanese Baptist Church, recipient of the 5th Order of the Sacred Treasure from the Japanese government, 511 Evergreen Award for his leadership in scouting and National JACL scroll recognition. Tickets are \$12.50 per person.



Harry Mastro

Education Chester Y. Sakura Sr., of Seattle died Dec. 19 while serving as a missionary under African Inland Mission.

Milestones Commercial and Industrial Air-conditioning & Refrigeration Contractor. Sam J. Umemoto Lic. #208893 C-20-38 SAM REIBOW CO. 1506 W. Vernon Ave. Los Angeles AX 5-5204 Experienced Since 1939

EMPEROR RESTAURANT 949 N. Hill St. (213) 485-1294 PEKING FOOD SPECIALTY Cocktail Lounge Party & Banquet Facilities DINAH WONG, Hostess

TIN SING RESTAURANT EXQUISITE CANTONESE CUISINE 1523 W. Redondo Blvd. GARDENA DA 7-3177 Food to Go Air Conditioned Banquet Rooms 20-200

INSIST ON THE FINEST KANEMASA Brand FUJIMOTO'S 800 MISB. Available at Your Favorite Shopping Center FUJIMOTO & CO. 302-306 S. 4th West Salt Lake City, Utah

Eigiku Cafe Dine - Dance - Cocktail SUKİYAKI & JAPANESE ROOMS 314 E. First St. Los Angeles MA 8-3020

QUON BROTHERS GRAND STAR 6 TIME WINNER OF THE PRIZED RESTAURANT WRITER AWARD BANQUETS TO 200 Validation Free Parking 943 N Broadway (in New Chinatown) 626-2285

Nanka Printing 2024 E. 1st St. Los Angeles, Calif. Angelus 8-7835

The New Moon Banquet Rooms available for small or large groups 912 So. San Pedro St., Los Angeles MA 2-1091

VISIT OLD JAPAN PASADENA 139 S. Los Robles • 795-7005 ORANGE 33 Town & Country • 541-3303 TORRANCE 24 Del Amo Fash. Sq. • 542-8877

GARDENA - AN ENJOYABLE JAPANESE COMMUNITY Poinsettia Gardens Motel Apts. 13921 So. Normandie Ave. Phone: 324-5883 68 Units Heated Pool Air Conditioning GE Kitchens Television OWNED AND OPERATED BY KOBATA BROS.

Los Angeles Japanese Casualty Insurance Assn. Complete Insurance Protection. Aihara Ins. Agcy. Aihara-Omatsu-Kakita-Fujioka 250 E. 1st St. 626-9625

Shimatsu. Ogata and Kubota Mortuary Three Generations at Experience... FUKUI Mortuary, Inc. 911 Venice Blvd. Los Angeles RI 9-1449 707 E. Temple St. Los Angeles 90012 626-0441

Books for You and Your Friends NEW! Weight Control with Asian Feeds by Kay Shimizu Low-cal gourmet recipes, 92pp. orig. woodcuts. \$2.95. Asian Flavors by Kay Shimizu. Japanese and Chinese, taste-tested basic recipes. Over 10,000 copies sold in U.S. 221pp. \$7.00. Asian Cookbook for Juniors and Beginners by Shimizu. For everyday use, excellent for all ages. Color illus. \$5.95. Eating Cheap in Japan. In color, exciting, pocket-size, 104pp. \$2.95.

Books for You and Your Friends Send Check or M.O. to Glenn Shimizu 19520 Scotland Dr., Saratoga, Calif. 95070 Include 6% Calif. sales tax plus 50c handling per book.

Books for You and Your Friends

Books for You and Your Friends

酒念市 Nam's Restaurant Cantonese Cuisine Family Style Dinners Banquet Room Cocktail Lounge Food to Go 205 E. Valley Blvd. San Gabriel, Calif. Tel. 280-8377

天星 EXQUISITE CANTONESE CUISINE 1523 W. Redondo Blvd. GARDENA DA 7-3177 Food to Go Air Conditioned Banquet Rooms 20-200

INSIST ON THE FINEST KANEMASA Brand FUJIMOTO'S 800 MISB. Available at Your Favorite Shopping Center FUJIMOTO & CO. 302-306 S. 4th West Salt Lake City, Utah

Yamasa Kamaboko - WAIKIKI BRAND - Distributors: Yamasa Enterprises. 815 Stanford Ave., L.A. Phone 625-2211

Mrs. Friday's DELIGHTFUL seafood treats DELICIOUS and so easy to prepare. MKS. FRIDAY'S Gourmet Breaded Shrimps and Shrimp Puffs. FISHING PROCESSORS 1327 E. 15th St., Los Angeles (213) 746-1307

Little Tokyo's Finest Chop Suey House SAN KWO LOW Famous Chinese Food 228 E. 1st St. Los Angeles MA 4-2075

The New Moon Banquet Rooms available for small or large groups 912 So. San Pedro St., Los Angeles MA 2-1091

VISIT OLD JAPAN PASADENA 139 S. Los Robles • 795-7005 ORANGE 33 Town & Country • 541-3303 TORRANCE 24 Del Amo Fash. Sq. • 542-8877

GARDENA - AN ENJOYABLE JAPANESE COMMUNITY Poinsettia Gardens Motel Apts. 13921 So. Normandie Ave. Phone: 324-5883 68 Units Heated Pool Air Conditioning GE Kitchens Television OWNED AND OPERATED BY KOBATA BROS.

Los Angeles Japanese Casualty Insurance Assn. Complete Insurance Protection. Aihara Ins. Agcy. Aihara-Omatsu-Kakita-Fujioka 250 E. 1st St. 626-9625 Anson Fujioka Agcy. 321 E. 2nd, Suite 500. 626-4393 263-1109 Funakoshi Ins. Agcy., Funakoshi-Kagawa-Manaka-Morey 321 E. 2nd St. 626-5275 462-7406 Hirohata Ins. Agcy., 322 E. 2nd St. 628-1214 287-8605 Inouye Ins. Agcy., 15092 Sylvanwood Ave., Norwalk. 864-5774 Tom T. Ito, 595 N. Lincoln, Pasadena. 749-7189 (LA) 681-4411 Minoru 'Nix' Nagata, 1497 Rock Haven Monterey Park 268-4554 Steve Nakaji, 11964 Washington Place. 391-5931 837-9150 Sato Ins. Agcy., 366 E. 1st St. 629-1425 261-6519

Shimatsu. Ogata and Kubota Mortuary Three Generations at Experience... FUKUI Mortuary, Inc. 911 Venice Blvd. Los Angeles RI 9-1449 707 E. Temple St. Los Angeles 90012 626-0441

Books for You and Your Friends NEW! Weight Control with Asian Feeds by Kay Shimizu Low-cal gourmet recipes, 92pp. orig. woodcuts. \$2.95. Asian Flavors by Kay Shimizu. Japanese and Chinese, taste-tested basic recipes. Over 10,000 copies sold in U.S. 221pp. \$7.00. Asian Cookbook for Juniors and Beginners by Shimizu. For everyday use, excellent for all ages. Color illus. \$5.95. Eating Cheap in Japan. In color, exciting, pocket-size, 104pp. \$2.95.

Books for You and Your Friends Send Check or M.O. to Glenn Shimizu 19520 Scotland Dr., Saratoga, Calif. 95070 Include 6% Calif. sales tax plus 50c handling per book.

Books for You and Your Friends

酒念市 Nam's Restaurant Cantonese Cuisine Family Style Dinners Banquet Room Cocktail Lounge Food to Go 205 E. Valley Blvd. San Gabriel, Calif. Tel. 280-8377

天星 EXQUISITE CANTONESE CUISINE 1523 W. Redondo Blvd. GARDENA DA 7-3177 Food to Go Air Conditioned Banquet Rooms 20-200

INSIST ON THE FINEST KANEMASA Brand FUJIMOTO'S 800 MISB. Available at Your Favorite Shopping Center FUJIMOTO & CO. 302-306 S. 4th West Salt Lake City, Utah

Yamasa Kamaboko - WAIKIKI BRAND - Distributors: Yamasa Enterprises. 815 Stanford Ave., L.A. Phone 625-2211

Mrs. Friday's DELIGHTFUL seafood treats DELICIOUS and so easy to prepare. MKS. FRIDAY'S Gourmet Breaded Shrimps and Shrimp Puffs. FISHING PROCESSORS 1327 E. 15th St., Los Angeles (213) 746-1307

Little Tokyo's Finest Chop Suey House SAN KWO LOW Famous Chinese Food 228 E. 1st St. Los Angeles MA 4-2075

The New Moon Banquet Rooms available for small or large groups 912 So. San Pedro St., Los Angeles MA 2-1091

VISIT OLD JAPAN PASADENA 139 S. Los Robles • 795-7005 ORANGE 33 Town & Country • 541-3303 TORRANCE 24 Del Amo Fash. Sq. • 542-8877

GARDENA - AN ENJOYABLE JAPANESE COMMUNITY Poinsettia Gardens Motel Apts. 13921 So. Normandie Ave. Phone: 324-5883 68 Units Heated Pool Air Conditioning GE Kitchens Television OWNED AND OPERATED BY KOBATA BROS.

Los Angeles Japanese Casualty Insurance Assn. Complete Insurance Protection. Aihara Ins. Agcy. Aihara-Omatsu-Kakita-Fujioka 250 E. 1st St. 626-9625 Anson Fujioka Agcy. 321 E. 2nd, Suite 500. 626-4393 263-1109 Funakoshi Ins. Agcy., Funakoshi-Kagawa-Manaka-Morey 321 E. 2nd St. 626-5275 462-7406 Hirohata Ins. Agcy., 322 E. 2nd St. 628-1214 287-8605 Inouye Ins. Agcy., 15092 Sylvanwood Ave., Norwalk. 864-5774 Tom T. Ito, 595 N. Lincoln, Pasadena. 749-7189 (LA) 681-4411 Minoru 'Nix' Nagata, 1497 Rock Haven Monterey Park 268-4554 Steve Nakaji, 11964 Washington Place. 391-5931 837-9150 Sato Ins. Agcy., 366 E. 1st St. 629-1425 261-6519

Shimatsu. Ogata and Kubota Mortuary Three Generations at Experience... FUKUI Mortuary, Inc. 911 Venice Blvd. Los Angeles RI 9-1449 707 E. Temple St. Los Angeles 90012 626-0441

Books for You and Your Friends NEW! Weight Control with Asian Feeds by Kay Shimizu Low-cal gourmet recipes, 92pp. orig. woodcuts. \$2.95. Asian Flavors by Kay Shimizu. Japanese and Chinese, taste-tested basic recipes. Over 10,000 copies sold in U.S. 221pp. \$7.00. Asian Cookbook for Juniors and Beginners by Shimizu. For everyday use, excellent for all ages. Color illus. \$5.95. Eating Cheap in Japan. In color, exciting, pocket-size, 104pp. \$2.95.

Books for You and Your Friends Send Check or M.O. to Glenn Shimizu 19520 Scotland Dr., Saratoga, Calif. 95070 Include 6% Calif. sales tax plus 50c handling per book.

Books for You and Your Friends

YAMATO EMPLOYMENT AGENCY 312 E. 1st Street, Room 202 Los Angeles, Calif. NEW OPENINGS DAILY 624-2821

TARBELL REALTORS Riki Yonezawa 13311 Artesia Blvd. Cerritos, Calif. 926-5821 (714) 522-4442

ED SATO PLUMBING AND HEATING Remodel and Repairs Water Heaters, Garbage Disposals, Furnaces - Servicing Los Angeles - AX 3-7000 RE 3-0557

SAITO REALTY CO. HOMES - INSURANCE One of the Largest Selections 2421 W. Jefferson, L.A. 731-2121 JOHN TY SAITO & ASSOCIATES

Mikawayama Sweet Shop 244 E. 1st St. Los Angeles MA 8-4933

Cherry Brand MUTUAL SUPPLY CO. 1090 Sunsume St. San Francisco, Calif.

KONO HAWAII RESTAURANT Polynesian Room (Dinner & Cocktails) (Dance Show) Cocktail Lounge (Entertainment) Tea House Teppanyaki Banquets 226 South Harbor Blvd. Santa Ana, Calif. 92704 (714) 531-1232

OPEN EVERY DAY Luncheon 11:30 - 2:00 Dinner 5:00 - 11:00 Sunday 12:00 - 11:00 Aloha Plumbing LIC. #201875 PARTS & SUPPLIES - Repairs Our Specialty - 1948 S. Grand, Los Angeles RI 9-4371

Nanka Printing 2024 E. 1st St. Los Angeles, Calif. Angelus 8-7835

TOYO PRINTING Offset - Letterpress - Linotyping 309 S. SAN PEDRO ST. Los Angeles 12 - MADISON 6-8153

EMPIRE PRINTING CO. COMMERCIAL AND SOCIAL PRINTING English and Japanese 114 Weller St., Los Angeles 90012 MA 8-7060

Eagle Produce 929-943 S. San Pedro St., Los Angeles 625-2101 Bonded Commission Merchants - Wholesale Fruits and Vegetables -

Los Angeles Japanese Casualty Insurance Assn. Complete Insurance Protection. Aihara Ins. Agcy. Aihara-Omatsu-Kakita-Fujioka 250 E. 1st St. 626-9625 Anson Fujioka Agcy. 321 E. 2nd, Suite 500. 626-4393 263-1109 Funakoshi Ins. Agcy., Funakoshi-Kagawa-Manaka-Morey 321 E. 2nd St. 626-5275 462-7406 Hirohata Ins. Agcy., 322 E. 2nd St. 628-1214 287-8605 Inouye Ins. Agcy., 15092 Sylvanwood Ave., Norwalk. 864-5774 Tom T. Ito, 595 N. Lincoln, Pasadena. 749-7189 (LA) 681-4411 Minoru 'Nix' Nagata, 1497 Rock Haven Monterey Park 268-4554 Steve Nakaji, 11964 Washington Place. 391-5931 837-9150 Sato Ins. Agcy., 366 E. 1st St. 629-1425 261-6519

Shimatsu. Ogata and Kubota Mortuary Three Generations at Experience... FUKUI Mortuary, Inc. 911 Venice Blvd. Los Angeles RI 9-1449 707 E. Temple St. Los Angeles 90012 626-0441

Books for You and Your Friends NEW! Weight Control with Asian Feeds by Kay Shimizu Low-cal gourmet recipes, 92pp. orig. woodcuts. \$2.95. Asian Flavors by Kay Shimizu. Japanese and Chinese, taste-tested basic recipes. Over 10,000 copies sold in U.S. 221pp. \$7.00. Asian Cookbook for Juniors and Beginners by Shimizu. For everyday use, excellent for all ages. Color illus. \$5.95. Eating Cheap in Japan. In color, exciting, pocket-size, 104pp. \$2.95.

Books for You and Your Friends Send Check or M.O. to Glenn Shimizu 19520 Scotland Dr., Saratoga, Calif. 95070 Include 6% Calif. sales tax plus 50c handling per book.

Books for You and Your Friends

Books for You and Your Friends

Books for You and Your Friends

Books for You and Your Friends

Books for You and Your Friends