

PACIFIC CITIZEN

Publication of the National Japanese American Citizens League

Vol. 84 No. 3

Friday, January 28, 1977

Postpaid in U.S. 20c

15 CENTS

Court scenes by Karen Takata:



WENDY YOSHIMURA

FORD PARDONS IVA TOGURI:

1st treason case voided

WASHINGTON — In one of his last actions as Chief Executive of the United States, President Ford pardoned Iva Toguri d'Aquino, known via voice to millions of World War II servicemen as "Tokyo Rose", on Jan. 19.

According to attorney Wayne Collins, this was the first time in U.S. history that a full and unconditional pardon had been granted where the conviction was for "treason".

"At first we were speechless," said Clifford Uyeda of the Committee for Iva Toguri. "Visions blurred. We were grateful..."

"We also thought of Edison Uno, our active colleague in the committee who left us so recently... We know that his joy would have known no bound..."

Mrs. d'Aquino was one of several women who made regular propaganda broadcasts for the Japanese in the Pacific, but was the only one prosecuted.

In 1949, the federal district court in San Francisco found Iva guilty of treason for her part in the Zero Hour programs—a charge she has steadfastly denied.

She served 6½ years in prison.

"Iva Toguri d'Aquino was a victim of a legend which led the American people to believe she was Tokyo Rose," said acting national JACL director Donald L. Hayashi in a public statement following the news of the pardon.

"In fact, Iva was but one of fourteen English speaking women announcers employed by Radio Tokyo."

Hayakawa's Role

Sen. S.I. Hayakawa (R-Calif.), who had urged Mr. Ford several times in the past few months to pardon Mrs. d'Aquino, called a news conference to hail the President's action.

Hayakawa said that because she alone refused to give up her American citizenship and accept Japanese nationality, she was subsequently tried.

"Mrs. d'Aquino was tried under conditions of postwar anti-Japanese hysteria," Ha-

yakawa said, "during which a fair trial was well-nigh impossible. She lived through her unjust prosecution and imprisonment with quiet dignity... she remained loyal to the U.S. despite the fact that the U.S. had treated her unjustly."

Continued on Page 3



IVA TOGURI

Vandals strike at Topaz

DELTA, Utah—A marker dedicating the site of the World War II Japanese Relocation Camp at Topaz, Millard County, was recently vandalized with an estimated \$2,500 damage.

The marker, dedicated during ceremonies Oct. 9, 1976, was found with three rifle holes in two of the metal plaques. One of the larger plaques was torn from the monument.

Ward Killpack, Millard County Bicentennial Chairman, stated, "The vandalism that we have going on is becoming serious. This is just one example. When concerned people put time, effort and money into a project it shouldn't be damaged by others with malicious ideas. Vandalism is serious and the only way it can be controlled is by the efforts of everyone concerned."

The Millard County Sheriff's Department is offering a reward for information leading to the arrest of the person defacing the monument.—Utah Nippo (Jan. 12)

Found guilty on 3 counts

By LEE RUTTLE

OAKLAND, Calif.—At 8:53 p.m., Thursday, Jan. 20, the jury of eight women and four men filed into Judge Martin Pulich's courtroom after deliberating for nine days and the foreman, Robert Loge, announced that they had found Wendy Masako Yoshimura guilty on three counts of the indictment. He said they could not reach a decision on the fourth count.

After the jury had been polled individually on each count at the request of Defense Attorney James Larson, the judge ruled the verdict on the first three counts as valid and declared a mistrial on the fourth count.

Wendy Yoshimura, 34, had been charged with unlawfully and knowingly possessing (1) an explosive; (2) a machine gun; (3) a substance, material and combination of substances and material with the intent to make a destructive device and explosive; and (4) a destructive device and explosive with intent to injure, intimidate and terrify

persons and with intent to wrongfully injure and destroy property.

Deputy District Attorney Jeffrey Horner, who had prosecuted the case, immediately moved that Wendy be remanded to custody. Larson jumped to his feet and in scathing words denounced Horner's motion calling it, "vindictive, utterly incomprehensible and appalling."

While Judge Pulich said that he did not approve of Larson's adjectives, he did rule against Horner's motions, taking into account the support Wendy received in the Japanese community and her good record since having been released in bail. He said, "I do not believe she will break that trust."

Pulich then set Thursday, Feb. 24, for sentencing and for arraignment on the five counts of contempt for which he cited her when she refused to answer certain questions on the witness stand.

Wendy could receive up to 15 years in state prison for conviction on the first

three counts in the indictment and six months on each of five contempt citations.

The judge dismissed the jury at 9:04 p.m.

Supporters Stunned

Spectators in the crowded courtroom, all friends and loyal supporters of Wendy, sat in stunned silence while the extensive press corps clamored to get statements from the principals in the 14-week trial. Both press and Wendy's friends had been in the courtroom daily since jury delibera-

Continued on Next Page

Suburban zoning upheld by court

WASHINGTON—The Supreme Court ruled 5-3 it was not inherently unconstitutional for a suburb to refuse to change zoning restrictions whose practical effect is to block construction of racially integrated housing for persons with low and moderate income.

The Jan. 11 ruling involved a nearly all-white Chicago suburb of Arlington

SACRAMENTO, Calif.—An Issei woman is apparently the victim of a legal technicality in the Trading with the Enemy Act, preventing her from recovering an estimated \$87,000 worth of property. The property was seized from Mrs. Onatsu Akiyama, and her husband (now deceased).

At the outbreak of World War II, the Akiyama family lived in nearby Florin. They were later interned at Crystal City, Texas. While at camp, their home and family store was destroyed in a fire, believed to be deliberately set. After the war ended, there was little they could return to.

While still interned at the

Heights. The majority opinion, written by Justice Lewis Powell Jr., said there must be "intent" or "purpose" to discriminate in order for zoning restrictions to be unconstitutional.

In a brief order the previous day, the court held unconstitutional a New York state law requiring private contractors on government jobs to hire citizens rather than aliens. □

Crystal City camp, they were offered the choice of returning to their home in Florin or being sent to Japan by the U.S. Government.

But as the Florin home was destroyed by fire, their son Taneo was still in Japan after being stranded while attending school there; and her mother was living in Japan and ill, Mrs. Akiyama decided to return to Japan.

The Akiyamas were sent, along with many other internees of Crystal City, to Japan in December, 1945.

The U.S. Government then declared the Akiyamas as enemy aliens under the Trading with the Enemy Act.

They had arrived three months too soon to avoid the "enemy" classification. Due to this, Mrs. Akiyama estimates an \$87,000 loss in property including stocks, insurance policies, cash and bank accounts.

Mrs. Akiyama states she was never told of the potential loss of property when they were sent to Japan, that she had no knowledge of the Trading with the Enemy Act.

The Akiyamas returned to the U.S. in 1959. They actively sought the return of their property until all avenues of

appeal were exhausted. As of May 27, 1976, the Akiyamas did not pursue any more claims since 1962. It seemed a hopeless cause.

Appeal to JACL

Last year, however, Brent Kato of the Asian Legal Services Outreach, advised Mrs. Akiyama that any suit regarding this denial of their claims is probably barred by the statute of limitations.

"We are uncertain of how many other Japanese Americans were caught in the same situation, but hopefully that can be determined at the national level of the JACL," wrote Brent Kato in a letter to Sacramento JACL President Floyd Shimomura.

Rex E. Lee, director of the Office of Alien Property responded on March 2 to Brent Kato regarding the issue:

"I regret to advise you that the interests of Michiharu Akiyama and Mrs. Onatsu Akiyama... cannot be returned to them or their heirs by the Office of Alien Property."

Kato then decided to seek the support and endorsement of the Sacramento JACL in Mrs. Akiyama's ef-

Continued on Next Page

Press lauds Carter's appointment, but Asian/Pacific American groups critical

HONOLULU — Patsy T. Mink, former U.S. representative, was nominated Jan. 14 by President-elect Carter as assistant secretary of state for ocean and environmental affairs, succeeding Frederick Irvin, a career Foreign Service officer.

Mink said, "Everyone in Hawaii knows of my deep concern for the environment and to expand this concern to worldwide issues is very challenging and exciting."

An editorial in the Star-Bulletin, Jan. 7, remarked: "We are pleased that the job found for Mink is an appropriate one . . . as chairman of the Subcommittee on Mines and Mining . . . she had a major role in the shaping of legislative proposals to regulate strip mining . . ."

"The fact that Mink is a woman," the editorial goes on, "—and an Oriental one, at that—was probably a factor in her selection, which is unfortunate. But her appointment is certainly not a token one—she is too vigor-



PATSY T. MINK

ous and able for that." Yet another editorial, the Honolulu Advertiser for Jan. 8, said, "It would have been surprising if . . . Carter had not made use of the talents of former Representative Patsy Mink . . ."

"Whatever happens on . . . specific issues, however, it is a plus for everyone that Patsy Mink's talents will be of use to the Carter Administration."

WASHINGTON—In a letter dated Jan. 17 to President-Elect Jimmy Carter, a group of Asian and Pacific Island American organizations criticized him for his failure to appoint Asian and Pacific Island Americans to his new administration.

In expressing "deep regret and disappointment", the Asian American organizations criticized Carter for not fulfilling the campaign promises which were made to the Asian American community in San Francisco to appoint qualified Asian Americans to positions in high levels of his administration.

The Asian and Pacific Island American organizations sending the letter included the Japanese American Citizens League, Organization of Chinese Americans, Inc., Organization of Pan-Asian American Women, and the Asian Pacific American Federal Employees Council.

The letter cited the fact that three U.S. senators and

three congressmen of Asian and Pacific Island ancestry serve on Capitol Hill (Hayakawa: R-Calif., Matsunaga: D-Hawaii, Inouye: D-Hawaii, Mineta: D-Calif., Akaka: D-Hawaii, and Won Pat: D-Guam) and that Asian and Pacific Island Americans have the fastest rate of growth of all racial minorities.

"However," the letter cited, "Asian Americans have

Camp newspapers go on display

LOS ANGELES—Newspapers published by evacuees in the WRA relocation centers are on display through Feb. 15 at the Cal State Univ.-Northridge Oviatt Library. The exhibit, titled "The Great Betrayal: the Japanese in American Internment Camps", can be seen Monday-Friday, 8 a.m.-5 p.m.

Despite false reports picturing the concentration camps as comfortable, they were in reality crowded with many families together in barracks, Dennis Blakewell, CSU-Northridge special collections librarian noted.

Other related material for exhibit or donation to the Oviatt Library are welcome.

been historically neglected by decision and opinion makers in our society."

The letter concluded, "we emphatically and hopefully urge you to consider the

appointment of Asian and Pacific Island American people so that your new administration will reflect the racial and ethnic diversity of America." □

MITSUINE'S

NISEI FUN TOUR TO RUSSIA

Join the snappy but lavishly planned 9-Day Adventure in Moscow and Leningrad

Departs: Sat., April 16, 1977
Returns: Mon., April 25, 1977

Aboard Pan American Airways Boeing 707. Tour Fare . . . \$963

From Los Angeles. Includes Airfare, Transportation, Kremlin, shopping in Red Square's 1st Class hotel accommodations, 3 meals a day, largest department store, dinner and show at Bolshoi or world famous Moscow Circus . . . 2 Days of Old Russia at Vladimir and Suzdal . . .

Tour Conductor: TAKITO YAMAGUMA

For Brochure Reservation, call or write

Mitsuline Travel Service

327 E. 1st St., Los Angeles 90012

Phone: (213) 625-1505



ITINERARY

3 days in Moscow: Inside the From Los Angeles. Includes Airfare, Transportation, Kremlin, shopping in Red Square's 1st Class hotel accommodations, 3 meals a day, largest department store, dinner and show at Bolshoi or world famous Moscow Circus . . . 2 Days of Old Russia at Vladimir and Suzdal . . . 3 Days in Leningrad: Built by Peter the Great to rival Venice, a city of 300 bridges, Hermitage Museum, super dinner, ballet or opera.

JACL Tour to Europe

HOLLAND • GERMANY • AUSTRIA • ITALY
FRANCE • ENGLAND

27-DAY EXCURSION — \$1,825

Includes airfare, airport tax, 1st class hotel accommodations, and many other features.

DEPARTS:
Thurs., June 9, 1977

RETURNS:
Tues., July 5, 1977

FROM LOS ANGELES
via Lufthansa German
Airlines 707

FEATURES

- First Class Hotel Accommodations
- Transfers Between Airports and Hotels
- 35-40 Meals (Mostly Breakfast)
- English-Speaking Escorts to Answer Questions and Provide Other Services
- Farewell Dinner Party on the Last Night

For Reservation, Call or Write

Tom Okubo
JACL European Tour
P.O. Box 22386
Sacramento, Calif. 95822
(916) 422-8749

Nights

AMSTERDAM	2
COLOGNE	1
HEIDELBERG	1
LUCERNE	2
INNSBRUCK	1
VIENNA	2
KLAGENFURT	1
VENICE	1
ROME	2
FLORENCE	2
GENOA	1
NICE	1
LYON	1
PARIS	3
LONDON	3

PROPERTY SEIZED

Continued from Front Page

forts. He asked that the information of her case be forwarded to the appropriate national JACL office or committee.

Insurance Case

A similar case occurred in 1969 when the 10 surviving relatives of a California Japanese American, Tadashi Uyemura, who died in Japan shortly after World War II, received \$1,511 due on his life insurance.

The money was seized by the U.S. Government as "enemy property". All attempts by the Uyemuras to claim the money over the past two decades were unsuccessful until the House, over avid objections from the Justice Department, finally passed a private bill to return the money.

Because Mr. and Mrs. Akiyama had arrived three months too soon in Japan, they were classified as "enemies".

In the eyes of the director of the Office of Alien Property, "There has been no change in the eligibility requirements for the return of vested property since the dismissal of Claims No. 43975, 44087, and 44088 (claims numbers of Mr. and Mrs. Akiyama)." □

Merit Savings assets up sharply

LOS ANGELES—Assets of Merit Savings reached a new high of \$43,624,320 as of Dec. 31, 1976, it was announced by its president Bruce Kaji this past week (Jan. 18).

New customers at Merit last year deposited a record \$8,039,530, which helped finance 276 homes and apartments in Los Angeles and Orange counties. Total mortgage loans made last year came to \$13,583,230, Kaji added.

Buddhist retreat center dedicated

SAN LUIS OBISPO, Calif.—The retreat center adjacent to the San Luis Obispo Buddhist Temple near Avila Beach was dedicated Dec. 19 at ceremonies officiated by Bishop Kenryu Tsuji.

First of several cabins comprising the retreat center was built by Harry Shimamoto and volunteers from the local temple.

Honors in science

LOS ANGELES—Nominations are open for California Scientist of the Year and California Industrialist of the Year, with papers to be submitted by Feb. 28 to the Calif. State Museum of Science and Industry, 700 State St., Los Angeles 90037.

Choose PC Advertisers

POPULAR COOKBOOKS by Kay Shimizu

- Asian Flavors, Basic text, 221 pp. Taste-tested Japanese and Chinese recipes, illus. . . . \$8.00 ppd.
- Gourmet Wok Cooking, Dynamic color. Over 40,000 in print . . . \$3.25 ppd.
- Japanese Foods for Health, Dramatic color photos. . . \$3.50 ppd.
- Weight Control With Asian Foods, Original woodblocks, 92 pp. . . . \$3.50 ppd.
- Asian Cookbook for Jrs. & Beg., Color plates, illus. . . \$6.75 ppd.

Send Money Order or check to
GLENN SHIMIZU, 19520 Scotland Dr., Saratoga, Calif. 95070



James Larson makes his closing statement to the jury.

Yoshimura trial—

Continued from Front Page

tions began, from early morning until the jury retired for the night, sometimes as late as 6 p.m., and for 18 hours on the last day.

Defense Attorney Larson told the press he would appeal on the basis of "judicial errors".

Prosecutor Horner, as expected, told reporters that the verdict "proved that the judicial system works". He would not say if he intended to re-try Wendy on the fourth count.

Although Wendy appeared to accept the verdict stoically, those close to her knew that she was stunned beyond belief. For a long time after the jury left the courtroom, Wendy sat in conference with her attorneys. The bailiff had to clear the courtroom. Even then her friends remained in the corridor, many in tears and

others in a state of shock.

When Wendy, her attorneys and a few close friends finally left the third floor courtroom and got off the elevator on the first floor they were met with a tremendous barrage of cameras and microphones.

Throughout the nine days of jury deliberations, jurors frequently requested read-backs of testimony and re-examination of items of evidence.

Regardless of verdict, they were obviously a hard-working jury; although elderly, Mrs. Lucille Mitchell, the only black person on the jury told the press she had held out for acquittal but was pressured by the others. "At one point," she said, "they called me stupid. I was ashamed to walk into that courtroom and answer to a guilty verdict." □

KOKUSAI TRAVEL



JAPAN TOURS FOR JACL'ERS

Highlights of Japan—11 days: 5/7, 6/22, 8/13 & 10/1.

Suggested for 1st timers & includes Tokyo, Hakone, Kurashiki, Hiroshima, Shodo Isle & Kyoto. Most meals & cost: \$395

Odyssey to the Other Side of Japan—11 days: 8/13 & 10/1.

To seldom explored areas of Japan. Includes Tokyo, Alps, Takayama, Japan Sea, Wakura, Fukui, Amanohashidate, Tottori, Kurashiki, Shodo Isle & Kyoto. Includes most meals. Cost: \$450.

Extensions from Kyoto

KYUSHU ISLAND—6 days: 7/1, 8/24 & 10/2. Cruise to Kyushu Island & visits Miyazaki, Cape Tai, Ibusuki, Kagoshima, Hitoyoshi, Kumamoto & ends in Fukuoka. Some meals & cost: \$275.

THE ORIENT—8 days: 10/13. To Bangkok, Singapore, Hong Kong and ends in Osaka. Breakfasts daily, airfare included. Cost: \$550.

Sansei Summer Tour—22 days: 6/22. Arranged especially for our Sansei. Includes Tokyo, Kyushu Island, Inland Sea, Kyoto, Japan Sea, Alps, Takayama, Mt. Fuji. Almost all meals & cost: \$630.

TRANS-PACIFIC AIRFARES NOT INCLUDED
JACL AUTHORIZED TRAVEL AGENT



KOKUSAI TRAVEL
321 E. 2nd St., Los Angeles, Calif. 90012
Phone: 626-5284

FORD PARDONS TOGURI

Continued from Front Page

The pardon was applauded by the JACL as Hayashi added: "Today's action by President Ford culminates efforts to right an unjust trial of 30 years ago."

"Iva was and is a true American patriot. During World War II, she courageously defended America and gave food and medical help to American prisoners of war in Japan."

"Today, we know after much research she was innocent. Today's action by President Ford was vigorously supported by U.S. Senators Spark M. Matsunaga of Hawaii, S. I. Hayakawa of California; Gov. George Ariyoshi of Hawaii; Attorney General Evelle Younger, California, and such groups as the California state legislature and the legislative bodies of San Francisco and Los Angeles."

"We are delighted and grateful to President Ford

'Tokyo Rose' case topic at Salinas

SALINAS, Calif.—Col. John Hada (ret.), who received his master's degree at the Univ. of San Francisco on the so-called "Tokyo Rose" case, will be guest speaker on this subject at the Salinas Valley JACL installation dinner on Saturday, Feb. 5, 6:30 p.m. at the Santa Lucia Room in the Community Center.

For Japanese-speaking members, Hada is expected to summarize his discussion in Japanese.

Shiro Higashi will be installed as 1977 chapter president. Dinner tickets are \$8.50 per person.

for granting pardon... This will enable her to regain her U.S. citizenship, which she cherished and clung to so tenaciously during her difficult years in Japan."

Justice Reigns

Dr. Clifford Uyeda, chairman of the JACL Committee for Iva Toguri, said:

"Nothing can be done to erase over 30 years of suffering, abuse and humiliation endured by Mrs. Iva Toguri d'Aquino. But a presidential pardon will go a long way toward correcting one of the great personal miscarriages of justice recorded in the history of our country."

San Francisco attorney Wayne M. Collins, whose late father was her chief counsel in the 1949 trial, stated that for the sake of history and for the integrity of the American judicial sys-

tem, "the gross miscarriage of justice had to be corrected by Presidential pardon". He praised Iva for "extraordinary courage in a long and difficult struggle."

Today, at age 60, Iva is a resident of Chicago and conducts a family gift shop.

"After all these years it's hard for me to believe that

it's all over, and that the pardon is really true," she said. "As you know, I have maintained my innocence from the very beginning."

"I wish to express my gratitude to President Ford for his compassion and sense of fair play and to all those who worked so hard on my behalf." □

Tamura among 7 to probe judge's job competence

SAN FRANCISCO—A seven-man tribunal of state appellate judges, including Stephen K. Tamura of the San Bernardino court, was selected by lot Jan. 17 to decide whether an 82-year-old state supreme court justice should be unseated because of senility and failure to perform his duties.

The Commission on Judicial Performance had recommended Associate Justice Marshall F. McComb be

removed.

Of the 51 active judges on the appeal court, 12 disqualified themselves from the drawing. Tamura was the fifth justice selected by the supreme court clerk, who conducted the drawing.

Tamura, 64, an active Orange County JACLer, was appointed to the superior court in 1961 by Gov. "Pat" Brown and to the appellate court in 1966 by Gov. Ronald Reagan. □

Eviction date for JACL-PC offices extended to May 31; tenants next door have Feb. 28

LOS ANGELES—Plight of some 30 Latino tenants facing eviction Feb. 28 from their apartment in the four-story Sun Hotel on Weller St. was dramatized Jan. 18 when the L.A. Times broke the story on the front page of its local news section.

Cameramen and reporters from the local TV-radio stations arrived on the scene later in the day to show construction activities of the New Otani Hotel, and heard representatives from the Little Tokyo People's Rights Organization who were demanding a moratorium on the evictions from the old hotel, which is scheduled to be razed for the new hotel

complex.

"The CRA (Community Redevelopment Agency) has threatened the Sun Hotel tenants with eviction," Cynthia Chono of the LTPRO charged. "They've been harassed but some—a small core of 10 or 12—are refusing to move."

Chono added the complaint stems from the CRA's failure to provide new living facilities for Sun Hotel residents.

Michael Oh, Little Tokyo CRA project manager, said his office has been helping to find new locations for the residents, "much beyond what is required and doing

so on an individual level" so that the eviction process may not be necessary.

However, Oh added he would be checking into procedures for forced eviction.

Tenants in the adjacent Sun Bldg., such as the JACL and Pacific Citizen were notified they would be able to stay through May 31, pending preparation of interim facilities, such as the old Nishi Hongwanji building at First and Central Ave.

The 22-story New Otani Hotel is scheduled to have its topping ceremony Feb. 1. Completion is scheduled for April, 1978. □

Authorized JACL Charter Flights

THIS NOTICE is to advise all JACL members that the West Los Angeles JACL Chapter's flights to Japan for 1977 have not been authorized by the National JACL Travel Committee. The National JACL organization disclaims any responsibility or liability arising from such flights.

The JACL Travel Committee was formed by the JACL National Board to supervise the expanding travel program by coordinating the various aspects of the flights for better membership service and preventing possible abuses from occurring. It is the goal of the Travel Committee to insure JACL members that airlines of the highest reliability and service to the passengers are used for its flights.

In order to provide the greatest service to the membership, the Travel Committee has established "reporting requirements". These are:

- 1—A detailed financial report of the flights to fully disclose what funds were collected from the passengers and how they were disbursed.
- 2—A full disclosure of all direct and indirect benefits that may inure to the benefit of a person or persons representing the chapter on JACL flights.

Benefits are defined as:

- (a) Cash gifts from any source connected with the travel business.
- (b) Free merchandise from any source.
- (c) Free services: 1—Meals, 2—Entertainment, 3—Hotel accommodations, 4—Land tours, 5—Transportation of any type, 6—Any others.
- (d) Commissions from: 1—Air fare, 2—Land tours, 3—Duty free stores and other sales organizations, 4—Insurance, 5—Others.
- (e) Any discounts of any type or form.
- (f) Any other benefits not listed above.

3—Passenger lists are required to insure that at least one member of the family was a JACL member for a minimum of six (6) months prior to departure to meet Civil Aeronautics Board (CAB) regulations.

THE ABOVE REPORTS and others are required by the Travel Committee to protect JACL's group travel status with the CAB, to meet all Internal Revenue Service and other governmental regulations, to protect all JACL travelers from abuses and to assure high standards of service to our members travelling under the auspices of the JACL.

STEVEN DOI

Chairman, JACL National Travel Committee

1977 JACL Travel Program

SPONSORED BY

National Japanese American Citizens League

Open to All Bonafide JACL Members

Group Flights to Japan

Via JAL 747/GA 100 Round trip fare: \$460*

GROUP NO.	DEPART FROM	DATES
1—	Los Angeles	March 27-April 24
2— FULL	San Francisco	April 11-May 2
3—	Los Angeles	May 7-May 28
4—	San Francisco	June 19-July 13
6—	Los Angeles	June 22-July 13
7—	San Francisco	July 20-Aug. 17
8—	San Francisco	Aug. 7-Aug. 28
9—	San Francisco	Sept. 25-Oct. 16
11—	San Francisco	Oct. 2-Oct. 23
12—	Los Angeles	Oct. 9-Oct. 30
13—	San Francisco	Oct. 9-Oct. 30

Group Flights to Japan

Via PanAm 747/GA 100 Round Trip Fare \$460*

16—	Los Angeles	Aug. 13-Sept. 3
10—	Los Angeles	Oct. 1-Oct. 22

Charter Flight to Japan

Via Japan Air Lines Round Trip Fare \$549*

17—	Chicago	Oct. 2-Oct. 22
-----	---------	----------------

First JACL Group Flight to Europe

Via Lufthansa 707 27-day Excursion: \$1,825**

15—	Los Angeles	June 9-July 5
-----	-------------	---------------

CONTACT YOUR ADMINISTRATOR FOR FOLLOWING FLIGHTS

- No. 1—Mas Hironaka (714—294-4176)
San Diego JACL, P.O. Box 2548, San Diego, Calif. 92112
- No. 2, 4, 13—Grant Shimizu (408—297-2088)
San Jose JACL, 724 N. First St., San Jose, Calif. 95112
- No. 15—Tom Okubo (916—422-8749)
Sacramento JACL, P.O. Box 22386, Sacramento, Calif. 95822

* Air fare subject to revision pending airline's fare increases for 1977; prices based on 1976 fare and includes round trip air fare, \$3 airport departure tax, \$20 JACL administrative fee. Adult and child seats same price on any flight; infants two years, 10 pct. of applicable regular fare. ALL FARES, DATES, TIMES MAY BE SUBJECT TO CHANGE.

** Air fare to Europe subject to revision pending airline's fare increases for 1977; price includes round trip air fare, tax, JACL administrative fee, hotel accommodations and some meals. All fares, dates, times may be subject to change.

Information Coupon

Mail to any JACL-Authorized Travel Agent, Chapter Travel Chairperson or President, JACL Regional Office or to:

National JACL Travel
1765 Sutter St., San Francisco, Calif. 94115

Send me information regarding 1977

Nat'l JACL Flight, especially Group No. _____

Name _____

Address _____

City, State, ZIP _____

Day Phone _____ Chapter _____

TOUR WITH... Japan Travel Bureau International

8-Day MAIN TOUR: TOKYO TO HIROSHIMA

Basic Fare: \$510*; Sgl Rm Supp \$117

Tokyo (2 nights), Toba (1), Katsuura (1), Shirahama (1), Kyoto (2).

6-Day KYUSHU EXTENSION: Hiroshima to Fukuoka

Basic Fare: \$358*; Sgl Rm Supp \$41

Beppu (1 night), Miyazaki (1), Ibusuku (1), Kagoshima (1), Fukuoka (1)

6-Day TOHOKU EXTENSION: Tokyo to Tokyo

Basic Fare: \$421*; Sgl Rm Supp \$50

Tokyo (1 night), Asamushi (1), Yasumiya (1), Hanamaki (1), Matsushima (1)

(This tour operated from June to October.)

* TOUR PRICES based on 15 or more members traveling together. Includes hotel accommodations, land transportation, English-speaking guide and escort. All fares may be subject to change.

Arrival and Departure Packages

Arrival: Transfer to hotel, overnight in Tokyo.....\$28
Sgl Rm Supp \$14.50

Departure: Overnight in Tokyo, transfer to airport.....\$28
Sgl Rm Supp \$14.50

This Is the Only Way to See Japan

Summer Vacation Tour

For College Students & Young Adults

Departure: Sunday, June 26 via JAL #61

FROM LOS ANGELES • RETURN JULY 17

ESCORT: MATAO UWATE

"This is My 16th Annual Tour to Japan"

This is a Custom-Designed Tour
and Not a Package Tour:

Visit Tokyo, Osaka, Izumo, Matsue, Amanohashidate, Kyoto, Toei Movie Studio, Aware, Eiheiji, Tojinbo, Kanazawa, Wakura, Toyama, Takayama, Meiji Mura, Gifu, Nara. (Tour disbands July 11). Cost: about \$1,800

CHALLENGING!
EXCITING!

ADVENTUROUS!
INFORMATIVE

Above All—Lots of Fun.

Radio Lil Tokyo, 110 N. San Pedro St.,
Los Angeles 90012. Tel. 628-4688



GENUINE TATAMI Manufacturer

NICHIBEI ENTERPRISES, INC.

260 E. 31st St., Los Angeles, Calif. 90011
Tel. (213) 232-1728



PACIFIC CITIZEN

Published weekly except first and last weeks of the year at 125 Weller St., Los Angeles, Calif. 90012. (213-626-8936)

James Murakami, National JAACL President
Alfred Hatate, PC Board Chairman
Harry K. Honda, Editor

Second-class postage paid at Los Angeles, Calif. Subscription rates payable in advance: U.S. \$9 year, foreign \$13 year. (First Class available upon request.) \$5 of JAACL Membership dues for one-year subscription through JAACL National Headquarters, 1765 Sutter St., San Francisco, Calif. 94115

News and opinions expressed by columnists, except JAACL staff writers, do not necessarily reflect JAACL policy.

Limitations: The National JAACL shall not be responsible for the commitments or obligations of local Chapters or District Councils and their officers unless National Headquarters assumes such liabilities in advance in writing. —JAACL By-Laws: Article XIV, Section 1

4

January 28, 1977

EDITORIALS:

Presidential Pardons

Presidential pardons were in the news this past week. The one clearing the court record for Iva Toguri d'Aquino, convicted in 1949 of treason for wartime broadcasts aimed at American GIs in the Pacific, was well received. The other one affecting draft resisters during the conflict in Vietnam has apparently split the feelings of the populace.

The case for Iva Toguri, for which JAACL carefully campaigned, again shows the pursuit of justice is an ennobling cause. Twenty-seven years ago, public hysteria surrounding the trial was still anti-Nisei and the JAACL pragmatically stood aloof—not wishing to be associated with a person charged with treason for fear of jeopardizing its own legislative efforts to secure naturalization privileges for the deserving Issei.

But the Pacific Citizen was criticized by some "Tokyo Rose" trial on the mistaken notion the organization was supporting Iva. Memberships in a few chapters were affected adversely.

The 11th-hour action of President Ford in granting the Chicago woman a pardon and correcting "one of the greatest personal miscarriages of justice" (to quote the JAACL Committee for Iva Toguri chairman Dr. Clifford Uyeda, who worked closely with Wayne M. Collins, who assumed his late father's role as counsel for Iva) was the most welcome news for Niseidom last week.

One comment for now on President Carter's controversial order is that he was exercising presidential powers stated in the Constitution. (Article II, Section 2: "...and he shall have Power to grant Reprieves and Pardons for Offences against the United States, except in Cases of Impeachment.) Perhaps, it is a step toward keeping another campaign pledge of his — to cut the fat from the defense budget.

In closing the Toguri case, there is another Nisei treason trial, which the younger generation of Nikkei may not be aware of—that of Tomoya Kawakita, who was convicted in the summer of 1948 for his activities in a Japanese prisoner of war camp. Employed by the Japanese army as an interpreter, he was charged with beating up American POWs—while the defense counsel Morris Lavine argued the charges did not arise to the "dignity" of treason but were "a series of isolated assaults and batteries—nothing more."

Kawakita maintained he had never committed brutalities as charged.

We are not aware of his whereabouts today, but he returned to Japan in 1963. His original death sentence was commuted to life by President Eisenhower in November 1953. In what was one of the last executive acts of President Kennedy, Kawakita was released from prison in 1963 on condition he leave the United States and never return. Rep. Edward Roybal (D-Calif.) was among the few insiders who got to Kennedy to have him release Kawakita.

Hosokawa Column Derogatory Terms

Editor:

I picked up the Pacific Citizen in a Salinas bank and felt happy to read it. Especially did I enjoy Bill Hosokawa's article, "The People Who Read PC" (Jan. 7-14).

He narrated how travelers enjoy chancing upon the paper in various places. They find much of interest in it. Yet they sometimes note a reflection of a negative feature of Japanese American life, Hosokawa states, such as a lack of humor.

On such a topic I am no authority. For one thing, I am not of Japanese ancestry.

However, I feel something else must be stressed to all people wherever they may dwell on earth. Time is rather short and humanity must keep it in mind at all times

We are living in a nuclear era. Man has very little time to learn to subdue his beastly qualities and develop far more his cooperative, kindly, fair and humane ones. For the first time in man's awfully long evolution, he has the power to provide an economically secure, adventurous, healthy and happy life for all or to utterly destroy himself by a final holocaust of nuclear war.

We must all stop holding grudges about what happened in the past. We must learn from man's experience over the ages what is needed most for us to enjoy life together, in the brief time each of us have. Is not 60, 70, 80 or 90 years of an individual's life merely a flash-of-a-firefly, compared to the eternity of a universe's existence?

Let us truly act as good brothers and sisters, wherever on earth our origin is from—what unites us as human beings is far more paramount than surface features that distinguish us—race from race, nationality from nationality, religion from religion, language from language, or whatever.

Let us think deeply. Let us work together. Let us smile often. Let us speak gently so as to soothe, not ruffle another person. Let us praise often. Let us find fault on petty matters less. Let us put our hands around one another's shoulders in friendship.

Together, at times, let us watch the mysterious stars of the sky and exclaim in utter modesty and appreciation: "Thanks universe. Thanks for making us a part, however microscopic; of the shoreless-and-timeless totality. Thanks for our sense of awe. Thanks for giving us the opportunity to crawl about on this pebble of a planet as we joy-ride through the cosmos. Thanks for good friends to keep us company. Thanks for life."

GEORGE HERMAN

Marina, Calif.

Edison Uno

Editor:

There is no way to measure the loss of Edison Uno to the Japanese American community.

His foresight, outspoken courage and tenacity as witness his long, lonely fight against Chief Justice Earl Warren to get him to admit that he made a mistake in pressuring for removal of Japanese from California when he was attorney general of the state, his intense campaign with co-chairman Raymond Okamura to eliminate Title 2 (the Detention Camp Act) from the statute books, his dogged determination for years in getting National JAACL to push for a Reparations Bill in congress, and his unflinching support to get Iva Toguri a presidential pardon and to see that Wendy Yoshimura received a fair trial One could go on and on and only touch the tip of the iceberg in what Edison accomplished in the field of human rights in his altogether too brief 47 years.

I am afraid he will be especially missed in JAACL. Leaders are few and far between. We have caretaker-type administrators but no real leader. We need courageous leadership now and in the near future. Our number 1 priority, the reparations program, requires an activist leader. Our battle for human rights for all will require someone with vision and courage.

I only hope that with Edison gone, the selection committee for a new national JAACL director, will display some foresight and select a true leader. Not some warmed-over caretaker, please.

KEN HAYASHI

Orange County JAACL

Editor:

While "Jap" may be pejorative, "Japlish" is not and has a different origin. Since Yūki Akaki (PC Ltrs, Jan. 7-14) lives in our neighborhood(*) state of Minnesota, he may be familiar with the Finnish people, their blend of Finnish and English, we in the upper northwest peninsula call "Finglish". H.L. Mencken has a chapter on such barbarous, macaronic uses in his book, "The American Language", and mentions Finglish.

It is odd that "Jap", a contraction of Japanese is said to be pejorative and derogatory. By analogy then, so should "Finn"

If I understand it, "Japlish" describes words which are English in origin but Japanese in form. The French, a sensitive if not orgulous lot when dealing with their holy

tongue, have tried putting down similar vulgarisms for years without getting anywhere. Almost all immigrant groups have amalgamated their particular languages with English in much the same way. (*)To the nitpicker, Michigan and Minnesota do have a common boundary with Isle Royale National Park (Mich.) in Lake Superior, adjacent to Minnesota.

JOHN V. WILCOX

Albion, Mich.

In appreciation

Editor:

Since Edison's death on Dec. 24, 1976, we have been overwhelmed by the many expressions of love, concern, and sympathy conveyed to us by those he touched.

Although it is our wish to thank everyone individually it is an impossibility. So we are taking this

means to express our heartfelt appreciation and gratitude to all who have helped us in one way or another during this trying time.

ROSALIND K. UNO

Elizabeth and Rosanne

THE UNO FAMILY

515 Ninth Avenue
San Francisco, Calif. 94118

Short Notes

Editor:

Your new format is exciting and very effective, I believe, from the reader's point of view. I hope you keep it permanently.

TOM OWAN

Los Angeles.

Dear Harry:

The new typography looks great. Please congratulate Kango (Kunitsugu) on his cover. It's really with it

BILL H.

Denver

From the Frying Pan: by Bill Hosokawa

Moses Lake Country

Moses Lake, Wash.

It was early in 1942 that Harry Masto and a couple of his friends from the Wapato farm country in Washington's Yakima valley drove over the Cascade Mountains to visit Jimmie Sakamoto in his newspaper office in Seattle. There were growing rumors of Evacuation, or maybe it had been decreed and all of us were waiting to hear details. I cannot remember which.

Anyway, Harry Masto had been approached by someone who owned a huge tract of land near a place called Moses Lake. He wanted to invite Japanese Americans from the Seattle area to settle on his land and farm it. Masto wanted Sakamoto's advice.

The big trouble was that the land, while incredibly rich, was largely sagebrush desert. Moses Lake was a sun-parched town of only a few hundred. Eventually water would be brought to the desert from the lake backing up behind massive Grand Coulee Dam across the Columbia River, but that would be some years in the future.

Masto was enthusiastic about the idea. It would be hard, he knew, but it would be infinitely better than sitting around in a concentration camp. Sakamoto seriously considered the plan and Hiko Setsuda kidded him about being a latter-day Moses leading the Japanese Americans to a new promised land at Moses Lake.

But for some now forgotten reason the project never materialized. Perhaps the Army frowned on it. Maybe there were more problems than could be solved in the limited time before Evacuation began.

People from Seattle were evacuated to the fairgrounds at Puyallup. Masto and the Issei and Nisei in the Yakima Valley were sent west, ironically enough to the livestock exhibition hall in Portland, Ore.

As soon as a leave program was established, Masto was among those who headed for farm jobs in eastern Oregon. Eventually he and Tom Iseri got into the produce shipping business in Ontario and prospered.

It was 1952 that Grand Coulee

water finally reached the Moses Lake area. Masto had never forgotten Moses Lake. He and Iseri turned their attention there, growing and shipping produce. In time Masto bought out his partner and Iseri returned to Oregon.

Today Masto has realized the promise he sensed back in 1942. His partner, Paul Hirai, runs the 3,000-acre Harry Masto Farms that grow prodigious tonnages of potatoes, onions, sugar beets, wheat, corn and other crops. Masto was one of the founders of a potato processing plant in Moses Lake. Some 600 local citizens bought stock and they got back many times their original investment when the plant was sold to a major national firm after six prosperous years.

Masto has a shipping shed in downtown Moses Lake. It was far out of town when he built it, but Moses Lake has grown around it. Masto's onions go out to buyers all over the country from this plant. Recently one shipment went to Belgium.

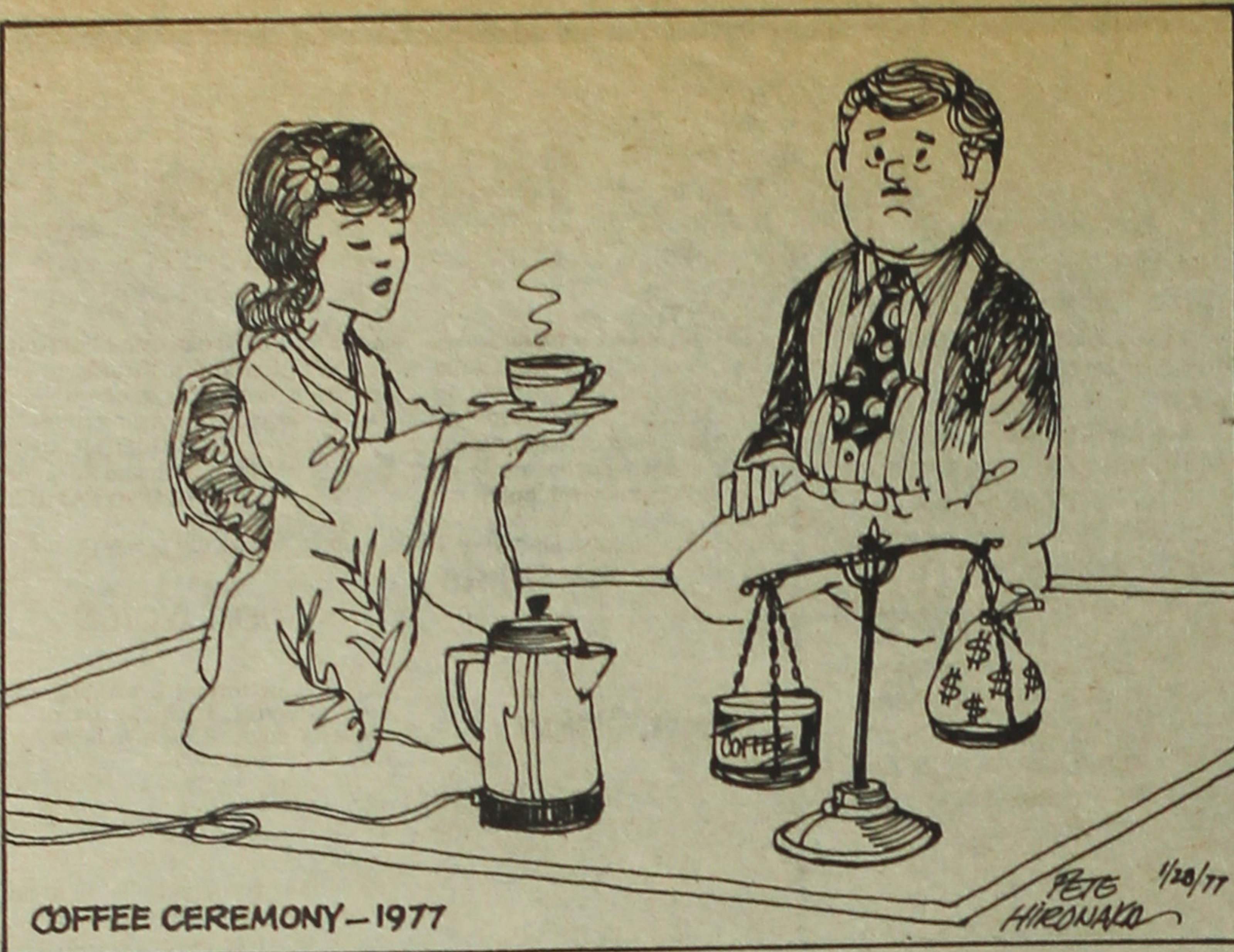
On the walls of Masto's modest office are a variety of plaques and certificates of appreciation for his services and contributions—Moses Lake Industrialist of the Year, citations from the Moses Lake Lions Club, Big Bend Community College, JAACL Century Club.

"I don't know if all this would have been possible if it weren't for the Evacuation," he says. "I might still be growing tomatoes and cantaloupes in Wapato."

Like many Nisei of the time, Masto took over the small family farm as soon as he finished high school. There wasn't enough money for college. He remembers that he plowed with a horse and pushed a walking cultivator to break the crust of the soil and get rid of the weeds.

"The Evacuation was a terrible experience, a terrible injustice," he says reflectively. "But when I hear some people say that some good came of it, well, I've got to agree."

If Moses Lake has been good to Harry Masto, Masto also has been good for Moses Lake. □



Book Review:

Yoshiko Uchida's 19th book

THE ROOSTER WHO UNDERSTOOD JAPANESE by Yoshiko Uchida, Charles Scribner's Sons, \$6.95 (6-9 years old)

Unless we have lost count, Yoshiko Uchida's latest book for children is the nineteenth to be published. As prolific a writer as she may be, Miss Uchida never seems to lose the spark, which makes her stories the kind children love to read.

THE ROOSTER WHO UNDERSTOOD JAPANESE promises to be another favorite with the youngsters.

This is the simply told story of little Miyo and how she solves a problem for her neighbor-friend, Mrs. Kitamura who has a rooster named Mr. Lincoln. "Mrs. K." as Miyo calls her, also has other pets, a basset hound named Jefferson, a parrot who answers to Hamilton, and a black cat named after Leonardo da Vinci.

But it is Mr. Lincoln and his early morning crowing

who creates the problem when a lonely and cranky neighbor objects to being awakened. He threatens "Mrs. K." with The Law, and that's when Miyo puts her ingenuity to work. The story ends happily for all concerned, including Mr. Lincoln.

The book is profusely and beautifully illustrated by Charles Robinson, who has depicted true-to-life pictures of average Japanese Americans. While the color reproduction leaves much to be desired, due to outrageous production costs in the publishing business, it is nonetheless warmly exe-

cuted in two basic colors. Robinson is a sensitive artist and this is the second time he has worked with a Uchida book. They do well together despite the distance of a continent between them.

The author very cleverly introduces bits of Japanese customs and even some words in the text, always deftly explaining so that the young reader becomes acquainted with a culture which might have been unfamiliar. She never "writes down" to her readers.

It is difficult for an adult to evaluate and criticize a book written for children unless one is immersed in that field. However children's librarians will tell you which books the youngsters ask for time and time again. Yoshiko Uchida's books rate highly with them, and that's important. —LEE RUTTLE

Reading material

TACOMA, Wash.—The Asian American Alliance, 1311 S. M St. (98406), needs magazines, books and newspapers in Japanese and Korean. Any donations are welcome.

• Feel free to comment. We are always open to your ideas and suggestions.—Editor.

CHIAROSCURO:

Muscle lacking where it counts

By Chiye Tomihiro
Chicago JAACL

One of our new board members, Neil Tashima, who is with the Asian American Mental Health Center, stated at a recent board meeting that JAACL is looked upon for guidance and respect by other Asian American groups because we are the only ones who have a national organization to represent them. This is reason enough for the necessity of a strong chapter especially in a large city like Chicago but there is more than that as far as I'm concerned.

Recently, I had occasion to read the annual report of a large utility in California where there are more Asian

"Chiaroscuro" is reserved for commentaries by JAACL chapter presidents as gleaned from newsletters, minutes and reports.

Americans than in any other mainland state. Of the 124 board members, executive officers and departmental managers I found one name which could be an Oriental one, probably Chinese.

Statistics show that the average educational level of the Asian American is higher than the average white person and yet you find painfully few among the administrative and managerial people in corporations and institutions. I am not necessarily proposing that we do anything about this situation as it calls for great individual sacrifices to fight giant corporations.

I do bring this up because it serves to illustrate the fact that in spite of the great strides we supposedly have made, we actually have very little muscle and that when it comes to a showdown on economic and political power

we need solidarity. Because of this, every Japanese American should be made to realize that membership is necessary to his own well being. □

East Wind: by Bill Marutani

R.I.P.: 'Minority of One'

Philadelphia

WHEN I READ of the sudden death of Edison Uno (PC Jan 7-14), I had just come home from a rather demanding day. While Vicki was warming up an evening meal (I had unexpectedly come home, having been unable to attend a scheduled meeting that evening due to a snowstorm) I joined her in the kitchen and had just opened up the PC to catch up on news in Niseidom. For years I had been a faithful reader of Edison's poignantly titled column, "Minority of One".

FOR A WHILE I just couldn't believe what I was reading: Edison dead. Just this past summer when I happened to stumble into a Northern California district meeting in San Francisco, I saw Edison, as usual gently raising points in his characteristic unassuming manner. I had always admired his ability to retain his composure and remain calm, particularly since I knew he felt deeply and keenly over issues, especially on a number of moral issues. And often when others of us were too timid to raise the issue, Edison would stand and quietly prick our consciences. And I, for one, would be glad.

IT WAS WRITTEN that Edison had his detractors. And while I never heard or met one, I guess maybe he did. But if he did, I have no doubt where the truth lay: for Edison was one of those rare individuals that one was privileged to meet who had integrity, complete and unvarnished. To suggest that he was ever seeking the limelight was to evade the truth of what he was saying. The tragedy was that he had to say it so many times. And thus the poignancy in the title of his column.

I COULDN'T HELP but wonder what Edison himself might have written in his column, were he to see his own obituary in the PC. I think he might dismiss the gravity of his death, even as it touched him all-too-prematurely. I shall be among the many who will miss him. Sorely so. □



お歳暮は故郷よりの便り
まごころ
真心を贈る季節。
菊正宗なら、
日本の心が伝わります。

Nikkei protest '42 film on TV

LOS ANGELES — Nisei viewing the Bowrey Boys in a 1942 film, "Let's Get Tough", on KHJ-TV (9) from noon last Saturday (Jan. 15), failed to see the comedy in the blatant use of "Japs" by the actors in the story.

The local JACL office was alerted and urged to lodge a protest with the offending station.

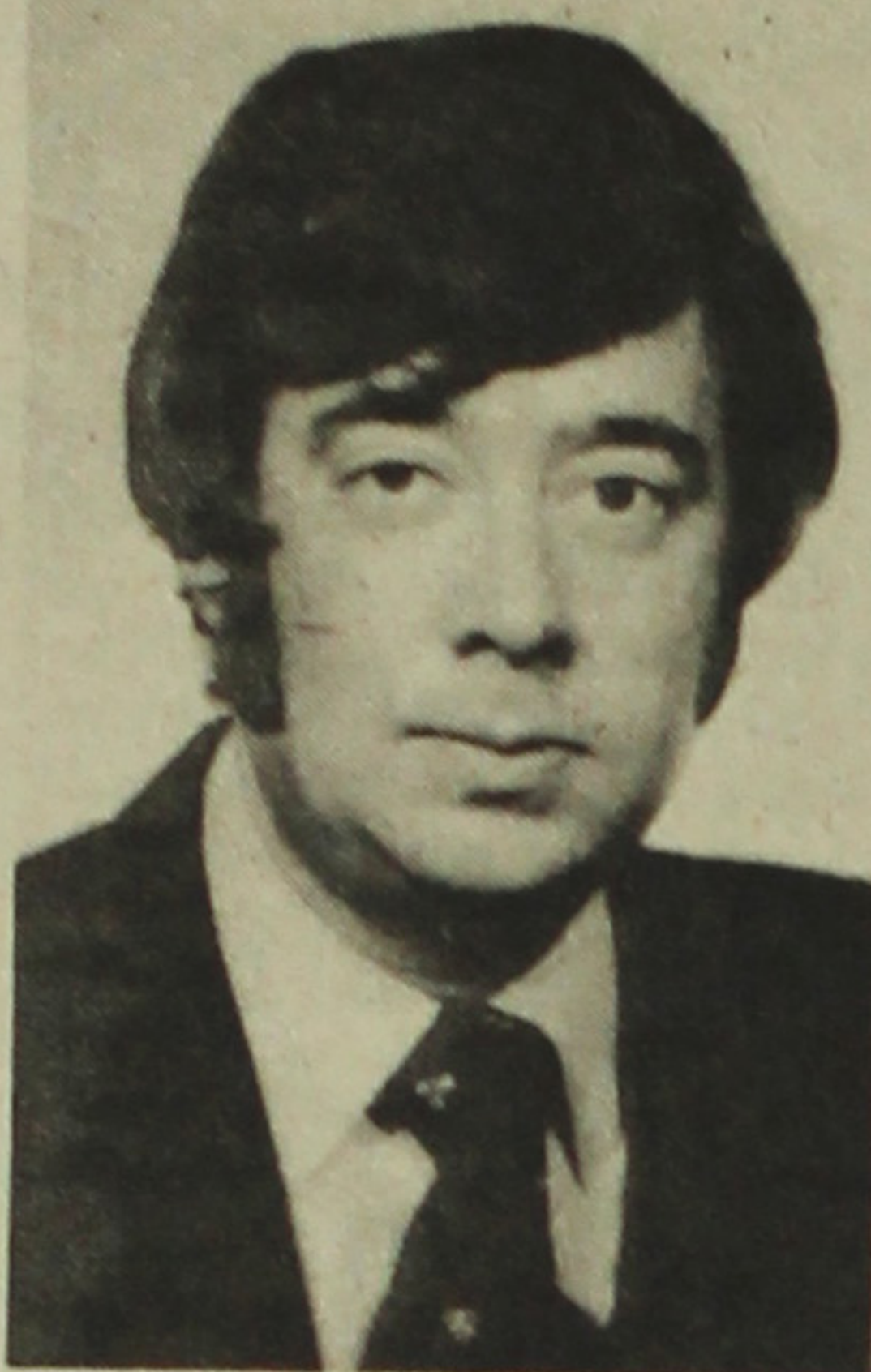
Calendar

Non-JACL calendar items are indicated with type in italics. —Editor.

- Jan. 28 (Friday)
 - Downtown L.A.—Inst dnr, Taix Restaurant, 6:30 p.m.
 - San Fernando Valley—Inst dnr, Castaway Restaurant, Burbank, 7:30 p.m.
 - West Valley—Inst dnr, Red Coach Restaurant, Cupertino; Frank Chuman, spkr.
 - EDC—Qtrly sess, Ft Myer Officers Club, Arlington, Va., 10:30 a.m.
 - Washington, D.C.—Inst dnr-dance, Ft Myer Officers Club, 6:30 p.m.; Dr Bertram Brown, spkr.
 - Monterey Peninsula—Inst dnr, Outrigger on Cannery Row; Maj Gen Erwin Wright (ret), spkr.
 - Fresno—JAYS teriyaki chicken lunch box sale (order in adv 237-4006).
- Jan. 30 (Sunday)
 - Cleveland—Inst dnr, Tokyo Gardens, 6:30 p.m.; Rep. Mary Oakar, spkr.
 - West Los Angeles—Shinnenkai, Felicia Mahood Ctr, 2-5 p.m.
- Jan. 31 (Monday)
 - Tulare County—Gen mtg, Golden Dragon Restaurant, Visalia, 6:30 p.m.
 - Tacoma—Proj CARE workshop on Employment, Education; Community House, 7 p.m.
 - Los Angeles—Info party, Asian Causes for Grad School of Social Welfare, AAC Mental Health Ctr, 1300 W Olympic, 7 p.m.
- Feb. 4 (Friday)
 - Contra Costa—Inst dnr.
- Feb. 5 (Saturday)
 - Salinas Valley—Inst dnr, Salinas Comm Ctr, 6:30 p.m.; Col. John Hada (ret), spkr. "Tokyo Rose" case.
 - Riverside—Inst dnr, Golden Dragon Restaurant, 9555 Magnolia, 6 p.m.; Frank Chuman, spkr.
 - SCYPCC—What's cooking, West L.A. Methodist Church, 1:30 p.m.
 - Fresno—ISC party, Chinese Garden Restaurant, 12n.
 - Los Angeles—Oriental Bldrs Assn inst dnr, Marriott Hotel, 7:30 p.m.
- Feb. 6 (Sunday)
 - Sacramento—Inst dnr, Sacramento Inn, 6:30 p.m.
 - Seattle—Inst dnr.
 - Stockton—Inst dnr.
- Feb. 8 (Tuesday)
 - Chicago—Bd mtg.
- Feb. 12 (Saturday)
 - Berkeley—Benefit Valentine dance, Veterans Hall, Albany, 8:30 p.m.
 - Fremont—New memb potluck dnr, So Alam Cty Buddhist Church hall, Union City, 6 p.m.
 - Gardena—So Calif MIS Shinnenkai, Kawafuku Restaurant, 6 p.m.
- Feb. 11-13
 - Portland—NW Buddhist conference.
- Feb. 13 (Sunday)
 - NC-WNDC—Qtrly sess, Marysville JACL hosts.
 - Philadelphia—Gen mtg.
- Feb. 14 (Monday)
 - Alameda—Bd mtg, Buena Vista Methodist Church, 7:30 p.m.
 - Puyallup Valley—Gen mtg, Buddhist Church, Tacoma.
- Feb. 19 (Saturday)
 - Puyallup Valley—Potluck dnr, Olympia members.
- Feb. 20 (Sunday)
 - St. Louis—Inst dnr, Le Chateau 5:30 p.m.
 - Tulare County, Parlier, Reedley—Heart Clinic, Reedley Japanese Hall, 7 a.m.
- Feb. 26 (Saturday)
 - IDC—Qtrly session, Salt Lake JACL hosts.
 - Detroit—30th ann inst dnr-dance, Michigan Inn, Southfield, 6:30 p.m.
 - San Mateo—Inst dnr, Shadows Restaurant, 7 p.m.; Hiroshi Kashiwagi play, "Laughter & False Teeth".
 - SCYPCC—What's Cooking?, Christ Presbyterian Ch, L.A.; 11 a.m.

While the CALENDAR features JACL events and deadlines, we now welcome non-JACL groups to post similar notices here. — Editor.

chapter pulse



GLEN PACHECO

● **Downtown L.A.**

Downtown L.A. installs its 1977 officers tonight (Jan. 28) at Les Freres Taix Restaurant, 1911 Sunset Blvd., with social hour at 6:30 and dinner served at 7.

L.A. Police Lt. Dan Cooke of the department's press section will be guest speaker.

Glen Pacheco, who succeeds two-term president George Fujita, heads the 1977 chapter board. Active in the Japanese American community, Glen worked in Japan prior to joining California First Bank in 1973 where he is now a loan officer at the bank's Little Tokyo office. He served as the chapter executive vice president the past biennium.

Ron Hasegawa and Aki Tsurukame co-chair the installation.

● **Fresno**

Advance orders are needed to obtain a chicken teriyaki box lunch being offered by the Fresno JAYS on Saturday, Jan. 29, from noon-4 p.m. at the Fresno United Methodist Church. Tickets for the lunch, which includes inari sushi, sunomono and vegetable tempura, are \$3.50, obtainable by calling:

Chie Yokota (237-4006 or 251-3314), Izumi Taniguchi (439-8769) or Stanley Morita (264-8476).

The February birthday party of the Issei Service Center will be held on Saturday, Feb. 5, noon, at Chinese Gardens. Tickets are \$3.75 with Chie Yokota (237-4006) taking reservations. Twelve ISC members have birthdays in February.

● **Placer County**

Chester Yamada of Roseville was inducted to his second term as Placer County JACL president during a potluck dinner Jan. 16 at Loomis Legion Memorial Hall.

Jerry Enomoto, former national JACL president and now director of the State Dept. of Corrections at Sacramento, was guest speaker. Koichi Uyeno, immediate past president, was program chairman.

● **Sacramento**

Roast of JACLers who were instrumental in reactivating the Sacramento JACL in the 1940s and the presentation of local scholarship winners highlight the Sacramento JACL installation dinner on Sunday, Feb. 6, 5:30 p.m. at Sacramento Inn.

The chapter re-elected Floyd Shimomura, deputy attorney general for the State of California, president for a second term.

Dinner tickets are \$7.50 per person.

● **San Fernando Vly.**

By Sam Uyehara

Highlights from several of their best plays will be presented by the East West Players during the San Fernando Valley JACL installation dinner-dance on Saturday, Jan. 29, 6:30 p.m., at the Castaway Restaurant above the city of Burbank.

Richard Yamauchi, who was re-elected president, will be installed with his new board by PSWDC Gov. Mike Ishikawa. Author-writer John Ball will be toastmaster. Dan Taguchi's band will play for the dance. John Nishizaka and Fred Muto are co-chairing the event.

Tickets at \$10 per person are available from Muto (899-3855) or Mitzi Kushida (360-6718). Full-time students will be admitted at \$5.

● **San Francisco**

A three-day Los Angeles/Little Tokyo excursion for Issei and senior citizens has been scheduled Mar. 17-19 by the San Francisco JACL, it was announced by Greg Marutani. Among the stops will be Universal Studios, NBC-TV Studio, Busch Gardens, Huntington Library's Japanese Garden and Little Tokyo.

Applications are being handled by Mrs. Kay Okamoto at Hamilton Senior Center and Aki Travel. Cost will be \$110 per person, double occupancy while at the hotel.

● **San Mateo**

San Mateo JACL will install Yasuko Ito as 1977 chapter president and her cabinet members during the dinner on Saturday, Feb. 26, at Shadows Restaurant. In lieu of a guest speaker, a play, "Laughter and False Teeth" by Hiroshi Kashiwagi, will be presented.

The chapter announced no increase in membership dues this year, despite wider chapter involvement and activities. It had been felt with greater chapter income, more projects could be undertaken. Instead, it will continue to rely on the annual June movie night and the other fund raiser.

● **West Los Angeles**

West Los Angeles JACL's annual Shinnen-kai will feature the Japanese New Year food (mochi, etc.) and an odori program this Sunday, Jan. 30, 2-5 p.m. at the Felicia Mahood Center, it was announced by Toy Kanegai. The luncheon program will cost \$2 per person.

West Los Angeles JACL, which collected over \$800 in funds and emergency supplies for victims of the Guatemalan earthquake, recently received an acknowledgment of their efforts from Dr. Julio Toriello de Leon, executive director of the

Roosevelt Hospital in Guatemala City. Robert Iwamoto and Toy Kanegai, who organized the community effort, had been assisted by the Japanese coordinating council.

Terri Teshiba, 17, of Uni-

versity High School received a full scholarship from the chapter for the Presidential Classroom for Young Americans, a week-long on-the-scene study of government in the nation's capital.

CHRISTMAS BILLS!

Pay your Holiday bills with a low interest consolidation loan from your Credit Union

National JACL Credit Union

P.O. Box 1721, Salt Lake City, Utah 84110
Office: 242 S. 4th East, Salt Lake City
Tel.: (801) 355-8040

Remember, you can borrow \$3,000 on your signature with a qualified credit rating.

INTERESTPLUS...

A new concept in time deposits.



In the race for top interest rates in time deposits, all good banks finish about the same. But now Sumitomo moves ahead with the new InterestPlus...

Now, \$2,000 in a one-year Time Certificate of Deposit earns a full 6%, the highest bank interest rate... PLUS... one of the most generous and unique package plans ever offered!

- A maximum \$1,000 credit line (overdraft protection)!
- Free checking account (no minimum balance required)!
- Commission-free travelers cheques!
- PLUS many more opportunities to save!

So get the best run ever for time deposit money at Sumitomo.

Regulations impose interest penalties upon premature withdrawal.

The Sumitomo Bank of California

Member FDIC

We've got a yen for your new car at a low interest rate.

Come Drive a Bargain With

CALIFORNIA FIRST BANK

(Formerly the Bank of Tokyo of California) MEMBER FDIC

San Francisco Main Office.....	(415) 445-0200
San Francisco Japan Center Office.....	(415) 445-0300
Oakland Office	(415) 839-9900
Fremont Office	(415) 792-9200
Palo Alto Office	(415) 941-2000
San Mateo Office	(415) 348-8911
San Jose Office	(408) 298-2441
Westgate Office	(408) 298-2441
Salinas Office	(408) 424-2888
Sacramento Office	(916) 441-7900
Stockton Office	(209) 466-2315
Fresno Office	(209) 233-0591
North Fresno Office	(209) 226-7900

L.A. Main Office: 616 W. 6th.....	(213) 972-5200
Los Angeles Office	(213) 687-9800
Montebello Office	(213) 726-0081
Crenshaw Office	(213) 731-7334
Western L.A. Office	(213) 391-0678
Gardena Office	(213) 327-0360
Torrance Office	(213) 373-8411
Panorama City Office	(213) 893-6306
Artesia-Cerritos Office	(213) 924-8817
Santa Ana, 5th and Main Office.....	(714) 541-2271
Irvine Office, 17951 MacArthur Blvd.....	(714) 549-9101

—With 75 Additional Offices—



The Mitsubishi Bank of California

FRIENDLY SERVICE

HEAD OFFICE	
800 Wilshire Blvd., Los Angeles, Calif. 90017	(213) 623-7191
LITTLE TOKYO OFFICE	
321 East Second St., Los Angeles, Calif. 90012	(213) 680-2650
GARDENA OFFICE	
1600 W. Redondo Beach, Gardena, Calif. 90247	(213) 532-3360
SAN FRANCISCO OFFICE	
425 Montgomery St., nr. California	(415) 788-3600

Member FDIC

SAN MATEO JACL:

Granted \$9,000 to work with Asian immigrants

SAN MATEO, Calif.—A grant of \$9,000 was made in November to the San Mateo JACL by the San Mateo Community Foundation for continuation of the chapter's work with Tongan and Vietnamese immigrants living in this city.

This was the largest of eight grants made to public and private non-profit groups in the country, totalling \$36,000, the largest quarterly distribution of funds in the foundation's 13-year history.

The chapter started its work with the Tongan and Vietnamese last year.

Tom Grubbs, the chapter's community worker, directs the staff which includes workers for both groups.

Of the \$9,000 grant, \$6,000 will be made available in three equal installments, spaced over a three month period.

The remaining \$3,000 will be given to the JACL on a matching basis dollar-for-dollar to be raised by the San Mateo JACL from sources other than the foundation.

Central Cal set for heart clinic

REEDLEY, Calif.—The Tulare County, Reedley and Parlier JACL chapters are sponsoring another heart clinic on Sunday, Feb. 20, at the Reedley Japanese Hall (a block west of the House of Chung).

Similar to the clinic conducted three years ago, blood will be tested for cholesterol and triglyceride levels. The door will be open from 7 a.m.

Results will be made known on Sunday, Mar. 13, 7:15 p.m. at Dinuba High School auditorium.

Judge sentences ad solicitor

LOS ANGELES—U.S. District Judge Robert Takasugi last week (Jan. 17) imposed a five-year sentence and \$15,000 fine on Michael Lasky for allegedly bilking businesses through phoney advertising invoice schemes.

Postal authorities described the case as the most important in their crack-down on over 100 phoney billing operations in the area. Asst. U.S. Attorney Leonard Sharenow charged Lasky's organization, Space Advertising Inc., used high pressure tactics to obtain payment for advertising which was never placed.

The Pacific Citizen was among the ethnic papers implicated in the scheme by solicitors for the firm.

\$1.7 million raised for L.A. center

LOS ANGELES—As of Jan. 11, a total of \$1,776,180.53 has been raised for the Japanese American Cultural and Community Center, it was announced by George J. Doizaki, JACCC president.

Construction cost for the Center building, first of the four-building complex to be built, has been pegged at \$2.5 million. Ground-breaking is being planned this spring.

Katsumasa Sakioka, noted Orange County farmer and developer, recently completed his \$10,000 pledge to the JACCC building fund and added another \$10,000 for a total gift of \$20,000. Other major individual donors who have completed their pledges include:

\$10,000—Yorimasa Chikawasa, Yamano Brothers, Kajima Corp.
\$5,000—So. Calif. Kendo Federation.

\$3,000—Kazuo Yano, Henry Onodera, Eijiro Sasajima, Umejiro Okamoto, Yoshifumi Takiguchi (another \$10,000 added).

\$2,000—Koshiro Torii, Yutaka Kubota.

\$1,000—Toshikazu Terasawa, Shigeru Hashimoto, Masuo Mitamura, Seima Munemitsu, Takusen Inouye, Mrs. M. Muranaka.

For the Record

In the process of correcting errors the names of Judy Ibarra and Gordon Yoshikawa were "covered" in the lead paragraph by another line in the Midwest Page story (Jan. 21 PC) on Congressmen hearing of JACL's concerns.

TRI-DISTRICT CONFERENCE

Pre-register by Feb. 1

RENO, Nev.—A block of 100 rooms have been reserved at Mapes Hotel, site of the third JACL Tri-District Conference April 22-24, the chapters in California, Arizona and Nevada were advised this past week.

Four sessions are planned Saturday, a main speaker that night and program closing by Sunday noon.

Delegates and boosters who pre-register at \$35 before Feb. 1 will also have room confirmation, if requested, at \$18 single and \$22 double. Bonus offers will be two coupon books worth \$25. One may also purchase a \$60 hospitality booklet for \$1.

The conference registration fee covers the Friday night mixer, continental breakfast, lunch and dinner Saturday. Pre-registrations are being accepted by:

NC-WN Regional Director George Kondo, 1765 Sutter St., San Francisco 94115.

Sex bias in schools

TOKYO — Housewives and teachers are campaigning for an end to compulsory segregation of boys and girls in public schools by 1980. Fewer than 50% polled recently still agree with the old maxim that girls must be educated to be gentle and the boys to be strong.

1977 JACL Officers

BERKELEY JACL

Paul Takata, pres; Gordon Kono, vp; Sady Hayashida, treas; Jean Kita, sec; Yone Nakamura, cor sec; Directors—Jim Ishimaru, Steve Kodama, Morris Kosakura, Gary Oda, Takeo Shirasawa, Terry Yamashita, James Yano, Bea Kono (ex-off), Marie Gilchrist, Henry Hamataka, Lawrence Harada, Fumi Nakamura, Tom Ouye, Gene Roh, Roy Wakida, Min Sano (ex-off); Board of Trustees—Harry Takahashi, George Yasukochi, Jordan Hiratzka, Bea Kono, Paul Takata (ex-off).

DOWNTOWN L.A. JACL

Glen Pacheco, pres; Steve Kawagishi, exec vp; Ed Matsuda, Joe Hazama, Aki Tsurukame, Tats Kushida, Takito Yamaguma, vp; Frank Hirata, treas; Frank Suzuki, sec; Soichi Fukui, 1000 Club; Richard McCann, counsel; George Fujita, past pres; adv bd—Yoneko Kato, Ted Kojima, Willie Funakoshi, Frank Tsuchiya and Misao Hirohata.

GRESHAM-TROUTDALE JACL

Dr. Henry Mishima, pres; Ed Fujii, vp; Kaz Kinoshita, 2nd vp; April Kinoshita, rec sec; Sets Okino, cor sec; Helen Tamura, hist-newsletter; Dr. Joe Onchi, 1000 Club; Dick Nishimura, del; Hiram Hachiya, alt del; Nobu Ishida, Sam Sasaki, treas.

LIVINGSTON-MERCED

Caroline Nakashima, pres; Buichi Kajiwara, vp; Hiroshi Hamaguchi, treas; George Yagi, prog & activ; Yoshiye Minabe, rec sec; Frances Kirihara, cor sec; Fred Hashimoto, pub; Kazuko Tanji, hist; Bob Ohki, youth, Frank Shoji, 1000 Club; Frances Tashima, schol; Kazu Masuda, ins; James Tanioka, Emerson Uye-matsu, Steven Kashiwase, area reps; B Ohki, B Kajiwara, del.

MARIN COUNTY JACL

John Tateishi, pres; Bill Tsuji, 1st vp; Dennis Sato, 2nd vp; Susan Shimoda, rec sec; Paula Mitsunaga, corr sec; Gene Oishi, treas; Lester Higashi, del; Aimy and Bruce Wilbur, hist; Ken Sato, nwsltr; board mem—Bill Obata, Alan Onizuka, Sam Shimomura.

MID COLUMBIA JACL

Mits Takasumi, pres; George Watanabe, vp; Philip Yasui, del; Taro Asai, social; Pat Lee, rec sec; Patty Gilkerson, treas; Koke Iwatsuki, Chiye Sakamoto, George Tamura, social; Mam Noji, alt del; Sho Endow Jr. 1000 Club.

MILWAUKEE JACL

Takio Kataoka, ch; Herbert Levandowski, vc; Diane Aratani, treas; Ronald Milner, sec; Julius Fujihara, membership; Ed Jonokuchi, 1000 Club; Jeffrey and Susan Kataoka, JAYS, Charles K. Matsumoto, Folk Fair; Lucille Miyazaki, Aya Tera-mura, Lil Kataoka—special comm and nwsltr; Ed T Hida, Milwaukee County Human Rights Committee; Roy Mukai, Ethnic Heritage; Betty Fujihara, Nobuko Levandowski, Grace Musahi-Sunshine.

PLACER COUNTY JACL

Chester Yamada, pres; Steve Kubo, 1st vp (program), Gay Imamoto, 2nd vp (memb); George Hirakawa, 3rd vp (pub rel); Ellen Kubo, treas; Roy Yoshida, rec sec; Cosma Sakamoto, cor sec; bd of dir—Nob Ni-mura, Ted Kitada, Kay Miyamura, Hugo Nishimoto, Kunio Okusu, Hiroshi Takemoto, Nob Hamasaki, Frank Hironaka, Douglas Mitani, Alfred Nitta, Masao Sugiyama, Tom Takahashi, Shig Yokote, Koichi Uyeno (ex-off).

ST LOUIS JACL

George Sakaguchi, pres; Masao Abo, vp (programs); Linda Peterson, vp (budg-fin); Anna Peterson, vp (memb); Eleanor Hoops, vp (p.r.); Lynn Fujimoto, hist. Ed Shimamoto, 1977 Japanese Festival Day; Council memb—Sumiko Urquhart, Ray Rikimaru (JAY pres), Linda Ishibashi (JAY adv), Linda Peterson (JAY adv); Bill Ryba, social; Lynn Shimamoto, educ; Ed Shimamoto, nomin.

SALT LAKE JACL

Jimi Mitsunaga, pres; Chiz Ishimatsu, 1st vp; Keith Sakai, 2nd vp; Mark Tsuyuki, 3rd vp; Tubber Okuda, treas; Paul Iwasaki, rec sec; Kiyo Oshiro, cor sec; Taka Kida, program; Al Kubota, comm activ; Tab Uno, hist; Alice Kasai, coord; bd memb—Tomi Nakano, Gordon Hashimoto, Ron Nishijima, Mary Umemoto, Grace Oshita, Gene Sato (ex-off), Ted Nagata (ex-off).


SAN MATEO JACL

Yasuko Ito, pres, Candace Nosaka, 1st vp; Ernie Takahashi, 2nd vp; Florence Yoshiwara, treas; Suzu Kunitani, rec sec; Grayce Kato, cor sec; bd mem—Tom Konno, Cora Clemons, Etsuko Kaizuka, Hiroshi Ito, Kiyo Okita, Jeanette Nakahara, Tom Grubbs, Junko Nakagawa, Tad Handa, Ernie Ito, Shig Mori, Tick Takahashi, Douglas Ota, Ken Handa, Akiko Docker, Yosh Kojimoto.

 <p>YAMATO EMPLOYMENT AGENCY LICENSED AGENCY BONDDED</p> <p>312 E. 1st St., Room 202 Los Angeles, Calif. NEW OPENINGS DAILY 624-2821</p>	<p>SHIATSU MASSAGE</p> <p>Finger-Tip Therapy for Relief of Pain, Circulation Improved</p> <p>Kazuko Terada 244 1/2 E. 1st St. L.A.</p> <p>Appointments Only 628-3873 261-1580</p>
<p>Aloha Plumbing</p> <p>LIC. #201875 PARTS & SUPPLIES —Repairs Our Specialty— 1948 S. Grand, Los Angeles Phone: 739-4371</p>	<p>ED SATO</p> <p>PLUMBING AND HEATING Remodel and Repairs Water Heaters, Garbage Disposals Furnaces</p> <p>Servicing Los Angeles 293-7000 733-0557</p>
 <p>SAITO REALTY CO. HOMES • • • INSURANCE</p> <p>One of the Largest Selections 2421 W. Jefferson, L.A. 731-2121</p> <p>JOHN TY SAITO & ASSOCIATES</p>	 <p>MARUKYO Kimono Store</p> <p>250 E. 1st St. Kajima Arcade A-5 Los Angeles 628-4369</p>
<p>Complete Home Furnishings</p>  <p>Koby's Appliances</p> <p>15120 S. Western Ave. Gardena 324-6444, 321-2123</p>	 <p>Red eye "Yellow Power"</p>  <p>Levi's</p> <p>Anaheim Buena Park Carson</p> <p>Eagle Rock - Fox Hills Mall - Garden Grove - Huntington Beach - Montclair - Northridge - Puente Hills Mall - Orange - Stonewood - Torrance - San Bernardino - West Covina - Westminster - Whittier</p>
<p>Established 1936</p> <p>Nisei Trading</p> <p>Appliances - TV - Furniture</p> <p>348 E. First St. Los Angeles, Calif. 90012 Tel.: 624-6601</p>	 <p>TOYO Myatake STUDIO</p> <p>318 East First Street Los Angeles, Calif. 90012 626-5681</p>
<p>Empire Printing Co.</p> <p>COMMERCIAL and SOCIAL PRINTING English and Japanese</p> <p>114 Weller St., Los Angeles 90012 628-7060</p>	
<p>Nanka Printing</p> <p>2024 E. First St. Los Angeles, Calif. Phone: 268-7835</p>	<p>Toyo Printing</p> <p>Offset - Letterpress - Linotyping 309 S. SAN PEDRO ST. Los Angeles - 626-8153</p>
<p>Three Generations at Experience</p> <p>FUKUI Mortuary, Inc.</p> <p>707 E. Temple St. Los Angeles 90012 626-0441</p> <p>Soichi Fukui, President James Nakagawa, Manager Nobuo Osumi, Counsellor</p>	
<p>Shimatsu, Ogata and Kubota Mortuary</p> <p>911 Venice Blvd. Los Angeles 749-1449</p> <p>SEIJI DUKE OGATA R. YUTAKA KUBOTA</p>	
<p>IF YOU ARE MOVING . . .</p> <p>Give us 3 week's advance notice.</p> <p>Please attach the PC Mailing label here, write in new address - below, and mail this whole form to: Pacific Citizen, 125 Weller St., Los Angeles, Calif. 90012</p> <p>New Address:..... Apt..... City, State, ZIP:..... Effective Date:.....</p>	

Nationwide Business and Professional Directory

Your business card placed in each issue here for 25 weeks (a half year) at \$25 per three-lines. Name in larger type counts as two lines. Each additional line at \$6 per line per half year.

<p>Greater Los Angeles</p>	<p>Seattle, Wash.</p>
<p>Asahi International Travel 1111 W. Olympic, L.A. 90015 — 623-6125/29 USA - Japan - Worldwide AIR—SEA—LAND—CAR—HOTEL Please Call: Tom or Gladys</p> <p>Flower View Gardens: Flowers & Gifts 1801 N. Western Ave., L.A. 90027 Call 1000er Art Ito: (213) 466-7373 Local or FTD Service Worldwide</p> <p>NISEI FLORIST In the Heart of Little Tokyo 328 E. 1st St. — 628-5606 Fred Mariguchi Member: Teleflora</p> <p>THE PAINT SHOPPE La Mancha Center 1111 N. Harbor Blvd. Fullerton, Calif. (714) 526-0116</p> <p>YAMATO TRAVEL BUREAU 312 E. 1st St., L.A. (90012) 624-6021</p>	<p>IMPERIAL LANES 2101 - 22nd Ave. So. 325-2525 Nisei Owned — Fred Takagi, Mgr.</p> <p>GOLD KEY REAL ESTATE INC. Homes and Acreage TIM MIYAHARA, Pres. Call Collect: (206) 226-8100</p> <p>KINOMOTO TRAVEL SERVICE Frank Y. Kinomoto 605 S. Jackson St. 622-2342</p> <div data-bbox="425 1956 709 2299">  <p>GALA SUPERMARKET BAZAARS</p> <p>Gifts Cooking Utensils Imported beverages Food delicacies Judo-Gi, Karate Pottery, China</p>  <p>UWAJIMAYA</p> <p>Free Parking Seattle: 6th S and Southcenter Store S. King St. Tukwila, Wa. MA 4 6248 CH 6-7077</p> </div>
<p>Watsonville, Calif.</p>	<p>The Midwest</p>
<p>Tom Nakase Realty Acreage Ranches - Homes - Income Tom T. Nakase, Realtor 25 Clifford Ave. (408) 724-6477</p>	<p>FAMILY CREST DISCOVERED Dr. M. Hoshiko 707 S. James St. Carbondale, Ill. 62901</p> <p>Sugano Travel Service 317 E. Ohio, Chicago 60611 : 944-5444 642-7193; Eve/Sun 472-4133</p>
<p>San Jose, Calif.</p>	<p>Washington, D.C.</p>
<p>Edward T. Morioka, Realtor 945 S. Bascom, San Jose Bus: 246-6606 Res: 241-9554</p>	<p>MASAOKA - ISHIKAWA AND ASSOCIATES, INC. Consultant - Washington Matters 900-17th St NW, Rm 520 296-4484</p>
<p>S.F. Peninsula</p> <p>Japanese Bunka Embroidery 4600 El Camino Real, Suite 216 Los Altos, Calif. 94022 Irene T. Kono—(415) 941-2777</p>	<p>Over 50,000 Readers See the PC Each Week</p>

PC's People

MUSIC: Toshiko Akiyoshi



Jazz musician **Toshiko Akiyoshi**, in her mid-40s now, is the first woman in jazz history to compose and arrange an entire library of

music and organize her own band, writes Jean Sanders for the Long Beach Independent-Press Telegram. One of Toshiko's recent albums, "Long Yellow Road", was the jazz album of the year by the '75 Stereo Review. She also cuts four albums each year for a Japanese company. She conducts the Toshiko Akiyoshi - Lew Tabackin Big Band. Her husband Lew is principal soloist whose flute work is exhilarating.

While jazz is popular in Japan, Toshiko says it's not true with Japanese Americans. "Japanese migrants didn't think jazz as respectable. I think they detested it," she said. "They preferred their own traditional classics and music popular in Europe."

But the new generation of Japanese Americans are among those who have accepted her progressive sounds, sometimes flavored with the Orient as well as the best of the swing era. "Once, I considered quitting music," she added, but her husband talked her out of it.

Awards

The Rev. Andrew Otani, longtime Twin Cities JACLer, recently received the Order of the Sacred Treasure, 5th Class, from the Japanese government ... The late Edwin W. Wade, mayor of Long Beach, Calif. for 15 years, was conferred the Order of the Rising Sun, 3rd Class, from Emperor Hirohito, in recognition of his civic activities promoting U.S.-Japan relations.

Government

Semanticist-elected U.S. senator, **Sam I. Hayakawa** (R) entered the Senate Jan. 2, two days ahead of other freshman senators as Calif. Gov. Brown appointed him to take over the seat vacated by defeated incumbent John Tunney (D). Capitol reporters were surprised to find Hayakawa painting in the eyes of a Daruma doll—a familiar Japanese ritual intended to insure a successful period of public service.

"In Japan, the victor in a political race celebrates his

assumption of office by painting in the eyes ... The Daruma with blank, empty eyes is given to the candidate by friends and well-wishers," he explained as the TV cameras whirred away.

The Daruma represents a Zen Buddhist sage who meditated so deeply and so long that he lost the use of his legs, thus achieving enlightenment. "I may meditate more and speak less," Hayakawa concluded. The doll was presented by the Yamanashi Kenjinkai of San Francisco.

With a new legislative season on hand, legislators were introducing or re-introducing their staff in Washington and at home. Sen. **Spark Matsunaga** (D-Hawaii) is still being assisted by many who had served with him in the House: **Cheri Matano** continues as administrative assistant (since 1970), **Carol Senaga** is secretary ... Rep. **Norman Mineta's** San Jose office is still being managed by **Tish Ishimaru** ... Rep. **Dan Akaka** (who occupies former Rep. Patsy Mink's post) named **Arlene Sumimoto** as his Washington secretary and **Timmy Hirata**, former Hawaii school superintendent,

as administrative coordinator of the Honolulu office ... Calif. Assemblyman **Floyd Mori** (D-Pleasanton) appointed former No. Calif. field representative for Sen. Tunney, **Mary C. Warren**, as administrative assistant.

Rep. **Norman Mineta** (D-Calif.) was elected to the House Budget Committee.

Entertainment

Nobu McCarthy is president of the first Asian American production firm to produce TV and feature films. **Bern-Jay Productions**, organized in La Puente, will begin on its first film, a science fiction feature, "The Devil's Domain". **Bill Shinkai** wrote the screenplay. Other members include:

Jesse Dizon, vp; Bill Cuthberg, secretary; Shinkai, Emil Davidson, Rowby Goren, Irving Paik, board of dir.

Politics

Sen. **Daniel Inouye** was named secretary of the Democratic Caucus—the No. 3 job with the majority ... **Don Bannai**, son of Assemblyman Paul Bannai (R-Gardena), was elected chairman for the 53rd Assembly District (his dad's area) at the Jan. 3 county Republican central committee meeting.

Issei Multimillionaire

SEATTLE, Wash. — A local tabloid newspaper, *Midnight*, carried a story Oct. 18, "Rags to Riches from \$2.50 to Multimillionaire," about **Kamekichi Shibayama**, 84, who was a sailor 65 years ago, jumping ship and parlaying 5 yen (then worth \$2.50) into Seattle real estate.

Today the holdings are worth several million dollars, including three shopping centers and five major apartment buildings. Working as a farmer, a baker, and restaurant cook, Shibayama came to own 17 hotels through business dealings and investments.

Today his sons and in-laws manage the business.

Eagle Produce

929-943 S. San Pedro St., Los Angeles
625-2101

Bonded Commission Merchants
—Wholesale Fruits and Vegetables—



102 SO. SAN PEDRO STREET • LOS ANGELES, CALIFORNIA 90012 • TELEPHONE: 628-3232

TOUR HIGHLIGHTS FOR 1977

FEBRUARY 19-21
(Washington's Birthday Weekend)
DEATH VALLEY — LAS VEGAS TOUR

APRIL 2-10 (Easter Vacation)
EAST COAST TOUR
BOSTON TO WASHINGTON D.C.
WITH NIAGARA FALLS

APRIL 29-30
CARLSBAD CAVERN TOUR

MAY 21 — JUNE 6
17 DAY EUROPE TOUR
England, Holland, Germany,
Austria, Italy, Switzerland & France

Plus numerous departures of our popular and unique tours to Japan.

MAY 27-30
GRAND CANYON, BRYCE &
ZION NATIONAL PARK TOUR

JULY 2-10
CANADIAN ROCKIES TOUR

JULY MIDDLE
YELLOWSTONE PARK &
GRAND TETON TOUR

SEPTEMBER 3-5 (Labor Day Weekend)
LAKE TAHOE TOUR

OCTOBER
SOUTH AMERICA TOUR

For further information on any of the above listed tours or for any travel arrangements — an airline ticket, package tours, cruises, or tours custom-made to your personal preference — come in to see us at:

102 South San Pedro Street — or call — (213) 628-3232

COMPLETE TRAVEL AGENCY — READY TO SERVE ALL YOUR NEEDS.



CARE

...there are times when it means everything...

There are sensitive times when care and understanding are all important.

We have known this for more than half a century and that is why Rose Hills offers every needed service — mortuary, cemetery, flowers, chapels, mausoleums and crematory — all within the world's most naturally beautiful memorial park. Knowing you care ... Rose Hills is nearby. Caring ... and understanding ... at Rose Hills that means everything.



ROSE HILLS MORTUARY

CEMETERY...
CHAPELS at
Rose Hills Memorial Park
Where one visit
arranges everything.

3900 Workman Mill Road
Whittier, California
699-0921

Ski Mammoth:
25/Nite Midweek*

2 bedroom condo, 2 bath, fully furnished,
minimum 2 nites. Call (213) 734-2589/
(714) 542-7238 (Days)/(714) 827-4886.
(*Weekend and holiday rates higher).

Adult classes

LOS ANGELES — The Venice Community Adult School offers Japanese in the new term starting Jan. 31. For complete schedule, call 391-0411.

CLASSIFIEDS

PC Classified Rate is 10 cents per word. \$3 minimum per insertion. 3% discount if same copy for four times. Payment with order unless prior credit is established with our PC Office.

Wanted

BONSAI SAIKEI: The Japanese Miniature Tree Gardens and Landscapes, by Kawamoto-Kunihara, English edition. Give book condition and price. T. Ward, 815 N. Humboldt, San Mateo, Calif. 94401 /2-18

Ask for ...

'Cherry Brand'
MUTUAL SUPPLY CO.
1090 Sansome St.
San Francisco, Calif.

Mikawaya

Sweet Shop
244 E. 1st St.
Los Angeles MA 8-4935

Commercial & Industrial
Air-conditioning & Refrigeration
Contractor

Sam J. Umemoto

Lic. #208863 C-20-38

SAM REIBOW CO.
1506 W. Vernon Ave.
Los Angeles 295-5204
Experienced Since 1939

KONO HAWAII

•POLYNESIAN ROOM
(Dinner & Cocktails - Floor Show)

•COCKTAIL LOUNGE
Entertainment



•TEA HOUSE
Tep-pan & Sukiyaki

OPEN EVERY DAY
Luncheon 11:30 - 2:00
Dinner 5:00 - 11:00
Sunday 12:00 - 11:00

226 South Harbor Blvd.
Santa Ana, Calif. 92704
(714) 531-1232

Eigiken Cafe

Sukiyaki - Japanese Komics
Sushi Bar - Cocktails
314 E. First St., L.A.
Tel: 629-3029

QUON BROTHERS



GRAND STAR
Lunch • Dinner • Cocktails
Entertainment

7 TIME WINNER OF THE PRIZED
RESTAURANT WRITER AWARD
BANQUETS TO 200
Validation Free Parking 943 N.
Broadway (in New Chinatown) 626-2228