

# PACIFIC CITIZEN

Publication of the National Japanese American Citizens League

Vol. 85 No. 6

Friday, August 5, 1977

Postpaid in U.S. 20c

15 Cents

## Asians petition HUD policy change

SEATTLE, Wash. — Asian residents of International Terrace, public housing for low-income elderly located in the heart of what was Seattle's Nihonmachi, are protesting the strict application of equal housing laws by the federal Dept. of Housing and Urban Development.

Seattle Housing Authority, at HUD's instigation, signed a compliance agreement recently whereby it was found 15 of the 24 residences for the elderly were racially imbalanced - either less than 10 pct. or more than 35 pct. minority. Thirteen of the buildings were occupied by more than 90% white but at International Terrace, 79 of the 100 units are occupied by minorities - mostly Asian.

The compliance agreement would mean units now oc-

cupied by Asians would go to whites as vacancies occur.

Residents in the International District are launching a petition drive to have International Terrace exempt as "many elderly Asians don't speak English and must live in this area to survive", according to Shari Woo of the International District Housing Alliance.

International Terrace was built in 1972 to house residents of the district who were being displaced by urban renewal projects in the area.

Robert Santos, executive director of International District Improvement Assn. (Inter-Im), preferred to keep International Terrace as 90 pct. minority "since other buildings can be 90% white" - rather than say non-Asians.

William Nishimura, Seattle

Housing Authority director, told protestors he was more than willing to make a formal request for exemption. He was previously told that having the building so designated

was impossible.

George Roybal, HUD regional administrator, is expected to raise the issue with his superiors in Washington, D.C., this month. □

## Title VI, Civil Rights Act

WASHINGTON—The President reminded in a July 20 memorandum to heads of executive departments and agencies, stating the Administration's strong commitment to enforcement of Title VI of the Civil Rights Act, urging that it be enforced.

"Title VI says government of all the people should not support programs which discriminate on the grounds of race, color or national origin. There are no exceptions to this rule; no matter how important a program, no matter how urgent the goals, they do not excuse violating any of our laws—including the laws against discrimination," the memorandum began.

"The effective use of sanctions (as provided) is an essential element of this Administration's efforts to guarantee that Federal funds do not flow to discriminatory programs."

## Bakke case jeopardizes civil rights won since 1940s, Rep. Chisholm tells JACL

ARLINGTON, Va. — Congresswoman Shirley Chisholm rallied the Japanese American Citizens League to help protect the fragile gains in civil rights won by all minorities in the past two decades. The Brooklyn Democrat was keynote speaker here last week (July 30) at the dinner of the Eastern and Midwest district councils in joint convention.

"Discrimination—whether on the basis of race, sex, ethnic origin, religion or age—is anti-human and should not be tolerated," Mrs. Chisholm, one-time nursery school teacher and child care center director, declared.

"The greatest challenge before us is our own pursuit of justice for all ... and to overcome the heritage of oppression which has prevented too many of our citizens from even experiencing the principles upon

which this country was built."

In terms of race relations, she believed the country's mood was shifting back to the "more overt" days after summarizing and commenting on the Allan Bakke case now before the U.S. Supreme Court. Here she interjected the results of the Gallup Poll of last May when 83% of those surveyed had said "no" to Affirmative Action. They believed ability as measured by tests and examinations—and not preferential treatment to correct past discrimination—should be considered in admitting students to the university.

Rep. Chisholm even found this trend in Congress when it recently passed two amendments prohibiting the collection of data based on sex or race and use of funds to implement Affirmative Action during debate on authorization of funds for the Dept. of Health, Edu-

cation and Welfare.

But looking at other procedures colleges and universities use in selecting students, it was noted athletes receive preferential treatment, rural applicants sometimes are favored over urban students nowadays in the belief a "geographically-mixed" student body enhanced the educational experience.

"Why cannot race and ethnic background have a place on this list for special consideration," she asked. "It is in the nation's interest to have more minority doctors ... (who) fill a demanding social need."

Of the Bakke case, which seeks to test the legality of minority admissions programs in higher education, Chisholm regretted it was being carried to the Supreme Court after it had been "so badly mishandled" by the Regents of the Univ. of California. She expressed the alarm of some civil rights leaders that "even a more liberal court (than Burger's) might find in favor of Allan Bakke".

At the time Bakke applied for entry at UC Davis's medical school, 16 of the 100 slots were reserved each year for "disadvantaged" students, she explained in a brief review of the case. While not accepted the first time, Bakke did better than the average applicant the second time but was told his slot for one of the 84 had been filled by another. As a 36-year-old engineer, he was not considered "disadvantaged". But Bakke contended he was a victim of

"reverse discrimination" in his suit against the University because none of the applicants admitted under the "disadvantaged" students program was white.

Arguments against Bakke when it was being heard in California were "questionable" and she noted many civil rights advocates at the time felt it would have been better "to sacrifice the program at Davis in order to keep the concept of minority recruitment and Affirmative Action alive in the rest of the country".

An important UC statistic was also recalled. In the bid for 84 slots, the system had resulted in the admission of no blacks, two Chicanos and 13 Asian Americans. Under the special admissions, six blacks, eight Chicanos and two Asian students were admitted to the medical school.

The first black woman in Congress, having been elected in 1968 after bucking the Democratic organization, said many have the wrong notion that "affirmative action means hiring or accepting for enrollment inferior applicants for the sole purpose of meeting sex or race quotas".

Affirmative Action does not deprive the white males of their rights, she declared. "Blacks or Hispanics or Asian Americans cannot reverse their positions with whites and treat whites now as minorities were treated in the past. Minorities do not have the power to do so," she continued. "Racism is

Continued on Page 3

## Pro-minority text dropped from OK list

SEATTLE, Wash. — "The Washington Story - A History of Our State" by writer-illustrator Ruth Pelz was withdrawn this past week as a textbook which took two years to produce for a more thorough chronicling of the contributions of minorities and women.

Seattle school superintendent David Moberly removed the 256-page paperback text from the list of approved texts after school board member Ellen Roe complained that there were "too many Indians" and the Japanese are "over-represented" in the book that she described as being "liberally laid out" but an unbalanced account in favor of minorities and labor.

"The entire tone of the book is ethnic history out of proportion to reality," Roe noted in her two-page complaint. She asserted the text was unfair because only one page is

devoted to 30 white ethnic groups that settled the state while about 60 pages are for minorities including "30 pages to Indians alone".

Her contention that Japanese American contributions are over-emphasized was not detailed.

Meanwhile, members of the Seattle minority communities defended the Pelz book, which had been screened for sex bias and multi-ethnic content by district social studies committees and field tested in classrooms as it was being written.

Ramona Bennett of the Puyallup Indians said previous textbooks were "blatantly racist", causing Indians to feel like "artifacts (or) freaks of nature".

Rev. Cecil Murray, a black minister from the Central area, said "Ellen Roe does not see minority history as legitimate unless it walks in

Continued on Page 3

## Fellowship recipients take-off ...



SAN FRANCISCO—Recipients of the 1977 JAL-JACL-JTBI cultural heritage fellowship departing July 9 for Tokyo are (from left) Harold Oshima, Rowland Heights, Calif.; Gerry Yokota, St. Louis; Gene Yoneda, San Jose; and Ed Coble, Chicago. They are taking six-week summer courses at Sophia University and will wind up with a two-week tour of Japan.

## 1977 Nisei Week ...

### Hayakawa marshal

LOS ANGELES—U.S. Sen. S. I. Hayakawa will be grand marshal of the 1977 Nisei Week Festival parade, culminating the week-long summer show of Japanese American culture on Sunday, Aug. 28, in Little Tokyo, it was announced by Hiro-michi Kume, Festival chairman.

Hayakawa, 71, when most men are well into retirement, undertook the rigorous campaign to run for the U.S. Senate last year—first upsetting some name Republicans in the primary

### Salinas council re-elects Hibino

SALINAS, Calif. — Mayor Henry Hibino was recently re-elected to his third term by the Salinas city council at its regular meeting. The 42-year-old grower was first chosen by his colleagues in 1973 and to his second term in 1975.

He was first elected to the city council in 1971 and had the most votes polled among the 12 candidates at the time.

and then unseating incumbent Sen. John Tunney in the general election last November.

Calendar listing the events will be available free in shops and offices. The souvenir booklet at \$1.50 is also on sale. Festivities open with the coronation ball Aug. 20.

The Nisei Week office surmised Hayakawa may have accepted the invitation to be grand marshal from what he said in a recent speech:

"I'm very proud to be a Nikkei (of Japanese ancestry), very, very proud to be a Nisei (second generation, American-born). I'm very, very proud to be a member of this community. And we are all jointly proud, I am sure, of the fact that we are Californians, the fact that we live in a society that despite the injustices of 50 years ago, or of even 35 years ago, despite the injustices against all Orientals, that these injustices fade over a period of time. They fade, partly because of the flexibility, the power of accommodation that the American people have, and partly because of the persistence and patience and willingness to work and willingness to wait that characterize the Japanese people and all other immigrant groups that have been successful." □

## Oxnard Mayor Kato on double duty during Washington visit

OXNARD, CALIF. — Mayor Tsujio Kato was on double duty during a three-day visit of Washington, D.C., this past week.

Initial purpose was as dentist to represent the western states in Congressional discussions on national health care as a member of the Council on Legislation for the National Academy of General Dentistry.

But as mayor, he was following up on the city's earlier letter to President Carter seeking information on the subject of LNG (liquid

natural gas). Oxnard is one of the major Southern California ports being studied as a site for an LNG terminal.

Mayor Kato was expected to meet with energy officials at the White House, representatives of the Federal Power Commission, and city's federal representatives: Senators Cranston and Hayakawa, Reps. Lagomarsino and Goldwater Jr.

On health care, Kato was to speak with Sens. Cranston, Byrd (Va.), Matsunaga (Hawaii), Rep. Conable (N.Y.) and others. □

## Internment credit bill hearing set

WASHINGTON — The House Subcommittee for Compensation and Employee Benefits has scheduled Sept. 13 as the date to hear the bill to provide Civil Service retirement credit to Japanese Americans who were evacuated and interned during World War II, it was announced this past week by the Washington JACL Office.

The subcommittee will convene in Rm. 311, Cannon House Office Bldg., at 9:30 a.m. Mark-up session is scheduled two weeks later on Sept. 26.

Wayne Horiuchi, JACL Washington representative and lobbyist for the Committee for Internment Credit (CIC), was

"happy" to see the bill "back on track". He said, "The difference has been some very effective politicking by Congressman Norman Mineta and the leadership of CIC, Toshie Yoshida, Muts Furiya, Bill Kyono and other officers who have gotten letters written to Members of Congress from the Japanese American community."

It had been reported subcommittee hearings would not be held this year due to budgetary limitations and lack of working days remaining in this first session. The manner in which the press reported the bill reminded what Mark Twain had written: "The reports of my death were greatly exaggerat-

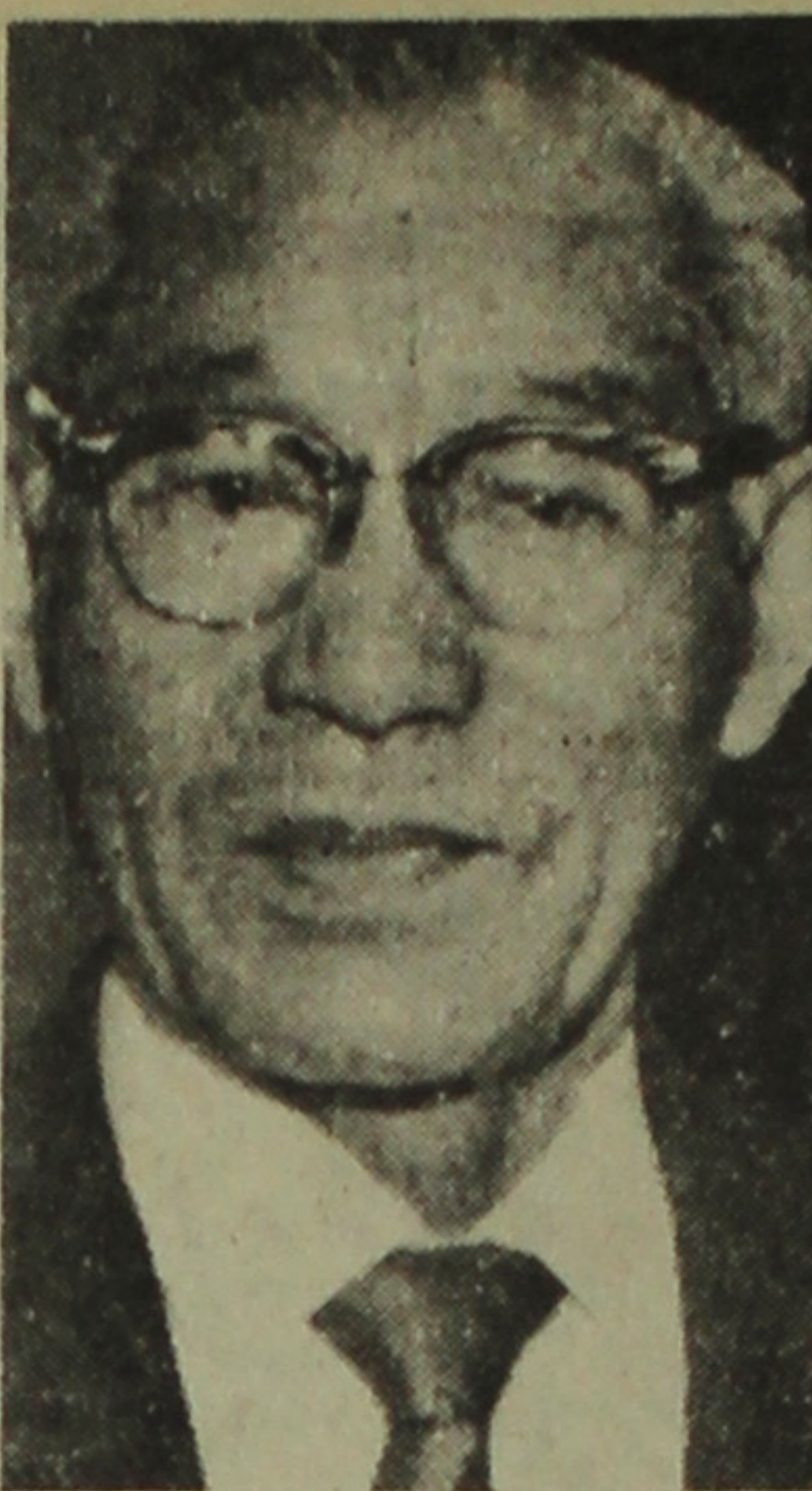
ed". Horiuchi said, "The ball is now back in our court."

Several congressmen, in support of CIC and JACL, encouraged Congresswoman Gladys Spellman, subcommittee chair, to schedule the hearings. They included:

Reps. William Lehman (Fla.), Jerry Patterson (Calif.), Daniel Akaka (Hawaii), Henry Waxman (Calif.), Leon E. Panetta (Calif.), Herb Harris (Va.), Cecil Heftel (Hawaii), Pete Stark (Calif.), Paul Simon (Ill.), Bill Hughes (N.J.), B.F. Sisk (Calif.), Don Edwards (Calif.), James Corman (Calif.), John (Jack) Murphy (N.Y.), Joel Pritchard (Wash.), Glenn Anderson (Calif.), Clarence D. Long (Md.), Charles H. Wilson (Calif.), Robert L. Leggett (Calif.), Newton Steers (Md.), Robert Nix (Calif.), Yvonne Burke (Calif.), John Krebs (Calif.), Leo Ryan (Calif.), Bizz Johnson (Calif.), Mark Hannaford (Calif.), Jim Lloyd (Calif.) and Sen. Spark Matsunaga (Hawaii).

## San Jose Issei pioneer decorated

By PHIL MATSUMURA  
San Jose, Calif.



MASUO AKIZUKI

With close to 575 present, Masuo Akizuki was honored at a community testimonial dinner July 24 at the Hyatt House. The 80-year-old pioneer resident of 65 years in America was recently decorated by Japan for his long service to the community with the Order of the Sacred Treasure, 6th class.

The honoree had been instrumental in promoting the highly successful and meaningful San Jose-Okayama Sister City exchange mathematical contest, which has seen thousands of students of all nationalities in Santa Clara Valley and Okayama participating over the past 11 years.

Till he retired recently, he had completed 30 years on the local Buddhist Church board of directors, engaged in other community work and assisted newcomers from Japan settle in their new homes here.

Testimonials were extended by:

Japanese Consul General

Hidenori Sueoka; Henry Yamate, chmn., Buddhist Church Betsuin; Kansui Kayamoto, Kinyukai Int'l; Kango Kagoshima, Fukuoka Nikkeijin Kai; telegram from Rep. Norman Mineta; City of San Jose resolution read by Mayor's representative Richard Tanaka.

In addition to presentations from various local groups and after a response by the honoree, entertainment followed featuring dances by Jumasuga Hanayagi (Mrs. Marjorie Nakaji), Kiyono Abe, Kikuya Nozaki, and songs by Massey Matsuura, Roy Kawamoto, George Tsukiji and Takeshi Nozaki.

Joe Yamaguchi was program chairman. Tom Takeita, committee chairman, was assisted by:

Kozo Ishimatsu, Seizo Ito, K Kagoshima, H Yamate, Fumio Kimura, Sam Oba, Shirley Abe, Karen Shiraki, Judy Ellwanger, Kazuko Maehara, Shizo Kawamoto, Rev. Ejitsu Hojo, P Matsumura, Kiyoshi Tokutomi, James Ichikawa, Torao Toyofuku; dinner—Roy Iwamoto, Yoshio Ando, Tom Futagaki, Yomi Fuzzelman, Minoru Higashi, Mitsuo Kaida, Dr. Wright Kawakami, Jan Kurahara, Ray Kurasaki, Yoshi Maehara, Jim Yamaichi.

## Assembly centers to be Historical Site

SACRAMENTO, Calif. — The twelve Japanese American assembly center sites in California were nominated this past week to the National Register of Historical Places by the State Assembly in a joint resolution (AJR 47) introduced by Assemblyman Joe Montoya (D-Los Angeles), with Paul Bannai (R-Gardena) and Floyd Mori (D-Pleasanton), principal co-authors.

The joint resolution specifically mentions the following:

MARYSVILLE — about 5 mi S of Marysville nr the Sacramento Northern RR station of Arboga at County Fairgrounds.

SACRAMENTO (Walerga)—about 8 mi NE of Sacramento adj Sou Pacific RR where a migrant camp once operated.

SALINAS—about 2 mi N of city at County Fairgrounds.

TANFORAN—about 12 mi S of San Francisco Nihonmachi at Tanforan

Racetrack (now a shopping center) nr San Bruno.

STOCKTON—about 2 mi S of city at County Fairgrounds.

TURLOCK—S of the city at the County Fairgrounds.

MERCED—SW of the city at the County Fairgrounds.

PINEDALE—about 8 mi N of Fresno, a former mill site on State Hwy 41.

FRESNO—about 3 mi E of city at the County Fairgrounds on State Hwy 180.

TULARE—S of the city at the County Fairgrounds on US Hwy 99.

SANTA ANITA—about 12 mi NE of Los Angeles Nihonmachi at the racetrack.

POMONA—about 25 mi E of L.A. Nihonmachi at the County Fairgrounds.

## Rep. Mineta to keynote PSW dinner to honor George Roth

LOS ANGELES — The Pacific Southwest JACL District Council will host a dinner on Saturday, Aug. 13 to honor George Knox Roth, who valiantly defended the Japanese Americans in the dark hours of the Evacuation in 1942, a stand which was to plague him throughout his career and to cause economic hardship to his family.

Television's "Star Trek" actor George Takei will serve as master of ceremonies with Norman Mineta keynoting the event.

The program will include entertainment by Alan Iwihara and presentations by Sam Minami, Togo Tanaka, and Pat Okura, members of

the Japanese American community who will be sharing their wartime experiences.

Contributions that are being received nationwide and the proceeds from the dinner will be presented to the Roth family as a gesture of deep appreciation from the community.

The event, co-chaired by Mitsu Sonoda and Sam Minami, will be held at the Little Tokyo Towers, 455 East Third St. No host cocktails begin at 6:30 followed by dinner at 7:30. Tickets are \$10 per person and may be obtained through:

Friends of George Knox Roth Committee, c/o California First Bank, 120 S. San Pedro, Los Angeles 90012. For further information phone 472-4361.

There were three more assembly centers operated by the Army's Wartime Civil Control Administration in Washington, Oregon and Arizona as follows:

PUYALLUP (Wash.)—S of the city at the County Fairgrounds on US Hwy 99.

PORTLAND (Ore.)—N of downtown by the river at the Pacific International Livestock Exposition.

MAYER (Ariz.)—About 25 mi SE from Prescott on State Hwy 69 at an abandoned CCC camp

The resolution resolves that members of the Assembly and Senate of the State of California recognize that the assembly centers represent an important reminder of the war hysteria and injustices directed against persons of Japanese descent.

Also the resolution notes that in terminating Executive Order 9066 which led to the Evacuation, former President Gerald R. Ford stated that there must be "an honest reckoning of our national mistakes as well as our national achievements".

In commemoration of 35 years since the deplorable assembly centers and evacuation of more than 110,000 Japanese Americans during World War II the resolution recommends that all 12 assembly center sites in California be nominated to the National Register of Historical Places.

### Sakura Kai

RICHMOND, Calif. — A coordinator for the Sakurai Kai, Issei senior citizen project here, is needed to succeed Mrs. June Sakaguchi who is planning to move out of the area, it was announced by Grace Goto (233-2586) and Meriko Maida (223-5407), who are handling inquiries until Aug. 7. The coordinator puts into roughly 50 hours a month, planning and implementing two Saturdays a month (10 a.m.-3 p.m.), plus attending meetings, etc.

### Miss Teen Sansei

LOS ANGELES — Keiko Nakagawa, 16-year-old daughter of the Harry Nakagawas and a Marshall High School student, reigned as Miss Sansei at the Crenshaw Square Festival July 23-24. She won a \$1,000 scholarship with the honors.

### On 2% of the land

TOKYO—Nearly 60 pct. (63.8 million) of Japan's population lives on about 2% of the total land area, the Prime Minister's Office noted from its October, 1975, census data.

## Deaths

Rev. Kengo Tajima, 93, of Los Angeles, died July 26. He was longtime pastor of the Pasadena Presbyterian Church prewar. Surviving are w Sue, s Tsuneo (Kan.), Yuji, Ted, Calvin, d Sophie Tajima, Kiwako Suga, 13 gc and 2 ggc, br Shinsuke (Jpn), sis Yu Iwama (Miami) and Take Machida (Jpn).

\*FOR WOMEN

## NORTHROP UNIVERSITY School of Law

### Study Law

Our part-time, day program leads to the Juris Doctor degree (J.D.)

Classes Start  
September 6

Contact: Dean, School of Law  
Northrop University  
(213) 641-3470 Ext. 63  
1186 W. Arbor Vitae Street Inglewood, CA 90306

\*Men are invited too!

Here Is



## The Mighty Challenge

Making wholesome food from the Orient with their exotic tastes previously unknown to the American palate has been the great challenge for Japan Food Corporation during the past two decades.

In 1969, the prestigious, centuries-old Kikkoman Company of Japan (established in 1661) joined forces in this mighty endeavor.

Today, more and more people are recognizing the value and delight of Oriental food. To meet this demand, Japan Food Corporation recently opened a larger warehouse, an automated facility and computerized operation in San Francisco. And to assure dependable service as an importer, wholesaler and distributor of some 4,000 Oriental speciality food products from foreign and domestic sources, Japan Food Corporation has distribution centers in Los Angeles, Sacramento, San Diego, Chicago, New York and Baltimore. Company representatives also assist from Atlanta and Houston.

This is a continuation of the public service announcements from Japan Food Corporation, which began as an Issei endeavor and grateful it has become the major distributing organization of Oriental food products in the United States.

### japan food corporation

MAIN OFFICE  
445 Kauffman Court, South San Francisco, Calif. 94080  
Branches: Los Angeles, San Diego, Sacramento, Chicago, New York, Baltimore, Houston

# Fresno senior citizens express needs in survey

FRESNO, Calif.—Most Japanese American elders here appreciate programs such as the JACL-sponsored Issei Service Center. However, they are expressing a desire for development of an apartment complex where they could reside at a reasonable cost.

Such needs were voiced by senior citizens during a survey conducted in June by the Fresno Commission on Aging's Information and Referral Office as part of its outreach program. Yoshio Kai was contracted to conduct the survey within a 10-mile radius of the Issei Service Center at 912 F St. More than 188 residents

in 134 homes were interviewed. They ranged in age from 59 to over 90. A one-page bilingual questionnaire was used.

Among the chief concerns of those interviewed was how to combat loneliness, especially for those living alone. "Most felt the continued need for such as the Issei Service Center, where they could meet and spend their time with others," Kai added.

"And many expressed a desire to see the center developed to eventually include an apartment complex." The center operates on a half-day basis, five days a week. □

## Miss CCYBA.



FRESNO, Calif.— Daughter of the Kiyoshi Kawamotos of Reedley, Ellyn reigned as Miss Bussei at the annual Central California YBA festival here July 1-2. She is a Reedley College graduate planning to attend CSU-Fresno in the fall and major in business.

## TEXTBOOK

Continued from Front Page

the shadows of the majority white history."

Arlene Oki regarded the removal as indicating the district "hasn't gotten to the point where too much can be said about minority people".

Roe, who was also critical of the text's accounts of socialistic colonies in the state history, said she expects more people to label her racist for her stand. "But I don't think my children or anyone else's should be subjected to this view of history," she concluded.

Text was prepared under a federal grant and supervised by Armand Colang, school district specialist in social studies. Social studies department heads in the city's 16 junior, middle and high schools had urged the text be adopted, pointing out no major textbook company had developed any usable text on the state of Pacific Northwest history since 1963 and that one is now out-of-date.

Long-standing state law requires students to study a unit of state history between the 7th and 12th grades as a graduation prerequisite. Seattle teaches the course in the 8th grade.

Pelz said she expected criticism in later years when the need of ethnic history wanes, but ethnic groups assured her the book "should go overboard on ethnic history because a teacher could find

information on the subject printed 10,000 copies at the relatively easily" cost of \$23,557 and received

Roe conceded the book might become supplementary material. The district has more than 2,000 orders from other districts after having examined review copies. □

## Eagle Produce

929-943 S. San Pedro St., Los Angeles 625-2101

Bonded Commission Merchants  
—Wholesale Fruits and Vegetables—

PALACE  
TATAMI

GENUINE TATAMI<sup>TM</sup> Manufacturer  
McKOW CORPORATION  
1030 Byram St., Los Angeles, CA 90015  
Tel. (213) 747-5324

## KONO HAWAII

•POLYNESIAN ROOM  
(Dinner & Cocktails - Floor Show)

•COCKTAIL LOUNGE  
Entertainment



•TEA HOUSE  
Tep-pan & Sukiyaki

OPEN EVERY DAY  
Luncheon 11:30 - 2:00  
Dinner 5:00 - 11:00  
Sunday 12:00 - 11:00

226 South Harbor Blvd.  
Santa Ana, Calif. 92704  
(714) 531-1232

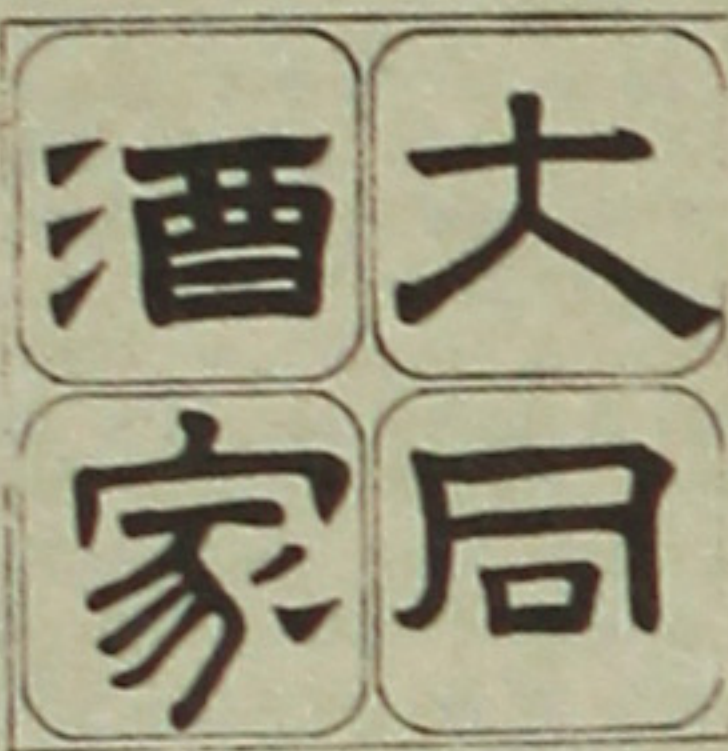
## Eigiku

Sukiyaki - Japanese Rooms  
Sushi Bar - Cocktails  
314 E. First St., L.A.  
Tel: 629-3029



## GRAND STAR

Lunch - Dinner - Cocktails - Entertainment  
7 Time Winner of the Prized  
Restaurant Writer Award  
BANQUETS TO 200  
943 N. Broadway (in New Chinatown), L.A.  
Validation Free Parking 626-2285



## Tai Hong Restaurant

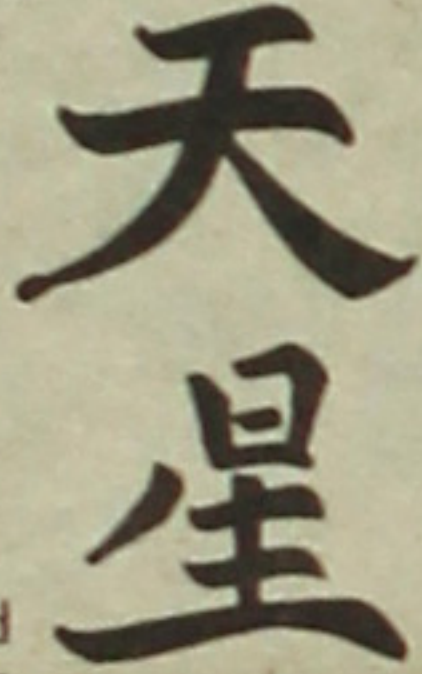
Most Authentic Cantonese Cuisine  
Famous Family Style Dinners  
Cocktails till 2:00 a.m.  
Banquet Facilities 10:00 a.m.—1:30 a.m.

845 N. Broadway, L.A.  
485-1052

## TIN SING RESTAURANT

EXQUISITE  
CANTONESE  
CUISINE  
1523 W.  
Redondo  
Blvd.  
GARDENA  
DA 7-3177

Food to Go  
Air Conditioned  
Banquet Rooms  
20-200



福  
祿  
壽  
酒  
樓

## EMPEROR RESTAURANT

949 N. Hill St.  
(213) 485-1294

PEKING FOOD  
SPECIALTY  
Cocktail Lounge  
Party & Banquet  
Facilities

Dinah Wong, Hostess

VISIT OLD JAPAN



## MIYAKO

Luncheon Dinner Cocktails

PASADENA 139 S. Los Robles • 795-7005  
ORANGE 33 Town & Country • 541-3303  
TORRANCE 24 Del Amo Fash. Sq. • 542-8677



## The New Moon

Banquet Rooms available  
for small or large groups

912 So. San Pedro St., Los Angeles MA 2-1091

## In Case You Missed It!

1977 Nisei Week Festival

Souvenir Booklet: \$1.50

Program - Photos Galore - Queen Candidates  
ON SALE IN LITTLE TOKYO STORES

Mail Orders Accepted at \$2.50 Postpaid by

Nisei Week Souvenir Booklet Committee  
c/o U.S. Japan Business News

530 W. 6th St., Suite 403, Los Angeles, Calif. 90014

Send to: \_\_\_\_\_  
Address: \_\_\_\_\_  
City: \_\_\_\_\_ State \_\_\_\_\_ Zip \_\_\_\_\_  
Enclosed \$ \_\_\_\_\_ for \_\_\_\_\_ copies

## CHISHOLM

Continued from Front Page

deeply entrenched and institutional, and the institutions we are talking about are still owned, controlled and operated by white males."

Further, the whites have been unjustly enriched at the expense of the oppressed minorities, she said. Until there is equal footing in society at all levels, "any charge of reverse discrimination or reverse racism is illogical and nonsensical", she insisted.

"Affirmative Action is, simply stated, an approach which opens up opportunities solely on the basis of their race or sex," she explained. "Women and minorities must be invited into the system, allowed to catch up and given the same opportunities to begin at the top ...

"It is time we say that discrimination felt in our professions is essentially a racial one and therefore, it deserves a racial solution," she noted in conclusion. If the courts rule in favor of Bakke, she feared institutions would abandon previous commitments to minorities and "we will set back the cause of redressing the past grievances of discrimination by a century."

Other highlights of the joint EDC-MDC convention, hosted by the Washington, D.C. JACL chapter, will be reported in a subsequent issue. □

## Another Li'l Tokyo venture to rise

LOS ANGELES - Bunmei-Do of California, U.S. subsidiary of the famed Japanese confectioners, broke ground July 23 for a \$300,000 commercial structure at 328 E. 2nd St in the Little Tokyo Redevelopment Project area. The two story building is expected to be completed by December to provide five professional offices upstairs and four shops on the ground floor.

Local owner participants with Bunmei-Do of Calif. are Leonard Beidle and Kiyomi Takata. □

SPECIAL 2-DAY ENGAGEMENT  
THURSDAY AUGUST 11 AND FRIDAY AUGUST 12

JAPAN'S NUMBER 1 SUPERSTAR  
**HIROSHI ITSUKI**  
Only U.S. appearance this year.  
\$500,000 in Spectacular Staging

HILTON SHOWROOM  
2 SHOWS NIGHTLY • 8 PM & MIDNIGHT

**Las Vegas Hilton**

For room reservations call your nearest Hilton Reservation Service  
For show reservations call (702) 734-7777 (11 am to Midnight)

James Murakami, National JACL President  
Alfred Hatate, PC Board Chairman  
Harry K. Honda, Editor

Second class postage paid at Los Angeles, Calif. Subscription rates payable in advance: U.S. \$9 year, foreign \$13 year. First class available upon request. \$5 of JACL membership dues for one year subscription through JACL Headquarters, 1765 Sutter St., San Francisco, Calif. 94115 (415-921-JACL)

## EDITORIALS:

## Belated Justice

Year 1977 may be the year when certain miscarriages of justice are being righted.

We have seen Iva Toguri d'Aquino pardoned by President Ford just before he left office in January.

The latest rectification has taken 50 years to accomplish when Massachusetts Gov. Mike Dukakis signed a proclamation July 19 that removed the stigma and disgrace attached to the Sacco-Vanzetti case in that the two Italian immigrants had indeed not received a fair trial.

The historic issue was whether fair and equal justice was possible for dissidents and minorities in midst of hysteria. The Governor's proclamation puts it: "prejudice against foreigners and dissidents at the time". Nicola Sacco and Bartolomeo Vanzetti were convicted in 1921 of murdering a paymaster and guard for a Massachusetts shoe factory, but many believed they had been doomed because they had been labeled as anarchists. Six years later, still protesting innocence, the two were executed.

Saying goes things happen in threes. What next?

## The Sea Monster

A Japanese fishing boat trawling 30 miles east of Christchurch, New Zealand, caught the remains of a badly decomposed sea monster on April 25 but the story with pictures didn't break till two weeks ago. A scholar of ancient animals at Yokohama National University, after examining the colored pictures, said the 44-ft. creature was a plesiosaurus - a marine reptile with a small head, long neck and tail with four limbs developed as paddles for swimming. Also submitted were patches of tissue which are being sent to the Smithsonian. The Japanese marine experts were not sure. Crewmen aboard the ship speculated it might have been a whale, shark or turtle.

A Chicago expert on extinct mammals sees this as a link to the Loch Ness creature. British fans of "Nessie" were buoyed by the news and pictures and felt their creature is something thought to be extinct from 100 million years ago, too. A fossil expert reminds the coelacanth fish, thought to have died out 65 millions ago, turned up off Madagascar in 1938, thus cautioning to say a plesiosaurus doesn't exist can be an unscientific statement.

But a Scottish zoologist, after noting the pictures in the papers, recognized it as a Hooker's sea lion and suggested the fishermen's "estimates" of size and weight were "an exaggeration". What he hadn't seen probably was another picture showing the carcass on deck of the fishing vessel where detailed sketches and more pictures were taken before it was dumped overboard for fear it would contaminate the fish catch. We detect a bit of white man's envy here in trying to belittle the Japanese.

## The Heat Gets PC

The graphic arts people in the Pacific Citizen readership will have quickly detected the variation in typefaces in this week's issue. Our regular font (Olympian) has been substituted in certain columns with another face (Crown)—all because it has been in the 90s during the week and above 80° inside the office in the late afternoon. The room air-conditioner just couldn't lower it to "operable temperature" for our phototypesetter, which must shut down when room temperature passes 76°F. In fact, it broke down... hence, the substitution.

A second air-conditioner has been installed in our production room; the windows covered with aluminum foil; and a notice posted on the doors to keep it shut at all times. By week's end, and at considerable expense, production has resumed and another deadline met.

Of course, to some readers the switch doesn't mean a thing. They are probably right in asking: was this editorial necessary?

## Comments, letters &amp; features

## Warren's Memoirs

Editor:

Bill Hosokawa's columns on Earl Warren bring back memories.

Exactly ten years ago I began writing to Earl Warren, suggesting that if in his opinion he felt that his statements expressed at the time of the Evacuation was in error, he owed it to himself and to the former Evacuees, both living and dead, that he so state this loud and clear.

I admired Edison Uno's persistent campaign to get Earl Warren to retract his wartime statements. Our letters were never ugly, and were respectful at all times. We never received a reply. Edison passed away only knowing that Earl Warren would express his regrets in his Memoirs yet to be published.

Warren's Memoirs are out. As Bill Hosokawa stated the apology is awkward, insipid and unworthy of the position Warren held. Whatever the reason for his apologizing in the way he did, Warren's stature as a man has shrunk considerably.

CLIFFORD I. UYEDA  
San Francisco

## 'Eki-ben' dated

Editor:

Regarding George Yoshinaga's "Bullet Train and Bento" (PC, July 22), the last time I was on the bullet train was in December, 1976, and that time, just like any other time I was on it, the girls in uniform came around every so often with a selection of local "eki-ben" and drinks, including tea (in plastic pots now). And every "eki-ben" I've ever eaten always had the date stamped on the wrapper.

Ridiculous statements like: "The Japanese don't have too good of a refrigeration system..." surely cannot be just thrown in a responsible newspaper without proper back-up information.

If the article was intended to be humorous, I fail to see anything funny in it.

MRS. M. VISHTAK  
San Francisco

*It is not in doing what you like, but in liking what you do that is the secret of happiness.* —James Barrie

## Human Rights

Editor:

Former National JACL President Henry Tanaka views with alarm the "insidious growth of so-called conservatism" and bewails the "diminishing voices of liberals" (PC, July 22).

Evidently he considers the sound and fury of a few years ago, generated by vociferous activists calling for the impeachment of everyone in sight, including the President of the United States and of the JACL, to be indicative of concern for "human rights".

Isn't it better to use our resources, financial and otherwise, in constructive ways like expanding the Pacific Citizen (a great plus for the present administration) instead of squandering them on welfare among our various factions? Countless thousands of dollars and thousands of man-hours have been wasted in past meetings, necessitated by attacks of high and mighty liberals on more conservative JACL officials, whose only sin was dedication to their duties.

Mr. Tanaka's demand for more advocacy of "human rights" issue is commendable; but the wishes of the membership should be carefully considered before the JACL takes a public stand. To illustrate, the crashing silence which has greeted the well-publicized reparation issue (except for a few bitter-enders Nisei and impressionable Sansei collegians), shows that it does not merit high priority. On the other hand, the generosity of Japanese Americans in granting scholarships and in contributing to such activities as Nikkei community centers, Sansei sports, and Issei projects indicate what their major concerns are.

The function of JACL is to meet the many-faceted needs of the national Japanese American community. "Human rights", which is so well protected in our great democracy, may not be as important as the practical requirements of our sons and daughters.

MASARU ODOI  
Gardena, Calif.

Editor:

My compliments to Mr. Henry Tanaka's most sensitive and well written article (PC, July 22). Such well written articles are stimulating and pleasurable to read.

But I disagree with his conclusion

that JACL should be more an aggressive advocate for human rights. I believe there is no doubt in anyone's mind whether JACL believes in general human rights. So the question is what does he mean by "a responsible advocate for human rights." I can only assume that he means for JACL to be more vocal on the issues.

Let us consider whether "human rights" are perhaps earned and not given on a silver platter. Everyone wanting everything on a silver platter and too many impractical intellectuals agreeing blindly to the merits of those demands is causing one of this nation's biggest social problems. Advocating and pushing may only cause the organization to be branded as "radical".

Also, the organization must be careful of its tone. No matter how righteous and noble the principles advocated, the organization must be careful in its tone, words, and logic based on practicality. It must be realistic and worldly to befit the general membership.

An organization half-cocked in its expressed views will not only lose membership of those who feel embarrassed by it, but also lose the respect of those non-member citizens and statesmen of all different genera. JACL should aim for respect from those slightly "right" of the middle.

Who would disagree with my opinion that majority of the Nisei and Sansei are on the slightly conservative side of the middle in its attitude? Hopefully, the more vocal few on the left can be brought back to the main stream with better articles in Pacific Citizen.

RICHARD M. KAWANISHI, CPA  
St. Louis, Mo.

## George Knox Roth

Editor:

I was happy to read about George Knox Roth (PC June 24). I feel that the principal characteristic that distinguishes Americans from most other people is that we have the freedom of speech and are trained to have the courage to speak for our convictions.

To go on the air to fight Evacuation required a trained, articulate spokesman. It is for that reason that I joined with a few other Nisei to back Mr. Roth. Unless we have the courage to fight injustice as it concerns us, we cannot really be happy with ourselves. On the other hand, once the

issues were clearly defined, I know we had an obligation to serve our country.

I worked with General Donovan in the Office of Strategic Service in the China-Burma-India theater. In the postwar era, I have worked with the group organized by Ambassadors Grew and Castle to work towards better relations between Japan and the United States.

KAY SUGAHARA  
President  
Fairfield-Maxwell, Ltd.  
New York, N.Y.

## Tenure Granted

Editor:

I would like to thank the Pacific Citizen for the role it has played in the effort toward securing my tenure at the University of California, Davis. The Pacific Citizen articles resulted in a number of letters to the University in my behalf from individuals in both the academic and broader community whom I have had the privilege to be associated with in the past. In addition there were letters of encouragement and support sent to me personally which were certainly welcomed during trying days.

This has been another example of the role that the Pacific Citizen plays in maintaining a "sense of community" in face of the impersonality imposed by a highly mobile, industrial society. It also reaffirms the strength which lies in collective effort and solidarity, a feature of our Asian cultural heritage which I sincerely hope can be maintained and preserved even in American society. It is because of the viability of this cultural pattern that I can once again say, "okage sama de..."

GEORGE KAGIWADA  
Associate Professor  
Asian American Studies  
Univ. of California  
Davis, Calif.

## Short Notes

Editor:

We thoroughly look forward to and enjoy your issues. Thanks for your excellent work, coverage, style, etc., etc.

ALICE YOSHINARI  
Norridge, Ill.  
*The bouquet shall be shared with the chapter people who send us hometown clippings and our regular contributors.—Editor.*

## West Wind: by Joe Oyama

## Mtn. View's Obon/Bazaar and a big Mini-Lecture

Berkeley, Calif.

Last year an unbelievable crowd of some 25,000 Japanese Americans and non-Japanese attended the Mountain View Buddhist Church Obon Festival and Bazaar. Reading about this, we decided to take a trip to Mountain View, which is 34 miles south of San Francisco.

The attractions were that there are many Japanese farmers in the area, and the food cooked at the Bazaar would be from their farms. In addition the affair was to be held on the Temple's ten-acre site, and parking would be free.

## Like Nathan's in Coney Island

The outdoor sushi bar was something to behold. I've seen Nathan's at Coney Island in New York, where they gross over one-million dollars a year just in dispensing hot dogs on a production line basis, and this was something like it: the efficient organization and the large volume production of very good quality, fresh and succulent *osushi*. Everything from fresh abalone, red or white clam, mackerel, tuna or sea bass, *kappa* or *tekka maki* sushi on a production line basis. The only thing missing were the belts.

The sushi were selling for 50 cents apiece except for the *tekka* and *kappa maki* which were two for 50 cents. A long line was waiting and some individual orders went for \$20 or \$30.

## Mini-Lecture in Buddhism

After lunch inside the huge gymnasium which combined as a dining hall, we went to hear the Nisei Rev. La Verne Sasaki present a mini-lecture on Buddhism. The audience in the Temple was mostly non-Japanese and the informal talk, I assume, was meant for them. Twenty-sixth in the line of Buddhist priests in his family, the Rev. Sasaki said that he had done his thesis on Christianity at the College of the Pacific and had spent several years in Japan.

(Incidentally, inside the Temple there was a rather fascinating exhibit of Chrysanthemum rocks with subtle flowers fashioned on them by nature. They are found only on one mountain in Gifu Prefecture, Japan. There were also striking ikebana floral arrangements created by Issei, Nisei, Sansei and even a six-year old youngster.)

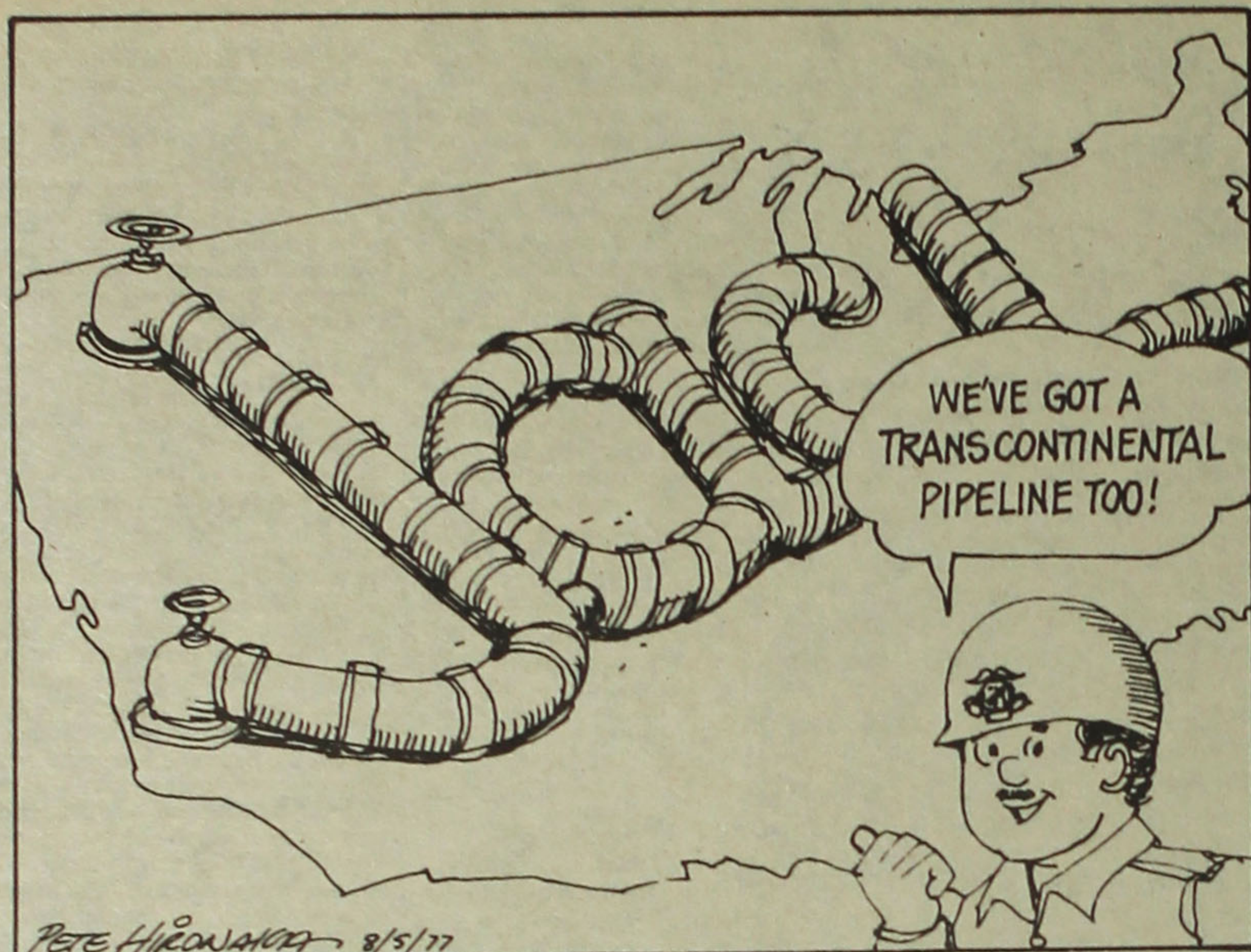
The Rev. Sasaki, using TV's popular technique to warm up the audience asked them where they were from. People were from all over—some from Europe, Japan, Connecticut, Pennsylvania, Arizona and from all over Northern California. He explained, "Buddhism is not a religion, not a philosophy but a way of life—an attitude of mind." (Japanese culture is rooted in Buddhism.)

"Last year," he said, "this country celebrated its 200th Birthday. This year is the 201st. Buddhism has a history of over 2,000 years." He continued there are close to 850 sutras, there is only one Bible. There are many approaches to Enlightenment—not only one. The road you take depends on you...

## If Everyone Looked Like Carter or Ford

"It would be frightening if everyone looked like Carter. It would be frightening if everyone in this room looked like Ford. It would be frightening if everyone in this room (he pointed to himself) looked like me. Each person is different. If everyone looked alike it would be uninteresting. We have many different kinds of people."

One woman asked, "Do Buddhists believe in a Creator?" The Reverend replied, "Buddhists do not believe in a Creator. Buddhists believe in *creation* but not on a Creator. You can ask, 'What created the Creator? What created the Creator to create the Creator? What created the Creator to create the Creator to create the Creator? Ad infinitum. ♦"



From Happy Valley: Sachi Seko

## Thrust of Television

Salt Lake City  
"If you had all the money in the world, what would you buy?" was a childhood game. Its innocence was obvious in the simplicity of the wanting and in the naivete of indiscriminate between \$100 or \$1,000,000.

I was playing this game one night with an educator from Colorado. He teaches history in a small college and one of his courses is Asian American history. I asked him what impact he thought his classes had upon our condition. He said his

classes were small and maybe they reached 100 students during a school year.

It was then I offered him the imaginary money, all he needed, to put into one program which would benefit Japanese Americans. He answered without hesitation: "Television".

I remembered the comment earlier last month. The occasion which prompted my memory was the awarding of the Medal of Freedom to Dr. Jonas Salk and to the late Dr. Martin Luther King

Jr. President Carter honored these two men for their conquests of polio and racial discrimination.

On August 28, 1963, Martin Luther King Jr. said, "I have a dream", and we across the land were caught in his hypnotic dream. The preacher-prophet style of his delivery lent cadence to his passion and made poetic the simple words.

The podium under a warm Washington sky became an altar. And he was a chosen messenger. "We shall overcome" sang the lowly and the mighty, black and white, and the song was heard in living rooms across the country.

King was an eloquent voice of the black movement, a man worthy of the Nobel Peace prize. President Carter characterized him as the "the conscience of his generation".

He was a man who was news, who created news. Whatever Martin Luther King Jr. said or did was instantly recorded and relayed. Television was one of his greatest assets and he used it to his advantage. Millions of people were simultaneously exposed to the ignoble nature of prejudice.

Television when compared with other means of communication, sometimes appears unrefined. Critics of the media have gone so far as to say that television demeans the intellectual capacity of its viewers.

Its primary purpose is to entertain. However, it has and does serve some educational purpose. Millions who will never read a book have had their area of knowledge enlarged.

The television production of "Farewell to Manzanar", was shown on a summer re-

Continued on Page 7

Common sense is instinct, and enough of it is genius.  
—Josh Billings



From the Frying Pan: Bill Hosokawa

## For the Japanophile

Denver, Colo.

No subject touched upon in recent times has stirred up as much reader response as Japanese history and genealogy. No doubt Alex Haley's *Roots* in which he traced his slave ancestors back to their African origins, has much to do with this new interest among Japanese Americans. That, plus the fact that the Nisei are old enough and mature enough to want to look into their distant past.

I hit the jackpot on a couple of recent days. First, Dr. Sho Takeda of Riverside, Calif., went to the trouble of typing out some material he had been working up on his family tree, and sent it along because the name Hosokawa appeared somewhere along the way. I haven't quite figured out the way to read the genealogy, but it contains some mighty interesting names going back to the year 850, and one of these days when I have some time I'll figure it out.

When I get around to that, I will depend on something else that came in the mail. It's a book called *Historical and Geographical Dictionary of Japan*, sent by Kay Tateishi, bilingual mainstay of the Associated Press's Tokyo bureau. Tateishi explained:

"It generally has been regarded as one of the best books in its field in English on Japanese history and geography up to the start of the 20th century. It was priceless as a hardcover edition. Charles E. Tuttle Co. has done a great service bringing it out in paperback at a more than reasonable price. It has been one of my favorites from before World War II, and I'm sure you will find it a treasurehouse of information."

How right he is. The paperback volume has more than 850 pages, some 300 illustrations, and 18 appendices, and I don't know how many thousand entries about the people who roamed through Japanese history for nearly 20 centuries.

Just for fun, I looked up Honda, a family

name known for motorcycles, small hard-to-get automobiles, and as editor of this newspaper. There were two pages of Hondas, most of whom seemed to have descended from a nobleman named Fujiwara Kanemichi (925-977). The family remained prominent enough after the Restoration in 1868 for several members to be named viscounts and barons.

As impressive as the contents of the book are, I was equally impressed by the determination and diligence of the author, E. Papinot, who is not even given the dignity of a first name. Papinot is described only as "among that distinguished band of Westerners who went to Japan following the Meiji Restoration of 1868 and who left to posterity a contribution to Japanese culture."

From reading the introduction and Papinot's own preface, one can only imagine the dedication of this foreigner who went to a strange land, mastered its infinitely difficult language, and then probed tirelessly for years and years into its history to write a definitive book about people with whom even the educated natives are only vaguely familiar.

Papinot devotes one appendix to principal foreigners who were connected with Japan between 1542 and 1868. It is a long list of Europeans—Portuguese, Spanish, English, a Hungarian, Italians, a French admiral, Dutch, and even a few Americans who preceded Commodore Perry. There was, for example, Commodore Biddle, an American who sailed the ship *Columbus* into Uraga in 1846 and asked to make a treaty with Japan. He was rejected, and perhaps for his failure he is largely ignored in favor of Perry who came along a decade later.

Many of the early Portuguese and Spaniards were Jesuits who introduced Christianity to Japan, and a deplorable number were assassinated, burned alive or otherwise tortured to death for their efforts.

Papinot's book was first published in 1910 and Tuttle reprinted it in 1972. Look it up sometime. You'll be fascinated. □

Plain Speaking: Wayne Horiuchi



## Things to Come

It's time to preview some issues which will be coming up in the next several months that directly concern the JACLer.

In the month of September, on the 13th, the Subcommittee on Compensation and Employee Benefits of the House of Representatives will be hearing testimony from the Committee for Internment Credit, JACL and government witnesses on the bill to provide civil service credit to Japanese Americans who were evacuated and interned during WW 2 (Congressman Norman Mineta's bill, HR 6412). The following two weeks, a mark-up session will be held on the legislation (a mark-up session is held whereby the bill is literally examined line by line and is subject to amendment).

When the fall term of the Supreme Court returns in October, the celebrated *Bakke v. the University of California Board of Regents* case will entertain oral argument. Shortly thereafter, a decision will be issued affecting the charges of "reverse discrimination" in favor of minorities against whites. This decision, depending on the Supreme Court's holding, could affect Asian Americans not only in admission to institutions, but also in the areas of employment.

September could also be the time when a hearing might be held for legislation which provides medical treatment for the U.S. citizens and permanent residents who were survivors of atomic bombings in 1945. This will depend on the predilection of the Subcommittee chairman, Rep. George Danielson, and the staff director, Bill Shattuck. I've had long talks with both of them and they're both very sensitive and understanding gentlemen.

Finally, in October, JACLers can expect that Congress will adjourn sine die for the First Session of the 95th Congress. During this period of time after Congress adjourns would be an excellent opportunity for JACL Chapters to invite their elected representatives to their annual installation dinners and district meetings. This is where the most effective communication occurs between JACLers and their public officials. Good Congressional members will always pay special attention and listen to their constituents.

I'll keep you informed of activities that will be coming up in the next several months because these issues will have impact on you as JACLers. □

# calendar

**Aug. 5 (Friday)**  
 Sacramento—Jan Ken Po benefit dnr-dance, Woodlake Inn, 7:30 p.m.  
**Aug. 6 (Saturday)**  
 San Francisco—Hiroshima-Nagasaki A-Bomb memorial, Japan Center, 2 p.m.  
**Aug. 7 (Sunday)**  
 Mid-Columbia—Picnic, Rooster Rock State Park, 11:30 a.m.  
 Cincinnati—Picnic, Maple Ridge Lodge, Mt Airy Forest.  
 NC-WNDC—Invitational swim meet, Palo Alto High, 8:30 a.m.  
 Salinas Valley—Mike Mineishi dnr, Holiday Inn, Seaside.

**August 8 (Monday)**  
 Alameda—Mtg, Buena Vista Methodist Church, 7:30 p.m.  
 Las Vegas—Mtg, Osaka Restaurant, 8 p.m.  
**August 9 (Tuesday)**  
 Sequoia—Bd Mtg, Cal 1st Bank, Palo Alto, 8 p.m.; Karl Nobuyuki, sprk.  
**August 10 (Wednesday)**  
 Orange County—Bd mtg, Calif 1st Bank, Santa Ana, 7:30 p.m.  
**Aug. 12 (Friday)**  
 Cleveland—Bd Mtg, H Tanaka, res, 8 p.m.  
**August 12-14**  
 Tacoma—35th anny Pre-Evacuation reunion, Bicentennial Pavilion.

## Seattle slates series on retirement

SEATTLE, Wash.—In response for more in-depth, detailed programs on retirement issues, the Seattle Nisei Retirement Conference is planning a seminar in September-October at an appropriate facility, it was announced by chairman Minoru Masuda this past week.

A community coalition group comprised of representatives of Nikkei organizations will produce a series of six weekly seminars devoted to the financial and legal aspects of retirement planning.

Registration forms and further details, list of speakers, etc. will be available from the first week of August. Seminars will be comprised of 2½-hour sessions with registration fee of \$12 and limited to 150 persons.

Subsequent seminars devoted to other aspects, such as second careers, leisure time, health, etc., are also being planned.

## S.F. memorial set for bomb victims

SAN FRANCISCO—A memorial service for victims of the 1945 atomic bombing of Hiroshima and Nagasaki will be held on Saturday, Aug. 6, 2 p.m. at the Sakura Room at Japan Trade.

Some 300,000 are known to have perished or been injured by the two blasts 32 years ago, according to Kanji Kuramoto, chairman of the Committee of Atomic Bomb Survivors.

The service is being co-sponsored by the Japanese American Religious Federation of San Francisco, National JACL, and the Gem-baku Hibakusha Kyokai.

Have Your Friends Join JACL

## Diablo Valley installs first cabinet



Getting ready for the Diablo Valley JACL installation are the new officers (from left) Masaye Nakamura, v.p., pinning a boutonniere, on Hiroshi Morodomi, pres; Richard Iseri, treas., likewise being pinned by Faye Sugimura, sec.

CONCORD, Calif.—The Diablo Valley JACL Chapter held its first installation dinner July 15 at the Concord Sheraton Inn. The officers were installed by James Murakami, National JACL President.

Presenting the gavel to the new president, Hiroshi Morodomi, was president William Nakatani of the sponsoring Contra Costa Chapter. Monetary presentations were made by the Northern California-Western Nevada District Council and the Contra Costa chapter.

Guest speaker Karl Nobuyuki, National JACL Director, spoke about the purposes for the new chapter. He said, "The search for goals is part of the Japanese spirit. The JACL is dedicated to human and civil rights, seeking security through unity."

He touched upon the 1980 census and its impact on ethnic identity, the absence of Nikkei on the board of the U.S.-Japan Friendship Act, concern over U.S.-Japan relations, the Bakke case, the Korematsu case which challenged the legality of the evacuation.

On the local level, he urged awareness of these issues, retention of our cultural heritage, and encouraged young Nikkei to join

the JACL. He warned, "The problem of equal access is always there." He concluded, "The JACL spirit is coordinated through the active local chapters, linking to the national chapter—individual decisions collectively used. This is how we hope to attain our goals and retain our integrity."

Singer Robert Kikuchi Yngojo entertained with his own compositions, accompanying himself on piano and guitar.

Guests included: Assemblyman Dan Boatwright, Assemblyman Floyd Mori, Supervisor Robert Schroder, Supervisor Nancy Fahden, Supervisor Eric Hasseltine, District Governor Charles Kubokawa, Regional Director George Kondo, their respective spouses; and Dr. Terry Hayashi, prewar Nat'l JACL pres.

Master of ceremonies was Tom Shimizu. Officers installed were:

Hiroshi Morodomi, pres; Masaye Nakamura, v.p.; Faye Sugimura, sec; Richard Iseri, treas; Wilma Haya-

shi, pub; Mollie Fujioka, memb; executive board—Alyce Honda, Ed Kubokawa, Noboru Nakamura, William Suzuki, George Toriyama, Raymond Yamada, Yukio Wada, Paul Hayashi, and Tom Shimizu.

## Classified

The PC Classified Rate is 10 cents per word. \$3 minimum per insertion. 3% discount if same copy appears 4 times. Payment in advance unless prior credit has been established with our office.

### Employment Clerk/Typist

Limited term employment not to exceed 12 months. Requires typing of 50 wpm, knowledge of office procedures, filing and record keeping. Work harmoniously with staff personnel and public. Salary is \$8,382 per annum.

Deadline for submission of application is Aug. 12, 1977.

ORANGE COUNTY HOUSING AUTHORITY (714-547-9133)

Equal Opportunity Employer



Largest Stock of Popular & Classic Japanese Records Magazines, Art Books, Gifts

340 E. 1st St., Los Angeles (New Addition) 330 E. 1st St. S. Ueyama, Prop.



Across from St. John's Hosp. 2032 Santa Monica Blvd. Santa Monica, Calif. MARY & GEORGE ISHIZUKA 828-0911

### Naomi's Dress Shop

Sport & Casual, Sizes 3-18 116 N. San Pedro St. Los Angeles • 680-1553

Open Tue-Fri. 9:30-6:30 and Sat. 11-9. Closed Sun.-Mon.

Commercial & Industrial Air-conditioning & Refrigeration Contractor

### Sam J. Umemoto

Lic. #208863 C-20-38

SAM REIBOW CO. 1506 W. Vernon Ave. Los Angeles 295-5204

Experienced Since 1919

**EAST WEST PLAYERS**  
 PRESENT  
**GEE POP**  
 A REAL CARTOON  
 By FRANK CHIN  
 "Wild, linguistic exploit..."  
 —Moore, Herald Examiner  
 Fri. - 8:30 - \$4.50  
 Sat. - 8:00 - \$4.50  
 Sun. - 7:30 - \$4.50  
 RESERVATIONS  
**660-0366**  
 4424 Santa Monica Blvd.

## Nationwide Business and Professional Directory

Your business card placed in each issue here for 25 weeks (a half year) at \$25 per three-lines. Name in larger type counts as two lines. Each additional line at \$6 per line per half-year period.

### Greater Los Angeles

Asahi International Travel  
 1111 W. Olympic, Los Angeles 90015  
 623-6125/29. Please Call Tom or Gladys  
 U.S.A. - Japan - Worldwide  
 AIR - SEA - LAND - CAR - HOTEL

Grand Opening—FLOWER VIEW GARDENS #2  
 110 S. Los Angeles St., L.A. 90012  
 Flowers/Gifts/Plants New Otani Hotel Shop  
 Mgr Art Ito Jr. Call (213) 620-0808

NISEI FLORIST  
 In the Heart of Little Tokyo  
 328 E. 1st St. - 628-5606  
 Fred Moriguchi Member: Teleflora

The PAINT SHOPPE  
 La Mancha Center, 1111 N. Harbor Blvd.  
 Fullerton, Calif. (714) 526-0116

YAMATO TRAVEL BUREAU  
 312 E. 1st St., Los Angeles 90012  
 (213) 624-6021

### Watsonville, Calif.

Tom Nakase Realty  
 Acreage, Ranches, Homes, Income  
 Tom T. Nakase, Realtor  
 25 Clifford Ave. (408) 724-6477

### San Jose, Calif.

EDWARD T. MORIOKA, Realtor  
 945 S. Bascom, San Jose  
 Bus. 246-6606 Res. 241-9554

### S.F. Peninsula

JAPANESE BUNKA EMBROIDERY  
 4600 El Camino Real, Suite 216  
 Los Altos, Calif. 94022  
 Irene T. Kono — (415) 941-2777

### Seattle, Wash.

IMPERIAL LANES  
 Nisei Owned — Fred Takagi, Mgr.  
 2201 - 22nd Ave. So. 325-2525

GOLD KEY REAL ESTATE INC.  
 Homes and Acreage  
 TIM MIYAHARA, Pres.  
 Call Collect: (206) 226-8100

KINOMOTO TRAVEL SERVICE  
 Frank Y. Kinomoto  
 605 S. Jackson St. 622-2342

**GALA SUPERMARKET BAZAARS**

Gifts  
 Cooking Utensils  
 Imported beverages  
 Food delicacies  
 Juda-Gi Karate  
 Pottery, China

**UWAJIMAYA**  
 Free Parking  
 Seattle: 6th S and Southcenter Store:  
 5 King St Tukwila, Wa  
 MA 4-6248 CH 6-7077

### The Midwest

SUGANO TRAVEL SERVICE  
 17 E. Ohio St., Chicago, Ill. 60611  
 944-5444; eve/Sun 784-8517

### Washington, D.C.

MASAOKA-ISHIKAWA AND ASSOCIATES, INC.  
 Consultant - Washington Matters  
 900-17th St NW, Rm 520, 296-4484

**Mrs. Friday's**  
 DELIGHTFUL seafood treats  
 DELICIOUS and so easy to prepare

## MRS. FRIDAY'S Gourmet Breaded Shrimps and Fish Fillets

Fishing Processors, 1327 E. 15th St., Los Angeles (213) 746-1307



### Marutama Co. Inc.

Fish Cake Manufacturer  
 Los Angeles

### YAMASA KAMABOKO



### —WAIKIKI BRAND—

Distributors: Yamasa Enterprises  
 515 Stanford Ave.  
 Los Angeles  
 Phone: 626-2211

## GARDENA—AN ENJOYABLE JAPANESE COMMUNITY Poinsettia Gardens Motel Apts.

13921 S. Normandie Ave. Phone: 324-5883  
 68 Units • Heated Pool • Air Conditioning • GE Kitchens • Television  
 OWNED AND OPERATED BY KOBATA BROS.

**YAMATO EMPLOYMENT AGENCY**  
 312 E. 1st St., Room 202  
 Los Angeles, Calif.  
 NEW OPENINGS DAILY  
 624-2821

**CHIYO'S**  
 Japanese Bunka Needlecraft  
 文化刺繍  
 WHOLESALE - RETAIL  
 Bunka Kits - Framing - Aoi Kimekomi Doll Kits  
 Nippon Doll Kits - Mail Orders Welcome  
 Lessons - Instructor's Certificate  
 2943 W. Ball Rd.  
 Anaheim, Calif. 92804  
 (714) 995-2432  
 Open Daily 10-5, Friday to 8  
 Closed Sunday, Tuesday

**Aloha Plumbing**  
 LIC. #201875  
 PARTS & SUPPLIES  
 —Repairs Our Specialty—  
 1948 S. Grand, Los Angeles  
 Phone: 749-4371

**ED SATO**  
 PLUMBING AND HEATING  
 Remodel and Repairs  
 Water Heaters, Garbage Disposals  
 Furnaces  
 Servicing Los Angeles  
 293-7000 733-0557

**SAITO REALTY CO.**  
 HOMES • INSURANCE  
 One of the Largest Selections  
 2421 W. Jefferson, L.A.  
 731-2121  
 JOHN TY SAITO & ASSOCIATES

**MARUKYO**  
 Kimono Store  
 250 E. 1st St.  
 Kajima Arcade A-5  
 Los Angeles 628-4369

**Koby's Appliances**  
 Complete Home Furnishings  
 15120 S. Western Ave.  
 Gardena 324-6444, 321-2123

**Mikawaya**  
 Sweet Shop  
 244 E. 1st St.  
 Los Angeles MA 8-4935

Established 1936  
**Nisei Trading**  
 Appliances - TV - Furniture  
 348 E. First St.  
 Los Angeles, Calif. 90012  
 Tel.: 624-6601

Ask for  
**'Cherry Brand'**  
 MUTUAL SUPPLY CO.  
 1090 Sansome St.  
 San Francisco, Calif.

**Kimura**  
 PHOTOMART  
 Cameras & Photographic Supplies  
 316 E. 2nd St., Los Angeles  
 622-3968

**TOYO Myatake**  
 STUDIO  
 318 East First Street  
 Los Angeles, Calif. 90012  
 626-5681

**Empire Printing Co.**  
 COMMERCIAL and SOCIAL PRINTING  
 English and Japanese  
 114 Weller St., Los Angeles 90012 628-7060

**Nanka Printing**  
 2024 E. First St.  
 Los Angeles, Calif.  
 Phone: 268-7835

**Toyo Printing**  
 Offset - Letterpress - Linotyping  
 309 S. SAN PEDRO ST.  
 Los Angeles - 626-8153

Three Generations at Experience  
**FUKUI Mortuary, Inc.**  
 707 E. Temple St.  
 Los Angeles 90012  
 626-0441  
 Soichi Fukui, President  
 James Nakagawa, Manager  
 Nobuo Osumi, Counsellor

**Shimatsu, Ogata and Kubota Mortuary**  
 911 Venice Blvd.  
 Los Angeles 749-1449  
 SEIJI DUKE OGATA  
 R. YUTAKA KUBOTA

# chapter pulse

## Berkeley

A group of 40 scouts and leaders from Berkeley's Japanese Sister City of Sakai arrived July 26 to spend two weeks, staying with host families and visiting local highspots such as the Lawrence Hall of Science and the Fages Trail the first week and the second week with Berkeley scouts at a camp near Willits.

Berkeley JACL has been assisting the Berkeley-Sakai Sister City Assn. in this exchange which began two years when a local group visited Japan. Troop 26 leaders Jordan Hiratzka and Roy Kurahara are in charge of general arrangements.

## Rookie Sakata slams 1st homer

BALTIMORE, Md. — Rookie Lenn Sakata ripped his first major league homer, a two-run shot with one out in the ninth to give the Milwaukee Brewers a short-lived 3-2 lead over the Baltimore Orioles July 25.

Another rookie, Dave Criscione, belted his first homer in the 11th to give the Orioles a 4-3 victory. Sakata made his major league debut at second base July 21 at Yankee Stadium. The Honolulu Sansei with the Spokane club had been batting .285 in the Pacific Coast League.

## SEKO

Continued from Page 5

run recently. Last year, the film provoked controversy in certain quarters. One of the complaints was that it white-washed the Evacuation and that it deliberately moderated the role of the whites.

The controversy detracted from the importance of a film being shown on prime time. I doubt that any presentation will ever achieve unanimous approval, especially among Japanese Americans. It is not our nature to agree.

I considered the film an important instrument to opening other doors. I hoped the film would compel some to further investigate this neglected passage in American history.

The morning after the rerun, my husband had two telephone calls from the East Coast. "Our children were fascinated. They want to know more. Tell us what resources are available."

At the office, at a party, at the shopping center it introduces a new dialogue. How deeply people have genuinely been touched we do not know. Whether it is for the moment, or beyond is unknown. But in the brief encounters, a connection is made.

The black movement was given its thrust by the instant exposure of television, the newest form of communication. Perhaps it would be to the best interests of JACL and of all Japanese Americans to creatively explore the exciting potential of using television as an educational instrument.

## Marin County

An informal Marin JACL dinner meeting with National Executive Director Karl Nobuyuki is being called for Aug. 27, 7:30 p.m. at the Royal Mandarin in Terra Linda. Tickets at \$7.50 and reservations by Aug. 12 are being handled by John Tateishi, 11 Inman Dr., Kentfield 94904 (457-2615).

Nobuyuki will comment on the direction of JACL, the Hollister case, reparations and issues.

## Sequoia

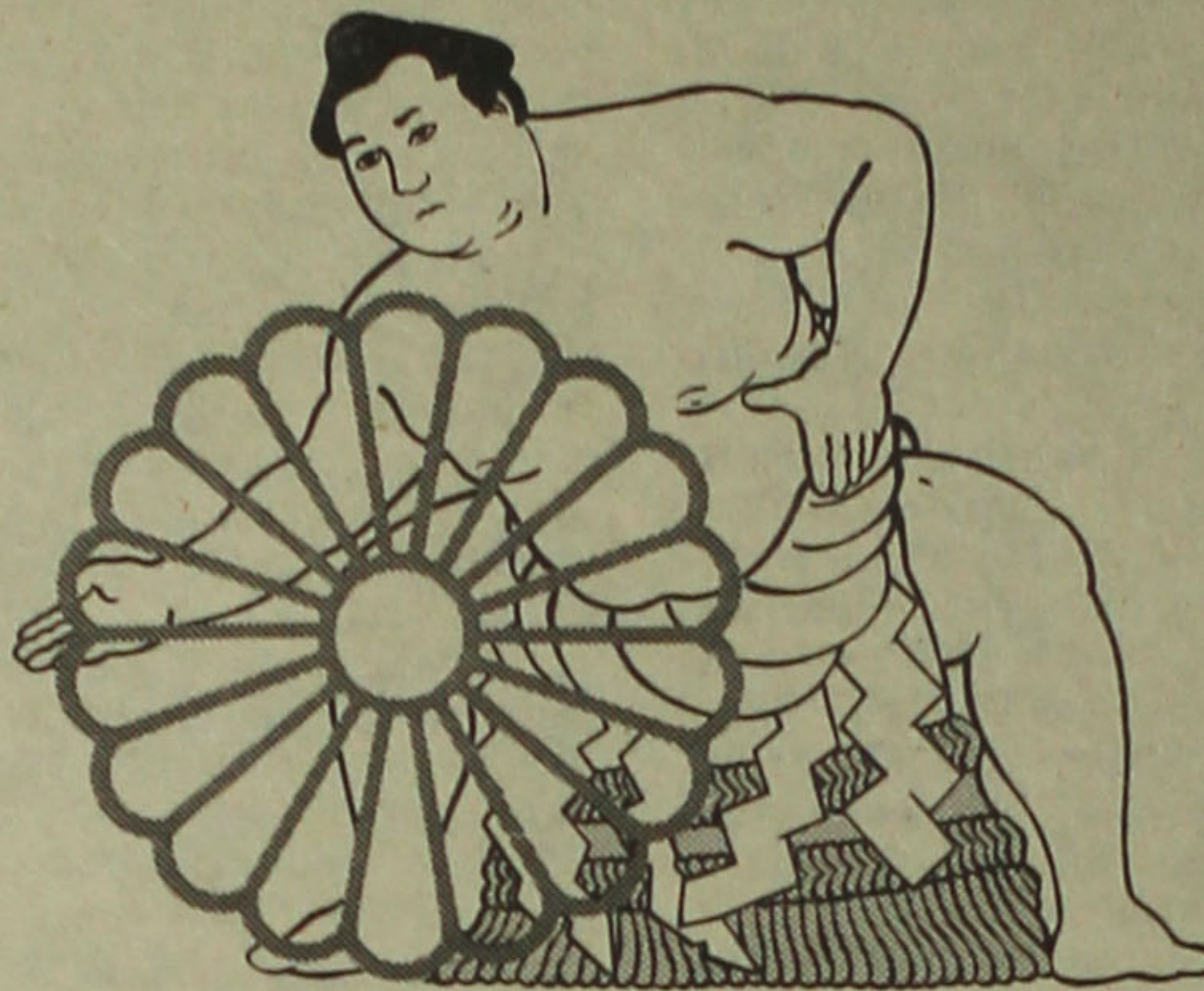
National Director, Karl Nobuyuki, will be the guest of Sequoia JACL at its Aug. 9 meeting. San Mateo, San Jose and West Valley JACL chapters have been invited.

The meeting begins at 8 p.m. at the California First Bank, 4291 El Camino Real, Palo Alto (across from the Hyatt Cabana Hotel).

The Sequoia Board voted to dispense with the business portion of its August meeting so that the different chapter members can meet each other

in an informal atmosphere. George Kondo, Northern California Regional Director, will also be present at this meeting.

## STRONGER AND BIGGER SAVINGS



ANNUAL INTEREST RATES ON INSURED SAVINGS  
All Interest Compounded Daily.  
Account Insurance Now Doubled To \$40,000

7 3/4% 6-Year Certificate \$1,000 Minimum  
7 1/2% 4-Year Certificate \$1,000 Minimum  
6 3/4% 30-Month Certificate \$1,000 Minimum  
6 1/2% 1-2 Year Certificate \$1,000 Minimum  
5 1/4% Regular Passbook Savings

Certificates of Deposit may be withdrawn prior to maturity, but in accordance with Federal Regulation requirements. Interest for the entire time of deposit will be recalculated at the prevailing savings passbook rate, less 90 days' interest. MEMBER FSLIC

## MERIT SAVINGS AND LOAN ASSOCIATION

LOS ANGELES: 324 East First Street 624-7434  
TORRANCE/GARDENA: 18425 South Western Avenue 327-9301  
MONTEREY PARK: 1995 South Atlantic Boulevard

## JACL Chapter-Sponsored Insurance

Endorsed by Pacific Southwest District Council

### New and Improved Group Medical Insurance, Includes Life Insurance for JACL Members

Contact Listed Brokers Below

LOS ANGELES	
Funakoshi Ins Agy	626-5275
Edward Matsuda	295-4690
Saburo Shimoda	933-5568
Kamiya Ins Agy	626-8135
Art S Nishisaka	731-0758
Tsuneishi Ins Agy	628-1365
Yamato Ins Svc	624-9516
ORANGE COUNTY	
Ken Ige	943-3354
James Seippel	527-5947
Mock Miyazaki	963-5021
Ken Uyesugi	540-3770
MONTEREY PARK	
Ogino Ins Agy	685-3144
Dennis Kunisaki	849-3365
George I Yamate	386-1600
Takuo Endo	283-0337
GARDENA VALLEY	
Jeff K Ogata	329-8542
Stuart Tsujimoto	772-6529
Sugino-Mamiya Ins	538-5808
George J Ono	324-4811
WEST LOS ANGELES	
Arnold T. Maeda	398-5157
Steve Nakaji	391-5931
Ken Uyetake	773-2853
Hiroshi Shimizu	463-4161
Toshio Kumamoto	793-7195
Ben Honda	277-8082

## Los Angeles Japanese Casualty Insurance Assn.

Complete Insurance Protection

Aihara Ins. Agy., Aihara-Omatsu-Kakita-Fujioka	
250 E. 1st St.	626-9625
Anson Fujioka Agy., 321 E. 2nd., Suite 500	626-4393 263-1109
Funakoshi Ins. Agy., Funakoshi-Kagawa-Manaka-Morey	
321 E. 2nd St.	626-5275 462-7406
Hirohata Ins. Agy., 322 E. Second St.	628-1214 287-8605
Inouye Ins. Agy., 15092 Sylvanwood Ave., Norwalk	864-5774
Tom T. Ito, 595 N. Lincoln, Pasadena	795-7059 (LA) 681-4411
Minoru 'Nix' Nagata, 1497 Rock Haven, Monterey Park	268-4554
Steve Nakaji, 11964 Washington Place	391-5931 837-9150
Sato Ins. Agy., 366 E. 1st St.	629-1425 261-6519



## The Mitsubishi Bank of California

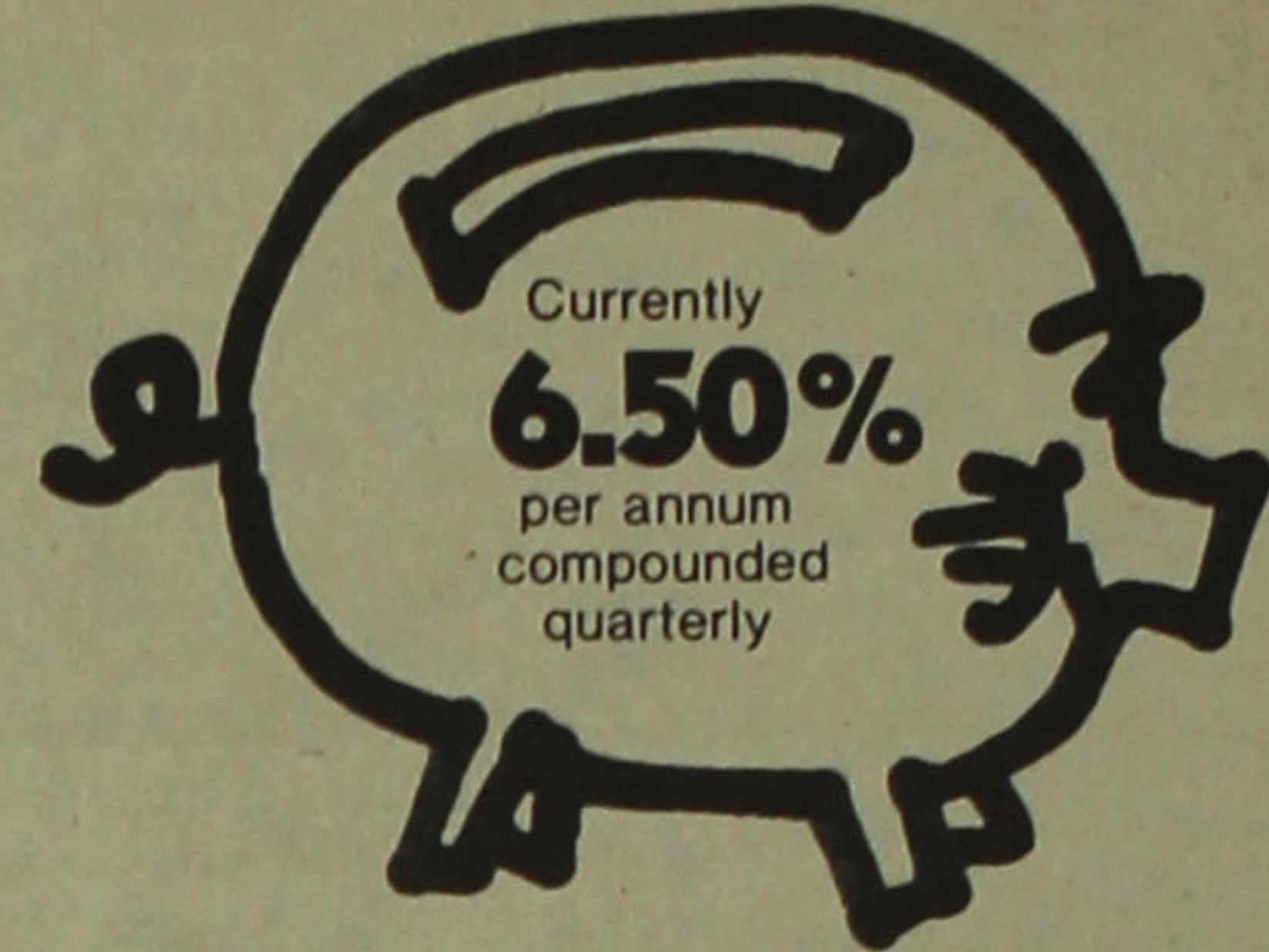
FRIENDLY SERVICE

HEAD OFFICE	800 Wilshire Blvd., Los Angeles, Calif. 90017	(213) 623-7191
LITTLE TOKYO OFFICE	321 East Second St., Los Angeles, Calif. 90012	(213) 680-2650
GARDENA OFFICE	1600 W. Redondo Beach, Gardena, Calif. 90247	(213) 532-3360
SAN FRANCISCO OFFICE	425 Montgomery St., nr. California	(415) 788-3600

Member FDIC

## SAVE WITH US

AND GET FREE LIFE SAVINGS INSURANCE COVERING YOUR SHARE BALANCE UP TO \$2000.



Currently  
**6.50%**  
per annum  
compounded  
quarterly

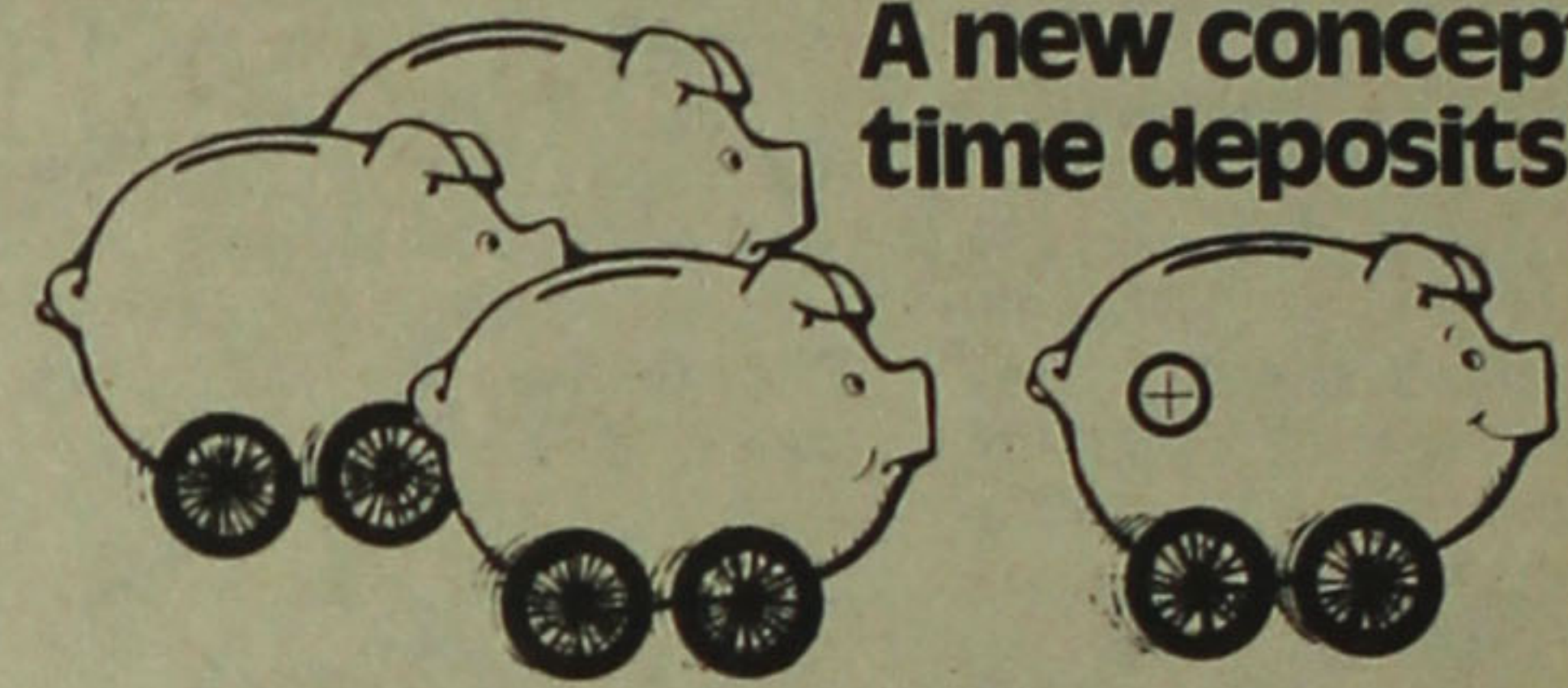
## National JACL Credit Union

PO Box 1721  
Salt Lake City, Utah 84110  
Telephone (801) 355-8040

Borrow up to \$3000  
on your signature  
to qualified borrowers.

## INTEREST PLUS...

A new concept in time deposits.



In the race for top interest rates in time deposits, all good banks finish about the same. But now Sumitomo moves ahead with the new InterestPlus...

Now, \$2,000 in a one-year Time Certificate of Deposit earns a full 6%, the highest bank interest rate... PLUS... one of the most generous and unique package plans ever offered!

- A maximum \$1,000 credit line (overdraft protection)!
- Free checking account (no minimum balance required)!
- Commission-free travelers cheques!
- PLUS many more opportunities to save!

So get the best run ever for time deposit money at Sumitomo.

Regulations impose substantial interest penalties upon premature withdrawal.

The Sumitomo Bank of California

Member FDIC

## The one that does more does it with A COMPLETE TRUST DEPARTMENT.

California First Bank has a full-service Trust Department with offices to serve you in Los Angeles, Beverly Hills and Newport Beach. And our experienced trust officers are available on an appointment basis at any of our LA and Orange County offices.

A secure future is yours at over 100 statewide locations of California First Bank. It's simply a matter of planning. So contact one of our trust officers directly, or make an appointment through your local office today. It's just another way we intend to make banking more, than it ever was before.

### TRUST DEPARTMENT OFFICES

LOS ANGELES	James Boyle 616 W. 6th St., 213/972-5272
Whitney Lee	11661 San Vicente Blvd., 213/478-0911
NEWPORT BEACH	Richard Jackson 1501 Westcliff Dr., 714/624-3111

CALIFORNIA FIRST BANK

MEMBER FDIC

Nisei in Japan: Barry Saiki

# Japanese and Nikkei Influences

Tokyo  
Numerous Japanese influences are apparent throughout the United States, in addition to the Toyotas, Datsuns, Suzukis, Yamahas and the Hondas. The most noticeable ones are:

1—ARCHITECTURE

The Buddhist churches and temples scattered along the West Coast, though not as old as the string of Spanish missions, were established initially by the Issei, who wanted to retain their family religions. While these buildings and Buddhism itself have not left significant impact on the overall U.S. public, they continue to serve useful purposes for the Nikkei.

Historically important is the fact that the Buddhist churches served as the base for many prewar Nihonmachi activities, ranging from language schools, cooking schools, flower arrangement classes, Nisei sports (karate, judo and kendo), Japanese movies and Bon odori, to weddings and funerals. Structures like the San Jose Betsuin, the Stockton Buddhist Church, Nishi Hongwaji and Higashi Hongwanji in Los Angeles, etc., have enriched the architectural wealth of their respective communities.

2—JAPANESE GARDENS

While the Issei had deep appreciation for Nature as eloquently expressed in traditional Japanese gardens, they were not economically endowed to build them. The prewar Issei gardeners were more noted for their efficiency and thoroughness rather than originality or uniqueness. The economic losses due to the Evacuation caused many Nisei to go into gardening as an occupation, primarily because it required little capital. It assured a comfortable living for those who had a love of soil and the will to toil.

The Occupation of Japan also gave many Americans the opportunity to grasp the Japanese concepts of nature; and with it, the desire to build. One will find numerous Japanese type gardens today, particularly on the West Coast, in Nisei homes, the homes of "war brides" and Japanophiles.

3—IKEBANA

Ikebana was almost wholly a Nihonmachi activity in the prewar, and its widespread popularity in the U.S. today has been achieved for several reasons, including the Occupation of Japan which placed many Americans into close touch and the influx of war brides who came to the States with credentials. Ikebana is taught today mostly by Nikkei on the West Coast and by Caucasians in the Midwest and East.

4—JAPANESE DANCE

The prewar Japanese dance was confined to the Nihonmachi and to the annual Bon Odori staged under the aegis of the Buddhist churches. The most spectacular performance

(we recall) was the Japan Day event held at the Golden Gate Exposition in 1937, with hundreds of kimono-clad Nisei participating. They are still the features of the Nisei Week in Los Angeles and the Cherry Blossom Festival in San Francisco.

But the spread of the Hanayagi schools for Japanese dances in the West Coast cities can be largely attributed to those, including warbrides, who had studied in Japan.

5—FINE ARTS, ETC.

The purchases of Japanese art and artifacts in the prewar was limited to wealthy U.S. families (like the Brundages) and a few Nikkei households. The postwar stationing of our troops in Japan brought them into firsthand contact with various art forms and created wider interest. Practically no American soldier or civilian left Japan without a silk painting, a Japanese doll, a folding screen, a large vase or a set of Noritake china. Others took back cushions (zabutons) and low coffee tables.

6—JAPANESE SPORTS

Judo and Kendo (Japanese fencing) both achieved strong popularity in the prewar Nihonmachi. Judo also had created interest in police and military circles and gained increased attention, particularly through the Occupation, when many GIs were exposed to it in Japan. Then, with the acceptance of judo as a venue for the Olympic Games, it won assurance of continued recognition as an international sport.

Kendo, less practical, has never regained its prewar following, although a number of clubs are still operating. Both Karate and Aikido were practically unknown in the prewar and both have gained some ground in the postwar, due to the U.S. involvement in the Far East. Karate has a larger following among non-Nikkei enthusiasts, while Aikido is still primarily a Nikkei sport.

7—JAPANESE FOODS

Japanese restaurants ca-

tering to the general trade were practically non-existent in the prewar, with the exception of the Miyako in New York and several restaurants in Los Angeles, San Francisco and Seattle. In other words, the Japanese restaurants were Nihonmachi businesses. The relocation paved the way for the opening of Japanese restaurants in Midwestern and Eastern cities, including New York, Chicago and Washington D.C. These establishments had to pattern their business to non-Nikkei business in order to survive.

On the West Coast, too,

the number of restaurants have proliferated until there are more than 50 in the Bay Region and even more in the Los Angeles area, with the major ones like Yamato, Suehiro, Tokyo Kaikan and Horikawa relying heavily on non-Nikkei trade. The continued success of these businesses can also be measurably attributed to the Occupation and the Security Pact, which have made many Americans aware of the appetizing qualities of various Japanese foods.

Not to be disregarded is the fact that several hundred thousand Americans

are visiting Japan annually, while more than double this number of Japanese travel to the U.S., including thousands of Japanese couples who take their honeymoons in Guam and Hawaii.

While we believe that we

fully understand our positions within our own set circles and surrounding neighborhoods, the general American public opinion throughout the rest of the U.S. is still strongly influenced by all things Japanese, good or bad. □

## 1977 JAACL Travel Program

SPONSORED BY  
National Japanese American Citizens League

Open to All Bonafide JAACL Members

Group Flights to Japan

GROUP NO	DEPART FROM	DATES
8—	FULL San Francisco	Aug. 7-Aug. 28
9—	San Francisco	Sept. 25-Oct. 16
11—	FULL San Francisco	Oct. 2-Oct. 23
12—	Los Angeles	Oct. 9-Oct. 30
13—	FULL San Francisco	Oct. 9-Oct. 30
14—	FULL San Francisco	Oct. 11-Nov. 1
19—(New)	San Francisco	Dec. 20-Jan. 9
20—(New)	San Francisco	Oct. 12-Nov. 7

Group Flights to Japan

Via Pan Am 747/GA 100	Round Trip Fare \$460*
16— Los Angeles	Aug. 13-Sept. 3
10— Los Angeles	Oct. 1-Oct. 22

Charter Flight to Japan

Via Japan Air Lines	Round Trip Fare \$549*
17— FULL Chicago	Oct. 2-Oct. 22

CONTACT YOUR ADMINISTRATOR FOR FOLLOWING FLIGHTS  
No. 2, 4, 13—Grant Shimizu (408—297-2088);  
San Jose JAACL, 724 N. First St., San Jose, Calif. 95112  
No. 6, 10, 12—Akira Ohno (213—477-7490), 2007 Barry Ave, Los Angeles 90025.  
No. 11—Tad Hirota (415—526-8626), 1447 Ada St, Berkeley 94702.  
No. 18—Ruby Schaar (212—724-5323), 50 W. 67th St., New York 10023

\* Air fare subject to revision pending airline's fare increases for 1977; prices based on 1976 fare and includes round trip air fare, \$3 airport departure tax, \$20 JAACL administrative fee. Adult and child seats same price on any flight; infants two years, 10 pct. of applicable regular fare. ALL FARES, DATES, TIMES MAY BE SUBJECT TO CHANGE.

### Information Coupon

Mail to any JAACL-Authorized Travel Agent, Chapter Travel Chairperson or President, JAACL Regional Office or to:

National JAACL Travel  
1765 Sutter St., San Francisco, Calif. 94115

Send me information regarding 1977  
Nat'l JAACL Flight, especially Group No. \_\_\_\_\_  
Name \_\_\_\_\_  
Address \_\_\_\_\_  
City, State, ZIP \_\_\_\_\_  
Day Phone \_\_\_\_\_ Chapter \_\_\_\_\_

Effective Date: \_\_\_\_\_  
City, State, ZIP: \_\_\_\_\_  
New Address: \_\_\_\_\_  
If you are moving, give us 3 week's advance notice. Clip out entire address label "box". Write in new address and effective date.  
No. 1955  
**PACIFIC CITIZEN**  
355 E. 1st St., Rm. 305, Los Angeles, Calif. 90012

JAACL-AUTHORIZED

### Retail Travel Agencies

For land tour arrangements, documentation and customer service, contact one of the following authorized travel agents.

PACIFIC NORTHWEST DISTRICT COUNCIL

GEORGE AZUMANO/JIM IWASAKI (503—223-6245)  
Azumano Travel Service, 400 SW Fourth Ave, Portland, Ore 97204  
MIKI KAWAGUCHI (206—622-5520)  
Kawaguchi Travel Sv, 711-3rd Ave, Suite 300, Seattle 98104

NO. CALIF.-W. NEV. DISTRICT COUNCIL

KEN YAMAHIRO (415—845-1977)  
Yamahiros Travel Sv, 2451 Grove St, Berkeley, Calif. 94704  
VICTOR IWAMOTO (415—398-5777)  
East West Travel, 391 Sutter St, San Francisco, Calif. 94108  
MORRIS KOSAKURA/KEN IMAMURA (415—956-4300)  
Kosakura Tours & Travel, 530 Bush St #515, San Francisco 94108  
JIM NAKADA (415—342-7494)  
Sakura Travel Bureau, 511-2nd Ave, San Mateo, Calif 94401  
DENNIS GARRISON (408—373-3266)  
Monterey Travel Agency, 446 Pacific St, Monterey, Calif. 93940  
JERRY MIYAMOTO (916—441-1020)  
Miyamoto Travel Sv, 2401-15th St, Sacramento, Calif 95818  
TOM KOBUCHI (415—781-8744)  
Japan American Trav Bureau, 25-B World Trade Ctr, San Fran 94111  
HENRY OE (415—982-4965)  
Nippon Express USA, 39 Geary St, San Francisco 94108  
PEARL OKAMOTO (408—371-9070)  
Horizon Travel Sv Inc, 1875 S Bascom Ave, Campbell, Calif 95008  
AKI TRAVEL SERVICE (415—567-1114)  
Japan Ctr - West Bldg, 1730 Geary Blvd, San Francisco, Calif 94115  
ICH TANIGUCHI (415—922-7171/7172)  
Kintetsu Int'l Express, 1737 Post St, San Francisco, Calif 94115  
FRANK or EDITH TANAKA (415—474-3900)  
Tanaka Travel Service, 441 O'Farrell St, San Francisco, Calif 94102  
CLARK TAKETA (408—287-5220)  
Travel Planners, 2025 Gateway Pl #280, San Jose, Calif 95110

PACIFIC SOUTHWEST DISTRICT COUNCIL

KAZUE TSUBOI (213—628-3235)  
Asia Travel Bureau, 102 S San Pedro St, Los Angeles, Calif 90012  
WILLY KAI/TOGO FURUMURA (213—626-5284)  
Kokusai Int'l Travel, 321 E 2nd St, Los Angeles, Calif 90012  
JOANNE MATSUBAYASHI (213—532-3171)  
Classic Travel Sv, 1601 W Redondo Beach Blvd, Gardena, Calif 90247  
HIROMICHI NAKAGAKI/YOSHIKO OTA (213—625-1505, 624-1505)  
Mitsuline Travel Sv, 327 E 1st St, Los Angeles, Calif 90012  
TOSHI OTSU (213—321-5066, 323-3440)  
Gardena Travel Sv, Pac Sq #10, 1610 W Redondo Bch Bl, Gardena 90247  
GIRO TAKAHASHI (213—937-2146)  
New Orient Express, 5455 Wilshire Blvd, Los Angeles, Calif 90036  
J E DUNKLE (714—474-2206)  
South Bay Travel Ctr, 1005 Plaza Bl (PO Box 295), National City 92050  
TANYA SANDS (602—949-1919)  
Fifth Ave. Travel & Tours, 7051-5th Ave, Scottsdale, Ariz 852251

INTERMOUNTAIN DISTRICT COUNCIL

JAN or GEORGE ISERI (503—889-6488)  
Iseri Travel Agency, PO Box 100, Ontario, Ore 97914  
GENE BETTS (208—459-0889)  
Caldwell Travel Sv, PO Box 638, Caldwell, Idaho 83605

MIDWEST DISTRICT COUNCIL

FRANK T. SUGANO (312—944-5444)  
Sugano Travel Sv, 17 E Ohio St, Chicago, Ill 60611  
RICHARD H YAMADA (312—944-2730)  
Yamada Travel Sv, 812 N Clark St, Chicago, Ill 60610

EASTERN DISTRICT COUNCIL

WARO OKAMOTO (212—586-4350)  
Kintetsu Int'l Express, 1270 Ave of Americas, New York, N.Y. 10020  
STANLEY T. OKADA (212—687-7983)  
New York Travel Sv, 551 Fifth Ave, New York, N.Y. 10017

## JAACL Theater Tour of Japan

\$800\*

Kabuki — Noh - Bunraku - Gagaku - Takarazuka

In Conjunction with the  
NEW YORK JAACL GROUP FLIGHT  
Via PanAm 747 from New York Oct. 24 and Return Nov. 7

All hotel accommodations, theater tickets, transportation within Japan, continental breakfasts, some lunches and dinners.

For Reservations, Write or Call:

Ruby Schaar, 50 W. 67th St., New York, N.Y. 10023  
(212—724-5323)