

# PACIFIC CITIZEN

Publication of the National Japanese American Citizens League

Vol. 86 No. 25

Friday, June 30, 1978

20¢ Postpaid U.S.

15 Cents

## JARVIS-GANN INITIATIVE

### Racist undertones seen in Prop. 13 vote

WASHINGTON—Claims by Sen. George McGovern (D-S.D.) and minority leaders that Proposition 13, the Jarvis-Gann initiative, had undertones of racism are "asinine and inept", said Howard Jarvis, who co-authored the tax-limitation measure on the California ballot.

Jarvis, appearing here on NBC's Meet the Press June 18, said his tax revolt will eventually peak in a protest against federal income tax. He said the claim of a middle

class rebellion against the poor was "totally unrealistic" and said support for the measure was heavy among minorities and poor people.

In Sacramento, the NAACP was concerned about the layoffs of minorities in government and schools and the effect of Prop. 13's passage on the poor. Regional NAACP director Virna Canson feared half of all layoffs caused by Prop. 13 budget cuts would affect minorities.

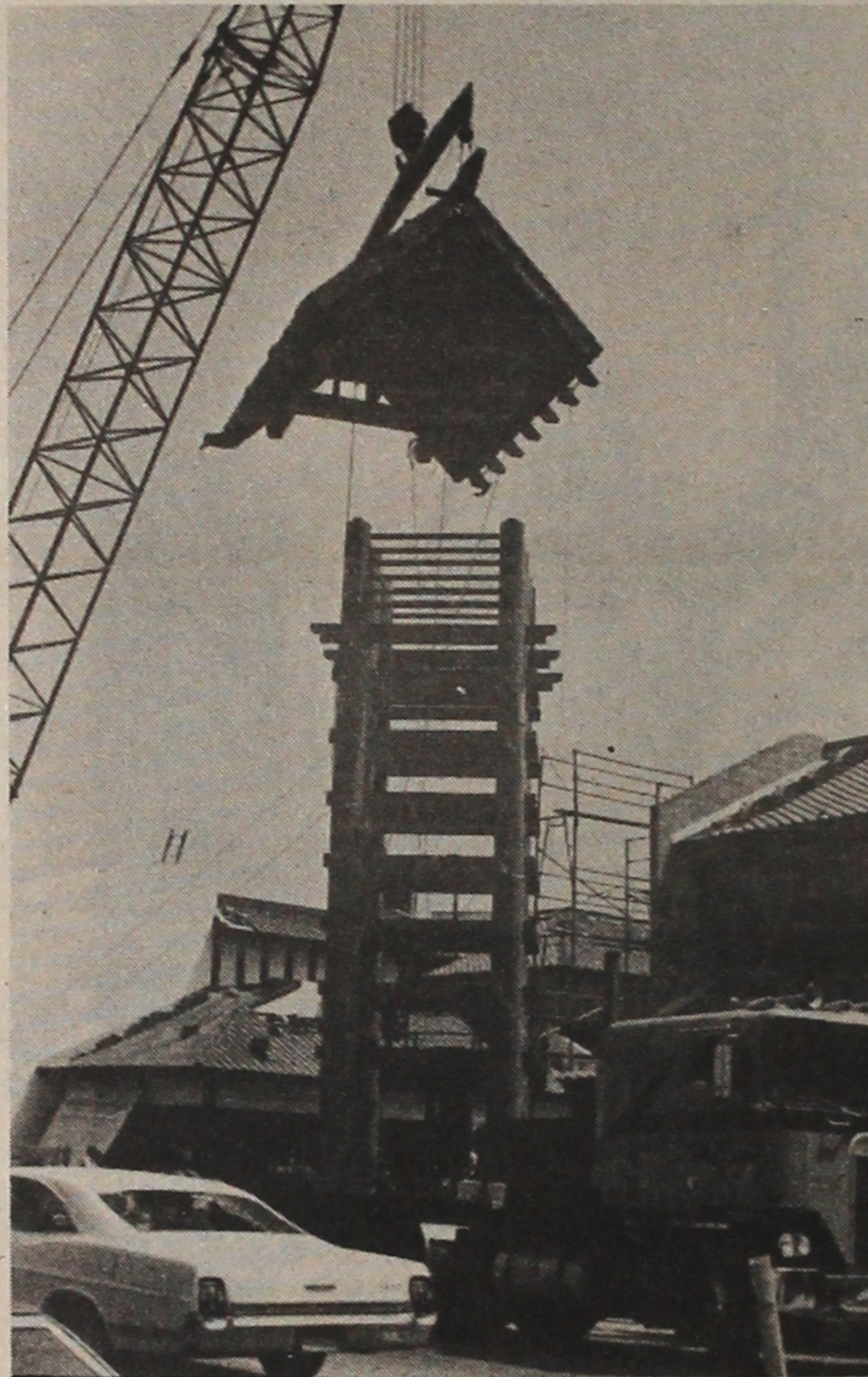
In Los Angeles, figures dis-

closed predominantly black areas had voted overwhelmingly against Prop. 13 while the largely white San Fernando Valley was in favor. Overall, the city vote was 64 pct. "for" and 36 pct. "against", but the city's poorest districts—7, 8 and 9 (south, southwest and central)—voted 76.4, 75.3 and 65.3 pcts. against the measure. City Councilman Gilbert Lindsay of the 9th (which includes Little Tokyo) said Prop. 13 "would kill the city

and the state as far as minorities and poor people were concerned" and added the vote wasn't "totally racist" because the prime reason for Prop. 13 was "people trying to get back at politicians and high taxes—and kill themselves in the process."

Meanwhile, Rep. Norman Mineta (D-San Jose) was appointed to the 10-member Calif. Congressional Delegation task force to study the effects of Prop. 13. #

### New landmark ensconced . . .



Kashu Mainichi Photo

About five stories high, a tower is capped in front of Japanese Village Plaza (across the street from our Pacific Citizen office, incidentally) in Little Tokyo.

### LITTLE TOKYO REDEVELOPMENT

#### More new buildings proposed

LOS ANGELES—California First Bank and Tashiro/Kobayashi Enterprises (TKE) received a priority agreement from the Community Redevelopment Agency June 5 to build a new office building and parking facility at E. 2nd and San Pedro St.

The CRA Board approved an agreement to negotiate exclusively for a 120-day period for joint development of the Little Tokyo parcel.

Bank expects to build a multi-storied office building with basement while TKE plans call for a 350-space parking structure.

On the same block at E. 1st and Central, a 30-ton replica of a Yedo-period fire watch-

tower, which stands 64 feet, was hoisted into position Sunday in the Japanese Village Plaza, now being rushed to completion.

JVP developer David Hyun announced an Aug. 17 grand opening day—in time for Nisei Week festivities which begin that weekend with a Saturday coronation ball hosted by the JACL this year at the Beverly Hilton and the Nisei Week parade on Sunday, Aug. 20.

The Japanese Village Plaza, with some 40 tenants, met as the JVP Merchants Assn. June 1. Taro Kawa of Enbun Co. is chairman of the merchants' board of directors. #

### BREEZIN' 78 . . .

## JAYS convention set for July 13-18

SALT LAKE CITY—Meeting just prior to the senior JACL convention, the youth in JACL (JAYS: Japanese American Youths) will assemble for its 7th Biennial convention July 13-18 at the Univ. of Utah.

The week-long program, with the theme of "Breezin' 78", consists of workshops, sightseeing, meetings and the Sansei brand of boogie.

The \$68 package deal covers five nights of lodging in University dorms, all meals and convention events. Non-JAYS are welcome. Registration forms are available from JAYS chapters, National Headquarters, or from:

Peggy Okubo, JAYS registration, 310 E. Oakland Ave., Salt Lake City, Utah 84115; (801) 466-7268.

Highlights of the convention program include:

**Japanese American Experience**—Five workshops by Jeff Mori, Russ Hamada of San Francisco. (a) Kinnara Taiko Drummers, Los Angeles; (b) Amerasia Bookstore, films and books; (c) On finding one's personal family roots, by Nancy Araki of San Francisco; (d) Organizing youth, by Dr. Larry Ozaki of Denver; and (e) Japanese American artists.

**Gambler's Mania**—Opening mixer.

**Canyon outing**—Sunday afternoon cookout in the spectacular Wasatch Mountains.

**Final Night**—Traditional dinner-dance, jazz-rock band Hiroshima from Los Angeles. #

## JAL-JTBI-JACL cultural heritage winners named

SAN FRANCISCO, Calif. — Names of the 1978 JAL, JACL, JTBI Cultural Heritage Fellowship recipients were announced this past week. They are: Chris Ando, Denver; Nancy Ann Karasawa, Whittier, Ca.; Richard Lee Yamasaki, Montebello; and Janet Hitomi Yasuda, Los Angeles.

The four were chosen from among 12 finalists on the basis of their written ap-

plications. Each applicant was required to submit essays concerning their views on cultural awareness, cultural pluralism and their commitment to their community.

The four will leave for Tokyo to enroll at Sophia University's Summer Session on July 13. They will spend six weeks taking courses with 25 other international stu-

Continued on Back Page

### JACL credit union treasurer dies

SALT LAKE CITY, Utah — Albert Yutaka Oshita, 53, National JACL Credit Union treasurer-manager, died June 18 of heart attack. Final rites were held June 21 at Deseret Mortuary. He is survived by his wife Louise, and three children, Larry, Jani and Sharon.

Oshita, who was appointed to the credit union post July 1, 1976, was active with the Japanese Church of Christ, Beehive Golf Club and the Issei Center Board. He was also busily involved with the Salt Lake JACL Convention Board.

### Enomoto predicts overcrowded prisons

SACRAMENTO, Calif. — State Director of Corrections Jerry Enomoto predicted that the state's prisons for men will be "dangerously overcrowded" next year and the situation would be far worse before any new prisons can be built.

His predictions of June 16 were based on staff projections which took into account the first nine months experience under the state's determinate sentencing law. The male felon population is expected to increase from 17,800 to 19,600 by mid-1979.

## Anti-Kenzo boycott launched by JACL

LOS ANGELES—Boycott of the Kenzo apparel was launched by JACLers this week (June 23). Informational pickets were posted in the Broadway Plaza during the noon hour, calling attention to the offensive and racist nature of "Jap" in the Kenzo label.

It was the latest of JACL attempts to put to rest the derogatory "Jap" label used by the Japan-born Parisian designer Kenzo Takada. JACL had protested in 1970 when stores in Manhattan offered the "Jungle Jap" line for the first time.

Difference this time, however, was the placement of a quarter-page ad in an appeal to the clothes buyers in the widely-read garment industry's trade paper, Women's Wear Daily, which was reluctant to accept the copy as initially prepared by the JACL Pacific Southwest District's Ethnic Concerns Committee. The ad, which appeared on page 24, June 13, reads as follows:

#### Help Put An End to Kenzo

We've put up with his scurrilous "Jap" labels long enough. It's high time that all thinking people of goodwill get together in the American spirit to put a stop to it.

Have you ever considered the fact that all races and ethnic groups are represented in the fashion industry, yet, it is only KENZO who chooses to label his line in a manner that defames and insults a certain people. By some perversion of thinking he once said it's "cute." Can you imagine that!

So, in the name of fair play and common courtesy, we urge all our fellow Americans in the industry to boycott Kenzo until he agrees to drop the word "Jap" from his labels.

The fashion industry in this country not too long ago rejected the "Neo-Nazi" labeled line currently popular in Europe for obvious reasons. Why are we not entitled to at least the same respect and consideration?

NATIONAL ANTI-KENZO CAMPAIGN  
JAPANESE AMERICAN CITIZENS LEAGUE

Initial copy in the JACL ad had asked if it would be just as "cute" if a Jewish-designed shirt carried a "Kike" label or an Italian put out a "Wop" skirt. The WWD legal staff conferred with Kodama, who was told the copy with the name of minority designers was inflammatory and might be subject to damage suits.

#### FOLLOW UP STORY

The ad also resulted in a follow-up story the next day when a WWD writer interviewed Kodama by telephone. This appeared on page 6 as a boxed story headlined: "Japanese-American group urges boycott of Kenzo apparel". Kodama reiterated, "Kenzo's use of the Jungle Jap label is insulting to every Japanese American."

The JACL drive started when a Bullock's Wilshire ad appeared in the Los Angeles Times May 5 promoting the Kenzo collection.

The JACL wrote to Bullock's Wilshire, asking removal of the label and an apology to the Nikkei community. A spokesman of the store told the WWD the company complied with the request.

Kodama also prevailed upon Bullock's Wilshire to pass the word to its parent company, Federated Dept.

Stores, Inc., Cincinnati, and recommending all of its outlets are "sensitized to our concerns".

JACL's appeal also went to seven other stores demanding the Kenzo line be dropped until the offensive label was dropped. "There is no justification for its use whatever the context," the Ethnic Concerns Committee chairman declared.

And asked if Kenzo had been in contact since the re-emergence of the Jungle Jap label, Kodama said, "There's no point. He understands how we feel about this issue."

#### INFORMATIONAL LEAFLET

Signed by the "National Anti-Kenzo Campaign, JACL", the informational leaflet was designed for the demonstration.

The defamatory nature of "Jap" is explained, comparing it with "Nigger . . . Kike . . . Frog", and the sale of merchandise bearing such labels being unacceptable under the circumstances.

"Because (the particular store) continues to handle Kenzo clothing after having been asked to drop his line", the demonstration was initiated as a further protest against Kenzo's use of the offensive label and not the store in question. "Our primary grievance is with Kenzo himself," the leaflet points out. "We find this the only way practicable to put an end to Kenzo's offensive business practices . . . hit him where it hurts—at the cash register."

#### LEADERSHIP CONFERENCE

The Washington, D.C.-based Leadership Conference on Civil Rights (LCCR), a coalition of 148 national organizations (including the JACL) of minorities, labor, religious groups, women and the handicapped, has always objected to the use of labeling that derogates the ancestry of any group of Americans, chairman Clarence Mitchell reminded in a July 6 letter to the JACL Ethnic Concerns Committee.

"To defame a group of people in the interests of merchandizing is grossly unfair and unjust," the letter continued. "As you have observed, Mr. Kenzo's clothing can be marketed in terminology that would not offend."

Copy of this letter was inserted in the educational leaflet passed out at the demonstration. #

### Supreme Court denies import curb

WASHINGTON—In a decision supporting U.S. trade policies, the Supreme Court unanimously ruled June 21 that the Treasury Department need charge higher tariffs on imported goods to make up for special tax benefits granted by foreign governments.

The court rejected the claims of the Zenith Corp. that higher duties should be charged on Japanese electronics products because they are not taxed in Japan. Justice Thurgood Marshall delivered the 18-page opinion. #



**DR. HENRY TAKAHASHI, 74:**

**Co-founder of S.F. JACL**

BERKELEY, Calif.—Dr. Henry Moriya Takahashi, well-known optometrist and one of the co-founders of the JACL chapter in San Francisco, died here Monday, June 19. Funeral services were held June 25 at the Trinity United Methodist Church with the Rev. Lester Suzuki officiating.

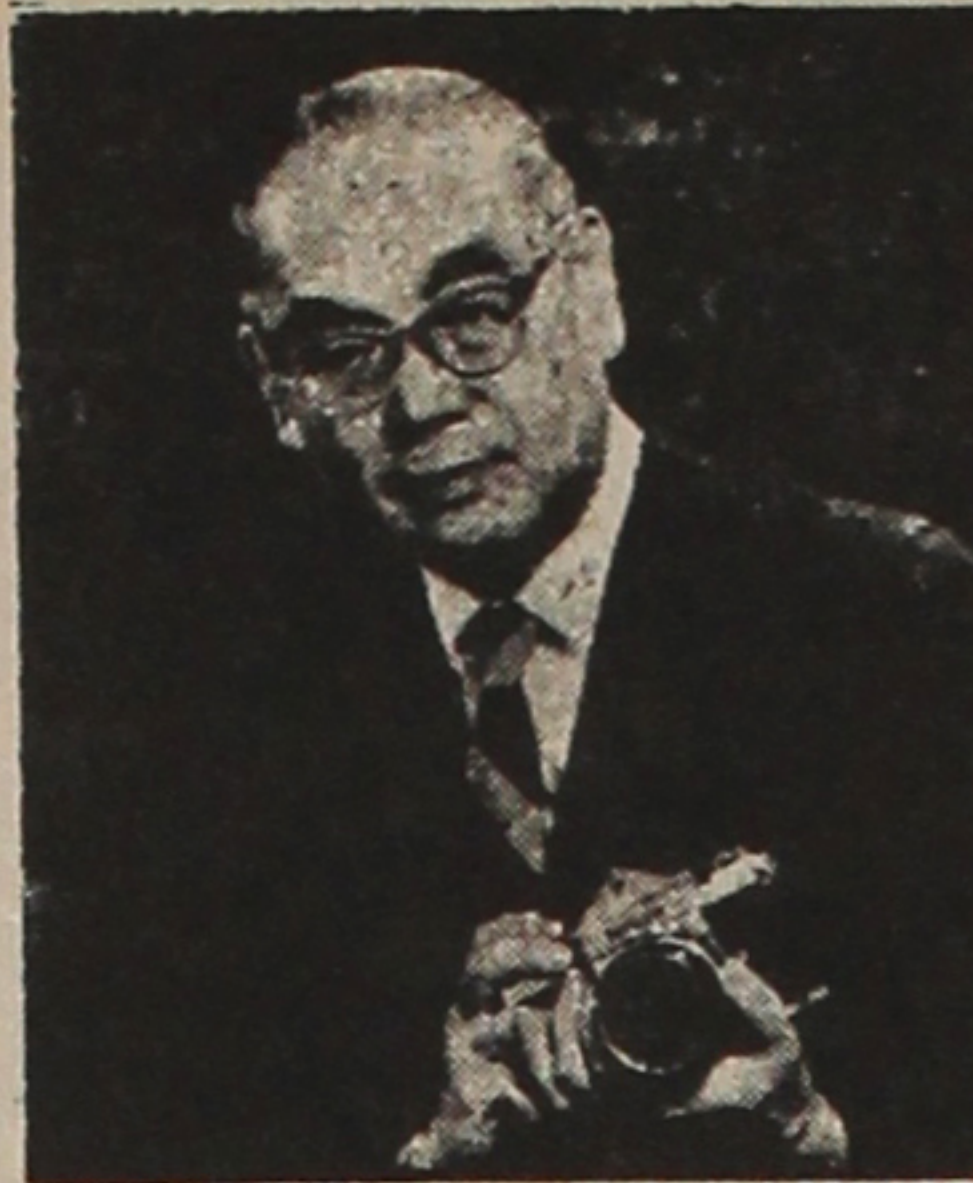
He is survived by wife Barbara, daughters Ellen Oyster (Birmingham, Ala.) and Joyce Doi (Davis, Ca.), three brothers, William, Shastini (Shasta County), Ca.; Ernest, Oakland; Joseph, Berkeley; and five sisters, Ruth Konomi, Richmond; Mary Takahashi, Atlanta; Elizabeth Nishikawa, Los Angeles; Grace Suzuki and Olive Suzuki, Berkeley; and two grandchildren.

Takahashi and the late Saburo Kido founded the New American Citizens League of San Francisco in 1928. After

the 1929 San Francisco conference which established the National Japanese American Citizens League, the group was renamed the San Francisco JACL. Takahashi served as chapter president in 1930 and 1933. Postwar, he served on the Berkeley JACL board of directors.

Dr. Takahashi was graduated from the U.C. School of Optometry in 1926 and was the first Nisei to practice in America. After 50 years of service, upon his retirement from practice, he was elected a life member of the school.

He was an amateur photographer and was elected Fellow of the Photographic Society of America in 1965 for his outstanding exhibitions. He founded the Golden Gate Leica Club in San Francisco in the early '30s and was a charter member



Cut Courtesy: Hokubei Mainichi  
Dr. Henry Takahashi

of both the Oakland and Berkeley Camera clubs, won many international and U.S. prizes for B&W and color pictures.

During the war, he was interned at Topaz, Utah.

He was a member of the Berkeley city planning commission from 1961-67, serving as its president in 1966. In 1965 he campaigned for the Berkeley city council

and was unsuccessful, finishing sixth in a field of nine candidates.

He served on the city's Civic Arts Commission and Board of Adjustments and the Univ. of California liaison and master library plan committees. He was a director of the Berkeley Rotary Club, councilor of U.C.

Business Opportunity  
**American Fast Food Chain seeks joint venture partners for hamburger outlets in West Germany and Japan. \$5,000 to \$100,000. Contact**  
AL KUSHIHASHI  
1660 S. Albion, Suite 309  
Denver, Colo. 80222  
(303) 756-7127



**TAKAKO HAMACHI**

433 Via Corta  
Palos Verdes Estates, Ca 90274  
TELEPHONE  
(213) 378-2268 res: 541-7954

Alumni and various philanthropic groups.

**CHIYO'S**

Japanese Bunka Needlecraft  
文化刺繍  
**WHOLESALE-RETAIL**  
Bunka Kits, Framing, Aoi Kimekoni and Nippon Doll Kits  
Mail Orders Welcome  
Lessons - Instructor's Certificates

2943 W. Ball Road  
Anaheim, Calif. 92804  
(714) 985-2432  
Open Daily 10-5, Friday to 8  
Closed Sunday, Tuesday

**ED SATO**

**PLUMBING AND HEATING**  
Remodel and Repairs  
Water Heaters, Garbage Disposals  
Furnaces  
**Servicing Los Angeles**  
293-7000 733-0557

Commercial & Industrial  
Air-conditioning & Refrigeration  
Contractor

**Sam J. Umemoto**

Lic. #208863 C-20-38

**SAM REIBOW CO.**  
1506 W. Vernon Ave.  
Los Angeles 295-5204  
Experienced Since 1939

**QUON BROTHERS**  
  
**GRAND STAR**  
CHINESE CUISINE  
Lunch • Dinner • Cocktails  
WE SPECIALIZE IN  
STEAMED FISH & CLAMS  
629-2288  
843 N. Broadway (In New Chinatown)  
5 Minutes from Music Center & Dodger Stadium  
DAILY 10:30 AM

**KONO HAWAII**

•POLYNESIAN ROOM  
(Dinner & Cocktails - Floor Show)  
•COCKTAIL LOUNGE  
Entertainment



•TEA HOUSE  
Tep-pan & Sukiyaki  
OPEN EVERY DAY  
Luncheon 11:30 - 2:00  
Dinner 5:00 - 11:00  
Sunday 12:00 - 11:00

226 South Harbor Blvd.  
Santa Ana, Calif. 92704  
(714) 531-1232

**Classified**

The PC Classified Rate is 10 cents per word. \$3 minimum per insertion. 3% discount if same copy appears 4 times. Payment in advance unless prior credit has been established with our office.

• Personal  
AKIRA MURAKAMI, formerly with 43rd Engrs, U.S. Army. Contact Norman Auxrecht, 6505 No 40th St., Omaha, Neb 68112. Home phone 402-451-7448; office phone 402-734-6750.

• Vacation Rentals  
VACATION IN Hawaii. Rent my condominiums on Waikiki Beach, Iliaki and Discovery Bay. Deluxe 1 and 2 bdrms, fully furnished, sleeps 4 to 6, weekly or monthly. Special rates. Reserve now. Phone evenings (415) 349-3767

• Employment—L.A.  
CHEF WANTED—Cook with managerial qualities for an expanding restaurant chain needs applicants now. Experience necessary. Phone (213) 681-6731. Attn: Dave Bradford.

SECRETARY  
South Bay located nationwide company has need for secretary to Manager of company tax department. Above-average secretarial skills sought. Salary range \$1,400-\$1,500 per month with excellent fringe benefits and profit-sharing plan. If you are interested in assuming the substantial responsibility that goes with this position, please send resume to: BOX T, Pacific Citizen, 355 E. 1st St., Los Angeles, Ca 90012. Equal Opportunity Employer M/F.

• Employment—Colorado  
COOK Japanese food chef, traditional. Colorado Springs and Denver, 4 yrs exp. Need not be Japanese. 40 hrs/wk, \$800/mo. Apply nearest Colorado Job Service or (303) 473-6220.

• Career Opportunities

**REGISTERED NURSES**

Immediate positions available throughout California, working with developmentally disabled residents, mentally disabled patients, and mentally disturbed penal code offenders. New graduates welcomed. Good starting salary, full civil service benefits, job security, and good promotional opportunities. Broad continuing education programs available. California license required. Write or call collect to:

Mary Bettisworth, RN  
HOSPITAL RECRUITMENT  
714 P St., Sacramento, CA 95814  
(916) 322-1221

• For Sale  
SALE!  
Quality merchandise—low prices. 20% lifetime discount. Satisfaction guaranteed. Write for free catalog.

Big Y Imports of Southern Cal.  
256 So. Robertson Boulevard  
Beverly Hills, Calif. 90211

**Support PC Advertisers**



**EMPLOYMENT**  
LICENSED AGENCY BONDED

312 E. 1st St., Room 202  
Los Angeles, Calif.  
NEW OPENINGS DAILY  
624-2821



**THE NATIONAL SHRINE at Rose Hills... a salute to Our Nation's Veterans**

**FREEDOM!**

Many times our country's fighting men and women have been asked to protect our precious freedom. Our country's tradition of individual freedom... for all mankind has been entrusted to our honored veterans.

That's why we at Rose Hills Memorial Park are proud that "The National Shrine" was created here to honor the American Veteran.

The "National Shrine," with its soaring "Arch of Freedom" enclosing the "All Services Monument," is now available for all veterans at special prices. (Veteran benefits, and pre-selection family programs are also offered.)

Convenient...  
Close to Home

**ROSE HILLS MEMORIAL PARK**

Where Care Means Everything

3900 So. Workman Mill Road, Whittier, California 90608 ☐ Telephone (213) 699-0921

**japan food corporation**

MAIN OFFICE  
445 Kauffman Court, South San Francisco, Calif. 94080  
Branches: Los Angeles, San Diego, Sacramento, Chicago,  
New York, Baltimore, Houston



**HIME Brand NAMA TOW FU**

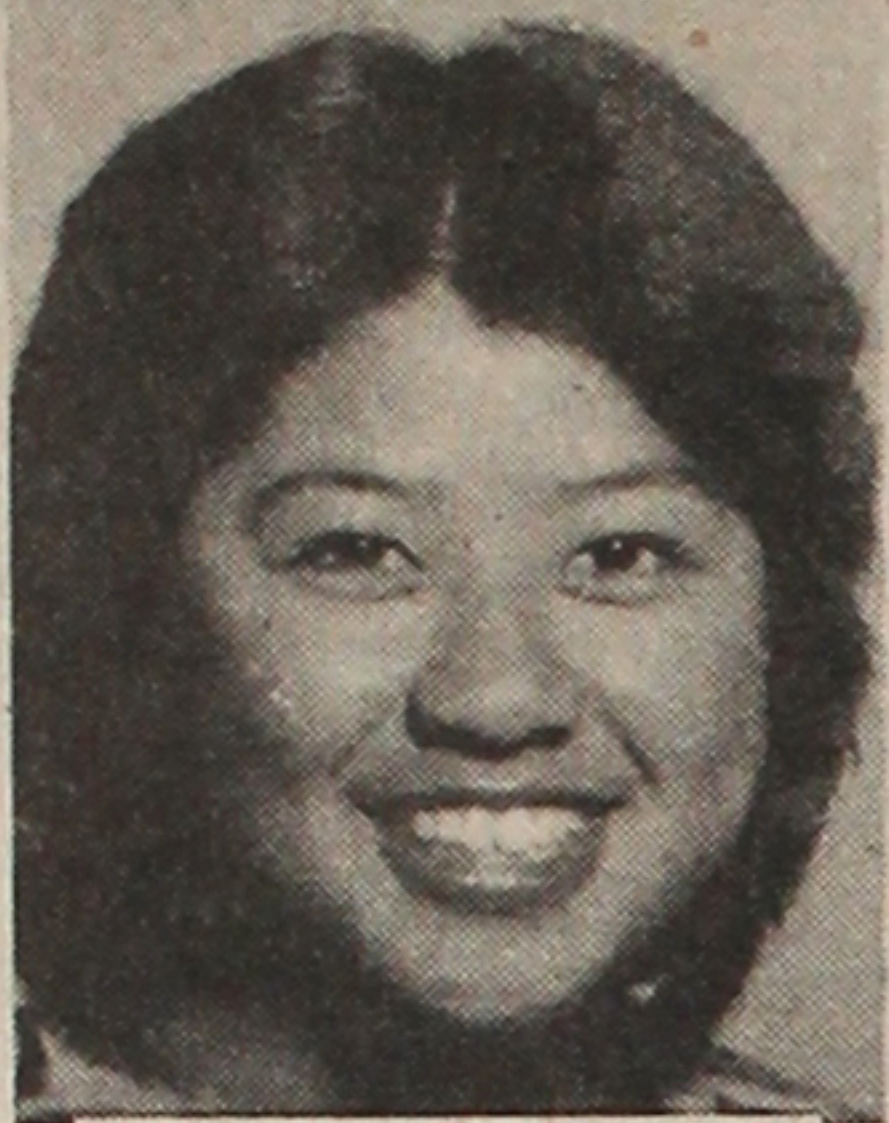
Summertime is the time for light meals... easy to prepare, refreshing to the taste. Hime Tow Fu is the answer for such a cool, satisfying meal. Serve it alone on ice with a splash of soy sauce seasoned with dried bonito, chopped scallions and ginger. Enjoy a Hime Tow Fu summertime meal today.



# JACL Calif. track meet staged

By HARRY HONDA  
 CULVER CITY, Calif. — A new chapter in the Nikkei athletic world was unfolded last Sunday (June 25) at West Los Angeles College where the first annual California JACL track and field championships were staged under sponsorship of the Pacific Southwest District Council.

A slate of 62 events (and likewise 62 new meet rec-



**JANICE MATSUOKA**

ords for the book) attracted some 200 athletes, including 75 representing the North, and about as many track buffs and parents.

The South won the meet with an overall score of 582-412 but a Northern teenager, Janice Matsuoka of Reedley, won the outstanding athlete honors with triple victories in the Girls' 100, 440 and Women's 220-yd. dashes plus anchoring the winning Girls' 440 relay team. The 15-year-old speedster had won similar honors at the San Francisco JACL Jr. Olympics two weeks earlier.

Closest race of the day proved to be the A — 100 as Bill McNerney of Orange County's Pacifica High, Garden Grove, edged Bruce Okine of Gardena with both being

timed at 10 flat.

The North South series in track and field resumes next season under Northern California auspices. Jim Okazaki of Orange County and Ruth Watanabe of West Los Angeles co-chaired the championships. The 1978 Nisei Relays committee assisted.

The winners:

**"A" DIVISION**  
 2 MILE—Curtis Miyagi, Contra Costa, 10:40.0; 100—Bill McNerney, Orange County, 10.0; 330 LOW HURDLE—Martin Toyama, Sac'to, 39.6; 880 James Endow, Con, 2:07.0; LONG JUMP—Greg Daijogo, Lodi, 22'1"; 120 HIGH HURDLE—Mike Okura, OC, 15.0; HIGH JUMP—James Nishinaka, OC, 5' 10 1/4"; 220—Brian Motooka, Seq, 23.3; MILE—Clyde Matsumura, So Cal, 4:52.0; POLE VAULT—Stanley Nakaso, Con, 12'; SHOT PUT—Rick Okubo, OC, 48' 4"; 440—Martin Toyama, Sac'to, 55.4; 440 RELAY—So Cal (Bruce Okine, James Nishinaka,

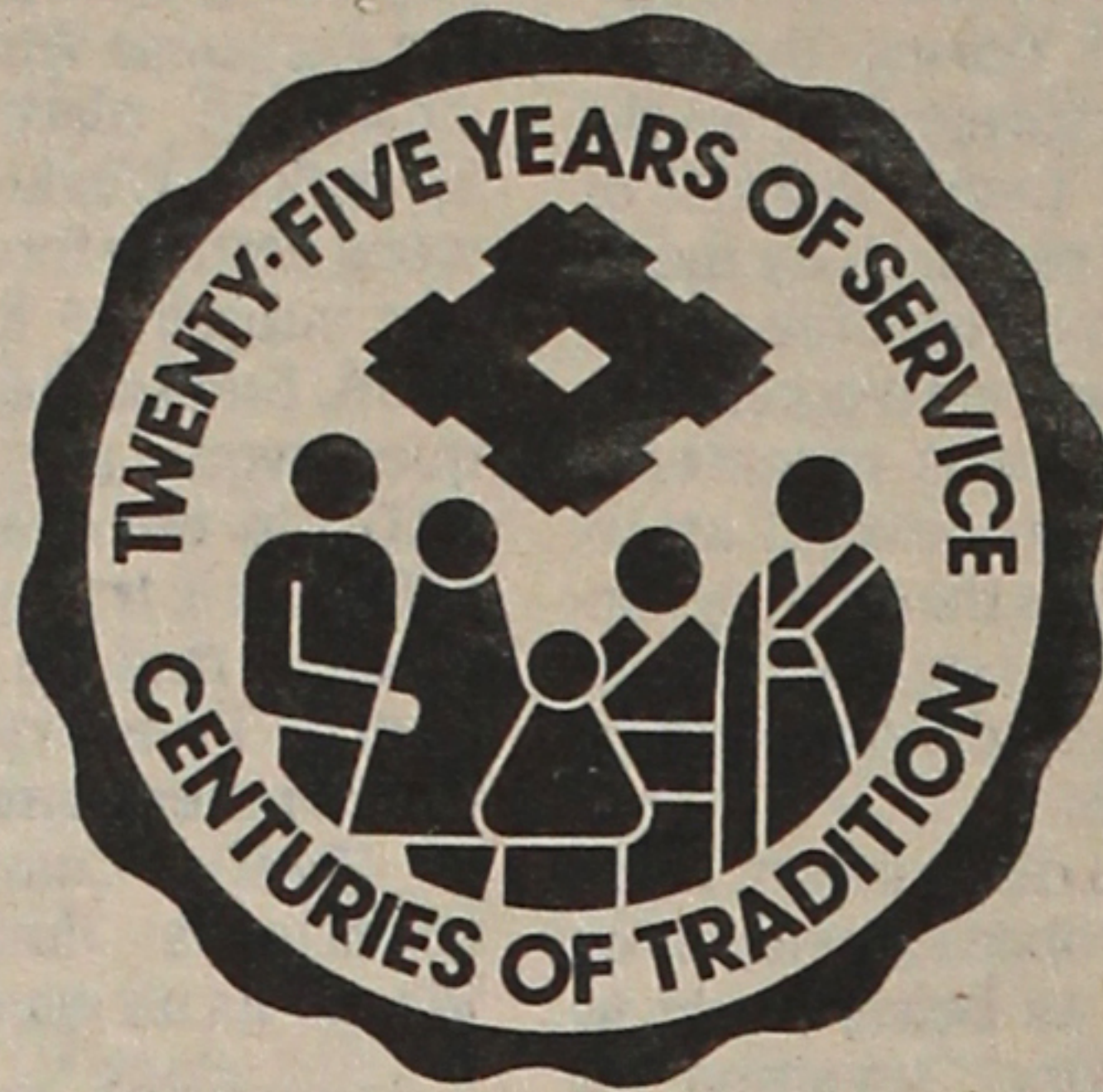
Mike Okura, Russ Miyashiro), 45.0; MILE RELAY—No Cal (Martin Toyama, James Endo, Ron Iseri, Tom Ito), 3:37.3.

**"B" DIVISION**  
 100—Robert Kajikami, San Mateo, 10.4; 880—Allen Just, Orange County, 2:11.0; HIGH JUMP—Miki Kubota,

Venice-Culver, 5' 10"; 70 HIGH HURDLE—Richard Peterlin, Gardena Valley, 9.15; 120 LOW HURDLE—Richard Peterlin, Gar, 13.3; 220—Robert Kajikami, SM, 24.2; MILE—Allen Just, OC, 4:56.4; LONG JUMP—Tom Tabata, West L.A., 19' 5 1/2"; POLE VAULT—Willie Takeda, VC, 11' 6"; SHOT PUT

—Allan Motooka, Sequoia, 44' 8 3/4"; 440—Brock Okura, OC, 59.7; 440 RELAY—So Cal (Tom Tabata, John Kurata, Andy Nishid Brock Okura), 47.5.

**"C" DIVISION**  
 HIGH JUMP—James Okazaki, OC, 4' 10"; 100—Brice Hata, WLA, 11.0;  
 Continued on Back Page



## The Silver Certificate Account

To help commemorate our 25 years of service to California, Sumitomo is offering the Silver Anniversary Certificate Account. \$1,000 or more in this one-year Time Certificate of Deposit earns 6%\* per annum and provides the following benefits...

- Checking account—no monthly service charge
- Customer new car loan rate
- Postage paid bank-by-mail
- Silver Certificate identification card
- A very special anniversary gift

\*FDIC regulations impose substantial interest penalties upon premature withdrawals.

*The Sumitomo Bank of California*

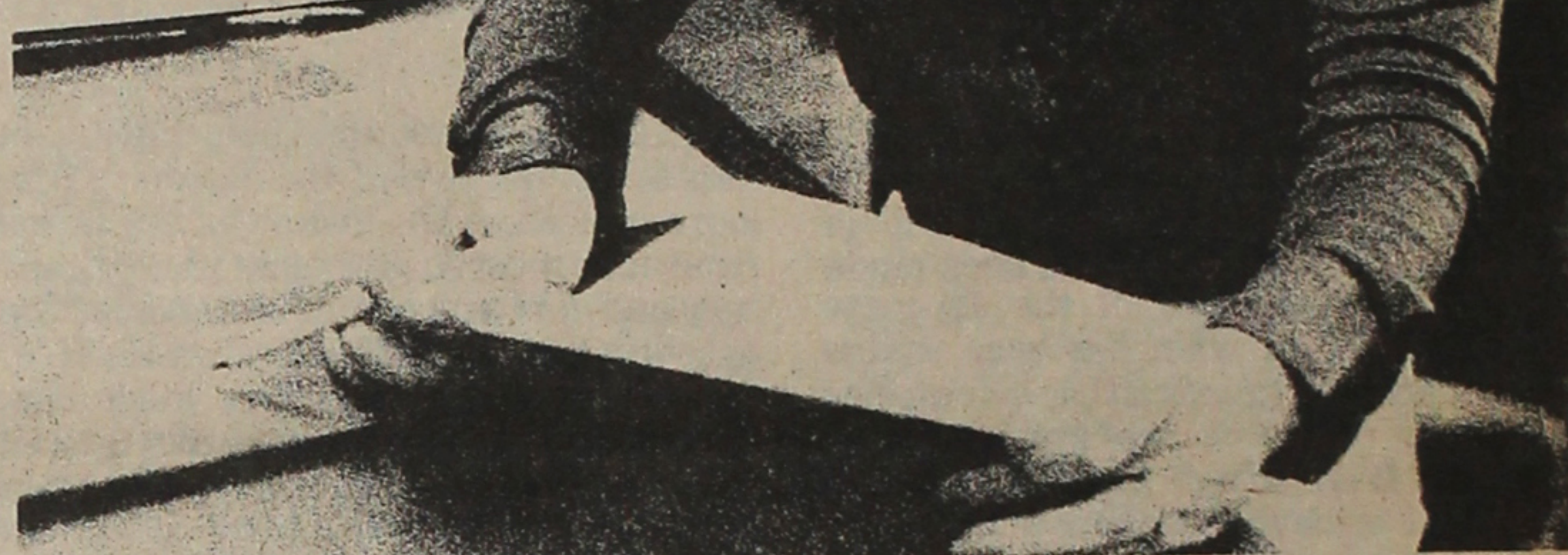
Member FDIC

## "Each customer I meet is a challenge.."

"As a customer service representative, I meet many kinds of people, both old and young. When they come to me with a banking problem, it makes me happy when I can introduce them to one of our services that suits their needs perfectly."

Alice Nishimoto is just one of 3,500 employees at California First. But the attitude she brings to her job is one we hope all our employees share.

California First, the former Bank of Tokyo of California, is now a statewide bank with over 100 offices.



Meet the people at California First.



## S. Stephen Nakashima

for Nat'l JACL-Vice President, Membership Services

### JACL PLATFORM

- "An organization is only as strong as its members. Membership strength comes not in numbers, but in participation."
- "The future of JACL depends upon ... developing programs which are not only enjoyable but meaningful."

#### Personal Background:

Birthdate: January 29, 1922, Fresno, Calif.  
 Married to Sally Sato, Fresno, Calif.  
 Children: 3 daughters, 1 son.  
 Resident of San Jose, Calif., since May, 1955. Lived in Reedley, Calif., to August, 1942. August, 1942 through August, 1943, resident Camp 3, Poston, Arizona.

#### Education:

Univ. of California, Berkeley, B.S. in Accounting, June, 1948.  
 Univ. of California, Berkeley, Boalt Hall School of Law, Juris Doctor, June, 1951.

#### Military Service:

United States Army

#### JACL Activities:

Member of JACL since 1955.  
 One Thousand Club Member from 1955  
 Century Club Member, 1970 to 1977.  
 Life Member, 1977.  
 Board of Directors, West Valley JACL, 1970 to present.  
 President, West Valley JACL, 1976.  
 Executive Committee, NCWNDC, 1975  
 Vice Governor, NCWNDC, 1977-1978.  
 Member, National Personnel Committee, 1977-1978.  
 Chairman, Resolution Hearing, 1976  
 National Convention, Sacramento, California.  
 Chairman-elect, Resolution Hearings, National Convention, Salt Lake City, Utah, 1978.

#### Professional Qualifications:

Attorney at Law.  
 Certified Public Accountant  
 Certified Specialist Taxation Law, California  
 Board of Legal Specialization

#### Professional Organizations:

Santa Clara County Bar Association  
 California State Bar Association  
 American Bar Association  
 American Judicature Society  
 Association of Attorneys-Certified Public Accountants.  
 American Institute of Certified Public Accountants  
 California Society/Certified Public Accountants, San Jose Chapter  
 Santa Clara County Estate Planning Council (President, 1958)



# Comments, letters & features



PRESIDENT'S CORNER: Jim Murakami

## Thank You, George

Santa Rosa, Ca. It seems that my columns lately have consisted of the remembrance of some past National JACL leaders and founders. This column is no exception, in that I am writing this on my way back from attending the funeral of George J. Inagaki, National JACL President during the years of 1952 to 1956.

I had visited with George during the first week of May, at which time he was still convalescing at home, but was up and able to enjoy a cup of coffee with Harry Honda and myself. As was inevitable, the conversation was about JACL, the organization which he dearly loved and cherished.

He told me of his JACL experiences and of his visits to chapters in Idaho, Oregon and Washington, and other states and

the many deep friendships that he had made during these times.

George was a membership and chapter-oriented man of great friendliness, openness and down-to-earth mannerisms that was infectious. I can see why the JACL grew so tremendously with people such as George incessantly, untiringly and so dedicatedly working for JACL in providing the leadership to enable the JACL to be the organization it is today.

As always, whenever I parted with George, he would say, "tanomu-yo" and this visit and my farewell tonight was no different.

Tonight at the funeral, I could hear him say to me and to all the members, "JACL wo tanomu-yo". What a priceless challenge and we in turn must say "Osewaninarimashita", thank you so very much, George. □

## Common Sense and Redress

The Seattle Evacuation Redress Committee's views on reparations, as presented in a series of articles published in the Japanese American press during the past three years, represented the results of many months of study and research by members of our committee over a period of some five years.

Our plan was repeatedly gone over by several attorneys and was thoroughly discussed with our area's congressmen and members of their staffs.

At these discussions, none of our proposals was ever criticized as being liable to Congressional rejection on the ground that it would set an undesirable precedent opening the way for all kinds of claims by other minority groups.

From the start, we have always recognized that the method of funding, the method of payment, and the amounts of reparations could be changed at any time. For example, we feel that the tax credit method of payment proposed by the Sacramento JACL Chapter is a good one and would have no objections to its adoption after certain relatively minor changes.

In any final draft of a bill based on the Seattle Plan, the amounts of payments originally suggested by us should, of course, be increased to offset the effects of inflation since the plan was first written. Most of the rest of our proposals cannot be so easily changed without altering the basic direction of our efforts which we have tried to base on the principles of equity and justice.

Although the recently formed JACL National Committee for Redress at its April meeting chose to reject practically all the proposals previously made by us, the National Committee's chairman has stated that his committee's decisions are open to modification. Members of the Seattle Evacuation Redress Committee feel that we would be failing in our responsibility to the Japanese American community if we now remained silent about the flaws in the National Committee's April decisions (see May 12 PC).

### NEED TO BE FAIR

Any JACL sponsored proposal asking Congress for monetary redress of wrongs perpetrated by the United States Government against Japanese Americans during World War II which will require the Government's expenditure of billions of dollars should appear to be fair, just, and reasonable upon first reading if it is to have much chance of serious consideration for passage by Congress. Furthermore, the amounts of payments to individuals should have at least some rough correlation with the injuries and injustices suffered.

The proposed payment of a flat \$25,000 for every Japa-

nese American residing within the Western Defense Command area at the start of World War II includes providing that amount even for Japanese Americans residing in places such as Spokane, Washington, who were neither forced to move nor subjected to imprisonment. Such a thoughtless request would at once open the JACL to the charge that, in effect, it is trying to conduct a mass raid on the United States Treasury using the Government's mistreatment of Pacific Coast Japanese Americans during World War II as an excuse.

Attempting to give each resident of non-evacuated areas the right to receive \$25,000 upon his presenting a "prima facie showing of injustices suffered" (whatever that means) is so preposterous a proposal that it will materially weaken any chance of the redress bill ever getting through Congress.

Common sense would indicate that every dollar of any reparations made available by the American Government justly belongs to the individuals who were directly affected by the World War II exile and mass imprisonment orders. That the individual victims of those injustices who are still living should be given the money to use or keep as they wish can hardly be a matter for dispute. For the JACL National Committee, however, to decide to deny to even the immediate kin of deceased evacuees the right to receive reparations money which the deceased would have received if living is an unwarranted denial of a basic and customary right of inheritance.

To state, furthermore, that such sums will be placed in a trust controlled by a Japanese American group to "be used for the welfare and benefit of Japanese Americans" is to sanction the unauthorized expropriation of money which rightfully should be going to the next of kin. We cannot consent to such an unconscionable proposal which we are unable to perceive as being morally much different from giving approval to an act of theft.

### \$3 BILLION INVOLVED

Moreover, we are both puzzled and alarmed by the National Committee's intention to first put all redress funds appropriated by Congress into a trust to be controlled by a Japanese American commission. In view of the demonstrated inability of the JACL to manage or handle its own funds, it is questionable whether a trust fund controlled by any casually selected Japanese American group could show any better results.

Directing the management and disbursement of up to three billion dollars requires persons of a very high level of experience, ability,

and integrity. Such a sum in the hands of a randomly chosen group of inexperienced Japanese Americans would become an almost irresistibly tempting money depot for looting by clever knaves and crooks.

The Seattle Evacuation Redress Committee firmly believes that any funds appropriated by Congress should remain in the hands of the United States Government at least until all claims by individuals have been paid.

If the National JACL is truly serious about getting redress for the former West Coast exiles and inmates of American concentration camps, it should not only refuse to accept most of the decisions made by its National Committee on Redress in April, it should also recognize that a reparations drive with any hope of success will require nothing less than the undivided attention and commitment of the entire resources of the organization for as long as necessary to get a bill passed and all its provisions carried out. This means that the JACL national staff will have to drop practically all its other activities and work almost solely on reparations because the JACL is too small and weak to be able to afford any other course.

We ask that all who are interested in getting a just and fair redress bill enacted into law make known their views to both the local and national officials of the JACL by telephone calls, letters or telegrams.

—Seattle Evacuation Redress Committee

### \$1000 Club

Editor:

It's high time that we recognize 1000 Club members who have contributed financially to JACL without any complaint. But this person who brought about anti-1000 Club at one of the national conventions should bow his head in shame, for we lost not so much of the financial help, but one of the greatest magnets for fellowship for the Japanese Americans.

So I take my hat off to the grandfather of 1000 Club, (the late) George Inagaki, for giving it a shot in the arm (PC, May 19.)

DR. FRANK F. SAKAMOTO  
Past Nat'l 1000 Club Chairman  
Chicago, Ill.

### JA Minority of One

Editor:

What a splendid proposal Sachiko Seko has made in her moving and beautifully written personal tribute to Edison Uno (PC, June 2) that a collection of his more notable literary efforts be compiled and published as "a gift from the past to the future".

Some enterprising publisher should also take note of Ms. Seko's enviable talent as a writer of exquisite sensitivity.

MICHI NISHIURA WEGLYN  
New York

### Short Note

Editor:

Thanks for putting in a note (June 9 PC) asking "Where is Mitsuye Endo?"

There was a response from her friend, and I was able to talk to (Ms. Endo) by phone.

CLIFF UYEDA  
San Francisco



DOWN TO EARTH: Karl Nobuyuki

## Nikkei Experience

San Francisco MANY WORDS have been used and many an analysis has been made regarding the "success" of the Japanese American. Much of what has been said is true. The Japanese American has come a long way from the earlier years of immigration to the present. It is also true that Japanese Americans have achieved a level of accomplishment perhaps unparalleled in America's history of ethnic minorities.

Yet, after all is said and done, one point remains poignantly clear—there is still a long way to go. While the Japanese Americans have reached a level of success, it is but a plateau. There are still enormous challenges that face us if we are to become a viable ethnic community.

What is more interesting is that while Japanese Americans (Nikkei) are used as an example of how "a minority can make it", very little is written in textbooks about the Japanese American experience and their accomplishments. Encyclopedias carry more information on Chinese checkers and Chinese cabbage than "America's successful minority"—the Japanese American.

Extending this further, Japanese Americans are often held up as a model to other ethnic groups as how "they can make it", which is, of course, a gross exaggeration and distortion of fact. This idea of "model minority" reaches a ludicrous height when an elected official on Capitol Hill cites the incarceration of Japanese Americans as fostering the "more Americanization" (whatever that means) of the Nisei. There is indeed a long way to go.

AS A national organization which has represented the rights of Japanese American for nearly a half century, there is a major responsibility placed upon us that has to be addressed.

JACL must develop and help implement an honest perspective of the Japanese American experience. The history of the Japanese American must be inherent to American history and not some part of an extracurricular activity or merely offered as an elective. As Americans, the Nikkei have made significant contributions, sociologically as well as economically, and the process that was experienced can be useful to all Americans in this nation. Of particular importance is the preservation of cultural integrity despite oppressive measures of racism. It is a sense of solidarity reinforced by the community that helps bring about the "success" of the Japanese in America.

What JACL must commit itself to for the next biennium is an effective public education drive to present to the general public a true and accurate perspective of the Japanese experience. This story should utilize the most contemporary manner possible. It should be distributed through mass media (TV) and it should be told by Japanese Americans themselves. Books are fine, but in today's world, the most effective means of reaching the public is television.

It is not enough that the Japanese American experience be presented in a 30-minute format. The history of the Japanese American cannot be accurately presented in that little time. Only those who have little confidence in the Japanese American could be satisfied with such a brief presentation.

It will take a series of programs to address the truth of the Japanese American experience. The time to begin this effort is now—not tomorrow. The tomorrows have come and gone and have become yesterdays. There are very few meaningful mass communication films or videotape that properly address the task at hand. The task will be time consuming and costly, but it must be done. □

## 35 Years Ago

IN THE PACIFIC CITIZEN

JULY 3, 1978

June 24—Evacuation of Japanese population from Hawaii asked by J.A. Balch, former chairman of Hawaii Mutual Telephone Co.

July 1—Interior Sec. Harold Ickes stands by Nisei employees on his Olney, Md., farm.

July 1—House Un-American Activities (Dies) Committee opens Washington hearings on Japanese Americans, conditions in WRA centers and JACL activities.

July 3—First Nisei girl (Mary Arakawa, El Monte High graduate and Heart Mountain) accepted by Women's Army Auxiliary Corps.

ISSN: 0030-8579

**PACIFIC CITIZEN**  
Published weekly except first and last weeks of the year at 355 E. First St., Los Angeles, Calif. 90012. (213-626-6936)

James Murakami, National JACL President  
Alfred Hatate, PC Board Chairman  
Harry K. Honda, Editor

Second class postage paid at Los Angeles, Calif. Subscription rates payable in advance: U.S. \$9 year, foreign \$13 year. First Class available upon request. \$5 of JACL membership dues for one year subscription through JACL Headquarters, 1765 Sutter St., San Francisco, Calif. 94115 (415-921-JACL)

News and opinions expressed by columnists, except JACL staff writers, do not necessarily reflect JACL policy.



FROM THE FRYING PAN: Bill Hosokawa

# Faces and Places



Denver, Colo. Seven or eight years ago, a young Japanese lad named Akifumi Kato came to the United States to look around and undertake some research into American cultural institutions like Disneyland. One day he happened to drive by the Hollywood Turf Club race track, or maybe it was Los Alamitos or Santa Anita—I've forgotten which, and besides it isn't important—and the sight of the bangtails running reminded him of home. His father, you see, is a horse trainer in Osaka and Kato had been an apprentice jockey.

So Kato decided to drop in and ask for a job. They asked if he could ride and he said of course he could. Pretty soon he was a jockey, riding in California, and up in Portland, Seattle and Spokane. It was hard going at first and Kato was thinking of going back to Japan when one day his horse stumbled in a race. Kato fell and broke his ankle. That was when he decided he'd better stay and show his folks he really knew how to ride. Since then he's had several concussions, broken an elbow and I don't know how many other bones. He also won a lot of races.

Anyway, Aki Kato came to Denver the other day and dropped by to say howdy. Not many people knew he was around until in the big Memorial Day Handicap Kato rode a horse named Hayli Talk to an upset victory over the favorite. Shows what a little fellow can do if he tries hard enough.

Which reminds me that Sun Tsujii of 30105—21 S, Federal Way, Wash., 98003, would be happy to have you send him a modest check or money order for the Cathy Newman Track Fund. Why he's doing this is a long story, but to make it short, Tsujii resettled in Des Moines, Ia., in 1944-45 and he's never forgotten the kindness he encountered there. He told himself that if he could ever help someone from Iowa, he sure as shooting would.

Well, Cathy Newman was a high school track star in Collins, Ia., and she was graduated from Iowa State University. In 1976

she qualified as a long jumper on the American team which went to Leningrad. She fell ill in Russia, was hospitalized and missed the Olympic trials. Miss Newman teaches commercial art and coaches track at Federal Way High School and is now getting in shape for a big track meet in Mexico City next month. The problem is that she needs \$300 to help pay air fare to Mexico City.

And Sun Tsujii, who has a long memory and perhaps a bit of the traditional Japanese sense of repaying a debt of gratitude, is trying to help her. You can make the check payable to the Cathy Newman Track Fund.

Lee Ruttle of Oakland, Calif., author of that moving anti-war novel, "The Private War of Dr. Yamada," has a suggestion for the adopted Japanese girl looking for her birth certificate, mentioned in the May 26 Frying Pan column. The girl, you may recall, was adopted at a very early age by an American serviceman and his wife, has lost touch with them, needs a birth certificate and doesn't know how to get one since she has no idea as to where or when she was born.

Ruttle suggests writing Mrs. Itsu Ueda, 149-1, 4-Chome, Kotobuki-cho, Naka-ku, Yokohama, Japan, a social service worker with a youth agency, who just might be able to help. If you know of anyone in a similar fix, you might pass along the name.

Isamu Noguchi and his sculpture are featured in the April issue of Smithsonian Magazine. Title of the profusely illustrated article: Isamu Noguchi's elegant world of space and function. And the June 5 Time has a two-page layout on the East Building of the National Gallery of Art in Washington, D.C., designed by China-born I. M. Pei. Time describes it as "a masterpiece," noting wryly that most recent Washington buildings are rather blah with one or two notable exceptions "such as the 1976 National Air and Space Museum by Gyo Obata." Three cheers for our side.

One remembered signing all his report cards himself. He also wrote notes explaining absence for illness or emergency. His Issei parents had never learned to write English. Another woman said her family had a restaurant that was open all hours. When she reached school in the morning, she remembered nodding over lessons. "My parents didn't believe I required sleep," she said.

There was almost mutual agreement among the guests, as one put it, "Often I

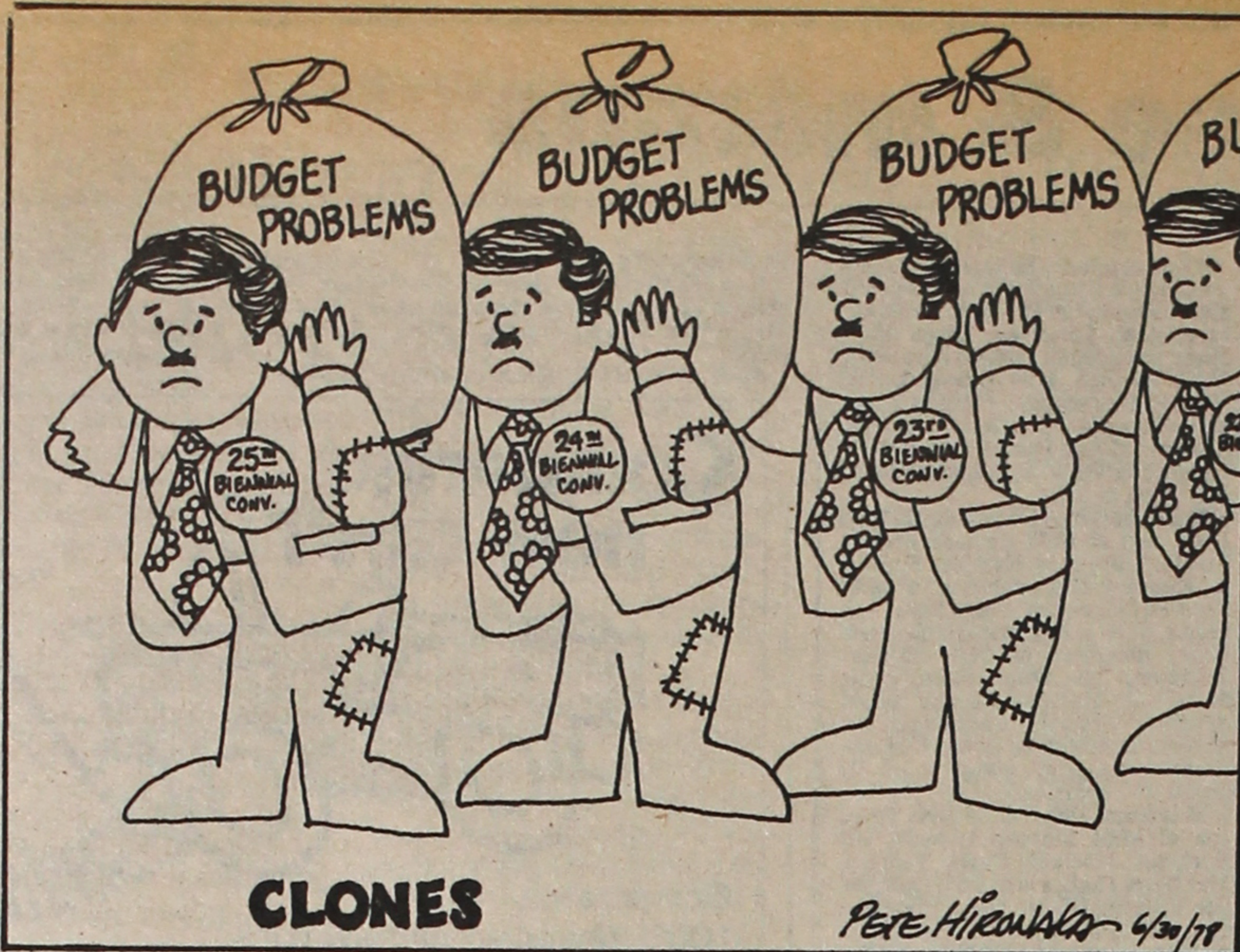
felt like I was the parent and my mother and father were my children." The shift in the nature of conversation surprised me. I noticed a change in the tone of voices, in facial expressions. An unfamiliar intimacy, like watching strangers undress.

Time passed and it was early morning, but the group seemed reluctant to leave. As if not wanting to break a spell.

During the controversial '60s it was conventional for Japanese Americans to deplore the loss of their cul-

tural heritage. There was considerable talk of the disintegration of the traditional Japanese family. Divorce, drug abuse and mental illness were attributed to assimilation into white society.

Some still believe that the preservation of the traditional Japanese family can be a positive factor in righting the wrongs that presently prevail. It is a very idealistic approach. The strongest argument against its feasibility is that memory is stronger than myth.



## RE DRESS

JACL NATIONAL COMMITTEE

PART XXXII

# Predecessors

By Clifford I. Uyeda

In the Pacific Southwest the E.O. 9066, Inc. under the leadership of Paul Tsuneshi has been advocating reparations for many years.

JACL's commitment to redress for the manner in which Japanese Americans were treated by their own government during World War II goes back over 35 years. It is not of recent origin, nor that of "only the radical Sansei." The commitment is mostly Nisei's, with many Issei's approval and most Sansei's strong support. We believe further support will be coming from the American public, once they learn the true story.

We acknowledge and pay tribute to the work done by the previous committees and by various individuals on reparations. The campaign itself will now involve hundreds of new participants. We will succeed because the cause is just. □

Our committee had the honor and the privilege of carrying on the work and the commitment of previous reparations committees and of many dedicated individuals.

Mike Masaoka's strong commitment to redress goes back to the very beginning of Japanese American expulsion from the West Coast in 1942. His commitment is indomitable.

In the Pacific Northwest, Shosuke Sasaki, Henry Miyatake, Ed Yamamoto and others have labored long and diligently for redress.

The late Edison Uno was an ardent proponent of a reparations campaign. Now that the actual public campaign is about to begin, we will miss him sorely. His eloquence and his dedication to the cause will be difficult to replace.

FROM HAPPY VALLEY: Sachi Seko

# Japanese Family Tradition

Salt Lake City

There were fourteen children in my family and we were very poor. I can't remember when we all sat down at the table together for dinner. There weren't enough dishes or silverware to go around, so when the older ones finished eating, the younger ones used the same plates.

We took turns wearing shoes. Those who had an errand to perform wore shoes and those remaining at home went barefooted. Enrollment in school was a sporadic affair, depending on the availability of shoes.

I was telling this story at a party one night, when a sympathetic listener leaned over and asked, "Aren't fourteen children unusual in a Japanese family? Was your father a polygamist?"

No, fourteen children weren't too many, if your father was a farmer, I explained. That was the only way to be assured of free labor and a profit from the farm. Someone said how strange, they thought my family came from the city. They knew of only four children in my family. What had become of the other ten?

They died, I said. And there was a respectful silence in the room. Belated

tribute to such a high mortality rate in my family. Malnutrition took some and the others died simply from having to work so hard, I sighed.

As I told the story, I avoided looking at my husband. He says I get carried away, telling outrageous stories. He doesn't appreciate that when conversations at parties begin to pale, a change in the drift is quite helpful. Caught in the mischief of my fabrication, I elaborated on invented hardships. How I had to chop wood, haul water, feed chickens and pigs, do the family laundry in a tub outside. All of this at the age of eight.

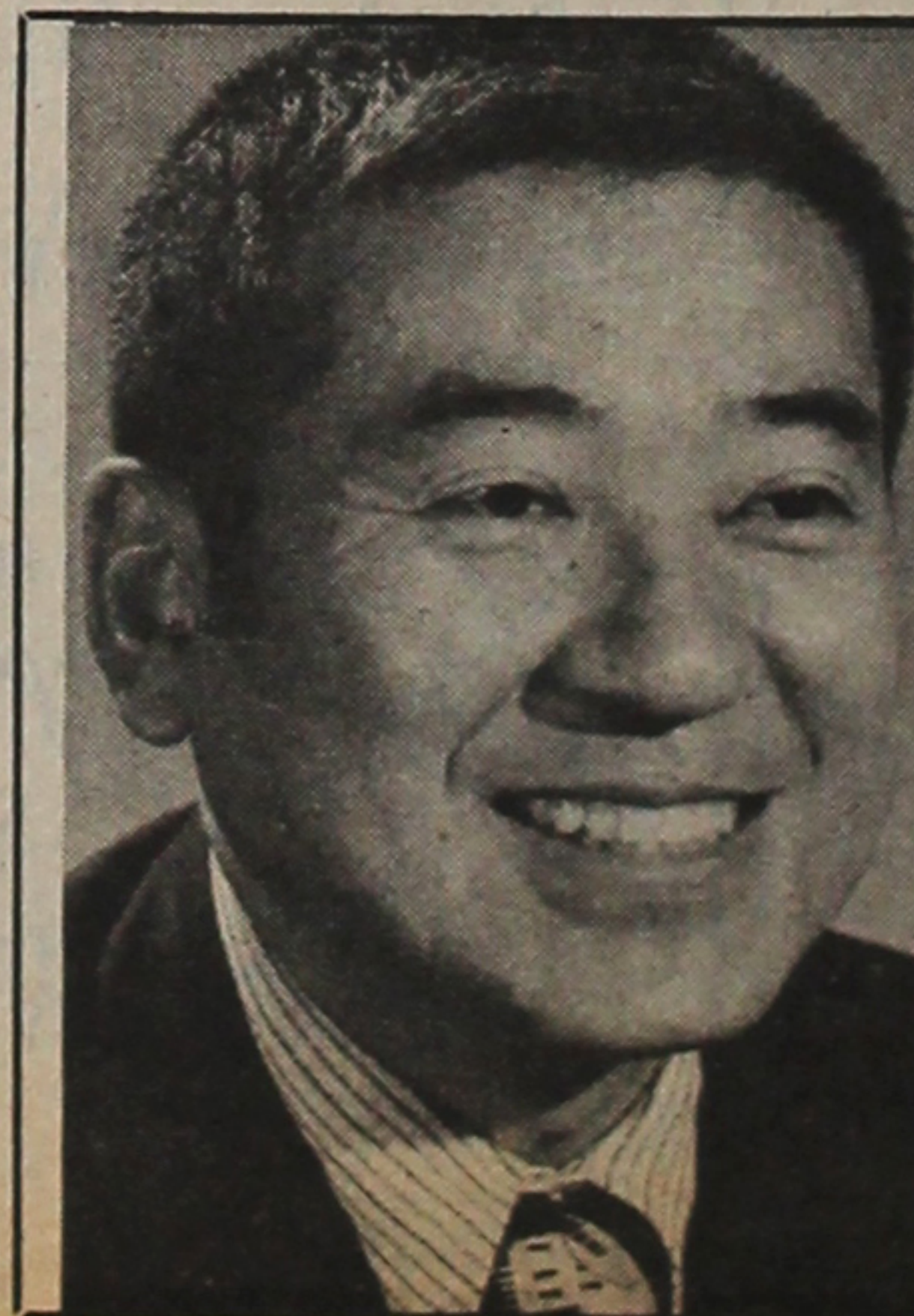
Before I realized what was happening, other guests entered the spirit of my tale. Over after-dinner drinks, the conversation had somehow moved around to success symbols. It was the usual harmless chatter about cars and houses, stocks and investments, spouses and children, vacations and parties, position and status. People are entitled to their rewards, to express pleasure and pride in their achievements and possessions.

What irritated me was the convenient alterations they made in their beginnings. To

listen to them, one would have been led to believe that their Issei fathers sat around writing poetry, while their mothers entertained friends all day. I knew these were the children of hard-working farmers and small businessmen. From their parents' conversational Japanese, I recognize dialects of rural Japan and little formal schooling. Survival, rather than aesthetic exploration, had characterized their struggle in the new land.

My story was only intended as a rebuke to myth over memory. So I was surprised at the little confessions that others contributed. One spoke of having to put newspapers in his shoes to cover the holes. By the time he reached school, the papers were soaked. He said his experience made him value shoes. I noticed the expensive alligator pair that he wore.

A woman spoke up and said that someday she was not permitted to go to school. When it was time to harvest, children stayed home to help parents. She remembered how white classmates teased about the lunches she brought. They were often rice balls and pickled plums. Sometimes she discarded them and went hungry.



## To All My Friends and Supporters:

Thanks for all your help during the course of our successful campaign to retain my position on the Santa Clara County Superior Court bench.

Sincerely,  
JUDGE TAKETSUGU "TAK" TAKEI

Committee to Retain Judge Takei, c/o Stan Tomita, Treasurer, P.O. Box 1832, San Jose, Calif. 95109



# Calendar, pulse & memos

## Giichi Aoki Memorial award administered by Nat'l JACL

SAN FRANCISCO, Calif.—A new freshman scholarship was added to the JACL National Scholarship Program, it was announced June 19 by Rich Okabe, National JACL youth director. Mrs. Y. F. Fujikawa of Seal Beach, Calif. has asked JACL to administer a scholarship in memory of her father, Giichi Aoki.

Aoki, who was born in 1875 in Izumisawa, Gumma ken, Japan, came to the United States at the age of 24. He completed his high school education at Lowell High School in San Francisco and as one of the first Japanese to graduate from the Univ. of California at Berkeley. He earned a degree in Economics in 1907.

Because he loved and appreciated music, Aoki established the Aoki Music Store in Sacramento and later opened a branch in Fresno. He sponsored many visiting Japanese musicians who gave

concerts in Sacramento.

Very involved in community affairs and with the Presbyterian Church, he was decorated in the 1960s with the 5th Order of the Sacred Treasure from the Emperor of Japan for his contributions to U.S.-Japan community relations.

Mr. Aoki was a kind and generous man. He died in 1973 at age 98. #

## Idaho Falls to host next IDC quarterly

IDAHO FALLS—The third quarterly IDC meeting will be hosted by Idaho Falls JACL on Saturday, July 8, at the JACL Hall, 187 First St., with Gov. John Tamenos agenda focusing on national convention matters: the budget, district funding, reparations and special projects.

A homemade lunch of Oriental dishes will be served by the chapter.

## San Francisco

The San Francisco JACL had the first class of their current dance lesson series June 16. Instructor Davitt Kasdan kept everyone loose with his humor and at the same time taught everyone the latest Disco dances including the "Saturday Night Fever" Hustle. Kasdan has promised to teach more Disco dances as well as the "Tango Hustle" and John Travolta's latest sensation, the "Grease" Hustle.

The series continues on Friday, June 30, at the Lafayette School, 36th Ave. and Anza St. Classes start promptly at 8 p.m.

## San Diego

The 21st annual San Diego JACL Scholarship Awards Dinner was held May 20 at Tom Ham's Lighthouse. A record number of 150 guests gathered to hear U.C. Regent Yori Wada recall his personal life story as he struggled during times of racial and social prejudice. In his work with disenfranchised youths, Wada noted the presence of racism still denying equal opportunity to every person in America, particularly those of the Black, Chicano, Asian and other minority communities.

Following Yori Wada's address, 16 scholarships totaling \$2,150 were presented as follows:

\$250—Eric J Segawa, Chula Vista High, son of M/M Ben Segawa, attending Univ. of Pennsylvania, economics.

\$200—Sharon Fujimoto, Bonita Vista High, daughter of M/M Fusatoshi Fujitoshi, Cal Poly SLO, architecture; Alan Hirakawa, Chula Vista High, son of M/M Hiroshi Hirakawa, USC, pre-med; Yuri Kaneda, Bonita Vista High, daughter of Rev/M Yoshikuni Kaneda, Stanford, pre-med; Nancy E Mukai, Patrick Henry High, daughter of M/M Abe Mukai, San Diego State, acctg.

\$100—Steven A Frakes, Chula Vista High, son of M/M Richard Frakes, Stanford, pre-med; Kathleen Fujimoto, Kearney High, daughter of M/M Fred Fujimoto, San Diego State, bus mgmt; Jana F Johnston, Chula Vista High, daughter of M/M Delbert Johnston, San Diego State, educ; Marue J Marsden, Morse High, daughter of M/M Bruce Marsden, UC Riverside, pre-med; Jana J Monji, Chula Vista High, daughter of Ty Monji, UC Irvine, art.

Masazumi Ohkubo, La Jolla High, son of M/M Masaaki Ohkubo, UC Berkeley, biochem; Danny Tallorin, Mar Vista High, son of M/M Dominador Tallorin, UC San Diego, chemical engr; Alice M Tayama, Patrick Henry High, daughter of M/M Haruo Tayama, UC San Diego, pre-med; Ellen Yamate, Castle Park High, daughter of Dr/M Kiyoshi Yamate, San Diego State.

\$100 Vocational—Stephanie Ikuta, Bonita Vista High, daughter of Chiyo Ikuta, Southwestern; Juliet D Yamada, Chula Vista High, daughter of M/M George Yamada, Fashion Institute of Design.

## Stockton

Seven local area high school graduates and one collegian were scholarship recipients at the annual Stockton JACL Awards luncheon June 11 at Yoneda Restaurant. The winners were:

1—\$500. JACL-Elizabeth Humbarger High School Scholarship to David Ota, son of Mrs. Dorothy Ota, East Union High School, Manteca.

2—\$250. JACL-Elizabeth Humbarger Delta College Foreign Student Award to Miyoko Takayasu from Japan.

3—Special \$100. JACL-Elizabeth Humbarger Scholarship to Kenji Armstrong, son of Mrs. Susan H. Armstrong, Stagg High.

4—\$100. Stockton JACL Scholarships to Todd Murakami, son of Mr. & Mrs. Satoru Murakami, Stagg High; Grace Saiki, daughter of Mrs. Shoko

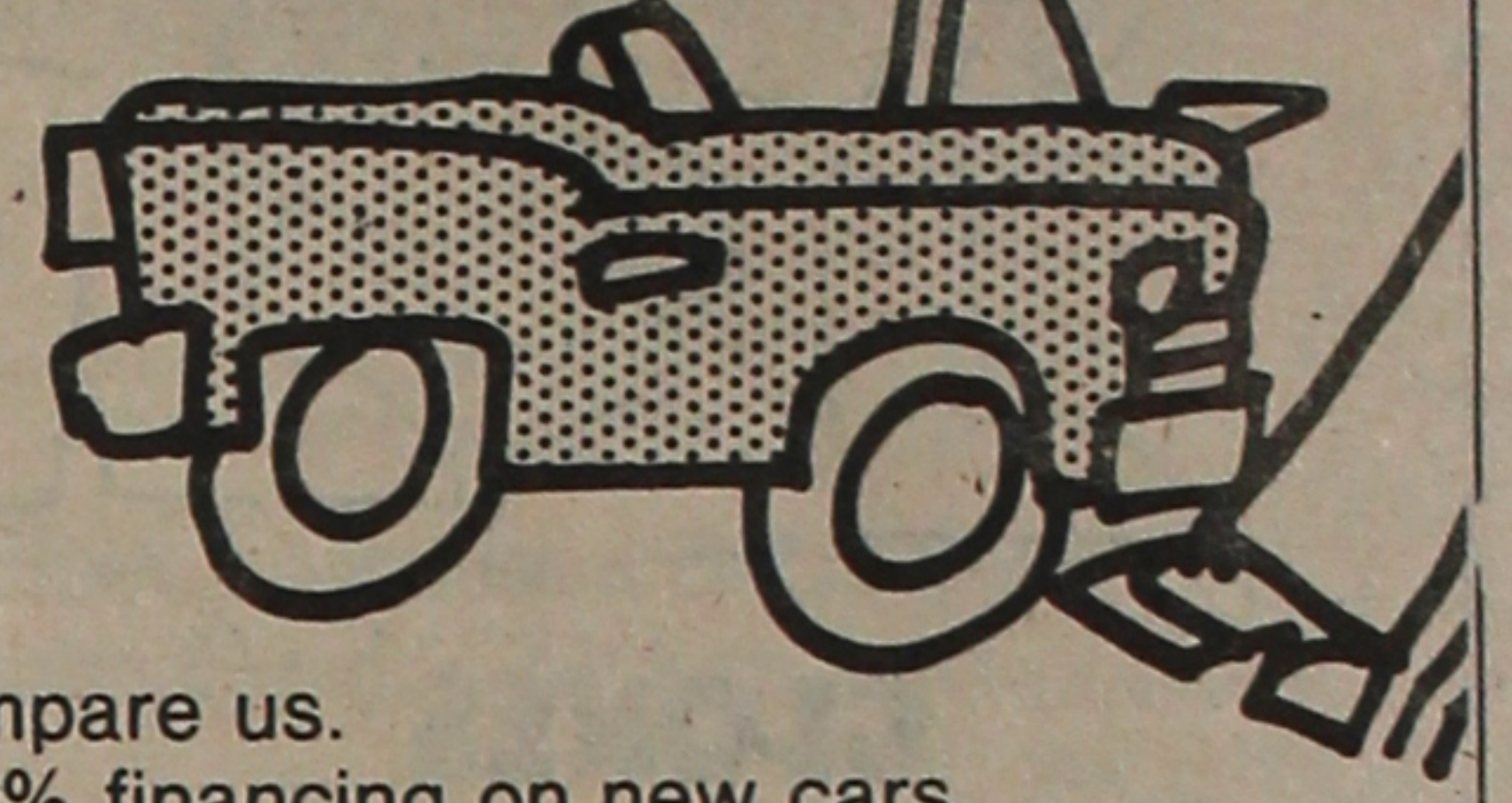
Saiki, Edison High.

5—\$100. Sumitomo Bank Scholarship to Janice Higashi, daughter of Mr. & Mrs. Shigeki Higashi, Edison High.

6—Stockton JACL Special Award

to Reiko Kurakazu, daughter of Mr. & Mrs. Ronald Kurakazu, Stagg High.  
7—\$100 Fred K. Dobana Memorial Scholarship to Russell Aoyama, son of Mr. & Mrs. Haroki Aoyama, Edison High.

## Comparing new cars?



Compare us. 100% financing on new cars.

## National JACL Credit Union

PO Box 1721 Salt Lake City, Utah 84110 Telephone (801) 355-8040

Borrow up to \$3000 on your signature to qualified borrowers.

## Nationwide Business and Professional Directory

Your business card placed in each issue here for 25 weeks (a half year) at \$25 per three-lines. Name in larger type counts as two lines. Each additional line at \$6 per line per half-year period.

<b>Greater Los Angeles</b> Asahi International Travel 1111 W. Olympic, Los Angeles 90015 623-6125/29: Please Call Joe or Gladys U.S.A. - Japan-Worldwide AIR—SEA—LAND—CAR—HOTEL FLOWER VIEW GARDENS #2—New Otani Hotel 110 S. Los Angeles St. LA 90012 Flowers/Gifts/Plants Deliveries City Wide Mgr Art Ito Jr Call (213) 620-0808 NISEI FLORIST In the Heart of Little Tokyo 328 E. 1st St. - 628-5606 Fred Moriguchi Member: Teleflora The PAINT SHOPPE La Mancha Center, 1111 N. Harbor Blvd. Fullerton, Calif. (714) 526-0116 YAMATO TRAVEL BUREAU 321 E. 2nd St., Suite 505, L.A. 90012 (213) 624-6021	<b>Seattle, Wash.</b> IMPERIAL LANES Complete Pro Shop—Restaurant & Lounge 2101-22nd Ave. So. (206) 325-2525 KINOMOTO TRAVEL SERVICE Frank Y. Kinomoto 605 S. Jackson St. 622-2342 GOLD KEY REAL ESTATE, INC. Homes and Acreage TIM MIYAHARA, Pres. Call Collect: (206) 226-8100 BEACON TRAVEL SERVICE, LTD. George A Kado, Owner 2550 Beacon Ave. So. 325-5849
<b>Watsonville, Calif.</b> Tom Nakase Realty Acreage, Ranches, Homes, Income Tom T. Nakase, Realtor 25 Clifford Ave. (408) 724-6477	<b>GALA SUPERMARKET BAZAARS</b> Gifts Cooking Utensils Imported beverages Food delicacies Judo-Gi, Karate Pottery, China UWAJIMAYA Free Parking Seattle: 6th S and Southcenter Store S. King St. Tukwila, Wa. MA 4-6248 CH 6-7077
<b>San Jose, Calif.</b> EDWARD T. MORIOKA, Realtor 3170 Williams Rd., San Jose Bus. 246-6606 Res. 371-0442	<b>Washington, D.C.</b> MASAOKA-ISHIKAWA AND ASSOCIATES, INC. Consultant - Washington Matters 900-17th St NW, Rm 520, 296-4484
<b>The Midwest</b> SUGANO TRAVEL SERVICE 17 E. Ohio St., Chicago, Ill. 60611 944-5444; eve/Sun 784-8517	Japanese Phototypesetting TOYO PRINTING CO. 309 So. San Pedro St., Los Angeles 90013 (213) 626-8153

## JOB OPENING Pacific Southwest JACL Regional Director

### MAJOR RESPONSIBILITIES

Director will be responsible for the administration of the Regional Office and staff. This will include day-to-day supervision of clerical and volunteer personnel. Incumbent will be responsible for fiscal operation of the regional office and the general activities of the office.

Additional responsibilities will include: Providing support services to the chapters and their respective boards in membership development, insurance programs, community relation activities and community service projects. The major responsibilities of the director to the chapters will be to offer staff assistance based on their particular requirements and needs. The director will also be expected to maintain a liaison relationship with community organizations, and public and private agencies.

The director will be expected to work with limited supervision and direction. The director will receive general supervision from the district governor and the district board. District policy and direction will be set by the district council.

### Qualifications

Two years experience in community organization. Ability to write reports and correspondence. Basic ability to maintain office bookkeeping system.

Salary: \$11,000/yr. and fringe benefits.

### SEND RESUMES TO:

JACL Regional Office—Pacific Southwest District Council  
 125 No. Central Ave., Los Angeles, Calif. 90012

Closing Date: July 28, 1978

## The Mitsubishi Bank of California



Little Tokyo Office

321 East Second St., Los Angeles, Calif. 90012

(213) 680-2650

## Deadlines

June 30—Applic papers for JACL-Haziwara Student Aid grant, JACL Hq.

July 15—Applic for Tom Hayashi Memorial Law Scholarships, c/o New York JACL, 50 W 67th St, New York, NY 10023.

July 22—Contribs to JACL Okubo-Yamada Fund, JACL Hq.

## Calendar

\* A non-JACL event

- JULY 1 (Saturday)  
 \*Los Angeles—Nisei Sgls benefit dance for Gardena JCI, Nishi Hongwanji Hall, 9 p.m.  
 \*Chicago—Natsu Matsuri (2 da), Buddhist Temple of Chicago.
- JULY 2 (Sunday)  
 Seabrook—Picnic, Thundergust, Parvins State Park.  
 Las Vegas—International Festival, Convention Center.
- JULY 4 (Tuesday)  
 San Diego—Comm picnic, Silver Strand State Beach.  
 St Louis—Chapter picnic, Eden Seminary.
- July 7 (Friday)  
 Watsonville—Benefit Japanese movies, Buddhist Hall, 7:45 p.m.
- JULY 8 (Saturday)  
 Washington, D.C.—Schol Awds; Dr Darrel Montero, splr.  
 \*Salt Lake City—Obon festival, Buddhist Church.
- IDC—Qtrly mtg, JACL Hall, Idaho Falls, Idaho.
- July 9 (Sunday)  
 Watsonville—Picnic, Santa Cruz County Fairgrounds, 11 a.m.
- JULY 10 (Monday)  
 Fresno—Bd mtg, Cal 1st Bank, 7:30 p.m.

- JULY 13 (Thursday)  
 Nat'l—JAYS Convention (6 da), Univ. of Utah campus, Salt Lake City.
- JULY 15 (Saturday)  
 \*Cincinnati—International Weekend (2 da), Zoo.  
 Cincinnati—Cult workshop, Benny Okura's res, 7:30 p.m.  
 \*Seabrook—Obon festival.  
 San Gabriel Valley—Toyo Niitake films, SGV Japanese Comm Ctr, West Covina, 8 p.m.  
 Hoosier—Ohio River boat cruise, Belle of Louisville.  
 West Los Angeles—Asian Festival, WLA Civic Mall.  
 \*Monterey—Obon Festival (2 da), Buddhist Church.
- JULY 16 (Sunday)  
 Contra Costa—Picnic, Napa Valley Ranch, 11 a.m.
- JULY 17 (Monday)  
 Nat'l—JACL Bd Mtg, Little America Hotel, Salt Lake City, 8 a.m.
- JULY 18 (Tuesday)  
 Nat'l—JACL Convention, Little America Hotel, Salt Lake City. Opening ceremony, 8 a.m.; IBM Motivation seminar, 1 p.m.; Reparation workshop, 2 p.m.; Asian American Voluntary Action, 4 p.m.; Nat'l Council session, 7 p.m.
- JULY 19 (Wednesday)  
 nat'l—JACL Conv, Lit Amer Hotel, Salt Lake City. Nat'l Council session, 8-11 a.m.; Tri-Generational report, Gene Levine, 11 a.m.; PC Seminar, Legal Seminar, 12-1:30 p.m.; Family Values & Retirement, 1:30-5 p.m.; Masaoka Distinguished Public Service Award banquet, 6:30 p.m.; Visual & Performing Arts panel, 9-10:30 p.m.
- JULY 20 (Thursday)  
 Nat'l—JACL Conv, L Amer Hotel, SLC. Japan-U.S. Friendship Act panel, 9 a.m.; Outing-barbecue, Snowbird Resort, 12:30-6 p.m.; Visual & Performing Arts, 7 p.m.; Pilgrimage reunion, 10:30

SOUTHERN ALAMEDA COUNTY

# Buddhist Church CARNIVAL BAZAAR

FREE ADMISSION

Saturday · JULY 1ST  
 11 AM to 10 PM

Sunday · JULY 2ND  
 11 AM to 10 PM

Fireworks Sale

SUSHI BAR Japanese Foods

Japanese Dance Performances 8:00 - 9:00 P.M.

Public Cordially Invited!

32975 ALVARADO · NILES ROAD  
 UNION CITY

Japanese Phototypesetting

TOYO PRINTING CO.  
 309 So. San Pedro St., Los Angeles 90013  
 (213) 626-8153

## Eagle Produce

929-943 S. San Pedro St., Los Angeles  
 625-2101

BONDED COMMISSION MERCHANTS  
 —WHOLESALE FRUITS AND VEGETABLES—

## Los Angeles Japanese Casualty Insurance Assn.

— COMPLETE INSURANCE PROTECTION —

Aihara Ins. Agcy., Aihara-Omatsu-Kakita	626-9625
250 E. 1st St.	
Anson Fujioka Agcy., 321 E. 2nd, Suite 500	626-4393
263-1109	
Funakoshi Ins. Agcy., 321 E. 2nd St.	266-5275
Hirohata Ins. Agcy., 322 E. Second St.	628-1214
287-8605	
Inouye Ins. Agcy., 15092 Sylvanwood Ave., Norwalk	846-5774
Tom T. Ito, 595 N. Lincoln, Pasadena	795-7059 (LA) 681-4411
Minoru 'Nix' Nagata, 1497 Rock Haven, Monterey Park	268-4554
Steve Nakaji, 11964 Washington Place	391-5931
837-9150	
Sato Ins. Agcy., 366 E. 1st St.	629-1425
261-6519	





**CALLAHAN'S CORNER: George Inagaki**

**Whatever happened... to Tats Kushida?**

Editor's Note: This column and one more to appear next week are the final pieces he had written for the PC. George Inagaki, as we all know, died on June 14.

While on the subject of inquiries of past active JACLers, there was another from an old-timer from Chicago-way. He was asking about Tats Kushida, whom he knew well when the latter was the Midwest JACL regional director from early '47 to late '49. Tats did such a good job, they transferred him to the PSWD office in Los Angeles in December of '49. Gotta give him credit because he stuck it out for seven years when he finally resigned to get into the insurance business with Cal-Western.

I met Tats for the first time way back in 1934 at the

Young Peoples Christian Conference in Berkeley. I was looking at a group picture at that particular Conference a few months ago and, sure enough, Tats was in it. He was a tall, slim and handsome University of California student at that time. For that matter, he's still the same tall, slim and handsome guy. He's the only guy I know who's been able to fool Mother Nature.

I got to know Tats pretty well because my tenure as national president ran from 1952 to 1956 and, he, with his many talents as the PSWD director, sure was helpful on many problems. I'm afraid I leaned on him a great deal, but he took it all in stride.

However, there was an occasion when he got on my nerves but bad!! It occurred when Tats and I took a two-day visitation trip to chapters in Phoenix, Brawley and San Diego.

In those days, we had a very limited budget and, be-

sides, in that part of the country, normal motels were a room, bath and a double bed. So, on the first night, we holed up in one of these motels. After showering, we went to a small restaurant which happened to

serve good-tasting food in ample portions.

On the way back to the motel, Tats stopped at a market and bought a shopping bag of sundry packages of cookies, popcorn, peanuts, etc. I thought all that was for

lunch while on the road next day. How wrong I was !! When we got into bed, he dragged that bag to his bedside and then it all started. He kept digging into that damn bag, and it was chomp, chomp, chomp; crackle, crackle, crackle; pop, pop, pop; and burp, burp, burp well past midnight. By the time he finally called it quits,

my nerves were in such a shamble, I couldn't sleep all the rest of the night. Yep, he snored to boot.

He's been with Cal-Western for 21 years now, and he has done well. He continually has won top honors as a salesman, then he became manager of Cal-Western's

Continued on Next Page

**EVERY SUNDAY MORNING 7:30-10:00**

**radio li'l tokyo**  
**matao uwate**

110 N. San Pedro St.  
Los Angeles, Ca 90012  
(213) 628-4688

KTYM (1460 kc) 7:30-8:30 a.m.  
KALI (1430 kc) 8:30-10:00 a.m.

**Matao Uwate's 4th Book 'Kokoro'**

This is a Continuation of Our First Cookbook "JAPANESE COOKBOOK for SANSEI"

**Recipes Discussed Separately for Pork, Beef, Chicken and Fish**

If You Are Serious in Learning Japanese Cooking, Mail \$11.00 (Postpaid) to:

**MATAO UWATE**  
110 N. San Pedro St., Los Angeles, CA 90012

—Now Conducting Cooking Classes for Hollywood JACL—

**Nanka Printing**  
Japanese Phototypesetting  
2024 E. First St.  
Los Angeles, Calif.  
Phone: 268-7835

**Aloha Plumbing**  
LIC. #201875  
PARTS & SUPPLIES  
—Repairs Our Specialty—  
1948 S. Grand, Los Angeles  
Phone: 749-4371

Three Generations of Experience ...

**FUKUI Mortuary, Inc.**  
707 E. Temple St.  
Los Angeles 90012  
626-0441  
Soichi Fukui, President  
James Nakagawa, Manager  
Nobuo Osumi, Counsellor

**Shimatsu, Ogata and Kubota Mortuary**  
911 Venice Blvd.  
Los Angeles  
749-1449  
SEIJI DUKE OGATA  
R. YUTAKA KUBOTA

Established 1936

**Nisei Trading**  
Appliances - TV - Furniture  
NEW ADDRESS:  
249 S. San Pedro St.  
Los Angeles, Calif. 90012  
Tel.: 624-6601

Ask for ...

**'Cherry Brand'**  
MUTUAL SUPPLY CO.  
1090 Sansome St.  
San Francisco, Calif.

**Kimura**  
PHOTOMART  
Cameras & Photographic Supplies  
316 E. 2nd St., Los Angeles  
622-3968

**TOYO Myatake STUDIO**  
318 East First Street  
Los Angeles, Calif. 90012  
626-5681

**Empire Printing Co.**  
COMMERCIAL and SOCIAL PRINTING  
English and Japanese  
114 Weller St., Los Angeles 90012 628-7060

**SAITO REALTY CO.**  
HOMES • INSURANCE  
One of the Largest Selections  
2421 W. Jefferson, L.A.  
731-2121  
JOHN TY SAITO & ASSOCIATES

**MARUKYO Kimono Store**  
New Otani Hotel & Garden—Arcade 11  
110 S. Los Angeles  
Los Angeles  
628-4369

Complete Home Furnishings

**Koby's Appliances**  
15120 S. Western Ave.  
Gardena 324-6444, 321-2123

**Mikawaya Sweet Shop**  
244 E. 1st St.  
Los Angeles MA 8-4935

**the universal force.**

**encounter it.**

There is a strange, compelling force that is in all things. It is a part of the tiniest grain of sand and the most gigantic meteors. And it flashes out in great surges of energy from giant stars and distant galaxies.

It is the mysterious, universal force of magnetism. Although it has never been fully understood or explained, it is of great service to man. It was instrumental in the development of such modern technological wonders as television, radar, the electronic microscope, and space travel. Probably it has already benefited your own life in many ways.

Now, TDK invites you to experience this universal force on a more intimate level through a direct encounter with the most powerful magnets known to man.

Pictured above is the original, authentic TDK necklace, called EPAULE™. Its tiny, beautifully fashioned cylinders each contain a super powerful Rare Earth Cobalt (REC) magnet, whose perpetual force field is 16 times more powerful than the force fields of other magnets. These magnets were first developed for the National Aeronautic and Space Administration of the U.S. Government (NASA) for use in space flights.

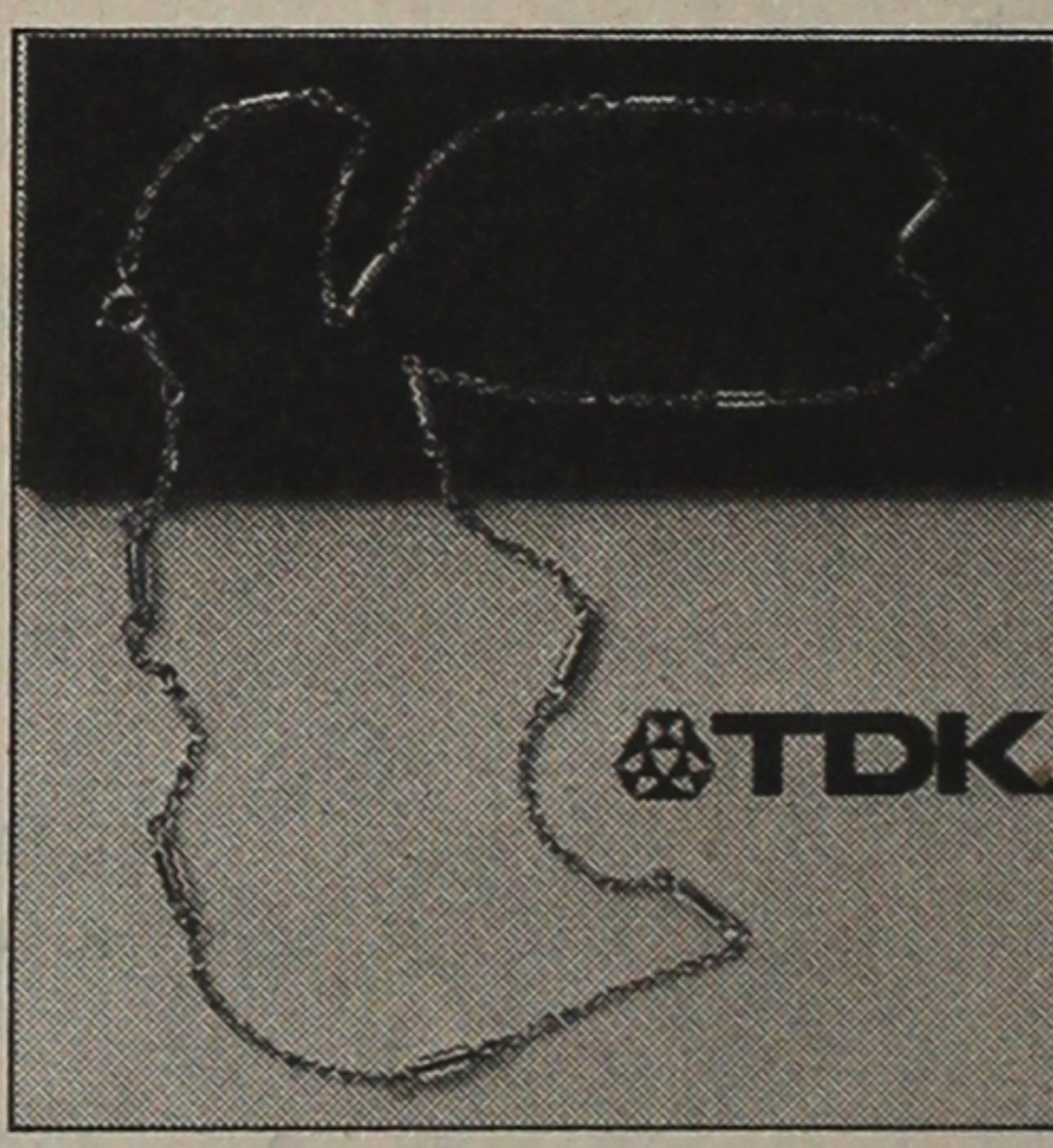
**USED BY OVER 2 MILLION MEN AND WOMEN—**

This necklace has a strange and intriguing history. Introduced in Japan just two short years ago, it was certified and approved by the Japanese Ministry of Health and Welfare.

In that short space of time, well over 2 million people have purchased it, worn it, and valued its effects.

Word of this mysterious necklace charged with the universal force is quickly spreading around the world. Articles about magnetic necklaces and their vast popular acceptance have appeared in the news media of all countries including such leading American publications as The Wall Street Journal, The Chicago Tribune, and New York Magazine.

Currently over 100,000 EPAULE™ magnetic necklaces are being sold each month. It is truly the most popular magnetic necklace ever created. And its appeal is universal. Young and old, men and women alike, believe in



EPAULE™ and celebrate the mysterious powers of the universal force in EPAULE™ that have touched them and changed their lives.

**SPECTACULAR OFFER—**

What will EPAULE™ do for you? Well, there are on record the actual experiences of thousands of satisfied owners of EPAULE™. Yet to tell you about them would only be relating it second hand. And, since the true nature of magnetism is still a mystery we'd rather let you discover, for yourself, how an encounter with the universal force concentrated in EPAULE™ can affect your life.

So, to introduce you to EPAULE™, and to give you the chance to encounter its unique powers personally, we will send it to you to use and to wear for a full 30 days. Perhaps what you experience will encourage you to write us about it.

You'll love its simple unisex elegance. Plated with genuine 14K gold (9 magnets, 17-inch chain) or sparkling white rhodium (11 magnets, 22-inch chain)—your choice.

The low Japanese prices for EPAULE™ of only \$29.95 and \$32.95 are being maintained for this special introductory offer. But because of the rapid fluctuation of exchange rates, these low prices cannot be guaranteed beyond 30 days from the date of this ad. So we'd suggest you act at once to avoid disappointment.

You take absolutely no risk, because EPAULE™, the original and authentic magnetic necklace, is fully guaranteed by TDK Electronics, a multi-million dollar company. If for any reason you're not completely captivated by EPAULE™, just return it within 30 days for prompt refund. Note: Not for use with pacemakers.

The mysterious universal force of magnetism is concentrated in every elegant cylinder of EPAULE™.

Encounter it!

**CALL TOLL-FREE 800-421-4543**  
for VISA or Master Charge Sales  
(California Residents call 800-252-0636)

**TDK MAGNETICS CORPORATION**  
Dept. FP3  
9465 Wilshire Boulevard — Suite 411  
Beverly Hills, California 90212

YES, please rush me the TDK magnetic necklace(s) at the special \$29.95 or \$32.95 price. I understand there is a \$1.00 shipping, handling and insurance charge for each. If I am not completely satisfied, I may return the necklace in its original condition within 30 days for a full refund of the purchase price. (Indicate quantity below.)

Women's 17" 14K Gold Plated (\$29.95 each)  
 Men's 22" Rhodium Plated (\$29.95 each)  
 Men's 22" 14K Gold Plated (\$32.95 each)

Total amount enclosed \$ \_\_\_\_\_  
(Include shipping and California Residents add 6% sales tax.)

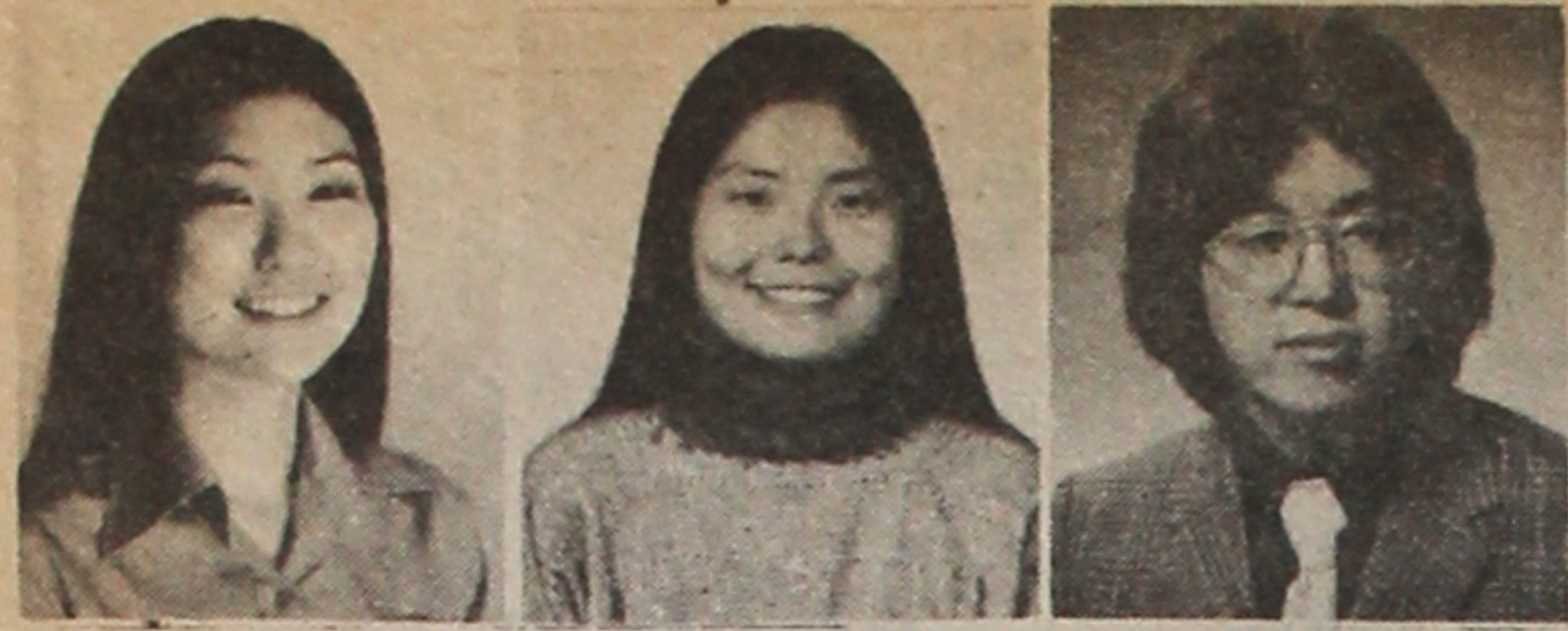
VISA (BankAmericard)  Master Charge  
Inter Bank # (Master Charge Only) \_\_\_\_\_

Card # \_\_\_\_\_ Expiration Date \_\_\_\_\_

Signature \_\_\_\_\_  
NAME \_\_\_\_\_  
ADDRESS \_\_\_\_\_  
CITY \_\_\_\_\_  
STATE \_\_\_\_\_ ZIP \_\_\_\_\_

Manufactured by TDK ELECTRONICS CO., LTD., Tokyo  
© 1978 by TDK ELECTRONICS CO., LTD. All Rights Reserved.  
U.S. Patent 4095587, U.S. Design No. 245769  
TM EPAULE Owned by TDK ELECTRONICS CO., LTD.





Nancy Karasawa Chris Ando Richard Yamasaki

## AWARD

Continued from Front Page

dents in the program. After the session, each will travel for two weeks throughout Japan, courtesy of Japan Travel Bureau International.

Chris N. Ando, 25, is the daughter of Toshio and Michi Ando of Denver, Colo. She received her teaching certification in elementary education this month from the Univ. of Colorado, Colorado Springs. Chris has done volunteer work with cerebral-palsied children at the Rocky Mountain Rehabilitation Center, participated in the Big Sister Program, and for the past two years she was a counselor with a crisis intervention shelter for adolescents.

In her essay, Chris states, "I want to learn of Japan's past and traditional customs to be sure, but I also expect to see and experience modern-day Japan. I am interested in investigating current trends of thought with the Japanese of my peer group. I would like to seek out their feelings about Americans and share with them my knowledge and experiences of life as a Japanese American."

Nancy Ann Karasawa, 22, is the daughter of Richard and Mary Karasawa of Whittier, Calif. She is completing her BA in Design at UCLA and plans to enter the Graduate Shelter program in the fall. Nancy participates in many sports including tennis, swimming, softball and basketball and was a member of the Selanoco JAYS.

She states, "I am confident that this fellowship experience will influence every aspect of my life, but I feel that it will be of particular importance to my work in design. As a result my potential as a future designer will be greatly enhanced. Problem solving and visual thinking require the totality of personal experience and learning in combination; it is said that, 'A designer uses everything'."

Richard Lee Yamasaki, 25, is

## TRACK

Continued from Page 3

LONG JUMP—Allen Morimoto, WLA, 16' 3/4"; 50—Allen Morimoto, WLA, 5.9; 440—John Fukuda, San Francisco Associates, 1:01.0; 440 RELAY—So Cal (Paul Nishida, Marty Nishimi, Joseph Warner, Mike Hamada), 51.3s.

### "D" DIVISION

LONG JUMP—Mark Abe, Seq, 15' 8 1/2"; 100—Diana Nishi, OC, 12.8; HIGH JUMP—Keith Watanabe, 4' 6 3/4"; 50—Mark Abe, Seq, 6.5; 440—Keith Watanabe, OC, 1:10; 440 RELAY—No Cal (Rick Kawamura, Christine Hyodo, Robert Asato, Mark Abe) 59.0.

### WOMEN'S DIVISION

100—Natalie Sasaki, West Valley, 11.8; 2-MILE—Mari Gibbs, OC, 12:28; 880—Mari Gibbs, OC, 2:35; LONG JUMP—Karen Ueda, West Valley, 16' 11 3/4"; 220—Janice Matsuoka, Reedley, 27.4; 440 RELAY—So Cal (Kim Urata, Liz Bush, Mari Gibbs, Kelly Okamura), 56.0.

### GIRLS' DIVISION

100—Janice Matsuoka, Ree, 12.1; LONG JUMP—Lydia Jeung, Con, 13' 10 1/2"; 440—Janice Matsuoka, Ree, 1:12.5; 440 RELAY—No Calif (Megan Kitagawa, Linda Sakurai, Susan Naito, Janice Matsuoka), 59.0.

### MEN'S DIVISION

2 MILE—(age 30+) Robert Kihara, 10:42.7; (age 45+) Fred Miyauchi, 12:07; 100—Robert Watanabe, 11.2; 880—Robert Kihara, 2:22.3. (Men's Division was invitational and not scored in the meet.—Ed.)

### Outstanding Athletes

A: Martin Toyama, Sac, 29 pts; B: Richard Peterlin, Gar, 26; C: Allen Morimoto, WLA, 26; D: Mark Abe, Seq, 29; Women: Mari Gibbs, OC, 27; Girls: Janice Matsuoka, Ree, 33 pts.

### Divisional Scoring

	A	B	C	D	G	W	Total
No.	124	94	32	52	64	46	—412
So	154	158	98	78	54	40	—582

so has as components, a great sense of community and family identity, of responsibility and obligation to others, of peace and serenity of mind. You will often read of the "exotic" culture of Japan but this is only a small part of cultural awareness. More vital is an actual feeling for the culture, a personal and intimate link between oneself and one's heritage." □

## INAGAKI

Continued from Previous Page

Wilshire Agency, and already he's going to semi-retire. Not bad, I say.

Incidentally, the Kushidas

have two daughters. Pam's a school teacher; Bev's a TV actress married to actor Michael Ansara, who is known for his portrayal of Indian chiefs.

So, that's what about Tats Kushida, in good health since he licked his cancer of the colon some 10 years ago. He's out fishing whenever possible and goes ballroom dancing weekly with May.

"Hope that covers what Tats' doing for you old-timers, especially in MDC, who's been wondering. Tats is just K.O.K." □

## Summer Japan Tour for JACLers

Scheduled with August 12 departure

12 Days - Most Meals - \$595

TOKYO - NIKKO - SENDAI - MATSUSHIMA  
NAGOYA - KURASHIKI - INLAND SEA  
SHODO ISLAND - KYOTO. Airfare excluded.

KOKUSAI INTERNATIONAL TRAVEL, INC.  
321 E. 2nd St., Los Angeles, Ca. 90012  
213/626-5284

Most Appreciated Omiyage in Japan

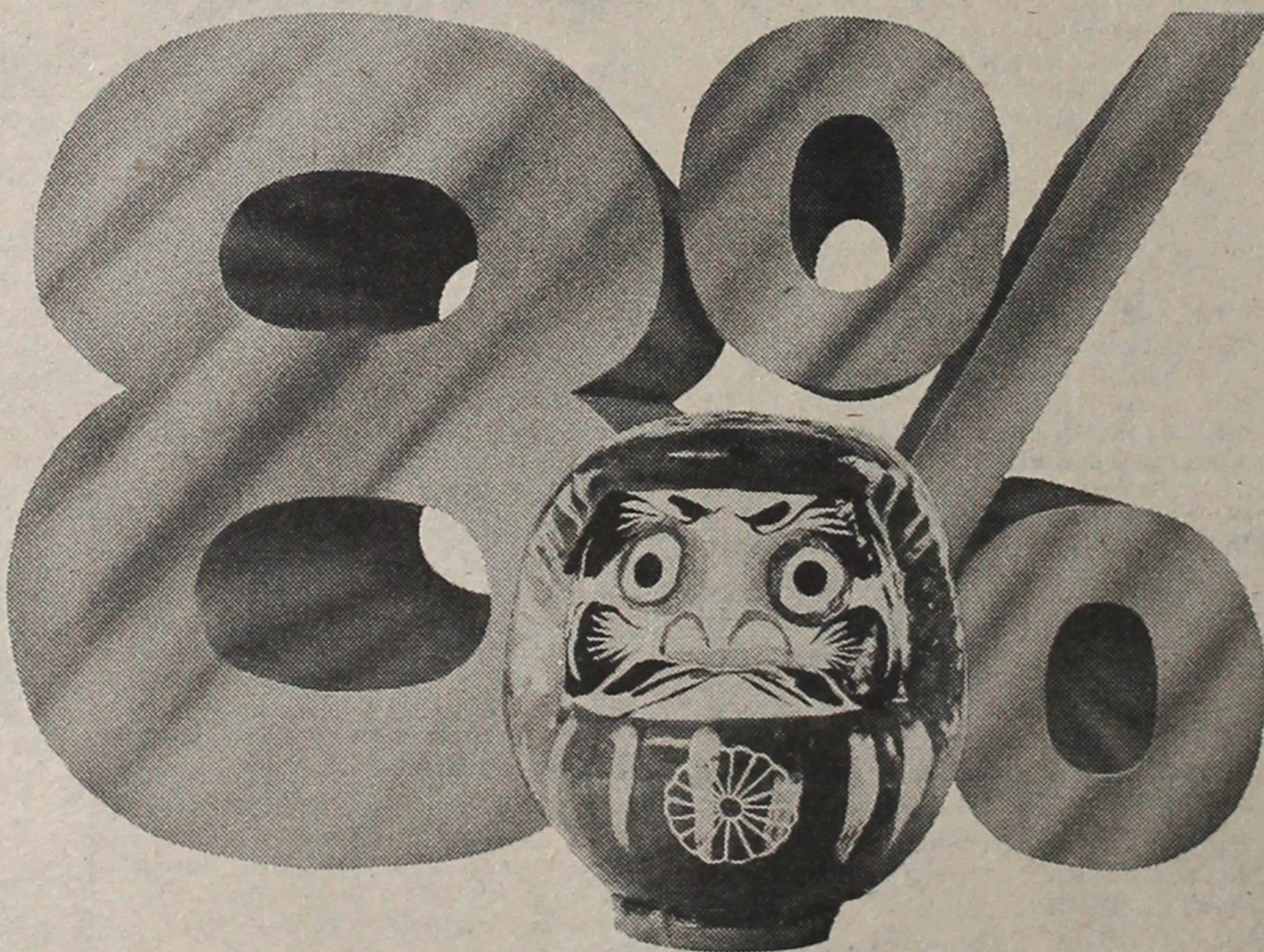
**PREMIUM QUALITY STEAKS / Packed in Blue Ice Box**

FILET MIGNON	5 lb.	16 pcs.	40.00
NEW YORK CUT	5 lb.	10 pcs.	40.00
NEW YORK CUT	4 lb.	8 pcs.	32.00
TOP SIRLOIN	4 lb.	11 pcs.	28.00
BEEF JERKY	9 1/2 oz.	Vacuum Pack	8.00
BEEF JERKY	5 oz.	Vacuum Pack	4.50

**Acomo USA, 312 E. 1st St., Rm. 309,**  
**Los Angeles, Ca 90012 : (213) 629-1271, 283-9905 (eve)**

Certified by the U.S.D.A. for easy clearance through Japanese Customs. Delivery to Los Angeles International Airport at check-in counter on departure date. Please order by phone at least a week before departure.

# INTRODUCING OUR NEW INTEREST



### ANNUAL INTEREST RATES ON INSURED SAVINGS

All Interest Compounded Daily • Account Insurance Now Doubled To \$40,000

8% 8-Year Certificate \$1,000 Minimum	7 3/4% 5-Year Certificate \$1,000 Minimum	7 1/2% 4-Year Certificate \$1,000 Minimum	6 3/4% 30-Month Certificate \$1,000 Minimum	6 1/2% 1-2 Year Certificate \$1,000 Minimum	5 1/4% Regular Passbook Savings
--	--	--	--	--	------------------------------------

Certificates of Deposit may be withdrawn prior to maturity, but in accordance with Federal Regulation requirements, interest for the entire time of deposit will be recalculated at the prevailing savings passbook rate, less 90 days interest.

## MERIT SAVINGS AND LOAN ASSOCIATION

LOS ANGELES: 324 E. First St. 624-7434 • TORRANCE/GARDENA: 18505 S. Western Ave. 327-9301  
MONTEREY PARK: 1995 S. Atlantic Blvd. 266-3011 • IRVINE: Under Construction MEMBER FSLIC

# The 1978 JACL TRAVEL PROGRAM

Sponsored by the National Japanese American Citizens League

Open to All Bonafide JACL Members

## Group Flights to Japan

Certain Flights have local administrators as listed below.

Group No.	Departs from	Dates
10—San Francisco		July 24-Aug 21 Full
11—Los Angeles/San Francisco		July 25-Aug 22 Full
12—San Francisco		July 31-Aug 31 Full
Tad Hirota, 1447 Ada St., Berkeley, Ca 94702 (415) 526-8626		
14—Los Angeles		Sep 5-25
15—San Francisco		Sep 25-Oct 16
Tad Hirota, 1447 Ada St., Berkeley, Ca 94702 (415) 526-8626		
17—San Francisco		Oct 3-27
Tom Okubo, 1121 Lake Glen Way, Sac'to, Ca 95822 (916) 422-8749		
18—San Francisco		Oct. 2-23 Full
Grant Shimizu, 724 N 1st St, San Jose, Ca 95112 (408) 297-2088		
21—San Francisco		Oct 16-Nov 6
24—San Francisco		Dec 20-Jan 9

## Via GA100—Round Trip Fare: \$720\*

9—Chicago Jun 25-July 16 Full  
Frank Sakamoto, 5423 N Clark St., Chicago, Il 60640 (312) 561-5105

## Via PanAm 747/GA100—Round Trip Fare: \$564\*

13—Los Angeles Aug 12-Sep 2 Full  
17A—San Francisco Oct 3-27 Full  
Tom Okubo, 1121 Lake Glen Way, Sacramento, Ca 95822 (916) 422-8749  
20—Los Angeles Oct 1-21 Full  
22—L.A./Honolulu stopover Oct 16-Nov 6

## Via JAL Charter—Round Trip Fare: \$599\*\*

16—Chicago (Revised Dates) Oct 1-22  
Frank Sakamoto, 5423 N Clark St, Chicago, Il 60640 (312) 561-5105

## Tokyo Arrival & Departure Packages

ARRIVAL: \$50 per person Sgl rm supp: \$19  
Arrive at NEW International Airport (NARITA). After the entry process, passenger will be greeted and transferred to a hotel in Tokyo.

EXTENSION: \$26 per night 3 night maximum  
FOR EITHER ARRIVAL OR DEPARTURE

DEPARTURE: \$50 per person Sgl rm supp: \$19  
Hotel accommodations for one night, transfer by motorcoach from hotel to NEW International Airport (NARITA).

For further information or reservation, please consult your local JACL Authorized Retail Travel Agent or Japan Travel Bureau International.

### ORIENTATION MEETINGS

LOS ANGELES—2nd Tuesdays, 7 p.m. Calif First Bank, 120 S San Pedro St. For info call Akira Ohno (213-477-7490).  
SAN FRANCISCO—Third Thursdays, 7 p.m., Mas Satow Bldg., 1765 Sutter St. For info, call Yuki Fuchigami (415-921-5225).

### GENERAL INFORMATION

\* Air fare (eff Aug 1, 1977) includes round trip, \$3 airport departure tax, and \$20 JACL administrative fee. Adult and child seats same price on any flight; infants 2 years old, 10% of applicable regular fare. / \*\* Charter price includes round trip airfare, tax, JACL administrative fee and may vary depending on number of passengers. All fares, dates, times subject to change. If there are any questions regarding the Nat'l JACL Travel Committee policies or decisions, write or call Yuki Fuchigami, Nat'l JACL Hq, 1765 Sutter, San Francisco, Ca 94115 (415-921-5225)

## Information Coupon

Mail to any JACL-authorized travel agent, chapter travel chairperson or

National JACL Travel  
1765 Sutter St., San Francisco, Calif. 94115

Send me information regarding 1978  
Nat'l JACL Flights, especially Group # \_\_\_\_\_

Name \_\_\_\_\_  
Address \_\_\_\_\_  
City, State, Zip \_\_\_\_\_  
Day Phone \_\_\_\_\_ Chapter \_\_\_\_\_

Effective Date \_\_\_\_\_  
City, State, Zip \_\_\_\_\_  
New Address \_\_\_\_\_  
If you are moving, give us 3 week's advance notice. Clip out entire address label "box". Write in new address and effective date.  
No. \_\_\_\_\_  
**PACIFIC CITIZEN**  
355 E. 1st St., Rm. 307, Los Angeles, Ca. 90012  
MEMBER FSLIC