

# PACIFIC CITIZEN

Publication of the National Japanese American Citizens League

No. 2,002—Vol. 87

Friday, July 21, 1978

20¢ Postpaid U.S.

15 Cents

## Convention mulls over redress proposal: \$25,000 per detainee

Text/Comments on JACL Draft — See Pg. 6-7

SALT LAKE CITY, Utah—A proposal to compensate for loss of civil rights due to wartime incarceration solely because of Japanese ancestry is to be presented for approval at the 25th biennial National JACL Convention assembled here this week at Little America Hotel.

Dr. Clifford Uyeda of San Francisco, chairman of the JACL National Committee for Redress, had released to the convention delegates earlier this month the proposal which provides those eligible a sum of \$25,000 tax-free compensation with payment first to eldest survivors of those evacuated in 1942 from the West Coast by Executive Order 9066.

Throughout the 35 weekly pieces on reparation or redress which have appeared in the Pacific Citizen, the committee did not publicize the individual sum per detainee.

Uyeda also noted it was the fourth draft due to suggestions from the various JACL district representatives. "Several committee members expressed concerns that in quibbling over every injustice, we might end up not having any program at all and the needy will not be helped," he added. "Most felt that the formula must be kept clean and simple".

The proposal incorporates

the following concepts:

(1) Eligibility is restricted to those actually detained or interned in camps, or were forced to move from "exclusion" areas.

(2) Individual payments are limited to survivors, and not to heirs of deceased detainees.

(3) Persons of Japanese ancestry brought over from Central and South America and interned in the U.S. are included.

(4) Processing and paying individual claims will be the responsibility of the U.S. Government.

(5) Trust foundation for the benefit of Japanese Americans will be administered by a Japanese American Commission.

It should be pointed out that #2 has created considerable controversy. The National Council will be asked to rule on this specific point.

The legislative proposal agreed upon by the convention is still JACL's own proposal. "What modification Congress will impose on it is still to be faced," Uyeda reminded.

"Whatever agreement the National Council passes, let

us all unite behind the campaign and push it to a successful conclusion," he concluded. #

### IF there's a strike of postal workers

Readers are advised that IF the U.S. Postal Service is struck by its employees this week, an embargo on this newspaper will likely be established—prohibiting us from placing it into the mails. It is our intention to continue publishing this newspaper, holding the editions until the embargo is lifted... We regret any delay which may be occasioned if such a strike situation should develop.

Al Hatate, Chairman  
The Pacific Citizen Board

### Gov. Brown names Gardena judge

LOS ANGELES—Calif. Gov. Brown appointed Madge Watai, Gardena attorney, to the Los Angeles Municipal Court bench last month. She had been practicing law in partnership with her husband, George Watai, and was honored last year by the East Los Angeles Community Union's Southern California Woman's Achievement Award. #

## Carter policy for more farm exports to Japan acclaimed

SACRAMENTO — Assemblyman S. Floyd Mori (D-Pleasanton) has reported he is "enthusiastic" about the Carter administration's taking a firm stand on the expansion of U.S. agricultural exports as a condition for U.S. support of a new international trade agreement.

The stand was announced at a Washington news conference by Robert Strauss, special trade representative, who said that unless Japan and European nations lower barriers to U.S. agricultural projects, the U.S. would not agree on the international trade pact which is being negotiated in Geneva.

"The statement by Ambassador Strauss," Mori noted, "appears to be clear and unequivocal, and reflects the concerns which we here in California have been expressing for many months." He also added that he hopes the Europeans and Japanese understand that there is strong grassroots support for the Carter administration's position on reducing barriers to agricultural trade.

Mori has met with federal officials to advocate reduced trade barriers for California farm exports on occasions before, and has introduced a bill, AJR 92, nearing passage in the Legislature which urges both Congress and the President to negotiate for greater U.S. access to foreign agricultural markets. But some Nisei in the flower growing industry see themselves as victims of

Carter's efforts.

Albert Nakai, who has made his living for over 30 years growing flowers in greenhouses in Palo Alto, says, "You can't win if you have to fight two countries. The U.S. permits virtually duty-free imports to come into this country to compete with domestic producers."

These foreign products, generally competing with small and politically weak groups like the flower industry, are being produced with cheap labor, Nakai explains, without the strict wage and safety regulations imposed on those in the United States.

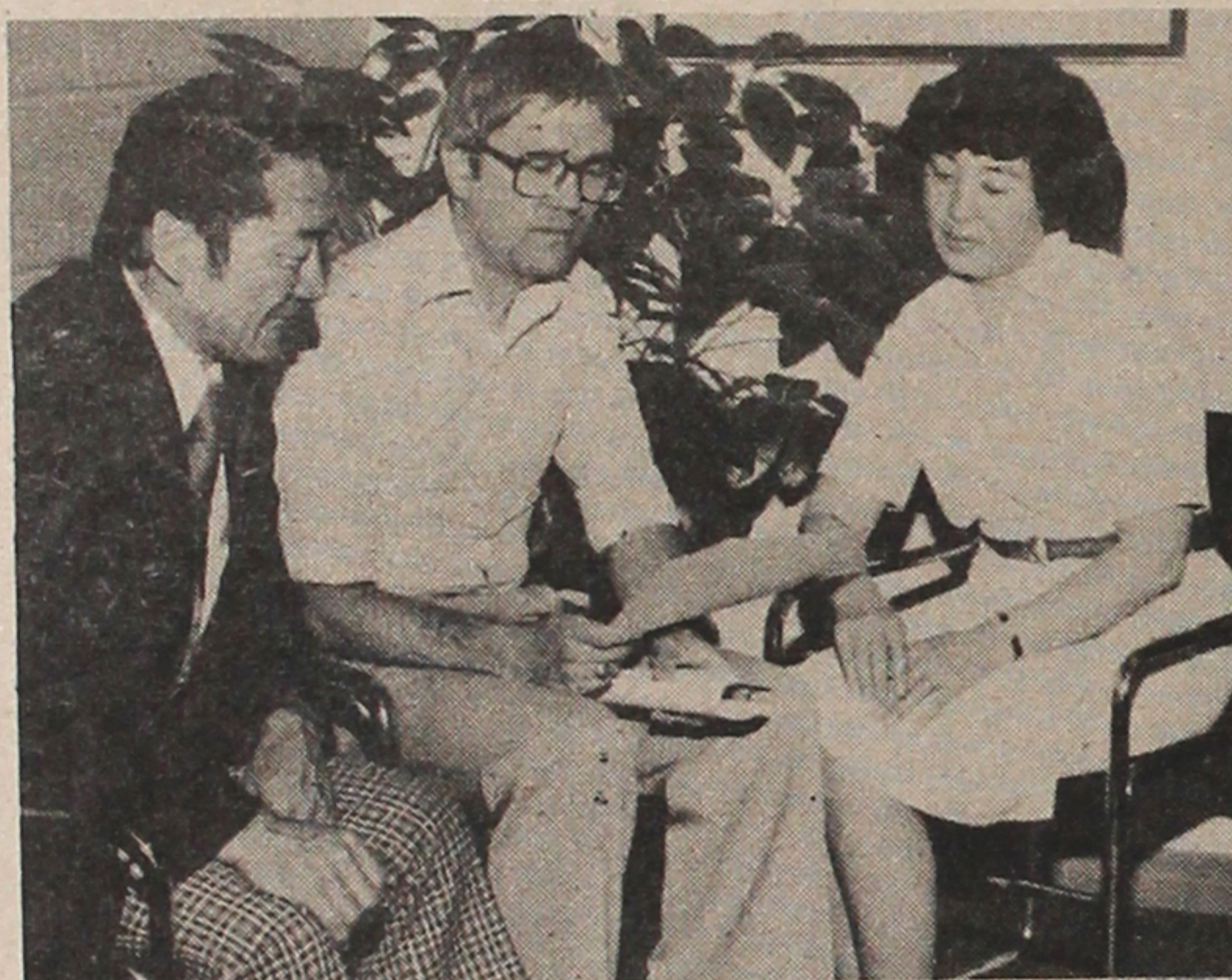
Some \$38 million in flower imports—90% from Colombia—might pressure domestic carnation and chrysanthemum growers, but it is not worth risking this nation's \$13 billion in exports of corn, soybeans, wheat and cotton, according to Tom Warden of the U.S. Dept. of Agriculture's foreign trade section.

One grower who chose to switch rather than fight is David Shinoda of Santa Barbara, owner of one of Southern California's largest flower operations. "I saw it coming eight years ago so I switched to roses and house plants," he said.

The state Coastal Commission also has something to say on growers who want to convert their greenhouse acreage in Encinitas into condominiums. Two proposals were rejected because the land is considered "prime agricultural land" though zoned for residential use. #

### On videotaping the workshops . . .

2x3 outline----



Judge Raymond Uno (left), co-chairman of the JACL Convention, Ronald Allison, producer-director of ITV, Univ. of Utah, and Jeanette Misaka, workshop project chairman, look over plans to videotape the workshop sessions.

### Amendment may change immigration, social security

NEW YORK—The Senator Percy Amendment restricting immigration by requiring the sponsor of an immigrant to sign a "bilateral contract" with the U.S. to support the immigrant or refugee for a period of five years would "destroy our historical immigration policy of family reunification (if enacted) . . . and in the future the Golden Door would be open only for the rich and affluent members of the world community", according to the American Immigration and Citizenship Conference.

Donald G. Hohl, AICC Committee on Legislation chairman, said Sen. Charles

Percy's proposal also calls for amending the Social Security Act by imposing a five-year residency requirement for lawful resident aliens or others residing "under color of law" who apply for Supplemental Security Income benefits.

The Percy amendment is being co-sponsored by 13 senators, including S.I. Hayakawa of California and Spark Matsunaga of Hawaii.

The AICC office, 20 W. 40th St, New York, N.Y. 10018, would appreciate copies of any letters written in connection with the Percy amendment. #

## Wimmer-Yamada design of El Cajon's new civic center wins top U.S. award

SAN DIEGO, Calif.—What might be regarded as the world series competition for landscape architects with Joan Mondale, wife of the Vice President, on hand to honor the winner belonged to Wimmer, Yamada & Associates this year.

Its president, Joseph Y. Yamada, went to Washington just after the Fourth of July to accept the award annually conferred by the American Society of Landscape Architects for an 11-acre civic beautification project known as El Cajon's Superblock, which is the city's new civic center with a \$7 million municipal complex and the East County Center for the Performing Arts.

Ronald S. Teshima, proj-

### ADA president

WASHINGTON—Patsy Takemoto Mink was elected in mid-June as president of the Americans for Democratic Action, succeeding Sen. George McGovern (D-S.D.)

ect director of the winning entry, was not able to attend the ceremony in Washington because of illness.

Over 100 other civic beautification projects from Maine to California competed.

Yamada's firm entered the ASLA competition for civic beautification project for the first time last year with his landscaping of Sea World, receiving a merit award. But the judges of the 1978 competition cited Superblock for its "excellent integration of architecture and landscape architecture, great economy of space and excellent sense of scale and good handling of water features".

San Diego Union real estate editor Bill Barry has described the recently installed lake and waterfalls flowing with ease "that makes the East County town's new civic center look like it has always been

there". The area previously had been a collection of rundown, faded and dilapidated commercial buildings in the center of town.

The San Diego JACLer has been in the landscaping business since 1954, the year he received his landscape architecture degree from UC Berkeley. He has landscaped millions of dollars worth of beautification projects at scores of civic and commercial buildings.

When people ask if he designs Japanese gardens, he quickly tells them, "I don't. I was born right here in San Diego and went to school here . . . I visited Japan once . . . They thought I was too tall. I hate raw fish and I can hardly use chopsticks," he adds with a smile.

Only time he doesn't smile comes when he discusses the complexities of a particular landscaping project or the time his family was uprooted (Joe was 11 years old

then) and with other Japanese detained in a wartime internment camp.

His father was in the restaurant business prior to Evacuation and one of the first to return after the war. Though he knew little about gardening, he picked up a Model A (Ford) and went into business for himself.

Meanwhile Joe went through school, spent a year in the Air Force upon graduation, then took a job as draftsman with Harriet Wimmer, who had established one of San Diego's four landscaping firms. He then took a job with the school district, when he was

Continued on Page 3

### Librarians

Beginning with the 2,000th edition, July 7, 1978, the whole number will be published with the Volume number, which changes every January and July of the year. The Volume for the 2,000th Issue should be corrected to No. 87. PACIFIC CITIZEN

**Symposium on limited resources**

NEW YORK—The U.S.-Japan symposium July 24-25 in Tokyo will be on the theme, "The Cultural Implications of Limited Resources", as cultural and educational leaders of the two nations speculate on the nature and extent of changes in future lifestyles brought about by limitations in world resources.

It is being organized for CULCON, U.S.-Japan Conference on Cultural and Education Interchange, by the International House of Japan and Japan Society of New York. It precedes CULCON IX meetings July 26-28 in Tokyo. #

**'Kenzo' issue on TV**  
LOS ANGELES—The JAFL campaign against use of "Jap" by fashion designer Kenzo will be the topic of KCET's "Tonight on 28" news magazine feature on Thursday, July 27, 7:30 p.m. #

**'Flower Market' on documentary film**

SAN FRANCISCO—A 16mm color film documentary, "San Francisco Flower Market", has been produced by David Darby-Gregory Bezat, 273 Francisco St., San Francisco 94133, relating its 75-year history.

Italian and Japanese immigrant growers were primary figures establishing the market and floricultural industry in the state. #

**MALDEF's 10th year**  
SAN FRANCISCO—The 10th anniversary of the Mexican American Legal Defense and Education Fund was celebrated here June 14. Mario Obledo, California Health and Welfare Secretary, is a past president.

**AVAC director resigns**

LOS ANGELES—Betty Kozasa resigned June 30 as director of Asian American Voluntary Action Center to become director of the Foster Grandparent Program of the L.A. Voluntary Action Center. Pending clarification of funding due to Prop. 13, search for a successor will not be made, according to AVAC board president Hoover Ng.

**Nichigo minister**

GARDENA, Calif.—Dr. Tokiyuki Nobuhara, recent graduate of Claremont School of Theology, is part-time Japanese-speaking minister at North Gardena United Methodist Church and at the Sage United Methodist Church, Monterey Park. Nichigo service at North Gardena is held Sundays at 11 a.m.

**The Mitsubishi Bank of California**



Member FDIC

Little Tokyo Office  
321 East Second St., Los Angeles, Calif. 90012  
(213) 680-2650

**6% TAX FREE INCOME**

APPROX.

**MUNICIPAL BONDS**

Municipal Bond Brochures Available Without Obligation

**ANPLAN (Rated A+ by Best)**

A SAFE SURE WAY TO ACCUMULATE CASH  
... FOR COLLEGE, RETIREMENT OR ANY LONG RANGE GOAL • HIGH INTEREST • TAX DEFERRAL  
GUARANTEED AVOID PROBATE • SOUND COLLATERAL • NO SALES CHARGE.

**7.51%**

**THOMSON MCKINNON SECURITIES INC.**

MEMBER NEW YORK STOCK EXCHANGE, INC.

445 S. FIGUEROA ST., LOS ANGELES, CALIF. 90071

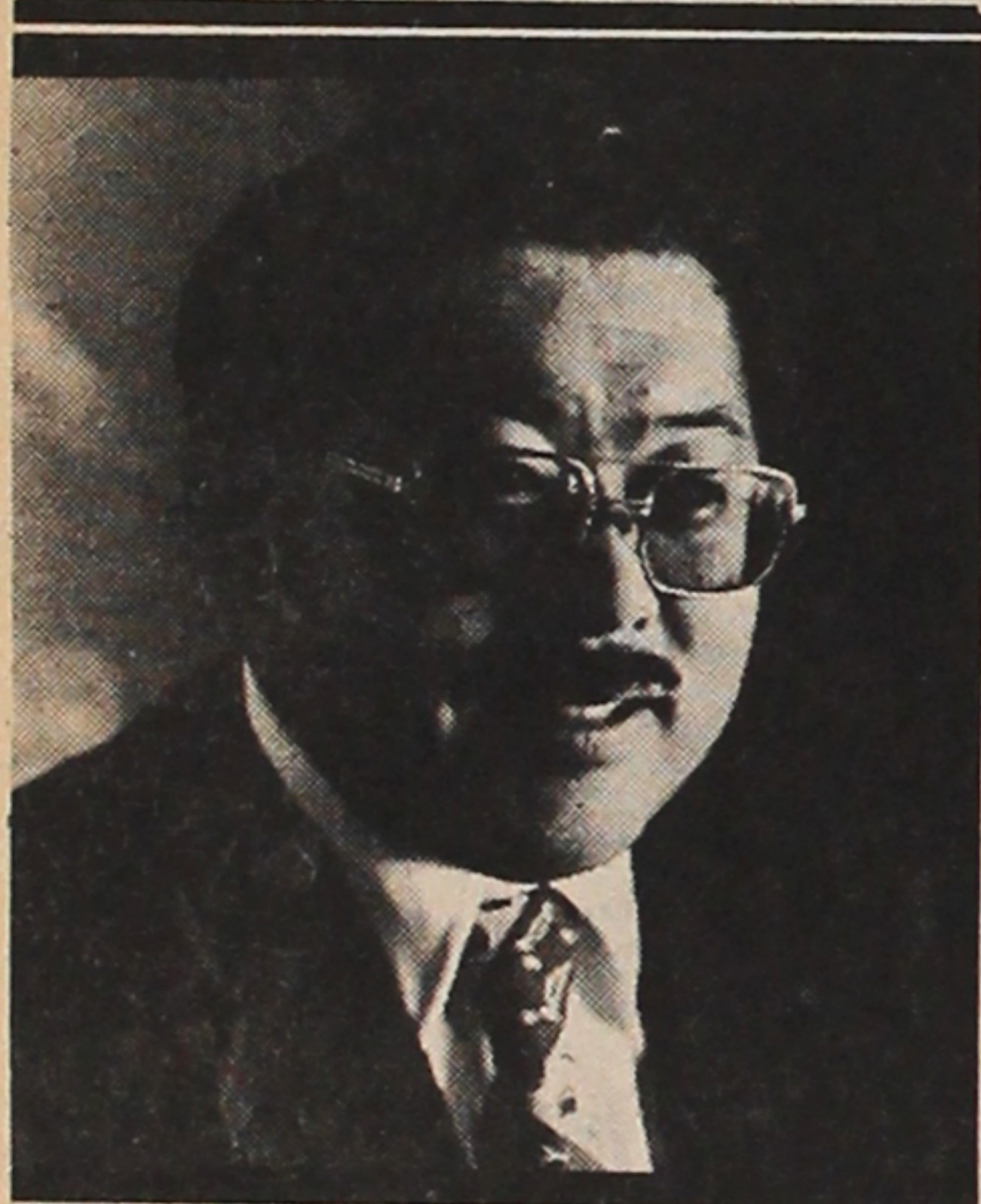
**Y. CLIFFORD TANAKA**

**田中 康雄**

**JON TANAKA**

**田中 ジョン**

(213) 629-5092



**Vernon T. YOSHIOKA**

**JACL PLATFORM:**

• To carry on the traditions of Leadership and Advocacy for our Japanese American concerns ... To establish new Horizons through cooperation with other Asian groups ... To utilize the latest technology for the greatest long-term gains in handling of membership records and other mundane operations.

**ENDORSEMENTS:**

San Diego JACL, Pacific Southwest District Council, PSWDC Executive Board

- |                        |                      |                         |                          |                        |
|------------------------|----------------------|-------------------------|--------------------------|------------------------|
| Hon. Paul Bannai       | Toshiko Ogita        | Tom Uda                 | Richard T Miyao          | Mel & Amy Okamura      |
| Paul Tsuneishi         | Dr Robert Obi        | Abe & Helen Mukai       | Richard & Susan Namba    | Giichi Omori           |
| Masaaki Hironaka       | George I Yamate      | Tom Yanagihara          | James M Yamate           | Joe & Alyce Owashi     |
| Masamune Kojima        | Carl & Mabel Bristol | Masato B Asakawa        | Roy Arakawa              | Tom & Elizabeth Ozaki  |
| Dr Roy Nishikawa       | Richard K Yamauchi   | Harry Kawamoto          | Yeaji & Midori Fujino    | Teruo Sakata           |
| Ellen Endo             | Phil Shigekuni       | Jack Matsueda           | Dr Shig Hara             | K J Takashima          |
| George M Tsujimoto     | Toshiko S Yoshida    | George Muto             | Leo & Taya Hashiguchi    | Nob Takashima          |
| Joe Fletcher           | Gloria Julagay       | Moto Asakawa            | Karen Ishizuka           | Dr Roy Tanaka          |
| George & Toy Kanegai   | Ken Hayashi          | Bert Tanaka             | Chas & Margaret Iwashita | Henry Tani             |
| Mas Dobashi            | Ben & Mae Shimazu    | Paul Hoshi              | Yutaka Kida              | Take & Nelli Taniguchi |
| Kiyoshi & Mitsu Sonoda | Betty Oka            | Min Sakamoto            | Frank & Misa Miller      | Dr Peter Umekubo       |
| Mike Ishikawa, Jr      | Iris Ikemi           | Fred & Mary J Katsumata | Steve Mori               | Edward Urata           |
| Mike Hoshiyama         | Henry S Sakai        | Kimiko Ann Fukuda       | Dr Mas & Tomi Morimoto   | sab & Rae Yamamoto     |
| Mike Hide              | Betty Yumori         | Robert Ito              | Takenori Muraoka         | Yuki Yano              |
| Ken Harada             | Don & Carol Estes    | Bradley Kaneyuki        | Fred & Tatsuko Murayama  |                        |
| Wiley Higuchi          | Isao Horiye          | Tetsuyo Kashima         | Pauline Nakamura         |                        |
| Tomoo Ogita            | James E. Seippel     | David & Carol Kawamoto  |                          |                        |
| France Yokoyama        |                      |                         |                          |                        |

for **Nat'l V.P.:**  
**Membership Services**

**PERSONAL**

Born Feb. 21, 1938, Hayward, Calif. ... A fourth-generation Californian ... MIT graduate, 1960, in aeronautical and astronautical engineering ... Married: wife Shinobu, four children.

**JACL / COMMUNITY**

San Diego JACL president, three terms ... PSWDC Executive Board 1977 ... Union of Pan Asian Communities, founding chairman ... Manpower Area Planning Council of S.D., exec bd (1973-74) ... Calif State Advisory Committee of U.S. Commission on Civil Rights (since 1974) ... United Way of San Diego, bd of dir.

**RECOGNITIONS**

1974—Comm Sv Award, San Diego County Human Relations  
1976—Achievement Award: UPAC  
1976—Community Service Award: San Diego AIAA

**OTHER AFFILIATIONS**

National Rifle Assn ... San Diego-Yokohama Sister City ... Music Masters of El Cajon, SPEBSQSA ... Republican Business and Professional Club ... MIT Alumni ... American Institute of Aeronautics and Astronautics ... Active member & officer, Oceanview United Church of Christ

**Classified**

The PC Classified Rate is 10 cents\* per word. \$3 minimum per insertion. 3% discount if same copy appears 4 times. Payment in advance unless prior credit has been established with our office.

**Announcement**

PHOTOGENIC female models wanted for top-rated American fashion magazine. Excellent fees. No height requirements. Please call for an interview. (213) 546-1892

**Business Property**

MUST SELL. Prime Interchange corner off/on ramp. C-2. Priced to sell fast, terms, will finance 30 cents square foot, 3 acres, high traffic count. Owner (714) 244-6644.

**Business Opportunity**

American Fast Food Chain seeks joint venture partners for hamburger outlets in West Germany and Japan. \$5,000 to \$100,000. Contact AL KUSHIHASHI 1660 S. Albion, Suite 309 Denver, Colo. 80222 (303) 756-7127



EMPLOYMENT AGENCY BONDDED

312 E. 1st St., Room 202  
Los Angeles, Calif.  
NEW OPENINGS DAILY  
624-2821



Across St. John's Hosp.  
2032 Santa Monica Blvd.  
Santa Monica, Ca.HI.  
MARY & GEORGE ISHIZUKA 828-0911

**GRAND STAR**

CHINESE CUISINE  
Lunch • Dinner • Cocktails  
WE SPECIALIZE IN  
STEAMED FISH & CLAMS  
626-2288  
543 N. Broadway (In New Chinatown)  
5 Minutes From Music Center & Dodger Stadium  
BANQUET TO 200

**KONO HAWAII**

•POLYNESIAN ROOM  
(Dinner & Cocktails - Floor Show)

•COCKTAIL LOUNGE  
Entertainment

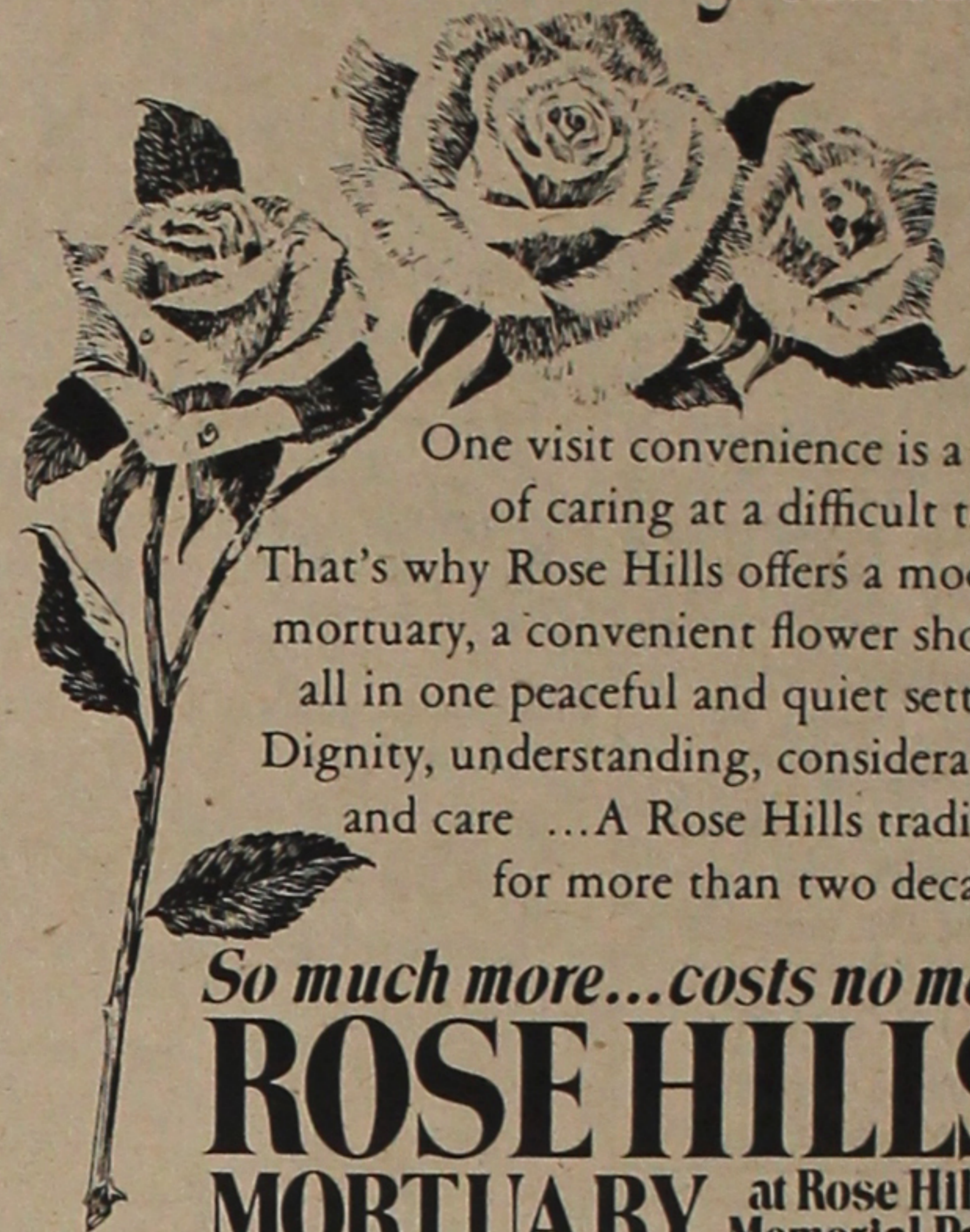


•TEA HOUSE  
Tep-pan & Sukiyaki

OPEN EVERY DAY  
Luncheon 11:30 - 2:00  
Dinner 5:00 - 11:00  
Sunday 12:00 - 11:00

226 South Harbor Blvd.  
Santa Ana, Calif. 92704  
(714) 531-1232

**There are times when care means everything**



One visit convenience is a part of caring at a difficult time. That's why Rose Hills offers a modern mortuary, a convenient flower shop... all in one peaceful and quiet setting. Dignity, understanding, consideration and care ... A Rose Hills tradition for more than two decades.

So much more...costs no more  
**ROSE HILLS MORTUARY** at Rose Hills Memorial Park

3900 Workman Mill Road • Whittier, California (213) 699-0921

**JOB OPENING**

**Pacific Southwest JACL Regional Director**

**MAJOR RESPONSIBILITIES**

Director will be responsible for the administration of the Regional Office and staff. This will include day-to-day supervision of clerical and volunteer personnel. Incumbent will be responsible for fiscal operation of the regional office and the general activities of the office.

Additional responsibilities will include: Providing support services to the chapters and their respective boards in membership development, insurance programs, community relation activities and community service projects. The major responsibilities of the director to the chapters will be to offer staff assistance based on their particular requirements and needs. The director will also be expected to maintain a liaison relationship with community organizations, and public and private agencies.

The director will be expected to work with limited supervision and direction. The director will receive general supervision from the district governor and the district board. District policy and direction will be set by the district council.

**Qualifications**

Two years experience in community organization. Ability to write reports and correspondence. Basic ability to maintain office bookkeeping system.

**Salary: \$11,000/yr. and fringe benefits.**

**SEND RESUMES TO:**

JACL Regional Office—Pacific Southwest District Council  
125 No. Central Ave., Los Angeles, Calif. 90012

**Closing Date: July 28, 1978**

**Asian American Scholar Position**

A faculty member is needed to teach undergraduate and graduate courses in Asian American studies and to carry a joint appointment in an academic discipline in the College of Education or in the College of Sciences and Arts, Washington State University. Candidate must have acceptable academic credentials and provide evidence of competencies and commitment to teach courses in Asian American studies.

Applicants should send curriculum vitae with three references to:

Chairperson, Search Committee  
for Asian American Scholar  
c/o Dr. George B. Brain, Dean  
College of Education  
Washington State University  
Pullman, Wash. 99164

Closing date for receipt of applications is July 21, 1978.

Washington State University is  
an Equal Opportunity/Affirmative Action employer.

### Gov't aid OK'd for L.A. produce market

LOS ANGELES—Federal government will supply \$8 million to rebuild the city's produce market area—between Terminal Market at 7th and Central and City Market at 9th and San Pedro. Another \$40 million in construction funds from private sources is expected, according to Mayor Tom Bradley who made the announcement July 10.

With him were Rep. Edward Roybal (D-Calif) and Councilman Gil Lindsay, in whose district the redevelopment project is located. Merchants have been waging a 30-year battle to modernize the wholesale produce market.

#### Renew Membership

### 齒科医院

Capital Bldg.  
Dental Group

Members of the American and California Dental Associations  
Most Major Dental Insurance Accepted

Including JACL Insurance  
CALL FOR APPOINTMENT  
(213) 373-7743

23244 Hawthorne Blvd., Torrance  
(Cor.: Hawthorne & Lomita Blvds.)

### BUNKA Beautiful Embroidery

THE ANNEX

65 Pier Ave.  
Hermosa Beach, Calif.  
Open 10 a.m. - 5:30 p.m. / Wed - Sun.  
376-3656

### Fashion show emcee

LOS ANGELES—TV personality Mario Machado will again donate his time and talent to emcee the Nisei Week fashion show, set for Sunday noon, Aug. 6, at the Biltmore Bowl with fashions provided by Sak's Fifth Avenue.

### Teenage pregnancies

WASHINGTON—Sen. S. I. Hayakawa (R-Calif.) worried the proposed \$60 million program to combat the epidemic of teenage pregnancies might make pregnant teenagers "the envy of non-pregnant girls."

### Medical dinner

LOS ANGELES—Young physicians undergoing postgraduate training at local hospitals were honored by the Japanese American Medical Assn. at its spring banquet May 21 at Riviera Country Club. Gifts from Japan were presented to the JAMA Women's Auxiliary for assisting Hiroshima physicians in the medical examination of atomic bomb survivors here last year. Mrs. Mitsuo Inouye, Aux'y president, also gave the proceeds of its recent benefit to Frank Omatsu, representing City View Hospital.



## The Silver Certificate Account

To help commemorate our 25 years of service to California, Sumitomo is offering the Silver Anniversary Certificate Account. \$1,000 or more in this one-year Time Certificate of Deposit earns 6%\* per annum and provides the following benefits...

- Checking account—no monthly service charge
- Customer new car loan rate
- Postage paid bank-by-mail
- Silver Certificate identification card
- A very special anniversary gift

\*FDIC regulations impose substantial interest penalties upon premature withdrawals.

**The Sumitomo Bank of California**

Member FDIC

## SAN DIEGO

Continued from Front Page

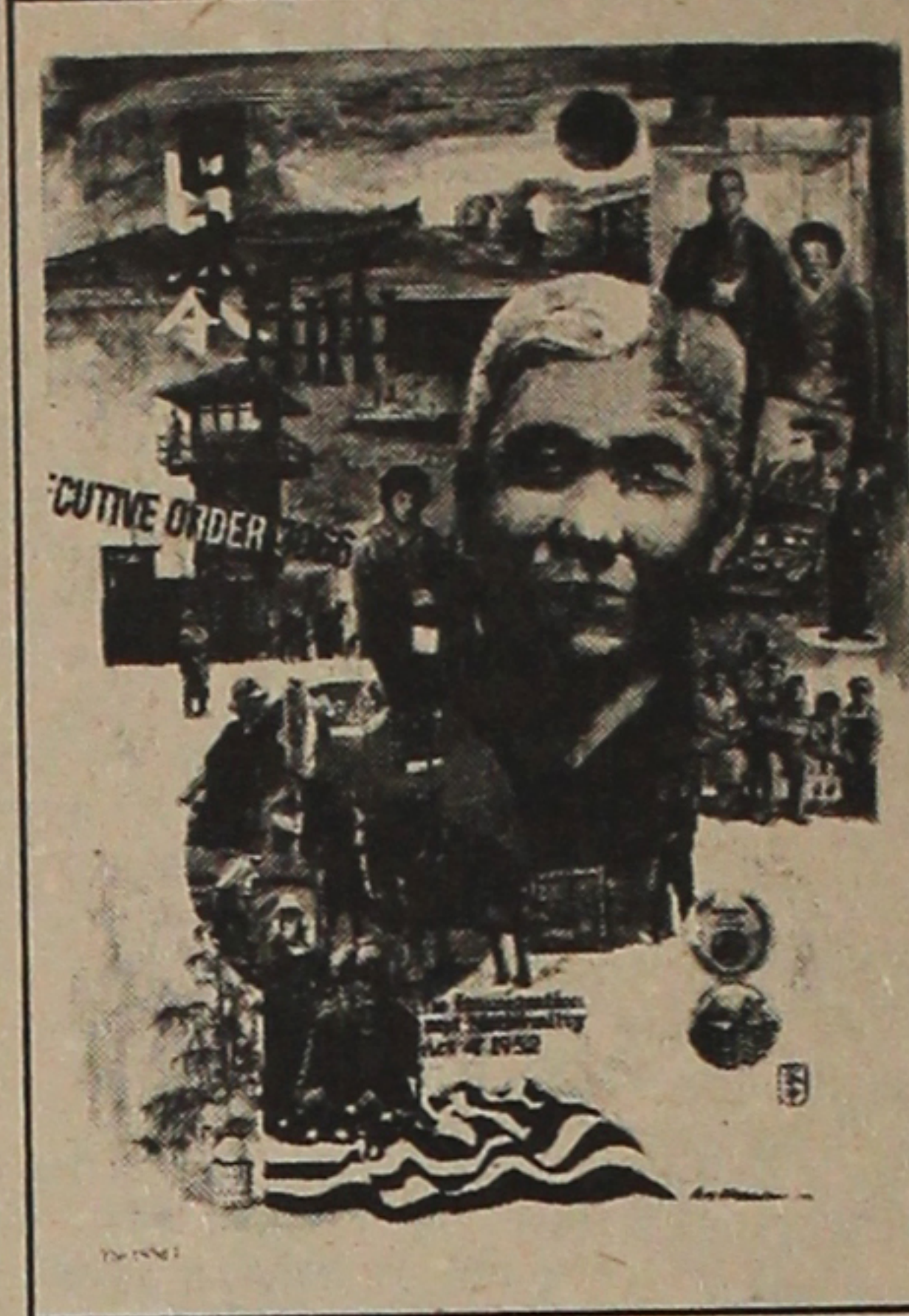
offered a full partnership by Wimmer and rejoined the firm. In 1966 he became president of the firm. Today the firm employs 12 draftsmen.

The more recent projects Yamada mentioned include the 12-acre seaside complex of Sea Port Village and the 50-acre regional park at La Mesa in what was a reservoir until it went dry. Besides putting in long

hours at his Fifth Avenue office, Yamada still gardens as a hobby at his home in La Jolla. "I love working with plants. For me, it's therapy... Plants are like children. I like to watch them grow from childhood to maturity."

### A LIMITED EDITION

### "THE ISSEI"



\$30.00

If not completely satisfied, return the art within 10 days and your money will be refunded.

• As a commemorative tribute to the Issei, Nisei artist Pete Hironaka has painted his interpretation of our pioneering immigrants. The Ohio artist who has exhibited in the Library of Congress, Philadelphia Academy of Fine Arts and other national and regional shows has been a recipient of a Merrill Lynch, Pierce, Fenner and Smith Purchase Award. He has won numerous Freedom Foundation Honor Medals for his Pacific Citizen cartoons.

• This first in a series of three paintings will be limited to only 1200 numbered prints and signed by the artist. This colorful interpretive creation can be a prized possession symbolizing a hardy but slowly vanishing generation.

• Become a proud owner of this impressive 21" x 28" full color keepsake. Or buy it as the perfect gift. The cost: \$30.00 (includes \$2.50 postage, handling charge and sales tax where applicable).

**Yes!** Please send me \_\_\_\_\_ copies of "THE ISSEI." Enclosed is my check (or money order) for \$ \_\_\_\_\_ payable to GRAPHIC CONCEPT CENTER.

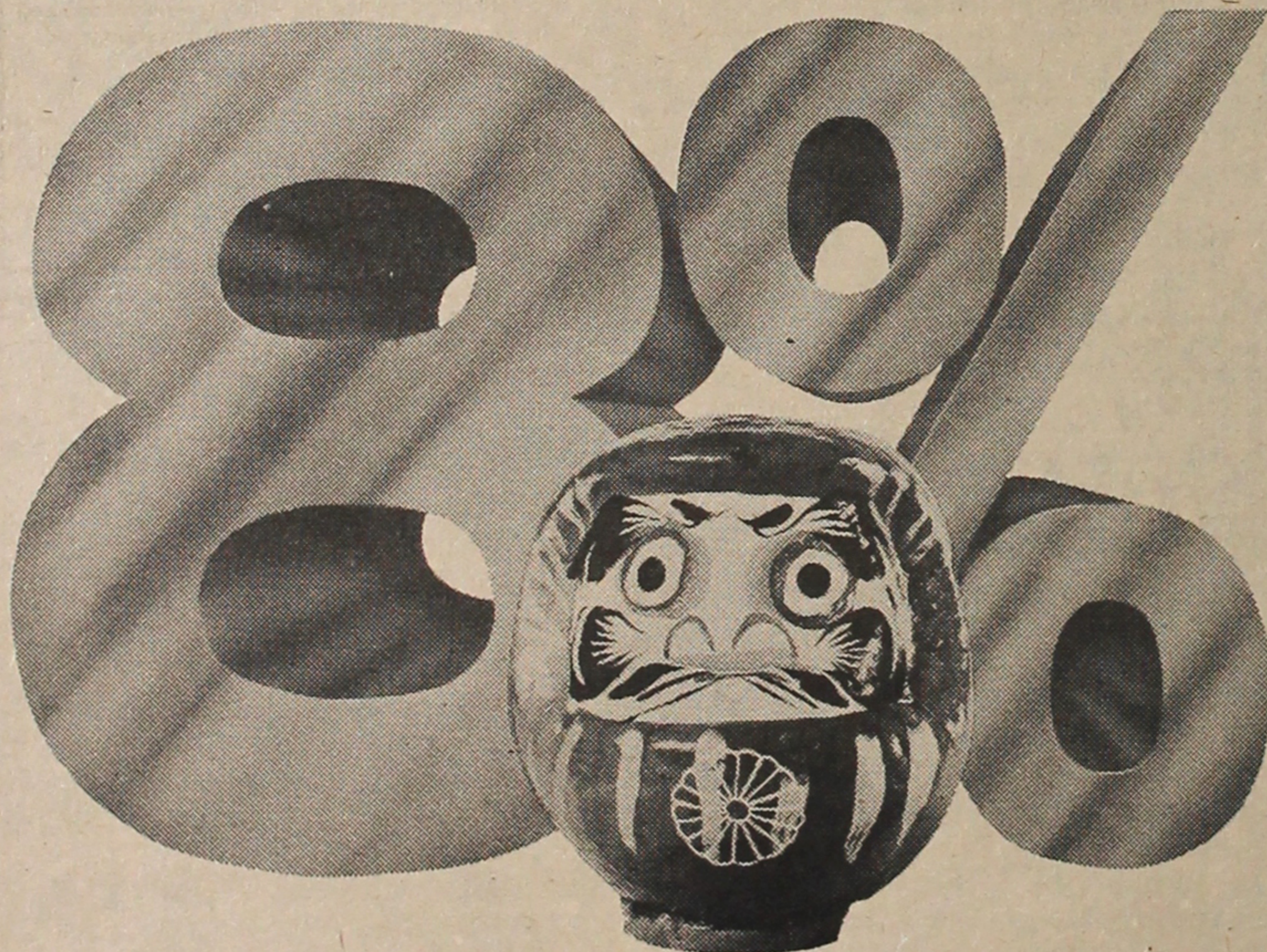
**GRAPHIC CONCEPT CENTER**  
P.O. Box 267  
Wright Brothers Branch  
Dayton, Ohio 45409

Name \_\_\_\_\_

Address \_\_\_\_\_

City \_\_\_\_\_ State \_\_\_\_\_ Zip \_\_\_\_\_

## INTRODUCING OUR NEW INTEREST



ANNUAL INTEREST RATES ON INSURED SAVINGS  
All Interest Compounded Daily • Account Insurance Now Doubled To \$40,000

8% 6-Year Certificate \$1,000 Minimum 7 3/4% 5-Year Certificate \$1,000 Minimum 7 1/2% 4-Year Certificate \$1,000 Minimum 6 3/4% 30-Month Certificate \$1,000 Minimum 6 1/2% 1-2 Year Certificate \$1,000 Minimum 5 1/4% Regular Passbook Savings

Certificates of Deposit may be withdrawn prior to maturity, but in accordance with Federal Regulation requirements, interest for the entire time of deposit will be recalculated at the prevailing savings passbook rate, less 90 days interest.

### MERIT SAVINGS AND LOAN ASSOCIATION

LOS ANGELES: 324 E. First St. 624-7434 • TORRANCE/GARDENA: 18505 S. Western Ave. 327-9301  
MONTEREY PARK: 1995 S. Atlantic Blvd. 266-3011 • IRVINE: Under Construction MEMBER FSLIC

## "Many of the customers I meet are advanced in years..."

"When I see their smiling faces, I feel respect for them. And I try my very best to make their banking experience with California First the most pleasant of all."

Carol Yamato is a teller at California First. She is one of 3,500 employees who take a special pride in their work. Because we are proud to be your bank.

California First, the former Bank of Tokyo of California, is now a statewide bank with over 100 offices.

**CALIFORNIA**  
**1ST**  
**FIRST BANK**  
Member FDIC

Meet the people at California First.



# PACIFIC CITIZEN

Published weekly except the first and last weeks of the year at 355 E. First St., Rm. 307, Los Angeles, Ca. 90012. (213) 626-6936

JAMES MURAKAMI, NATIONAL JAACL PRESIDENT  
ALFRED HATATE, PACIFIC CITIZEN BOARD CHAIRMAN  
HARRY K. HONDA, EDITOR

Second class postage paid at Los Angeles, Calif.

### SUBSCRIPTION RATES

JACL Members: \$5 of national dues provides one year on a per-household basis. Non-members payable in advance: U.S. \$9 per year; foreign \$13.50 per year. Price on request for First Class (air) service.

News and opinions expressed by columnists, except JACL staff writers, do not necessarily reflect JACL policy.

## letters

### JPC Quarterly

Editor:

As a PC reader for the past 10 years (initially as a watchdog to be apprised of what JACL was doing to us Japanese Americans) I've grown to appreciate what JACL has done for the benefit of all JA's. In fact at times I'm greatly moved by the dedication of its various members to that cause.

There's one thing that has distressed me from time to time, however, and that is the stereotyping that influential JACLers engage in to the detriment of many of us JA's. This time, in the PC Quarterly (July 7) article "Works by Issei reveal humaneness," by Mei Nakano, I found myself being irked by the assertion that Nisei tend not to think of their parents as sexual beings; that "to the Sansei, the Issei acquire an almost saintly virtue and grace"; and that Issei are a suppressed, quiet lot. Such view doesn't agree with mine, a fellow Nisei. To the contrary my Issei father and his cronies impressed me as being down-to-earth and at home with things that come naturally while it was hard for me to accept that my Nisei brothers were sexual beings for the longest time.

It's the Nisei, not the Issei, who have been pinned with the label "Quiet Americans"; which label had me paranoid for awhile but have in time become resigned to the historical fact that Nisei in general have been quiet Americans. Nevertheless, despite outward appearances, we are as individuals, as diverse in our interests, values, circumstances, responses to given circumstances and in experiences as persons of any other race.

And if we stereotype ourselves, can we blame others for putting us in the same bag whenever a critical issue arises? Whaling by Japan, for example. I am deeply grateful to Clifford Uyeda for the just manner in which he has dealt with that issue; and if he's a JACLer that's another plus for JACL, in my view. In this instance I wouldn't mind being stereotyped, if undeservedly, as sharing his views on the whaling controversy, which I have adopted wholeheartedly.

MRS. MARY TANI  
Los Angeles

## 35 Years Ago

IN THE PACIFIC CITIZEN  
JULY 17, 1943

**Story of Week**—Air Force gunner Sgt. Ben Kuroki of Hershey, Neb., among American airmen presented to King and Queen of Britain at the U.S. airbase "somewhere in England".

**June 24**—Northfield, Minn., American Legion Post 84 protests "Japs in Our Yard" article in June, 1943, American Legion magazine; Legion district convention supports Northfield post.

**July 10**—Rep. Martin Dies (D-Tex.) calls off investigation of Nisei; no evidence of mass disloyalty, rampant subversiveness, WRA coddling and pampering of evacuees in camps nor JACL domination of WRA policy as publicized in pre-hearing newspaper stories.

**July 12**—Sen. Chapman Revercomb (R-W.Va.) urges Army control of WRA camps.

**July 16**—WRA intends segregation of loyal and disloyal evacuees from about Sept. 1.

JULY 24, 1943

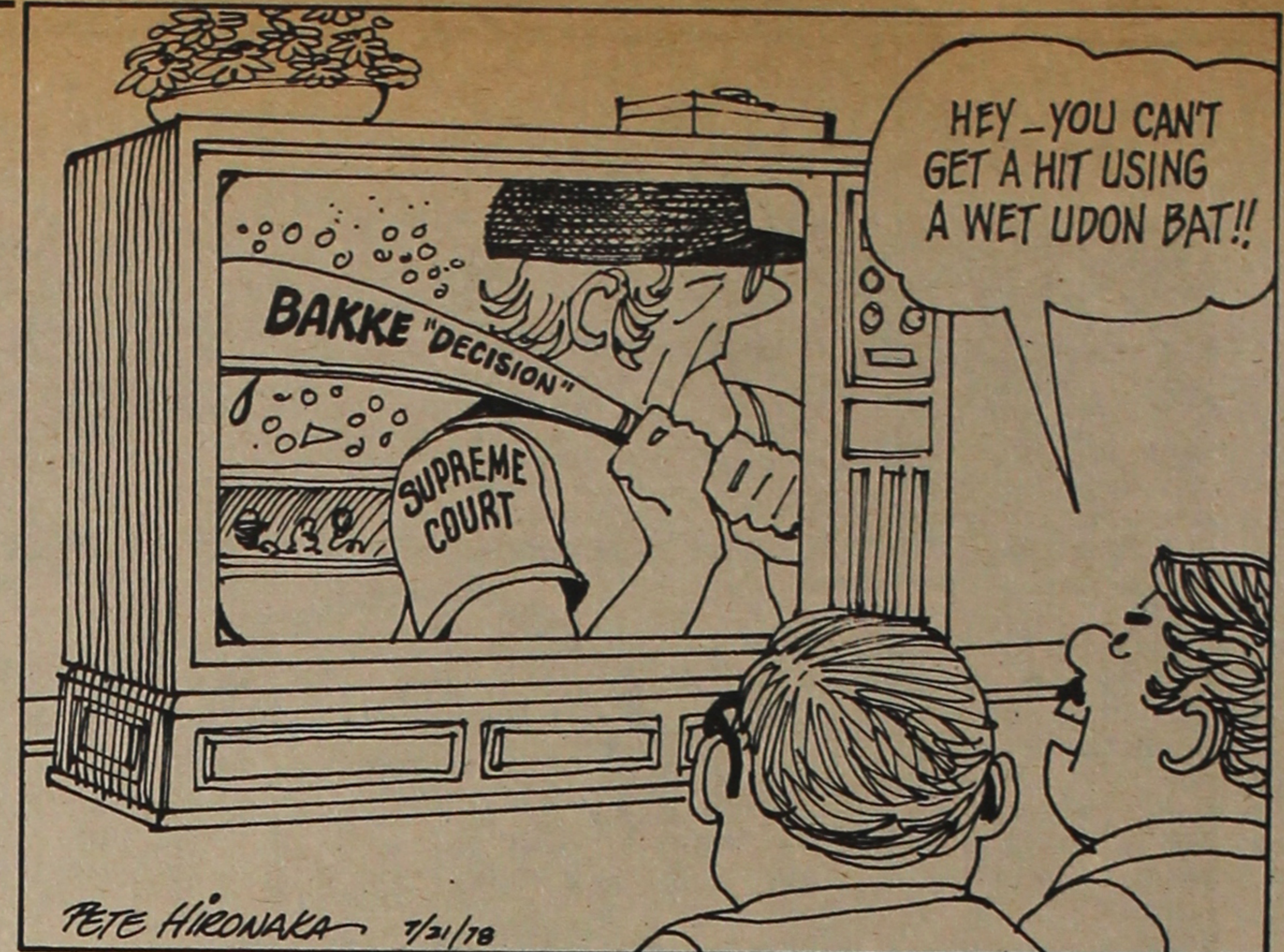
**July 8**—Congress passes \$48 million annual budget for WRA administration.

**July 15**—Rep. John Costello (D-Calif.), member of the Dies Committee, and Carey McWilliams debate "Should all Japanese continue to be excluded from West Coast for duration of the War?" over radio NBC's "Town Meeting of the Air" debate from Santa Barbara, Calif.

**July 16**—Senate Military Affairs Committee recommends reopening draft of Nisei; over 7,500 Nisei already in uniform. (Nisei were classified 4-C, ineligible aliens, prior to Evacuation; voluntary enlistment accepted from Jan. 28, 1943.)

**July 18**—Rep. Karl Mundt (R-S.D.) of Dies Committee, backs loyal Nisei and WRA program.

**July 20**—New York liberals ask President Roosevelt to condemn Dies Committee for stirring race hatred.



FROM THE FRYING PAN: Bill Hosokawa

## Evacuee Camp Art

describe what evacuee artists had created.

Mostly, the evacuees used whatever was on hand for their raw materials. Rugs were woven from unraveled gunny sacks. The desert yielded odd-shaped stones and old timbers carved by wind-blown sand. Scrap lumber and packing crates provided wood for making plaques, carvings and even furniture.

Not long ago Ruth Hashimoto of Albuquerque had occasion to wonder what had happened to the many pieces of relocation camp art. Were they gathering dust in basements and garages? Worse yet, after the old folks had passed on, were the survivors tossing away these mementoes of the past simply because they didn't know what to do with them?

Eventually Mrs. Hashimoto came up with the thought that JACL ought to undertake a permanent collection of the arts and crafts of the war years and preserve them as part of the history of the Japanese in the United States.

She suggested that at first the items might be assembled at JACL headquarters in San Francisco, catalogued and identified, and placed on

exhibit there until a more permanent home can be found for them.

"Many of today's young people do not understand or know of the sweat and tender loving care put into these works—beautiful artwork created out of discarded materials or natural objects found in the environs of those desolate relocation centers," Mrs. Hashimoto writes. "What better means do we have than to create a repository of the tangible evidence of the history that our people experienced, for posterity?"

In San Jose, not long ago, Mrs. Hashimoto viewed some of the creations of Hissao Omori, an 80-year-old Issei. They were packed in a carton box and included, among other things, a beautiful tobacco pouch and pipeholder woven of string taken from messhall onion sacks. He would be happy, she says, to donate his items to a museum if one materializes, and there must be many others who would be delighted to have their work preserved rather than hauled off to the dump some not-distant day.

More than 30 years have passed since the camps were

Continued on Page 6

### EDITORIALS:

## Time to streamline the JACL Constitution

Many resolutions are advanced at each National JACL Convention but none can be more radical nor fundamental than those proposing a complete overhaul of the JACL Constitution. Marin County JACL is calling for the National Board to appoint a committee "to review and revise" with a draft to be distributed to all the chapters six months prior to the 1980 convention. Marin County also is calling for a 1979 constitutional convention. Whichever is adopted, it requires three-fourths approval from the National Council delegates present and voting.

But the idea is not new. The JACL Planning Commission over a decade ago (1967) saw the need to update. Then national legal counsel (and now judge) Bill Marutani and the PC editor as "staff" assigned to the Planning Commission did indeed restructure the entire document but it has never seen the light of day beyond the Constitution Revision Committee which had asked Headquarters prior to the 1976 convention to circulate the draft.

To accelerate the process, this draft with the latest amendments added might be offered at this Convention for further chapter study.

Political logic demands the structure or the quality be the toughest to amend, hence three-fourths approval is needed to amend. The trappings and activities which quantify the structure, giving it motion, etc., but of substantial importance make up the by-laws, requiring two-thirds approval to amend or repeal. Matters which tend to be guidelines, procedural or promote a sense of order and subject to majority approval are referred to as rules of order. The 1969 draft added nothing new. Language was clarified; sections were rearranged, as can be seen in the partial line-up below:

### CONSTITUTION (3/4 to amend)

1—Name & Composition. 2—Policy. 3—Incorporation & Seal. 4—National Officers. 5—Manner of Amendments. 6—Initiative & Referendum.

### BY-LAWS (2/3 to amend)

1—Membership: qualifications, dues, rights and duties. 2—Chapters: qualifications, dues functions. 3—Petitions for charter (to form a chapter). 4—District Councils: functions, meeting and voting. 5—National Council: functions, meeting and voting. 6—National Board: functions, meeting and voting. 7—EXECOM: composition. 8—National Officers: nominations, elections, qualifications and duties. 9—National Director. 10—Budget-Finance. 11—Conventions. 12—National Committees. 13—Pacific Citizen. 14—Special Projects. 15—Endowment Fund. 16—Past National Presidents. 17—Limitations. 18—Creed, Slogans, Hymn.

### RULES OF ORDER (Majority to amend)

101—General provisions.

The preamble—which is the moral force—perhaps would undergo the severest test. An indication of that flared at the Portland convention of 1974 when an entire afternoon was devoted to a parade of delegates taking both sides of the issue to change the preamble so that non-citizens would be entitled to having full privileges in JACL, which originally was founded as a patriotic organization because its members wanted other Americans to understand Japanese Americans were citizens.

It may come as a surprise, however, that the first JACL constitution adopted in 1930 did not have a preamble. And it had only 13 articles and no by-laws. At the 1938 convention at Los Angeles, major revisions were made—but that copy is not in our file. A wordy preamble appears in the November 1942 minutes starting with "We, American citizens of Japanese Ancestry" all in capital letters. Thirty-six articles in the constitution and by-laws follow. It now appears that as JACL matured the lengthier the constitution became. But maturity need not be measured by verbiage.



## Preparations Complete

By Clifford Uyeda

The dilemma of organizing a committee is between equitable representation of all Districts versus the necessary reality of an effective, workable group. We chose the latter only because it was imperative that we get down to the immediate task of functioning and moving ahead.

Our small committee of four will function through the Salt Lake City national convention. It was a committee formed to prepare for the launching of the redress campaign. We believe we have accomplished our goal with:

- 1) The weekly presentation in the Pacific Citizen to acquaint the membership on the redress issue.
- 2) The writing of a proposal which we believe can be acceptable to Japanese Americans.
- 3) The publication of informational booklets for the public campaign.

It took us eight months to do the above; but we believe it was necessary. Now begins the task of educating the American public. Coordinating, participating in the campaign, and keeping all Districts and Chapters informed on the progress of the campaign will be the function of the National Chair. The critical emphasis, however, shifts to the District and the Chapter chairpersons who will now play the major role.

I wish to personally thank our committee members, without whose help the important preparations could not have been completed. They will continue to play an important role in the campaign for redress because they are talented and dedicated individuals. They are: Ken Hayashi of Los Angeles, Peggy Iwasaki of Portland, and Raymond Okamura of Berkeley.

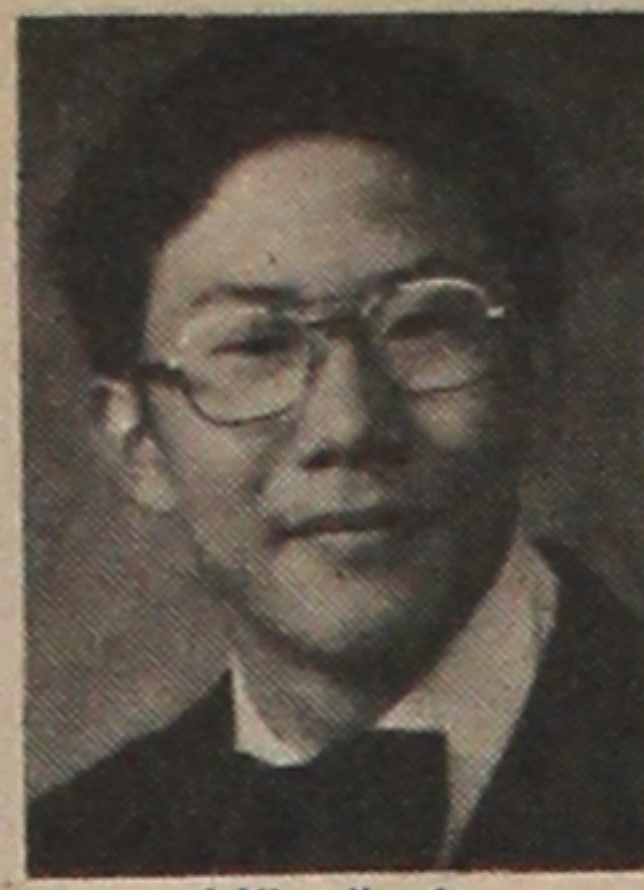
# 1978 Nat'l JACL Scholarship Winners



Kyle Konishi



Steve Hashiguchi



Mike Ikeda



Chieko Oi



Andrew Haruyama



Sayoko Moroi



Jacquelyn Tominaga



Esther Kawano



Daniel Blois



Joyce Takeyasu



Linda Koya



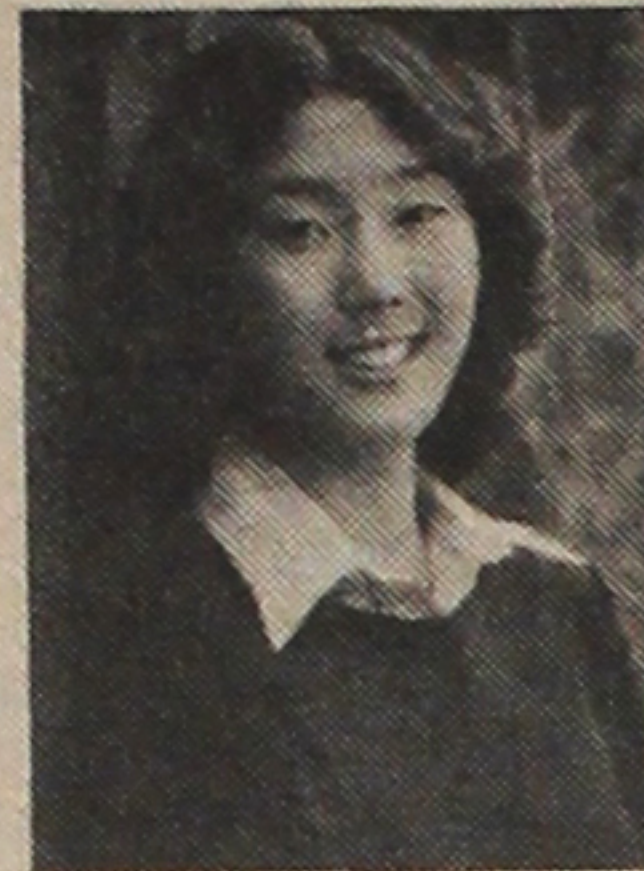
Krissie Horiuchi



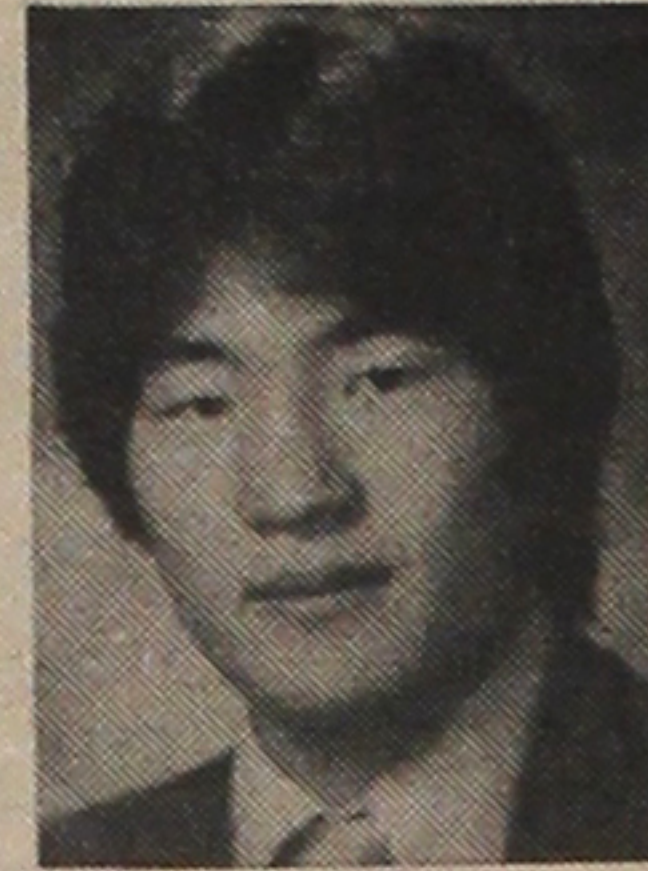
Bobbi Endo



Steve Shiotsu



Carrie Katayama



Phil Matsumoto



Hope Nakamura



Steve Adachi

Not Available

From a record draw of 260 applicants, the National JACL Scholarship Committee, chaired by Izumi Taniguchi of Fresno, awarded 18 outstanding high school graduates a total sum of \$13,150.

Seven finished with a perfect 4.0 grade point average; eight were ranked No. 1 in their respective class.

Competition continued to be keen as judges in six district councils spent many long hours reviewing the applications. Academic achievement, financial need and extracurricular activities were weighed.

The committee also acknowledged the scholarship donors who continue to support the program, which has distributed nearly \$100,000 en toto through the years. National committee members include:

Jeff Fukawa (CCDC), Ai Abe (PNWDC), Yvonne Stebbins (MDC), Peter Suzuki (MPDC), Kerry Iseri (IDC) and Harry Hatasaka (NC-WNDC).

### California First Bank

**KYLE WILLIAM KONISHI**, son of Gardena Valley JACLers Toshiko & Donald Konishi, maintained a 3.97 GPA at Gardena High, plans to attend Stanford or Harvard in the fall to pursue studies in physics or engineering; a recipient of the National Merit Scholarship, on the Honor Roll for four years, voted "most likely to succeed" by his classmates, honored in the Junior Engineering and Technican Society and Mentally Gifted Minor Program.

**PAULA K. KAKIMOTO**, 1977 recipient of the first Cal First Bank scholarship, has been presented with the second installment of her four-year award. The No. 1 graduate of her class at Marlborough School, Los Angeles, she maintained her good standing the first year at Princeton and, according to terms of the scholarship, is entitled to a renewal. Her parents are the Harold Kakimotos, Los Angeles.

### Mr. & Mrs. Tak Moriuchi

**STEVE ANTHONY HASHIGUCHI**, son of Iris and William Hashiguchi, ranked No. 1 in his class of 170 at Harrisonburg (Va.) High School, where he was a 4.0 average honor student, a runner-up in the national math exam, a National Merit semi-finalist and played on the All-Regional Symphonic Band. He was selected to the Virginia Governor's School for the Gifted and plans to study pre-med at either Duke or Richmond.

**MICHAEL MIYOSHI IKEDA**, son of Imperial Valley JACLer Emiko and Miyoshi Ikeda, ranked No. 2 in his class at Calipatria High, where he was a 3.9 average student, a National Merit finalist and earned awards in speech, chemistry, math and physics. He was senior class president and plans to major in medicine at UC Riverside.

### Kenji Kasai Memorial

**CHIEKO M. OI**, daughter of Kiyono and Shoji Oi of Seattle, ranked No. 5 in her class of 407 at Roosevelt High School, where she was a 3.95 GPA student, honor society president and school

representative for the Olympic Scholar's award. She headed a tutoring program, wrote for the school magazine and served on the junior debate team and service group.

### South Park Japanese Community of Seattle

**ANDREW NOZOMI HARUYAMA**, son of New York JACLers Sara and Justin Haruyama, was graduated from Bronx High School of Science, where he was an honor society student, a math-physics tutor, yearbook manager and won first place in a computer program contest. He is active with the Asian American Methodist Youths. He plans to major in law at Princeton or Amherst.

### Dr. Takashi Terami

**SAYOKO EILEEN MOROI**, daughter of Kazue and David Mori, Kent, Ohio, was No. 4 in her class of 400 at Roosevelt High, where she qualified for distinguished and creative arts scholarships, won top ratings for three years in Ohio Music Education Assn. competition and was active in student government, band, choirs and varsity cheerleading captain. She wants to major in medical research at Duke or Case Western.

### Mr. & Mrs. James Michener

**JACQUELYN TOMINAGA**, daughter of Pocatello-Blackfoot JACLers Betty and Jack Tominaga, was No. 1 in her class at

Snake River High, where she was a 3.99 GPA student, honor society president, an Idaho Girl's State and JACL's Presidential Classroom for Young Americans participant and plans to attend Utah State. She's involved with Girl Scouts, 4-H and the Methodist youths.

**ESTHER MIEKO KAWANO**, daughter of Kishiyo and Harold Kawano, Honolulu, is No. 1 of her class of 710 at Farrington High School, where she was a 4.0 honor student and a National Merit commendation winner, class treasurer and active with many school project committees and clubs. She plans to major in engineering at Northwestern or Rice.

### Sumitomo Bank of Calif.

**DANIEL LEE BLOIS**, son of Keiko and Stanley Blois, was No. 4 out of 390 at La Sierra High School, Sacramento, where he was a 3.95 average student, class president, staff member of the literary magazine and served as a state legislative intern and two educational task force committees. He has applied to Washington and UC Berkeley and major in political science.

**JOYCE YUKO TAKEYASU**, daughter of Gilroy JACLers Toshiko and George Takeyasu, was graduated No. 1 in her class of 298 at Gilroy High, where she was a 4.0 student, winner of awards in science and math; active with tennis, basketball and volleyball and has participated with the community band, Gilroy Community Theater and Young Buddhists of America. She is a pre-med applicant at Stanford or UC Berkeley.

### Gongoro Nakamura Memorial

**LINDA NAOMI KOYA**, daughter of Satsuko and Yoshio Koya of Arleta, Calif., finished No. 1 in her class of 749 at Polytechnic High School (in San Fernando Valley), where she was a 4.0 student, active in school service groups and the Asian Ameri-

can students club. She represented her Japanese School, where she studied for nine years, at a language oratorical contest. She will be in pre-med at UCLA in the fall.

### Mitsuyuki Yonemura Memorial

**KRISSIE MIKIKO HORIUCHI**, daughter of Barbara and Katsuhiro Horiuchi of Los Angeles, was No. 2 in her class of 550 at Franklin High, where she won awards in English and from service groups. She was a Candy Stripper at USC Medical Center and a Keywanettes. She will be a biology major at Amherst.

### Maiju Uyesugi Memorial

**BOBBI LYNNE KIDO**, daughter of Snake River JACLer Yae and Robert Kido, was a 3.98 student finished among the top 2% of her class at Ontario (Ore.) High School. She plans to major in business at Oregon State. Winner of "most valuable" student and "most service" awards, she was student body president, co-edited the annual, an Oregon Girls State delegate, and active in debate and tennis, Jr. JACL, Methodist Church choir and the J's sorority.

### Col. Walter Tsukamoto Memorial

**STEVEN G. SHIOTSU**, son of Audrey and Tom Shiotsu, with a 3.94 average ranked No. 2 in his class of 390 at Paramount (Calif.) High School, where he was co-captain of the wrestling team and lettered in football. Listed in the Who's Who Among American High School Students, he will major in either math or science at UC San Diego.

### Saburo Kido Memorial

**CARRIE KIKUYE KATAYAMA**, daughter of Sanger JACLers Josephine and Yoichi Katayama, graduated No. 1 in her class of 395 at Sanger High, where she was a 4.0 student, honor society president, recipient of various awards and honors, including the Certificate of Merit

from the Nat'l Education Development Committee. She participated in student government, rallies, 4-H, Order of Rainbow and Methodist youths. She will be a pre-med student at UCLA.

### Giichi Aoki Memorial

**PHILLIP JUNTA MATSUMOTO**, son of Gardena Valley JACLer Evelynne and Shiegru Matsumoto, was No. 1 in his class of 940 at Gardena High, where he was a 4.0 student, winner of honors in forensic, band music and a delegate to Boys State and Model United Nations and involved with Gardena's Project Pride, Special Olympics and Harbor Judo Club. He will major in political science at Harvard and then go on to law school.

### JACL Supplemental

**STEVEN HIROSHI ADACHI**, son of Fumi and Ralph Adachi of Westminster, Calif., was valedictorian of his class at Huntington

Valley Christian High School, where he was a 4.0 student, a National Merit finalist and voted "most likely to succeed" by his classmates. He is involved with the U.S. Chess Federation, acting, photography and listed in the Society of Distinguished American High School Students. He will major in math at either Caltech or Harvey Mudd College.

**HOPE GISELE NAKAMURA**, daughter of Ben Nakamura, Los Angeles, was No. 4 in her class of 650 at Westchester High, where she was a 3.96 student, student body president and active with the choir, school service clubs, and city-wide student council. She received a U.S. Senate Youth internship and involved with Special Olympics NCCJ Brotherhood Camp and Panel of Americans. She will continue at Stanford with a career in law or politics in mind. #

## Collegiate scholarship winners . . .

The four recipients of the JACL Graduate Scholarship were selected from among 29 applicants. They were judged on the basis of academic achievement, financial need and extracurricular activities.

Medicine continues to dominate the field of study as 10 will enter medical schools in the fall. Fifteen applicants made their school's Dean's List and four were Phi Beta Kappa members.

Graduate scholarships were judged by a Pacific Southwest District committee chaired by Kay Nakagiri.



Jeri Kanemoto  
Monterey Park



George Yoshimura  
Stockton



Susan Kamei  
Anaheim



Martin Yahiro  
West Covina

### Sumitomo Bank of Calif.

**GEORGE JOJI YOSHIMURA**, 27, is the son of Shizuko and Haruo Yoshimura of Stockton, California. He is completing work for a Masters of Science in Clinical Psychology at San Francisco State and will enter a Phd program in Clinical/Community Psychology at Boston University; a recipient of a Chancellors' University Service Award at UC Santa Barbara; a counselor in the Santa Barbara EOP program, and a rehabilitation assistant at the Stockton State Hospital.

**SUSAN HIROKO KAMEI**, 21, is the daughter of Tami and Hiroshi Kamei of Anaheim, Calif. She graduated from UC Irvine with a BA in Linguistics and plans to enter law school in the fall; on the Dean's List for four years, a member of Phi Beta Kappa; a Peer Academic Advisor, and participated in the Education Abroad in the Soviet Union Program.

### Nisaburo Aibara Memorial

**JERI S. KANEMOTO**, 22, is the daughter of Michiko and George Kanemoto of Monterey Park, Calif. Jeri is graduated from UCLA, BA in Psychobiology, second year at USC in the Occupational Therapy Masters Program; 4.0 average at USC, was on the UCLA Dean's List; a volunteer with the White Memorial Hospital, the UCLA Exceptional Children's Tutorial Project and the UCLA Unicamp.

### Magoichi Kato Memorial

**MARTIN ANDREW YAHIRO**, 22, is the son of Fumie Yahiro of Covina, Calif.; Martin majored in Biological Sciences UC Irvine and will attend John Hopkins Medical School in the fall; was on the Dean's Honor List, recipient of a Chancellors' Scholarship Award, involved with American Heart Association, and a research assistant at the UC Irvine Medical School.

## Aloha Plumbing

LIC. #201875  
PARTS & SUPPLIES  
—Repairs Our Specialty—  
1948 S. Grand, Los Angeles  
Phone: 749-4371

## Shimatsu, Ogata and Kubota Mortuary

911 Venice Blvd.  
Los Angeles  
749-1449  
SEIJI DUKE OGATA  
R. YUTAKA KUBOTA

## Nanka Printing

Japanese Phototypesetting  
2024 E. First St.  
Los Angeles, Calif.  
Phone: 268-7835

Three Generations of Experience . . .

## FUKUI Mortuary, Inc.

707 E. Temple St.  
Los Angeles 90012  
626-0441  
Soichi Fukui, President  
James Nakagawa, Manager  
Nobuo Osumi, Counsellor



One of the Largest Selections  
2421 W. Jefferson, L.A.  
731-2121  
JOHN TY SAITO & ASSOCIATES

## Koby's Appliances

Complete Home Furnishings  
15120 S. Western Ave.  
Gardena 324-6444, 321-2123

## MARUKYO Kimono Store

New Otani Hotel & Garden—Arcade 11  
110 S. Los Angeles  
Los Angeles  
628-4369

## Mikawaya Sweet Shop

244 E. 1st St.  
Los Angeles MA 8-4935

## 1978 Certificate of Excellence

The JACL Certificate of Excellence is awarded by the JACL National Scholarship Committee to those freshman scholarship applicants who do not receive a scholarship but who have demonstrated outstanding

academic achievement by meeting two of the following criteria: 4.0 GPA; #1 class rank; class valedictorian; National Merit finalist or semi-finalist.

The 18 recipients this year are:

Recipient	Parents/Hometown
Kenji B. Armstrong	Susan, Stockton, Ca.
Linda Sue Brehmer	Nobuko & Roger, Castro Valley, Ca.
Lorraine Meiko Fujita	Yoshiko & Kazuma, Seattle, Wa.
Cheryl Ann Hirata	Margaret & Minoru, Carson, Ca.
Devin Sei Iimoto	Yoneko & Theodore, Harbor Cty. Ca.
John Hideo Miyazaki	Lynn & Shu, Woodridge, Ill.
Toru Shimoji Kellam	Shige & John, Kailua, Ha.
Erika Mueller	Yoshiko & Otto, Detroit, Mich.
Teri Chieko Oda	Ellen & Albert, Sylmar, Ca.

Recipient	Parents/Hometown
Jeannette Kay Oka	Susie & John, Wilmington, Ca.
Steven K. Shibata	Teruko & Kunio, Richmond, Ca.
Linda Hiroko Tamaki	Fumiko & Yukata, Torrance, Ca.
Ann Miki Shiomoto	Lois & Ray, Campbell, Ca.
Miles Kei Tsuji	Mary & Kiyoshi, Camarillo, Ca.
Amy Fusako Yamane	Mary & Roy, Thousand Oaks, Ca.
Judy Umeda	Ayako & Joe, Sacramento, Ca.
Julie Ann Yasuda	Margie & Kenji, Van Nuys, Ca.
Patricia T. Yoshida	Betty & Frank, Seattle, Wa.

REDRESS PROPOSAL: 1978 CONVENTION

# JACL's No. 1 legislative proposal drafted

Following is the text of the Redress Proposal as drafted by the JACL National Convention for Redress and presented to the 1978 National Convention:

(A)

**PURPOSE:** To provide cognitive redress to persons of Japanese ancestry, two-thirds of whom were American citizens, and their immediate family members who, during World War II, suffered injustices by official actions of the United States Government; to remind our nation of the need for continued vigilance and to render less likely the recurrence of similar injustices.

(B)

**BASIS FOR CLAIM:** Imprisonment, expulsion from homes, and/or injustices suffered following issuance of Presidential Executive Orders No. 9066 and No. 9489, or other official acts of the United States Government. These unconscionable acts of our Government, based solely on ancestry, were imposed without criminal charges or indictments and in gross violation of basic human rights guaranteed by the Bill of Rights of the Constitution of the United States.

(C)

**ELIGIBILITY:** All persons of Japanese ancestry and their immediate family members, who, during World War II, were (a) detained or interned by the United States Government, or (b) while residing within the "exclusion" areas of the Western Defense Command were moved from their homes following issuance of Executive Order Number 9066.

(1) Proof of detention or internment shall be conclusive where such is reflected in any governmental record or document, including but not limited to papers of the War Relocation Authority (WRA), the Wartime Civil Control Administration (WCCA), the Justice Department or the War Department.

(2) Proof of residence within the "exclusion" areas may be established by any federal, state, county or municipal records or documents.

(D)

**REDRESS:** The United States Congress shall be called upon to appropriate a total sum based upon \$25,000 for each "eligible person" as defined under "C" above; such a total sum for the 120,000 would be approximately three billion dollars.

Payment and receipt therefrom to be free from any federal, state or local taxes and not to affect eligibility to receive any benefits.

(E)

**METHOD OF DISBURSEMENT:**

(1) Direct individual payments by the United States Government shall be due to all eligible persons living as of the date of enactment of the redress legislation. A minimum of \$500 million a year shall be paid to individual claimants. The eldest survivors shall be given priority.

(2) Upon enactment of the redress legislation an appropriation of a sum of \$100 million shall be held in trust

to be administered and disbursed by a Japanese American Commission established by Congress for the welfare and benefit of Japanese Americans.

(3) Fund remaining after individual payments shall be transferred into Trust.

(F)

**JAPANESE AMERICAN COMMISSION:**

(1) The Commission shall consist of at least 12 voting members with staggered fixed terms. All voting members of the Commission shall be of Japanese ancestry; three-fourths of the voting members also shall be eligible survivors as defined in the Eligibility Section. The Commission shall include two non-voting government representatives, one each from the Treasury Department and the Justice Department.

(2) Appointment to the Commission and vacancies therein shall be by the President of the United States from a list of nominees submitted by the Japanese American Nominating Committee. All Commissioners shall be subject to prompt removal for malfeasance or nonfeasance. The Japanese American Nominating Committee shall act as a fact-finding body in the event of such charges and make recommendations to the President of the United States regarding the removal of any Commissioner.

(G)

**JAPANESE AMERICAN NOMINATING COMMITTEE:**

The initial nominating committee shall consist of one representative from each of the eight Japanese American Citizens League (JACL) Districts, not limited to JACL members, plus at least eight representatives of other Japanese American organizations. The Nominating Committee shall be broadly representative of all elements of the Japanese American community.

(H)

**DEFINITIONS:** For the purpose of this bill, the following definitions will apply.

(1) "Expelled, detained, or interned" refers to expulsion from the "exclusion" areas, detention, or internment pursuant to—(a) Executive Order Number 9066, dated Feb. 19, 1942. (b) Executive Order Number 9489, dated Oct. 18, 1944. (c) Any other statute, rule, regulation, or order directed toward persons of Japanese ancestry who were citizens or permanent residents of the United States.

(2) "Exclusion" areas of the Western Defense Command refers to the areas from which persons of Japanese ancestry were vacated under Civilian Exclusion Orders Number 1 through 108: Southern half of Arizona, all of California, western half of Oregon and Washington (Exact boundaries are defined in the "Civilian Exclusion Orders").

(3) "World War II" refers to the period beginning on Dec. 7, 1941 and ending on Oct. 1, 1946 (the date the last mass detention camp was closed).

(4) "Persons of Japanese ancestry" refers to anyone who has one or more ancestors who was a national of Japan. #

## COMMENTS

Statements, explanations and statistics appended to the Redress Proposal listed under "Comments" follow:

**Purpose**

The term "Japanese Americans" has been suggested in place of "persons of Japanese ancestry." Reason:

—Japanese Americans—need not refer just to citizens.

—"Persons of Japanese ancestry" does not address the issue directly. It sounds like Japanese were put into camps, and not Americans.

—This is an American issue; therefore, we should be up front about this.

However, the proposal as written includes Central and South American Japanese brought over and interned by the U.S. Government.

If eligibility is limited to "residents of the U.S. and/or its territories" then the term "Japanese Americans" might be more appropriate.

**Basis for Claim**

"Other official acts" refers to bringing in the South Americans, military imprisonment in Hawaii before E.O. 9498, FBI imprisonments, etc.

**Eligibility**

**RESTRICTIONS:** It is restricted to those who were actually detained or interned in one of the camps, or were forced to move from the "exclusion" areas ("voluntarily" or otherwise).

Those in Military Zone II but were not sent into camps lived under special threats of imminent expulsion order. Their hardships were real, only lacked actual imprisonment. However, unenforced threat should not be equated with actual incarceration, some reasoned, and would weaken the proposal.

Japanese Americans who lived even away from the West Coast States faced many harassments, hardships and injustices.

A Trust fund will benefit those not eligible for individual payments.

**HEIRS:** Some insisted that heirs should be eligible for individual redress. To deny this, it was stated, is to "deny the basic customary right of inheritance," and is "consenting to a form of unauthorized misappropriation of other people's money."

Others insisted just as strongly that conferring eligibility to heirs of deceased persons would not only complicate the matter a great deal but this provision would jeopardize Congressional

acceptance. Litigation, family feuds and other legal headaches would take years to settle, and the probate courts would be swamped with cases.

It seems that legally one cannot inherit what did not exist (redress money) at the time of former detainee's death.

Heirs of persons who were actually living at the time the Act becomes effective have legal right to be eligible to receive that person's share provided beneficiary is defined appropriately.

The Jewish situation was considerably different. Millions of Jewish inmates were systematically put to death, leaving few survivors.

Eight persons of Japanese ancestry were shot and killed by guards within the camp compounds.

Some felt that we should take care of school age children of deceased former detainees. In many instances the widow cannot or is having a difficult time completing her children's education.

This can be accomplished, it was stated, by extending eligibility to heirs that qualify for Social Security dependent benefits—minor children 18 years of age and under, and up to 22 years of age if still attending school.

—This again faces the problem of conferring eligibility to heirs.

We realize that every instance of injustice and hardship cannot be corrected. But at the same time we do not wish to be insensitive to existing needs. Whether such special cases can be aided through the Trust fund is another possibility that must be further explored.

**CENTRAL & SOUTH AMERICAN JAPANESE:** There were both strong support and objection for including them in our redress program. Some felt that eligibility should be limited to citizens and permanent residents of the U.S. and/or its territories.

Some felt that these persons were forcibly brought here by the U.S. government, and therefore U.S. should be responsible. Germany's restitution to Jews are not restricted to former German citizens.

Others felt that their inclusion would complicate the program. We should get our own program out of the way, THEN we can consider lending our efforts to ward them, some stated.

**Redress**

There were 120,313 persons

## HOSOKAWA

Continued from Page 4

closed and it is altogether likely that many priceless pieces of camp art have been lost forever. Still, it isn't too late to begin.

JACL as an organization has supported or undertaken a number of programs, but none seems to be more worthy than this one proposed by Mrs. Hashimoto.

Pearl Buck, after seeing the pictures in Eaton's book remarked: "How profound in its revelation, how humbling to the arrogant and the ignorant."

How much more meaningful if the arrogant and the ignorant could see at first hand what was created by the beauty, spirit and aspirations of those who were exiled to the desert camps by their own country. #

*The superior man understands what is right; the inferior man understands what will sell.* —CONFUCIUS

## Calendar

\* A non-JACL event

- **JULY 21 (Friday)**  
Nat'l—JACL Conv, L Amer Hotel, SLC. Nat'l Council, 8 a.m.-12; JACLer of Biennium/Recognitions luncheon, 12n; Political workshop, 2 p.m.; 1000 Club whingding, 9:30-1 a.m.
- **JULY 22 (Saturday)**  
Nat'l—JACL Conv, L Amer Hotel, SLC. Golf, 7:30 a.m.; Nat'l Council, 8 a.m.-4 p.m.; workshop wrapups, 12n; "Nisei of Biennium" award banquet, Sayonara Ball, 7 p.m.  
\*Anaheim—Obon Festival (2 da), Orange County Buddhist Church.  
\*New York—Obon Festival, Riverside Park Mall, 5:30 p.m.
- **JULY 23 (Sunday)**  
Nat'l—JACL Bd mtg, Little America Hotel, Salt Lake City, 9 a.m.-12n.  
PSWDC—Rev H V Nicholson testimonial dnr, Golden Palace Restaurant, Los Angeles, 6 p.m.
- **JULY 24 (Monday)**  
\*Union City—Pre-teenage basketball clinic, (5 da), So Alameda City Buddhist Church hall, 1:30-4:30 p.m.
- **JULY 26 (Wednesday)**  
\*Gardena—Pre-retirement seminar, part V, Japanese Cultural Institute, 7:30 p.m., Madge Watai, spkr.
- **JULY 27 (Thursday)**  
\*San Lorenzo—Eden JSC tour: tofu factory, lv 10 a.m. fr Holiness Church.
- **JULY 28 (Friday)**  
Riverside—Sendai Festival (2 da), Riverside Plaza.  
San Diego—Bd mtg.  
Hoosier—Minyo dance workshop, Eastgate Christian Church, 7-9 p.m.
- **JULY 29 (Saturday)**  
\*Indianapolis—Obon Festival,

Woodland Trace Clubhouse, 1800 E 116th, Carmel, 6 p.m.

- **JULY 30 (Sunday)**  
Reno—Picnic, Bowers Mansion, 12n.  
Philadelphia—Barbecue picnic, Tak Moriuchi's, 2 p.m.  
Seattle—1000 Club golf tournament, Jackson course.  
Detroit—Picnic.  
NC-WNDC—Invitational swim meet, Gunn High.
- **AUGUST 5 (Saturday)**  
\*Los Angeles—Nisei Week baby show, Police Dept aud, 8 a.m.-12n.  
\*Union City—Obon Odori, Sangha Hall, 5 p.m.
- **AUGUST 6 (Sunday)**  
Mid-Columbia—Picnic, Rooster Rock State Park, 11 a.m.  
Cincinnati—Picnic, Maple Ridge Lodge, Mt Airy Forest.
- **AUGUST 12 (Saturday)**  
Mt Olympus—Outing, Liberty Pk.
- **AUGUST 13 (Sunday)**  
Hoosier—Picnic, Eagle Creek Park Area D, 1 p.m.  
PSWDC—Qtry mtg, West L.A. JACL hosts; Ramada Inn, Culver City, 9 a.m.
- **AUGUST 15 (Tuesday)**  
San Mateo—Bd Mtg, Sturge Presbyterian Church, 8 p.m.
- **AUGUST 19 (Saturday)**  
Hollywood—Nisei Wk Coronation Ball, Beverly Hilton.
- **AUGUST 20 (Sunday)**  
Milwaukee—Picnic, Deer Park Area 3.  
Santa Barbara—Picnic, Manning Park Area 3.  
\*Los Angeles—Nisei Week parade, Little Tokyo.

### Renew Membership

## Membership

● CONTINUOUS MEMBER INCREASE

STILL GOING

- 9 Years: Monterey Peninsula (1969-1977); Tulare County (1969-1977).
- 7 Years: Mid-Columbia (1971-1977); West Valley (1971-1977)
- 6 Years: West Los Angeles (1972-1977)
- 5 Years: Downtown L.A. (1973-1977); Sequoia (1973-1977)
- THE RECORD
- 14 Years: San Fernando Valley (1959-1973)
- NOTABLE MENTIONS
- 13 Years: Monterey Peninsula (1954-1966)
- 11 Years: Alameda (1964-1974); Gardena Valley (1966-1976); West Los Angeles (1960-1970)
- 9 Years: Sanger (1964-1973)
- 9 Years: Fresno (1967-1975)
- ICHIBAN CHAPTER (Since 1946)
- 14 Years: San Francisco—1958, 1959, 1960, 1961, 1962, 1963, 1965, 1966, 1971, 1972, 1973, 1974, 1975, 1977.
- 5 Years: Chicago—1947, 1948, 1949, 1950, 1951, 1952, 1953, 1954, 1955.
- 5 Years: San Jose—1964, 1967, 1968, 1969, 1970.
- 2 Years—Southwest L.A.—1956, 1957.
- 1 Year: Gardena Valley—1976; Mile-Hi—1946.
- ALL-TIME CHAPTER HIGH NATIONAL
- 1,908—Gardena Valley (1976)

## Nationwide Business and Professional Directory

Your business card placed in each issue here for 25 weeks (a half year) at \$25 per three-lines. Name in larger type counts as two lines. Each additional line at \$6 per line per half-year period

<p>● <b>Greater Los Angeles</b></p> <p>Asahi International Travel 1111 W. Olympic, Los Angeles 90015 623-6125/29; Please Call Joe or Gladys U.S.A. - Japan-Worldwide AIR—SEA—LAND—CAR—HOTEL</p> <p>FLOWER VIEW GARDENS #2—New Otani Hotel 110 S. Los Angeles St. LA 90012 Flowers/Gifts/Plants Deliveries City Wide Mgr Art Ito Jr Call (213) 620-0808</p> <p>NISEI FLORIST In the Heart of Little Tokyo 328 E. 1st St. - 628-5606 Fred Moriguchi Member: Teleflora</p> <p>The PAINT SHOPPE La Mancha Center, 1111 N. Harbor Blvd. Fullerton, Calif. (714) 526-0116</p> <p>YAMATO TRAVEL BUREAU 321 E. 2nd St., Suite 505, L.A. 90012 (213) 624-6021</p> <p>● <b>Watsonville, Calif.</b></p> <p>Tom Nakase Realty Acreage, Ranches, Homes, Income Tom T. Nakase, Realtor 25 Clifford Ave. (408) 724-6477</p> <p>● <b>San Jose, Calif.</b></p> <p>EDWARD T. MORIOKA, Realtor 3170 Williams Rd., San Jose Bus. 246-6606 Res. 371-0442</p> <p>● <b>The Midwest</b></p> <p>SUGANO TRAVEL SERVICE 17 E. Ohio St., Chicago, Ill. 60611 944-5444; eve/Sun 784-8517</p>	<p>● <b>Seattle, Wash.</b></p> <p>IMPERIAL LANES Complete Pro Shop—Restaurant &amp; Lounge 2101-22nd Ave. So. (206) 325-2525</p> <p>KINOMOTO TRAVEL SERVICE Frank Y. Kinomoto 605 S. Jackson St. 622-2342</p> <p>GOLD KEY REAL ESTATE, INC. Homes and Acreage TIM MIYAHARA, Pres. Call Collect: (206) 226-8100</p> <p>BEACON TRAVEL SERVICE, LTD. George A. Koda, Owner 2550 Beacon Ave. So. 325-5849</p> <p>GALA SUPERMARKET BAZAARS Gifts Cooking Utensils Imported beverages Food delicacies Judo-Gi, Karate Pottery, China</p> <p>UWAJIMAYA Free Parking Seattle: 6th S and Southcenter Store 5 King St. Tukwila, Wa MA 4 4248 CH 9-7077</p> <p>● <b>Washington, D.C.</b></p> <p>MASAOKA-ISHIKAWA AND ASSOCIATES, INC. Consultant - Washington Matters 900-17th St NW, Rm 520, 296-4484</p>
---	---

# COMMENTS

Continued from Previous Page

ceased and who escaped actual incarceration but still suffered severe injustice as Japanese under the custody of the WRA at one time or another. See "Evacuated People: A Quantitative Description", United States Government Printing Office, 1946. Fig. 1, page 8.

From Assembly Centers	90,491
Direct Evacuation	17,915
Births	5,981
Dept of Justice Internment and Detention Camps	1,735
Seasonal Workers (Released by WCCA)	1,579
Institutions	1,275
Hawaiian Islands	1,118
Voluntary Residents	219
	120,313

Approximately 30,000 former detainees have deceased.

### Method of Disbursement

There was individual injustice. There was also injustice against Japanese Americans as a group. Some Japanese Americans who escaped incarceration suffered severely as a consequence of E.O. 9066.

**INDIVIDUAL PAYMENTS:** Individual eligibility, once agreed upon, can be straightforward, clear and according to strict rules.

This approval relegates the details of individual payment to the U.S. Government. Why should a Nikkei Commission be burdened with such paper work details, it was stated.

Nikkei Commission can then concentrate on the administrative

Support PC Advertisers

tion of the Trust foundation for the welfare and benefit of Japanese Americans. That, in itself, will be a huge task.

There should be minimum payment by the Government per year. Otherwise, Issei and older Nisei would never see the redress money. At \$25,000 per individual, \$500 million will pay for 20,000 individuals. There are approximately 90,000 individuals to be paid. West Germany is at present paying out \$900 million per year in restitution money.

**JACL SURVEYS:** The questionnaires were all prepared separately in each district and in each instance the question asked was: What type of government payment do you prefer: (1) To individuals? OR (2) Into trust? Respondents were made to choose one or the other. 85% favored individual payment plan.

Not a single questionnaire

### Nat'l VFW to act on Nikkei motions

DALLAS, Tex.—When the National VFW Convention meets here Aug. 18-25, there will be two resolutions on Nikkei up for consideration, which were adopted last month by the Pacific Areas Department convention in Seoul.

PA Res 46 on redress and PA Res 53 on civil service retirement credit were among sixty being transmitted from the Pacific Areas. Both were authored by the VFW Memorial Post 9723, Japan, which is the largest in the region with 1,200 members. #

asked opinions concerning eligibility for heirs.

Five of the six redress proposals that had been submitted to the JACL had a Trust concept incorporated in them.

Many had looked upon the Trust as in memory of those de-Americans during World War II. The present committee took the stand that it should not be EITHER/OR but that BOTH are essential and necessary.

**TRUST FOUNDATION:** Some have stated that they would not trust Japanese Americans with such large sums of money. They're inexperienced, it was claimed.

It should be clearly understood that the Trust will not be administered by the JACL, and is not part of the JACL organization.

If Japanese Americans cannot

trust ourselves, who are we going to trust? Who is then competent and qualified? If we are not competent, then how will we ever become competent if we do not permit ourselves to manage our own affairs?

We have many competent people within our midst. What we need to do is exercise careful selection.

### Japanese American Commission

The idea of redress recipients controlling the administrative commission is not new, and is considered a definite improvement over the old systems where the payer made all the decisions.

—To handle the Hawaiian Native Claims Settlement Act an 11-member Commission is being proposed. Six of the members must be of Native Hawaiian blood.

### Fresno NSC keeps busy even in July

FRESNO, Calif.—Heat is no deterrent to Nikkei Service Center activities for senior citizens in July, including a tour of the local Roma winery July 24 and Friday afternoon workshops on arts and craft at 912 F St.

The July birthday party will be held July 22, 12:30 p.m., at the Fresno Betsuin. #

A police officer spoke July 13 on burglary and different ways of being victimized. NSC is sponsored by the Central California JACL District Council.

The center also completed its survey to locate elderly Nikkei in rural Fresno county before phasing out the project June 30. #

Germany has finally agreed to the formation of a non-govern-

Continued on Next Page

## pulse

### ● Reno

Reno JACL's summer picnic will be held on Sunday, July 30, noon at Bowers Mansion North Pavilion, it was announced by Sam Wada (786-1277) and Michiko Spahr (747-4783). Members were urged to invite their friends and neighbors to the potluck affair.

### ● Sacramento

Twenty scholarship winners were announced in June by Sacramento JACL committee which administers a number being sustained by community groups, individuals and business firms. The judges noted all applicants had excellent grades, which made selection difficult but the final punch was in their extracurricular activities both on campus and in the community. Recipients are:

JACL-Community Awards (\$100 each)—Elaine K Fujii, Jami Tanihara, both Sacramento City College; Sacramento JACL (\$200)—Alan Kashiwagi, Cordova High; VFW Nisei Post 8985-Mary Hanada Memorial (\$100)—Debbie R. Ishikawa, Bella Vista High; VFW Auxiliary (\$100)—Ellen J Sato, Cordova High; Chris K Cuistas, Cordova High; VFW-Makoto Shimazu Memorial (\$125)—Jeffrey T Yasuda, Hiram Johnson High; VFW-Nobu Saito Memorial (\$100)—Sharon T Ito, Hiram Johnson High; VFW Post (\$200)—Linda Iwasa, Hiram Johnson High; VFW-Tomome Sato Memorial (\$100)—Karen Y Niya, Kennedy High; VFW-Tomami Hirohata Memorial (\$100)—Daniel Blois, La Sierra High; Dr. Jack Fujimoto Award (\$100)—Gary Tahara, McClatchy High; Sumitomo Bank of Calif. (\$200)—Steven M Otani, Hiram Johnson High; Sac to Nisei Bowling (\$200)—Carl S Ito, Hiram Johnson High; Roy Kurosawa Memorial (\$200)—John Hosoume, Kennedy High; Senator Lions (\$150)—Gloria K Yamauchi, Burbank High; Hiroshima Kenjinkai (\$150)—Steven M Uyeda, Burbank High; Sanwa Bank (\$100)—Dale K Matsubara, Rio Vista High; Calif. First Bank (\$100)—Judy Umeda, McClatchy High; Sac to Gardeners Assn. (\$100)—Gail Horita, McClatchy High.

Exchange students from Japan visiting here July 24-26 under sponsorship of Ichinomiya Jaycees are being assisted by local Sacramento JACLers with housing and staging a Japan Night thank you party. #

# What have over 2 million people discovered about the mysterious powers of this magnetic necklace?

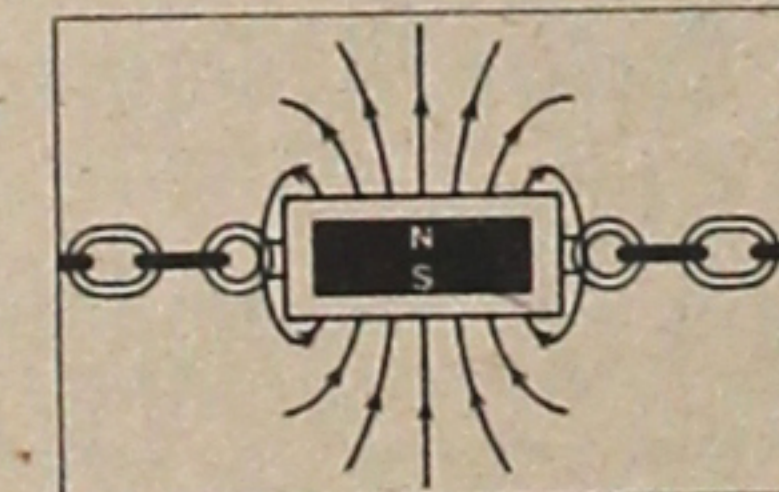
## YOU CAN LEARN THE ANSWER FOR YOURSELF WHEN YOU ACCEPT THIS UNUSUAL OFFER

The necklace pictured on this page is the authentic, internationally famous TDK magnetic necklace.

It is one of the most unique works of original jewelry ever created. In fact, since it was first introduced in Japan just 2 short years ago, over 2 million people have purchased it, worn it, and value its effects. Currently over 100,000 necklaces per month are being sold, and it would not be stretching a point at all to say that it is the most popular necklace in all of history. Its appeal is universal. It is worn by men and women, young and old.

As more and more people experience the powers of this mysterious necklace, word has begun to spread around the world. Articles about its vast popular acceptance appear internationally as well as in such leading American publications as The Wall Street Journal.

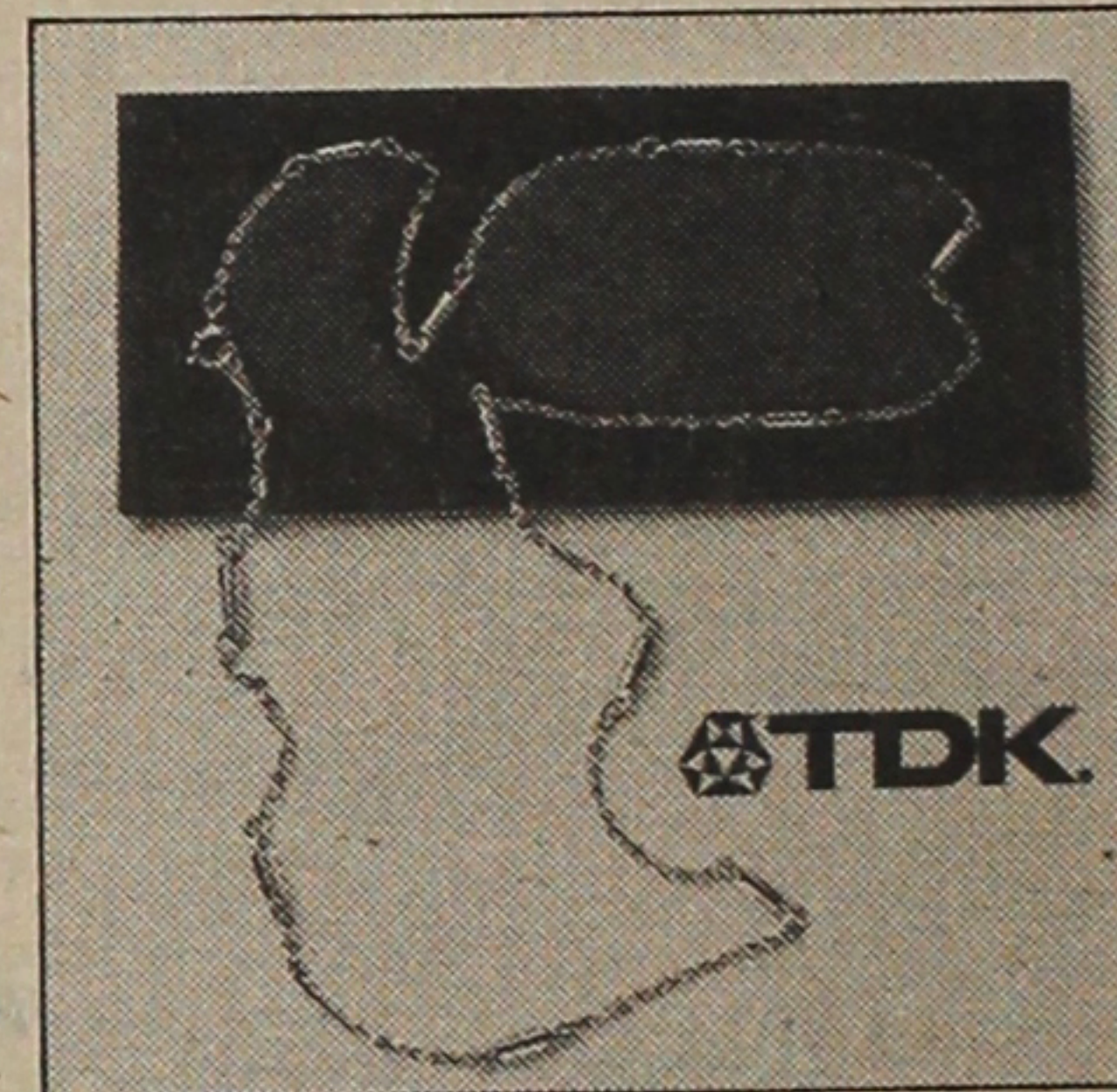
Now it is being offered for sale in this country by TDK. And under the terms of a most unusual offer. If you accept, you will be able to wear this magnetic necklace and experience its powers for a full 30 days — without any financial risk at all. We'll tell you more about this offer in a moment. First — some fascinating facts about EPAULE™, the authentic, original TDK magnetic necklace.



**MAGNETIC FORCE IS IMPORTANT TO MAN'S ENVIRONMENT**

**CERTIFIED BY THE JAPANESE MINISTRY OF HEALTH AND WELFARE**  
One of the most interesting things about EPAULE™ is that it has been officially certified and approved for sale by the Japanese Ministry of Health and Welfare. In addition, compliance tests have been conducted, and continue to be expanded, throughout the free world. The necklace pictured here, that you now have the opportunity to acquire, is the exact same necklace that was certified by the Ministry of Health and Welfare of Japan. Most of these unusual necklaces sold in Japan were sold by pharmacists in Japan's 30,000 drug stores.

**MAGNETS DEVELOPED BY SPACE AGE TECHNOLOGY**  
Another fascinating fact about EPAULE™ is that its elegant, cylindrical magnets are really super powerful in spite of their small size. They are made of Rare Earth Cobalt (REC) and their perpetual magnetic field is actually well over 16 times more powerful than the force fields of traditional magnets. Interestingly enough, these rare earth cobalt magnets were not developed in Japan, but for the National Aeronautics and Space Administration of the U.S. Government (NASA) for use in space



flights. For the technically minded, their magnetic power rating is 16 Mega Gauss Oersted. EPAULE™ is the most powerful magnetic necklace commercially available.

**MANUFACTURED BY A \$400 MILLION DOLLAR COMPANY**  
TDK, founded over 40 years ago, is one of the world's leading manufacturers of magnetic and electronic products. You perhaps know them best by the "TDK" brand magnetic tapes sold in the U.S. and throughout the world, which are valued for their high quality. Chances are you also have TDK magnets in your car, telephone, radio, television and electronic calculator.

**DISCOVER WHAT EPAULE™ CAN ADD TO YOUR LIFE**  
Man has known about the strange power of magnetism for thousands of years. Yet only since TDK developed the EPAULE™ magnetic necklace has the personal use of magnetic power become popular. As noted earlier, over 2 million people have already experienced the powers of this magnetic necklace in their lives.

**NOW IT IS YOUR TURN.**  
What will magnetism accomplish for you? Well, there are on record the actual experiences of thousands of satisfied owners of EPAULE™. Yet to tell you about them would only be relating the experiences of others to you on a secondhand basis. And, since the true nature of magnetism is still a mystery, we'd rather let you discover, for yourself, how the mysteries of the magnetic force embodied in this authentic TDK EPAULE™ magnetic necklace can affect your life.

**OUR OFFER**  
Earlier we mentioned an unusual offer. This is it. To introduce EPAULE™ to you, and to give you the opportunity to experience its powers yourself, we will send it to you to use and to wear for a full 30 days. We know you'll love its simple unisex elegance. It's plated with genuine 14K gold or sparkling white rhodium. Your choice.

As you wear EPAULE™ we'd even like to encourage you to drop us a few brief lines about what you experience.

If for any reason you're not completely satisfied with EPAULE™, just return it within 30 days and we'll rush you a full, unquestioned refund. Note: Not for use with pacemakers.

**ACT NOW AND TAKE ADVANTAGE OF THE LOW JAPANESE PRICE**

The low price in Japan for EPAULE™ is being maintained for the U.S. introduction... only \$29.95 or \$32.95. TDK is selling it direct to you, exclusively by mail order. It is not available at retail. Because of the rapid fluctuation of exchange rates, these low prices cannot be guaranteed beyond 30 days from the date of this ad. So don't be disappointed. Accept our no-risk offer and discover for yourself how the mysterious powers of EPAULE™ can affect your life.

**CALL TOLL-FREE 800-421-4543**  
for VISA or Master Charge Sales  
(California Residents call 800-252-0636)

**TDK MAGNETICS CORPORATION**  
Dept. 2P1  
9465 Wilshire Boulevard — Suite 411  
Beverly Hills, California 90212

YES, please rush me the TDK magnetic necklace(s) at the special \$29.95 or \$32.95 price. I understand there is a \$1.00 shipping, handling and insurance charge for each. If I am not completely satisfied, I may return the necklace in its original condition within 30 days for a full refund of the purchase price. (Indicate quantity below.)

Women's 17" 14K Gold Plated (\$29.95 each)  
 Men's 22" Rhodium Plated (\$29.95 each)  
 Men's 22" 14K Gold Plated (\$32.95 each)

Total amount enclosed \$ \_\_\_\_\_  
(Include shipping and California Residents add 6% sales tax.)

VISA (BankAmericard)  
 Master Charge

Inter Bank # (Master Charge Only) [ ] [ ] [ ] [ ]

Card # \_\_\_\_\_ Expiration Date \_\_\_\_\_

Signature \_\_\_\_\_

NAME \_\_\_\_\_

ADDRESS \_\_\_\_\_

CITY \_\_\_\_\_

STATE \_\_\_\_\_ ZIP \_\_\_\_\_

Manufactured by TDK ELECTRONICS CO., LTD., Tokyo  
© 1978 by TDK ELECTRONICS CO., LTD. All Rights Reserved  
U.S. Patent 4095587, U.S. Design No. 245769  
TM EPAULE™ owned by TDK ELECTRONICS CO., LTD.

## Pacific Square

America's Newest and Largest Japanese Shopping Center

1600-1638 Redondo Beach Blvd.  
Between Normandie & Western Ave.  
Gardena, Calif. 90247

**EAST MALL**

- LEAH'S — Women & Children's Fashions
- THE PIZZA MACHINE — Fine Pizza & Sandwiches
- DAISUKE RAMEN — Japanese Food
- MOON'S BEAUTY SALON — Hair Styling
- KIKU FLORIST & GIFTS — Flower Shop
- GARDENA TRAVEL AGENCY — Air, Sea, Travel Planning
- KUNI MATSU-YA — Toy Store
- MURATA PEARL CO. — Finest in Pearl Jewelry
- SAV BEAUTY SUPPLIES — Retail & Wholesale
- TERIYAKI HAWAII — Teri Hawaii

**CENTRAL MALL**

- MELJI PHARMACY — Drugs & Prescriptions
- P. DOTE & CO. — Clothing Merchant
- CONTEMPO SHOES — Specialize in Small Sizes
- NEW MELJI MARKET — American & Oriental Foods
- SINGER FRIEND CO. — Sewing Machines
- PACIFIC SQUARE INN — Hotel

**WEST MALL**

- SAN RIO — Gift Gate
- SUPER SHEARS — Hair Styling
- LAOX — Video and Sound
- MASTERS GOLF & GIFTS — Sport Shop
- HIRATA'S CAMERA — And Sound
- CARROW'S HICKORY CHIP RESTAURANT — Open 24 Hrs
- KAWAFUKU RESTAURANT — Oriental Cuisine
- OPTOMETRIST — Eye Doctor
- MIKAWAYA — Japanese Confectioners
- CHATEAU CAKE SHOP — Bakery
- JEANS PACIFIC — Sports Wear
- TSURUYA — Japanese Cuisine
- TOKYO-DO-SHOTEN — Book Store
- THE LIVING WORD — Religious Gift Shop
- ANN'S BOUTIQUE — Wigs & Dress Store
- YAMATO GIFT CENTER — Oriental Gifts
- MIDORI'S GIFTS — Hallmark Cards
- MORI JEWELERS — Elegant Jewelry
- KEN NAKAOKA — Realtor

**PACIFIC TOWER**

- MITSUBISHI BANK — Personal & Commercial Accounts
- RICOH DEVELOPMENT OF CALIF., Inc. — Offices

# Midwest District Council

Chicago, Cincinnati, Cleveland, Dayton, Detroit, Hoosier, Milwaukee, St. Louis, Twin Cities

## SPEAKING OUT:

### Out by the Great Salt Lake

**Anna Eriko Peterson, St. Louis Chapter**  
Salt Lake City, here I come.

It's my first national convention, and without much of an agenda, I'm not too sure what to expect. My room-mate, Judy Ibarra of Cincinnati, is attending her second convention. Therefore, I'll regard her as a "pro" and follow doggedly in her footsteps.

I approach two aspects of the convention with considerable trepidation.

One is the traditional credentials certification hassle. One would assume that since this is our national convention, and it only occurs every two years, each chapter would feel it necessary to send a delegate.

Why so many proxies, especially from West Coast chapters who are usually located closer than others to the convention sites? And, why can't proxy procedures as outlined in the national constitution be followed?

The cost of sending a delegate from the MDC or EDC must be more expensive than sending one from California. Yet, I would guess that proportionately, the MDC and EDC have higher representation than the West Coast districts, at least at recent conventions.

Can this be the way an organization, such as ours, should function?

The second and more serious consideration, at least from the viewpoint of the Midwest chapters, is the anticipated bud-

getary struggles and how these will reflect on the funding of our Midwest regional office.

Will a general increase in the dues structure insure adequate funding for our regional office during the next biennium, or will we be asked to sanction a dues increase and a cutback in funding? Will we be able to convince the National Council of the importance of continuing our regional office with adequate funding.

While the MDC receives a not insignificant share of the national budget in order to run a regional office, it also seems to me that Midwesterners give quite a bit of their money.

When faced with the alternative of submitting a \$10 proxy and saving the \$400+ it takes to send a representative to convention, they get out and "beat the bushes" if necessary to find a delegate. Representation is important to them.

When considering that the MDC has less than 2,500 members with nearly 1,000 located in Chicago, the activities detailed on the monthly MDC page are truly remarkable. These chapters are active because they want to be, and deserve all the help they can get.

With a district in which chapters are as isolated from each other as ours, the need for qualified professional staff to assist in chapter and district programming is critical. We realize it, and we hope the National Council does, too!

## POPULAR TOPIC FOR AUGUST WORKSHOP:

### Interracial Marriage and the JACL

CINCINNATI, Ohio — On Aug. 26, a workshop for MDC members on "Interracial Marriage and the JACL" will be co-sponsored by the Hoosier and Cincinnati chapters.

The proposed objectives of the workshop are to determine the specific needs and interests which JACL members of interracial families seek from their MDC chapters and to develop a broad survey which determines the extent to which couples of interracial marriage are represented and participate in MDC chapters.

"By reading the Pacific Citizen, many get the idea that the JACL is a Nisei/Sansei dominated organization, and this might not necessarily be true in the Midwest," said George Hanasono, Hoosier president.

"Yet, prospective members still approach the JACL with that stereotype in mind."

Topics to be discussed will include:

- 1) Leadership roles of the naturalized citizen and also the non-Japanese spouse in MDC chapter affairs;
- 2) Racial and other forms of discrimination experienced by couples of interracial marriages;
- 3) Concerns for children of interracial marriages, and
- 4) How language barriers might limit access to knowledge of JACL.

While workshop coordinators, Lida Fukumura (Cincinnati) and Bill Alexander (Hoosier) hope for a good turnout at the workshop, they aim to keep its format largely informal.

"The workshop will be participatory in nature with small team discussions," said Hanasono. "At the end of each discussion period, the team leaders will briefly summarize each topic, and after the workshop a transcript will be developed to be passed on to the chapters." Fukumura and Alexander

request (1) that MDC chapters call on interested members who are willing to act as team discussion leaders and send these persons as chapter delegates to the workshop; (2) that by Aug. 4 chapter presidents submit to Fukumura a general outline of each chapter's make-up so that workshop topics can be planned to suit the needs, and (3) that chapters encourage all members who are interested in attending to do so.

"The primary purpose is not to solve problems, but to state these problems and concerns, so that participants can take information back to their chapters for use in programming," said Fukumura.

Information of exact time, place and workshop format will be published on the MDC page next month.

It can also be obtained after Aug. 7 from:  
Lida Fukumura, 573 Howell St., Cincinnati, Oh 45220 (503) 861-0890; or Bill Alexander, 111 Roundelay Dr., Franklin, Ind. 46131 (317) 736-7927, or contact your local chapter president.

## Convention spotlights

CHICAGO—Lillian Kimura, Governor, announced that all nine MDC chapters would send delegates to the National Convention in Salt Lake City. Representing their chapters will be:

CHICAGO—Chiye Tomihoro, Rev. Michael Yasutake (alt); CINCINNATI—Judy Ibarra; CLEVELAND—Rev. George Nishimoto (1/2), Dr. Toaru Ishiyama (1/2), Henry Tanaka (alt); DAYTON—Vickie Mikesell; DETROIT—Dr. Kaz Mayeda; HOOSIER—Dr. George Umemura; MILWAUKEE—Takio Kataoka; ST. LOUIS—Anna Peterson, George Sakaguchi (alt); TWIN CITIES—May Tanaka.

A district caucus was set for 7 a.m., Tuesday, July 19.

BIENNIUM HONORS  
Chicago JACL revealed its nomination of Dr. Newton Wesley as "Japanese American of the Biennium". Wesley, an eminent optometrist, is credited with perfection of the contact lenses. He manages his world-wide operation from a base in Chicago.

St. Louis announced its submission of an application for the George J. Inagaki award given to the Chapter of the Biennium.

Winners are announced at the award banquets during the convention.

## pulse

### ● Hoosier

While the Hoosier JACL will provide the beverage, it will be a pitch-in lunch for those enjoying the chapter picnic schedule Aug. 13, 1 p.m., at Eagle Creek Park's Shelter D area—adjacent to Interstate 65 and 71st St. There is an admission fee for entrance and parking. Park has boating, fishing, cycling and golf facilities as well as a craft center and an Indian museum.

Tsutomu Matsuda, president of the Federation of Tokyo Minyo Clubs, will be guest instructor at a Minyo Dance workshop July 28, 30 and 31, at the Eastgate Christian Church, 7 to 9 p.m., according to Mrs. Etsuko Oba (844-8002). The workshop precedes the July 29 Obon Festival at Woodland Trace Clubhouse, 1800 E. 116th St., Carmel, starting at 6 p.m.

The chapter announced \$300 was raised at the recent garage sale held at the Kats/Nellie Kojiro garage.

## COMMENTS

Continued from Previous Page

mental, largely Jewish claims commission to administer the German restitution program. It will be administered by the foundation set up by the Conference on Jewish Material Claims, headed by Dr. Nahum Goldmann, former chairman of the World Jewish Congress. This development is hailed by Americans.

The present committee felt that it would be another tragedy for Japanese Americans to forfeit control of the administrative Commission.

<p>Illinois</p>	
<p><b>Uptown Auto Service, Inc.</b> Complete Auto Rebuilding 5745 No. Broadway Chicago, Illinois 60660 (312) 561-6122/3</p>	<p><b>the WATCH CLINIC</b> 17 N. WABASH AVE., LOBBY CHICAGO, ILL. 60602 - 372-7863 Dave Yoshimura, Proprietor Authorized Seiko and Citizen - Sales &amp; Service</p>
<p><b>San Juan Drugs, Inc.</b> 916 W. Belmont Chicago, Ill. 60657 (312) 248-2432 George Ichiba, R.Ph. Hiroshi Nakano, R.Ph.</p>	<p><b>CHICAGO JACL Federal Credit Union</b> 5415 North Clark Street Chicago, Illinois 60640 (312) 728-7171 Weekday Hours: 1 to 5 p.m.</p>
<p><b>Yamada Travel Service</b> Authorized JACL Travel Agency DOMESTIC &amp; FOREIGN • COMPLETE TRAVEL SERVICE 812 N. Clark St., Chicago, Ill. 60610 • (312) 944-2730</p>	
<p>Whatever your reason, be sure to see us for all your real estate needs. <b>TAK OCHIAI REALTY WORLD — DON WILLIAMS &amp; ASSOCIATES</b> 4141 N. Lincoln Ave., Chicago, Ill. 60618 • (312) 549-1404</p>	

**Comparing new cars?**



Compare us.  
100% financing on new cars.

**National JACL Credit Union**  
PO Box 1721  
Salt Lake City, Utah 84110  
Telephone (801) 355-8040

Borrow up to \$3000  
on your signature  
to qualified borrowers.

**JOB OPENING**

**Midwest District JACL Regional Director**

**MAJOR RESPONSIBILITIES**

Director will be responsible for the administration of the Regional Office and staff which includes the day-to-day supervision of the clerical and volunteer personnel.

Other responsibilities are: 1) provide technical assistance and advice to chapters and the District Council on programmatic matters, membership development, etc.; 2) establish and maintain effective contact and communication with Asian American organizations, public and private human service agencies, local, state and federal government offices; 3) plan and implement programs and projects authorized by the District Council and by National mandate; 4) represent JACL in public contacts with government bodies, academia, business, minority and civil rights groups, etc.

The director must be able to function with limited supervision and direction. General supervision will be given by the district governor and the district board. District policy and direction is set by the district council.

**QUALIFICATIONS**

Bachelor's degree and at least two years paid work experience in a human service, civil rights organization, or related experience. Ability to write reports and correspondence, basic ability to maintain office bookkeeping and set up the regional office budget.

**SALARY RANGE: \$9,000-12,000 plus fringe benefits**  
**CLOSING DATE: August 21, 1978**

**SEND RESUME TO:**  
Lillian C. Kimura, MDC Governor,  
1314 W. Winnemac, Chicago, IL 60640

Indiana

**NICHI BEI KAI**  
(317) 787-0381  
4514 S. EMERSON AVE.  
INDIANAPOLIS, IND. 46203

**Oriental Grocery and Gift Store**  
Ask us for special orders and wholesale prices. Imported foods from the Orient, gifts, Japanese magazines, fresh vegetables, tako, teriyaki meat, maguro and other fish available daily.

1-465 at Emerson Ave.  
Beech Grove Exit #52—Located inside Best Western Motel,  
Beech Grove

**STEAK HOUSE OF JAPAN**  
3709 N. Shadeland Ave. (317) 545-3438  
Indianapolis, Indiana  
9:30-5 Mon-Sat / 9:30-7 Sun

Missouri

**JOTSU**

- Complete Travel and Tour Arrangements
- Passport Information
- Visas
- Tickets—All Airlines
- Group Arrangements
- 10% Minimum Down Payment

**ORIENTAL TRAVEL service INC.**  
927 De Mun Ave., St. Louis, Mo. 63105  
(314) 727-5994 / 432-2343

Ohio

**Dayton Oriental Food**  
(513) 254-3711  
812 Xenia Ave., Dayton, O. 45410  
Richard and Aiko Fletterbush  
(Members, JACL)

Michigan

**Mt. Fuji Foods**  
Specializing in Japanese Foods and Fine China  
Open Daily 10-7, Closed Sunday  
22040 W. 10 Mile Road  
Off Lahser Road  
Southfield, MI. • 357-0476

**MISAKO KONDO**  
FLOWERS & GIFTS  
"Only the Finest"  
907 Woodward So., Royal Oak  
546-1101 564-2264

**MOY'S RESTAURANT**  
JAPANESE STEAK HOUSE  
Chinese/American Foods  
Table Top Cooking  
16825 Middlebelt Rd. at 6 Mile  
427-3170—Livonia



**MOSHI MOSHI: Gene Konomi**

## Nikkei Phenomenon

do the job. They represent whole communities of diverse ethnic compositions. The Nikkei, who are usually small minorities, have been divided between the Democrats and the Republicans. From the point of view of the communities at large, then, the ethnicity of the new mayors must seem pretty irrelevant. Some of them may even bridle at the thought of being considered champions of the Nikkeijin.

Or does it mean the emergence of a new type of Nikkeijin? Although no two of them are alike, a certain pattern seems to run through their lives and careers. They are all from fairly well-to-do families; they were better than average scholars, and graduates of colleges or universities; professionally, they have walked the smooth and unobstructed roads of success; only a few of them suffered the truly crushing setback of relocation. None of them could be described as a Horatio Alger character. Except for their physical appearance, they are no different from other middle class Americans. In fact they are middle class Americans.

Only in one respect was their being Nikkei a factor in their success. Their determination to excel and "show them" has been a trait inculcated in them by their family upbringing.

So, the apparently sudden political awakening of the Nikkei may only be part of the national development. In the second half of the 20th century, politics emerged as the major concern and activity of the elements of the populace which had traditionally remained on the sideline of the national and local arenas. It was the students' protests that put an end to Vietnam. Welfare rights movement brought about some reforms in welfare administration. The Association of the Retired Persons conducts one

### Los Angeles Japanese Casualty Insurance Assn.

— COMPLETE INSURANCE PROTECTION —

- Aihara Ins. Agy., Aihara-Omatsu-Kakita 250 E. 1st St. 626-9625
- Anson Fujioka Agy., 321 E. 2nd, Suite 500 626-4393 263-1109
- Funakoshi Ins. Agy., 321 E. 2nd St. 626-5275
- Hirohata Ins. Agy., 322 E. Second St. 628-1214 287-8605
- Inouye Ins. Agy., 15092 Sylvanwood Ave., Norwalk 846-5774
- Tom T. Ito, 595 N. Lincoln, Pasadena 795-7059 (LA) 681-4411
- Minoru 'Nix' Nagata, 1497 Rock Haven, Monterey Park 268-4554
- Steve Nakaji, 11964 Washington Place 391-5931 837-9150
- Sato Ins. Agy., 366 E. 1st St. 629-1425 261-6519

## Eagle Produce

929-943 S. San Pedro St., Los Angeles  
625-2101

BONDED COMMISSION MERCHANTS  
— WHOLESALE FRUITS AND VEGETABLES —

### Established 1936 Nisei Trading

Appliances - TV - Furniture

NEW ADDRESS:  
249 S. San Pedro St.  
Los Angeles, Calif. 90012  
Tel.: 624-6601



**Kinura**  
PHOTOMART

Cameras & Photographic Supplies  
316 E. 2nd St., Los Angeles  
622-3968

### Ask for 'Cherry Brand'

MUTUAL SUPPLY CO.  
1090 Sansome St.  
San Francisco, Calif.

TOYO

*Myatake*  
STUDIO  
318 East First Street  
Los Angeles, Calif. 90012  
626-5681

## Empire Printing Co.

COMMERCIAL and SOCIAL PRINTING  
English and Japanese

114 Weller St., Los Angeles 90012 628-7060



Japanese Phototypesetting

**TOYO PRINTING CO.**  
309 So. San Pedro St., Los Angeles 90013  
(213) 626-8153



Largest Stock of Popular  
& Classic Japanese Records  
Magazines, Art Books, Gifts  
Two Shops in Little Tokyo  
330 E. 1st St. 340 E. 1st St.  
Los Angeles, Calif. 90012  
S. Ueyama, Prop.

### Naomi's Dress Shop

Sports & Casual / Sizes 3 to 8  
116 N. San Pedro St.  
Los Angeles : 680-1553  
Open Tue-Fri, 9:30-6:30  
Sat 11-9 / Closed Sun-Mon



**RED CARPET REALTORS**  
**Howard Kishida**  
ASSOCIATE  
1031 Rosecrans, #201  
Fullerton, CA 92735  
(714) 992-6363/992-5297

Commercial & Industrial  
Air-conditioning & Refrigeration  
Contractor

### Sam J. Umemoto

Lic. #208863 C-20-38

**SAM REIBOW CO.**  
1506 W. Vernon Ave.  
Los Angeles 295-5204  
Experienced Since 1939



### TAKAKO HAMACHI

433 Via Corta  
Palos Verdes Estates, Ca 90274  
TELEPHONE  
(213) 378-2268 res: 541-7954



VISIT OLD JAPAN

**MIYAKO**  
Luncheon Dinner Cocktails

PASADENA 139 S. Los Robles • 795-7005  
ORANGE 33 Town & Country • 541-3303  
TORRANCE 24 Del Amo Fash. Sq. • 542-8677



## The New Moon

Banquet Rooms available  
for small or large groups

912 So. San Pedro St., Los Angeles MA 2-1091

of the most aggressive lobbies in Congress. And so on. The Nikkei mayors were no more than a logical ramification of the national trend.

The social and economic upclimbing of the Nikkei seems to have reached a plateau. The Nikkei community is a predominantly middle-class society, with education and income averages somewhat above the national. More and more its accumulated excess energies will be turned to its integration into the American polity at the grass roots level. It appears no longer as an enclave of disadvantaged people, hemmed in on all sides with handicaps and prejudices.

The only variation from the general type among the new mayors is Robert Ouye of Marina, Monterey County. He is a throwback to the type very common in the early days of Japanese immigration, and probably its last

specimen. That he is such a conspicuous exception is a measure of how far the Nikkei society has come. It has finally attained its proper estate in the American society.

### U.S. judge named for No. Marianas

HONOLULU — Kauai Circuit Judge Alfred Laureta's nomination to a federal court bench in the Northern Marianas was confirmed by the U.S. Senate May 18. The first federal jurist of Filipino ancestry did not know when he could assume the post as he has several decisions under advisement here.

The Northern Marianas with its capital in Saipan recently voted to become a U.S. commonwealth.

### Kelly Yamada heads international board

NEW ORLEANS, La. — Dr. Kelly K. Yamada of Seattle was elected president of the International Assn. of the Board of Examiners in Optometry here July 2. The long-time JACLer is the doctor of optometry from the State of Washington to have attained this high office.

Yamada, who began his practice in 1951, is presently on the Washington State Optometric Board of Examiners.

### CRA man resigns

LOS ANGELES—Michael Oh, Little Tokyo CRA project manager, tendered his resignation July 12, explaining personal and business reasons for leaving the post he assumed in November, 1976.

Sign Up One New JACLer



DELIGHTFUL seafood treats  
DELICIOUS and so easy to prepare

### MRS. FRIDAY'S Gourmet Breaded Shrimps and Fish Fillets

Fishing Processors, 1327 E. 15th St., Los Angeles (213) 746-1307



### Marutama Co. Inc.

Fish Cake Manufacturer  
Los Angeles

### YAMASA KAMABOKO



—WAIIKI BRAND—

Distributors: Yamasa Enterprises  
515 Stanford Ave.  
Los Angeles  
Phone: 626-2211

### GARDENA—AN ENJOYABLE JAPANESE COMMUNITY Poinsettia Gardens Motel Apts.

13921 S. Normandie Ave. Phone: 324-5883  
68 Units • Heated Pool • Air Conditioning • GE Kitchens • Television  
OWNED AND OPERATED BY KOBATA BROS.

## DENTAL INSURANCE

DENTIST OF YOUR CHOICE

Anywhere in California

Benefits paid at 80%

Diagnostic & preventative - no deductible  
Restorative, oral surgery - \$50 deductible  
Prosthetics at 50% - \$50 deductible  
Maximum allowance - \$1,000 per year

## CANCER INSURANCE

California Only

Do you know the 7 CANCER WARNING SIGNALS?

Send for free brochure with information on CANCER facts and insurance that helps pay for the high cost of medical care. Benefits paid regardless of other insurance.

NO AGE LIMIT NO PHYSICAL EXAMINATION  
PREMIUMS ARE LOW! LOW! LOW

For brochure call: Ben T. Tsuchimoto  
(415) 752-7392

Or Mail Coupon To:  
642 - 19th Ave., San Francisco, CA 94121

Cancer \_\_\_\_\_ Dental \_\_\_\_\_  
Name \_\_\_\_\_  
Address \_\_\_\_\_  
Zip \_\_\_\_\_  
Phone Area Code \_\_\_\_\_

# Books, stage & films

## CONFLICT AMONG CHINESE WRITERS

### Asian American writers convene in Hawaii

To "talk story" in Hawaii means to indulge in over-the-backyard-fence gossiping—idle conversation to pass time pleasantly.

Now it means something else too. "Talk Story: Our Voices in Literature and Song" was the name of Hawaii's Ethnic American Writers Conference held June 19-24 in Honolulu.

Some of the sessions were "Directions in Chinese American Literature", "The WW2 Camp Experience in Japanese American Literature", and "Asian American Literature in Higher Education".

Poetry, fiction, drama, oral history and other workshops were conducted, also

readings and a session called "Talk Stink" (which in Hawaii pidgin is the converse of "talk story", meaning to tell malicious gossip).

Maxine Hong Kingston, author of the highly-acclaimed book, "Woman Warrior", had explained before the conference that "Talk Stink" would be "based on the Hawaiian custom of 'ho'oponopono'. To have it out. Clear the air."

Kingston, brought up in California but a resident of Hawaii now, pointed out that "one of our characteristics is that we Asian Americans are very hard on one another, nit-picking and clobbering one another's work, name calling and finger-pointing."

She proved to be right. "Mainland, Isle Chinese get into literary brawl" headlined a Hawaii newspaper story on the Chinese American literature panel discussion, which turned out to be an unplanned ho'oponopono between mainland and Hawaii Chinese Americans.

Panelists were Jeffrey Paul Chan, Laureen Mar and Shawn Wong from the mainland and Hawaii poet Wing Tek Lum. They bemoaned the absence of author and playwright Frank Chin (sometime contributor to the PC) and praised his writing about Chinese immigrants in America as major contributions to Chinese American literature.

The panel criticized Kingston's "Woman Warrior", accusing her of negatively viewing her background. In the audience, Kingston argued that they had "misread" her book.

The fact that Hawaii writers are not as obsessed with the immigration experience—the difference and sore point between the two camps—was the basis for the heated arguments between audience and panel. From the audience, Hawaii author Lila Kan called the mainland panelists a "Chinese American literary mafia".

Stephen Sumida, one of the conference planners, had invited Chin to attend, in spite of the controversy it might set off. Sumida was not disturbed that the altercation occurred even without Chin. "Today we fight because we have our differences and then tomorrow it's OK," he said.

According to Sumida, the conference expected to explore differences between cultures, although the Chinese American session seemed preoccupied with friction within their group.

Sumida says the conference was dedicated to the idea of cultural pluralism. "We have all experienced subtle, sometimes overt, racism and cultural elitism born of ignorance or fear," he says. "We are interested in cultural changes that our generations undergo and the interaction between ethnic groups."

"The differences are so interesting; we have so much to learn," he says.

teresting; we have so much to learn," he says.

NIKKEI EXPERIENCES  
The atmosphere was also emotional at times during the session on the Japanese American experience in internment camps. Panelists were Noriko Bridges, Lawson Inada, Hisaye Yamamoto de Soto, Kazuo Miyamoto and Toshio Mori.

Bridges read the first poem she had written which mentions her brothers, serving in the 442nd, being killed. She and another panelist were in tears.

Bridges said, "I thought I had already vented my pain," referring to her internment in an Arizona relocation camp. She says after she left camp, she was "pretty well brain-washed into thinking we were unentitled to ordinary civil rights. We knew it was unjust but were powerless..."

"The anger has been suppressed all these years," she explains. "That's why we still can't talk about it."

Miyamoto, a doctor and an author, was one of 300 Hawaii Japanese shipped to internment camps.

Miyamoto said the Japanese "resignation to holocausts (typhoons and earthquakes in Japan) and their constant attempts to make life endurable", helped them deal with the camp experience.

A noteworthy keynote speech was given by O.A. Bushnell, professor of microbiology at the Univ. of Hawaii, and author. He is the grandson of Portuguese plantation laborers, a group which has also been treated as a minority group in Hawaii.

Bushnell believes the process of crating ethnic writers "requires three generations on the average" to "learn the



Photo Courtesy: Honolulu Advertiser  
Noriko Bridges (left) and Lawson Inada talk story in Hawaii.

## Issei Christians

Issei Oral History Project, Inc.

Parkview Presbyterian Church  
727 "T" St., Sacramento, Ca. 95814

Please send \_\_\_\_\_ copies of *Issei Christians* @ \$6.00 plus 75¢ for postage & handling per copy.

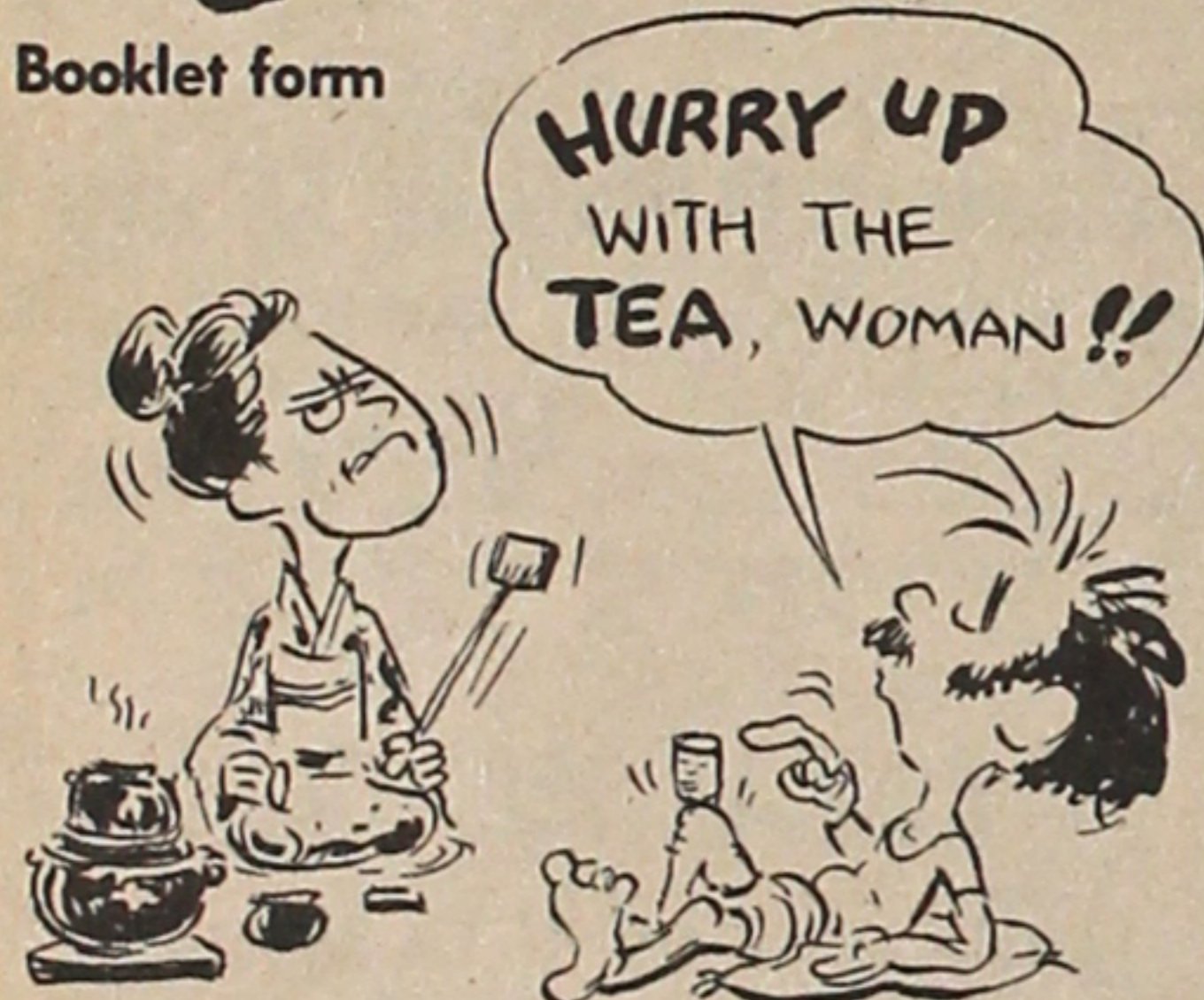
Name \_\_\_\_\_

Address \_\_\_\_\_

City, State, ZIP \_\_\_\_\_

## SENSEI!

in Booklet form



LIMITED EDITION: \$2.95 per copy

'Sensei'. 804 Edgemar Ave., Pacifica, Ca 94044

Enclosed is \$..... for .....copies of "Sensei". Send to:

Name \_\_\_\_\_

Address \_\_\_\_\_

City, State, ZIP \_\_\_\_\_

## EAST WEST FLAVORS I & II



East-West Flavors, the ever popular cookbook published by the West Los Angeles JAACL Auxiliary, now has a sequel, *East-West Flavors II*. This beautiful 331 page silver and black cookbook with all new recipes and menu suggestions will complement *East-West Flavors I*, the original 202 page cookbook. Order now. Both cookbooks are available.

I am enclosing my donation for:

\_\_\_\_\_ copies E-W I, \$4.50, 75c postage and handling: \$5.25 each \_\_\_\_\_

\_\_\_\_\_ copies E-W II, \$7.00, \$1 postage and handling: \$8.00 each \_\_\_\_\_

TOTAL enclosed: \$ \_\_\_\_\_

Name \_\_\_\_\_

Street \_\_\_\_\_

City, State, ZIP \_\_\_\_\_

Please make checks payable to:  
West Los Angeles JAACL Auxiliary  
1431 Armacost Ave., Los Angeles, Ca. 90025

Continued on Next Page

**EAST WEST PLAYERS**  
PRESENTS

KINNARA TAIKO DRUM GROUP

Saturday - 8:30 to 10:00

\$3 Admission

NOW! Visa/Mastercharge

**660-0366**

4424 Santa Monica Blvd.

## Japanese Cookbook for Sansei

by matao uwate

Instructor of Japanese Foods and Culture  
at UCLA Extension

FALL TERM BEGINS SEPT. 25

Mail \$11 per book to:

Matao Uwate, 110 N. San Pedro St., Los Angeles, Ca. 90012

Name \_\_\_\_\_

Address \_\_\_\_\_

City, State, ZIP \_\_\_\_\_

## Books from PC

**The Bamboo People: The Law and Japanese Americans**, by Frank Chuman. Legal and legislative history of the Japanese in America. A "must" for every collection.  
 Hardcover, \$11.50 postpaid.

**Japanese American Story**, by Budd Fukei. A good taste of the history and cultural heritage. One chapter by Mike Masaoka recalls JAACL's role during Evacuation.  
 Hardcover, \$7.50 postpaid.

**They Called Her Tokyo Rose**, by Rex Gunn. Documented story of a WW2 legend by a Pacific war correspondent who stayed with the story to its unimagined culmination.  
 Paperback, \$5.50 postpaid.

**Nisei: the Quiet Americans**, by Bill Hosokawa. Popular history of the Japanese in America, 1869-1969.  
 Hardcover, \$9.50 postpaid.  Softcover, \$4.50 postpaid.

**Rulemakers of the House**, by Spark Matsunaga-Ping Chen. An inside look at the most powerful committee in the House of Representatives, based on Spark's 10-year experience in that committee. (The Senator has autographed a limited supply for PC readers.)  
 Hardcover, \$7.50 postpaid.

**Camp II Block 211**, by Jack Matsuoka. Daily life in internment camp at Poston as sketched by a young cartoonist.  
 Softcover, \$6.60 postpaid.

**Hawaiian Tales**, by Allan Beekman. Eleven matchless stories of the Japanese immigrant in Hawaii.  
 Hardcover, \$4.60 postpaid.

**Thunder in the Rockies: the Incredible Denver Post**, by Bill Hosokawa. Personally autographed copy from the author to PC readers: Packed with hours of entertainment.  
 Hardcover, \$13.60 postpaid.

**In Movement: a Pictorial History of Asian America**. By Visual Communications, Inc.; text by Dr. Franklin Odo. Oriented toward schools and libraries in areas of multi-cultural and ethnic studies.  
 Hardcover, \$25.60 postpaid  Softcover, \$15.60 ppd.

**Years of Infamy**, by Michi Weglyn. Shocking expose of America's concentration camps as uncovered from hitherto secret archives. (Special on new Paperback Edition, see below.)  
 Hardcover, \$11.50 postpaid;  Softcover \$4.50 p/pd.

**Sachie: A Daughter of Hawaii**, by Patsy S. Saiki. A faithful portrayal of the early second-generation Japanese in Hawaii told in novel form.  
 Softcover, \$4.50 postpaid.

### BOOKS IN JAPANESE

**Nisei: Kono Otonashii Amerikajin**, translation of Hosokawa's "Nisei" by Isamu Inouye. Ideal gift for newcomers to U.S. and friends in Japan. Library edition.  
 \$15.00 postpaid. (Only supply in U.S.)

**America's Concentration Camps** (Translation of Allan Bosworth book) by Prof. Yukio Morita.  
 Softcover, \$6.50 postpaid.

### RECENT ARRIVALS

**The Private War of Dr. Yamada**, by Lee Ruttle. A World War II novel of a Japanese Army surgeon, whose secret diary reflects the thoughts, fears and hopes of his men.  
 \$9.35 postpaid.

Name \_\_\_\_\_

Address \_\_\_\_\_

City, State, ZIP \_\_\_\_\_

Pacific Citizen, 355 E. 1st St. Rm 307, Los Angeles, Ca. 90012  
Please send us the above order of books.

**JAPANTOWN ART & MEDIA**

**Writers hold Tues. workshops**

SAN FRANCISCO, Calif. — Problems faced by Asian American writers are discussed Tuesday nights by the Japantown Art and Media Writers' Workshop here.

While JAM does not claim

**HAWAII**

Continued from Previous Page

realities of the new culture, and especially the niceties of speaking and writing in the English language.

"Only now are we growing a generation of Chinese and Japanese... whose members are comfortable in the use of English," he said. "Ethnic groups who came later may need another generation before this is achieved."

"Ironically, tragically, this generation of Yonsei or Gosei which is literate in English is unable to talk with ancestors, living or dead, and has lost touch with its ancestors' past."

"The ones who have the talents to tell the story no longer know the details to make it 'read true,'" he said. #

to have all the answers to both beginning and established Asian writers, it does "try to have good discussions and a lot of sharing" on existing obstacles facing the writers, a spokesman said.

Some believe Asians are geared away from literature because a "yellow face is not supposed to understand Shakespeare (he/she can only speak pidgin to begin with)." The absence of Asian writers in the U.S., thus, is a reflection of institutionalized racism, some JAM members say.

A second reason for the absence is due to the capitalist nature of America, which makes literature a commodity rather than a legitimate art form. "What it boils down to: Harold Robbins and Erich Segal sell. Bringing us to another problem confronting Asian American writers today—that of audience."

The public is welcome to the meetings, held at 1852 Sutter St., near Buchanan Mall. For more information, call 567-3851. #

**Ed Sakamoto play opens at Workshop**

SAN FRANCISCO—Asian American Theater Workshop presents the Northern California premiere of Ed Sakamoto's "Yellow Is My Favorite Color" July 21 and runs weekends through Aug. 27 at their theater, 4344 California St.

Under the direction of Rodney Kageyama, the play is an exciting mix of comedy and drama focusing on the life of Henry Kawamizu, a 40-year-old Japanese American who has turned his back on his Asian heritage.

**CSU Long Beach publishes journal**

LONG BEACH, Calif.—A new literary publication, "Echoes from Gold Mountain": An Asian American Journal, has been edited and published by Cal State University Long Beach students and faculty of Asian American Studies Dept., 1250 Bellflower Blvd., Long Beach 90840. Copies are \$3.50 postpaid.

A community invitation ... to enjoy

**An Evening With The Rev. Herbert and Mrs. Nicholson**

of Pasadena, California



The community's public gesture of appreciation to a missionary couple, now retired, who worked with persons of Japanese ancestry for over 50 years, co-sponsored by:

Nisei Veterans Coordinating Council  
Japanese Chamber of Commerce of So. Calif.  
Japanese American Citizens League  
Japanese Evangelical Missionary Society

Japanese American Church Federation of So. Calif.  
Christian Laymen Association  
Japanese American Women's Federation of So. Calif.  
Issei Bokushikai / Nisei Ministerial Fellowship

**Sunday, July 23, 6 p.m., Golden Palace Restaurant**

913 No. Broadway, Los Angeles (New Chinatown)

TICKETS: \$10 Donation (Non-deductible). CHECKS payable to: "JACL—Nicholson"

JACL Office, 125 N. Central Ave., Los Angeles, Ca 90012

**Valiant Odyssey**

Herbert Nicholson  
in and out of  
AMERICA'S CONCENTRATION CAMPS



Edited by Michi Weglyn and Betty E. Mitson

This little book illuminates the internment story of the evacuated West Coast Japanese Americans in a fresh and unusual way — with honesty and candor. It is richly informative, and because it throws considerable new light on history, it should be in every school and

church library.

Since the editors are contributing their time and all other expenditures, and the printer is giving a large discount, the cost is low. All profits will be given to the "Hibakusha" (Atomic bomb victims).

Pacific Citizen, 355 E. 1st St., Los Angeles, Ca. 90012

Send.....copies of "Valiant Odyssey" at \$3.50 per copy. Remainder of our donation is for "Hibakusha"

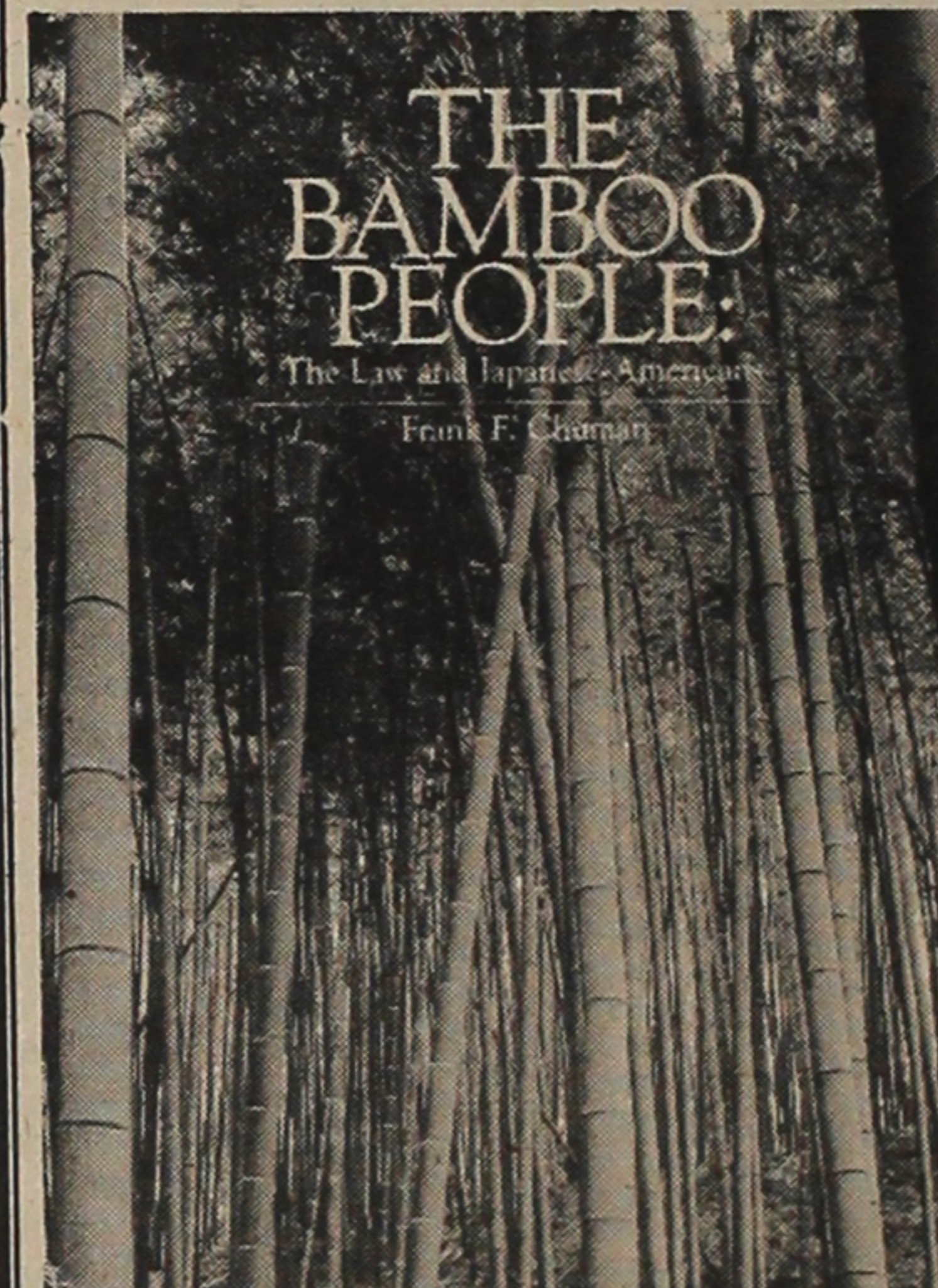
Name .....  
Address .....  
City, State, ZIP .....

Voluntary contributions for the "Hibakusha" is also welcome and will be gratefully acknowledged by Rev. Herbert Nicholson, 1639 Locust St., Pasadena, Calif. 91106.

BOOK AVAILABLE AT CONVENTION

**THE BAMBOO PEOPLE:**  
The Law and the Japanese-Americans

by Frank F. Chuman



NOW IN THIRD PRINTING  
Illustrated, 386 pp, Preface, Footnotes, Index  
Publisher's Inc., Del Mar, Calif. List Price: \$12.95

"A historical treatise that needed to be written from the perspective of a Japanese American, with his own observations, interpretations and commentary upon the tragedy of racial discrimination and the dignity of those who endured it ... A stimulating work."

TOM C. CLARK  
Associate Justice of the U.S. Supreme Court (ret.)

"An illuminating study which puts this event into perspective ... The only book which I am familiar which records these cases (of other injustices perpetrated against mainland Japanese Americans) and their decisions."

SEN. DANIEL INOUE (D-Hawaii)

"You have plugged a significant gap in our history with your carefully documented report ... It is history of the tenacious hopes and dreams of a particular minority group coping with persistent racism ..."

GORDON HIRABAYASHI  
Univ. of Alberta

"A worthy reference for those dealing with civil liberties and human rights ..."

CAMERON WEHRINGER  
American Bar Association Journal

"A new and fine presentation of the legal obstacles which the Japanese immigrants to the U.S. and their descendants met and overcome."

JAMES C. PURCELL  
San Francisco

**SPECIAL OFFER TO JACL MEMBERS AND FRIENDS**

**SPECIAL BULK RATE TO JACL CHAPTERS**

Order Now as Chapter Gifts at Installations, for Public Relations, and Presentation to All Schools and Libraries

One Case of 8 Books 'Bamboo People'—\$72 plus Shipping

JACL-Japanese American Research Project  
c/o Midwest JACL Office  
5415 N. Clark St., Chicago, Ill. 60640

Please send me \_\_\_\_\_ copy(s) of Frank Chuman's "The Bamboo People" at the special rate of \$10.95 plus 55 cents for mailing and handling per book.

Name .....  
Address .....  
City, State, ZIP .....  
Make Check or Money Order payable to: JACL-JARP.  
Amount Enclosed: \$ .....

# pc's people

## Education

**Mrs. Suellen Yoneda**, teacher's aide at Kennedy Elementary School, was cited as the Outstanding Aide of the Year by the Stockton Unified School District. She has been assisting for the past six years and was recognized for her role as noontime supervisor and volunteer parent in classrooms.

**Dr. Richard T. Doi**, formerly of Stockton, Calif., is president of the Central Washington University Federation of Teachers, AFT Local 3231, Ellensburg. He is associate professor of arts and acting director of ethnic studies.



Sherman Kishi

Honored by Merced-Mariposa Service Center Council was **Sherman Kishi** for his 20 years on the Livingston Elementary and Merced Union High School boards at a recent Friends of Education banquet.

## Elections

The Los Angeles County registrar of voters, referring to the Election Code, declared **Mas Odoi** cannot run as an independent candidate for the 31st Congressional seat on the November ballot as he was defeated "partisan candidate" in the June 6 primaries. An "Independent" must not be registered with any party one year prior to the primary, according to the state code. He can, however, file as a "write-in" candidate.

## Flower-Gardens

The Pacific Coast chapter of California Landscape Contractors Assn., the all-Nikkei chapter, presented awards for professionalism to ten of its finest craftsmen: **Tak Matsushita**, Dana Point; **Kinya Hara**, Anaheim; **Kay Miyamoto**, Cypress; **Glen Koyama**; **Satoshi Tsukada**, Buena Park; **Roy Okita**, Santa Ana; **Yoshi and Genji Kariya**, Long Beach; **Ken Suzuki**; **Koji Hamashima**.

**Frank M. Yonemura**, pioneer Gar-

dena businessman, was honored June 22 as the Nurseryman of the Year by the Centinela chapter of the Calif. Assn. of Nurserymen. He began his operation in 1932, was active in civic and church work and recently decorated by Japan with the Sixth Order of the Sacred Treasure.

## Government

**Betty Kozasa**, of Los Angeles, was recently appointed to serve on the Los Angeles County Transportation Commission's Citizens Advisory Committee by County Supervisor Kenneth Hahn. The commission was established in 1977 to review transportation needs and coordinate appropriate highway and transit programs and investments.

## Churches

**Adney Y. Komatsu**, the first Mormon Nisei bishop and a world-wide authority in the LDS church, was a featured speaker at the first Mormon Area Conference ever held in the U.S. June 18 in Honolulu. A former savings & loan executive, he completed three years as the presiding church member in Japan and has returned to Hawaii. Komatsu is also a member of the Quorum of the Seventy.

## Health

**Dr. Bradley Seto**, who was graduated with honors from Emory University Dental School, Atlanta, has been accepted as a resident at the UCLA Medical Hospital for the coming year. He is the son of Sacramento JACLers Louis and Jane Seto.

## Music

Young Musicians Foundation of Los Angeles award scholarships to clarinetist **Daryl Akamichi**, 15, of Los Angeles provided by **Victor and Andrea Carter** (Venice-Culver JACL 1000 Club life members).

## Science

**John Takemoto**, of Washington School, Sanger, won the Fresno-Madera Pharmaceutical Assn. award at the annual fair held in Fresno recently. **Cheryl Kunimitsu**, of Eaton School, Fresno, received a handbook of chemistry and a physics award.

## Sister Cities

**Peter B. Frank**, a partner in the accounting firm of Price Waterhouse and Co., has been named chairman of the Nagoya Sister City Committee, replacing **George Salk**, whose term expired. Frank, who was a vice chairman of the Nagoya Sister City Affiliation, joined Price Waterhouse in 1966 and four years later transferred to Tokyo, returning to L.A. in 1973.

## Sports

Reedley College sophomore **Chirs Iwasaki** was a 20th round pick last

month of the regular phase of the free agent baseball draft to the Los Angeles Dodgers. A powerful outfielder with a .364 batting average this year and a .357 his freshman year, he holds the school record of eight home runs in one season. If he signs, he may make his minor league with the Lodi Dodgers. Stockton JACLer **Ted Yoneda**, who has been golfing off and on for 17 years, had a "nest-in-one" on the 18th hole at Manteca Municipal golf course. On his third shot, he hit a 6-iron to the par 5 515-yd. hole and pulled it into the trees. No one saw the ball fall. **Ted Aoyama**, in the threesome with **Yoneda** and **Herm Urenda**, climbed the tree and found the ball nestled in an abandoned bird's nest. The stroke penalty cost **Yoneda** a tie for a third in the tournament but earned a write-up in the Chronicle's Sporting Green.

Three Sansei athletes at Edison High, Stockton, won athletic recognition. **Don Lusk** is the MVP in baseball,

on the all-city first team as pitcher-infielder; **Maryam Yoneda** is co-sharing the MVP award for girls' basketball; and **Jayne-Lel Yoneda**, a freshman, the coach's award in softball.

Oregon State University hired **Hatsue Aki Hill**, 38, a native of Japan, to be women's basketball coach. The past two years she had been assistant coach at Foothill Community College and Santa Clara University. She previously coached in Japan's AAU organization for 11 years.

Japan-born **Aki Kato** was named the leading jockey at Playfair last year by the Spokane sportswriters. At 5 ft.-5, he has trouble keeping his riding weight under 110. His career began in March 1972 as an apprentice at Golden Gate, and became a journeyman in October, 1973, riding the circuits in the Northwest—Portland, Salem, Yakima. His father in Japan trains race horses. **Aki** makes his home in Spokane. #

## More Asian staffers seen on Seattle city hall team

By EIRA NAGAOKA

SEATTLE, Wash.—Asian Americans who were campaigning actively last fall for various city councilmen have since been asked to continue their efforts to improve the quality of civic life through appointments to positions inside City Hall.

**Alice Liu** is program evaluation analyst to the City Council Central staff whose duties are to review transportation policy issues. **Arlene Oki** is special assistant to Mayor **Charles Royer**.

**Rita Fujiki**, working on her Ph.D., is city council assistant (half time) to Councilman **Michael Hildt**. Others include **Alan Kurimura**, city council assistant to Councilman **George Benson**, and **Ruth Yoneyama Woo** as secretary to City Attorney **Doug Jewett**.

**Sharon Yuasa** was nominated by Councilman **George Benson** resulting in Mayor **Royer** appointing her to small business task force. The purpose of the task force is to advise mayor and council on small business.

She is the daughter of Mrs. **Kiki Hagimori**.

And recently three Asians were hired as legislative interns for the City Council. Councilman **Hildt** hired **Younghee Kim** who is doing graduate work in public affairs at the Univ. of Washington. Councilwoman **Jeanette Williams** hired **Grace Chien**, law student at the Univ. of Washington and Councilman **Tim Hill** has hired **Katherine Hayashi**, law student at the Univ. of Washington.

Continuing in their respective positions are **Tomi H. Terao**, purchasing agent; **Ben Woo**, chairperson for Board of Adjustment, and **Nobie Kodama Chan**, chairperson for the civil service commission. #

## Heiwa Terrace

CHICAGO—Groundbreaking ceremonies were held July 8 for **Heiwa Terrace**, a 200-unit project for senior citizens and handicapped at **Lawrence Ave. and Sheridan Rd.**

## NVC Auxiliary

SEATTLE—Keiro Nursing Home benefited \$1,743 from a garage sale held June 10 at the NVC Memorial Hall by the Nisei Veterans Committee Women's Auxiliary.

# The 1978 JACL TRAVEL PROGRAM

Sponsored by the National Japanese American Citizens League

Open to All Bonafide JACL Members

## Group Flights to Japan

Certain Flights have local administrators as listed below.

Via JAL 747/GA100—Round Trip Fare: \$564\*

Group No.	Departs from	Dates
10	San Francisco	July 24-Aug 21 Full
11	Los Angeles/San Francisco	July 25-Aug 22 Full
12	San Francisco	July 31-Aug 31 Full
Tad Hirota, 1447 Ada St., Berkeley, Ca 94702 (415) 526-8626		
14	Los Angeles	Sep 5-25
15	San Francisco	Sep 25-Oct 16
Tad Hirota, 1447 Ada St., Berkeley, Ca 94702 (415) 526-8626		
17	San Francisco	Oct 3-27
Tom Okubo, 1121 Lake Glen Way, Sac'to, Ca 95822 (916) 422-8749		
18	San Francisco	Oct. 2-23 Full
Grant Shimizu, 724 N 1st St, San Jose, Ca 95112 (408) 297-2088		
21	San Francisco	Oct 16-Nov 6
24	San Francisco	Dec 20-Jan 9

Via PanAm 747/GA100—Round Trip Fare: \$564\*

13	Los Angeles	Aug 12-Sep 2 Full
17A	San Francisco	Oct 3-27 Full
Tom Okubo, 1121 Lake Glen Way, Sacramento, Ca 95822 (916) 422-8749		
20	Los Angeles	Oct 1-21 Full
22	L.A./Honolulu stopover	Oct 16-Nov 6

Via JAL Charter—Round Trip Fare: \$599\*\*

16	Chicago (Revised Dates)	Oct 1-22
Frank Sakamoto, 5423 N Clark St, Chicago, Il 60640 (312) 561-5105		

## Tokyo Arrival & Departure Packages

ARRIVAL: \$50 per person	Sgl rm supp: \$19
Arrive at NEW International Airport (NARITA). After the entry process, passenger will be greeted and transferred to a hotel in Tokyo.	
EXTENSION: \$26 per night	3 night maximum
FOR EITHER ARRIVAL OR DEPARTURE	
DEPARTURE: \$50 per person	Sgl rm supp: \$19
Hotel accommodations for one night, transfer by motorcoach from hotel to NEW International Airport (NARITA).	
For further information or reservation, please consult your local JACL Authorized Retail Travel Agent or Japan Travel Bureau International.	

## ORIENTATION MEETINGS

LOS ANGELES—2nd Tuesdays, 7 p.m. Calif First Bank, 120 S San Pedro St. For info call **Akira Ohno** (213-477-7490).  
SAN FRANCISCO—Third Thursdays, 7 p.m., Mas Satow Bldg., 1765 Sutter St. For info, call **Yuki Fuchigami** (415-921-5225).

## GENERAL INFORMATION

\* Air fare (eff Aug 1, 1977) includes round trip, \$3 airport departure tax, and \$20 JACL administrative fee. Adult and child seats same price on any flight; infants 2 years old, 10% of applicable regular fare. \*\* Charter price includes round trip airfare, tax, JACL administrative fee and may vary depending on number of passengers. All fares, dates, times subject to change. If there are any questions regarding the Nat'l JACL Travel Committee policies or decisions, write or call **Yuki Fuchigami**, Nat'l JACL Hq, 1765 Sutter, San Francisco, Ca 94115 (415-921-5225)

## Information Coupon

Mail to any JACL-authorized travel agent, chapter travel chairperson or president, JACL Regional Office or to:

National JACL Travel  
1765 Sutter St., San Francisco, Calif. 94115

Send me information regarding 1978  
Nat'l JACL Flights, especially Group # \_\_\_\_\_

Name \_\_\_\_\_  
Address \_\_\_\_\_  
City, State, Zip \_\_\_\_\_  
Day Phone \_\_\_\_\_ Chapter \_\_\_\_\_

Effective Date \_\_\_\_\_  
City, State, Zip \_\_\_\_\_  
New Address \_\_\_\_\_  
If you are moving, give us 3 week's advance notice. Clip out entire address label "box". Write in new address and effective date.

No. 2007  
**PACIFIC CITIZEN**  
355 E. 1st St., Rm. 307, Los Angeles, Ca. 90012



## The Orient & Japan

WITH WILLY KAI!

Departs November 19, 1978  
16 Days - \$1495

HONG KONG - MANILA - KUALA LUMPUR  
SINGAPORE - PATTAYA BEACH - BANGKOK.  
ENDS IN TOKYO - LEISURE RETURN TO LOS ANGELES

1st class and deluxe hotels, transfers, baggage handling, complete sightseeing, breakfast & lunch or dinner daily.

Kokusai International Travel, Inc.  
321 E. 2nd St., Los Angeles, Ca. 90012  
213/626-5284

## SPECIAL GIFTS TO JAPAN

Premium Quality Steaks and "Columbus" Salame for your overseas friends/relatives



## WHEN YOU DEMAND THE VERY BEST, TRY OUR UNIQUE GIFTS

12 cuts of specially selected Filet Mignon steaks 4.5 lbs net wt.  
10 cuts of specially selected New York steaks 5 lbs net wt.  
Both Steaks are carefully aged and vacuum sealed to be packed in our reusable styrofoam cooler - with blue ice.  
\* Six 13 oz roll of San Francisco's favorite hors d'oeuvres in a handsome easy carry package.  
\* Both certified by the U.S.D.A. to easily clear Japanese customs.  
\* Ask about our services from Hawaii.



ORTIZ International, Inc. Phone  
690 Market St., Suite 320 (415) 391-4111  
San Francisco, CA 94104

## 肉のおみやげ 専門店 IT'S NOT FROZEN



## FRESH BEEF TO JAPAN FROM HENRY VIII

HENRY VIII proudly offers FRESH BEEF, SALAME, and BEEF JERKY for very popular gifts to Japan. Please try it yourself once!

- \* Certified by the USDA for easy clearance through Japanese Customs.
- \* Delivery to JAL counter at Airport on departure date.
- \* You may order by using the form supplied below or order by phone up to the morning of departure. (415) 668-1344.

Check items listed below for orders.

1	New York Cut	5 L.B.	\$40.00	\$
2	Filet Mignon	5 L.B.	\$40.00	\$
3	N.Y. 2 1/2 lb & Fil 2 1/2 lb	5 L.B.	\$40.00	\$
4	Hickory Smoked Ham	6 L.B.	\$35.00	\$
5	Italian Dry Salame	13oz x 10	\$30.00	\$
6	Pemmican Beef Jerky	24 oz	\$17.00	\$
7	Pemmican Beef Jerky	12 oz x 3	\$30.00	\$
TOTAL AMOUNT			\$	\$

(NAME) \_\_\_\_\_ (PHONE) \_\_\_\_\_

(ADDRESS) \_\_\_\_\_

(DEPARTURE DATE) \_\_\_\_\_ (GROUP NO.) \_\_\_\_\_

Henry VIII Prime Rib 3815 GEARY BLVD. S.F. CA. 94118 (415) 668-1344