

# PACIFIC CITIZEN

Publication of the National Japanese American Citizens League

Vol. 86 No. 6

Friday, February 17, 1978

20c Postpaid U.S.

15 Cents

## Changes to citizenship law proposed

An American woman living in Tokyo has taken up a vigorous letter writing campaign to draw support for Sen. Edward Kennedy's proposed revisions to the American Immigration and Nationality Act.

Beverly Nakamura, married to a Japanese citizen, has called parts of the act "harsh and discriminatory", and wrote Kennedy to express her support for Senate Bill 2314, which may remedy some of the restrictions when transferring American nationality and citizenship to certain children born outside the U.S., in cases where one parent is an alien and the other a U.S. citizen.

"If it hadn't been for a friend who spotted an article about the bill in her local English language newspaper in Germany, I would never have known about the bill," Nakamura said. "Americans overseas are so uninformed.

"When I contacted the American Embassy to get some information on the bill nobody had heard of it. In fact, one lady told me very nicely that if the bill became law they would let me know."

Current law states that an American citizen living overseas and married to an alien spouse, in order to transmit citizenship to his children, must have lived in the U.S. at least 10 years, with at least five of those years after reaching the age of 14.

Kennedy's proposal would reduce the "physically pre-

sent" requirement to a simple two years prior to the birth of the child overseas.

The senator's bill is a companion to a bill sponsored by Rep. Joshua Eilberg (D-Pa.) who proposed on Oct. 20 that parts of the current law be eliminated. The proposal would eliminate two sections that:

—Require that children born overseas of one American parent, in order to retain their U.S. citizenship, must live continually in the U.S. two years between the ages of 14 and 28 or the alien parent must be naturalized before the child turns 18;

—Provide that children of American parents who are born outside the U.S. and acquire dual nationality at birth can be automatically and involuntarily stripped of

Continued on Page 8

## Convention booklet ad deadline near

SALT LAKE CITY, Utah — Tom Sutow, ad sales chairman for the national convention booklet, has issued the big push for advertising, warning that the March 15 deadline is only a month away.

Sutow said he hopes to reach over 80,000 readers—a first in JACL history—but this can only be accomplished if enough revenue is raised through booklet ads, either nationally, at the chapter level, or locally, and from other fund-raisers.

## Mink: Everybody 'counts' in politics

VAN NUYS, Calif.—Assistant secretary of state Patsy Mink laughed and joked about her beginnings in politics this past week, but wound up on a serious note, encouraging San Fernando Valley JACL members to "seize every opportunity" to make their voices heard in national politics.

Speaking before about 150 members at an installation dinner held Feb. 4 at the Holiday Inn here, the former Hawaii congresswoman continually emphasized the importance of the individual in making the political process work. Nancy Gohata is the new chapter president.

"The reality is, if people become involved, it makes it real. It is so imperative we join in this activity. There are so many issues around. Every individual counts—the obscure person may be-



Patsy Mink

come the center of focus.

"I would hope that you will find creative ways to find important activities and will communicate the spirit of vitality to the national level," she said. "Make yourself

heard in Washington. Send people who are competent and get them spaces on commissions and boards—that's politics."

Her own career has been dotted with more highs than lows and Mink now finds herself under the Carter Administration's Oceans International and Scientific Affairs bureau—a post she admits sounds like a "staid, esoteric place," but is one that has provided new challenges and interests.

Getting there is another story in itself, as she told the chapter.

"When I look back, I've convinced myself I became a politician because I couldn't find another job," she laughed. "It's a terrible thing to say.

"But here I had this marvelous degree and nobody would have anything to do with me. I couldn't throw my marvelous sheepskin away, so I opened up my own, small, dingy law office. My dad paid the rent."

After realizing the clients were not flocking to her business, Mink said she "had to find a useful way" to utilize her college background. She turned to politics—and at a time Hawaii was experiencing drastic changes in areas from taxation to health to social reform.

Mink threw herself into the causes, became involved with the Young Democrats of Hawaii, worked her way to Congress and after suffering a loss in a Senate race, was appointed by Carter to her present position.

"It has been an interesting experience," she said, "but I don't want to relate the feeling of its being unique. Anyone in Hawaii at the time could've done it. It continues to be the same challenge for young people."

The duties she now assumes as assistant secretary of state might have seemed monumental to

## First nominee for JACL pres. named

SAN FRANCISCO—Clifford I. Uyeda, 61, a retired pediatrician who is now chairing the National JACL Reparation Committee, has signed nomination papers to run for the National JACL president in July, the Northern California-Western Nevada District regional office announced this past week.

Dr. Uyeda has served on San Francisco JACL board for a number of years and spearheaded efforts on the whale issue and presidential pardon for Iva Toguri. He was cited as the JACLer of the Biennium at the Sacramento 1976 convention.

Mink when she was still growing up among sugar plantations in a small village on Maui.

But today, fully acclimated to the routine of political life, she maintains that a remote background has nothing to do with the contributions a person can make. "It's how you feel and what things that inspire you that count."

Her largest responsibilities fall under scientific affairs, where technological issues must be smoothed out among foreign countries. Carter's policy on non-proliferation in the nuclear arena, also is one of the major concerns. For the policy to succeed, Mink said she believes the U.S. must set the example in curtailing nuclear weaponry and try to find alternate energy sources.

The whole concept of international environment, another concern, has been redefined under the Carter Administration. Rather than presenting a "negative kind of concept of just preventing pollution," environment has been described as the total condition people find themselves in.

Continued on Page 6

## Hike Yego seeks another term as constable in Loomis

LOOMIS, Calif.—Coming as no surprise to voters here, Constable Hike M. Yego for the Loomis Judicial District this past week announced his decision to seek re-election in the June primaries.

In a rare achievement for a first bid to public office, Yego with a 52% plurality outpolled four other candidates in the June 1972 primaries to win. The Placer County board of supervisors, following the election, appointed the first Nisei con-

stable in the U.S. to complete the unexpired term of the late Percy Lanouette.

A founding member of the Placer County JACL, Yego is also serving his fourth term on the county alcoholism advisory board, a member of the State Judges, Marshals and Constables Assn., and completed the police officers training course as mandated by the State penal code.

Citing ever growing population of his district, particularly in the Loomis Basin, which has added greatly to the diversity of its residence in recent years, Yego is of the opinion the post of constable requires a person with a good working knowledge of the area's constituency. Also, a compassionate understanding of their hopes and aspirations, including the variables in their life style, adds Kay Miyamura, his campaign manager.

In this respect, the Nisei constable expressed confidence that the valuable experience he gained during

Continued on Page 8

## Judge Tak Takei faces election

SAN JOSE, Calif.—Attorney David Lull, 54, announced his candidacy last week for the Santa Clara County superior court seat currently held by Judge Taketsugu Takei, who was appointed by Gov. Brown in July, 1976, to the bench.

Lull said his opponent "has not lived up to the level of judicial competency that our community deserves." The non-partisan election for the seat is to be on the June primary ballot.

## Beware: Check Your Label

All PC subscribers now can notice their expiration date on the address label (on back page). Dates are either typewritten or hand-written. Effective 1978, our address lister will be instructed "to kill" readers whose subscriptions have expired. For example: address cards marked 1/78 were dropped on Feb. 3; those marked 2/78 will be around from March 3.

(79 indicates subscription has been extended to same month in 1979.)

Realizing the time involved in JACL membership renewal process, the PC will honor phone calls, postcards or letters of "intent to renew" from subscribers or chapters to assure against any disruption of subscription service.—2-10-77

## PC PROFILE:

### Appointed in August, Iseri seeks full term in city council



Businessman George Iseri so far has liked learning about city government since his appointment to the Ontario (Ore.) City Council last August.

Now, he's hoping that local residents let him continue his political education when he runs for city council election in May.

"I hope the voters will give me a chance to do really something for the community," he said. "I've only had a year to serve. That's not really enough to learn everything. I'm hoping for another chance, and," he added

optimistically, "I think the people will give it to me."

Iseri, an authorized JACL travel agent, was appointed to the council when the body's lone councilwoman, Ramona Swan, resigned.

Since then, he's enjoyed his brief stay in office and has encountered and dealt with substantial issues.

"One of our biggest problems was the domestic water problem. There was not enough storage for our side of town and we had a drought.

"We used a lot of water, so that meant less water supply. That's our biggest project now. Fortunately, we're having a nice wet winter."

Things are not so dire elsewhere in Treasure Valley—as far as Iseri's concerned. Ontario, the home of 8,000 people, is growing and rapidly becoming the hub of the valley's shopping area.

"We're primarily a farming area—a desert with water. And I think we have the most beautiful, most productive farming area in the world. And I've traveled all over," he said.

About 2,000 Japanese American families live in the Treasure Valley area, with 80-90% of them being successful farmers, Iseri said.

He, however, has successfully entered the business world, running two travel agencies, a fire and casualty insurance company, real estate office and Hertz rental car company.

Iseri and his wife, Dixie, have two sons and a daughter who all help out in the family businesses.

—Pat Tashima

## Inagaki Prize deadline set for chapter of biennium

SAN FRANCISCO, Calif. — Deadline for applying for the George J. Inagaki Chapter Citizenship Award, presented biennially to the chapter with the best citizenship programs, is June 1, 1978, National JACL Headquarters announced.

A \$500 prize will be awarded to the winning chapter at the 25th Biennial Convention in Salt Lake City, with an additional \$100 going to the chapter's district council. Two honorable mentions will also be presented.

Chapters wishing to compete should submit one copy of the Inagaki Award Application form and Citizenship Activity Reports form describing up to five programs or activities during 1976-77.

Applications are obtainable from national headquarters.

The Citizenship Activity Reports should be concise and in summary form. News clippings, scrap books and photographs should not be submitted. Selection will be

based on program objectives, the degree of participation (within the context of chapter's situation) and program effectiveness.

The Inagaki Prize was established to acknowledge his many years of dedicated service and outstanding JACL leadership. In keeping with the longtime JACLer's personal commitment to the betterment of society, the award is intended to stimulate chapter participation on the social, civic and educational issues of the day at the community, city, state and national levels.

Some of the areas recognized in the past include: health care education, drug abuse prevention, voter registration, fair housing and employment enforcement, environmental protection and human relations development.

The top honor in 1976 went to the Salt Lake JACL.

This year's participants should submit applications to National Headquarters.



Fresno JAYS pose with Sen. S.I. Hayakawa before he addressed the annual JACL district convention Nov. 13 in Fresno. They are (from left) Neal Taniguchi, district rep; Adair Takikawa, pres.; Senator Hayakawa; Stan Morita, sec.; Janel Urushima, publicity; and Victor Hsu, vice pres.

## 'EO 9066' photo display donated to Nat'l JACL

SAN FRANCISCO—The California Historical Society has presented its traveling exhibit "Executive Order 9066" to the Japanese American Citizens League.

The nationally renowned exhibit depicts the Evacuation and incarceration of Japanese Americans during World War II with stunning photographs and helped to make public the courage, suffering and mistreatment of Japanese Americans and the denial of their constitutional rights.

The exhibition first opened in Washington, D.C., in 1972 at the Concoran Gallery on the occasion of the National JACL convention.

In presenting the exhibit, Dr. J.S. Holliday, executive director of the California Historical Society, commented,

"We are giving you this complete set of our nationally renowned exhibition because we want to support

your work and we know that the exhibit will reach a continuing and large audience through your national organization . . . together we have made this exhibit a national experience, and I am sure that it will continue to influence American thinking."

The National JACL expressed its gratitude for the time and effort placed into this exhibition by the California Historical Society and hopes to use "Executive Order 9066" to its fullest potential as expressed by Dr. Holliday.

## Intermountain Dist. to meet

SALT LAKE CITY, Utah — The first Intermountain District Council quarterly session will be held on Saturday, Feb. 25, 1 p.m., at Little America Motel—site of the 1978 National JACL Convention.

Gov. John Tameno of Vale, Ore., announced the agenda that begins with a joint session with the Intermountain District Youth Council to discuss youth funds and hear reports from the IDC youth commissioners and DYC leadership. Welcome to the afternoon session will be extended by host chapter president Jimi Mitsunaga.

It is expected that matters to be presented at the national convention will be drafted. Reports are expected by various committees along with approval of a district budget.

## Annual credit union meeting set Feb. 25

SALT LAKE CITY—The annual National JACL Credit Union dinner-dance will be held at Little America Motel, 5th South and Main, on Saturday, Feb. 25, 7 p.m. with a brief business session to be called after the prime rib dinner.

Up for election to the credit union board are incumbent Ichiro Doi, Nobuo Iwamoto and Min Matsumori. Further nominations will be accepted up to 48 hours prior by committee chairman Saige Aramaki (467-3048). Dinner will be \$9 for C.U. members and \$15 for all others.

**Jobs for Filipinos**  
SACRAMENTO, Calif.—A bill that would improve employment opportunities for persons of Filipino ancestry was passed last week by the State Senate. According to Sen. David Roberti, the bill's sponsor, the measure directs cities and counties with at least 25,000 persons of Filipino ancestry to compile records on the number of Filipinos employed.

## Classified

### • Employment

Japanese American Citizens League Offers Employment As:

### Washington Representative

Monthly Salary \$14,000-\$18,000 Annually (Negotiable).

**The Position**  
The Washington Representative is under the direct supervision of the National Executive Director. Duties include but are not limited to working with legislative staff, the federal government and civil rights organizations. Aids and keeps National Director informed of federal and legislative matters and helps National Director carry out National JACL programs. The Washington Representative will also communicate posture/position of JACL on statutory or regulatory issues of importance to JACL/Japanese Americans to legislative staff as well as federal government and other national organizations. Will in consultation with the National Executive Director give testimony at Congressional hearings on issues of importance to JACL/Japanese Americans.

**Minimum Qualifications**  
Graduation from an accredited college or university with a major in behavioral or social science or related field; or work experience in equivalent areas.

Possess knowledge of Japanese Americans, JACL and an appreciation of the ethnic heritage of all minority groups.

Knowledge of the political process and how it relates to minority groups. Knowledge of fundraising and proposal writing.

**SUBMIT RESUME TO:**  
Personnel  
JACL National Headquarters  
Masao W. Satow Building  
1765 Sutter Street  
San Francisco, CA 94115

**The Examination**  
Oral - 100%  
**Final Filing Date**  
Feb. 17, 1978 - 5 p.m. (PST)

Japanese American Citizens League Offers Employment As

### Travel Coordinator

**Location:**  
National JACL Headquarters,  
1765 Sutter St., San Francisco 94115

**Duties:**  
Coordinates National JACL-sponsored flights and tours in cooperation with airlines, travel agents and local chapter administered.

**Qualifications:**  
College or some work experience in travel preferable.

**Special Requirements:**  
Some evening and weekend work. Motor vehicle license.

**Salary:**  
\$754-931  
(Negotiable)

**SUBMIT RESUME TO:** Personnel,  
JACL Headquarters, 1765 Sutter St.,  
San Francisco, Ca 94115.

PC Classified Rate is 10 cents per word. \$3 minimum per insertion. 3% discount if same copy for four times. Payment with order unless prior credit is established with our PC Office.

### • Employment

**PRECISION MACHINE** shop—3 positions open. Must be fast and accurate. English speaking. Salary open. Jig Bore Operator, Machinist, Estimator. 6219 S. Western Ave., L.A. day (213) 750-6883, eve (213) 378-8985.

**MACHINIST NIGHTS ONLY**—Jig bore horiz. boring mill. Class "A" Exp., Lucas-de Vlieg—P & W Overtime, Permanent, many benefits, we welcome women & minority applicants. Ray Drascich 213/227-8888, apply before 11 a.m. STADCO Standard Tool & Die Co., 1931 N. Broadway, LA 90031. Equal Opportunity Employer, M/F/H

**NEEDED:** One Data Processing conversion translator from Japanese to English. O S system. Urgent! Other assignments available. Long and short term. VOLT TEMPORARY SERVICES, Outstanding Leaders in Temporaries, 4825 Torrance Blvd., Torrance 90503—370-5603

### • Real Estate

**ANAHEIM**—15,000 sq. ft. retail space now leasing SEC Beach & Ball. 2nd busiest corner in Anaheim. Special concessions made on leases signed before ground breaking approx 2/15. Bob Moosmann, Charles Dunn Co., Realtors (714) 833-8800.

### Panoramic View

from every room in this

## Monterey Park Hills

home. 4 bedrooms, 3 baths, fully air-cond.-forced air climate control; marble kit. & bath counter tops; marble windowsills and thresholds; imported hand-painted Ital. cer tile; 25 ft. cathedral ceiling; lg. family room; wet bar, marble fireplace; lg. patio & balcony areas; many extras.

\$210,000

**Open house**  
Sat. & Sun. 10-4  
**700 RODMAN CIRCLE**  
or by appt. 288-9045  
Nts. & wknds  
799-8409 or 282-8920

### • Rental—Gardena

**FURNISHED ONE BR**, \$210; furnished sgl \$175; unfurnished 1 BR \$195 w/stove & refig, heated pool, patio, security. 13605 So. Vermont Ave., Gda. Call (213) 329-1208, 532-3660

### • Announcement

\$3 PAID for any old \$2 bill. Cho Cho Co., 207 S. Broadway, Suite B-3, Los Angeles, Ca 90012



**312 E. 1st St., Room 202**  
Los Angeles, Calif.  
NEW OPENINGS DAILY  
624-2821

### CHIYO'S

Japanese Bunka Needlecraft  
文化刺繍  
WHOLESALE - RETAIL  
Bunka Kits - Framing - Aoi K mekomi Doll Kits  
Nipponi Doll Kits - Mail Orders Welcome  
Lessons - Instructor's Certificate  
2943 W. Ball Rd.  
Anaheim, Calif. 92804  
(714) 995-2432  
Open Daily 10-5. Friday to 8  
Closed Sunday, Tuesday

### Aloha Plumbing

LIC. #201875  
PARTS & SUPPLIES  
—Repairs Our Specialty—  
1948 S. Grand, Los Angeles  
Phone: 749-4371

### ED SATO

PLUMBING AND HEATING  
Remodel and Repairs  
Water Heaters, Garbage Disposals  
Furnaces  
Servicing Los Angeles  
293-7000 733-0557



One of the Largest Selections  
2421 W. Jefferson, L.A.  
731-2121  
JOHN TY SAITO & ASSOCIATES

### MARUKYO Kimono Store

New Otani Hotel & Garden—Arcade 11  
110 S. Los Angeles  
Los Angeles  
628-4369

### Mikawaya

Sweet Shop  
244 E. 1st St.  
Los Angeles MA 8-4935

Complete Home Furnishings  
**Koby's Appliances**  
15120 S. Western Ave.  
Gardena 324-6444, 321-2123

### Nisei Trading

Appliances - TV - Furniture  
NEW ADDRESS:  
249 S. San Pedro St.  
Los Angeles, Calif. 90012  
Tel.: 624-6601

### 'Cherry Brand'

MUTUAL SUPPLY CO.  
1090 Sansome St.  
San Francisco, Calif.

### TOYO Myatake STUDIO

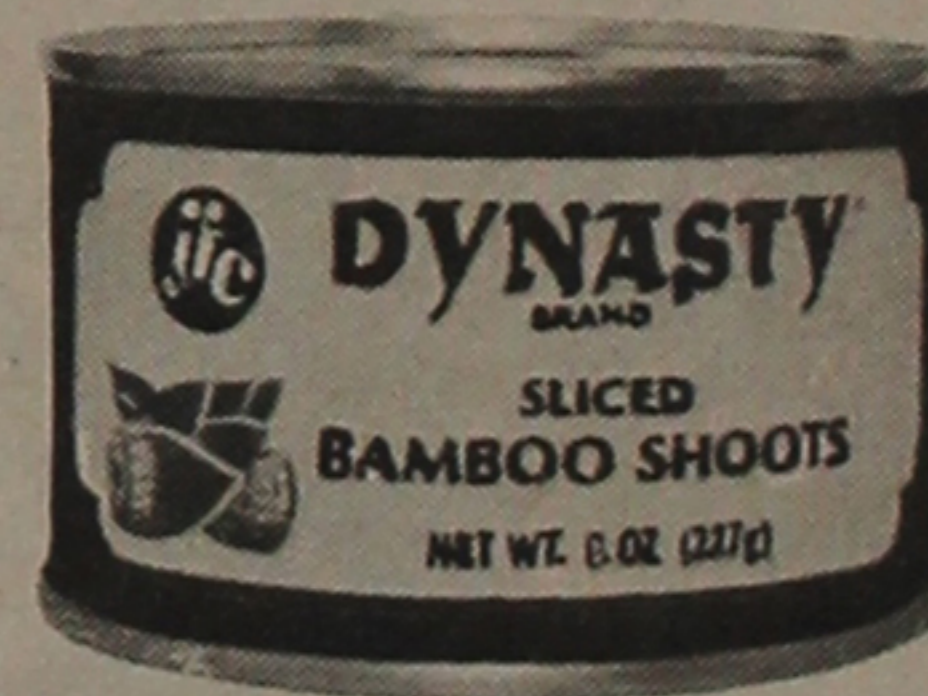
318 East First Street  
Los Angeles, Calif. 90012  
626-5681

**Kimura**  
PHOTOMART  
Cameras & Photographic Supplies  
316 E. 2nd St., Los Angeles  
622-3968

## Empire Printing Co.

COMMERCIAL and SOCIAL PRINTING  
English and Japanese

114 Weller St., Los Angeles 90012 628-7060



### DYNASTY Brand BAMBOO SHOOTS

Dynasty Sliced Bamboo Shoots are crunchy and delicious in many Oriental recipes. Add them to vegetables and combine with meat, seafood or poultry in stir-fry dishes for a pleasant crunchy texture. They'll even pick up the flavor of seasonings and sauces. Your favorite salads will become something special with Dynasty Sliced Bamboo Shoots too . . . try them today.

### japan food corporation

MAIN OFFICE  
445 Kauffman Court, South San Francisco, Calif. 94080  
Branches: Los Angeles, San Diego, Sacramento, Chicago,  
New York, Baltimore, Houston



Washington D.C. JACL member Fred K. Murakami was awarded the National Science Foundation's Meritorious Service Award for his "outstanding leadership and significant contribution to the management of administrative operations" within the organization. Murakami has been with NSF since 1969, serving in top management positions, first as Director of Management Analysis and then Director of Personnel and Management. Presentation was made by NSF Director Richard Atkinson.

## pc's people

### ● The Arts

Jeff Ishikawa and Jeff Inouye, both of Cupertino High School, won \$100 awards from Fidelity Savings in the Art Scholarship Calendar Program. Ishikawa was also presented a summer scholarship to the San Francisco Academy of Art. From hundreds of entries, 13 drawings made it to Fidelity's appointment calendar. Ishikawa's pen and ink drawing of the Bridge of Friendship in the Japanese Friendship Garden of San Jose is on the cover. Inouye's picture was of the Landrum House in Santa Clara ... Sachiko Takaki of Pueblo, Colo. won first prize in the oils and mixed media division at the 17th annual Collector's Mart at the Jewish Community Center. Prize winning paintings were sold at the show.

Actor Jack Soo, a detective on the "Barney Miller" television series, was in good spirits following the removal of a malignant tumor from his esophagus. The actor changed his name from Suzuki to Soo prior to World War II and first landed jobs as a Chinatown nightclub entertainer. He and his family were interned at Topaz, Utah. Soo, a onetime straightman for Joey Bishop, played Sammy Fong in the Broadway production of "Flower Drum Song".

Mark Iwanaga of Reedley High, a drummer, was selected for the third year to the California All-State Band. He was also recently chosen for the McDonald's High School All-Star band and performed in the Macy's Thanksgiving Day parade in New York and Tournament of Roses parade in Pasadena.

### ● Business

Steven T. Okamoto has earned the National Quality Award by the National Assn. of Life Underwriters and the Life Insurance Agency Management Assn. Okamoto is a member of the San Francisco JACL ... Shigeo Yamada, 51, was elected director of California First Bank, replacing Seiichi Ohka, general manager of the Bank of Tokyo's San Francisco agency. Ohka was reassigned to Japan.

Henry Masuda, 78, owner of the Fresno landmark Yosemite Nursery, has sold the establishment to developers. He operated the nursery over 31 years on Blackstone Ave., while other businesses sold or fled to the suburbs. For years he was the largest volume retail dealer in the area. Construction of a restaurant and office complex is tentatively scheduled to begin on the five acres of property.



Ben T. Seo

Ben T. Seo was appointed controller of the newly-formed Aerojet Services Co., Sacramento. Prior to joining Aerojet in 1969, Seo was accountant/auditor for the Franchise Tax Board and private CPA firms in Sacramento and San Francisco. He is a graduate of Placer Union High School and holds a BA in business administration from Golden Gate University.

Harry Yamamoto will head the So. Calif. Schlitz Beer Wholesalers Assn. this year. President of Towne Distributing Co. of L.A., the Downtown JACler has been in the beer business 30 years. An active Boy Scout leader, he has received the Order of Merit from the Sierra Trails District and is a past commander of the Commodore Perry American Legion Post 525. His business partners are Ronnie Sugiyama and Kaz Furuto ... Wayne T. Adachi, of Mountain View, Calif., was promoted to branch manager of the San Jose branch of San Jose Production Credit Assn. A 1971 graduate of UCLA, Wayne holds a BA in public service and is working on his masters in business administration at Santa Clara University.

### ● Education

June Mei, Nobuya Tsuchida and Lucie Hirata presented papers at UCLA's second "Asian American Labor History Conference" recently. Mei, a UCLA history lecturer, spoke on "The Class Structure of 19th Century Chinatown; Tsuchida, research assistant of UCLA's Asian American Studies Center, focused on "Japanese Gardeners" and Hirata, a UCLA sociology professor, on "Free, enslaved and indentured workers in 19th century America: The case of Chinese prostitution." Conference was sponsored by Asian American Studies Center.

Continued on Back Page

# The Mitsubishi Bank of California



Member FDIC

Little Tokyo Office  
321 East Second St., Los Angeles, Calif. 90012  
(213) 680-2650

## A Message of Appreciation on our Silver Anniversary.



In the month of February, our bank will celebrate its first 25 years of service. This very special occasion marks a quarter century of extraordinary growth from Sumitomo's San Francisco and Los Angeles offices in 1953, to its present 43 offices throughout California. But most important, it serves to spotlight the bank's growing number of friends and customers, without whom this 25th Anniversary would not be taking place. To all of you, Sumitomo expresses its sincere gratitude... and the promise of continuing service built on centuries of tradition.

*The Sumitomo Bank of California*

Member FDIC

## CONSOLIDATE.



Lower your monthly payments with our consolidation loan.

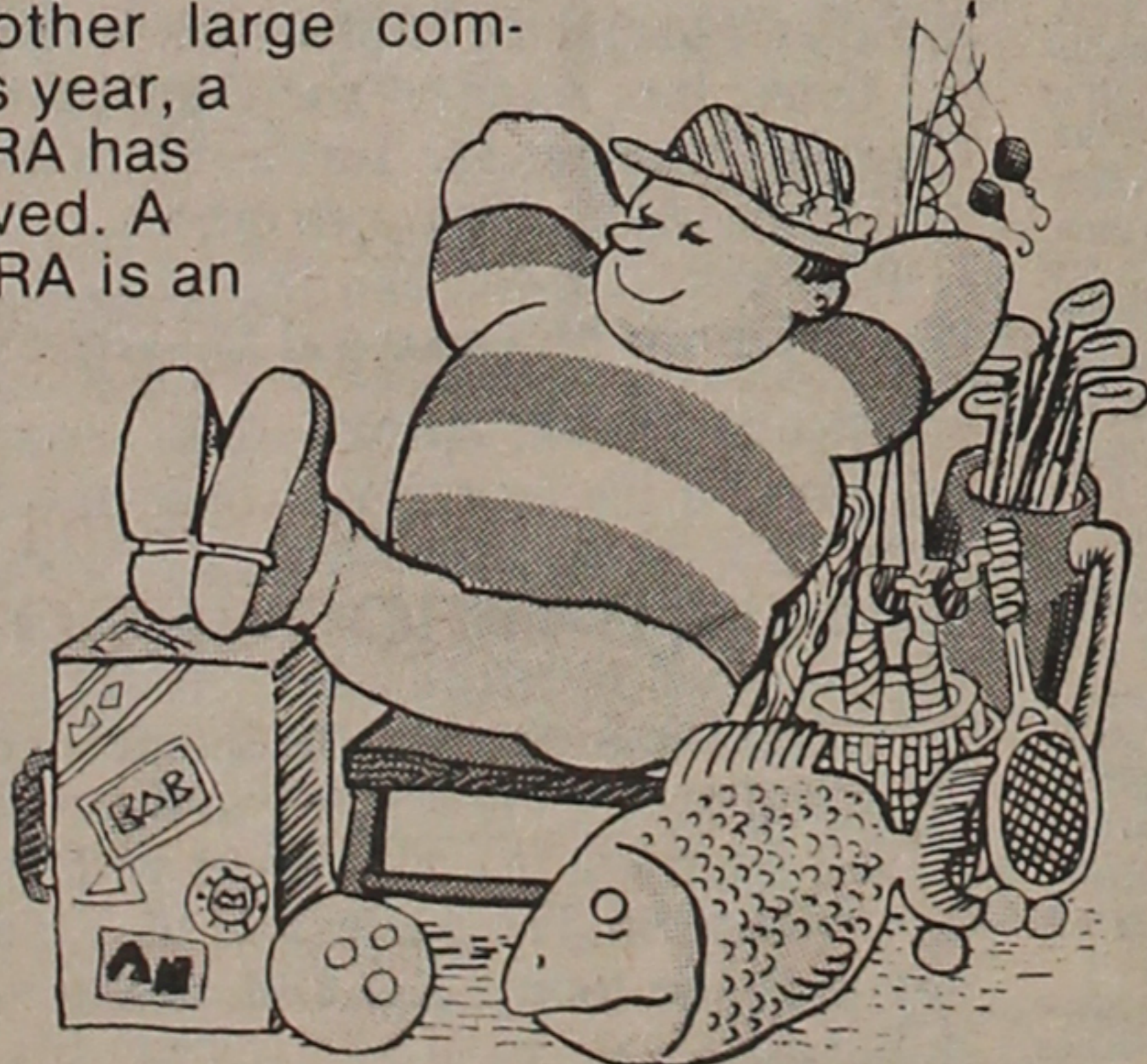
### National JACL Credit Union

PO Box 1721 Borrow up to \$3000  
Salt Lake City, Utah 84110 on your signature  
Telephone (801) 355-8040 to qualified borrowers.

## YEAR END TAX PLANNING IRA and KEOGH

### PLANS FOR BOTH INDIVIDUALS AND SELF-EMPLOYED

If you work for someone and are not covered by a qualified retirement plan — or are self-employed Merit Savings has a plan to help you retire with greater financial independence taking full advantage of tax benefits enjoyed by corporations and other large companies. This year, a SPOUSES IRA has been approved. A SPOUSES IRA is an alternative account which an employed IRA participant can establish for a non-employed



spouse, who has received no wages during the year. Generally, two separate IRA accounts are maintained. Contributions up to \$1,750 or 15% of the working spouse's compensation, whichever is less, are permitted. The amount contributed should be equally divided between your account and that of your spouse. For example, a contribution of \$1,750 would require that \$875 be deposited to each account.

IRAとは勤めている方で現在加入されていない個人が年間収入の15%又は\$1,500.00のいずれか少ない方の金額を積立てることができる退職年金制度です。又、このプランは税金控除になるという特典があり配偶者でも加入することが出来ます。詳しいことは各支店で御問い合わせ下さい。

Let us help you plan for tomorrow. Please call Merit Savings Retirement Dept.

**MERIT SAVINGS AND LOAN ASSOCIATION**  
MAIN OFFICE (213) 624-7434 · TORRANCE (213) 327-9301 · MONTEREY PARK (213) 266-3011

## "Many of the customers I meet are advanced in years..."

"When I see their smiling faces, I feel respect for them. And I try my very best to make their banking experience with California First the most pleasant of all."

Carol Yamato is a teller at California First. She is one of 3,500 employees who take a special pride in their work. Because we are proud to be your bank.

California First, the former Bank of Tokyo of California, is now a statewide bank with over 100 offices.

**CALIFORNIA  
1ST  
FIRST BANK**  
Member FDIC



Meet the people at California First.

YE EDITOR'S DESK: Harry K. Honda

## Beware: Check Your Label

A front page notice, "Beware: Check Your Label", appeared two months ago, Dec. 8 to be exact. It probably intimidated some unexpectedly. JAACL or PC has never acted this way before. We said, "Effective 1978, our address lister will be instructed to kill (the labels of) readers whose subscriptions have expired."

A number of chapters and individuals took heed, informing us of their intention to renew and thus assuring themselves against disruption of subscription service.

Our main concern for publishing that notice was simply economic. The cost of presswork, postage and mailing services, we identify as "cost per copy", has been gradually rising over the years. For FY 1977 ending Sept. 30, cost per copy averaged 8.75 cents and for 1978 we estimated it would be 10.5 cents.

Other fixed costs, such as editorial, typesetting and general office, are rendered as "cost per inch" which, for FY 1977, was \$1.075 or roughly \$90 a page to produce. To meet that, we need at least 25 columns of ads (at \$4 per column inch). For eight pages then, we need at least 200 column inches (30%) per issue, another 100 column inches for each additional set of four pages.

Significance of the estimated 10.5 cents cost per

copy is impressive when the big picture is made evident by statistics we have from the PC Renewal Campaign—which circulation manager Yuki Kamayatsu (now on sick leave) began in 1966. The chapters receive a list of delinquent members, based upon our subscription records. Chapters were allowed 30 days to verify the list. If delinquents were not rejoining we then solicited them to continue as non-member subscribers. Generally, about five months would pass before a delinquent subscriber was finally cut off.

Average of the past three years (1972-77) shows we have about 3,000 delinquents a year. Of that number, about 2,300 (80%) do not care to renew and 150 come back as non-member subscribers, fortunately enough to cover our actual solicitation expenses. Delinquents held on for five months and not renewing translates into dollars lost. Here's what our scratch pad shows:

$2,300 \times 10.5¢ = \$241.50$  per week;  $\$241.50 \times 5$  months (20 weeks) =  $\$4,830$  for 1978.

By immediate cut-off, there are further savings with less pressrun and postage costs, which came to about 6 cents per copy or \$138 a week for 20 weeks or \$2,760 at the 1977 rates. So the total saved by timely cut-off involves \$7,590 for 1978

—a nice bundle we hated to see burn away in smoke. That can easily cover the rental and supplies of the Cheshire-Xerox S-730 Address Lister, which can automatically skip labels of expired subscribers.

The address lister was acquired a year ago because of the mounting cost of producing labels via metal plates. The "mark-up" process was tedious and required additional help this past October-December to complete—thus enabling us to automatically skip or selectively print labels by chapter for their particular needs. We are happy to say that chapters are starting to make use of this new service.

It was a historic but unwelcome day in the PC office two Fridays ago when our address lister was programmed to automatically skip labels coded "Jan/78". Of the approximate run of 23,000 cards, 850 (3.7%) were skipped. All memberships received from Headquarters through Feb. 1 were processed before the cards were put through the lister.

A hustling membership committee might rightfully question our procedure. Midwest chapters this winter have been seriously hampered by the blizzard in organizing their renewal campaign. Many chapters

are waiting for new officers to take over. Other problems common to volunteer organizations can paralyze the best of intentions.

We continue to hear of proposals wanting National Headquarters to take over the renewal process, but this centralization without a computer to differentiate the varying amounts in chapter dues could be an administrative debacle. It may be possible, however, here through the PC Office without tying into an outside computer. The chapter code is already on the label. We occasionally publish a list of chapters with its dues and the name of membership people that members can refer to send in renewals. Or this list can be included as part of the membership renewal letter. A special mailing with the letter and a return envelope addressed to National can be dispatched using PC labels.

To insure a complete listing, PC is now adding names of members who do not want PC. These will be printed when the chapter needs a complete set of their labels.

Furthermore, by coinciding PC subscription and JAACL membership expirations together, some of the present confusion over expiration dates can be reduced. This system is used to start 1000 Clubbers.

A nice thing about our address lister is that it does not discriminate on account of race, color, creed, age or sex. When a subscriber's time has come, the lister skips that label automatically. □



Jim Murakami

## President Jim Says

### STATE OF AFFAIRS OF JAACL

The present state of affairs with JAACL overall is coming around in excellent shape. The original directive of putting the house in order which was given in June of 1977 to Karl Nobuyuki, National Director of JAACL, is being accomplished well. I can report that the three branches of service of the National JAACL that Karl has identified as Administrative, General Services and Program have been implemented and are working well to track the multitude of functions and responsibilities that are required of the Headquarters Staff.

During January, the first staff workshop since 1975 has held at the National Headquarters and included Regional Directors and personnel as well as the PC staff. Majority of the present staff is all relatively new to the JAACL, necessitating the workshop to exchange ideas and to mutually understand the responsibilities of each of the staff entities.

Fiscally and interrelationally, the increase in JAACL membership is equal historically to that which has been realized in the past bienniums. As reported in the PC, the JAACL's membership now stands at 31,484.

The status of the program priorities adopted by the National Council is progressing probably not in accordance with the expectations of some, but nonetheless they are on the move and not standing totally still as implied.

**REPARATION**—Mike Honda who was appointed chairman of the Reparation Committee in February, 1977, consolidated and summarized the surveys, questionnaires, etc., which had been undertaken in six of the eight Districts of JAACL. This summary, which is essential for a data base for the program and an ultimate legislation bill, was of necessity required before any campaign could proceed on a firm basis.

At the September 1977 meeting, the EXECOM had directed that each District Council submit to the National Board (it will meet Mar. 10-12) a Reparation Plan which was approved by their respective Chapters. These then are to be considered by the Board, followed by recommendations as to a plan or plans for consideration and approval by the National Council.

Dr. Clifford Uyeda of San Francisco was appointed chairman of a new Reparation Committee to clarify the issue of reparation, then to submit concrete alternative plans to Japanese Americans for review and comments. The goal is the development of a single realistic proposal which has wide support not only from Japanese Americans, but other Americans as well. This educational phase is anticipated to be complete by the National Convention in Salt Lake City in July of this year.

If the National Council can concur to a single plan, the next phase will be to push for its passage by the Congress of the United States.

**YOUTH**—As the JAACL Youth Director, Rich Okabe, formerly of Chicago, is providing staff responsibilities to the youth program including among others the JAYs, PCYA, JAACL-JAL Cultural Heritage, National JAACL Scholarship and the Student Aid programs. It should also be noted that some of the Districts have utilized their District Funding for furthering Youth Programs and activities within their own areas.

It is also notable that new JAY Chapters are being started in the Midwest and NC-WN Districts.

**DISTRICT FUNDING**—This concept, which was adopted for the first time in Sacramento was a means of providing monies for District Programs from the National JAACL budget. All Districts that have requested funds have received their requested amounts. The EXECOM has revised the guidelines to expedite the approval process necessary in the request for funds.

The approval is now vested with the National President, National Treasurer and the National Director instead of the total EXECOM as the original guidelines delineated.

There have been problems which have arisen as a result of the new concept, such as the unwieldy approval process method, the non-coincidence of the National with some of the District's fiscal year and the lack of monies to run some of the programs as desired by the Districts.

We do need to closely examine the concept and look to ways to improve the methodology if possible. Because there were some problems with the concept during the biennium should not be sufficient reason to abandon the concept for something different which may be no better

## PC Letterbox

### U.S.-Japan Trade

Editor:

Bill Hosokawa's article (PC Holiday Issue) on U.S.-Japan trade is a timely warning on the touchy problem between two nations; the problem is also bound to have unpleasant implications to us, Japanese Americans. We can do much to prevent a possible rise of anti-Japanese propaganda of the '30s.

First of all the trade imbalance can be easily solved by allowing Japanese to buy what they need. Although I have nothing against selling more beef and fruits, it is not a solution. Japanese are well-fed and somewhat overweight like us. Their market is flooded with high quality fruits, which I wish we could buy here.

What they need are staple food, raw materials and energy. Several years ago we were selling millions of bushels of grain to USSR at discount. In consternation the Japanese realized the danger of relying on a single source of supply. They now have alternate sources.

More than ten years ago, exports of pulp and lumber were put on the voluntary restriction. Japanese have since developed synthetic paper and are extensively utilizing plastics in housing.

But above all Japanese need oil, which is a source of energy as well as the raw material for food packaging, clothing, shelter and for other modern necessities. There was a talk of selling our Alaskan oil to Japan and our buying more from Middle East.

This was considered to be in our favor, because transporting the oil from Alaska to the middle U.S. is an expensive proposition. But, the talk faded away quickly. If this is done, the trade imbalance will be solved easily. Why don't (we) do it? Would it reveal a real nature of our economic problem, which is not Japan at all. The value of dollar is going down because of our excessive import of oil from Middle East. So, Japan is made a scapegoat.

The closing of Youngstown Steel is blamed in the importation of Japanese steel. Yet, steel is coming from western Europe, Brazil and even from eastern Europe. Again, Japan is made a scapegoat. The cause of failure was a mismanagement; a long neglect of modernization, which is estimated to cost \$180 million. For those who mismanaged the corporation, it is a handy excuse to make Japan a scapegoat.

Immediately after the failure of Youngstown Steel, there was a talk of getting Japanese help. This was stopped by Washington. Why? We subscribe to the free enterprise system. If Japanese have a better know-how, why don't we let them manage the mill? This will enable to employ workers, keep town's economy going and get some of the dollars back. There are many large corporations in the U.S. which are owned and operated by Belgian, English, Dutch, German and Swiss. Why not Japanese?

Many 1973 Fords rusted in certain parts of the body. It was blamed on "cheap" Japanese steel. Is this true?

My '74 Ford had also a part of body which rusted quickly. The dealer did not say it was a "cheap" Japanese steel nor a "cheap" steel made in the U.S. If indeed '73 Fords had "cheap" Japanese steel, I question Ford's purchase specification. Why didn't they buy a good quality Japanese steel? Again, people are making Japanese a scapegoat to cover up their failure.

Kodak tried to promote sales of their films by making anti-Japanese propaganda. Recently, anti-whalers blamed Japan for continuing its whaling. They were strangely silent about USSR and other European nations on their whaling. When Eskimos objected on the whaling ban, they didn't say anything. Yet, both Eskimo and Japanese are people of the Pacific.

Europeans, mostly English, who exhaustively hunted whales in Pacific are accusing Japanese. If the Euro-Americans are genuinely concerned with preserving whales in the Pacific, they can start making some compensation for the damage they have made. But, this has never been mentioned. Instead, they have a righteous attitude in blaming Japanese.

There are Christian ministers who habitually make Japanese a scapegoat in their sermons. What is frightening is their moralistic overtone.

Scapegoating is an emotional outlet; for those who do it, it does not make any difference whether it is directed upon Japanese or Japanese Americans. It does not matter whether it is directed at children or adults.

We can learn much from the experience of Jewish people in Europe. For centuries they were made a scapegoat. In Germany they were well integrated; there were no ghettos. There were many intermarriages. There were many prominent professionals. Yet, we all know what happened.

Although scapegoating is usually a careless emotional habit, its social and historical implications are frightening. Making Japanese a scapegoat is a widely spread habit of our society.

What we can do is, first, being alert to notice it and second, to uncover the source. Then, we can point out to the person that he is making an error.

Because most Americans are good-natured, they would readily recognize their mistakes. However,

there are people who try to cover it up and accuse you instead. Typically, they might say, "you are too sensitive; over-reacting, etc."

If people refuse to recognize their mistakes, the effective way to counter scapegoating is to make their names and ethnic background public.

NOBUYUKI NAKAJIMA  
Sheffield, Lake, Ohio

### Convention idea

Editor:

Wouldn't it be great if a "Salute to America" banquet was scheduled for the 1978 JAACL Biennial Convention, featuring outstanding Japanese Americans from all over the United States?

It would be a public acknowledgment of the tremendous blessings we have received since we emerged from the shadows of relocation centers three decades ago.

Clear proof of the good will of our fellow citizens is the large number of Japanese Americans who have reached positions of honor and distinction. JA's have been elected senators, congressmen, assemblymen, judges, mayors, councilmen, and city clerks. Our people have been appointed to influential positions in cities, counties and states. Our businessmen, professional men, and religious leaders are highly successful.

All chapters can participate in this project by forwarding to appropriate committees the names of noteworthy persons in their respective areas. The Gardena Valley JAACL, by itself, has a number of such personages including the first JA mayor, the first JA assemblyman, the first JA city clerk and many others, including outstanding Issei.

Isn't it time that we Japanese Americans proclaim to our friends and neighbors across the continent: "We are proud to be part of the greatest and the most humanitarian nation on earth! Thank you for being such wonderful people! We love you with all our hearts!"

MASARU ODOI  
Gardena, Calif.

*Logistics and expenses of such a salute would be just as "great". But the blessings would be greater if we could accomplish the same without the costs involved.—Ed.*



### PACIFIC CITIZEN

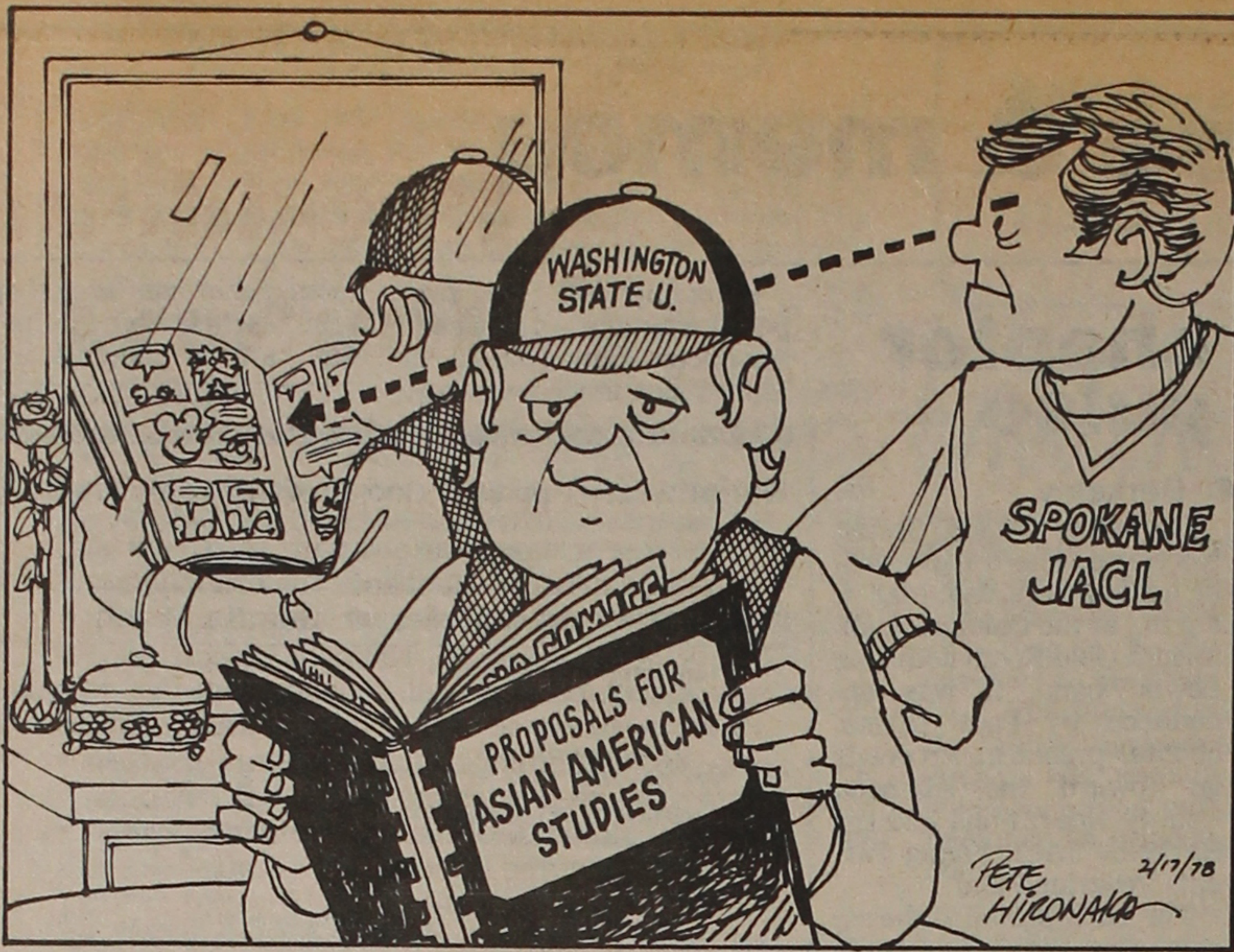
Published weekly except first and last weeks of the year at 355 E. First St., Los Angeles, Calif. 90012 (213-626-6936)

James Murakami, National JAACL President  
Alfred Hatate, PC Board Chairman  
Harry K. Honda, Editor

Second class postage paid at Los Angeles, Calif. Subscription rates payable in advance. U.S. \$9 year, foreign \$13 year. First Class available upon request. \$5 of JAACL membership dues for one year subscription through JAACL Headquarters, 1765 Sutter St., San Francisco, Calif. 94115 (415-921-JAACL)

News and opinions expressed by columnists, except JAACL staff writers, do not necessarily reflect JAACL policy.

ISSN: 0030-8579



U-NO BAR: Raymond S. Uno

## Zeroing In

Salt Lake City "Lead time" is an often-used term in many areas. Lead time is necessary to prepare for the undertaking of special, large-scale projects. It helps prepare the groundwork to successfully achieve a given assignment, event or experiment. For our National Convention, our lead time is quickly coming to a close. We must now zero in on what people have shown an interest in.

Our fund-raising projects are off to a good start. We are very optimistic that our convention booklet to every JACL household will be successful. It is an enormous and challenging affair, but a breakthrough to get the convention to the people.

Project Takara, also, is off the ground and sailing smoothly. It is a good way for chapters to raise funds to defray expenses of their delegates to the Convention. It can be done relatively easily and successfully. The Salt Lake Chapter has done this for almost every National Convention.

The convention site here, the Little America, is also near completion. The Utah State Bar Association had its mid-year meeting there and the accommodations were extremely good. When completed, I am sure it will meet with the expectations of our Convention Board. There is a very interesting story about the owner of Little America which I hope I will be able to relate in one of my articles. It has a Horatio Alger quality.

Our workshops are still in the planning and drawing board stage. We have had various suggestions from many people. We are trying to incorporate these into our planning. The Business-Employment workshop is not clearly defined as we would like. We felt it may be better to work on fewer workshops and concentrate on them more intensively than spread ourselves too thin and not be able to explore in-depth the subject matters we do undertake. This may necessitate the elimination

of the Business-Employment Workshop or incorporating it into one of the other workshops. Tomio Moriguchi of the Seattle Chapter has submitted material and suggestions that may assist in clarifying this issue.

The original concept of these workshops was to make the input national in scope since it will take place at a national convention. To some extent, this will take place; however, we still do need much, much more input from the various district councils. Northern California-Western Nevada District Council is on line to work on the Japan-U.S. Friendship Act. The Intermountain District Council will work on the Thousand Club Whing Ding. Dr. Min Masuda from the Pacific Northwest District Council is working on the Retirement or JA Family oriented workshop with input from Pat Okura of Eastern District Council. On all of these, our local committees will be assisting and coordinating with the various district councils.

The workshop on politics will come up with some novel ideas. We hope to make this one of the more interesting, informative and fruitful workshops on this topic ever. The Writer-Artists workshop has the problem of scope and may be narrowed down to a more selective format, yet, it will be novel and exciting.

The Pilgrimage-Reunion project will be a once-in-a-lifetime event. It will bring the past and present together and will blend with the various workshops because we were all, in one way or another, touched by the war and evacuation and the sundry happenings at the convention will be colored harmoniously by such experiences.

Our National officers have had a chance to meet the Convention Board and now can appreciate what we have been trying to do. They have been very helpful in giving us their input. We are now getting our act together and by convention time, we will have it all together. We will have "zeroed in" right on target.

### Candidates' night

LOS ANGELES—Japanese American Republicans candidates' night dinner (\$10) will be held Feb. 24, 7:30 p.m. at Sir Michael's in City of Commerce, chairman Sam Fujimoto announced. Candidates for the November election are being invited.

## 35 YEARS AGO —

### Feb. 11, 1943

Feb. 6—Police search for a "shabbily-dressed" man who invaded a Des Moines home and beat 18-year-old Fumi Mae Miyuki, a domestic, unconscious.

Feb. 7—Los Angeles area Chinese Girl Scouts send packages of scouting materials to Japanese American girl scouts interned at Heart Mountain.

Feb. 7—Acting on appeal from Sons of Utah Pioneers, Rep. Walter Granger (D-Utah) suggests to War Manpower Commission that evacuees be made available to farmers as "practical solution" for state's labor problem.

Feb. 11—Los Angeles attorney A.L. Wirin is appointed as JACL legal counsel by national secretary Mike Masaoka to represent JACL in Reagan vs. Native Sons case and Oshiro case.

### Home insurance

SACRAMENTO, Calif.—Assemblyman S. Floyd Mori (D-Pleasanton), said earlier this month that the extra \$5 tacked onto California homeowner's insurance premiums is an "absolutely ludicrous situation (and) unconstitutional." The extra money is to provide workers' compensation coverage for domestic employees. Mori sponsored Assembly Bill 2009 which would have permitted owners to waive the household workers' compensation in comprehensive personal liability insurance policies but the bill failed in committee.

Feb. 11—President Roosevelt, in a letter to Secretary of War Stimson, endorses the Army's new Japanese American combat team, declaring that the new volunteers will add to the "nearly 5,000 loyal Americans of Japanese ancestry who are already serving in the armed forces of our country."

### February 18, 1943

Feb. 11—Los Angeles Parlor No. 45 of the Native Sons of the Golden West protests formation of the Japanese American combat unit and asks Congress to nullify the War Department intent.

Feb. 12—In less than two weeks since military service is reinstated for Japanese Americans, more than 7,425 men volunteer from Hawaii, exceeding the call for 1,500.

Feb. 12—In Amache, Colo., Hiroshi "Horse" Tadakuma scales a 90-foot steel pole to rescue a stranded American flag. Afterwards, Tadakuma said, "... Glad to be of service to my country ..."

Feb. 18—Sgt. Ben Kuroki becomes the first Japanese American in combat on the European front as Army Air Force tailgunner.



FROM THE FRYING PAN: Bill Hosokawa

## Swastikas in Skokie

Denver, Colo.

I have no intention of reopening discussion about the Bakke case.

Everyone should know by now that this is a complaint by a white student of that name who charges that he was a victim of "reverse discrimination." He contends he was denied enrollment in the medical school at the University of California, Davis, because places had to be reserved for less qualified minority students. Even though many Japanese Americans here ruled against Bakke, the Supreme Court of the United States is agonizing over that one. The justices are paid handsome salaries to wrestle with such knotty problems, so let's see what they come up with.

However, it is necessary to mention the Bakke case by way of introducing the subject of today's essay, which is another excruciatingly difficult legal and moral issue that has direct implications for Japanese Americans.

It is the 6-to-1 decision of Illinois State Supreme Court judges that American Nazis dressed in Nazi uniforms emblazoned with swastikas must be permitted to march through Skokie, a predominantly Jewish suburb of Chicago where many survivors of Nazi concentration camps now live. The justices contend that the Nazi march is "a symbolic political speech" and freedom of speech must be protected.

Where do the Nisei, and their chief organization, JACL, stand on this one?

I would guess that to be consistent about civil rights the Nisei would have to agree that freedom of speech must be defended at all costs even though any movement that glorifies Hitler's racist death camps is loathsome.

But just for argument, let's concoct a purely hypothetical scenario in which the same principles are at issue, but which is much closer to us as Japanese Americans.

Let's say that there is a group of Japanese Americans somewhat comparable to

the Illinois Nazis, except that they glorify Japanese militarism. They dress in reasonable facsimiles of Japanese military uniforms, sport long samurai-type swords, and parade around carrying Japanese battle flags.

Let's say that these misguided nuts decide to hold a rally, shout banzais and march around in front of one of the U.S. naval installations in San Diego just at the time the "Survivors of Pearl Harbor" and the "Gold Star Families of Pearl Harbor" are holding their annual reunion. It's obvious that these Japanese Americans are hoping to provoke violence and get a lot of publicity on national television, and it seems quite likely they will succeed.

How would you react?

Would you stand up for the rights of these neo-fascists to free political expression, no matter how abhorrent?

Would you demand that this political rally, which undoubtedly would be damaging to all Japanese Americans, be suppressed?

If you believe in the right of political and ethnic minorities to demonstrate as an expression of their discontent—blacks, Hispanos, students, gays, farmers—would the fact that these imaginary demonstrators in San Diego are advocates of Japanese militarism alter your thinking?

If so, why?

Or would you be able to stand up and say: I abhor Japanese militarism as much as German Naziism, but I defend the right of these people to speak out even in the face of violent reaction that indirectly may injure a great many innocent people for a long time to come.

Up to now, the issue is only with the neo-Nazis in Skokie. But who is to say that our imaginary banzai march in San Diego will not take place?

If all this has discomfited you, it was intended to. It might do us good to test and analyze the strength and firmness of our convictions.

## Comments Received

§ We have survived. Be glad—and leave it at that. (Detroit)

§ Let bygones be bygones. Human suffering is a strengthening of self. (Female, age 55)

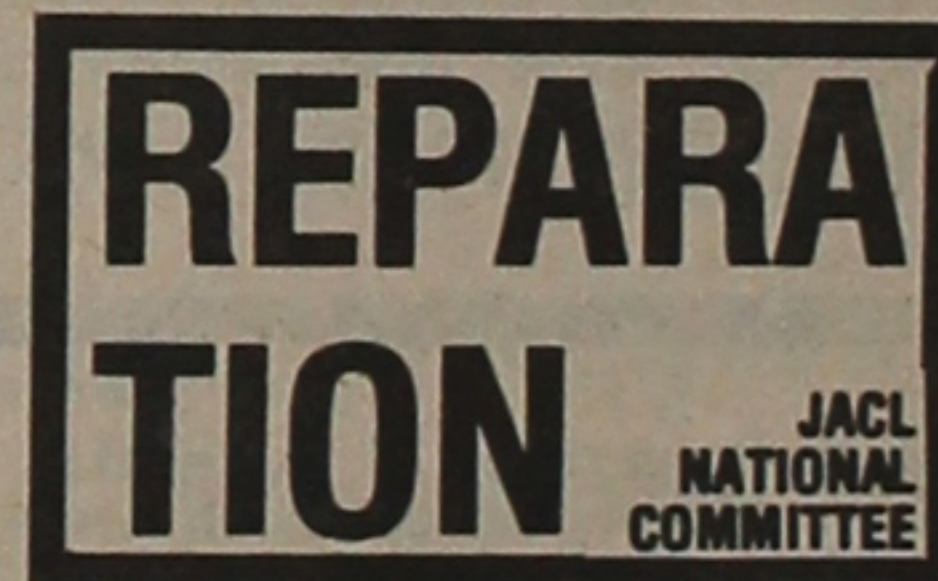
§ I hope I am not still licking my wounds. Let's look forward, not backward. (Midwest).

§ Americans will not face up to the enormity of the crime against the basic human and civil rights until reparations are made. (No. Calif.)

§ \$300 received from the Evacuation Claims Act of 1948 is not justice for 4 years in camp, plus all our farm losses, house, etc. (Male, 79)

§ Four years of economic void. Ten years of economic disruption. Had to start all over again from scratch—homeless and jobless with a family of four. (Male, 68)

PART 13



§ It is only *right* the wrong. No argument should be made about needing the money. (Male, Seattle)

§ I feel only money will awaken the American public to the wrong. (Female, 53 Sacramento, Calif.)

§ My wife was ill. There was no doctor, medicine or facilities. She died—without medical treatment whatsoever. (Male, 70)

§ How can reparation get what I lost? Many are barely making a living now. Only college educated Nisei came out of the evacuation smelling like a rose. (Female, 61, Los Angeles)

§ There are many Issei and Nisei who need help now. (Detroit)

These, and the comments to follow next week, were taken from the questionnaire returns.

**Salt Lake's Great in 78!**  
25th Biennial National JACL Convention  
July 17-22, 1978 • Little America Hotel,

**22**  
WEEKS TO GO!

# Calendar, pulse & memos

## PSW enthusiasm for convention up

VAN NUYS, Calif. — Salt Lake City Judge Raymond Uno went home confident that the Pacific Southwest District Council will be an enthusiastic and significant force at the forthcoming National JAACL Convention. He addressed the Feb. 5 luncheon of the first quarterly district session hosted by San Fernando Valley JAACL at the Holiday Inn here, giving an overview of convention plans.

Earlier in the morning, Assistant Secretary of State Patsy T. Mink called upon JAACL to develop a national directory of Nikkei professionals and leaders so that appointive powers at all levels of government, federal, state and local, would have ready access of prospects to fulfill affirmative action requirements.

The district went on record to support a joint venture proposed by National Headquarters to relocate the youth office from San Francisco to Los Angeles to "re-design the JAACL youth program". Karl Nobuyuki, na-

tional director, pointed to the greater number of youth in the area who might benefit and hoped a model project could be developed. However, Masamune Kojima, nat'l JAACL v.p., felt placing the youth office in Los Angeles would be "a distortion" and added police here are now worrying about ethnic gangs displacing established youth organizations.

PSW regional director Glen Isomoto reported his office was allocated \$43,000 in CETA Title VI funds to provide two coordinators (Leota Shimabukuro in health services and Andy Uchiyama, youth services); and two office aides, Carlene Ige and Anna Craig. The CETA staff was hired Jan. 2.

Gov. Paul Tsuneshi appointed George Kodama as chairman of ethnic concerns and Cary Nishimoto as district legal counsel. Nishimoto is a deputy city attorney for Los Angeles.

The district council approved its first trust fund allocation of \$500 to assist the Japanese Welfare Rights

Organization launch its annual fund-raising campaign. The interest from the PSWDC Trust fund, now some \$97,000, is to be available, according to Dr. Roy Nishikawa, trust fund chairman. Forms and guidelines are being released.

The 1977 Christmas Cheer project disbursed \$12,650 to nearly 700 families or individuals, it was reported by Dennis Kunisaki of Pan Asian chapter, which will continue to coordinate Cheer for 1978.

## MINK

Continued from Front Page

"It (the definition) covers the whole field of international environment. Carter has made a large commitment in his perception of human rights—it's not just the environment.

"Of course, we're worried about pollution, too. The spilling of big oil tankers, the upper atmosphere, burning of fossil fuels. These problems we attempt to address on an international level."

Mink related her political activities to all activities, noting that the political process is completed by the issues and involvement its participants undertake.

From her work in Congress, she told of meeting JAACL representatives on several occasions and said JAACL has been a "living institution" in Washington.

"I come from Hawaii, where group togetherness perhaps is not as important. The Asian block is greater and we have no need to look beyond large expanses of land to discover ourselves like you have had to do for decades.

"I come humbled," she continued, "and am flattered to come and see what you've experienced. I feel the spirit of vitality in the organization."

—Pat Tashima

## chapter pulse

### Berkeley

Berkeley JAACL's Spring Nocturne benefit dance will be held on Saturday, Mar. 4, 8 p.m., at the Oakland Auditorium Gold Room with Don Lewis' band, it was announced by Paul Takata, chapter president. Proceeds go toward the Alameda County Heart Fund and the Berkeley JAACL Young Parents Program Fund.

The band played at the recent New Year's Eve JAACL dance and the Valentine's dance last year. Tickets at \$5 per person are available from:

Beatrice Kono, Terry Yamashita, Min Sano, Judy Kono.

### Chicago

A tentative 1978 program, highlighted by a youth workshop this month and Japanese American conference in June, has been slated by Chicago JAACL program vice-presidents Ken Katahira and Niel Tashima.

Hoping to make the Chicago chapter a vehicle that will lure people to JAACL in an "enjoyable manner," both men are soliciting suggestions for future activities.

### Woodblock prints on WLA 'menu'

LOS ANGELES — Hokusai and Hiroshige are undoubtedly names that will be mentioned when Tomoo Ogita, a renowned teacher, authenticator and appraiser of Oriental fine arts, presents his slides and lecture on "Japanese Woodblock Prints".

He will be guest speaker at the West Los Angeles JAACL and Auxiliary dinner on Monday, Feb. 20, 6:30 p.m., at Ponderosa Restaurant, Culver City, it was jointly announced by chapter president Toy Kanegai and Aux'y president Mitsu Sonoda.

Sign Up One New JAACLer

Rounding out the proposed schedule is a Japanese American film festival in March; box lunch social and

Asian American workshop, April; scholarship dinner, May; annual meeting and

Continued on Next Page

## Nationwide Business and Professional Directory

Your business card placed in each issue here for 25 weeks (a half year) at \$25 per three-lines. Name in larger type counts as two lines. Each additional line at \$6 per line per half-year period

### Greater Los Angeles

**Asahi International Travel**  
1111 W. Olympic, Los Angeles 90015  
623-6125/29 : Please Call Joe or Gladys  
U.S.A. - Japan-Worldwide  
AIR—SEA—LAND—CAR—HOTEL

**FLOWER VIEW GARDENS #2—New Otani Hotel**  
110 S. Los Angeles St. LA 90012  
Flowers/Gifts/Plants Deliveries City Wide  
Mgr Art Ito Jr Call (213) 620-0808

**NISEI FLORIST**  
In the Heart of Little Tokyo  
328 E. 1st St. - 628-5606  
Fred Mariguchi Member: Teleflora

**The PAINT SHOPPE**  
La Manca Center, 1111 N. Harbor Blvd.  
Fullerton, Calif. (714) 526-0116

**YAMATO TRAVEL BUREAU**  
312 E. 1st St., Los Angeles 90012  
(213) 624-6021

### Watsonville, Calif.

**Tom Nakase Realty**  
Acreage, Ranches, Homes, Income  
Tom T. Nakase, Realtor  
25 Clifford Ave. (408) 724-6477

### San Jose, Calif.

**EDWARD T. MORIOKA, Realtor**  
3170 Williams Rd., San Jose  
Bus. 246-6606 Res. 371-0442

### S.F. Peninsula

**JAPANESE BUNKA EMBROIDERY**  
425 First Street  
Los Altos, Calif. 94022  
Irene T. Kono — (415) 941-2777

### Seattle, Wash.

**IMPERIAL LANES**  
Complete Pro Shop—Restaurant & Lounge  
2101-22nd Ave. So. (206) 325-2525

**GOLD KEY REAL ESTATE INC.**  
Homes and Acreage  
TIM MIYAHARA, Pres.  
Call Collect: (206) 226-8100

**KINOMOTO TRAVEL SERVICE**  
Frank Y. Kinomoto  
605 S. Jackson St. 622-2342

**GALA SUPERMARKET BAZAARS**

Gifts  
Cooking Utensils  
Imported beverages  
Food delicacies  
Judo-Gi, Karate  
Pottery, China



**UWAJIMAYA**

Free Parking  
Seattle, 6th S and Southcenter Store  
S. King St. Tukwila, Wa  
MA 45248 CH 6-7077

### The Midwest

**SUGANO TRAVEL SERVICE**  
17 E. Ohio St., Chicago, Ill. 60611  
944-5444; eve/Sun 784-8517

### Washington, D.C.

**MASAOKA-ISHIKAWA AND ASSOCIATES, INC.**  
Consultant - Washington Matters  
900-17th St NW, Rm 520, 296-4484



The 1978 Marin County JAACL officers gather for their first cabinet photograph. They are (from left): seated—Bruce Wilbur, Dr. Aimy Wilbur, 1st vp; Dennis Sato, pres; Sam Shimomura, 2nd vp; standing—Susan Shimoda, Dr. Steve Gotanda, June Minami, Yuriko Hanamoto, Dr. Bill Obata, Paula Mitsunaga, Gene Oishi, Peter Besag and Rose Nieda, treas.

## Deadlines

Japanese American of the Biennium—Nominations by Mar. 31, JAACL Hq; presentation at Convention, July 22, Salt Lake City.

Nat'l JAACL Scholarship (Freshman-Graduate)—Forms, support papers by April 1, JAACL Hq; announcement in June.

JAACLer of the Biennium—Nominations by May 1, JAACL Hq; presentation at Convention, July 19, Salt Lake City.

Nat'l Convention Agenda proposals—Chapter input by Feb. 28, JAACL Hq.  
Amendments to JAACL Constitution—Notify Nat'l Director 60 days prior (June 5)...NC-WNDC chapter input by May 7, Regional Office.

Nominations for Nat'l Officers—District nominations 90 days prior (April 23).

Budget/Convention Agenda from Hq—30 days prior (June 19).

Inagaki Prize—Entries from JAACL Chapters by June 1, JAACL Hq.

## Fund Drives

**JAACL Okubo-Yamada Fund**  
c/o Nat'l JAACL Headquarters  
1765 Sutter St., San Francisco, Ca 94115

● No. 7—Jan. 31, 1978  
Total to date: \$4,782.55  
\$1-25—Jun R. Miyakawa, Sac; Frank T. Kosugi, Fr Cp; F. Kanemoto, Fr Cp; John B. Levine; Frank J. Shinoda, Ms. Susie S. Agari, Roy Ikeda,

Nakata Nursery, Mr. K. Takei, O.D., Mr. John K. Yamaguchi, Hank's Auto Repair, Southside Pharmacy, Dick S. Fuji, all of Stockton.  
\$100 or more—No. Cal.-Western Nevada District Council, Seattle JAACL Chapter (\$157.55).

## Calendar

- **FEB. 18 (Saturday)**  
San Diego—UPAC Conf on School Issues, Educ Cultural Complex, 4343 Ocean View Blvd, 8:30 a.m.-4:30 p.m.  
Union City—Hawaiian Festival dnr Buddhist Church Annex, 6:30 p.m.
- **FEB. 20 (Monday)**  
West Los Angeles—Dnr mtg, Ponderosa Restaurant, Culver City, 6:30 p.m.; Tomoo Ogita, spkr., "Japanese Woodblock Prints"
- **FEB. 23 (Thursday)**  
Solano County—New chapter charter mtg, Civic Aud, Fairfield.
- **FEB. 24 (Friday)**  
Sequoia-Inst dnr, Sakura Garden, Mountain View, 7 p.m.  
Los Angeles—JARS candidate night, Sir Michael's Restaurant, City of Commerce, 7:30 p.m.  
Los Angeles—Evening with Rep. Norman Mineta, Biltmore Hotel Gold Room, 5:30-8 p.m.  
El Cerrito—Retirement planning, Sycamore Church.
- **FEB. 25 (Sunday)**  
Nat'l JAACL—Annual credit union dnr-dance, Little America Motel, Salt Lake City, 7 p.m.  
IDC—Qtrly session, Salt Lake JAACL hosts, Little America Motel, 1 p.m.  
San Mateo—Inst dnr-dance, Peninsula Social Hall, 6:30 p.m.; Karl Nobuyuki, spkr.; George Takahashi's band

- \*Los Angeles—SCYPCC theater party, East West, 8 p.m.
- \*Fresno—NSC birthday party, Betsuin Annex, 12:30 p.m.
- **FEB. 26 (Sunday)**  
CCDC—Nisei Retirement conference, Fresno Buddhist Church Annex 8:30 a.m.-4 p.m.; Prof. Harry Kitano, UCLA, spkr.
- **MAR. 1 (Wednesday)**  
New Mexico—Income tax night, Albuquerque Fed S&L, 8321 Menaul NE, 7:30 p.m.; Perry Mori, spkr.  
Long Beach—Japanese cult experience, Stearns Pk, 8 p.m.; Rev. Mishima, spkr.
- **MAR. 4 (Saturday)**  
NCDYC—Spring Qtrly, Eden AAYs host, (2 days), Sat—Workshop, Sun—Mtg, Easter party at Agnews St Hosp.  
Los Angeles—Westside Optim Las Vegas Night, Vet Mem Hall, Culver City, 7:30 p.m.  
Sacramento—Camellia Fest Int'l exhibit, Sac'to Comm Ctr.  
Seattle—Workshop on Women, St Peter's Epis Church.  
Berkeley—Spring Nocturne dance, Gold Rm, Oakland Aud.
- **MAR. 6 (Monday)**  
Denver—JANBA bowling tournament (all wk), Celebrity Lanes.
- **MAR. 10 (Friday)**  
Nat'l JAACL—Bd mtg (3 days), Hq, San Francisco.
- **MAR. 11 (Saturday)**  
Sacramento—Camellia Festival parade, Downtown, 10 a.m.  
Denver—JANBA tourn dnr, Marriott Hotel.
- **MAR. 13 (Monday)**  
Long Beach—Foods of Japan, Stearns Park, 8 p.m.

## 1978 Officers

- CORTEZ JAACL**  
Sam Fidel, pres; Jim Miyamoto, Roger Masuda, vp; Nobuzo Baba, treas; May Toyoda, rec sec; Pat Sugiyama, cor sec; Kathy Hagiwara, Diane Yotsuya, actv; Lester Yamaguchi, pub; Mae Yotsuya, hist; Jim Dahlgren, Harry Kajioka, orchard; Yoshio Asai, BSA rep; Jim Yamaguchi, insur; Peter Yamamoto, gnd supt; Mabel Sugiura, schol; Kazumi Kajioka, custodian; Takeshi Sugiura, Hugh Washburn, derby; D Yotsuya, JAYS adv; Lloyd Narita, past pres.
- EAST LOS ANGELES JAACL**  
Dr. Robert Obi, pres; Mas Dobashi, vp; Mrs. Sue Sakamoto, sec; Fuji Yamamoto, sec; Mrs. Mable Yoshizaki, pub; Walter Tatsuno, 1000 Club; George Yamate, inst. comm; Sid and Mari Inouye, Duprees adv.; bd of gov—Mattie Furuta, Ron Hatakeyama, Miki Himeno, Raymond Hongo, Marie Ito, Danny Iwama, Jolene Kasai, Ken Kato, Ritsuko Kawakami, Robert Lee, Michael Obi, Michi Obi, Henry Onodera, Junko Tanikawa, Roy Yama.
- VENICE-CULVER JAACL**  
Caroline Takemoto, Dr. Richard Saiki, co-ch; Irene Hoshiyama, memb; Frances Kitagawa, insur; Akemi Nagao, sec; Hitoshi Shimizu, treas; Fred Hoshiyama, del; Jane Yamashita, Comm Ctr rep.

**Eagle Produce**  
929-943 S. San Pedro St., Los Angeles  
625-2101  
BONDED COMMISSION MERCHANTS  
—WHOLESALE FRUITS AND VEGETABLES—

Japanese Phototypesetting



**TOYO PRINTING CO.**  
309 So. San Pedro St., Los Angeles 90013  
(213) 626-8153

**Nanka Printing**  
Japanese Phototypesetting  
2024 E. First St.  
Los Angeles, Calif.  
Phone: 268-7835



**THE Spokesman BICYCLES**  
—Sales & Service—  
15224 Hawthorne Blvd., Lawndale, Ca 90260  
TAKA IINUMA (213) 676-4570

Three Generations of Experience

**FUKUI Mortuary, Inc.**  
707 E. Temple St.  
Los Angeles 90012  
626-0441  
Soichi Fukui, President  
James Nakagawa, Manager  
Nobuo Osumi, Counsellor

**Shimatsu, Ogata and Kubota Mortuary**  
911 Venice Blvd.  
Los Angeles  
749-1449  
SEIJI DUKE OGATA  
R. YUTAKA KUBOTA

## Membership trend up

CHICAGO—Final 1977 figures published by National Headquarters showed that the Midwest District totalled 2,359 members for the year, an increase of more than 5% over 1976. While less than the 10% rise projected by Second Vice Governor Gordon Yoshikawa last year, the increase represented a significant reversal of a downward trend. Since 1972, total MDC membership had declined almost 15% through 1976.

Six of the nine chapters in the district recorded higher totals in 1977 than in the previous year, with St. Louis showing a 45% gain in reaching a new all-time high of 181 members. According to chapter sources, much of the growth can be attributed to the chapter-sponsored charter-flight to Japan last October and to a direct mail campaign aimed at non-member Japanese Americans in the St. Louis area.

Chicago remained the largest chapter in the Midwest, barely missing the 1,000 mark with 996 members. More than 42% of the total MDC membership belong to the Chicago Chapter alone.

Governor Lillian Kimura congratulated the chapters for their 1977 membership recruiting efforts, and expressed her hope that it was the start of a new upward trend in the coming years.

## Survey continues in CCDC for elderly

FRESNO, Calif.—Dorothy Fumiko Gresham has been hired as the survey statistician at the CCDC-JACL Nikkei Service Center.

In her new post, Mrs. Gresham will survey rural areas within Fresno County and disperse her findings among senior citizens. Through her work, the Center hopes to locate and help more Japanese elderly. □

## ATTENTION

### Central California JACL Members

To meet today's rising health care costs

APPLY NOW

for Major Medical Protection

BEFORE YOU PAY FOR YOUR CURRENT MEDICAL COVERAGE, CHECK OUR LIBERAL BENEFITS AND LOW RATES.

Maximum Limit.....\$300,000.00  
Maximum Room Rate.....\$80 per day  
Co-Insurance.....80/20  
Deductible.....\$50 per claim

#### QUARTERLY RATES

Male member.....43.20 Member plus 1.....91.80  
Female member.....54.00 Family.....118.80

APPROVED and RECOMMENDED by the

JACL Central California District Council

Capitol Life's Major Med Health Plan has been in effect in Central California continuously for over TWELVE YEARS. The plan has been working smoothly and efficiently. Claim service has been FAST and FAIR, with NO DELAY or RED TAPE.

Written and serviced by your own fellow members and Community leaders who are genuinely interested in your personal welfare.

WE URGE YOU TO CALL NOW

Hiro Kusakai, Fresno.....(209) 485-3674  
Taro "Kat" Katagiri, Fresno.....(209) 485-3674  
Kaz Komoto, Sanger.....(209) 875-3705  
Tom Shimasaki, Lindsay.....(209) 562-2166  
John Niizawa, Fresno.....(209) 255-8229  
Ed Yano, Reedley.....(209) 638-4533  
Yoichi Katayama, Parlier.....(209) 875-5689

Underwritten by Capitol Life Insurance Co., Denver, Colo.

ADMINISTERED BY

Chinn-Edwards Insurance Agency  
2811 Wilshire Blvd., Suite 770

Santa Monica, Calif. 90403 (213) 829-4727

## Midwest District Council

Chicago - Cincinnati - Cleveland - Dayton - Detroit - Hoosier - Milwaukee - St. Louis - Twin Cities

## Marutani attracts in Mpls.

By BILL DOI  
MINNEAPOLIS — The announcement that Judge William Marutani of Philadelphia was to be the main speaker at the Twin Cities JACL installation dinner was the "draw" needed to produce the near-record gathering of members and friends here Jan. 28 at the Normandie Inn.

(The same weekend in Indianapolis, blasted by the worst January snowstorm, the Hoosier JACL was forced to cancel its installation dinner Sunday.)

And he didn't disappoint the 136 who came. His topic, "An Asian American Perspective of the Judiciary, Or; What, an Oriental Judge?" was most interesting and enlightening.

The judge told of his first notion to seek a vacancy on the Court of Common Pleas in the First Judicial District

in Pennsylvania. Many had urged Marutani to seek the appointment.

"I ultimately did so, but not without hesitation, doubts and some reservations," he said. "Among other things, there was the element of relinquishing the safety of the known—a partnership in a 30-lawyer law firm—for the uncertainty of the unknown; to turn one's back on the admitted financial rewards of an established private practice for the limited financial remunerations of a judge."

Marutani said there was another formidable question of whether an Asian American stood a chance in the competition.

Marutani went on to encourage any who have felt the same way to disregard such worries and plunge "into the arena of public service."

THOMAS TERAJI: Chicago JACler

## Awarded Silver Beaver

CHICAGO—Thomas S. Teraji was honored at the 1977 Leaders Recognitions Dinner of the National Council of the Boy Scouts of America as one of the distinguished recipients of the Silver Beaver Award. Out of a thousand in attendance at McCormick Place on Jan. 28, 130 represented the Japanese American community to witness the recognition of Tom's achievements.

The Silver Beaver Award is made upon the recommendation of the Chicago Area Council for noteworthy service primarily to the youth of America and to other community organizations. Tom is currently the Institutional Representative of the Buddhist Temple of Chicago and has served in many capacities in the scouting movement.

The Terajis are a scouting family, with three sons—Allan, Jimmy, David—all attaining the Eagle rank and the youngest daughter, Barbara, active in the Girl Scouts of America.

A member of the Chicago JACL, Tom is president of the Japanese American Service Committee (JASC) Housing Corp. and a JASC Board member. He is employed by the City of Chicago as director of facilities planning of the Chicago Board of Education.

In Ogden, Utah, the Lake Bonneville Council honored Roy Nakatani the 1977 Eager Silver Beaver Award—a complement to the Silver Beaver Award accorded him in 1965.

Sign Up One New JACler

## pulse

Continued from Previous Page

more films, October; a benefit movie screening, November; and inaugural and mochitsuki in December.

### San Mateo

Most of the Bay Area's dance groups and the San Jose-based band, "Drifters" will make appearances at San Mateo's installation dinner-dance Feb. 25.

Proceedings begin at 6:30, with dinner at 7:30 at the Peninsula Social Club, 100 N. "B" St., San Mateo. Karl Nobuyuki, JACL national director, will install incoming chapter president Suzu Kunitani and her board.

The "Drifters" feature three female singers and two male crooners who present nostalgic and contemporary Japanese songs. The group also will provide music for fox trots, rumbas, swings and rock.

"... don't hesitate; don't let the false bugaboo of being an American of Asian Ancestry cause you to hold back; rather, accentuate the positive, the immutable truth of your Americanism—and give of your particular fine talents and contributions to our America."

Besides Marutani, other special guests included six ice sculptors from Sapporo, Japan, and their two public relations and interpreter personnel. The Japanese artists were invited by several local businesses and the city to carve two huge statues out of ice for the St. Paul Ice Carnivals.

One was a large bust of the late Hubert H. Humphrey and the other an immense 47' x 24' structure depicting two ancient Japanese warriors on horses in combat. Literally thousands came to view the impressive works of art.

President May Tanaka and her board for 1978 were installed.

This year marked the 25th Anniversary of the Twin Cities JACL Credit Union. To highlight the occasion Silver Pins were awarded to six deserving JACLers for their long and faithful service.

George Yoshino—25 years of service; Ed Yoshikawa, treasurer for 24 years; Steve Iwago—18 years; Roy Kyono—14 years; Mikio Kirihara—13 years; Yukio Yamaguchi—12 years.

And Howard Nomura, who already has received a Silver Pin, was given a citation for his 20 years of service to the credit union.

Breaking the more formal part of the program were vocal selections by Mrs. Kathy (Tom) Hara and accordian numbers by Harry Tabata whose band also provided the music for the dance.

### Illinois

#### San Juan Drugs, Inc.

916 W. Belmont  
Chicago, Ill. 60657  
(312) 248-2432  
George Ichiba, R.Ph.  
Hiroshi Nakano, R.Ph.

### Indiana

#### A-B Oriental Grocery and Gift Store

Imported foods from China, India, Japan, Korea, Philippines & Thailand  
Two Locations  
3709 N. Shadeland Ave. (317) 545-3438  
7019 Northwestern Ave. (317) 251-3929  
INDIANAPOLIS, INDIANA  
For personal service and special orders, ask for Mr. Ki C. Yi, Owner and Manager

#### NICHI BEI KAI

(317) 787-0381  
4514 S. EMERSON AVE.  
INDIANAPOLIS, INDIANA 46203  
1-465 at Emerson Ave.  
Beech Grove Exit #52—Located inside Best Western Motel, Beech Grove  
STEAK HOUSE OF JAPAN

#### Yamada Travel Service

Domestic & Foreign  
Tickets for Any Airline, Train, Bus  
Steamship, Hotel Reservation  
Tours and Auto Rental  
812 N. Clark St., Chicago, 60610  
944-2730

#### CHICAGO JACL Federal Credit Union

5415 North Clark Street  
Chicago, Illinois 60640  
(312) 728-7171  
Weekday Hours: 1 to 5 p.m.

#### THE WATCH CLINIC

17 N. WABASH AVE., LOBBY  
CHICAGO, ILL. 60602 - 372-7863  
Dave Yoshimura, Proprietor  
Authorized Seiko and Citizen - Sales & Service

Whatever your reason, be sure to see us for all your real estate needs.

#### TAK OCHIAI REALTY WORLD — DON WILLIAMS & ASSOCIATES

4141 N. Lincoln Ave., Chicago, Ill. 60618 • (312) 549-1404

### Missouri

Complete Travel and Tour Arrangements  
Passport Information  
Visas  
Tickets—All Airlines  
Group Arrangements

10% Minimum Down Payment  
ORIENTAL TRAVEL SERVICE INC.

927 De Mun Ave., St. Louis, Mo. 63105  
(314) 727-5994 / 432-2343



St. Louis JACL \$5.25 pp.  
Place orders with  
Bill Ryba  
1404 Virginia Dr.  
St. Louis, Mo. 63011

## Nisei Kitchen Cookbook

MASAKO KONDO  
FLOWERS & GIFTS  
"Only the Finest"  
907 Woodward So., Royal Oak  
546-1101 564-2264

MOY'S RESTAURANT  
JAPANESE STEAK HOUSE  
Chinese/American Foods  
Table Top Cooking  
16825 Middlebelt Rd. at 6 Mile  
427-3170—Livonia

Evening with Mineta

LOS ANGELES — Site of the "Evening with Rep. Norm Mineta" has been changed to the Gold Room, Biltmore Hotel, on Friday, Feb. 24,

5:30-8 p.m., it was announced by Mrs. Mitsu Sonoda, co-hostess.

SAN JOSE, Calif.—Sen Edward Kennedy will appear on behalf of Rep. Norman Mineta at a dinner Sunday,

Feb. 26, at the Hyatt House, Mediterranean Room here. Actor George Peppard will be the master-of-ceremonies for the \$100 per person fundraising event. For reservations, call 297-2088 or 245-7830.

Chapter People Handling Memberships

Membership fee shown after the name of the Chapter reflect the current rate for Single and Couple. Thousand Club members now contribute \$35 and up; their spouse (TC sp) may enroll at a special rate as shown, otherwise

the Single rate applies. Student (s) dues do not include PC subscription but such members may subscribe at the JACL rate of \$5 per year. Membership checks are payable to the JACL chapter of the individual's choice.

Report Late Changes to Pacific Citizen.

- Pacific Northwest
Columbia Basin (\$20-35, s\$7)
Ed Yamamoto TC sp \$15
4502 Fairchild Loop
Moses Lake, Wash. 98837
Gresham-Troutdale (\$12-15)
Hawley Kato
Rte 1, Box 187
Gresham, Ore 97030
Mid-Columbia (\$15-26)
Ron Yamashita
3790 Mountain View Dr.
Hood River 97031
Portland (\$15-27)
Nobi Azumano
2802 SE Moreland Lane
Portland, Ore 97202
Puyallup Valley (\$16-30)
Hanna Yoshida
5402 Pacific Ave.
Tacoma, Wash. 98408
Seattle (\$18-31, s\$6)
John H. Matsumoto
c/o 316 S. Maynard
Seattle, Wa 98104
Spokane (\$15-25, s\$5)
Marcelline Terao
378 E. 7th
Spokane, Wash. 99202
White River Valley (\$15-30)
Hiro Nakai
917-40th Ave. South
Auburn, Wash. 98002
No. Calif.-W. Nev.
Alameda (\$15-28)
Nancy Taiima
1165 Sand Beach Pl.
Alameda, Ca. 94501
Bay Area Comm (\$17-34, s\$9)
Etsuko Steimetz
1507 El Dorado Ave.
Berkeley, Calif. 94707
Berkeley (\$15-27, TC sp \$12, s\$8)
Terry Yamashita
1107 Ordway St.
Albany, Calif. 94706
Contra Costa (\$16-28)
John Shinagawa
3011 Phillips Court
Richmond, Ca. 94806
Cortez (\$15-29)
Lloyd Narita
13626 W. Harding Rd.
Turlock, Calif. 95380
Diablo Valley (\$15-27.50)
Mollie Fujioka
1874 Meadow Ln.
Walnut Creek 94595
Eden Township (\$13-26)
Rev. David Kagiwada
629 Via Manzanitas
San Lorenzo, Calif. 94580
Florin (\$13-26, s\$5)
Catherine Taketa
1324-56th St.
Sacramento, Calif. 95819
Fremont (\$15-28)
Herb Izuno
41966 Via San Gabriel
Fremont, Calif. 94538
French Camp (\$15-25)
Hiro Shimamoto
690 W. Mathews Rd.
French Camp, Calif. 95231
Gilroy (\$15-30)
Ray Yamagishi
777 Cumberland Dr.
Gilroy, Calif. 95020
Las Vegas (\$12-24)
Lillian Morizono
2888 El Cajon
Las Vegas, Nev. 89109
Livingston (\$17-34)
Stanley Morimoto
9527 W. Meadow Dr.
Winton, Calif. 95388
Lodi (\$14-28)
Taul Takao
2115 W Walnut St
Lodi, Calif. 95240
Marin County (\$18-30)
Sam Shimomura
19 Tilden Dr.
Novato, Calif. 94947
Marysville (\$14-28)
Ray Kyono
1648 Melanie Lane
Yuba City, Calif. 95991
Monterey (\$20-35)
Pet Nakasako
805 Lily St.
Monterey, Calif. 93940
Oakland (\$15-27)
Roy R. Endo
614 Mandana Blvd.
Oakland, Calif. 94610
Placer County (\$15-28, s\$9)
Gary S. Imamoto
P.O. Box 646
Newcastle, Calif. 95658

- Reno (\$13-25)
Kiks Wada
2007 Branch Ln.
Reno, Nev. 89509
Sacramento (\$15.50-29)
Percy T. Masaki
2739 Riverside Blvd.
Sacramento, Calif. 95818
Salinas Valley (\$15)
Larry Umetani, OD
1185 N. Main St.
Laurel Plaza, Suite 11
Salinas, Calif. 93901
San Francisco (\$15-27)
Yo Hironaka
56 Collins St.
San Francisco 94118
San Jose (\$16-24)
Rose Kinaga
1576 Darlene Ave.
San Jose, Calif. 95125
San Mateo (\$15-30)
Grayce Kato
1636 Celeste Dr.
San Mateo, Calif. 94402
Sequoia (\$17-32, sr. 15-28)
John Enomoto
3710 Tripp Rd.
Woodside, Calif. 94062
Sonoma Cty (\$17-30, s\$5)
Frank K. Oda
1615 W. Third St.
Santa Rosa, Calif. 95401
Stockton (\$14-28, TC sp \$14)
James Tanji
975 W. Mariposa Ave.
Stockton, Calif. 95204
Tri-Valley (\$15-27)
H. Kitajima
185 Front St. #204
Danville, Calif. 94526
Watsonville (\$15-24)
Frank Tsuji
3595 Vienna Dr.
Aptos, Calif. 95003
West Valley (\$15-27)
Jane Miyamoto
2850 Mark Ave.
Santa Clara, Calif. 95051

- Central California
Clovis (\$15-28, s\$5)
Toshi Kawasaki
2013 Arden Dr. W.
Fresno, Calif. 93703
Delano (\$13-26)
Jeff Fukawa
714 Washington
Delano, Calif. 93215
Fowler (\$13-26)
Wilson Kawaguchi
4331 E. Jefferson
Fresno, Calif. 93725
Fresno (\$14-26)
Tak Morita
5162 N. Biola Ave.
Fresno, Calif. 93727
Parlier (\$13-25)
Tom Takata
14910 E. Adams
Parlier, Calif. 93648
Reedley (\$12-24)
Tim Kurumaji
6612 S. Pedersen Ave
Reedley, Ca. 93654
Sanger (\$15-27)
Tom Moriyama
9594 E. American Ave.
Del Rey, Calif. 93616
Selma (\$13-26)
George Fukagawa
11891 E. Elkhorn Ave.
Kingsburg, Calif. 93631
Tulare County (\$15-35)
Maude Ishida
20220 Rd. 256
Strathmore, Ca. 93267

- Pacific Southwest
Arizona (\$14-27)
Mrs. Masa Takiguchi
5702 W. Northern Ave.
Glendale, Ariz. 85302
Carson (\$12-24)
Nita Baird
23207 S. Marigold Ave.
Torrance, Calif. 90502
Coachella Valley (\$15-30)
Sam Musashi
43-712 Main
Indio, Calif. 92201
Downtown L.A. (\$18-29)
Ed Matsuda
4001 S. Bronson
Los Angeles, Calif. 90008
East L.A. (\$15-30)
Michi Obi
111 St. Albans Ave.
So. Pasadena, Calif. 91030
As of Feb. 10, 1978

- Gardena Valley (\$18-30)
Dudley Otake
Gardena JACL
P.O. Box 2361
Gardena, Calif. 90247
Greater Pasadena (\$15-28)
Bob Uchida
852 S. Los Robles
Pasadena, Calif. 91106
Hollywood (\$18-30, s\$7.50)
Irene Koseki &
Toshiko Ogita
2017 Ames St.
Los Angeles, Calif. 90027
Imperial Valley (\$17-26)
Shiz Morita
590 Euclid
El Centro, Calif. 92243
Long Beach Harbor (\$18-28)
Lloyd Inui
187 Kallin
Long Beach, Calif. 90815
Metro L.A. (\$15-27)
Cynthia Lew
405 N. Valencia St.
Alhambra, Calif. 91801
North San Diego
Hiro Honda
1120 Chestnut Ave.
Carlsbad, Calif. 92008
Orange County (\$18-30)
Betty Oka
13228 Ferndale Dr.
Garden Grove 92644
Pan Asian (\$18-30)
Chris Naito
164 Grove
Sierra Madre, Calif. 91024
Pasadena (\$15-28)
Ruth Ishii
515 Longwood Ln.
Pasadena, Calif. 91103
Progressive Westside
Toshiko Yoshida
5156 Sunlight Pl.
Los Angeles, Calif. 90016
Riverside (\$13-26)
Howard Nojiri
735 Glenhill Dr.
Riverside, Ca. 92507
San Diego (\$17-30)
Jack Matsueda
461 Westby St.
Chula Vista, Calif. 92011
San Fernando Vly (\$18-28, s\$7.50, TC sp \$14)
Phil Shigekuni
16915 Labrador St.
Sepulveda, Calif. 91343
San Gabriel Vly (\$18-28)
Fumi Kiyari
1423 S. Sunset
West Covina, Calif. 91790
San Luis Obispo (\$14-28)
Geo Ikenomiya
1662 Crestview Cir.
San Luis Obispo 93401
Santa Barbara (\$15-28)
Reiko Uyesaka
1236 E. De La Guerra St.
Santa Barbara 93103
Santa Maria (\$16-30)
Sam Iwamoto
605 E. Chapel St.
Santa Maria, Calif. 93454
Selanoco (\$18-30)
James Seppel
4063 Via Encinas
Cypress, Calif. 90630
South Bay (\$15-28)
Thomas Shigekuni
400 Union Bank Tower.
Torrance, Calif. 90503
Venice-Culver (\$18-28)
Irene Hoshiyama
11822 Wagner St.
Culver City, Ca. 90230

- Ventura County (\$18-29)
Yas Yasutake
292 Walnut Dr.
Oxnard, Calif. 93030
West Los Angeles (\$15-28)
Steve Yagi
3950 Berryman Ave.
Los Angeles, Calif. 90066
Wilshire (\$18-30)
Alice Nishikawa
234 S. Oxford
Los Angeles, Calif. 90004

- Intermountain
Boise Valley (\$20-35)
Roy Oyama
1515 Locust
Caldwell, Ida 83605
& Rina Yamashita
Rt 8, Box 34
Caldwell, Ida. 83605
Idaho Falls (\$13.50-27)
Martha Inouye
P.O. Box 494
Shelley, Ida 83274

- Mt. Olympus (\$15-27)
Mary Takemori
170 Pioneer St.
Midvale, Utah 84047
Pocatello (\$15-30)
Marie Proctor
1605 Monte Vista Dr.
Pocatello, Ida 83201
Salt Lake (\$15-27)
Chiz Ishimatsu
656 N. 1400 W.
Salt Lake City, Ut. 84116
Snake River (\$15)
David Mizuta
Rt 1, Box 147
Ontario, Ore. 97914
Wasatch Front North (\$14)
Stephen Oda
824 N. Brookshire
Kaysville, Utah 84037

- Mountain Plains
Arkansas Valley (\$12-24)
Harry Shironaka
Rt 1, Box 76
Ordway, Colo 81063
Fort Lupton (\$15-30)
Tom Sasaki
1812 Weld County Rd. 27
Brighton, Colo 80601
Houston (\$17)
Harvey Onishi
5118 Jackwood
Houston, Tex. 77096
Mile-Hi (\$15-30)
Kiyoto Futa
1282 Brentwood
Lakewood, Colo 80215
New Mexico (\$15-28)
Mary Matsubara
7017-4th St NW
Albuquerque, NM 87107
Omaha (\$15-30)
Mary Smith
3006 Mason St.
Omaha, Neb. 68105
San Luis Valley (\$12-24)
Shirow Enomoto
P.O. Box 750
Alamosa, Colo. 81101

- Midwest
Chicago (\$18-30)
Donna Ogura
5414 N. Clark St.
Chicago, Ill 60640
Cincinnati (\$15-28)
Tae & Masaji Toki
7810 Euclid Rd.
Cincinnati, Ohio 45243
Cleveland (\$13-26)
Mrs. Alice Nakao
2510 Lincoln Ave.
Parma, Ohio 44134
Dayton (\$15-25)
Matilde Taguchi
4100 W. Third St.
Dayton, Ohio 45428
Detroit (\$12.75-25.50)
Michiko Tagami
15508 Rose Dr.
Allen Park, Mich. 48101
& Akio Suzuki
15696 Edgwood Dr.
Livonia, Mich. 48154
Hoosier (\$15-27.50)
Ken Matsumoto
4240 Briarwood Dr.
Indianapolis, Ind. 46250
Milwaukee (\$12-18)
Julius Fujihira
5856 S. 33rd Ct.
Milwaukee, Wisc. 53221
St. Louis (\$14-28)
Masao Abo
12451 Glenmeade No. J
Maryland Hts, Mo 63043
Twin Cities (\$15-28)
Tosh Abe
9624 Vincent Rd.
Bloomington, Mn. 55431

- Eastern
New York (\$18-35)
Haruko Muranaka
697 West End Ave. #14D
New York, NY 10025
Philadelphia (\$15-28)
Hatsumi Harada
2500 Pine St.
Philadelphia, Pa. 19103
Seabrook (\$15-28, sr. \$10)
John (Terry) O'Neill
25 Orilla Dr.
Bridgeton, NJ 08302
Washington D.C. (\$13-26)
Etsuko Y. Smith
6208 Perthshire Ct.
Bethesda, Md. 20034

Mile-Hi Nisei pinfest hosts 850

By SHIG SAKAMOTO (Special to Pacific Citizen)

Denver, Colo. March 6-11 will be a busy week for members of the Denver Nisei Bowling Assn., who are hosting the fourth annual Japanese American National Bowling Assn. tournament at Celebrity Lanes.

Nearly 850 are participat-

YEGO

Continued from Front Page



Hike Yego

his first six-year term gives him a big plus to his qualifications that will enable him to better serve the law enforcement needs of his district, added Miyamura. A life-long Placer County resident, he and his wife Alice live in Penryn. They have two daughters, Jean Yamada of San Diego and Peggy Izumi of San Jose.

At the time Yego assumed his position six years ago, presiding in the Loomis judicial court was Judge Cosma Sakamoto, president of the Placer County JACL which is celebrating its 50th year.

CITIZENSHIP

Continued from Front Page

their citizenship if they live for three consecutive years in the foreign country of which they are citizens after reaching the age of 22.

Nakamura has urged Americans in Japan to write representatives and senators in support of both bills, Kennedy's in particular.

The rigid citizenship requirements have especially produced ill effects on children born to Japanese women who married American soldiers after the war.

A survey by the International Social Service (ISS) found in 1973 about 3,900 children, who were nominally American citizens because of the father, stood to become stateless because of the two-year residency clause between ages 14-28—the clause Eilberg wishes to eliminate.

Because many of the families could not afford to give their children a two-year stay in the U.S., many fathers returned home alone—their Japanese wives unable to locate them, according to the ISS.

For the child to then become a naturalized Japanese citizen is an equally complicated process, as Japanese nationality is not granted to children of Japanese mothers, just children of Japanese fathers.

The task requires up to three years and some 37 different documents.

ing, reports publicity chairman John Noguchi, for a new record number of entries. There are 100 men's and 60 women's teams entered with about three dozen individuals in various events. Sixteen teams are coming from Hawaii. A contingent is expected from Japan.

The opening mixer, normally held on Mondays, has been switched to Wednesday to accommodate the majority of bowling participants. It will be held at the Celebrity Lanes Lounge with Dr. Takashi Mayeda, mixer-entertainment committee chairman, in charge.

The traditional awards dinner and Sayonara Ball will be held on Saturday night at the Marriott Hotel.

Tournament schedule consists of open ragtimes, mixed doubles, sweepers, team doubles and single with three special events added: the special match games for men and for women, and a

senior citizens handicap all-events.

The match games on a scratch scoring basis will be limited to the first 100 men and 50 women who sign up. With deadline extended for the match games, entries are being received by tournament co-chairmen Rich Nakamura or Jean Sunada, 1548 S. Monroe St., Denver 80210. Others on the tournament committee are:

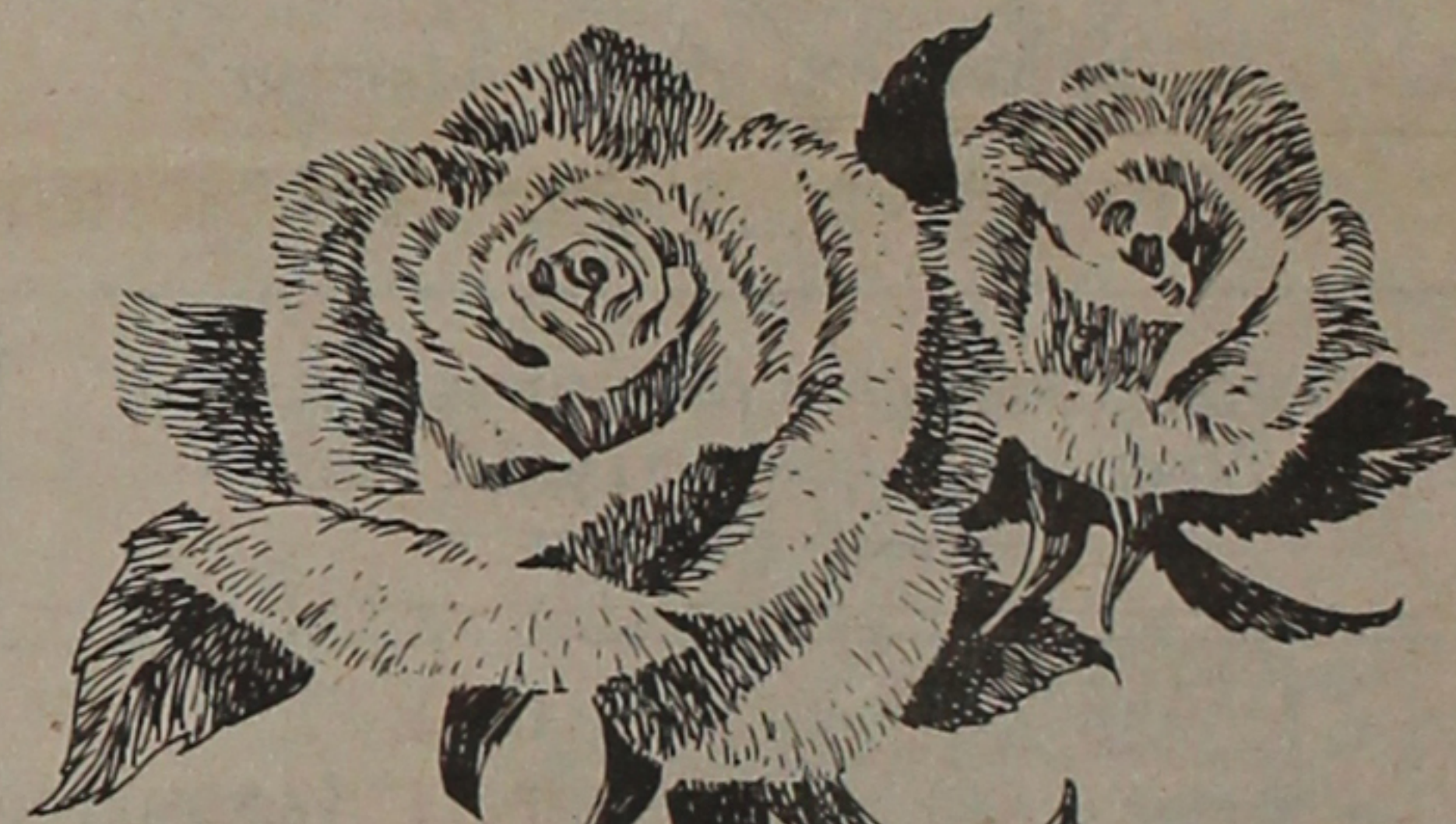
Dr. Bob Mayeda, men's div; Sadami Kuroda, women's div; Iwao Nishikawa, treas; Jean Matsuda, sec; Fred Ikeva, booklet; Sallie Tawara, regis; Bud Stark, Bill Chikuma, transp; Glennyth Shepard, hous; Christine Wanifuchi, sched; Russell Ota, tab; Paul Fukuma, trophy; Hal Muroya, ragtime; Dennis Ioka, Arlene Sugiura, awds banq; John Noguchi, pub; Dr Takashi Mayeda, mixer-entertainment; Jane Hada, Susan Tawara, spl events; Bud Uchida, tickets; Jean Matsuda, mimeograph.

Women's Division—Sue Mayemura, Peggy Bungo, sgl; Himi Morishige, Marlene Tanouye, team; Lil Terasaki, Taeko Tagawa, dbl; Mary Shihao, Rose Tanabe, Shirley Horiuchi, swprs;

Men's Division—Dick Sato, team; Tad Shimizu, dbl; Stan Eshima, sgl; Jay Fukaye, swpr; Harry Furukawa, mixed dbl.

Spl Match Gm—Howard Wanifuchi, Mel Takahashi, Mats Ito.

WHEN CARE MEANS EVERYTHING



One visit convenience is part of caring at a difficult time. That's why Rose Hills Mortuary offers a modern mortuary, a flower shop and concerned counselors all in one peaceful and quiet setting.

So much more... costs no more

ROSE HILLS Mortuary at Rose Hills Memorial Park

Dignity, understanding, consideration and care... A Rose Hills tradition for more than two decades.

3900 Workman Mill Road, Whittier, California (213) 699-0921

Mr. and Mrs. Mr. Mrs. Miss

New Same

Mailing Address

Phone

City State Zip Code (No PC without Zip)

Every JACL household entitled to one PC subscription which is non-transferable.

MEMBERSHIP:

□ New Regular (See above) □ 1000 Club (\$35) □ Renewal Regular (See above) □ 50 Club (\$50)

Amount \$

JACL Chapter

(If couple membership, wife's first name)



# Spokane JACL rebuts WSU's responses

Continued from Last Week

## II. ASIAN AMERICAN SCHOLAR'S POSITION

### A. PC Statement by Beasley says:

"A request for an Asian American scholar's position was received and we plan to institute the program as quickly as resources allow. ... I do admit we have not fulfilled the request for the scholar's position ... But we plan to fill the position sometime this year, if possible. ... I believe the University should have a scholar's position, but we just don't have the funds now for a full professor" ... "I'm not sure an Asian American Studies Program has support of faculty and students."

### JACL Response

It is our position that the establishment of an Asian American Scholar's position with support staff is only the first step in the fulfillment of the University's moral and legal responsibilities to equal educational opportunities for Asian Americans. Unless an Asian American Studies Center is implemented and established there will continue to be disparate educational opportunities for Asian Americans compared to other minority

ethnic groups at WSU. Even when apparent firm commitments were made by the WSU administrative staff to Asian Americans and 28 new positions were funded in 1976, these commitments were not honored. Not one of the 28 new positions were allocated for an Asian American scholar. The same reasons that were cited in 1976 and 1977 are now being cited in 1978. There is little concrete, "hard" evidence to indicate that WSU's commitment to equal opportunity for Asian Americans is any greater in 1978 than in 1973, when the University administrative staff elected not to support and approve the grant application for the Asian American Proposal which could have implemented a program for Asian Americans at little cost to the University. The JACL has learned from:

(1) A memorandum dated, March 24, 1976, to Dr. Beasley following a meeting, March 22, 1976, with Dr. Beasley, the Executive Director, Wash. State Commission on Asian Affairs, a former student, and an Asian American professor.

"... concerning the commitment by you towards the placement of an Asian American scholar at WSU. This scholar will be selected from outside of WSU and he or she will aid in the development of an Asian American Center." (italics added).

"1. Every effort will be made to find a quality Asian American scholar.

Commercial & Industrial Air-conditioning & Refrigeration Contractor

**Sam J. Umemoto**  
Lic. #208863 C-20-38

**SAM REIBOW CO.**  
1506 W. Vernon Ave.  
Los Angeles 295-5204  
Experienced Since 1939

### INDEPENDENCE INTERNATIONAL

Helping qualified people obtain a second income (\$300-900 month), financial independence. Write or call us for a personal interview.

**H. TOM SUECHIKA**  
8307 Keim St., Rosemead, Ca 91770  
(213) 571-0311

\*Ask About Our Business Opportunity\*

"2. This firm commitment is for a hard money tenure track position"

"3. If an existing vacancy is not available, then a position will be created (italics added).

(This is part of the summary of that meeting.)

(2) A letter dated March 23, 1976, to the Executive Director of the Washington State Commission on Asian American Affairs from Dr. Beasley.

"... I recognize clearly the need for someone to assume some responsibility for working in Asian American Studies (italics added), even though we are not at the present time talking about a formal academic program ... I will support efforts to get someone on campus to assume leadership in this important role."

"1. If there is a vacancy which is a full-funded position, and therefore is a tenure-track appointment that can be used for the purposes outlined in our discussion, we will move in this direction in an attempt to find a person who will be acceptable, not only in terms of providing leadership in Asian American Studies, but also in the department with which the person is to be affiliated."

"2. If there are new positions allocated (italics added), there will be an attempt to identify a position that can be used ... This, also, would be a permanent position on tenure track."

"I cannot guarantee that we will have the most desirable solution to this problem by the fall of 1976 ... for additional outlay of funds ... the timing could not be worse."

(3) A memorandum written in response to Dr. Beasley's letter to the Executive Director of the Wash. State Commission on Asian American Affairs, dated March 26, 1976, from a participant at the meeting when the commitment was made.

"... I would like to express some surprise that this position may not be filled by this Fall. I was under the impression that the commitment was rather firm without any contingencies to establish this position by the Fall of 1976 or earlier."

(4) A letter dated June 23, 1976, from another participant in the same meeting.

"I have been following the progress (or lack of it) of the establishment of the Asian American position. I am very concerned with the apparent reluctance on the part of the administration relative to their original commitment to meeting our request. I was under the clear impression that the position would be secured by Fall" (italics added).

(5) (JACL Comment)—It is interesting to note that just one day after making an apparent firm oral commitment, Dr. Beasley has already begun backing away from that commitment ... Items 1-4 all relate to the same meeting.)

(6) A memorandum dated, Oc-

tober 4, 1976, to the Asian American Steering Committee from Dr. Beasley. Subject: Asian American Program (italics added).

"... We have not forgotten your request for and our commitment to implement the program when financially possible. The reason we did not move this summer was, and continues to be, lack of funds."

(7) A summary of a meeting of the Asian American Steering Committee with Dr. Beasley, dated Oct. 8, 1976.

"Dr. Beasley announced that it was not possible to fund an Asian American Scholar by the Fall of this year due to the financial profile of Washington State University." ... Dr. Way inquired whether or not it was true that 28 new positions were funded this year. This number of new positions was confirmed by Dr. Allan Smith, Vice President, Academics."

(8) A memorandum dated, Sept. 15, 1977, from Dr. Allan Smith, Vice President—Academics.

"... it is, unfortunately, not possible for the central administration to allocate an FTE (Full time equivalent ... a full time position) for the Asian American Scholar ..."

(9) A summary of Asian and Asian American Faculty Members' Meeting with Dr. Beasley dated April 22, 1976. Memorandum dated April 23, 1976, to Asian and Asian American Faculty, Subject: Asian American Courses.

"... I was surprised at the attendance at this meeting and the interest and concern generated by you." (JACL comment—18 faculty members attended the meeting which concerned the development of an Asian American curriculum and the establishment of an Asian American center as a long range goal.)

### III FUNDING OF THE ASIAN AMERICAN STUDENT ORGANIZATION

A. PC statement by Beasley:

Beasley did not deny, either, the fact Asian American student groups have not been funded by the associated students ... Beasley explained the Asian group simply has not asked for funds in several years. "When the (Asian) students were an active organization and asked for funds, they were funded. But the associated students have not received a request since 1975 ... that's why they haven't been funded. That they have never been funded is untrue; that they have not been funded recently is true, because they have not asked for funds."

### JACL Response

Nowhere in our administrative complaint to HEW or in our news release to the PC, did the JACL allege that the ASWSU did not fund the Asian American Student Organization. What we did allege was that the ASWSU

underfunded the Asian American student group in comparison to other minority groups when the number of Asian American students on campus was the largest of all minority groups and that this contributed significantly to its subsequent inactivity and disbanding. The failure of the WSU administration to support and approve the grant application for the Asian American Proposal in 1973, which was spearheaded by this group (mainly made up of Japanese Americans), and the underfunding of the same group by the ASWSU were the major factors in its disbanding.

In the PC article, Dr. Beasley used the "Straw-man" argument, by rebutting their own perception of the allegations. It is our position that the use of the impact of discriminatory treatment of Asian Americans, in the first place, as a justification for their views, deserves little comment, for the Asian American student group did not exist in 1976 and 1977 to

apply for funds. The WSU administration and the ASWSU had effectively discouraged its activity.

The JACL had learned from:

A news article, dated May 8, 1973, Daily Evergreen (Campus newspaper), "Asian request cut to \$500."

"... the newly formed Asian American group on campus faced a major setback when the ASWSU finance committee cut their original request of \$2,861 down to \$500 ..." "Mecha (Chicano group) also faced a dwindling budget request ... but this was not due to committee imposed cutbacks. Because of mistakes on the original request of \$2,325 ... Mecha will operate on a more limited budget than last year's \$1,890 due to mistakes in their request." (JACL comment—It is known that the Black student group received the largest allocation of over \$2,000 but it is not known exactly how much.)

### To be Concluded

## SONS HAWAII

•POLYNESIAN ROOM  
(Dinner & Cocktails - Floor Show)

•COCKTAIL LOUNGE  
Entertainment



•TEA HOUSE  
Tep-pan & Sukiyaki

OPEN EVERY DAY  
Luncheon 11:30 - 2:00  
Dinner 5:00 - 11:00  
Sunday 12:00 - 11:00

226 South Harbor Blvd.  
Santa Ana, Calif. 92704  
(714) 531-1232

QUON BROTHERS

**GRAND STAR**  
Lunch - Dinner - Cocktails - Entertainment  
7 Time Winner of the Prized  
Restaurant Writer Award  
BANQUETS TO 200  
943 N. Broadway (in New Chinatown), L.A.  
Validation Free Parking 626-2285

Be a PC Ad-Watcher

Finest Japanese Cuisine - Open Daily  
Tatami Room Cocktails

**EIGIKU**  
Restaurant

314 East First Street, Los Angeles • (213) 629-3029

**TIN SING RESTAURANT**

EXQUISITE CANTONESE CUISINE  
1523 W. Redondo Blvd.  
GARDENA DA 7-3177

Food to Go  
Air Conditioned Banquet Rooms  
20-200

福祿壽酒樓

**EMPEROR RESTAURANT**  
949 N. Hill St.  
(213) 485-1294

PEKING FOOD SPECIALTY  
Cocktail Lounge  
Party & Banquet Facilities

Dinah Wong, Hostess

VISIT OLD JAPAN

**MIYAKO**  
Luncheon Dinner Cocktails

PASADENA 139 S. Los Robles • 795-7005  
ORANGE 33 Town & Country • 541-3303  
TORRANCE 24 Del Amo Fash. Sq. • 542-8877

**The New Moon**

Banquet Rooms available  
for small or large groups

912 So. San Pedro St., Los Angeles MA 2-1091

**RED CARPET REALTORS**

**Howard Kishida**  
ASSOCIATE

1031 Rosecrans, #201  
Fullerton, CA 92635  
(714) 992-6363/992-5297

**CAMPBELL'S flowers**

Across from St. John's Hosp.  
2032 Santa Monica Blvd.  
Santa Monica, Calif

MARY & GEORGE ISHIZUKA 828-0911

**Naomi's Dress Shop**

Sport & Casual, Sizes 3-18  
116 N. San Pedro St.  
Los Angeles: 680-1553

Open Tue.-Fri. 9:30-6:30 and  
Sat. 11-9. Closed Sun.-Mon.

**CHIYO'S**  
Japanese Needlecraft  
Bunka Embroidery  
Craftkits - Art - Framings

WHOLESALE & RETAIL  
Chiyoko K. Welch, Prop.  
2943 W. Ball Rd.  
(714) 995-2432 Anaheim, Calif.

Open Daily 10-5. Friday to 8:30  
Closed Tuesday • Lessons Available

DELIGHTFUL seafood treats  
DELICIOUS and so easy to prepare

**MRS. FRIDAY'S**  
Gourmet Breaded Shrimps  
and Fish Fillets

Fishing Processors, 1327 E. 15th St., Los Angeles (213) 746-1307

**Marutama Co. Inc.**  
Fish Cake Manufacturer  
Los Angeles

**YAMASA KAMABOKO**

—WAIKIKI BRAND—

Distributors: Yamasa Enterprises  
**515 Stanford Ave.**  
Los Angeles  
Phone: 626-2211

GARDENA—AN ENJOYABLE JAPANESE COMMUNITY

**Poinsettia Gardens Motel Apts.**

13921 S. Normandie Ave. Phone: 324-5883

68 Units • Heated Pool • Air Conditioning • GE Kitchens • Television  
OWNED AND OPERATED BY KOBATA BROS.

West Los Angeles JACL Auxiliary

**EAST-WEST FLAVORS COOK BOOKS I and II**

We are now taking orders for East West Flavors II, 331 pages of all new recipes and menu suggestions. Our original 202-page East-West Flavors is still available. Please send me:

\_\_\_\_\_ copies E-W I, \$4.50, 75¢ postage & handling; \$5.25 each  
\_\_\_\_\_ copies E-W II, \$7.00, \$1 postage & handling; \$8.00 each  
TOTAL enclosed: \$ \_\_\_\_\_

Name \_\_\_\_\_  
Street \_\_\_\_\_  
City, State, ZIP \_\_\_\_\_

Please make checks payable to: West Los Angeles JACL Auxiliary  
1431 Armacost Ave., Los Angeles, Ca. 90025

# Theater, stage & books

WEST WIND: Joe Oyama

## 'Mondai Wa Akira'

Time: Late Dec. 1955  
Place: Berkeley, Calif.

Although written by Hiroshi Kashiwagi during the frenetic McCarthy era of the 1950s, "Mondai Wa Akira" is a delightfully simple, bi-lingual comedy set in post-war Berkeley. Unmatched in a feeling of innocence and naivete, the play is about an Issei couple's 28-year-old bachelor Nisei gardener son whom the mother would like to marry off, because she is concerned mainly about what other people will think. But the son seems quite happy, merrily going his own way, bowling and watching football, not terribly concerned about having dates.

Mr. Murata, the semi-retired father and former owner of a Berkeley dry-cleaning shop, now helps his son, Akira, with his gardening business. The father is quite unconcerned as long as he can have his TV, which he watches without sound, except for the sporting events which he seems to understand, much to the consternation of Mrs. Murata, who holds the reins in the family. She is an expert seamstress and her "dresses known as Murata originals are much talked about, especially by the faculty wives in the

Berkeley Hills ... She was a great beauty in her youth." (From the Asilomar program notes.)

Performed by the Center Players, a Japanese American theater group, it had its premiere at the Asilomar Conference of the San Francisco Center for Japanese American Studies June 18, 1977.

The audience response was enthusiastic. Nancy Araki, narrator of the play, surmised, "The audience was primed. It's because they had been discussing the Japanese American experience and they were ready for it. If you give the play in Oakland or Walnut Creek, the audience response won't be as good!"

But in the fall, "Mondai Wa Akira" was presented again at the Anza school in San Francisco to a paying audience of mostly Sansei and Nisei and the response was surprisingly good.

More about the play. Mr. Murata is a kind of pompous father, although he no longer holds the purse strings, ordering his family with shouts of "Telephone ... why doesn't someone hurry and answer it", often mistaking the doorbell for the telephone. He is so livid about

TV, sometimes, he doesn't know whether it is night or day, or what day of the week it is.

There are long stretches of telephone conversation between the Murata children and their friends, which set the tone for later events in the play, leading to a climax. The telephone conversation was at times, I thought boring, but necessary to the play.

One scene that I especially liked was the scene between Mrs. Nodoguchi, played by Suzie Okazaki, and Mrs. Murata, played by Asami Oyama. Mrs. Nodoguchi, with her daughter, played by Joyce Yamamoto, come to pick up a dress that she is to wear for her fourth son's Sunday wedding (her other three sons are married). Mrs. Nodoguchi tells Mrs. Murata that she, too, must become grandmother; it's wonderful to have a house full of children visit. Although Suzie Okazaki's portrayal of Mrs. Nodoguchi was good, I felt that there was just a little too much body movement, swaying arms, for an "Okusama" (Japanese lady).

The long conversation between Akira Murata, played by Randall Akira Nakano and Joe Uehara, played by Yuki Kawaguchi, was handled very well, although handicapped by a somewhat limited script. Both participants improvised, so that they were able to get sufficient laughter from the audience. Considering that

the phone talk was supposedly between two 28-year-old Nisei, I thought it sounded too juvenile, but this was during the McCar-

### A Bi-lingual Comedy by Hiroshi Kashiwagi

thy era when no one was saying much, least of all on the phone.

The phone conversation between Mrs. Murata and Joe Uehara captures the fragmented Japanese-English of the Nisei: Mrs. Murata: "Haro Ano donata desuka?" Joe: "Wh...at?" Mrs. Murata: "Donatadesuka?" Joe: "Oh ... oh ... boku Joe" etc.

In one scene, Tommy Higurashi played by David Araki asks Joyce Murata, played by Kristen Yamamoto, "Are you going to the Bonenkai?" She replies, "I know those

stupid Japanese songs and dances and silly skits", showing the ambivalent feeling that a lot of Nisei had about their cultural heri-

tage, until they became enlightened in recent years with the trend towards ethnicism and interest in cultural background and heritage.

Played by M. Moss Fujii (who, incidentally, produced, directed and narrated a weekly educational program in Aspen, Colo., "Never-Miss Sewamono-San" was ably performed as the busybody called in by Mrs. Murata to help her find a "garu frendo" (girl friend) for Akira, the bachelor.

Hageyama-san, played by Hiroshi Kashiwagi (in a

scene which he added to the play later), is a very "humble" type of Issei, given to a lot of bowing and kowtowing, more of a character to be pitied than to laugh at, but he was funny in his exaggerated "umbleness" and given to Freudian dreams.

Last but not least, I played the part of Mr. Murata. (At Asilomar before the curtain went up, I forgot all of my lines, but once on stage the Adrenalin surged through me, and the portrayal of Mr. Murata clicked.)

Play was directed by Ted Samuels, program director of radio station KALW with wide experience in the theater. Other credits: Shigin text, Miyao Kokurei; producer, Aileen Yamaguchi (now attending Univ. of Hawaii); technical effects, Hiroshi Kashiwagi-Nimura. □

## Asian angles color 'Scoop'

SAN FRANCISCO — Three authors long associated with Asian American activities are among the star-studded contributors in the year-end annual magazine "Scoop", published by the Press Club of San Francisco, one of the most prestigious clubs in the nation.

The Asian-oriented writers and longtime club members are U.S. Sen. S. I. Hayakawa, retired newspaperman Lee Ruttle and Charles L. Leong, dean of Chinese American newsmen here who is now a public relations

consultant.

"Life on Another Hill" is the article written by Hayakawa, first Asian American senator from California, who in his academic days was known as a world-famous semanticist, later as the fire-brand president of San Francisco State University. His piece describes the practices inside the U.S. Senate as observed by this junior senator from California, who in 1976 as a Republican political novice created the election upset of the year in his victory over incumbent John Tunney.

Ruttle, who first appeared on the Chinatown scene from New York thirty years ago producing Chinese shadow plays, lives in Oakland. Mrs. Ruttle is the former King Lan Chew, daughter of the distinguished late editor Ng Poon Chew. Ruttle continues his interest in Asian American affairs as a correspondent of Pacific Citizen, publication of the Japanese American Citizens League. "The Great Tomato Juice Massacre" is an "inside" story of an incident—hilarious but significant—of the nationally reported Wendy Yoshimura trial last year. Ruttle's first novel, "The Private War of Dr. Yamada" is due to hit the bookstores in March, with excellent reviews already in the publishing trade magazines.

Leong's article, "There's Always a Chinese Angle?" examines in a light vein the role of the Chinese in the journalism history of California, and the stereotypes in both fiction and nonfiction in American literature since Bret Harte's famous lines on "the heathen Chinese".

Leong also gives for the first time a run-down on the "Chinese angle" of the Press Club, both staff and members, of an organization which probably has more members of Asian ancestry than any other private club in the United States today. He has co-authored the best-selling Chinese cookbook "Eight Immortal Flavors", a children's text-book "The

Eagle and the Dragon".

These three authors, in itself a "first" in Asian American contributions, are sprinkled with a sterling list of other contributors, including two Pulitzer Prize winning writers and columnists, top columnist Herb Caen, world-famous author-explorer Lowell Thomas and other writing stars of the publications and public relations world. Editor of this year's "Scoop" is author/editor and well-known raconteur Paul Speegle. □

## Bookshelf

### ● Loyal Linguists

Story on the Nisei in (G-2) military intelligence service during World War II is no longer a secret among PC readers. But the MINNESOTA HISTORY (\$1.75), quarterly publication of the Minnesota Historical Society, St. Paul, Minn. 55101, in its Fall 1977 number has yielded a different perspective in having a Japanese citizen, Masaharu Anno, find "among the many sad stories of exclusion and discrimination toward Japanese Americans ... one of trust and confidence". Titled, "Loyal Linguists" (an alliteration we wished we had used to identify the MIS gang), Anno wrote the piece while a graduate student in immigration history at the Univ. of Minnesota. He is director of the Center for Japanese American Language and Culture on Ogori, Yamaguchi-ken, and is doing a study of Japanese immigrants who returned to Japan from the U.S. mainland and Hawaii. □



# 二世

このおとなしいアメリカ人

●ビル・ホソカワ 井上勇訳  
★A5判 620頁 ¥3,600 (\$14.40)

筆者はアメリカ日系市民協会と協力して、二世とはなにかという疑問に光をあてようと試みた。大戦中、大部分のアメリカ人よりも、さらにアメリカ建国の精神と理想とを力強く生き抜いた二世の出所進退はどこに由来したか。これを考えることは、二世のみならず、日本人が自らを認識するのに大いに参考になる。(訳者)

(Special Price of \$14 Includes Postage)

Order Form for Hosokawa Book, "Nisei" (Japanese Edition)

Pacific Citizen, 355 E. 1st St., Rm 307, Los Angeles, Ca 90012

Please send \_\_\_\_\_ copies of the Hosokawa book, "Nisei" (Japanese edition) at special price of \$14 postpaid to readers of this newspaper.

Enclosed check to "Pacific Citizen" for \$ \_\_\_\_\_

Ship books to: \_\_\_\_\_  
Name: \_\_\_\_\_  
Address: \_\_\_\_\_  
City: \_\_\_\_\_ State \_\_\_\_\_ ZIP \_\_\_\_\_

Gift Lists Welcome at the Same Special Price

**EAST WEST PLAYERS**

ONCE UPON IN AMERICA  
Last 3 shows!!  
Fri., Sat. - 8 pm  
Sun. - 7:30 pm

"SOUL" Returns!!!!

NOW! Visa/Mastercharge  
**660-0366**  
4424 Santa Monica Blvd.

# Dancer, musician home in Long Beach

LONG BEACH, Calif. — As the fluid movements of the dancer graced the stage, the gentle strains of music resounded throughout—the union highlighted the homecoming of the American Ballet Theater's two performers most recognizable to locals.

The principals—ballerina Yoko Ichino and music director Akira Endo—appearing at the Terrace Theater here in Long Beach recently, were playing to hometown crowds.

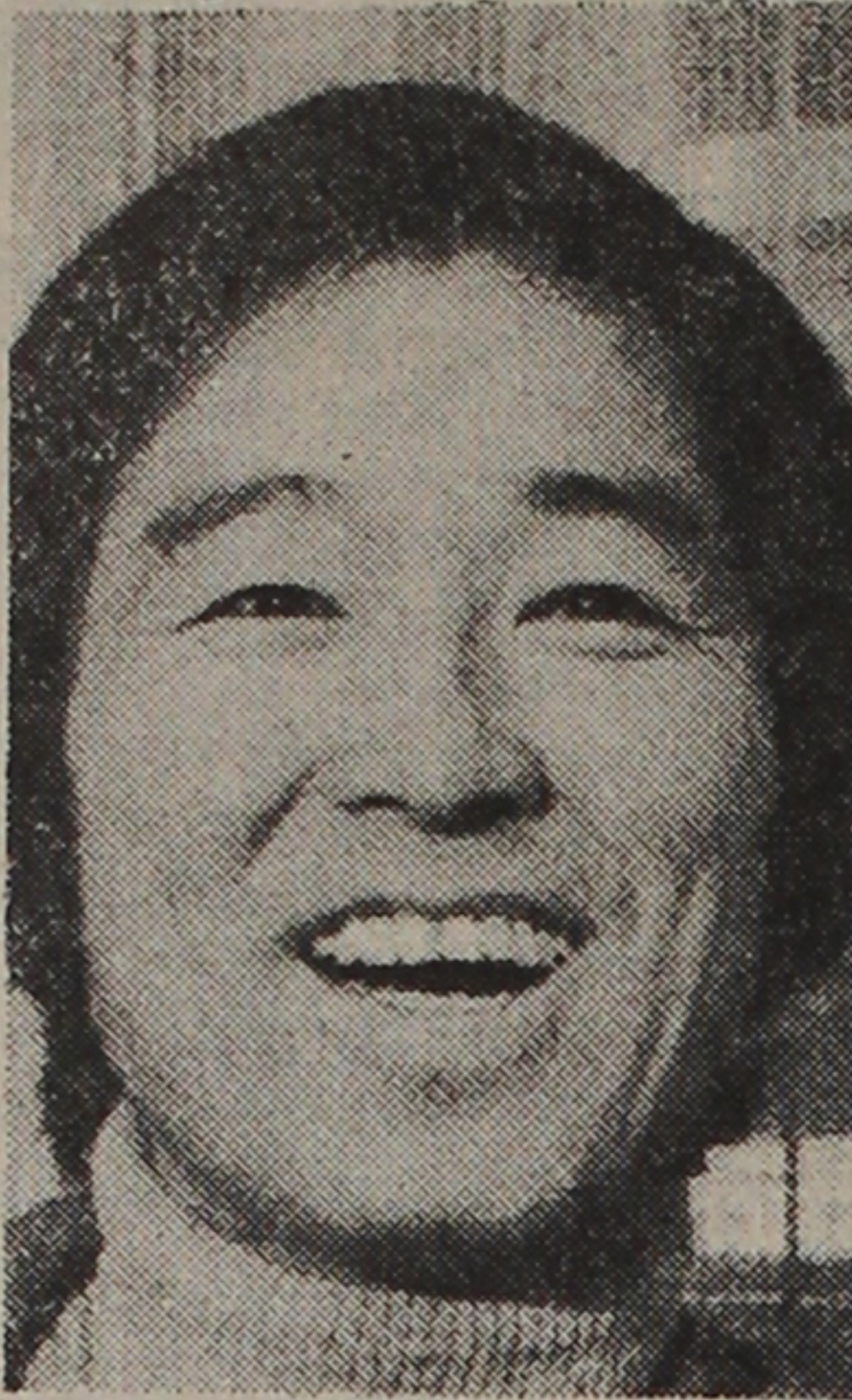
Long Beach, the port city noted more for its monstrous freighters and horizon polka-dotted with oil derrick after oil derrick, was the unknowing breeding ground several years ago for two of the finest performers of today's cultural arts.

Long Beach was where Ichino, the pride of Longfellow Elementary and Hughes Junior High, was first schooled in ballet—with Audrey Share, "not because my parents knew anything about dancing, but because I had flat feet and the doctor thought dancing might help," she laughed.

And Long Beach was also Endo's first U.S. home, where he was brought in 1951 after being discovered

while playing the violin at an American canteen in Japan.

Endo continued his education at USC and received the distinguished alumni award



Akira Endo

after graduating. He then began teaching at Long Beach City College, where he later conducted the college orchestra.

During his two-year stint as conductor of the Long Beach Symphony, Endo twice won awards in the Dmitri Mitropoulos International Music Competition for Conductors.

It was during one of the competitions he was noticed

by Leonard Bernstein, who recommended him for the ABT post of principal conductor.

In 1974, Endo accepted the resident conductor position with the Houston Symphony and later that year became permanent conductor of the Austin Symphony. The next year he was named music director and principal conductor of ABT.

"In nine years with the American Ballet Theater," he said, "I have learned a great deal."

The learning process has been equally as beneficial for Ichino, who has captivated crowds internationally, but in particular, the Soviet Union.

In June 1977, the young dancer withstood the rigors and pressures of the Third International Ballet Competition at Moscow and emerged with a bronze medal.

"There were 76 contestants from countries around the world; 15 of the entrants were Russians," she said. "Of the six judges, one, Robert Joffrey, was American. We drew lots for the order in which we would compete—I was number 40. We each danced two pieces, one classical, one modern."

At the end of the first round, 36 dancers remained; at the second round's conclusion, 21. All 15 Russians were still in competition.

Nine of the 13 medals went to Russians, Ichino recalled, with Australia, Romania, Japan and U.S. also represented.

"The audience was wonderful at the final gala event. I wasn't looking for an award, just for the chance to learn from the experience. I couldn't believe that I was the only one asked to do an encore."

Similar challenges in her career have been met with the same success.

When studying with Audrey Share, Ichino passed the intermediate exams of the Royal Academy of England with honors. Later, she studied in Los Angeles with Mia Slavenska, then joined the Joffrey II Company in New York.

In 1973, she became a member of the City Center Joffrey Ballet and in 1975 went to the Stuttgart Ballet.

After winning the coveted honors in Moscow, Ichino was a guest artist in Monte Carlo under the direction of Marika Besobrasova and in October 1977, became an ABT dancer.

Her local performances have drawn the praise of critics, many placing her at the superstar level.

She admits, though, that she still has flat feet. "But now I can dance," she smiles.



Yoko Ichino performs "Le Corsaire", which won the Bronze Medal.

## Books from PC

**The Bamboo People: The Law and Japanese Americans**, by Frank Chuman. Legal and legislative history of the Japanese in America. A "must" for every collection.

Hardcover, \$11.50 postpaid. (PC Office has limited supply available on cash & carry basis at \$10.95.)

**Japanese American Story**, by Budd Fukei. A good taste of the history and cultural heritage. One chapter by Mike Masaoka recalls JACL's role during Evacuation.

Hardcover, \$7.40 postpaid

**Nisei: the Quiet Americans**, by Bill Hosokawa. Popular history of the Japanese in America, 1869-1969.

Hardcover, \$9.45 postpaid.  Softcover, \$4.40 ppd.

**Jan Ken Po**, by Dennis Ogawa. On the heritage of Japanese Americans in Hawaii. An excellent introduction.

**OUT-OF-PRINT. Paperback edition due August, 1978.**

**Rulemakers of the House**, by Spark Matsunaga-Ping Chen.

An inside look at the most powerful committee in the House of Representatives, based on Spark's 10-year experience in that committee. (The Senator has autographed a limited supply.)

Hardcover, \$7.40 postpaid.

**Camp II Block 211**, by Jack Matsuoka. Daily life in internment camp at Poston as sketched by a young cartoonist.

Softcover, \$6.55 postpaid.

**Hawaiian Tales**, by Allan Beekman. Eleven matchless stories of the Japanese immigrant in Hawaii.

Hardcover, \$4.55 postpaid.

**Thunder in the Rockies: the Incredible Denver Post**, by Bill Hosokawa. Personally autographed copy from the author to PC readers. Packed with hours of entertainment.

Hardcover, \$13.40 postpaid.

**Years of Infamy**, by Michi Weglyn. Shocking expose of America's concentration camps as uncovered from hitherto secret archives.

Hardcover, \$11.40 postpaid.

### BOOKS IN JAPANESE

**Nisei: Kono Otonashii Amerikajin**, translation of Hosokawa's "Nisei" in Japanese by Isamu Inouye. Ideal gift for newcomers to U.S. and friends in Japan. Library edition.

\$14.25 postpaid. (Only supply in U.S.)

**America's Concentration Camps** (Japanese translation of Allan Bosworth's book) by Yukio Morita.

Hardcover, \$6.35 postpaid.

### RECENT ARRIVALS

**In Movement: a Pictorial History of Asian America**. By Visual Communications, Inc.; text by Dr. Franklin Odo. Oriented toward schools and libraries in areas of multi-cultural and ethnic studies.

Hardcover: \$25.50 postpaid.  Softcover: \$15.50 ppd.

**They Called Her Tokyo Rose**, by Rex Gunn. Documented story of a WW2 legend by a Pacific war correspondent who stayed with the story to its unimagined culmination.

Paperback, \$5.50 postpaid.

Pacific Citizen, 355 E. 1st St. Rm 307, Los Angeles, Ca. 90012  
Please send us the above order of books.

Name \_\_\_\_\_

Address \_\_\_\_\_

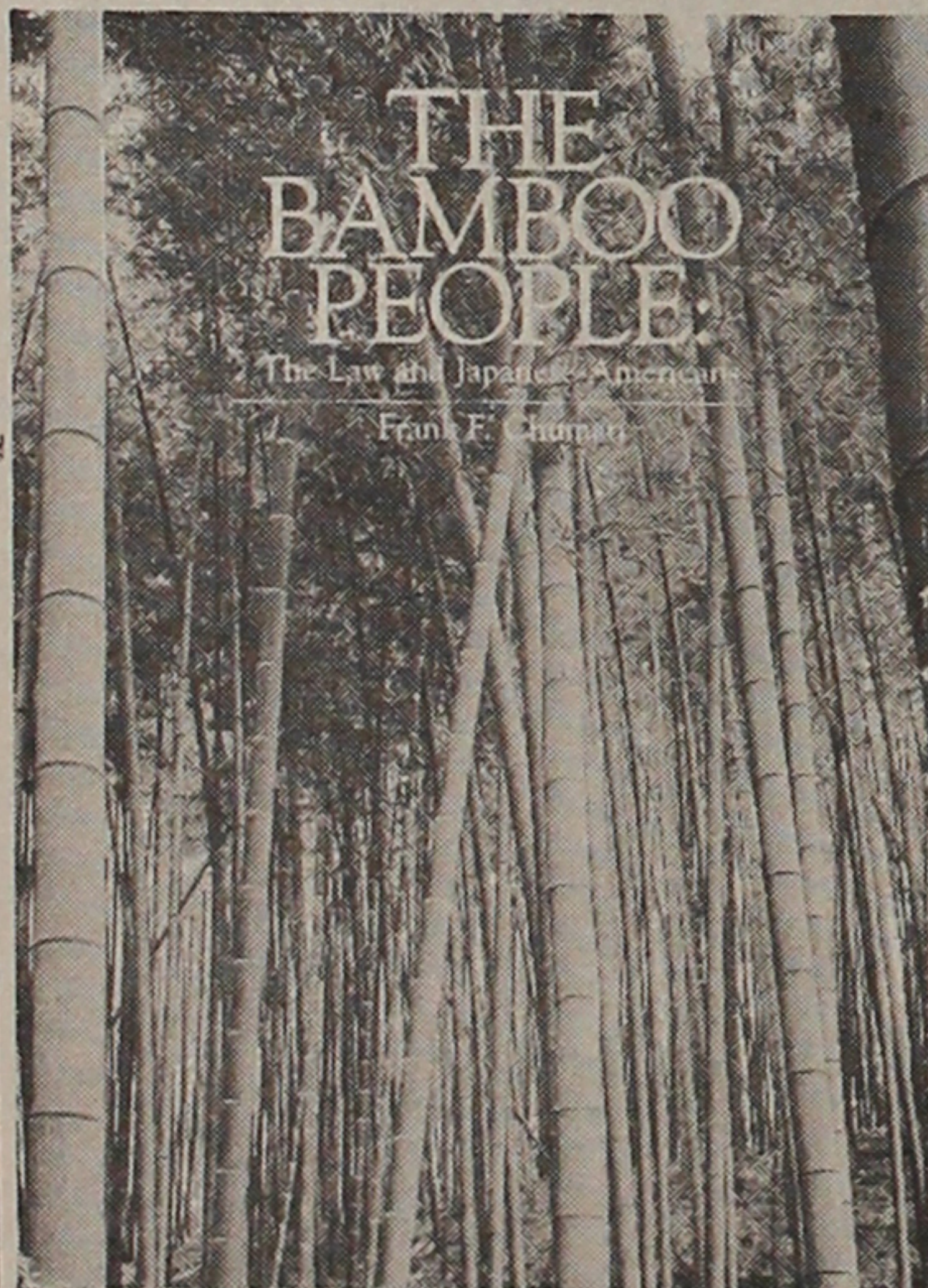
City, State, ZIP \_\_\_\_\_

Check payable to 'Pacific Citizen' enclosed: \$ \_\_\_\_\_

## THE BAMBOO PEOPLE:

### The Law and the Japanese-Americans

by Frank F. Chuman



"A historical treatise that needed to be written from the perspective of a Japanese American, with his own observations, interpretations and commentary upon the tragedy of racial discrimination and the dignity of those who endured it . . . A stimulating work."

TOM C. CLARK

Associate Justice of the U.S. Supreme Court (ret.)

"An illuminating study which puts this event into perspective . . . The only book which I am familiar which records these cases (of other injustices perpetrated against mainland Japanese Americans) and their decisions."

SEN. DANIEL INOUE (D-Hawaii)

"Books about court cases are often difficult to read because they contain too much 'legalese', the language used by judges and attorneys. But Chuman has succeeded in writing his book in nonlegal language."

HANK SATO

Honolulu Star-Bulletin

"You have plugged a significant gap in our history with your carefully documented report . . . It is history of the tenacious hopes and dreams of a particular minority group coping with persistent racism . . ."

GORDON HIRABAYASHI

Univ. of Alberta

"A worthy reference for those dealing with civil liberties and human rights . . ."

CAMERON WEHRINGER

American Bar Association Journal

"The book has helped make the Bicentennial more meaningful . . ."

DO VANGLY, retired Ambassador

to the United States, Japan and other countries representing Vietnam.

"A new and fine presentation of the legal obstacles which the Japanese immigrants to the U.S. and their descendants met and overcome."

JAMES C. PURCELL

San Francisco

NOW IN THIRD PRINTING

Illustrated, 386 pp. Preface, Footnotes, Index  
Publisher's Inc., Del Mar, Calif. List Price: \$12.95

#### SPECIAL OFFER TO JACL MEMBERS AND FRIENDS

JACL-Japanese American Research Project  
c/o Midwest JACL Office  
5415 N. Clark St., Chicago, Ill. 60640

Please send me \_\_\_\_\_ copy(s) of Frank Chuman's "The Bamboo People" at the special rate of \$10.95 plus 55 cents for mailing and handling per book.

Name \_\_\_\_\_

Address \_\_\_\_\_

City, State, ZIP \_\_\_\_\_

Make Check or Money Order payable to: JACL-JARP.

Amount Enclosed: \$ \_\_\_\_\_

#### SPECIAL BULK RATE TO JACL CHAPTERS

Order Now as Chapter Gifts at Installations, for Public Relations, and Presentation to All Schools and Libraries

One Case of 8 Books 'Bamboo People'—\$72 plus Shipping

**RINGSIDE SEAT: George Yoshinaga**



# My sister's golden wedding jubilee

Los Angeles

I'm back. Okay, I didn't expect any wild applause from the reading audience, anyway.

Perhaps many people didn't even realize that I was gone for the past couple of months (in Tokyo working with Japan Bowl, etc).

The only one that missed me is probably my typewriter, a vintage model Royal, which was laden with dust.

Since I've been gone from the local scene I will have to get my feet wet again, which shouldn't be too difficult a task with the weather the way it is.

The other night my older sister and her husband celebrated their golden anniversary at General Lee's Man Jen Low.

The only thing the affair made me feel was very old. Where have the years gone? A sister who has been married 50 years!

I used to think only very old Issei couples celebrated their 50th wedding anniversary and here was my sister and her husband, still looking very youthful, toasting the gathering with champagne.

It was one of those rare occasions when I get to see my brother and other sister in the same room.

For one reason or another we never seem to be able to

get together so it was a nice evening, chatting about how things are going with each other.

My sister's son (I guess you refer to them as nephews) just returned from Europe where he was producing a film.

He owned the Murakami-Wolf film studios in Hollywood at one time and produced some Oscar-winning animation films.

My brother is a painter. No, he doesn't do canvas. Most of his oils go on houses and interiors of houses.

My other sister, who lives in Mountain View in Northern California works for the Bank of America. I don't see her frequently enough for her to recognize me, even if I

walked in and stuck up the branch she works in.

One of the toughest parts about going to a golden wedding anniversary party is to find a gift, what with the price of gold what it is.

I was going to donate one of my gold-bridge teeth but found that it was too small to inscribe any messages on it.

If the celebration took place during relocation camp days I could have brought a roll of toilet paper. Remember, we used to refer to a roll of TP as "white gold"?

At any rate, I congratulate Tom and Shiz Murakami upon reaching this rare milestone while still looking slightly youthful.

—Kashu Mainichi

## pc's people

Continued from Page 3

**Ben Tom**, a transportation analyst for the California Public Utilities Commission, has unanimously been elected president of the San Francisco Board of Education. Tom succeeds Dr. Zuretti Goosby, board veteran and San Francisco dentist. Tom has been on the board almost a year and has worked with numerous school district committees.

**Dr. Midori Nishi** was appointed associate coordinator of the Japanese Studies Center at California State University, Los Angeles. She will serve through the summer quarter of 1978. ... **Carolyn Kami**, granddaughter of the late **Dr. Carl Hirota** of San Francisco, was among 14 students selected to continue their studies abroad in the Redwood International Student Exchange program. A 15-year-old student of Redwood High School, she will travel in Europe and Latin America during 1978-79. She is the daughter of **Dr. and Mrs. Saburo Kami**, of Tiburon.

**Dr. S. Frank Miyamoto**, 65, is the first Japanese American to be named dean of the College of Arts and Sciences of the Univ. of Washington. A native of Seattle, he has been chairman of the sociology department and is known for his research on mental health. He has served as the college's associate dean since 1975.

### Flowers-Garden

**Koichi Kawana**, environmental design professor at UCLA, has been commissioned to create a Japanese niwa for the Denver Botanic Gardens. About \$250,000 has been allocated for the work.

### Government

**Robert S. Ingersoll**, U.S. ambassador to Japan 1972-73, was honored at the Japan America Society's 69th anniversary banquet at the Los Angeles Biltmore Hotel. Following his tenure as U.S. ambassador, he was Assistant Secretary of State for East Asian and Pacific Affairs in 1974 and Deputy Secretary of State, 1974-76. He presently serves on the Board of Directors of the Japan Society and the Trilateral Commission (North America).

Alamosa architect **Akira Kawanabe** has been appointed by Colorado Gov. Richard Lamm to serve on the state's Energy Conservation Advisory Council. Kawanabe also has been named to the state advisory group to assist in solar energy planning. ... **Roy Nakadegawa**, a Richmond senior civil engineer, was re-elected vice president of the AC Transit Board of directors, the poli-

cymaking body for the transit district.

**Rita Fujiki Elway** of Seattle was one of two new aides recently appointed to the staff of newly-elected councilman Michael Hildt. Elway is a communications and community affairs consultant and was recently appointed by President Carter to the National Commission for the Observance of International Women's Year. A member of Seattle JACL board, she has an MA in communications from the Univ. of Washington and is a doctoral candidate in higher education.

**Dr. Stanley Kim**, 55, a sociologist-criminologist credited with building better rapport between San Francisco deputy sheriffs and county jail inmates, has been named permanent training officer in the sheriff's department. He had been a temporary officer for the past four years under a federal grant. A Korean-American and Hawaii native, Kim initiated training for new deputies and in-service training for long-time personnel. He says building rapport between deputies and inmates eases tensions and improves attitudes.

**Jae Min Roh** and **Ernest S. Nishinaka** were among 10 Los Angeles employees honored with 1978 Career Service awards. Roh, a librarian at the Inner City Bookmobile Unit, is responsible for the weekly stops in Little Tokyo. Nishinaka, counselor with the Dept. of Recreation and Parks, has been working over 25 years with police, youth and senior citizen groups in the Crenshaw area. ... **Ronald Low**, 26, was appointed Executive Director of the California Advisory Commission on Youth by Lt. Gov. Mervyn M. Dymally. Low previously worked as an intern in Dymally's office and coordinated the Council on Intergroup Relations. He received his BA in criminology from UC Berkeley and his masters in social work from CSU Sacramento.

### Sports

**Rick Fujioka**, of Reedley High School, will play in the Central California All-Star football game Aug. 17 at Ratcliffe Stadium. The Sansei griddler was one of six Reedley High members named to the county team.

### Fashions presented

LOS ANGELES—"Majestic Elegance", a fashion show luncheon featuring the designs of Irene Tsu and Rubin Panis will be held Sunday, Feb. 19 at the Biltmore Hotel. Proceeds will go toward the L.A. Chinese Drum and Bugle Corps, according to Rose Tong (213) 758-4462.

Support PC Advertisers

# The 1978 JACL Travel Program

SPONSORED BY NATIONAL JAPANESE AMERICAN CITIZENS LEAGUE

Open to All Bonafide JACL Members

## GROUP FLIGHTS TO JAPAN

Group No.	Depart From	Dates
1—	Los Angeles/San Francisco	FULL Apr 05-Apr 26
4—	Los Angeles	Apr 19-May 10
5—	Vancouver	Apr 01-Apr 24
7—	San Francisco	May 22-Jun 05
8—	Los Angeles	June 26-Jul 10
10—	San Francisco	Jul 24-Aug. 21
11—	Los Angeles/San Francisco	Jul 25-Aug 22
12—	San Francisco	Jul 31-Aug 31
14—	Los Angeles/San Francisco	Sep 04-Sep 25
15—	San Francisco	Sep 25-Oct 16
17—	San Francisco	FULL Oct 03-Oct 26
18—	Los Angeles/San Francisco	Oct 03-Oct 23
21—	San Francisco	Oct 16-Nov 06
23—	San Francisco	Nov 27-Dec 18
24—	San Francisco	Dec 20-Jan 09

Via **JAL 747/100**: Confirmed  
**GA100**: Confirmed Round Trip Fare: \$720\*  
 9— Chicago Jun 25-Jul 16

Via **PanAm 747/GA100**: Confirmed Round Trip Fare: \$564\*  
 6— Los Angeles May 6-May 27  
 13— Los Angeles Aug 12-Sep 02  
 20— Los Angeles Oct 01-Oct 21  
 22— Los Angeles—Honolulu Stopover Oct 16-Nov 06

Via **JAL Charter**: Confirmed Round Trip Fare: \$599\*\*  
 16— Chicago Oct 02-Oct 22

## CARIBBEAN CRUISE

Norwegian Caribbean Lines/MS Skyward

B Deck Inside, \$589.25; C Deck Outside, \$560.75. (Airfare to Miami extra.)  
 Depart May 12 evening, return May 20 mid-afternoon. Ports of Call—  
 Cap Haitien, Haiti; San Juan, P.R.; St. Thomas, V.I.; Puerto Plata, Dom. Rep.

## GROUP TOUR TO EUROPE

Via **Lufthansa** 26-day excursion: \$2,300  
 2—Los Angeles May 28-Jun 22

## GROUP TOUR TO SOUTH AMERICA

3—San Francisco (via Varig) Apr 22-May 06

### LOCAL ADMINISTRATORS

Flt 1, 18—Grant Shimizu, 724 N. 1st St., San Jose, Ca 95112 (408) 297-2088.  
 Flt 2, 17—Tom Okubo, 1121 Lake Glen Way, Sacramento, Ca 95822 (916) 422-8749, 455-5568  
 Flt 5—Harry Kadoshima, 526 S. Jackson, Seattle, Wa 98104  
 Flt 9, 16—Frank Sakamoto, 5423 N. Clark St., Chicago 60640 (312) 561-5105.  
 Flt 12, 15—Tad Hirota, 1447 Ada St., Berkeley, CA 94702 (415) 526-8626.

### GENERAL INFORMATION

\* Air fare (effective Aug. 1, 1977) includes round trip, \$3 airport departure tax, and \$20 JACL administrative fee. Adult and child seats same price on any flight; infants 2 year old, 10% of applicable regular fare. / \*\* Charter price includes round trip airfare, tax, JACL administrative fee and may vary depending on number of passengers. ALL FARES, DATES, TIMES SUBJECT TO CHANGE. / If there are any questions regarding the National JACL Travel Committee policies or decisions, write or call Mich Mizushima: Nat'l JACL Hq, 1765 Sutter, San Francisco, Ca 94115 (415-921-5225).

## Information Coupon

Mail to any JACL-authorized travel agent, chapter travel chairperson or president, JACL Regional Office or to:

**National JACL Travel**  
 1765 Sutter St., San Francisco, Calif. 94115

Send me information regarding 1978  
 Nat'l JACL Flights, especially Group # \_\_\_\_\_

Name \_\_\_\_\_  
 Address \_\_\_\_\_  
 City, State, Zip \_\_\_\_\_  
 Day Phone \_\_\_\_\_ Chapter \_\_\_\_\_

If you are moving, give us 3 week's advance notice. Clip out entire address label "box". Write in new address and effective date.

New Address \_\_\_\_\_  
 City, State, ZIP \_\_\_\_\_  
 Effective Date \_\_\_\_\_

**PACIFIC CITIZEN**  
 355 E. 1st St., Rm. 307, Los Angeles, Ca. 90012

## West Los Angeles 1978 Travel Program

Flights are open to JACL Members and all qualified family members. Membership must be at least 6 months immediately prior to departure.

## FLIGHTS TO JAPAN

### FLIGHT 1: JUNE 13-JUNE 30

Dir.: Steve Yagi, 3950 Berryman Ave., L.A. 90006 ..... 397-7921

### FLIGHT 2: AUG. 5-AUG. 25

### FLIGHT 3: SEP. 30-Oct. 21

Dir.: Mrs. Toy Kanegai, 1857 Brockton Ave., L.A. 90025 820-1133

## L.A. — Tokyo \$554\* Round Trip

Includes \$3 Departure Tax and \$10 Administrative Fee  
 Optional Stopover in Honolulu, additional \$3

• 12-day Land Tours available. Optional tours to Kyushu Extension; On Flt. 3 only Hokkaido Extension. • For reservations, mail \$100 as partial payment with coupon below. Make payable to "West LA JACL Flight". Coupon may be sent to Flight Director as listed.

West L.A. JACL Flight, c/o R. Takeda  
 1702 Wellesley Ave., Los Angeles, Calif. 90025

Please reserve \_\_\_\_\_ seat(s) for your flight No. \_\_\_\_\_

I am a JACL member or will have been at least six months prior to date of flight departure. I agree to the conditions of the contract and brochures. JACL and its agents act only in the capacity of agents for passengers in all matters relating to travel and as such assume no liability for any injury, damage, loss, accident, delays or change beyond their control. Liability of transportation and tour operation is limited to the terms of the tickets and membership agreements. Flight schedules are subject to change.

Name \_\_\_\_\_  
 Address \_\_\_\_\_  
 City, State, ZIP: \_\_\_\_\_  
 Phone: \_\_\_\_\_ Passport No. \_\_\_\_\_  
 Send Tour Brochures  Flight Only

FOR ADDITIONAL INFORMATION PLEASE WRITE OR CALL:

George Kanegai, 1857 Brockton Ave., L.A. 90025 (213) 820-3592 (eve)

• Next flight and tour meeting will be held at Felicia Mahood Recreation Center, 11338 Santa Monica Blvd., WLA, on Sunday, Feb. 19, 2 p.m. Brochures, general information available. Open to all JACL members.

Tour With ...

## JACL/South American Tour

BRAZIL • ARGENTINA • PERU

16 Days visiting Rio De Janeiro, Iguassu Falls, Buenos Aires, Lima.

From LOS ANGELES via VARIG AIRLINES

Departs: April 22, Sat.

Returns: May 6, 1978, Sat.

Tour Features: Locally Hosted ... Deluxe Hotels to First Class Hotels ... Continental Breakfasts in Some Cities ... Sightseeing Each City ... Deluxe Dinner Party in Brazil ... One JACL Tour Escort ... Transfers between Airports and Hotels.

For Reservation, Call or Write Your Local JACL Authorized Retail Travel Agent or JACL National Headquarters.