

IN&S called on harassing Asian aged

WASHINGTON — Responding to reports (Jan 18 PC) that elderly Asian Supplemental Security Income (SSI) recipients are being subjected to unnecessary harassment by Immigration and Naturalization Service officers, Rep. Robert T. Matsui (D-Ca) of Sacramento has asked for a full investigation of the matter.

In a strongly worded letter

to Acting INS Commissioner David Crosland, Matsui cited specific allegations made by the San Francisco Neighborhood Legal Assistance Foundation.

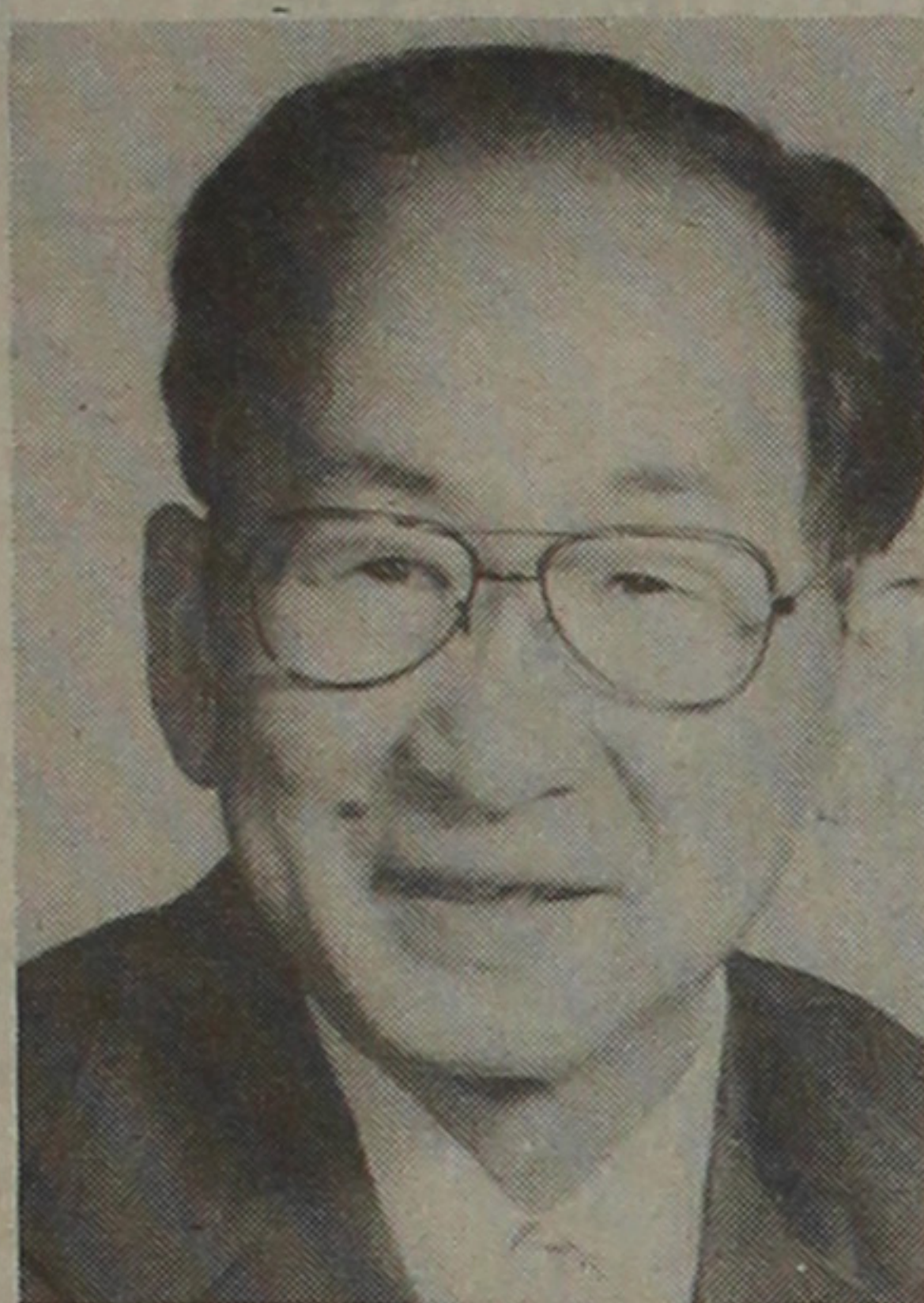
According to reports, the problem focuses on the harassment of elderly Asian SSI recipients who have traveled abroad recently. At present, INS officers are under strict

Federal mandate to review fully each case following stringent protective guidelines. However, it has been reported that some officers, in violation of these guidelines, are intimidating Asian senior citizens to the point where they are forfeiting their SSI benefits for fear of losing their permanent residency status.

"Given my concern that all

citizens and permanent residents of the United States are entitled to fair and equal treatment under our immigration and naturalization laws," said Matsui, "I request a timely investigation by your Washington office into these allegations." He added, "Any delay will exasperate an already intolerable situation, especially given the sensitive age of the population subjected to the harassment." #

Supervisor Yoshikawa facing 8 in primaries



Richard Yoshikawa

STOCKTON, Ca. — Richard Yoshikawa will seek reelection this year to the First Supervisorial District post he has held on the San Joaquin County Board of Supervisors since his appointment in December, 1974.

His candidacy brings to eight the number of people now in the race to represent the district that extends from Central Stockton to Lathrop.

Yoshikawa, 59, was appointed to the county board in December, 1974, by Gov. Ronald Reagan. He replaced Carmen Perino, who had been elected to the State Assembly.

Yoshikawa won election to the board in November, 1976, after outpolling White, 6,397 to 5,088, in a runoff election. In the June primaries, there were nine candidates for the First Supervisorial District seat.

A professional photographer and longtime JACLer, Yoshikawa is a native Stocktonian who attended Stockton College and later the Art Center School of Photography in Los Angeles.

He served on the Delta College Board of Trustees for 11 years immediately before being appointed to the county board. #

Buddhists raise \$17,000 for relief

SAN FRANCISCO — First totals of the donations to appeals by the Buddhist Churches of America for Cambodian relief came to almost \$17,000 as of Jan. 13, it was announced by the Rev. Ryo Imamura, chairman of the BCA social welfare committee. Over 14,000 appeals were mailed, some 1,500 returned.

"It's not the amount given that is important," Imamura said. "Even one dollar from an elderly Issei on fixed income shows genuine concern and compassion." #

Affirmative action hiring by State of Calif. upheld

SAN FRANCISCO — The California Supreme Court this past week (Jan. 25) upheld the use of racial quotas in affirmative action plans for hiring public employees. The 4-3 decision to correct racial imbalance due to past discrimination for the majority was written by Justice Mathew O. Tobriner, who declared:

"Such remedial affirmative action measures promote, rather than thwart, the attainment of the ultimate constitutional and legislative objective, a society in which equal

employment opportunity is a reality rather than an elusive dream."

The minority opinion, by Justice Stanley Mosk, condemned racial quotas as reflective of the "new racism" and "per se unequal and discriminatory". He observed: "For every person quota-ed in, another is quota-ed out."

Tobriner was joined by Chief Justice Rose Elizabeth Bird, Justices Wiley Manuel and Frank C. Newman (all Gov. Brown appointees, incidentally). Joining Mosk were Justices William P. Clark and Frank Richardson.

It was recalled that in 1976 Mosk had written the majority

6-1 decision with Tobriner the lone dissenter in the case of Allan Bakke, who contended he had been denied admission to UC Davis medical school in favor of less qualified minorities. The U.S. Supreme Court two years later upheld the Bakke decision.

The Jan. 25 decision stems from the Sacramento County civil service commission, which had found there was only one minority among the 65 lawyers in the county district attorney's office—and "disproportionately low" to the 19½% minority population of the county.

In Sacramento, the district attorney's office will decide

what steps to take after it studies the opinion. Office spokesman Jim Morris, asst. chief deputy, said of the 89 lawyers on staff, three are minorities. Three other minorities had recently resigned.

"Unfortunately, we've lost some minority lawyers... but it's not from a lack of trying," Morris added.

Those in support of the decision called it a "terrific victory". Margaret C. Crosby of the ACLU of Northern California said, "It clears the way for programs where there has been a substantial racial imbalance due to an employer's own practices." #

EXECOM called for Feb. 1-3

SAN FRANCISCO—JACL's Executive Committee will meet Feb. 1-3 at Headquarters with Dr. Clifford Uyeda, National JACL president, presiding. Sessions open at 7 p.m. Friday and conclude by Sunday noon.

Listed as unfinished business from the previous session of Nov. 10 are:

Preliminary 1980-82 budget, National support fund, A-bomb survivors, Constitutional revisions, Redress, JARP, Personnel, 1000 Club and Legal summary.

The usual EXECOM agenda expects reports from all standing National JACL committees, plus:

TV Project update, 1980 Convention, Washington Office, Operations '80s, Youth Director's report, chapter/district visitations, PNW District Office and regional directors' reports.

Overflowing Cal. prisons spur expansion plans

SACRAMENTO, Ca.—Jerry Enomoto, state director of corrections who runs California's 12 prisons, will present to the State Legislature a long-range plan to rebuild and expand the system that will include 11 new prisons, each with a capacity of 400 inmates.

The package may be closer to \$1-billion in the long run, he said recently.

The 22,000 prisoners, at the present time, overflow the facilities, he continued. By the mid-1980s, he foresees a shortage of 6,000 to 8,000 beds in the system without new construction because of the high

rate of commitment of persons convicted of felonies.

Enomoto said he would like to build 10 of the new prisons for men preferably in Southern California—over half of the new felons come that part of the state. There has never been a men's prison south of Tehachapi for reasons deep in state politics. It was explained that in the days when the north dominated state politics, having a prison built in one's district helped the economy.

But siting a prison isn't easy, Enomoto adds. Almost nobody wants a penitentiary in the neighborhood today. #



Richard T. Doi of Columbia Basin JACL is the new Pacific Northwest District governor. A resident of Ellensburg, Wa., he is associate professor of arts at Central Washington University.



WITH THE FIRST LADY—Mrs. Rosalynn Carter and Washington JACL Representative Ronald K. Ikejiri meet at a recent White House Briefing on the Mental Health Systems Act (MHSA). JACL supports passage of the MHSA since provisions of the bill (S. 1177), specifically address Asian/Pacific American and minority mental health concerns. Internationally noted mental health administrator, K. Patrick Okura and Dr. Minoru Masuda, national chairperson of JACL's Committee on Aging and Nisei retirement, will discuss mental health care and the MHSA as it relates to the Japanese American community in the Pacific Citizen.

Kosai heads major transit agency in Tacoma metro area

TACOMA, Wa. — Yoshio Kosai, former Tacoma Transit general manager, was named the executive director of the Pierce County Public Transit Benefit Area Authority.

Kosai had been serving the authority as its acting executive director since the transit system was approved by the voters in November. The new system will expand transit service from Tacoma to many outlying areas. The authority will employ 350 persons when fully complemented.

There had been reports that Tacoma Mayor Mike Parker was holding out to get another

executive to run the system, but Parker spoke no ill of Kosai during the consideration of his appointment Jan. 21.

Kosai is currently serving as the president of the Tacoma Buddhist Church. He was also the president of the Puyallup Valley Chapter of JACL in 1968 and 1969. #

Washington

Citing the success of the first Asian/Pacific American Heritage Week last year, Rep. Robert Matsui (D-Ca) has asked President Carter to issue an executive proclamation declaring another celebration (in May) this year.

items

● **Reunions**

San Jose Zebras, a respected name in Nisei athletics, celebrates its 50th anniversary over the 1980 Memorial Day weekend, culminating with a gala banquet at the Hyatt House featuring onetime Zebra basketball player, Hon. Norman Mineta, ex-mayor and now congressman. All players on the original YBA Zebra basketball team in the 1930s will be present and honored, except for one member, the late Dave Sakamoto. Also expected are the many who cavorted with the Zebra teams through the decades, including the distaff counterpart.

Graduates of Crowley (Colo.) High School from 1946-57 will hold a 1980 reunion during the Crowley County Days celebration in late July. Mrs. Jean Frey Nelson, 88 Watson Blvd., Colorado Springs, Colo. 80911, is seeking the whereabouts of three 1946 graduates now believed to be in California: Gilbert Suzuki, Shigeo Araumi and Yoshiharu Taira.

● **Hawaii**

Over objections of its owners, 52-year-old Royal Hawaiian Hotel was placed on the Hawaii Register of Historic Places in January. The famed pink landmark on Waikiki is owned by Kyoya Co., Ltd.; while Bishop Estates owns the land under the hotel. Buildings on the state list may not be changed without prior notice to the HRHC review board.

Okinawans on Hawaii observed the 80th anniversary of their arrival Jan. 20 at Iolani Palace with other events planned for the remainder of the year.

● **Los Angeles**

Oriental Builders Assn. holds its ninth annual installation dinner Feb. 16, 6:30 p.m., at International Club, World Trade Center, 350 S. Figueroa.

A benefit variety show, "An Evening with Johnny Yune", the Korean comic, will be held Feb. 16, 8 p.m. at Scottish Rite Auditorium for Korean Youth Center (939-0383), 932 S. Crenshaw Blvd., a project of the Asian American Drug Abuse Program (AADAP). Other guest artists include singer Tony Silva, Gloria Bang, Jazz Co. dancers, and Lloyd Cooper's orchestra with Annie Cho as emcee.

Los Angeles' own bicentennial in 1981 was ushered last month with 21 walking tours downtown, including one covering Little Tokyo, City Hall Mall and Olvera St., so that residents might know the city better.

● **San Diego**

Will Hippen, honorary consul general of Japan at San Diego, spoke on the proposed Japanese Garden for Balboa Park at the 16th annual dinner of the House of Japan held Jan. 15 at Tom Ham's Lighthouse. Paul Hoshi, president, presided with a capacity crowd of 175 attending. Program chair Tom Yanagihara introduced the 1980 House of Japan queen, Nami Nadahara. Awards were presented to Akiko Bourland, Ohara School of Ikebana president here, and Akira Shima for their cultural efforts.

● **San Francisco**

Asian American Dance Collective presents a benefit dance, "Sushi Stomp", Feb. 15, 8 p.m., at Christ United Church with music spanning the decades from the 1950s. For Stomp tickets: Paper Tree, JAM Workshop or Kearny St. Workshop. For AADC info: Sachiko Nakamura, artistic director, 552-0467.

PSW regional office burglarized

LOS ANGELES—The Pacific Southwest JAACL Regional Office, 125 N. Central Ave., was burglarized over the Jan. 19-20 weekend. Losses were estimated in excess of \$5,000 as four IBM Selectric typewriters, answer phone equipment (but the tape cassette was removed and left on the secretary's desk), dictaphone and a desk calculator were reported stolen.

John Saito, regional director, said it was "a very professional job" as the machines, which had been bolted to typewriter desks, were neatly lifted out, leaving behind only screws and the bolts. The few coins and dollar bill by the coffee maker, expensive cameras and an old TV set were untouched. #

Renew Your Membership

Henry Tanaka's dad dies at 92

CLEVELAND, Ohio — Frank T. Tanaka, 92, died Jan. 4 after suffering a heart attack at an Oberlin nursing home where he had lived for the past five

months. His son, Henry, was past national JAACL president.

A lifelong chef after a bit of railroad work upon his arrival in 1904 from Fukuoka-ken, he became head chef at the Salem (Ore.) Hotel prior to WW2 and later opened a Japanese restaurant.

The Tanaka family moved here in 1944 and he worked as a chef for Case Institute of Technology fraternity until his retirement in 1967.

Other survivors are: w Maki, s Paul (Hawaii), d Ayako Hashimoto (Japan), Helen Watanabe (Los Angeles) Aiko Ebihara (Oberlin), Hazel Asamoto, br, 15gc, Sggc.

Many friends recalled that it was no surprise when his cooking fame at Tule Lake's Block 15 spread, attracting evacuees from neighboring blocks to stand in line and shortly thereafter being transferred as chef of the camp headquarters mess. #

Tule Lake Committee's book on the WW2 concentration camps, "Kinenhi: Reflections on Tule Lake", is expected to be available in March. Unpublished photos inside Tule Lake, interviews and pilgrimage experiences are featured, according to TLC, 1858 Sutter St., S.F. 94115.

Group counseling on "Getting Along in Marriage" for Japanese Americans is scheduled to meet for eight sessions from Mar. 4 at Berkeley. Group will be limited to five couples, the fee to be a sliding scale. For information, call Ryo Imamura (M.S. in counseling), 415-522-5243 or Patti Shirakawa (M.Ed., counseling), 549-2303.

● **Sacramento**

Japanese culture classes are beginning a new season in the Sacramento area: (1) Sandpainting, Feb. 4, American River College, 484-8643; Feb. 7, 7 p.m., City College, 449-7443; (2) Conversation, beg., Feb. 4, interm., Feb. 5, American River College, 484-8643; (3)

Ikebana, Feb. 5, American River College; Feb. 6, 9:30 a.m., Sutterville School (call Sac'to City Coll 449-7443), Feb. 6, 7 p.m., Miller Middle School (call 449-7443); Feb. 4, 9:30 a.m., Davis Art Center.

● **Midwest**

Asian American Alliance of Oberlin College hosts a symposium, "38 Years Later: Legacy of the Internment Camps", Feb. 9 at Wilder Hall, starting at 10 a.m. with workshops and ending in the evening with cultural presentations. Speakers include Lawson Inada from Oregon, Yuri Kochiyama from New York and Toyo Kawakami from Columbus. A Cleveland JAACLer is to speak on redress. For information, call Grant Din, coordinator, (216) 775-8467, 774-1700.

JFC International, distributors of Oriental foods, leased a new 70,000 sq. ft. office-warehouse for its Midwest headquarters at 1370 Thorndale, Elk Grove Village, Ill., from Trammell Crow Co., developer.

Nevada Investment Property By Owner

\$160 ACRES OR MORE; \$199 and up Per Acre

Range land with abundant water from flowing spring & wells. Available for development into good cropland. Buyer can live on property or arrange local leasing and operating improvements. Property should increase in value when water is developed. Located on Hwy 93 btwn Wells and Jackpot, Nev. Cash or owner will carry contract at low interest rate. Call while still available: (801) 262-6094.

4770 S 900 East, Suite 102
SALT LAKE CITY, UTAH 84117



Plaza Gift Center

FINE JEWELRY - CAMERA - VIDEO SYSTEM
SPORTING GOODS & HOME APPLIANCES

Authorized
SONY Dealer

111 Japanese Village Plaza Mall
Los Angeles, Calif. 90012
(213) 680-3288

DELIGHTFUL seafood treats
DELICIOUS and so easy to prepare

Mrs. Friday's

MRS. FRIDAY'S
Gourmet Breaded Shrimps and Fish Fillets

Fishing Processors, 1327 E. 15th St., Los Angeles (213) 746-1307

GARDENA—AN ENJOYABLE JAPANESE COMMUNITY

Poinsettia Gardens Motel Apts.

13921 S. Normandie Ave. Phone: 324-5883
68 Units • Heated Pool • Air Conditioning • GE Kitchens • Television
OWNED AND OPERATED BY KOBATA BROS.

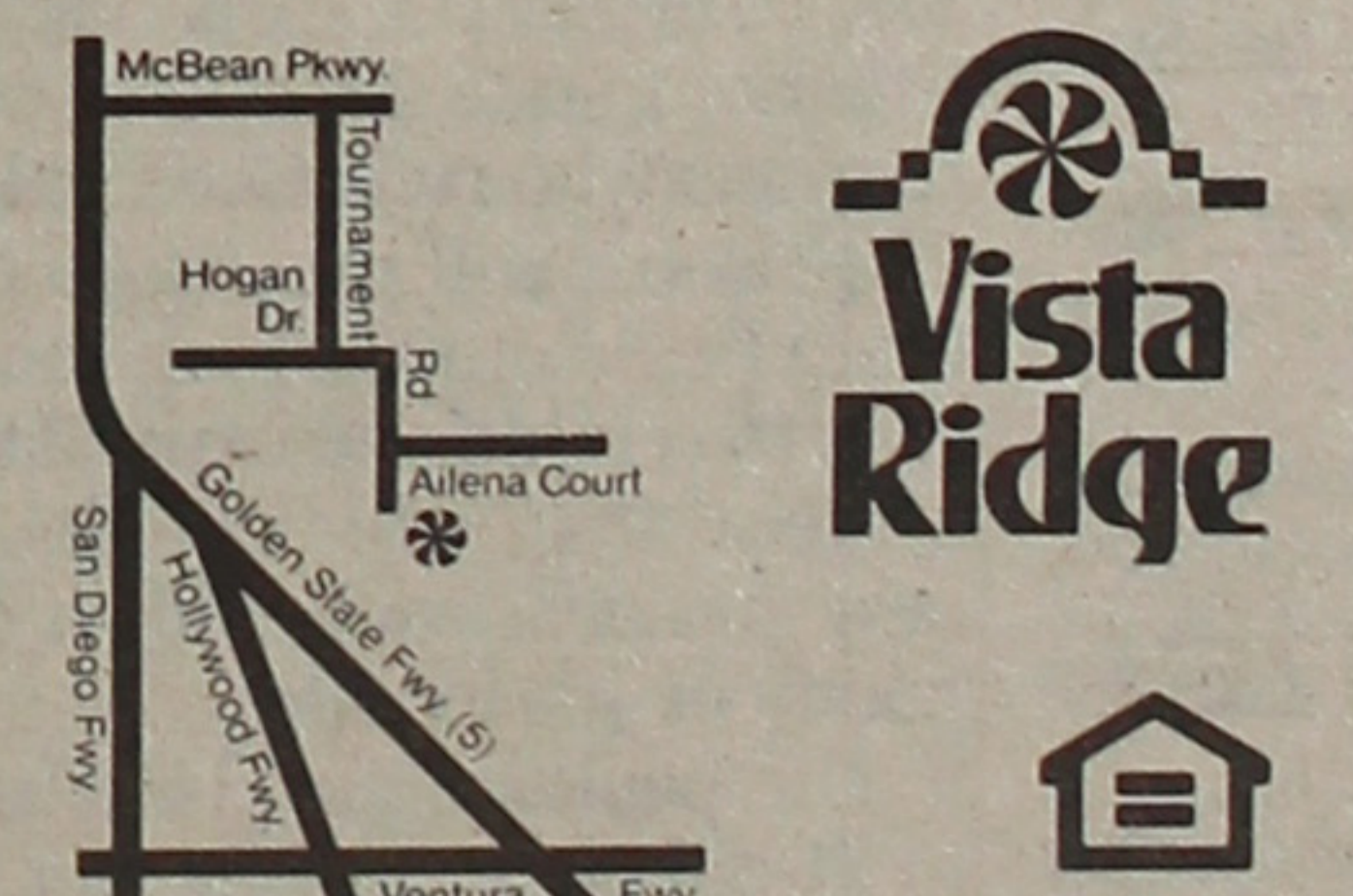


It's Valencia.
If You've Set Your Sights On a Golf Course View.

Everything about Vista Ridge homes is special. Which explains why only 8 remain unsold. Some overlook the golf course and you'll find homes with the most spectacular views in Valencia. There's luxury wherever you look. From the private Swim and Racquet Center with its pools, therapy spa and night-lighted tennis courts...to custom home features like bay windows, wet bars and 3-car garages. Some include Vista Ridge's popular bonus rooms, too.

You don't merely move into Vista Ridge. You move up, to the most prestigious area of Valencia. And with only 8 homes available, you'd better move fast as well.

Up to 5 bedrooms.
From \$163,950



3, 4, and 5 bedroom furnished models open every day from 10 AM to 5 PM. Interstate (5) North to McBean Parkway, then right on Tournament Rd. to Vista Hills Model Center. (213) 362-1677 or (805) 255-4211.

A homeowner association supported by all residents maintains the quality of common facilities. Ask a sales representative for the Calif. D.R.E. public report for details.

Three Generations of Experience

FUKUI Mortuary, Inc.

707 E. Temple St.
Los Angeles 90012
626-0441

Soichi Fukui, President
James Nakagawa, Manager
Nobuo Osumi, Counsellor

Shimatsu, Ogata and Kubota Mortuary

911 Venice Blvd.
Los Angeles
749-1449

SEIJI DUKE OGATA
R. YUTAKA KUBOTA

Min Yasui to keynote Orange County inaugural

ANAHEIM — Minoru Yasui, executive director, Denver Commission on Community Relations, will be keynote speaker at the Orange County JACL installation dinner Feb. 16, 6:30 p.m., at the Sheraton Anaheim Motor Hotel. He will also address the Pacific Southwest JACL District Council, which meets the following day at the same locale.

Active in the current national JACL redress campaign, Yasui was one of the first Nisei to challenge the constitutionality of the curfew law against Japanese Americans in World War II and fought his case through the U.S. Supreme Court. Then a Portland resident, he was incarcerated in solitary confinement at the Multnomah County jail for

JACL credit union declares 7% again

SALT LAKE CITY—The National JACL Credit Union continued to declare a 7% dividend per annum but a 2% bonus dividend for the 1979 fourth quarter, according to Ichiro Doi, treasurer.

Earnings will be credited to member accounts as of Jan. 1. Two seats are up for election on the credit union board as the two outgoing directors are Shake Ushio, president, and Saige Aramaki, nominations chairman. Nobuo Iwamoto announced. Election will be held later this month.

over nine months for his stand.

Dr. Luis Kobashi, a native of Peru and now a practicing urologist here, will be installed as 1980 chapter president. Butch Kasahara will entertain at the dinner. Tickets are \$15 per person and obtainable from:

Betty Oka (714/835-5330), Ben Shimazu (541-2271) or Ken Hayashi (213/733-0366).

For the DC meeting Sunday, the JACL Office (626-4471) is accepting registrations at \$8.50 per person. Fee includes a continental breakfast and the luncheon. Orange County JACL is hosting the first PSW quarterly session.

PC People

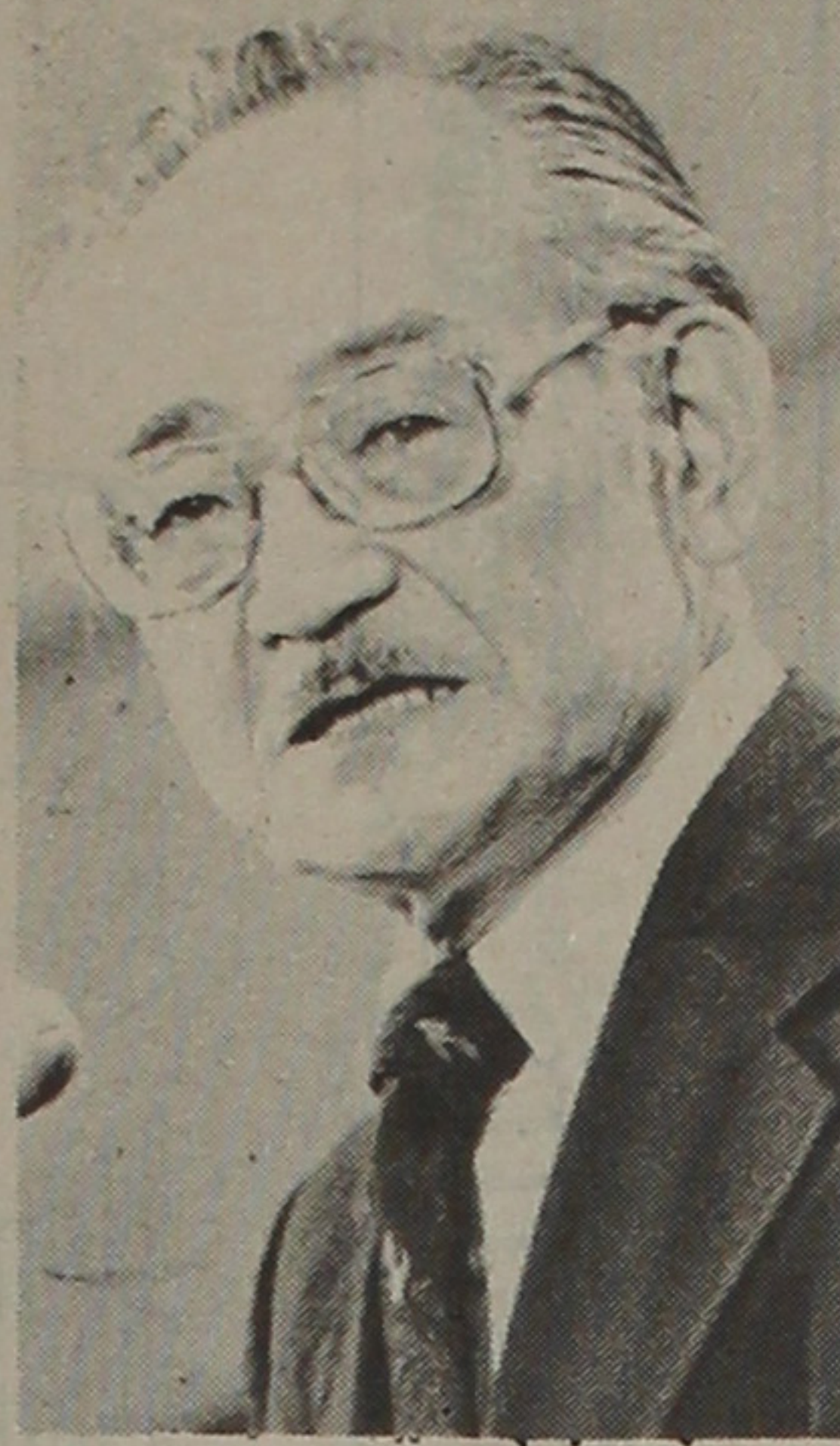
● Agriculture

Coachella Valley JACL president **Cherry Ishimatsu** of Indio was installed local president of the California Women for Agriculture, a statewide group of some 5,000 members. She was a founding member of the CWA and was its first statewide president.

● Business

Jack T. Nakawatase and **Marvin H. Taniguchi** have been promoted to associates at the San Diego landscape architectural and land planning firm of **Wimmer, Yamada and Associates**.

Downtown L.A. JACLer **Frank Hirata**, assistant vice president at California First Bank has been named manager of Japanese media relations. Before he joined the bank in 1975, Hirata worked for two years as vice president and manager at Nakano Warehouse and Transportation in Compton, and for many years was secretary of the So. Calif. Japanese Chamber of Commerce. A native of Washington, he earned his B.A. from UCLA and law degree from Kyoto University in Japan.



Minoru Yasui

Nobuyuki Enokido has been promoted to executive vice president and general manager of Kikkoman International, Inc., San Francisco. Previously with the parent Kikkoman Shoyu Co., Ltd., in Tokyo, Enokido succeeds **Shimichi Suzuki**, who has held the position for the past nine years. Suzuki returns to Japan for corporate reassignment.

Pan Asian JACLer **Dennis Kuni-saki** has joined California First Bank's trust department at Los Angeles as a business development officer. He was a field underwriter for Mutual of New York Life Insurance Company in Los Angeles, a native of Los Angeles and a graduate of SCU-Los Angeles.

● Education

George M. Wakiji, 50, a public information officer with ACTION, the federal volunteer agency, was granted an administrative leave to serve as instructor for "A Presidential Classroom for Young Americans" program for 1980. He is the first Nikkei instructor appointed. (According to the Washington, D. C. JACL Office, there were 31 Japanese Americans sponsored by JACL chapters last year.)

JAL increases air fare to Japan

SAN FRANCISCO—Japan Air Lines Jan. 21 scrapped group affinity tour (GA-100) fares which made JACL's travel program between U.S. and Japan attractive over the past decade. The JACL travel committee is scheduled to meet later this month to re-assess its 1980 procedures.

As noted in the JACL Travel Program ad revised this week in the Pacific Citizen, the so-called JACL group fare schedule coincides with the APEX (advance purchase excursion) fares, which have been available for some time: \$655 basic and \$719 peak season, round-trip individual fare to Japan from the west coast.

Group inclusive tour (GIT)

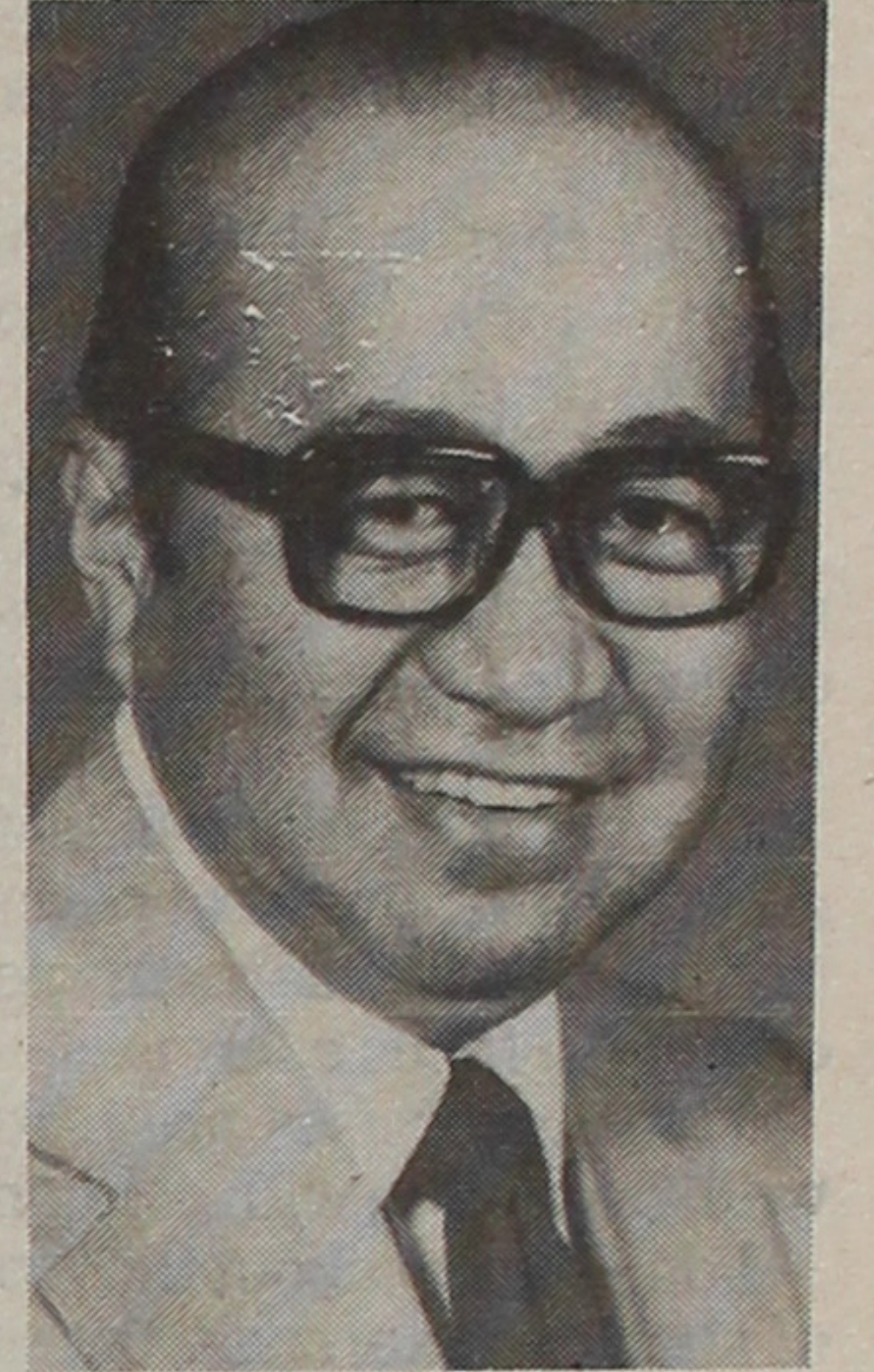
fares remain with a 10% increase to \$761 basic and \$845 peak season for round-trip travel to Tokyo.

A new special economy class fare of \$487 one-way from the U.S. west coast to Tokyo without free stopover privileges is now effective. Regular economy and first class fares went up 10% to \$552 and \$893, respectively, one-way.

New group own-use and incentive fares for 40 people have also been instituted. However, individual inclusive and 21-day excursion fares have been dropped. The APEX fare is least costly round-trip individual fare to Japan. #

● Government

Buddy T. Iwata, 61, longtime Livingston-Merced JACLer and recently retired as manager of the Livingston Farmers Assn., was named by Gov. Brown to the California Employment and Training Act Council, which advises the Secretary of Health and Welfare Agency on state manpower programs. A Republican, he had served on the Merced College board of trustees for 15 years, and taught Japanese at the Univ. of Colorado Navy Language School and at Northwestern during WW2.



James Y. Iso

U.S. Secretary of Agriculture Bob Bergland appointed **James Y. Iso** as agricultural trade officer in Singapore, one of six regional trade offices opened this year under the Agricultural Trade Act of 1978. He joined the agency in 1975 after a 10-year career in Tokyo as far east director with the National Renderers Assn. A native of San Jose, Ca., Iso has specialized in foreign market development.

San Francisco Mayor Feinstein named **Anne Saito Howden** to the fire commission. A board member of International Institute for the past seven years and now retired, she is active in the Democratic party.

REV. GOLDWATER:

50 years as Buddhist priest

LOS ANGELES—Many pre-war Young Buddhist Association members who were befriended and guided by the Rev. Julius A. Goldwater will come to honor him at a surprise appreciation dinner Feb. 10, 5:30 p.m., at the Senshin Buddhist Temple social hall—the same place where countless number of people were housed, fed and assisted in search of jobs and homes immediately after WW2 when Rev. Goldwater opened up the first Buddhist hostel on the Pacific Coast.

He visited the concentration camps during the war, seeing to the needs of the wives of ministers who were abruptly shipped to enemy internment camps, and caring for the belongings of the evacuees. He also saw to the safekeeping of

many Buddhist temples in the Southland, served as a spokesman for the Buddhists and sustained much hardship as a consequence to himself and his wife Pearl.

The first military funeral arranged at a hostile veterans' cemetery was arranged by Rev. Goldwater.

Rev. Goldwater was first introduced to Buddhism through Dr. Ernest Shinkaku Hunt of Hawaii and the late Hawaii Bishop Yemyo Imamura. Further encouraged by the late Bishop Kenju Masuyama and the late Rinban Jokatsu Yukawa, he was ordained at the Hongwanji headquarters, Kyoto, in 1930.

Tickets are \$15 per person, obtainable through: Rev. Arthur Takemoto (714) 521-1510.

THREE FEASTS



THE GRILL KURO-FUNE

BEEF OSCAR:

Ribeye steak topped with crab, asparagus and bearnaise sauce. \$9.95

CATCH-OF-THE-DAY:

Seafood: rex sole, flounder, sea bass, halibut. (depending on the day and season). \$8.95

CHICKEN MONTEREY:

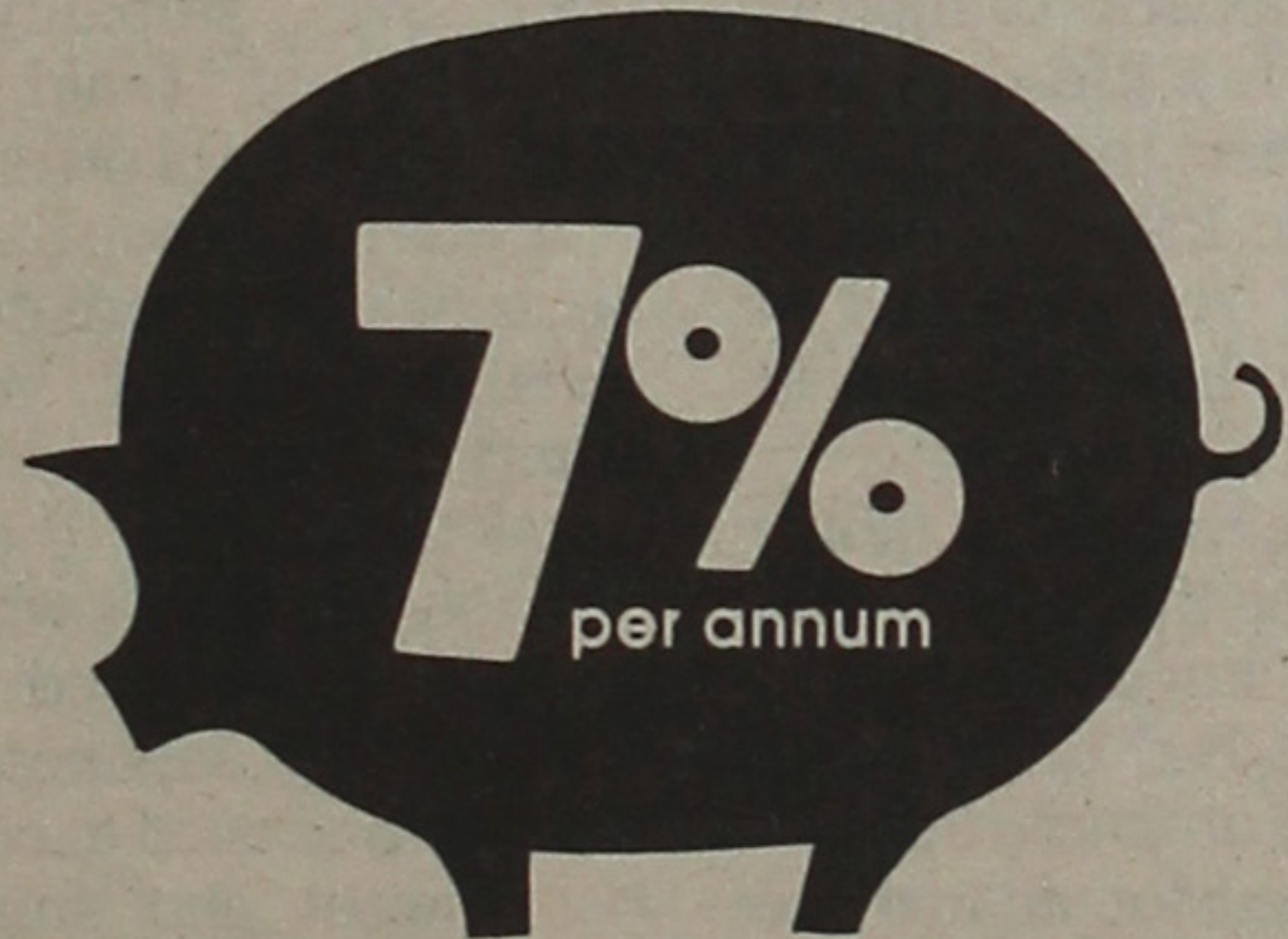
Breast of chicken topped with avocado, tomato and cheese. \$7.95

Served with soup or salad
Open 7 days, 5:30 to 10:30 pm.
(213) 629-1200
Reservations suggested



First & Los Angeles St., L.A. 90012

INSURED SAVINGS



Currently 7% per annum, paid quarterly.
Better than banks or savings & loans,
and free insurance, too.

NATIONAL JACL CREDIT UNION

Now over \$4.2 million in assets

Insured Savings* currently 7% per annum

Car loans low rates on new & used

Signature Loans up to \$3000**

Free Insurance on loans & savings

*TO \$40,000 BY USDGC **TO QUALIFIED BORROWERS

PO 1721 Salt Lake City, Utah 84110 (801) 355-8040

Money Market Certificates at California First Bank.

Money Market Certificates are one of the best investments you can make today. And we have them at California First Bank.

When you invest a minimum of \$10,000 for 6 months, your money earns the highest commercial bank rate of interest allowed by law.*

To find out more, come and meet the people at California First.



*Federal regulations require a substantial interest penalty be imposed for early withdrawal and prohibit the compounding of interest during the term of the deposit.

©California First Bank, 1979



The Mitsubishi Bank

of California Member FDIC

Little Tokyo Office

321 East Second St., Los Angeles, Calif. 90012
(213) 680-2650

ISSN: 0030-8579

PACIFIC CITIZEN

Published weekly, except first and last weeks of the year at 355 E. First St., Rm. 307, Los Angeles, Ca 90012. (213) 626-6936

DR. CLIFFORD UYEDA
National JACL President

ELLEN ENDO
Pacific Citizen Board Chairperson

Harry K. Honda, Editor

2d Class postage paid at Los Angeles, Ca.

Subscription Rates—JACL Members: \$7 of National Dues provide one year on a one-per-household basis. Non-Members: \$10 a year, payable in advance; foreign: US\$15.00 a year. Price on request for 1st Class or air.

News or opinions expressed by columnists, except JACL staff writers, do not necessarily reflect the JACL policy.

PRESIDENT'S CORNER: Clifford Uyeda



Eyeglasses

It was the second day in Kwangchow (Canton). Those who think Tokyo streets are overcrowded should visit China. A mass of humanity, all in identical attire, filled the sidewalks and half the streets.

"Do you notice," said my wife, "that hardly anyone wears glasses?" This became a topic of conversation among many.

"Probably they need glasses but can't afford them," said one. Medical care is available to all the people at no extra charge. A clinic visit is five fen (3¢).

As one went from one area to the next, it was the same. Seeing eyeglasses was a rarity, even among university students.

In Changsha (Hunan Province) we visited an embroidery factory. Workmanship was unusually fine and delicate. Women were bent over silk cloths in lights which we considered not ideal. Again, no eyeglasses!

"They must last at the most a couple of years," commented someone. Workers ranged from teenagers to over 50 years of age. Some had worked here for over 20 years.

Upon questioning we learned about the eye exercises done for 15 minutes at periodic intervals. It is a combination of extraocular muscle massage, relaxation and a change in focus exercises.

These exercises are a routine part of the schools as well, beginning with elementary schools.

I don't know about the "scientific proofs" of the results of such eye exercises, but the concept is fascinating. #

YE EDITOR'S DESK: Harry Honda

Leave 'em Laughing



By some noble-yukking logic, the Pan Asian JACL reasoned that no one would come to honor Karl but many might to bury him with tomfoolery and pranks. The Pan Asians hit the bull's-eye. About 300 turned out for the "Karl-Yaki" last Saturday at Holiday Inn in Torrance. They shelled forth a double sawbuck to experience the laugh extravaganza.

The chefs who roasted Karl Nobuyuki, National JACL executive director about to complete his third year at the post, spared no love nor care for the spree.

Judge Bob Takasugi, who was hedging about participating in any kind of roast until this one was dubbed "Karl-Yaki", was in rare form. His whammy even had co-emcee Yuki Shimoda flopping off his chair from laughter. As the lead-off roaster, the judge had the audience in a yipping mood.

Ron Wakabayashi, co-emcee and buddy from kindergarten days, all the while was assuring Karl he would be protected from unkind cuts but as the evening merrily fermented away, Ron's yeasty gags kept the mirth forever popping.

Dr. Kiyoshi Sonoda admitted it was too slick a pace to be following the judge's piercing repartees but offered Karl the first of many gag gifts of the night—a rubber chicken topped with a breezy remark.

For John Saito, introduced as the most powerful man on the JACL staff (by virtue of his high ranking in Aikido), his cuts representing regional directors (he read George Kondo's doggerel about Karl's divot digging plus adding his own gentle digs) were quick and over. If the chefs had a time limit, I'm sure John was the only one to observe the recipe.

A co-worker during their years in Gardena, Kerry Doi might have been the most convincing chef had he dished the cream pie at the honoree. Many in the audience, including Karl's wife, were relieved after the frothy launch was defused when Karl grabbed the pie pan away. Holiday Inn towels were conspicuously available if needed.

George Kodama, who tried to clear the haze of horseplay by praising the national executive director's *forte* and administrative skills, nevertheless continued the caper by relating a slim slice of Karl's life and admonishing him with his home-made maxim: If you want to back out, put *first* your gear in reverse.

Mike Ishikawa proceeded to poke fun at Karl's *oshi*. As if to grandstand Mike's reference, Karl rose gracefully from his chair (he was seated out front for the occasion) and turned to the rostrum, smartly bowing (as he was taught at kendo school).

As one who urged Karl to seek the JACL position, Helen Kawagoe was the lone woman chef but also introduced as one who hates to cook. (Husband Tak seemed to nod in agreement.) It was that kind of evening → the roasters got bent at times, too. Karl was dubbed a "super-hog" as Helen crowned him with an fierce-looking red cap that Arkansas Razorback sports-fans wear.

Assemblyman Paul Bannai seldom fails to come with a resolution in hand — and this one for Karl (if it hangs at Headquarters, read it) ranks as one of the bonniest banters we've heard. The Great Seal at the lower left corner is a seal all right — bearing the face of a California seal (the genuine aquatic specie).

Final roaster & city councilman Mas Fukai milked his

COMMENTS & LETTERS

Chapter Presidents

Editor:

I note that you have me listed as a chapter president in 1934... The actual year was 1933.

I remember this specifically, because my older brother and I, with a group of youngsters from Hood River went to the 1930 Nat'l JACL convention in Seattle, and we were so fired up that we came back and in 1931 formed the Hood River JACL chapter...

I remember well that George Kinoshita was our first chapter president, and that Kumeo "Koon" Yoshinari was our 2nd president... I was the 3rd president of the Hood River chapter, in 1933.

Kazuo Kanemasu was the 4th president, and he followed me as chapter president.

MIN YASUI
Denver, Colo.

Editor's Note: Other corrections are invited. Some have been called to our attention, which we appreciated. At some future date, we hope to publish an updated list as corrected.

HI Cover Photo

Editor:

Here's a \$10 check for a year's subscription to the PC to include the 1979 Holiday Issue. I am interested since I am in the 1930 convention photo. I also attended the 1932 convention at Los Angeles, representing the Puyallup Valley JACL. My maiden name was Ayako Ohashi, married Rokuro Okubo who died in 1977 and since remarried.

AYAKO O. HURD
Bothell, Wa.

Editor's Note: Ayako's letter should encourage others in the same picture to bring our JACLers and PC readers up-to-date.

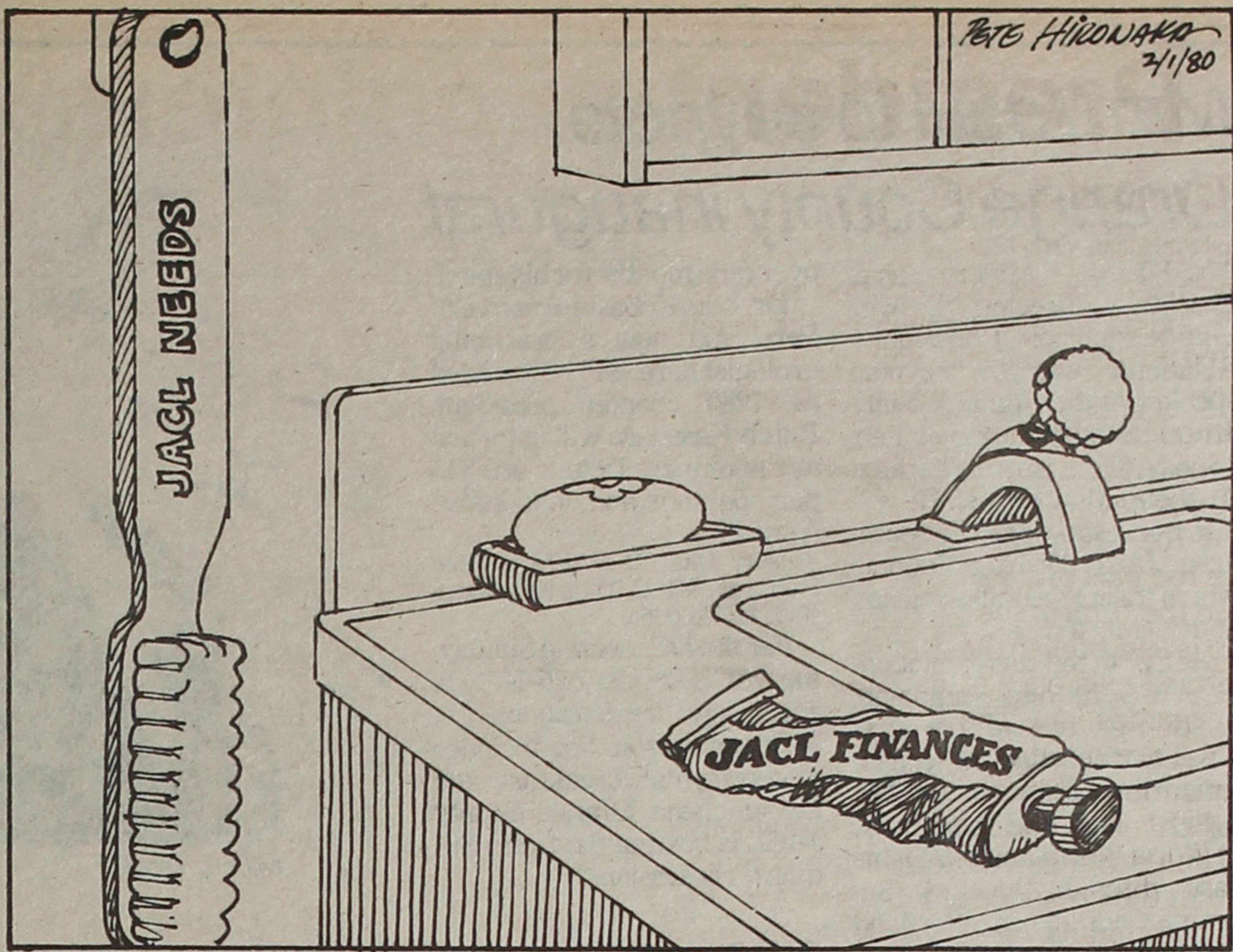
Frank Ishida (of Seattle), now retired, spent an afternoon at the PC office recently bringing us to up-to-date—little realizing that my bowling buddy of 20 years ago had attended the first JACL convention.

... share of laughs despite the eight cooks which preceded him. The Gardena resolution, he said, was too embarrassing to present as he kept it wrapped. But to prove what he was saying, Mas unwrapped it and found it difficult to read as the whereabouts were either left blank or incomplete: "Even the mayor and the city council were too embarrassed by this because this resolution for Karl is unsigned."

Hollywood, Pasadena and Pan Asian chapters also amused with their gifts.

But the audience was most delighted by the dessert—the response by a fast-cracking Karl who by this time was fired up for his snappiest and rompish role. The 1000 Club whing dings stand on slapstick, but Karl's hoary-headed humor and hilarity stand up as well. He wanted to see Mike Ishikawa, the L.A. county director of affirmative action, shipped to Tehran to work out the problem caused by the return of only blacks and women from the U.S. embassy... About dentists, he observed they put metal in your mouth and extract more coins from the pocket... Since Helen became city clerk, Carson seems to have had more than its share of elections, recalls, etc. ... Councilman Mas must be running for something higher since his pictures appear in the papers more frequently of late... Karl had quips for them all—but we were laughing too hard to jot them all for this report.

It's not like us to write a long column in face of a production deadline, but we wanted to cover this first Karl-Yaki for we know too well the world suffers from the lack of laughter. #



FROM HAPPY VALLEY: Sachi Seko

Jinxes Run in Threes

Salt Lake City

Last month, we experienced two household disasters. The hot water tank leaked, spreading water through the library, bedroom and utility room downstairs. My immediate complaint was that I could not wash clothes. As we were sponging up the water, I grieved that I could not function without laundry facilities. I am a compulsive laundress, whose sense of order is secured by operating the washer and dryer daily.

Later that day, the kitchen sink backed up, sending water through the dishwasher and onto the floor upstairs. We could not even wash dishes in the sink with boiled water. I lamented that the house resembled a disaster site. "Dirty dishes are the absolute end," I moaned. My husband, who was trying to unclog the sink by executing various acrobatic postures, asked me to contain my dramatic oration on how much my life depended on the washer, the dryer, the kitchen sink. Instead of being chastized, I retorted that he was lucky to have a wife with simple, practical needs.

We had accepted a dinner invitation for that night, ignorant of the impending catastrophes. We had to be boiled for bathing, an annoying task for those accustomed to merely turning a faucet. After two days of inconvenience, this occurring on a weekend, a new hot water tank was delivered and installed and the kitchen sink was unclogged. I was back in business, turning the various knobs and listening to the reassuring hum of appliances.

"Satisfied?" my husband

asked, as I ran hot water for bathing.

"Satisfied with what?" I asked, forgetting that I was the woman who declared her life and mental well-being depended on the washer, the dryer, the kitchen sink and hot water.

"What's your problem, now?" he asked.

"The next calamity," I replied.

"What is it?" he prompted.

"That's what bothers me," I said. "I don't know. But bad luck always runs in streaks, mostly in three's. We've had two already with the hot water tank and the kitchen sink. We have one more to go."

My husband thought for a moment and suggested, "The Christmas cards were two weeks late in delivery."

"Not bad enough," I said.

"Then what about the check for buying gift certificates that I misplaced?" "That was your own stupidity, so it doesn't count," I said, brushing aside his helpful offer.

It was the wrong thing to say because he immediately countered, "Okay, if you're so smart do you know any way to break the jinx?"

A long time ago, when I was a child, I observed it being done by my Japanese grandmother. She used to cook a flat fish, sweet and small, in a sauce of strange-tasting ingredients. Not a disagreeable flavor, but different, indescribable. She mouthed a mumble of words over the fish, then using chopsticks, deftly lifted the eyes from the fish. These she poked into my mouth, urging me to chew before swallowing the morsels. As I performed her bidding, she smiled ecstatically saying, "Now, good luck." I do not know whether it was a custom of her province, or a clever scheme of my grandmother's to divert bad luck, but it always seemed to work.

#

Nobuyuki Nakajima

Industrial Challenge

Cleveland

Most Americans of European descent assume racial discrimination no longer faces the Asian, especially an American of Asian descent. Here lies a danger because they are ignoring the fact that anti-Asian discrimination continues.

After 200 years of having Euro-Americans as president, if an Asian American still does not become a president, what is good about democracy?

This argument applies not only in U.S. politics but also in the corporate world and other avenues where leadership can be exercised. What can we do?

In this regard, I am particularly anxious to see young Japanese Americans pursue careers in leadership. I believe both opportunities are unlimited and barriers surmountable. That is the challenge. For this reason I have been urging young JAs to have a higher education.

Now I am inviting them to join industry, because industry is ready to offer positions of leadership to Asian Americans. #

35 Years Ago

Jan. 27, 1945

Jan. 17—L.A. wholesale market official denies deal with Teamsters to freeze out Nisei workers.

Jan. 19—Anti-evacuee group (Monterey Bay Council on Japanese Relations) formed in Salinas.

Jan. 20—Nat'l American Legion commander (Ed Scheiberling) urges Hood River Post to restore Nisei names erased Nov. 28 from honor roll.

Jan. 22—UC president Dr. Sproul assures Nisei of welcome as students, UCLA has 5 evacuee applications.

Jan. 22—Placer County Nisei (Sumio Doi) vows to stay on farm despite night-riders' threats and violence; family given 24-hour police protection after his packing shed burned down Jan. 18.

in the Pacific Citizen

Jan. 22—Anti-Japanese League (of Placer County) renamed Calif. Reservation Assn.

Jan. 23—Newly-elected Gov. Wallgren of Washington continues to oppose return of evacuees to state, as U.S. senator he also opposed return.

Jan. 23—First Japanese alien (Tono Sakai) gets Calif. business license (from city of Sacramento to run hotel).

Jan. 25—Ogden Nisei (George Sugihara) to file test case on city's business license ban of persons of Japanese ancestry.

Jan. 26—JACL Reporter bows as monthly paper for members only; Joe Grant Masaoka of Denver, editor.

Presidential pointers on JACL Constitution

● Raymond S. Uno

National President, 1970-72

The need for an organization such as JACL exists today as much as the need existed in the past and will exist in the future.

Although my key role in JACL today is as a dues-paying member, I feel today as I did in the past and will feel in the future, such a role is essential to the continued existence of the organization. The fact we are a national organization, consisting of chapters and members throughout the United States reinforces my conviction that the presence of the Asian American community and particularly the Asians of Japanese ancestry is not totally neglected, abused with impunity, or represented without voice.



Without relating the triumphs and failures of JACL, it is enough to say we have had them. But each of us through our efforts or lack thereof, have contributed to both. We have been critics and apologists of JACL. Regardless, most participants have tried to aim high to raise the level of consciousness of all concerned. That, in itself, is a great accomplishment.

The miniscule role we play in the whole of life's activities becomes more accentuated when we view, with our extremely limited perspective, what has transpired in the last five years, or even the last three years and better yet, the last year. The fall of the Shah of Iran, the Egyptian-Israeli peace treaty, the fighting in Southern Asia, Africa, and South America, the energy crisis, inflation, poverty, environmental pollution, multinational corporations, ad infinitum, ad nauseam.

How can we, as one isolated individual, impact what impacts us. Moreover, as the population of the world approaches the five billion mark, we all become like ants and bees, fulfilling our division of labor for the chosen few. However, there must be and there is hope, and we must tenaciously cling to it.

In the governance of men, rules, regulations, laws and even constitutions are vital, if not absolutely essential. Without them, we would have anarchy, civil strife, wars and destruction of life as we know it today. Therefore, the coming Constitutional Convention for JACL serves an important function for us.

Although I perceive no drastic changes in the JACL constitution, it is sometimes necessary to have a major tune-up to determine if all of the working parts are performing as well as they should. Occasionally, it avoids major breakdowns or costly repairs down the road apiece. In addition, we gain the added security and comfort of knowing we are making the safest journey possible. We can concentrate our major efforts toward reaching our goals in the quickest and most efficient manner.

Whatever changes are made should be made in an effort to strengthen the organization. As pointed out, as the influence of the individual diminishes, increasing the influence of the group will have geometrically corresponding results.

The structure should leave room for dissent, discussion, debate, deliberation and, finally, decision. Even though I have not always agreed with every policy and decision of JACL, when the decision was made and I was in the minority, I tried my very best to swallow my pride, my ego and my bitterness to acquiesce in the majority will. For I well expected, when I sided with the majority, the minority would do the same; but not always so, which, of course, is the right of each individual to do as his or her conscience dictates.

Powerlessness is a feeling of frustration. Complete powerlessness is complete frustration. Whether it is economic, political, institutional or social power, influence or decision making, those who have the power, influence or decision making are becoming concentrated into fewer and fewer numbers. As the disparity increases, commensurately the frustration increases.

Unfortunately or fortunately, the compartmentalized mentality of human be-

ings has been punctured by exposure through the medium of mass communication to what is and what can be. Thus, people everywhere are ventilating their individual frustrations through the continuum of the ballot box on to revolution.

In order to preserve our form of democratic government and society, it is my feeling we must have an avenue to express our frustrations, wants, desires and opinions. As imperfect an organization as JACL is, in my opinion, it is still the best we have to advance the cause of people of Japanese ancestry.

Although JACL cannot and possibly should not represent all the people of Japanese ancestry, it certainly should have every right to represent those who belong to it. Likewise, those people who may advocate other causes and other organizations have the same right; but they should, on the other hand, not pretend to represent JACL or those of differing points of view unless there is consent or mutual agreement.

Any changes for JACL should provide for coalitions with Asian as well as non-Asian groups, development of youth-

oriented services, development of services for older members and nonmembers, rapid and accurate transmission of ingroup and intergroup information, recruiting of members from every state, keeping pace with the highly mobile society of today, accelerate job opportunity information and follow through—be it occupational, trade, professional or private entrepreneurship, immigrant and related assistance, a mature and realistic policy vis-a-vis Japan, fostering of political aspirants and political education, organizing national interest groups and providing a forum for same (lawyers, doctors, writers, sportsmen, farmers, businessmen, government workers, etc.)

Although most of my time and energy are directed toward my family, I still realize the importance of paying some attention to the world about me. I have placed a considerable amount of trust in the local, district and national JACL organization to carry on the multitude of critical chores that needs to be tended to by someone. So far, I have no serious misgivings, in spite of the fact I don't agree with what they do all of the time. #

● K. Patrick Okura

National President, 1962-64

The resolution passed at the 1978 Biennial Convention held in Salt Lake calling for a Constitutional Convention prior to the 1980 National Convention provides

a unique opportunity for the membership of the Organization to express their pros and cons about our National Organization. How often does the membership of any National Organization have such a rare chance at overhauling the basic document that spells out the boundaries and the functions of our national league.

During the past five or six years the National Organization, Board, and National Staff have undergone some turbulent ses-

sions, partly due to the vagueness and broad interpretation of various parts of the Constitution. So, not only is there a need for updating, but also perhaps a clearer enunciation of the policy, program and goals of the organization. Perhaps we need to enlarge our scope of activities to include all Asians.

I encourage every Chapter to give some serious consideration to becoming involved in making JACL a viable, meaningful and relevant, up-to-date national organization concerned with the welfare and well-being of Americans of Japanese ancestry. Now is the time.

Notice

Because of the importance we attach to the revision of the JACL Constitution, chapter commentaries are invited for this page. Individual comments will be reserved for the Letterbox on the opposite page.

Bill Hosokawa will be returning here next week. — Ed.

Sumitomo Introduces the 2½-Year Money Certificate.



Starting January 1, Sumitomo Bank is introducing the 2½-Year Money Certificate. Only \$100.00 is required for this new certificate which offers a rate of interest ¾% less than the average yield of 2½-Year U.S. Treasury securities. New rates are announced monthly by the Treasury Department.

90-Day Time Certificate of Deposit. Sumitomo is increasing the 90-day Time Certificate of Deposit to 5¼% per annum effective January 1.

Individual Retirement Accounts. The new 2½-Year Money Certificate and 6-month Money Market Account (\$10,000 minimum balance) is now available to Sumitomo Individual Retirement Accounts.

Open one of these high yield accounts now.

Note: Federal regulations impose substantial interest penalties upon premature withdrawal.

The Sumitomo Bank of California
Member FDIC

From January 1st to January 31st

MERIT SAVINGS ANNOUNCES

HIGHER INTEREST RATES FOR SAVERS

10.40% Current Annual Rate **11.12%** Current Annual Yield

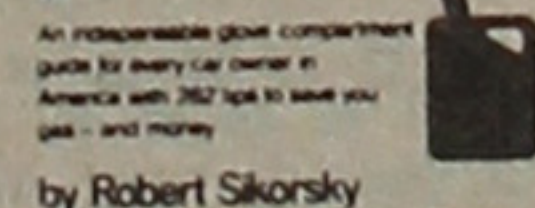
This is the fixed term rate that you will receive on 2½ year certificates with only a \$100.00 minimum deposit. It's the highest rate of return on any certificate offered today by any insured savings institution.

6.00% Current Annual Rate **6.18%** Current Annual Yield

This high interest is available to passbook/certificate savers. It can be yours with Merit Savings easy 90 day account. Put your money in, leave it for one quarter, and you'll earn this highest interest available on 90 day insured savings.

HIGHER GAS-MONEY SAVINGS CAN BE YOURS, TOO!

How to Get More Miles per Gallon



by Robert Sikorsky

Stop by any office of Merit Savings and pick up your copy of this indispensable glove-compartment guide to better mileage. It provides 282 tips to save you gas — and money! It's the most complete collection of fuel conservation tips available in the world today.

Come in today, open your account and pick up your free copy of "How to get more miles per gallon". Start 1980 off right with Merit Savings and Loan Association.



MERIT SAVINGS AND LOAN ASSOCIATION

Assets over 90 million



LOS ANGELES: 324 E. First St. 624-7434 • TORRANCE/GARDENA: 18505 S. Western Ave. 327-9301
MONTEREY PARK: 1995 S. Atlantic Blvd. 266-3011 • IRVINE: 5392 Walnut Ave. (714) 552-4751

WEST WIND: Joe Oyama

For one George Shima, there're 1,000 Issei hands

San Francisco
People have a narrow view of Japanese American history, thinking that it begins and ends with our internment. Actually, a whole half-century preceded it. This comes from Yuji Ichioka of UCLA's Asian American Studies Center.

From 1885-1908 (the Sojourner period), "the Japanese who came to this country overwhelmingly had no intention of settling down. Rather, they intended to return to Japan after making money or gaining new knowledge," said Ichioka. From 1908-1924 (the Permanent Settler period), the Japanese met "all kinds of obstacles. They fought exclusion, but their efforts came to naught with the passage of the 1924 Exclusion Act," a racist measure prohibiting (solely on the basis of race) the Japanese from migrating to this country. This act was repealed June 27, 1952.

Slap in the Face ...

Following passage of the Exclusion Act in 1924, I recall even as a child a very dark period of depression and anxiety. I remember Issei in Sacramento talked about the need of sending their Nisei children to Japanese school just in case things became worse and be forced to return to Japan. Japan saw the Exclusion Act as a slap in the face.

Those who first came in the 1880s were mostly students with little private resources and who had to work their way through school. Ichioka said, "Many turned to houseboy jobs, known to the Japanese as 'gakubo'. The Issei man did not take to housework, 'gijo', which was identified as work of lower class women. (Rather), their aim was to acquire facility in the English language with the hope that upon their return to Japan, they would achieve success."

In a previous lecture, another speaker discovered in his research that many of the Japanese students of that period also came from well-to-do families. On the east coast, students attending Ivy League colleges were mostly from the upper classes.

'Danna' means Master ...

To Yone Noguchi, the poet-father of sculptor Isamu, who went to work as a houseboy, "Even a stove was a mystery.

He would burn kindling wood in the oven, blow out the gas lights and remove his shoes and trousers to scrub the floor. American clothes were considered a luxury," Ichioka related.

"The Issei received patronizing names like 'Charlie'. (Incidentally, I remember my own father being called just that, although his name was Katsuji and happened to have an American name of Joe.)

Seeing a notice posted in a Japanese mission, one Issei took a houseboy job, Ichioka continued. "When he was asked his first name, he replied, 'Danna (master)', because he was talking to the master of the house. After that the employers referred to him as 'Danna'. When his friends came to visit him, they couldn't contain themselves. So as not to be rude, they ran into another room and laughed. The master-servant relationship was reversed."

To my surprise, Ichioka said that according to the U.S. Census at the turn of the century, more than half of the 985 Japanese women in this country were (sojourners) prostitutes. Not really surprising, I guess, in view of the fact that Issei men were not free to bring in wives. Ichioka said, "Thugs preyed parasitically on the women. These men were called 'buraikon', 'pimpu', 'Amegoro' or thugs."

I would have been happy if Ichioka could have related at least one story about one Japanese prostitute who saves money to send back to a destitute family in Japan and buys her way out of prostitution.

Japan

With eating habits in Japan changing, the Japanese government doesn't know what to do with its 7-million ton of surplus rice, just under the record 7.2 million surplus of 1970. Japan produces 11.8 million tons a year, consumes about 11.3 million tons, exports what it can to food-short Third World nations and sell it food processors to develop new products. A suggestion that surplus be used to produce alcohol for gasohol was opposed by farmers.

Nearly 3.8 million vending machines are operating in Japan, second to the 4.9 million in use in the U.S. On a per-capita basis, one machine for every 30 person, Japan is already the world's largest vending machine society.

In this respect, Japanese films usually portray prostitutes with sympathy as victims of circumstance or bad karma. The word 'prostitute' in Japanese does not have the sting that it has in English. To the Japanese, a person is not totally good or totally bad. They are a combination of both good and bad. Even the former president, Mr. Nixon.

Nikkei Roots ...

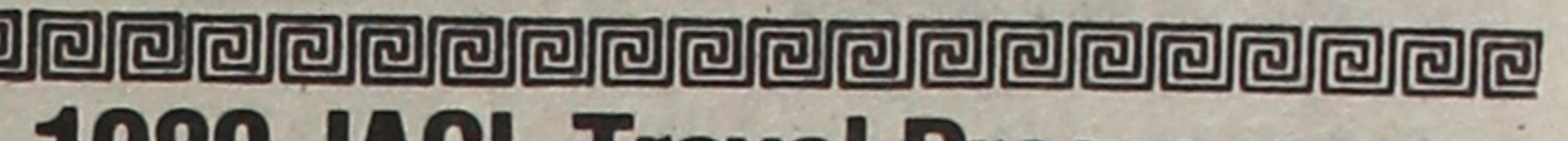
"In the 1880s, a significant number of laborers landed—mostly agricultural workers. By 1909, they became the dominant labor force in California; 1906-07 was the peak. Up to 14,000 laborers worked mainly as section hands. They worked with every major rail-

road (in the west), in the mining industry and in the coal fields," Ichioka continued.

Here is a vast amount of untapped material for the Nikkei writer that is disappearing fast with most of the Issei passing on.

"This phase of history is the history of working people. Most of the workers worked under a labor contract business. Students preceded the workers. Many students became labor contractors under a very exploitative system. They earned their income through fees and commissions of finding jobs for workers, taking 10% off the top. The Issei workers started using the term, Boss ("bossu"), in a

pejorative way. In frontier setting, a contractor would often "mochinage" or contracting was much higher abscond with the workers' pay than in agriculture. In the and return to Japan.



1980 JACL Travel Program

Opened to All **Bona-fide JACL Members and Family Only**
ALL DATES SUBJECT TO CHANGE
APEX Fare to Japan: \$655 basic, \$719 peak season PLUS \$3 DEPARTURE TAX
Basic fare applies to Flights 1,2,3 / Peak season fare applies to all other Flights, 4to 17
For immediate reservation/information: See Chapter Administrator

Group Flight No. / Dates	Carrier / Departure from
1 APRIL 3 - APRIL 24 (JAL) San Francisco	
San Jose JACL: Grant Shimizu, 724 N 1st St, San Jose, Ca 94112	
2 APRIL 5 - APRIL 26 (Pan Am) Los Angeles	
West L.A. JACL: George Kanegai, 1857 Brockton, Los Angeles 90025 (Optional Honolulu stopover; make return flight to mainland with travel agent.)	
3 MAY 12-JUNE 2 (JAL) Los Angeles	
Downtown L.A. JACL: Aki Ohno, 2007 Barry Ave, Los Angeles 90025	
4 JUNE 16 - JULY 7 (Pan Am) Los Angeles	
West L.A. JACL: George Kanegai, 1857 Brockton, Los Angeles 90025 (Optional Honolulu stopover; make return flight to mainland with travel agent.)	
5 JUNE 19 - JULY 10 (JAL) San Francisco	
Berkeley JACL: Tad Hirota, 1447 Ada St, Berkeley, Ca 94702	
6 JUNE 21 - JULY 13 (Pan Am) Los Angeles	
Downtown L.A. JACL: Aki Ohno, 2007 Barry Ave, Los Angeles, 90025	
7 JUNE 22 - JULY 13 (JAL) San Francisco	
Chicago JACL: Dr Frank Sakamoto, 5423 N Clark St, Chicago 60640 Group + SFO individuals assemble in San Francisco	
8 JUNE 23 - AUG. 21 (Pan Am) Los Angeles/San Francisco	
San Diego JACL: Mas Hironaka, 2640 National Ave, San Diego 92115	
9 JULY 12 - AUG. 9 (Pan Am) Los Angeles/San Francisco	
Downtown L.A. JACL: Aki Ohno, 2007 Barry Ave, Los Angeles 90025 San Jose JACL:724 N. First St., San Jose, Ca 94112	
10 AUG 6 - AUG 27 (JAL) San Francisco	
National JACL: Yuki Fuchigami, 1765 Sutter St., San Francisco 94115	
11 SEPT. 27 - OCT. 18 (Pan Am) Los Angeles	
West Los Angeles JACL: George Kanegai, 1854 Brockton, L.A. 90025 (Optional Honolulu stopover. Make return flight to mainland with travel agent.)	
12 OCT. 2 - OCT. 23 (JAL) San Francisco	
Berkeley JACL: Tad Hirota, 1447 Ada St., Berkeley, Ca 94702	
13 OCT. 6 - OCT. 27 (Pan Am) Los Angeles	
Downtown L.A. JACL: Aki Ohno, 2007 Barry Ave., Los Angeles 90025	
14 OCT. 5 - OCT. 26 (JAL) San Francisco	
Chicago JACL: Dr Frank Sakamoto, 5423 N Clark St., Chicago, Ill 60640 Group + SFO individuals assemble in San Francisco.	
15 OCT. 6 - OCT. 30 (JAL) San Francisco	
San Jose JACL: Grant Shimizu, 724 N. 1st St., San Jose, Ca 94112	
16 OCT. 6-29 / OCT. 7-30 (JAL) Los Angeles	
San Diego JACL: Mas Hironaka, 2640 National Ave., San Diego 92115 Orange County JACL: Ben Shimazu, P.O.Box 1854, Santa Ana, CA 92702	
17 OCT. 18 - NOV. 8 (Unconfirmed) San Francisco	
Sacramento JACL: Tom Okubo, 1121 Lake Glen Way, Sacramento, Ca 95822	

SPECIAL TOURS

SOUTH AMERICA: June 21 - July 6, departing Los Angeles via Varig Air Lines. Tour includes: Manaus, Brasilia, Rio de Janeiro, Sao Paulo, Iguassu Falls, Buenos Aires, Lima, Macchu Picchu.
CHINA: Oct. 4 - 20, departing West Coast via Japan Air Lines. Tour includes: Hong Kong, Kwangchow, Shanghai, Wuhsi, Peking, Tokyo stopover.
YOUTH TOUR: (New date) Aug. 6-22. Visiting historic and cultural sites in Japan; climb Mt Fuji, home stays, other unique experiences. Individual return dates.
SOUTHEAST ASIA/CHINA TOUR: Nov. 7-26. Tour includes: Hong Kong, Bangkok, Singapore, 12 days in China visiting Peking, Shanghai, Canton and one other city; Tokyo stopover optional.
OTHER SPECIAL TOURS in Japan will be available to JACL members who wish to travel together.

For Further Information: Call Yuki Fuchigami, JACL Travel Coordinator, 1765 Sutter St., San Francisco 94115

Information Coupon

Mail to any JACL-authorized travel agent, or to:
National JACL Travel
1765 Sutter St., San Francisco, Calif. 94115

Send me info on Nat'l JACL Flights, especially Group # _____

Name _____

Address _____

City, State, ZIP _____

Day phone: _____ Chapter: _____

1980 Tours by Kokusai Travel

The Spring Odyssey to Japan

March 31, 1980: JAL-14 Day Tour - from \$1458
Visits Tokyo, Matsumoto, Takayama, Kanazawa, Amanohashidate, Hiroshima, Kurashiki, Shodo Island & Kyoto. Inclusive of flight, tour & most meals.

The Summer Odyssey to Japan

July 3, 1980: JAL - 14 Day Tour - \$1508
Visits Tokyo, Nikko, Matsumoto, Takayama, Kazanawa, Amanohashidate, Shodo Island, Hiroshima & Kyoto. Inclusive of flight, tour & most meals.

442nd European Tour-'80

October 13, 1980: TWA - 16 Days - \$1895
London, Paris, Bruyeres, Rhine Cruise, Rothenburg, Interlaken, Venice—and Florence & Rome OR Madrid & Costa del Sol. Inclusive of flight, tour & some meals.

The Autumn Odyssey to Japan

November 7, 1980: JAL - 14 Day Tour - \$1508
Visits Tokyo, Nikko, Matsumoto, Takayama, Kanazawa, Amanohashidate, Kyoto, Cruise to Kyushu, Ibusuki, Amakusa, Nagasaki & Fukuoka. Inclusive of flight, tour & most meals.

Kokusai International Travel, Inc.
321 E. 2nd St., Los Angeles, CA 90012
(213) 626-5284

• Author Max Templeman served with Nisei in the WW2 Pacific theater and in occupied Japan. He lives in Hawaii, works for the U.S. Army as chief of its education branch. He majored in Japanese history at Univ. of Hawaii.

KIBEI

A NOVEL by MAX TEMPLEMAN

Caught up in the 1942 atmosphere of fear and hysteria on the West Coast is the Miyamoto family, and Taro, a Kibei. A realistically told odyssey between 1942 and 1960 in search of self-identity, although enlaced with sex and violence, it is a story you will long remember for its poignant portrayal of the ironies of prejudice and the many facets of love among a whole generation of fascinating people. "Kibei" is a moving drama of the calamities and confusions produced by the Evacuation.

• I found it an informative, timely, enlightening account of the conflicts encountered by Japanese Americans during and after the Second World War ...
Sen. Daniel K. Inouye

Daimax Publishing House,
860 Hoomaemae St., Pearl City, Hawaii 96782

Please send me _____ autographed copies of 'Kibei' at \$11.95 postpaid. Money back guarantee.

Name _____

Address _____

City, State, ZIP _____

JACL South America Tour

JUNE 21 - JULY 6, 1980

\$2,350* per passenger, Los Angeles departure
VARIG AIR LINES

Special Tour includes meetings with Nikkei community in Sao Paulo; visits to Manaus, Rio de Janeiro, Brasilia, Iguassu Falls, Sao Paulo, Brazil; Buenos Aires, Argentina; and Lima, Peru. Optional tour to Macchu Picchu. Seats limited. Make reservations early accompanied by \$150 deposit to: Travel Coordinator, National JACL Headquarters, 1765 Sutter St., San Francisco, Ca 94115.
*COST SUBJECT TO CHANGE.

JACL Friendship Tour to China

OCTOBER 4 - 20, 1980

Limited Seats: Make Reservations Immediately for Confirmation.
\$3,141* per passenger, San Francisco departure
JAPAN AIR LINES

Tour takes you to Peking: the Great Wall, Ming Tombs, Forbidden City and other historic sites; Shanghai: picturesque and largest city in the world; Canton: dating back to ninth century B.C. cultural sites, export commodities exhibition hall, the panda zoo; Wuhsi, center for pottery and silk; Hong Kong 3 nights; Tokyo stopover. Optional return date to U.S. Send application and \$300 deposit by Mar. 15 to: Travel Coordinator, National JACL Headquarters, 1765 Sutter St., San Francisco, Ca. 94115.
*COST SUBJECT TO CHANGE

APPLICATIONS AND BROCHURE AVAILABLE: CONTACT
Yuki Fuchigami, Travel Coordinator, National JACL Headquarters,
1765 Sutter St., San Francisco, Ca. 94115; tel. (415) 921-5225.

If you are moving, allow 3 weeks' advance notice. Include the old address label (above), and fill out and send this notice to us.

New Address: _____
City, State, ZIP _____

Effective Date: _____

No. 2078
213/626-6936

pacific citizen

355 E. 1st St., Rm 307, Los Angeles, Ca 90012