

Mainichi Daily News

HAPPY BIRTHDAY—Japan's first quintuplet—two boys and three girls—who were born to NHK reporter Yorimitsu Yamashita and his wife, are on their way to kindergarten, accompanied by their mother in Tokyo. The five children, who were born prematurely, celebrated their fourth birthday Jan. 30.

Japantown ponders survival and growth

SAN JOSE, Ca.—The Issei-Nisei old-timers here have called their community, "Sannoze" (rhymes with Jose), which is being revitalized as Japantown.

For the past six months, the city planning commission and a task force of area residents and merchants have been working on an overall renewal of the downtown area to include an upbeat Japantown, plenty of parking and interesting cultural attractions.

Taking active roles in this effort are two past San Jose JACL presidents, Mike Honda, a member of the city planning commission and Jan Kurahara Jr., with the task force.

A planning commission report, heavily quoted in a recent San Jose News story, noted "a new face for Japantown may not have a lot to say about whether the neighborhood can continue as a

distinctly ethnic community with the passing of the older generation of merchants.

"If Japantown does not adapt to serve the needs of these new groups (of businessmen and tourists), it will wither away, but if it can adapt it will survive and prosper," the report stated.

Reminiscent of other cities that have a Japanese shopping area in need of a symbolic drawing power, the San Jose planners are considering a large torii gate spanning Jackson St. at North 4th St. as the entrance to a mall filled with Japanese restaurants and shops.

Financing still is a question, however, said Aki Toyoshima, president of the Jackson-Taylor Business Association. Just how much money will be needed is not clear because of uncertainty about the overall size of the project.

Continued on Page 3

50th anniversary medals

SAN FRANCISCO—The Franklin Mint notified JACL National Headquarters this past week that the order for the 50th Anniversary Medallions will be minted and delivered to JACL by the end of February. Those who have placed their orders should receive their medallions at the beginning of March.

A few medallions, commemorating JACL, and pressed from 24k electroplated gold sterling silver, are still available at \$35. To place an order, send check or money order to:

JACL 50th Anniversary Medallions, 1765 Sutter Street, San Francisco, CA, 94115. (Allow six weeks for delivery.)

Voter registrar ousted under pressure of Chinese American protest on racist slur

SAN FRANCISCO—Thomas P. Kearney, 52, the registrar of voters, was removed from his office this past week by pressure from Chinese American community leaders who had met with Roger Boas, chief administrative officer, Feb. 3. Kearney was shifted to the city's sewer system office.

Kearney's removal came despite a letter to Boas that he regretted a remark he allegedly made last year referring to the Chinese as "goddam Chinks". With the federal courts telling him to come up with Chinese-speaking precinct workers for an upcoming election, he was against it.

"If they're going to vote, they should know English," Kearney was heard to say

more than once. During a special training class held for Chinese-speaking poll workers, an aide heard him mutter, "Goddam Chinks." The remark came to light during a contempt hearing in the U.S. district court last Nov. 24.

Henry Der, director, Chinese for Affirmative Action, said "It was a very progressive action by people who were saying they are not going to tolerate any kind of second-class treatment in this city."

Harold Yee of Asians, Inc., said the system was such that "you were viewed as a subversive if you participated in the political process...and particularly bad in our community because that (suppressive) feeling has been passed on from generation to generation".

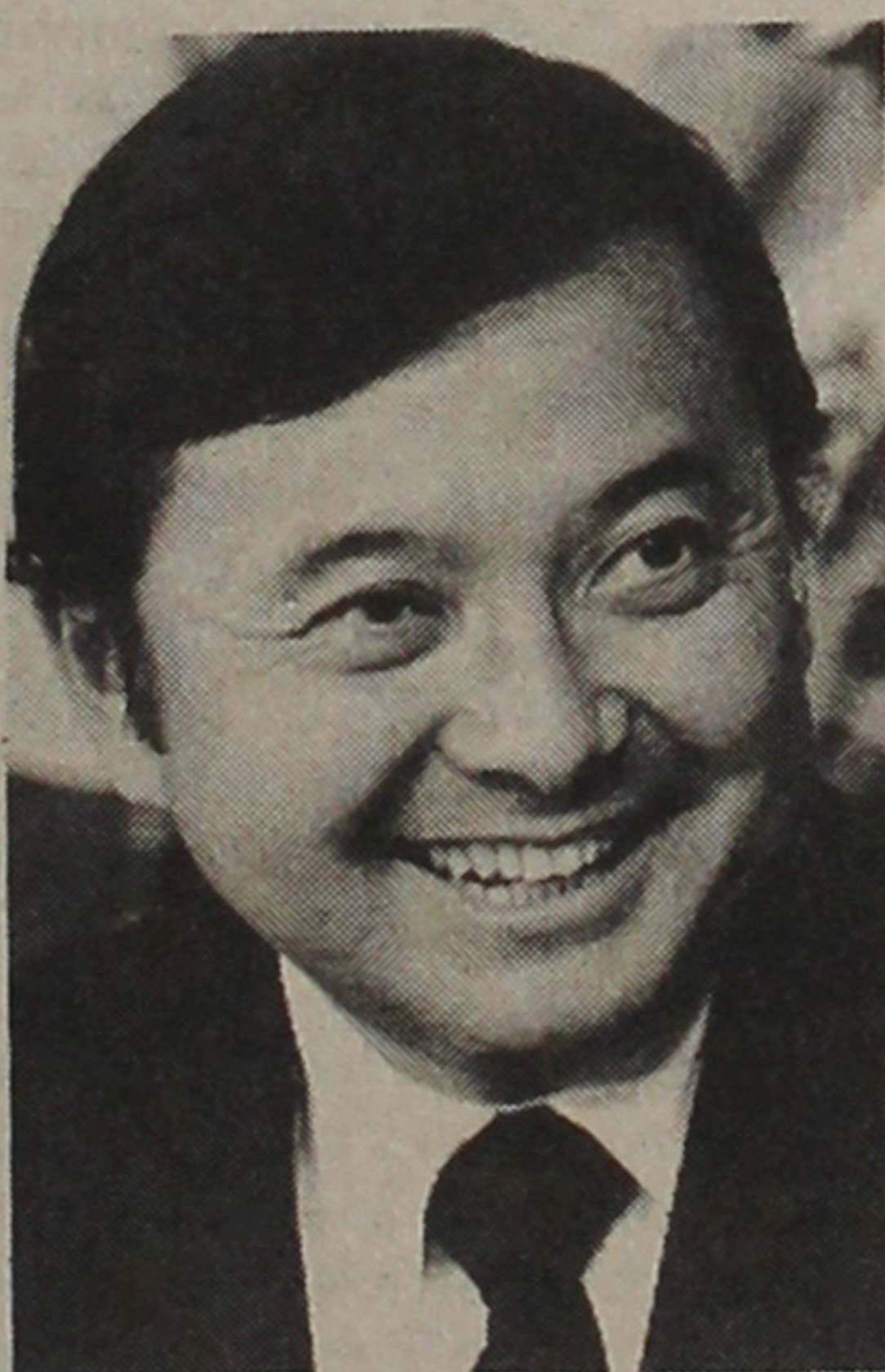
Utah Sen. Hatch backing S 1647

WASHINGTON—Sen. Orrin Hatch (R-Utah) has joined the coalition of the U.S. senators and congressmen pushing S 1647 and HR 5499 for a commission to investigate the relocation and internment of Americans during World War II.

"No official inquiry has ever been made into this matter," Hatch explained. "We need answers to the tough questions of civil rights and national defense that would be rightfully raised in the investigation of this affair, both for the enhancement of civil rights and the enhancement of our national security in the future."

"There are serious questions involving the civil rights of citizens during times of national crisis. Utah members of the Japanese American Citizens League asked me to sponsor the bill, and after studying the proposal I've joined the sponsors," Hatch said.

The Senate bill has 18 cosponsors and a companion House bill has attracted 135 cosponsors.



Sen. Daniel Inouye

Ex-Supervisor Gordon Lau, the city's first-elected Chinese American who lost his seat on the county board last November, remarked, "If this happened even five years ago, Kearney probably would still be there."

Mayor Feinstein's press secretary Mel Wax said the Chinese have become considerably "more sophisticated in the use of their (political) power". Some observers have said they may be the most organized political interest group in the city: more than 10% of the estimated 650,000 population in San Francisco is

Nichibei Kai center dedicated

SAN FRANCISCO—Nichibei Kai dedicated its new \$474,000 community center Feb. 2 with Eddie Moriguchi as emcee. Adjacent to National JACL headquarters, first floor is being used for cultural classes, the second floor as an office and library, the top third as a Japanese tea room, which is yet to be completed.

Yukio Sekino, Nichibei Kai president, noted contributions from Japan played a big role in meeting building costs. #

Sen. Inouye: ranking Nikkei legislator

LOS ANGELES—Sen. Daniel K. Inouye of Hawaii will be among the five Nikkei members of Congress to be honored during the "American Testimonial" benefit dinner March 22 at the Bonaventure Hotel.

Inouye is the only person who has held a major statewide office for the full 20 years of Hawaii's statehood. He is considered by many to

be one of the most influential members of the Senate and his popularity among his peers makes him a national figure of some importance, it was noted by local JACL leaders. The Senator drew national attention and prominence in 1973 through his dignified performance on the Senate Watergate Committee. His well prepared performance contrasted crisply with the per-

formance of some of the witnesses - and with lawyer John J. Wilson's tawdry "little Jap" remark.

Inouye was first elected to Congress in 1959, and in 1962 he was elected to the U.S. Senate. Since then, he has been re-elected in 1968 and 1974 and maintains a strong popularity in Hawaii with more than 80% of the vote in the last two elections. His public ser-

mark crossed ideological and cultural lines. "A common link among all of us was our collective opposition to the racism against Chinese Americans," Der added. "...It showed that regardless of political beliefs and whatever difference, people can work together on common issues that affect all Chinese Americans in the city."

In 1877, Denis Kearney—no relation to the ousted registrar—built the Workingmen's Party of California with anti-Chinese diatribes.

In 1942, another San Francisco registrar of voter was challenged by the Native Sons of the Golden West to remove Japanese American voters from the rolls. The right of Nisei voters was upheld in a 1943 ruling. #

Another Gardena Nisei in first try for city council seat

GARDENA, Ca.—A fund raising dinner Feb. 28 for the election campaign of Dr. Paul Y. Tsukahara, candidate for city council, has been announced by co-chairpersons Ryo Koma and Hideko Bannai at \$100 a plate at the Gung Hay Restaurant. Bruce Kaji will be master of ceremonies.

Dr. Tsukahara, has been active in the community through organizations such as:

Japanese Cultural Institute, Gardena Chamber of Commerce, JACL, and the Boy Scouts of America.

In his first attempt for public office, Tsukahara faces a field of 6 for two open seats.

For tickets, call campaign headquarters 770-0990.

Voters in the Gardena city elections April 8 will also find two incumbent Gardena Valley JACLers running unopposed: Mayor **Edmond J. Russ** and City Treasurer **George Kobayashi**. Russ has been mayor since being elected to the office in 1972. Kobayashi won his first race in 1976.



Dr Paul Tsukahara

May Doi, an elementary school teacher on leave and member of the Gardena Planning and Environmental Quality Control Commission, is challenging longtime city clerk Doris Diamond.

Continued on Page 4

22 weeks till the 1980 JACL Convention:



JULY 28 — AUGUST 1

JACK TAR HOTEL

1980
SAN FRANCISCO

JACL 1980 Travel Program rules amended

SAN FRANCISCO — The 1980 JACL travel program, despite the recent elimination of Group Affinity fares, will continue to be offered as planned, it was decided at the travel committee meeting here Feb. 10. The JACL has seats reserved on the flight dates as noted in its schedule (see announcement on page 8) at APEX fares, which are the

lowest available.

While individuals can apply on their own for APEX fare seats on non-JACL flights, the JACL seats are confirmed and being made available to JACLers and family. The travel committee, in the meantime, has amended the flight eligibility rules by (a) waiving the six month membership requirement, and (b) only one

adult member of the household, husband or wife, need to be JACL members.

Passengers should apply through one of the authorized JACL travel agents as early as possible to assure seat confirmation, advised Henry Sakai, committee chair. Travel program information is also available from the local chapter administrator or National

JACL travel coordinator.

"This may be the last year of scheduled JACL flights to Japan. Therefore, for those who have been thinking of going, this is the year to go," Sakai said. "The dollar is approximately 240 yen, higher than it has been since the 180-yen rate in 1978.

"Fare prices will continue to increase, as well, not only next year but possibly this year. If tickets are purchased earlier, these will be honored even if the fare increases. However, there may be a penalty if you cancel the ticket," Sakai added.

● Education



Margaret Kobama (above) who is conducting research on influenza viruses, is one of 80 minority students at Cal State L.A. engaged in a unique project involving significant biomedical research. She lives in Pasadena. Program began in 1973 with funds from National Institutes of Health with \$2 million more granted recently to continue the project another three years.

Elizabeth Yamashita, professor of journalism at Northwestern University, was appointed the first woman chairperson of the School of Journalism at Michigan State University, effective July 1. The Australian-born reporter who has been associated since 1976 with the Medill School of Journalism at Northwestern was married to her Hawaiian-born husband Don, a mechanical engineer, 10 years ago.

cooperation and goodwill between the U.S. and Japan."

Members of the selection committee include:

Dr. Terry Hayashi and Dr. Yoshiye Togasaki, co-chairs; Jack Kusaba, sr. v.p., Sumitomo Bank; Ben Matsui, sr. v.p., California First Bank, and Mrs. Margaret Murakami, wife of former JACL National President, Jim Murakami, and Masaoka, ex-officio member.

Nominations for the Award are to be made through local JACL Chapters and District Councils. Nominations should include a narrative statement not to exceed two pages, and a biographical summary of the nominee. Deadline is April 30, 1980. The selection will be made by the Distinguished Public Service Award Committee.

The award will be presented at a testimonial banquet scheduled during the JACL's Golden Anniversary Convention at the Jack Tar Hotel, San Francisco, July 28 to August 1, 1980.

To obtain nomination forms and further information, write to:

Distinguished Public Service Award Committee, c/o JACL National Headquarters, 1765 Sutter Street, San Francisco, CA 94115.

JACL helps defend good taste of Seattle's Japanese eateries

SEATTLE—Harry Honda received a letter from an old friend in Japan last year about the front page article appearing in Sept. 5 issue of Tokyo Shimbun. The copy of the letter was received by Cherry Kinoshita. The letter from Japan said in part:

"The main reason I am writing to you today is in reference to an enclosed Japanese article that my wife was really upset about and brought to my attention. I agree with my wife one thousand percent that the article is degrading and insulting not only to JA people in Seattle but all Nikkei in the entire States. The article was obviously written by a narrow minded Japanese who brags about a Japanese elite group of businessmen stationed in Seattle. He stated that Japanese food in Japanese restaurants there are so poorly prepared that they are not suited for the Japanese elite group of businessmen. I would like to ask you to either file complaints or protests against his misleading statement which ridiculed Japanese restaurants and Japanese Americans and all other people in Seattle. I don't think I am unnecessarily sensitive about the whole thing."

Ken Nakano became the contact man, assisted by PC

district representative Cherry Kinoshita. Nakano translated the article, which is in file in the JACL office. Excerpt from the article reads:

"There are several Japanese restaurants in Seattle. They serve only *inaka* (country style) dishes. The miso-shiru soup is so salty that one's tongue becomes shriveled, and residue miso remains in the bowl. I think most of these Seattle Japanese restaurants were originated and managed by the descendants of farm oriented immigrants. These Seattle restaurants are not suitable for elite Japanese shosha-men who are college graduates and belong to first class business companies (upper class)." The article was written by Tadami Nasu.

The Seattle Chapter led by liaison Nakano, Kinoshita and president Mich Matsudaira, made contacts with president of Shunju Club (Japan businessmen group stationed in Seattle), and the Consulate General in Seattle.

The Shunju Club as business representatives of Japan, was instrumental in getting the corrective article being published in the Tokyo Shimbun. Atsushi Katagiri of the Marubeni America Corp. and president of Seattle Shunju Club, was credited for using tactful diplomacy. Seattle Chapter wrote a letter of thanks to Katagiri, and also acknowledged the special role of Nakano. #

JAYS summer confab at Sac'to State campus set

SACRAMENTO, Ca.—The Japanese American Youth (JAYS) will host their National Youth Conference on July 22-27 here on the grounds of the Sacramento State University campus and is expected to attract approximately 250-300 youth from across the nation.

Many professional and non-professional people will join a

● Sports

Santa Rosa Jr. College swim coach Bob Miyashiro was selected Community College Women's Swimming Coach of the Year (1980) by the Calif. Coaches Assn. His team enjoyed an undefeated season and beat perennial swim power Diablo Valley college for the state title.

number of JACLers to present a series of workshops dealing with the "Japanese American Experience", from the first immigration, up to the present, and into the future in an attempt to provide the Japanese American youth an insight into their heritage.

The total conference cost will be approximately \$100, which will include lodging, meals, transportation costs to and from event sites, and all workshop fees.

For more information, contact:

Bruce K. Shimizu/ National Youth Director, JACL Headquarters, 1765 Sutter St. San Francisco, CA 94115.

JACL youth tour to Japan detailed, set Aug. 6-22

By BRUCE K. SHIMIZU
(National JACL Youth Director)

San Francisco

In August of this year JACL will launch its first Youth Tour to Japan. This tour is open to all JACL members and their children interested in seeing Japan on what should be a most unique and interesting sixteen day tour. This tour, the first of its kind for JACL, has been given the utmost attention by Kosakura Travel and Ms. Yuki Fuchigami (JACL's Travel Coordinator). As the National Youth Director, in charge of this program, I shall be accompanying this group through Japan.

The tour cost will be \$1,500 (due to fluctuation in dollar: yen exchange this total price is subject to change), and will include roundtrip air fare, lodging, some meals, and all ground transportation.

The itinerary for this trip will cover the cities of Tokyo, Kamakura, Hakone, Kyoto, Hiroshima, Matsuyama, Takamatsu, Osaka, and Mishima.

Highlights of the trip include: a visit to the N.H.K. Broadcasting Center, cruise on Lake Hakone, tram ride up Mt. Komagatake, trip through the Owakudani Valley (famous for the hot sulfur geysers), rides on the "Bullet Train" to Kyoto, Hiroshima, and Mishima, visit to the "Daibutsu" (Great Image of Buddha), the many temples shrines near Kyoto and Nara, tour of the Toei Movie Studio, visit to the Hiroshima Peace Memorial Park, Hydrofoil ride across the Inland Sea to Matsuyama, visit to the Matsuyama Castle (one of the most preserved castles in Japan), steamer cruise to Osaka, see the Osaka Castle, climb Mt. Fuji, stay in traditional Japanese farm houses, plus many other tours and adventures.

Since this tour is available to only 30 individuals it is very important reservations are made early. As the maiden voyage for the JACL Youth Tours those who participate can expect a trip they will long remember. All efforts have been made to make this tour enjoyable to both those who have never been to Japan and to the veteran traveler.

Those interested in participating in this "once in a lifetime tour", should contact us at JACL National Headquarters.

HINA MATSURI
Girls' Day, Doll Festival.
March 1-3, 6-10 pm. A
Thousand Cranes Restaurant.
It's a family event in the
grand Japanese tradition,
featuring: a special Bento box
dinner, Hina Arare, fresh peach
blossoms, exquisite dolls displayed
in the Tatami room and floating on
the garden pond, and complimentary
paper dolls for each girl. \$10.50/person.
Reservations suggested. Free self-parking.

The New Otani
HOTEL & GARDEN
LOS ANGELES
First 6 Los Angeles Street • Los Angeles, CA 90012 • (213) 629-1200

Nominations due from chapters for Masaoka Distinguished Service Award

SAN FRANCISCO—The Mike M. Masaoka Distinguished Public Service Award will be presented marking its 10th anniversary at the upcoming national convention of the Japanese American Citizens League.

The award was first established in 1970 to honor Masaoka's 30 years of service to the JACL and the Japanese community in the United States as its fulltime national secretary and subsequently the JACL's Washington Representative.

This award is one of the highest honors that the Japanese American Citizens League can confer to an "individual or organization in this country that has contributed most to (a) improve the quality of life for all Americans and especially Japanese Americans and/or (b) promoting and improving United States-Japan relations.

The first honoree of the Distinguished Public Service Award was former U.S. Ambassador to Japan, Edwin

Reischauer, noted author and Harvard professor.

In 1972, the recipient was the Leadership Conference on Civil Rights, Washington, D.C.-based coalition of over 150 national organizations dedicated to civil and human rights legislation, litigation and administration.

In 1974, it was former U.S. Ambassador to Japan, and former Undersecretary of State for Political Affairs, U. Alexis Johnson.

In 1976, the Award was presented to then Senate Majority Leader and presently Ambassador to Japan, Mike Mansfield.

In 1978, Nobuhiko Ushida, Japan's Minister of State for External Economic Affairs, was selected to receive the Award and was cited, "for his years of dedicated and inspired service, first as an official of the Foreign Ministry, then as Japan's Ambassador to the U.S. and more recently as Minister for External Economic Affairs promoting trade,

Chicago popular with industries from Japan

CHICAGO — Mitsubishi Heavy Industries recently announced the opening of its wholly-owned subsidiary head office, Mitsubishi Heavy Industries America, in Chicago. The Japanese firm chose Chicago because of the city's central location and superior transportation facilities.

This is but another example of Chicago's growing popularity with firms from Japan. Lured by the city's thriving business community, central location and vast transportation network, more and more Japanese firms are opening offices in the Chicago area.

● Awards

Scott S. Shimamoto, graduate of Schurr High School, Montebello, Ca., was awarded the \$500 Joseph T. DeSilva Scholarship. He is a business student at USC. Award is named for the founding president of Local 770, Retail Clerks Union, now part of the United Food and Commercial Workers Union, AFL-CIO. Awardee is the son of Local 770 member Kinuko Shimamoto.

Salt Lake City Fifth Circuit Judge Raymond Uno was honored with a life membership by the Utah State Conference on Human Services in recognition of "his leadership and contributions to social work and community projects". He exemplifies the finest of the three professions—social work, law and teaching—all of which he had studied and graduated.

● Military

Dr. Matthew Masuoka of Portland was elected to head the Oregon Nisei Veterans to start the '80. Dr. Toshi Kuge is the outgoing commander.

A telling barometer of the rapid growth of Japanese investment in this region is the Japanese Chamber of Commerce and Industry. When this organization began 12 years ago, it had 64 members. Today, there are well over 200.

As the chamber has grown both the composition and location of its membership have changed dramatically. Initially, over 80% of its members were located in the downtown area. By 1979, however, less than 30% were residing within the city limits. Furthermore, as total membership has grown to more than three times its original number, city membership has increased by 10, while suburban membership grew from 13 to well over 130 over the same period.

Concurrent with a major shift to the suburbs is a change in the composition of the chamber. Early members were comprised primarily of banks, insurance companies, government and economic organizations, small retail stores and restaurants. Today, however, over 60% of the members are manufacturing concerns.

The center of the greatest growth has been the area surrounding O'Hare Airport. It is the home today of over 60 members. Twelve years ago, it was the home of only two. Remembering that the majority of newcomers are manufacturers, this is not surprising.

—Chicago JACLer



Photo by Art Yotsuya

SAN JOSE YJA (Young Japanese Adults) hear their adviser, Rep. Norman Mineta, at recent installation dinner at a Los Gatos restaurant. Officers include (from left): Jerry Kinoshita, Taka Makiyama, Stan Tomita (pres), Mineta, Ellie Satow, Eileen Moriya.

SAN JOSE

Continued from Front Page

The planning report noted that Community Development Block Grant money may be available, as well as financing through the Small Business Administration or local banks.

The Pacific Square Mall in Gardena was built by Japanese money from Japan," the report noted. "The possibility of a similar funding source for the San Jose Japantown should be explored."

Merchants also met with Rep. Norman Y. Mineta, to discuss funding possibilities. Mineta, the former San Jose mayor, owns an insurance agency on Jackson Street.

The gate would cost \$30,000-\$40,000, said Tomoo Inouye, owner of Fourth Street Pharmacy.

The planning report recommends that merchants should begin making plans to upgrade and improve their stores, and to recruit new stores and businesses to the area.

"Consideration should be given to recruiting new businesses with a Japanese accent from Japan as well as from the local economy," the report said.

Census estimates fewer illegal aliens

WASHINGTON—A new Census Bureau estimate places the number of illegal aliens in the U.S. at 5 million—well below the earlier count between eight and 12 million.

The President's Select Commission on Immigration and Refugee Policy, for whom the report was prepared, called it probably the best available analysis to date.

The city council unanimously endorsed extending the study another six months. A series of recommendations to change the general plan to reflect existing land uses, transportation (making 3rd and 4th Sts. one-way) and rezoning (parts of Empire St. to single family residential will be studied further.

The task force is also trying to locate a site for a Japanese community center. Meanwhile, the media has been a closer look at Japantown as of now. The Mercury News, in a full-page Sunday spread (Feb. 10), noted Japantown was hopeful of the future as the city is seeking to retain its character.

Other changes suggested in the report were landscaping planters and Japanese street lanterns in place of the existing street lighting.

The report said that the neighborhood should take advantage of its location near the civic center, the nearby industrial area and professional offices along First Street, whose employees need a place for lunch and noontime shopping.

Several merchants told the San Jose News that the success of the project will have a lot to say about whether San Jose can continue to claim one of the few distinctly Japanese areas in this country and the heart of the city's Japanese community since the early part of the century.

The residential streets around the commercial district have lost some of their ethnic identity over the years, although city planner Jim Williams said that the neighborhood still has more of the city's approximately 12,000 people of Japanese heritage than any

other section of the city.

Wherever Japanese live in the Santa Clara Valley, Williams said, they return often to Japantown.

But shop owners—primarily Nisei (second generation) who took over the businesses from their immigrant parents—are having problems keeping their sons involved, merchants said.

"We can't seem to attract the new blood," said Inouye.

Toyoshima said, "These changes could make a difference. We need the younger generation coming in."

The planning report noted the passing of the basic purpose of Japantown—to provide a place for the area's Japanese to meet, shop, worship and socialize. #

PC People

Government

Tom Owan, Washington, DC JACLER and a contributor to the PC Holiday Issue several years ago, was appointed by NIMH to chief, services for minorities, Division of Mental Health Services. His paper, "Asian Americans: A Case of Benighted Neglect", appeared in the 1975 Holiday Issue. A sequel appeared in the 1976 HI.

News Briefs

So. Calif.

California First Bank opened its 10th office in the state Jan. 23 at Fallbrook with Randy Jones as manager. Bank president Toshio Nagamura was present for the ribbon-cutting ceremony witnessed by some 600 people.

To meet increasing needs of the Asian/Pacific communities, the Asian American Voluntary Action Center (AVAC), 1891 S. Westmoreland Ave., Los Angeles 90006 (213-744-3411), named a new board president in Fred Hoshiyama and an executive director in Lucy Fried, former coordinator for Coalition for Economic Survival. Hoshiyama (active Venice-Culver JACLER) is director of the YMCA national youth project using mini-bikes.

Equivest Associates, an El Monte-based business development group, received a state grant providing cost-free business transfer assistance, it was announced by Teresa Iizuka, project director (213-448-9803).

Hawaii

Circuit Judge Arthur Fong ruled 1978 candidate Wayne Nishiki for lieutenant governor had libelled his opponent, Billie Beamer, by claiming she was "controlled" by former state land board member Larry Mehau and union official David Trask. Judge said a person running for public office "cannot be the target of vicious, unfounded attacks in the name of free speech".

A supreme court rule permitting out-of-state attorneys to practice on a given case only within the discretion of the presiding judge, mainland attorneys are being barred from arguing or even sitting at the counsel table in the current asbestos damage suits in Hawaii state courts. A South Carolina attorney was disqualified in Circuit Judge Fong's court Jan. 30.

First students coming to Hawaii from the People's Republic of China to study at East West Center are middle-aged men involved with the travel industry who have come to learn more about tourism.

ISSN: 0030-8579

PACIFIC CITIZEN

Published weekly except first and last weeks of the year at 244 S. San Pedro St., Rm. 506, Los Angeles, Ca 90012 (213) 626-6936

DR. CLIFFORD UYEDA
National JACL President

ELLEN ENDO
Pacific Citizen Board Chairperson
Harry K. Honda, Editor

2d Class postage paid at Los Angeles, Ca.

Subscription Rates: JACL Members—\$7 of National dues provides one-year on per-household basis. Nonmembers—\$10 a yr, payable in advance. Foreign—US\$15 a yr. Air or 1st Class extra.

News or opinions expressed by columnists, except JACL staff writers, do not necessarily reflect the JACL policy.

CON SOLI DATE

Consolidate your multi payment loans into a single payment with our consolidation loan.

NATIONAL JACL CREDIT UNION

Now over \$4.2 million in assets

Insured Savings* currently 7% per annum

Car loans low rates on new & used

Signature Loans up to \$3000**

Free Insurance on loans & savings

*TO \$40,000 BY USDC ** TO QUALIFIED BORROWERS
PO 1721 Salt Lake City, Utah 84110 (801) 355-8040



The Mitsubishi Bank

of California Member FDIC

Little Tokyo Office

321 East Second St., Los Angeles, Calif. 90012
(213) 680-2650

For as little as \$100

2 1/2-Year Securities Certificates

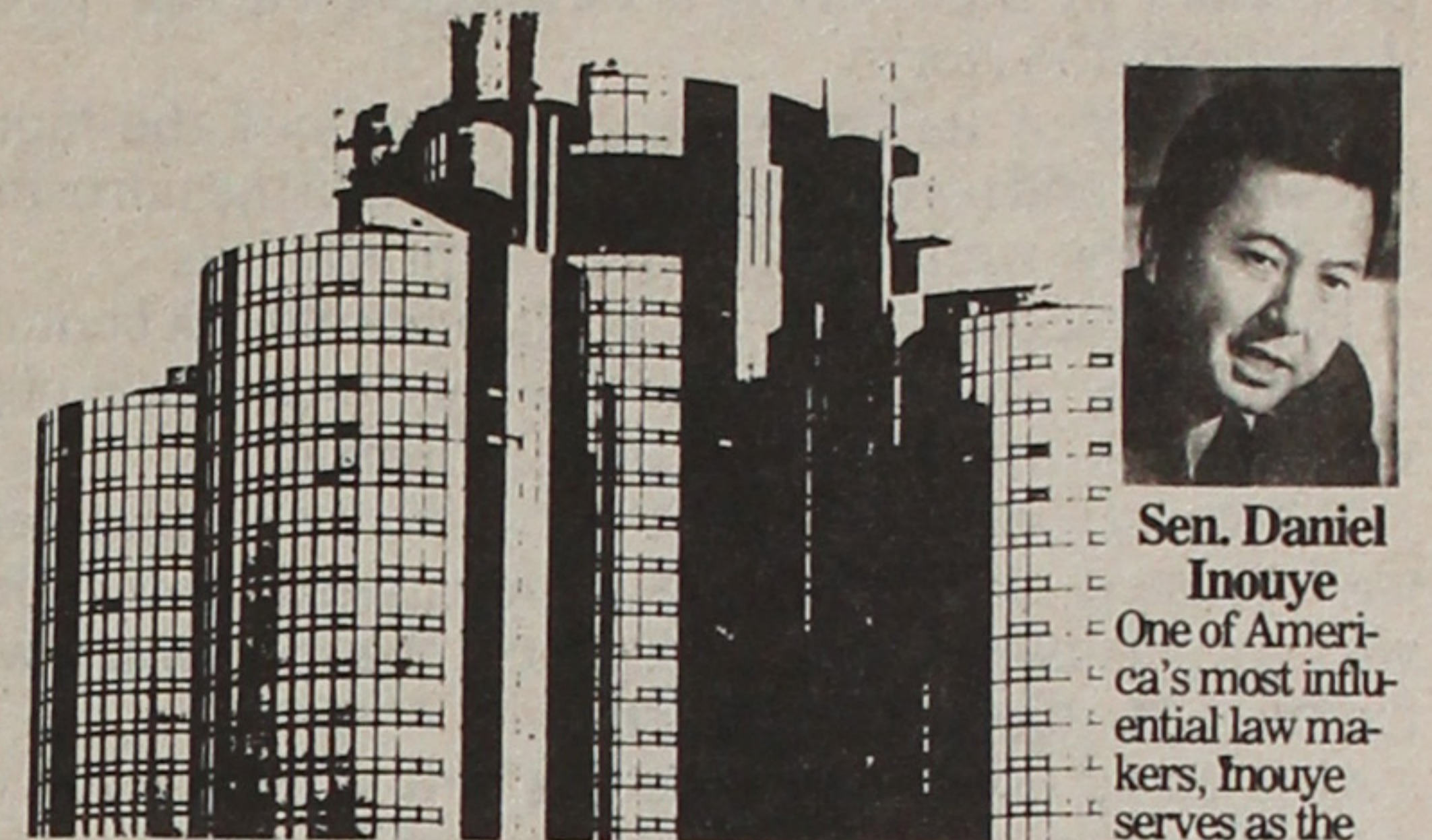
You can start earning high interest now on a securities certificate of deposit at California First Bank.

All it takes is a deposit of \$100 or more. Minimum term of certificates is 2 1/2 years and maximum term is 10 years.*



*Federal regulations require a substantial interest penalty be imposed for early withdrawal and prohibit the compounding of interest during the term of the deposit.

©California First Bank, 1979

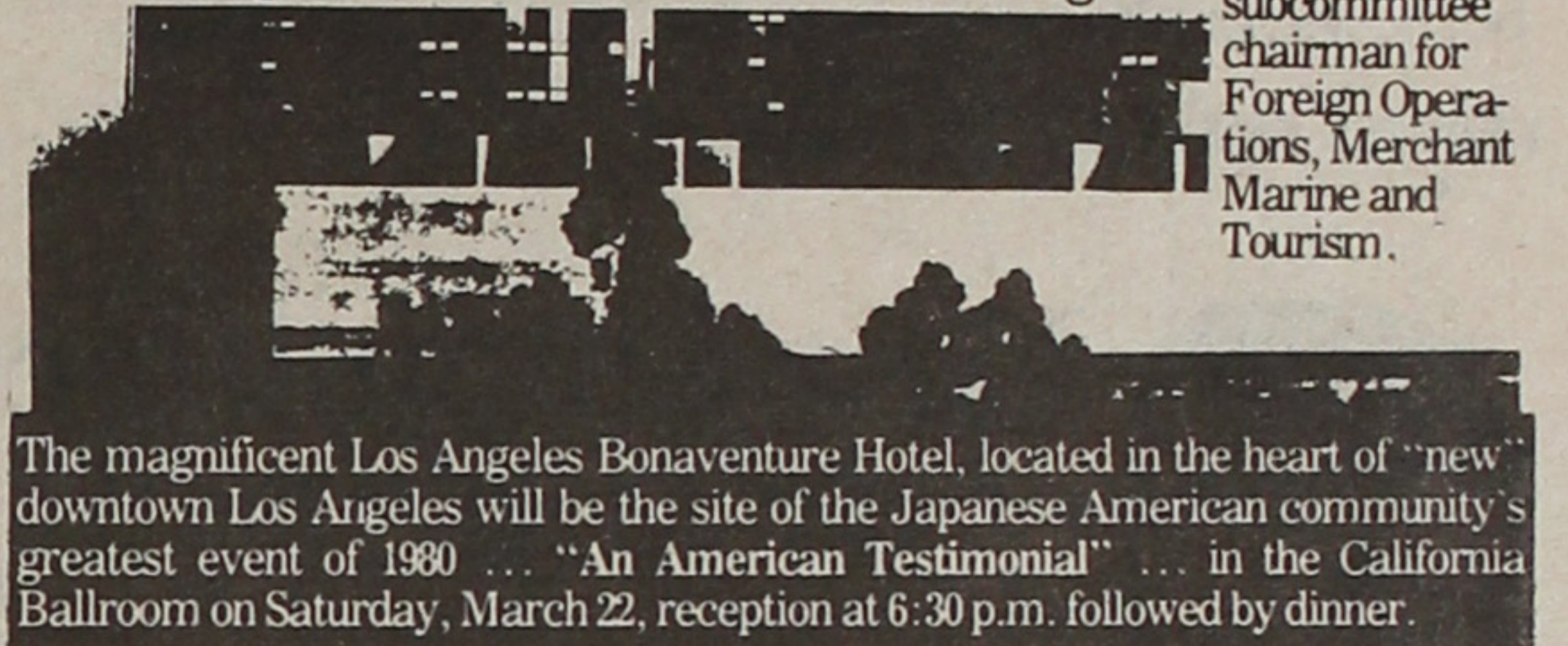


Sen. Daniel Inouye

One of America's most influential law makers, Inouye serves as the fifth ranking member of the prestigious Senate Appropriations Committee. He is also subcommittee chairman for Foreign Operations, Merchant Marine and Tourism.

An American Testimonial:

To Members of Congress of Japanese Ancestry, the Japanese American Experience, and the Challenges Ahead in Human and Civil Rights.



The magnificent Los Angeles Bonaventure Hotel, located in the heart of "new" downtown Los Angeles will be the site of the Japanese American community's greatest event of 1980... "An American Testimonial" ... in the California Ballroom on Saturday, March 22, reception at 6:30 p.m. followed by dinner.

YES, I am interested in "AN AMERICAN TESTIMONIAL"

Name: _____
Address: _____
City, State _____ ZIP _____
Enclosed check, payable to JACL—An American Testimonial, is for:
\$ _____ for _____ person(s): \$100 per person. PLEASE MAIL TO:
\$ _____ for _____ table(s): \$1,000 per table. JACL-An American
\$ _____ as a contribution. (Sorry I cannot attend) Testimonial
125 N. Central Ave.
Los Angeles, Ca. 90012
Contributions tax-deductible. For further information, call the JACL Office (213) 626-4471

PRESIDENT'S CORNER: Clifford Uyeda



Great Wall

It was a two-hour train ride north from Beijing. From the train station a hike of about half a mile brought us to the wall. This was a restored section of the wall that extended 500 yards to both East and West. Several of us selected the western climb which was steeper and therefore less crowded.

We climbed to successive battlements and viewed the terrain below us. The barren, rock-strewn mountains presented in themselves a formidable barrier to anything from the North.

About six of us from the group reached the highest battlement and some of us went beyond to the unrestored section of the wall. The footing was precarious.

Built along the ridges for 3,000 miles, it took centuries to complete. It is said to be the only man-made object visible to the astronauts during earth orbit.

Viewed from the highest battlement the undulating wall twisted and turned over the rugged landscape. It was surprising to note hairpin turns that presented walls running parallel to each other.

One could not help wondering how effective the wall was after the tremendous efforts used for its construction. History shows that the wall became obsolete as an effective barrier against determined invaders.

Hundreds of thousands of workers labored at the wall for centuries. It seemed like wasted manpower. It may be, however, that manpower not used is a true waste.

REDRESS PHASE 2: John Tateishi



New Committee

Although the process has taken some time, I have finally completed the selection of representatives from each of the JACL districts to serve on the newly restructured National Committee for Redress.

The object of restructuring the Committee was to find people who could take responsibility for developing the Redress campaign in each of their districts. These people were selected with this in mind, and each was highly recommended.

The new Redress Committee consists of the following JACLers:

- | | |
|---------------------|------------------------------------|
| PNW—Dr. George Hara | MPDC—Minoru Yasui |
| NCWN—Chuck Kubokawa | IDC—John Tameno |
| CCDC—Tom Shimasaki | MDC—Ross Harano |
| PSW—Ron Wakabayashi | EDC—Cherry Tsutsumida |
| | Southeast Liaison—George Sakaguchi |

The Committee will hold its first meeting at JACL Headquarters in San Francisco on Feb. 29 - March 1, to discuss the overall strategy for the educational portion of the campaign and develop a timetable for the strategy.

Specifically, our task at this meeting will be to develop the specifics of chapter activities and the plans for a concerted campaign to develop grassroots support within our communities. And this will be the beginning of the broader campaign to educate the American public about our WWII experiences.

We will also be discussing further plans for fund raising in the districts to help finance the campaign. Although we have already embarked on major fund raising projects, we will require additional funding for the long range goals of the campaign.

Many chapters, I realize, have been anxious to begin the educational campaign in their communities and have been waiting for some direction from the National Committee. Thus far, our efforts have been focused on S1647 and HR 5499 with direction being given by our Washington JACL Office.

But now that the Committee has been restructured with representatives from each of the JACL districts, we can better facilitate developing the working relationship between the Committee and individual chapters.

The members of the reconstituted National Committee are all outstanding individuals who are well known in their districts and well respected. With such an excellent group, we all look forward to a successful campaign.

35 Years Ago

in the Pacific Citizen

- Feb. 17, 1945
 - Feb. 7—Yakima valley farmers post "No Jap" stickers on fences.
 - Feb. 8—U.S. Employment Office reveals Nisei placed in defense plants in Los Angeles area.
 - Feb. 9—Calif. State Personnel Board will accept applications of returning Nisei; exception made of 87 Nisei discharged after Pearl Harbor.
 - Feb. 9—Native Sons of Golden West asks State Legislature to (a) ban Nisei from fishing in coastal waters, (b) strengthen alien land law which allows ownership of land by Nisei, (c) enforce escheat provisions of alien land law, and (d) keep Japanese language schools closed.
 - Feb. 10—Nisei nurse (Masako Takayoshi) decides to quit Harborview Hospital post after protest; had been welcomed back by Univ. of Washington and hospital Feb. 2 to prewar supervisory position.
 - Feb. 10—Fresno sheriff investigates three shotgun blasts fired into home of Nisei evacuee (Frank Osaki, Fowler), back from Arizona camp; WRA notes over 100 evacuees back in Fresno area.
 - Feb. 12—U.S. Supreme Court denies appeal to rehear Fred Korematsu case.
 - Feb. 13—UC Berkeley's campus daily poll shows 65.7% of students would welcome return of Nisei students.
 - Feb. 16—Army reports Hood River Nisei (Sgt Frank Hachiya) killed in action Jan. 3 during action on Leyte.
- Those who are dull and unteachable are as abnormal as prodigious births and monstrosities, and are but few in number.* —QUINTILIAN



YE EDITOR'S DESK: Harry Honda



JACL Int'l / Jup' Pluvius Combination

Delineation of the geographic boundaries of our JACL district council areas is not cited as among the major changes in the proposed national constitution and by-laws. But we well remember the lengthy discussion on these at the 1948 convention when the number of five districts then governing the chapters was expanded to eight.

The old five (make that read—the "first five") covered the Northwest District (States of Washington, Oregon and adjacent parts of Idaho), Northern California District (all counties north of and including Monterey, Kern and Inyo), Southern District (remainder of California and Arizona), Intermountain District (Utah and Idaho), and the Tri-State District (Colorado, Wyoming and Nebraska).

At the 1948 convention, Northern California lost 10 chapters which made up the new Central California District. Midwest and Eastern districts were also established. Intermountain picked up southeastern Oregon (that part which observes Mountain Time). Tri-State was renamed Mountain Plains and included new areas such as Montana, New Mexico and Texas.

The 1980 draft stays with eight districts but geographic boundaries continue to expand. And note the additions!

Alaska becomes a part of the Pacific Northwest. Southwestern Nevada (Las Vegas) is attached to the Pacific Southwest District. Mountain Plains will include the rest of the states heretofore unnamed in our JACL constitution—the Dakotas, Kansas, Arkansas, Oklahoma and Louisiana. Midwest, expanding southward to the Gulf, will list Kentucky, Tennessee, Mississippi and Alabama. And Eastern District has the remainder of the states on the east coast from Maine to Florida.

Conspicuous by its absence in the JACL roster of states is the 50th State of Hawaii which is being provided for in the section dealing with new district councils, established upon petition of three or more chartered chapters and approved by the National Council. Hawaii is in the process of organizing a chapter, according to a recent column by President Clifford Uyeda. While Hawaii will need two more chapters to operate its own district, we envision no problem constitutionally to welcome a chapter based in Hawaii for it can be administered provisionally by the nearest district council—which would be the Pacific Southwest. But it could be prudent politics to anticipate Hawaii as another district council with a parenthetical advisory (upon establishment).

No doubt, at the outset the Pacific Northwest might look after the district needs of the Tokyo (Japan) chapter upon activation because of proximity. But it'll be a pretty expensive proposition.

But the real tickler of this week's column is this: It may be that JACL might envision itself as "JACL International" in the coming decades since membership is really open now, irrespective of residency, to all who would subscribe to the JACL constitution. Bringing in a Tokyo chapter (Barry Saiki: we're counting on you) should legitimize JACL being "international", constitution or no!

Southern California was drenched by rain, which visiting Min Yasui from Denver found easier to take than the still-wintery blasts that buffeted the Mile-Hi city he had left to speak before the Orange County JACL installation dinner last Saturday at the Sheraton Anaheim. The rain had let up by evening but the storm did affect attendance somewhat. About 90 people finally came through (hell or high water?) to:

1—Hear Yasui recollect his personal experiences of 1942, laud the long history of the chapter (it was founded in 1934) and expound the importance of JACL's redress campaign.

2—Realize JACL has another articulate spokesperson in its National Youth Director, Bruce Shimizu, who reminded the long-range Operations 80s is an action with pieces for all to share.

3—Understand some of the membership needs as voiced by Pacific Southwest District Governor Wiley Higuchi, Esq. (Dues

will likely rise, but he prefers it be stayed and memberships be pushed harder.)

4—Applaud the efforts of Ken Hayashi, outgoing chapter president (a JACLer whose membership goes back to prewar Tacoma and wartime New York).

5—Demonstrate their trust in Dr. Luis Kobashi, incoming president (and the first JACL president who hails from Lima, Peru).

6—And enormously enjoy the style and songs of James "Butch" Kasahara, accompanied by Betti Vincent (who made the hotel piano sound better than it was with five or ten sticky keys).

One can appreciate the appearance of "Esq." in the dinner program in Orange County as Jim Okazaki (chapter president in 1969 and the attorney) and Jim Okazaki (newly-installed vice president, long associated with Nisei Relays and the JACL state track & field meet, and a petroleum engineer) need to be distinguished as simply as possible. As an engineer in search of oil, Jim No. 2 could well sport G.O. (gas & oil), but which better describes his dedication to youth work.

Not enough praise can be showered upon Butch Kasahara, whose rich voice adds a memorable touch to any evening—be it at a nightclub when he's in contract or at a community function for the sheer of love of entertaining. His repertoire is Asian-Pacific, an elegance enriched by the classics and polish gilded with Hawaiian wit... If the Convention Board is reading this, one of Butch's favorites (and ours, too) is his rendering of "San Francisco". And we've never heard the JACL Hymn sung as solemnly as he sings it.

All night long we kept wondering if John Saito made it to Santa Barbara because of flooded freeways north and west of Los Angeles. Read his column in this week's issue. #

DINNER

Continued from the Front Page

vice career represents over 25 years in the state and national legislature.

As a senior senator from Hawaii, his tenure in office has placed him in a vital position as one of America's most influential law makers. Presently, Senator Inouye serves as the fifth ranking member of the prestigious Senate Ap-

Wilshire JACL plan helps Mar. 22 dinner

LOS ANGELES—The Wilshire JACL Chapter Board last week developed a special plan to aid chapter attendees of the March 22nd Testimonial Dinner honoring Senators S.I. Hayakawa, Daniel Inouye and Spark Matsunaga, and Congressmen Norman Mineta and Robert Matsui.

Chapter aid will be extended on a first-come first-serve basis to the first 20 applicants. Funds raised by the dinner will be given to the JACL Redress Committee. For information, call:

Alyce Takami 294-4536, or Roy Nishikawa 384-7400. #

COMMENTS & LETTERS

● **P.S.: Karl-Yaki**

Editor,
This may be a small matter to some but it hurts me very deeply. In the article by our wonderful National Executive Director Karl K. Nobuyuki it was inferred in a small way that I had "dropped out" of JACL and was making a comeback??

May I say to our Director and JACLers old Man Mack IS NOT a Prodigal Son of the JACL Movement. He has been in the thick and thin of JACL activities all the way. Of course with his traditional "Red Vest" 60th birthday party over, these weary old bones are slowed down a wee bit.

How can you not like the fellowship and fun with beautiful people like Karl and his beautiful wife. Few JACLers fall by the wayside like seeds planted on a rocky surface because they will not let a majority vote rule. Someone said, "when you're ready to quit and to give up the fight, and the skies all above you are black as the night. Then lift up your hand through the owly night air, there is power and triumph in a confident prayer".

MACK YAMAGUCHI
Pasadena, Ca.

propriations Committee, and is known as a strong supporter of the federal programs related to both the foreign and domestic problems of the nation. His interest is shown in his position as a ranking member:

On the Commerce Committee and his chairmanship of both the subcommittee on Foreign Operation and the subcommittee on Merchant Marine and Tourism. The scope of his influence is reflected in his diversified participation on the subcommittee on Defense; Labor; HEW and Related Agencies; Military Construction; State, Justice, Commerce, the Judiciary and Related Agencies; and the Subcommittee on Aviation; and the Subcommittee on Communications.

Inouye was a distinguished member of the group of Japanese Americans who fought in the 42d Infantry Regimental Combat Team, the most decorated and casualty-ridden American military unit in World War II. He is a graduate of the Univ. of Hawaii and received his Juris Doctorate degree from George Washington University. The Senator and his wife Margaret have one son, Daniel K. Inouye, Jr. #

FROM THE FRYING PAN: Bill Hosokawa



Our Issei May Well Remember

New York, N.Y.

During a 24-hour business trip to New York City there was just enough free time to visit the photographic exhibit at the Japan House Gallery on East 47th Street. The exhibit was of photographs taken in Japan between 1854, the year Commodore Perry and representatives of the Shogunate signed the Treaty of Kanagawa, and 1905.

Since many Issei came to the United States before 1905, the exhibit depicts much of the Japan that they left behind when they set out for the New World. In this sense the exhibit should be of particular interest to their second, third and fourth generational descendants.

The names of the photographers — Felix Beato, an Italian; and A. Le Bas, French; Baron von Stillfried, Austrian; and Kusakabe Kimbei (who probably learned the business from von Stillfried) — don't mean a great deal to the casual observer. But their documentary pictures are fascinating.

There are scowling samurai, character and dignity written on their faces, as well as remarkably slight and youthful lesser warriors. There are pictures of sumo

wrestlers, painted women, child acrobats, kabuki actors and women musicians.

There are more mundane subjects — an umbrella maker, a peddler of bamboo baskets, two men drinking sake purchased from a sake seller on a street, a farmer in winter costume, a vegetable vendor in straw rain cape with huge baskets of produce suspended from a carrying pole balanced on one shoulder, a vendor of picked vegetables, bare-legged men carrying samurai across a river.

There are street and village scenes, landscapes, shrines and temples which probably would evoke nostalgic memories of childhood among the handful of Issei who are still with us. And these photographs offer a sense of ethnic and family roots missing in pictures of contemporary Japan with the bullet train racing in front of Mount Fuji, traffic jams in Tokyo, skyscrapers in Shinjuku, giant steel mills and shipyards, automobile assembly lines and girls in white smocks assembling color television sets.

Few of the photographs illustrate the enormous forces that were modernizing Japan during this period when, within a few decades, a hermit nation leaped from feudalism into the role of Asia's only industrial power. Japan did a lot of silly things in seeking instant Westernization,

such as building dark, stifling English-style homes and dressing their ladies in bustles. But there is one picture in the collection that characterizes the foolish efforts some Japanese were making to put their culture behind them. It shows a Japanese in what looks like a Charley Chaplin suit, hat and all, sitting at a table with a waiter in tailcoat serving.

Of course, the photographers were more interested in the quaint old Japan than the railroads she was building and the factories that were rising. So, unfortunately, these glimpses of a rapidly disappearing Japan were preserved for us to see.

The photographs were assembled by the Japan House (Japan Society) Gallery and the American Federation of Arts with support from the Japan-U.S. Friendship Commission and the National Endowment for the Arts. Unfortunately the New York exhibit has ended, but the photographs will be sent to museums in various parts of the United States. If it comes to your city, make an effort to see it. The pictures show what life was like in 19th century Japan, the years when the Issei were being born and growing up, and it's a fascinating experience to go visiting back to those times.

A 152-page catalogue of the exhibit, with suitable commentary, has been published. I'm not sure of the price, but it can be ordered from the Japan House Gallery, 333 E. 47th St., New York, N.Y. 10017. #

EL PIMENTERO: Frank Fukazawa



Japanese economy shrinking to '45 level

bleak! Maybe, we might have to get along with less and eat the crumbs of the pie as it continues to shrink.

Tokyo

Only a few years ago, 114 million people in Japan were eating a BIG pie, even being affluent enough to afford some left-overs. Today, the picture has completely changed. \$8 billion in the red (no criticism nor controversy from American politicians anymore and no sympathy either); forced to import hiked priced oil as usual to maintain the industrial production; electricity, gas and postage prices going up; inflation ready to burst at its seam; a foreseeable slow-down in economic growth is settling in.

Japan's outlook for 1980 is

On the political and international scene... Ohira's cabinet is being tossed around by Carter, Breznev and Khoumeni. Still undecided what to do about Iran and Afghanistan, Ohira is hesitating. To co-operate with Carter's economic sanctions would cut 15% of the oil pipe line from Iran contracting the pie even smaller, bringing horrendous consequences to the entire island. But to appease Carter's wrath, Ohira has reluctantly decided, in his sole peculiar manner, to not (?) participate in the Moscow Olympics. The REAL decision will be taken, however, in May and until then,

"all subjective and objective circumstances will be duly examined whether it merits to go to Moscow or not!"

While flirting with such words, Ohira's government was bomb blasted from right under their seats by a spy-bomb... A general in the Japanese Army, a Sovietologist fluent in Russian and director of counter-espionage, has been feeding the Soviets with classified military secrets for 25 years! Such an unbelievable betrayal had never occurred in Japan's history. Caught red-handed and investigated, he was no simple amateur but a cool dedicated Russian spy receiving direct orders from Moscow over the waves in ciphered codes... This happened one month ago. Yet Ohira is STILL cautiously

thinking how to lodge his complaints to the Soviet Embassy, while the key Russian military attache' had quickly slipped out of Japan, the following day the Japanese general was arrested.

On the economic scene, ... concern over energy comes first over all else. Japan has only 90 days of reserved oil, paying more than \$35 billion a year, all imported! Unlike America, close to 86% of this oil goes to industrial use and a marginal quantity for car consumption, with gasoline prices being hiked up 15% monthly.

The Americans complain about high gas prices and scramble to buy small cars. But if they knew gas costs \$2.50 per gallon in Tokyo, they should be thankful that their

price is still one of the cheapest in the world except those of the OPEC countries. Cars are busily running around nose to nose on Ginza Street but one fine day, they will abruptly stop if the present prices still climb higher. That is, gas will not be bought anymore.

Just like they stopped flat to buy "Kazunoko" (herring eggs), a speciality for New Year dishes and a must in Japan. Hokusho Company specializing in this item had bought up the majority off the market intending to scoop a big profit by labelling high prices. Although an indispensable item, scared stiff with the prices, the public just didn't buy it.

Conclusion: Only one week ago, Hokusho Co. went bankrupt with \$20 million in debt. Victory for the consumers and perhaps the same thing might happen to the gas profiteers.

Seven percent conservation in energy is this year's goal indicated by the government.

... All government officials except directors and up, are prohibited to commute with private or official cars. Use the trains or walk to work is their orders. All neon-signs, TV will be off at midnight sharp. Thermostat during daytime must be fixed at 63 degrees and after 5 o'clock, heating is turned off. For overtime work? Use an extra sweater or overcoat, if you feel cold. ... Consequently, ingenious devices are popping up all around the country.

In Asakusa, a "Sentoh" (public bath) operates on solar heat. If it rains, what happens? Regrettably, not yet solved.

Hokkaido boasts for self-generated electricity by wind propellers. Cement factories burns thousands of used old tires conserving 4% oil. Coast

Continued on Back Page

Sumitomo Introduces the 2½-Year Money Certificate.



Starting January 1, Sumitomo Bank is introducing the 2½-Year Money Certificate. Only \$100.00 is required for this new certificate which offers a rate of interest ¾% less than the average yield of 2½-Year U.S. Treasury securities. New rates are announced monthly by the Treasury Department.

90-Day Time Certificate of Deposit. Sumitomo is increasing the 90-day Time Certificate of Deposit to 5¾% per annum effective January 1.

Individual Retirement Accounts. The new 2½-Year Money Certificate and 6-month Money Market Account (\$10,000 minimum balance) is now available to Sumitomo Individual Retirement Accounts.

Open one of these high yield accounts now.

Note: Federal regulations impose substantial interest penalties upon premature withdrawal.

The Sumitomo Bank of California
Member FDIC

From February 1st to February 29th

MERIT SAVINGS ANNOUNCES

HIGHER INTEREST RATES FOR SAVERS

10.65% Current Annual Rate **11.43%** Current Annual Yield

This is the fixed term rate that you will receive on 2½ year certificates with only a \$100.00 minimum deposit. It's the highest rate of return on any certificate offered today by any insured savings institution.

6.00% Current Annual Rate **6.18%** Current Annual Yield

This high interest is available to passbook/certificate savers. It can be yours with Merit Savings easy 90 day account. Put your money in, leave it for one quarter, and you'll earn this highest interest available on 90 day insured savings.

HIGHER GAS-MONEY SAVINGS CAN BE YOURS, TOO!

How to Get More Miles per Gallon

by Robert Skansky

Stop by any office of Merit Savings and pick up your copy of this indispensable glove-compartment guide to better mileage. It provides 282 tips to save you gas — and money! It's the most complete collection of fuel conservation tips available in the world today.

Come in today, open your account and pick up your free copy of "How to get more miles per gallon". Start 1980 off right with Merit Savings and Loan Association.



MERIT SAVINGS AND LOAN ASSOCIATION

Assets over 90 million



LOS ANGELES: 324 E. First St. 624-7434 • TORRANCE/GARDENA: 18505 S. Western Ave. 327-9301
MONTEREY PARK: 1995 S. Atlantic Blvd. 266-3011 • IRVINE: 5392 Walnut Ave. (714) 552-4751



FROM PACIFIC SOUTHWEST: John J. Saito
Chapters Visits

Chapter visits on weekends creates problems and some planning on my part. First of all, I have to make sure that I have a full tank of gas in my car to last the weekend because the gas lines are getting longer and more stations are closing on Sundays. Odd and even days also cre-

This past weekend I drove to the Riverside chapter installation which was held on the University of California Riverside campus. I left Los Angeles early enough to reach the campus before it turned dark, because I knew I would have a difficult time trying to find the faculty dining room in the dark. I arrived on campus around dusk and after one wrong turn I found Carl Bristol walking on one of the campus roads and I knew I was safe. It was early therefore I had time to sit and relax before the festivities began. The first couple that I met was Nori and Mitsuyo Nakai from Elsinore. (I did not know that any Nikkeis lived there.) They were former Terminal Islanders therefore it gave me the chance to talk to them about the PSWD co-sponsored film project. They knew of the project and of the fund drive that the Terminal Island group is conducting to fulfill their share of the project.

Sumi Harada received special honors for her unceasing behind-the-scenes efforts. Ever pleasant Toshi Hanazono was also singled out for her contributions to the chapter with the JACL silver pin.

John Tateishi was the guest speaker and this was the first time that I had seen him do a solo job, I thought he did an outstanding redress presentation. The ride home seemed shorter probably because we had a pleasant evening visiting with the Riverside chapter.

Sunday Morning I had less than half a tank of gas left and with odd numbered plates on an even day I drove to San Fernando Valley to attend their brunch installation party. It was a beautiful day with the outside temperature about 72 degrees and no smog.

M.C. John Kaneko greeted us and made us welcome as soon as we entered the restaurant. Because we arrived early I had time to chat with other early arrivals and rekindle that good feeling that the San Fernando Valley Chapter has a way of transmitting.

Board member Fred Muto made a special presentation honoring past chapter presidents Tom Imai and Tom Endow, who presided in 1942 and 1954 respectively.

The highlight of the afternoon was a humorous skit put on by chapter members portraying a typical board meeting. Betty Yamaoka portrayed the role of the new board member that was railroaded into the undesirable chapter functions with background music provided by Nancy Gohata. I got home with about a quarter tank of gas left, which will be more than enough to get to the office Monday.

I made it OK this weekend but I am beginning to worry about the next weekend when I have to get to Santa Barbara on Saturday and then to Anaheim on Sunday morning.

Calendar

* non-JACL event

- FEB. 29 (Friday)
San Jose—No Calif Singles mtg, Sumitomo Bank, 7:30pm (every 4th Fri).
*San Francisco—Asn Amer Theater Workshop prod: 'And the Soul Shall Dance', 4344 California St, 8:30pm (wks ends thru Apr 6).
Diablo Valley/Solano County/Tri-Valley—Joint mtg with Karl Nobuyuki, Operations 80s, PGE Bldg, Concord.
● MAR. 1 (Saturday)
San Mateo—Inst dnr, Shadow's Restaurant, 6:30pm; Karl Nobuyuki, spkr.
Tri-Valley—Progressive dnr.
*Los Angeles—Nisei VFW Post 9902 benefit dance, Jpns Retirement Home, 9pm.
● MAR. 4 (Tuesday)
Gardena Valley—Gen mtg, JCI, 7:30pm.

- Milwaukee—Bd mtg, Charlie Matsumoto's res.
*Berkeley—Grp counseling for married AJA cpls, Rev Ryo Inamura (522-5243).
● MAR. 7 (Friday)
Cleveland—Bd mtg.
Tulare County—Reno fun trip (3da).
● MAR. 8 (Saturday)
PSWDC/Nisei Relays—Jog-a-thon Cerritos High School, Orange County.
Sacramento—Camellia Festiv lunch, Woodlake Inn, 1pm.
*Los Angeles—Pac Asn Amer Women Writers West readings, Amerasia Bookstore (680-2888).
● MAR. 9 (Sunday)
*Los Angeles—Jpns variety show, Be-tsuin Kaikan, 1pm.
Arizona—Las Vegas Night.
● MAR. 14 (Friday)
Philadelphia—Bd mtg, Hiro Ueyehara's res, 8pm.
Contra Costa—CARP mtg, East Bay Free Methodist Church, 8 pm.
*New York—Asn-Pac Conf on Women (3da), CCNY Graduate Ctr, call Angie Cruz, coord, 790-4435.
● MAR. 19 (Wednesday)
San Mateo—Bd mtg, Sturge Presbyterian Church, 8pm.
● MAR. 21 (Friday)
*San Francisco—S.F. Ctr for JA Studies mtg, Pine United Methodist Church, 8pm.
● MAR. 22 (Saturday)
Natl JACL / PSWDC—'An American Testimonial' banq, Bonaventure Hotel, Los Angeles, 6:30pm; Sens Inouye, Matsunaga, Hayakawa, Reps Mineta, Matsui, honorees.
Riverside—Potluck supper, Meiji Univ. baseball tm guests.
*Stockton—Shimizu Choir concert.

Upon my wall I woke to see these words: He only wins his freedom and existence who each day conquers them newly.
—EDGAR LEE MASTERS

Shimatsu, Ogata and Kubota Mortuary
911 Venice Blvd.
Los Angeles
749-1449
SEIJI DUKE OGATA
R. YUTAKA KUBOTA

Three Generations of Experience ...
FUKUI Mortuary, Inc.
707 E. Temple St.
Los Angeles 90012
626-0441
Soichi Fukui, President
James Nakagawa, Manager
Nobuo Osumi, Counsellor

Chapter Pulse

● **East Los Angeles**
East Los Angeles JACL will introduce its 1980 Nisei Week queen candidate at the 26th annual Emerald Ball, April 5, at Luminarias Restaurant. Aspirants 18 years & up have until March 15 to enter the chapter contest through Mabel Yoshizaki (262-8469). At least one parent must be of Japanese ancestry.

● **San Diego**
Local San Diego JACL scholarships amounting to \$2,600 will be awarded this year to deserving high school graduates in the greater San Diego area who meet at least one of the following requirements: (a) member or dependent of a San Diego JACLer, or (b) with one parent who is of Japanese ancestry.

Local high school counselors have application forms. Three of the local winners will be nominated for a National JACL scholarship. Deadline is Mar. 15, it was reminded by James Yamate, scholarship chair (422-4333).

Chapter will hold its general meeting Feb. 23, 7:30 p.m., at the Ocean View United Church of Christ with Vernon Yoshioka in charge. Regional director John Saito will report on Operation '80s in the PSWDC. Beverly Yip will discuss local programs for the Nikkei.

1000 Club

- (Year of Membership Indicated)
*Century, ** Corp, L Life
Feb 4-8, 1980 (85)
- Chicago: 16-Ted I Miyata, 7-Frank K Sakamoto.
 - Cincinnati: 5-Ichiro B Kato.
 - Clovis: 6-Fumio Ikeda.
 - Contra Costa: 6-James Tanizawa.
 - Detroit: 6-Glen Kumasaka, 26-Sue Omori.
 - Downtown L.A.: 7-Mitsubishi Bank**.
 - 22-Dr Robert M Nakamura, 19-Kakuo Tanaka.
 - Fremont: 8-Shizuo Harada, 14-Frank Kasama, 10-Dr Walter Kitajima.
 - French Camp: 14-Tom Natsuhara.
 - Gardena: 16-Dr Harry T Iida.
 - Hollywood: 10-Arthur M Emi.
 - Idaho Falls: 22-Sam S Sakaguchi.
 - Livingston-Merced: 18-Yo Kuniyoshi.
 - Marysville: 1-Roy R Hatamiya.
 - Mile-Hi: 1-Tosh Ando, 4-Tom Ioka, 25-George Mits Kaneko, 18-Dr Ben Miyahara, 1-Mike Tashiro.
 - Milwaukee: 19-Roy A Mukai, 4-Thelma K Randlett.
 - Oakland: 11-Jean Aiko Rowe.
 - Orange County: 9-Henry Neishi.

Support the JACL-Satow Fund
c/o Sumitomo Bank of Calif.
Attn: Hiro Akahoshi
365 California St.
San Francisco, Ca. 94104

● **Reno**
Reno JACL calendar for the spring led off with a potluck dinner Feb. 23 at Sparks Recreation Center. Upcoming are the scholarship fund dinner, Mar. 16, 2-5 p.m., at Roger Corbett School; a general meeting May 18, and the annual picnic June 29 at the Bowers Mansion.

1980 PSWDC Nisei Relays site selected

LOS ANGELES—The JACL Nisei Relays Committee announced that the 29th annual Pacific Southwest District will be held on June 1 at Santa Ana Community College, to be followed two weeks later, June 15, at the same track facility by the 3rd annual JACL California State Track/Field Championship.

A jog-a-thon has been scheduled for March 8, at Cerritos High School to raise funds to help to defray the program ex-

penses such as hosting the Northern California team. Adults as well as youngsters are welcome to compete.

For information, call:
East L.A.—Michael I. Mitoma 687-6963(w), 280-8340 (h); West L.A.—George Kanegai 820-5392; Gardena—Norm Hata 538-3995 (h), 635-5924(w); Chester Sugimoto, 834-2925; Orange County—Jim Okazaki (714) 539-2437; Pasadena—Mack Yamaguchi 797-7949; San Fernando Valley—Roy Kawamoto 886-2851; Venice/Culver—Akemi Nagao 477-4201 (h), 392-7228(w).

ARKANSAS

Farm Estate for Sale Offered by Sealed Bids
2,615 Acres SOYBEAN & CATTLE FARM

2,315 Acres Cultivable, 1800 Acres in Beans, remainder in Pasture and coastal hay in 1979, 80 Acres solid woods, Brick home, 3 mobile homes, Tractor shed and shop, Fenced, Cross-fenced, Cattle working pens and scales. Sealed bids will be received on this farm located in Sevier and Little River Counties, Ark. (near Horatio and DeQueen). Bids will be received on the entire farm and must be accompanied with security in the form a Cashier's Check in the amount of 5% of the amount of the bid payable to Snellings, Breard, Sartor, Inabnett & Trascher, Attorneys-at-law, as escrow agent for sellers, P.O. Box 6134, Monroe, La. 71203, on or before Tuesday, Mar. 11, 1980, at 12 noon Central Standard Time, at which time all bids will be considered by sellers. Successful bidder's security will constitute Earnest Money and all other deposits accompanying unacceptable bids will be returned as soon as practicable. Any bidder refusing to enter into required contract or contracts within 30 days after being awarded the bid will have his 5% check retained as liquidated damages, not as penalty. Owner reserves the right to accept or reject any and all bids. Existing financing of approximately \$650-700 per acre is assumable without penalty. Present farm manager is available to show property upon reasonable notice. For further information:

George Snellings, III 318/387-8000
Keith Babb & Assoc., Inc. 318/343-6211

BIG WINNINGS TAX BENEFITS

U.S. Lottery Offers Oil, Gas Bonanza

As a citizen of the U.S. you have an opportunity between the 3rd and 4th Monday of each month to acquire oil and gas leases on lands that are owned by the federal government. We will assist you by selecting the best leases with lowest probable competition and forward your entry card and filing fee to the proper Dept. of Interior offices.

The winners of hundreds of leases will be determined by public drawing. Immediate income will be realized by many who will sell these leases to oil companies. Call or write for complete information and procedure to be mailed to you at no cost. Don't delay. This could mean thousands of dollars to you. Your costs are tax deductible.

Jim White
OIL PROPERTIES, INC.
495 Biltmore Way, Suite 404
Miami, Fla. 33124 / (305) 446-8062

CHAPTER PULSE / CALENDAR

Pasadena: 11-Moe Takagaki.
Philadelphia: 16-Roy K Kita, 8-Grayce K Ueyehara.
Placer County: 19-George Nishikawa.
Portland: 2-Sho Dozono.
Reedley: 19-Kiyoshi Kawamoto.
Riverside: 8-James Urata.
Sacramento: 17-Masao Fujikawa, 24-Amy Masaki, 24-Martin Miyao, 11-Kikuji Ryugo, 10-Henry Y Yamada.
San Benito: 23-E Sam Shiotsuka.
San Fernando: 9-Ikuyo Sakaguchi.
San Gabriel: 10-M Paul Sagawa, 12-Deni Y Uejima.
San Jose: 21-Rep Norman Mineta*, 12-Roy Yamada.
San Luis Obispo: 16-Robert C Takahashi.
San Mateo: 2-Robert Shoda.
Seattle: 7-Dr Frank Y Tanaka.
Sequoia: 7-Phyllis Carol Hiura.
Snake River: 26-Rosie Iseri, 22-Joe Komoto.
Spokane: 14-Dr James M Watanabe.
Stockton: 3-Ruby T Dobana, 19-Dr Kenneth Fujii, 3-Bill Shima.
Tulare: 22-Tez Ezaki, 1-Kay Hada, 20-Jun Jimmy Hatakeda, 22-Sawato Hatakeda, 25-Mike Imoto, 14-Robert Ishida, 22-William Ishida, 25-Hiroshi Mayeda, 20-Harry Morofuji, 25-Ed Nagata, 2-Stanley Nagata, 23-George Oh, 22-Gene Shimaji, 29-Tom Shimasaki, 24-Jack Sumida, 25-Ethel Y Tashiro, 30-Kenji Tashiro, 23-Kay Watanabe, 23-Doug Yamada, 10-Dr James Yasuda, 25-Hisao Bill Yebisu.
Twin Cities: 12-Nobu Harada, 1st Albert Tsuchiya.
Venice-Culver: 12-Fred M Makimoto.
Ventura: 13-Dr Stanley I Kimura.
Washington, DC: 20-Akiko Iwata.
Wilshire: 27-Tatsuo Tut Yata.
National Associate: 6-Harold Iseke, 7-Marjorie Y Iseke.

CENTURY CLUB*
1-Rep Norman Mineta (SJo).
CORPORATE CLUB**
7s-Mitsubishi Bank (Dnt).

SUMMARY (Since Dec. 31, 1979)
Active (Prev total) 267
Total this report 85
Current total 352



Family Crest
YOSHIDA KAMON ART
312 E. 1st St., Rm. 205
Los Angeles, Ca. 90012
(213) 629-2848 / 755-9429

Kei Yoshida, Instructor
Creator of Embossed Art

(1) The Kamon (Japanese Family Crest) is a legacy handed down by Japanese ancestors, wishing for their descendant's prosperity. (2) All Japanese-Americans have Kamons. (3) By tracing through one's name and Kamon, one can discover his family history. (4) There will come a time when the way to read and write one's name in Japanese will be forgotten. (5) Let us leave to our descendants our hand-crafted Kamon and Japanese name, because we, too, will become ancestors.

Please enclose \$1 when inquiring by mail.

Wesley UMW Cookbook
15th Printing Revised
Oriental and Favorite Recipes
Donation: \$4.25, handling 75¢
Wesley United Methodist Women
566 N 5th St., San Jose, CA 95112

Major Auto or Aviation Aftermarket Franchise

A proven franchise in the lucrative automotive aftermarket entering its 4th year of success is now available in your area. Plasticizer is a coast-to-coast franchise providing new and used cars, boats and airplanes the ultimate exterior finish. A space-age formulation of polymers and silicone emulsions permeating, protecting and bonding each paint molecule with a dazzling mirror-like finish.

Plasticizer offers four (4) franchises in one (1), requiring only a modest investment. Exclusive areas available nationally and internationally. Suitable for owner-operator or investment. Find out more about this remarkable opportunity.

Call: (918) 747-9381
Or Write
TRIPLE K PLASTICIZING CORP.
4828 S. Peoria, Suite 105
Tulsa, OK 74105

EAST WEST PLAYERS PRESENT
Hawaii No Ka Oi
By Edward Sakamoto
Feb. 7 — Mar. 9, 1980
Fri., Sat—8 p.m. Sun.—7:30 p.m.
EAST WEST PLAYERS 660-0366
4424 SANTA MONICA BLVD.

KEN & COMPANY
clothing merchants
SHORT & SMALL MEN'S APPAREL
NOW OPEN IN SAN JOSE AREA
785 W. Hamilton Ave., Campbell, Ca. 95008
(408) 374-1466
Hours: Mon-Fri 10 a.m. - 8:30 p.m.
Sat 10 a.m. - 6 p.m. / Sun 12 - 5 p.m.

KIBEI
A NOVEL by MAX TEMPLEMAN

Caught up in the 1942 atmosphere of fear and hysteria on the West Coast is the Miyamoto family, and Taro, a Kibei. A realistically told odyssey between 1942 and 1960 in search of self-identity, although enlaced with sex and violence, it is a story you will long remember for its poignant portrayal of the ironies of prejudice and the many facets of love among a whole generation of fascinating people. "Kibei" is a moving drama of the calamities and confusions produced by the Evacuation.

● I found it an informative, timely, enlightening account of the conflicts encountered by Japanese Americans during and after the Second World War ...
Sen. Daniel K. Inouye

Daimax Publishing House,
860 Hoomaemae St., Pearl City, Hawaii 96782

Please send me _____ autographed copies of 'Kibei' at \$11.95 postpaid. Money back guarantee.

Name _____
Address _____
City, State, ZIP _____

Nationwide Directory
Business - Professional

● **Greater Los Angeles**

Asahi International Travel
1111 Olympic, Los Angeles 90015
623-6125/29: Call Joe or Gladys
U.S.A., Japan, Worldwide
Air-Sea-Land-Car-Hotel

Flower View Gardens #2
New Otani Hotel, 110 S. Los Angeles
Los Angeles 90012/(213) 620-0808
Citywide Delivery Art Ito, Jr.

NISEI FLORIST
In the Heart of Little Tokyo
328 E. 1st St. — 628-5606
Fred Moriguchi / Member: Teleflora

Nisei Travel
1344 W 155th St, Gardena, Ca 90247
(213) 327-5110

Custom Made Futon Comforter
(213) 243-2754
SUZUKI FUTON MFG.

THE PAINT SHOPPE
La Mancha Center, 1111 N. Harbor
Fullerton, Ca / (714) 526-0116

Taiwa Realty, Inc.
(213) 488-1662
614 W College St., Los Angeles 90012
Mary Ann Harada: 777-4615
Lila Jue: 570-1747

Yamato Travel Bureau
321 E. 2nd St., #505
Los Angeles 90012 624-6021

● **San Diego, Ca.**

Paul H. Hoshi
Insurance Service
852-16th St. (714) 234-0376
San Diego 92101 res. 264-2551

Pacific Sands Motel
Pete and Shoko Dingsdale, Prop.
(714) 488-7466
4449 Ocean Blvd., Pacific Beach 92109

● **Watsonville, Calif.**

Tom Nakase Realty
Acreage, Ranches, Homes, Income
TOM NAKASE, Realtor
25 Clifford Ave. (408) 724-6477

● **San Francisco, Calif.**

Cherry BRAND
Mutual Supply Co., Inc.
1090 Sansome St, San Francisco 94111

● **San Jose, Calif.**

ACACIA REALTY
Full MLS Service—5%
Tak Kawai (408) 269-6343
Edward T. Morioka, Realtor
3170 Williams Rd., San Jose
Bus. 246-6606 Res. 371-0442

● **Seattle, Wash.**

YES! AT WONDERFUL UWAJIMAYA

Great Oriental gifts, gourmet foods and unique kitchen appliances

CHINATOWN: 6th Ave. S & S King St. 642-6248

BELLEVUE: 15555 N.E. 24th 747-9012

SOUTHCENTER: 246-7077

All stores open Sundays. Chinatown, Southcenter open weekday evenings

● **Imperial Lanes**

Complete Pro Shop, Restaurant, Lounge
2101-22nd Ave So. (206) 325-2525

Kinomoto Travel Service
FRANK Y. KINOMOTO
507 S. King St. (206) 622-2342

Gold Key Real Estate, Inc.
Home and Acreage
Call Collect: (206) 226-8100
TIM MIYAHARA, President

● **The Midwest**

Sugano Travel Service
17 E. Ohio St., Chicago, Ill 60611
944-5444 / eve, Sun: 784-8517

● **Washington, D.C.**

Masaoka-Ishikawa and Associates, Inc.
Consultants — Washington Matters
900 — 17th St NW, #520 / 296-4484

Renew Your Membership

Los Angeles Japanese Casualty Insurance Assn.

- COMPLETE INSURANCE PROTECTION
- Aihara Insurance Agency, Inc.**
250 E. 1st St., Los Angeles 90012
Suite 900 626-9625
 - Funakoshi Ins. Agency, Inc.**
321 E. 2nd St., Los Angeles 90012
Suite 300 626-5275
 - Inouye Insurance Agency**
15029 Sylvanwood Ave.
Norwalk Ca 90650 864-5774
 - Ito Insurance Agency, Inc.**
595 N. Lincoln Av., Pasadena 91103
PO Box 3007 / 795-7059, 681-4411 LA
 - Steve Nakaji Insurance**
11964 Washington Pl, Los Angeles 90066
391-5931 837-9150
 - Tsuneishi Insurance Agency**
327 E. 2nd St., Los Angeles 90012
Suite 221 628-1365
 - Anson T. Fujioka Insurance**
321 E. 2nd St., Los Angeles 90012
Suite 500 626-4394
 - Hirohata Ins. Agency, Inc.**
322 E. 2nd St., Los Angeles 90012
628-1214 287-8605
 - Itano, Morey & Kagawa, Inc.**
321 E. 2nd St., Los Angeles 90012
Suite 800 624-0758
 - Kamiya Ins. Agency, Inc.**
327 E. 2nd St., Los Angeles 90012
Suite 224 626-8135
 - Sato Insurance Agency**
366 E. 1st St., Los Angeles 90012
626-5861 629-1425
 - Wada Asato Associates, Inc.**
3116 W. Jefferson Bl., Los Angeles 90018
732-6108



DIABLO VALLEY JAACL installs its 1980 officers. Pictured are (from left) Sunny McPeak, Contra Costa County supervisor; Mollie Fujioka, 1980 chapter president; Rep. Norman Mineta, guest speaker; and Yukio Wada, 1979 chapter president.

● **Gardena Valley**
Calendar—With the 1980 chapter calendar just about set, the details will be noted through its quarterly newsletter scheduled for April, July, October and January. Monthly meetings are held the first Tuesday, 7:30 p.m., at the JCI Bldg.
Calendar highlights:
March—4: Mtg. 8: PSWDC Nisei Relays benefit jog-a-thon. Candidates night for Apr 8 city election.
April—JAACL scholarships. Mini-Olympics with Orange County.
May—2,3,9,10: El Camino College production of "The King and I". Talent showcase and oratorical contest, tent.
June—1: PSWDC Nisei Relays. 15: JAACL state track meet. Miss Gardena coronation.
July—?: AJA youth event.
August—9: Las Vegas Night, JCI. Nisei Week coronation ball. Hollywood Bowl concert.
September—Step-up of 1982 JAACL Convention planning. AJA event. Nomination of 1981 officers.
October—Election.
December—Installation.

Japanese Phototypesetting

TOYO PRINTING CO.
309 So. San Pedro St. Los Angeles 90013
(213) 626-8153

SAITO REALTY CO.
HOMES... INSURANCE

List with us. Buyers waiting.
2421 W. Jefferson, L.A. 731-2121

JOHN TY SAITO & ASSOCIATES

Commercial & Industrial Air-conditioning & Refrigeration Contractor

Sam J. Umemoto
Lic. #208863 C-20-38

SAM REIBOW CO.
1506 W. Vernon Ave.
Los Angeles 295-5204
Experienced Since 1939

Established 1936

Nisei Trading
Appliances - TV - Furniture

NEW ADDRESS:
249 S. San Pedro St.
Los Angeles, Calif. 90012
Tel.: 624-6601

REALTOR
George Nagata Realty
1850 Sawtelle Blvd.
Los Angeles, Ca. 90025
478-8355, 477-2645

CHYO'S
Japanese Bunka Needlecraft
2943 W. Ball Rd.
Anaheim, Ca 92804
(714) 995-2432

GRAY HAIR GRADUALLY VANISHES!

Silvercheck makes gray hair young again — secretly and easily. The leading formula for men and women in 26 countries. Silvercheck is as simple to use as hair tonic. Leaves you with natural looking color that you control. Silvercheck won't wash out, won't leave gray roots, is not a dye. In 2-3 weeks, Silvercheck gives you freedom from gray hair. Discover it now!

Silvercheck
313 Vista de Valle Mill Valley, CA 94941
Silvercheck, Dept. 606 313 Vista de Valle, Mill Valley, CA 94941

Please send me, in a plain wrapper, ___ bottles of Silvercheck Cream , Liquid . I understand Silvercheck is sold with an unconditional moneyback guarantee. Enclosed is my check for \$___ which includes \$1 postage and handling. Charge to my VISA MASTER CHARGE
Card Number _____ Exp. Date _____
Allow time for delivery. Calif. Res. add 6% sales tax.

Name _____
Address _____
City _____ St. _____ Zip _____

1980 Officers

BERKELEY JAACL
Gordon Kono, pres; Gordon Yamamoto, vp (budg/const); Fumie Nakamura, vp (civ aff); David Inouye, Takeo Shirazawa, vp (prog/active); Joe Niki, treas; Marie Gilchrist, sec; Tom Ouye, cor sec; bd memb (1 yr)—Steve Kodama, M Gilchrist, Henry Hamataka, Etsuko Steimetz, Shoji Takata, Kay Kajiwara; (2 yrs)—D Inouye, J Niki, G Yamamoto, James Furuichi, Kiyoshi Katsumoto, F Nakamura, Amy Maniwa, Joe Oyama; ex-officio—Bea Kono, Min Sano, Paul

Classified

Classified Rate is 12¢ a word, \$3 minimum one time. Payment with order unless prior credit is established with PC A 3% discount allowed if same copy runs four times.

SAN DIEGO
LOCAL REAL estate wants attractive Japanese salesperson who also speaks English. RE license necessary. (We also offer training). Commission, grt oppor. R.W. AliBaba, 9461 El Cajon Blvd, LaMesa, Ca 92041 (714) 463-0341.

ARIZONA
SCOTTSDALE, AZ. Oriental grocery, gift and cooking school. The only one of its kind in the area. Owner will carry with \$17,000 down plus inventory and interest only the first year. Blue Ribbon Realty. Eugenia Bermudez, Louise Snedden, Suite 17, 1219 E Glendale, Phoenix, Az 85020 (602) 263-9696.

TEXAS
South Texas Egg Farm
490 acres. 300,000 laying hens. 120,000 pullets. \$500,000 per year net. Sells 5,000 cases per week. \$500,000. Approximately 50 miles from Houston. For info on above or other fine investments, call: RALPH WILLIAMS, (713) 532-0300 Or write: William's Todays Properties 1314 Milam, Wharton, Tx 77488 (Brokers inquiries welcome)

R.W. ALI BABA
Land-Homes-Income
Eivor Christopherson
Realtor-Owner
9461 El Cajon Blvd.
Foot of Mt Helix facing 8E
La Mesa, Ca 92041
Bus. (714) 463-0341

ESTATE SALE / Silver grey mink stole plus natural mink skins fashioned for suit or coat. Will trade for equal value in diamond, gold or silver.
LEO GOODMAN
607 S. Hill St., Room 200
Los Angeles : 628-4786
M/F 10:00-4:00

YAMATO EMPLOYMENT AGENCY

312 E. 1st St., Room 202
Los Angeles, Calif.
NEW OPENINGS DAILY
624-2821

ED SATO
PLUMBING AND HEATING
Remodel and Repairs
Water Heaters, Garbage Disposals
Furnaces
Servicing Los Angeles
293-7000 733-0557

Aloha Plumbing
LIC #201875
PARTS & SUPPLIES
Repairs Our Specialty
1948 S. Grand, Los Angeles
Phone: 749-4371

Nanka Printing
Japanese Phototypesetting
2024 E. First St.
Los Angeles, Calif.
Phone: 268-7835

Complete Home Furnishings

Koby's Appliances
15130 S. Western Ave.
Gardena DA 4-6444 FA 1-2123

Takata. **BERKELEY JAYS**
Sitaraon Sakamoto, Bill Mitoma, co-pres; Dave Uriu, treas.

Kono Hawaii

● **POLYNESIAN ROOM**
(Dinner & Cocktails - Floor Show)

● **COCKTAIL LOUNGE**
Entertainment

● **TEA HOUSE**
Tep-pan & Sukiyaki

OPEN EVERY DAY
Luncheon 11:30 - 2:00
Dinner 5:00 - 11:00
Sunday 12:00 - 11:00

226 South Harbor Blvd.
Santa Ana, Calif. 92704
(714) 531-1232

MATSU

JAPANESE RESTAURANT
Fine Japanese Food • Low Prices
Oriental Mood • Personality
FREE PARKING
Lunch—11:00 to 2:30
Dinner—4:30 to 9:00

1267 W. Temple
Los Angeles
624-0820

QUONBROTHERS

GRAND STAR
CHINESE CUISINE
Lunch • Dinner • Cocktails
We Specialize in Steamed Fish & Clams
(213) 626-2285
943 Sun Moon Way, New Chinatown
5 Min. from Music Center & Dodger Stadium
BANQUET TO 200

MIKAWAYA
Sweet Shops
244 E. 1st st.
Los Angeles, CA 628-4935
2801 W. Ball Rd.
Anaheim, CA (714) 995-6632
Pacific Square
Redondo Beach Blvd.
Gardena, CA (213) 538-9389
118 Japanese Village Plaza
Los Angeles, CA 624-1681

DePanache
Today's Classic Looks for Women & Men
Call for Appointments:
Phone 687-0387
105 Japanese Village Plaza Mall
Los Angeles 90012
Toshi Otsu, Prop.

MARUKYO
Kimono Store
New Otani Hotel & Garden—Arcade 11
110 S. Los Angeles
Los Angeles 628-4369

EAGLE PRODUCE CO.
Division of Kittys Vegetable Distributors, Inc.

BONDED COMMISSION MERCHANTS WHOLESALE FRUITS AND VEGETABLE

929-943 S. San Pedro St.
CITY MARKET
Los Angeles, Ca. 90015
Phone: (213) 625-2101

Empire Printing Co.
COMMERCIAL and SOCIAL PRINTING
English and Japanese
114 Weller St., Los Angeles 90012 628-7060

FUKAZAWA

Continued from Page 5

line sea transport is switching over to new modern sailing ships. Solar system houses are being constructed at relative-

Business

Former Dayton JACL president Charles Pace, till recently director of postal relations with Newsweek, Inc., has established a consulting firm in postal matters, Pace Associates, 36 Henry Austin Dr., Wilton, Ct. 06897 (203-834-0533). His background also includes work with Wall Street Journal in circulation and the Postal Service headquarters in Washington, D. C., as transportation officer. He was a member of the Postmaster General's Mailers Technical Advisory Committee.

ly cheap prices. There are already three in my neighborhood.

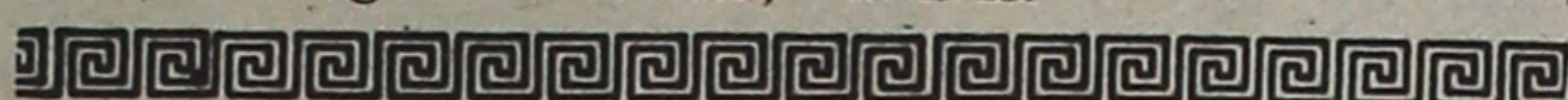
Green houses are kept warm during the night by candles and it works.

To secure warm water for his bath and kitchen, a self-styled inventor had arranged hundreds of empty Sake bottles on his roof, running water through them. Only he had forgotten, Japan is sitting on top of a volcano jolted 55 times a year by minor and large earthquakes.

Although the shrinking economic pie may present a bleak outlook, Japan will probably continue to shovel along with 4.8% economic growth, high

productivity, ingenious ideas and at the worst will bear up with it even eating the crumbs. Having the fate and custom of always living on with less,

they will walk to work if their cars go out of gas and start out all over again from scratch, if required as they once did back in 1945.



1980 JACL Travel Program

Opened to All Bonafide JACL Members and Family Only

DATES SUBJECT TO CHANGE

APEX Fare to Japan: \$655 basic, \$715 peak season PLUS \$3 DEPARTURE TAX

Basic fare applies to Flts 1, 2, 3 / Peak season fare applies to all other Flights 4 to 17

For immediate reservation/information: See Chapter Administrator

Group Flight No. / Dates	Carrier / Departure from
1 APRIL 3 - APRIL 24	(JAL) San Francisco San Jose JACL: Grant Shimizu, 724 N 1st St, San Jose, Ca 94112
2 APRIL 5 - APRIL 23, 28	(Pan-Am) Los Angeles West L.A. JACL: George Kanegai, 1857 Brockton, Los Angeles 90025
3 MAY 12 - JUNE 2	(JAL) Los Angeles Downtown L.A. JACL: Aki Ohno, 2007 Barry Ave, Los Angeles 90025
4 JUNE 16 - JULY 7	(unconfirmed) Los Angeles West L.A. JACL: George Kanegai, 1857 Brockton, Los Angeles 90025
5 JUNE 19 - JULY 10	(JAL) San Francisco Berkeley JACL: Tad Hirota, 1447 Ada St, Berkeley, Ca 94702
6 JUNE 21 - JULY 13	(unconfirmed) Los Angeles Downtown L.A. JACL: Aki Ohno, 2007 Barry Ave, Los Angeles, 90025
7 JUNE 22 - JULY 13	(JAL) San Francisco Chicago JACL: Dr Frank Sakamoto, 5423 N Clark St, Chicago 60640 Group + SFO individuals assemble in San Francisco
8 JUNE 23 - AUG. 6	(Pan-Am) Los Angeles San Diego JACL: Mas Hironaka, 2640 National Ave, San Diego 92115
9 JULY 12 - AUG. 9	(JAL) Los Angeles Downtown L.A. JACL: Aki Ohno, 2007 Barry Ave, Los Angeles 90025
10 AUG. 6 - AUG. 27	(JAL) San Francisco National JACL: 1765 Sutter St, San Francisco, Ca. 94115
11 SEPT. 27 - OCT. 18	(unconfirmed) Los Angeles West Los Angeles JACL: George Kanegai, 1854 Brockton, L.A. 90025
12 OCT. 2 - OCT. 23	(JAL) San Francisco Berkeley JACL: Tad Hirota, 1447 Ada St., Berkeley, Ca 94702
13 OCT. 6 - OCT. 27	(Pan Am) Los Angeles Downtown L.A. JACL: Aki Ohno, 2007 Barry Ave., Los Angeles 90025
14 OCT. 5 - OCT. 26	(JAL) San Francisco Chicago JACL: Dr Frank Sakamoto, 5423 N Clark St, Chicago, Il 60640 Group + SFO individuals assemble in San Francisco.
15 OCT. 6 - OCT. 30	(JAL) San Francisco San Jose: Grant Shimizu, 724 N 1st St, San Jose, Ca 94112
16 OCT. 6-29/OCT. 7-30	(JAL) Los Angeles San Diego JACL: Mas Hironaka, 2640 National Ave., San Diego 92115 Orange County JACL: Ben Shimazu, P.O.Box 1854, Santa Ana, Ca 92702
17 OCT. 18 - NOV. 8 (unconfirmed)	San Francisco Sacramento JACL: Tom Okubo, 1121 Glen Way, Sacramento, Ca 95822

SPECIAL TOURS

SOUTH AMERICA: June 21 - July 6, departing Los Angeles via Varig Air Lines. Tour includes: Manaus, Brasilia, Rio de Janeiro, Sao Paulo, Iguassu Falls, Buenos Aires, Lima, Macchu Picchu.

CHINA: Oct. 4 - 20, departing West Coast via Japan Air Lines. Tour includes: Hong Kong, Kwangchow, Shanghai, Wuhsi, Peking, Tokyo stopover.

YOUTH TOUR: [New date] Aug. 6-22. Visiting historic and cultural sites in Japan; climb Mt Fuji, home stays, other unique experiences. Individual return dates.

SOUTHEAST ASIA/CHINA TOUR: Nov. 7-26. Tour includes: Hong Kong, Bangkok, Singapore, 12 days in China visiting Peking, Shanghai, Canton and one other city; Tokyo stopover optional.

OTHER SPECIAL TOURS in Japan will be available to JACL members who wish to travel together.

For Further Information: Call

JACL Travel Coordinator, 1765 Sutter St., San Francisco 94115

Information Coupon

Mail to any JACL-authorized travel agent, or to:

National JACL Travel
1765 Sutter St., San Francisco, Calif. 94115

Send me info on Nat'l JACL Flights, especially Group # _____

Name _____

Address _____

City, State, ZIP _____

Day phone: _____ Chapter: _____

JACL South America Tour

JUNE 21 - JULY 6, 1980

\$2,350* per passenger, Los Angeles departure
VARIG AIR LINES

Special Tour includes meetings with Nikkei community in Sao Paulo; visits to Manaus, Rio de Janeiro, Brasilia, Iguassu Falls, Sao Paulo, Brazil; Buenos Aires, Argentina; and Lima, Peru. Optional tour to Macchu Picchu. Seats limited. Make reservations early accompanied by \$150 deposit to: Travel Coordinator, National JACL Headquarters, 1765 Sutter St., San Francisco, Ca 94115.
*COST SUBJECT TO CHANGE.

JACL Friendship Tour to China

OCTOBER 4 - 20, 1980

Limited Seats: Make Reservations Immediately for Confirmation.
\$3,141* per passenger, San Francisco departure
JAPAN AIR LINES

Tour takes you to Peking: the Great Wall, Ming Tombs, Forbidden City and other historic sites; Shanghai: picturesque and largest city in the world; Canton: dating back to ninth century B.C. cultural sites, export commodities exhibition hall, the panda zoo; Wuhsi, center for pottery and silk; Hong Kong 3 nights; Tokyo stopover. Optional return date to U.S. Send application and \$300 deposit by Mar. 15 to: Travel Coordinator, National JACL Headquarters, 1765 Sutter St., San Francisco, Ca. 94115.
*COST SUBJECT TO CHANGE

APPLICATIONS AND BROCHURE AVAILABLE: CONTACT

Travel Coordinator, National JACL Headquarters,
1765 Sutter St., San Francisco, Ca. 94115; tel. (415) 921-5225.

1980 National JACL Authorized Retail Travel Agencies

PACIFIC NORTHWEST

- Azumano Travel Service (503) 223-6246
George Azumano/Nobuko Susaki, 400 SW 4th Ave, Portland, Ore 97204
- Beacon Travel Service (206) 325-5849
George Koda, 2550 Beacon, Seattle, Wa 98144
- Kawaguchi Travel Service (206) 622-5520
Miki Kawaguchi, 711-3rd Ave #300, Seattle, Wa 98104

NORTHERN CALIFORNIA-WESTERN NEVADA

- Aki Travel Service (415) 567-1114
Kaz Kataoka, 1730 Geary St, San Francisco, Ca 94115
- Flying Dutchman Travel (415) 897-7137
Kiyomi 'Kim' Van Asperen, 951 Front St, Novato (Marin County), Ca 94947
- Japan American Travel (415) 781-8744
Hank Kimura, 250-B World Trade Ctr, San Francisco, Ca 94111
- Kintetsu International Express (415) 922-7171
Ich Taniguchi, 1737 Post St, San Francisco, Ca 94115
- Kosakura Tours & Travel (415) 956-4300
Morris Kosakura, 530 Bush St, San Francisco, Ca 94115
- LSA Travel (408) 578-2630
Lawson Sakai, 124 Blossom Hill Rd, San Jose, Ca 95123
- Miyamoto Travel Service (916) 441-1020
Jerry Miyamoto, 2401-15th St, Sacramento, Ca 95818
- Monterey Travel Service (408) 649-4292
Dennis Garrison, 446 Pacific St, Monterey, Ca 93940
- Nippon Express, USA (415) 982-4965
Noby Katayose, 39 Geary St, San Francisco, Ca 94108
- Pleasanton Travel Service (415) 462-1404
Nancy O'Connell, 818 Main St, Pleasanton, Ca 94566
- Sakura Travel Bureau (415) 342-7494
Jim Nakada, 511-2nd Ave, San Mateo, Ca 94401
- Tanaka Travel Service (415) 474-3900
Frank or Robert Tanaka, 441 O'Farrell, San Francisco, Ca 94118
- Travel Planners (408) 287-5220
Clark Taketa, 2025 Gateway Pl #280, San Jose, Ca 95110.
- Travel Tech (408) 737-7500
Aki Yoshida, 333 Cobalt Way, #101, Sunnyvale, Ca 94086
- Yamahiro's Travel Service (415) 845-1977
Ken Yamahiro, 2451 Grove St, Berkeley, Ca, 94704

CENTRAL CALIFORNIA

- Mikami & Co. Travel Service (209) 268-6683
Henry Mikami, 814 E St, Fresno, Ca 93706

PACIFIC SOUTHWEST

- Asahi International Travel (213) 623-6125
Pete Endo, 1111 W Olympic Blvd, Los Angeles, Ca 90015
- Asia Travel Bureau (213) 628-3235
Kazuo Tsuboi, 102 S San Pedro, Los Angeles, Ca 90012
- Classic Travel Service (213) 532-3171
Joanne Matsubayashi, 1601 W Redondo Beach, Gardena, Ca 90247
- Gardena Travel Agency (213) 323-3440
- Toko Pearlman, Pac Sq #10, 1610 W Redondo Bch, Gardena, Ca 90247
- International Holiday Tour & Travel (714) 898-0064
Nanami M George, 12792 Valley View C-2, Garden Grove, Ca 92645
- Kokusai International Travel (213) 626-5284
Willy Kai, 321 E 2nd St, Los Angeles, Ca 90012
- Mitsuline Travel Service (213) 625-1505
Hiromichi Nakagaki, 345 E 2nd St, Los Angeles, Ca 90012
- Monterey Park Travel (213) 721-3990
Les Kurakazu, 255 E Pomona Blvd, Monterey Park, Ca 91754
- New Japan Travel Center (213) 628-0276
Yoshitaka Ena, 206 S San Pedro St, Los Angeles, Ca 90012
- New Orient Express (213) 624-1244
Giro Takahashi, 330 E 2nd #201, Los Angeles, Ca 90012
- Nisei Travel (213) 327-5110
Aki Mano, 1344 W 155th St, Gardena, Ca 90247
- Takahashi Travel (213) 694-1863
Ken Takahashi, 221 E Whittier, LaHabra, Ca 90631

- Alcala Travel (714) 287-1530
Choko McConnell, 5343 University, San Diego, Ca 92105
- Fifth Avenue Travel & Tours (602) 949-1919
Tanya Sands, 7051-5th Ave, Scottsdale, Az 85251

- Jarvinen Travel Center (714) 299-9205
Sandra Ojiri, 475 Hotel Circle So, San Diego, Ca 92108
- South Bay Travel Center (714) 474-2206
John Dunkle, 1005 E Plaza Blvd, National City, Ca 92050
- Travel Center (714) 234-6355
Misa Miller, 709 E St, San Diego, Ca 92101

INTERMOUNTAIN

- Caldwell Travel Service (208) 459-0889
Gene Betts, P.O. Box 638, Caldwell, Idaho 83605
- Iseri Travel Agency (503) 889-6488
George Iseri, P.O. Box 100, Ontario, Ore 97914
- Ogden Travel Center, Inc. (801) 399-5506
Zack Stephens, 440-22nd St, Ogden, Ut 84401

MIDWEST / EASTERN

- Macpherson Travel Bureau (212) 354-5555
Jean Furukawa, 500 Fifth Ave., New York, N.Y. 10036
- New York Travel Service (212) 687-7983
551-5th Ave, #214, New York, N.Y. 10017
- Sugano Travel Service (312) 944-5444
Frank Sugano, 17 E Ohio St, Chicago Il 60611
- Yamada Travel Service (312) 944-2730
Richard H Yamada, 812 N Clark St, Chicago, Il 60610

For Listing Here, Call JACL Travel (415) 921-5225.

1980 Tours by Kokusai Travel

Choice: 3 Japan Odyssey

Departures: 3/31 \$1458 - 7/3 \$1518 - 11/7 \$1508
Includes 14 days tour & most meals. JAL flights based on APEX airfare of 16-45 days. Reserve at least 45 days before departure.

442nd European Tour-'80

October 13, 1980: TWA - 16 Days - \$1895
London, Paris, Bruyeres, Rhine Cruise, Rothenburg, Interlaken, Venice — and Florence & Rome OR Madrid & Costa del Sol. Inclusive of flight, tour & some meals.

Caribbean-New Orleans

Departs Sep. 6, a day in Miami, 7 days cruise on the Carnival to Samana, St. Croix & San Juan; 3 days in New Orleans. From \$1295.
Reservations accepted through March 7.

Kokusai International Travel, Inc.

321 E. 2nd St., Los Angeles, CA 90012
(213) 626-5284

Our 1980 Escorted Tours

- NEW ORLEANS DIXIELAND (5 days) April 13th
- GRAND EUROPE (22 days) May 15th
- JAPAN ADVENTURE April 12th & Oct. 14th
- HOLY LAND & GREEK ISLANDS (16 days) . June 16th
- CANADIAN ROCKIES—VICTORIA (8 days) . June 4th
- JAPAN SUMMER TOUR Aug. 6th
- EAST COAST FOLIAGE (10 days) Oct. 6th
- FAR EAST (Japan, Bangkok, Singapore
Hong Kong Nov. 7th

For Full Information/Brochures:



TANAKA TRAVEL SERVICE

441 O'Farrell Street (415) 474-3900
San Francisco, Ca. 94102



Most Appreciated Omiyage in Japan

Premium Quality

STEAKS

Packed in Blue Ice Box

- 12 cut FILET MIGNON 4.5 lb
- 8 cut NEW YORK CUT 4 lb
- 11 cut TOP SIRLOIN 4 lb
- 16 cut T.T. STEAKS 5 lb
- ROAST BEEF 4 lb

• ALSO VACUUM PACK BEEF JERKY, ORANGES, HONEYDEW.

(213) 629-1271
(eve) 283-9905

ACOMO U.S.A. 312 E. 1st St., #309
Los Angeles, Ca 90012

Certified by the U.S.D.A. for easy clearance through Japanese Customs. Delivery to Los Angeles International Airport at check-in counter on departure date. Please order by phone at least a week before departure.

City, State, ZIP
New Address:
Effective Date:

Include the old address label (above), and fill out and send this notice to us.
No. 2081
pacific citizen
355 E. 1st St., Rm 307, Los Angeles, Ca 90012 • 213/626-6926