

IBM case adds friction to U.S.-Japan trade

Trade relations between the U.S. and Japan have certainly been under heavy stress lately and recent developments, such as the IBM computer scam in June, have no doubt worsened the situation.

Richard King, former director of International Trade for California, wrote in a San Diego Union column July 4:

"In 20 years of experience in Japan-United States trade relations, I have never seen more tension and confrontation in the trade and economic area: automobiles, semiconductors, machine tools, agriculture, just to name a few that exist today. And to make it worse, these issues are beginning to be interrelated, lined with each other than dealt with as individual commodity negotiations . . ."

King then summarized: ". . . In short, our trade relations with Japan are in a mess."

Indeed, autos and the Medfly quarantine issue had already strained the ties between the two nations, and of late, other commodities have made headlines as well.

PC UPDATE

The IBM "sting" operation conducted by the FBI raised the question within the Reagan Administration as to whether Japan was "playing fair" in the high technology field.

Although officials at Hitachi and Mitsubishi apologized to their respective stockholders and even withdrew newspaper advertisements because of their damaged reputations, both companies did not admit any wrongdoing, denying the accusation that they had knowingly purchased stolen IBM computer secrets.

While the guilt or innocence of the 14 persons charged has yet to be decided, the case had deeper implications.

The computer field has been one of the fiercest economic battlegrounds for the two nations. Since 1960, the Japanese have been producing computers compatible with IBM's but at a lower cost.

The Christian Science Monitor (July 2) noted the Japanese would buy an IBM machine on the open market, strip it and then copy it. But more recently, the Japanese used an easier method: they simply collected data from every available source on each new IBM model and its accompanying software.

IBM, however, has been fighting back, and many of its latest models contain features that make it difficult for Japanese makers to produce compatible models. And because of this new strategy by the U.S. giant, the Japanese companies might possibly have become desperate enough to fall into the FBI's elaborate trap.

The whole incident has raised concern in both countries, and the Christian Science Monitor pointed out that Japan, in an effort to avoid excessive friction with its trading partners, proposed an exchange of information with the U.S. and Western Europe as a first step toward possible joint development.

Commentators in the newspaper field have also stressed that the IBM case is another indicator of rising anti-Japanese sentiment.

The New York Times noted in a recent editorial that the case raises an important issue: "Whether Japan plays any dirtier than its rivals is far from clear. What is clear is America's response to the Japanese economic challenge should not be influenced much by the answer . . . The American temptation to view Japan as the enemy is obvious. First they grabbed the auto and consumer electronics industries . . . Now they are going after the world market for computers, making inroads in a market that just a few years was virtually all-American . . ."

"In any case, the challenge creates a handy opportunity to re-examine government policies that affect the pace of technical innovation. For example, it might make sense to relax anti-trust regulations to allow cooperative research and development. There is also a case to be made for expanding government support of technical education . . . American

Continued on Page 5

Denver facility named for Nisei director

DENVER, Colo.—A new facility providing educational, vocational and therapeutic programs for 100 residents of the Wheat Ridge Regional Center was dedicated June 29.

The new center in Arvada was named Sunada Learning Center in honor of Dr. Kayo Sunada, who has been on the staff of the state home and training school for 21 years including 15 as director. The ceremonies included dedication of similar learning centers constructed

in Pueblo and Grand Junction to assist the mentally handicapped.

Sunada, a graduate of Green River (Wyo.) High School and Jefferson Medical College, Philadelphia, came to Wheat Ridge in 1961 as chief of clinical services. He had been clinical assistant in pediatrics and a fellow in bacteriology at the Univ. of Washington. As state home director, he produced a dramatic change in the lives of the mentally handicapped, according to Lu Glover, director of training and information at Wheat Ridge.



PC Photo by Pete Imamura

BACK IN L.A.—Some of the near 700 supporters of the 100-442-MIS Museum Foundation gather around Sen. Daniel Inouye, guest speaker at a kickoff luncheon Sunday in a Los Angeles hotel where he delivered a major policy speech on world peace and nuclear disarmament. (Details on page. 4.)

Mineta urges Fifth Preference to remain in immigration law

WASHINGTON—Rep. Norman Y. Mineta (D-San Jose, Ca.) and 14 other members of the House of Representatives have urged the House Judiciary Committee to restore the full Fifth Preference in any immigration reform bill passed this year.

In a jointly signed letter June 15, the members told Judiciary chairman Peter Rodino (D-N.J.) that the "Fifth Preference is a reflection of our family reunification concept—an important component of our immigration policies". Later in the letter they emphasized that reuniting families should be a "priority". Elimination of the Fifth Preference would "violate a sacrosanct right of the American citizen to live with his family according to his own tradition and lifestyle," they said.

In commenting on the letter, Mineta said, "I am hopeful the Judiciary Committee will act to reinstate the Fifth Preference, but if the provision is not restored I will support an amendment on the floor of the House to reinstate the preference category as it now exists." Mineta expressed confidence that such an amendment would be successful. "Support for the Fifth Preference comes from all cultural and ethnic groups," he stated. "Family reunification is an important principle for everyone," he added.

Under existing law, the Fifth Preference provides preferential status in visa applications for brothers and sisters of U.S. citizens.

The proposed Immigration Re-

Continued on Page 4

Washington state auditor says Asian commission unnecessary

SEATTLE—There does "not appear to be a pressing public need" for continuing the State Commission on Asian American Affairs, according to a report issued by a legislative auditor in May.

The Commission, charged with making recommendations on program and law changes pertaining to Asian Americans, operates out of an office in Seattle's International District.

The Commission is currently involved in: the Asian Pacific American Affirmative Action Network, serving as resource agency for the Governor's affirmative action policy committee, various refugee task forces and the King County Indochinese farm project.

The auditor's report states that the Commission should be allowed to terminate as scheduled on June 30, 1983, the date the statute which created the Commission expires.

According to the auditor, the services provided by the Commission "have been of some value" to the Asian community, but, "there is no body of evidence to indicate that those services are in fact needed."

The auditor points out that no other state has an Asian American Affairs Commission on the state level and that no corresponding commission exists for Blacks in this state. The Commission provides few direct services, the auditor's report adds.

However, Vivian Luna, director of the Commission, differs with the auditor's report on whether the Commission is truly needed. "With the growing number of Asian Pacific Americans—including the many new

Continued on Page 8

Judge Kanemoto of San Jose retires

SAN JOSE, Ca.—Testimonial banquet in honor of Judge Wayne Kanemoto of San Jose Municipal Court, who recently retired from the bench, will be held on Thursday, Aug. 12, 6:30 p.m., at the Mediterranean Center, San Jose Hyatt, under sponsorship of the local Japanese community. Tickets (\$25 including dinner and gift) will be available by calling the law offices of Grant Shimizu (297-2088), Stan Tomita (286-3775), George Hinoki (297-3707)

Seattle JACL participates in high court case on busing

SEATTLE—The U.S. Supreme Court held unconstitutional a Washington state initiative that barred districts from taking children away from neighborhood schools to achieve racial balance.

In a 5 to 4 decision June 30, the high court ruled that the statewide initiative aimed at overturning a Seattle mandatory busing program was in violation of the equal protection clause of the 14th Amendment.

The Seattle Board of Education had decided in 1977 to introduce a desegregation program involving mandatory busing, generally introduced only when a court orders a school district to do so. In November, 1978, however, a statewide initiative was passed by voters, overturning the Seattle program.

But the Supreme Court held the initiative was addressed specifically to cause discrimination of

school students by denying busing and placed the burden of transportation on racial minorities.

The decision means that Seattle's program—involving 13,000 of 46,679 students—will continue operating.

Among those who supported the Seattle program were the Tacoma and Pasco school districts, the American Civil Liberties Union, League of Women Voters, Urban League, Black Attorney Assn., Asian Law Assn. and the Seattle JACL.

The Seattle JACL executive board had recommended to help cover the costs of the amicus curiae brief before the Supreme Court. Sam Shoji, chair of the chapter's school committee, expressed his jubilation of the decision, noting: "It is rare that a small organization is able to participate in the Supreme Court and we should be proud." #

Census: 5,000 in U.S. turn 65 years of age every day

(District representatives on the JACL Aging and Retirement Committee are contributing reports as a prelude to their Convention workshop. — Ed.)

By BETTY KOZASA

Los Angeles

Under the leadership of Dr. Michael Ego, chairman, the JACL Aging and Retirement Committee met for the first time in May. As is the case with any group activity where the participants are not known to each other, time was spent getting acquainted, discussing varying points of view and finally developing active steps to meet the needs of the membership. (See PC June 4 and June 25)

It is well to remember that planning for aging and retirement must be made in view of the fact that the 1980 census reveals that in the United States 5,000 persons turn 65 years of age daily, which is a net increase of 1,600 a day or 600,000 yearly. There are currently 25.5 million individuals who are 65 years and over. It is no wonder then that this period in history is often described as the "graying of America".

It is interesting to note that there are 148 women to 100 men over age 65; there are 178 women to 100 men

over age 75 and there are 217 women to 100 men over age 85. By merely looking among our acquaintances, it can be discerned that there are more women than men in the later years.

Longevity is being studied and many causes are thought to affect the number of years one lives. Black men average 65 years; Native Americans 45 years and Hispanics a little lower than 65. Caucasians live the longest and the time of writing this column, the breakdown for Asians was not available.

The fastest growing poverty group in the country is women due to the fact that they are living longer; have fewer marketable skills (especially those women who left the job market to raise their children) and pensions usually become non-existent with the husband's death. Nationally, 49% of the elderly have never attended high school; 38.7% have completed high school and 8.7% have grad-

Continued on Page 8

Rotary honors Issei pioneer



Watanabe

OMAHA, Neb.—A 77-year-old Issei pioneer who lost both legs as a result of an illness two years ago was honored by the Omaha Rotary at its fourth annual Free Enterprise Day recently.

Honoree board chairman of Oriental Trading Co. Harry G. Watanabe, who came to the U.S. at 13, "still rules the roost", said his son, Terry, 25, who became president of the import-trading firm last year. A world-wide firm which marked its 50th year began at 18th and Farnam Sts.

here, serving a near dozen shops across the Midwest till WW2, it was virtually closed during the war years, when he turned to manufacturing kewpie dolls.

When evacuees from the west coast began to settle in Omaha, he hired and gave them a new start in life, one Omaha JACLer recalled. He also assisted the chapter substantially in various capacities and was among the major donors to the Headquarters Building Fund.

With resumption of trade after the war, he built the company that today trades in carnival merchandise, circus novelties, seasonal decorations and other products from Japan, Hong Kong, Korea, Taiwan and China, selling extensively to Central and South America and Europe.

Omaha Rotary award chairman James Eggers termed his achievements "as truly an American story". #

4

WEEKS UNTIL THE ...

27th Biennial National JACL Convention

Hosts: Gardena Valley JACL

August 9-13 (Mon.-Fri.)

Hyatt Airport Hotel, Los Angeles



"KOKORO"

REDRESS PHASE 4: by John Tateishi



'My Kibei Dad'

Santa Monica

When I first became involved with the JACL redress program in the Northern Cal area in 1976, my father had serious misgivings about the organization's (or any group's) ability to unravel an issue which, by the nature of the community affected, seemed to be locked in a quagmire of internal conflict and an inability to externalize the issue fully. Graver still were his misgivings when I was appointed chair of the National Redress Committee in 1978.

His doubts came not so much from the fact that he saw, realistically, the overwhelming odds on the issue, but from the fact he was a Kibei. Typically of the Kibei, he was fiercely proud and independent and a believer in personal integrity. And in what seemed to be a typical Kibei attitude, he was given over at times to laconic irony when he talked about the JACL and Evacuation. Spoken in Japanese, I didn't always understand the words, but I never misunderstood the tone.

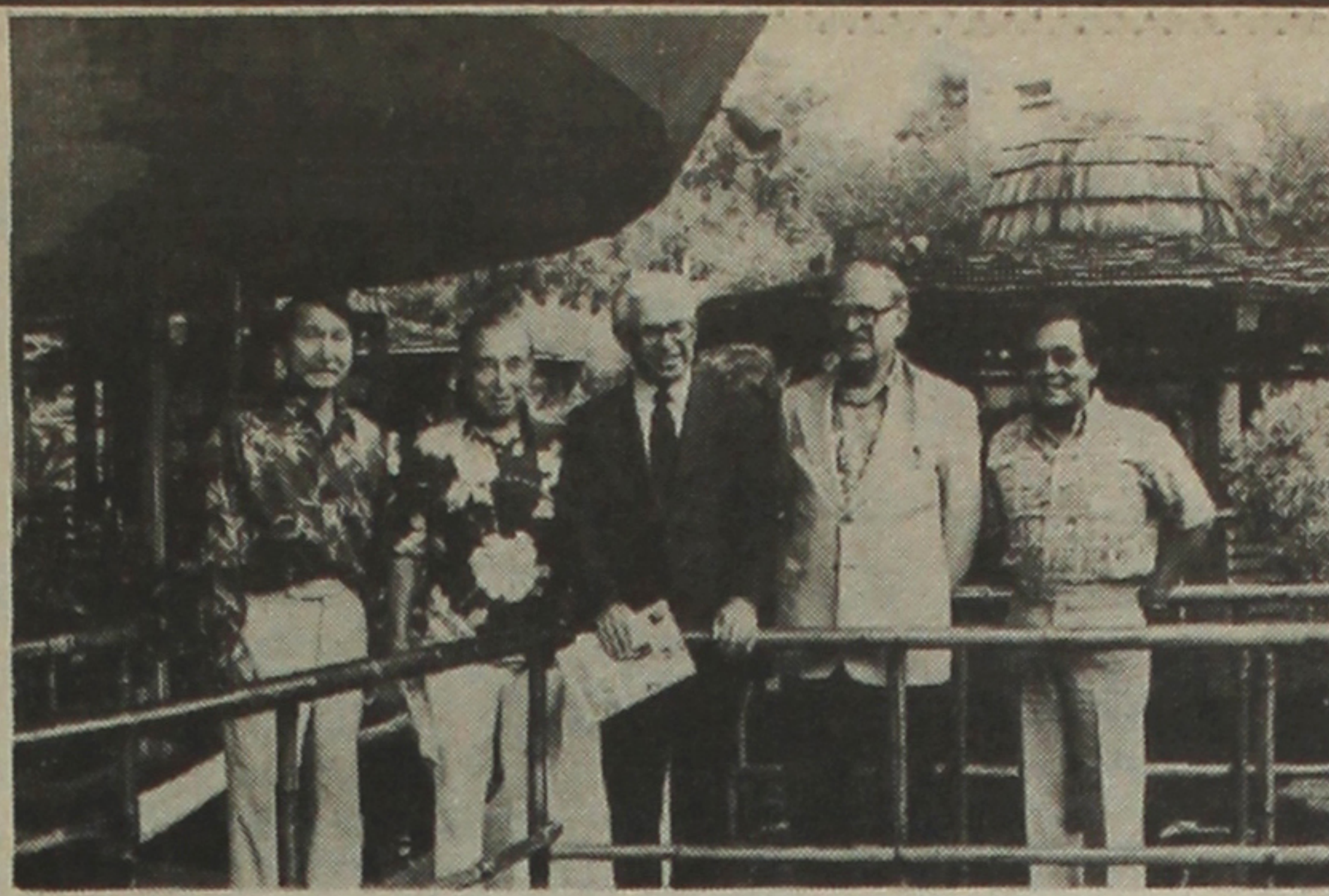
The last time I talked to my father—seriously talked to him—about Evacuation and this issue, his views had changed somewhat, perhaps mellowed over the years. He said that in '42 he knew nothing could be done to stop the Evacuation. Only a damn fool would believe it could. He only wished that, as an organization, the JACL had made a little more noise about it.

Those were, he recognized, difficult and uncompromising times that left us in the breach and left us in conflict with ourselves. And typical of the Kibei, he responded with outrage in 1942. What I realized many years later was that his reaction was a result of his indignation of what was happening to him—to all of us—as Americans. It was not so much the Japanese side of him that was offended as it was the American. I was surprised to learn this but I guess I should not have been. He always had an American flag of one sort or another in his house, was filled with pride as each of his sons put on American uniforms, and even attended naturalization classes with the Issei (even though he was already an American citizen) just to become a better citizen. He has never allowed the hinomaru in his house.

If this country failed to understand the rest of us in 1942, then surely there was very little chance it could have understood the Kibei. Small wonder, since it seems the Kibei were little understood by the rest of us. It wasn't until I as well into adulthood that I began to understand the Americanism of my Kibei father.

It is, among many other things, what I remember of him as much as I do his fierce pride, his independence, and his dignity. And those are not bad things to remember any man by.

EDITOR'S NOTE: John's dad, Sam Shigetoshi, 75, of Santa Monica died July 2 after a prolonged illness. Also surviving are his widow Yuriko, sons Toshio, Bob Masao, William Norio and eight grandchildren.



GOLDBERG IN HAWAII—Justice Arthur Goldberg (center), member of the Commission on Wartime Relocation and Internment of Civilians, stands outside the Pagoda Hotel, Honolulu, where he addressed the Honolulu JACL luncheon May 15. Calling the wartime treatment of the Japanese American citizens and resident aliens "one of the most monstrous injustices ever committed in our society", the onetime supreme court justice announced he would support material reparations for the internees. With him are (from left) Harry Hayashi, hotel manager; Earl Nishimura, chapter president; Marvin J. Anderson, interim Univ. of Hawaii chancellor; and Lawrence Kumabe, 1st v.p. . . .

Goldberg admitted he almost refused to serve on the CWRIC because of the name. "Relocation and internment are nice words. A better term would have been 'Commission on Concentration Camps'." He offered a separate minority view if the final CWRIC report "if it didn't do what was appropriate".

Inspector general Sato in the news

WASHINGTON—Upon advice of Veterans Administration inspector general Frank Sato, VA head Robert Nimmo reimbursed the government \$6,441 to cover wages of a chauffeur who drove him to work—in violation of a 1981 law.

Nimmo's announcement June 15 caught four members of Congress by surprise who were planning to hold a press conference to criticize his use of funds. The IG had investigated Nimmo's use of a larger car, office renovations and his decision to send old furniture to his daughter's office, where she serves as Commerce Dept. spokesman. Sato's report noted the reno-

vation was "not extravagant" and while regulations were violated, it did not cause any government loss.

Hayakawa introduces new Sec. of State

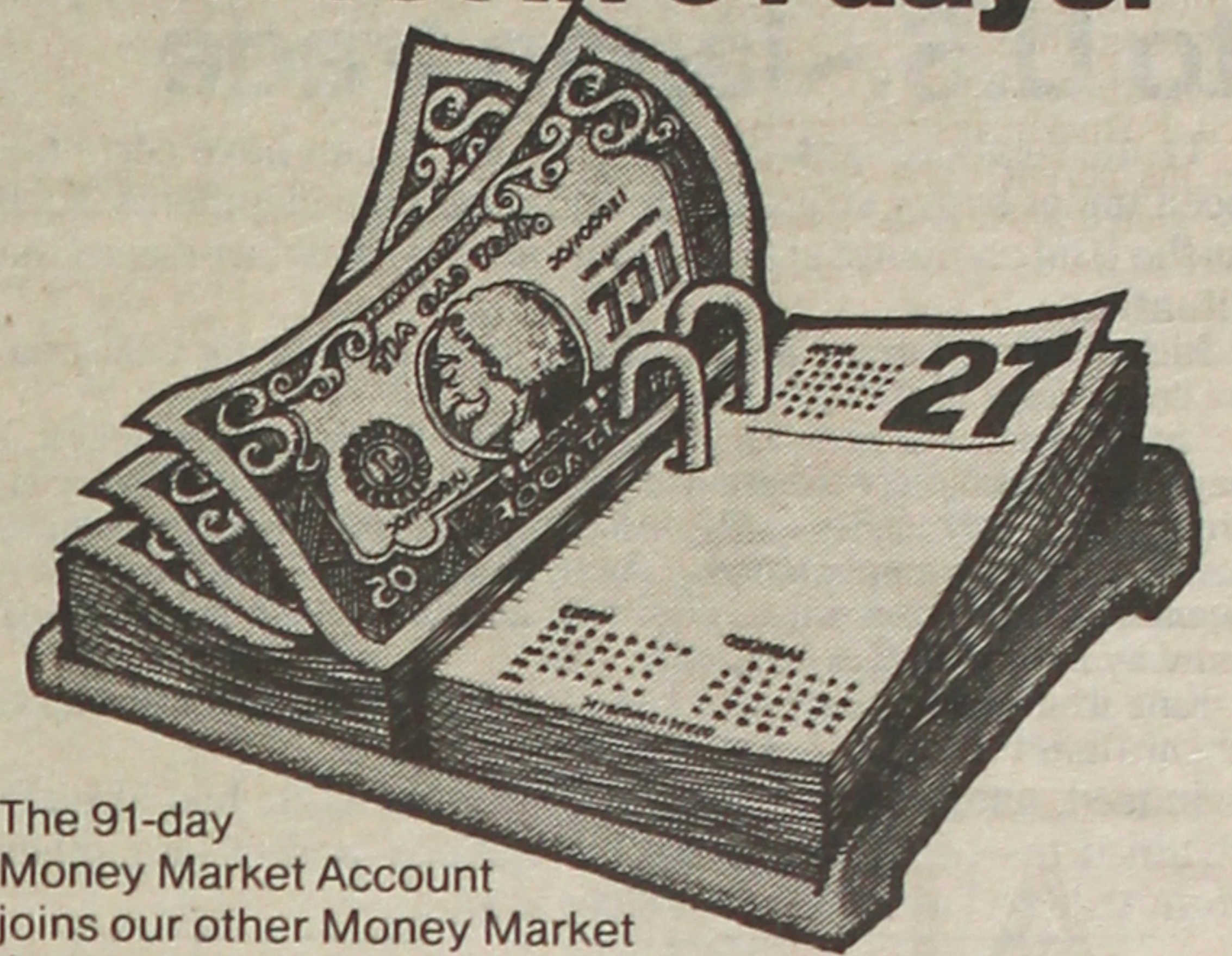
WASHINGTON—Sen. S.I. Hayakawa, member of the Senate foreign relations committee, was to introduce Secretary of State-designate George Schulz at the confirmation hearings scheduled to start July 13.

Tell Them You Saw It In the Pacific Citizen

New chief named at Sumitomo Bank

SAN FRANCISCO—Teruhisa Shimizu, 49, became Sumitomo Bank of California's ninth president July 1, succeeding Nimei Akamatsu, 53, who has been recalled by the parent company in Tokyo to be a director and assistant to the president. The new chief joined Sumitomo Bank, Ltd., in 1955 upon graduation from Tokyo University, and was general manager of its international banking group in the Americas Dept.

Now! Money Market Interest in 91 days.



The 91-day Money Market Account joins our other Money Market Accounts to give you greater flexibility and high interest. The interest rate for this short-term account is linked to the 91-day U.S. Treasury bill* and requires a \$7,500 minimum. Also available now is our new 3½-year Money Market Account, which earns a market rate on as little as \$500. Get into the money market today with a Sumitomo Money Market Account.

Note: Substantial penalties upon premature withdrawal. *The actual return to investors on Treasury bills is higher than the discount rate. Federal regulations restrict the compounding of interest on the 91-day account.



Sumitomo Bank of California Member FDIC

家紋



HOW WOULD YOU LIKE TO HAVE A KAMON EXHIBIT HELD IN YOUR CITY?

Do you wish to personally ask Kei Yoshida questions concerning your Kamon, Surname, and their Histories?

Yoshida Kamon Art is now holding sign-ups for groups interested in having Kei Yoshida set up a Kamon exhibit for them in their city. We have much informational material, and the exhibits will be conducted in both English and Japanese. Interested groups, please send:

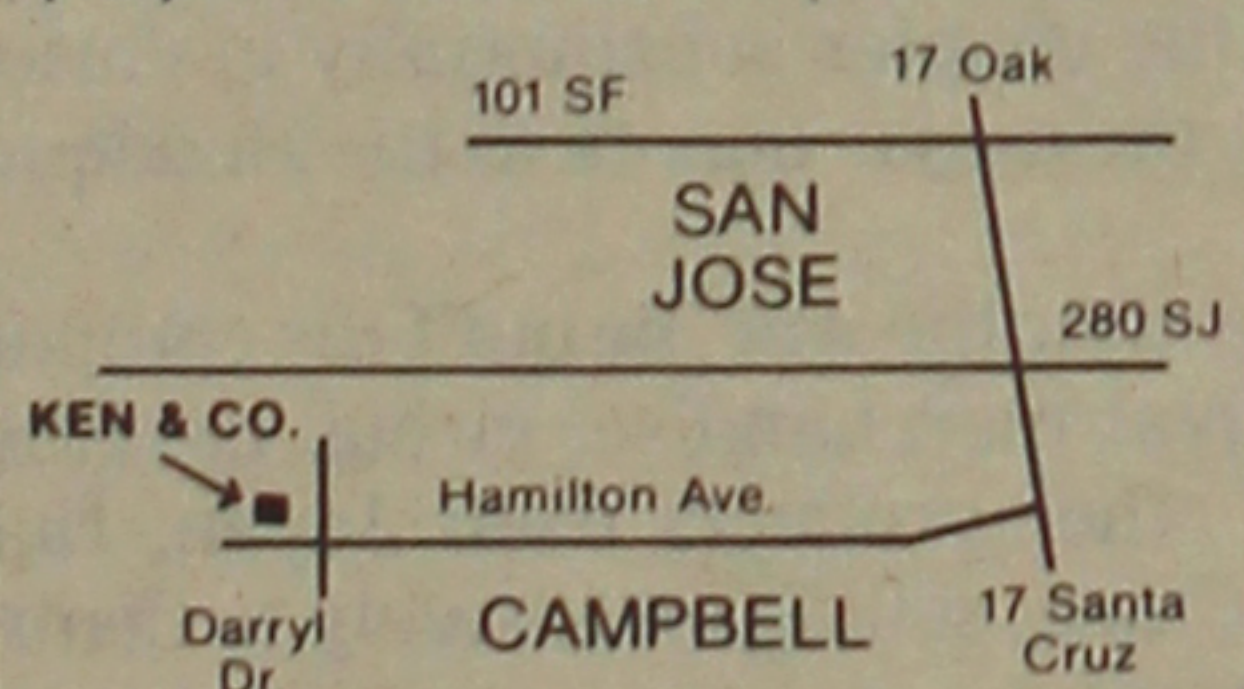
- (1) Some general information concerning your group (e.g., number of individuals, etc.),
- (2) Name, address and phone number of one member as a contact to discuss details concerning the exhibit.

In exchange for holding an exhibit, we ask groups to provide us with the exhibit area, transportation costs and overnight stay (if necessary). Please send requests by Aug. 7, 1982, to Yoshida Kamon Art, 312 E. 1st St., Suite 205, Los Angeles, CA 90012; (213) 629-2848 / 755-9429. The Yoshida Kamon Art is open:

Monday-Thursday 9-3:30 Sat. & Sunday 9-5

SHORT & SMALL MEN'S APPAREL

Spring '82 Sport Coats & Suits in sizes 34 extra-short to 42 short. Free consultation on judging the proper fit of a suit or sport coat.



(408) 374-1466 785 W. Hamilton Ave., Campbell

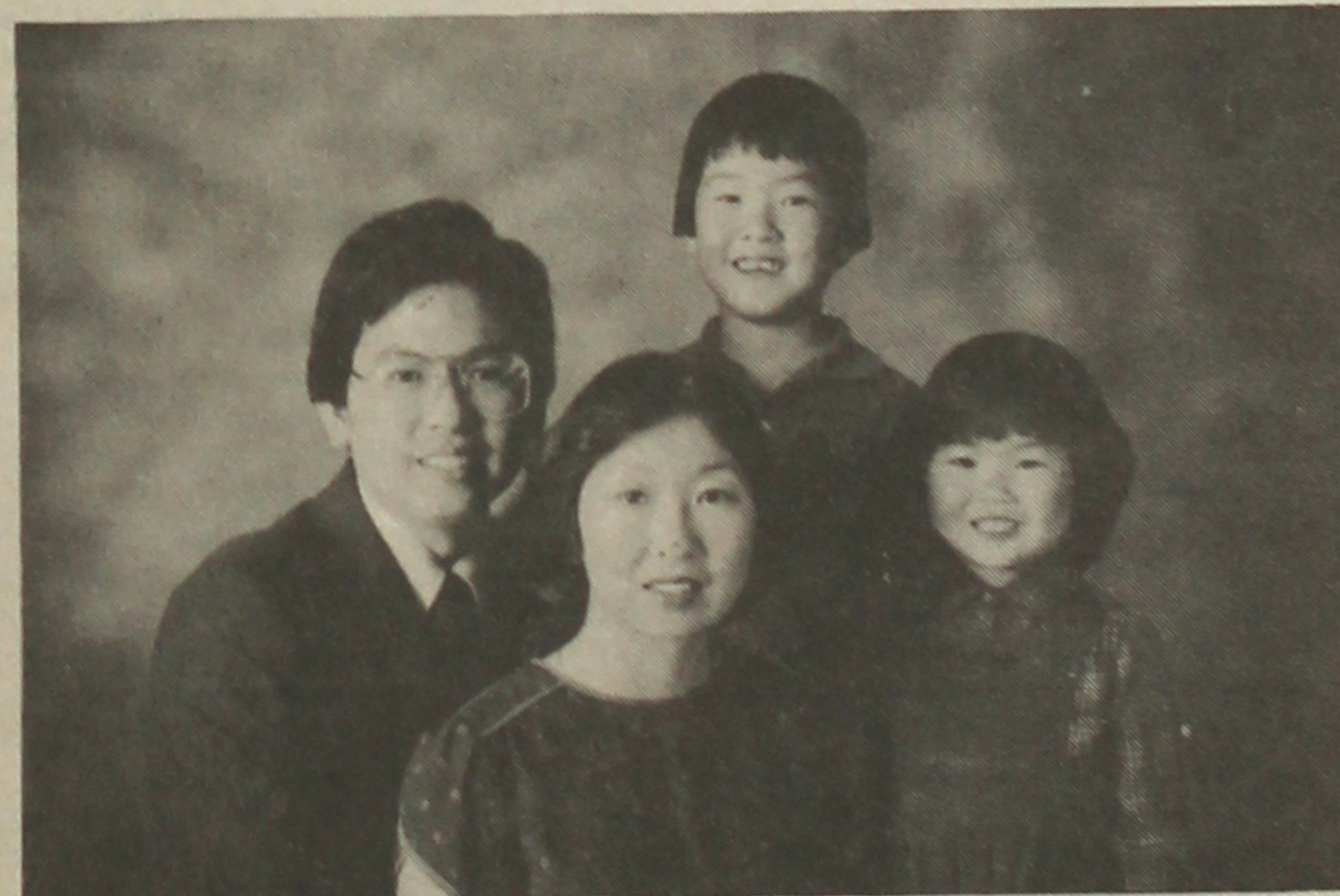
KEN & COMPANY clothing merchants



Ken Uyeda owner GIVENCHY/LANVIN ST. RAPHAEL

'A New Beginning ...'

FLOYD SHIMOMURA for NATIONAL JACL PRESIDENT



Floyd, Ruth, Mark, Lisa

JACL ACTIVITIES

- Nat'l V.P. Public Affairs (2 terms)
- Testified Redress Hearings, Washington, D.C.
- Submitted "Legal Remedies" Paper to CWRIC
- Speaker, Pan American Nikkei Conference, Mexico City
- JACL Constitutional Revision Committee
- Program Chair, Tule Lake Dedication
- Secretary, NC-WN District Council
- Sacramento Chapter President (2 terms)

PROFESSIONAL

- Professor of Law, U.C. Davis
- Calif. Deputy Attorney General (1973-1981)
- Eight cases - California Supreme Court

EDUCATION

- 1973: U.C. Davis Law School
- Law Review, Order of the Coif
- 1970: U.C. Davis, Economics, Oriental Languages Phi Beta Kappa
- 1969: Studied in Japan

Noguchi raises funds in Japan

TOKYO—Former Los Angeles County Chief Medical Examiner-Coroner Dr. Thomas T. Noguchi began a fund-raising tour here July 2 aimed at offsetting expenses in his efforts to regain his job.

The Los Angeles County Civil Service Commission will hold hearings beginning July 19 to determine whether the 55-year-old Noguchi should be reinstated, after being demoted for allegedly mismanaging and misusing the coroner's office.

Noguchi was also scheduled to visit Fukuoka, his birthplace, to see his parent's graves. He had also slated a television interview there as well.

Meanwhile, in Los Angeles, Noguchi's attorney Godfrey Isaacs had requested a new hearing officer in the case, charging that there may be a possible conflict of interest.

Sara Adler, the commission hearing officer, had recently been retained by the law firm of Irell and Manella which, in turn, is counsel for the law firm of Roger and

Wells. Counsel for the county, William Masterson, is associated with Rogers and Wells. Isaacs felt that this may jeopardize Noguchi's chances for a fair hearing. The commission, however, denied Isaac's request.

John Saito, speaking for Concerned Americans for Responsible Progress (CARP), denounced the denial, adding that the commission's action raises the question of whether or not the county wishes to "wrap up" Noguchi's case in their favor.

CARP, noted Saito, JACL PSW regional director, also questioned the county's decision to hire a private attorney instead of following the usual procedure of assigning county counsel. Legal fees to retain a private attorney are paid for by the taxpayers, he said.

Tanabata fest set at Pacific Asia Museum

PASADENA, Ca.—The Japanese Arts Council of the Pacific Asia Museum here will hold a musical and culinary celebration, "Tanabata Matsuri" on Saturday, July 24, 5:30 p.m., in the Museum's courtyard garden, 46 N. Los Robles Ave.

A buffet dinner of specially prepared Japanese foods will be followed by performances by renowned Koto performer Hiromi Hashibe, the Bando Mitsuhiro Classical Dance Troupe and the Taiko Aiko Kai.

Megamillion Club planning for holidays

LOS ANGELES — Megamillion Club (formerly the Japanese American Widow and Widowers) will plan for the year-end holiday with a brunch-workshop July 25, 11:30 a.m. at the Hyatt Airport Press Room. For details, call Shiz (213) 821-3219 or Betty (714) 636-8207.

Oxnard to hold Obon festival July 17

OXNARD, Ca.—Oxnard Buddhist Church holds its 27th annual Obon festival July 17, 2-10 p.m. at its church ground, 250 S. H St., with indoor and outdoor cultural exhibits, foods and Obon dance. Yo Iwai is general chair.

Commercial & Industrial
Air Conditioning & Refrigeration
CONTRACTOR

Sam J. Umemoto
Lic. #208863 C-20-38

SAM REIBOW CO.
1506 W. Vernon Ave.
Los Angeles / 295-5204
Experienced Since 1939

MARUKYO
Kimono Store
New Otani Hotel & Garden—Arcade 11
110 S. Los Angeles
Los Angeles
628-4369



Hibakusha film in Gardena July 17

GARDENA, Ca.—"Survivors", a film about Japanese American atomic bomb victims, will be shown July 17, 7 p.m. at the Ken Nakaoka Memorial Center, 1700 W. 162nd St., under sponsorship of the Committee for Atomic Bomb Survivors, Asian Americans for Nuclear Disarmament and the Gardena-South Bay chapter for National Coalition for Redress and Repatriation. Tickets are \$3. For info, call (213) 250-3867 or 329-2257.

Testimonial set for Sac'to BCA minister

SACRAMENTO, Ca.—A testimonial and appreciation dinner for the Rev. Hogen Fujimoto, who served the Sacramento Betsuin before his retirement, will be held July 17, 5:30 p.m. at the Red Lion Inn, 2001 Point West Way. The Brawley-born minister was raised in Santa Barbara and had been director of administration at the Institute of Buddhist Studies in Berkeley. For reservations, call (916) 446-0121.

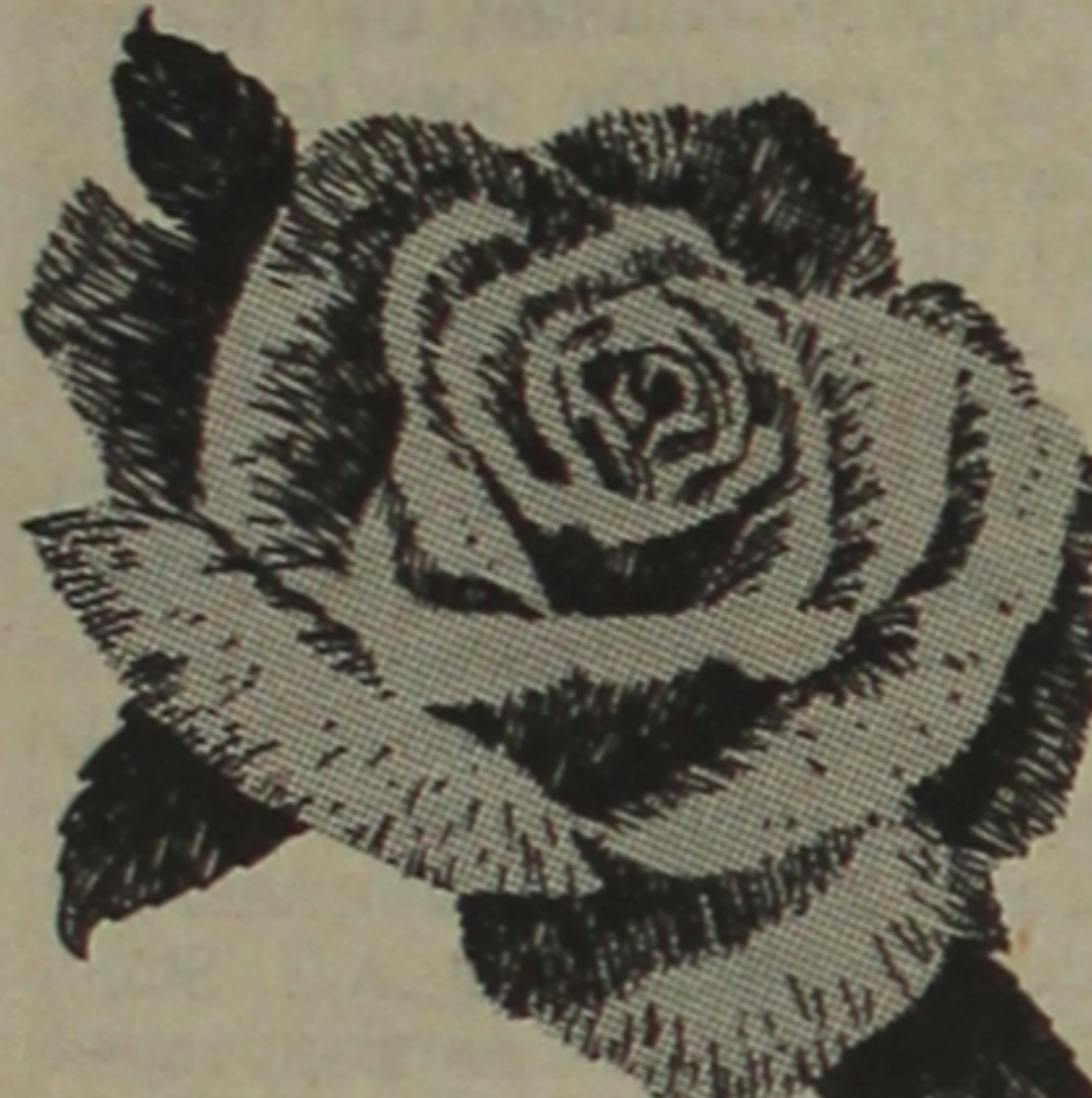
Plaque dedication set for Tule Lake

SAN FRANCISCO—The Tule Lake Christian Ministry Plaque Dedication Pilgrimage will take place Oct. 2 on top of Castle Rock at the site of the former camp. The historical bronze plaque will serve as a symbol of the Christian ministry that was carried on in every camp, said Tule Lake Pilgrimage Committee member Rev. Lester E. Suzuki.

The names of all the ministers, including student ministers, will be inscribed on the plaque, and a steel cross will be erected at the site to replace the old wooden one which gave in to the elements. A brief service at Klamath Falls cemetery will follow the dedication.

Persons interested in attending the dedication (\$30 covers roundtrip bus fare, lodging and two meals) should contact Lillian Omi, 562 Bates St., El Cerrito Ca. 94530, (415) 232-5410.

CARE



...THERE ARE TIMES WHEN IT MEANS SO MUCH

At sensitive times caring means everything. Care is more than a quarter of a century tradition at Rose Hills. Our experienced counselors offer every needed mortuary service... even a beautiful flower shop, all in one serene, peaceful location. Knowing you care... Rose Hills cares. At Rose Hills convenience and care means everything.

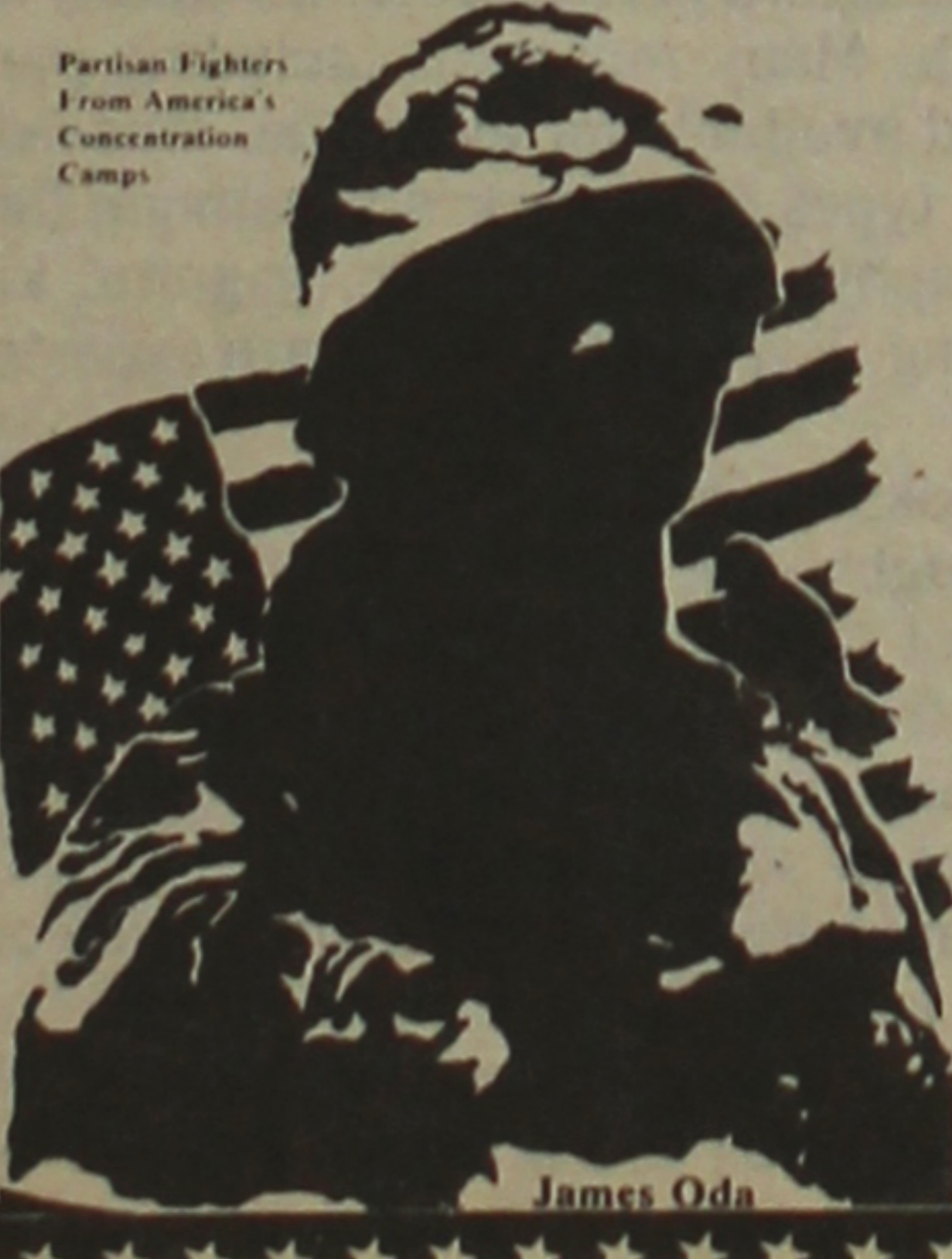
So much more... costs no more

ROSE HILLS MORTUARY

at Rose Hills Memorial Park

3900 Workman Mill Road, Whittier, California
(213) 699-0921
(714) 739-0601

HEROIC STRUGGLES of Japanese Americans



3rd Edition Is Now Out!

The following articles are added to the 3rd Edition in paperback (now 325 pages).

- Dr. Mary Oda's Testimony on Evacuation Redress
- In Response to Cultural Chauvinists

Also an investigative report on Sanzo Nosaka's intrigue in connection with the Richard Sorge Incident was added to the 2nd edition (pages 233a-e).

Softcover: \$9.50 postpaid at the Pacific Citizen

GLENN SHINTAKU D.P.M.
Podiatrist—Foot Specialist
Announces the opening of his Office at
1249 W. Gardena Blvd., Suite 100
Gardena, Calif. 90247
Telephone: 538-2982

ENGINEERS
Multi-National Needs for Overseas P.H.D.'s
Fluent in Japanese
ELECTRICAL ENGINEERING / SIGNAL PROCESSING / COMPUTER SCIENCE / ACOUSTICS / MECHANICAL / PHYSICS / MATH
Resumes in English appreciated.
Perri Reeder
WALLACH ASSOCIATES
1010 Rockville Pike
Rockville, MD 20852
(301) 762-1100

WALL COVERINGS - PAINT - DRAPES (714) 528-0116
MARTIN SENOUR PAINTS
The Paint Shoppe
"Where Color is King"
LA MANCHA CENTER 1111 N. HARBOR BLVD. FULLERTON, CALIF.

Review seeks Asian American poetry

NEW YORK—With funding from National Endowment for the Arts, the Greenfield Review Press (RD 1 Box 80, Greenfield Center, NY 12833) will publish a major anthology of poetry by Asian American writers. As yet untitled, it is expected to run 240 pages with each poet featured with a picture, bio and about six pages of poetry. Payment will be \$10 plus two copies of the book.

The anthology deadline is Dec. 15. Pieces, published or unpublished, should be sent with a self-addressed stamped envelope. Published works also require permission to reprint in the anthology.

CARY H. NISHIMOTO
ANNOUNCES THE OPENING OF HIS OFFICES
FOR THE GENERAL PRACTICE OF LAW
250 EAST FIRST STREET
SUITE 1112
LOS ANGELES, CALIFORNIA 90012
TELEPHONE (213) 626-4417


NOW AVAILABLE: GO FOR BROKE!
A pictorial history of the Japanese American 100th Infantry Battalion and the 442nd Regimental Combat Team
BY CHESTER TANAKA
Limited Supply of the Numbered Editions

Price After July 1, 1982	\$ 34.95
6 1/2% sales tax (CA residents)	2.27
Shipping	3.00
Total	\$ 40.22

All proceeds beyond cost go to Go For Broke, Inc., a non-profit educational organization founded by Japanese American veterans of World War II.

Send _____ books to the following address:
NAME _____
ADDRESS _____
CITY _____
STATE _____ ZIP _____

Send orders to
JACP, INC., Box 367, San Mateo, CA 94401
Phone (415) 343-9408 for further information.

odyssey
THEATRE ENSEMBLE
PRESENTS THE SANSEI THEATER COMPANY PRODUCTION OF
LIFE IN THE FAST LANE
Requiem For A Samsel Poet

A ONE MAN TOUR DE FORCE
Starring Lane Nishikawa
July 13-August 29
"He is a sort of Japanese Lenny Bruce... His performance is first rate"
Wendy Brateman, Channel 6 Cable, S.F.
Performances Daily except Monday. Ticket prices \$6.50-\$8.50
For reservations and group information call 826-1626
ODYSSEY THEATRE 12111 OHIO AVE. @ STA MONICA & BUNNY IN WEST LA

pacific citizen

Published by the Japanese American Citizens League every Friday except the first and last weeks of the year at 244 S. San Pedro St., Los Angeles, Ca 90012; (213) 626-6936 • 2nd Class postage paid at Los Angeles, Ca. • Subscription payable in advance: \$16 a year, foreign \$24 a year. Eight dollars of JACL member dues to Nat'l JACL provides a year's subscription on a one-per-household basis.

Opinions expressed by columnists other than JACL staff and presentation of the news do not necessarily reflect JACL policy.

Dr. Jim Tsujimura: Nat'l JACL President
Dr. Clifford Uyeda: PC Board Chair

Editor: Harry K. Honda
News Editor: Peter A. Imamura
Advertising: Jane Ozawa
Subscriptions: Tomi Hoshizaki, Mitsuko Sakai
Typsetting: Mary Imon. Mailing: Mark Saito

YE EDITOR'S DESK: by Harry Honda



100/442nd/MIS Museum Foundation

Since Americans tend to forget, Sen. Daniel Inouye said in preface to his major policy speech here Sunday afternoon (July 11), it was right that there be a museum to preserve the history of Japanese Americans during World War II "for how can we depict exactly that pride and honor" otherwise of that chapter in American history. His audience was well aware and knew first-hand the frame of reference for his remarks—because of Pearl Harbor, race prejudice tried awfully hard to atomize away the patriotism and loyalty of the Japanese American. Nisei pride and honor was demonstrated by action of the 100th/442nd in Europe and the Military Intelligence Service in the Pacific.

The senator may have sounded weary from the long flight from Manila, having arrived on "red eye special" from Honolulu early Sunday morning and anticipating another "red eye" onto Washington after the luncheon. But it gave a somber and convincing tone to the subject matter of his address: the current efforts for world peace, arms control and nuclear disarmament.

The 600 Nisei veterans, their spouses and friends attending the \$60 luncheon fund-raiser for the 100th/442nd/MIS Museum Foundation, Inc., keenly shared his personal concerns of the days ahead as he noted his son (Dan Jr.) was going to be 18-years-old three days hence and would be going to the Post Office to fill out a registration form. This doesn't dismiss a household without sons as the youth of today, he interjected, face a threat unlike the 1940s and an insane future—unless... as he began his address following a most entertaining interlude by Butch Kasahara and his Band—a plug here which is most deserved.

In this issue, Bill Hosokawa writes of his visit to Hiroshima Peace Park. The senator noted the nuclear

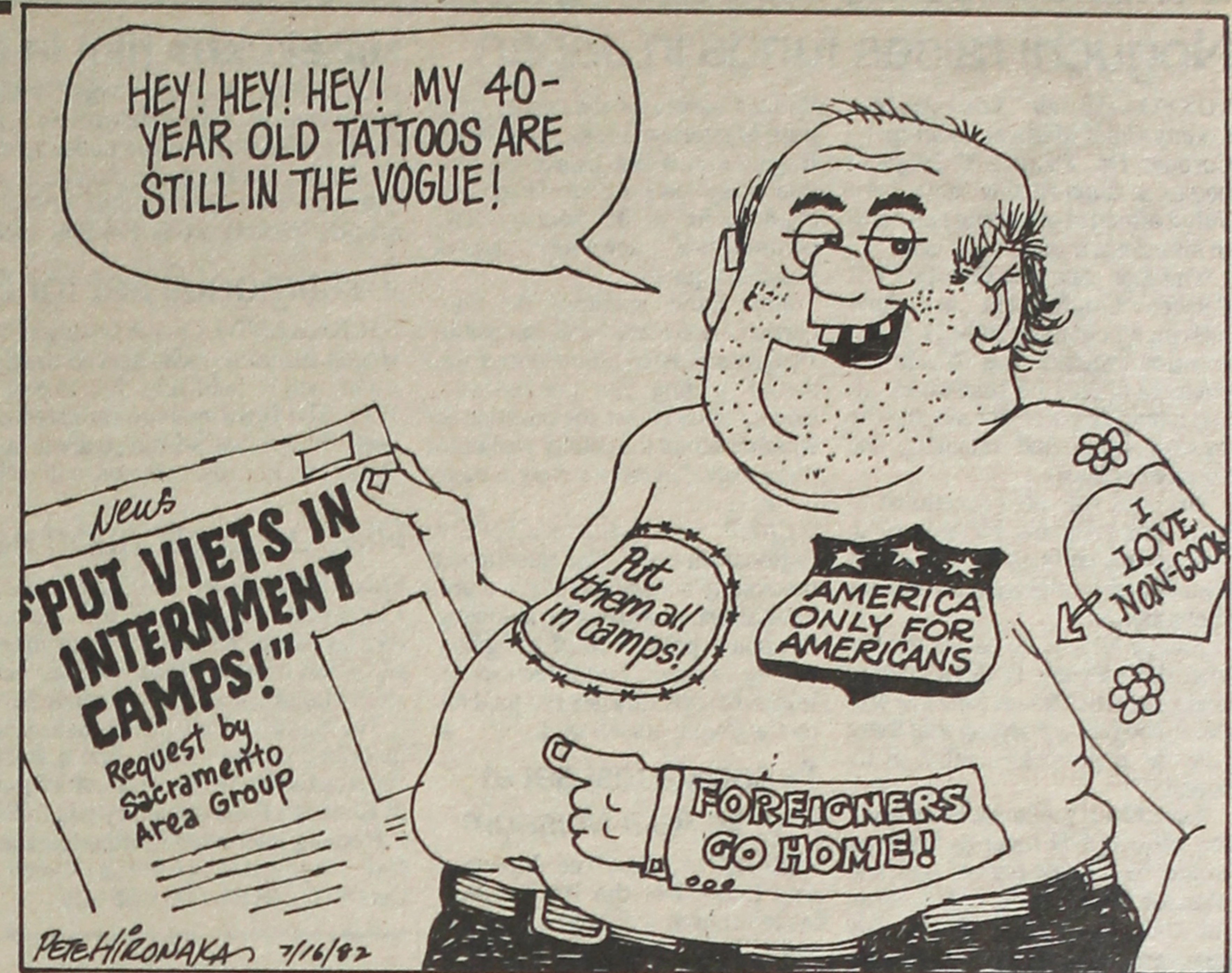
weapon stockpile is well over one million Hiroshima bombs... The Soviets have over 7,000 nuclear bombs pointed at us and we can launch over 9,000 nuclear warheads at them... No city (on either side) with 25,000 people or more would be spared. Now the U.S. wants to develop more along with an impression that with sufficient warning, maybe 25% of the U.S. would survive. But that's "utter nonsense", Inouye emphasized and that it's "extraordinarily dangerous to even consider such a possibility". Looking at Hiroshima, for instance, 270 out of a total 294 doctors were killed along with 1,645 out of 1,780 nurses. Further, 42 out of their 45 hospitals were destroyed. "Where are the doctors and nurses coming from if a city is hit?"

Referring to mental health statistics from the Vietnam war, Inouye shuddered at the psychological impact of nuclear war upon combatants and non-combatants... There's no way of knowing and we cannot afford to experiment... thus, the debate on nuclear war is in a real sense a debate on the very future of mankind. Inouye reminded he was no pacifist and had volunteered in WW2, but times are different today as the world faces a nuclear war with "consequences that are beyond even our wildest nightmares..."

Thereupon he hoped, "We will soon have the vision to halt the arms race to oblivion... We are running out of time... with each passing week, it becomes more difficult to reduce world-wide tensions... Unless we act decisively and immediately, we face the real prospect of total breakdown in our arms control process. We must restore sanity and objectivity to the peace process."

The subject of Inouye's speech was so ominous and ponderous that it tended to overwhelm the purpose of the luncheon—to raise funds to collect, catalogue and organize all artifacts, text and photographs that depict and perpetuate the story of Japanese American soldiers during WW2—but he sounded a call that must be heeded first and foremost.

Come Aug. 6 at the L.A. County Museum of Natural History at Exposition Park, the Army-produced "Go For Broke" exhibit (expanded with a section covering the MIS) begins a year's stay. The 100/442/MIS Museum Foundation (P.O. Box 3007, Gardena, CA 90247), launched minus fanfare by veterans and community people, hopes the exhibit continues on to Washington, D.C., to Honolulu and other communities for this Nisei story needs telling and retelling. #



Letterbox

● Tule Lake recalled

Editor:
Commenting on the Tule Lake pilgrimage June 6, it brings mixed feelings about my childhood there. I remember going to Japanese plays, sumo, judo and boxing matches, baseball games, exhibits of various crafts and hobbies. What people did with scrap lumber, crepe paper, sea shells always amazed me. On the negative side there was much demonstration by the pro-Japan Bozu Gumi and affiliated gangs that terrorized the rest of the camp internees. There were more stealings, gang fights, rioting and demonstrations than there are in New York or Chicago. Three-thousand five-hundred Nisei renounced their citizenship and elected to go to Japan.

We always had adequate food in camp. Many of us with special passes could hike up Mount Baldy which was just outside the camp. Winter was cold and summer hot and dusty. How we endured the tar-papered barracks and sleeping on cots for 3½ years amazes me.

From 1944 on, the camp administration would ask my father if we wanted to leave camp and move east. They said many internees had already left the camps and settled in Omaha, St. Paul, Chicago, New York, Cleveland and Detroit. Many internees were very apprehensive about leaving during wartime and many stories of harassment outside the camp were told. Finally in late August 1945, we

left camp for Cleveland. WRA paid our train fare and allowed \$20 for each member of the family for expenses. In Cleveland, the WRA arranged for job interviews and offered other job opportunities.

In 1974, my job as truck driver gave me an opportunity to drive past Tule Lake. It brought mixed feelings about my former residence of 3½ years.

JAMES TABATA
San Francisco

● Shades of EO 9066

Editor:
Draft resisters are taunting the Government in that it does not have sufficient room to incarcerate ALL of the draft resisters. They forget the Government is capable of ANYTHING. One has just to examine Executive Order 9066, which eventually provided free room and board for its citizens and some non-citizens of Japan...

I am sure that the Government can find the same suitable quarters for these draft resisters whose loved ones live in the comparative luxury of their own homes. If the Government does less than fully prosecute these draft resisters, they will have dishonored the memory of those who made the supreme sacrifice and these include those of the 442nd.

DENNIS A. ROLAND
Astoria, N.Y.

Be a PC Ad-Watcher

35 Years Ago

IN THE PACIFIC CITIZEN

JULY 19, 1947

July 9—Nisei-owned Winters (Ca.) Farm Co. sues to regain farm property transferred to fuel oil distributors (for duration of war) and to be returned upon demand.

July 10—Nearly 40 in Los Angeles stricken by shoyu-food poisoning; over 120 cases of reported throughout California, Utah and eastern Oregon; authorities now trace arsenic contamination in shoyu base made by A.E. Staley Co., Decatur, Ill.; company mystified by presence as no material containing arsenic used in making shoyu base or arsenic-type pesticides in soy bean fields; health inspectors alert Japanese communities, freeze shipments against display on grocery shelf, seize unbottled batch for tests; Staley orders total freeze of its supply throughout U.S.

July 11—Real estate scheme to keep San Francisco peninsula "all white" and segregating "non-whites" condemned by civic leaders; plan proposed by Harry Carskadon of Atherton the day after Redwood City's Council for Civic Unity urges San Mateo board of realtors back housing for minority groups; special Palo Alto Times editorial July 12 cites scheme as "thoroughly vicious".

July 12—Army returns Byron Hot Springs to original owners; once famed spa 14 miles from Tracy, Ca., used as camp for German and Japanese PWs during WW2.

July 12—First Nisei jockey, Joe Kobuki, 28, of Seattle who rode prewar at Tijuana, Tanforan and other west coast tracks, racing at Hastings Park, wartime assembly center for Japanese Canadians in Vancouver, B.C.

July 14—Fifty-five more war-stranded Nisei return to U.S. from Japan aboard General Gordon. (Also aboard the Gen. Meigs which landed July 3 were 40 strandeers, including the first Nisei from Okinawa.)

July 16—Senate passes HR3149, amendment to Soldier Brides Act, permitting entry into U.S. "ineligible alien" spouses of American servicemen, veterans. (In original 1945 bill, only GI spouses of alien background eligible for citizenship were admissible automatically; JACL-ADC pointed to racial discrimination as Rep. Frank Fellows (R-Me.) authored bill for JACL.)

July 19—"There will be need for JACL, similar groups, as long as special problems remain," says Saburo Kido in reaction to Bayard Rustin assertion that progress of minority groups can be measured by its active interest in other minorities. Rustin noted, "This interest was almost totally lacking in the average Nisei (and JACL)." #

Support Our Advertisers

IMMIGRATION

Continued from Front Page

form and Act of 1982 (HR 5872) originally eliminated the Fifth Preference. Known as the Simpson-Mazzoli bill, the legislation was slated to go before the full Judiciary Committee. The Subcommittee on Immigration, Refugees and International Law has rewritten the bill (HR 6514) to include a limited Fifth Preference for only unmarried brothers and sisters. Other co-signers of the June 15 letter included Philip Burton (D-Ca.) and Mike Lowry (D-Wa.) of Seattle. #

For the Record

Recent report relating Ruby Schaar had received a JACL sapphire pin at the New York appreciation dinner dance in April should read "a ruby pin from the New York chapter". Having been awarded this pin from the National Board in early 1950 for her public relations work during the war and immediate postwar years, and aware of her efforts in subsequent decades, it was surmised she had also garnered a sapphire pin which she didn't have. National JACL has yet to confer a second ruby pin to anyone.—Ed.

NISEI IN JAPAN: by Barry Saiki

Origami—The Art of Folding Paper



Tokyo

For the past twenty years, I have been fascinated by Origami, the Japanese art of folding paper. It started with a casual interest in the folding of the crane, or "tsuru".

In 19 folds, a square piece of paper can be converted into a presentable-looking bird. When made of colored paper, it makes a decorative item. Almost all young girls in Japan learn how to fold the crane in either kindergarten or elementary school. Young mothers are also adept since they make them for their children.

The Japanese are the most highly skilled in paper-folding. The reason is historical. Some brilliant Japanese discovered the way to fold the crane in the Nara period (712 to 784 A.D.) This Nara genius, who must have had a keen sense of construction engineering, also found that this crane fold could be used as the base for making countless birds and animals. He prepared a handbook showing the crane fold and various other objects.

The crane fold is geometric in design, consisting of 12 lines or folds. Once the crane fold is made, he noted that its four identical corners would be individually or separately folded into shape. In the crane, he used two corners for wings, the third for neck and head and the fourth for the tail. Using the four corners imaginatively, he perceived that he could fold a dozen different types of birds.

He next conceived that with two pieces of paper and eight corners, he could develop even greater possibilities. It meant

that four legged animals, with a head and a tail, could be devised.

While originating in Japan over 1,200 years ago, it remained a hobby pursued by a small group of people. Paper was then very expensive and only the rich could afford to use it for recreation. It is probable that Origami was developed by the nobility, and was practiced primarily among the court ladies, who had the time and means, as well as intelligence (e.g. Murasaki Shikibu) during the Heian period.

Beginning in 1603, the Tokugawa period brought stability and domestic economic growth. Many materials including paper became more plentiful and available for everyone. This led to the development of many types of paper crafts, among them woodblock prints, calligraphy, paper cutting, origami, kite-making and paper wrapping. Even today, there are experts in all of these fields.

Although hundreds of books on Origami have been published in Japan and have been bought by at least a million people, only a few are highly proficient in this art. A few acknowledged masters are able to fold from two to ten thousand different objects and have spent their entire lifetimes in pursuit of their art. Some experts have been sent as cultural emissaries to foreign countries by the Japan Foundation. The main defect of these Origami books is the lack of adequate explanations.

However, any person with a little patience and slight dexterity can learn to fold about 20 birds and animals. Beyond that, progress depends on imagination, as well as more patience and time. #



Quiet Americans at Hiroshima Peace Park

Hiroshima

This was my third visit to Peace Park which commemorates Hiroshima's agony and expresses the city's plea for world peace. It was the most deeply moving of the three, and I am

not sure why.

Perhaps the grisly displays in the atomic bomb museum are more graphically presented than before, as certainly they are. Perhaps, with age and experience, I had become more sensitive to the pain of human suffering. Perhaps I was more acutely aware that The Bomb—this time infinitely more powerful than the crude device that obliterated Hiroshima and its citizens—could be detonated again in anger and malice as the two superpowers rattle sabers and glower at each other. Perhaps I was thinking of my grandchildren who resemble so closely the youngsters who died instantly or with excruciating slowness that ghastly day in 1945.

Peace Park is a spacious open area just off one of Hiroshima's main thoroughfares where life, as it does in every large Japanese city, races along at a frenetic pace. The baseball stadium which is the home of the

EAST WIND: by Bill Marutani

A 2-Way Street

Philadelphia

TRUTH TO TELL, in my time I've done and said things for which I've been sorry. And continuing to be frank, I find it most difficult to admit it, particularly by apologizing to the one I've offended. I tell myself that the ability to admit error, and then to seek forgiveness, is an act of strength, not of weakness—but it's still difficult to express error and ask to be forgiven. This is not to say that I've not done so. I have. And when I've done so, I've felt much better about it.

I have a hunch that many of you out there also have the same difficulty, and have had the same experience.

THERE IS ANOTHER aspect to this act of admitting error and seeking forgiveness: it involves the person who is in the position of granting forgiveness. Just as the act of seeking forgiveness involves courage, so the act of granting forgiveness involves grace—also an act of strength. In the fact of a contrite apology, awkwardly extended, a sour rebuff not only lacks grace but is a reaction of immaturity. Children often so react. And greater the perceived wrong, the more grace must be commanded in the acceptance.

I RECALL ONCE reading a parable wherein one of Napoleon's soldiers was court-martialed for falling asleep while on guard duty, a most serious offense. The young soldier was accordingly condemned to death. His mother sought and finally gained an audience before Napoleon and pleaded for mercy for her condemned son. Napoleon's response was that her son was not deserving of mercy, to which the mother replied, "Sire, if my son deserved mercy, I would not be asking for mercy."

I'VE NO FAMILIARITY, at least meaningful familiarity, with the cultural mores of other societies. But I'm led to believe, for example, that in the jurisprudence of our Issei parents' background, that a genuine act of contrition means much; that, indeed, within the ambit of the cultural values of that particular society, often a sincere act of contrition alone, can be sufficient. Indeed, even in our American courts, the perceived attitude of the wrongdoer is taken into consideration in formulating an appropriate punishment or relief.

IN OUR AMERICAN society, the one common medium by which contrition, or regret, is conveyed is monetary. This is so whether it be a traffic offense, defamation, negligence, criminal act, breach of contract, violation of anti-trust laws, rupture of a marriage relationship, and so on. Rarely, however, is the monetary sum sufficient to restore the wronged individual to his/her former status; in fact, in a very real sense, it never can. Take, for example, in the area of criminal acts: a monetary sanction cannot restore a life that was taken, or bodily mayhem that was inflicted.

IF THERE BE a "meaningful" act of apology—and the individual will need to make that assessment—then the question one is faced with is whether that individual will have the grace to accept it.

It's a two-way street. #

proud Hiroshima Carps is not far away. At one end of the park is the stark, rusting skeleton of the Chamber of Commerce Building, high above which the bomb exploded. It is believed the structure escaped being flattened like the others around it only because the domed tower deflected some of the bomb's blast.

At the other end of the park is the museum where relics of the blast are exhibited. There is a dramatic diorama of the Hiroshima area, and another exhibit which shows life-sized figures, a man and a woman and a child, all badly injured fleeing the flames of the ruined city. One can rent a cassette tape recorder with an English language explanation of the exhibits which, under the circumstances, is done very objectively.

Between the two buildings are an eternal flame and a reflecting pool and monument to the child victims. This monument is modest in size but the garlands of thousands of folded paper cranes and the story about them make it the most dramatic of them all. There is a story, or perhaps it is more correctly a tradition, that if one has the patience to take the time to fold one thousand cranes, his most fervent wish will be granted.

The story in Hiroshima is that a little girl cruelly maimed in the nuclear blast set out to fold a thousand

WASHINGTON WRAP-UP: by Ron Ikejiri

Access and Responsibility

Washington

In the upcoming Redress legislative campaign, the role of JACL's congressional supporters will be crucial. We can count on our friends in Congress to critique the

JACL legislative strategy and plan, to suggest approaches to certain obstacles to the legislative progress, and to help us monitor the climate on the Hill.

Yet, perhaps one of the most important roles that JACL's congressional supporters play in the process is to help us decide what doors should be opened, help us decide when those doors should be opened, and help us open those doors.

That's access.

Without access, our legislative advocacy may not be adequately heard, or be as persuasive to Members of Congress as it could.

With access, the likelihood of success is dramatically enhanced, and we can maintain Congressional interest and mo-

mentum in our legislative activities.

But, getting inside the door is just the beginning. Once inside, all of the resources of the JACL will be put to test. The JACL will have to compete with others, who are pushing and pressuring legislators with their own legislative agenda and issues.

How well the views of the JACL are received is directly related to the extent the JACL has done its homework, not only in Washington, D.C., but also at the Chapter level, and in those areas of the country where we do not have any JACL presence, for example, the South.

Also, how well the JACL performs in the legislative areas is directly related to our ability to bring together our supporters, regional lobbying efforts, public opinion, and identify our potential opposition and detractors.

With access comes responsibility, and it is the responsibility of the JACL to be prepared to advocate, substantiate and persuade the Congress that our views are worthy of their support and vote. #

U.S.-JAPAN Continued from Front Page

dominance can no longer be assumed, even in its home market. But neither the cause nor the cure lies in finding foreign scapegoats."

The press in Japan, however, has not been as kind. The Asahi Shimbun, the country's second largest daily, noted in a front-page story: "Even among some Americans there can be heard voices saying that this was a highly political action against Japan."

Japanese commentators cried "entrapment" and said the case had seriously eroded U.S.-Japanese trust. Columnist Minoru Hirano for the Yomiuri Mainichi criticized an American suggestion that the Japanese were "trying to do to the U.S. computer industry what it has already done to autos". He said the idea of American arbitrariness was beginning to gain ground in Japan, and that the U.S. was ignoring the fact that its economic policies were dragging down the yen and seriously affecting the livelihood of the Japanese people.

Yet while some are saying that the IBM scandal has inflicted more damage to U.S.-Japan relations, computer industry analysts feel that Hitachi, at least, will not be seriously hurt by the incident in the long run. Although the employees have been demoralized, the company should be able to recover after the headlines fade, they noted.

Other Trade Problems in the Wake

But the computer scam is clearly only one of the newer elements of tension in the trade issue. A week after the disclosure of the IBM arrests, the U.S. Dept. of Justice accused eight Japanese seafood importers of conspiring since 1979 to fix price paid American processors for Alaskan crab.

Without admitting guilt, the Japanese trading firms—which included one of the country's largest, Kyokuyo Co., Ltd.—agreed to accept an injunction by a U.S. district court in Seattle that bars them from fixing prices and exchanging competitive information on their purchases of processed Alaskan seafood.

U.S. officials are also attacking Japan's beef quotas, demanding that Japan abolish its quotas on beef imports or at least raise them from the 135,000 tons promised for fiscal 1982. Japanese cattlemen, however, are flatly opposed to lifting the quotas, having already been plagued with debts and expenses incurred due to the high cost of feed and other supplies for their herds.

Even the video game field has become an area of controversy for Japanese business. Japan's Nintendo Co. Ltd. is being sued by Universal City Studios, Inc., for allegedly misappropriating the character of King Kong. Nintendo manufactures the "Donkey Kong" video game, which features a giant ape who's run off with a terrified blond girl. The game's player controls a "rescuer" who must climb several sets of stairs to save the girl—while avoiding fireballs and barrels hurled by the ape. Universal representatives hope to recover damages "in the millions" from Nintendo based on the number of arcade games sold.

This example may be one of the more trivial cases, but it simply points out the far-reaching implications of the unstable U.S.-Japan relationship.

Still, some in Japan argue that anti-Japanese sentiment has been somewhat exaggerated. The Japan Times noted that Prof. Fuji Kamiya of Keio University felt U.S. public opinion toward Japan is not as bad as it seems.

(Part III of Six-Part Series)

Kamiya noted that Zbigniew Brzezinski, aide to former President Jimmy Carter, listed in the New York Times Magazine (Dec. 1981) several crisis areas that confronted U.S. foreign policy. Japan-U.S. relations was not among them.

Kamiya, who was quoted from the May issue of President magazine, concluded: "This does not mean ... that active U.S. specialists on international issues are not aware of the importance of Japan and Japan-U.S. relations. But they feel Japanese problems are more stable than the more serious ones. In other words, Japanese-U.S. relations are basically not as bad as the Japanese media say they are." #

LOW-COST AUTO LOANS

currently at 15%

INSURED SAVINGS

currently paying 7%,
insured to any amount

IRA ACCOUNTS

now available

FREE SAVINGS INSURANCE

up to \$4,000

FREE LOAN PROTECTION INSURANCE

pays loan in full in the event of death

Now over \$5 million in assets

NATIONAL JACL CREDIT UNION

PO 1721 Salt Lake City, Utah 84110 (801) 355-8040

From PACIFIC NORTHWEST: by Karen Seriguchi



Familiar Dilemma

Kirkland, Wash.

A few days after he addressed the JACL National Board in May, the remarkable Sen Nishiyama visited the home of an old friend, Pete Okada of the Lake Washington Chapter, and spoke to an informal gathering of the Nikkei.

A Nisei who left his native Utah in the 1930s after obtaining a master's degree, Sen Nishiyama quickly rose to a high post in the Japanese government and was later to interpret for Ambassador Reischauer and to translate for the Japanese audience the televised Apollo moon-landing, making him the best-known interpreter in Japan.

Now a Sony executive on a speaking tour through the United States, Nishiyama expounds a multi-layered message: the U.S.-Japan relationship is the most important bilateral relationship in the world, and its cutting edge is the economic partnership, comprising 20% of all trade with the free world. It is in business, even more than in cultural exchanges, said Nishiyama, that one makes special efforts to understand one another.

Nishiyama believes that a greater understanding of the trade situation will ease current frictions. True, Japan has imposed some unfair trade barriers, he explained, but Japanese businesses also face protectionist measures. Mikan, for example, are prohibited in 43 states, although Japan imports more than a hundred thousand tons of citrus fruits from the U.S. a year. Japanese airlines suffer restrictions of flights that disembark passengers in the U.S. And so on.

More importantly, while the trade balance does tip to Japan's advantage, the overall balance of payments actually favors the United States. Bank service charges, loan charges, and tourist dollars (yen) make up the difference. This flow of money translates into U.S. jobs.

Perhaps one role Nikkei could play in U.S.-Japan relations, said Nishiyama, would be to disseminate such facts, to paint a more accurate and more interesting picture of the economic give-and-take between the two countries.

New Mexico gears for Aug. 1 Matsuri

ALBUQUERQUE, N.M.—New Mexico JACL's second annual Japanese Festival will be held again at Taro's Garden on Sunday, Aug. 1, 1:30-8 p.m., and is expected to attract all Nikkei in the state, according to chapter president Calvin Kobayashi and publicist Randy Shibata.

Meantime, the chapter picnic held June 27 was attended by some 60 members and friends who feasted on member-grown watermelons, played games and shared bento. Japan's concert guitar artist Yoshio Homma, who is touring the nation this summer, was the afternoon highlight.

The 1000 Club

(Year of Membership Indicated)
 * Century; ** Corporate;
 L Life; M Mem; C/L Century Life
SUMMARY (Since Dec. 31, 1981)
 Active (previous total)1,466
 Total this report15
 Current total1,481

JUNE 21-25, 1982 (15)
 Chicago: 2-Dr George Matsumoto, 19-Rev Min Mochizuki.
 Boise Valley: 17-Sam Fujishin.
 French Camp: 7-Mike Hoover, 17-Yoshio Ted Itaya.
 Milwaukee: 25-Satoshi Nakahira*.
 Philadelphia: 24-Mary D Murakami, 27-Dr Tomomi Murakami.
 Portland: 29-James K Kida.
 Sacramento: 32-Joe Matsunami*.
 Salt Lake City: 25-Seiko M Kasai.
 San Fernando Valley: 8-Marvin Kroner.
 Twin Cities: 26-Sumiko Teramoto.
 Venice-Culver: 29-Fred Hoshiyama.
 West Valley: 6-Dr C Ken Miura.

CENTURY CLUB*
 4-Joe Matsunami (Sac), 2-Satoshi Nakahira (Mil).

Join the JACL

Three Generations of Experience ...

FUKUI Mortuary, Inc.

707 E. Temple St.
 Los Angeles, CA 90012
 626-0441

Gerald Fukui, President
 James Nakagawa, Manager
 Nobuo Osumi, Counsellor

Carson sells fireworks for scholarship fund

CARSON, Ca.—Since adjacent Torrance banned the sale of fireworks this year, Carson JACL fireworks booth on Carson St. next to Budget Nursery and Flowers by Ruthie was open earlier from June 28 through July 4 to raise funds for the chapter scholarship. Volunteers were also recruited to keep watch 24 hours. Chapter also held a rummage sale at the same time.

Selma JACL awards chapter scholarship

SELMA, Ca.—Ron Kurisu, a graduating senior at Selma High School, recently received the Selma JACL chapter scholarship. The son of Sam and Sayeko Kurisu was class senator on the student council, president of the Central California Jr. Young Buddhists Assn., and member of the Selma High and Valley Relay swim teams.

Ways & Means Thanks You

Donations Received May 21-31, 1982
 \$100 - \$26—M/M Mits Kaneko.
 \$25 - \$10—M/M Harry K. Honda, Mrs. Ruiko Moritsugu.

Donations Received: June 1-18, 1982
 \$100 - \$26—Fred T. Kataoka.
 \$25 - \$10—Mrs. Chieko Tada, Easy Fujimoto, Ms. Y. Wada, Dr. Henry Kazato, M/M Torao Hirohama, Mrs. Chiyo Inouye, M/M George Kenmotsu, Douglas Yamada, M/M Ken Nihei, Stanley Nagata, M/M Tosh Taniguchi, Tom Mochimaru, Mrs. Y. Tokunaga, Arthur T. Kumada, M/M Gene J. Takahashi, R. Sumida.

Shimatsu, Ogata and Kubota Mortuary

911 Venice Blvd.
 Los Angeles
 749-1449

SEIJI DUKE OGATA
 R. YUTAKA KUBOTA

Sen Nishiyama's talk aroused conflicting emotions for me: feelings of vindication (that Japan wasn't totally to blame, after all) were alloyed by resentment of that very relief. For why should I have felt defensive about the trade imbalance in the first place? The task of formulating an intelligent position on trade relations gets tangled in irrationalities.

But no one can deny that relations between the U.S. and Japan affect Japanese Americans. What does that mean for JACL?

That question leads to a web of others that catch us in a familiar dilemma: If we perform "ambassadorial" duties for Japan, won't that reinforce the general misconception that we're Japanese (foreigners)? But if that misconception persists no matter what we do, won't we better off helping to ease tensions by sharing information with our fellow Americans? Would that make us flacks for Japanese businesses, or voices of

protest against racist scapegoating? Will a Nikkei voice be credible, or do we need to ask non-Nikkei organizations for help on this issue? Is it even JACL's role to promote an understanding of Japanese trade?

I am confident that the JACL leadership (and the National Council, especially, during the Convention—Ed.) will be able to weave a coherent organizational policy on this issue and look forward to stimulating discussions at the National Convention.

New JACL Life Membership Rate urged

The San Diego JACL resolved a regular JACL life membership rate of \$500 be established in the membership by-laws, with the principal totally invested so that its interest (conservatively estimated at 15%) represents the dues to include the chapter rebate. "Some of the interest could be returned to the fund to build it up and as a hedge against future inflation," the Chapter board resolution suggested.

* If 2,000 regular life members can be recruited, a \$1 million trust fund would be formed, Mas Hironaka, chapter president, pointed out.

THE STATE OF UTAH INVITES YOUR BID ON THE FOLLOWING LAND FOR SALE

Req. No. 600147 Parks and Recreation

It is the intention of the Division of Parks and Recreation to dispose of 133.97 acres of property which is located adjacent to Redwood Road in North Salt Lake, Davis County. Of the above mentioned acreage, five acres will be withheld at this time for use by the Division of Corrections. Should the State desire to exercise its option on the above mentioned five acres, an easement to the property must be provided to the State at no additional charge. Should Corrections decide not to exercise its option, the purchaser of the 128.97 acres will be given the first opportunity to acquire the remaining five acres at the appraised price of \$12,500.00 per acre.

NORTH SALT LAKE (DAVIS COUNTY): 133.97 Acres, as follows: All of the NE 1/4 of section 3, Township 1 North, Range 1 West, Salt Lake Base and Meridian, less the south 377 feet thereof and the east 50 feet thereof. Zoned M-1 except the east 300 feet which is Zoned C-M (Commercial and Light Manufacturing)

MINIMUM ACCEPTABLE BID: \$12,500 PER ACRE

For further information call Denis H. Browning (801) 533-4616, or Mike Barker (801) 533-4466. Bid forms are available at Rm. 147, State Capitol Bldg.; Natural Resources Bldg., 1636 West North Temple, Rm 116; and State Surplus Property, 522 So. 700 West, Salt Lake City. Bids will be accepted in Rm. 147, State Capitol Bldg. no later than 10:30 a.m. Tuesday, July 20, 1982.

DENIS H. BROWNING
 State Surplus Coordinator

- a) Hawaii Ocean Frontage
- b) Private Lakes
- c) Ski Resort

PARTNER WANTED FOR 50% OWNERSHIP IN ALL THREE PROJECTS

233 acres with 1/4-mile ocean frontage on the Island of Hawaii / 361 acres in Montana with two private lakes and an approved subdivision for 165 lots / Interior Ski Resort with potential for large development; now successful skiing operation. / Asking price 4.7 million. Contact Bruce Deildal or L.A. Regen at TOD MOUNTAIN DEVELOPMENT LTD., P.O. Box 869, Kamloops, B.C. V2C5M8 (604) 372-5757.

VIDEO MOVIES BY MAIL ORDER

3,000 titles to select from

On Golden Pond

Kagemusha

Yojimbo

Shogun

Taps

and more

Send \$2.50 for catalogue.



VIDEO ACTION

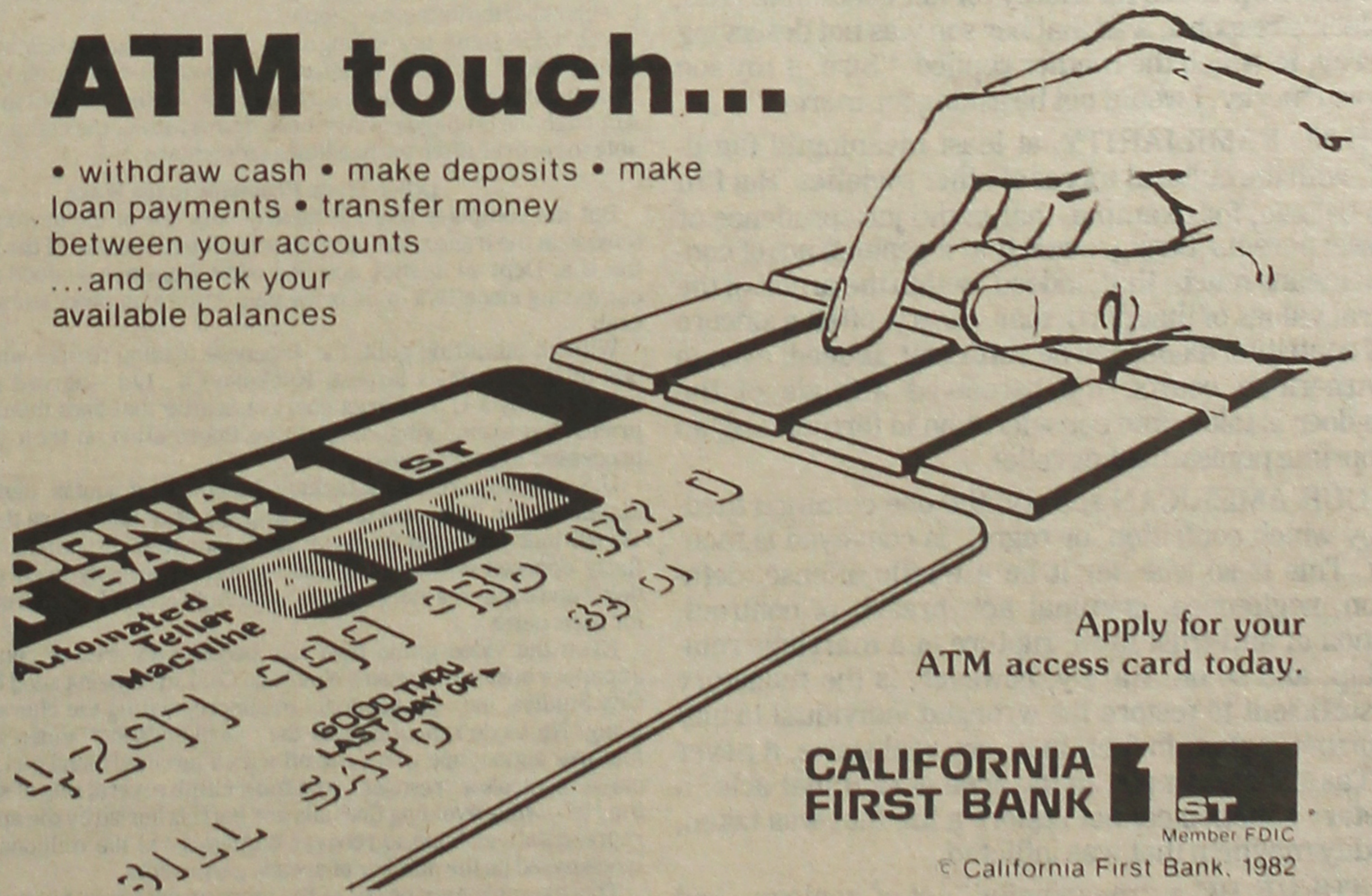
708 West First St. (P) • Los Angeles, CA 90012
 Phone: (213) 617-3545

Complete coupon and return to VIDEO ACTION.

Name _____
 Address _____
 City _____
 State _____ Zip _____
 Enclosed is \$2.50 for Video Movie Catalogue. (Do not send cash)

ATM touch...

• withdraw cash • make deposits • make loan payments • transfer money between your accounts ...and check your available balances



Apply for your ATM access card today.

CALIFORNIA FIRST BANK



Member FDIC
 © California First Bank, 1982

PC Business-Professional Directory

Your business card copy here for 25 weeks at \$25 per three-lines. Each additional line \$6 per same period. • Larger (14 pt.) type counts as two lines. Logo extra.

Greater Los Angeles

Asahi Travel
Supersavers/Group Discounts/Apex
Fares/Computerized/Bonded
1111 W Olympic Blvd, LA 90015
623-6125/29 • Call Joe or Gladys

FLOWER VIEW GARDENS #2
New Otani Hotel, 110 S Los Angeles
Los Angeles 90012 Art Ito Jr
Citywide Delivery (213) 620-0808

NISEI FLORIST
In the Heart of Little Tokyo
446 E 2nd St.: 628-5606
Fred Moriguchi Member: Teleflora

Nisei Travel
1344 W 155th St, Gardena 90247
(213) 327-5110

SAISHO-SEVEN / Room & Board
LOS ANGELES, CALIF.
733-9586

CUSTOM MADE FUTON
(213) 243-2754
SUZUKI FUTON MFG.

TOKYO TRAVEL BUREAU
530 W. 6th St. #429
Los Angeles 90014 680-3545

Travel Guild
404 S. Figueroa St., Level 6
Los Angeles 90071/(213) 624-1041

YAMATO TRAVEL BUREAU
321 E 2nd St, #505
Los Angeles 90012 624-6021

Orange County

Executive-Realtors
VICTOR A KATO
Investments - Exchanges - Residential
8780 Warner Ave., Suite 9
Fountain Valley, CA 92708
Bus. (714) 848-4343 res. (714) 962-7447

THE PAINT SHOPPE
LaMancha Center, 1111 N Harbor
Fullerton, Ca / 714-526-0116

San Diego
PAUL H. HOSHI
Insurance Service
852-16th St (714) 234-0376
San Diego 92101 res. 264-2551

Ventura County
CALVIN MATSUI REALTY
Homes & Commercial
371 N. Mobil Ave, Suite 7, Camarillo
(805) 987-5800

Monterey Peninsula
RANDY SATOW REALTOR
"GOLF CAPITAL OF THE WORLD"
Pebble Bch, Carmel, Monterey Peninsula
Ocean Front Homes, Condos, Investments
YOSHIO R. SATOW --- (408) 372-6757

San Jose
Kayo K. Kikuchi, Realtor
SAN JOSE REALTY
996 Minnesota Ave., #100
San Jose, CA 95125-2493
(408) 275-1111 or 296-2059

Tatsuko "Tatty" Kikuchi
General Insurance Broker, DBA
Kikuchi Insurance Agy.
996 Minnesota Ave., #102
San Jose, CA 95125-2493
(408) 274-2622 or 296-2059

EDWARD T. MORIOKA, Realtor
580 N. 5th St., San Jose
(408) 998-8334/5 res. 371-0442

Watsonville
Tom Nakase Realty
Acreage, Ranches, Homes, Income
TOM NAKASE, Realtor
25 Clifford Ave. (408) 724-6477

Northern California
'Seiko's Bees'
Pollination Service (Reg. #24-55)
4967 Hames Dr., Concord, CA 94521
(415) 676-8963

Established 1936
Nisei Trading
Appliances - TV - Furniture
239 S. San Pedro St.
Los Angeles 90012
(213) 624-6601

CHIYO'S
Japanese Bunka Needlecraft
Framing, Bunka Kits, Lessons, Gifts
(714) 995-2432
2943 W. Ball Rd, Anaheim, Ca 92804
(213) 617-0106
450 E. 2nd St., Honda Plaza
Los Angeles, CA 90012

Tell Them You Saw It
In the Pacific Citizen

San Francisco

ASUKA Japanese Antiques
25A Tamalpais Ave., San Anselmo
(415) 459-4026
JULI (YORICHI) KODANI

Seattle, Wa.

YES! AT WONDERFUL
UWAJIMAYA

Great Oriental gifts.
gourmet foods and unique kitchen appliances

CHINATOWN:
6th Ave. S & S King St.
624-6248

BELLEVUE
15555 N.E. 24th
747-9012

SOUTHCENTER
246-7077

All stores open Sundays.
Chinatown, Southcenter
open weekday evenings

Imperial Lanes
Complete Pro Shop, Restaurant, Lounge
2101-22nd Ave So. (206) 325-2525

The Intermountain
Mam Wakasugi
Sales Rep, Row Crop Farms
Blackaby Real Estate, Rt 2 Bx 658, Ontario,
Ore 97914 • (503) 881-1301/262-3459

The Midwest
SUGANO TRAVEL SERVICE
17 E Ohio St, Chicago 60611
(312) 944-5444 784-8517, eve, Sun

Washington, D.C.
MIKE MASAOKA ASSOCIATES
Consultants - Washington Matters
900-17th St NW, Washington, DC 20006
202-296-4484

TOYO Myatake STUDIO

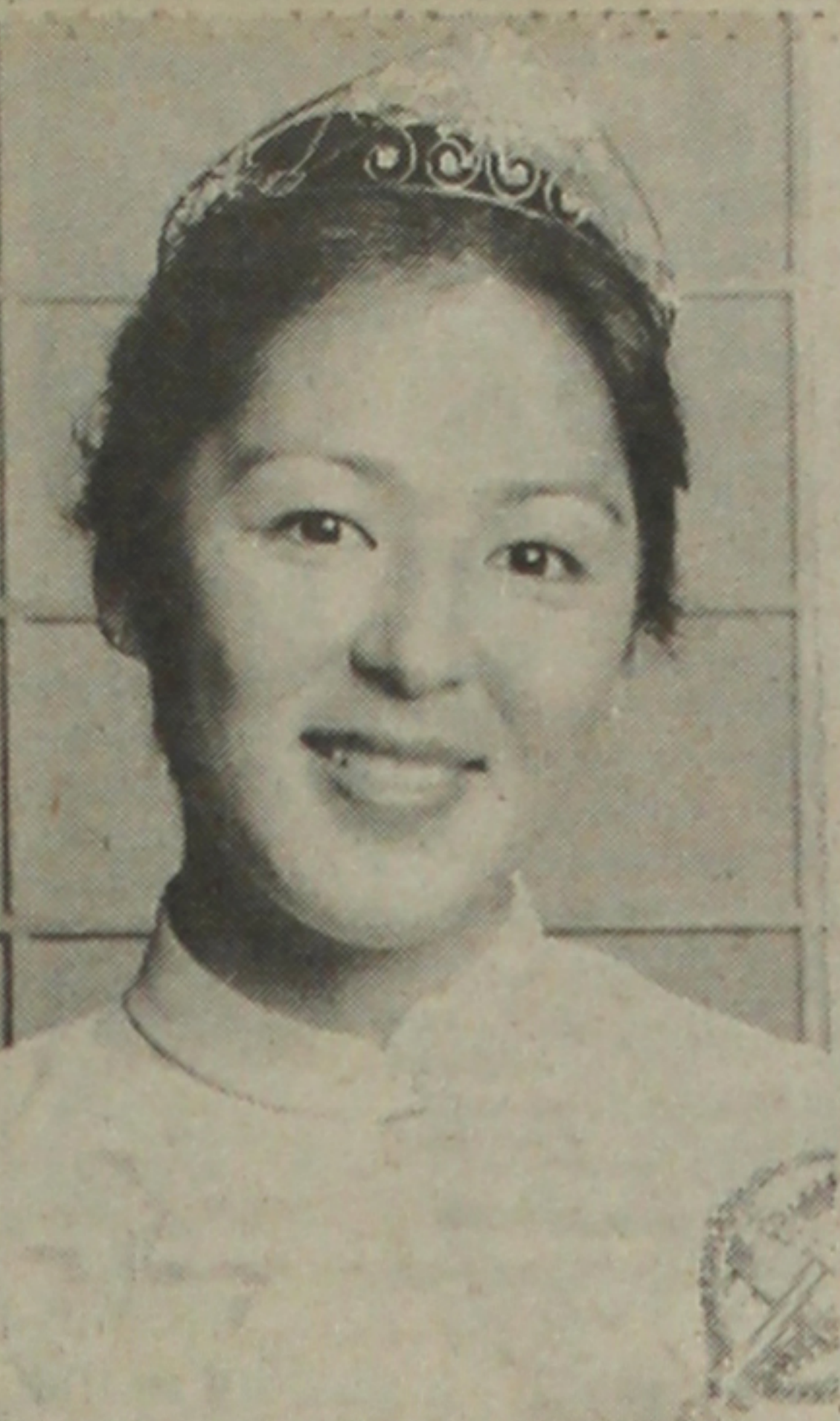
318 East First Street
Los Angeles, CA 90012
(213) 626-5681

Kimura PHOTOMART
Cameras - Photographic Supplies
316 E. 2nd St.
Los Angeles, CA 90012
(213) 622-3968

ED SATO
PLUMBING AND HEATING
Remodel and Repairs
Water Heaters, Garbage Disposals
Furnaces
Servicing Los Angeles
293-7000 733-0557

Complete Home Furnishings
Koby's Appliances
15120 S. Western Ave.
Gardena 324-6444 321-2123

AT NEW LOCATION
Aloha Plumbing
Lic. #201875 - Since 1922
PARTS - SUPPLIES - REPAIR
777 Junipero Serra Dr.
San Gabriel, Ca 91776
(213) 283-0018



SEATTLE QUEEN — Mary Leslie Ishii, a music education student at Univ. of Washington, Seattle, is named 1982 Japanese Community queen and will reign as Miss Cherry Blossom at the Seattle spring festival. Daughter of George and Marie Ishii, she will guest at the upcoming Nisei Week Festival at Los Angeles.

PC PEOPLE

Awards
Among foreign nationals decorated by the Japanese government April 29 were two Boston-area professors who received the Order of the Rising Sun, Third Class: Dr. Donald H. Shively, professor of Japanese history and literature at Harvard (previously at UC Berkeley and Stanford); and Dr. Jacob P. denHartog, MIT professor emeritus in mechanical engineering, whose contributions enormously raised the level of engineering in Japan. Leading figures in this field in Japan were students of denHartog at MIT.

Courtroom
Harry T. Tanaka, 61, was sworn in as the newest judge on the Hawaii Intermediate Court of Appeals in ceremonies at the state supreme court June 24. An attorney in Honolulu since 1954, he will serve a 10-year term on the three-member panel ... Dean Matsunaga, 1971 graduate of the U.S. Air Force Academy and a Los Angeles resident, was a June graduate from Boalt Hall, UC Berkeley's law school ... Cary Nishimoto, Pacific Southwest JAACL district governor, retired July 2 from the Los Angeles city attorney's office where he had served for nearly a decade. He is now in private practice with an office in Little Tokyo's Kajima Bldg.

Education
Planning to major in computer science in the fall at UC Berkeley, Jeff Okamoto won the 1982 Transamerica Corp. Merit Scholarship. He is the son of Steve Okamoto, manager of Transamerica Occidental Life Insurance Co. office at Redwood City, and was head student at Royce High School. Merit Awards range from \$250 to \$2,500 depending upon scholastic achievement and financial need ... Brigham Young (Hi.) sophomore Sylvia Maeda, a Kohala High School graduate, received a \$500 scholarship from the local American Society of Women Accountants.

Medicine
Calif. Gov. Brown reappointed Dr. Lindy F. Kumagai, 54, professor and chief of the endocrinology section at UC Davis Medical Center, to a new term expiring June 1, 1986, on the state board of medical quality assurance. The Univ. of Utah graduate in medicine has been on the licensing board since June 1980 ... March of Dimes Birth Defects Foundation has awarded Dr. Henry Ichiho, chief of the maternal and child health branch in Hawaii's Dept. of Health, a \$1,375 fellowship ... Melanie Oda of Toronto was recently awarded the Gail Donner scholarship in nursing. A 1977 graduate from Ryerson, she plans to study psychiatric nursing.

CLASSIFIED ADS

Friday, July 16, 1982 / PACIFIC CITIZEN—7

Classified rate is 12¢ a word, \$3 minimum per issue. Payment with order. A 3% discount if same order appears four times.

BUSINESS OPPORTUNITY—Colo. 03
Colorado
Lodge with newly remodeled bar & restaurant plus store, cabins, gas, propane & corrals on 10+ acres in National Forest. (Can be family operated).
Call (303) 856-3218 or write
Alexander Lake Lodge,
Star Route
Cederedge, CO 81413

BUSINESS OPPORTUNITY—Oregon 03
JOINT VENTURE PARTNER for Timeshare Resort. \$2,000,000 investment in 20-unit luxury condominium resort with river/golf frontage, Mt. Hood (Portland), Ore. Project completed but never occupied; timeshare documents approved and ready for market. Excellent return and tax benefits. Secured by real estate. Principles only.
CALL
Johnston Hawks, Ltd.
7511 N. Edgewater
Portland, OR 97203
(503) 289-7753

EMPLOYMENT—(Calif.) 06
TYPESETTER WANTED. Experienced, fast & accurate. Part-time eves & weekends now. Then, full-time days in fall. Call Women's Graphic Center, (213) 222-2477

FOR SALE (Calif.) 07
CAMERA STORE 10-YR. LEASE for sale. High traffic, prime corner 1 block from Disneyland. 1,015 sq ft. Rent 1200 mo. 1765 S. Harbor, Anaheim, CA 92802

POSITION WANTED 08
SKIPPER
Wants position on motor yacht, 100-ton lic. years of boating & mech. experience. Exceptional with people. Have boat purchase expertise. Will relocate. Available now. For more detailed background, call:
Bud J., (213) 822-7041.

REAL ESTATE (Acreage) 09
CANADA
VANCOUVER ISLAND, 1,650 acs.—Fantastic ocean views 10 mins. from downtown Nanaimo. This last large parcel well located, zoned 20-acc. lots, rds open, 5 test wells, 12-40 gallons per minute. Price US\$5 million or Canadian \$6.5 million. Call 604/245-8476 owner or write K. Porte, P.O. Box 820, Ladysmith, B.C., Canada, V0R2E0

FOR SALE—AUTOS
JEEP, CARS, PICKUPS
From \$35. Available at local Gov't Auctions. For Directory call 805-687-6000 Ext. 1317. Call refundable.

Collector's 18-k Gold Watches—Vacheron/Constantin \$20 gold piece that opens with solid gold band; \$7,500. Corum zodiac w/solid gold band; \$6,000. Corum Rolls-Froyce w/leather; \$4,000. Matching Rolls-Froyce cuff links \$1,000. Corum ingot gr15 w/leather \$3,000. Come visit Bob Goldberg, Cabana 667, The Arizona Billmore or call (602) 955-6600.
Collector Items & Classic Cars

Tell Them You Saw It
In the Pacific Citizen

MAUI, HAWAII
Kalama Terrace—Condominium 1 Br—L—Kit—Bath—Furnished.
Shared Pool & Common Areas. Assume 14% Loan—good tax shelter.
Call (503) 256-3963

Los Angeles Japanese Casualty Insurance Assn.
COMPLETE INSURANCE PROTECTION

Aihara Insurance Agy. Inc.
250 E. 1st St., Los Angeles 90012
Suite 900 626-9625

Anson T. Fujioka Insurance
321 E. 2nd St., Los Angeles 90012
Suite 500 626-4394

Funakoshi Ins. Agency, Inc.
321 E. 2nd St., Los Angeles 90012
Suite 300 626-5275

Inouye Insurance Agency
15029 Sylvanwood Ave.
Norwalk, CA 90650 864-5774

Itano & Kagawa, Inc.
321 E. 2nd St., Los Angeles 90012
Suite 301 624-0758

Ito Insurance Agency, Inc.
1245 E. Walnut St, Suite 112
Pasadena 91106; 795-7059, 681-4411

Kamiya Ins. Agency, Inc.
327 E. 2nd St., Los Angeles 90012
Suite 224 626-8135

The J. Morey Company
11080 Artesia Blvd, Suite F, Cerritos, CA 90701; (213) 924-3494, (714) 952-2154

Sato Insurance Agency
366 E. 1st St., Los Angeles 90012
626-5861 629-1425

Tsuneishi Insurance Agency, Inc.
327 E. 2nd St., Los Angeles 90012
Suite 221 628-1365

Wada Asato Associates, Inc.
16520 S. Western Ave, Gardena 90247
(213) 516-0110

REAL ESTATE—Hawaii 09
MAUI, HAWAII—9.66 acres, zoned hotel/commercial/condo. Asking \$12 million. Excellent financing. Free color brochure. Surfside Realty, Inc., Box 1042, Kihei, HI 96753. (808) 879-4402.

REAL ESTATE—Georgia 09
Atlanta, Ga. 300 Units
9% down for positive cash flow. 5.5x GSI. \$5.6 Mil. or trade?
Owner/Agent
(408) 423-3178

REAL ESTATE (Washington) 09
INTRODUCING OLYMPIC SHORES
A sea to mountain community of rare natural perfection on Washington State's Olympic Peninsula. Limited to 20 only—5 acre park-like custom home sites including waterfront, amenities too numerous to mention. Five acre home sites with terms start at \$75,000.
Call Owner:
(206) 232-5539
or
(206) 385-2045

FILMING IN HAWAII
Secluded privacy, beautiful ranch-style home in park-like setting on 1/2 acre in La Canada. 3BR, spa. Ideal for outdoor entertaining. EXCHANGE for comparable home in Hawaii or lease for \$1,650 month. From July thru March.
DON HELLENGA
(213) 790-5567
In Hawaii: (808) 732-5577

REAL ESTATE (Hawaii) 09

RENTALS (Hawaii) 09
MAUI CONDO
Fabulous designer's home near Kaanapali, 2-3 BR, 2 Ba. 1700 sq. ft., wetbar, sunken sub, all amenities, 3 lanais, sleeps 6 to 8. Call for brochure and reasonable rates.
Susan J., (415) 332-8891, or write,
S. Martel, 150 Curry Ave., Sausalito, CA 94965.

RENTAL—Tennessee 10
KNOXVILLE, Tenn., WORLD'S FAIR—4 bdrm house, 15 min from Fair. Renting to groups of 2 to 10 people. \$50 per bdrm and less depending on length of stay.
(615) 868-2097.

Plaza Gift Center
FINE JEWELRY - CAMERA - VIDEO SYSTEM
WATCHES - PEN - TV - RADIO - CALCULATORS
DESIGNER'S BAGS - COSMETICS - BONE CHINA

Authorized SONY Dealer
111 Japanese Village Plaza Mall
Los Angeles, Ca 90012
(213) 680-3288

EAGLE PRODUCE CO.
Division of Kittys Vegetable Distributors, Inc.

BONDED COMMISSION MERCHANTS
WHOLESALE FRUITS AND VEGETABLE

929-943 S. San Pedro St.
CITY MARKET
Los Angeles, Ca. 90015
Phone: (213) 625-2101

Empire Printing Co.
COMMERCIAL and SOCIAL PRINTING
English and Japanese
114 Weller St., Los Angeles 90012 628-7060

Japanese Phototypesetting
TOYO PRINTING CO.
309 So. San Pedro St., Los Angeles 90013
(213) 626-8153

MIKAWAYA SWEET SHOPS
244 E. 1st St., Los Angeles
(213) 628-4945
2801 W. Ball Rd., Anaheim
(714) 995-6632
Pacific Square, Gardena
1630 Redondo Beach Blvd.
(213) 538-9389
118 Japanese Village Plaza
Los Angeles / (213) 624-1681

DePanache
Today's Classic Looks for Women & Men
Call for Appointments:
Phone 687-0387
105 Japanese Village Plaza Mall
Los Angeles 90012
Toshi Otsu, Prop.

CENSUS

Continued from Front Page

uated from college.

Health is a matter of great concern on the part of the aged, as recommendations from the 1981 White House Conference on Aging indicate. About 5% are living in institutions (board and care homes, intermediate care facilities, nursing homes) and it is estimated that 40% of those who are institutionalized do not belong there but have no place else to go. Eighty per cent of the elderly suffer from some kind of chronic illness (diabetes, arthritis, high blood pressure, etc.) but most manage to function without serious limitations. This data from the California Dept. of Aging portends major shifts in public policy and definite changes in life styles. In its report, "Future Directions for Aging Policy: A Human Service Model", the Subcommittee on Human Services of the House Select Committee on Aging the following possibilities for legislative and administrative changes are recommended:

1—In a nation where the old are growing older, the full floor of ser-

vices must be mandated only for those who need it the most, the frail elderly (75 plus) and those who have reached functional dependence before this age.

2—Direct, effective service delivery is the primary goal of the Human Service Model. To this end, the independence of the Administration on Aging within the Department of Health & Welfare.

3—Simplification and decentralization of administration is the final goal with a recommendation that there be a merger of Title XX services to the elderly under the Older Americans Act.

How does all this affect the Issei and the rapidly growing number of older Nisei? Are our concerns and needs the same as those of the majority population? How does it compare with those of the other minority groups?

The common goal of all persons is to live out their days in dignity . . . with adequate housing, reasonably good health and sufficient income to keep them independent. The 1982 National JAFL Convention will offer a workshop focused on aging and retirement issues. The Committee urges your attendance!

Powell St. Festival set July 31-Aug. 1

VANCOUVER, B.C.—Over the past four years, Japanese Canadian groups here sponsored the Powell St. Festival, named after the prewar area where Japanese community life was centered, at Oppenheimer Park. It will be sponsored this year (July 31-Aug. 1) by the local JCCA. #

PC's Calendar of Events

- JULY 17 (Saturday)
 - New Age—Las Vegas fun trip.
 - San Francisco—"Go For Broke" book party, Mas Satow Bldg, 1-5pm.
 - Los Angeles—Miss Sansei Calif Pageant, Bev Hilton Hotel, 7pm (Clavell Writing Prize).
 - Sacramento—Rev. Hogen Fujimoto Testimonial dnr, Red Lion Inn, 5:30pm.
 - Oxnard—Obon festival, Buddhist Church, 2-10pm.
 - Salt Lake City—Obon Festiv (2da), Buddhist Temple.
- JULY 18 (Sunday)
 - NC-WNPDC/Eden Township—Preconv dist sess, Blue Dolphin, 9am.
 - Sacramento—Bazaar, Parkview Presbyterian Ch.
- JULY 20 (Tuesday)
 - Salinas Valley—Bd mtg, Cal First Bank Mtg Rm, 7pm (3d Tue).
- JULY 21 (Wednesday)
 - San Jose—Bd mtg, Calif 1st Bnk, 1st & Younger, 7:30pm (3d Wed).
 - San Mateo—Bd mtg, Sturge Presbyt'n Ch, 8pm (3d Weds).

- JULY 23 (Friday)
 - Contra Costa—CARP mtg, EB Free Methodist Ch, 8-10pm (4th Fri)
 - Sacramento—Rev. Hei/Gloria Takarabe apprec dnr, Wong's Islander. (Info: 443-464)
- JULY 24 (Saturday)
 - Marina—Theater party, East West Players: "Pilgrimage".
 - Seattle—Green Lake reunion (2da), Bush Garden dnr (Sat); picnic, Carkeek Pk, 9am (Sun).
 - Pasadena—Tanabata Matsuri, Pac Asia Museum, 5:30pm
- JULY 25 (Sunday)
 - Seattle—1000 Club golf tourney, Jefferson Course; tour, 11am; Awd dnr, 6pm, Perry Ko's South China Res't.
- JULY 28 (Wednesday)
 - Gardena Valley—Conv Bd mtg, Union Fed S/L, 7pm. (4th Wed)
 - Monterey Peninsula—Bd mtg, JACL Hall, 7pm (4th Wed).
- JULY 31 (Saturday)
 - Sacramento—Beat the Heat benefit, Buddhist Church, 8pm.



MAN OF THE YEAR—Frank White, retiring president of the Camarillo (Ca.) Chamber of Commerce (left), presents the group's "Man of the Year" Award to Shigeru "Shig" Yabu on June 17. Next to Shig is his wife Irene and new chamber president Jim Jevens. Mr. Yabu, executive director of the Camarillo Boys and Girls Club since 1967, was honored for his service to the community.

ASIAN Continued from Front Page

arrivals to this country—we need a liaison agency at the state level with access to both community groups and state bureaucracy," she told the International Examiner's Ron Chew.

One important and unique function of the Commission is to coordinate joint lobbying efforts by Asian community groups, she said. The auditor's report also does not take into account many intangibles, Luna said, which are key in evaluating the question of whether the Commission should continue.

The Commission often plays an active role in informing community groups about various types of racist legislation such as the Simpson/Mazzoli immigration bill currently in the U.S. Congress, Luna said. "The Commission helps to educate people about these types of laws before they are passed and helps coordinate efforts to oppose them," she added.

Luna said she views the negative audit of the Commission as part of the State Legislature's lack of commitment to social and health programs serving minority and low-income groups.

Luna noted, however, that the Governor's office has expressed support for continuation of the Commission. And she's hopeful community groups will also come forth to write letters and make phone calls on behalf of the Commission. For more information, the Commission can be reached at (206) 464-5820. #

SHARE PARADISE . . .
OWN AN OCEANVIEW CONDOMINIUM ON

MAUI

FOR AS LITTLE AS
\$8,900
FULL PRICE
(Internal Ownership)

FOR MORE INFORMATION
Call now toll free: **800-432-7257**
(Ext. 881-A)

You could be enjoying all this at Maui Lea:

- Maui's famed Gold Coast bathed in the Hawaiian Sun.
- Luxurious condominiums, designer furnished including complete kitchens, linens, TV and a variety of floor plans.
- Attractive terms available.
- Huge pool, tennis, putting green, shuffleboard and 54 holes of golf nearby.
- The opportunity to exchange with 600 resorts in over 30 countries.
- Ownership advantages are just like a home. (You can use, rent or sell.)

WRITE TODAY TO:
VACATION CONCEPTS UNLIMITED
610 Newport Center Dr. Suite 483,
Newport Beach, CA 92680
Ask how to qualify for complimentary Hawaiian Tour

—SPRING SPECIAL—

TOKYO \$655 round trip
HONG KONG \$880 round trip/with TOKYO

BEST OF THE ORIENT GROUP DEPARTURES

Mid-Summer Tour July 31-Aug 20
Autumn Tour Oct 02-Oct 22

COMPLETE VISA SERVICE
Japan Club Tours, 354 S. Spring #401
Los Angeles, CA 90013
(213) 622-5091 / 622-5092 • Outside Cal. (800) 421-9331

Our '82 Escorted Autumn Tours

- EAST COAST & FOLIAGE (Oct. 4th) SOLD OUT
- Ishida URA-NIHON JAPAN (15 days) OCT. 3rd
- Tokyo, Sendai Dist., Sado, Shiga Kogen, Matsumoto, Takayama, Kanazawa, Amanohashidate, Tottori, Hiroshima . . . Via JAL
- JAPAN AUTUMN ADVENTURE & Kyushu Ext. OCT. 15th
- MEXICO TOUR (9 days) NOV. 8th
- Guadalajara, Chapala, Morelia, Patzcuaro, Taxco, Mexico City, Optional—Acapulco

For full information/brochure:

TANAKA TRAVEL SERVICE
441 O'Farrell Street (415) 474-3900
San Francisco, CA 94102

1982 Tours by Kokusai Travel

- San Juan-Caribbean Cruise**
MS Cunard Countess
Aug. 11 - 10 Days - Now \$1,500.
San Juan, Caracas, Grenada, Barbados, St. Lucia & St. Thomas.
- Hokkaido-Tohoku Tour**
Sept. 20 - 14 Days - Most Meals - \$2150.
- Nisei Vets-Orient** (Few spaces remain)
Oct. 22 - 14 Days - Most Meals - \$2195.
- Nisei Vets - Japan** (Few spaces remain)
Nov. 4 - 14 Days - Most Meals - \$1720.

1983 Tours by Kokusai

- Easter-Mexico Cruise**
Mar. 26 - 7 Days - \$1165.
 - Spring-Japan Furusato Tour**
Apr. 3 - 13 Days - Most Meals - \$1950.
 - China, Orient & Japan Bonsai Tour**
May 14 - 18 Days + Japan Option.
 - 442d European Tour**
Sept. 30 - 22 Days - Many Meals - \$2500.
- All tours include: roundtrip flights, transfers, baggage portorage, hotels, sightseeing and meals as noted.

Kokusai International Travel, Inc.
400 E. 2nd St., Los Angeles, CA 90012
(213) 626-5284

42nd Annual NISEI WEEK FASHION SHOW

Sponsored by L.A.-Nagoya Sister City Affiliation

SUNDAY, AUGUST 1, 1982
BILTMORE HOTEL
12 NOON
TICKETS: \$25 / PERSON

CLIP AND MAIL

Mrs. Paula Stone
645 N. Wilcox Ave., 3-A
Los Angeles, CA 90004

Enclosed is \$ _____ for _____ reservations to the Nisei Week Fashion Show.

Name _____ (Please Print)
Address _____
City, State, ZIP _____
Telephone: [_____]

Make checks payable to LANSKA.

Seat me with _____

No. 2,197

244 S. San Pedro St., Room 506, Los Angeles, CA 90012 • (213) 626-6936

pacific citizen

If you are moving, allow 3 week's advance notice. Report your change of address with old address label below.

New Address: _____
City, State, ZIP: _____
Effective Date: _____

• Thank you for using this form. It saves PC 25 cents in fees.