

# Pacific Citizen

April 8, 1983

The National Publication of the Japanese American Citizens League

ISSN: 0030-8579 / Whole No. 2,233 / Vol. 96 No. 13

(30¢ Postpaid)

News Stand 20¢

## JACL Headlines...

### Summary of Board Meeting Actions

### Satow Estate leaves \$5,993 to JACL

### D.C. Leadership Program deadline soon

Page 5

### Shimomura: 'Going For It' on Redress

Page 4

## 100th/44nd veterans fete 40th anniversary in Hawaii

HONOLULU—Sen Daniel K. Inouye told other Japanese American veterans of the famed 100th/442nd fighting units of World War II, that honor led the Nikkei to volunteer for service 40 years ago.

"All of us may give different explanations, use different words—some eloquent, some less so—but I believe it all boils down to a matter of honor," Inouye said in remarks prepared for delivery at the March 27 anniversary luau.

During the early stages of the war, Nisei were not allowed to serve in the armed forces. The restriction was lifted in 1943 at the personal order of President Franklin D. Roosevelt.

"We volunteered," Inouye said, "with the expectation that we would be in combat to fight for a nation that had sent some of us or our families and loved ones into desolate barbed wire camps, euphemistically called 'internment centers.' We volunteered to uphold the flag of a nation that had declared us '4-C,' undesirable for military service, in the same category as enemy aliens. We volunteered to risk

life and limb for a nation whose majority considered us 'Japs' and synonymous with the enemy."

Inouye, who lost his right arm during the last days of the war, said he and other volunteers were still considered "less than desirable" even after they were segregated into the 442nd.

The Democratic senator recalled how the Nisei were ill-treated as they were shipped to the European front in the converted troop ship U.S.S. Lurline.

"We were guarded along the route by military police," Inouye said. "Instead of looking like proud and gallant warriors marching to battle, we must have appeared as prisoners of war being transported to some prison camp."

"Whenever we tried to wave to friends, the MPs would admonish us and make us stop. And if some agonized father or mother tried to rush out from the crowd to touch or shake a hand, or embrace in one last hug, they would be pushed away, or, as in one case that I witnessed, even beaten away. This was the

Continued on Page 4



**HONORING CORAM NOBIS PETITIONERS**—Sam Fujimoto, president of the Japanese American Republican Club (right), presents Min Yasui with a plaque from the many sponsoring community organizations who held a fund raiser in L.A.'s Chinatown March 31 for the coram nobis efforts of Yasui, Gordon Hirabayashi and Fred Korematsu. At far left is Dale Minami, one of the Bay Area attorneys representing Korematsu; at far right is Harry Kajihara, representing the JACL PSWDC, one of the sponsoring organizations.

## Japanese cars 'vastly superior' Survey says Americans favor quality of Japan-made autos

BOSTON—A recent survey conducted by the Christian Science Monitor indicates that many American car buyers feel the better product is still stamped, "Built in Japan."

The wide ranging survey, distributed by Obun Intereurope, Ltd., Tokyo, drew responses from 1,153 Monitor readers, of whom 578, or 50.1 percent, acknowledged owning and driving a Japanese car. The other half own and operate either a U.S.-built car or a European import.

The Monitor noted that clearly, millions of U.S. car buyers believe that Japanese cars are not only more dependable and fuel efficient, but also of better quality and cost less than those built by Detroit. Also, buyers are increasingly aware of quality or lack thereof.

A total of 373 respondents rate Japanese-built cars as "vastly superior" in workmanship while 374 say they are "superior" and 205 say "much better" than U.S.-built cars. Only 23 rate the Japanese vehicles a "poor," while 3 (out of 1,153) say "very poor." Of the respondents, 142 rate U.S. and Japanese-built cars "about the same."

On fuel economy, 253, or 21.9 percent of the total, say Japanese cars are "vastly superior," while 413 say "superior." Only 4 respondents call their performance "poor" in this area.

Significantly, those who now own a Japanese car possess a higher opinion of that nation's motor vehicles than those who do not. For example, 22 percent of those who consider the workmanship on Japanese cars "vastly superior" to that of U.S.-built cars, now own a Japanese car. Only 10.1 percent of the non-owners rate the Japanese cars so high. Of the owners, 47.1 percent say the workmanship was "about the same," while 39.9 percent of the non-owners checked the "same" box.

It was on the safety issue that the U.S.-built cars come off the best. Only 29 respondents vote the Japanese cars as "vastly superior" in safety while 71 and 98, respectively, say "superior" and "much better." However, 566—nearly half the total response to the survey—rate the Japanese cars as "about the same" in safety as U.S. built-cars, while 260 rate them "poor," and 72 "very poor" in terms of safety.

But U.S. carmakers still suffer an image problem, in terms of producing a quality product. Despite its \$80 billion program to redesign, reengineer, and resize its total automotive fleet, getting the message across to the "tire kicker" on the hunt for a new car is hard. Too, the problems that plague some of the domestic industry's new vehicles do not help although many motorists do believe that the domestic carmakers have upgraded the quality of their cars. Even so, the image persists that U.S.-built cars still have a long way to go.

"The perception of U.S. motorists is that U.S. quality is improved, but still poor," says B. J. Coughlan, general marketing manager for Lincoln-Mercury division of Ford Motor Company.

### Imports Feed Unemployment

With 250,000 American auto workers still on long-term layoff, 715 of the respondents to the Monitor survey feel that Japanese automobile imports are contributing to the high rate of unemployment in the U.S.; 414 say they do not. Twenty-four (2.1 percent) say they don't know.

Flush with success in the global auto market and feeling the heat in the U.S., Japanese automakers have extended for a third year their voluntary curb on car shipments to the U.S. (1,680,000 units a year).

Japan has recently gone a step further to ease trade frictions, announcing March 26 that it would revise several of its laws that discriminate against imports and promised to simplify import regulations that have confounded efforts to bring foreign products into the country.

The Associated Press reported that the plan calls for a revision of 17 separate laws found to discriminate between domestic and foreign products in setting product standards, testing and certification requirements.

It also outlines administrative steps to simplify the red tape sur-

Continued on Page 4

## Marutani seeks Pennsylvania Supreme Court judgeship

PHILADELPHIA — Judge Bill Marutani of the Philadelphia Court of Common Pleas is one of six candidates running for an open seat on the Pennsylvania Supreme Court in the May 17 state primaries. He is believed to be the first Japanese American on the Mainland seeking a statewide office.

With support from political and independent groups, his decision to run for the high office was made in mid-March, according to Dr. Tom Tamaki, who heads the Nikkei Friends of Judge Marutani Committee, which opened a financial campaign to assist in the election.

Marutani, 60, was first appointed to the bench in 1975 by then Gov. Milton Shapp. He was the top votegetter in the November, 1977, election with 194,615 votes for a 12-year term, pacing a field of 11 other candidates in a city-wide race.

Currently a member of the U.S. Commission on Wartime Relocation and Internment of Civilians, he hails from Kent, Wash., interned with his family during World War II in a U.S. concentration camp. He served three years (1944-47) in the Army, being discharged as an officer with Military Intelligence Service, and returning to his studies. He finished Dakota Wesleyan University in 1950 and graduated in law from the Univ. of Chicago in 1953. He joined the Philadelphia law firm of McCoy, Evans and Lewis, where he practiced for 23 years, becoming a senior partner.

In 1967, Marutani presented oral arguments before the U.S. Supreme Court in the case of Loving v. Virginia, which declared anti-miscegenation laws unconstitutional.

A longtime member of the Japanese American Citizens

Continued on Page 8

## Coram nobis fundraiser: Nikkei attorneys 'rewriting history'

LOS ANGELES—A fundraising reception was held March 31 to support the attorneys currently involved in the coram nobis petition cases of Gordon Hirabayashi, Fred Korematsu and Min Yasui.

Yasui was the featured speaker for the evening, delivering a rousing, emotional oration to the audience of nearly 200 at the Miriwa Restaurant in Chinatown.

He noted that the attorneys working on the cases were "rewriting history" and that their efforts would "not only benefit Japanese Americans, but all Americans."

Hirabayashi, Korematsu and Yasui are seeking, through a writ of error coram nobis, a reversal of their World War II convictions in which they had been charged with violating curfew orders and refusing to follow exclusion and evacuation regulations imposed by the U.S. government.

Representatives of the sponsoring organizations were present for the event: Leslie Furukawa, president of the Japanese American Bar Assn.; Harry Kajihara, representing the JACL PSWDC; Fred Fujioka, president of the Japanese American Democratic Club; Tsutomu Maehara, president of the Little Tokyo Business Assn.; Takeo Taiyoshi of the LTBA; and Sam Fujimoto, president of the Japanese American Republican Club.

Although Hirabayashi and Korematsu were unable to attend the reception, several of the attorneys representing

them and Yasui were present; Dale Minami, Lorraine Bannai, Donald Tamaki and Dennis Hayashi of San Francisco and Oakland (Korematsu); and Frank Chuman of Los Angeles (Yasui). Attorneys who were unable to attend were Kathryn Bannai and Arthur Barnett of Seattle (Hirabayashi); Michael Wong of Oakland, Karen Kai, Russell Matsumoto and Robert Rusky of San Francisco (Korematsu); and Peggy Nagae of Eugene, Or. (Yasui).

The sponsoring groups also presented plaques for each of the petitioners to Yasui and the attorneys representing the other litigants. Fujioka, emcee for the event, lauded the efforts of the three men, calling them "heroes" of the Nikkei community.

## Marin Human Rights Comm. urges redress

SAN RAFAEL, Ca. — The Marin County Human Rights Commission passed a resolution March 14 supporting the JACL's efforts to seek redress, including adequate compensation for former Nikkei internees.

The Commission also went on record "acknowledging that such past injustices committed against persons by our government must be rectified as recognition of the moral and democratic principles which made this great nation of ours the leader of humanitarian ideals."



Photo by Kaz Takeuchi

**BRADLEY MEETS JACLERS**—Los Angeles Mayor Tom Bradley shares a humorous moment with JACL members at the March 25 dinner meeting sponsored by the West Los Angeles Chapter in Little Tokyo Towers. Seated at the head table with the Mayor were (l to r): Charlie Inatomi, WLA Chapter President; John Saito, PSWDC Regional Director; and Cary Nishimoto, PSWDC Governor.



## Noguchi must go to Superior Court

LOS ANGELES—Former county coroner Dr. Thomas T. Noguchi lost his last administrative battle to win his old job back when the county's Civil Service Commission voted 4-1 on March 30 to uphold its previous decision to demote him. Noguchi must now take his appeal to the Superior Court, and that battle may take as long as three years.

In reaction to the Commission's final decision, Noguchi's attorney, Godfrey Isaac, said, "I can't say I'm shocked." He called the Commission's decisions "political rather than factual" and said that they marked "the death of the civil service commission."

Noguchi, 56, was demoted last year by the Board of Supervisors on charges of mismanagement and misuse of his department. The former coroner appealed his demotion and hearings were held before the Commission.

Yet despite the recommendation by the Commission's own hearing officer, Sara Adler, that Noguchi should be reinstated, four of the five commissioners upheld the demotion.

The only commissioner supporting a reinstatement of Noguchi was George Nojima, an appointee of Supervisor Kenneth Hahn, the only Board member who opposed Noguchi's demotion.

Noguchi said he wasn't surprised by the decision either. He vowed to "work hard in maintaining the independence of the medical examiner system" and "will

work hard for the people (because) the civil service system must be preserved."

Meanwhile, the Noguchi support group, Concerned Americans for Responsible Progress (CARP), issued a statement noting that the former coroner "did not receive a fair and objective decision from the commission members, but rather one tainted by politics."

CARP also said it would continue to update the progress of Noguchi's case and it thanked the many community groups who supported him during his attempt to win back his job.

### Education

**Dr. Donald T. Hata, Jr.**, of CSU Sacramento history department, is chairing the April 16, 1:30 p.m. session, "Historian's Perspective on Depression-Time California", of the California History Institute, April 15-16, at Univ. of Pacific, Stockton.

### Government

**Togo W. Tanaka** of Los Angeles has been appointed to the California State World Trade Commission. The announcement was made recently by Secretary of State, March Fong Eu.

Tanaka, chairman of Gramercy Enterprises of Los Angeles, is a director of the Federal Reserve Bank of San Francisco. #

### Military

**Dean Alan Sadanaga** of Vanden High School, Solano County, was recently nominated by Representative Vic Fazio (4th Congressional District, California) to the Air Force Academy, Military Academy at West Point, and to the Naval Academy. Dean was the only senior to be nominated to all three academies by Congressman Fazio. Dean's parents, Colonel and Mrs. John Sadanaga, are active both in the Solano JACL and the Suisun Nisei Clubs.

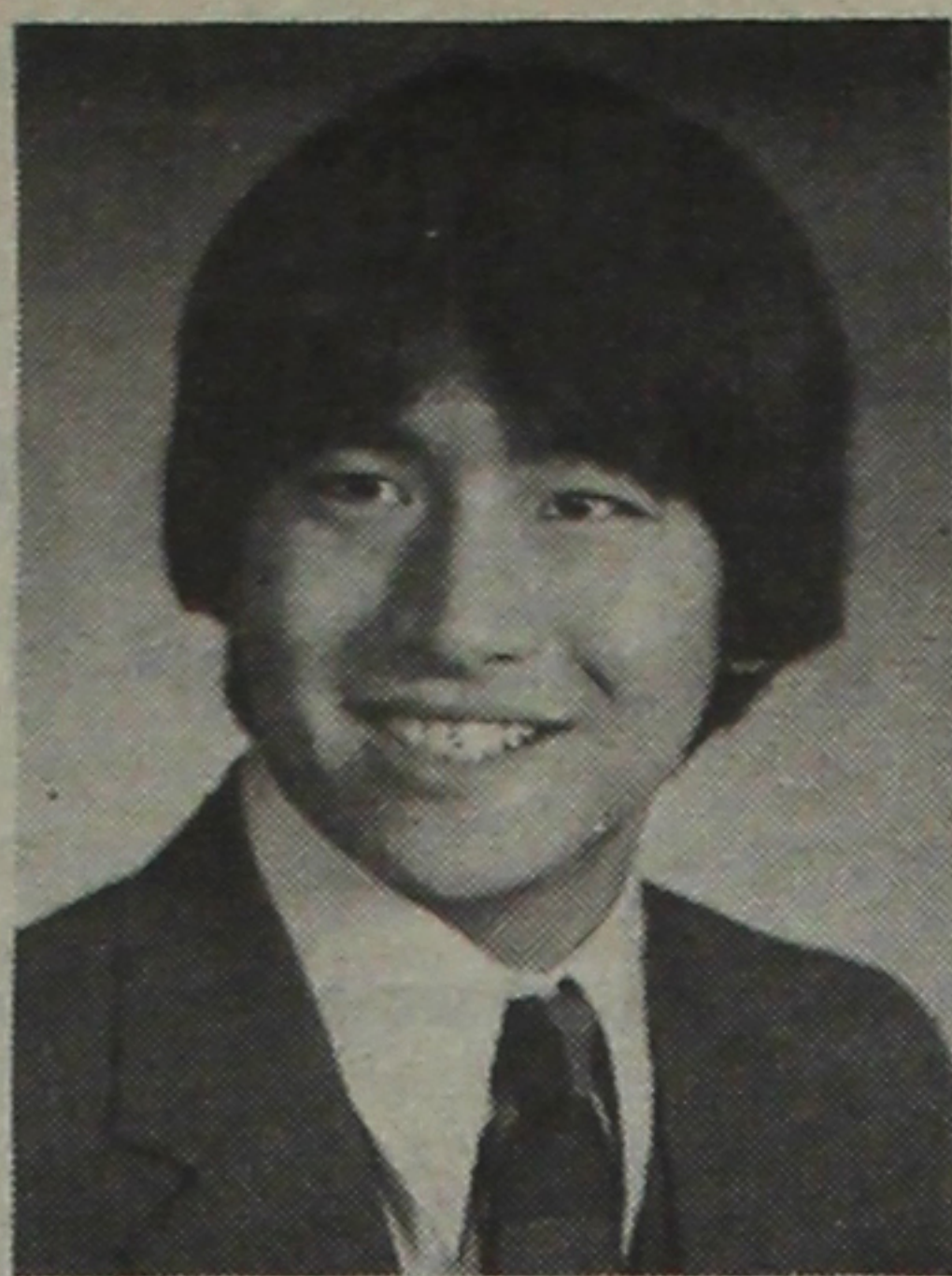
## Gardena JCI director Hiroto to be honored

GARDENA, Ca.—William T. "Wimpy" Hiroto, Executive Director of the Gardena Valley Japanese Cultural Institute will be the guest of honor at a \$150-per-plate fund raising dinner benefiting the Japanese Cultural Institute and the South Bay Keiro Nursing Home.

The testimonial dinner will be held Thursday, May 26, 1983 at the Bonaventure Hotel in Los Angeles and is being planned to recognize Mr. Hiroto's contributions and community services over the past 30 years.

"Wimpy's unselfish and dedicated services in both the Gardena and Li'l Tokyo communities have never been adequately chronicled," Stated dinner chairman, Vincent Okamoto, "primarily because much of Wimpy's efforts and talents have been expended 'behind the scenes'."

For the past seven years Hiroto has served the JCI as Executive Director. It was primarily through his efforts that the JCI received \$4.8 million dollars to provide a much needed 101-unit senior citizen housing complex. Hiroto will also be remembered as the publisher/editor of the Li'l Tokyo based "Crossroads," the only all-English, Japanese-oriented, tabloid newspaper from 1963-1971. He has also been involved with the development of City View Hospital; Keiro Nursing Homes, the charter Japanese American Optimist Club, Yellow Brotherhood anti-drug movement; and the Southern California Nisei Golf Association. For more info, call Okamoto at (213) 540-3315. #



Eric Koide

### Awards

**Eric Koide**, a senior at Dobbs Ferry High School in Dobbs Ferry, NY, placed third in the annual nationwide Westinghouse Talent Search for aspiring scientists. Eric's research project at Michigan State University involved a study of immuno-biology and gene analysis of Thy-1 (a membrane marker for specialized tissue cells). He plans to study medicine at either Yale or Harvard in the fall. Eric is the son of Drs. Samuel S. and Sumi Mitsudo Koide of the New York JACL.

**Margaret Tominaga**, a 3.77 GPA student at University High School in Los Angeles, was the recipient of the UCLA Alpha Delta Alumnae Scholarship for 1982-83. The scholarship of \$500 is awarded each fall to Asian American women students, based on academic achievement and financial need. The Chi Alpha Delta Alumnae will hold their annual Scholarship Benefit Bridge Tea on May 1 at the West L.A. Buddhist Church. For more info call Mabel Ota, (213) 294-4533.

### Business

**Kenji Neyama** was elected Operations Manager of Pacific Central Company in Gilroy, Ca. Neyama joined Pacific Central, a manufacturer of school, office, and college paper goods, in 1961. He is an active member of the VFW Post 9970, the Gilroy JACL, and the Santa Clara Valley JACL Dance Club. Pacific Central was founded in 1961, so Neyama is one of the founders of the company, which is a division of 130 year-old Bradner Central, a paper merchant and converter.

## ASPEN HOTEL PARTNERSHIP INVESTMENT OPPORTUNITY.

Introducing a unique opportunity to share in the ownership of a first class resort hotel and benefit from all the advantages of being a hotel owner. Tax shelter. Share in hotel profits. Hotel use for your own vacation. Appreciation/investment potential. And, all for much less than you might think.

### INVESTMENT PROFILE

Conceptually, the "condominium hotel," as it is now referred to in the industry, involves the purchase of a hotel room much like the purchase of a unit in a condominium building, in that the owner is deeded his unit of the hotel. The condominium hotel is considered an investment and as such it is registered with the Securities & Exchange Commission and subject to all its guidelines and regulations. And a fine real estate investment it is! Owners share in the net operating profits of the hotel and are entitled to a substantial tax shelter as well. And they can use the hotel themselves up to two weeks every year.

### THE ASPEN PRODUCT

The Woodstone Inn is a successful 91 room first class hotel at the base of Aspen Mountain in one of the resorts best locations. The Woodstone's amenities include an indoor-outdoor pool with swim-up bar, a beautiful lobby, full service front desk, a superb

restaurant, Jacuzzi, saunas, massage room and underground parking.

It's one of Aspen's best kept secrets and a year-round vacation retreat as well.

### SUCCESSFUL HISTORY, BRIGHT FUTURE

Condominium hotels may be a relatively new investment concept but they have already proven themselves in a number of resorts across the country. The most successful is The Mariner's Inn on Hilton Head Island which just opened for business last month. Mariner's Inn sold out in just six months and today is doing business today. If you write us we'll be happy to tell you about it.

### CONDOMINIUM HOTELS INTERNATIONAL

Condominium Hotels International, Inc. is the country's leading marketer of condominium hotels with offices in Hilton Head Island and in Colorado.

*This is not an offer (in any state where such an offer is prohibited or not registered) to sell or a solicitation to buy. Such an offer can only be made by an effective prospectus, which may be obtained from a Condominium Hotels International, Inc., representative.*

Call Hal Jones 1-(800) 633-2252 Ext. 440 collect or write to the address below:

## CONDOMINIUM HOTELS INTERNATIONAL, INC.

709 E. Durant Avenue, Aspen, Colorado 81611

ASK ABOUT OUR 3-DAY/2-NIGHT INSPECTION OFFER.

"This does not constitute an offer to sell in states where prohibited by law."

## Ota wins Assembly seat in Los Angeles

LOS ANGELES—Mabel Ota gathered the largest number of votes in a field of seven candidates to win the Senior Assembly seat in California's Senior Legislature Election Area 4, which comprises City Council Districts 10 and 4.

Ota's current activities in senior affairs includes: secretary of the Asian Pacific Coalition for Aging; secretary of the Education Commission of the L.A. City Council on Aging; vice president, Seinan Senior Citizens' Center Club. Other volunteer activities include vice president of Program Policy Board of South Central Regional Center for Developmental Disabilities; vice president, Wilshire JACL; administrative board member of Centenary Methodist Church.

She retired 2½ years ago from the L.A. Unified School District after 31 years as an educator. #

Three Generations  
of Experience . . .

**FUKUI  
Mortuary, Inc.**

707 E. Temple St.  
Los Angeles, CA 90012  
626-0441

Gerald Fukui, President

Nobuo Osumi, Counselor

**Shimatsu, Ogata  
and Kubota  
Mortuary**

911 Venice Blvd.  
Los Angeles  
749-1449

SEIJI DUKE OGATA  
R. YUTAKA KUBOTA

Sumitomo Super Checking

## Checking at Sumitomo Earns Greater Interest.

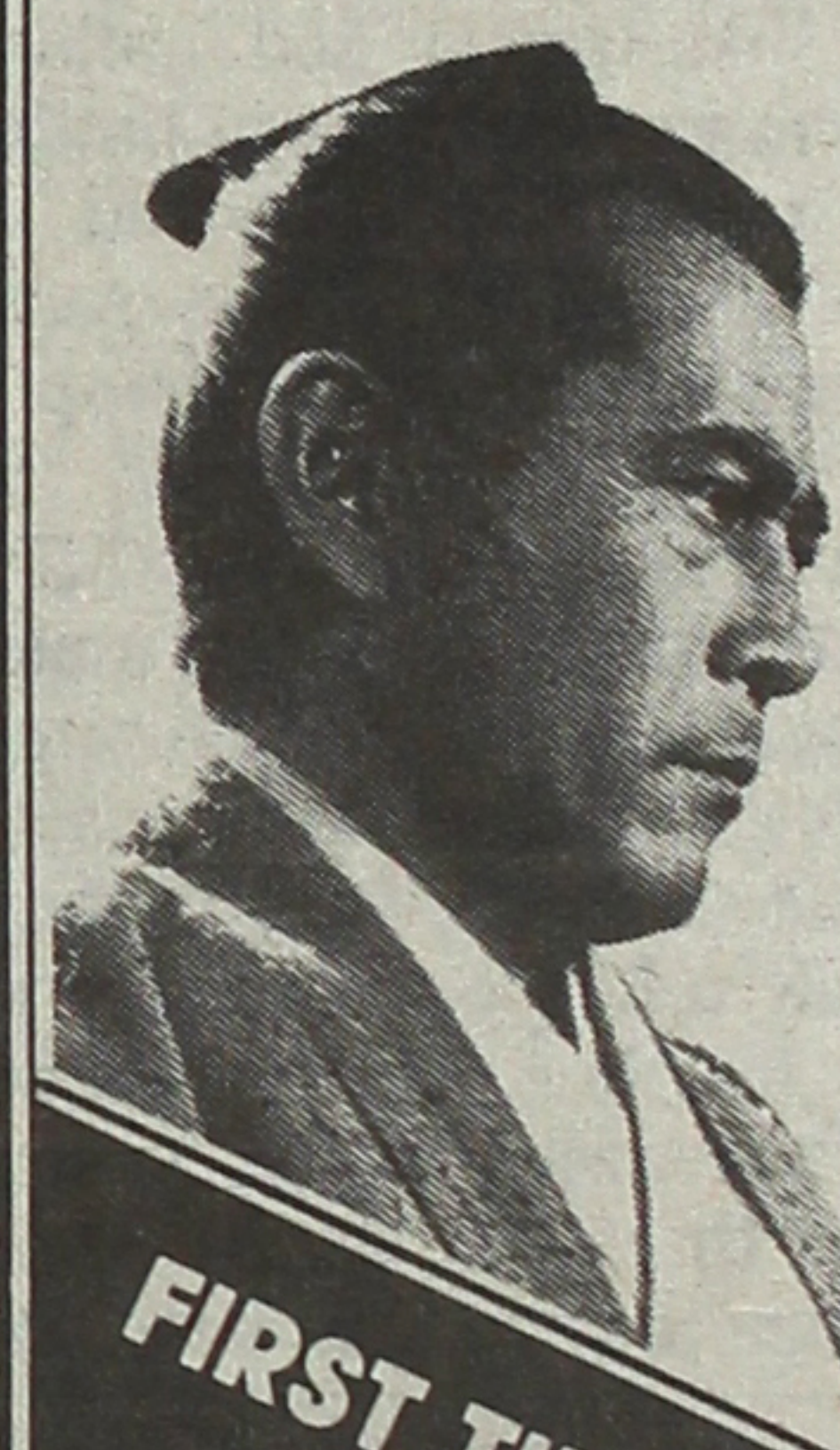
Sumitomo's Super Checking\* gives you all the advantages of a checking account and more. Earn the highest interest Sumitomo has ever offered on checking by maintaining an average balance of \$2,500. Enjoy unlimited check-writing privileges, have the safety of FDIC insurance, and of course, use our statewide network of Automated Teller Machines to deposit, withdraw or transfer funds. Our ATM transactions can be as fast as 12 seconds.

Inquire at your nearest branch office for information about Sumitomo Super Checking.

\*Individuals, sole proprietors, governmental units and certain nonprofit organizations are eligible for Sumitomo Super Checking.

**Sumitomo Bank**

Sumitomo Bank of California Member FDIC.



**VIDEO ACTION  
PRESENTS**

- ☐ Love and Faith (Oginsama)  
Toshiro Mifune, Takashi Shimura
- ☐ The Phoenix (Hinotori)  
Masao Kusakari, Tatsuya Nakadai
- ☐ Murder in the Doll House  
(Midare Karakuri)  
Yusaku Matsuda, Hiroko Shino
- ☐ Nomugi Pass  
(Ah Nomugi Toge)  
Shinobu Otake, Mieko Harada

**SPECIAL PRICE**  
All 4 videocassettes for \$249  
**REGULAR PRICE**  
\$69 each

**FIRST TIME ON VIDEOCASSETTE  
WITH ENGLISH SUBTITLES**

Please send me:  
☐ VHS ☐ Beta  
☐ All 4 titles  
☐ The above checked titles  
☐ More information

Enclosed is: ☐ Check ☐ Money Order

☐ VISA/MC #

Expiration Date

Add \$3 each for shipping and handling and 6% CA or 6½% LA County resident sales tax. Delivery: 3-5 weeks.

Name

Address

City

State

Zip

**VIDEO ACTION**

708 W. 1st St. • Los Angeles, CA 90012 • (213) 617-3545



## USC's Asian Student Service establishes support group

LOS ANGELES—USC's Office of Asian Pacific American Student Services has formed a new support group, the Asian Pacific American Support Group, to provide financial assistance to APA programs, reports J.D. Hokoyama, director of APASS.

APASS is the year-old office established to help the University meet the growing needs and concerns of its Asian Pacific American students. The 3,200 APA students currently enrolled in the undergraduate, graduate, and professional schools comprise 14% of USC's total student population.

Hokoyama, who has served as acting national director of the JACL, and as principal of Maryknoll School in the Los Angeles Archdiocese, points to the accomplishments of the fledgling office, "We have started an APA Consortium consisting of the leaders of the 26 AP student organizations and have begun assisting the groups in planning their activities."

APASS activities receive funding from the Student Affairs Division of the University, but "the funds are not adequate to achieve all of our goals," says Hokoyama. "The Support Group monies will be critical to the beginning of these programs directly serving the APA students."

Charter membership in the Support Group is available through April 20, with a minimum, annual, tax deductible contribution of \$150 for individual membership, or \$250 for family membership. Other charter membership categories are associate (for alumni within three years of graduation) for \$75, sponsor (\$500), corporate (\$500), and patron (\$1,000). Life membership is attained with a one-time contribution of \$2,500.

Non-charter memberships are available to current students for \$25.

Charter members will have the

## UC Irvine to fete Asian Wk. Apr. 11-15

IRVINE, Ca.—The University of California, Irvine will celebrate Asian Week Monday through Friday, April 11-15. Most of the events, which are free and open to the public, will be held in the University Center on campus.

Five clubs representing Japanese, Filipino, Korean, Vietnamese and Chinese students will each host one day of the week's activities. Among events planned are martial arts demonstrations, art exhibits, traditional dancing and music.

For more information, call UCI Cross-Cultural Center at (714) 833-7215.

opportunity to meet with students, and University administrators at a reception on April 10, to be held on the USC campus.

For more information about the Asian Pacific American Support Group or APASS programs, write to: Asian Pacific American Student Services, University of Southern California, Student Affairs Division, Student Union 202 H, University Park, Los Angeles, CA 90089-0890.

Telephone inquiries can be directed to J.D. Hokoyama at (213) 743-4999, or Mary Kurushima at 743-5480.

## Aging Assn. starts L.A. Nikkei chapter

LOS ANGELES—Mrs. Yo Abe, a member of the State Commission on Aging, announced plans for the formation of a Nikkei chapter of the American Association of Retired Persons (AARP).

Assisting in the formation is Dr. Michael Ego, recently appointed to the staff of AARP. According to Dr. Ego, AARP is the world's largest organization of seniors with more than 12 million members, and provides many programs of interest and benefits for the seniors.

Mrs. Abe stated, "AARP is dedicated to the idea that the mature years are an opportunity, not a drawback. However, there are no Japanese American chapters, and it is important to reach out to the many Nisei who are now in the retirement age, or approaching it."

Persons interested in helping to form the first such chapter should attend the initial meeting scheduled for April 11, 2:30 p.m., at Union Church, 401 E. 3rd St., in Little Tokyo. For more information call Mrs. Abe at (213) 680-3729.

## Little Tokyo statue to stay

LOS ANGELES—The board of directors of the Los Angeles Community Redevelopment Agency March 30 approved a motion which would allow a controversial statue to remain in its current location in Little Tokyo, despite the objections of the president of a Japanesetown art patrons group and the administrator of the massive urban renewal agency.

Since its erection in March, the ten-foot high bronze statue of Meiji Era Japanese folk hero Ninomiya Kinjiro had been the focal point of a running controversy between CRA bureaucrats who felt that it was not fine art and Little Tokyo residents and businessmen, who felt that the statue, intended as a tribute to the hard-working spirit of the Issei, belonged in Little Tokyo.

## Cherry Blossom fest slated in East L.A.

MONTEREY PARK, Ca.—The eighth annual Cherry Blossom Festival will be held April 23-24 on the East Los Angeles College Campus, 1301 Brooklyn Ave, and will feature 28 cultural exhibits and seven arts and customs displays.

For more information, call Cherry Blossom Festival chairperson Kathern Inouye (213) 283-9952.

## San Jose Taiko group at Foothill College

SAN JOSE—The San Jose Taiko group will perform on Saturday, April 16 at 7:00 p.m. at the Foothill College Theatre located at 12345 El Monte Road, Los Altos Hills.

Advance tickets are available from Nichi Bei Bussan Department Store, 140 East Jackson Street, and Sakoda's Barber Shop, 605 North 5th Street, and at the door at 6:00 p.m. on the evening of the performance. Admission is \$5.00 (general admission) and \$3.00 (senior citizens and children 12 and under).

For more information, call Sandy Wong at (408) 293-3644.

Tokyo.

CRA Administrator Edward N. Helfeld had threatened to hold local developer Al Taira in breach of contract unless he removed the statue and replaced it with a CRA-approved work of fine art. Meanwhile, those who felt the statue should stay conducted a recent demonstration in favor of it.

At a March 30 meeting, leaders appeared to speak in favor of retaining the Ninomiya statue, which was commissioned by the developer at a cost of \$25,000.

In favor of keeping the statue in its current location were Takeo Taiyoshi, a Little Tokyo book and antique store operator, Kenzo Okubo, owner of local clothing store; and Katsumi Kunitsugu, executive director of the Japanese American Cultural/Community Center.

## Poston Camp II reunion slated in Aug.

SACRAMENTO—"As Time Goes By" has been selected as the theme for the Poston Camp II Reunion. All residents of Camp II, spouses and friends and especially the Issei are encouraged to attend and meet with former teachers, administrators and former residents. The three-day reunion will be held at the Sacramento Inn, I-80 and Arden Way, in Camellia City on Aug. 19-21.

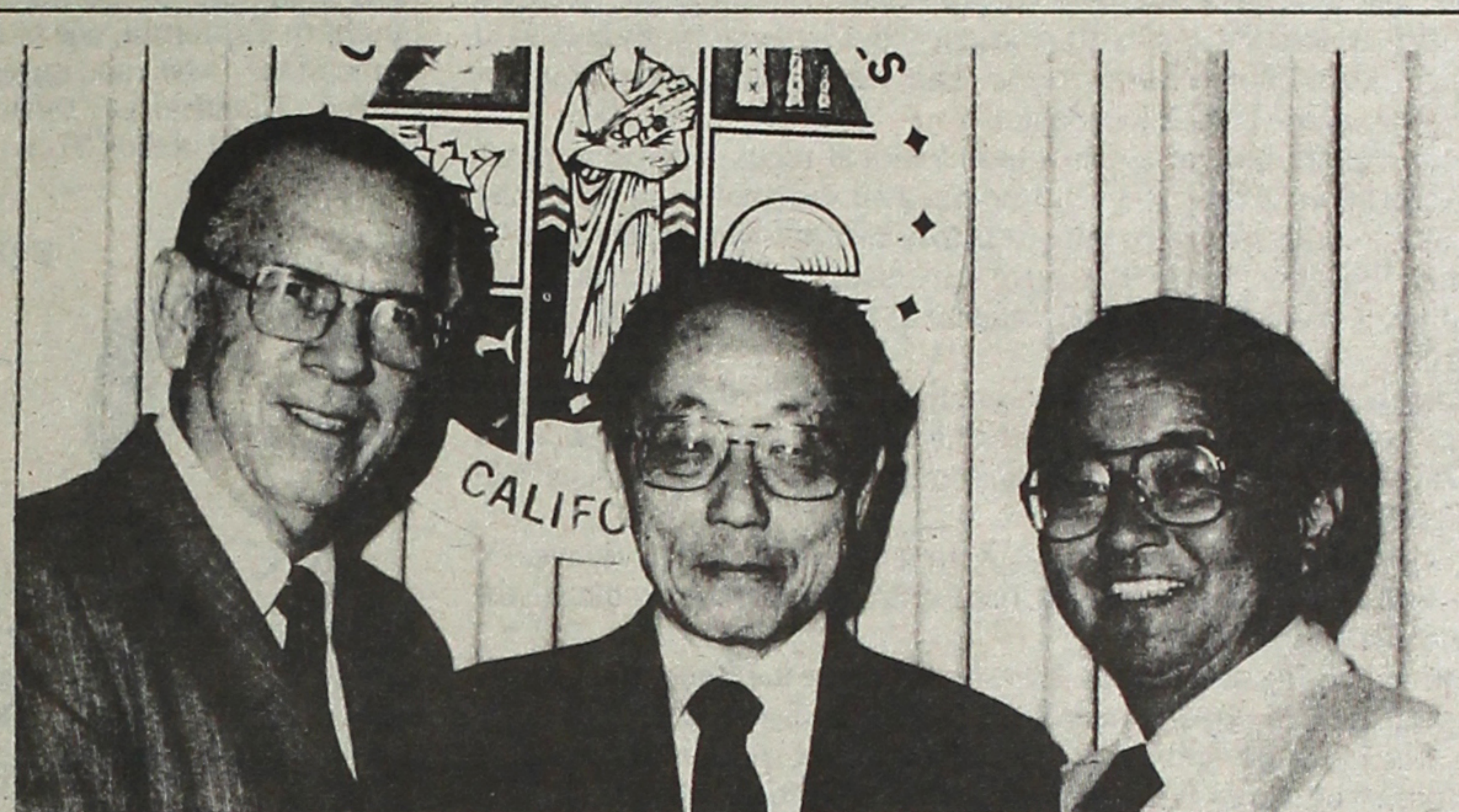
Chairman Roy Hayashi states that the theme "As Time Goes By" is very appropriate for this third reunion because "as time goes by" we appreciate more fully our Issei parents, the camp administrators and staff, our teachers, our classmates, the cooks, drivers and everyone at Camp II that have influenced and made our lives a bit more bearable during those trying and challenging times.

For more information on Camp II Reunion write or call Roy Hayashi, 3951 Happy Lane, Sacramento, CA 95827; (916) 363-3657, or Joan Kitamura Oki, P.O. Box 7118, Sacramento, CA 95826; (916) 383-5665.

## Belmont High's S'43 class plans reunion

LOS ANGELES—Belmont High S'43 class reunion chair Val Rodriguez, 3742 Cazador St., Los Angeles 90065, is seeking the addresses of some Nisei students in the group. No reunion date was indicated. Those who were in the same class as the late Karie Shindo, the late Paul Mayekawa, Ralph Yanari and Shogo Iwasaki should write to Rodriguez.

PAID POLITICAL ADVERTISEMENT



County Supervisor Kenneth Hahn, Col. Young O. Kim, Gardena City Councilman Mas Fukai.

## Col. YOUNG O. KIM

CANDIDATE FOR

Member of Board of Trustees, Office No. 5,  
Los Angeles Community College District

Eric Abe  
Philson Ahn  
Ralph Ahn  
John Aiso  
Nancy Araki  
Ted Asato  
Soorah Buffum  
Rene Casacang  
Lily Lee Chen  
Tong Soo Chung  
Susan Cuddy  
Nina David  
Louise Davis  
Mrs. Ray Dobbin  
Allen Dong  
Sirel L. Forster  
Sam Fujikawa  
Grace Fujimoto  
Monte Fujita  
Mas Fukai  
Harry Fukazawa  
Frank Fukuzawa  
Kaz Furuto  
Remedios Geaga  
David Goldstein  
Philip Kan Gotanda  
George Grandstaff  
Connie Guerrero  
Mrs. Jason Hahn  
Dr. Harold S. Harada  
Tad Hashimoto

Charles Hillinger  
Irene Hirano  
H. K. Honda  
Edwin Hiroto  
Wimpy Hiroto  
Karen Hudson  
Dorothy Huebel  
David Hyun  
Charles Inatomi  
Mary Ishizuka  
Willie Kai  
Bruce Kaji  
Jonathan Kaji  
George Kanegai  
Toy Kanegai  
Tom Kasai  
Jim Kawaminami  
David Kim, Esq.  
Col. Chris Keegan  
Jane Kim  
Keith Kim  
Kiyoshi Kimura  
Dr. Richard Kumashiro  
Kango Kunitsugu  
Harry Kurokawa  
Rev. Peter Kwon  
David Lee  
K. W. Lee  
Kampson Yim Lee  
Chip Mamiya  
Linda Mabalot

Y.B. Mamiya  
William Min, Esq.  
Kiyoshi Minami  
William Mir  
William H. Miyagi  
David Monji  
Hershey Miyamura  
Rev. Paul Nakamura  
Satoru Nakamura  
Moto Nakasaka  
Sam Nakata  
Yosh Nakayama  
Sho Nishida  
David Novack, M.D.  
Vince Okamoto  
Clifford Oscarson  
Dick Osumi  
Col. William Pye  
Ramon Quesada  
Beulah Quo  
Jerry Rhee  
Selma Rhee  
Joon H. Rho, Ph.D.  
Nilda Rimonte  
John Saito  
Henry Y. Sakato  
Lloyd Seki  
Frank T. Segawa  
Ko Shibuya  
Joe Chang Shin  
Dick Shinto

Arthur Song  
Arthur Song, Jr.  
Mitsu Sonoda  
Frank Sugiyama  
Vincent Tajiri  
Norman Tachiki  
Yoshiye Tachiki  
Ben Tagami  
Kenny Takaki  
Mike Takamine  
Diane Takei  
Rev. William S. Terao  
Lloyd H. Toda  
Mike Tsuji  
Paul Tsukahara  
Jim Umeda  
Jack Wakamatsu  
Ruth Watanabe  
Mike Woo  
George Yamada  
Grace Yamada  
Kei Yamaguchi  
Yoshiko Yamaguchi  
John Yamano  
Sid Yamazaki  
Joselyn Yap  
Sada Yonaki

Partial list of supporters.

Citizens Committee to Elect Col. Young O. Kim 16418-B So. Western Ave., Gardena, CA 90247

## The Lawyers Registry Corporation

We direct people to lawyers in specific fields. Call our toll-free number and talk to a Lawyer Registry attorney. He will analyze your concerns and refer you to an independent attorney in your community.

Our service is free.

IF YOU NEED A LAWYER,  
YOU NEED US.

Call 800-752-9937

## APRIL IS HANAMATSURI



Surround yourself with 2500 years of celebration in one month of festivities • Celebrate Hanamatsuri, The Birth of Buddha  
See Graceful Tea Ceremonies • Hear delicate sounds of Japanese music • View giant handcrafted murals • Watch brilliant cherry blossoms dance in the breeze

SPECTACULAR EVENT—11:00am, Sunday, April 10 • A "Live" elephant carries the baby Buddha statue and leads the colorful procession of priests and followers to the site of the public "Sweet Tea Ceremony" in Japanese Village Plaza. Don't miss the chance! • Visit Japan in April • Visit Japanese Village Plaza

Japanese  
Village Plaza  
(213) 620-8861



# Pacific Citizen

Published by the Japanese American Citizens League every Friday except the first and last weeks of the year at 244 S. San Pedro St., Los Angeles, CA 90012; (213) 626-6936. • 2nd Class postage paid at Los Angeles, CA. • Annual Subscriptions—JACL members: \$9.00 of national dues provides one-year on a per-household basis. Non-members: \$16, payable in advance. Foreign addresses: Add U.S.\$8. • News or opinions expressed by columnists other than JACL staff do not necessarily reflect JACL policy.

Floyd D. Shimomura, National JACL President  
Henry S. Sakai, PC Board Chair  
General Manager/Operations: Harry K. Honda  
Editor: Peter A. Imamura  
Advertising: Jane M. Ozawa  
Circulation: Tomi Hoshizaki, Mitsuko Sakai  
Typesetting: Mary Imon. Mailing: Mark Saito

## AUTO Continued from Front Page

rounding certification of foreign products, accept some foreign test data, harmonize Japanese standards with international codes, and involve foreigners in drafting future product standards to bring "transparency" into the system.

A major component of plan would allow foreign automobiles to be certified under the "type designation" system, recognizing foreign test data and sparing imports from the costly and time consuming process of vehicle by vehicle inspection.

However, Henry V. Leonard, manager of General Motors' Japan branch, told the Associated Press "preliminary investigation does not indicate to us that this is of any particular value. It won't really help us in any significant manner, as far as we can see, in taking the cost out of getting imported vehicles into Japan."

Even with the bulk of Japan's technical and regulatory barriers removed, observers note, Japan's complicated distribution system may remain a nemesis to foreign importers in search of a wide-open market.

But on the official level, the move signals an end to what critics have called protectionist government standards that favor domestic manufacturers.

Meanwhile, Japanese carmakers are responding to an increasing pressure by setting up production facilities in the U.S.—Honda, Nissan, and now Toyota, which has a tentative agreement to build cars in a vacant GM plant in California.

If the GM-Toyota deal goes through, Japanese firms will have invested more than \$1 billion in U.S. production facilities by 1984, according to the Department of Commerce.

So while the Japanese are at least trying to ease the trade tensions that exist with the U.S., Americans will continue to have mixed feelings on the issue. The Monitor's survey on autos might reflect such ambivalence, as exemplified by some of the comments received from its readers.

A reader from Newport News, Va., said, "If Japanese carmakers are responsive to American buyers and Detroit is not, should we buy American anyway and thus encourage this unresponsiveness?"

Another reader, however, said, "All I can say is that I try to buy U.S. whenever possible, even though I may have to pay more. I consider this an investment in my job and in my future pension."

An Atlanta respondent said, "Trade problems would be readily solved if the American car companies would design and produce good, well-designed, efficient cars."

trap and we priced ourselves out of the market. It's that simple."

A St. Louis, Mo. reader: "Japan is unfair in using a variety of ways to block American sales in Japan. However, I am not in favor of U.S. barriers on Japanese imports."

And finally, a Taylors, S.C. reader: "Competition is the spice of life."

An interesting finding of the survey pertained to the knowledge level of Americans on the issue. When asked "How would you evaluate the American public's understanding of the U.S.-Japan automobile issue?", 514 said the public was "aware, but weak"; 484 said "limited"; 69 said "non-existent" and 33 said "well informed."

## INOUE

Continued from Front Page

farewell parade of the 442nd."

During the intervening years, the unit had become known as the "Go For Broke" 442nd.

The unit's greatest fame rests with the 1944 Battle of the Lost Battalion, involving a battalion of servicemen from Texas that was caught behind enemy lines in France.

For a week, other Texas units fought in vain to free the battalion, and in the end the Japanese Americans were thrown into the battle.

Two-hundred members of

the 442nd were killed and 600 were wounded, but 211 of the 275 trapped Texans got out alive.

Although the 442nd was given its chance to win glory, Inouye said, "I am absolutely certain that all of us were well aware that we were being used in the rescue because we were expendable... it would have been inconceivable for the 442nd to call upon another regiment to rescue one of our own battalions."

"Notwithstanding the circumstances, the odds and the heavy casualties, we did succeed and we did win the battle. Yes, it was a matter of honor."

## Jewish Committee backs CWRIC

LOS ANGELES—A statement was issued Feb. 25 by Arthur N. Greenberg, President, Western Region, American Jewish Committee, endorsing the conclusions of the Commission on Wartime Relocation and Internment of Civilians:

"The American Jewish Committee strongly endorses the conclusion of the congressional Commission on Wartime Relocation and Internment of Civilians. The relocation and internment of 120,000 Japanese Americans in World War II was a grave injustice. These United States citizens were supposedly entitled to the protection guaranteed by the Constitution. Yet, in the midst of wartime hysteria, fueled by racial prejudice, these protections were swept aside."

"The American Jewish Committee will be joining shortly with the Asian-American Legal Defense Fund in an amicus brief in support of a legal action urging the United States Supreme Court to overturn its World War II decision which upheld the government's shameful treatment of the Japanese Americans."

## Letters

### Some Nice Words

Editor:

For those of us who don't have the opportunity to read news of interest to Nikkei, your coverage is valuable. The feature articles, well-balanced in a variety of interests, and comments following-up on pertinent subjects, are satisfying.

Careful attention in covering both sides of a story makes this paper unique.

MRS. YONE KENNEDY  
(Nikkei alumnus of  
Tanforan and Topaz)  
Yonkers, NY

### For the Record

In the March 18 PC, Pg. 2, the picture, "Coram Nobis Fund-raisers" erroneously identified Koshiro Torii as the president of the Little Tokyo Business Assn. Torii actually represents the Japanese Chamber of Commerce of Southern California, one of the organizations who sponsored the March 31 fundraiser. Torii was a past president of the LTBA.



PRESIDENT'S CORNER: by Floyd Shimomura

## 'Going For It'

Woodland, Ca.

On February 24, the CWRIC issued its factual report on the evacuation and internment in a document entitled "Personal Justice Denied." The report, which correctly condemned the World War II action as a "grave injustice," attracted international press coverage and sparked numerous editorials.

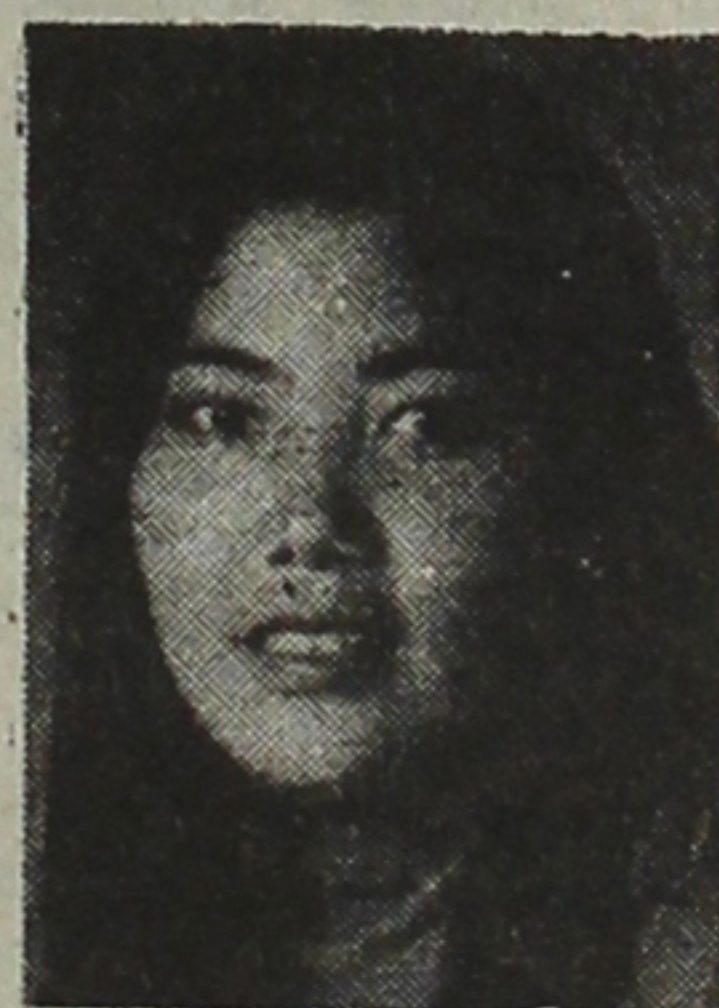
For example, the New York Times, Washington Post, San Francisco Examiner, Los Angeles Times and Tokyo newspapers all ran major stories. There was also extensive coverage on television and radio. Virtually all the coverage was favorable.

At its recent meeting (March 18-20, 1983), the National Board carefully reviewed the current status of the redress program. Min Yasui, National Redress Chair, reported on the extensive media coverage and the fact that the CWRIC will be issuing its final report on economic losses and its all important recommendations for Congressional action in May or June.

Washington Representative Ron Ikejiri advised the Board the JACL must be prepared to move quickly and aggressively in the period following the release of the CWRIC recommendations in order to capitalize on the publicity and momentum generated thus far.

However, to do so, the spadework must be done now. The Board was told that a "window" of maximum opportunity was opening on the redress issue. The 12 month period following the release of the CWRIC recommen-

From the Program Director: by Lia Shigemura



With each passing month of my employment with JACL, I regularly "discover" how our organization operates, and what our organization is. Later "discoveries" do not preclude those made earlier, they are simply added together, and hopefully, aren't contradictory. In the past few months, I've been fortunate to observe the growth and development of the NCWNP's Women's Committee. Made up of Nikkei members of both sexes, this committee has the potential to awaken their districts, and perhaps, our organization, to the realities of sexism, especially within the JACL.

Sexism however, is not the topic of this discussion. The process and growth of this committee, and how it relates to JACL, while not as flashy as sexism or feminism, is the focus of this article.

Unlike most other committees that I have observed or served on, the NCWNP's Women's Committee functions as a "true" committee, the type that most other committees try to emulate. The members travel far distances to share ideas, brainstorm and prepare for their workshop at the Tri-District conference, and projects following. Responsibilities are shared, and in fact, I realize now that if a Chair does exist, her or his presence is not



dations—whether favorable or not—would be critical. After that time, memories would likely fade in Washington, D.C., and the capitol would become preoccupied by the 1984 presidential elections.

Based on the foregoing, the National Board voted to step-up its redress expenditures and "go for it" during the next 12 to 15 month period. (A detailed budget will be presented at the July meeting.) Since the National Convention in Gardena in August, the redress program has been funded by the dedication of the chapters and districts in making good their chapter pledges (\$5 per member per year). In fact, by a combination of austere budgeting of limited funds and prompt payment by many of chapter pledges, it has not been necessary to borrow a penny from the Endowment Fund to the present time. This is as it should be. Borrowing from the Endowment, although authorized by the National Council, was meant to be a last resort option, only if unavoidable.

However, with the increase in expenditures necessitated by the redress issue reaching its final stages, it is necessary to call on all chapters in every district to meet its full chapter pledge in a timely fashion! If each chapter does so, the redress program can move forward at a fully funded level without borrowing from the Endowment. In the coming months, National will also attempt to raise funds for redress.

Together, we can all help to bring this issue to a satisfactory conclusion—hopefully in the next 12 to 15 months. But time is running short. The National Board has decided to "go for it." With your support, we can.

## Women's Committee

San Francisco

With each passing month of my employment with JACL, I regularly "discover" how our organization operates, and what our organization is. Later "discoveries" do not preclude those made earlier, they are

simply added together, and hopefully, aren't contradictory. In the past few months, I've been fortunate to observe the growth and development of the NCWNP's Women's Committee. Made up of Nikkei members of both sexes, this committee has the potential to awaken their districts, and perhaps, our organization, to the realities of sexism, especially within the JACL.

Sexism however, is not the topic of this discussion. The process and growth of this committee, and how it relates to JACL, while not as flashy as sexism or feminism, is the focus of this article.

Unlike most other committees that I have observed or served on, the NCWNP's Women's Committee functions as a "true" committee, the type that most other committees try to emulate. The members travel far distances to share ideas, brainstorm and prepare for their workshop at the Tri-District conference, and projects following. Responsibilities are shared, and in fact, I realize now that if a Chair does exist, her or his presence is not

dominating. If their enthusiasm has ever waned, it has not been detected by me.

This Women's Committee does not even remotely resemble the stereotypic "band of 'girls' monku-ing about men." These are sincere men and women trying to accomplish goals using the JACL as their vehicle of growth, and target of action. I find the women and men in this committee very open to new ideas. Their breadth of awareness, and depth of foresight has impressed me deeply. The three generations and different sexes represented in this committee offer a welcomed diversity in background and ideas. It is out of this kind of environment that great things are spawned.

Grassroots committees of this type, while perhaps not as refined, are what the JACL is all about; people sincerely caring, and taking action. If there is no impetus at the chapter or district levels, then no need exists for JACL national leadership. Fortunately, there are many sincerely concerned and active individuals, like those in the Women's Committee, that provide the support from which the JACL grows. It is these unnamed, anonymous people that I wish to recognize and applaud. Too often, these truly committed individuals ignore their own actions and contributions by respectfully deferring to JACL's district or national leaders. To these people I ask, "What is the JACL without YOU?"



# Summary of National Board Decisions

San Francisco

**Ed. Note:** Here is a brief summary of actions taken by the JACL National Board during its meeting at National HQ on March 18-20. The following information was provided by National Director Ron Wakabayashi.

## Committee Actions

**Aging and Retirement.** The Board modified its previous action of last October (the approval of \$13,000 for a videotape project) to require the presentation of a new budget from ARC for approval, before allowing the use of funds from the general account.

ARC had originally intended to sponsor the production of a videotape on aging and retirement concerns by reknowned filmmaker Henry Ushijima. However, the unexpected passing of Ushijima last December forced a temporary setback for the project, and ARC is seeking another production company for the videotape.

**Committee Appointments.** The Board ratified the following committee chairs: Resolutions—Tony Ishii (CCDC); U.S.-Japan—Frank Iwama (NCWNPDC); Atomic Bomb Survivors—Jim Tsujimura, co-chair (PNWDC); Employment Practices—Peggy Legget (CCDC); Veterans' Affairs—Marshall Sumida (NCWNPDC); Ways & Means—Gene Takamine (PSWDC); Committee on Issues Affecting Nikkei Women—Susan Karnei (PSWDC); Ad Hoc Committee for Support of the Big Mountain People (in Arizona)—Dr. Clifford Uyeda (NCWNPDC).

**International Relations Committee.** The Board approved a proposal by the Japan Chapter that a delegation consisting of the National Director Ron Wakabayashi and National President Floyd Shimomura be sent to Japan this fall to explore ways to improve U.S.-Japan relations. The Board also approved an allocation of \$500 to reprint a Japanese language version of the JACL's brochure, as well as \$1,500 to cover travel expenses for the delegation.

A motion was also passed which provides that travel contributions to JACL for the Pan American Nikkei Association Convention, should any be received, be used to provide for the travel of Luis Yamakawa of the Latin American Chapter; National President Shimomura; and NCWNPDC Regional Director and PANA Secretary George Kondo or VP Public Affairs Chuck Kubokawa.

Kubokawa's report on the schedule and agenda of the PANA conference (July 13-17) was accepted, and the Board also authorized the purchase of a JACL advertisement (greetings) in the program booklet for the PANA Convention.

**Redress.** The Board took the Redress Committee's recommendation for a \$50,000 target figure in the Legislative Guidelines "under advisement" until the Commission on Wartime Relocation and Internment of Civilians releases its report.

The Board also approved the Redress Committee's recommendation that a trust foundation, should it be included in future legislation, have a board composed of at least 51% survivors or descendants of former internees.

The Board also sanctioned a \$15,000 monthly spending level from April 1 to the end of September (82-83 fiscal year), and required a review of the new budget for the 1983-84 fiscal year at the next Board meeting to accelerate the redress program.

**Satow Memorial Committee.** The Board will request support for sales of the book, "JACL In Quest of Justice" by Bill Hosokawa, since sales are not progressing as well as hoped at this point.

**Scholarship Committee.** The Board authorized the staff to amend the Committee's proposed budget to be consistent with existing JACL expense policy, but approved the budget request for support of committee expenses.

The budget that was presented before the Board from the Committee was approximately \$850, to cover expenses incurred for the Scholarship Application Process (at JACL National HQ, April 20-22); the Freshman/Undergraduate Subcommittee meeting (in Los Angeles, May 14-15) and the Graduate Subcommittee meeting (L.A., May 21).

**Ways and Means.** This committee has been shifted from the authority of the Vice President, Planning and Development, to the National Treasurer.

## Financial, Legal Actions

**Budget Report.** The 1982 fiscal year concluded without the need to borrow any funds to carry the year-end cash flow. Financial review is in the process of close out.

Current year projections appear to have the budget in line on both the revenue and expense side.

**Endowment Fund.** A "negative pledge" was adopted by the Board to prevent any additional loans from being placed upon the JACL National HQ Building while the loan from the Endowment Fund to the Redress Committee (of \$300,000 for a three-year period) was still outstanding.

Also, Members of the Finance Committee (including the National President, National Director and Treasurer) were given authorization to execute a loan from the Endowment Fund (so far the Redress Committee has not had to take out a loan, since most expenses have been covered by pledges).

**Legal Counsel.** The Board requested that the Legal Counsel prepare a JACL "Amicus Brief" in support of the current coram nobis petitions of Gordon Hirabayashi, Fred Korematsu and Min Yasui. The JACL brief would include the original Korematsu amicus brief filed by the League in 1944.

## Awards, Convention, Membership

**Awards and Recognitions.** The Board awarded a Ruby Pin to National Legal Counsel Frank Iwama for over 10 years of service to the National Organization. The award will be presented at an appropriate event, and a letter of acknowledgement will be sent to Iwama's law firm.

**JA of the Biennium Award.** The Board approved a recommendation by NCWNPDC to modify the language describing the award, to include consideration of an individual's contributions over a period beyond the immediate biennium, as well as lifetime contributions.

**Membership.** A summer membership campaign, proposed by VP Membership Vernon Yoshioka, was referred to the Fi-

## Chiz Satow estate leaves \$5,993 to National JACL

SAN FRANCISCO—The final payment to National JACL from the estate of Chiz Satow, longtime JACL staff member and wife of Masao W. Satow, was received recently at National Headquarters. The total amount received by JACL was \$5,993.

Chiz Satow worked on the JACL staff for over 30 years alongside her husband, who served as National Director for over 25 years. The couple, for extensive periods of the organization's wartime and postwar period, were the principal staff persons for the JACL, maintaining all of the support functions.

JACLers, recalling Chiz Satow, have commented on her complete dedication to the organization. While serving in a staff capacity, the attention to detail and careful handling of the organization's resources were hallmarks of Chiz Satow's contributions. This concern for the JACL and the Nikkei community carried over to her remembering the organization in her will. #

## D.C. Program deadline is April 15

SAN FRANCISCO—"Our Japanese American Members of Congress and political leaders throughout the United States can provide 'access' to the internal workings of government. But, it is up to organizations like the JACL to provide the Japanese American community with leaders who have the capability, confidence, and background as to our history, tradition, and/or needs," said Frank Sato, Inspector General of the Veterans Administration, and National Secretary/Treasurer of the JACL.

With this idea of training and developing future leaders, the National JACL will offer a week-long leadership and development program, focused on the Japanese American's role in the American political system. The program is scheduled for June 19-25, in Washington, D.C.

By action of the JACL National Board, this new program will be conducted on a "pilot" basis. Each JACL District will have the opportunity to select one participant. The tuition of approximately \$600 will be funded by the JACL District.

This intensive program will feature seminars and clinic sessions with Japanese American policy-makers in Washington, D.C. relating their experience and expertise. It is the type of program where the participants and speakers "roll up their sleeves" and discuss the realities of the political process and learn the "tools" necessary to deal with government.

JACL Districts have been requested to select their participant for the program by April 15. For additional information and/or inquiries about the program contact: David Nakayama, National Youth Director; National JACL Headquarters; 1765 Sutter Street; San Francisco, CA 94115; (415) 921-5225. #

nance Committee for consideration. The campaign basically called for chapters to plan promotional activities in the month of July.

**National Convention.** The Board requested staff development of cost estimates for the purpose of providing travel and one-half lodging expenses of district governors to the National Convention.

The Board also ratified the dates for the 1984 Convention in Hawaii—Aug. 13-17.

Regarding the 1982 Gardena Convention, the Board authorized the Finance Committee to take action on closing out the books of the 1982 Convention, and to develop recommendations and guidelines to facilitate future closeouts.

Continued on Next Page

NEW  
LOAN  
RATE

13 1/2% APR

## LOW-COST AUTO LOANS

currently at 13 1/2%

## INSURED SAVINGS

currently paying 7%,  
insured to any amount

## FREE SAVINGS INSURANCE

up to \$4,000

## FREE LOAN PROTECTION INSURANCE

pays loan in full in the event of death

## IRA ACCOUNTS

now available

Now over \$5 million in assets

## NATIONAL JACL CREDIT UNION

PO 1721 Salt Lake City, Utah 84110 (801) 355-8040

## LIVING NATIONAL TREASURES OF JAPAN

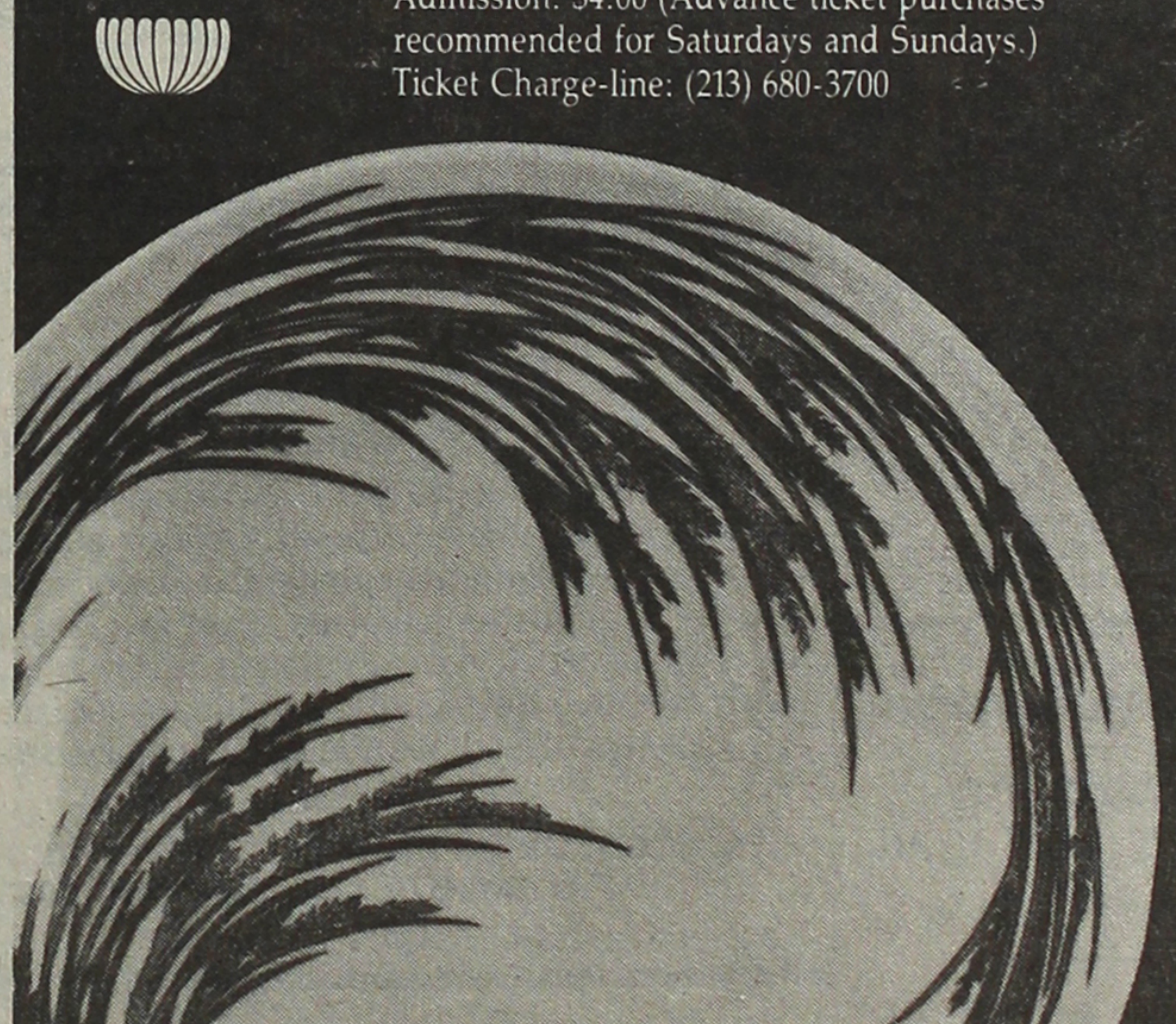
April 7 through May 1, 1983

George J. Doizaki Gallery

Japanese American Cultural & Community Center  
244 South San Pedro Street (Little Tokyo)  
Los Angeles, California 90012

Admission: \$4.00 (Advance ticket purchases  
recommended for Saturdays and Sundays.)

Ticket Charge-line: (213) 680-3700



The exhibition and catalogue, "Living National Treasures of Japan," are made possible by The Committee of the Exhibition of Living National Treasures of Japan, The Japanese Ministry of Foreign Affairs, The Japanese Agency for Cultural Affairs, The Japan Foundation, The Commemorative Association for the Japan World Exposition 1970, The Vehicle Racing Commemorative Foundation, Nippon Television Network Corporation, The Yomiuri Shimbun, and the companies affiliated with the Mitsubishi Group (Mitsubishi Heavy Industries, Ltd., Mitsubishi Electric Corporation, Mitsubishi Motors Corporation, Mitsubishi Corporation, The Mitsubishi Bank, Ltd.) and with the cooperation of The National Museum of Modern Arts, Tokyo, and The National Museum of Modern Arts, Kyoto.



## NAT'L BOARD Continued from Page 5

**New Chapters.** Two new chapters have joined the PSWDC. The Board approved interim charters for both the Greater Los Angeles Singles Chapter and the Torrance Chapter.

**1000 Club.** The Board accepted "in concept" the 1000 Club's recommendation for the Mike Masaoka Fellowship, and directed coordination with the Ways & Means Committee for specific guideline development, which will be returned to the Board. The proposed fund called for a minimum donation of \$1,000 in order to be named a "Mike Masaoka Fellow."

The Board also instructed the National Legal Counsel to draft an amendment for the next National Convention, which pro-

poses that the National By-Laws establish a 1000 Club Chairperson as an appointed, voting member of the National Board.

In the meantime, the current 1000 Club chair would be invited to attend the next National Board meeting to make a complete report on the committee's activities including the Masaoka Fellowship and other revenue-developing matters.

A motion to establish a "loan interest fund" was defeated by the Board.

### Other Actions

**Health Insurance.** A proposal for a new national health insurance plan developed by NCWNPDC was referred to the

## Ways & Means seeking support

SANTA ANA, Ca.—JACL Ways & Means Committee chair Gene Takamine is seeking persons who can assist in the formation of a fund raising network. Persons with contacts in the business and professional community should contact Takamine at 1705 W. 17th St., Santa Ana, CA 92706, (714) 547-6371.

## Scholarship Committee named

LOS ANGELES—The 1982-84 JACL National Scholarship Committee was recently announced by Committee chair J.D. Hokoyama of the Downtown L.A. Chapter.

The Freshman/Undergraduate Sub-Committee consists of: Irene Hirano (Executive Director of T.H.E. Clinic in Los Angeles), Lorrie Inagaki (attorney in San Francisco), Harry Kawahara (counselor, Pasadena City College), Helen Mineta (educator, San Jose), Dr. Izumi Taniguchi (Professor of Economics, Fresno State College) and Hokoyama, Director of USC's Asian Pacific American Student Services.

The Graduate Sub-Committee consists of: Dr. Harry Kitano (Professor of Sociology and Social Welfare, UCLA), Dr. Sarah Miyahira (Associate Director, USC Counseling Center), Dr. Don Nakanishi (Asst. Professor of Education, UCLA), Dr. Bob Suzuki (Dean, Graduate School at CSU Los Angeles) and Tertia Toyota (News Anchorperson, KNBC-TV).

National Health Insurance Chair for review.

Mitsue Takahashi. This case involves the reinstatement efforts of Mrs. Takahashi, who was dismissed from her position.

Continued on Page

## Tri-District registration forms still accepted until April 15

SAN FRANCISCO—Registration package forms are still being accepted for the upcoming NCWNPDC, CCDC and PSWDC Tri-District Conference in Reno, Nv. on April 22-24. The deadline has been extended to April 15, noted NCWNPDC Regional Director George Kondo.

The fee of \$30 covers the Friday night mixer (\$5), registration (\$10) and a Saturday luncheon (\$15), which will feature keynote speaker Rep. Robert T. Matsui (D-Sacramento). Also attending the opening session on Saturday will be Assemblyman Patrick Johnston and his aide Priscilla Ouchida; and state Sen. Ralph Dills, who were instrumental in the passage of the state worker compensation bill, AB 2710.

Workshops will include Aging and Retirement, Women's Issues, Redress, U.S.-Japan, Agriculture and Fund Raising.

Registration may be sent to JACL-1983 Tri-District Conference, 1765 Sutter St., San Francisco, CA 94115. For more info call George Kondo (415) 921-5225. Hotel accommodations at the Reno Hilton (\$40 per night—single or double; \$50 per night—triple; \$60 per night—quadruple) can be arranged by calling their toll-free number 1-800-648-4882.

## Tri-District wkshp on Women's issues focuses on sex roles

EL CERRITO, Ca.—Most functions in the Japanese American community—including that of the JACL find a good deal of the voluntary work carried out by women ... whether it's a bazaar, picnic, forums, health fairs, etc. At the same time, most of the decision making positions—membership on boards, chairpersons, representatives to civic functions, and to district and national conventions are occupied by men.

Delegates to the upcoming JACL Tri-District Conference on April 22-24, at Reno will have a chance to focus on some aspects of this problem—the unspoken assumptions and cultural constraints regarding sex roles in our Nikkei community.

The Women's Concern workshop will present a "slice of life"—a short skit of a "typical" (somewhat exaggerated) JACL Board meeting. Participating will be Mollie Fujioka, Leah Hamachi, Ernest Iiyama, Ozzie Imai, Lucy Kishaba, Bruce and Paula Shimizu.

"We would like to invite both men and women to the Saturday workshop," declared Mei Nakano and Chizu Iiyama, workshop co-chairs. "We believe an awareness of some of these problems will be helpful to every chapter."

There will be time for small group discussion, and for sharing of experiences.

### CHIYO'S

Japanese Bunka Needlecraft  
Framing, Bunka Kits, Lessons, Gifts  
(714) 995-2432  
2943 W. BALL RD.  
ANAHEIM, CA 92804  
(213) 617-0106  
450 E. 2nd ST., HONDA PLAZA  
LOS ANGELES, CA 90012

## Deer Trail Lodge & Fireside Inn

PANGUITCH LAKE, UTAH

1983 FISHING SEASON  
OPENS MAY 28th

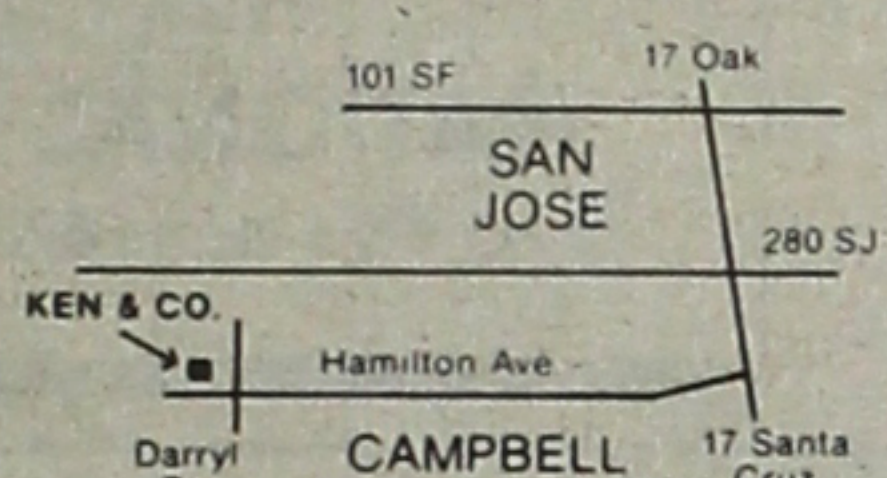
Housekeeping cabins (accommodates 4), The Premier House (accom. 14+), Guided trail rides in the wilds, Team & wagon hayrides, Courtyard barbecues and Dutch oven dinners, Deer Trail Queen fishing launch, Room for RVs. For Brochure or Reservations:

958 N. 700 West  
St. George, UT 84770  
(801) 673-2908

or after May 1, call or write  
Lodge, (801) 676-2601,  
Panguitch Lake, UT

## SHORT & SMALL MEN'S APPAREL

We at KEN & CO. are now featuring our new line of shoes & shirts by ...  
FRENCH-SHRINER, NUNN-BUSH  
Sizes: 5-9 M & E widths  
JOHN HENRY, OSCAR DE LA RENTA  
Sizes: 14-16½ neck, 30 & 31 sleeves



(408) 374-1466  
785 W. Hamilton Ave., Campbell

## KEN & COMPANY clothing merchants



Ken Uyeda owner  
GIVENCHY/LANVIN  
ST. RAPHAEL

## Commercial & Industrial Air Conditioning & Refrigeration CONTRACTOR

Sam J. Umemoto  
Lic. #208863 C-20-38

SAM REIBOW CO.  
1506 W. Vernon Ave.  
Los Angeles / 295-5204  
Experienced Since 1939

## ED SATO

PLUMBING AND HEATING  
Remodel and Repairs  
Water Heaters, Garbage Disposals  
Furnaces

Servicing Los Angeles  
293-7000 733-0557



## PHOTOMART

Cameras - Photographic Supplies

316 E. 2nd St.  
Los Angeles, CA 90012  
(213) 622-3968



Complete Home Furnishings

15130 S. Western Ave.  
Gardena, CA  
324-6444 321-2123

### FINANCIAL

## Management Level Position Available in Colorado

Extensive and demonstrable experience in administrative and financial arrangement required. College and graduate level education preferred but comparable experience will be considered. This position involves upper level management in a major quasi-municipal corporation which is involved in the water resource development and management activities of N.E. Colorado. Resumes should be submitted to:

Larry D. Simpson, Mgr.

Northern Colorado Water Conservancy District  
P.O. Box 679, Loveland, Colo. 80539

No later than April 15, 1983

EOE M/F

## QUALITY & QUANTITY

Jake's ALASKA WILDERNESS OUTFITTERS gives you a quality trip and a great quantity of service for a very, very reasonable price. We offer: GUIDED FISHING TRIPS-UNGUIDED HUNTING & FISHING TRIPS-COMplete OUTFITTING. For free brochure call or write:

JAKE'S ALASKA WILDERNESS OUTFITTERS  
P.O. Box 104179-O, Anchorage, AK 99510 (907) 277-6297



# Hawaiian Host

## CHOCOLATES

THIS IS THE SWEETEST WAY TO SAY "ALOHA"

Now Available  
on the Mainland

A Unique Variety of

Chocolate-Covered Macadamia Nuts & Caramels

ALSO

HAWAIIAN JAMS & JELLIES • DRY ROASTED MACADAMIA NUTS, BRITTLES & CHEWS  
COCONUT CANDIES • HAWAIIAN HONEY-AND MORE!  
GOURMET PACKAGING FOR ANY OCCASION

Call Us for Fund-Raising Sales Promotions

15601 S. Avalon Blvd., Gardena, CA 90248 - (213) 532-0543

PLANT TOURS AVAILABLE BY APPOINTMENT

LIMITED EDITION: 15" x 22" lithograph, one color

Autographed by artist Roger Leyonmark,  
Boston, Mass.

## An American Nightmare



## Now Available

All proceeds are restricted to the National JACL redress campaign. Send your \$50 contribution or more to the campaign directly to National JACL Headquarters ... Leyonmark's artwork first appeared illustrating an article on redress in the Cleveland Plain Dealer on June 14, 1981. He was guest of JACL at the Day of Remembrance program held last Feb. 19 in San Francisco.

National JACL Redress Campaign,  
1765 Sutter St., San Francisco, CA 94115

Please send \_\_\_\_\_ copies of "An American Nightmare" (\$50 each) to:

Name \_\_\_\_\_

Address \_\_\_\_\_

City, State, ZIP \_\_\_\_\_



# National Business-Professional Directory

Your business card copy here for 25 weeks at \$25 per three-lines. Each additional line \$6 per same period. Larger (14 pt.) type counts as two lines. Logo extra.

## Greater Los Angeles

### Asahi Travel

Supersavers - Group Discounts - Apex  
Fares-Computerized-Bonded  
1111 W Olympic Blvd., LA 90015  
623-6125/29 • Call Joe or Gladys

**FLOWER VIEW GARDENS #2**  
New Otani Hotel, 110 S Los Angeles  
Los Angeles 90012 Art Ito Jr.  
citywide Delivery (213) 620-0808

### Nisei Travel

1344 W 155th St., Gardena 90247  
(213) 327-5110

### CUSTOM MADE FUTON

(213) 243-2754  
SUZUKI FUTON MFG.

### TOKYO TRAVEL SERVICE

530 W. 6th St. #429  
Los Angeles 90014 680-3545

### Travel Guild

404 S. Figueroa St., Level 6  
Los Angeles 90071/(213) 624-1041

### YAMATO TRAVEL BUREAU

321 E 2nd St., #505  
Los Angeles 90012 624-6021

## Orange County

### EXCEPTIONAL HOMES

AND INVESTMENTS  
VICTOR A KATO  
Residential & Investment Consultant  
18682 Beach Blvd., Suite 220  
Huntington Beach, CA 92648  
(714) 963-7989

### THE PAINT SHOPPE

LaMancha Center, 1111 N Harbor  
Fullerton, CA (714) 526-0116

## San Diego

### PAUL H. HOSHI

Insurance Service  
852-16th St.  
San Diego 92101 (619) 234-0376  
res. 264-2551

## Ventura County

### CALVIN MATSUI REALTY

Homes & Commercial  
371 N. Mobil Ave., Suite 7, Camarillo  
(805) 987-5800

## Join the JACL

Established 1936

## Nisei Trading

Appliances - TV - Furniture

239 S. San Pedro St.  
Los Angeles 90012  
(213) 624-6601



**DePanache**  
Today's Classic Looks  
for Women & Men

Call for Appointments:  
Phone 687-0387

105 Japanese Village Plaza Mall  
Los Angeles 90012  
Toshi Otsu, Prop.

## MIKAWAYA SWEET SHOPS

244 E. 1st St., Los Angeles  
(213) 628-4945

2801 W. Ball Rd., Anaheim  
(714) 995-6632

Pacific Square, Gardena  
1630 Redondo Beach Blvd.  
(213) 538-9389

118 Japanese Village Plaza  
Los Angeles / (213) 624-1681



Japanese Phototypesetting

**TOYO PRINTING CO.**  
309 So. San Pedro St., Los Angeles 90013  
(213) 626-8153

## Empire Printing Co.

COMMERCIAL and SOCIAL PRINTING  
English and Japanese

114 Weller St., Los Angeles 90012 628-7060

## San Jose

### Kayo K. Kikuchi, Realtor

SAN JOSE REALTY  
996 Minnesota Ave., #100  
San Jose, CA 95125-2493  
(408) 275-1111 or 296-2059

### Tatsuko "Tatty" Kikuchi

General Insurance Broker, DBA

### Kikuchi Insurance Agency

996 Minnesota Ave., #102  
San Jose, CA 95125-2493  
(408) 294-2622 or 296-2059

### EDWARD T. MORIOKA, Realtor

580 N. 5th St., San Jose  
(408) 998-8334/5 res. 371-0442

## Watsonville

### Tom Nakase Realty

Acreage, Ranches, Homes, Income  
TOM NAKASE, Realtor  
25 Clifford Ave. (408) 724-6477

## San Francisco Bay Area

### ASUKA Japanese Antiques

Wholesale - Retail  
25A Tamalpais Av., San Anselmo CA 94960  
(415) 459-4026 Juli (Yorichi) Kodani

### DŌBŌ COUNSELING CENTER

Experienced Nikkei Counselors  
Low Cost - Confidential  
(415) 522-5243 or 843-843-6933

### GORDON Y. YAMAMOTO

Attorney at Law  
654 Sacramento Street  
San Francisco, CA 94111 (415) 434-4700

## Sacramento

### SHARON NODA, COOK REALTY

Fine Older Homes/Quality Newer Homes  
(916) 443-6702 or 739-1068

## Lake Tahoe

### RENT INC

Recreation Realty Enterprises at North  
Tahoe. Sales, vacation rental, prop. mgmt.  
(916) 546-2549, Shig & Judy Tokubo

**Tell Them You Saw It  
In the Pacific Citizen**

## Kono Hawaii

### POLYNESIAN ROOM

(Dinner & Cocktails - Floor Show)

### COCKTAIL LOUNGE

Entertainment

### TEA HOUSE

Tep-pan & Sukiyaki

OPEN EVERY DAY  
Luncheon 11:30 - 2:00  
Dinner 5:00 - 11:00  
Sunday 12:00 - 11:00

226 S. Harbor Blvd.  
Santa Ana, Ca 92704  
(714) 775-7727

## Seattle, Wa.

### YES! AT WONDERFUL

### UWAJIMAYA

Great Oriental gifts.

gourmet foods

and unique kitchen appliances

CHINATOWN: 6th Ave. S & S. King St. 624-6248

BELLEVUE: 15555 N.E. 24th 747-9012

SOUTHCENTER: 246-7077

All stores open Sundays. Chinatown, Southcenter open weekday evenings

Imperial Lanes

Complete Pro Shop, Restaurant, Lounge

2101-22nd Ave So. (206) 325-2525

KINOMOTO TRAVEL SERVICE

FRANK KINOMOTO

507 S King St. (206) 622-2342

The Intermountain

Mam Wakasugi

Sales Rep., Row Crop Farms

Blackaby Real Estate, Rt 2 Bx 658, Ontario, Or 97914 / (503) 881-1301, 262-3459

The Midwest

SUGANO TRAVEL SERVICE

17 E Ohio St, Chicago 60611

(312) 944-5444 784-8517, eve, Sun

Washington, D.C.

MIKE MASAOKA ASSOCIATES

Consultants - Washington Matters

900-17th St NW, Washington, DC 20006

202-296-4484

AT NEW LOCATION

Aloha Plumbing

Lic. #201875 - Since 1922

PARTS - SUPPLIES - REPAIR

777 Junipero Serra Dr.

San Gabriel, Ca 91776

(213) 283-0018

MARUKYO

Kimono Store

New Otani Hotel & Garden-Arcade 11

110 S. Los Angeles

Los Angeles 628-4369

4

4

4

4

4

4

4

4

4

4

4

4

4

4

4

4

4

4

4

4

4

4

4

4

4

4

4

4

4

4

4

4

4

4

4

4

4

4

4

4

## 1000 Club Roll

(Year of Membership Indicated)

\* Century; \*\* Corporate;

L Life; M Mem; C/L Century Life

SUMMARY (Since Dec. 1, 1982)

Active (previous total) 612

Total this report 214

Current total 826

FEB 28-MAR 11, 1983 (214)

Alameda: 19-Dr Roland S Kadonaga, 17-James Ushijima.

Arizona: 30-Masaji Inoshita, 12-Sueo Murakami, 18-Tom T Tanita.

Berkeley: 19-Hiroshi Kanda, 17-Vernon Nishi.

Boise Valley: 10-Chickie Hayashida, 19-George Kawai, 19-William Kawai, 10-Roy M Oyama.

Chicago: 10-Willie Aki, 13-Shigeru Hashimoto, 28-Mieki Hayano, 9-Gumpe Honda, 26-Calvin Ishida, 17-Michael Y Iwanaga, Life-Charles Kohn, 14-Seichi Konzo, 8-George K Nakao, 5-Chieko Onoda.

Cincinnati: 10-Gordon Yoshikawa.

Contra Costa: 12-Tosh Adachi, 20-James Kimoto, 22-Meriko Maida, 29-Fumiko Sugihara, 3-Toshio Yamashita.

Dayton: 6-Lea Nakauchi, 14-Mariann R Schwegel, 6-Addie P Titus.

Delano: 22-Jeff Fukawa\*.

Detroit: 16-George T Doi.

Diablo Valley: 2-Mike Hamachi, 3-Dr John F Kikuchi, 23-Dr Hisaji Quintus Sakai.

Downtown Los Angeles: 19-Al Hatate\*, 34-Sho Iino.

East Los Angeles: 7-John Kataoka, 3-Michael Mitoma.

Eden Township: 3-Shigenobu Kuramoto, 30-Tetsuma Sakai.

Fort Lupton: 7-Edward Duckworth, 29-Floyd Koshio, 1-Sam Koshio, 29-Jack Tshura, 28-Frank Yamaguchi.

Fowler: 9-Shig Uchiyama.

Fresno: 2-Marco Margarite, 10-Dr Izumi Taniguchi.

Gardena Valley: 20-John K Endo, 21-Yoshio Kobata, 5-Art S Nishisaka, 9-Mitsuko D Soraoka, 21-Robert Tarumoto, 6-Dr Robert N Yamasaki, 1-Teruko Yoshiki.

Greater Los Angeles Singles: 3-George K Eguchi, 27-Yoshie Furuta.

Gresham-Troutdale: 22-Kazuo Fujii.

Hollywood: 28-Robert K Kato, 16-Muriel Merrell.

Japan: 1-The Ichiban Shop\*, 6-Barry Saiki.

Livingston-Merced: 9-Jean Y Koda, 29-Samuel Y Maeda.

Marin County: 1-George Sakanari, 2-George T Shimizu, 1-Dr Sam Shimomura.

Marina: 28-Sam S Miyashiro, 3-Cary Nishimoto.

Marysville: 5-Joe Kobayashi, 17-George Yoshimoto.

Mid-Columbia: 20-Masami Asai, 29-Sho Endow, Jr, 3-Satoshi Tsubota.

Mile-Hi: 8-Kiyoto Futa, 12-Robert Inai, 8-Richard K Shigemura.

Milwaukee: 13-Andrew Hasegawa, 12-Spark Hashimoto.

New Mexico: 3-Kenneth Yonemoto, 7-Miyuki Yonemoto.

New York: 19-Jack K Kunitugu.

Oakland: 17-Torao Neishi\*.

Omaha: 4-Frank Tamai.

Pan Asian: 1-Albert Matevosian, 4-Carol Ann Taeko Saito.

Pasadena: 14-Dr Robert Shimasaki, 14-George Shiota, 14-Harvard K Yuki.

Philadelphia: 9-Mary Hamada, 11-George K Higuchi, 4-David K Nitta.

Placer County: 2-Dr Michael B Hatashita, 2-Eugene Nodohara, 1-David E Oseto, 14-Helen Otow, 15-Tom N Takahashi.

Portland: 14-Dr Katsumi James Nakadate, 4-Herbert Okamoto.

Progressive Westside: 21-Charles T Matsuhira.

Puyallup Valley: 11-Edna J Ellis, 11-Dr Paul Ellis, 20-Amy E Hashimoto, 18-Dr Kiyooki Hori.

Reedley: 9-Ronald H Nishinaka, 12-Sammy S Nakagawa.

Reno: 9-Arthur K Donoghue, 12-James Ihara.

Sacramento: 13-Fusako Fujita, 27-Edward A Hayashi, 4-Richard A Inaba, 23-Tom N Ishida, 11-Samuel T Kaneko, 3-Charles S Kawada, 11-Joseph Y Kiyota, 4-Kinji Kurosaki, 17-George T Matsui, 11-Starr T Miyagawa, 27-Martin Miyao, 26-David Noguchi\*, 8-Harry Shigaki\*, 25-Frank Yokoi.

San Benito County: 22-Tony Masami Yamaoka.

San Diego: 14-Carl H Kaneyuki, 6-Steve N Sato\*, 19-Katsumi Jimmie Takashima, 14-Shigeru Yamashita.

San Fernando Valley: 27-Michi Imai, 27-Tamotsu Tom Imai, 20-K David Yoshioka.

San Francisco: 25-Steven Doi, 9-Carvin T Dowke, 21-Joe J Fujimoto, 33-Dr Tokuji Hedani, 23-Hisao Inouye\*, 19-Raymond K Konagai, 27-Jack S Kusaba, 11-Akio J Mochizuki, 17-James M Nakamura, 23-Sumi Schloss, 19-Maury A Schwarz, 3-Fumi Shimada, 23-Harry Y Tono, 28-Takeo B Utsumi, 17-Noby Yoshimura, 21-Joseph K Yoshino, 19-Teruko Yukawa.

San Jose: 17-Kiyoshi Higashi, 16-Ted Kimura, 14-Roy Shimizu.

San Luis Obispo: 12-Akio Hayashi, 7-George Ikenoyama, 22-Ken Kitasako, 12-Mitsuo Sanbonmatsu.

San Mateo: 23-William A Takahashi.

Santa Barbara: 11-Richard Kitagawa.

Santa Maria: 15-Leonard Ueki.

Seattle: 14-Shiro Fujihira, 24-Fred Y Imanishi, 16-Tomio Moriguchi, 10-Dr Frank Y Tanaka\*.

Sequoia: 14-George Y Izumi.

Snake River: 16-Arthur Hamanishi, '23-Pil Sugai, 23-Louis J Yturri.

Sonoma County: 20-George I Hamamoto, 6-Hitoshi F Kobayashi, 5-Margaret Yoshiko Scott\*, 21-Martin Shimizu.

Spokane: 14-Saburo Sam Nakagawa, 14-Richard S Sakai.

Stockton: 23-Dr John I Morozumi, 1



## NAT'L BOARD Continued from Page 6

as teacher in the Livingston-Merced School District. The JACL National Board approved an endorsement of fund raising efforts on her behalf to protect her civil rights and due process of law. The Board also supported the efforts of organizations and groups outside of JACL, who are raising funds, to indicate National Board endorsement.

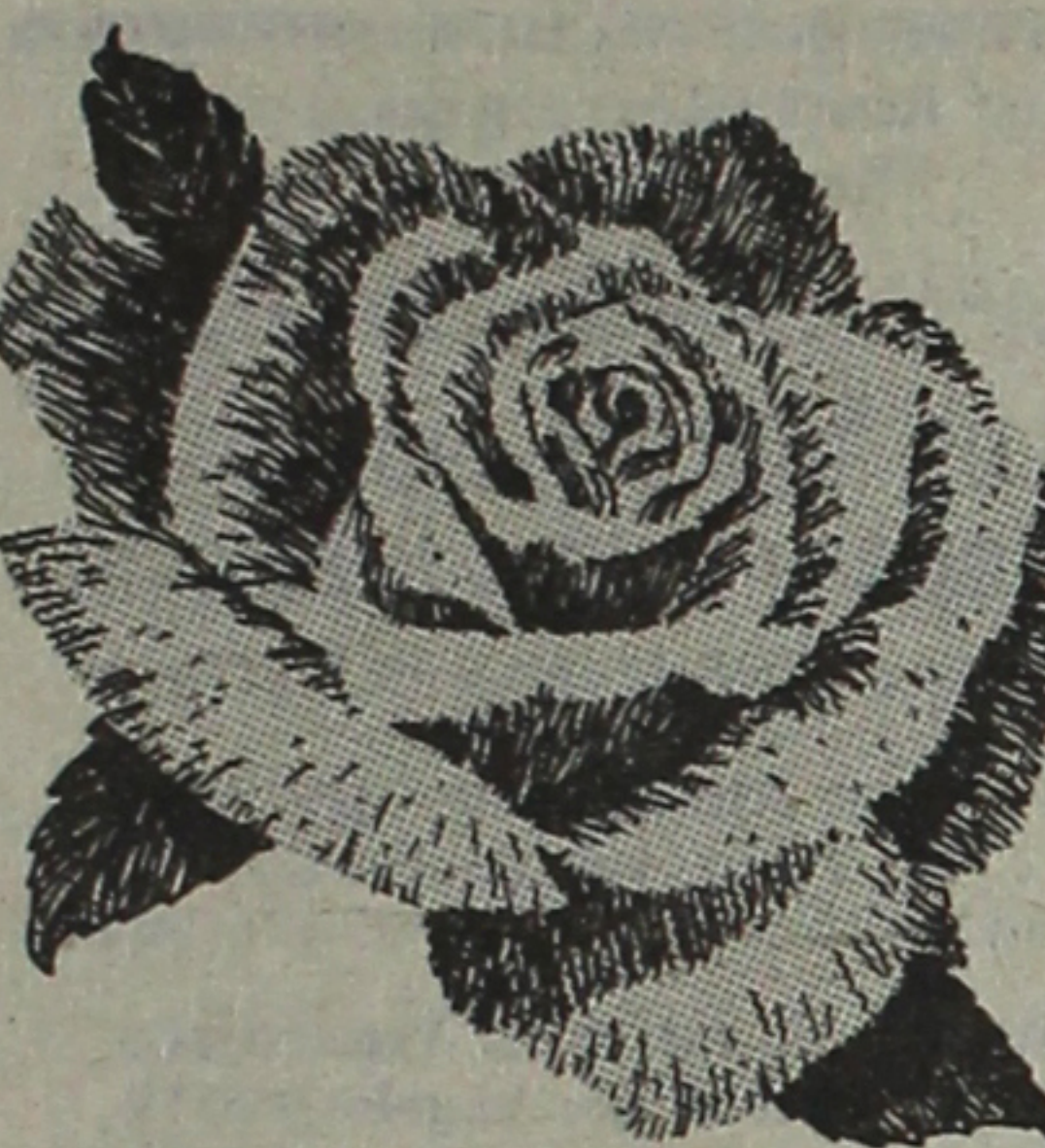
**Nikkei Travel Club.** Plans for a new Travel Club are currently being developed, and the new club would offer JACL members the opportunity to join in order to receive certain travel rates.

**Pacific Citizen.** A report on Harry Honda's new responsibilities as General Manager/Operations was presented by PC Board Chair Hank Sakai—Honda's new duties include supervision of PC office operations, developing new sources of revenue for the PC (advertising) and performing typesetting jobs for clients outside of the PC (as a means of increasing income).

The Board also approved a budget modification for the PC to accommodate a part-time Editorial Assistant, so that the PC could begin publishing alternating 8 and 12 page editions.

**Personnel.** A report from VP General Operations Ben Take-shita will be presented to the Board at a later time, but he noted that there were "no major problems" in the area of personnel at JACL National HQ. The Board also approved a new two-year contract for National Director Ron Wakabayashi. #

## CARE



# ...THERE ARE TIMES WHEN IT MEANS SO MUCH

At sensitive times caring means everything. Care is more than a quarter of a century tradition at Rose Hills. Our experienced counselors offer every needed mortuary service... even a beautiful flower shop, all in one serene, peaceful location. Knowing you care... Rose Hills cares. At Rose Hills convenience and care means everything.

So much more... costs no more

## ROSE HILLS MORTUARY

at Rose Hills Memorial Park

3900 Workman Mill Road,  
Whittier, California  
(213) 699-0921  
(714) 739-0601

## Singles Chapter to focus on redress

LOS ANGELES—The Greater L.A. Singles Chapter will hold its next meeting on April 8, 7:30 p.m., at Founders Savings, 2001 Redondo Beach Blvd. in Gardena. Harry Kajihara, chairman of PSWDC Redress Committee, member of the National JACL Redress Committee and Ventura County JACL president, will speak on chapters' role in redress.

Blue Shield Medical Insurance/JACL Liaison Hobard Oei will be present to answer questions. Open enrollment period has been extended to April 20. For more info call (213) 541-6698. #

## Housing matters to be discussed

EL CERRITO, CA—The Contra Costa JACL Committee on Aging and Retirement will hold a meeting on Friday, April 15 at East Bay Free Methodist Church, 5359 Potrero Avenue, beginning at 8:00 p.m.

There will be two subject matters, housing and agencies, on the evening program. George Oyama of Locators, Inc. will be speaking on housing discussing multi-unit apartments for combination investment and future retirement homes. Nancy Johnson, R.N. of Alta Bates Hospice Program, will speak about the Hospice Program, a program to help seriously ill and dying patients. #

## MARUTANI

Continued from Front Page

League, serving as national legal counsel (1962-70), he was acclaimed the JACLer of the 1965-66 Biennium for his volunteer work in civil rights cases on Bogalusa, La.

He also served on a number of civic and professional committees and boards, including the state advisory to the U.S. Commission on Civil Rights, the Small Business Administration, Philadelphia Fellowship Commission, ACLU's national committee on minority rights, and the Nationalities Service Center.

More information on the Nikkei Friends of Judge Marutani Committee may be obtained by contacting Dr. Tom Tamaki, P.O. Box 1522, Norristown, PA 19404. #

## LOWEST FARES TO JAPAN

S.F. — TYO \$660.00!  
R.T. nonstop  
Community Travel Service, 165 O'Farrell St.  
#209  
San Francisco, Ca. 94102 (415) 398-1146

## San Jose to hold scholarship dinner

SAN JOSE, Ca.—Members of the San Jose JACL are cordially invited to a Spring Potluck and Scholarship Awards Night on Friday, May 13, 7 p.m., at the Wesley United Methodist Church Fellowship Hall, 566 North Fifth Street.

Representatives from eight organizations and private parties will present the awards to the scholarship winners.

Support Our Advertisers

## Discover SOUTH AMERICA

Visiting Ecuador, Colombia, Brazil, Paraguay, Argentina, Chile and Peru  
From Los Angeles ■ Aug. 2-23, 1983

With  
Chuck and Ruth Severns,  
7467 Mission Gorge Rd. #210,  
Santee, CA 92071

Cost: \$3191

## Kokusai Travel

### Special Summer Bargain

Honolulu - Hong Kong - Japan

Jul 1 - 18 Days - Most Meals - \$1995

Japan - Tokyo, Pearl Island, Inland Sea, Shodo Island, Hiroshima, Miyajima, Tsuwano, Japan Sea, Matsue and Kyoto.

—SPACE IS NOW LIMITED—

Sep 30 - 442nd European Tour - 23 Days

Oct 1 - Japan Furusato Tour - 14 Days

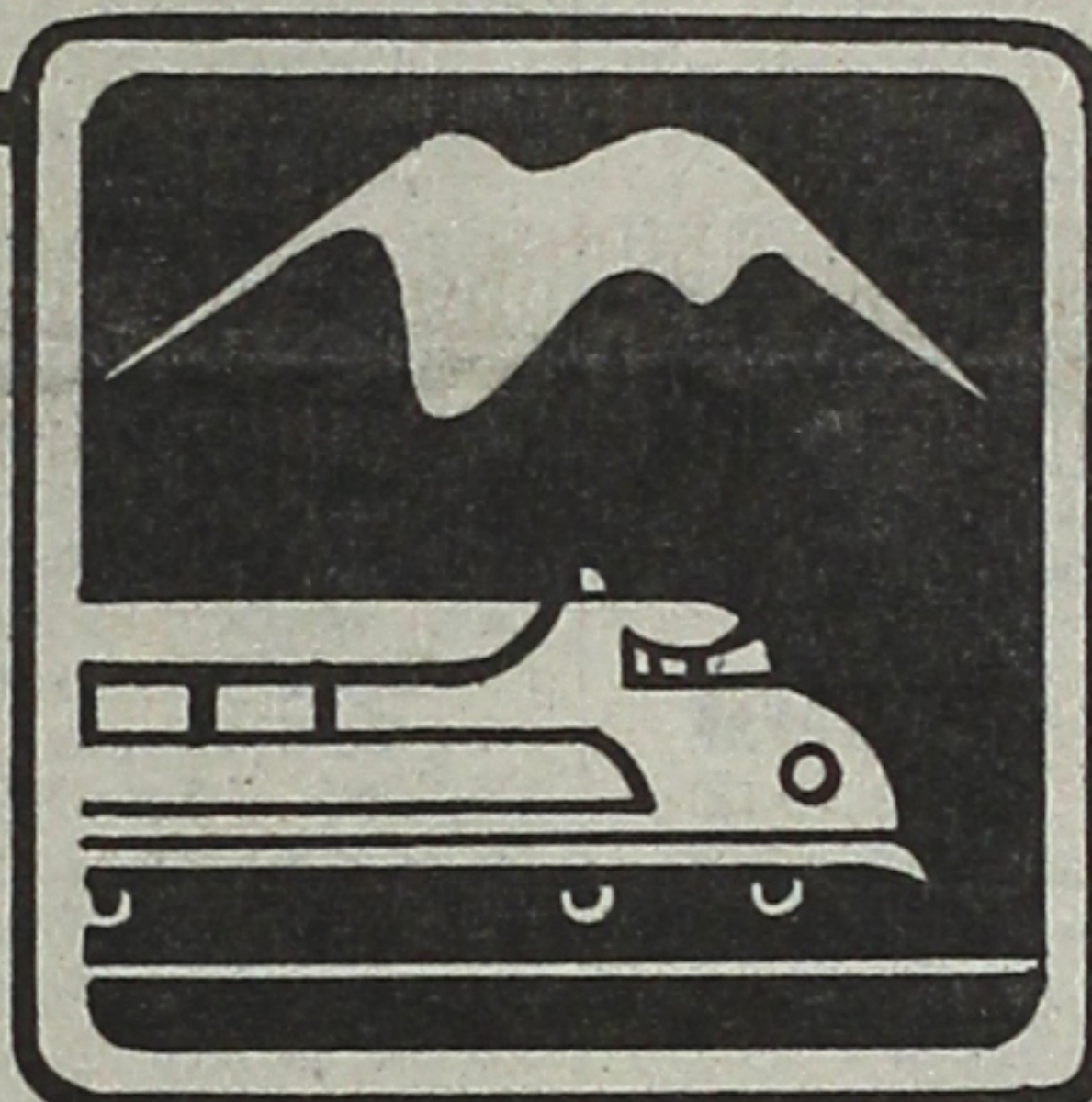
Nov 3 - Japan Odyssey Tour - 14 Days

All tours include: roundtrip flights, transfers, baggage portage, hotels, sightseeing and meals as noted.

## Kokusai International Travel, Inc.

400 E. 2nd St., Los Angeles, CA 90012  
(213) 626-5284

## JAPAN RAIL PASS



# 7-days from \$90

Travel at Reduced Costs

Now Available to Green Card Holders

JAPAN RAIL PASS CENTER

## NIPPON TRAVEL AGENCY PACIFIC, INC.

727 7th St., Suite 1035, Los Angeles, CA 90017  
Phone: (213) 627-2820, (714) 535-7808

## JAPAN HONG KONG TOUR

\$1,398 - 12 days; Depart every Saturday

**\$605: Tokyo**

Round Trip

800-421-9331

**\$770: Hong Kong**

R.T. w/Tokyo

213-622-5091/622-5092

## JAPAN CLUB TOURS

354 S. Spring St. #401,

Los Angeles, CA 90013

## Member expiration date on new form

Clarification over which expiration date prevails for JACL membership was made again this week by the Pacific Citizen, which last November printed JACL membership renewal forms from its computer file. The membership expiration date appears on the renewal form—along side the surname at the top righthand corner. It is often different from the PC expiration date which appears on the PC mailing label.

Chapters are expected to forward the computer-printed form for renewals to members rather than relying on a PC label to indicate the expiration date.

## Our 1983 Escorted Tours

Grand European (17 days)	May 22
Canadian Rockies-Victoria (8 days)	June 16
Japan Summer Adventure	June 27
Alaska Cruise (8 days)	July 9
Eastern Canada (SOLD OUT)	Aug. 25
East Coast & Foliage (SOLD OUT)	Oct. 3
Japan Autumn Adventure	Oct. 15



For full information/brochure

## TRAVEL SERVICE

441 O'Farrell St. (415) 474-3900  
San Francisco, CA 94102

## 1983 West L.A. JACL Travel Program

FOR JACL MEMBERS AND FAMILY

	TOUR DATES:	GUIDE
*Late Changes/Addition		
B—Cherry Blossom	Mar. 26-Apr. 16	Toy Kaneg
C—*Takayama/Kanazawa/Shikoku	Apr. 30-May 21	Yuki Sa
J—May Charter Flight	May 7-21	
K—*Canadian Rockies	Jun 20-July 5	Toy Kaneg
D—Summer Tour	June 18-July 9	Charles Nishikav
L—*Europe Highlight	Sept. 2-24	Jiro Mochizu
F—Honshu/Taipei-Hong Kong-Bangkok	Oct. 1-22	Bill Sakur
G—Ura-Nihon/Shikoku-Kyushu	Oct. 1-22	Steve Ya
M—*New England Foliage	Oct. 15-29	Toy Kaneg
H—November Special	Nov. 1-11	
I—Special Holiday Tour	Dec. 22-Jan. 4	George Kaneg

## THE 1984 TRAVEL PROGRAM

A—*New Zealand/Australia	Feb. 25-Mar. 1
E—Tohoku Special	Aug. 4-21

- 30-Day Student Home Stay Program June/July/Aug
- Weekly Mini-Charters R/T Tokyo: Jan-May \$605\*\*/Jun-Oct \$679
- 4-day Hong Kong Tour \$325, includes R/T air, deluxe hotel, some meals, double occupancy from Tokyo.

\*\* Subject to Chan

FOR INFORMATION, RESERVATIONS, CALL OR WRITE

Roy Takeda: 1702 Wellesley Ave., West Los Angeles 90025 820-4309  
Steve Yagi: 3950 Berryman Ave., L.A. 90066 397-7921  
Toy Kanegai: 1857 Brockton, L.A. 90025 820-3592  
Bill Sakurai: 820-3237 Yuki Sato 479-8124 Veronica Ohara 473-7066  
Charles Nishikawa 479-7433 Amy Nakashima 473-9969 Jiro Mochizuki 473-0441

Land Arrangements by Japan Travel Bureau International

West L.A. JACL Tour Brochures Available

TRAVEL CHAIRPERSON: GEORGE KANEGAI - 820-3592

West Los Angeles JACL

1857 Brockton Ave., Los Angeles, CA 90025

West LA JACL Flight, c/o Roy Takeda  
1702 Wellesley Ave., Los Angeles, CA 90025

Please reserve \_\_\_\_\_ seat(s) for your Flight No. \_\_\_\_\_  
I agree to the conditions of the contract and brochures. Flight schedules are subject to change.

Name \_\_\_\_\_  
Address \_\_\_\_\_  
City, State, ZIP \_\_\_\_\_  
Phone: (Area code) \_\_\_\_\_  
☐ Send tour brochure ☐ Flight only

If you are moving, allow 3 week's advance notice to report your change of address with label below.

No. 2,233

New Address: \_\_\_\_\_

City, State, ZIP: \_\_\_\_\_

Effective Date: \_\_\_\_\_

• Thank you for using this form. It saves PC 25 cents in fees.

pacific citizen

244 S. San Pedro St., Room 506, Los Angeles, CA 90012 • (213) 626-6936