

Pacific Citizen

January 28, 1983

The National Publication of the Japanese American Citizens League

ISSN: 0030-8579 / Whole No. 2,223 / Vol. 96 No. 3

(45¢ Postpaid)
News
Stand **20¢**



AP Photo Courtesy Rafu Shimpō

THREE FAMOUS MEN—Fred Korematsu (left), Min Yasui and Gordon Hirabayashi announce plans to seek reversals of their World War II Supreme Court cases which in effect upheld the right of the U.S. government to evacuate and intern 110,000 Japanese Americans. They made their announcement Jan. 19 at the Press Club in San Francisco.

U.S.-Japan trade: no easy answers for this highly complex issue

WASHINGTON—Last week's meeting between President Reagan and Japan's Prime Minister Yasuhiro Nakasone may have produced an exchange of goodwill for their respective countries, but the real work now begins for both leaders in trying to avoid an all-out trade war.

Reagan had pledged Jan. 18 that he would continue to fight against protectionism, while Nakasone assured the President that more measures would be taken to further open Japan's markets. However, the 64-year-old Japanese leader was not specific as to how these measures would be carried out.

Reagan has warned Nakasone indirectly that trade frictions with Japan could contribute to a victory by the Democratic Party in 1984, which would eventually "open the path to protectionism" in the U.S.

But Nakasone has also made a favorable impression on the Reagan Administration. Since Nakasone took power two months ago, he has shown a willingness to take risks and brave criticism from his own country in an effort to strengthen U.S.-Japan ties in the areas of defense and trade.

Prior to his arrival here on Jan. 17, Nakasone has initiated new tariff cuts and market-opening measures; he has managed to secure a larger increase in Japan's defense budget than had seemed probable before he came to office; and he has broken a 16-year-old ban on the export of such technology to the U.S.

Nakasone has also reached agreement with South Korea on long-term Japanese economic aid through a precedent-breaking trip to that country.

More Access to Japanese Market

The Japanese leader has made efforts to improve foreign import access to the Japanese market as well. On Jan. 13, the Japanese government announced a package of new measures, which included:

- The strengthening of Japan's Office of Trade Ombudsman, in order to resolve import-access grievances promptly and fairly;
- An increase in imported tobacco sales outlets;
- More access to promotional facilities for imported goods;
- Reduction of burdensome product safety laws, so that imported products such as roller skates, motorcycle helmets and baseball hats will be judged on nearly the same level as domestic products;
- Revision of product standards and testing requirements so that the Japanese market can be more accessible to imports.

Nakasone had also told Reagan Jan. 19 that Japan was "prepared to listen to American opinions about conditions in the U.S. auto industry..." However, he added that Japan should decide what the numerical limit should be on their exported autos.

Of course, these efforts by Japan have made only a small dent in the record \$20 billion trade surplus which Japan holds on the U.S. from last year.

More Equity Called for by U.S.

And the friction between the two countries certainly won't cool off in the near future. Alan W. Wolff, a former deputy trade negotiator for the U.S., has said that there needs to be a "greater sense of equity" between the two countries, noting that U.S. businesses are constantly complaining about the difficulties of trying to penetrate the Japanese market.

But Nakasone has said that the opportunities already exist for American businessmen to sell their goods in Japan. They just need to make the right effort.

Japanese businessmen have made great efforts in developing a market in the United States and in promoting their scientific and technolo-

Continued on Page 5

Mansfield may retire in March

WASHINGTON—Mike Mansfield, the former Senate Democratic leader from Montana, is expected to resign in mid-March from his post as ambassador to Japan after a six-year tour under two administrations.

Sources said Jan. 13 Mansfield has advised the White House of his intention.

Information on the proposed retirement is still unofficial. White House and State Department officials available to reporters said no formal resignation has been received, and were unable to confirm the reports.

Mansfield, who will be 80 years old March 16, is said to want to begin work on the Mansfield Center for Pacific Affairs in Polson, Montana, his home state.

The long-time Democratic senator and former Senate Democratic leader has been in the demanding post since 1977, and was the only politically appointed ambassador in the Carter administration asked to stay on by the Reagan administration.

In 1980, President-elect Reagan asked Mansfield to stay on in Tokyo for two years.

The sources said David Abshire, 56, president of Georgetown University's Center for Strategic and International Studies, is in line for the post.

Abshire is a former assistant secretary of state for congressional relations, and is a graduate of the U.S. Military Academy.

Abshire, who is also a member of the President's Foreign Intelligence Advisory Board, was at the White House Jan. 13. He has refused to comment on the reports that he will be chosen, and the usually accessible Mansfield did not return telephone calls from reporters.

Another prospect for the Tokyo job, former National Security Adviser Richard Allen, now with the Heritage Foundation, has been dropped from the list of possible candidates to succeed Mansfield, according to the sources.

Mansfield has been extremely popular in Japanese political and business circles. He announced plans to retire in 1981 at the end of Carter's term, "To move out of the strain of diplomatic life," but agreed to stay on when Reagan appealed to him.

Nikkei of WW2 Supreme Court cases seek reversal of decisions

SAN FRANCISCO—Charging that U.S. government officials suppressed evidence which could have led the Supreme Court to prohibit the internment of Japanese Americans, the three defendants of those infamous high court cases are now seeking reversals of their convictions.

Gordon Hirabayashi, Fred Korematsu and Min Yasui filed petitions in the United States District Court here Jan. 19 for a Writ of Error Coram Nobis.

Hirabayashi, then a student at the University of Washington, was convicted in Seattle in 1942 both for violating the military curfew orders imposed on persons of Japanese ancestry, and for refusing to report to a civil control station for evacuation. He served a total of two years in county jails and federal prisons.

Yasui, a Portland, Or. attorney, was arrested and convicted that same year for violating military curfew orders.

Korematsu, a San Francisco shipyard welder before the war, was also convicted in 1942 of remaining in a military area which excluded persons of Japanese ancestry.

Juvenile is guilty of torching Issei

SAN JOSE—A school boy accused of tossing a lighted match onto the back of an 81-year old Issei woman and setting her afire was found guilty of two felonies Jan. 14.

Scott Morris, 13, could be sentenced to the California Youth Authority until he is 20, should Juvenile Court Judge Reed Embler give him the maximum sentence.

Shina Shigemura suffered third degree burns on her back and on her head in the Dec. 28 incident.

Tim Perkins, a playmate of Morris, testified that the two were walking past Mrs. Shigemura as she was stooped over in her yard pulling weeds.

Scott "asked me if I wanted to throw a match on her," Perkins testified. "We walked right past her and he threw a match on her."

S.F. bill passes

SAN FRANCISCO—This city is hoping to make amends for something that happened more than 40 years ago and is looking for 16 people who were city employees before their internment during World War II because they were of Japanese ancestry.

The board of supervisors, by a unanimous vote, passed an ordinance Jan. 10 that will provide reparation for loss of salary caused by their relocation to internment camps.

Introduced by Supervisor Quentin Kopp, the measure covers the years of 1942 through 1945. It provides \$1,250 for each year, with a maximum of \$5,000.

Armed with a list of 16 names from the Civil Service files, Kopp said that the employee has to file his own claim for the money with the Civil Service. Mayor Dianne Feinstein was expected to sign the statute into law on Jan. 24.

The U.S. Supreme Court, in 1943 and 1944, had upheld the convictions of all three defendants on the basis of "military necessity." But now evidence compiled by a group of attorneys known as the Committee to Reverse the Japanese American Wartime Cases charges that U.S. government officials suppressed, altered, and destroyed key evidence in order to influence the outcome of these wartime cases.

The finding of "military necessity" by the high court was based upon government representations that Japanese Americans were committing espionage and sabotage by signalling enemy ships from shore.

The Court also accepted government arguments that the loyalty of Japanese Americans was suspect because of the racial characteristics of the population.

The allegations of espionage, sabotage and disloyalty were contained in an official document entitled, "Final Report" and issued by Lt. Gen. John L. DeWitt, who ordered the evacuation and internment.

Dale Minami, who is currently

the lead attorney for Korematsu, noted that these allegations were "repeated often verbatim" in the Court briefs of the Justice Department and the attorneys general of the California, Oregon and Washington.

"The importance of this petition is that evidence for reversing these convictions comes from the government's own files," noted Peter Irons, lead counsel for the attorney group. "Records show that the efforts of government lawyers who objected to the suppression of evidence were rejected by high-ranking officials."

Yasui, Hirabayashi and Korematsu and their attorneys are now charging that the Justice Department and the War Department were aware of high level reports from the office of Naval Intelligence, the FBI, the Federal Communications Commission and the Army's Military Intelligence Division (G-2), which directly refuted the espionage, sabotage, and disloyalty allegations. These reports, which undermined the "military necessity" claims, were withheld from the Court.

Continued on Page 5

Washington state employee bill urged

SEATTLE—Washington state Sen. George Fleming introduced a bill Jan. 17 to the Legislature which calls for \$5,000 compensation to Japanese American former state employees who were summarily dismissed from their jobs because of the World War II evacuation.

The bill, SB 3163, is similar to the California legislation AB 2710 except that the \$5,000 payment would be distributed over a two-year period, rather than four. Eligible recipients would be those Nikkei employees who were terminated during World War II as a result of the state's adoption of EO 9066 and PL 503. Approximately 38 Nikkei are believed to be eligible; many of them had worked for state agencies, the University of Washington, Western State Hospital, Central Washington College of Education and Washington State University.

In addition to Fleming, the bill was co-sponsored by state Senators Jack Jones, Kent Pullen, James McDermott and Phil Talmadge.

Many community organizations are currently lobbying for or supporting the bill, including the Seattle JACL, the JACL Pacific Northwest District Council, the Washington Coalition on Redress, the Washington Commission on Asian American Affairs, the American Jewish Committee of Greater Seattle, the Asian Pacific Women's Caucus and the Washington Federation of State Employees.

Hayakawa does quiet fadeout, leaves puzzling legacy behind

WASHINGTON—S.I. Hayakawa, now a private citizen, may at best be remembered for his controversial statements and his sleepy, insensitive image, for during his six-year term as the junior U.S. senator from California, he had few legislative accomplishments to claim.

Hayakawa, 76, plans to return to writing and lecturing, and he intends to spend the next three months preparing papers for the Hoover Institution at Stanford University.

A review of Hayakawa's legislative record shows that very few of his proposals even passed the Senate and the causes to which he dedicated his main efforts remain unresolved.

"He's well-liked, but he's considered ineffective," was the polite conclusion of a fellow senator.

Senate 'Instructive'

Hayakawa himself could name few accomplishments to his credit, but he summed up his term in this way: "It's extremely instructive. It makes you less arrogant about criticizing government and what government can do. Serving here makes you realize how complicated it is to do anything."

Hayakawa was a puzzling figure in the political arena. A brilliant

semanticist, he apparently had the potential to be an effective legislator. But many factors worked against him—a weak staff, his inability to grasp important issues, and his own refusal to play the political game.

A former aide to Hayakawa noted, "I certainly think he wanted to accomplish things. His biggest problem is he just didn't know how."

Other Capitol Hill workers said the former Republican senator was of little help in assisting others in getting things done.

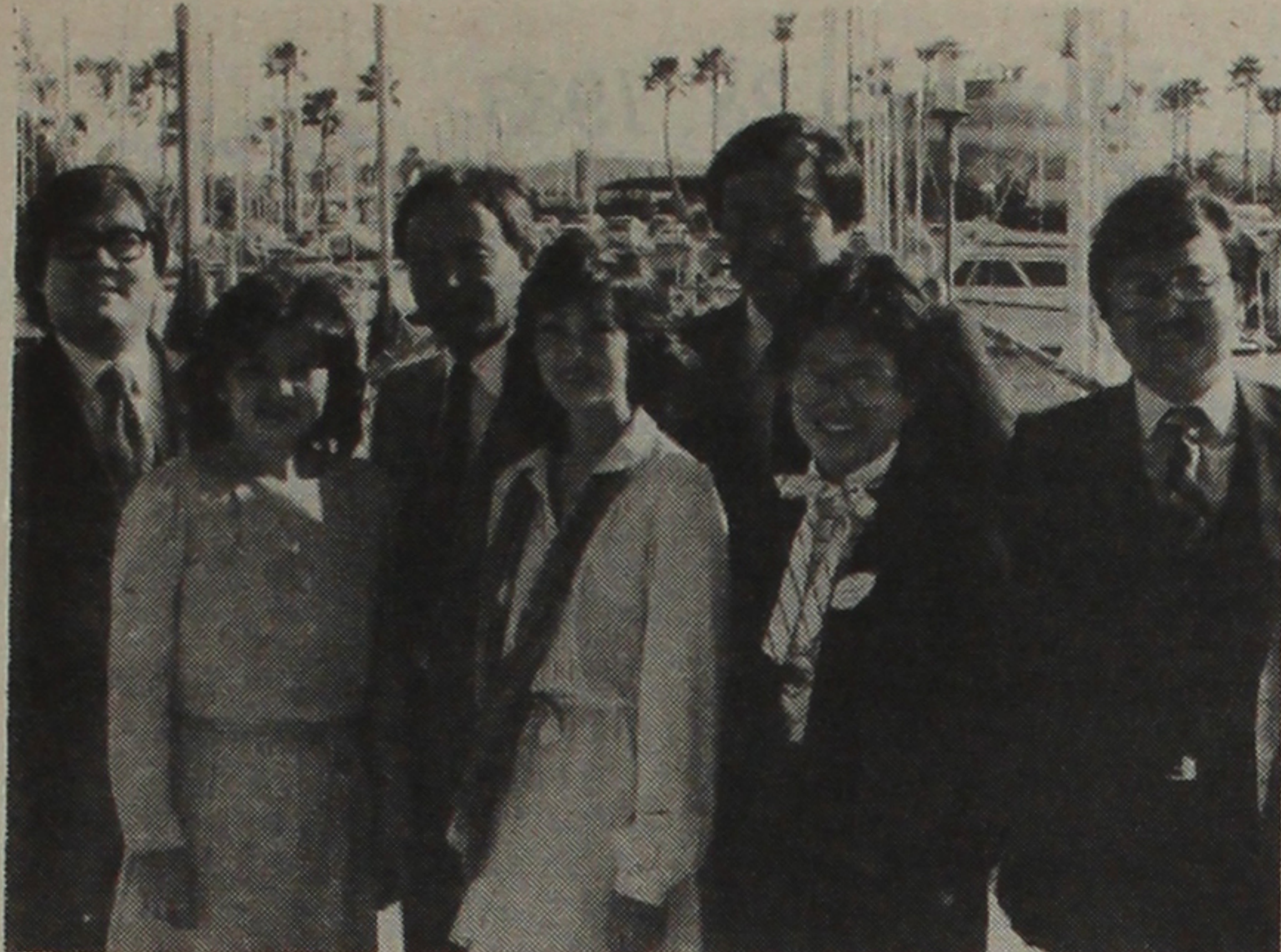
Staff Problems

Another aide recalled, "We didn't have much contact with Hayakawa because unless we absolutely had to, we never called on him for help. The staff was so screwed up."

"Along side (Sen. Alan) Cranston's staff there was no comparison," the aide noted. "So whenever we really wanted something done, we went to Cranston."

The former aide added, "I'm not saying the staff was perfect and couldn't have done better, but it was very disheartening for the staff to do the back-up work and have him (Hayakawa) not carry the ball."

Continued on Page 4



JABA'S NEW OFFICERS—Leslie Furukawa, JACL PSW-DC's Legal Counsel, became the first woman president of the Japanese American Bar Association and was installed at the California Yacht Club in Marina Del Rey, Ca. on Jan. 15. JABA's new officers include (l to r): secretary Gerald Sato; Furukawa; past president Michael Yamaki; vice presidents Carol Matsunaga and Howard Halm; treasurer Judy Otamura-Kester; and president-elect Ronald Ito.

Chol Soo Lee's 2nd charge overturned

SAN FRANCISCO—An attorney for a Korean immigrant acquitted of two murder convictions called the acquittals "amazing" Jan. 16.

"Nobody else has ever had the opportunity to have the door re-opened like this," Ranko Yamada, Chol Soo Lee's childhood friend and attorney said.

"It's so amazing, you know, the odds of this happening—to win that retrial, to win the appeal—that's what's so exciting."

Lee, 30, was convicted in the 1973 slaying of a rival Chinatown gang associate and sentenced to state prison in 1977. His second conviction was for the killing of an inmate in the Deuel Vocational Institute in Tracy.

A San Francisco jury acquitted Lee in September after a retrial on the first conviction. The jury did not believe the caucasian witnesses to the shooting and acquitted Lee of gunning down Yip Yee Tak.

The Third District Court of Appeals in Sacramento, acting on a petition filed in 1981, overturned his conviction for the second murder Jan. 14. The appeal court reversed Lee's conviction in the death of inmate Morrison Needham because the judge failed to make clear to the jury that he could be convicted of a lesser charge such as second degree murder or manslaughter.

San Francisco authorities have petitioned for a new trial in the Chinatown case, and San Joaquin County authorities were expected to do the same in the Deuel killing.

ILWU leader who helped Nisei dies

SAN FRANCISCO—Louis Goldblatt, a leader of the International Longshoremen's and Warehousemen's Union for more than 40 years, died Jan. 17 at the age of 72.

Goldblatt, who had undergone heart surgery more than a decade ago, was receiving cardiac treatment again at the Kaiser Foundation Hospital in Terra Linda when he died.

Bronx-born and Berkeley-educated, Goldblatt was a passionate left-wing activist in the student movement on the Berkeley campus during the earliest days of the Depression.

After two years of graduate studies in economics, he left the academic world in 1932 and soon became a warehouse union organizer. Meanwhile, San Francisco's longshoremen were organizing on the waterfront and Harry Bridges was emerging as their leader.

The two men began an alliance that lasted for decades and were involved with the waterfront labor movement all along the West Coast.

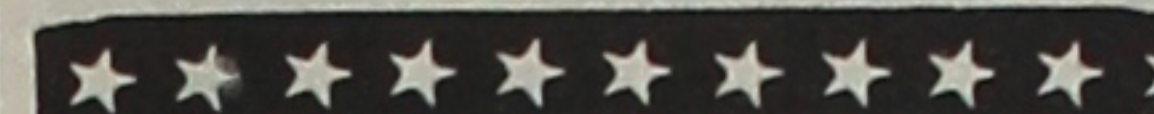
Goldblatt often said that his most significant union contribution was organization of Hawaii's sugar and pineapple workers in 1946 and then winning advantageous contracts for them.

Worker support for his effort was largely made possible by his

own outspoken opposition to the internment of Japanese Americans during World War II—a stand that was politically unpopular but earned him the deep admiration and gratitude of the diverse ethnic groups that still make up Hawaii's main labor force. The ILWU remains a most powerful factor in Hawaiian politics.

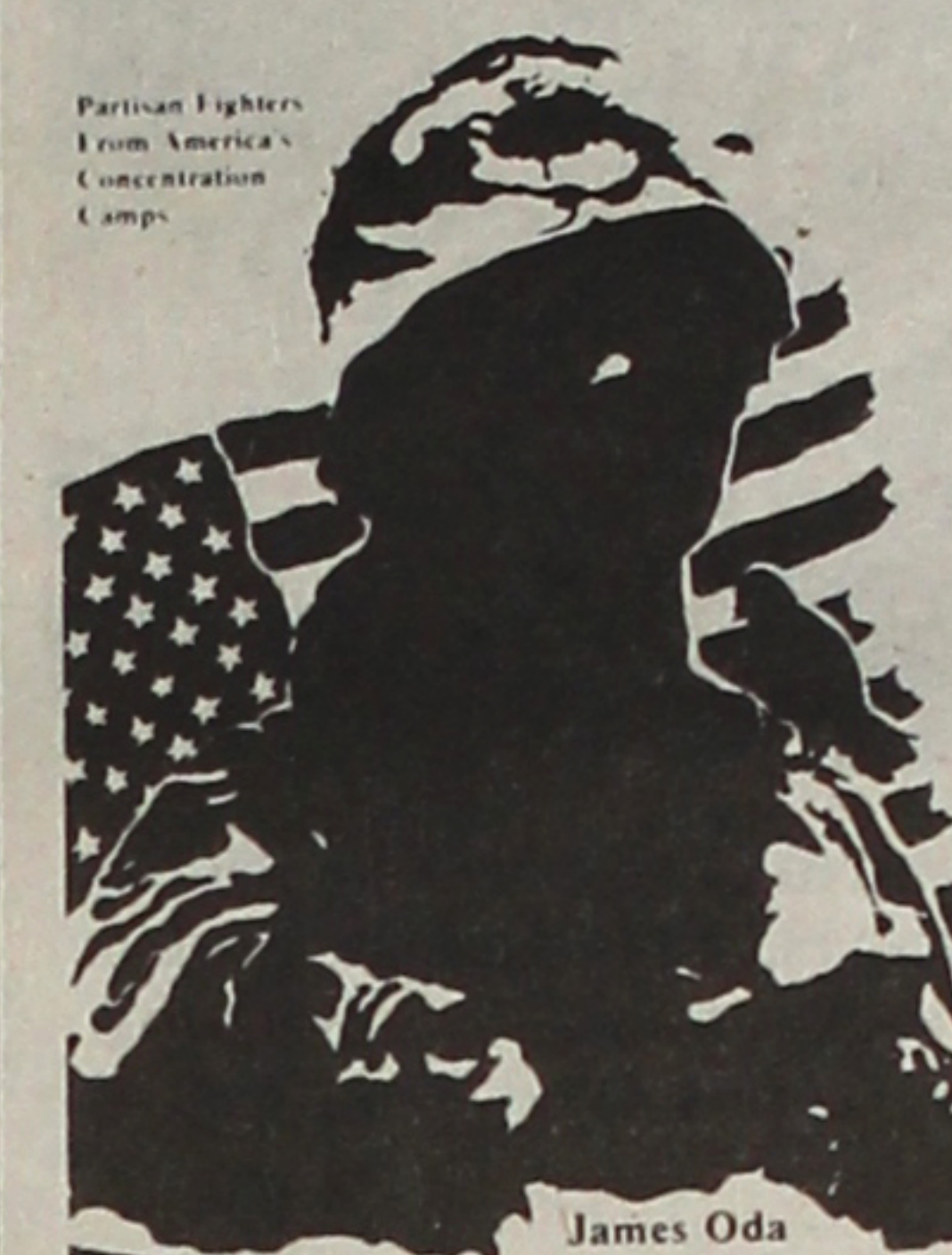
• Military

Col. Charles H. Moriyama of Danville, Ca., was recently awarded the Legion of Merit for exceptionally meritorious service during a combined active and Army reserve career of 30 years, culminating as Commander, 478th Military Intelligence Detachment (Strategic), Oakland, Ca., from September 1977 to August 1982.



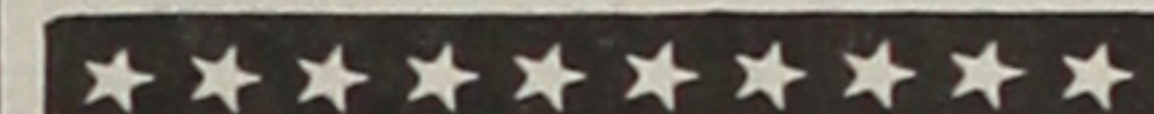
HEROIC STRUGGLES

of Japanese Americans



Hardcover: \$14.50
Softcover: \$9.50

Postpaid at the Pacific Citizen



Goldblatt, who lived in Mill Valley, is survived by his wife, Theresa, and three daughters, Ann Smith of Arcata, Lee Nixon of San Rafael and Lisa Goldblatt, a graduate student at UCLA. #



What is the Japanese American Kamon?

The Issei are the forefathers of the Japanese Americans. With the Issei, a long line of Japanese history ended;

however, in giving birth to the Nisei, a brand-new, Japanese American history was also born.

In order to always commemorate the Issei within your family, and to eternally mark this clear, historical transition from Japanese to Japanese American, Kei Yoshida designed and created her original, bronze Japanese American Kamon. The unique features of this JA Kamon are:

- It is handcarved, then handcast with the 3 essential "keys" to your family history—your Kamon, surname in Kanji, and ancestral birth-place—into one, solid bronze piece, so that the 3 will never be separated for 2-3000 years.
- Every JA Kamon is individually hand-made, not mass-produced. Hence, each is one-of-a-kind, and will function as a durable record which accurately reflects your family's history.

Kei Yoshida is an artist, a researcher of Kamons and sumames, and the mother of 2 Nisei children.

If you wish to order, please send a request along with a self-addressed, stamped envelope for further information and a price list.

YOSHIDA KAMON ART

S. K. UYEDA BLDG., Suite 205

312 E. 1st ST. LOS ANGELES, CA 90012

(213) 629-2848/755-9429

SHORT & SMALL MEN'S APPAREL

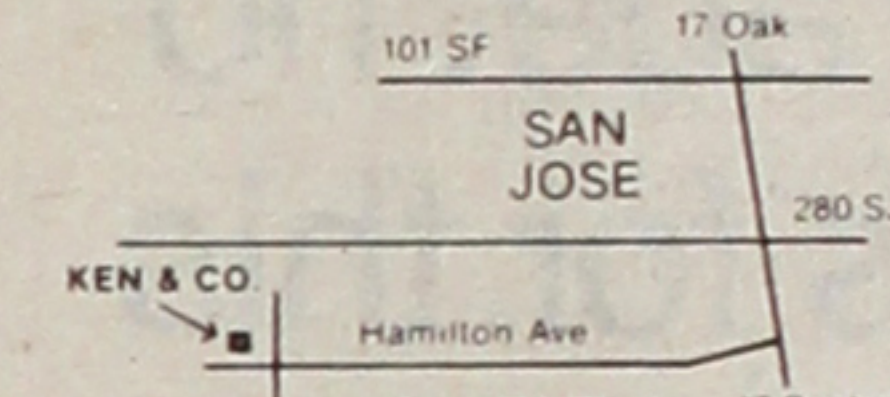
We at KEN & CO. are now featuring our new line of shoes & shirts by...

FRENCH-SHRINER, NUNN-BUSH

Sizes: 5-9 M & E widths

JOHN HENRY, OSCAR DE LA RENTA

Sizes: 14-16 1/2 neck, 30 & 31 sleeves



(408) 374-1466

785 W. Hamilton Ave., Campbell

KEN & COMPANY clothing merchants



Ken Uyeda owner
GIVENCHY/LANVIN
ST. RAPHAEL

PACIFIC GARDEN APARTMENTS

WEST LOS ANGELES

Studios, 1 Bedroom

2 Bedroom, 2 Bath

FURNISHED AND UNFURNISHED

- POOL, SPA
- CLUB HOUSE
- EXERCISE ROOMS
- SAUNA
- TENNIS PRO
- SOCIAL ACTIVITIES

Security Patrolled Building

We Also Offer Sunday Brunch

and a Happy Hour on Friday

CLOSE TO UCLA & ELS LANGUAGE SCHOOL

● JANUARY MOVE-IN SPECIALS

3636 Sepulveda Blvd.
Los Angeles, Calif. 90034
(213) 398-2796

HEALTH FAIRS!

康健
(Health)

JACL Chapters
wants healthy communities
For more information about Health Fairs
call National JACL.

415/921-5225

Oppenheimer Special Fund

**\$2,000 a year
turned into \$73,612
in just over 9 years.
Good enough for
your IRA?**

How you invest your IRA retirement money will directly affect how comfortably you live after retirement. That's why we say—take a close look at Oppenheimer's aggressive mutual fund, the Special Fund.

Had there been an IRA program nine and a half years ago when the Oppenheimer Special Fund began operations, a maximum annual IRA contribution of \$2,000 a year would now be worth all of \$73,612,* had you reinvested all distributions. That's a 22.8% average annual total return on investment. And that performance took place during these turbulent investment years.

Of course, nobody can guarantee the future. We do not suggest that an investor may not have a loss if he or she buys at one time and sells at another, after equity prices have declined.

But 22.8% average per year for over nine years? See if anybody else can top that. Then send in the coupon for complete information about the Oppenheimer Special Fund.

Special Fund is not available in Maine, Miss., Mo., N.H., Ohio or Wis.
* On September 30, 1982, assuming you had reinvested all dividends and distributions and invested your annual \$2,000 on March 15, 1973 (inception of fund), and on the first business day of each year thereafter.

Jo Anne Kusudo, CFP
Protected Investors of America
900 Welch Rd. Ste 203, Palo Alto, CA 94304

(415) 321-1103

Please send me a prospectus containing more complete information including all fees and expenses so I may read it carefully before I invest or send money.

Name

Telephone

Address

City

State

Zip



Asian counseling ctr. opens in N.Y.

NEW YORK—With the introduction of two recently-hired staff members, Rev. Mas Kawashima announced recently that "The Japanese American Counseling Center (JACC) is now in operation," and invited the Japanese community to use the professional services which it will offer.

More than a year in the planning, the JACC is a part of the Asian American Mental Health Demonstration Project funded by the New York State Department of Mental Health and administered by the Hamilton-Madison House, a

private not-for-profit multi-service settlement house operating in New York City since 1898.

Funds for the project have been allocated for three years, and the first year's budget is \$225,000. The money will be divided proportionately among the four participating Asian groups—Chinese, Filipino, Japanese and Korean. Each group will function semi-autonomously out of offices located in various parts of the city, designing programs to meet each community's needs.

The JACC is located at 236 West 72nd Street, between Broadway and West End Avenue, New York, N.Y. 10023.

The two staff members were introduced at a recent dinner meeting of the JACC at the Nippon Club which was presided over by the Rev. Kawashima, who represents JACC on the advisory board of the Asian American Mental Health Task Force.

Hiroshi Suzuki has been named Case Manager. Suzuki is a graduate of Wurzelweil School of Social Work, Yeshiva University, in New York City. He is a trained psychotherapist with many years of experience in counseling.

The position of Community Organizer will be filled by Kimiko Shiomura, a graduate of Tokyo Women's Christian University and of the University of Minnesota School of Social Work. During her last six months at the University of Minnesota, she served as special assistant to Ron Wakabayashi, National Director of the JACL. In addition, she was associated with Nobiru-Kai, a service for Japanese newcomers.

Both staff members are bilingual, in Japanese and English.

The professional services being offered by the JACC include counseling, both preventive and therapeutic, outreach, education, and referrals.

JACL, NCRR plan 'Remembrance' day

LOS ANGELES—The JACL Pacific Southwest District and the Southern California Regional of the National Coalition for Redress/Reparations (NCRR) will hold a candlelight march on Feb. 19 as part of the "Day of Remembrance" activities.

With the theme, "United for Justice—Remember the Issei," the program begins at 5:30 p.m. at the old Nishi Hongwanji Temple (First St. and Alameda Ave.).

The program will include speakers Mas Fukai, Gardena City Councilman; Rep. Mervyn Dymally (D-Compton); JACL PSWDC Gov. Cary Nishimoto and redress chair Harry Kajihara.

Urban Fellows seeking applicants

NEW YORK—National Urban Fellows, Inc., is seeking applicants for 30 mid-career fellowships in urban administration, and is looking in particular for minority group members with a demonstrated potential for leadership.

According to the organization's president, Luis Alvarez, the 1983-84 fellowships will each carry a tax-exempt educational grant of \$13,000 to \$15,000 for the 14-month program period.

Those chosen Fellows will spend an intensive seven-week residential semester at Bernard M. Baruch College of City University of New York City, beginning this July. They will then be assigned to nine-month mentorships as special assistants to mayors, city managers, county administrators and other urban administrators.

Those Fellows who have not obtained an advanced degree will return to Baruch in June of 1984 for eight weeks to enable them to complete requirements for a Master of Public Administration (MPA) degree. The tuition will be paid by National Urban Fellows, Inc.

To be eligible, men and women should be United States citizens between the ages of 25 and 40 and have more than three years of full-time administrative experience. They should also have a commitment to the solving of urban problems.

Application forms and details may be obtained from The National Urban Fellows, Inc. 1776 Broadway, 22nd floor, New York, N.Y. 10019. Phone number (212) 541-5711. Completed applications must be received by Feb. 18.

Rental referrals offered by LTSC

LOS ANGELES—Due to the present economic conditions and subsequent housing shortage, the Little Tokyo Service Center has announced the beginning of a new feature of the housing information counseling service, which has been one of the services of the LTSC for the past few months.

This new addition is called the Housing Information and Referral Exchange Service (HIRES). The main objective of HIRES is to collect and match available rental units with people who are seeking apartments or houses to rent.

Those interested in being a part of this exchange should call the Little Tokyo Service Center on

Thursday afternoons from 1 to 4 p.m. and ask for Yo Abe at (213) 680-3729.

Ankka & Co.

Largest Stock of Popular & Classic Japanese Records, Magazines, Art Books, Gifts

Two Shops in Little Tokyo
330 E. 1st St. - 340 E. 1st St.
Los Angeles, Calif. 90012
S. Ueyama, Prop.

Oshogatsu festival set for Jan. 29

SAN FRANCISCO—Japantown's twelfth annual Oshogatsu Festival will be held on Saturday, Jan. 29, 10 a.m. to 5 p.m., at the Morning Star School and the Buddhist Church (corner of Pine and Octavia).

The New Year's festival will feature traditional Asian foods, mochi-making, entertainment, arts, and Japanese Sumo wrestling.

Marutama Co. Inc.

Fish Cake Manufacturer
Los Angeles

Naomi's Dress Shop

Sports & Casual • Sizes 3 to 8
133 Japanese Village Plaza Mall
Los Angeles • 680-1553

Open Tue-Fri 9:30-6:30
Sat 11-9, Sun 11-5, Closed Mon

ESL exams offered by Cross Culture Ctr.

LOS ANGELES—The U.S.-Japan Cross Culture Center will administer special qualifying examinations for the certification of teachers of English as a second language (ESL) for native speakers of Japanese.

The certifying organization, the Cross Culture Center of Japan, has been a well-known administrator of ESL teaching in Japan for over 20 years.

Examinations will be administered three times a year. This year exams will be held on the following Saturdays: May 28, July 30, and Oct. 29. The examination fee will be \$20.00.

For more info contact the U.S.-Japan Cross Culture Center, 244 S. San Pedro St., Suite 305, Los Angeles, Ca. 90012; phone number (213) 617-2039.

PACIFIC HERITAGE BANK

VINCENT H. OKAMOTO, Chairman of the Board

3440 Torrance Bl. • Torrance 90503 • 542-0581

Member FDIC • Federal Reserve System

Mrs. Friday's

DELIGHTFUL seafood treats
DELICIOUS and so easy to prepare

MRS. FRIDAY'S
Gourmet Breaded Shrimps and Fish Fillets

Fishing Processors, 1327 E. 15th St., Los Angeles, (213) 746-1307

GARDENA—AN ENJOYABLE JAPANESE COMMUNITY

Poinsettia Gardens Motel Apts.

13921 S. Normandie Ave. Phone: 324-5883

68 Units • Heated Pool • Air Conditioning • GE Kitchens • Television
OWNED AND OPERATED BY KOBATA BROS.

Carat

Japanese Charms
Japanese Names
Japanese Family Crests

12558 Valley View, Garden Grove, CA 92645 • (714) 895-4554

Check our rates first.

Check the interest rate on Sumitomo's Money Market Premium Account, and compare it to those of other money market funds. Our high rate shows that you really rate with us.

Money Market Premium Account Advantages

- High money market interest
- Easy access to your funds
- FDIC insurance protection
- Check-writing privileges
- Initial minimum deposit of \$2,500

24-Hour Banking

We serve you statewide with a network of Automated Teller Machines for day and night banking. Use ATM with our Money Market Premium Account. Our ATM cash withdrawals are quick, as fast as 12 seconds.

Consumer Loans

We've lowered our loan rates. Our home improvement loans help you build for your future. Home equity and car loans are also available. Come to Sumitomo for your financing.

Call Sumitomo for rates or visit a branch office near you.

Sumitomo Bank

Sumitomo Bank of California Member FDIC

ATM touch...

- withdraw cash • make deposits • make loan payments • transfer money between your accounts ...and check your available balances

CALIFORNIA FIRST BANK

Member FDIC

California First Bank, 1982

Pacific Citizen

Published by the Japanese American Citizens League every Friday except the first and last weeks of the year at 244 S. San Pedro St., Los Angeles, CA 90012; (213) 626-6936. • 2nd Class postage paid at Los Angeles, CA. • Annual Subscriptions—JACL members: \$9.00 of national dues provides one-year on a per-household basis. Non-members: \$16, payable in advance. Foreign addresses: Add U.S. \$8. • News or opinions expressed by columnists other than JACL staff do not necessarily reflect JACL policy.

Floyd D. Shimomura, National JACL President
Henry S. Sakai, PC Board Chair
General Manager/Operations: Harry K. Honda
Editor: Peter A. Imamura
Advertising: Jane M. Ozawa
Circulation: Tomi Hoshizaki, Mitsuko Sakai
Typesetting: Mary Imon. Mailing: Mark Saito

Evacuation Impact on Law & the Courts

Boston

Editor's Note: Dr. Peter Irons, the lead counsel for the Coram Nobis cases of Gordon Hirabayashi, Fred Korematsu and Min Yasui, had testified before the Commission on Wartime Relocation and Internment of Civilians in Boston on Dec. 9, 1981. Here is the paper he presented to the CWRIC:

Generally overlooked, in the stress on the impact of wartime internment on the evacuated Japanese Americans, is the impact of the relocation program on the legal profession and the judicial system. Most of the civilian officials responsible for the evacuation decision, and for the subsequent administration of the relocation program and its legal defense, were lawyers, as were many of the military officials who participated in these events. As the internment program progressed from the initial debate over evacuation through the decisions of the Supreme Court upholding the curfew regulations and evacuation orders, and finally to the decision to end internment and the protracted litigation over citizenship renunciation, government lawyers in both policy-making and litigating roles faced serious questions of ethical and professional responsibility.

Notwithstanding the exigencies of the wartime situation and the perceived need to protect the largely undefended West Coast against a potential invasion, it is clear that the justification of "military necessity" as the rationale for internment lacked any substantial factual foundation. During the debate that preceded evacuation, lawyers in the War Department (including Secretary of War Henry L. Stimson) recognized, as Stimson admitted in his diary, that "we cannot discriminate among our citizens on the ground of racial origin" and that internment would "make a tremendous hole in our constitutional system." In contrast to Gen. John L. DeWitt's unsupported allegations of acts of espionage and sabotage by Japanese Americans, War Department and Justice Department officials had been informed by J. Edgar Hoover that "[t]he necessity for mass evacuation is based primarily upon public and political pressure rather than factual data." That lawyers cognizant of the constitutional and factual infirmities of internment proceeded to urge it on President Franklin D. Roosevelt and to implement the program points up not only an institutional failure but evasions of personal and professional ethics as well.

A second example of both institutional and ethical failure is illustrated by the contents of and the events surrounding Gen. DeWitt's *Final Report* on evacuation. At the time that lawyers in the Justice Department were preparing the government's brief in the *Hirabayashi* case in early 1943, records show that War Department officials deliberately withheld this report from the Justice Department, in order to cover up its factual errors and lack of substance. A year later, after release of the *Final Report*, investigations directed by the Attorney General and conducted by the FBI and the Federal Communications Commission demonstrated conclusively its erroneous foundation. Yet, over the objections of Edward J. Ennis and John Burling of the Justice Department, the *Final Report* was cited to the Supreme Court in briefs in the *Korematsu* case as factual justification for evacuation.

It is clear from the record that internment was decided upon and implemented, and justified in the courts, on the basis of a demonstrably false set of assumptions about the Japanese American community and equally false "facts" to support allegations of espionage and sabotage. It is to the credit of lawyers such as Mr. Ennis and Mr. Burling that they protested these decisions, although they stopped short of resignation from office or public exposure of these facts.

The ethical questions raised by the internment experience, as it involved the legal profession, go to the heart of the balance between personal responsibility and professional demands. These questions are, it should be stressed, not unique to the Japanese American internment case, but have been recurrent in American history. Similar questions arose during World War I, when Alfred Bettman and John Lord O'Brian of the Justice Department argued against the indictment of Eugene Debs on charges of violating the Espionage Act, and were overruled to placate political demands. More recently, congressional and press investigations have shown that prosecutions of Vietnam War opponents, purportedly based on evidence of foreign direction, were authorized in knowing disregard by government lawyers of factual refutation of such allegations.

The internment experience shows more clearly than other

Continued on Next Page

Letters

● 'Offensive Stupidity'

Editor:

The period of the 1930s and the activities of the JACL is a time that needs a great deal of scholarly attention so I appreciate Mr. James S. Oda's observations (PC Jan. 21) on my article that appeared in the Holiday Issue.

In response I would also like to point out that the article was written for the Journal of San Diego History and so was oriented to Mr. Abe and this area where he did indeed played a major role.

I did not intend to imply in any way that Mr. Abe fought the anti-Japanese fishing bills singlehandedly. In fact I attempted to include the names of as many others as I could establish who were involved.

The suggestion that Sam Yorty introduced his bill at the behest of the State CIO was first suggested by John Modell in his dissertation on the Japanese of Los Angeles. This contention is supported by the minutes of the state Assembly debates of 1939.

DONALD H. ESTES
San Diego, CA.

'Relocation and Redress' confab planned for Utah

SALT LAKE CITY—A three-day conference exploring the various aspects and consequences of the relocation and internment of Japanese Americans during World War II will be held by the Center for Historical Population Studies at the University of Utah on March 10-12. Forty-two scholars and organizational representatives from across the country are expected to participate in the meeting to discuss the internment experience and the current redress movement.

The conference will include a visit to the former Topaz Relocation Center, photo and art exhibits, and film screenings. Discussions will focus on: intermountain camps; the uprooting of communities; the response of churches and the state; economic losses of the Japanese American community; public opinion and congressional reaction; education in the camps; sociopsychological impact; the role of the JACL in the relocation; the Canadian and Latin-American experiences; constitutional issues; the redress movement; and Japanese Americans and politics, 40 years later.

Taking part in the conference will be:

Arthur A. Almeida, President, San Pedro Bay Historical Society, San Pedro, Ca.; Leonard J. Arrington, History, Brigham Young University; Howard Ball, Political Science, University of Utah; Shirley Castelnovo, Political Science, Northeastern Illinois University; F. Alan Coombs, History, University of Utah; John J. Culley, History, West Texas State University; Roger Daniels, History, University of Cincinnati; Dixie L. Ehrenreich, Laboratory of Anthropology, University of Idaho; C. Harvey Gardiner, History (Emeritus), Southern Illinois University; Asael T. Hansen, Anthropology (Emeritus), University of Alabama; Lon Hata-miya, Cincinnati, Oh.; Gordon Hirabayashi, Sociology, University of Alberta; Lane Hirabayashi, Asian-American Studies, UC-Santa

Barbara; William Hohri, National Council for Japanese American Redress, Chicago; Bill Hosokawa, Journalist, The Denver Post; Toaru Ishiyama, Superintendent, Ohio Department of Mental Health; Thomas James, Education, Stanford University; Alice Kasai, JACL Coordinator, Salt Lake City; Tetsuden Kashima, Director, Asian-American Studies, University of Washington; Mary Kawakami, Business, Provo, Ut.; Mrs. Toyo S. Kawakami, Head Librarian, Ohio State University.

Harry Kitano, Sociology, UCLA; Tom Lansburg, Publisher, Thousand Oaks, Ca.; William M. Marutani, Judge, Court of Common Pleas, Pa.; Amy Iwasaki Mass, Social Work, Whittier College; Spark Matsunaga, U.S. Senator/Hawaii, Washington, D.C.; Herbert B. Maw, Former Governor, State of Utah; Gary Okihiro, Director, Ethnic Studies, University of Santa Clara, Ca.; Dennis M. Ogawa, American Studies, University of Hawaii; Grace Oshita, Salt Lake City; Barry Saiki, Business, Universal Public Relations Inc. Tokyo, Japan; Masayuki Sato, San Jose, Ca.; Floyd Schmoee, Americans Friends Service Comm., Seattle; Floyd Shimomura, National President, JACL; Robert C. Sims, History, Boise State University; Geoffrey Smith, History, Queens University, Canada; John Tateishi, Director, National Redress, JACL, San Francisco; Sandra C. Taylor, History, University of Utah; Dr. James Tsujimura, Past President, JACL, Portland, Or.; Raymond Uno, Judge, Fifth Circuit Court, Ut.; Ron Wakabayashi, National Director, JACL, San Francisco; Minoru Yasui, Commission on Community Relations, Denver, and National JACL Redress Committee Chair.

Funding for the conference is provided by numerous sources, including the National Endowment for the Humanities, the Utah Endowment for the Humanities and the Salt Lake JACL Chapter.

Persons interested in attending the meeting should contact: Relocation and Redress Conference, University of Utah, The Center for Historical Population Studies, 211 Carlson Hall, Salt Lake City, UT 84112.

HAYAKAWA

Continued from Front Page

The poor guidance Hayakawa received from his staff was exemplified in 1977, when the senator went to a strictly social, non-partisan California State Society winter meeting. Hayakawa amazed his mostly Democratic partygoers by giving a partisan speech on how to build the Republican Party into a majority. He later explained that an aide had told him it was a Republican affair.

A former staff member said that in many cases, perhaps, Hayakawa should have been guided better, but the senator was, in part, to blame as well, because he tended to hide in a corner, and did little mingling with people.

"I think the bottom line was that the senator could not make the transition from the academic world to the political world. It's a vastly different thing. When he wrote books, he could research, and think, and ponder, and look at the ceiling. But here, it's bang-bang, and he couldn't handle that. Nor could he handle the wheeling and dealing. Much as he likes to be an exhibitionist, he's really a timid man. He didn't feel as polished as the other senators, and that made him insecure," noted the aide.

"You say, 'Now you've got to call this senator,' and he'd agree to do it, but he'd put it off. He was much more comfortable writing letters to the other senators and

giving speeches on the floor. That's not the way it's done, though," he added.

A Canadian-born Nisei, Hayakawa was propelled into the public limelight in 1968 when, while acting president of San Francisco State University, he climbed onto a sound truck being used by protesting students and pulled wires from their loudspeakers.

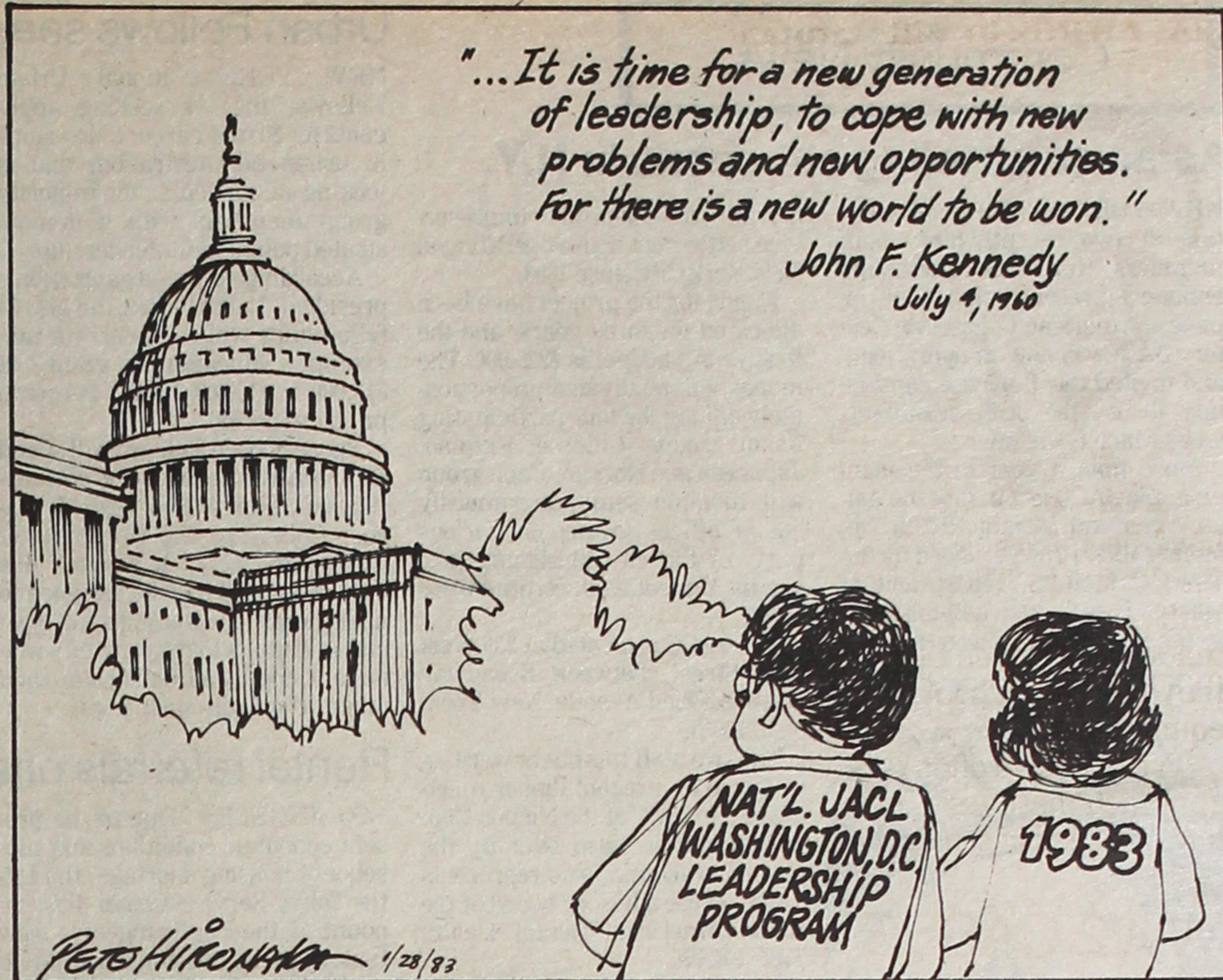
The incident won him much support from many blue collar voters, and Hayakawa was viewed as a national symbol of resistance to protestors of the Vietnam War and other causes.

He had been previously known for his accomplishments in the academic field, having spent 40 years as an educator (after earning a Ph.D from the University of Wisconsin) and writing several books, most notably, "Language in Thought and Action."

In 1976, although retired at the age of 70, Hayakawa became the surprise GOP entry in the senatorial race, and he defeated incumbent Democrat John Tunney. Tunney had a better record than his image of a "playboy" senator, but Hayakawa, still remembered for the SFSU incident, emerged the victor.

However, once in the Senate, Hayakawa could "never get in tune with that method of operating," noted an aide. "He's a very bright man and he had wonderful accomplishments in his life. But the Senate and politics were altogether new things to him."

Continued on Next Page



Former Seabrook Nikkei plan reunion

LOS ANGELES—Seabrook, N.J., (Hasuie) Yamanaka, (213) 666-2992; Ann (Tsuiji) Yamasaki, southeast of Philadelphia, has a frozen food packing industry that still bustles with several hundred Japanese American workers that first arrived there during World War II. At its peak years in the 40s there were over 3,000 Nikkei living in the industrial commune where jobs and housing were assured for the adults.

Riding on the tide of reunions that have been taking place since last spring, Fujio Sasaki of Gardena, Ca., affectionately known as "Mayor," called a group of ten people to a meeting last Nov. 13 at which the time, date and place for a large scale reunion were discussed. At its second meeting a month later on December 11, Mas (Hasuie) Yamanaka was named chairman with Mayor Sasaki serving as advisor.

The date for this reunion '83 has been set for Sunday, March 27, at the New Otani Hotel in Little Tokyo. The affair will be an informal luncheon, an 11:30 a.m.-12:30 p.m. Friendly Hour, with lunch to follow to enable more Issei to attend.

The cost will be \$15.00 per person, and the reservation deadline is Tuesday, March 15. Interested people in Los Angeles may contact by phone the "Mayor," (213) 532-6426; Ruth and Leo Toyama, (213) 733-3694; Hideko (Kawashiri) and Tom Shono, (213) 323-1983; Mas

Winnipeg, Canada—A national study on how the aged Issei and Nisei in Canada are spending their retirement years has commenced under the direction of Professor K. Victor Ujimoto, University of Guelph, and Professor Harry K. Nishio, University of Toronto.

The study will gather information on how the Issei and Nisei over 65 years of age spend their daily lives in various social, organizational, and leisure activities. Using questionnaires, the study will attempt to examine the various life experiences such as the World War II evacuation, internment relocation, career changes, and other life events that may have influenced how the Issei and Nisei spend their post-retirement days.

The study will be undertaken in the major urban centres of Canada. Because of the rapidly aging Japanese Canadian population across Canada, very wide interest in the project has been expressed by various Japanese Canadian organizations.

Study looks at Canadian aging

WINNIPEG, Canada—A national study on how the aged Issei and Nisei in Canada are spending their retirement years has commenced under the direction of Professor K. Victor Ujimoto, University of Guelph, and Professor Harry K. Nishio, University of Toronto.

The study will gather information on how the Issei and Nisei over 65 years of age spend their daily lives in various social, organizational, and leisure activities. Using questionnaires, the study will attempt to examine the various life experiences such as the World War II evacuation, internment relocation, career changes, and other life events that may have influenced how the Issei and Nisei spend their post-retirement days.

The study will be undertaken in the major urban centres of Canada. Because of the rapidly aging Japanese Canadian population across Canada, very wide interest in the project has been expressed by various Japanese Canadian organizations.



Making The Deserts Bloom

Philadelphia

WHENEVER WE READ of some country being unable to produce enough food to sustain its own populace, particularly within the underdeveloped "Third World" nations, we've wondered whether it might not

have been feasible to harness the talents of our retired Issei farmers. These Issei often occupied marginal lands with poor soil, properties that no one else wanted, and made those lands bloom and yield a cornucopia. And they did it without a lot of fancy, expensive farm equipment.

"Yes," we've often thought, "our Government should approach these Issei and have them go to these foreign lands instead of sending well-intentioned bureaucrats."

WW2 CASES Continued from Front Page

They also have discovered the evidence of a heretofore unknown original version of the Final Report which contradicted and undermined the government's position before the Court:

The first version stated that mass evacuation was necessary not because there was insufficient time to make individual loyalty determinations, but because it was "impossible" to separate the loyal from the disloyal no matter how much time was taken in the process.

The Justice Department had consistently argued to the Court that mass evacuation was necessary precisely because there was insufficient time to hold individual hearings. War Department officials were also concerned that the Supreme Court might view DeWitt's position that it was "impossible" to determine the loyalty of Japanese Americans as racist.

The attorneys claim that the report was altered, the original Final Report was burned, and records indicating the issuance of the first Final Report were destroyed to conceal its existence.

Naval Intelligence Report

The Office of Naval Intelligence conducted a two-year study of the West Coast Japanese American population. Authored by the ONI authority on Japanese Americans, Lt. Cmdr. K.D. Ringle, the report concluded that only a small and readily identifiable portion of the Japanese American people were even potentially disloyal. "The entire Japanese problem has been magnified out of its true proportion largely due to the physical characteristics of the people," wrote Ringle in Feb. 1942.

Edward Ennis, director, Enemy Alien Control Division of the Justice Department and the attorney responsible for supervising the drafting of the Justice Department briefs, advised Solicitor General Charles Fahy in April of 1943 that "we must consider most carefully what our obligation to the Court is in view of the fact that the responsible Intelligence Agency regarded selective evacuation as not only sufficient but preferable (to mass evacuation). I think we should consider very carefully whether we do not have a duty to advise the Court of the existence of the Ringle memorandum and of the fact that it represents the view of the Office of Naval Intelligence... Any other course of conduct might approximate the suppression of evidence."

FBI, FCC: No Illicit Signalling

In response to a request by Attorney General Francis Biddle to verify the accuracy of the Final Report, J. Edgar Hoover wrote in Feb. 1944: "Every complaint (of shore to ship signalling and radio transmissions) has been investigated, but in no case has any information been obtained which would substantiate the allegation that there has been illicit signalling from shore to ship..."

In response to a similar request, James Fly, the Chairman of the FCC, wrote in Feb. 1944: "There were no radio signals... which could not be identified, or which were unlawful."

Other evidence uncovered by the CRJAWC attorneys noted that Ennis and another Justice Department attorney, John Burling, had tried to warn Biddle and other high-level Justice Department officials that DeWitt's Final Report contained a lot of incorrect information and "intentional falsehoods" about Japanese Americans. Yet, this Report stood "as practically the only record of causes for the evacuation..." noted Ennis.

Background on New Petition

The Writ of Error Coram Nobis is a means of obtaining reversal of a conviction, and is used to prevent injustice and to correct fundamental errors that affect the validity of legal proceedings.

The lead attorney for the three Nikkei litigants, Irons, is currently on the political science faculty at UC San Diego. He was also on the faculty of the Legal Studies Program at the University of Massachusetts at Amherst.

Numerous Asian American attorneys are serving as co-counselors for Hirabayashi, Korematsu and Yasui.

Hirabayashi will be represented by Kathryn Bannai and Arthur Barnett of Seattle; Korematsu by Dale Minami, Lorraine Bannai, Dennis Hayashi, Donald Tamaki, and Michael Wong of Oakland, and Karen Kai, Russell Matsumoto, and Robert Rusky of San Francisco. Yasui will be counselled by Frank Chuman of Los Angeles and Peggy Nagae of Eugene, Or.

Korematsu had filed his petition last week in San Francisco; Yasui will file in Portland and Hirabayashi, in Seattle.

During the press conference held shortly after the three had filed the petition, Yasui, 67, noted that his father had "believed in America, and as his son, I too believe in America. I believe as a great country we can rectify the wrongs of the past."

Korematsu, 64, said, "I was not a criminal or an enemy alien. The Pearl Harbor attack was done secretly by the military leaders of Japan. Even the people of Japan didn't know about it—and yet we were to blame for it out here. I think that was wrong."

Hirabayashi, also 64, told reporters that such an event as the evacuation and internment could happen again. "As emotions are aroused, we have a history of doing whatever is expedient... Anything will happen again if citizens let it."

IT WOULD HAVE been a symbiotic relationship benefiting all: the Issei would be engaged in the type of work they thrived upon, making the impossible produce; the host country would become closer to being self-sufficient, thereby bringing stability to the world; the United States' reputation would be enhanced among these emerging nations and less of our tax dollars would be spent in providing continuing "international welfare." It would have been "a natural."

THERE ARE PRECIOUS few of these Issei around; they have reached the evening tide of their lives. Indeed, the Nisei are beginning to enter that tide. But even today, we know of an Issei here and there, still puttering away on their plot of ground, still raising vegetables, fruits and berries—with admirable success. And although time has taken its toll on the body, and the eyes and ears are not as keen as they once were, we continue to be amazed at how industrious and well they are. We know several of them that do not even wear spectacles, use no hearing aids, etc. and are nearing 80 years and yet assiduously work their plot of ground. Daily. Indeed, these good people happen to be our sources of fresh *nappa*, *nihon-nasubi*,

DR. IRONS Continued from Page 4

examples, however, that eminent and respected lawyers holding high office were willing to disregard their own knowledge of the unconstitutionality of internment, and to support its justification on the basis of false and misleading statements. That the Supreme Court was misled by these statements into upholding the legality of the various phases of internment, or that members of the Court responded similarly to the arguments of wartime exigency, hardly condones the failure of lawyers in the government, in whatever role, to resist the political pressures on them and to subject to critical scrutiny the "facts" presented to them by their subordinates.

It seems to me difficult to devise any fool-proof institutional safeguard against a repetition of the failures of personal and professional ethics exhibited during the internment experience. The pressures of politics and patriotism on even the most respected lawyers and public officials can become, during wartime, compelling and overriding. Perhaps the most concrete suggestion I can make is that there be established, within the Justice Department, a staff of lawyers charged with the review before its implementation of every action of the various national defense agencies that would substantially affect the rights of civilians. In the end, however, I think that the oversight of Congress, the scrutiny of the press, and the personal consciences of lawyers and other officials in the government will more effectively deter any recurrence of internment than will any institutional reform.

HAYAKAWA

Continued from Page 4

In addition to his inability to be an effective politician, Hayakawa's chances of re-election in 1982 were also eroded by his controversial public statements and incidents of falling asleep on the job and in important meetings.

One of his most noted statements was made in May 1979, when, after a meeting with President Jimmy Carter and California officials on the oil crisis, Hayakawa offered his own solution to the nation's energy crisis—let gasoline prices rise as much as \$2 to \$3 a gallon. When asked by a reporter, "What about the poor?" Hayakawa responded, "The poor don't need gas because they're not working."

On that incident, Hayakawa noted that he was making "a very important economic statement."

"I said if you permit the price of gas to go up, then the supply will go up, then they said, 'What about the poor?' And I said they don't need gas as much. So that translates into 'Poor Can Walk, Says Hayakawa,'" the senator noted.

"I blurt things out which newspapers take advantage of to caricature me," Hayakawa told the Los Angeles Times. But damn it, I'm the kind of guy that blurts things out as they come to me. And that's been very damaging."

Against Redress

Hayakawa also raised the ire of some Japanese Americans when he testified at the Commission on Wartime Relocation and Internment hearings in August of 1981, speaking out against redress and

calling the internment a "vacation" for the Issei.

He reiterated those sentiments on the Senate floor last December, drawing an angry response and a demand for an apology from Rep. Robert T. Matsui of Sacramento.

His sleepiness had become favorite subject for comedian Johnny Carson—and the senator became notorious for falling asleep in committee meetings, on the Senate floor, and even in meetings with President Carter.

Yet despite his poor performance while in office, Hayakawa did have a few accomplishments to his credit, at least early in his career. His federal judicial appointments were considered excellent by Sen. Cranston's office.

Hayakawa sometimes showed sensitivity to those who needed it. He eloquently lobbied for pardons for both Iva Toguri (a.k.a. "Tokyo Rose") and Patty Hearst. He opposed the nomination of Attorney General Griffin Bell on the grounds that Bell had been part of an Old South segregationist apparatus that America had rejected.

Hayakawa has returned to his home in Marin County, and he received little fanfare when he left Washington.

As Samuel Ichiye Hayakawa readjusts to private life, he leaves behind a legacy that historians must now evaluate.

"He's basically a pretty deep guy," said one ex-staffer. "I didn't know him then, but people who did said that it's just too bad he didn't come here (to the Senate) 30 years ago."

takana, daikon, kabocha and other delectables.

THE RETIRED NISEI might possibly fill the bill that we had thought of—providing agricultural know-how to these underdeveloped countries. Tanzania, for example, is suffering from yet another food shortage. But the Nisei farmer expanded into exotic equipment that the Issei never knew, and Tanzania would be fortunate to have even hand tractors and tillers.

WE RECALL WHEN we were incarcerated in Tule Lake in 1942 that the inmates of Tule worked some nearby, abandoned, desolate lands; that by the fall of '42, they brought back truckloads of vegetables the likes of which this youth had never seen. To this day, I recall giant *kabu*, gleaming white. We've often wondered what that land, (below Klamath Falls, Oregon) is producing. No doubt, once others saw what the potential of that land was, they eagerly moved in.

THAT BIG EQUIPMENT alone is not enough is demonstrated by the perpetual shortage that the USSR suffers. But we're not suggesting that any Nikkei might be "volunteered" to that land. The Soviets will just have to make it on their own.

U.S.-JAPAN Continued from Front Page

gical skills. Their successful penetration of the U.S. market is the result of such effort," Nakasone said in a television interview. "We have studied your customs, your social institutions and your consumer preferences. In contrast, American businessmen have not made such great efforts to sell their products in Japan."

But Japan, to an extent, must face responsibility for the trade problem. Wolff noted in a Los Angeles Herald Examiner column on Jan. 18:

"...Japan has achieved a \$100 billion annual surplus in manufactured goods trade with the rest of the world. Its exports consist of high-value goods that create substantial employment at home while its imports are dominated by raw, unprocessed materials that create relatively fewer jobs in countries producing them. This is increasingly resented throughout the world."

"In part, the surplus reflects difficulties that other nations' products encounter when similar domestic products are available in the Japanese market. Foreign electronic components manufacturers find that the principal Japanese consumers of their products are a few large firms that appear to have a marked preference for each other's products. Steel-makers in developing countries find the Japanese market inhospitable. Even Scotch whisky and American cigarettes face a highly protected market. Japan, moreover, has organized its economy to produce and export certain goods with remarkable efficiency—for example, ball bearings, steel-mill products and machine tools. Now the focus is on information-age products."

Real Issues Must Be Clarified

The debate as to who is to blame for the U.S.-Japan trade problem could go back and forth endlessly, but the real issues must be clarified within the imbroglio before any viable solutions can be attained.

Michael Berger, who has reported on Japan for the San Francisco Chronicle since 1967, pointed out a very important aspect of the U.S.-Japan dispute which many more Americans and Japanese should be made aware of: special interest groups in both countries now have political leverage far out of proportion to their importance in the overall U.S.-Japan relationship. These special interest groups include the United Auto Workers and beef and citrus groups in America and agricultural cooperatives and public corporations in Japan.

Public statements by these groups and the politicians and officials they influence, note Berger, often deepen distortions rather than contribute to public understanding of the trade issue.

Hopefully, both Reagan and Nakasone will insist that cooler heads prevail when seeking solutions to the trade issue. Drastic measures can only result in disastrous results for both countries.

LOW-COST AUTO LOANS

currently at 15%

INSURED SAVINGS

currently paying 7%, insured to any amount

IRA ACCOUNTS

now available

FREE SAVINGS INSURANCE

up to \$4,000

FREE LOAN PROTECTION INSURANCE

pays loan in full in the event of death

Now over \$5 million in assets

NATIONAL JACL CREDIT UNION

PO 1721 Salt Lake City, Utah 84110 (801) 355-8040

Lithographs on sale for JACL's redress campaign

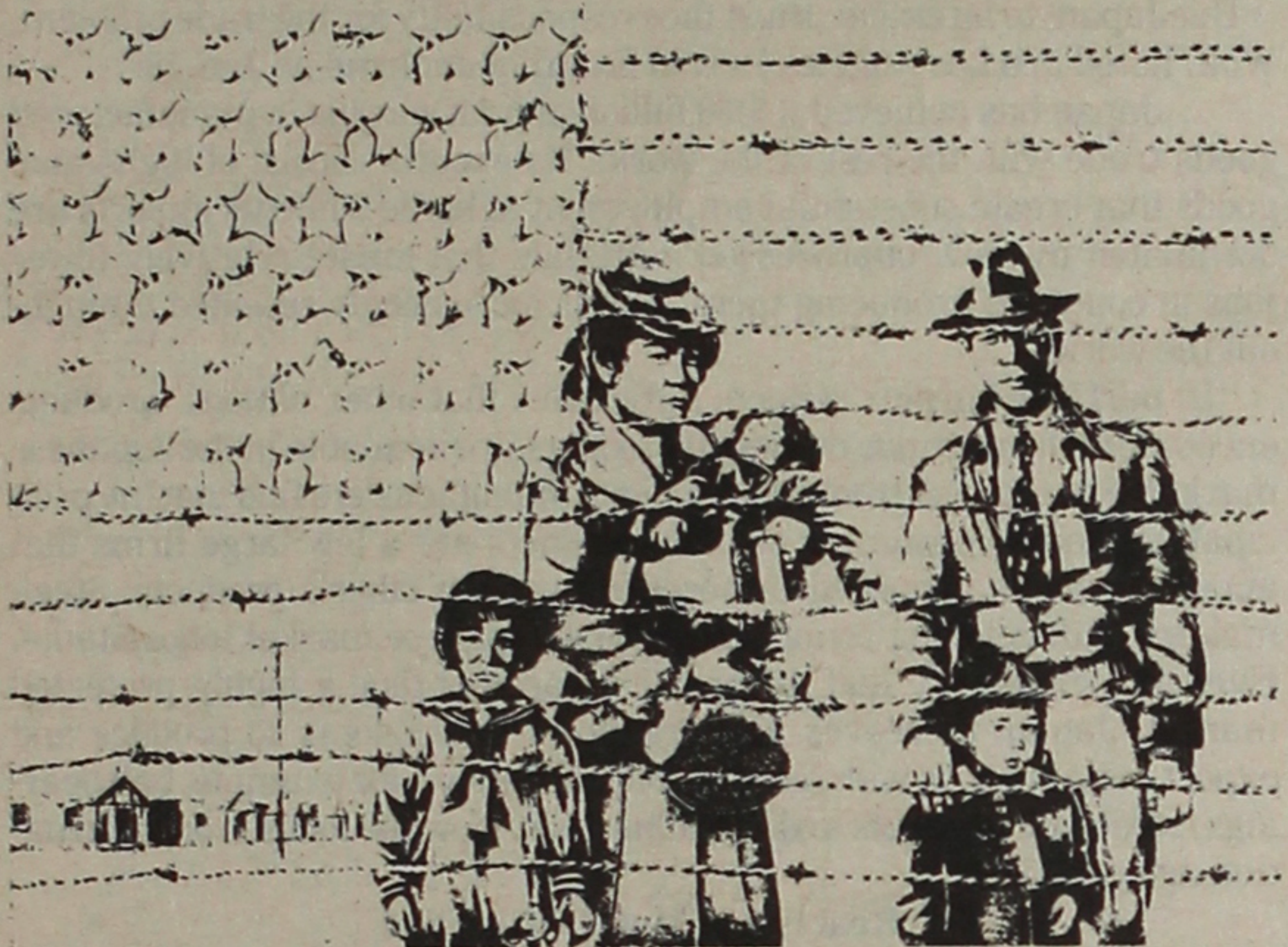
SAN FRANCISCO—National JACL Headquarters announced Jan. 21 that a lithograph entitled, "An American Nightmare," by Boston freelance illustrator Roger Leyonmark, will be published in limited edition for a fund-raising effort to benefit the National Redress effort. Two hundred and fifty hand printed lithographs, numbered and signed by the artist, will be provided to contributors who donate \$50 or more to the campaign directly to National JACL Headquarters. Contributions should be addressed to JACL HQ, 1765 Sutter Street, San Francisco, Ca. 94115.

The lithograph will be unveiled at a Day of Remem-

brance commemoration at National JACL HQ on Feb. 19. The artist will be present to sign and number the graphics, which are being printed by Ikura Kuwahara of San Francisco's Vorpall Gallery.

The illustration was printed by the Cleveland Plain Dealer on June 14, 1981, in conjunction with a feature article on the redress campaign. The artist contributed his artwork to the JACL, and provided permission to reproduce the work.

The lithograph will be provided to contributors on the basis of availability. After the first printing is depleted, the graphics will not be available. For more info call (415) 921-5225.



'AN AMERICAN NIGHTMARE'—This lithograph by artist Roger Leyonmark will be on sale at JACL National Headquarters to help support the League's redress campaign.

Japan Chapter holds fundraiser

TOKYO—A buffet reception was sponsored by the Japan JACL Chapter on Dec. 18 for the third consecutive year, as a combination fundraiser and annual Nikkei get-together.

The function, which gathered more than 300 members and their friends, featured a buffet, a five-piece band, a Japanese drum performance and a raffle. Winning the Grand Prize, a roundtrip ticket for two to the West Coast, were Jack Sakazaki, successful Sansei businessman and his wife, Mayumi. Other top awards included dinners for two at the New Otani's Top of the Tower, Garden Barbecue and Trader Vic's restaurants, a Seiko watch, a Sony Walkman and a

huge stuffed animal. Approximately 80 raffle prizes and 60 door prizes were distributed, with a roundtrip air ticket to Osaka and a night's accommodations by JTB being the most valuable of door prizes.

The entertainment package was provided through the donation of \$450 by Okura Motion Picture Co., Ltd. The raffle netted sufficient donations to cover the Chapter's 1983 Redress assessments, a gift of a wheelchair to the Japan Times' Annual Campaign and a donation to NHK's "Help the Needy" program.

Heading the Program Committee were Sansei, including Len Kiahara, Ann Miyashiro, Roland Nishimura, Richard Kenmotsu and Ken Ishibashi, with prizes being collected by Bert Fujii, Charles Harada, Dick Yamashita, Coolidge Ozaki, Tom Inouye and Barry Saiki.

Shimatsu, Ogata and Kubota Mortuary

911 Venice Blvd.
Los Angeles
749-1449
SEIJI DUKE OGATA
R. YUTAKA KUBOTA

Three Generations
of Experience...

FUKUI Mortuary, Inc.

707 E. Temple St.
Los Angeles, CA 90012
626-0441

Gerald Fukui, President

Nobuo Osumi, Counsellor

MIKAWAYA SWEET SHOPS

244 E. 1st St., Los Angeles
(213) 628-4945

2801 W. Ball Rd., Anaheim
(714) 995-6632

Pacific Square, Gardena
1630 Redondo Beach Blvd.
(213) 538-9389

118 Japanese Village Plaza
Los Angeles / (213) 624-1681

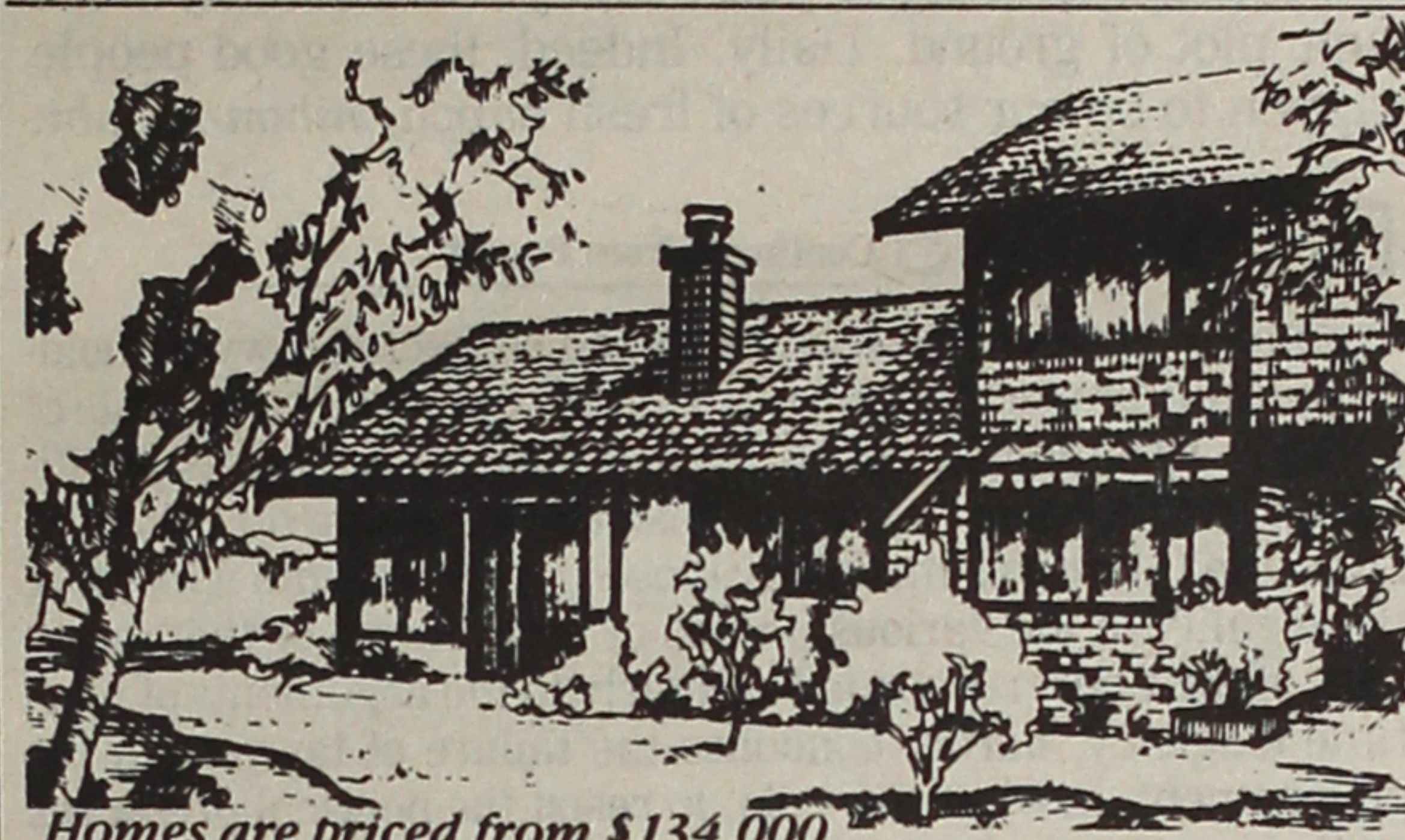
Mrs. Shendan
Spiritualist, reader, healer & advisor
will solve all problems such as love,
marriage & Business. Call Today
(213) 658-7398.



LIBRARY GETS GRANT—The Friends of the Little Tokyo Public Library Services was recently awarded a \$500 grant by the JACL's Pacific Southwest District Council through the Hollywood JACL to buy Japanese books for the LT Bookmobile. Shown, PSWDC Regional Director John Saito presents the check to Yo Abe, past president of the Friends of LTPLS (center), and Tomiye Yonemoto, current president.

SEATTLE WASH

Stendall Place Townhouses



Homes are priced from \$134,000.

With the new year the value of abundant space within Stendall Place Townhouses becomes far more apparent. For example, how many in-city townhouses have beautifully finished basements with three-quarter baths where a small army of grandchildren can sleep and play? And with three bedrooms and two plus baths in many models, there is room for overnight guests without crowding.

Of course, you can always have those spaces you enjoy all year long. Your den, sewing room and workshop are all possible at Stendall Place. And there's more—large double garages with offstreet parking for two more cars; private curving streets wind through the over seven acres of beautifully landscaped open space.

Located well inside the city, in the quiet zone just west of Northwest Hospital, at North 120th and Ashworth North.

Several different 30 year financing programs are available too, with interest beginning as low as 9 3/8% for the first year.

Stendall Place Townhouses

Developed and built by Hurlen Homes

Offered by Foro Properties

Phone (206) 364-9676

Open 1:00 p.m. 'til Dusk

Contractor's Registration #HU-RL-EH #24887

VIDEO MOVIES BY MAIL ORDER

3,000 titles including Japanese movies to select from

VIDEO ACTION

708 West First St. (P) • Los Angeles, CA 90012
Phone: (213) 617-3545

Complete coupon and return to VIDEO ACTION.

Name _____
Address _____
City _____
State _____ Zip _____

☐ Enclosed is \$3.00 for Video Movie Catalogue.
(Do not send cash)

1983 JACL Officers ...
(installation date)

FT. LUPTON JACL

Hirato Uno, pres; Shigeo Hayashi, 1st vp; George Masunaga, 2nd vp; Shigs Nishimoto, rec sec; Bob Kawakami, corr sec; Eugene Watada, treas.

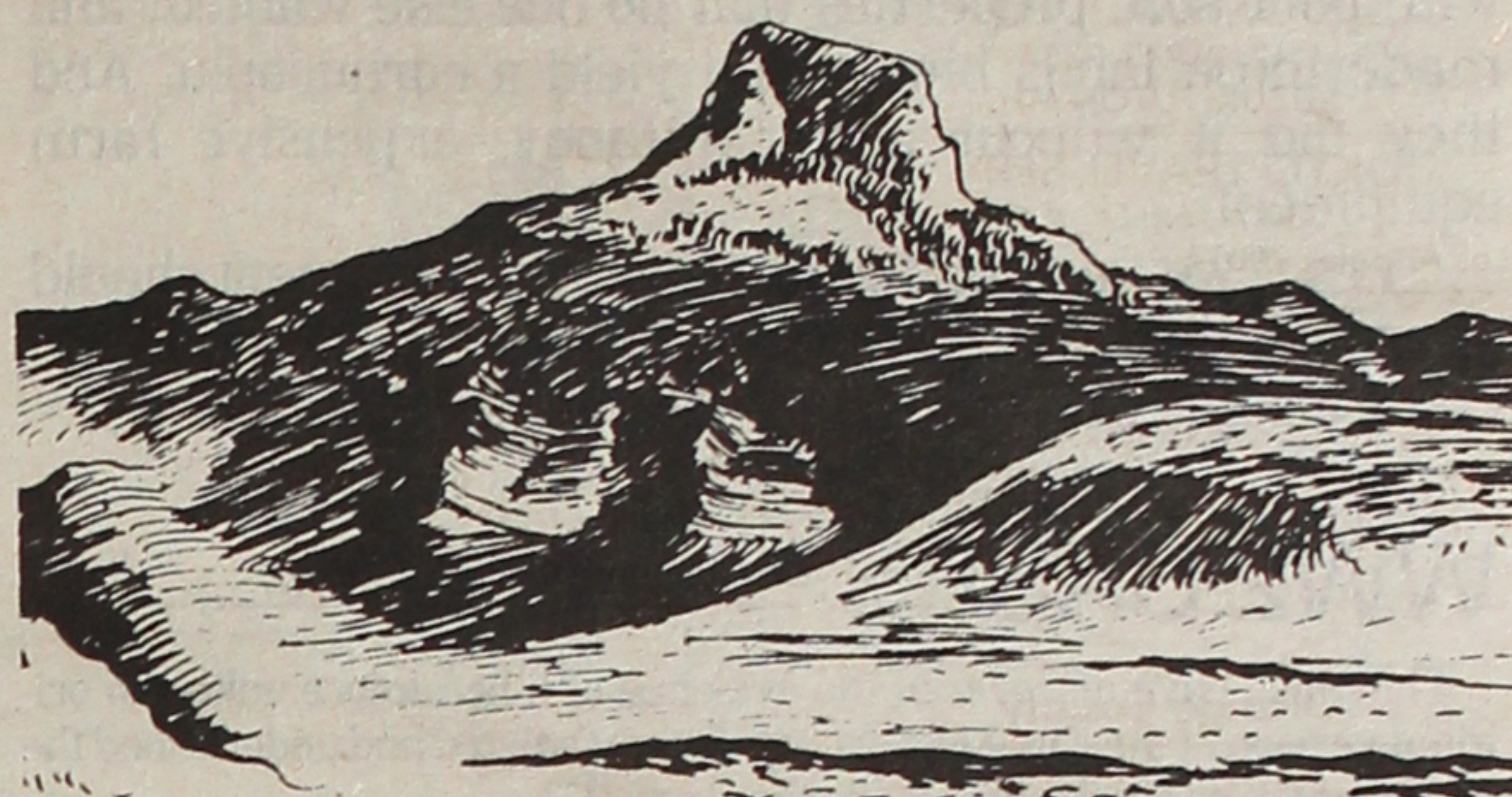
WEST VALLEY JACL (Nov. 13, 1982)

James Y. Sakamoto, pres; John Tauchi, 1st vp; Arthur Okuno, 2nd vp; Darci Sakamoto, rec sec; Ruth Sakai, corr sec; Ko Sameshima, treas.

EAST L.A. JACL

(Jan. 15, 1983)

Douglas K. Masuda, pres; Dean Aihara, Dr. Robert Obi, Milton Noji, Angela Kato, vps; Yuri Shimamoto, Jeanne Latchis, secs; Lillian Fujimoto, hist; Mas Dobashi, 1000 Club; Mable Yoshizaki, publ; Byron Baba, treas; George Yamate, ins; Larry Fukuhara, Mattie Furuta, Miki Himeno, Edwin Hiroto, George Ige, Sid Inouye, Marie Ito, June Kurisu, Brian Minezaki, Michael Mitoma, Michi Obi, Sue Sakamoto, Grace Shiba, Roy Yamadera, Fuji Yamamoto, Min Yoshizaki, Walter Tatsuno, bd of govs.



Heart Mountain Reunion (Apr. '82) Attendees

All those who were photographed for the Heart Mtn. Reunion Photo Album and who have not yet received their free album, please contact Sachie or Jack for a free copy. (One roll of film was lost by the Photographer.) Limited Albums are available for \$4 (includes postage) at request. Souvenir Booklets are still available at \$4 (includes postage). Contact:

Sachie Sasaki, 2281 College View Dr., Monterey Park, CA 91754

Jack Funo, 1500 Pebble Hurst, Monterey Park, CA 91754

CANAL CAMP INTERNS

A limited amount of souvenir programs are available from the 40th year Canal Camp Reunion held in Fresno, Aug. 1982.

Also available is *DISTANT VOICES: A SANSEI'S JOURNEY TO GILA RIVER RELOCATION CENTER, 1982* by Mas Masumoto.



Price for both: \$5.00
(or write for info.) --

Mas Masumoto
(Inaka Publications)
9336 E. Lincoln
Del Rey, Calif. 93616

EDOKKO

Japanese Cuisine

DINNER

OPEN 7 Days

SPECIAL BUFFET

Sushi
Shrimp
Tempura
Beef Teriyaki

\$6 95

Plus 20 other dishes



EDOKKO

OPEN 7 DAYS * LUNCH 11:30-2:30 DINNER 5:00-10:00

1215 N. SAN FERNANDO BLVD.
BURBANK, CA. • 841-1280

PC Business-Professional Directory

Your business card copy here for 25 weeks at \$25 per three-lines. Each additional line \$6 per same period. • Larger (14 pt.) type counts as two lines. Logo extra.

Greater Los Angeles

Asahi Travel
Supersavers/Group Discounts/Apex
Fares/Computerized/Bonded
1111 W Olympic Blvd., LA 90015
623-6125/29 • Call Joe or Gladys

FLOWER VIEW GARDENS #2
New Otani Hotel, 110 S Los Angeles
Los Angeles 90012
Citywide Delivery (213) 620-0808

Nisei Travel
1344 W 155th St., Gardena 90247
(213) 327-5110

SAISHO-SEVEN / Room & Board
LOS ANGELES, CALIF.
733-9586

CUSTOM MADE FUTON
(213) 243-2754
SUZUKI FUTON MFG.

TOKYO TRAVEL SERVICE
530 W. 6th St. #429
Los Angeles 90014 680-3545

Travel Guild
404 S. Figueroa St., Level 6
Los Angeles 90071/(213) 624-1041

YAMATO TRAVEL BUREAU
321 E 2nd St., #505
Los Angeles 90012 624-6021

Orange County

EXCEPTIONAL HOMES AND INVESTMENTS
VICTOR A KATO
Residential & Investment Consultant
18682 Beach Blvd., Suite 220
Huntington Beach, CA 92648
(714) 963-7989

THE PAINT SHOPPE
LaMancha Center, 1111 N Harbor
Fullerton, Ca / 714-526-0116

San Diego

PAUL H. HOSHI
Insurance Service
852-16th St (714) 234-0376
San Diego 92101 res. 264-2551

Ventura County

CALVIN MATSUI REALTY
Homes & Commercial
371 N. Mobil Ave., Suite 7, Camarillo
(805) 987-5800

Monterey Peninsula

RANDY SATOW REALTOR
"GOLF CAPITAL OF THE WORLD"
Pebble Bch, Carmel, Monterey Peninsula
Ocean Front Homes, Condos, Investments
YOSHIO R. SATOW -- (408) 372-6757

San Jose

Kayo K. Kikuchi, Realtor
SAN JOSE REALTY
996 Minnesota Ave., #100
San Jose, CA 95125-2493
(408) 275-1111 or 296-2059

Tatsuko "Tatty" Kikuchi
General Insurance Broker, DBA
Kikuchi Insurance Agy.
996 Minnesota Ave., #102
San Jose, CA 95125-2493
(408) 274-2622 or 296-2059

EDWARD T. MORIOKA, Realtor
580 N. 5th St., San Jose
(408) 998-8334/5 res. 371-0442

Watsonville

Tom Nakase Realty
Acreage, Ranches, Homes, Income
TOM NAKASE, Realtor
25 Clifford Ave. (408) 724-6477



DePanache
Today's Classic Looks
for Women & Men
Call for Appointments:
Phone 687-0387
105 Japanese Village Plaza Mall
Los Angeles 90012
Toshi Otsu, Prop.



Japanese Phototypesetting
TOYO PRINTING CO.
309 So. San Pedro St. Los Angeles 90013
(213) 626-8153

Empire Printing Co.
COMMERCIAL and SOCIAL PRINTING
English and Japanese
114 Weller St., Los Angeles 90012 628-7060

San Francisco

ASUKA Japanese Antiques
Wholesale -- Retail
25A Tamalpais Av., San Anselmo CA 94960
(415) 459-4026 Juli (Yorichi) Kodani

DOBŌ COUNSELING CENTER
Experienced Nikkei Counselors
Low Cost -- Confidential
(415) 522-5243 or 843-843-6933

Sacramento

SHARON NODA, COOK REALTY
Fine Older Homes/Quality Newer Homes
(916) 443-6702 or 739-1068

Seattle, Wa.

YES! AT WONDERFUL UWAJIMAYA



Great Oriental gifts,
gourmet foods
and unique kitchen
appliances

CHINATOWN:
6th Ave. S & S. King St.
624-6248

BELLEVUE:
15555 N E 24th
747-9012

SOUTHCENTER:
246-7077

All stores open Sundays.
Chinatown, Southcenter
open weekday evenings

Imperial Lanes

Complete Pro Shop, Restaurant, Lounge
2101-22nd Ave So. (206) 325-2525

The Intermountain

Mam Wakasugi
Sales Rep, Row Crop Farms
Blackaby Real Estate, Rt 2 Bx 658, Ontario,
Ore 97914 • (503) 881-1301/262-3459

The Midwest

SUGANO TRAVEL SERVICE
17 E Ohio St, Chicago 60611
(312) 944-5444 784-8517, eve, Sun

Washington, D.C.

MIKE MASAOKA ASSOCIATES
Consultants - Washington Matters
900-17th St NW, Washington, DC 20006
202-296-4484

Join the JACL

AT NEW LOCATION

Aloha Plumbing
Lic. #201875 -- Since 1922
PARTS - SUPPLIES - REPAIR
777 Junipero Serra Dr.
San Gabriel, Ca 91776
(213) 283-0018

CHIYO'S

Japanese Bunka Needlecraft
Framing, Bunka Kits, Lessons, Gifts
(714) 995-2432
2943 W. BALL RD,
ANAHEIM, CA 92804
(213) 617-0106
450 E. 2nd St., HONDA PLAZA
LOS ANGELES, CA 90012

ED SATO

PLUMBING AND HEATING
Remodel and Repairs
Water Heaters, Garbage Disposals
Furnaces
Servicing Los Angeles
293-7000 733-0557

Kono Hawaii

•POLYNESIAN ROOM
Dinner & Cocktails - Floor Show

•COCKTAIL LOUNGE
Entertainment

•TEA HOUSE
Tep-pan & Sukiyaki

OPEN EVERY DAY
Luncheon 11:30 - 2:00
Dinner 5:00 - 11:00
Sunday 12:00 - 11:00

226 S. Harbor Blvd.
Santa Ana, Ca 92704
(714) 775-7727

Established 1936

Nisei Trading

Appliances - TV - Furniture
239 S. San Pedro St.
Los Angeles 90012
(213) 624-6601

Improve Your English

Foreign Dialect Removed
ADVANCED ENGLISH CLASSES
(213) 988-0897
Licensed Speech Therapist

Lingerie Store

FOR SALE
Small retail store featuring
lounge wear in Rancho Palos
Verdes. For info, call:

(213) 377-0597

NO. CALIF.

SIERRA RESORT SURVIVAL AREA

Includes beautiful home, 140-ft. lake front.
Spectacular, popular lake + 9 rentals. Top
opportunity @ \$450K. Call owner-agent
(916) 596-3208

ATTENTION!

Land Being AUCTIONED
4.2 acres of prime East Bay property will
be for Auction Feb. 17, 1983, at 1 p.m. by
CALTRANS. Min. bids for this property is
\$1,263,750. Bring \$126,875 in cashier's
check or money order as your ticket to
make a bid. For addi. info, call or write:

CLENNIS JUSTICE
Dept. of Transportation
P.O. Box 7791, Rincon Annex
San Francisco, CA 94120
(415) 557-0343 Weekdays
7:30-11:30 a.m., 12:15-4:15 p.m.

Commercial & Industrial

Air Conditioning & Refrigeration CONTRACTOR

Sam J. Umemoto
Lic. #208863 C-20-38

SAM REIBOW CO.
1506 W. Vernon Ave.
Los Angeles / 295-5204
Experienced Since 1939

MARUKYO

Kimono Store
New Otani Hotel &
Garden-Arcade 11
110 S. Los Angeles
Los Angeles
628-4369



CLASSIFIED ADS

Rate: 15c a word, \$5 minimum per insertion. Payment with order.

BUSINESS OPPORTUNITY (Col.) 03

GOLD, SILVER OPPORTUNITY—If you believe the price of gold and silver will rise sharply in the next 3 yrs. then we want to borrow what money you can spare for 3 yrs. We will pay 45% interest. Total (15% annual) or 75% of the price increase, whichever is greater. Sufficient gold and silver concentrates or ore will be stored and insured to guarantee your loan. Write: RETRIBUTION MINING CO., P.O. Box 895, Georgetown, CO 80444

BUSINESS OPPORTUNITY 03

Best Profit Anywhere w/'Survival' + Pleasure

From only area of logical truck stop, restaurant, lounge bar none! Is stop from east before going onto L.A. next day. Is only stop going west before 270 miles. Most unique desert in world. Needles, CA., is true oasis w/topmost golf and river sports. Opportunity is on 31 acres at "Off ramp" of Highway 40, both directions. Serves E-W+Barstow, Kingman and casinos at Laughlin, NV. Unquestionably topmost opportunity!!

Dr. Sheppard
(619) 326-4730

FOR SALE (Horses) 07

QUARTER HORSES

FOR SALE BY OWNER

1974 AQHA Black mare, gentle and well broke. Granddaughter of Three Chicks. She is bred to AQHA Oh Sharpie AAA with 16 Halter Points. Due to foal Mar. 20/83. \$1800. 1968 AQHA Chestnut mare, Skipper W breeding. She is a big, stout gentle mare. In foal for an Apr. 13/83 foal to Tuffys Three Bars, AQHA Superior Halter Horse and AQHA Superior Western Pleasure Horse. \$2250.

1974 AQHA Buckskin mare, big, stout and very gentle. In foal for Apr. 11/83 to Tuffys Three Bars, AQHA Superior Halter Horse and AQHA Superior Western Pleasure Horse. \$2500.

1971 AQHA Sorrel mare, Skipper W breeding. She is very gentle and pretty. In foal for a June/83 foal to a black son of Mr Impressive. \$2250. Also other good mares in foal and some good fillies from last spring. For info on above and other Top bloodlines, great colors and the right prices. Contact

CARLSON RANCH
Bismark, North Dakota 58501
(701) 223-3297

Support Our Advertisers

Los Angeles Japanese Casualty Insurance Assn.
COMPLETE INSURANCE PROTECTION

Aihara Insurance Agy. Inc.
250 E. 1st St., Los Angeles 90012
Suite 900 626-9625

Anson T. Fujioka Insurance
321 E. 2nd St., Los Angeles 90012
Suite 500 626-4394

Funakoshi Ins. Agency, Inc.
321 E. 2nd St., Los Angeles 90012
Suite 300 626-5275

Inouye Insurance Agency
15029 Sylvanwood Ave.
Norwalk, CA 90650 864-5774

Itano & Kagawa, Inc.
321 E. 2nd St., Los Angeles 90012
Suite 301 624-0758

Ito Insurance Agency, Inc.
1245 E. Walnut St., Suite 112
Pasadena 91106; 795-7059, 681-4411

Kamiya Ins. Agency, Inc.
327 E. 2nd St., Los Angeles 90012
Suite 224 626-8135

The J. Morey Company
11080 Artesia Blvd., Suite F, Cerritos, CA
90701; (213) 924-3494, (714) 952-2154

Sato Insurance Agency
366 E. 1st St., Los Angeles 90012
626-5861 629-1425

Tsuneishi Insurance Agency, Inc.
327 E. 2nd St., Los Angeles 90012
Suite 221 628-1365

Wada Asato Associates, Inc.
16520 S. Western Ave., Gardena 90247
(213) 516-0110

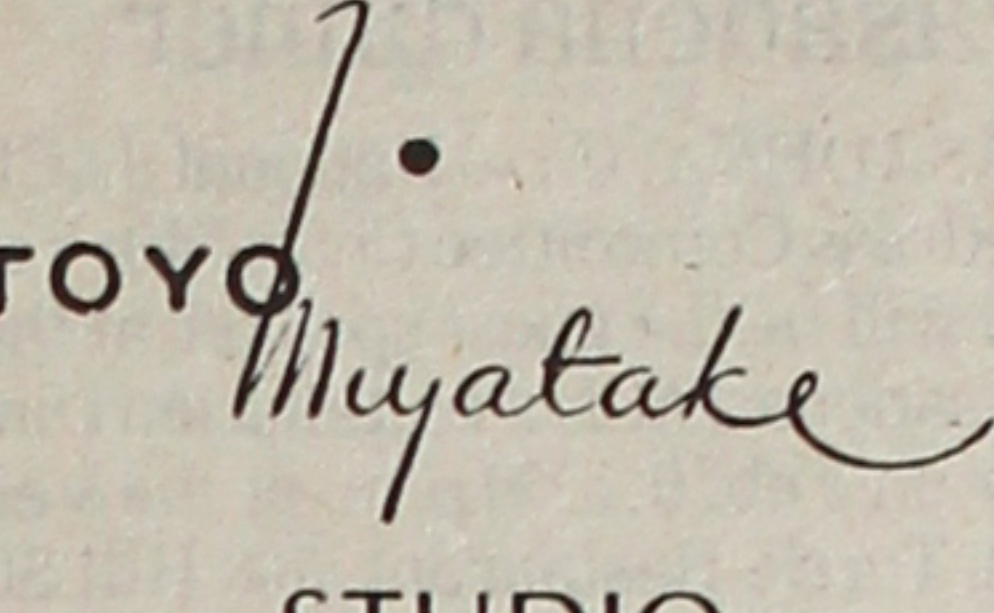
BUSINESS OPPORTUNITY 03

ATTENTION MICROCOMPUTER HOBBYISTS. We are seeking part-time distributors throughout the U.S. for fast-moving, competitively priced microcomputer products. No investment required. Contact: D. T. Oshiro, International Business Resources, Inc., P.O. Box 6475, Honolulu, HI 96818.

REAL ESTATE 09

Mountain Retreat SURVIVAL

Beautiful Ruidoson, N.M. Area
New quality 2 story w/3bdrm, 2+ lgr multi-purpose rm. Loaded w/extras. Constructed for low maintenance. Gorgeous views, Top roads. Uniquely worth \$89,750. Call Builder (915) 584-4933



TOYO Miyatake STUDIO

318 East First Street
Los Angeles, CA 90012
(213) 626-5681

COLORADO CONNECTION

Ski packages, white water river rafting, dude ranches, golf & tennis. The ultimate in COLORADO. Ask about our discounted airfares. Special rates for groups.
1-800-543-4047

Complete Home Furnishings
Koby's Appliances

15120 S. Western Ave.
Gardena 324-6444 321-2123

brother. TYPEWRITER



Official Typewriter Of the Los Angeles 1984 Olympic Games



Plaza Gift Center
(213) 680-3288 111 JAPANESE VILLAGE PLAZA MALL
687-4115 LOS ANGELES, CA 90012



Plaza Gift Center
FINE JEWELRY - CAMERA - VIDEO SYSTEM
HOME COMPUTERS - WATCHES - TV - RADIO
SOFTWARE - DESIGNER'S BAG - BONE CHINA
Authorized SONY Dealer
111 Japanese Village Plaza Mall
Los Angeles, CA 90012
(213) 680-3288



EAGLE PRODUCE CO.
Division of Kittys Vegetable Distributors, Inc.
BONDED COMMISSION MERCHANTS
WHOLESALE FRUITS AND VEGETABLE
929-943 S. San Pedro St.
CITY MARKET
Los Angeles, Ca. 90015
Phone: (213) 625-2101

JACL Reports

Credit Union to hold board meeting

SALT LAKE CITY—National JACL Credit Union Board Chairman Nobe Iwamoto announced that the Board of Directors has selected Feb. 19 as the date for the Annual Meeting of the National JACL Credit Union. The meeting will be held at the Ramada Inn, 999 South Main Street, commencing with dinner at 6:30 p.m.

At the conclusion of the dinner a business meeting will be held to report on the Credit Union's progress for 1982 and to elect two members to the Board of Directors. Entertainment for the evening will be Jack Hart's Incredible Wonder Show of magic and illusion.

Chairman Iwamoto appointed Min Matsumori as chairman of the Nominating Committee. Assisting on the committee are Jeanne Konishi and Noboru Tabata, members of the Board of Directors. All those desiring to be placed on the

ballot for election to the Board should contact Matsumori 48 hours prior to the Annual Meeting. His address is 848 West 12300 South, Draper, Ut. 84020.

Despite the economic situation the Credit Union had another financially successful year with \$279,969.92 credited to members' share/savings accounts. #

Yasui to speak at Pasadena dinner

PASADENA, Ca.—National JACL Redress Committee Chair Min Yasui will be the guest speaker at the Pasadena JACL's Installation Dinner on Feb. 6, 5:30 p.m. at the Velvet Turtle Restaurant, 708 Hill St. in Los Angeles' Chinatown. For reservations call Miyo Senzaki (213) 798-4849; Frances Hiraoka, 681-3125; Ruth Ishii 681-9986 or Mack Yamaguchi 797-7949.

Ventura to host PSWDC meeting

OXNARD, Ca.—The Ventura County JACL will host the PSWDC quarterly meeting on Sunday, Feb. 20, 9 a.m. at the Girl's Club of Oxnard, 701 S. G. Street.

Delegates should send a check for \$7.50 to the Ventura Chapter, c/o Harry Kajihara, 1000 W. Devonshire Dr., Oxnard, CA 93030 by Feb. 13.

'Fast Lane' a hit in Chicago

by JANE KAIHATSU
Chicago JACL

CHICAGO—Over 400 people attended the Chicago premier performances of "Life in the Fast Lane—Requiem for a Sansei Poet" starring Lane Kiyomi Nishikawa. The performances, held on Dec. 10 and 11 at the Latin School, were sponsored by the Chicago Chapter JACL.

Nishikawa's dynamism and unique expressions of Japanese American life captivated the Nikkei and non-Nikkei audiences, many of whom were exposed to Asian theatre for the first time. All notions of a sedate evening of Sansei poetry were quickly dispelled with Nishikawa's opening selections. He told of getting into a fistfight with some white boys for calling him "chink." Just when he is almost overwhelmed, some "black dudes" pull up to rescue him and escort him to safety. He turns to thank them and as they drive away one calls out, "Anytime, Chink."

Other pieces include "Obaachan", a touching tribute to his grandmother with whom he spent many summers in Hawaii. "The Bigot" is a hit-right-between-the-eyes type of confrontation with a parent's thoughts of racism when faced with a child's interracial marriage. The sorrow of the Evacuation and a "No No Boy" are also recounted. To the Chicago audience, Nishikawa was history and hard-hitting drama of the woes and triumphs of Asian America.

Reactions to the performance were no less than enthusiastic by Nisei and Sansei alike. Transplanted Hawaiians were especially stirred and amused by the incantations of Hawaiian life expressed in a perfectly-accented pidgin. "It really moved something in my heart and made me think of home to hear someone talk like that," said Everett Ogawa, a Sansei from Kauai. "I hadn't had that feeling in quite some time."

"I was proud that a Sansei not only wrote the material but gave such an impressive performance," said Rose Kaihatsu, a Nisei Chapter member. Many other attendees had similar feelings.

Because the show received such a positive response, the Chicago Chapter is looking into the possibility of a return engagement when the Sansei Theatre Co. will tour "Fast Lane" in the Spring of '83. #



Nisei Fun Tour to Japan

Depart LAX: Apr. 04, 1983
BY JAPAN AIRLINE FLT. 61

Cost: \$2,249 (sharing room)

Includes: Round Trip AIRFARE • First Class Hotel Accommodations • Tour with English-speaking Guides • Breakfast 13 times • Lunch 11 times • All Tips, Tax and Admission Fees.

ITINERARY

Tokyo - Kamakura - Hakone - Atami - Nagoya - Ise - Toba - Kyoto
Nara - Osaka - Takarazuka - Takamatsu - Okayama - Hiroshima

FOR MORE DETAILED INFORMATION, CONTACT
Los Angeles Office

Mitsui Air International, Inc.
345 E. 2nd St., Los Angeles, CA 90012
(213) 625-1505
or New York Office: (212) 878-6734



LOWEST FARES TO JAPAN

S.F. — TYO \$660.00!
R.T. nonstop
Community Travel Service, 1650 O'Farrell St.
#209
San Francisco, Ca. 94102 (415) 398-1146

Our 1983 Escorted Tours

Japan Spring Adventure	April 4
Grand European (17 days)	May 22
Canadian Rockies-Victoria (8 days)	June 16
Japan Summer Adventure	June 27
Alaska Cruise (8 days)	July 9
East Coast & Foliage (10 days)	Oct. 3
Japan Autumn Adventure	Oct. 15



For full information/brochure

TRAVEL SERVICE

441 O'Farrell St. (415) 474-3900
San Francisco, CA 94102

1983 Kokusai Tours

Spring Japan Odyssey

April 2 - 14 Days - Most meals - \$1990.

Special Summer Bargain

Honolulu, Hong Kong, Japan

July 1 - 18 Days - Many Meals - \$1995.

442nd European Tour

Sept. 30 - 24 Days - Many Meals - \$2750.

Fall Furusato Tour

Oct. 1 - 14 Days - Most Meals - \$2095.

Fall Japan Odyssey

Nov. 3 - 14 Days - Most Meals - \$1990.

1984 PREVIEW

Britain & Scandinavia - Aug. 3

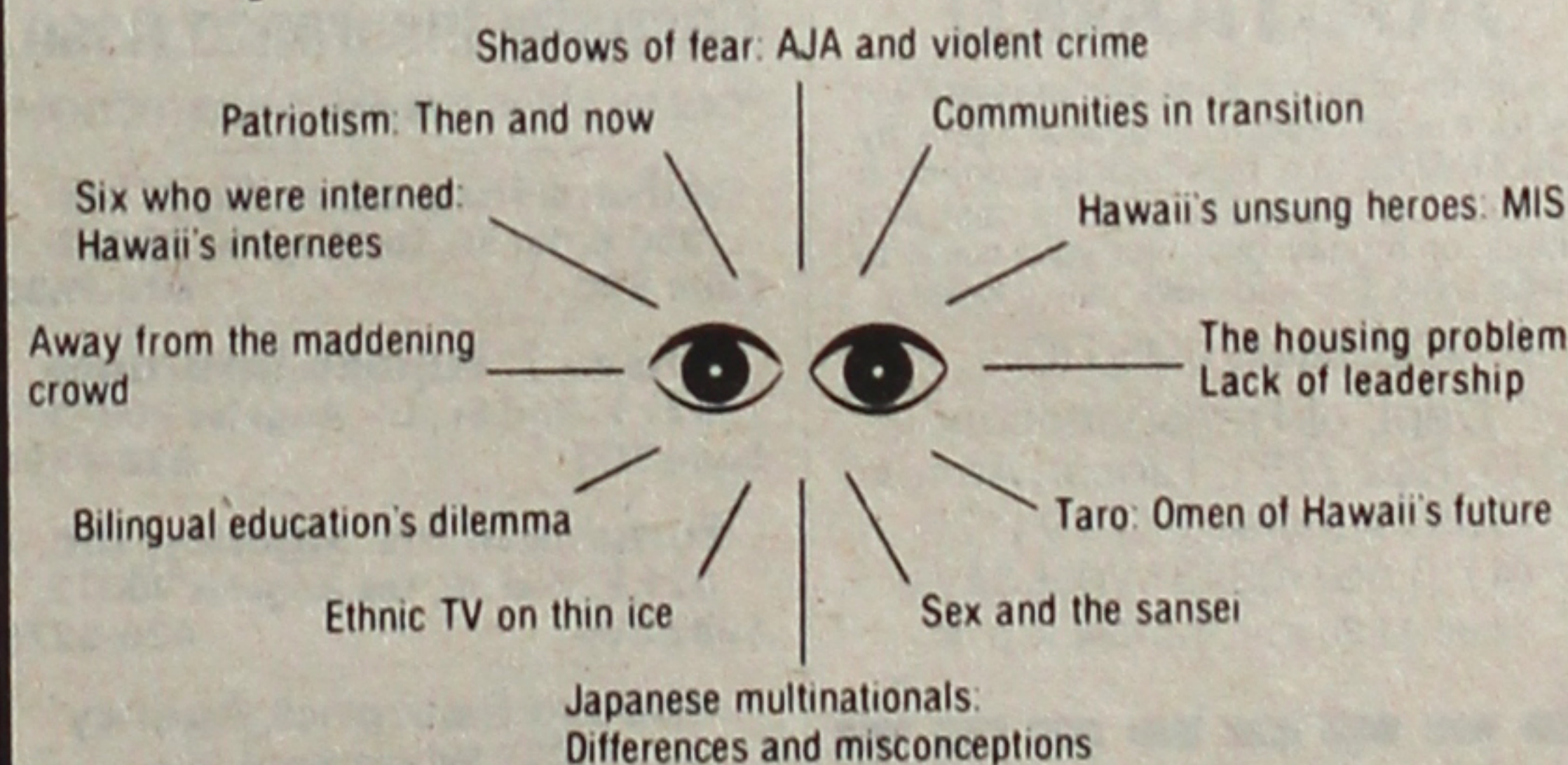
Tahiti, New Zealand & Australia - Oct. 18.

All tours include: roundtrip flights, transfers, baggage
porterage, hotels, sightseeing and meals as noted.

Kokusai International Travel, Inc.

400 E. 2nd St., Los Angeles, CA 90012 (213) 626-5284

See Hawaii from a Japanese American Viewpoint



Journey to Hawaii twice a month with The Hawaii Herald

Fill the form for a free sample copy. There is no obligation. Regular subscription is \$7.00 for six months (12 issues).

Send form to: Sample
Hawaii Herald
P.O. Box 17429
Honolulu, HI 96817

Name _____
Address _____
City, State, Zip _____

1983 West L.A. JACL Travel Program

FOR JACL MEMBERS AND FAMILY

	TOUR DATES:	GUIDES
A—*New Zealand/Australia	Feb. 26-Mar. 15	Toy Kanegai
B—Cherry Blossom	Mar. 26-Apr. 16	Toy Kanegai
C—*Takayama/Kanazawa/Shikoku	Apr. 30-May 21	Yuki Sato
J—May Charter Flight	May 7-28	
K—*Canadian Rockies	Jun 20-July 5	Toy Kanegai
D—Summer Tour	June 18-July 9	Charles Nishikawa
E—Tohoku Special	Aug. 7-28	Satoshi Nitta
L—*Europe Highlight	21 Days/Sept.	Jiro Mochizuki
F—Honshu/Taipei-Hong Kong-Bangkok	Oct. 1-22	Bill Sakurai
G—Ura-Nihon/Shikoku-Kyushu	Oct. 1-22	Steve Yagi
M—*New England Foliage	Oct. 15-29	Toy Kanegai
H—November Special	Nov. 1-15	
I—Special Holiday Tour	Dec. 22-Jan. 4	George Kanegai

- 30-Day Student Home Stay Program June/July/August
- Weekly Mini-Charters R/T Tokyo: Jan-May \$585**/Jun-Oct \$655**
- 4-day Hong Kong Tour \$305, includes R/T air, deluxe hotel, some meals, double occupancy from Tokyo.

** Subject to Change

FOR INFORMATION, RESERVATIONS, CALL OR WRITE

Roy Takeda: 1702 Wellesley Ave., West Los Angeles 90025 820-4309
Steve Yagi: 3950 Berryman Ave., L.A. 90066 397-7921
Toy Kanegai: 1857 Brockton, L.A. 90025 820-3592
Bill Sakurai: 820-3237 Yuki Sato 479-8124 Veronica Ohara 473-7066
Charles Nishikawa 479-7433 Amy Nakashima 473-9969 Jiro Mochizuki 473-0441

Land Arrangements by Japan Travel Bureau International

West L.A. JACL Tour Brochures Available

TRAVEL CHAIRPERSON: GEORGE KANEGAI - 820-3592

West Los Angeles JACL

1857 Brockton Ave., Los Angeles, CA 90025

West LA JACL Flight, c/o Roy Takeda
1702 Wellesley Ave., Los Angeles, CA 90025

Please reserve seat(s) for your Flight No.
I agree to the conditions of the contract and brochures. Flight schedules are subject to change.

Name _____
Address _____
City, State, ZIP _____
Phone: (Area code) _____
☐ Send tour brochure ☐ Flight only

JAPAN HONG KONG TOUR

\$1,398 - 12 days Depart every Saturday.

\$605 Tokyo **\$770 Hong Kong**
round trip round trip with Tokyo

800-421-9331 outside Calif.

213-622-5091/622-5092

JAPAN CLUB TOURS

354 S. Spring St. #401 Los Angeles, CA 90013

COMPLETE VISA SERVICE

If you are moving, allow 3 week's advance notice to report your change of address with label below.

New Address: _____

City, State, ZIP: _____

Effective Date: _____

Thank you for using this form. It saves PC 25 cents in fees.

pacific citizen

244 S. San Pedro St., Room 506, Los Angeles, CA 90012 • (213) 626-6936