

pacific citizen

June 22, 1984

The National Publication of the Japanese American Citizens League

ISSN: 0030-8579 / Whole No. 2,294 / Vol. 98 No. 24

(50¢ Postpaid)
News Stand: 25¢



For posterity's sake—Masao 'Duke' Yoshimura (left) and Bob Ogino mount plaque marking site of the former Stockton Assembly Center, which more than 4,000 Nikkei called home for five months in 1942. State of California has declared it Registered Historical Landmark No. 934.

Detention center site is state landmark

By Tetsuya Kato

STOCKTON, Calif.—Under a clear bright sky with some 160 somber onlookers, a quiet but emotional ceremony was held June 2 to dedicate the plaque marking the location of the former Stockton Assembly Center.

Under sponsorship of local Japanese American organizations and after two years of preparation, the monument stands to commemorate the confinement of 4,271 Japanese American residents from May 10 to Oct. 17, 1942.

The plaque, issued by the state Department of Parks and Recreation, carries the landmark designation No. 934.

The monument sits beside the main entrance on the lawn bordering the fairground administration building. The site was prepared by Masao "Duke" Yoshimura, assisted by Bob Ogino and George Baba. A one-ton

feather rock was used for the plaque mounting.

Dedication

The dedication ceremony, emceed by Nelson Nagai, was highlighted by the posting of colors by Boy Scout Troop 293 and unveiling of the monument by Merrily Shimakawa Kobashi, who was born in the detention camp.

Principal speaker was John Tateishi, national JACL redress director, who declared, "What happened here will never happen again as long as we are involved."

On view at the reception hall were memorabilia of the camp. Spectators were reminded of the swift passage of time as they reviewed forgotten events chronicled in the "El Joaquin," the camp newspaper edited by Barry Saiki.

Also on display were copies of documents maintained by the National Archives in Washington, D.C.

ABC Olympics responds to minority concerns

LOS ANGELES—ABC-TV's proposed coverage of and hiring policies for the 1984 Summer Olympics have survived close scrutiny by a coalition of 18 community groups, which pronounced a "great improvement" in the station's treatment of minorities.

Americans Committed to the Olympic Spirit reported June 14 that the ABC Olympic Sports Committee has filled one-third of its 1,200 jobs with minorities; has promised to focus one-fourth of its short features about the Olympics on minority groups in Los Angeles; has hired 9 minorities for on-camera work out of 63 positions; has given \$1 million in business to minority vendors and expects to give another \$500,000 by the end of 1985.

Attorneys for ABC, however, declined to reveal the total ABC budget for Olympic vendor contracts, or what percentage of those con-

tracts have seen signed by minorities.

Thus, said John Saito, who represents JACL in the coalition, "If we were writing a report card, we would give an 'incomplete' for vendor contracts."

Olympic vendors are providing ABC with services and supplies ranging from high-tech equipment to food, gasoline, transportation and insurance.

"But I think we would give an A- to ABC's Olympic Sports Committee for their attitude," Saito continued. "The numbers show a great improvement.... Of course, we'll be doing a follow-up after the Olympics to see exactly what their performance has been."

Earlier Complaint

Formed as an ad hoc group in November 1983, Americans Committed to the Olympic

Continued on Back Page

News in Brief

More in House back redress

WASHINGTON—Members of the congressional Black caucus, like those of the Hispanic caucus (see June 8 PC), have endorsed legislation providing monetary redress for those interned in the U.S. during WW2, announced Reps. Robert Matsui and Norman Mineta.

The two California congressmen also reported that HR 4110 has picked up four new co-sponsors for a total of 103. Joining the bill are Reps. Larry Smith (D-Fla.), Thomas Luken (D-Ohio), Gerry Sikorski (D-Minn.), and Thomas Downey (D-NY).

Church body adds support

PHOENIX, Ariz.—Representing 3.5 million members, the 196th general assembly of the Presbyterian Church USA voted to support HR 4110 and S 2116 at its national meeting May 29-June 6.

The resolution directs the assembly to communicate with members of Congress as well as Presbyterian congregations.

Canadian gov't to apologize

OTTAWA—Individual compensation for Nikkei internees of WW2 will not be recommended to the Canadian cabinet, said Multiculturalism Minister David Collette June 12. Collette indicated that the Canadian government would apologize to survivors of the 22,000 internees and perhaps offer some form of group compensation.

Japan fines U.S. protestor

TOKYO—Kathleen Morikawa, a Pittsburgh native who has lived in Japan for 11 years, was fined about \$43 by a Yokohama court for refusing to be fingerprinted. Aliens in Japan must give a print of their left index finger to obtain a registration card and every five years thereafter when the card is renewed.

Morikawa was also denied a re-entry permit.

An estimated 820,000 foreigners live in Japan, many of whom say the fingerprinting is discriminatory and humiliating.

Kashiwahara: A reporter can also make news

LOS ANGELES—Ken Kashiwahara, a correspondent for ABC News since 1974, delivered the keynote address at the Asian American Journalists Assn.'s scholarship benefit dinner June 16 at the Hyatt Regency Hotel.

The gathering of approximately 800 was also addressed by AAJA president and KNBC-TV news anchor Tritia Toyota, Mayor Tom Bradley, and emcee Rosalind Chao, co-star of the CBS series "AfterMASH."

Kashiwahara, now San Francisco bureau chief for ABC, assessed the progress Asian Americans have made in the field of journalism, saying that the profession was "virtually a virgin territory for Asian Americans" 15 years ago and that although things have changed, there is still "a long way to go."

He noted that only two Asian Americans worked as network correspondents ten years ago and that there are still only two today. He also said that white males still dominate decision-making positions.

A Nikkei in Vietnam

On a more personal note, Kashiwahara recounted some of his most vivid experiences as a foreign correspondent. While a reporter in South Vietnam, he found that he was "not a minority for the first time in my life." Being an Asian in an Asian country had its advantages. As anti-American sentiment grew with the cutoff of U.S. military aid to the Saigon government, Kashiwahara was still able to film the action because he was with a Vietnamese camera crew and was not taken for an American.

But when the Americans pulled out of Saigon in April 1975, having an Asian face was no longer so desirable. Panicked by rumors of a



Photo by Jon Takasugi

Newsman Ken Kashiwahara gives personal accounts of Vietnam, Aquino assassination

bloodbath that would follow the impending Communist takeover, civilians stormed busses, determined to get out of the country.

"A mob prevented me from getting on one bus and stripped me of my baggage and possessions," Kashiwahara recalled. When he was finally able to get onto a bus, he saw something that he will long remember: a Vietnamese man running after the bus, holding his baby out and calling to the driver, "Take my baby, take my baby!" The man stumbled and fell, and the baby dropped un-

Continued on Back Page



ALOHA

28th Biennial Nat'l JACL Convention

8 Weeks Until . . .

Aug. 12-17, 1984

Pacific Beach
Hotel * Waikiki

WATCH FOR CONVENTION HOTEL
REGISTRATION INFORMATION
AND TRAVEL PACKAGE

P.O. Box 3160, Honolulu, HI 96802 • (808) 531-7453

LITTLE TOKYO LIFE: (No. 22) By Harry Honda



Wilmington / Weller

This week's panorama of prewar Little Tokyo (right) identifies three sites where JACL offices held sway since the mid-1930s. Patrick Okura, now of Washington, D.C., was executive secretary when the L.A. JACL Office was opened around 1936 to promote the Nisei Week Festivals as a major JACL fund raiser. Incidentally, last week's photo shows the old Nishi Hongwanji Bldg. where JACL and PC were situated in 1975-1980 (the fourth site). It's still there at the northwest corner of 1st and Central. Thus, pictorially, the various addresses of JACL/PC in Little Tokyo have been pinpointed. But this segment is focusing on that diagonal positioned Weller St. in the photo this week. It had been renamed around 1910 from Wilmington St. (100 block), when San Pedro St. was cut through between First St. and Second St. to connect No. San Pedro with So. San Pedro St. In the pueblo era, San Pedro street was Wilmington Road. Undoubtedly, City Hall had changed the name to ballyhoo the new harbor and annexation.

Today, Weller is opened half-way to automobiles because of the Weller Court shopping complex with its pedestrian mall. Eventually, it will be all pedestrian.

This one-block long street has a colorful history of its own. In the 1880s, this triangular shaped block and the 2nd and Los Angeles area was German town, highlighted by two breweries in the neighborhood. The first Black businesses were situated here in the 1900s—a barber shop, pool hall and saloon. These were later occupied by Filipino and Japanese shops. The Filipino shops were to spread westward up E. 1st a block to Main St., while the Japanese were already settled eastward.

To show where Japanese businesses were on Wilmington/Weller St., the addresses are indicated within parentheses. In our 1912 Japanese directory of Los Angeles, Wilmington St. had four hotels or rooming houses (105, 107, 112, 113), three noodle shops (106, 108½, 122), one tailor (115), two grocery stores (109, 121), a tobacco shop (111), Dr. Fujimori's clinic (145), a carpenter (126), two eating houses (109) and (one with an unusual name, Little Mint: 119); the Saitama Kenjinkai office and an express agency inside Toyo Shokai (121), the grocery store. Most of them were near First St. and gave old Wilmington St. a Japanese character that Angelenos venturing past Main Street were sure to recognize. The First-Weller-Los Angeles area then was the Shinjuku (westgate) to Little Tokyo, you might say.

By 1930, the Salvation Army had its hostel at 121 Weller. On Saturday nights, the band would march toward First and San Pedro to conduct its mission. Kawafuku Japanese Restaurant occupied the upper floors of the 109 Weller building. Only after the war did it move into the upper floors of the 1st and L.A. building on the SE corner (204½ E. 1st). There were five more restaurants (116, 137, 149, 153, 157) down Weller. New Palace Hotel (118) and Teruwa Hotel (101) were bases for several clubs, offices, translation service and fashion school. Umeya confectioners (118½) was next door. Other Japanese businesses included pool hall and soda fountain (105), tailor (105½), two barber shops (111, 120), Dr. Furusawa's office (117½), investment broker (123), carpenters (141, 143), elec-



Pacific Citizen Archives

trician (142), employment office (145), and machine shop (155).
Comparing addresses between 1912 and 1930 listings, it was interesting to see who was where then and later. It was an eye-opener to spot the incidences and coincidences. For instance: ... The Uyeda store today (whose back door opens to Weller) was the first Japanese business to open in Little Tokyo after Evacuation in early 1945. The oldest business on Weller today, strange as it may seem, had moved in postwar—Empire Printing (114) around 1947. All the earlier ones (Rafu Bookstore, 118½, for example) were relocated by urban redevelopment. And would you believe the redevelopment office has a Weller St. address today (123)?
 But the best coincidence comes from the 1912 directory, which lists Empire Printing at 230 E. 1st St.—the address of the S.K. Uyeda Store today.

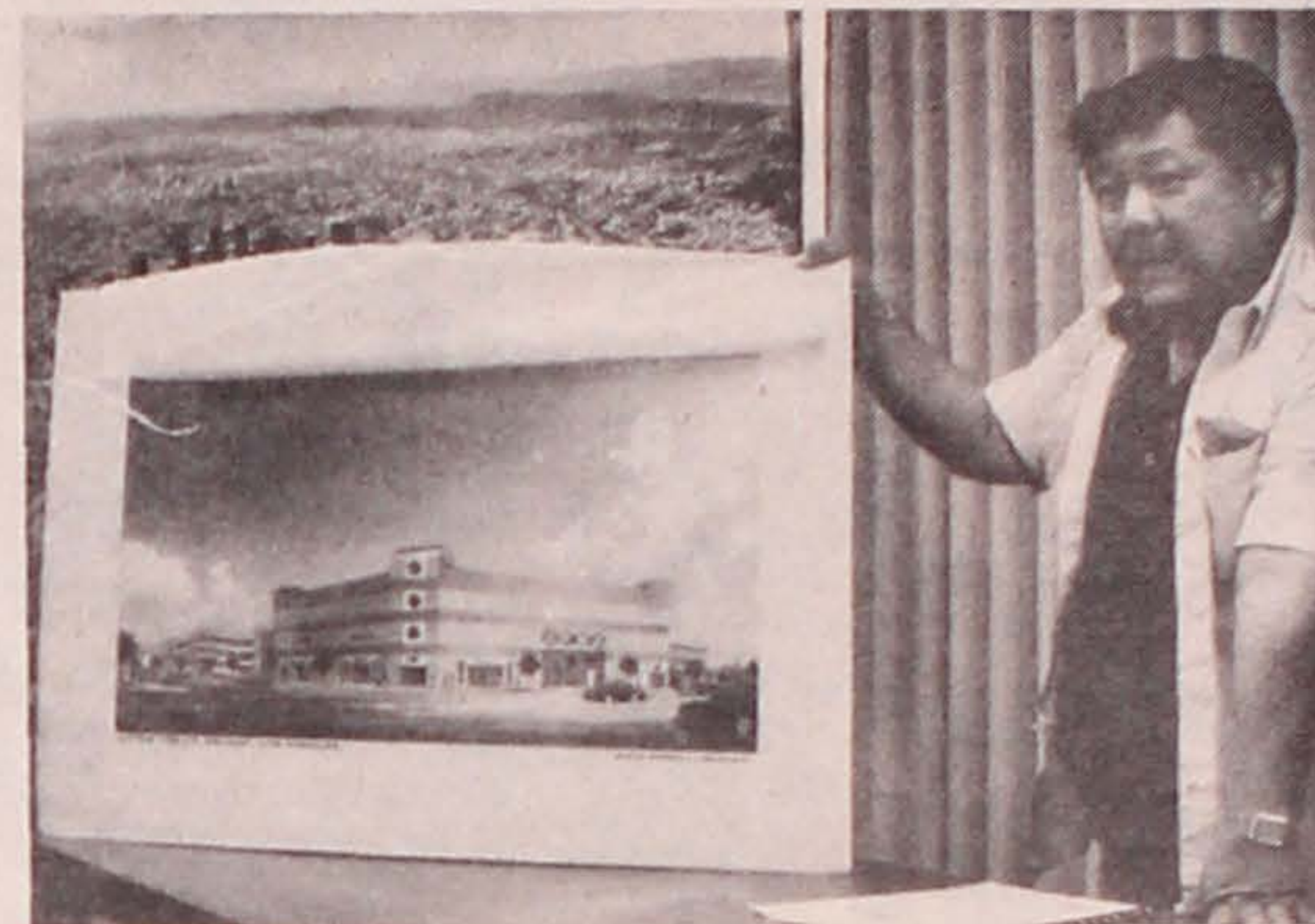
Development money pours into old industrial part of J-town

LOS ANGELES—About 300 community members attended a ground-breaking for the new development project in Little Tokyo June 12. The four acres bounded by Central Ave. and Alameda, Third and Fourth Sts., to be called "Little Tokyo Square," will contain a three-story shopping center with supermarket, an entertainment complex housing three first-run movie houses, a bowling alley, and several restaurants.

Centenary United Methodist Church will occupy a corner of the block. Yaohan Supermarket and a parking structure are expected to be ready by May or June, 1985, with rest of the shopping mall completed by August.

Little Tokyo Square is adjacent to the Community Redevelopment Agency-designated Little Tokyo project area and site of the prewar Post Office terminal annex.

Project developers are Centenary UMC, Ohbayashi American Corp., Joe's Autor Parks, Taira Investment Co., World-wide Construction Corp. and Yaohan Corp. of Japan.



Under construction—Al Taira of Taira Investment shows illustration of new supermarket in Little Tokyo Square.

'Nisei Soldier' wins top film awards

WASHINGTON—Loni Ding received a coveted Golden Eagle for her film "Nisei Soldier: Standard Bearer for an Exiled People." The award was given by the Council on International Nontheatrical Events at its recent annual awards ceremonies.

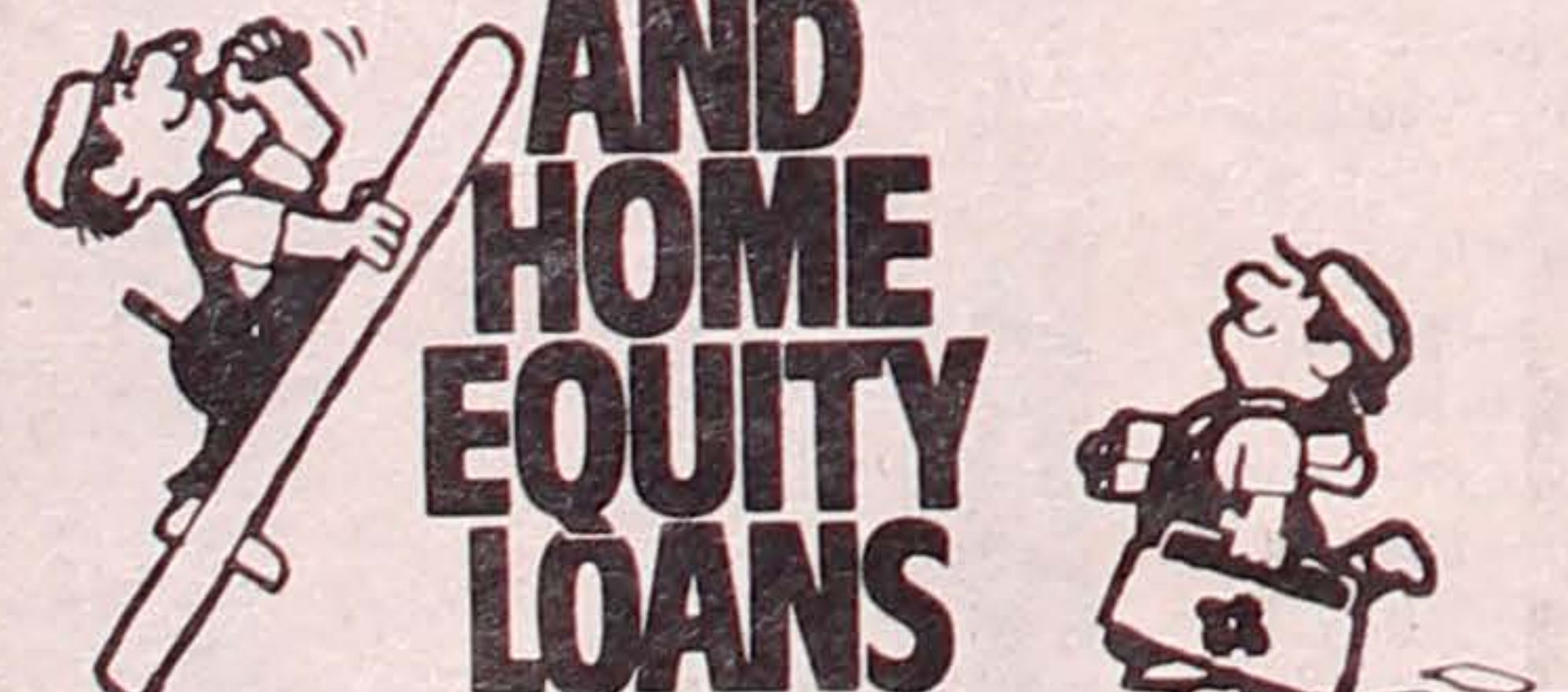
"Nisei Soldier" also won the Blue Ribbon first place award at the 26th annual American Film Festival in New York on June 1.

The 30-minute documentary tells the story of the

442nd Regimental Combat Team, a WW2 all-Nisei unit that became the most-decorated unit of its size in U.S. military history.

Funding for the film was provided by the John Simon Guggenheim Memorial Fellowship; Corp. for Public Broadcasting; National Endowment for the Humanities; Calif. Public Broadcasting Commission, joint grant with Calif. Council for the Humanities; and Wash. Commission for the Humanities.

HOME IMPROVEMENT AND HOME EQUITY LOANS



The loan rates we offer on home improvement and home equity are reasons you should check with Sumitomo before you do any borrowing. Our loan representatives are courteous and efficient too.

Home Improvement Loans. Remodeling? Adding on? Let our home improvement loan help you get greater satisfaction and comfort from your home as well as increase its value.

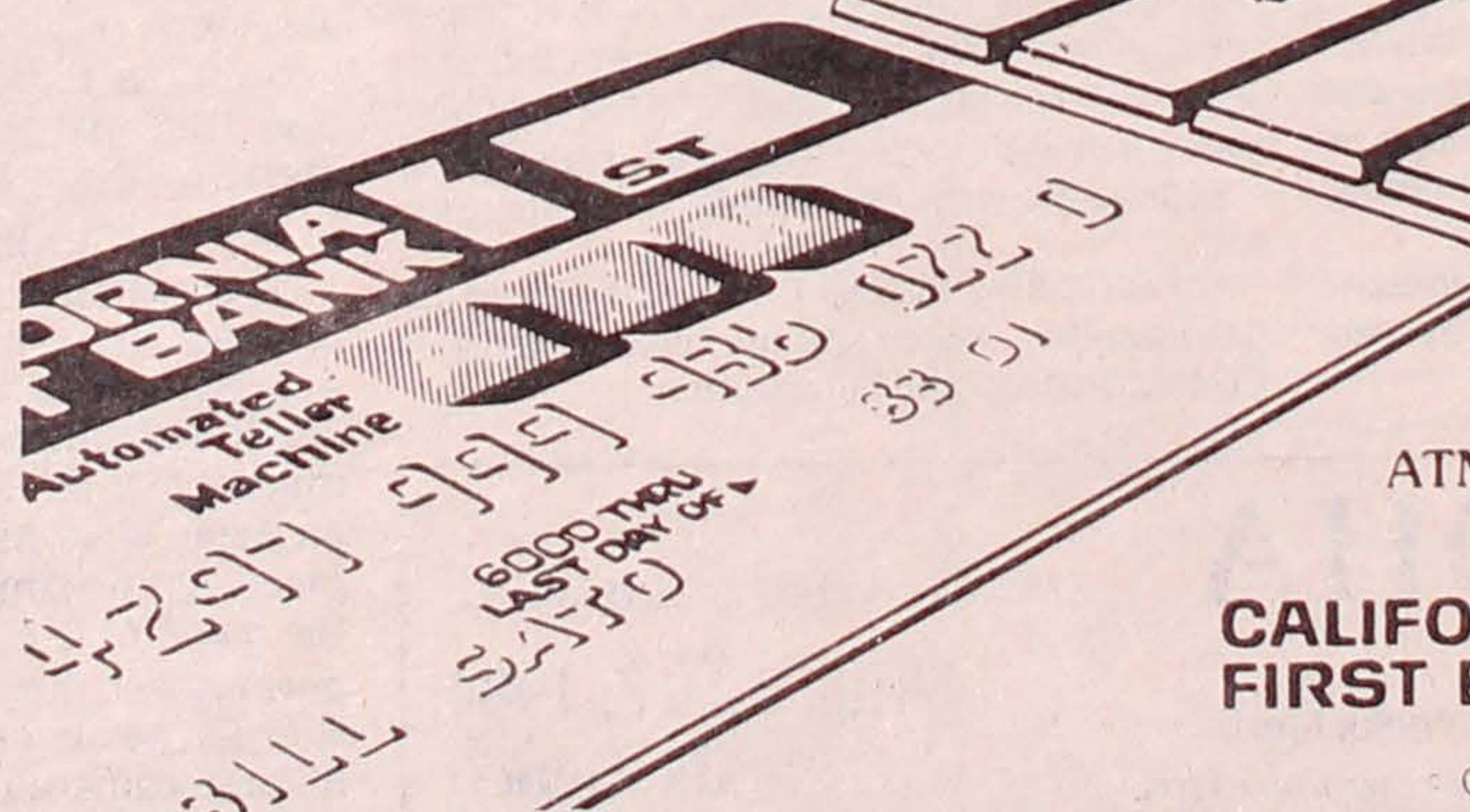
Home Equity Loans. You've built up the equity in your home. Now let it work for you by borrowing against that equity for personal use, investment capital or other financial contingencies.

See our loan representatives for current rates.



ATM touch...

- withdraw cash • make deposits • make loan payments • transfer money between your accounts ...and check your available balances



Apply for your ATM access card today.



California First Bank, 1982

Little Tokyo Service Center to honor three community leaders

LOS ANGELES—Three outstanding leaders of the Southern California Nikkei community will be honored at a dinner and awards ceremony slated for the Hyatt Regency Hotel, Friday, July 6. Little Tokyo Service Center has chosen to honor Rokuro

Watanabe, Ethel Kohashi and Tritia Toyota for their service to the community.

Watanabe, Ethel Kohashi and Tritia Toyota for their service to the community.

government. From 1972-76 he served as president of Sozenji Buddhist Church. In 1979 he was honored as a pioneer of the San Fernando Valley by the VFW. He helped establish the So. Calif. Japanese American Senior Citizens Federation and served as

nial, Little Tokyo Service Center, Little Tokyo Community Development advisory committee, Los Angeles-Nagoya Sister City Affiliation, and Nisei Week Festival committee. She was also active in the Amimono Club, a knitting club that sponsors fashion shows and donates proceeds to charitable organizations.

Tritia Toyota, familiar as the KNBC news anchor, is equally well known for her community service contributions. She can be seen on many weekends and week nights volunteering time to emcee benefits, assisting with public service announcements, and helping to promote such community services as Little Tokyo Health Fair and Asian/Pacific Islander High Blood Pressure Task Force.

She co-founded Asian American Journalists Assn., which provides scholarships to young Asians aspiring to the field of journalism. She has been named Outstanding Young Woman of America and has received awards from Los Angeles Human Relations Commission, U.S.-Asia Institute, Greater Los Angeles YWCA, and Los Angeles Asian American Assn.

This fifth annual Japanese American community service awards dinner will be emceed by attorney Rose Ochi, director of Criminal Justice Planning, City of Los Angeles. Little Tokyo Service Center also cites Merit Savings and Loan Assn. for its numerous contributions to the Nikkei community.

The dinner begins at 7 p.m., preceded by a cocktail hour from 6 p.m. Tickets are \$35. For reservations call 680-3729. Donations are tax deductible.



Ethel Kohashi



Tritia Toyota



Rokuro Watanabe

Watanabe, Ethel Kohashi and Tritia Toyota for their service to the community.

Rokuro Watanabe was born in Fukushima-ken in 1904. At 16 he came to Seattle, later moved to Los Angeles, and in 1932 married Katsue Furuyama. They started a wholesale floral business in the San Fernando Valley. The business developed, and they eventually had three sons.

1955-62 he served as president of San Fernando Valley Japanese School. He has twice received awards from the Dai Nippon no Kai.

He helped establish the San Fernando Valley Meiji Senior Citizens Club and served as president for 17 years, receiving numerous awards from the city, county and state. In 1975 he received the Sixth Class, Order of the Rising Sun, from the Japanese

president in 1980.

In 1981 he was honored as an Issei Pioneer by the Nisei Week Festival board. The same year he was board member of Nikkei Village senior citizens housing project in San Fernando. He now serves as board member of the Japanese Chamber of Commerce of So. Calif.

Ethel Kohashi is known for her tireless work on behalf of numerous Nikkei community organizations. She is past president of the So. Calif. Japanese Women's Society, Nichibei Fujinkai, Japanese American Republicans, Friends of the Japanese Retirement Home, Ladies Auxiliary-Japanese Philharmonic Society, and Tuesday Neters.

She has served on the boards of Japanese American Cultural and Community Center, Japan America Society, Little Tokyo Centen-

Theater arts workshop open

LOS ANGELES—East West Players offers its third annual intensive summer workshop Aug. 6 through Sept. 2 for persons with varying degrees of theater arts experience.

Classes in acting, voice production, dance/movement (creative, modern, Japanese movement, martial arts, and taiko) and rehearsal procedure culminate in a production of play and musical excerpts.

Another class, especially created for East West Players, is in Asian American history theater. It involves acting exercises, improvisations and writing to help class participants to more fully understand the history of Asian Americans.

Partially funded by the National Endowment for the

Arts, past workshops have brought participants from Boston, Hawaii, Seattle, California, and Japan.

Mako, East West Players' artistic director and nominee for the Tony and Academy awards, feels that this type of workshop provides students with the opportunity to be trained in a professional environment. Students are asked to commit 60 hours a week, six days a week for the duration of the workshop.

Enrollment is limited and is open to anyone 16 years or older. Deadline for registration is June 30. A few scholarships are available.

Further questions should be addressed to East West Players, Summer Workshop Program, 4424 Santa Monica Blvd., Los Angeles, CA 90029; 660-0366.

Nisei and Retirement to present lecture/demo on physical fitness

SAN FRANCISCO—In their "golden years," many Nisei are finding that wear and tear on their bodies begins to inhibit activity. According to physical therapist Gene Oishi, these Nisei need not succumb to the aging process.

Oishi cites news stories of persons in their seventies and eighties who embark on training for such rigorous activity as marathon running, long-distance swimming or weight lifting. Although he does not advocate such extreme programs he does stress the importance of general fitness through regular exercise, especially for persons of retirement age.

Oishi speaks at the next meeting of Nisei and Retirement, Saturday, June 30, from 1 to 4 p.m., in the Hospitality Room, California First Bank, Japan Center. Nikkei of all ages are welcome. It is suggested that those attending wear clothes appropriate to an informal participative program.

Oishi will explain and demonstrate simple movements for the maintenance of a well-functioning body and for the prevention of disorders usually associated with aging.

Oishi is director of physical and occupational therapy at Marin General Hospital.

The program is chaired by Kiku Funabiki, a yoga teacher who was once crippled with rheumatoid arthritis.

For more information call Funabiki, 668-4660, or Jeri Handa, 282-2803. Funabiki is bilingual.

EAST WEST PLAYERS

SUMMER WORKSHOP 1984
Aug. 6 — Sept. 2

Intensive Training in All Phases
of Professional Theater

Acting I, II, III
Voice Production
Dance/Movement
Ethnic Dance
Martial Arts
Taiko
Rehearsal Procedure
Production Techniques
Asian American History Theatre

Open to anyone 16 years or older.
Limited Scholarships Available

EAST WEST PLAYERS
Summer Workshop Program
4424 Santa Monica Blvd., Los Angeles, CA 90029

Application Deadline: June 30, 1984

Earn a Gold Star!

The California Dept. of Corrections (CDC) has more than 3,000 openings for men and women in institutions all over California. The job is called "CORRECTIONAL OFFICER", and the starting salary is \$1,757 a month.

DO YOU QUALIFY?

Experience: Two years of any kind of work experience or military service is required. (College may be substituted for experience year for year.) **And Education:** High school graduation or equivalent. **And Special Qualifications:** At least 21 years of age; valid California drivers license; good health; normal hearing and vision; no felony convictions; U.S. citizenship.

WHAT YOU SHOULD DO NOW!

- You can APPLY IMMEDIATELY by picking up a State Application for Examination from your nearest Employment Development Department (EDD) office and mailing the completed application to one of the offices below. You will be scheduled for the next examination; and, by return mail, you will receive an info packet telling you all about CDC and what a Correctional Officer does.
- If you just want the INFO PACKET, phone or write one of the offices below. You can apply at any time. Applications are accepted throughout the year, and testing is frequent.

Calif. Dept. of Corrections

Northern Testing Center Southern Testing Center
700 Franklin Blvd. #110 320 W. G St., #106
Sacramento, CA 95823 Ontario, CA 91762
(916) 427-4369 (714) 984-2245

VIDEO ACTION PRESENTS

Ganmurai

THRILLERS

FIRST TIME ON VIDEOCASSETTE



For your Japanese Video collection

- Watch Out, Crimson Bat! Mekurano Oichi Midaregasa (dubbed)
 Professional Killers I Hissatsu Shikakenin (subtitle)
 Sword Of Fury I Miyamoto Musashi I (subtitle)

Please Send Me: VHS BETA

The above checked titles More information

Enclosed is: Money Order Check (For faster service, write driver's license # and birthday on check.)

MC/VISA # _____

Expiration date _____

Name _____

Address _____

City _____

State _____

Zip _____

Add \$3 each for shipping and handling and 6% CA or 6 1/2% L.A. County resident sales tax.

VIDEO ACTION 708 W. 1st St., Los Angeles, CA 90012
(213) 617-3545

Community affairs

LOS ANGELES—March Fong Eu, California secretary of state, is among the guest speakers at the first meeting of the Asian Pacific Voter Registration Project, Monday, July 2, Asian Pacific Legal Center, 620 W. Olympic Blvd., 6-8 p.m. The goal of the group is to register thousands of Asian Pacifics for voting in this year's elections. For more information call 746-6029.

LOS ANGELES—Artist Dan Nakamura exhibits his original origami works in the Calif. State University Student Union's Exploratorium, 5154 State University Dr., through July 5. Viewing hours are 11 a.m. to 7 p.m., M-Th, and 11 a.m. to 1 p.m. on Friday. Daily demonstrations are scheduled to June 27, 11 a.m. to 3 p.m. Nakamura has developed new designs for both miniatures and life-size forms.

GARDENA, Calif.—Japanese Cultural Institute holds its summer carnival June 23-24 at 16215 S. Gramercy Pl. Carnival hours are 3 p.m. to 10:30 p.m. Saturday, and 3 p.m. to 9 p.m. Sunday. Among the sponsors are Gardena Valley and Torrance JAACL chapters. Food, games, bingo and exhibits highlight the affair.

SAN FRANCISCO—Karl Yoneda talks about his 60-year struggle as a Kibei labor organizer Friday, June 22, 8 p.m., at JAACL headquarters, 1765 Sutter St. Copies of his autobiography, "Ganbatte," will be available.

CONCORD, Calif.—The Japanese American Hall on Treat Lane is the site of the Old-Timers' Yearly Potluck and Get-Together, Sunday, June 24, from 11 a.m. All interested persons are invited. For further information, call George Yamauchi, (209) 368-2403.

Cultural events

LOS ANGELES—Korea's emerging role in world affairs, issues in the Korean American community, and Korean American women are addressed in a dinner forum sponsored by Leadership Education for Asian Pacifics, Thursday, June 28, 6-9 p.m., at Korea Plaza, 1905 S. Figueroa St. Tickets are \$15. For reservations, call J.D. Hokoyama or Denise Kurushima, 743-4999.

SAN FRANCISCO—"Invisible Citizens: Japanese Americans," airs Wednesday, June 27, 10 p.m., on public television as part of PBS's Non-Fiction Television series. (Check local listings for other areas.) Produced by Keiko Tsuno and the Television Laboratory at WNET in New York, the documentary examines the effect of the WW2 internment on Japanese America.

Convention Schedule

A schedule of events for the 28th national JACL convention has been established by vice president Ben Takeshita and the Honolulu convention committee, chaired by Edgar Hamasu.

The core of the convention, setting national policy for the next biennium, takes place during five business sessions. A delegate orientation on the first day will introduce council members to the working structure and process of those meetings.

Most of the events listed below are offered in the various convention registration packages. Arrangements for the few events still being planned (marked by an asterisk) will be announced at the convention.

SUNDAY, AUGUST 12

Day—Registration.

Evening—Thousand Club reception.

MONDAY, AUGUST 13

Morning

Golf tournament.

Hawaiian Adventure briefing.

National board meeting.

Nominations committee meeting.

Afternoon

Delegate orientation.

Evening

Women's concerns committee reception.

Aloha banquet, opening ceremony.

TUESDAY, AUGUST 14

Morning

Business session I.

Exhibit room opens.

Afternoon

USS Arizona Memorial tour.

Evening

Presentation on Nikkei immigration to Hawaii, by Prof. Ronald Takaki.*

Candidates' night/mixer.

District caucuses.*

WEDNESDAY, AUGUST 15

Morning

Women's concerns committee.

Candidates' breakfast.

Business session II.

Afternoon

Workshops: Session 1—U.S.-Japan relations; redress; women's concerns. Session 2—U.S.-Japan relations (cont.); aging & retirement; ethnic concerns.

Evening

Sunset luau.

District caucuses.*

THURSDAY, AUGUST 16

Morning

Punchbowl cemetery memorial ceremony.*

Business session III.

Afternoon

Commemorative tree planting, East-West Center.*

Washington Place reception, hosted by Gov. and Mrs. Ariyoshi and Honolulu JACL.*

Evening

Furusato Matsuri.

FRIDAY, AUGUST 17

Morning—Business session IV.

Afternoon—Business session V.

Evening—Sayonara Ball.

SATURDAY, AUGUST 18

Morning—National board meeting.

Further details of convention and booster events will be published in the Pacific Citizen. Deadline for "Early Bird" convention registration has been extended until June 30. To take advantage of the bargain prices, call GELCO Travel Services at (800) 821-2494 if outside California, or call collect at (415) 321-2890 in California.

ISSN: 0030-8579

pacific citizen

Published by the Japanese American Citizens League every Friday except the first and last weeks of the year at 244 S. San Pedro St., Los Angeles, CA 90012; (213) 626-6936 • 2nd Class postage paid at Los Angeles, Ca. Annual Subscriptions—JACL members: \$10.00 of national dues provides one-year on a per-household basis. Nonmembers: \$16, payable in advance. Foreign addresses: Add U.S.\$8 • News or opinions expressed by columnists other than JACL staff do not necessarily reflect JACL policy.

Submitted articles and letters should be typed, double-spaced. Deadline is the Friday before date of publication.

OFFICERS

Floyd D. Shimomura, Nat'l JACL Pres. Henry S. Sakai, PC Board Chair

EDITORIAL / BUSINESS STAFF

Gen Mgr./Operations: Harry K. Honda Editor: Karen Seriguchi

Advertising: Jane M. Ozawa Staff Asst: Henry K. Mori

Circulation: Tomi Hoshizaki, Mitsuko Sakai Mailing: Mark Saito

Production: Mary Imon, Jon Takasugi Holiday Issue: Charles Fullert

Postmaster: Send address changes to Pacific Citizen, 244 S. San Pedro St #506, Los Angeles, CA 90012-3891.



EAST WIND: by Bill Marutani



Yes, Warts 'n All

THERE ARE SOME Americans whose professed commitment to this nation is founded upon the fantasy that we, as a nation, are without blemish, without fault. This chauvinistic approach would not permit any criticism, any pointing to shortcomings, or even any suggestions to improve ourselves as a nation. Should anyone dare to suggest that we are anything less than ideal perfection, there is the threat of being tarred as disloyal, unpatriotic and at least ungrateful and untrustworthy. This threat is often directed to minorities within our midst, notwithstanding that such minorities may be full-fledged citizens. And, yes, there may be some Nikkei who, consciously or unconsciously, feel stifled as a potential target.

WELL, WE'VE SAID it before and we'll say it again: we Nikkei have unmistakably demonstrated—not merely proclaimed, which is all too easy to do—our unswerving commitment to this, our country and nation. We did so even as some of our fellow citizens falsely accused us and reviled us. We did so even as this, our motherland, abused us as if we were stepchildren or outcasts. We experienced her weaknesses, her insensitivity, her indifference—and we held fast by her side, defending her against foreign enemies whether across the Atlantic or across the Pacific. We did so even as wives, parents, younger brothers and sisters remained behind, confined in barbed-wire camps.

In short, we demonstrated our unswerving commit-

ment to the only mother we know and have, America—warts 'n all.

OURS IS NOT a commitment, a devotion, that is contingent upon looking at this nation through rose-colored glasses, obliterating her faults. Ours is not the precarious chauvinism that is dependent on seeing that which is not there: perfection. No, ours is steady, open and honest. We know the warts she has and we remain committed. We remain committed because she is our mother, our motherland. She belongs to us, and we are her children. This relationship is not dependent on someone else's "permission"; it is not at the sufferance of some group or segment of our society. It cannot be changed, even as some might purport or attempt to modify it. It cannot be changed any more than the relationship of mother-and-child that exists in everyday life. It is, because... it is.

AND AS OUR country, individually, we wish to be proud of her. We want her to be great. And where there are faults, as there are, we want those corrected. As concerned, dedicated citizens—we want those corrected. And so we would modify a jingoistic cry to: "My country, may she be right; but if wrong, make her right."

WHEN ONE SPEAKS of some basic principles in life, the words somehow seem trite. But we mean every word, every one of them.

Convention arranges Punchbowl memorial service for 100th/442nd

SAN FRANCISCO—Preliminary arrangements for a memorial service at the Punchbowl National Cemetery on Thursday, Aug. 16, in conjunction with the JACL national convention, was announced by JACL national headquarters. Arrangements for the service developed when JACL vice president Ben Takeshita recently visited Honolulu to assist in the preparation for the national convention.

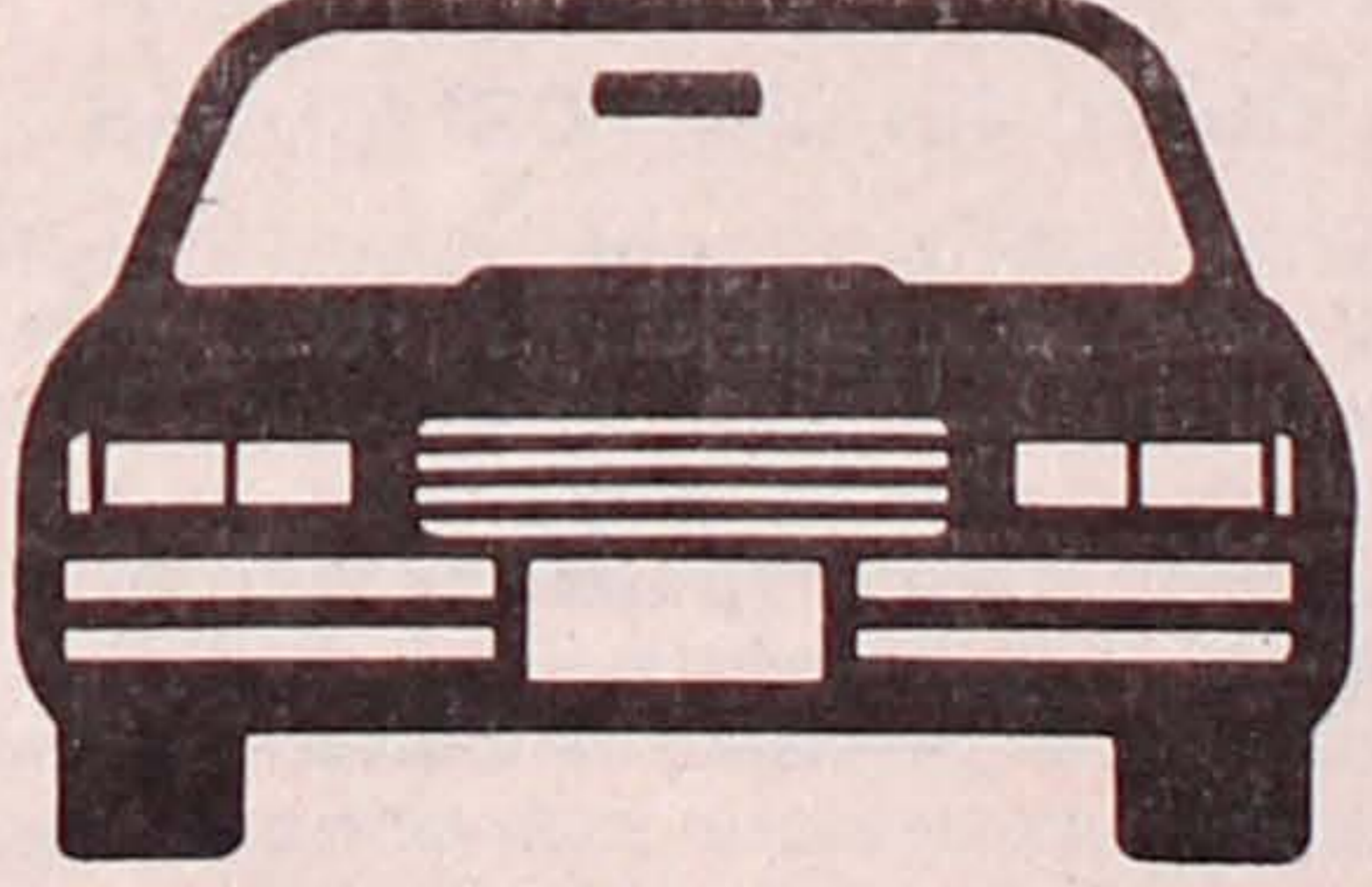
Special attention will be made in the program to the contributions of the Hawaiian Japanese Americans during World War II. The 100th Infantry Battalion, composed of men from Hawaii, served in the European Theater for nine months before their counterparts in the 442nd were able to join them. A JACL spokesperson noted, "As an organization that is mainland based, we have a greater understanding of the 442nd Regimental Combat Team; the specific sacrifices of the Japanese Americans from Hawaii have had a lesser degree of understanding. We're hoping that this event at the Punchbowl helps provide a fuller picture of the Nisei veteran, especially the Hawaiian story."

JACL national secretary/treasurer, Frank Sato, who is the inspector general for the Veterans Administration, and Paul Bannai, former California state senator, and now in charge of memorials for the Veterans Administration, are assisting in facilitating the program. Takeshita made contact with Hawaiian veterans groups representing the 100th, the 442nd and the MIS to solicit their participation.

A sunrise memorial service on the morning of Aug. 16 is anticipated. Transportation of JACL convention participants to the Punchbowl will be available, with specific arrangements to be announced during convention registration.

NEW CAR LOANS

11.9% APR



Insured Savings currently paying 7%

Free Insurance on loans and savings

IRAs now available

Now over \$5.7 million in assets

NATIONAL JACL CREDIT UNION

PO Box 1721 Salt Lake City, Utah 84110
Telephone (801) 355-8040

REDRESS PHASE FIVE: Minoru Yasui

Eastern District Council

Led by Mike Suzuki, EDC JACL governor, the chapters of the Eastern District met in Philadelphia during the end of March. The explicit purpose of the gathering was to review progress in the redress campaign on the East Coast.

Grayce Uyehara, as the indefatigable redress chair for EDC, has been putting forth tremendous work in organizing grassroots JACLers. She and her husband, Hiroshi, left shortly after the meeting on a two-month sabbatical, going to China on a Smithsonian tour, and later spending a month in Japan, before returning to Philadelphia at the end of May.

In the meanwhile, Tom Kometani of the New York JACL, in Grayce Uyehara's absence, assisted in coordinating the EDC redress effort. It must be noted, with gratitude, that local efforts in Pennsylvania, New York and New Jersey are outstanding. Sumi Kobayashi operates in the Philadelphia area, and Jack Ozawa assists in southern New Jersey and in Delaware.

Steadfast Charles Nagao, as an old-time stalwart of the Seabrook JACL in New Jersey, has mobilized that chapter in contacting members of Congress to support the redress bills, HR 4110 and S 2116. We recognize the critical importance of constituents keeping Rep. Peter Rodino (D-NJ) informed and supportive, inasmuch as he is the chairman of the House Judiciary Committee, and also Rep. Hamilton Fish (R-NY), ranking minority member of that committee.

In the Washington, D.C., area, K. Patrick Okura has taken over coordination of efforts in both Maryland and Virginia. It is gratifying to note that Sen. James Sarbanes of Maryland has come on board as a co-sponsor of the Senate redress bill, S 2116.

We acknowledge that Kei Kaneda and Gary Glenn of the New England area have been doing important work in their region. Unfortunately, since our March article in the Pacific Citizen was written during December 1983, we did not know facts nor latest developments in and around Boston, and in other New England states. We apologize to the New England JACLers, and express our thanks and appreciation for their efforts in connection with redress. Keep up the good work!

If there are other areas, especially in the East, Midwest and in the Deep South, where we have neglected to give appropriate credit and express our gratitude for work well done, please let us know. We would be more than happy to recognize such individuals and the important work they are doing.



Gene Takamine

Takamine unopposed for national post of JACL secretary/treasurer

FOUNTAIN VALLEY, Calif. —Attorney Gene Takamine is this biennium's sole candidate for national JACL secretary/treasurer.

Takamine has been a member of the Selanoco Chapter board for the past four years, was Selanoco Chapter president in 1981, member of the Pacific Southwest District Council board in 1982-83, and is currently national ways and means committee chair.

Takamine ran unsuccessfully for national vice president/public affairs in 1982.

In his platform statement,

Takamine emphasized that "JACL needs to concentrate on being more effective in its money management of existing funds and more aggressive in its solicitation of money.... Ideas are not made into effective programs without the money for staff, equipment and expenses."

As a Sansei, he also looks to the future of JACL: "Is there life after redress?" he asks. "The next generation is moving up and the time has arrived with their agendas and priorities to take a proper place with that of the Nisei and Issei," he concludes.

FROM THE FRYING PAN: by Bill Hosokawa



Cries from the Heart

Of the score or more books published on the Japanese American experience, none is quite so poignant as the latest, *And Justice for All*. Most of the other books examine that experience at arm's length as historians or sociologists or simply reporters. This one is made of the personal stories and observations of 30 Japanese Americans telling of their experiences and feelings as their own country abandoned them.

It is Mary Tsukamoto remembering a Fourth of July program inside an American concentration camp: "Because we couldn't think of anything to do, we decided to recite the Gettysburg Address as a verse choir. We had an artist draw a big picture of Abraham Lincoln with an American flag behind him. Some people had tears in their eyes; some people shook their heads and said it was so ridiculous to have that kind of thing recited in camp. It didn't make sense, but it was our hearts' cry. We wanted so much to believe that this was a government by the people and for the people and that there was freedom and justice."

It is Jack Tono, one of a group of youths sent to federal prison for resisting the draft: "I think our group respected citizenship more than anybody in this country, because we were actively trying to preserve our citizenship rights, instead of just saying that we're citizens of this country. If you're treated the way we were, there's no such thing as real citizenship. You have to fight and pay your dues... It was good what I did; I did it with a clear conscience. Because what we fought for was a righteous cause, and we weren't going to back off for nothing."

It is Wilson Makabe coming back from the war without his legs and driving to a gas station in his home town of Loomis, Calif.: "When he saw me at the service station getting out, struggling to get out of the car, to fill it with gas, he came out. After I was all through he said, 'I'd like to talk to you.' I said, 'Hop in.' He traveled with me down the road from the station. He said, 'Y'know I was one bastard. I had signs on my service station saying 'No Jap Trade Wanted.'" He said, 'Now, when I see you come back like that, I feel so small.' And he was crying. That was one of my experiences when I came back."

The book, compiled by John Tateishi from a series of interviews, is called an oral history. Reading it is like sitting down and talking with the subjects, probing their minds and hearts, hearing what they really thought and really felt, and how they feel today about their experiences 40 years after their lives were turned topsy-turvy by a callous government.

This book is "must" reading, particularly for the Sansei and Yonsei who have complained that the Nisei won't talk about the Evacuation. In this volume they do indeed talk and the words flow, sometimes awkwardly but always intensely and honestly.

In a way, this is a catharsis, but it is also living history that provides penetrating insights into the pain the Evacuation inflicted on individuals. And after one becomes acquainted with the individual stories, one is led to ask what it is about America that managed to preserve the loyalty and affection of those it mistreated. In the long run, that question may be more pertinent than asking how racism, hysteria and callousness caused the problem in the first place.

New novel dishes up pulp

CHIKARA!

by Robert Skimin, St. Martin's/Marek, NY, 1984, 543 pp, \$16.95

The dust jacket for this "sweeping novel of Japan and America from 1907 to 1983" shows a stereotyped Madame Butterfly/geisha girl face against a backdrop of the Golden Gate Bridge and the Japanese battle flag. It is the most repulsive design I have ever seen in a book purportedly about Japanese Americans.

I promptly discarded the jacket so it would not distract from an objective reading of the book.

That didn't help much. Matters only got worse when I began reading.

The prologue depicts a topflight, Americanized Japanese businesswoman donning, of all things, a kimono in order to attend a crucial meeting with her fellow business executives. Good grief, no businesswoman in her right mind would have done something so stupid! That would have been like Mary Cunningham wearing an evening gown to her board of directors meeting.

Then early on, there is a lurid, anatomical description of Japanese women's bodies as they are stripped naked and abused by white male immigration officials at the port of entry to the United States. Historically, I'm sure that the Japanese men went through the same degrading check for diseases, but there is not one word about men's bodies.

Fortunately, the author depletes his repertoire of sexist/racist fantasies after three chapters (or so it seemed until the end of the book). No doubt Skimin is using the opening pages to draw in a white audience by appealing to their prurient interests. The trouble is that most Japanese Americans won't be able to wade through this garbage.

Saga of One Family

The story itself is your typical pulp fiction: it is filled with tales of lust, hate, jealousy, greed, infidelity, prostitution, gangsterism, and murder. It is a narrative of one family's insatiable thirst for wealth and power (viz., *chikara*). The fact that the family is Japanese is almost irrelevant: they act, think, and talk like capitalists all over the world.

Despite the ostentatious and ingratiating "dedication," the book is not about Japanese Americans. Instead, it is about a sojourner family from Japan who only happened to have lived in the Lodi-Stockton area of California at one time, but left no progeny. They are roughly analogous to a present-day "kaisha" family.

The major characters are: a stubborn and often foolish patriarch who tries in vain to become rich in America, an ambitious matriarch who leaves her husband to establish a separate branch of the family in Japan, a nationalistic Japan-born son who becomes a general in the Imperial Japanese Army, a bitter American-born grandson who defects to Japan and vows revenge against the "hakujiins" for mistreating his family, and a ruthless Japan-born/American-educated granddaughter who is the savior of the family fortunes.

Other family members who wish to put down roots in America are scorned and meet with violent deaths. Of the two sons, and of the two grandsons, it is always the one who wants to be an American who is killed first. Sooner or later, everyone in the family (except for one aged, widowed daughter-in-law) returns or goes to Japan. Thus, a Japanese American family never develops.

Is the author trying to tell us something? Perhaps subconsciously? Is this the old "go back where you came from" routine?

In any case, the "dedication" is totally inappropriate, and the Japanese American community should not be so easily duped into supporting this book. Skimin is pulling the same fast hustle perpetrated by his fictional characters. The real "dedication" is to the American and Japanese entrepreneurial spirit.

Light Entertainment

Skimin is a good storyteller, and the bulk of *Chikara* provides pleasant enough reading, as long as one accepts it for what it is: i.e., light entertainment and pure fiction. Nothing profound can be expected because Skimin's research was minimal and his understanding of Japanese culture is extremely superficial. It comes nowhere near matching James Michener's *Hawaii* as a historical novel.

There is a danger, however, in the author's somewhat swelled head and his grandiose plans to produce a TV mini-series, claiming his book to be a Japanese "Winds of War" and a Japanese American "Roots." It could be considered a Japanese "Winds of War," but a Japanese American "Roots"? No way! A Japanese "Dallas" or "Falcon Crest" would be closer to the mark.

The novel ends with the "merchant princess," the tough-minded heir to the family throne, who would do anything—including killing an antagonist—in order to make a buck. While mouthing the words of her grandfather, she actually represents the culmination of the matriarchal dynasty founded by her grandmother, and hopefully continuing with her own daughter.

Ah, but she has one weakness: a white man. Disgusting! It's the same white man's fantasy that started the novel. Does Skimin imagine himself to be another Lieutenant Pinkerton? I should have thrown the whole book away in the first place.

—Raymond Okamura

Chapter Pulse

San Diego

SAN DIEGO, Calif.—Dr. Jack Fujimoto, president of West Los Angeles Community College, was featured speaker at the chapter's scholarship dinner May 6. Nineteen scholars shared in the \$5,600 awarded by the chapter this year.

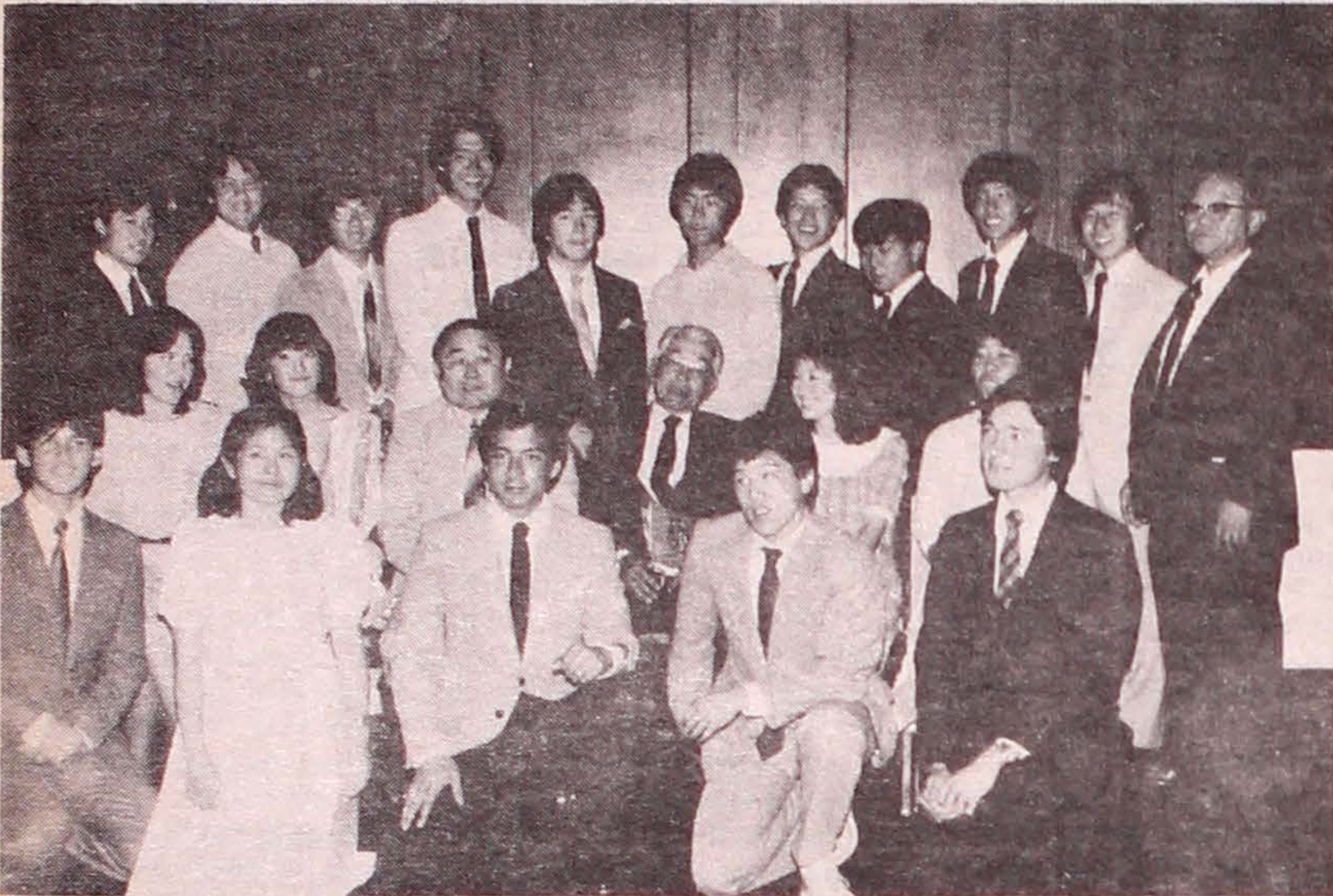
Recipients were:

Bryan MacQuarrie and Richard Sootkoos, Patrick Henry High School; Mark Ishihara, Raymond Flournoy, Ichibei Honda, Brian Koide and Brian Oyama, Madison; John Kida, Southwest; Linda Argon and Janet

San Jose

SAN JOSE, Calif.—Pleasant Hills Golf Course is the site of the JACL golf tournament set for Saturday, July 28. Open to JACLers and guests, the tournament uses July's handicap (maximum of 28 for men, 36 for women).

Starting time is limited, so enter early. Deadline is July 17. Fee is \$13 for JACL members, \$15 for non-members, and \$11 (optional) for a cart. For more information, call co-chairs George Neyama, 275-9200, or Ken Azebu, 970-0922.



Education assisted—Winners of San Diego JACL scholarships gather around West Los Angeles Community College president Jack Fujimoto (2nd row, 3rd from left) and scholarship committee chair James Yamate (4th from left). Chapter president Mas Hironaka stands at right.

Hatt, Mt. Miguel; Edward Feasel and Jeffery Garcia, Sweetwater; Merri Hatashita and Rodney Takashima, Bonita Vista; Kent Ninomiya and Akiko Tamano, University City; Joyce Tsuji, Pt. Loma; and Steven Uyeji, Hilltop.

The award for continuing vocational education was given to Naomichi Okawa.

Members of the scholarship committee were James Yamate (chair), Gale Kanehiro, Tetsuyo Kashima, Elizabeth Ozaki and Kathy Segawa.

San Mateo

HAYWARD, Calif.—The chapter's first annual golf tournament is open to men and women. Sign-ups are taken by David Hayashi, 345-2082 (home) or 344-3156 (office). The tournament will be held Sunday, July 22 at Skywest, from 11:30 a.m.

Cleveland

CLEVELAND, Ohio—The annual foundation community picnic takes place Sunday, July 22, at Clay's Park. Scheduled are a softball game, undo-kai, swimming, boating and games. Tickets are \$3.50, with children under 3 free.

For transportation or more information call Tom Nakao, 464-5335 (M-F, 9a.m. to 5 p.m.).

Greater L.A. Singles

LOS ANGELES—A support group for the divorced meets at 8 p.m. the first and third Tuesdays of each month at 1415 Brockton Ave., West Los Angeles, and on the second and fourth Tuesdays at 1409 Rolling Hill Dr. in Monterey Park. JACL membership is not required.

Purpose of the group is to help the newly divorced as well as those who have been divorced for some time. For information, call 478-9565 or 264-2769.

On Saturday, June 30, the chapter holds a yard sale at Lutheran Oriental Church, 2654 W. 164th St. (corner of Wilkie) in Torrance, from 9 a.m. to 4:30 p.m. Clothing, household goods, jewelry, furnishings and knick-knacks are among the items for sale.

Singles convention addresses roles of men and women, forming relationships, handling grief after widowhood

By Meriko Mori

GARDENA, Calif.—About 250 Nisei, Sansei and other singles gathered Memorial Day weekend for the first national JACL singles convention, hosted by the Greater Los Angeles Singles Chapter. They discovered that they were not alone, as conventioners came from Seattle, Salt Lake City, San Diego, San Jose, Sacramento and Fresno.

A successful golf tournament Friday morning (May 25) marked the opening of convention activities. A Friday night mixer kept conventioners busy with games, line dances, TV for Laker fans, and dancing.

Gwen Duffy, Gardena councilwoman and mayor pro tem, opened Saturday morning's session as she welcomed everyone and related how proud the city of Gardena was to have the highest concentration of Japanese Americans in the mainland U.S. Midori Watanabe, convention chair, then called the business meeting to order. As first order of business, Ada Shimabuku was elected recording secretary.

John Saito, PSW regional director, commented that the Greater L.A. Singles Chapter was the youngest chapter in the district and was concrete evidence of the district's innovativeness. Official delegates and representatives of visiting chapters and organizations were introduced:

Pam Shimada, Gardena Valley; Yuki Sato, West Los Angeles; Dorothy Shimizu, Marina South; Roy Makino, San Fernando Valley; Joe Nagase, San Diego; Fumi Uyeshima, Santa Maria; Bill Kumagai, San Jose Nikkei Singles; Anna Chiong, Seattle Tomo-no-Kai; Nat Ohara, Sacramento Nikkei Singles; and Elsie Chung, San Francisco Nikkei Widowed.

Purpose of the Group

Discussion followed on the purpose of singles groups. Points raised included fellowship, building political influence, educational activities, age diversity, variety of activities, and community service.

Advantages of JACL affiliation given were leadership and resources availability, publicity provided by Pacific Citizen and the non-discriminatory aspect. Ideas were presented on how to help form singles chapters in other cities, stressing networking through use of media, handbooks, support groups, newsletters, and speakers bureaus.

In order to present a resolution at the JACL national convention in August, a resolutions committee was appointed, with Kei Ishigami of Sacramento Nikkei Singles, Pam Shimada from Gardena Valley, Yuri Moriwaki of San Francisco Nikkei Widowed, Meriko Mori from Greater L.A. Singles, and Mas Yano of Salt Lake City as legal counsel.

Exploring Life

Saturday afternoon was filled with workshops, the majority of participants opting to attend the "Getting to Know You" and "Lifestyle Options" workshops. Bebe Reschke, social worker, chaired the first workshop with Edward Himeno, a child psychiatrist who reviewed child development from the fetus to adolescence. He emphasized that our attitudes come from the past, and he reported that in his work he has found that the WW2 camp experience has had a more negative impact on feelings of adequacy than had ever before been realized. Reschke covered hang-ups from prior relationships, how to modify one's reaction to situations, the interim person, and getting over relationships.

Satoshi Hayashi, social worker, spoke on

"Lifestyle Options," recommending going beyond the initial game-playing and the big rush in building new friendships and intimate relationships. He challenged the group to be risk-takers, to be honest, and to take off the mask and build a partnership. He suggested that to build a partnership, people need to set mutually agreeable time frames and goals, share needs and fears, and use them as a permanent basis for a partnership or to close the partnership with care and respect for the other person. The workshop ended in heated discussion on the difference between female assertiveness and aggressiveness and how the female is often perceived as aggressive by the male when she thinks of herself as being assertive.

Actor George Takei emceed Saturday evening's dinner ceremonies. Harry Kitano, the main speaker, spoke on love and received a rousing ovation as the host chapter presented him with an Outstanding Nikkei Award for achievements in his field and contributions to the community. Dancing to the music of the Melodaires brought the evening to a close.

Sunday morning's closing session was a wrap-up of Saturday's workshops. Yuri Moriwaki reported that, in the widowed group, it was very important to go through the grief period fully. Midori Watanabe reported that it was very important to rebuild after a divorce. Margaret Endo, graduate student at UCLA School of Social Welfare, reported on her interviews of divorced Japanese Americans.

New Chapters, Another Convention

Guidelines prepared by Midori Watanabe for setting up new singles chapters were distributed. A resolution requesting that the National JACL establish a national singles concerns committee, with support staff, was unanimously passed.

The Sayonara Brunch, emceed by Rusty Kimura, was highlighted by a hilarious skit by Lucy Yoshihara that dramatized excuses given by men and women when asked for a date. As the last order of business, a motion for a second singles JACL convention was unanimously passed, and a steering committee for the convention was appointed:

Allen Yoshimi, Japanese American Singles Club; Mas Yano, Salt Lake City; Bill Kumagai, San Jose Nikkei Singles; Anna Chiong, Seattle Tomo-no-Kai; Kei Ishigami, Luceen Wong and Jim Sakamoto, Sacramento Nikkei Singles; Yuri Moriwaki, San Francisco Nikkei Widowed; Ted Nakamoto, unaffiliated; and Midori Watanabe, Lucy Yoshihara, Meriko Mori, Yo Minami, Kaz Yoshitomi, Tae Kaili, and Tom Shimazaki, Greater L.A. Singles. Serving as liaison members will be Joe Nagase, San Diego; Tama Murotani, Seattle; and Larry Taira, Fresno.

Among those responsible for the convention's success were:

Sally Kuriyama, housing; Tad Hirayama, transportation; Tae Kaili, golf tournament; Hana Shepard, registration desk; Roy Kayano, treasurer; Ada Shimabuku, Bea Fujimoto, Tae Kaili, Wally Uyebara, Paul Munesuye, souvenir booklet; Annabelle Lee, Friday night mixer; Terry Yoshimura, Saturday morning session; George Kamei, Saturday obento; Aiko Ide, "Lifestyle Options" workshop; Kaz Yoshitomi, Saturday dinner-dance; Sue Ota, aging and retirement workshop; Rusty Kimura, tours; Lucy Yoshihara, Sayonara Brunch.

The success of the convention was shown in the radiance and exuberance displayed by the conventioners on their faces—a reflection of inner feelings of higher self-esteem and self-worth. They realized that they no longer needed to be on the outside looking in from the fringe of society, but that they could return home with renewed hopes and joy.

Sonoma County

SANTA ROSA, Calif.—JACL and Enmanji Temple hold a community picnic at Howarth Park (upper picnic area B near the merry-go-round), Sunday, June 24.

Stockton

STOCKTON, Calif.—Recipients of the 1984 chapter scholarships were honored Sunday, June 10, at Kazan restaurant.

Honorees were: Liana Itaya, who received the JACL-Elizabeth Humbargar High School award; Darryl Chau, chapter award; and Diane Saga, Steven Adachi Memorial-Humbargar award. All are Stagg High School graduates.

Other recipients, graduates from Edison H.S., were Mary Murakami, who won the California First Bank award; Judi Nishimori, Sumitomo Bank of California award; and Jane McGhee, chapter award.

Janice Kochi, Lincoln H.S. graduate, received the JACL-Sumiden award, and Diane Hayashino, Manteca East Union H.S., won the Fred Dobana Memorial award.

Stockton JACL-Elizabeth Humbargar scholarships for San Joaquin Delta College foreign students were given to Ann Nguyen and Joe Kraft Jr.

Central Calif. District awards five scholarships

FRESNO, Calif.—Five high school students received a total of \$1,700 in scholarship awards from the Central Calif. District Council, announced Maude Ishida, district governor.

Winners were: Michael George Kondo of Fowler and Keith Uota of Visalia, Issei Memorial scholarships; Joyce Ogawa of Sanger, Calif. First Bank scholarship; Lisa Katayama of Sanger and Melanie Takata of Visalia, CCDC-JACL scholarships.

Citizenship plaques were awarded to Brian Mimura, West High School, Clovis; Thomas Kajioka, Redwood H.S., Visalia; Gail Nagata, Central H.S., Fresno; and Ronald Yamaguchi, Roosevelt H.S., Fresno.

Calendar

● To June 23

Seattle—Yellow Fever, by Rick Shimomi, Nippon Kan Theater, 628 S. Washington, Th-Sat; info 624-8800

● To July 1

Albuquerque—Turning Leaves, photographs from Nikkei families in Gallup, NM, E Gallery, Maxwell Mus, Univ New Mexico, M-F 94; Sat 104; Sun 1-5

● To Sept 5

San Francisco—Asian Masterpieces in Wood, Asian Art Mus, Golden Gate Prk; daily 10am-5pm

● JUNE 23 (Saturday)

Seattle—Tennis Fun Nite, 7:30pm-midnight; Martin Luther King & Walker St; potluck dinner follows

Berkeley—Marva Brown speaks on Retirement and Soc Sec Benefits, 11am, N Berk Sen Cit Center, 1901 Hearst Ave; preceded at 10am with tai chi chih exercises

● JUNE 24 (Sunday)

Gilroy—Ann'l comm'ty picnic, Christmas Hill Park

Mid-Columbia—1st ann'l golf tournament

Riverside—Comm'ty picnic, Sylvan Park, Redlands, from 11am

New Mexico—Albuquerque's Omatsuri, Civic Plaza, 11am on

Las Vegas—Int'l Festival, Convention Cntr, 11am on

● JUNE 30 (Saturday)

PNWDC—Las Vegas Nite fundraiser, Bush Asia Center, Seattle Int'l

Dist; from 7pm

● JUNE 30-JULY 1

Chicago—Buddhist Temple's Natsu Matsuri

● JUNE 30-JULY 4

Carson—Fireworks sales, 438 W Carson St

● JULY 1 (Sunday)

Seabrook—40th anniv comm'ty apprec picnic, Thundergust, Parvins State Prk

● JULY 8 (Sunday)

Los Angeles—Venice Japanese Comm'ty Cntr reunion, 12448 Braddock Dr; tkts \$13.50 (free to prewar Issei residents of Venice, Culver City); 12n

● JULY 14 (Saturday)

Cleveland—Obon Odori, Buddhist Temple

BY THE BOARD: by Henry Sakai



PC: Growing and Changing

I hope that most of you have noticed that the PC has expanded to 12 pages with an occasional 16-page edition. This provides the opportunity to include more news, JACL information, and articles. To produce 12 pages every week requires a lot of hard work and dedication by the staff, especially our new editor, Karen Seriguchi. With an assistant being added, PC will be able to continue to expand and improve its contents.

The Pacific Citizen's goal is to grow to 16 and eventually to 24 pages. We have set a fairly ambitious plan: we are hiring the assistant to the editor now and later we will hire an assistant on the business side to help generate more income and learn the other facets of the operation.

Of course, 24 pages will require additional staff. PC will have to generate considerably more income to fund the growth, so it won't be easy, but Harry Honda, general manager/operations, and I both feel it is feasible and necessary.

Ambiguity in Structure

The PC board, representing each district (the MDC representative could not attend) met the weekend of April 14-15 to review the policies and direction of the newspaper. In addition, the board had to determine what position to take with regard to the issue, "Who has the authority over the Pacific Citizen staff and operations: the national director or the PC board?" A clarification is necessary since the national JACL bylaws are ambiguous as to whether PC staff in this respect is part of national staff. The board members were unanimous in their strong feeling that the freedom and integrity of the Pacific Citizen should be maintained under the authority of the PC board, and they felt this reflected the views of their district membership. The PC is the major viable link to the membership, and for many the paper represents what they feel they get for their dues.

The PC board voted unanimously to approve a resolution to

amend the national JACL bylaws clarifying that the Pacific Citizen and its staff are the responsibility of the PC board, which reports to the national president, national board and national council.

The PC is a newspaper and a business that needs a lot of attention. The national director has many other priorities and time constraints that may conflict with the operation of the PC.

The background information and the resolution clarifying the bylaws is contained below.

Background to the Resolution amending Article IX of the Bylaws

The Pacific Citizen, "the official publication" of the Japanese American Citizens League, was established by the organization's founders as an entity separate from national headquarters to be governed by its own board of directors reporting to the national president, national board and the national council.

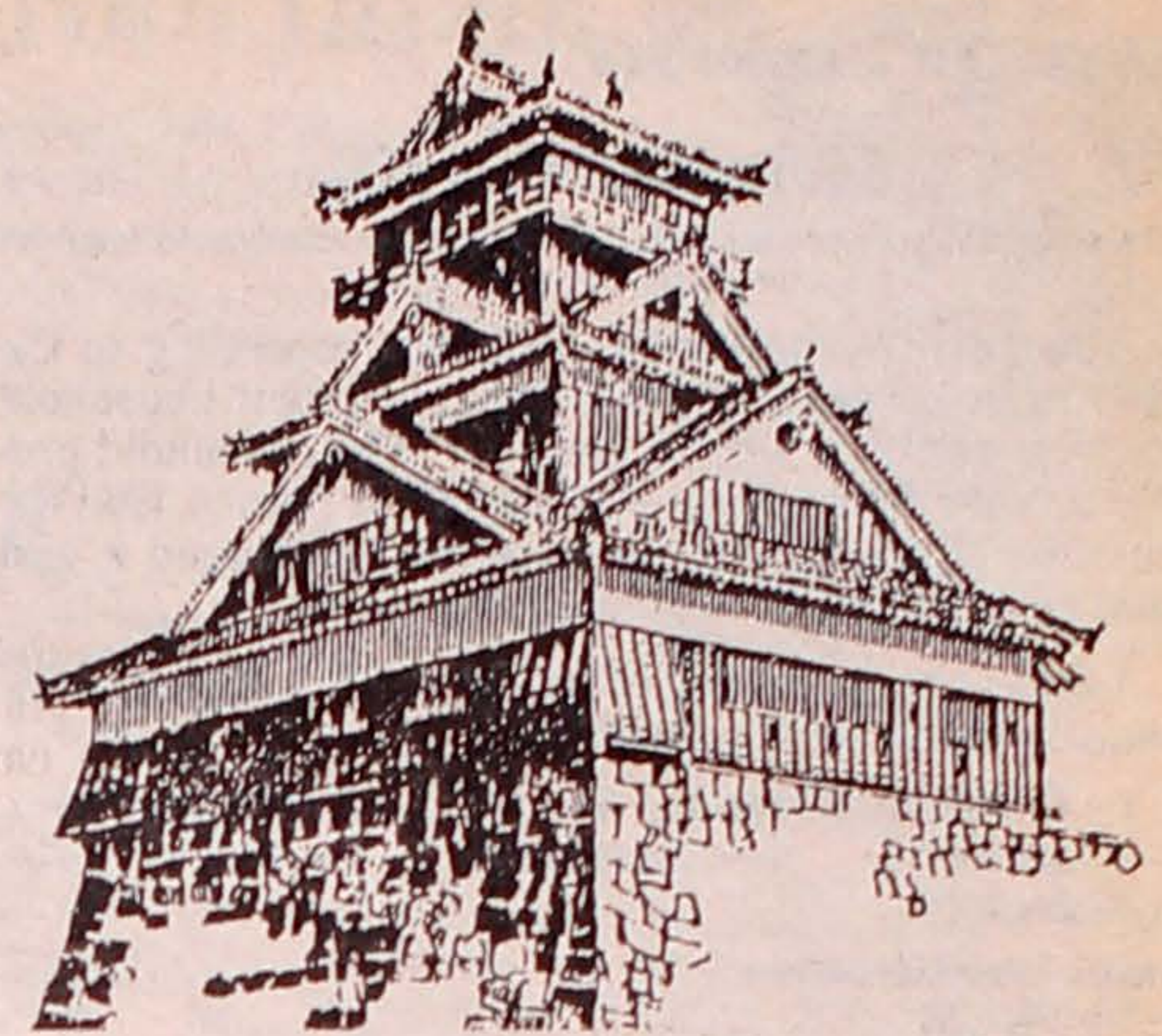
Article XII, Section 2 of the bylaws specifies that "the Pacific Citizen Board of Directors shall be entrusted with the business and editorial responsibilities of this publication."

Originally, subscriptions of Pacific Citizen were purchased directly from the newspaper. In 1960, it was decided to collect the PC subscription fee along with membership dues through national headquarters. Periodically, national headquarters disbursed funds due Pacific Citizen. At the end of the fiscal year any balance remaining was forwarded to the Pacific Citizen to clear the books. In other respects, the line of authority as specified in Article XII, Section 2 of the bylaws continued to be observed.

In 1974, under an apparently arbitrary administrative decision, Pacific Citizen did not receive its full subscription fee allocation. This has occurred off and on since that time with an accumulated shortfall in funds due PC approaching \$50,000 by the end of 1982. The Pacific Citizen board considers this an

Continued on Page 8

● The Chance of a Lifetime . . .



1984 Post-Convention SENNINKAI TOUR

(1000 Club Tour to Japan)

All JACLers Welcome—Not Just 1000ers

\$ 799.00

Sponsor: National 1000 Club
Dr. Frank Sakamoto, Chair

Organizers: Pacific Northwest JACL District Council
Denny Yasuhara, Governor

Columbia Basin JACL
Ed Yamamoto, Chapter President

Aug. 18-28

Depart from Honolulu



Via JAL to Tokyo • 10 days, 9 nights in Western-style, a/c hotels; 7-day rail pass, Bullet train, English-speaking local guides, private motor coach on tours, 2-piece luggage handling, appropriate tax & tips included: \$799 dbl occ, \$298 sgl supp • Special arrangements for senior citizens and wheelchairs. • Open to bonafide JACL members and their family only. New members may join with tour application the organizing chapter of this tour: Columbia Basin JACL, \$35 sgl, \$65 family • All JAMS PCS/JAL flight packages valid for 60 days.

SENNINKAI TOUR (Aug. 18-28): Narita, Osaka, Kyoto (3 nights), Nara, Okayama, Kurashiki, Wauhan Hill, Hiroshima (1 night), Miyajima, Hakata (1 night), Beppu (1 night), Mt. Aso, Kumamoto (1 night), Amakusa Islands, Unzen, Nagasaki (1 night), Fukuoka or Osaka (1 night).

Sample r.t. fares from point-of-origin/Honolulu/Tokyo/-point-of-origin: Washington, DC \$1580; Boston \$1580; Dallas \$1480; Houston \$1520; Chicago \$1430; Denver \$1350; Salt Lake City \$1360; Spokane \$1140; Seattle \$1050; Los Angeles \$ 990; San Francisco \$ 950; Honolulu \$730.

FOR INFORMATION AND RESERVATION
Call Miss Lee / Mr. Sato at 800-525-2333 (toll free),
(Japanese brochure also available.) Or write:

Pacifico Creative Services, Inc.
Logan Bldg. Suite 803, 500 Union St.,
Seattle, WA 98101 (206) 682-8350

Name _____
Address _____
City/State/ZIP _____
Telephone _____ (bus.); _____ (res.)

I/we belong to _____ JACL; exp. date _____
I/we apply for Columbia Basin JACL membership.
Fees enclosed: _____

Application for JACL 1000 Club Tour to Japan:
_____ No. of _____ seats on HON-TYO-HON (\$730).
_____ 10-Day Tour Package (\$799 dbl occ),
_____ (\$298 sgl supp).
\$200 deposit enclosed: _____
_____ 1000 Club Whing-Ding in Tokyo: **New Sanno Hotel,**
Aug. 27.
_____ Land package at Honolulu requested for: (date) _____
_____ At the Surfrider Hotel.
_____ Optional: Honolulu Aug. 12-18 (\$205 p/person)
_____ At the Surfrider Hotel. (Make separate check.)

Payment Plan—All deposits must be received by **June 30** and final payment by **July 16, 1984.** Itinerary and general information will be sent upon receipt of application and deposit. Air tickets and any other pertinent information will be sent after confirmation and final payment. Make tour-flight checks payable to: **Pacifico Creative Service, Inc.** For new JACL memberships, checks are payable to **Columbia Basin JACL** and remit together with tour application/deposit.

ILLINOIS—BY OWNER:

INDUSTRIAL / COMMERCIAL OR INVESTMENT / DEVELOPMENT

Prime location in the City of McHenry, McHenry County, Illinois. 5+ acres with 4 buildings, parking, 13,700 sq ft of office space and a country club/golf course along rear of property. Frontage on tributary leading into Fox River and entire Chain of Lakes Recreation Area in Northern Illinois. Priced for quick sale at \$621,000.

FOR MORE DETAIL

Call (815) 344-5000, ext. 3288

1984 West L.A. JACL Travel Program

FOR JACL MEMBERS,
FAMILY AND FRIENDS

F—Nat'l JACL Convention (Hawaii)
Aug. 12-Aug. 17
Tour Guide—George Kanegai

G—Hokkaido/Hokuriku Sep 29-Oct 17
* Glimpse of China (Extension) . Oct 15-Oct 27
Tour Guide—Toy Kanegai

H—Autumn Tour Oct 6-Oct 26
Tour Guide—Steve Yagi
Southern Honshu: Tokyo, Hakone, Atami, Shimoda, Shuzenji Spa, Ise, Toba, Nara, Kyoto, Hiroshima; Kyushu: Beppu, Miyazaki, Kagoshima, Ibusuki, Kumamoto, Nagasaki, Fukuoka, Tokyo.

J—Fall Foliage (New England/Canada)
Oct. 3-Oct. 11
Tour Guide—Bill Sakurai

I—Caribbean Cruise Oct 24-Nov 6
Tour Guide—Jiro Mochizuki

K—Special Holiday Tour Dec 22-Jan 5
Tour Guide—George Kanegai

FOR INFORMATION, RESERVATIONS, CALL OR WRITE
Roy Takeda: 1702 Wellesley Ave., West Los Angeles 90025 820-4309
Steve Yagi: 3950 Berryman Ave., L.A. 90066 397-7921
Toy Kanegai: 1857 Brockton, L.A. 90025 820-3592
Bill Sakurai: 820-3237 Yuki Sato 479-8124 Veronica Ohara 473-7066
Jiro Mochizuki 473-0441

Land Arrangements by Japan Travel Bureau International
West L.A. JACL Tour Brochures Available

TRAVEL CHAIRPERSON: GEORGE KANEGAI - 820-3592
West Los Angeles JACL

1857 Brockton Ave., Los Angeles, CA 90025
Flight and tour meetings every 3rd Sunday of the month, 1 p.m.,
at Felicia Mahood Center, 11338 Santa Monica Blvd., West L.A.

Hawaii's top ROOM+CAR packages.

"Hawaiian Roamer"

As low as **\$36** Cars provided
per day. by
for two people. **National Car Rental**

Fine hotels on 4 islands.



QUEEN KAPIOLANI,
Waikiki - From \$48



KAUAI RESORT,
Kauai - From \$51



MAUI BEACH,
Kahului, Maui - From \$45



MAUI PALMS
Kahului, Maui - From \$36



HILO HAWAIIAN,
Hilo, Hawaii - From \$48



KONA LAGOON,
Keauhou, Kona - From \$51

For reservations and full information...
see your travel agent or phone toll free

(800) 367-5004



Shigeru Tomita, Pres./Akira "Flash" Fujiki, V.P.
1150 S. King St., Honolulu, HI 96814

About Our Readers (6):

Household Profile

(Based on a 33% response of the 2,182 readers randomly selected from the PC file of some 26,000)

A surprising number of JACLers responding to the 1983 PC market survey had indicated their household income was over \$50,000 per year. The household profile further showed that 87% own their homes, that the number of readers in the household averaged 2, and that nearly half (48%) read all the pages.

Asking about reading of ads in the PC, type of copy usually read in order were:

- 1—Books/magazines, 2—travel, 3—shops/stores, 4—classifieds, 5—restaurants, 6—jewelry/gifts, 7—directory.

Annual Household Income:

1—Up to \$10,000	56	09.1%
\$10,001—\$20,000	101	16.4
\$20,001—\$30,000	111	18.0
\$30,001—\$40,000	172	27.9
\$40,001—\$50,000	102	16.4
Over \$50,001	164	26.6
Home Owned	440	87.3%
Rented	64	13.7

(Actual Count by JACL Districts)

H'hold Income:	EDC	MDC	MPD	IDC	PSW	CCD	NCW	PNW
Up to \$10,000	0	1	0	4	22	2	24	3
\$10,001—20,000	2	10	1	6	29	6	39	8
\$20,001—\$30,000	2	7	4	5	32	5	46	10
\$30,001—\$40,000	-	17	2	9	45	10	62	24
\$40,001—\$50,000	-	10	2	5	33	25	31	10
Over \$50,001	-	9	2	5	50	9	57	21
Home: Owned	17	36	4	19	109	25	174	56
Rented	2	12	2	-	28	28	2	15

Reading of PC Advertising: (By Percentages)

	Usually	Always	Never
Classifieds	58.1	10.2	31.7
Directory	57.2	11.0	31.8
Book/Magazine	68.2	15.2	16.6
Gift/Jewelry	57.7	9.6	32.7
Restaurants	61.1	11.4	27.4
Shops/Stores	64.4	13.7	21.9
Travel/Hotels	63.7	17.9	18.4

Description: JACL District Perimeters
 EDC—Eastern (Atlantic Seaboard from Maine-Virginia-Pennsylvania); MDC—Midwest (Dakotas-Ohio-Missouri); MPD—Mountain Plains (Rocky Mtn. region from Montana-Nebraska-Texas); IDC—Intermountain (Idaho-Utah); PSW—Pacific Southwest (So. Calif., Las Vegas, Ariz.); CCD—Central Calif., Fresno-Bakersfield); NCW—Northern California-Western Nevada-Pacific (No. Calif., Reno, Hawaii & Japan); and PNW—Pacific Northwest (Wash., Oregon and Alaska).

PC BOARD

Continued from Page 7

unwarranted infringement on its responsibilities, and a serious handicap in its efforts to provide Pacific Citizen with responsible management.

The relationship among the Pacific Citizen board, the Pacific Citizen staff and the national director has been clouded by ambiguities in the bylaws. Despite these ambiguities, questions regarding the lines and extent of authority were not raised previously. The current national director has correctly requested a clarification of his responsibilities, and national legal counsel has found that under the bylaws the Pacific Citizen staff is to be considered part of the national staff and therefore under the jurisdiction of the national director.

The Pacific Citizen board believes this was not the intent of the founders. Further, the Pacific Citizen board believes that in the spirit of the First Amendment guaranteeing freedom of the press, it is imperative to free the Pacific Citizen from the possibility or even the appearance of outside influence. Therefore, in order to clarify the bylaws and to maintain Pacific Citizen's integrity as originally intended, the Pacific Citizen board has proposed the following resolution to amend the bylaws.

CLARIFYING DUTIES OF THE NATIONAL DIRECTOR

Whereas, Article XII of the national JACL bylaws entrusts the responsibility for the organization's publication, the Pacific Citizen, to the Pacific Citizen's board of directors; and

Whereas, the Pacific Citizen board reports to the national president, national board and to the national council as does the national director; and

Whereas, the responsibility delegated to the Pacific Citizen board must be accompanied by authority; and

Whereas, without said authority, the Pacific Citizen board

would be relegated to the meaningless role of an advisory body; and

Whereas, the Pacific Citizen must remain editorially independent to fulfill its function of maintaining press freedom; and

Whereas, the bylaws are not clear as to the role of the national director regarding the Pacific Citizen staff;

Now, therefore be it resolved, that JACL bylaws be amended as underlined for Article IX, Section 3, and appended for clarification as follows:

**ARTICLE IX. NATIONAL DIRECTOR
Section 3. Duties**

(b) The National Director shall supervise the National Headquarters and all staff members and regional area offices within the National budget and under the supervision of the National Secretary/Treasurer, shall disburse funds for all organization activities in accordance with the mandates of the National Council, *except as hereinafter provided in paragraph (c).*

(c) *The Pacific Citizen and its staff shall be responsible to the National President, National Board and National Council through the Pacific Citizen Board. Pacific Citizen funds shall be clearly identified in the overall National budget as subscription income and disbursed to the Pacific Citizen.*

Approved by the Pacific Citizen board at its meeting April 14-15, 1984, in Los Angeles. Members present: Henry Sakai (chair); Ellen Nakamura, Eastern District representative; Bill Hosokawa, Mountain Plains; Robert Endo, Intermountain; Cherry Kinoshita, Pacific Northwest; Greg Marutani, N. Calif.-W. Nevada-Pacific; Fred Hirasuna, Central Calif.; Warren Nagano, Pacific Southwest.

This amendment requires a two-thirds majority of chapters at the national convention to pass.

A Career For Men and Women In Law Enforcement



AGE: 20-31 SALARY: \$1766-\$2206 PER MONTH

The California Highway Patrol is offering a career opportunity for men and women as State Traffic Officers. If you're between 20 and 31 years of age and have at least a high school diploma or the equivalent, you'll find what we have to offer very rewarding. For example:

- A starting salary of \$1,766 per month during the 21-week Academy training period.
- A uniform allowance of \$350 per year.
- Two weeks vacation per year with increases to four weeks.
- Health and life insurance, dental coverage and an outstanding retirement plan.
- And a thorough legal background training that's hard to find outside of law school.

So if you're athletic, like working outdoors, and want a career with advancement opportunities, there's a lot to like about the California Highway Patrol. Just fill out the coupon below. Or contact your nearest CHP office. Minorities and women are encouraged to apply.

Please send to: Calif. Highway Patrol, P.O. Box 898
 Sacramento, CA 95804 / or your local Highway Patrol Office.

I am interested in becoming a state traffic officer.

Name: _____

Address: _____

City _____ State _____ Zip Code _____

Home Phone: _____



AN EQUAL EMPLOYMENT OPPORTUNITY—AFFIRMATIVE ACTION EMPLOYER

Ready to Greet You

By Frank Sakamoto, Gila River II Reunion Chair

CHICAGO—As of this date, the following have graciously agreed to serve as hosts and hostesses at the Gila River II Reunion: Ami and Henry Nagahori, Torrance, Calif.; author Michi Weglyn and husband Walter, New York City; Rose and Yosh Migaki, San Jose; Helen and Tak Kawagoe, Carson Calif.; Molly and Yoji Ozaki, Chicago; Helen and Eddie Jonokuchi, Toshi and Sat Nakahira, and April Goral, all from Milwaukee, Wis.; Lillian Tara Kamatani; and Harry T. Tsumishima, Altadena, Calif. Harry read about the reunion in the Hokubei Mainichi and is more than willing to help us make this a successful get-together. He is looking forward to seeing all his Gila River friends.

To those of you planning to be at the reunion, please be sure to sign up for the JACL Thousand Club Whing-Ding since the Gila River Camp II Reunion is being held in conjunction with the Whing-Ding.

I have heard from many former residents of Gila River and hope you will continue to send me names of those whom you would like to see.

Let's make this a GRAND OLD REUNION!

*An Invitation
to take Advantage of a
Special Limited Offering*

Salvador Dali's

newest etching

"Santiago el Grande"

*Currently at Pre Publication Prices
From Creative Art Publishing
for information call collect*

818-760-0204

Letters

Money least important form of compensation

I truly became angered to read the June 8 letter to the editor written by Wilfred H. de Cristoforo, member of the redress committee, Salinas Valley JACL.

I feel the writer is a dreamer and another "majority" Caucasian, who thinks that the redress matter must include monetary reparation.

In the United States of America, more and more Americans believe that the only way a matter of this magnitude can be settled is to force the "wrong-doers" to

pay money. It is unfortunate, indeed, that a certain segment of our society chooses to take this course of action against brothers, sisters, parents, and relatives. This money-hungry segment ignores the means of arbitrations and negotiations without involving money. In many parts of the world, this type of monetary settlement is looked upon as unethical and, therefore, not practiced.

Living in a capitalistic nation, money is considered to be the only instrument to adjudge right from wrong, but in the Christian, Buddhist, Moslem or in any other religious worlds, money is not the instrument for settlement of disputes.

It is crucial to bring about the final settlement as soon as possible, however.

Some of us sincerely hope at least part of the redress matter be settled during our lifetime. Foremost, we want our government's apology and complete exoneration of alleged violators of curfew and military exclusionary laws. Money is the very last item we consider.

JACL Supporter

I have been a JACL 1000 Club member of a long standing and a faithful supporter of JACL goals. Consequently, I have contributed toward JACL headquarters building funds and have participated in many JACL fund-raising campaigns, including redress. I intend to continue supporting JACL and its goals to bring about "Equality and Justice for All."

Let me say that my personal experience has not been an easy one. Until March of 1942, I operated a business in San Francisco with a substantial investment. I was forced to dispose of it before I was

conscripted into the United States Army in 1942. Unfortunately, at that time no Americans (excluding Japanese Americans) in their right mind wanted to purchase my business and assets. They all knew that all Japanese Americans were faced with an eventual evacuation and expulsion from San Francisco. As a result, I suffered a complete loss of my business and assets.

I may be entitled to some compensation for my loss. However, I will not seek it until after the apology and exoneration issue is much more settled. In my opinion, settlement of the apology and exoneration issue much more meaningful, crucial and important. I am entitled to my feeling and no third party will ever change it!

Wooden Nickel Okay

If all issues in the redress campaign could be resolved within a foreseeable future, at least during the remainder of my lifetime, nothing could be finer! But, even with wishful thinking, all issues will not be resolved as long as the monetary reparation stumbling block exists. Let's not keep on dreaming. Life is getting shorter. And all Japanese Americans involved in redress are included.

I am willing to accept the wooden nickel against Bill Marutani's suggestion. I have never seen a wooden nickel to place in my hand. Even the wooden nickel is better than nothing at all.

If we become involved in a war of attrition, remember, we will all lose out. I have the feeling that our government and congressional representatives will wage this war until no internees remain alive to demand redress settlement. And then what?

NOBY YOSHIMURA
San Francisco

Look at Vassar course

I admire Noriko Okamoto for speaking up on racism and sexism at Vassar and for protesting against Prof. Gillin and the Vassar administration. I also support her letter to Cross Currents: News-magazine of the Asian American Studies Center, Univ. of California, Los Angeles (May 18 PC).

I would like to propose (1) that Asian American organizations get together to form a committee, which would include sociologists and (2) that the committee investigate the course content and the method of presentation of Prof. Gillin to pin-point which part of his lecture is objectionable and why.

NOBUYUKI NAKAJIMA
Sheffield Lake, OH

Primer on Japan

I have just received a copy of "What I Want to Know About Japan," a booklet written for junior high school students by Betty Bullard, associate professor, Univ. of South Carolina.

Japan has been the world's fastest changing country. So rapid has the change been to virtually all aspects of Japanese society, life, and culture in the last ten years that even native Japanese themselves often find it difficult to keep abreast of these developments.

The Western eye has focused on Japan as exotic and a cultural curiosity. At the same time Japan shares much in common with the United States. Both are democratic societies faced with many of the same social problems inevitable in modern industrial civilization.

The booklet covers 25 topics most frequently asked by junior high school students in the United States. Not only is this booklet useful for students and teachers but it is also interesting for any JACLer who wants to know Japan without using the Japanese language.

This complimentary booklet may be obtained by just writing for it to Japan Information Center, 410 Park Ave., New York, NY 10022.

Our committee would like to share this information with other JACLers.

KEN NAKANO, Chair
International Relations
Committee
Seattle Chapter

Fine Books from Japan



By special arrangement with Kodansha International/USA, the Pacific Citizen offers popular titles of books about Japan and Asia on a "direct shipment" basis. Some books are on display only at the PC Office.



1983-84 PC BEST-SELLERS

[** Non-returnable]

- **Sushi at Home.** by Kay Shimizu & 12 Culinary Experts. A treasury of sushi recipes especially adapted for the Western kitchen, using easy-to-find ingredients. (Shimizu, a San Jose Nisei, has been writing best selling cook books for many years.) 140pp, 7½x10½", 59 color pages, \$12.95.
- **Origami for Christmas.** by Chiyo Araki. Over 1,000 drawings and pictures highlight easy-to-follow, step-by-step instructions for making Christmas decorations. 144pp, 18 color, 58 b&w plates, \$14.95.
- **Japanese for Busy People.** by the Assn. for Japanese Language Teaching. Ideal first book for tourists and businessmen who want to learn Japanese quickly and expertly; based on two years of actual use in classrooms. 170pp, 50 charts, glossary, \$14.95. / Separately available: two 60-minute instructional cassettes \$45, although not necessary to make use of book.
- **Collection of Stuffed Dolls from a Fancy World.** by Kyoko Yoneyama. Step-by-step instructions for making 15 story-book and fairy tale dolls; a popular addition to handicraft collections. 156pp, 63 color, \$9.95.
- **Fine Patchwork and Quilting.** by Ondori Staff. An art form born of rural wives who make quilts, pillows, placemats, runners, table covers—with how-to color drawings. 80pp, 35 color, \$5.95.
- **Elegant Cross-Stitch Embroidery.** by Ondori Staff. Sixty stunning patterns to beautify your home; gift items with a personal touch. 110pp, 40 color pages, \$9.50.
- **Embroidery and Cross-Stitch from Framing.** by Ondori Staff. Fifty patterns for creating beautiful wall hangings; sur-fire bazaar items. 100pp, 40-color, \$9.50.

KODANSHA ENCYCLOPEDIA OF JAPAN

\$550.00 (until Sept. 30, 1984)
Plus \$20 shipping/handling
No Discount—Non-returnable

BACKLIST: IN LANGUAGE

- **A Dictionary of Japanese & English Idiomatic Equivalents.** Charles Cortwin et al. Over 10,000 of the most frequently expressions in thesaurus format with 222 categories. 302pp, 6x8" \$18.75.
- **Japanese Kana Workbook** by P.G.O'Neill. Both hiragana and katakana can be mastered in as little as 10 hours. 128pp, 7½x10½", \$6.50pb.
- **Kodansha English-Japanese Dictionary.** Shigeo Kawamoto, chief ed. Japanese expressions in Kanji and Kana. 90,000 entries, 1,557pp, 4½x7", \$22.50.
- **Kodansha Japanese-English Dictionary.** Shigeo Kawamoto, chief ed. 60,000 entries given in Japanese syllabary order using Kana. 1,250pp, 4½x7", \$22.50.
- **Modern Japanese: an Advanced Reader (2 Vol. Set).** Gen Itasaka, Seiichi Makino & Kikuo Yamashita. In 20 short extracts, comprehensive vocabulary and grammar explanations are given for each section. 328pp, 6x8½", \$13.25 set.

RECENTLY ANNOUNCED BUT POSTPONED

- **Japanese and the Japanese.** by Takao Suzuki, trans. by Akira Miura. A brilliant exploration of language in its intimate relationship to life-style, psychology, and culture. Of primary importance to everyone with an interest in Japanese language/culture. 152pp, 4½x7¼", \$——. (Spring '85 pub. date.)
- **Opulence: The Kimonos and Robes of Itochiku Kubota.** 128pp, 80 color, 24 b&w pages, 10½x14½", \$——. (Postponed, no date.)
- **Macrobiotic Miracle: A Woman Cures Herself of Cancer.** by Virginia Brown with Susan Stayman. 240pp, 6x8¼", 10 photos, \$——. (Postponed, no date.)
- **** The Art of Central Asia: Stein Collection in the British Museum, Vol. 3 Textiles, Sculpture and Other Arts.** by Rod-erick Whitfield. 340pp, 10½x14½", 200 color plates, 64 b&w plates, \$——. (Postponed, no date.)
- **10. Textbook of Modern Karate.** by Teruyuki Okazaki & Milorad V. Stricevic, M.D. 352pp, 8½x12", \$——. (Postponed, no date.)

Save This List as other Titles will appear. / Prices are subject to change without notice.

• All orders must be accompanied by payment in full plus shipping and handling charges. Make checks payable to: PACIFIC CITIZEN, 244 S. San Pedro St., #506, Los Angeles, CA 90012

CHARGES FOR SHIPPING AND HANDLING

For books totaling up to:	Add	For books totaling up to:	Add
\$10.00	\$1.75	25.01 to \$50.00	\$2.75
10.01 to \$25.00	2.25	50.01 to \$100.00	3.50
		Over \$100	5.00

Name: _____

Address: _____

City: _____ State: _____ Zip: _____



CARE



THERE ARE TIMES WHEN IT MEANS EVERYTHING

So near when care means so very much, Rose Hills offers the convenience of every needed service, including a flower shop and the caring guidance of an understanding counselor... all in a single visit.

Dignity, understanding, consideration and care... A Rose Hills tradition for more than a quarter of a century. We think that's important.

So much more... costs no more ROSE HILLS MORTUARY

at Rose Hills Memorial Park

3900 Workman Mill Road, Whittier, California
(213) 699-0921 • (714) 739-0601

Bonsai master creates miniature world of beauty from junipers

DENVER—Bob Kataoka is a bonsai master. His 600 specimens are esteemed as among the best in the country, writes Tom Jenkins in the February-March issue of Modern Maturity.

"His fingers move with deftness and sureness as he prunes his junipers and ponderosa pines," Jenkins notes. "The gardens that contain

them surround his suburban home, transforming a once-ordinary lot and modest house into a microcosm of beauty and serenity."

Throughout Kataoka's yard, there are permanently planted trees and those placed in the traditional, shallow bonsai trays. Although half of his plants are considered "exotics" from

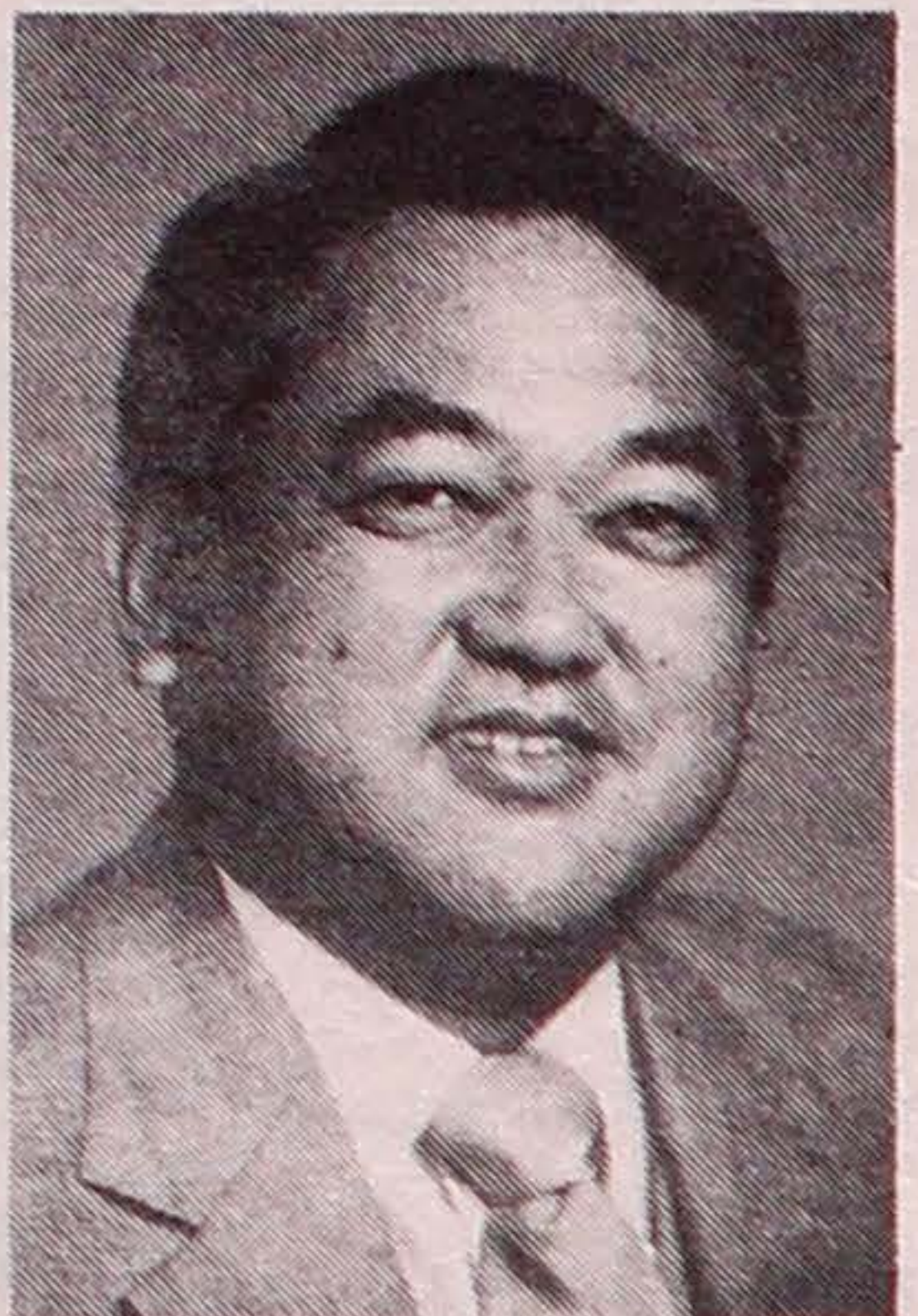
Japan or from the eastern United States, it is the Colorado native junipers, limber pines and ponderosa for which he is celebrated.

Forty-seven Colorado spruce and pines have been trained (aged and shaped) to such proportional relationship that the viewer seems to be within a miniature forest.

"The bonsai are trained, not tortured," Kataoka explains. "It is not neglect that creates the naturally weathered look, but the right training. The essence of the bonsai process is to evoke the spirit of nature. Viewing bonsai is restful, a brief contact with nature's calmness," he said.

Carefully pruning some branches, bending and typing others, Kataoka gradually gives a tiny tree an ancient look, even a strange illusion (when viewed from the right perspective and with an imaginative mind) that it isn't a tiny tree but a giant of the forest, the article concluded.

—Bob M. Hirata San Jose, CA.



Stuart Tsujimoto

Business

Stuart Tsujimoto has been named vice president of Universal Heritage Investments Corp., a national brokerage firm headquartered in Los Angeles. Tsujimoto, a certified financial planner and divisional manager with Universal, is completing his 15th year in the securities business. Active in the community, he served several terms as president of Gardena Valley JACL and is currently active in the Torrance chamber of commerce, as well as other civic activities. Tsujimoto's new responsibilities are with corporate development and marketing.

Earning mention in the Washington Post lead editorial May 26 was Chi Luu, an ethnic Chinese who came to New York in November 1979, as one of the Vietnamese boat people. Working part-time in a can factory improving his English and attending class at City College of New York since 1980, he was graduated in May with a straight-A average in engineering. In praising his achievements, the Post was passing on the accomplishments highlighted in the New York Times.

Medicine

Omaha JACLer Dr. Clarence T. Ueda, department chair of pharmaceuticals at Univ. of Nebraska Medical Center, was one of five faculty members honored in April as an outstanding teacher. The honors included a \$1,000 award.

KUBOTA NIKKEI MORTUARY

(Formerly SHIMATSU, OGATA & KUBOTA MORTUARY)

911 VENICE BLVD. LOS ANGELES, CALIF. 90015 PHONE (213) 749-1449

Y. Kubota • H. Suzuki • R. Hayamizu Serving the community for over 30 years.

Four Generations of Experience

FUKUI Mortuary, Inc. 707 E. Temple St. Los Angeles, CA 90012 626-0441

Gerald Fukui, President Ruth Fukui, Vice President Nobuo Osumi, Counsellor

Sports

The No. 2 singles player last year on the Japan Davis Cup team, Shozo Shiraishi, 26, is professionally representing Keizo Plaza Inter-Continental Hotel on the Japanese and international tennis tours this season. He had played his collegiate years at Pepperdine University in Malibu in the late 1970s.

Press Row

Two Japanese American women were among the seven Univ. of Hawaii-Manoa journalism students awarded \$2,000 in prizes from the Carol Burnett Fund for Responsible Journalism. Lisa K. Maneki, 22, received the top \$500 prize for her essay, "Racism and the Print Media," and Karen S. Maeshiro, also 22, was awarded a \$300 second-place prize in the research paper category and \$100 by tying for third in essays.

Courtroom

Third-year law student Jay Fujitani will clerk for Supreme Court Justice William Brennan in 1985-86. He will also serve a year's clerkship with U.S. federal district court Judge Stanley Weigel in San Francisco in 1984-85. Fujitani is a student at U.C. Berkeley's Boalt Law School. Faculty members there persuaded Brennan to accept Fujitani as a clerk.

U.S. senator Sen. Daniel Inouye (D-Hawaii, who has pushed for the right of American attorneys to establish legal practices in Japan, has been named 1984 Advocate of the Year by the Japan-Hawaii Lawyers Assn. He received the award at his office in the Prince Kuhio Federal Bldg. on April 29. Since 1955, Japan has been virtually closed to foreign barristers, who can practice there only after passing the Japanese national bar examination and completing a two-year training program. No foreign attorney has ever passed the examination.

Commercial & Industrial Air Conditioning & Refrigeration CONTRACTOR Glen T. Umemoto Lic. #441272 C38-20 SAM REIBOW CO. 1506 W. Vernon Ave. Los Angeles / 295-5204 Experienced Since 1939

Kimura PHOTOMART Cameras & Photographic Supplies 316 E. 2nd St., Los Angeles (213) 622-3968

Empire Printing Co. COMMERCIAL and SOCIAL PRINTING English and Japanese 114 Weller St., Los Angeles CA 90012 (213) 628-7060

PROFESSIONAL Spring '84 Suits & Sports Coats by Givenchy, YSL, and St. Raphael are arriving in sizes 34-42 Short & Extra Short Lengths. For a good selection shop early. KEN & COMPANY clothing merchants SHORT & SMALL MEN'S APPAREL 785 W. Hamilton Ave., Campbell, CA 95008 Hours: M-F 12-8:30, SAT 10-6, SUN 12-5 (408) 374-1466

Renew JACL Membership

LEARN FROM THE MASTERS

Join us in Los Angeles at the Sheraton Plaza La Reina (LAX) Hotel 6101 W. Century Blvd., Los Angeles for the 1984 FGL COMMODITIES CONFERENCE

Registration: FRI. 6/22/84—1-4 p.m. SAT. 6/23/84—7-8 a.m. Conference: FRI. 6/22, 4 p.m. SAT. & SUN. 6/23-24—8 a.m.

- TECHNICAL ANALYSIS: Economic Time Theory... Elliot Wave Theory... Seasonal trends... Long and short term cycles... Try JAKE BERNSTEIN, ROBERT PRECHTER and GAIL SAGEL. These are the very best in the industry. They will tell and show you how to use the past to make money in the future. INDEX FUTURES — MARKET ANALYSIS: LARRY WILLIAMS needs no introductions wherever he goes — not only can Larry tell you how, his trade record shows he practices what he preaches. MARKET TIMING?: TOM DE MARK, an institutional equities consultant, will discuss new and exciting market timing indicators and show you how they can make you money in financial futures. PRECIOUS METALS, FOREIGN CURRENCIES, FINANCIAL HEDGING: DENNIS GARTMAN a leading authority in the industry will show you how to put more equity in your portfolios with careful planning. COMPUTERS: Here is an area of interest for all of you. BO THUNMAN, a nationally known expert, will give you the knowledge necessary to use your computer to help you make more money! MANAGED ACCOUNTS: Are they right for you? ALLEN LEONARD, president of Clemson Financial Corporation will give you "inside" information on how managed accounts could work for you.

FOR MORE INFORMATION CALL FGL Commodities Services, Inc. Lloyd Aylsworth or Gordon Wiebke (800) 247-4142 P.O. Box 65537, West Des Moines, Iowa 50265

PC Business-Professional Directory

Your business card copy here for 23 weeks at \$25 per three-lines. Each additional line \$6 per same period. Larger (14 pt.) type counts as two lines. Logo extra.

Greater Los Angeles Asahi Travel Supersavers - Group Discounts - Apex Fares - Computerized-Bonded 1111 W Olympic Blvd, LA 90015 623-6125/29 • Call Joe or Gladys FLOWER VIEW GARDENS #2 New Otani Hotel, 110 S Los Angeles Los Angeles 90012 Art Ito Jr. Citywide Delivery (213) 620-0808 Nisei Travel 1344 W 155th St, Gardena 90247 (213) 327-5110 TATAMI & FUTON (818) 243-2754 SUSUKI FUTON MFG. TAMARA TRAVEL INTERNATIONAL Martha Igarashi Tamashiro One Wilshire Bldg., Ste 1012 Los Angeles 90017(213) 622-4333 TOKYO TRAVEL SERVICE 530 W. 6th St. #429 Los Angeles 90014 680-3545 YAMATO TRAVEL BUREAU 321 E 2nd St, #505 Los Angeles 90012 624-6021 Orange County EXCEPTIONAL HOMES AND INVESTMENTS VICTOR A KATO Residential & Investment Consultant 18682 Beach Blvd., Suite 220 Huntington Beach, CA 92648 (714) 963-7989 The Paint Shoppe LaMancha Center, 1111 N Harbor Fullerton, CA 92632 (714) 526-0116 Kane's Hallmark Ctr. LaMancha Center, 1117 N Harbor Fullerton, CA 92632 (714) 992-1314 San Diego PAUL H. HOSHI Insurance Service 852-16th St (619) 234-0376 San Diego 92101 res. 264-2551 Ventura County CALVIN MATSUI REALTY Homes & Commercial 371 N. Mobil Ave., Ste. 7, Camarillo 93010 (805) 987-5800 San Jose Kayo K. Kikuchi, Realtor SAN JOSE REALTY 996 Minnesota Ave., #100 San Jose, CA 95125-2493 (408) 275-1111 or 296-2059 Tatsuko "Tatty" Kikuchi General Insurance Broker, DBA Kikuchi Insurance Agency 996 Minnesota Ave., #102 San Jose, CA 95125-2493 (408) 294-2622 or 296-2059 Join the JACL Los Angeles Japanese Casualty Insurance Assn. COMPLETE INSURANCE PROTECTION Aihara Insurance Agency, Inc. 250 E. 1st St., Los Angeles 90012 Suite 900 626-9625 Anson T. Fujioka Insurance 321 E. 2nd St., Los Angeles 90012 Suite 500 626-4393 Funakoshi Ins. Agency, Inc. 200 S. San Pedro, Los Angeles 90012 Suite 300 626-5275 Inouye Insurance Agency 15029 Syhanwood Ave. Norwalk, CA 90650 864-5774 Itano & Kagawa, Inc. 321 E. 2nd St., Los Angeles 90012 Suite 301 624-0758 Ito Insurance Agency, Inc. 1245 E. Walnut St, Suite 112; Pasadena 91106; 795-7059, 681-4411 LA. Kamiya Ins. Agency, Inc. 327 E. 2nd St., Los Angeles 90012 Suite 224 626-8135 Maeda & Mizuno Ins. Agency 18902 Brookhurst St, Fountain Valley CA 92708 (714) 964-7227 The J. Morey Company 11080 Artesia Blvd, Suite F, Cerritos, CA 90701; (213) 924-3494, (714) 952-2154 Steve Nakaji Insurance 11964 Washington Pl. Los Angeles 90066 391-5931 Ogino-Aizumi Ins. Agency 109 N. Huntington, Monterey Park 91754; (213)571-6911, 283-1233.L.A. Ota Insurance Agency 312 E. 1st St., Suite 305 Los Angeles 90012 617-2057 T. Roy Iwami & Associates Quality Insurance Services, Inc. 2975 Wilshire Blvd., Suite 629 Los Angeles 90005 382-2255 Sato Insurance Agency 366 E. 1st St., Los Angeles 90012 626-5861 629-1425 Tsuneishi Insurance Agency, Inc. 327 E. 2nd St., Los Angeles 90012 Suite 221 628-1365 Wada Asato Associates, Inc. 16520 S. Western Ave, Gardena 90247 (213) 516-0110

Plaza Gift Center FINE JEWELRY - CAMERA - VIDEO SYSTEM HOME COMPUTERS - WATCHES - TV - RADIO SOFTWARE - DESIGNER'S BAG - BONE CHINA Authorized SONY Dealer 111 Japanese Village Plaza Mall Los Angeles, CA 90012 (213) 680-3288 brother. TYPEWRITER Official Typewriter Of the Los Angeles 1984 Olympic Games (213)680-3288 687-4115 111 Japanese Village Plaza Mall Los Angeles, CA 90012

Japanese American Travel Club

Japanese American Travel Club

A unique organization to serve the Japanese American community by offering (1) extraordinary travel bargains at membership prices, generally unavailable on an individual basis, (2) fellowship and goodwill enriched by group travel, and (3) exceptional travel planning for maximum enjoyment and multicultural understanding.

Join Now! Remember: The JATC shall be a service to the Japanese American community, its program prepared by travel experts who are offering high quality tours and cruises at the best available prices.

1984 Japan Travel Bargain

With convenient daily departures on UNITED AIRLINES

includes round trip airfare from any West Coast gateway city to Narita Airport, Tokyo. One-way bus transfer from airport to hotel, plus accommodations at the Takanawa Prince or Pacific Hotel and a guided sightseeing tour of Tokyo by air-conditioned motorcoach for the program below:

- 15 DAYS TOKYO** \$ 922.00
Six nights in Tokyo. Your travel agent or we will assist you with reservations for the remaining seven (7) nights, at additional cost, if desired.
- 15 DAYS JAPAN** \$ 1295.00
With two (2) nights in Tokyo, one (1) night at Kowakien Hotel, Hakone; one (1) night at Shima Kanko in Kashikojima, and ending in Kyoto for two (2) nights at International Hotel. Sightseeing includes Kamakura, Hakone, take the Ago Bay boat cruise, visit the Mikimoto Pearl Island, Ise Grand Shrine, Kyoto and Nara. Hotels for BALANCE OF THE 7 NIGHTS not included. Explore on your own or VISIT FRIENDS OR RELATIVE.
- 5 DAYS, 4 NIGHTS: Hong Kong Extension** \$295.00
For those desiring to visit Hong Kong as a special extension of the above tour. Will depart from Osaka and fly into Kai Tak airport. Additional airfare plus four (4) nights at the New Prince Hotel with a sightseeing tour of Hong Kong island are included.

• Please add \$3 U.S. departure tax to the above cost. Travel during June through October, a peak season, will require a \$125 air supplement.

(* Escorted) Programs* for 1984

- Sept. 25—Le Grande Europe - 23 days** \$ 1999.00
All of this: London, Frankfurt, Munich, Brussels, Innsbruck, Venice, Florence, Capri, Rome, Pisa, Montecatini, Monaco, the French Riviera, Avignon, Lyon, Paris, and Versailles! First class and superior tourist hotels throughout, all breakfasts, many dinners. Round trip air fare from Los Angeles included.
- Oct. 8—Fall Foliage - 8 days** \$ 1250.00
Autumn in New England and French Canada: Montreal, Quebec. The autumn coloring, blended with majestic evergreen can be surpassed nowhere in the world in natural beauty as in New England in late September and early October. The clear, crisp air excites the appetite to enjoy New England's famous cookery and assures restful sleep. (* Limited space available, bookings based on first come-first served basis.)
- Oct. 22—Golden China - 21 days** \$ 3077.00
The greatest attractions in China! Peking (Beijing) and the Forbidden City, The Great Wall, Xian and the archeological discovery of the century, the Terra Cotta Army! Nanjing, Suzhou, Shanghai, Guilin, and Canton (Guangzhou). Then to exciting Hong Kong. All meals in China, most meals and first class hotels in Hong Kong. Round trip air fare from Los Angeles included.
- Nov. 1—Blue Lagoon - 10 days** \$ 1767.00
A grand adventure to the most exotic islands of the South Pacific: Moorea, Bora Bora, and exquisite Tahiti. First Class hotels with most breakfasts and dinners included. Round trip air fare from Los Angeles included.
- Nov. 17—Mexican Grand Tour - 15 days** \$ 1070.00
All of the best of Mexico! The Floating Gardens of Xochimilco, the awe-inspiring Pyramids of Teotihuacan, Taxco, Ixtapan de la Sal Spa, and famed Acapulco. First Class hotels, some meals included. Round trip air fare from Los Angeles included.

Cruise Programs

- Sept. 9—Fun Cruise to Mexico - 8 days** From \$ 1,055
Sail from Los Angeles to Puerto Vallarta, Mazatlan, and Cabo San Lucas (tidal conditions permitting). All meals on board included. Special air fares to Los Angeles available. Have a ball!
- Nov. 9—The Caribbean - 8 days** From \$ 1,185
After a night in Miami, cruise to such inviting ports of call as Nassau, San Juan, and St. Thomas (Virgin Islands). Visit the rain forests and walk the winding streets of these tropical islands. Warm waters and blue skies that seem to go on forever invite you. All shipboard meals. Includes one night in Miami plus airfare from over 70 major cities in U.S. & Canada.

NOTE: Final price on all cruises will depend on deck and cabin type availability. Unless otherwise indicated all prices are from Los Angeles. Please consult for other air fares. Applicable taxes not included.

• Your annual membership dues will be applied towards your tour package selected within the 12 months.



Endorsed by
the National JACL
SEE YOUR TRAVEL AGENT OR CONTACT:

Japanese American Travel Club Inc.

(213) 624-1543

250 E. 1st St., Suite 912; Los Angeles, CA 90012

Name _____
Address _____
City/State/ZIP _____
Phone: (a/c) _____

- I wish to apply for membership in JATC. Enclosed is \$20. JACL members are entitled to a 50% discount on JATC dues for self and dependents.
- I wish to include _____ dependents at \$10 each.
Name of Dependents: _____ Relationship _____

I am a JACL member. Send me information on tours (✓)
 checked above.

I would like more information on JATC. Also send me information
 on tours above.

• Prices subject to change without notice. Departure dates may be adjusted when conditions warrant it. (*) All groups consisting of 15 or more tour members will be escorted by a Tour Escort.

JOURNALISTS

Continued from Front Page

der the wheels of the bus and was run over.

As the bus arrived at the U.S. embassy, Kashiwaha saw that he would have to climb over the embassy walls to get to a helicopter. Hundreds of Vietnamese civilians were struggling to get over the walls but were being kicked back by U.S. Marines.

Seeing American boots in Asian faces, Kashiwaha was faced with a crisis: "How could I let the Marines know I was an American?" He tried to come up with the most American thing he could think of and decided to yell, "Dodgers won the pennant!" if he was going to be kicked back with the others.

"But I got a hand instead," he said. "I never knew how he [the Marine] knew I was American."

Assassination in Manila

In August 1983, Kashiwaha's brother-in-law Benigno Aquino, a political opponent of Philippines president Ferdinand Marcos, asked Kashiwaha to help put together a contingent of journalists to accompany the exiled opposition leader back to Manila.

Aquino wanted the journalists along as a safety measure. Kashiwaha was torn between professional ethics, which dictated that journalists not get involved in news events, and his obligation to a family member. He finally decided that "in this one instance, family was first."

(Upon arrival in Manila, Aquino was gunned down as he stepped off the plane. Those on board heard the shots but were prevented from leaving the plane by security guards.)

In addition to the trauma of Aquino's death, Kashiwaha now found himself in the limelight as a witness. As he was interviewed by reporters from around the world, Kashiwaha-

OLYMPICS

Continued from Front Page

Spirit comprises Operation PUSH, League of United Latin American Citizens (LULAC), minority-actor organizations, student groups, and a number of Asian American professional and civil rights groups.

The coalition filed a petition with President Reagan in November 1983, contending that, given ABC's record, the broadcasting company might not accurately portray America's ethnic diversity or employ minorities in significant numbers.

The petition was based in part on a LULAC memorandum filed in October 1983 with the Federal Communications Commission, which showed that in ABC prime time:

—Only 3 out of 264 speaking parts, no matter how insignificant, were Hispanic, and two of the Hispanics were portrayed as criminals.

—No significant speaking parts were allocated to Asians or to Native Americans.

—Of all Blacks shown, 49% played criminals, servants, entertainers or athletes.

Our 1984 Escorted Tours

GRAND EUROPEAN (8 countries)	May 24
CANADIAN ROCKIES-VICTORIA (8 days)	June 13
JAPAN SUMMER ADVENTURE	June 25
SCANDINAVIAN (5 countries-17 days)	July 6
ALASKA CRUISE (8 days)	Aug. 8
EAST COAST & FOLIAGE (10 days)	Oct. 1
JAPAN AUTUMN ADVENTURE	Oct. 15
FAR EAST (Bangkok/Malaysia/Singapore/Hong Kong/Taiwan, etc) ...	NOV. 2
KYUSHU-SHIKOKU (Sponsor: Sowan Wakayama Kenjinkai)	Oct. 7
ISHIDA JAPAN (Kii Peninsula, Shikoku, Haji: Escort-Shun Ishida) ...	Oct. 8



For full information/brochure

TANAKA TRAVEL SERVICE

441 O'Farrell St. (415) 474-3900
San Francisco, CA 94102

JAPAN HOLIDAY

TO TOKYO (ROUND TRIP)

from NEW YORK	\$ 960
CHICAGO	963
WASHINGTON, D.C.	981
DALLAS	952
DENVER	902
LOS ANGELES	645

(213) 484-6422

ra said he retained his journalistic training, sticking to the facts, relating only what he saw, and not voicing his suspicions—"although maybe I should have." There has been widespread suspicion that the Marcos government had a role in the killing.

Being a newsmaker instead of a news reporter was a new experience for Kashiwaha. "Reading published accounts of interviews, I found out what it was like to be misquoted," he recalled, adding that "for the first time I knew what it was like to be in front of pushing, shoving, screaming journalists.... I think it's made me do a better job."

Although he now covers the Western U.S. for ABC, Kashiwaha feels that he must "continue, at least in part, the role that I accepted last year"—that of bringing Aquino's killers to justice.

Kashiwaha concluded that journalists, within the bounds of professional ethics, "not only can get involved—they should."

Scholarship Winners Announced

Following dinner and a cultural performance, AAJA vice president Frank Kwan of KNBC-TV announced the names of seven college students and five graduating high school seniors who were selected as AAJA's 1984 scholarship award recipients. The winners were:

Paula Bock, Hartford, Conn.; Catalina Camia, Santa Rosa, Calif.; Joann Harumi Gekko, Madera, Calif.; Chin-Hay Lue, Los Angeles, Calif.; Laralyn Sasaki, Napoleon, Ill.; Jin-Hwa Yang, People's Republic of China (currently at UCLA); Hye-Won Yi, Redwood City, Calif.; David Honda, Alhambra, Calif.; Linda Huang, Torrance, Calif.; Linda Kung, Beverly Hills, Calif.; Mona Miyasato, Hacienda Heights, Calif.; Sharon Chin, San Francisco, Calif.

The 12 students received a combined total of \$6,000.

A lifetime achievement award was given to Ted Tajima, a journalism instructor at Alhambra High School for 34 years. Under his direction, the school newspaper has won national awards every year since 1957. Elaine Woo, a former student of Tajima's who now writes for the Los Angeles Times, presented the award.

American Holiday Travel

—1984 Travel Schedule—

JAPAN SUMMER FAMILY/YOUTH TOUR — July 17 (13 days)
Tokyo, Kamakura, Hakone, Matsumoto, Takayama, Kanazawa, Kyoto, Nara, Osaka, Hiroshima.

URA-NIHON / SHIKOKU TOUR — Oct. 4 (15 days)
Tokyo, Hakone, Atami, Kyoto, Amanohashidate, Tottori, Izumo, Tamatsukuri, Hiroshima, Matsuyama, Kochi, Takamatsu.

MEDITERRANEAN CRUISE — Oct. 9 (15 days)
Lisbon, Casablanca, Granada, Palma de Mallorca, Monte Carlo, Florence, Naples, Mykonos, Athens.

For information and reservations, please write or call us.

American Holiday Travel

368 E. 1st St., Suite 1, Los Angeles, CA 90012
(213) 625-2232 (213) 846-2402 (Burbank)

RENEWAL REMINDER—If the last four digits on the top row of your label reads 0784 (which is your PC expiration date), please renew within 60 days to assure continued service.

EXPIRATION NOTICE—If the last four digits on the top row of your label reads 0884, the 60-day grace period ends with the last issue in June, 1984. Please renew your subscription or membership. If membership has been renewed and the paper stops, notify the PC office.

If you are moving, allow 3 week's advance notice to report your change of address with label below.

New Address:

City, State, ZIP:

Effective Date:

• Thank you for using this form. It saves PC 25 cents in fees.

No. 2,294

pacific citizen

244 S. San Pedro St., Room 506, Los Angeles, CA 90012 • (213) 626-6936