

pacific citizen

National Publication of the Japanese American Citizens League

November 16, 1984

Newsstand: 25¢ (50¢ Postpaid)

244 S. San Pedro St., #506, Los Angeles, CA 90012-3981 (213) 626-6936, 628-3768

ISSN: 0030-8579 / Whole No. 2,315 / Vol. 99 No. 17



Photo by J.K. Yamamoto

PREHISTORIC PRESENT—JACL national president Frank Sato, guest speaker at West L.A. Chapter's Nov. 10 installation dinner, examines a gift from the chapter—bookends made from fossilized palm root. (See p. 2 for details of Sato's speech.)

Election results generally pleasing

Asian Americans fared well, for the most part, in the Nov. 6 state and local elections.

In California, Rep. Robert Matsui (D-3rd) of Sacramento ran unopposed and received 125,309 votes. Rep. Norman Mineta (D-13th) of San Jose beat Republican John D. Williams by a wide margin, 136,936 to 69,180. Matsui and Mineta remain the only Nikkei in the House.

Republican Echo Goto of South Central Los Angeles lost to Democratic incumbent Augustus Hawkins of the 29th district, 106,494 to 16,289.

In the 42nd district, Democrat Mary Lou Brophy, a supporter of redress, lost to incumbent Republican congressman Dan Lungren, a staunch opponent of redress, 58,161 to 171,142.

In the state assembly races, incumbent Democrat Patrick Johnston defeated Republican Doug Wilhoit, a San Joaquin County supervisor, in the 26th assembly district. In 1982, Johnston authored legislation granting \$5,000 payments to Nikkei state workers who were fired in 1942 because of their ancestry.

In San Francisco, Julie Tang won a second term on the Community College Board, receiving the most votes (149,229) and Ben Tom won a third term on the Board of Education, also receiving the highest number of votes (150,141).

In the city of Oxnard, incumbent mayor Nao Takasugi easily won reelection with 15,909 votes, defeating Craig Huntington (7,965), Juan Soria (3,367), Stanley Hopkins (2,345), and Edward Wienecke (1,845).

Oxnard residents voted 16,456 to

14,588 to recall city councilman Tsujio Kato while deciding to retain councilman Manuel Lopez. The vacancy left by Kato will be filled by special election.

In the city of Marina, Mayor George Takahashi was reelected by an overwhelming 2,557 (compared to Paul Davis, 661; Joe Martinez, 635; and Val Kosorek, 417). Despite a low-key campaign, former mayor Robert Ouye was again elected to the city council with 2,359 votes.

In Washington, Republican Gov. John Spellman was defeated by Democrat Booth Gardner, 797,237 to 913,218. Spellman is remembered for introducing a redress resolution which passed unanimously at the Western Governors Conference last year but was rejected at the conference of the National Governors Assn. Gardner, an heir to the Weyerhaeuser lumber fortune, has demonstrated sensitivity to minority issues and is also expected to support redress.

Incumbent attorney general Ken Eikenberry, a Republican, defeated Democrat Phil Talmadge, 911,191 to 702,447 (with 99% of the precincts reporting). Talmadge gave strong support to state redress for the 27 Nisei school clerks who were fired during WW2.

In the state legislature, two Chinese American assemblymen were reelected. Gary Locke (D-37th), who represents Seattle's Beacon Hill area, won against Republican Earl Cook, 24,008 to 4,374; Art Wang (D-27th) of Tacoma beat Republican C.W. Kinsman 14,354 to 6,055.

In Utah, Raymond S. Uno of Salt Lake City was one of two judges

Continued on Back Page

Most redress supporters re-elected to House

The '84 congressional races have resulted in a net loss of eight state representatives who supported redress bill HR 4110 during the 98th Congress.

In California, the only incumbent who failed to win reelection was Rep. Jerry Patterson (D-38th), who lost to Republican challenger Robert Dornan. Patterson, an original co-sponsor of HR 4110, had served in Congress since 1974 and was the only Democrat representing conservative Orange County. The former Santa Ana mayor lost to Dornan 71,288 to 84,131.

In Ohio, Rep. Lyle Williams (R-17th) lost to Democrat James Traficant, a county sheriff from Youngstown, 104,861 to 122,426. Williams, one of six Republicans co-sponsoring HR 4110, had represented the steel manufacturing district since 1978.

In Indiana, Rep. Katie Hall (D-1st) lost in the primaries to fellow Democrat Peter Visclosky, who went on to defeat Republican Joseph Grenchik in November. Hall was the only congressperson from Indiana to support HR 4110.

Two New York Democrats who supported the bill did not run for reelection: in the 9th district, Geraldine Ferraro, who unsuccessfully sought the vice presi-

dency; and in the 20th district, Richard Ottinger.

Illinois congressman Paul Simon (D-22nd) gave up his seat to challenge incumbent Republican Charles Percy for the Senate. Simon edged the three-term senator 3,364,682 to 2,290,029 (with 99% of the precincts reporting). Simon's victory, however, offsets the loss of Paul Tsongas (D-Mass.) in the Senate. Tsongas, a supporter of redress bill S 2116, chose not to run for reelection.

Also not running for reelection were Republican Dan Marriott of Utah's 2nd district, the only member of Congress from that state to support redress, and Massachusetts Democrat James Shannon of the 5th district.

Territorial delegate Antonio Won Pat (D-Guam), another redress supporter, narrowly lost to Republican Ben Blaz, a retired Marine general, 15,402 to 15,725. (At last report, a recount had been scheduled.) In Puerto Rico, redress supporter Baltasar Corrada (D) did not run for reelection.

Among newly elected representatives, at least one—Republican John Miller of Washington's 1st district—has already stated his intention to support redress legislation. Miller, a TV commentator and former Seattle city council-

man, filled the spot vacated by Republican Joel Pritchard, defeating Democrat Brock Evans 136,712 to 106,989.

Miller, who has supported redress in TV editorials, pledged his support for redress in a written statement to Seattle JACL. If he makes good on his promise, he will be the only Republican congressman from the West Coast co-sponsoring a redress bill.

News in Brief

Congress OK on rights

WASHINGTON — The 98th Congress had a "moderately good" record on civil rights issues, a coalition of 165 national organizations said Oct. 29. The Leadership Conference on Civil Rights, of which JACL is a member, also said that Congress "prevented once again the Radical Right from enacting any of its legislative agenda."

English-only ballot measure approved

SACRAMENTO—Proposition 38, an initiative requiring that the governor of California urge the federal government to eliminate bilingual ballots and election materials, was passed by a two-to-one margin, 1,563,497 in favor and 783,743 against. The measure was opposed by Asian and Hispanic groups, who said it discriminated against citizens with limited proficiency in English. Prop. 38 is merely an advisory and will have no immediate impact on current laws.

KKK losing members

DENVER—Ku Klux Klan membership has dropped about 35 percent in the past two years, according to a report issued by the Anti-Defamation League of B'nai B'rith. In 1982, ADL estimated that the KKK was 8,000 to 10,000 strong.

The report, issued Nov. 1, speculated that the rise of "more respectable" groups that oppose busing and quotas might have helped weaken the Klan. As a consequence, ADL said, "some in the Klan have concluded that their only recourse is to undertake desperate measures, including the formation of small, underground cells to conduct terrorist activities."

A regional profile of the KKK indicates that the KKK "has become relatively inactive" in the West.

Nikkei Republicans expect good things

Reaction among Nikkei and other Asian Americans to President Reagan's reelection was, as might be expected, divided along party lines.

San Jose attorney S. Stephen Nakashima, chair of Japanese Americans for Reagan-Bush '84, said that Japanese Americans "are quite aware of what Reagan has done" and are "very, very satisfied" with the president's record.

Nakashima said that he expected the Japanese and Asian American communities to benefit from Reagan's second term. Recalling that Reagan was aware of Asian/Pacific when he was governor of California, Nakashima added that he anticipated the president's "looking to the Asian community for some appointments."

While he was elated at Reagan's landslide victory, he stressed that he also regarded defeated Democrats Walter Mondale and Geraldine Ferraro as "good people."

Lance Izumi of Japanese American Republicans (JAR) in Los Angeles declared Reagan's victory to be proof that "there has been a political realignment in this country" and that "the American people realize that the Republican Party is the party of the future and of opportunity and that the

Democrats are the party of the past."

Hideko Bannai of Gardena, a JAR member and delegate to the Republican national convention, also interpreted the landslide as "a decisive consensus of voters of approval of the president's direction and his leadership."

She added that she looked forward to "furtherance of progress during the second Reagan Administration in areas of education and employment in general with specific attention to expanding opportunities for minorities and women."

Democrats Disappointed

Alan Nishio of Southern California Asian Pacifics for Mondale-Ferraro predicted "a tough four years" under Reagan. He found Reagan's reelection disturbing because it reflects "an increasing polarization" in the country.

"We saw the defection of a lot of whites from the Democratic Party to vote for Reagan," Nishio commented. "The Democratic Party is being increasingly identified with the concerns of minorities and women." He added that this apparent backlash against Democrats could create a "tense, volatile environment" for minorities, the poor, and others.

Continued on Back Page

Sato: Nikkei largely absent among national leaders

SANTA MONICA, Calif. — Japanese Americans need to develop leaders in national government and in industry if they are to have a say in policies affecting them, JACL president Frank Sato told an audience of 140 on Nov. 10.

Speaking at the West Los Angeles Chapter installation banquet, Sato said that despite the common perception of Japanese Americans as successful, they have yet to attain great influence.

"The sad fact is, many Japanese Americans have attained a high level of technical competence and achievement in their professional field. But they are sometimes unprepared or other-

wise unable to break through to the managerial ranks," Sato said.

"Another dimension of the image and perception problem is the honest assessment one must make regarding the relative influence of the Japanese American Citizens League."

For example, Sato noted that because of his own contacts, JACL was able to make an appointment with White House staff to discuss redress. But, he said, JACL should have had the status to be able to line up a meeting by itself.

Sato also outlined a "lack of full participation in leadership positions": In Washington, D.C., today, he said, there are four Nikkei

members of Congress, none who are members of the cabinet or agency heads, and only one whose presidential appointment requires Senate confirmation out of approximately 225 such appointments.

The Nikkei community must identify persons who are capable of filling such positions, Sato said, and persuade them to serve the public and the government.

The community also needs to develop the capability to speak out on issues with a strong collective voice.

Turning to the JACL, Sato enumerated the organization's goals as set by the National Board (see

Oct. 26 PC), and focused particularly on the need to enhance the organization's image. For example, promotional materials explaining the JACL and informing readers of its achievements in civil rights are being prepared, not only for prospective members, but also for use at the national and international level.

Installation Dinner

Sharing the banquet program were the awarding of scholarships for the Presidential Classroom for Young Americans to Yuki Takasumi and Akihito Koyama, both of University High School; and a performance by violinist Maya Iwabuchi, winner of the national youth competition, New York Philharmonic Symphony Orchestra.

WEST LOS ANGELES JACL 1985 Officers and Board

Sid Yamazaki, pres; Fred Miyata, 1st vp; Charles Inatomi, Emily Takeuchi, 2d vp; Toy Kanegai, 3d vp; Kiyo Teramaye, rec sec; Ron Kumataka, cor sec; Roy Takeda, treas; Bill Sakurai, publ; Shig Takeshita, 1000 Club; Carol Ushijima, legis; Steve Yagi, hist; Jack Nomura, leg couns; Arnold Maeda, ins; Veronica Ohara, comm srv; George Kanegai, trav; Phyllis Murakawa, hosp; Walter Iso-no, nom.

Board: Helen Eto, Robert Funke, Eiko Iwata, Harold Miller, Jiro Mochizuki, Galen Murakawa, Amy Nakashima, Haru Nakata, Charles Nishikawa, Satoshi Nitta, Karen Hirai Olen, Himeji Sakaniwa, Yuki Sato, Sho Shimotsu, Paul Suyetsugu, Yuki Tawa, Tak Tanabe, Virginia Tomina-ga, Jean Ushijima, Ben Yamanaka.

Auxiliary: Veronica Ohara, pres; Eiko Iwata, vp; Helen Ishikawa, sec; Stella Kishi, publ/hist; Amy Nakashima, treas.

Earth science: Henry Nagae, pres; Betty Minami, sunshine.

Women of color obtaining political power despite odds

RENO, Nev. — They came from California and Colorado, from New Mexico and Maryland, from Washington, Nevada, Alaska, Hawaii and other states across the nation. Some 200 women gathered Oct. 19-20 to develop strategies for empowerment at a conference sponsored by the National Institute for Women of Color.

Women of color must unite on such concerns as equal pay, child care, and poverty, said former U.S. Rep. Patsy Mink, conference keynoter. "It's outrageous but true that 54 percent of all female-dominated jobs pay poverty wages," Mink noted. "There's a strong misery index which should forge a strong power base."

Pointing to Geraldine Ferraro's feat as the Democratic vice-presidential candidate, Mink encouraged women to run for office at all levels of government. "We need women in power to make decisions for us," she said. "We have

to mobilize and capture our force and cease living in our own little space."

Other women of color elected to state positions related their experiences and offered political strategies.

"I took a poll in my district. It revealed that voters would not vote for a Pilipino woman. I ignored it and I won," said Thelma Buchholdt, former Alaska state representative and the first and only Pilipina state legislator.

"In losing you learn how to win," proclaimed Sen. Diane Watson, who in 1978 became the first Black woman elected to the California state legislature. Watson noted the gains made by and for women even with the defeat of ERA. "Every woman has the potential to become an elected official," Watson stated. She noted that women have skills that are transferable—organizing, budgeting, decision-making—skills that

women exercise daily in the household.

Sen. Polly Baca of Colorado, the first Hispanic woman elected to any state legislature, stressed that women should run even when the odds are against them. In 1974 she ran as the first minority woman from a blue-collar conservative district. In 1978 she ran for the state senate unchallenged.

"I wanted to run because I saw the wrong people getting elected to office," said Sen. Ana Nisi Goyco, Commonwealth senator from Puerto Rico. In 1980 Goyco conducted a door-to-door campaign and won in the primary against four men, a feat she recently repeated. Goyco is the youngest of four women serving in the senate.

"Once elected we should set aside our political ideology and work for the people," Goyco stated. "We must never lose our integrity. Dynamism and energy are our power."

CAMPBELL'S flowers
Across St. John's Hosp.
2032 Santa Monica Blvd.
Santa Monica, CA
KIRK ISHIZUKA 828-0911

Carat Karat
Japanese Charms
Japanese Names
Japanese Family Crests
12558 Valley View, Garden Grove, CA 92645 • (714) 895-4554

Aurica Records
LARGEST STOCK OF POPULAR & CLASSIC JAPANESE RECORDS, MAGAZINES, ART BOOKS, GIFTS
Two Stores in Little Tokyo
30 E. 1st St. • 340 E. 1st St.
LOS ANGELES, CALIF 90012
S. Ueyama, Prop.

Mrs. Friday's
DELIGHTFUL seafood treats
DELICIOUS and so easy to prepare
MRS. FRIDAY'S
Gourmet Breaded Shrimps and Fish Fillets
Fishing Processors, 1327 E. 15th St., Los Angeles, (213) 746-1307

NOW AVAILABLE ON THE MAINLAND
Hawaii's Number One Hawaiian Host® Chocolates
CHOCOLATE COVERED MACADAMIA NUTS & CARAMELS • DRY ROASTED-SALTED MACADAMIA NUTS • BRITTLES & CHEWS • COCONUT CANDIES • HAWAIIAN JAMS & JELLIES • HAWAIIAN HONEY • SPECIAL GOURMET PACKAGE.
Hawaiian Host
Call Us for Fund-Raising Sales Promotions
Hawaiian Host Chocolates
15601 S. Avalon Boulevard
Gardena, California 90248
Phone (213) 532-0543
PLANT TOURS AVAILABLE BY APPOINTMENT

Naomi's Dress Shop
Sports & Casual • Sizes 3 to 8
133 Japanese Village Plaza Mall
Los Angeles • 680-1553
Open Tue-Fri: 9:30-6:30, Sat: 11-9
Sun: 11-5 Closed: Monday

No. 2,317
If you are moving, allow 3 week's advance notice to report your address change with label on front.
New Address: _____
City, State, ZIP _____
Effective Date: _____
• Thank you for using this form. It saves PC 25 cents in fees.
Pacific Citizen, 244 S. San Pedro St. #506, Los Angeles, CA 90012
EXPIRATION NOTICE—If the last four digits on the top row of your label reads 1184, the 60-day grace period ends with the last issue in January 1985. Please renew your subscription or membership. If membership has been renewed and the paper stops, notify the PC office.

MARUKYO
Kimono Store
New Otani Hotel & Garden—Arcade 11
110 S. Los Angeles
Los Angeles
628-4369

\$1500 PER ROUND TURN
Never More Than \$17
DAY OR OVERNIGHT
• ALL COMMODITIES
• OPTIONS ON FUTURES
• ALL U.S. EXCHANGES
If you are a serious investor ready to avail yourself of a reasonably priced, professional futures brokerage service offered by a lean, no nonsense company, we respectfully invite your inquiry.

MTM COMMODITIES, INC.
Established 1978
200 So. Rock Road - Suite G
Wichita, Kansas 67207
CALL TOLL FREE
1-800-835-0140
In Kansas Call Collect (316) 682-7772

Compare this monthly checking fee with yours.
\$0.00
If you keep \$2,500 or more in a Sumitomo regular savings or time deposit account, you will not have to pay a monthly fee on checking.* That can help make balancing your checkbook easier. More importantly, your savings and time accounts will be earning high interest.
See New Accounts and ask about Sumitomo Combined Balance Checking. They'll be glad to make the necessary arrangements or to answer any questions.
*Applies to Regular Checking, NOW or Sumitomo Super Checking accounts.
Sumitomo Bank
Sumitomo Bank of California Member FDIC



Photo by J.K. Yamamoto

A participant in the 13th annual Little Tokyo Community Health Fair has her blood pressure checked by a medical volunteer. Nikkei seniors were offered free services such as flu shots, electrocardiograms, and oral, eye and foot examinations at L.A.'s Union Church Nov. 10. Japanese translation was also provided.

Community Affairs

SAN FRANCISCO—Asian American Theater Company holds a holiday benefit to help pay the costs of its 11th season, Tuesday, Nov. 20, from 7 p.m. to 9:30 p.m. at the Veterans Bldg., 401 Van Ness Ave. "Not My Fault," the company's improvisational comedy troupe, performs. \$25 admission also includes fashion show and appetizers. Information: 982-1506, 386-3955.

More than 600 persons attended an Oct. 26 showing of "Unfinished Business," a documentary about the legal challenges of Gordon Hirabayashi, Minoru Yasui and Fred Korematsu. The benefit screening at the Palace of Fine Arts aided the Asian Law Caucus and the Committee to Reverse the Wartime Internment Cases.

SAN MATEO, Calif.—An exhibit and sale of Japanese art objects and prints runs Nov. 26 through Dec. 20 at San Mateo County Historical Museum, College of San Mateo, 1700 W. Hillsdale Blvd. Two films on textile and woodblock printing are shown daily. Hours are 1-4:30 p.m., Saturday-Thursday. Information: Mitchell Postel, 574-6441.

GARDENA, Calif.—Amerasia Music Festival features Gravity, Charlie Chan and American Urge on Friday, Nov. 23, and Visions, Arco Iris and Cookie Wong on Saturday, Nov. 24, from 8 p.m. both nights at Nisei VFW Hall, 1964 W. 162nd St. Tickets are \$7. Information: 680-2888 days, 327-9072 evenings.

LOS ANGELES—"The Art of Old Japan," an exhibition of approximately 120 paintings, ceramics and decorative arts from Nagoya City Museum, is on display through Dec. 2 at Doizaki Gallery, Japanese American Cultural and Community Center, 244 S. San Pedro. Hours are noon to 5 p.m., Tuesday-Sunday. Admission \$2. Information: 628-2725.

Megamillions, a Nikkei widow and widowers club, holds its annual Christmas party on Saturday, Dec. 1, 7 p.m., at New Otani Hotel. Information: Shiz, (213) 821-3219; Betty, (714) 835-5330 x 211.

NEW YORK—Lane Nishikawa performs his one-man show, "Life in the Fast Lane," at Jazz Center of New York, 380 Lafayette St. on Sunday, Nov. 25, Wednesday, Nov. 28, and Friday, Nov. 30. Curtain is 8 p.m. Information: 505-5660.

BOSTON—Asian American Resource Workshop sponsors the Asian American International Film Festival at Tower Auditorium, Massachusetts College of Art. Programs are: "Mississippi Triangle" with director Christine Choy, Friday, Nov. 30, 7:30 p.m.; "First Look" and "Cruisin' J-Town" on Saturday, Dec. 1, 4 p.m.; "Wataridori," "The Departure" and "Nisei Soldier" on Saturday, Dec. 1, 7 p.m.; and "Afterbirth," "The Only Language She Knows" and "East to West" on Sunday, Dec. 2. Information: 426-5313.

Climbing corporate ladder easier with collective action

by Teru Kanazawa,
New York Nichibei

NEW YORK—A standing room only crowd of approximately 200 turned out Nov. 2 for a forum on "Asian Americans in Corporate America: How Successful Are We?" at AT&T headquarters on E. 55th St. The unexpectedly large turn-out surprised the event's sponsors, the New York chapters of JACL and Organization of Chinese Americans.

Welcoming the crowd and setting the tone for the event, JACler Fae Minabe said that she didn't think "AT&T has ever seen this many Asians in the building"—aside, perhaps, from a visiting delegation from NT&T, Japan's equivalent of AT&T. Minabe urged everyone present to recognize "the unique situation" that Asian Americans face in the corporate world and said that stereotypical and prejudicial attitudes co-exist with the assumption that "Asians are not that bad off."

Forum speakers were Ron Osajima, a director at AT&T Bell Laboratories; New Jersey Institute of Technology law professor Anthony Kahng; and Carolyn Chin, a vice president at Citicorp.

In response to a question posed by the publicity flyer—"Have we really achieved parity with our white counterparts or have we simply become 'professional coolies'?"—the speakers discussed the status of Asian Americans in the corporate world and the difficulties encountered in joining its managerial ranks. All three speakers agreed that collective, concerted action was needed to deal with discrimination in the workplace.

'Juppies' and 'Cuppies'

Greeting the audience as "Juppies" and "Cuppies"—Japanese and Chinese American equivalents of Yuppies, or Young Urban Professionals—Osajima described the gains that Asian Americans have made in promotion to managerial ranks in recent years,

and then posed the question, "So why are we complaining?" Using slides, Osajima pointed to the underrepresentation of Asian Americans in corporate ranks and said that both cultural differences and "plain, old racism" explained the disparity in figures between Asian Americans and other, specifically white male, groups.

Citing examples of racism he has encountered at Bell Laboratories—individuals saying, "You know those Asians, you can't trust them," "Asian accents turn me off," "Asians talk too fast," and the belief that Asians lack leadership skills—Osajima elaborated on ways in which Asians can combat these attitudes.

Coupled with developing a more assertive attitude in involving themselves in the values and mores of the corporate structure, Osajima also advised Asian Americans to "develop collective structures" and with the use of petitions, even, "to raise management's awareness of the problem and increase its commitment to change."

A Combat Zone

Kahng spoke dramatically of what one must do to deal with a "class society" where what one does is more important than who

one is. Kahng urged the listeners to grasp the "adversarial" and "combat-ready" nature of the U.S. business world.

Contrasting, as an example, the popular attitude that Slavic and Italian accents are "cute" compared to the accents of Asians, Kahng elaborated on the need for Asian Americans to be aggressive in pursuing their goals for advancement, referring to assertiveness training workshops as "too romantic." He also urged Asians, despite their numerous subgroups, to think of themselves more as a "yellow" class and to fight together for mutual goals.

Breaking Stereotypes

The final speaker, Carolyn Chin, addressed the question of prejudice with the statement that "subtle racism is more dangerous than overt," because with the former it is harder to pinpoint what the problem is. Chin cautioned that "stereotypes can hurt you when you break them" because failing to live up to pre-judgments can cause confusion or "cognitive dissonance" in the other person.

Chin advised Asians to take risks, speak up, make contacts, and "pick areas to conquer and do it and be very deliberate about it."

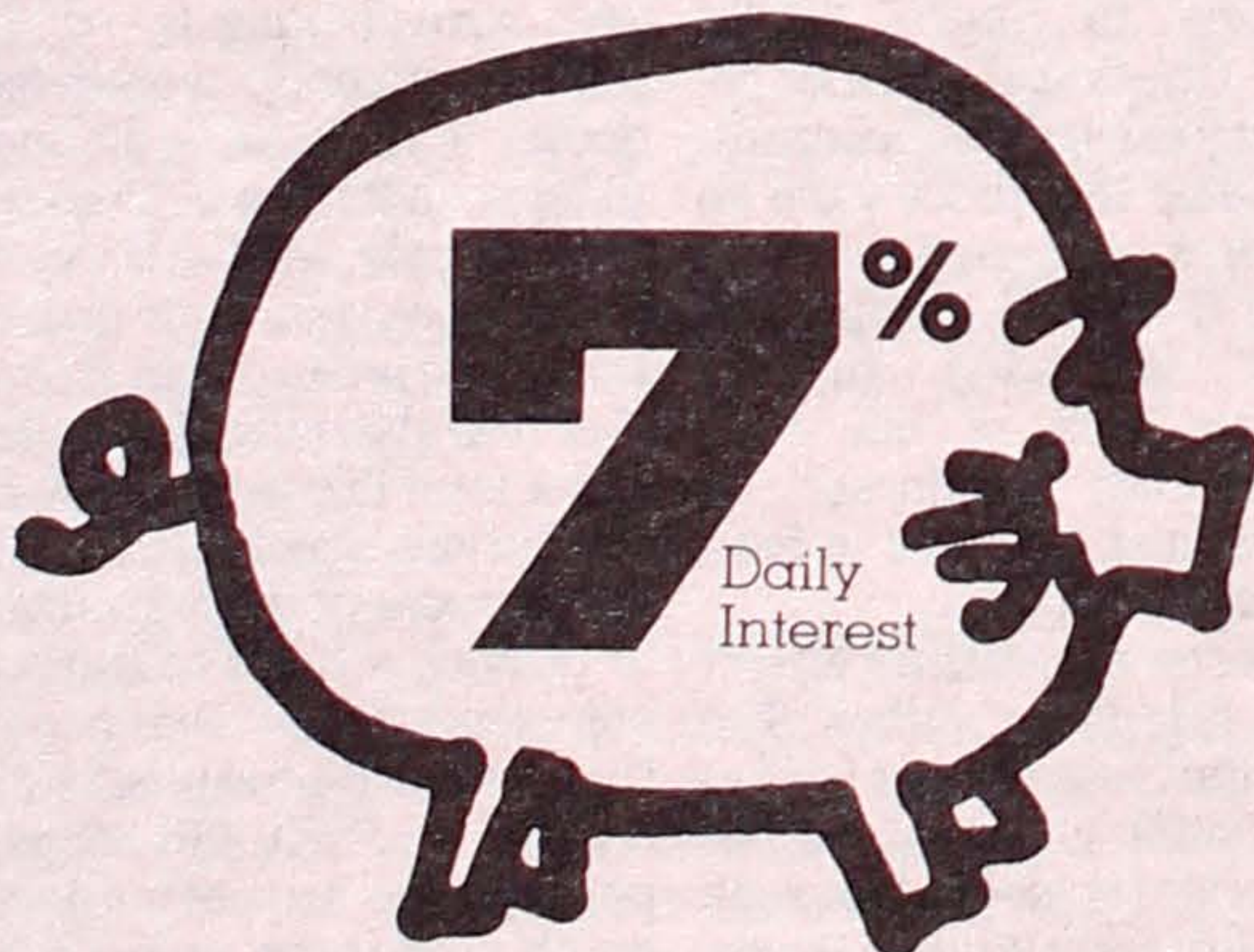
Hayakawa says Quaker organization overreacted, misunderstood his intent

MILL VALLEY, Calif.—Former senator S.I. Hayakawa called a letter of protest he received from the American Friends Service Committee a "crazy and paranoid reaction." The Quaker organization, which opposed the WW2 internment of Japanese Americans and supports redress for former internees, had asked Hayakawa not to use AFSC's name in his anti-redress statements (see last week's PC).

"I was not trying to get them on

my side. I just think the Japanese Americans benefitted from what they did," Hayakawa said, referring to AFSC's role in enabling interned Nisei to attend colleges outside the West Coast. "I am not trying to use them. What I am trying... is to say that whatever damage Japanese Americans suffered, it was mitigated" by AFSC's efforts. He added that redress would "stir up resentment" against JAs because they are the "wealthiest of all minority groups."

SAVE WITH US.



Paid quarterly plus bonus dividend.
Free Savings and Loan Insurance.
IRA Accounts available.
Now over \$6 million in assets

**NATIONAL JACL
CREDIT UNION**

PO Box 1721
Salt Lake City, Utah 84110
Telephone (801) 355-8040

How to Get Up to \$100,000 in Cash, Whenever You Need It

If you're a residential homeowner, you may never need to apply for a conventional loan again.

Now there's a way to borrow as much as \$100,000 just by writing out a check.

It's called the CALIFORNIA FIRST ASSET LINE.™

Asset Line gives you the flexibility to decide **how much money you want** and **when you want to use it**. It allows you an open line of credit with California First Bank, which can be used as little or as often as you like.

When you establish your California First Asset Line, you'll incur one-time fees for title insurance, appraisal, and loan processing (the processing fee is typically 1½% of the approved amount of credit). After these fees are paid, however, there currently are no additional annual charges. You'll pay interest only on the credit you use, at 2% above the bank's prime interest rate. Your annual percentage rate therefore may vary.

California First's Asset Line is a great way to consolidate your debts. To buy that new car you've been thinking about. Or to simply take that well-deserved vacation.

For further information about terms and how to apply, simply stop by any one of our 113 statewide offices.

**CALIFORNIA
FIRST BANK** 

Member FDIC

© California First Bank, 1983.

The Garand M-1 Rifle

EAST WIND

Bill Marutani



AS A BOY growing up in Washington's White River Valley, the most lethal weapon I ever had to fire was a BB gun. Following the outbreak of the war in the Pacific, being uprooted and incarcerated, we left camp (Tule Lake) to attend school in South Dakota. There I had occasion to learn to use a shotgun, hunting pheasants with friends. I learned the tricky technique of "leading" the flying target in order to bag the game.

Then came the Army; more specifically, infantry training at Camp Robinson, Arkansas.

WE WERE ISSUED gear, including a shoulder arm known as the "Garand M-1 rifle," a gas-operated .30 caliber clip-loaded weapon. The piece weighed something in the vicinity of nine pounds (without the bayonet) and had, as we now recall, a muzzle velocity of 2,700 feet per second. For those of you not familiar with muzzle velocities, that's pretty stiff, lethal.

And the piece had quite a kick, as we were shortly to learn, much to our consternation. Unlike even that of a shotgun that we used to bag pheasants in South Dakota.

THIS BASIC WEAPON of the U.S. infantryman was to be fired in at least three basic positions: standing, sitting, and the prone (flat on the ground) position. (By the end of our basic training, we were firing the weapon from the hip, a la John Wayne.) The prone position was the most stable and thus most accurate, and the standing position the least stable. Firing the weapon from the sitting position could be quite accurate. But back to that "kick" we just mentioned.

FIRING THE M-1 from any of the three positions with the inevitable kick was knocking the dickens out of our face, more specifically our right cheek. Re-

turning from the firing range, this recruit looked like he'd been in a bruising bout with a prize-fighter. The right side of the face was black and blue, and tender. Especially tender when returning to the firing line the following morning, cheek puffed up.

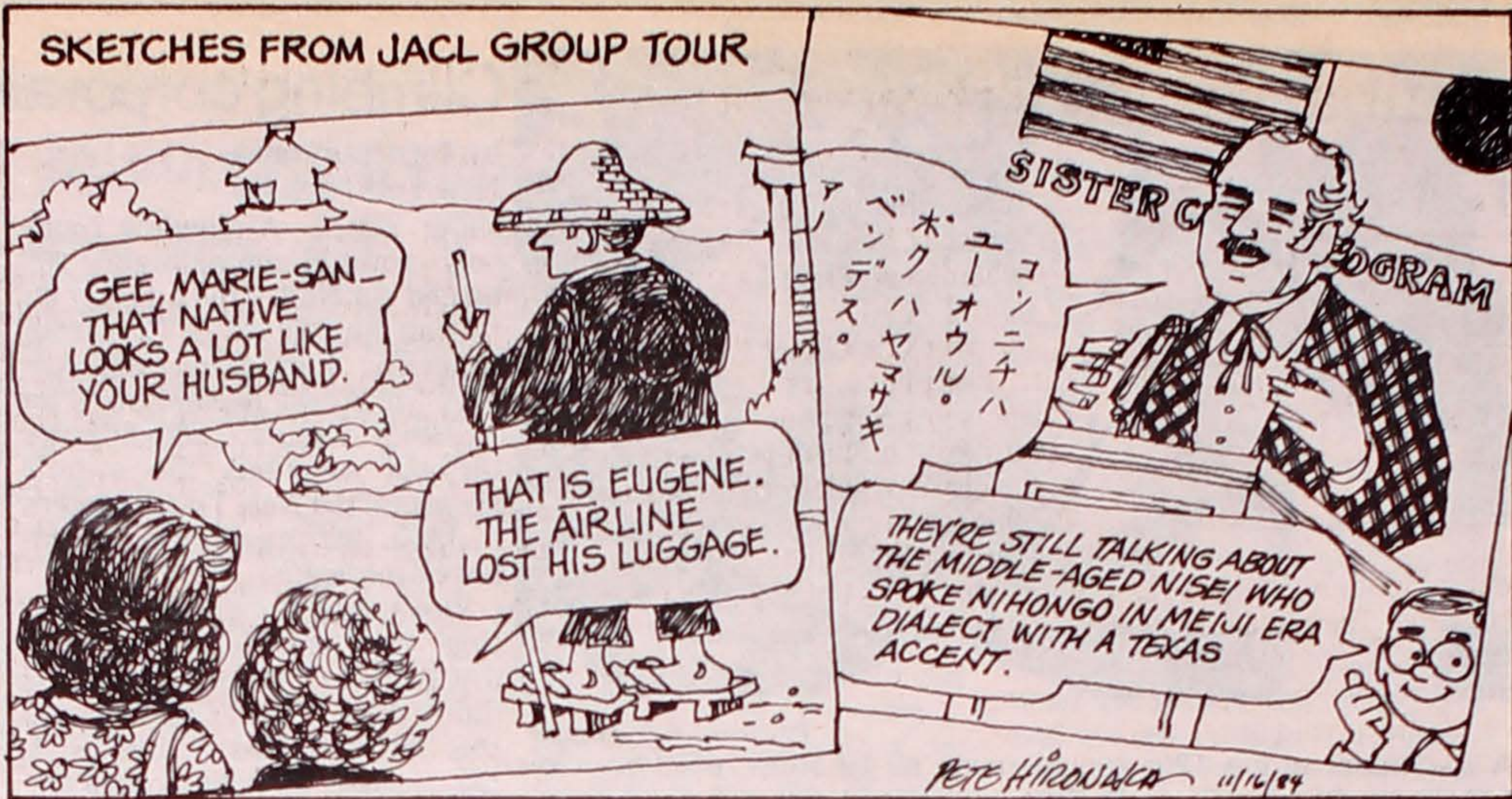
At that time, I knew there had been a good reason why I had previously volunteered (unsuccessfully) for the Navy Air Corps. I then had visions of being an infantryman who had to rely on a firearm which was, to put it bluntly, knocking the hell out of him.

BUT NO NISEI worth anything is going to let that situation continue. Sore or not, we soon picked up the trick and learned what we were doing wrong: our right cheek was not firmly cradled against the stock of the rifle. With the cheek firmly placed, upon firing, the cheek simply moved up with the butt instead of getting socked. You can imagine my relief in no longer being assaulted by a weapon which was supposed to be my major defense.

WE WERE ALSO trained in use of mortars, grenades and the bayonet—which completed the arsenal of the infantryman's lines of attack. Again, as to the bayonet we ended up with our right hand sore and bloodied; and again we painfully learned—but learned—that one must grip the bayoneted rifle firmly while lunging at the target. Otherwise, the trigger guard can chop up the hand on impact.

BY THE END of our training, we became quite proficient, as did the others. We could take apart and assemble that M-1 rifle blindfolded. That menacing, kicking weapon became a familiar, treasured companion. We found that we could learn to hit distant targets by dropping pieces of dried grass from shoulder height, observe the angle at which the grass fell, then adjust the rifle's sight for windage and elevation—and wham! On target.

WE'VE COME a full circle back to today. The only shoulder weapon we've fired of late is an air-operated pellet rifle which we use for plinking at empty tin cans. And the wife chides me whenever I miss. Which can be more often than I'm willing to admit.



Redress Funding A Continuing Challenge



PRESIDENT'S CORNER:

by Frank Sato

Redress remains our top priority, and adequate funding for this program continually challenges each of us. I'd like to clarify some critical factors involved.

The biennial budget for 1985-86 passed by the National Council at the Honolulu convention provides for:

- 1—redress pledge payments of \$100,000;
- 2—voluntary additional payments made with membership dues of \$40,000;
- 3—fundraising (mainly through sales of John Tateishi's book "And Justice for All") of \$45,000; and
- 4—other donations of \$41,000, for a total \$226,000 annually to fund our redress program.

By this action, redress pledge payments committed by the Council in 1982 for three years have effectively been extended to a fourth year to 1986.

The related commitment for loans from the Endowment Fund to finance redress activities beyond the third year (1985) was not made. Thus, loans from the Endowment Fund will not be available in 1986. Further, loans obtained from the Endowment Fund are due and payable in 1986—estimated by the Endowment Fund committee to be approximately \$100,000.

Your continuing timely payment of redress pledge payments are crucial to our cash flow situation for both 1985 and 1986.

A major fundraising effort is being planned by Harry Kajihara, (PSW Governor) and others for this total effort. Not only will we need to raise \$226,000 in 1986, we anticipate the need to repay loans from the Endowment Fund of \$100,000.

The progress to date in the redress program has been made possible by your strong support. The continuing existence of the program depends on each district,

every chapter, and each individual to do his or her part. I know we can count on you!

* * *

On a related pledge issue, in Washington, D.C., we have the Combined Federal Campaign (CFC)—yours may be the United Givers Fund (UGF) or a similar program. I noted with interest that the CFC brochure states:

"A list of agencies that participated in last year's CFC is provided—you may also donate to any human health and welfare charity recognized as tax exempt by the IRS under 26 USC 501(c)(3)

whether or not it appears on the list provided.... To do so you may write in the name and location of the voluntary agency in the space provided on the pledge card."

This applies to JAACL. Chapters might also provide their members with the IRS tax ID number for their pledge cards.

Why not make your CFC/UGF payments/pledges as a gift to the JAACL?

Why not seek to set the JAACL chapters on lists of authorized agencies participating in CFC/UGF in communities—for we are, among other things, committed by our constitution to upholding human and civil rights for all.

Fair Play and Nikkei in America

MUSUBI

by Ron Wakabayashi



Life isn't fair. Col. Karl Bendetsen, who gained his military rank from the formulation of the scheme to intern 120,000 Japanese Americans, testifies before a congressional subcommittee and states that there were no barbed wires or armed guard in those World War II camps. His testimony is made to the sympathetic ears of one Congressman Tom Kindness (R-Ohio), who just happens to be a former employee of his.

The internment, itself, wasn't exactly a fair thing, either. The level of unfairness is what strikes me. This nation and most nations have historical episodes that reek with unfairness. While, thankfully, most of the detainees survived camp in the sense that they lived on, unlike the death camps of Germany, it still was a pretty unfair exercise to disrupt that many lives on the sole basis of race.

No other occasion brought to-

gether all three branches of our federal government in such unanimity. At the very highest levels of those three branches, which were envisioned to provide a system of checks and balances to thwart such abuses, decisions were drawn together to remove Jichan, Bachan, Mom, Pop and the kids from their homes and for them to do time. Now, we have some folks who were directly involved saying that there weren't any armed guards or barbed wire. Somebody would have to doctor a whole lot of photographs to back up that case. Next, we will have people who will say that it never took place. I understand that there is a group that preaches that line about the Holocaust.

Because life isn't fair, we have institutions like the JAACL. The entire purpose of the organization is to provide a basis of fairness for one segment of the population that has a higher risk of being treated unfairly. Perhaps, just perhaps, we are not subject to as much unfairness as in days past. Maybe the form is just different, or maybe the scale for all Americans has changed and the relative degrees remain the same, but harder to spot by older standards. The last words of Vincent Chin, one of the younger Asian Americans, were, "It's not fair."

pacific citizen

ISSN: 0030-8579

Nat'l JAACL Headquarters, 1765 Sutter St., San Francisco, CA 94115, (415) 921-5225

Published by the Japanese American Citizens League every Friday except the first and last weeks of the year at 244 S. San Pedro St., Los Angeles, CA 90012; (213) 626-6936 • 2nd Class postage paid at Los Angeles, Ca. Annual Subscriptions—JAACL members: \$10.00 of national dues provides one-year on a per-household basis. Nonmembers: \$18, payable in advance. Foreign addresses: Add U.S.\$8 • News or opinions expressed by columnists other than JAACL staff do not necessarily reflect JAACL policy.

OFFICERS

Frank Sato, Nat'l JAACL President Dr. Clifford Uyeda, PC Board Chair

EDITORIAL / BUSINESS STAFF

Editor: Karen Seriguchi Asst: J.K. Yamamoto, Henry Mori
Advertising: Jane M. Ozawa
Circulation: Tomi Hoshizaki, Mitsuko Sakai Mailing: Mark Saito
Production: Mary Imon, Jon Takasugi
Gen. Mgr./Operations: Harry K. Honda

POSTMASTER: Send address changes to Pacific Citizen, 244 S. San Pedro St., #506, Los Angeles, CA 90012.

Unembarrassed Ethnicity

FROM THE
FRYING PAN:

Bill
Hosokawa



About a month ago Vice President George Bush visited San Francisco's Chinatown in a search for votes. We were in the middle of the presidential election campaign, remember? I happened to see the extensive coverage given the event by Asian Week, a weekly San Francisco newspaper which calls itself "An English Language Journal for the Asian American Community."

"Bush was greeted by extended applause and prancing lion dancers as his limousine pulled up in front of the Supreme Pastry shop on Stockton Street," Asian Week reported. "He walked to the corner of Jackson Street and then started working his way up the clogged sidewalks, shaking hands and kissing babies."

"He was handed a white butcher's smock and apron outside the Sang Sang Market and the Canton Market, where he stopped to carve a slice of roast pig and then roast duck, which he ate ..."

"With merchants offering him Chinese food and souvenirs almost every step of the way, Bush then turned down Jackson Street and made his way to the Grand Palace on Grant Avenue. A small group of about 30 prominent community leaders awaited him inside the restaurant."

"As the Vice President and his wife sat down to a table for some dim sum ..."

Asian Week also published a number of photographs, some of which show a long banner behind the head table. The banner carries three rows of Chinese characters, which I cannot read,

and one line in English: "San Francisco Chinese Welcome Vice President and Mrs. Bush."

John T. C. Fang, publisher of Asian Week, spoke at the restaurant reception, saying that San Francisco's Chinese American community makes up 14 percent of the city's population, that some 20 Chinese language newspapers are published there, and that a half-dozen Chinese-language schools are in the immediate vicinity of Chinatown. Fang was quoted in his newspaper: "The Chinese consider San Francisco Chinatown the capital city and the Chinese cultural center of America. But we are Americans also, and we are proud to welcome our vice president today."

Why all this attention in this column to a month-old political event in an election that is now history?

The point I want to make is that Chinese Americans proudly proclaim their Chinese ancestry and cultural background while, broadly speaking, Japanese Americans with equal pride seem to be more inclined to emphasize their Americanism. Correct?

Had George Bush strolled through Li'l Tokyo, would he have been invited to slice himself a piece of sashimi or cook himself a shrimp tempura? Would the welcome banner over the head table have carried three lines of Japanese characters and one line of English? Would the speaker have told Bush about the number of Japanese-language schools and newspapers in the community? Or would the emphasis have been on the way ethnic Japanese have become part and parcel of the greater American community, taking leading roles in business, teaching in schools, being elected to public office?

This isn't the place to pass judgment as to which approach is better, but only to point out the difference. And it would make an interesting study to determine why the difference exists.

Chapter Pulse

San Francisco

SAN FRANCISCO — A spaghetti-crab feed will be held at Saturday, Dec. 1, from 5 to 8 p.m., at Christ United Presbyterian Church, 1700 Sutter St. The menu comprises spaghetti, fresh crab, salad, french bread, and coffee or tea, all for \$10 (price at door is \$15). Wine and soft drinks are extra.

Tickets may be ordered by sending a check to the chapter, P.O. Box 22425, San Francisco, CA 94122. Tickets will be mailed to purchasers until Nov. 26 and held at the door after that date.

Cincinnati-Dayton

MORAIN, Ohio—A joint installation dinner for the Cincinnati and Dayton chapters will be held Sunday, Dec. 2, at Mandalay Banquet Center, 2700 E. River Road. No-host cocktails will be served from 4 p.m., followed by dinner at 5:30

p.m. Guest speaker is Jim Shimura of Detroit, honored as one of the two JACLers of the biennium for his work with the Vincent Chin case.

Cost of dinner is approximately \$13. For reservations, call Frances Tojo, 531-0627, by Nov. 25.

Greater

Los Angeles Singles

LOS ANGELES — A post-Thanksgiving theater party will be held Saturday, Nov. 24, 8 p.m., at the East West Players, 4424 Santa Monica Blvd. Robert Ito stars in Philip Gotanda's "A Song for a Nisei Fisherman." Chapter members and friends will meet the cast over champagne and hors d'oeuvres.

Tickets are \$15. Reservations: call Annabelle Lee, 327-0099, or Kaz Yoshitomi, 296-7848.

FROM THE NATION'S CAPITAL: By G. Tim Gojio

Military Threats to Rights: A Lesson Not Learned

Several recent articles by Washington Post columnist Jack Anderson indicate that the federal government has not learned its lesson from the internment of Japanese Americans during World War II. Then, under guise of military necessity, the government "evacuated" 120,000 Japanese Americans from the West Coast. Now, under the guise of supporting local law enforcement officials during a national emergency, the federal government is again threatening the civil liberties of American citizens.

The Federal Emergency Management Agency (FEMA) has drafted an executive order entitled the "Defense Resources Act." That act would authorize FEMA to seize private property as necessary for national defense purposes, and would impose various restrictions upon employment rights as deemed essential for the national health, safety, or interest.

The Dept. of Defense (DOD) is also involved; the Joint Chiefs of Staff issued a report in December 1983 entitled, "Military Support of Civil Defense: System Description." In coordination with FEMA, the DOD would allow the military to assume judicial, law enforcement and administrative functions of local government based upon "necessity actual and present."

One comment I receive from

those who hear our case for redress is that mass internment and relocation would not occur again, that for some reason we have learned from our mistakes. Although I would like to believe that is true, one thing history has shown is that governments consistently fail to learn from the mistakes of the past. The FEMA and DOD documents lay the groundwork for the federal government's intrusion upon the constitutional rights of Americans.

The Hokubei Mainichi (of San Francisco) in its Oct. 20 issue, terms the measure "chillingly reminiscent of the actions taken during World War II internment of Japanese Americans." Jack Anderson describes the FEMA and Pentagon proposals as "willing to scrap the Constitution and turn the United States into a military dictatorship." Although Anderson's comment may seem exaggerated to some, it accurately portrays the danger such proposals pose to our constitutional rights.

The internment of Japanese Americans, with the sanction of the U.S. Supreme Court, has created a serious breach in our constitutional rights by allowing the military to abuse its power under the guise of military necessity. Through that breach has come such measures as Title II of the Internal Security Act of 1950,

which allowed the federal government to detain individuals in concentration camps who were deemed a threat to internal security. Now, I believe we have a similar threat, the FEMA and DOD proposals outlined in Anderson's column.

George Santayana, the Spanish American philosopher, stated, "Those who cannot remember the past are doomed to repeat it." We, as concerned Americans, must remember the internment and tell others about it, to ensure that no other group of Americans goes through what we went through. We must be vigilant of our rights, and wary of those both within and without the federal government who seek to deprive us of our hard-earned constitutional rights. These FEMA and DOD proposals are a subtle and direct attack upon those rights, and should serve as reminder that mass evacuation and internment can happen again.

ROSE HILLS



SO NEAR WHEN CARE MEANS SO MUCH...

At Rose Hills one visit offers the convenience of a modern mortuary, beautiful flower shop — and thoughtful, professional counselors who understand a family's needs and budget. Rose Hills has served families with dignity, understanding and care for more than a quarter of a century. Care — and convenience.

So much more... costs no more

ROSE HILLS MORTUARY

at Rose Hills Memorial Park

3900 Workman Mill Road, Whittier, California (213) 699-0921 (714) 739-0601

THE FIVE MINUTE GIFT That Lasts All Year...

This year, give the Pacific Citizen to:

- Your Mom and Dad
- Your Son and Daughter
- Your Aunt and Uncle
- Your Friends
- Your Doctor, Dentist and Lawyer
- Your Local Library or Hospital

Help them stay in touch with the issues, events, and people that are making news in the Japanese American community — every week, all year long!

Simply fill in your gift list below and enclose \$18 per gift.

What better and easier way to say Happy Holidays this year?

SEND THE PACIFIC CITIZEN TO:

Name _____

Address _____ Apt # _____

City _____ State _____ Zip _____

Name _____

Address _____ Apt # _____

City _____ State _____ Zip _____

Use an additional sheet if necessary. Mail gift list to: Pacific Citizen
244 S. San Pedro #506
Los Angeles, CA 90012

Enclosed is \$18 per gift subscription.

(Add \$20 for first class postage; \$8 for foreign orders.)

Total enclosed: \$ _____

1000 Club Roll

(Year of Membership Shown)
 * Century; ** Corporate;
 L Life; M Memorial;
 C/L Century Life

Summary (Since 12-1-1983)
 Active (previous total) 1,938
 Total this report: #34 ... 6
 Current total ... 1,944

OCT 22-26, 1984 (6)

Berkeley: 3-David Nakayama.
 Chicago: 1-Robert M Tanaka.
 Detroit: 21-George Otsuji.
 Sacramento: 24-Frank M Daikai.
 Solano: 20-Leo H Hosoda.
 Venice-Culver: 29-Dr Takao Shishino.

CENTURY CLUB*

1-Robert M Tanaka (Chi).

Summary (Since 12-1-1983)
 Active (previous total) 1,944
 Total this report: #35 ... 42
 Current total ... 1,986

OCT 29-NOV 2, 1984 (42)

Berkeley: 13-Jordan F Hiratzka, 6-Chie Kondo.
 Chicago: 23-Seiji Itahara, 29-Lincoln Shimidzu, 28-Louise A Suski*.

Delano: 29-George Y Nagatani.
 Downtown Los Angeles: 19-Tom Shigeru Hashimoto, 33-David Y Nitake.

Eden Township: 25-Jean S Kawahara, 25-Sam Isami Kawahara.
 Florin: 26-Bill S Taketa.
 Fowler: 26-Harley M Nakamura.

French Camp: 31-Mitsuo Kagehiro.

Hollywood: 30-Dr Shig J Masuoka, 19-Jeffrey Y Matsui.
 Milwaukee: 30-Shigeru Nakahira.

Monterey Peninsula: 32-Minoru C Uyeda.
 Orange County: 1-Michael Honda, 31-Ken Uyesugi.
 Pacifica-Long Beach: 28-Dr Katsumi Izumi.

Pasadena: 34-Yoneo Y Deguchi, 29-Hayato Harris Ozawa.
 Placer County: 14-Jack K Yokote.

Progressive Westside: 36-John Ty Saito.
 Reno: 1-Gerald A Ikeda.
 Sacramento: 25-Dr Stanley Y

Inouye, 11-Edwin M Kado.
 Saint Louis: 31-Dr Jackson Eto*.

San Diego: 29-Shoji Date.
 Sanger: 29-Tom H Nagamatsu.

Seabrook: 1-Gregory D Ono.
 Seattle: 29-Howard S Sakura.
 Snake River: 20-Sam Uchida.
 Stockton: 30-Sam M Itaya.

Twin Cities: 24-Toshio W Abe, 33-Charles Tatsuda.
 Washington, DC: 7-Dr Richard Otogaki.
 Wasonville: 18-Kenzo Yoshida.

West Los Angeles: 12-George W Asawa, 27-Akira Ohno*, 28-Joe Uyeda.
 Wilshire: 14-George H Takei.

CENTURY CLUB*

5-Louise A Suski (Chi), 9-Dr Jackson Eto (SIL), 4-Akira Ohno (WLA).

Redress Pledges

Actual amounts acknowledged by JACL Headquarters for the period of:

Oct. 19-Nov. 2, 1984.
 Oct. 18 Total: \$134,690.39
 This Report: (4) \$ 6,695.00
 Oct. 18 Total: \$141,385.39

PNW Dist. Council (final '84 pledge) \$5,820; S Ruth Y Hashimoto (cr to New Mexico JACL, MPDC) \$500; Philadelphia JACL \$200, Marin JACL (Pledge #4) \$175.

FY-84 DIST. BREAKDOWN
 (Actual: 10-1-83/11-2/84)
 NC-WN-Pac ... 62,388.48
 Pac Southwest ... 39,990.00
 Pac Northwest ... 13,708.75
 Intermountain ... 7,000.00
 Eastern ... 5,220.00
 Central Cal ... 4,990.00
 Mt Plains ... 4,193.16
 Midwest ... 3,895.00
 Total: \$141,385.39

PC Classified Advertising

3—Business Opportunity

RESTAURANT BAR for lease or sale; So. Calif. mountain resort, plus fully equipped, seats 96, living quarters, \$2,000 mo. lease. (213) 836-7308

QUEBEC, CANADA:

Motel Restaurant Bar
 FOR SALE BY OWNER

Motel, 23 units plus 2 apts, restaurant & bar with 100 seating capacity. Air cond., fully equipped, in operation, open year round. Est. for 30 years. Located on the Canada-U.S. border line HWY 15, Que. Province, 30 miles S of Montreal. For more particulars call

(514) 246-2496 or write P.O. Box 264, Champlain, NY 12919.

CANADA

HOTEL AND MOTOR INN

Within 200 mi. of Toronto in heart of business dist., with 35 del units, wall-to-wall carpeting, independent heat con. and air cond, cable TV, tel. conf. rms., member of the Friendship Inn. Seating capt. in dining rm and lounge 55; ample parking. P&L statement avail to serious purchaser. Listed at \$800,000 with \$200,000 down, with a return of 43.1% on your investment of \$200,000. We also have a printing business with sales of 1 1/2 million and fast food business with sales of \$400,000, both of which are showing a very good profit. Call

Lomer Roy / Letts Realty
 (416) 547-9016 or
 (416) 662-3320;
 1408 King St. East;
 Hamilton, Ont.,
 Canada L8M 1H8.

5—Employment

TOPSKOUT

Personnel Service
 Fees paid by employer. Top job opportunity, especially bilingual. If you are looking, we can help. Send us your resume in confidence, include wages expected and specify occupation. Send resume in English to 1543 W. Olympic Blvd, Los Angeles 90015. Employer inquiry welcome.

(213) 742-0810, TLX 673203

LEASING AGENT

Property Management Co.
 Seeking Japanese/English speaking commercial leasing agent.
 Real Estate license required.
 Call Norma (213) 373-8787.
 EOE

ACCOUNTANT CPA

Brentwood CPA firm specializing in real estate medical services & gas & oil has opening for CPA with 3-5 yrs. public acctg. exper. Microcomputer exper. desirable. Challenging assignments & oppy. available.
 (213) 826-7316
 Ask for BOB
 EOE

OPPORTUNITY IN DIBOLL, TEXAS

FOR
 UM/370 SYSTEMS PROGRAMMER

Temple-Eastex, Inc., a fully integrated forests products company located in East Texas has an immediate opportunity for a systems programmer. Support DOS/VSE running under VM on an IBM 4381. Install and maintain IBM software products: CICS, VTAM, NCP, and Power/VSE. Minimum of two (2) years system programming experience required. We offer an opportunity for growth in a small town atmosphere along with excellent company benefits. Interested applicants should send resume to:

TEMPLE-EASTEX, INC.
 Personnel Department
 P.O. Drawer N
 Diboll, Texas 75941, (409) 829-1600
 EOE

8—Real Estate (Acreage)

BEAUTIFUL OREGON FAMILY RANCH BY OWNER
 38 mi. So. of Eugene. 32 acres in permanent pasture for horses, cattle or sheep. 13 acres of timber. A total of 50 acres and 3 homes, creek, fruit, nuts and picturesque. Price \$245,000. Will nego. for cash. Tom Mathews, 9010 SE St. Helens No 144, Clackamas, Oregon 97015. (503) 654-4594

FOR SALE BY OWNER

Antelope Valley, CA

5 ac, \$7,900 FP, your down, \$86 p/mon. Deeds, roads.
 2 1/2 ac, \$11,990 FP, your down, \$128 p/mon. Deeds, roads.
 Please call (213) 398-3396 for further details. Also have other fine properties.

9—Real Estate

SASKATCHEWAN, CANADA

Owner Retiring

Coronach Area. RM 11 & 12, 7 quarters farm, 10 quarters pasture, leased, fenced and cross-fenced. Feedlot for 300 head, lots of corrals and water, grain storage for 20,000 bus., good bldgs. (306) 267-5729, Box 223, Coronach, Sask., Canada S0H 0Z0.

SO. CALIF.

Montreal, Canada

Waterfront property of 61,481 sq ft with an executive house and an attached indoor swimming pool heated all year round; particularly suitable for a professional person with the family; located on the back of the Back River of the Montreal Island. Private sale by owner; asking price \$295,000 US CURRENCY. PLEASE CALL (514) 626-2202 or WRITE to: P.O. Box 11, Pierrefonds, Quebec, Canada H9H 4K8.

ALASKA—BY OWNER

GOLD MINE

Located Cariboo Creek, Alaska. 40 acre placer claim, but due to terrain probably covers 80 ac. of land. Last assay 37.65 ozs. of gold ton black sand, 10.31 oz. of silver ton black sand. Ph: (403) 465-5238, res (403) 481-7413. Lou Schmidt, 7203-183 B St., Edmonton, Alta, Canada T5T 3Z6.

SO. CALIF.

WESTWOOD-Walk to UCLA & Village

2bd, 2 1/2ba 3rd floor loft den w/sundck, lg liv. rm w/dine area, wet bar, ice maker fripl, patio, parquet flrs, mirror d walls laundry area & lots of designer upgrades, this twnhse has lg assume. mort, \$249,000. Ownr: (213) 852-1878 d/s; (213) 470-8903 e/s.

ALASKA—BY OWNER

GOLD MINE

Located Cariboo Creek, Alaska. 40 acre placer claim, but due to terrain probably covers 80 ac. of land. Last assay 37.65 ozs. of gold ton black sand, 10.31 oz. of silver ton black sand. Ph: (403) 465-5238, res (403) 481-7413. Lou Schmidt, 7203-183 B St., Edmonton, Alta, Canada T5T 3Z6.

PC ads make shopping easier!

Call Coleen Harmsen (714) 973-1283

SOUTHERN CALIFORNIA

Hollywood Riviera

Located in Torrance, fabulous ocean and city view. 4,000 sq. ft., 2-story Colonial. 4+BR, 5 BA, large kitchen, music room, large family room fireplace, office and large basement. Numerous other amenities. Listed at \$475K, reduced to \$439K, discounted to ?? Make offer. By owner (213) 375-1597.

9—Real Estate

Montserrat, West Indies

PRIVATE SALE
 "Mar Azul"—350-ft. elevation gives sweeping panoramic view of mountains, valleys, Caribbean Sea to this magnificent 2-story home, 4 BR, 3 1/2 BA, 3,900 sq ft. Formal & informal; living & dining areas, wide galleries both levels. Walled and fenced 1/4 acre, lushly landscaped. Offered Totally and Luxuriously furnished at US \$400,000. Detailed info: J R Hoch, Box 412, Plymouth, Montserrat, West Indies. Tel. (809) 491-5498.

STUDIO CITY

UNOBSTRUCTED CANYON VIEW South of Ventura Blvd. Quiet street off Coldwater Canyon. Modern 2 story house + guest quarters. Extra large living room, wet bar, fireplace, balcony on each floor. 3 bedroom + den, 3 1/2 baths.

\$249K good financing. Exchange possible. Owner (213) 829-1129

CALIF.—ORANGE COUNTY

NEWPORT BEACH: OCEAN VIEW. Relax-watch golden sunsets over Catalina from your living room. Contemporary 3 bd, 2 1/2 ba, home. Convenient cor. loc. in Old CdM. Only steps to Little Corona man beach & shops. Light & airy design, many skylites/beaut. redwood paneling.

MUCH MORE-A MUST SEE!
 Custom built by owner.
 Offered at only \$575,000.
 Full comm. to brokers. (714) 760-8512

CANADA

Ottawa Area

315 Acres

Fronting on shores of Mississippi River, 35 reg'd Holstein cows with milk quota of 220,000. 192-litres, daily on No. 1; 170 head cattle, complete equipment 5 tractors, 2 houses, 2 sets of barns. \$685,000. Other good investments available, commercial, etc.

John Lazenby
 (613) 596-1651
 res: (613) 726-1443
 Re/Max House of R.E. Ltd., Rltr.

CALIFORNIA

DELUXE SHOPPING CENTER

40,435 sq. ft. established shopping center located in Placentia, CA. Center contains both retail and office space. Room for expansion. Center encompasses 2 busy corners. Local property Management available.

Call Coleen Harmsen (714) 973-1283

ASSISTANT DIRECTOR BUSINESS OPERATIONS

The University of Maryland University College
ASIAN DIVISION
 YOKOTA, JAPAN

University College's Asian Division, established in 1956, provides a range of undergraduate courses and degree programs for U.S. service members, government employees, and their families stationed in Asia. Over 30 different sites are served by the Asian Division, which has its administrative headquarters at Yokota Air Force Base, Japan.

Responsibilities: The Assistant Director oversees all business operations of the Asian Division, with responsibility for all fiscal and contracting activity. Specific responsibilities include policy formulation, oversight of accounting, payroll, personnel, purchasing, cash management, and other business functions; preparation of financial statements, preparation of tuition rate proposals; and other duties as assigned by the Director. The Assistant Director supervises a staff of seven.

Qualifications: A bachelor's degree in Accounting, MBA or CPA, and a minimum of five years of professional experience are required. Preference will be given to applicants with experience at an institution of higher education and knowledge of data processing applications.

Salary: Commensurate with qualifications.

Expected Starting Date: January 1, 1985.

Application Deadline and Procedure: The deadline is November 20, 1984. Submit a letter of application, professional resume, and the names of three references.



Assistant to the Director
 Administration and Finance
 The University of Maryland University College
 University Boulevard at Adelphi Road
 College Park, MD 20742

The University of Maryland actively subscribes to a policy of Equal Employment Opportunity.

IN THEIR OWN WORDS



THE ISSEI



Verbal Portraits of Japanese Pioneers in America

THE ISSEI

PORTRAIT OF A PIONEER
 An Oral History

Eileen Sunada Sarasohn

A unique work ... Destined as an important source work ... for future scholars, for the Japanese Americans themselves. \$21 postage & handling

Issei Oral History Project Inc.

6942 Gallery Way

Sacramento, CA 95831

Please send _____ copies of **The Issei** @ \$21 postpaid to:

Name _____

Address _____

City, State, Zip _____

6th Edition
FAVORITE RECIPES
 \$6.00 per copy
 Includes postage & handling
 So. Alameda County
 Buddhist Church Fujinakai
 32975 Alvarado-Niles Rd.
 Union City, CA 94587

Kimura PHOTOMART
 Cameras & Photographic Supplies
 316 E. 2nd St., Los Angeles
 (213) 622-3968

Empire Printing Co.
 COMMERCIAL and SOCIAL PRINTING
 English and Japanese
 114 Weller St., Los Angeles CA 90012
 (213) 628-7060

COMPUTER TRAINING

Plaza Gift Center
 IN ENGLISH & JAPANESE
 111 Japanese Village Plaza Mall L.A., CA 90012
 680-3288 687-4115

"The only Kamon designed for Japanese Americans"
 THE ORIGINAL BRONZE
J A KAMON
 (Japanese American Family Crest)
 CONTAINS EVERYTHING
 A JAPANESE AMERICAN MUST KNOW TO RESEARCH AN ACCURATE FAMILY HISTORY
 To place order / For Further Info, please contact:
 YOSHIDA KAMON ART
 312 E. First St., Suite 205
 Los Angeles, CA 90012; (213) 629-2848 / 755-9429
 KEI YOSHIDA, Researcher/Artist NINA YOSHIDA, Translator
 • Kamon/Surname Research and Translation Service •

SHORT & SMALL MEN'S APPAREL

FALL '84
 SUITS & SPORT COATS
 BY GIVENCHY, LANVIN,
 VALENTINO AND
 ST. RAPHAEL ARE
 ARRIVING IN SIZES
 34-42 SHORT & EXTRA
 SHORT LENGTHS. FOR
 A GOOD SELECTION
 SHOP EARLY.

785 W. HAMILTON AVENUE
 CAMPBELL, CALIFORNIA 95008
 PHONE: 408 / 374-1466
 M-F: 12-8:30, SAT: 10-6, SUN: 12-5



OWNER: KEN UYEDA

KEN & COMPANY

Marutama Co. Inc.
 Fish Cake Manufacturer
 Los Angeles

Cut 1984 Taxes by 100%

Receive Up to 20 Times Your Investment in Cash Flow
 And Recover Your Back Taxes for Three Years with the Best Non-Abusive Tax Shelter!!

FREE SEMINAR IN State-of-the-Art WIND FARMS

Nov. 13, 7:30-8:30pm, San Mateo (Dunfey Hotel)
 Nov. 14, 7:30-8:30pm, Sacramento (Red Lion Inn)
 Nov. 15, 7:30-8:30pm, San Jose (Red Lion Inn)

For Information or Reservations
 Call (800) 882-9463 or (415) 570-6444

MANY SEMINARS IN OTHER AREAS
 CALL FOR SCHEDULE

WINDTRICITY
 155 Bovel Road, Suite 430
 San Mateo, CA 94402-3112

(Sold only through an Offering Memorandum to California residents who satisfy suitability requirements of \$150,000 net worth or \$50,000 net worth and \$50,000 taxable income.)

Donations to JACL-Pacific Citizen For Typesetting Fund from the JACL Chapters

Three more chapters have contributed to the JACL-Pacific Citizen typesetter fund. We appreciate Downtown L.A. JACL's challenge to other JACL chapters to support the PC and be counted.

As of Nov. 9, 1984

Chapter	Amt	Chapter	Amt
Berkeley	\$200	Riverside	\$300
Contra Costa	50	St Louis	100
Dayton	150	Salinas Redress	50
Downtown L.A.	100	San Diego	500
French Camp	50	San Fernando Vly	200
Grtr LA Sngles	50	San Jose	100
Hoosier	100	Sonoma County	100
Marysville	50		

Contributions to Pacific Citizen

As of Nov. 10: \$13,800.31 (524)
Last week: \$13,088.50 (511)
This week: \$ 711.81 (13)
\$ 2 from: Norman Abe.
\$ 5 from: Tom Ogino.
\$10 from: Joe Yamamoto,
Ronnie Yokota.
\$20 from: George/Lillian
Kanatani, Ray/Grace Michi-
hira, Mori Shimada.

\$25 from: George/Kay Fuji-
nami, Sarah Yogi.
\$50 from: French Camp
JACL.
\$74.81 from: Interest.
\$200 from: Berkeley JACL.
\$250 from: JACL Women's
Concerns Committee.

Thank You!

People

● Awards
Masanori Fujimoto and George Michio Narumi, advisors for Boy Scout Troop 379 sponsored by Koyasan Buddhist Temple in Los Angeles, received

the 1984 Hototogisu (Cuckoo) Award from the Boy Scouts of Japan. The award is presented in recognition of services to scouting and creating goodwill between scouts of U.S. and Japan.

● Arts
Pamela Matsuo is the new general manager of the San Jose Taiko Group.

Book Sales: 'And Justice for All'

(1 case = 18 books, \$238.77)
4-18-84—7-3-84 5,552.21
#1 total (15 chapt, 26 cs)
7-9-84—7-26-84 4,600.91
#2 total (15 chapt, 46 cs)
9-7-84—9-17-84 2,445.90
#3 total (5 chapt, 7 cs)
Redress Fund \$12,609.02.
#4 total (3 chapt, 5 cs)
Redress Fund \$13,221.56.
#5 total (2 chapt, 2 cs)
Redress Fund \$13,693.33.

REPORT #5
Seabrook \$238.77, Sonoma County \$233.

The Mike M. Masaoka Fellows

Membership in the Masaoka Fellows is achieved by individual or corporate contributions to the Mike M. Masaoka Fund, a perpetual fund from which proceeds would annually support the general operations of the JACL, to which Mike has devoted over 40 years. Contributions to the fund, c/o JACL

HQ, are graded as follows:
Fellow—\$1,000-\$2,500; Emeritus—\$2,500 minimum; Sustaining—\$200 for 5 yrs; Amicus—Less than \$1,000.
10-1-83 to 10-30-84 \$ 6,400 (October, 1984)
Budd Fukei (3d inst/'85) \$200, Anon (in mem of Henry Tani) \$200.
Fund Total \$15,720

Chapters Soliciting Holiday Issue Ads

JACL Chapters are currently gathering Season's Greetings for the annual Holiday Issue.

DEADLINE: NOV. 30
Or send them directly to the Pacific Citizen.
Thanks!

TOYO
Miyatake
STUDIO
318 East First Street
Los Angeles, CA 90012
(213) 626-5681

MIKAWAYA
SWEET SHOPS
244 E. 1st St., Los Angeles
(213) 628-4945
2801 W. Ball Rd., Anaheim
(714) 995-6632
Pacific Square, Gardena
1630 Redondo Beach Blvd.
(213) 538-9389
118 Japanese Village Plaza
Los Angeles /
(213) 624-1681

Plaza Gift Center
FINE JEWELRY - CAMERA - VIDEO SYSTEM
HOME COMPUTERS - WATCHES - TV - RADIO
SOFTWARE - DESIGNER'S BAG - BONE CHINA
Authorized SONY Dealer
111 Japanese Village Plaza Mall
Los Angeles, CA 90012
(213) 680-3288

PARADISE OKAZU-YA RESTAURANT
Specializing in Hawaiian-Orient Cuisine
OPEN Tue-Sat, 7am-7pm • Sun. 7am-5pm
1631 W. Carson St., Torrance - 328-5345
Eat In or Take Out
Closed Monday Only
Quick service from steam table.
Combination Plate
Very Reasonable Prices
OPEN FOR BREAKFAST AT 7 A.M.
Our own style Portuguese sausage mix,
Spam, Boloni, Chashu.
(With eggs & choice of rice or hash browns)
Includes Coffee, Tea or Miso Soup.

GIGANTIC
\$22.5 MILLION
LIQUIDATION
CONSISTING OF MACHINERY, TOOL AND EQUIPMENT
FROM THE SHELL SCOTFORD REFINERY PROJECT
Located at Turbo Industrial Park, 1/2 miles north of the Clover Bar
Feed Mill Highway 16E. Turn onto Sherwood Park Road and follow the
Road to the Red Blimp in the Sky.
Open 9 AM to 9 PM Monday to Friday
Saturday 9 AM to 5 PM, Stock arriving daily
TOOLS: Replacement cost \$6 million. WELDING EQUIPMENT: Welders
Hose, Torches, Stingers, Line Up Clamps, Rod, Welding Cable, etc., etc.
PIPE FITTING EQUIPMENT: Power Threaders, Dies, Tr-Stands, Vices,
Beveling Machines, etc. PIPE FITTING & VALVES: Approximately \$5
million in Inventory. CARPENTRY EQUIPMENT: Band Saws, Radial Arm
Saws, Skill Saws, etc., etc. TRAILERS: 200 Units various sizes and
Applications. VEHICLES: Approx. 100 Trucks, various sizes. ELECTRICAL
TOOLS: Extension Cord, Generator Sets, Light Plants, Cable
Pullers. LUMBER: Scaffolding Planks, Plywood, Heavy Timber, Kelly
Panels, etc., Approx. 1.5 Million in All-Around Scaffolding. CONSTRUCTION
EQUIPMENT: Wackers, Tampers, Rollers, Forklifts, etc. CON-
CRETE EQUIPMENT: Power Trowels, Vibrators, Tamps, Forms, Con-
struction Heaters, etc. If you have an Industrial Project we probably have
everything you are going to need. Come Out Today.
GEOPETROL RESOURCES LTD.
Box 3355, Fort Saskatchewan, Alta.,
Canada T8L 3T2
(403) 998-0509, ext 362, 364 (403) 467-3530

CHIYO'S
Japanese Bunka Needlecraft
Framing, Bunka Kits, Lessons, Gifts
(714) 995-2432: 2943 W. Ball
Rd., Anaheim, CA 92804
(213) 617-0106: 450 E. 2nd
St., Honda Plaza, L.A. 90012

Favorite Recipes
of New Mexico JACL
Members and Friends
103-pp. \$7 postpaid
N.M. JACL Arts
& Crafts Club,
7624 Osuna NE,
Albuquerque, NM 87109

XMAS SHOPPING SERVICE
For Japanese gift items. Service fee:
6% of the cost of merchandise +
UPS (you save time and gasoline).
For details, send self-addressed
stamp envelope and 50c to:
Oriental Gift World
1908 Beverly Blvd. #104, Los Angeles,
CA 90057, (213) 413-5207,
484-0411. We'll locate the lowest
price in L.A. for the gift you want.

Complete Home Furnishings
Koby's Appliances
15120 S. Western Ave.
Gardena, CA
324-6444 321-2123

ED SATO
PLUMBING & HEATING
Remodel and Repairs
Water Heaters, Furnaces
Garbage Disposals
Serving Los Angeles
293-7000 733-0557

I.M. Hairstyling
Hair Care for Women & Men
Shampoo & Haircut—\$10
Permanent Wave—\$40
For Other Services at Realistic
Prices Call 378-3327
4172 Pacific Coast Hwy.
Village Shop #105,
Torrance, CA 90505

BOYNTON BEACH
Fastest growing area in South Florida
Prime Location
Close to new Boynton Mall area
Congress Ave. and Ocean Drive
For sale (or) joint venture
118,000 sq. ft. land
Zoned Commercial
Permits in Place, architects plans plus
other soft costs for 75,000 sq. ft. building
Contact
Don Lewis (514) 731-7961 Joe Jekkel
Brokers protected.

Four Generations
of Experience ...
FUKUI
Mortuary, Inc.
707 E. Temple St.
Los Angeles, CA 90012
626-0441
Gerald Fukui, President
Ruth Fukui, Vice President
Nobuo Osami, Counsellor

ESTABLISHED 1936
NISEI TRADING
Appliances - TV - Furniture
249 S. San Pedro St.
Los Angeles 90012
(213) 624-6601

AT NEW LOCATION
Aloha Plumbing
Lic. #201875 -- Since 1922
PARTS - SUPPLIES - REPAIR
777 Junipero Serra Dr.
San Gabriel, Ca 91776
(213) 283-0018

KUBOTA NIKKEI
MORTUARY
(Formerly Shimatsu,
Ogata & Kubota
Mortuary)
911 Venice Blvd.
Los Angeles, CA 90015
Phone: (213)
749-1449
Y. Kubota • H. Suzuki • R. Hayamizu
Serving the Community
for Over 30 Years

Commercial & Industrial
Air Conditioning &
Refrigeration
CONTRACTOR
Glen T. Umemoto
Lic. #441272 C38-20
SAM REIBOW CO.
1506 W. Vernon Ave.
Los Angeles / 295-5204
Since 1939

De Panache
Today's Classic Look
for Women & Men
Call for Appointment
Phone 687-0387
105 Japanese Village Plaza
Mall, Los Angeles 90012
Toshi Otsu, Prop.

Yarraloch
Killara Road, Gruyere
Melbourne
Australia
Melbourne: 35 miles Lilydale: 9 miles
An outstanding scenic cattle breeding and fattening
property with considerable residential potential;
extensive frontage to Yarra River and Woori Yallock
Creek; wildlife reserve. 1518 acres
including farm buildings, cattle yards, 600 acres
pasture in 9 paddocks, plus forest land.
AUCTION
2.30 pm Friday 30th November 1984
at National Mutual Theatre.
447 Collins Street, Melbourne.
Sale particulars from:
Jones Lang Wootton
500 Collins Street
Melbourne
Phone: (Melbourne) 627621
Pat Rice & Hawkins Pty Ltd.
360 William Street
Melbourne
Phone: (Melbourne) 328 3844

PC Business-Professional Directory

Greater Los Angeles
ASAHI TRAVEL
Supersavers-Group Discounts
Apex Fares-Computerized-Bonded
1111 W Olympic Blvd., LA 90015
623-6125/29 • Call Joe or Gladys
Flower View Gardens #2
New Otani Hotel, 110 S Los Angeles
Los Angeles 90012 Art Ito Jr.
Citywide Delivery (213) 620-0808
Inoue Travel Service
1601 W. Redondo Beach Bl, #209
Gardena, 90247; 217-1709; Offices
in Tokyo, Japan / Lima, Peru
TATAMI & FUTON
(818) 243-2754
SUSUKI FUTON MFG.
Tama Travel International
Martha Igarashi Tamashiro
One Wilshire Bldg., Ste 1012
Los Angeles 90017; (213) 622-4333
Tokyo Travel Service
530 W. 6th St. #429
Los Angeles 90014 680-3545

Greater Los Angeles
Yamato Travel Bureau
321 E 2nd St, #505
Los Angeles 90012 624-6021
Orange County
Exceptional Homes
and Investments
VICTOR A. KATO
Residential-Investment Consultant
18682 Beach Blvd, Suite 220
Huntington Beach, CA 92648
(714) 963-7989
The Paint Shoppe
LaMancha Center, 1111 N Harbor
Fullerton CA 92632, (714) 526-0116
Kane's Hallmark
CENTER
LaMancha Center, 1117 N Harbor
Fullerton CA 92632, (714) 992-1314
San Diego
PAUL H. HOSHI
Insurance Service
852-16th St (619) 234-0376
San Diego CA 92101 res. 264-2551

Ventura County
Calvin Matsui Realty
Homes & Commercial
371 N. Mobil Ave, Ste. 7,
Camarillo 93010, (805) 987-5800
San Jose
Kayo K. Kikuchi, Realtor
SAN JOSE REALTY
996 Minnesota Ave., #100
San Jose, CA 95125-2493
(408) 275-1111 or 296-2059
Tatsuko "Tatty" Kikuchi
General Insurance Broker, DBA
Kikuchi Ins. Agy.
996 Minnesota Ave., #102
San Jose, CA 95125-2493
(408) 294-2622 or 296-2059
Edward T. Morioka, Realtor
580 N. 5th St., San Jose, CA 95112
(408) 998-8334 bus; 371-0442 res.
Wayne Nishinaka, Agent
Farmers Insurance Group
2680 Cropley, San Jose, CA 95132
(408) 943-0713/5 res. 996-2582

San Jose
UYEDA CO.
Plumbing Contractor
New Construction - Remodel
Licensed - (408) 371-1209
Watsonville
Tom Nakase Realty
Acreage, Ranches, Homes, Income
TOM NAKASE, Realtor
25 Clifford Ave. (408) 724-6477
San Francisco Bay Area
Y. KEIKO OKUBO
Five Million Dollar Club
39812 Mission Blvd.,
Fremont, CA 94539; (415) 651-6500
Lake Tahoe
RENT INC Realty Inc.
Sales, Rentals, Management
Box 65, Carmelian Bay, CA 95711
(916) 546-2549; Shig-Judy Tokubo
Seattle, Wa.
Imperial Lanes
Complete Pro Shop, Restaurant, Lounge
2101-22nd Ave So. (206) 325-2525

Seattle
UWAJIMAYA
...Always in good taste.

For the Best of
Everything Asian.
Fresh Produce, Meat,
Seafood and Groceries.
A vast selection of
Gift Ware.
Seattle • 624-6248
Bellevue • 747-9012
Southcenter • 246-7077

The Intermountain
Sales
Mam Wakasugi, Rep.
Row Crop Farms; Blackaby Real Estate,
Rt 2 Bx 658, Ontario, OR 97914
(503) 881-1301, 262-3459
Chicago
Sugano Travel Sv.
17 E Ohio St, Chicago IL 60611
(312) 944-5444 784-8517, eve, Sun
New Jersey, Penna.
Ben M. Arai
Attorney at Law
126 Mercer St., Trenton, NJ 08611
Hours by Apmt. (609) 599-2245
Member: N.J. & Pa. Bar
Washington, D.C.
Mike Masaoka Associates
Consultants - Washington Matters
900-17th St NW, Wash, DC 20006
(202) 296-4484

SHUN
(SEASON)
Jan. 1 - Dec. 31
Japanese
Cookbook
BY MATAO UWATE
Learn How to Make
New Year Dishes
(Osechi)
History, Traditions,
Recipes - p.b. - 33
MAIL \$12 TO
MATAO UWATE
110 N. San Pedro St.
Los Angeles, CA 90012
(213) 628-4688
1985 TOUR
Sunday, June 23

REACTION

Continued from Front Page

"Much of the electorate went for form over content. They weren't looking at what is happening... The people have bought more of a hope than a reality," Nishio said.

Tom Hsieh of San Francisco, chair of the Asian Pacific Caucus of the Democratic National Committee, accentuated the positive, saying that Asian Pacific Democrats made a "tremendous amount of progress" during the past four years.

"This election rallied Asian Pacific Americans across the country... because of the election, we are able to have 22 state caucuses across the nation," Hsieh

said. "We see that many Asians are much more aware that political involvement is important to them."

Between now and 1988, Hsieh plans to work on developing leadership and resources and strengthening the network between Asian Pacifics in different parts of the country. Reagan's policies, he said, "will give everyone an incentive to work harder" because "the contrast [between the two parties] will be so strong."

In fact, Hsieh said, Reaganism will provide "a much better environment for us to work out our problems and develop our strength" than would a Democrat in the White House.

RESULTS

Continued from Front Page

elected to the 3rd District Court, receiving the second highest number of votes (113,048 with 99% of the precincts reporting). Judge Judith Billings received over 144,000 votes. Uno is the first Asian American to serve on the district court level in Utah.

Tom Shimizu, a Republican,

easily won reelection as Salt Lake County commissioner against opponent Chris Beck, 167,194 to 89,698.

In the Delaware race for lieutenant governor, Democrat S.B. Woo, a physics professor, narrowly beat Republican Battle Robinson, 120,545 to 120,031. Woo is the first Asian American to hold a state-level position in Delaware.

Calendar

- NOV 16-18
Midwest DC—Dist council mtg hosted by Detroit Chapter
- Milwaukee—Ann'l Hol Folk Fair, Milwaukee MECCA
- NOV 16 (Friday)
New York—Asn Am Legal Def & Ed Fund 10th anny celeb, Lib & Mus of Perf Arts, Lincoln Cntr; showing of 'Unfinished Business,' info Phil Nash 966-5932
- Los Altos Hills—June Watanabe Dance Co perf, Foothill Coll Th, 8pm
- NOV 17 (Saturday)
Houston—Speech by James Shimoura, Four Seasons Htl, 1300 Lamar, 2pm; info Betty Waki, (713) 643-1338
- Seabrook—Xmas craft bazaar, 10am-5pm, Seabrook and Woodruff Sch
- Washington—Ann'l gen mtg, Bradley

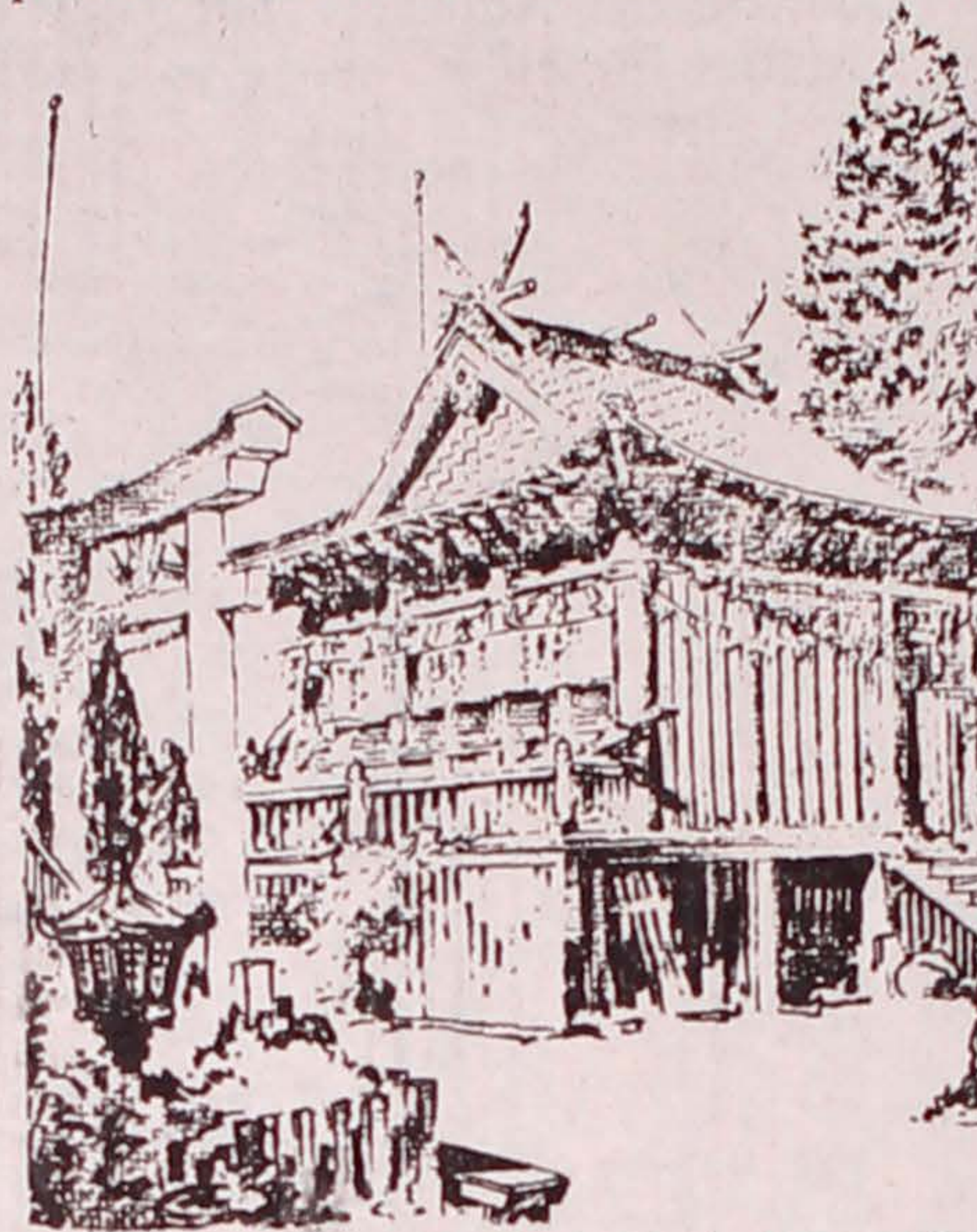
- Hills Presbyterian Ch, 6pm
- Carson—Ann'l Turkey Shoot, Bowl-A-Drome, Western & 220th, Torrance, 2-4:30pm; info Kaz Nishida 835-9833
- Los Angeles—Wksp on leadership, 9am-12:30pm, Int'l Stud Cntr, 1023 Hilgard Av; tkts \$20, As/Pac Women's Network members \$15; students \$10; info Feele 206-8616
- Seattle—Ayame Kai hol crafts fair bnft Nikkei Concerns, 1427 S Main, 10-4
- NOV 18 (Sunday)
NCWNP Dist Council—8th ann'l volleyball tourney, Terra Linda HS, 320 Nova Albion Way San Rafael, 9am, info 897-8006
- PSW Dist Council—Quarterly mtg, Torrance Civic Lib, info 626-4471
- East Los Angeles—Evening at East West Players ('Song for a Nisei Fisherman'), box supper 6pm; tkts \$15, redress bnft; info Mable Yoshizaki, 263-8469

LITTLE TOKYO LIFE (No. 41):

San Pedro / Terminal Island

by Harry Honda

Much can be said by many PC readers of the prewar Terminal Island-San Pedro scene—where about 2,000 lived and worked in the fishing industry. They can relate in fine detail what happened to them in wake of Pearl Harbor. They



Drawing by Charles H. Owen (1940)

The Shinto shrine on Terminal Island stood for 25 years, frequented by the Issei fishermen before going to sea and upon their safe return.

were given but 48 hours by the U.S. government to leave the island on their own. The Terminal Island Issei-Nisei were the first group to be removed by government order. Such shocking and harsh treatment is not well known.

At Fish Harbor/San Pedro, Nakahara & Co. (ship chandlers) and wholesale fish dealers were the major Japanese enterprises, but the three tight blocks of Tuna St., and cross streets of Wharf, Cannery and Terminal were packed with fish packing plants, offices, banks, a newspaper (Nanengan Jiho—South Coast Review), cafes and eating houses (Minato Udon), markets, manju-ya, Ishino Hotel, rooming houses, shoe store, Sato's gas station and gas suppliers (for

the ships), Mikado music shop, photographer, sporting good shops, pool halls, etc. The Tosanko Koritsu Gakko (the Issei rendition of East San Pedro Public School) stood at Tuna and Terminal Way.

While major communities had several Kenjinkai offices, on Terminal Island there were several "mura—village" offices. Their main Wakayama Kenjinkai base was in Little Tokyo. The Kannon shrine (illustrated above) was behind the newspaper office at 151-D Cannery.

How compact and bustling it was then cannot be easily forgotten by this occasional visitor. In the carefree years of the 1930s, we remember catching serpentes from relatives and friends leaving for Japan at either the NYK or OSK berths, covering baseball games on Terminal Island or swimming at Brighton Beach at the island's east end, where the power generating plant still stands—though protected by big dikes because of land subsidence in the past three decades. Until the '60s, a ferry connected San Pedro and Terminal Island. Now stand three bridges (one looks like the Golden Gate bridge) at both ends and in the middle of the island.

Upcoming 1985 Escorted Tours

Japan Spring Adventure	Apr. 8
Europe	May and June
Canadian Rockies - Victoria (8 days)	June 19
Japan Summer Adventure	July 2
Hokkaido-Tohoku (No. Japan)	Sept. 30
East Coast & Foliage (10 days)	Oct. 7
Japan Autumn Adventure	Oct. 15
Far East (Bangkok, Singapore, Malaysia, Hong Kong, Taiwan, Japan)	Nov. 1



For full information/brochure

TANAKA TRAVEL SERVICE
441 O'Farrell St. (415) 474-3900
San Francisco, CA 94102

1985 West L.A. JAACL

Travel Program

FOR JAACL MEMBERS, FAMILY & FRIENDS

* Late Changes/Addition TOUR DATES: -GUIDES
Las Vegas Bus-Fun Trip Nov. 30-Dec. 2: Geo. Kanegai
K ('84)—Spcl Holiday Tour Dec 22-Jan 2: G. Kanegai

1985 TOURS

- 1—Japan Snow Festival Jan. 30-Feb. 13: Yuki Sato
 - 2—Cherry Blossom-Kyushu-Honshu Apr 1-21: Toy Kanegai
 - 3—Wash'n DC Heritage Tour May 1-12: Yuki Sato
 - 4—Basic Japan + HK, Bangk May 11-29: Phyllis Murakawa
 - 5—European Tour June 1-22: Toy Kanegai
 - 6—Canadian Rockies (Special) Jun 20-24: George Kanegai
 - 7—Japan Summer Tour Jun 22-Jul 6: Bill Sakurai
 - 8—Ura-Nihon, HK, Bangk Sep 28-Oct 19: Veronica Ohara
 - 8A—Izu, Kii Pnsl, Hokkaido, T'hoku Sep 28-Oct 19: S Yagi
 - 9—China & Kyushu Tour Sep 29-Oct 22: Jiro Mochizuki
 - 10—Ura-Nihon, No. Kyushu Tour Oct 5-26: Bill Sakurai
 - 11—Mediterranean Cruise Sep 29-Oct 11: Toy Kanegai
 - 12—Fall Foliage/New Eng. Can. Oct 3-11:
 - 13—Japan Highlights Nov 2-Nov 14:
 - 14—Spcl. Japan Holiday Tour Dec 21-Jan 4: Geo. Kanegai
- Mini-Group air fare from Sept. 15 on a bi-weekly travel/tour.
Mini-schedule 1985—30 days Japan Homestay to or from Japan.
Brochure available in early January 1985.

FOR INFORMATION, RESERVATIONS, CALL OR WRITE
Roy Takeda: 1702 Wellesley Ave., West Los Angeles 90025 820-4309
Steve Yagi: 3950 Berrymill Ave., L.A. 90066 397-7921
Toy Kanegai 820-3592 Bill Sakurai: 820-3237 Amy Nakashima 473-9969
Veronica Ohara 473-7066 Yuki Sato 479-8124 Chas. Nishikawa 479-7433
Jiro Mochizuki 473-0441 Phyllis Murakawa 821-8668
Land Arrangements by Japan Travel Bureau International
West L.A. JAACL Tour Brochures Available

West Los Angeles JAACL
TRAVEL CHAIR: GEORGE KANEGAI-820-3592
1857 Brockton Ave., Los Angeles, CA 90025

Flight and tour meetings every 3rd Sunday of the month, 1 p.m.,
at Felicia Mahood Center, 11338 Santa Monica Blvd., West L.A.

West LA JAACL Flight, c/o Roy Takeda
1702 Wellesley Ave., Los Angeles, CA 90025

Please reserve seat(s) for Flight No. _____
I agree to conditions of the contract and brochures. Flight
schedules are subject to change.

Name _____
Address _____
City, State, ZIP _____
Phone: (Area code) _____
 Send tour brochure Flight only information

Los Angeles Japanese Casualty Insurance Assn.

COMPLETE INSURANCE PROTECTION

Aihara Insurance Agency, Inc.
250 E. 1st St., Los Angeles 90012
Suite 900 626-9625

Anson T. Fujioka Insurance
321 E. 2nd St., Los Angeles 90012
Suite 500 626-4393

Funakoshi Ins. Agency, Inc.
200 S. San Pedro, Los Angeles 90012
Suite 300 626-5275

Inouye Insurance Agency
15029 Sylvanwood Ave.
Norwalk, CA 90650 864-5774

Itano & Kagawa, Inc.
321 E. 2nd St., Los Angeles 90012
Suite 301 624-0758

Ito Insurance Agency, Inc.
1245 E. Walnut, #112 Pasadena 91106
(818) 795-7059, (213) 681-4411 L.A.

Kamiya Ins. Agency, Inc.
327 E. 2nd St., Los Angeles 90012
Suite 224 626-8135

Maeda & Mizuno Ins. Agency
18902 Brookhurst St. Fountain Valley
CA 92708 (714) 964-7227

The J. Morey Company
11080 Artesia Bl, Suite F, Cerritos, CA
90701, (213) 924-3494, (714) 952-2154

Steve Nakaji Insurance
11964 Washington Pl.
Los Angeles 90066 391-5931

Ogino-Aizumi Ins. Agency
109 N. Huntington, Mont y Pk 91754;
(818) 571-6911, (213) 283-1233 L.A.

Ota Insurance Agency
312 E. 1st St., Suite 305
Los Angeles 90012 617-2057

T. Roy Iwami & Associates
Quality Ins. Services, Inc.
2975 Wilshire Blvd., Suite 629
Los Angeles 90005 382-2255

Sato Insurance Agency
366 E. 1st St., Los Angeles 90012
626-5861 629-1425

Tsuneishi Ins. Agency, Inc.
327 E. 2nd St., Los Angeles 90012
Suite 221 628-1365

Wada Asato Associates, Inc.
16520 S. Western Ave, Gardena,
CA 90247, (213) 516-0110

United Way DONORS

Support the Japanese/American community social services by designating your United Way Donations to the



Little Tokyo Service Center, Inc.

ANY other incorporated non-profit social service agency can also be designated. The following is a list of some agencies who are LTSC members:

- Asian American Voluntary Action Center
- Japanese American Community Services
- Japanese American Cultural and Community Center
- Japanese Welfare Rights Organization
- Little Tokyo People's Rights Organization
- So. Calif. Society for the Japanese Blind
- Friends of the Little Tokyo Public Library Services

JAPAN HOLIDAY

TO TOKYO (ROUND TRIP)

from Los Angeles, San Diego, San Francisco, Seattle, Portland	\$ 730
Phoenix	783
Denver	846
New York, Miami, St. Louis, Minneapolis, Detroit, Chicago, Omaha	946
Cleveland, Milwaukee, Washington, D.C., Tampa, Boston, Philadelphia, Atlanta	968

SPECIAL OFFERS

- Korean Airlines. Los Angeles, San Francisco/Tokyo. FREE Honolulu Stop (1-Year Open) ... \$ 594
- Singapore Airline. Los Angeles/Tokyo, nonstop (60 Days Open) ... 670
- Christmas/New Year Vacation Flt available now. round trip \$654, free Honolulu Stop.

(213) 484-6422



JACP
INCORPORATED

414 east third avenue
san mateo, ca 94401

HOLIDAY SALE

Asian American Rag Doll

Soft & Cuddly for Kids

Unique Gift Idea

Fast U.P.S. delivery for continental U.S. only

Lynn is a 19-inch rag doll with hand-embroidered Asian-American features. Her black yarn ponytails are held with pink ribbons that match her polkadot, lace-trimmed dress. She is wearing a pinafore with her name embroidered on it, white bloomers, pink stockings and white shoes.
\$28.00 includes tax, shipping & handling.
Expires Dec. 31, 1984 (415) 343-9408

JACP Inc., P.O. Box 367, San Mateo, CA 94401

I have enclosed \$ _____ for _____ LYNN DOLLS at \$28 each

Please ship to: Name _____

Address: _____

City, State, ZIP _____

