

# pacific citizen

National Publication of the Japanese American Citizens League

November 30, 1984

Newsstand: 25¢ (50¢ Postpaid)

244 S. San Pedro St., #506, Los Angeles, CA 90012-3981 (213) 626-6936, 628-3768

ISSN: 0030-8579 / Whole No. 2,320 / Vol. 99 No. 22

## News in Brief

### Liberals weary of rights battle, psychologist says

NEW YORK — White liberals "seem to feel they have gone far enough" in promoting equal rights, a panelist said at a conference marking the 20th anniversary of the Civil Rights Act. Kenneth B. Clark, professor emeritus of psychology at City College, said that, "The struggle for democracy is an ongoing burden and battle fatigue is a very real phenomenon. People get tired, particularly if they are not the direct victims of the inequities."

Clark added that Blacks who have benefitted from civil rights gains are "less concerned with continuing the struggle than in becoming indistinguishable from their white corporate brothers."

### Bikinians push harder for radioactive cleanup

WASHINGTON—Their homeland still contaminated with radioactivity, the 1,100 displaced people of the Bikini Atoll in the Marshall Islands have taken their case to the United Nations. The Bikinians, whom the U.S. moved to a small, rock-bound islet 38 years ago, asked the UN Oct. 30 to request an opinion from the World Court of Justice on whether the U.S.—which administers the atoll in a UN trust agreement—is obligated to clean up its nuclear contamination.

The U.S. exploded 23 atomic and hydrogen bombs over the atoll between 1946 and 1958 at a cost of approximately \$91 billion in 1984 dollars. Scientists have estimated that without the cleanup, food grown on the islands would be dangerously contaminated for the next 100 years. Cleanup costs would run about \$50 million.

If Congress approves a Compact of Free Association, the U.S. would establish a \$75 trust fund for the Bikinians and health care for those affected by nuclear tests.

### Tea garden vandalized

SAN MATEO, Calif. — A pair of drunks did about \$6,500 worth of damage to the prized Japanese tea garden in San Mateo's Central Park on Nov. 10. The men, leaving a trail of beer cans, overturned a 1,500-pound concrete garden lantern, ripped off railings, broke windows, and knocked boards and timbers off the bridges. Police are continuing their investigation.

## Civil rights policies articulated

WASHINGTON—President Reagan's reelection Nov. 6 has generated a growing concern among minority groups that the next four years will see a reversal of civil rights progress. Of particular concern are Reagan's possible appointments to the U.S. Supreme Court, should any seats fall vacant, and the policies of the U.S. Dept. of Justice. The latter has argued, for example, against affirmative action quotas before the Supreme Court.

Chief spokesman for the Administration's views in this area

is William Bradford Reynolds, assistant attorney general, Civil Rights Division, Dept. of Justice. Following are excerpts from Reynolds' Nov. 14 address before the National Foundation for the Study of Equal Employment Policy.

It should be noted that some civil rights groups, most prominently the Anti-Defamation League of B'nai B'rith, support the Administration's stance on affirmative action quotas. The JAACL has not taken a position on this issue.

\* \* \*

"My position, and that of this Administration, enthusiastically endorses use of affirmative measures, such as recruitment and outreach programs, to bring increased numbers of minorities and women into the workforce, and has insisted on 'make whole' relief for all individual victims of the discriminatory practices. But we have declined, on both legal and moral grounds, to use race-conscious techniques (quotas, goals, set-asides, etc.) that assign to nonvictims of the employer's discrimination a preference based on race...."

"All of the opinion polls show that the American public (both minorities and nonminorities) overwhelmingly support race-neutrality and oppose quota remedies. Congress has similarly committed itself to the high road of equal opportunity, rejecting explicitly any notion that comfort can be found in proportional representation or equality of results."

"And last Term, the same signal came from the Supreme Court in its celebrated decision in *Firefighters Local Union v. Stotts*, the Memphis firefighters' case. [In this case the Court ruled that the fire department could not lay off certain white employees with seniority rights even to keep a certain percentage of minorities on the force. The Court held that "there was no finding that any of the blacks protected from layoff had been a victim of discrimination."]

"*Stotts* may well represent the most significant victory for civil rights in this Nation in a great many years—not a victory for whites or males or union members or any other discrete group in our pluralistic society, but a victory for all Americans."

"I dare to make so bold a statement because the inescapable consequence of the *Stotts* decision is to move government at the federal, state and local levels noticeably closer to the overriding objective of providing all citizens with a truly equal opportunity to

Continued on Page 2

### Depicted slaying

### Student insists humor not racist

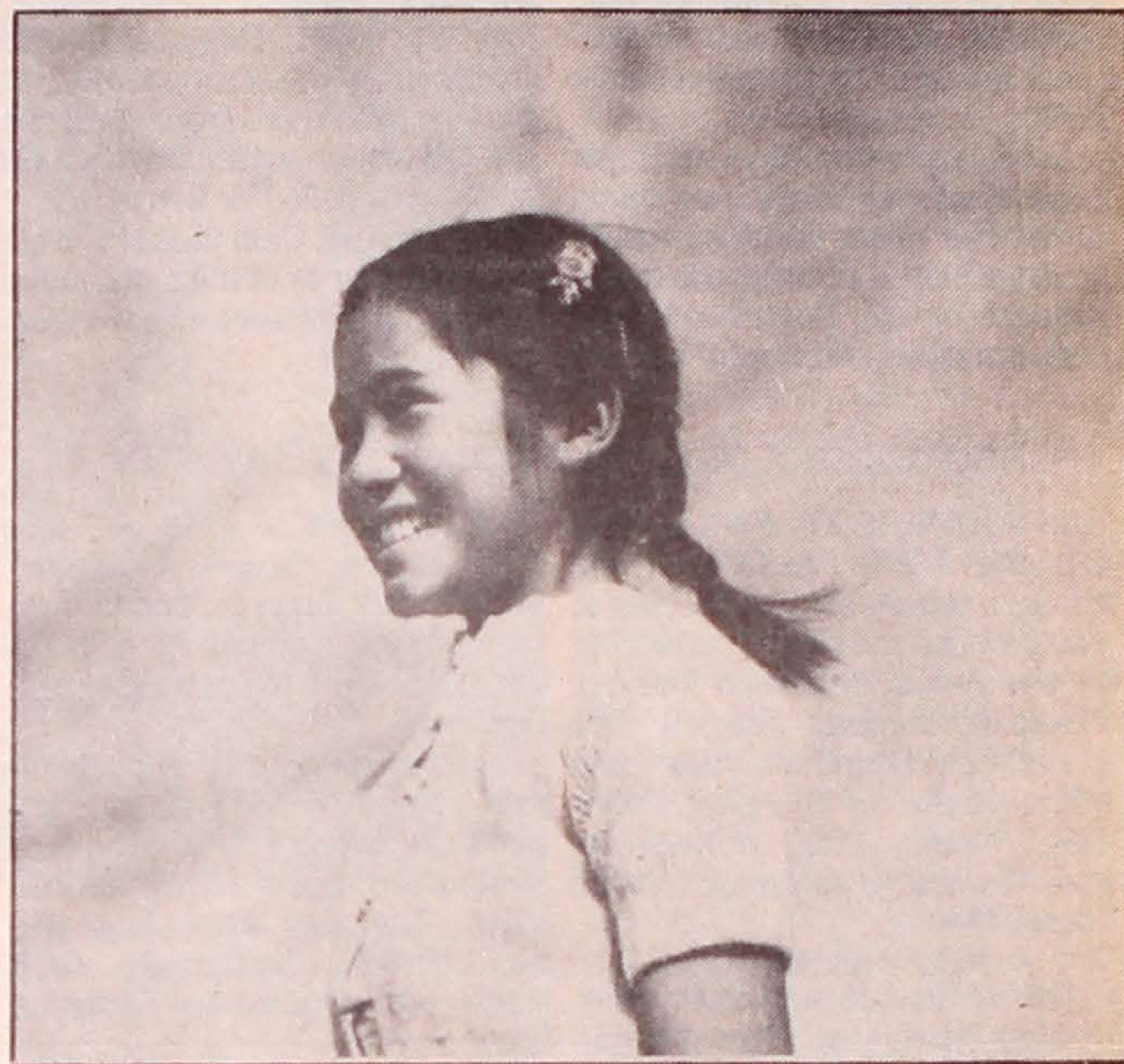
DETROIT—About 40 law students cheered and clapped, giving Bob Connelly first prize, when he unveiled his entry in a Wayne State University pumpkin-carving contest. The winning pumpkin? A depiction of the Vincent Chin slaying, it had Asian features and a baseball bat smashed into it.

Organizers of the Halloween party, thrown by the university's law school student board of governors, said the contest winner was not racist. Connelly, who made a public apology after receiving protests from the Asian community, also denied he was racist.

"I am sorry," the 27-year-old, third-year student said Nov. 15. "If I had any idea I would offend people, I never would have done it. It was arguably in bad taste, but now I am being branded a racist and animal by people who don't even know me. I may have terrible taste, but I am not a racist."

Connelly said his pumpkin was supposed to depict "the entire Vincent Chin case, which I think was a disgrace to the entire legal community." He did not elaborate.

Vincent Chin was beaten to death with a baseball bat in June 1982 by two white men after a drunken argument in a topless bar. The assailants were convicted of manslaughter and sentenced to three years' probation and fined \$3,780 each. A federal jury this June convicted the man who swung the baseball bat, Ronald Ebens, with one count of violating the civil rights of Chin. The Dept. of Justice argued that Ebens and his companion, Michael Nitz, attacked Chin because of the victim's Asian ancestry. Ebens was sentenced Sept. 18 to 25 years in prison and is expected to appeal.



©Ansel Adams Photography

EQUAL BUT NOT FREE—Child interned at Manzanar is among the subjects of Ansel Adams' recently

re-released photo collection, 'Born Free and Equal,' originally printed in 1944 (see story on page 9).

## Men and women learn to work together

by J.K. Yamamoto

LOS ANGELES—Do Asian American women have what it takes to succeed in leadership positions? Are Asian Americans too quiet and passive to take charge in business, politics and community affairs?

Breaking down stereotypes and addressing ethnic and gender-related differences that do exist were two goals of the Nov. 17 "Leadership to Win" conference jointly sponsored by Asian Pacific Women's Network and Leadership Education for Asian Pacifics (LEAP).

The gathering at UCLA's International Student Center was addressed by Monterey Park city councilwoman and former mayor Lily Chen, whose achievements include presidential appointments to the Advisory Committee on the Rights and Responsibilities of Women and to the National Advisory Council on Adult Education and serving on the Platform Committee at the Democratic National Convention.

Having served as the nation's first Chinese American woman mayor, she told the audience, "Pioneering is not easy. But just as with the first pioneers in this country, the rewards for them—and particularly for their children—have been great. For all of you here, our next generation, there is no limit as to what you can achieve. The limits are all self-imposed."

The difficulties Chen has faced as mayor include the "double burden" of providing services for

Asians, who make up one-third of Monterey Park's population, while at the same time serving the entire community. She said that she has proven "that it is important to have an Asian American to serve in a city where we have a large Asian population" but also that "it is possible for this Asian person to represent the interests of all."

Chen, who was born in China, said she also demonstrated that "the blend of two cultures made me a better mayor," giving her "double the resources that I can bring to the community."

Being bicultural had its problems as well. After marrying and having children, "it was very important for me to fulfill my career goals," she recalled. "...and I've proven that we don't have to forsake one's family to achieve professionally. In fact, I think your family has even greater respect for you as an individual if you extend yourself. But because I am from another generation, I felt guilty." She added that she has come to terms with those feelings.

A workshop on "Female/Male Team Building" focused on perceptions men and women leaders have of each other and strategies by which they can work together effectively. The panelists were:

Irene Chu, exec. director, Chinatown Service Ctr.; Irene Hirano, exec. director, T.H.E. Clinic; Ernest Hiroshige, superior court judge; Audrey Noji, clinical social worker; Violet Rabaya, attorney, Office of the Advocate; Bill Tan, attorney; Richard Wong, attorney; and J.D. Hokoyama, director of USC Asian Pacific Ameri-

Continued on Back Page



## 442d honors Duus

SAN FRANCISCO—More than 50 well-wishers from California and Utah came to honor Masayo Duus, author of *Tokyo Rose: Orphan of the Pacific* and *Liberators of Bruyeres*, at a testimonial dinner held Nov. 3 at Yamato Restaurant.

Keynote speaker was Dr. Clifford Uyeda, past JAACL national president. Speaking on "Japanese Americans Today and Their Link with the Past," Uyeda enumerated the sacrifices and accomplishments of the Nikkei since WW2.

Duus explained how her book *Liberators of Bruyeres* came to be. Her original intent was to write about the early Japanese immigrants to Hawaii and the U.S. mainland. When she learned

about the 100th Battalion and the 442nd Regimental Combat Team, she decided to tell their story instead.

Her research, begun in 1978, comprised more than 300 individual interviews in Hawaii, major cities on the mainland, and in Bruyeres, France.

In May 1982 the first of her series on the "Liberators of Bruyeres" was published in "Bungei Shunju" magazine, a prestigious monthly with a circulation of a million readers.

At the dinner Duus received a plaque from the National JAACL, a plaque and a scroll from Company K Club, and a certificate of appreciation from Go For Broke, Inc.

Company K Club plans to circulate videotapes of the testimonial among its members who were unable to attend.

## Reward offered in kidnapping case

BERKELEY, Calif.—Friends and family of a UC Berkeley student who disappeared Nov. 4 while jogging are offering \$5,000 for information leading to her return.

Missing is Roberta "Bibi" Lee, who was last seen being dragged toward a van by a heavy-set white male near Monterey Blvd. in Oakland. A witness was able to identify Lee from flyers posted in Redwood Regional Park, where Lee is reported to have vanished. The sighting has been confirmed by tracking dogs who followed Lee's scent for 100 feet in the area.

The man Lee was seen struggling with is described as white, 40 to 45 years old, with a bloated facial appearance, beer belly, unkempt curly-brown collar-length hair, beard and mustache, and wearing a tan sleeveless t-shirt and tan pants.

Lee is 21 years old, 5 foot 6 inches tall, 115 pounds, with black shoulder-length hair. She was wearing black-and-white striped shorts, a dark shirt and running shoes.

The van they were struggling near is described as a golden metallic brown Dodge, Ford or Chevrolet with smoked windows on the rear doors and no windows along the side behind the driver's seat.

Those who have information regarding the kidnaping should contact Berkeley Police Dept. homicide detail, (415) 644-6839; the 24-hour dept. number, 644-6743; or the Friends of Bibi Lee network, 540-1255.



Missing person Bibi Lee



Sketch of suspected kidnapper

No. 2,322

**If you are moving, allow 3 week's advance notice to report your address change with label on front.**

New Address: \_\_\_\_\_  
City, State, ZIP \_\_\_\_\_

Effective Date: \_\_\_\_\_  
• Thank you for using this form. It saves PC 25 cents in fees.

**Pacific Citizen, 244 S. San Pedro St. #506, Los Angeles, CA 90012**

EXPIRATION NOTICE—If the last four digits on the top row of your label reads 1184, the 60-day grace period ends with the last issue in January, 1985. Please renew your subscription or membership. If membership has been renewed and the paper stops, notify the PC office.

## Hwang one-act plays to premiere in Bay Area

SAN FRANCISCO—Fantasy and intrigue set in traditional and modern Japan are the themes of two new one-act plays premiering at the Asian American Theater Company through Jan. 13. The plays, "The Sound of a Voice" and "The House of Sleeping Beauties," were both written by award-winning playwright David Henry Hwang.

### New York Successes

The works had successful runs in New York last year. Two of Hwang's plays previously produced by the AATC were "FOB," winner of the 1981 Best Play Obie Award, and last year's production of "Dance and the Railroad," a 1982 Drama Desk Award nominee.

"The Sound of a Voice" features Randy Nakano and Diana Tanaka in a story of a warrior who hunts down a woman he believes is a witch, only to fall in love with her.

"The House of Sleeping Beauties" is based on a short story about a bizarre brothel where women are kept in a drug-induced sleep. The play stars Amy Hill and Hiroshi Kashiwagi. Both plays are directed by Christine Yao.

Curtain time is 8 p.m. Thursday through Saturday, and 3 p.m. and 7 p.m. Sunday, at People's Theatre Coalition, Fort Mason Center, Bldg. B. Information: 776-8999.

## RIGHTS POLICIES

Continued from Front Page

compete on merit for the benefits that our society has to offer—an opportunity that allows an individual to go as far as that person's energy, ability, enthusiasm, imagination and effort will take him and not be hemmed in by the artificial allotment given to his group in the form of a quota....

"For those who argue that I overstate the significance of the decision, I refer you to [Supreme Court] Justice Blackmun, the author of the dissenting opinion in *Stotts*, who is reported to have openly acknowledged this summer that *Stotts* effectively 'interred' judicial reliance on quotas, goals, or any other kind of preferential relief to nonvictims, based on race, sex, religion, or national origin....

"There are those who argue that reliance on individual relief for identifiable victims is too harsh an approach and will not fully redress the effects of past discrimination. The available evidence, however, proves this thesis to be wrong—most likely because it fails to appreciate the way in which this relief works.

"Once liability has been established, the Justice Dept. seeks the affirmative remedies of back-pay, retroactive seniority, reinstatement, and hiring and promotion priorities, for all individual victims of discrimination....

"Moreover, the offending employers under our decrees are required to make special, affirmative efforts to recruit minority and

female workers from those communities that had been ignored in the past....

"[These measures] fully eradicate the effects—all the effects—of prior discrimination. And it does so without trampling on the legal rights of innocent employees....

"The use of race in an effort to restructure society along lines that better represent someone's preconceived notions of how our limited educational and economic resources should be allocated among the many groups in our pluralistic society necessarily forecloses opportunities to those having the misfortune—solely by reason of skin color—to be members of a group whose allotment has already been filled....

"I would submit to you that the era of the racial quota has run its course; no longer can it be said that there exists a tolerance for the judiciary to use discrimination as a tool to remedy discrimination. Notwithstanding some detours, and, yes, perhaps even a wrong turn or two along the way, we have emerged from the crossroad on the principled path first charted by Sen. Hubert Humphrey, as the leading sponsor of the landmark civil rights legislation enacted twenty years ago. All Americans can take heart that we are back on the equal opportunity course where no individual—black or white, or brown or red—shall be slighted or favored because of race."

## Council to hear Asian mental health concerns

SACRAMENTO — A state advisory council is holding a series of six public hearings to gather information on the nature of Asian Pacific American mental health needs, announced Allan Seid of Palo Alto, the body's chair.

California Citizens Advisory Council's Ad Hoc Committee on Asian Pacific American Mental Health Issues is a 15-member body that advises the governor, the legislature, and the state department of mental health.

The committee will hear experiences of the APA community in obtaining mental health services and listen to recommendations for effective delivery systems.

The first hearing was held in Los Angeles Nov. 16. Future hearings are scheduled for San Diego, Dec. 7; Sacramento, Jan. 17; Merced-Fresno, Feb. 1; San Francisco-Oakland, Feb. 24; and San Jose, Feb. 25.

For information, call the council office, (916) 323-8301, or Dr. Seid, (415) 327-1056.

## For the Record

In the Nov. 9 PC Henry Goshō's title for the U.S. pavilion at Tsukuba Expo was incorrect. Goshō is Special Asst. to Ambassador James J. Needham, Commissioner General, United States Pavilion, Japan International Exposition, Tsukuba 1985.

# Compare this monthly checking fee with yours.

# \$0.00

If you keep \$2,500 or more in a Sumitomo regular savings or time deposit account, you will not have to pay a monthly fee on checking.\* That can help make balancing your checkbook easier. More importantly, your savings and time accounts will be earning high interest.

See New Accounts and ask about Sumitomo Combined Balance Checking. They'll be glad to make the necessary arrangements or to answer any questions.

\*Applies to Regular Checking, NOW or Sumitomo Super Checking accounts.



**Sumitomo Bank**  
Sumitomo Bank of California Member FDIC

# JOIN

**the National JAACL Credit Union. Just fill in below and mail.**



I am interested in joining. Please send me your informational brochure.

Name \_\_\_\_\_

Address \_\_\_\_\_

City/State/Zip \_\_\_\_\_

PO Box 1721 / Salt Lake City, Utah 84110  
Telephone (801) 355-8040



## Community Affairs

LOS ANGELES — "Can't Stop the Beat!"—a dance party featuring the rock-n-roll band Use a Guitar, Go to Prison—will be held Saturday, Dec. 8 to benefit **East Wind Magazine**. Happy hour begins at 8 p.m., with music from 9 p.m. to 1 a.m. at Downtown Dance Studio, 929 E. 2nd St. Advance tickets are \$5 and can be obtained by calling Richard Katsuda, 680-3729. Tickets at the door are \$7. East Wind is a semi-annual publication covering the politics and culture of Asian Americans.

**Western Region Asian American Project of Family Service Agency** sponsors two presentations about "You and Your Aging Parent," Thursday evenings, 7:30-9:30 p.m., at Venice Japanese Community Center, 12448 Braddock Dr. On Dec. 6 the subject is "Depression, Delirium and Dementia"; on Dec. 13, it is "Resources: What to Consider." Information: Emily Takeuchi or Jon Matsumoto, 478-8241.

**Shogun Santa Children's Parade** begins 2 p.m. on Sunday, Dec. 2 in Little Tokyo. Children will march, dance and sing along 2nd and 1st Sts., ending at Japanese Village Plaza. Santa will hand out treats to all children as he is carried on a *mikoshi*.

SAN MARINO, Calif.—Mark Sakamashi, president of **Financial Planning Consultants, Inc.**, conducts a two-part workshop on personal financial planning at 2600 Mission St., Suite 100. Participants may choose between Tuesday evening sessions, Dec. 4 and 11, 7-10 p.m., or Saturday, Dec. 8 and 15, 9:30 a.m. to 12:30 p.m. Reservations required. Cost is \$150 per individual or \$175 per couple. Information: (818) 799-9511.

SAN FRANCISCO—The **Assn. of Chinese Teachers (TACT)** offers a 1985 calendar of photographs entitled "Chinese Women of America, Past and Present." The calendars are available from TACT Curriculum Project, 746A Ninth Ave., San Francisco, CA 94118. Cost is \$7.50, including postage and handling.

**Nisei Widowed Group** holds its monthly meeting Dec. 9 at the home of Mrs. Yuri Moriwaki from 2 p.m. In-

formation: Yuri Moriwaki, Oakland, 482-3280; Elsie Chung, San Francisco, 221-0268.

**Nihonmachi Little Friends** holds its annual Christmas arts and crafts fair Dec. 1-2, at 2031 Bush St. from 10 a.m. to 4 p.m. Information: 922-8898.

HAYWARD, Calif.—About 600 persons attended the open house ceremony of Eden Issei Terrace on Nov. 3. The project is a 100 unit facility for low-income elderly and handicapped sponsored by **East Bay Issei Housing, Inc.**, and **Eden Housing, Inc.**

SEATTLE—**Northwest Asian American Theatre** holds a benefit party at the Atrium, 5701 Sixth Ave. S., on New Year's Eve, featuring the music of Deems Tsutakawa. There will be hors d'oeuvres, sushi and party favors. Donation is \$20 in advance, \$25 at door. Information: Ed Locke, 281-8748.

**Asian Pacific Women's Caucus** sponsors an Asian Santa Claus in the International District, with whom children may have their picture taken for \$2.50. Santa appears at Wing Luke Memorial Museum, Saturday, Dec. 15, from 11 a.m. to 3 p.m. Information: 522-0858.

COLLEGE PARK, Md. — "Go for Broke" and "Yankee Samurai" photo exhibits are on display at the Parents Assn. Gallery in the student union of the Univ. of Maryland from Dec. 9-21 and Jan. 7-18. Hours are 8 a.m. to 8 p.m. Monday through Saturday; noon to 8 pm. on Sunday. For holiday hours Dec. 22 to Jan. 6, call 454-2801.

HONOLULU — In cooperation with the **Hawaii International Film Festival**, the U.S. Park Service is making available the Arizona Memorial Visitors Center Theatre for showings of "Farewell to Manzanar" and "Nisei Soldier," on Monday, Dec. 3. This is the first time the Arizona Memorial Theater has shown any film to the public other than its documentary of the bombing of Pearl Harbor.

AMSTERDAM, Holland—"Life in the Fast Lane," Lane Nishikawa's one-man show, will be presented at the International Theatre Festival at De Bolie Theater beginning Dec. 7.



Photo by James Young

HELD OVER—"A Song for a Nisei Fisherman" continues through January at East West Players in Los Angeles. (See Calendar, page 6, for details.) Robert Ito (left) stars with Keone Young.

## Film raises \$10,000 in So. California

GARDENA, Calif.—Donations received for the Southern California debut of Steven Okazaki's documentary "Unfinished Business" are expected to reach \$10,000, according to Glenn Oshima, treasurer for the steering committee that organized the screening.

On Oct. 6 at the Gardena High School auditorium, an audience of

900 saw the film, which documents the WW2 internment of Japanese Americans and the legal battle of three Nisei—Fred Korematsu, Gordon Hirabayashi and Minoru Yasui—who challenged the government's actions.

The donations, which are still coming in, will help offset the cost of distribution of the film.

## Chicago endorses monetary redress

CHICAGO—By unanimous action, the city council of Chicago on Oct. 31 adopted a resolution endorsing the findings and recommendations of the Commission on Wartime Relocation and Internment of Civilians. The council also urged that "all legislative bodies in the United States enact similar resolutions urging Congress to redress the wrongs inflicted on Japanese Americans during World War II."

The resolution was originally introduced by Alderman David Orr, representing the 49th ward on Chicago's far north side. In his testimony, presented Oct. 19, before the council's Committee on Intergovernmental Relations, Orr stated that, "Their [Japanese Americans'] story is poignant and sometimes painful. My goal is not to reopen these kinds of wounds but rather to face up to a sad chapter in American history, recognize our mistakes and rededicate ourselves to the protection of our civil liberties."

In stating why it is important that the city council address this issue, Orr said, "I'm convinced that every level of government, city, state and federal, must accept responsibility for the protection of civil liberties. We cannot claim that we have done any adequate job in office while at the same time other branches of government neglect or infringe on the rights of any citizen. Many of us may wish that someone else would handle such controversial matters, but we all share mutual responsibility..."

In concluding his remarks, Orr stated the importance of immediate action on the resolution. "It is important that we provide a clear message to the 99th Congress when it convenes in January of 1985."

Carat  
Karate

Japanese Charms  
Japanese Names  
Japanese Family Crests

12558 Valley View, Garden Grove, CA 92645 • (714) 89-4554

DELIGHTFUL seafood treats  
DELICIOUS and so easy to prepare

**MRS. FRIDAY'S**  
Gourmet Breaded Shrimps and Fish Fillets

Fishing Processors, 1327 E. 15th St., Los Angeles, (213) 746-1307

NOW AVAILABLE ON THE MAINLAND

**Hawaii's Number One Hawaiian Host Chocolates**

CHOCOLATE COVERED MACADAMIA NUTS & CARAMELS • DRY ROASTED-SALTED MACADAMIA NUTS • BRITTLES & CHEWS • COCONUT CANDIES • HAWAIIAN JAMS & JELLIES • HAWAIIAN HONEY • SPECIAL GOURMET PACKAGE.

Call Us for Fund-Raising Sales Promotions

**Hawaiian Host Chocolates**  
15601 S. Avalon Boulevard  
Gardena, California 90248  
Phone (213) 532-0543  
PLANT TOURS AVAILABLE BY APPOINTMENT

**CARBELL'S flowers**

Across St. John's Hosp.  
2032 Santa Monica Blvd.  
Santa Monica, CA  
KIRK ISHIZUKA 828-0911

**Naomi's Dress Shop**  
Sports & Casual • Sizes 3 to 8  
133 Japanese Village Plaza Mall  
Los Angeles • 680-1553  
Open Tue-Fri: 9:30-6:30, Sat: 11-9  
Sun: 11-5 Closed: Monday

'PC' Advertisers Look Forward to Serving You

**Shōgun Santa**

**Children's Costume and Singing Parade**

Celebrate the arrival of Shōgun Santa. See Shōgun Santa march through the streets of Little Tokyo followed by hundreds of costumed children, award winning drill teams, and lively dancers.

Sunday, December 2nd, 2:00pm

Follow the parade to Japanese Village Plaza and see live music & dance and arts & crafts. Free balloons & gifts. Shōgun Santa picture booth.

**JAPANESE VILLAGE PLAZA**  
1st St. near Central, Little Tokyo  
Info: (213) 620-8861



## 'Used Car Dealers'

EAST WIND

Bill Marutani



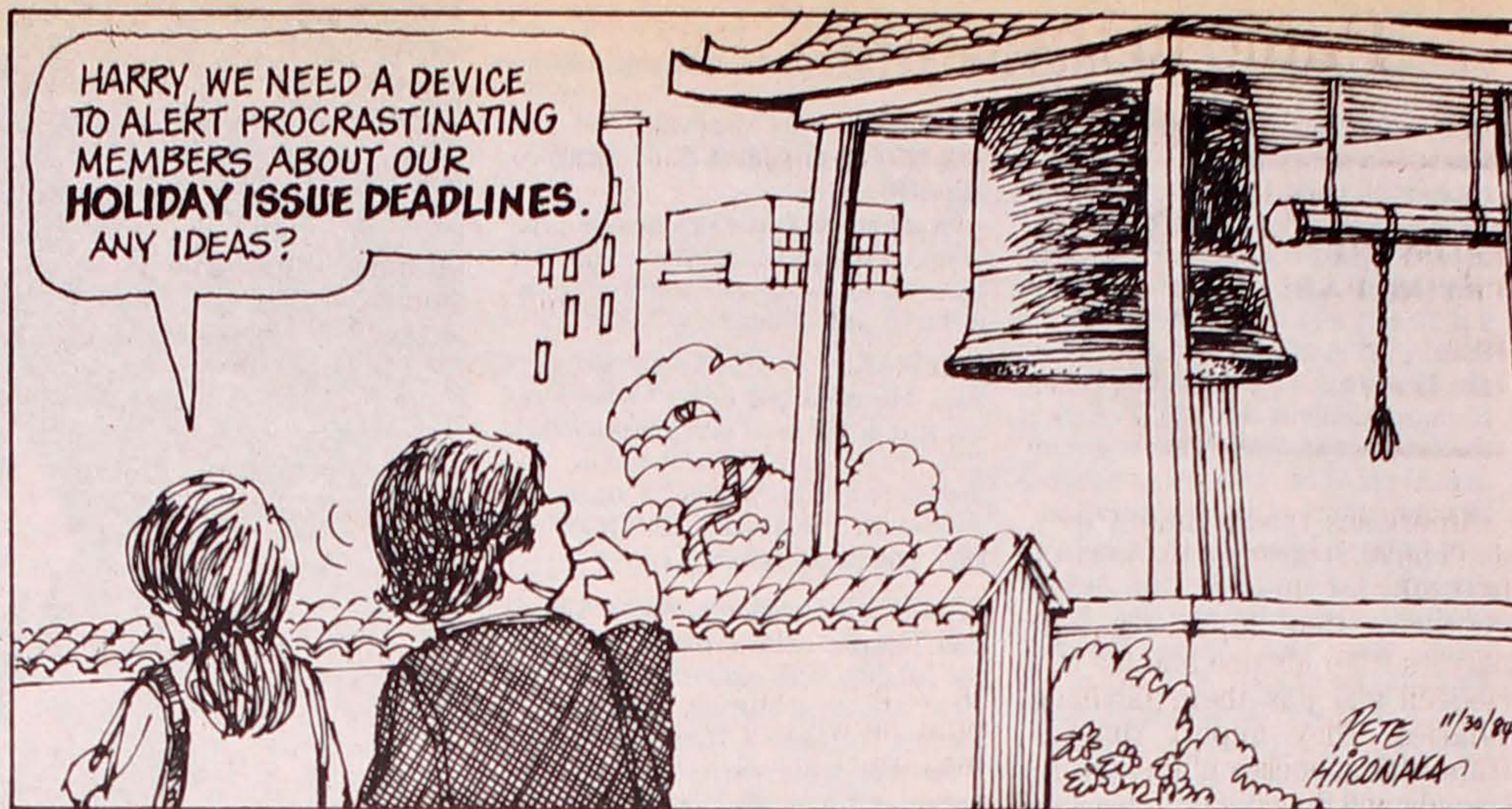
(Fourteenth Amendment) Apply these violations by multiplying the lives involved: over 115,000 innocent souls whose only "crime" was being of the "wrong" race. In the United States of America.

IN THE DISTORTED view of some misguided "Americans," all this is to be overlooked, excused, and no rectifying gesture is necessary "Because..." And these "because" take on many forms of misleading—not to mention grossly false—rationalizations. Many of you have heard them: "The camps were not that unpleasant; I've visited some and found they were rather good." "You were free to come and go anywhere you pleased." "All your farms, personal belongings, and crops were taken care of and saved for you and credited to your accounts; you lost nothing." "You were helped, benefited, by the 'evacuation' by being dispersed from your ghettos." (Try selling that one to the Italian American community here in South Philadelphia, or to the Polish American community in Milwaukee, and so on, to persuade them to break up their communities.)

Let's assume that instead of the tar-papered barracks in some hot (or extremely cold) godforsaken desert, you were shipped (in first-class accommodations) from your pre-1942 community to be housed in the Waldorf-Astoria where you were provided with room service. Would that then justify the violations of all those rights guaranteed in the Constitution, make up for all that the Issei and Nisei lost and endured, wipe away the continued cloud of suspicion that continues to hang over us? (If you have any doubts about this last point, the Supreme Court of the United States, the "final voice," has not retracted its decision in *Korematsu*, *Hirabayashi* and *Yasui*.)

And that is precisely what those "voices" would seek to foist upon us.

BY THE WAY: I suppose one "voice" would support another "evacuation" in order to break up the "ghettos" that can be seen in the shadows of Los Angeles' city hall, San Francisco's Sutter-Buchanan area, and so on. Then, next we can all work on the Italians, Poles, Ukrainians, etc., and make it a clean sweep.



Florida Delegation

## Elected representatives reveal misconceptions

Among members of Congress who have not supported redress legislation, attitudes toward the issue vary. Some agree that the WW2 internment of Japanese Americans was an injustice but for some reason do not support monetary compensation. Others maintain that the internment was justified and scoff at the idea of redress.

Ida Hayataka of Jacksonville, Fla. has written to senators and congressmen representing her state to ascertain their positions on redress. Following are excerpts from their replies (reprinted from the St. Louis JACL newsletter).

\* \* \*

**Sen. Paula Hawkins (R):** "While I believe that our government made a mistake by detaining Japanese Americans without cause during World War II, I also believe that monetary compensation is not appropriate."

"World War II created great hardships for almost all Americans. No monetary compensation could overcome this suffering. Monetary compensation will not erase the fact that we treated these Americans with harshness."

"The proper course of action at this time is to recognize our mistake and express our understanding to those wronged by the internment decision."

**Sen. Lawton Chiles (D):** "It may well have been that some people

in this detention program suffered losses in terms of their homes, businesses, and income. I think it was a very unfortunate situation and no American can feel good that it happened."

"However, we have to remember that we were at war with Japan at that time, and that Japan had attacked our Navy bases in Hawaii. The President, as commander-in-chief, did what he thought was necessary to protect our national security. Moreover, that action of detention was upheld as being legal and constitutional by the Supreme Court."

"I served in the Army during the Korean War, and I know that sometimes you have to make tough decisions in the heat of battle. It may be easy to second guess those decisions years and even decades later. But I think that the decisions have to be reviewed in light of the situation at the time they were made."

"If I'm called on to vote on this issue, I certainly plan to keep the fact that we were in the middle of the biggest war in the history of mankind uppermost in my deliberations."

**Rep. Bill Chappel (D-4th):** "Regarding the issue of compensation, I have difficulty in seeing how a monetary value can be set for the damage against these people or how such action will help undo the original wrong and further protect against its recurrence."

"In light of the emotional atmosphere at the time, I am not convinced that financial compensation is appropriate or adds to the public finding and acknowledgement of error."

**Rep. Bill McCollum (R-5th):** "The Commission [on Wartime Relocation and Internment of Civilians] recommended monetary and other compensation for these citizens. However, such compensation would have to be authorized by the United States Congress. Under the present budgetary restraints, such compensation seems unlikely..."

"However, unfortunate, and damaging this experience was for those who had to go through it, credible evidence has been presented to the Subcommittee [on Administrative Law and Governmental Relations] that the relocation was necessary and justified based on intelligence reports of espionage activities that had been planned by the Japanese government and a number of Japanese Americans."

"What, if any, action the Subcommittee will take on the bills this session beyond the holding of these hearings is not yet clear."

\* \* \*

The only Florida congressmen to support redress bill HR 4110 during the 98th Congress were Lawrence Smith (D-16th) and William Lehman (D-17th). Both were reelected in November.

## Papers for South America Convention

SAN FRANCISCO — A call for academic and professional papers regarding the contribution and role of persons of Japanese ancestry in their native countries was issued by Charles Kubokawa, board member, Pan American Nikkei Assn. The papers will be presented at the 3rd biennial Pan American Nikkei Convention to be held July 25-29, 1985, in Sao Paulo, Brazil.

Harry Honda, general manager/operations of the Pacific Citizen, is planning to submit a paper on the population of the Japanese in the U.S. and a brief immigrant history—a report he made orally

in Peru on short notice at the last PANA convention. Early submission of papers will ensure their translation into Spanish and Portuguese, Kubokawa announced.

In the meantime, Japanese Americans who attended the first convention in Mexico City in 1981 and the second convention in Lima, Peru, in 1983, have received flyers about the third gathering and what the tourist to Brazil should anticipate.

Convention arrangements for the JACL/American group are being coordinated by George Kondo, deputy PANA secretary, JACL headquarters, 1765 Sutter,

St., San Francisco, CA 94115.

Masahiko Chisaka, head of the Brazil conference organizing committee, also extended an official invitation during the JACL National Convention in Hawaii. PANA President Carlos Kasuga of Mexico City similarly issued an invitation during the recent So. Calif. karaoke invitational contest in Little Tokyo.

About 100 Nikkei from the U.S. went to the previous PANA conferences, enjoying the hospitality of host families and discussing matters connected with the past, present and future of Nikkei communities in the Americas.

**pacific citizen**

ISSN: 0030-8579

Nat'l JACL Headquarters, 1765 Sutter St., San Francisco, CA 94115, (415) 921-5225

Published by the Japanese American Citizens League every Friday except the first and last weeks of the year at 244 S. San Pedro St., Los Angeles, CA 90012; (213) 626-6936 • 2nd Class postage paid at Los Angeles, Ca. Annual Subscriptions—JACL members: \$10.00 of national dues provides one-year on a per-household basis. Nonmembers: \$18, payable in advance. Foreign addresses: Add U.S.\$8 • News or opinions expressed by columnists other than JACL staff do not necessarily reflect JACL policy.

**OFFICERS**

Frank Sato, Nat'l JACL President Dr. Clifford Uyeda, PC Board Chair

**EDITORIAL / BUSINESS STAFF**

Editor: Karen Seriguchi Asst.: J.K. Yamamoto, Henry Mori  
Advertising: Janie M. Ozawa  
Circulation: Tomi Hoshizaki, Mitsuko Sakai Mailing: Mark Saito  
Production: Mary Imon, Jon Takasugi  
Gen. Mgr./Operations: Harry K. Honda

POSTMASTER: Send address changes to Pacific Citizen, 244 S. San Pedro St., #506, Los Angeles, CA 90012.



## Panic in the Sumo Ring

FROM THE  
FRYING PAN:

Bill  
Hosokawa



Americans readily admit they don't have a corner on the world's best athletes. In their search for excellence they import baseball players from Mexico and the Caribbean and pay them fabulous salaries. They import runners from Africa, hockey players from Canada and Scandinavia, basketball players from Yugoslavia and in at least one case, Africa, and soccer-style kickers from everywhere to convert field goals for football teams.

The Japanese also import professional baseball players, although there's a limit of two per team. (American Greg "Boomer" Wells of the Hankyu Braves this year became the first foreigner to win the triple crown—batting average, home runs, runs batted in—and was named Most Valuable Player in the Pacific League.)

But Japanese chauvinism and

xenophobia surged to the surface recently when a roly-poly 20-year-old American Samoan named Sal-eavaa Atisanoe came close to winning the autumn Grand Sumo Tournament. Performing as Konishiki, he scored victories over assorted stars of the sumo world and finished second. The fact that he weighs 215 kilograms, which according to my calculation is in the neighborhood of 470 pounds, may have had something to do with his success.

Atisanoe's performance, according to press reports, stirred up some strongly hostile feelings. One former grand champion was quoted as saying Atisanoe's victories were a "shame for Japan." A sumo writer said that if a foreigner becomes grand champion, "sumo tournaments should be called off." A magazine reported that a "Stop Konishiki" movement is gaining momentum.

What seems to irk the fans is that Atisanoe-Konishiki, unlike the Hawaiian Takamiyama who took out Japanese citizenship, has no intention of making sumo a long-term commitment. He is reported to be thinking of going back to Hawaii and opening a supermarket after his sumo career is ended.

The darker side of sumo has been revealed by the Atisanoe-Konishiki fuss. Some have suggested he ought to be intentionally injured during practice sessions. Others have said his *chanko-nabe* stew, the high-calorie dish that makes up a large part of the sumo wrestlers' diet, ought to be laced with sugar to make him susceptible to diabetes.

Still another proposal is that Atisanoe-Konishiki be indoctrinated in the practice of "injection," which means taking a bribe to lose a match. Fixes seem to be a not-uncommon practice with the price tag ranging from 250,000 yen to one million yen (approximately \$1,000 to \$4,000), depending on the importance of the match.

Sumo, which would seem to be something of an absurdity among the world's sports, resembles nothing so much as a bull elephant pushing match. Yet it commands intense interest in Japan, just as football is popular in the U.S., and perhaps for the same reason—both demand the kind of strength the average person doesn't possess.

But it is sad indeed that some Japanese fans are so caught up in the intense and unhealthy nationalism of sumo that there have been published suggestions for crippling a foreign athlete to prevent him from winning.

That's sport?

## Chapter Pulse

### Greater L.A. Singles

LOS ANGELES—Members of the chapter's Support Group for the Divorced remind all JACLers that holidays are a particularly difficult time for the newly separated or divorced. The support group, composed of both Nisei and Sansei, meets Tuesdays at 7:30 p.m. For more information, call (213) 478-9565.

### Contra Costa

EL CERRITO, Calif.—The annual Board Appreciation Dinner will be held Tuesday, Dec. 4, at 7:15 p.m. at Yokohama Restaurant, 11880 San Pablo Ave. A short business session precedes the dinner at 6:30 p.m. Reservations should be made by calling Fred Takemiya, 524-3255.

### French Camp

FRENCH CAMP, Calif.—A dance party will be held Saturday, Dec. 8, from 6 p.m. at the Japanese Community Hall. Mr. and Mrs. Yo Moriwaki, dance instructors, are honored guests. A potluck dinner precedes the dancing. Katie Komure is chair.

The chapter's annual Christmas party will be held Friday, Dec. 14, from 7 p.m. at the hall. Entertainment and gift-sharing are featured at the family event. Kimi

Morinaka and Lydia Ota are general chairpersons.

### Marin County

TERRA LINDA, Calif.—John Tateishi, redress director and author of *And Justice for All*, is guest speaker for the annual installation dinner, Saturday, Dec. 8, from 6:30 p.m. at Royal Mandarin Restaurant in Northgate Shopping Center.

Price is \$11.50 per person. Reservations should be made as soon as possible by calling Nell Noguchi, 499-1666.

### Washington, D.C.

COLLEGE PARK, Md.—A special opening for the "Go for Broke" and "Yankee Samurai" photo exhibits at the Univ. of Maryland will be held Sunday, Dec. 9, 4:30 p.m. at Parents Assn. Gallery in the student union. (See Community Affairs, page 3, for more details.) The 1952 film "Go for Broke" will be screened at 7:30 p.m. in Hornbake Undergraduate Library, Multimedia Conference Room, 4th fl.

### Washington D.C. JAYS

RESTON, Va.—JAYS and their parents are invited to a chili potluck dinner on Saturday, Dec. 8, at the home of Mr. and Mrs. Gerald Mukai, 11003 Ring Rd., 435-9630. Hostesses are Jenny Marumoto and Marika Mukai. Program for the event: bowling at 4 p.m.; dinner at 6 p.m.; games and movies at 8 p.m. Those interested should call to make reservations.

### Yamashita family funds scholarship

SAN FRANCISCO—The scholarship program of JACL has announced the establishment of "The Rev. H. John Yamashita Memorial Scholarship" by the family and friends of the late community leader.

In a letter to National JACL headquarters from the Yamashita family, it was noted that "the Rev. Yamashita believed in the future of the community and the youth that must mold that future."

David Nakayama, national youth director, expressed the gratitude of National JACL for the \$8,000 endowment. He stated, "The Rev. Yamashita touched many lives in his service to the Japanese American community and this scholarship will continue to do so in the years to come."

Yamashita was born in Oakland, Calif., and was pastor of the Oakland West 10th Methodist Church prior to WW2. Following the internment, he founded a hostel for internees returning to the West Coast. Later, he pastored at the Centenary Methodist Church in Los Angeles until his retirement in 1966. Yamashita died in Gardena, Calif., on July 23, 1984.

JACL plans to incorporate this award into the national scholarship program. Applications for scholarships may be obtained by sending a self-addressed stamped envelope to: National Scholarship Program, JACL, 1765 Sutter St., San Francisco, CA 94115.

## Differences between Nikkei and Chinese Americans

by Glen S. Fukushima

Bill Hosokawa is to be commended for his consistently stimulating and informative column, "From the Frying Pan." His recent piece on "unembarrassed ethnicity" (Nov. 16 PC) was especially thought-provoking.

Why, he asks, is it that "Chinese Americans proudly proclaim their Chinese ancestry and cultural background while, broadly speaking, Japanese Americans with equal pride seem to be more inclined to emphasize their Americanism"? This is an important question with implications for the position of JAs in the U.S., Japan, and U.S.-Japan relations. Let me offer five factors that I believe contribute to this difference between JAs and CAs.

### 1. Historical Experience

The most obvious answer to Mr. Hosokawa's question is the wartime experience of CAs and JAs. While China and the U.S. were allies forging close ties through business, the military, Christian missionaries, and the China Lobby, Japan was perceived as the archenemy, responsible for Pearl Harbor, the rape of Nanking, the Bataan death march, and other acts that left searing impressions on the American public.

Given this hostility between the U.S. and Japan and the incarceration in 1942, it is little wonder that JAs—at least on the mainland U.S.—have emphasized their Americanism and have been less than enthusiastic about proclaiming pride in their ties with Japan.

### 2. Response of Japan and China

At the same time, the Japanese response to JAs has not encouraged JAs to embrace things Japanese. In part due to the JA role during the war, some Japanese still harbor resentment, or at least suspicion, toward JAs. Others are simply uninterested, uninformed, or misinformed concerning JAs. Whereas CAs have often been accorded preferential treatment by China, JAs sometimes com-

plain of discriminatory treatment when they visit Japan. Such tensions do not encourage JAs to openly display pride in their ancestry and cultural heritage.

### 3. Demography

Demographic factors have had differential impact on the two groups both temporally and spatially. First, the immigration pattern for CAs is more complex and varied than for JAs, resulting in a greater maintenance of cultural and linguistic contact with China, Taiwan, or Hong Kong. Second, the incarceration resulted in a forced dispersal of JAs after the war, which for better or worse made it difficult for them to replicate the large Chinatowns of San Francisco or New York. This dispersal, coupled with the lingering stigma of being associated with things Japanese, led some JAs to deny their cultural heritage.

### 4. JA and CA Values

It may be that among the values brought over to the U.S. by the Issei during the Meiji period was the notion of *kanson minpi*, or the predominance of official (i.e., government) power over the people. In other words, deference to governmental authority was the norm, and to challenge such authority was virtually unthinkable. (Perhaps one reason redress encountered such resistance among certain JAs?)

This unquestioned allegiance to the government and "us versus them" group consciousness—which have by no means disappeared in contemporary Japan—may be stronger among JAs than among CAs. If so, they may contribute to the mainland JA tendency to identify strongly with the U.S. government to the point of rejecting affiliation with anything that smacks of "alienness."

### 5. U.S. Response to Japan and China

China has historically been recognized by the West as a great civilization with a rich, majestic, and profound culture. Japan, on the other hand, has attracted the

attention of the West primarily for its commercial successes, whether in the prewar or postwar period. Even this respect for Japan is a grudging one, echoed by President de Gaulle's famous dismissal of Prime Minister Ikeda as a "transistor salesman"—leading a nation of clever merchants, perhaps, but hardly a significant civilization in world-historical terms.

To the extent that JAs are the beneficiaries or victims of American stereotypes of Japan, they tend to be identified with such cultural products as sushi, tea ceremony, and flower arrangement—perhaps aesthetically pleasing, but bordering on the exotic and a far cry from the bold, robust, self-confident culture of a continental civilization such as China. Perhaps this is to say that when drawing on their cultural heritage, CAs on the whole face greater receptivity among the general American public than do JAs.

In attempting to answer Mr. Hosokawa's question, I have focused primarily on the past. But in thinking of the future we cannot ignore the common American perception that Japan poses a formidable challenge to U.S. economic and technological security. If this view of Japan as rival persists, JAs may find it uncomfortable, inconvenient, or even dangerous to identify closely with Japan.

Because of space limitations, I have only touched the surface of each of the above factors. But I would be curious to know Mr. Hosokawa's reactions. Have I even partially answered his question? If so, what are the implications for JAs—in the U.S., in Japan, and in U.S.-Japan relations? And is it possible, despite our cultural differences, for JAs, CAs, and other Asian Pacific Americans to form an alliance to gain greater participation in the American political process? I hope Mr. Hosokawa will enlighten us by devoting a future column or two to these questions.

Glen S. Fukushima practices law in Los Angeles.



# Mountain Plains wins powerful ally in Senate

ALBUQUERQUE, N.M. — Highlighting the meeting of Mountain Plains District Council was the banquet held Saturday, Oct. 13, at the Classic Hotel. Sen. Pete Domenici (R) was speaker and, according to the New Mexico JACL newsletter, those who listened "will never forget what happened."

"To put it mildly, history was made that night," the newsletter report continues. "After Min Yasui gave us a presentation on redress, Senator Domenici spoke. He was impressed with Min's attitude and the Nikkei attitude toward redress... that even though we were subjected to an injustice, we have always had a great love

for our country. Domenici then said he would help and that JACL has an ally in Washington. The senator said that he felt that Senator Matsunaga's bill was a good thing for this country.

"The senator then related to the audience a story.... During World War II, his mother was arrested and detained for three hours because she was of Italian ancestry, and the family's short-wave radio and shotgun were confiscated. He told us that what his family went through was nothing compared to what the Nikkei went through....

"Senator Domenici then con-

cluded by discussing something that King Juan Carlos of Spain had told him, that all of mankind's achievements happened when men were free."

Domenici, a member of the Senate since 1973, is a member of the Budget, Aging, and Republican Policy committees, among others.

## Mountain Plains DC

Paul Shinkawa, Texas, governor; Betty Waki, Houston, vice governor Texas; Sam Koshio, Ft. Lupton, vice governor Colorado; Steve Hasegawa, Omaha, vice governor Nebraska; Randolph Shibata, Albuquerque, vice governor New Mexico; Sharon Ishii-Jordon, Omaha, secretary; Mits Kaneko, Mile-Hi, treasurer.

# PSWDC Trust Fund considers supporting 7 community projects

TORRANCE, Calif.—Seven applications to the PSWDC Trust Fund received endorsement from the Pacific Southwest District Council during its Nov. 18 session here at the Civic Library.

The trust fund board, chaired by Roy Nishikawa, is considering applications from the following JACL chapters:

San Diego—Pacific Citizen typesetter fund; San Fernando Valley—NCCJ Brotherhood Camp, Assn. of Asian Pacific American Artists, Koreisha Christmas Project; West Los Angeles—Generation Films, Little Tokyo Stroke Project; and Gardena Valley—"Unfinished Business" film project.

In other actions, the PSWDC approved a supplemental budget to cover '85 programs for the women's concerns committee and ethnic concerns; contributed the district's share of the national membership contest rebate to the district council contest prize fund; and voted to meet Feb. 24 at a site to be designated by the co-host Pan-Asian and Downtown L.A. chapters.

Elizabeth Szu of the South Bay Chinese Assn. was introduced. The JACL videotape, "A Tale of Nisei Retirement," produced for the Aging and Retirement Committee, was also shown.

## Calendar

### Through Dec. 9

Fresno—Go For Broke photo exh, also photos of Manzanar by Ansel Adams, Metro Art Mus

### Through Jan

Los Angeles—"Song for Nisei Fisherman," by Philip Gotanda, with Robert Ito, East West Players, 4424 Santa Monica; 8pm Th-Sun, 7:30pm Sun; tkts 660-0366

### Through Jan. 27

Oakland—Works by Asn Am Artists at Oakland Mus

### NOV 30-DEC 20

San Mateo—Exh and sale of Japanese art objects, San Mateo County Hist Mus, Coll of San Mateo, 1700 W Hillsdale Blvd; 1-4:30pm Sat-Thurs; info 574-6441

### NOV 30-DEC 1

San Francisco—SoundSeen, performance group with musicians Mark Izu, Lewis Jordan, dancers Sachiko Nakamura, Brenda Aoki, Gumption Th, 1563 Page; 8:30pm, tkts 647-9343

### NOV 30-DEC 2

Boston—Asn Am Film Fest, Asn Am Res Wksp; info 426-5313

### DEC 1 (Saturday)

San Mateo—Tomodachi Snr Women's Club holiday boutique, 415 S Claremont, 10am-4pm

Oakland—Bnft screening of 'Unfinished Business,' doc film about coram nobis cases, Lake Park Un Methodist Ch, 281 Santa Clara Ave; Dale Minami, Fred Korematsu, spkrs; 7:30pm; info 922-8896, 621-2493

San Francisco—Spaghetti-crab feed, Christ Un Presby Ch, 1700 Sutter, 5-8pm; tkts \$10 adv/\$15 door

San Francisco—Zuke Matsui talks abt Nisei Vets reunion in Maui, July 1985; 1855 Folsom, 1pm

Carson—Xmas pty for family, Dolphin Park, 21201 Water St, 6:30pm  
W Valley—Mochitsuki, Snr Cntr, 5am

### DEC 2 (Sunday)

San Diego—Instl dnr, Kona Kai Club, Shelter Isl, 6pm; tkts \$20; Eric Saul spkr; info 230-4174, 238-0334, 453-2739

Cincinnati/Dayton—Jnt instl dnr, Mandalay Bnqt Cntr, 2700 E River Rd, 4pm; Jim Shimoura spkr; res by Nov. 25, Frances Tojo, 531-0627

### DEC 6 (Thursday)

Marina—Xmas pty, Burton Chase Prk, potluck, gift exchange, 7pm

### DEC 8 (Saturday)

Seabrook—Snr Cit Apprec Night, Buddhist Temple soc hall, 6pm; tkts \$6

Marin—Instl dnr, Royal Mandarin Res't, Northgate Shopping Cntr, Terra Linda, 6:30pm; res Nell Noguchi 499-1666

### DEC 15 (Saturday)

Los Angeles—Asn Bus League 1st ann'l Xmas Ball, Biltmore Htl, 515 S Olive; George Takei, emcee; 6pm

Marina—Caroling to Jpnz Ret Home, 3pm; info Pat Wakimoto 329-7345, Paul Miura 437-6412

### DEC 21-22

Los Angeles—Amahl and the Night Visitors pres by Assn. of As Pac Am Artists, Jpn Am Th, 244 S San Pedro, 3pm, 8pm; tkts 680-3700; info 654-4258

### DEC 29 (Saturday)

Washington—Mochitsuki, Bradley Hills Presby Ch

### DEC 31 (Monday)

San Jose—New Year's Eve dance, JACL dance club

Berkeley—New Year's Eve dance, El Cerrito Comnty Cntr, 7007 Moeser Ln, 8pm; info 525-5784, 525-4277

1985

### JAN 18 (Friday)

Monterey Peninsula—Instl dnr, Rancho Canada bnqt rm; Tom Walton, ex ed, Monterey Peninsula Herald gst spkr

### JAN 19-20

San Diego—"Unfinished Business," Lewis Jr HS, 5170 Greenbrier Ave, 6:30pm; Peter Irons spkr; tkts \$5, stud \$3; info 563-3124

# Torrance proclaims JACL Day for district

TORRANCE, Calif.—It was "JACL Day" here Nov. 18 when the Pacific Southwest District Council held its quarterly session at the Torrance Civic Library. Mayor James Armstrong presented the proclamation designating the day during the meeting hosted by the newest chapter in the district, Torrance JACL.

PSWDC's role in the community was cited in the proclamation as: (1) promoting participation in civic and national life and securing justice and equal opportunities for all Americans; (2) providing educational and cultural programs that increase public awareness and understanding of Japanese Americans; and (3) supporting community service programs to assist the aged and providing scholarship and leadership programs for the youth.

PSWDC vice-governor George Nakano, a member of the Torrance City Council, introduced the mayor.

# THE FIVE MINUTE GIFT That Lasts All Year...

This year, give the Pacific Citizen to:

- Your Mom and Dad
- Your Son and Daughter
- Your Aunt and Uncle
- Your Friends
- Your Doctor, Dentist and Lawyer
- Your Local Library or Hospital

Help them stay in touch with the people, issues and events that are making news in the Japanese American community — every week, all year long!

Simply fill in your gift subscription list below and enclose \$18 per gift.

What better and easier way to say Happy Holidays?

### SEND THE PACIFIC CITIZEN TO:

Name \_\_\_\_\_  
Address \_\_\_\_\_ Apt. \_\_\_\_\_  
City \_\_\_\_\_ State \_\_\_\_\_ Zip \_\_\_\_\_

Name \_\_\_\_\_  
Address \_\_\_\_\_ Apt. \_\_\_\_\_  
City \_\_\_\_\_ State \_\_\_\_\_ Zip \_\_\_\_\_

### My name and address are:

Name \_\_\_\_\_  
Address \_\_\_\_\_ Apt. \_\_\_\_\_  
City \_\_\_\_\_ State \_\_\_\_\_ Zip \_\_\_\_\_

Use an additional sheet if necessary. Mail gift list to: Pacific Citizen  
244 S. San Pedro #506  
Los Angeles, CA 90012

Enclosed is \$18 per gift subscription.

(Add \$20 for first class postage; \$8 for foreign orders.) Total enclosed: \$ \_\_\_\_\_

## A Holiday Gift Suggestion ...



By Ichiro M. Murase, Design by Michael Nakayama

A project of Visual Communications/Asian American Studies Central, Inc.

Published by Little Tokyo Centennial Committee

A selection from over 65,000 images from a variety of sources, including the 26,000 housed in the Visual Communications archives of the early 1900s, the war years and contemporary period... A kind of medley of images and mirror of Little Tokyo's past. Anyone who has lived in Little

Tokyo or who has friends who grew up in the greater Los Angeles area will discover a familiar face in one or more of the pages... 24 pages of text; selected bibliography... A pictorial companion to Pacific Citizen's LITTLE TOKYO LIFE series.

### Pacific Citizen, #506

244 S. San Pedro St., Los Angeles, CA 90012

Please send \_\_\_\_\_ copies at \$21.25 each postpaid to:

Name: \_\_\_\_\_

Address: \_\_\_\_\_

City, State, ZIP \_\_\_\_\_



# Letters

# Scholarships Available for Members Only?

## Membership Drive

How many hundreds of members do we lose each year just because our obsolete system requires that somebody personally contact most members about renewals?

1. Two examples will illustrate the weakness of the present system. For several years before, during, and after I was president of the Puyallup Valley Chapter, that chapter regularly received special citations for increases in membership each year. Credit was due to the organizing ability and persistence of the membership chair, Hanna Yoshida. When she resigned, the membership which had reached almost 300 dropped to well below 200.

2. When my wife and I moved to Eugene, Oregon, in 1946, after having helped establish a New York City chapter of JACL, our membership was transferred to the Portland chapter. Nobody reminded us when our membership renewal was due and we let it drop.

3. Notification of renewals due by a central process at National Headquarters would be an economical way to reduce this annual loss. It would not interfere with chapter autonomy to establish dues structures which could be different for every chapter if desired. What possible advantage is to be found in the present anachronistic system?

PAUL W. ELLIS,  
Olympia, Wash.

## Merchant Marines

Bill Marutani's article in Nov. 9 PC has humbled me in that I have been carrying a grudge against

our government for many years because it refuses to recognize the American Merchant Mariner of World War II whose sacrifices exceed that of any other component of the armed forces.

We have no graveyards or stone markers because we lie in the Deep Six. We are all 100% volunteers. Many were 4F'ers rejected by the armed forces. Yet others were too old for the military and came out of retirement to carry the beans and the bullets which made victory possible.

Perhaps you can understand my frustrations when our government refuses to recognize those of us who survived as veterans. We are strictly civilians and thus unable to receive medical treatment brought on by our war experiences. Bill's article turned on the lights for me and so now I accept in retrospect the same treatment which has been accorded to those brave warriors, 100th/442nd RCT. And may I close by saying that Eric Saul's article has my hat off to the above-mentioned lads.

DENNIS ROLAND  
New York

Roland is a survivor of H Force Burma/Thai railroad and River Kwai bridge and spent 3 months on the German raider Michel.

## Navy Seal Team

I am sending you a page from the history of Seal Team 2, U.S. Navy. I feel a correction is in order. [The enclosed material states that Seal Team 2, with a combat medal count of 526, is the most highly decorated naval unit in modern times.—Ed.]

I agree with Mr. Eric Saul. The

At the first National Board meeting of this biennium, newly elected President Frank Sato presented several sets of goals and objectives, based fundamentally on the JACL constitution and resolutions. Some are action items, others are programmatic. Also considered at this meeting were nominations for chairpersons of various committees that will carry out the activities of the National JACL. In the interest of time, a motion to ratify the president's appointments of these chairpersons was approved. The sooner the committee chairs are empowered, the less time will be lost, for bienniums have a way of slipping away so quickly, especially on the national scale with its inherent problems.

There is much work to be done

442nd and 100th Battalion were a great group of American fighting men. Their respect and love for one another can't be equaled. I know I have met many of these brave men.

I believe Mr. Saul will consider that the U.S. Navy Seal Team can be called a member of military history. A Seal Team is comprised of 7 officers and 34 non coms. At their time in Vietnam, a man had to do one tour (8 months). The average tour a man did was no less than 3. Their time in Vietnam was Oct. 1967 to Dec. 1972. This small group of men accounted for the highest number of enemy KIAs. All the medals the team received were for valor, which I might add included Medals of Honor, Navy Cross, Silver and Bronze Stars, etc.

BOB SEARS  
San Francisco

BY  
THE  
BOARD:

by  
Miki Himeno



the projected change in policy for the heretofore non-controversial scholarship program. A proposal for the scholarship program to become a "member benefit"—requiring full membership of all applicants—is meeting with the approval of most National Board members. I find little solace in this being referred to a committee for decision.

## Don't Limit to JACLers

I believe strongly that the scholarship program should remain open to the larger Nikkei community that they should not be denied the opportunity to enter this award competition, just as no one seeking the help of JACL is denied because of non-membership. Or is this a trend, a portent of the direction JACL is headed in? I hope not. Anyone understanding the scholarship procedures in high schools and why Japanese American students specifically need to be recognized, will surely share my position. Mika Hiramatsu, Youth Council chair, points out that college students are notoriously poor. Thirty dollars may buy one textbook. Is JACL to serve only the rich and able? How do other students feel? How would non-members feel? And what about the donors? Would they like to see scholarships pulled back and limited to members only?

by these committees before February's board meeting. The chairperson will want a local core committee to work with and also to interface with district chairpersons. Committee goals for the biennium need to be defined and an appropriate budget submitted.

The Women's Concerns Committee under Irene Hirano is already hard at work, continuing efforts begun last biennium. A resource binder is being collated and a major new project is soon to be announced.

Aging and Retirement will be led by Ford Kuramoto in Los Angeles, co-chairing with his mentor Pat Okura in Washington, D.C. They will be seeking grant monies to carry out a Seattle research project. Hopefully Michael Ego, past chair, will continue with the film project of the last biennium, to facilitate its packaging and distribution.

Jan Yoshiwara of Tacoma, Washington, has been named Scholarship chairperson, in keeping with the rotation plan to center this committee in different locations within budgetary constraints. Lori Inagaki will chair a headquarters sub-committee.

My major concern at present is

At the national convention we empowered a committee for new leadership development and recruitment. By requiring membership of scholarship applicants, we would be terminating the one true outreach and public relations program. It's lonely out here, and I remain a minority dissenting vote on this matter.

# Books from Kodansha / Japan Publications

By special arrangement with Kodansha International/USA, the Pacific Citizen offers popular titles of books about Japan and Asia on a "direct shipment" basis. Some books are on display only at the PC Office.



## GREAT JAPANESE ART SERIES

A new, large format series (10 1/2 x 14 1/2") to cover all fields of Japanese art in succinct, lucid texts enhanced by fine color plates. Each volume 48pp (except as noted).

- Early Ukiyo-e Master.** \$18.95
- Ukiyo-e, Kobayashi.** \$18.75
- Utamaro, Kobayashi.** \$18.75
- Sharaku.** by Muneshige Narazaki, tr. by Bonnie Abiko. Most comprehensive collection in print of a popular 18th Century ukiyo-e artist; 35 color, \$18.95.
- Kyoto Country Retreats: The Shugakuin and Katsura Palaces.** by Michio Fujioka. A concise text and stunning colorplates reveal the shifting moods and harmonies of two 17th Century imperial villas. 48pp, 10 1/2 x 14 1/2", 32 color, biblio; \$18.95
- Zen Ink Paintings.** by Barnet Burto. Five centuries of this art traced through numerous plates; 96pp, 41 b&w, \$18.75

## KODANSHA (SEP.-DEC. '84)

Available Again in Hardcover ...

- Shoji Hamada: A Potter's Way & Work** by Susan Peterson. A fascinating insight into pottery and the life of an internationally famous Japanese potter.—House Beautiful. 240pp, 7 1/4 x 10 1/4", 18 color, 235 b&w plates, \$29.95.
- Challenge of Japan's Internationalization: Organization and Culture.** ed: Hiroshi Mannari, Harumi Befu. New insights into how the Japanese facing the world abroad, and how it is changing them at home. 216pp, 5 7/8 x 8 1/4", \$14.95.
- Graphic Design in Japan: Volume 4** by Japan Graphic Designers Assn. A colorful collection of the best conceived, best-executed graphic designs in Japan. 220pp, 10 1/2 x 13 1/2", 500 plates, \$69.95.
- New Fashion Japan.** by Leonard Koren. Look out, America: here comes the new wave of Japanese fashion. Call it elegant or outlandish, wild or weird, it's bursting with visual excitement. And so is this book—a feast of fun and surprise, as vibrant as the new styles themselves. 176pp, 11 1/2 x 8 1/2", 200 b&w photos, collages, drawings, 16pp color, 48pp duotone, \$19.95.
- Living Masters of Netsuke.** by Miriam D. Kinsey. A colorful look at 12 modern practitioners of an ancient art, with valuable advice for collectors. 256pp, 8 1/2 x 11 1/2", 240 color, \$100.00.
- Kodokan Judo.** by Jigoro Kano. True judo, from its founder and most famous teacher, a most authoritative guide to judo. 256pp, 1,500 b&w plates, \$24.95.

## JAPAN PUBLICATIONS—OCT.-DEC.

- Attractive Handknits.** by Nihon Vogue Staff. A rich resource of sweater ideas for every style, season and setting. 74pp, 7 1/2 x 10 1/2", 33 color, \$7.95.
- Mohair Knitting.** by Nihon Vogue Staff. An irresistible collection of some of the most luxurious sweaters ever found in a pattern book 80pp, 8 1/2 x 10 1/2", 46 color, \$8.95.
- Fun with Clay.** by Tomoko Kanai. Working with clay has never been this much fun—or produced such wonderful results. 116pp, 7 1/2 x 10 1/2", 40 color, \$7.95.

- Macrobiotic Cuisine.** by Lima Ohsawa. A complete guide to the art of macrobiotic cuisine, from a world-famous creator of macrobiotic recipes. 224pp, 7 1/4 x 10 1/4", 70 illus, \$12.95.
- Handcraft for Baby.** by Ondori Staff. From a newborn's nightie to a two-year-old's playsuit, here's the perfect pattern book for outfitting tots and toddlers. 94pp, 8 1/2 x 10 1/2", 32 color, \$8.95.
- Easy Cross-Stitch.** by Ondori Staff. A bounty of new ideas for simple but elegant cross-stitch projects. 124pp, 7 1/2 x 10 1/2", 40 color, \$7.95.
- Macrobiotics and Human Behavior.** by William Tara. Forward by Michio Kushi. Mental health the macrobiotic way—a guide for therapists and individuals. 224pp, 7 1/4 x 10 1/4", 14 drawings, 15 b&w photos, \$12.95.

## 1984-85 PC BEST-SELLERS

[\*\* Non-returnable]

- Sushi at Home.** by Kay Shimizu & 12 Culinary Experts. A treasury of sushi recipes especially adapted for the Western kitchen, using easy-to-find ingredients. (Shimizu, a San Jose Nisei, has been writing best-selling cook books for many years.) 140pp, 7 1/2 x 10 1/2", 59 color pages, \$14.95.
- Origami for Christmas.** by Chiyo Araki. Over 1,000 drawings and pictures highlight easy-to-follow, step-by-step instructions for making Christmas decorations. 144pp, 18 color, 58 b&w plates, \$14.95.
- Origami.** by Hideki Sakata. The perfect can't fail book of origami by a designer-teacher of 20 years. Step-by-step color instructions. 66pp, 7 1/2 x 10 1/2", 66 color. June paperback orig—\$5.95.
- The Art of Sumi-E: Appreciation, Techniques and Application.** by Shozo Sato, assisted by Thomas A. Heenan. The complete illustrated book of Asian ink painting—the first to combine history, aesthetics and step-by-step instructions in one volume, 312pp, 8 1/2 x 11 1/2", approx. 320 b&w, 50 sketches, \$34.95.
- The Bells of Nagasaki.** by Takashi Nagai, tr. by William Johnston, SJ. A shattering eye-witness account of what it is like to survive an atomic holocaust; 144pp, 5 7/8 x 8 1/4", 8pp b&w photos, \$14.95.

- Totto-Chan: The Little Girl at the Window.** by Tetsuko Kuroyanagi, illus. by Chihiro Iwasaki, tr. by Dorothy Britton. The "Barbara Walters of Japan" share the story of her unorthodox education to highlight the need for educational reform in Japan. 216pp, 4 1/4 x 7 1/8", \$4.50.
- A First Book of Japanese Cooking.** by Masako Yamaoka. Finally, a Japanese cookbook you don't need to be a master chef to use. 148pp, 7 1/4 x 10 1/2", 24 color, 100 illus., \$14.95
- Food in a Japanese Mood.** by Yukiko & Robert Haydock. Fifty mouth-watering recipes, many original, that add a special Japanese touch to any meal. 148pp, 7 1/4 x 9 3/8", 50 color, 132 b&w plates, \$14.95.
- The Twilight Years.** by Sawako Ariyoshi, tr. by Mildred Tahara. A touching family novel from Japan's best-selling woman writer. 216pp, 5 7/8 x 8 1/4", Fiction, \$14.95
- Insider's Guide to Japan,** by Peter Popham. How to get the most out of a trip to Japan—the one guide book no traveler should leave home without. 208 pp, 5 1/2 x 8 1/4", 196 color, 8 maps, \$12.95.

## JAPAN PUBLICATIONS

- Home Style Japanese Cooking in Pictures.** — A companion volume to Home Style Chinese Cooking \$10.50.
- The Book of Soybeans: Nature's Miracle Protein.** by Tokuji Watanabe. An account of the importance of soybeans to the diet and the ways soy foods meet commercial and dietary needs; 120 recipes, 192pp, 7 1/4 x 10 1/4", \$12.95.
- Joy of Origami.** by Toshie Takahama. A step-by-step guide that leads from the simplest fold to the most skillful form. 128pp, 7 1/2 x 10 1/2", 16 color, \$8.95.
- Patchwork for Your Home.** by Ondori Staff. From major bedroom ensembles to a whole range of accessories. 126pp, 7 1/4 x 10 1/4", \$7.95.

Save This List as other Titles will appear. / Prices are subject to change without notice.

- Easy to Knit Handsome Men's Sweaters.** by the Ondori Staff. For every beginning knitter who wants to make a perfect sweater on the first try. 64pp, 7 1/2 x 10 1/2", full color illus, \$5.95.
- Easy Embroidery.** (Revised Edition) by Ondori Staff. A new edition of the best-selling needlework classic. 96pp, 7 1/2 x 10 1/2", 48 color, \$5.95.
- A New Look for Needlework: Embroidery & Cross Stitch.** by Ondori Staff. Encompassing all the latest and best ideas, this collection features the "new elegance". 112pp, 8 1/2 x 10 1/2", 40 color, \$9.50.
- Romantic Lake Designs.** by Ondori Staff. Featured are projects for dining room, bureaus, bedspreads, pillows and curtains. 92pp, 7 1/4 x 10 1/4", \$6.50.
- Fancy Crochet Lace.** by Nihon Vogue Staff. A new collection introduces the latest ideas in lace. 98pp, 8 1/2 x 10 1/2", 40 color, \$8.95.
- Lace for Beginners.** by Nihon Vogue Staff. A basic introduction to crochet, featuring over 40 designs, color illus. 82pp, 7 1/2 x 10 1/2", \$6.95.

● All orders must be accompanied by payment in full plus shipping and handling charges. Allow from 4 to 6 weeks for delivery. Make checks payable to:  
**PACIFIC CITIZEN, 244 S. San Pedro St., #506, Los Angeles, CA 90012**

**Send to:**  
Name \_\_\_\_\_  
Address \_\_\_\_\_

**City/State ZIP** \_\_\_\_\_

Additional charges for shipping and handling:	
For books totaling up to \$10.00	add \$1.75
10.01 to \$25.00	add 2.25
25.01 to \$50.00	add 2.75
50.01 to \$100.00	add 3.50
Over \$100	add 5.00

Sales Tax (N.Y. residents only) \_\_\_\_\_  
Total Amount Enclosed ..... \$ \_\_\_\_\_



## Families Resist Therapy

## Mental Health of Asian American Adolescents

Ted Tokaji, M.D., a psychiatrist on staff at Del Amo Hospital and member of its Board of Directors, maintains a subspecialty in his private practice addressing the particular mental health needs of Asian-Americans. While being interviewed for this article on cultural influences affecting the state of child and adolescent mental health in the Asian community, Dr. Tokaji received a telephone call.

"The call was from the parents of a 15-year-old, third-generation Japanese girl who, for the third time, had attempted to take her life by way of a drug overdose. It is clear that the girl is actively suicidal and may very well need psychiatric hospitalization. In fact, that should have been clear two attempts ago. Yet, with this call, the girl's parents are for the first time seeking psychiatric help for their child."

Perhaps what is most unusual about this case is that there is nothing spectacularly unusual about it. According to Tokaji, it is not at all uncommon for Asian parents to postpone seeking psychotherapeutic help for an emotionally troubled child, despite what may seem to be obvious problems to the casual observer.

"To understand why, we must understand the effect of Asian culture on the lives and parenting methods of Asian adults. Because of assimilation, the influences of Asian culture are strongest among first- and second-generation Asian Americans, somewhat less among the third and fourth generation and progressively less among later generations.

"Prominent among traditional values that Asian children are imbued with are the mores of good behavior, good posturing, academic achievement, hard work and controlling one's destiny through industriousness.

"Conversely, expression of affection, frustrations, displeasure and other strong emotions—particularly with respect to authority figures—is discouraged, both in the home and in public," Tokaji

said.

Central to these values is the concept of "face": esteem, both personal and communal. To maintain face, one must comply with and meet these cultural and community standards. Failure to do so creates a loss of face, i.e., shame. Further, losing face affects the individual's family as much as the individual and, indeed, impacts the local Asian community to a lesser or greater extent.

Thus, the individual that gains face brings honor to his family and community network; the one that loses face casts dishonor on them.

"Unfortunately, one of the ways to lose face in the Asian community is through emotional disorders or outright psychiatric illness. Exhibiting such problems violates expectations of good behavior, good posturing, academic achievement, control of destiny, et cetera. In failing these standards, the troubled child—or adult, for that matter—is often viewed as jeopardizing the family's standing in the community, and is threatened with bringing shame upon his family," Tokaji said.

## Withdrawing from School

In response, the parents, in some cases, choose to withdraw the child from school, thus complicating the child's emotional state by denying one of the most vital social structures of child development.

"We should remember that their response—keeping the child hidden, having a family member take care of him—is not done maliciously. Quite the opposite. Such actions are often taken by more traditional Asians not for their own benefit, but for the perceived benefit to the child and community-at-large. They feel that this is the best way to help all concerned," Tokaji said. "Asians take pride in taking care of their own."

Traditional families will seek traditional remediation for their troubled child: religion, family in-

volvement, acupuncture, herbal medicine and local community support.

Yet another facet in the development and progression of mental illness among Asian children and adolescents raised in a traditional atmosphere is subtlety of symptoms, initially.

"Troubled children raised in a typical American family come to the attention of their parents when they show or voice a complaint—often through acting-out behavior. But this is much less likely to occur among traditionally raised Asian children because such behavior, comparatively speaking, is considered far less acceptable among Asians. Early generation Asian children are stringently taught never to act badly, regardless of the circumstances. If there is something wrong, they are not to express it.

"For this reason, the traditionally raised Asian child or adolescent would more likely manifest a quiet withdrawal initially, which would not draw much attention. Later, only when the severe depression or psychosis is evident, do we recognize a problem.

"This psychosis is of a more quiet kind—not manic, excited or disruptive, but a psychosis of thought, such as paranoid ideation that, solely from outward appearances, would not be disruptive.

"Short of psychotic conditions, disturbed Asian children and adolescents might exhibit subtle signs of depression and suicidality. They may have an amalgam of physical complaints, manifesting emotional disturbances as fatigue, headache, backache, gastro-intestinal problems, and cardiovascular symptoms, among others," Tokaji said.

Despite indications that Western acculturated parents may perceive as symptoms of mental problems, early generation Asian American parents are unlikely to seek psychiatric help at this stage for their disturbed child.

## Avoidance of Help

"There are several reasons for this attitude: Traditional Asians see little value in 'talking' treatment, are averse to expressing emotions and prefer not to go outside their cultural environment for help (psychiatry is relatively foreign to even modern Asian societies). Therefore, seeking the help of a psychotherapist conflicts with traditional beliefs, is inferred by others as socially unacceptable and is only performed as a final and rather desperate recourse," Tokaji said.

This prolonged avoidance of psychotherapeutic assistance, Tokaji believes, is directly reflected in Asian-American mental health statistics.

"As a group, Asian children, adolescents and adults are far below average when it comes to seeking psychotherapeutic treat-

ment for emotional problems. On the surface, it would seem that Asians are less susceptible to mental health problems.

"But to get a clearer picture, you have to look at the other side of the coin: How do the diagnoses of this group and all others compare? If they were similar, it would appear that Asians have an exceptional resistance to mental illness," Tokaji said.

## Disparities Found

They are, however, dissimilar. Among all groups, depression and chemical abuse rank as the most common diagnoses. Among Asians diagnosed for mental illness, mild depression and chemical abuse disorders are not nearly as common, while major and severe psychotic illnesses are more common.

"The reason for the disparity is that traditionally raised Asians and their families postpone psychotherapeutic treatment for mental health disorders. They wait longer and come to us with more severe problems. As such, they tend to require more intensive and longer-term treatment than average, and the prognoses are worse," Tokaji said.

He added that one must keep in mind that these tendencies "are most common among those of traditional—that is, conservative—Asian upbringing. The greater the Occidental acculturation in successive generations, the less prominent are these influences."

Continued on Page 11

## Empire Printing Co.

COMMERCIAL and SOCIAL PRINTING  
English and Japanese  
114 Weller St., Los Angeles CA 90012  
(213) 628-7060

## PARADISE OKAZU-YA RESTAURANT

Specializing in Hawaiian-Orient Cuisine  
OPEN Tue-Sat, 7am-7pm • Sun. 7am-5 pm  
1631 W. Carson St., Torrance - 328-5345

**LOMI SALMON**  
**LAULAU**  
**KALUA PIG**  
**POI**  
**SAIMIN**

Eat In or Take Out  
Closed Monday Only  
Quick service from steam table.  
Combination Plate  
Very Reasonable Prices

OPEN FOR BREAKFAST AT 7 A.M.  
Our own style Portuguese sausage mix,  
Spam, Boloni, Chashu.  
(With eggs & choice of rice or hash browns)  
Includes Coffee, Tea or Miso Soup.



## Plaza Gift Center

FINE JEWELRY - CAMERA - VIDEO SYSTEM  
HOME COMPUTERS - WATCHES - TV - RADIO  
SOFTWARE - DESIGNER'S BAG - BONE CHINA

Authorized SONY Dealer

111 Japanese Village Plaza Mall  
Los Angeles, CA 90012  
(213) 680-3288

## COMPUTER TRAINING

Plaza Gift Center  
IN ENGLISH & JAPANESE

111 Japanese Village Plaza Mall L.A., CA 90012  
680-3288 687-4115

United Way  
DONORS

Support the  
Japanese/American com-  
munity social services by  
designating your United Way  
Donations to the



## Little Tokyo Service Center, Inc.

ANY other incorporated non-profit social service agency can also be designated. The following is a list of some agencies who are LTSC members:

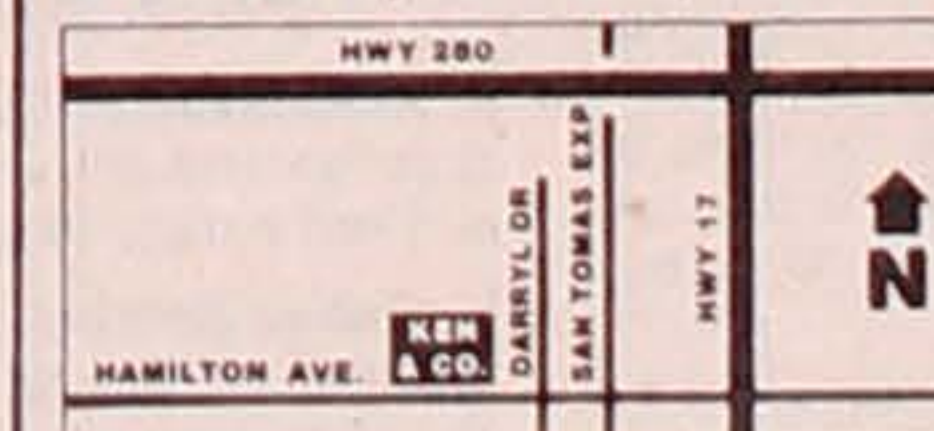
Asian American Voluntary Action Center  
Japanese American Community Services  
Japanese American Cultural and Community Center  
Japanese Welfare Rights Organization  
Little Tokyo People's Rights Organization  
So. Calif. Society for the Japanese Blind  
Friends of the Little Tokyo Public Library Services

## SHORT &amp; SMALL MEN'S APPAREL

## FALL '84

SUITS & SPORT COATS  
BY GIVENCHY, LANVIN,  
VALENTINO AND  
ST. RAPHAEL ARE  
ARRIVING IN SIZES  
34-42 SHORT & EXTRA  
SHORT LENGTHS. FOR  
A GOOD SELECTION  
SHOP EARLY.

785 W. HAMILTON AVENUE  
CAMPBELL, CALIFORNIA 95008  
PHONE: 408/374-1466  
M-F: 12-8:30, SAT: 10-6, SUN: 12-5



OWNER: KEN UYEDA

## KEN &amp; COMPANY

DIRECTOR OF  
REAL ESTATE

GCC Theatres, Inc. a division of General Cinema Corporation located in Boston, MA, is the largest motion picture exhibitor in the United States. GCC Theatres, Inc. operates 1,100 screens in 37 states and the District of Columbia, and is pursuing an aggressive and accelerated expansion program.

To meet the needs created by the expansion program, GCC Theatres, Inc. is restructuring its Real Estate Department to include a Director of Real Estate - West in the Home Office. The individual selected will have had Real Estate/Development experience, including site selection, financial analysis, profit projections, lease negotiations, land purchases, and landlord/tenant relations. The individual selected will interact with Corporate, Division, and Field Executives. The Director of Real Estate - West will be responsible for all real estate development west of the Mississippi River and along with the Director of Real Estate - East will report to the Vice President of Real Estate.

Education: MBA in finance or development, or JD

Experience: At least 5-7 years "deal making" in the national real estate market

Please send resume and salary history to JMS, Human Resources Department

## GCC THEATRES, INC.

A SUBSIDIARY OF GENERAL CINEMA CORPORATION

27 Boylston St., Chestnut Hill, MA 02167

An Equal Opportunity Employer



## Commentary

# How a Newspaper Treated Two Stories

The following column, which appeared Nov. 1 in the Oakland (Calif.) Tribune, concerns media coverage of the recent hearings on Asian gang activity in the U.S. (see last week's PC). The author is Tribune ombudsman William Wong.

Some racial and ethnic minority Americans distrust the press because of the way newspapers have covered news about them. Generally speaking, they criticize the press for engaging in stereotypes, for not knowing enough about their communities, for writing about them only in "bad" times—crime, conflict, convulsions.

With more ethnic and racial minority journalists these days, the situation is improving slowly, but even at the Tribune, with a racially diverse newsroom that presumably is more sensitive to minority issues, lapses in judging the merits of a racially oriented story can—and do—occur.

Two of the most recent lapses involved stories with a Chinese American subject. The poor handling of the two stories is somewhat surprising because the Tribune over the past five years has won a reputation among some Asian Americans for being accessible and sensitive to news about them.

Last week, the Tribune sensationalized an incomplete story by giving it front-page prominence. The week before, it virtually ignored a story that had international implications.

### Exaggerated Threat

The sensationalized story—on Oct. 26—was headlined, "Asian gangs operating in the Eastbay." It quoted an Oakland police sergeant, Ray Chenault, who had testified several days earlier to the President's Commission on Organized Crime in New York.

He told the Tribune that "the Wah Ching gang is believed to own a restaurant in Oakland, and the Hop Sing gang reportedly runs a restaurant in Emeryville."

The sergeant said that in 1978 each member of the Hop Sing gang was "selling at least four pounds

of heroin a year," but he added that it was difficult to know how much of the Eastbay's heroin traffic is handled by the two gangs.

As published, the six-paragraph story was irresponsible because it raised more questions than it answered, and by so doing perpetuated stereotypes of a "mysterious Chinatown" replete with tong wars and opium dens.

For instance, are the restaurants that are "believed to" be and "reportedly" run by the two gangs merely fronts, or is selling wonton soup a crime? What criminal activities are these gangs engaged in? Is the Asian American community, Oakland and the Eastbay threatened or victimized by these gangs? If so, in what ways? What, if anything, is being done to curb those activities?

Moreover, the story was based on Sgt. Chenault's investigation of the two gangs in 1978—six years ago. Such old information without any current update should have been a cautionary signal to the Tribune editors. By putting this non-story on the front page, this newspaper gave it a prominence it didn't deserve.

The intent of the story was to get on the record testimony before the commission that dealt specifically with Oakland. The Tribune didn't publish wire service accounts of the commission's first day of hearings (Oct. 23), at which general references were made to the connection between "new crime cartels" from Asia and Chinese fraternal organizations in Oakland and San Francisco, among other U.S. cities.

It's no longer news that Asian American gangs exist. But if there's a reason to write about Asian American gangs in the Eastbay, then the Tribune ought to do a thorough and independent reporting job—interviewing police, community and gang sources—rather than offer up a front-page story quoting only one person.

The story this newspaper almost ignored dealt with the killing of Henry Liu, a Chinese American writer, at his Daly City home on Oct. 15. Friends of Liu suspect a

political motive because he authored a book critical of the political leadership of Taiwan. He also wrote for a San Francisco Chinatown newspaper that favors the People's Republic of China.

There wasn't a word about this case in the Tribune until Oct. 20. A mention of the killing should have found its way into the Tribune earlier because some Eastbay readers are interested in the continuing local ramifications of the long-standing international dispute between Taiwan and China.

On Oct. 22, the Tribune appeared to trivialize his funeral by running a photo of his funeral procession and a caption with the inappropriately playful headline, "Henry Liu's adieu." In addition, the caption was muddled because it didn't make clear the possible political motive.

The effect of making something out of nothing (the gang story) and nothing out of something (the Liu story) was to confuse readers who thought the Tribune showed good judgment on stories on sensitive minority issues.

### 442nd film awarded

CHICAGO—Loni Ding, producer/director of the award-winning documentary "Nisei Soldier" was awarded the silver medal at the Chicago International Film Festival Sunday, Nov. 18, at the Midland Hotel.

"Nisei Soldier: Standard Bearer for an Exiled People" is the story of Japanese Americans who volunteered from internment centers during World War II and received worldwide recognition for their bravery. The film, telecast nationally over public television, also depicts the "evacuation" of Japanese Americans from their West Coast homes to the ten inland centers. Numerous Nisei veterans who served in the military intelligence service in the Pacific and in the European conflict with the famed 442nd Regimental Combat Team relate their experiences of fighting

Continued on Page 11

## Manzanar photos re-released

FRESNO, Calif.—Though best known as a nature photographer, the late Ansel Adams once delved into a subject that had serious political ramifications—the WW2 internment of Japanese Americans.

In the fall of 1943, Adams visited the Manzanar internment camp at the invitation of Ralph Merritt, the camp director. Working without financial compensation, he recorded on film the day-to-day life in the camp.

The following year, he displayed 204 photographs of Manzanar at the New York Museum of Modern Art. The exhibit closed in three weeks due to negative reaction and political pressure. The 112-page book he wrote to accompany the photos, entitled "Born Free and Equal: The Story of Loyal Japanese Americans," was removed from circulation when the government bought nearly every copy.

### Portraits of Individuals

"Moved by the human story unfolding in the encirclement of desert and mountains and by the wish to identify my photography in some creative way with the tragic momentum of the times, I came to Manzanar with my cameras," wrote Adams in the preface. As the title suggests, Adams strove to portray the internees he met as unique individuals, in direct contradiction to the "anti-Jap" propaganda of that period.

The book begins with an excerpt from the 14th Amendment, which guarantees equal protection under the law to all citizens, and includes portraits of Japanese Americans of all ages, backgrounds, and occupations. Adams concludes by declaring, "We must be certain that, as the rights of the individual are the most sacred elements of our society, we will not allow passion, vengeance, hatred, and racial antagonism to cloud the principles of universal justice and mercy."

During the short-lived exhibit, museum officials removed many photos and portions of text from the book, including the 14th Amendment.

Through the efforts of Emily Medvec, a fine arts photographer and former pupil of Adams, 50 of the Manzanar photos are being displayed in a new "Born Free and Equal" exhibit at the Fresno Metropolitan Museum of Art, History and Science through Jan. 20, after which it will travel to other museums across the country.

"Ansel fought to make the collection public, to make noise about it, but it didn't happen in his lifetime," said Medvec. "I think he'd feel good to know that 'Born Free and Equal'—and the moment in history it represents—hasn't been forgotten."

### Book Being Reissued

Medvec also published a condensed version of Adams' book with a new introduction and 50 photos from the original. (Because of restrictions on reproduction rights, the pictures are much smaller than in the 1944 edition.)

She learned of the existence of the prints and negatives, which Adams had donated to the Library of Congress in 1965, from Adams' son and daughter-in-law, who reside in Fresno.

Upon seeing the photos and reading Adams' account of the Manzanar visit, Medvec "knew that America had to see this collection." She was so inspired, in fact, that she was able to put the show and the book together within seven weeks.

She was also frightened by the attempts to censor Adams' works. "Could this happen again?" she asked.

Adams' Manzanar photos have seldom been seen in public. Selected prints from the collection were once shown with photos taken by famed photographer Toyo Miyatake, who was interned in Manzanar, in the 1978 "Two Views of Manzanar" exhibit in Los Angeles.

The new edition of "Born Free and Equal" can be ordered by sending \$15, plus \$1.50 for postage and handling, to: Emily Medvec, Echolight Corporation, 151 Kentucky Ave. SE, Washington, D.C. 20003. Call (202) 546-1220 for further information.



### MARUKYO Kimono Store

New Otani Hotel &  
Garden—Arcade 11  
110 S. Los Angeles  
Los Angeles  
628-4369



'PC' Advertisers  
Appreciate You!



LARGEST STOCK OF POPULAR &  
CLASSIC JAPANESE RECORDS,  
MAGAZINES, ART BOOKS, GIFTS

Two Stores in Little Tokyo

30 E. 1st St. • 340 E. 1st St.  
LOS ANGELES, CALIF 90012  
S. Ueyama, Prop.



### An exciting new concept in Japanese American publications

Available monthly, Tozai Times talks with Nikkei newsmakers, explores traditional culture and customs, and investigates Japanese American social patterns.

Subscribe to the new family newspaper that starts where the others end.

Tozai Times is free if you live in Los Angeles, Orange, or Ventura counties, and \$12 if you live outside the tri-county area.

Name \_\_\_\_\_  
Address \_\_\_\_\_  
City, State, ZIP \_\_\_\_\_  
Mail to: TOZAI TIMES, Circulation Dept.,  
5810 E. Olympic Blvd., Los Angeles, CA 90022.

This month:  
The first Nikkei in space



LITTLE TOKYO LIFE (No. 43):

by Harry Honda

## Long Beach / Signal Hill

Li'l Tokioans (as some L.A. Nisei used to refer to themselves) remember Long Beach best for that 1933 earthquake, in which about a 100 people were killed and many injured. About a half-dozen Japanese names were reported in the injured list. Founded as American Colony in 1881 and renamed because of its long beachfront, it thrived as a seaside community. Long Beach to the north was farming country till the Signal Hill oil boom of 1923. The gentle slopes of the hill (in the area then known as Burnett) flourished with flower farms till the oil boom. Its harbor and tidelands to the west were dredged about the same time, ushering the modern era and another home for the U.S. Navy.

The Issei community in the 1910s was substantial as evidenced by presence of the Japanese American Assn. office at 217½ Elm, the same structure which had the Nagahama boarding house and Mac's Keian (employment agency). Issei stores (Yamato, Tomomatsu, Hinode, Ben-ten), cafes, produce and fish mongers operated in the center of town and along the Pike (ocean front).

There were over 50 Japanese families—each with an RFD box number in Burnett or Long Beach—in the 1910s farming or growing flowers around and on top of Signal Hill. With the oil boom, the hill community became a city in 1924. Some of these families moved further east—to Orange County.

By 1930 the Nihonjinkai office went eastward, near Signal Hill to Molino Ave. by the S.P. train tracks. The Long Beach Gakuen was also there. The main Issei-run stores, by now, were dealing in Japanese art goods. There were Issei concessionaires on the Pike, many eateries (chop suey and cafe), over 50 grocery and produce stands (many up E. Broadway), and a number of business and farmer associations. It seems Lily Okura's and Yayoi Ono's father (Mr. Arikawa) was the only Issei insuranceman in town. Nisei florist

and community leader Frank Ishii operated at 120 E. 5th and 116 Pine.

We are about to conclude this year-long series with a segment on the newcomers in our midst and then an assessment of what's to come in Little Tokyo—as the toils of another Holiday Issue come to bear.

**GARDENA ADD**—On file are minutes of the Gardena city council for Feb. 17, 1942, furnished by Gardena city clerk May Doi upon request of councilman Mas Fukai whose resolution of Oct. 26, 1982, had invalidated a 40-year-old ordinance requesting the federal government to remove enemy aliens without delay from the city for the duration of the war. In 1942, with the ouster of Japanese from Terminal Island earlier in the week, the wholesale influx of Issei (i.e., *enemy aliens*) and their American-born families into the area bounded by Rosecrans, Normandie, 146th and Western, and particularly the premises of 1355 W. 145th met with stiff protest from neighbors. While the Gardena Valley JAACL (Fred Ikeguchi was then president) informed the city it was helping "evacuees" (so identified in the 1942 minutes) from the prohibited areas by offering use of the Buddhist church at 16531 Halldale and the Japanese school at 233-157th St., Gardena mayor Wayne Bogart called for the U.S. government to control the influx since no city ordinance could stop it, then requested the county health department to check whether the building at 145th St. was fit for human habitation and whether an unlimited number could be housed at the church hall and school.

All this transpired two days before E.O. 9066 was promulgated, when the Roosevelt administration and the U.S. government put into motion the "greatest wartime mistake" and threw out the Bill of Rights in the name of military necessity. The courts sustained this ploy as a constitutional exercise of presidential powers.

## PC Classified Advertising

### 3—Business Opportunity

**RESTAURANT BAR** for lease or sale; So. Calif. mountain resort, plush, fully equipped; seats 96, living quarters; \$2,000 mo. lease (213) 836-7308

QUEBEC, CANADA:

### Motel Restaurant Bar

FOR SALE BY OWNER  
Motel, 23 units plus 2 apts, restaurant & bar with 100 seating capacity. Air cond, fully equipped, in operation, open year round. Est. for 30 years. Located on the Canada-U.S. border line HWY 15. Que. Province, 30 miles S of Montreal.  
For more particulars call

(514) 246-2496 or write  
P.O. Box 2619,  
Champlain, NY 12919.

FOR SALE: High technology commercial electronics firm needs additional working capital for continued expansion and market penetration. Substantial sales backlog and receivables. Closely held corporation will consider majority interests. Call President or Chief Financial Officer, (916) 488-5533.

### PROPERTY SOUND AD

SO. CALIF.  
FURNITURE FACILITY

Fully eqpt. 120,000 sq. ft. Complete operating plant. 280 Painted/finishing lines. 11 spray booths with emission rights rough mill, finish mill, panel saw area, assembly area, dust system, loading docks, o/c. area, yard & parking area. Avail. immed. Production can be started at once.  
LA area (213) 627-6021  
Gary Goodman

### PHOTOCERAMIC

Revolution Fastfoods 25 yrs ago  
Computers 5 yrs ago  
1 Hour Photo 3 yrs ago  
Now instant Photoceramics!!

1 Stop Center-Color portrait professionally taken. Permanently transferred to selected gift. Beautifully boxed all within 15 min. Not a franchise own complete turn key business within 21 days. Various programs available. Average investment under \$10,000. Dreamers read next ad. Doers act NOW!! Time is running out!!

In Los Angeles call Mark Gole (818) 893-5521 or Calif. & Nationally, Tim Wood (916) 677-9489, or write Helios Enterprises PO Box 893, Shingle Springs, CA 95682

### 5—Employment

### TOPSKOUT

### Personnel Service

Fees paid by employer. Top job opportunity, especially bilingual. If you are looking, we can help. Send us your resume in confidence, include wages expected and specify occupation. Send resume in English to 1543 W. Olympic Blvd., Los Angeles 90015. Employer inquiry welcome.

(213) 742-0810, TLX 673203

GOVERNMENT JOBS. \$15,000-\$50,000/year possible. Immediate opportunities. Guaranteed. Call 805-687-6000 ext. R-9000.

### DATA PROCESSING

Sacramento County

is seeking applicants for

the classifications of..

SYSTEMS ANALYST

ANALYST PROGRAMMER

And SENIOR COMPUTER

SOFTWARE SPECIALIST

The Sr. Computer Software Specialist (Systems Programmer) is a mgt. position which req. 3 yrs exp. on MVS. The starting salary is \$30,596 with annual adj. to \$37,190 per year.

The Systems Analyst is a mgt. position req. 4 yrs of responsible exp. in applications programming, systems analysis and project management for med to lrg scale computer systems. The starting salary is \$30,596 with annual adj. to \$37,190 per year.

The Analyst Programmer position req. 3 yrs exp. in applications programming on a med. to lrg scale computer system. This is a journey level class. The starting salary is \$28,288 w/annual adj. to \$34,382 per yr.

We also offer an attractive benefits package in all positions. We are a progressive, state-of-the-art data processing organization looking for dedicated, competent professionals in the field of data processing. We currently employ two processors, an IBM 3083 and an IBM 4341. The latest in DBMS, TP, Office Automation, Information Center, Personal Computing, and Distributed Processing are a few of the technological advantages offered at Sacramento County.

All these positions are open for continuous filing and can be filled upon the receipt of your application and completion of interviews. If you feel you're ready to join one of the most advanced data processing organizations in the country, either call, write or visit

The Sacramento County

Employment Office,

700 H Street, Ground Level,

Sacramento, CA. 95814

(916) 440-5593 AA/EOE

### 5—Employment

PHYSICAL REHAB PROFESSIONAL  
Mercy Health Center an acute care and rehabilitation center located in picturesque and historic Dubuque, Iowa is expanding our Physical Rehab Medicine Service. Construction on our 20 bed rehab unit is near completion. We are seeking:

\* 3 PHYSICAL THERAPISTS, BS  
\* 2 SPEECH LANGUAGE PATHS MA, CCC  
\* 1 OTR, BS, AOTA

To join our Rehab Med. Dir./Physiatrist and 32 other physical rehab professionals in our multi-disciplinary program you must have:

\* Degree/Certification  
\*\* 1 year experience rehab/acute care preferred

\* License or eligible in Iowa  
Competitive salary/benefit package includes relocation/Cont. Ed allowance. Send resume or call (319) 589-9676 for more information.

SANDY BURGE  
Employment Coordinator  
MERCY HEALTH CENTER  
Dubuque, Iowa 52001

### Inservice Director

Full or part time. Registered nurse to plan/coordinate and conduct the training of nursing staff for the Keiro Homes, Japanese Retirement Home, and Intermediate Care Facility. Facilities are located in the Los Angeles and Gardena area. Experience preferable but not necessary. Any questions or inquiries, please call

KEIRO NURSING HOME  
Personnel Office  
(Mon.-Fri, 1:30pm-4:30pm)  
(213) 225-1393

### CABLE TV

### SERVICE TECHNICIAN

Times Mirror Cable Television, Inc. currently has a position available for a Service Technician in our Orange County system. Minimum 2 years experience required. You will be responsible for a variety of technical functions including service, maintenance and level adjustments of our 2-way system. Competitive salary and an exceptional benefits program including dental insurance and a company paid pension plan. Applicants must be able to read, write and speak English. Please send resume to: JIM PRICKETT

TIMES MIRROR CABLE TELEVISION, INC.  
27611 La Paz Rd., Suite C, Laguna Niguel,  
CA 92677; Equal Opportunity Employer

### 9—Real Estate

### PENNSYLVANIA MILTON HORSE FARM ESTATE

Consists of 50 acres with newly constructed 10 room Southern Colonial Home. Horse Barn 48 x90 with 6 stalls and large storage area. Asking price \$450,000. Small stream and large pond. Situated near I-80 and US-15 in Central Pennsylvania. (717) 743-6383 or (717) 286-2304.

### CALIFORNIA, USA

### When You See This Home You Will Say . . .

There is no other place on earth you'd want to live or go on vacation.

### • ½ Acre Oceanfront, CALIFORNIA, USA

When You See This Home You Will Say . . . There is no other place on earth you'd want to live or go on vacation.

### • ½ Acre Oceanfront, White-water View.

• Corona Del Mar 7000' 3 yr. old 5 or 6 bdr., 8 ba. + detached maid's quarters, gymnasium, huge pool & jacuzzi for 12. Coml bar & wine cave, elevator, sec. syst. Air conditioned, all marble floors downstairs. Finest custom made solid oak doors & cabinets. Custom gourmet kitchen with every appliance. Exterior & interior — interior doors imported from English castle. Meditation deck on ocean bluff. Private stairway to sandy beach.

• See this house! If you can afford it, YOU'LL BUY IT!

• Sacrifice price \$6,500,000  
Bank appraisal \$7,500,000.

WM. E. DOUD & CO., INC.  
Realtors Estab. 1907  
2865 E. Coast Highway  
Suite 207  
Newport Beach, Ca  
92625 USA  
Telex #298630—  
Answer back George

### 8—Real Estate (Acreage)

### SOUTH DAKOTA

SALE BY OWNER

Attention: Builders, Developers (brokers invited). FOR SALE—Land for development. 38 acres in northeastern South Dakota. Located in industrial park next to city limits of Milbank. If interested, contact Orlyn Reich (605) 432-5244.

### 9—Real Estate

### LAKE COUNTY

### Northern Calif. Waterfront custom home

3 bdrm. 2 baths, 1900 sq. ft. 2 car garage. Dock. In beautiful Lake County. \$117,000  
Call (818) 366-2953

### BRITISH COLUMBIA, CANADA

### Must Sell.

Fairmont Hot Springs Villas (timeshare), Villa D-2, week 10, current market \$8,910, sale price \$6,300. Villa B-1 week 4, current market \$6,390, sale price \$4,420. For info on this investment call (709) 364-6733 or (709) 364-2224 and ask for Brian, owner, or write Box 6175, Station E. St. John's, Newfoundland, Canada A1C 5X8.

### PENNSYLVANIA MILTON HORSE FARM ESTATE

Consists of 50 acres with newly constructed 10 room Southern Colonial Home. Horse Barn 48 x90 with 6 stalls and large storage area. Asking price \$450,000. Small stream and large pond. Situated near I-80 and US-15 in Central Pennsylvania. (717) 743-6383 or (717) 286-2304.

### SEMINAR

8 ALL PRO SPEAKERS

Fri. December 7th,

1984 - 9:am to 5:pm

REGISTRATION

8:00 to 8:45 am

QUALITY INN

5429 W. Century

Bld., L.A.,

CA 90045

### • Jack Morgan—Senior Partner—Morgan, Cheroske & Reamer Moderator

• Richard B. Hettig—Chairman of the Board—The Hettig Companies 10 key points to success in real estate

• Marc. P. Jacobs—Senior Partner—King & Brady Limited Partnerships. Alternative Syndications.

• Donald B. Prell—President—Imperial Credit Corp.—Imperial Bank Co. Subsidiary Institutional Creative Financing

• Morris Engle—CPA, Attorney at Law—Laventhol & Horwath. New Tax Act.

• Greg McKay—President—American Fidelity Properties Inc. Private Creative Financing.

SPECIAL SURPRISE SPEAKER  
Special surprise subject

• T.L. "THOM" Holmes—President Elect. National Association of Real Estate Brokers President H.J.T. Industries—How to Buy Right.

• Gerald M. Condon—Senior Partner—Condon & Condon, Attorney at Law. How to Sell Right.

End of day drawing for paid admissions! 1st prize new 19" Sony T.V. including VHS video component.

Plus other valuable door prizes!! Fee \$35.00 per person. Limited seating advanced sales only. Tickets available through Ticketmasters.

### TICKETMASTER

AT MAY COMPANY, MUSIC PLUS

AND SPORTMART

TICKETMASTER CHARGE

(213) 480-3232 or (714) 740-2000

**I.M. Hairstyling**  
Hair Care for Women & Men  
Shampoo & Haircut—\$10  
Permanent Wave—\$40  
For Other Services at Realistic  
Prices Call 378-3327  
4172 Pacific Coast Hwy.  
Village Shop #105,  
Torrance, CA 90505

Complete Home Furnishings  
**Koby's Appliances**  
15120 S. Western Ave.  
Gardena, CA  
324-6444 321-2123

Japanese Phototypesetting  
**TOYO PRINTING CO.**  
309 So. San Pedro St. Los Angeles 90013  
(213) 626-8153

It's MOCHI season  
...again  
ASK FOR IT AT YOUR NEARBY MARKET  
  
Fresh Frozen  
UMEYA RICE CAKE CO. LOS ANGELES, CA. 90013  
Manufacturers of Japanese Confection Since 1925

  
**De Panache**  
Today's Classic Look  
for Women & Men  
Call for Appointment  
Phone 687-0387  
105 Japanese Village Plaza  
Mall, Los Angeles 90012  
Toshi Otsu, Prop.

"The only Kamon designed for Japanese Americans"  
THE ORIGINAL BRONZE  
**A KAMON**  
(Japanese American Family Crest)  
CONTAINS EVERYTHING  
A JAPANESE AMERICAN MUST KNOW TO  
RESEARCH AN ACCURATE FAMILY HISTORY  
To place order / For Further Info, please contact:  
YOSHIDA KAMON ART  
312 E. First St., Suite 205  
Los Angeles, CA 90012; (213) 629-2848 / 755-9429  
KEI YOSHIDA, Researcher/Artist NINA YOSHIDA, Translator  
• Kamon/Surname Research and Translation Service •

TOYO  
  
Miyatake  
STUDIO  
318 East First Street  
Los Angeles, CA 90012  
(213) 626-5681

  
**Marutama Co.**  
Inc.  
Fish Cake Manufacturer  
Los Angeles

  
\$ EXCELLENT  
INVESTMENT IN  
INCOME PROPERTY \$  
Looking for a good investment? Try these two brand new 4-plexes for a positive cash flow investment. In Kenai peninsula's best rental location, 8-plex economy with 4-plex flexibility. Excellent construction with detailed finish work. Large and spacious; in a highly valued neighborhood. Marble fireplace in each building, laundry facilities and storage spaces. Builder will guarantee the construction for one year. Total price US \$454,000 Cash or low.  
FHA financing available now. For more information write  
Taeac Inc., 120 Trading Post Rd., Kenai, Alaska 99611 or call  
(907) 283-3380 • 283-3380 or 288-3162

'PC' Advertisers Look Forward to Serving You



**THERAPY**

Continued from Page 8

In treating disturbed children and adolescents, the need for family involvement in treatment is clear.

Due to the exceptionally strong ties within Asian families, individual therapy alone is usually inadequate. Therapy sessions must include the child's family: not just the parents, but aunts, uncles and other adults in the child's extended family. [Among Asians, deference to older family members and to authority, Tokaji mentioned, is not reduced with age. Incorporating extended-family therapy in the overall treatment approach might be as appropriate with an 80-year-old patient as it would be with an 8-year-old.]

"Psychotherapists must keep these cultural influences in mind when treating the Asian child or adolescent. Even in a grossly psychotic patient, the mores and tenets of his culture cannot be ignored. To effect viable treatment and eventual reintegration into society, the psychotherapist would find far greater success in integrating these cultural influences into the demands of the treatment rather than ignoring them or trying to change them," Tokaji said.

First published in Del Amo Hospital Child and Adolescent Mental Health Review, Fall 1984. Reprinted by permission.

**'NISEI SOLDIER'**

Continued from Page 9

against enemies at home and in the front lines.

Ding is now in the process of producing another film on Japanese Americans who served in the Pacific campaign with the military intelligence service.

Arthur T. Morimitsu, Midwest chairman of the Go For Broke, Inc. Nisei veterans organization,

accepted the award for Loni Ding at the awards ceremonies.

Morimitsu is past commander of Chicago Nisei Post 1183, which successfully introduced a resolution to recognize the injustice of the internment and the patriotism of Japanese Americans at the recent national convention of the American Legion at Salt Lake City, Utah.

**People**

**Literature**

Jeanne Wakatsuki Houston, author of *Farewell to Manzanar*, was one of 14 winners of the 1984 Wonder Woman Awards presented at New York's Plaza Hotel Nov. 14. Warner Communications sponsors the 3-year-old foundation, which selected the winners from more than 1,400 names. Each receives a grant of \$7,500.

**Government**

Minoru Yasui was appointed by Maryland Governor Harry Hughes to the National Institute for Prevention and Control of Violence and Extremism. The

institute is chaired by Birch Bayh, Jr., former senator from Indiana.

**1984 HI Boxscore**

1983 TOTALS  
 Display Ads ..... 7,666  
 One-Line Greetings ..... 909  
 JACL-HI Project ..... 24 units

1984 DISPLAY ADS  
 Nov. 23: 7,379 1/2" (96%)

Chapters which raise funds for their program through solicitation of Holiday Issue ads are entitled to special bulk rates. Bulk rate starts at 5¢ (2¢ page); full page is 84", a two-page spread 168". Chapters reserving HI space for 1984 are listed; chapters which solicited in 1983 but have not reported are shown with only a line of dots; other chapters without the line of dots are encouraged to come on board the HI boxscore. (g) see one line greetings.

Alameda	168	Parlier	
Arizona		Pasadena	25
Arkansas Vly		Philadelphia	
Berkeley	336	Placer Cty	(g)
Boise Vly	(g)	Pocatello	(g)
Carson	9	Portland	168
Chicago	84	Prog W side	
Cincinnati		Puyallup Vly	84
Cleveland		Reedley	168
Clovis	6	Reno	6
Coachella Vly		Riverside	14
Columbia Bsn		Sacramento	168
Contra Cos	168	St Louis	(g)
Cortez	15	Salinas Vly	336
Dayton		Salt Lake	105
Delano	19	San Benito	(g)
Detroit		San Diego	336
Diablo Vly	6	San Fern Vly	336
Downtown LA		San Francisco 224	
East LA	224	San Gab Vly	
Eden Twn	150	San Jose	168
Florn	12	San L Obispo	
FL Lupton		San Mateo	
Fowler	6	Sanger	57
Fremont	12	Sta Barb	(g)
French Camp	9	Sta Maria Vly	
Fresno	168	Seattle	168
Gardena Vly	126	Seabrook	(g)
Gilroy		Seiandoo	504
Golden Gate		Selma	84
Gtr LA Sgl	4	Sequoia	84
Gtr Pas Area		Snake River	504
Gresh-Tr	(g)	Solano Cty	
Hawaii		Sonoma Cty	16
Hollywood		So Bay	
Hoosier	6	Spokane	
Houston	4	Stockton	168
Idaho Falls		Torrance	
Imp Vly		Tri-Valley	
Japan	336	Tulare Cty	
Lake Wash n		Twin Cities	
Las Vegas		Venice-Culv	(g)
Latin Amer		Ventura	168
Liv-Merced	168	Wasatch FN	
Lodi		Wash, DC	
Marin Cty		Watsonville	168
Marina	6	West LA	180
Marysville	105	West Valley	48
Mid-Col		White Riv Vly	(g)
Mile-Hi	6	Wilshire	4
Milwaukee			
Mont'y Pnsia	168	CCDC	6
Mt Olympus		EDC	
New England		Intermountain	8
New Mexico	9	Midwest DC	8
New York	68	Min Plain	14
No SDiego		NWAPDC	20
Oakland		PNWDC	5
Olympia		PSWDC	20
Omaha	84		
Orange Cty	84	Ad Dept	398 1/2
Pacifica		PC Office	120
Pan-Asian			

**Contributions to Pacific Citizen For Typesetting Equipment**

As of Nov. 24: \$14,646.31 (547)  
 Last week: \$14,441.31 (542)  
 This week: \$ 205.00 (5)  
 \$10 from: Joe/Mariko K uwahara.  
 \$20 from: Donald/Deborah Hayashi.  
 \$25 from: Joe/Sumie Akiyama.  
 \$50 from: Fremont JACL.  
 \$100 from: Selma JACL.  
 Thank You!

**1000 Club Roll**

(Year of Membership Shown) * Century; ** Corporate; L Life; M Memorial; C/L Century Life	Mid-Columbia: 30-Sho Endow, Jr.	Selanoco: 1-Wayne Isa*, Snake River: 31-Abe Saito.
<b>Summary (Since 12-1-1983)</b> Active (previous total) 1,986 Total this report: #36 ... 52 Current total ..... 2,038	Monterey Peninsula: 19-George Y Uyeda.	Venice-Culver: 26-Dr Mitsuo Inouye.
<b>NOV 5-9, 1984 (52)</b>	New York: 31-May N Hirata*, 28-George Kyotow, 3-Jiro Murase**	Wasatch Front North: 31-Ken Uchida.
Berkeley: 15-A Scarcella, 13-Masaji G Uratsu.	Orange County: 24-Dr S Douglas Arakawa, 33-Harry H Matsukane.	White River Valley: 28-George Kawasaki.
Boise Valley: 11-Harry Hamada.	Pasadena: 29-Mich Tsuchiyama.	National: 31-Mats Ando, 24-Lloyd K Kumataka.
Chicago: 30-Roy Iwata, 19-Lillian C Kimura*.	Philadelphia: 15-William Hamada*, 30-Ben Ohama.	<b>CENTURY CLUB*</b> 10-Lillian C Kimura (Chi), 5-Takito Yamaguma (Dnt), 4-May N Hirata (NY), 3-Jiro Murase (NY), 15-William Hamada (Phi), 12-George I Azumano (Por), 10-William Y Sakai (Por), 1-Wayne Isa (ZLA), 4-Ken Uchida (WFn).
Cleveland: 24-John Ochi.	Placer County: 23-Kunio Okusu.	<b>Summary (Since 12-1-1983)</b> Active (previous total) 2,038 Total this report: #37 ... 24 Current total ..... 2,061
Delano: 30-Sadawo Yonaki.	Portland: 33-George I Azumano*, 20-Dr Toshi Hasuiki, 20-Dr Albert A Oyama, 23-William Y Sakai*, 20-Dr James M Tsugawa.	<b>NOV 13-16, 1984 (24)</b>
Detroit: 25-Shig T Kizuka, 29-Isao Sunamoto.	Puyallup Valley: 15-Yoshihiko Tanabe.	Boise Valley: 24-George Koyama.
Downtown Los Angeles: 7-Kenneth Kasamatsu, 24-Takito Yamaguma*.	Sacramento: 23-Tom Furukawa, 20-Edwin S Kubo.	Chicago: Life-Rose Sawako Tani.
East Los Angeles: 20-Dr George S Mizunoue, 28-Frank S Okamoto, 29-George Watanabe.	Saint Louis: 1-Roy S Yamahiro.	Cleveland: 2-Dr Kayoshi Masuoka.
Eden Township: 31-Kenji Fujii.	San Jose: 24-Peggy Sonoda Asuncion.	Dayton: 21-Ken F Sugawara.
Fowler: 28-Judge Mikio Uchiyama.	Seabrook: 28-Charles T Nagao.	Eden Township: 15-Art Mitsutome.
Livingston Merced: 22-Agnes Winton, 28-Gordon H Winton, Jr.	Seattle: 14-Roy Y Sakamoto, 26-Roy Y Seko, 34-Fred T Takagi.	
Marina: 24-Cathy Sonoda.		
Marysville: 31-Mosse M Uchida.		

Fresno: 8-Dorothy Kikue Kanenaga, 2-Sumi Suda, 2-Dr Kikuo H Taira, 1-Dr Shaw Yorizane, Jr.	Gardena Valley: 7-Ken Hokoyama.	Japan: 3-Mutsuya Matsu-moto.
Livingston-Merced: 30-Eric Andow.	Marina: 24-Ann Sonoda.	Monterey Peninsula: 15-Dr Takashi Hattori, Life-Mickey N Ichiuji, Life-Yoshiko E Ichiuji, Life-Lily Y Kageyama, Life-Kenneth H Sato.
Reedley: 19-George Y Kiyomoto.	Sacramento: 22-Dr Hitoshi Okamoto.	San Fernando Valley: 34-Susumu Yokomizo.
Sequoia: 26-Eugene Y Kono.	Snake River: 31-George Iseri*.	Sonoma County: 22-Shiz Tsujihara.
<b>LIFE</b> Rose Sawako Tani (Chi), Mickey N Ichiuji (MP), Yoshiko E Ichiuji (MP), Lily Y Kageyama (MP), Life-Kenneth H Sato (MP).		

**Memorial**

**Henry N. Tani**  
 Henry Tani died in February 1965. I still remember him vividly, as he helped to organize the Anti-Discrimination Committee. He was one of the founders of the St. Louis JACL chapter, and an ardent worker for civil rights.

carried on in leadership and has inspired many Sansei here in the Midwest. Following in the footsteps of his father, John has been a Chicago Chapter chairperson as well as MDC governor. He recently joined the Mike Masaoka Fellows.

His widow, Rose Sawako Tani, sends a Life 1000 Club membership in memory of her husband. We salute men and women like the Tanis for having the vision and leadership so that our parents could be naturalized and such legislation as Evacuation Claims Act passed and anti-alien land laws abolished.

—By Frank Sakamoto

**Deaths**

**William Noda, 71**, Turlock, Calif., businessman and real estate broker, died Nov. 15. Born in Salinas, he grew up on a farm in Denair and was a star athlete at Turlock H.S. in football and basketball. He was past president of Cortez JACL, Turlock Social Club, Turlock Lions Club, and Turlock Board of Realtors. He served on the Stanislaus County Republican Central Committee from 1968 to 1974.

**LOWEST TO JAPAN!!**  
 \$561 Round Trip  
 SFO/LAX - Tokyo  
**Community Travel Service**  
 5237 College Ave., Oakland  
 CA 94618; (415) 653-0990

**AT NEW LOCATION**  
**Aloha Plumbing**  
 Lic. #201875 -- Since 1922  
 PARTS - SUPPLIES - REPAIR  
 777 Junipero Serra Dr.  
 San Gabriel, Ca 91776  
 (213) 283-0018

**CHIYO'S**  
 Japanese Bunka Needlecraft  
 Framing, Bunka Kits, Lessons, Gifts  
 (714) 995-2432: 2943 W. Ball  
 Rd., Anaheim, CA 92804  
 (213) 617-0106: 450 E. 2nd  
 St., Honda Plaza, L.A. 90012

**ED SATO**  
 PLUMBING & HEATING  
 Remodel and Repairs  
 Water Heaters, Furnaces  
 Garbage Disposals  
 Serving Los Angeles  
 293-7000 733-0557

**MOCHI MAKER**  
 Cooks  
 Steamers  
 # Pounds  
 \$169.00  
 S. L.: 10.99  
 (CA res only)  
 shipping \$5.00  
 For detail or order:  
**Oriental Gift World**  
 1908 Beverly Blvd, Suite 104  
 Los Angeles, CA 90057

*Four Generations  
 of Experience ...*  
**FUKUI**  
 Mortuary, Inc.  
 707 E. Temple St.  
 Los Angeles, CA 90012  
 626-0441

**Gerald Fukui, President**  
**Ruth Fukui, Vice President**  
**Nobuo Osumi, Counselor**

**KUBOTA NIKKEI MORTUARY**  
 (Formerly Shimatsu, Ogata & Kubota Mortuary)  
 911 Venice Blvd.  
 Los Angeles, CA 90015  
 Phone: (213)  
 749-1449  
 Y. Kubota • H. Suzuki • R. Hayamizu  
 Serving the Community  
 for Over 30 Years

ESTABLISHED 1936  
**NISEI TRADING**  
 Appliances - TV - Furniture  
 249 S. San Pedro St.  
 Los Angeles 90012  
 (213) 624-6601

**Kimura PHOTOMART**  
 Cameras & Photographic Supplies  
 316 E. 2nd St., Los Angeles  
 (213) 622-3968

**PC Business-Professional Directory**

<p><b>Greater Los Angeles</b></p> <p><b>ASAHI TRAVEL</b>              Supersavers-Group Discounts              Apex Fares-Computerized-Bonded              1111 W Olympic Blvd., LA 90015              623-6125/29 • Call Joe or Gladys</p> <p><b>Flower View Gardens #2</b>              New Otani Hotel, 110 S Los Angeles              Los Angeles 90012 Art Ito Jr.              Citywide Delivery (213) 620-0808</p> <p><b>Inoue Travel Service</b>              1601 W. Redondo Beach Bl., #209              Gardena, 90247; 217-1709; Offices              in Tokyo, Japan / Lima, Peru</p> <p><b>TATAMI &amp; FUTON</b>              (818) 243-2754              SUSUKI FUTON MFG.</p> <p><b>Tama Travel International</b>              Martha Igarashi Tamashiro              One Wilshire Bldg., Ste 1012              Los Angeles 90017; (213) 622-4333</p> <p><b>Tokyo Travel Service</b>              530 W. 6th St. #429              Los Angeles 90014 680-3545</p>	<p><b>Greater Los Angeles</b></p> <p><b>Yamato Travel Bureau</b>              321 E 2nd St., #505              Los Angeles 90012 624-6021</p> <p><b>Orange County</b></p> <p><b>Exceptional Homes and Investments</b>              VICTOR A. KATO              Residential-Investment Consultant              18682 Beach Blvd., Suite 220              Huntington Beach, CA 92648              (714) 963-7989</p> <p><b>The Paint Shoppe</b>              LaMancha Center, 1111 N Harbor              Fullerton CA 92632, (714) 526-0116</p> <p><b>Kane's Hallmark CENTER</b>              LaMancha Center, 1117 N Harbor              Fullerton CA 92632, (714) 992-1314</p> <p><b>San Diego</b></p> <p><b>PAUL H. HOSHI</b>              Insurance Service              852-16th St (619) 234-0376              San Diego CA 92101 res. 264-2551</p>	<p><b>Ventura County</b></p> <p><b>Calvin Matsui Realty</b>              Homes &amp; Commercial              371 N. Mobil Ave., Ste. 7,              Camarillo 93010, (805) 987-5800</p> <p><b>San Jose</b></p> <p><b>Kayo K. Kikuchi, Realtor</b>              SAN JOSE REALTY              996 Minnesota Ave., #100              San Jose, CA 95125-2493              (408) 275-1111 or 296-2059</p> <p>Tatsuko "Tatty" Kikuchi              General Insurance Broker, DBA  <b>Kikuchi Ins. Agy.</b>              996 Minnesota Ave., #102              San Jose, CA 95125-2493              (408) 294-2622 or 296-2059</p> <p><b>Edward T. Morioka, Realtor</b>              580 N. 5th St., San Jose, CA 95112              (408) 998-8334 bus; 371-0442 res.</p> <p><b>Wayne Nishinaka, Agent</b>              Farmers Insurance Group              2680 Cropley, San Jose, CA 95132              (408) 943-0713/5 res. 996-2582</p>	<p><b>San Jose</b></p> <p><b>UYEDA CO.</b>              Plumbing Contractor              New Construction - Remodel              Licensed: (408) 371-1209</p> <p><b>Watsonville</b></p> <p><b>Tom Nakase Realty</b>              Acreage, Ranches, Homes, Income              TOM NAKASE, Realtor              25 Clifford Ave. (408) 724-6477</p> <p><b>San Francisco Bay Area</b></p> <p><b>Y. KEIKO OKUBO</b>              Five Million Dollar Club              39812 Mission Blvd.,              Fremont, CA 94539; (415) 651-6500</p> <p><b>Lake Tahoe</b></p> <p><b>RENT INC Realty Inc.</b>              Sales, Rentals, Management              Box 65, Carnelian Bay, CA 95711              (916) 546-2549; Shig-Judy Tokubo</p> <p><b>Seattle, Wa.</b></p> <p><b>Imperial Lanes</b>              Complete Pro Shop, Restaurant, Lounge              2101-22nd Ave So. (206) 325-2525</p>	<p><b>Seattle</b></p> <p><b>UWAJIMAYA</b>              ... Always in good taste.</p> <p><b>For the Best of              Everything Asian.</b>              Fresh Produce, Meat,              Seafood and Groceries.              A vast selection of              Gift Ware.</p> <p>Seattle • 624-6248              Bellevue • 747-9012              Southcenter • 246-7077</p>	<p><b>The Intermountain</b></p> <p><b>Mam Wakasugi, Rep.</b>              Row Crop Farms; Blackaby Real Estate,              Rt 2 Bx 658, Ontario, OR 97914              (503) 881-1301, 262-3459</p> <p><b>Chicago</b></p> <p><b>Sugano Travel Sv.</b>              17 E Ohio St, Chicago IL 60611              (312) 944-5444 784-8517, eve., Sun</p> <p><b>New Jersey, Penna.</b></p> <p><b>Ben M. Arai</b>              Attorney at Law              126 Mercer St., Trenton, NJ 08611              Hours by Apmt. (609) 599-2245              Member: N.J. &amp; Pa. Bar</p> <p><b>Washington, D.C.</b></p> <p><b>Mike Masaoka Associates</b>              Consultants - Washington Matters              900-17th St NW, Wash, DC 20006              (202) 296-4484</p>
--	---	---	---	---	--



**WORKSHOP**

Continued from Front Page

can Student Services. Panelists noted that women are hampered by stereotypes that they are not suited for leadership because they are too emotional, are not "team players," and do not inspire confidence in others. Another assumption that Asian women may impose upon themselves is that some people are better at following than leading, and that a quiet person would be more comfortable working "behind the scenes."

Hiroshige related an incident in which six Asians—five men and a woman—were meeting to plan a political fundraiser. The men, who knew the woman but had not worked with her before, proceeded to make plans without asking for her opinions. When the woman confronted the men with that fact, they apologized and the problem was resolved.

Wong's comment was that "women, in general, do not take leadership enough. They wait to be allowed to take leadership." On the other hand, Rabaya said, women who attempt to "try harder, be better, be stronger" to compensate for the stereotype are often stigmatized as "over-aggressive." She suggested that community leaders also have a responsibility to bring other people into the decision-making process.

Rabaya and Noji also noted that Asian women often play key roles in community affairs but do not get credit for their work. Noji had an experience in which "I've been directing this major project, I was the chair, and here was someone, a member of the committee, standing and greeting all of these invited guests at the door, and I was setting up the food!" "One of the difficulties in the

Asian Pacific community," Hokoyama stated, "is that men and women have difficulty articulating [problems]... unless we can get beyond that to the point where we can talk to each other without bringing up the defenses, or without feeling as though we're insulting each other, it becomes very difficult."

Before entering the corporate or political arena, Tan suggested, women should be aware of "the rules by which men play." As for values that many Asians grow up with, Wong said, "sometimes... we need to have them, and we should be up front. But at other times, we need to put our values in the back seat and use white values."

In either case, one need not compromise one's values, said Hokoyama. "There's a balance there. You have to be part of the system, but you've got to know what you want to change. If that's not clear in your mind... you could become co-opted, or you could be totally alienated out."

**'Your Time Will Come'**

Hiroshige also stressed the importance of knowing "where you are and where you want to go." Although one must "play the game" even with those "who do not like you either as an Asian, or as a person who's a liberal, or whatever," he said, there will eventually be "a point where you are in command and then you can assert your principles."

The panelists were in general agreement as to the need to look at the approaches used by other people—men, whites, role models, mentors, peers, and others—to experiment, and to ultimately decide what works best for oneself.

A workshop on "Cultural Values as Strengths" was conducted by: Kenyon Chan, clinical psychologist;

Tong Soo Chung, president of Korean American Coalition; Helen Kawagoe, Carson city clerk; Violet Rabaya; and Michael Woo, senior consultant to state sen. David Roberti.

Noting that Asians can be found in many fields but seldom in leadership positions in those fields, Chan asked the audience to list 1) what they considered good leadership qualities and 2) what they considered as typical Asian traits. The lists were to be compared to see what assets and liabilities Asian Americans have as potential leaders.

**Undesirable Traits?**

The audience's consensus was that good leaders: take charge, relate to people, have communication skills, can motivate people, get results, influence others, have charisma and can delegate authority; are assertive, sensitive to others, goal-oriented, committed, intelligent, creative, responsible, open-minded, flexible, self-aware, and competent.

According to the audience, Asian Americans: are shy, smart, subtle, non-dynamic, status-quo-oriented, responsible, group-oriented, non-risk-taking, trustworthy, humble, education-oriented, success-oriented, organized, family/community-oriented, hard-working, practical, parochial, and materialistic; take orders well; may lack social skills and—if not American-born—English skills; and have a sense of cultural pride. (Agreement was not unanimous on every point.)

Kawagoe said that one possible response to this apparent disparity between cultural traits and leadership requirements is "to take the traits that we feel are positive and to develop new styles in terms of how those that are in leadership positions should act... changing, perhaps, the image of what leadership means."

Referring to the "negative" traits, Chan emphasized that "none of these things are immutable. There are ways of changing,

there are ways of evolving. Leadership is... a process of our individual development." He also theorized that that Asians may take risks more readily within their own communities than in the non-ethnic world.

Chung expanded on that idea. "Japanese Americans... have been here long enough, have become more homogenized within themselves as well as homogenized with the outer society. That makes it easier to organize your own community and to bridge the gap with the other communities, whereas... to be effective within the Korean community requires so many skills that are hindrances to you in the outside community."

His conclusion was that "it's true that to be more effective leaders means that you have to become—I hate to use this word, but—more assimilated into the mainstream. How you do that without losing your own cultural identity... is a matter for each of us to resolve."

**JAPAN HOLIDAY**

TO TOKYO (ROUND TRIP)

from Los Angeles, San Diego, San Francisco, Seattle, Portland	\$ 730
Phoenix	783
Denver	846
New York, Miami, St. Louis, Minneapolis, Detroit, Chicago, Omaha	946
Cleveland, Milwaukee, Washington, D.C., Tampa, Boston, Philadelphia, Atlanta	968

**SPECIAL OFFERS**  
**Korean Airlines.** Los Angeles, San Francisco/Tokyo. FREE Honolulu Stop (1-Year Open) ... \$ 594  
**Singapore Airline.** Los Angeles/Tokyo, nonstop (60 Days Open) ... 670  
 Christmas/New Year Vacation Fit available now. round trip \$654, free Honolulu Stop.  
 (213) 484-6422

**Upcoming 1985 Escorted Tours**

Japan Spring Adventure	Apr. 8
Europe	May and June
Canadian Rockies - Victoria (8 days)	June 19
Japan Summer Adventure	July 2
Hokkaido-Tohoku (No. Japan)	Sept. 30
East Coast & Foliage (10 days)	Oct. 7
Japan Autumn Adventure	Oct. 15
Far East (Bangkok, Singapore, Malaysia, Hong Kong, Taiwan, Japan)	Nov. 1

For full information/brochure  
**TANAKA TRAVEL SERVICE**  
 441 O'Farrell St. (415) 474-3900  
 San Francisco, CA 94102

**1985 West L.A. JACL Travel Program**

FOR JACL MEMBERS, FAMILY & FRIENDS  
 \* Late Changes/Addition TOUR DATES: GUIDES  
 Las Vegas Bus-Fun Trip Nov. 30-Dec. 2: Geo. Kanegai  
 K ('84)—Spl. Holiday Tour Dec. 22-Jan. 2: G. Kanegai  
**1985 TOURS**

- 1—Japan Snow Festival Jan. 30-Feb. 13: Yuki Sato
  - 2—Cherry Blossom-Kyushu-Honshu Apr. 1-21: Toy Kanegai
  - 3—Wash'n DC Heritage Tour May 1-12: Yuki Sato
  - 4—Basic Japan + HK, Bangk. May 11-29: Phyllis Murakawa
  - 5—European Tour June 1-22: Toy Kanegai
  - 6—Canadian Rockies (Special) Jun 20-24: George Kanegai
  - 7—Japan Summer Tour Jun 22-Jul 6: Bill Sakurai
  - 8—Ura-Nihon, HK, Bangk. Sep 28-Oct 19: Veronica Ohara
  - 8A—Izu, Kii Pnsl, Hokkaido, T'hoku Sep 28-Oct 19: S. Yagi
  - 9—China & Kyushu Tour Sep 29-Oct 22: Jiro Mochizuki
  - 10—Ura-Nihon, No. Kyushu Tour Oct 5-26: Bill Sakurai
  - 11—Mediterranean Cruise Sep 29-Oct 11: Toy Kanegai
  - 12—Fall Foliage/New Eng. Can. Oct 3-11: 13—Japan Highlights Nov 2-Nov 14: 14—Spl. Japan Holiday Tour Dec. 21-Jan 4: Geo. Kanegai
- Mini-Group air fare from Sept. 15 on a bi-weekly travel/tour. Mini-schedule 1985—30 days Japan Homestay to or from Japan. Brochure available in early January 1985.

FOR INFORMATION, RESERVATIONS, CALL OR WRITE  
 Roy Takeda: 1702 Wellesley Ave., West Los Angeles 90025 ... 820-4309  
 Steve Yagi: 3950 Berryman Ave., L.A. 90066 ... 397-7921  
 Toy Kanegai 820-3592 Bill Sakurai: 820-3237 Amy Nakashima 473-9969  
 Veronica Ohara 473-7066 Yuki Sato 479-8124 Chas. Nishikawa 479-7433  
 Jiro Mochizuki 473-0441 Phyllis Murakawa 821-8668  
 Land Arrangements by Japan Travel Bureau International  
 West L.A. JACL Tour Brochures Available

West Los Angeles JACL  
**TRAVEL CHAIR: GEORGE KANEGAI-820-3592**  
 1857 Brockton Ave., Los Angeles, CA 90025

Flight and tour meetings every 3rd Sunday of the month, 1 p.m., at Felicia Mahood Center, 11338 Santa Monica Blvd., West L.A.

West LA JACL Flight, c/o Roy Takeda  
 1702 Wellesley Ave., Los Angeles, CA 90025

Please reserve \_\_\_\_\_ seat(s) for Flight No. \_\_\_\_\_  
 I agree to conditions of the contract and brochures. Flight schedules are subject to change.

Name \_\_\_\_\_  
 Address \_\_\_\_\_  
 City, State, ZIP \_\_\_\_\_  
 Phone: (Area code) \_\_\_\_\_  
 [ ] Send tour brochure [ ] Flight only information

**MEDICAL PRACTICE FOR SALE**

G.P., F.B. INT. with tremendous following. Retiring. Good opportunity for one or two MDs. Large office. Reasonable. Good rent. Call (916) 448-9181 or write 2128-10th, Sacramento, CA 95818.

**FOR THE HOLIDAYS ...**

By Popular Demand—3rd Printing of  
**Recipes to Share Cookbook**  
 287-pages, 616 favorite & Asian recipes  
 Calvary Presbyterian Church Cookbook  
 1239 S. Monroe St., Stockton, CA 95206  
 \$6.50 + \$1.50 postage/handling

(Price as of June 1, 1983)

**East West Flavors**

The ever popular cookbook published by the West Los Angeles JACL Auxiliary

I enclose my donation for:  
 \_\_\_\_\_ Copies of E-W 1: \$7.00 (+\$1 by mail/.46 CA Tax)  
 \_\_\_\_\_ Copies of E-W 11: \$9.00 (+\$1.30 by mail/.59 CA Tax)  
 (6 1/2% sales tax for CA res. only)  
 Amount enclosed: \$ \_\_\_\_\_



Name \_\_\_\_\_  
 Address \_\_\_\_\_  
 City, State, ZIP \_\_\_\_\_  
 PLEASE MAKE CHECK PAYABLE TO:  
 WEST LOS ANGELES JACL AUXILIARY  
 1431 Armacost Ave., Los Angeles, CA 90025

**VIDEO ACTION PRESENTS**  
**Samurai THRILLERS**  
 GREAT GIFT IDEAS

**2 for \$109.95 HOLIDAY SPECIAL\***

ORDER NOW AND SAVE! Individual Price \$59.95 each.

- Watch Out, Crimson Ball! Mekurano Ochi Midaregasa (d)
- Professional Killers I Hissatsu Shikakeneri (subtitled)
- Sword of Fury I Miyamoto Musashi I (subtitled)
- Sword of Fury II Miyamoto Musashi II (subtitled)
- The Gambling Samurai Kuni-sada Chuji (subtitled)
- Samurai Saga Anu Kengo no Shogai (subtitled)

Also: For Your Japanese Video Collection

- Love and Faith Oginsama (subtitled)
- Nomugi Pass Ah Nomugi Toge (subtitled)
- Murder in the Doll House Midare Karakuri (subtitled)
- The Phoenix Hinotori (subtitled)
- The War in Space (dubbed)

Please Send Me:  VHS  BETA  
 The above checked titles  More information

Enclosed is:  Money Order  Check (For faster service, write driver's license # and birthday on check.)  
 MC/VISA # \_\_\_\_\_  
 Expiration date \_\_\_\_\_

Name \_\_\_\_\_  
 Address \_\_\_\_\_  
 City \_\_\_\_\_ State \_\_\_\_\_ Zip \_\_\_\_\_

Add \$3 each for shipping and handling and 6% CA or 6 1/2% L.A. County resident sales tax.

**VIDEO ACTION 708 W. 1st St., Los Angeles, CA 90012 (213) 617-3545**

- Los Angeles Japanese Casualty Insurance Assn.**  
 COMPLETE INSURANCE PROTECTION  
**Aihara Insurance Agency, Inc.**  
 250 E. 1st St., Los Angeles 90012  
 Suite 900 626-9625
- Anson T. Fujioka Insurance**  
 321 E. 2nd St., Los Angeles 90012  
 Suite 500 626-4393
- Funakoshi Ins. Agency, Inc.**  
 200 S. San Pedro, Los Angeles 90012  
 Suite 300 626-5275
- Inouye Insurance Agency**  
 15029 Sylvanwood Ave.  
 Norwalk, CA 90650 864-5774
- Itano & Kagawa, Inc.**  
 321 E. 2nd St., Los Angeles 90012  
 Suite 301 624-0758
- Ito Insurance Agency, Inc.**  
 1245 E. Walnut, #112, Pasadena 91106;  
 (818) 795-7059, (213) 681-4411 L.A.
- Kamiya Ins. Agency, Inc.**  
 327 E. 2nd St., Los Angeles 90012  
 Suite 224 626-8135
- Maeda & Mizuno Ins. Agency**  
 18902 Brookhurst St., Fountain Valley  
 CA 92708 (714) 964-7227
- The J. Morey Company**  
 11080 Artesia Bl., Suite F, Cerritos, CA  
 90701, (213) 924-3494, (714) 952-2154
- Steve Nakaji Insurance**  
 11964 Washington Pl.  
 Los Angeles 90066 391-5931
- Ogino-Aizumi Ins. Agency**  
 109 N. Huntington, Mont'y Pk 91754;  
 (818) 571-6911, (213) 283-1233 L.A.
- Ota Insurance Agency**  
 312 E. 1st St., Suite 305  
 Los Angeles 90012 617-2057
- T. Roy Iwami & Associates**  
**Quality Ins. Services, Inc.**  
 2975 Wilshire Blvd., Suite 629  
 Los Angeles 90005 382-2255
- Sato Insurance Agency**  
 366 E. 1st St., Los Angeles 90012  
 626-5861 629-1425
- Tsuneishi Ins. Agency, Inc.**  
 327 E. 2nd St., Los Angeles 90012  
 Suite 221 628-1365
- Wada Asato Associates, Inc.**  
 16520 S. Western Ave., Gardena,  
 CA 90247, (213) 516-0110