

pacific citizen

Newsstand: 25¢
(60¢ Postpaid)

National Publication of the Japanese American Citizens League

ISSN: 0030-8579 / Whole No. 2,336 / Vol. 100 No. 10

244 S. San Pedro St., Rm. 506, Los Angeles, CA 90012-3981 (213)626-6936, 628-3768

April 26, 1985



Photo by George Thow

DESERTED — Remains of garden at Manzanar are inspected by members of Manzanar Committee and officials of Los Angeles City and Inyo County water departments. (Story on page 9.)

'Asians don't value life,' U.S. senator says

WASHINGTON—Sen. Paul Trible (R-Va.) resurrected a Vietnam-era stereotype earlier this month when he said that he didn't think his fighting in Vietnam "would have saved the world" because "Asians have no value for life."

During the war, a similar statement was made by Gen. William Westmoreland.

Trible's remarks appeared in the Washington Post on April 15 as part of a series on the Vietnam war. The Post noted that Trible, a member of the Senate Foreign Relations Committee, was photographed for a campaign ad wearing a pilot's uniform in the cockpit of a military plane despite the fact that he received a medical deferment during the war for a slight malformation of the right arm.

On April 17, Rep. Norman Mine-

ta (D-Calif.) sent Trible a letter of protest which read as follows:

"I am writing to express my anger at your highly offensive and racist statement..."

"Please consider what you have said with that remark. You have said that you believe that an entire race of people does not value or understand life the way other human beings do. With your statement you imply that an entire race of people feels no compunction about killing other human beings and that an entire race does not care about the conditions in which they live their lives."

"As an American of Asian ancestry, I am personally offended by your remark."

"Perhaps you are trying to give the American people a new explanation for our defeat in Vietnam—

that our servicepeople had to fight against inhumane and bizarre Asian forces. Such a blanket statement is no substitute for a thoughtful analysis of our involvement in Vietnam."

"The Vietnam War was tragic and complex and there are many differing views and opinions about our country's role. Statements such as yours do not address the issues involved, are clearly inflammatory, and only continue to create an atmosphere of hatred and misunderstanding about Asia and its people."

"I find it outrageous that you, a member of the Senate Foreign Relations Committee, would have such a distorted and racist view of the world. I urge you to withdraw the statement and apologize to those whom you have offended."

Taiwan official sentenced in Liu murder

TAIPEI—The former head of Taiwan's military intelligence bureau was convicted April 19 of planning the murder of Chinese American writer Henry Liu and sentenced to life imprisonment.

A military tribunal found Vice Adm. Wang Hsi-ling guilty of "taking advantage of the opportunities arising from his performance of official duties to collaborate in the murder" of Liu, a critic of Taiwan's government, who was shot to death at his Daly City, Calif., home on October 15, 1984.

Liu, who wrote for the Chinese-language San Francisco Journal, had written a biography critical of Taiwan President Chiang Ching-kuo.

Wang and two of his deputies

were implicated by two of the men who actually carried out the killing, Chen Chi-li, leader of Taiwan's United Bamboo gang, and fellow gang member Wu Tun.

According to Chen, who was also an intelligence agent for Taiwan, Wang told him that Liu was an intelligence operative for Taiwan who became a double agent for China and that the "traitor" had to be killed. Wang admitted mentioning that Liu needed to be "taught a lesson" and giving Liu's photo and address to Chen, but he denied actually giving orders to kill Liu.

Chen and Wu were sentenced April 9 to life imprisonment. A third gang member said to have taken part in the killing, Tung

Kuei-sen, is still at large and is believed to be in the Philippines.

Wang's deputies, Maj. Gen. Hu Yi-min and Col. Chen Hu-men (no relation to Chen Chi-li), were found to be accessories to murder and were given prison terms of 2½ years each. The three intelligence officers and the two gangsters had all faced possible death sentences.

Court observers representing Liu's family complained that the possibility of higher-level government involvement was not examined at any of the trials. Liu's widow, Helen, who strongly suspects that her husband's murder was sanctioned by officials higher than Wang, said, "A lot of questions still need to be answered."

At his trial, Wang said that his superiors had no knowledge of a plot to kill Liu. Government officials have maintained that Wang ordered Liu killed for unspecified personal reasons.

Support group for Kimura formed

by Katie Kaori Hayashi

LOS ANGELES—More than 55 persons attended a meeting at the Japanese American Cultural and Community Center to help Fumiko Kimura, a native of Japan who attempted suicide by walking into the ocean near Santa Monica Pier on January 29, taking her two children with her.

Kimura was pulled unconscious from the water by two bystanders, but her 4-year-old son Kazutaka and 6-month-old daughter Yuri died. She has pleaded not guilty to two counts each of murder and

Commentary on page 8

felony child endangering but could face the death penalty if the prosecution's allegation of special circumstance of multiple murder is accepted.

She allegedly became despondent after finding out that her husband Itsuroku was having an affair. In Japan, parent-child suicide, known as *shinju*, is more common and more accepted than it is in the U.S.

During the April 12 meeting, initiated by Yoshiko Yamaguchi, a social worker at the San Fernando Japanese Community Center, people from all walks of life expressed their support for Kimura. Some participants were affiliated with Christian and Buddhist churches or with Onnatachi no Wa, a Japanese women's organization; others were individuals who sympathized with Kimura.

The main theme of the discussion was to help Kimura get a fair trial and to prevent future parent-child suicides in the Japanese community. At the end of the meeting, participants agreed to form a group to support Kimura, including three committees—fundraising, translation for petitions, and agenda.

Gerald Klausner, Kimura's attorney, explained the court proceedings. He said that Kimura resented being rescued and was surprised when she learned that she had been charged with murder. Although she felt that the whole world was against her, Klausner added, she found the will to live when she knew some people cared about her. He urged participants to write letters of encouragement to Kimura.

Concerned individuals can write to Kimura c/o Gerald Klausner, 4676 Admiralty Way, Suite 336, Marina Del Rey, CA 90292.

Congress requests extradition of killers

WASHINGTON—A request that Taiwan send anyone implicated in the murder of Chinese American journalist Henry Liu to the U.S. for trial was passed in the House of Representatives by a 398-2 vote April 17. The Taiwan government rejected the non-binding resolution, as it has done with other such requests.

Rep. Robert Matsui (D-Calif.) said that the overwhelming margin of support in the House "left no question that Congress is unhappy with the lack of progress" in efforts to extradite two gang members who confessed to killing Liu and military intelligence officials who allegedly ordered the killing to punish Liu for his writings, which were critical of Taiwan's government.

Matsui called the House vote "a

signal that we will not stand for any stonewalling in this case, and that we want those responsible for the killing to be brought to justice. The murder of Henry Liu was an act of terrorism and it is reprehensible that more has not been done."

The five men implicated in the murder have been tried, convicted and sentenced in Taiwan, but the question of whether the murder was sanctioned by the Taiwan government has not been answered to the satisfaction of Liu's supporters in the U.S.

The resolution also called for the conclusion of an extradition agreement between the U.S. and Taiwan, which have not had such a treaty since diplomatic ties were broken off in 1979.

News in Brief

Woman jailed for 9 hours, gets \$25,000

CHICAGO — A federal jury awarded \$25,000 to a woman who was jailed after being arrested for feeding pigeons and walking unleashed dogs in a small park, reported the Pasadena (Calif.) Star-News. Anita Kirchoff, who was locked in a jail cell for less than 9 hours, said in U.S. District Court that, "It's not the amount of the award but the principle that counts."

Kirchoff was awarded \$5,000 more than each former internee would receive for an average of 3 years spent in concentration camps if JAACL-supported redress legislation were enacted.

S.F. may name street after Chinese activist

SAN FRANCISCO — The public works committee voted unanimously April 12 to change Brenham Place to Walter U. Lum Place. No street in the city is currently named for a Chinese American. Lum was a civil rights activist and journalist of the early 1900s. The board of supervisors will consider the committee's resolution.



Photo from collection of The Morikami Museum
Jo and Sada Sakai, pioneers of Yamato, Florida.

Domestic violence project started

LOS ANGELES—Asian Pacific American Legal Center of Southern California has launched a domestic violence project for Asian Pacific women who have low incomes.

The U.S. Attorney General's office estimates that 50% of married women in California will be assaulted at some time by their husbands. Separate statistics for Asian/Pacific marriages have not yet been tabulated. Domestic violence does occur in these households, as evidenced by Asian/Pacific counseling centers and battered women's hotlines and shelters.

The Center for the Pacific-Asian Family, for example, served 1,571 battered women in 1983. Many of these women are also impoverished, non-English speaking, and pressured by culture into silence.

Everywoman's Shelter, of the Center for the Pacific-Asian Family, Inc., is the only shelter that focuses primarily on Asian/Pacific women. The Korean Family Counseling and Legal Advice Clinic is one of the few clinics that counsels on family matters in the Asian/Pacific community. And throughout Southern California, there are no legal service centers that have the bilingual staff or culturally sensitive programs to provide legal assistance to Asian/Pacific women who have been battered, especially those who

are poor and non-English speaking.

The Asian/Pacific American Legal Center has initiated a project that provides free bilingual legal counseling and referral; multilingual informational brochures on battered women's rights and legal procedures; a multi-service referral guide, including agencies that are equipped to help the Asian/Pacific woman in a culturally appropriate and respectful manner; and community education.

The center's domestic violence project committee includes volunteer Asian/Pacific attorneys and law students, as well as center staff.

For further information call (213) 746-6029.

No. 2,336

If you are moving, allow 3 week's advance notice to report your address change with label on front.

New Address: _____
City, State, ZIP _____

Effective Date: _____

• Thank you for using this form. It saves PC 25 cents in fees.

Pacific Citizen, 244 S. San Pedro St. #506, Los Angeles, CA 90012

EXPIRATION NOTICE—If the last four digits on the top row of your label reads 0485, the 60-day grace period ends with the last issue in June, 1985. Please renew your subscription or membership. If membership has been renewed and the paper stops, notify the PC office.

Descendants of Yamato colony to return to site of former Florida settlement

DELRAY BEACH, Fla.—One could call it a ghost town, but 43 years after its demise, the spirit of Yamato, Florida, will come alive again as survivors and descendants of the defunct agricultural community reunite.

On May 4, some 35 members of Yamato families, as well as dozens of old-timers who knew them, their parents, and grandparents, will come to Morikami Park, west of Delray Beach, for the dedication of four wooden pavilions to the Sakai, Kamiya, Yamauchi, and two Kobayashi families.

The shelters are being named after five of the last remaining families of Yamato, which was established in the summer of 1905 by Jo Sakai and some fifteen settlers from Japan. The five families, continued to farm land between Delray Beach and Boca Raton into the 1920s and '30s.

Plaques will identify each shelter and provide biographical notes on the Issei who settled Yamato and chose to raise families there. Briefly, they are:

Jo and Sada Sakai, married in 1906. Five daughters were born in Yamato.

Sada returned to Japan with the children in 1924 following her husband's death.

Tamemasu and Etsu Kamiya. They raised six children in Yamato after their marriage in 1909. Kamiya remained in the area for a time following his wife's death in 1936, then joined the family of his eldest daughter in California shortly before the outbreak of World War II.

Jinzo and Naka Yamauchi. Married in 1915, they raised one son, born in Yamato. The family moved to Miami in 1928.

Hideo and Umeko Kobayashi, married in 1920. Four children were born in Yamato. The family was evicted from their property in Yamato by a federal judge in 1942 to make way for the construction of an Army Air Corps training facility.

Susumu and Suye Kobayashi, married in 1922. One daughter was born in Yamato before the family moved to Illinois in 1925.

Yamato family members are coming from California, Michigan, Massachusetts, Pennsylvania, New Jersey, and Japan to share memories with each other and with those still living in Florida.

The land where Morikami Park now rests was donated to Palm Beach County by George Sukeji Morikami, an original Yamatoite, who remained until his death in 1976.

The Morikami park, museum and Gardens preserves and interprets the culture of Japan and the Japanese American heritage in the 150-acre park. The museum, principally run by the Friends of the Morikami, has exhibits that chronicle the early Yamato days, as well as displaying current Japanese culture.

Nebraska Nikkei in city council race

OMAHA, Nebr. — Former city councilman Richard Takechi, a 47-year-old jeweler, will run against District 5 city councilwoman Connie Findlay, who unseated him in 1981, in the May 14 general election.

After receiving 51.8% of the April 2 primary vote to Findlay's 27.8%, Takechi said, "The feeling I'm getting is that she wasn't going out into the district that much." As an example, he cited Findlay's council vote supporting the One Pacific Place development project, which many area residents opposed.

In the eight precincts nearest One Pacific Place, 609 voted for Takechi and 241 voted for Findlay.

"That area is supporting my position of, 'Let's be responsive to the people,'" Takechi said.

Takechi, a Republican, has the support of Rep. Hal Daub (R-2nd) while Findlay, a Democrat, has been endorsed by former congressman John Cavanaugh (D), who represented the same district.

Former Douglas County Republican chairman Chuck Sigeron said, "Richard's friends in the Republican Party will rally behind him." State Democratic chair Thomas Monaghan and Douglas County Democratic chair Herb Millard have vowed to support Findlay.

—from a report by
Omaha World-Herald

STORE FOR MR. SHORT

Joseph's
SINCE 1946 **MEN'S WEAR**

238 E. First Street., Los Angeles, CA 90012
Tel.: (213) 626-1830

Specialist in Short and Extra Short Sizes

BIG MONEY IN SPORTS!
FOR MEN & WOMEN

Low Dealer Prices • Be Your Own Boss • Part or Full-Time
Brandname Items for All Sports
Work From Your Home
Financial Independence
Only \$1,500 Required

Let us make you an immediate success in your own sporting good business!

Sport-It Inc., Dept. PC-4
Minneapolis, MN 55433 1-800-328-3820 1-612-757-2930 MN

Sport-It The Sporting Goods Franchise of the Future

Fast action, low rate car loans.

Select your new car loan with the same care and consideration you use in choosing the right car. Automobile financing has been one of our specialties for over 30 years. Come to Sumitomo for low competitive rates and fast action.

Sumitomo Bank
Sumitomo Bank of California Member FDIC

Asian American film festival slated to begin next week in Northwest

SEATTLE—Next week marks the first Seattle Asian American film festival, to be held May 2-5 at the historic Nippon Kan Theatre (628 S. Washington St., in the International District). Sponsored by Kingstreet Media, the festival will showcase the best feature-length and short dramatic films made by independent Asian Amer-

ican filmmakers from around the country.

To be featured is "Beacon Hill Boys," a locally produced film about Japanese American life in Seattle during the early 1970s. "Beacon Hill Boys" premiered in Seattle this January to sell-out crowds, and has been selected to open the 8th Annual Asian American International Film Festival in New York City. The festival then tours 15 cities in the U.S. and Canada.

The Seattle film festival also features the return of "Chan Is Missing," the critically acclaimed 1982 film about two San Francisco Chinatown cab drivers searching for the man who has disappeared with their money.

Michigan Asians continue coalition

TROY, Mich.—About 300 people—primarily Asian Americans of Chinese, Korean, Japanese, Filipino, Vietnamese and Indian ancestry—rededicated themselves to the principles of equality and justice which united them two years ago.

The American Citizens for Justice held a "rededication dinner" on March 30 at the Hilton Hotel, marking the second anniversary since the group was founded on March 31, 1983, following the sentences of probation and fines to the killers of Vincent Chin, the 27-year-old Chinese American computer technician who was brutally slain by two autoworkers who were angry about Japanese auto imports.

Addressing the group was Michigan Lt. Gov. Martha Griffiths, who spoke on what Asian Americans can do to be represented in

Continued on Page 6

Also returning is "Hito Hata: Raise the Banner," the first Asian American feature film, produced in 1980, depicting the life story of a Japanese American immigrant.

The local premieres of seven recently completed films will highlight the festival, including the Oscar-nominated shorts "The Silence" and "Sewing Woman." Other films are "Freckled Rice," "The Departure," "Fool's Dance," "The Only Language She Knows," and "Fei Tien: Goddess in Flight."

Tickets for the film festival are available at Uwajimaya stores, Mich's Short & Small Shop (2122 Third Avenue), Cinema Books (4753 Roosevelt N.E.) and The Chop House (2552 Beacon Ave. So.). Tickets are \$5 per show, \$4 for senior citizens. Tickets will be sold at the door only as available. Information: 624-8800.

Playwright Yamashita to be honored

LOS ANGELES—Karen Tei Yamashita, the award-winning author, playwright, and poet, will be honored at the third annual Author Recognition Benefit Luncheon given by the Friends of Little Tokyo Public Library Services.

Yamashita, who recently brought her play "Hiroshima Tropical" to East West Players as part of their works-in-progress series, is well known for her many literary works. Her short stories include "The Bath," "Tucano," "In Brazil, the Earth is Red," and "Asaka-no-miya," which won

first place in the first James Clavell American Japanese Short Story Contest. Her plays include "Omen: An American Kabuki," and "The Misokai Bridge," a series of plays for story theater based on Japanese folktales.

The luncheon takes place on Saturday, May 11, at the Akasaka Hanten Restaurant in Weller Court. Also featured will be a special auction of valuable new art collectibles. Cost per person is \$10, which includes Yamashita's readings, luncheon, and art auction. For more information, call (213) 731-5888.

Hibakusha medical team coming to U.S.

SAN FRANCISCO—In June, a team of doctors from Japan returns to the United States to conduct medical examinations on American survivors of the Hiroshima and Nagasaki bombings. This will be the team's fifth visit since 1977 sponsored by the Japanese government. The doctors arrive in San Francisco on June 12 and will conduct examinations in five cities: San Francisco, Los Angeles, Seattle, Honolulu, and Vancouver, Canada.

There are an estimated 1,000 survivors (hibakusha) of Japanese or Korean ancestry residing in the United States and Canada. The Committee of Atomic Bomb Survivors (CABS) urges all survivors to register for the examinations. Travel stipends and accommodations may be available. All participants can be assured of confidentiality. For more information, write to: CABS, 1109 Shell Gate Place, Alameda, CA 94501.

Community Affairs

LOS ANGELES — The 22nd annual Mothers of the Year Luncheon will be held Sunday, May 5, noon, in the Golden Ballroom, New Otani and Gardens, 120 S. Los Angeles St. Cosponsors are Downtown L.A. JACL and So. Calif. Japanese Women's Society. Honorees are Shizu Abe, 76; Tsuchiyo Domoto, 89; Takayo Kato, 83; and Fusayo Sato, 89. Reservations (by April 29): Mary Nishimoto, (213) 206-8616; Ted/Christine Miyashiba, (818) 355-3934; or Frank Hirata (213) 478-7845 (eves).

Asian/Pacific American Heritage Week Committee hosts the annual Heritage Dinner in honor of the First Asians in Space: Maj. Ellison Onizuka, Dr. Taylor Wang, and R. Eugene Trinh, Friday, May 10, 6 p.m., San Francisco Room, Bonaventure Hotel, 404 S. Figueroa St. Tickets \$30. RSVP by May 3: 485-5198.

Centenary United Methodist Church presents an Arigato Bazaar, named in appreciation of the support received through the years, on Saturday, May 4, 11 a.m. to 6 p.m., at 35th St. and S. Normandie Ave. The Rev. George Nishikawa said the bazaar is "one last fling at a corner that has been a special place since 1926" before the church moves to Little Tokyo.

Featured will be an array of fresh produce, plants, games, arts and crafts and food booths.

UCLA Asian American Studies Center is sponsoring a public lecture by Dr. Alan T. Moriama on May 4, 2 p.m., at JACCC, 244 S. San Pedro St. Moriama will speak about his research on Japanese emigration to Hawaii. Information: 825-2974.

KENTFIELD, Calif. — Nisei Widowed Group holds its monthly meeting at the home of Harry Murata, May 5, 1:30 p.m. Information: (415) 453-9248; Yuri Moriwaki, 482-3280; Elsie Chung, 221-0268.

SEATTLE — The city's 10th annual Cherry Blossom and Japanese Cultural Festival, takes place May 3 to 5 at Seattle Center. The free festival features photography exhibits, textile demonstrations, performing arts, martial arts, games, and films. Information: 623-7900.

NEW YORK — Presbyterian Church (U.S.A.) is seeking Japanese American bilingual elementary teachers for the 1985-86 school year in Alexandria, Egypt. Certified teachers may contact: Doris Caldwell, Presbyterian Church (U.S.A.), 475 Riverside Dr., Room 406, New York, NY 10115.

NOBODY FLIES YOU TO MORE OF JAPAN FROM MORE OF AMERICA.



It's a claim we're proud of at Northwest Orient. Because it means we're working harder than any other airline to bring Japan closer to you. That includes nonstop service to Tokyo... from New York City, Chicago, San Francisco, Los Angeles, and Seattle/Tacoma, with direct service from Minneapolis/St. Paul and Dallas/Ft. Worth. We also fly nonstop from Honolulu to both Tokyo and Osaka. And all these nonstops are in the comfort of wide cabin 747's.

If you fly First or Executive Class to Japan, you'll be treated to Northwest Orient's Regal Imperial service. You'll dine on delicious entrees with fine wines and champagnes. You'll relax in our wider seats in Executive Class or sleeper seats in First Class. Plus, Regal Imperial passengers are welcome to relax in our private Top Flight Club lounges prior to departure. And, Executive Class passengers will be automatically upgraded to First Class on the domestic portion of their Northwest Orient flight (space permitting).

Northwest Orient serves more cities across the Pacific from more cities in America than any other airline. In addition to Tokyo and Osaka, we'll make business travel easy to Seoul, Shanghai, Okinawa, Guam, Taipei, Manila, Hong Kong and Kuala Lumpur. So fly Northwest Orient.

For information and reservations, call your travel agent, corporate travel department, or Northwest Orient: (800) 447-4747 toll-free. Japanese speaking reservationists are available during business hours at (800) 692-2345 toll-free.

NORTHWEST ORIENT
The world is going
our way.

Those Law-Abiding Japanese

EAST WIND

Bill Marutani



EARLIER THIS YEAR the U.S. Dept of Justice, Federal Bureau of Investigation, issued a report titled "Oriental Organized Crime." The report covers Chinese, Japanese and Vietnamese "organized crime." Focusing upon the Japanese phase of the report, we'd like to share some of the information with you.

THE TERM FOR Japanese gangsters that most of us have heard in recent years is *yakuza*; however, the constabulary in Japan refer to these organized crime groups as *boryokudan*, meaning "violent bands" or "gangs." The derivation of the term *yakuza* is from the numbers 8, 9 and 3—taking the first syllable of each of these numbers. While this writer is not a card-player (*hanafuda*), we understand that the worst hand that one can be dealt in such a card game is "8, 9, 3." In short, *yakuza* is a "loser."

THE LAND OF the Rising Sun, while reportedly having one of the lowest crime rates in modern society, nonetheless is said to have almost 2,500 *boryokudan*s with a total membership slightly in excess of 100,000. This calculates to an average of 40 members (*kobun*) in each gang. Reportedly, membership and structure are highly formalized with an initiation ceremony into a *kai* (club), with the initiate pledging eternal fealty to the *oyabun* (boss). There is an underboss (*daigishi*) who "takes the heat" for crimes sought to be ascribed to the *oyabun*. These gangs have their own strict code of criminal honor—if criminals can have honor—subscribing to precepts such as *jingi* (humanity and justice), *giri-ninjo* (duty and love) and *ninkyō* (chivalry).

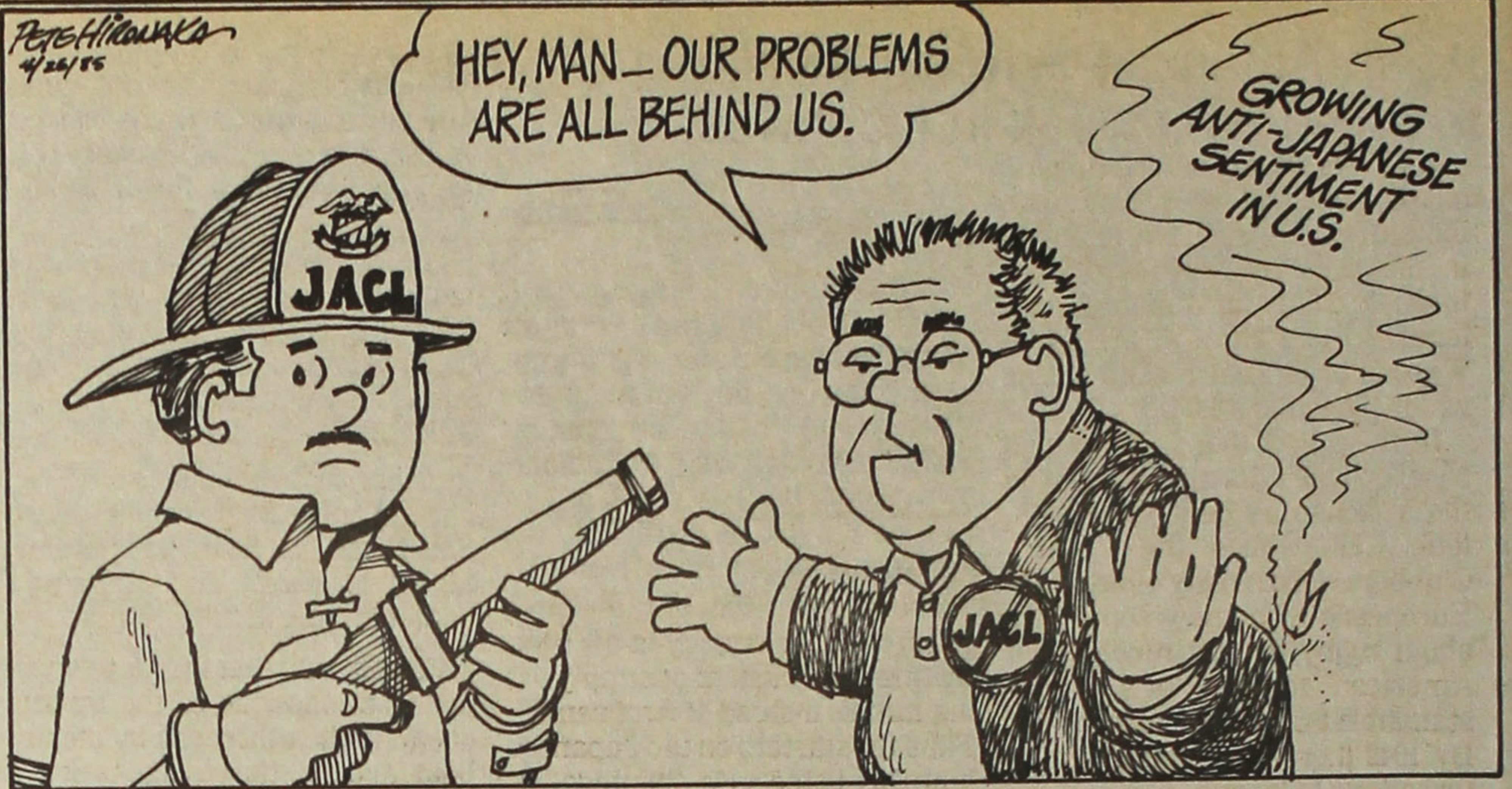
WITHIN THE GANGS there are groups with specialties, one known as *sokaiya* engaged in

economic crimes, primarily extortions against corporations. The *sokaiya* acquire corporate stock, thus entitling members to attend stockholder meetings where subtle pressures are used, and if not successful in gaining their goals, not-so-subtle tactics are employed unless management capitulates with a pay-off. So pervasive is this problem that the Commerce Act of Japan was revised, making it a crime for any corporate officer to divert any portion of the corporate assets to anyone other than stockholders. Sony Corporation reportedly had a stockholder meeting that lasted some thirteen hours because of the activities of the *sokaiya*. Isuzu Motor Company had a stockholder meeting that ran ten hours. With American corporate interests joining with Japanese enterprises, there is concern that the gangster element may infiltrate such international business conglomerates.

THE "TAKE" by these criminal elements is estimated to be some \$31.72 billion, translated into U.S. dollars. That's only for the year 1977. In the Pacific basin area, including centers with sizable Japanese American populations, *boryokudan* elements are being detected by law enforcement agencies. Criminal activities focus upon gambling, narcotics, prostitution and pornography. Reportedly, the *boryokudan* has made inroads into the control of Japanese tourist trade into the States. It is reported that *yakuza* elements have been making overtures in Las Vegas and Atlantic City.

IN THIS WRITER'S comparatively sheltered world, we know next to nothing about the workings and scope of the *yakuza*. However, it is reported that in Japan it is not unknown for politicians and *yakuza* elements to have an open relationship, such as at a funeral for an *oyabun*. For most Westerners, and those with a Western mind (which includes this writer), it is said that one may well associate quite intimately but unknowingly with *yakuza* elements.

WELL, SO MUCH for law and order.



Heroes Reflect Value System

Got any heroes? According to a U.S. News and World Report, my generation (18-24 in the 1970s) didn't have any heroes. Well, all right, I'm stretching it a bit — I was 25 in 1970, but what's a year or two.

The report went on to say that things are different now. The people 18-24 year olds most admire and emulate are — are you ready for this? — Clint Eastwood and Eddie Murphy. Now what does that say about our young adults.

The list is one of glamour, fame and wealth. Men chose Eastwood, Murphy, Ronald Reagan, Steven Spielberg, Julius Erving, Joe Montana, Doug Flutie, Harrison Ford, and Lee Iacocca, with — how's this for bizarre — Pope John Paul II and Michael Jackson tied for 10th.

Women chose Jane Fonda, Sally Field, Eastwood, Mother Teresa, Murphy, Nancy Reagan, Pope John Paul II, Geraldine Ferraro, Reagan and Meryl Streep.

Overall, the order of the top five: Eastwood, Murphy, Reagan (Ronald), Fonda, with Sally Field and Spielberg tied for 5th. Think about that. All six spots occupied by show-biz people. The next four were the Pope, Mother Teresa, Michael Jackson and Tina Turner.

But with a show-biz president what can we expect? People are impressed with glamour. With wealth. They don't want to hear about what's wrong, just what's nice, what doesn't jog our conscience. We're in the '50s again.

ONE THING LEADS TO ANOTHER

Bob Shimabukuro



Eisenhower mentality. But never fear. The '60s followed the '50s.

Right now, more people are falling under the poverty line. I look outside the JACCC building and I see these folks running around with their cardboard looking for a place to sleep. Every night. A little further down the road, they line up to sleep on the sidewalk on 5th, 6th, 7th St. I wonder who their heroes are.

Mario Savio is back on the campus at Berkeley where a new round of sit-ins takes place. Columbia University students are emulating their 1960s ancestors also. All for divestiture of school funds in South Africa. It used to be free speech. Now it's school investments. The young seem to understand the connection between wealth and power and status quo. Is this the generation of Eastwood and Murphy?

I was in the seventh grade (or eighth, I can't remember, it's been a long time) when my teacher asked who my heroes were. My dad, who influenced my thinking a lot, was what you might call

"progressive," and that's probably a euphemism.

"Sun Yat Sen [the Chinese revolutionary], Harriet Bouslong [who was defending the ILWU and the Hawaii Seven from HUAC interrogation], and Patsy Takemoto Mink [who at that time was defending crew members of the Phoenix — the pacifist boat cruising the nuclear test areas in the Pacific]," I offered cautiously. I agreed with my dad. These were courageous people.

My teacher didn't agree, needless to say. I'll never forget the look on her face. Or the reaction of the rest of the class. Until I went to college the only heroes I'd admit to after that were good safe ones: Jackie Robinson, Roy Campanella, and Don Drysdale. Sandy Koufax was not a hero. He was a god, somebody you worshipped. His fastball and curveball was evidence enough that he was divine.

In college, I said, "Che." After all, he was an asthmatic revolutionary. Talk about identification. Got a pretty good response in college.

Later, at a JACL wine-tasting gathering of "youngsters" who were being recruited, I offered the same answer to the hero question. The reply? "Che? Che, who?" I knew I was in different company. Shades of 7th grade.

How about you? Have any heroes? Asian American ones? Write, let us know. I'll write about one who qualifies next week.

U.S.—Japan Relations: What Can We Do?

by Floyd Shimomura

What specifically can we do to help U.S.-Japan relations in our own communities?

Certainly there are many possibilities. However, I would begin by encouraging Japanese companies and individuals to be good

Fourth in a Series.

"guests" when they are in our country; to learn about the history of the treatment of Japanese Americans so they can better appreciate the opportunities they possess; to abide by our civil

rights laws in their own hiring and promotions; to create jobs and not unemployment for our American workers; and to support the civic and cultural life of the communities in which they do business. In other words, we should encourage the Japanese to create "goodwill" and not "backlash."

On the other hand, we should encourage our fellow Americans be fair "hosts" to the Japanese companies and individuals that come to the U.S.; to treat them with equality—neither better nor worse than anyone else; to judge them on their individual merit and not condemn all because of

the conduct of a few; and to welcome them into the civic and social life of the communities in which they reside. In other words, to again help create "goodwill" and not "bad will."

In this way, I believe we can begin to make a positive contribution to better U.S.-Japan relations in our own community and minimize the possibility of backlash and ill-feelings.

Remember to double-space all submitted articles and letters to the editor.

ISSN: 0030-8579



pacific citizen

Nat'l JACL Headquarters, 1765 Sutter St., San Francisco, CA 94115, (415) 921-5225

Published by the Japanese American Citizens League every Friday except the first and last weeks of the year at 244 S. San Pedro St., Los Angeles, CA 90012; (213) 626-6936 • 2nd Class postage paid at Los Angeles, Ca. Annual Subscriptions—JACL members: \$10.00 of national dues provides one-year on a per-household basis. Nonmembers: \$18, payable in advance. Foreign addresses: Add U.S.\$8 • News or opinions expressed by columnists other than JACL staff do not necessarily reflect JACL policy.

OFFICERS

Frank Sato, Nat'l JACL President Dr. Clifford Uyeda, PC Board Chair

EDITORIAL / BUSINESS STAFF

Editor: Karen Seriguchi Ass't Editor: Bob Shimabukuro
Advertising: Jane M. Ozawa Edit. Ass't: J.K. Yamamoto
Circulation: Tomi Hoshizaki, Mitsuko Sakai
Typesetting: Mary Imon Mailing: Mark Saito
Gen Mgr./Operations: Harry K. Honda

POSTMASTER: Send address changes to Pacific Citizen, 244 S. San Pedro St., #506, Los Angeles, CA 90012.

Prewar Pigskin Preview

As I was saying before running out of space last week, American football was introduced to Japan in the 1930s by Nisei who were there to study in Japanese colleges. In 1934 Nisei at Meiji and Waseda organized pickup teams which played to a 0-0 tie.

In the fall of that same year a Nisei college all-star team played the Yokohama Country and Athletic Club. Since the Country Clubbers were mostly overweight Europeans who knew something about rugby but not much about American football, it's understandable that the Nisei won 26-0. By 1942 there was a six-team intercollegiate league.

In the last few years American college teams have been playing in Japan, but against each other in the absence of suitable opponents. But, I've learned recently, there was a trans-Pacific football game back in 1936, played on Sunday, Dec. 27, at Gilmore Stadium in Los Angeles.

George Kondo of San Francisco passed along the information and loaned me a four-page souvenir program (which sold for a dime) as proof. The game was between the "Japanese All-Star Squad" and the "Southern California All-Star Squad." Unfortunately the program doesn't explain who the

FROM THE FRYING PAN:

Bill Hosokawa



athletes were.

The people who put the program together employed the frustrating Issei custom of simply using initials instead of first names. Thus the starters on the Japanese team are listed as M. Shimoda, M. Inouye, A. Fukuda, T. Imamura, S. Machida, M. Hata, T. Ariga, A. Nagai, K. Nakamura, S. Yasuda and H. Hata. The Americans had names like J. McDonald, W. Blaisdell, H. Sargent, E. Dempsey, B. Clow and L. Bach. The one recognizable name is Dean Cromwell, listed among the officials. If memory doesn't betray me, he was track coach at USC.

Somewhat more interesting are the program advertisements purchased by Li'l Tokyo supporters. The Miyako Hotel at First and San Pedro, and the Japanese Theatre Assn. at 201 N. San Pedro bought the biggest ads. Among other ad-

vertisers were the T. Iwata Art Store at 256 E. First; I. Nishikawa, jeweler at 233 E. First, the Olympic Hotel at 117 N. San Pedro, Tanaka Photo Service at 114 N. San Pedro, Nada Sake & Wine Co. at 459 E. Third; Tenshodo Drug Co. at 260 E. First; G. Sumida Co., sporting goods and musical instruments, at 325 E. First; San Pedro Garage at 211 N. San Pedro; S. Kataoka, jeweler, at 301 E. First; and Mikawayaya confectionary at 246 E. First.

Considering that the only way to get from one side of the Pacific ocean to the other was by steamboat, and that the voyage took two weeks, it must have been a staggering endeavor to get the team from Yokohama to Los Angeles and back again. And what kind of shape were they in for playing football after all that time cooped up in a ship?

Unfortunately, George Kondo didn't tell me who won the game. Maybe some fan with a long memory can recall. Or some kind person will take the time to look into the files of the Rafu Shimpou or Kashi Mainichi, which certainly must have covered such a momentous community event, and give us a brief rundown if not a play-by-play account.

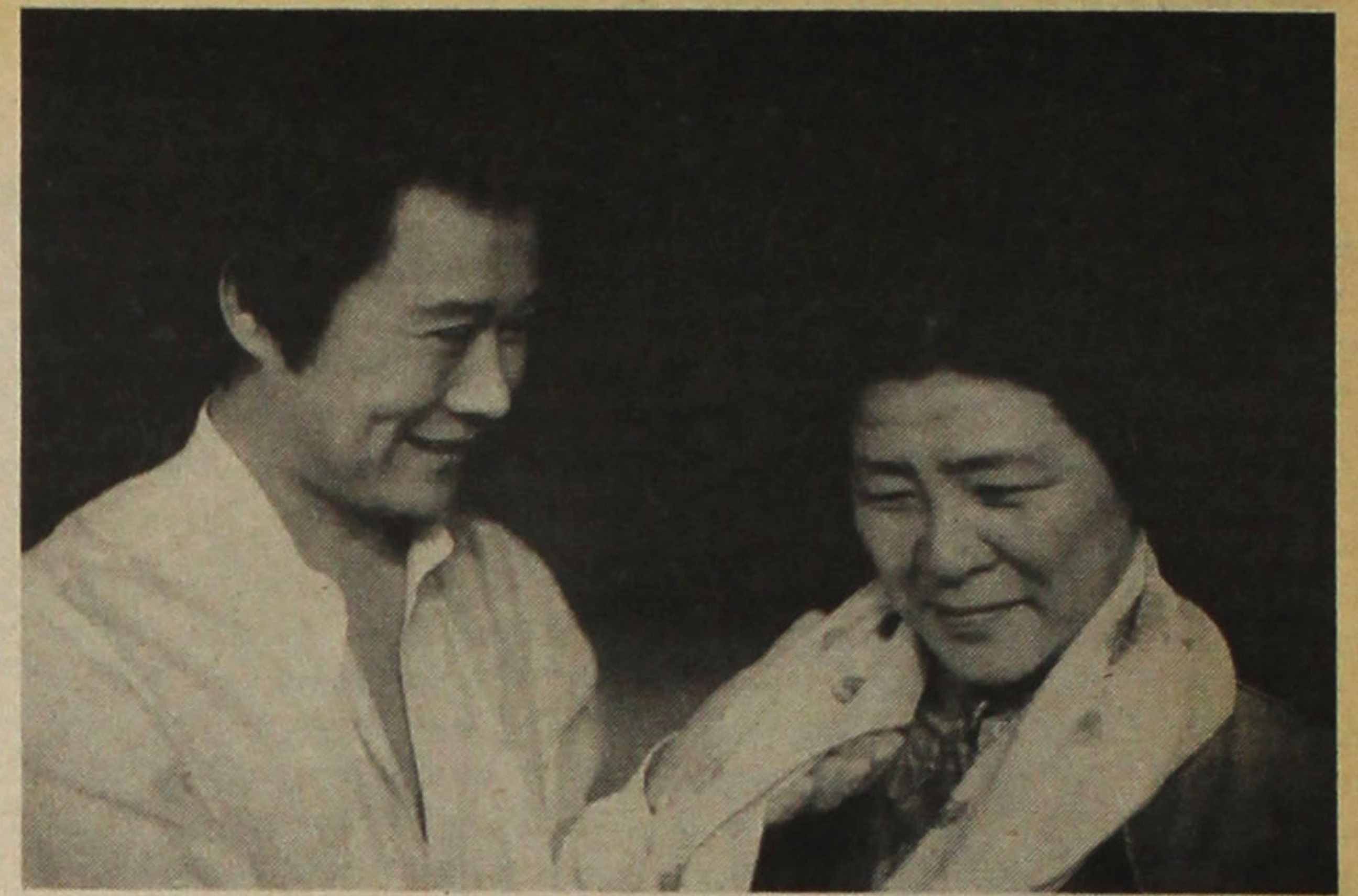


Photo by Chris Komuro
SURPRISE — The widow Chizuko (Shizuko Hoshi) beams upon receiving a gift from Kawaguchi (Soon Teck-Oh) in East West Players' production of Wakako Yamauchi's "The Music Lessons."

'Music Lessons' a Powerful Play

by Elizabeth Lu

LOS ANGELES—In "The Music Lessons," playwright Wakako Yamauchi dares us to bare our feelings. The consequences, as the hardworking widow Chizuko Sakata (Shizuko Hoshi) discovers, can be painful, but taking that risk, going out on a limb, is a part of loving and living that makes each of us feel alive.

Building on Yamauchi's succinct but effective script, set in the Imperial Valley during the Depression, director Mako communicates to the audience the vulnerable, feeling side of every parent. Mako skillfully choreographs Chizuko's transformation from a beleaguered mother of three who hides her emotions behind farmwork and drab, unisexed overalls, to a woman with emotions, desires, and dreams that go beyond the obligatory ones centered on her children.

The production features a strong performance by Shizuko Hoshi, who portrays with special insight the lonely mother and widow Chizuko. With every long day she labors away in the fields and with every heavy sigh, she epitomizes the self-sacrificing parent that each of us remembers.

In what was the most powerful scene in the play, Chizuko and her daughter (Susan Haruye Ioka) open a floodgate of emotions as they throw accusations back and forth and say things they had always felt but dared not express. Ioka, in what was an otherwise unassuming performance, is at her best in this mother-daughter confrontation.

The catalyst that sparks the conflict is Kaoru Kawaguchi (Soon-Teck Oh), an itinerant worker who comes to the family's

ship in different PSWD chapters, which was a prime purpose of the conference. An outlying Ventura County JACL chapter attendee, Dorene Tsukida, wants another conference held next year. Thank you, Mary Nishimoto, for developing a super membership recruitment leaflet for PSWD. We needed one for a long time. I am both proud and delighted by Irene Hirano's effective representation of JACL on the "Inter-ethnic Dialogue" panel with co-panel personages like Harvey Schechter, Anti-Defamation League, B'nai B'rith; John Huerta, Mexican

farm with a painful past of his own. As the visiting stranger, veteran actor Oh has the good looks and gentle manner that makes the subtle love triangle believable. However, Oh at times looks inappropriately dazed when he should express only mild surprise or embarrassment.

Dana Lee, as the affable old neighbor Nakamura, is wonderful as comic relief. He shuffles to and fro and downs cheap red wine while he quips with Kawaguchi, filling the audience in on each character's past. Darrell Kunitomi as Chizuko's eldest son Ichiro provides the solid yet low-keyed support appropriate for his character. Janellen Steininger as the waitress spices things up with her very brief but interestingly sultry moment with Kawaguchi at the bar.

The physical production has some minor flaws. For example, there is the impossible angle of view from the house to Kawaguchi's separate shed. The backdrop of what is supposed to be the hills and fields seems to be trapped in papermache. Then there are the occasional slips in synchronizing Oh's violin playing with the soundtrack. These shortcomings tend to distract the audience from the action and dialogue.

Despite these minor problems, "The Music Lessons" at East West is sure to set one thinking about its message of hope and disillusionment. The production offers a provocative evening of powerful emotions.

"The Music Lessons" is playing at East West Players, 4424 Santa Monica Blvd., Thursday (\$8), Friday, Sunday, Sunday matinee (\$9), and Saturday (\$10). Information: (213) 660-0366.

American Legal Defense and Education Fund; and Mark Ridley-Thomas, Southern Christian Leadership Conference. It was a super conference. Community outreach was effectively accomplished. It will be tough to top, but PSWD needs to continue this community outreach to inform and acquaint the people about JACL and increase PSWD membership to 10,000 by the JACL national conference week in 1986.

HARRY KAJIHARA
Oxnard, Calif

Letters

Praise for PC

This letter is an enthusiastic support for your fine newspaper and its excellent coverage.

I recently took a copy of your issue to an Asian community meeting. People attending were ages 24 to 70. All were very impressed with the issue; in fact, an older couple has decided to resubscribe and rejoin JACL. You can expect many more new subscribers from our area.

Our group agreed that your articles on community networking to grapple with racism, articles raising awareness of discrimination against Asian people (whether it is police brutality or problems in the schools), articles about important Asian leaders, internationally and nationally, made your paper more valuable than ever.

We also enjoy the editorials, and contributions by writers. Another aspect of the paper we especially appreciate is more news which concerns us locally here in the Northwest. Helping all of us learn what is happening to one another up and down this coast and nationwide is a real contribution your paper makes for a more effective and educated community.

As a Japanese American, I appreciate a newspaper which takes seriously connecting me and my community to important issues which, in the end, impact all of us.

D. MISA JOO
Eugene, Ore.

Author! Author!

Seldom does an author react to the plaudits or barbs his books get from reviewers. It is sort of an unwritten code. However, in the case of my *Chikara!* I think the gentleman's criticisms in the Pa-

cific Citizen were an unwarranted burst of outrage triggered by more than dislike for the content. I am sorry the book disturbed him so much.

Yes, as he said, I am a white man. But when a writer is down to the bare bones searching for truth, color is hardly important. Two of the greatest facets of the Japanese Americans have been their fierce patriotism and adherence to the concepts of democracy. I care about those JAs who found something of value in *Chikara!*—something of pleasure, or maybe pride... which is why I dedicated the book to them. I am thankful that I was able to write it.

ROBERT SKIMIN
El Paso, Texas

Chikara! was reviewed by Raymond Okamura in the June 22, 1984, PC.

Shinji's Cartoons

I found Shinji's cartoon in the March 8 PC very interesting. It touches on so many issues and feelings all Japanese Americans must be dealing with.

There is the desire to be a PART. To be assimilated.

There is the desire, at the same time, to hold onto what is Japanese in us, and for the Japanese not to be totally assimilated into the population.

I have a child who is half-White. I am interested in a Black community organizer/political activist. I grew up with mostly White friends, later with many Black friends, now with Japanese friends as well.

Where else but America could all this dazzling/puzzling mixing take place?

I look forward to seeing more of Shinji's cartoons.

PATTI ADACHI
Chicago

More Conference Kudos

I wish to publicly commend and express appreciation to J.D. Hokoyama, chairperson of the recent PSWD community outreach "Japanese American Involvement: A Commitment to the 80's" conference, co-chair Irene Hirano, Shirley Chami, Ron Doi, Glen Fukushima, Linda Hara, Miki Himeno, Janet Kajihara, Midori Watanabe Kamei, Harry Kawahara, Sandi Kawasaki, Betty Kozasa, Ford Kuramoto, George Nakano, Marilyn Nakata, Mary Nishimoto, George Ogawa, Patrick Ogawa, and Emily Takeuchi.

The conference was superbly done. The national JACL director Ron Wakabayashi commended the conference planners. He informed me that he had distributed the PSWD conference handout material to all district governors for use as resource material. President Frank Sato was very much impressed by the talents of the conference planners and professionalism of the participants. The conference also provided a forum for Frank to "spread his gospel" pertaining to preparing, supporting, and getting Sansei, Yonsei, and Gosei into decision-making positions in industry and government. I, of course, voice a resounding "yes" to Frank's idea! Tom Shimasaki, Tri-District (NCWNP-CC-PSW) conference chair, was very impressed and complimentary on the conference content.

I have heard that a number of people have applied for member-

Pacific Citizen editor to leave

LOS ANGELES — Pacific Citizen editor Karen Seriguchi has been named the first national executive director of the Asian American Journalists Assn. (AAJA). She leaves her current position May 7. Bob Shimabukuro will become acting editor.

"Karen's outstanding skills and experience as a manager, community organizer and journalist are ideal for our efforts to increase the number of Asian Americans in news media and improve coverage of our communities," AAJA president Tria Toyota said.

Seriguchi's appointment comes as the Los Angeles-based AAJA, a four-year-old non-profit professional corporation, is beginning to organize on a national basis.

"It's vital that more Asian Americans attain key management posts in the news media," Seriguchi said. "I would like to stress programs to help Asian American journalists improve their job skills."

"In addition, more Asian Americans in the newsroom will help the media become more sensitive to minority issues. My hope is that the number of Asians in journalism will double within the next few years."

AAJA's membership includes nearly 100 working journalists throughout the nation, in such cities as San Diego, San Francisco, Sacramento, Stockton, Seattle, Milwaukee and Washington, D.C.

Seriguchi has been editor of

rights of Americans of Asian ancestry, by their efforts personally and governmentally in the Vincent Chin matter."

Entertainment at the event was also notable. Jerry Woo, a 17-year-old Pilipino award-winning singer-breakdancer performed several popular recording hits. China's prima ballerina, Hui-Fang Mao, who played the starring role in the movie "White Haired Girl," performed classical ballet. And famed folksinger-songwriter Charlie Chin flew in from New York to sing pieces from his show, "An ABC from NYC," and his "Ballad to Vincent Chin."

Last year, ACJ organized a courtwatch in the federal civil rights trial of Ronald Ebens and Michael Nitz, which resulted in the conviction of Ebens, who was sentenced to 25 years. Nitz was acquitted of all charges, but now faces a civil suit for his part in the wrongful death of Vincent Chin. Ebens is free on bond, pending appeal; ACJ continues to monitor the case.

But with the completion of the federal trial last June, ACJ's efforts to obtain equal justice for Asian Americans have not lessened. ACJ successfully led two other national campaigns to remove a racially derogatory exhibit at the federally funded Six Flags Auto World in Flint, Michigan, and to eliminate the demeaning "Charlie Rum" character from a local television station. ACJ has also joined with a number of groups to monitor legal efforts in the racial attacks against a Vietnamese man and his family in Grand Ledge, Michigan.

the Pacific Citizen since September 1983. Bill Sing, AAJA chairman and business reporter for the Los Angeles Times, noted that, "Many community leaders have credited her with significantly improving the quality and scope of the newspaper."

Seriguchi, a JAACL staff member since October 1980, is a former regional director of the Pacific Northwest District, based in Seattle, and was assistant director of Performing Arts Services in San Francisco, managing director of San Francisco's Asian American Theater Workshop, and an editor at the Carnegie Council on Policy Studies in Higher Education at Berkeley.

For the Record

In the April 19 issue, a line was omitted from Henry Sakai's commentary ("On Nikkei Celebrities and PSW Conference," p. 8). The paragraph originally read:

"One thing that bothered me at the conference was that Frank Sato, JAACL national president, said that U.S.-Japan relations was JAACL's second highest priority. *It would seem that some other programs have equal priority, including aging and retirement, youth, women's concerns, health fairs, employment discrimination, etc.* Let's not forget we are supposed to be a civil and human rights organization. Maybe the National Board needs to reevaluate where they are spending our time and money. What has happened to outside fund-raising and membership recruitment?"

Chapter Pulse

Marina

MARINA DEL REY, Calif.—Harry Kitano, professor of social welfare and sociology, UCLA, is guest speaker at the chapter's May 2 meeting. Kitano will be presenting new findings on why people seek interracial relationships. Information: Larry Takahashi, (213) 479-8479.

San Francisco

SAN FRANCISCO — The chapter voted unanimously to sponsor a track team in the 1985 Junior Olympics. President Cressy Nakagawa said that, "Since the San Francisco Chapter originated the Junior Olympics 33 years ago, it was felt that the chapter should become involved again." Anyone interested in joining the team may pick up applications at the Paper Tree in Japantown, or call David Nakayama, JAACL headquarters, (415) 921-5225.

San Jose

HAYWARD, Calif. — The 33rd annual JAACL Junior Olympics will be held June 2 at Chabot College. By virtue of its second consecutive team victory last year, San Jose JAACL again acts as the host organization.

Age divisions from 10 years old and under the masters divisions for adults are open to participants in a long list of track and field events. Over 350 entrants

from all over Northern California typically participate. Information: Tom Oshidari, (408) 257-5609; Robert Setoguchi, (408) 247-1494.

Venice-Culver

LOS ANGELES — The highly acclaimed documentary "Unfinished Business" by Steven Okazaki will be shown with the film strip "Gaman" on Friday, May 3, 7:30 p.m., at the Venice Japanese Community Center, 12448 Braddock Dr. Admission is free.

Ventura County

OXNARD, Calif. — A cooking demonstration of three Japanese dishes is offered on Sunday, April 28, 2-4 p.m., at Oxnard High School. Information: Ann Asaka (805) 484-0481; Marcia Miyasaka 499-2117.

South Bay

TORRANCE, Calif. — An udon booth is the offering of the chapter at the 12th Bunka-sai, a Japanese cultural festival sponsored by the Torrance Sister City Assn., April 27-28, at Torrance Recreation Center, Torrance Blvd. and Madrona. Hours are 11 a.m. to 6 p.m., Saturday; 10 a.m. to 5 p.m., Sunday. Free admission to exhibits and demonstrations of bonsai, karate, calligraphy, dance, sumie painting, music, and other activities.

ACJ

Continued from Page 3

the decision-making levels of government. Griffiths served in the U.S. Congress for 20 years and was the chief sponsor of the Equal Rights Amendment.

Griffiths also announced the appointment of ACJ president Helen Zia to a newly formed state commission on criminal justice.

Michigan Dept. of Civil Rights director Ronald Quincy spoke on the growing awareness by state government of the concerns of Asian Americans. The civil rights department currently has no bilingual Asian employees, a situation which exists in most of the state's service departments, including the bilingual education program.

To remedy the absence of Asian Americans in meaningful positions in state government, ACJ president Zia advocated the formation of a Governor's Advisory Commission on Asian American Affairs. ACJ has been working with the governor's staff, in conjunction with other groups, for over a year to establish such a body to improve communications about Asian American concerns.

ACJ presented its 1985 Justice Award to a number of individuals in the U.S. Dept of Justice, including William Bradford Reynolds, who heads the civil rights division; Leonard Gilman, local U.S. attorney (posthumously); and Theodore Merritt and Amy Hay, the Vincent Chin trial attorneys. The award was given in recognition "for their understanding and dedication in upholding the civil

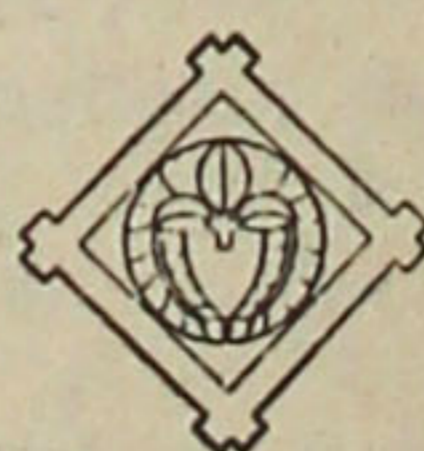
MEDICAL TRANSCRIBER

California Medical Facility, Vacaville, is accepting applications for Medical Transcriber. Starting salary is \$1,349. Requirements are: Two years of experience in typing and clerical work, at least one year shall have been in medical nature requiring transcription of dictation from a dictating machine. Academic education above the 12th grade may be substituted for one year of general experience. Mail applications to:

California Medical Facility - Vacaville, P.O. Box 2000, Vacaville, CA 95696-2000

FINAL FILING DATE: April 30, 1985.

Equal Opportunity Employer



Plaza Gift Center

FINE JEWELRY - CAMERA - VIDEO SYSTEM HOME COMPUTERS - WATCHES - TV - RADIO SOFTWARE - DESIGNER'S BAG - BONE CHINA

Authorized SONY Dealer

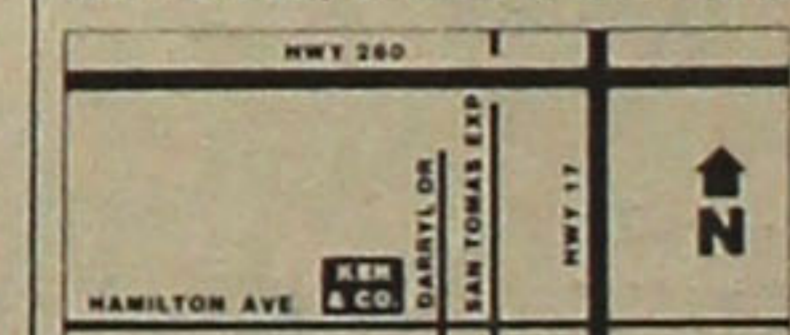
111 Japanese Village Plaza Mall
Los Angeles, CA 90012
(213) 680-3288

SHORT & SMALL MEN'S APPAREL

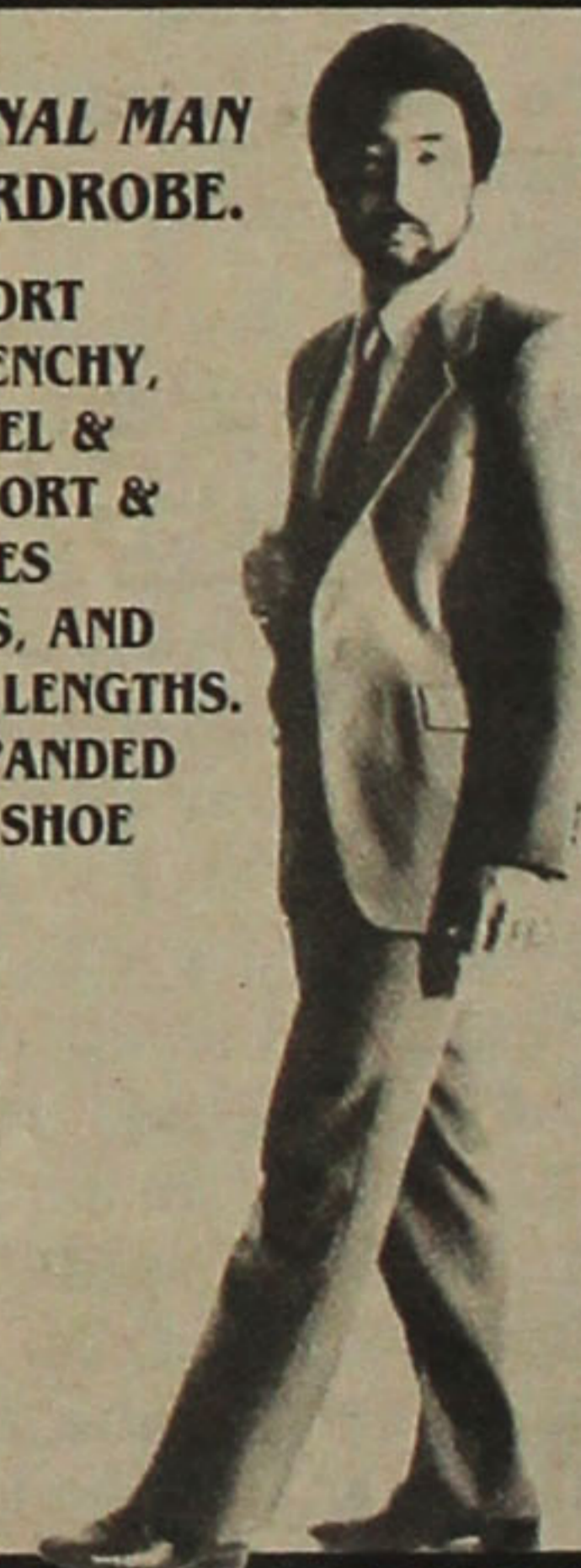
WE OFFER THE PROFESSIONAL MAN A COMPLETE BUSINESS WARDROBE.

CARRYING OVER 500 SUITS, SPORT COATS AND OVERCOATS BY GIVENCHY, LANVIN, VALENTINO, ST. RAPHAEL & LONDON FOG IN SIZES 34-42 SHORT & EXTRA SHORT. OUR ACCESSORIES INCLUDE DRESS SHIRTS, SLACKS, AND TIES IN SHORT & SMALL SIZES / LENGTHS. IN ADDITION, WE RECENTLY EXPANDED TO INCLUDE AN ITALIAN DRESS SHOE LINE IN SIZES 5-7 1/2.

785 W. HAMILTON AVENUE
CAMPBELL, CALIFORNIA 95008
PHONE: 408 / 374-1466
M-F: 12-8:30, SAT: 10-6, SUN: 12-5



OWNER: KEN UYEDA



KEN & COMPANY

Keep Up with the 'PC' Ads

TREASURES OF THE ORIENT

(A Mail Order Company)

Quality giftware (hand painted silk screens, dolls, lacquerware, Imari ware, dishes, etc.) from Japan and the Far East at discount prices. Send for a free catalog in color by completing this form:

Name:
Address:
City, State, ZIP:

Mail to: TREASURES OF THE ORIENT
P.O. Box 3978, Gardena, CA 90247

CHIYO'S

Japanese Bunka Needlecraft

Framing, Kits, Lessons, Gifts
2943 W. Ball Rd, Anaheim,
CA 92804 - (714) 995-2432
450 E. 2nd St., Honda Plaza
LA 90012 - (213) 617-0106

ED SATO

PLUMBING & HEATING
Remodel and Repairs
Water Heaters, Furnaces
Garbage Disposals
Serving Los Angeles
293-7000 733-0557

Koby's Appliances

Complete Home Furnishings

15120 S. Western Ave.
Gardena, CA
324-6444 321-2123

MIKAWAYA

SWEET SHOPS

244 E. 1st St., Los Angeles
(213) 628-4945
2801 W. Ball Rd., Anaheim
(714) 995-6632
Pacific Square, Gardena
1630 Redondo Beach Blvd.
(213) 538-9389
118 Japanese Village Plaza
Los Angeles /
(213) 624-1681

COMPUTER TRAINING



Plaza Gift Center

IN ENGLISH & JAPANESE

111 Japanese Village Plaza Mall L.A., CA 90012
680-3288 687-4115

St. Louis
JAACL



\$7 postpaid
from Bill Ryba
1404 Virginia Drive
St. Louis, Mo. 63011

'Let's Samba'

by George Kondo

As of now, approximately 100 persons have registered for the Pan American Nikkei Conference III being held in Sao Paulo, Brazil, July 25-28. Many have attended the conferences in Mexico City and/or Lima, Peru, with fond memories of a very enjoyable time, especially visits with the host families.

These experienced travelers are from throughout the States and their itinerary is being processed by Unique Adventures, who successfully handled the tour to Lima in 1983. Unique Adventures specializes in Latin American travel and has been designated by the North American and Royal Canadian Astronomical Societies and the Smithsonian Institute as their official operator in conjunction with the Peruvian Astronomical Society for the Halley's Comet Watch Tour in the spring of 1986.

The majority of tourists are taking a tour which, in brief, will cover Sao Paulo, the conference, overnight tour of Iguassu Falls, staying at the Tropical Hotel das Cataratas, Rio Palace Hotel in Rio de Janeiro and the Rio Corcovado, and Sugar Loaf Tour with breathtaking views and historical sites as well as lunch and a special jewelry fashion show.

Also included in this tour will be attendance at the "La Scala" Cabaret with its show-stopping Samba Revue, cocktail and dinner included. This tour will be from July 23-August 3.

Those who were unable to attend the 1983 conference are extending their travels to include Lima, with visits to Cuzco and Machu Picchu, which are must places to see in South America. Others are taking individualized tours which the operator can arrange.

Varig Brazilian Airlines will be the principal carrier from gateways New York, Miami and Los Angeles, as well as for air travel while in South America. In addition, those flying Varig will receive an invitation from Amsterdam Sauer of Brazil, gem dealer, for cocktails and a jewelry fashion show in the Bandeirantes Room, Sao Paulo Hilton, at 6 p.m., July 24, the day of arrival in Sao Paulo.

All persons attending the 1985 Pan American Nikkei Conference must preregister by sending the registration fee of \$100 to Pan American Nikkei Assn. (North America), 1765 Sutter St., San Francisco, CA 94115. After June 1, registration fee will increase to \$125. Additional information on the conference can be obtained by reading the article by Charles Kubokawa, secretary/treasurer for PANA, in the April 5 edition of the Pacific Citizen, page 6.

JACL scholarships

UC alumni to expand programs

SAN FRANCISCO—California Japanese Alumni Association (CJAA) board of trustees at a meeting held in San Francisco on March 15 proposed the following resolutions:

1. To increase the number of scholarship recipients and/or to increase the amounts of the awards for 1985 by adding \$15,000 to the fund allocated for scholarships in the national JACL scholarship program. This will result in a total of \$25,000 available for distribution. The eligibility requirements remain the same: Any student enrolled in undergraduate or graduate studies at any of the University of California campuses will qualify.

2. To expand its programs to cover social activities and membership recruitment. The present membership of CJAA, approximating 150, are principally graduates of the UC Berkeley. Efforts will be made to recruit graduates from other campuses. With nominal membership dues and tax exempt donations the programs benefitting Japanese American students can be expanded to include contributions specifically to campuses which have a large number of Japanese American students.

3. To amend the name of CJAA to reflect more clearly the composition of its members; i.e., Americans of Japanese ancestry. In the past, the present name has been misinterpreted.

During the past few years CJAA has contributed \$10,000 to the national JACL scholarship program, \$10,000 to UC Berkeley Alumni Assn.'s 50th Anniversary Scholarship Endowment Fund for

the benefit of the Japanese American scholars, \$5,000 to Harry L. Kingman Memorial Fund, \$1,500 to the UC Berkeley Asian American Studies Library, \$5,000 to UC Berkeley Alumni Assn. Scholarship Fund, and \$5,000 to national JACL redress campaign.

To become a member of this organization alumni of the University of California system may send one-time membership dues of \$5 and/or contributions to: CJAA, 1890 Sutter St., #305 San Francisco, CA 94115.

Carat
the Karat

Japanese Charms
Japanese Names
Japanese Family Crests



12558 Valley View, Garden Grove, CA 92645 • (714) 895-4554

Architectural Travels with Pratt

Alvar Aalto in Finland May 21-June 4 \$1875

Join us for Pratt's eighth annual Finland tour. Study the major works of Alvar Aalto in Helsinki, Turku, Jyväskylä and Imatra on this 15-day workshop tour. Led by Michael Trencher, Professor at Pratt Institute, this tour will provide an extensive review of the Finnish cultural context in relation to the broader European framework.

CITIES AS DESIGN IN ITALY JUNE 28-JULY 20 - \$3,400

An annual 3-week travel study tour focusing on the history and development of the architecture & design of the Italian cities: Rome, Siena, Florence, Bologna & Venice. Come enjoy an Italian summer with our urban study program featuring lectures with many renowned architects, planners & designers & 1st class hotel accommodations.

- Round trip air transportation from NY, chartered bus throughout tour
- Full schedule of architectural study visits & sightseeing
- Undergraduate credits or CEUs included (graduate credit additional). May be tax deductible for professionals.

pratt

For information call (718) 636-3453 or write:
Judith Glass, Director, Continuing Education
Pratt Institute, Brooklyn, N.Y. 11205-3897

NOW AVAILABLE ON THE MAINLAND

Hawaii's Number One Hawaiian Host® Chocolates

CHOCOLATE COVERED MACADAMIA NUTS & CARAMELS • DRY ROASTED-SALTED MACADAMIA NUTS • BRITTLES & CHEWS • COCONUT CANDIES • HAWAIIAN JAMS & JELLIES • HAWAIIAN HONEY • SPECIAL GOURMET PACKAGE.



Call Us for Fund-Raising
Sales Promotions

Hawaiian Host Chocolates
15601 S. Avalon Boulevard
Gardena, California 90248
Phone (213) 532-0543

PLANT TOURS AVAILABLE BY APPOINTMENT



"Hawaiian Roamer"



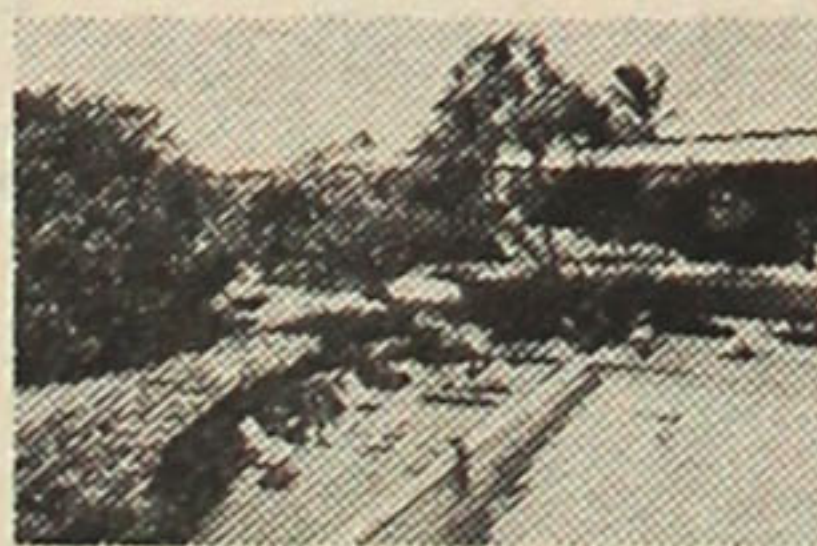
QUEEN KAPIOLANI
Waikiki—From \$60



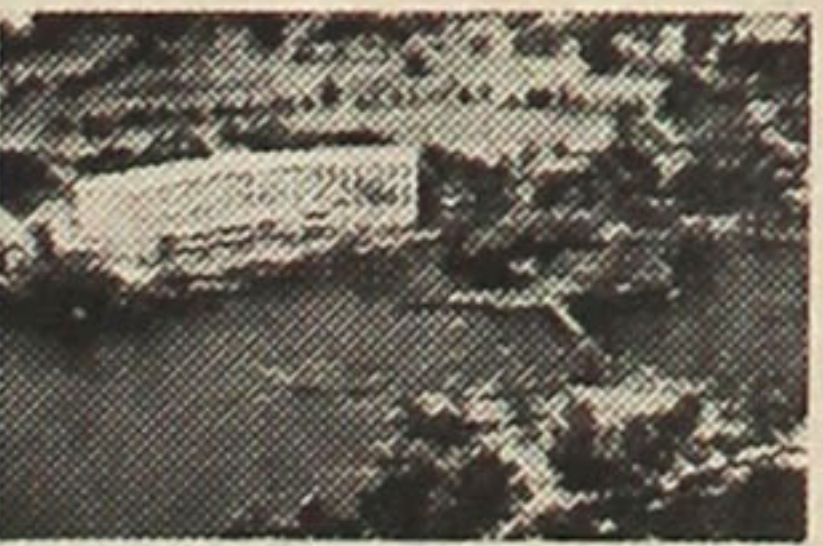
KAUAI RESORT
Kauai—From \$64



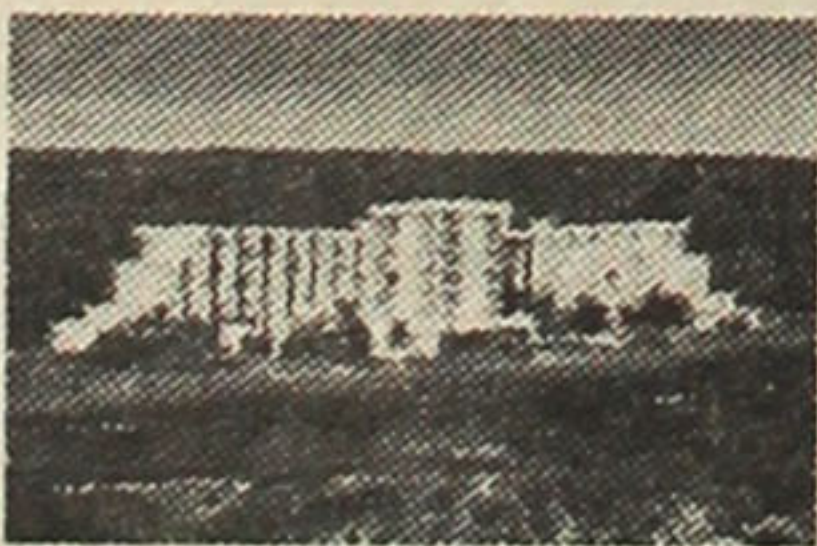
MAUI BEACH
Kahului, Maui—From \$49



MAUI PALMS
Kahului, Maui—From \$40



HILO HAWAIIAN
Hilo, Hawaii—From \$54

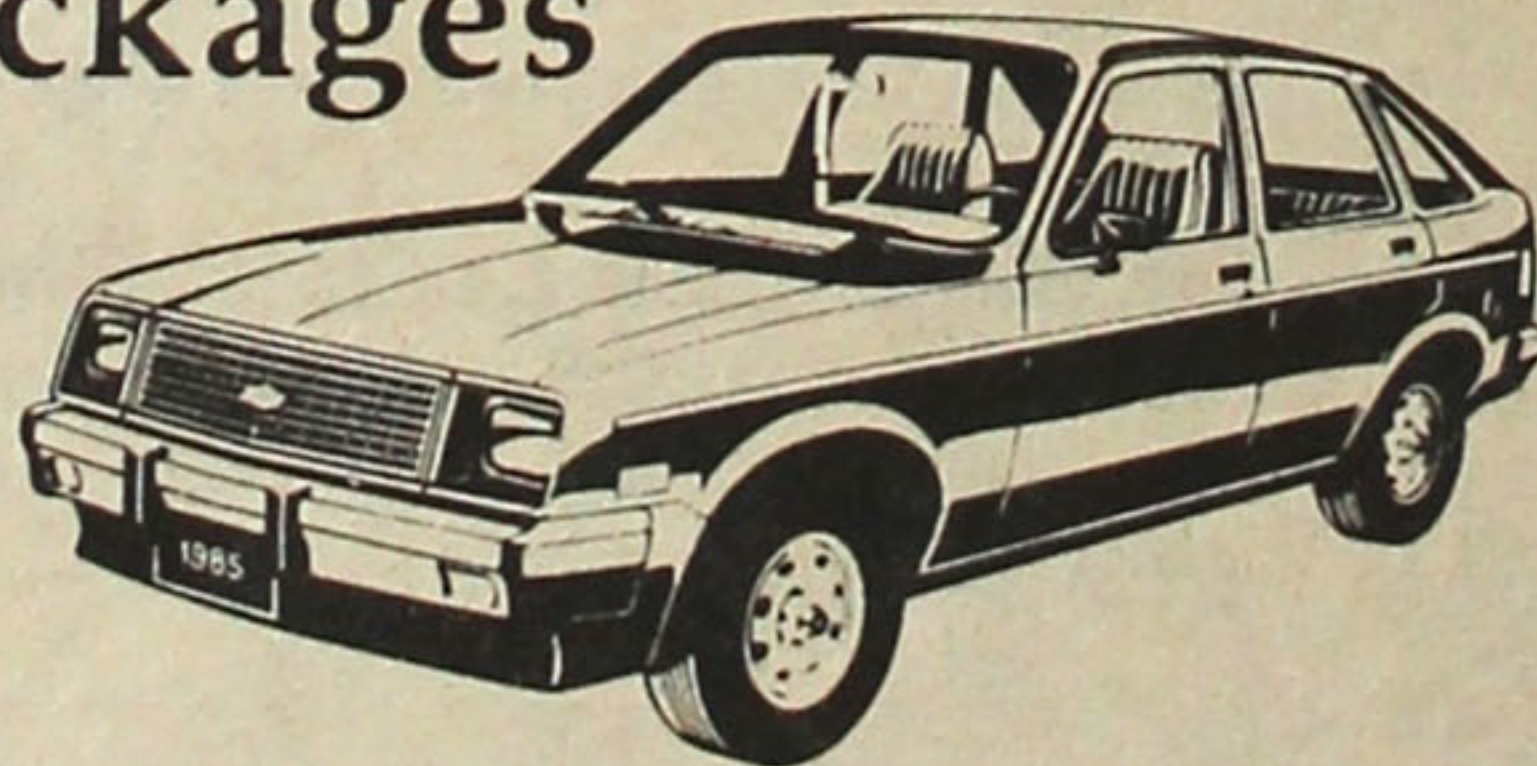


KONA LAGOON
Keauhou, Kona—From \$59

Fine hotels on 4 islands.

As low as \$40 per day... Cars provided by National Car Rental

Hawaii's top ROOM+CAR packages



For reservations and full information... see your travel agent or phone toll free

(800) 367-5004

**Hawaiian
Pacific Resorts**

Shigeru Tomita, Pres./Akira "Flash" Fujiki, V.P.
1150 S. King St., Honolulu, HI 96814



SAT. MAY 4, 1985

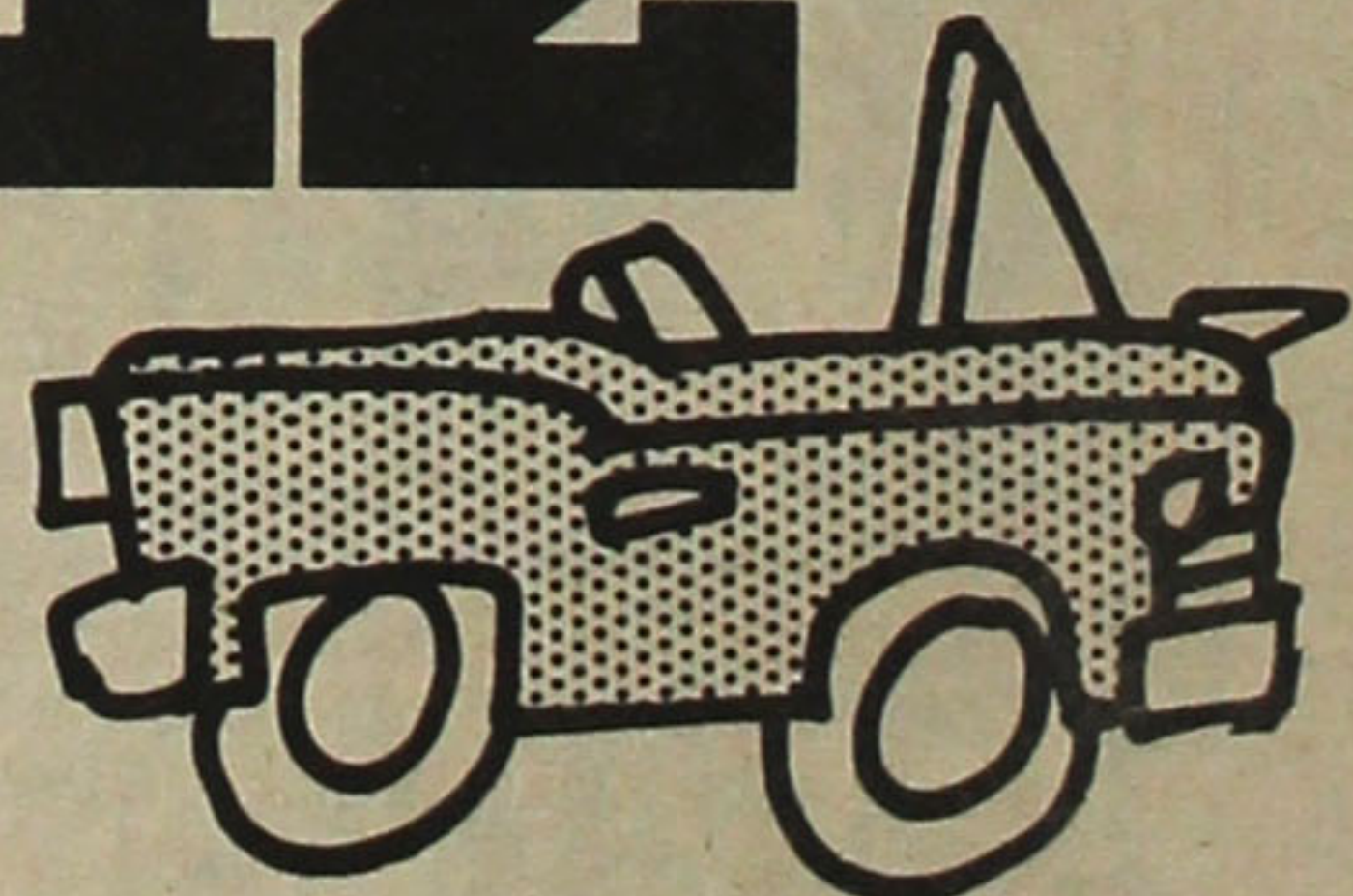
11 to 6 p.m.

WITH GRATITUDE
FOR YOUR SUPPORT
DOWN THROUGH
THE YEARS

CENTENARY UNITED METHODIST CHURCH
OUR FINAL BAZAAR at 35th & Normandie
LOS ANGELES, CALIF.

NEW
RATE!

12.5% APR
NEW CAR LOANS



Used Car Loans 14% APR
Insured Savings currently paying 7% plus
Free Insurance on loans and savings
IRA Accounts available

Now over \$6.1 million in assets

**NATIONAL JACL
CREDIT UNION**

Post Office Box 1721
Salt Lake City, Utah 84110
Telephone (801) 355-8040

Shinju: A Cultural or a Criminal Act?

With this issue, Katie Hayashi joins the PC as a freelance reporter. A native of Japan, she will be writing about Japanese newcomers to the U.S.

This commentary concerns the case of Fumiko Kimura, a Japanese woman who attempted suicide in Santa Monica, Calif., by walking into the ocean holding her son and daughter. Both children died, but Kimura survived and has been charged with murder (see story on page 1). A suicide in which one takes the lives of loved ones as well as one's own is called shinju.

The following is an expanded version of an article previously printed in the Santa Monica Corsair and the Los Angeles Times.—Ed.

by Katie Kaori Hayashi

Five and a half years ago, I came to the United States with my husband and my one-year-old son because my husband wanted to continue his studies in this country. I am almost the same age as Fumiko Kimura. When I found out about her shinju, I empathized with her, although my American friends sympathized with the two children. I was surprised that Americans didn't understand the Japanese custom of shinju.

In my English as a Second Language class at Santa Monica College, the instructor used a Los Angeles Times article about Kimura as discussion material. I was also surprised that people of other ethnic groups didn't understand shinju. But some of my classmates agreed that American courts should consider her cultural background because her act was caused by Japanese custom and her despair.

Kimura's shinju is a crime by American standards, but in Japan it is an accepted cultural act. Shinju is treated like involuntary manslaughter in Japan. The Japanese don't find malice in the intent of shinju survivors. Survivors of parent-child suicide are ceremonially prosecuted and brought into court. They are usually given a short sentence in prison, but their sentences are suspended, and most of them are

immediately placed on probation. If they commit no crime while on probation, they are released without serving time in prison.

Inseparable Bond

The Japanese don't see shinju survivors as criminals. The Japanese are sympathetic towards shinju survivors because the survivors are regarded as the persons who have struggled against harsh realities and have been finally engulfed by them. For the Japanese, Kimura isn't a merciless criminal, but she is a Japanese mother who was bound to the traditional Japanese concept and loved her children deeply. Her shinju is caused by the inseparable bond between mother and child.

From the time a Japanese child is born, his or her parents see themselves as father and mother, no longer as just a man and a woman. They are also expected to behave as a father and mother in society. Japanese parents, especially mothers, view their children as part of themselves.

Japanese mothers protect, dominate and devote themselves to their children. They would willingly sacrifice themselves for their children. They give up pleasure until their children become adults. Mothers take their children wherever they go. If a mother leaves her child with a babysitter to go to a movie or party, she is frowned upon and labeled an irresponsible mother.

Deep Devotion

Because of their deep devotion to their children, they believe that they are better protectors than anyone else. A Japanese mother and child are joined by a strong bond. A Japanese proverb says that what a child receives from his or her mother is higher than a mountain and deeper than an ocean.

When a Japanese mother commits suicide, she feels obliged to take her children with her. She believes that her children will suffer without her protection and care.

In Japan, to be raised by a single parent or in an orphanage is a stigma. Those experiences traumatically damage children's lives. Those children are looked down upon and often discriminated against in employment and marriage. For example, a bank will not hire a person who doesn't have a father.

Children are deprived of their opportunities because of their parent's death or divorce. To save their children from eventual suffering and humiliation, parents are obliged to take their children's lives along with their own lives.

When Kimura submerged herself and her children in the sea, she didn't think of her act as murder, but suicide. She killed her children to complete her suicide successfully because she saw her children as an extension of herself. She couldn't leave her children behind because of the strong bond between her and her children and her love for her children.

Japanese mothers usually commit suicide with their children, but fathers do not do so as often. But single fathers will take their children with them because they know that nobody will take care of their children.

Two Categories

Shinju is broken down into two categories. One occurs between parent and child, and the other between lovers. The Japanese are moved when it occurs between lovers because it is considered the culmination of love.

Almost 300 years ago, this kind of shinju became an epidemic under a strong restriction against marriage outside social caste. To prevent the consecutive occurrences, the shogun ruled that the

shinju survivors would be relegated to the ranks of "hinin," the lowest rank in the social caste, and also deprived of human rights, regardless of their previous status. But the law didn't prevent lovers from committing shinju. Writers at that time beautified it, and people relished the stories. After that time, shinju became a part of Japanese culture. Shinju stories between lovers are still played in kabuki, bunraku and movies.

Shinju occurs every day in Japan. Seven years ago my friend and her mother committed shinju, but the incident did not appear in the media because the Japanese media didn't consider it news. The extensive media attention given to the Kimura case was a surprise to me. Later I learned that a socially accepted deed in one culture is a cruel crime in another.

Suicide is regarded as a sin in Christian belief, but for the Japanese it is a way to save a person from a living hell. In 1983, 25,202 Japanese committed suicide.

The cherry blossom analogy may help Americans understand Japanese propensity for shinju. The most beloved flower in Japan is the cherry blossom. At the prime of spring, the cherry blossom brightens up Japanese towns by its pink flowering. But the blossoms fall in one day by strong winds or violent rain. Unlike other flowers, it doesn't expose darkened, shriveled petals to people's eyes. Because of its ephemeral and glamorous life, people love it and say, "I want to live like the cherry blossom." The Japanese choose to die if they know only humiliation awaits them.

For example, during World War II, Japanese soldiers were taught that it was a shame to be

captured by the enemy. When they were surrounded by the enemy force, they often killed each other because they did not want to surrender themselves to humiliation. The Japanese prefer committing suicide to floundering miserably.

Divorce Still a Stigma

For Fumiko Kimura, who survived shinju in Santa Monica Beach, it was her second marriage. Divorce is still a stigma in Japan. She didn't want to shame and subject herself to more humiliation, nor did she want to bicker with her husband and her husband's mistress.

For Japanese women, marriage is a life goal. Women aren't fully accepted in the work force. They are discriminated against in employment, promotions and salary raises. Women feel obliged to quit their jobs when they get married or give birth to a baby. Most women with a college education quit their jobs in three years after being hired and live as mothers. Women joke that marriage is the most secure employment. When a marriage is threatened or falls apart, a Japanese woman becomes desperate.

I feel empathy for Kimura. Her crime by American standards is forced upon her by despair and Japanese custom. I feel sorry for Kimura because she is going to be punished by the American law. We newcomers gladly abide by the American law, but culture is ingrained in people's mind. We try hard to assimilate to American culture, but to deny our original culture means to deny our self-esteem and identity. I hope that Americans can consider her cultural background and interpret their law, accordingly.

Career Opportunities in Japan

LIAISON / INTELLIGENCE OPERATIONS SPECIALIST GS-7 THROUGH GS-12 (PLUS ALLOWANCES)

The Naval Investigative Service is seeking applicants for its Japan Area offices. Applicants must be U.S. citizens who can read, write, and speak the Japanese language. Applicants must meet basic qualifications set forth in OPM Handbook X-118.

All authorized relocation costs will be paid by the Naval Investigative Service.

Interviews will be held on May 2 (Thu.), May 3 (Fri.), and May 4 (Sat.), 1985, at the New Otani Hotel, 120 South Los Angeles Street, Los Angeles, California. For further information and to schedule an interview appointment, contact Mary Brandenburg, (213) 547-6124, 547-6125.

THE NAVAL INVESTIGATIVE SERVICE U.S. NAVAL INTELLIGENCE SERVICE

AN EQUAL OPPORTUNITY EMPLOYER

i.M. Hairstyling

Hair Care for Women & Men

GREAT CUTS
COLD WAVES
CELLOPHANES

Call 378-3327

4172 Pacific Coast Hwy.
Village Shop #105
Torrance, CA 90505



Kimura PHOTOMART

Cameras & Photographic Supplies

316 E. 2nd St., Los Angeles
(213) 622-3968

Commercial & Industrial
Air Conditioning &
Refrigeration
CONTRACTOR

Glen T. Umemoto

Lic. #441272 C38-20

SAM REIBOW CO.
1506 W. Vernon Ave.
Los Angeles / 295-5204
Since 1939

THE LOST YEARS

1942-46

REPRINTED BY
POPULAR DEMAND

4th Printing

THE LOST YEARS: 1942-1946

Edited by
Sue Kunitomi
Embrey

Features "Why It Happened Here" by Roger Daniels (1967), a historian's view of the Evacuation after 25 years ... Pictures, poems and pieces of camp life ... Selected bibliography.

Pacific Citizen,
244 S. San Pedro St.
Los Angeles, CA 90012

Please send _____ copies at \$5 each postpaid of
"The Lost Years: 1942-1946".

Name _____

Address _____

City/State/ZIP _____

Amount enclosed: \$ _____

Credit union enjoys year of growth

CHICAGO—Dudley Yatabe was re-elected to a third consecutive term and ten years in the aggregate as president of the Chicago JACL Federal Credit Union at the first meeting of the newly elected board of directors held on April 11.

Serving on the 1985 board are Roy Teshima, vice president; Sumi Shimizu, secretary; Ariye Oda, treasurer; and Sumiko Ono, asst. treasurer. **Credit Committee:** Chairman Roy Teshima, Richard Hikawa, Thomas Masuda, John Tani, Dudley Yatabe. **Supervisory Committee:** Chairman Rich Yamada. **Education Committee:** Chairman Jack Nakagawa, Mits Kodama, Roy Ku-

roye, Aki Matsushita, Janet Suzuki, Tak Tomiyama, and Carol Yoshino.

Pursuant to the bylaws, two non-directors will be appointed by the board to serve on the supervisory committee. A replacement will likewise be appointed for John Tani, who has accepted a position with Kimberly-Clark Corp. at its headquarters in Wisconsin.

The 38th annual meeting of shareholders was convened at Como Inn on March 29, at which President Yatabe reported that the past year was another year of growth, surpassing records of the previous year. Historical highs were evident in loans outstanding

of \$664,400, shares on deposit of \$665,370, total assets of \$766,175, and the dollar value of loans made during the year of \$452,392. Although gross income of \$83,381 was not a record, it was second only to that of the previous year.

At Dec. 31, 1984, the loan/share ratio was 101.84% and the percentage of delinquent loans was 2.74%. An all-time high was also attained in the declaration of an 8 1/4% dividend per annum.

Among the significant events of 1984 were, once again, the appraisal of a #1 rating by the federal examiner, the purchase of a computer for the automation of all records and accounts, and reaching the \$750,000 mark in assets. It is hoped that the \$1 million mark will come to pass in 1986 to coincide with the 40th anniversary of this credit union.

Storm Lake, Iowa



REDRESS UPDATE

by Minoru Yasui
Legislative Education Committee

Chiye Tomihiro of Chicago knows the country around Storm Lake, Iowa, in the northern part of Iowa, about 120 miles north of Des Moines. It is a pretty, bucolic, rural and agricultural part of Iowa—and no doubt beautiful during the spring, summer and fall.

But, during winter, it is bone-chillingly cold! We were in Storm Lake lecturing at the small Buena Vista College during January. We were struck by the sense of isolation and provincialism of that community, at least during the bitter cold of winter. Most of the 900 students at Buena Vista are local, and after graduation, we are told, most stay within a hundred-mile radius of their home towns.

We were trying to bring the message of redress to this part of Iowa. We emphasized that what happened to Japanese Americans could well happen to German Americans, or Russian Americans—or to anyone who might be willy-nilly ancestrally linked with a perceived enemy. That seemed like a far-fetched possibility to most of the students, because they were secure on their farms and homes that had been in their families for several generations—and despite the fact that many were of German ancestry.

We noted, too, that the members of Congress from Iowa were

relatively moderate. Rep. Berkeley Bedell from northern Iowa, who became a multi-millionaire in the manufacture of fishing equipment, is rated as an open-minded representative. We know that his local office sent a representative to hear me speak at the college in Storm Lake.

Four other Iowa congressmen, Rep. James Leach of Davenport, Rep. Tom Tauke of Dubuque, Rep. Neal Smith of Altoona, and Rep. Cooper Evans of Grundy Center, are all rated as being liberal. The sixth congressman is newly elected Jim Ross Lightfoot, reportedly a former sheriff from southwestern Iowa.

The two Iowa Senators are influential. Sen. Charles Grassley has already held hearings on redress, as chairman of the Senate sub-committee on Administrative Practices and Policy of the Judiciary Committee. Sen. Grassley is a businessman, and relatively conservative, but not unreasonable. The other Iowa senator is newly elected Sen. Tom Harkins of Ames. Sen. Harkins is known as a civil rights advocate and was a liberal member of the House until his elevation to the U.S. Senate.

We know of Dr. Neil E. Nakadate, a professor at Iowa State University in Ames. However, we do not have contacts with other Nikkei, or friends in the State of Iowa. We believe that the Iowa delegation can be of great help to us in redress, if only we could reach them.

Could any Pacific Citizen readers give us names, addresses and telephone numbers of friends or relatives in the State of Iowa?

Manzanar desert may bloom again

MANZANAR, Calif. — Members of the Manzanar Committee met with Duane Buchholz, northern district engineer, Los Angeles Aqueduct Division, for a walking tour of the former WW2 internment camp on March 28. The purpose of the meeting was to discuss an Enhancement/Mitigation Project, one of 17 projects mandated in the pending Inyo-Los Angeles 5-year water agreement recently approved in San Bernardino Superior Court.

Joining the tour were Greg James, water director for Inyo County, and Shiro Nomura, curator of the Manzanar project at the Eastern California Museum of Independence, and other staff from both water departments.

The tour was to familiarize agency officials with the gardens and other remains in the one-mile

square area where more than 20 gardens have been identified by members of the Manzanar Committee.

"Manzanar must not become a divisive issue in carrying out the water agreement," Manzanar Committee spokespersons emphasized. "It would be nice to see Manzanar green again with debris cleaned up. However, we do not wish for this project to take precedence over other projects which would benefit Inyo County residents," stated Sue Kunitomi Embrey, committee chairperson. She added, "We are anxious not to disturb what is left since it is a historic landmark."

Pilgrimage

The committee reported further that plans for the April 27 pilgrimage are proceeding smoothly. Bus reservations for the Little

Tokyo area charter may be made by calling (213) 626-2249. The bus departs from in front of JACCC, 244 S. San Pedro St., at 7 a.m. San Fernando Valley residents may reserve seats by calling Nancy Gohata, (818) 899-4237, in the evening. Departure location is the Japanese Community Center, 12953 Branford St., in Pacoima. Departure time is 7 a.m.

For the fourth year, the Asian Pacific Committee of the United Teachers of Los Angeles is sponsoring a district-approved, one-day credit workshop/pilgrimage for teachers of the Los Angeles Unified School District.

Persons attending the pilgrimage are reminded to wear comfortable walking shoes, clothing for both warm and windy weather and to take flowers for the cemetery, as well as food and drinks.

For additional information, in Los Angeles, call (213) 662-5102; in San Francisco, (415) 567-1814.

Naomi's Dress Shop

Sports & Casual • Sizes 3 to 8
133 Japanese Village Plaza Mall
Los Angeles • 680-1553
Open Tue-Fri: 9:30-6:30, Sat: 11-9
Sun: 11-5 Closed: Monday



Across St. John's Hosp.
2032 Santa Monica Blvd.
Santa Monica, CA
KIRK ISHIZUKA 828-0911



LARGEST STOCK OF POPULAR & CLASSIC JAPANESE RECORDS, MAGAZINES, ART BOOKS, GIFTS
Two Stores in Little Tokyo
300 E. 1st - 340 E. 1st
Los Angeles, CA - (213) 625-0123
625-0123 - 625-8673
S. Uyeyama, Prop.

Announcing

INTERACTIVE VIDEO DISC WEST

May 15-17, 1985
Los Angeles Airport Hilton

This conference includes presentations on Interactive Videodisc covering:

Advanced Technologies

Videodisc with
Digital Data Encoding
Sound over Still Frame
CD-ROM (Compact Disc)

Applications

Education and Industrial Training
Job Performance Assistance
Point of Sale
Public Information
Archival Storage

Program Design

Authoring Systems
Effectiveness Criteria
Courseware Transportability

Exhibits by Pioneer, Sony, LaserVideo, 3M, EECO, DEC and other leading suppliers of hardware, software, and interface systems will be available to conference registrants in an adjacent exhibit area.

For further information contact:
Society for Applied Learning Technology
50 Culpeper Street, Dept. J
Warrenton, VA 22186 (703) 347-0055

Gift Suggestion ...



By Ichiro M. Murase, Design by Michael Nakayama

A project of Visual Communications/Asian American Studies Central, Inc.

Published by Little Tokyo Centennial Committee

A selection from over 65,000 images from a variety of sources, including the 26,000 housed in the Visual Communications archives of the early 1900s, the war years and contemporary period ... A kind of medley of images and mirror of Little Tokyo's past. Anyone who has lived in Little

Tokyo or who has friends who grew up in the greater Los Angeles area will discover a familiar face in one or more of the pages ... 24 pages of text; selected bibliography ... A pictorial companion to Pacific Citizen's LITTLE TOKYO LIFE series.

Pacific Citizen, #506
244 S. San Pedro St., Los Angeles, CA 90012
Please send _____ copies at \$21.25 each postpaid to:
Name: _____
Address: _____
City, State, ZIP _____



DELIGHTFUL seafood treats
DELICIOUS and so easy to prepare

MRS. FRIDAY'S

Gourmet Breaded Shrimps and Fish Fillets

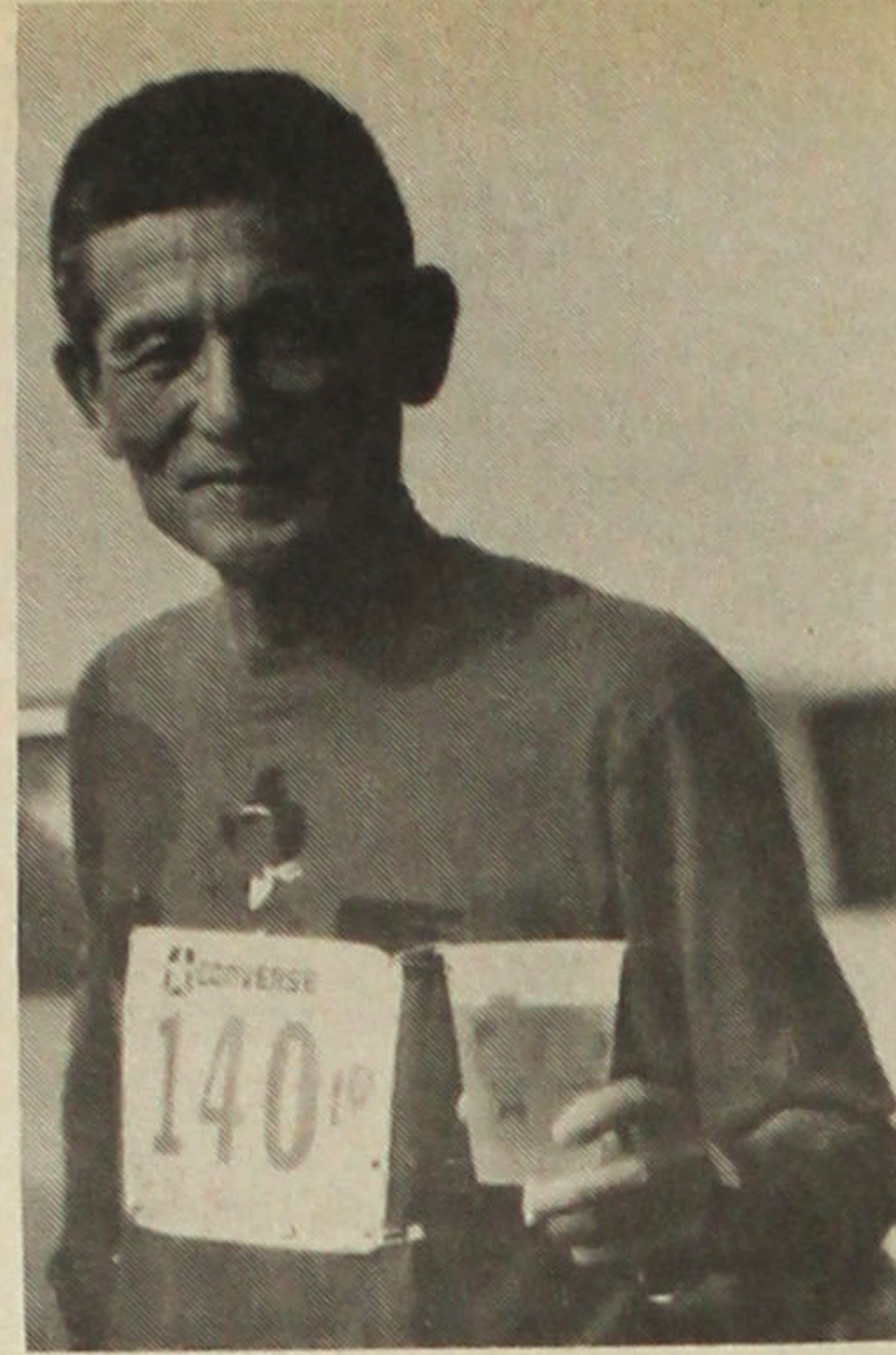
Fishing Processors, 1327 E. 15th St., Los Angeles, (213) 746-1307

Going like 60 in 10K run

SAN JOSE, Calif.—California is a long way from Texas, but that won't stop 69-year-old Texan Paul Katsuro from participating in San Jose's Japantown 10K Banner Run on May 5.

Katsuro started running about six years ago, starting at one mile and since working his way into 26-mile marathons. One wall of his dining room is decorated with awards from a variety of athletic events, as well as 1st through 3rd place marathon trophies. Many of these awards were obtained within the last five years, proof that retirement doesn't necessarily mean inactivity.

Yu-Ai Kai, a non-profit community service for seniors, is hosting the run to raise funds for an Adult Day Health Care facility. The center will offer medical, nutritional, exercise, and recreational facilities for seniors who may otherwise be institutionalized because of functional impairments or who are socially isolated.



Paul Katsuro

The run is a 10K certified and sanctioned course through North San Jose to a finish in Japantown. In addition, the run includes a one-mile "fun walk/run," awards and prizes. It is being held in conjunction with the annual Nikkei Matsuri. For more information, call (408) 294-2521.

Radio-TV

Sylvia Komatsu of Dallas public TV station KERA-13 wrote and produced "Legacies of the Land," a documentary which aired Feb. 28. It deals with the traditional history of Texas as well as less publicized aspects, such as unequal treatment of Native Americans and Latinos. Her previous documentaries have dealt with Texas prisons, public health care and welfare policies, and black artists. She is also planning one on Asians in Texas.

Book Sales: 'And Justice for All'

(1 case = 18 books, \$238.77)
4-18-84/7-3-84 5,552.21 #1 total (15 chapt, 26 cs)
7-9-84/7-26-84 4,600.91 #2 total (15 chapt, 46 cs)
9-7-84—9-17-84 2,445.90 #3 total (5 chapt, 7 cs)
Redress Fund \$12,609.02
#4 total (3 chapt, 5 cs)
Redress Fund \$13,221.56
#5 total (2 chapt, 2 cs)
As of 10-21-84 \$13,693.33
#6 total (2 chapt, 4 cs)
As of 12-7-84 \$14,648.41
#7 total (1 chapt, 1 cs)
As of 1-7-85 \$14,887.48
#8 total (3 chapt, 9 cs)
As of 2-15-85 \$17,434.61

REPORT #8

Marin (1) \$238.77, Livingston-Merced (1) \$300.28, Florin (4 cs @ 18.95 p/bk - 30% disc) \$955.08, Florin (3 cs @ 25 p/bk) \$1,350.

1000 Club Roll

(Year of Membership Shown)
* Century; ** Corporate;
L Life; M Memorial;
C/L Century Life

Summary (Since 12-1-1984)

Active (previous total) 1,026
Total this report: #1357
Current total1,083

APRIL 8-12, 1985 (57)

- Arizona: 8-Wendell DeCross,
Berkeley: 14-George Kondo,
11-Kosakura Tours & Travel*,
26-George Yasukochi, 5-Sam Yamauchi.
Boise Valley: 30-Seichi Hayashida*,
23-Kay Yamamoto.
Chicago: 11-Lillie Nakamura,
25-Toshio Noma, 3-Charles Waller.
Cincinnati: 16-Joseph L Cloyd.
Dayton: 16-Yaeko Sato.
Detroit: 12-Sam Moy.
Fresno: 10-Barbara Tani-guchi.
Gardena Valley: 1-Louis Kiyoshi Ito,
1-Sue Shizumi Okada.
Gilroy: 18-Lawson Sakai*.
Hollywood: 30-Robert K Kato.
Livingston Merced: 30-Robert Ohki.
Marina: 5-Marie Miyashiro,
16-Frank Kay Omatsu.

- Marysville: 30-Thomas H Teesdale,
23-Isao Tokunaga.
Monterey Peninsula: 3-Richard Hidemi West.
Mount Olympus: 16-Charles S Kawakami.
Oakland: 3-Akira Abe.
Omaha: 15-Yukio Kuroishi,
2-Mike Watanabe.
Pasadena: 30-Mikko Dyo,
27-Rev Ken Yamaguchi.
Puyallup Valley: 25-Nobuo Yoshida.
Reedley: 11-Ken Sunamoto.
Sacramento: 11-Dr Richard Ikeda,
30-Yasushi Ito,
27-Harry Morimoto.
Saint Louis: 27-Richard T Henmi,
30-Dr George M Tanaka.
Salt Lake City: 21-Ben Terajima.
San Fernando Valley: 25-Kay I Nakagiri.
San Francisco: 35-Yasuo Abiko,
20-Ken Kiwata,
5-Dr Jerry Y Osumi,
14-Giichi Sakurai.
San Jose: 33-Yoneo Bepp*,
18-Karl Kinaga.
San Luis Obispo: 24-Ken Kitasako.
Seattle: 18-Wilce Shiomi.
Sequoia: 4-Ernest Murata,
3-Fred M Nakamura*.
Sonoma County: 14-Ed Nomura.
Stockton: 8-Charles Yagi.
Twin Cities: 18-Kimi Hara,
26-Mieko F Ikeda.
Watsonville: 5-H Frank Sakata.
West Los Angeles: 21-Grace K Deguchi,
14-Dr Kenneth Matsumoto.
National: 9-Mary Matsubara.
CENTURY CLUB*
11-Kosakura Tours & Travel (Ber),
5-Seichi Hayashida (Boi),
7-Lawson Sakai (Gil),
5-Yoneo Bepp (SJo),
3-Fred M Nakamura (Seq).

Donations to JACL-Pacific Citizen

For Typesetting Fund

As of Apr. 20, 1985: \$27,791.37 (723)
This week's total: \$ 70.00 (2)
Last week's total: \$27,721.37 (721)
\$20 from: James Itami.
\$50 from: Golden Gate JACL.
Thank you!

Family Counseling in Little Tokyo

By Professional Bilingual Counselors
Confidential, Reasonable Fees

We can help you understand and cope with difficulties in family or marital relationships, career, identity, and cultural differences.

To make an appointment
Call Yasuko Sakamoto, MSW
at (213) 680-3729

Nikkei Family Counseling Program
Little Tokyo Service Center
244 S. San Pedro St., Rm. 411
(In the Japanese American Cultural & Community Center)

KUBOTA NIKKEI MORTUARY

(Formerly Shimatsu, Ogata & Kubota Mortuary)

911 Venice Blvd.
Los Angeles, CA 90015
Phone: (213) 749-1449

Y. Kubota • H. Suzuki • R. Hayamizu

Serving the Community for Over 30 Years

Four Generations of Experience ...

FUKUI Mortuary, Inc.

707 E. Temple St.
Los Angeles, CA 90012
626-0441

Gerald Fukui, President
Ruth Fukui, Vice President
Nobuo Osumi, Counsellor

Tell Them You Saw It In the Pacific Citizen

AT NEW LOCATION

Aloha Plumbing

Lic. #440840 -- Since 1922
PARTS - SUPPLIES - REPAIR

777 Junipero Serra Dr.
San Gabriel, CA 91776
(213) 283-0018
(818) 284-2845

Plaza Stores or Offices

in small shopping ctr (3) 1000 sq ft,
(2)800 sq ft. \$1.25 per sq ft. Air,
close to 134 & 2 off ramp (213)
254-4397, (818) 790-8617 (eves.)

ESTABLISHED 1936

NISEI TRADING

Appliances - TV - Furniture

249 S. San Pedro St.
Los Angeles 90012
(213) 624-6601

ATTN: INVESTORS FOR SALEBY OWNER

'Best Farms in the Country'

800 ac. rice & soybean farm (486 base rice acreage), 4 miles SW of Harrisburg, AR. (20 miles south of Jonesboro). Highly developed progressive area.

This farm is fully irrigated, which includes 3 - 12 ft & 1 - 16 ft well. Farm grain storage & aeration includes four 10,000-BU bins w/both aeration & heat. There are good roads & drainage ditches on farm. There is a 100-ft. times 3/4 mile private sod. Airstrip located next to headquarters area.

There is catfish farming & excellent duck hunting on adjacent lands near the farm. Local mgmt. available.

\$1,900 / ac.
Cash preferred.

Call: (501) 578-2115 or write Rt 3, Box 47, Harrisburg, AR 72432

PARADISE OKAZU-YA RESTAURANT

Specializing in Hawaiian-Orient Cuisine
OPEN Tue-Sat, 7am-7pm • Sun. 7am-5 pm
1631 W. Carson St., Torrance - 328-5345

Est In or Take Out
Closed Monday Only

Quick service from steam table.
Combination Plate
Very Reasonable Prices

KALUA PIG
POI
SAIMIN

OPEN FOR BREAKFAST AT 7 A.M.
Our own style Portuguese sausage mix,
Spam, Boloni, Chashu.
(With eggs & choice of rice or hash browns)
Includes Coffee, Tea or Miso Soup.

Classified Advertising

4—Business Opportunities

CANADA

Money wanted \$300,000

to complete financing gold silver operating mine & mill operatn in B.C. 15,000 tons \$300 plus ore stock piled on prop now w/unlimtd potential for more. Terms of pay back \$600,000 return on money in 1 yr or 1/2 net smelter return, decision up to lender.

Phone (604) 374-9943 or write Wayne Tyner, Principal 817 McQueen Dr Kamloops, B.C. Canada V2B 7x8
Priv. or foreign money welcome

CENTRAL CALIFORNIA
SALE BY OWNER

Liquor Store

Deli, Video Game Room, Barber Shop.

All in one building package deal 3,000 sq. ft. Two walk-in boxes in store, one with 5 doors, the other with 6 doors. \$300,000—inventry.
Located next to busy on/off ramp near freeway.

'Bill' Stardust Liquors

1612 Ellington St.
Delano, CA 93215
(805) 725-1233

South Dakota

Unique Investment 10 Duplexes

Side by side. 20 rentals. 12 garages. Close to colleges in Rapid City, South Dakota. Good rental history. Individual meters. \$67,800 annual income. Price: \$409,000. For additional information, call (605) 342-1140 or (605) 348-1869 nights.
LDS, INC.
27 Signal Dr.
Rapid City, SD, USA

Auto—Used Car Lot

Busy Sherman Way location (in San Fernando Valley). Very nice offices & lot. Net \$10,000+ per month. Good lease-body shop on lot. Make us an offer. We have too many businesses & must reduce our workload. This is a real opportunity. Call our main office & ask for Jack, (818) 902-1100.

CHILDREN'S GIFTS & TOYS
Two Successful Locations in Major Malls of Glendale and Fresno w/good lease. Cheerful Stores. Excellent income.
(707) 226-3200

INVESTOR WANTED

Joint Venture

For ski & sailboard specialty shop in the center of ski country.
CALL OWNER: (208) 529-4876 or write
TO SKI & SAIL
P.O. Box 1882
Idaho Falls, Id. 83403

5—Employment

CANADA

Torrance OPEN HOUSE

1-5 Sunday. Only 1 mile to Beach!
3 BR, 1 1/2 BA, Interior Designers Delight!
Great for entertainment. \$235,000. 5243 Doris Way. By Owner, call Anne (213) 540-0464

PRESIDENT

San Francisco Community College Centers

A division of the San Francisco Community College District.

The San Francisco Community College District invites applications for the position, President of the Community College centers. The President is responsible for the overall operations and administrations of the centers division which enrolls approximately 35,000 adult students in its non-credit programs. Starting date will be July 1, 1985, or as soon thereafter as possible. Completed application must be received by May 13, 1985.

Information fully describing the position is available and will be provided upon request.
For information and/or brochure, please contact:

Mr. R.Y. Alexander,
Vice Chancellor,
Certificated Services,
San Francisco Community College District,
33 Gough St.,
San Francisco, CA 94103
(415) 239-3031
AA/EE

9—Real Estate

CALIFORNIA

Santa Barbara County

NEW, under construction, Creekside country ranch home on 10 acs. 2800 sq of living space, 25 mins from Vandenberg in beautiful Piques Canyon.
\$325,000.
(805) 937-4705

CANADA

PRIVATE SALE

560 ACRES at McCREARY MANTI-TOBA. 100 A sown to alfalfa brome. Rest of land fenced and cross fenced pasture. Two story home completely renovated. Large barn, cattle shelter and full set of slatted corals. Plus other buildings. Price \$120,000.
Phone 204-835-2133. Or Write
Box 402 McCreary,
Manitoba Canada R0J1E0

Japanese Phototypesetting

TOYO PRINTING CO.

309 So. San Pedro St., Los Angeles 90013
(213) 626-8153

Marutama Co. Inc.

Fish Cake Manufacturer
Los Angeles

Camp Mishemokwa

Girls and Boys 6-16 Bat Cave, N.C. In the Blue Ridge Mountains. ACA accred. Mountain-side Waterslide, Min/Golf, Tennis, Soccer, Fishing, Backpacking, Rock Climbing, Tubing, Canoeing, Ceramics, Fillety, Nature Crafts, Archery, Sports, Karate, Guitar, Drums, Swimming, Computers, Tubing in math and Reading. 1-8 wks.

Dr. & Mrs. S. Smith, Jr.
PO Box 516,
GULF BREEZE, FL 32561
(904) 932-9465

The Man Who Saved Democracy in Missouri

When Y. Fred Fujikawa made a sightseeing stop in Missouri late last year, little did he suspect that he would meet someone who had changed his life 40 years earlier.

Fujikawa, a 1934 graduate of the Creighton University School of Medicine, had a practice in Los Angeles when war broke out between the U.S. and Japan. He was interned in Jerome, Arkansas, where he was paid \$19 a month to treat fellow internees.

He applied for an opening at the Missouri State Sanatorium in Mount Vernon and was accepted as a chest surgeon in November 1943. Fujikawa's employment at the hospital created a stir in the state legislature, where Rep. A.J. Gray (R-Atchison County) declared, "This doctor may be skillful, but by the eternal gods a Jap is a Jap. We've been too lenient with the Japs. We can't trust Japs in America."

No Japanese Wanted

In March 1944, Gray introduced a rider to a bill dealing with salary increases for doctors. The amendment required that a doctor who had not been licensed to practice medicine in Missouri could not be employed there, but its admitted purpose was to "prevent wholesale importation and employment of Japanese in our hospitals."

Rep. O.K. Armstrong (R-Springfield) strongly opposed the measure. "If we prevent a man from pursuing his honorable profession because his ancestors were Oriental, we would be fanning coals of racial prejudice that might burst into raging flames," he said.

Punishing the Innocent

"Let us not punish the innocent victims of war for the crimes of those who are the enemies of freedom. Dr. Fujikawa is not responsible for our war with Japan... Let us then deny the implication that white Americans are the super-race... If I were a Japanese, or the son of any other race and could be born in this land of liberty, I would thank God that I am an American citizen."

"Let us lift our voices against any moves toward discrimination because of color or creed. If inter-

racial bigotry and intolerance... lift their reeking banners in other lands, or even in other states of this Union, let Missouri remain forever a refuge of tolerance."

Also defending Fujikawa were Rep. Elsie Langsdorf (D-St. Louis) and Ira Jones, head of the state hospital board. Jones said that without Fujikawa "we would have had to send 150 patients home, and many of them would have died."

Amendment Defeated

The amendment was later defeated on the grounds that it dealt with employee qualifications and was therefore not germane to a bill on employee salaries. House Speaker Howard Elliot said that the debate over the amendment showed that "as long as this nation can handle a challenge of this type in time of stress, we need have little fear of losing those principles which have made us great."

An editorial in the Pacific Citizen praised Armstrong's defense of Fujikawa: "It is such men who keep alive the American documents of freedom."

Fujikawa remained at the hospital, where he became a tuberculosis surgeon, until January

Pacifica head arrested in protest against apartheid

WASHINGTON—Sharon Maeda, executive director of Pacifica Radio, was arrested for protesting outside the South African embassy April 15.

Maeda, whose parents and grandparents were interned during WW2, said that South Africa's apartheid policy "is worse than taking the Native Americans off their land, slavery and injustice against all oppressed American groups combined. It would not be tolerated today in the U.S. It should not be tolerated anywhere in the world."

The board of directors of Pacifica, a listener-sponsored radio network, voted in January to withdraw all funds from banks investing in South Africa.

1949, when he returned to California. His surgical practice ended in 1975 after four coronaries and arthritis in his hands. Now living in Seal Beach, Calif., he and his wife Alice have three children, one of whom was born in camp.

The Fujikawas met Armstrong once in 1946 when he was passing by their Mount Vernon home and stopped to introduce himself. He later became a congressman.

Unexpected Reunion

In November 1984, Fred and Alice Fujikawa visited the site of the Battle of Wilson Creek, fought in 1861, in southwest Greene County, Missouri. By chance, Fred found out that the Armstrong residence overlooked the battle site. Although he thought that Armstrong had long since died, a park ranger said that he had seen Armstrong the day before. Not long after that, the Fujikawas paid a visit to Armstrong and his wife Marjorie.

During the visit, which Fujikawa called "the high point of my trip," he left a note in the Armstrongs' guest book: "I cannot thank you enough for your kindness and support during those trying days in 1944... you alone stood up for me in the state legislature."

—from reports by Springfield Leader & Press

Little Tokyo cultural center celebrates 5th anniversary

by Harry Honda

LOS ANGELES — Before a happy audience of 500, the Japanese American Cultural and Community Center celebrated its fifth anniversary this past week (April 17) with dinner at the Bonaventure Hotel.

Imbedded in the opening remarks of Judge Kathryn Doi Todd, mistress of ceremonies, was the explanation of the enigmatic theme, "Century II: The Center Comes Alive." Now that Little Tokyo has completed its first century, the JACCC is off and running as Japanese Angelenos commence their second century, she said.

Japanese Consul General Taizo Watanabe congratulated JACCC's accomplishments and predicted the center/theatre is destined to play an even more important role in Century II. "We cannot afford to destroy the lines of communication which exist between Japan and the United States," he emphasized.

SCGF and CRA Cited

JACCC board of directors recognized the role of the So. Calif. Gardeners' Federation (SCGF)

and the Community Redevelopment Agency of the City of Los Angeles (CRA) in the development of the JACCC in particular and in the community in general.

The JACCC President's Award was bestowed upon Mr. and Mrs. Takio Fukuwa for their work in U.S.-Japan cultural affairs, specifically through the JACCC, its theatre and the Ambassador's Council.

Restrictive Licensing

The federation was formed in 1956 following legislative efforts to impose stiff licensing requirements on gardeners as professionals, thus restricting many from entering this service.

SCGF, one of the co-sponsors of Little Tokyo Towers with JACL and the Buddhist and Japanese Christian church federations, today has medical insurance, retirement plan, credit union and a purchasing cooperative. It also regularly conducts specialty classes on such topics as tree trimming, landscaping, pest control and soil improvement.

Seiji Horio, SCGF president, and Bill Kondo, executive director, accepted the award—a scroll inscribed with a Japanese poem by calligrapher Hiroko Ikuta.

Accepting a similar award for the CRA were James M. Wood, CRA chair, and Ed Helfeld, administrator.

Looking Ahead

In concluding remarks, JACCC executive director Gerald Yoshitomi spoke of future events, such as the Aug. 7 grand opening of the Grand Kabuki Co. here, dance, music and photo exhibits. The JACCC, he said, is committed to nurturing young talent in the arts, promoting Japanese American heritage, sharing in U.S.-Japan activities and welcomes suggestions to enhance the role of the JACCC.

Noritoshi Kanai, current Japanese Chamber of Commerce president, and Frances Hashimoto, past Little Tokyo Centennial Committee chair, co-chaired the dinner. Kosuke Iwatake and Toshikazu Terasawa were honorary co-chair.



Photo by Mark Susuki

FIRST TIME IN 40 YEARS—Nisei GIs stationed with the QMC Detachment, 1851st Unit, in Camp Berkeley, Texas, gather in Little Tokyo at New Otani Hotel for their first reunion. Pictured (from left) are Matt Matsuoka, S. Henry Miyata, Jack Takemoto, Eiji Kanoh, Ken Kaneoka, Roy Morikado and Tak "Chick" Susuki. Over 60 Nisei—all pre-WW2 draftees—were shipped en masse after basic training to Texas in January 1942. Eventually, they saw combat with the 442nd RCT, joined the MIS or saw duty in the Canal Zone.

PC Business-Professional Directory

Greater Los Angeles

ASAHI TRAVEL
Supersavers-Group Discounts
Apex Fares-Computerized-Bonded
1111 W Olympic Blvd., LA 90015
623-6125/29 • Call Joe or Gladys

Flower View Gardens #2
New Otani Hotel, 110 S Los Angeles
Los Angeles 90012 Art Ito Jr.
Citywide Delivery (213) 620-0808

Inoue Travel Service
1601 W. Redondo Beach Bl., #209
Gardena, 90247; 217-1709; Offices
in Tokyo, Japan / Lima, Peru

TATAMI & FUTON
(818) 243-2754
SUSUKI FUTON MFG.

Tama Travel International
Martha Igarashi Tamashiro
One Wilshire Bldg., Ste 1012
Los Angeles 90017; (213) 622-4333

Tokyo Travel Service
530 W. 6th St., #429
Los Angeles 90014 680-3545

Greater Los Angeles

Yamato Travel Bureau
200 S San Pedro St., #502
Los Angeles 90012 680-0333

Orange County

Exceptional Homes and Investments
VICTOR A. KATO
Residential-Investment Consultant
18682 Beach Blvd., Suite 220
Huntington Beach, CA 92648
(714) 963-7989

The Paint Shoppe
LaMancha Center, 1111 N Harbor
Fullerton CA 92632, (714) 526-0116

San Diego

PAUL H. HOSHI
Insurance Service
852-16th St (619) 234-0376
San Diego CA 92101 res. 421-7356

Ventura County

Calvin Matsui Realty
Homes & Commercial
371 N. Mobil Ave., Ste. 7,
Camarillo, CA 93010, (805) 987-5800

San Jose, CA

Kayo K. Kikuchi, Realtor
SAN JOSE REALTY
996 Minnesota Ave., #100
San Jose, CA 95125-2493
(408) 275-1111 or 296-2059

Tatsuko "Tatty" Kikuchi
General Insurance Broker, DBA
Kikuchi Ins. Agcy.
996 Minnesota Ave., #102
San Jose, CA 95125-2493
(408) 294-2622 or 296-2059

Edward T. Morioka, Realtor
580 N. 5th St., San Jose 95112
(408) 998-8334 bus; 559-8816 res.

Choose 'PC' Advertisers

Watsonville

Tom Nakase Realty
Acreage, Ranches, Homes, Income
TOM NAKASE, Realtor
25 Clifford Ave. (408) 724-6477

San Francisco Bay Area

Y. KEIKO OKUBO
Five Million Dollar Club
39812 Mission Blvd.,
Fremont, CA 94539; (415) 651-6500

Lake Tahoe

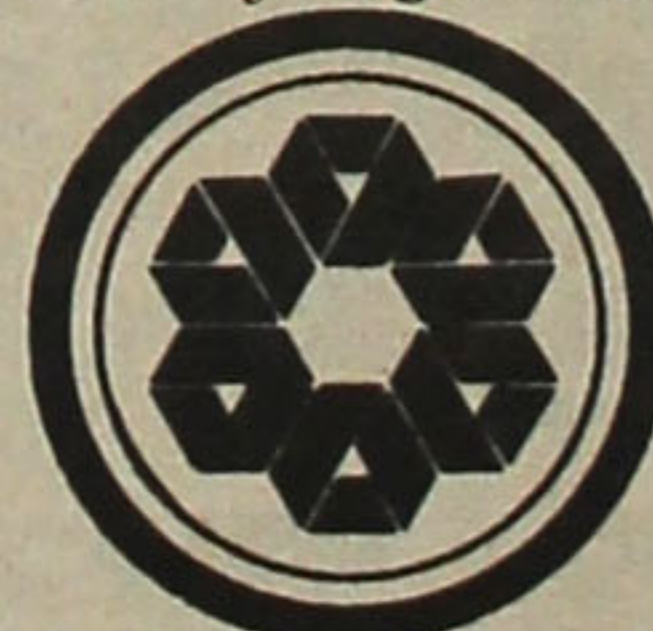
RENT INC Realty Inc.
Sales, Rentals, Management
Box 65, Carnelian Bay, CA 95711
(916) 546-2549; Shig-Judy Tokubo

Seattle, Wa.

Imperial Lanes
Complete Pro Shop, Restaurant, Lounge
2101-22nd Ave So. (206) 325-2525

Seattle

UWAJIMAYA
...Always in good taste.



For the Best of Everything Asian.
Fresh Produce, Meat, Seafood and Groceries.
A vast selection of Gift Ware.

Seattle • 624-6248
Bellevue • 747-9012
Southcenter • 246-7077

The Intermountain

Mam Wakasugi
Sales, Rep.
Row Crop Farms; Blackaby Real Estate, Rt 2 Bx 658, Ontario, OR 97914 (503) 881-1301, 262-3459

Mountain-Plains

Charlie Braun "Brown"
Commercial-Investment-Residential
Lambros Realty, 1001 S. Higgins
Missoula, MT 59801
(406) 543-6663 / (406) 251-3113

Midwest District

Sugano Travel Sv.
17 E Ohio St., Chicago IL 60611
(312) 944-5444 784-8517, eve, Sun

Eastern District

Ben M. Arai
Attorney at Law
126 Mercer St., Trenton, NJ 08611
Hours by Apmt. (609) 599-2245
Member: N.J. & Pa. Bar

Mike Masaoka Associates
Consultants - Washington Matters
900-17th St NW, Wash, DC 20006
(202) 296-4484



De Panache
Today's Classic Look for Women & Men
Call for Appointment
Phone 687-0387
105 Japanese Village Plaza
Mall, Los Angeles 90012
Toshi Otsu, Prop.

TOYO Miyatake
STUDIO
318 East First Street
Los Angeles, CA 90012
(213) 626-5681

Calendar

Through May 5
Los Angeles — 'The Music Lessons' by Wakako Yamauchi, dir by Mako, East West Players, 4424 Santa Monica Blvd; Th-Sat 8pm; Sun 7:30pm; 2pm mat; tkts (213) 660-0366

Through May 12
Denver — Ansel Adams photo exh on Manzanar, 'Born Free & Equal,' Denver Art Mus, 100 W 14th Ave Prkwy

Los Angeles — Japanese Ink Painting exh, Cnty Mus of Art, 5905 Wilshire Blvd

Through June 2
Los Angeles — 'Traditions Transformed,' contemp works by As Am artists, Doizaki Gallery, 244 S San Pedro

April 28-30
Eugene, Ore. — Conf on Intervention and Nuclear Threat; info (503) 483-1755

Saturday, April 27
Los Angeles — Pilgrimage to Manzanar; info (213) 662-5102

Tulare Cnty — Teriyaki dnr, bnft movie, 5pm

Selanoco — 'Music Lessons' perf, East West Players, 4424 Santa Monica Blvd, LA, 8-m; food, cast recep; info (714) 637-7412/ (213) 923-9903

Midwest Dist Cncl — Redress mtg, Chicago

Sunday, May 5
San Jose — Yu Ai Kai 1mi/10k banner run, Nikkei Matsuri

San Francisco — Showing of 'Genbaku-shi: Killed by the Atomic Bomb,' story of U.S. flyers in Hiroshima, 1st Unitarian Ch, Franklin & Geary, 7pm;

Saturday, May 11
Los Angeles — Karen Tei Yamashita honored at luncheon of Friends of Little Tokyo Public Library Services; also art auction; tkts \$10; info 713-5888

LOWEST TO JAPAN!!
\$561 Round Trip SFO/LAX — Tokyo

Community Travel Service
5237 College Ave., Oakland CA 94618; (415) 653-0990

CANADA
Teepee Heart Ranch
We invite you to join with our other guests from Canada & around the world on fully equipd packtrips into magnificent Taseko Mtns. Explore by horseback the most beautiful country the historic Chilcotin has to offer. Abundant wildlife, exp't friendly guides, fine horses & xint meals. Outfitting available to suit the hunter, fisherman, photographer and groups both large and small. Packtrip adventures: \$80/day C.F. Accommodations at the ranch: \$50/day C.F. Your host speaks Japanese. Remember we supply almost everything!

DON EVANS: Box 29 R.R.2, North Gables, Williams Lake, B.C., Canada V2G 2P2.
(604) 989-4397, country phone
Keep trying! Write for brochure.

EUROPE '85 SPECIAL

Europe Vacation Tour
9 Countries / 15 Days

From \$489
Plus air fare
Per person
based on double occupancy

BARGAIN AIR FARE
(Round Trip) from West Coast

To Amsterdam from \$548
To London \$599
To Frankfurt \$618
To Paris \$588

EURO TOUR AND CHARTER
(213) 413-8274

Special Holiday in Japan ANYWHERE, ANY TIME — 9 DAYS

Features: (1) Air Fare, (2) 7-Nights Top Value Hotel throughout Japan, including all taxes & service charge, (3) Unlimited Train Pass (includes Express Train, Shin-Kansen).

SPECIAL PRICE
From: Los Angeles, San Francisco \$ 898.00
and special rate from any U.S. city is available.

The prices shown above are per person based on double occupancy.

Japan Holiday Tour

(213) 484-6422

Going Places? Watch the 'PC' Travel Ads!

1985 KOKUSAI TOURS

Nisei Vets - Hawaii, Hong Kong, Japan	Jul 5
18 days - 30 meals - \$1995 (Very limited space).	
Caribbean Cruise, Norwegian Caribbean Lines	Jul 26
Bahama, Jamaica, Grand Cayman & Cozumel - from \$1105.	
European Vistas - 6 Countries	Aug 24
17 days - 27 meals - 1st class hotels - \$2295 (Limited space).	
Greece & Egypt. (Greek Isles & Nile Cruises)	Sept 18
14 days - 29 meals - 1st class hotels - \$3150 (Wait List Only)	
Tohoku/Hokkaido Odyssey, Hong Kong Option	Oct 5
14 days - 35 meals - \$2250 (Space limited).	
Hong Kong, Okinawa & Kyushu	Oct 19
14 days - 33 meals - \$2295 (Wait List only).	
Japan Fall Foliage Tour - Hong Kong Option	Nov 2
14 days - 33 meals - \$2050 (Very limited space).	
JASTA's Japan Fall Tour	Nov 2
14 days - 33 meals - \$2095.	
Winter Holidays Tour - Hong Kong & Japan	Dec 18
14 days - 30 meals - \$2095.	

1986 PREVIEWS — SOUTH AMERICA, EUROPEAN VISTAS AND ORIENT VISTAS.

All tours include: roundtrip flights, transfers, baggage, hotels, sightseeing and most meals.

Kokusai International Travel, Inc.
400 E. 2nd St., Los Angeles, CA 90012, (213) 626-5284

Pan American Nikkei Convention

July 25-28, 1985 - Sao Paulo, Brazil

Inoue Travel Service, in cooperation with UniverTur of Sao Paulo, the official travel agency designated by the host PANA Convention committee, offers two Basic Tour packages.

Rates per Person / Share Twin Basis

BASIC TOUR I: Rio de Janeiro, Sao Paulo
8 days/7 nights—\$1,360

7/22 Mon—Lv LAX, 3:40pm; Japan Air Lines #64. 7/23 Tue—Arr Rio, 7:40am; your hotel, Rio Palace. 7/24 Wed—Rio city tour; Dinner with samba show.

7/25 Thu—Flight to Sao Paulo, arr 11:25am; your hotel: Hiltonl (PANA Convention Hq). 7/26 Fri — 7/28 Sun—III PANA Convention. 7/29 Mon—optional Tour: Iguassu Falls. 7/30 Tue—6:30pm flight to Rio; connect with JAL #63 for Los Angeles. 7/31 Wed—Arr LAX at 8:15am.

BASIC TOUR II: Rio de Janeiro, Sao Paulo
12 days/11 nights—\$1,427; Sgl Supp \$325

7/18 Thu—Lv LAX, 3:40pm, Japan Air Lines #64. 7/19 Fri—Arr Rio, 7:40am; your hotel, Rio Palace. 7/20 Sat—Rio city tour, Dinner with samba show. 7/21 Sun - 7/22 Mon: Rio at leisure.

7/23 Tue—10:30am flight to Sao Paulo; your hotel, Hilton (PANA Convention Hq). 7/24 Wed—A.M.-Half-day city tour. 7/25 Thu—P.M.—Registration at Convention. 7/26 Fri — 7/28 Sun—III PANA Convention. 7/29 Mon—Optional Tour: Iguassu Falls. 7/30 Tue—9:15pm flight to Rio, connect with JAL #63 for Los Angeles. 7/31 Wed—Arr LAX at 8:15am.

Optional Tours (p/person, share twin basis)

No. 1—Rio de Janeiro-Santos Tour: One day, lunch included \$40 p/per

No. 2—Manaus: 3days/2 nights Tropical Hotel, full day Amazon River cruise, two meals, 1/2-day city tour, round trip transfers \$220, \$77 sgl suppl.

No. 3—Brasilia: 3days/2 nights Meriden Hotel, round trip transfer, one-day tour in Brasilia, full-day stroll in the islands, 1/2-day tour in Salvador, two meals at hotel. . . \$160, \$66 sgl suppl.

No. 4—Iguassu Falls: 2 days/1 night Tropical Hotel das Cataratas, round trip transfers, airfare, 1 meal at hotel, Iguassu Falls tour \$187, \$30 sgl suppl.

Brazil Airpass—For those wishing to visit Brasilia or Manaus, this pass which permits travel to 4 Brazilian cities may be purchased \$250 p/per.

Rates include round trip air, \$3 U.S. departure tax, round trip transfers via private motorcoach, portage for a maximum of 2 bags per person in & out of hotels, airports; hotel accommodations as indicated including tax and service; meals indicated. Rates DO NOT include PANA Convention registration, Brazilian taxes, visa services, tips to guides/drivers, items of a personal nature.

INOUE TRAVEL SERVICE, (213) 217-1709
1601 W. Redondo Beach Blvd. #209, Gardena, CA 90247 *Se habla Espanol*

Our 1985 Escorted Tours

EXCEPTIONAL FEATURES—QUALITY VALUE TOURS

Europe: 7 countries (17 days) May 25
Canadian Rockies - Victoria (8 days) June 19
Japan Summer Adventure July 2
Spain-Portugal (14 days) July 6
Hokkaido-Tohoku (No. Japan) Sept. 30
East Coast & Foliage (10 days) Oct. 7
Japan Autumn Adventure Oct. 15
Far East (Bangkok, Singapore, Malaysia, Hong Kong, Taiwan, Japan) Nov. 1

For full information/brochure

TANAKA TRAVEL SERVICE
441 O'Farrell St. (415) 474-3900
San Francisco, CA 94102

JAPAN TOUR SPECIALIST

1985 Schedules The Best of Japan

I. Group Programs Available from US\$1,650

JUNE—12 days from June 15, Tsukuba Expo, Cormorant Fishing, Inland Sea Cruise.
JULY—13 days from July 20, Hokkaido (Northern Island) in depth.
AUGUST—12 days from Aug. 3, Mt. Fuji, Tsumago, Cormorant Fishing, Mt. Koya.
SEPTEMBER—12 days from Sept. 26, Tohoku (Northern Japan) in depth.
OCTOBER—12 days from Oct. 20, Golden Route: Kyoto, Matsue, Hagi, Hiroshima.
NOVEMBER—13 days from Nov. 23, Takayama, Kanazawa, Yamanaka Hot Springs.

II. Individual Arrangements Specialized In

- RYOKAN • HOTELS IN JAPAN & HONG KONG
- JAPAN RAIL PASS (Authorized JNR Agent)
- AIRLINE TICKETS • OTHER PERSONAL SERVICES

For Information & Reservations, Please Call Now

NIPPO TRAVEL AGENCY PACIFIC, INC.
611 W. 6th St., Suite 2700
Los Angeles, CA 90017 / (213) 627-2820

1985 West L.A. JACL TRAVEL PROGRAM

FOR JACL MEMBERS, FAMILY & FRIENDS

TOUR DATES: GUIDES

4: Basic Japan + HK, Bangk .May 11-29: Phyllis Murakawa
5: European Tour SOLD OUT June 1-22: Toy Kanegai
7: Japan Summer Tour Jun 22-Jul 6: Bill Sakurai
8: Ura-Nihon, HK, Bangk Sep 28-Oct 19: Veronica Ohara
8a: Omote, Hokkaido, T'hoku Sep 28-Oct 19: Steve Yagi
9: China & Kyushu Tour Oct 2-Oct 26: Jiro Mochizuki
10: Ura-Nihon, No. Kyushu Tour Oct 5-26: Bill Sakurai
11: Mediterranean Cruise Sep 29-Oct 11: Toy Kanegai
12: Fall Foliage/New Eng. Can. Oct 3-13: Yuki Sato
13: Japan Highlights Nov 2-Nov 14:
14: Spl. Japan Hol Tour Dec 21-Jan 4: Geo Kanegai

Mini-group air fare on a bi-weekly travel/tour.
Mini-schedule 1985: 30 days Japan
Homestay to or from Japan.

FOR INFORMATION, RESERVATIONS, CALL OR WRITE
Roy Takeda: 1702 Wellesley Ave., West Los Angeles 90025 820-4309
Steve Yagi: 3950 Berryman Ave., L.A. 90066 397-7921
Toy Kanegai 820-3592 Bill Sakurai: 820-3237
Veronica Ohara 473-7066 Yuki Sato 479-8124
Jiro Mochizuki 473-0441 Phyllis Murakawa 821-8668
Land Arrangements by Japan Travel Bureau International
West L.A. JACL Tour Brochures Available

West Los Angeles JACL TRAVEL CHAIR: GEORGE KANEGAI-820-3592
1857 Brockton Ave., Los Angeles, CA 90025

Flight and tour meetings every 3rd Sunday of the month, 1 p.m., at Felicia Mahood Center, 11338 Santa Monica Blvd., West L.A.

West LA JACL Flight, c/o Roy Takeda
1702 Wellesley Ave., Los Angeles, CA 90025

Please reserve _____ seat(s) for Flight No. _____
I agree to conditions of the contract and brochures. Flight schedules are subject to change.

Name _____
Address _____
City, State, ZIP _____
Phone: (Area code) _____

[] Send tour brochure [] Flight only information

Japanese American Travel Club

Travel with Friends and Save Up to \$170

1985 Group Escorts

Tour Program	Length	Departure
Deluxe Canadian Rockies Lake Louise, Columbia Icefield, Banff, Silver Mountain and Calgary/9 meals/\$1,056, and stay at BANFF SPRING and CHATEAU LAKE LOUISE Hotel.	6days	July 2
Bill Hamada, tour escort.		
Alaska Cruise* Save \$95 Inside Passage Cruise, Wrangell Island, Endicott Arm, Juneau, Skagway, Davidson and Rainbow Glaciers, Ketchikan and Vancouver/all meals/\$1,670.	8days	July 19
Alyce Komoto, tour escort		
Europe Grand Tour 10 Countries - Greece, Italy, Austria, Liechtenstein, Switzerland, Germany, Holland, Belgium, France and London/32 meals/\$2,207.	22days	Sept 16
Alyce Komoto, tour escort		
Princess Cruise-Mexican Riviera Cabo San Lucas, Mazatlan, Puerto Vallarta, Zihuateneja /Ixtapa and Acapulco/all meals/from \$1,499.	8days	May 29
Bill Hamada, tour escort.		
Canadian Mini Vacation Vancouver and Victoria/3 meals/\$698.	4days	July 4
Bill Hamada, tour escort.		
The Best of Europe 7 countries - France, Switzerland, Italy, Austria, Germany, Holland and London/21 meals/\$1,756.	17days	Aug 10
Bill Hamada, tour escort.		
Japan/Tsukuba Expo Expo-85 Tokyo, Hakone, Kashikojima, Ise Shima National Park, Toba, Kyoto and Nara/15 meals/\$1,870.	9days	Sept 1
Bill Hamada, tour escort.		
Golden China Beijing, Xian, Nanjing, Suzhou, Shanghai, Guilin, Guanzhou, Hong Kong / 53 meals/\$3,145.	21days	Sept 3
Frank Niimi, tour escort.		
USA/Canada Fall Foliage New York, New England, Quebec and Montreal /14 meals/\$1,275.	8days	Oct 6
Hank Sakai, tour escort.		
Old Mexico Mexico City, San Miguel De Allende, Guanajuato, Patzcuaro, San Jose Purua, Ixtapan and Taxco /21 meals/\$890.	10days	Oct 6
Hank Sakai, tour escort.		
Ancient Cathay Tokyo, Kyoto, Hong Kong, Guangzhou, Guilin, Shanghai, Xian and Beijing/49 meals/\$3,225.	21days	Oct 7
Paul Bannai, tour escort.		
Down Under-New Z'land/Australia Auckland, Rotorua, Mt. Cook, Queenstown, Te Anau, Dunedin, Christchurch, Melbourne and Sydney /17 meals/\$2,389.	18days	Oct 30
Paul Bannai, tour escort.		
So. America Circle Bogota, Lima, Machu Picchu, Santiago, Buenos Aires, Iguassu Falls and Rio de Janeiro/21 meals/\$2,874.	17days	Oct 18
Paul Bannai, tour escort.		
Mayan/Yucatan Exploration Merida, Chichen Itza, Uxmal and Kaban/12 meals/\$714	6days	Nov 2
Paul Bannai, tour escort.		
Caribbean Cruise San Juan, Curacao, Caracas, Grenada, Martinique, St. Thomas/all meals/\$1,430.	8days	Nov 2
Paul Bannai, tour escort.		
Orient Highlights Tokyo, Kamakura, Hakone, Kyoto, Nara, Bangkok, Singapore and Hong Kong/31 meals/\$2,495.	16days	Nov 9
Paul Bannai, tour escort.		

Prices subject to change without notice. Departure dates may be adjusted when conditions warrant it. (*) All groups consisting of 15 or more tour members will be escorted by a Tour Escort from Los Angeles.

Endorsed by the National JACL
SEE YOUR TRAVEL AGENT OR CONTACT:

Japanese American Travel Club Inc.
(213) 624-1543

250 E. 1st St., Suite 912; Los Angeles, CA 90012

Name _____
Address _____
City/State/ZIP _____
Phone: (a/c) _____

I wish to apply for membership in JATC: \$20 per person.
 For JACL members: \$10 perperson.
 I wish to include dependents: (at the above rates)
Name of Dependents: _____ Relationship _____

Send me information on tours as checked: ()

Participating Agents / Contacts (Partial List)
Debi Agawa, CTC (805) 928-9444: Santa Maria, CA
Ben Honda (619) 278-4572: San Diego, CA