

pacific citizen

Newsstand: 25¢
(60¢ Postpaid)

National Publication of the Japanese American Citizens League

ISSN: 0030-8579 / Whole No. 2,347 / Vol. 101 No. 2

941 E. 3rd St. #200, Los Angeles, CA 90013 (213) 626-6936

Friday, July 12, 1985

Hirabayashi trial

Gov't case was badly prepared, witnesses say

by J.K. Yamamoto

LOS ANGELES—The U.S. government did a poor job of defending itself against charges of misconduct at last month's reopening of the WW2 Supreme Court case of Gordon Hirabayashi, according to witnesses Jack Herzig and Aiko Herzig-Yoshinaga.

The Virginia couple, who have done archival research for the Commission on Wartime Relocation and Internment of Civilians, the National Council for Japanese American Redress and the *coram nobis* cases of Hirabayashi, Minoru Yasui and Fred Korematsu, commented on the trial July 8 during a visit to Los Angeles.

Hirabayashi, convicted of violating curfew and internment orders, had his appeal turned down by the Supreme Court in 1943. Hirabayashi's attorneys now charge that he was denied a fair trial because government officials suppressed intelligence reports showing mass internment of Japanese Americans to be unnecessary while allowing rumors of espionage to be reported as fact.

The Herzigs were among the witnesses called by Hirabayashi's legal team during an evidentiary hearing held June 17-27 in Seattle. Judge Donald Voorhees presided and U.S. attorney Victor Stone represented the government.

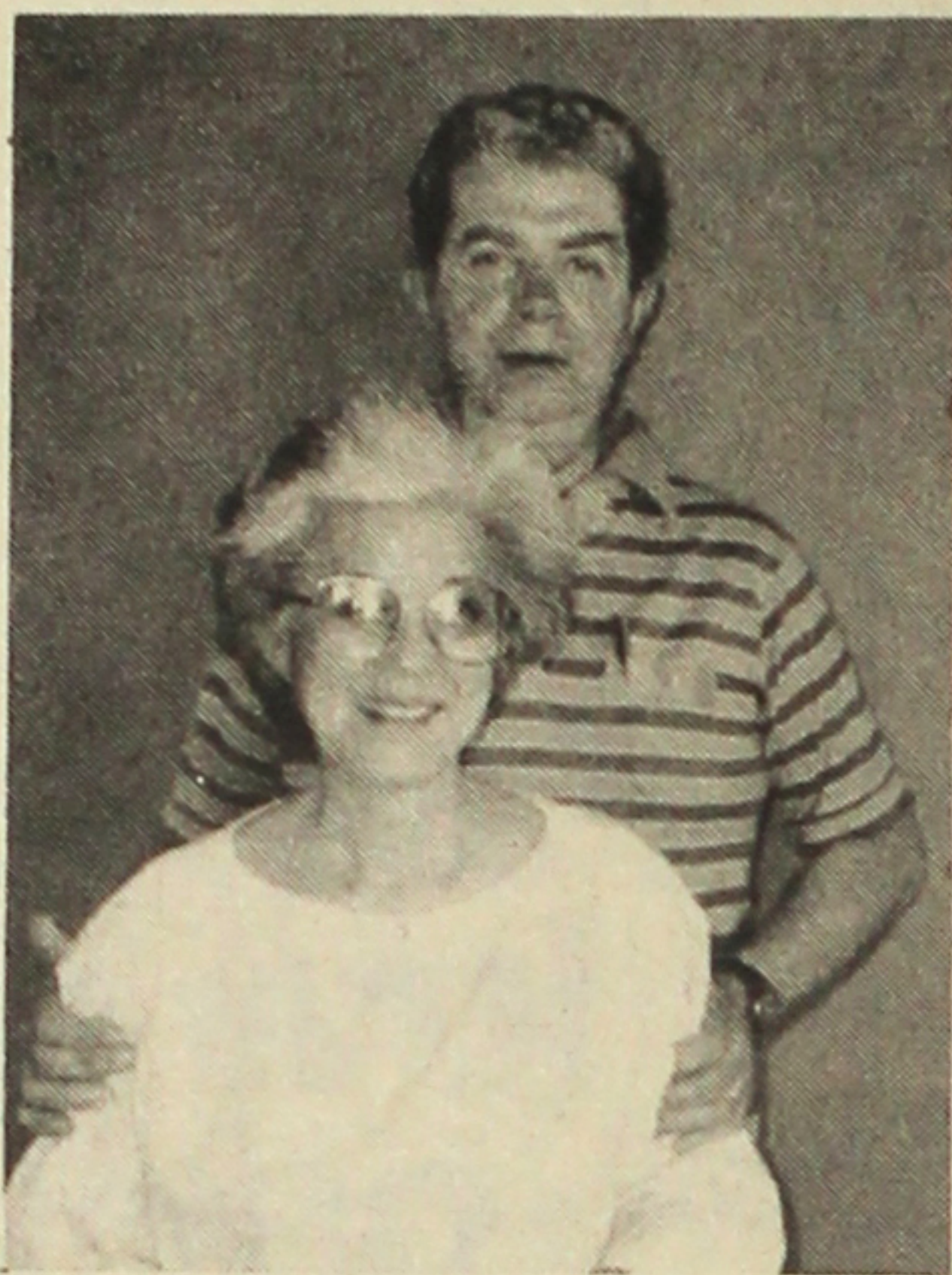
"The government attorney kept saying that military necessity was the key... and if it's militarily necessary, then the things that followed could not be considered governmental misconduct," Herzig recalled.

'Magic' Debate

Former intelligence officer David Lowman, who testified during congressional hearings on redress last year, was called to the stand to talk about the "Magic" cables, decoded Japanese diplomatic cables in which the possibility of using Japanese Americans as spies was discussed.

Herzig, who was called by Hirabayashi's team as a rebuttal witness, thinks Lowman's claim that the cables justified fears of espionage was based on "misuse of facts." He charged that Lowman treated "Magic" as proof of sabotage by Japanese Americans "when in fact there is no corroborating evidence anywhere, even in the Magic cables themselves."

Neither man heard the other's testimony because, at the govern-



Aiko and Jack Herzig

ment's request, witnesses scheduled to testify or to give rebuttals were barred from the courtroom when they were not on the witness stand.

Herzig said that Stone's case was "poorly prepared," citing his failure to meet the judge's deadline for submitting a list of documents to be used as evidence. Herzig further reported that Stone was able to submit a document relating to "Magic" at the trial's end but that the judge, upon reading it, burst out laughing.

"In essence, this is a document from a Japanese consulate in England, and it names as intelligence sources something like this—11 Irishmen, 7 Welshmen, 3 Englishmen and 2 Catholics... that really encapsulated the government's defense."

As to the reason why the government did not call as witnesses former assistant secretary of war John McCloy and Karl Bendetsen of the Western Defense Command, both key figures in the internment, Herzig speculated that it was "because for the first time, both of them would have been subjected to swearing an oath that they would tell the truth, and been subjected to cross-examination. I don't think either one of them could stand up to that situation."

Since neither was under oath when testifying before Congress and the CWRIC, he said, they were able to "evade and distort."

Availability of Documents

Yoshinaga testified on another issue—the government's contention that Hirabayashi, using information available for decades, could have taken his case to court years ago but failed to do so.

Based on her experience in combing through government archives, she has found that "records in general are very difficult to find... You don't go to the card catalog, find a book and go to the shelf... sometimes the inventory is so general, there's a period, say,

Continued on Page 3

Asians appointed to DNC; caucus status in doubt

WASHINGTON—The appointment of two Asian Americans, both from San Francisco, to positions in the Democratic National Committee was announced by DNC chair Paul Kirk on June 28.

Thomas Hsieh, chair of the DNC's Asian Pacific Caucus, will be one of four at-large members of the 41-member executive committee; Sandy Mori, past president of Nihonmachi Political Assn., will be one of 25 at-large members of the 377-member DNC.

This development comes at a time when the Democratic leadership has been drawing fire from Asian American Democrats because of the apparent elimination of the party's Asian Pacific Caucus in May.

Reps. Norman Mineta and Robert Matsui (both D-Calif.) hailed the appointments. Mineta said that Kirk and the DNC were acknowledging "the important contributions made to the Democratic Party by the Asian Pacific Caucus." Matsui said that the appointments "further illustrate the growing importance of Americans of Asian ancestry on the American political scene."

Bay Area Asian Democrats applauded the appointments at a June 26 press conference in San

Francisco, but they also reaffirmed their intention to regain formal recognition of the Asian Pacific Caucus from the party.

Mabel Teng, Northern California chair of the California Asian Pacific Caucus, said, "The incorporation of the APC into the Democratic Party bylaws is a sign of whether or not the party will treat us with equality and respect. We will not give up our effort."

Anger at Kirk and other executive committee members stems from a May 17 vote to end the official status of the Asian Pacific, gay and lesbian, liberal and progressive, and business and professional caucuses of the DNC. The Black, Hispanic and women's caucuses, which are protected by the party's charter and bylaws, were unaffected. The Asian Pacific Caucus was established in 1983 but was never incorporated into party bylaws.

Asian Democrats in Los Angeles denounced the move at a June 26 press conference. Carol Ono of the West San Gabriel Asian Pacific Democratic Club said that the party's message to Asian Americans was that "our concerns are meaningless, our vote is useless and our financial contributions are worthless."

Like their Northern California counterparts, the spokespersons wanted Kirk to support an amendment to party bylaws giving the APC formal recognition.

Status Unclear

However, Hsieh, after meeting with Kirk in Washington the week of the DNC appointment, announced that the caucus would receive "continued recognition and support as a unit of the party."

Mori has accepted her appointment but agrees that the status of the caucus needs to be clarified. She told the Pacific Citizen that the resolution passed in May is being interpreted two ways—"continuing with the caucus structure or that there are no caucuses."

She said she is certain that party leaders, trying to get away from the perception of Democrats as "the party of special interests," feel they have eliminated the caucuses.

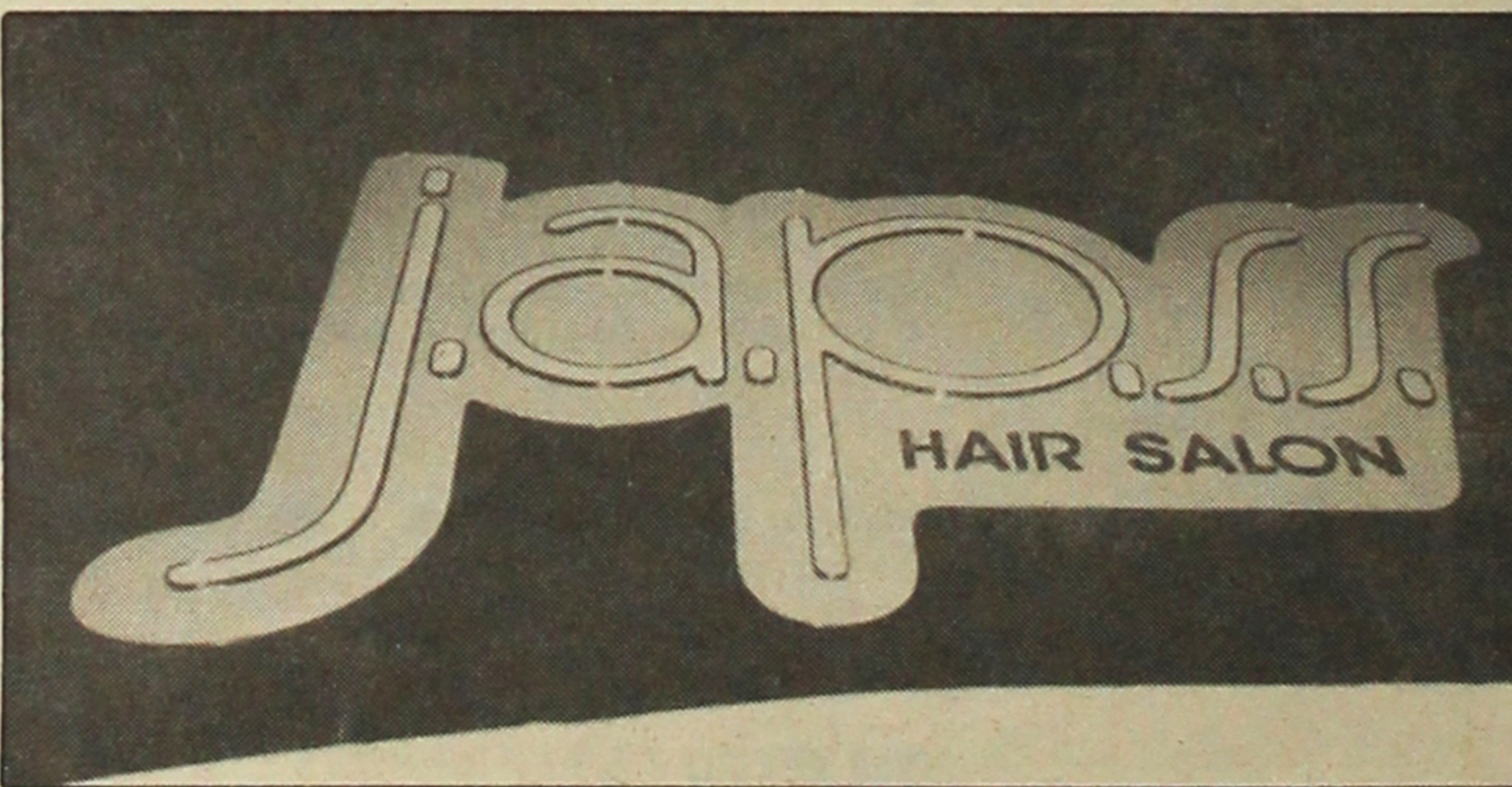
Mori was also sure that "the Republicans are going to use this situation" to recruit Asian Americans. California Republicans are, in fact, stepping up recruitment efforts directed at Asian Americans, and Dalia Remys of the National Republican Heritage Groups Council has indicated that a national organization of Asian Republicans may be in the works.

Although she was not sure whether incorporation into party bylaws would resolve the problem with the Democrats, Mori stressed that "Asians have got to do their homework with the DNC to make it [the caucus] more of a permanent situation."

Liu murder subject of KQED special

SAN FRANCISCO—The 1984 murder of Chinese American journalist Henry Liu, a critic of the Taiwan government, is the subject of an "Express" investigative report to be broadcast on KQED (Ch. 9) on July 24, 8 p.m. and July 28, 5 p.m. Producer Stephen Talbot and associate producer Linda Jue cover new developments in the case, which has been linked to the head of Taiwan's military intelligence agency.

Liu's supporters believe that his murder was sanctioned at the highest levels of Taiwan's government. Although two confessed assassins and the official who allegedly ordered the killing have been tried and convicted in Taiwan, members of Congress have sought their extradition for trial in the U.S. Liu, an American citizen, was shot to death at his home in Daly City, Calif.



HAIR CURLING — Sign that offends some Asian Americans.

Business name may not be permanent

WEST HOLLYWOOD, Ca.—Mayor Valerie Terrigno said June 21 that she will investigate the possibility of forcing a hair salon called "JAPSS" to change its name, according to City News Service.

The salon, whose name comes from the initials of the five co-owners' first names, has been the target of a petition and letter-writing campaign coordinated by National Coalition for Redress/Reparations (NCRP). The owners, two of whom are from Japan, have defended the name.

NCRP members are concerned that approval of the name "JAPSS" by the Japanese co-owners will give the impression that all people of Japanese ances-

try find the term acceptable.

Endorsers of the campaign to have the name changed include PSW JACL Ethnic Concerns Committee, Japanese American Bar Assn., Manzanar Committee, and Asian Pacific American Advocates of California.

Since the sign apparently does not violate any city ordinance, Terrigno said she would ask the city attorney to see if any state or federal law prohibits racially offensive signs.

For those who wish to express their views on the salon name, the address of JAPSS is 9041 Santa Monica Blvd., West Hollywood, CA 90069.

Ito begins campaign for school board seat

SAN MATEO, Calif.—Ann Ito, a member of the city's Human Relations Commission, is running for the City School District Board of Trustees, reports the San Mateo Times.

Ito, 63, has been active in school and community affairs for more than 20 years. She is the first non-board member to formally announce her intention to run for one of three seats in the November 5 election.

A San Mateo resident for the past 38 years, she said she was prompted to run for the board by the deteriorating relationship between trustees and the community.

"Communication is so impor-

tant," she said. "It's important to get the people involved, even if it takes a little longer. They [trustees] go through the motions, but they really are not listening to the concerns of the people."

Ito said trustees have not been as sensitive to the concerns of parents from schools that have been closed as they could have been.

Ito is a member of the Bay Area United Way board of directors and a former member of the San Mateo County Human Relations Commission. She has also served on committees for the San Mateo Union High School District and the San Mateo County Community College District.

Now retired, she has been a nursery school teacher and has also worked with severely mentally disabled children.

Christians to gather in So. California

LOS ANGELES—A historic event for Christians of Japanese ancestry will take place July 24-28, when the World Congress on Japanese Evangelization will bring together Japanese Christians from around the world to set strategy for evangelism to Japanese people.

Approximately 500 participants representing Brazil, Canada, Europe, Mexico, Southeast Asia, Japan, and the U.S. are expected to attend the four-day conference on the USC campus.

Speakers include Dr. Mas Toyotome, founder and executive director of Missionary Strategy Agency; Dr. Kosuke Koyama, professor of World Christianity at Union Theological Seminary; and Rev. Akira Izuta, chair of the Japan Protestant Congress.

The program also includes small group seminars offered in both Japanese and English. Among the topics: evangelism as

it relates to Japanese culture, ancestor worship, cults, abortion and the nuclear arms race; evangelism to business leaders, senior citizens, youth and families; resources for evangelism; guidelines for training others in evangelism; and church growth and church planting.

On July 28, an outdoor evangelistic rally in Little Tokyo will feature Rev. Koji Honda, Japan's foremost evangelist. A banquet at the Hotel Bonaventure and a communion service will close the congress.

The cost of attendance for the entire week is \$250 for registration, meals, housing and closing banquet. Information: Union Church, 401 E. 3rd St., L.A., CA 90013; (213) 626-6080.

Southwest 'Omatsuri' draws 20,000

ALBUQUERQUE, N.M.—An estimated 20,000 people attended the fourth annual Japanese American "Omatsuri" sponsored by the New Mexico JACL at the Civic Center on June 22.

Chapter president Henry Tamura opened the festival, with Randolph Shibata officiating as master of ceremonies. The theme of this year's celebration was the 40th anniversary of the closing of the internment camps and the 95 years of Japanese American history in New Mexico. Ruth Hashimoto, originally from Seattle, recounted her experiences and memories of the Heart Mountain camp in Wyoming. Min Yasui, as chair of JACL's Legislative Education Committee (LEC), was keynote speaker.

In addition to Japanese food booths, there were demonstrations of aikido, Ikebana, bon odor, shigin, tea ceremony, shibu, haiku, and kenjutsu, culminating with a kimono fashion show.

Booths included a sword display by Ronald Shibata and Ken Yonemoto, bonsai displays, koi culture, a sister cities display by Ruth Hashimoto, and redress activities

explained by Harry Watson, Col. Joe Ando, and Randy Shibata.

A dozen Albuquerqueans who extended assistance to Japanese Americans during 1942-1946 were honored, including Bob Collum, a former WRA official who headed the Cleveland, Ohio, office; Ernest Salazar, who as a deputy U.S. marshal assured Japanese Americans in the Albuquerque area of the protection of the law; and Rev. Albert Kinsolving, who gave services behind barbed wire at the Santa Fe, N.M., internment camps.

Among the former internees recognized were Charles Matsubara from Manzanar; the Yoshimoto family from Rohwer and Gila River; and Lorraine Morimoto from Topaz.

New Mexico JACL recognized the support given by Mayor Harry Kinney and the City of Albuquerque, as well as all segments of the local news media.

Life term for robbery

SEATTLE—Wai-Chiu (Tony) Ng, the last of three defendants to be tried for the 1983 robbery and murder of 13 persons at a Chinatown gambling club, was sentenced July 3 to 13 life terms by King County Superior Court Judge Charles Johnson.

Ng was acquitted of 13 counts of first-degree murder but was convicted of 13 counts of first-degree robbery, for which the maximum penalty in Washington is life imprisonment, and one count of assault for wounding the lone survivor of the massacre. Benjamin Ng, no relation to Tony, and Kwan-Fai Mak had already been convicted of 13 counts of aggravated first-degree murder. Ng was sentenced to life without possibility of parole; Mak received the death sentence.

WORLD FAMOUS SUN VALLEY

Own a ski and summer resort subdivision. 335 acres of aspen groves and river property. 3-phase project with 138 lots approved. Phase 1 completed with paved streets and all utilities. Excellent long-term investment for corporation and syndicates. Priced for immediate sale at \$4.3 million cash. (Courtesy to brokers.) Color brochure and plat maps available.

Call Jeffrey Bushnell
(805) 544-6215 (CA) or (208) 726-8453 (ID)
P.O. Box 2798, Sun Valley, Idaho 83353 (AP)



BILINGUAL CUSTOMER SERVICE ASSISTANT

Our International Department has an immediate opportunity for a Bilingual Customer Service Assistant. Responsibilities include verifying and processing commercial transactions, foreign exchange, funds transfers and assisting customers with their corporate and personal banking needs.

Candidates must be totally fluent in, as well as be able to read and write JAPANESE and ENGLISH. Proven skills in accounting and finance, as well as an undergraduate degree, are preferred.

Our total compensation program includes an extensive cafeteria-style benefit program and merit-based salary increases. We offer a professional environment that provides career development and personal growth. Qualified candidates should forward their resume to:

L.M. Graham
Professional Employment
411 W. Lafayette
Detroit, MI 48226

MANUFACTURERS BANK

Equal Opportunity Employer M/F/H/V

Fast action, low rate car loans.



Select your new car loan with the same care and consideration you use in choosing the right car. Automobile financing has been one of our specialties for over 30 years. Come to Sumitomo for low competitive rates and fast action.



Sumitomo Bank
Sumitomo Bank of California Member FDIC

NEW CAR LOAN RATE

11.75% APR

Used car loans 13.75% APR
No prepayment penalty fee
Free insurance on loans & savings
IRA accounts available
Now over \$6.5 million in assets

NATIONAL JACL CREDIT UNION

Post Office Box 1721
Salt Lake City, Utah 84110
Telephone (801) 355-8040

For Sale in Australia DURAL SYDNEY

Excellent opportunity to purchase a large residence on 2.023 HA of pasture-land in the prestigious suburb of Dural, 28 km from the C.B.D. Near new approximate 1100 square metre home with double brick construction, separate maids quarters, I.G. pool, magnificent view. Ideal home to live and entertain on a grand scale. The property is designed for horse enthusiasts with excellent stables and fencing.

Asking price is \$795,000. (A.F.) cash prefer. Take advantage of favorable exchange rates to invest now in Australia.

FOR FURTHER INFORMATION CONTACT
Mr. J. Lewis at Forge Real Estate, 428 Old Northern Rd., Glenhaven, Australia, 2154.
Tel.: (02) 634-7177.

THE SHORT SHOP FASHION CLOTHING FOR THE SHORTER MAN

SHORT MEN 4'10" - 5'7"

EVERYTHING IN YOUR SPECIAL SIZES

X-SHORT • SHORT • PORTLY SHORT
30"-31"-32" SLEEVE LENGTHS

1275 Market Street
SAN FRANCISCO (415) 864-7140

1233 Broadway Plaza
WALNUT CREEK (415) 930-0371

103 Town & Country Village
PALO ALTO (415) 321-5991

683 Fashion Valley
SAN DIEGO (619) 296-9210

Call or Write for Free Catalog

'Japanese American Experience' opens in East Coast showing

PHILADELPHIA—Rep. Norman Mineta (D-Calif.) was guest of honor at the opening reception of the "Japanese American Experience" exhibit at the Balch Institute for Ethnic Studies on June 14. About 300 guests attended.

After viewing the exhibit, Mineta said that it tells "a moving and dramatic story—the story of a group of people who wanted nothing more than to be seen as what they were: loyal Americans willing to serve their nation in whatever way they could."

"These photos remind us over and over again that the Americans of Japanese ancestry were not a nameless, faceless group of people but indeed were individuals, each with their own history and future."

Many Americans on the East Coast, he said, are not familiar with the WW2 internment or the record of the all-Nisei 442nd Regimental Combat Team. "We cannot convince anyone to...fix the wrongs of the internment if people do not know about those wrongs." He added that redress would be

easier to enact "if every American could see these exhibits."

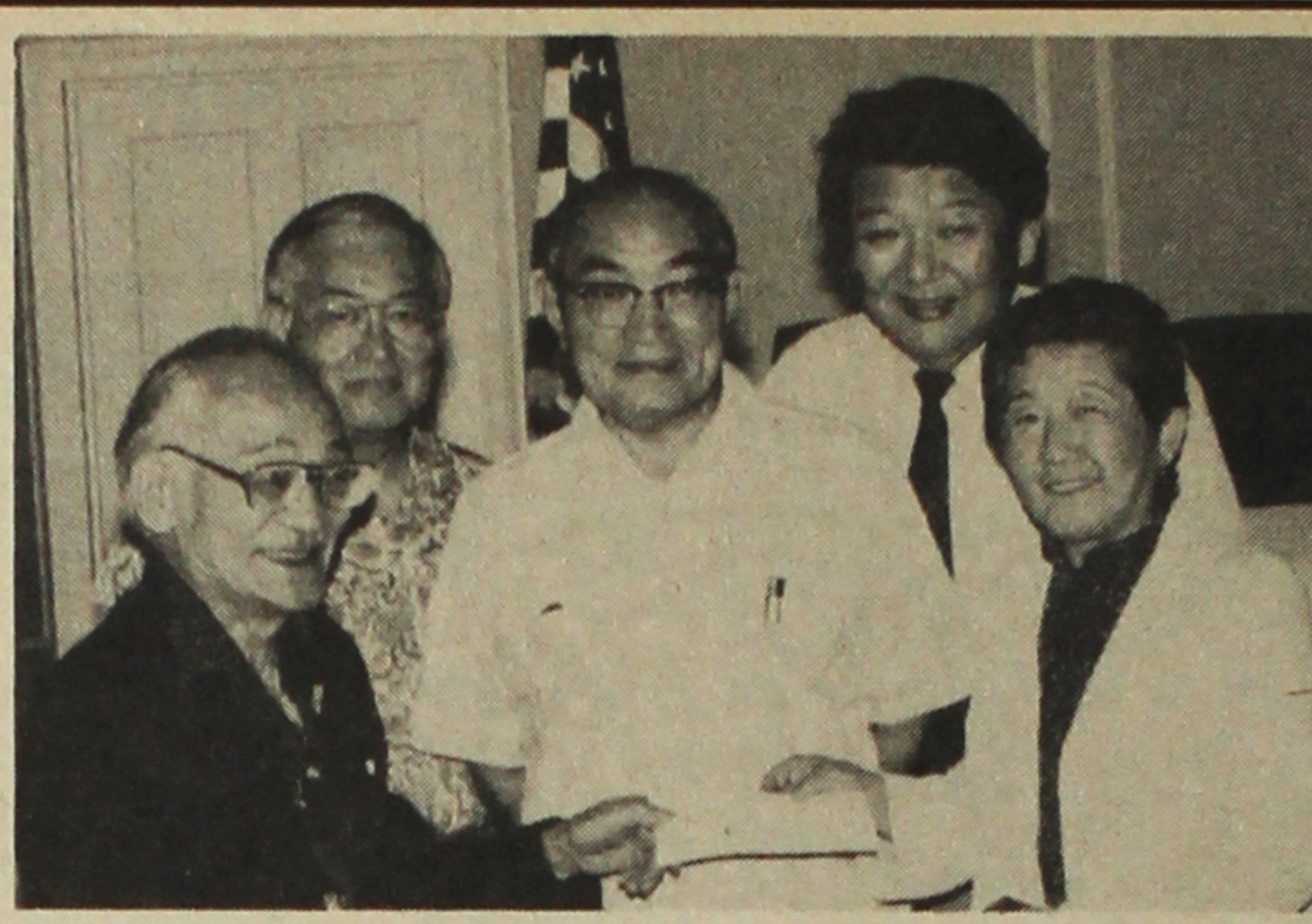
The Japanese American story told by the exhibit includes early immigration in the 1890s, evacuation and internment, postwar resettlement in Philadelphia and Seabrook, and traditions that have continued to the present.

Also featured are two traveling exhibits: "Go For Broke," which depicts the exploits of the 442nd, and "Born Free and Equal," a collection of 52 photographs taken at Manzanar in 1943.

The 80 photographs in the "Go For Broke" exhibit are supplemented by photos of local 442nd veterans. Harry Sakamoto lent an original 442nd jacket while others loaned combat medals, an American flag, and other memorabilia. The traveling exhibit is sponsored by the National Japanese American Historical Society and organized by Go For Broke, Inc. at the Presidio Army Museum in San Francisco.

The "Born Free and Equal" photos, taken by the late Ansel Adams, show camp life at Manzanar. Best known for his nature photography, Adams sympathized

Continued on page 5



INVESTORS — Jack Ozawa (center) and Grayce Uyehara (right) present checks for \$1,000 each to LEC Chair Min Yasui, JACL President Frank Sato and Eastern District Governor Mike Suzuki during district LEC meeting June 15.

Editors to examine community media

LOS ANGELES—Asian American Journalists Assn. (AAJA) looks at "The Role of the Ethnic Media" July 23, 7-9 p.m., at the Japanese American Cultural and Community Center, 244 S. San Pedro St. The panelists are Naomi Hirahara, Rafu Shimpo; Sophia Kim, Korea Times; Daisy Tseng, Chinese World TV; Tan Shih-Ying, Centre Daily News; Do Ngoc Yen, Nguoi Viet; and Cecile Ochoa, Filipino American Press Club.

The panel will examine such issues as: advantages and disadvantages of working with the ethnic media; the political influence of the native or ancestral country; the conflicts of covering one's own community; the services which the ethnic press can provide and the mainstream media cannot; and how the ethnic media can better serve their communities.

Admission is free. For more information, call (213) 389-8383.

Community Affairs

CORAM NOBIS

Continued from Front Page

of 1940-45. And then they'll say, 'We have 100 boxes on this subject. Where do you want to start?'"

A government witness, military archivist Hanna Zeidlik, testified that finding such records was very easy. Yoshinaga said that Zeidlik's testimony was misleading because "she has the kind of access to records that, as a private citizen, I don't have."

Yoshinaga was particularly resentful of this attempt to discredit her testimony because she remembered specific instances when Zeidlik and attorney Stone had difficulty locating certain documents despite their government contacts.

Herzig and Yoshinaga added that some valuable records, such as the first draft of Lt. Gen. John DeWitt's "Final Report" and a copy of U.S. Solicitor General Charles Fahy's arguments in the Korematsu case, were discovered purely by accident because no one knew that they existed.

Outcome of Trial

Although Voorhees' decision is not due until October at the earliest, the Herzigs were confident that Hirabayashi would get a favorable ruling. Herzig felt that the government would have difficulty contesting such a ruling because "both sides did have a fair chance to present their case."

At the same time, both said that the media gave the trial inadequate coverage. "They picked up Lowman's stuff, for example, on Japanese Americans involved in espionage, and they filed that in the morning," said Herzig, "so they never got around to hearing my viewpoint as a counterintelligence officer."

Yoshinaga concluded that "We have to do a lot of publicity for it [the trial] to have an impact."

The two spoke at Monterey Park's Sage Methodist Church and elsewhere during their stay here.

DELRAY BEACH, Fla.—The Ice and Fire exhibit continues through July and August at the Morikami Museum, focusing on the Obon festival, Japanese ways of beating the heat, and other aspects of summer life in Japan. The museum, which can be reached by taking Linton Blvd. west from I-95 or Atlantic Ave. east from Florida's Turnpike to Carter Rd. south, is open Tue.-Sun., 10 a.m.-5 p.m.

SAN FRANCISCO—Asian Pacific American Advocates of California, S.F. Region, presents "Hibakusha (Atomic Bomb Survivors)—Past, Present and Future" July 16, 7 p.m., at JACL Headquarters, 1795 Sutter St. Terri Handa of Friends of Hibakusha and Gina Hotta of Bay Area Asians for Nuclear Disarmament will address the issues of a-bomb survivors and nuclear warfare. Steve Okazaki's film "Survivors" will also be shown. Call Allan Seid, (408) 998-1544 or Marlene Tonai, (415) 848-3560.

SACRAMENTO—Asian Legal Services Outreach holds its 8th annual fundraiser, "Beat the Heat," August 3, 7 p.m., at Sacramento Buddhist Church Kaikan, 2401 Riverside Blvd. Dancing, no-host cocktails and the music of Henry and Peter are featured. ALSO provides translation and other support services to Asian American seniors. Tickets: \$8 advance, \$10 at the door, \$2 discount for students, seniors and members. Call (916) 447-7971 or write ALSO/SACR, 1903 14th St., Sacramento, CA 95814.

LOS ANGELES—The first recipient of the Stephen J. Tatsukawa Memorial Award will be honored at an informal reception July 27, 7:30 p.m., at the Japanese American Cultural and Community Center, 244 S. San Pedro St. The award recognizes individual achievement in promoting creative expression and opportunities for Asian Americans in media. Contact: Chris Iwanaga Aihara, 628-2725. Tatsukawa,

who died last year, was a key mover in Visual Communications and other Asian American media groups as well as director of program development at PBS station KCET-TV.

The recent works of Anita Kiyon Ota are on display at Little Tokyo Clayworks, 106 N. San Pedro St., July 13-28, open Wed.-Sun. 10 a.m.-5 p.m. and closed Mon.-Tue. Call: (213) 617-7193.

MILL VALLEY, Calif.—The Berkeley-based East-West Counseling Center sponsors a lecture on "The Challenges Facing Asian-Caucasian Marriages" July 18, 7:30 p.m., at Marin Buddhist Temple, 390 Miller Ave. Ryo Imamura, the center's executive director and a licensed marriage and family therapist,

Denver to celebrate Asian art and culture

DENVER—Asian food, entertainment, art and educational activities will highlight the third Festival of Asian Arts and Culture, July 27-August 4 at the Denver Botanic Gardens, 1005 York St.

To mark the event, Colorado governor Richard Lamm and Denver mayor Frederico Pena have proclaimed July 27-August 4 Asian American Heritage Week.

Oscar winner Dr. Haing Ngor, star of "The Killing Fields," will open a special lecture series on July 28. Noted educators will present lectures July 29-August 1.

Evening entertainment features Thai, Japanese and Korean artists August 2, Cambodian, Vietnamese, and Lao/Hmong on August 3, and Indian, Filipino and Chinese on August 4.

Throughout the festival, visitors can see select pieces of Asian art from the Denver Art Museum and sample food from some of Denver's finest Asian restaurants.

Proceeds benefit the Asian Pacific Development Center, which serves the state's non-English speaking Asian groups through counseling and other support services.

For more information, call the A/P Development Center at (303) 393-0304.

pist, will talk about marital and family issues arising from such marriages. A \$5 donation is requested. Info: (415) 540-5373.

CHICAGO—A seminar on **Minority Business Enterprise** aimed specifically at Asian American businesses and civic leaders will be presented July 18, 10 a.m. at the Kraft Bldg., 500 N. Peshtigo Ct., 4th fl., by the Mayor's Advisory Committee on Asian American Affairs and the Office of Cable Communication. Representatives of cable companies, the Mayor's Office of Employment and Training, and the Dept. of Purchases, Contracts and Supplies will be present to discuss Asian American involvement in cable television. Call 744-4052 or 744-1547.

JACL Legislative Education Committee Fund Drive Report

<p>No. 1—July 5, 1985 Targeted Donation: \$33,000 by June 30, 1985; Donations Received: \$22,045</p> <p>Pac Northwest \$3,625 No. Cal-WN-P 750 Central Cal 7,470 Pac Southwest** 7,470 Intermt 1,000 Mtn-Plain 1,000 Midwest 1,000 Eastern*** 8,200</p> <p>* Dist Keyperson holding. ** \$4,500 in Nat'l Hq LEC acct. *** \$500 in Nat'l Hq LEC acct. \$1,000</p> <p>DONORS (as of June 30, 1985)</p> <p>\$1,000 and over March Fong Eu, Janet/Harry Kajihara, Thomas T Kobayashi, Victoria/Bill Marutani, Rep Robert T Matsui, Tak Morichi, David Nikaido, Lily/Patrick Okura, Jack Ozawa, Namiko/Mike Suzuki, Grayce/Hiroshi Uyehara, Shig Wakamatsu, Thelma/Denny Yasuhara, Min Yasui.</p> <p>\$500—\$999 Tomio Moriguchi, Miyuki/Homer Yasui.</p> <p>\$100—\$499 Amey/Hatsuro Aizawa, Betty/Sim Endo, Molly/George Fujioka, Kyo Hamamura, Mary/Sho Higashi, Sadako/Katsumi Kawaguchi, Hisa/Lindy Kumagai, Betty/Arthur Kumamoto, Katherine/Junji Kumamoto, Fumi/Fred Muneakiyo, Bob Ohashi, Chiyu Sasaki, Elsie Sogo, Nancy/William Takano, Sumi/Herb Takemura, Jiro Takisaki, Helen/Clifford Uyeda.</p> <p>Up to \$99 Anonymous, Yoshie/James Butler, Masako/George Fujimoto, Masako/James Gifford, Sumi Harada, Nobuko Hayashi, Michi Iida, George Kitagawa, Gladys Kohatsu, Betty/Robert Meltzer, Margaret/Michael Mizumoto, Kimiko/Mark Mukai, Dolly/Gen Ogata, Jeannie/Yutaka Tanaka, Karen/Douglas Urata, Michiko Yoshimura.</p> <p>Yum Yum Donut, Frank Watake, chair, \$250 for LEC Qtrly in PC; San Diego area donors to be listed after processing is completed; estim total donation is \$4,500.</p>	<p>PRIME SOLICITORS Target: 250 Appointed to Date: 48</p> <p>Pac Northwest (13): Lloyd Hara, Ed Honma, Cherry Kinoshita, Kaz Kinoshita, Marsha Tadano Long, Michi Mae-bori, Tomio Moriguchi, Sam Nakagawa, Bob Sato, Jim Tsujimura, Terry Yamada, Denny Yasuhara, Homer Yasui.</p> <p>No Cal-WN-P (15): Kenichi Bunden, Violet de Christoforo, Jerry Enomoto, Molly Fujioka, Mike Hamachi, Tad Hirota, Frank Iwama, James Murakami, Judy Niizawa, Harry Sakasegawa, Ben Takeshita, H. Tando, J. Tando, Tony Yokomizo, Cliff Uyeda.</p> <p>Central Cal (2): Peggy Sasashima Liggett, Tom Shimasaki.</p> <p>Pac Southwest (8): Miki Himeno, Mas Hironaka, Harry Kajihara, Junji Kumamoto, Rose Ochi, Mary Ogawa, Willie Takano, Frank Watake.</p> <p>Intermountain (0):</p> <p>Mtn-Plain (1): Min Yasui.</p> <p>Midwest (2): Frank Sakamoto, Shig Wakamatsu.</p> <p>Eastern (6): Tom Kometsani, Tak Morichi, Lily Okura, Jack Ozawa, Mike Suzuki, Grayce Uyehara.</p> <p>Staff (1): Ron Wakabayashi.</p>
---	--

Ad Sponsored by
JACL-LEC; Min Yasui, Chair—(303) 722-9255
1150 S. Williams St., Denver, CO 80210

5-DAY AUCTION

Starting MONDAY, JULY 22, and continuing
July 23-24-25-26 at 9:00 a.m. each day

ARMCO HOUSTON WORKS

**Closes Its Multi-Million Dollar 774-Acre Facility at
13609 INDUSTRIAL ROAD, HOUSTON, TEXAS**

**MACHINE SHOPS • MILL SPARES • ELECTRIC
MOTORS and ACCESSORIES • LOCOMOTIVES
and LOCOMOTIVE CRANES • MAGNETS • METAL-
LURGICAL LABS • CONSTRUCTION EQUIP. •
BLACKSMITH SHOP • PIPE SHOP • ROUND HOUSE
• COIL SHOP • TRUCKS • TRAILERS • PLUMBING •
WAREHOUSING • QUANTITY NON-FERROUS and
FERROUS MATERIALS • etc., etc.**

Inspection: 9 a.m.-4 p.m. daily, incl. Sat. & Sun., starting Mon., July 15.
Sale site: (713) 450-3471. For illustrated brochure, contact the Auctioneers.
(Texas Lic. #CaE-016-0269.)

STANLEY M. FRIEDMAN, INC.

Auctioneers • Liquidators • Appraisers
135 Post St., 5th Floor, San Francisco, CA 94108
(415) 392-5050 ... Calif. Lic. No. 187

The Yarmulke

EAST
WIND

Bill
Marutani



WE RECENTLY ATTENDED a burial in a Jewish cemetery when 80-plus-year-old Ethel Sporkin was laid to rest in a moving and dignified ceremony. Mrs. Sporkin was the wife of longtime jurist Judge Maurice W. Sporkin, an outstanding judge before whom I've had the pleasure of appearing as a trial attorney. Judge Sporkin, nearing the age of 90 years, was sorrowfully unable to attend the funeral, being hospitalized from a recent stroke that he suffered.

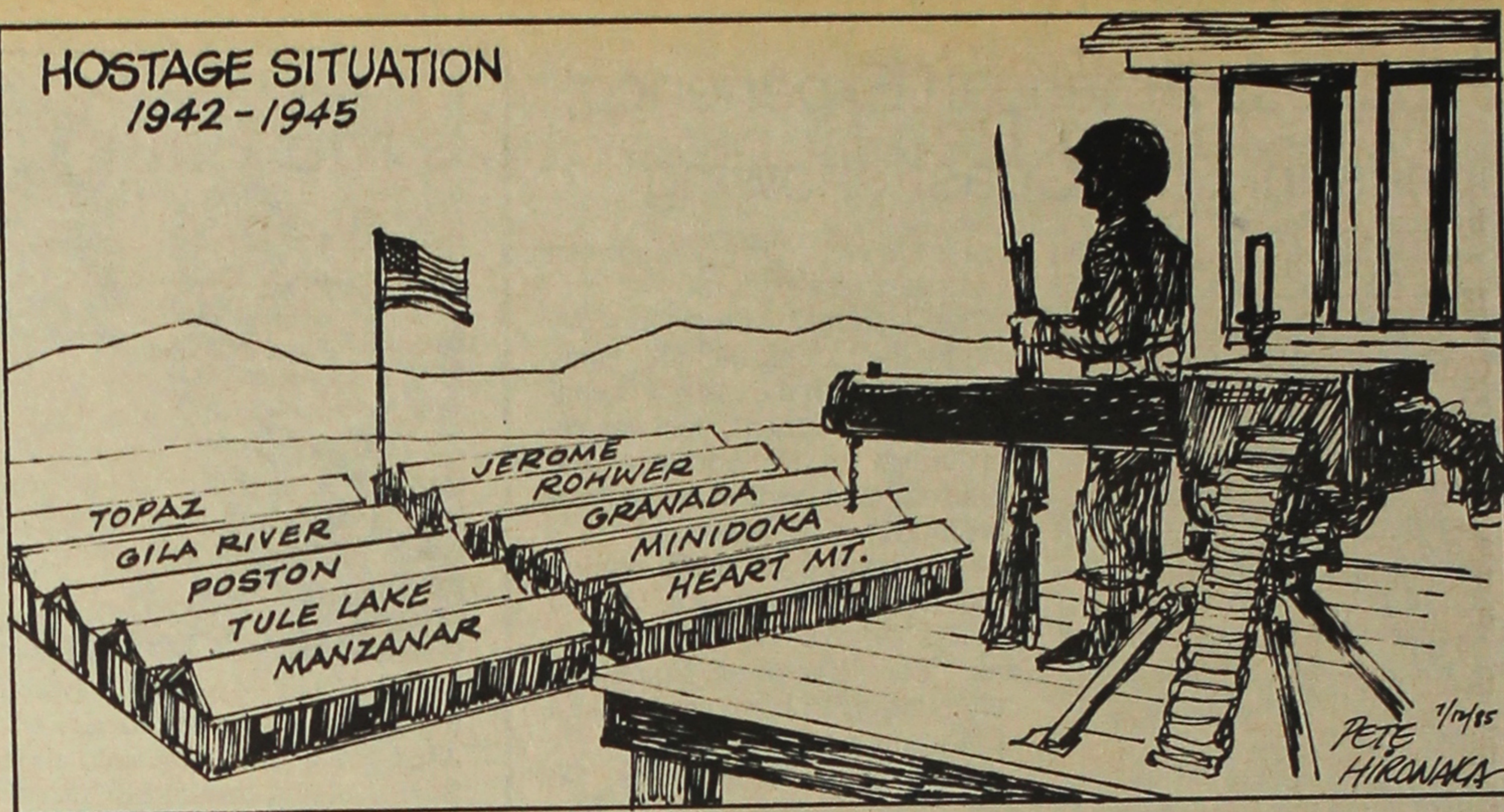
Just before the ceremonies the weather appeared threatening, and to meet the contingency, two tents had been erected in the cemetery. But as the people began to gather, the sun broke through the low clouds.

I FIND THAT, generally speaking, funerals are basically the same whether they be Buddhist, Jewish, Protestant or Roman Catholic. Each has its own solemn dignity, although the ceremony differs in various respects. For a Jewish funeral service, whether it be in a synagogue or in the open cemetery, a head covering for men is in order. I had forgotten my hat in the automobile so I was given a yarmulke. In a Roman Catholic church, ladies cover their heads in homage, often with a lace shawl.

THE FIRST TIME I ever entered a synagogue, as a mark of respect for any house of worship, I automatically removed my hat as I entered. I quickly determined that this was error and put my hat back on. I must admit that it took a little getting used to, wearing a hat during worship services. This was some years ago when I attended (Jewish) New Year's services at the Har Zion, one of the largest synagogues in these parts, led by its dynamic Rabbi Goldstein.

LATER THIS MONTH we're scheduled to speak at one of the

HOSTAGE SITUATION 1942-1945



synagogues in the suburbs. Oh, no, nothing such as a *sekkyo*, for we're not qualified for anything like that. But to play it safe, we're going to take along our yarmulke, just in case. In fact, I plan to have it on when I enter. It'll be less embarrassing to take it off rather than putting it on as an afterthought. Because we have occasion to attend so many ceremonies—be they weddings, Passover, funerals, etc.—in a synagogue, in the past I've toyed with

the idea of having my own tailor-made head cover—with my family crest on top.

However, so that I don't inadvertently offend protocol, I'll first check with a rabbi if this would be acceptable. I've seen other worshippers with colorful yarmulkes with interesting patterns.

YARMULKE OR NOT, lace head covering or not, regardless of how each may elect to worship

the one God of all of us, I have little doubt that the various paths will take us to the one gathering place. An understanding, forgiving God would not have it any other way.

And so, when I check my chips in—which hopefully won't be for quite a while yet—I have little doubt that I'll again see Mrs. Sporkin and all the other folks who will have preceded me.

Provided, of course, I head in the right direction.

Sheroes of Herstory

by Carole Hayashino
and Lia Shigemura

In response to Bob Shimabukuro's recent PC articles examining "heroes," or lack thereof, in today's youth, we want to contribute our thoughts on this provocative subject.

The origins of the word "hero," as stated in the American College Dictionary, come from Greek mythology. Hero was a priestess of Aphrodite and lover of Leander. Leander, guided by a lamp in Hero's tower, would swim to see her nightly. After finding Leander's drowned body on the rocks below her tower, Hero joined her lover by committing suicide. This act was defined as "heroic."

Although the word "hero" originated in this myth, the term has evolved into the "masculine." The dictionary defines "hero" as "a man of distinguished valor or performance, admired for his noble qualities." (Italics added.)

The dictionary also defines "heroine" as "a female hero." The term "female hero" is not only

redundant, it's incorrect! Hero was a woman! Yet the term "hero" refers exclusively to men. (So Bob, what do you *really* mean when you call a man a "hero"?)

Some women, fed up with male-dominated language, have begun to create words which are felt to be more accurate and meaningful to women. From such humble beginnings come words like "her-story," "womyn," "wimmin," and "sheros."

Why "heroes?" Why not, as Maya Angelou says, "sheroes?" A more appropriate question, for at least half of the world's population, would be "Who are your sheros?" Shero. Herstory. New words? Perhaps, but too long in coming for those who are searching for words which are inclusive of the lives and experiences of women.

These new terms might not find widespread use within JACL, but they do serve a purpose. They remind us that words and language have an impact on who and what we are, and what we can become.

Search for Acceptance

The difficulty encountered by Japanese Americans to gain complete acceptance into the American mainstream can be disconcerting. The third and fourth generation descendants of our immigrant forbears may well ask, "How long will it be before Asian Americans gain the full acceptance enjoyed by Americans of European ancestry?"

Bill Hosokawa, in a recent PC column, wonders whether "our emphasis on ethnic cultures" may have added to the difficulty of achieving acceptance as "unadulterated Americans."

"If this is so," questions Hosokawa, "...is there merit in returning to the long-ago grade school maxims which taught us to forget the old country culture and strive to become 110% Americans?"

Some of us older Nisei are wont to take a nostalgic glance at the halcyon years of the '20s and '30s. We dream of the past as being a little more pleasant than it was. Besides, it is less enervating to reminisce than to approach a subject surgeon-like, with scalpel in hand. Still, I am tempted to poke and probe into this matter a bit more.

First off, reject any notion of adopting pre-WW2 teachings. The narrow nationalism thrust upon us in those days would be unacceptable to today's youths, whose minds, fortunately, encompass a wider horizon. Let the prejudices of yesterday remain buried.

Yet for all their irrelevance, reactionary ideas persist. The huge popularity of the Reagan Administration may be partly to blame for this. We now see the tragic spectacle of a mighty nation stumbling about in bewildered retreat because we lack the imagin-

ation to confront the enormous problems of the '80s. To continue to wander into the pastoral past is to move in the direction of an unfulfilling mirage in the arid regions of history—a sterile course of action.

There are many ramifications to the problem of assimilation. In search for answers to this or any other national dilemma, there are no quick answers. Barring miracles, there remains the painfully slow and tedious process of education and appropriate political action. Patience and the power of knowledge are still the qualities which must be employed in order to deal effectively with the numerous and vexing situations which trouble the world as we approach the closing decade of the 20th Century.

The complete and satisfying assimilation of minorities into the melting pot of America is a national concern. It is a responsibility of the majority as well as the minority. The search for acceptance must be greeted with a willing and open reception.

BILL FUKUBA
San Jose, Calif.

Directorship of LEC

It's been brought to my attention that an ad in the PC for the LEC executive director's position has raised an apparent concern among some JACLers that I was not asked to assume that position.

I appreciate the concern raised in such a question, but in fairness to Min Yasui and the LEC, I feel I need to clarify this matter.

I've served as the LEC acting director since 1982 and was aware that once the LEC became activated, it would require a full-time staff director. At the same time, I've been aware that the director's

functions would necessitate that he or she be located in Washington, D.C.

Because a move to Washington would place undue hardship on my family, I would not find it in any way possible to relocate to Washington, whether with the LEC or in any other capacity. In fact, I had been asked on a number of occasions to move to Washington in my present position with the JACL, but had refused such a move.

Sometime within the past few months, Min and I discussed the LEC director position, at which time I informed him that I could not serve in that capacity but would continue to provide whatever assistance I could to LEC.

Please be assured that I feel the LEC is in good hands and have the greatest confidence that it will provide the redress campaign with an effort of which we will all be proud.

JOHN TATEISHI
San Francisco

Donations to Pacific Citizen

For Typesetting Fund

As of July 6, 1985: \$29,903.02 (744)
This week's total: \$ 1,353.99 (10)
Last week's total: \$28,549.03 (734)

\$ 4 from: George/Dorothy Ikegami.
\$ 5 from: John/Polly Shigaki.
\$15 from: Seiya Tanaka.
\$18 from: Naomi Kashiwabara (in memory of Bob Okazaki and Alfred L. Benshimol).
\$30 from: Benjamin/Dorothy Enomoto.
\$36.28 from: Ted Nagata.
\$50 from: Reno JACL.
\$95.71 from: Interest.
\$100 from: Florin JACL.
\$1,000 from: Toshi Kuge (in honor of Takaye Kuge).

Thank you!

ISSN: 0030-8579



pacific citizen

National JACL Headquarters, 1765 Sutter St., San Francisco, CA 94115, (415) 921-5225
Published by the Japanese American Citizens League every Friday except the first and last weeks of the year at 941 E. Third St., Los Angeles, CA 90013; (213) 626-6936. • 2nd Class postage paid at Los Angeles, CA. • Annual Subscriptions—JACL member: \$10 of National dues provides one year on a per-household basis. Nonmembers: \$20 a year, \$38 two-years, payable in advance. • Foreign addresses: Add US\$10; 1st Class air—U.S./Canada addresses: \$25 extra, Japan/Europe: US\$60 extra.

News or opinions expressed by columnists other than the National President or National Director do not necessarily reflect JACL policy.

Frank Sato, Nat'l JACL Pres.

OFFICERS

Dr Clifford I Uyeda, PC Board Chair

EDITORIAL / BUSINESS STAFF

Acting Editor: Robert Shimabukuro
Advertising: Jane M. Ozawa
Production: Mary Imon
Circulation: Tomi Hoshizaki
Mailing: Mark Saito
General Manager / Operations: Harry K. Honda

POSTMASTER: Send changes of address to Pacific Citizen,
941 E. 3rd St., Mezz., Los Angeles, CA 90013.

Concerns at the National Level

U.S.-Japan Relations: What's the Plan?

by Henry S. Sakai

Having been active in JACL for 13 years and served on the National Board as treasurer and Pacific Citizen board chair, I have some concerns about what is happening (or not happening) at the national level. I will discuss these separately, and hopefully it will stimulate some action and thoughts from those in charge and also from the membership.

I think we have an excellent national staff. However, they need support and some direction from the National Board in establishing priorities and plans.

U.S.-Japan Relations

In 1981, when Jim Tsujimura was the first president from National JACL to go to Japan to meet with government and business people, it was the start of the U.S.-Japan relations program. After he returned, and a number of months went by, the so-called experts started to criticize Jim because JACL did not respond with a proposal or program. These experts said the Japanese were waiting to see what JACL would do and expected us to respond with a proposal.

After Floyd Shimomura was elected president, he and the national director went to Japan and the director went again by himself later. Floyd came back and said the Liberal Democratic Party wanted to invite some younger Japanese Americans over as their guests. But he was concerned about getting involved with a political party and said maybe JACL could help suggest a few names. Later, about eight or nine young Nisei and Sansei (coincidental that they were JACLers) went over as guests of the LDP.

After current president Frank Sato was elected, he and the national director went over to Japan also. In addition, about six Sansei selected by JACL went over again as guests of the LDP. Now the National Board has approved this as an official JACL function. I'm not sure that JACL should be accepting free trips from a political party or even be involved with them, as Floyd Shimomura originally said. I have no problems with the individuals that went; it's the program itself.

Secondly, I'm still waiting for the proposal or program that the so-called experts criticized Jim Tsujimura for not coming up with back in 1981. Are the Japanese still watching and waiting? I'm not sure what the purpose of the U.S.-Japan relations program is other than free trips.

Yes, I read Floyd's articles and Frank's articles. Frank told the Japanese that we Japanese Americans worked and sacrificed to be accepted here in America, which in turn made it easier for the Japanese to come in and be accepted in the '60s and '70s, and they agreed—so that's one debt they owe us.

Secondly, we have told them that we catch and have to fight the backlash that they create by their actions. They said they understood that and were concerned about it too, so that's two debts that they owe us.

So where are we? We spend a lot of time and money fighting the backlash, the Japanese make big money and give millions to other American institutions, and JACL gets nothing other than a few free trips and maybe a handful of corporate members.

When I was national treasurer, we met with a study team from Japan and I told them that I felt that since they were giving away millions to other American organizations they should help JACL. Then we could set up a public affairs program to fight the backlash. Let's face it, money is the bottom line whether you're in America or Japan.

I don't think that receiving part of the millions they give to American organizations makes JACL a puppet of Japan. Other ethnic groups such as the French, Italians, Greeks, and Jews are much closer to their ancestral land than we are, and certainly they aren't bashful about giving or taking money and positions.

Besides, how much can you take before you become a puppet? Is it \$30,000, which is about what it cost for the free trips? Is it \$50,000, or \$250,000? I think JACL needs to decide to get in or get out as far as accepting funds, free trips, corporate memberships, etc. Hobnobbing in the corporate dining room may be great for some people's egos, but it doesn't mean a thing if you've only got ten dollars in your pocket, worried they may say "Dutch treat."

I notice that the Japanese American Republicans of Los Angeles passed a resolution supporting President Reagan's position and saying that America should avoid any racist action in resolving the trade issue. If JACL can't take that kind of position, I don't know if it can ever do anything in U.S.-Japan relations. Therefore, we should lower its priority to a cultural exchange program.

Part one of a series

We're Not Kidding Around

FROM THE
FRYING PAN:Bill
Hosokawa

If there is such a thing as a stereotypical Japanese, my father would have fit. He was short and stocky and had a bristling moustache. He wore glasses to correct severe myopia. He worked hard until late in life, when he decided it was more fun to take it easy. He did a pretty good job of mangling the English language.

If he had lived, he would be celebrating his 103rd birthday this week, but alas he is long gone.

What distinguished him from most of his contemporaries was that he was a marvelous raconteur. He could entertain his friends by the hour with stories about his experiences, about people he had known, about things he had seen. He made the fun of his boyhood in rural Japan a shared pleasure. He had his audiences roaring in laughter, even though they may have heard the stories many times, about his misadventures as a young immigrant in the strange land called America.

He loved to tell about going fishing and the big ones that eluded him (although in reality he was an excellent fisherman), and going out to shoot pheasant and stuffing a cabbage into the pocket in the back of his jacket to make it look as though he were a more successful hunter than he was. He had a knack for making those stories come alive and he enjoyed entertaining his friends with them.

In short, he had a sense of humor. He could be serious, but he

knew how to laugh. He thought laughter was an important part of life and he had a wonderful time helping others to laugh.

How many Nisei do you know with that kind of talent? Oh, sure, there are guys like Pat Morita, who makes a good living as a comedian, and the late Goro Suzuki, who as Jack Soo could make people laugh simply by looking mournful. Guys like Butch Kasa-hara, the singer, who has great stage presence, and the late Charlie Kamayatsu who, like my Dad, was full of funny stories.

But they are the exceptions. Most of the rest of us are overly earnest and sober-sided, acting as if the weight of the world's ills and sorrows rests on our shoulders and it is our destiny, indeed our obligation, to wear sackcloth until we succeed in banishing them. How do I know this? Just look at the Japanese American press.

Scan this newspaper sometime in search of levity. Are you likely to find any other than in Pete Hironaka's cartoons or Judge Bill Marutani's countryboy accounts of the delights of pickled mustard greens? Rarely. If this newspaper reflects the society it seeks, we are indeed a lugubrious lot.

It can be argued, of course, that there isn't much to laugh about when you're preoccupied with the injustice of current racism and redress for long-past wrongs, which we are told we should be doing.

Of course these are pressing matters. But surely there must be more to life than anger, frustration and outrage, and more involved in leadership than stirring up these moods.

I'm grateful that my father, who like most Issei lived a life harsher by far than that of Nisei and Sansei, taught me the pleasure of laughter. It would be a sorry thing to forget how to smile, at least once in a while.

EXHIBIT

Continued from Page 3

with the internees and considered the internment unjust.

Balch president M. Mark Stolarik and museum director and curator Gail Stern welcomed the guests. Sumi Kobayashi, JACL exhibit committee chair, thanked Balch, the JACL exhibit committee and the more than 40 persons who loaned or donated items for the exhibit. Emily Medvec, organizer and curator of "Born Free and Equal," also spoke.

The show includes the drawings and paintings of four Nikkei art-

ists, each of whom has a long list of credits. Henry Sugimoto and Mine Okubo of New York attended the reception.

Sugimoto, whose works are displayed in the Smithsonian and many other museums in the U.S. and abroad, is exhibiting paintings which show the suffering caused by evacuation and internment. Okubo is exhibiting paintings as well as original drawings used in her book *Citizen 13660*, based on her experiences at Tanforan Assembly Center and at Topaz.

Ben Kamihira, a well-known Philadelphia artist currently in Spain, is exhibiting two contemporary paintings. Roger Shimomura of Lawrence, Kansas, is displaying oil paintings inspired by entries in his grandmother's diary during WW2. His work has been described as having elements of pop art and of *ukiyo-e* prints.

Among the out-of-town guests were JACL-LEC chair Min Yasui and wife True, Denver; Joe and Naomi Tanaka, St. Louis; Richard and Teru Graves, Port Washington, N.Y.; and from Washington, D.C.: JACL Eastern District Council chair Mike Suzuki, Key Kobayashi of Go For Broke, Lily and Pat Okura, and Toro Hirose.

Also attending were represent-

atives of companies funding the exhibit, including Denise Middleman and Robert Lee, Subaru of America, and Stephen Prichard, FMC Corp. Representing Rep. William Gray (D-Penn.) was his press secretary, William Epstein.

The exhibit is co-sponsored by the Balch Institute and Philadelphia chapter JACL, with participation by Seabrook JACL and support from JACL Eastern District Council. Major funding was supplied by the Subaru of America Foundation with additional support from FMC Corp., Bell of Pennsylvania, and Polaroid.

The exhibit will be on display until September 12. The museum is open Monday through Saturday, 10 a.m. to 4 p.m.

The following businesses and individuals contributed food and labor to the reception:

Restaurants Chocho, Genji, Ginza, Hana, Hikaru and Kawabata; Oriental Food Mart and Yep's Fortune Cookies; Louise Maehara, Betty Endo, Mary Fleisher, Shigeko Kawano, Nobu Miyoshi, Mary Watanabe, Yuri Kita, Teresa Maebori, Yone Okamoto, Vicki Marutani, Miiko Horikawa, Yuri Moriuchi, Gladys Kamihira, Martha Nakamura Kale, Lucille Kono, Takeko Forsythe, and Kelly Resinger.

—Sumiko Kobayashi

Chapter Pulse

French Camp

FRENCH CAMP, Calif.—The annual French Camp JACL bazaar will be held July 20, 4 p.m., at French Camp Community Hall, featuring foods, games and door prizes. Planners include Alan Nishi, Lydia Ota, George Komure and Carl Yamasaki. Funds go to scholarships and a children's Christmas party.

Salinas Valley

SALINAS, Calif.—The 1985 chapter scholarship award winners are: Bill Matsui, a graduate of York School who has been accepted by Harvard; Sally Yoshimura, a Gonzales H.S. graduate bound for UC Berkeley; and Susie Matsuno, a York graduate accepted by UC Berkeley and Stanford. Chris Yamane was scholarship committee chair.

Marina

SAN PEDRO, Calif.—A 2½-hour cruise of L.A. Harbor can be reserved on the sailing ship Buccan-Queen for a special dinner on the town, August 3, 6:30 p.m. Food

and music, dinner at sunset and a romantic moonlit return are yours for \$25.50. Call Terry Takeda, 481-5363 or 202-6976.

Psychic Barbara Connors will be the chapter's special guest at the August 1 meeting. She will discuss her work with the police and will perform individual readings.

Cleveland

CLEVELAND, Ohio — Twenty persons or more are needed for a theater party at Playhouse Square of "Jacques Brel Is Alive and Living in Paris," July 25, at 8 p.m. For reservations, call Suzi Nakashige, 771-4444, ext. 251.

The chapter also announces that the revised Cleveland JACL directory is available. Copies may be purchased for \$2.50 at the Buddhist Temple, Omura's Japanese Food Store, and the Cleveland Assn. of Retired Persons. Mail orders at \$3.50 per copy are also taken by Peggy Tanji, 1786 W. 52 St., Cleveland, OH 44102; or Mary Obata, 1868 Roxford Rd., E. Cleveland, OH 44112.

Special Thanks

The staff of Pacific Citizen wishes to thank the individuals, JACL chapters, committees and district councils, businesses and other organizations that have donated to the typesetter fund since it began one year ago. Thanks to your generosity, we are now approaching the \$30,000 mark.

Special thanks go to Dr. Toshi Kuge of Portland, who is the second individual to donate \$1,000. He gave the donation in the hope that PC "continues to have a long life" and to honor his mother, Takaye Kuge, who celebrated her 94th birthday in May.

Kuramoto to be feted for volunteerism

DENVER—George Kuramoto, 75, was named "Volunteer of the Month" for July by the Denver Community Volunteer Awards committee for his 32 years of voluntary services as a judo instructor and community leader in the Denver metropolitan area.

Presentation ceremonies are scheduled for July 14, 7:30 p.m., at the Tri-State Buddhist Temple, 1947 Lawrence Street. The Kuramoto presentation will precede the Temple's annual O-Bon festival.

Kuramoto was born in 1910 in Hawaii. After graduation from high school in Hawaii, he trained and worked as a mechanic in San Francisco from 1930-35. He moved to Walnut Grove, Calif., in 1935, where he established a garage,

JACL staffer honored by local government

CHICAGO—JACL Midwest Office Assistant Alice Esaki was recently named as one of 12 recipients of the 1985 Superior Public Service Award given annually to those employed in local government who have distinguished themselves in service to the public.

Esaki serves as a guidance clerk at Nicholas Senn High School, where her work is concentrated in the Title VII program for limited English speaking students, most of them Indochinese. Cited among her many accomplishments was her development of a book for vocational tutoring.

The award was formally presented to Esaki at a luncheon in the Grand Ballroom of the Palmer House on June 13.

and married Alice Maeda in 1939. Caught in the 1942 evacuation, Kuramoto and his family were sent to the Amache, Colo. camp. After WW2, Kuramoto moved to Denver and established a garage and service station with Ping Oda. "Ping and George's" became a social gathering place for local Nikkei during postwar years.

Until he was forced to close his service station by urban renewal, Kuramoto was active in promoting and establishing the Denver School of Judo, where he is still a 6-dan instructor and president. He has devoted 53 years of his life to teaching judo.

After 12 years with Gart Brothers as a salesman and manager, Kuramoto retired in 1982, but he continues his voluntary activities in judo.

Kuramoto's nomination was submitted by the Rev. Kanya Okamoto of the Tri-State Buddhist Church and Albert Tagawa, head instructor at the Denver School of Judo. The nomination was supported by the Denver Central Optimists through president James Hada; the Jefferson County School District, by teacher Philip Jordan; Simpson Methodist Church, by Rev. Hidemi Ito; and six other organizations and individuals.

The Denver Community Volunteer Awards carries \$1,500 in grants, which were distributed to the Tri-State Buddhist Church, the Simpson Methodist Church, and the Denver School of Judo, in accordance with Kuramoto's wishes. Past Nikkei winners of the awards are Dorothy Fujino of the Tri-State Buddhist Church, and Tom T. Masamori of Nisei American Legion Post #185.

1000 Club Roll

(Year of Membership Shown)
* Century; ** Corporate;

L Life; M Memorial;
C/L Century Life

Summary (Since 12-1-1984)
Active (previous total) .1,489
Total this report: #2319
Current total1,508

JUNE 17-21, 1985 (19)
Detroit: 17-Frank Kuwahara.
East Los Angeles: 5-Michael Mitoma*.
Eden Township: 3-Jerry Sasaki.
Fresno: 8-Dr Testuo T Shigyo.
Gardena Valley: 25-James N Kunibe, 11-Dr Hideo Yamane.
Japan: 1-Calvin I Kuniyuki.
Orange County: 31-Mitsuo Nitta.
Pocatello Blackfoot: 22-Bobby Endo.
Sacramento: 15-Hiroshi Nishikawa.
San Diego: 11-Glenn H Asakawa*.
San Francisco: 18-Calvert Kitazumi, 31-William Hoshizawa.
Seabrook: 19-Ted T Oye.
Seattle: 10-Mitsui M Abe.
Sequoia: 9-Dr Lawrence K Onitsuka.
Spokane: 1-Denny Yasuhara.
Venice-Culver: 14-Richard R Muise.
National: 31-Charlie Saburo Matsubara.
CENTURY CLUB*
2-Michael Mitoma (ELA), 3-Glenn H Asakawa (SD).

Summary (Since 12-1-1984)
Active (previous total) .1,508
Total this report: #2323
Current total1,531

JUNE 24-28, 1985 (23)
Chicago: 33-Dr Newton K Wesley*.
East Los Angeles: Life-Rose Ochi.
Fresno: 23-Ben Nakamura.
Gilroy: 5-Mamoru Nakao.
Japan: 5-Dyke D Nakamura.
Marina: 3-Umeko Hoshizaki, 2-Sam M Sunada.
Mile High: 30-George Mits Kaneko*.
New York: 21-Mike Watabe*.
Pacific/Long Beach: 5-Harold S Kobata.
Saint Louis: 8-Robert W Denby, 1-Dr Yasuo Ishida.
Salt Lake City: 31-Mas Yano.
San Fernando Valley: 8-Paul Tsuneishi*.
San Francisco: 19-Calvert Kitazumi (SF).
San Jose: 5-Judy Junko Nizawa.
Seattle: 10-Lincoln Beppu, 30-S Billie Yoshioka.
Sequoia: 5-Edward Masuda.
Twin Cities: 9-Dr Kaworu Nomura*, 5-Louise Nomura*.
Venice-Culver: 32-Fres Hoshizawa.
National: 5-Chevron USA Inc**.

CENTURY CLUB*
7-Dr Newton K Wesley (Chi), 5-George Mits Kaneko (MHi), 15-Mike Watabe (NY), 3-Paul Tsuneishi (SFV), 9-Dr Kaworu Nomura (Twi), 5-Louise Nomura (Twi).
CORPORATE CLUB*
5g-Chevron USA Inc (Nat).
LIFE
Rose Ochi (ELA).

Redress Pledges

Actual amounts acknowledged by JACL Headquarters for the period of:
#16: May 1 / 31, 1985
1985 Total: \$ 30,642.13
Previous Total: \$169,935.64
This Report: (8) \$ 6,636.88
Grand Total: \$176,632.52

Omaha JACL \$115; Puyallup Valley JACL \$700; Fresno JACL ('85 final) \$2,085; Hoosier JACL, \$355; Tulare County JACL, \$215; Seabrook JACL \$1,760 (176 @ \$5); Las Vegas JACL \$156.88; Alameda JACL \$1,250.

1985 DIST. BREAKDOWN
DC Subtotals Corrected (Actual: Jan.-Dec. 1985)
NC-WN-Pac12,079.00
Pac Southwest7,696.88
Central Cal3,500.00
Pac Northwest2,926.25
Midwest2,265.00
Eastern2,060.00
Mt Plains115.00
Intermountain
Total: \$ 30,642.13

People

Science

Theodore Kuwana, a professor of chemistry at Ohio State University, has been named director of Kansas University's Center for Bio-analytical Research after a nationwide search lasting nearly a year. The program is aimed at developing sophisticated analytical methods for use in the pharmaceutical, chemical and petroleum industries. A native of Idaho Falls, Idaho, he earned his doctorate at KU in 1959.

Education

Mae Morita, president of the Central Unified School District board of trustees, was presented the 1985 Fresno County Golden Apple Award on May 23 by the Fresno County Chapter of the Assn. of California School Administrators. She was honored for over 25 years of service to public education, including 4 years on the CUSD board and 8 on the Biola Pershing school board.

Bob Miyamoto of the Las Virgenes Unified School District is one of 34 educators who have completed a management trainee program sponsored by the L.A. County Office of Education.

All participants had been recommended by their district superintendents and possessed a California Administrative Credential.

Lewis Hashimoto has finished first in Stanford's MBA program, won a \$5,000 prize and earned an MS in food research in Stanford's institute dealing with the global hunger and food production problem. He also has a Ph.D. in environmental engineering from Harvard.

Medicine

Terry Hayashi, chair of obstetrics and gynecology at Magee-Women's Hospi-

tal and University of Pittsburgh School of Medicine, has been elected chair of the American Board of Obstetrics and Gynecology. He is also president-elect of the American Gynecological and Obstetrics Society.

Photography

Joey Ikemoto, who runs a photo studio in Torrance, Calif., won the Best of Show award at the April/May Print Competition held by Professional Photographer West Assn. for his photo "Innocence." He also won two Gold Corners at the Professional Photographers of America Convention in Anaheim.

TRAVELER'S CHOICE TRIPS & TOURS FROM PACIFIC N.W.

Oct 2-15, \$1895. JAPAN/HONG KONG BUDGET TOUR. Takayama Festival.

Oct 11-Nov 1, \$2176. MAMIYA TOUR with George & Yoshi. Ura Nihon & Hong Kong. Free days.

Nov 9-Dec 2, \$2095. HASHIMOTO TOUR with Hank & Shiz. Japan Alps and Hong Kong. Free days.

Nov 2-9. W. CARIBBEAN CRUISE. Under \$1000. airfare included. Fun/Sun!

VICTOR KAWASAKI

LANDMARK TRAVEL SERVICE Inc.

15419 FIRST AVENUE SOUTH, SEATTLE, WA 98148
Bus: (206) 242-4800, Res: 762-5686

HONG KONG HOLIDAY

- 8 days / Free stop in HONOLULU **\$969.00**
- Round trip economy fare to/from Los Angeles or San Francisco.
- First Class Hotel.
- Transfer between Airport and Hotel.
- Half day sightseeing.
- Daily American Breakfast.

HONG KONG & TOKYO
(10 days)
\$1199.00

BEST WAY HOLIDAY

TEL: (213) 484-1030

1985 West L.A. JACL TRAVEL PROGRAM

AIRFARE LAX — TYO — LAX \$602.00

FOR JACL MEMBERS, FAMILY & FRIENDS

TOUR DATES: GUIDES

8: Ura-Nihon, HK, Bangk Sep 28-Oct 19: Veronica Ohara
8a: Omote, Hokkaido, T'hoku Sep 28-Oct 19: Steve Yagi
9: China & Kyushu Tour Jiro Mochizuki
10: Ura-Nihon, No. Kyushu Tour Oct 5-26: Bill Sakurai
11: Mediterranean Cruise Sep 29-Oct 11: Toy Kanegai
12: Fall Foliage/New Eng. Can. Oct 3-11: Yuki Sato
13: Japan Highlights Nov 2-Nov 14: Roy Takeda
14: Spl. Japan Hol Tour Dec 21-Jan 4: Geo Kanegai

Mini-group air fare on a bi-weekly travel/tour.

Mini-schedule 1985: 30 days Japan

Tour brochure with daily itinerary available. Tour meetings every 3rd Sunday of the month, 1 p.m., at Felicia Mahood Center, 11338 Santa Monica Blvd., West L.A. For info: George Kanegai, Travel comm chair, 1857 Brocton Ave, Los Angeles, CA 90025, (213) 820-3592; Roy Takeda, 1702 Wellesley Ave, LA 90025, (213) 820-4309; Steve Yagi, 3950 Berryman Ave, LA 90066, (213) 397-7921; Veronica Ohara (213) 473-7066; Yuki Sato (213) 479-8124; Bill Sakurai (213) 820-3237; Jiro Mochizuki (213) 473-0441.

LOWEST TO JAPAN!!

\$561 Round Trip
SFO/LAX — Tokyo

Community Travel Service
5237 College Ave., Oakland
CA 94618; (415) 653-0990

Complete Home Furnishings

Koby's Appliances

15120 S. Western Ave.
Gardena, CA
324-6444 321-2123

JAPANESE AMERICAN TRAVEL CLUB

Travel with JACL & JATC Friends
1985 Group Escorts

Tour Program	# of Days	Depart Date
Japan/Tsukuba Expo '85	9dys	Sep 1
Golden China	21dys	Sep 3
Europe Grand Tour	24dys	Sep 16
Mexican Riviera Cruise	7 nights, fr Sep 28-Dec 14	Oct 30
Down Under-New Zealand/Australia	18dys	Nov 2
Caribbean Cruise	8dys	Nov 2
Orient Highlights	16dys	Nov 9

CALL TOLL-FREE
(800) 421-0212 (Outside Calif.)

OR
(800) 327-6471 (Calif.)

Only Mon, Wed, Fri (9am-4:30pm), Sat (9:30-2pm)



Endorsed by the National JACL
Japanese American
TRAVEL CLUB INC.

See Your JATC Travel Agent or Contact:

250 E. 1st St., Suite 912, Los Angeles, CA 90012; (213) 624-1543

or Contact Participating Agents (Partial List)

Debi Agawa, CTC ... (805) 928-9444: Santa Maria, CA
Ben Honda (619) 278-4572: San Diego, CA
Nori Masuda (209) 268-6683: Fresno, CA
Dil Miyasato (213) 374-9621: Redondo Beach, CA
Gordon Kobayashi ... (408) 724-3709: Watsonville, CA

Our 1985 Escorted Tours

EXCEPTIONAL FEATURES—QUALITY VALUE TOURS

Japan Summer Adventure July 2
Spain-Portugal (14 days) July 6
Hokkaido-Tohoku (No. Japan) Sept. 30
East Coast & Foliage (10 days) Oct. 7
Japan Autumn Adventure Oct. 15
Far East (Bangkok, Singapore, Malaysia, Hong Kong, Taiwan, Japan) Nov. 1
NCL Caribbean Cruise (8 days) Jan. 26, 1986
(Post-cruise optional—Disneyworld/New Orleans)



For full information/brochure

TANAKA TRAVEL SERVICE

441 O'Farrell St. (415) 474-3900
San Francisco, CA 94102

Special Holiday in Japan

ANY WHERE, ANY TIME — 9 DAYS

Features: (1) Air Fare, (2) 7-Nights Top Value Hotel throughout Japan, including all taxes & service charge, (3) Unlimited Train Pass (includes Express Train, Shin-Kansen).

SPECIAL PRICE

From: Los Angeles, San Francisco \$ 898.00
and special rate from any U.S. city is available.

The prices shown above are per person based on double occupancy.

Japan Holiday Tour

(213) 484-6422

PARADISE OKAZU-YA RESTAURANT

Specializing in Hawaiian-Orient Cuisine
OPEN Tue-Sat, 7am-7pm • Sun. 7am-5pm
1631 W. Carson St., Torrance - 328-5345



LOMI SALMON
LAULAU

Eat In or Take Out
Closed Monday Only
Quick service from steam table.
Combination Plate
Very Reasonable Prices

KALUA PIG

OPEN FOR BREAKFAST AT 7 A.M.

POI

Our own style Portuguese sausage mix,

SAIMIN

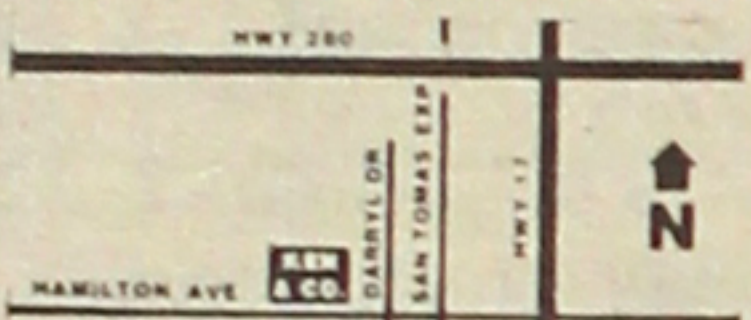
(With eggs & choice of rice or hash browns)
Includes Coffee, Tea or Miso Soup.

SHORT & SMALL MEN'S APPAREL

**WE OFFER THE PROFESSIONAL MAN
A COMPLETE BUSINESS WARDROBE.**

CARRYING OVER 500 SUITS, SPORT
COATS AND OVERCOATS BY GIVENCHY,
LANVIN, VALENTINO, ST. RAPHAEL &
LONDON FOG IN SIZES 34-42 SHORT &
EXTRA SHORT. OUR ACCESSORIES
INCLUDE DRESS SHIRTS, SLACKS, AND
TIES IN SHORT & SMALL SIZES / LENGTHS.
IN ADDITION, WE RECENTLY EXPANDED
TO INCLUDE AN ITALIAN DRESS SHOE
LINE IN SIZES 5-7 1/2.

785 W. HAMILTON AVENUE
CAMPBELL, CALIFORNIA 95008
PHONE: 408 / 374-1466
M-F 12-8:30, SAT 10-6, SUN 12-5



OWNER: KEN UYEDA

KEN & COMPANY**Medicare Supplement
Insurance**

MEN and WOMEN—Ages 64 and Over

- Helps pay your MEDICAL EXPENSES IN EXCESS OF THE AMOUNT APPROVED BY MEDICARE.
- Offered by an A+ Excellent Company (United American Insurance Co., MAXC)
- GUARANTEED RENEWABLE for life, subject to company's right to change rates.
- Pays your Medicare initial hospital deductible, and co-insurance beginning the 61st day.
- Pays for your private room costs.
- Pays for blood charges.
- PAYS 100% OF YOUR HOSPITAL EXPENSE AFTER MEDICARE RUNS OUT.
- You choose your own doctor and hospital.
- Current monthly premium is \$59 for all ages.

FOR FURTHER INFORMATION, CALL OR WRITE

SEICHI (SAGE) SUGINO
Sugino Insurance Agency

18321 S. Western Ave., Suite F, Gardena, CA 90248
L.A. Phone: (213) 770-4473
Gardena Phone: (213) 538-5808 / 329-8542

PC's New Address

After July 1, 1985

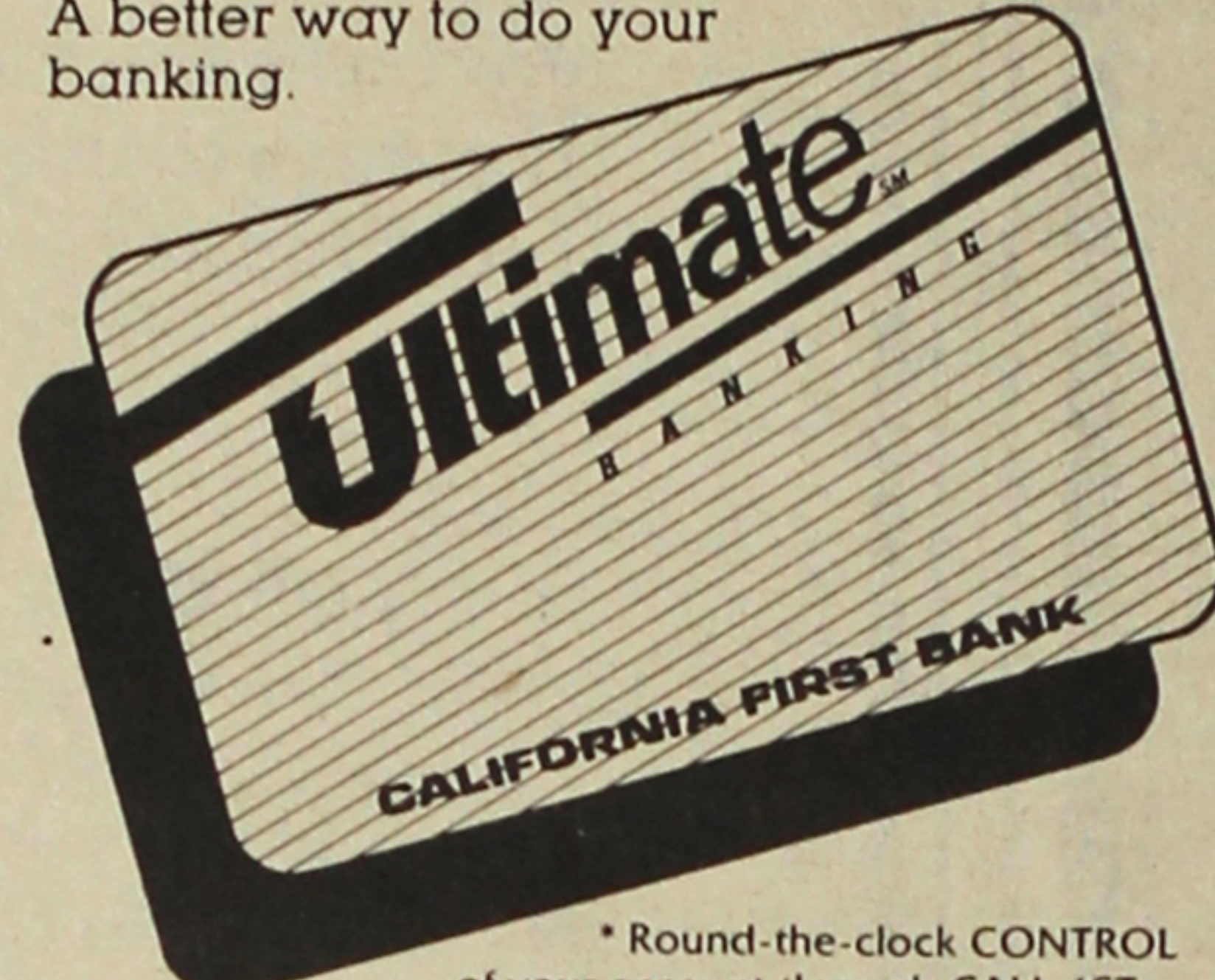
941 E. 3rd St., # 200
Los Angeles, CA 90013

Our phone number is still
(213) 626-6936

IT'S NEW!

**CALIFORNIA FIRST BANK'S
ULTIMATE BANKING.**

A better way to do your
banking.



- Round-the-clock CONTROL of your account through CALL IST.
- Round-the-clock ACCESS to your money through 120 Ultimate Banking™ ATMs.
- SIMPLE recordkeeping with check safekeeping.
- MORE CONVENIENT access through more than 1000 Star System teller machines through California and other states.

Stop by your nearest California
First Bank office and ask
details of Ultimate Banking™.

**CALIFORNIA
FIRST BANK**
Member FDIC
© California First Bank, 1985

PC Classified Advertising**4—Business Opportunities**

MICHIGAN

**Granot Loma Lodge
on Lake Superior**

70-Room Lodge with 3.64
miles of Lake Superior shore-
line. 11 miles north of Mar-
quette in Michigan's Upper
Peninsula. Includes over
5000 acres of forest and
farmland, two homes, large
brick barn, bathhouse and
pool and several garages.
Selling price: \$4.2 million.
Write:

Trust Department
c/o 1st National Bank &
Trust Co.
Drawer 10,
Marquette, MI 49855

Distributors

Part time or full time. Deliver
product to retail store. Indi-
vidual or family business. No
selling. Deposit \$8,900 se-
cured by inventory. Average
return of investment 30-60
days. \$6000-\$8000 p/month.

CALL COLLECT
(214) 637-0882
• Calls accepted •
7 days a week.

NOTARY PUBLIC
Japanese-English
Lic #207520-59L190
(213) 663-3594

ESTABLISHED 1936

**NISEI
TRADING**

Appliances - TV - Furniture
249 S. San Pedro St.
Los Angeles 90012
(213) 624-6601



De Panache
Today's Classic Look
for Women & Men
Call for Appointment
Phone 687-0387
105 Japanese Village Plaza
Mall, Los Angeles 90012
Toshi Otsu, Prop.

5—Employment

WANTED

NISEI/SANSEI applicants. We have
many attractive openings now in LA &
Orange Counties. College graduates or
equivalent preferred. Send in resume or
call us for an appointment.

TOPSKOUT PERSONNEL SVC.
(213) 742-0810
1543 W. Olympic Bl.
L.A. 90015

TRAVEL AGENT

Located downtown L.A., seeks full time
Bilingual (Japanese/English) with
some experience in ticketing and air
lines computer. Pars, panamac. Please
call or send resume to:
U.S. Gateway Tourist Inc.
1545 Wilshire Blvd., #406
Los Angeles CA 90017
(213) 413-3200/Mr. Watanabe

8—Real Estate (Acreage)

SALE BY OWNER

Northern California

7,000 Deeded Acres—Cattle ranch,
picturesque setting, springs, streams,
irrigated meadows, six residences
plus other buildings, adjacent to rec-
reation areas, Hwy 36 east of Red
Bluff. \$2.3 million, owner finance.
(415) 391-7234, (415) 347-1175.

AT NEW LOCATION

Aloha Plumbing

Lic. #440840 - Since 1922
PARTS - SUPPLIES - REPAIR
777 Junipero Serra Dr.
San Gabriel, CA 91776
(213) 283-0018
(818) 284-2845

7th Edition

**FAVORITE
RECIPES**

\$6.00 postpaid

**So. Alameda County
Buddhist Church Fujinkai**
32975 Alvarado-Niles Rd.
Union City, CA 94587

**Commercial & Industrial
Air Conditioning and
Refrigeration
CONTRACTOR**

Glen T. Umemoto
Lic. #441272 C38-20

SAM REIBOW CO.
1506 W. Vernon Ave.
Los Angeles/295-5204
SINCE 1939

9—Real Estate

SALE BY OWNER

HUNTERDON COUNTY, N.J.,
1-hr drive to NYC. Spectacular view
overlooks Round Valley and Spruce
Run Lakes. Swimming, boating, fish-
ing, excl. 5-ac zoning. Contemp ranch
42,000 sq. all brick, glass & redwood.
10-rm, 4 BR, 4 BA, x-lrg 2-car gar,
outside deck is 1100 sq. ft. \$475,000.
Neg for cash. Princ. only. (201) 735-
4421. PO Box 7, Annandale, NJ 08801

SO. CALIF.

FOR SALE

- 152 Units - Signal Hill; 38 Four-plexes, \$9.4 M.-15% down; 8.5% Gross. All 2 bedroom units.
- 186 Units Escondido
- 7.1 M split down over two years; 7.83 acres. One acre developable. Refurbished, all new roof.
- 40 acres prime \$-1 Lake Holly-wood. Superbly located. Buy or joint venture.

D. Valachi/M. Rosenthal

South Bay Realty

(213) 534-0933

**ARKANSAS
LAND, WATER, WOOD &
GAME ON MOUNTAIN TOP**
IN ARKANSAS: Available for company
retreat or retirement home. 80 acres
and 900 sq ft of house complete the
site. 100 miles fr Little Rock, 10 miles
from Leslie. \$100,000 cash. For more
info & picture, write Overstreet, HCR
78, Box 554, Leslie, AK 72645.

10—Rental

STORE WITH small apartment,
1400 sq ft \$795 / mo, 57c sq ft.
Secure parking. Near Downtown
L.A. (213) 481-8010.

FOR LEASE: SO. CALIF.

Bell Gardens

Lease 1200 s.f. medical office
suite, parking. Suitable for podia-
trist, optometrist or dentist. No
podiatrist or optometrist currently
serving the area. Call: Parkview
Medical Clinic, (213) 927-3911.

**CHIYO'S
Japanese Bunka
Needlecraft**

Framing, Kits, Lessons, Gifts
2943 W. Ball Rd., Anaheim,
CA 92804 - (714) 995-2432
450 E. 2nd St., Honda Plaza
LA 90012 - (213) 617-0106

**ED SATO
PLUMBING & HEATING**

Remodel and Repairs
Water Heaters, Furnaces
Garbage Disposals
Serving Los Angeles
(213) 293-7000 - 733-0557

PC Business-Professional Directory**Greater Los Angeles****ASAHI TRAVEL**

Supersavers-Group Discounts
Apex Fares-Computerized-Bonded
1111 W Olympic Blvd., LA 90015
623-6125/29 • Call Joe or Gladys

Flower View Gardens #2

New Otani Hotel, 110 S Los Angeles
Los Angeles 90012 Art Ito Jr.
Citywide Delivery (213) 620-0808

Inoue Travel Service

1601 W. Redondo Beach Bl., #209
Gardena, 90247; 217-1709; Offices
in Tokyo, Japan / Lima, Peru

TATAMI & FUTON

(818) 243-2754
SUSUKI FUTON MFG.

Tama Travel International

Martha Igarashi Tamashiro
One Wilshire Bldg., Ste 1012
Los Angeles 90017; (213) 622-4333

Tokyo Travel Service

530 W. 6th St., #429
Los Angeles 90014 680-3545

Greater Los Angeles**Yamato Travel Bureau**

200 S San Pedro St., #502
Los Angeles 90012 680-0333

**Exceptional Homes
and Investments**

VICTOR A. KATO
Residential-Investment Consultant
18682 Beach Blvd., Suite 220
Huntington Beach, CA 92648
(714) 963-7989

The Paint Shoppe

LaMancha Center, 1111 N Harbor
Fullerton CA 92632, (714) 526-0116

San Diego**PAUL H. HOSHI**

Insurance Service
852-16th St (619) 234-0376
San Diego CA 92101 res. 421-7356

Ventura County**Calvin Matsui Realty**

Homes & Commercial
371 N. Mobil Ave., Ste. 7,
Camarillo, CA 93010, (805) 987-5800

Tell Them You Saw It
In the Pacific Citizen

San Jose, CA**Kayo K. Kikuchi, Realtor**

SAN JOSE REALTY
996 Minnesota Ave., #100
San Jose, CA 95125-2493
(408) 275-1111 or 296-2059

Tatsuko "Tatty" Kikuchi
General Insurance Broker, DBA

Kikuchi Ins. Agy.

996 Minnesota Ave., #102
San Jose, CA 95125-2493
(408) 294-2622 or 296-2059

Edward T. Morioka, Realtor

580 N. 5th St., San Jose 95112
(408) 998-8334 bus; 559-8816 res.

Watsonville**Tom Nakase Realty**

Acreage, Ranches, Homes, Income
TOM NAKASE, Realtor
25 Clifford Ave. (408) 724-6477

San Francisco Bay Area**Y. KEIKO OKUBO**

Five Million Dollar Club
39812 Mission Blvd.,
Fremont, CA 94539; (415) 651-6500

Lake Tahoe**RENT INC Realty Inc.**

Sales, Rentals, Management
Box 65, Carnelian Bay, CA 95711
(916) 546-2549; Shig-Judy Tokubo

Seattle, Wa.**Imperial Lanes**

Complete Pro Shop, Restaurant, Lounge
2101-22nd Ave So. (206) 325-2525

The Intermountain**Mam Wakasugi, Sales Rep.**

Row Crop Farms; Blackaby Real
Estate, 36 SW 3rd St, Ontario, OR
97914 (503) 881-1301. 262-3459

Mountain-Plains**Charlie Braun "Brown"**

Commercial-Investment-Residential
Lambros Realty, 1001 S. Higgins
Missoula, MT 59801
(406) 543-6663 / (406) 251-3113

Midwest District**Sugano Travel Sv.**

17 E Ohio St, Chicago IL 60611
(312) 944-5444 784-8517, eve, Sun

Eastern District**Ben M. Arai**

Attorney at Law
126 Mercer St., Trenton, NJ 08611
Hours by Apmt. (609) 599-2245
Member: N.J. & Pa. Bar

Mike Masaoka Associates

Consultants - Washington Matters
900-17th St NW, Wash, DC 20006
(202) 296-4484

**Marutama Co.
Inc.**

Fish Cake Manufacturer
Los Angeles

MIKAWAYA**SWEET SHOPS**

244 E. 1st St., Los Angeles
(213) 628-4945

2801 W. Ball Rd., Anaheim
(714) 995-6632

Pacific Square, Gardena
1630 Redondo Beach Blvd.
(213) 538-9389

118 Japanese Village Plaza
Los Angeles /
(213) 624-1681

Ready for PANA

SAO PAULO, Brazil—Approximately 150 U.S. Nikkei are expected for the 3rd Pan American Nikkei Assn. convention to be held July 25-28 here at the Hilton Hotel.

Macahiko Tisaka, heading convention arrangements, had met with JACL leaders in San Francisco and with Japanese chamber of commerce officials at Los Angeles in May to assure "all was ready".



**Kimura
PHOTOMART**

Cameras & Photographic Supplies

316 E. 2nd St., Los Angeles
(213) 622-3968

**KUBOTA NIKKEI
MORTUARY**



(Formerly Shimatsu,
Ogata & Kubota
Mortuary)

911 Venice Blvd.
Los Angeles, CA 90015
Phone: (213)
749-1449

Y. Kubota • H. Suzuki • R. Hayamizu

Serving the Community
for Over 30 Years

Four Generations
of Experience

FUKUI

Mortuary, Inc.

707 E. Temple St.
Los Angeles, CA 90012
626-0441

Gerald Fukui, President
Ruth Fukui, Vice President
Nobuo Osumi, Counsellor

**Los Angeles Japanese
Casualty Insurance Assn.**

COMPLETE INSURANCE PROTECTION

Aihara Insurance Agency, Inc.
250 E. 1st St., Los Angeles 90012
Suite 900 626-9625

Anson T. Fujioka Insurance
321 E. 2nd St., Los Angeles 90012
Suite 500 626-4393

Funakoshi Ins. Agency, Inc.
200 S. San Pedro, Los Angeles 90012
Suite 300 626-5275

Inouye Insurance Agency
15029 Sylvanwood Ave.
Norwalk, CA 90650 864-5774

Itano & Kagawa, Inc.
321 E. 2nd St., Los Angeles 90012
Suite 301 624-0758

Ito Insurance Agency, Inc.
1245 E. Walnut, #112, Pasadena 91106;
(818) 795-7059, (213) 681-4411 L.A.

Kamiya Ins. Agency, Inc.
327 E. 2nd St., Los Angeles 90012
Suite 224 626-8135

Maeda & Mizuno Ins. Agency
18902 Brookhurst St., Fountain Valley
CA 92708 (714) 964-7227

The J. Morey Company
11080 Artesia Bl., Suite F, Cerritos, CA
90701; (213) 924-3494, (714) 952-2154

Steve Nakaji Insurance
11964 Washington Pl.
Los Angeles 90066 391-5931

Ogino-Aizumi Ins. Agency
109 N. Huntington, Mont'ry Pk 91754;
(818) 571-6911, (213) 283-1233 L.A.

Ota Insurance Agency
312 E. 1st St., Suite 305
Los Angeles 90012 617-2057

**T. Roy Nami & Associates
Quality Ins. Services, Inc.**
3255 Wilshire Blvd., Suite 630
Los Angeles 90010 382-2255

Sato Insurance Agency
366 E. 1st St., Los Angeles 90012
626-5861 629-1425

Tsuneishi Ins. Agency, Inc.
327 E. 2nd St., Los Angeles 90012
Suite 221 628-1365

AHT Insurance Assoc., Inc.
dba: Wada Asato Associates, Inc.
16500 S. Western Ave., #200
Gardena, CA 90247 (213) 516-0110

TREASURES OF THE ORIENT

(A Mail Order Company)

Quality giftware (hand painted silk screens, dolls, lacquerware, Imari ware, dishes, etc.) from Japan and the Far East at discount prices. Send for a free catalog in color by completing this form:

Name:

Address:

City, State, ZIP

Mail to: TREASURES OF THE ORIENT
P.O. Box 3978, Gardena, CA 90247

**MIDAS
OPERANDI**

Invest in Dollars and Have It
Working for You in Yen ...
With Liquidation in Dollars.

**Hedge Against Inflation
by Realizing More than
20% NET per Annum**

Minimum Investment: \$15,000

—DETAILS UPON REQUEST—

Dyke Nakamura, Foreign Department

Yamakichi Securities Co., Ltd.
7 Nihonbashi, Kabutocho, 1-chome
Chuo-ku, Tokyo, Japan 103

Cable: YAMASECURE, TOKYO
Telephone: (03) 667-7947

Empire Printing Co.

COMMERCIAL AND SOCIAL PRINTING
English and Japanese

114 Weller St., Los Angeles, CA 90012
(213) 628-7060



Japanese Phototypesetting

TOYO PRINTING CO.

309 So. San Pedro St., Los Angeles 90013
(213) 626-8153

To our first 500 portrait sittings in our
new facilities, you will receive a free wall
frame as a thank you for visiting our new
studio in the San Gabriel Valley.

Offer expires Oct. 1, 1985

TOYO
Miyatake STUDIO

(213) 283-5685 • (818) 289-5674
235 West Fairview Ave., San Gabriel, CA 91776
Free Parking

WOMEN AS PATROL OFFICERS

AGE: 20-31 SALARY: \$2082-\$2487 per month



VIDEO ACTION

Releases
SPECIAL INTRODUCTORY OFFER!



NOW ON SALE!!

☐ SWORDS OF DEATH SHINKEN SHOBU ☐ STATION EKI
(Subtitled) \$49.95 (Subtitled) \$44.95

SEND FOR MORE INFORMATION—

MORE TITLES AVAILABLE FOR YOUR VIDEO COLLECTION

PLEASE SEND ME: ☐ VHS ☐ BETA

☐ The above checked titles. ☐ More information.

ENCLOSED IS: ☐ Money Order ☐ Check (For faster service,
write driver's license number and birthdate on check).

MC/VISA #

Expiration date

Name

Address

City

State

ZIP

Add \$3 each for shipping & handling; 6% CA or 6 1/2% L.A. County
resident sales tax. • Hawaii residents: Add \$5 each for shipping
and handling; \$2 for each tape thereafter.

VIDEO ACTION 708 W. 1st St., Los Angeles, CA 90012
(213) 617-3545

FILL THIS OUT AND MAIL TO:

CALIFORNIA HIGHWAY PATROL
OFFICE OF EQUAL EMPLOYMENT
OPPORTUNITY
2555-1st AVENUE, P.O. BOX 898
SACRAMENTO, CALIFORNIA 95804
(916) 322-6862

I am interested in becoming a State Traffic Officer

Name

Address

City

State

Zip Code

Home Phone



AN EQUAL EMPLOYMENT OPPORTUNITY-AFFIRMATIVE ACTION EMPLOYER