

pacific citizen

Newsstand: 25¢
(50¢ Postpaid)

National Publication of the Japanese American Citizens League

ISSN: 0030-8579 / Whole No. 2,323 / Vol. 100 No. 3

244 S. San Pedro St., #506, Los Angeles, CA 90012-3981 (213) 626-6936, 628-3768

January 25, 1985

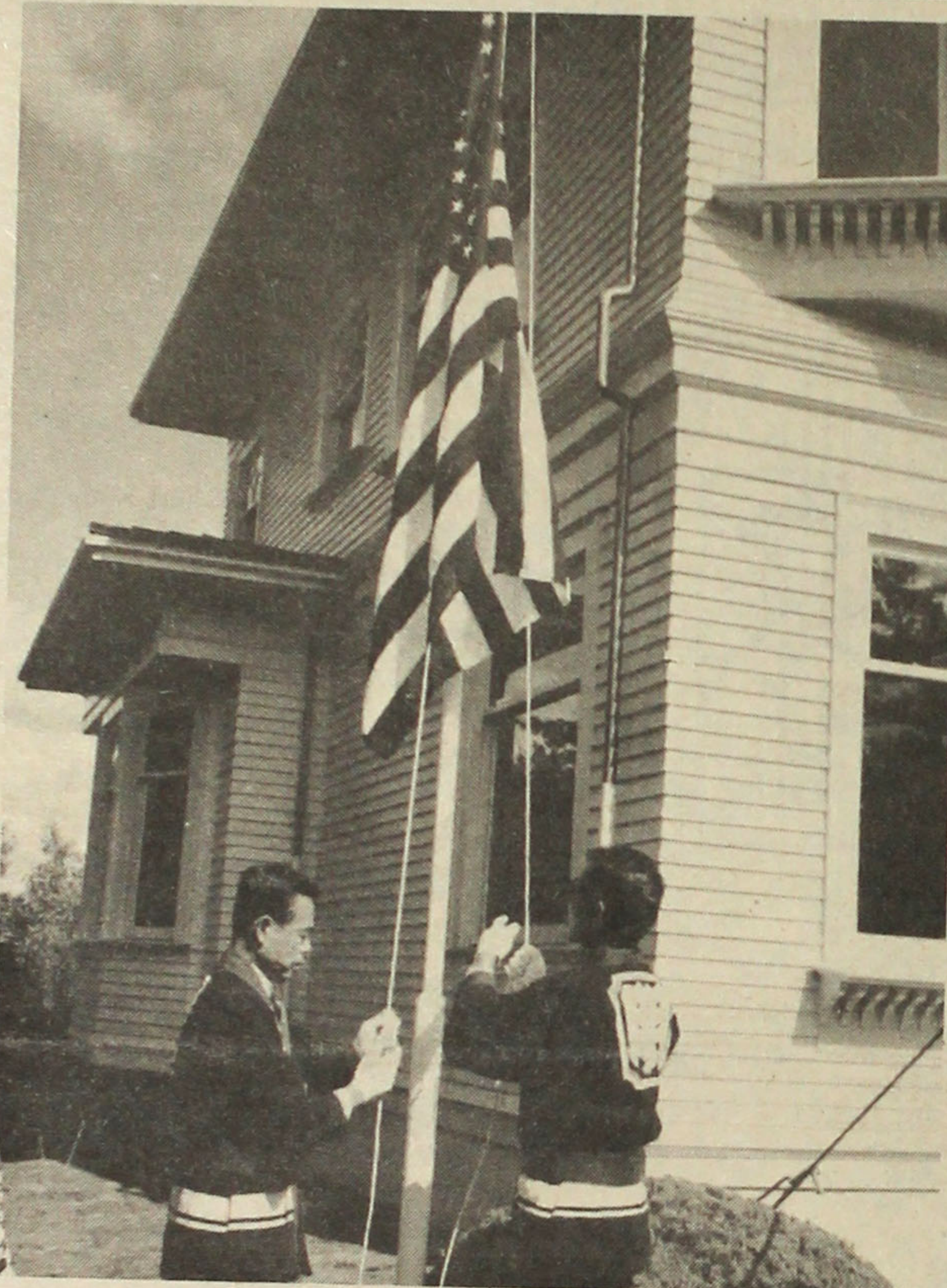


Photo by Ken Nakano

ISSEI CONTRIBUTION — American flag is raised at the former Japanese Evangelical Church of Seattle, rebuilt as an exhibit at Japan's open-air Meiji Village near Nagoya. (Story on page 7.)

Midwest community rallies behind Chinese victim

by Helen Zia

DETROIT—Kiet Tien, a 20-year-old ethnic Chinese from Vietnam, moved to the U.S. with his brothers, grandfather and other family members through a refugee assistance program four years ago. They settled in Grand Ledge, Mich., a semi-rural town of 7,000 located about eight miles from Lansing. Off and on for the last four years, Kiet Tien has been harassed, and in December the harassment turned to violence.

On Jan. 2, four white men were arraigned for attempting to break into the Tien home with intent to commit murder the day before. The four—Robert Schrauben, 18, Rick Wallace, 18, Jerry Wilson, 18, and Michael Osborne, 19—were freed on bond, and preliminary hearings began Jan. 10.

Knock at the Door

At the hearings, Tien's wife Christina, a Caucasian and a native of Grand Ledge, testified that at about 11 p.m. on Jan. 1 she answered a knock on the door. Schrauben, accompanied by the other three, was at the door wielding a hunting knife. When Mrs. Tien asked what they wanted, Schrauben reportedly replied, "I just want to talk to your Chinese

husband and any other chinks you have in there."

While Mrs. Tien went to call the police, the men began pounding on the door with their knives and breaking windows. Local police arrived within minutes. As they subdued the four, some allegedly yelled, "Why are you protecting them? Ship 'em in a boat and send them back to China where they came from."

Neighbors who knew the Tiens

reported that this was not the first such incident for Kiet Tien. "He's been harassed by four or five young men...saying things like he's taking their jobs and why doesn't he go back where he came from," said Betty Miller, who sponsored the Tien family's move to the U.S.

As a result of these violent encounters, Tien, a quiet man who speaks in halting English, has quit

Continued on Page 6

New redress bill attracts 100 sponsors

WASHINGTON — Ninety-nine members of Congress have signed on as co-sponsors of redress bill HR 442, also known as the Civil Liberties Act of 1985. The bill was introduced to the House of Representatives Jan. 3 by Rep. Jim Wright (D-Tex.), who introduced redress bill HR 4110 in 1983.

The new bill, named in honor of the all-Nisei 442nd Regimental Combat Team, is essentially the same as HR 4110. One provision of HR 4110 that was dropped from the present bill is the requirement that five of the nine members of the proposed Civil Liberties Public Education Trust Fund be Japanese Americans. Some members of Congress had considered the requirement discriminatory.

The current list of supporters includes representatives who were not co-sponsors during the last session of Congress: Robert Borski (D-Pa.), Dan Burton (R-Ind.), Bob Carr (D-Mich.), Richard Gephardt (D-Mo.), Edward Madigan (R-Ill.), and Don Young (R-Alaska). Also on the list is newly-elected congressman John Miller (R-Wash.).

* * *

Co-sponsors of HR 442 (By State and District)

- Alaska: Don Young (R-At Large)
- American Samoa: Fofu Sunia (D)
- Arizona: Morris Udall (D-2nd)
- California: Douglas Bosco (D-1st), Robert Matsui (D-3rd), Vic Fazio (D-4th), Barbara Boxer (D-6th), George Miller (D-7th), Ronald Delums (D-8th), Fortney Stark (D-9th), Don Edwards (D-10th), Tom Lantos (D-11th), Norman Mineta (D-13th), Tony Coelho (D-15th), Leon Panetta (D-16th), Richard Lehman (D-18th), Henry Waxman (D-24th), Edward Roybal (D-25th), Howard Berman (D-26th), Meldon Levine (D-27th), Julian Dixon (D-28th), Augustus Hawkins (D-29th), Matthew Martinez (D-30th), Mervyn Dymally (D-31st), Esteban Torres (D-34th), Jim Bates (D-44th)
- Colorado: Timothy Wirth (D-2nd)
- Connecticut: Samuel Gejdenson (D-2nd), Bruce Morrison (D-3rd)
- District of Columbia: Walter Fauntroy (D)
- Florida: Lawrence Smith (D-16th), William Lehman (D-17th)
- Hawaii: Daniel Akaka (D-1st)
- Illinois: Charles Hayes (D-1st), Gus Savage (D-2nd), Cardiss Collins (D-7th), Sidney Yates (D-9th), Edward Madigan (R-15th)
- Indiana: Danny Burton (R-6th)
- Louisiana: Gillis Long (D-8th)
- Maryland: Barbara Mikulski (D-3rd), Parren Mitchell (D-7th), Michael Barnes (D-8th)
- Massachusetts: Barney Frank (D-4th), Nicholas Mavroules (D-6th), Edward Markey (D-7th), Joe Moakley (D-9th), Gerry Studds (D-10th)
- Michigan: John Conyers (D-1st), Howard Wolpe (D-3rd), Mark Siljander (R-4th), M. Robert Carr (D-6th), Dale Kildee (D-17th), David Bonior (D-12th), George Crockett (D-13th)
- Minnesota: Bruce Vento (D-4th)
- Missouri: Richard Gephardt (D-3rd), Alan Wheat (D-5th)
- Nevada: Harry Reid (D-1st)
- New Jersey: William Hughes (D-2nd), James Howard (D-3rd), Robert Roe (D-8th), Robert Torricelli (D-9th), Peter Rodino (D-10th)
- New York: Thomas Downey (D-2nd), Gary Ackerman (D-7th), James Scheuer (D-8th), Charles Schumer (D-10th), Eldolphus Towns (D-11th), Major Owens (D-12th), Charles Rangel (D-16th), Ted Weiss (D-17th), Robert Garcia (D-18th), Mario Biaggi (D-19th), Hamilton Fish (R-21st), Benjamin Gilman (R-22nd), Frank Horton (R-29th)
- Ohio: Thomas Luken (D-1st), Tony Hall (D-3rd), Edward Feighan (D-19th), Louis Stokes (D-21st)
- Pennsylvania: Thomas Foglietta (D-1st), William Gray (D-2nd), Robert Borski (D-3rd), Joseph Kolter (D-4th), Robert Edgar (D-7th), Peter Kostmayer (D-8th), Austin Murphy (D-22nd)
- South Dakota: Thomas Daschle (D-At Large)
- Tennessee: Harold Ford (D-9th)
- Texas: Charles Wilson (D-2nd), Jim Wright (D-12th), Mickey Leland (D-18th), Solomon Ortiz (D-27th)
- Vermont: James Jeffords (R-At Large)
- Washington: John Miller (R-1st), Thomas Foley (D-5th), Mike Lowry (D-7th)
- Wisconsin: Robert Kastenmeier (D-2nd), James Moody (D-5th)

Total: 100

Japanese, American auto-makers in new relationship

by Robert Shimabukuro

The refurbished Toyota-General Motors plant in Fremont, Calif., sent its first Nova off the assembly line last month, and industry, labor and management experts are watching the experiment with great interest. In an era of sometimes disquieting envy of Japa-

Analysis

nese industry by American corporations and animosity toward Japanese products by American labor unions, the Fremont plant is a cautious *ménage à trois* of two of the world's largest manufacturing concerns and the once-powerful United Auto Workers (UAW).

Unlike the Honda plant in Ohio and the Nissan plant in Tennessee, the NUMMI (New United Motor Manufacturing, Inc.) plant in Fremont is comprised of union members, a large number of them rehired from the old Fremont GM plant. Because of that, the UAW has as much at stake as GM and Toyota.

In February 1983, when GM-Toyota announced the formation of NUMMI, then-UAW president Douglas Fraser said that, based on his discussions with GM chairman Roger Smith, the UAW had "every reason to believe the UAW will continue to be the bargaining agent at the plant." But when Toyota chairman Eiji Toyoda announced in Tokyo that laid-off UAW workers would not be given priority when hiring was done at the Fremont plant, relations soured. Because union activists were not hired at Nissan and Honda, the UAW members were very skeptical about who was going to work for NUMMI.

Skepticism Countered

Toyota officials were skeptical also. The GM Fremont plant had a high absenteeism rate, low morale, drug and alcohol abuse, and union-management friction. But intense pressure, meetings, discussions with high-level officials, and reassurances from Fremont City Councilman Yoshio Fujiwara about the abilities and habits of American workers, resulted in

NUMMI recognizing the UAW; presently, 90% of the work force is from the pool of ex-GM workers. According to UAW members, their job is to show that American workers can produce a quality car and that the problems of the GM Fremont plant were due in most part to GM management.

Management Techniques

NUMMI is incorporating Japanese management techniques that appear to be meeting with the approval of the workers. Time clocks are gone, and so are private offices. Executives fight for parking space along with assembly-line workers, and everyone eats in the same cafeteria. Group leaders, team leaders, and team members talk about teamwork, mutual trust, cooperation, and quality over early morning calisthenics.

Rather than the specialized, one-man-one-job process emphasized in the U.S., NUMMI will operate within the flexible Japanese system in which a worker performs more than one function,

Continued on Page 4

News in Brief

Government response to Hirabayashi due

SEATTLE—The U.S. Dept. of Justice is expected to file its pre-trial order in response to Gordon Hirabayashi's petition for a writ of *error coram nobis*, filed in January 1983. Hirabayashi, whose conviction for violating military curfew and "evacuation" orders was upheld by the Supreme Court, charged that the government suppressed, altered and destroyed evidence attesting to the loyalty of Japanese Americans during WW2.

U.S. District Court Judge John Voorhees heard the petition in May 1984 and agreed that he should conduct an evidentiary hearing, or trial, on the matter. The government's pre-trial order, due today, must indicate the issues, documents, and witnesses it plans to use in its case against Hirabayashi.

Veterans help rebuild torched Buddhist temple

HAWLEY, Mass.—After three angry Vietnam war veterans burned down a Buddhist temple New Year's Eve 1984, other veterans from around the country helped to rebuild it. A new, larger temple is now ready for the congregation of the Mahasiddha Nyingapa Center.

The men said they burned the shrine to protest the lack of services available for Vietnam veterans. The congregation of the temple is nearly all white.

Hiring of Southeast Asian protested

PORTLAND, Ore.—The director of the Willamette National Cemetery reinstated a work experience program with Portland Community College after cancelling it when a local veterans group objected to the hiring of a Vietnamese student. An employee of the cemetery had instigated the protests.

Paul Bannai, director of the Veterans Administration's Dept. of Memorial Affairs, which oversees the national cemetery system, has backed the Willamette director.

Elected official says he didn't intend slur

BOISE, Idaho—State Sen. Walter H. Yarbrough (R-Grand View) said he "didn't mean it as degrading" when he referred to Japanese as "slant-eyes."

Yarbrough, who is beginning his 11th term, made the remark during a hearing of the Idaho Legislature's revenue projection committee Jan. 4, when it discussed ways to improve markets for Idaho agricultural products in the Pacific.

Speaking as a cattle rancher, Yarbrough said beef producers have run into difficulty trying to sell to the Japanese. "When you start dealing with those slant-eyes, you'd better be pretty sharp," he said.

Later that day, Yarbrough declared, "All the Japanese are my good friends," and noted that Japanese Americans, the most unpopular ethnic group in the U.S. during WW2, have since become among the nation's most respected citizens.

The slur prompted Pocatello Blackfoot JACL president Kunio Yamada to write Yarbrough a letter which read, in part: "Your derogatory remark is an affront to Japanese everywhere, including those Japanese Americans with whom you claim friendship...."

Asians encountering Black hostility

by Hiroshi Uyehara

PHILADELPHIA—Four hearings were conducted by the Philadelphia Commission on Human Relations from Oct. 27 to Nov. 5 to investigate incidents of violence against Asian refugees and immigrants. The hearings were a result of Councilwoman Joan Specter's prodding of the city council's inaction in the face of increasing violence against Asians in West Philadelphia and the Logan section of the city. Mayor Wilson Goode's response was to tour the troubled West Powelton area and declare that the attacks on Asians were not racially motivated.

It was against this background that Reiko Gaspar testified for JACL and recounted her personal experiences of racism at the last hearing. After her testimony she was asked about racial slurs and she responded in a loud clear voice that she had been taunted,

"Chink, Chink, Gook! Can you see through those slits?" as she walked through the halls of the University City High School. As a public school teacher for many years who had worked with Black students, she has encountered similar hostility and sensed increasing racism. There was no doubt in her testimony that the slurs were racially motivated.

During the past year a Vietnamese student was beaten and his neck broken and, recently, a Hmong visiting in West Philadelphia was savagely beaten with both legs broken and surgical repair of his skull needed. The Hmong did not report attacks, robberies, extortion, and even rape to the police because of fear of retaliation. The police say that they have not received any such reports. The Hmong response is to gather their extended families

Continued on Page 8

Congress demands action on Liu case

WASHINGTON—The murder of Chinese American journalist Henry Liu, already the subject of investigations by Daly City (Calif.) police and the FBI, is beginning to draw attention in Congress because of the recent implication of Taiwan government officials in the killing.

Rep. Norman Mineta (D-San Jose) has sharply criticized the Reagan Administration's response to the case. "How can Chinese Americans feel safe when the President remains silent on this terrorism and the State Dept. has to be dragged kicking and screaming into the investigation of this case?" he asked.

"Americans of Chinese ancestry should not have to demand that the President condemn this attack, or that the Justice Dept. will vigorously prosecute this case, or that the State Dept. will press for full cooperation from the Taiwanese government. The President should demand that the Taiwanese government return the two suspects in Mr. Liu's killing immediately, if only to assure us as U.S. citizens that Taiwan will not become a sanctuary for terrorists."

Rep. Tom Lantos (D-San Mateo) has called for a congressional inquiry. "The involvement of officials of a foreign government in

such acts is reprehensible and requires immediate and forceful action on the part of our government," he wrote in a letter to Rep. Stephen J. Solarz (D-N.Y.), chair of the House Foreign Affairs Subcommittee on Asian and Pacific Affairs.

Solarz announced Jan. 18 that he planned to hold hearings on whether the killing violated a 1982 law prohibiting harassment of American citizens by foreign governments. Under the law, written by Solarz, arms sales to a country found to have engaged in such conduct would be banned.

Critical of KMT

Liu, who immigrated to the U.S. from Taiwan 17 years ago, was known to readers of the Chinese language press in the U.S. and Hong Kong for his articles and books criticizing Taiwan's ruling Nationalist Party (Kuomintang) and President Chiang Ching-kuo. After he was gunned down at his Daly City home Oct. 15, his widow and others in the Chinese American community charged that the killing had been ordered by the Taiwan government.

The controversy over Liu's death is similar to that which surrounded the case of Chen Wen-chen in 1982. Chen, a professor at

No. 2,323

allow 3 week's advance notice to report if you are moving, your address change with label on front.

Effective Date: _____

* Thank you for using this form. It saves PC 25 cents in fees.

Pacific Citizen, 244 S. San Pedro St. #506, Los Angeles, CA 90012

EXPIRATION NOTICE—If the last four digits on the top row of your label reads 0185, the 60-day grace period ends with the last issue in March, 1985. Please renew your subscription or membership. If membership has been renewed and the paper stops, notify the PC office.

Carnegie-Mellon University in Pittsburgh, was found dead on a Taipei college campus after being interrogated by security police. Government officials declared that Chen, a critic of the Kuomintang, had committed suicide, but associates of Chen believed that he had been murdered.

When Chen Chi-li, Wu Tun and Tung Kuei-sen, all reputed members of the Taiwan-based Bamboo gang, were identified by the FBI as suspects in the Liu case, they

Continued on Page 9

NOW AVAILABLE ON THE MAINLAND

Hawaii's Number One
Hawaiian Host® Chocolates

CHOCOLATE COVERED MACADAMIA NUTS & CARAMELS • DRY ROASTED-SALTED MACADAMIA NUTS • BRITTLES & CHEWS • COCONUT CANDIES • HAWAIIAN JAMS & JELLIES • HAWAIIAN HONEY • SPECIAL GOURMET PACKAGE.



Call Us for Fund-Raising Sales Promotions

Hawaiian Host Chocolates
15601 S. Avalon Boulevard
Gardena, California 90248
Phone (213) 532-0543
PLANT TOURS AVAILABLE BY APPOINTMENT

"Hawaiian Roamer"

As low as **\$40** per day... Cars provided by **National Car Rental**
for two people.



QUEEN KAPIOLANI
Waikiki—From \$60



KAUAI RESORT
Kauai—From \$64



MAUI BEACH
Kahului, Maui—From \$49



MAUI PALMS
Kahului, Maui—From \$60



HILO HAWAIIAN
Hilo, Hawaii—From \$54



KONA LAGOON
Keauhou, Kona—From \$59

Hawaii's top ROOM+CAR packages



For reservations and full information... see your travel agent or phone toll free
(800) 367-5004

Hawaiian Pacific Resorts

Shigeru Tomita, Pres./Akira "Flash" Fujiki, V.P.
1150 S. King St., Honolulu, HI 96814

Fine hotels on 4 islands.

Arizona to put on 3-month Japanese exposition

PHOENIX—"Behind the Mask: A Cultural Exposition of Japan," a 3-month exposition designed to provide a well-integrated approach to understanding Japan, gets under way on Feb. 2 and 3 with "Matsuri."

The Matsuri, offering exhibits, performances, and items for sale at Heritage Square and the Lath House, is open to the public between 11 a.m. and 5 p.m. each day. Scattered around the square will be exhibits of bonsai trees, koi, ikebana, dolls, origami, calligraphy and Japanese swords. Dem-

onstrations include dance, martial arts, music and a special kimono fashion show. The festival also includes a variety of items on sale to the public, including food, handcrafts, kites and novelties.

Utilizing over 10 different locations during the next three months, "Behind the Mask" presents a series of lectures, demonstrations, and exhibits on a wide variety of subjects, including Japanese literature, history, music, religion, philosophy, politics, crafts and arts, both traditional and modern.

A panel discussion on the Japanese American experiences in the Valley is scheduled for Thursday, Feb. 7, 7:30 p.m. at the ASU Memorial Union Pinal Room.

In addition, exhibits of Japanese pottery, photography, prints, and Kabuki images are scheduled. Performances include Yuriko Doi's Theater of Yugen from Portola Valley, Calif., on April 3, and Kabuki West from Pomona College in Claremont, Calif., on April 14.

A Japanese film series with discussions following is also scheduled. "The Men Who Tread on the Tiger's Tail" (Akira Kurosawa)

is set for Feb. 6; "Double Suicide" (Masahiro Shinoda) for Feb. 13; and "The Ballad of Nanyama" (Shohei Imamura) for Feb. 19.

"Mask" director Jean Micuda said that the Valley has a Japanese American population of about 5,000 and the project will recognize the contributions of these residents—many of whom came to the area during the internment years.

Participating groups include Arizona State Univ., the Bonsai Society, JACL, Japan America Society, Phoenix-Himeji Sister City, Phoenix Koi Club and Ikebana of Arizona.

Sponsors are ASU Centennial Commission; the Phoenix Parks, Recreation and Library Dept.; Arizona Humanities Council; Arizona Commission on the Arts; Consulate General of Japan in Los Angeles; Mitsui and Company (USA) Inc.; and NKK Switches of America, Inc.

Valley residents are asked to contact Dennis Petty, 965-1985, for information about the Matsuri, and to call 965-6911 for information about the "Behind the Mask" series.

Asian performing arts series opens

LOS ANGELES—The Japan America Theatre opened its 1985 winter/spring series last week with Samul-Nori, the virtuoso dance-drummers from Korea.

On Jan. 31 and Feb. 1, Kodo, the breath-taking taiko drummers from Sado Island, Japan, are back by popular demand after playing to sold-out audiences during the Olympic Arts Festival. Once again, they bring their 900-pound o-daiko drum.

For dance enthusiasts, Satoru Shimazaki presents a solo tribute to Michio Ito, one of the true pio-

neers of American modern dance who taught such dance luminaries as Martha Graham and Lester Horton. In his Los Angeles debut on Feb. 16, award-winning cho-

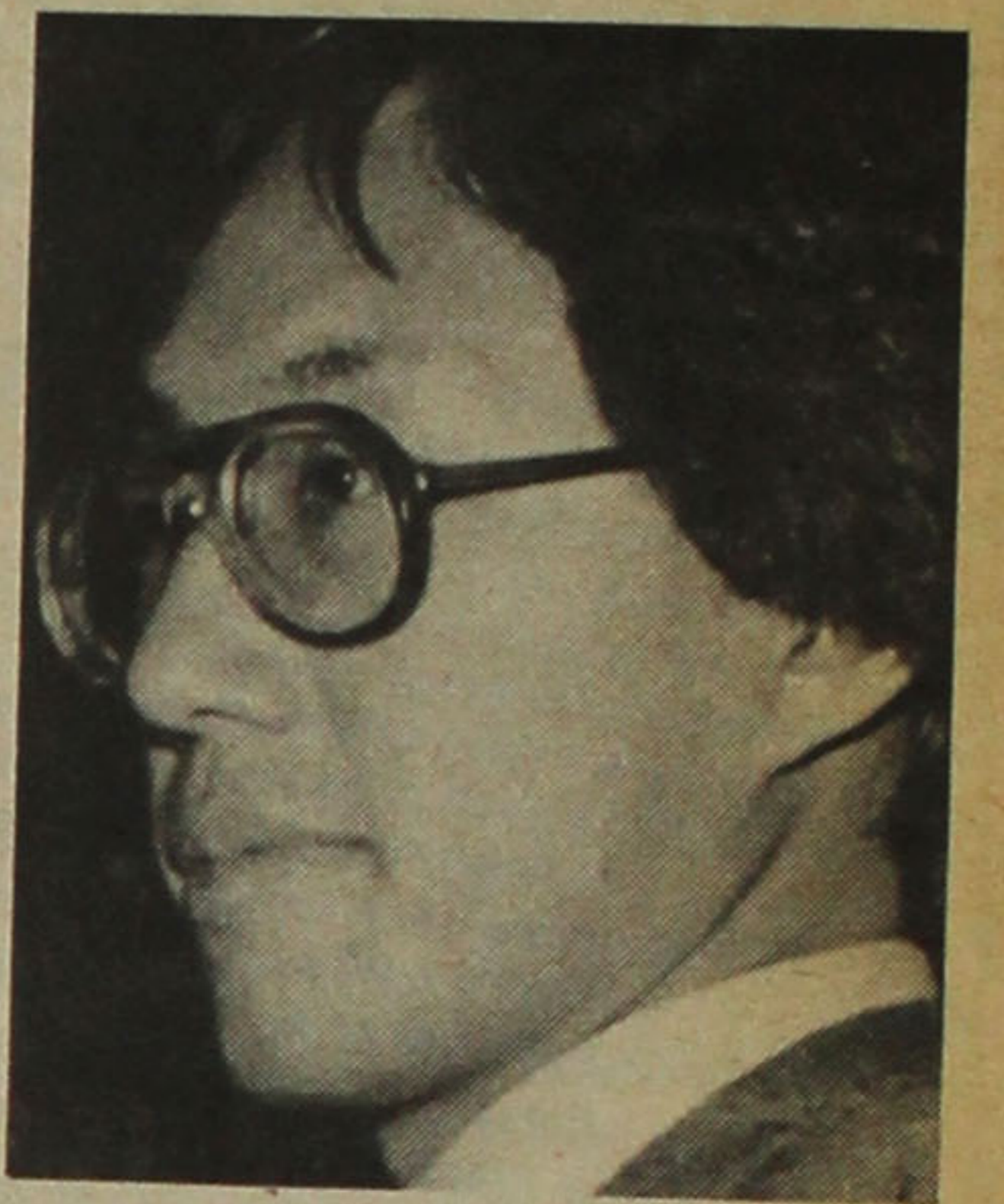
Continued on Page 6

Woo to try for city seat

LOS ANGELES—Mike Woo formally announced his candidacy for the Los Angeles City Council Jan. 14 at his campaign headquarters. The council race for the 13th District will be a rematch with Councilwoman Peggy Stevenson, who defeated Woo by two percentage points in a primary held four years ago.

Woo, 33, is a senior consultant to State Senator David Roberti and a member of various community organizations, including Leadership Education for Asian Pacifics (LEAP), Pacific Asian American Roundtable, and the Asian Pacific Caucus of the Democratic Party. If elected, he will be L.A.'s first Asian American city councilman.

The 13th District includes Echo Park, Hollywood, Los Feliz, and Silver Lake. Woo, whose plans in-



Mike Woo

clude the redevelopment of Hollywood and the preservation of Griffith Park, said that incumbent Stevenson "has lost touch with the people" and "is too close to special interests."

Community Affairs

OAKLAND, Calif.—To inaugurate its gallery space, the Ohana restaurant and cultural center features works of artists from the Kearny Street Workshop of San Francisco. The exhibit is open all hours that Ohana is open: lunches every day and through the evening hours Tuesday through Sunday. Information: 658-1868.

STANFORD, Calif.—Asian Pacific Student Union holds its annual conference on Saturday, March 2. Dr. Allan Seid, president of Asian Pacific American Advocates of California, and Mabel Teng, co-chair of the Chinese Progressive Assn., will give keynote addresses. Five workshops focus on politics, job prospects, art and identity, international affairs, and

racism. Information: Rachel Shigekane, 755 14th Ave., Santa Cruz, CA 95062; (408) 462-2472.

LOS ANGELES—Leadership Education for Asian Pacifics presents "Korea's Emerging Role in World Affairs" as a panel discussion with Bill Im, Dr. Eui-Young Yu, and Irene Choi on Thursday, Jan. 31, at Los Angeles Athletic Club, 6-9 p.m.. Tong Soo Chung moderates. Tickets for dinner program are \$17.50; students, \$15; at door, \$25. Reservations: J.D. Hokoyama or Larry Ng, (213) 743-4999.

The Downtown Chapter of the American Assn. of Retired Persons meets at JACCC, 244 S. San Pedro, Rm. 410, from 1:30 p.m., Monday, Feb. 4. Persons 50 and over are welcome. Information: 292-3165, 263-8469.

Foundation to train Asian/Pacific leaders

SAN FRANCISCO—The Coro Foundation is now accepting applications for a public affairs training course for leaders in the East Bay Asian/Pacific community. The program begins March 2 and ends Apr. 19. Application deadline is Monday, Feb. 4.

The program is designed to give Asian/Pacific community leaders an intensive, up-close introduction to public affairs decision-making in the Bay Area. It emphasizes hands-on training and the development of a broad understanding of how a city functions and how individuals and institutions interact to shape the public agenda.

The program includes sessions on seven Tuesday evenings, three Friday afternoons and three Saturdays. It is open to 12 individuals of Asian/Pacific background. Applicants must live or work in Alameda or Contra Costa county. A San Francisco-based program open to Asian/Pacific leaders in other Bay Area counties will be conducted in May.

To obtain an application, interested parties should write to the Coro Foundation, 1370 Mission St., San Francisco 94103, or call (415) 863-4601.

CARE



THERE ARE TIMES WHEN IT MEANS EVERYTHING

So near when care means so very much. Rose Hills offers the convenience of every needed service, including a flower shop and the caring guidance of an understanding counselor...all in a single visit. Dignity, understanding, consideration and care...A Rose Hills tradition for more than a quarter of a century. We think that's important.

So much more...costs no more
ROSE HILLS MORTUARY

at Rose Hills Memorial Park

3900 Workman Mill Road, Whittier, California
(213) 699-0921 • (714) 739-0601

Could you live on \$15.68 a day?

If you're planning to retire on your social security, you may find your golden years rather thinly plated. Today, the average person's benefits are \$15.68 a day.

At California First Bank, we think you deserve more. That's why we offer a choice of Individual Retirement Accounts that amply provide for your future. You also save money now, since your deposits are tax deductible.

The next time you're near one of our 131 branches, stop by. We'll be happy to find an IRA that's exactly right for you. After all, \$15.68 a day doesn't amount to much security.

CALIFORNIA FIRST BANK Member FDIC
The Right-Size Bank

Jidai-geki Terebi

EAST WIND

Bill Marutani



WE'VE WRITTEN BEFORE how we make a bee-line for Japanese movie houses whenever we're in San Francisco or Los Angeles. The fantasy nurtured since boyhood days of watching *chambara*, when a stoic swordsman of few words—ala Gary Cooper or John Wayne—flashed his *toh* in the name of righteousness and honor, still clings to us. But residing in these parts on the East Coast, where Japanese movies are available only years apart in one of the local "art" theaters, and where the New York stations are just far enough away that our rooftop aerial cannot pick up the signals on Sundays, when some station up in the Big Apple beams Japanese programs—well, it's somewhat like living in a fast-food hamburger joint and seldom seeing *chazuke-n-koko*.

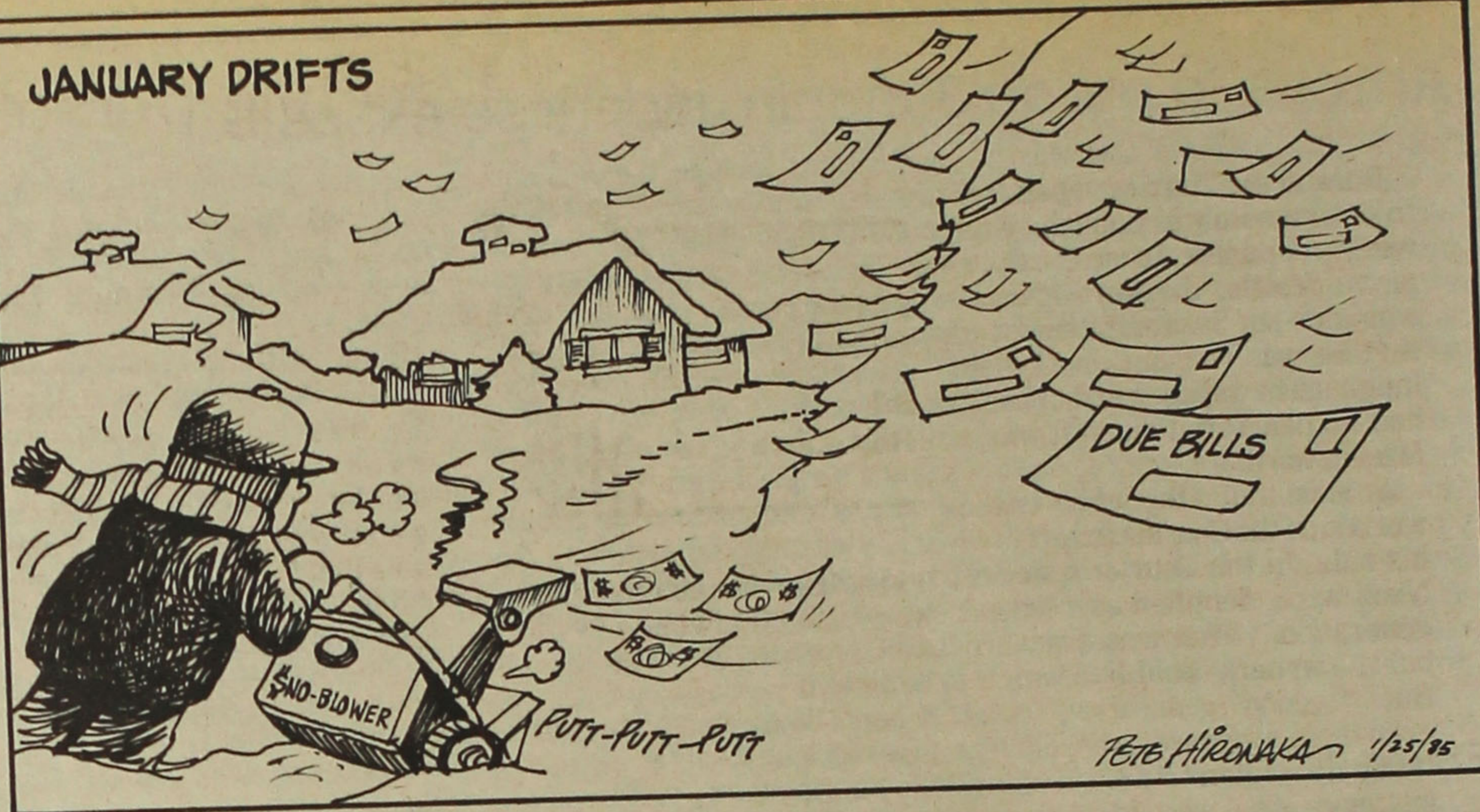
SPEAKING OF SWORDSMANSHIP, I'm reminded of the story of the champion U.S. Olympic fencer who had heard so much about the samurai swordsmanship of Japan that he travelled to Japan to see a demonstration by their three top swordsmen. The third-

ranking Japanese champion stepped forward; a teacup upside down on the table was lifted, whereupon a fly emerged and flew up. No. 3 drew his sword, slashed the air, and the fly fluttered to the ground in two pieces. No. 2 then stepped forward, the second cup lifted, upward went a fly—and the sword flashed twice—and the fly dropped in four pieces. Thereupon, the top-ranking swordsman approached, the third cup was raised, a fly buzzed out and *ichi-ban* swished the air with his sword. But the fly kept flying around. Puzzled, the Olympian queried: "No. 3 cut his fly in half; No. 2 cut his into quarters; yet your fly is still buzzing in the air." Whereupon *ichi-ban* turned to the Olympian and observed: "Hai, but that one mate no more."

Okay, so let me get back to the subject of *jidai-geki* on *terebi* ("period movies on television").

ON THE SUBJECT of *jidai-geki*, I've experienced one of those "good news, bad news" phases. The good news is that frau Vicki also enjoys these period movies and she stumbled across a place some 40 miles away which stocks VCR tapes of Japanese movies. So now she rents up to three or four at a time, and after dinner we'll sit down and enjoy a good ol' *katsudo-shashin*. The bad news part is that since I don't understand everything that's being said (and she does), I keep asking for an explanation. Which can be

JANUARY DRIFTS



PETE HIROUKA 1/25/85

mighty exasperating to her. While she's patiently explaining to me, both of us miss what is then being projected, so we both miss parts of the movie. If any of you have been to a theater where some yokel nearby keeps talking during the movie, you'll get an idea of what Vicki has to go through. In fact, worse: in her case, that yokel is sitting right by her ear.

A FEW YEARS ago, Vicki had a supply of tapes taken from Japanese television shipped from Japan. Eagerly, the layers of wrappings were peeled back, and we placed the first cassette on our Panasonic player—only to get squiggly lines and unintelligible garble. Chagrined, we had the player checked; it was o.k. We then had the tapes checked, and

none of them played except on an expensive Mitsubishi or Hitachi player. And there we were: stuck with two shipments of programs and a player that would not accept them. We broke down and bought the Hitachi. We gave away the Panasonic.

The most expensive *jidai-geki*'s I've ever seen, I'll tell you.

FREMONT

Continued from Front Page

a concession from UAW. It should reduce boredom and make it easier to change job assignments. Workers are urged to make "creative suggestions"; morning calisthenics are voluntary, however.

Structure of NUMMI

Basically, Toyota and the UAW will produce the cars, and Chevrolet will market them. Of the \$250 million invested in the reopening, GM invested \$20 million plus the site. Toyota supplied the rest. Nova is a subcompact, front-wheel-drive auto similar to the Toyota Corolla. The drive train (transmission and engine) is Japanese; the other parts, American made. The top management is hired by Toyota, and the production is by Toyota. The board of directors is one-half Toyota, one-half GM.

Objections Voiced

Objections to this joint venture have come from Chrysler and Ford, both charging that the deal violates anti-trust laws. Chrysler has a suit pending.

Others argue that the plant does little to boost the ailing American heavy industries. Because the drive train is built in Japan, some critics contend that very little is being done to build up the industrial base that the U.S. sorely needs. Americans will be assembling parts machined overseas, so the argument goes.

But a plant expected to account for only 2% of the total automobile sales in the United States cannot be expected to change the industrial base in the U.S. What the critics are nervous about are the trends in the American automobile industry. Already, Mazda has announced that it will open a plant at an abandoned Ford plant in Flat Rock, Michigan, just outside of Detroit. Some of the cars will be marketed through Ford.

And like NUMMI, Mazda has decided to hire union workers. Said Kazuhiko Hoshino, one of Mazda's managing directors, the decision to recognize the UAW came after "frank discussions" with UAW executives.

Mitsubishi Joins the Parade

And last month, it was announced that Mitsubishi Motors will also open a plant in the Midwest, probably in Illinois, Indiana, Ohio, or Kentucky. According to Toyoo Tate, president of Mitsubishi Motors Corp., MMC would not operate the plant alone, but declined comment on the possibility of joining hands with Chrysler. At present, Mitsubishi manufactures the Colt and a few other cars for Chrysler.

Harvard economist Robert Reich, writing in the Feb. 27, 1984 issue of the *New Republic*, states:

The overall strategy is clear. It is the same strategy that underlies Japan's recent, rapid shift into aircraft engines, video cassette recorders, telecommunications devices, and personal computers. These products are launching pads for gaining scale and experience in the world's newest technologies. Attaining immediate profits from these products is less important than becoming the largest and most experienced world practitioners of the advanced methods which lay behind them. A Japanese labor force so attuned will easily come to dominate the highest-valued portions of any global industry. There is nothing sinister about this; consumers all over the world continue to benefit from Japan's advances... Viewed in this light, the Japanese automobile strategy is part of an overall national strategy by which the Japanese

will become the design engineers for the world.

In the same way that the American consumer electronics industry has given up competing with the Japanese, the automobile industry is about to do the same.

Toyota Objectives

It must be remembered that Toyota will not have much to gain economically from this venture. While GM shares one-half the profits for \$20 million invested (normally, a new model costs \$100-200 million to produce), Toyota objectives may be more subtle. Sankei Shimbun deputy foreign news editor Jun Kusano claims that Toyota's objectives are more strategic than economic. Quoting a Toyota source, Kusano says that reviving a GM factory may soften protectionist sentiment in the United States. Also, by marketing the car through Chevrolet, Toyota expects to help "blunt opposition to Japanese auto imports." In addition, Toyota's investment now will pay off in a work force of engineers and designers better able to innovate in the future.

NUMMI will test how well unionized workers perform under the Japanese management system; it will also be testing how adaptive that system is, for there are signs that it needs some attention.

'Lifetime Employment a Myth'

Management books have earlier suggested that Japan's system of lifetime employment, company trade unions, company loyalty, seniority-based wages together with a workaholic work force has produced the Japanese "miracle." Some analysts, like Prakesh Sethi, Nobuaki Namiki, and Carl Swanson, in their book, "The False Promise of the Japanese Miracle," suggest that the Japanese success has been achieved at "enormous cost to the Japanese people and their environment." They charge that the system blatantly discriminates against

Continued on Page 12

New Typesetter Is Here!

Three boxes airshipped from New York have occupied one corner of the PC office since early December, having come during the Holiday Issue blitz. This past week, a technician from Allied Linotype came to uncrate and hook up the CRTonic 200 digital typesetter and the Diablo 630 printer—the items being purchased from the PC typesetter fund.

This week (Jan. 21-25), two PC staffers are attending classes to learn how to operate the new equipment. One more attachment—a communication interface

board—is to be inserted, enabling the typesetter to accept data from other word processors in-house or by modem from the outside.

* * *

The first half of the campaign to attain \$40,000 has been attained, with \$21,000 received since the fund drive was started in July 1984. The completion of the second half of the campaign within the next few months will be one of the happiest accomplishments in PC's 55-year history. The staff thanks everyone who has already contributed and those who are about to.

—HKH.

ISSN: 0030-8579



pacific citizen

Nat'l JACL Headquarters, 1765 Sutter St., San Francisco, CA 94115, (415) 921-5225

Published by the Japanese American Citizens League every Friday except the first and last weeks of the year at 244 S. San Pedro St., Los Angeles, CA 90012; (213) 626-6936 • 2nd Class postage paid at Los Angeles, Ca. Annual Subscriptions—JACL members: \$10.00 of national dues provides one-year on a per-household basis. Nonmembers: \$18, payable in advance. Foreign addresses: Add U.S.\$8 • News or opinions expressed by columnists other than JACL staff do not necessarily reflect JACL policy.

OFFICERS

Frank Sato, Nat'l JACL President
Dr. Clifford Uyeda, PC Board Chair

EDITORIAL / BUSINESS STAFF

Editor: Karen Seriguchi
Advertising: Jane M. Ozawa
Circulation:
Typesetting: Mary Imon
Gen Mgr./Operations:
Ass't Editor: Bob Shimabukuro
Edit. Ass't: J.K. Yamamoto
Tomi Hoshizaki, Mitsuko Sakai
Mailing: Mark Saito
Harry K. Honda

POSTMASTER: Send address changes to Pacific Citizen, 244 S. San Pedro St., #506, Los Angeles, CA 90012.

Labeling Ourselves

Back in the Thirties, when Jimmie Sakamoto was publishing the weekly Japanese American Courier in Seattle, the word "Nisei" was a no-no. Sakamoto reasoned that he was running an English language newspaper and "Nisei" had no place in it since it was a foreign word.

At least that's the way we who worked on the Courier interpreted his rule. In the Courier's stories Nisei were identified as "second generation." That was awkward but the writers could live with it. But "second generation" was even more awkward in headlines. It simply wouldn't fit. So in many instances Nisei were identified in headlines as "youth." That was accurate, all right, since Nisei in those times certainly were young. But it was a stilted use of the word

FROM THE
FRYING PAN:

Bill
Hosokawa



and no one was happy with it. Still, we couldn't find a better word. We were stuck with "youth."

Since those days "Nisei" has become an accepted part of the English language. It appears in my Webster's Third New International: "(Jap, lit., second generation, fr. *ni* second + *sei* generation): a son or daughter of issei parents who is born and educated in America and esp. in the U.S.—

distinguished from *kibei*, compare *sansei*."

But just about the time "Nisei" became accepted, they are vanishing from the American scene. Sansei, Yonsei and Gosei are taking over. In the sense that Nisei means Japanese Americans, the word has been applied to later generations. But it is understandable that Sansei, Yonsei, et al consider the term inaccurate. I also gather that many prefer not to be confused with a generation which they regard without great admiration.

Some of the Japanese American press, including Pacific Citizen, have adopted the term "Nikkei" to apply to Japanese Americans. Sound okay? Well, aside from its unfamiliarity, there are more basic objections which have

been voiced by Glen S. Fukushima, a graduate of Gardena High School, Stanford and Harvard Law School, a Fulbright Fellow at the University of Tokyo, and now an attorney in Los Angeles (See Jan. 18 PC).

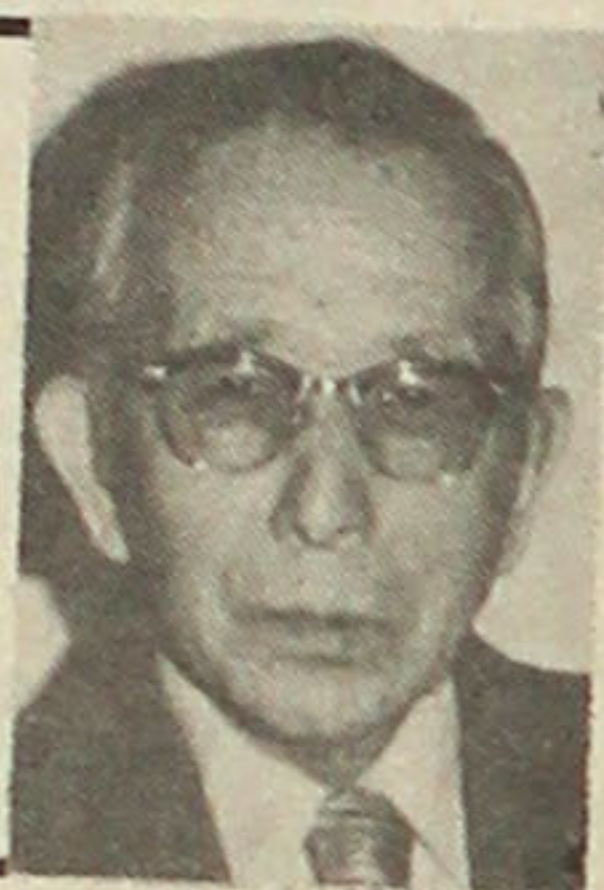
"Whereas 'Japanese American' denotes 'American citizen of Japanese ancestry', Fukushima writes, "'Nikkei' merely denotes 'related to Japan' or 'of Japanese ancestry'. Clearly, much is lost by using the latter term. I seriously question whether this emphasis of ethnicity over citizenship is in the best interest of Japanese Americans—either for our future or for properly understanding our role in American history.

"Nikkei is never used as a noun in Japanese to refer to an American of Japanese ancestry. The

proper term is 'Nikkei Amerika-jin' . . . In fact, using Nikkei in Japanese can be confusing because the term encompasses anything outside of Japan related to Japan. Thus 'Nikkei kigyo' is routinely used to mean Japanese-owned companies operating abroad. Similarly 'Nikkei bijunesuman' more often refers to Japanese nationals than to Japanese Americans. The word 'Nikkeijin' is used as a noun, but this too when used alone is ambiguous inasmuch as it makes ethnicity rather than citizenship its defining characteristic."

An impressive explanation. Obviously 'Nikkei' as used by the Japanese American press is an inaccurate use of the term. But is there a better one that's accurate, understandable and acceptable?

MOSHI
MOSHI



by
Jin Konomi

One autumn day the lord of Matsuyue went on a horseback excursion into the suburbs (of Edo). After many miles of unconfined galloping and cantering in the wide open country he was beginning to feel hungry when, as he passed a farmhouse, he smelled a most tantalizing odor. On a sudden impulse he entered the yard.

Behind the house by the kitchen door, he saw a woman squatting before a *shirchirin* (portable charcoal brazier). Some fish were broiling on the grill, and thick, blue smoke rose from the fire. The tantalizing odor filled the air. He summoned his attendants, who had been following him at a respectful distance. He told a page to order the woman to serve him luncheon, with the wonderful smelling fish.

The woman balked at first at such an outrageous demand, for she was nobody's servant, certainly not of the stranger making the demand. After much cajoling by the page she was finally persuaded. She set his lordship on the kitchen verandah and served him an impromptu luncheon of fresh cooked rice and the fish hot off the grill. It was the most delicious meal his lordship had ever had in his life.

After thanking and rewarding the woman (not personally, of course) he rode on. He learned the fish was called *samma*, and the place he had this heavenly repast was Meguro.

Shortly thereafter his lordship met his friend, lord of Kokura, in the Edo Castle, where he was in attendance on the shogun as required by protocol. He could hardly contain himself in his eagerness to talk about his gourmet adventure. He waxed euphoric as he drooled over the memory of the most delicious *samma* of Meguro. Lord Kokura swallowed the story whole. He was angry that

such a delicacy had been denied him. So as soon as he went home he had his steward issue an order to the cook to serve him *samma* as soon as possible.

The cook was in a quandary. *Samma* was one of the lowliest fishes, deemed totally unsuitable to serve to such an exalted personage as his lordship. As he had never handled it, he did not know what to do. So he proceeded in his usual *haute cuisine* manner. First he steamed the *samma* to remove the oil; then he had his helper pull out all the fine bones, one by one, with tweezers; then he marinated and broiled it.

Lord Kokura was sadly disappointed. The *samma* was even flatter than the other fishes to which he was daily accustomed.

At the next palace attendance, Lord Kokura told Lord Matsuyue how disappointed he was with *samma*. Lord Matsuyue asked: "But where did your cook get the *samma*?" "At the Uogashi, of course," answered Lord Kokura. "Ah, so," smiled Lord Matsuyue, smugly. "No wonder. *samma* has to be from Meguro. That's the only place you can get real *samma*!"

* * *

Above is a barebone synopsis of the classic *rakugo*, "Tonosama no *samma*." Its intent obviously was to get laughs at the expense of the *tonosama's* ignorance and naive unworlidity. Though the episode is not unbelievable, it is rather far-fetched. Its *sage* (I will explain later) is not blatant but rather low-key, and its humor is droll and mild. The story's perennial popularity would seem to indicate that the common people enjoyed poking fun at the *species tonosama*.

All *rakugo* end in a *sage*, also called *otoshi*, or *ochi*, corresponding to the punch line. The *sage* of this story is that Meguro is miles from the sea.

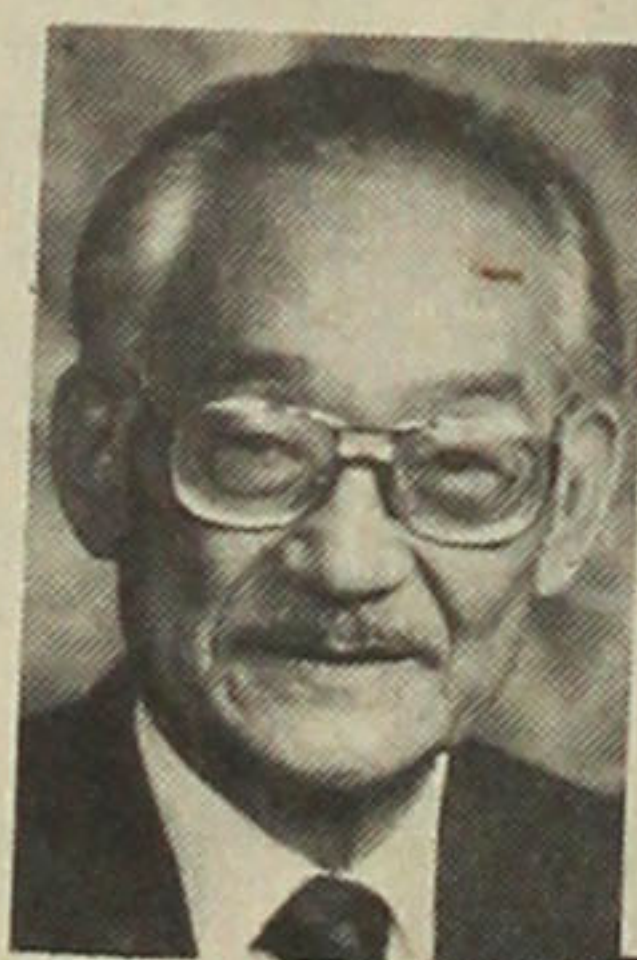
The English name for *samma* is saury or mackerel pike; the

A Tonosama Story

latter is more descriptive. It looks like a small pike and tastes like mackerel. A seasonal fish, its prime is early autumn. Traditionally it has been held in low esteem because of its abundance and cheapness. But it is probably one of the most delicious fishes of Japan's coastal seas.

The mention of *samma* brings back memories and longing for another taste of this fish. (Japanese groceries have frozen *samma*, but I haven't tried it yet). In my childhood-adolescence in the height of its season, the evening air of the neighborhood was heavy with the charac-

teristic blue smoke rising from countless *shichirin*, charged with the most unbearably tantalizing smell in the world. I can understand why Lord Matsuyue thought the *samma* of Meguro the most heavenly taste he enjoyed in his life. This also I want to explain in a later article.



REDRESS
UPDATE:
Minoru Yasui,
Chair
Legislative
Education
Committee

Dr. Arthur S. Flemming was a most conscientious member of the U.S. Commission on Wartime Relocation and Internment of Civilians (CWRIC). He has served as Secretary of HEW, president of several universities and colleges, Commissioner on Aging, Chairman of the U.S. Civil Rights Commission, and has held a number of other positions of power and influence at high levels. He is a longtime, experienced practitioner in government circles. In a word, he is a "pro."

Now, though he is age 78, he is a vigorous, dynamic person—still going strong! He actively chairs several national citizens committees on civil rights. He is keenly concerned about redress. He believes that a mass movement of citizens is needed to prod Congress to taking any action on redress. Unless members of Congress are convinced that most Americans feel strongly that such aberrations as forced removal and detention of individuals without charges should never again occur—we will be a long, long time (maybe never) in achieving redress.

Dr. Flemming points out that the miniscule Nikkei population in the United States cannot ac-

complish redress by themselves. Our numbers and our direct influence is much too small. We must move other individuals and groups to make redress their cause, too, because it *could* adversely affect the future for all of us.

Interest in issues of evacuation, relocation and detention will not last forever. The CWRIC report and recommendations in 1983 got nationwide coverage. Last summer, subcommittee hearings attracted some momentary attention—and a lot of opposition. We must keep the issues alive by networking and by building coalitions with non-Nikkei groups across the country.

Personal contacts and individual involvement with other groups are essential. No one will help us, unless we ourselves are willing to participate in the activities and causes of other groups. Nikkei must concern themselves with local community, state, regional, national and international issues, too. As we contribute to other causes, with our sincere efforts, so we can expect others to contribute and support our redress cause.

Each of us are members of other groups. Through our participation in other organizations, we have opportunities to persuade such groups to support our cause. For example, Vi de Cristoforo of Salinas persuaded the local teachers group to pass a re-

solution supporting redress. Ultimately, the national organization of teachers endorsed redress. Further, Leslie K. Furukawa and other Asian attorneys in the Los Angeles area proposed that the State Bar of California support redress—and by dint of a great deal of effort and effective lobbying—persuaded the State Bar of California to support redress. Similarly, in Seattle, Cherry Kinoshita and others persuaded Mayor Charles Royer to push through a favorable resolution at the National League of Cities conference recently held in Indianapolis. We need to multiply these examples a thousand-fold!

Nationally, a prestigious citizens' coalition for redress, Americans for Personal Justice, was initiated in Washington, D.C., a couple of years ago. It needs to be activated, so that it is nationwide in scope. Individual members of the coalition need to be motivated to speak out on behalf of redress across the country.

You can help (1) by participating in local organizations, and pushing for expressed support of redress, and (2) by suggesting names, addresses and telephone numbers of influential individuals well-known at regional levels who might participate in a national citizen coalition for redress. Your personal knowledge and your contacts with individuals and organizations are keys to a successful drive.

Support from Others

Takasugi Responds Judiciously

CITY OF COMMERCE, Ca.—U.S. District Court Judge Robert Takasugi fielded questions from the audience to highlight the 1985 East Los Angeles JACL installation dinner Jan. 12 at Steven's Steak House.

Rather than deliver a prepared address, the one-time National JACL legal counsel responded to questions regarding the recent DeLorean case, his personal experiences with the polygraph (lie detector), civil rights cases in his eight years on the federal bench, and upcoming cases before him, especially the "M" Club.

Douglas K. Masuda, Esq., was re-elected to his seventh consecutive term as president—a chapter record which he said was possible only because of the excellent and cooperative board around him:

Officers: Dean Aihara, vp; Milton Noji, vp; Angela Kato, vp; Yuri Shimamoto, sec; Deena Tokuda, sec; Byron Baba, treas; Mas Dobashi, 1000

Club; Mable Yoshizaki, publ & dist del; George Yamate, ins.

Board: Mattie Furuta, Miki Himeno, George Ige, Sid Inouye, June Kuri-su, Takeshi Matsumoto, Brian Minezaki, Michael Mitoma, Michi Obi, Robert T. Obi, Sue Sakamoto, Mike Taketani, Ron Tsuji, Min Yoshizaki.

Also honored were the 1984 high school scholarship winners:

Arthur Akinori Hashizume, Roosevelt High; Patricia Hazama, Montebello High; Lisa Ann Nakama, Alhambra High; Sean Suzuki, Schurr High; Cynthia Yukiko Takahashi, Mark Keppel High; Raymond Makoto Uyemura, Wilson High.

Heading the dinner committee were Michi Obi and Mabel Yoshizaki, both "M" Club stalwarts. Others in the club are Mattie Furuta, Mas Dobashi, Miki Himeno and Milton Noji.

Edward Himeno was emcee. Miki Himeno was installing officer. Rev. Russell Hamada, Sansei priest at Nishi Hongwanji, gave the invocation and benediction.

A special treat to close the dance segment of the series is the week-long residency of post-modern choreographer Kei Takei and her 11-member company Moving Earth. As one of today's most provocative and innovative artists, Kei and her company will present the U.S. premiere of "Light 20," her latest piece in a continuing "Light" series which began in 1969. The two performances on May 24 and 25, along with workshops in the community, will end her month-long tour of Japan and the United States.

The last in the series is the Los Angeles premiere of a new work by the legendary Indian sitarist Ravi Shankar. With an all-star ensemble of fine musicians from home and abroad, this program on June 7 and 8 treats audiences to his latest work which fuses traditional Indian themes with Japanese instrumentation on *koto*, *shakuhachi*, *shamisen*, and *taiko*.

All performances begin at 8 p.m. Tickets may be purchased at 244 So. San Pedro Street in Little Tokyo. Information and charge-line sales: 680-3700.

SERIES

Continued from Page 3

reographer Shimazaki will offer a program of his original works as well as from the repertory of Ito.

A showcase of Asian American dance on March 16 combines the unique styles of the San Francisco-based June Watanabe Dance Company and emerging Los Angeles choreographer Heidi Ashley. June Watanabe, a former member of the Gloria Newman Dance Theatre, presents a broad spectrum of style with her creative use of music as counterpoint to her choreography. Heidi Ashley is a fourth-generation Japanese American whose works reflect her devotion to traditional Japanese art forms and contemporary influences.

Another Los Angeles debut on April 13 is Saeko Ichinohe & Company. She creates works based on Japanese folk tales and legends, blending influences from the East and West. A winner of several choreography awards, her repertory has been performed by companies such as the Boston Ballet and Joffrey II Dancers.

HARASSMENT

Continued from Front Page

his job at a Grand Ledge gas station and is thinking of moving.

Local Asian American groups which had been involved in the Vincent Chin case began to take action immediately after the attack was reported in Michigan newspapers. Members of Assn. of Chinese Americans (ACA) contacted the Tien family. American Citizens for Justice (ACJ) notified the FBI and the U.S. Dept. of Justice; a preliminary FBI investigation is under way. Asian Americans living near the town are mobilizing to attend the court proceedings.

Asian American leaders from different parts of the state met with Tien, his family, and local officials Jan. 9 to try to deal with the situation. In attendance were ACA president Frank Chen; Andy Wong, a national officer with Or-

ganization of Chinese Americans (OCA); ACJ secretary Roland Hwang; and Dan Dizon of Asian Pacific American Council. They learned that the Tien family had been subjected to several prior incidents of harassment and violence. The group also spoke with a state civil rights officer, Al Stine, who was investigating on behalf of the state.

Community Reaction

Grand Ledge church leaders have been meeting to see how the racial agitation can be countered, and some businessmen have offered Tien other employment.

In spite of the concern voiced by Asian Americans and others throughout Michigan, Grand Ledge officials downplayed the incident. Mayor Lou Gentry and City Manager Ron Lee, who is of

Chinese descent, stated that this was an isolated incident rather than a reflection of possible racial tensions in the area. The Eaton County prosecutor handling the case against the four men indicated that he would not try to bring out the racial circumstances surrounding the crime.

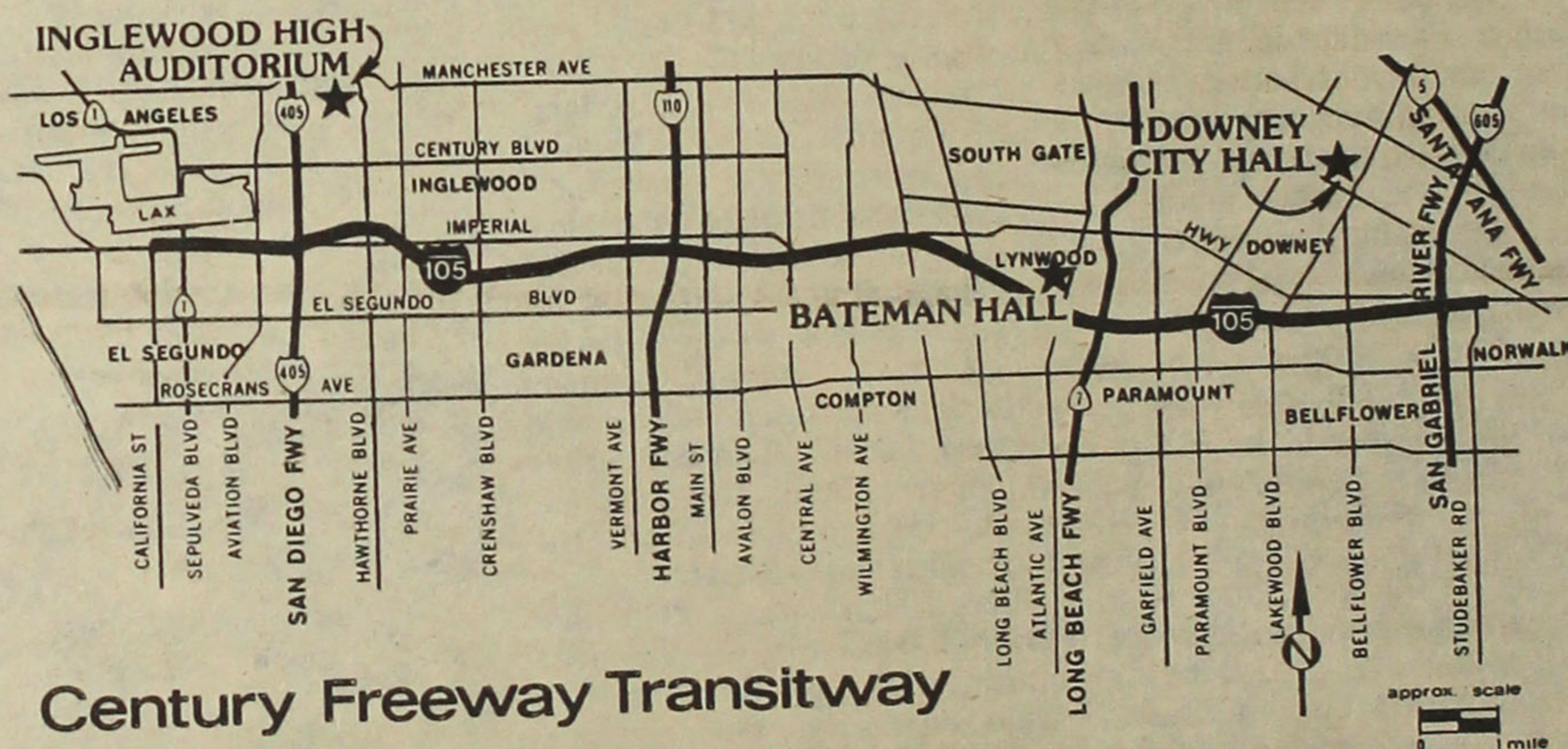
Local Asian Americans see similarities between the attack on Tien and the 1982 killing of Vincent Chin by two whites who apparently had hostile attitudes toward Asians.

Asian American organizations have vowed to do whatever is necessary to assist Tien and provide moral support. "Everybody responded right away," said Chen. "I think we all recognized that we want to prevent another Vincent Chin case from happening. Right now, we're giving the wheels of justice a chance to do the right thing. But we also let them know we are concerned."



PUBLIC HEARING

Caltrans will be holding three Public Hearings concerning an Employment Study for the I-105 Century Freeway Project.



Century Freeway Transitway

This study provides Caltrans with proposed goals for employing minorities and females to work on the I-105 project. The purpose of the hearings is to gather public comments on the study findings. A Spanish translator will be available at each of the hearings.

Locations	Dates & Times
Inglewood High Auditorium 231 So. Grevillea Ave. Inglewood, CA	February 19, 1985 7:00 P.M. to 9:00 P.M.
Bateman Hall 11331 Ernestine Ave. Lynwood, CA	February 20, 1985 7:00 P.M. to 9:00 P.M.
Downey City Hall 11111 Brookshire Ave. Downey, CA	February 21, 1985 7:00 P.M. to 9:00 P.M.

These findings and hearing comments will be analyzed for use in preparing revised Equal Employment Opportunity goals for minorities and females.

The Employment Study Report is available for viewing or purchase between the hours of 7:30 A.M. and 4:00 P.M. at:

Caltrans
Century Freeway Civil Rights Branch
120 South Spring Street, Room 3-5G
Los Angeles, CA 90012

Copies are also available to read in the following locations:

Inglewood I-105 Information Office at 3520 W. Imperial Highway, Downey I-105 Information Office at 8830 Imperial Highway and CFAAC at 2610 Industry Way, Lynwood.

If you wish to comment on the study, please submit your written comments before March 8, 1985 to Caltrans, District 7, Century Freeway Civil Rights Branch, c/o Court Burrell, Chief, I-105 Construction & Civil Rights, 120 South Spring Street, Los Angeles, CA 90012.

JOIN

the National JACL
Credit Union. Just fill
in below and mail.

I am interested in joining. Please send me your informational brochure.

Name _____

Address _____

City/State/Zip _____

PO Box 1721 / Salt Lake City, Utah 84110
Telephone (801) 355-8040

Reflections on a Former Home

An article describing the moving of the Seattle Japanese Evangelical Church and its dedication at the Meiji-mura Museum ran in the PC Nov. 9.

by the Rev. Seiichi Michael Yasutake

EVANSTON, Ill.—Our family home for 12 years (from 1930 to 1942) in Seattle, Washington, was dedicated as a museum in Meiji-mura (Meiji village) near Nagoya, Japan, on Oct. 21, 1984. The house in which all four Yasutake children grew up was taken apart board by board and reconstructed beside over 50 other Meiji era structures at the 250-acre museum site. The house was on top of Beacon Hill in Seattle (1312 Massachusetts St.) and it was relocated in Meiji-mura on top of a hill overlooking the large expanse of beautiful Lake Iruka.

Present at the dedication ceremonies were my mother, Hide Yasutake, my two brothers, Toshio and Joseph, and myself. Because of commitments at home, my sister, Mitsuye May Yamada (in Orange County, Calif.), was unable to attend.

The house was dedicated as the Japanese Evangelical Church. The building had been used as a church since 1949 (when our family sold the house) and was donated to Meiji-mura by its owner, Mrs. Kimiko Motoda, who expressed her pleasure in making this contribution during the dedication ceremonies.

Some 120 people attended the dedication, and many others sent congratulatory messages. President Ronald Reagan wrote that our former house "provides both an opportunity to recognize the strong ties between the United States and Japan and the enormous contribution made to America by the Issei and their descendants."

Congratulatory Messages

Japanese Foreign Minister Shintaro Abe wrote of the contribution made by the Japanese immigrants in Seattle in advancing relations between Japan and the United States. Congratulatory letters included those from Nikkei con-

gressmen Robert T. Matsui and Norman Y. Mineta, and senators Daniel K. Inouye and Spark M. Matsunaga.

Matsui referred to the building as "a reminder of the many threads which intertwine the Japanese and American cultures and histories." Matsunaga, paying tribute to our father, noted that "the house was for many years the home of Jack Kaiichiro Yasutake, a highly respected leader in Seattle's Japanese American community."

* * *

After the ceremonies, we toured the building with its four bedrooms and a bathroom upstairs, a large parlor and dining room combination (used as the worship sanctuary by the Issei church congregation), kitchen and pantry downstairs, and a large entrance hallway by the front door. The full basement is to include the *furo*, which was imported to Seattle from Japan and was now being brought back with the house! The house was almost as we left it when we were "evacuated" in April 1942.

As the touring party entered the front entranceway, my mother recounted to Chubu Nippon TV News how two FBI agents made their way to that very entrance hallway to arrest my father on Dec. 7, 1941.

In response to a question by the TV interviewer as to what was uppermost in my mind, I recalled my feeling at the end of the war: that the devastation had finally ended and the question of which nation won the war no longer seemed relevant.

It was difficult not to be moved to tears by those vivid memories of wartime fear and anxiety in that very house, which was located in the land with which the U.S. had been at war. During this brief house tour, all these memories flooded our minds as family members talked about various rooms and household items preserved from those years.

There are two other overseas structures relocated in Meiji-mura. One is the

former Japanese Congregational Church from Hilo, Hawaii, and the other is the former house of Yasuo Kubota in São Paulo, Brazil.

In a separate building, there was a whole floor of displays of photographs, family journals, and books, including our sister's *Camp Notes and Other Poems*. Other items of interest depicting the life of the Japanese residents in the U.S.—in homes, schools, temples, churches, *kenjinkai* gatherings, and in camps—were also on display.

To our surprise, we saw that a group picture of Issei men in a Missoula, Montana "internment camp" included our father, who had been confined there at one time.

Meiji-mura Officials

The Yasutake family along with Mrs. Motoda was honored by Meiji-mura officials before and after the ceremonies, in particular by Dr. Masaru Sekino, director of Meiji-mura; Suemichi Tsuchiya, director of the Tokyo office; Dr. Juro Kikuchi, architect and historian; and Masatoshi Nishio, the architect who supervised the transportation and reconstruction of the house at Meiji-mura.

JACL was represented by Ken Nakano, Boeing engineer and resident of Kirkland, Wash., who, as a bilingual JACLer and chair of its international relations committee, worked out the final details of getting the house transported to Meiji-mura.

Accompanying Poem

One of the poems written by our sister Mitsuye in *Camp Notes and Other Poems* vividly brings back to my mind this former Beacon Hill house as "our hilltop home in Seattle overlooking the valley."

This poem, "Bedtime Story," is striking in its contrast of perceptions of society by the Issei father and his Nisei daughter.

For the Issei father, this beautiful Japanese legend expresses his gratitude for the little joys in the midst of the hard, cold world of Caucasian society in which the Issei are regarded as aliens. For the little Nisei girl, the perception of society is more success-oriented and the story has

no point. Thus, her quizzical question: "Is that the end?"

The poem, I conjecture, was composed in the house which now sits atop a hill overlooking Lake Iruka in Meiji-mura.

A Bedtime Story

Once upon a time,
an old Japanese legend
goes as told
by Papa,
an old woman traveled through
many small villages
seeking refuge
for the night.
Each door opened
a sliver
in answer to her knock
then closed.
Unable to walk
any further
she wearily climbed a hill
found a clearing
and there lay down to rest
a few moments to catch
her breath.

The village town below
lay asleep except
for a few starlike lights.
Suddenly the clouds opened
and a full moon came into view
over the town.

The old woman sat up
turned toward
the village town
and in supplication
called out
Thank you people
of the village,
if it had not been for your
kindness
in refusing me a bed
for the night
these humble eyes would never
have seen this
memorable sight.

Papa paused, I waited.
In the comfort of our
hilltop home in Seattle
overlooking the valley,
I shouted
"That's the end?"

Copyright 1976 by Mitsuye Yamada

Books from Kodansha / Japan Publications

By special arrangement with Kodansha International/USA, the Pacific Citizen offers popular titles of books about Japan and Asia on a "direct shipment" basis. Some books are on display only at the PC Office.



JAPAN PUBLICATIONS
(March Paperbacks)

(April Paperbacks)

- The Macrobiotic Health Education Series: Diabetes & Hypoglycemia.** by Michio Kushi, ed. by John David Mann. Introduction, explanation to origin, causes and symptoms of disorders; the macrobiotic approach to prevention; case histories. 128pp, 5 1/2 x 8 1/2", 25 diagrams & illus., \$6.95.
- Laceworks.** by Nihon Vogue Staff. A marvelous collection of crochet from a skilled artist-designer. 74pp, 8 1/2 x 10 1/4", 34 color, \$8.95.
- Aikido.** by Kisshomaru Uyeshiba. The authoritative, profusely illustrated introduction to a martial defense system, written by the son of its founder. 190pp, 7 1/2 x 10 1/2", over 500 photos, \$15.95.
- Cancer & Heart Diseases: The Macrobiotic Approach to Degenerative Disorders.** Revised Ed. by Michio Kushi with Robert S. Mendelsohn, M.D., et al. An anthology of articles relating to diet to disease with a chapter on new directions in preventive medicine and case studies. 192pp, 7 1/4 x 10 1/4", 30 illus., \$13.95.
- Macrobiotic Diet.** by Michio & Aveline Kushi. A general and non-scientific introduction for the layman on the importance and effectiveness of a balanced, natural diet. (Previously announced by July 1983) 224pp, 7 1/4 x 10 1/4", 30 illus., \$13.95.

KODANSHA (JANUARY '85)

- Before It Is Too Late.** by Aurelio Peccei & Daisaku Ikeda, edited by Richard Gage. This vigorous dialogue between two world leaders casts vivid light on man's condition in the world today. 172pp, 6 1/4 x 8 1/2", \$14.95.
- Freedom of Expression in Japan: A Study in Comparative Law, Politics and Society.** by Lawrence Bear. The first book in English that comprehensively examines the status of freedom of expression in Japan. 416pp, 7 1/4 x 10 1/4", \$50 (* short discount).

KODANSHA (FEBRUARY '85)

- The Roots of Wisdom: Saikontan** by Hung Ying-Ming, tr. by William Scott Wilson. For nearly 400 years, these poems have inspired and guided those in responsible positions, especially those in business. 136pp, 5 7/8 x 8 1/2", 12 b&w sketches, \$15.95.

- Reader of Handwritten Japanese.** by P.G. O'Neill. A complete self-study course that shows the student how to develop skill in reading a variety of handwriting styles. Only book of its kind. \$25.00 (* short discount).
- The Art of Central Asia: Stein Collection in the British Museum Vol. 3 Textiles, Sculpture and Other Arts.** by Roderick Whitfield. This current, and last, volume of a magnificent limited edition series presents a seldom seen selection of a famous collection (previously announced in Nov. 1983). 340pp, 10 1/2 x 14 1/2", 200 color, 64 b&w; **\$375 until Apr 30/85; **\$425 thereafter (** non-returnable). NOW AVAILABLE: Vol. 1—Paintings from Dunhuang I \$425*; Vol. 2—Paintings from Dunhuang I \$425*

KODANSHA (APRIL '85)

- The Fall of the House of Nire** by Morio Kita, tr. by Dennis Keane. "A triumph of a novel... One of the most important of the postwar period."—Yukio Mishima. 240pp, 5 7/8 x 8 1/2", \$16.95.
- A Place Called Hiroshima** by Betty Jean Lifton, photos by Eiko Hosoe. What Hiroshima was like immediately after the bombing. First published in 1970 and revised for the 40th anniversary. 112pp, 7 1/4 x 10 1/4", 70 b&w photos, \$15.95.

KODANSHA (Paperbacks)

- Opulence: The Kimonos and Robes of Itchiku Kubota.** tr. by Emma Farber. The first book in English about a sensational Japanese fashion designer and textile craftsman. 148pp, 10 1/4 x 14 1/4", 115pp in color, \$29.95.
- Good Tokyo Restaurants** by Richard Kennedy. A guide to the best restaurants in the Tokyo area serving cuisine from around the world. 240pp, 5 1/2 x 7 1/2", 40 sketches, \$ 7.95
- Karate in Action I** by M. Nakayama. Instruction from a 9th degree black belt who pioneered in developing karate along scientific lines. 96pp, 5 1/2 x 8 1/2", 300 b&w ill., \$ 8.95.

JAPAN PUBLICATIONS (Popular Favorites)

- Handsome Men's Sweaters.** by the Ondori Staff. For every beginning knitter who wants to make a perfect sweater on the first try. 64pp, 7 1/2 x 10 1/2", full color illus., \$5.95.

- Macrobiotic Cuisine.** by Lima Ohsawa. A complete guide to the art of macrobiotic cuisine, from a world-famous creator of macrobiotic recipes. 224pp, 7 1/4 x 10 1/4", 70 illus., \$12.95.
- Effective Tsubo Therapy: Simple and Natural Relief Without Drugs.** by Katsusuke Serizawa, MD. A do-it-yourself manual for easing pain the natural way—with no drugs (and at no cost). Tsubo are vital points along the body that form the basis of such therapies as acupuncture and shiatsu. 240pp, 7 1/2 x 10 1/4", over 100 illus., \$13.95
- The Tofu Gourmet.** by Linda Barber & Junko Lampert. A dazzling array of tofu recipes designed to please American appetites: main courses, hors d'oeuvres, salads, sauces, soups, bread, desserts. 128pp, 7 1/2 x 10 1/2", 48 color, illus., \$14.95.
- Attractive Handknits.** by Nihon Vogue Staff. A rich resource of sweater ideas for every style, season and setting. 74pp, 7 1/2 x 10 1/2", 33 color, \$7.95.
- Mohair Knitting.** by Nihon Vogue Staff. An irresistible collection of some of the most luxurious sweaters ever found in a pattern book. 80pp, 8 1/2 x 10 1/2", 46 color, \$8.95.
- Fine Patchwork and Quilting.** by Ondori Staff. An art form born of rural wives who make quilts, pillows, placemats, runners, table covers—with how-to color drawings. 80pp, 35 color, \$5.95.
- Macrobiotics and Human Behavior.** by William Tara. Forward by Michio Kushi. "...health the macrobiotic way—a guide for therapists and individuals." 224pp, 7 1/4 x 10 1/4", 14 drawings, 15 b&w photos, \$12.95. *Temporarily Out of Stock*

- The Art of Sumi-E: Appreciation, Techniques and Application.** by Shozo Sato, assisted by Thomas A. Heenan. The complete illustrated book of Asian ink painting—the first to combine history, aesthetics and step-by-step instructions in one volume. 312pp, 8 1/2 x 11 1/2", approx. 320 b&w, 50 sketches, \$34.95.

KODANSHA (SEP.-DEC. '84)

- Available Again in Hardcover ...
- Shoji Hamada: A Potter's Way & Work.** by Susan Peterson. A fascinating insight into the life and work of an internationally famous Japanese potter.—House Beautiful, *Temporarily Out of Stock*, 18 color, 235 b&w plates, \$29.95.
- Challenge of Japan's Internationalization: Organization and Culture.** ed. Hiroshi Matsuoka, Harumi Befu. New insights into Japanese facing the world abroad. *Temporarily Out of Stock*, it is changing them at home. 216pp, 7 1/4 x 10 1/4", \$14.95.
- Kodokan Judo.** by Jigoro Kano. True from its founder and most famous teacher. *Temporarily Out of Stock*, authoritative guide to judo. *Temporarily Out of Stock*, 140 b&w plates, \$24.95.

• All orders must be accompanied by payment in full plus shipping and handling charges. Allow from 4 to 6 weeks for delivery. Make checks payable to:
PACIFIC CITIZEN, 244 S. San Pedro St., #506, Los Angeles, CA 90012

Send to:
Name _____
Address _____
City/State ZIP _____
Additional charges for shipping and handling:
For books totaling up to \$10.00 add \$1.75
10.01 to \$25.00 add 2.25
25.01 to \$50.00 add 2.75
50.01 to \$100.00 add 3.50
Over \$100 add 5.00
Sales Tax (N.Y. residents only) _____
Total Amount Enclosed \$ _____

1984-85 PC BEST-SELLERS

[** Non-returnable]

- Sushi at Home.** by Kay Shimizu & 12 Culinary Experts. A treasury of sushi recipes especially adapted for the Western kitchen, using easy-to-find ingredients. (Shimizu, a San Jose Nisei, has been writing best-selling cook books for many years.) 140pp, 7 1/2 x 10 1/2", 59 color pages, \$14.95.
- Origami.** by Hideki Sakata. The perfect can't fail book of origami by a designer-teacher of 20 years. Step-by-step color instructions. 66pp, 7 1/2 x 10 1/2", 66 color. June paperback orig—\$5.95.

HEARINGS

Continued from Page 2

and flee from violence.

Julianna Mark-Le of Chinese Resource Center Inc., said that Asians' experience in reporting violence or extortion to public agencies including the police is that they are not taken seriously. Asians do not get any respect.

Tsian Law, representing the Asian American Council, stated that in addition to historical anti-Asian feelings, one of the causes of violence against Asians was the anti-Asian-import campaign carried on by the auto and steel industries and some unions in favor of protectionist policies. Their campaigns have led to an environment where attacks on Asians are accepted and condoned.

Local Black residents of the Logan area resented the sudden attention focusing on violence against Asians. Residents claimed that their area was always troubled by drugs, violence and crime and that city agencies had not done anything to alleviate their problems. The refugees had been dumped, without much preparation on what to expect, into substandard and often condemned housing in high-crime, blighted areas. A Black resident of the West Powelton area said, "This commission should acknowledge the fact that racism is a strong motivating factor in these attacks."

On the other hand, many speakers representing agencies and groups involved in resettlement, community, and human relations

—while acknowledging there are many problems—pointed out the positive aspects of projects in crafts, dance, cross-cultural education, and people-to-people contacts alleviating tensions.

The Philadelphia JACL made the following recommendations:

- (1) Recognize that racism exists.
- (2) Counteract rumors of preferential government financial aid to the refugees, since all refugees

regardless of national origin receive aid to help them settle.

(3) Recognize that the refugees are struggling to survive and often do not have the time to think about cultivating the community even though it is the reasonable thing to do.

(4) Recognize the fear and threat of competition. Encourage fairness within the greater community.

(5) Keep the lines of communication open. Political leadership

is necessary to find political solutions.

It may be months before the Commission on Human Relations issues a report and makes its recommendations. Meanwhile, the U.S. Civil Rights Commission has been holding similar hearings to document incidents of violence against Asians and will be coming to Philadelphia and other Eastern cities.

—Reprinted from Philadelphia Chapter Newsletter

Chapter Pulse

Diablo Valley

WALNUT CREEK, Calif.—John Tateishi is featured speaker at the chapter's installation dinner, Sunday, Jan. 27, at King Tsin Restaurant, 2280 Oak Grove Rd. Special guests are Rep. George Miller and Supervisor Nancy Fahden. Tickets are \$14. Reservations (as soon as possible): Masaye Nakamura, 120 Brookside Rd., Orinda, CA 94563; (415) 254-4039.

George Fujioka, pres; Ed Kubokawa, 1st vp; Aki Toriyama, 2d vp; Yukio Wada, sec; Mary Takai, treas; Gilbert Matsuoka, nwsltr; Sharon Ikeda, schol; Sukeo Oji, EBII; Wilma Hayashi, health. Bd: Sumi Nakashima, Aki Hara, Lajos Linszky, Yoshiye Togasaki, Ray Yamada.

Stockton

STOCKTON—Superior Court Judge Bill Dozier speaks at the chapter's installation dinner, Saturday, Jan. 26, from 6 p.m. at the Sampan Restaurant. Reservations: Ruby Dobana, (209) 957-1801, 951-7230.

Edwin Endow, pres; Allen Kato, 1st vp/off del; Sam Ishihara, 2d vp/activities; Nelson Nagai, 2d vp/fin; Grace Nagata, rec sec; Amy Matsumoto, cor sec; May Saiki, treas; George Baba, redress/vets/off del; Tetsuya Kato, alt del.

Bd: Mitzie Baba, soc; James Tanaka, golf; Tad Akaba; Art Nakashima; Calvin Matsumoto, golf; John Yamaguchi; Yutaka Watanabe, 1000 Club; Bill Shima, Sam Itaya, schol; Ted Saiki; Frank Kitagawa; George Matsumoto, ins; Mary Kusama, hist; Hito Nishi; Mabel Okubo, cul herit; Debra Hatanaka; Toyo Ijuin; Tom Rushing; Richard Yoshikawa; Dick

Fujii; Ruby Dobana, memb.

Add'l cmtte: Gladys Murakami, memb; Nancy Baba, nwsltr; Tae Tomoda, aging & ret; Tetsuo Kato, Jack Kitagawa, vets.

San Francisco

SAN FRANCISCO—The board of governors will be installed at a dinner-dance on Friday, Feb. 8, at the Holiday Inn at Fisherman's Wharf. No-host cocktails begin at 6:30 p.m., with dinner at 7 p.m. The evening features the announcement of the 1985 scholarship award of \$1,000. Bobby 'G' and his mobile disco will play music from the late '50s to today (people may also bring records).

Tickets are \$20. Reservations by Feb. 1: JACL-San Francisco Chapter, P.O. Box 22425, San Francisco, CA 94122. Dance only from 8:30 p.m.; tickets, \$5. Information: Greg Marutani, 621-5911 (day), or 641-1697.

St. Louis

ST. LOUIS—Min Yasui, chair of the JACL Legislative Education Committee, speaks at the annual inaugural dinner, Saturday, Jan. 26, at House of Hunan, 3730 S. Lindbergh, from 6 p.m. Tickets are \$15. Reservations: Irene Hasegawa, 771-4339; George Sakaguchi, 842-3138.

Ed Tsugita, pres; Rose Womack, vp; Riki Rikimaru, treas; Diane Nishi, sec; Joe Tanaka, redress; Kimi Durham, Cathy Hironaka, memb; Sue Yakushiji, sunshine. Bd: Robert Uchiyama, Shawn Tiemier, Irene Hasegawa-Chastain, John Hayashi, Minoru Kimizuki.

Redress supporters honored at Yasui fete

GARDENA, Ca.—Eighty members of the Redress Committee of Pacific Southwest District JACL and their friends joined Min Yasui at a dinner at Gung Hay Restaurant on Jan. 13.

Those honored for their notable

For the Record

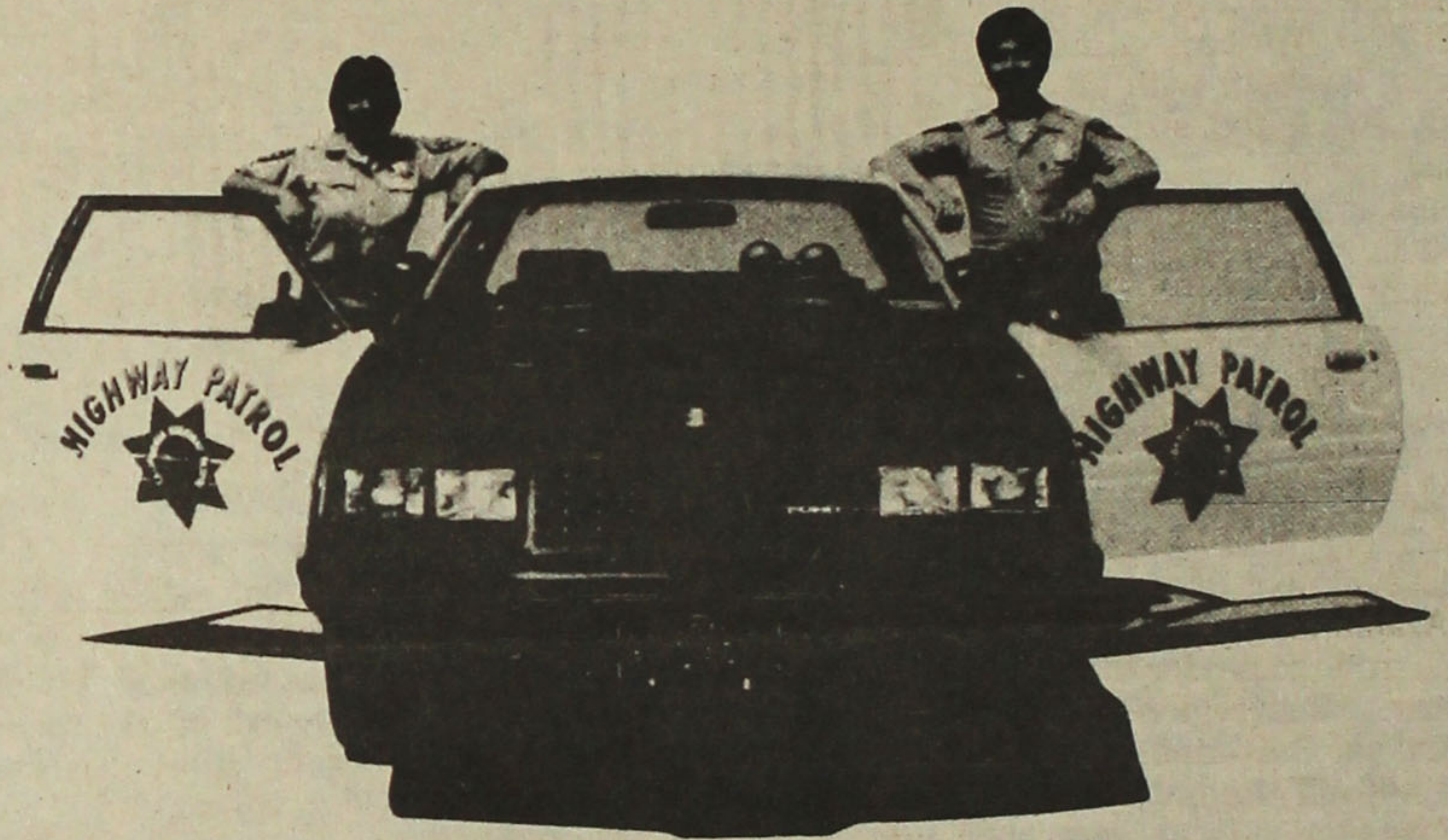
The article about the Feb. 16-17 Poston reunion sponsored by the American Baptist National Ministries (Jan. 18 PC) did not include the number to call for further information. Call Ray Jennings at (215) 768-2249.

contributions to JACL's redress campaign were Mabel Ota, Don and Betty Yamaoka, and Khan Komai.

Yasui, who is chair of the Legislative Education Committee (LEC), spoke about the current status of the new redress bills in the 99th Congress—HR 442 in the House and S 100 in the Senate—and the need for intensified lobbying, especially in California.

He and PSW governor Harry Kajihara briefed members about the nature and role of the LEC, which is about to become active as the lobbying arm of JACL.

A Career For Men and Women In Law Enforcement



AGE: 20-31

SALARY: \$2082 - \$2487 PER MONTH

The California Highway Patrol is offering a career opportunity for men and women as State Traffic Officers. If you're between 20 and 31 years of age and have at least a high school diploma or the equivalent, you'll find what we have to offer very rewarding. For example:

- A starting salary of \$2,082 per month during the 21-week Academy training period.
- A uniform allowance of \$350 per year.
- Two weeks vacation per year with increases to four weeks.
- Health and life insurance, dental coverage and an outstanding retirement plan.
- And a thorough legal background training that's hard to find outside of law school.

So if you're athletic, like working outdoors, and want a career with advancement opportunities, there's a lot to like about the California Highway Patrol. Just fill out the coupon below. Or contact your nearest CHP office. Minorities and women are encouraged to apply.

CALIFORNIA HIGHWAY PATROL
OFFICE OF EQUAL EMPLOYMENT
OPPORTUNITY
2555-1st AVENUE, P.O. BOX 898
SACRAMENTO, CALIFORNIA 95804
(916) 322-6862

I am interested in becoming a State Traffic Officer

Name: _____

Address: _____

City _____ State _____ Zip Code _____

Home Phone: _____



AN EQUAL EMPLOYMENT OPPORTUNITY—AFFIRMATIVE ACTION EMPLOYER

Commentary

South Africa's 'Crime Against Humanity'

Stan Shikuma, with several other Asian Americans, was arrested Jan. 20 for demonstrating against apartheid in front of the South African consulate in Seattle.

by Stan Shikuma
International Examiner (Seattle)

National attention has focused recently on South Africa and its system of racial segregation known as apartheid. Although apartheid has existed officially since 1948, and unofficially much earlier, many Americans are still ignorant of the nature of the social and political system that the United Nations has branded "a crime against humanity."

The Republic of South Africa, more properly called Azania by the indigenous people, occupies the southern tip of the African continent. It encompasses a territory larger than the combined area of Washington, Oregon, California and Nevada. It also maintains illegal control over Namibia (South-West Africa), a former UN trust territory with an area roughly twice the size of California.

Azania is a resource rich nation, with vast tracts of fertile farmland and wealth of diamonds, gold, uranium and other strategic minerals. It sits astride the Cape of Good Hope and the major shipping lanes connecting the Atlantic and Indian Oceans. Furthermore, due to the economic development under colonial rule, Azania stands at the hub of rail and trade routes for the whole southern African region of Namibia, Angola, Botswana, Zambia, Zimbabwe and Mozambique.

The population totals about 31 million: 23 million Blacks, 5 million whites, 2.5 million "coloreds" (mixed-race) and 800,000 Asians. Apartheid refers to the system set up to ensure that all political and economic power remains firmly, solely, and perpetually in the hands of the white minority.



U.S. Rep. Mervyn Dymally (D-Calif.) was among those arrested Jan. 3 for demonstrating within 500 feet of the South Africa Embassy in Washington, D.C. His arraignment is set for today.

The white population, either English-speaking or Afrikaner, are descendents of Dutch, German and British settlers who colonized Azania starting from the late 17th century. Since the creation of the Union of South Africa in 1910, they have steadily and methodically put together a system of government and a way of life totally dependent on cheap non-white labor.

In the early 1900s, laws were

passed that effectively drove Blacks off the land and into the mines, factories and fields of the growing white South African economy. In 1948, these earlier laws were enlarged and codified into a constitutional system of mandated inequality between whites and non-whites known as apartheid.

Under apartheid, Blacks cannot own land or travel freely. At all times, they must carry pass-

cans in Lebanon, hijackings in Kuwait and the killing of a Polish priest by Polish security forces, but not in the Liu murder."

FBI agents and Bay Area police are searching for a tape allegedly made by Chen Chi-li before his arrest as "insurance" in case government officials tried to place the blame solely on him. Wen Wei Bao, a Hong Kong newspaper, said on Jan. 9 that it had learned from a Bamboo gang member that part of the tape reveals the reason for the killing—to warn overseas Chinese not to be disloyal to the Kuomintang or the Chiang family. U.S. officials have not confirmed the existence of the tape, however.

U.S. law enforcement officers also plan to visit Taiwan to question the two suspects.

Congressional hearings could affect U.S. arms shipments to Taiwan, which totaled \$780 million last year. Despite its normalization of ties with the Beijing government in 1979, the U.S. has continued to supply Taiwan with weapons.

government spokesman, said that "whoever is involved, whatever their rank, they will be brought to justice." Jerome Garchik, attorney for the Committee to Obtain Justice for Henry Liu, is among those expressing doubt that Taiwan will identify the mastermind of the plot if it is a high government official. "We still don't know how high this thing goes," he said.

State Dept. spokesman Alan Romberg said that the involvement of government officials in the killing is "a very serious matter" but added that "our general position on this is that this is a matter that's under investigation and law enforcement authorities are the ones who are dealing with it."

Rep. Mineta charged the Reagan Administration with being "selective about condemning acts of terrorism." The administration, he said, "has seen fit to speak out on the kidnapping of Ameri-

LIU

Continued from Page 2

had already left the country. Chen and Wu were picked up by authorities after their arrival in Taiwan but have not been extradited to the U.S. because, Taiwan officials said, the U.S. and Taiwan do not have an extradition treaty. Tung is still at large.

The case developed into a major political scandal when Chen not only confessed to the murder but also implicated government officials. Among those being questioned is Col. Chen Hu-men, a military intelligence bureau director of the Defense Ministry, who reportedly met with Chen Chi-li before the latter went to the U.S. and after his return. Col. Chen's superior, Military Intelligence Bureau director Vice Adm. Wang Hsi-ling, was relieved of his duties and questioned by authorities.

On Jan. 16, President Chiang ordered an investigation into Chen Chi-li's connections with government officials. Victor Chang, a

Connections

South Africa's apartheid policies seem oppressively familiar to those who know the history of Japanese Americans: Individuals of the "wrong" race have been "relocated" and confined to crowded, sometimes desolate areas; they cannot become voting citizens of their own country; and they cannot marry whites, among other restrictions.

Many Japanese Americans cite other reasons for taking on a responsibility to help end apartheid:

—As Americans, whose pension funds, stock portfolios and savings accounts may be invested in companies doing business in South Africa, Asian Americans

are supporting the South African economy, even if indirectly.

—As Japanese Americans work for a redressing of the WW2 internment and as they have obtained the support of civil rights groups across the country, so must Japanese Americans work for the human rights of others, both at home and abroad, especially where the U.S. government is involved.

Sen. Ted Kennedy has indicated that he will introduce legislation to address U.S. policy in South Africa. Letters may be sent to U.S. senators and representatives on this issue immediately, however. —Ed.

books with them that stipulate where they work, where they live and where they are allowed to be. Any white can demand their passbook at any time, and if they refuse to produce it, do not have it, or are in an unauthorized area, they may be jailed. Over 1,000 people are arrested under the Pass Laws each and every day.

Another aspect of apartheid is the government policy of establishing Black "homelands" called Bantustans. Thirteen percent of the most barren land in Azania is reserved for over 70 percent of the population. There are no cities or industry in the Bantustans; Blacks must travel to white areas of the country to find work. Black families are often not allowed to follow their men as they seek work, so the Bantustans are largely populated by women, children and elderly.

Outside the "homelands," Blacks are forced to live in townships which are little more than sprawling urban ghettos. The townships are kept well away from white residential, industrial

and downtown shopping areas, so Blacks must commute in and out from work every day. "Coloreds" and Asians also have their own designated areas in which to live. No mixing of races is allowed.

Under apartheid, education and health care for Blacks are virtually ignored. Half of all Black children in Azania die before the age of five due to a simple lack of food, sanitation and medical services. Black children must pay to attend school in crowded, often rundown classrooms, while white children attend free, universal and modern schools. Whites in South Africa have one of the highest standards of living in the world, maintained at the expense of the misery and exploitation of the vast majority of the population.

Blacks have a long history of struggle against this oppression, and many Black organizations have developed over the years. Many Asians, "Coloreds" and whites have also joined in opposition to the established order.
Continued on Next Page

Sumitomo's Individual Retirement Account All Wage Earners Eligible!

- Deduct up to \$2,000 on your federal tax return
- Protect your savings for retirement
- Choose from several Sumitomo IRA Plans
- Check our floating rate account with high money market interest and an automatic deposit plan

Keogh plans are also available. Visit your local Sumitomo Bank today!

Sumitomo Bank
Sumitomo Bank of California Member FDIC

APARTHEID

Continued from previous page

fortunately, government suppression has been severe, with many leaders killed, imprisoned or "banned," a particularly vicious form of house arrest. Many have been forced underground or into exile.

Two of the oldest Black liberation groups are the African National Congress (ANC), founded in 1912, and the Pan-Africanist Congress of Azania (PAC), founded in 1959. These two organizations are among the leaders in the armed struggle developing there now.

Recently, apartheid in South Africa has reemerged into the international limelight. The white minority government, under continued international pressure to repudiate the policies of apartheid, enacted a new constitution giving nominal parliamentary representation to Asians and "Coloreds," but not to Blacks.

Hundreds of thousands of Blacks demonstrated in protest against the new constitution and around other political demands. More than 150 protesters were killed by South African soldiers sent into the townships to quell the protests, and dozens of Black leaders were detained without charge.

Asians and "Coloreds" called for a boycott of elections for what they labeled sham reforms. The boycott was 80 to 90 percent successful. At the same time, Bishop Desmond Tutu, an outspoken critic of the apartheid regime, was named the recipient of the 1984 Nobel Peace Prize.

In response to these dramatic developments, major Black leaders in the U.S. launched the Free South Africa Movement with a sit-in at the South African embassy in

Washington, D.C. Over the past month, nearly 200 people have been arrested nationwide in protests opposing both apartheid in South Africa and Reagan administration support for it through the policy of "constructive engagement."

Under President Reagan, the United States has refrained from criticizing the apartheid regime in South Africa. Instead, Reagan claims to be using "quiet diplomacy" to gently entice South Africa away from its repressive policies. Concretely, this has meant a tremendous surge in economic dealings with South Africa, a pariah among nations, on whom the United Nations has slapped an economic boycott.

William Garling, legal counsel for the Rainbow Institute and member of the Democratic Party's National Platform Committee, states that "Western influence bringing progress is an untruth. It's totally wrong. Apartheid allows [U.S. corporations] to make superprofits, and that's why they're in South Africa to begin with." They are not there, he stresses, to help the Black majority reform the system.

"It's not simply a question of Blacks getting a 'fair share' of the present system. Some Blacks might get a better deal, but capitalism being what it is, the vast majority would not benefit. The white minority will not willingly allow the redistribution of wealth necessary to make [reforms] work."

"Constructive engagement," he believes, like "new constitutions" in Azania, is no more than an illusion designed to allow the continuance of business as usual. And with \$15 billion invested, American multi-nationals are involved in some pretty big business.

PC's Classified Advertising

2—Announcement

CHARISMA!

Workshops in personal enhancement for the Asian woman. Opens for enrollment: Jan. 2, 1985. Workshops start May 4, 1985/Los Angeles. Information and Brochure CHARISMA, INC. Ms. Kathy Baba. Tel: (213) 695-8978; Write: P.O. Box 9272, Whittier, CA 90601

3—Business Opportunity

COLORADO

Fertilizer Business
Established. Land, machinery and supplies. Next to railroad. In good location. Wanting to retire.
(303) 296-1045

CALIFORNIA

AUTO
Daily rental. Ugly Duckling Used Cars of North Hollywood, Van Nuys, Burbank & Pasadena. All or part. Established money maker. Call Chip Young (818) 985-1500.

MONTANA

Exceptional 7500 Sq Ft, 400 person
Restaurant/Nightclub
IN MISSOULA, MT.,

home of Univ. of Montana and a horde of "out-eaters". Atmosphere coupled with outstanding talent consistently generate capacity nightclub crowds. Quality and location add up to high lunch and dinner traffic. Buy this and a strong management team for \$550,000 plus inventory. Terms to qualified buyer. Premises & liquor license are leased.

CHARLIE BRAUN "BROWN", Lambros Realty, 1001 S. Higgins, Missoula, MT 59801. (406) 543-6663 or (406) 251-3113.

MONTANA

Rare opportunity to own profitable operation in an INCOMPARABLE FACILITY and LOCATION.

7,000 Sq Ft Restaurant
w/Lounge—One of our finest in downtown Missoula, MT. Other income area exceeds 2900 Sq Ft. Substantial land for expansion included. Ample paved parking. Good labor base — Missoula is home for the Univ. of Montana. Included at no extra cost is a base of patrons who love to eat out. Total price \$1.475 million plus inventory. Terms to qualified buyer.

CHARLIE BRAUN "BROWN", Lambros Realty, 1001 S. Higgins, Missoula, MT 59801. (406) 543-6663 or (406) 251-3113.

3—Business Opportunity

IDAHO

FOR SALE
Two Idaho restaurants, 17 miles north of Moscow, and 36 miles east of Twin Falls. Seating 100 and 175+, also living quarters. Full liquor in one. \$200,000 each.
Phone (208) 664-6665, Ask for Wally.

WASHINGTON SALE BY OWNER FAMILY ORIENTED BUSINESS

Coulee City, Wa.
12-Unit Motel
Recently remodeled, 3 BR, new house w/1 1/2 BA, 7-unit RV trailer park on 9 city lots. City water and sewer, good workshop and laundry room. Sell for \$185,000, negotiable. Half in cash. Call (509) 632-5596 or write to:
Virginia-Leo Gilbeau, P.O. Box 836, Coulee City, WA 99115

Resort Development WHITEHALL-NEGRIL ESTATES, JAMAICA, WEST INDIES

400 acres of beachfront and rolling scenic hills located in Westmoreland Parish with 600 sq. ft. Great House. Preliminary plans to build 300-room resort hotel and 18-hole PGA golf course and agriculture survey study in progress. Interested in joint venture, partnership or sale. \$4.9 million. Contact: WHITEHALL LIMITED, 2008 Freeman Ave., Cincinnati, Ohio 45214, USA, (503) 381-2442.


CANADA

Tech-Nacan Construction Management & Design Consultants
Specializing in Recreation Facilities, Curling Rinks, Hockey Rinks
• Complete Designing & Engineering
• Cost Projections
• Complete Ice Making Equipment & Design
• Complete Services for Community Projects
Also sophisticated fruit and vegetable storage facilities. Losses reduced by as much as 25%
(306) 568-2362 or 568-2363
Great Plains Auction Bldg.
Box 529, White City, Sask.
Canada S0G 5B0
Lethbridge, Alta. (403) 327-0001



DePanache
Today's Classic Look for Women & Men
Call for Appointment Phone 687-0387
105 Japanese Village Plaza Mall, Los Angeles 90012
Toshi Otsu, Prop.

ESTABLISHED 1936
NISEI TRADING
Appliances - TV - Furniture
249 S. San Pedro St.
Los Angeles 90012
(213) 624-6601



Japanese Phototypesetting
TOYO PRINTING CO.
309 So. San Pedro St., Los Angeles 90013
(213) 626-8153

5—Employment

TOPSKOUT Personnel Service
Fees paid by employer. Top job opportunity, especially bilingual. If you are looking, we can help. Send us your resume in confidence, include wages expected and specify occupation. Send resume in English to 1543 W. Olympic Blvd., Los Angeles 90015. Employer inquiry welcome.
(213) 742-0810, TLX 673203

AUTOMOTIVE TOYOTA AUTO MECHANICS
Expanding dealership has openings for at least two qualified mechanics. Toyota experience preferred. NIASE, smog-license preferred, but not necessary. Full-line mechanics need only apply. Holiday pay, health plan, school pay and all company benefits. All replies in strict confidence. Ask for
John McCrea or Roy Okamoto
(213) 821-8979
Toyota of Marina del Rey, EOE.

DATA PROCESSING PROGRAMMING ANALYST
We are a leading manufacturer of food service equipment serving the food service industry nationwide. We are looking for an individual with at least 2 years IBM system 38 programming experience. Should have good communications skills, experience in a manufacturing environment would be an asset. Excellent benefits. Please call or send resume to:
WELLS MANUFACTURING
2 Erik Circle
Verdi, Nevada 89439
(702) 345-0444
Equal Opportunity Employer

5—Employment

Dental Receptionist
Exp. with some insurance knowledge. Full time, including two evenings and Saturday. Xint benefits. Start at \$7.39 per hr.

Dental X-ray Technician
Full time, including two evenings and Saturday. Xint benefits. Start at \$7.39 per hr.

Dentist—Full or Part Time
PLEASE CALL
(213) 925-3765
EOE M/F

GOVERNMENT JOBS
\$16,559 - \$50,553/year.
Now Hiring—Your Area. Is it true? Find out now.
Call (805) 687-6000 Ext. R-1317

9—Real Estate CALIFORNIA PRICE REDUCED.
Must sell by owner. Prime-prime site. Corrala, 5 1/2 acres, 650 frontage ft. motel, restaurant, offices. Riverside Fwy, near proposed race track. Asking price \$2 million.
Call or write Tom Blandi, P.O. Box 2715, Newport Beach, CA 92663, (714) 650-7368.

CANADA Montreal—South Shore
700 acres of top quality, 100% drained cornland in one piece. Superb mansion, buildings, silos and all machinery. Price \$1,850,000. For more info, call
Amex Realty Ltd, Henry Gotesmann, 405 Montee Prevost, Belloeil, Que., Canada J3G2C9, (514) 467-7445.

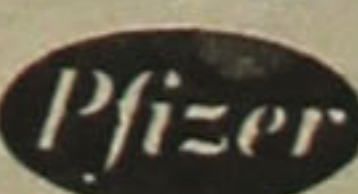
HAWAII Kalaheo, Kauai
area; 3500 sq ft 3 BR, 3 BA, panoramic ocean view.
\$400,000, pp.
(714) 492-2281, (808) 332-9239

Treat Yourself to the Penthouse Atop Ilikai Hotel—Honolulu
Spend your vacation in a multi-million dollar plus PENTHOUSE. Ocean. Beach Front. All resort facilities. Luxurious immaculate two bedroom, two bath. The largest, finest, most prestigious PENTHOUSE in the world-famous Ilikai. Accommodates up to 6. Relax, play, entertain, dine, dance, shop. Every convenience furnished. \$320 daily double —\$15 each additional person, plus 4% tax. Includes: Weekly Maid ("Daily" maid available.) Includes Limousine plane-side pickup.
BROCHURE—Call (714) 525-8806. Write the PENTHOUSE, 145-B W. Whiting St., Fullerton, CA 92632.
There is only one — Reserve Early.

Commercial & Industrial Air Conditioning & Refrigeration CONTRACTOR
Glen T. Umemoto
Lic. #441272 C38-20
SAM REIBOW CO.
1506 W. Vernon Ave.
Los Angeles / 295-5204
Since 1939



Kimura PHOTOMART
Cameras & Photographic Supplies
316 E. 2nd St., Los Angeles
(213) 622-3968

Engineer
Process Engineer
Pfizer, an international Fortune 500 Company, has an excellent opportunity for a qualified Engineer at our CO extraction facility in Sidney, Nebraska.
Reporting directly to the Plant Superintendent, you will coordinate production of assigned products to meet quality, quantity, and delivery requirements at standard costs, develop and supervise process improvement and cost savings programs, and, when required, directly supervise production personnel and processes.
You should have a BS degree in Chemical Engineering (Master's desired), 1-3 years engineering experience in a process industry, preferably in a food or pharmaceutical product environment, and a background in thermodynamics. Mechanical engineers specializing in refrigeration are also encouraged to apply.
Explore our excellent salary/benefits program and the opportunity for personal recognition and career growth. Send your resume with current salary in confidence to: Mr. Michael Wisniewski, Pfizer Inc., East Highway No. 30, Sidney, Nebraska 69162.
 An equal opportunity employer

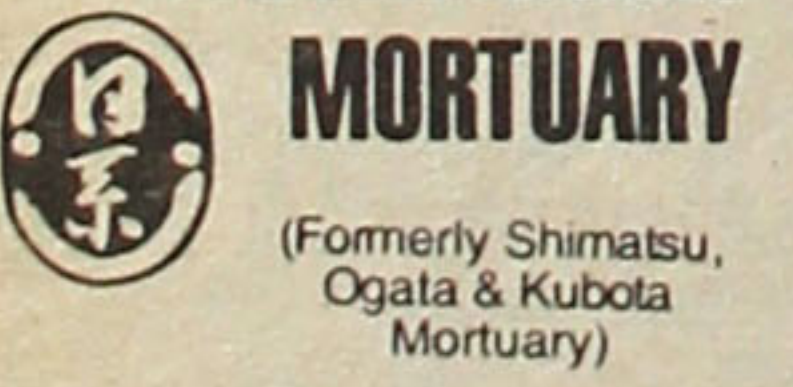


TOYO Miyatake STUDIO
318 East First Street
Los Angeles, CA 90012
(213) 626-5681




St. Louis JACL Nisei Kitchen Cookbook
\$7 postpaid from Bill Ryba
1404 Virginia Drive
St. Louis, Mo. 63011

Four Generations of Experience ...
FUKUI Mortuary, Inc.
707 E. Temple St.
Los Angeles, CA 90012
626-0441
Gerald Fukui, President
Ruth Fukui, Vice President
Nobuo Osumi, Counsellor



KUBOTA NIKKEI MORTUARY
(Formerly Shimatsu, Ogata & Kubota Mortuary)
911 Venice Blvd.
Los Angeles, CA 90015
Phone: (213) 749-1449
Y. Kubota • H. Suzuki • R. Hayamizu
Serving the Community for Over 30 Years

Generation to Generation: A Family Cookbook
First Edition is now ready for sale. Packed with over 370 pages of recipes and unique old photos of Orange County. The Cookbook features special sections on California Cuisine, Asian Cookery, and Strawberry recipes.
Cookbook Order Form: I wish to order _____ cookbooks at \$10 each, plus \$1.25 per book for shipping and handling.
Name _____
Address _____
City/State/ZIP _____
Phone(____) _____
Total Cost \$ _____
 I will pick up my Shipping/Handling \$ _____
cookbooks at the church Total Paid \$ _____
 Please mail my cookbooks
Write checks payable to OCBC Cookbook Fund.
Send check and order form to:
OCBC Cookbook Committee,
Orange County Buddhist Church,
909 So. Dale, Anaheim, CA 90804.



Yoshiko Uchida's Award-Winning Classics Are Back in Print!
Journey To Topaz, the moving WW2 story of 11-year-old Yuki and her family as they are uprooted from their California home and sent to the desert concentration camp TOPAZ. \$5.95
Samurai of Gold Hill, the vivid story of young Koichi and the Wakamatsu Colony who came from Japan to start an ill-fated tea and silk farm in post-Gold Rush California. \$5.95
FOR CHILDREN 9-YEARS AND UP
Yoshiko Uchida, the foremost Japanese American writer of children's books says, "... I hope to convey the values, spirit, and the sense of hope and purpose of the early Japanese immigrants. Beyond that, I want to celebrate our common humanity, for I feel the basic elements of humanity are present in all our strivings."
FIRST 100 COPIES AUTOGRAPHED BY AUTHOR.
Just in time for the Day of Remembrance commemorations on Feb. 19. Share your heritage with those you love ... Order Now at the special pre-publication price of \$12 for both books (includes tax and shipping). Offer expires Feb. 19, 1985.
Regular price \$5.95 each plus \$2 shipping for first first book, 20¢ for each additional book. CA buyers: Add 39¢ tax for each book.
Order from: JACP, Inc., Box 367, San Mateo, CA 94401
Send _____ sets of 'Journey to Topaz' and 'Samurai of Gold Hill'. \$12 per set.
Name _____
Address _____
City, State, ZIP _____

People

Government

Miya Iwataki has been appointed special assistant to Rep. Mervyn Dymally (D-Calif.), responsible for media relations and for liaison with the Asian/Pacific Islander community, women, and Caribbean Action Lobby. She will also represent Dymally in his district cities of Gardena, Carson and Hawthorne.

Awards

Marian Uchida of Sacramento, was awarded the Air Force Asian American/Pacific Islander Employment award for 1983. She was recognized for her efforts to promote cultural awareness of the Asian Pacific community and an understanding of those who are handicapped at McClellan Air Force Base.

Business

Jon Nagamatsu of Canoga Park, Calif., has been appointed vice president of production operations at Rocketdyne, a division of North American Space Operations of the Rockwell International Corp. He is a 30-year manager at the company.

Education

Janice Yoshiwara, director of Minority Affairs at Ft. Steilacoom Community College, was re-

cently named assistant director of Student Services/Minority Affairs with the Washington State Board for Community College Education. Yoshiwara has chaired the Washington State Commission on Asian American Affairs and has been president of the Asian American Alliance in Tacoma.

George Yamane, D.D.S., Ph.D., of Chatham, N.J., was one of nine faculty members of the University of Medicine and Dentistry of New Jersey recently selected as recipients of excellence-in-teaching awards. The 25-year faculty member has taught at the undergraduate and graduate levels. Colleagues and students choose the award recipients.

Organizations

Katsumi (Kats) Kunitzugu, executive secretary of the Japanese American Cultural and Community Center, was elected general chair of the 1985 Nisei Week Japanese Festival. She also doubles as director pro tem of the JACCC's Franklin D. Murphy Library and editor of the center's two publications.

Masaomi "Jim" Mita of Gardena has been appointed to serve as a national aide-de-camp for 1984-85 by Veterans of Foreign Wars.

1000 Club Roll

(Year of Membership Shown)
* Century; ** Corporate;
L Life; M Memorial;
C/L Century Life

Summary (Since 1-1-1985)
Active (previous total) . . . 00
Total this report: #1 89
Current total 89

JAN 7-11, 1985 (89)

Alameda: 19-Hajime Fujimori, 25-Harry Ushijima, 16-Mike M Yoshimine.
Arkansas Valley: 6-Henry Konishi*
Berkeley: 18-Dr Eiichi Tsuchida.
Boise Valley: 18-James N Oyama.
Chicago: 13-Takeo Itano, 21-Hiroshi Miyake, 17-Sumi Raffan, 20-Isamu Sam Zaiman.

Book Sales: 'And Justice for All'

(1 case = 18 books, \$238.77)

4-18-84/7-3-84 5,552.21
#1 total (15 chapt, 26 cs)
7-9-84/7-26-84 4,600.91
#2 total (15 chapt, 46 cs)
9-7-84 - 9-17-84 2,445.90
#3 total (5 chapt, 7 cs)
Redress Fund \$12,609.02
#4 total (3 chapt, 5 cs)
Redress Fund \$13,221.56
#5 total (2 chapt, 2 cs)
As of 10-21-84 \$13,693.33
#6 total (2 chapt, 4 cs)
As of 12-7-84 \$14,648.41
#7 total (1 chapt, 1 cs)
As of 1-7-85 \$14,887.48

REPORT #7

Golden Gate (1) \$238.77

Contributions to Pacific Citizen

As of Jan. 19, 1985: \$21,428.49 (596)
This week's total: \$ 435.00 (4)
Last week's total: \$20,993.49 (592)
\$35 from: Pasadena JACL.
\$100 from: Carson JACL.
Nelson/Miyuki Kobayashi.
\$200 from: Sequoia JACL.
Thank you!

Delano: 29-Edward Nagatani, 9-Mitsuko Nagatani.
Detroit: 10-Glen H Kumasaka, 29-Tes T Tada, 32-Minoru Togasaki.
Diablo Valley: 5-Edward E Kubokawa.
Downtown Los Angeles: 22-Hanako Nitake, 33-Shigeji Takeda, 27-SK Uyeda.
Eden Township: 28-Tom Kitayama.
Fowler: 27-Kazuo Hiyama.
Fremont: 13-Sally M Inouye, 15-Ted Inouye.
Fresno: 1-Lily Ishii, 29-Dr Akira Jitsumyo, 32-Dr George MSuda.
Golden Gate: 31-Katherine Reyes.
Hollywood: 14-Hideo Kondo.
Marysville: 8-Larry Matsu-mura, 23-Mrs Henry Oji*.
Mile-High: 24-John T Noguchi, 5-Terry Nishida Sato, 9-William T Yoshida.
Milwaukee: 22-Charles K Matsumoto.
Mount Olympus: 13-Minoru Jim Matsumori.
Monterey Peninsula: 16-Rinzi Manaka, 23-Akio L Sugimoto.
New England: 2-Margie Yamamoto Hopkins.
Oakland: 22-James G Nishi.
Orange County: 18-Dr Samuel R Maehara, 7-Tsutomu B Takenaga, 13-Tsuzumi Tiz Tsuma.
Pacific-Long Beach: 30-Easy Isao Fujimoto, 20-Dr Tsunehiko Makino.
Philadelphia: 1-Rodger Nogaki.
Portland: 31-Dr Toshiaki Kuge.
Puyallup Valley: 25-Ted Masumoto.
Sacramento: 27-Tom Fukushima, 12-Dr Akio Iwanaga, 13-Dr H Setsuo Masaki, 27-Ralph Nishimi, 12-Dr Robert M Shimada, 29-Noboru Shirai.
Saint Louis: 22-Joseph K Tanaka*.
Salinas Valley: 19-Roy Saka-segawa.

Salt Lake City: 36-Roy Tachiki.
San Diego: 18-Masato Bruce Asakawa, Life-Arthur S Kaihatsu, 30-Hiomi Nakamura.
San Fernando Valley: 19-Dr Frank K Kajiwara, 12-Kikkoman Intl Inc**, 17-Dr Lawrence T Nakamura, 3-Jane H Wong, 8-Kiyoshi Joe Yukawa.
San Gabriel Valley: 12-Henry S Oshiro.
San Jose: 4-Mary Ewing, 4-George K Hanada, 18-Ray M Matsumoto.
San Gabriel Valley: 14-M Paul Sagawa.
Seattle: 1-Dale Shigaki*.
Selanoco: 4-Kazuo Mori.
Snake River: 23-Gish Amano.
Sonoma County: 23-James F Murakami*, 23-Dr Roy Okamoto*.
Stockton: 16-Frank Kitagawa.
Twin Cities: 29-George Rokutani.
Ventura County: 9-Akira Yatabe.
West Los Angeles: 4-Grace Fujimoto, 4-Dr M Jack Fujimoto, 29-Dr Toru Iura.
West Valley: 24-Ko S Sameshima*, 3-Shiro Takei, 17-Dr Raymond Uchiyama.
White River Valley: 1-Michi Maebori, 15-Koji Norikane, 11-Margaret Okitsu.
National: 7-Frank Iritani, Brian R Kashiwagi, 6-Dr Karl K Nishimura.
CENTURY CLUB*
5-Henry Konishi (Ark), 4-Mrs Henry Oji (Mar), 3-Joseph K Tanaka (STL), 1-Dale Shigaki (Set), 14-James F Murakami (Son), 7-Dr Roy Okamoto (Son), 24-Ko S Sameshima (WV), 4-Frank Iritani (Nat).
CORPORATE CLUB**
s12-Kikkoman Intl Inc (SF).
LIFE
Arthur SKaihatsu (SD).

Family Counseling in Little Tokyo

By Professional Bilingual Counselors
Confidential, Reasonable Fees

We can help you understand and cope with difficulties in family or marital relationships, career, identity, and cultural differences.

To make an appointment
Call Yasuko Sakamoto
at (213) 680-3729

Nikkei Family Counseling Program
Little Tokyo Service Center
244 S. San Pedro St., Rm. 411
(In the Japanese American Cultural & Community Center)

The only Kamon designed for Japanese Americans

THE ORIGINAL BRONZE

J A KAMON
(Japanese American Family Crest)

CONTAINS EVERYTHING
A JAPANESE AMERICAN MUST KNOW TO
RESEARCH AN ACCURATE FAMILY HISTORY

To place order / For Further Info, please contact:
YOSHIDA KAMON ART
312 E. First St., Suite 205
Los Angeles, CA 90012; (213) 629-2848 / 755-9429
KEI YOSHIDA, Researcher/Artist NINA YOSHIDA, Translator
• Kamon/Surname Research and Translation Service •

Plaza Gift Center

FINE JEWELRY - CAMERA - VIDEO SYSTEM
HOME COMPUTERS - WATCHES - TV - RADIO
SOFTWARE - DESIGNER'S BAG - BONE CHINA

Authorized SONY Dealer

111 Japanese Village Plaza Mall
Los Angeles, CA 90012
(213) 680-3288

Complete Home Furnishings

Koby's Appliances

15120 S. Western Ave.
Gardena, CA
324-6444 321-2123

ED SATO

PLUMBING & HEATING
Remodel and Repairs
Water Heaters, Furnaces
Garbage Disposals

Serving Los Angeles
293-7000 733-0557

Empire Printing Co.

COMMERCIAL and SOCIAL PRINTING
English and Japanese

114 Weller St., Los Angeles CA 90012
(213) 628-7060

AT NEW LOCATION

Aloha Plumbing

Lic. #201875 -- Since 1922
PARTS - SUPPLIES - REPAIR

777 Junipero Serra Dr.
San Gabriel, CA 91776
(213) 283-0018

MIKAWAYA

SWEET SHOPS

244 E. 1st St., Los Angeles
(213) 628-4945

2801 W. Ball Rd., Anaheim
(714) 995-6632

Pacific Square, Gardena
1630 Redondo Beach Blvd.
(213) 538-9389

118 Japanese Village Plaza
Los Angeles /
(213) 624-1681

LOWEST TO JAPAN!!

\$561 Round Trip
SFO/LAX — Tokyo

Community Travel Service
5237 College Ave., Oakland
CA 94618; (415) 653-0990

CHIYO'S

Japanese Bunka Needlecraft
Framing, Bunka Kits, Lessons, Gifts
(714) 995-2432: 2943 W. Ball
Rd, Anaheim, CA 92804
(213) 617-0106: 450 E. 2nd
St., Honda Plaza, L.A. 90012

PARADISE OKAZU-YA RESTAURANT

Specializing in Hawaiian-Orient Cuisine
OPEN Tue-Sat, 7am-7pm • Sun. 7am-5 pm
1631 W. Carson St., Torrance - 328-5345

Lomi Salmon
LAULAU
Quick service from steam table.
Combination Plate
Very Reasonable Prices

KALUA PIG
POI
SAIMIN

OPEN FOR BREAKFAST AT 7 A.M.
Our own style Portuguese sausage mix,
Spam, Boloni, Chashu.
(With eggs & choice of rice or hash browns)
Includes Coffee, Tea or Miso Soup.

Marutama Co. Inc.

Fish Cake Manufacturer
Los Angeles

VIDEO ACTION PRESENTS

Gamurai
THRILLERS

GREAT GIFT IDEAS

\$59.95 each

NEW RELEASES

- Kojiro Sasaki Kojiro (subtitled)
- Wonsan Operation (dubbed)
- Watch Out, Crimson Bat!
Mekurano Orichi Midaregasa (dubbed)
- Professional Killers I
Hissatsu Shikakuenin (subtitled)
- The Gambling Samurai
Kunisada Chuji (subtitled)
- Samurai Saga
Aru Kengo no Shogai (subtitled)

For Your Video Collection

- Sword of Fury I Miyamoto Musashi I (subtitled) *
- Sword of Fury II Miyamoto Musashi II (subtitled) *
- * Sword of Fury I and II: SPECIAL \$109.95 for both.

Also:

- Love and Faith Oginsama (subtitled)
- Nomugi Pass Ah Nomugi Toge (subtitled)
- Murder in the Doll House Midare Karakun (subtitled)
- The Phoenix Hinotori (subtitled)
- The War in Space (dubbed)

PLEASE SEND ME: VHS BETA

The above checked titles. More information.

ENCLOSED IS: Money Order Check (For faster service,
write driver's license number and birthdate on check).

MC/VISA # _____
Expiration date _____
Name _____
Address _____
City _____ State _____ ZIP _____

Add \$3 each for shipping & handling; 6% CA or 6 1/2% L.A. County
resident sales tax. • Hawaii residents: Add \$5 each for shipping
and handling; \$2 for each tape thereafter.

VIDEO ACTION 708 W. 1st St., Los Angeles, CA
90012
(213) 617-2545

PC Business-Professional Directory

Greater Los Angeles

ASAHI TRAVEL
Supersavers-Group Discounts
Apex Fares-Computerized-Bonded
1111 W Olympic Blvd., LA 90015
623-6125/29 • Call Joe or Gladys

Flower View Gardens #2
New Otani Hotel, 110 S Los Angeles
Los Angeles 90012 • Art Ito Jr.
Citywide Delivery (213) 620-0808

Inoue Travel Service
1601 W. Redondo Beach Bl., #209
Gardena, 90247; 217-1709; Offices
in Tokyo, Japan / Lima, Peru

TATAMI & FUTON
(818) 243-2754
SUSUKI FUTON MFG.

Tama Travel International
Martha Igarashi Tamashiro
One Wilshire Bldg., Ste 1012
Los Angeles 90017; (213) 622-4333

Tokyo Travel Service
530 W. 6th St. #429
Los Angeles 90014 680-3545

Greater Los Angeles

Yamato Travel Bureau
321 E 2nd St, #505
Los Angeles 90012 624-6021

Orange County

Exceptional Homes
and Investments
VICTOR A. KATO
Residential-Investment Consultant
18682 Beach Blvd., Suite 220
Huntington Beach, CA 92648
(714) 963-7989

The Paint Shoppe
LaMancha Center, 1111 N Harbor
Fullerton CA 92632, (714) 526-0116

Kane's Hallmark
CENTER
LaMancha Center, 1117 N Harbor
Fullerton CA 92632, (714) 526-1314

San Diego

PAUL H. HOSHI
Insurance Service
852-16th St (619) 234-0376
San Diego CA 92101 res. 264-2551

Ventura County

Calvin Matsui Realty
Homes & Commercial
371 N. Mobil Ave., Ste. 7,
Camarillo, CA 93010, (805) 987-5800

San Jose, CA

Kayo K. Kikuchi, Realtor
SAN JOSE REALTY
996 Minnesota Ave., #100
San Jose, CA 95125-2493
(408) 275-1111 or 296-2059

Tatsuko "Tatty" Kikuchi
General Insurance Broker, DBA
Kikuchi Ins. Agy.
996 Minnesota Ave., #102
San Jose, CA 95125-2493
(408) 294-2622 or 296-2059

Edward T. Morioka, Realtor
6580 N. 5th St., San Jose, CA 95112
(408) 998-8334 bus; 559-8816 res.

Wayne Nishinaka, Agent
Farmers Insurance Group
2680 Cropley Ave., San Jose 95132
(408) 943-0713/5 res. 996-2582

San Jose

UYEDA CO.
Plumbing Contractor
New Construction - Remodel
Licensed : (408) 371-1209

Watsonville

Tom Nakase Realty
Acreage, Ranches, Homes, Income
TOM NAKASE, Realtor
25 Clifford Ave. (408) 724-6477

San Francisco Bay Area

Y. KEIKO OKUBO
Five Million Dollar Club
39812 Mission Blvd.,
Fremont, CA 94539; (415) 651-6500

Lake Tahoe

RENT INC Realty Inc.
Sales, Rentals, Management
Box 65, Carnelian Bay, CA 95711
(916) 546-2549; Shig-Judy Tokubo

Seattle, Wa.

Imperial Lanes
Complete Pro Shop, Restaurant, Lounge
2101-22nd Ave So. (206) 325-2525

The Intermountain

Mam Wakasugi, Sales Rep.
Row Crop Farms; Blackaby Real
Estate, Rt 2 Bx 658, Ontario, OR
97914 (503) 881-1301, 262-3459

Mountain-Plains

Charlie Braun "Brown"
Commercial-Investment-Residential
Lambros Realty, 1001 S. Higgins
Missoula, MT 59801
(406) 543-6663 / (406) 251-3113

Midwest District

Sugano Travel Sv. I
17 E Ohio St, Chicago IL 60611
(312) 944-5444 784-8517, eve, Sun

Eastern District

Ben M. Arai
Attorney at Law
126 Mercer St., Trenton, NJ 08611
Hours by Apmt. (609) 599-2245
Member: N.J. & Pa. Bar

Mike Masaoka Associates
Consultants - Washington Matters
900-17th St NW, Wash, DC 20006
(202) 296-4484

FREMONT

Continued from Page 4

women and the old. Hardly any women enjoy lifetime employment and only one-third of the work force does.

Kunihiko Takano, a Japanese commentator, writing in the magazine "Shukan Daiyomondo," says that the three pillars of security for the average Japanese—lifetime employment, seniority-based wages, and a stable middle class—are crumbling.

"Lifetime employment and the seniority-based pay system, once standard features of Japanese organizations, have been badly shaken over the last decade. The myth that nearly all Japanese are middle class has been shattered by growing income disparities." The income gap between the well-paid managers and professionals and those who do not achieve that status, he adds, "threatens to upset the social harmony with which Japan's postwar economic success was achieved."

Equal Opportunity for Women

Another factor which threatens to upset the social harmony is the changing attitudes of women. In 1983, for the first time in twenty years, working wives outnumbered housewives. Twenty percent of female workers work part time, at about \$2.35/hour. There is no protection or compensation; they can be fired on short notice; they receive no employment insurance, bonuses, or holiday pay. They are paid approximately 76% of what full-time female workers are paid, which, in turn, is about one-half what male workers are paid.

In 1980, Japan signed a United Nations pledge to eliminate dis-

crimination against women during "U.N. Decade for Women: Equality, Development, and Peace." This year, the eighth year of that Decade, the Equal Opportunity Bill (EOB) is being discussed in the Diet with much opposition from both management and labor. As one writer put it, the law [EOB] may very well destroy the "basis of the stability of Japanese society and the source of power of Japanese corporations."

Additional Pressures

In addition, the average age of Japan's manufacturing plants and equipment will for the first time since WW2 be older than that of the U.S. Also, Japan is facing stiff competition from Korea and Taiwan for its share of the U.S. import market. (GM has signed a \$427 million agreement to co-produce "T" cars with Dae Woo Corp. in Korea; Chrysler and Ford are investigating Korea and Taiwan as possible partners.)

With all of these pressures building on the Japanese economy, the NUMMI plant will be an important testing ground for Japanese management and industrial policy. How that system adapts to the American worker, how it adapts to American governmental regulations, and how it is adopted by other corporations could determine how it plays its course in Japan. Perhaps the most important question is, will U.S. corporations once again "surrender" to the Japanese in the interests of short-term profits, or will it invest to develop its own design and production workforce capable of meeting the Japanese challenge.

Los Angeles Japanese Casualty Insurance Assn.

COMPLETE INSURANCE PROTECTION

Aihara Insurance Agency, Inc.
250 E. 1st St., Los Angeles 90012
Suite 900 626-9625

Anson T. Fujioka Insurance
321 E. 2nd St., Los Angeles 90012
Suite 500 626-4393

Funakoshi Ins. Agency, Inc.
200 S. San Pedro, Los Angeles 90012
Suite 300 626-5275

Inouye Insurance Agency
15029 Sylvanwood Ave.
Norwalk, CA 90650 864-5774

Itano & Kagawa, Inc.
321 E. 2nd St., Los Angeles 90012
Suite 301 624-0758

Ito Insurance Agency, Inc.
1245 E. Walnut, #112, Pasadena 91106;
(818) 795-7059, (213) 681-4411 L.A.

Kamiya Ins. Agency, Inc.
327 E. 2nd St., Los Angeles 90012
Suite 224 626-8135

Maeda & Mizuno Ins. Agency
18902 Brookhurst St., Fountain Valley
CA 92708 (714) 964-7227

The J. Morey Company
11080 Artesia Bl., Suite F, Cerritos, CA
90701; (213) 924-3494, (714) 952-2154

Steve Nakaji Insurance
11964 Washington Pl.
Los Angeles 90066 391-5931

Ogino-Aizumi Ins. Agency
109 N. Huntington, Mont'y Pk 91754;
(818) 571-6911, (213) 283-1233 L.A.

Ota Insurance Agency
312 E. 1st St., Suite 305
Los Angeles 90012 617-2057

T. Roy Iwami & Associates
Quality Ins. Services, Inc.
2975 Wilshire Blvd., Suite 629
Los Angeles 90005 382-2255

Sato Insurance Agency
366 E. 1st St., Los Angeles 90012
626-5861 629-1425

Tsuneishi Ins. Agency, Inc.
327 E. 2nd St., Los Angeles 90012
Suite 221 628-1365

Wada Asato Associates, Inc.
16520 S. Western Ave., Gardena,
CA 90247; (213) 516-0110

ASIA TRAVEL BUREAU'S



Calendar of Tours

We would like to thank you for your patronage and continued support in helping us make your business and vacation travel as enjoyable as it can be. We also look forward to serving your need for the coming year whether it be business or pleasure.

In 1985, we will again present exciting, fun-filled, as well as informative tours.

A wide selection of affordable, quality tours are prepared for 1985, and all are being escorted by Asia Travel Bureau's bilingual experienced escorts to make your trip more enjoyable.

- * March 31 Asia's Spring Tour
- * April 6 Kyushu Spring Tour
- * May 14 Europe Tour (8 countries)
- * June 19 Kyodo System Japan Tour
- * June 23 Radio Li'l Tokyo's Sansei Japan Tour
- * June 23 Canadian Rockies Tour
- * July 5 Sansei Fun Japan Tour
- * July 9 Alaska Cruise Tour
- * July 25 Matsumae-kai Japan Tour
- * Sept 9 Spain-Portugal-France Tour
- * Sept 9 Great Mainland China Tour
- * Sept 25 Autumn Hokkaido Tour
- * Sept 25 Kyushu/Shikoku Tour
- * Oct 3 Hokubei Minyo Tour
- * Oct 6 Mie-kenjin Kai Hokuriku/Sanin Tour
- * Oct 11 Momiji Japan Tour
- * Oct 18 South Pacific Tour
- * Oct -- South American Tour

Other Special Tours are also being formed. Itinerary will be passed on to you upon request.

Asia Travel Bureau

102 S. San Pedro St., Los Angeles, CA 90012
or call (213) 628-3232

COMPLETE TRAVEL AGENCY — READY TO SERVE ALL YOUR NEEDS

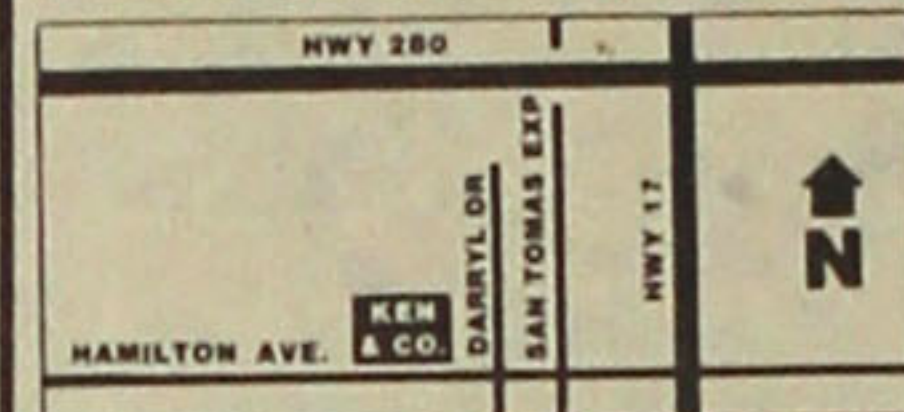
SHORT & SMALL MEN'S APPAREL

1985

NOW FEATURING

ITALIAN SHOES BY SANDRO MOSCOLONI in sizes 5 - 7½ M & S widths

785 W. HAMILTON AVENUE CAMPBELL, CALIFORNIA 95008 PHONE: 408 / 374-1466 M-F: 12-8:30, SAT: 10-6, SUN: 12-5



OWNER: KEN UYEDA

KEN & COMPANY

Going Places? Watch the 'PC' Travel Ads!

Special Holiday in Japan

ANY WHERE, ANY TIME — 7 DAYS

Features: (1) Air Fare, (2) 5-Nights Top Value Hotel throughout Japan (including all taxes & service charge), (3) Unlimited Train Pass (includes Express Train, Shin-Kansen).

SPECIAL PRICE

From: Los Angeles, San Francisco \$ 848.00
Chicago, New York \$1,195.00

The prices shown above are per person based on double occupancy.

Japan Holiday Tour

(213) 484-6422

1985 West L.A. JAACL

Travel Program

FOR JAACL MEMBERS, FAMILY & FRIENDS

* Late Changes/Addition TOUR DATES: GUIDES

- 2—Cherry Blossom-Kyushu-Honshu Apr 1-21: Toy Kanegai
 - 3—Wash'n DC Heritage Tour May 1-12: Yuki Sato
 - 4—Basic Japan + HK, Bangk. May 11-29: Phyllis Murakawa
 - 5—European Tour June 1-22: Toy Kanegai
 - 6—Canadian Rockies (Special) Jun 20-24: George Kanegai
 - 7—Japan Summer Tour Jun 22-Jul 6: Bill Sakurai
 - 8—Ura-Nihon, HK, Bangk. Sep 28-Oct 19: Veronica Ohara
 - *8a—So. Honshu, Hokkaido, Thoku Sep 28-Oct 19: S Yagi
 - 9—China & Kyushu Tour Sep 29-Oct 22: Jiro Mochizuki
 - 10—Ura-Nihon, No. Kyushu Tour Oct 5-26: Bill Sakurai
 - 11—Mediterranean Cruise Sep 29-Oct 11: Toy Kanegai
 - 12—Fall Foliage/New Eng. Can. Oct 3-11
 - 13—Japan Highlights Nov 2-Nov 14
 - 14—Spcl. Japan Holiday Tour Dec 21-Jan 4: Geo. Kanegai
- Mini-Group air fare from Sept. 15 on a bi-weekly travel/tour. Mini-schedule 1985—30 days Japan Homestay to or from Japan. Brochure available in early January 1985.

FOR INFORMATION, RESERVATIONS, CALL OR WRITE
Roy Takeda: 1702 Wellesley Ave., West Los Angeles 90025 820-4309
Steve Yagi: 3950 Berryman Ave., L.A. 90066 397-7921
Toy Kanegai 820-3592 Bill Sakurai: 820-3237
Veronica Ohara 473-7066 Yuki Sato 479-8124
Jiro Mochizuki 473-0441 Phyllis Murakawa 821-8668
Land Arrangements by Japan Travel Bureau International
West L.A. JAACL Tour Brochures Available

West Los Angeles JAACL TRAVEL CHAIR: GEORGE KANEGAI-820-3592 1857 Brockton Ave., Los Angeles, CA 90025
Flight and tour meetings every 3rd Sunday of the month, 1 p.m., at Felicia Mahood Center, 11338 Santa Monica Blvd., West L.A.

West LA JAACL Flight, c/o Roy Takeda
1702 Wellesley Ave., Los Angeles, CA 90025

Please reserve _____ seat(s) for Flight No. _____
I agree to conditions of the contract and brochures. Flight schedules are subject to change.

Name _____
Address _____
City, State, ZIP _____
Phone: (Area code) _____
[] Send tour brochure [] Flight only information

Upcoming 1985 Escorted Tours

EXCEPTIONAL FEATURES—QUALITY VALUE TOURS

- Japan Spring Adventure Apr. 8
- Europe: 7 countries (17 days) May 25
- Canadian Rockies - Victoria (8 days) June 19
- Japan Summer Adventure July 2
- Hokkaido-Tohoku (No. Japan) Sept. 30
- East Coast & Foliage (10 days) Oct. 7
- Japan Autumn Adventure Oct. 15
- Far East (Bangkok, Singapore, Malaysia, Hong Kong, Taiwan, Japan) Nov. 1

For full information/brochure



TANAKA TRAVEL SERVICE

441 O'Farrell St. (415) 474-3900
San Francisco, CA 94102

American Holiday Travel

1985 Tour Schedule

- Senior Nikkei Japan Golf Tour May 23-June 1
Tokyo/Chiba—Narashino Country Club; Hakone—Hakone Kohan Golf Course, Dai-Hakone Country Club; Kawana—Kawana Country Club (Fuji & Oshima Course).
 - European Holiday Tour June 22-July 8
Holiland, Germany, Austria, Italy, Monaco, France, Switzerland, England.
 - Canadian Rockies Holiday Tour July 19-July 28
Vancouver, Victoria, Kamloops, Jasper, Lake Louise, Banff.
 - Senior Nikkei Japan Golf Tour Oct 5 - Oct 25
Tokyo; Hakone (Hakone Kohan Golf Course); Kawana (Kawana Country Club-Fuji Course); Atami, Kyoto, Hiroshima (Hiroshima Kokusai Golf Club), Beppu, Miyazaki (Phoenix Country Club), Ibusuki (Ibusuki Golf Course), Kumamoto/Mt. Aso (Kumamoto Golf Club), Fukuoka.
 - Hokkaido-Tohoku Holiday Tour Oct 7 - Oct 20
Tokyo, Sapporo, Lake Akan, Lake Mashu, Sounkyo, Nobonbetsu, Lake Toya, Hakodate, Aomori, Morioka, Sendai, Matsushima, Nikko.
 - Japan Cuisine/Cooking Tour Oct 12-Oct 26
Tokyo, Hakone, Yaizu, Kyoto, Osaka—cooking school, unique meals, fish markets, green tea farm, sake factory.
 - South American Holiday Tour Nov 6-Nov 21
Argentina—Buenos Aires; Brazil—Rio de Janeiro, Sao Paulo, Iguaçu Falls; Peru—Lima, Cuzco, Machu Picchu (Peru optional).
- For information and reservations, please write or call us.

American Holiday Travel

368 E. 1st St. Suite 1, Los Angeles, CA 90012
(213) 625-2232 (818) 846-2402 (Burbank)
(213) 849-1833

JAPANESE AMERICAN TRAVEL CLUB

1985 Group Escorts

Tour Program	# of Days	Depart Date
1 Down Under-New Zealand/Australia	18dys	Mar 6
2 Ancient Cathay	21dys	May 6
3 Japan/Tsukuba Expo	9dys	May 19
4 Golden China	21dys	May 28
5 Deluxe Canadian Rockies	6dys	July 2
6 Canadian Mini Vacation	4 dys	July 4
7 Alaska Cruise	8dys	July 19
8 The Best of Europe	17dys	Aug 10
9 Hawaiian Island Cruise	10dys	Aug 22
10 Japan/Tsukuba Expo	9dys	Sept 1
11 Golden China	21dys	Sept 3
12 Europe Grand Tour	22dys	Sept 16
13 USA/Canada Fall Foliage	8dys	Sept 29
14 USA/Canada Fall Foliage	8dys	Oct 6
15 Old Mexico	10dys	Oct 6
16 Ancient Cathay	21dys	Oct 7
17 Panama Canal/Caribbean Cruise	12dys	Oct 15
18 Down Under-New Zealand/Australia	18dys	Oct 16
19 So. America Circle	17dys	Oct 18
20 Mayan/Yucatan Exploration	6dys	Nov 2
21 Caribbean Cruise	8dys	Nov 2
22 Orient Highlights	16dys	Nov 9

For highlight of tour programs, refer to Travel Supplement (Dec. 7, 1984, PC) or call (213) 624-1543



Endorsed by the National JAACL

SEE YOUR TRAVEL AGENT OR CONTACT:

JAPANESE AMERICAN TRAVEL CLUB INC. (213) 624-1543

250 E. 1st St., Suite 912; Los Angeles, CA 90012

Name _____
Address _____
City/State/ZIP _____
Phone: (a/c) _____

- I wish to apply for membership in JATC. Enclosed is \$20.
- JAACL members are entitled to a 50% discount on JATC dues for self and dependents.
- I wish to include _____ dependents at \$10 each.
Name of Dependents: _____ Relationship _____

Send me information on tours (✓)
• Prices subject to change without notice. Departure dates may be adjusted when conditions warrant it. (*) All groups consisting of 15 or more tour members will be escorted by a Tour Escort from Los Angeles.