

pacific citizen

National Publication of the Japanese American Citizens League

Newsstand: 25¢
(60¢ Postpaid)

ISSN: 0030-8579 / Whole No. 2,367 / Vol. 101 No. 22

941 E. 3rd St. #200, Los Angeles, CA 90013

(213) 626-6936

Friday, November 29, 1985

Battle lines drawn on language issue

by J.K. Yamamoto

MONTEREY PARK, Calif. — A proposal to make English the official language of Monterey Park has prompted the formation of a group opposing the move and focused national attention on this multi-ethnic city.

"The people of Monterey Park don't like foreign-language signs that dominate the business district," says photographer Frank Arcuri, who is leading the drive to place the measure on the April ballot. "It alienates us."

Asians, many of them immigrants from Hong Kong and Taiwan, make up 40% of the population here, and signs in Chinese are a common sight. (Latinos

make up 37% of the 58,000 residents; Anglos are 22%.)

Arcuri thinks those signs "divide the community" and constitute "discrimination against Americans" who cannot read Chinese. "This is America. Immigrants are welcome here, but they have to join in the brotherhood."

The proposed measure, authored by Arcuri and teacher Barry Hatch, reads, "English is the language that we use in Monterey Park when we want everyone to understand our ideas. This is what unites us as Americans, even though some of our citizens speak other languages. Let us make English our official language as a symbol of this

unity."

Arcuri describes the measure as "a symbolic policy statement" that he wants the city council to use "as a guide [in] future policy decisions."

He denies accusations of prejudice by saying, "There is nothing racist about saying English is a good language, a practical language."

The Coalition for Harmony in Monterey Park (CHaMP), which held its first press conference Nov. 1, has proposed a counter-measure which reads, "Although we recognize that English is our common language in Monterey Park, we believe that making English the official language of our city would lead to violations of our constitutional rights."

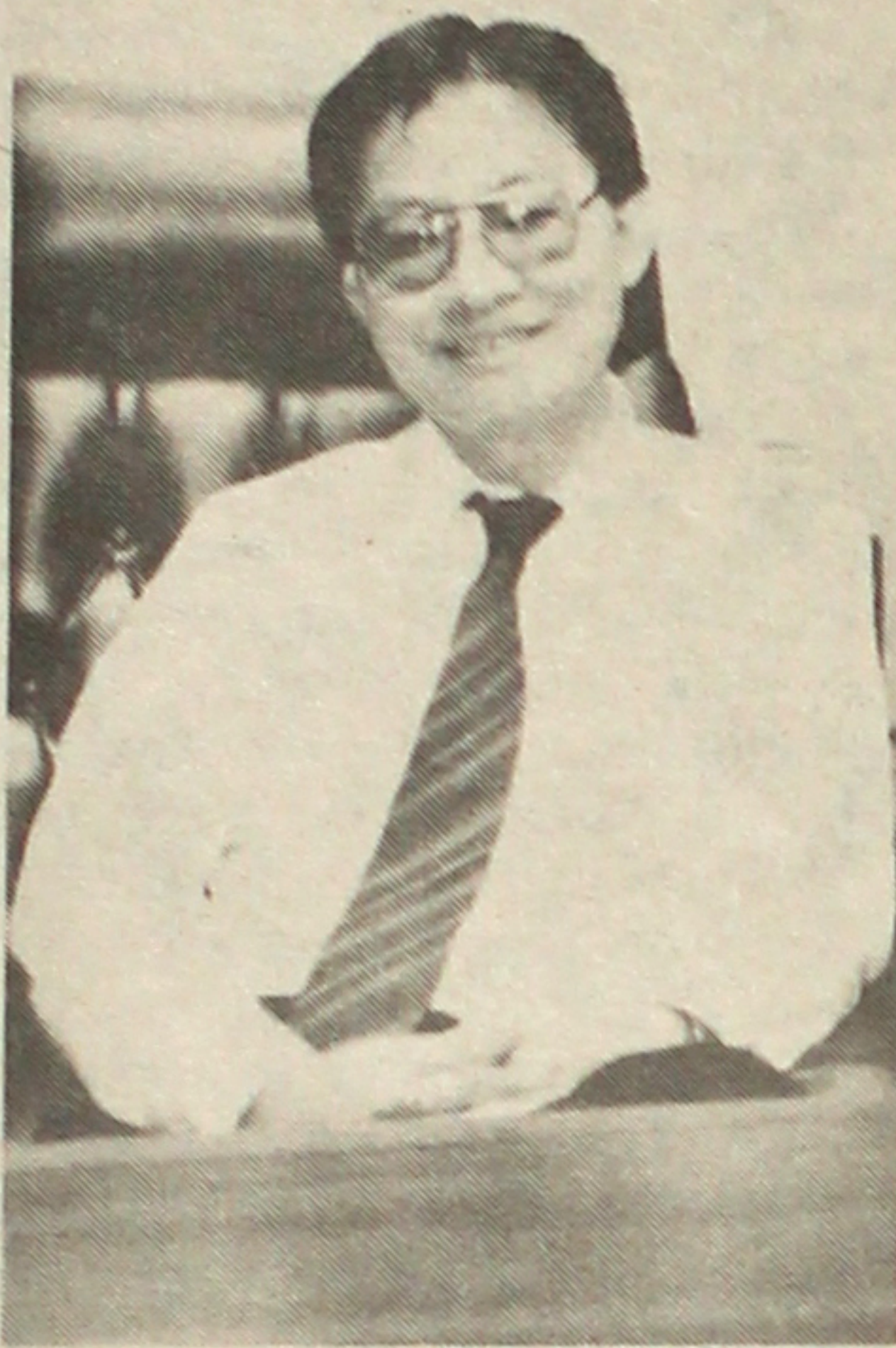


Photo by J.K. Yamamoto
Michael Eng

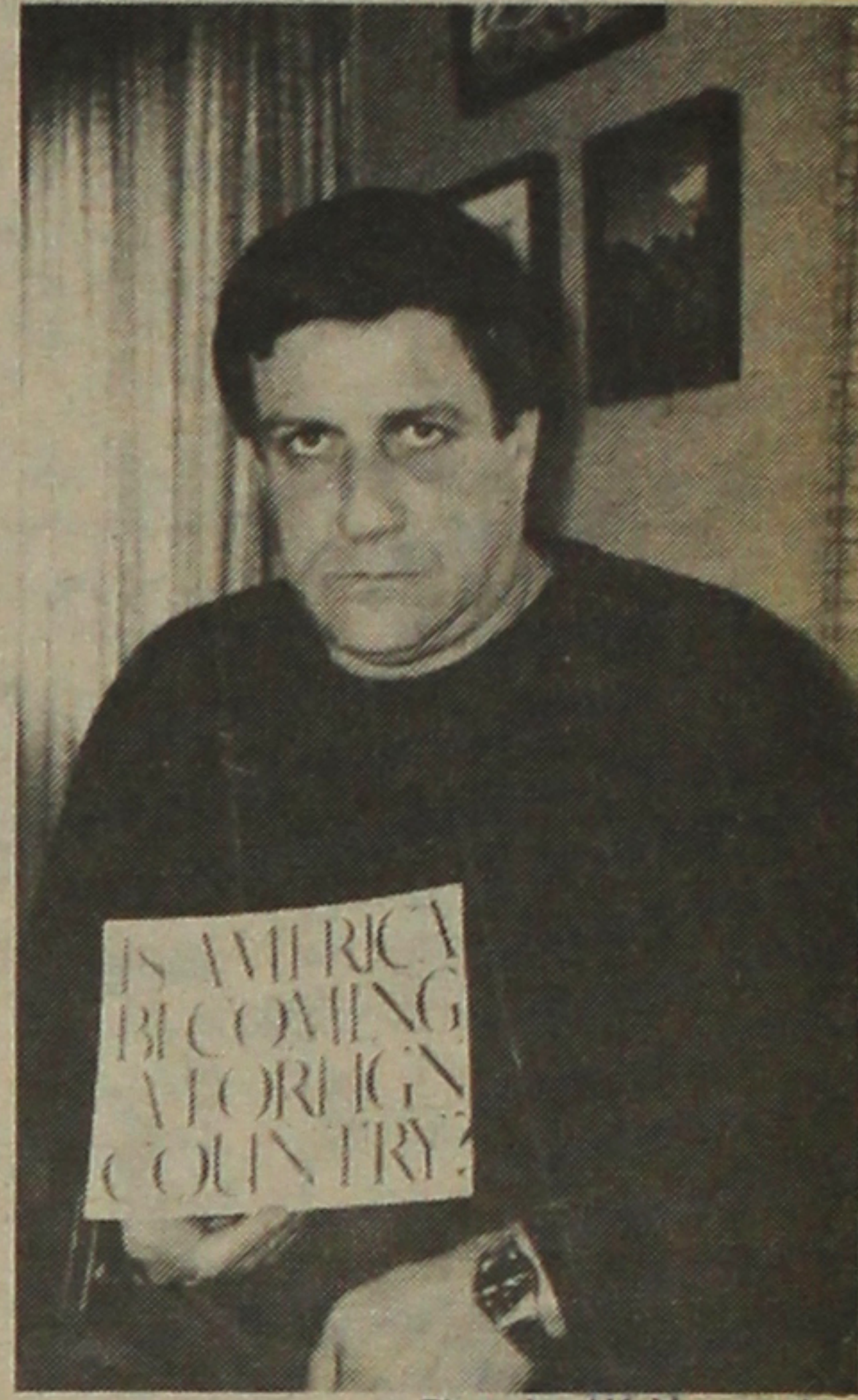


Photo by J.K. Yamamoto
Frank Arcuri

Continued on Page 4

Hayakawa calls for official language

by Katie Kaori Hayashi

NORTHRIDGE, Calif.—English should be the national language of the U.S., so a measure to prevent other languages from becoming official should be adopted, former senator S.I. Hayakawa said Nov. 13.

The California Republican circulated petitions at California State University Northridge to put a measure on the state ballot making English the official language. "Melting pot, yes. But the Tower of Babel, no," he shouted.

"Unofficially, you can speak any language at home, at church, at crap games and at bingos," said author and semanticist Hayakawa, who is honorary chair of the Washington, D.C.-based organization U.S. English. But one language, English, should be used at official places such as Congress, state legislatures and city council meetings, he said.

Since the U.S. consists of various peoples who practice different customs, ideas and religions, the use of one language "dissolves distrust and fear and draws up understanding and agreement," he said.

"A common language is what makes society possible. American society is a melting pot, so one public language makes people unite."

"But in the past several years," he added, "the idea of a melting pot has been changed... some people say we should think of it [the U.S.] as a salad bowl."

In San Francisco, a bilingual ballot initiative supported especially by Hispanic leaders was passed without much debate in 1975, he said. "This is in direct contradiction to the immigration laws that require immigrants to learn English to become American citizens."

As a senator, Hayakawa introduced in 1981 a constitutional amendment, which was never passed, that would make English the nation's official language.

As part of Calif. Committee for Ballots in English, Hayakawa pushed for passage of Proposition 38, approved in November 1984, under which the governor urged the federal government to eliminate bilingual ballots and other election materials.

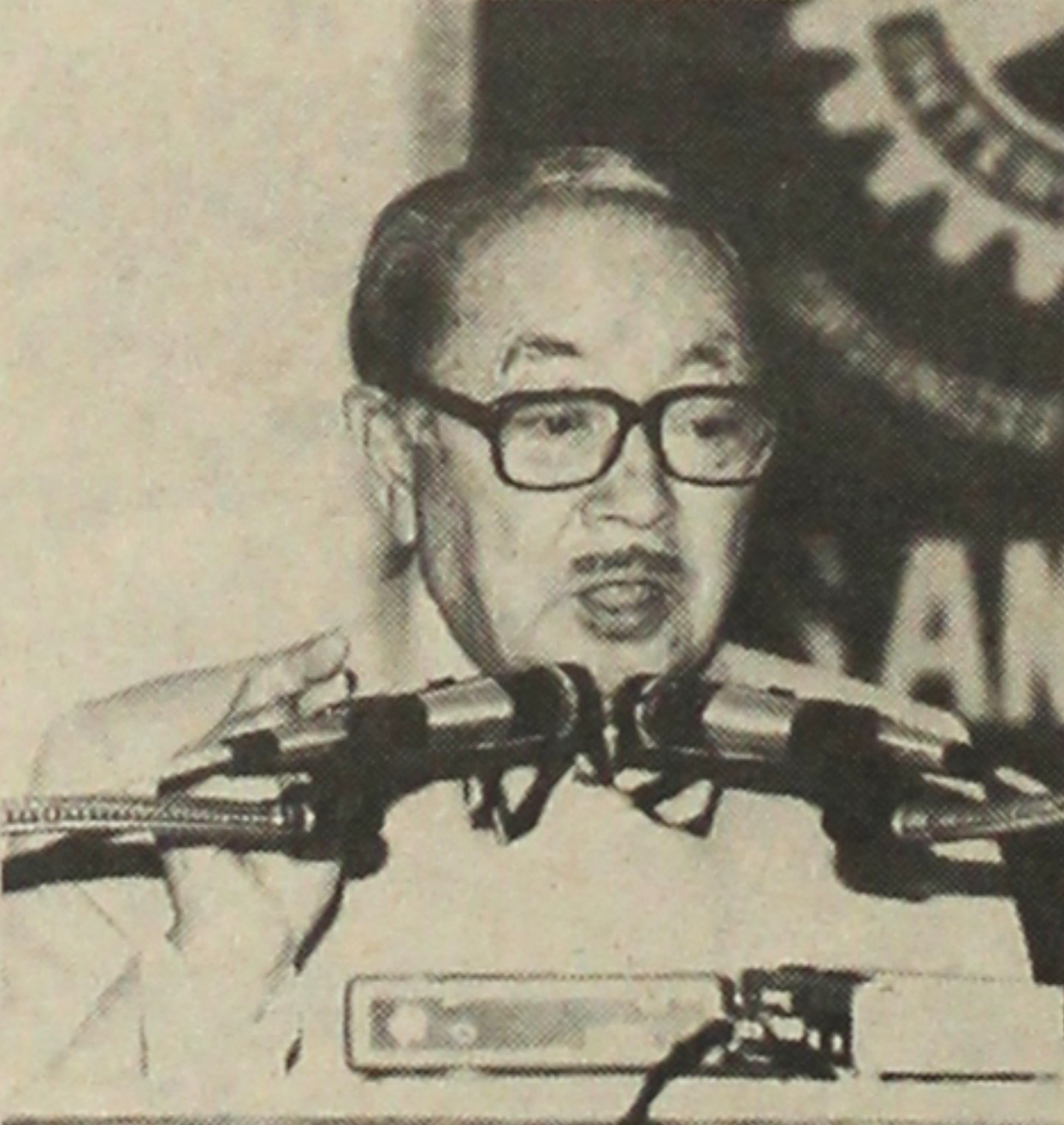


Photo by Jon Takasugi/Rafu Shimpo
Former Sen. S.I. Hayakawa during a Los Angeles appearance in June.

Asians prefer GOP, survey suggests

PASADENA, Calif.—A new survey indicates Asian Americans are more likely than Latinos to oppose special government programs for immigrants and to support President Reagan and call themselves Republicans, the Washington Post reports.

The phone survey, conducted by Bruce E. Cain and D. Roderick Kiewiet, associate professors of political science at Calif. Institute of Technology, reached a random sampling of 593 Latinos, 305 Asians, 335 Blacks and 409 whites.

Cain and Kiewiet said they designed their survey after observing Democratic efforts, particularly by presidential candidate Jesse Jackson, to unite minorities under the party's banner.

The poll suggests that Asians do not believe they share the problems facing Blacks and Latinos or need help from traditionally Democratic-sponsored programs. The researchers note that 29% of Asian discrimination complaints were job- or housing-related, compared to 59% for Blacks and 44% for Latinos.

The poll also showed 67% of Asian respondents voted for Reagan in 1984 as opposed to 36% of Latinos.

Democratic councilman Mike Woo of Los Angeles said he was not surprised by those results. "They see him as a strong anti-communist," he said, noting that many Chinese, Korean and Vietnamese immigrants have seen communism first-hand.

Woo said the predominance of Democrats among Asian American elected officials may be due to their concentration in areas

with large numbers of other minorities who tend to vote Democratic. But he expects to see Asian Republicans elected from Korean and Vietnamese neighborhoods.

Immigration Issues

Asian respondents supported sanctions against employers for hiring illegal aliens 51% to 34%, compared to Latino opposition of 42% to 40%. Whites and Blacks supported sanctions by somewhat wider margins than Asians.

All ethnic groups supported amnesty for illegal aliens already in the country, though the margin of approval by Asians was 43% to 33% compared to 61% to 20% for Latinos. The disparity may be attributable to the fact that the proportion of illegal immigrants is greater among Latinos than among Asians.

A similar Asian-Latino split occurred on bilingual education, with Asians supporting it 51% to 40% compared to 69% to 22% support from Latinos. (Blacks were 63% to 25% in support and whites were 51% to 42% against.)

Monterey Park councilwoman Lily Chen, a Democrat, said the split may be explained in part by media accounts that concentrate on bilingual programs for Spanish speakers and put little emphasis on services available for speakers of Asian languages.

Latinos supported bilingual ballots 60% to 31%, as did Blacks, 49% to 38%. Asians opposed them 50% to 43% and whites were 67% to 29% against.

However, slightly more Asians, 47%, than Latinos, 43%, said they usually do not speak English at home.

DNC plans outreach to Asian/Pacifics

SAN FRANCISCO—Democratic National Committee chairman Paul Kirk announced a major outreach program directed at Asian Pacific Americans during a Nov. 13 reception at Dimasalang House hosted by Tom Hsieh, DNC Asian Pacific Caucus chair.

"With the support of key political leaders in Congress," Kirk said, "I am proposing creation of a national federation that will give the Asian Pacific community a greater role in the affairs of the Democratic Party."

"The federation will afford Asian Pacific Democrats the au-

tonomy to pursue a wide-ranging political agenda of importance to the community, but it will also provide a strong link to the formal Democratic Party organization."

Kirk announced that he will convene a meeting of Asian Pacific elected officials and DNC members by the first of next year to plan and implement a structure for the federation.

"We want this new organization to be planned by the Asian Pacific American community itself, not imposed by the National Party Committee," he said, add-

ing that he is soliciting suggestions from the community.

Kirk promoted his party by saying that Asian Pacifics are known for "hard work, resourcefulness, self-discipline and devotion to family. Those are qualities which have historically been identified with the Democratic Party."

"We are eager to forge a closer working relationship with the millions of Americans of Asian Pacific descent... The Democratic Party best reflects the diversity of this country which is its fundamental strength. Asian Pacific Americans are an essential element of that strength."

Continued on page 5

Community Affairs

LOS ANGELES—National Coalition for Redress/Reparations (NCRP) holds a reception for the "Born Free and Equal" exhibit of Ansel Adams' Manzanar photos at Doizaki Gallery, Japanese Cultural & Community Center, 244 San Pedro St., on Dec. 3, 7:30-9:30 p.m. Donation: \$5. Info: Miles Hamada, 628-2725.

The second annual Shogun Santa Children's Parade ushers in the Christmas season Dec. 1, 2-5 p.m., in Little Tokyo. Children from the L.A. School District, ethnic language schools and community youth groups will participate. During closing festivities at Japanese Village Plaza on 1st St., Shogun Santa will present awards for best costume, performances, and banners. Info: (213) 620-8861.

SAN FRANCISCO—Asian American Theater Co. presents "All Through the House" by David Ginn, the story of a

yuppie couple trying to recapture the magic of Christmas, Dec. 4-22, 8 p.m. weekdays and 3 p.m. & 7 p.m. Sundays, at Ft. Mason Center, Bldg. B. Info: Adrienne Fong, (415) 928-8922.

San Francisco Choraliers, a bilingual children's group directed by May Murakami, performs a Christmas concert Dec. 14, 7:30 p.m., at Christ United Presbyterian Church, 1700 Sutter St. Info: 567-3988.

SEATTLE—Tomo No Kai, a widow and widowers support group, holds a Christmas potluck Dec. 14, 6 p.m., at Blaine Memorial Methodist Church, 3001 24th Ave. S. Info: Hana Masuda, 322-0691.

SAN JOSE, Calif.—Sheridan Tatsuno, industry analyst at Japanese Semiconductor Industry Service, Dataquest, Inc. speaks on licensing and joint ventures in the semiconductor industry Dec. 5 at Red Lion Inn. Reservations

required. Info: Japan Society, (415) 986-4383.

OAKLAND, Calif.—Bassist Mark Izu performs at Ohana Cultural Center, 4345 Telegraph Ave., Dec. 13, 8:30 p.m. Also featured will be performance artist Brenda Aoki, percussionist Jeanne Aiko Mercer and saxophonist Russel Hisashi Baba. Admission: \$5. Sponsored by Kearny St. Workshop. Info: (415) 658-1868.

Book on Santa Clara JA farmers released

SANTA CLARA, Calif.—An autograph party for the authors of the newly published *Japanese Legacy: Farming and Community Life in California's Santa Clara Valley*, is scheduled for Dec. 14, 2 p.m., in the Fellowship Hall of Wesley Methodist Church, 566 N. 5th St.

Authors Timothy Lukes and Gary Okihiro, both Santa Clara University professors, will be present.

Published by the California History Center at De Anza College, the book traces the history of the Santa Clara JA farming community from about 1895, when the first agricultural laborers arrived, to 1945, when the first JAs returned to the valley from wartime internment camps.

The book also records how local politicians and landowners profited from the presence of Japanese farmers.

Illustrated with 60 historical photographs collected by Duane Kubo, *Japanese Legacy* was produced with funding from Calif. Council for the Humanities, American Assn. for State & Local History, Sourisseau Academy at San Jose State University, and SCU's College of Arts & Science and Ethnic Studies Program.

No. 2,367

allow 6 weeks advance notice to report your address change with label on front

If you are moving,

New Address: _____

City, State, Zip _____

Effective date: _____

•Thank you for using this form. It saves PC 30 cents in fees.

Pacific Citizen, 941 E. Third St., Room 200, Los Angeles, CA 90013

EXPIRATION NOTICE—If the last four digits on the top row of your label reads 1185, the 60-day grace period ends with the last issue in January, 1986. Please renew your subscription or membership. If membership has been renewed and the paper stops, notify the PC office.

Asians wary of new Chinatown film

SAN FRANCISCO—A rally was held Nov. 12 in Chinatown to protest the 20th Century Fox film "Big Trouble in Little China," which is now in production.

About 25 people, organized by Bay Area Coalition Against "Year of the Dragon," carried signs and chanted "No more racist movies" at Ross Alley, where the "Little China" film crew had been scheduled to shoot.

Described by director John Carpenter ("Starman") as "an adventure-comedy-kung fu-monster-ghost story about the imaginary world underneath Chinatown where the ghosts live," the film is written by W.D. Richter ("Buckaroo Banzai") and stars Kurt Russell and Dennis Dun as truck drivers searching for a woman kidnapped by the mysterious Lords of Death.

Protestor Gordon Mar said that the film "is portrayed as light-weight fantasy, but it promotes a very dangerous image... The film includes prostitution

rings and underground slave chambers."

Another of the coalition's complaints is that the Chinatown in the film is the site for open warfare between "Yellow Turbans" and "Red Turbans" using knives, meat cleavers and hatchets.

Concern about the film has been expressed by National Asian American Telecommunications Assn., the San Francisco-based Chinese for Affirmative Action and the Los Angeles-based Asian Pacific American Media Watch, which, like the Bay Area coalition, was formed in response to Michael Cimino's film "Year of the Dragon" in August.

The Bay Area group demanded that 20th Century Fox halt production of the film until it has met with coalition members and resolved the issue, and that the City of San Francisco adopt a policy which considers minority community concerns when issuing permits for location filming.

—from a report by East West

JAM 1986 calendars now available

SAN FRANCISCO—Japantown Art and Media Workshop (JAM) has released its 1986 calendar, which features 13 limited-edition prints silk-screened by hand.

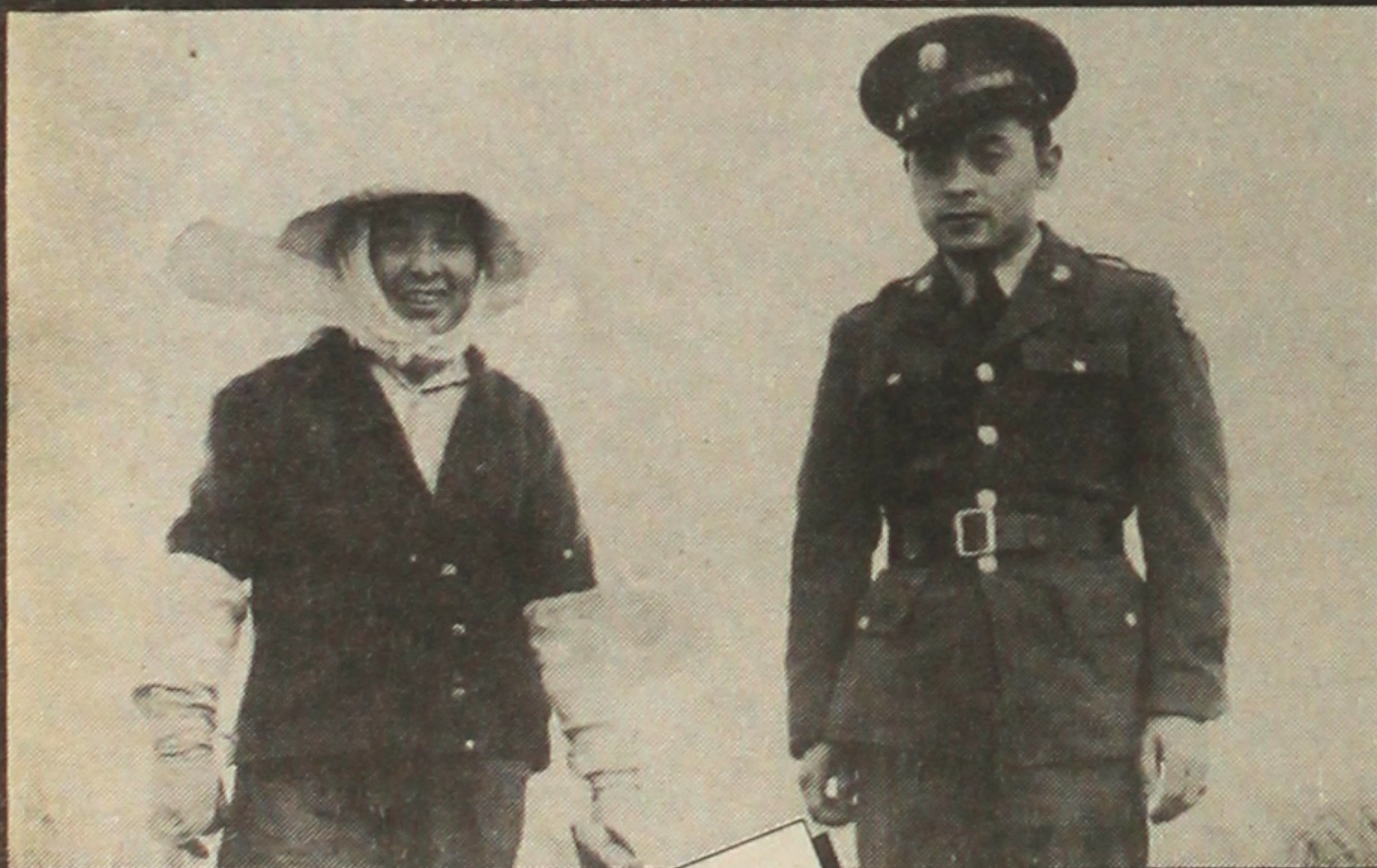
Artists whose works are featured are Chester Yoshida, Wes Aoki, Wes Senzaki, Holly Calica, Cecily Chow, Richard Szeto, Leon Nancy Hom, Rich Tokeshi, Russell Miyaki, Stephanie Lowe & Peter Man, Art Matsuura, and Coleen Nakamura.

"Calendar JAM," which costs \$50 (20% discount for JAM mem-

bers), will be available Dec. 14-15 at Nihonmachi Little Friends' Christmas art and craft fair at the West Building of Japan Center and Dec. 14 at Tygress 50 Asian Art Gallery, 2118 Haynes St.

JAM is a non-profit organization which sponsors cultural events and provides graphic services and art workshops and classes for the Asian American community. Membership is \$20 general, \$10 students, seniors and low-income persons. Info: (415) 567-3851.

nisei soldier
STANDARD BEARER FOR AN EXILED PEOPLE



PBS Documentary
1984

CBS NEWS

I thought every angle of what happened to Japanese Americans during the Second World War had been covered by documentaries over the years. I was wrong. You have shined a light on one of the most important chapters of the way America violated its own ideals. Instructive, because you have reminded us of the courage and patriotism of the Nisei who fought for rights they were not themselves allowed to exercise.

"Nisei Soldier" is a mirror of America at her worst and her best. Thank you for it.

Sincerely,
Bill Moyers

1st Prize
American
Film Festival 1984
CINE Golden Eagle 1984
EMMY 1985

A film by Loni Ding

Please send VHS or Beta (Check one) Price: \$53.00 (postpaid)

To: Name _____
Address _____
City, State, ZIP _____

Send directly as a gift, enclosing card with my name.
(Please print) _____

Checks payable to: VOX, P.O. Box 26581, San Francisco, CA 94126

AVAILABLE NOW for HOLIDAY GIVING
A keepsake for the generations to share and remember

JACL/Pacific Citizen
Typesetter Fund
941 E. 3rd St., Rm. 200
Los Angeles, CA 90013

'Nisei Soldier' wins film and TV award

NEW YORK—Loni Ding's documentary "Nisei Soldier" was awarded a gold medal in the history and biography category at the 28th annual International Film and Television Festival of New York on Nov. 15 at the Sheraton Center.

The film, which documents the story of Japanese Americans who fought for the U.S. in Europe during WW2, has been broadcast on PBS and received numerous media awards.

Producer and director Ding was represented by Tooru Kanazawa, who said on her behalf, "We accept with pride this gold medal in the name of the men of the 442nd Regimental Combat Team and their families, whose heroism and moral courage the film wishes to remember and celebrate."

A total of 5,313 entries from 44 countries competed in the festival.

'86 TOYOTAS ARE HERE!

NORIO OKADA, Sales Manager


5944 N. Figueroa St.,
Highland Park, CA 90042
(213) 259-8888



UNI TOYOTA
VERSAL

NEW CAR LOAN RATE

11.75% APR



Used car loans 13.75% APR
No prepayment penalty fee
Free insurance on loans & savings
IRA accounts available

Now over \$6.5 million in assets

NATIONAL JACL CREDIT UNION

Post Office Box 1721
Salt Lake City, Utah 84110
Telephone (801) 355-8040

THE SHORT SHARP
FASHION CLOTHING FOR THE SHORTER MAN

**SHORT MEN
4'10" - 5'7"**

EVERYTHING IN YOUR SPECIAL SIZES
X-SHORT • SHORT • PORTLY SHORT
30"-31"-32" SLEEVE LENGTHS

1275 Market Street
SAN FRANCISCO (415) 864-7140

1233 Broadway Plaza
WALNUT CREEK (415) 930-0371

103 Town & Country Village
PALO ALTO (415) 321-5991

683 Fashion Valley
SAN DIEGO (619) 296-9210

Call or Write for Free Catalog

Needs of ethnic communities explored

LONG BEACH, Calif.—Over 250 community leaders and volunteers tackled the issue of meeting the health and human services needs of the city's expanding ethnic population on Nov. 7 at California State University, Long Beach.

Jointly sponsored by Long Beach Area Planning Council of United Way, Junior League of Long Beach and National Conference of Christians and Jews, the conference was entitled

"Building Bridges to Intercultural Understanding"

Than Pok, executive director of United Cambodian Community, told participants that the Long Beach ethnic population has grown from 30% to more than 50% in the past five years.

"More needs to be done to understand these people and to incorporate them in the service delivery system," he said. "In so doing, we hope to have a harmonious community where black

and white, yellow and brown can live peacefully side by side."

Dr. Stephen Horn, president of CSULB, spoke about the vital role higher education plays in providing opportunities, though he lamented that only one-third of the student body represented ethnic minorities. "We need to build networks to bring these students into our university."

Fernando del Rio, v.p. of public affairs at KHJ-TV, said, "I realize how frustrating it must be for those of you who work in minority affairs to get your message heard and understood. Those of us in the media have an obligation to serve all segments of the community."

Workshops were devoted to identifying areas that impede delivery of services, determining bridges to solve the problem, and developing a plan of action.

Speakers dealing with the Asian American community included:

—Santa Ana College counselor Tuyet Pham, United Cambodian Community assistant director Prany Sananikone and Kavouth Huv of Catholic Welfare Bureau Immigration and Resettlement Services on understanding cultural variations in family dynamics;

—Mike Watanabe, executive director of Asian American Drug Abuse Program, on securing, selecting and orienting intercultural staff;

—Leland Wong, director of public policy development for United Way, on planning programs to accommodate changing demographics;

—Dr. Kong Chhean of Khmer Buddhist Church on the role of the church in bridging intercultural barriers;

—Alan Kumamoto of Center for Non-Profit Management on orientation to fundraising.

Pearl Harbor invoked in ad campaign

HOUSTON—A public relations consultant and former state legislator has run full-page advertisements in local papers stating, "Japan is stealing American jobs. It's an economic Pearl Harbor."

Henry "Hank" Grover, who operates Grover & Associates in the Montrose area, placed the ads in the Nov. 12 Houston Chronicle and Dallas Morning News to promote bumper stickers with the slogans "Remember Pearl Harbor/Save American Jobs," "Boycott Japan/Buy American," and "Buy American/Save Your Job."

"Let's awaken Americans to this serious crisis with a nationwide bumper sticker campaign," the ad reads in part.

"The trade deficit costs 925,000 American jobs. [Grover says that 25,000 jobs are lost per \$1 billion in the \$37 billion trade deficit with Japan.] Maybe your job or the job of a relative or friend is one of them. Many American industries are being destroyed forever—or owned by Japan."

Grover, who said he is acting for himself, not on behalf of a client, wants to "send a message to Tokyo that we want equal treatment. If they want an open market in the U.S., let American goods in. Free trade is a two-way street but we're the only country that practices it"

He plans to place ads in newspapers all over the U.S. and hopes a national movement will force change.

Grover was elected state representative as a Democrat in 1960, 1962 and 1964 and to the state senate as a Republican in 1966 and 1968. In 1972 he narrowly lost to Dolph Briscoe in the race for governor; he unsuccessfully ran for U.S. senator in 1984.

Jean Choate, executive director of the Japan America Society in Houston, said Grover's charges are "biased, old hat and not true. This is the same old hate stuff that's been going on since the war."

Japan has made an honest effort to eliminate many of its trade restrictions, she said, adding that the U.S. has many trade barriers of its own.

Many of the society's corporate members, said Choate, are "making lots of money over there. Americans who make an honest attempt to do business with Japan do very well."

The U.S. has a large trade deficit with Canada that hasn't attracted the same kind of attention, she added.

Grover said that he has targeted only Japan because it is the worst offender.

—from a report by Houston Chronicle.

Video on Asian stereotypes planned

BOSTON—Asian American Resource Workshop (AARW) has been awarded \$10,000 by Mass. Council on the Arts and Humanities to produce, promote and exhibit a 30-minute videotape on images of Asians in the media.

The proposed videotape will document the history of Asian stereotypes in print, film and TV and critically analyze their role in shaping social attitudes toward and self-images of Asian Americans.

Peter Kiang, AARW program director, said the project will show "how stereotypic images have been used to justify exclusion and institutionalized discrimination throughout our history. Especially in light of the rise in racial harassment and violence against Asian Americans, it is critical to understand the role of media images like 'Rambo' and 'Year of the Dragon.'"

"Asian American media producers have been struggling for many years to create more positive, accurate media images," said production team member Julian Low, who was production assistant for Wayne Wang's film "Chan Is Missing." "Through the

videotape, we want to show that it's important not only to protest racist stereotypes but also to support and promote our own works as alternatives."

Production will end in January and exhibition will begin in spring 1986.

"During the first year, we will primarily show the tape to Asian Americans student and community groups in the Greater Boston area," said Helen Liu, coordinator of AARW's Media Group. "Secondarily, we plan to reach other audiences of color as well as educators and media producers interested in the Asian American experience."

"We're not aware of any other recent productions that deal with the issues of stereotypes in this way, so we may be able to distribute the tape nationally."

Funding comes from the Heritage Program, a new program of Mass. Council on the Arts and Humanities that supports projects which increase public awareness and appreciation of the heritage of Afro American, Asian American, Hispanic, Haitian, Cape Verdean and Native American peoples.



KEOGH...

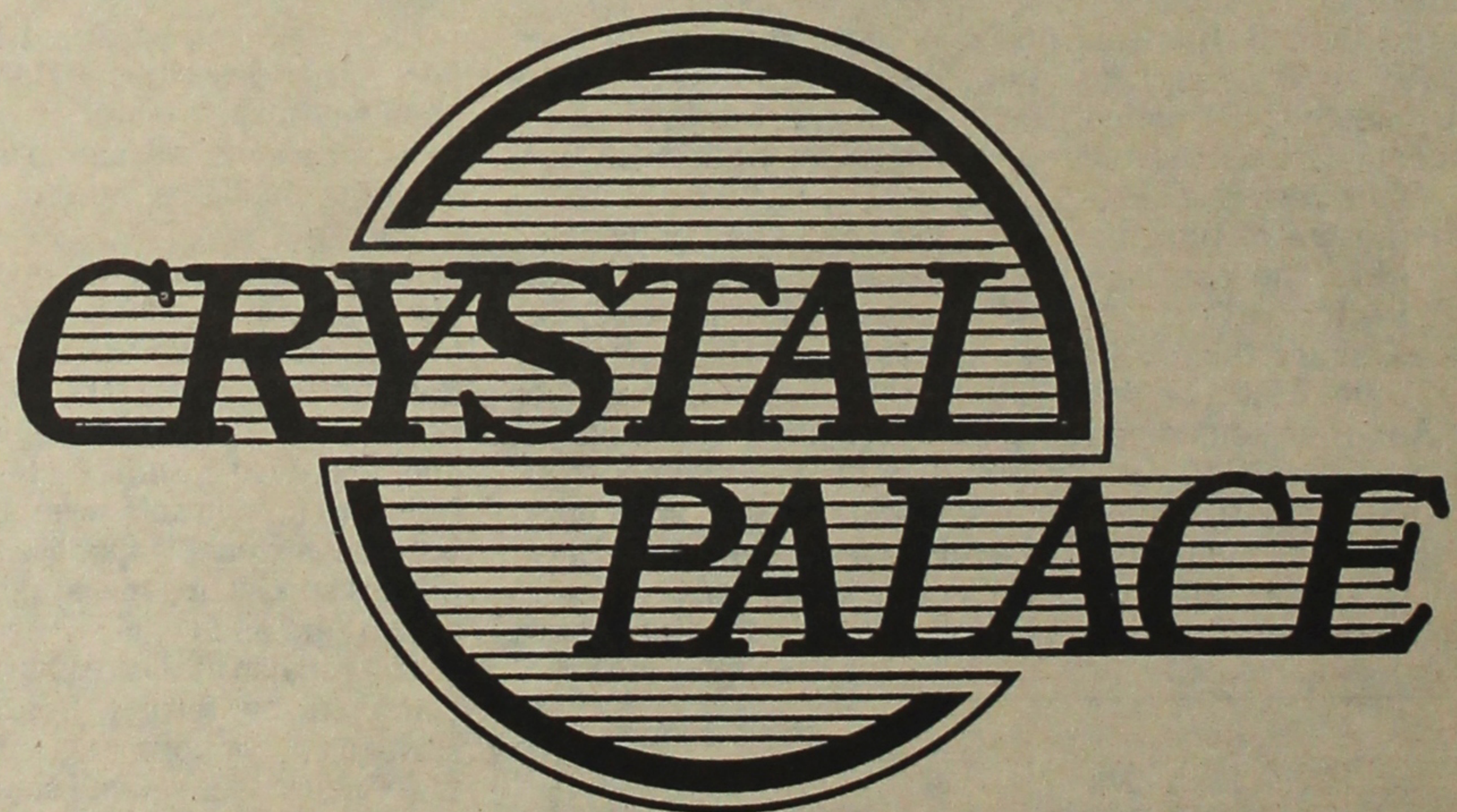
a tax shelter that protects your future retirement today.

If you're a self-employed individual who is a sole proprietor or in a partnership, you can establish a Keogh Plan. Annual contribution limits are now as high as \$30,000. Funds contributed for you and your employees are tax deductible for the business.

Come to Sumitomo and look out for your future security today. Establish a Keogh Plan before the end of your business' fiscal year to receive the tax benefits.



Sumitomo Bank
Sumitomo Bank of California Member FDIC



- POCKET BILLIARDS
- JUKE BOX
- VIDEO GAMES
- CABLE TV
- BEER, WINE, FOOD

Dick Obayashi
4335 W. Imperial Hwy., Inglewood, CA 90304
(213) 677-2965



Amerasia Bookstore

129 Japanese Village Plaza
Los Angeles, CA 90012
(213) 680-2888

Gary Sumida, Manager

Write for free catalog
of Asian Pacific American materials

- Books
- Records
- Films
- Videotapes
- Posters

Reminders of Japan

EAST WIND

Bill Marutani



thing such as ordering *hi-no-maru* style would do the trick. Not so; it's *me-dama* (eyeballs). When the order arrived, I couldn't help but think of two reddish-orange eyeballs staring up at me from the plate, watching me drinking my (strong) coffee.

I think I prefer my eggs "sunnyside up."

SPEAKING OF BREAKFAST, the *yo-shoku* (Western) comes with a salad—which may not be a bad idea once one gets used to it. The *pan* (bread), we were reminded, is sliced very thick and tends to be taller than it is wide. Some AJA's rate Japanese *pan* as tops. We understand that Japanese-style *pan* is sold in stores in California, such as in the Gardena area.

We'll stick to our bran muffins for breakfast since such *pan* is not, to my knowledge, available on the East Coast of the U.S.

THE BIG TRUCKS on the road are still equipped with three green lights atop the cab. Each light lights up depending on the truck's speed. When all three are lit, the truck is going at top speed (a specific speed) so it's very easy for the highway patrol to spot violators.

Continues to amaze me how the operators of buses and trucks are able to maneuver their vehi-

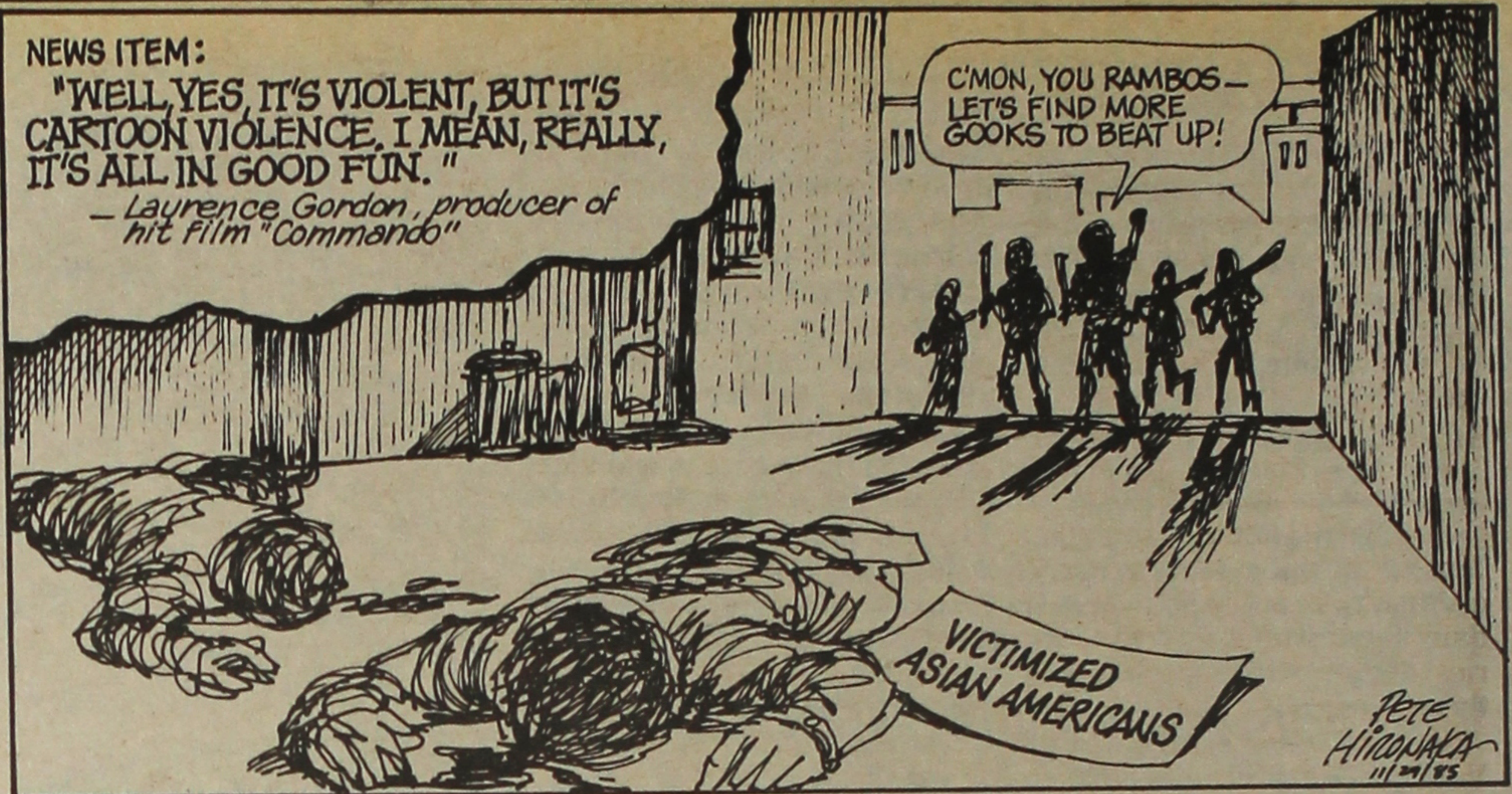
WHILE WE'D VISITED Japan two years ago, we had to be reminded of certain features of Japanese customs, practices and traditions. For example, washrooms on the road are not equipped with paper towels or alternatives for drying dripping wet hands. So, experienced travellers carry a cotton handkerchief.

And speaking of washrooms, it is not uncommon for the cleaning lady to be carrying out her duties as the *danna's* stand at the urinals. In fact, the other day a lady customer entered and proceeded into an open booth. Neither of us got flustered.

The absence of paper towels in Japan is understandable when one considers that Japan imports all of its paper pulp (from Alaska, Canada and Russia).

WHEN ORDERING BREAKFAST eggs, back home it's "sunnyside up." Seeking the same here, I would have thought some-

NEWS ITEM:
"WELL, YES, IT'S VIOLENT, BUT IT'S CARTOON VIOLENCE. I MEAN, REALLY, IT'S ALL IN GOOD FUN."
— Laurence Gordon, producer of hit film "Commando"



cles along these narrow streets and mountain roads.

And, oh yes. The *kanko* (tour) buses for the denizens do have chandeliers. Saw a couple of double-decker buses which had a bar and lounge downstairs.

THERE ARE VEHICLES—cars, trucks, cycles—of models, names, sizes, etc. never heard of back home in the states. One of the newest models is a two-door Honda, somewhat akin to the Civic-DX we see on the road in the states. Except this one is even shorter, has a greatly slanted nose, and has a two-lunger engine.

Saw one on the road announcing that it was equipped not simply with a turbo-charger but a

"super-turbo." I wonder what a two-cylinder engine with a super-turbo will do in a one-minute run? Might leave some of those fancy sports cars eating dust.

Although we've never driven one, we understand that the Honda Civic CRX can really leap from a standing start, maneuvers like a sports car, and is easy on the gas. It's available in the states—with dealers charging premiums because of the high demand for this auto. Even though its proportions are somewhat awkward in our opinion.

SIGNS OF PROGRESS: Saw a TV program which was teaching the speaking and reading of the Korean language. It is good that the Japanese society thinks enough

of the Korean language and culture as to disseminate them through the television media.

Last night I saw the use of television in conjunction with *karaoke* (sing-along) which was quite advanced and imaginative. The live performing singer is backed by a video-cassette which projects the words as subtitles on a moving picture appropriate to the song. There is background music of the band. And as the live singer (from the audience) sings, the TV monitor picks him/her up and projects his/her face onto one corner of the projection screen.

And so it goes.

Marutani this week writes from Kagoshima.

LANGUAGE

Continued from Front Page

Coalition members present included Michael Eng, Anthony Miera, Lucy Rios, Ruth Willner, Pete Hollingsworth, Fred Rivera and David Chen.

Eng, an attorney, fears that Arcuri's measure "is a first step of a two-part program" that will eventually eliminate bilingual education as well as driver's pamphlets, voter information, and emergency services that use languages other than English.

Arcuri is no fan of bilingual education, which he considers "costly and ineffective."

Both sides argued their cases at a Nov. 12 council meeting during which Arcuri presented petitions with more than 3,000 signatures (1,500 verified signatures are required to place an initiative on the ballot) and the CHaMP measure was placed on the ballot by a 4-to-1 council vote.

Describing the atmosphere at the crowded council meeting as tense, Eng says the effect of the English initiative has been to "play on every single prejudice, every fear of citizens in our community—the fear of overcrowding, the fear of being left out of the economic pie..."

"When you play on fears like that, I think the mood turns very ugly, because then people are not thinking about working together; they're thinking about how to protect what little they have."

He cites as a "bad precedent" a similar resolution passed earlier this year in Fillmore, Calif., which has a large Hispanic population. "It's pitted neighbor against neighbor, race against race. There are people there who've said that they grew up as friends and neighbors and now don't speak to each other... There's a recall attempt against the city council people who voted

for that. The entire city is in turmoil..."

"If those citizens had come together and, instead of fighting with each other, spent that same amount of time teaching English, providing programs to wipe out illiteracy, to establish a commission on racial harmony... it would have been much more worthwhile."

Each side claims broad support. Eng describes CHaMP's membership as "Asians, Hispanics, Caucasians, all age groups, longtime residents, newcomers, immigrants."

Arcuri, who calls the opposition a "coalition of hate" trying to create a "segmented, isolated, fragmented" society, says his supporters are one-third Hispanic and one-third Asian, including Chinese immigrants who have become citizens. "Japanese people are supporting me, almost to a man," he adds.

The English measure has been endorsed by former Sen. S.I. Hayakawa, honorary chair of U.S. English (see related story on page 1). "I have been in contact with him," says Arcuri. "We have

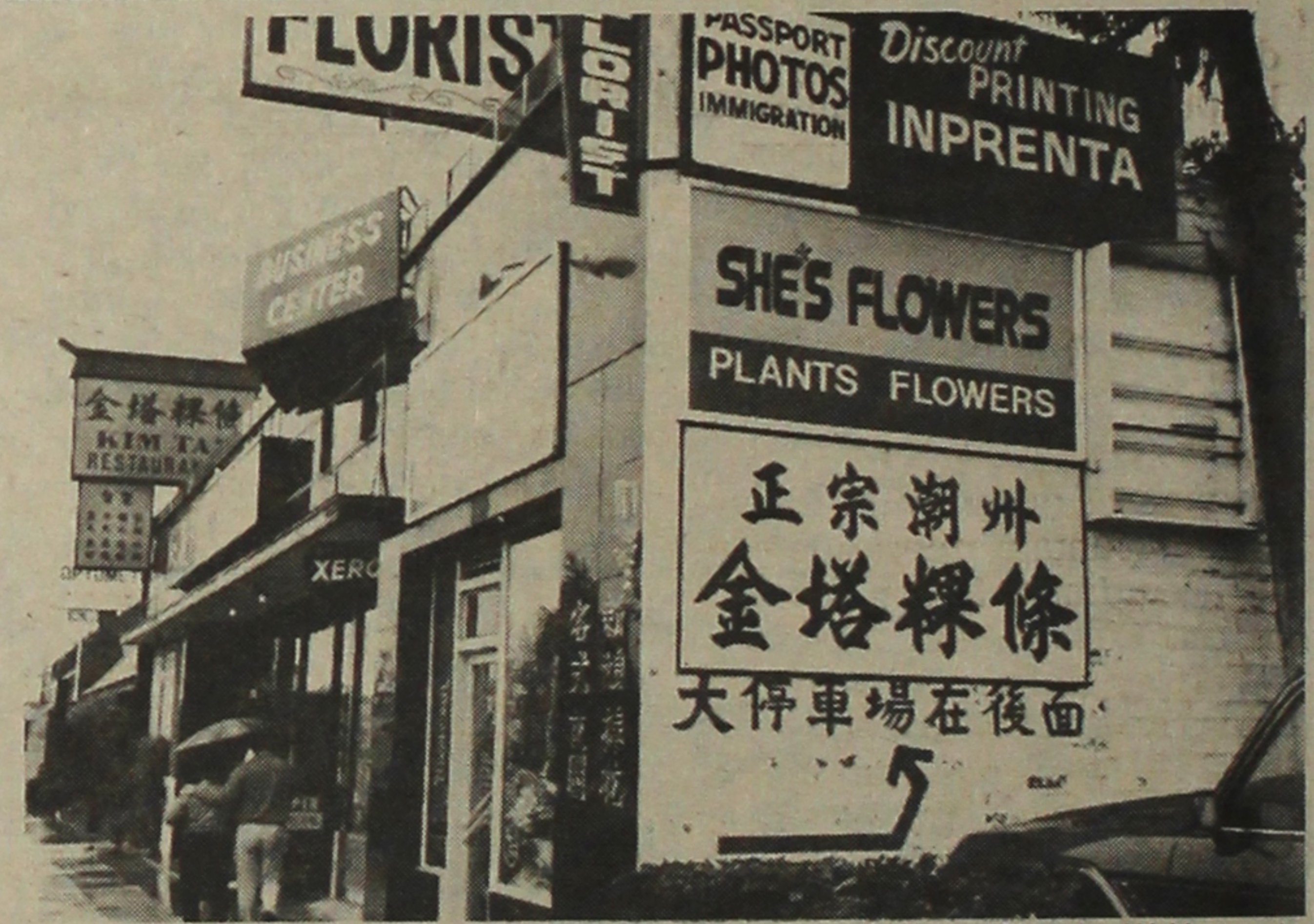


Photo by J.K. Yamamoto

Businesses on Atlantic Blvd. in Monterey Park show a mixture of languages.

the full support of U.S. English." That support may take the form of legal assistance from the Washington, D.C.-based organization as Arcuri continues his fight to have the measure placed on the ballot. City Atty. Richard Morillo ruled it invalid Nov. 20 on the grounds that it lacked the proper legal wording of an ordinance.

Arcuri is confident that the measure will be voted on next year. "I don't take no for an answer."

"There is always a legal possibility that he can get it reinstated through some lawsuit or some sort of civil procedure," agrees Eng. "So I don't think anyone can call this a victory at this particular time."

Hayakawa's support adds a national dimension to the issue, Eng observes. "U.S. English is targeting California for its national campaign because California is like a weather vane for the nation as far as issues concerning immigrants... The eyes of the nation are watching."

Because Arcuri plans to run for city council, Eng charges that "the 'English Only' drive is simply an opportunistic attempt to promote someone's political career."

City Councilwoman Lily Chen feels that as the only Asian American on the council, she is "definitely a target" of Arcuri's campaign. During the council hearings, his remarks were "par-

Continued on Next Page

ISSN: 0030-8579



pacific citizen

Nat'l JACL Headquarters, 1765 Sutter St., San Francisco, CA 94115, (415) 921-5225

Published by the Japanese American Citizens League every Friday except the first and last weeks of the year at 941 E. 3rd St., Los Angeles, CA 90013; (213) 626-6936. • 2nd Class postage paid at Los Angeles, Ca. • Annual Subscriptions—JACL members: \$10 of national dues provides one-year on a per-household basis. Nonmembers: \$20/yr., \$38 two years, payable in advance. • Foreign addresses: Add U.S.\$12.00; 1st class air — U.S./Canada addresses: \$25 extra, Japan/Europe: U.S.\$60 extra.

• News or opinions expressed by columnists other than the National President or National Director do not necessarily reflect JACL policy.

OFFICERS

Frank Sato, Nat'l JACL President Dr. Clifford Uyeda, PC Board Chair

EDITORIAL/BUSINESS STAFF

Acting Editor: Robert Shimabukuro Asst. Editor: J.K. Yamamoto
Advertising Mgr: Rick Momi
Advertising: Jane M. Ozawa Business/Mailing: Mark Saito
Circulation: Tomi Hoshizaki
Production: Mary Imori
General Mgr./Operations: Harry K. Honda

POSTMASTER: Send address changes to Pacific Citizen, 941 E. 3rd St., #200, Los Angeles, CA 90013.

FOREIGN ADDRESSEES

Effective immediately, the "additional postage" for subscribers in all foreign countries is being raised from \$10 to \$12 per year. International rate for printed matter was increased Nov. 15, 1985. The new subscription rate for Non-members: US\$32 per year.

—Pacific Citizen

Donations to Pacific Citizen

For Typesetting Fund

As of Nov. 25, 1985: \$32,367.82 (784)
This week's total: \$ 400.00 (3)
Last week's total: \$31,967.82 (781)
\$25 from: John/Misao Hoshiyama, Debra Nakatomi.
\$350 from: Northern Calif.-Western Nevada-Pacific District JACL.

Thank You!

A 'Mild' Error

FROM THE FRYING PAN:

Bill Hosokawa



The Nov. 23 issue of the Japan Times Weekly, which is a reprint of material published in the daily Japan Times in Tokyo, carries a story which begins with this paragraph:

"Liberal Democratic Party Vice President Susumu Nikaido said that during his recent visit

to the United States he found protectionist sentiment on Capitol Hill less severe than he had expected."

The story went on to say that few of the many congressional leaders he met in Washington expressed strong support for protectionist sanctions as a means of reducing America's trade deficit with Japan. The newspaper also credited Nikaido as saying he perceives a growing awareness among U.S. legislators that protectionism is the wrong solution to the problem.

The headline over the story was: "Protectionist Sentiment in U.S. Mild."

Come again? Mild? That's grossly misleading. There is nothing in the story to give the impression of mildness in the American attitude toward protectionist legislation. Nikaido, according to the story, said he found protectionist sentiment less severe than he had expected, but of course we don't know from the story exactly how severe he had expected it to be.

The headline is either an excellent example of unprofessional workmanship or the product of editorial manipulation. But more than that it is the sort of erroneous information that can adversely affect relations between the two countries.

Protectionist legislation damaging to international trade is

still alive and kicking in Congress. If the Japanese are led to believe our legislators are being "mild" about the issue, and ease up on their efforts to bring trade into closer balance, the problem is going to get worse.

On a quick trip to Washington recently I had an opportunity to talk with Congressman Norman Mineta about this problem. The fuss over trade issues, he says, have deteriorated into "a very bad situation" and congressional patience has become "very short," as witness House passage recently of the textile restriction bill directed mainly against China, South Korea, Hong Kong and Japan.

"Japan keeps saying things are going to get better, and Prime

Minister Nakasone says things will get better, but it isn't," Mineta contends. "The result is that Americans are using war rhetoric to describe the situation—expressions like 'trade war' and 'we're being bombed by imports.' That's unfortunate—for one matter it may affect Asian Americans—but it's happening"

That doesn't sound like mild. Even an economic illiterate can understand that a trade imbalance running into the billions of dollars cannot be eliminated in a few months. It will take time for remedial measures to become effective and patience is necessary. But an unrealistic appraisal of the problem won't do a thing to solve a critically pressing problem.

LANGUAGE

Continued from Previous Page

ticularly directed at me," she says.

Arcuri is of the opinion that Chen's constituency is limited to Chinese immigrants. "She represents their interests first," he charges.

Like Eng, Chen thinks the initiative would mean "a regressive direction that could potentially eliminate... bilingual measures which are so necessary to help newly arrived citizens become a part of our mainstream. They need help during this transitional period..."

"What the citizen ought to be doing, if he's really interested in helping the new immigrants learn English, is to support..."

English as a second language. We have many projects designed to help the immigrants learn."

The initiative, she says, is based on "a wrong assumption that the people are not willing to learn. They're too anxious and willing to learn. It's just that we don't have enough resources."

One area of agreement is that the issue will not die easily. "Everybody in Monterey Park recognizes we have problems," Arcuri says. "The only question is how to go about solving it."

"Even if the initiative is defeated, the fears and the issues are not going to go away overnight," notes Eng. "A lot of the fears and tensions which the 'English Only' petition plays on require long-term solutions."

DEMOCRATS

Continued from Front Page

A joint statement issued by Sens. Daniel Inouye and Spark Matsunaga of Hawaii, Reps. Norman Mineta and Robert Matsui of California, and Fofu Sunia of American Samoa praised Kirk's proposal.

In an effort to recruit more Asian Pacifics to the party, Kirk has appointed Hsieh to the DNC Executive Committee; Matsui to the Democratic Policy Commission; Linda Yang to the Fairness Commission, which will make delegate selection rules for the 1988 national convention; and Sandy Mori as an at-large DNC member.

Suggestions can be sent to Kirk c/o DNC, 430 South Capitol, SE, Washington, D.C. 20003, until Dec. 31.

Broadcast dates set for 'Silk Screen'

The first installment of "Silk Screen," a series showcasing documentaries and dramatic films by and about Asian Americans, will be broadcast as follows:

Atlanta: WPBA, Ch. 30, Wed., Dec. 4, 6 p.m.

Houston: KUHT, Ch. 8, Mon., Dec. 9, 8 p.m.

Boston: WGBH, Ch. 2, Sun., Dec. 15, 6 p.m.

Washington, D.C.: WETA, Ch. 26, Thur., Dec. 19, 10 p.m.

New York: WNET, Ch. 13, Sun., Dec. 22, 11 p.m.

San Francisco: KQED, Ch. 9, Tue., Jan. 21, 10 p.m.

Los Angeles: KCET, Ch. 28, Fri., Jan. 31, 10 p.m.

Seattle: KCTS, Ch. 9, January (date and time to be announced).

The three-part series begins with Renee Cho's "Jazz Is My Native Language," a profile of musician Toshiko Akiyoshi.

Former Heart Mountain internees needed

CASPER, Wyo.—KTWO-TV is producing a documentary on the Heart Mountain relocation center, according to Bacon Sakatani of West Covina, Calif.

Former internees who can converse in English and are at least 67 years old can contact Sakatani at 210 N. Shadydale, West Covina, CA 91790; (818) 338-8310.

Women's experiences are especially needed. Taping begins in early December.

JAPSS hearing Dec. 5

WEST HOLLYWOOD, Calif.—A public hearing on the use of the name J.A.P.S.S. by a local hair salon will be held by the city council Dec. 5, 7 p.m., at West Hollywood Park Auditorium on San Vicente between Melrose and Santa Monica Blvd.

The meeting was initiated by National Coalition for Redress/Reparations, which has been picketing the salon and circulating leaflets and petitions demanding that the name be changed.

Momii joins staff

Rick Momii has joined the PC staff as the new advertising manager. Momii previously was the managing editor of the Los Angeles-based Tozai Times.

KIKU GARDENS

Rent-subsidized senior housing has limited openings for prospective tenants age 62 and over, maximum income single \$9,650 annually, couple \$11,000 annually, security building.

Call (619) 422-4951 or write to Joe Owashi, KIKU GARDENS, 1260 Third Avenue, Chula Vista, CA 92011

JAPANESE AMERICAN JOURNEY: the story of a people

by JACP Inc.

Editors: Miyo Burton, Florence M. Hongo, Andrea Kuroda, Ruth Sasaki, Cheryl Tanaka.

Writers: Takako Endo, Florence M. Hongo, Sadao Kinoshita, Katherine M. Reyes, Donald Y. Sekimura, Rosie Shimonishi, Shizue Yoshina.

Illustrator: Hideo Chester Yoshida of Dekiru Design, San Francisco. 7" X 10", 181 pages, 72 photos and 6 illustrations. An intermediate level book for grades (5-8). Publication date is November 30, 1985.

CHAPTERS ONE THROUGH SIX - HISTORY

CHAPTER SEVEN - BIOGRAPHIES: Joseph Heco, An Accidental Visitor to America; Kanaye Nagasawa, Samurai of the Vineyards; Kyutaro Abiko, A Man Who Had A Dream; George Shima, The Potato King; Keisaburo Koda, The Rice King; Kiyoshi Hirasaki, The Garlic King; My World of Flowers, by Yoshimi Shibata; Mike Masaoka, A Vigorous Fighter for Better Americans in a Greater America; Daniel K. Inouye, The First Japanese American in Congress; Yoshiko Uchida, A Children's Author; and Edison Uno, A Fighter for Justice.

CHAPTER 8 - SHORT STORIES: Uncle Kanda's Black Cat, by Yoshiko Uchida; One Happy Family, by Toshio Mori; and Gambatte, by Valerie Ooka Pang.

Order now to reserve a deluxe hard back first edition at the price of \$22.50** and/or paper back copy for \$12.95**.

**All orders must add \$3 for shipping for the 1st book and \$.50 for each additional book. California residents add tax - (Hard Back: +\$1.46), (Paper Back: +\$.84). Add for each copy ordered.

You may also order by phone with your MasterCard or Visa - 415-343-9408. Call between 10:30 a.m.-4:30 p.m., Mon.-Sat.

Send check or money order or charge information to: JACP, INC., PO BOX 367, 414 E. THIRD AVENUE, SAN MATEO, CA 94401.

NAME: _____
 ADDRESS: _____
 CITY: _____ STATE: _____ ZIP: _____
 Visa/MasterCard Charge Acct. No.: _____ Exp. Date: _____
 Signature: _____
 Cost of Books: \$ _____ Tax: \$ _____ Shipping: \$ _____ TOTAL: \$ _____

THE INTERNATIONAL EXAMINER, A NEWSPAPER FOR ASIAN AMERICANS

IN-DEPTH NEWS COVERAGE: Gordon Hirabayashi's challenge to the World War II internment order, JACL's tribute to Issei pioneers, anti-apartheid protests in Seattle, the making of the "Beacon Hill Boys" movie, the Hibakusha in the Pacific Northwest, Seattle Keiro Nursing Home's new building project, Nippon Kan Heritage Association's pre-war photo exhibit, increasing anti-Asian violence, Wah Mee murder trials, national conference of the National Asian American Telecommunications Association in Los Angeles, immigration reform legislation, redress efforts.

ORIGINAL INTERVIEWS: Laureen Chew, star of "Dim Sum"; Delaware Lieutenant Governor S.B. Woo; U.S. Senator Daniel Inouye; Honolulu City Council member Patsy Mink; short story writer Tama Tokuda; Dr. Haing Ngor, star of "The Killing Fields"; Masahiro Shinoda, director of "MacArthur's Children"; playwright Momoko Iko; playwright David Henry Hwang; Loni Ding, producer of "Nisei Soldier"; poet Janice Mirikitani; Genny Lim, author of "Paper Angels."

REGULAR FEATURE COLUMNS: "Money Guide" by Sharon Harada, "National News" by Glenda Ahn, "Legal Notes" by Gary Chung Huie, "Arts, Etc." by Wm. Satake Blauvelt, "District Notes" by Susan Taketa and Ron Chew, "District Watch" by the International District Emergency Center.

Name _____
 Address _____
 City/State/Zip _____

I have enclosed \$ _____ for a _____-year subscription to the International Examiner.

\$10—One Year; \$18—Two Years; \$25—Three Years
 Optional first class (to speed delivery): \$15 per year

Return to: International Examiner, 318 Sixth Avenue South Suite 127, Seattle, WA 98104

JOIN

The Nat'l JACL Credit Union

JUST FILL OUT AND MAIL

Name _____
 Address _____
 City/State/Zip _____

PO Box 1721 Salt Lake City, Utah 84110 Tel (801) 355-8040

Chapter Pulse

Ventura County

THOUSAND OAKS, Calif.—The annual year-end potluck will be held Dec. 7 beginning at 5:30 p.m. at the Library, 1401 E. Janss Road. (101 Freeway to 23 Freeway. Go north on 23 Freeway. Take first exit, Janss Rd., go right. Library is on the left.) The chapter will provide plates, flatware, beverages and dessert. A barber-shop quartet, "The Carriage Trade" featuring chapter member Dr. Wallace Tamayose, will provide entertainment. Games and prizes are also on tap. Info: Teri Komatsu, (805) 984-1907 or Nate Harimoto, (805) 492-6638.

Philadelphia

MOORESTOWN, N.J.—Children are invited to meet Santa at the chapter Christmas potluck party, Dec. 14, 2-7 p.m., at the Friend's Meeting House, Main St. and Chester Ave. Arts and crafts, a piñata, tree trimming, and singing are some of the activities planned.

A \$1 donation for members (\$2 for non-members) will be charged. Children are free. Those attend-

ing are asked to notify Sim Endo, (215) 844-7317; Eugene Gonzalez, (609) 871-1028; or Gladys Kamihiro, (609) 866-1476, of the names of the children attending and the category of food (salad, main dish, or dessert) they will contribute.

Seattle

SEATTLE—Chapter president Dave Okimoto, director of Seattle's Dept. of Human Resources, appears in the December issue of Esquire along with 115 others selected as "America's New Leadership Class—men and women under 40 who are changing the nation." Others on the list include Bruce Springsteen and Garry Trudeau.

Okimoto, 35, who directed the Asian Counseling and Referral Service for nine years, was honored for his social work aiding Asian refugees. "I was simply the person heading up an organization that was successful due to the efforts of many people," he said modestly.

San Mateo

SAN MATEO, Calif.—Hand-made items such as Japanese-style

Christmas ornaments, sushi serving boards, planters, aprons, and table decorations will be among the items on sale at the Tomodachi Senior Club's Holiday Boutique Dec. 6, 3-8 p.m., and Dec. 7, 10 a.m.-4 p.m., at San Mateo JACL Community Center, 415 S. Claremont St. A Japanese quilt created by Setsu Ninomiya will be presented to the winner of Saturday's drawing. Proceeds will be used to purchase office equipment for the center.

Seniors will greet Santa Claus at the JACL Community Center holiday party Dec. 12, noon-3 p.m., at Central Park Recreation Center, 50 E. 5th Ave. For reservations, call 343-2793 by Dec. 10.

1000 Club Roll

(Year of Membership Shown)
* Century; ** Corporate; L Life; M Memorial; C/L Century Life

Summary (Since Dec 1, 1984)
Active (previous total) 2,002
Total this report: #44 35
Current total 2,037

NOV 12-15, 1985 (35)
Arizona: 21-Z Simpson Cox*.
Berkeley: 14-Masaji G Uratsu, 6-Yuriko Yamashita*.
Boise Valley: 23-Ronnie Y Yokota.
Chicago: 20-Lillian C Kimura*.
Detroit: 30-Tes T Tada.
Downtown Los Angeles: 2-Eiko Nomura, 25-Takito Yamaguma*.
East Los Angeles: 30-George Watanabe.
Gardena Valley: 1-Donna Reiko Nishimura.
Hoosier: 14-Mary Sato.
Japan: 4-Mutsuya Matsumoto.
Livingston-Merced: 23-Agnes Winton, 29-Gordon H Winton, Jr.
Marina: 25-Ann Sonoda, 25-Cathy Sonoda.
Monterey Peninsula: 21-James Tabata.
Philadelphia: 16-William Hamada*.
Portland: 21-Dr Toshi Hasuike, 21-Dr Albert A Oyama, 21-Dr James M Tsugawa.
Progressive Westside: 36-Dr George S Tarumoto*.
Saint Louis: 2-Roy S Yamashiro.

San Jose: 25-Peggy Sonoda Asuncion.
Seattle: 24-Dr Roland S Kumasaka, 30-Howard S Sakura, 15-Roy Y Sakamoto, 27-Roy Y Seko.
Snake River: 32-George Iseri*, 32-Abe Saito.
Sonoma County: 23-Shiz Tsujihara.
Venice-Culver: 27-Dr Mitsuo Inouye.
Ventura County: 30-Willis Hirata.
West Los Angeles: 28-Akira Ohno*.
White River Valley: 29-George Kawasaki.

CENTURY CLUB*
2-Z Simpson Cox (Ari), 6-Yuriko Yamashita (Ber), 11-Lillian C Kimura (Chi), 6-Takito Yamaguma (Dnt), 16-William Hamada (Phi), 2-Dr George S Tarumoto (SW), 7-George Iseri (Sna), 5-Akira Ohno (WLA).

Nikkei hospital to be subject of study

DAVIS, Calif.—Troy Kaji of Gardena, Calif., a medical student at UC Davis, has been awarded a \$960 SmithKline Beckman Medical Perspectives Fellowship to study the evolving role of City View Hospital in Los Angeles.

According to Kaji, several Japanese American hospitals were established during the 1920s and 1930s, but only City View remains today.

The project will focus on how the health care needs of the JA community have changed with succeeding generations and how the hospital has changed to meet those needs.

"I'd like to know how big the need is for special health care services and whether it warrants an ethnically oriented hospital," said Kaji. "I think there might be a need for this kind of hospital in Los Angeles. If so, I'd also like to determine what led to the demise of other similar hospitals in the Japanese American community."

1985 HI Boxscore

GOALS TO BEAT: 1984 TOTALS
Display Ads 7,860 col inches
One-Line Greetings 832
JACL-HI Project 32 units

1985 DISPLAY ADS
Nov. 25: 7,410 1/2" (94.3%)
Chapters are now soliciting Holiday Issues greetings to raise funds for their projects. Close to three-fourths of the 113 chapters participated; we trust all will be recognized here this year. The (g) indicates one-line greetings have been solicited.

(56 of 113 Chapters Participating)

Alameda	168	Parlier	
Arizona	21	Pasadena	13
Arkansas Valley	2	Philadelphia	
Berkeley	294	Placer County	
Boise Valley		Pocastello	
Carson		Portland	168
Chicago	84	Prog W'side	
Cincinnati		Puyallup Valley	84
Cleveland	6	Reedley	168
Clovis	6	Reno	
Coachella Valley		Riverside	10
Columbia Bsn		Sacramento	168
Contra Costa	168	St Louis	
Cortez		Salt Lake	354
Dayton		San Benito	116
Delano		San Diego	1
Detroit		San Francisco	336
Diablo Valley	9	San Fern Valley	224
Downtown LA		San Gab Valley	14
East LA	196	San Jose	168
Eden Township	146	San L Obispo	
Florin		San Mateo	6
Ft Lupton		Sanger	56
Fowler	6	Sta Barb	
Fremont	12	Sta Maria Valley	
French Camp		Seattle	168
Fresno	168	Seabrook	
Gardena Valley		Selma	84
Gilroy		Sequoia	
Golden Gate	9	Snake River	452
Gtr LA Singles		Solano County	
Gtr Pas Area		Sonoma County	1
Gresh-Tr		So Bay	
Hawaii		Spokane	
Hollywood		Stockton	168
Hoosier	6	Torrance	84
Houston	6	Tri-Valley	
Idaho Falls		Tulare County	
Imp Valley		Twin Cities	
Japan	252	Venice-Culver	
Lake Wash'n		Ventura County	84
Las Vegas		Wasatch Front N	
Latin America		Wash, DC	
Liv-Merced	168	Watsonville	168
Lodi		West LA	168
Marin County		West Valley	168
Marina		White Riv Valley	
Marysville	84	Wilshire	5
Mid-Columbia			
Mid-Hi	120		
Milwaukee			
Monterey Pnsa	168	CCDC	
Mt Olympus		EDC	
New England	2	Intermountain	8
New Mexico		Midwest DC	
New York	84	Mtn Plain	14
No San Diego		NCWNPCD	20
Oakland		PNWDC	5
Olympia		PSWDC	
Omaha	84		
Orange County	84	Ad Dept	424 1/2
Pacific		PC Office	143
Pan-Asian			

One-Line Greetings: 131 (15.7%)
Boise Valley Reno
Cincinnati Riverside
Cleveland 22 St Louis
Cortez San Benito 24
Dayton Sta Barbara
Delano Seabrook
Detroit Sonoma County
Ft Lupton Spokane
GLA Singles Tulare County
Gresh-Tr 39 Twin Cities
Milwaukee Venice-Culver
Mt Olympus Ventura County
Olympia Wash, DC
Pasadena 16 West Valley
Philadelphia White Riv Valley
Placer County PC Off
Poc-Blackfoot

JACL/HI PROJECT
16—Student Aid 2—Redress Fd
—Bldg Fd —Pac Cit Type Fd
1—LEC Program —Endowment Fd

CANADA

INVESTMENT NEEDED

\$175,000 to \$200,000, C.F. Money needed for expansion of business already in operation. Money secured by real estate and property. Only those persons sincerely interested, please call: (709) 785-2800 or write:

C & G HOLDINGS LTD.

398 O'Connell Dr.
Cornerbrook, Newfoundland
A2H 5P1, Canada

Oil 85 - Should I Invest Today?

SEMINAR TO INCLUDE

Why Oil? Oil Income Potential Tax Advantages
Private vs. Public Partnerships

Tue. Dec. 3, 7:30 p.m. Hyatt Wilshire, L.A.
Wed. Dec. 4, 7:30 p.m. Ramada Hotel, Culver City

RESERVATIONS REQUIRED Call (213) 613-8938
NO CHARGE (714) 895-1668

Carson Oil Co., 5011 Argosy Ave., Huntington Beach, CA 92649

St. Louis JACL



Nisei Kitchen Cookbook

\$7 postpaid from Bill Ryba
1404 Virginia Drive
St. Louis, Mo. 63011

MIKAWAYA SWEET SHOPS

244 E. 1st St., Los Angeles (213) 628-4945
118 Japanese Village Plaza L.A./ (213) 624-1681
LITTLE TOKYO SQUARE 333 So. Alameda St., L.A. (213) 613-0611
Pacific Square, Gardena 1630 Redondo Beach Bl (213) 538-9389



Kimura PHOTOMART

Cameras & Photographic Supplies
316 E. 2nd St., Los Angeles (213) 622-3968

Tell Them You Saw It In the Pacific Citizen

MANAGEMENT

CAREER RATING

Choose a 5-Star Food Service career in Colorado, Arizona, Nevada or California. What do you look for when you consider a career move? A company with exceptional growth and profitability? An organization that can back your ideas with the resources of an industry leader? A marketing stance that puts innovation and quality as top priorities?

You've been looking for Saga Contract Food Services—the largest division of Saga Corporation \$1.2 billion industry leader. Our continuing expansion has created openings available now through Feb. 1, 1986, for Managers in Corporate, Health Care and Education Food Services. General requirements for all positions include 2-5 years experience and a service-oriented attitude. A college degree is preferred.

Food Service Managers—Requirements include experience in food and beverage dietetics and knowledge of all aspects of food service.

Catering Managers—Requirements include knowledge of menu planning, food preparation and presentation, staffing/service standards and catering sales.

Fast Food or Retail Cash Managers—Requirements include experience in fast food/pe-packaged menu planning and preparations, staffing/recruiting, supervising the food service staff (mostly students).

In addition to these outstanding management opportunities, we offer a superior salary and benefits package. Please send your resume to Mr. Jerry McEniry, Saga Corporation, 6120 Paseo Del Norte, Suite E-2, Carlsbad, CA 92006, or call (619) 438-6890.

Saga

EOE

CALIFORNIA

HOTEL SITE

4 1/2 Acres
Across from Disneyland
Build up to 450 rooms
\$5.8 Million

Call JIM ARNOLD (213) 944-0151
Brokers cooperation welcomed.



Take Advantage of This Special Offer

pacific citizen

The Only National Japanese American Newspaper

The 1985 John Anson Ford Award-Winning media for "timely and balanced coverage of human relations and issues of importance to the diverse peoples of Los Angeles County."

- ✓ Offers a \$5 saving for a year's subscription at \$15 per year (regular \$20) and ...
- ✓ Get the recommendations from JACL chapters around the nation on where to stay, eat and see as you travel across the U.S. and Hawaii in the 1985 Holiday Souvenir Issue — our 128 pager of special articles and greetings ... Many JACL Chapters also exchange greetings from many of their members with names and addresses so that you may locate an old friend in the Holiday Souvenir Issue.

ACT NOW before Dec. 10 to receive the valuable 1985 Holiday Souvenir Issue.

Pacific Citizen, 941 E. 3rd St. #200, Los Angeles, CA 90013

Yes, I would like to take advantage of the special \$15.00 offer and receive the PC for one year including the Holiday Souvenir Issue.

Please send a gift subscription to the following friends at \$15 each.

Please send the 1985 Holiday Souvenir Issue ONLY at \$3 each to:

Enclosed is my check for \$_____ to cover the above orders.

Or join JACL at the special rate and receive the Pacific Citizen for a year:

\$30 Single

\$55 Family (Couple)

Name _____

Address _____

City/State/ZIP _____

And remit to: JACL Headquarters, c/o Membership Dept., 1765 Sutter St., San Francisco, CA 95112.

PC Classified Advertising

CHOOSING YOUR "CONTINUING EDUCATION"

How do you pick the right executive development program for You?

- FIRST: EXAMINE THE CURRICULUM.** The Graduate School of Credit and Financial Management (GSCFM) program emphasizes the latest findings in all areas of concentration of today's executive: business strategy and policy, organizational and managerial behavior, domestic and international finance, marketing, economics, and computer applications.
- SECOND: EXAMINE THE FACULTY.** The GSCFM is an independent executive development program which draws its faculty from not just one but many of the leading business schools across the country: Harvard, Stanford, Dartmouth, Wharton, etc. These senior professors and Deans live on-campus with participants — enriching the classroom experience with unlimited opportunities for informal discussions.
- THIRD: EXAMINE THE ROSTER OF STUDENTS.** GSCFM Participants are seasoned executives, recognized by their companies as having significant advancement potential. These men and women represent a diverse range of managerial disciplines, providing the opportunity for broadening the educational experience outside as well as inside the classroom.
- FOURTH: EXAMINE THE LOCATION.** Stanford University in Palo Alto, CA and Dartmouth College in Hanover, NH provide outstanding educational facilities. Recreational and cultural opportunities abound in beautiful and stimulating surroundings.

At the GSCFM Your education will advance with state-of-the-art coursework, top-quality instructors and stimulating peers, all at a great location.

GRADUATE SCHOOL OF CREDIT AND FINANCIAL MANAGEMENT
3000 MARCUS AVENUE
LAKE SUCCESS, NEW YORK 11042
(516) 488-1166

YES! I want to fully examine my continuing education opportunities. Please send your syllabus to:

NAME _____
ADDRESS _____
ZIP _____

'Our' Advertisers are good people. They support 'your' PC.

4—Business Opportunities

Calif. Real Estate Computer System

Looking for investors. Contact: Zetta International Promotion and Sales Co., 24056 Kernwood Dr., Sunnymead, CA 92388 (714) 924-8309

ATTN. INVESTORS: ARKANSAS, U.S.A. BY OWNER
900-acre Dairy Farm:
150 acre irrigated bottom land. Creek runs through property. 200+ cow operation, 3 metal buildings, 3 bdrm, 1 1/2 baths, modern home. Local management available. Cash or terms. Excellent tax shelter. Call or write Sam Murphy, Rt. 2, Hardy, Ark. 72542, (501) 994-2432.

OPPORTUNITIES in AUSTRALIA
Australian firm seeking companies or individuals who wish to export to Australia or invest in production and real estate ventures. We specialize in engineering, mining, and recreational developments, and we are particularly interested in computer and technological imports. All offers will be considered. Roach Industries, 6 Pound Rd., Hornsby, Sydney, Australia 2077. Tel: 61-2-477-5770.

5—Employment

LIBRARIAN

Project Director for Asia Project. MLS, 4-5 yrs. Experience with increasing responsibility including supervision/management. Salary: \$35K. Dynamic person sought; preferably with marketing/business experience. Duties: direct operations; plan and prepare PR/marketing activities; formulate financial programs to provide funding for operations. Sensitivity to East/Southeast Asian cultures, languages, informational needs desirable and preferable. Send for full job information to:

Asia, c/o South State Cooperative Library System, 7400 E. Imperial Hwy., P.O. Box 7011, Downey, CA 90241, (213) 922-7538.

5—Employment

NISEI-SANSEI APPLICANTS

We have many attractive openings now in L.A., Surrounding Cities and Orange County. College graduates or equivalent preferred. Call us for an appointment or send in resume.

JAPANESE IS NOT ESSENTIAL REQUIREMENT.
SALARY RANGE \$1,440 — \$45,000

Exec. Secretary/Secretary/Receptionist/General Office/Admin. Ass't/Accountant/Bookkeeper/Sales Rep./Marketing Ass't/National Sales Manager/Warehouse Supervisor/Marketing Research/etc.

TOPSKOUT PERSONNEL SERVICE
(213) 742-0810
1543 W. Olympic Bl., #433, L.A. 90015

DIRECTOR OF BUSINESS SERVICE

The Foothill-DeAnza Community College District, located 40 miles south of San Francisco in Los Altos Hills, Calif., is seeking highly qualified applicants for the position of Director of Business Services.

Position available Feb. 1, 1986. Application deadline: Dec. 13, 1985.

An equal opportunity/affirmative action employer. Women, racial and ethnic minorities, Vietnam era veterans and individuals with physical handicaps are encouraged to apply.

For further information and applications write:

Employment Service
Foothill-DeAnza Community College District
12345 El Monte Rd.
Los Altos Hills, CA 94022-4599

8—Real Estate (Acreage)

FOR SALE
Northeastern, Wash.
305 Acres by Owner

In beautiful Ferry County, one mile to country general store. County-maintained road to property. 7 miles north of Curlew Lake and county airport. 17 miles to Republic, WA.

Write: Owner
17603 SE 292nd Place,
Kent, WA 98042
Call (206) 631-8441

9—Real Estate

CANADA

A Better Buy in Montreal

Office building, 60,000 sq ft, 6 stories high, strategic location on Cafe de Neige, revenue \$800,000, expense \$248,000, mfg. \$4.2 million at 10% 5 years. Gilles Laplante, Delta Realities, (514) 270-3333; res. (514) 445-8550.

B.C. CANADA

SOUTH PENDER ISLAND

—157 Acres 25 Acres cleared
—800 ft. waterfront Bedwell Harbour
—2 Bedroom house. Fruit trees, garden
—2 wells, pond provides year round irrigation
—Quiet country living
—Great potential. Asking \$325,000
—C.F. Cash preferred
For information on above or other fine investments contact:

FRANK FENN
Ocean City Realty Ltd., 990 Hillside Ave.,
Victoria, B.C. Canada, V9T 2A1
(604) 381-2233 or (604) 656-0779

ED SATO PLUMBING & HEATING

Remodel and Repairs
Water Heaters, Furnaces
Garbage Disposals
Serving Los Angeles
(213) 293-7000 - 733-0557

AT NEW LOCATION Aloha Plumbing

Lic. #440840 - Since 1922
PARTS - SUPPLIES - REPAIR
777 Junipero Serra Dr.
San Gabriel, CA 91776
(213) 283-0018
(818) 284-2845

Koby's Appliances

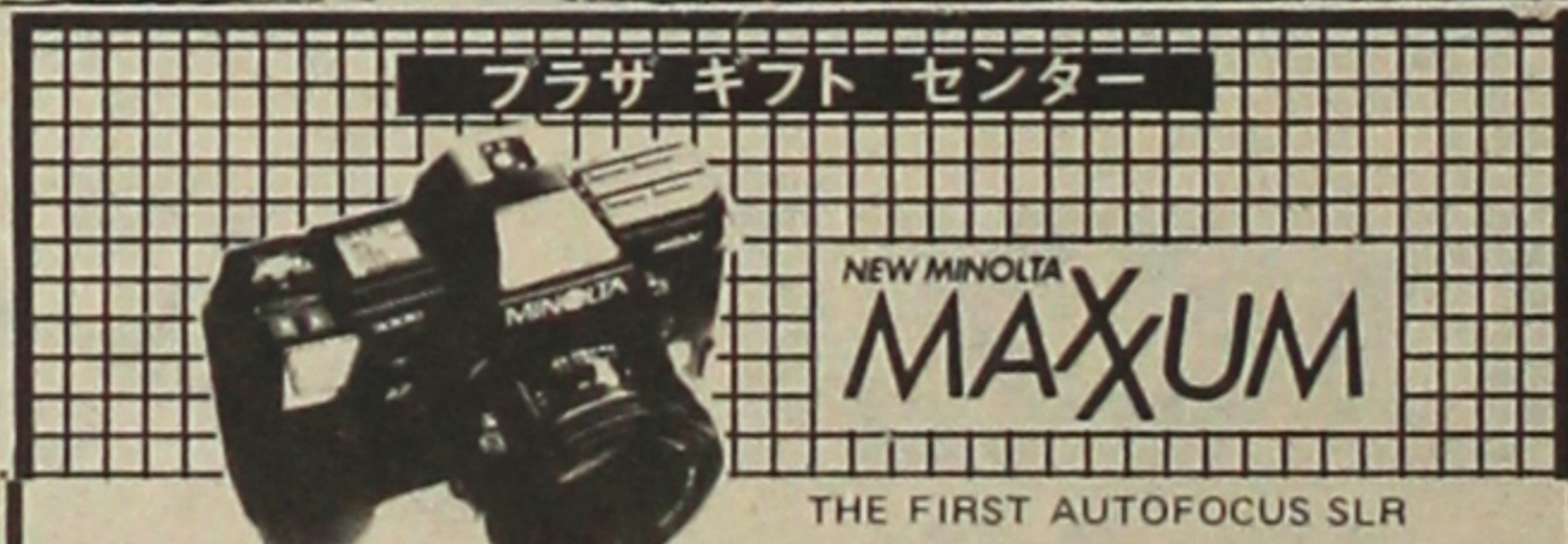
Complete Home Furnishings
15120 S. Western Ave.
Gardena, CA
324-6444 321-2123

Empire Printing Co.

COMMERCIAL AND SOCIAL PRINTING
English and Japanese
114 Weller St., Los Angeles, CA 90012
(213) 628-7060



Japanese Phototypesetting
TOYO PRINTING CO.
309 So. San Pedro St., Los Angeles 90013
(213) 626-8153



Plaza Gift Center
111 JAPANESE VILLAGE PLAZA
PHONE (213) 680-3288

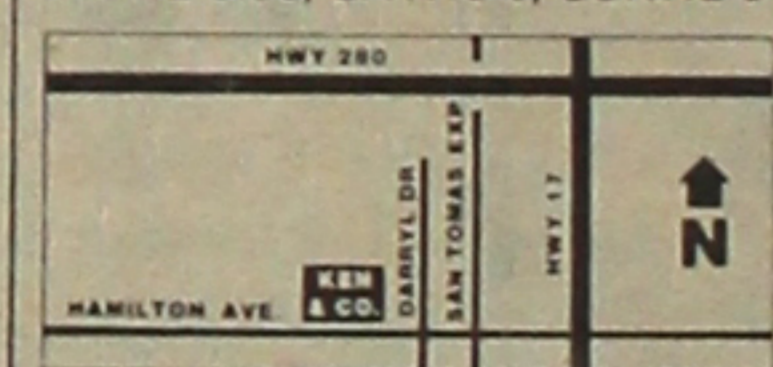
PC Advertisers Appreciate You

SHORT & SMALL MEN'S APPAREL

WE OFFER THE PROFESSIONAL MAN A COMPLETE BUSINESS WARDROBE.

CARRYING OVER 500 SUITS, SPORT COATS AND OVERCOATS BY GIVENCHY, LANVIN, VALENTINO, ST. RAPHAEL & LONDON FOG IN SIZES 34-42 SHORT & EXTRA SHORT. OUR ACCESSORIES INCLUDE DRESS SHIRTS, SLACKS, AND TIES IN SHORT & SMALL SIZES / LENGTHS. IN ADDITION, WE RECENTLY EXPANDED TO INCLUDE AN ITALIAN DRESS SHOE LINE IN SIZES 5-7 1/2.

785 W. HAMILTON AVENUE
CAMPBELL, CALIFORNIA 95008
PHONE: 408 / 374-1466
M-F: 12-8:30, SAT: 10-6, SUN: 12-5



OWNER: KEN UYEDA

KEN & COMPANY



PC Business-Professional Directory

Greater Los Angeles

ASAHI TRAVEL

Supersavers-Group Discounts
Apex Fares-Computerized-Bonded
1111 W Olympic Blvd., LA 90015
623-6125/29 • Call Joe or Gladys

Flower View Gardens #2
New Otani Hotel, 110 S Los Angeles
Los Angeles 90012 Art Ito Jr.
Citywide Delivery (213) 620-0808

Dr Darlyne Fujimoto

Family Optometry & Contact Lenses
11420 South St., Cerritos, CA 90701
(213) 860-1339

Inoue Travel Service

1601 W. Redondo Beach Bl., #209
Gardena, 90247; 217-1709; Offices
in Tokyo, Japan / Lima, Peru

TATAMI & FUTON

(818) 243-2754
SUSUKI FUTON MFG.

Tama Travel International

Martha Igarashi Tamashiro
One Wilshire Bldg., Ste 1012
Los Angeles 90017; (213) 622-4333

Greater Los Angeles

Tokyo Travel Service

530 W. 6th St. #429
Los Angeles 90014 680-3545

Yamato Travel Bureau

200 S San Pedro St., #502
Los Angeles 90012 680-0333

Orange County

VICTOR A. KATO

(714) 841-7551
Exceptional Real Estate
17301 Beach Blvd., Suite 23
Huntington Beach, CA 92647

The Paint Shoppe

LaMancha Center, 1111 N Harbor
Fullerton CA 92632, (714) 526-0116

San Diego

PAUL H. HOSHI

Insurance Service
852-16th St (619) 234-0376
San Diego CA 92101 res. 421-7356

Ventura County

Calvin Matsui Realty

Homes & Commercial
371 N. Mobil Ave, Ste. 7,
Camarillo, CA 93010, (805) 987-5800

Tell Them You Saw It
In the Pacific Citizen

San Jose, CA

Kayo K. Kikuchi, Realtor

SAN JOSE REALTY
996 Minnesota Ave., #100
San Jose, CA 95125-2493
(408) 275-1111 or 296-2059

Tatsuko "Tatty" Kikuchi

General Insurance Broker, DBA
Kikuchi Ins. Agy.
996 Minnesota Ave., #102
San Jose, CA 95125-2493
(408) 294-2622 or 296-2059

Edward T. Morioka, Realtor

580 N. 5th St., San Jose 95112
(408) 998-8334 bus; 559-8816 res.

Watsonville

Tom Nakase Realty

Acreage, Ranches, Homes, Income
TOM NAKASE, Realtor
25 Clifford Ave. (408) 724-6477

San Francisco Bay Area

IRENE A. OGI

ATTORNEY-AT-LAW
848 Cleveland St., Oakland,
CA 94606 (415) 832-1055

Y. KEIKO OKUBO

Five Million Dollar Club
39812 Mission Blvd.,
Fremont, CA 94539; (415) 651-6500

Lake Tahoe

RENT INC. Realty Inc.

Sales, Rentals, Management
Box 65, Carmelian Bay, CA 95711
(916) 546-2549; Shig-Judy Tokubo

Directory Rate

Your business card copy in each issue for half year in the PC Business-Professional Directory at \$12 per line. Larger (12 pt.) typeface counts as two lines.

Seattle, Wa.

Imperial lanes

Complete Pro Shop, Restaurant, Lounge
2101-22nd Ave So. (206) 325-2525

The Intermountain

Mam Wakasugi, Sales Rep.
Row Crop Farms; Blackaby Real Estate, 36 SW 3rd St, Ontario, OR 97914 (503) 881-1301, 262-3459

Midwest District

Sugano Travel Sv.

17 E Ohio St, Chicago IL 60611
(312) 944-5444 784-8517, eve, Sun

Eastern District

Mike Masaoka Associates
Consultants - Washington Matters
900-17th St NW, Wash, DC 20006
(202) 296-4484

PC's Home for Your Business-Professional Name Card

Check This Out!

Your business card or copy in each issue in the PC Business-Professional Directory at \$12 per line for a half year.

Larger typeface counts as two lines.

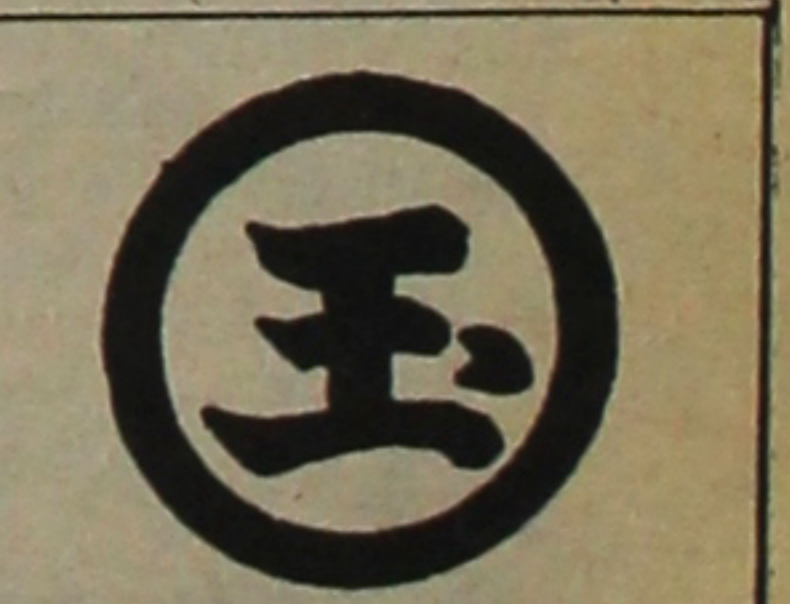


De Panache
Today's Classic Look
for Women & Men

Call for Appointment
Phone 687-0387

105 Japanese Village Plaza
Mall, Los Angeles 90012
Toshi Otsu, Prop.

Choose 'PC' Advertisers



Marutama Co.
Inc.

Fish Cake Manufacturer
Los Angeles

CHIYO'S
Japanese Bunka
Needlecraft
Framing, Kits, Lessons, Gifts
2943 W. Ball Rd., Anaheim,
CA 92804 - (714) 995-2432
450 E. 2nd St., Honda Plaza
LA 90012 - (213) 617-0106

'PC' Advertisers
Appreciate You

TOYO
Miyatake
STUDIO
235 W. Fairview St.
San Gabriel, CA 91776
(213) 283-5685
(818) 289-5674

KUBOTA NIKKEI
MORTUARY
(Formerly Shimatsu,
Ogata & Kubota
Mortuary)
911 Venice Blvd.
Los Angeles, CA 90015
Phone: (213)
749-1449
Y. Kubota • H. Suzuki • R. Hayamizu
Serving the Community
for Over 30 Years

Four Generations
of Experience ...
FUKUI
Mortuary, Inc.
707 E. Temple St.
Los Angeles, CA 90012
626-0441
Gerald Fukui, President
Ruth Fukui, Vice President
Nobuo Osumi, Counsellor

Los Angeles Japanese Casualty Insurance Assn.
COMPLETE INSURANCE PROTECTION
Aihara Insurance Agy. Inc.
250 E. 1st St., Los Angeles 90012
Suite 900 626-9625
Anson T. Fujioka Insurance
321 E. 2nd St., Los Angeles 90012
Suite 500 626-4393
Funakoshi Ins. Agency, Inc.
200 S. San Pedro, Los Angeles 90012
Suite 300 626-5275
Inouye Insurance Agency
15029 Sylvanwood Ave.
Norwalk, CA 90650 864-5774
Itano & Kagawa, Inc.
321 E. 2nd St., Los Angeles 90012
Suite 301 624-0758
Ito Insurance Agency, Inc.
1245 E. Walnut, #112, Pasadena 91106;
(818) 795-7059, (213) 681-4411 L.A.
Kamiya Ins. Agency, Inc.
327 E. 2nd St., Los Angeles 90012
Suite 224 626-8135
Maeda & Mizuno Ins. Agency
18902 Brookhurst St., Fountain Valley
CA 92708 (714) 964-7227
The J. Morey Company
11080 Artesia Bl., Suite F, Cerritos, CA
90701; (213) 924-3494, (714) 952-2154
Steve Nakaji Insurance
11964 Washington Pl.
Los Angeles 90066 391-5931
Ogino-Aizumi Ins. Agency
109 N. Huntington, Mont'y Pk 91754;
(818) 571-6911, (213) 283-1233 L.A.
Ota Insurance Agency
312 E. 1st St., Suite 305
Los Angeles 90012 617-2057
T. Roy Iwami & Associates
Quality Ins. Services, Inc.
3255 Wilshire Blvd., Suite 630
Los Angeles 90010 382-2255
Sato Insurance Agency
366 E. 1st St., Los Angeles 90012
626-5861 629-1425
Tsuneishi Ins. Agency, Inc.
327 E. 2nd St., Los Angeles 90012
Suite 221 628-1365
AHT Insurance Assoc., Inc.
dba: Wada Asato Associates, Inc.
16500 S. Western Ave., #200,
Gardena, CA 90247 (213) 516-0110

PARADISE OKAZU-YA RESTAURANT
Specializing in Hawaiian-Orient Cuisine
Open Tu-Sat 7am-7pm, Sun 7am-2pm
1631 W. Carson St., Torrance
LOMI SALMON 328-5345
LAULAU POI **EAT IN OR TAKE OUT**
CLOSED MONDAY ONLY
KALUA PIG Quick service from steam table.
SAIMIN Combination Plate - Very Reasonable Prices
OPEN FOR BREAKFAST AT 7 A.M.
Our own style Portuguese Sausage mix, Spam, Boloni,
Chashu. (With eggs & choice of rice or hash browns.)
Includes Coffee, Tea or Miso Soup

Be a 'PC' Ad Watcher

THE ORIGINAL BRONZE
J.A. KAMON
(Japanese American Family Crest)
Learn Interesting Facts
on Your Surname!
80% of Japanese surnames have originally been derived from
CHIMEI (place names); the rest, from profession, rank titles, etc. If
you'd like to learn a few interesting facts concerning your sur-
name (such as its category of origins, variant kanji writings, etc.),
please send us your surname in kanji, along with \$7.00. We will
send you the above plus other info useful to family history re-
search. In all our research, we utilize the vast collection of refer-
ences owned by Kei Yoshida who first, in 1972, introduced the
Kamon (Family Crest) to the Japanese American community.
Yoshida Kamon Art, 312 E. 1st St., Suite 205
Los Angeles, CA 90012; (213) 629-2848 / 755-9429
Kei Yoshida, Researcher/Artist NINA YOSHIDA, Translator

Your Business Is Our Business
Pacific Business Bank
We make it our business to understand your needs.
Member FDIC
438 West Carson Street, Carson, CA 90745, 213/533-1456

MOCHI
THE ISSEI... when they immigrated here many, many
years ago from Japan, brought with them not only their
high hopes, stoic courage and immense pride, but also
their culture. Among other things, it included MOCHI,
which was not only good to eat, but was also used as a
centerpiece for very special occasions as a "Gift to the
Gods." Usually, a small mikan sat on top of the Kazari-
MOCHI.
Every house had the MOCHI display during New Year's
and the day started with a bowl of o-zoni, which literally
means "cook everything in it." Whatever, but it isn't
o-zoni if it does not have a few pieces of MOCHI in it.
The practice of eating o-zoni during the holidays still
holds sway today in many Japanese American families.
UMEYA RICE CAKE CO. LOS ANGELES, CA. 90013
Manufacturers of Japanese Confection Since 1925

TREASURES OF THE ORIENT
(A Mail Order Company)
Quality giftware (hand painted silk screens,
dolls, lacquerware, Imari ware, dishes, etc.)
from Japan and the Far East at discount prices.
Send for a free catalog in color by completing
this form:
Name: _____
Address: _____
City, State, ZIP _____
Mail to: TREASURES OF THE ORIENT
P.O. Box 3978, Gardena, CA 90247

Our 1986 Escorted Tours
Exceptional Features—Quality Value Tours
Japan Spring Festival April 8
China (18 days) May 8
Grand Europe (17 days) May 25
Canadian Rockies-Victoria-Expo
Vancouver (9 days) June 19
Japan Summer Adventure July 5
East Coast/Foliage (10 days) Oct. 6
Japan Autumn Adventure Oct. 13
New Zealand-Australia Oct. 31
For full information/brochure
TANAKA TRAVEL SERVICE
441 O'Farrell St. (415) 474-3900
San Francisco, CA 94102

Going Places? Watch
the 'PC' Travel Ads!

IT'S NEW!
CALIFORNIA FIRST BANK'S
ULTIMATE BANKING™
A better way to do your
banking.
Ultimate BANKING
CALIFORNIA FIRST BANK
* Round-the-clock CONTROL
of your account through CALL 1ST.
* Round-the-clock ACCESS to your money through 120
Ultimate Banking™ ATMs.
* SIMPLE recordkeeping with check safekeeping.
* MORE CONVENIENT access through more than 1000
Star System teller machines through California and other
states.
Stop by your nearest California
First Bank office and ask
details of Ultimate Banking™.
CALIFORNIA FIRST BANK
Member FDIC
© California First Bank, 1985

Japanese American Travel Club
Travel with JAACL & JATC Friends
1985 Program # of days Departs
Waikiki Holidays 8dys Tu, Wed
1986 Programs Inquire about Other Departure Days
Ski-Banff/Canada 8dys Sat (till 3-29)
Mexican Riviera Cruise 7dys Jan 1-May 17
Expo '86 Holiday (Vancouver, BC) 8dys July 26
Niagara Falls/Ontario, Canada 7dys 5/5, 7/10, 10/3
Golden Tour of Japan 11dys 4/18, 6/27, 10/17
Hong Kong Bargain 7dys Mon, Thu
Alaska Cruise-MTS Daphne 8dys Aug 1
Grand Europe-10 countries 21dys Sept 14
Call Toll Free: (800) 421-0212 [Outside CA]
(800) 327-6471 [CA]. Hours: M,W,F 9-4:30/Sat 9-2
Endorsed by the National JAACL
Japanese American TRAVEL CLUB INC.
See your JATC travel agent or contact:
250 E. 1st St., #912, Los Angeles, CA 90012; (213) 624-1543
or Contact Participating Agents (a partial list)
Debi Agawa CTC (805) 928-9444, Santa Maria, CA
Ben Honda (619) 278-4572, San Diego, CA
Nori Masuda (209) 268-6683, Fresno, CA
Dil Miyasato (213) 374-9621, Redondo Beach, CA
Gordon Kobayashi (408) 724-3709, Watsonville, CA
Victor Kawasaki (206) 242-8000, Seattle, WA

Choose 'PC' Advertisers
HONG KONG HOLIDAY
● 8 days / Free stop in HONOLULU **\$969.00**
● Round trip economy fare to/from Los Angeles or San Francisco.
● First Class Hotel.
● Transfer between Airport and Hotel.
● Half day sightseeing.
● Daily American Breakfast. **HONG KONG & TOKYO (10 days) \$1199.00**
BEST WAY HOLIDAY
TEL: (213) 484-1030

TOKYO **\$612**
OSAKA 11,580 FUKUOKA 8608 OKINAWA 8720
Hong Kong - Tokyo - Honolulu \$709
Japan Rail Pass \$120-
Hotel/Ryokan Reservation \$25- per night
Check Our Lowest Fares!
(415) 653-0990
COMMUNITY TRAVEL SERVICE
6237 COLLEGE AVE. OAKLAND, CA 94618

JAPANESE FAIRY TALE SERIES
Most Loved Fairy Tales
Beautifully Illustrated
Hardcover, 32 pages, Jacket
"are equally suitable as a means to introduce... Japanese culture and customs to English speaking youngsters everywhere..." Japan Times
Available now:
The Monkey and the Crab \$9.95 X _____
The Old Man Who Made The Trees Bloom \$9.95 X _____
The Fisherman and the Grateful Turtle \$9.95 X _____
The Adventure of the One Inch Boy \$9.95 X _____
Charge: Visa M/C Sales Tax _____
Per. Check Total _____
No. _____ Exp. Date _____
Sign _____
Name _____
Address _____
City _____ State _____ Zip _____
Order to: Helan International, Inc.
P.O. Box 1013, Union City, CA 94587 (415) 471-8440

MOCHI
MOCHI
MOCHI
Fresh Frozen
ASK FOR IT AT YOUR MARKET

Special Holiday in Japan
ANYWHERE, ANY TIME — 9 DAYS
Features: (1) Air Fare, (2) 7-Nights Top Value Hotel throughout Japan, including all taxes & service charge, (3) Unlimited Train Pass (includes Express Train, Shin-Kansen).
SPECIAL PRICE
From: Los Angeles, San Francisco \$ 898.00
and special rate from any U.S. city is available.
The prices shown above are per person based on double occupancy.
Japan Holiday Tour
(213) 484-6422