

pacific citizen

National Publication of the Japanese American Citizens League

Newsstand: 25¢
(60¢ Postpaid)

Whole No. 2,406 Vol. 103 No. 11 ISSN: 0030-8579

941 East 3rd St. #200, Los Angeles, CA 90013

(213) 626-6936

Friday, Sept. 12, 1986

Deukmejian Announces Opposition to Prop. 63

SACRAMENTO — JACL and other civil rights groups that have been campaigning against Proposition 63 are applauding Gov. George Deukmejian's decision to oppose the ballot initiative, which would make English the official language of California.

"The governor's position on the 'English Only' initiative reflects his thoughtful sensitivity to California's multiethnic, multilingual population," said JACL national director Ron Wakabayashi. "We were extremely pleased to learn that Gov. Deukmejian recognizes cultural and linguistic diversity as a resource to the state."

In a statement issued Sept. 2, Deukmejian called Proposition 63 "an unnecessary, confusing and counterproductive way to emphasize the importance of a common language."

"In practice, English is already California's dominant language, and there is no compelling reason to add such a provision to the state constitution," he said. "The proposition would not result in any individual learning English any faster or better than he or she does now. To the extent that there are problems in our bilingual education programs, this measure does nothing to solve them."

Referring to the measure's provision that any resident who feels the law is not being enforced can sue the state, he commented, "the ambiguous wording of the proposition could lead to a voluminous round of litigation. It would also cause fear, confusion and resentment among many minority Californians, who see the measure as an effort to legislate the cultural superiority of English-speaking people."

No Criticism of Proponents

Deukmejian avoided criticizing proponents of the measure, however, stating that he shared their belief that "a common language is essential to California's continued growth, progress and cohesiveness as a society."

"The governor understands how divisive and dangerous this measure really is," said Ed Chen of Californians United Committee Against 63. "He can see that the passage of Proposition 63 would tear at the fabric of our society and run counter to the American way."

Members of the statewide coalition contend that the initiative, if passed in November, will lead to the elimination of government services that utilize languages other than English.

National JACL Position

In a related development, JACL was represented by Eastern District Governor Mike Suzuki and Washington, D.C. staff member Rochelle Wandzura at an Aug. 20 press conference held in Washington, D.C. by civil rights groups opposed to the "Official English" movement. Participating organizations included ACLU, Mexican

Continued on page 3

LEC Chair Yasui Resigns Post Due to Poor Health

DENVER — In a letter dated Aug. 30, Minoru Yasui, citing reasons of health, resigned as chair of the JACL-LEC effective Aug. 31.

Yasui, who has chaired the LEC since its inception in August 1982, entered a Denver hospital for surgery Sept. 8.

In his letter of resignation, Yasui requested that he be permitted to remain an LEC board member until December 1988, the end of his current term, unless "earlier further incapacitated."

He went on to request that "the responsibilities and authority of the Chairman of the LEC be transferred to the appropriate LEC official, as provided in the bylaws, as of Sept. 1, 1986."

Yasui was elected chairman of the LEC at the 1982 JACL National Convention in Gardena, Calif. Since that time, he has traveled across the U.S., speaking about redress to community organizations, church groups, and college and university students. His fiery speaking style has moved audiences and made Americans more aware of the redress issue while disseminating the stories of injustice and

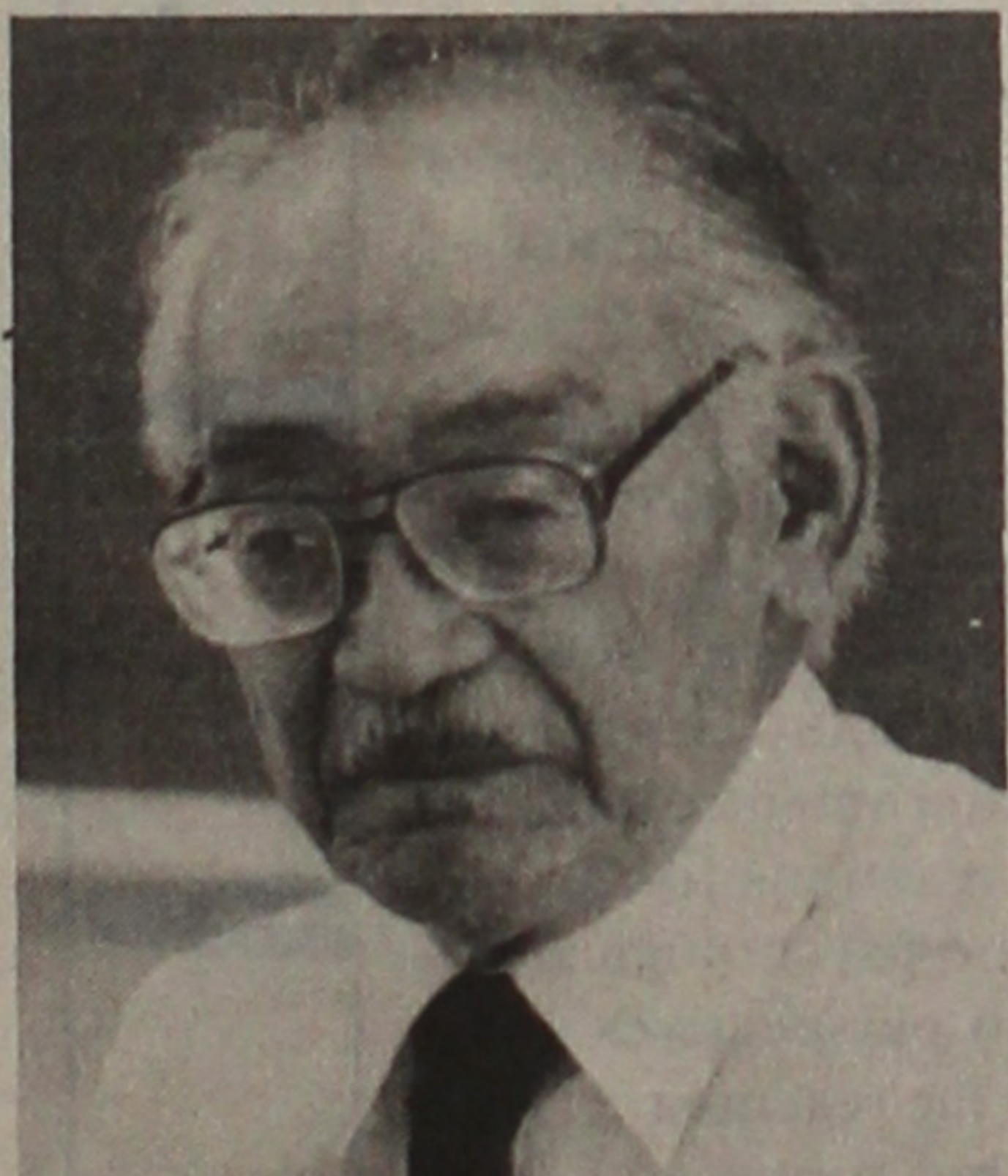
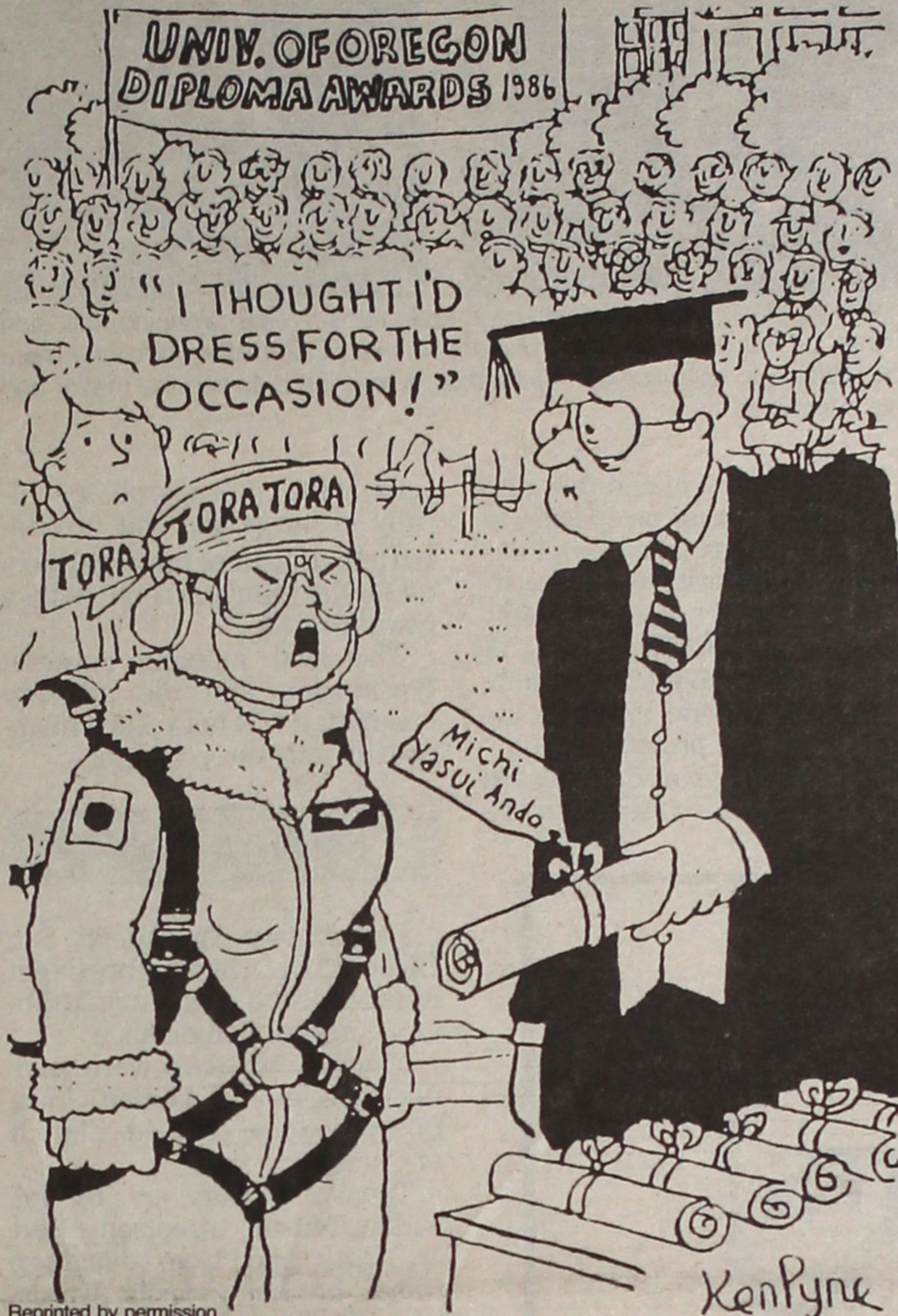


Photo by Sachi Yamamoto
Minoru Yasui

personal tragedies resulting from the WW2 incarceration of Japanese Americans.

LEC Executive Director Grayce Uyehara said that "Yasui's leadership will not be easily replaced, so JACL-LEC looks for a speedy recovery so he can continue to serve on the board."

In accordance with the LEC bylaws, LEC will be chaired by Grant Ujifusa, vice-chair for legislative affairs, until the LEC Board meets in February to elect a new chair.



Reprinted by permission

Newspaper's Caricature of Nisei Sparks Criticism

A cartoon depicting the graduation of Michi Yasui Ando, who received her degree from University of Oregon 44 years late, has drawn criticism from JACL and from Ando herself.

The Times Higher Education Supplement, published in London, carried a news item about Ando's graduation in its June 27 edition. The article explains that Ando was barred from university commencement ceremonies in 1942 because of her Japanese ancestry. She left Oregon soon thereafter to avoid internment and resettled in Colorado. After being contacted by a university archivist, she finally received her diploma June 15 (see June 6 PC).

The accompanying cartoon, drawn by Ken Pyne, depicts Ando showing up at the ceremonies wearing a Japanese fighter pilot's uniform—complete with a headband reading "Tora Tora Tora"—and saying, "I thought I'd dress for the occasion."

'Just Ridiculous'

"I think that it's just ridiculous," Ando, 65, told the Pacific Citizen. The cartoonist, she said, must have been an "uninformed, ignorant person that doesn't really know anything about the Nisei background in this country... How can you tell a story about something that you don't know anything about?"

At the same time, Ando, who now lives in Denver, said the cartoon "didn't really arouse" her anger.

Continued on page 3



Michi Yasui Ando

Redress Update

4 Groups to Sponsor Joint Forum

SAN FRANCISCO — "Redress Update: A Community Forum," sponsored by the four major redress organizations, is scheduled for Sept. 20, 1 p.m., at Christ United Presbyterian Church (corner of Sutter and Laguna streets).

Represented will be JACL and National Coalition for Redress/Reparations, which seek passage of redress legislation in Congress; National Council for Japanese American Redress, which has filed suit against the government on behalf of Japanese Americans interned during WW2; and the *coram nobis* legal teams, which have challenged the decisions in the WW2 Supreme Court cases of Gordon Hirabayashi, Min Yasui and Fred Korematsu.

Hirabayashi Featured

A panel discussion moderated by Alameda County Superior Court Judge Ken Kawaichi will feature *coram nobis* petitioner Hirabayashi, William Hohri of the Chicago-based NCJAR, Northern California-Western Nevada-Pacific District JACL Governor and LEC board member Mollie Fujioka, and Mari Matsumoto of NCRR.

Rep. Norman Mineta (D-Calif.) has also been invited to give an update on House redress bill H.R. 442.

"This event marks the first Bay Area event sponsored by the four redress organizations," said JACL public information officer Carole Hayashino. "There's been progress made in every aspect of the redress campaign—in Congress, with the class action lawsuit, and in the *coram nobis* cases. We hope the forum will give the community a sense of that progress as we summarize our respective efforts and discuss our strategies for the coming months."

Info: JACL National Headquarters, (415) 921-5225.

'Compensate Victims' Illinois Gov. Backs Redress

SPRINGFIELD, Ill. — Gov. James Thompson gave his endorsement on July 25 to efforts to pass redress legislation in Congress.

In a letter sent to every member of the Illinois congressional delegation, Thompson said that House bill H.R. 442 and Senate bill S. 1053 are intended "to redress the terrible wrong inflicted on Americans of Japanese ancestry at the onset of World War II."

He went on to say that "the unlawful internment of 120,000 people without due process not only violated our Constitution but our most basic and fundamental principles of freedom and justice. Although we cannot change history, we can certainly acknowledge the wrongs of the past, make efforts to remedy those injustices and in some fashion compensate the victims."

"However, the most important step that we can take is to educate the public to assure that events like the unwarranted internment of Japanese Americans does not happen again to anyone at any time."

The effort to gain the endorsement was initiated by JACL Midwest regional director Bill Yoshino and LEC treasurer Shig Wakamatsu. Meeting on July 15 with Deputy Governor Jerry Lakemore and Thompson's special assistant Shinae Chun, Yoshino and Wakamatsu urged that every effort be made to secure the governor's support.

Asians Praise Washington's Achievements

CHICAGO — Members of the Mayor's Advisory Committee on Asian American Affairs had much praise for Mayor Harold Washington during their Aug. 5 meeting with him at City Hall.

Among Washington's accomplishments cited by the committee was his high visibility in the Asian community. In the words of Ross Harano, immediate past chairperson of the advisory committee, Washington has been "very visible in our community, attending many of our community functions. Many of these groups had never seen the mayor of Chicago before."

Washington was also cited for his part in the success of the city's minority business enterprise program, which seeks to increase the number of minority owned and operated companies that do business with the city.

According to Linval Chung, chairperson of the subcommittee on economic development, "There are more than 52 Asian businesses now certified as minority contractors."



Chicago Mayor Harold Washington welcomes William Yoshino, left, and Ross Harano, members of the Mayor's Advisory Committee on Asian American Affairs, to his office during the Aug. 5 meeting between the mayor and his committee.

The advisory committee also briefed the mayor on specific issues and needs faced by Chicago's Asian Americans, such as increasing concerns for their safety in the Uptown, Chinatown, Albany Park and West Devon communities, and the need for increased police protection.

The committee also addressed a lack of qualified Asian Ameri-

cans on the city's payroll, specifically in the police and fire departments, where they are needed for the bilingual services they could provide.

The next meeting between Washington and the advisory committee will take place in approximately three months.

Deaths

Bert Motoru Tanaka, 68, San Diego JAACL Chapter president in 1957, passed away Aug. 26 due to a cerebral hemorrhage.

Funeral services were conducted Sept. 1 at Lemon Grove Congregational United Church of Christ.

Tanaka is survived by his widow, Mitsue; three sons, Bert Jr., Gary and Ron; daughter, Karen; brother, Francis; five sisters, Tsuruyo, Edith Oshima, Doris Chung, Yaeko Hasegawa and Rachel Omori; and 11 grandchildren.

No. 2,406
Allow 6 weeks advance notice to report address change with label on front

If you are moving / Wish to subscribe,

Write New Address below. Effective date

Please send the Pacific Citizen for:

1-Yr \$20 2-Yrs \$38 3-Yrs \$56

To:

Address:

City, State, ZIP:

All subscriptions payable in advance. Foreign: US\$12.00 extra per year.

Checks payable to: Pacific Citizen, 941 E. 3rd St., Los Angeles, CA 90013

EXPIRATION NOTICE—If the last four digits on the top row of your label reads 0886, the 60-day grace period ends with the last issue in October, 1986. Please renew your subscription or membership. If membership has been renewed and the paper stops, notify the PC office.

Community Calendar

Sept. 13 - 27

DELRAY BEACH

Now through Nov. 16 The works of sculptor Toshio Odate are on display at the Morikami, 4000 Morikami Park Rd., Fla. Info: Tom Gregerson, (305) 495-0233.

DENVER

Sept. 17-18 Enjun Kikuta, priest at Shokakuji Temple in Yamagata and an instructor at the Ikenobo school, will conduct an Ikebana International Workshop at the Denver Botanic Gardens.

FULLERTON

Now through Oct. 3 The works of Carol Miura McCormack are being exhibited at the Eileen Kremen Gallery, 619 N. Harbor. Gallery hours are Monday through Saturday, 10 a.m. to 6 p.m. Info: (714) 879-1391.

LOS ANGELES

Sept. 14 Maryknoll Boy Scout Troop 145 will celebrate its sixth anniversary with a Court of Honor dinner at Maryknoll Church and School, 222 S. Hewitt St. Info: Arthur Nishimoto, (818) 284-2165.

LONG BEACH

Sept. 18 2-6 p.m. Long Beach Asian Pacific Mental Health Program, 1401 Chestnut Ave., will hold an Open House to mark the beginning of community-based services for Indochinese refugees with adjustment difficulties. Info: Florentius Chan, (213) 599-9401.

NEW YORK

Sept. 13 8 p.m. Isao Tomita, avant-garde musician, will be presented in a free concert, "Back to the Earth," at Battery Park.

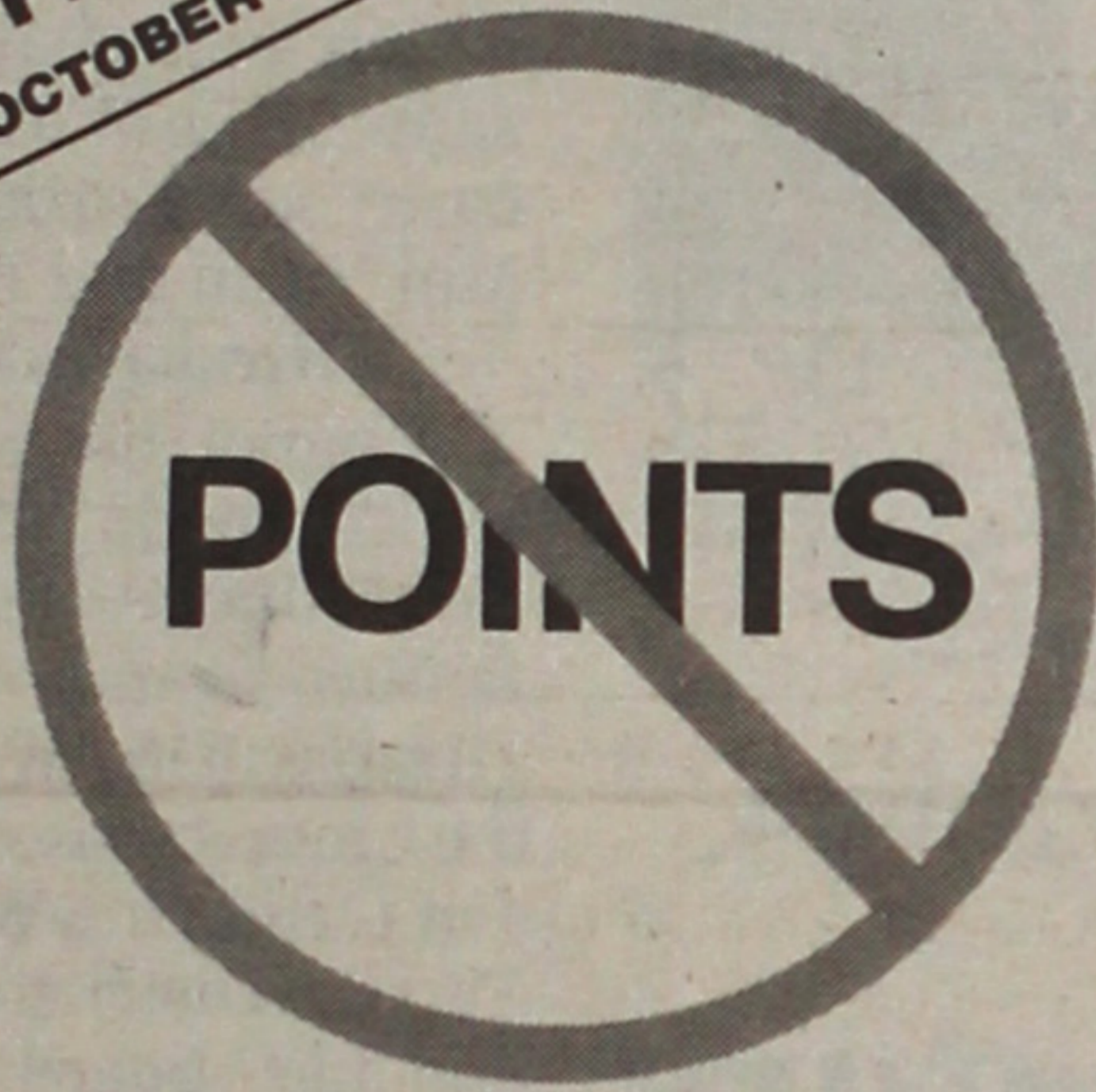
SACRAMENTO

Sept. 20 8 p.m. Fall dance, sponsored by the Nisei VFW Post 8985, will take place at the Sacramento Buddhist Hall, 2401 Riverside Blvd. Music will be provided by the Swing-Tones. Info: Tom Sasaki, (916) 428-8460.

SAN FRANCISCO

Sept. 13 10 a.m.-4 p.m. Benefit sale for the Nikkei Lions Club's Youth and Community Activities Fund will take place at Christ United Presbyterian Church, 1700 Sutter St. Info: Steve Ide, (415) 956-7750.

LIMITED TIME OFFER
GOOD UNTIL OCTOBER 31, 1986



HOME EQUITY LOANS.

From Aug. 1 through Oct. 31, 1986, Sumitomo is offering its **Fixed Rate** and **Variable Rate Home Equity Loans** with **no points** and its **Sumitomo Equity Credit Line** with **no participation fee**. Other fees may apply.

Borrow against the equity you've built up in your home for whatever your needs may be—new car, home improvement, school tuition. It's the perfect opportunity to convert your home equity into cash and save money at the same time.



This is a limited time offer, so act soon. Call or visit any of our offices for details. Some restrictions may apply.



Sumitomo Bank
Sumitomo Bank of California Member FDIC

New Car Loans

10.5%
apr



Up to 60 months,
85% financing, simple interest
No pre-payment penalties. Free loan insurance.

NATIONAL JAACL CREDIT UNION

NOW OVER \$7.8 MILLION IN ASSETS

PO Box 1721 / Salt Lake City, Utah 84110 / 801 355-8040

JAPANESE AMERICANS

FROM RELOCATION TO REDRESS

Edited by Roger Daniels,
Sandra C. Taylor & Harry H. L. Kitano

This important new work offers the most thorough and up-to-date account of Japanese American life — from the evacuation order of World War II to the current policy debate over redress and reparation.

The articles published here for the first time present: a complete overview and chronology of the Japanese American experience; moving, first-hand accounts of the relocation itself; intimate, previously unpublished descriptions of life and events in the internment camps for "enemy aliens;" personal reactions to the camps; an assessment of the psychological effects of internment; fresh perspectives on economic losses and their far-reaching implications; and many other topics and issues.

The result is a pathbreaking volume describing the heavy psychic and economic toll exacted by overt racism and injustice during a tortuous episode in America's recent past. 1986. 320 pages, 35 photos, map. Cloth, \$24.95

At your bookseller
or call toll-free (Visa and MasterCard)
1-800-662-0062, Ext. 6771



University of Utah Press
Salt Lake City, UT 84112

'Man of the Year'

CAMBRIDGE, Mass.—Sen. Spark Matsunaga (D-Hawaii) was honored Sept. 1 as the "Wind Energy Man of the Year" for the third time in four years by the American Wind Energy Association at its 1986 national conference.

Little Tokyo



Avoid The Hassles!

Call us for the "lowest prices, warranty protected products/service, always friendly assistance (before and AFTER delivery)." We lease and sell all makes/models (Japanese, German, American, etc.) and offer a complete line of accessories; i.e., car alarms, stereos, window tinting, sunroofs . . .

GIVE US A CALL
MICHAEL H. ISHIKAWA
President
CHRIS F. NAITO
Vice President

(213) 680-1168,
680-4039

110 So. Los Angeles St.
Suite 18-B
Los Angeles, CA 90012

New L.A. Redistricting Plan Considered; Asians Opposed

by J.K. Yamamoto

LOS ANGELES — A new redistricting plan tentatively adopted by the City Council on Sept. 3 could increase the chances of Councilman Mike Woo's political survival, but still leaves the issue of Asian American voting strength unresolved.

The reapportionment issue, which began with a Justice Department lawsuit directing the city to redraw its district lines in order to increase the voting power of Hispanics, was seemingly resolved July 30, when the council and Mayor Tom Bradley approved a plan creating a second district with a Hispanic majority.

The disadvantage of the plan was that it placed Woo and Councilman John Ferraro in the same district and would force them to run against each other next year.

Following the sudden death of Councilman Howard Finn on Aug. 12, Woo and Ferraro drew up a new plan enabling them to represent separate districts which include their power bases in Hollywood and the Wilshire area, respectively. Finn's 1st District in the San Fernando Valley would be incorporated into the districts of Councilmen Ernani Bernardi and Joel Wachs; the Hispanic district would become the new 1st District, where an election could be held next year without an incumbent.

Valley Opposed

The plan, which received preliminary council approval by a 10-4 vote, was assailed by valley residents, among them Finn's widow, Anne. During a hearing before the vote, one resident, Louis Snow, called the plan "a forcible rape upon the citizens of the 1st District," while another, Albert Jones, charged that the plan disenfranchised 400,000 constituents "for the political convenience of two men."

Wachs, who stands to lose about 90% of his present district, vehemently opposed the plan. "This plan was drawn up by a couple of people, in closed doors, with no public input," he said, calling the plan an example of "sleazy backroom politics."

Woo defended the plan, saying that it allowed for a special election in the new Hispanic district rather than the next scheduled election in 1989; that it increases the Hispanic percentage in valley districts, thus creating "a real opportunity for yet another Hispanic seat on the City Council"; and that the valley, now served by four full districts and parts of three others, would gain part of a fourth district. "Arguably, that provides better opportunities for representation," Woo said.

Ethnic Concerns

Although the plan met with the approval of Mexican American Legal Defense and Education Fund, a plaintiff-intervenor in the federal suit, Asian American community groups took a different view.

Speaking for Asian Pacific American Legal Center, Estelle Chun told council members that her group opposes any plan "that continues to fragment Asian American communities." She pointed out that under both the new plan and the previous one, Chinatown was divided between the 9th and 13th districts, Koreatown among the 10th, 8th and 4th, and the Filipino community among the 2nd, 4th and 13th.

Although attorneys representing Asian plaintiff-intervenors

unveiled a plan in July that consolidated Chinatown and Little Tokyo into the 9th District, Koreatown into the 10th and the Filipino community into the 4th, "no one [on the council] backed it," attorney Albert Lum told the Pacific Citizen.

Asian plaintiff-intervenors in the federal suit are Asian Pacific American Legal Center, Southern California Chinese Lawyers Association, Nayong Pilipinas and Confederation of Philippine-U.S. Organizations.

Korean American Coalition, represented at the council hearing by Charles Kim and Tong Soo Chung, also opposed the new plan and had applied to be an intervenor in the suit.

KAC's application was denied Sept. 8 by Judge James Ideman, who agreed with the argument filed by City Attorney James Hahn on Aug. 25: that even if Koreatown were in one district, its residents would comprise no more than 20 percent of the population—far short of a majority.

During the Sept. 8 court hearing, those groups that are already intervenors "were put on notice that the same argument that was used to deny the Koreans status will be used against the Chinese, Filipinos and Japanese," according to Stewart Kwoh of APALC.

If the court concludes that Asian populations are too small to qualify for protection under the federal Voting Rights Act, the plaintiffs' only recourse may be to persuade the City Council to amend its redistricting plan to consolidate Asian communities.

K
A
B
U
K
I



Hachinosuke Nakamura portrays the lion club in the Grand Kabuki performance of "Renjishi" (Two Lions). The Grand Kabuki performed to sell-out crowds last week at the Japan America Theatre in Los Angeles' Little Tokyo.

JACL POSITION ON 'ENGLISH ONLY'

Continued from front page

American Legal Defense and Education Fund, League of United Latin American Citizens, and National Asian Pacific American Democratic Council.

In a written statement, JACL said that U.S. English, the national organization promoting the English movement, "attempts to impose linguistic and cultural conformity... seeks to punish those who fail to conform due to an inability to speak English... makes no effort to increase English proficiency at a time when classes in English as a second language are over-enrolled... would isolate those who have not yet mastered English and curtail all services which would encourage participation in the greater community."

CARTOON

Continued from front page

In a letter to the newspaper, dated Sept. 1, JACL national director Ron Wakabayashi said that the cartoon "falls prey to the identical racial misconceptions that plagued America over 40 years ago... the same misunderstanding and racial bigotry that denied her the rights and privileges of American citizenship at that time.

"Your cartoonist fails to distinguish between race and nationality... It is ironic that something so backward appears in a publication called the Higher Education Supplement."

TOKYO

\$550

R.T. from LAX plus tax

(Calif): 800-327-6471

HONG KONG

From \$899

R.T., 6 nights hotel, trnsfr & city tour

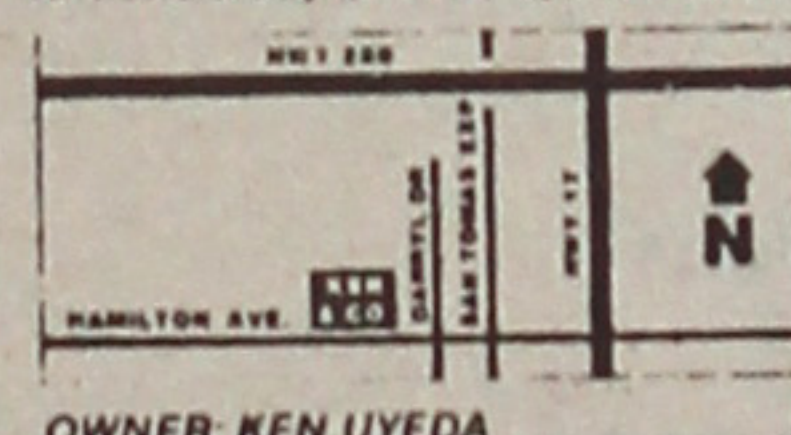
(USA): 800-421-0212

SHORT & SMALL MEN'S APPAREL

WE OFFER THE PROFESSIONAL MAN A COMPLETE BUSINESS WARDROBE.

CARRYING OVER 500 SUITS, SPORT COATS AND OVERCOATS BY GIVENCHY, LANVIN, VALENTINO, ST. RAPHAEL & LONDON FOG IN SIZES 34-42 SHORT & EXTRA SHORT. OUR ACCESSORIES INCLUDE DRESS SHIRTS, SLACKS, AND TIES IN SHORT & SMALL SIZES / LENGTHS. IN ADDITION, WE RECENTLY EXPANDED TO INCLUDE AN ITALIAN DRESS SHOE LINE IN SIZES 5-7 1/2.

785 W. HAMILTON AVENUE
CAMPBELL, CALIFORNIA 95008
PHONE: 408 / 374-1466
M-F: 12-8:30, SAT: 10-6, SUN: 12-5



OWNER: KEN UYEDA

KEN & COMPANY



Books from UNIVERSITY OF HAWAII PRESS

(Several of these have been adopted for college texts.)

The Floating World

James A. Michener, with commentary by Howard A. Link

A classic work on the Japanese print of the Edo period (1615-1868) reissued as a quality paperback, with new chapters and more than 60 illustrations. \$12.95, paper

- Retreat from Reform: Patterns of Political Behavior in Interwar Japan.** by Sharon Minichiello (\$18 cloth, 188pp.) The apparent metamorphosis of liberal reformists into willing instruments of totalitarian forces is the subject of Professor Minichiello's book.
- The Barren Zone.** by Toyoko Yamasaki, tr. by James T. Araki (\$22.50 cloth, 392pp.) The story of thousands of Japanese prisoners of war in Siberia, their repatriation in an unfamiliar Japan and headlong rush into frenzied economic expansion.
- Amerika Samoa: An Anthropological Photo Essay.** by F.K. Sutter (\$25.95 cloth, 136pp.) The 198 full-color photos present an intimate view of Samoan culture.
- Kaui: The Separate Kingdom.** by Edward Joesting (\$22.50 cloth, 376pp.) This includes a comprehensive history of Niihau, the little known story of the Russian adventure in Hawaii and a fresh perspective to the Garden Island.

SEND THIS ORDER FORM TO:

Pacific Citizen, 941 E. 3rd St., #200, Los Angeles, CA 90013

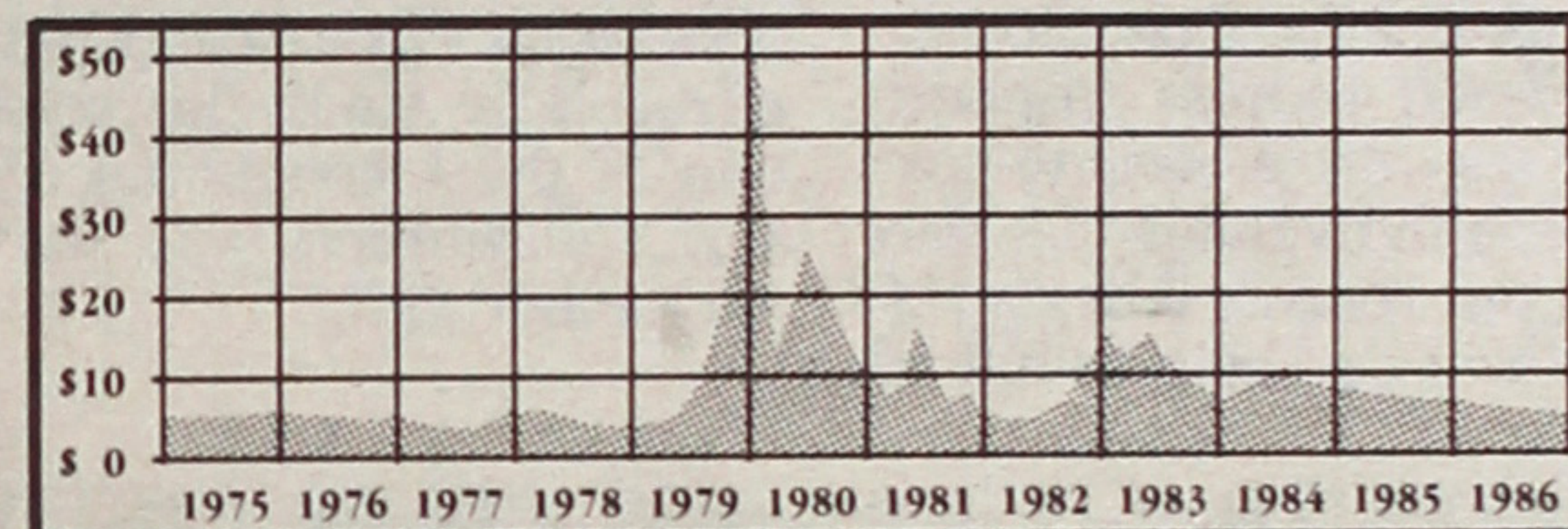
The check or money order should be made out to Pacific Citizen.

Shipping: please add \$1.00 for each book ordered.

Send book(s) as checked off to:

Please allow six weeks for delivery. Thank you!

Did you miss the 1979-80 Silver Boom?



In 1979-80, silver rose from \$6 to \$48 per ounce within a 10 month period. At the present time, silver is now trading at a bottom level of \$5 to \$6 per ounce. With possible turbulent economic conditions on the horizon due to our huge government deficit and a record number of bank failures, silver appears to be an excellent hedge against inflationary conditions.

Gold vs. Silver??

With the Gold/Silver ratio at around 50 to 1, silver is by far the better buy.

For Silver Inquiries
Call (714) 541-0994

KKRC

Kenneth H. Kusumoto Rare Coin

Nexus Financial Center
Orange, California 92668

JACL-Blue Shield

Medical-Hospital-Dental Coverage



Available Exclusively to:

- Individual JACL Members
- JACL Employer Groups

JACL members between the ages of 18 and 64 may apply to enroll in the Blue Shield of California Group Health Plan sponsored by JACL especially for JACL members. Applicant and dependents must submit a statement of health acceptable to Blue Shield before coverage becomes effective.

For full information complete and mail the coupon below or call (415) 931-6633.

To: Frances Morioka, Administrator
JACL-Blue Shield of California
Group Health Plan
1765 Sutter Street
San Francisco, CA 94115

Please send me information on the JACL-Blue Shield of California Group Health Plan:

- I am a member of _____ chapter.
- I am not a member of JACL. Please send me information on membership. (To obtain this coverage membership in JACL is required.)

Name _____

Address _____

City/State/Zip _____

Phone (____) _____ Work Home

Return to Stockton Reunions and Redress

The Grand Reunion held in Stockton, Calif. over Labor Day weekend was a memorable event for Americans of Japanese ancestry and resident aliens incarcerated in the Rohwer Relocation Center in Arkansas and the Gila River Relocation Center in Arizona from 1943-46.

The reunion, the first since Stockton area residents left their homes to enter the Stockton Assembly center, brought together those who were scattered throughout the U.S. to start new lives in new communities with those who eventually returned to the Stockton area.

Without a doubt, the weekend was an emotional one; to identify individuals from high school and college days was a most difficult feat in some instances. Once identified, nostalgia set in with, "Do you remember when...?"

Stockton JACL President Edwin Endow and Dick Fujii, co-chairs of the reunion, are to be highly commended for the eventful and fun weekend. Those of us who took advantage of all the well-planned events think it would be nice if the Stockton and French Camp chapters would plan a 50th reunion. By then, even the younger Nisei will have joined the senior citizen category.

The reunion weekend gave me a wonderful opportunity to put faces with names of people who have carried redress responsibility. It was also a boost to hear from these individuals that they support our redress lobbying effort and will also help with fund raising.

Sacramento Chapter Redress Chair George Matsuoka, JACL Treasurer Alan Nishi, Mats Murata and I stood outside after the Sayonara Banquet for some JACL talk. While enjoying the cool evening breeze which followed the dry, hot day, Matsuoka reported that under the capable leadership of LEC Secretary Jerry Enomoto, the Sacramento-San Joaquin Valley chapters are off to a running start on the JACL-LEC Fund Drive event Nov. 29 in Sacramento.

Enomoto, a former JACL national president, is being assisted by Mary Tsukamoto, who continues to educate non-Nikkei, getting them involved in letter-writing and grass roots lobbying.

This will be a second Northern California fund raiser for JACL-LEC. San Francisco Chapter President Cressey Nakagawa has set the model with the Bay Area Americans for Justice Dinner. Without a doubt, Enomoto will carry his ideas to a successful fruition.

Upon returning to the Washington office, I found a mountain of mail waiting for me. The response of so many people to the request to write letters and to send us copies of replies from members of Congress helps us to push on to our final effort to secure redress.

*Mote Nakasako, director of Veterans Service Division of the County of Los Angeles, took the redress issue to the Veterans of Foreign War Convention held in Minneapolis in late August. Art Morimitsu, LEC Board member from Chicago, also attended this convention to help set up the photo exhibit of the MIS and the 442nd RCT.

Mitsugi Kasai, Intermountain District redress chair, has been writing letters to his congressional delegation and to the Salt Lake City newspaper with a focus

LEC UPDATE

Grayce Uyehara



on the heroic efforts of the Japanese American veterans.

We are hoping the veterans' organizations can identify veteran contacts who will lobby the redress bills in places where the JACL has no chapters.

From time to time, I have been receiving copies of letters which were written in 1984 during the 98th Congress. Whenever we have a new session of Congress, we must write to our congressional delegation again. Not only do bills introduced in the previous Congress receive new numbers, the members of Congress need to be continuously refreshed on the issue addressed by the bill. This is because out of roughly 10,000 bills introduced in Congress, approximately 625 get passed.

So we need each one of you to continue writing your letters to your representative and senators requesting their support on the redress bills. Be sure to emphasize the abrogation of constitutional rights as the focus of redress, particularly since the celebration of the bicentennial of the U.S. Constitution will start in September 1987.

Letters

Incident Over Tule Lake

I am currently near the end of a sabbatical year at Pacific University, in which I am writing the history of the Hood River Issei. My research is based primarily on interviews with 14 of the Issei, ages 82 to 95, and their stories span the period from their early years in Japan to their return from the camps and their lives today.

One of the Issei has referred repeatedly to an incident at Tule Lake which I have been unable to confirm.

The incident is described as "stones from the sky" (presumably meteorite fragments) which fell during the pre-segregation period at Tule Lake. I did receive a rock sample which, according to a scientist who examined it, seems to be from a meteorite. I have, however, been unable to gather any other confirming information.

The woman did mention an article in the camp newspaper, which had reported that those who found the stones would have good fortune. In my review of the Tulean Dispatch, I was unable to find such an article, although a number of issues were missing from the collection.

None of the other valley Issei seem to recall this incident, and the woman's son, who reportedly gathered the stones, has since died. I also addressed a letter to the Tule Lake Committee listed in the book *Kimenhi*, but it has been returned. I assume the committee has since disbanded.

Does anyone have information regarding such an incident? I would appreciate any assistance you can provide.

LINDA TAMURA
19875 NW Rock Creek Blvd.
Portland, OR 97229



Asians at a Premium

FROM THE FRYING PAN

Bill Hosokawa



The Associated Press not long ago distributed a story saying the Metropolitan Life Insurance Co., which became the biggest insurer of Hispanic Americans through a methodical courtship of that ethnic group, is applying some of the same marketing techniques to win over Asian Americans.

One of America's biggest corporations shaping special marketing techniques to sell life insurance to Asian Americans? How times have changed! The snickering you hear in the background is from Nisei graybeards who remember a time when, with a few notable exceptions, life insurance was available to them only if they accepted discriminatory treatment.

Life insurance experts generally agreed that among the policies available prewar, the best buy was something called "ordinary life." For a relatively reasonable pre-

mium you bought protection for your family while building up cash value that could be collected at some future time, if you survived, in a nice little nestegg.

The trouble with "ordinary life," I discovered when I began shopping for insurance, was that it wasn't available to Japanese Americans. The insurance companies steered them to "20-pay life" or a policy similarly named, in which you paid a relatively large premium over 20 years for relatively little protection. Its attraction was that you were building up cash value—in reality an endowment for yourself—but the policy wouldn't do much for your family in case you croaked.

How come "ordinary life" wasn't available? Wasn't protection for the family the name of the game? Well, yes, the agents would explain. But there's such a thing as actuarial mortality tables, which said that even though lynching had gone out of style, Asian Americans as a class weren't likely to live as long as the majority. And to protect themselves, the insurance companies had to insist that Asian Americans agree to be considered special cases, meaning insurance protection would cost them more than it would cost

ordinary folks.

Even after the war I remember being told by a very large, conservative and wealthy insurance company that sure, they would be happy to sell me an ordinary life policy. But there was one small catch. Because I happened to be ethnic Japanese, I would have to pay a little extra even though the doctor would certify that he found nothing to indicate an early demise. Simply because of race, I would have to pay a higher premium, as though I had tuberculosis, diabetes, or a bum heart.

Thank you but no, I said in somewhat less polite terms, and scouted around until I found another company that was less concerned about where my folks had come from. At the time, that wasn't particularly simple.

So now Metropolitan Life has discovered that Asian Americans are concerned about protecting their families. Now we are told that contrary to earlier wisdom, we make good insurance risks and are worthy of being pursued with an expensive advertising campaign.

Times change but big business's instinct for profit-making hasn't been dulled. Please excuse me for snickering. A bit impolitely.

Book Review

Experiences Worth Recollecting

Our Recollections, East Bay Japanese for Action, Inc., Berkeley, Calif., 1986. Hardbound. 335 pp.

by Asami Oyama

Our Recollections, an engrossing collection of personal memoirs written by 13 Issei and two Kibei women, grew out of weekly writing classes conducted by Mrs. Mizue Kato. East Bay Japanese for Action (EBJA), now incorporated as Japanese American Services of the East Bay (JASEB), still sponsors the writing class as part of its senior nutrition program. I am grateful these women survived into their 80s and 90s to leave us these tales of their struggles.

Twice in the book the writers quote the old saying, "women are weak but mothers are strong." Belief in such sayings and religious faith, be it in Buddhism or Christianity, appear to be the sustenance which saw them through the years of discrimination and incarceration. The common experience of the evacuation, camp life, and the anguish of sending sons off to war are narrated from different perspectives by each of the authors.

One mother wrote of her feelings when she learned of her son's injury and loss of his leg: "I cried so much I could only

wonder at the volume of tears humans were capable of."

I was also moved by the essay of how the author decided to return to this country after having moved back to Japan 25 years earlier—"to be near my [second] son, who sleeps in the Golden Gate National Cemetery." Her son was killed in Cambodia during the close of the Vietnam War.

As I read the essays, I could visualize these authors as the young women they were when they first crossed the wide Pacific to make a life in a strange land. Another author, at age 27, lost

her husband in a car accident. Forced to go out into the fields herself, she parted with her children and, at 20 cents an hour, labored to send money back to Japan for them.

Two thousand copies were printed and are available only by donating to EBJA Book Project, 2126 Channing Way, Berkeley, CA 94704. A minimum \$20 donation is requested. For \$50, a copy with the EBJA seal will be mailed, and a generous \$100 donation will bring an autographed copy. This book is truly a commendable fundraiser.

ISSN: 0030-8579



pacific citizen

Nat'l JACL Headquarters, 1765 Sutter St., San Francisco, CA 94115, (415) 921-5225
Published by the Japanese American Citizens League every Friday except the first and last weeks of the year at 941 E. 3rd St., #200, Los Angeles, CA 90013
2nd Class postage paid at Los Angeles, CA. • Annual Subscriptions—JACL members: \$10.00 of national dues provide one-year on one-per-household basis. Non-members: \$20/yr., \$38/2-yr., payable in advance. Foreign addressees: Add U.S.\$12 p/yr.; First class/air—U.S./Canada US\$25 extra, Japan/Europe US\$60 extra
Opinions expressed by columnists other than the National President or National Director or the news do not necessarily reflect JACL policy.

OFFICERS

Harry H. Kajihara, National JACL President Clifford Uyeda, PC Board Chair

EDITORIAL - BUSINESS STAFF

Editor: Lynn Sakamoto-Chung Ass't Editors: Robert Shimabukuro, J.K. Yamamoto
Advertising-Business Manager: Rick Momii Adv / Acctg: Jane Ozawa, Mark Saito
Circulation: Tomi Hoshizaki Production: Mary Imon

General Manager/Operations: Harry K. Honda
POSTMASTER: Send address changes to:
Pacific Citizen, 941 E. 3rd St. #200, Los Angeles, CA 90013

A Lesson in Linguistics

Notes on 'Nikkei'

EAST
WINDBill
Marutani

MY WIFE, VICKI, will be the first to tell you that I am by no means a *Nihongo* linguist. But, such as it is, I try. It isn't that I'm a complete illiterate when it comes to *Nihongo*. After months of MIS language school at Ft. Snelling, a few things did rub off. (Such as being able to shout in *Nihongo*, "*Migi muke!*")

One of the running household disputes we have, which remains unresolved to date, is the use of the term *Nikkei*. The frau equates it with the term "Japanese American" and I resolutely point out to her that it means "Japanese lineage" or "ancestry." Thus, I argue (futilely) that the term is applicable to any person of Japanese ancestry, such as those living in Canada or South America.

And I live in neither.

I MUST CONCEDE, however, that Kenkyusha's *jiten* defines *Nikkei* as meaning "Japanese American," although if one reads the *kanji* portion, the definition is *Nikkei Beijin* or "American of Japanese ancestry." So even Kenkyusha acknowledges that the term *Nikkei* alone is not complete and therefore inaccurate.

And so it is that in this column we use the abbreviation AJA for Americans of Japanese ancestry, or at times "Nikkei American" or "Nikkei Canadian," although strictly speaking there is a bit of redundancy there. Literally translated it comes out "Japanese ancestry American" when simply "Japanese American" would do.

But as I stated at the outset, "My wife, Vicki, will be the first to tell you..."

My First Encounter
With the Third World

by Lon Kurashige

Recently I had the good fortune to travel to Mexico City with a team of about 20 Japanese American men and women to compete in the 11th International Nikkei Sports Festival.

The chance to talk with Nikkei from areas outside the U.S. excited me. What would Nikkei from Latin America be like, I wondered. Being a citizen of what's absurdly called the First World, I assumed there would be a bit of envy from my Third World counterparts. After all, doesn't everybody want to live in the United States?

The Mexican hosts housed all the participants together and encouraged us to interact freely. At first it struck me to hear Nikkei speaking Spanish and Portuguese. I felt proud speaking English; it showed I was American.

My need for patriotism ran rampant. I wanted our team jackets to display the Stars and Stripes; I longed for a cowboy hat; I could have killed myself for leaving my Levis at home. Some of my teammates suggested buying those little American flags, ubiquitously waved on the Fourth of July or any other time when passed out free of charge.

WHICH BRINGS US yet to another aspect of the language problem, this one by Japanese publications and their translation of "Japanese American Citizens League." The label has erroneously appeared in several forms: *Nikkei Amerikajin Kyokai*, *Zenbei Nikkei Shimin Kyokai*, and *Nikkei Nichibei Kyokai*, just to list a few (thanks to Ken Nakano for the list).

At least within the Issei community to which I was exposed as a lad, the JACL was known, abbreviated, as *Shimin Kyokai* or "citizens league." And now that I've had a bit of linguistic Army training, I would complete that into *Nichibei Shimin Kyokai*, which, however, is subject to being translated into "Japan America Citizens League." And to this extent, I would relent to the frau and allow a slight modification so it would read *Nikkei Shimin Kyokai*, even though the term could be applied to Nikkei Canadians or Nikkei in South America.

THERE IS A pamphlet issued by JACL National Headquarters which accurately sets forth the translation of the organizational name: *Beikoku Nikkei Shimin Kyokai*. Which, by the way, is a tacit acknowledgment that the term *Nikkei* is not synonymous, necessarily, with "Japanese American." That is unless one fills the void by mentally adding "American" into the term, which apparently many folks do. Which, as a matter of linguistics, doesn't make it so.

THE POINT OF all this is that perhaps the JACL should have an official translation to be used and passed along to Japanese publications. Otherwise, we can be at the mercy of whatever writer chooses to translate the organizational name, at his or her whim.

AS I SAID at the outset....

Being a U.S. citizen made me feel special.

Breakfast one morning proved a humbling experience for me and many of my teammates. Due to complaints about the food, our hosts made pancakes especially for us Americans. As I licked the last trace of hot maple syrup from my plate, I felt the cold stares of numerous Argentines and Peruvians who had received some sort of granola instead.

Most of us Americans felt ashamed of our exclusive treatment. I no longer sought to show off my Americanism, for now this meant being a spoiled, selfish brat. That morning I realized that my U.S. passport did not make me better or more special than those form other, especially Third World, countries.

All of us were humans, not political entities; we were engaging in friendship, not diplomacy. It was only after my Third World prejudices (or American conceit) were exposed that I began to appreciate the beauty of the Nikkei Olympics. I began seeing fellow athletes not as Mexicans, Brazilians, Peruvians, etc., but as Luis, Haruko, Annas, etc. Language and political barriers receded in the presence of sportsmanship and camaraderie.

1000 Club Roll

(Year of Membership Shown)
* Century; ** Corporate; L Life;
M Memorial; C/L Century Life

Summary (Since Jan 1, 1986)
Active (previous total)1,699
Total this report: #31 31
Current total1,699

AUG 4-8, 1986 (31)

Arizona: 13-Benjamin Ehara.
Berkeley: 33-Tokuya Kako, 20-Peter N Kawakami.
Cincinnati: 28-Lorraine T Tokimoto Higashihara.
Detroit: 12-David McKendry.
Downtown Los Angeles: 21-Masashi Kawaguchi.
Eden Township: Life-Giichi Yoshioka.
Fresno: 6-Dr Alvin K Hayashi, 23-Jin Ishikawa, 3-Henry H Kubow, 22-Dr Kenneth S Masumoto, Life-Dr Caroline Sakauye.
Hoosier: 1-Jo Anne Kagiwada.
Marina: 7-Ryoko Takata.
Marysville: 38-Akiji Yoshimura.
Orange County: 24-Kay Tamura.
Puyallup Valley: 33-H James Kinoshita, 32-Paul T Seto.
Sacramento: 30-George I Matsuoka.
Saint Louis: 28-Harry H Hayashi.
Salt Lake City: 18-Tatsumi Misaka, Life-Sadao Nagata, Life-Terrell Nagata.
San Francisco: 25-Masanori Hongo, 21-Manuel S Nuris, 7-Patti Paganini.
Seattle: 5-Aki Kurose, 8-Martin Mich Matsudaira, 3-Chessie Tsubota.
Spokane: 33-Tetsuo Nobuku.
Tulare County: Life-Robert Ishida.

LIFE

Giichi Yoshioka (Ede), Dr Caroline Sakauye (Fr), Sadao Nagata (SLC), Terrell Nagata (SLC), Robert Ishida (Tul).

Summary (Since Jan 1, 1986)

Active (previous total)1,699
Total this report: #32 30
Current total1,729

AUG 11-15, 1986 (30)

Boise Valley: 23-Paul Yasuda.
Chicago: 4-Lester John Ishida, 25-Seiji Itahara.
Dayton: 26-Roy F Sugimoto*.
Downtown Los Angeles: 4-Ann A Kusumoto, Life-John Saito.
French Camp: 19-Hideo Morinaka.
Gardena Valley: 22-Isaac I Matsushige, 30-Ronald I Shiozaki.
Hollywood: 33-Miwako Yanamoto*.
Marin County: 8-Bruce Shimizu.
Milwaukee: 17-Sus Musashi.
New York: 29-Alice Suzuki.
Oakland: 23-Ted T Mayeda.
Pacific-Long Beach: 32-George Mio.
Portland: 19-Nobi Azumano.
Sacramento: 25-Louis Seto, 24-Howard Yamagata.
Saint Louis: 28-Richard T Henmi, 28-Dr George S Uchiyama.
Salt Lake City: 8-Yuji Okumura.
San Diego: Life-Father Clement, 28-Dr Kiyoshi Yamate.
San Francisco: 21-Masato Ty Toki.
Seattle: 33-Kay Yamaguchi.
Sonoma County: 8-Margaret YoshikoScott.
National: 6-Dennis R Sugino.

CENTURY CLUB*

7-Roy F Sugimoto (Day), 13-Miwako Yanamoto (Hol).

LIFE

John Saito (Dnt), Father Clement (SD).

Summary (Since Jan 1, 1986)

Active (previous total)1,729
Total this report: #33 18
Current total1,747

AUG 18-22, 1986 (18)

Chicago: 32-George M Ikegami.
Diablo Valley: 24-Yukio Wada.
Fresno: 5-Deborah Ikeda, 5-Sachiye Kuwamoto, 5-Satoshi Kuwamoto.
Gardena Valley: 29-David S Miyamoto*.
Mount Olympus: 21-Aiko N Okada.
Orange County: 26-Harry H Nakamura*.
Reedley: 15-Sammy S Nakagawa.
Reno: 29-Wilson H Makabe.
Salt Lake City: 15-Jimi Mitsunaga.
San Diego: Life-Robert P Ito.
San Francisco: 14-Blue Shield of California**, 15-Giichi Sakurai.
San Jose: 24-Tad Sekigahama.
Seattle: 33-Dr Theodore T Nakamura, 1-Koji Oishi.
Snake River: 26-Louis J Yturri.

LIFE

Robert P Ito (SD).

CORPORATE CLUB*

8g-Blue Shield of California (SF).

CENTURY CLUB*

6-David S Miyamoto (Gar), 6-Harry H Nakamura (Ora).

Coalition-Building: How Do You Start?

By the Board

by Cherry Kinoshita
VP of Public Affairs

Almost as a sub-theme woven through the National Convention's main theme of "Interaction" was the urgency of coalition-building, as keynoted in one workshop and stressed in another.

The total thrust of the redress workshop (see Aug. 8 PC) was on strategies of coalition-building, as presented dynamically by both Ralph Neas, executive director of the Leadership Conference on Civil Rights, and David Roth of the American Jewish Committee.

In the anti-Asian violence workshop, panelists also emphasized how critically important it is to form alliances with other Asian and minority groups, as well as with sister civil rights organizations, as a mode of combating the rising tide of racial violence.

But no one explained exactly how you get started. Lacking an explosive rallying cause such as the Vincent Chin killing, how do you arouse the motivation for coalition-forming?

Situation in Seattle

The LCCR itself is just such a coalition, founded by Arnold Aronson, A. Philip Randolph and Roy Wilkins in 1950, composed of 175 national organizations brought together under an umbrella "to promote the passage of civil rights, social and economic legislation and enforcement of laws already on the books." So one might expect that in most major cities there would already be a counterpart of such a coalition linking together local branches of organizations with a mutuality of interests.

How about in Seattle? I'd never really thought about it, but assumed somewhere in the back of my mind that there was such an organization. Not more than two

After the Olympics concluded, all of us athletes exchanged our uniforms, sweats, and even name tags. The scene was confusing: Americans wore Brazilian jackets, Peruvians were in Argentine T-shirts, Brazilians in Mexican gear, and Mexicans in American jackets. It was difficult to categorize people by their countries.

I saw a friend from Mexico wearing one of our jackets and mistakenly thought she was an

days after arriving home from Chicago, I found that no such coalition of civil rights organizations exists locally, even on an informal basis.

The reason I found out so quickly was that I was advised by Seattle Chapter President Bob Sato that on July 29 there would be an initial meeting to explore the formation of such a group, initiated by none other than the Anti-Discrimination Committee of Seattle JACL.

Naomi Iwata-Sanchez, recently in the news as the newly promoted vice chancellor of the Seattle Community Colleges District, wasted no time in acting on one of the goals which she said she "inherited" when appointed as chair of the Anti-Discrimination Committee—that of developing a relationship with at least five other civil rights organizations. She decided to do even better and, after compiling a list of some 25 organizations, she sent out letters of invitation to a no-host dinner meeting "to become better acquainted with organizations whose interests are the same as ours."

Surprising Results

Dubious about results, I attended, wondering how effective a single invitation letter would be. To my surprise, the turnout of about 20 included representatives from the American Jewish Committee (three came), the Anti-Defamation League of B'nai B'rith, the Seattle Human Rights Department, the Washington State Human Rights Commission, the American Civil Liberties Union, the Korean Association, the Central Area Motivation Program, and the Women's International League for Peace and Freedom.

After a brief welcome and introductions, Dr. Iwata-Sanchez, who had two other work-related commitments that evening, turned the gathering over to Tim Gojio, who is also the co-chair of the Seattle Redress Committee.

After enjoying a repast of Chinese dishes mixed with informal

socializing, each member was asked to tell a little about his/her organization. Much information was exchanged, not only on the background of each organization—which ranged from the oldest, AJC, founded in 1906, to the newest, the Korean Association, formed in the '60s—but also on the programs and issues which concern each organization. All seemed well aware of JACL's primary issue of redress.

I recognized and thanked those organizations which had been very supportive in our redress legislative efforts on the state and local levels over the past six years, and pointed out that we had so often asked for their help and yet had never been asked to help in their issues—which we willingly would do. Ralph Neas' philosophy of "a win for one is a win for all and a loss for one is a loss for all" came to mind.

The evidence of the success of the meeting was a unanimous decision to meet again Sept. 30, with each organization bringing one issue to discuss. Several commented that there had long been a mutual need to work together on civil rights issues and they were glad to see an attempt being made in this direction.

That a JACL chapter was able to bring about what appears to be the promise of a modest coalition left me speculating with a couple of reflections: (1) Regardless of whether you succeed or fail, you'll never know if you don't make the attempt—or, nothing ventured, nothing gained; (2) Never sell the name of JACL short—or, don't we tend to underestimate the stature of our organization?

Plaudits to Iwata-Sanchez, Gojio, and other members of the Anti-Discrimination Committee: Roger Shimizu, Marie Coon, Jill Nishi, and Teri Eguchi. Please keep us posted as to progress. Your project may serve as a prototype which other chapters might follow.

Donations to Pacific Citizen
For Typesetting Fund

As of Sept. 6, 1986: \$35,436.02 (841)
This week's total: \$ 53.00 (3)
Last week's total: \$35,383.02 (838)

\$10 from: Kiyomi Fukushima.
\$13 from: Naomi Kashiwabara (in memory of Bert M. Tanaka).
\$30 from: Kay Shimizu.

Thank You!

'Jukebox': Music With a Message

by Robert Shimabukuro

*Black or brown or white or red or yellow
Calling you no matter who you are
Why can't we come together people
Come together human race*

—Tarabu Betserai

OAKLAND — Utilizing a story line that at times appeared to be a San Francisco Mime Troupe version of "Mr. Roger's Neighborhood," Community Information Network, in conjunction with National Asian American Telecommunications Association and Pacifica Radio, presented a landmark production of a live radio music drama, "Jukebox: Music to Live By," before standing-room-only crowds at the Laney College Auditorium Aug. 23 and 24.

Written by Tarabu Betserai and directed by Norman Jayo, "Jukebox" is about a racially diverse community facing eviction by city planners and developers to make way for the "gentrification" of the neighborhood. The basic story line is an old one—the evil landlord vs. the poor tenant with no place to go; old-time melodrama with a modern, urban twist.

What sets this story line apart from most melodrama is the complex composition of the neighborhood, made up of Asians, Blacks, Latinos and Whites, often at odds with each other, and the inner conflict of the major characters in deciding whether to stay and fight the eviction with their neighbors, or to move on.

At the center of the drama is Bekham's Real Soulfood Restaurant, run by Charles and Toshi Bekham, played by stage and screen star Danny Glover and Great Leap artistic director Nobuko Miyamoto. Charles has a jukebox, a beautiful old Wurlitzer, and plans... plans to move out of the neighborhood to an up-town, classy restaurant with the



Clockwise, from top: Danny Glover, Nobuko Miyamoto, Annette Dolores Oropreza and Attallah Shabazz, with Wurlitzer jukebox.

jukebox as its centerpiece. The eviction notice provides a convenient opportunity to move on.

Toshi, on the other hand, is torn between the desire to see her husband's dream fulfilled, and the painful memories of a previous forced relocation as a Japanese American child during WW2. She decides to stay and fight eviction against the wishes of her husband.

Inspired by I-Hotel

The story line should be familiar to Bay Area residents, especially Betserai and Jayo. Both were early organizers of Third World News Bureau, a multicultural group of writers, researchers, and reporters who regularly fed news stories and features to local radio and Pacifica Radio Network stations out of their production studio in Oakland.

During that time, the nine-year struggle of the tenants of the International Hotel in San Francisco to keep their home was a major focus of the News Bureau.

The eviction of the tenants at the I-Hotel was covered by the News Bureau and broadcast live, "hanging out of windows with microphones while the police were climbing up on fire ladders," said Betserai. Thousands of people had formed a human barricade in the streets to no avail as Sheriff Richard Hongisto broke down the doors to remove the last of the elderly tenants on the night of Aug. 4, 1977. Today all that remains at that site is a large hole in the ground.

Commented Jayo, "We saw a lot of the plight of people being evicted from the development projects of downtown interests. This musical embodies many of those dynamics."

Conflict and Unity

Those dynamics include the conflicts seemingly inherent in a poor neighborhood, especially one of residents with a history of conflict with one another—within and without each particular ethnic group. It also includes the at-

titudes of those outside the neighborhood interested in cleaning up an "eyesore," and in "relieving" residents of their crowded living conditions.

But those dynamics also include the ability of the neighborhood residents to perceive that unity is their only hope. And what unifies both the neighborhood and the play is the music.

The music, written primarily by Jayo and Betserai, is, simply put, "hot." Most of the aforementioned "dynamics" are reflected in song. The songs dance, jump, cry, laugh, and incite. At times, they eclipse the stage production itself. The staging, with all its technological equipment and expertise, has the look of music videos. But the songs are not your usual MTV stuff. Combining elements of Latin, Afro-American, and Asian music, the songs reflect the cross-cultural influences of the drama.

Led by Bay Area vocalist Linda Tillery, the chorus of Larry Batiste, Roger Bearde, Molly Holm and Jacqui Marshall is superb, with some of the finest singing I've heard in a long time. And Nobuko Miyamoto, singing her own composition, "These Three Women," with Attallah Shabazz and Annette Oropreza, got the second half of the performance off and running.

Both performances were broadcast live over KPFA in Berkeley. The radio production, although suffering from a few technical difficulties, sounded just as good; at times, it made more sense. The role of the Poet, played by Lewis Jordan of United Front and Sound-Seen, did not seem clearly defined on stage, but over the radio, the role blossomed into an essential part in maintaining a continuity of action and in explaining what was going on.

Continued on page 8

MIDAS OPERANDI

Invest in Dollars and Have It Working for You in Yen... With Liquidation in Dollars. Hedge Against Inflation by Realizing More than 20% NET per Annum

Minimum Investment: \$15,000

—DETAILS UPON REQUEST—

Dyke Nakamura, Foreign Department

YAMAKICHI SECURITIES CO., LTD.

7 Nihonbashi, Kabutocho, 1-chome
Chuo-ku, Tokyo, Japan 103

Cable: YAMASECURE, TOKYO □ Telephone: (03) 667-7947

Nat'l Business - Professional Directory

Your business card in each issue for a half year (25 issues) in the PC Business-Professional Directory is \$12 per line, three-line minimum. Large type (12 pt.) counts as two lines. Logo same line rate.

Greater Los Angeles

ASAHI TRAVEL

Supersavers, Group Discounts, Apex Fares
Computerized-Bonded
1111 W. Olympic Blvd., Los Angeles 90015
(213) 623-6125/29 ● Call Joe or Gladys

FLOWER VIEW GARDENS #2

New Otani Hotel, 110 S Los Angeles
Los Angeles 90012 / Art Ito Jr.
Citywide Delivery / (213) 620-0808

Dr. Darlyne Fujimoto

Family Optometry & Contact Lenses
11420 South St., Cerritos, CA 90701
(213) 860-1339

Dr. Loris Kurashige

Vision Examinations/Therapy, Contact Lenses
11420 South St., Cerritos, CA 90701
(213) 860-1339

INOUE TRAVEL SERVICE

1601 W. Redondo Beach Blvd., #209
Gardena, CA 90247; (213) 217-1709
Offices in Tokyo, Japan / Lima, Peru

TATAMI & FUTON

(818) 243-2754
SUSUKI FUTON MFG.

TAMA TRAVEL INTERNATIONAL

Martha Igarashi Tamashiro
One Wilshire Bldg., Ste 1012
Los Angeles 90017; (213) 622-4333

TOKYO TRAVEL SERVICE

530 W. 6th St., #429
Los Angeles 90014 (213) 680-3545

YAMATO TRAVEL BUREAU

200 S San Pedro St., #502
Los Angeles 90012 (213) 680-0333

Orange County

Victor A. Kato

(714) 841-7551 ● Exceptional Real Estate
17301 Beach Blvd., Suite 23
Huntington Beach, CA 92647

The Paint Shoppe

LaMancha Center, 1111 N. Harbor Blvd.
Fullerton CA 92632, (714) 526-0116

San Diego, Calif.

Paul H. Hoshi Insurance

852 -16th St., San Diego, CA 92101
Office (619) 234-0376 Res. (619) 421-7356

Ventura County

CALVIN MATSUI REALTY

Homes & Commercial
371 N. Mobil Ave., Ste. 7,
Camarillo, CA 93010 (805) 987-5800

San Jose, Calif.

Kayo K. Kikuchi, Realtor

SAN JOSE REALTY
996 Minnesota Ave., #100, San Jose 95125-2493
(408) 275-1111 or (408) 296-2059

TATSUKO "TATTY" KIKUCHI

General Insurance Broker, DBA
Kikuchi Ins. Agency
996 Minnesota Ave., #102
San Jose, CA 95125-2493
(408) 294-2622 or (408) 296-2059

San Jose

Physical Therapy

Diane Shiraishi RPT; Chris Ota RPT
2337 Forest Ave., San Jose CA 95128
(408) 246-5861
1580 S. Winchester Blvd. #108,
Campbell CA 95008 (408) 866-5567

EDWARD T. MORIOKA, Realtor
580 N. 5th St., San Jose CA 95112
(408) 998-8334 bus 559-8816 res.

Watsonville, Calif.

Tom Nakase Realty

Acreage, Ranches, Homes, Income
TOM NAKASE, Realtor
25 Clifford Ave. (408) 724-6477

San Francisco Bay Area

IRENE A. OGI

ATTORNEY-AT-LAW
848 Cleveland St., Oakland, CA 94606
(415) 832-1055

Y. KEIKO OKUBO

Five Million Dollar Club
39812 Mission Blvd.,
Fremont, CA 94539 (415) 651-6500

Seattle, Wash.

Imperial Lanes

Complete Pro Shop, Restaurant, Lounge
2101-22nd Ave So., Seattle (206) 325-2525

UWAJIMAYA

...Always in good taste.



For the Best of Everything Asian.
Fresh Produce, Meat, Seafood and Groceries.
A vast selection of Gift Ware.

Seattle • 624-6248
Bellevue • 747-9012
Southcenter • 246-7077

The Intermountain

Mam Wakasugi, Sales Rep.

Row Crop Farms; Blackaby Real Estate,
36 SW 3rd St, Ontario, OR 97914
(503) 881-1301 or (503) 262-3459

Eastern District

MIKE MASAOKA ASSOCIATES

Consultants - Washington Matters
900-17th St NW, Washington, DC 20006
(202) 296-4484

CHIYO'S

Japanese Bunka Needlecraft
Framing, Bunka Kits, Lessons, Gifts
(714) 995-2432
2943 W. Ball Rd., Anaheim, CA 92804
(213) 617-0106
424 E. 2nd St., Honda Plaza, L.A. 90012

Kimura PHOTOMART

Cameras & Photographic Supplies
316 E. 2nd St., Los Angeles, CA 90012
(213) 622-3968

Aloha Plumbing

Lic. #440840 -- Since 1922
PARTS - SUPPLIES - REPAIR
777 Junipero Serra Dr. San Gabriel, CA 91776
(213) 283-0018 ● (818) 284-2845

Commercial & Industrial Air Conditioning and Refrigeration CONTRACTOR

Glen T. Umemoto
Lic. #441272 C38-20

SAM REIBOW CO. 1506 W. Vernon Ave.
Los Angeles/295-5204 SINCE 1939

MIKAWAYA SWEET SHOPS

244 E. 1st St., Los Angeles; (213) 628-4935
118 Japanese Village Plaza, L.A.; 624-1681
Little Tokyo Square, 333 So. Alameda, L.A.; (213) 613-0611
Pacific Square, 1630 Redondo Beach Bl, Gardena; (213) 538-9389

Empire Printing COMPANY

Commercial and Social English and Japanese

114 Weller St.
Los Angeles, CA 90012
(213) 628-7060

Four Generations of Experience ...

FUKUI MORTUARY Inc.

707 E. Temple St.
Los Angeles, CA 90012
626-0441

Gerald Fukui, President
Ruth Fukui, Vice President
Nobuo Osumi, Counsellor



LARGEST STOCK OF POPULAR & CLASSIC JAPANESE RECORDS, MAGAZINES, ART BOOKS, GIFTS

Two Stores in Little Tokyo
300 E. 1st - 340 E. 1st
Los Angeles, CA - (213) 625-0123
625-0123 - 625-8673
S. Ueyeyama, Prop.

Kubota Nikkei Mortuary

(Formerly Shimatsu, Ogata & Kubota Mortuary)

911 Venice Blvd.
Los Angeles, CA 90015
(213) 749-1449

R. Hayamizu, President; H. Suzuki, VP/Gen. Mgr.; Y. Kubota, Advisor.

Serving the Community for Over 30 Years

TOYO Miyatake STUDIO

235 W. Fairview St.
San Gabriel, CA 91776.

(213) 283-5685 (818) 289-5674

ED SATO

PLUMBING & HEATING

Remodel and Repairs. Water Heaters, Furnaces, Garbage Disposals
Serving Los Angeles, Gardena
(213) 321-6610, 293-7000, 733-0557

ESTABLISHED 1936

NISEI TRADING

Appliances - TV - Furniture

249 So. San Pedro St.
Los Angeles, CA 90012
(213) 624-6601



Japanese Phototypesetting

TOYO PRINTING CO.

309 So. San Pedro St., Los Angeles 90013
(213) 626-8153

Chapter Pulse

FRESNO

•The Fall Festival Run in the Park will be held Sept. 21 at Woodward Park, Mt. View Shelter. The two-mile run starts at 7:30 a.m. and the six-mile run starts at 8 a.m. A special walkers/striders participation event starts at 7:30 a.m. for one to two miles. Winners will receive hapi coats. All participants will be eligible for a one-week trip for two to Hawaii and a three-day trip for two to Las Vegas. Entry fee: \$8. Info: Nadine Nishio, (209) 661-2074.

MARINA

•Those interested in biking from Marina del Rey to Hermosa Beach on Sept. 21 should meet in the parking lot of El Torito at Fisherman's Wharf by 9 a.m. Contact: Lance Izumi, (213) 329-9838.

VENTURA COUNTY

•The chapter will sell California sushi and shaved ice at the Ventura International Food Fair, on Main St. near Chestnut and Figueroa, on Sept. 14, 10 a.m. to 5 p.m. Info: Yas Umeda, (805) 984-3333.

WASHINGTON, D.C.

•The Keiro Kai Dinner, held annually to recognize members and guests over 70 years old who firmly believe in the goals of JACL, is scheduled for Sept. 27, 5-7:30 p.m., at Bradley Presbyterian Church, 6601 Bradley Blvd., Bethesda, Md. Reservations: Eileen Miller, (703) 534-8542; or Carole Coleman, (703) 941-9129.

Recruiting Women, Sansei

NJAHS Dropping 'Go For Broke' from Name

SAN FRANCISCO — Go For Broke, Inc./National Japanese American Historical Society henceforth will be known simply as the National Japanese American Historical Society following an overwhelming vote last month to drop the name Go For Broke.

The decision was made during the organization's annual meeting at its Folsom Street offices. Although not an agenda item, the motion, introduced by Clifford Uyeda, received almost unanimous support from the membership. No one voted against the motion, but two members who had voiced their opposition abstained.

Uyeda, speaking prior to the vote, said that the organization had reached a critical point and was faced with major decisions concerning its future.

Go For Broke could retain its name and continue with the perception of outsiders that it is a veterans' organization, he said, or it could more accurately reflect its many different national historical projects by changing its name.

Negative Influence?

Another concern addressed by Uyeda was the apparent negative influence the name Go For

Broke had on efforts to recruit new members, particularly women and Sansei.

"We need new members to keep the organization going,"

Uyeda told the Pacific Citizen, "but most women and Sansei don't want to join because they think we are a veterans' organization."

The PANA Kickoff Dinner

Pan American Nikkei Assn. of So. Calif.

Open Invitation to Supporters of the PANA Theme: "Seamos Mejores Ciudadanos en Nuestro Continente." LET US BE BETTER CITIZENS IN OUR CONTINENT

Friday, Oct. 3, 6:30 p.m., New Otani Hotel, Grand Ballroom
\$25 per Person; Reservations Limited to 150

SEND CHECKS PAYABLE TO: PANA OF SO. CALIF.

Attn: Shoji Tateishi, Japanese Chamber of Commerce of Southern California
244 S. San Pedro St. #504, Los Angeles, CA 90012 / (213) 626-3067

JAPANESE AMERICAN NATIONAL MUSEUM

JOB ANNOUNCEMENT

Administrative Assistant, Fundraising

The JAPANESE AMERICAN NATIONAL MUSEUM (JANM) seeks an Administrative Assistant to organize and to implement plans of the Fundraising Committee under the direction of the Project Coordinator and the Fund Drive Committee.

The purpose of the JANM is to create a legacy of the Japanese American social and cultural heritage which will be accessible and appealing to a broad general audience.

Job responsibilities include the ability to conduct research and identify donor resources in the nation-wide Japanese American community; to maintain records and files; assist in coordinating the Fundraising Committee's activities; assist committee members in preparing documents and materials as needed; and other responsibilities as assigned.

Qualifications: Should be a self-directed person with ability to implement plans. Ability to work with and to direct a wide range of people. Knowledgeable of the Japanese American community. Have experience in fundraising. Have strong organizational and communication skills, including writing and typing.

Salary: \$15,000 - 19,000 with fringe benefits.

To apply, submit a letter of interest and resume to:

JAPANESE AMERICAN NATIONAL MUSEUM, Personnel Department
941 E. 3rd St., Suite 201, Los Angeles, CA 90013; (213) 625-0414

Deadline: October 15, 1986

Painting of Manzanar Donated

LOS ANGELES — An original painting of Manzanar by C.T. Hibino has been donated to the Manzanar Committee by Clifford Robbins of Elwood, Ind.

The painting was initially given by the "artist in residence," as Hibino was called, to Robbins' sister, Eva Robbins. Miss Robbins had been sent to Manzanar during WW2 by the American Red Cross to work with children

interned in the eastern California camp.

The donation was made by Robbins to honor the memory of his sister, who died several years ago, on the anniversary of her birthday, June 15.

ENGINEERS

WILLDAN ASSOC.

CIVIL ENGINEERS

Immediate Openings Exist in our L.A. Regional Office
Building Plan Checker
Candidate must have a minimum of 3 yrs. Municipal plan check experience.

Attn: E. KIEPKE
Willdan Associates
Engineers & Planners
12900 Crossroads Pkwy. South, #200
Industry, CA 91746
EOE, U.S. Citizen or Permanent Resident Visa Required

CLASSIFIED ADS

4—Business Opportunities

SO. CALIF.

RESTAURANT PRIVATE

One of the most beautiful and elegant in the San Fernando Valley, Sherman Way at Van Nuys Blvd. Low rent. Long lease. Lot of parking. Beer and wine license.
(818) 997-6368 11:30 to 2:30, 5 to 9.

INVESTOR WANTED

active or passive, in acquisition of established 1000 slip marina and 140 acres approved for commercial, 150 condo units, hotel, and 20 residential sites. Appraisal \$30 million. Bank liquidator will settle for \$5 million. Match my \$1 million deposit and share in profits. Qualified principals only. (415) 856-9787.

SO. CALIF.

LIQUOR STORE

For sale. Low overhead. Good location. Price: \$110K firm plus inventory. All cash. 619 W. State St., Redlands, CA 92373. For further details, call

(714) 793-5334

CALIFORNIA

HALF MOON BAY (Near San Francisco) FOR SALE

GREENHOUSE Nursery Facilities

Prime San Francisco Bay Area location. 4 acres, new construction, with established rental income. Room for expansion. Adjacent 10 acres also available. Assumable financing. MAI appraisal \$1.7 million, asking \$1.2 million.

Present management will stay.

ROGER VALENCICH
(415) 726-5547 (am) (15) 747-0792 (pm)

Good Business Opportunity SO. CALIF.

Excellent Auto Mechanic Shop, Hermosa Beach. If you have over \$60K cash, call
(213) 318-3509

Supermarket

Gross \$2.4 million.

San Joaquin Valley area. Land & building + inventory. EZ terms. (209) 674-2491 Pablo.

OREGON, USA

NOW AVAILABLE!!!

Approx 5 acre. Restaurant Lounge with social gambling, blackjack, poker, pan & Texas hold'em. Also 2 comm bldg. one 3600 s.f., one 2400 s.f. Parking for approx 130 cars. Plus 2-bdm house. Also on approx. 5-acre, land avail. for dev. of hotel/motel; call (503) 888-5213 or day/night (503) 888-5682, or write: Mr. G. Lackey, 1088 New Mark St., Coos Bay, OR 97420.

MONTHLY INCOME PROFIT SHARING

Receive a percent of National Cable T.V. & Radio ad. Profit revenue. \$10,000 investment will return 15% first year. Plus \$2100/yr. for next 36 months. Income starts Dec. 15th. Principal escrow. Serious inquiries. Call (813) 481-6415.

Machine Shop

IN WESTERN CANADA

Is seeking custom work. N.C. lathes up to 34" O.D. 12 1/2" bore. Phone: (403) 437-0878 or write to P.O. Box 8464, Sta F, Edmonton, Alberta, Canada T6E 4Z1

5—Employment

RECEPTIONIST/SECRETARY

Full time, Bank exp. preferred. Bilingual helpful, type 50-55, heavy phones/filing. Medical benefits, paid parking.

AMERICAN INTERNATIONAL BANK
525 S. Olive, Los Angeles, CA 90013,
(213) 626-3500, contact Loan Dept.
Member FDIC, EOE, M/F/H/V.

Immediate Opening for Chiropractic Back Office Assistant

Dependable, energetic female for busy preventative health practice in Gardena. Prefer bilingual English/Japanese speaking person. Knowledge of physical therapy or shiatsu-type bodywork helpful. Call: 327-5102

Denver Area Family

seeking Asian woman care for 2 children and do light housekeeping exchange for room, board & salary. Private quarters, beautiful country surroundings. Close to city. (303) 694-1985

Work at Home

Make \$480 weekly. No experience needed. Take photographs for our company. Make \$180 per roll of film. Apply now. Call refundable.

(714) 582-6777, ext. 522

9—Real Estate

BY OWNER

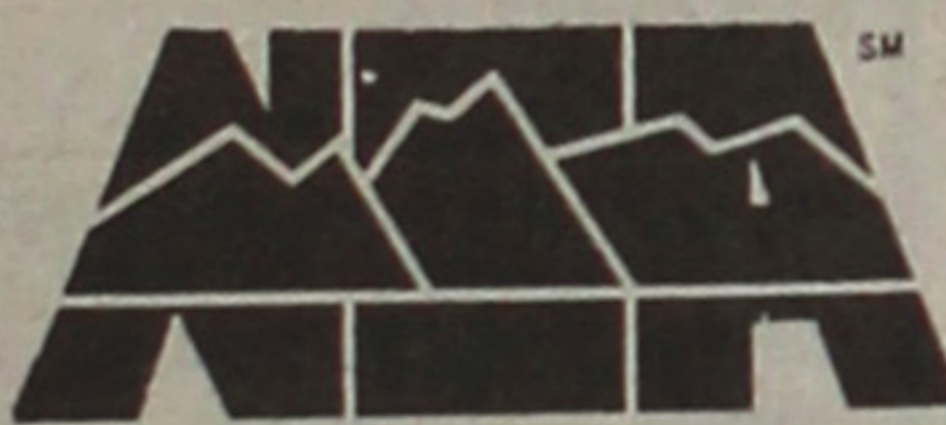
ALASKA

Cust 1 BR log home w/2 spiral staircases overlooking Beaver Pond. Thickly wooded 7 + 20 acs great potential for hunting/fishing lodge or retirement home in rural Alaska. \$175,000. (907) 733-2584
Box 452, Talkeetna, Alaska 99676

MANITOBA CANADA

ATTN: INVESTORS

FOR SALE IN CARMAN AREA 2300-acre grain & potato fam. Productive soil, ideal for potatoes, grain, corn or other crops. Can be divided to suit your requirements. Large 8-year-old home w/smaller home on separate yard. Good 40x60 workshop. Storage for 100,000 cwt. for potatoes. Grain storage separate location for 120,000-bus. Good drying & handling system with 40-ton scales. See this now while the crop is on it. CONTACT Mr. Lloyd Kitching, Box 327, Carman, Manitoba, Canada R0G 0J0. (204) 745-3180



NATIONAL SPORTSMEN OF AMERICA

HUNTERS & FISHERMEN

Would you like to save hundreds of dollars on your next fishing trip to Baja, your favorite fall Big Game Hunt, or that Alaskan Fishing Trip of a lifetime....INTERESTED? CHECK THIS OUT!

MAZATLAN EXPRESS • 5 Days/4 Nights - ocean front hotel • 2 full days fishing • 42 cruiser • 2 Lunches/Breakfasts • Buffet • Boat/tackle/taxes/permits/tips Included • Round trip Airfare from LAX ONLY \$319.00	TEXAS TROPHY WHITETAILS • 3 Deer limit • 1 Javelina • 1 Turkey • Fantastic Quail Hunting • 3 Days Only \$610.00	FISH ALASKA • Salmon • Trout • Steelhead • 4 days Only \$536.00
---	---	--

WANT MORE?

• Alan Baier/Little Creek Ranch - Colorado "The Ultimate in Hunting Variety"	15-20% OFF	• Rancho San Lucas - California "California Hog Heaven"	10% OFF
• Jerry Malson - Montana "Best of the Best in the Bitterroots"	10% OFF	• Kona Charter Skipper's Association - Hawaii "Hawaii's Best Fishing"	10% OFF
• Chuck Davies - Colorado "Colorado's Most Experienced G/O"	10% OFF	• H & M Landing - Point Loma California "Albacore Capital of the World"	15% OFF
• C J Dye - Wyoming "Top Notch Antelope and Deer Hunts"	15% OFF	• Rancho Buena Vista - Baja "Mexican Sportfishing Extraordinaire"	15% OFF
• Y.O. Ranch - Texas "Premier Exotic Hunting"	10% OFF	• Sportsman Travel International - Worldwide "Hunt & Fish all over the world for just about anything"	10% OFF

Only NSA Members can enjoy these great savings and these are just a few of the fantastic trips NSA can put in your reach.

STILL NOT CONVINCED?

KOA Campgrounds	10% OFF
Altman R.V. Rentals	15% OFF
U-Haul Centers	10% OFF

Rebates from top manufacturers - i.e. U.S. Repeating Arms, Winchester, Sabre Rods, Sea Strike Lures, etc. 10-20% Off regular daily rate on over 11,000 motel/hotels world wide

10% NSA discount off National Car Rental regular daily rate or guaranteed best rate available. Air travel guaranteed to match lowest air fare on day of booking or double your money back.

ANTELOPE VALLEY SPORTSMAN'S CLUB

Pheasant /Chukar/Bob White/Turkey Hunting at its Best

NSA Members-No Initiation Fee-Special Day Rate

Taxidermy Unlimited

"The hottest taxidermy studio on the West Coast"

Worldwide Shipping 10-20% OFF

Special insurance package designed exclusively for Sportsmen

All this for only \$22.95
Seniors \$19.95
VIP package \$55.00

If you are serious about hunting and fishing YOU NEED NSA!

Become part of a Sportsman's Savings Network by joining NSA TODAY!

MEMBERSHIP APPLICATION

Name _____
Address _____
City _____ State _____ Zip Code _____
Telephone() _____ Age _____
I'm most interested in: Hunting Saltwater Fishing Freshwater Fishing
Must enclose check or money order for \$22.95, \$19.95 Seniors (60 years and over), \$55.00 VIP in order to process application.

Send to:



National Sportsmen of America
P.O. Box 758
Buena Park, CA 90621-6158
(213) 921-5565

Please allow 3-4 weeks to receive membership kit PC-1

Radio Series to Focus on Bilingualism

by Robert Shimabukuro

BERKELEY — A radio series, "Bilingualism in America," will be broadcast simultaneously on KPFA in the Bay Area, KPBS in San Diego, KFCS in Fresno and KPFA in Los Angeles on Sept. 16 and 17 at 7 p.m.

The two-part documentary will explore the various ramifications of bilingualism in the U.S., focusing on Spanish, since it is the second most spoken language in the U.S. and since Hispanics/Latinos are the largest minority in the five-state Southwest.

Following the second part of the documentary on Sept. 17, a live call-in show will be aired at 7:30 p.m. from KPFA studios in Berkeley. Producer Santiago Casal told the Pacific Citizen that the entire state of California should be covered by the four stations.

Featured guests for the call-in portion will be former senator S.I. Hayakawa, founder of U.S. English, an organization seeking a constitutional amendment to make English the official language of the U.S.; Richard Rodriguez, author of *Hunger for Memory*; State Sen. Art Torres; and Stanford professor of English Shirley Brice-Hall.

Through a statewide hookup, listeners will be able to ask the panel questions by calling numbers which will be given over the air by the local stations.

While Proposition 63 is not the focus of the series, Casal said that the subject is sure to come up during the call-in portion. NBC News, which is doing a special on Proposition 63 to be aired on Sept. 19, will have camera crews at the KPFA studio.

The radio series consists of two half-hour documentaries, five short features, six 60-second spots, and 23 live call-in radio dialogues to follow the airing of the documentaries in key cities across the country. Overall, the program will be aired by 75 stations nationally.

The documentary includes interviews with a wide spectrum of personalities, including San Antonio Mayor Henry Cisneros, Sen. Paul Simon (D-Ill.), Hayakawa, Rodriguez, and singer/songwriter Smokey Robinson.

Going Places? Watch the 'PC' Travel Ads

GRIZZLY RIDGE HUNTING COMPANY
R.S. RENAUER
LICENSED OUTFITTER
Exhilarating Mountain Hunting Experience For:
Grizzly Bear Mt. Goat
Moose Bruin Black Bear
Caribou Wolf
X-Country Summer Horse Rides Available
P.O. Box 515 Hudson Hope,
British Columbia, Canada V0C 1V0 (604) 783-5485

• **British Columbia, Canada**
MOOSE, MTN. GOAT, GRIZZLY, BLACK BEAR AND FISHING
Hunt the interior valleys and remote coastal mountains of west central British Columbia
Write or Call: Nanika Guiding
R.R.#2, Burns Lake
British Columbia
Canada V0J 1E0
Ph# 604-695-6542 604-695-6351
BRING YOUR CAMERA

• **CANADA**
-HUNT ALBERTA'S ROCKY MOUNTAINS-
SPRING-Grizzly and Black Bear
April-June
FISH-The Famous BOW River for Trophy Trout
June-Nov.
FALL-Trophy Elk, Deer, Black Bear
Sept.-Nov.
Born, Licensed and Insured
For information contact: **LES PATTON**
Back Country Guiding & Packing Services
Box 604, Mindapore, Alberta T0L 1J0
Phone (403) 256-2235



Photo by J.K. Yamamoto

THINKING AHEAD—Torrance, Calif. City Councilman George Nakano, who will run for re-election in March 1988, is joined at a Sept. 4 fund-raising reception by (from left) L.A. Municipal Court Judge Fumiko Wasserman, Torrance Mayor Katy Geissert, and Torrance Councilwoman Dee Hardison.

Presbyterian Church Ordains First JA Woman Minister

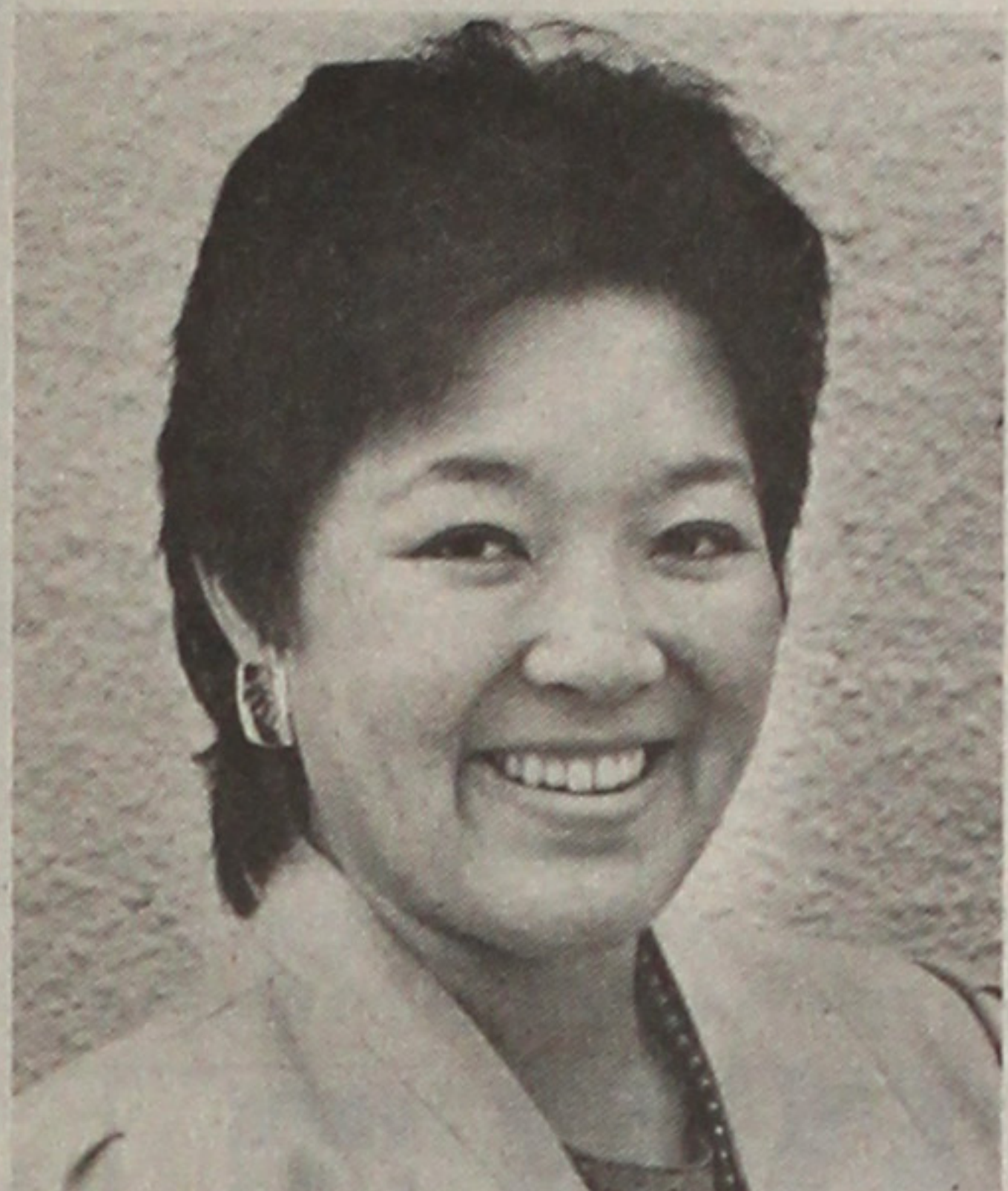
ALTADENA, Calif. — Mariko Yanagihara became the first Japanese American woman to be ordained a Presbyterian minister Sept. 7 during ceremonies at First Presbyterian Church of Altadena, where she was installed as associate pastor.

Yanagihara, daughter of Mr. and Mrs. Shinichi Yanagihara of San Francisco, received her bachelor's degree in nursing from UC San Francisco and served as a registered nurse on the staff of the university's medical center before deciding on church work as a career.

She began her studies at San Francisco Theological Seminary in the summer of 1981 and earned her master of divinity degree in 1985.

Later that year, Yanagihara joined First Presbyterian Church of Altadena as pastoral assistant.

The Rev. Virstan Choy, associate executive presbyter of the San Jose Presbytery, presented the sermon. Lorraine Wilson, elder of Pasadena Presbyterian Church and vice-moderator of the San Gabriel Presbytery, presided. The Rev. Dick Wichman, pastor emeritus of Yanagihara's home church, the Pres-



Mariko Yanagihara

byterian Church of San Francisco's Chinatown, conducted the service of investiture.

'JUKEBOX'

Continued from page 6

So what's next for "Jukebox"? According to Betserei, there is hope of putting it together as a staged musical drama. But money, as is the case with most productions, is the key to future plans. Joked Betserei, "We had champagne tastes on a beer budget."

Jayo, the more optimistic of the two, was much more upbeat. "There's a definite interest from a Los Angeles theater," he said. And judging from the response to "Jukebox," added Jayo, "It's obviously going to fly."

For now, an editing and production of a marketable tape for public radio, and perhaps other performances as a live radio show seem a certainty. "The response," said Betserei, "has been great. We are still getting calls asking when the next performance is."

"Jukebox" represents an ambitious step for Community Information Network, but if this is an example of what is possible, then the future of this production studio looks bright indeed. Multiracial productions, produced with multiracial casts, concerning multiracial themes and interests, are very rare. For one to be a first-class production is not only rarer, it is extremely exhilarating.

Anyone for some "Cajun-style teriyaki chicken?"

*Hearts and minds unite in transformation
People standing up for what they need
Differences diminish in the vision
Voices calling out in harmony*
—Tarabu Betserei and Nobuko Miyamoto

Choose 'PC' Advertisers

1986 West L.A. JACL Travel Program

Administered by WLA Travel, Inc.

For JACL Members, Family & Friends

1986 Airfare: LAX-TYO-LAX **\$578***

AFTER NOV. 1: \$548*

'HOT ITEM': TOKYO

5-DAY, 4 NIGHT EXCURSION

— \$898 —

\$825 after Nov. 1

PACKAGE DEPARTURES ON SATURDAYS

Oct 4, Oct 18, Nov 8, Nov 22,

Dec 6, Dec 20,

1987—Jan 10, Jan 24,

Feb 7, Feb 21,

Mar 7, Mar 21.

Includes round trip direct flight from LAX; \$8 U.S. departure & custom tax; arrival transfer from Narita to Shiba Park Hotel (2 blocks from Tokyo Tower), rate based on dbl occupancy, 4 American breakfasts, half-day Tokyo tour, with option to extend. • Arrange to visit relatives or other tours within Japan.

1986 Tour Dates

(Sept. 3 Update)

#15: Sept 26-Oct 18 Hokkaido/Kyushu-Honshu Tour

#16: Sept 13-26 Fall Foliage-2 Nations, Niagara Falls (4 seats open)

#16a: Oct 3-20 Japan Omote Tour

#17: Oct 18-Nov 1 Japan Fall Foliage Tour

#18 & 19: (These tours cancelled.)

#20: Dec 20-Jan 3 Japan Highlights Tour

Introduction of Our 1987 Travel Programs to be Made Nov. 16 in West LA
WATCH FOR DETAILS

Tour Itineraries

Hokkaido/Kyushu-Honshu Sep 26-Oct 18

Tour A: Sapporo, Lake Toya, Noboribetsu, Shirai Aino Village, Chitose; Fukuoka, Beppu, Mt. Aso, Kumamoto, Matsushima, Shimabara, Unzen, Nagasaki, Hiroshima. Land tour: ¥250,000 (dbl occ) plus airfare. Tour escort: Bill Sakurai.

Tour B: Hiroshima, Inland Sea, Kyoto, Takarazuka Excursion, Nara, Gifu, Nagoya, Shuzenji Spa, Atami, Hakone, Lake Kawaguchi, Mt. Fuji, Tokyo. Land Tour: ¥199,000 (dbl occ). Tour escort: Bill Sakurai.

Japan Omote Tour Oct 3-20

Tour #1: Tokyo, Nikko Excursion, Kamakura, Hakone, Atami, Nagoya, Toba, Kashikojima, Nara, Kyoto, Hiroshima (11 days). Land tour: ¥251,000 (dbl occ), plus airfare. Tour escort: Steve Yagi.

Tohoku Fall Foliage Oct 18-Nov 1

Visit Tokyo, Asamushi Spa, Lake Towada, Ohdate, Lake Tazawa, Tamagawa Spa, Hachimantai, Morioka, Hirazumi, Sendai, Matsushima Excursion, Toggata, Zao, Yamagata, Yonezawa, Izuka Spa, Bandai Plateau, Higashiyama Spa, Koriyama, Utsunomiya, Nikko, Tokyo. Land tour: ¥360,000 (dbl occ), plus airfare. Tour escort: Toy Kanegai.

TOUR/FLIGHT MEETING:

Every third Sunday of the month from 1 p.m. at Felicia Mahood Recreation Hall, 11338 Santa Monica Blvd., West Los Angeles (west of the San Diego Freeway). Next meeting: Sept. 21: Showing film on Australia, New Zealand and Fiji.

Plus \$20 Administrative Fee

For information, brochure, write to:

West L.A. TRAVEL
12008 Ohio Ave.
Los Angeles, CA 90025
(213) 820-5250,
820-3451 (day) 826-9448 (eve)



Japanese American Travel Club

ENDORSED BY THE NATIONAL JACL

250 E. 1st St., Los Angeles, CA 90012; (213) 624-1543
Toll Free: (800) 421-0212 outside CA Office Hours:
(800) 327-6471 in CA M-F 12-4; Sat 9-2

Fall Foliage — U.S./Canada. Book Today!

7-Days NIAGARA FALLS & ONTARIO, CANADA. \$655 from New York
Limited space available Oct. 2, Oct. 8, Oct. 13 on first-come basis. Visit Adirondack Mountains, Ottawa, Thousand Island Cruise, Ontario Place, Corning Glass Museum & Pocono Mountains. Meals: 6 breakfasts, 4 lunches, 4 dinners. N.Y. overnight required plus airfare from hometown city. Above price based on sharing twin room.

7-Days MONTREAL, QUEBEC, VT. & N.H. \$699 from New York.
Limited space available Oct. 10 & Oct. 13 on first-come basis. Visit Old Deerfield, Dartmouth College, Green Mountains, Montmorency Falls, Norman Rockwell Museum, Connecticut River valley. Meals: 6 breakfasts, 4 lunches, 4 dinners. N.Y. overnight required plus airfare from hometown city. Above price based on sharing twin room.

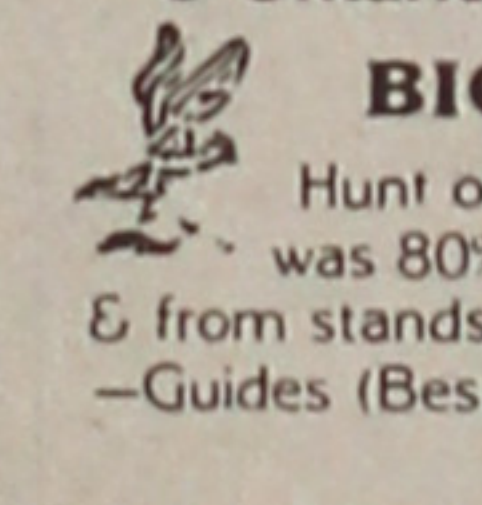
7-Days AUTUMN IN NEW ENGLAND \$825 from New York.
Limited space available Sept. 11 to Oct. 20 on first-come basis. Visit West Point/Lake George, Lake Placid/Stowe, New Hampshire Mountains, Rocky Coast of Maine, Gloucester/Boston, Lexington & Concord, Bennington/Stockbridge. Meals: 5 breakfasts, 6 lunches, 6 dinners. N.Y. overnight required plus airfare from hometown city. Above price based on sharing twin room.

7-Days MEXICAN RIVIERA TROPICAL CRUISE \$775 from L.A.
Sunday sailings year round from Port of Los Angeles. Prices from \$775/prsn/sharing inside Category-1 cabin plus port charges of \$25 p/prsn. Third/fourth person sharing a stateroom with two full-fare passengers in Category 4 or above \$945 each will each pay a flat rate of \$395 adult, child 16 yrs & under \$195 plus \$25 port charges p/prsn.

Or Contact Your JATC Participating Agent (Partial List)

Ben Honda (619) 278-4572: San Diego, CA
Dil Miyasato (213) 374-9621: Redondo Beach, CA
Gordon Kobayashi (408) 724-3709: Watsonville, CA
Ruby Nishima/Emi Misaki (916) 424-9001: Sacramento, CA

• Ontario, Canada



BIG NORTH LODGE—GUIDED BLACK BEAR HUNTS

Hunt over 600 sq. mile area with over 50 baited tree stands. Success rate last 4 yrs. was 80% - package includes: All meals, room, daily maid service—Transportation to & from stands—Boat & Motor for Fishing—Trophy Preparation—Freezer Service—Tracking—Guides (Best in area).

Alex Rheault N.A.H.C. Recommended
Big North Lodge Box 24, Minaki, Ontario, Canada P0X 1J0 (807) 224-4318

SFO or LAX -to- TOKYO Round trip \$519*

JAPAN RAIL PASS
Hotel/Ryokan Reservation \$30 per night....

* Rates from Other Cities available
(415) 653-0990

COMMUNITY TRAVEL SERVICE
5237 College Ave., Oakland, CA 94618

Special Holiday in Japan

ANYWHERE, ANYTIME — 9 DAYS

Features: (1) Air Fare, (2) 7-Nights Top Value Hotel throughout Japan, including all taxes & service charge, (3) Unlimited Train Pass (includes Express Train, Shin-Kansen.)

SPECIAL PRICE

From Los Angeles, San Francisco \$ 898.00
and special rate from any U.S. city is available.

The prices shown above are per person based on double occupancy.

Japan Holiday Tour
(213) 484-6422

Los Angeles Japanese Casualty Insurance Assn.

COMPLETE INSURANCE PROTECTION

Aihara Insurance Agency, Inc.

250 E. 1st St., Suite 900, Los Angeles, CA 90012
626-9625

Anson T. Fujioka Insurance

321 E. 2nd St., Suite 500, Los Angeles 90012
626-4393

Funakoshi Ins. Agency, Inc.

200 S. San Pedro, Suite 300, Los Angeles 90012
626-5275

Inouye Insurance Agency

15029 Sylvanwood Ave., Norwalk, CA 90650
864-5774

Itano & Kagawa, Inc.

321 E. 2nd St., Suite 301, Los Angeles 90012
624-0758

Ito Insurance Agency, Inc.

1245 E. Walnut, #112, Pasadena, CA 91106
(818) 795-7059, (213) 681-4411 L.A.

Kamiya Ins. Agency, Inc.

327 E. 2nd St., Suite 224, Los Angeles 90012
626-8135

Maeda & Mizuno Ins. Agency

18902 Brookhurst St., Fountain Valley, CA 92708
(714) 964-7227

The J. Morey Company

11080 Artesia Bl., Suite F, Cerritos, CA 90701
(213) 924-3494, (714) 952-2154

Steve Nakaji Insurance

11964 Washington Pl., Los Angeles, CA 90066
391-5931

Ogino-Aizumi Ins. Agency

109 N. Huntington, Monterey Park, CA 91754
(818) 571-6911, (213) 283-1233 L.A.

Ota Insurance Agency

312 E. 1st St., Suite 305, Los Angeles, CA 90012
617-2057

T. Roy Iwami & Associates

Quality Ins. Services, Inc.
3255 Wilshire Bl., Suite 630, Los Angeles 90010
382-2255

Sato Insurance Agency

366 E. 1st St., Los Angeles, CA 90012
626-5861, 629-1425

Tsuneishi Ins. Agency, Inc.

327 E. 2nd St., Suite 221, Los Angeles 90012
628-1365

AHT Insurance Assoc., Inc.

dba: Wada Asato Associates, Inc.
16500 S. Western Ave., #200, Gardena 90247
(213) 516-0110