

pacific citizen

National Publication of the Japanese American Citizens League

Newsstand: 25¢
(60¢ Postpaid)

Whole No. 2,408 Vol. 103 No. 13 ISSN: 0030-8579

941 East 3rd St. #200, Los Angeles, CA 90013

(213) 626-6936 Friday, Sept. 26, 1986

Anti-Asian Violence Seen as Nationwide Problem

Justice Dept. to Retry Chin Case

DETROIT — The Justice Department decided on Sept. 19 to retry Ronald Ebens, whose conviction for civil rights violations in the June 1982 bludgeoning death of Vincent Chin had been overturned the week before.

The decision to retry was made by Assistant Attorney General William Bradford Reynolds, head of the department's Civil Rights Division, according to spokesman John Wilson.

In June 1984, a federal jury found Ebens, who beat Chin with a baseball bat after an argument in a Highland Park night club, guilty of killing the Chinese American engineer because of racial prejudice. Ebens was sentenced to 25 years in prison, but the 6th U.S. Circuit Court of Appeals in Cincinnati ruled earlier this month that he had not received a fair trial.

Rep. Norman Mineta (D-Calif.) complimented the Justice Department on its decision to retry the case, calling it "correct and timely." The department "cannot have been unmindful of the strong feelings all Americans of Asian ancestry have over this tragedy," he said.

Rep. Robert Matsui (D-Calif.) said, "The prompt response of the Justice Department in pursuing this matter is evidence of the gravity and strength of this case. I am pleased that this case will be decided on the merits and not on the basis of a legal technicality."

James Shimoura, president of American Citizens for Justice, was also pleased by the "very rapid fashion" in which the decision was made. ACJ, a Detroit-based Asian American community coalition, was formed in response to the Chin killing.

Continued on back page

Commission Report Released

WASHINGTON — The case of Vincent Chin is just one example of anti-Asian violence examined in "Recent Activities Against Citizens and Residents of Asian Descent," an 87-page report released this month by the U.S. Commission on Civil Rights.

The report is the culmination of a study begun by the agency in 1984. Reasons for the independent study were twofold: first, to examine anti-Asian violence, vandalism, harassment and intimidation; and second, to explore the reasons behind such sentiment and activity.

In examining anti-Asian activity, the report cites several incidents which occurred in no one particular geographic area and have been aimed at a wide range of Asian ethnic groups. A few examples are as follows:

- In New York City, a Chinese American woman was pushed in front of a subway train by a man who pleaded insanity, claiming he had a "phobia about Asians."

- In Houston, a public health official characterized Chinese and Vietnamese restaurants as having "different standards of cleanliness than we do. They think it's clean and we think it's awful."

- In California, the word "Jap" was spray-painted on the garage door of a Japanese American state legislator.

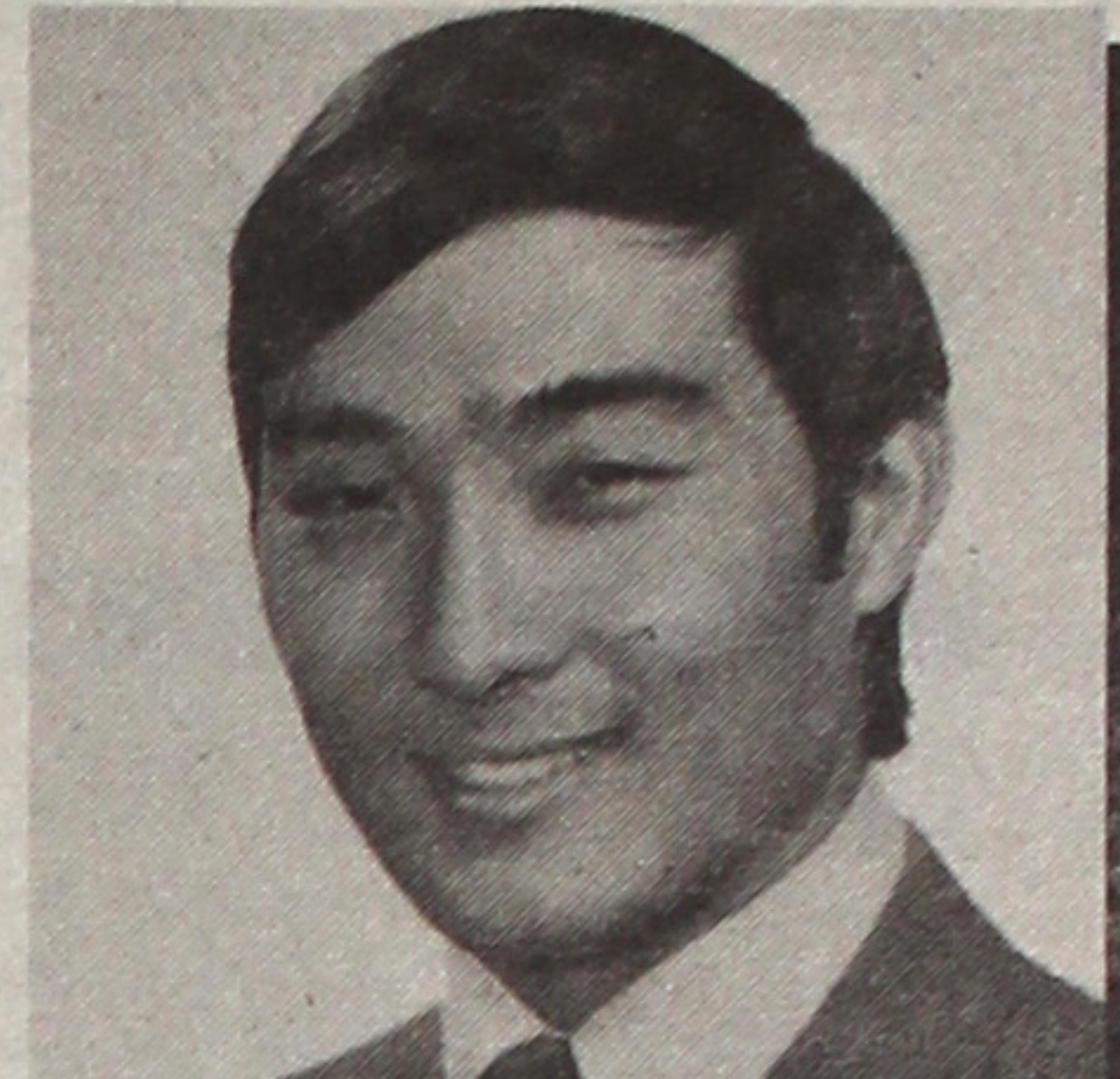
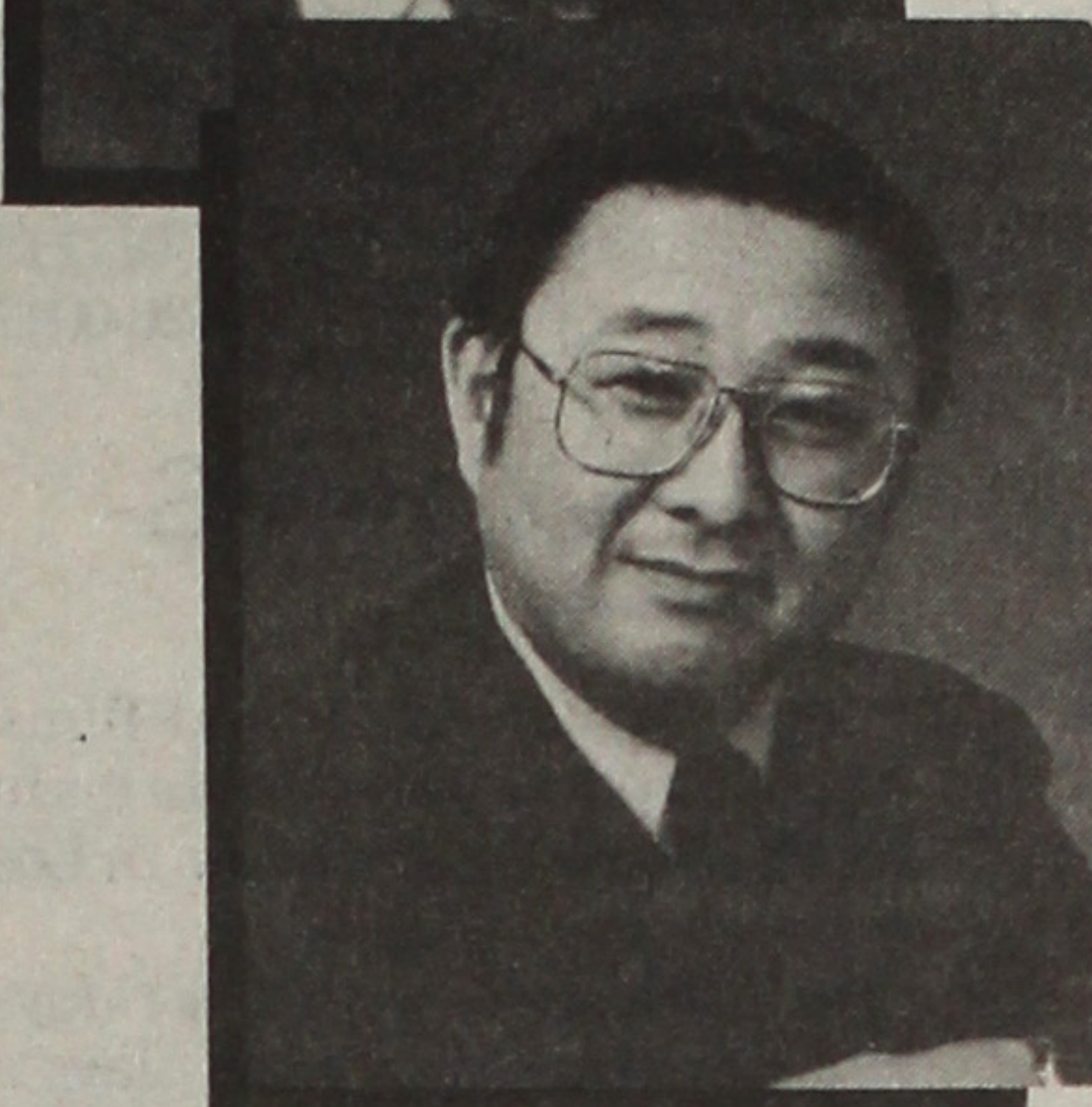
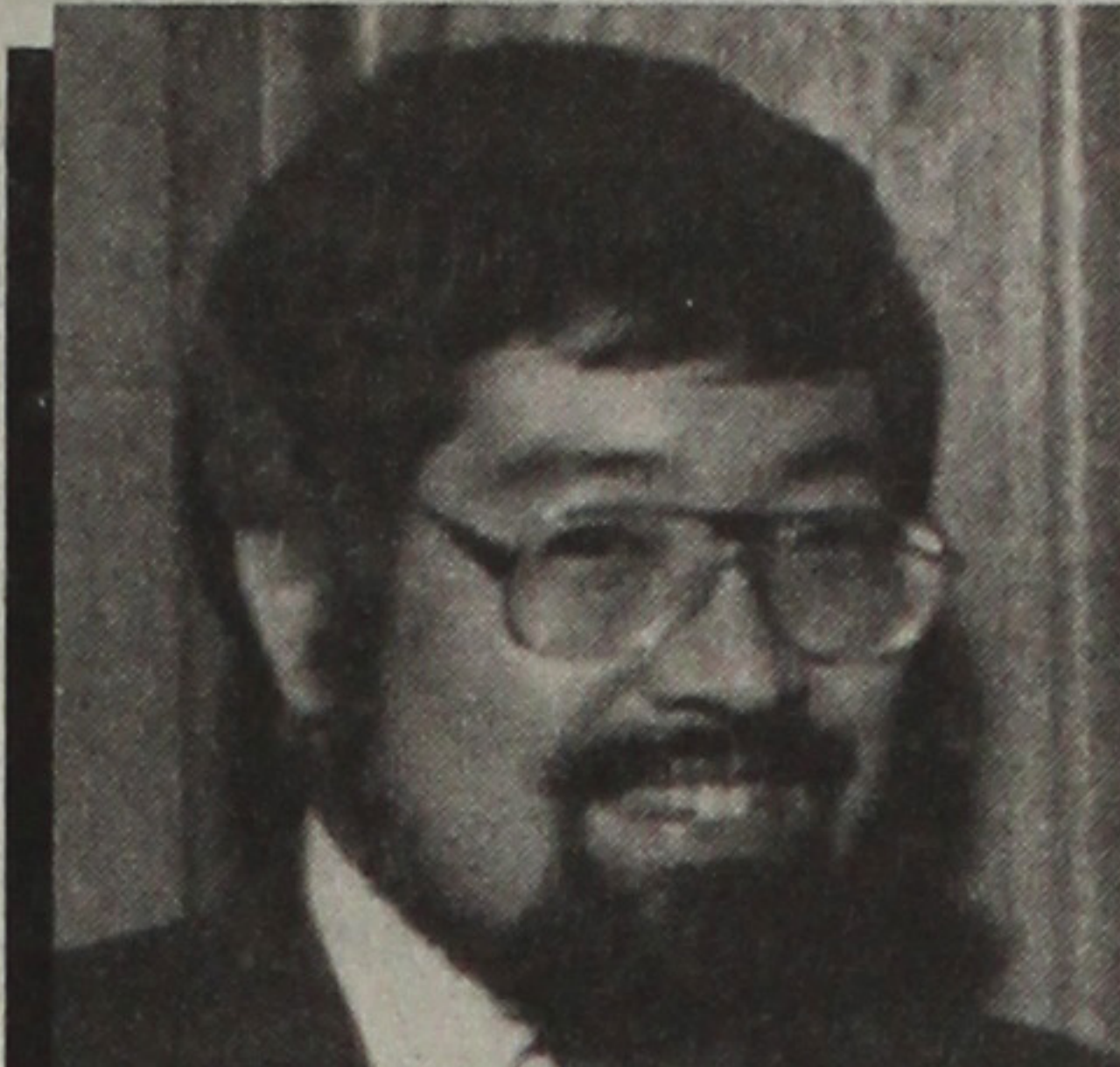
- In San Francisco, anti-Asian brochures have been placed on car windows and on posts by a group calling itself the White American Resistance Movement.

Also cited by the commission are several acts of violence directed at Asian refugees in Iowa, Massachusetts, Pennsylvania, Florida, Texas and California.

Continued on back page

JACL Election Spawns Controversy

Do Delegates Obey Chapter or District?



Clockwise, from top right: Dale Ikeda, Peggy Liggett, Yosh Nakashima and Paul Igasaki.

by Robert Shimabukuro

Conflicting interpretations of written and unwritten election policies prior to and during the JACL national convention in Chicago (July 20-25) have led to bitterness, charges and countercharges of intimidation and a call for a review of the election rules of procedure.

At the center of this controversy are the Central California District delegates and CCDC Gov. Peggy Liggett, whose actions have exacerbated a tense situation created by the hard-fought campaign for JACL national president.

Bloc Voting

Everyone seems to agree on the basic facts: (1) JACL Central California District Council, by a majority vote of the chapters (five of six present) decided to vote as a bloc for Harry Kajihara at the convention; (2) Of the CCDC delegates at the convention, four out of the five delegates representing the nine chapters expressed a preference for Rose Ochi; (3) CCDC Gov. Peggy Liggett had two proxies transferred to herself at the convention, ending with five proxy votes.

INDIVIDUALS INVOLVED

VP Gen. Oper.	Yosh Nakashima
Interim Legal Counsel	Paul Igasaki
CCDC Governor	Peggy Liggett
CCDC Delegates:	
Clovis	Dale Ikeda
Fowler	Kimihiro Sera
Delano	proxy—Liggett
Fresno	Debbie Ikeda
	Kathy Sasaki
Parlier	proxy—Liggett
Reedley	proxy—Liggett; transferred to Dale Ikeda; then back to Liggett
Sanger	proxy—Liggett
Selma	proxy—Debbie Ikeda; transferred to Kim Sera; then to Liggett
Tulare	proxy—Maude Ishida
CCDC Chapter Presidents	
Clovis	Gene Tsukamoto
Fresno	Wayne Nishio
Reedley	Tom Shitanishi
Selma	Mits Shiroshima
Tulare	Kay Hada

CCDC July 9 Meeting

While the controversy erupted at the convention, it began in a July 9 CCDC meeting in Fresno. According to the district meeting minutes, six out of nine chapters were present. Absent were Fowler, Parlier, and Delano.

Fresno delegates Debbie Ikeda and Kathy Sasaki, along with Clovis delegate Dale Ikeda, had already left for Chicago, with instructions from their chapters to "vote their conscience." Debbie Ikeda also held Selma chapter's proxy.

Three candidates for national office, Kajihara, Ochi and Mary Nishimoto, made presentations and fielded questions from the district representatives.

Limit on Proxies

After the presentations, the candidates were excused. During the ensuing discussion, the fact that Liggett held four proxies (Parlier, Sanger, Delano and Reedley) was brought up. Because of an assumption that no more than three proxies could be held by one person, Reedley's proxy was transferred to Dale Ikeda, Clovis' delegate.

Unknown to the CCDC, however, was an Apr. 21 memo from Tulare County delegate and Credentials Committee chair Maude Ishida to Kajihara campaign chair Roy Makino, stating that there was no limitation on the number of proxies a delegate may hold.

Continued on page 2

On CBS, ABC

Asians Featured in Fall Shows

Asian American actors are featured as regulars in three new network television shows this fall.

In the situation comedy "Together we Stand" (CBS, Mondays at 8:30), Ke Huy Quan, whose film credits include "Indiana Jones and the Temple of Doom" and "Goonies," plays a Vietnamese teenager adopted by a Caucasian couple (Elliot Gould and Dee Wallace Stone). The family also adopts a Black girl played by Natasha Bobo.

The cast of "Kay O'Brien" (CBS, Thursdays at 10), a medical drama set in New York, includes Keone Young as Michael Kwan, described as a "by-the-book" doctor who works with the title character, a surgical resident played by Patricia Kalember. In addition to appearing fre-

Continued on page 2



Ernie Reyes, Jr. of "Sidekicks"

Nishikawa a Potential L.A. Council Candidate

by Lynn Sakamoto-Chung

LOS ANGELES — Dennis Nishikawa, chief of staff for 10th District Councilman David Cunningham, is "looking very seriously" into running for the office his boss will vacate Sept. 30.

"There are a lot of factors that must be taken into consideration," Nishikawa told the PC. "If I decide to run, it will be because I have the critical endorsements and the dollars necessary to run a serious and viable campaign."

Black Candidate Wanted

One of those chief factors and a stumbling block facing the 41-year-old Nishikawa is the likely endorsement of a so-far unnamed Black candidate by Mayor Tom Bradley, himself a former councilman of the 10th District, and

Cunningham, who is resigning from office Sept. 30 "to pursue life as a private citizen."

Just last week, Bradley called for a meeting of more than two dozen Black civic and political leaders to establish a selection committee for such a candidate. The move by the mayor was a clear attempt to prevent a split of Black votes within the district.

Bradley handpicked Cunningham as his successor for the 10th District seat in 1973 and this latest move is part of a strategy by the mayor to repeat the same selection process.

Nishikawa, however, said that such a united effort by itself will not stop him from pursuing the 10th District seat.

Continued on Page 3



Dennis Nishikawa

Community Calendar

Sept. 27 - Oct. 10

ALBANY, Calif.

Oct. 2
6-8 p.m. Sakura Kai opens its 10th annual benefit art exhibit and auction with a reception at Sumitomo Bank, 1451 Solano Ave. Hors d'oeuvres will be served.

PALO ALTO

Oct. 4-5
11 a.m.-4 p.m. Palo Alto Japanese Cultural Festival will be held at Mitchell Park Community Center. Exhibits, demonstrations and films on various aspects of Japanese culture will be featured. Performers include San Francisco Taiko Group. Japanese foods and handicrafts will be sold.

LOS ANGELES

Oct. 3
6 p.m. Asian Business Association and Asian American Architects/Engineers hold their 9th annual awards banquet in the California Ballroom of the Bonaventure Hotel, 404 S. Figueroa St. Honorees are Takashi "Tak" Shida, Asian American Architect of the Year; Yum Yum Donuts co-chair Frank Watase, Asian Business Owner of the Year; and actor George Takei, Lifetime Achievement Award. Cost: \$150 per person, \$1,500 per table. Info: Lynne Choy Uyeda, (213) 933-1151.

MONTEREY

Oct. 4
4:30 p.m. The fall MIS NorCal dinner meeting will be held at the Officers Club, Presidio of Monterey, followed by social hour at 6 and dinner at 7. Col. Monte Bullard will be the principal speaker. Reservations: Goro Yamamoto, 1149 Shafer St., Seaside, CA 93955; (408) 394-4487.

ANAHEIM

Sept. 27
7 p.m. Orange County Sansei Singles holds a discussion of "Single Sansei" at Orange County Buddhist Church, 909 S. Dale. Psychologist Gail Kawanami Allen and Harvey Hanemoto, director of a health institution, will speak on interpersonal relationships, self-actualization, intimacy, coping with stress or identity crisis, and sex. Cost: \$5. Info: Harvey Hanemoto, (714) 492-1229; Gail Allen, (714) 494-6264; or Ann Miyake, (714) 472-8667.

IRWINDALE

Sept. 28
1 p.m. A San Gabriel Valley Singles' meeting will feature Kei Higashi, owner of Alu-Mont Furniture, who will share his experiences as a hunter and deep-sea fisherman. Meeting will be held at the Alu Mont Furniture showroom, 5400 N. Irwindale Ave. Admission: \$2. Info: Irene, (818) 965-2165, or Toshi, (714) 861-9676.

FRESNO

Oct. 2-3 Central California Forum on Refugee Affairs will sponsor a two-day regional conference at Hacienda Resort and Convention Center, 2550 W. Clinton. Topics will address the impact of refugee resettlement on state systems such as social services, criminal justice and community-based organizations. Info: Nancy Germanetti, (209) 453-6164.

NEW YORK

Oct. 7 through
Nov. 1 Pan Asian Repertory Theatre will present "The Imposter," a comic, controversial romp from modern China, at Playhouse 46, 423 W. 46th St. Info: (212) 505-5655.



Japanese Phototypesetting

TOYO PRINTING CO.

309 So. San Pedro St., Los Angeles 90013
(213) 626-8153

INTEREST CASH BONUS UP TO \$990

Sumitomo is offering an immediate Interest Cash Bonus incentive of \$30 for every \$3,000 you deposit in a 3-Year Money Market Account. IRA and Business Accounts are not eligible. This offer begins September 1 and ends November 30, 1986. Act now and visit a Sumitomo office near you.

Deposit Amount	Minimum Deposit	Examples of Other Deposit Amounts			
		\$15,000	\$30,000	\$60,000	\$99,000
Interest Cash Bonus	\$30	\$150	\$300	\$600	\$990

Interest Cash Bonus applies to accounts under \$100,000.

Note: Substantial penalties, including loss of interest bonus, upon premature withdrawal. Interest Cash Bonus will be reported as taxable income. Certain conditions may apply.



Sumitomo Bank
Sumitomo Bank of California Member FDIC

25th Year PC's Ozawa to Retire Next Month

LOS ANGELES — East Los Angeles JACL and the Pacific Citizen will co-host a retirement buffet party for Jane M. Ozawa Oct. 19, 4 p.m., at the Golden Shark Restaurant in Japanese Village Plaza (east First Street near Central Avenue in Little Tokyo).

Ozawa is completing 25 years of employment with JACL in the PC business department. During that time, she has been the familiar "PC voice," taking phone calls from throughout the country and overseas.

Ozawa, a 1000 Club member of the East Los Angeles Chapter and a JACL sapphire pin awardee, will retire Oct. 15.

Tickets for the party are \$15 and include tax and tip. For reservations, please contact Mabel Yoshizaki, (213) 263-8469; Michi Obi, (213) 256-8551; or the PC, (213) 626-0047.

TV PROGRAMS

Continued from page 1

quently in television and films. Young produces and performs in plays at East West Players in Los Angeles.

In "Sidekicks" (ABC, Fridays at 9:30), Ernie Reyes, Jr. plays a child martial arts expert who, after the death of his grandfather Sabasan (Keye Luke), is adopted by a policeman (Gil Gerard). Luke's character, who appears in flashbacks, comes from "Patasan," a fictional Asian country. The pilot for the series was "The Last Electric Knight," which aired on the "Disney Sunday Movie."

Reyes has appeared in the films "The Last Dragon" and "Red Sonja." Luke, who played the "Number One Son" in 13 "Charlie Chan" films in the 1930s and '40s, has been a regular in the TV series "Kung Fu" and "General Hospital."

TOYO
Miyatake

STUDIO

235 W. Fairview St.
San Gabriel, CA 91776

(213) 283-5685 (818) 289-5674

No. 2,409
Allow 6 weeks advance notice to report address change with label on front

If you are moving / Wish to subscribe,

Write New Address below. Effective date

Please send the Pacific Citizen for:

1-Yr \$20 2-Yrs \$38 3-Yrs \$56

To:

Address:

City, State, ZIP:

All subscriptions payable in advance. Foreign: US\$12.00 extra per year.

Checks payable to: Pacific Citizen, 941 E. 3rd St., Los Angeles, CA 90013

EXPIRATION NOTICE—If the last four digits on the top row of your label reads 0886, the 60-day grace period ends with the last issue in October, 1986. Please renew your subscription or membership. If membership has been renewed and the paper stops, notify the PC office.

ELECTION CONTROVERSY

Continued from front page

When asked why she didn't comment on the proxy limitation at the meeting, Ishida said, "[Peggy] didn't ask me. She didn't give me a chance [to comment]. She automatically started giving her proxy away. So I thought that at the May national board meeting, they had clarified the ruling on proxies."

In subsequent action, CCDC passed, with one abstention, a motion to vote as a bloc at the national convention. Tulare County abstained, pending further chapter consultation.

With one dissenting vote from Tulare county, the district council also decided to vote for Kajihara for president. In addition, the council decided to support Nishimoto for vice president of membership and to keep the decisions of the council confidential until the day of the balloting "in order to use the bloc as a bargaining factor."

July 20-23 in Chicago

Of the nine chapters in CCDC, five were represented by proxy. Of the six CCDC delegates to the convention, four expressed a preference for Ochi. These four delegates controlled five votes, including two proxies. Liggett had three votes.

At a July 20 Governors Caucus Liggett learned of the existence of the Ishida-to-Makino memo. After learning of the delegates' preference for Ochi, Liggett, who felt that the district's mandate was being subverted, decided to have the two proxies in question transferred, and reportedly told Ishida that she (Ishida) would be decertified unless she agreed to vote for Kajihara.

"I was just trying to carry out

the wishes and authority of CCDC," Liggett told PC. She also "categorically denied" that she had threatened to decertify anyone, saying, "I never threaten anybody with anything I don't know how to do, and I don't know how one would go about doing that [decertifying a delegate]. What I told Maude was she had to deal with her chapter president. I also scolded her for not telling us about the no limitation on proxies matter."

Fresno chapter delegates Ikeda and Sasaki, along with Clovis delegate Ikeda, felt that it was permissible to support Ochi after asking national director Ron Wakabayashi whether a district could direct delegates to cast their votes as a bloc. Wakabayashi said that he told them, "I don't think so, but you should get the legal counsel's opinion."

Yosh Nakashima, whose position as vice president for general operations places him in control of the operations at the national convention, also was asked by CCDC members about bloc voting. He too expressed an opinion that it was not permitted.

July 24

The following day Liggett sent Nakashima a request for a ruling on two items: (1) the authority of the VP/Operations to "dictate or proscribe actions by the District Council"; and (2) the prohibition of a bloc vote by a district after a majority at a properly-noticed meeting decided to vote as a bloc.

Acting legal counsel Floyd Shimomura had left the convention; President Frank Sato appointed Chicago attorney Paul

Continued on page 4

MIKAWAYA SWEET SHOPS

244 E. 1st St., Los Angeles, (213) 628-4935
118 Japanese Village Plaza, L.A.; 624-1681
Little Tokyo Square, 333 So. Alameda, L.A.;
(213) 613-0611
Pacific Square, 1630 Redondo Beach Bl.
Gardena; (213) 538-9389

Little Tokyo



Avoid The Hassles!

Call us for the "lowest prices, warranty protected products/service, always friendly assistance (before and AFTER delivery)." We lease and sell all makes/models (Japanese, German, American, etc.) and offer a complete line of accessories; i.e., car alarms, stereos, window tinting, sunroofs ...

GIVE US A CALL

MICHAEL H. ISHIKAWA
President

CHRIS F. NAITO
Vice President

(213) 680-1168,
680-4039

110 So. Los Angeles St.
Suite 18-B
Los Angeles, CA 90012

Don't pay

up to 21%
Interest on credit cards.

Try our SignLine loan at 12.9% apr. Here's how it works. Sign for up to \$3000 without collateral*. Then pay off your credit cards and call us if you need more cash...you have a maximum \$3000 credit.

*For previous qualified borrowers.

NATIONAL JACL CREDIT UNION

NOW OVER \$7.8 MILLION IN ASSETS

PO Box 1721 / Salt Lake City, Utah 84110 / 801 355-8040

NISHIKAWA

Continued from front page

"Having worked for Councilman Cunningham for eight years and having worked for Mayor Bradley as a volunteer since 1974," said Nishikawa, "I fully understand the delicate politics of the situation, especially under the current redistricting that took place within the city."

A lack of support from the mayor "because I am not of the 'right' ethnic background deeply hurts," he confessed, "but I don't hold it against him."

The new redistricting lines have resulted in an increase in the district's Blacks and Whites from 38 to 44 percent, and 11 to 22 percent, respectively. The Hispanic figures dropped from 37 to 22 percent, and the number of Asians remained relatively unchanged at 12 percent.

Nishikawa's current base of support is concentrated in the Asian/Pacific communities, both in and outside of the 10th District, and it has come primarily in the form of donation pledges. To date, those pledges total approximately \$80,000, a respectable start in an effort to raise the \$250,000 Nishikawa feels it will take to run a viable campaign.

And, although he admits that his Asian/Pacific support cannot help him much in terms of votes, he is counting on his own good track record and knowledge of the 10th District to carry him in all of the district's ethnic communities.

"This is a coalition district," he said, "and in spite of the strong vocalization of Black elected officials and Black community leaders that it remain a Black-elected-official district, I believe that it will be a coalition of voters from various ethnic communities that will elect the next official to the 10th councilmanic district."

So, will he run or not? Nishikawa has a while to make up his mind. Chances are good that the 10th District seat will remain vacant after Cunningham's departure until a successor can be chosen in the city's regular elections in April. If that happens, Nishikawa has until Jan. 17 to file his intention to run for office.

"If I do run," he said, "I hope that I won't burn my bridges with the Bradley team or with the Black community, and especially with Councilman Cunningham, whom I admire greatly."

"If I don't run, I know that I will try and continue my city services, but as a magnet or lightning rod for the Asian/Pacific community. In that kind of capacity I will work to ensure that those who are trying to power-broke for the 10th councilmanic seat had damn well not ignore the Asian/Pacific community because we are a very viable force within the city of Los Angeles."

USAF Facility Named After JA Astronaut

SUNNYVALE — Fallen astronaut Ellison S. Onizuka received another posthumous honor Sept. 3 when the Sunnyvale Air Force Station was renamed after him.

The name change was made official during a dedication ceremony at the California station which serves as headquarters for the Air Force Satellite Control Facility.

Rep. Norman Mineta (D-Calif.), who introduced legislation in May to rename the station after Onizuka, attended the ceremony, as did the late astronaut's wife, Lorna.



Participants in the Chilivisions Chili Cookoff, the Aug. 23 fund raiser for Visual Communications, included, standing from left, Lisa Javier, People's Choice Award; Ronnie Matsuda; June Kuramoto; Bob Uno, second place; Dan Kuramoto; and Warren Furutani with children, Joey and Sei Malik. Kneeling, from left, are Phil Mosley; Ben Tagami, People's Choice Award; and Jeff Chop, first place. The cookoff was followed by the Pioneering Visions film screening of "Freckled Rice" and "Beacon Hill Boys" at the Japan America Theatre in Los Angeles' Little Tokyo.

Task Force Hearings

New York Asians Speak on Community Issues

NEW YORK — Representatives of Asian American community organizations expressed their needs and concerns before a panel of officials from 17 city agencies Aug. 11 at PS 124 in Chinatown.

The hearing was one in a series sponsored by the Asian American Task Force to address major issues in the rapidly growing Asian American populations in each of the city's five boroughs.

Speakers emphasized the need for low- and moderate-income housing; bilingual/bicultural services and language programs; job training for recent immigrants; regulations controlling commercial rents; and measures by city law enforcement agencies to curb anti-Asian violence.

Cyril Nishimoto, speaking for Japanese American Social Services Inc., emphasized the need for more bilingual/bicultural services for Japanese Americans, including recent immigrants. He also highlighted social service needs such as counseling, information regarding housing and immigration status, and help for senior citizens.

Because the Japanese American community does not have a geographical center like Chinatown, he said, providing services depends largely on outreach efforts.

Social worker Fumi Raith of the Japanese unit of Asian American Mental Health Services said that "Japanese, like any nationality here in New York, are not immune from emotional distress and mental disorders"

but that "there is a stigma attached to those who seek mental health services."

She recommended additional funding for expansion and outreach programs as well as the recruitment of more mental health professionals.

Margaret Fung of Asian American Legal Defense and Education Fund identified four problems "that deserve special attention": racially motivated violence against Asians; attacks on the rights of immigrants and undocumented aliens; lack of bilingual assistance for limited-English-proficient Asians seeking government services; and displacement of low-income Chinatown residents.

In proposing the creation of a special task force to examine bilingual services currently provided by government agencies, Fung warned against the movement to make English the nation's official language. The city, she said, "should reaffirm its support for bilingual services and denounce the racist and nativist sentiments of the 'English Only' movement."

Margaret Chin of Asian Americans for Equality also placed emphasis on the Chinatown housing crisis, calling for the abolition of the Special Manhattan Bridge District and creation of a "Chinatown housing task force with direct negotiating authority with the City Planning Commission."

Regarding anti-Asian violence, Chin recommended that Mayor Ed Koch "set up an inter-ethnic council with adequate

staffing and budget allocation." She also urged the city to "take a lead in developing... affirmative action policies throughout its agencies and institutions."

—from a report by New York Nichibei

A/P Education Concerns to be Addressed

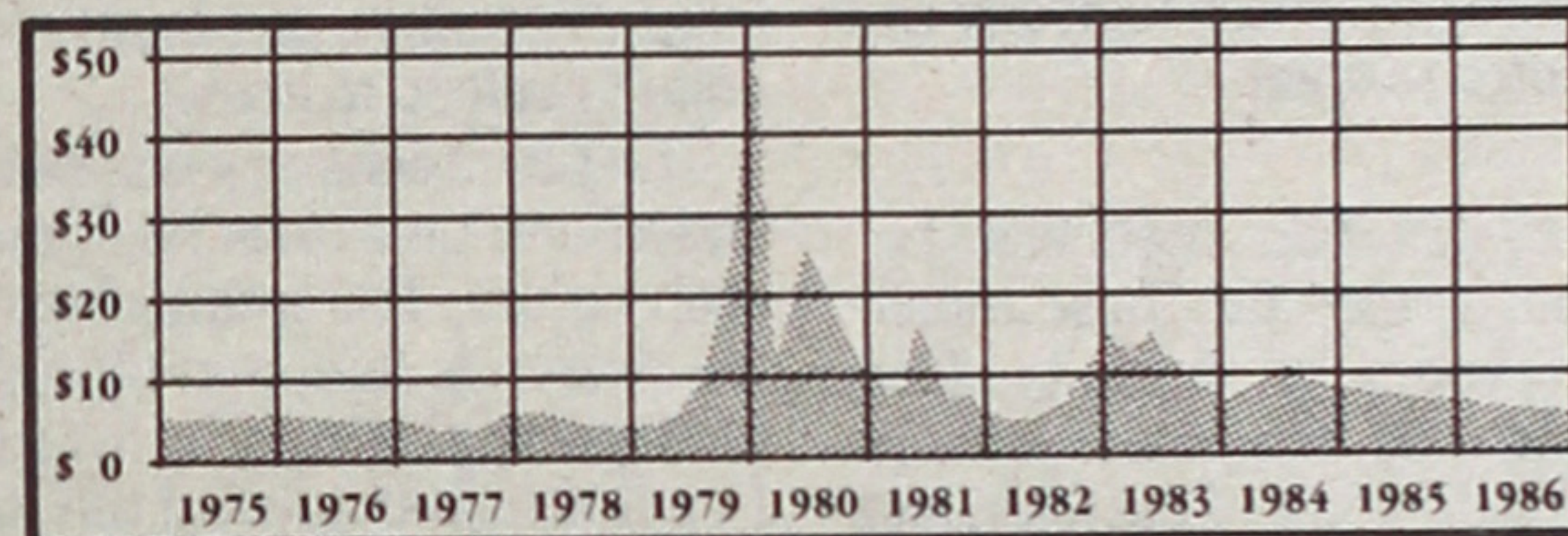
SANTA ANA, Calif. — Results of a 15-month study on the educational needs and concerns of Asian/Pacific Islander students in California public schools will be discussed Oct. 8, 7-9 p.m., in the Santa Ana Unified School District board room, 1405 French St.

Members of State Superintendent of Public Instruction Bill Honig's Advisory Council on Asian/Pacific Islander Affairs will share their findings, recommendations and the joint plan of action agreed upon by the California Department of Education and the advisory council earlier this year.

Copies of the report, based on information gathered at a series of public hearings held throughout the state from 1984 to 1985, will also be available at the meeting.

The briefing is the fifth in a series of six public meetings scheduled by the council. The last briefing will be held Oct. 14, 4-6 p.m., at the Ted C. Wills Community Center, 770 N. San Pablo Ave., Fresno.

Did you miss the 1979-80 Silver Boom?



In 1979-80, silver rose from \$6 to \$48 per ounce within a 10 month period. At the present time, silver is now trading at a bottom level of \$5 to \$6 per ounce. With possible turbulent economic conditions on the horizon due to our huge government deficit and a record number of bank failures, silver appears to be an excellent hedge against inflationary conditions.

Gold vs. Silver??

With the Gold/Silver ratio at around 50 to 1, silver is by far the better buy.

For Silver Inquiries
Call (714) 541-0994

KKRC
Kenneth H. Kusumoto Rare Coin

Nexus Financial Center
Orange, California 92668

JACL-Blue Shield

Medical-Hospital-Dental Coverage



Available Exclusively to:

- Individual JACL Members
- JACL Employer Groups

JACL members between the ages of 18 and 64 may apply to enroll in the Blue Shield of California Group Health Plan sponsored by JACL especially for JACL members. Applicant and dependents must submit a statement of health acceptable to Blue Shield before coverage becomes effective.

For full information complete and mail the coupon below or call (415) 931-6633.

- To: Frances Morioka, Administrator
JACL-Blue Shield of California
Group Health Plan
1765 Sutter Street
San Francisco, CA 94115

Please send me information on the JACL-Blue Shield of California Group Health Plan:

- I am a member of _____ chapter.
 I am not a member of JACL. Please send me information on membership. (To obtain this coverage membership in JACL is required.)

Name _____
Address _____
City/State/Zip _____
Phone (____) _____ Work Home

The PANA Kickoff Dinner Pan American Nikkei Assn. of So. Calif.

Open Invitation to Supporters of the PANA Theme:
"Seamos Mejores Ciudadanos en Nuestro Continente."
LET US BE BETTER CITIZENS IN OUR CONTINENT

Friday, Oct. 3, 6:30 p.m., New Otani Hotel, Grand Ballroom
\$25 per Person; Reservations Limited to 150

SEND CHECKS PAYABLE TO: PANA OF SO. CALIF.

Attn: Shoji Tateishi, Japanese Chamber of Commerce of Southern California
244 S. San Pedro St. #504, Los Angeles, CA 90012 / (213) 626-3067

プラザギフトセンター



NEW MINOLTA
MAXUM
THE FIRST AUTOFOCUS SLR

Plaza Gift Center (213) 680-3288
111 Japanese Village Plaza - Little Tokyo

The Mysterious Mania for Matsutake

FROM THE FRYING PAN

Bill Hosokawa



Hereabouts, which means the Denver area, September is the month of *matsutake* madness. I have written on this subject on previous occasions but so widespread is the interest that it will bear repeating. *Matsutake* is a mushroom that grows in the pine forests of Washington, Oregon, Idaho, British Columbia, and sometimes in Colorado. It has a tantalizing aroma and is highly prized by Japanese and Japanese Americans.

Several years ago some eager-beaver *matsutake* hunters, alleged to be Frank and Lily Fujita, happened to find some in July. That, obviously, was a freak situation because *matsutake* normally don't begin to push through the pine needle beds until late August or, some years, early September. However, the fact that *matsutake* might be available in mid-summer stirs a fever among some locals almost as soon as springtime in the Rockies is over. Unable to contain their anxiety, they begin exploratory forays long before the season logically can be expected to open.

I say "*matsutake* madness" because the search for these mushrooms borders on insanity. The more intent of *matsutake* hunters get up in the middle of the night and drive three hours or more to favorite forest glens in northern Colorado and southern Wyoming. Arriving at the hunting grounds at dawn, they tramp all day through the woods, eyes glued to the forest duff for tell-tale blisters that might hide emerging *matsutake*. Then they drive homeward another three hours through the gathering dusk.

That's only part of the madness. *Matsutake* hunters become secretive about their favorite hunting grounds. They respond to inquiries with shameless white lies. They decline to share information even with relatives and good friends. They keep their ears alert, like jackrabbits, for rumors about where *matsutake* have been found. They may be level-headed individuals about every aspect of their lives, but they are willing to listen and give credence to the most outrageous rumors.

This is particularly true in poor seasons. We are now reaching the end of the second consecutive bad year so that you can understand the madness is rampant. Last fall the Rockies produced virtually no *matsutake*. This season is only a little better. At first it was common to blame the shortage on lack of moisture or rains that were too early or too late.

This year new theories have begun to emerge. One of the most interesting is that acid rain is at the root of the problem. I don't know that there is any scientific basis to this idea, but if acid rain is afflicting our mountain lakes, making them uninhabitable for trout, wouldn't it make sense that delicate *matsutake* also would be affected? Or maybe it is the fallout from Chernobyl, or Mount Adams. I don't pretend to know.

The pessimists say our season is ended and there has been another crop failure. The optimists say that the season is late, and that *matsutake* will begin to pop up in October. I incline to lean toward the view of the pessimists.

Both schools of thought agree there's always next year. The problem with that bit of optimism is that next year is a long time away. The drive to the mountains becomes more tedious, and climbing them more difficult with each passing year. What we need is *matsutake* this year.

ANOTHER SETBACK FOR DIE-HARD MALE CHAUVINISTS.



It Said: 'Planning & Development'

By the Board

by Bill Marutani
VP of Planning & Development

Let me start with a confession. When I ran for the office of vice president of Planning and Development, I thought the responsibilities centered on something such as "R & D"—research and development—as many business operations have. You know, let loose some kooky scientist who comes up with ideas, nurtures and develops them, gets them operational and then lets the company (in this case National JAACL) take them over, then works on a next new project, functions as the midwife, and so on. I envisioned myself as that kooky scientist, the midwife helping to bring life to new concepts, new directions, new programs.

One can hardly blame me; look at the title of the office: Planning and Development.

There are six committees under the responsibility of this particular office. They are: Aging & Retirement; National Youth Council; Scholarship; Singles' Concerns; Veterans' Affairs; and Women's

Concerns. Fortunately, each of these committees was chaired by a competent and conscientious person who, working on the proverbial shoestring, performed admirably. Each chairperson dug into his/her own pockets in many respects to keep their particular program viable and productive.

I am delighted to have these committees to work with and I pledge to each chair my full support. Although I suspect a number of them can get along very well by themselves, thank you. But I'll be there if they should need some moral support.

And now about that kooky scientist who looks forward to doing some R & D work, along with many of you. In this office of Planning and Development, I do wish all of you to engage in some free-wheeling brainstorming, to plan ahead for the next five to 10 years so that JAACL may have a plan, a chart, a "road map" as to where its objectives are to be, how we're going to realize those objectives, and what the target dates are.

It is my hope, my expectation, to have vigorous, working groups in each of the districts whose brainstorming ideas will be reviewed, refined and then reported out to the National Board and to the National Council two years hence. Such

brainstorming sessions themselves should not be dampened by considerations such as finances, workability, and other negative thoughts such as "It won't fly" or "They'll never buy it." Let us freely dream, be openly daring, and yes, idealistic. We can always sort things out later as we go along.

There are some "hard-headed" projects that we have in mind. One of them is to promote and hopefully realize a codification of the various provisions that govern the national organization along with National Council decisions. We need a compilation, a single book where everything is gathered in some understandable fashion so that they appear in some coordinated, logical fashion. It will be a major task, but one that needs to get done.

I happen to believe so strongly in that R & D aspect of this particular vice-presidency that I've (foolishly) requested the national president to appoint me as chair of that committee; and the national president (even more foolishly) has done so. But in all seriousness, I hope not to disappoint either of us.

So I start with this earnest call to each of you. Send me your suggestions, your ideas, your brainstorming thoughts. You can write me: Bill Marutani, 8112 Algon Ave., Philadelphia, PA 19152. It'll only cost you 22 cents.

ELECTION CONTROVERSY

Continued from page 2

Igasaki interim legal counsel. Igasaki issued the following ruling:

ISSUE: Can a District Council, at a properly-noticed meeting, direct, by majority vote, delegates from that District to cast their votes as a bloc?

CONCLUSION: No. All delegates to the National Council represent Chapters and would thus be free to cast their votes on behalf of the Chapters they represent without control from the District level.

In his discussion of the issue, Igasaki said that the District's influence in the elections is limited to the nominations level. Citing references to the Constitution, Bylaws and Rules of Procedure, Igasaki ruled that the National Council, which is composed of delegates from chapters in good standing, is the final authority on election matters.

The National Council allows only for chapter representation, he said, and "absent separate authority, which does not exist in any of the above-mentioned documents, it is clear that District Councils cannot compel delegates to vote in any particular way at the National Convention."

ISSUE: Does the Vice President for General Operations have the au-

thority to dictate or proscribe actions by a District Council, in the context of ruling on bloc voting at a National Convention?

CONCLUSION: Generally, the Vice President for General Operations shall have no authority over the workings and actions of District Councils, as separately constituted entities. She or he shall, however, have some authority over the participation of even the District Councils in the National Council or over the National Council or Convention.

Attorney's Ruling

Igasaki ruled that the VP/General Operations is the "officer responsible for the internal affairs of the National organization, including the National Convention. She or he also would be an officer with authority to respond to inquiries relating to the Rules of Procedure of the National Convention. . . . The autonomy of District Councils is limited by the National organization's Constitution, Bylaws, and Rules. . . . Only delegates as representatives of the Chapters may participate in the election of officers. The National Organization, through its officers and staff, may then protect the Chapters' right to vote by issuance of opinions or advice consistent with the above."

Liggett was not happy with what she termed "shoddy legal reasoning."

What the ruling seemed to be saying, she said, "was that because there is nothing that says the districts can [direct votes], they can't."

On the other matter, Liggett felt that what it said was "because the VP/Operations was not specifically denied the right to control the actions of the districts, he could." Neither ruling seemed acceptable to her.

Liggett added that she had not known that Shimomura had left the convention and she did not know who Igasaki was. She felt that "they" [Ochi supporters] had just picked a delegate who would issue a ruling favorable to them.

Liggett instead decided to rely on the advice of long-time JAACLers in her district, Tom Shimasaki and Fred Hirasuna. Both advised her that the delegates should vote as the district wanted. They also advised Liggett that she could attempt to have the chapter presidents transfer proxies to delegates who would be more inclined to vote the chapters' wishes. And both said that bloc voting was permissible as long as the district had voted for it.

Decision 'Not Unilateral'

As a result of her discussions with Shimasaki, Hirasuna, and CCD chapter presidents, Liggett

felt it was within her bounds to ask for the Reedley proxy back.

In addition, she asked that telegrams from the chapter presidents be sent to the National staff at the convention authorizing the transfer of Reedley's proxy back to Liggett and Selma's proxy to Fowler delegate Kim Sera.

While there were differences of opinion as to the events which necessitated the two-hour delay of the election voting on Friday, the net result was that Liggett ended up with five legal proxy votes.

According to Liggett, all she was trying to do was to insure that the wishes of the district

were carried out. "I did not act unilaterally on all this. I was getting the advice and support from Tom Shimasaki and Fred Hirasuna, long-time active JAACLers. I also felt it necessary to inform chapter presidents how their delegates were voting."

Hirasuna echoed her feelings. "Peggy was doing her job as CCDC governor. She had the CCDC mandate and she was just trying to ensure that the wishes of CCDC were honored."

Next week: Clifford Uyeda asks for a review of election practices; Dale Ikeda presents his recommendations; the issue of preconvention voting commitments is discussed.

ISSN: 0030-8579



pacific citizen

Nat'l JAACL Headquarters, 1765 Sutter St., San Francisco, CA 94115, (415) 921-5225
Published by the Japanese American Citizens League every Friday except the first and last weeks of the year at 941 E. 3rd St., #200, Los Angeles, CA 90013
2nd Class postage paid at Los Angeles, CA. • Annual Subscriptions—JAACL members: \$10.00 of national dues provide one-year on one-per-household basis. Non-members: \$20/yr. \$38/2-yr. payable in advance. Foreign addressees: Add U.S.\$12 p/yr.; First class/air—U.S./Canada US\$25 extra, Japan/Europe US\$60 extra
Opinions expressed by columnists other than the National President or National Director or the news do not necessarily reflect JAACL policy.

OFFICERS

Harry H. Kajihara, National JAACL President Clifford Uyeda, PC Board Chair

EDITORIAL - BUSINESS STAFF

Editor: Lynn Sakamoto-Chung Ass't Editors: Robert Shimabukuro, J. K. Yamamoto
Advertising-Business Manager: Rick Momii Adv / Acctg: Jane Ozawa, Mark Saito
Circulation: Tomi Hoshizaki Production: Mary Imon

General Manager/Operations: Harry K. Honda

POSTMASTER: Send address changes to:
Pacific Citizen, 941 E. 3rd St. #200, Los Angeles, CA 90013

Letters

Onizuka Honor

I support the idea of a statue and/or street named after Challenger astronaut Lt. Col. Ellison S. Onizuka in Little Tokyo. Lt. Col. Onizuka was the first Japanese American and the first Hawaiian to fly in space. His dream as a young man was to become an astronaut. When he was growing up, there were no Asian, Black or women astronauts. His dream seemed too big. However, Lt. Col. Onizuka persevered and achieved his dream. He will be remembered.

JOHN F. MAHER
Torrance, Calif

Gimme a Break

I was very disappointed with the article entitled "A Double Standard" (Sept. 5 PC). Yosh Nakashima states, "it was the women voters who supposedly gave the victory to the new national president. I don't have the actual facts, but in discussions with a number of people who happened to be women, and who were perceived to have key votes, it was clear that they voted for the male candidate... You all had an excellent opportunity with a well qualified candidate, and in my mind you all didn't come through." (Italics added.)

In reading these comments, several thoughts and questions come to mind. I understand that 42 of the delegates in attendance at the National Convention were women. How many did the writer actually talk to? Ten, twenty, thirty? Two? Of these women, how many were actual voting delegates? How many were wives of delegates or non-voting boosters?

As representatives of their chapters, how many women delegates were instructed to vote for the male candidate? Did some delegates cancel each other out by splitting their chapter vote? Were chapters within a district urged into voting as a bloc? How many proxy votes were cast as intended by chapters that were unable to attend?

The election result was 62½ to 59½, which is a three-vote margin and a very respectable showing. For our female presidential candidate to receive 49% of the votes when only 17% of her voting constituency is female is a remarkable feat!

The facts and figures do not substantiate Dr. Nakashima's assertions. I suggest that next time he have more than "a hard hat and flak jacket" to support his comments.

PAULA SHIMIZU
San Luis Obispo, Calif

Support Official English

In response to Jack Umezu's letter (Aug. 1 PC), we do agree with him 100%.

As a deaf Nisei, I wish for all immigrants of all races to know the facts as follows:

We, the deaf and hearing-impaired, fought for better education in English; we fought for the closed-captioned adapter on our television in English; we fought for the Telecommunication Device for the Deaf (TDD) to increase our better communication with the hearing world in English.

Yes, we need to be well educated in English. We must support English as the official language locally, statewide and nationwide.

HANNAH TOMIKO HOLMES
Los Angeles

JACL Membership Count

Jan. 1/Dec. 31, 1986

Mon	Monthly Membership Totals: Report No. 2									Total
	Reg	Fam	TC-50	TC-100	Corp	Stdnt	Youth	Assoc		
Jan	1,841	614	189	13	1	31	4	-	-	2,693
Feb	1,671	882	276	22	2	28	2	8	-	2,891
Mar	2,261	1,317	243	16	-	48	6	2	-	3,893
Apr	1,226	637	234	16	-	39	2	-	-	2,154
May	916	416	104	10	-	27	2	1	-	1,476
Jun	699	327	152	13	-	37	9	1	-	1,238
Jul	886	212	104	13	-	20	1	-	-	1,236
Aug	456	189	65	4	g-1	8	3	1	-	727
YTD	9,956	4,594	1,367	107	4	238	29	13	-	16,308
1985 Final Membership										26,478
1986 Year-to-Date										16,308
YTD Percentage of 1985										61.6%

October: The Final Days

With only two more weeks left in the 99th Congress, it remains to be seen whether there will be an extension on its targeted closing date of Oct. 3.

This last month in Congress is quite a lively one. The members of Congress have left some very important work for this short period which followed the Labor Day recess.

The budget resolution which must deal with the deficit is a top item to be completed. The tax reform bill is another major one to be considered. There are other bills, such as a new higher education act and environmental legislation which includes Superfund authorization. There is also the unresolved foreign policy question of South African sanctions.

Among all these legislative matters, you and I who are working to see that the redress bills move forward need to know what is happening with our bill, H.R. 442, which we wanted to see go to mark-up in the House Judiciary subcommittee on Administrative Law and Governmental Relations, where the bill now rests.

In our more recent contacts with Chairman Peter Rodino (D-N.J.) of the Judiciary Committee and Chairman Dan Glickman (D-Kan.) of the subcommittee, it seems the plan to mark up H.R. 442 has not been scheduled because both Rodino and Glickman are presently tied up with the Senate impeachment trial of Judge Harry Claiborne. Glickman's staff in his subcommittee office stated that he is unable to schedule any committee meetings while the impeachment is in progress.

Congressmen's Plea

On Sept. 11, California Congressmen Norman Mineta and Robert Matsui wrote to Glickman, urging him to report H.R. 442 for his subcommittee "so that the injustice of the internment can be corrected." Glickman was told that "once this bill is cleared by your subcommittee it will proceed through the legislative process with increasing speed and rapidity. However, we cannot begin down that road until your subcommittee acts."

For all of us who have been working diligently during this session of Congress—and to date, we have 141 co-sponsors, of which 136 have votes—let me say we have not given up. With the baseball playoffs coming, I am reminded that Yogi Berra once said, "It isn't over til it's over." So we must go on right to the very end to find more support for the redress bills and move H.R. 442 and S. 1053 forward until Congress is finally adjourned.

I am as disappointed as all those who have taken the time to lobby that to date we must report that the House bill has not been scheduled for additional

LEC UPDATE

Grayce Uyebara

action by the committee, but we must continue our effort to seek additional support right up to the time of the congressional elections in November.

At the same time we recognize the effort which is being carried by so many individuals, chapters and organizations to present educational programs to people throughout this nation who know so little about the tragedy of 120,000 Japanese Americans who were denied freedom and justice.

Yasui Update

Many subscribers to Pacific Citizen have been concerned about Minoru Yasui after the announcement of his resignation as chair of LEC due to his health. We have been informed by his wife True that he is doing as well as can be expected, though he is quite weak following surgery. He is home for a short period before he returns to the hospital. We hope that the strong fighting spirit which sustained him over the years as he fought for the redress cause will be working for him in his fight to regain his health.

In his letter to me which accompanied his resignation, Yasui said that he deplored quitting the redress battle. To give him peace of mind that the fight for equal justice continues, let us all keep the momentum going by taking our share of completing this great task.

Class Action Suit

Harry Kajihara, National JACL president, and I as executive director of JACL-LEC signed on the joint *amicus curiae* brief in support of the petition for writ of certiorari filed by William Hohri, et al. in their class action suit against the United States.

In our letter of interest sent to Stanley Mark of Asian American Legal Defense and Education Fund, we wrote, "To remedy the shameful episode for the Japanese American survivors and to affirm the guarantees of the Bill of Rights and the Constitution for people at all times, we join in support of the petitioners."

We have been informed that the Anti-Defamation League of B'nai B'rith and Asian Law Caucus have also joined AALDEF in submitting this support brief.

We wish Hohri, et al. the best as they seek review of their case by the U.S. Supreme Court for the purpose of restoring the legal claims dismissed by the lower federal courts.



Active on Many Fronts — and Gearing Up for More



PRESIDENT'S CORNER

Harry Kajihara

The LEC of JACL must temporarily pursue redress without the physical presence of the "Ole Warrior," Minoru Yasui. All members and non-members of JACL who know about Min's untiring, spirited and illustrious work on redress and civil rights issues are hoping and rooting for his rapid recovery so that he can resume his leadership rôle in the pursuit for redress.

Scholarship Winners

Congratulations to all scholarship winners. Appreciation is also extended to all scholarship sponsors and the JACL Scholarship Committee, chaired by Jan Yoshiwara. Anyone familiar with scholarship committees knows the tremendous time, effort and energy required to evaluate and rate all the submittals. I am sure that each scholarship winner wrote a letter of appreciation to the scholarship sponsors, and perhaps to the scholarship committee chair. It would really be marvelous if the winners would, in the future, drop a short note to JACL and their scholarship sponsors to keep us informed on their academic and personal achievements.

WCC Conference

NCWNP Gov. Mollie Fujioka sent me a copy of the registration form for the "Japanese American Women in Transition: 1986"

conference sponsored by JACL Women's Concerns on Sept. 13. Many substantive workshops were detailed on the form. I fully appreciate the enormous effort involved in sponsoring conferences because these programs are truly beneficial to the community and to JACL. By showing the JACL "flag," the community sees JACL's vitality, non-members are encouraged to become actively involved in JACL and current members maintain their berths. Thank you very much, Chizu Iiyama, Contra Costa; Susan Nakamura, San Jose; Pat Orr and Alice Nakahata, Marin; Kathy Reyes, Golden Gate; and Mei Nakano, Sonoma.

Board Meeting

The first full-blown board meeting of the 1986-88 biennium will take place in San Francisco Oct. 10-12. The board will be approving some 35 committee chairs and presidential appointees. After the meeting, I will publish a list of the new chairs in the PC.

Vice President Bill Marutani has prepared and distributed a schedule for article submission to the PC by elected officers, appointed officers and governors. This way, grassroots will be able to read informative articles on happenings by the National Board.

The national director and I met on Sept. 6. We discussed the budget, cash flow, repayment of the loan to the endowment fund, status of the SRS mailout, management of funds, and contracts to JACL by LEC. Many concerns on budgetary matters were pinpointed at this meeting. I expect a large portion of the upcoming board meeting to be devoted to fiscal matters.

Prev. Gross Total: 303,872.54
This Report: (7) 21,505.52
Grand Total: \$325,378.06
(Since Aug 11; Aug 5 receipts noted in Report #29)

Oakland JACL \$40 (previously into "Support Redress", should be Redress Pledges); PSWDC (1985-86 pledges); Marin County JACL (1986 pledge balance) \$325.

1986 DISTRICT BREAKDOWN

District	Amount
NC-WN-Pac	29,185.50
Pac Southwest	14,940.52
Midwest	12,985.00
Pac Northwest	4,135.00
Central Cal	3,719.50
Intermountain	1,500.00
Eastern	1,400.00
Mtn-Plains	862.50
Aug 31 Total:	\$ 68,728.02

Redress Support

These amounts come with membership form check-offs. Actual amounts from the JACL Chapters acknowledged by JACL Headquarters for the period of: #7: AUGUST, 1986
Philadelphia (4) \$12, Oakland (s/b Redress Pledge -\$40), Mile-Hi (2) \$10, Houston (?) \$50, Mid-Columbia (?) \$60, East L.A. (2) \$10, Selanoco (1) \$5, Lake Washington (1) \$50, Puyallup Valley (1) \$5.

1986 Redress Support Summary

Month	Count	Received
'85 Dec	(62)	\$ 420.00
Jan	(164)	1,001.00
Feb	(187)	1,298.00
March	(105)	1,062.00
April	(204)	1,774.00
May	(33+)	309.00
June	(47+)	323.00
July	(27+)	225.00
August	(12+)	172.00
1986 Total:		\$ 6,584.00

Remember: All articles and letters to the editor should be typed or computer printed, double-spaced.

The Mike M. Masaoka Fellows Fund

Membership in the Masaoka Fellows is achieved by individual or corporate contributions to the Mike M. Masaoka Fund, a perpetual fund from which proceeds would annually support the general operations of the JACL, to which Mike has devoted over 40 years.

Contributions to the fund, c/o JACL HQ, are graded as follows: Fellow—\$1,000-\$2,500; Emeritus—\$2,500 minimum; Sustaining—\$200 for 5 yrs; Amicus—Less than \$1,000.

THE 1986 REPORT

Total This Report: #18—\$800.00
Budd S Fukei \$200 (sust for '86), Alice H Hirano \$500 (in memory of the late James M Hirano), Alice H Hirano \$100 (in memory of Mr. Masaoka's daughter Midori).
Fund Summary: Sept 2, 1986

Emeritus (1)	\$ 2,500
Fellows (10)	10,000
Sustaining Members:	
1st Year (17)	3,900
2nd Year (13)	2,600
3rd Year (11)	2,200
4th Year (6)	1,400
5th Year (3)	600
Amicus (4)	520
Contribution (3)	850
Fund Total	\$24,570

Redress Pledges

Actual amounts acknowledged by JACL Headquarters for the period of: #30: AUGUST, 1986
1986 Total to Date: \$ 68,728.02

Donations to Pacific Citizen For Typesetting Fund

As of Sept. 22, 1986: \$35,962.42 (845)
This week's total: \$ 56.00 (2)
Last week's total: \$35,906.42 (843)

\$6 from: Elaine Kudo Fan Club.
\$50 from: Charles Nagao.

Thank You!

Asian Groups Unanimous in Opposing Prop. 63

by J.K. Yamamoto

LOS ANGELES—Speakers from different Asian communities gave their perspectives on Proposition 63, which would make English the state's official language, at a Sept. 16 press conference held at the Japanese American Cultural & Community Center.

Alan Nishio, co-chair of National Coalition for Redress/Reparations, said that Japanese Americans "can readily attest to historical efforts that have been made to impose 'English Only.'"

"When we were put into concentration camps in WW2, English was the only language that the government allowed to be used in conducting camp business. Thus, many Issei... were not allowed to participate in any government in the camps because of their limited English-speaking ability. The imposition of this 'English Only'... served to further disrupt and divide our community."

More recently, the JA community "has benefited from a variety of bilingual services that have increased access to social services," he said. "We clearly see these services under attack as a result of Proposition 63."

When asked whether former Sen. S.I. Hayakawa, who strongly supports the measure, is representative of the JA community's position, Nishio responded that Hayakawa's views are "not in line with the concerns or perspectives of the Japanese American community or the Asian community overall."

City Councilman Mike Woo said that in addition to threatening government-funded bilingual programs, Proposition 63 "would do nothing to increase funding for English-language programs which are already overenrolled by enthusiastic newcomers anxious to become proficient in English."

There is strong bipartisan opposition to the initiative, Woo said, pointing out that incumbent Gov. George Deukmejian, a Republican, and the Democratic gubernatorial candidate, Mayor Tom Bradley, are both against it. Woo urged public officials to "do their part in promoting greater understanding and harmony between different ethnic groups."

Duncan Lee, external vice president of Korean American Coalition, said that the largely immigrant Korean community is striving to learn English but needs bilingual assistance "to ease into the mainstream English-speaking society."

Noting that early European immigrants experienced problems while assimilating into American society, Lee said, "Today, unfortunately, people feel that we as [new] immigrants have to also suffer."

Andy Anh, a native of Vietnam and executive director of the Economic and Employment Development Center for Indochinese, warned that Proposition 63 "will force all non-Anglos to give up their cultural heritage... My first name has already been Anglicized. Perhaps Prop. 63 will force me to Anglicize my family name as well."

Rose Ibanez, a member of Filipino American Community Committee on Education, stated that although many Filipino immigrants can speak English, cuts in bilingual services could hurt those who have recently arrived.

Richard Katsuda, a member of Californians United Committee Against Proposition 63, served as moderator.

Legislature to Hold Hearings on Initiative

SAN FRANCISCO—Joint hearings of the State Senate Elections Committee and a special Assembly task force will be held on the potential effects of Proposition 63, the so-called "English-Only" initiative, Sept. 29, 9:30 a.m.-5 p.m., at the State Building Auditorium, 350 McAlister St.

A Los Angeles hearing is scheduled for Oct. 1, 9:30 a.m.-5 p.m., at Kinsey Auditorium, Museum of Science and Industry, 700 State Dr., Exposition Park.

Speakers will include Proposition 63 supporters, such as former Sen. S.I. Hayakawa and California English chair Stanley Diamond, and opponents, such as Attorney General John Van de Kamp and JACL national director Ron Wakabayashi.

GRIZZLY RIDGE HUNTING COMPANY
R.S. RENUER
LICENSED OUTFITTER
Exhilarating Mountain Hunting Experience For:
Grizzly Bear Mt. Goat
Moose Brun Black Bear
Caribou Wolf
X-Country Summer Horse Rides Available
P.O. Box 515 Huxon, Idaho
British Columbia, Canada VOC 1VO (604)783-5485

Kubota Nikkei Mortuary
(Formerly Shimatsu, Ogata & Kubota Mortuary)
911 Venice Blvd.
Los Angeles, CA 90015
(213) 749-1449
R. Hayamizu, President; H. Suzuki, VP/Gen. Mgr.; Y. Kubota, Advisor
Serving the Community for Over 30 Years

TOKYO \$550
R.T. from LAX plus tax
(Callif): 800-327-6471
HONG KONG From \$899
R.T., 6 nights hotel, trnsfr & city tour-
(USA): 800-421-0212

Books from Pacific Citizen (#1)

As of July 1, 1986 - This three-part list supersedes previous advertisements

- The Bamboo People: The Law and the Japanese Americans. By Frank Chuman. A popular reference on American Japanese legal history in layman's language. \$9.25 ppd, soft.
- Camp II Block 211. By Jack Matsuoka. A young cartoonist sketches life inside internment camp at Poston. A humorous touch, to be sure. \$7.25 ppd, soft.
- Comfort All Who Mourn. By H.V. Nicholson and Margaret Wilke. Life story of Herbert and Madeline Nicholson. Includes first-hand account of WW2 internment of Japanese Americans. \$7.20 ppd, soft.
- Economics and Politics of Racial Accommodation: The Japanese of Los Angeles 1900-1942. By John Modell. JACL-JARP's definitive social history research into prewar Little Tokyo life by Modell, checking out the prewar Rafu Shimpo English section. \$13.75 ppd, hardcover.
- Go For Broke: A Pictorial History of the Japanese American 100th Infantry Battalion and 442nd Regimental Combat Team. By Chet Tanaka. In a beautiful limited first edition, veterans themselves tell their WW2 saga. \$36.70 ppd, hard.
- Hawaiian Tales. By Allan Beekman. Eleven matchless stories of the Japanese immigrant in Hawaii. \$6.95 ppd, hardcover.
- Heroic Struggles of Japanese Americans: Partisan Fighters from America's Concentration Camps. By James Oda. An eye opener! The trauma of evacuation as recalled vividly by a young man, 28 years old at the time. \$9.75 ppd, soft.
- Heroic Struggles of Japanese Americans: Partisan Fighters from America's Concentration Camps. \$14.75 ppd, hardcover.
- The Issei: Portrait of a Pioneer. Ed. by Eileen Sunada Sarasohn. A collection of 32 interviews conducted in Japanese and translated into English. A most enlightening portrait. \$19.10 ppd, hardcover.
- JACL in Quest of Justice. By Bill Hosokawa. The JACL Story—not only for members and its critics but for new Americans to understand how one minority group was able to overcome discrimination. \$13.75 ppd, hardcover.
- Japanese Americans: Changing Patterns of Ethnic Affiliation Over Three Generations. By Darrel Montero. Study questions whether a distinct Japanese community can be maintained into the fourth generation. \$21.00 ppd, hardcover.
- The Issei. By Pete Hironaka. Limited edition, 21x28in., first in a series of three prints. \$30.00 ppd. (Autographed).

PLEASE SEND BOOKS TO:
Name _____
Address _____
City, State, ZIP _____
Amount enclosed: \$ _____ Prices subject to change without notice.
Some titles at PC Office are obtainable less postage fees.
POSTAL INSURANCE (U.S. only) extra: First \$20 value, add 45¢; up to \$50; add 85¢.
PRICES SUBJECT TO CHANGE WITHOUT NOTICE.
Make check payable to PACIFIC CITIZEN,
941 East 3rd Street, #200, Los Angeles, CA 90013

Chapter Pulse

RIVERSIDE

•The 19th annual Sendai Festival, honoring Riverside's sister city in Japan, will be held Oct. 4, 11 a.m.-5:30 p.m., at Canyon Crest Town Centre, Central Ave. and Canyon Crest Dr. The event features cultural programs, including folk dancing, origami, koto, and martial arts. Admission is free. Info: (714) 684-7962.

SO. CALIF. ASSN. OF NIKKEI

•The chapter holds a personal development workshop Nov. 9, 9 a.m., at Venice Japanese Community Center, 12448 Braddock Dr. in Mar Vista. Topics include: assertiveness communication, time management, stress management, interpersonal relations, and discrimination against Asians at the corporate level. Pre-registration fee: \$7; after Oct. 24, \$10. Fee includes continental breakfast and lunch. Info: Galen Murakawa, (213) 822-1144 or 822-7470 (evenings).

•The chapter is hosting a car rally and barbecue on Oct. 12. A prize will be awarded to the winner. Winner will be determined by time and mileage. Reservations: Jackie, (213) 214-0314 (weekdays); Paul, (213) 207-2030 (weekends); Art, (213) 379-8362.

VENTURA COUNTY

•Ventura County JACL Singles, a mostly Sansei and Yonsei group, will go to Los Angeles County Museum of Contemporary Art, 152 N. Central Ave. in Los Angeles, to see the "Tokyo: Form and Spirit" exhibit on Oct. 5. Carpools leave from Camarillo and meet at 12:30 p.m. in front of the museum. Info: Sue Ann, (805) 488-5479, or Guy, (805) 985-7896.

Nisei Post to Pay Homage to Issei

SACRAMENTO—Approximately 150 Issei parents will be honored by Nisei Post 8985 on Oct. 5, 4 p.m., at Sacramento Buddhist Church, 2401 Riverside Blvd.

The annual dinner was started 30 years ago by post members to thank and honor their parents for enduring prewar hardships and the 1942-45 internment of Japanese Americans.

The event, which costs approximately \$2,000, is financed each year by paper drives under the direction of George Matsushita.

Japantown Run Raises Funds for Senior Service

SAN JOSE — A total of \$6,827 was raised by the second annual Japantown Banner 10K Walk/Run held May 4 as a benefit for the building fund of the Yu-Ai Kai Japanese American Community Senior Service, 565 N. Fifth St.

Winners and their respective divisions are: Laura Sanchez, Women; Tim Gruber-Fujishin, Men; and 75-year-old Edward Ogoshi, Oldest.

Nat'l Business - Professional Directory

Your business card in each issue for a half year (25 issues) in the PC Business-Professional Directory is \$12 per line, three-line minimum. Large type (12 pt.) counts as two lines. Logo same line rate.

Greater Los Angeles

ASAHI TRAVEL
Supersavers, Group Discounts, Apex Fares
Computerized-Bonded
1111 W. Olympic Blvd, Los Angeles 90015
(213) 623-6125/29 • Call Joe or Gladys

FLOWER VIEW GARDENS #2
New Otani Hotel, 110 S Los Angeles
Los Angeles 90012 / Art Ito Jr.
Citywide Delivery / (213) 620-0808

Dr. Darlyne Fujimoto
Family Optometry & Contact Lenses
11420 South St, Cerritos, CA 90701
(213) 860-1339

Dr. Loris Kurashige
Vision Examinations/Therapy, Contact Lenses
11420 South St, Cerritos, CA 90701
(213) 860-1339

INOUE TRAVEL SERVICE
1601 W. Redondo Beach Blvd., #209
Gardena, CA 90247; (213) 217-1709
Offices in Tokyo, Japan / Lima, Peru

TATAMI & FUTON
(818) 243-2754
SUSUKI FUTON MFG.

TAMA TRAVEL INTERNATIONAL
Martha Igarashi Tamashiro
One Wilshire Bldg., Ste 1012
Los Angeles 90017; (213) 622-4333

TOKYO TRAVEL SERVICE
530 W. 6th St., #429
Los Angeles 90014 (213) 680-3545

YAMATO TRAVEL BUREAU
200 S San Pedro St., #502
Los Angeles 90012 (213) 680-0333

Orange County

Victor A. Kato
(714) 841-7551 • Exceptional Real Estate
17301 Beach Blvd., Suite 23
Huntington Beach, CA 92647

The Paint Shoppe
LaMancha Center, 1111 N. Harbor Blvd.
Fullerton CA 92632, (714) 526-0116

San Diego, Calif.

Paul H. Hoshi Insurance
852 - 16th St., San Diego, CA 92101
Office (619) 234-0376 Res. (619) 421-7356

Ventura County

CALVIN MATSUI REALTY
Homes & Commercial
371 N. Mobil Ave., Ste. 7,
Camarillo, CA 93010 (805) 987-5800

San Jose, Calif.

Kayo K. Kikuchi, Realtor
SAN JOSE REALTY
996 Minnesota Ave., #100, San Jose 95125-2493
(408) 275-1111 or (408) 296-2059

TATSUKO "TATTY" KIKUCHI
General Insurance Broker, DBA
Kikuchi Ins. Agency
996 Minnesota Ave., #102
San Jose, CA 95125-2493
(408) 294-2622 or (408) 296-2059

San Jose

Physical Therapy
Diane Shiraishi RPT, Chris Ota RPT
2337 Forest Ave., San Jose CA 95128
(408) 246-5861

1580 S. Winchester Blvd. #108,
Campbell CA 95008 (408) 866-5567

EDWARD T. MORIOKA, Realtor
580 N. 5th St., San Jose CA 95112
(408) 559-8816 a.m. 998-8334 p.m.

Watsonville, Calif.

Tom Nakase Realty
Acreage, Ranches, Homes, Income
TOM NAKASE, Realtor
25 Clifford Ave. (408) 724-6477

San Francisco Bay Area

IRENE A. OGI
ATTORNEY-AT-LAW
848 Cleveland St., Oakland, CA 94606
(415) 832-1055

Y. KEIKO OKUBO
Five Million Dollar Club
39812 Mission Blvd.,
Fremont, CA 94539 (415) 651-6500

Seattle, Wash.

Imperial lanes
Complete Pro Shop, Restaurant, Lounge
2101-22nd Ave So., Seattle (206) 325-2525

UWAJIMAYA
...Always in good taste.



For the Best of Everything Asian.
Fresh Produce, Meat, Seafood and Groceries.
A vast selection of Gift Ware.

Seattle • 624-8248
Bellevue • 747-9012
Southcenter • 248-7077

The Intermountain

Mam Wakasugi, Sales Rep.
Row Crop Farms; Blackaby Real Estate,
36 SW 3rd St, Ontario, OR 97914
(503) 881-1301 or (503) 262-3459

Eastern District

MIKE MASAOKA ASSOCIATES
Consultants - Washington Matters
900-17th St NW, Washington, DC 20006
(202) 296-4484

Aloha Plumbing
Lic. #440840 -- Since 1922
PARTS - SUPPLIES - REPAIR
777 Junipero Serra Dr. San Gabriel, CA 91776
(213) 283-0018 • (818) 284-2845

Kimura PHOTOMART
Cameras & Photographic Supplies
316 E. 2nd St., Los Angeles, CA 90012
(213) 622-3968

Commercial & Industrial Air Conditioning
and Refrigeration CONTRACTOR
Glen T. Umemoto
Lic. #441272 C38-20
SAM REIBOW CO. 1506 W. Vernon Ave.
Los Angeles/295-5204 SINCE 1939

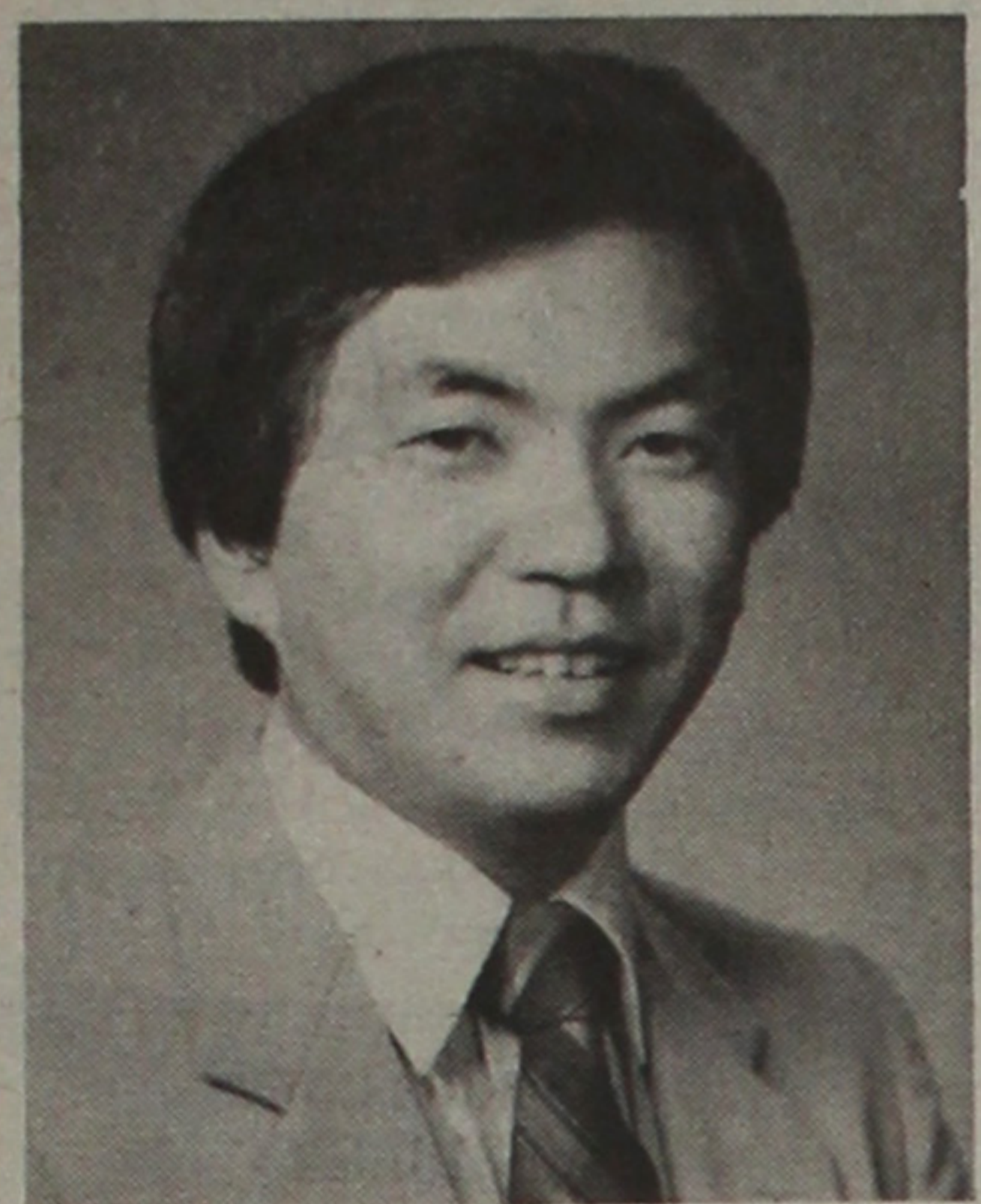
CHIYO'S
Japanese Bunka Needlecraft
Framing, Bunka Kits, Lessons, Gifts
(714) 995-2432
2943 W. Ball Rd, Anaheim, CA 92804
(213) 617-0106
424 E. 2nd St., Honda Plaza, L.A. 90012

ED SATO
PLUMBING & HEATING
Remodel and Repairs. Water Heaters,
Furnaces, Garbage Disposals
Serving Los Angeles, Gardena
(213) 321-6610, 293-7000, 733-0557

Empire Printing COMPANY
Commercial and Social
English and Japanese
114 Weller St.
Los Angeles, CA 90012
(213) 628-7060

ESTABLISHED 1936
NISEI TRADING
Appliances - TV - Furniture
249 So. San Pedro St.
Los Angeles, CA 90012
(213) 624-6601

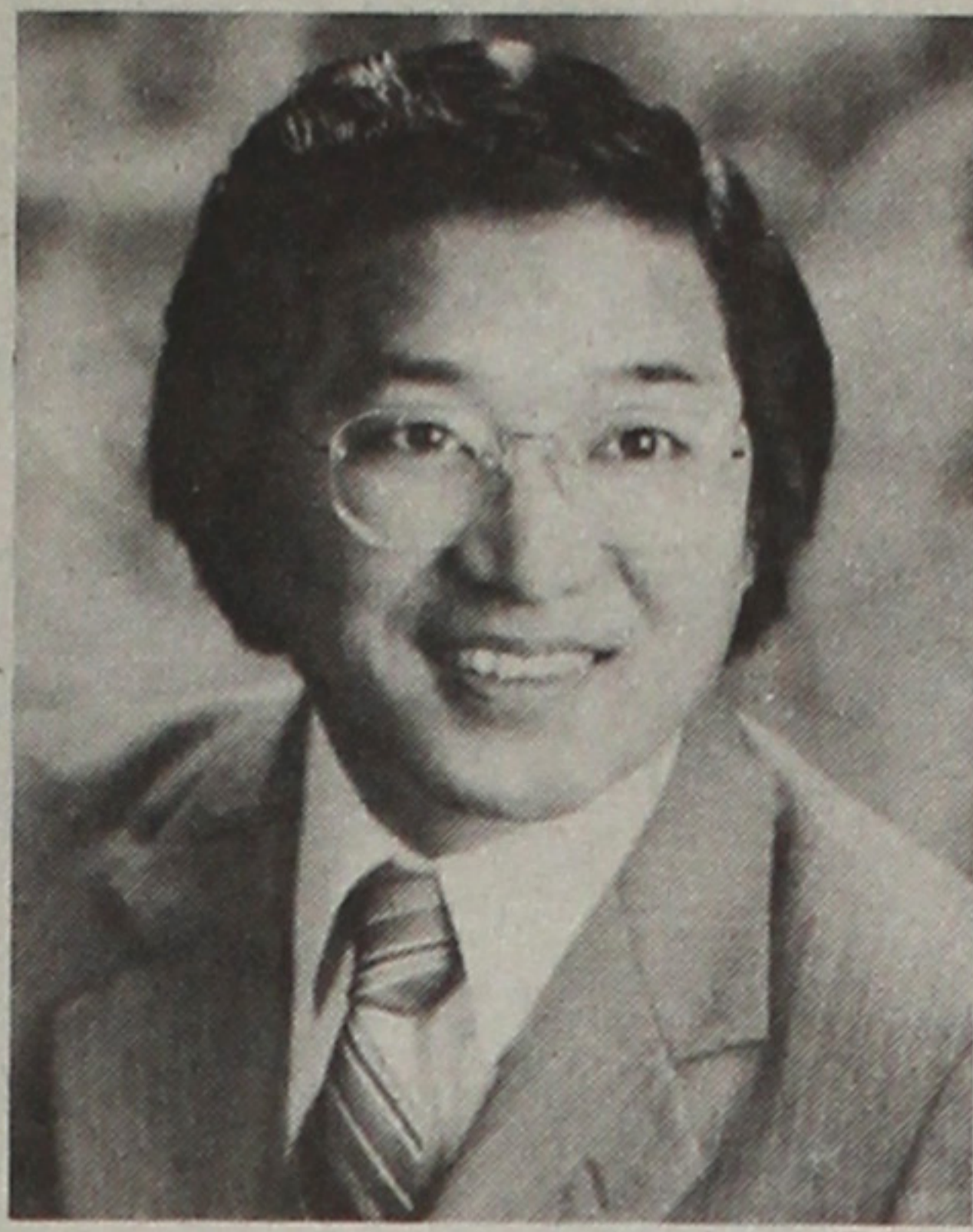
Nikkei Newsmakers



Ken Fujimoto of Harbor City, Calif., has been appointed vice president of Merit Savings Bank. He has been with Merit Savings since 1981 as a business development representative and as a marketing executive.



Irene Hirano, executive director of T.H.E. Clinic in Los Angeles, is a 1986 recipient of the Asian American Achievement Award for contributions in human resources. The award is sponsored by Organization of Chinese Americans.



Shinzui Sanada of San Jose, a career agent with New England Mutual Life Insurance Company's (The New England) San Jose agency, recently received the company's All Star Team award for "outstanding promise and high insurance marketing potential."

Board of Supervisors Hopefuls to Address Asian Community

SAN FRANCISCO—Candidates for the Board of Supervisors, Board of Education and Community College Board will speak at a Candidate's Night sponsored by 11 Asian and Pacific community organizations Oct. 1, 7:30 p.m., at Christ United Presbyterian Church (corner of Sutter and Laguna streets).

Among those invited are the Asian American candidates: Community College Board member Julie Tang and Dr. William Gee, who are running along with 17 others for the Board of Supervisors; Gilman Louie and Leland Yee, who are among the nine Board of Education candidates; and incumbent Alan Wong and Moy Velasquez, who are among the six Community College Board candidates.

Each candidate will be given four minutes to speak and additional time for questions and answers.

Sandy Mori of Nihonmachi Political Association said the purpose of Candidates Night is twofold: "We want voters to hear how the candidates will address the issues and concerns of our Asian and Pacific communities. Secondly, we wanted to hold one event for all our groups so the candidates will see that Asian Americans are a viable voting group in the city."

Sponsoring organizations are: Asian American Bar Association of the Greater Bay Area; Asian Pacific American Coalition USA; Japanese American Democratic Club; Nihonmachi Political Association; Bay Area Committee; Pacific & Asian American Women Bay Area Coalition; Filipino American Democratic Club; The Association of Chinese Teachers; San Francisco Nikkei in Education; Asian American Federation of Union Members; and San Francisco JACL.

Hollywood Star to Bear JA's Name

LOS ANGELES—Actor George Takei, Mr. Sulu in the "Star Trek" TV and film series, will receive a star on Hollywood Blvd's Walk of Fame, Asian Business Assn. (ABA) has announced.

Sponsored by the Walk of Fame committee of the Hollywood Chamber of Commerce, the ceremony is scheduled for Oct. 30, 12:30 p.m. Takei will be joined by fellow "Star Trek" cast members as well as representatives of Asian business and community organizations.

ABA spearheaded the effort to secure a star for Takei in 1985 and was formally notified of the selection by Walk of Fame committee chairman Johnny Grant.

Other Asian American actors who have received a star include Sessue Hayakawa, Anna May Wong and Philip Ahn.

Takei will also be given the ABA's Lifetime Achievement Award at an Oct. 3 banquet. As a board member of So. Calif. Rapid Transit District, he has made Asian American business owners aware of subcontract opportunities available from the L.A. Metro Rail project. As a result, a number of consultants, vendors and suppliers obtained contracts.

Scholar

SEATTLE — Becky Sasaki, a junior at the University of Washington, has been selected as one of the nation's 1986 Truman Scholars. Sasaki was one of 102 college and university students selected from campuses throughout the United States to receive the congressional scholarship.

COMMERCIAL FINANCING

- Apartments
- Construction Loans
- Office Buildings
- Mortgages
- Residential
- Equipment Financing
- Retail Operations
- Second Mortgages
- Business Loans
- Refinancing
- Trucks & Trailers
- Warehouse Equipment
- Developments
- Condominiums
- Out of State Projects

If your financial need is not listed, please call our office for information. Contact:

Garrett & Burke, Financial Consultants
Edward D. Jones Bldg., Lower Level
2334 Lewis Avenue, Billings, MT 59102
Phone: (406) 658-4334 • Call Collect

SHORT & SMALL MEN'S APPAREL

WE OFFER THE PROFESSIONAL MAN A COMPLETE BUSINESS WARDROBE.

CARRYING OVER 500 SUITS, SPORT COATS AND OVERCOATS BY GIVENCHY, LANVIN, VALENTINO, ST. RAPHAEL & LONDON FOG IN SIZES 34-42 SHORT & EXTRA SHORT. OUR ACCESSORIES INCLUDE DRESS SHIRTS, SLACKS, AND TIES IN SHORT & SMALL SIZES / LENGTHS. IN ADDITION, WE RECENTLY EXPANDED TO INCLUDE AN ITALIAN DRESS SHOE LINE IN SIZES 5-7 1/2.

785 W. HAMILTON AVENUE
CAMPBELL, CALIFORNIA 95008
PHONE: 408 / 374-1466
M-F: 12-8-30, SAT: 10-6, SUN: 12-5



OWNER: KEN UYEDA

KEN & COMPANY

Cambodian Runs for Office

LONG BEACH, Calif.—Nil Hul, believed to be the first Cambodian immigrant in the nation to run for office, placed fourth out of 10 candidates Sept. 2 in a special election for the 6th District City Council seat left vacant by the recent death of James Wilson.

Although he received 154 votes to winner Clarence Smith's 1,515, Hul, 53, believes he has broken ground for future political aspirants from the Cambodian, Vietnamese and Laotian communities. Long Beach has the largest Cambodian population—about 25,000—of any U.S. city.

"This is a steppingstone for other campaigns," Hul told the Los Angeles Times. "You're going to hear from us again and again—from the city level and the county level and the state

level and, later on, on the national level.

"We're going to prepare our youngsters. I know we're going to make it. If not this time, then the next time."

Formerly a business executive and army officer in his native country, Hul is now a grocer and county employment consultant. He is married and has four children.

The \$8,000 raised for Hul's campaign came largely from the Southeast Asian communities in the area. The Organization of Indo-Chinese Americans walked door to door, seeking to register new citizens as voters.

Hul came in 132 votes behind John Rambo, who finished third. Also in the running was Mineo Miyagishima, who garnered 53 votes.

CLASSIFIED ADS

4—Business Opportunities

CANADA By Owner
B.C. CENTRAL INTERIOR LODGE, Restaurant, bar, cabins, marina, 10 acres, commercial lakeshore prop. GUIDING TERRITORY. 600 sq. km., main camp, 2 wilderness camps, boats. Together or separate available.

Phone (604) 996-7917
Box 838, Fort St. James, B.C., Canada VOJ 1p0

OHIO BY OWNER
Seventy acre Amusement Park in State of Ohio

For sale. Includes 25 major rides, 18 kiddie rides, three video arcades, 16 food concessions, an Olympic sized filtered swimming pool, an animated bear show, a one hundred and eighty degree cinema, an 18 hole miniature golf course, shaded picnic area and lake inside the park, approximately thirty group games. Plenty of room for expansion. Five hundred thousand seasonal attendance. Asking six million dollars.

Write Dept. AAP, PO Box 69580
Los Angeles, CA 90069

5—Employment

APPLICATIONS BEING ACCEPTED FOR SPECIAL AGENT (CIVILIAN CRIMINAL INVESTIGATOR) WITH THE NAVAL INVESTIGATIVE SERVICE (NIS)

NIS is seeking applicants for GS-7 entry level positions worldwide, starting salary is \$22,278 including overtime pay. The basic qualifications are:

Possess a four-year baccalaureate degree from a United States accredited university, United States citizenship for a minimum of five years, Applicant's immediate family should also be United States citizens, 21-34 years of age, excellent physical condition.

Unquestioned integrity and willingness to transfer approximately every 2-4 years to any of the 140 locations worldwide. Individuals proficient in the Japanese language are encouraged to apply. Some offices in the Orient include Korea, Japan, and the Philippines.

TO APPLY CONTACT

Daniel Simas, Special Agent
Regional recruiter

P.O. Box 80667
San Diego, CA 92138
(619) 225-4487

NIS is an Equal Opportunity Employer

Work at Home

Make \$480 weekly. No experience needed. Take photographs for our company. Make \$180 per roll of film. Apply now. Call refundable.

(714) 582-6777, ext. 522

Large Company-Owner

seeking couple to direct affairs of residence in Bel-Air. Bi-lingual, Japanese/English preferred. Duties: reside rent free in separate home, supervise servicemen, some cooking and housekeeping for main house required. Please call:

(213) 385-1287

GOVERNMENT JOBS \$16,040 - \$59,230/yr. Now Hiring. Call (805) 687-6000 Ext. R-1317 for current federal list.

5—Employment

* Bookkeeper * Bilingual

A national leader in the real estate industry has an opening in one of their Century City highrise properties for an experienced Bookkeeper fluent in English and Japanese.

Responsibilities include rent collection, preparation of bilingual reports and other general bookkeeping functions.

If you are seeking a challenging position, competitive salary and attractive benefits please call Julie Priest, (213) 557-0890.

CUSHMAN & WAKEFIELD

A ROCKEFELLER GROUP COMPANY

The Biology Department of Wesleyan University is seeking application for a tenure track position at the rank of an assistant professor. Candidates are expected to develop a strong independent research program, supervise Ph.D. students, and participate in instruction of cell biology for undergraduates. Post-doctoral experience is required. Please send CV, three letters of recommendation and a brief description of future research plans by November 1, 1986, to:

Search Committee, Biology Department, Wesleyan University
Middletown, CT 06457

Wesleyan University is an Equal Opportunity/Affirmative Action Employer

BENIHANA

—IMMEDIATE HIRING—

for
Chef,
Waitresses,
and
Cocktail Waitresses
CONTACT:

Chris Doering, Mgr.
(213) 821-0888

SO. CALIF.

Professional Laundry & Dry Cleaners

Lancaster; 1 hr north of Los Angeles, family operated. Good location. \$50K. For further information, call: (805) 273-5138

7—Personal

VISA/MASTERCARD—Get your card TODAY! Also New Credit Card, NO ONE REFUSED! Call (518) 459-3546 Ext C-2948C, 24 HRS.

9—Real Estate

GOVERNMENT HOUSING—from \$1.00, you repair. Also, delinquent tax properties and foreclosure properties. For info., call (refundable) (315) 736-1610, Ext. 1185.

BY OWNER

ALASKA

Cust 1 BR log home w/2 spiral staircases overlooking Beaver Pond. Thickly wooded 7 + 20 acs great potential for hunting/fishing lodge or retirement home in rural Alaska. \$175,000. (907) 733-2584

Box 452, Talkeetna, Alaska 99676

11—Travel

EXPO 86 on Video — See the World's Fair & beautiful Vancouver, B.C. in the comfort of your home or office. Broadcast quality, professionally produced tape with music & narration, on VHS or Beta. \$24.95. Shipped postpaid, MC or VISA accepted, or send check to "EXPO 86", P.O. Box 121206 Arlington, TX 76012. Great for gifts or promotions. Credit card orders may call collect. (817) 261-2500.

VIOLENCE

Continued from Front Page

The attacks on Asian refugees may be tied directly to some specific causes of anti-Asian sentiment cited by the commission such as the large and sudden increase of immigrants from China, Taiwan, Japan, Hong Kong, Korea and the Philippines between 1966 and 1983; a feeling shared by many Americans that refugees take jobs away from other Americans, receive special treatment or are too dependent on government assistance; and the feeling of low income and disadvantaged Americans that new refugees are cutting into their share of scarce resources such as public assistance.

However, overall reasons for anti-Asian sentiment, concludes the report, can be blamed on "no single factor." Rather, the report states, "it appears to be a combination of many factors of which race is one."

The "many factors" cited by the commission include misinformation and misconceptions about Asian Americans, immigrants and refugees. The report goes on to say that according to many of those interviewed during the study, those misconceptions have been popularized in and reinforced by the media.

Report findings are limited in only one respect; they cannot statistically show an increase or decrease in anti-Asian violence due to the lack of that type of information on a national level. In fact, of the 50 law enforcement agencies contacted during the study in cities with concentrated Asian populations, only two — New York and Boston — maintained such figures.

But, because of this lack of information, the study, which in the beginning was to be based primarily on social science literature and previous research, was expanded into an intensive field research project. Interviews were conducted with local, state and federal officials in eight states and Washington, D.C.

For copies of "Recent Activities Against Citizens and Residents of Asian Descent" (Clearinghouse Publication No. 88), write to U.S. Commission on Civil Rights, Washington, D.C. 20425.

● **British Columbia, Canada**
MOOSE, MTN. GOAT, GRIZZLY, BLACK BEAR AND FISHING
 Hunt the interior valleys and remote coastal mountains of west central British Columbia
 Write or Call: Nanika Guiding
 R.R. #2, Burns Lake
 British Columbia
 Canada V0J 1E0
 Ph# 604-695-6542 604-695-6351
BRING YOUR CAMERA

● **CANADA**
HUNT ALBERTA'S ROCKY MOUNTAINS-
SPRING—Grizzly and Black Bear April-June
FISH—The Famous BOW River for Trophy Trout June-Nov.
FALL—Trophy Elk, Deer, Black Bear Sept.-Nov.
 Bonded, Licensed and Insured
 For Information contact—LES PATTON
 Back Country Guiding & Packing Services
 Box 604, Mindapore, Alberta T0L 1J0
 Phone (403) 256-2235

Special Holiday in Japan

ANYWHERE, ANYTIME — 9 DAYS

Features: (1) Air Fare, (2) 7-Nights Top Value Hotel throughout Japan, including all taxes & service charge, (3) Unlimited Train Pass (includes Express Train, Shin-Kansen.)

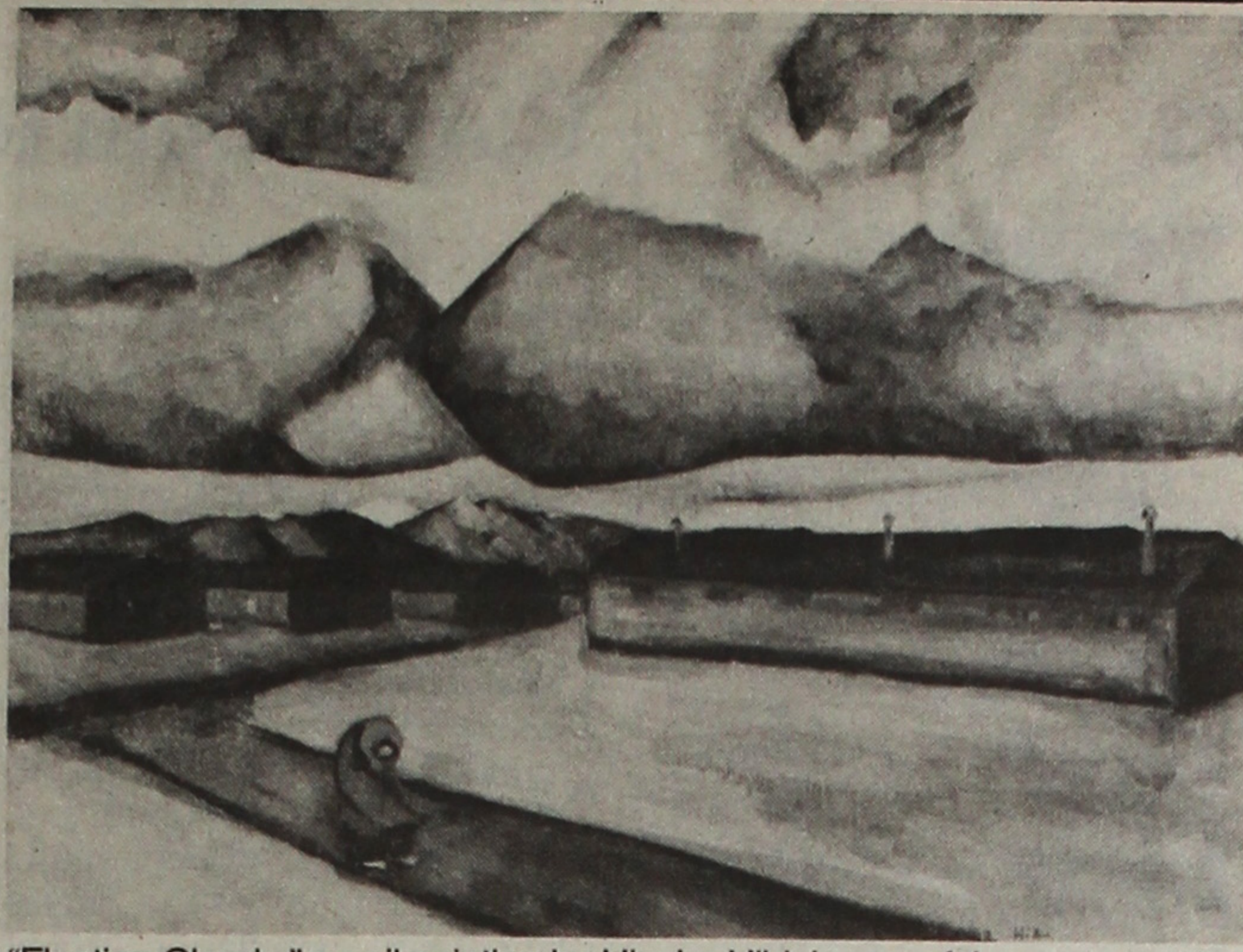
SPECIAL PRICE

From Los Angeles, San Francisco \$ 898.00
 and special rate from any U.S. city is available.

The prices shown above are per person based on double occupancy.

Japan Holiday Tour

(213) 484-6422



"Floating Clouds," an oil painting by Hisako Hibi, is one of the works on display through Sept. 30 at the National Japanese American Historical Society.

VINCENT CHIN CASE

Continued from front page

Shimoura said his group plans to monitor the trial, which is expected to begin early next year.

When Judge Charles Kaufman of Wayne County Circuit Court found Ebens and his stepson, Michael Nitz, guilty of manslaughter and sentenced them to probation and fines in March 1983, ACJ and other Asian American groups organized protests that eventually prompted the Justice Department to have Ebens and Nitz indicted on charges of violating Chin's civil rights. Nitz was acquitted and Ebens was convicted on one count.

After the conviction was overturned on Sept. 11, ACJ urged the Justice Department to retry Ebens. "It is unacceptable that the imperfections of our criminal justice system can permit an admitted killer to continue to roam the streets," said Shimoura on Sept. 18. "After more than four years since Vincent Chin's death, Ebens has not spent a single day in jail."

The Appeals Court ruled that U.S. District Judge Anna Diggs Taylor, who presided over the civil rights trial, should not have restricted the defense attorneys' access to recordings of a pretrial conversation between attorney Lisa Chan and three of Chin's friends, all of whom were with him the night of the incident. The tapes, which were not heard by the jury, show that the prosecution witnesses were coached to testify that Ebens used racial slurs before the fight started, the Appeals Court judges contended.

Shimoura responded that a guilty verdict could be reached

COMMUNITY TRAVEL SERVICE

- LOWEST AIRFARES TO JAPAN/ASIA
- \$554—West Coast to Tokyo round trip
- Japan Rail Pass
- HOTEL/RYOKAN PASS

Specializing in travel to Japan/Asia

(415) 653-0990

5237 College Ave.
 Oakland CA 94618

even if the tapes are played in their entirety. "The use of the transcripts of the tapes was done out of context with the specific intent by Mr. Ebens' attorneys to give the appearance of coaching or orchestration," he charged at a Sept. 19 press conference held prior to the Justice Department's announcement.

Mother Speaks Out

Lily Chin, the victim's mother, said, "I want everybody to tell the government not to drop the case. I want justice for my son."

Other speakers included Elaine Prout; Winston Lang, Detroit NAACP executive secretary; Horace Sheffield, founder of Detroit Association of Black Organizations; and Art Featherstone from the office of Rep. John Conyers (D-Mich.).

Exhibit of Issei Artist's Works Extended

SAN FRANCISCO — An exhibit of oil paintings by Hisako Hibi depicting the Tanforan Race Track Assembly Center in California and the Topaz Detention Camp in Utah has been extended through Sept. 30 at the National Japanese American Historical Society, 1855 Folsom St.

Hibi, an Issei, was incarcerated at Topaz during WW2 along with 10,000 other Japanese Americans. Her paintings, which capture scenes from the barren desert surrounding Topaz, have been viewed by more than 6,000 people in the past two months.

The Appeals Court decision was also denounced by the Detroit Free Press, Detroit Mayor Coleman Young, JAACL national director Ron Wakabayashi, and Asian Pacific American Coalition USA president Alan Seid.

At a Sept. 19 press conference in San Francisco, held prior to the Justice Department's decision, Alan Yee of Asian Americans for Justice said that the court's decision sent a "message to Asian Americans and the public... that it's okay to kill Chinese and Asian Americans."

After the Appeals Court ruling, Ebens, quoted in the Detroit Free Press, said that he had committed a "grievous wrong" but insisted, "I've never been a racist. I've never had anything against anyone in the whole world."

Japanese American Travel Club

ENDORSED BY THE NATIONAL JAACL

250 E. 1st St., Los Angeles, CA 90012; (213) 624-1543
 Toll Free: (800) 421-0212 outside CA Office Hours: M-F 12-4; Sat 9-2
 (800) 327-6471 in CA

7-Days New Orleans Pre-Mardi Gras/Steamboatin' From \$846 + air
 Special Departure with Sami Kushida, escort, Tue., Feb. 24, 1987. Includes 3 nights at ROYAL SONESTA HOTEL (Bourbon St.), 1 bkfst, 1 lunch, sightseeing tour of New Orleans, transfers airport/hotel, plus Mississippi cruise / Steamboatin' on legendary DELTA QUEEN in heart of Dixie, visit Houmas House & St. Francisville, includes all meals on board. Cabins also available in C & D Categories at \$907-\$1,022 + airfare from hometown city.

7-Days HONG KONG ONLY \$899
 Daily year-round midweek departures from LAX includes R.T. air, 6 nights at New Kowloon Hotel, transfers airport/hotel and guided sightseeing tour of Hong Kong. (Sept 16-Dec 15, add \$120 hotel surcharge).

9-Days SEOUL & HONG KONG SHOPPING \$999
 Weekly departures from LAX includes R.T. air, 3 nights at Seoul Plaza Hotel, 4 nights New Kowloon Hotel, transfers airport/hotel and guided sightseeing tours at Seoul & Hong Kong. Optional Honolulu stopover at no additional airfare.

7-Days MEXICAN RIVIERA TROPICALE CRUISE \$775 from L.A.
 Sunday sailings year round from Port of Los Angeles. Prices from \$775/prsn/sharing inside Category-1 cabin plus port charges of \$25 p/prsn. Third/fourth person sharing a stateroom with two full-fare passengers in Category 4 or above \$945 each will each pay a flat rate of \$395 adult, child 16 yrs & under \$195 plus \$25 port charges p/prsn.

Or Contact Your JATC Participating Agent (Partial List)

Ben Honda (619) 278-4572: San Diego, CA
 Dil Miyasato (213) 374-9621: Redondo Beach, CA
 Gordon Kobayashi (408) 724-3709: Watsonville, CA
 Ruby Nishima/Emi Misaki (916) 424-9001: Sacramento, CA

American Holiday Travel presents ...

1986 Tour Schedule-Itineraries

Southwestern National Parks Tour Sept 30.-Oct. 4
 Join us and see the magnificence and natural beauty of our National Parks in the Southwest U.S. Beautiful photographic scenery. You will be visiting:
 ARIZONA: Grand Canyon, Monument Valley, Meteor Crater, Petrified Forest. COLORADO: Mesa Verde, Four Corners.
 Tour Escort: Frank Hirata Tour Cost: \$425.00 per person, Twin Share.

South American Holiday Tour Nov. 5 - 20
 TANGO-ARGENTINA — BRAZILIAN-SAMBA
 Join us and see the beautiful, exotic and historical countries of Brazil, and Argentina. Just in time for your Christmas shopping ... Bargains in gem stones, leather goods, furs, handicrafts, etc. ... Visit the local Japanese community in Sao Paulo, Brazil.
 BRAZIL - Rio de Janeiro, Sao Paulo, Iguassu Falls. ARGENTINA: Buenos Aires.
 Tour Escort: Ernest T. Hida. Tour Cost: \$2083.00 per person, Twin Share.
 For information and reservations, please write or call:

AMERICAN HOLIDAY TRAVEL
 368 E. 1st St., Los Angeles, CA 90012, (213) 625-2232
 YAEKO TSUBAKI

3913 1/2 Riverside Dr., Burbank, CA 91505, (213) 849-1833
 (818) 846-2402, ERNEST & CAROL HIDA

● **Ontario, Canada**

BIG NORTH LODGE—GUIDED BLACK BEAR HUNTS
 Hunt over 600 sq. mile area with over 50 baited tree stands. Success rate last 4 yrs. was 80% - package includes: All meals, room, daily maid service—Transportation to & from stands—Boat & Motor for Fishing—Trophy Preparation—Freezer Service—Tracking —Guides (Best in area).

Alex Rheaull
Big North Lodge
 Box 24, Minaki, Ontario, Canada P0X 1J0
 N.A.H.C. Recommended
 (807)224-4318

1986 West L.A. JAACL Travel Program

Administered by WLA Travel, Inc.

For JAACL Members, Family & Friends
1986 Airfare: LAX-TYO-LAX \$578*
AFTER NOV. 1: \$548*

● **'HOT ITEM': TOKYO**

5-DAY, 4-NIGHT EXCURSION \$898
 \$825 after Nov. 1

PACKAGE DEPARTURES ON SATURDAYS
 Oct 4, Oct 18, Nov 8, Nov 22, Dec 6, Dec 20, 1987—Jan 10, Jan 24, Feb 7, Feb 21, Mar 7, Mar 21.

Includes round trip direct flight from LAX; \$8 U.S. departure & custom tax; arrival transfer from Narita to Shiba Park Hotel (2 blocks from Tokyo Tower); 4 American breakfasts, half-day Tokyo tour; with option to extend • Arrange to visit relatives or other tours within Japan.

● **1986 Tour Dates**
 (Sept. 3 Update)

#15: Sept 26-Oct 18
Hokkaido/Kyushu-Honshu Tour

#16: Sept 13-26
Fall Foliage-2 Nations, Niagara Falls (4 seats open)

#16a: Oct 3-20
Japan Omote Tour

#17: Oct 18-Nov 1
Japan Fall Foliage Tour

#18 & 19:
 (These tours cancelled.)

#20: Dec 20-Jan 3
Japan Highlights Tour

● **Introduction of Our 1987 Travel Programs to be Made Nov. 16 in West LA**
 WATCH FOR DETAILS

● **Tour Itineraries**

Hokkaido/Kyushu-Honshu Sep 26-Oct 18

Tour A: Sapporo, Lake Toya, Noboribetsu, Shirai Ainu Village, Chitose; Fukuoka, Beppu, Mt. Aso, Kumamoto, Matsushima, Shimabara, Unzen, Nagasaki, Hiroshima. Land tour: ¥250,000 (dbl occ) plus airfare. Tour escort: Bill Sakurai.

Tour B: Hiroshima, Inland Sea, Kyoto, Takarazuka Excursion, Nara, Gifu, Nagoya, Shuzenji Spa, Atami, Hakone, Lake Kawaguchi, Mt. Fuji, Tokyo. Land Tour: ¥199,000 (dbl occ). Tour escort: Bill Sakurai.

Japan Omote Tour Oct 3-20

Tour #1: Tokyo, Nikko Excursion, Kamakura, Hakone, Atami, Nagoya, Toba, Kashikojima, Nara, Kyoto, Hiroshima (11 days). Land tour: ¥251,000 (dbl occ), plus airfare. Tour escort: Steve Yagi.

Tohoku Fall Foliage Oct 18-Nov 1

Visit Tokyo, Asamushi Spa, Lake Towada, Ohdate, Lake Tazawa, Tamagawa Spa, Hachimantai, Morioka, Hiraizumi, Sendai, Matsushima Excursion, Togata, Zao, Yamagata, Yonezawa, Iizuka Spa, Bandai Plateau, Higashiyama Spa, Koriyama, Utsunomiya, Nikko, Tokyo. Land tour: ¥360,000 (dbl occ), plus airfare. Tour escort: Toy Kanegai.

● **TOUR/FLIGHT MEETING:**
 Every third Sunday of the month from 1 p.m. at Felicia Mahood Recreation Hall, 11338 Santa Monica Blvd., West Los Angeles (west of the San Diego Freeway). Next meeting:
Sept. 21: Showing film on Australia, New Zealand and Fiji.
 • Plus \$20 Administrative Fee

For information, brochure, write to:

West L.A. TRAVEL
 12008 Ohio Ave.
 Los Angeles, CA 90025
 (213) 820-5250,
 820-3451 (day) 826-9448 (eve)