

pacific citizen

National Publication of the Japanese American Citizens League

Newsstand: 25¢
(60¢ Postpaid)

Whole No. 2,415/Vol. 103 No. 20/ISSN: 0030-8579

941 East 3rd St. #200, Los Angeles, CA 90013

(213) 626-6936

Friday, Nov. 14, 1986



Photo by Robert Shimabukuro

FRIGHTENING FRIENDS — Trick-or-treaters from nearby Nihonmachi Little Friends make their annual rounds at JACL National Headquarters in San Francisco on Halloween.

New Lineup in House, Senate May Help Redress Legislation

by Robert Shimabukuro

The Nov. 4 elections produced "good news for redress," said JACL-LEC executive director Grayce Uyehara when asked about the outcome of the congressional races.

"We picked up strength in the Senate," she explained, noting that the change in leadership in the Senate Governmental Affairs Committee will improve the chances of a redress bill moving out of committee.

Of the 29 co-sponsors of Senate redress bill S. 1053, three have left office, but as many as five possible supporters will take their place.

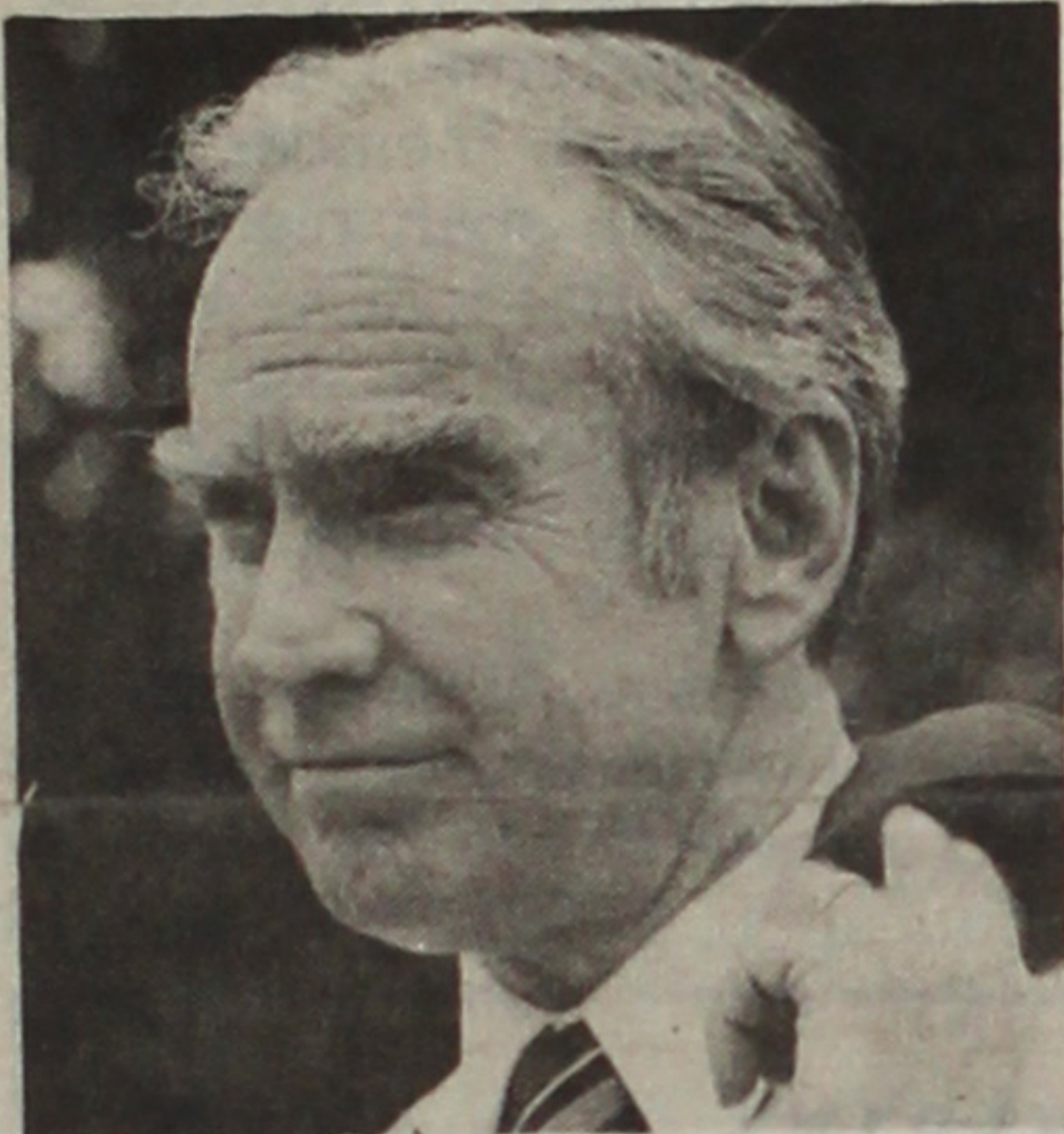
Jeremiah Denton (R-Ala.) lost to Democrat Richard Shelby, Gary Hart (D-Colo.) resigned to begin his presidential campaign, and Slade Gorton (R-Wash.) lost to Brock Adams, a former congressman and Transportation Secretary.

From House to Senate

At the same time, four House co-sponsors of H.R. 442 have moved up to the Senate: Tim Wirth (D-Colo.), who replaces Hart; Barbara Mikulski (D-Md.); Harry Reid (D-Nev.); and Tom Daschle (D-S.D.).

In addition, JACL Vice President of Public Affairs Cherry Kinoshita of Seattle reported that Adams has stated he will support and vote for the redress bill.

Sen. Arlen Specter (R-Pa.), who won reelection, is reportedly in favor of the bill also, accord-



Jim Wright



Tim Wirth

ing to an ACLU poll of candidates.

While acknowledging that there were unknowns in the House after the loss of 15 co-sponsors to death, retirement or the election process, Uyehara said there were still 127 (and possibly 128) co-sponsors.

She added that with Majority Leader Jim Wright (D-Texas)

Continued on Page 3

Asian Pacific Candidates Make Gains

Saiki Captures House Seat; Is 1st GOP Rep

by Robert Shimabukuro

HONOLULU — Stressing her experience as a legislator and the advantages for Hawaii to have bipartisan representation in Congress, Patricia Saiki became the first Republican from Hawaii to win a seat in the U.S. House of Representatives, defeating Mufi Hannemann by over 30,000 votes in the Nov. 4 election.

Democrats Divided

The former state GOP chair benefited from a disorganized opposition which refused to heal its wounds after a bitter Democratic primary fight between Hannemann, a former aide to Gov. George Ariyoshi; Neil Abercrombie, who is serving out the term of Rep. Cecil Heftel, who resigned to run for governor; and State Sen. Steve Cobb.

Still, by winning by more than 22 percent of the vote, Saiki demonstrated that she had widespread support in her 99,673-to-63,057 victory.

"I had some Cobb and Abercrombie support," she told PC. "The Democratic Party never healed their wounds. Being the only AJA candidate, excepting [U.S. Sen. Daniel] Inouye, also had its advantages. But when push came to shove, my 14 years in the State Legislature made the difference. People were familiar with my record."

Support for Redress

When asked how she felt about being Hawaii's first Republican representative, Saiki replied, "It's a privilege and I'm going to have to set a good example."

Saiki also said she was supportive of redress for Japanese Americans. "I do feel that the period when AJAs were interned was one of the darkest periods in American history. Those who were affected should have redress and should be compensated," she said.

Continued on Page 3



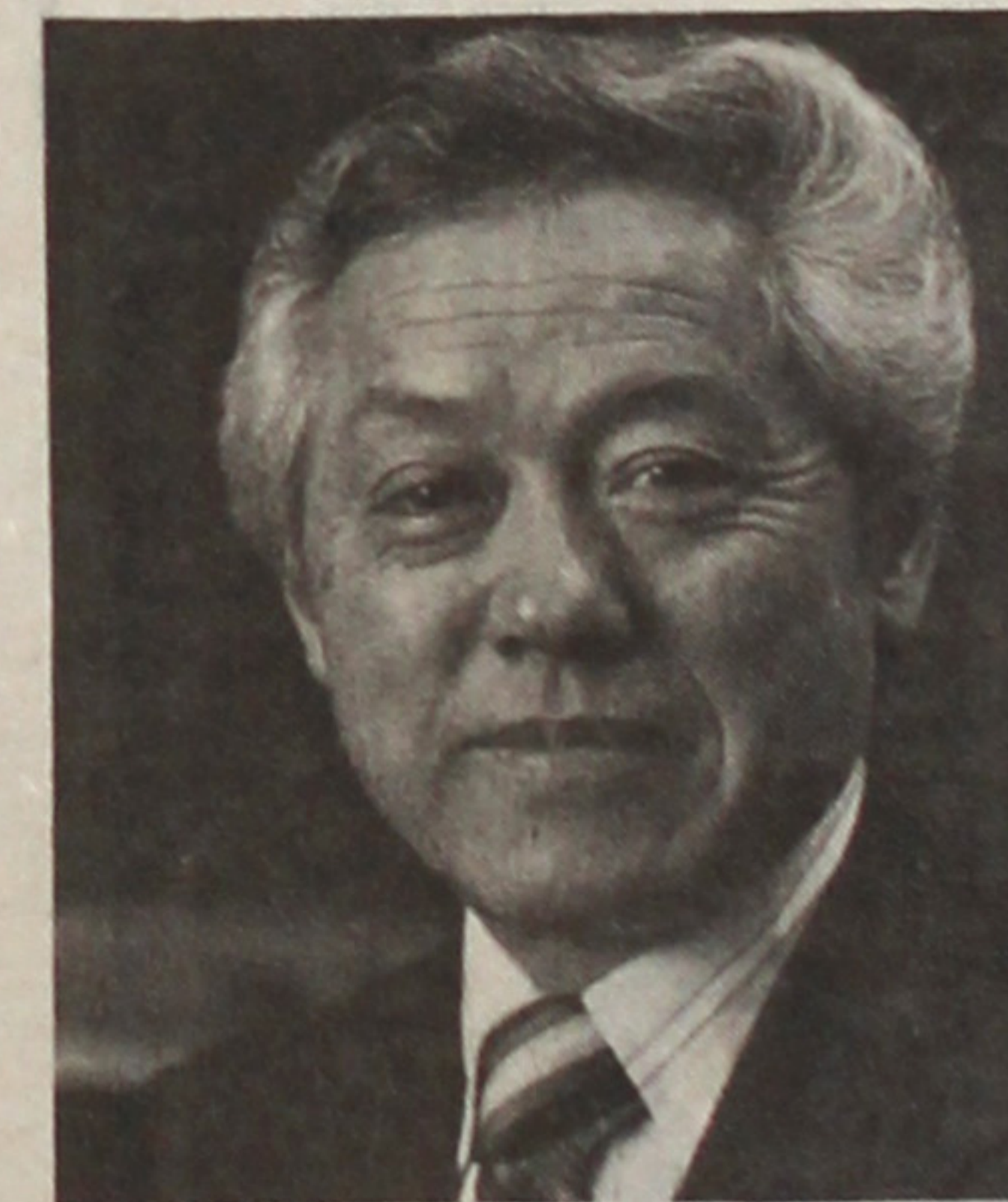
Patricia Saiki



Daniel Inouye



March Fong Eu



Nao Takasugi

Incumbents Big Winners; Others Lose

by J.K. Yamamoto

The Nov. 4 election had mixed results for Asian American candidates across the U.S. Mainland, with incumbents retaining their seats and challengers going down to defeat.

Easy Victories

As expected, California's two Japanese American congressmen won reelection by wide margins.

Rep. Norman Mineta (D) of the 13th District (Santa Clara) received 106,064 votes (70%) to Republican challenger Bob Nash's 45,755 (30%). Formerly mayor of San Jose, Mineta was first elected to the House in 1974.

Rep. Robert Matsui (D) of the 3rd District (Sacramento) outdistanced his Republican opponent, Lowell Landowski, by a margin of 156,667 (76%) to 49,524 (24%). A former Sacramento city councilman, Matsui was first elected to the House in 1978.

Incumbent California Secretary of State March Fong Eu, a Democrat, easily deflected a challenge by Republican Bruce Nestande, 4,871,269 (69%) to 1,859,805 (26%).

Contest in Utah

Republican Tom Shimizu, a Salt Lake County commissioner, lost his bid for Utah's 2nd District congressional seat to Democrat Wayne Owens, a former congressman, 60,924 (44%) to 76,875 (55%). The two were vying for the position vacated by David Monson (R).

In an interview with PC, Shimizu said of the opposition, "It seems like they were well organized. They had run campaigns a number of times before. I didn't have that experience... We learned a lot."

Asked if he planned to run for office again, he replied, "I think that I will," adding that the race had given him "good name recognition." But he said he had not decided what office to seek next.

Some charges were traded

Continued on next page

Prop. 63 Passes; Opponents Plan Next Move

by J.K. Yamamoto

As had been predicted by pollsters, California voters on Nov. 4 passed Proposition 63, which makes English the state's official language, by an overwhelming margin, 5,016,556 (73%) to 1,837,803 (27%).

Proponents of the measure, led by the California English campaign and the nationwide U.S. English organization, said that a constitutional amendment was needed to unite the state's diverse population under one language; opponents, including Asian, Hispanic and other civil rights groups, called the measure

an attempt to deprive immigrants of bilingual services without helping them learn English.

JACL national director Ron Wakabayashi did not think that the lopsided vote count showed widespread anti-immigrant sentiment, however. "Exit polls did not reflect the mean-spiritedness of the proponents," he said. "It was a 'Why not?' kind of vote."

Lack of Funds

Lenny Goldberg, campaign manager for Californians United Committee Against Proposition 63, said the coalition's efforts were only partly successful: "We succeeded in making it clear that

Proposition 63 was a controversial issue, but with the small amount of money that we had, we didn't succeed in changing many minds... You need to hammer your message at the voters time and again."

The "No on 63" campaign spent about \$85,000, while California English spent more than \$800,000 to place the initiative on the November ballot and to campaign on its behalf.

While lacking funds, the coalition was joined in its opposition by a number of political figures, from conservatives like Gov.

Continued on next page

Holiday Issue Submissions

The Pacific Citizen is now accepting non-returnable articles, editorials, short stories, poetry, photographs, etc., for this year's holiday issue (Dec. 19), which will be themed "Japanese Americans: A Model Minority?"

In addition, elementary, junior high and high school students are encouraged to participate in a PC essay contest, "What Being Japanese American Means to Me." Winning essays will be published in the Holiday Issue and first-place winners in each of the three school division categories will be awarded \$25.

Written material must be typed, double spaced. Photographs should be black and white and measure at least 5X7 inches. All submissions must include sender's name, address and phone number. Contest entries must also include student's grade and school. Please send all submissions to the PC, 941 E. Third St., Los Angeles, Calif. 90013, by Dec. 1, 1986.

PROPOSITION 63

Continued from front page

George Deukmejian and Los Angeles Police Chief Darryl Gates to liberals like Lt. Gov. Leo McCarthy, San Francisco Mayor Dianne Feinstein and Los Angeles Mayor Tom Bradley. But their statements apparently failed to dissuade voters from supporting the measure.

The measure directs the Legislature to "insure that the role of English... is preserved and enhanced" and to "make no law which diminishes or ignores the role of English." It also allows residents to sue the state if they think the law is not being obeyed.

'Deceit and Deception'

In a statement released the night of the election, Californians United said, "Tonight's vote measures the short-term effectiveness of deceit and deception. California voters felt that they were simply supporting an innocuous, symbolic initiative to enshrine English officially as our common language... [but] the measure clearly opens the door to divisiveness, conflict, expensive and unnecessary litigation, and dangers to public health and safety..."

"We are fortunate, in spite of the inclusion of this backward law in our state constitution, that the democratic process is an ongoing one. The vote tonight measures the need to educate further... The democratic process is wonderful in its ability to correct itself over time."

Possible responses to the new law are still being discussed, said Wakabayashi. The coalition could challenge the measure in court, or it could "wait for actual implementation and respond to a specific situation," he said.



William T. (Wimpy) Hiroto is sworn in as a member of the Los Angeles County Design Control Board (Small Craft Harbors) by Supervisor Kenneth Hahn. Hiroto is executive director of the Gardena Valley Cultural Institute and serves on the advisory board of Pacific Heritage Bank.

Assemblyman Frank Hill (R-52nd District) has already announced his intention to introduce bills eliminating bilingual provisions of such state services as driver's tests, welfare forms, student financial aid forms, and voting materials.

The only areas Hill considered exempt from the law are public health, safety and justice. "He also believes in bilingual education," said a spokesman for Hill, "as long as it emphasizes transition [to English] and not the teaching of native languages."

Opponents fear the measure could lead to the elimination of bilingual education, court interpreters, and bilingual emergency telephone operators, none of which are specifically exempted.

Wakabayashi suggested that the amount of litigation brought about by Proposition 63 could be reduced, albeit slightly, by making it clear that the law does not

apply to private businesses that advertise in languages other than English or to services provided by city or county governments.

Money for Classes

He added that the Legislature could actively help immigrants learn English by setting aside funds to provide instruction for the estimated 800,000 adults who are unable to enroll in classes because of limited funding. The measure does not specifically mandate the increase of such funding.

California English chairman Stanley Diamond did not announce immediate plans to either eliminate non-English services or promote the learning of English. "I don't expect much for the next couple of months," he told the Los Angeles Times. "We're going to let things settle down a little bit and reflect on where we are."

Both sides agree that the wide margin of support for "Official English" in California could lead to a nationwide trend.

No. 2,415
 Allow 6 weeks advance notice to report address change with label on front
If you are moving / Wish to subscribe,
 Write New Address below. Effective date
Please send the Pacific Citizen for:
 1-Yr \$20 2-Yrs \$38 3-Yrs \$56
 To:
 Address:
 City, State, ZIP:
All subscriptions payable in advance. Foreign: US\$12.00 extra per year.
Checks payable to: Pacific Citizen, 941 E. 3rd St., Los Angeles, CA 90013
EXPIRATION NOTICE—If the last four digits on the top row of your label reads 1086, the 60-day grace period ends with the last issue in December, 1986. Please renew your subscription or membership. If membership has been renewed and the paper stops, notify the PC office.

MAINLAND ELECTION RESULTS

Continued from Front Page

during the race; former President Gerald Ford called Owens' voting record "even more liberal than Tip O'Neill's," while Owens said Shimizu lacked knowledge about how Congress operates. However, according to Shimizu, the overall campaign was not negative.

Another Nikkei Republican in Utah fared better: Frank Nishiguchi was elected to a two-year term as a Box Elder County commissioner, receiving 8,261 votes.

Bay Area Results

Out of five Chinese American candidates in San Francisco races, only one, incumbent Community College Board member Alan Wong, was elected. Wong received the most votes, 95,975 (24%).

Board of Supervisors incumbents Nancy Walker, Bill Maher, Richard Hongisto, Doris Ward and Wendy Nelder were all re-elected; two-term Community College Board member Julie Tang came in sixth place with 84,791 votes (10%) and Dr. William Gee, formerly of the San Francisco Committee on Aging, was in ninth place with 29,320 votes (3%).

Incumbents Rosario Anaya, Soderia Wilson and Myra Kopf were reelected to the Board of Education. Leland Yee, a child

psychologist, was in fourth place with 60,999 votes (13%); Gilman Louie, the president of a computer software firm, was in sixth place with 46,552 votes (10%).

Berkeley School Board

David Kakishiba, director of the Berkeley Asian Youth Center, lost in his bid for the Berkeley School Board, garnering 10,907 votes (compared to the 20,460 received by the top vote-getter, Myron Moskovitz). Along with Howard Traylor and Noel Krenkel, both of whom also lost, Kakishiba had been running on a slate endorsed by the Berkeley Citizens Action coalition.

"It was an uphill battle from the very start, both in terms of money and resources," Kakishiba told PC. At the same time, he characterized his campaign as "very vigorous, very visible... Friends and foes alike have acknowledged that."

In his campaign, he stressed the fact that more than 60 percent of the children in the district were minorities but that no one on the school board was. One of his priorities was establishing a program to curb the dropout rate among minority students.

'Tremendous Fears'

He expressed "tremendous fears" about the new School Board. With regard to such problems as layoffs and dropouts, he said, "I don't think they'll take decisive steps in addressing that."

Asked about another run in the future, Kakishiba responded, "I leave that option open, but it really depends on the time, place and conditions."

Also losing in the School Board race was Dorothy Miao, who came in third place with 12,046 votes.

Berkeley Rent Stabilization Board candidate Mark Min, with 17,097 votes, came in sixth place in a race for five open seats. Inez Watts received the most votes, 18,959.

Alameda/Contra Costa Transit
 Continued on page 8

TEMPORARY CENTER USA CORPORATION
 Permanent & Temporary Personnel Services
 700 South Flower St., Ste. 1400
 Los Angeles, CA 90042
 Headquarters/L.A. Office: (213) 489-2989 • Torrance (213) 986-8382
 San Francisco (415) 986-8382 • Orange County (714) 476-3690
 JOBS FOR—Secretary - Bilingual Secretary - Accounting Clerk
 Assistant Office Manager - Computer Engineer - Office Jobs - Etc., Etc.

INTEREST CASH BONUS UP TO \$990

Sumitomo is offering an immediate Interest Cash Bonus incentive of \$30 for every \$3,000 you deposit in a 3-Year Money Market Account. IRA and Business Accounts are not eligible. This offer begins September 1 and ends November 30, 1986. Act now and visit a Sumitomo office near you.

Deposit Amount	Minimum Deposit	Examples of Other Deposit Amounts			
	\$3,000	\$15,000	\$30,000	\$60,000	\$99,000
Interest Cash Bonus	\$30	\$150	\$300	\$600	\$990

Interest Cash Bonus applies to accounts under \$100,000.
 Note: Substantial penalties, including loss of interest bonus, upon premature withdrawal. Interest Cash Bonus will be reported as taxable income. Certain conditions may apply.

Sumitomo Bank
 Sumitomo Bank of California Member FDIC

MIDAS OPERANDI
 Invest in Dollars and Have It Working for You in Yen... With Liquidation in Dollars.
Hedge Against Inflation by Realizing More than 20% NET per Annum
 Minimum Investment: \$15,000
 —DETAILS UPON REQUEST—
 Dyke Nakamura, Foreign Department
 YAMAKICHI SECURITIES CO., LTD.
 7 Nihonbashi, Kabutocho, 1-chome
 Chuo-ku, Tokyo, Japan 103
 Cable: YAMASECURE, TOKYO □ Telephone: (03) 667-7947

Medicare Supplement Insurance
 MEN and WOMEN—Ages 64 and Over

- Helps pay your MEDICAL EXPENSES IN EXCESS OF THE AMOUNT APPROVED BY MEDICARE.
- Offered by an A+ Excellent Company (United American Insurance Co., MAXC)
- GUARANTEED RENEWABLE for life, subject to company's right to change rates.
- Pays your medicare initial hospital deductible, and co-insurance beginning the 61st day.
- Pays for your private room costs.
- Pays for blood charges.
- PAYS 100% OF YOUR HOSPITAL EXPENSE AFTER MEDICARE RUNS OUT.
- You choose your own doctor and hospital.
- Current monthly premium is \$63 for all ages.

FOR FURTHER INFORMATION, CALL OR WRITE
SEICHI (SAGE) SUGINO
 Sugino Insurance Agency
 18321 S. Western Ave., Suite F, Gardena, CA 90248
 L.A. Phone: (213) 770-4473
 Gardena Phone: (213) 538-5808 / 329-8542

Commercial & Industrial Air Conditioning and Refrigeration CONTRACTOR
 Glen T. Umemoto
 Lic. #441272 C38-20
 SAM REIBOW CO. 1506 W. Vernon Ave.
 Los Angeles/295-5204 SINCE 1939

CHIYO'S
 Japanese Bunka Needlecraft
 Framing, Bunka Kits, Lessons, Gifts
 (714) 995-2432
 2943 W. Ball Rd., Anaheim, CA 92804
 (213) 617-0106
 424 E. 2nd St., Honda Plaza, L.A. 90012

CAMPBELL'S flowers
 Across St. John's Hosp.
 2032 Santa Monica Blvd.
 Santa Monica, CA.
 KIRK ISHIZUKA 828-0911

Bunka Bunka
 LARGEST STOCK OF POPULAR & CLASSIC JAPANESE RECORDS, MAGAZINES, ART BOOKS, GIFTS
 Two Stores in Little Tokyo
 300 E. 1st - 340 E. 1st
 Los Angeles, CA - (213) 625-0123
 625-0123 - 625-8673
 S. Uyeyama, Prop.

Justice Dept. Probe?

Charges that UC Berkeley Bars Asian Students Being Checked

BERKELEY — Federal civil rights officials are taking a "preliminary look" to see if Asian students at the University of California, Berkeley, and other universities are being discriminated against, the Oakland Tribune reported.

Nathaniel Douglas, head of the education section of the Department of Justice, said his section is conducting an inquiry "to determine whether or not there are any policies that restrict the enrollment of Asian students."

Douglas, however, emphasized that the department has not made any decision at all about the allegations. "We're looking at a policy brought to our attention, but it's not an investigation," he said in a telephone interview with the Tribune.

Complaint Filed

According to Douglas, the issue was brought to the attention of the Justice Department by both a complaint filed from the Berkeley campus and several articles in major newspapers about a growing concern that a disproportionate number of students at some of the nation's best universities are Asian.

The civil rights official would not specify who filed the complaint or which other universities are part of the inquiry.

UC Berkeley spokesman Ray Colvig said that the Justice Department had not informed the campus about the inquiry, but "if they do inquire, we will provide them all the data."

The data shows that overall freshman enrollment at Berkeley has dropped 27 percent since 1983. The university has been trying to reduce the number of students at the campus since 1984, when total enrollment was 31,000.

Despite that goal, total enrollment edged up to 31,463 this year, reported the Tribune, citing enrollment statistics released at the end of October.

Drop in Enrollment

The new figures revealed that the number of Asian students enrolling as freshmen dropped from a high of 609 in 1983 to 382 this year. They represent 26.5 percent of the freshman class, a slight drop from the 27.3 percent figure for 1983.

The total number of undergraduate Asian students at Berkeley has increased from 4,879 in 1983 to 5,509 this year.

University officials were quick to point out that the number of white students enrolling as freshmen fell more dramatically from 2,592 in 1983 to 1,494 this year.

Douglas also noted that several newspaper articles have mentioned admissions policies at Ivy League schools that tend to reduce the number of Asians admitted.

Prof. Ling-Chi Wang of the UC Berkeley ethnic studies department also accused Berkeley of having an unstated policy that tends to reduce the number of Asians admitted by over-emphasizing the importance of students' verbal scores in making admission decisions.

Wang pointed out that Berkeley's Asian students score an average of 100 points below other students on the verbal section of the Scholastic Aptitude Test and English achievement test.

"In the past two years, there's been a high level of awareness that Berkeley is unsympathetic to Asians," Wang added. "Without exception, the other UC campuses are experiencing a great increase in the number of applicants."



Photo by Leslie Michihira

A JOB WELL DONE — Longtime East L.A. Chapter board member Robert Obi presents a proclamation from Mayor Tom Bradley to Jane Ozawa during a reception held in her honor Oct. 19 in Little Tokyo. Ozawa retired after 25 years of advertising and business work for PC.

Bud Travers, assistant vice chancellor for undergraduate affairs, denied that Berkeley is using discriminatory practices. He noted that the Berkeley campus has more Asian students than any other in the country.

Asians Overrepresented

The undergraduate affairs official also mentioned that because of the large number of Asians, they are overrepresented relative to their numbers in the general population. Thus, they are no longer considered minorities for admissions purposes.

The campus is currently trying to reduce the overall number of students admitted, while at the same time trying to increase the number of Black, Hispanic and Native American students, said campus officials. This means that there are fewer spaces available for Asians and whites.

"If one group increases, another group is going to decrease," Travers stated. "It's not a matter of whether they are competing or not. It's just there's only a certain amount of space."

REDRESS

Continued from Front Page

moving up to become Speaker of the House, Tom Foley (D-Wash.) becoming Majority Leader, and either Tony Coelho (D-Calif.) or Charles Rangel (D-N.Y.) being chosen as Majority Whip, the three top positions in the House will be filled by strong redress supporters. This development should enhance the bill's chances, she said.

Cautious Assessment

Grant Ujifusa, acting LEC chair, was a bit more cautious, emphasizing that passage of the bill will not be easy. "While prospects have improved," he said, "if we hope to succeed, we still have to work very hard."

Still, as Kinoshita summed up, "For redress, the elections came out pretty well."

HAWAII ELECTION

Continued from front page

She added that because her uncle was interned in Topaz, Utah, she has personal involvement in the issue.

Saiki also emphasized the bipartisan nature of the issue: "AJAs need to recognize the realities that we do have a Republican administration, that we need bipartisan support for a lot of issues of concern to AJAs. We need someone to carry the other side of the aisle."

In other Hawaii election results, Inouye easily defeated his Republican opponent, businessman Frank Hutchinson, 241,872 to 86,876. Inouye will probably retain his position as chair of the Senate Democratic Caucus, the number three party spot in the Senate, unless Sen. Robert Byrd (D-W.Va.) decides not to run for majority leader.

The Democratic ticket of John Waihee and Ben Cayetano won a close victory over D.G. Anderson and John Henry Felix in the governor/lieutenant governor's race, capturing 173,655 votes to the GOP ticket's 160,460.

Waihee will be the nation's first governor of Hawaiian ancestry, while Cayetano will become the highest ranking Filipino American officeholder in the country.

In the race for the second congressional district, Democratic incumbent Daniel Akaka defeated Republican Maria Hustace, 123,821 to 35,365.

In mayoral races, incumbent Hannibal Tavares of Maui held off a challenge by Democrat Marvin Miura, 15,921 to 13,772; and Kauai's mayor, Tony Kunimura, defeated his Republican opponent, John Barretto, 10,025 to 8,352.

Wesley UMW Cookbook
18th Printing, Revised
Oriental & Favorite Recipes
Donation: \$6 + Handling \$1
Wesley United Methodist Women
566 N. 5th St., San Jose, CA 95112

Kimura PHOTOMART
Cameras & Photographic Supplies
316 E. 2nd St., Los Angeles, CA 90012
(213) 622-3968

Empire Printing COMPANY
Commercial and Social
English and Japanese
114 Weller St.
Los Angeles, CA 90012
(213) 628-7060

MIKAWAYA SWEET SHOPS
244 E. 1st St., Los Angeles; (213) 628-4935
118 Japanese Village Plaza, L.A.; 624-1681
Little Tokyo Square, 333 So. Alameda, L.A.; (213) 613-0611
Pacific Square, 1630 Redondo Beach Bl. Gardena; (213) 538-9389

TOYO Miyatake STUDIO
235 W. Fairview St.
San Gabriel, CA 91776.
(213) 283-5685 (818) 289-5674


Helpline
NIKKEI-1 日本ヘルプ・ライン
THE NIKKEI HELPLINE IS HERE FOR YOU
1-800-NIKKEI-1
1-800-645-5341
IF YOU'RE IN NEED OF HELP IN DEALING WITH A FAMILY CRISIS, DRUG ABUSE, VIOLENT CRIME, SUICIDE, OR CONSUMER INFORMATION, CALL US.
WE'RE A TOLL-FREE, 24 HOURS A DAY, SEVEN DAYS A WEEK SERVICE IN BOTH ENGLISH AND JAPANESE.
THIS NONPROFIT SERVICE IS SPONSORED BY THE LITTLE TOKYO SERVICE CENTER.

New Car Loans
10.5% apr

Up to 60 months,
85% financing, simple interest
No pre-payment penalties. Free loan insurance.
NATIONAL JACL CREDIT UNION
NOW OVER \$7.8 MILLION IN ASSETS
PO Box 1721 / Salt Lake City, Utah 84110 / 801 355-8040

プラザギフトセンター

NEW MINOLTA
MAXUM
THE FIRST AUTOFOCUS SLR
Plaza Gift Center (213) 680-3288
111 Japanese Village Plaza - Little Tokyo


SIGN LINE LOANS
Borrow up to \$3000 without collateral*... on your signature alone. Use the cash for paying off credit cards (compare our 12.9% apr to theirs) or for any purpose you may have.
*Previous qualified borrowers.
NATIONAL JACL CREDIT UNION
NOW OVER \$7.8 MILLION IN ASSETS
PO Box 1721 / Salt Lake City, Utah 84110 / 801 355-8040

JOIN The National JACL Credit Union
JUST FILL OUT AND MAIL
Name _____
Address _____
City/State/Zip _____
PO Box 1721 Salt Lake City, Utah 84110 Tel (801) 355-8040

Diary of an 'Enemy'

FROM THE
FRYING PAN

Bill
Hosokawa



Last December, *Periodical* of the Council on America's Military Past, edited by Dan L. Thrapp in Tucson, Ariz., published entries from the diary of a 35-year-old Japanese medical officer who died in battle on Attu Island in the Aleutians on May 29, 1943.

The diary tells of cold and constant fog, food shortages and illness, frequent American attacks and heavy casualties and the expectation of death. The last entry, dated May 29, tells of being assembled for a desperate suicide attack by 1,000 men on an American artillery position after all the hospital patients were made to kill themselves with grenades.

An introduction to the diary says: "This unknown Japanese soldier's diary apparently was captured on the battlefield and, if written in Japanese, was translated. Forty-two years later, a copy was donated to the Fort Guijarros Museum Foundation of San Diego by the San Diego County California Public Administrator's office. The rarity of such documents and unusual insights in this particular diary makes them extremely valuable to military historians. How often can a soldier of the winning side comprehend what goes on in the minds of those of the enemy who are about to die?"

The diary given the museum, found among the effects of a former serviceman, was a faded typewritten copy. Presumably the original was in Japanese since it seems unlikely that a Japanese officer would have access to a typewriter. And it seems safe to presume that the translation and typing were done in

the field by a Nisei translator, a number of whom were assigned to U.S. units in the Aleutians, where they performed yeoman service.

What makes the diary of the unnamed soldier particularly poignant is the personal history attached to it. It said he had been at Pacific Union College from 1926 to 1932, at the College of Medical Evangelists from 1933 to 1937, and had received a California medical license in 1938. It also said he was "transferred to 1st Imperial Infantry Division" Jan. 10, 1941.

One reader of *Periodical* wrote that his brother is now on the faculty of the medical school where the diarist earned his degree, now renamed Loma Linda University. That touched off further investigation which revealed that the diarist was Paul Nobuo Tatsuguchi. He married Taeko Miyake in the U.S., then went to Japan as a medical missionary for the Seventh-day Adventists at the Adventists Tokyo Sanitarium. He was drafted into the Japanese Army in 1941 as an enlisted man and not as a medical officer, apparently because his American background made him suspect. Tatsuguchi and Taeko apparently had two children, one of whom was born after Paul was shipped to Attu.

Ronald May of La Mesa, Calif., who wrote the original *Periodical* story, says he learned Dr. Tatsuguchi had sought to surrender to an American and said something in English, holding a Bible in front of him. One of the Americans heard him say, "Don't shoot, I am a Christian," but another soldier shot him. May says "To Seventh-day Adventists, Paul Nobuo Tatsuguchi is a hero."

Perhaps this is an old story to Nisei who knew the Tatsuguchi and Miyake families in California, but it is new to me. It is one more dramatic story, among the many surfacing from time to time, that attest to the tragedy, waste and unfairness of war.

Scoring Points

ONE THING
LEADS
TO ANOTHER

Bob
Shimabukuro



It is often said that the problem with AJA males is that we are indirect and evasive. We hate confrontation. But hey, what's a guy to do? Let's look at some examples.

A typical Anglo or Latino American male, wishing to comment about his wife's (or girlfriend's) legs, will step right up

to her and state, "What I don't like most about you is your thunder thighs." (Some AJAs, imitating other Americans, would probably comment about her "daikon legs.")

Now you know a comment like that is bound to produce an argument, if not an out-and-out fight. But at least it would be out in the open.

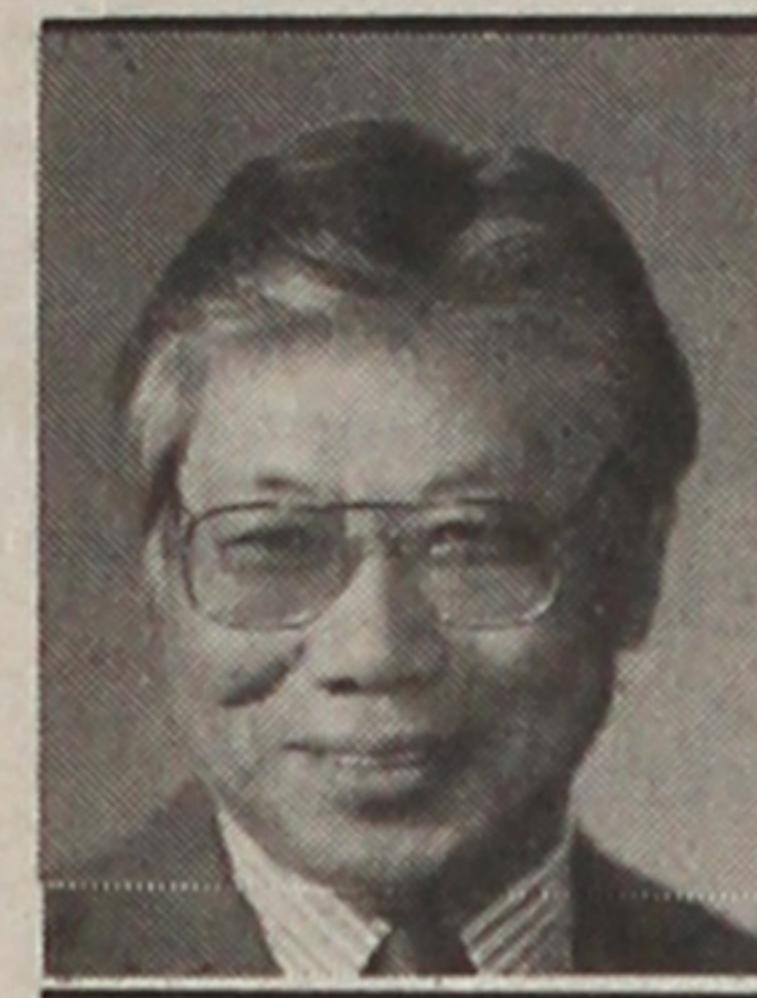
A slightly less blunt comment, but one which would still produce irritation would be: "You may have thunder thighs, but you've got the prettiest eyes."

"Great, so all I have to do is make my thighs look like my eyes—go take a walk," she replies.

Continued on Next Page



Getting Our Act Together at All Levels



PRESIDENT'S
CORNER

Harry
Kajihara

On Oct. 10-12, I presided over the first full-blown 1986-88 biennium National Board meeting. The main business matters after approval of the committee chairs and presidential appointees were finances and membership.

JACL Finances

There exists a potential deficit of \$100,000 in the JACL treasury in 1986, with a projected membership revenue loss of \$50,000 and other unbudgeted outlays, including liability insurance premiums, hiring professional firms for consultation on IRS problems and fund-raising outside of JACL, and a \$50,000 advance to LEC.

A committee headed by JACL Treasurer Alan Nishi will submit a plan for recovery from this deficit at the next National Board meeting, scheduled for Feb. 13-15, 1987.

Membership

The previous administration, in an attempt to raise money outside JACL and increase membership, contacted a professional fund-raising firm. We recruited 650 new members. To maximize retention, we plan to provide a computer listing of these new members to chapters for personal contact and follow-up.

Other actions approved by the board include a \$10 rebate to chapters for signing up new members between Oct. 1 and Dec. 31, and sending letters of invitation to rejoin JACL to the approximately 2,000 persons who failed to renew membership in 1986. A computerized list of non-renewing members will be sent to chapters for personal follow-up.

Another thought offered by a PNW JACler was for us to compile a JACL mailing list. These names and addresses would be developed by having volunteers in each of the 115 chapters scour the telephone directories. In this way, JACL could contact many non-members for such matters as membership recruitment, redress, and other donations. This idea will be explored further.

Personal Computer

Mountain Plains District Governor Paul Shinkawa came to the National Board meeting, accompanied by Mile-Hi Chapter President Bob Sakaguchi and a Leading Edge personal computer. A donation from the district, the computer will enable JACL to

take the first giant step toward development of an automated membership renewal system. It will also be shared with the JACL business manager to computerize the processing of financial data. Thank you, Mountain Plains District!

Thanks also to Bob Sakaguchi for all the time, effort and energy he has expended, plus the know-how he has contributed to JACL's computerization thrust. Bob will continue helping JACL with software development. He has also set up the LEC computer operation in Washington, D.C.

To utilize the computer capability fully, district governors will go back to their respective districts to see if each will contribute \$250-500 to purchase needed software and versatile printers. Thank you in advance, all districts!

Outgoing Governors

The board meeting marked the end of the term for two of the eight district governors. Paul Shinkawa of Mountain Plains will now serve as a member of the JACL legal counsel team formed by Gene Takamine. Central California District Governor Peggy Sasashima-Liggett will slide over a chair at the National Board to occupy the PC board chair's position.

Northern California-Western Nevada-Pacific District Governor Mollie Fujioka was just re-elected for a new term.

PNW Visit

On Oct. 17-19, I visited the Pacific Northwest District to attend the District Council meeting and met with the co-chairs of the upcoming National Convention, Ben Nakagawa and Tomio Moriguchi. Governor Denny Yasuhara and Regional Director Tim Otani also attended.

In a major effort to keep costs down, the convention will be held on the University of Washington campus. I visited the facilities, and they looked terrific to me. The co-chairs are diligently pursuing corporate sponsors for the convention. Concurrently, ideas are being developed to attract non-members to the convention activities for membership development.

I attended the Reno Night festivities sponsored by White River, Lake Washington, Puyallup Valley and Olympia chapters. I had planned to make some pocket money and was doing okay until National Youth Chair Diana Kato took over the house table dealership. I was cleaned out in about 20 minutes, dropping a tidy sum. Oh well, it went to a good JACL cause.

Incidentally, Oyster Bay, just

about five minutes from Olympia, is my birthplace. It was a homecoming for me after many, many years. I called and met many dear friends, some who I knew before camp and others who I met at camp. It was a marvelous visit.

The District Council meeting, chaired by Governor Yasuhara, moved along at a good pace. A special presentation was made to Dr. and Mrs. Paul Ellis by Jan Yoshiwara of Puyallup Valley and John Umino of Olympia. The Ellises contributed much time and energy to the formation and development of Puyallup Chapter and, more recently, Olympia Chapter.

Twin Cities Chapter

I just got back from attending the 40th anniversary installation dinner of the Twin Cities Chapter, Midwest Governor Tom Hara's home chapter.

Tom hosted a Sunday morning business-discussion breakfast meeting, where I enjoyed getting to know better (and they me, I hope) Twin Cities President Matt Abe, convention delegate May Tanaka, Kay Kushino, Gladys Stone, Tom's mother Kimi (scholarship chair for many years), redress chair Sam Honda, John Nakasone (brother of the national youth chair of several bienniums past), Tom Kanno (the super MC of the dinner), Chuck Tatsuda, Yuri Esaki, Chris Sandberg, and Jay Yamashiro.

The discussion session was valuable for me. The implementation of several recommendations will be beneficial to JACL, and I shall pursue them.

This is all for now. I must attend to the many JACL matters accumulating on my desk.

For the Record

The Oct. 17 article on the "Nisei Soldier" follow-up incorrectly stated that the Nisei of the 1800th Army Engineer General Service Battalion were dishonorably discharged during WW2 for protesting the internment of their families and the discriminatory treatment they had received from the Army.

1800th veteran Cedric Shimo informed us that most of the Nisei were honorably discharged and most of the Kibei were given "blue" or "without honor" discharges, the difference being that dishonorable discharges are usually for soldiers who are court-martialed for disobeying military orders, whereas "blue" discharges are often for attitudes unbecoming a soldier. According to Shimo, the difference is as great as that between a felony and a misdemeanor.

ISSN: 0030-8579



pacific citizen

Nat'l JACL Headquarters, 1765 Sutter St., San Francisco, CA 94115, (415) 921-5225

Published by the Japanese American Citizens League every Friday except the first and last weeks of the year at 941 E. 3rd St., #200, Los Angeles, CA 90013
2nd Class postage paid at Los Angeles, CA. • Annual Subscriptions—JACL members: \$10.00 of national dues provide one-year on one-per-household basis. Non-members: \$20/yr, \$38/2-yr, payable in advance. Foreign addressees: Add U.S.\$12 p/yr. First class/air—U.S./Canada US\$25 extra, Japan/Europe US\$60 extra
Opinions expressed by columnists other than the National President or National Director or the news do not necessarily reflect JACL policy.

OFFICERS

Harry H. Kajihara, Nat'l JACL President Peggy S. Liggett, PC Board Chair

EDITORIAL / BUSINESS STAFF

Editor: Lynn Sakamoto-Chung Ass'l Editors: Robert Shimabukuro, J.K. Yamamoto
Advertising/Business Manager: Rick Momi Bookkeeper: Mark Saito
Production: Mary Imon Circulation: Tomi Hoshizaki

General Manager / Operations: Harry K. Honda

POSTMASTER: Send changes of address to Pacific Citizen,
941 E. 3rd St., #200, Los Angeles, CA 90013-1703

TRAVEL SECTION

Prepared by the Japanese American Travel Club, Inc. 250 E. 1st St., Suite 912, Los Angeles, CA 90012 (213) 624-1543

Friday, November 14, 1986



HAPPY TRAVELS

Henry Sakai
JATC Chairperson

JATC's 3rd Year

As we finish our third year of operation and get ready for a new year of travel, I'd like to thank all of you who have traveled with JATC. The purpose of starting JATC was to provide top-grade tours at reasonable prices for Nikkei who wanted to travel together.

Under directorship of Bill Hamada, former sales manager of Canadian Pacific Airline, JATC has offered many and varied tours. This year, JATC has added fishing, golfing and Christmas shopping in Hong Kong in addition to the recent EXPO-86. Mrs. Sami Kushida came on board this past spring to help out when Bill had to take medical leave and has a lot of enthusiasm and ideas for exciting tours.

JATC welcomes your input on the type of trips you would like to go on and JATC will help make it possible. JATC is for you!

Look at the many exciting tours and cruises being offered in 1987 and make your vacation plans early. Bill, Alyce (Komoto) and Sami will be looking forward to hearing from you.

Have a happy Holiday Season and a prosperous New Year.

Happy Travels,
HANK SAKAI

Who Painted the Martyrs of Nagasaki in Cuernavaca? Uncovered in 1958 in Mexico

By HARRY K. HONDA
CUERNAVACA, Mexico — Most people find Cuernavaca as advertised—the land of eternal spring, where the temperatures vary but 10 degrees throughout the year, a haven for U.S. retirees at the comfortable climate of 5,000 ft. above sea level and a 90-minute drive over the toll road (#95) from Mexico City.

What this roving Nisei writer—al-

ways on the prowl for a Nikkei angle in a story—found here were the dramatic murals inside one of the oldest churches in Mexico, the Cathedral of the Assumption that depicts the 26 martyrs of Nagasaki, six foreigners and 20 Japanese who were crucified Feb. 5, 1597, as a result of Hideyoshi Toyotomi's decree of 1587 prohibiting Christianity. Legend has it that for 80 days after the cru-

cifixion, they looked like sleeping angels on the cross, showing no sign of death. As the days passed, various miracles occurred, drawing the attention of many in the neighborhood. (The place of execution, but 5 minutes on foot from the Nagasaki Station, was converted to Nishizaka Park in 1949.)

The story of the Nagasaki martyrs is well known to Japanese Catholics, but its depiction as a mural in the New World should evoke all kinds of wonders to scholars, artists and travelers. And what's mystifying is that for centuries these murals had been covered with baroque art.

Uncovered in 1957

Then in 1957 the avant-garde bishop of Cuernavaca decided to refurbish the dreary-appearing church by ripping out the gaudy decorations. One tourist book mentions workers began to scrape the walls bare, but one was a little slower ("maybe he felt it was blasphemous to renovate a 16th century church..."), and discovered a picture hidden underneath layers of paint and grime.

The renovation was immediately halted and experts called to restore (rather than raze) the murals, which took about a year. What remains (and to be awed now) are portions of the scenes of missionaries arriving, the Christian prisoners being herded, then crucified and finally—which was shocking to see—crosses on the ground with bodies beheaded.

We (thanks to our gracious guides Julio and Miwa Pierre-Audain) were allowed to take photographs but not for publication: a sure way to have people come and see for themselves. There's no admission charge; the cathedral is open daily

(except one day out of the year—the day which we had unwittingly chosen—when the church is scrubbed clean on the Saturday before Aug. 15—feast day of the Assumption of the Blessed Virgin Mary after which the church was named. Carlos Kasuga's sister Miwa was able to persuade the rector to permit four Japanese American visitors on a very brief stay in Mexico to view the great murals.

Inscriptions Noted

Above the murals, capital letters tell the story in essence: ...RE-SIVEN EN JAPON ... EMPERADOR TAYCOSAMA. MANDO MARTIRIZAR POR ...

"... Receive in Japan ... emperor Taico-sama (translates Prince or Shogun) had put to death as martyrs by ... (in this case, the shogun was Hideyoshi who banned preaching of Christianity in 1587)."

Not to be lost is the background to this bit of Japanese history in Mexico and the Americas. After Spain had founded Manila in 1571, the Franciscans based in Cuernavaca were sent by the archbishop of Mexico City to the missions in the Philippines. They sailed from Acapulco. One galleon, returning home, was blown off course during an October storm in 1596 and landed in Japan. Among the passengers was Fray Felipe (de Jesus) de las Casas-Martinez, a Mexican trader who took the habit in Manila. He and his five companions were imprisoned and eventually crucified. Felipe was to become Mexico's first saint, being canonized in 1862 with the Nagasaki martyrs.

Japanese Land in Acapulco

The first Japanese to set foot in the Americas were members of the Hasekura Mission, landing at Aca-

Continued on next page



Photo by Author: Cuernavaca, Aug. 1986

INSIDE CUERNAVACA'S CATHEDRAL sampling baroque art at the lower fringes are the Julio Pierre-Audains of Mexico City, Betty Morinaga and Veronica Ohara of Los Angeles while meeting with the rector who forbade taking pictures of the murals of the Nagasaki martyrs for print.

Orient Highlights: a vivid blend of Japan with four countries

Of the many attractions in Asia, nothing stands out more strongly than the once-stronghold land of the mighty Shogun. Without having lost its charm or culture, Japan stands as an example to the rest of the world on how its many traditions and festivals can thrive in modern civilization. Undoubtedly one of the most courteous people in the world, the Japanese have not only absorbed the Twentieth Century in a scant 150 years, but have also shown the way in their many improvements to high technology.

Thus in our Orient Highlights program we have thoughtfully prepared a 16-day package for our members who do not have the time to visit the Orient in depth. We have embodied the spirit of modern Tokyo and blended it with its temples and gardens to show to advantage a throbbing metropolis and at the same time exposing its secret hideaways wherein meditation and the leisurely appreciation of nature can be truly captured. And we have not forgotten to take you to the ancient capitals of Kyoto and Nara, nor to visit Hakone and the great Daibutsu of Kamakura dating back to the year 1250.

A Smooth Train Ride

A ride on the Bullet Train is an experience in itself, a masterly piece of Japanese engineering that travels quietly and smoothly at speeds of up to 130 m.p.h.

In Kyoto, the power of Shogun truly comes to life with a visit to Nijo Castle, where court intrigues and the fear of assassination led to the construction of an ingenious flooring that squeaks at every step, gaining for itself the appropriate name of "Nightingale Corridors." Of the hundreds of temples in Nara, none is more absorbing than the Temple of a Thousand Lanterns with its freely roaming deer tamely looking for a handout.

On to Bangkok

From Japan, a transition is made to another never-never land, a land of beautiful women, colorful temples and impressive stupas, with none more beautiful than the Royal Temple of the Emerald Buddha. Carved from a large jasper stone, it is probably the most revered Buddha in Thailand. But nothing is as striking as the dazzling colors and golden roofs of these intricately constructed temple grounds.

It is without doubt the most photographed corner of Thailand, and you will hate yourself a thousand times for not bringing four times as much film as you thought you might need. However, nothing is more intimate of Siamese life than that which abounds along its klongs and waterways.

Nothing is wanting; from shops along the way to canoes filled with vegetables and daily commodities,

this way of life has existed for centuries. Again film reserves are a must.

The Singapore Spirit

Leaving Thailand in our memories, Singapore is next to capture our attention as we experience the modern miracle of expansion and construction to a degree hardly seen in any city. Block after block of tremendous high-rise buildings seem to mushroom all around us,

United adds five international gateway cities

On Feb. 11, when United Airlines began flying the former Pan Am routes to 10 countries and 13 cities in the Pacific, three additional international gateways were opened in the West - at Los Angeles, San Francisco, and Honolulu - in addition to UAL's existing Portland and Seattle Gateways, with service to Tokyo and Hong Kong, New York also became an international gateway. The carrier reports that travelers can reach 13 Pacific destinations from 162 U.S. cities, without changing airlines.

The UAL expansion covers 65,000 existing route miles formerly served by Pan Am. In addition, United has hired more than 2,700 former Pan Am employees, and acquired 18 aircraft.

United has also inaugurated a Pacific route which was not part of the Pan Am system - daily SFO/Osaka service.

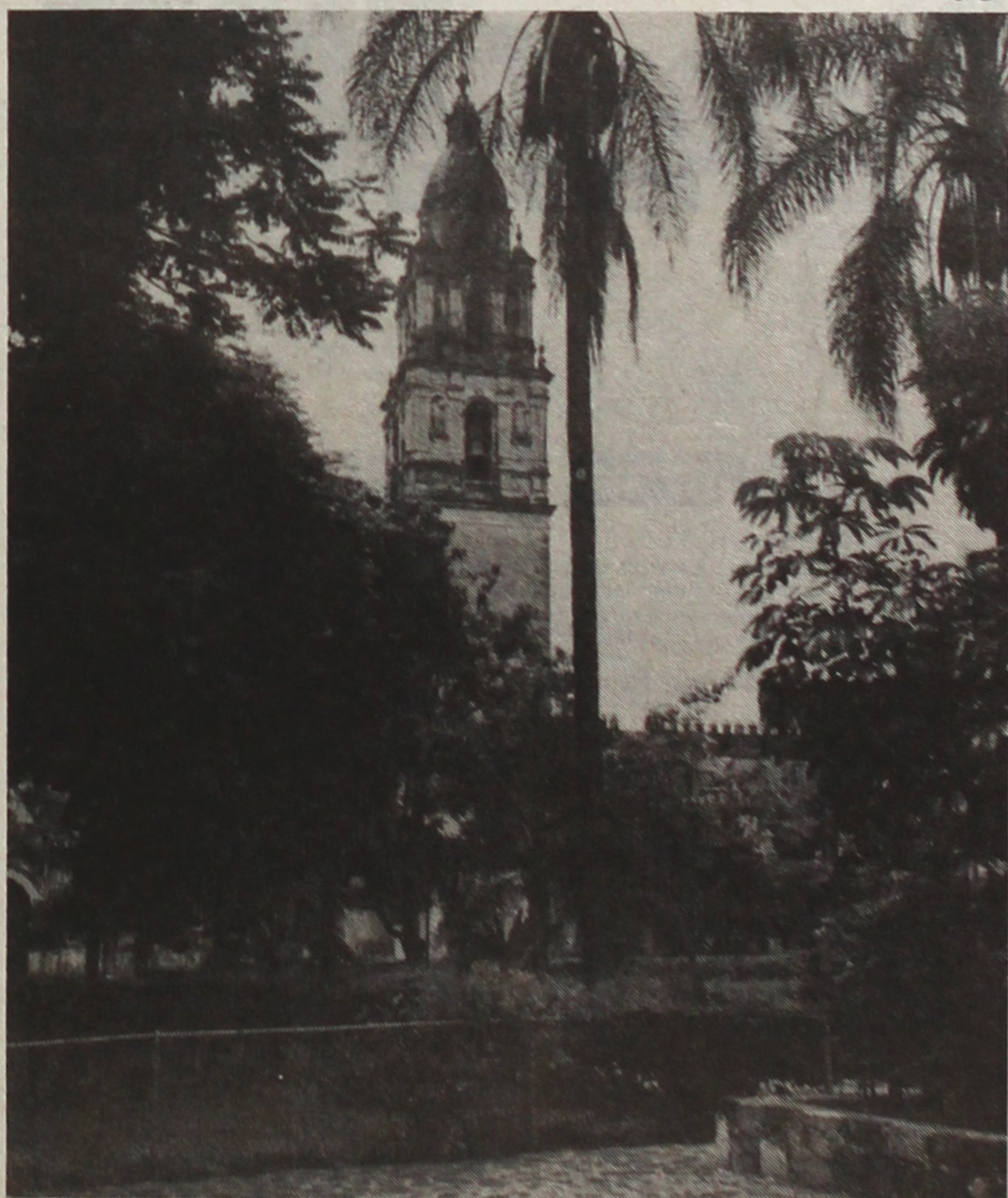


Photo by Author: Cuernavaca, Aug. 1986

BELL TOWER marks one of the oldest churches still in use today in Mexico. The structure was built in 1521 in Cuernavaca by conquistador Cortes.

Discover Alaska!

Special Discount Sets the Pace

Travelers planning on a vacation in Alaska in 1987 can save up to \$400 per couple by early booking with Holland America Line-Westours Inc., the Japanese American Travel Club director Bill Hamada has announced. The special offer requires booking and deposit by Dec. 31, 1986.

JATC members are looking forward to the 7-day deluxe Alaska cruise scheduled for Thursday, July 23, aboard the M.S. Rotterdam sailing from Vancouver, B.C. With this early booking deposit, Hamada explained it will mean a \$200 saving per person on this cruise scaled from \$1,495.

One of the delightful things about an Alaskan holiday is the number of surprises: the sheer size of it all, the astonishing display of natural wonders, the midsummer weather (much like the Pacific Northwest), and the friendliness of everybody you meet.

Inland Passage Cruise

The ship will cruise through the scenic Inland Passage with its forested slopes and picturesque inlets to Ketchikan (with its impressive collection of original totems) and Juneau (the state capital with the mountains and a glacier literally in its backyard), Glacier Bay, Sitka and return to Vancouver.

The day in Ketchikan can be vivid to understanding the Indian (Tlingit and Haida) culture at the Totem Heritage Cultural Center. And even if you lack the time to visit the center, should you touch the Chief Kyan Totem at the top of Ketchikan's Main Street, "they say" you will have money in your hands within 24 hours.

Juneau is being revitalized with a kind of frontier charm downtown that is captivating visitors and residents alike. Mendenhall Glacier is still a main attraction

And sailing through Glacier Bay—a whole day of it from the comfort of the ship, this startling experience encompasses ice-age in action: great slabs of the glacier breaking off from the towering ice cliffs into the sea where seals, humpback and killer whales, porpoises, clown-faced puffins, eagles, and bears make their home.

At historic Sitka, the czarist Russian touch endures at St. Michael's Cathedral with its priceless icons. This Russian America capital was the hub of its vast fur empire and at Castle Hill, Russia sold Alaska to



HUGE GLACIERS in Alaska's Glacier Bay National Park draw the nearly 34,000 ton Holland America Line luxury liner Nieuw Amsterdam. This awesome display of nature's grandeur is a major highlight of an Alaska cruise.

the U.S. in 1867 for 2 cents an acre.

Cruise Information

The fare includes accommodations, all meals and entertainment on board; airfare to Vancouver from your hometown is additional. Shore excursions, items of a personal nature (laundry, beverage, gifts, etc.), gratuities and embarkation fees (\$40 per person) are not included.

Fare for children, 12 & under, sharing with one adult fare, is half; under 3 sharing with two adults in same cabin is free.

There's a "no cash" policy aboard Holland America ships—you sign for all purchases and services and at the end of the cruise, you settle (in U.S. funds) with the purser's office via personal check, traveler's check or major credit card.

Passengers requiring special dietary meals can be arranged at least two weeks prior to sailing. A medical doctor is always on board; his professional services are available at the ship's dispensary.

Baggage is limited to two pieces checked and one overnight or flight bag. Embarkation commences at 4 p.m. from Canada Place at the foot of Burrard Street with passengers expected to be on board at least an hour prior to the 6 p.m. sailing.

As for accommodations, the Rotterdam offers twelve categories on six decks. Cabins are either inside or outside, single or double, economy, large or deluxe. It's a floating hotel, a luxurious resort and a leisurely adventure all wrapped in one.

TRAVEL SECTION

Japanese American Travel Club, Inc.
250 E. 1st St., Suite 912
Los Angeles, CA 90012
(213) 624-1543

Chairperson HENRY S. SAKAI
President TYLER TANAKA
Legal Counsel CHANEY SHEFFIELD

Editor/Publisher WILLIAM Y. HAMADA
Contrib. Editor JOHN BALL
Contrib. Editor RAFAEL BOUFFARD

Advertising WILLIAM Y. HAMADA

The TRAVEL SECTION is published quarterly and is available to advertisers in the travel industry.

TOUR PRICES IN TRAVEL SECTION

All tour and cruise prices mentioned in the JATC Travel supplement are based on per/person/twin (sharing twin) room basis. Single Supplement is available upon request.

Air fares and tour prices are based on current fares and are subject to change without notice or due to currency adjustments.

The \$8 U.S. tax & customs charges must be added for International Travel and are not included in the prices.

Murals -

Continued from Front Page

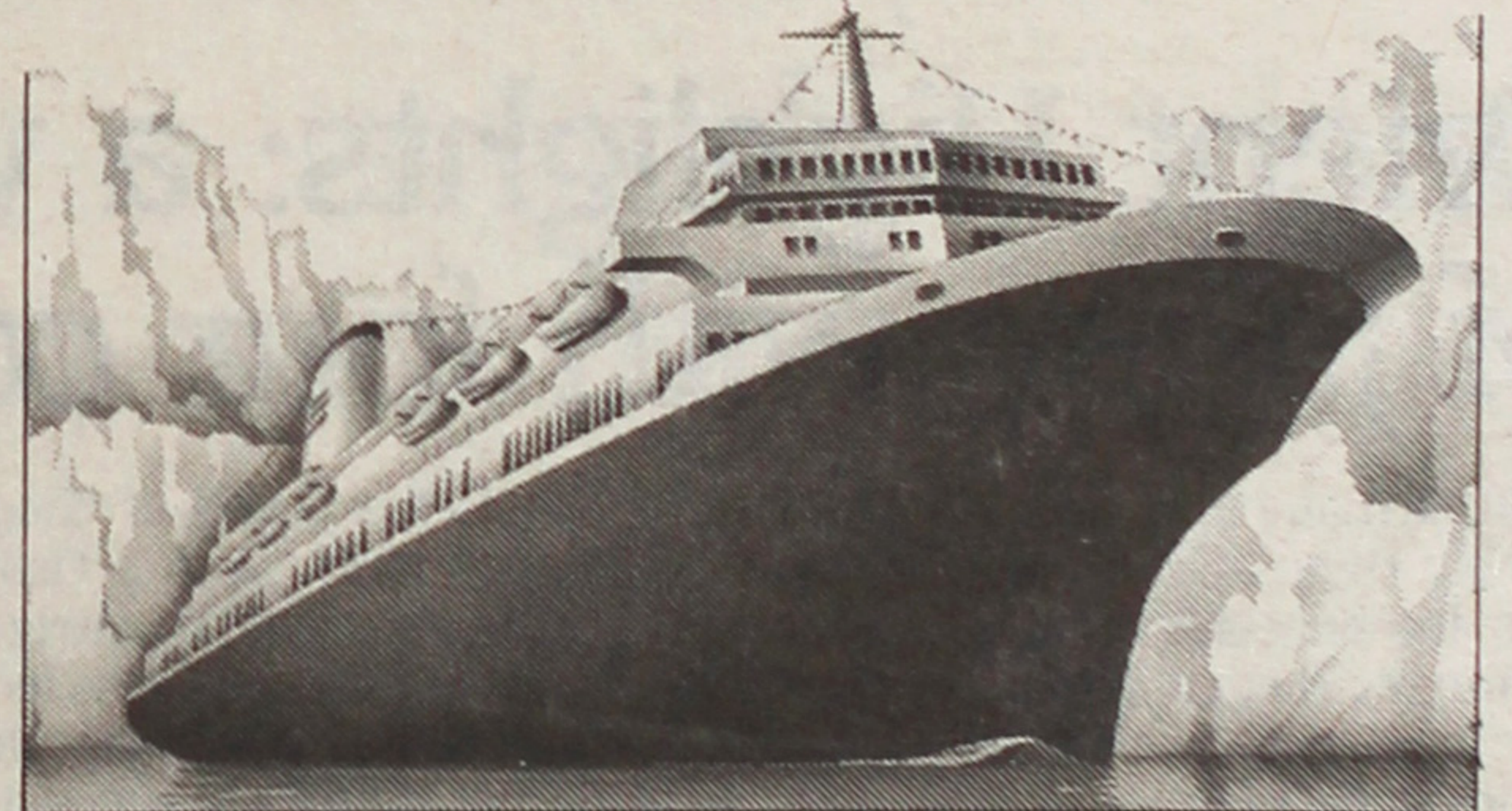
pulco in 1610 on their way to Rome. That's 10 years before the Pilgrims landed at Plymouth Rock.

And who drew the murals? Scholars have yet to uncover a definitive record. Experts who know Spanish colonial art in the New World, comparing it with Japanese art of the 16th century, have concluded the murals are by a Japanese artist. On the other hand, Fr. James Yuki, director of the 26 Martyrs Museum in Nagasaki, feels local painters, probably hearing the story from the Hasekura Embassy, drew the murals around 1628 when Felipe de Jesus was beatified, the step before canonization. However, Japanese writer Mitsusuda Fukusaku (1967) disagrees, contending that the style is very Japanese.

Maria Elena Ota-Mishima of the College of Mexico refers to an 1683 description of the chapels in Mexico, one pointing to the "pintados los veintiseis martires" (the pictures of the 26 martyrs) who endured death "en Nangasaqui" on one wall and a tableau of the storm and arrival of the Galeon San Felipe in Japan on the other wall. She is satisfied no further evidence is needed as to when it was drawn and by whom—local painters who had contemporary drawings of 16th century Japan for reference.

But we were excited that Cuernavaca has this solemn Japanese/Nikkei connection nearly 400 years old. A half-hour stop here enroute to Taxco, for instance, would make a trip to Mexico City very special.

ALASKA'S BEST CRUISE.




\$1495

Aboard a luxurious Holland America Ocean Liner™ you get the best views of Inside Passage scenery from the most luxurious vantage. For as little as \$1,495*, plus extra savings on airfare, sail 7 days roundtrip, to such scenic ports as Ketchikan, Sitka, Juneau — and magnificent Glacier Bay. You'll be pampered as you've never been before, with exquisite meals, roomy cabins, attentive personal service, and Holland America's exclusive *no tipping required* policy. But call today, before this sale sails. Scheduled departure:

July 23 (Thu), 1987

*Prices are per person, double occupancy based on minimum stateroom, plus \$30 port charges. Ships' Registry: Netherlands Antilles.

 **Holland America Cruises**



Japanese American Travel Club

ENDORSED BY THE NATIONAL JAACL

250 E. 1st St., Los Angeles, CA 90012; (213) 624-1543

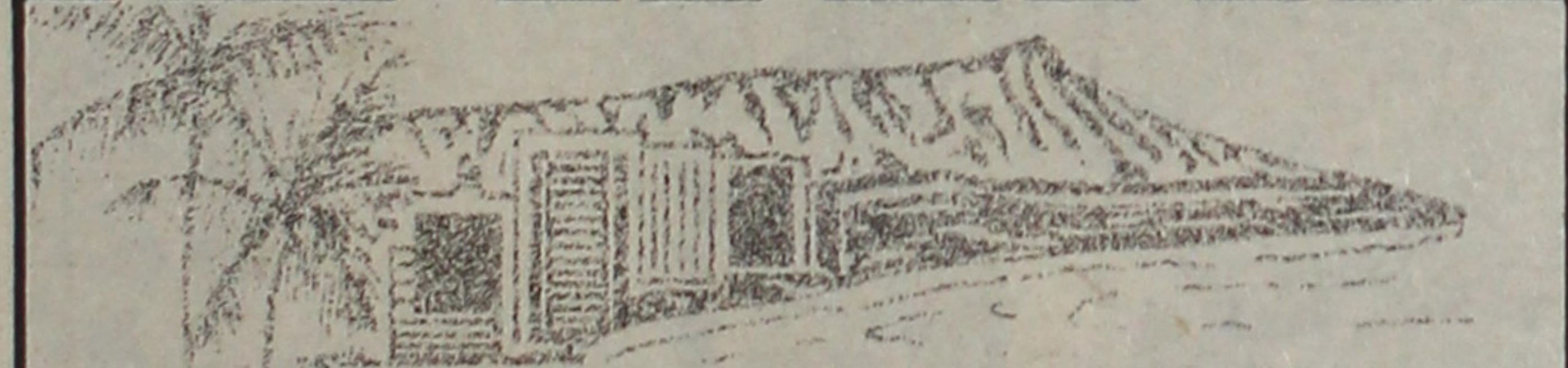
Toll Free: (800) 421-0212 outside CA
(800) 327-6471 in CA

Office Hours:
M-F 9-4; Sat 9-2

\$319

INCLUDES HOTEL & AIRFARE
BOOK NOW — SPACE IS LIMITED
Per person, dbl. occ. PHH-AQ

HAWAII



WEEK IN WAIKIKI

YOUR HOLIDAY INCLUDES:

- Round Trip Air Fare via Wide Body Jet, Including Meal and Beverage Service
- 8 Days/7 Nights Accommodations at a Waikiki Beach Hotel
- Round Trip Transfers Including Baggage Tips
- Flower Lei Greeting, Color Memory Album

7 Nights Oahu & One Neighbor Island \$649
PER PERSON TWIN

OR

Oahu & Two Neighbor Islands \$709
PER PERSON TWIN

Departures from LAX, San Francisco or Seattle
Other Departure Dates (except Tue/Wed) slightly higher.

PRICE GUARANTEE

Book your Holiday now, pay in full and we will protect your low price at the current fare applicable on your date of travel.

FLY WITH THE BEST

HAWAIIAN AIR

Some Booking Restrictions Apply. Holiday/Seasonal Supplements Will Apply at Certain Times of The Year. See Brochure or Call for Conditions Applicable to Your Specific Holiday. Prices Subject to Change.

Pleasant Hawaiian Holidays
"Making Paradise Affordable!"SM

Hawaii — The Golfer's Paradise

By SAMI KUSHIDA

HONOLULU — "This place is so incredibly beautiful . . . I must have landed in HEAVEN," remarked Mrs. Cherry Uyeda of Encino, Calif., upon arrival at Hawaii's famed Turtle Bay Golf Resort on the northern shore of Oahu. Heaven it was! The balmy Hawaiian weather, clear blue/green waters and the moonlit white beaches engulfed us all at this golfer's paradise.

The first JATC Golf/Hawaii group arrived in Honolulu on Sept. 24 for a 7-day tour to golf at the most famous courses on Oahu: Turtle Bay in Kahuku, Makaha and the Hawaii Kai.

Since it was such a delightful experience, JATC wants to make this an annual group tour.

On the first day, after settling into our spacious ocean-front rooms at Turtle Bay at 1 p.m., I couldn't believe the unanimous decision of the 14 golfers to play nine holes of golf that afternoon and enjoying every minute of it. No jet lag for this enthusiastic group: we swung, chipped, putted and cursed our way through the fairways for the next two days. Some even managed to drive the ball right at the huge mowing machine in the fairway and lost 100 yards on the drive. What a waste?

We left beautiful Turtle Bay before sunset on mini-vans and viewed the tropical eastern shoreline on our way to Ala Moana Americana Hotel, adjacent to the world famous Ala Moana Shopping Center.

Saturday found us viewing the annual ALOHA WEEK parade with colorful floats, bands and dignitaries, headed by Gov. and Mrs. George Ariyoshi. The gals spent the rest of the day shopping and returned with loads of Hawaiian clothing, Kona coffee and macadamia nuts/candy for their families and friends.

We certainly contributed heavily into the sagging economy of the State of Hawaii. Believe me, this group ate all the papayas, pineapples, saimin and Mac nut pancakes for breakfast daily. The restaurants, merchants and pro shops loved us all for buying everything.

The tour, which included the Arizona/Pearl Harbor, Punchbowl, downtown city and historical sites, turned out to be a fun-filled but emotional experience. Viewing the sunken battleship Arizona and standing by the gravesite of Astronaut Ellison Onizuka at the Punchbowl moved us all. However, the van operators entertained us with their colorful Hawaiian commentaries and stories. After a Japanese Tea House dinner, we toured past the shady nightlife of Honolulu and saw the city lights from up high on Mt. Tantalus' inspirational point.

Monday was a treat! Sales executive Mel Inatsuka provided us with a tour of Sheraton Makaha Golf Resort on the eastern shore, hosted a welcome reception in their new dining area and served their specialty of Hawaiian papaya/ice cream dessert and refreshments. The Makaha West Course was the best cared-for course but, sad to say, the birdies and pars were not to be seen. Our consolation . . . we did have fun, enjoyed the landscape and ate the delicious Japanese obento.

Rainy Tuesday dampened our spirits a bit. We golfed in the rain for five or six holes and then the sun saved us. Despite the rain, we were mighty proud of Doc Ben Tamaki, who managed to play his best game at Hawaii Kai, a course by the shore and mountainous areas that creates a lot of challenges for everyone.

The two-day women's tournament was won by Cherry Uyeda, who received a beautiful Japanese clock/photo decorative piece donated by Sumitomo Bank of Crenshaw. Cherry deserved the prize for playing well on all the courses. What a golfer!

We all welcomed Haru Tsusaki, the lone Northern Californian from Lodi. We hope she is encouraging other Northern Californians to join us on our next golf tour.

The group left Hawaii with many happy memories of golfing, shopping, eating and most of all, relaxing in beautiful Hawaii. We bid aloha to Hawaii and sadly departed, wearing the traditional Hawaiian lei as a remembrance of our wonderful golf tour.



JATC Photo: On Oahu, Sept. 1986

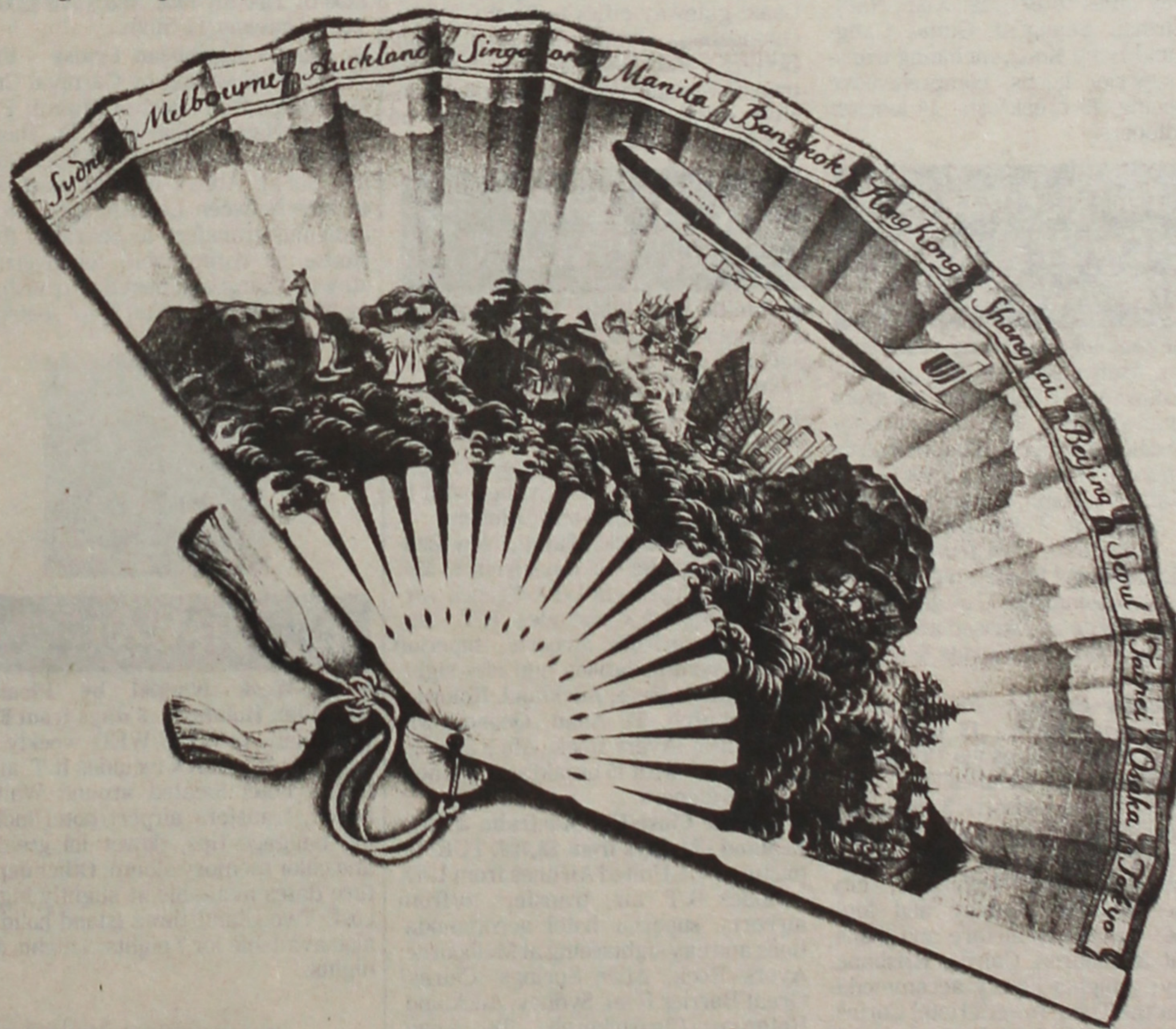
HAPPY FACES IN HAWAII—JATC's first GOLF/HAWAII TOUR members (from left) are: back row—George Tambara, Jaxon Uyeda, Jerry Scruggs, Ben Tamaki, Cherry Uyeda, Nobie McCabe and June Malone; front—Haru Tsusaki, Kaz Kurahashi, Toshi Ikeda, Yoshi Tambara, Marj Tamaki and tour coordinator Sami Kushida. Missing are the trio who joined the tour's last two games: Lorraine Hinatsu, Elsie Matsumoto and June Watanabe.

A fresh breeze across the Pacific.

The airline that serves more top business centers in the United States now serves more top business centers across the wide Pacific with more nonstops than any other airline. Convenient service to thirteen cities in all, with all the advantages that come with one airline service. One airline to handle ticketing, seat assignments,

boarding passes, and baggage for your whole trip. And, of course, United's incomparable Mileage Plus, offering a whole world of exciting travel awards. You'll enjoy United's famous Royal Pacific Service, the best of the

friendly skies in First Class, Business Class, and Economy. Best of all, you'll be flying with a friend. United Airlines. Now the friendly skies covers the wide Pacific. Call United or your Travel Agent. You're not just flying, you're flying the friendly skies.



fly the friendly skies

United

Orient Highlights

Continued from Front Page

and the charm of old Singapore is fast being replaced by its modern magnificence.

Soon the tri-shaws will be gone, as will most of its Chinatown, but places like the Raffles Hotel will survive to offer the warmth of its colonial beauty to visitors as they sip a Singapore Sling on a tropical veranda.

Famous for its Botanical Gardens and astonishing array of orchids, Singapore will continue to attract the visitor to savor its unique mix of Chinese, Malaysian, Indian, and Eurasian cultures.

And Hong Kong

Last but not least of all is glittering Hong Kong, whose future hangs in the balance as 1997 grows near and its status as a British Colony grows dimmer.

Yet for all its worries it continues to thrive with optimism, flexing its financial and economical muscle and attracting visitors in ever-increasing numbers.

Hong Kong is one huge department store with thousands of shops competing for your dollar. It is a woman's shopping paradise, her only regret being that her pocketbook is not as large as she would like it to be. Custom clothing, jewelry, cameras, watches, and myr-

riad knick-knacks abound in this shoppers' delight.

But all in Hong Kong is not just shopping as a tour of the island of Victoria will soon show. From its Wanchai area of Susie Wongs to its Central District and heart of the colony's thriving economy, to the winding roads on the other side of the island showing off its magnificent views, from Repulse to Deep Water Bay, you cannot but feel drawn to its natural beauty.

And then there is Aberdeen, home of the Water People and typhoon shelter for its seafarers in time of raging winds and whipping rain. For one of the most magnificent views in the world, Victoria Peak is a must as you witness below you the striking beauty of Hong Kong harbor and its many ships, as well as the expanse of Kowloon Peninsula with China looming in the background.

'Orient Highlights'

All this is yours for only \$2,995 (per person, twin) with monthly departures on Saturday via United Airlines.

Call us now for further information: (213) 624-1543, (800) 421-0212 outside Calif., or (800) 327-6471 inside Calif.; MWF, 9 a.m.-4:30 p.m.; Sat. 9:30 a.m.-2:30 p.m.

JATC Details 1987 Tour Program

JAPAN

- **Spring/Summer/Autumn in Japan** - 11 days, from \$2,580. May 14, July 24 & Oct. 16 departures via United Airlines from LAX includes R.T. air, transfer airport to hotel, Bullet Train ride, 9 nights superior accommodations and city sightseeing at Tokyo, Nikko, Kamakura, Hakone, Kashikojima, Kyoto & Nara with tour terminating in Kyoto. 12 breakfasts, 5 lunches & 7 dinners. Optional extension tour of Japan as well as to Hong Kong available on request.
- **Tokyo, Kyoto & Kyushu Tour** - 13 days \$2,325. Land Only from arrival at Narita on Fridays including airport meet and assist transfers to/from hotel, Bullet train ride, hotel accommodations and city sightseeing at Tokyo, Nikko, Kamakura, Hakone, Kyoto, Nara, Hakata/Fukuoka, Beppu, Mt. Aso/Kumamoto, Unzen/Nagasaki with tour ending on the 13th day, 3:30 p.m. at Hakata with 2 breakfasts, 5 lunches and 2 dinners. Price subject to change based on exchange rate.

CHINA

- **Extraordinary China & Tibetan Capital** - 16 days, from \$3,580. Sept. 8 TUE departure via United Airlines from LAX includes R.T. air, transfers to/from airports, hotel accommodations and sightseeing at Guangzhou, Chengdu, Lhasa, Kunming & Hong Kong with 3 meals a day in China and Tibet; Highlight visit to Potala Palace, former residence of Dalai Lama, and Jokhang Temple & monasteries of Drepung & Sera.
- **Spectacular China & Hong Kong** - 16 days, from \$3,195. Monthly SAT departures via United Airlines from LAX including R.T. air, transfers to/from airports, hotel accommodations & sightseeing at Guangzhou, Guilin, Shanghai, Xian, Beijing & Hong Kong with 2 meals in China and Hong Kong. Highlight visit to Guilin/Li River cruise, Terracotta Army of Emperor Qin at Xian, Great Walls and Forbidden City of Beijing.
- **Blue Jade** - 21 days, from \$3,630. TUE departures monthly via United Airlines, round trip from West Coast gateway cities to Beijing, Xian, Nanjing, Suzhou, Shanghai, Guilin, Guangzhou, and Hong Kong, including transfers, superior hotels, comprehensive sightseeing, 19 breakfasts, 14 lunches and 4 dinners.

UNESCORTED NEW ZEALAND AND AUSTRALIA

- **New Zealand—Auckland & Rotorua** - 10 days from \$1,652. THU departures year round via United Airlines from LAX includes R.T. air; transfers to/from Auckland airport, 5 nights luxury accommodations at the Hyatt Kingsgate Hotel-Auckland, half-day sightseeing at Auckland, Waitomo Glow-worm Caves, lunch at a Kiwi fruit orchard, traditional Maori feast, 2 nights at the THC International plus U.S. departure/customs charge and season air and hotel charges plus N.Z. goods & service tax.
- **Australia—Sydney, Melbourne & Great Barrier Reef** - 12 days from \$2,184. TUE departures via United Airlines from LAX includes R.T. air; transfers to/from airports, 3 nights luxury accommodations at the Sheraton Wentworth Hotel-Sydney; 3 nights at the Windsor Hotel-Melbourne, city sightseeing tours Sydney and Melbourne; round trip airfare and transfers at Melbourne, Cairns, Brisbane, Sydney; 2 nights luxury accommodations at the Tuna Towers Hotel-Cairns, 1 night at the Gazebo Terrace Hotel-Brisbane, and full-day excursion to the Great Barrier Reef.
- **Pacific Spectacular: Australia & New Zealand** - 24 days from \$2,999. THU departures via United Airlines from LAX includes R.T. air; transfers to/from airports, superior hotel accommodations and city sightseeing at Sydney, Canberra, Cooma, Melbourne, Auckland, Christchurch, Dunedin, Te Anau, Milford Sound, Queenstown, Mt. Cook, Wellington, Tongariro, Rotorua and Auckland with 3 breakfasts, 4 lunches and 3 dinners.

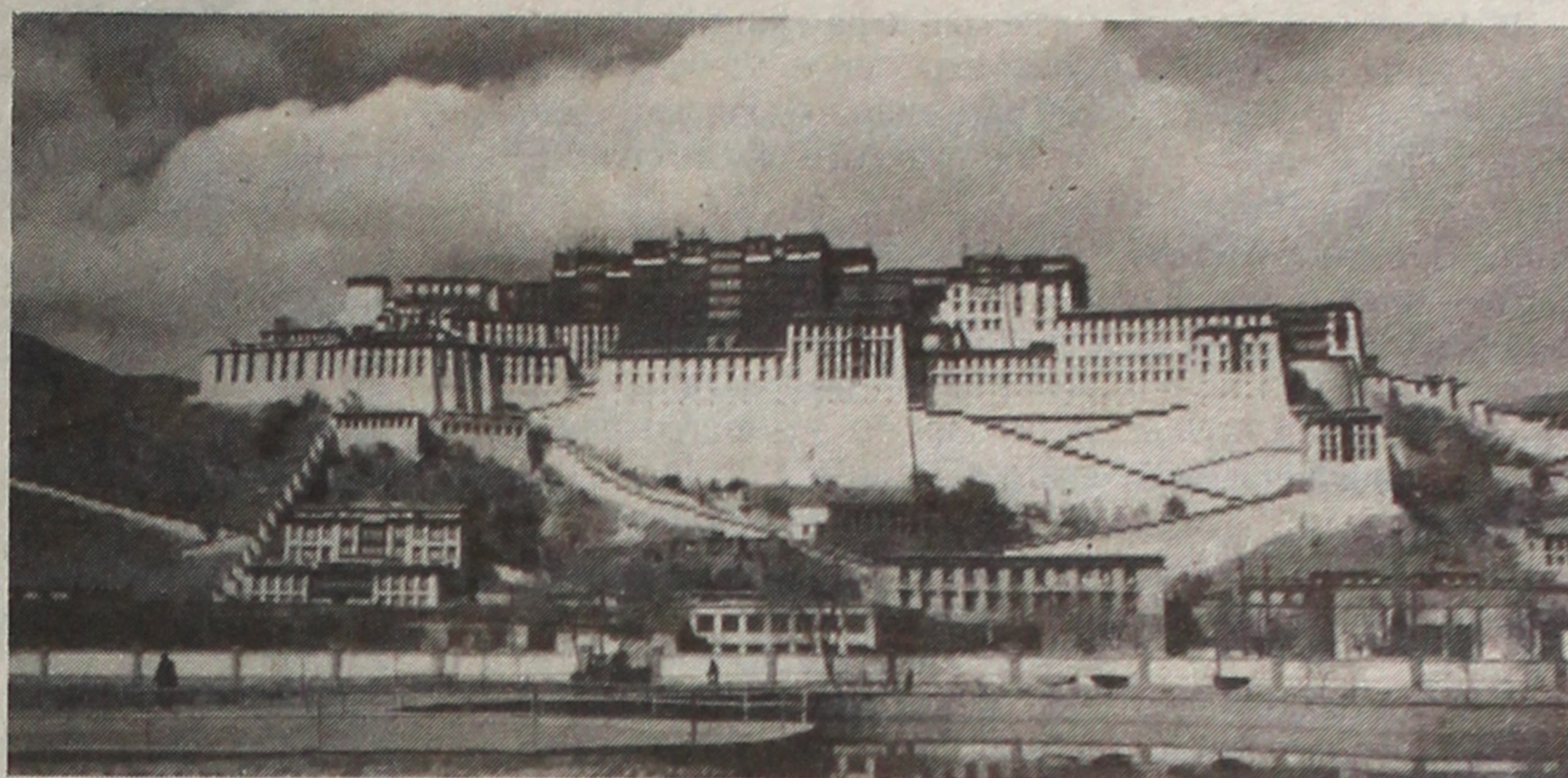
ORIENT

- **Hong Kong Only** - 8 days, \$899. Mid-week departures year round via United Airlines from LAX include R.T. air, transfers to/from airport, 6 nights at the New Kowloon Hotel and sightseeing tour of Hong Kong. Surcharges will apply for weekend travel and peak season hotel. U.S. tax and custom charge \$8 additional.
- **Seoul & Hong Kong Shopping Spree** - 9 days from \$999. Midweek departures year round via Korean Airlines from LAX includes R.T. air, transfers to/from airports, 3 nights at the Seoul Garden Hotel, 4 nights at New Kowloon Hotel and sightseeing tours of both cities. U.S. tax and custom charge \$8 additional Optional Honolulu stopover at no additional airfare.
- **Japan and Hong Kong** - 15 days, from \$2,790. SAT departures monthly via United Airlines from LAX includes R.T. air, transfers to/from airports, hotel accommodations & city sightseeing at Tokyo, Kamakura, Hakone, Kashikojima, Nara, Kyoto & Hong Kong with 13 breakfasts, 3 lunches & 10 dinners.
- **Orient Highlights: Japan - Taiwan - Thailand - Singapore & Hong Kong** - 16 days, from \$2,995. SAT departures monthly via United Airlines from LAX includes R.T. air, transfers to/from airports, hotel accommodations & city sightseeing at Tokyo, Kamakura, Hakone, Kyoto, Taipei, Bangkok, Singapore & Hong Kong with 15 breakfasts, 7 lunches & 7 dinners.
- **Orient & China** - 15 days, from \$3,310. FRI departures monthly via United Airlines, round trip from West Coast gateway cities to Tokyo, Kamakura, Hakone, Kyoto, Beijing and Hong Kong, including transfers, superior hotels, comprehensive sightseeing, 12 breakfasts, 7 lunches and 5 dinners.
- **Orient Splendors** - 21 days, from \$4,230. SUN departures monthly via United Airlines, round trip from West Coast gateway cities to Kyoto, Tokyo, Beijing, Bangkok, Singapore, Bali and Hong Kong, including transfers, superior hotels, comprehensive sightseeing, 18 breakfasts, 10 lunches and 8 dinners.
- **Ancient Cathay** - 21 days, from \$3,730. MON departures monthly via United Airlines, round trip from West Coast gateway cities to Kyoto, Tokyo, Guangzhou, Guilin, Shanghai, Xian, Beijing, and Hong Kong, including transfers, superior hotels, comprehensive sightseeing, 18 breakfasts, 10 lunches and 8 dinners.

ESCORTED SOUTH PACIFIC

- **Pacific Highlights: New Zealand & Australia** - 15 days from \$2,656. SAT departures via United Airlines from LAX includes R.T. air; transfers to/from airports, superior hotel accommodations and city sightseeing at Auckland, Rotorua, Te Anau, Queenstown, Christchurch, Melbourne and Sydney with 12 breakfasts, 3 lunches and 5 dinners.
- **Pacific Outback: Tahiti, New Zealand & Australia** - 18 days from \$3,535. FRI departures via UTA French Airlines from LAX includes R.T. air; transfers to/from airports, superior hotel accommodations and city sightseeing at Papeete, Auckland, Rotorua, Christchurch, Te Anau, Queenstown, Melbourne, Ayers Rock, Alice Springs and Sydney with 15 breakfasts, 3 lunches and 6 dinners.
- **Pacific Close-Up: Australia & New Zealand** - 21 days from \$3,796. TUE departures via United Airlines from LAX includes R.T. air; transfers to/from airports, superior hotel accommodations and city sightseeing at Melbourne, Ayers Rock, Alice Springs, Cairns/Great Barrier Reef, Sydney, Auckland, Rotorua, Christchurch, Te Anau, Queenstown and Auckland with 18 breakfasts, 4 lunches and 7 dinners.

NOTE: By booking the guaranteed departures of ORIENT & CHINA or a SOUTH PACIFIC tour program with JATC, members can SAVE from \$75 to \$125 per person, sharing room, and the amount is deductible from the above published tour prices.



Potala Palace (Lhasa)

CRUISES

- **7 Days Mexican Riviera** - From \$775. SUNDAY sailing year round by Carnival Cruises / Tropicale from Port of Los Angeles. Ports of call: Puerto Vallarta, Mazatlan and Cabo San Lucas / subject to tidal condition. Gourmet meal on board, Port charges \$25 per person additional; sharing cabin with a couple in category #4 or above stateroom of \$945/person, 3rd or 4th adult pay a flat rate of \$395 plus port charges. Child 16 years & under pay \$195 p/child.
- **7 Days Budget Alaska Cruise** - From \$1,290. Aug 14, FRI sailing by Costa Cruises/Daphne from Vancouver, B.C. Ports of call: Wrangell, Endicott Arm, Juneau, Skagway, Davidson & Rainbow Glaciers, Ketchikan, Vancouver; port charges \$40 per person additional. Above cost includes free R.T. airfare between Los Angeles and Vancouver plus transfers to/from shipside. Deposit \$200 by Dec 31, 1986, and save \$200 per cabin.
- **7 Days Deluxe Alaska Cruise** - From \$1,495. July 23, THU sailing by Holland America Line (Westours)/Rotterdam from Port of Vancouver, B.C. Ports of call: Ketchikan, Juneau, Glacier Bay, Sitka & Vancouver; port charges \$36 per person additional. 3rd & 4th adult in cabin, only \$495 per person; airfare from hometown additional. Deposit \$200 by Dec 31, 1986, and save \$200 per cabin, category I cabin.
- **7 Days Caribbean Cruise** - From \$1,145. SUN sailing by Carnival Cruises/Jubilee from Port of Miami; Ports of call: Nassau, San Juan, St. Thomas and Miami; port charges \$25 per person additional. Above cost includes R.T. airfare between Los Angeles and Miami plus transfers to Sheraton River House or comparable for overnight stay in Miami and next day transfer at 11:30 a.m. to your "Fun Ship", category #4 cabin.



HAWAII

- **One-Week Waikiki by Pleasant Hawaiian Holidays** - 8 days from \$319. Hawaiian Air TUE/WED weekly departures from LAX includes R.T. air; 7 nights hotel located around Waikiki beach, transfers airport/hotel including baggage tips, flower lei greeting and color memory album. Other departure dates available at slightly higher cost. Two island/three island holidays also available for 7 nights, 9 nights & 14 nights.



LATIN AMERICA

- **Highlights of South America** - 17 days, \$2,735. JATC Group departure Tue., Nov. 3, 1987 from LAX includes R.T. air, transfer to/from airports, superior hotel accommodations, guided city sightseeing of Rio de Janeiro, Brasilia, Sao Paulo, Iguassu Falls, Buenos Aires and Lima with choice of Cuzco/Machu Picchu or Iquitos Tour. Daily American breakfasts throughout the tour.
- **Archaeological Mexico Tour** - 7 nights, \$843. JATC Group departure: Nov. 14 from LAX includes R.T. air, transfer to/from airports, superior hotel accommodations & taxes and sightseeing at Mexico City, Pyramids of Teotihuacan, Temple of Quetzacoatl; Villahermosa/Palenque, one of the most beautiful Mayan archaeological sites; Merida/ Uxmal, religious center of the ancient Mayan and Chichen-Itza of the Tolteca and Cancun - relax on the Caribbean beaches of Mexico before returning home. 7 breakfasts and 3 lunches included. Mexico departure tax of \$10 additional.

CANADA

- **Canadian Rockies by Tauck Tours** - 7 Days from \$745 (spring), \$840 (fall). Tour commences from Calgary by motorcoach with visits to Yoho, Banff and Jasper National Parks, Moraine Lake, Kicking Horse Pass, Lake Louise, Athabasca Glacier and Sulphur Mtn. gondola ride; 6 breakfasts, 4 lunches and 6 dinners. Airfare from hometown city to Calgary and overnight hotel additional to above cost.
- **4 Days Getaway to Vancouver or Victoria, B.C.** - from \$339. Canadian Pacific Airlines daily departures (good until Apr 30, 1987) from LAX includes R.T. air; 3 nights at Century Plaza Hotel with 3 breakfasts, Grayline sightseeing tour of Vancouver, special \$19 for extra nights; \$379 at Pan Pacific Deluxe Hotel, special \$35 for extra nights. Choice of round trip bus/ferry to Victoria or 2 days U-Drive (48 hrs including 400 km) or one day bus and dual-mountain ski pass to Whistler/Blackcomb Ski area.

FISHING

- **Campbell, B.C.—The Salmon Capitol of the World—4 Days**—from \$469.00. 3 nights accommodation at the Coast Discovery Inn, limo transfers to/from airport, 12 hours based on 2 fishermen per boat with experienced guide, 2 box lunches for fishing trip, fishing baits provided. Fishing tackle rental & 7% Hotel tax extra. Sample air fare r.t. from LAX from \$292.83 advance purchase at least 14 days with Sat. overnight, extra.

SCANDINAVIA

- **Viking Explorer** - 15 days, \$1,198 + air. Weekly MONDAY departments from June to mid-September via SAS with tour commencing from Copenhagen, Denmark, and ending in Oslo for return transatlantic flight home. Stay at first class & deluxe rooms, tour Sweden, Norway & Finland, visiting castles, cross the Baltic Sea, mini-cruise Norway spectacular Sognefjord and experience many more special events with Scandinavian breakfasts daily and dinners at Vaexjoe/Sweden, Hamar/Norway, etc.

FRENCH POLYNESIA, COOK ISLANDS

- **Moorea-Tahiti-Aitutaki-Rarotonga** - 13 days, from \$674 + Air. SAT departures with FRI return via UTA French Airlines, staying 3 nights Moorea, 2 nights Tahiti, 3 nights Aitutaki and 4 nights Rarotonga with Tahitian feast and dance show at Moorea, lagoon excursion at Aitutaki and circle island tour of Rarotonga.

SKI CANADA

- **Whistler/Blackcomb Ski, B.C.** - 3 nights from \$379. Daily departures Dec 1, 1986-Apr 30, 1987 via Canadian Pacific Airlines including R.T. air from LAX, transfer to/from airport, 3 nights at Delta Mountain Inn and 2 days interchange ski lift ticket. 5 nights package from \$439, sharing twin.
- **Ski Banff** - 7 nights from \$574. Weekly departures Jan 10-Apr 12, 1987, includes R.T. air from LAX, transfer to/from airport, 7 nights lodging at the Banff Springs, 4 days of skiing with unlimited use of lifts and tows at Mt. Norquay, Sunshine & Lake Louise.

POPULAR FALL FOLIAGE U.S./CANADA

- **7 Days Niagara Falls & Ontario, Canada (from N.Y.)** - \$685. Visit Adirondack Mountains, Ottawa, Thousand Island Cruise, Ontario Place, Corning Glass Museum, & Pocono Mountains. 6 breakfasts, 4 lunches, 4 dinners.
- **7 Days Montreal-Quebec-Vermont-New Hampshire (from N.Y.)** - \$725. Visit Old Deerfield, Dartmouth College, Green Mountains, Montmorency Falls, Montrel, Shelburne Museum, Stockridge, Norman Rockwell Museum. 6 breakfasts, 4 lunches, 4 dinners.
- **7 Days Autumn in New England (from N.Y.)** - \$870. Visit West Point/Lake George, Lake Placid/Stowe, N.H. Mtns, Rocky Coast of Maine, Gloucester/Boston, Lexington & Concord, Bennington/Stockridge. 5 breakfasts, 6 lunches and 7 dinners.

NOTE: Above TAUCK TOURS operate departures from Sept. thru mid-Oct. All tours require overnight accommodation at the Waldorf Astoria, based on sharing twin room, plus airfare from hometown city—not included in above cost. Suggest book early. Every year, we book on first come basis to avoid disappointment. Considerable savings on airfare from West Coast can be realized by booking early.

JACL/LEC Treasurer's Report

The months are moving along! Part I of this report is a recap of the LEC Fund Drive for the first fiscal year, 6/1/85 - 5/31/86. Part II shows the status of the fund drive as we completed the first 4 months of the second fiscal year on 9/30/86. Part III is the accounting of the receipts and disbursements for JACL/LEC's operations during this first period, 6/1/86 - 9/30/86, of the current fiscal year. The accounting is on the cash basis.

I. LEC Fund Drive—6/1/85-5/31/86

Receipts:

Donations at Oxnard depository	\$177,015.21
Bank interest	3,388.31
Total	\$180,403.52

Debits:

Checks ret'd NSF	\$1,115.00
PSWDC Dinner Comm.	200.00
Bank charges	22.83
Transfer to LEC Treasurer/Chgo	45,000.00
Total	46,337.83

Balance at 6/1/86, Oxnard Dep. \$134,065.65

II. LEC Fund Drive—6/1/86-9/30/86

Receipts:

Donations at Oxnard depository	\$29,207.60
Bank interest 6/1/86 - 8/31/86	2,224.64
(Int. for Sept. not available)	
Total	\$165,497.89

Debits:

Checks ret'd NSF	\$85.00
Bank charges	6.00
Transfer to LEC Treasurer/Chgo	55,000.00
Total	55,091.00

Balance at 9/30/86, Oxnard Dep. \$110,406.89

III. Statement of Income & Expenditures

LEC Treasurer/Chicago - 6/1/86 - 9/30/86

Checkbook balance at 6/1/86	\$8,806.02
LEC fund transfer from Oxnard	55,000.00
Nat'l JACL fund transfer from S.F.	30,000.00
Bank interest	366.48
Total	\$94,172.50
Less Expenditures	52,522.74
Checkbook Balance at 9/30/86 (Chicago)	\$41,649.76

Expenditures - FY 6/1/86 - 9/30/86

A. Offices/Personnel

- Redress Chair, Denver Office
- Washington, D.C. Office

Phone	\$1,626.79
Printing	65.85
Bound copies, P.C.	60.00
Postage, Express mail	96.75
Office supplies	1,211.84
Subscriptions	65.00
Furniture	178.08
Equipment purchase - computer, word processor, printer	4,812.00
Service contracts	1,384.54
Petty cash	1,300.00
Total	\$10,800.85
- Director's West Chester Office

Phone	24.67
Utilities - 9 mos. thru 6/30/86	225.00
Office supplies	103.28
Postage	79.75
Total	432.70
- Salaries - D.C. Office

Salaries	14,838.19
FICA	715.00
Insurance	1,024.02
Payroll tax	136.00
Total	16,713.21
- Director's DC Travel Expenses

Travel	1,038.55
Hotel	2,854.44
Meals	1,063.93
Total	4,956.92
- Clearing House - Chicago

Phone	384.47
Xerox copies	36.70
Total	421.17
- Contract Services - JACL Hqts.

Postage	112.17
Xerox copies	52.75
Phone	7.77
Total	172.69

B. Meetings/Travel

- LEC Chair
- LEC Board Meetings (S.F. & Chicago)

C. Kinoshita	835.88
A. Morimitsu	
S Wakamatsu	373.16
M. Yasui	314.50
J. Tsujimura	834.65
J. Enomoto	659.83
G. Ujifusa	1,026.29
H. Kajihara	893.27
G. Uyehara	917.65
Breakfast Meeting	122.76
Total	5,995.99

C. Fund Drive Expenses

Phone	454.93
Postage, Express mail	747.16
Mailing envelopes, misc. supplies	573.12
Xerox copies	40.56
Computer supplies	97.83
Total	1,913.60

D. Material Procurement

1500 Brochure reprints (Personal Justice Denied)	1,792.40
3300 Pamphlets reprints	736.00
1200 LEC pins	1,800.00
12 Almanacs of American Politics	190.53
Total	4,518.93

E. Lobbying Expenses

- Washington, D.C.

Hill business appointments	170.91
Cab fares (see also Petty Cash report)	59.75
Legislative Chair	994.28
Total	1,224.94
- Grass Roots

Special Advisors' travel expenses (S.F., Chicago)	295.01
Staff travel expenses (Director's July trip to West Coast)	667.05
Total	962.06

F. Special Events/P.R.

Nat'l Assn. of Neighborhoods (Phila)	50.00
Guests, Nat'l JACL Conv. (Chicago-Asian American representatives)	70.00
Honorariums to convention speakers	4,000.00
Total	4,120.00

G. Miscellaneous Expenses

Finance Committee	31.68
Vice Chair - postage, phone	65.19
1986 Nat'l JACL Convention	145.00
Secretarial/minutes	48.95
Hospital gift to Min Yasui	40.80
Total	331.62

TOTAL EXPENDITURES 6/1/86 - 9/30/86 \$52,564.68*

* There is an overstatement of \$41.94 in the itemized totals not reconciled at the time of this report.

PETTY CASH REPORT

Balance at 6/1/86, D.C. Office	\$330.89
From Treasurer - 6/11/86	600.00
- 6/14/86	400.00
- 9/18/86	300.00
Total	\$1,630.89

Expenditures - 6/1/86 thru 9/30/86

Cabs/Metro to Hill	25.65
Postage	1,193.63
Office supplies	9.11
Printing	66.25
Miscellaneous	19.19
Total	1,313.83

BALANCE ON HAND at 9/30/86 \$317.06

Back in 1984, Min Yasui had confided to me that he had two good years to give to Redress. And give he did! During the 17-month period since January 1985, he has taken 53 out-of-town trips, an average of three trips per month; appeared before 24 colleges from Harvard to Hawaii; gave about 76 speeches, the majority of which were addressed to non-Nikkei audiences totaling approximately 10,000 people; has been in and out of 28 cities in the U.S. In the process, he has indirectly contacted millions more through national TV, radio and newspaper interviews.

Of the 518 days covered, he was away from home 295 days. Except for six of these 53 trips, he covered his own expenses with some help from local groups.

All of this is a measure of our warrior—of doing what he felt had to be done for a cause he believed in. It is also a measure of the great debt we all owe him. His hospitalization for major surgery last month was a blow to all of us. Our hopes and prayers for a full recovery are with Min and his wife True.

Respectfully submitted,
Shig Wakamatsu
JACL/LEC Treasurer
10/8/86

SHIMABUKURO

Continued from Previous Page

A typical evasive Sansei expressing the same sentiment: "Say, I got this book for you. It's called *Thin Thighs in 30 Days*. You should read it."

An argument should ensue. **ADVICE:** Refrain from comments about thighs. Those are guaranteed to cause trouble.

Situation: You are at a dinner party. At some point you notice that most of the women have "retired" to the kitchen. The men have settled in front of the TV set to watch Monday Night, Thursday Night, or Saturday Night Football. What do you do?

Typical AJA male response: Continue to watch the game, discuss your latest fishing expedition, and wait until someone yells from the kitchen for help. If you're lucky, no one will say anything.

B.S. response: My mom once told me, "When you're invited to dinner, always wash the dishes. You'll get invited more often."

There is another advantage. All the women are in the kitchen.



1986 HI Boxscore

GOALS TO BEAT — 1985 TOTALS

Display Ads	8,036 col inches
One-Line Greetings	797
JACL-HI Project	30 units

1986 DISPLAY ADS
Nov. 10: 5,256" (65.4%)

This year's boxscore shows bulk rate chapters in bold letters. Legend: 64 = 2/4 pg (min.); 96 = 1 pg, 192 = 2 pg, 288 = 3 pg, 384 = 4 pg & so on.

Alameda	192	Parlier	
Arizona		Pasadena	
Arkansas Vly		Philadelphia	
Berkeley	336	Placer County	
Boise Vly		Pocatello/Blackfoot	
Carson		Portland	144
Chicago	288	Prog W'side	
Cincinnati		Puyallup Vly	96
Cleveland		Reedley	2
Clovis		Riverside	96
Contra Costa	192	Sacramento	192
Cortez		St Louis	
Dayton		Salinas Vly	288
Delano		Salt Lake	
Detroit		San Benito	
Diablo Vly		San Diego	384
Downtown LA		San Fern Vly	96
East LA	192	San Francisco	
Eden Twn		San Gab Vly	
Florin		San Jose	4
Ft Lupton		San L Obispo	
Fowler		San Mateo	
Fremont		Sanger	
French Camp		Sta Barb	
Fresno	192	Sta Maria Vly	
Gardena Vly		Seattle	
Gilroy		Seabrook	
Golden Gate	24	Selma	768
Gtr LA Sgl		Sequoia	
Gtr Pas Area		Snake River	384
Gresh-Tr		Solano Cty	
Hawaii		Sonoma City	
Hollywood		So Bay	
Hoosier		Spokane	
Houston		Stockton	192
Idaho Falls		Tacoma	
Imp Vly		Tri-Valley	
Japan		Tulare City	
Lake Wash		Twin Cities	
Las Vegas		Venice-Culver	
Latin America		Ventura	96
Liv-Merced	144	Wasatch FN	
Lodi		Wash, DC	
Marin City		Watsonville	192
Marina		West LA	2
Marysville		West Valley	
Mid-Columbia		White Riv Vly	
Mile-Hi	192	Wilshire	
Milwaukee		Central Cal DC	9
Monterey Pnsia	128	Eastern	
Mt Olympus		Intermountain	8
New England		Midwest DC	
New Mexico		Mtn Plain	14
New York	96	NC/NPDC	20
Nikkei Ldr A		PNWDC	
No San Diego		PSWDC	20
Oakland		Ad Dept	385
Olympia		PC Office	92
Omaha	96		
Orange City			
Pacific			
Pan-Asian			

(25 of 113 chapters participating)

1-LINE GREETINGS

Boise Valley	Reno
Cincinnati	Riverside
Cleveland	St Louis
Cortez	San Benito
Dayton	Sta Barbara
Delano	Seabrook
Detroit	Sonoma City
FL Lupton	Spokane
GLA Singles	Tulare City
Gresh-Tr	Twin Cities
Milwaukee	Venice-Culver
Mt Olympus	Wash, DC
Olympia	West LA
Pasadena	White Riv Vly
Philadelphia	PC Office
Placer City	
Poc-Blackfoot	

JACL/HI PROJECT: (13)
9—Student Aid 1—Redress Fd
—Bldg Fd 3—Pac Cit TypeFd
—JACL Program —Endowment Fd

And remember, the kitchen is the focal point of most relationships. What you do or do not do in that part of the house has a direct bearing on what happens elsewhere in the house.

Take advantage of the situation, help with the dishes. Score points with your friend. Score points with her mom.

Downside: Lose points with her dad. In addition, if something was overcooked and a few pots were burned in the process, you may be at the sink longer than you had planned. Check to see if any pots were burned before you offer your help.

Caution: Some Nisei women view the kitchen as their personal domain. They may just kick you out. Hey, I didn't say it was going to be easy.

□ □ □

But if you're looking for sure-fire advice, I've got the quickest way to improve your relations with the women in your life—mother, sister, lover, wife, daughter. As a friend once said, "Always lift the toilet seat before you do your business and put it down when you're done."

From personal experience, I can tell you that you get a lot less flak when you remember that.

1000 Club Roll

(Year of Membership Shown)
* Century; ** Corporate; L Life; M Memorial; C/L Century Life

Summary (Since Jan 1, 1986)

Active (previous total)	1,901
Total this report: #41	16
Current total	1,917

OCT 20-24, 1986 (16)

Chicago: 20-Omar Kaihatsu*.
Pasadena: 31-Jiro Oishi.
Reedley: 30-Karoly A Ikemiya, 31-Dr James M Ikemiya.
Placer County: 23-Bunny Y Nakagawa.
Puyallup Valley: 7-Thomas T Shigio.
Sacramento: 31-Kanji Nishijima.
San Diego: 9-Gale Eiko Kaneshiro.
San Francisco: 19-Frank Hirofumi Minami.
Seabrook: 3-Gregory D Ono.
Seattle: 17-Thomas T Mukasa.
Snake River: 25-Gish Amano.
Solano: 22-Leo H Hosoda.
Venice Culver: 31-George T Isoda, 3-Akimi Kodama.
National: 8-Roy T Shimizu*.
9-Omar Kaihatsu (Chi), 8-Roy T Shimizu (Nat).

Summary (Since Jan 1, 1986)

Active (previous total)	1,917
Total this report: #42	11
Current total	1,928

OCT 27-31, 1986

Cleveland: 1-Ike Komatsu.
Downtown Los Angeles: 2-Edward Kamiya, 29-Tom K Taira.
Fremont: Life-Joseph Toi.
Fresno: 34-Dr George M Suda.
Hollywood: 32-Dr Shig J Masuoka.
Japan: 7-George I Nakamura.
Marin County: 15-James O Wright, Jr.
Monterey Peninsula: Life-Kay Kiyoshi Nobusada.
Oakland: Life-Peggy K Saika.
Seattle: 32-Joe S Hirota.

LIFE


Joseph Toi (Frm), Kay Kiyoshi Nobusada (MP), Peggy K Saika (Oak).

H.I. Deadlines

Nov. 15—Bulk-rate reservations.
Nov. 30—All advertising (bulk and regular) and special articles.
Dec. 7—Absolute (i.e., advertising material for reserved space).

Send or Call in Your Ads Now

Japanese Phototypesetting



TOYO PRINTING CO.
309 So. San Pedro St., Los Angeles 90013
(213) 626-8153

ESTABLISHED 1936

NISEI TRADING

Appliances - TV - Furniture

249 So. San Pedro St.
Los Angeles, CA 90012
(213) 624-6601

UNITED WAY DONORS

Support Japanese American community social services by DESIGNATING your United Way donations to the:

Little Tokyo Service Center, Inc.

ANY other incorporated non-profit social service agency can also be designated. The following is a list of some agencies who are LTSC members:

Asian Rehabilitation Services
Japanese American Community Services
Japanese American Cultural and Community Center
Japanese Welfare Rights Organization
Little Tokyo People's Rights Organization
So. Calif. Society For The Japanese Blind
Friends of the Little Tokyo Public Library Services



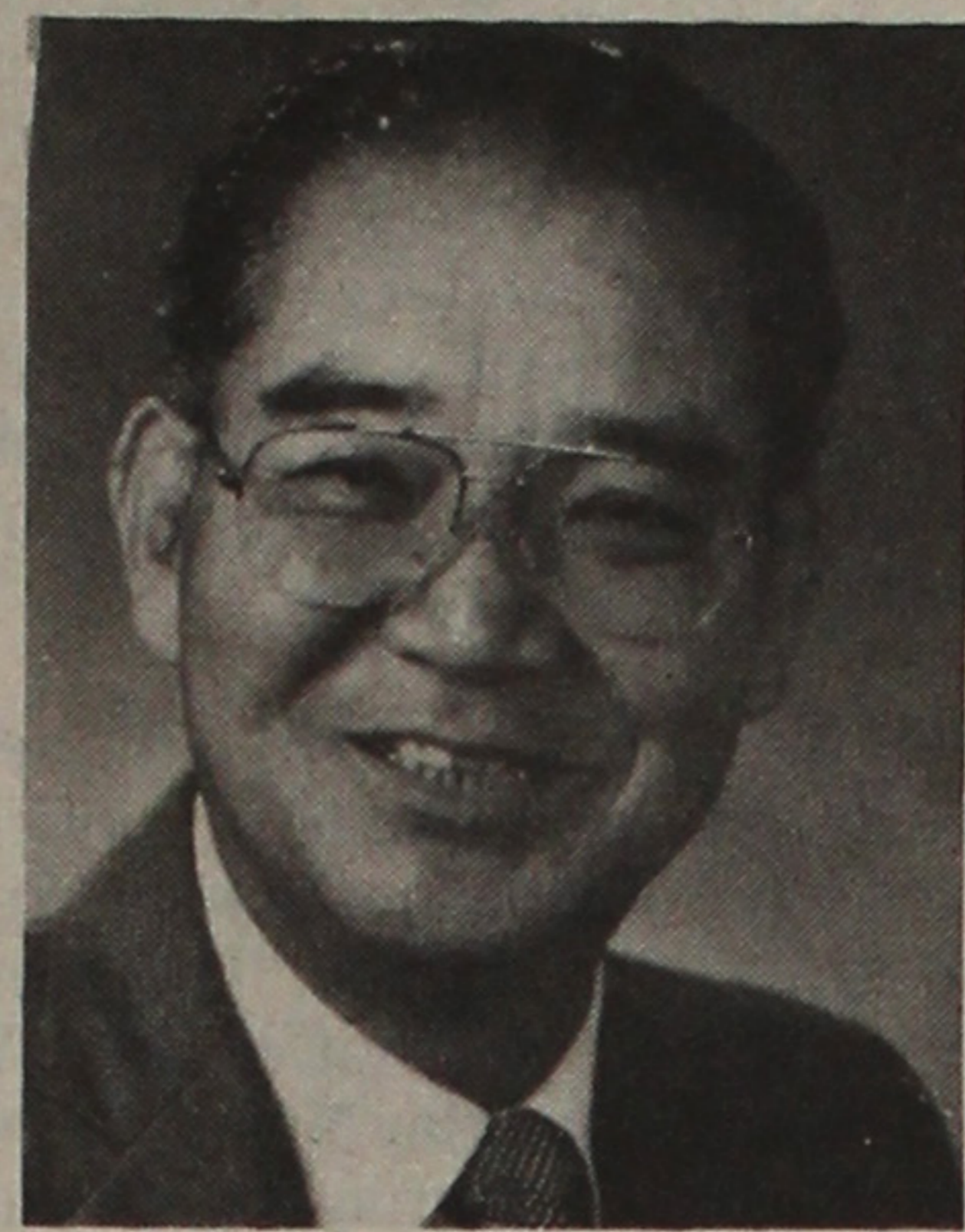
JA History in Orange County Theme of Event

ANAHEIM, Calif. — KCBS-TV news anchor Tritia Toyota will serve as mistress of ceremonies for "Nikkei Legacy of Orange County," a Nov. 22 dinner at the Emerald Hotel, 1717 S. West St., sponsored by the Japanese American Council (JAC) of the Historical and Cultural Foundation of Orange County and the Orange County Japanese American Association.

The event is being held to celebrate the completion of three projects that pay tribute to the heritage of the county's Japanese American community.

The first project to be spotlighted at the dinner will be the historic site survey, a comprehensive description of all existing public and private structures connected with Orange County's pre-WW2 past. Philip Brigandi, coordinator of the project, will present a slide show at the event.

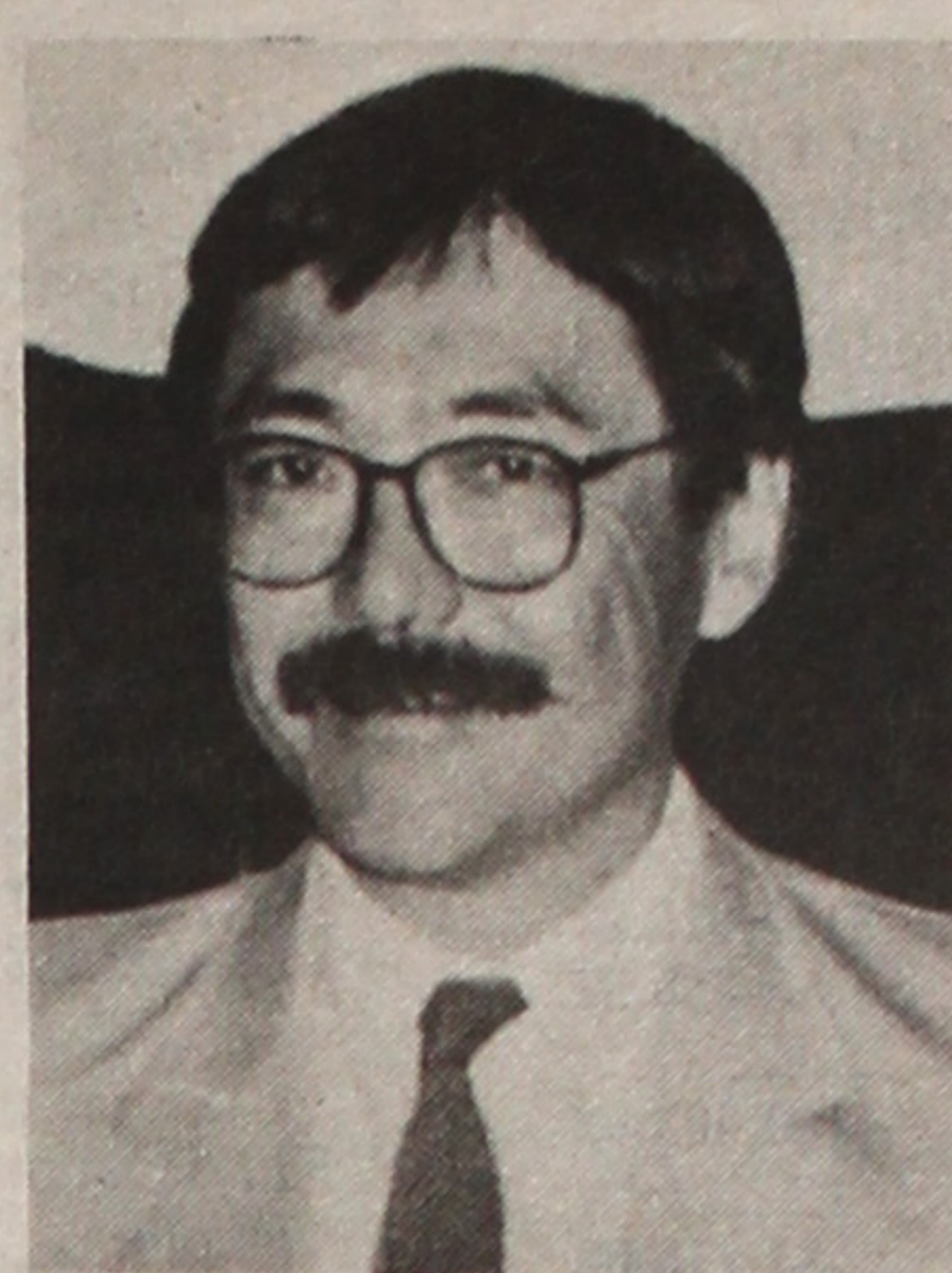
The second project to be showcased at the dinner is a novel, *Harvest of Hate*, written by Orange County resident Georgia



Katsuumi Shiba, senior vice president of Sumitomo Bank of California, has been appointed manager of the bank's branch offices in Pomona and Claremont. Shiba had been on special assignment for several months as an assistant to the president for Southern California.



Taeko S. Brown has received the Woman of Distinction Award from Soroptimist International of Palo Alto/Menlo Park for outstanding contributions over an extended period of time. Brown is a member of the JACL Sequoia Chapter.



Robert Murase of Murase Associates, Portland, Ore., has received a Merit Award of Excellence from the American Society of Landscape Architects. His award-winning project is Celilo Court, a HUD housing project.

Nikkei Newsmakers

Day Robertson and jointly published by JAC and the Japanese American Project of the Orange History Program at California State University, Fullerton.

Robertson, who will be celebrating her 100th birthday this fall,

worked as a teacher at the Poston internment camp in Arizona during WW2. Her book describes the plight of an evacuated Southern California Nikkei family in 1946.

The final project to be commended is the first phase of JAC's Oral History Project, which includes published volumes of interviews with 15 Orange County Nikkei.

"Nikkei Legacy of Orange County" will begin with a 6 p.m. no-host cocktail reception. Dinner and program will follow at 7 p.m. Tickets are \$50 per person and reservations may be obtained by calling the foundation office, (714) 250-1957.

Workshop Set for Non-Profit Board Members

LOS ANGELES — Workshops for new, current and prospective organizational board members will take place Nov. 20 and Jan. 24 at the United Way, 621 S. Virgil Ave., sponsored by Leadership Education for Asian Pacifics (LEAP) and the Kellogg Training Center.

The Nov. 20 workshop, "Fundraising Techniques," will take place from 6-9:30 p.m. Topics will include board and staff roles and responsibilities, how to ask for money, how to set practical limits, and elements of a fundraising campaign.

"Strategic Planning for Non-Profits" is the title of the Jan. 24 workshop, which will take place from 8:30 a.m. to noon. Topics will include planning principles, the planning sequence, environmental analysis, setting strategic goals and the board's role in planning.

Fee for the workshops is \$12 per person. Special rate of \$10 per person is available for organizations sending three or more individuals. Info: Mary Gonzales Wiersma, (213) 736-1304, or J.D. Hokoyama, (213) 743-4999.

from 1973-81.

Hayashi has been working on projects in the San Francisco area for the past five years at Sansei Productions. He also is credited with the touring success of Nishikawa's one-man show, "Life in the Fast Lane."

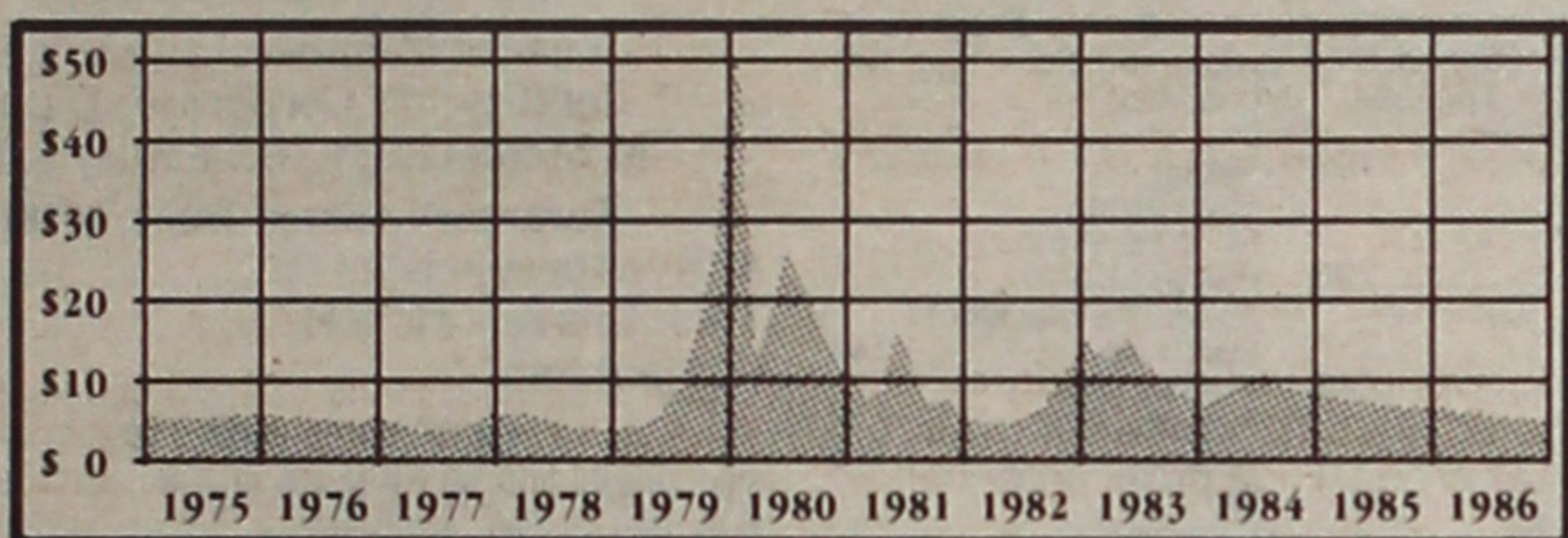
AATC Hires 2 New Directors

SAN FRANCISCO — The Asian American Theater Company, 1881 Bush St., on Oct. 27 announced the hiring of two new directors.

Lane Nishikawa, playwright, actor and director, has been named artistic director of the company. He is best known for his direction of "Yellow Fever," the award-winning play by Rick Shiomi and Marc Hayashi.

Eric Hayashi, one of the AATC's founding members, has returned to the company as executive director, a position he held

Did you miss the 1979-80 Silver Boom?



In 1979-80, silver rose from \$6 to \$48 per ounce within a 10 month period. At the present time, silver is now trading at a bottom level of \$5 to \$6 per ounce. With possible turbulent economic conditions on the horizon due to our huge government deficit and a record number of bank failures, silver appears to be an excellent hedge against inflationary conditions.

Gold vs. Silver??

With the Gold/Silver ratio at around 50 to 1, silver is by far the better buy.

For Silver Inquiries
Call (714) 541-0994

KKRC

Kenneth H. Kusumoto Rare Coin

Nexus Financial Center
Orange, California 92668

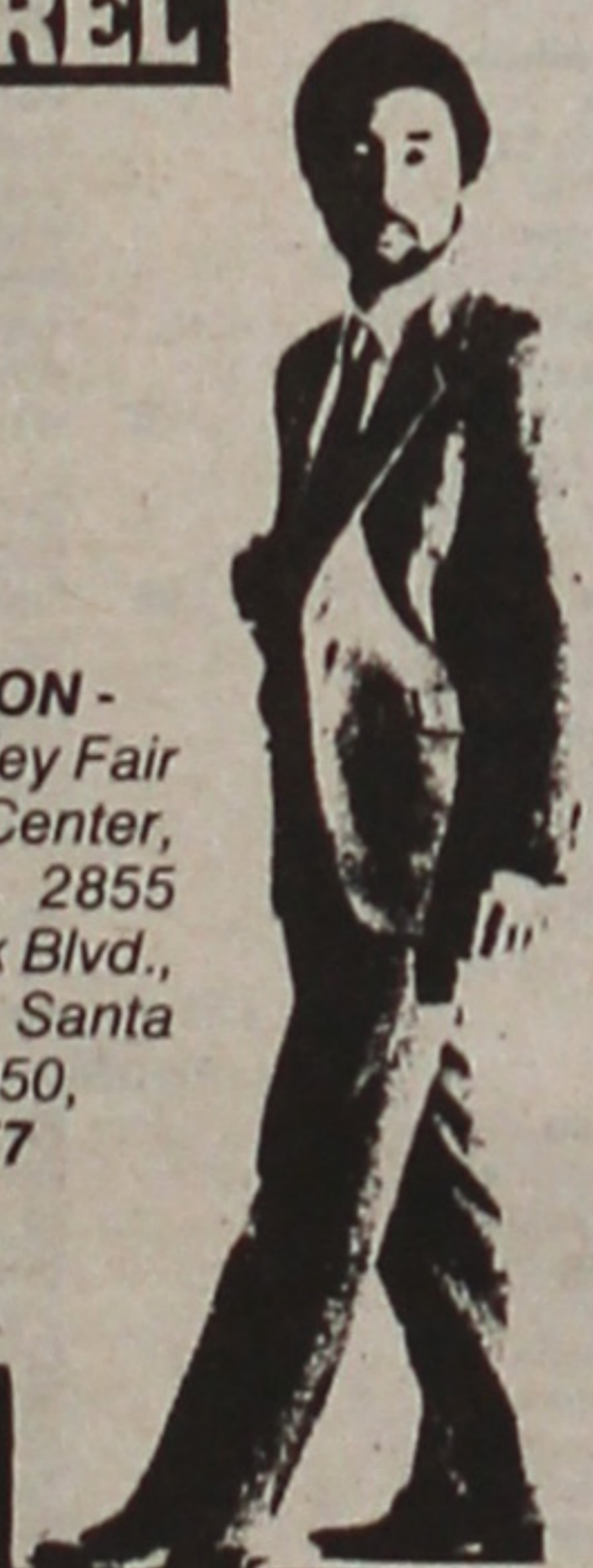
SHORT & SMALL MEN'S APPAREL

WE OFFER THE PROFESSIONAL MAN A COMPLETE BUSINESS WARDROBE.

CARRYING OVER 500 SUITS, SPORT COATS AND OVERCOATS BY GIVENCHY, LANVIN, VALENTINO, ST. RAPHAEL & LONDON FOG IN SIZES 34-42 SHORT & EXTRA SHORT. OUR ACCESSORIES INCLUDE DRESS SHIRTS, SLACKS, AND TIES IN SHORT & SMALL SIZES / LENGTHS. IN ADDITION, WE RECENTLY EXPANDED TO INCLUDE AN ITALIAN DRESS SHOE LINE IN SIZES 5-7 1/2.

NEW LOCATION -
Oct. 15th. Valley Fair Shopping Center, Near Macy's, 2855 Stevens Creek Blvd., Ste 2249, Santa Clara, CA 95050, (408) 246-2177

OWNER: KEN UYEDA



KEN & COMPANY

IT'S NEW!



CALIFORNIA FIRST BANK'S
ULTIMATE BANKING™

A better way to do your banking.

* Round-the-clock CONTROL of your account through CALL 1ST.

- * Round-the-clock ACCESS to your money through 120 Ultimate Banking™ ATMs.
- * SIMPLE recordkeeping with check safekeeping.
- * MORE CONVENIENT access through more than 1000 Star System teller machines through California and other states.

Stop by your nearest California First Bank office and ask details of Ultimate Banking™

CALIFORNIA FIRST BANK
Member FDIC
© California First Bank, 1985

DEATH NOTICE

Jack K. Ozawa, 63

Memorial service was held Nov. 13 in Philadelphia for longtime JAC'er Jack Ozawa, who was found dead at his home Saturday, Nov. 8. The Seattle-born Nisei who had recently retired was assisting local community groups. Surviving are Dr. Roy & Harry (Los Angeles), Bill (Seattle), Dorothy Hirai (Kimberly, ID), Hamako Kawamura & Marie Ozawa (Seattle), and Grace Michihira (Huntington Beach, CA).

Los Angeles Japanese Casualty Insurance Assn.

COMPLETE INSURANCE PROTECTION

Aihara Insurance Agency, Inc.
250 E. 1st St., Suite 900, Los Angeles, CA 90012
626-9625

Anson T. Fujioka Insurance
321 E. 2nd St., Suite 500, Los Angeles 90012
626-4393

Funakoshi Ins. Agency, Inc.
200 S. San Pedro, Suite 300, Los Angeles 90012
626-5275

Inouye Insurance Agency
15029 Sylvanwood Ave., Norwalk, CA 90650
864-5774

Itano & Kagawa, Inc.
321 E. 2nd St., Suite 301, Los Angeles 90012
624-0758

Ito Insurance Agency, Inc.
1245 E. Walnut, #112, Pasadena, CA 91106
(818) 795-7059, (213) 681-4411 L.A.

Kamiya Ins. Agency, Inc.
327 E. 2nd St., Suite 224, Los Angeles 90012
626-8135

Maeda & Mizuno Ins. Agency
18902 Brookhurst St., Fountain Valley, CA 92708
(714) 964-7227

The J. Morey Company
11080 Artesia Bl., Suite F, Cerritos, CA 90701
(213) 924-3494, (714) 952-2154

Steve Nakaji Insurance
11964 Washington Pl., Los Angeles, CA 90066
391-5931

Opino-Aizumi Ins. Agency
109 N. Huntington, Monterey Park, CA 91754
(818) 571-6911, (213) 283-1233 L.A.

Ota Insurance Agency
312 E. 1st St., Suite 305, Los Angeles, CA 90012
617-2057

T. Roy Iwami & Associates Quality Ins. Services, Inc.
3255 Wilshire Bl., Suite 630, Los Angeles 90010
382-2255

Sato Insurance Agency
366 E. 1st St., Los Angeles, CA 90012
626-5861, 629-1425

Tsuneishi Ins. Agency, Inc.
327 E. 2nd St., Suite 221, Los Angeles 90012
628-1365

AHT Insurance Assoc., Inc.
dba: Wada Asato Associates, Inc.
16500 S. Western Ave., #200, Gardena 90247
(213) 516-0110

Nat'l Business - Professional Directory

Your business card in each issue for a half year (25 issues) in the PC Business-Professional Directory is \$12 per line, three-line minimum. Large type (12 pt.) counts as two lines. Logo same line rate.

Greater Los Angeles

ASAHI TRAVEL

Supersavers, Group Discounts, Apex Fares Computerized-Bonded.
1111 W. Olympic Blvd., Los Angeles 90015
(213) 623-6125/29 • Call Joe or Gladys

FLOWER VIEW GARDENS #2
New Otani Hotel, 110 S. Los Angeles
Los Angeles 90012 / Art Ito Jr.
Citywide Delivery / (213) 620-0808

Dr. Darlyne Fujimoto
Family Optometry & Contact Lenses
11420 South St., Cerritos, CA 90701
(213) 860-1339

Dr. Loris Kurashige
Vision Examinations/Therapy, Contact Lenses
11420 South St., Cerritos, CA 90701
(213) 860-1339

INOUE TRAVEL SERVICE
1601 W. Redondo Beach Blvd., #209
Gardena, CA 90247; (213) 217-1709
Offices in Tokyo, Japan / Lima, Peru

TATAMI & FUTON
(818) 243-2754
SUSUKI FUTON MFG.

TAMA TRAVEL INTERNATIONAL
Martha Igarashi Tamashiro
One Wilshire Bldg., Ste 1012
Los Angeles 90017; (213) 622-4333

TOKYO TRAVEL SERVICE
530 W. 6th St., #429
Los Angeles 90014 (213) 680-3545

YAMATO TRAVEL BUREAU
200 S. San Pedro St., #502
Los Angeles 90012 (213) 680-0333

Going Places? Watch the 'PC' Travel Ads

Orange County

Victor A. Kato

(714) 841-7551 • Exceptional Real Estate
17301 Beach Blvd., Suite 23
Huntington Beach, CA 92647

The Paint Shoppe

LaMancha Center, 1111 N. Harbor Blvd.
Fullerton CA 92632, (714) 526-0116

San Diego, Calif.

Paul H. Hoshi Insurance

852 - 16th St., San Diego, CA 92101
Office (619) 234-0376 Res. (619) 421-7356

Ventura County

CALVIN MATSUI REALTY

Homes & Commercial
371 N. Mobil Ave., Ste. 7,
Camarillo, CA 93010 (805) 987-5800

San Jose

EDWARD T. MORIOKA, Realtor
580 N. 5th St., San Jose CA 95112
(408) 559-8816 a.m. 998-8334 p.m.

Watsonville, Calif.

Tom Nakase Realty
Acreage, Ranches, Homes, Income
TOM NAKASE, Realtor
25 Clifford Ave. (408) 724-6477

San Francisco Bay Area

Our Advertisers are good people.
They support 'your' PC.

Y. KEIKO OKUBO
Five Million Dollar Club
39812 Mission Blvd.,
Fremont, CA 94539 (415) 651-6500

Seattle, Wash.

Imperial Lanes

Complete 1 to Shop, Restaurant, Lounge
2101-22nd Ave So., Seattle (206) 325-2525

UWAJIMAYA

...Always in good taste.



For the Best of Everything Asian.
Fresh Produce, Meat, Seafood and Groceries.
A vast selection of Gift Ware.

Seattle • 624-6248
Bellevue • 747-9012
Southcenter • 246-7077

The Intermountain

Mam Wakasugi, Sales Rep.
Row Crop Farms; Blackaby Real Estate,
36 SW 3rd St., Ontario, OR 97914
(503) 881-1301 or (503) 262-3459

Eastern District

MIKE MASAOKA ASSOCIATES
Consultants - Washington Matters
900-17th St NW, Washington, DC 20006
(202) 296-1481

Community Calendar

Nov. 15 — 29

DELRAY BEACH

Nov. 22 An exhibit of contemporary woodblock prints by Tomikichiro Tokuriki opens at The Morikami, 4000 Morikami Park Road. The exhibit will be on display at the Florida museum through March 1, 1987.

BERKELEY

Nov. 22 6:30 p.m. Big Game Night will be sponsored by UCSF Japanese Alumni at H's Lordship, 199 Seawall Drive, Berkeley Marina. No-host cocktail hour begins at 6:30 p.m. and dinner will be served at 7:30 p.m. following the game between Stanford and UCSF. Cost is \$25 per person and includes dinner, entertainment, games, skits and favors. Info: Tokuzi Hedani, (415) 921-9423.

LOS ANGELES

Nov. 23 1 p.m. The seventh annual Shogun Santa Children's Parade will take place in the streets of Little Tokyo beginning at the corner of East Second Street and Central Avenue. This year's parade, themed "Children of the World," will feature approximately 1,000 students, ages 7-14, from the Los Angeles Unified School District, youth groups and community and service organizations. Grand marshals will be Jerry Robinson of the L.A. Raiders, and Danny Pintauro, star of the television series "Who's the Boss."

Nov. 22 7:30 p.m. Benefit dance sponsored by We Who Care will take place at Nishi Hongwanji Betsuin Hall, 815 E. First St. Special feature will be a performance by 14 students from Sloan Studios. Proceeds from the event will go to the Japanese Retirement Home's Rebuilding Fund. Tickets are \$9 per person and may be purchased at the door. Info: Eddy, (213) 388-6011 or 269-4913.

Nov. 24-25 9 a.m.—5 p.m. Two-day lecture series, "Diet, Behavior and Drug Addiction," will take place at the Japanese American Cultural and Community Center, 244 S. San Pedro St., sponsored by the Asian American Drug Abuse Program. Tickets are \$5. Reservations may be obtained by contacting Meg Thorton at AADAP, (213) 293-6284.

LONG BEACH

Nov. 18 5 p.m. Big Game Night will be held by UC Berkeley Japanese Stanford and UCB. Cost is \$25 per person and includes feature approximately 1,000 students, ages 7-14, from the holds its first gala reception, "Asians in California: A and Royal Salon of the Hotel Queen Mary. Speakers include Lucie Cheng, UCLA Center for Pacific Rim Studies; Janice Koyama, Moffitt Library, UC Berkeley; and Lilly Lee, Asian Pacific Research & Development, United Way. R.S.V.P. by Nov. 10. Info: (213) 583-2313.

SACRAMENTO

Nov. 22 7 p.m. "Yankee Samurai" will be shown for the first time in Sacramento at Sacramento City College Auditorium, 3835 Freeport Blvd. Tickets are \$10. Reservations may be obtained by calling (916) 391-5099.

NJAHS Project

Liberators of WW2 Death Camp Sought

SAN FRANCISCO — Nisei veterans of the 522nd Field Artillery Battalion who participated in the liberation of the Dachau concentration camp in Germany in April of 1945, and who are willing to share their experiences, are being sought by the National Japanese American Historical Society.

The historical society, in addition to Israeli filmmaker Katriel Schory and the American Jewish Committee, is attempting to locate those veterans in an effort to include the Dachau liberation story in Schory's film "Yankee Samurai."

The 522nd Battalion was formed in Camp Shelby, Miss., in 1943 as part of the famed 442nd Regimental Combat Team. They participated in all of the campaigns with the 442nd until after the rescue of the "Lost Battalion." Noted for their accuracy in firing cannons, they were transferred to the 7th Army to participate in the Anvil Campaign, a major invasion of Germany.

During this invasion, a forward element of the 522nd came upon a walled fortress-like structure. Not knowing what it was, the Nisei broke open the gates and discovered literally thousands of bodies. Patrols were sent into the woods, where they found survivors of Hitler's death camp.

Veterans and family members who have artifacts or who are willing to be interviewed for this film project are asked to write Eric Saul at NJAHS, 1855 Folsom St., San Francisco CA 94103, or pr call (415) 431-5007.



Photo courtesy of NJAHS

A rare photo of a Nisei soldier of the 522nd Field Artillery Battalion with recently liberated victims of the Dachau death camp in April 1945.

Japanese Orators to Compete

LOS ANGELES — The second annual Japanese Oratorical Contest, sponsored by the Franklin D. Murphy Library of the Japanese American Cultural and Community Center, will take place Nov. 16, 1 p.m., in the second floor conference room of the JACCC, 244 S. San Pedro St.

Contestants will be judged in two categories: junior/senior high school division for those attending an accredited Japanese language school on a junior/

senior high school level, and the adult division for anyone 18 years of age or older who has not continuously lived in Japan longer than two years after the age of six.

Winner of the junior/senior high school division will receive a trophy and a \$150 book-purchase gift certificate. Winner of the adult division will receive a trophy and a \$300 book-purchase gift certificate.

Info: (213) 628-2725.

CLASSIFIED ADS

4—Business Opportunities

SO CALIF

Partner Wanted

Mineral Hot Spring desires one partner to underwrite development and renovation. Possible tax credit. High profit potential.

(714) 585-2757/585-2050

EQUITY PARTNER WANTED

Invest in single family houses. Fully secured. No negative cash flow. No management problems. Good tax benefits. Good estimated growth. The best consistent growth for 40 years. Properties available in So. Cal. & Bay Area. QUANTUM MANAGEMENT CO., 360 Channing Way #15, San Rafael, CA 94903.

(415) 472-1876

BURIED TREASURE—Our new proprietary scientific instrument will detect/locate buried gold bullion from a distance of 1/4 mile or more! Joint venture partner wanted to fund 5 month, 350K expedition to Philippine Islands to survey/recover Japanese WW II era documented gold bullion cache sites on land. We will demonstrate that our instrument positively works and provide absolute documentation that our gold cache sites are valid. Brokers welcome - Great Southern Salvage & Recovery - 628 W. 17th St. - Houston, TX 77008.

SO. CALIFORNIA BY OWNER-MOTEL: TRAVELodge!

29 Units. Approx. 55% occupancy. 50% ownership. Living quarters can be family operated. Forced to sell. Health reasons. Price: \$465,000, negotiable for cash. Call or write, Mr. Ed Marks, 2201 Highway 58, Mojave, CA 93501. (805) 824-2441.

AUTOMOTIVE & Heavy-Duty Radiator & Cooling System Service. BY OWNER. Good cash flow, approximately \$200K annual gross. On prime prime property in high desert that can be leased or sold by same owner.

(619) 245-3340

5—Employment

GOVERNMENT JOBS \$16,040 - \$59,230/yr. Now Hiring. Call (805) 687-6000 Ext. R-1317 for current federal list.

ACCOUNTING

Small CPA firm San Fernando Valley seeking CPA or CPA candidate with 2-3 years well rounded experience, familiar with Safeguard & Accutex systems.

Call (818) 908-9455 EOE

MARKETING MANAGER (OCEAN FREIGHT CARGO)

Wanted: 1 yr. & 6 Mos. experience & Japanese language required. Great Bear Transportation, Inc. (213) 676-6100

PC ads make shopping easier!

AIRLINE JOBS \$17,747 to \$63,459/Year, Now Hiring! CALL JOB LINE (518) 459-3535 Ext A2948C. For info. 24 HRS.

8—Real Estate (Acreage)

ARIZONA

PIG FARM

One of the largest in the USA. 75,000 hogs, 6,800 sows, 875 acres and computerized feed mill. Located on railroad line, in Northern Arizona. Excellent management and profits. Asking \$13.8 million U.S. Fuller & Sons, Inc., P.O. Box 15583, Phoenix, Arizona 85060, (602) 952-2200. TELEX: 3712847 MBEPHX1

9—Real Estate

ONTARIO, CANADA

FREEMAN R.E. SERVICES INC.

Toronto 4+6 plex apt. building, Bathurst St., 8.33% return, asking \$960,000. Toronto commercial/res. bldg. Adelaide St. W. exec. location and cond. Net income '86-\$214,000. bef. financ. asking \$2.5 M. Oakville shopping plaza, 22,657 sq. ft. net income '86-\$224,583. bef. financ. asking \$2.69M.

Other good investments available Oakville exc. restaurant, European style for sale. Small European delicatessen and several other businesses at different locations for sale. Please call:

FRIEDHELM KRUMME
(416) 842-8690

OCEANSIDE, CA.

On Sand and Beach!

2 houses; fenced yard, barbecue, 2 car garage, fireplace, tourism, reduced/quick \$299K. Owner leaving. Best location in Oceanside, near Marina.

(213) 393-5454

LAS VEGAS, NEV.

For sale by owner, 4 BR, 2 BA, cathedral ceiling, mbl flrs, mirrors, Indry rm, patio, fully cptd, applic, fully landscaped. Call (702) 648-3636 \$125,000

ALBERTA, CANADA

Mfrs-Electrical Contractors:

This super well-maintained bldg in Fairview, approx 36,000 sq ft of warehouse w/about 4,800 sq ft of office space, sitting on 1.53 ac. of land, for just \$675,000, or \$18.75 sq ft. Also this bldg could be subdivided into 3 separate units. JIM ROBINSON, RE/MAX Nth (403) 293-3335.

SALE/EXCHANGE

KONA, HAWAII Steps to Beach. Large 3 Br., dining room/lanai, 2 Ba. furn. Downstairs rental, 1 Br., livingroom, kitchen, 1 Ba. for home/condo.

Newport Beach, Laguna or vic. pp
(213) 519-0850 or (818) 966-7684

12—Miscellaneous

ATTENTION: RACING FANS

Join our club & get our new \$5,000 WBC handicapping and money management method for all types of horses and greyhounds, with a 5-yr club membership. Write for details.

Western Bettors Club, 1816 East Lewis Av. Ste D, Las Vegas, NV 89101. (702) 383-8138

TIME SHARE/CALIFORNIA

By owner. Golfer's paradise 27 hole Palm Desert Resort. Tennis, swimming dash 2 weeks best season. Sleeps 6. RCI exchange. Asking price, \$9,800.00 cash or owner will carry with \$2,700.00 down.

Call Mark A. at (213) 557-8578.

Paradise Okazu-Ya Restaurant

Specializing in Hawaiian-Orient Cuisine
Open Tue-Sat: 7am-7pm; Sun: 7am-2pm.
1631 W. Carson St., Torrance 328-5345
Eat In / Take Out • Closed Mondays Only

QUICK SERVICE FROM STEAM TABLE
Combination Plate - Very Reasonable Prices
OPEN FOR BREAKFASTS AT 7 A.M.

Our own style Portuguese Sausage mix, Spam, Boloni, Chashu. (With eggs & choice of rice or hash browns.) Includes Coffee, Tea or Miso Soup

DELIGHTFUL seafood treats
DELICIOUS and so easy to prepare

MRS. FRIDAY'S
Gourmet Breaded Shrimps and Fish Fillets

Fishing Processors, 1327 E. 15th St., Los Angeles, (213) 746-1307

Kubota Nikkei Mortuary

Formerly Shimatsu, Ogata & Kubota Mortuary

911 Venice Blvd.
Los Angeles, CA 90015
(213) 749-1449

R. Hayamizu, President; H. Suzuki, VP/Gen. Mgr.; Y. Kubota, Advisor.

Serving the Community for Over 30 Years

Four Generations of Experience...

FUKUI MORTUARY Inc.

707 E. Temple St.
Los Angeles, CA 90012
626-0441

Gerald Fukui, President
Ruth Fukui, Vice President
Nobuo Osumi, Counsellor

BANKRUPTCY AUCTION SAT., NOV. 22, 11:00 A.M.

403 AC TRACT SELLING AS A WHOLE BAKER RD., NASHVILLE, TENN

For further info, contact Jerry E. Gregory, Auctioneer
Days, (615) 292-6619 • Nights, (615) 876-2172

From Nashville, go I-65 North to Long Hollow Pike, exit turn left 1/2 mile to U.S. 41 and 31 West, go North through Goodlettsville 1 1/2 mi. to KOA Campgrounds; turn left on Lickton Pike and follow signs 4 1/2 mi. to property on Baker Road. This is one of the best locations around the Nashville area, being only 6 1/2 mi. from a major shopping area known as Riversgate Mall and less than 10 minutes from Opreland U.S.A. Property fronts 620' on Baker Road and is ideal for a private residence, retreat, or could be developed into private acreage estates. The property is served by public utility and is beautifully fenced along road frontage into a corral type holding area with Baker Creek running through it. The frontage is cleared and opens up into a breathtaking valley. There is a natural building site about 1000' back on approximately 2 acre plateau that overlooks Frontage and views the valley behind. There is approximately 60-75 acres cleaned and the balance is wooded. Four springs are known to be on the property.

Terms: 15%, day of sale in cash on a good check to be certified Monday, November 24th, balance at closing.

SELLING BY ORDER OF U.S. BANKRUPTCY COURT ROBERT H. WALDSCHMIDT, TRUSTEE BANKRUPTCY #386-02927

BILL COLSON AUCTION & REALTY CO., INC.
MOST MONEY IN THE SHORTEST TIME
2012 BEECH AVE NASHVILLE, TN

