



# pacific citizen

Established 1929 • National Publication of the Japanese American Citizens League

Newsstand: 25¢  
(60¢ Postpaid)

#2,500 / Vol. 107 No. 10

ISSN: 0030-8579

941 East 3rd St. Suite 200, Los Angeles, CA 90013

(213) 626-6936

Friday, October 7, 1988

## JACL, JACL-LEC Laud Members of Congress

By Grayce Uyehara

WASHINGTON — Members of the 100th Congress who took leadership roles in the enactment of the redress legislation received recognitions for their efforts from representatives of the JACL, JACL-Legislative Education Committee (JACL-LEC) and Go for Broke Veterans on Sept. 27 and 28. H.R. 442, which was signed by President Reagan on Aug. 10, provides a public apology and monetary redress to surviving Japanese Americans incarcerated during WW2 on the basis of ethnicity.

Presenting silver scroll plaques, which commend recipients for "leadership in the (Congress) redressing Americans of Japanese ancestry for arbitrary and constitutional deprivation of rights, liberty and property during WW2," were Mike Masaoka of the Go for Broke veterans group; Cressey Nakagawa, JACL National president; Jerry Enomoto, JACL-LEC chair; and Grayce Uyehara, JACL-LEC executive director.

Senators visited by the team included Senate Minority Leader Robert Dole of Kansas, Senate Minority Whip Alan Simpson of Wyoming, Senate Majority Whip Alan Cranston of California and Daniel Inouye of Hawaii. Sen. Spark Matsunaga of Hawaii was represented by Cheri Matano.

Plaques were left at the offices of Majority Leader Robert Byrd of West Virginia, John Glenn of Ohio, David Pryor of Arkansas and Ted Stevens of Arkansas.

Representatives awarded in person included Speaker of the House Jim Wright of Texas; Peter Rodino of New Jersey, Judiciary Committee chair; Henry Hyde of Illinois; Hamilton Fish of New York, ranking minority member of the Judiciary Committee;

Continued on Page 2

## Settlement a 'Historic' Step Forward in Area of Human Rights, Says JACL-LEC

WASHINGTON — In released statements, Rep. Robert T. Matsui (D-Calif.) and the JACL-LEC commended the Canadian government for its decision to pay reparations to Japanese Canadians interned during WW2.

The \$230 million settlement reached between Canadian Prime Minister Brian Mulroney and the National Association of Japanese Canadians on Sept. 22 awards payments of about \$17,000 to each of the estimated 12,000 camp survivors. The decision also calls for \$27 million to go to the Japanese Canadian community for educational and cultural programs and for the establishment of a human rights foundation, which will be named in memory of the internment experience.

"Our northern neighbors made a courageous and much-warranted decision," Matsui said. Referring to President Reagan's Aug. 10 signing of the legislation to redress Japanese Americans, he continued, "You can't help to think that our own government's recent actions served as the engine that motivated that decision."

### A 'Historic' Step

JACL-LEC, one of the organizations which led the fight for Japanese American redress, hailed Mulroney's

## Grayce Uyehara to Keynote San Diego Redress Celebration

SAN DIEGO — The San Diego Chapter of the JACL is hosting a redress celebration and recognition banquet on Oct. 23, 6 p.m., at the San Diego Princess Resort, 1404 W. Vacation Rd.

Highlighting the event, which will recognize the efforts of local individuals and organizations toward passage of the Japanese American redress bill, H.R. 442, will be a keynote address by Grayce Uyehara, former JACL-LEC executive director.

Uyehara, who resides in Medford, N.J. with husband, Hiro, retired from her post last week, almost three years to the day she replaced John Tateishi as JACL-LEC executive director. A key player of the redress movement, she organized major letter-writing campaigns at the grassroots level and worked to help guide H.R. 442 through Congress to its enactment.

Uyehara will relate her experiences as a redress lobbyist and some of the behind-the-scenes maneuverings that led up to the president's Aug. 10 signing. She will also outline the steps that persons eligible for the reparations payment can follow.

Others slated for recognition at the celebration are Marleen



Grayce Uyehara

Kawahara, San Diego JACL redress chair and JACL Pacific Southwest District redress coordinator, and Jan Tokumaru, co-chair of the San Diego Redress and Reparations Committee.

The evening's activities will include a dinner, program and dance. For more information, call Marleen Kawahara at (619) 458-1710.

### Radio Spies

## Tracking Down Questionable 'Fact' Proves No Trivial Pursuit

By George Johnston

LOS ANGELES — The name of the article was "U.S. History Trivia: Stranger Than Fiction," but one of the items appearing in it seemed a little bit too strange for Terry Nakawatase, a fourth grade teacher in the Los

Angeles Unified School District. Her husband, Roy, an administrator in the school district, also thought it was strange.

The article, which appeared in the September issue of *Learning*, a magazine for school teachers who teach from kindergarten to the eighth grade, cited "funny facts" which would be helpful for making students interested in history. One of the "facts" which piqued Nakawatase's curiosity stated that during WW2, comic actress Lucille Ball picked up radio signals on her temporary tooth fillings from a "secret Japanese radio station" which was "operating underground in Hollywood."

Continued on Page 3

## Pearl Harbor 'Joke' Discriminatory, EEOC Suit Claims

WASHINGTON — Jokes about a person's ethnicity can be used as evidence of discrimination, the Equal Employment Opportunity Commission (EEOC) is arguing in a lawsuit.

The EEOC is seeking full back pay and an equal amount in damages for Harumi Yoshimoto, a 64-year-old Nisei worker. In its federal District Court suit, the commission alleges that Yoshimoto was subjected to illegal harassment when his boss at a Santa Fe Engineers, Inc. construction project kept telling him, "Remember Pearl Harbor."

Yoshimoto was later fired by the company after it completed its project

Continued on page 5

## AA Groups Urge Continental Airlines to Stop 'Fare Samurai' Ad Campaign

SAN FRANCISCO — Asian American groups are asking Continental Airlines to discontinue its "Fare Samurai" newspaper and television advertising campaign. The advertisement depicts a samurai, portrayed by a White actor, who speaks pseudo-Japanese and broken English and literally slashes prices with a sword.

The ad was created by the Houston office of N.W. Ayer. Allen Brivic, an ad director at the agency, said the campaign was based on a samurai character made famous by the late actor John Belushi on television's "Saturday Night Live."

### 'Displays Insensitivity'

In a Sept. 23 letter to Continental, Bill Yoshino, acting JACL National director, wrote that the ad "displays insensitivity, perpetuates negative images and contributes to a growing sense of apprehension among Japanese Americans and Asian Americans brought about by the continuing trade friction and its ramifications between the United States and the countries of the Far East, particularly Japan."

"During the 1980s, there have been

concrete indications of a rising trend of violence toward Asians in the United States," wrote Yoshino. "The utilization of mockery and stereotypic images does not, in any manner, contribute to an environment in which Asian Americans are too easily victimized because of their physical appearance."

"... We ask that you take immediate action to withdraw this advertising campaign and that you act with better judgement and sensitivity in the future."

A letter sent by the Chinese for Affirmative Action in San Francisco stated: "Such a deplorable racist action is inexcusable [and] would certainly dissuade the Asian community from flying Continental."

According to a spokesman for the airlines, the company does not plan to stop the ad campaign, which is scheduled to end this week. Continental did not intend for the ads to be offensive, said the spokesman, who added that the advertisements were reviewed by a group of advertising executives that included Japanese Americans.

## Three Senators Vying for Majority Leader

WASHINGTON — Nov. 29 will be a big day for one of three Democratic senators—Daniel Inouye of Hawaii, J. Bennett Johnston of Louisiana and George J. Mitchell of Maine. On that day, Democratic senators will, in a closed caucus, choose one of the three to replace Sen. Robert C. Byrd of West Virginia as Senate majority leader.

The race is so tight that Senate observers are declining to make a prediction who will win or who has the best chances. The three have been in the running since April 12, when Byrd announced that he would step down from the post. He first held the post from 1977 to 1981 and served as minority leader from 1981 to 1986.

Although there are no formal procedures for campaigning for the coveted slot, tactics to gain support usually involve favors and "perks" that a senior senator can bestow upon junior senators. This year, however, all three candidates have positive factors which could give them the final advantage.

In Inouye's favor are his 20 years in the Senate, marking him as the

senior candidate. Johnston's advantage is his chairmanship of the Senate Energy and Natural Resources Committee. Mitchell, who was the chairman of the Democratic Senatorial Campaign Committee, could have the support of the 11 Democratic freshmen elected to the Senate in 1986.

Part of the outcome could depend on who is elected in the presidential election, which could swing advantage to a particular candidate, possibly for reasons of ideological or regional balance.

Another factor could be the Democratic freshmen senators. Eight previously served in the House of Representatives and are reportedly frustrated with delays in the progress of legislation. As a result, they made a list of demands for change and have asked each of the candidates to commit themselves to implementation.

Since the trio are all respected and generally well liked, some believe that whoever becomes majority leader may be determined not only on competence and gratitude, but who is best liked.

## NEWS IN BRIEF

### Woo to Face Roth in Senate Race

DOVER, Del. — By a vote of 20,221 to 20,154, Delaware Lt. Gov. S.B. Woo beat out rival Sam Beard to win the Democratic Party nomination for U.S. Senate, despite an attack by AFL-CIO leader Pete Peterson referring to his Chinese ethnicity. Peterson said the union opposed Woo in part because it wanted to eliminate "Asian influence" in the nation. He later modified the term "Asian influence" to "Asian and foreign corporate influence."

The remark stemmed from Woo's involvement in the successful purchase and opening of the Phoenix Steel Plant by a joint venture of a Hong Kong investor and a financial institution controlled by the mainland Chinese government.

Woo, who will face Republican incumbent Bill Roth in the Senate race, also opposed a state bill that would have required the plant's new owners to hire all the former workers on the grounds that the investors might back out of the deal.

### Bill Gives Permanent Status to Peace Institute

WASHINGTON — Sen. Spark Matsunaga (D-Hawaii), with a bi-partisan majority of colleagues acting as original co-sponsors, introduced legislation giving permanent status to the U.S. Institute of Peace. The institute began operations and was reauthorized for a two-year period by Congress in 1986.

The bill provides permanent authorization with spending authority capped at \$20 million per year. It would not change the institute's mandate, which is to provide peace research, education and training in both the public and private sectors through in-house programs, by providing grants or contracts to other institutions, through public outreach programs and through the Jennings Randolph Program for International Peace.



## 'Nisei Onassis' Dies in New York

By Harry K. Honda

NEW YORK — The so-called "Nisei Onassis" (*Esquire* Magazine) and internationally prominent New York businessman Kay Sugahara, 79, died of cancer on Sept. 25.

As president of Fairfield-Maxwell Ltd., which owned and operated a fleet of oil tankers and other ships, Sugahara was well known in prewar Los Angeles, where he was founder of the Nisei Week Festival in Los Angeles, JACL chapter president, a '32 UCLA graduate, and the first Nisei custom broker on the U.S. mainland.

During WW2, the Seattle-born Sugahara was interned with his wife, Yone, and three sons at Santa Anita race track in California. They were later sent to the Granada WRA camp in Colorado.

### Camouflage Project

In a 1981 interview with a reporter

### DEATHS

**Masami Tsuyama**, 70, former chairman of California First Bank, died of pneumonia Aug. 15 in Tokyo. Tsuyama's banking career began in 1940 with Yokohama Specie Bank, which was renamed Bank of Tokyo, Ltd., after WW2. He later moved to San Francisco to join the Bank of Tokyo of California and was instrumental in the formation of California First Bank in 1975, when the Bank of Tokyo of California acquired Southern California First National Bank. Tsuyama served as president and chief executive officer of the new bank. Board chairman from 1978-1984, he was named chairman emeritus in 1984 before resigning in 1987.

**Sueo Kuramoto**, 65, of Honolulu died Aug. 24. A retired city Sewer Division manager inspector, Kuramoto was a member of the Military Order of Purple Heart Chapter No. 7442 during WW2.

He is survived by his wife Edna, sons Wayne and Kenneth, brothers George and Harold, and a sister Mrs. Fumiko Nunotani.

from the *Washington Post*, Sugahara said he found it ironic that he and other evacuees were ordered to work on the camouflage project at Santa Anita "when we were feared as disloyal . . . but were expected to work on a camouflage project to protect the U.S. Army." He also served with a propaganda project in India with the Office of Strategic Services.

After the war, Sugahara and his family relocated to New Rochelle, N.Y. He then worked with Joseph Grew and Eugene Doonan, Japan experts at the U.S. State Department in reestablishing U.S.-Japan ties through the American Council for Japan. In the late '50s, he started making tankers in Japan for U.S. companies. During the Korean conflict he procured strategic materials for the U.S. military.

When the Suez Canal closed in 1967, boosting tanker rates, Sugahara was one of the few operators with ships on the Persian Gulf-Japan route.

### Founded Think Tank

In the late 1970s, Sugahara stepped down from his post as president of Fairfield-Maxwell Ltd. and his son, Kaytaro, became head of the business. Sugahara then organized the U.S.-Asia Institute in 1979, a think-tank setting forth Asian American perspectives and an attempt to raise the national image of Asian Americans. One project which made headlines in 1983 was Sugahara's proposal of a \$10 billion Partnership in Prosperity Fund to a meeting of the National Governors' Association. It also managed to have him return to his prewar haunts in Little Tokyo and ride the Nisei Week parade as grand marshal the same year.

Surviving Sugahara are his wife and sons Kaytaro, Bryan and Byron.

## CONGRESS

Continued from page 1

Pat Swindall of Georgia; Barney Frank of Massachusetts; Howard Berman of California and Patricia Saiki of Hawaii.

Reps. Norman Mineta and Robert Matsui, both of California, received their recognitions from JACL-LEC at the JACL National Convention in August. Congressmen who were unable to meet with the team but were left with plaques at their offices were Jack Kemp of New York and Dick Cheney of Wyoming. Tony Coelho of California was represented before the team by his administrative assistant, Fred Hatfield.

### Honoring Congressional Staff

During a Sept. 27 dinner, held at the Szechuan Gallery Restaurant in Chinatown, congressional staffers were honored by JACL-LEC for their work on the redress legislation and assistance to JACL-LEC's Washington office. Nakagawa and Enomoto expressed their appreciation on behalf of JACL and JACL-LEC respectively.

Among those recognized were Angus Macbeth, legal counsel for the Commission on Wartime Relocation and Internment of Civilians, and the

Task Force for Redress. Those who co-chaired the task force under the Leadership Conference on Civil Rights (LCCR) were Ralph Neas, LCCR executive director; David Brody, Washington director of the Anti-Defamation League of B'nai B'rith; and Wade Henderson, associate director of the American Civil Liberties Union.

Also honored was Joe Rauh, LCCR counsel who served as an advisor to the JACL-LEC board, and Ruth Flower of the Friends Committee on National Legislation who chaired the Religious Coalition for Redress.

Senate staff honored with Certificates of Appreciation Plaques include the following:

Cheri Matano and Elma Henderson of Matsunaga's office, Margaret Cuminsky of Inouye's office, Lorraine Lewis of Glenn's office, Rick Goodman and Ed Gleiman of Pryor's office, Lisa Sutherland of Steven's office and Glenn Roberts of Mikulski's office, who was a former legislative director for Mineta when he helped to write H.R. 442.

House staff recipients awarded plaques were:

Carol Stroebe of Mineta's office, Janet Potts and Belle Cummins of Frank's office, Ed Hatcher of Matsui's office, Elaine Mielke of Rodino's office, Jan Fujiwara of Swindall's office and Kaz Oshiki of Kastenmeier's office. Oshiki also served as one of the advisors to Ueyehara during her three years as JACL-LEC executive director.

## Kumon Institute Offering Free Trial Course in Japanese

LOS ANGELES — The Kumon Educational Institute is offering a free two week trial course in the Japanese language from Oct. 17 to 29. Students will receive individualized instruction, learn at their own pace, and set their own schedule.

The Kumon Institute states that through its program students can become almost fluent in the Japanese language within two years simply by attending a couple of 30 to 60 minute classes per week, the days and times of which are flexible to suit each student's personal schedule. A one-time registration fee of \$40 includes all materials and a further fee of \$70 a month covers all classes.

For more information about the two week trial course or institute, call (213) 215-3311.

**CHIYO'S**  
JAPANESE BUNKA NEEDLECRAFT  
Framing, Bunka Kits, Lessons, Gifts  
2943 West Ball Road,  
Anaheim, CA 92804 ■ (714) 995-2432

## AQUAFARMING FOR PROFITS

**AQUAFARMING** (fish and organic vegetables) is a timely investment for the diet-and-wellness '90s. Pesticide Free!

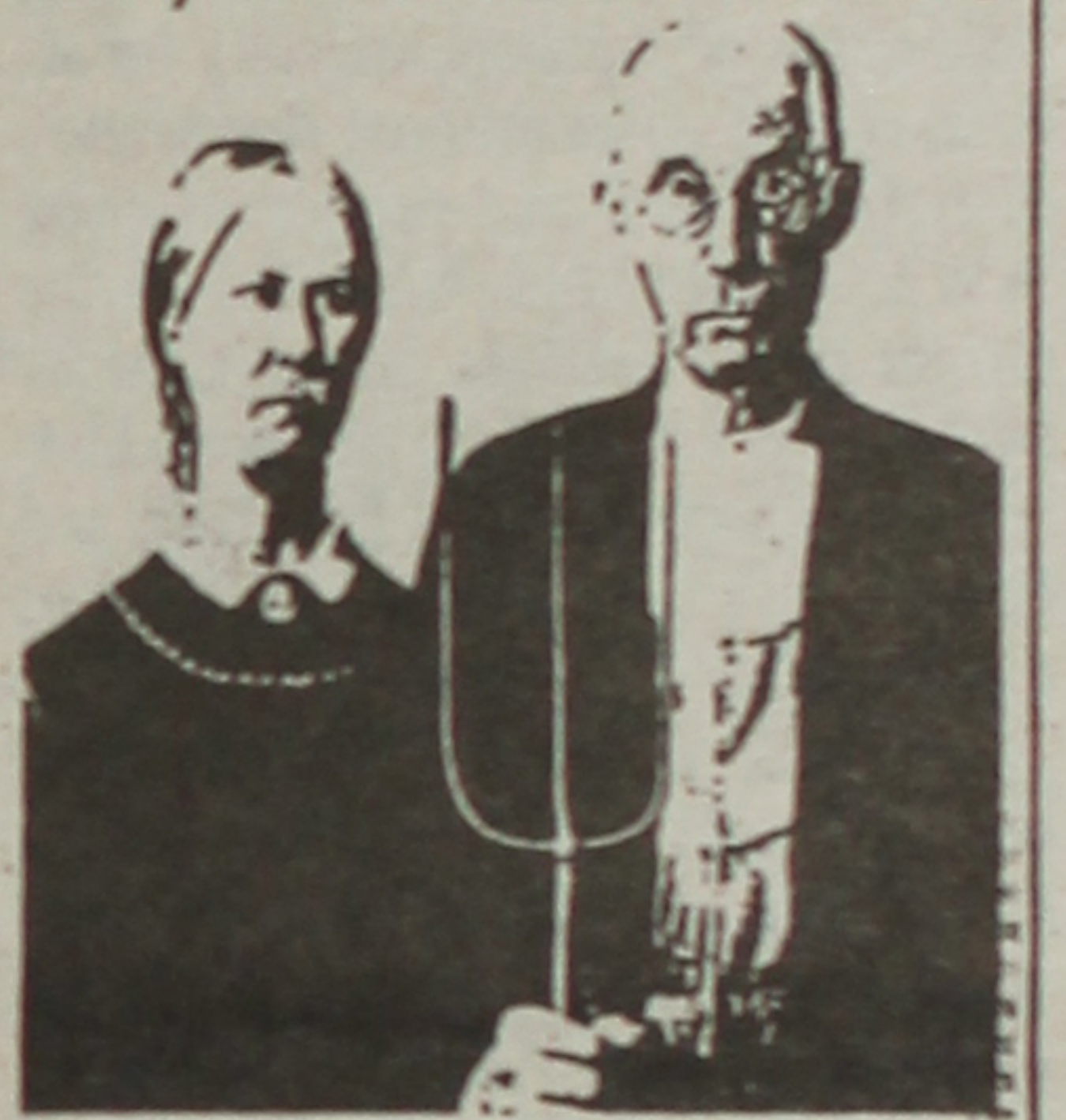
Large or small investors may operate hi-tech aquafarm equipment or UPC may operate systems for owners at UPC's farms. Options are many. General Partners welcome too! 20% annual income is reasonable and worth more as sheltered and inflation indexed! • Management and non-recourse financing available. Established markets. Proven past. Bright future!

**FREE BROCHURE** explains aquafarming's benefits. If you agree that increasing concerns about pollution, wellness, inflation and farming costs will benefit aquafarming's profits,

**FREE BROCHURE**  
UPC, Del Mar, Calif.

Good Times or Bad, People Still Eat!  
Pollution Free is Best!

**CALL NOW!**  
(714) 754-6258  
Sunday-Friday 9am to 6 pm



BECOME A BLACK BELT IN THE INTERNATIONAL BUSINESS COMMUNITY:

## LEARN JAPANESE



At the last convention you attended, what percentage of the booths were taken by Japanese companies? 20%? 30%? Probably even more.

Isn't it about time you gave yourself the edge and learned to speak Japanese?

Despite the conception that the Japanese language is cumbersome and confusing to English-speaking people, through KUMON's innovative teaching methods you'll be reading and writing basic Japanese within 6 months.

You could be almost fluent within 2 years!

Over 1.5 million students strong, KUMON is the largest Educational Institute in the world. There are already over 19 KUMON classes in L.A. and Orange County - at each you'll receive individualized instruction, learn at your own pace, and set your own schedule.

For your further convenience, correspondence courses are available too!

Call any of our locations listed below - or the KUMON Regional Office - for further information.

You'll discover why we ARE the world's #1.

**FREE TRIAL: OCT 17-29**

## FREE INTRODUCTORY LANGUAGE COURSE AT:

CENTRAL IRVINE	(714) 786-5026	HANCOCK PARK	(213) 389-8449	SHERMAN OAKS	(818) 360-6947
CERRITOS	(213) 865-0563	LITTLE TOKYO	(213) 516-0724	W. LOS ANGELES	(818) 360-6947
DIAMOND BAR	(714) 861-1763	NEWPORT MESA	(714) 968-0112	WESTWOOD	(213) 626-1531
FOUNTAIN VALLEY	(714) 531-9414	NORTH TORRANCE	(213) 542-1001		(213) 391-3943
GARDENA	(213) 217-0877	PASADENA	(818) 574-5743	WILSHIRE	(213) 215-3311
GRAND AVE	(213) 538-5904	REDONDO BEACH	(213) 217-0877		(714) 594-0334
	(714) 594-0684				

**KUMON**  
KUMON EDUCATIONAL INSTITUTE  
OUTSTANDING JAPANESE LANGUAGE PROGRAM

**(213) 215-3311**

KUMON EDUCATIONAL INSTITUTE CO., LTD.  
20000 Mariner Ave., Suite 400, Torrance, CA 90503

## MIDAS OPERANDI

Invest in Dollars and Have It Working for You in Yen . . . With Liquidation in Dollars. Hedge Against Inflation by Realizing **More than 20% NET per Annum**

Minimum Investment: \$25,000

—DETAILS UPON REQUEST—

**Dyke Nakamura, Foreign Department**

**YAMAKICHI SECURITIES CO., LTD.**

7 Nihonbashi, Kabutocho, 1-chome  
Chuo-ku, Tokyo, Japan 103

Cable: YAMASECURE, TOKYO □ Telephone: (03) 667-7947



## RADIO STATION

Continued from page 1

Nakawatase showed her husband the article and he mailed a photocopy of the article to JACL Pacific Southwest District Regional Director John Saito. His reacted by calling the article "outrageous."

### Letter Sent

As a result of reading the article, Saito mailed a letter in care of *Learning* to the story's author, Patricia Lee Holt. Saito demanded that further information be made available, including the names of the people operating the station, the kinds of messages transmitted, the language the broadcast was in, what official action was taken against the station operators, the dates when Ball heard these broadcasts and the source of Holt's information.

Saito also wrote that he was "taken aback" by the item in the story. "Because of the false propaganda directed towards the Japanese American community before and during the World War II period," Saito wrote, "and the

stigma that came with it, we are keenly sensitive to what you call historical trivia.

"I believe it would be very dangerous for teachers to pass on to their students the incomplete information contained in your trivia article. The article is not conclusive and can lead to damaging inferences.

"Your history trivia is an indictment against a community, which had already been cleared by the Federal Bureau of Investigation and the Navy Department, and whose loyalty had been proven in blood in the battlefields of Europe and the Pacific."

### Reply Sent

On Oct. 3, Saito received a reply from Karen L. Hansen, consulting editor for *Learning*. Her letter read:

"Dear Mr. Saito [sic],  
"Thank you for your letter concerning the article 'Stranger than Fiction.'

"*Learning* magazine reprinted the item in question from a book published by Citadel Press. I have forwarded your letter to the author in care of the publisher."

After reading the reply, Saito felt that the letter didn't go far enough. "The teachers aren't aware of this com-

plaint and will use the story in the classroom," he said. He believes that even if the story is true, it is misleading and if it turns out to be false, retractions by the magazine and the book will be in order.

Saito promptly mailed her back a reply and in part wrote, "Our real concern is that the information or misinformation which your magazine has reprinted is now in the hands of thousands of school teachers, ready to pass to students under the attention getting banner of history trivia."

Saito also called and wrote Lucille Ball's production company to find out if the story was factual. Ball's secretary, however, told him that she was out of town until next week.

### 'Terrible'

Pacific Citizen spoke with Hansen of *Learning* Oct. 4. Concerning the veracity of the information written by Holt, Hansen said, "It was strictly her research. We simply reprinted her research and her work." *Learning* has a circulation of about 300,000.

According to Terry Nakawatase, "It being an educational publication, it has far-reaching consequences." She feels *Learning* is a good magazine, but she believes that if the item in the story proves false, Nakawatase would like the magazine to, "in some prominent way, publish in their next magazine what the findings are . . . I'd like to see if they researched it all.

"It's kind of an irresponsible thing for an educational magazine to do. If it were in *People* magazine, it wouldn't shock me as much, but it being a magazine for teachers . . . I thought it was terrible."

## APASG Dinner to Honor Tamaki, Wang

LOS ANGELES — The University of Southern California Asian Pacific American Support Group (APASG) is holding its fourth annual awards dinner on Oct. 20 at the Biltmore Bowl, Biltmore Hotel in downtown Los Angeles.

The support group, which honors Asian Pacific American leadership of the past, present and future, will recognize the late Carl Tamaki and Kenjohn Wang for lifetime achievements in the area of community service and professional pursuit.

Tamaki, who died in June, was a retired acting general manager for the Department of Water and Power, City of Los Angeles. Tamaki was also president of the Japanese Community Pioneer Center and a board member of the Japanese American Cultural and Community Center of Los Angeles.

A real estate developer, Wang founded the Taiwanese American Foundation and co-founded and served as president-elect of the Taiwanese American Chambers of Commerce of North America.

The dinner program will also feature a presentation of scholarships to outstanding undergraduate and graduate Asian Pacific American students representing a wide variety of disciplines at the University of Southern California.

Chartered in 1982, the APASG opens its membership to all alumni and

friends who wish to invest in the education and future of Asian Pacific American students. The support group also assists the university's Office of Asian Pacific American Student Services by providing funds and other support for projects and programs.

Tickets for the upcoming event are \$75 per person. For reservations or more information, contact Lana Chin at (213) 743-4999.



Photo By Daniel Inouye

**SPECIAL APPEARANCES**—Mary Tsukamoto, author of *We The People, A Story of Internment in America*, will attend both the Jerome Reunion in Torrance, Calif. and the Florin Area Reunion in Buena Park, Calif. Oct. 7-9 to autograph copies of the book. In paperback, the book is \$15; hardback is \$30. It can be mail-ordered from Laguna Publishers, P.O. Box 692, Elk Grove, CA 95759-0692; add \$2 for shipping costs.

## No Points Adjustable Rate Mortgage.

No APPLICATION FEE

No PRE-PAYMENT PENALTY

No BALLOON PAYMENT

No NEGATIVE AMORTIZATION

Visit us and make yourself at home with a Sumitomo Adjustable Rate Mortgage. Offer good through November 30, 1988.



**Sumitomo Bank**  
Sumitomo Bank of California Member FDIC



**RIGHTEOUS RIDE**—Tony Kusumoto's 1956 Ford Thunderbird was judged "Best in Show" at the first Nisei Week Car Show. It also received first place in the "Domestic Classic" category. Other first place winners in the popular event included Ronald Akashi (Foreign Classic), Dick Obayashi (Domestic Custom) and Gary Kato (Foreign Custom). Pictured above are (l-r) Nisei Week Queen Karen Uchizono, Kusumoto, Susan Iida, Kris Moriyama, Renee Teruya and Lily Miyauchi.

## Scholarship Application Forms Mailed to JACL NCWNPDC Chapters

Wilma Hayashi, chairperson of the JACL Northern California-Western Nevada-Pacific District Council (NCWNPDC) scholarship committee, has announced that application forms for the annual Scholastic Achievement Awards for 1989 high school graduates have been mailed to JACL chapter presidents. The awards are given to outstanding graduating high school seniors from families holding membership in the NCWNPDC.

Award recipients for 1988 are Jason J. Ura of Watsonville, Michael

Suekawa of San Jose and Kristin Takeda of Lodi.

Established in 1976 by the NCWNPDC, the award recognizes and encourages excellence in the scholastic abilities and extra-curricular activities of high school students. Consideration of financial need and the issue of continued education on a higher level are not pertinent.

For more information, contact NCWNPDC Regional Director George Kondo at (415) 921-5225.

## South Bay JACL Singles Fundraiser to Benefit Nikkei Homeless, Hungry

GARDENA, Calif. — The Sansei Singles Committee of the South Bay JACL Chapter is holding its first major fund-raising event, "We Care for the Homeless and Hungry," on Oct. 15 at the Nakaoka Center, 1700 W. 162 St.

According to Yasuko Sakamoto, a social worker at the Little Tokyo Service Center, more Nikkei are in need of food, shelter and other emergency care. The committee reports that proceeds from the event will go to the Emergency Caregiver Program of the Little Tokyo Service Center.

The fund-raiser includes a dance,

beginning at 8 p.m. with music provided by a live band "The Shake Down," and a karaoke contest. Singers competing in the contest, which will be judged by karaoke instructor Atsuko Ota, are encouraged to bring their own cassettes. A raffle drawing will also award a grand prize of round-trip airfare and hotel accommodations for two nights in Las Vegas for two. Other prizes include a television set and clock radio.

For more information, call Brenda at (213) 538-2508 or Jeri at (213) 329-6875.

### Pacific Citizen Accepting Holiday Issue Materials

The P.C. is accepting submissions for the 1988 Holiday Issue. This year's theme is redress. To contribute material, send your completed text or query letter to Holiday Issue, Pacific Citizen, 941 E. Third St. Suite 200, Los Angeles, CA 90013. Deadline: Nov. 30, 1988.

Submissions should be type-written and double-spaced; please include a contact phone number.

Call P.C. regarding submissions on floppy disk.

**THE SHORT SHOP**  
FASHION CLOTHING for the SHORTER MAN  
**SHORT MEN 4'10"-5'7"**  
EVERYTHING IN YOUR SPECIAL SIZES  
X-SHORT • SHORT • PORTLY SHORT  
30"-31"-32" SLEEVE LENGTHS  
1233 Broadway Plaza  
WALNUT CREEK (415) 930-0371  
103 Town & Country Village  
PALO ALTO (415) 321-5991  
683 Fashion Valley  
SAN DIEGO (619) 296-9210  
Call or Write for FREE Catalog



**Helpline**  
NIKKEI-1 日米ヘルプ・ライン

THE NIKKEI HELPLINE IS HERE FOR YOU

**1-800-NIKKEI-1**  
**1-800-645-5341**

IF YOU'RE IN NEED OF HELP IN DEALING WITH A FAMILY CRISIS, DRUG ABUSE, VIOLENT CRIME, SUICIDE, OR CONSUMER INFORMATION, CALL US.

WE'RE A TOLL-FREE, 24 HOURS A DAY, SEVEN DAYS A WEEK SERVICE IN BOTH ENGLISH AND JAPANESE.

THIS NONPROFIT SERVICE IS SPONSORED BY THE LITTLE TOKYO SERVICE CENTER.

Largest Selection of Oriental and Asian American Books (Mostly in English) from Middle to the Far East (Egypt, India, Japan, China, Korea) - Occult

**ORIENTAL BOOK STORE**  
NEW - USED ■ BUY - SELL - TRADE

1713 E. Colorado Blvd., Pasadena, CA 91106 - (818) 577-2413  
FRANK MOSHER

## SHORT & SMALL MENSWEAR



### FOR THE PROFESSIONAL MAN.

Suits & Sport Coats in 34 - 44 Short and Extra-Short, also Dress Shirts, Slacks, Shoes, Overcoats and Accessories by Givenchy, Lanvin, Talia, Arrow, John Henry, London Fog, Sandro Moscoloni, Cole-Hann and Robert Talbot.

**KEN & COMPANY**

2855 STEVENS CREEK BLVD.  
SUITE 2249  
SANTA CLARA, CA 95050  
PHONE: 408 / 246-2177

LOCATED IN THE NEW  
VALLEY FAIR SHOPPING CENTER  
SECOND LEVEL, NEAR MACY'S.



ISSN: 0030-8579



**pacific citizen**

941 E. 3rd St., Rm. 200, Los Angeles, CA 90013-1703  
(213) 626-6936, Fax: 626-8213, Editorial: 626-3004

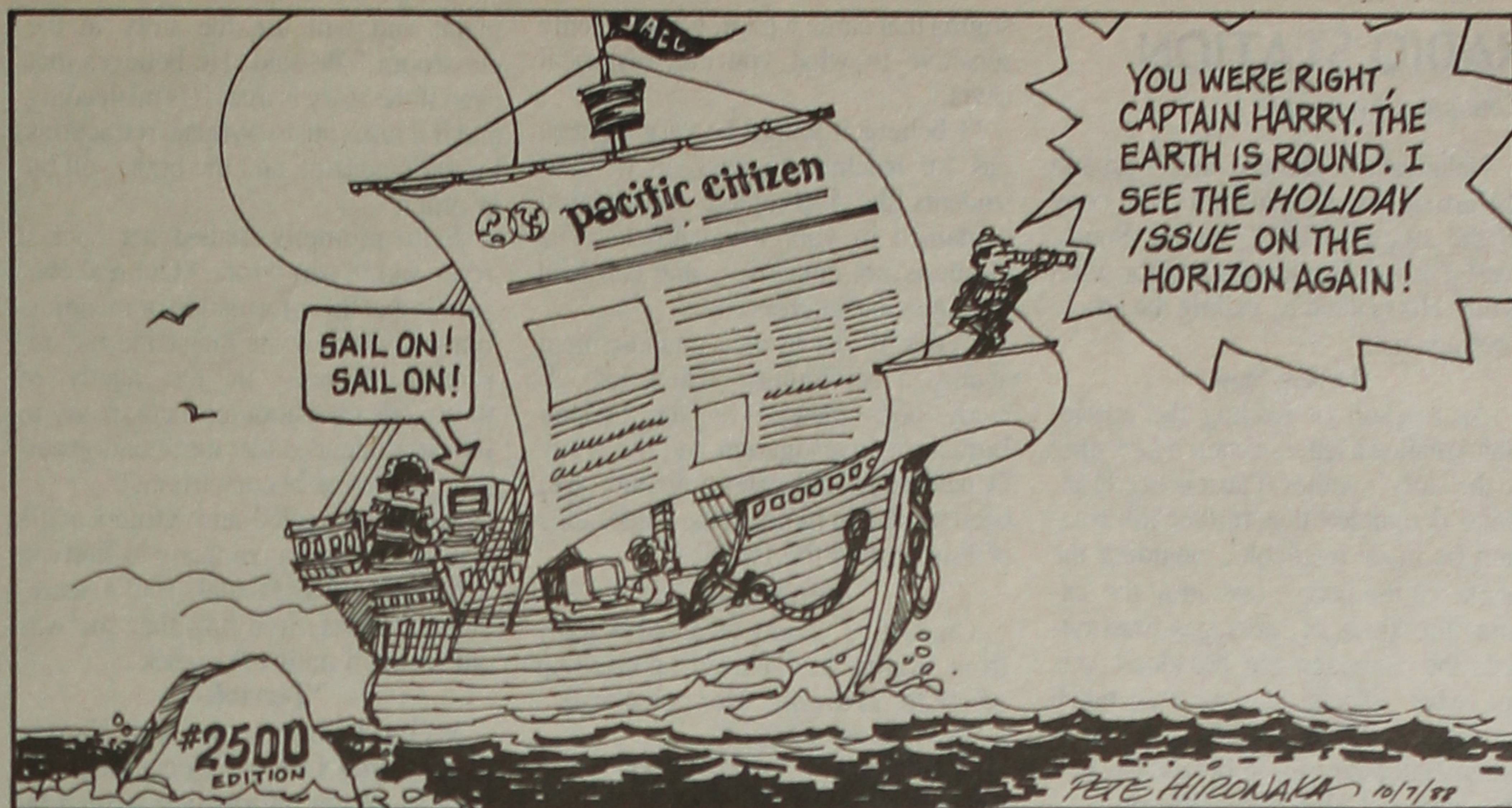
Published at Los Angeles, Calif. by the Japanese American Citizens League, National Headquarters, 1765 Sutter St., San Francisco, CA 94115, (415) 921-5225, every Friday except the first and last weeks of the year, biweekly during July and August, and one week in December prior to the year-end Holiday Issue.

Second Class Postage Paid at Los Angeles, Calif. • Annual Subscription Rates — JACL Members: \$11.00 of the national dues provide one year on a one-per-household basis. Non-Members: 1 year — \$25, 2 years — \$48, payable in advance. • Foreign: add US\$13.00 per year. • Air mail — U.S., Canada, Mexico: add \$30 US per year; Japan / Europe: add US\$60 per year.

The news and opinions expressed by columnists other than the National President or National Director do not necessarily reflect JACL policy.

**OFFICERS:** National JACL President: Cressy Nakagawa. Pacific Citizen Board Chair: Peggy S. Liggett. National Director: Bill Yoshino (acting), Deputy Nat'l Director: Carole Hayashino (acting).  
**EDITORIAL - BUSINESS STAFF:** General Manager / Operations: Harry K. Honda. Assistant Editors: George T. Johnston, Laurie Mochidome. Subscription / Circulation: Tomi Hoshizaki, Marjorie Ishii. Business: Mark Saito, Julie Louie. Production: Mary H. Iman, Frank M. Iman.

**POSTMASTER:** Send Address Change to: Pacific Citizen, 941 E. 3rd St., Los Angeles, CA 90013-1703



## EDITORIAL OF THE PACIFIC CITIZEN:

### Respect Deserved

CALIFORNIA HAS a new nominee for state treasurer. He is state Auditor General Thomas W. Hayes, an apolitical technician nominated by Gov. George Deukmejian to succeed the late Jesse Unruh. Deukmejian's first choice was Congressman Daniel Lungren whose nomination was rejected for a variety of reasons.

One of them, perhaps an important factor, was the opposition of Asian Americans who resented Lungren's position on the redress bill. Back in September 1987, he voted against H.R. 442. He opposed the measure because it provided individual monetary payment to the victims of the World War II evacuation.

However, he voted in favor of the final version of H.R. 442 which emerged last August from the House-Senate conference committee. The bill had undergone only minor changes in conference but Lungren reversed his position. This attracted little notice at the time. The reason for his change of heart was not widely understood until Pacific Citizen last month quoted from the *Congressional Record*.

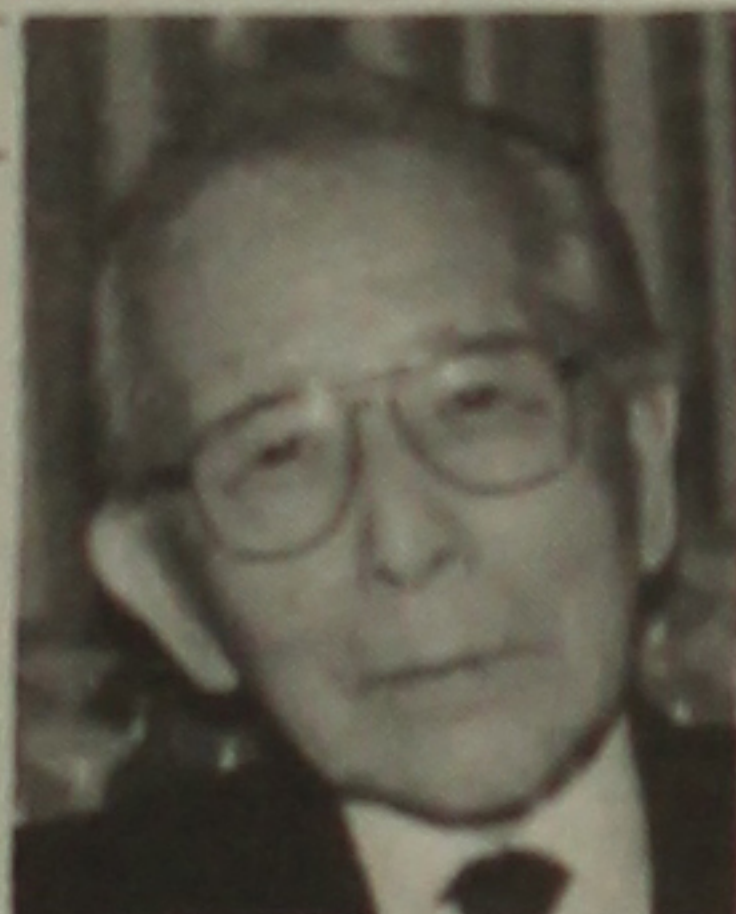
Lungren, addressing his colleagues, said he still thought individual reparations were unjustified and would have liked further discussions. But he agreed with the findings of the Commission on Wartime Internment and Relocation of Civilians, which were the basis of the redress bill, that a Constitutional injustice had been done to Japanese Americans and that they deserved a government apology. Despite his reservations about the controversial individual payment portion of the redress measure, Lungren said he felt the overall principle involved was important enough to deserve his vote.

It is impossible to say whether clarification of his position would have had an effect on Lungren's nomination for state treasurer. Be that as it may, Lungren's respect for principle is worthy of our respect.

## MOSHI MOSHI

JIN KONOMI

### An Irony of History



History's ironies fill us with a wry sense of the incongruity between what would have been and what was, but only briefly. But there are some exceptions which we view with regret and a real sense of loss. One example is the current image of the Japanese as blatant racists, which by now must be firmly fixed in the perception of many Americans, especially Black Americans.

For, at one time in history, Japan, alone and ahead of all nations, had advocated the banning of racial discrimination. At the Versailles Peace Conference of 1919, it was Prince Kinmochi Saionji, chief delegate of Japan, who proposed a resolution declaring the equality of all races of mankind.

Japan's motive for introducing such a resolution was not all idealism to be sure. A big part of it was Japan's long standing vexation at having its nationals treated as an inferior race. The peace conference was an ideal forum for airing the grievance.

By its role as the military ally of Great Britain and source of Germany's immobilization in Tsingtao, thus enabling the Allied forces to concentrate on European operations, Japan thought it had earned a right to demand the correction of this traditional injustice. But the most significant fact about this resolution was that Japan was not demanding the elimination of racial discrimination for its nationals alone, but for all the "lesser" races of the world.

The world was not ready for such a visionary proposition. Colonialism

was still in its heyday. The European nations' hold on their colonies was predicated on the assumption, which at this time had the force of God's law, of the superiority of the White race over all other races. To grant their subject peoples' racial equality was tantamount to cutting the ground from under their own feet. So they summarily rejected Japan's resolution.

Viewed against the subsequent history of Japan, which was marked by the rapid rise of militarism and complementing decline of civil rights, the idealism of Saionji's resolution takes on an aspect of Utopian unreality; you almost begin to doubt that such thing had ever happened.

Yet if you study the Taisho Era (1912—ca. 1917), you will see that it was not the private fantasy of this liberal nobleman, but was a product of the soil and climate of Japan of that time. The Taisho Era was a rare period in Japan's history when there was a sudden flowering of all the humanistic, liberal trends in Japanese thought. For once the Japanese cherished the vision of a world in which all races of mankind would co-exist as equals. The idea was certainly Utopian, but it was very much in the character of Taisho liberalism.

Though the resolution was rejected, it was a diplomatic *tour de force* and a moral victory for Japan. For Japan put itself on record as the champion of all the "lesser" races of the world. From then to WW2, many colonial

Continued on page 5



## FROM THE FRYING PAN

BILL HOSOKAWA

### Future Opportunities for AJAs

Japanese Americans who have spent a large part of a lifetime trying to ignore Japan might benefit from a chat sometime with a Sansei entrepreneur named Les Hamasaki who runs a Los Angeles firm called the AmerAsia Group.

Hamasaki says he can't think of anything better than being a Japanese American. "It's the opportunity to be what the next century is about," he says.

That's based on the belief, supported by no less an authority than Ambassador Mike Mansfield, that no international relationship is more important than the one between the United States and Japan, now and in the foreseeable future.

Considering that only a little more than four decades ago the U.S. was by far the most powerful nation the world had ever seen, and Japan was in ruins as a victim of that power, what happened?

Hamasaki has an interesting theory.

He says Japan rose from the ashes to become a worthy partner of the United States because of five factors—luck, connections, timing, determination and discipline. Let's examine each of them.

**Luck:** Japan was fortunate not to be divided by the occupying powers after World War II, the way Germany and Korea were divided. Imagine what Japan would have been like if the Soviets had seized the northern half of the country, or had taken Hokkaido in addition to the four little islands a short distance from Hokkaido which they still occupy.

**Connections:** The Japanese had strong connections with the United States, links that could be resumed quickly after war's end. These ties led not only to an enlightened peace, but to quick resumption of the economic relationships that enabled Japan to rebuild.

**Timing:** Japan's economy was still staggering five years after war ended

when Korea erupted. The United States poured men into Asia and they had to be fed and supplied. Japan became a supply depot and staging area. Thousands of unemployed Japanese civilians found jobs working directly or indirectly for the Americans. Tanks, trucks and jeeps had to be repaired and serviced, ships needed maintenance and the Japanese had the skills to do the work. The Japanese economy was given a tremendous boost. A little more than a decade after the Korean fighting wound down, the United States became involved in Indo-China. Once more the Japanese economy received a tremendous boost.

**Determination:** With little to work with, the Japanese knew they had to work harder in order to succeed. Determination carried them a long way.

**Discipline:** Determination would have been of little use without discipline. So the Japanese disciplined their human resources and learned to get the most of what they had.

Meanwhile, the U.S. was riding along on momentum, wasteful, undisciplined, yielding to greed and indulgence. Hamasaki's point is that it's not too late for the U.S. to mend its ways, and he sees Japanese Americans with their Asian heritage as being in position to help restore American greatness.

Interesting theory, well worth studying. Don't you think so?

## Welcome to Our 2,500th Issue

By Harry K. Honda

The first issue of the Pacific Citizen, then named "Nikkei Shimin" (four syllables of Japanese meaning "citizen of Japanese ancestry," that's 10 syllables) was published by the San Francisco JACL chapter on Tuesday, Oct. 15, 1929, as Vol. 1 No. 1. It featured a story and photo of the Citizens' League Convention which met earlier on April 5-6 at the old Community House on Post St. T. Takimoto, secretary of the Japanese Association of America, extolled the formation of a citizen Nisei group. The Chinese American Citizens Alliance secretary Kenneth Fung asked for cooperation "because we have much in common." About sixty delegates were present at this historic gathering to establish the national JACL. Messages of congratulations from Mayor James Rolph Jr. and Consul General Morikazu Ida filled the rest of the front page.

The paper ran a "name the paper" contest that year and while our records do not tell who won, "Pacific Citizen" was chosen in 1930 and it was to become the official membership publication of the National JACL at the 1932 convention at Los Angeles. It continued as a monthly during the 1930s until the Evacuation forced closure of the paper and relocation of National Headquarters in March, 1942. The P.C. resumed its operations as a weekly in Salt Lake City in June, 1942, under the eye of the late Larry Tajiri.

### In Los Angeles Since 1952

When the JACL National Convention in 1952 decided to relocate Headquarters and the P.C. back to the West Coast, the paper came to Los Angeles because of its larger Japanese American community, which could better support the paper through advertising rather than at its prewar venue in San Francisco . . . and here we still are!

STATEMENT OF OWNERSHIP, MANAGEMENT AND CIRCULATION (Required by 39 U.S.C. 3685)		
1. TITLE OF PUBLICATION <b>PACIFIC CITIZEN</b>	2. PUBLICATION NO. 00308579	3. DATE OF FILING Sept 30, 1988
4. FREQUENCY OF ISSUE Every Friday except first and last weeks of the year, biweekly during July and August, 1988.	5. NO. OF ISSUES PUBLISHED ANNUALLY 45	6. ANNUAL SUBSCRIPTION PRICE \$25.00
7. COMPLETE MAILING ADDRESS OF HEADQUARTERS OF PUBLISHER (Street, City, County, State and ZIP Code) (Not printed)		
941 E 3rd St., #200, Los Angeles, Los Angeles, CA 90013-1703		
8. COMPLETE MAILING ADDRESS OF THE HEADQUARTERS OF GENERAL BUSINESS OFFICES OF THE PUBLISHER (Not printed)		
941 E 3rd St., #200, Los Angeles, CA 90013-1703		
9. FULL NAMES AND COMPLETE MAILING ADDRESS OF PUBLISHER, EDITOR, AND MANAGING EDITOR (Not printed)		
PUBLISHER (Name and Complete Mailing Address) Japanese American Citizens League, dba: PACIFIC CITIZEN CA 90013-1703		
EDITOR (Name and Complete Mailing Address) Harry K. Honda 941 E 3rd St., #200, Los Angeles, CA 90013-1703		
MANAGING EDITOR (Name and Complete Mailing Address) None		
10. OWNERS (If owned by a corporation, its name and address must be stated and also immediately thereunder the names and addresses of stockholders owning or holding 1 percent or more of total amount of stock. If not owned by a corporation, the names and addresses of the individual owners must be given. If owned by a partnership or other unincorporated firm, its name and address, as well as that of each individual must be given. If the publication is published by a nonprofit organization, its name and address must be stated.) (Not printed)		
FULL NAME COMPLETE MAILING ADDRESS Japanese American Citizens League 1765 Sutter St., San Francisco, CA 94115 (a nonprofit corporation)		
11. KNOWN BONDHOLDERS, MORTGAGEES, AND OTHER SECURITY HOLDERS OWNING OR HOLDING 1 PERCENT OR MORE OF TOTAL AMOUNT OF BONDS, MORTGAGES OR OTHER SECURITIES (If there are none, so state)		
FULL NAME COMPLETE MAILING ADDRESS None		
12. FOR COMPLETION BY NONPROFIT ORGANIZATIONS AUTHORIZED TO MAIL AT SPECIAL RATES (Section 435.12 (b)(1) (b)(2) (b)(3) (b)(4) (b)(5) (b)(6) (b)(7) (b)(8) (b)(9) (b)(10) (b)(11) (b)(12) (b)(13) (b)(14) (b)(15) (b)(16) (b)(17) (b)(18) (b)(19) (b)(20) (b)(21) (b)(22) (b)(23) (b)(24) (b)(25) (b)(26) (b)(27) (b)(28) (b)(29) (b)(30) (b)(31) (b)(32) (b)(33) (b)(34) (b)(35) (b)(36) (b)(37) (b)(38) (b)(39) (b)(40) (b)(41) (b)(42) (b)(43) (b)(44) (b)(45) (b)(46) (b)(47) (b)(48) (b)(49) (b)(50) (b)(51) (b)(52) (b)(53) (b)(54) (b)(55) (b)(56) (b)(57) (b)(58) (b)(59) (b)(60) (b)(61) (b)(62) (b)(63) (b)(64) (b)(65) (b)(66) (b)(67) (b)(68) (b)(69) (b)(70) (b)(71) (b)(72) (b)(73) (b)(74) (b)(75) (b)(76) (b)(77) (b)(78) (b)(79) (b)(80) (b)(81) (b)(82) (b)(83) (b)(84) (b)(85) (b)(86) (b)(87) (b)(88) (b)(89) (b)(90) (b)(91) (b)(92) (b)(93) (b)(94) (b)(95) (b)(96) (b)(97) (b)(98) (b)(99) (b)(100) (b)(101) (b)(102) (b)(103) (b)(104) (b)(105) (b)(106) (b)(107) (b)(108) (b)(109) (b)(110) (b)(111) (b)(112) (b)(113) (b)(114) (b)(115) (b)(116) (b)(117) (b)(118) (b)(119) (b)(120) (b)(121) (b)(122) (b)(123) (b)(124) (b)(125) (b)(126) (b)(127) (b)(128) (b)(129) (b)(130) (b)(131) (b)(132) (b)(133) (b)(134) (b)(135) (b)(136) (b)(137) (b)(138) (b)(139) (b)(140) (b)(141) (b)(142) (b)(143) (b)(144) (b)(145) (b)(146) (b)(147) (b)(148) (b)(149) (b)(150) (b)(151) (b)(152) (b)(153) (b)(154) (b)(155) (b)(156) (b)(157) (b)(158) (b)(159) (b)(160) (b)(161) (b)(162) (b)(163) (b)(164) (b)(165) (b)(166) (b)(167) (b)(168) (b)(169) (b)(170) (b)(171) (b)(172) (b)(173) (b)(174) (b)(175) (b)(176) (b)(177) (b)(178) (b)(179) (b)(180) (b)(181) (b)(182) (b)(183) (b)(184) (b)(185) (b)(186) (b)(187) (b)(188) (b)(189) (b)(190) (b)(191) (b)(192) (b)(193) (b)(194) (b)(195) (b)(196) (b)(197) (b)(198) (b)(199) (b)(200) (b)(201) (b)(202) (b)(203) (b)(204) (b)(205) (b)(206) (b)(207) (b)(208) (b)(209) (b)(210) (b)(211) (b)(212) (b)(213) (b)(214) (b)(215) (b)(216) (b)(217) (b)(218) (b)(219) (b)(220) (b)(221) (b)(222) (b)(223) (b)(224) (b)(225) (b)(226) (b)(227) (b)(228) (b)(229) (b)(230) (b)(231) (b)(232) (b)(233) (b)(234) (b)(235) (b)(236) (b)(237) (b)(238) (b)(239) (b)(240) (b)(241) (b)(242) (b)(243) (b)(244) (b)(245) (b)(246) (b)(247) (b)(248) (b)(249) (b)(250) (b)(251) (b)(252) (b)(253) (b)(254) (b)(255) (b)(256) (b)(257) (b)(258) (b)(259) (b)(260) (b)(261) (b)(262) (b)(263) (b)(264) (b)(265) (b)(266) (b)(267) (b)(268) (b)(269) (b)(270) (b)(271) (b)(272) (b)(273) (b)(274) (b)(275) (b)(276) (b)(277) (b)(278) (b)(279) (b)(280) (b)(281) (b)(282) (b)(283) (b)(284) (b)(285) (b)(286) (b)(287) (b)(288) (b)(289) (b)(290) (b)(291) (b)(292) (b)(293) (b)(294) (b)(295) (b)(296) (b)(297) (b)(298) (b)(299) (b)(300) (b)(301) (b)(302) (b)(303) (b)(304) (b)(305) (b)(306) (b)(307) (b)(308) (b)(309) (b)(310) (b)(311) (b)(312) (b)(313) (b)(314) (b)(315) (b)(316) (b)(317) (b)(318) (b)(319) (b)(320) (b)(321) (b)(322) (b)(323) (b)(324) (b)(325) (b)(326) (b)(327) (b)(328) (b)(329) (b)(330) (b)(331) (b)(332) (b)(333) (b)(334) (b)(335) (b)(336) (b)(337) (b)(338) (b)(339) (b)(340) (b)(341) (b)(342) (b)(343) (b)(344) (b)(345) (b)(346) (b)(347) (b)(348) (b)(349) (b)(350) (b)(351) (b)(352) (b)(353) (b)(354) (b)(355) (b)(356) (b)(357) (b)(358) (b)(359) (b)(360) (b)(361) (b)(362) (b)(363) (b)(364) (b)(365) (b)(366) (b)(367) (b)(368) (b)(369) (b)(370) (b)(371) (b)(372) (b)(373) (b)(374) (b)(375) (b)(376) (b)(377) (b)(378) (b)(379) (b)(380) (b)(381) (b)(382) (b)(383) (b)(384) (b)(385) (b)(386) (b)(387) (b)(388) (b)(389) (b)(390) (b)(391) (b)(392) (b)(393) (b)(394) (b)(395) (b)(396) (b)(397) (b)(398) (b)(399) (b)(400) (b)(401) (b)(402) (b)(403) (b)(404) (b)(405) (b)(406) (b)(407) (b)(408) (b)(409) (b)(410) (b)(411) (b)(412) (b)(413) (b)(414) (b)(415) (b)(416) (b)(417) (b)(418) (b)(419) (b)(420) (b)(421) (b)(422) (b)(423) (b)(424) (b)(425) (b)(426) (b)(427) (b)(428) (b)(429) (b)(430) (b)(431) (b)(432) (b)(433) (b)(434) (b)(435) (b)(436) (b)(437) (b)(438) (b)(439) (b)(440) (b)(441) (b)(442) (b)(443) (b)(444) (b)(445) (b)(446) (b)(447) (b)(448) (b)(449) (b)(450) (b)(451) (b)(452) (b)(453) (b)(454) (b)(455) (b)(456) (b)(457) (b)(458) (b)(459) (b)(460) (b)(461) (b)(462) (b)(463) (b)(464) (b)(465) (b)(466) (b)(467) (b)(468) (b)(469) (b)(470) (b)(471) (b)(472) (b)(473) (b)(474) (b)(475) (b)(476) (b)(477) (b)(478) (b)(479) (b)(480) (b)(481) (b)(482) (b)(483) (b)(484) (b)(485) (b)(486) (b)(487) (b)(488) (b)(489) (b)(490) (b)(491) (b)(492) (b)(493) (b)(494) (b)(495) (b)(496) (b)(497) (b)(498) (b)(499) (b)(500) (b)(501) (b)(502) (b)(503) (b)(504) (b)(505) (b)(506) (b)(507) (b)(508) (b)(509) (b)(510) (b)(511) (b)(512) (b)(513) (b)(514) (b)(515) (b)(516) (b)(517) (b)(518) (b)(519) (b)(520) (b)(521) (b)(522) (b)(523) (b)(524) (b)(525) (b)(526) (b)(527) (b)(528) (b)(529) (b)(530) (b)(531) (b)(532) (b)(533) (b)(534) (b)(535) (b)(536) (b)(537) (b)(538) (b)(539) (b)(540) (b)(541) (b)(542) (b)(543) (b)(544) (b)(545) (b)(546) (b)(547) (b)(548) (b)(549) (b)(550) (b)(551) (b)(552) (b)(553) (b)(554) (b)(555) (b)(556) (b)(557) (b)(558) (b)(559) (b)(560) (b)(561) (b)(562) (b)(563) (b)(564) (b)(565) (b)(566) (b)(567) (b)(568) (b)(569) (b)(570) (b)(571) (b)(572) (b)(573) (b)(574) (b)(575) (b)(576) (b)(577) (b)(578) (b)(579) (b)(580) (b)(581) (b)(582) (b)(583) (b)(584) (b)(585) (b)(586) (b)(587) (b)(588) (b)(589) (b)(590) (b)(591) (b)(592) (b)(593) (b)(594) (b)(595) (b)(596) (b)(597) (b)(598) (b)(599) (b)(600) (b)(601) (b)(602) (b)(603) (b)(604) (b)(605) (b)(606) (b)(607) (b)(608) (b)(609) (b)(610) (b)(611) (b)(612) (b)(613) (b)(614) (b)(615) (b)(616) (b)(617) (b)(618) (b)(619) (b)(620) (b)(621) (b)(622) (b)(623) (b)(624) (b)(625) (b)(626) (b)(627) (b)(628) (b)(629) (b)(630) (b)(631) (b)(632) (b)(633) (b)(634) (b)(635) (b)(636) (b)(637) (b)(638) (b)(639) (b)(640) (b)(641) (b)(642) (b)(643) (b)(644) (b)(645) (b)(646) (b)(647) (b)(648) (b)(649) (b)(650) (b)(651) (b)(652) (b)(653) (b)(654) (b)(655) (b)(656) (b)(657) (b)(658) (b)(659) (b)(660) (b)(661) (b)(662) (b)(663) (b)(664) (b)(665) (b)(666) (b)(667) (b)(668) (b)(669) (b)(670) (b)(671) (b)(672) (b)(673) (b)(674) (b)(675) (b)(676) (b)(677) (b)(678) (b)(679) (b)(680) (b)(681) (b)(682) (b)(683) (b)(684) (b)(685) (b)(686) (b)(687) (b)(688) (b)(689) (b)(690) (b)(691) (b)(692) (b)(693) (b)(694) (b)(695) (b)(696) (b)(697) (b)(698) (b)(699) (b)(700) (b)(701) (b)(702) (b)(703) (b)(704) (b)(705) (b)(706) (b)(707) (b)(708) (b)(709) (b)(710) (b)(711) (b)(712) (b)(713) (b)(714) (b)(715) (b)(716) (b)(717) (b)(718) (b)(719) (b)(720) (b)(721) (b)(722) (b)(723) (b)(724) (b)(725) (b)(726) (b)(727) (b)(728) (b)(729) (b)(730) (b)(731) (b)(732) (b)(733) (b)(734) (b)(735) (b)(736) (b)(737) (b)(738) (b)(739) (b)(740) (b)(741) (b)(742) (b)(743) (b)(744) (b)(745) (b)(746) (b)(747) (b)(748) (b)(749) (b)(750) (b)(751) (b)(752) (b)(753) (b)(754) (b)(755) (b)(756) (b)(757) (b)(758) (b)(759) (b)(760) (b)(761) (b)(762) (b)(763) (b)(764) (b)(765) (b)(766) (b)(767) (b)(768) (b)(769) (b)(770) (b)(771) (b)(772) (b)(773) (b)(774) (b)(775) (b)(776) (b)(777) (b)(778) (b)(779) (b)(780) (b)(781) (b)(782) (b)(783) (b)(784) (b)(785) (b)(786) (b)(787) (b)(788) (b)(789) (b)(790) (b)(791) (b)(792) (b)(793) (b)(794) (b)(795) (b)(796) (b)(797) (b)(798) (b)(799) (b)(800) (b)(801) (b)(802) (b)(803) (b)(804) (b)(805) (b)(806) (b)(807) (b)(808) (b)(809) (b)(810) (b)(811) (b)(812) (b)(813) (b)(814) (b)(815) (b)(816) (b)(817) (b)(818) (b)(819) (b)(820) (b)(821) (b)(822) (b)(823) (b)(824) (b)(825) (b)(826) (b)(827) (b)(828) (b)(829) (b)(830) (b)(831) (b)(832) (b)(833) (b)(834) (b)(835) (b)(836) (b)(837) (b)(838) (b)(839) (b)(840) (b)(841) (b)(842) (b)(843) (b)(844) (b)(845) (b)(846) (b)(847) (b)(848) (b)(849) (b)(850) (b)(851) (b)(852) (b)(853) (b)(854) (b)(855) (b)(856) (b)(857) (b)(858) (b)(859) (b)(860) (b)(861) (b)(862) (b)(863) (b)(864) (b)(865) (b)(866) (b)(867) (b)(868) (b)(869) (b)(870) (b)(871) (b)(872) (b)(873) (b)(874) (b)(875) (b)(876) (b)(877) (b)(878) (b)(879) (b)(880) (b)(881) (b)(882) (b)(883) (b)(884) (b)(885) (b)(886) (b)(887) (b)(888) (b)(889) (b)(890) (b)(891) (b)(892) (b)(893) (b)(894) (b)(895) (b)(896) (b)(897) (b)(898) (b)(899) (b)(900) (b)(901) (b)(902) (b)(903) (b)(904) (b)(905) (b)(906) (b)(907) (b)(908) (b)(909) (b)(910) (b)(911) (b)(912) (b)(913) (b)(914) (b)(915) (b)(916) (b)(917) (b)(918) (b)(919) (b)(920) (b)(921) (b)(922) (b)(923) (b)(924) (b)(925) (b)(926) (b)(927) (b)(928) (b)(929) (b)(930) (b)(931) (b)(932) (b)(933) (b)(934) (b)(935) (b)(936) (b)(937) (b)(938) (b)(939) (b)(940) (b)(941) (b)(942) (b)(943) (b)(944) (b)(945) (b)(946) (b)(947) (b)(948) (b)(949) (b)(950) (b)(951) (b)(952) (b)(953) (b)(954) (b)(955) (b)(956) (b)(957) (b)(958) (b)(959) (b)(960) (b)(961) (b)(962) (b)(963) (b)(964) (b)(965) (b)(966) (b)(967) (b)(968) (b)(969) (b)(970) (b)(971) (b)(97		



## DLI Celebrating 47th Anniversary with Dinners, Building Dedications

MONTEREY, Calif. — Defense Language Institute (DLI) will celebrate its 47th anniversary this month with festive dinners, building dedications, troop formations, exhibits, barbecues and cultural programs.

As the largest foreign language training institute in the free world, DLI teaches 33 languages to 3,000 students, using a faculty of about 1,000 native speaking instructors. The institute traces its history back to Nov. 1, 1941, when, as Military Intelligence Service (MIS), it started out with a faculty of 4 Japanese Americans and 60 Nisei students. The 6,000 graduates of MIS played a significant role in the Pacific victory during WW2. In 1988, DLI works to maintain the national security of the U.S.

Scheduled anniversary events include a birthday banquet to be held Oct. 27 at the Monterey Sheraton in downtown Monterey.

At 9:30 a.m. on Oct. 28, Rep. Norman Mineta (D-Calif.) will give the keynote address for a double dedication of buildings memorializing two MIS leaders. The dedication will take place in the parking area between the two buildings at the Presidio of Monterey.

The DLI Headquarters Building will be named in honor of Col. Kai Rasmussen, school founder and wartime commandant, and a newly completed academic library will be named in honor of John Aiso. Aiso implemented

the War Department plans to train Japanese American soldiers in military intelligence.

For more information about the upcoming events, contact the Presidio's protocol officer at (408) 647-5336.

## ABA to Hold Awards Banquet at Biltmore Hotel

LOS ANGELES — The Asian Business Association (ABA) will pay tribute to Asian Americans who have made outstanding contributions in the fields of business and architecture/engineering at its 11th annual awards banquet, scheduled for Oct. 20 at the Beverly Hilton Hotel.

The event, themed "Where Business and Opportunity Meet," is being co-sponsored by Asian American Architects and Engineers (AAAEE) and will feature Warren Furutani as master of ceremonies. Furutani, who is the first Asian American member of the Los Angeles Board of Education, will be joined at the dais by L.A. Councilman Mike Woo and Dennis Nishikawa, public works commissioner.

This year's honorees include:

Edward Y. Kim, president of Bestway Recycling, Inc. and Asian Business Owner of the Year; Jay C. Kim, president of JayKim Engineers and Asian American Engineer of the Year; Harold Yee, president of the San Francisco-based Asian, Inc. and Lifetime Achievement Award recipient; and P.L. Martin, executive vice president of the Southern California Edison Company and Corporate Partnership Award recipient.

Founded in 1977, ABA has established itself as a leader in advocating issues affecting Asian American business and economic development throughout California. For reservations and ticket information, call Susan Sakamoto at (213) 933-7992.

## 2,500TH ISSUE

Continued from Previous Page

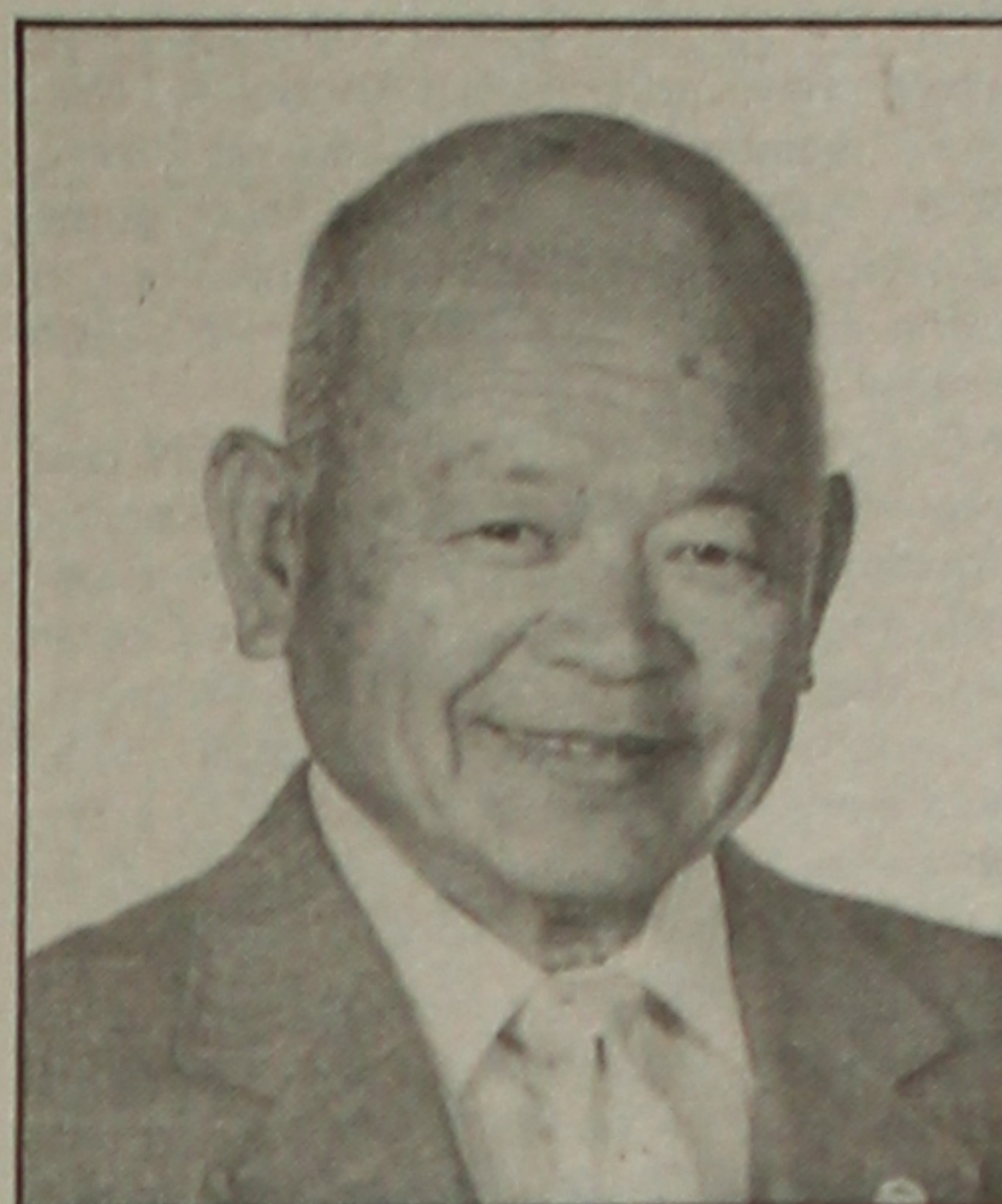
gate the bombings of temples in Atlanta and Peoria. Terrorism and vandalism against Japanese Americans returning to the West Coast in 1945-46 was being remembered by JACL at the same time. Idaho had just repealed its alien land law. The Fresno JACL's 35th anniversary celebration was also on the front page along with Monterey Buddhists plans for a church, an Issei willing \$700 to JACL Headquarters, and start of genetic study in Hawaii of "hapa" children.

### 500 Issues Ago

The 2,000th on July 7, 1978, was spectacular—Pat Tashima and Kango Kunitsugu had co-edited a commemorative 2,000th issue in a magazine format. Hard news headlines show the anti-alien land law was still front-page material as the California Assembly approved a measure to restrict nonresident aliens to own and farm no more than five acres. Assemblyman Floyd Mori (now Mt. Olympus JACL president) was its chief opponent along with his Fresno colleague, then Assemblyman Ken Maddy. The bill was initiated by Richard Lehman, also of Fresno. Other issues: The Allan Bakke case in the U.S. Supreme Court, designer Kenzo's "Jap" label, JACL preparing for its 1978 convention at Salt Lake City, and the JACL protest over off-cuff remarks by a college trustee made during the San Diego City College Commencement. Inside, "From the Frying Pan" recalled his early years with the P.C.—circa 1933-34—when it was being printed in Seattle at Jimmie Sakamoto's *Japanese American Courier* plant. He didn't ever dream then the P.C. would be around in 1978.

We calculate the 3,000th issue will appear sometime in 1998, and we hope you will all be with us to celebrate. Your thoughts, ideas, suggestions and prayers will always help. Your comprehension, initiative and tolerance will assure the future of the P.C. and JACL. So hail and farewell to our 2,500th and onward to the 3,000th.

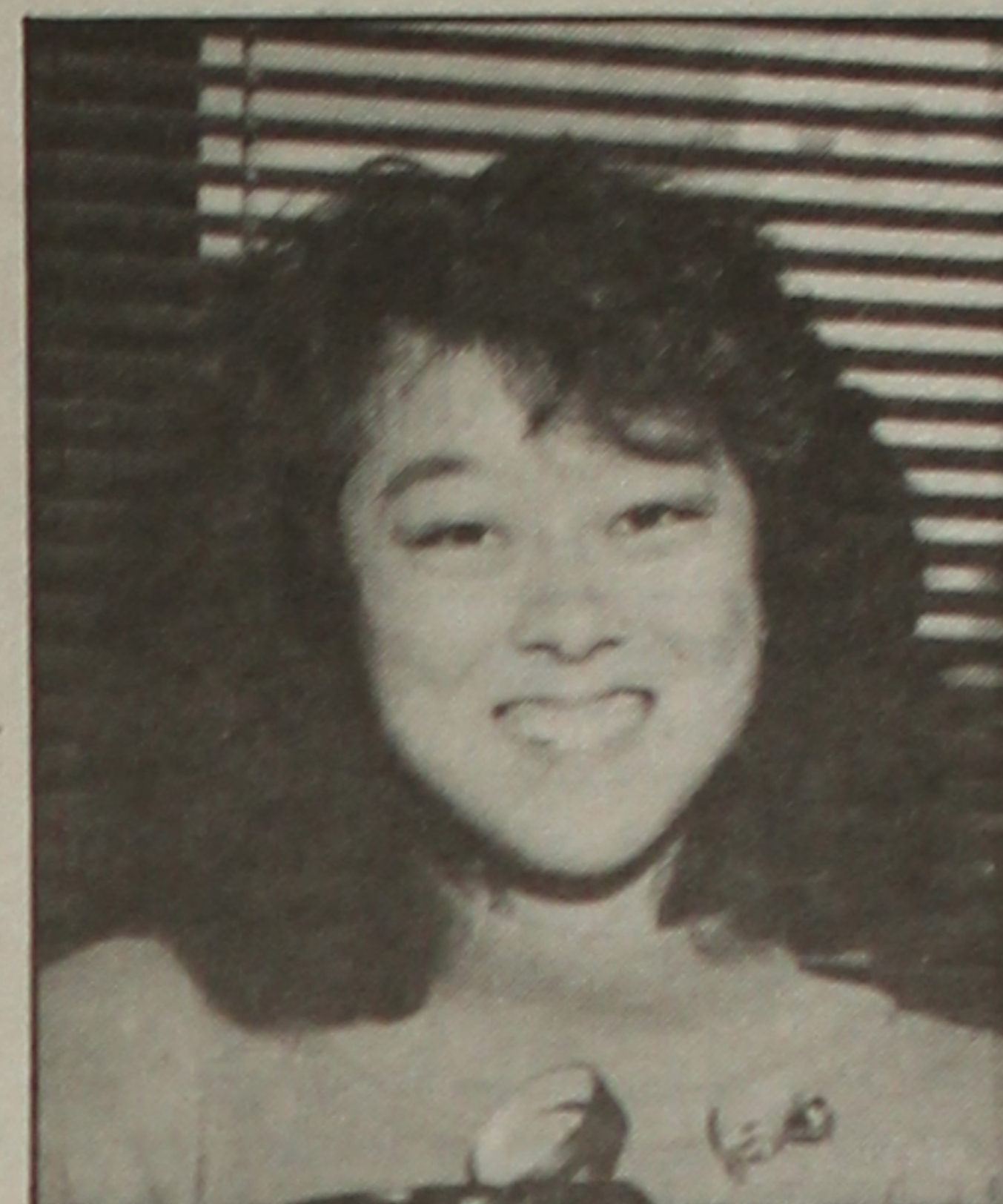
## THE NEWSMAKERS



David Nakagawa

► David Y. Nakagawa, a longtime executive with the Pasadena (Calif.) Boys Club, received the National Council of Presbyterian Men's first "Churchman of the Year" award at its 1988 national meeting in St. Louis, Mo. A synod representative for Southern California-Hawaii, Nakagawa's leadership and enthusiasm is credited for the resurgence of men's work in the Presbyterian Church (USA), especially with attendances at breakfasts of over 500. Nakagawa, a Terminal Island-born Nisei, retired in 1986 from the Boys Club.

► Lisa Miyuki Kimura, a student at Santa Monica College, received tickets to Japan



Lisa Miyuki Kimura

after winning in the college student category of the Japanese Speech Contest, which was held as part of Japan Week L.A. 1988.

► Dr. Alley E. Watada, a research leader of the U.S. Department of Agriculture's Horticulture Crops Quality Laboratory at Beltsville, Md., has been elected Fellow of the American Society for Horticulture Science. Watada was honored during the society's annual meeting in East Lansing, Mich. He was recognized for his research and leadership in postharvest biology and technology of fruits and vegetables and leadership at meetings on postharvest horticulture issues.

## AN IRONY

Continued from Page 4

peoples regarded Japan as their possible liberator. It was too bad that Japan blew away the rare advantage of this position. The Japanese army and navy, by their arrogance and unconscionable exploitation of the resources and manpower of their occupied territory, completely alienated the liberated populations.

But most regrettably they lost the golden opportunity to become the moral leaders of the post war world.

### Aloha Plumbing

Lic. #440840 -- Since 1922  
PARTS - SUPPLIES - REPAIR  
777 Junipero Serra Dr. San Gabriel, CA 91776  
(213) 283-0018 • (818) 284-2845

### Los Angeles Japanese Casualty Insurance Assn.

COMPLETE INSURANCE PROTECTION

Aihara Insurance Agency, Inc.  
250 E. 1st St., Los Angeles 90012  
Suite 700 626-9625

Anson T. Fujioka Insurance  
321 E. 2nd St., Los Angeles 90012  
Suite 500 626-4393

Funakoshi Ins. Agency, Inc.  
200 S. San Pedro, Los Angeles 90012  
Suite 300 626-5275

Ito Insurance Agency, Inc.  
Howe Bldg. 180 S. Lake Ave., #205, Pasadena, 91101  
(818) 795-7059, (213) 681-4411 L.A.

Kagawa Insurance Agency, Inc.  
350 E. 2nd St., Los Angeles 90012  
Suite 302 628-1800

Kamiya Ins. Agency, Inc.  
120 S. San Pedro, Los Angeles 90012  
Suite 410 626-8135

Mizuno Insurance Agency  
18902 Brookhurst St., Fountain Valley  
CA 92708 (714) 964-7227

The J. Morey Company, Inc.  
11080 Artesia Bl., Suite F, Cerritos, CA 90701  
(213) 924-3494, (714) 952-2154, (415) 340-8113

Steve Nakaji Insurance  
11964 Washington Pl.  
Los Angeles 90066 391-5931

Ogino-Aizumi Ins. Agency  
1818 W. Beverly Bl., Ste #210, Mt. View, 90640  
(818) 571-6911, (213) 728-7488 L.A.

Ota Insurance Agency  
321 E. 2nd St., Suite 604  
Los Angeles 90012 617-2057

T. Roy Iwami & Associates  
Quality Ins. Services, Inc.  
3255 Wilshire Blvd., Suite 630  
Los Angeles 90010 382-2255

Sato Insurance Agency  
366 E. 1st St., Los Angeles 90012  
626-5861 629-1425

Tsuneishi Ins. Agency, Inc.  
327 E. 2nd St., Los Angeles 90012  
Suite 221 628-1365

AHT Insurance Assoc., Inc.  
dba: Wada Asato Associates, Inc.  
16500 S. Western Ave., #200,  
Gardena, CA 90247 (213) 516-0110

WE LOVE  
TO LOAN

We have plenty of cash for  
low-cost loans on new and  
used cars, a new vcr, for  
whatever you may need.  
Call us today.

### Nat'l JACL Credit Union

PO Box 1721 / Salt Lake City, Utah 84110 / 801 355-8040  
Toll Free 800 544-8828 Outside of Utah

Japanese Phototyping



### TOYO PRINTING CO.

309 So. San Pedro St., Los Angeles 90013  
(213) 626-8153

プラザギフトセンター

NEW MINOLTA  
**MAXUM**  
THE FIRST AUTOFOCUS SLR

Plaza Gift Center (213) 680-3288  
111 Japanese Village Plaza - Little Tokyo

### ED SATO

PLUMBING & HEATING

Remodel and Repairs, Water Heaters

Furnaces, Garbage Disposals

Serving Los Angeles, Gardena

(213) 321-6610, 293-7000, 733-0557

TOYO  
Myatake  
STUDIO

SAN GABRIEL VILLAGE  
235 W. Fairview Ave., San Gabriel, CA 91776  
(213) 283-5685, (818) 289-5674  
LITTLE TOKYO  
114 N. San Pedro St., Los Angeles, CA 90012  
(213) 626-5681, 626-5673

### KKRC

KENNETH H. KUSUMOTO  
RARE COINS

Rare Coin Investments  
Gold/Silver Bullion Sales  
714 / 541-0994

Nexus Financial Center  
Orange, CA 92668

### JACL-Blue Shield

Medical-Hospital-Dental  
Coverage

Available Exclusively to:

- Individual JACL Members
- JACL Employer Groups

JACL members 18 and over may apply to enroll in the Blue Shield of California Group Health Plan sponsored by JACL especially for JACL members. Applicants and dependents under age 65 must submit a statement of health acceptable to Blue Shield before coverage becomes effective.

For full information complete and mail the coupon below or call (415) 931-6633.

To: Frances Morioka, Administrator  
JACL-Blue Shield of California  
Group Health Plan  
1765 Sutter Street  
San Francisco, CA 94115

Please send me information on the JACL-Blue Shield of California Group Health Plan:

- ☐ I am a member of \_\_\_\_\_ chapter.  
☐ I am not a member of JACL. Please send me information on membership. (To obtain this coverage membership in JACL is required.)

Name \_\_\_\_\_

Address \_\_\_\_\_

City/State/Zip \_\_\_\_\_

Phone ( ) \_\_\_\_\_ ☐ Work ☐ Home



## THE CALENDAR

## CHICAGO

■ Present—Oct. 30—Midwest premiere of Philip Kan Gotanda's *Yankee Dawg You Die*, produced by the Wisdom Bridge Theatre. Performance Times: Tues., 7 pm; Wed.—Fri., 8 pm; Sat., 5 & 8:30 pm; Sun., 3 & 7:30 pm. Tickets: \$18–\$24, with discounts available for students, seniors and groups. Info: 312 743-6000.

## LOS ANGELES AREA

■ Oct. 8–30—Little Tokyo's Japanese Village Plaza's 10th anniversary, between 1st & 2nd and Central and San Pedro Sts. Features afternoon entertainment, sidewalk sales, raffles, etc. Free. Info: Jackie, 213 620-8861.

■ Oct. 9—The Japanese American Optimist Club's 2nd annual fashion show/ luncheon, 11 am, the Biltmore Hotel, 506 S. Grand Ave. Features a number of celebrity models. Tickets: \$35, with corporate seating at \$500 per table. Info: Randy, 213 384-1121 or Leiton, 213 324-2934.

■ Oct. 9—"Japanese Gardens: Essence of Nature," a slide lecture by environmental designer Koichi Kawana, 2 pm, room 39, Haines Hall, UCLA. Also scheduled are tours of UCLA's Hannah Carter Japanese Garden at noon, 3:30 pm and 4:30 pm. Sponsored by the UCLA Museum of Cultural History. Free. Reservations and info: 213 825-4361.

## PC Classified Advertising

Continued from Page 7

## 9—Real Estate

COLORADO RIVER RANCH—south of Brownwood. 1,500 acres, excellent hunting & cattle ranch. 2 homes, 19 lakes and ponds, 1 mile river, 700 acres Klien grass, \$600/acre.

BOOTS & SADDLE RANCH—87 acres. 50 miles west of Houston. 7,000 sq. ft. home, 4 other houses, covered arena with 23 horse stalls, more barns, chain link fencing, owner financing.

JIM LEE REALTY (713) 461-2890.

## Atlanta, Georgia

## Prestige Office Building

30,000 sq. ft. Expandable in foremost Northwest Office Park. Join Champion International and Marriott as User/ Owner or purchase for excellent investment

\$3.1 mil.  
(207) 829-5144

■ Oct. 9—East San Gabriel Valley Japanese Community Center's 16th Annual Aki Matsuri, beginning at noon, 1203 W. Puente Ave., West Covina. Features food, game booths, bingo, West Covina Taiko and a raffle. Info: 818 337-9123, 818 960-2566 or Ray Tokai, 818 505-2465.

■ Oct. 15—Benefit tennis tournament and beginner's workshop, Loyola University, Westchester, 8 am–3 pm. Proceeds to benefit the Asian Community Service Center and the Pacific Asian Alcohol Program. Tournament participation donation: \$25. Beginner's workshop donation: \$15. Entry donation: \$7. Info: Roy Morales, 213 738-3361 or Steve Yung, 213 217-7300.

■ Oct. 16—"Fashion Focus '88" and "Boutique," presented by the Maryknoll Ladies Guild at the Almansor Court in Alhambra. Door prizes. Proceeds to be donated to the Japanese Retirement Home, the Maryknoll School and the Asian Pacific Residential Program. Info: Catherine Uyeda, 213 262-9851.

■ Oct. 20—The Asian Pacific American Support Group (APASG) of the University of Southern California's 4th Annual Awards Dinner, the Biltmore Bowl, Biltmore Hotel. Tickets: \$75 each or a table of ten, \$750. Information: 213 743-4999.

■ Oct. 21—Asian AIDS Awareness Seminar, 8:30 am–5:00 pm, LAX Viscount Hotel. Will cover medical issues, legal perspectives, counseling, preventive education and other topics. Fee: \$25. Registration deadline: Oct. 10. Info: 213 738-3351.

■ Oct. 22—"How to Get a Job Teaching English in Japan," 1–4:30 pm, Oxnard College. Presented by Naginata Associates. Info: 805 986-5822.

■ Oct. 22—"Basic Japanese for Business People," 9 am–noon, Oxnard College. Presented by Naginata Associates.

■ Oct. 22—Pianist Glenn Horiuchi plays at System M, 213A Pine Ave., Long Beach. Info: 213 435-2525.

■ Present—Oct. 23—"Containing Beauty: Japanese Bamboo Flower Baskets," UCLA Museum of Cultural History, museum gallery, rm. 2, noon–5 pm. Free. Parking is \$3. Info: 213 825-4361.

■ Present—Oct. 31—Paintings examining life at Jerome Internment Camp by Eddy Kurushima, Torrance Civic Center Library, 3301 Torrance Blvd., Torrance. Info: 213 618-5950.

■ Present—Nov. 13—East West Players presents *The Fantasticks*, East West Playhouse, 4424 Santa Monica Blvd. Info: 213 660-0366.

## MONTEREY

■ Oct. 27 & 28—The 47th anniversary of

the Defense Language Institute (formerly MIS), Sheraton Hotel Ballroom, 350 Calle Principal, Monterey, 6:30 pm. RSVP Sept. 30. Business attire, Black Tie, Mess or Dress Blue with Bow Tie. Oct. 28: Double dedication of buildings memorializing Kai Rasmussen and John Aiso, 9:30 am, Presidio of Monterey. Info: 408 647-5302/5336.

## SAN FRANCISCO BAY AREA

■ Oct. 15—"Sansei Live!," sponsored by Kimochi Inc., 7 pm–1:30 am, Giftcenter Pavilion, 888 Brannan St. Features music acts Deems & the Living Band, and Crosswinds. Tickets: \$45. Info: Kimochi, 415 931-2294.

■ Oct. 21—Moon-viewing with Theatre of Yugen and sampling of food at Pioneer Park in Mountain View, Japanese Cultural Center at Foothill College, 12345 El Monte Rd., Los Altos Hills., 8–10 pm. Fee: \$10. Info: 415 960-4302.

■ Oct. 22—Open House celebrating the beginning of construction of the community hall and gymnasium for the Japanese Cultural & Community Center of Northern California, 2 pm, 1840 Sutter St., Suite 202. Program: Speech by Rep. Robert Matsui, entertainment, displays and refreshments. Info: 415 567-5505.

■ Oct. 27—Cooking demonstration featuring chef Martin Yan, 7–10 pm, Issei Hall, Palo Alto /Buddhist Temple, Palo Alto. Cost: \$20. Reservation deadline: Oct. 17; only 40 seats available. Info: Colleen Imamura, 415 856-0200 (day) or 415 969-0328 (eve.), or Ginger Yukawa, 415 966-8470 (eve.).

## SEATTLE

■ Present—Oct. 29—"Art of the Samurai," Japanese armor and sword fittings, Honeychurch Antiques, 1008 James St., Mon.–Sat., 10 am–6 pm.

■ Present—Nov. 6—"In Pursuit of the Dragon: Traditions and Transitions in Ming Ceramics," examples of Ming ceramics from the Idemitsu Museum of Arts in Tokyo, Seattle Art Museum, Volunteer Park, Tues.–Sat., 10 am–5 pm, Thurs., 10 am–9 pm, Sun., noon–5 pm.

■ Oct. 25—Japanese classical dance & Nagauta shamisen music by Mary Mariko Ohno, noon–1 pm, Broadway Performance Hall, Seattle Central Community College, 1707 Broadway. Free. Info: Lilli Kanegoe, 206 722-5152.

Publicity items for The Calendar must be typewritten (double-spaced) or legibly hand-printed and mailed at least THREE WEEKS IN ADVANCE. Please specify a day or night phone contact for further information.

THINKING OF MOVING TO or INVESTING  
in Nevada, especially  
**LAS VEGAS?**

Contact Susan / Realtor, Broker  
**REALTY 500, SUNSHINE REALTY**  
Liberace Plaza, 1775 E. Tropicana #3  
Las Vegas, NV 89119, (702) 798-8600

Commercial & Industrial Air Conditioning  
and Refrigerator Contractor

Glen T. Umemoto

Lic. #441272 C38-20

**SAM REIBOW CO., 1506 W. Vernon**  
Los Angeles 295-5204 / Since 1939

ACQUISITION  
OPPORTUNITY

Commercial Mortgage Insurance, Inc.,  
a shell corporation with certificates of authority in  
47 states, is for sale. The corporation holds various  
insurance licenses in:

Mortgage Guaranty, Casualty, Fidelity,  
Surety, and Credit.

Interested parties contact Tom Anderson:

**(608) 257-2527**

## GOLF COURSE

## AUCTION SALE

The Woodlands Golf Community

18710 - 67th Ave. N.E.

Arlington, Washington

On October 27, 1988, the Trustee in Bankruptcy for the Woodlands Development will conduct an auction of the entire development, less 39 lots previously sold. The Woodlands development contains approximately 385 acres, a completed nine-hole golf course; area for construction of an additional nine holes; platted single and multiple family residential lots, unplatted areas for additional residential lots, and an additional area for development of a business park. The platted residential area initially contained 150 saleable single-family and 5 saleable multiple family residential lots. Some of these lots have been sold and there now remain 114 saleable single family lots and two saleable multiple family residential lots in the platted area. All of the unsold platted residential lots, together with all of the remaining portions of the Woodlands Development, will be included in Auction Sale.

Minimum bid is \$4,900,000.00.

For further information contact:

Trustee:

Robert G. Ludwick, Inc.  
135 Lake St. South, Suite 115  
Kirkland, WA 98033. (206) 828-4355

Trustee's Attorney:

Arthur H. McKean  
Aiken, St. Louis & Siljeg  
1215 Norton Building  
Seattle, WA 98104. (206) 624-2650

## MILD SEVEN

An Encounter with Tenderness.

MILD SEVEN Lights



MILD SEVEN

**SURGEON GENERAL'S  
WARNING: Smoking Causes  
Lung Cancer, Heart Disease,  
Emphysema, And May  
Complicate Pregnancy.**



## 4—Business Opportunities

CALIF

## SALINAS AREA

Strawberry grower Shipper. Sales and Complete cooling facility. 377 acres in leases and land for sale.

(408) 757-9035 EVE. (408) 678-2565

## Taking Your Company Public

Control available. Will assist in developing plan to raise \$500,000-\$5,000,000 equity capital or debt financing. Will introduce to market maker, broker-dealers and financial public relations firms. Send business plan and financials to Pendleton C. Waugh, Attorney, Four Forest Plaza, Suite 350, 12222 Merit Dr., Dallas, TX 75251. Please refer calls to Ms. Miller (214) 661-1200.

Timberland. 2770 ac. in the fast-growing SE MS area. 5.5 mil. bd. ft. southern yellow pine + hardwoods. Managed for long-term growth for over 30 yrs. Xlnt wood products mkts. in area; good hunting. Xlnt investment oppty. Brochure.

Peter Parker Rt. A 02, Box 59  
Rochester, Vt. 05767 (802) 767-3250.

INVESTORS!—Growing auto rental Co. needs autos to expand leases, investment-secure by titles and promissory notes.

Bob Kelly, (206) 775-7497

Alaska-American, Inc.,  
144 Railroad Ave., Suite 204,  
Edmonds, WA 98020.

## MANUFACTURING FACILITIES

Ice cream - Ice MFG Plant  
Ne Connecticut-13,000 sq ft, 5,000 sq ft freezer storage. 5 bay loading dock-offices. Acreage avail. Call (203) 599-4478 8am-4pm or (203) 774-1066 5pm-11pm  
ask for Mr. Maynard.

CALIF

## FLOWERS/GIFTS BEACH AREA

Doctor says sell. \$90k + invent  
incl'd's fixtures, Van & cooler.  
(714) 496-6825 or (714) 492-5242

## TAMPA &amp; VICINITY

Apparel Store Chain located in Maj Malls. 5 Operating, 2 Openings Spring 1989. Expand to 100 or more. Name Trademark, Franchise, Pkg Ready. Proj '89 Sales at \$3,000,000. Sell for 1x Gross.  
(813) 797-9098/Harry Kay

B.C. CANADA

Wanted Investor Partner (Mature Female Preferred) for Holiday Resort on Trans Canada Hwy. Major tourist area in B.C. Minimum investment \$200,000. Serious inquiries only. Unlimited potential. Call (604) 836-2583. Principal Box 189, Sicamous, B.C. Canada V0E 2V0.

## Canadian R.E. Development

Beaut. Montreal Suburb (resid'l), seeking \$1 Million Investment with R.E. sec. 30% return 1st yr. Call

Gerry Dragon, DDC (514) 443-8267; 8268  
or POB 262, Brossard Quebec. J403J2

CANADA

Immigration Services-Business Ventures-Real Estate Opportunities-Joint Ventures-Mergers-Financing-In House  
SORDAT—1981 McGill College, S. 1460 Montreal, Canada H3A 2Y1.

Tel: (514) 842-1760. Fax: (514) 842-9949.

## FOR SALE:

18.57% interest  
in partnership which owns a 40% interest in a second partnership holding the following commercial real estate assets: First Interstate Plaza (Phase 1) and Plaza Princessa Shopping Center, Santa Fe, New Mexico, and 50% general partnership interest in warehouse complex in El Paso, Texas. For additional information, call or write

William P. Johnson, Attorney for  
Elliott Johnson, Bankruptcy Trustee,  
P.O. Box 10, Roswell, NM 88202-0010,

(505) 622-6510.

## Investors Wanted

Established and proven captain, tired of games. Looking for corporate or private investors for tournament fishing vessel. Be among the "Guts and Glory Gang."

I'll be available while this ad is running.

Please contact for options:

## CAPTAIN NEIL

(404) 874-5900

## 5—Employment

PAINTING

## Automotive Paint Matcher

Exper. full time for large jobber firm in Las Vegas, NV. Very good wages & benefits for the person. Moving expenses considered.  
KENT, TOM or DAN.  
(702) 871-3711. EOE.

## FREELANCE TRANSLATORS

Wanted to translate Japanese patents and other texts in Electronic, Computer and Mechanical Engineering into English. A technical background and fluency in both languages required.

GERARD & ASSOCIATES  
Technical Translators  
837 Arlington Ave., Berkeley, CA 94707  
Tel. (415) 525-2603

## 5—Employment

HIRING! Federal government jobs in your area and overseas. Many immediate openings without waiting list or test. \$15-68,000. Phone call refundable. (602) 838-8885. Ext. 8181.

## CITY OF LOS ANGELES

## SPECIAL OFFICER

\$2,038 to \$2,532  
per Month

Special Officers are sworn peace officers authorized to carry firearms and perform law enforcement duties at the Los Angeles International Airport and the Port of Los Angeles.

Applicants must be 18 years of age at time of appointment; have a high school diploma or GED; be in good physical health; successfully pass a background check and be a U.S. citizen or have applied for citizenship at least one year prior to application.

APPLY ON OCT. 17, 1988 at:

111 E. First Street, Room 100  
Los Angeles, CA 90012 or  
Call for information  
(213) 485-4142

An EEO/AA Employer

## CALIFORNIA STATE TEACHERS' RETIREMENT SYSTEM

## Assistant Corporate Affairs Advisor

California State Teachers' Retirement System (STRS) is seeking proposals from individuals with experience in Corporate Governance. As a contractor, the Assistant Corporate Affairs Advisor will analyze proxies of corporations whose shares are held by STRS, and prepare reports pertaining to corporate affairs.

## MINIMUM QUALIFICATIONS:

A college degree from an accredited four-year institution. Three (3) years work experience in corporate affairs and/or financial/securities analysis.

FOR A COPY OF THE  
REQUEST FOR PROPOSAL, CONTACT:

California State Teachers'  
Retirement System  
P.O. Box 163749  
Sacramento, CA 95816-3749  
(916) 386-3670

All Proposals must be submitted by 4 p.m.,  
November 3, 1988.

## Customer Service

## AFTER SALES/SERVICE MANAGER

If you're "people-oriented," consider a Customer Service/Relations Management position with DUTY FREE SHOPPERS, where we can offer you an excellent opportunity for your career advancement. You'll enjoy working in our dynamic retail environment, where you will be responsible, through your staff, for the stocking, pulling and distribution of merchandise to our departing international customers.

The ideal candidate will be Japanese and English-speaking (Japanese preferred, but not mandatory), with 3-5 years of supervisory experience. Excellent communication skills, and an eye for detail, and good follow-through skills are required.

We offer a competitive salary, bonus, profit-sharing, and outstanding benefits that include medical, dental, vision, and life insurance. For prompt consideration, please send your resume to:

Employment Manager



## Duty Free Shoppers

Duty Free Shoppers-West  
5730 Arbor Vitae Street  
Los Angeles, CA 90045

EOE

## 6—For Sale

Oil & Gas Minerals  
For Sale

Wyoming, USA. Open & Producing, 18,672 acres. Howard Cooper, High Plains Energy Company, 1600 Broadway Ste. 1565, Denver, CO 80202, USA.

Tel: (303) 830-0888/Fax: (303) 830-2818.

## 9—Real Estate

CALIFORNIA For Sale:  
Palmdale 23.48 acres

Mixed Use Project — • 4.61 ac. comm'l, • 14.14 ac. residential,  
• 4.73 ac. industrial.

CUSHMAN & WAKEFIELD,  
Pat Casey (818) 716-0800.

MANHATTAN, N.Y.

58th St E. Commercial Property  
6000 sq ft + 4 story + basement  
Renovated bldg. Flexible terms  
\$3.2 mill. Princ. only.

242 E. 58th St., (313) 761-2501

New York

Great Neck Kings Pt. Firm producer sells award winning content used in films. Located on pond. 30 mins NYC indoor pool, skylights, garden, 7 BR/BTH Many amenities, \$1.6 million add'l acreage avail. For \$1.1 million or a total discount price of \$2.8 million  
(516) 487-8186.

## 9—Real Estate

Georgetown, Texas

9.919 acres: 1.5 miles west of IH-35 on Williams Drive. Commercially zoned, prime acreage for immediate development, site plan approved. Areas lowest comparable sale \$3.50/sq.ft. appraised value \$3.50/sq.ft. All or part of this property is available for sale at a below market value of \$3.25/sq.ft. or purchase price for entire tract of \$1,350,000. Brochure available,

please call (713) 739-0642.

## PRESTIGIOUS ESTATE

Southampton L.I., New York  
Classic turn of the century manor house on maturely landscaped 4 + acres surrounded by 20 ft. hedges. Magnificent reception rooms, 12 ft. ceilings, fine architectural details and moldings, nine working fireplaces, six master bedrooms, four baths, multiple staff quarters and baths, 2-car garage, brand new state-of-the-art kitchen, alarm system, lawn sprinkler system, newly renovated 2 bedroom guest cottage, pool and pool house. Scene of 1988 Southampton Decorator Show House. Mint Condition. \$3,750,000. Additional acreage available.

## Madelle Hegeler Semerjian

81 Windmill Lane, PO Box 214  
Southampton, New York 11968  
Tel: (516) 283-2656 or (516) 283-1798

MASSACHUSETTS

## 'Windswept'

## Cape Cod Waterfront Classic

Vintage colonial with 150' frontage on Nantucket Sound. Located in prestigious Old Mill Point, West Harwich, one of the Cape's most secure, exclusive private compounds. Private beach, small boat moorings. Extensively updated main house has seven bedrooms, four baths, enclosed "L"-shaped sun porch, wet bar and five-zone heat. Exquisitely decorated.

Two car garage with bedroom and 1/2-bath attached. One mile to large marina, 20 minutes to Hyannis Airport. Offered by owner.

\$1.8 million.

Call (203) 254-0169

or FAX (203) 254-3625

## CABINET SHOP, LA, CALIF AREA

land, bldg. fully equipped approx. 1 million gross in '87. Price: \$2.25 million.

Owner will nego. Terms.

Call Barbara Ottway  
(714) 825-3344

Over 300 Prime Acres  
in So. Calif. for Development,  
Possible Resort Complex.  
VERY IMPORTANT  
PROPERTIES  
(213) 539-3661

B.C. CANADA

By owner, 10 acres corner property in South Surrey. Cleared & fenced. Near freeway & border crossings. 2 BR rancher & 3 year old mobile home. Subdividable from agricultural to light industrial.  
\$300,000 obo. (604) 574-5436 after 5.

NEW MEXICO

## Super Investment Potential

In one of the fastest growing areas of N.M. Located 35 miles east of Albuquerque on I-40. 70 ac. Development land adjoining city limits of Moriarty 409,500. w/owner financing. Jim or Judy.  
H. REALTY LTD. (505) 281-3768  
Additional prop. from 1-320 ac.

## I-95 EXCHANGE

Excellent location between Baltimore & Phila. Good visibility. 6 acres. Zoned for hotel restaurant. 1/2 ACRE LOT.

On Route 40 Intersection. Zoned C-2.  
(301) 378-3585

Million Dollar  
JAPANESE  
RESTAURANT  
in Fresno Area  
Is Set to Open  
November, 1988

An agreeable, stylish, modern  
& bright facility has openings for  
• 5 teppanyaki chefs  
• 2 sushi chefs  
• 1 yakitori chef  
• 1 tempura chef  
• 3 a la carte kitchen chefs  
• 2 kitchen assistants

Competitive wages, some knowledge of Japanese language useful but not mandatory. We are seeking people who enjoy working with public and like a team-oriented environment. Experience is preferred; however, ambitious individuals who are willing to learn may also apply. Resumes being accepted immediately. Please indicate desired salary.

## BANDO-YA

c/o CML Consulting Inc.,  
P.O. Box 3652, Pinedale, CA 93650

Attn: Mrs. Mitsue Lauer.  
Interview will be held  
at your convenience.

(209) 432-2044

## 9—Real Estate

Northern Neck/Lancaster Co  
WATERFRONT

214 acres by survey on Lancaster Creek; or same property as sub-divided into 87 lots w/5 prime waterfront & common area. \$1950/acre. Northern Neck Properties, Fred: (804) 529-6868.

CALIFORNIA

Moving to LA—Your in Luck. Rare, spacious spectac. landmark apt at edge of Hancock Pk, 4 BRs 3 1/2 mbrl bths, hi beam ceils, orig moldings, fpl, lrg frml DR, lrg kit, security bldg, beaut swim pool, jacuzzi, pvt gym for bldg & electronic gar indr prkg for 2 cars. Rent \$6500/mo or purchase for \$650,000.

Contact Owner at (212) 249-6771.

By Owner, Quality, Energy efficient home. 5 Bedrooms-3 baths, 2400 plus sq ft with 2 fireplaces with inserts. Shop, barn, and garage all on 5 acres. Heat pump, sandy loam soil. Large fruit and douglas fir trees. Sense, black top, cul de sac, and circular driveway.

Price \$139,500. (206) 894-2819.

MAUI, HAWAII

Apt complex w/8 furn units, incl pool and jac. priv. parking. Loc in Maui's growing south side and just steps to the White Sandy Beach. \$4 million (fee simple).

(808) 667-7636.

MAINE

FRENCHVILLE—Tired of the rate race? Need space? Need an investment that won't eat you alive in taxes? 22.95 +/- acres overlooking miles of wooded area. Interested? Serious inquiries

(207) 543-7566

## MENDOCINO COUNTY

1729 acre cattle/sheep ranch, near Boonville on Hwy 128, gorgeous land, creeks, springs fenced 10 barns, in 11 parcels \$900,000 25% down owner finance.

Sanhedrin Realty, Box 127 Potter Valley, CA 95469, (707) 743-1184.

## Investor-Developers.

60 acres at I 75. New 6 Lane State Road #64 in Bradenton, Florida. For Office Park, Hotel, Shopping Center, Resort, Commercial 100,000K - Acre.

Psychiatric Associates  
(216) 343-8511

Highland Bch Betwn Boca & Delray  
ON THE OCEAN.

Lrg Upper flr unit in premium newer bldg w/ magnif views of the Atlantic and intercoastal, 3 BR, 3 1/2 bths, formal DR, dbl indoor parking, personal res. of interior designer. Furnished. \$530K. For appt or information, 9-5,  
Mon.-Fri. (407) 391-4469.

## ATLANTA AREA

Townhome apts. 177 new units in natural 26 acre setting w/2 lakes. 96% occupancy. \$9.1 million appraisal. \$1 million equity. Assume \$7.3 million, 6 1/4% tax free bonds. Call (912) 742-5376.

OKLAHOMA . . . The Perfect Lifestyle  
Beautiful ranch, 2 story, 2240 sq.ft. rock home on 104 productive acres. Ideal for horses, cattle and ATV's. Ponds, Creek, Mineral rights, barn, corrals, practice arena.  
STEAL for \$175K firm.  
(918) 652-7758

## 9—Real Estate

CALIF

80 A.C. Abundant water pump 1300 GPM from 12 inch 300 foot well. Good soil, paved road joins Alfalfa farm. Raise row crops, fruit, nuts, hay. \$80,000 Terms. Newberry Farms, (818) 796-2347. 15 N. Euclid Ave. Pasadena, CA 91101.

## SALE/TRADE

LAS VEGAS, NEVADA

74 + acres near the new GOLDEN NUGGET GOLF COURSE now being developed. Owner will consider trade for income property. TONY PONTICELLO, BROKER

(702) 735-7359

COLORADO

Vail "THE LODGE AT VAIL"

condo in world class hotel. 3-3, center Vail Village, ski in-out. Feb. '89 World Cup. \$595k.

Finance avail. (303) 779-0420

## GATEWAY TO YOSEMITE

High on a mountain top-spectacular views of the San Joaquin Valley & snow capped Sierras. 7 miles north of Oakhurst. 1325 beautiful acres presently leased for hunting & grazing. Under Williamson Act. Grant Deed for road easement from Hwy 49. Choice acreage for possible further development.

Deadrich Realtors (415) 632-1234.

Investors/Developers. 386 acres prime property—approx 5 miles from beach resort of Ocean City, Md. with a bldg permit for an 18-hole championship golf course. 210 acres remaining for 400+ home sites. For more info call

Stan Gomboš or Martin Groff at Martin Groff  
Real Estate & Constr. (800) 433-1566

## PRIME ORANGE COUNTY

## APARTMENTS

- 272 U — 2 & 3 bedroom  
Major arterial street
- 493 UNITS IN PALMDALE:
- 308 U — 1 & 2 bedroom  
Ten years old, \$45,130 per unit
- 108 U — Prime location 1 & 2 bedroom
- 77 U — 1, 2 & 3 bedroom  
Plus land to build

## INTEREST RESOURCES

(714) 833-1554

SOUTH CAROLINA

## 8-1 ACRE SITES

## ON GOLF COURSE

WITH INTER. COASTAL VIEWS

## FOR SALE

## AT PLEASANT

## POINT PLANTATION

## BEAUFORT COUNTY

## SOUTH CAROLINA

ONLY 35 MI. FROM HILTON HEAD

- OTHER REAL ESTATE ACCEPTED
- TRADE FOR CLASSIC, EXOTIC OR SPECIAL INTEREST CARS
- OWNER FINANCING ARRANGED
- OTHER TERMS AVAILABLE

## \$45,000 PER ACRE

## CONTACT OWNER

## JIM BARRICELLA

(201) 825-4444

Continued on Page 6

## National Business &amp; Professional Directory

Your business card in each issue for 25 issues is \$15 per line, three-line minimum. Larger type (12 pt.) counts as two lines. Logo same as line rate as required.

## Greater Los Angeles

## ASAHI TRAVEL

Supersavers, Group Discounts, Apex Fares  
Computerized-Bonded  
1111 W. Olympic Blvd., Los Angeles 90015  
(213) 623-6125/29 • Call Joe or Gladys

Billiards

Video Games



4335 W. Imperial Hwy., Inglewood 90304  
(213) 677-2965 Dick Obayashi

## FLOWER VIEW GARDENS

Flowers, Fruit, Wine & Candy  
Citywide Delivery/Worldwide Service  
1801 N. Western Ave., Los Angeles 90027  
(213) 466-7373 / Art & Jim Ito

## Dr. Darlyne Fujimoto

Family Optometry & Contact Lenses  
11420 South St., Cerritos, CA 90701  
(213) 860-1339

MAX A. SKANES, Atty-at-Law, (213) 390-7719. Experienced in Employer Compliance, Ancestry, Citizenship, Petitions, Other Legal Matters.

## TAMA TRAVEL INTERNATIONAL

Martha Igarashi Tanashiro  
One Wilshire Bldg., Ste 1012  
Los Angeles 90017; (213) 622-4333

## TOKYO TRAVEL SERVICE

530 W. 6th St. #429  
Los Angeles 90014 (213) 680-3545

## YAMATO TRAVEL BUREAU



## JACL PULSE

## CHICAGO

• Redress Q & A, Oct. 15, 7:30 pm, Japanese American Service Committee, 4427 N. Clark St. Info: 312 728-7170.

## DIABLO VALLEY

• Redress/Reparation forum, 2-4 pm, Oct. 30, Walnut Creek Intermediate School, 2425 Walnut Blvd., Walnut Creek. Info: Jim Yamasaki, 415 829-8901.  
• "Candidates & Issues," Oct. 15, Vista Room of the Rossmore Hillside Center, Walnut Creek. Co-sponsored by the Contra Costa Coalition of Asian Organizations. 7:30-8:30 pm: Insurance Issues (props. 100, 101, 103 & 104). 8:30-10:30 pm: Candidates for state and federal congressional seats from the Diablo Valley. Info: George Fujioka, 415 935-4766.

## FLORIN

• "Annual All You Can Eat Spaghetti Dinner Dance," Oct. 22, Florin Buddhist Church Hall, 8329 Florin Rd. 6-8 pm: Dinner. 8-midnight: Dance. Donation: \$7.50/each. Proceeds to go to the chapter scholarship program. Info: James Abe, 916 363-1520 or Tommy Kushi, 916 454-0539.

## SAN DIEGO

• Redress celebration, Oct. 23, San Diego Princess Resort, Island Room, Convention Center, 1404 W. Vacation Rd. Keynote Speaker: Grayce Uyehara, executive director, JACL-LEC. Cocktails, 5 pm; dinner, 6 pm; and program, 7 pm. Tickets: \$40. RSVP by Oct. 16. Info: 619 458-1710.

## SAN FRANCISCO

• "Autumn Reflections" luncheon fashion show, Oct. 29, Hotel Nikko. Commentator: Jan Yanehiro, KPIX "Evening Magazine." Designs: Janice Lee. Tickets:

\$40, \$35 if purchased by Oct. 15. Proceeds to benefit the California Textbook Revision Campaign. Ticket info: Frances Morioka, 415 931-6633 (day) or Char Doi, 415 776-0723 (eve.).

## SOUTH BAY

• Fundraising dance for Nikkei homeless, Oct. 15, 8 pm, Nakaoka Center, 1700 W. 162nd St., Gardena. Sponsor: South Bay Chapter Sansei Singles Committee. Band: The Shake Down. Includes a raffle to Las Vegas and a karaoke contest. Info: Brenda, 213 538-2508 or Jeri, 213 329-6875.

## VENTURA COUNTY

• Potluck general meeting, Oct. 14, 7 pm, Santa Barbara Savings & Loan Community Room, 425 Arneill Rd., Camarillo. Bring your favorite dish to add to the buffet table; dessert provided by the chapter. Post meeting: Japan trip slide show by George and Toy Kanegai, WLA JACL Travel Group. Info: Janet Kajihara, 805 983-2612.

## WEST LOS ANGELES

• Installation luncheon, Nov. 6, noon, Trident Room, 11355 W. Olympic Blvd. Guest Speaker: Herbert Kawahara, president of the Pacific Stock Exchange. Tickets: \$17/each. Free parking available from the Purdue Ave. parking entrance. Reservation deadline: Oct. 27; tickets will not be sold at the door. For tickets, send checks to Chieko Inouye, 11740 Tennessee Ave., Los Angeles, CA 90064, ☎ 213 477-7976, or call Mitzi Kurashita, 213 827-3414.

Items publicizing JACL events should be type-written (double-spaced) or legibly hand-printed and mailed at least THREE WEEKS IN ADVANCE to the P.C. office. Please include contact phone numbers, addresses, etc.

Thousand Club —  
One Report

(Year of Membership Shown)  
\* Century; \*\* Corporate; L Life;  
M Memorial; C/L Century Life  
Summary (Since Nov 30, 1987)  
Active (previous total) ..... 1511  
Total this report: #33 ..... 56  
Current total ..... 1567

August 8-12, 1988 (56)  
Alameda: 32-Archie H Uchiyama\*.  
Arizona: 15-Benjamin Ehara.  
Boise Valley: 1-Henry Suyehira.  
Chicago: 34-George M Ikegami, 6-Lester J Ishida, 3-Minoru Mochizuki, 20-Ben Terusaki.  
Cincinnati: 30-Lorraine T Higashihara, Life-Kaye K Watanabe.  
Cleveland: 3-Hazel Asamoto.  
Contra Costa: Life-Alice Ninomiya, Life-Flora Ninomiya, Life-Richard Yamashiro.  
Dayton: 28-Roy F Sugimoto\*.  
Detroit: 26-James N Shimoura.  
Diablo Valley-Life-Yukio Wada.  
Downtown Los Angeles: Life-Toshiko Yamamoto.  
East Los Angeles: 1-Susumu Ben Takahashi.  
Florin: 21-Kenneth H Ozawa.  
Fresno: 5-Henry H Kubow, 7-Sachiye Kuwamoto, 7-Satoshi Kuwamoto, Life-H Rocky Teranishi.  
Gardena Valley: 11-Thomas Y Kamidori, 28-James N Kunibe, 24-Isaac I Matsushige.  
Hollywood: 35-Miwako Yamamoto\*.  
Houston: 2-Theresa K Narasaki, 2-Lily Yamasaki.  
Marina: 3-Sophie F Namba.  
Marysville: 40-Hizeko Yoshimura.  
Mt. Olympus: 23-Aiko N Okada.  
New York: 31-Alice Suzuki, 19-Takeko Wakiji.  
Oakland: 25-Ted T Mayeda.

Olympia: 16-Paul Ellis.  
Orange County: 28-Harry H Nakamura\*.  
Pacifica/Long Beach: 34-George Mio.  
Puyallup Valley: 35-H James Kinoshita.  
Sacramento: Life-Tom T Kurotori, 27-Louis Seto.  
Salt Lake City: Life-Al Kubota.  
San Francisco: 8-Tsugiko Holdaway.  
San Jose: 10-Albert K Mineta.  
San Mateo: 35-Ted T. Masaoka.  
Seattle: 4-Dale Shigaki.  
Snake River: Louis J Yturri.  
Sonoma County: 10-Margaret Yoshiko Scott, 10-Bruce Shimizu.  
South Bay: 8-George I Imamura.  
Spokane: 35-Tetsuo Nobuku.  
Stockton: 2-Assemblyman Patrick Johnston, 24-Mrs Tetsuo Kato.  
Tulare County: Life-Ethel Tashiro, Life-Kenji Tashiro.  
West Los Angeles: 33-Ben M Nishimoto.

LIFE  
Kaye K Watanabe (Cin), Alice Ninomiya (CnC), Flora Ninomiya (CnC), Richard Yamashiro (CnC), Yukio Wada (Dia), Toshiko Yamamoto (Dnt), H Rocky Teranishi (Frs), Tom T Kurotori (Sac), Al Kubota (SLC), Ethel Tashiro (Tul), Kenji Tashiro (Tul).  
CENTURY CLUB\*  
1-Archie H Uchiyama (Ala), 9-Roy F Sugimoto (Day), 15-Miwako Yamamoto (Hol), 8-Harry H Nakamura (Ora).

**Kimura**  
PHOTOMART  
Cameras & Photographic Supplies  
316 E. 2nd St., Los Angeles, CA 90012  
(213) 622-3968



**FLORIN SCHOLARSHIP WINNERS**—Florin Chapter scholarship winners were honored at the chapter's annual membership barbeque on July 10. Pictured (l to r) are Chapter President Rick Uno, honorees Edward Sing Lee, Katherine Oda, Matthew Okamoto and Seiji Fujimoto and Scholarship Chair Twila Tomita.



# MITSUI AIR International, Inc.

## TRAVEL DIVISION

is pleased to announce  
the Relocation of Its Office  
as of October 11, 1988

## OUR NEW ADDRESS

374 E. Second St.

SOUTHWEST CORNER OF 2ND AND CENTRAL AVE.

Los Angeles, CA 90012

TELEPHONE

(213) 625-1505 - (800) 331-5413

FAX: (213) 613-0215

### 1988 TANAKA TOURS

#### EXCEPTIONAL FEATURES • VALUE QUALITY TOURS

JAPAN AUTUMN ADVENTURE (14-Days Ext-HongKong) ..... OCT 10  
SOUTH AMERICAN SPLENDOR (17-days) ..... NOV 3

## NEW 1989 TOUR PROGRAMS

FLORIDA (Epcot/Space Ctr, etc) & NEW ORLEANS, 8-Days .. FEB 25  
MEXICO (Taxco/Yucatan Pyramids/Cancun) 8-Days ..... MAR 7  
FANTASTIC AFRICA KENYA SAFARI ..... AUG 2  
JAPAN SPRING ADVENTURE ..... APR 10  
IMPERIAL CHINA, 17-Days ..... MAY 12

For full information/brochure



**TANAKA TRAVEL SERVICE** (415) 474-3900  
441 O'Farrell St., San Francisco, CA 94102

INTERNATIONAL - DOMESTIC - YOBIYOSE

COMMUNITY

TOKYO RT \$525  
OW \$325\*

TRAVEL

ARC-IATA Appointed

653-0990

5237 College Ave., Oakland, CA

\*Fares subject to change

RAILPASS - HOTEL - RENT-A-CAR

## Japanese American Travel Club

ENDORSED BY THE NATIONAL JACL

250 E. 1st St., Los Angeles, CA 90012

Call Bill or Sami: (213) 624-2866 / (800) 877-8777

## JAPAN &amp; ORIENT TOURS

15-Days Japan & Hong Kong. Oct 22 or Nov 12 departure from LAX ..... \$3525  
Tokyo-Kamakura-Hakone-Kashikojima-Ago Bay-Toba-Ise-Kyoto-Nara & Hong Kong. Inclusive air & land, sharing twin plus 26 meals.  
15-Days Orient & China. Oct 28 or Nov 11 departure from LAX ..... \$3692  
Tokyo-Kamakura-Hakone-Kyoto-Beijing & Hong Kong. Inclusive air & land, sharing twin plus 29 meals.  
17-Days Orient Highlights. Nov 9 or Dec 14 departure from LAX ..... \$3880  
Tokyo-Kamakura-Hakone-Kyoto-Taipei-Bangkok-Singapore & Hong Kong. Inclusive air & land, sharing twin plus 33 meals.  
21-Days Orient Splendors. Oct 20 or Nov 3 departure from LAX ..... \$4120  
Tokyo-Beijing-Bangkok-Singapore-Bali & Hong Kong. Inclusive air & land, sharing twin plus 39 meals.

## JAPAN-ONLY TOURS

11-Days Oct 2 departure R.T. from LAX ..... \$2395  
Tokyo, Hakone, Matsumoto, Takayama, Kanazawa, Amano Hashidate, Kyoto; plus 13 meals, sharing twin. / 6-Days Extension Tour after Kyoto-Takamatsu, Kurashiki, Hiroshima, Osaka plus 12 meals sharing twin additional \$870.  
14-Days Oct 15 departure R.T. from LAX ..... \$2690  
Tokyo-Hakone-Kyoto-Takamatsu-Kurashiki-Hiroshima-Osaka. Plus 23 Meals, sharing twin.  
15-Days Oct 15 departure R.T. from LAX ..... \$2850  
Tokyo-Hakone-Kyoto-Beyppu-Kumamoto-Nagasaki-Osaka. Plus 25 meals, sharing twin.

## CRUISES

7 Days Caribbean Cruises/Celebration (incl R.T. from LAX) ..... \$1,385  
7 Days Christmas / New Years at Sea. Cunard's Princess Holiday Cruises. fr \$545  
Los Angeles, Cabo San Lucas, Mazatlan, Puerto Vallarta back to Los Angeles. Sailing Dec 24 & Dec 31. Experience holiday gaiety on a cruise.

## TRAVEL SPECIALS

8 Days Bali / The Isle of Gods. Weekly Wed departures from LAX ..... \$1096  
Stay 5 nights on the Beach Pertamina Cottage Hotel. R.T. airport/hotel transfers. Air transp & guided tour. Sharing twin basis/Garuda Indonesia Airlines.  
Hong Kong Extension: 5 days/4 nights, sharing twin, Kowloon Hotel, R.T. airport/hotel transfers, guided tour. Additional p/person ..... \$698  
9 Days / 7 Nights Hong Kong-Singapore. Fridays (1st & 3rd) departures fr LAX \$1340  
Stay 4 nights at Kowloon Hotel/Hong Kong tour, 3 nights at Westin Stamford Hotel/Singapore city & East Coast island tour. Based on sharing twin/Cathay Pacific Airlines.  
12 Days / 10 Nights Hong Kong-Singapore-Bangkok. Sunday (end of month) ..... \$1540  
Departures from LAX. Same as 9 day/7 night Hong Kong-Singapore Tour package (above) plus stay 3 nights Meridien Hotel/Bangkok & tour of Klongs, Royal Palace, Thai dinner & dances, based on sharing twin/Cathay Pacific Airlines.

ALL PRICES SUBJECT TO CHANGE. RESTRICTIONS MAY APPLY.

## 1988 West L.A. Travel Program

Administered by WLA Travel, Inc.

FOR JACL MEMBERS,  
FAMILY & FRIENDS

Airfare: LAX-TYO-LAX — \$578  
plus tax



Torii Gate, Miyajima

### Travel Meeting: Oct. 16

Movies, slides, fellowship renewal with tour companions, and refreshments, every third Sunday of the month, 1-3 p.m., at Japanese School Auditorium, 2110 Corinth Ave. West L.A. (Located nr Olympic corner West of San Diego Freeway.)

### 1988 GROUP TOURS

(Revised July 15, 1988)

#15a India & Nepal/Sri Lanka/  
Tiger Tops. Oct 22-Nov 9  
Alyce Komoto, escort

#16 Europe Highlights Tour  
Sep 25 - Oct 11  
Galen Murakawa, escort

#17 Fall Foliage Tour:  
New England/Canada  
Oct 1 - Oct 14  
Yuki Sato, escort

#19 Hokkaido/Nagoya Festival  
Tour - Oct 6 - Oct 20  
Toy Kanegai, escort

#19a Hokkaido/Ura-Nihon  
Tour - Oct 6 - Oct 20  
Dan Kawahara, escort

#20 Australia, N.Z. Tahiti  
Oct 6 - Oct 24 (Sold Out)  
Eric Abe/Veronica Ohara

#21 Japan Basic Tour  
Oct 7 - Oct 22 (Sold Out)  
Bill Sakurai, escort

#22 Okinawa & Kyushu Tour  
Oct 22 - Nov 4 (Sold Out)  
Ray Ishii, escort

#22b Hong Kong, Seoul, Tokyo  
Nov 1 - Nov 11 (Sold Out)  
Escorted.

#22c Kuala Lumpur, Malacca,  
Penang, Bangkok, Singapore, Tokyo. Nov 3 - Nov 18  
George Kanegai, escort

#23 Orient Holiday Tour  
Dec 19 - Jan 2  
George Kanegai, escort

### 1989 GROUP TOURS

#1 Aspen Ski  
Jan 8 - Jan 15

#2 Snow Festival  
Feb 4 - Feb 13

#3 Cherry Blossom Tour  
Mar 26 - Apr 7

#4 Best of Florida/Epcot  
April 28 - May 5

#5 Basic Japan Tour  
May 12 - May 27

#6b Historic East  
Mid-May

#7 Caribbean Cruise  
May 27 - Jun 3

#8 Ura Nihon Tour  
May 27 - Jun 8

#9 Popular European  
Panorama  
Jun 5 - Jun 21  
Bill Sakurai, escort

#10 New Mexico-Carlsbad  
Cavern  
June 10 - 17

#11 Basic Japan Tour  
June 16 - 24

#12 Eastbound Explorer  
Ireland-Britain  
July 9 - 24

For information, brochure, write to:

**West L.A. TRAVEL**  
12012 Ohio Ave.  
Los Angeles, CA 90025  
(213) 820-5250