



pacific citizen

Established 1929 • National Publication of the Japanese American Citizens League

Newsstand: 25¢
(60¢ Postpaid)

#2,507 / Vol. 107 No. 16

ISSN: 0030-8579

941 East 3rd St. Suite 200, Los Angeles, CA 90013

(213) 626-6936

Friday, November 18, 1988



Photo By Robert Yamada

HANDS UP—The elected officers for the Northern California-Western Nevada-Pacific District Council JACL were sworn in by NCWNPDC Regional Director George Kondo (not pictured) on Nov. 6 at the Gilroy Senior Center in Gilroy, Calif. Pictured (l-r) are Alan Nishi, Niles Tanakatsubo, Maya Shiroyama (treasurer), Greg Marutani (secretary), Susan Nakamura, Ted Inouye, Dr. Yosh Nakashima (governor), Dr. Les Hata (vice-governor), John Yamada and Mollie Fujioka (ex-officio).

Forum Discusses Concerns of KA, JA Communities

By Jimmy Tokeshi

LOS ANGELES — Fifty years ago, it would have been difficult to imagine members from the Korean American community organizing with members from the Japanese American community. The scars and open wounds left by the pre-WW2 colonization of Korea by Japan have been passed from generation to generation and across the Pacific, to continue in America. It was a fact no one at the Korean American Coalition (KAC)/Japanese American Citizens League (JACL) community forum denied.

The two organizations sponsored a program to examine issues of common

Continued on Page 3

CCDC Pays Tribute to WW2 Nisei Vets

By Marlene Kubota

FRESNO — A capacity crowd of 400 attended the 39th annual Central California District Council (CCDC) JACL Installation banquet held Sunday, Nov. 13, at Tornino's.

The installation banquet theme, "With Liberty & Justice for All," was highlighted with a specially printed program booklet listing and honoring all Central California Nisei veterans who served in the 442nd regimental combat team, the 100th Infantry Division and military intelligence. The installation banquet paid tribute, as did keynote speaker Rep. Robert Matsui (D-Calif.), to those veterans who fought and gave their lives during WW2.

With outgoing CCDC district governor Mae Takahashi as toastmistress, the evening began with the presentation of colors and pledge of allegiance led by Nori Masuda and Tom Teramoto of VFW Sierra Nisei Post 8499. Rinban Keizo Norimoto gave

the invocation and Judy Andreen, chairperson of the Fresno County Board of Supervisors, gave the official welcome.

In his keynote address, Matsui thanked everyone for the passage of H.R. 442. He said Central California played an instrumental role in raising funds and giving support for the bill's passage. Matsui also gave credit to his local House colleagues, Reps. Charles Pashayan (R-Calif.), Richard Lehman (D-Calif.) and Tony Coelho (D-Calif.) for their support and praised state Sen. Rose Ann Vuich of Dinuba for her role in opposing Daniel Lungren's confirmation for California state treasurer. Passage of H.R. 442, said the congressman, was possible through the efforts of individual JACL and non-JACL members.

Presentations

During the dinner program, National JACL President Cressey

Continued on Page 2



Photo By Ben Nagatani

CCDC INSTALLATION—Pictured with outgoing Central California District Council JACL Gov. Mae Takahashi and new Gov. Dale Ikeda are keynote speaker U.S. Rep. Robert Matsui and his family. Pictured (l-r) are Brian Matsui, Takahashi, Matsui, Doris Matsui and Ikeda. The installation took place Nov. 13 at Tornino's in Fresno, Calif.

Reagan Vetoes Bill Requiring Census Bureau to Tally Asian Americans Groups Individually

WASHINGTON — A bill requiring the Census Bureau to tabulate nine different Asian American sub-groups individually was vetoed Nov. 8 by President Reagan. The president's pocket veto of H.R. 4432 was because the bill would "... unnecessarily restrict the form of the race question in future censuses. Second, it would require the Census Bureau to use a form of race question that the bureau has tested and found to be less accurate than the one it plans to use in 1990. Third, it would specifically require questions relating to plumbing facilities and heating and cooling equipment in housing units that would not produce data sufficiently useful to justify their inclusion ... Finally, these changes would increase administrative costs and add to the paperwork burden imposed on the public by the census."

A disappointed Rep. Robert Matsui (D-Calif.), who introduced the measure, responded by saying, "It's disturbing to see the White House take a negative approach to such a basic measure of fairness and democracy." He also said that the bureau assured him weeks ago that it would carry through with the legislation's intent regardless of the bill's future. "I certainly hope the bureau plans to stand by its word," he added.

Rep. Norman Mineta (D-Calif.) also reacted to the veto and said, "I am angered that President Reagan has chosen to veto this important piece of legislation. By vetoing H.R. 4432, the president has refused to recognize that the changes proposed by the Census Bureau would have distorted the accuracy of the census, thereby making this legislation an absolute necessity." The House approved its version of the bill on Sept. 26, 1988 and the Senate approved its version on Oct. 18, 1988.

Also dismayed by the veto was JACL Acting National Director Bill Yoshino, who said, "We urge the Census Bureau to proceed with the format as prescribed in the legislation so as to avoid an undercount of services to the community." JACL Washington

Representative Rita Takahashi said, "President Ronald Reagan's refusal to sign H.R. 4432 into law, despite wide-range support from many groups, is stunning. The message has already been sent that the check-off format is desired in the 1990 decennial census count of Asian and Pacific Island Americans. Apparently, President Reagan decided not to go with the sentiments of the congressional leaders of this country."

The controversy began when it became known that the Census Bureau intended to use an individual write-in method for counting Asian and Pacific Island Americans. In the 1980 count, individuals checked off boxes by their respective ethnic group. As a result of the Census Bureau's decision, Asian American groups, fearing an undercount and subsequent potential lack of services, organized a campaign to force the Census Bureau to use a counting method similar to the 1980 census.

Despite the president's veto, there are still intentions to have the Census Bureau list the individual subgroups. "Until the forms contain those subgroups, this issue is not over," said Matsui.

Nikkei Overall Fare Well in Nov. 8 Elections

All Nikkei congressional members running for re-election in the Nov. 8 elections won their respective races.

California Democratic Reps. Robert Matsui of Sacramento and Norman Mineta of San Jose respectively defeated Republican challengers Lowell Landowski and Luke Sommer. Matsui received 175,112 votes to Landowski's 70,723 in the 3rd congressional district race. Mineta drew 132,802 votes to Sommer's 58,706 in the 13th congressional district.

Continued on Page 6

NEWS IN BRIEF

Ambassador to Japan Mansfield to Retire

TOKYO — After an 11½ year tenure as U.S. ambassador to Japan, Mike Mansfield, 85, announced at a Nov. 14 news conference his intention to retire from the post. Appointed in 1977 by President Jimmy Carter, Mansfield is the U.S.'s longest serving ambassador to Japan. After returning to the U.S., Mansfield will retire to Montana after spending some time in Washington, D.C. Mansfield said he does not know who will replace him. In his remarks to the press, he called the U.S.-Japanese relationship "the most important in the world, bar none." He also said that since he assumed the post in 1977, the relationship between the two nations has evolved into "one of a brother to a brother."

JACL-Minidoka Project Needs Matching Funds

POCATELLO, Idaho—The JACL-Intermountain call for contributions to raise at least \$5,000 by Dec. 30 was repeated this past week for the Idaho Centennial's Minidoka Relocation Camp project that had been announced at the National JACL Council in Seattle by Hero Shiosaki. The sum represents the amount from the state as matching funds. Former camp residents and JACL chapters can remit donations to: Bob Endo, 339 S. Grant Ave., Pocatello, ID 83201. Project will memorialize the camp's history with a plaque at the entrance site.

Hawaii Homes to Be Sold in Tokyo Store

TOKYO — Hawaii residential properties, as well as those in northern and southern California, will be featured for sale in a real estate information center being opened in the Tokyo Nihonbashi department store, says a report published in the Oct. 18 issue of the *Honolulu Advertiser*. Under an agreement between Grubb & Ellis Co. and a Tokyo-based subsidiary of Citicorp, prospective Japanese real estate shoppers will be able to preview luxury homes and use a "credit card," with an initial credit line of \$500,000, to put their transaction into escrow. According to a spokesman for Grubb & Ellis, which deals in commercial properties in Hawaii, the company is only one of many U.S. real estate firms flocking to the Far East.

Pacific Citizen Accepting Holiday Issue Materials

The P.C. is accepting submissions for the 1988 Holiday Issue. This year's theme is redress. To contribute material, send your completed text or query letter to Holiday Issue, Pacific Citizen, 941 E. Third St. Suite 200, Los Angeles, CA 90013. Deadline: Nov. 30, 1988.

Submissions should be type-written and double-spaced; please include a contact phone number.

Call P.C. regarding submissions on floppy disk.

REDRESS TOLL-FREE HOTLINE

(800) 228-8375

8:30 am-8:30 pm Eastern Time
English / Nihongo

Department of Justice
Office of Redress Administration
P.O. Box 66260
Washington, DC 20035

DEATHS

Harry Shinsuke Kobayashi, 97, died Aug. 26 in Tokyo. Kobayashi was the last surviving Japanese Canadian who served with the Canadian army in France during WWI. Although Kobayashi was a Canadian citizen and veteran, his Montreal-based business was seized and sold by the Canadian government. As WW2 ended, he assisted the U.S. Army in Japan in a civilian capacity, subsequently establishing a successful export business.

George Ban, veteran Japanese American activist for the Communist Party and supporter of the Communist publication *People's Daily World*, died in Chicago on Oct. 6. He was 86. The California-born Ban, according to the publication, was active in the Kibei section of the JACL during WW2. An organizer of Local 646, the Oriental Culinary Workers, Ban is remembered by the *Daily World* as the man who distributed the publication in Chicago.

Minoru John Kubota, 77, veteran *Hokubei Mainichi* correspondent for Central California, died Oct. 8 at his home in Fresno, Calif. The Lindsay, Calif.-born Nisei also produced a Japanese radio program airing since 1947 and worked with Voice of Tokyo since 1972. He was decorated with the Fifth Order of the Sacred Treasure from the Japanese government in 1983.

George Kuramoto, 78, co-founder of the Denver School of Judo, died Oct. 15 of a heart ailment in Denver. Born in Honolulu, Kuramoto moved to the mainland in the '30s. He and his family were evacuated to the Amache WRA camp from Walnut Grove, Calif., and relocated to Denver where his service station, George's Motors, was a popular Nisei gathering place.

Surviving Kuramoto are his wife Alice, sons Kenny and Arthur of Denver, daughter Janice Michi Hoshiko of Lakewood, Colo., brothers Tatsunori and Sakae Kuramoto and Paul Nakaoka all of Honolulu.

Rev. Michio Ito, 88, former pastor of Westview Presbyterian Church, Watsonville, Calif., died Oct. 30. Ito, who had been stricken with Parkinson's disease for several years, resided with his wife Shizue at Nihonmachi Terrace in San Francisco.



Photo by Shigeo Yokota

CHARTER MEMBERS — Five of seven surviving charter members of the Placer County JACL Chapter were recently honored with certificates recognizing their 60 years of service at the chapter's 48th annual Goodwill Dinner on Oct. 15, held at the Placer Buddhist Church Hall. Pictured (l to r) is Kuni Okusu, recognition chairman, standing with charter members Hike Yego, Harry Kawahata, Kay Takemoto, Roy Yoshida and Cosma Sakamoto.

Placer County Goodwill Dinner Celebrates Successful Redress Effort

PENRYN, Calif. — Placer County JACL's 48th annual Goodwill Dinner on Oct. 15 was an evening of celebration as the chapter toasted its 60th anniversary, guest speaker Mike Masaoka's 73rd birthday and the recent success of JACL's 10-year pursuit of redress for Japanese American former internees.

During a stirring address to the crowd of 225 who filled the Placer Buddhist Church Hall, Masaoka stated, "Even when our own government discounted our loyalty, we still believed in that same government and had faith in America and democracy."

Recounting a time when even "a flower arrangement in your house meant disloyalty," Masaoka said that for the first time in history a Western

country apologized to a minority group it mistreated when, in 1942, the U.S. government authorized the evacuation and internment of Japanese Americans away from the West Coast.

The former JACL Washington representative described the JACL Legislative Education Committee's unflagging redress campaign and praised President Reagan's Aug. 10 signing of the redress bill. "This is the first time . . . that America has apologized to any of its minorities," he said. "This is not an indictment of America—it is praise for the justice that prevails under

Continued on Page 3

Allow 6 weeks advance notice to report Address Change with label on front side

If you are moving || Wish to subscribe

Effective Date: _____

Please send the Pacific Citizen for:

☐ 1-Yr: \$25 ☐ 2-Yrs: \$48 ☐ 3-Yrs: \$71

TO - Name: _____

Address: _____

City, State ZIP: _____

All subscriptions payable in advance. Foreign: US\$13.00 extra per year.

Checks payable to: Pacific Citizen, 941 E. 3rd St., Los Angeles, CA 90013-1703

EXPIRATION NOTICE: If the last four digits on the top line of address label reads 1188, the 60-day grace period ends with the last issue for January, 1989. If JACL membership has been renewed and the paper stops, please notify the P.C. Circulation Office immediately.

CCDC BANQUET

Continued from Page 1

Nakagawa made a special presentation to Sachi Kuwamoto, who has served as regional director of the CCDC JACL office and the Nikkei Service Center since 1978. Takahashi awarded pins to the outgoing chapter presidents. She in turn received a dry floral arrangement in appreciation for her service as district governor and JACL-LEC treasurer from Peggy Liggett, immediate past governor, and Elmer Kobashi, Selma JACL Chapter president.

For their efforts on behalf of redress, staffers from the offices of Coelho, Pashayan and Lehman were given certificates of appreciation by CCDC Redress Chairman Tom Shimasaki. Plaques were also awarded to retired JACL-LEC Executive Director Grayce Uyehara and JACL-LEC strategist Grant Ujifusa by Ken Yokota, CCDC

LEC coordinator. Past National President and JACL-LEC Chairman Jerry Enomoto accepted on behalf of Uyehara and Ujifusa who were unable to attend.

Nakagawa installed the 1989 CCDC and local chapter offices. The CCDC JACL cabinet for the new biennium includes:

Dale Ikeda (Clovis)—district governor; Ken Yokota (Fresno)—1st vice governor; Larry Ishimoto (Tulare County)—2nd vice governor; Irene Ikeda-Robles (Clovis)—secretary; Dallas Kanagawa (Sanger)—treasurer; Karen Mukai (Clovis) and Ben Nagatani (Delano)—publicity; Kim Sera (Fowler)—youth commissioner; Sharleen Ozawa (Tulare County)—scholarship chair; Mae Takahashi—immediate past governor; and Stanley Nagata—executive past governor.

Raffle prize winners named during the evening's festivities were Don Kanesaki, outgoing Fresno JACL president who received \$500; Grant Bungo, who won the \$250 second prize; and Naiochi Shohara, winner of the \$100 third prize.

Four Generations of Experience

FUKUI MORTUARY Inc.

707 E. Temple St.
Los Angeles, CA 90012
(213) 626-0441

GERALD FUKUI, President
NOBUO OSUMI, Counselor



Serving the Community
for Over 30 Years

KUBOTA NIKKEI MORTUARY

Formerly Shimatsu, Ogata & Kubota Mortuary

911 VENICE BLVD.
LOS ANGELES, CA 90015
(213) 749-1449

R. Hayamizu, President
H. Suzuki, V.P./Gen. Mgr. Y. Kubota, Advisor

Empire Printing Co.

Commercial and
Social Printing
ENGLISH & JAPANESE

114 Astronaut E.S. Onizuka St.
Los Angeles, CA 90012
(213) 628-7060

THE SHORT SHOP FASHION CLOTHING for the SHORTER MAN

SHORT MEN
4'10"-5'7"

EVERYTHING IN YOUR SPECIAL SIZES
X-SHORT • SHORT • PORTLY SHORT
30"-31"-32" SLEEVE LENGTHS

1233 Broadway Plaza
WALNUT CREEK (415) 930-0371

103 Town & Country Village
PALO ALTO (415) 321-5991

683 Fashion Valley
SAN DIEGO (619) 296-9210

Call or Write for FREE Catalog

ESTABLISHED 1936

Nisei Trading

Appliances - TV - Furniture

FURNITURE SHOWCASE

2975 Wilshire Blvd., Los Angeles
(213) 383-4100

WAREHOUSE SHOWROOM

612 Jackson St., Los Angeles, CA 90012
(213) 620-0882



SAN GABRIEL VILLAGE
235 W. Fairview Ave., San Gabriel, CA 91776
(213) 283-5685, (818) 289-5674
LITTLE TOKYO
114 N. San Pedro St., Los Angeles, CA 90012
(213) 626-5681, 626-5673

CAREER OPPORTUNITY

NATIONAL JACL DIRECTOR

Under the general policy and direction of the National JACL Board; manages and directs administrative affairs of the National JACL organization and its staff; serves as spokesperson for the JACL on issues and concerns which are related to the objectives of JACL.

- Position open from October 28, 1988
- Filing deadline: January 20, 1989
- Salary: \$31,896-\$54,576

REQUIREMENTS

(1) A bachelor's degree from an accredited university or college and work experience of five (5) years in management. (2) Managerial and supervision experience. (3) Knowledge of budget and financial management. (4) Knowledge of JACL, its organization, programs, activities (preference) or minimum of 2 to 3 years active participation; and ability to relate to current social problems in society and to communicate with all elements along the political continuum.

DESIRABLE QUALIFICATIONS

(1) Ability to communicate effectively, orally and in writing. (2) Knowledge of personnel management, salary administration, EEO and affirmative action. (3) Program planning, development and public relations. (4) Working knowledge and sensitivity to the needs of the Japanese Americans and other related volunteer organizations. (5) Mature in both judgement and thinking. Leadership qualities. (6) Fundraising experience is desirable.

DUTIES

Full responsibility for implementing the directives and decisions of the JACL's national council and national board of directors on matters pertaining to administration, personnel, program planning and development, and public relations.

Exercises general responsibility for proper financial management and accounting; maintenance of physical facilities, property, equipment, disbursement and expenditure of funds, and revenue development activities.

Full responsibility for personnel related matters, including the employment and termination of all staff in accordance with the JACL personnel manual.

Provides individual supervision to the Acting Deputy Director, the Administrative Director, the Business Manager, the Public Information Officer, the Regional Directors, and the Washington, D.C. Representative and other professional staff who may be hired by the JACL.

Serves as a spokesperson to the general public, including mass media, government, business and community.

Conducts regular periodic national staff meetings for the purpose of program planning and development, policy implementation, staff development, and program evaluation.

Represents the JACL at national meetings and conferences and may serve as member of such groups and organizations which are related to the work of the JACL and develops a personal network with key government officials and bodies, media, and other organizations in the interest of the JACL.

In consultation with the National JACL President, prepares the agenda for all meetings of the national board and other meetings as required.

Maintains regular communication with the national membership. Prepares periodic reports of operating procedures, staffing assignments, and financial status and submits recommendations for the review of the national board.

- Submit cover letter and resume to:

JACL PERSONNEL COMMITTEE
JACL HEADQUARTERS
1765 Sutter St., San Francisco, CA 94115-3297

Interview, travel and lodging expenses will be reimbursed; reasonable moving expenses for the National Director will be provided.

THINKING OF MOVING TO or INVESTING
in Nevada, especially
LAS VEGAS?

Contact Susan / Realtor, Broker
REALTY 500, SUNSHINE REALTY
Liberace Plaza, 1775 E. Tropicana #3
Las Vegas, NV 89119, (702) 798-8600

ED SATO

PLUMBING & HEATING

Remodel and Repairs, Water Heaters

Furnaces, Garbage Disposals

Serving Los Angeles, Gardena

(213) 321-6610, 293-7000, 733-0557

プラザギフトセンター

NEW MINOLTA
MAXUM
THE FIRST AUTOFOCUS SLR

Plaza Gift Center (213) 680-3288
111 Japanese Village Plaza - Little Tokyo

BORROW
UP TO
\$3000

ON YOUR SIGNATURE*

with our SignLine loan at
11.9% apr. Then pay off
your credit cards, etc. Call
us if you need more. We'll
also give you FREE loan
insurance.

*For previous JACL Credit Union qualified borrowers.

Nat'l JACL Credit Union

PO Box 1721 / Salt Lake City, Utah 84110 / 801 355-8040
Toll Free 800 544-8828 Outside of Utah

JOIN The National
JACL Credit Union

JUST FILL OUT AND MAIL

Name _____

Address _____

City/State/Zip _____

PO Box 1721 / Salt Lake City, Utah 84110 / 801 355-8040
Toll Free 800 544-8828 Outside of Utah

FORUM

Continued from Page 1

importance to each community Nov. 12 at the United Way building. About 60 participants attended the forum, which was led by a panel of nine leaders from both communities.

The forum began with demographic profiles of each community by Rev. Tom Choi. Representatives from each community then gave a brief analysis on issues they perceived to be of greatest concern to their communities. An open discussion, facilitated by L.A. Times reporter Bill Sing, concluded the event by listing the institutional ways the communities could work together to reach a common understanding.

Representing the Korean American community, panelist Tong Soo Chung, former KAC president, spoke of the disjointed immigration the Korean community experienced. "We don't have the Issei, Nisei and Sansei like the Japanese. We have the bilingual 1.5 generation," said Chung.

Chung spoke of the large number of Korean adoptions to American, the experiences of Korean war brides during the '50s, and the changing role of women as more enter the work force through necessity or choice. He attributed the economic success of the Korean community to the large number of Mom & Pop stores, but pointed to the need of moving toward wholesaling and manufacturing for continued success.

Concluding his presentation, Chung stated, "The teaching of the American way is important and maybe we can use the Japanese American political success as a role model, yet we must keep in mind the heritage and culture we have."

J.D. Hokoyama, JACL Pacific Southwest District governor, spoke of

Japanese immigration up until WW2 and of the Japanese American internment experience. He continued with a discussion on the generational struggles, loss of community, and the high rate of outmarriage facing Japanese Americans today. He stated, "A major social issue is how to deal with the Issei. Right now there is a strong movement to care for the elderly."

Other issues of importance to the Japanese American community, said Hokoyama, included political empowerment, the passage of the redress bill, the blockage of Daniel Lungren as California state treasurer, the inclusion of Japanese American history in school books and the differences between Japanese Americans and Japanese nationals.

"Racism in our country is growing," said Hokoyama. "When people are angry at Asians, we become Japs, looked upon as the people who bombed Pearl Harbor."

During the open discussion, suggestions from panelists and the audience identified empowerment, problems of anti-Asian violence and achieving adequate aging and human services among common concerns for both Asian American communities.

Warren Furutani, a member of the L.A. Unified School District, noted

that exchanges between Korean and Japanese Americans were necessary for the future of each community. Stating that meetings "can provide reference points for Asian communities," he suggested that Asian Americans inform an entire community on the needs of their respective communities.

Joint Resolution

At the end of the community forum, a resolution in spirit of common concerns in the Korean American and Japanese American communities was drafted. The resolve reads:

"Creation of a working task force initiated by JACL and KAC and other organizations which will eventually include other Asian groups. The task force will implement projects and programs such as 1) Development of common agenda, creation of workshops and forums in sharing experiences, outreach to Asian communities, education of legislators about community concerns and issues, grassroots cultural celebrations and additional items identified by the task force, and; 2) to meet a minimum of once a year, and; 3) the creation of a Pan-Asian Conference planned by the task force.

The forum was initially an idea of the PSW Ethnic Concerns/Civil Rights Caucus, which organized the event with the KAC Public Affairs Committee.

Jimmy Tokeshi is National Youth chair.

Literary Journal Now Available

SAN FRANCISCO — *Fusion 4*, the latest issue of the Japanese American anthology published by the Asian American Studies Department at San Francisco State University, is now available, announces Professor Jim Okutsu, project director.

The latest issue includes the creative expressions of various generations of Japanese Americans. Bay Area contributors to this issue are Robert Day, May Iwahashi, Manzen, Joe Oyama,

Susan Sugawara and Yachiyo Uehara. Other California resident contributors are Toshio Ito, Lynne Kataoka and Julia Ohki. Additional contributors are Irene Kuniyuki of Washington and Ernest Matsunaga of Illinois.

Fusion is available for \$2 at the Kinokuniya Bookstore in San Francisco, Amerasia Bookstore in Los Angeles or from Asian American Studies at San Francisco State University.



HONOR RECIPIENT—George S. Iwasaki, past president of the Seattle JACL Chapter and an electronic instructor for both Seattle Community College and Western Washington University, was recently chosen as an honor recipient by the Community College Leadership Program at the University of Texas. Nominations for the award, which recognizes the "best of the best" classroom educators throughout North America, is based on an educator's exemplary practice and talent in college instruction. Pictured is Iwasaki (far right) working with a group of hearing-impaired students through their interpreter.

PLACER COUNTY

Continued from Page 2

the Constitution."

During the course of the dinner program, arranged by general chairman Ken Tokutomi and emceed by George Hirakawa as master of ceremonies, greetings were extended by Bob Mahan of the county board of supervisors, Mollie Fujioka, departing Northern California Western Nevada Pacific district governor, and JACL National President Cressey Nakagawa.

Chapter President Hike Yego welcomed the guests and thanked them for their continued support of the JACL program. Yego stated that this year marked the 60th anniversary of the

chapter, which was founded in August of 1928 through the efforts of his late brother Tom Yego Sr. and 15 other concerned Nisei citizens.

Recognition was accorded by Kunio Okusu, recognition chairman, to five of the seven surviving charter members present. Kay Takemoto, Cosma Sakamoto, Harry Kawahata, Roy Yoshida and Yego received certificates honoring them as chapter charter members.

Also honored were Ellen Kubo, the first and only woman past president, and Yego, a two-time president. Both were presented with a Certificate of Appreciation and a sapphire pin by National JACL for special meritorious service to the chapter and contribution to the welfare of Japanese Americans.

Kimura
PHOTOMART
Cameras & Photographic Supplies
316 E. 2nd St., Los Angeles, CA 90012
(213) 622-3968

Commercial & Industrial Air Conditioning
and Refrigerator Contractor
Glen T. Umemoto
Lic. #441272 C38-20
SAM REIBOW CO., 1506 W. Vernon
Los Angeles 295-5204 / Since 1939

Los Angeles Japanese
Casualty Insurance Assn.
COMPLETE INSURANCE PROTECTION

Aihara Insurance Agy. Inc.
250 E. 1st St., Los Angeles 90012
Suite 700 626-9625

Anson T. Fujioka Insurance
321 E. 2nd St., Los Angeles 90012
Suite 500 626-4393

Funakoshi Ins. Agency, Inc.
200 S. San Pedro, Los Angeles 90012
Suite 300 626-5275

Ito Insurance Agency, Inc.
Howe Bldg. 180 S. Lake Ave., #205, Pasadena, 91101
(818) 795-7059, (213) 681-4411 L.A.

Kagawa Insurance Agency Inc.
350 E. 2nd St., Los Angeles 90012
Suite 302 628-1800

Kamiya Ins. Agency, Inc.
120 S. San Pedro, Los Angeles 90012
Suite 410 626-8135

Mizuno Insurance Agency
18902 Brookhurst St., Fountain Valley
CA 92708 (714) 964-7227

The J. Morey Company, Inc.
11080 Artesia Bl., Suite F, Cerritos, CA 90701
(213) 924-3494, (714) 952-2154, (415) 340-8113

Steve Nakaji Insurance
11964 Washington Pl.
Los Angeles 90066 391-5931

Opino-Aizumi Ins. Agency
1818 W. Beverly Bl., Ste #210, Mt. View, 90640
(818) 571-6911, (213) 728-7488 L.A.

Ota Insurance Agency
321 E. 2nd St., Suite 604
Los Angeles 90012 617-2057

T. Roy Iwami & Associates
Quality Ins. Services, Inc.
3255 Wilshire Blvd., Suite 630
Los Angeles 90010 382-2255

Sato Insurance Agency
366 E. 1st St., Los Angeles 90012
626-5861 629-1425

Tsuneishi Ins. Agency, Inc.
327 E. 2nd St., Los Angeles 90012
Suite 221 628-1365

AHT Insurance Assoc., Inc.
dba: Wada Asato Associates, Inc.
16500 S. Western Ave., #200,
Gardena, CA 90247 (213) 516-0110

No
Points
Adjustable Rate
Mortgage.

No APPLICATION FEE	No PRE-PAYMENT PENALTY
No BALLOON PAYMENT	No NEGATIVE AMORTIZATION

Visit us and make yourself at home with a
Sumitomo Adjustable Rate Mortgage. Offer good
through November 30, 1988.

Sumitomo Bank
Sumitomo Bank of California Member FDIC

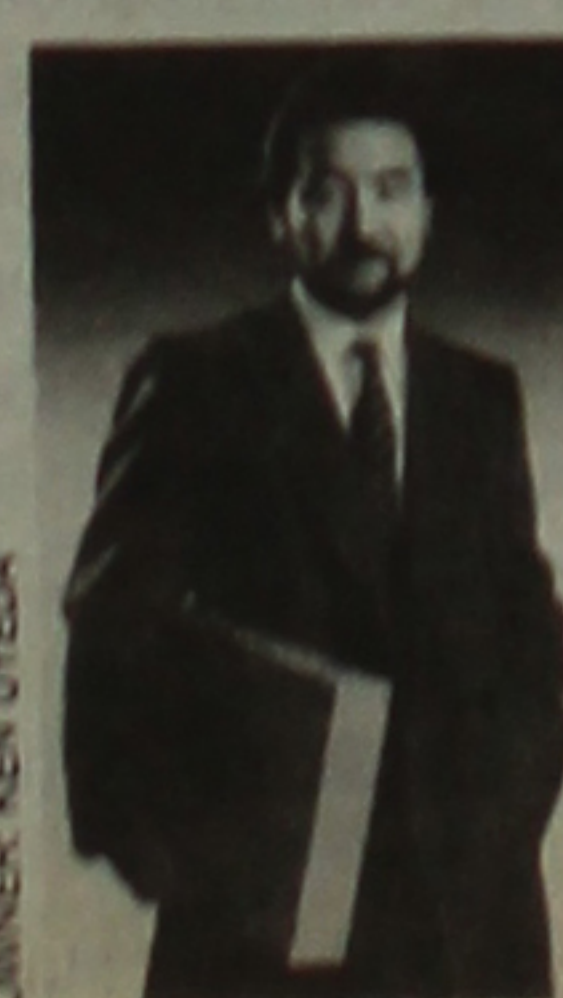
Aloha Plumbing

Lic. #440840 - Since 1922
PARTS - SUPPLIES - REPAIR
777 Junipero Serra Dr. San Gabriel, CA 91776
(213) 283-0018 • (818) 284-2845

CHIYO'S

JAPANESE BUNKA NEEDLECRAFT
Framing, Bunka Kits, Lessons, Gifts
2943 West Ball Road,
Anaheim, CA 92804 • (714) 995-2432

SHORT & SMALL MENSWEAR



FOR THE PROFESSIONAL MAN.

Suits & Sport Coats in 34 - 44 Short and Extra-Short, also Dress Shirts, Slacks, Shoes, Overcoats and Accessories by Givenchy, Lanvin, Talia, Arrow, John Henry, London-Fog, Sandro Moscoloni, Cole-Hann and Robert Talbott.

KEN & COMPANY

2855 STEVENS CREEK BLVD.
SUITE 2249
SANTA CLARA, CA 95050
PHONE: 408 / 246-2177

LOCATED IN THE NEW
VALLEY FAIR SHOPPING CENTER
SECOND LEVEL, NEAR MACY'S.

Japanese Phototypesetting
TOYO PRINTING CO.
309 So. San Pedro St., Los Angeles 90013
(213) 626-8153

Kenneth H. Kusumoto
KKRC
Rare Coins
Investments in Rare Coins
and Precious Metals
Nexus Financial Center
721 S. Parker St., Suite 165, Orange, California 92668
714/541-0994

JACL-Blue Shield

Medical-Hospital-Dental
Coverage

Available Exclusively to:

- Individual JACL Members
- JACL Employer Groups

JACL members 18 and over may apply to enroll in the Blue Shield of California Group Health Plan sponsored by JACL especially for JACL members. Applicants and dependents under age 65 must submit a statement of health acceptable to Blue Shield before coverage becomes effective.

For full information complete and mail the coupon below or call (415) 931-6633.

To: **Frances Morioka, Administrator**
JACL-Blue Shield of California
Group Health Plan
1765 Sutter Street
San Francisco, CA 94115

Please send me information on the JACL-Blue Shield of California Group Health Plan:

- ☐ I am a member of _____ chapter.
☐ I am not a member of JACL. Please send me information on membership. (To obtain this coverage membership in JACL is required.)

Name _____
Address _____
City/State/Zip _____
Phone () _____ ☐ Work ☐ Home

ISSN: 0030-8579



pacific citizen

941 E. 3rd St., Rm. 200, Los Angeles, CA 90013-1703
(213) 626-6936, Fax: 626-8213, Editorial: 626-3004

Published at Los Angeles, Calif. by the Japanese American Citizens League, National Headquarters, 1765 Sutter St., San Francisco, CA 94115, (415) 921-5225, every Friday except the first and last weeks of the year, biweekly during July and August, and one week in December prior to the year-end Holiday Issue.

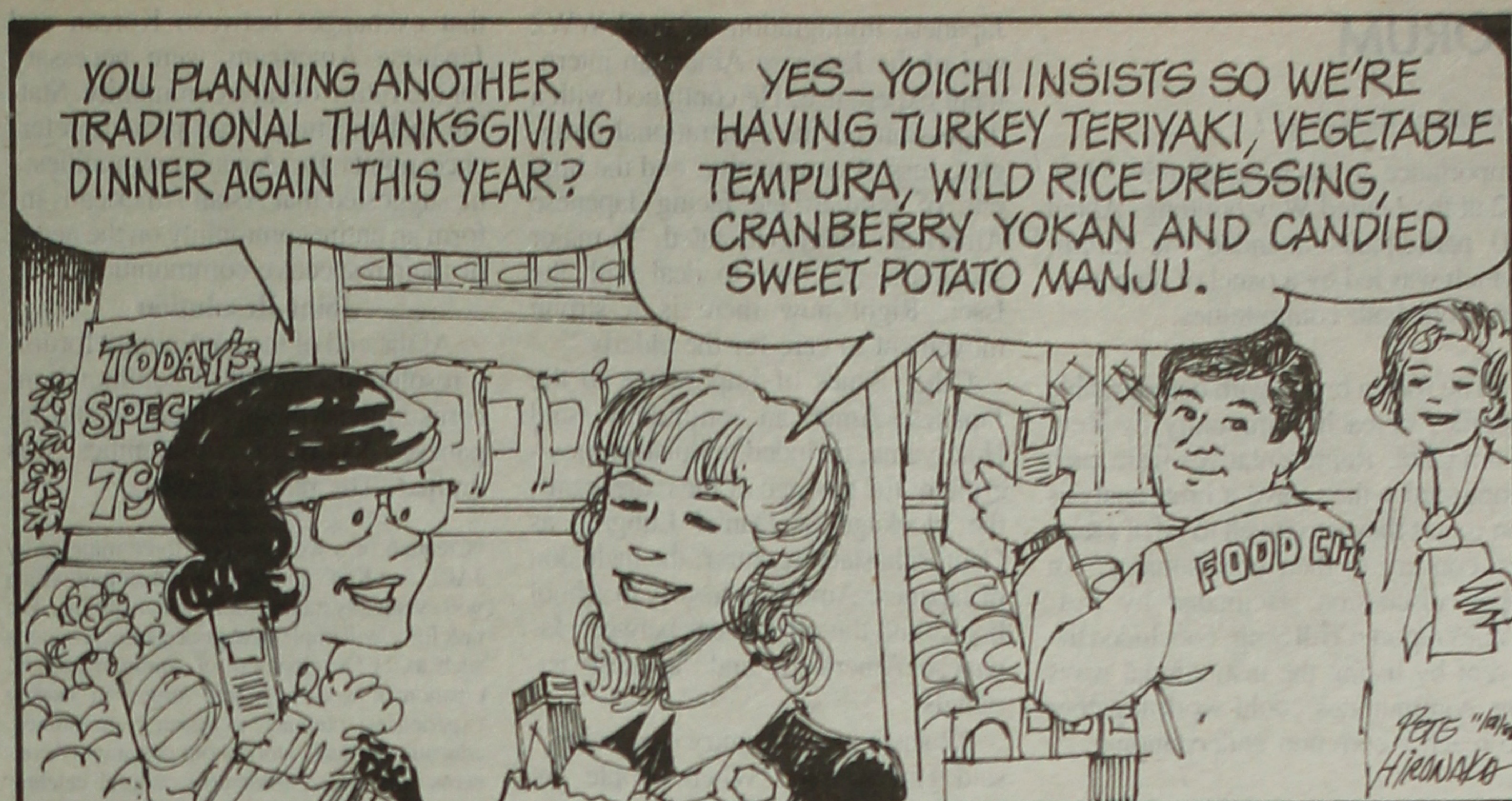
Second Class Postage Paid at Los Angeles, Calif. • Annual Subscription Rates — JACL Members: \$11.00 of the national dues provide one year on a one-per-household basis. Non-Members: 1 year — \$25, 2 years — \$48, payable in advance. • Foreign: add US\$13.00 per year. • Air mail — U.S., Canada, Mexico: add \$30 US per year; Japan / Europe: add US\$60 per year.

The news and opinions expressed by columnists other than the National President or National Director do not necessarily reflect JACL policy.

OFFICERS: National JACL President: Cressey Nakagawa. Pacific Citizen Board Chair: Lillian Y. Kimura. National Director: Bill Yoshino (acting), Deputy Nat'l Director: Carole Hayashino (acting).

EDITORIAL - BUSINESS STAFF: General Manager / Operations: Harry K. Honda, Assistant Editors: George T. Johnston, Laurie Mochidome, Subscription / Circulation: Tomi Hoshizaki, Marjorie Ishii. Business: Mark Saito, Julie Low. Production: Mary H. Imon, Frank M. Imon.

POSTMASTER: Send Address Change to: Pacific Citizen, 941 E. 3rd St., Los Angeles, CA 90013-1703



EDITORIAL OF THE PACIFIC CITIZEN:

A Good Example To Follow

PERHAPS BY coincidence, Thanksgiving Day follows close on the heels of Election Day. It is an appropriate sequence, for after the rancor and rhetoric of hard-fought campaigns, there is much to be thankful for.

We can be thankful that the republic has not collapsed despite dire presidential campaign warnings. We can be thankful that a new administration was chosen without the gunfire that is customary in some countries. We can be thankful that victorious and defeated candidates, in gracious post-election gestures, have congratulated each other and pledged to work for the national welfare.

Michael Dukakis, swallowing his disappointment, wished his erstwhile opponent well and promised to do everything he could to help solve America's problems. George Bush welcomed the support and said he would reach out to all segments of the nation.

We must not delude ourselves that all will be love and kisses between the two political parties. They will have many differences, particularly over methods and details. But there is no doubt that despite the harsh campaign rhetoric, they share a common desire to create a better country, a more responsive government, and peace and prosperity.

We Japanese Americans can learn from the example. Judging from the letters to the editor published in this newspaper, there is little inclination in some quarters to let the past be the past. There seem to be resentments that continue to fester after many decades. We have long memories and we dwell on them instead of searching for ways to improve the here and now.

Not long ago, a Japanese American was asked to become a member of JACL. "Hell no," he said, "I'll never support that no-good outfit."

Why, he was asked. His response: "They sold us down the river back in 1942."

Even assuming this to be true, it didn't seem to occur to him, and those who think like him, that that was 46 years ago, the length of time it takes an infant to reach middle age. Has nothing happened since then? One thing that has happened is that more than enough time has sped by for our community to end the brooding on the past. We cannot afford that indulgence. There is too much that needs to be addressed in the present and the future, in the community as well as in the nation.

Saito Claims Untrue

The convention issue of the P.C. (Aug. 5-12, 1988) contains a letter to the editor entitled "Insensitive Action," which was submitted by PSWD Regional Director John Saito. John characterizes the National Board as "insensitive," citing the JACL Personnel Manual updating process as an example.

John states that, "I was never consulted in the revision of the manual and I believe I can safely say neither was any other staff person." This is not an accurate statement in accordance with official JACL memorandums circulated to staff and the official actions that took place.

At the National Board meeting in February 1987, the draft proposed update of the JACL Personnel Manual was submitted by Manual Update Chair Peggy Liggett. Liggett invited all staff and board members to submit comments, in writing, on the proposed update.

At the Feb. 16, 1987 staff meeting, then National Director Ron Wakabayashi covered this subject, indicating that staff members should submit comments directly to Chair Liggett, or submit comments to Midwest Regional Director Bill Yoshino, who was tasked to submit a compilation of staff inputs. This is verified by memo LOC: NDW (National Director Wakabayashi): 106-03-11-87. John Saito's name appears under the "copy to" in this memo.

On April 24, 1987, a copy of the staff proposed JACL Personnel Manual was submitted by Midwest Regional Director Bill Yoshino to Director Wakabayashi with distribution to staff.

On May 11, 1987, memo LOC: NDW: 151-05-11-87 issued by Director Wakabayashi to Yoshino states that Wakabayashi had discussed with Kajihara the Personnel Manual compilation assembled from staff and a meeting between Yoshino, representing staff, and Kajihara was arranged to discuss the manual update and staff inputs. Prior to the National Board meeting of June 14 to 15, this meeting took place and details were circulated to staff under Yoshino's memo, dated June 30, 1987.

John also states in his letter that the Personnel Committee "immediately set up an adversarial relationship between board and staff."

This committee addressed numerous personnel matters that required attention. In my opinion, their work did not create an adversarial relationship between board and staff.

HARRY KAJIHARA
Oxnard, Calif.

Racism: Japan Not Alone

The JACL is right to concern itself with U.S.-Japan relations and charges of Japanese insensitivity towards Blacks and other minorities, issues that have been discussed in the Pacific Citizen and at the August National Convention. I agree that Japan must be held accountable for its lack of judgment and sensitivity, it must answer for its exclusivist, racist philosophy. At the same time, certainly the JACL

should also challenge the U.S. to heed its words and examine racism within its own borders.

Not too long ago, the U.S. marketed its share of offensive, stereotypical Black characters and images—perhaps Aunt Jemima and Uncle Ben on today's American supermarket shelves should remind us how far we still have to go. Twenty-five years ago, 200,000 Americans demonstrated in Washington to support Black demands for equal rights, but still today, charges of racial violence and discrimination make U.S. headlines. Focusing exclusively on Japanese racism diverts scrutiny away from the U.S., a dangerous tactic for all minority groups in the States.

So how should the JACL fit into all this? It seems clear that domestic civil rights issues should continue to have first priority. The JACL should closely follow and support initiatives of the Black Caucus as well as those of other organizations.

In the meantime, research and education on Japan are imperative. Sharing the same forebears does not necessarily give us special privileges and knowledge concerning the Japanese; Japan is a foreign nation that we must study, as we would study any country whose policy we intend to influence. Hasty and uninformed accusations are petty and irresponsible. An issue as complex as racism requires comprehensive study of all its aspects.

Most Japanese have never personally met a Black of any nationality. Indeed, Japan's knowledge and perception of Blacks is largely informed by the continually unfair depictions of them as pimps and hoodlums in American cinema and television. We are right to demand a change in Japanese attitudes; at the same time, we must criticize American social structures that foster such attitudes.

Ultimately, education and understanding will make progress possible. Muscle and loud voices produce change of a kind, but only education and cooperation can lead to a change that people feel to be true. The JACL can become a strong, influential force to help broaden Japan's limited perspective, to enrich relations between countries. The goal of total equality in the U.S. must go hand in hand with this process.

KATHRYN HASHIMOTO
Japan Chapter JACL
Tokyo, Japan

'Uproar' Is Necessary

Regarding Mr. Paul Ito's letter to the editor (P.C., Nov. 4, 1988), we would like to address the last three paragraphs of his letter. Since Mr. Ito made his decision to not join the JACL, it is interesting that he has passed judgment on the organization's direction when he asks it to "pursue a program not steeped in negativism." We wonder if he is aware of the many pro-active causes that the JACL pursues such as programs for leadership development, aging and retiring, civil rights, coalition building and community service projects, as well as a host of other positive programs.

In regard to Mr. Ito's closing state-

ment, "Don't get in an uproar everytime ethnic slurs are uncovered. We're outnumbered . . . Keep focused on the future. Life is too short," his message is quite clear; individuals should not take action when they are portrayed or treated negatively. On this issue, we must agree to disagree with Mr. Ito.

It has been because of "uproars" caused by individuals like Susan B. Anthony who fought for women's voting rights and Dr. Martin Luther King, Jr. who fought legalized segregation that we, today, have a better quality of life and have a more equal role in a country that is founded on the ideal that all men and women are created equal. Incidentally, if the individuals involved in the redress movement felt "outnumbered" and did not cause an "uproar," the Japanese American community would not be celebrating the passage of the redress bill today.

The problem with not responding to ethnic slurs is that, if nothing is said, then those who promote racially distorted images will continue to do so. Mr. Ito may be correct in assuming that " . . . racism and prejudice will never disappear from the American scene . . ." but why should we play the role of the cynic? We agree with Mr. Ito in that life is too short; therefore, we must fight for our right to be treated as equally created beings in a country that is founded on that ideal. We also must, as Mr. Ito suggests, "keep focused on the future," so that our legacy will live on and our children may enjoy the privileged life that we have not . . . one that is free of racism and prejudice.

DOUGLAS URATA
TRISHA MURAKAWA
Co-Chairs, Civil Rights Caucus
Pacific Southwest District
Japanese American Citizens League

JACL: Staying Alive

With the partial success of redress (pending appropriation), those eligible for the money must wisely think of getting the best for the \$20,000. I am sure many of the P.C. readers have been pondering about what to do with the money.

I would like to suggest to JACLers and non-JACLers receiving redress money to think about buying their children \$500 gift life JACL memberships as living memorials to all those incarcerated in the U.S. concentration camps. By doing so there is a potential towards reviving the organization by increasing the membership and operational funds to carry out new projects.

The action will also keep the youth in touch with their ethnic group through the P.C., and help keep alive an organization that will continue to work for the benefit of all minorities. It is a positive way to say, "Thanks JACL, for a job well done."

CHUCK KUBOKAWA
Palo Alto, Calif.

Letters to the editor should be typewritten (double-spaced) or legibly hand-printed and no more than 200 words. A contact phone number and address must be included or P.C. will not print the letter. Letters may be subject to editing.



FROM THE FRYING PAN

BILL HOSOKAWA

The Japan Chapter: An Active Bunch

Consider the possibility that the most active of all JACL chapters is the one most distant from headquarters in San Francisco. That would be the Japan Chapter, most of whose members live in Tokyo.

One recent evening an astonishingly large number of members turned out to welcome some wayfarers from the homeland, including Hiro Hishiki who publishes the *Kashu Mainichi* in Los Angeles, Yoriko Imada who publishes the *Rocky Mountain Jiho* in Denver, and me and my wife. On second thought, the main attraction may have been not the guests, but the sumptuous Chinese buffet dinner arranged by that superlative arranger, Barry Saiki.

(Saiki first went to Japan after the war as an U.S. Army officer. After retirement he got a position in the public relations business. Every time I see him he says he's planning to quit his job and come home to the States. Tokyo won't be the same without him.)

The chapter membership is an interesting melange of Japanese Americans. There are ex-military, like Saiki and Bert Fujii who has the courage to drive in Tokyo traffic and proved it by picking us up at the hotel for the ride

to the dinner. There are Sansei, like Jack Sakazaki about whom I may write more on another occasion, and some women who were so busy I couldn't get their names. There are Nisei like Kay Tateishi, who came before the war and couldn't get back home, and found an interesting career in English language journalism, and Sen Nishiyama, the Salt Laker who after the war became the U.S. Embassy's exceptionally talented interpreter.

And then there are what might be called honorary members, like John Fujii, who was reared and educated in the United States and still doesn't read or write Japanese, but is technically not a Nisei because he was born in Japan. His citizenship precludes him from JACL membership, but shucks, he's one of the group anyway.

This is a diverse membership, old and young, in a wide variety of occupations but mostly in positions where their English is indispensable, and obviously enjoying working and living in Japan.

Yet it is their American links that bring them together from distant parts of the jam-packed metropolis. They

Continued on Page 8

THE CALENDAR

LOS ANGELES AREA

■ Present—*The Wash*, a film written by Philip Kan Gotanda, directed by Michael Uno and starring Mako and Nobu McCarthy, Laemmle's Grand, 345 S. Figueroa. Info: 213 617-0268.

■ Present—"Earth, Water & Fire," a Japanese American ceramics exhibition, MOA Gallery, 8554 Melrose Ave., West Hollywood. Artists: Eiko Amano, Mary Ichino, James Kobayashi, Kazuko Matthews, Rose Nishio, Yukio Onaga, Keikichi Sato, Hisae Shiba, Sawako Shintani, Ace Sumida, Rodney Tsukashima and Junko Yamamoto. Hours: Mon.-Fri., 10 am-1 pm, 2-6 pm; Sat., 10 am-3 pm.

■ Nov. 18—"Salad Bowl Versus Melting Pot: The Challenge of Cultural Diversity in Our Schools" sponsored by the Community Relations Conference of Southern California, 8 am-1:15 pm, Muses Room in Aerospace Building, Museum of Science and Industry in Exposition Park. Parking: Figueroa, south of Exposition Blvd. Registration and info: 213 295 2607.

■ Nov. 26—The 20th Annual People's Potluck, 4 pm, 1766 Seabright Ave., Long Beach-Harbor Community Center. Sponsored by the Asian American Student Association of CSULB alumni to celebrate Asian American Studies and student activism. Entertainment: Benny Yee, Atomic Nancy, and Visions. Admission: \$5 plus food for 4. Info: Sher Maimoni, 213 546-5002 or Don Fujita, 818 369-6229.

ELECTION

Continued from Page 1

In Hawaii, Democratic Sen. Spark Matsunaga beat out Republican challenger Maria Hustice with a vote of 179,819 to 48,781. Republican Rep. Patricia Saiki triumphed over Democrat Mary Bitterman with a 96,848 to 76,394 vote for Hawaii's 1st congressional district, while Democratic Rep. Daniel Akaka won over Republican opponent Lloyd Mallan by a vote of 68,773 to 9,568 for the 2nd congressional district seat.

In Southern California, Oxnard Mayor Nao Takasugi won re-election, and in Santa Clara County, Tom Matsumoto was re-elected to the Evergreen School District Board.

The following Nikkei were elected to the Hawaii state Senate:

Richard Matsuura (D-2nd dist., Downtown Hilo-Waiakae), Mamoru Yamasaki (D-4th dist., Wailuku-Kahului-Upcountry), Donna Ikeda (D-11th dist., Hawaii Kai-Aina Haina), Ann Kobayashi (D-14th dist., Manoa-Makiki) and Norman Mizuguchi (D-21st dist., Halawa Heights-Aiea-Pearl City).

The following were elected to the

NEW YORK

■ Present—Dec. 6—"The Streets of Dai Fau: Arnold Genthe's Photographs of San Francisco's Old Chinatown," New York Chinatown History Project, 70 Mulberry St., 2/f. Hours: Sun.-Fri., 12-5 pm. Info: 212 619-4785.

OMAHA

■ Dec. 8—Harry G. Watanabe, founder of Oriental Trading Co. (OTC), honored as 1988 "Spirit of Life" recipient by City of Hope's Greater Omaha Civic Executive Council, 6:30 pm, Red Lion Hotel. Dinner: 7:30 pm. Info: Bette Rosen, 602 274-8663; or Michelle Pigman of OTC, 402 331-5511.

SAN FRANCISCO

■ Nov. 19—"Big Game Nite" dinner-dance, sponsored by the California Japanese Alumni Association (CJAA), 7 pm-1 am, Cathedral Hill Hotel, Geary St. and Van Ness Ave. Fee: \$25 CJAA members, CJAA guests and students; \$30 non-members. Reservations and info: Steve Nakashima (Peninsula), 408 246-0246; Mo Noguchi (Marin County), 415 499-1666; George Yasukochi (Eastbay), 415 843-1519; Hats Aizawa (San Francisco), 415 695-8700.

SAN JOSE

■ Nov. 19—"Asian Game Night" presented

Hawaii state House.

Harvey Tajiri (D-2nd dist., Waiakae-Waiakae Homestead), Dwight Takamine (D-4th dist., N. & S. Hilo-Hamakua-Halaula), Herbert Honda (D-8th dist., Wailuku-Kahului), Marshall Ige (D-17th dist., Kaneohe), Fred Hirayama (D-22nd dist., Hawaii Kai Aina Haina), Barbara Marumoto (R-23rd dist., Waiakae Iki-Waiakae-Maunalani Hts.), Les Ihara (D-26th dist., Kaimuki-Kapahulu), Brian Taniguchi (D-27th dist., Manoa-Woodlawn), David Hagino (D-29th dist., Moiliili-McCully), Carol Fukunaga (D-31st dist., Makiki-Tantalus), Mazie Hirono (D-32nd dist., McCully-Ala Moana), Ken Hiraki (D-35th dist., Kakaako-Downtown), Dwight Yoshimura (D-36th dist., Palama-Kamehameha Hts.), Dennis Arakaki (D-37th dist., Kalihi-Kalihi Valley), Karen Horita (D-40th dist., Moanalua-Salt Lake-Aliamau), Tom Okamura (D-41st dist., Halawa Hts.-Aiea Aiea Heights), Clarice Hashimoto (D-42nd dist., Pearlridge-Waimalu-Pearl City), David Ige (D-43rd dist., Waiau-Newtown-Pearl City), Roland Kotani (D-44th dist., Pearl City-Pacific Palisades), Paul Oshiro (D-46th dist., Ewa Beach-Waipahu) and Bertha Kawakami (D-51st dist., Koloa-Waimea-Nihau).

JoAnn Yukimura (D) was elected mayor of Kauai. Elected to the Hawaii state Board of Education were Mitsugi Nakashima (Kauai Residency), Denise Matsumoto (Honolulu Residency), Ronald Nakano (Leeward Oahu Residency), and Randal Yoshida and Betty Lou Miura (Oahu).

by the Asian American Social Club, 7:30 pm, JACL Building, 565 N. 5th St. Bring your own newly created game and play indoor classic games such as Trivial Pursuit. Bring favorite dessert. Beverages provided. Fee: \$3.50 members; \$5 non-members. Info: Tim 415 797-2617.

SANTA ANA

■ Present—Nov. 22—"Junctures, Disjunctures & Fusions: Asian American Artists, Rancho Santiago College Art Gallery, Humanities Building C, 17th at Bristol St., Santa Ana. Artists: Judy Chan, See Lee, Mary Noguchi, Hanh Thi Pham, Samuel Suhr & May Sun. Hours: Mon.-Thurs., 10 am-2 pm; Fri., 11 am-1 pm; Tues. & Wed. eve., 6:30-8:30 pm. Info: 714 667-3177.

SEATTLE

■ Present—Dec. 31—"Son of Heaven: Imperial Arts of China," Seattle Center's Flag Pavilion. Features over 200 rare objects, 4 times larger than the King Tut exhibit. Info: Mary Hammond, 206 582-6616.

■ Present—*The Wash*, a new film by Philip Kan Gotanda and directed by Michael Uno, Metro Theatre, NE 45th and Roosevelt Way, 1:10 and 3:10 (Sat. & Sun. only), 5:10, 7:10 and 9:20 pm; first matinee at discount price. Info: 206 633-0055.

■ Present—Nov. 27—"Seattle Before and After," works by former Seattle artists including Roger Shimomura, Center on Contemporary Art, 1309 1st Ave., Tues.-Sat., 11 am-6 pm. Admission: \$2. Info: 206 682-4568.

■ Nov. 25—Japanese Community Queen Committee sponsors a queen's court fashion show, Seattle Trade Center, 2601 Elliott Ave., 8 pm. Tickets: \$10, advance, \$12 at the door, available from committee members or at Uwajimaya. Info: Jane Tsuboi, 206 722-2375 (h) or 206 684-1114 (w).

TOKYO

■ Nov. 28-30—"Semicon/Japan '88," Tokyo International Fair Grounds, Harumi. Info: Ms. Kaori Takaya, 2921, Tokyo Hilton International, 6-6-1 Nishi-Shinjuku, Shinjuku-ku, Tokyo, 106 Japan or call (03) 345-6061.

VACAVILLE

■ Present—Nov. 27—"From Rising Sun to Golden Hills, the Japanese American Experience in Solano County" exhibit, Vacaville Museum. Exhibit includes artifacts and photographs depicting the Japanese experience in Solano County from the 1890s to the post WW2 years. Hrs: 1-4:30 pm, Wed.-Sun. Fee: Adults, \$1; students, 50¢. Wed. free. Info: 707 447-4513.

Publicity items for The Calendar must be typewritten (double-spaced) or legibly hand-printed and mailed at least THREE WEEKS IN ADVANCE. Please specify a day or night phone contact for further information.

THE NEWSMAKERS

► **K. Carl Nomura**, founder of Honeywell's Solid State Electronics Division, received the University of Minnesota's Outstanding Achievement Award on Oct. 4. The award is the highest conferred on university alumni and recognizes exceptional professional accomplishment.

► **Bill Hosokawa**, a former editor of the *Denver Post*, has been named president of the newly-formed Colorado Freedom of Information Council, a group created to make government decisions more accessible to the public and news media. The council aims to provide a remedy for members of the public and news media who believe they have been denied access to government information. It is comprised of 13 voting organizations, including the Colorado Bar Association and Colorado Broadcasters Association, plus three public members. A regular columnist for the *Pacific Citizen*, Hosokawa currently serves as reader representative for the *Rocky Mountain News*, writing a weekly column about newspaper practices and ethics.

► **William Yamamoto** of Chicago, president of LaSalle Service and Lion Photo, was honored by the Japanese American Service Committee (JASC) of Chicago at its 18th annual Fuji Festival on Nov. 6 at the Hyatt Regency O'Hare in Rosemont. The festival, a major JASC fund-raiser, also presented the music of composer-playwright-performer Keith Uchima and a program by magician and illusionist Robert Higa. Yamamoto was recognized for his contributions to JASC, scholarship funds for Japanese American college students and the current fund drive for the construction of the Chicago Keiro Nursing Home.

► **Rev. Steven Toshio Yamaguchi** is the new minister at Grace Presbyterian Church in Paramount, Calif. A graduate of the Princeton Theological Seminary, Yamaguchi formerly served as assistant pastor at the Tokyo Union Church in Tokyo, Japan, the Japanese Christian Church of Philadelphia and the Memorial West Presbyterian Church in Newark, New Jersey.


JUST OFF THE PRESS!

History of the Japanese of Tacoma

Translated from the Japanese of the 1917 Chronicles:
Tacoma Nihonjin Hattenshi
by James Watanabe

\$12.00 ppd. Check payable to: JACL-Pacific Northwest District Council
Mail Order to: H. Del Tanabe, 2503 Freeman Rd. E, Puyallup, WA 98371

© AT&T 1988



We don't have to know who you are to know how you feel.

The Nikkei Helpline is strictly confidential. You can call 24 hours a day to talk to any of our bilingual Japanese and English speaking volunteers. No problem is too small.

- Cultural Adjustment Problems
- Loneliness
- Family Problems
- Legal Difficulties
- Social Service Information and Referral
- Substance Abuse
- Relationships

Call 1-800-NIKKEI-1 (1-800-645-5341)

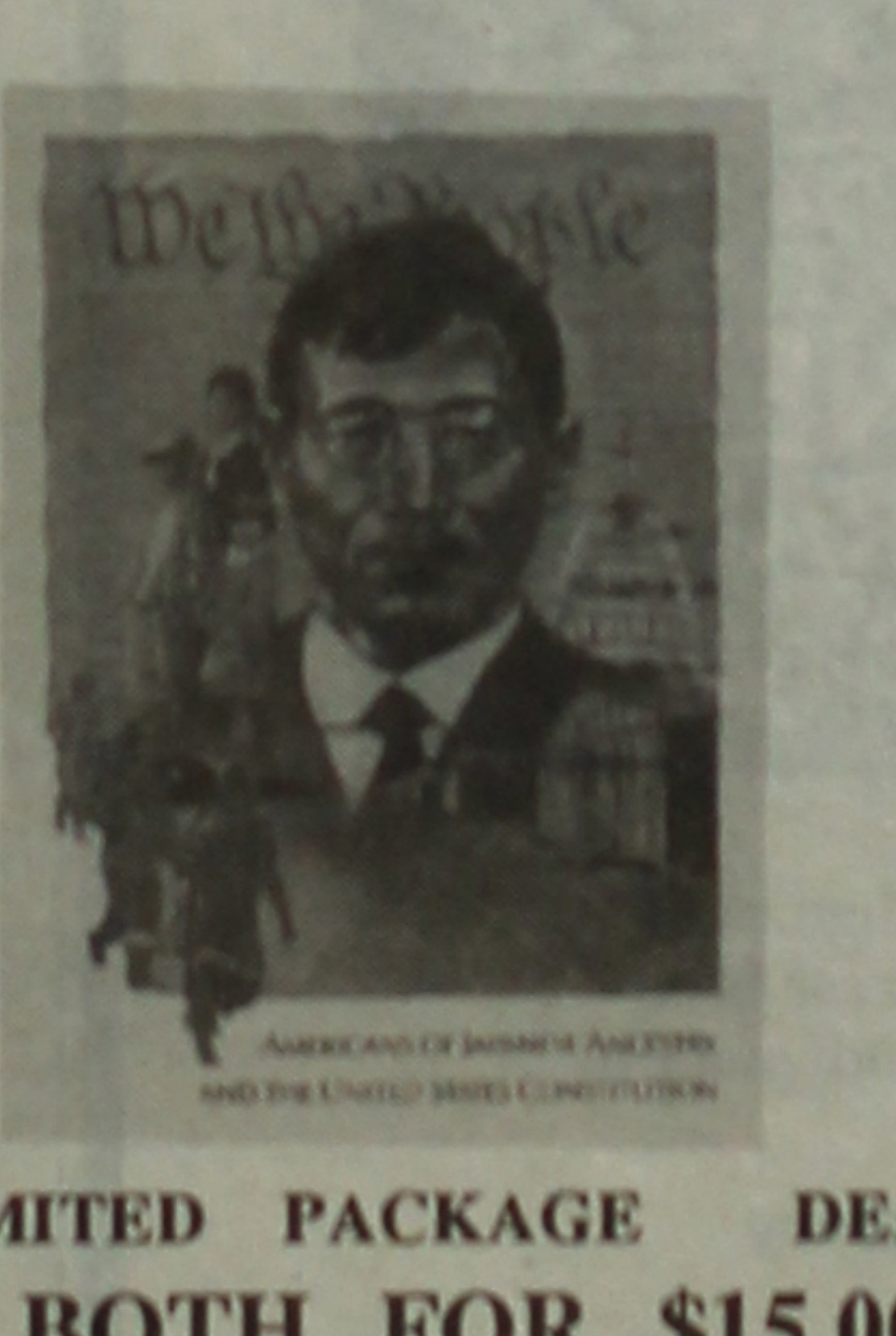
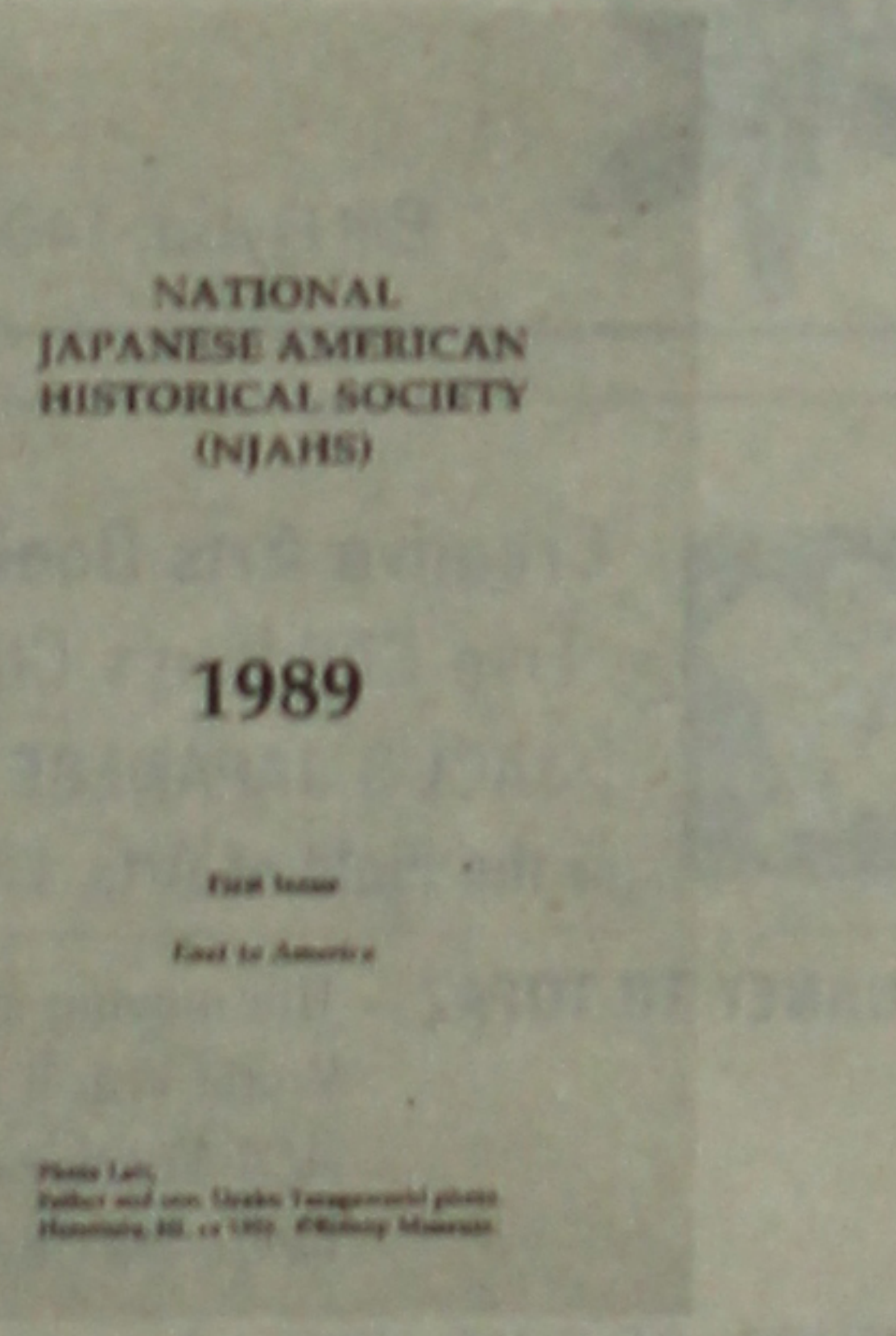

The Nikkei Helpline is a program of the Little Tokyo Service Center, sponsored in part by AT&T



NIKKEI-1 HELPLINE

HOLIDAY GIFT IDEA

National Japanese American Historical Society



1989

LIMITED PACKAGE DEAL BOTH FOR \$15.00

Special Offer with this ad: The 1989 Fundraiser Calendar on the Japanese American experience is now available. This full size calendar includes rare archival photographs, significant dates in Japanese American history, and a special section on Redress. It is being offered with the commemorative booklet: *Americans of Japanese Ancestry and the United States Constitution* containing a complete pictorial chronology of Japanese American history. Both, as a package deal, can be obtained for only \$15.00.

I wish to order _____ set(s) of the calendar and booklet for \$15.00/set. Please send to:

Name: _____

Address: _____

City/State/ZIP: _____

MAKE CHECK PAYABLE TO:
NJAHS, National Japanese American Historical Society
1855 Folsom St., # 161, San Francisco, CA 94103-4207

SINGLE COPIES
Calendar \$10. Commemorative Booklet \$12 (INCLUDES POSTAGE AND HANDLING)

4—Business Opportunities

FOR SALE: Wholesale pizza supply distributor company, established 15 years, gross about \$1.5 million a year, located in San Fernando Valley; will train. \$249,000 + inventory. Call: Ed Kovino, (818) 994-4882.

COPY STORE

Modern, full color and black & white high-speed equipment. Central Beverly Hills location w/established clientele. Great lease. Good income, even better future. Asking 150K plus inventory. Call WALTER. (213) 271-9888.

FLORIDA

Miami Int'l Commerce Ctr.

We are 2 mins from Airport w/fully equipped 3,800 sq ft warehouse & 750 sq ft offices & will represent mfr of any kind from NY/NJ in Florida. Write or call Trans-Mundial Inc., 1637 NW 79th Ave, Miami, FL 33126 (305) 477-7415, Fax: (305) 592-7415

CALIFORNIA

DEVELOPER SEEKS INVESTORS

For short term, high yield, fully secured Southern California real estate project. (818) 712-0204.

Will cooperate with syndicators.

FOR SALE/INVESTOR—KARRIOR MFG.

CO. Electric industrial vehicles. Small growing company in So. Calif. Well-established line of electric powered vehicles & material handling trailers. Good customer base, expanding dealer organization. Needs working capital and production expertise. Outstanding opportunity for active owner or investor. For details contact: Ed Gaffney, (800) 558-7786 or (414) 542-6060.

Womens Professional Basketball Investment

One of the fastest growing sports in the world. The league will begin play in April '89 and now has memberships and territorial rights available.

Evidence from national and international research and marketing studies indicates the league has strong growth potential for its program on a national and international basis. This will include national marketing and television exposure. If interested, contact: BILL BYRNE, National Scouting Association, Inc., 15201 Vose Ct., Van Nuys, CA 91405. (818) 908-1570, 785-4652, Fax: (818) 501-6813

100% TAX CREDIT INVESTMENT

No risk on revenues. 150K of working interest available. 30K min. available. BARBAROSSA OIL CO.

Call Mr. Johns V.P.

(818) 366-6698

10 a.m.-4 p.m. Pacific Standard Time.

Nursery and Greenhouse

45,000 Square feet for sale in Culver City area.

Call: (213) 458-4100

(broker-Dara)

5—Employment

TEMPORARY EDITORIAL HELP WANTED IMMEDIATELY!

For regular and year-end editions now under preparation. Involves copy-inputting (computerized typesetting; willing to train), proof-reading and sorting editorial mail. Hours flexible.

Call Harry Honda, Pacific Citizen (213) 626-6936, 8 a.m.-4:30 p.m.

CAREER OPPORTUNITY AT THE PACIFIC CITIZEN Assistant Editor

A full-time assistant editor to gather/write news, edit copy and proof-read. Operate with cold-type process, camera-ready pasteup. Typing skill of at least 35 words per minute. Will train to use in-house typesetters. Familiarity with Japanese American community-at-large and/or Japanese American Citizens League a key priority. Prefer candidates with college degree in English, journalism, related field or comparable newspaper experience. Some evening and weekend hours required. Salary \$17,900-\$22,000 depending on qualifications. Resume and samples of prior work to Harry K. Honda.

Pacific Citizen, 941 E. 3rd St., #200, Los Angeles, CA 90013. Deadline: Dec. 23, 1988, or until candidate is selected.

CAREER OPPORTUNITY

Adv./Bus. Manager

A dynamic individual to generate advertising income and oversee the business side of the Pacific Citizen is being sought. Individual must have sales and marketing experience, preferably in the print media. Must have knowledge of automated (d-base III+) systems, accounting, finance and management. Individual will be responsible for soliciting and promoting all phases of advertising—general, classified and special issues. The person will become familiar with other aspects of production / business aspects and eventually assume full responsibility as business manager. Base salary: \$20,000 plus commissions-\$30,000. Resume and references to Harry K. Honda.

Pacific Citizen, 941 E. 3rd St., #200, Los Angeles, CA 90013. Deadline: Dec. 23, 1988, or until candidate is selected.

9—Real Estate

ARIZONA

Prime Office Bldg.

FOR SALE

AAA National Tenants / NNN Leases

22,000 + Square Feet

SUN CITY, ARIZ.

(602) 931-6000 / B & B REALTY, INC.

Contact Rande Leonard

Classified Ads

9—Real Estate

COLORADO

320 ac Hunter's Paradise—Timber, exceptional views, old homestead, creek, springs. 1/4-mi Nat'l Forest, nr Steamboat. Great buy \$162,500. Terms. 640 AC Superb Hunting—Stream, springs, timber, views, Alpine Valley, elk breeding grounds, 2 cabins. Was \$480K, now \$285K. BROKER: (719) 574-3099.

KANSAS—USA—Mobile Home Developers.

80 Acre planned community for sale in Wichita, KS. 427 total lots, 92 currently developed and leased. Ready for expansion. Low interest financing available. \$600,000 and assume 7% debt. Great opportunity. Contact owners: Builders Inc, 301 North Main St., Ste 800, Wichita, KS 67202, Call Rebecca Way (316) 291-8345.

CALIFORNIA

OCEANFRONT NEAR Santa Cruz Yacht Harbor—One level home on fenced 2 lots offering safety, privacy & unobstructed whitewater, sand & harbor views. Offered at \$997,000. CONNIE PERRY at David Lyng & Assoc. (408) 668-0200 / 722-7796.

MONROE-31 ACRES INDUSTRIAL facing NY 17, 1 mile from K-Mart & Grand Union, zoned industrial.

70 acres zoned 150 single family building lots, sewer under property. Market value...\$100K, we are asking for only \$45K.

Call (914) 783-7033.

CALIFORNIA

220 Acres Prime Subdivision Land

Subject property is in the process of being annexed into the City of Bakersfield, CA. Has existing income producing crop (almond trees). \$2,900,000. Contact: Douglas Murray Karpe Associates, Realtors. (805) 832-1806.

Marina / Restaurant

w/200' FLOATING PALACE are on 2.2 acres of prime land w/2,000 ft. of waterfront. The deep water marina has unlimited potential for expansion. Property is located on the famous, scenic Severn River with a breathtaking view of Annapolis and the U.S. Naval Academy. Price: \$10,000,000. FRANK SARDINIA (301) 757-8114.

GLOUCESTER, MASS.

Oceanfront Antique Estate—formerly a grinding mill. 9800 sq. ft. of living space on 3 acres of water rights. 4 bdrms, 2 1/2 ba w/1000 sq ft great room in addition to the living room; with giant stone fireplace and wrap-around balcony. Unique indoor fish pond, 2000 sq ft of open living space on third floor. Additional large maid quarters above 2-car garage. Boat dock & deck, gas heat and electric generator backup make house almost self-contained. Near Boston. Price \$2.2 million.

Call: (617) 631-2551, USA.

Ask for Shirley.

NEW YORK

10,000 Acre Resort 5 Million U.S. Within an hour drive of Montreal, Burlington, VT, and Lake Placid and Plattsburg, NY. Fronts glacial Chateaugay Lake, includes 100-acre Bradley Pond. Contains 4 mountain peaks above 2,000 ft., 26 miles paved roads.

Timber value: \$1 million.

Contact: Henry Lassiter

(404) 968-4182/fax; (404) 968-4188

CALIFORNIA

1 of a Kind!! \$650,000

SECLUDED VALLEY MOUNTAIN RANCH ESTATE

60 acres completely surrounded by U.S. Forest. 1 mile off State Hwy on private paved road to beautiful log home of approx. 2,800 sq. ft. w/2 car garage, guest house, shop & barn. Features mountain spring water, underground sprinklers, beautiful oak grove. U.S. Forest grazing permit, 45 mins. to Riverside, 4,000 ft. elevation.

CLEAN MOUNTAIN AIR IS YOURS AT LAST. (714) 849-1674

NEW YORK

IN THE VILLAGE OF OLD WESTBURY, N.Y., AN HONEST 40-MINUTES FROM MANHATTAN ...

An elegant white Georgian mansion crowns four landscaped acres. Five years ago the resident owner refurbished this magnificent 75-year-old estate, including new roof, plumbing, underground wiring. Home features large center hall, paneled library, sunroom, lavish living room, formal dining room, butler's pantry, master suite with whirlpool and steam shower, 8 bdrms plus guest wing with 3 additional bdrms, and 5 fireplaces. Extensive grounds include slate terrace, 4-car garage and kennels. Resident owner prefers private direct sale at \$2,400,000. Contact Joel Auerbach at (516) 334-3800.

LOS ANGELES, CALIF.

ATTENTION! ATTENTION! AVAILABLE FOR SALE OR LEASE Magnificent Secluded Mansion

Through gates—a long tree-lined drive leads to this spectacular 3-story home on the Mulholland corridor (choice hideaway for rich or famous). Set on approx. 2 1/2 acres of wooded seclusion with hiking trails, and fruit trees. This home accommodates large gatherings with ease yet affords family & house guests their own privacy and space. Incredible views, gated courtyard. Pool & spa, 2-stall horse stable, and more. Room for tennis court. Offered at \$2,695,000. Also for lease at \$25,000/mo. Furnished.

Incredible investment opportunity! Also stunning broad beach home, 4 bdm + den offered at 1.2 million. Contact: CLAUDE DAUMAN, ALVAREZ, HYLAND & YOUNG • (213) 275-8021

9—Real Estate

CALIFORNIA

INDUSTRIAL LOCATION—Excellent price, 200 acres zoned ME (ind. est). All level land, plentiful road frontage plus rail head (S.P.). Good water area, power. \$2,250/acre (terms). Also 165 approved lots, 225 acres, beautiful Yerington area. WESTERN RANCH REAL ESTATE (702) 463-3333 / 463-4346.

SOUTHERN CALIFORNIA

SANTA MONICA CONDO

Spectacular ocean views in 3 directions from 14th floor. 2 BR, 2 BA, elegant St. Charles kitchen. All new decor. A/C, pool, spa, 24-hr. valet parking & switchboard. Partially furnished. \$525,000. By owner (213) 393-4756.

NEVADA

TWO PRESTIGIOUS EXECUTIVE OFFICES available within a professionally decorated suite in the hub of Las Vegas, Nevada's financial district. Suite to be shared with a tax specialist. May include shared receptionist, sec. serv., tele, fax & Ofc. eqmt. Full kitchen, priv restrm, cleaning services, & covered assigned parking. (702) 733-6612.

HAWAII, MAUI

Apt complex w/6 furnished units, all amenities included. Just steps to the white sandy beach. \$4 million, owner offers excel financing terms (\$2.5 million down balance carried at 10%). (808) 667-7636. Serious inquiries only.

PRIME OFFICE BUILDING FOR SALE

AAA National Tenants
NNN Leases; 22,000+ Square Feet
SUN CITY, ARIZONA
Call Randy Leonard, (602) 931-6000
B & B REALTY, INC.

MONTANA

Prime land for development

Approx 100 acres contiguous to City of Great Falls, near hospital, shopping center, college & business district, water & sewage available. \$15,000/ac. (406) 965-3974.

So. Calif. Office

\$18,500,000
× \$157/SF × 100% leased × 65% credit
tenants × 8.5% Cap rate. Principals only.
ALEX EGIDIO
(818) 346-1566

NEW YORK

PARK SLOPE EXCLUSIVE

Elegant elevated living. 2 magnificent 3300 sq ft residences have been created out of a landmark 1890 baronial home off Prospect Park. Each features private elevator, custom gourmet kitch, designer baths, WBF, C/AC and redwood deck. Lower duplex—offers formal living w/unique details and rare oak, tapestry walls, mural ceiling & ornate stained glass. Upper triplex—offers charm w/dramatic space incl LR w/30' vaulted skylit tower. Both available at \$900,000s.

ROBERTA FAULSTICK, VP
(718) 230-5500/622-3429.

Equal Housing Opportunity.



FOR SALE - 157 ACRES OF DEVELOPMENT PROPERTY

Located at NE corner of Lindsay & Ray Roads, Gilbert, Ariz.,

\$43,500 per acre, will discount for cash. For further information, call:

GINA SANNAR,

First Interstate Bank of Arizona, N.A.

(602) 271-6153

Courtesy to Brokers

9—Real Estate

CALIFORNIA

HOLLYWOOD HILLS ESTATE—3 bdrm, 4 1/2 ba, pool, spa, sauna and guesthouse. Master suite w/fireplace & private balcony. Over 1/2 acre of wooded grounds. \$999,000. Exclusive Realtors, Michael Fried, Bkr. (818) 761-4104.

JAY, OKLAHOMA

INDUSTRIAL SITE—Metal Bldg with 64,000 sq ft. located on 10 acres. Approx. 330 ft. of hwy frontage along US Hwy 59, located one mile north of the city of Jay, Okla.

For further info. Call: Mark Londagin,

(918) 786-2203.

SASKATCHEWAN, CANADA

By Owner: 45 Suite Apartment building in Saskatoon, \$1,200,000, mortgage \$830,000 at 10% for 3 years. With owner/management a \$370,000 investment will yield a net annual tax sheltered income of \$45,000 to \$60,000. Call Chuck or Ken at (403) 426-1965. Box 85 Pickardville, Alta, Canada T0G 1W0 for details.

CANADA

SUNSHINE COAST (2 1/2 miles west of Gibsons), home of the new OJI Pulp and Paper Mill. 19 site mobile home park, 3 revenue homes, 6 room lodge, 50 campsites on year round creek, 50-seat restaurant, approx 7 acres w/8 separate titles, waterfront w/boat launch, zoned for expanded development. Asking \$625,000 C.F. Jon McRae, Gibsons Realty Ltd. (604) 886-2277

Brookville-Laurel Hollow. New 8000 sf brick Col house on THE LANE, 5 bdrm, 7 baths, mag kitchen, LR, DR, grt rm, fam rm, fin bsmt, elevator, cedar deck, landscaped & more. Immed possess. \$1,295,000. Call builder day (516) 626-1850, eve/wknd (516) 626-0943.

CALIFORNIA

Extraordinary San Francisco VIEW MANSION

Best Pacific Heights location, 5 bdrm, 5 ba, panoramic views, extra large lot, heated pool, garage, servants qtrs. \$8,000,000. Stanfield & Co. (415) 346-3390, 2526 California St., San Francisco, CA 94115.

CONNECTICUT

GREENWICH HORSE FARM—5 acre horse complex w/7 box stall barn & lge carriage barn, exercise ring & turn out areas, incl dutch colonial w/4 BR, 3 1/2 bth, poss in-law apt above 2-car garage. Just reduced \$1,150,000.

NEW ENGLAND LAND CO.

(203) 661-6604 eves/wknds (203) 661-6017

CALIFORNIA

La Jolla Estate

On over 5 acres overlooking La Jolla and blue Pacific.

This outstanding 20,860 sq. ft., 6 BDRM Country Traditional features office suites, a 2-BDRM guest house, maid quarters, waterfall, 2 pools, nature trails, golf greens, a tennis court and much more.

Price: \$9,950,000

For more information, Contact:

WILLIS M. ALLEN CO.

(619) 459-4033

9—Real Estate

CANADA

INVESTMENT REAL ESTATE in Canada. Properties \$2-\$100 million. Gloria Realty Inc. Broker, 6900 Decarie, Montreal, Quebec, Canada H3X 2T8. (514) 735-6491. Fax: (514) 738-9387 c/o Mary Kramer or Gloria Labonte.

CALIFORNIA

ONE OF CALIF.'S TOP RATED R.V. CAMPGROUNDS & MHP—Sandy beaches, private lake, river frontage make this an ideal project. Room to expand. Only one hour from Bay Area. Strong upside+cash flow. Now \$5,400,000. CAM-LINV (415) 946-1147.

CALIFORNIA RANCHO MIRAGE BY OWNER

Outstanding location, professionally decorated, 3250 3BR, 3BA, 3-car garage. Large master suite marble entry. Priced \$309,000. Will negotiate for cash. (619) 328-1221 or write: 63 Sierra Madre, Rancho Mirage, CA 92270.

NORTH CAROLINA

OCEAN FRONT Communities include Topsail Reefs, Topsail Dunes, Ocean Bay, St. Regis, St. Moritz and Ship Watch townhomes and condominiums. Other resort properties include Bayshore Marina and Racquet Club and North Shore Country Club. We have Ocean Front Sound and Golf Course homesites and more at prices you can afford. 1 bdrm ocean front condos from \$49,900. Call today to arrange a visit. (800) 257-0021.

CENTURY 21 BY-THE-SEA.

LOS ANGELES, CALIF.

MAGNIFICENT 21-ACRE ESTATE

25 minutes from Downtown L.A. Located in 24-hr. guard-gated community of Bradbury Estates. 5,000 sq. ft. main house. Excellent condition. 3 guest houses w/3 bdrm & 2 baths each. Office complex with 4 separate offices. Modern horse facilities, pool, spa. Broker cooperation. Brochures on request.

Most fabulous buy in L.A. today!

\$6,250,000. (818) 793-4134

M. FELDSEHER

IDAHO

Northern Idaho Timberland

FOR SALE

5,400 acres prime timberland with old growth zoned for 20 acre parcels. Some lake frontage on Priest Lake. Sewer system planned to be constructed through 2 miles of the property. \$6,500,000. Would consider taking corporate jet in trade (\$1,500,000 max value) plus cash.

Contact Tim Blixseth

(503) 274-2300.

10—Rental

For lease corner building 2,500 square feet occupied by a drug store for many years but there are no merchandise to buy and no old fixtures to buy. Ample stock room, kitchenette elevated prescription area. Selling area 33x65 feet located in Delano, CA population 20,000 2 independent drug stores, one Thrifty one in Von's grocery chain. Agricultural community on freeway 99, 150 miles north of L.A. and 80 miles south of Fresno in Kern County.

E.H. Takaki (415) 462-4175

National Business & Professional Directory

Your business card in each issue for 25 issues is \$15 per line, three-line minimum. Larger type (12 pt.) counts as two lines. Logo same as line rate as required.

Greater Los Angeles

ASAHI TRAVEL

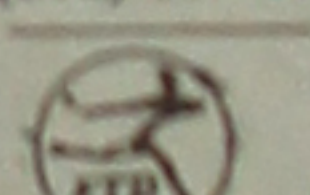
Supersavers, Group Discounts, Apex Fares
Computerized-Bonded
1111 W. Olympic Blvd., Los Angeles 90015
(213) 623-6125/29 • Call Joe or Gladys

Billiards

Video Games



4335 W. Imperial Hwy, Inglewood 90304
(213) 677-2965 Dick Obayashi



FLOWER VIEW GARDENS

Flowers, Fruit, Wine & Candy
Citywide Delivery/Worldwide Service
1801 N. Western Ave., Los Angeles 90027
(213) 466-7373 / Art & Jim Ito

Dr. Darlyne Fujimoto

Family Optometry & Contact Lenses
11420 South St., Cerritos, CA 90701
(213) 860-1339

MAX A. SKANES, Atty-at-Law, (213) 390-7719, Experienced in Employer Compliance, Amenity, Citizenship, Petitions, Other Legal Matters.

TAMA TRAVEL INTERNATIONAL

Martha Igarashi Tanashiro
One Wilshire Bldg., Ste 1012
Los Angeles 90017; (213) 622-4333

TOKYO TRAVEL SERVICE

530 W. 6th St. #429
Los Angeles 90014 (213) 680-3543

YAMATO TRAVEL BUREAU

200 S San Pedro St., #502
Los Angeles 90012 (213) 610-0333

Orange County

Victor A. Kato

(714) 841-7551 • Exceptional Real Estate
17301 Beach Blvd., Suite 23
Huntington Beach, CA 92647

Kobayashi Entertainment

Any Occasion (714) 543-4208

Dr. Ronald T. Watanabe

CHIROPRACTOR
Santa Ana Medical Arts Center
1125 E. 17th St., Suite N400
Santa Ana, CA 92701 (714) 836-4333

North San Diego County

Quality

FRYER

Continued from Page 4

hold golf tournaments, sometimes get together for the holidays, put out a lively newsletter, and enjoy each others' company and the pleasure of speaking English. They have friends and family back in the States. They're interested in what's going on back there, interested in matters like the election campaign, and the inside story of how redress, the mission impossible, was achieved.

They wait for the arrival of Pacific Citizen, which comes by slow boat and may be a couple of months old when it shows up. But no one has discovered a way to get earlier delivery, and the delay doesn't seem to be all that irritating because the non-news contents are fresh.

You can take the American out of his country, but it's difficult to get his country out of the American who has gone abroad.

1988 HI Boxscore

THE 1987 TOTALS
Display Ads 8,373 col inches
One-Line Greetings 757
JACL-HI Project 24 units

1988 DISPLAY ADS
Nov. 14: 2,726" (32.5%)
The bulk rate chapters set in bold. Legend:
60 (min.) 3 pg
90 1 pg
180 2 pg
180 1-liners

Alameda	6	Parlier	4
Arizona	2	Pasadena	(g) 11
Arkansas Vly	2	Philadelphia	()
Berkeley	360	Placer County	()
Boise Vly	()	Pocahontas/Blackfoot	()
Carson	9	Portland	()
Chicago	128	Providence	()
Cincinnati	1	Puyallup Vly	()
Cleveland	6	Reedley	()
Clovis	6	Reno	()
Coachella Vly	()	Riverside	(g) 14
Contra Costa	()	Sacramento	180
Cortez	()	St. Louis	()
Dayton	()	Salinas Vly	405
Delano	()	Salt Lake	()
Detroit	()	San Benito	()
Diablo Vly	()	San Diego	()
Downtown LA	()	San Fern Vly	()
East LA	9	San Francisco	()
Eden Twn	()	San Gab Vly	()
Florin	()	San Jose	()
Fl Lupton	()	San L Obispo	()
Fowler	()	San Mateo	()
Fremont	9	Sanger	()
French Camp	180	Sta Barb	()
Fresno	180	Sta Maria Vly	()
Gardena Vly	8	Seattle	6
Gilroy	()	Seabrook	()
Golden Gate	()	Selma	9
Gtr LA Sgl	2	Sequoia	()
Gtr Pas Area	()	Snake River	360
Gresh-Tr	()	Solano City	()
Hawaii	()	Sonoma City	()
Hollywood	()	So Bay	()
Hoosier	()	Spokane	()
Houston	()	Stockton	180
Idaho Falls	()	Torrance	90
Imperial Vly	()	Tri-Valley	()
Japan	()	Tulare City	()
Lake Wash'n	9	Twin Cities	()
Las Vegas	()	Venice-Culver	()
Latin American	()	Ventura	180
Liv-Merced	()	Wasatch FN	()
Lodi	()	Watsonville	()
Marin City	()	West LA	()
Marina	()	West Valley	()
Marysville	()	White Riv Vly	()
Mid-Columbia	48	Wishire	()
Mid-Hi	()		
Milwaukee	()		
Monterey Pnsla	()		
Mt Olympus	()		
New England	9		
New Mexico	72		
New York	()		
Nikkei Ldr A	()		
No San Diego	()		
Oakland	()		
Olympia	()		
Omaha	270		
Orange City	()		
Pacific	()		

ONE-LINE GREETINGS: 37 (4.9%)	
Boise Valley	Pocahontas
Cincinnati	Riverside
Cleveland	St. Louis
Cortez	San Benito
Dayton	Sta Barbara
Delano	Seabrook
Detroit	Seattle
Diablo Valley	Sonoma City
Fl Lupton	Spokane
Gresh-Tr	Tulare City
Houston	Twin Cities
Milwaukee	Venice-Culver
Mt Olympus	Wash, DC
Olympia	West LA
Pasadena	West Valley
Philadelphia	White Riv Vly
Placer City	

JACL/HI PROJECT: 6 (33%)	
7—Student Aid	—Redress Fd
—Abiko Schol	1—P.C. Typesetter Fd
—LEC Program	—Endowment Fd

bbb/115



JANM PRESERVATION ARCHITECTS — The Los Angeles-based architectural and interior design firms of Woodford Parkinson Wynn & Partners and A.T. Heinsbergen & Co. have been selected to serve as the historical preservation team of the Japanese American National Museum (JANM). Since the former Nishi Honganji Buddhist Temple in Los Angeles, the future home of the museum, is on the national registry of historical sites, JANM will renovate the building to meet the Secretary of Interior's standards. The firms join the already working architectural team of K.N.S.U. Joint Venture Architects. JANM is scheduled to open in 1990. Pictured (l to r) are Jim McElwain, project architect; Doug Wynn, president of Woodford partners; Tak Shida, JANM trustee and co-chair of the museum's facility development committee; restorationist Tony Heinsbergen; and Bill Ellinger, project manager.

'CHRISTMAS CHEER' FUND DRIVE

Continued from Page 5

Masao Minabe, Mr. & Mrs. Ted Mikitani, Mike M. Mitani, Nellie Mitani, A. Mitani, Mr. & Mrs. Kenji Mitsuhashi, Dr. David M. Mura, Mr. & Mrs. Reiso Miyamoto, Sam S. Miyashiro, Hiro Mizuki, Kei & Yuki Mochida, I. Morita, Geo. Morry, Nancy Morita, Robert Murakawa, Mr. & Mrs. Tadashi Murakawa, Mr. & Mrs. Masao Murayama, Henry Nagahori, Kime Nagai, Mr. & Mrs. Michio Nagai, Mas Nagami, Michi Nagasugi, Masaharu Nagata, Mr. & Mrs. George Naito, John I. Naito, Mr. & Mrs. Roy Nakagawa, Tom T. Nakagawa, Tami Nakaguchi, Yo & Tosh Nakahiro, George Nakamura, Teruko Nakamura, Mr. & Mrs. G. Nakashiki, F. H. Nakano, M.D., Ruby K. Nakano, Mr. & Mrs. John J. Nakao, Mr. & Mrs. Dan Nakashima, Haruko Nakasora, Ralph Nakasugi, Mr. & Mrs. H. Nakasuchi, Sonoko Nakasuchi, Mr. & Mrs. Lloyd T. Nakayama, Tony Nakazaki, Mr. & Mrs. Joe Nantoku, K. Naruse, Grace Ng, Nelson, Inc., Ruby Nishio, Art S. Nishisaka, Jane Nitta, Ben Nobori, Noboru Nomura, Gram Noriyuki, Hironobu Noshita, Mr. & Mrs. Arthur Nozaki, Roy Nure, Mr. & Mrs. Zenyo Oba, Dr. & Mrs. Robert T. Oba, Mary S. Oda, George Ogawa, John Ohta, Sammy O. Betty Oka, George A. Okamoto, Dorothy M. Okano, Ruth S. Okazaki, Louis M. Oki, Joe Okimoto, Mr. & Mrs. Richard Okinaga, Mr. & Mrs. Jou Okitsu, Mr. & Mrs. Sumi Okubo, Franya Ono, James T. Oshiro, Frank S. & Kazuko Ota, Chester H. Otani, Florence M. Ozaki, Harry & Jane Ozawa, Roy T. Ozawa, Ralfi Bussan, Inc., Dr. & Mrs. C. Robert Rypko, Mr. & Mrs. Taro Saicho, Henry Saito, John Takeshi Saito, Mr. & Mrs. David T. Sakai, George M. Sakai, B. Sakata, Chieko Sakuda, Mr. & Mrs. Tadao Satow, Mr. & Mrs. T. Sekiguchi, Frank K. Shigekawa, Fumi T. Shigetomi, Ukio Shimada, T. Shimizu, Kenneth Shimokochi, Sam & Pat Shimomura, Noboru Shimotsuka, M. M. Shimmi, Mr. & Mrs. Jimmy H. Shode, T. J. Shirashi, Saku Shirakawa, Katsumi Shirohaga, Jack & Miyo Shundo, Mr. & Mrs. George Sugimoto, Mike Sugita, Shizuko Sumi, John T. Sumi, Robert Suzuki, Clarence Tabata, Ayako Tagashira, Mr. & Mrs. Taney Tajiri, Mas & Michiko Takahashi, Shigeru Takahashi, Mr. & Mrs. Noboru Takaki, Robert N. Takamoto, Julie Takada, Mr. & Mrs. T. Takenaga, Paul & Lani Takeshita, Roger A. Tamaki, Mr. & Mrs. Sam Tanaka, Mr. & Mrs. Shigeo Lonnie Tanaka, Mr. & Mrs. Thomas Tanaka, Yoshiyoshi Tanaka, Kojo Tatsu, Mr. & Mrs. Tohru Tatsu, K. Ernest Teraso, D.D.S., Kenneth M. Teshima, D.P.M., Mr. & Mrs. N. R. Takamoto, Transamerica Foundation, K. Tsuji, Elmer M. Uchida, Mrs. & Mrs. Morey K. Umamoto, Ernest Urita, Masashi Urita, M.D., Tei Utsunomiya, Mr. & Mrs. Leon R. Uyeda, George Eji Uyemura, Mr. & Mrs. Mas Uyeyasu, Fred I. Wada, Grant Wada, Wakayama Fujin Club, Eddie Masao Wakimoto, B.J. Watanabe and Ron Osajima, George Watanabe, Patricia K. Watanabe, Thelma Watanabe, Betty M. Westerfield, Wendell & Vicki Wong, Cheri Yago, Mr. & Mrs. Tats Yago, David & Alice Yakura, Mary Yamada, Mr. & Mrs. Tak Yamada, Mr. & Mrs. Isaac Yamagata, Jim Yamaguchi, Tokyo Yamaguchi, Mr. & Mrs. Geo. Yamamoto, John R. Yamamoto, Daniel & Nancy Yamasaki, George M. Yamasaki, Ed Yamashita, Tom T. Yanaga, Koichi Yanagizawa, Miwako Yanamoto, Nori Yano, Pauline A. Yano, Mr. & Mrs. Chester R. Yasui, Mr. & Mrs. Geo. Yasukochi, Julian Yee, Jim Yamamoto, Bill Y. Yokoyama, Tom M. Yonemura, Mr. & Mrs. Jack Yoshimi, Mr. & Mrs. Masato Yoshimoto, Mitsuye Yoshinaga, Kenneth Takeshi Yuge, Yuzo's Dental Lab, Roy T. Zukeran.

\$30	Mr. & Mrs. George Aratani, Tom Asato, Fred T. & Elsie M. Dozen, Masako Ishoka, Eiichi Koshimizu, Mr. & Mrs. Matt Y. Matsuda, Roy T. Shimizu, Frances Sugiyama.
\$35	Y. M. Hayase, R. E. Kuroda, Akira Nishizawa, Minoru Ota, Robert G. Yamamoto, Dr. K. Stanley Yamashita.
\$40	Ray & Nancy Hesse.
\$50	Larry H. Abe, Richard Y. Akasaka, Mr. & Mrs. Joe S.

CHAPTER PULSE

GREATER L.A. SINGLES

• Annual Scholarship Fund Dance, Nov. 19, 7:30 pm—midnight, Japanese Cultural Institute, 16215 Gramercy Pl., Gardena. Music by Bob Bergara's Band. Cost: \$10 in advance, \$12 at the door. Info: Bea, 213 935-8648 or Emy, 213 324-2669.
• Christmas dinner/dance, Dec. 17, Alondra Country Club, 16400 S. Prairie Ave., Lawndale. 6 pm: No host cocktails. 7 pm: Dinner. Cost: \$22 (after 12/10, \$25). Music by Taka. Info & reservations: 714 637-9274 or 213 477-6997 or 714 893-2158.

JAPAN

• Christmas party dinner/dance, Dec. 10, 6-9 pm, Cafe Bon Cinq, Akasaka Twin Tower basement. Features a live band, buffet, door prizes and raffle. Reservation deadline: Dec. 1. Members, ¥5,000; non-members, ¥6,000. Exit Toranomon station (Ginza Line) & walk back toward Akasaka (10 min.) Info: Barry Saiki, (03) 503-6451 or Bert Fuji, (03) 321-5141.

MILWAUKEE

• Christmas Party, Dec. 11, noon, Mitchell Park. Family of 2: Bring a main dish. Family of 3 or more: Bring a main dish plus cookies, bars, a salad or an item for the drawing. Reservation deadline: Dec. 2. Info: Barb Suyama, 414 251-2279, Margaret Igowsky, 414 643-5999, or Lynn Lueck, 414 421-0992.

NCWNPDC

• Redress forums featuring JACL-LEC Strategy Chair Grant Ujifusa. Nov. 19: 2-4 pm, James Moore Theatre, 1000 Oak St., Oakland. Info: Mike Hamachi, 415 837-8031 (eve.) or Tony Yokomizo, 415 530-7850 (eve.). Nov. 19: 7-9 pm, South Alameda Buddhist Church, 32975 Alvarado-Niles Rd., Union City. Info: Ted Inouye 415 797-3075.

SAN FERNANDO

• "Do Children of Mixed Marriages Have Special Concerns?" Nov. 19: 6:30 pm \$7 Chinese dinner, 7:30 program, San Fernando Valley Japanese American Community Center, 12953 Branford St., Pacoima. Speakers include Dr. Amy Iwasaki Mass and Kay Kokubun, director of the Los Angeles County Asian Pacific Community Service Center. Dinner reservations required: 818 899-9092.

Items publicizing JACL events should be typewritten (double-spaced) or legibly hand-printed and mailed at least THREE WEEKS IN ADVANCE to the P.C. office. Please include contact phone numbers, addresses, etc.

1989 TANAKA TRAVEL TOURS
EXCEPTIONAL VALUE • TOP QUALITY TOURS

FLORIDA/EPCOT (incl. Space Ctr.) & NEW ORLEANS (9 dys) FEB 25
MEXICO (Taxco/Yucatan pyramids/Cancun) SheratonHills (8 dys) MAR 7
JAPAN SPRING ADVENTURE (Hong Kong extension) (13 dys) APR 10
IMPERIAL CHINA (Beijing, Shanghai, Xian, Guilin, etc.) (17 dys) MAY 12
CANADIAN ROCKIES/VICTORIA (very scenic) (8 dys) JUN 14
JAPAN SUMMER (Jpn. Inn & West. style accom, HKG ext) (11 dys) JUN 26
FANTASTIC AFRICAN KENYA SAFARI (11 dys) AUG 2
GRAND EUROPE VISTA (7 countries) (17 dys) SEP 9
EAST COAST & FALL FOLIAGE (2 departure dates) (10 dys) OCT 2 & 9
JAPAN AUTUMN ADVENTURE (Hong Kong extension) (14 dys) OCT 9
FAR EAST (Taiwan/Singapore/Bangkok/Penang/HKG) (14 dys) NOV 5

— CALL OR WRITE TODAY FOR OUR FREE BROCHURES —

TANAKA TRAVEL SERVICE
441 O'FARRELL ST., SAN FRANCISCO, CA 94102
(415) 474-3900

Japanese American Travel Club
ENDORSED BY THE NATIONAL JACL
250 E. 1st St., Suite 910, Los Angeles, CA 90012

ASK for BILL or SAM! Hours: Mon-Fri 9-4; Sat by Appointment Only
Toll Free: (800) 877-8777 (ext. 215); (213) 624-1543

DELUXE TAUCK HAWAII TOURS

13 dys 5-ISLAND HAWAII VACATION \$2,275
Deluxe ocean front hotels sharing twin with 4 nights at the ROYAL HAWAIIAN HOTEL/Oahu, 1 night at the KALUA KOI RESORT/Molokai, 2 nights at SHERATON MAUI/Maui, 2 nights at ROYAL WAIKOLAN/Hawaii, 2 nights SHERATON MIRAGE PRINCEVILLE/Kauai, and 1 night at WESTIN KAUAI LAGOON on Kauai, plus 29 meals; round trip airfare to Honolulu — extra.

9 dys 3-ISLAND HAWAII HOLIDAY \$1,595
Deluxe ocean front hotels sharing twin with 3 nights at the HILTON HAWAIIAN VILLAGE-Rainbow Tower/Oahu, 2 nights at SHERATON MIRAGE PRINCEVILLE/Kauai and 3 nights at STOUTER WAIKOA BEACH RESORT/Maui plus 17 meals; round trip airfare to Honolulu — extra.

ECONOMY HONOLULU

8 dys/7 nights WAIKIKI HOLIDAY by PLEASANT HAWAIIAN \$359
Sharing twin with 7 nights at PLEASANT HOLIDAY ISLE or selected OUTRIGGER HOTELS, round trip airfare from Los Angeles with transfers & baggage tips.

7 nights at HILTON HAWAIIAN VILLAGE including round trip airfare from Los Angeles, transfers & flower lei greeting. Full color memory album (one per room) and ONE-DAY rental car from DOLLAR CAR RENTAL, sharing twin \$809
Same as above but at the HYATT REGENCY WAIKIKI \$684
\$151 worth BONUS VALUE PAK — ONE FREE PER ROOM available to above PLEASANT HAWAIIAN HOLIDAY TOUR PACKAGES.

INTERNATIONAL - DOMESTIC - YOBIYOSE
COMMUNITY
TRAVEL
ARC-IATA Appointed
*Fares subject to change
RAILPASS - HOTEL - RENT-A-CAR

TOKYO RT \$525
ow \$325*
653-0990
5237 College Ave., Oakland, CA

AN OPEN INVITATION FOR ALL TO PARTICIPATE
in a very special 15-Day personalized tour of historic Alsace, France.
Sites of Famous WW1 and WW2 Battles
and dedication of the Peace and Freedom Trail, the French testimony to the U.S. 100th/442nd Regimental Combat Team Nisei veterans.

July 7-13, 1989: BRUYERES, Epinal, Biffontaine, LaBresse, Strasbourg, Struthoff, Kintzheim, Saint-Die, Gerardmer, Verdun; July 14-17: PARIS: Bastille Day celebration ceremonies; French Revolution Bicentennial celebration ceremonies; free time for museums and shopping.

Departures: Tour A; July 5 or July 6 Total cost: \$3,456
Tour B; July 1 or July 2 Total cost: \$3,523

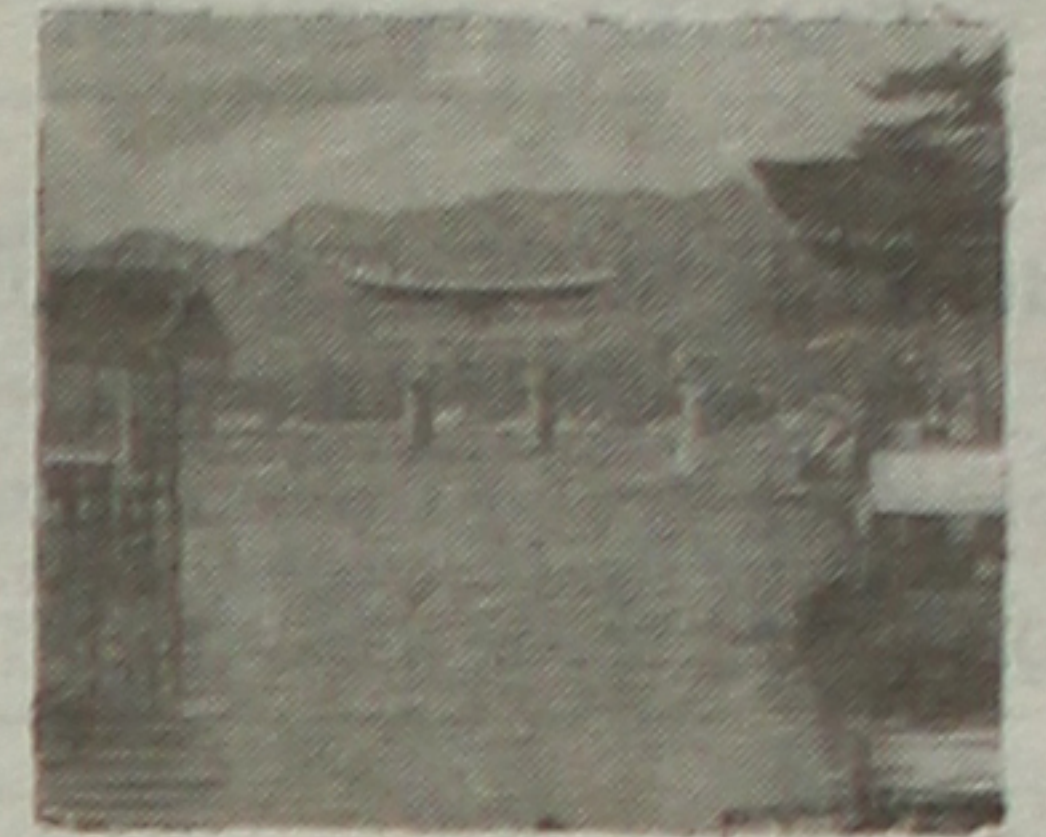
Air Arrangements: NIPPON TRAVEL AGENCY PACIFIC INC., Redwood City, Calif. For more information call: Rudy Tokiwa, coordinator, (408) 733-7692. Reservation deadline: December 15, 1988.

1989 West L.A. Travel Program

Administered by WLA Travel, Inc.

FOR JACL MEMBERS, FAMILY & FRIENDS

Airfare: LAX-TYO-LAX — \$578 plus tax



Torii Gate, Mijajima

(Revised Oct. 21, 1988)

1989 GROUP TOURS

- #1 Aspen Ski Trip
Jan 7 - Jan 14
Phyllis/Galen, escorts
- #2 Hokkaido Snow Festival
Feb 4 - Feb 13
- #3 South America Tour
Lima, Machu Picchu, Santiago, Buenos Aires, Iguassu Falls, Rio, Optional Sao Paulo, Etc.
Mar 1 - Mar 15
Masako/John, escorts
- #4 Japan Cherry Blossom Tour
Mar 26 - Apr 7
Ray, escort
- #5 Best of Florida/Epcot
April 28 - May 5
- #6 China Tour-10 Days w/Hong Kong
May 4 - May 14
- #7 Historic East
May 5 - May 14
- #8 Caribbean Cruise
May 27 - Jun 4
Toy/Eric, escorts
Optional 4-Day Walt Disney World/Epcot
Jun 4 - June 7
- #9 Ura-Nihon Tour
May -27 - Jun 8
Ray, escort
- #10 Popular Europe Panorama
Jun 5 - Jun 21
Bill, escort
- #11 Japan Basic Tour
June 16 - Jun 28
- #12 New Mexico/Carlsbad Cavern
Jun 10 - Jun 17
- #13 Eastbound Explorer Ireland/Britain Tour
Jul 9 - Jul 24
Toy, escort
- #14 National Parks & Canyon Country Tour
Jul 1 - Jul 12
Yuki, escort
- #15 Alaska/Yukon
Jun 29 - Jul 11
Masako, escort
- #16 Scandinavia & Russia
Jul 20 - Aug 10
- #17 Canadian Rockies Tour
Aug 8 - Aug 19
Yuki, escort
- #18 Japan Festival Tour
August
- #19 Portugal/Spain/Morocco Tour
September
Hidy/Jiro, escort
- #20 New England/Canada Fall Foliage Tour
Oct 3 - Oct 17
- #21a Japan Basic Tour
Oct 7 - 21
Ray, escort
- #21b LA-Nagoya Festival Tour
Oct 7 - Oct 21
Toy, escort
- #22 Australia/New Zealand 17 Days Tour
Oct 28 - Nov 13
- #23 Africa-Nile Cruise
Nov 8 - Nov 23
Toy, escort
- #24 Kuala Lumpur/Penang/Singapore/Bangkok Tour
Nov 9 - Nov 24
Ray, escort
- #25 Shopping Tour, HKG/BKK/SEL
Nov - 16 - Nov 25
- #26 Japan Holidays Excursion
Dec 23 - Jan 3
George, escort
- #27 Hawaii-3 Islands Vacation.
Kona, Maui, Honolulu
Apr 1 - Apr 7
Toy, escort
- #28 Puerto Vallarta Vacation
Thanksgiving Week-end
Nov 22 - Nov 27
Masako, escort

For information, brochure, write to:

West L.A. TRAVEL12012 Ohio Ave.
Los Angeles, CA 90025
(213) 820-5250